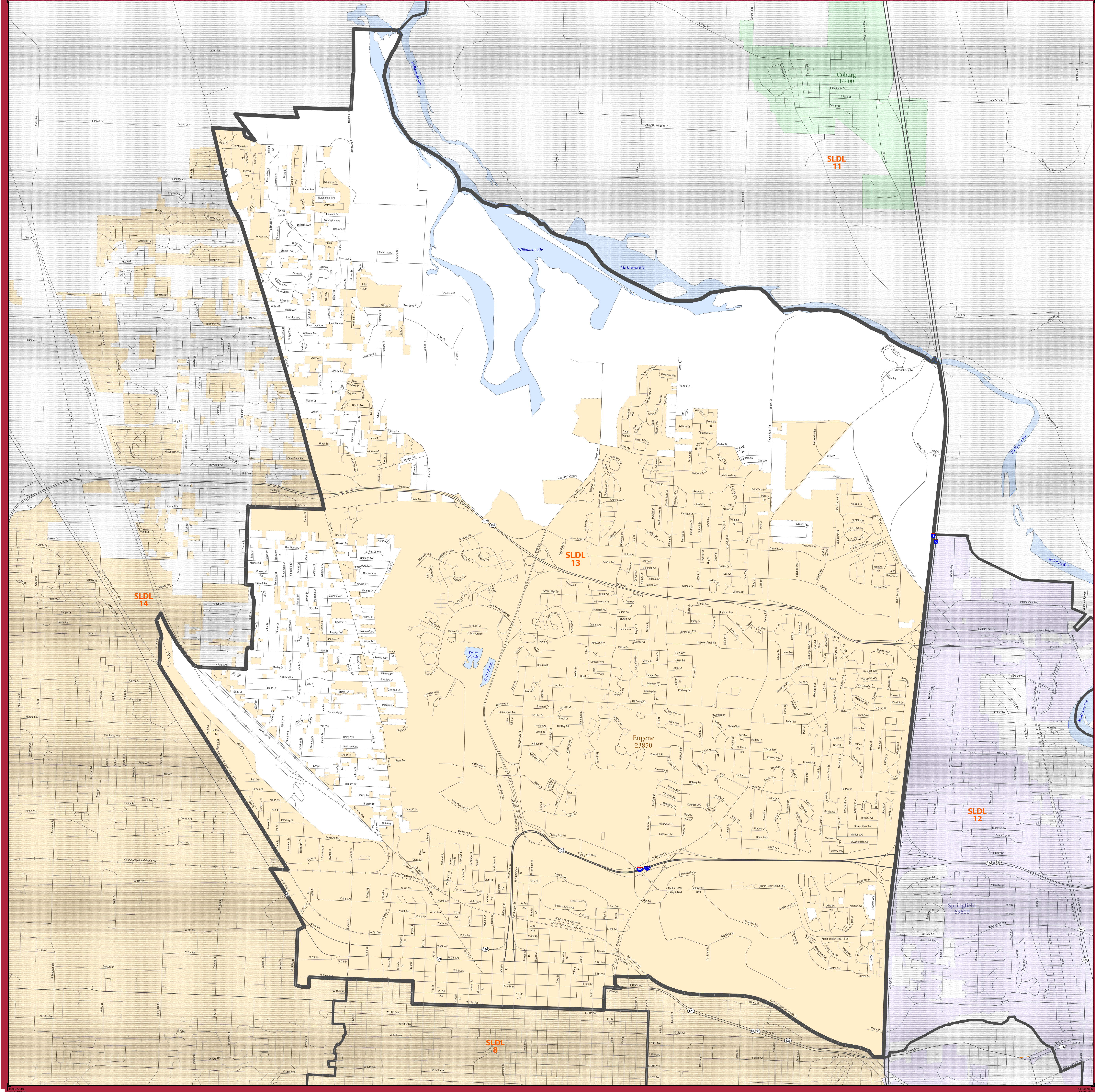


STATE LEGISLATIVE DISTRICT REFERENCE MAP: State House District 13 (Oregon)



LEGEND

SYMBOL DESCRIPTION	SYMBOL	SYMBOL	SYMBOL	DESCRIPTION	SYMBOL
International	--- ---	CANADA		Water Body	Blue Fill
Federal American Indian Reservation	Grid of Dots	L'ANSE RES 1880		U.S. Highway	Orange Line with Shield
Off-Reservation Trust Land	Grid of Dots	T1880		State Highway	Red Line with Shield
State American Indian Reservation	Grid of Dots	Tama Res 9400		Other Road	Thin Grey Line
State Legislative District - Lower (House)	Thick Orange Line	SLDL 94		Railroad	Black Line with Cross-Ticks
State (or statistically equivalent entity)	Thick Dashed Line	NEW YORK 36			
County (or statistically equivalent entity)	Thin Solid Line	ERIE 029			
Minor Civil Division (MCD)	Thin Dashed Line	Bristol town 07485			
Consolidated City	Thick Dotted Line	MILFORD 47500			
Incorporated Place ²	Color Swatches	Davis 18100			
Census Designated Place (CDP) ²	Color Swatches	Incline Village 35100			

Where international, state, county, and/or MCD boundaries coincide, the map shows the boundary symbol for only the highest-ranking of these boundaries.

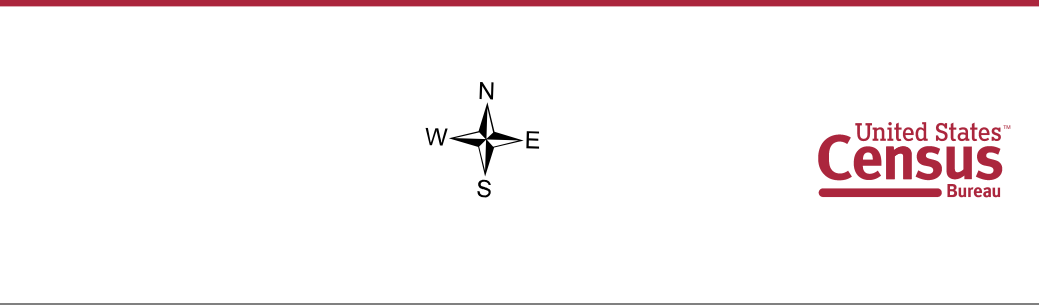
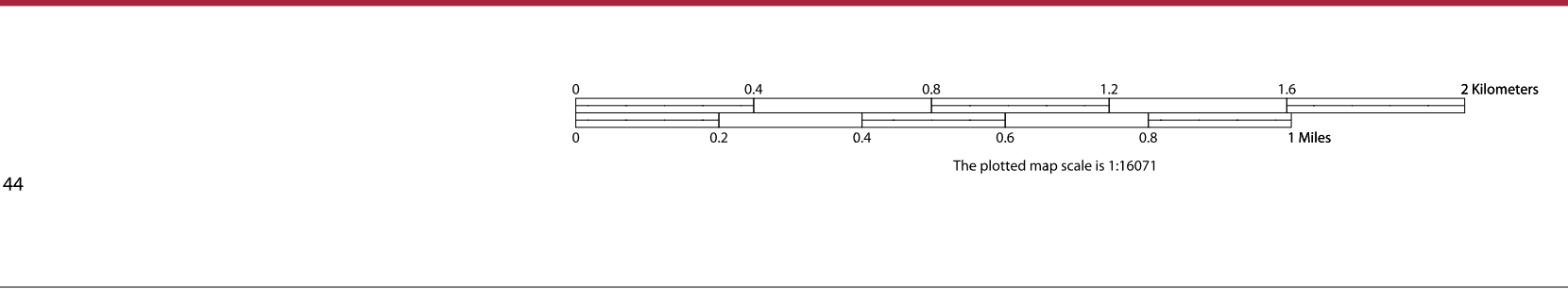
¹ MCD boundaries are shown in the following states in which some or all MCDs function as general-purpose governmental units: Connecticut, Illinois, Indiana, Kansas, Maine, Massachusetts, Michigan, Minnesota, Missouri, Nebraska, New Hampshire, New Jersey, New York, North Dakota, Ohio, Pennsylvania, Rhode Island, South Dakota, Vermont, and Wisconsin. (Note that Illinois and Nebraska have some counties covered by nongovernmental precincts and Missouri has most counties covered by nongovernmental townships.)

² Place label color corresponds to the place fill color.
Label colors: Davis Davis Davis Davis Davis

State legislative districts are delineated based on the results from the 2010 Decennial Census, all other legal boundaries and names are as of January 1, 2010. The boundaries shown on this map are for Census Bureau statistical data collection and tabulation purposes only; their depiction and designation for statistical purposes does not constitute a determination of jurisdictional authority or rights of ownership or entitlement.

Geographic Vintage: 2010 Census (reference date: January 1, 2010)
Data Source: U.S. Census Bureau's MA/TIGER database (BAS13)
Map Created by: Geography Division: May 18, 2013

Projection: Albers Equal Area Conic
Datum: NAD83
Spheroid: GRS 80
1st Standard Parallel: 42 42 46
2nd Standard Parallel: 45 34 55
Central Meridian: -120 34 56
Latitude of Projection's Origin: 41 59 44
False Northing: 0



PARENT SHEET 1
Total Sheets: 1
Index Sheets: 0
Parent Sheets: 1

NAME: State House District 13
ENTITY TYPE: State Legislative District - Lower (House)
ENTITY CODE: 013
ST: Oregon (41)
CO: Lane (039)