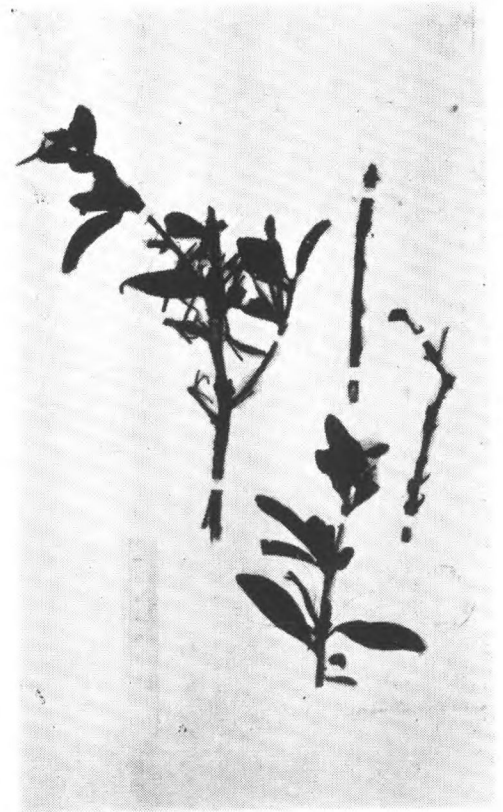
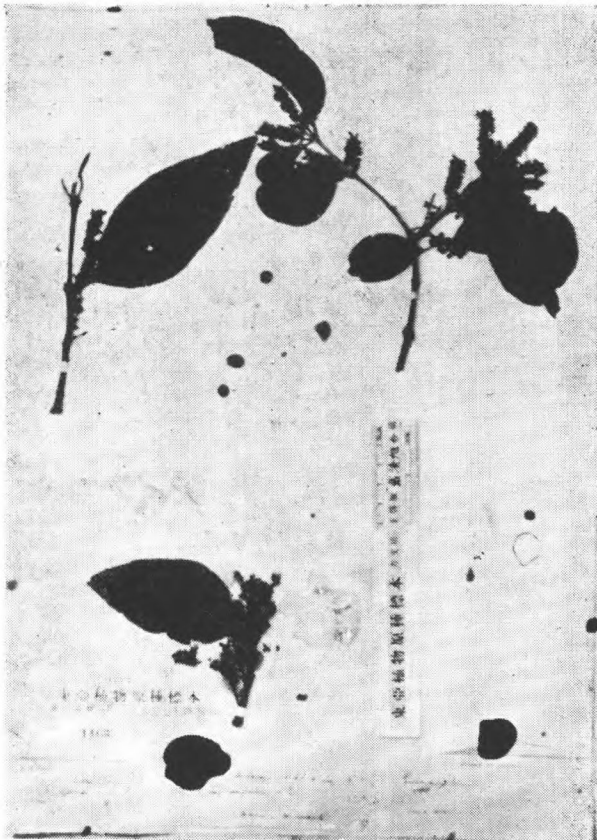


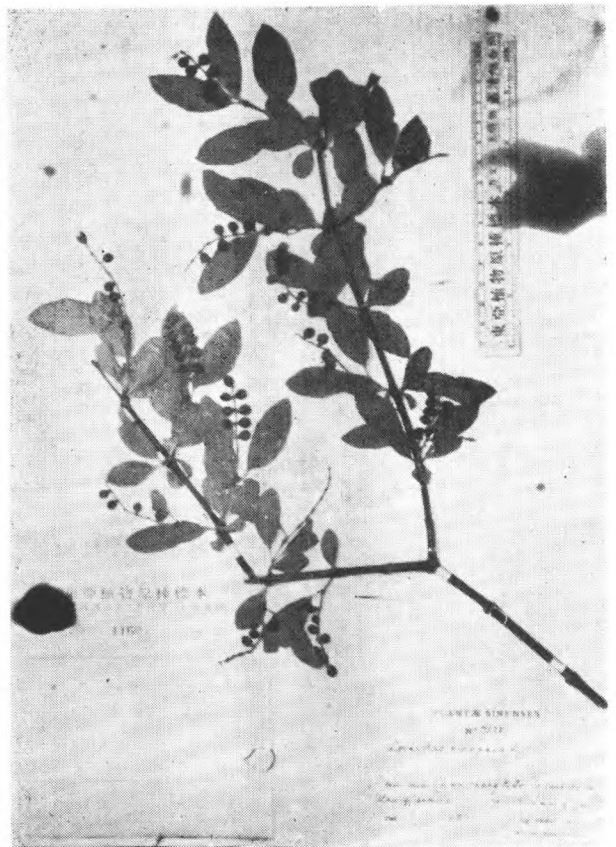
Loranthus Calorea Diels var. *Fargesii*
Lecte.
Wils. (Veitch) 4441 四川西部



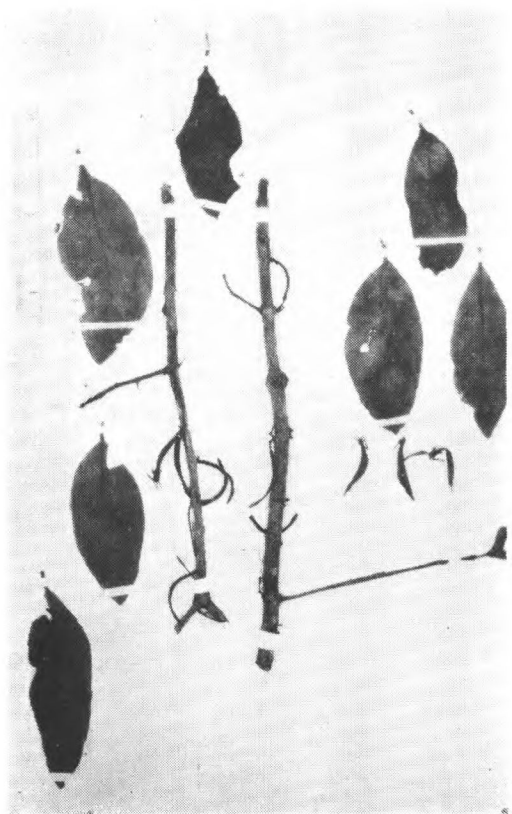
Loranthus Delavayi (Van Tiegham) Engl.
gl.
Forr. 5622 云南



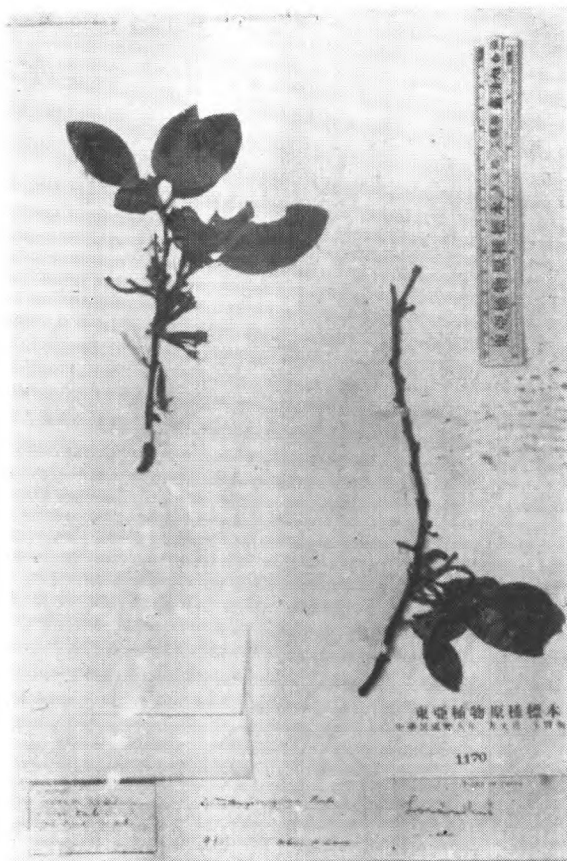
Loranthus Delavayi var. *latifolius* Van
Tiegham
Henry 12892 云南



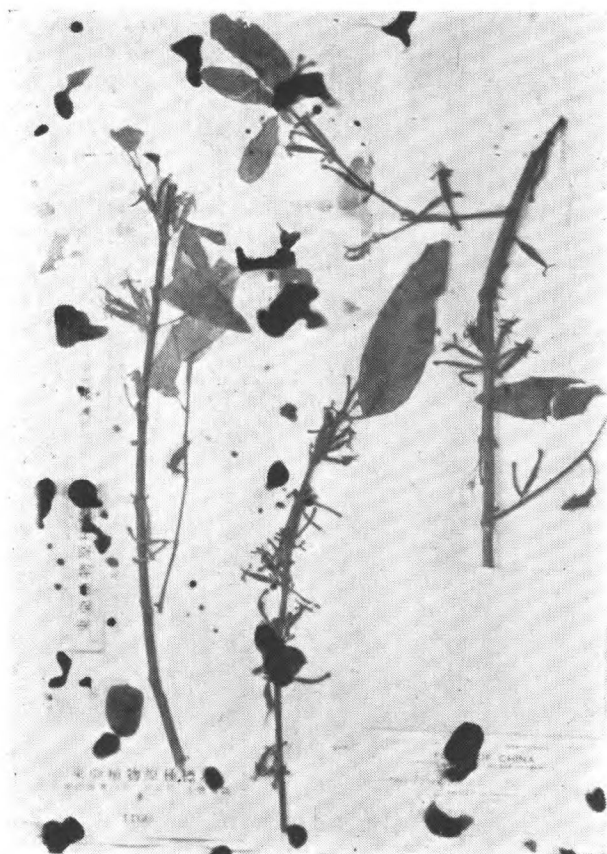
Loranthus europaeus Jaiquin
H. Smith, 7528 山西



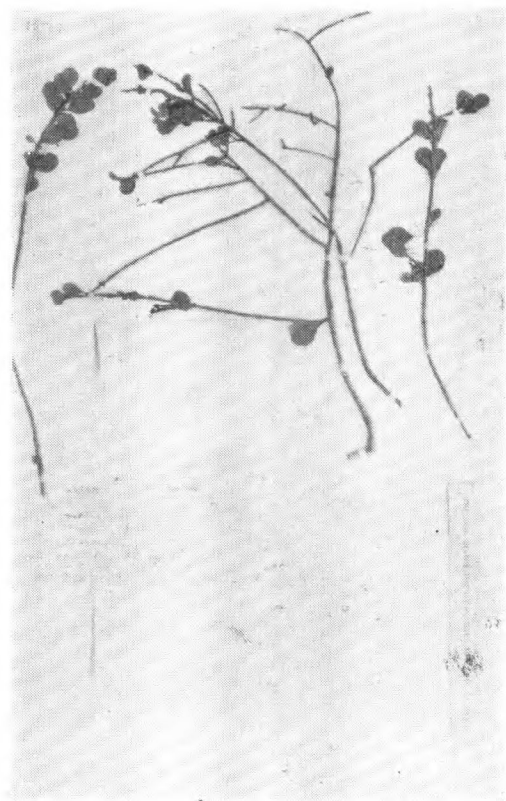
Loranthus estipitatus Stapf
Henry 10057 (type.) 云南思茅



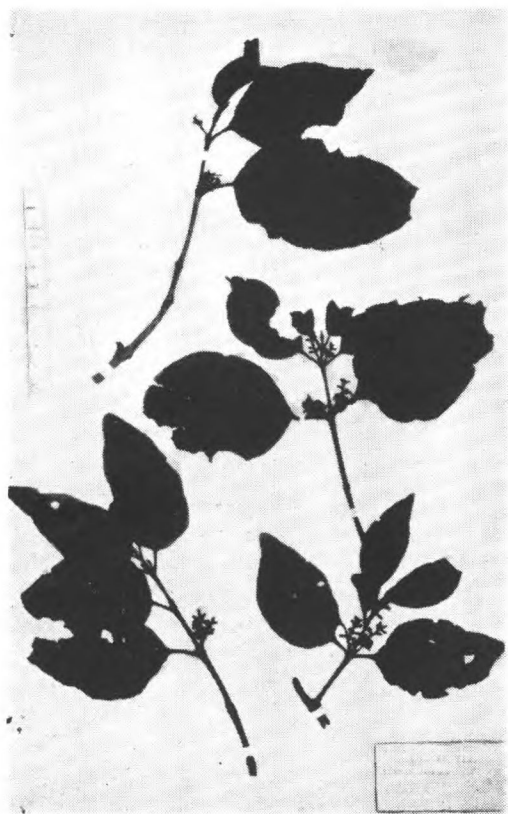
Loranthus ferogineus Roxburgh
Henry 9947 云南(Mele-H (Hsien) 弥勒



Loranthus Levinei Merrill
C. O. Levine 3321 广东



Loranthus notothixoides Hance.
Henry 22169 (type.) 海南



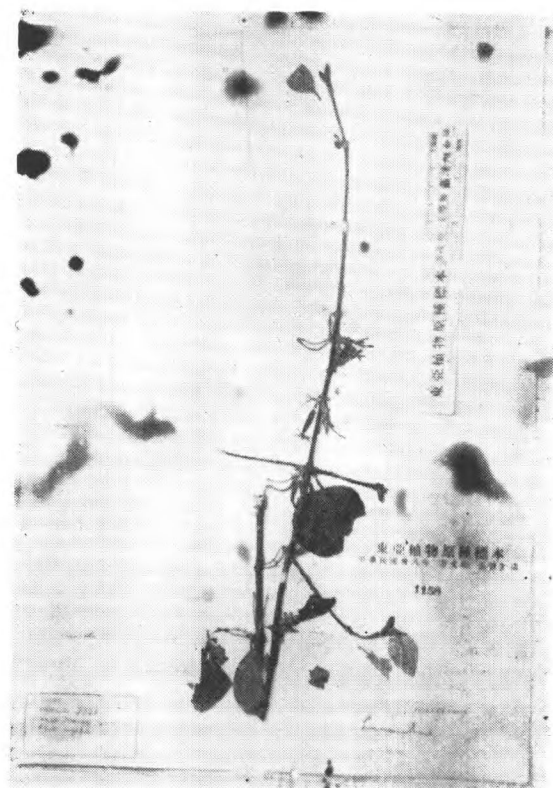
Loranthus odoratus Wall.
Henry 10912 云南蒙自



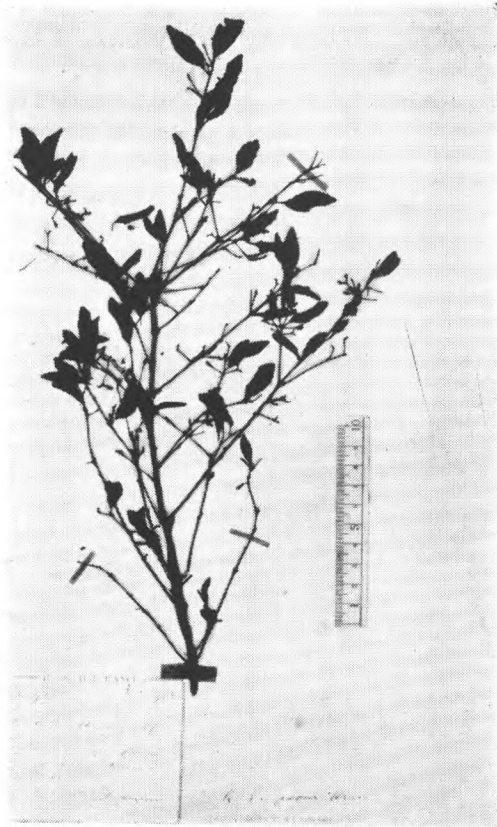
Loranthus parasiticus (Linn.) Merrill
C. Wang 36776 海南



Loranthus pentapetalus Roxb.
Henry 无号海南



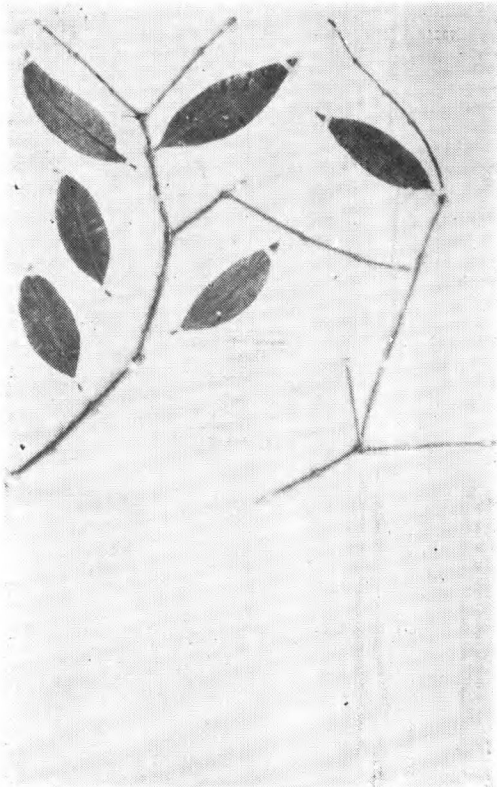
Loranthus philippinensis Cham. et
Schlecht.
Henry 9991 云南蒙自



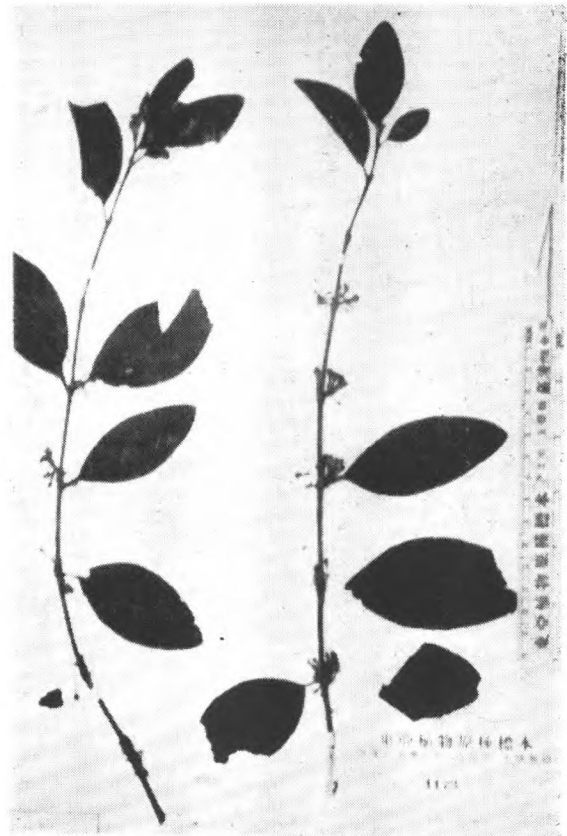
Loranthus Sampsoni Hance.
Sampson, 9013. (isotype.) 广东



Loranthus scoriarum W. W. Sm.
Forr. 7689 (type.) 云南



Loranthus Sourrula L.
McClure 7963 海南那大



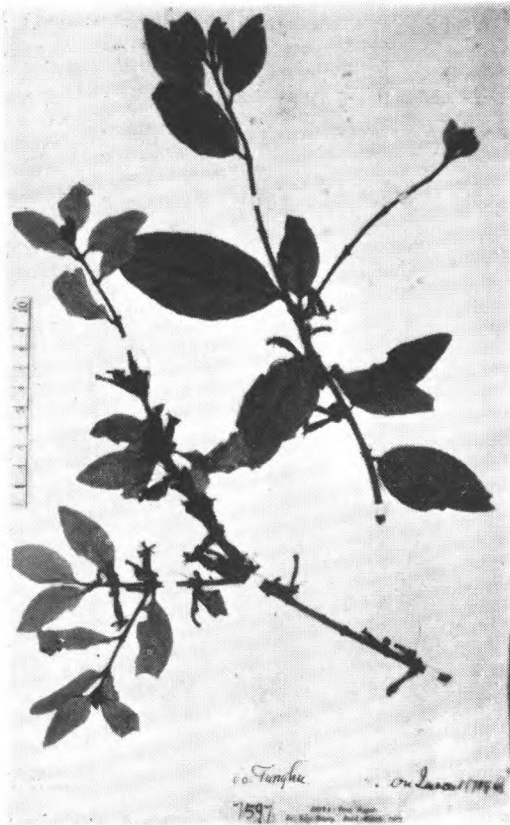
Loranthus sootepensis Craib.
Henry 10315 云南蒙自



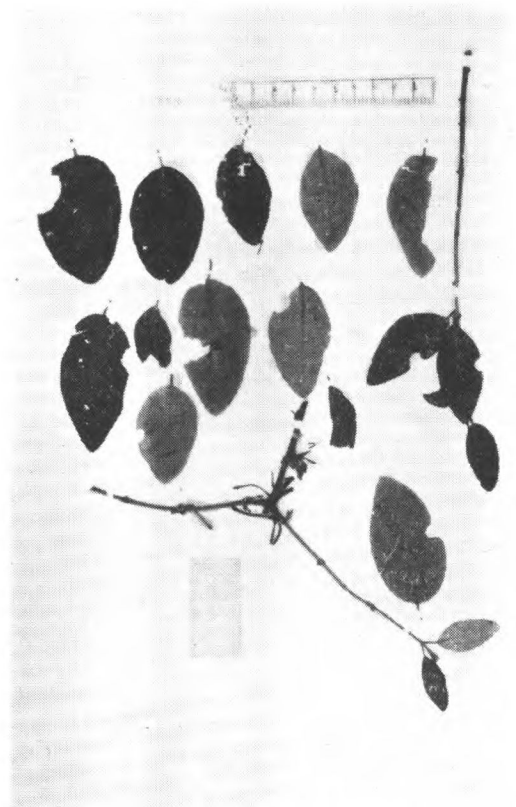
Loranthus sutchuenensis Lecomte
Farges, 无号(isotype.) Tchen-Keoutin. 四川



Loranthus theifera Hay.
Wils. 10045. 台湾



Loranthus yadoriki Sieb. et Zucc.
Henry 7597 湖北 Tunghu (东湖)



Loranthus yadoriki Sieb. et Zucc. var.
hupehanus Lecte.
Wils. 3521. (syntype.) 湖北宜昌

Macrosolen Bl.

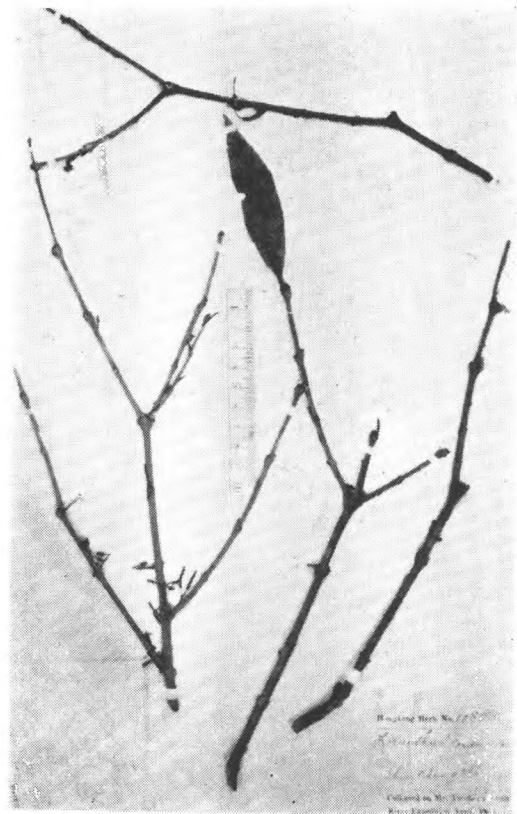
Macrosolen bi bracteolatus (Hance)
Denser C. Ford. 无号广东北江



Macrosolen cochinchinensis
(Lour.) Blume
Ford 79 广东罗浮山



Macrosolen cochinchinensis (Lour.) Bl.
var. *tonkinensis* (Lecte.) Wu
Wils. 3525 四川(西)叙府

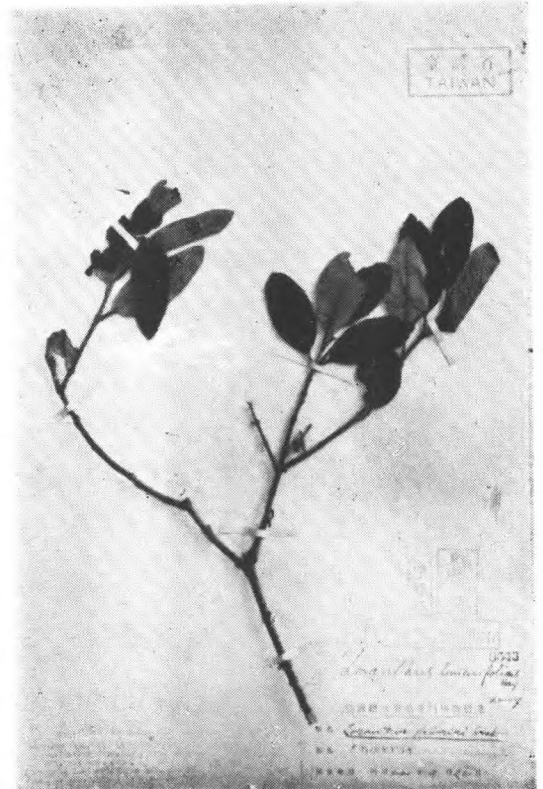


Macrosolen Fordii (Hance)
Tutcher 10875 广东

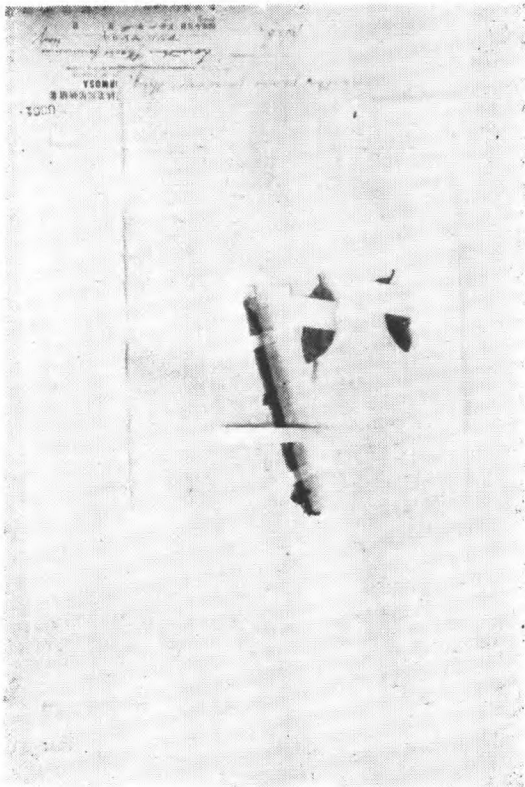
Scurrula L. = Loranthus L.



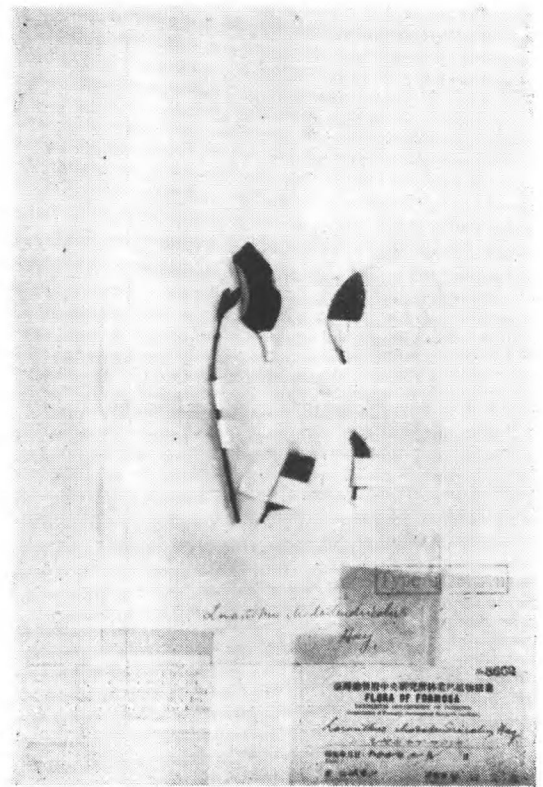
Macrosolen Fordii (Hance) Danser
C. Ford in Herh, Hance 22225
广东



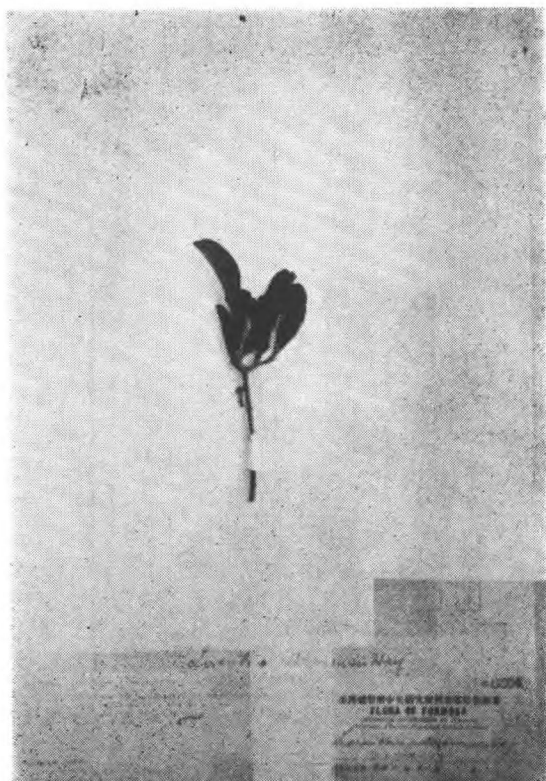
Scurrula lonicerifolia (Hay.) Hosok.
U. Mori 2007, 台湾摩利嵩山



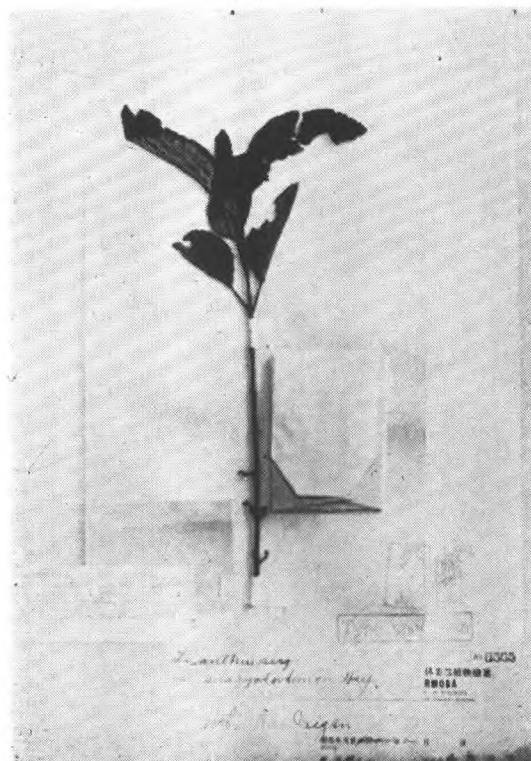
Scurrula phoebe-formosanae (Hay.)
Danser
B. Hay. 无号 (merotype.) 台湾阿里山



Scurrula rhododendricola (Hay.) Danser
B. Hay. 无号 (merotype.) 台湾阿里山

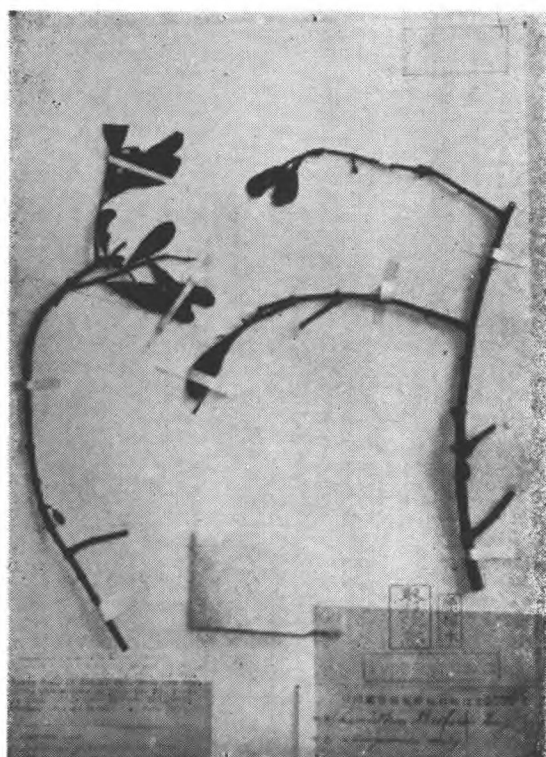


Scurrula ritozanensis (Hay.) Danser
T. Kawakami, 无号 (merotype.) Mt. Ritozan, 台湾

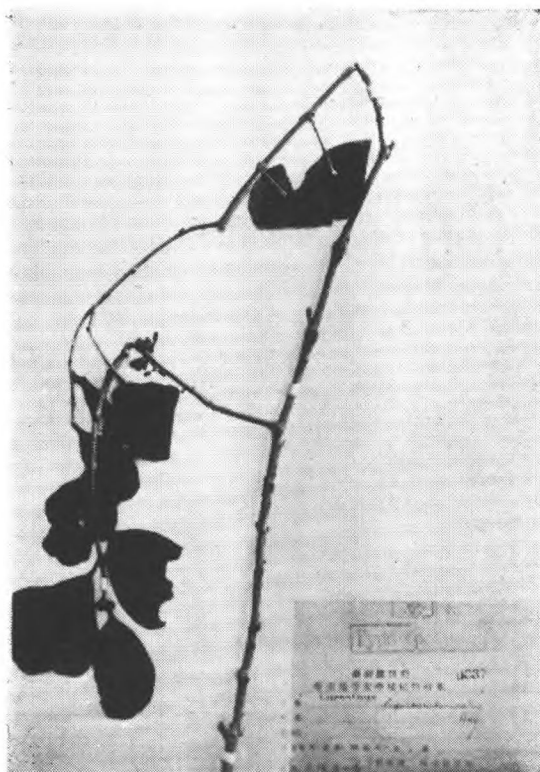


Scurrula seraggodostemon (Hay.) Danser
N. Konishi et S. Nakai, 无号, (isotype.)
台湾鬮大山

Taxillus Van Tiegh.

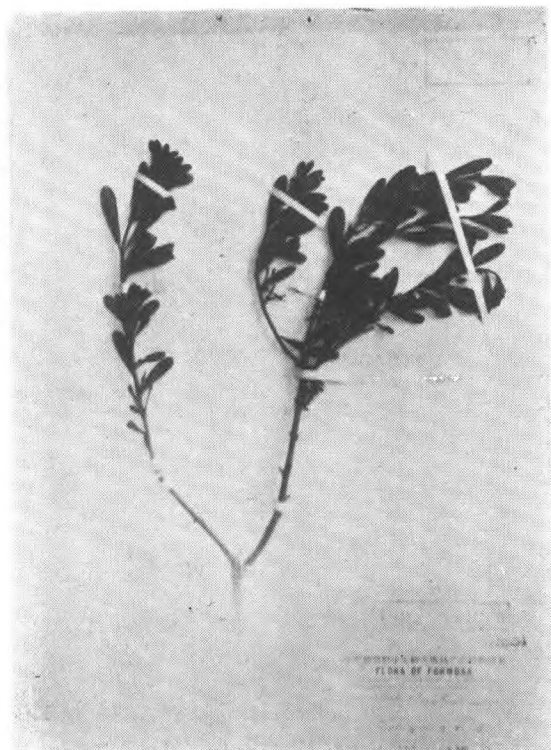


Scurrula theifera (Hay.) Danser
S. Sasaki 无号 (isosyntype.) Koshun,
Shijkei, 台湾

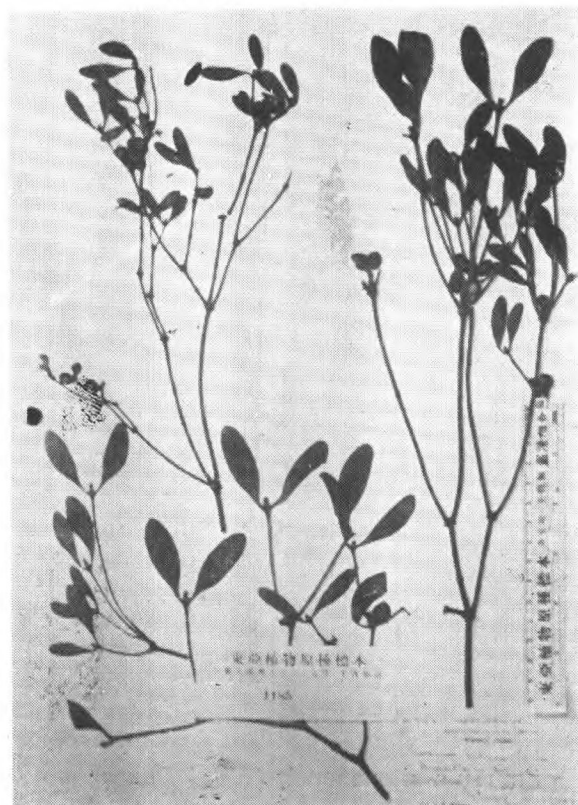


Taxillus liquidambaricolus (Hay.) Hosok
T. Soma 无号 (isotype.) Nanto,
Kyoshiryo, 台湾

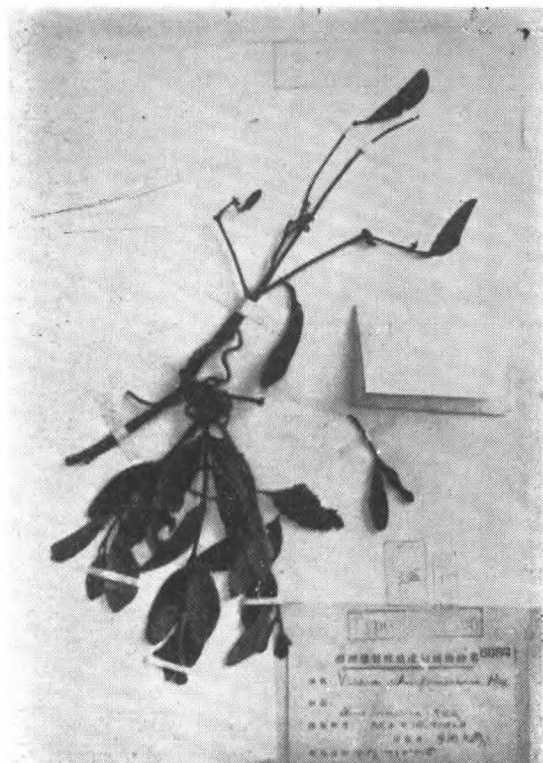
槲寄生屬 *Viscum L.*



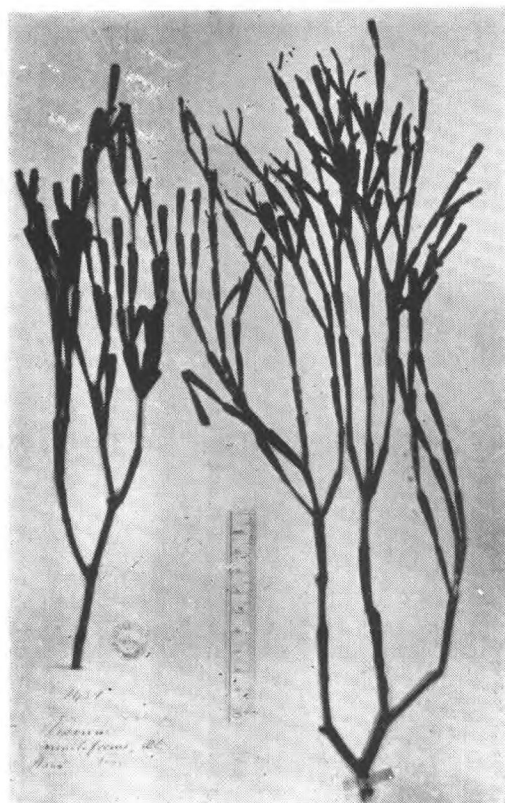
Taxillus Matsudai (Hay.) Hosok.
Y. Matsuda 无号 (isotype) Nanto,
Saramao, 台湾



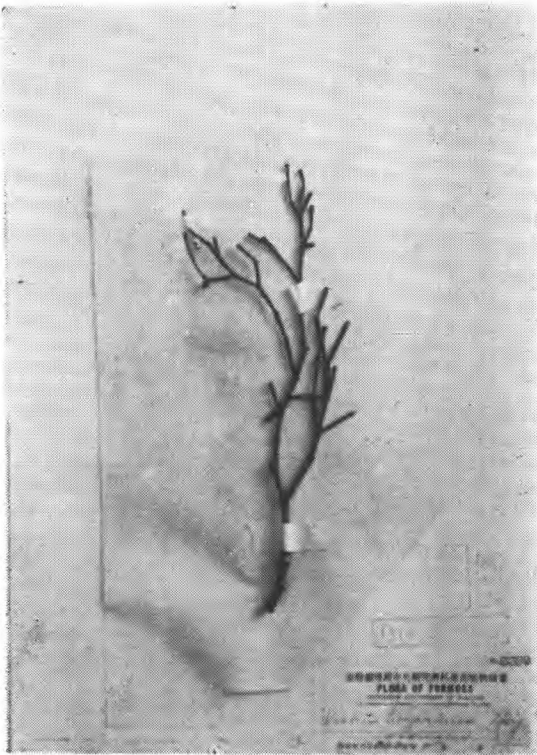
Viscum album L.
Wils. 796 湖北宜昌



Viscum alni-formosanae Hay.
B. Hay. 无号 (isotype.), Musha, Tsutsu-
jigaoka, 台湾



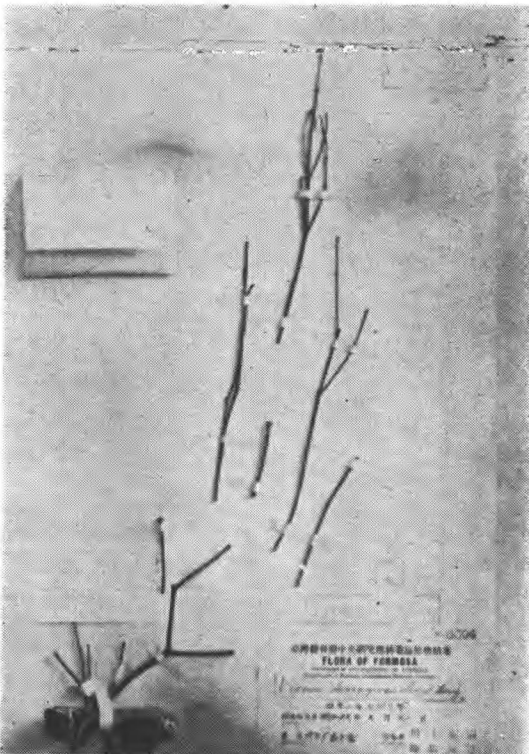
Viscum articulatum Burm. f.
Hance 1451. 福建廈門



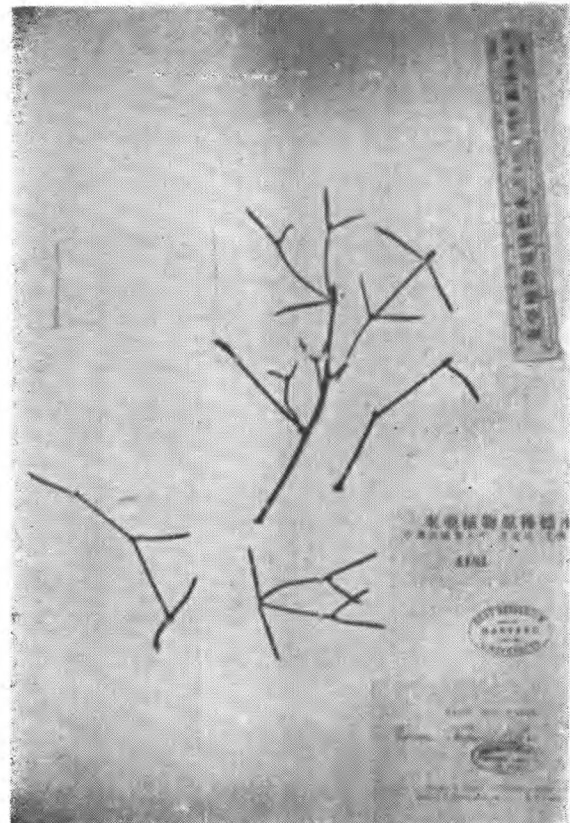
Viscum bongariense Hay.
S. Sasaki 无号 (merotype.), Akocho,
Bongarisha, 台湾



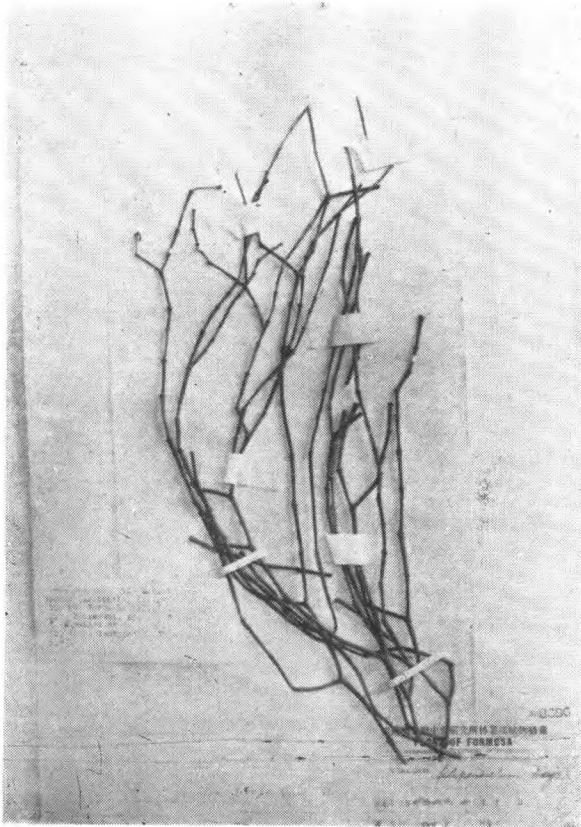
Viscum coloratum (Komarov) Nakai
John Ross 389. 辽宁



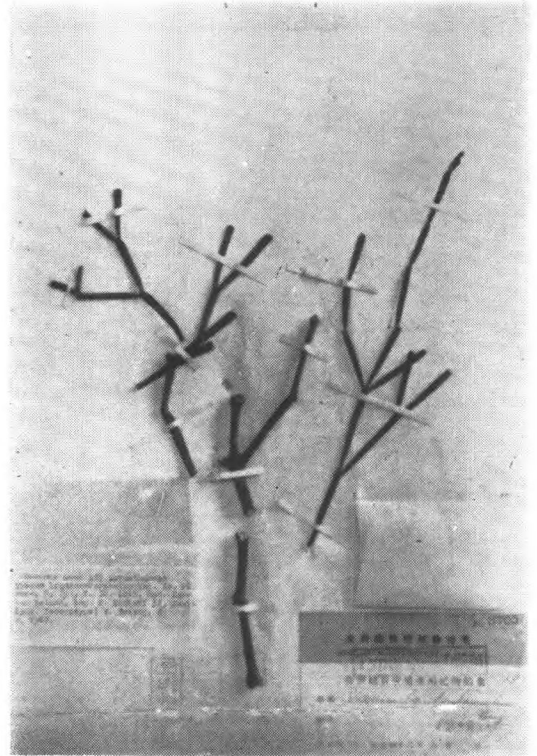
Viscum diospyrosicola Hay.
H. Kawakami et Y. Shimada 无号 (iso-
type.), Toroku, 台湾 Kyoshi-ryo,



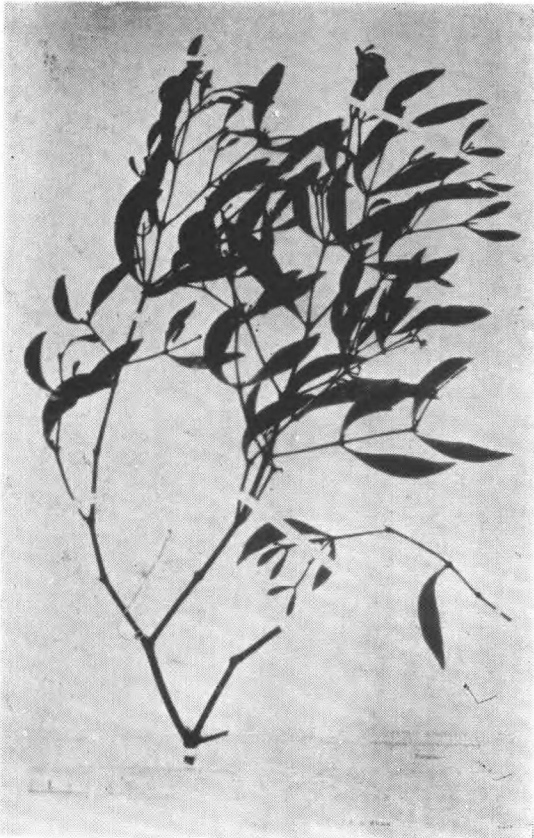
Viscum Fargesii H. Lecomte
R. P. Farges, (istoype) 四川 Tchen-keoutin



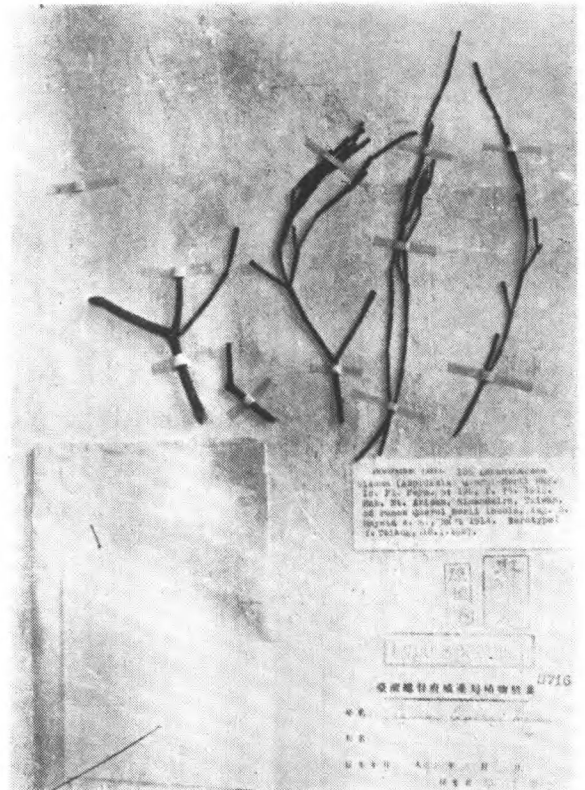
Viscum liguidambaricola Hay.
T. Kawakami et S. Sasaki 无号, (isotype.)
Ryusensui, Kosyun. 台湾



Viscum filipendulum Hay.
N. Konishi 38, (iso-syntype.) 海南



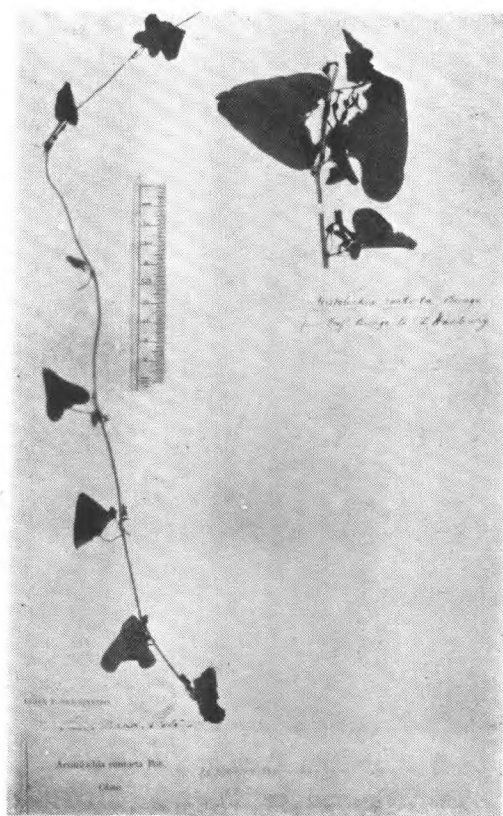
Viscum multinerve Hay.
Wils. 10107 台湾



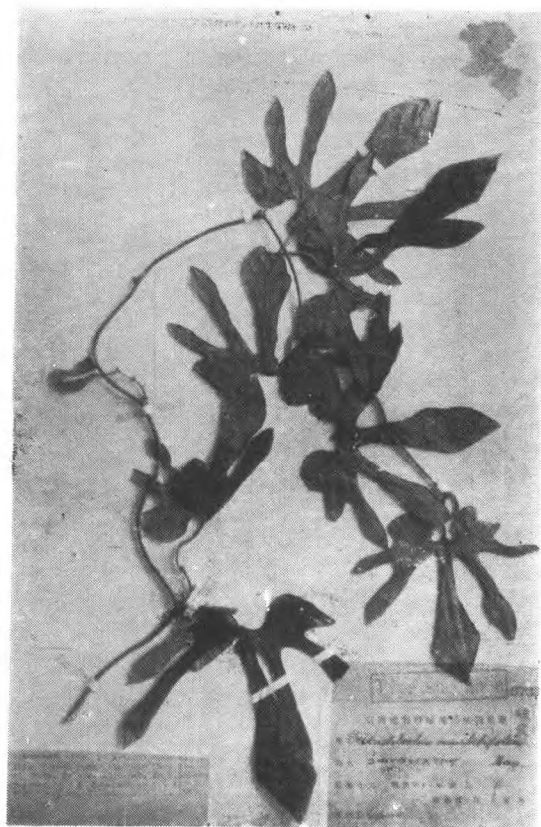
Viscum Querci-Morri Hay.
B. Hay. 无号 (merotype.) 台湾阿里山

30. 馬兜鈴科 *Aristolochiaceae*馬兜鈴屬 *Aristolochia* L.

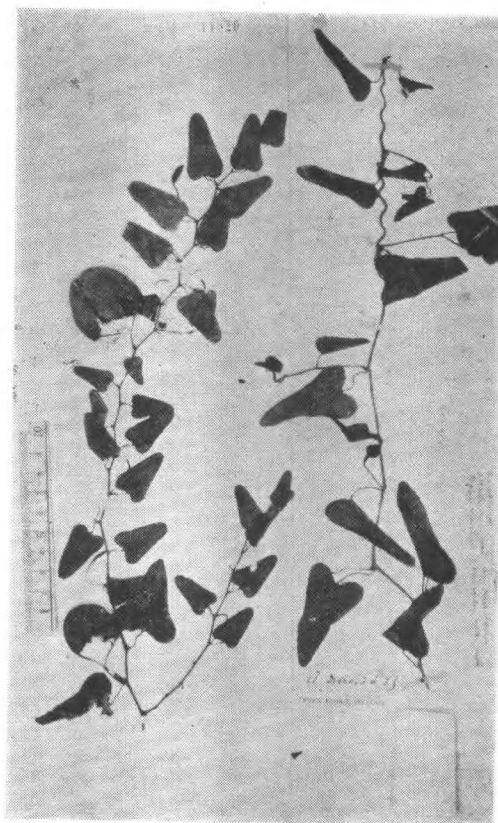
Viscum stipilatum *Lecte.*
Henry 12758 (type.) 云南思茅



Aristolochia contorta *Bge.*
Bge. 无号 (cotype.) 中国北部



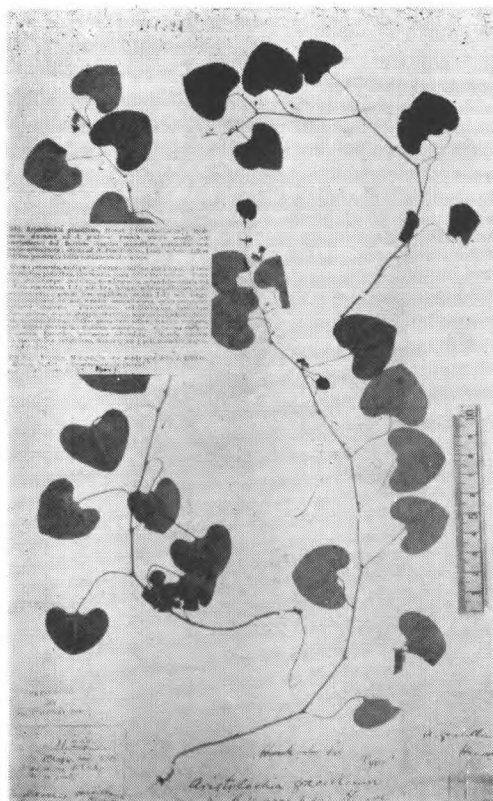
Aristolochia cucurbitifolia *Hay.*
T. Kawakami 无号 (isotype) Kagi,
Baiako, 台湾



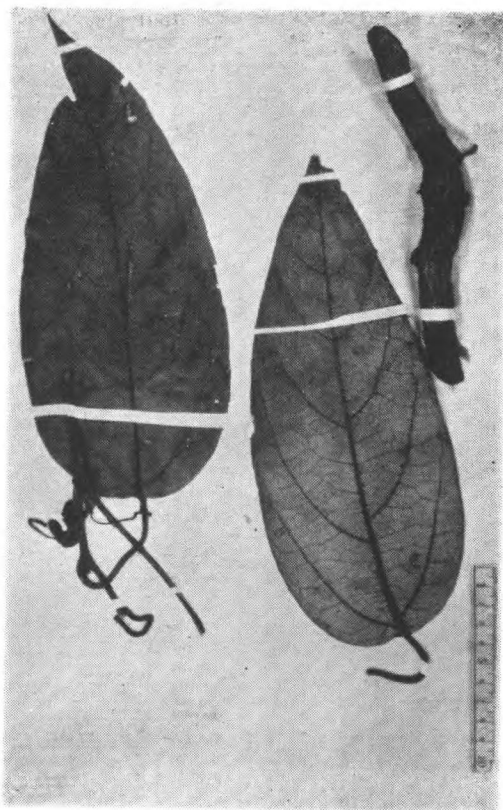
Aristolochia debilis *S. et Z.*
Shearer 无号 九江, Henry 无号 湖北宜昌



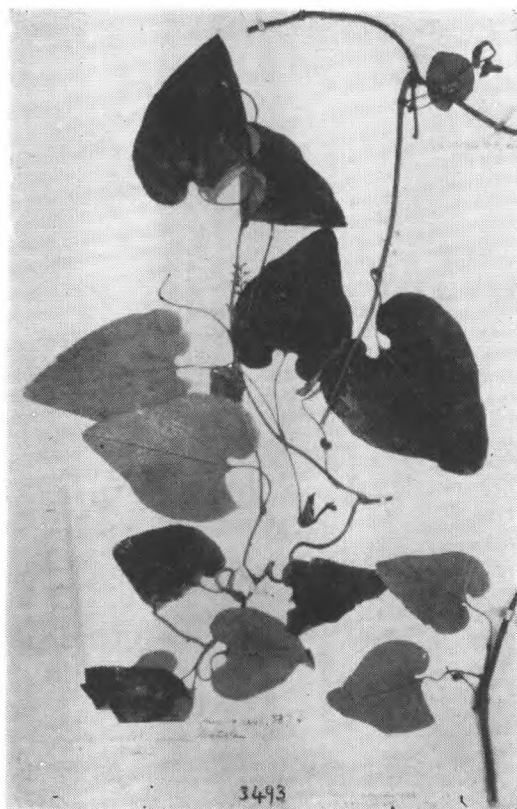
Aristolochia Fordiana Hemsl.
A. B. Westland ex Ford. 无号 (type.)
广东



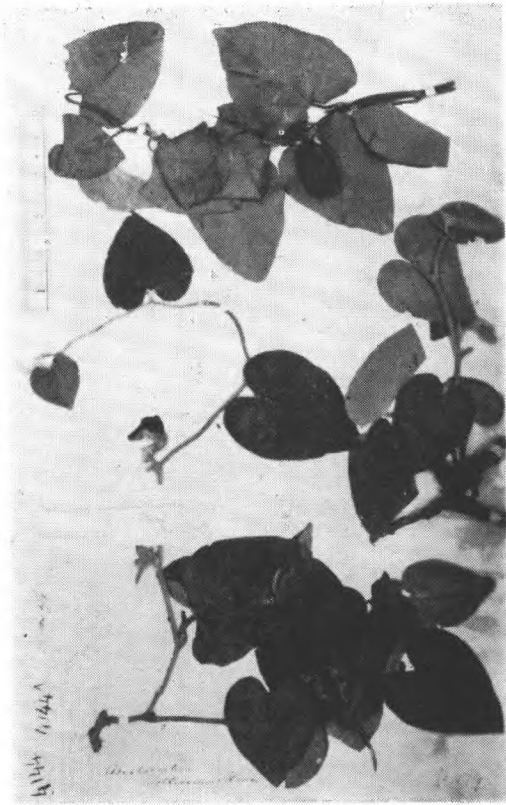
Aristolochia gracilima Hemsl.
Henry 11222. (type.) 云南蒙自



Aristolochia hainanensis Merr.
McClure 8630 (cotype.) 海南五指岭



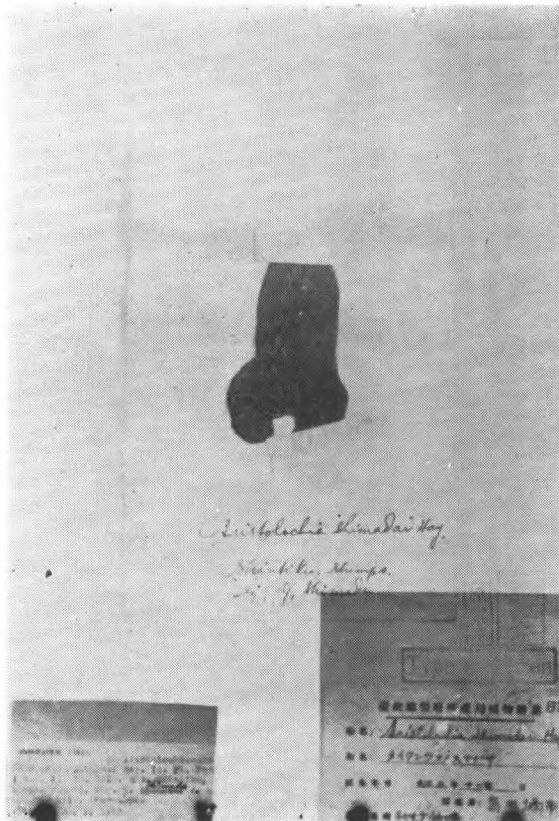
Aristolochia heterophylla Hemsl.
Henry 3493. (Syntype.) 湖北兴山县



Aristolochia mollissima Hance
Henry 4144, 4144a. 湖北宜昌



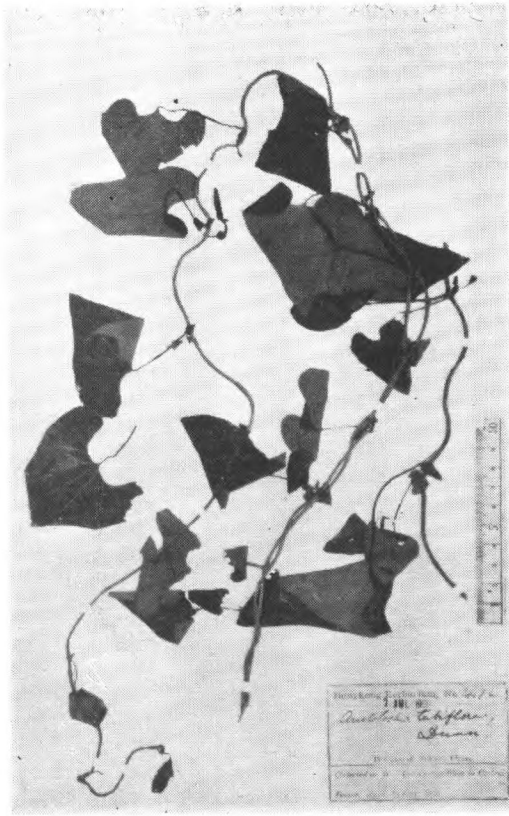
Aristolochia moupinensis Fr.
Wils. 无号 (isotype) 四川穆坪



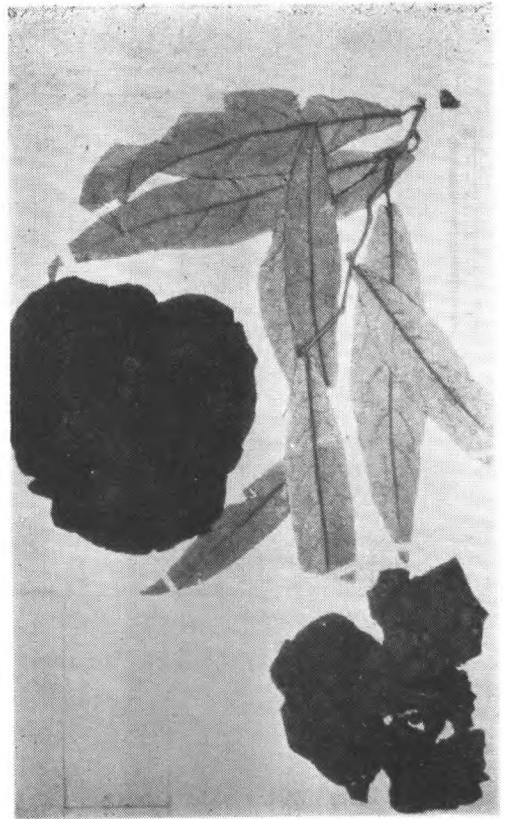
Aristolochia Shimadai Hay.
Y. Shimada 无号(merotype.) Shintiku,
Shinpo, 台湾



Aristolochia Thwaitesii HK. f.
Bot. Mag. t. 4918. 无号 香港

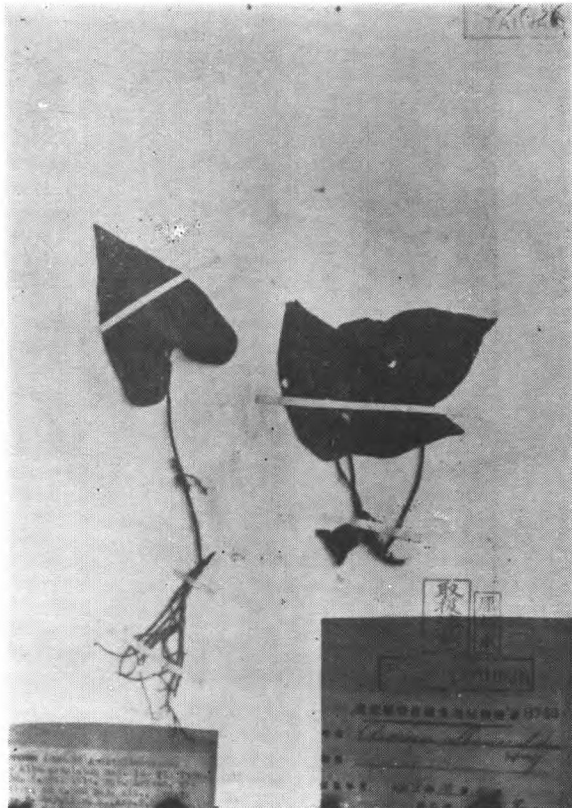


Aristolochia tubiflora Dunn
Dunn ex herb, Hkgk. 3472. (type.) 福建

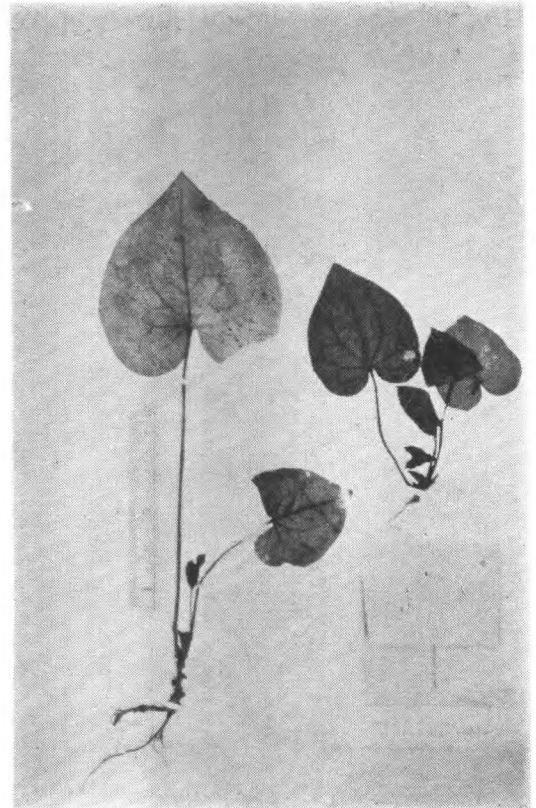


Aristolochia Westlandii Hemsl.
A. B. Westland ex C. Ford 无号 (type.)
香港新界

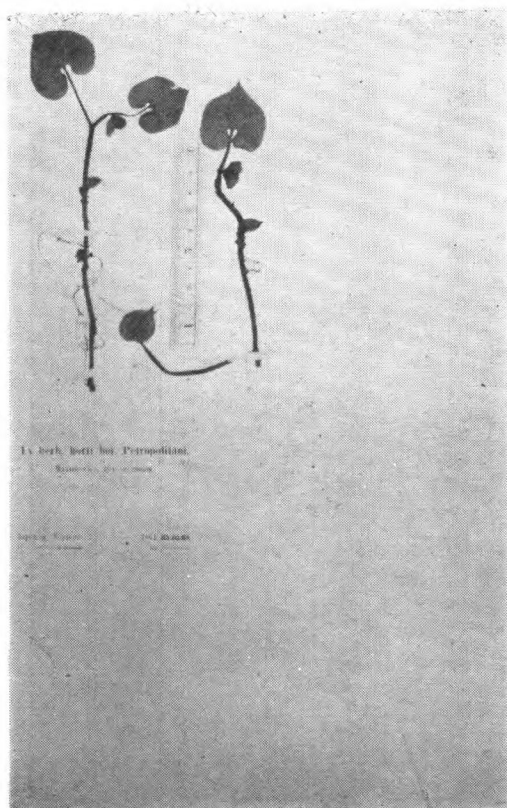
細辛屬 *Asarum* L.



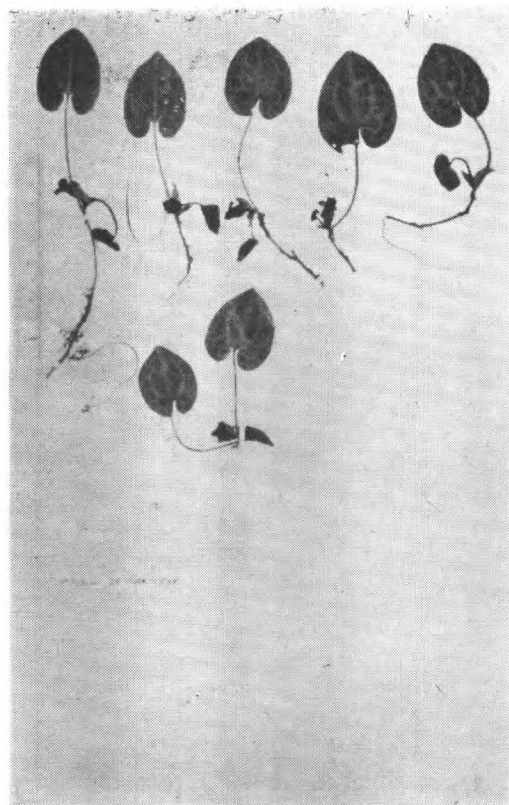
Asarum albo-maculatum Hay.
T. Ito et B. Hay. (Isotype.) Arisan, Ni-
mandaira, 台湾



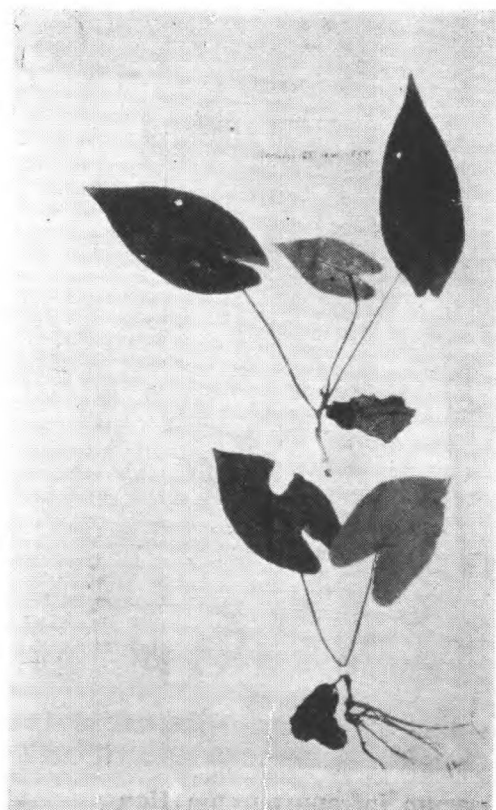
Asarum arrhizoma Lévl. et Vant.
Cavalerie 933. (cotype.) 云南



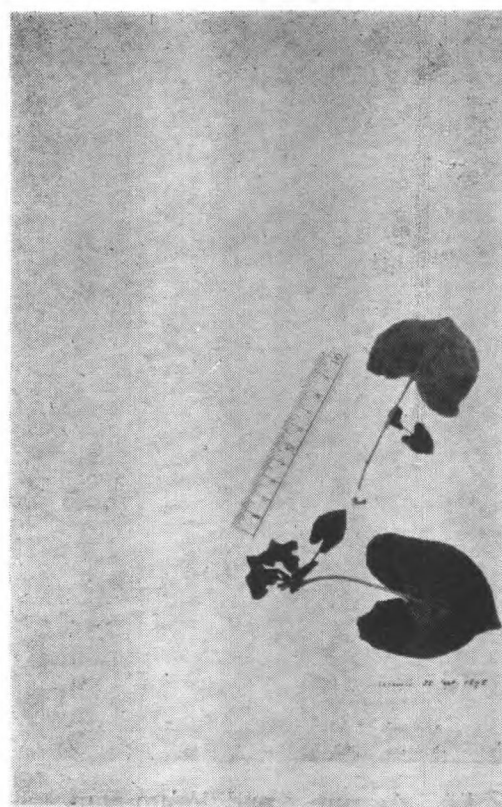
Asarum caulescens Maxim.
Tschonoski. 无号 (cotype.) 日本



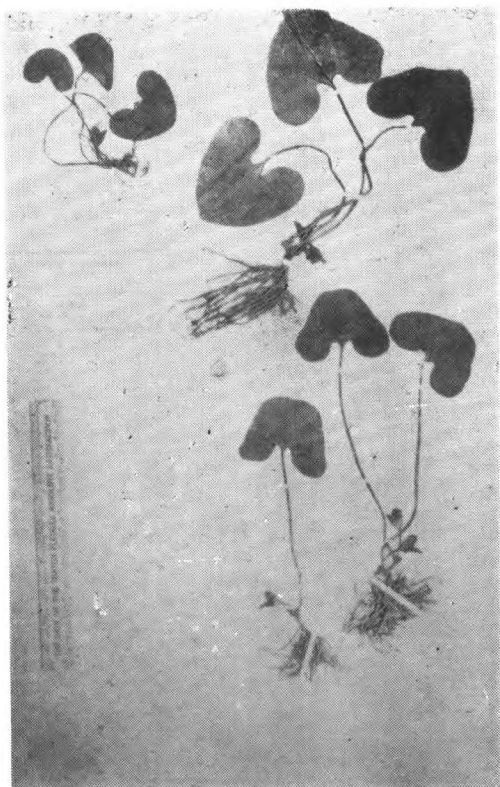
Asarum chinense Fr.
Farges 1205. (cotype.) 四川城口



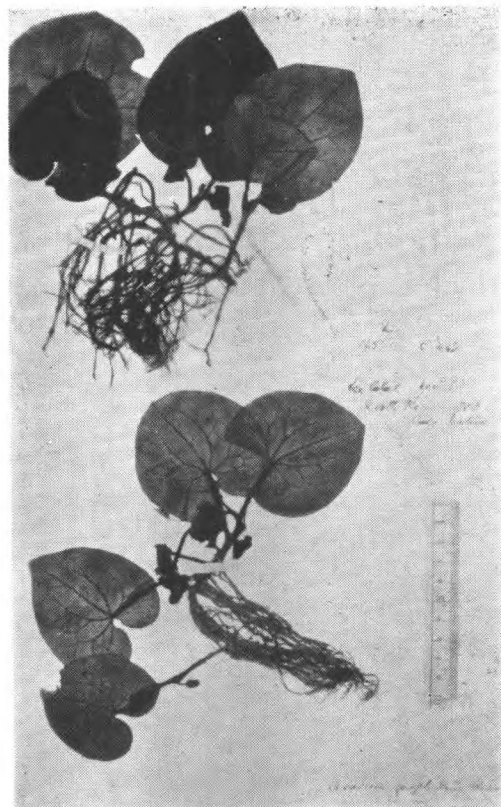
Asarum Delavayi Fr.
Delavay 5150. (cotype.) 云南西北



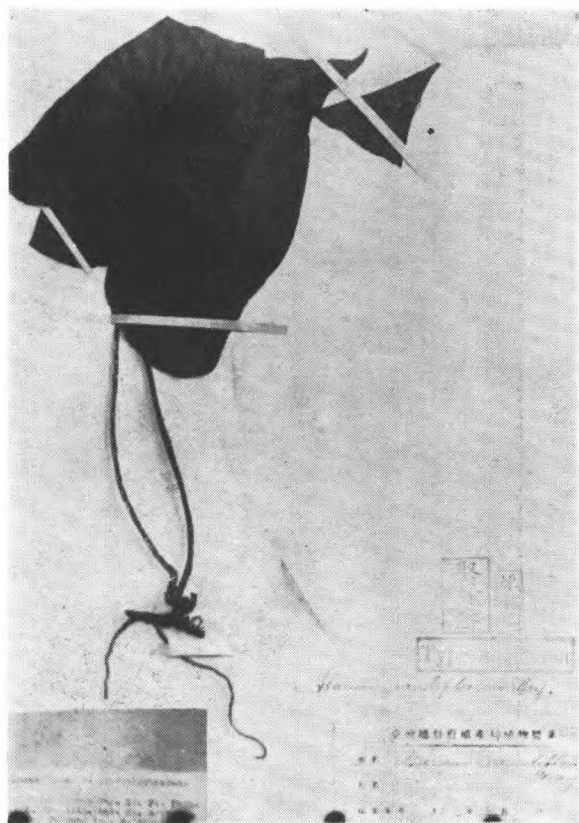
Asarum Fargesii Fr.
Farges 无号 四川东太平县



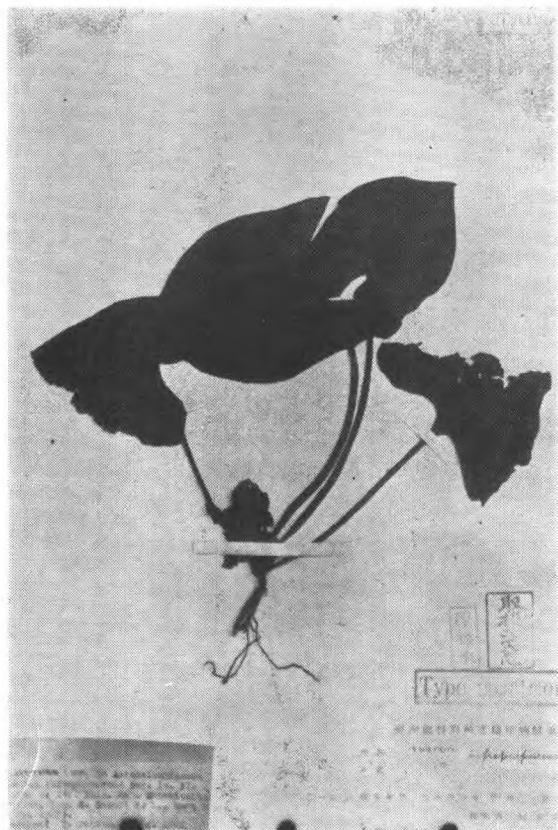
Asarum Forbesii Maxm.
Forbes 2056. (type.) 浙江北部梅溪



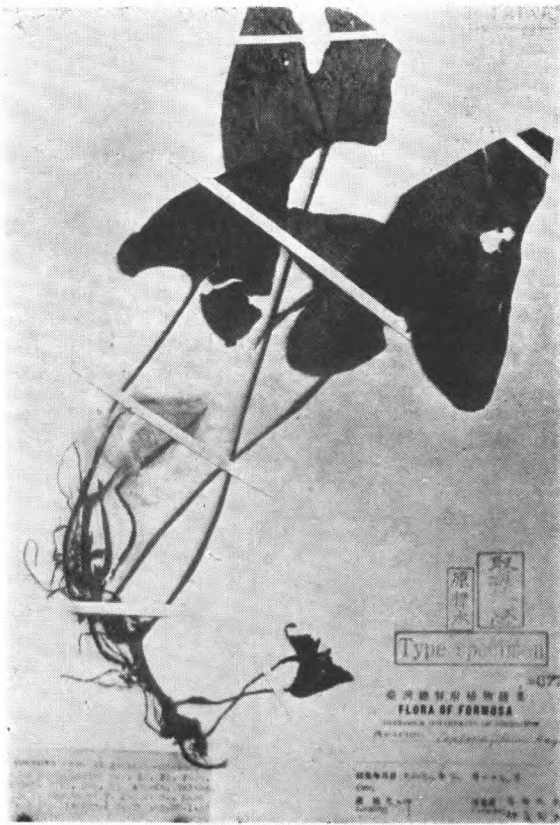
Asarum geophilum Hemsl.
C. Ford 125. (type.) 广东北江



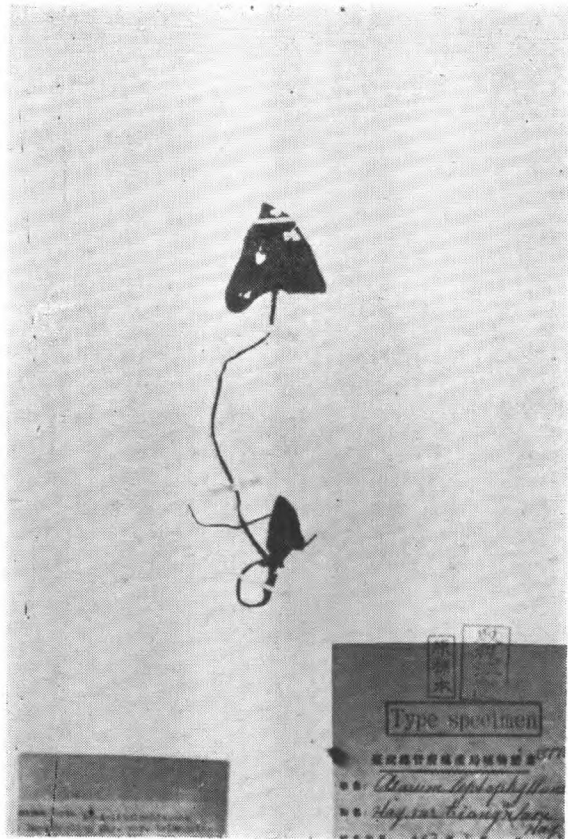
Asarum grandillorum Hay.
B. Hay. et T. Ito 无号 (Isotype.) Arisan,
Nimandaira, 台湾



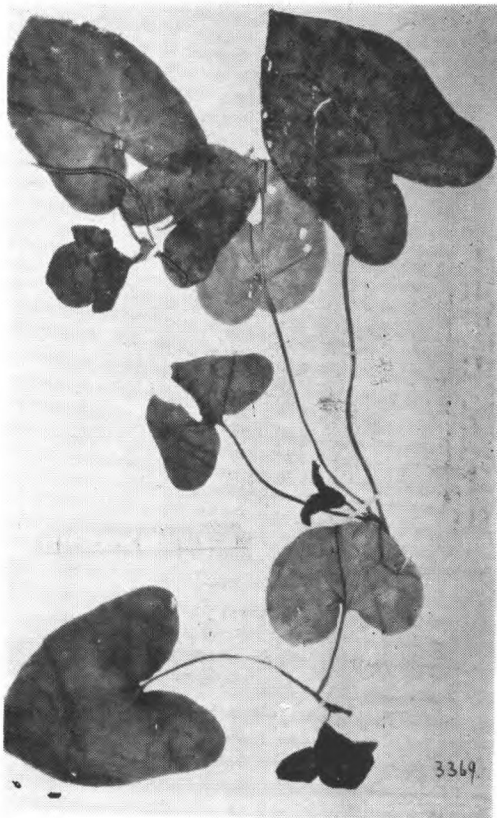
Asarum infrapurpureum Hay
S. sasaki 无号, (Isotype.) Shichiseitonzan,
台湾



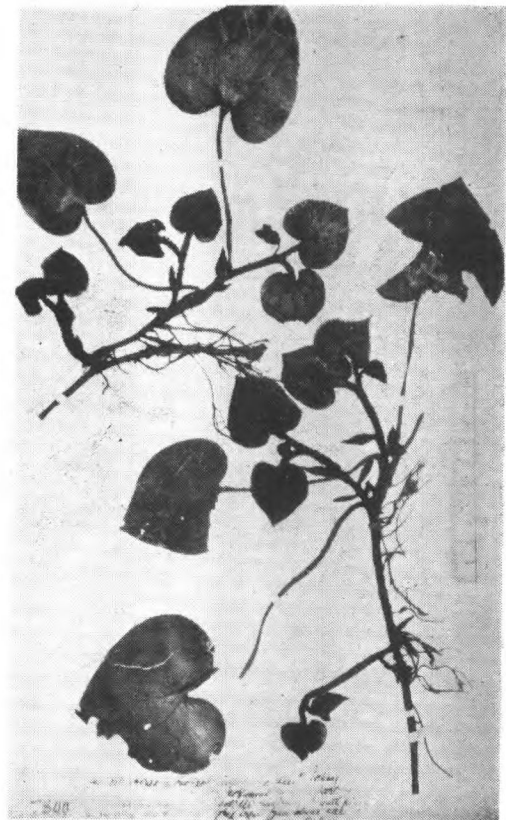
Asarum leptophyllum Hay.
B. Hay. et T. Ito 无号 (Isotype.) Arisan,
台湾



Ararum leptophyllum Hay. var. *triangulare* Hay.
B. Hay. et I. Iti 无号 (Isotype.) Arisan,
Funkiko, 台湾

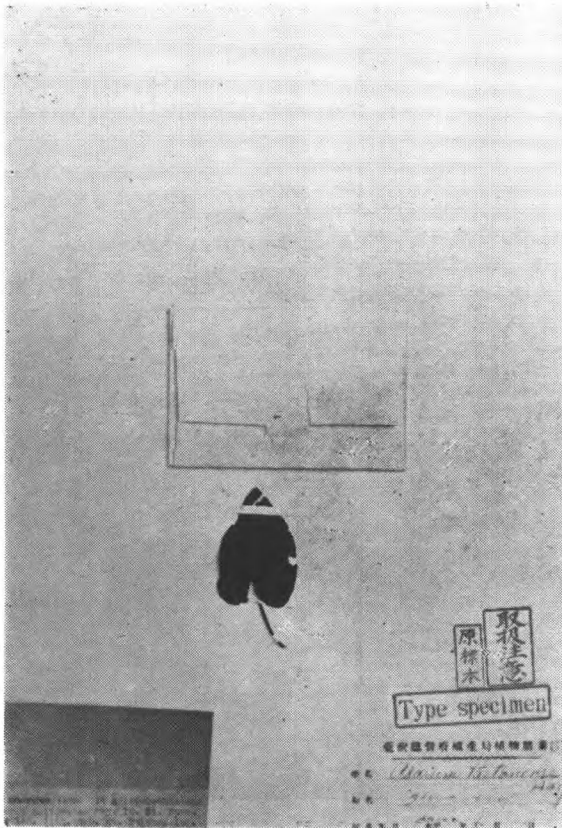


Asarum maximum Hemsl.
Henry 3369. (holotype.) 湖北宜昌



Asarum pulchellum Hemsl.
Henry 7800 湖北宜昌

馬蹄香屬 *Saruma Oliv.*



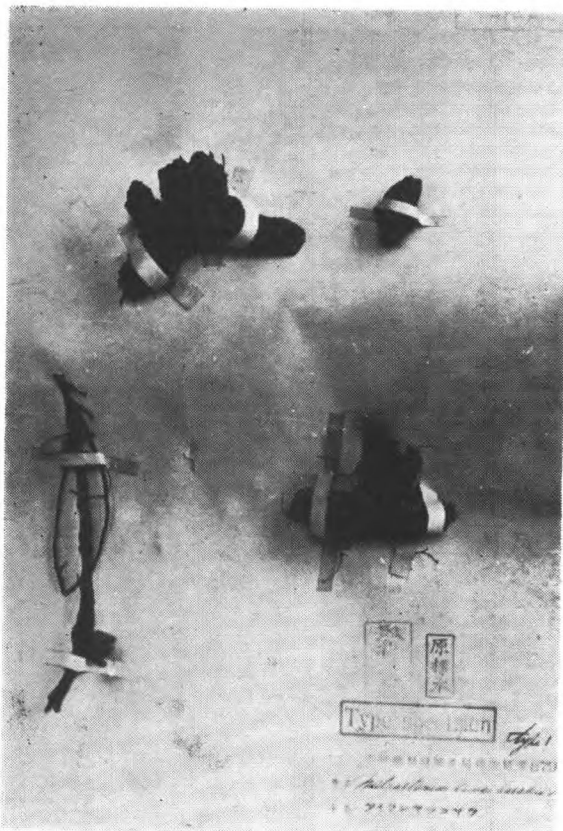
Asarum taitonense Hay.
U. Faurie 无号 (Merotype) Mt. Taiton, 台湾



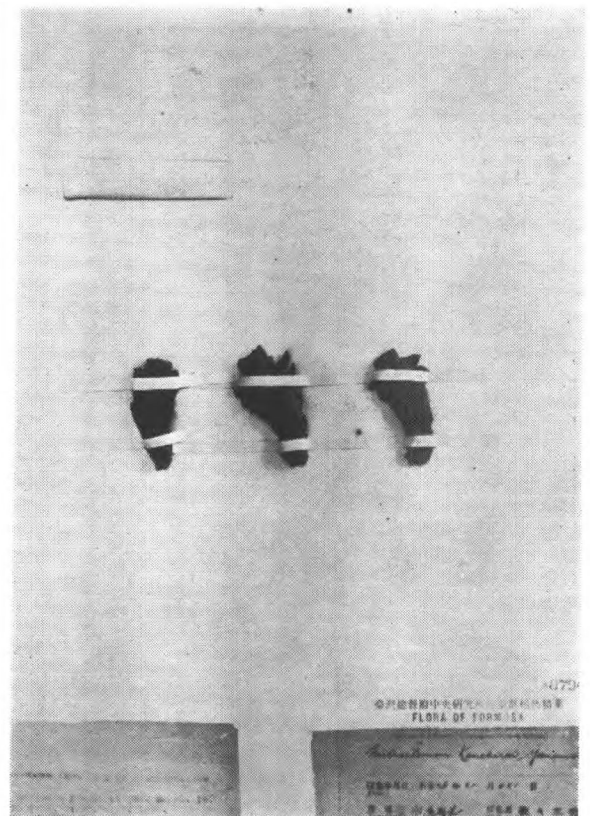
Saruma Henryi Oliver.
Henry 6676, (Syntype.) 湖北房县

31. 大花草科 *Rafflesiaceae*

奴草屬 *Mitrastemon Mak*



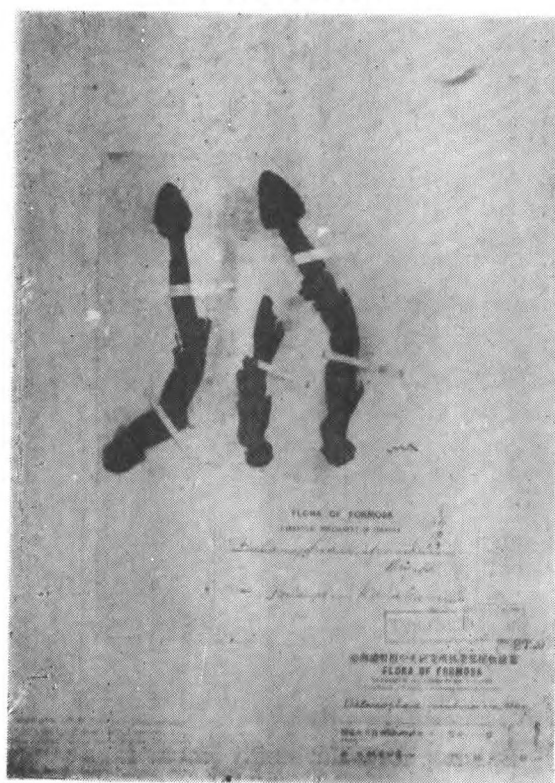
Mitrastemon Kawa-sasaki Hay.
T. Kawakami et S. Sasaki 无号 (Isotype.)
monte Muto, 台湾



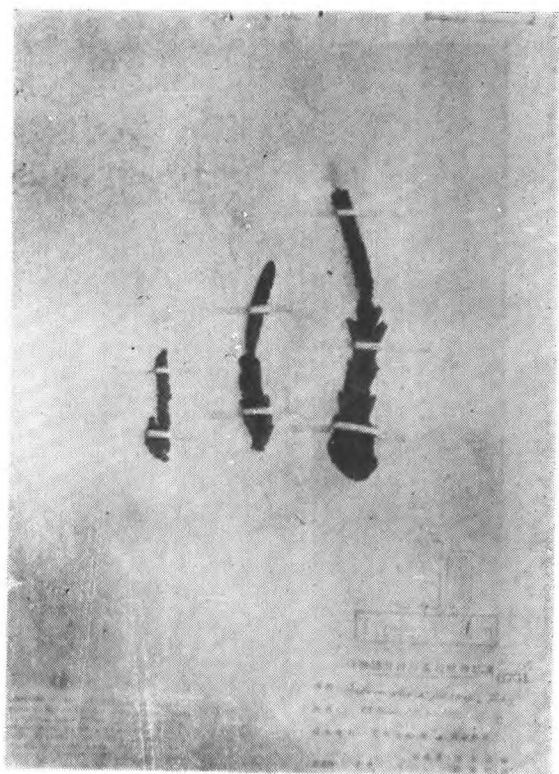
Mitrastemon Kanehirai Yam.
S. Sasaki 无号 Taichu, 台湾

32. 蛇菰歌 *Balanophoraceae**Balania* *Van Tieghem.*

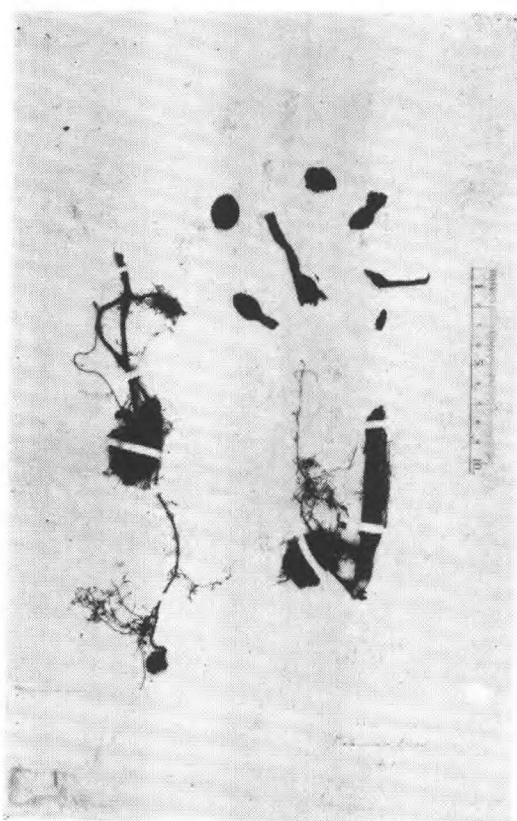
Mitrastemo Yamaomtoi Makino
Y. Horikawa 无号 Kago-shima, 日本



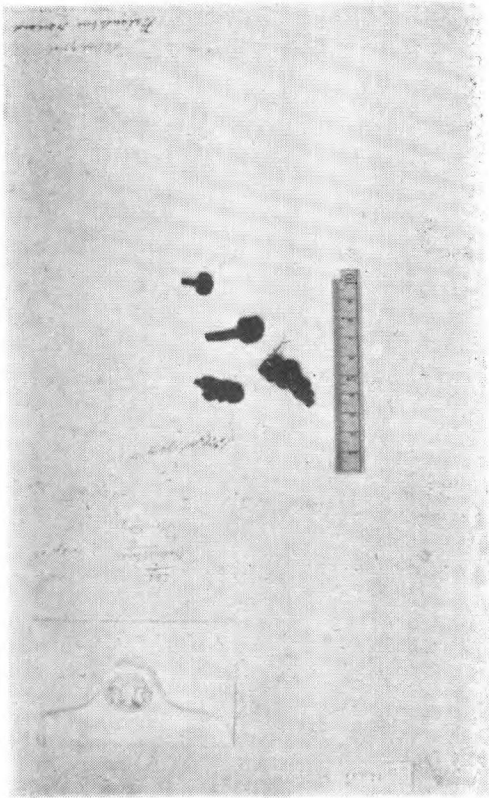
Balania mutinoides (Hay.) Masam.
S. Sasaki 无号 (isotype.) 台湾阿里山东山



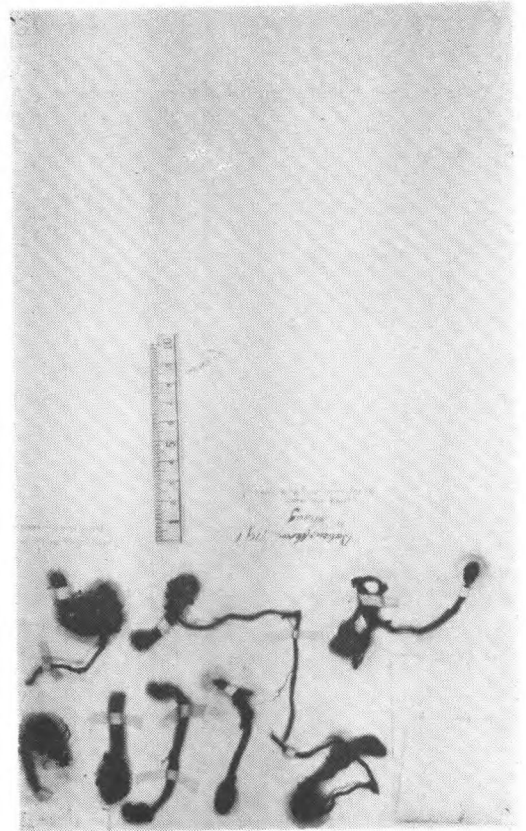
Balania parvior (Hay.) Masam.
T. Kawakami et U. Mori 2227, (isotype.)
台湾摩利嵩山

蛇菰屬 *Balanophora* *Forst.*

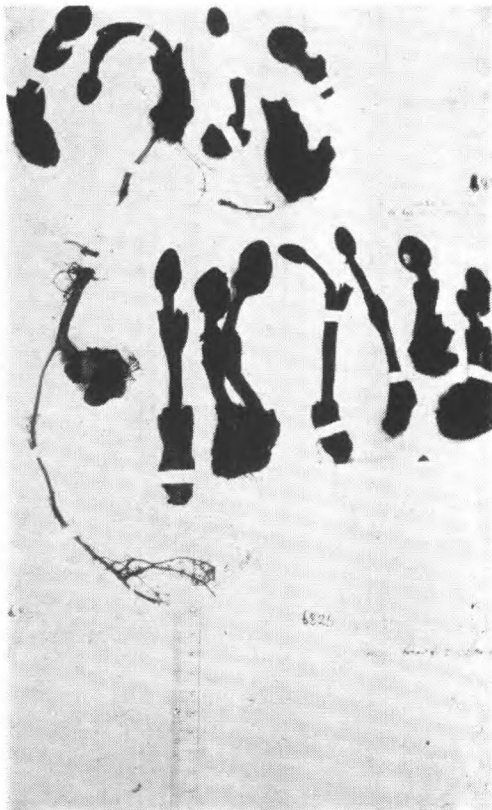
Balanophora Fargesii (Van Tieghem)
Engl.
Farges 无号, (type.) 四川城口



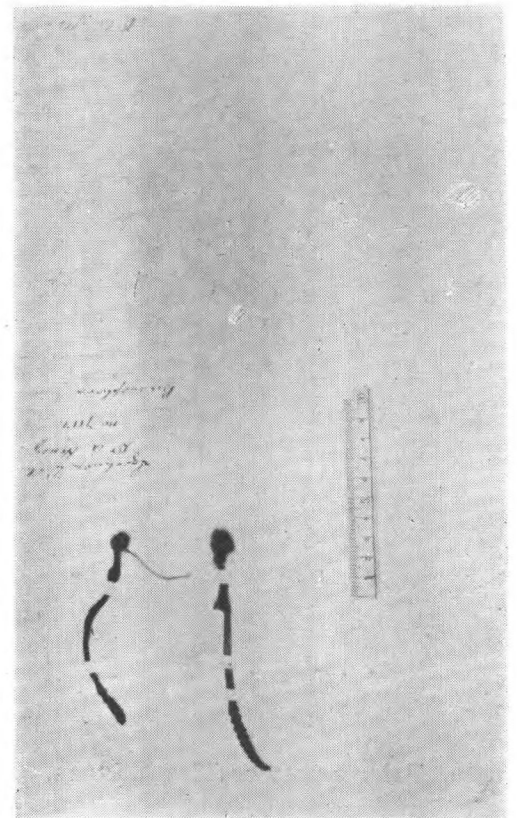
Balanophora Harlandii Hook. f.
Harland 269 (type.) 香港



Balanophora Henryi Hemsl.
Henry 7191 (type.) 湖北宜昌

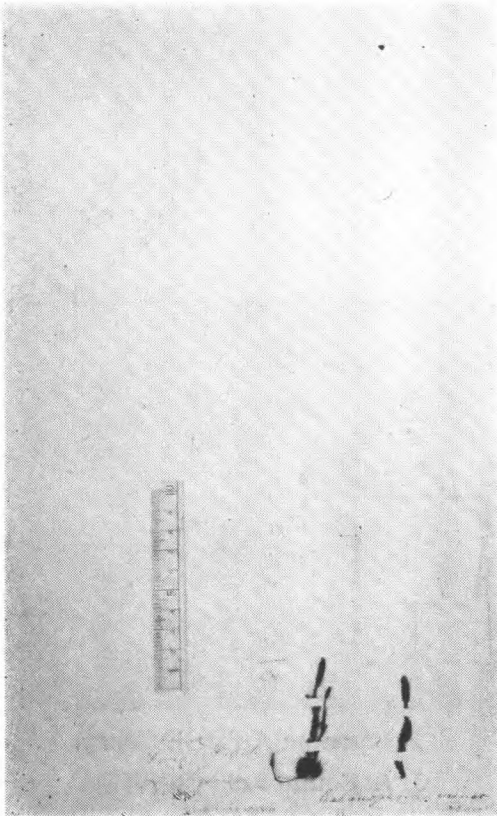


Balanophora involucrata Hook. f.
Henry 6825, 5851, 6880, 湖北房县

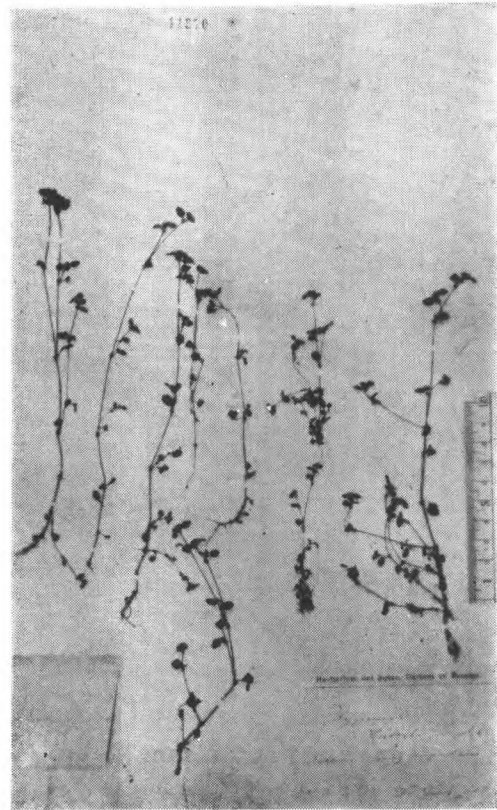


Balanophora laxiflora Hemsl.
Henry 7112 (type.) 四川

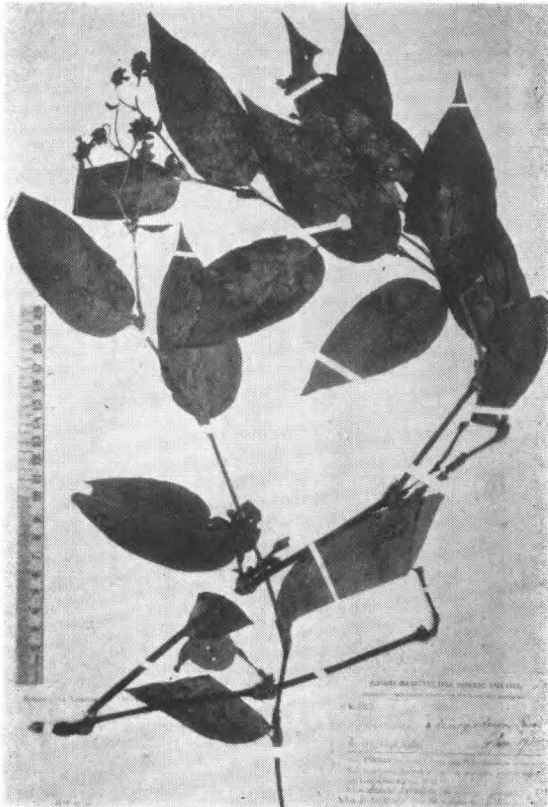
33. 蓼科 Polygonaceae

冰島蓼屬 *Koenigia* L.

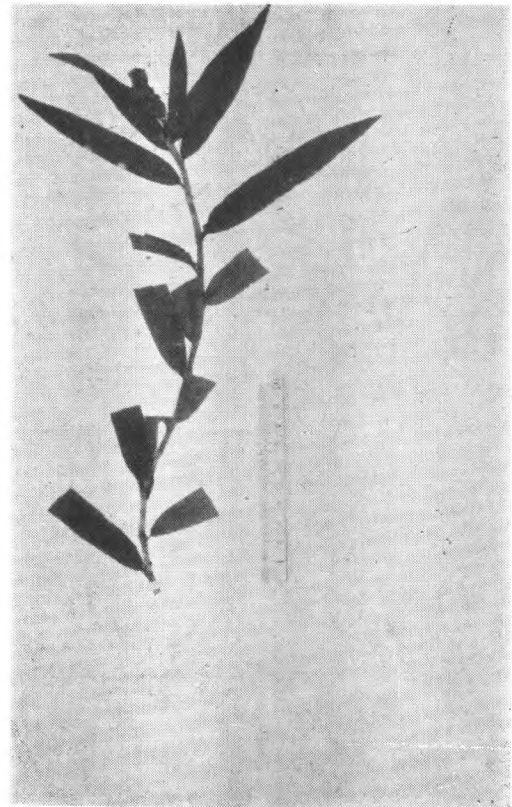
Balanophora minor Hemsl.
A. Henry 无号 (type.) 湖北房县



Koenigia pilosa Maxim.
Limpricht 2716. 四川

蓼屬 *Polygonum* L.

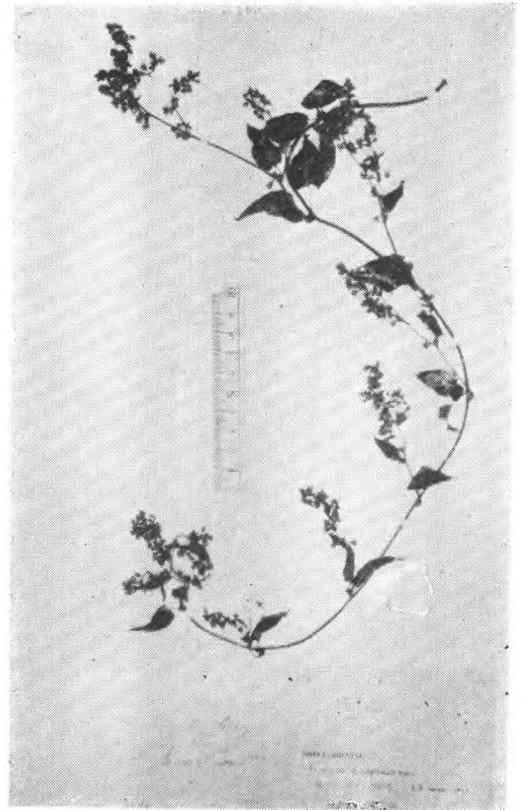
Polygonum adenopodum Samuels.
H.-M. 9407 (type.) 云南丽江



Polygonum amphibium L. var. *restitutum*
Hemsl.
Forbes 1872 (type.) 山东芝罘



Polygonum assamicum Meisn.
Morge 261, 广西龙州



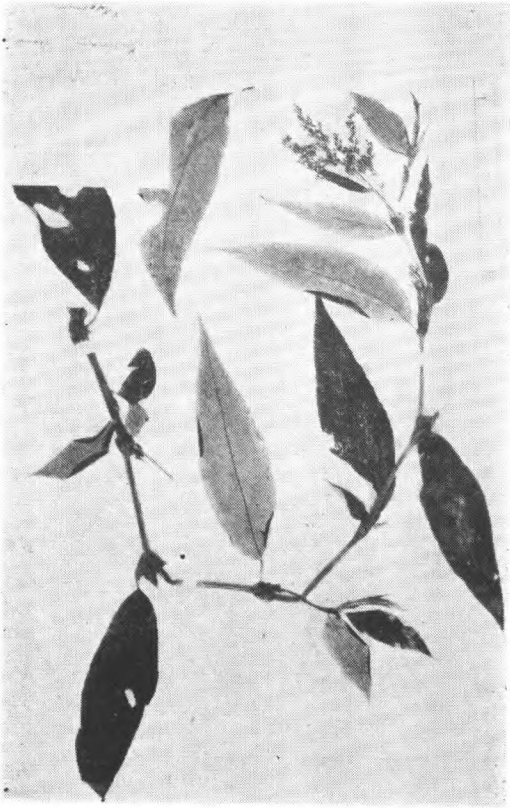
Polygonum Aubertii Henry.
J. A. Soulie 219 西康打箭炉



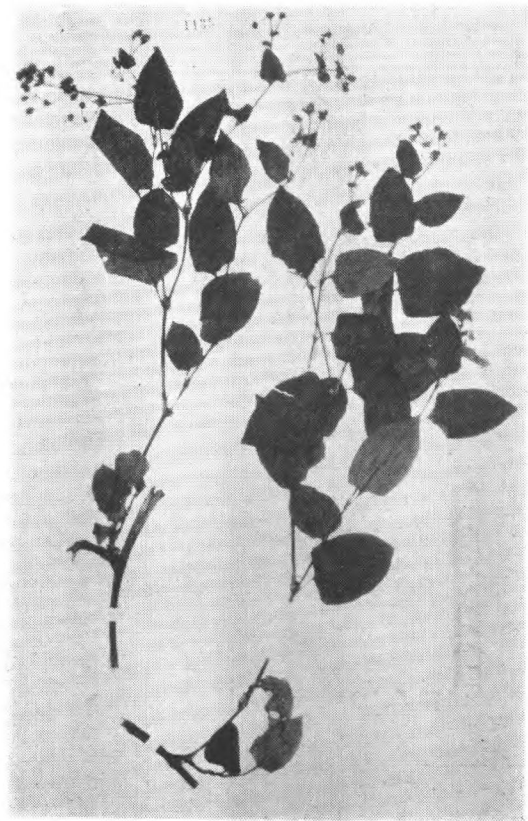
Polygonum aviculare L.
J. Ross 340. 瀋阳到辽阳



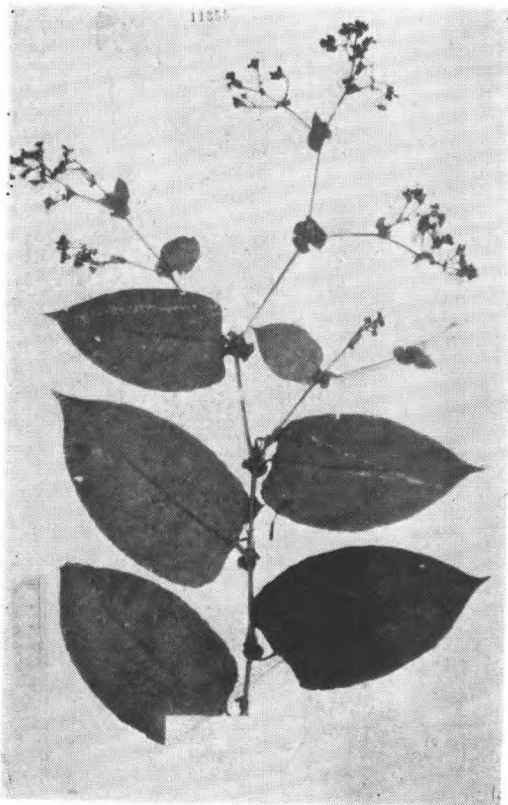
Polygonum Bungeanum Turcz.
J. Ross. 347. 辽宁千山



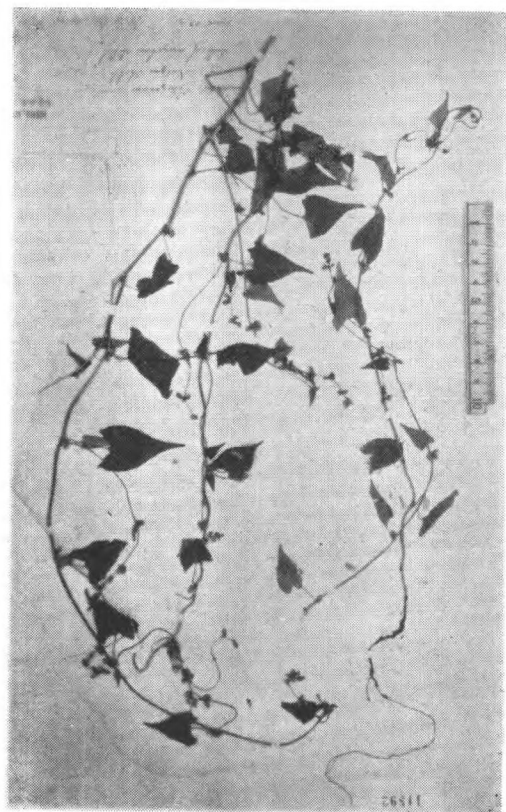
Polygonum campanulatum Hook. f.
Henry 9454. 云南



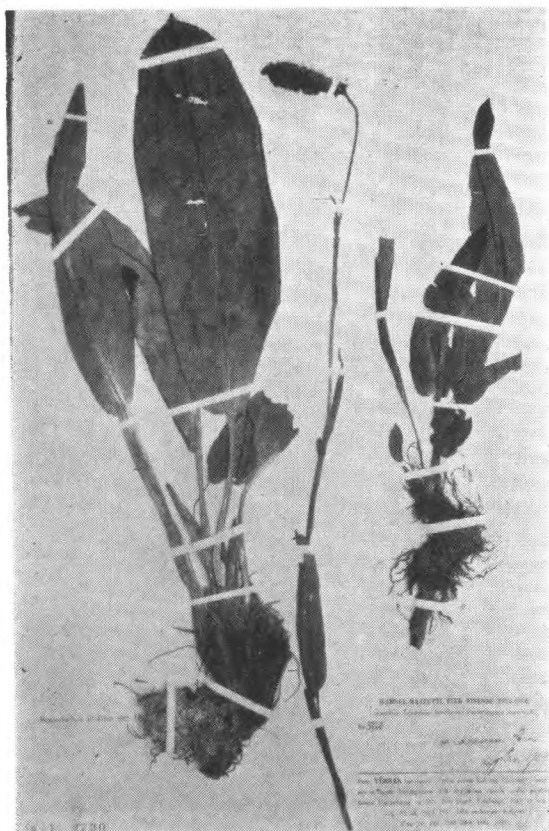
Polygonum chinense L.
Champion 159 (type) 香港



Polygonum chinense L. var. *hispidum*
Hook. f.
Henry 12695. 云南思茅南山



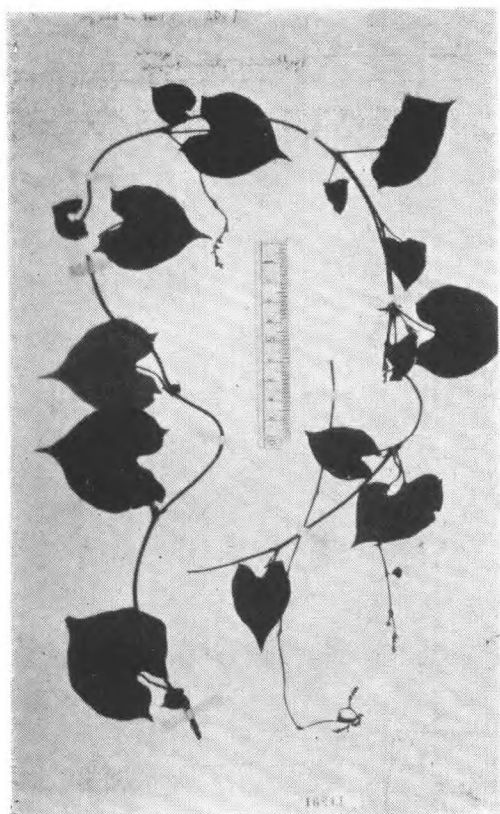
Polygonum convolvulus L.
Cowdry 1534. 张家口



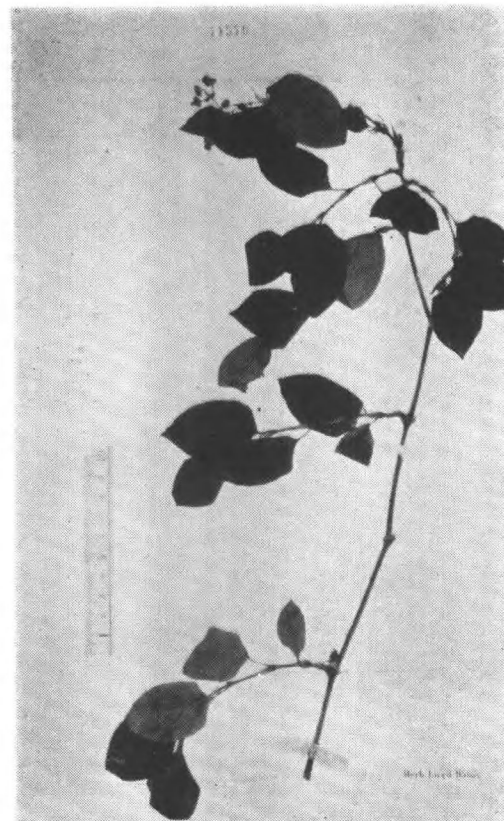
Polygonum coriaceum Samuelsson
H.-M. 5720 (type.) 云南丽江玉龙山



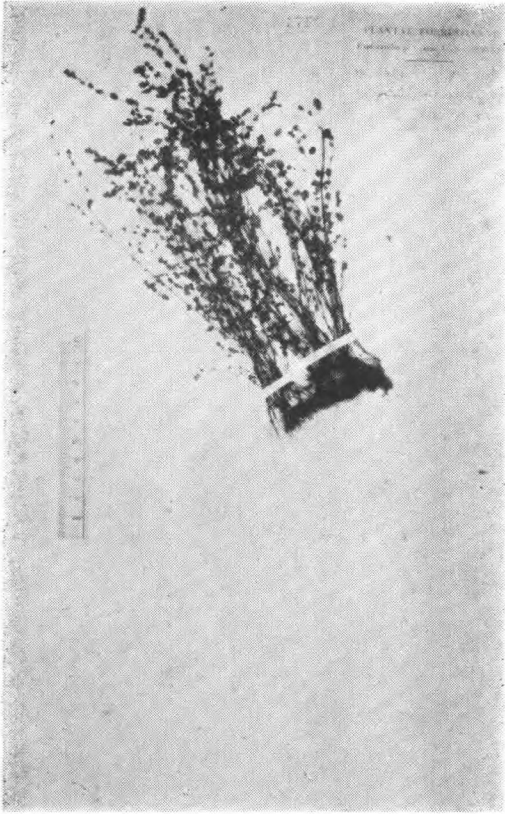
Polygonum criopolitanum Hance.
Hance 10506 (cotype) 广州, Bullock 55
江西九江



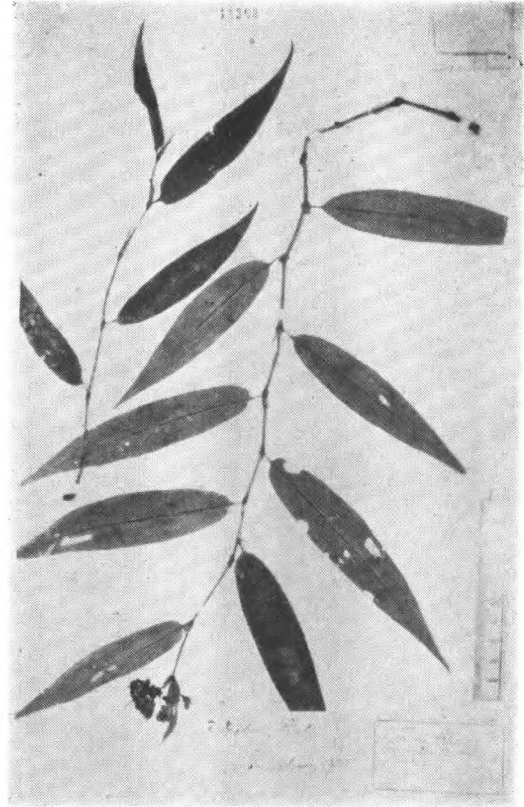
Polygonum cynanchoides Hemsl.
Henry 6196 (type.) 湖北



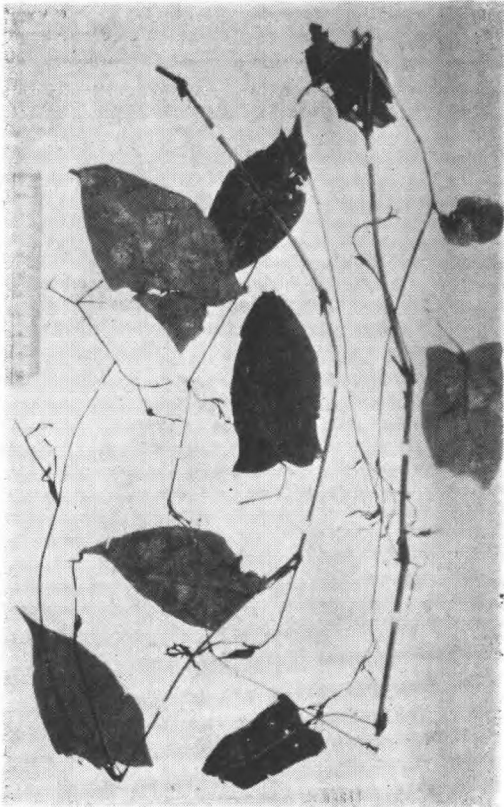
Polygonum debile Meisn.
Ex herb Lugd-Batavo (cotype.)



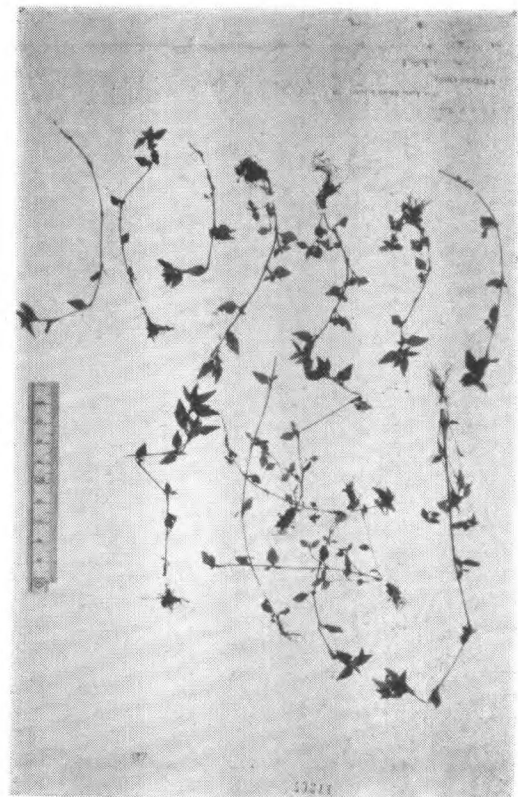
Polygonum delicatulum Meisn.
Forr. 18496 云南



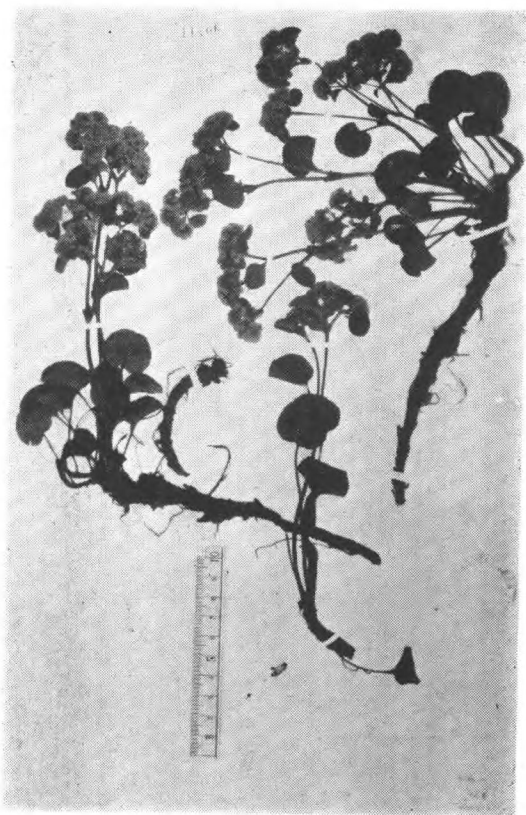
Polygonum Dielsii Lévl.
Henry 9922, 云南弥勒



P. dissitiflorum Hemsl.
E. Faber (syntype.) 浙江宁波



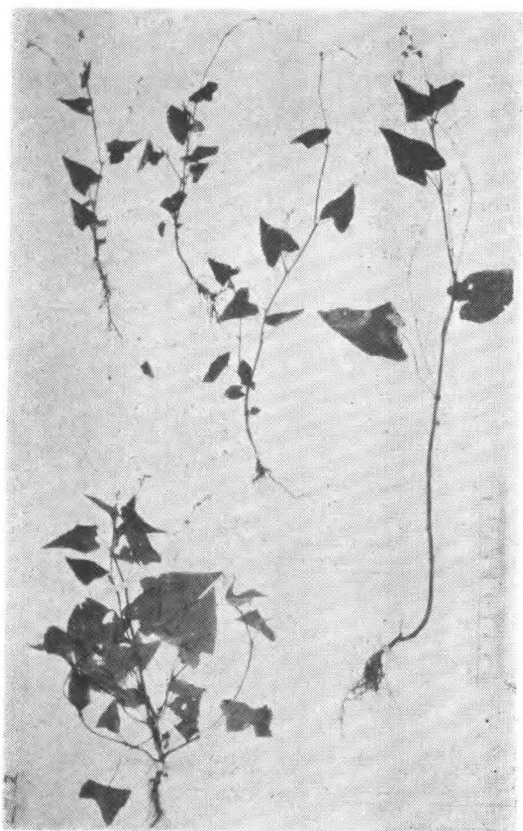
Polygonum filicaule Wall.
Wils. 4398. 中国四川西部



Polygonum Forrestii Diels.
Forr. 7123 (type.) 云南大理



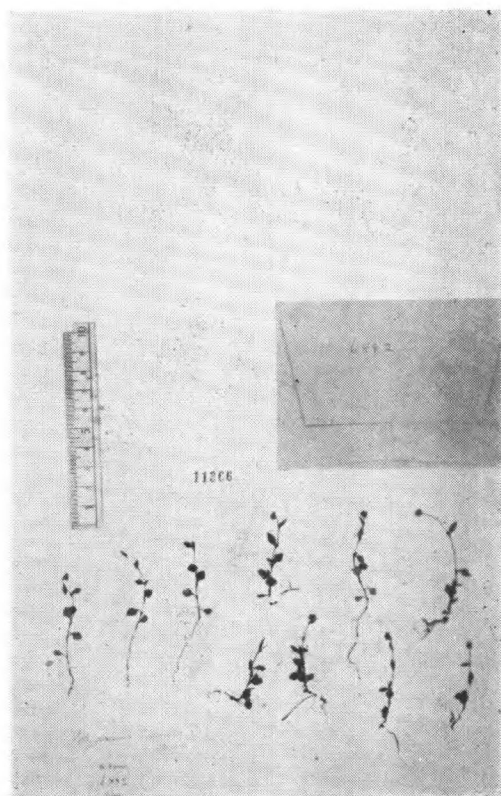
Polygonum glabrum Willd.
Hance 10507. (cotype.) 广州



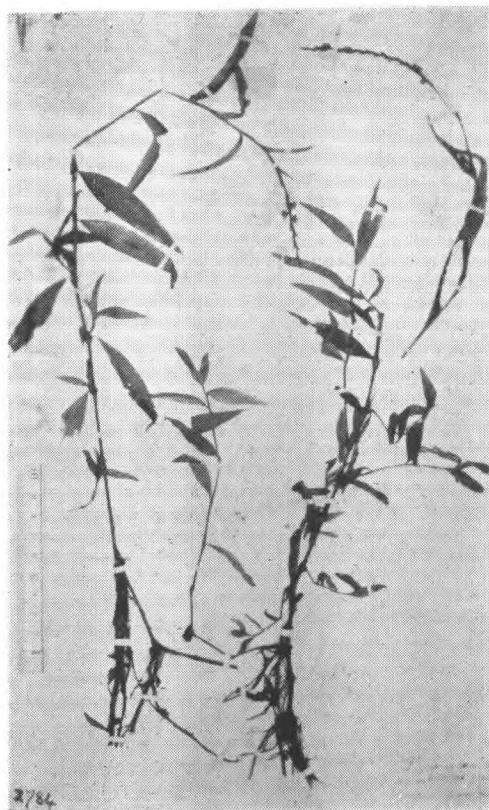
Polygonum gracilipes Hemsl.
E. Faber 846, (syntype.) 四川峨眉 Henry
4742 湖北巴东



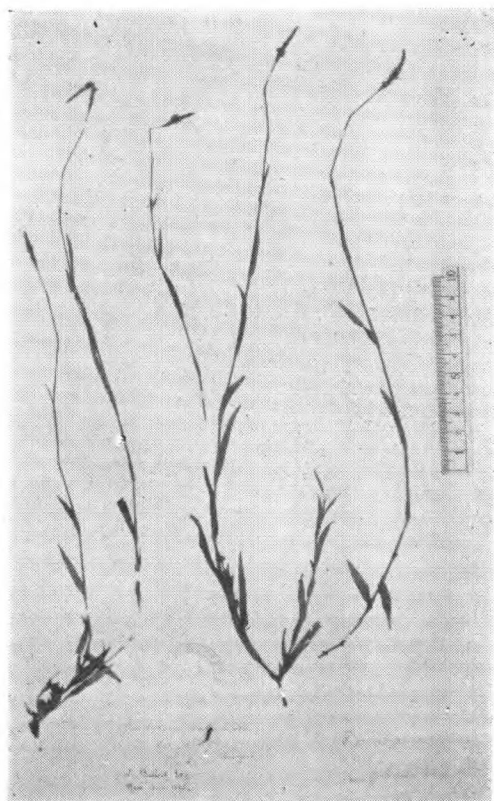
Polygonum Griffithii Hook. f.
Monbeig, 云南 Tsekou.



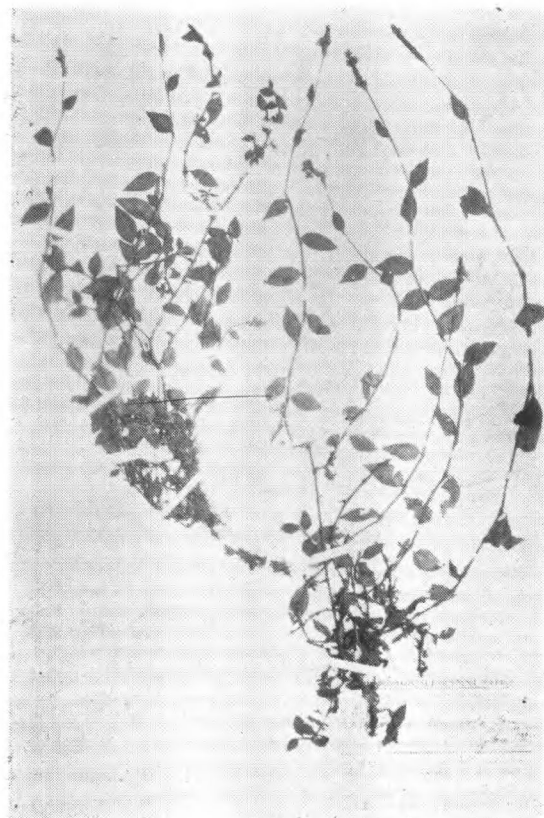
Polygonum humile Meisn.
Forr. 6882 云南



Polygonum interruptum Bge.
Bunge (isotype.) 北京翠微山



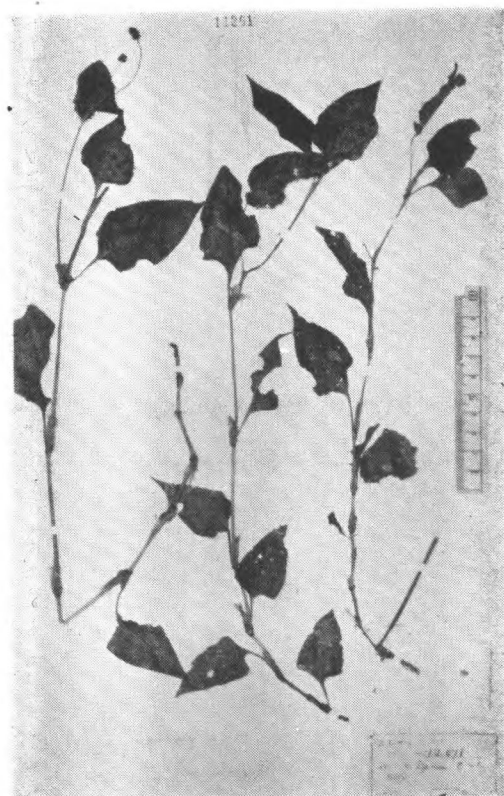
Polygonum jucundum Meisn.
J. S. Bullock 江西九江



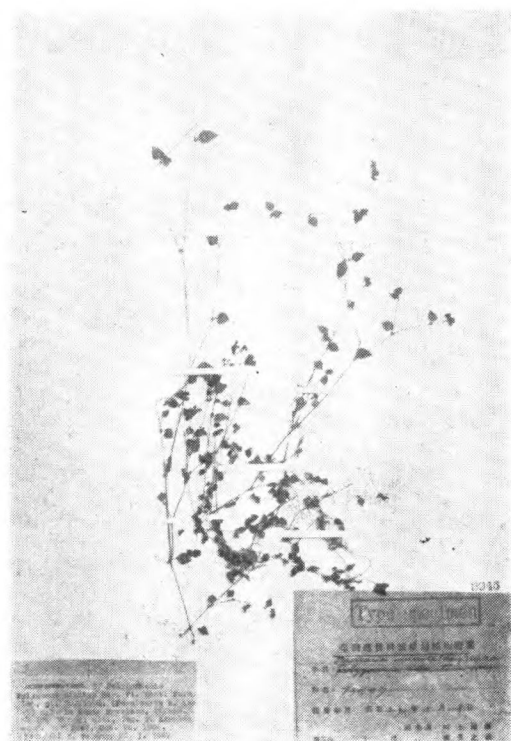
Polygonum limicola Samuels
H.-M. 11389 (type.) 湖南长沙嶽麓山



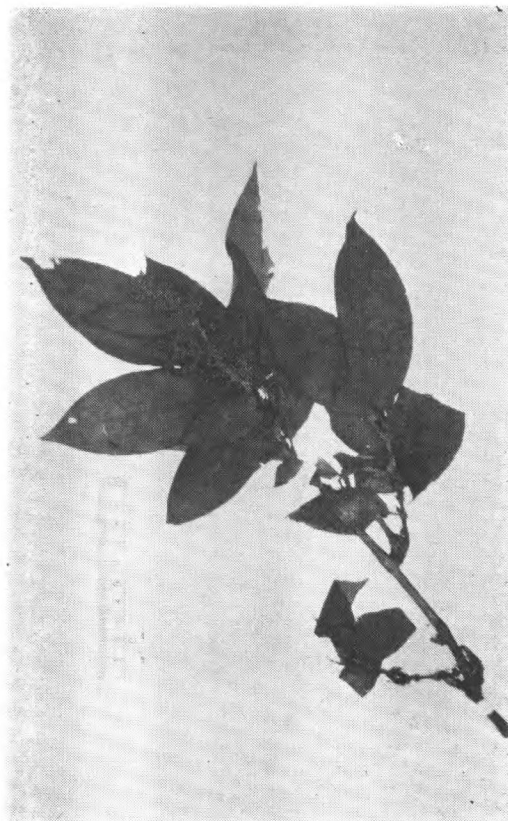
Polygonum lineare Samuels.
H.-M. 8569 (type.) 云南大理



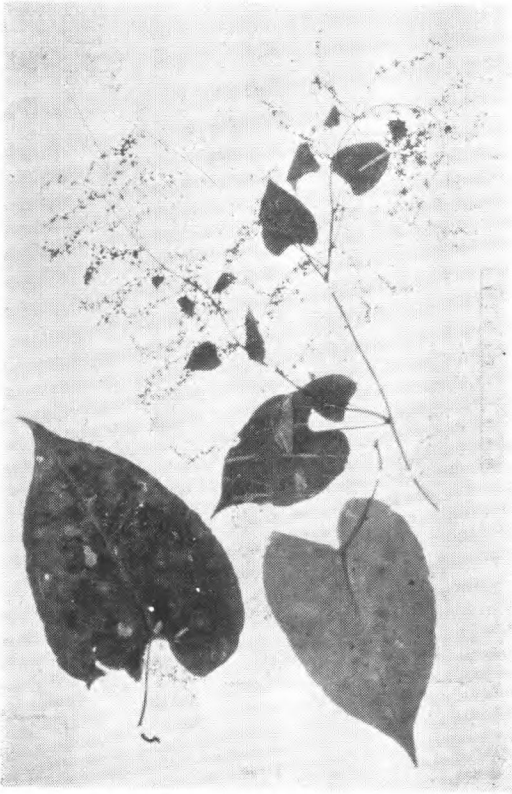
Polygonum microcephalum D. Don.
Henry 12071. 云南思茅东山



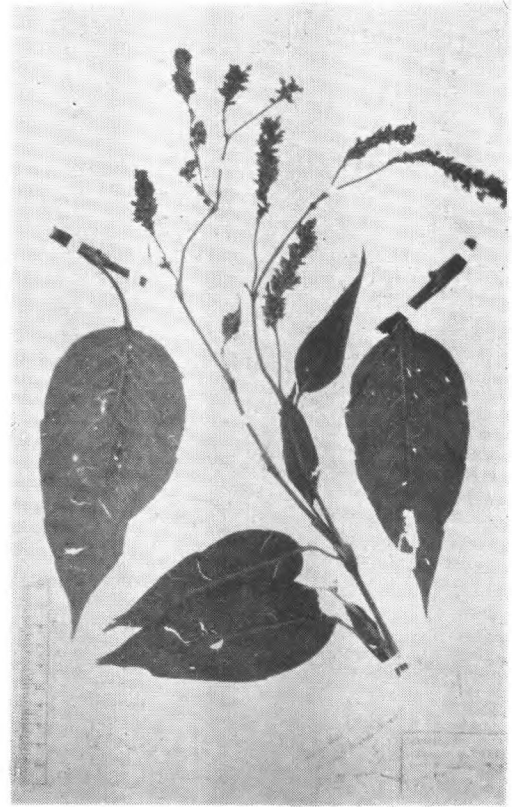
Polygonum minutum Hay.
T. Kawakami et U. Mori 2267, (isotype.)
台湾, Monte Morrison.



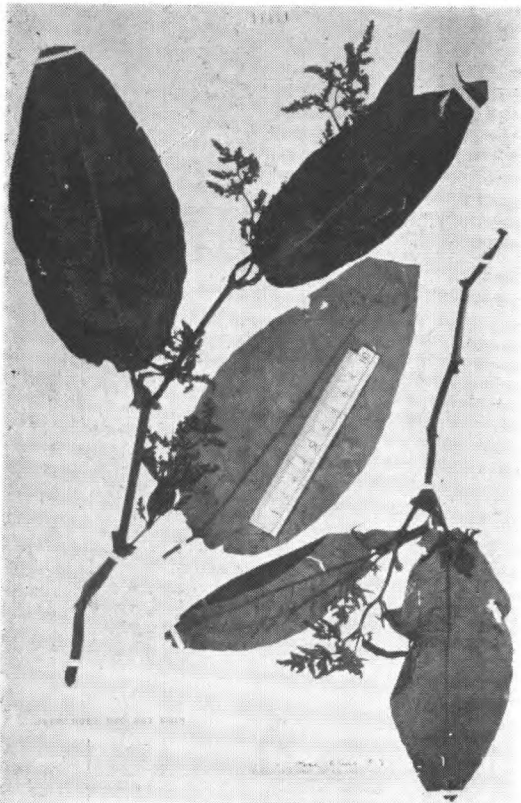
Polygonum molle D. Don.
Forr. 8735, 云南腾越



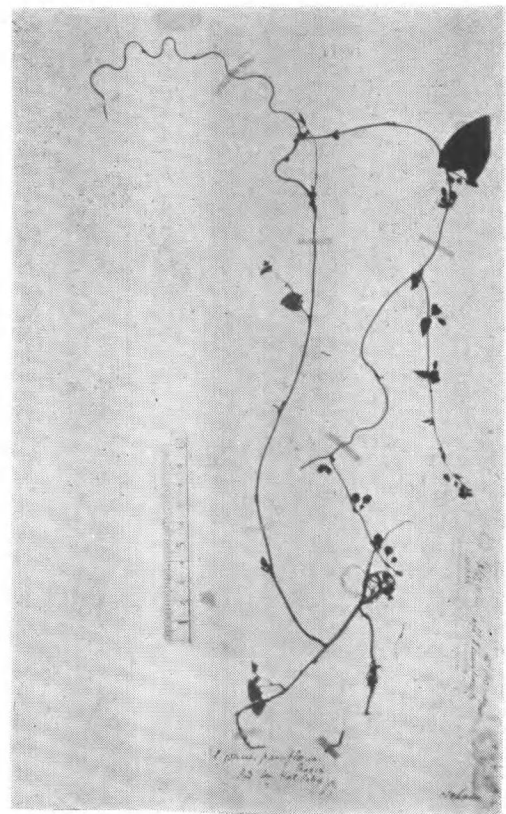
Polygonum multiflorum Thbg.
Hancock 353 云南蒙自



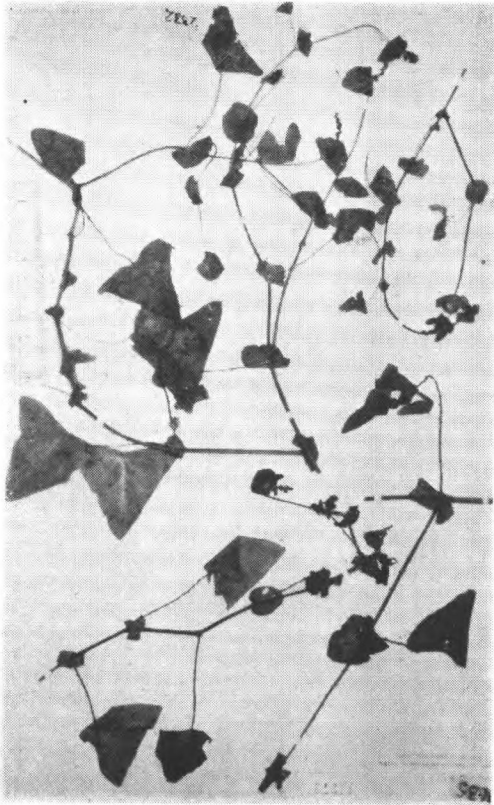
Polygonum orientale L.
Henry 13201 云南思茅



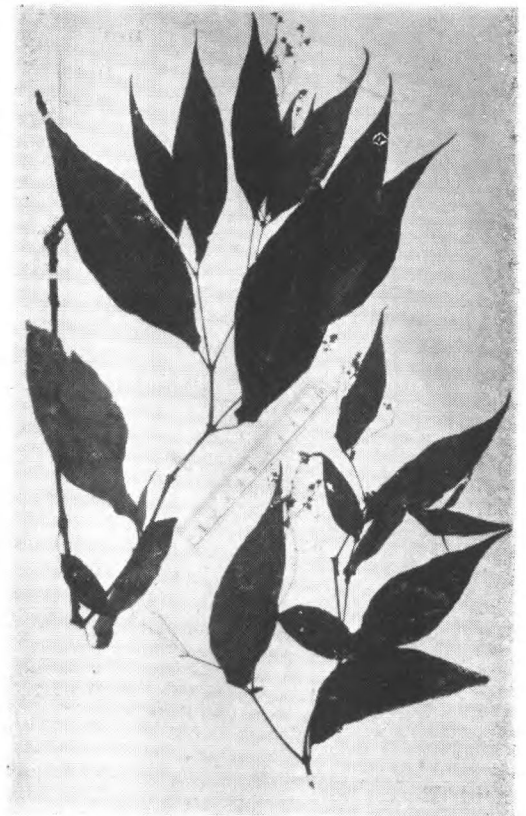
Polygonum paniculatum Bl.
Forr. 4567, 云南大理



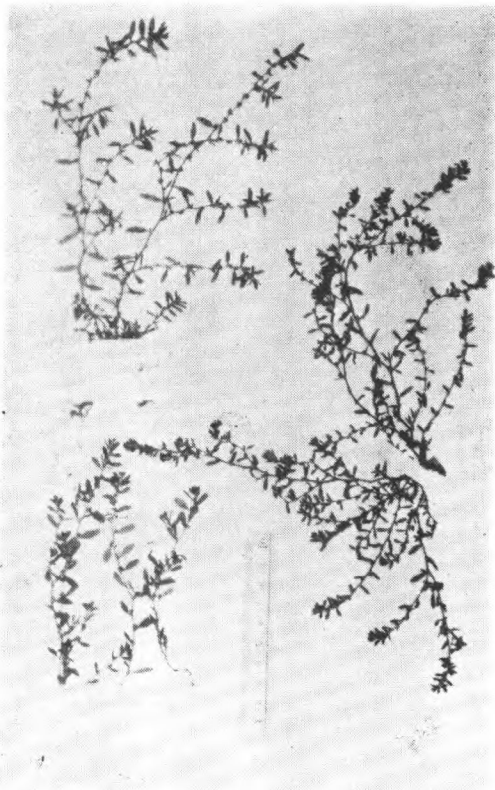
Polygonum pauciflorum Maxim.
Oldham 698 朝鮮



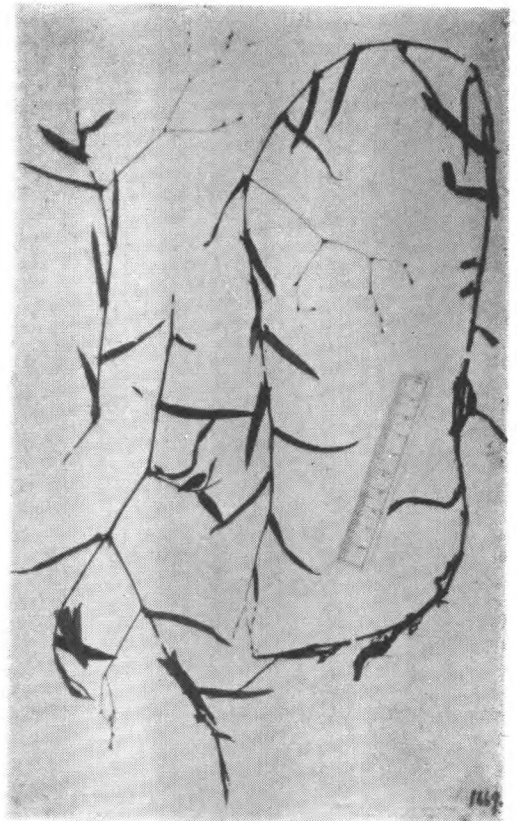
Polygonum perfoliatum L.
Henry 635, 2332. 湖北宜昌



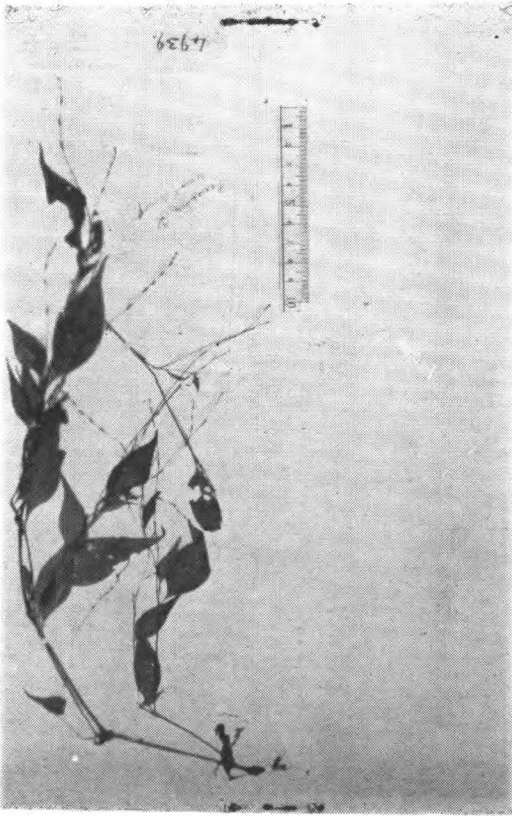
Polygonum pinetorum Hemsl.
Faber 843, 855 (syntype.) 四川峨眉



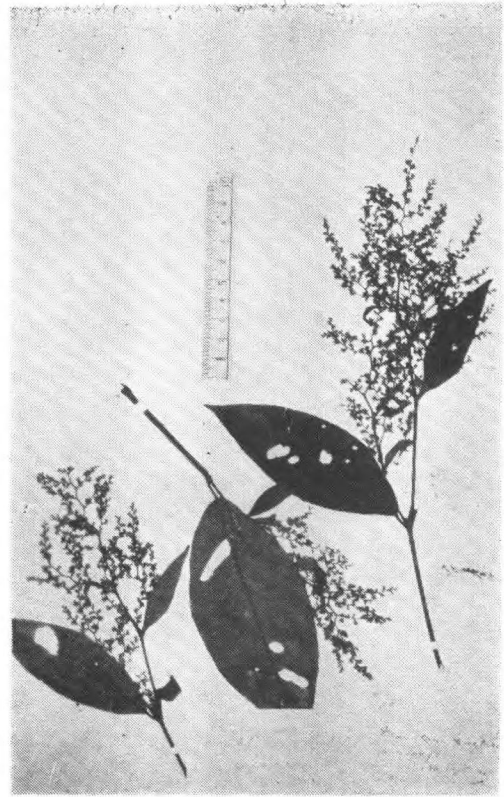
Polygonum plebeium Br.
C. Wright 419, 香港, G.M.H. Playfair 14
广东北海



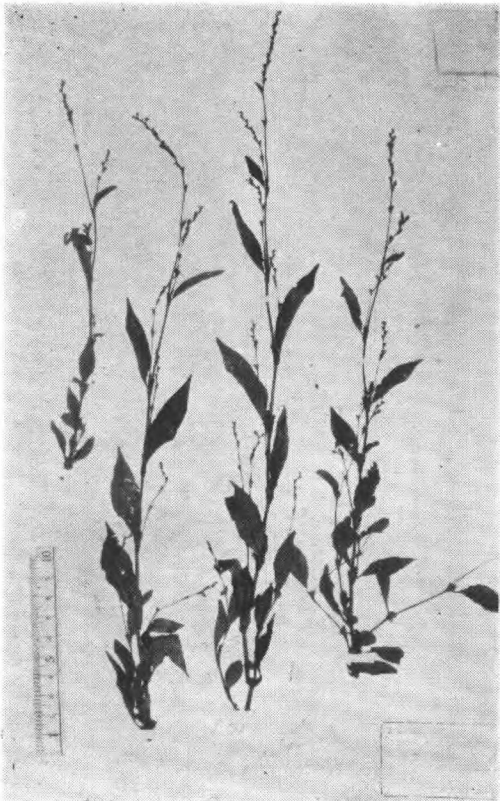
Polygonum pratermissum Hook. f.
Henry 1669. 湖北宜昌



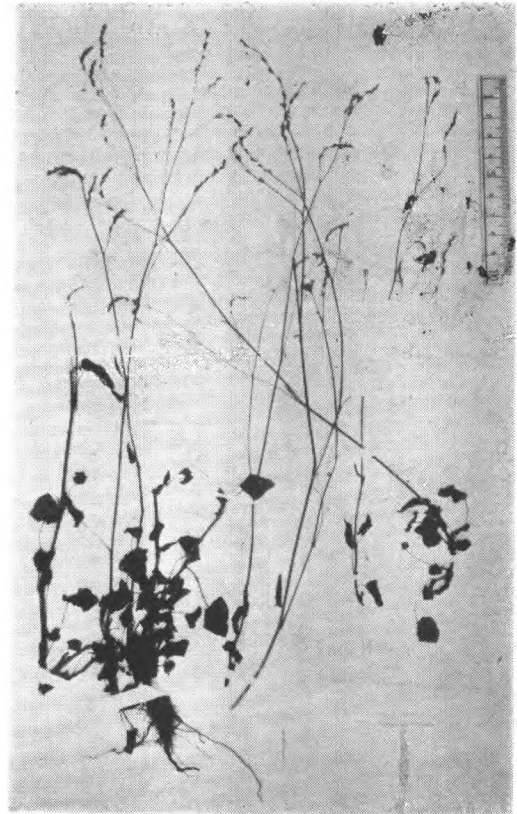
Polygonum posumbu Ham.
Henry 4939 湖北巴东



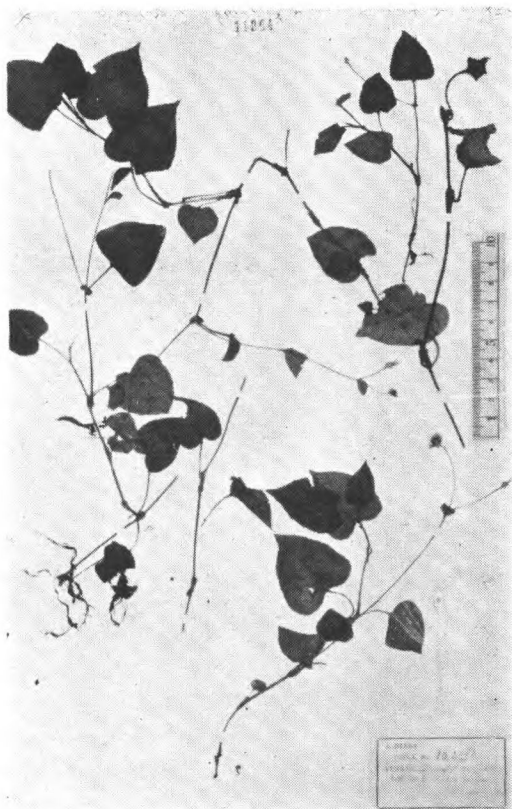
Polygonum rude Meissn.
Hancock 195 云南蒙自



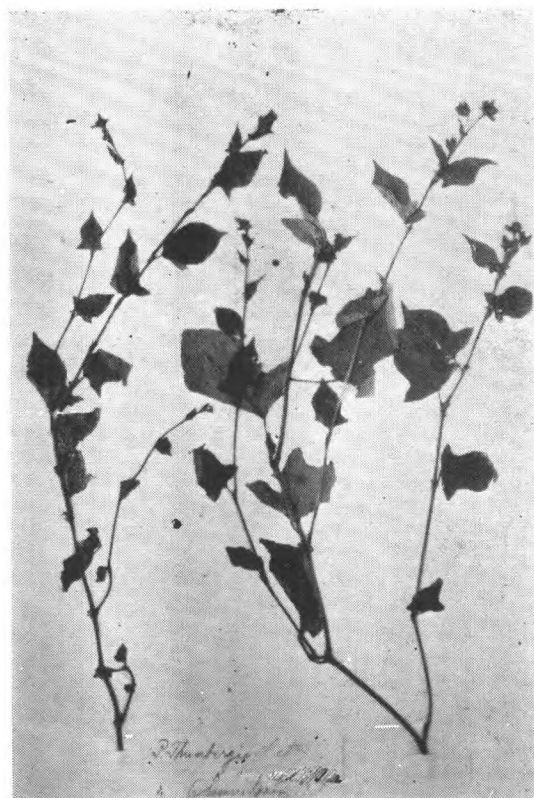
Polygonum schinzii J. Schuster.
Henry 92454A (cotype.) 云南蒙自北山



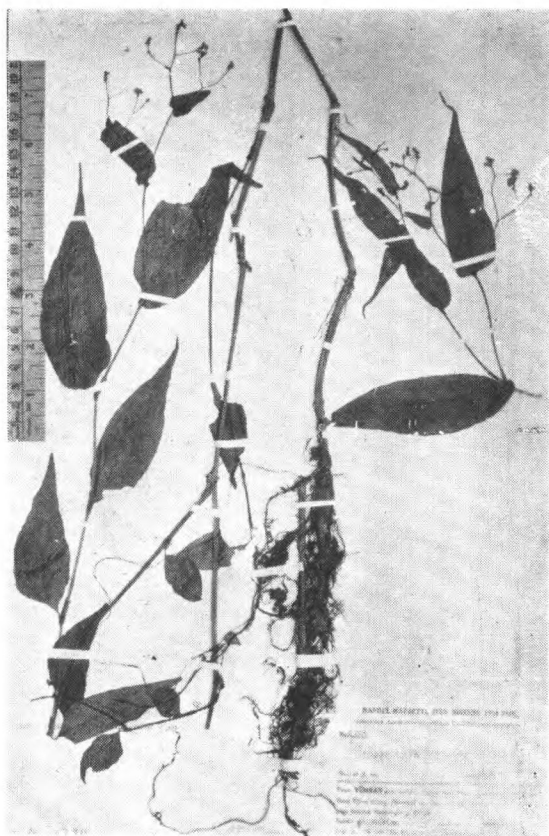
Polygonum statice Lévl.
J. Cavalerie 4565. 贵州黄草壩



Polygonum Strindbergii Schuster.
Henry 10499A. 云南蒙自



Polygonum Thunbergii Sieb. et Zucc.
Thbg. (type.) 日本



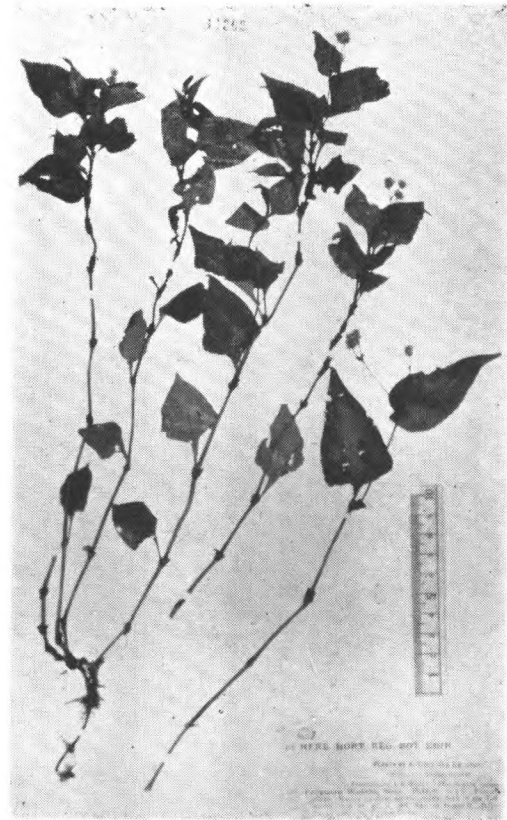
Polygonum umbrosum Samuels.
H.-M. 9350 (type.) 云南独江



Polygonum viscosum Ham.
Henry 2785 湖北宜昌



Polygonum Weyrichii Fr.
Max. 日本函館

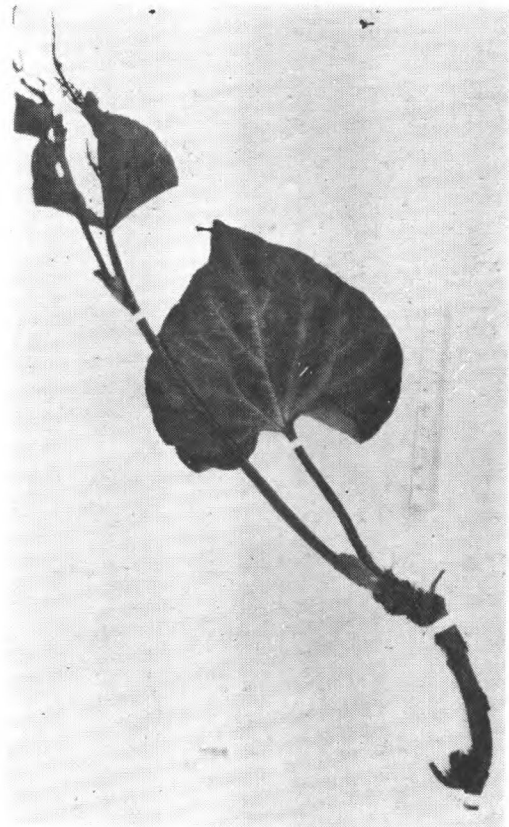


Polygonum Wallichii Meisn.
Forr. 4580, 云南大理

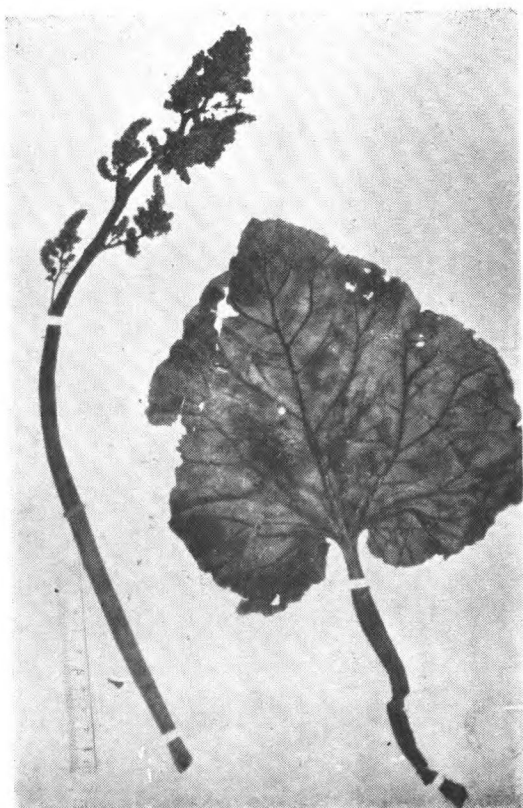
大黃屬 *Rheum* L.



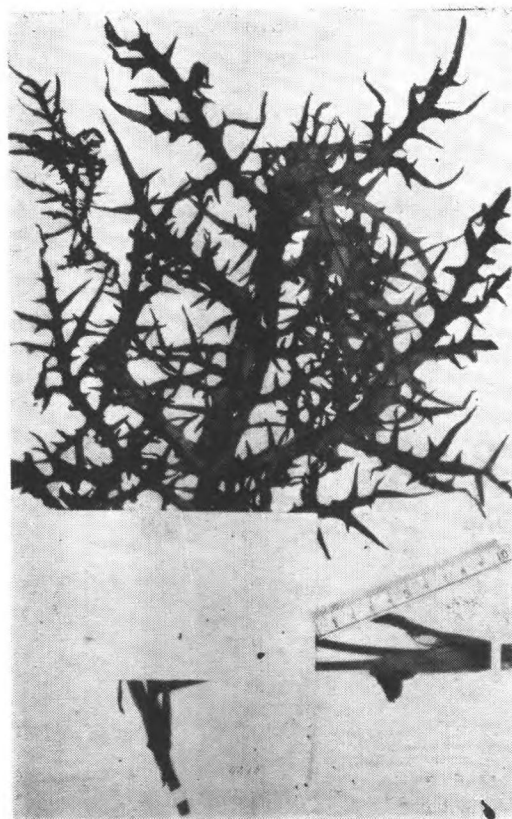
Rheum Alexandrae Batal.
Potanin (cotype.) 西藏



Rheum Emodi Wall.
Forr. 5928. 云南



Rheum Forrestii Diels
Forr. 5940 (istotype.) 云南

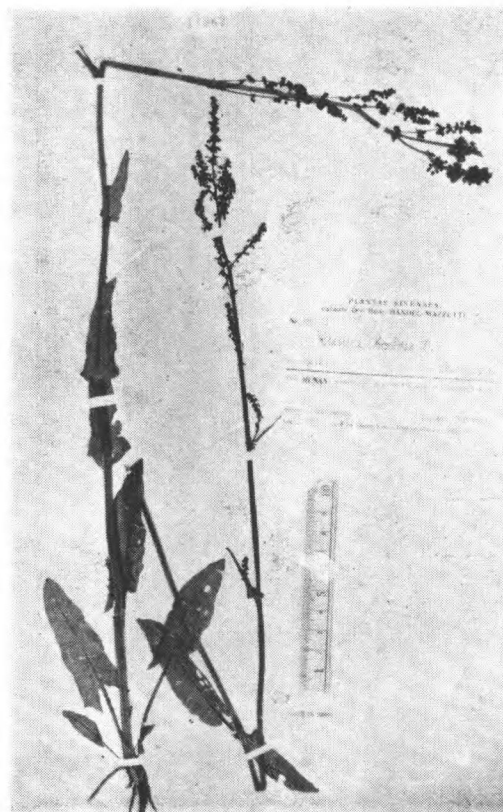


Rheum laciniatum Prain.
Wils. (Veitch) 4415 (type.) 中国西部

酸模屬 *Rumex* L.



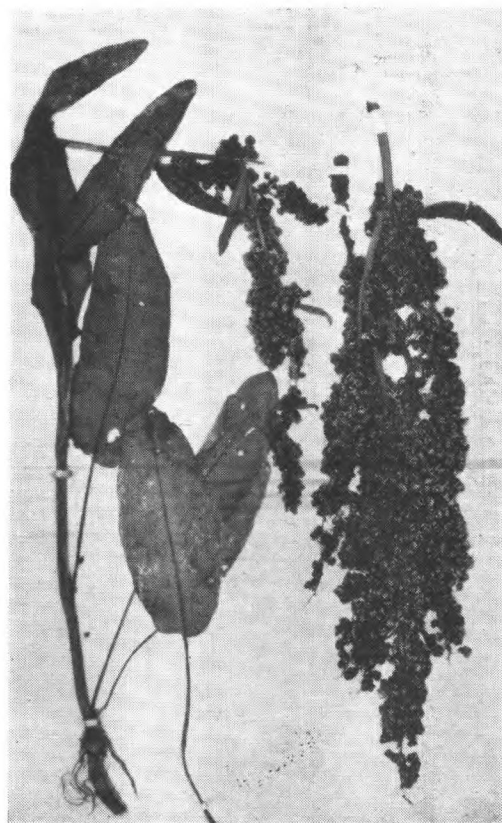
Rheum tibeticum Maxim.
T. Thomson (cotype.) 西藏西部



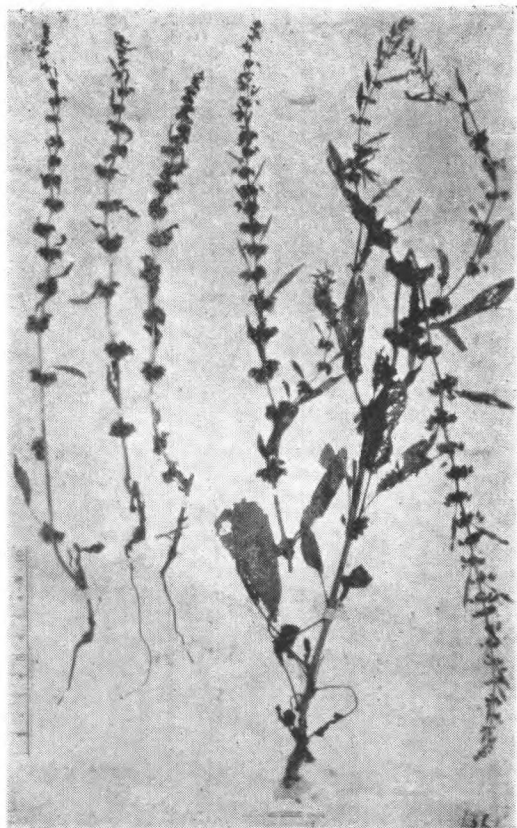
Rumex Acetosa L.
H.-M. 116. 湖南武崗云山



Rumex cardiocarpus Pamp.
Wils. (Veitch) 823. 湖北 Nanto



Rumex crispus L.
E. Faber 210. (Cotype) 四川重庆



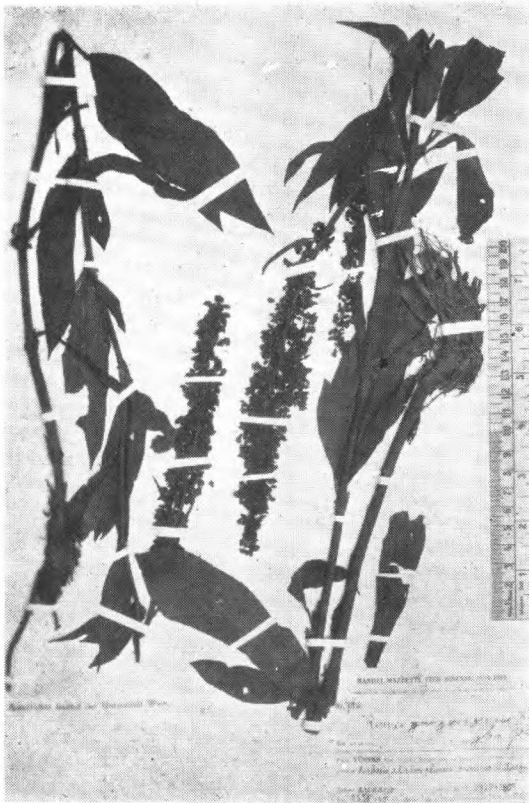
Rumex dentatus L.
Henry 1361. 湖北宜昌



Rumex remotiflorus Samuels.
H.-M. 7164 (type.) 云南永宁

34. 藜 科 *Chenopodiaceae*

千針莧屬 *Acroglochin* Schrader

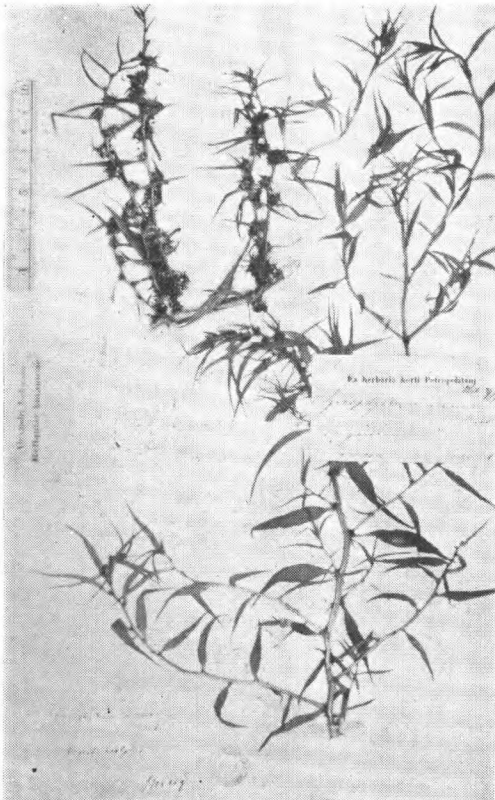


Rumex yungningensis *Samuels*.
H.-M. 7162 (syntype.) 云南永宁

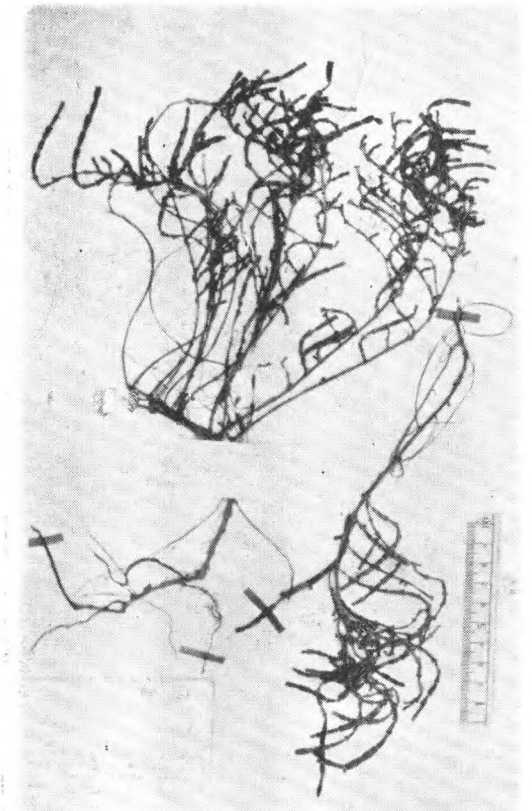


Acroglochin persicarioides (*Poir.*) *Miq.*
Henry 5143, 4470, 湖北巴东南陀(Nan-to.)

沙蓬屬 *Agriophyllum* *Biebestein.*

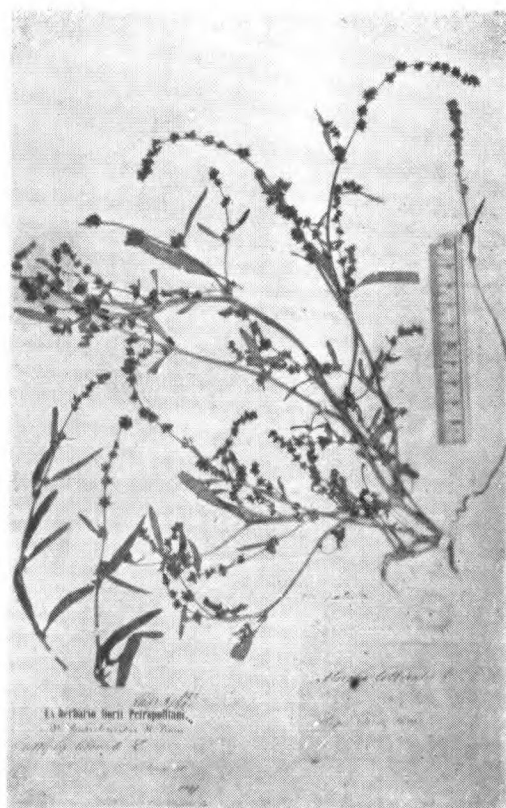


Agriophyllum arenarium *Bieberst.*
Bunge 339.



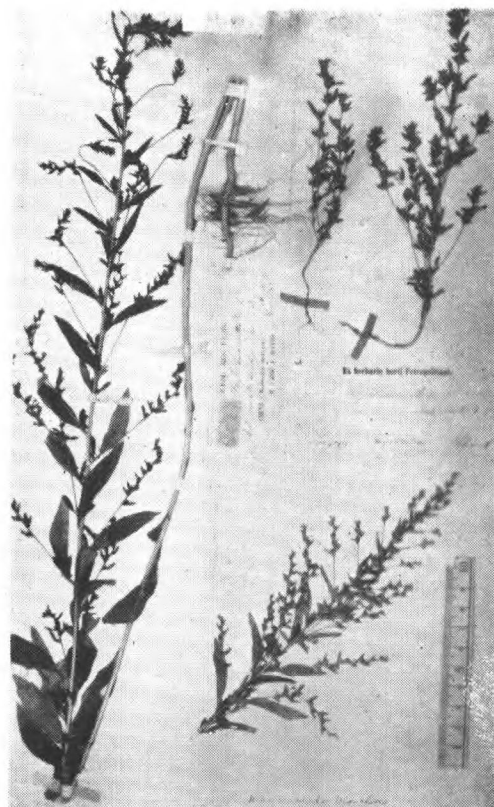
Arthrocnemum indicum (*Willd.*) *Moquin*
Fagg in Herb. Hance 13024. 海南

滨藜属 *Atriplex* L.



Atriplex Gmelini C. A. Meyer.
Bretschneider 623 北京

轴藜属 *Axyris* L.



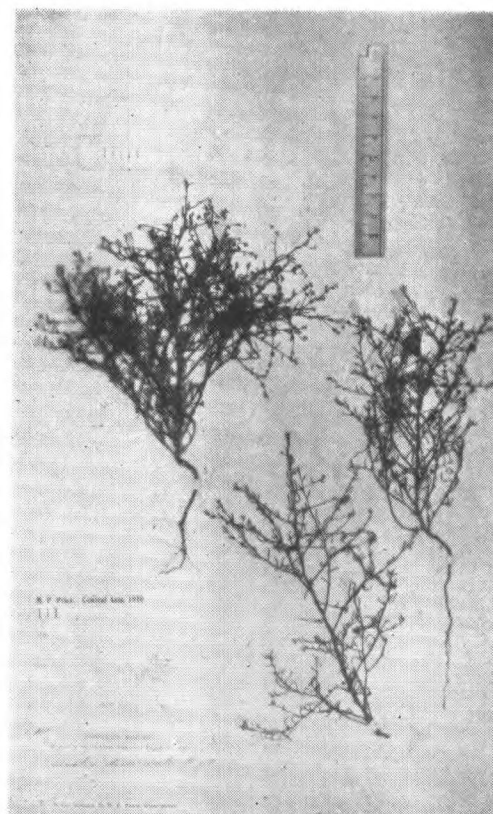
Axyris amaranthoides L.
Schrenk, Songaria; David 2027, 热河
James, 吉林, 齐齐哈尔

巴锡黎属 *Bassia* All.



Bassia desyphylla (Fisch. et Meyer)
O. Ktze.
M. P. Price 111. 中亚

藜属 *Chenopodium* L.



Chenopodium acuminatum Willd.
C. Ford 377. 海南



Chenopodium album L.
Bretschneider 615, 621. 北京



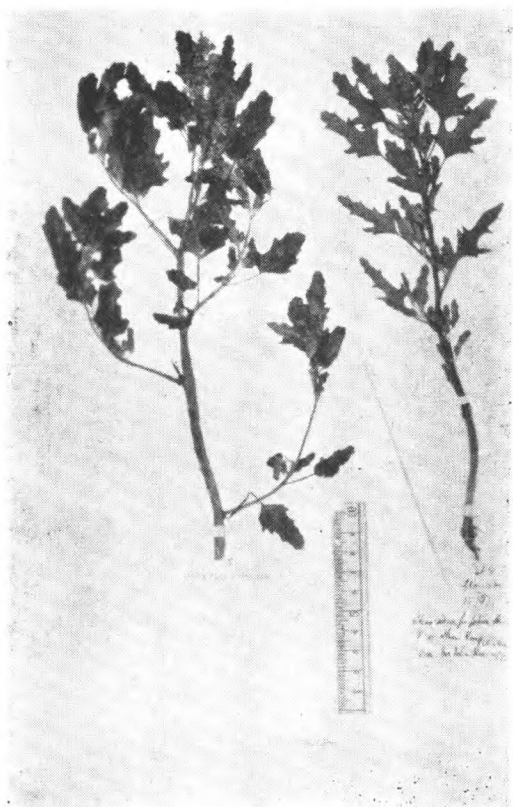
Chenopodium amaranticolor
Coste et Reyre.
Pere Maire 云南西部



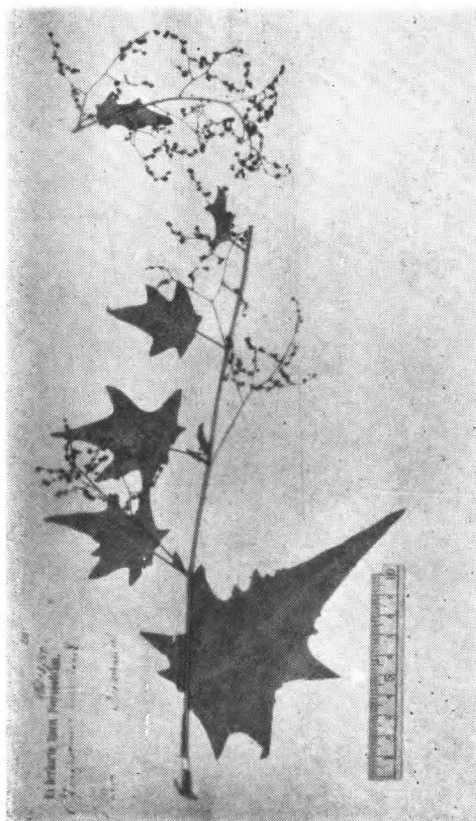
Chenopodium aristatum L.
N. H. Cowdry 1852. 河北张家口山頂



Chenopodium Botrys L.
Licent 4576. 甘肃洗甲台

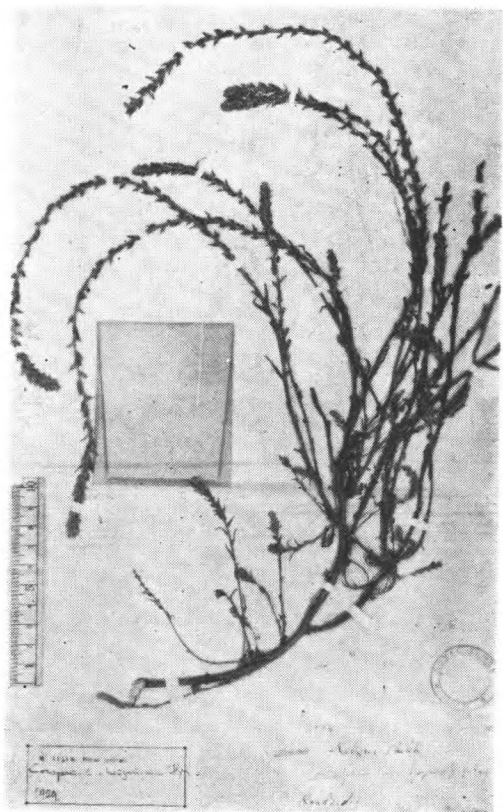


Chenopodium bryoniaefolium Bge.
John Ross. 367 藩阳
Playfair 361? 台湾

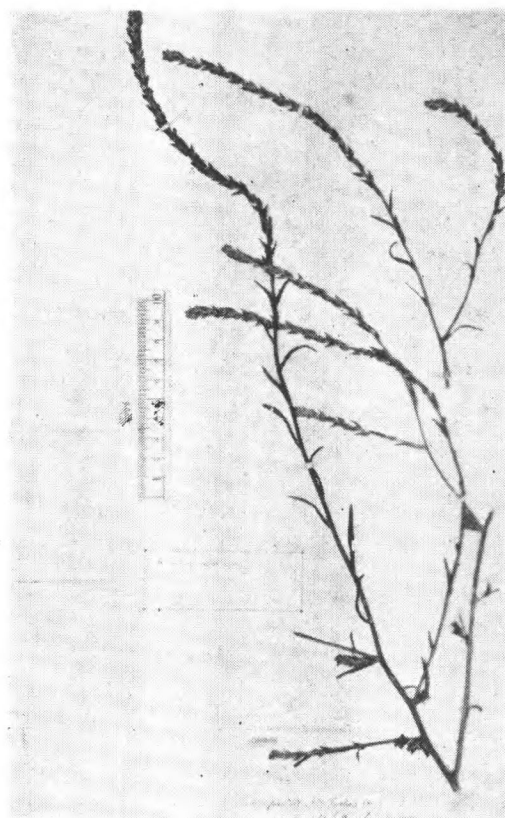


Chenopodium hybridum L.
Bretschneider 216. 北京

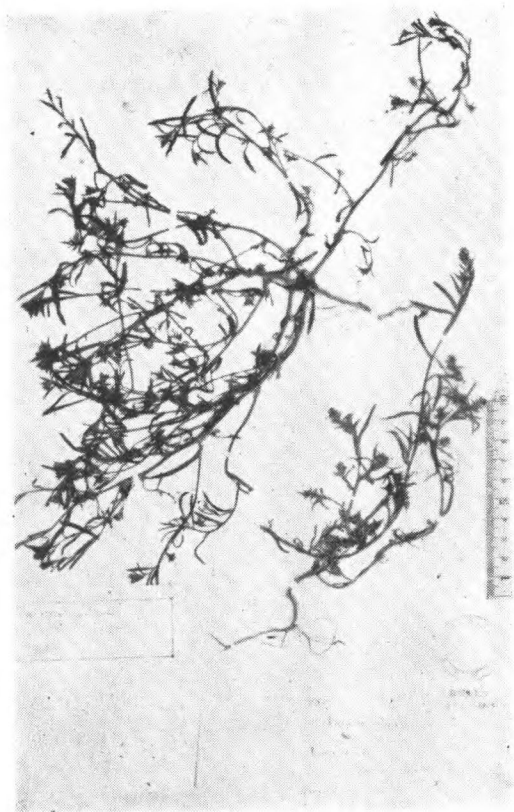
虫 实 属 *Corispermum* L.



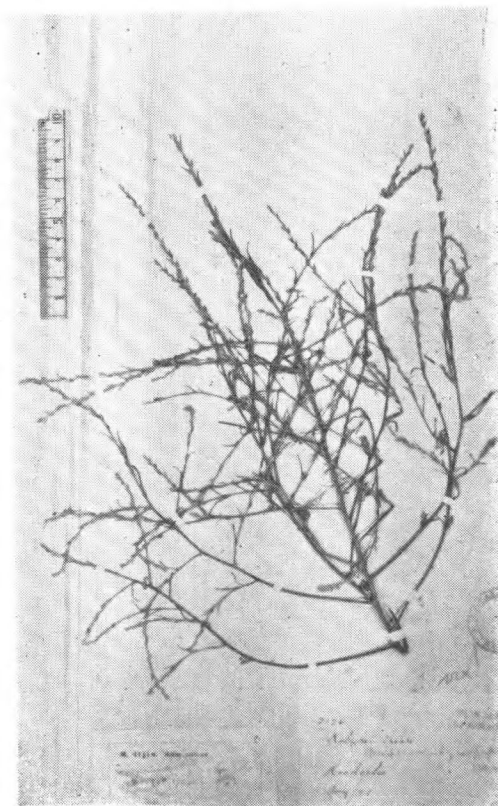
Corispermum chinganicum Ilj.
Cowdry 2125 河北张家口



Corispermum elongatum Bge.
F. B. Forbes, 1872. 山东芝罘

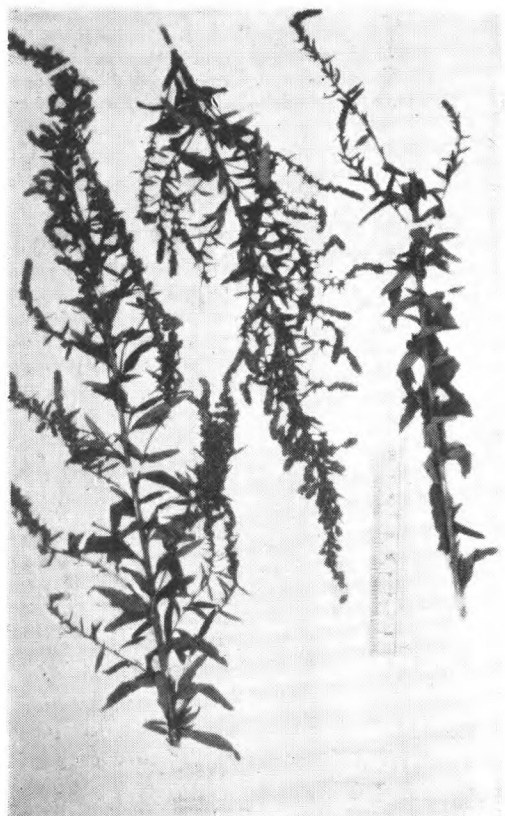


Corispermum puberulum Ilj.
Cowdry 1950. 河北张家口

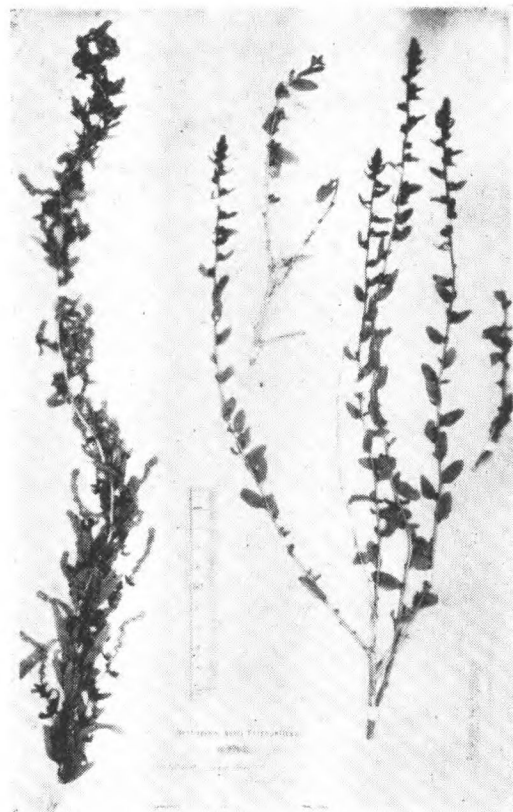


Corispermum tylocarpum Hance.
Cowdry 2126 河北张家口

优若藜属 *Eurotia* Adanson



Eurotia artorescens Losina-Losinskaja
Wils. (Veitch) 3834. 四川岷江谷



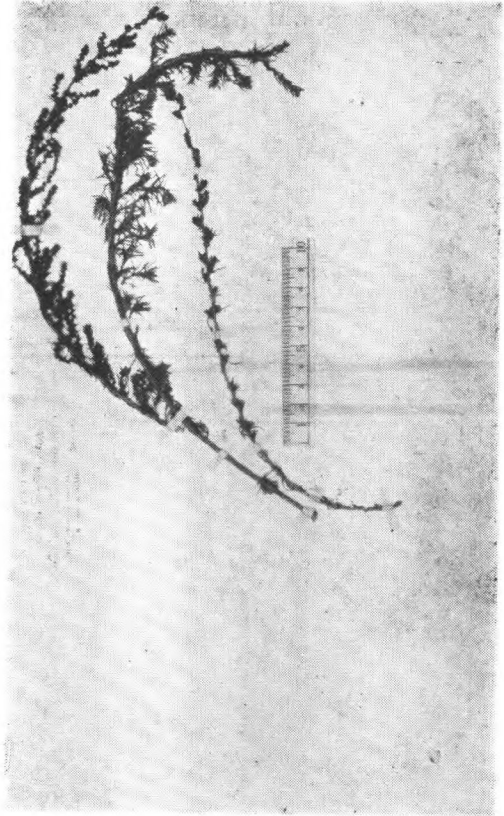
Eurotia ceratoides (L.) C. A. Meyer
Przewalski 338. 蒙古阿拉善

盐爪爪属 *Kalidium Moquin*



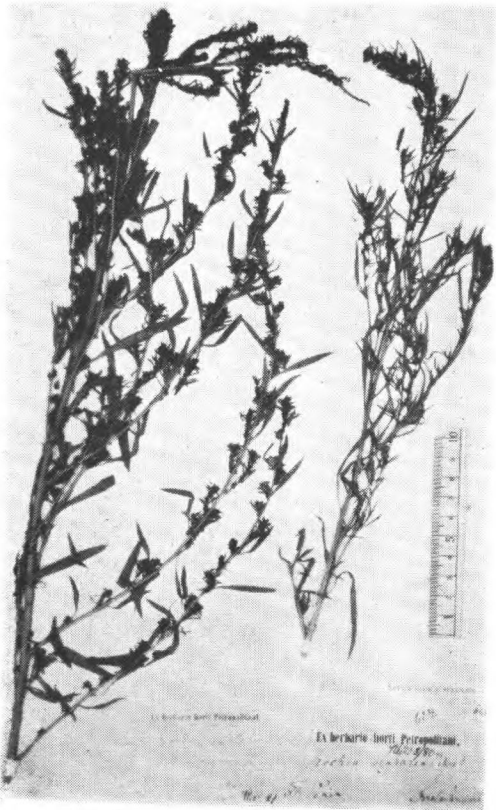
Kalidium gracile Fenzl.
Bge. 1831 蒙古戈壁, Przewalski. 1873
阿拉善

地肤属 *Kochia Roth.*

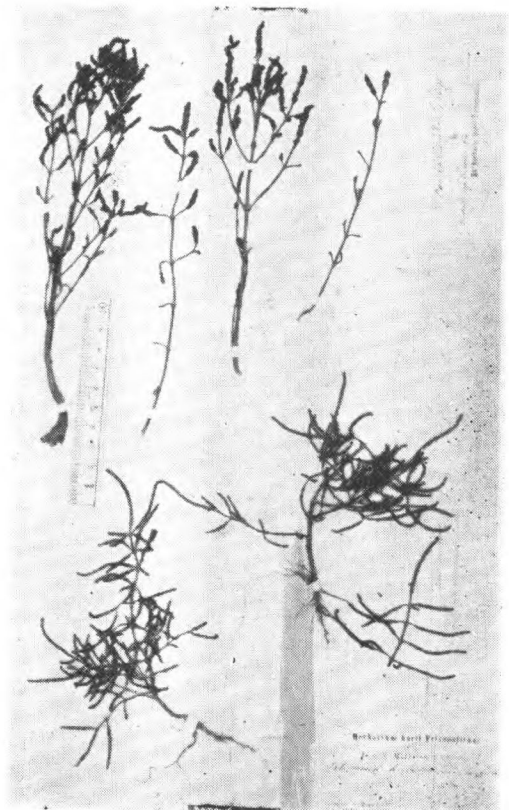


Kochia prostrata (L.) Schrader
David 2949. 热河 Sartchy.

盐角菜属 *Salicornia L.*

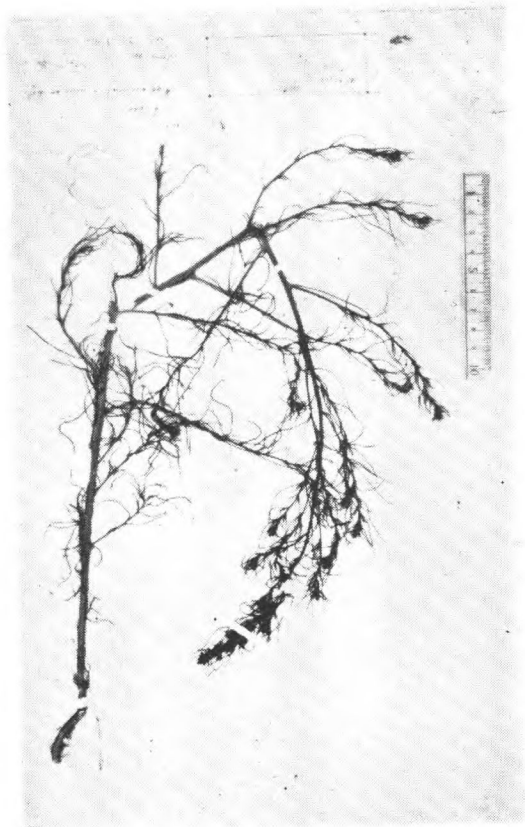


Kochia Scoparia (L.) Schrader
Bretschneider 628. 北京

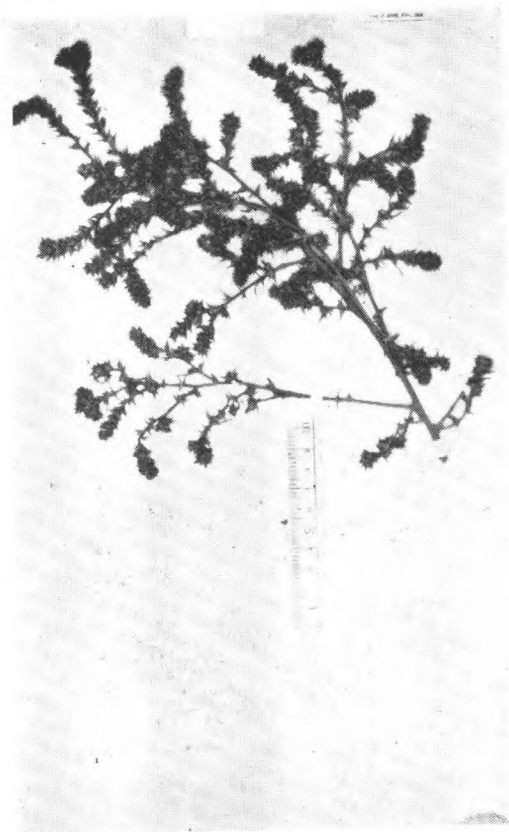


Salicornia herbacea (L.) L.
Przewalski. 阿拉善

猪毛菜属 *Salsola* L.

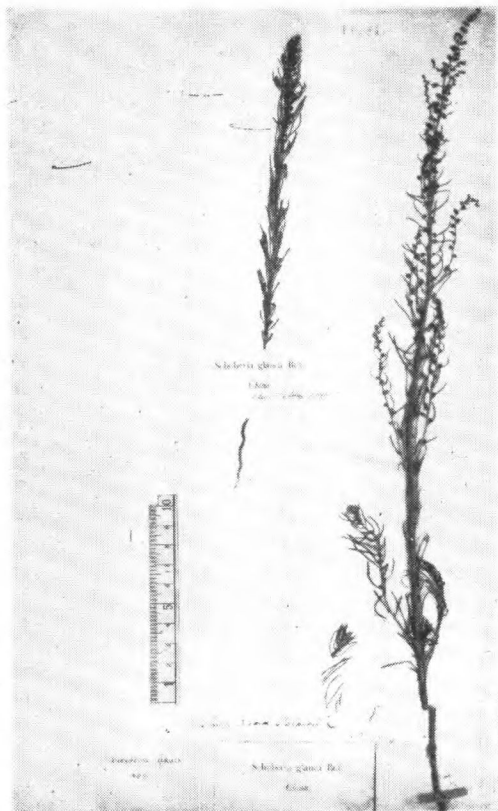


Salsola collina Pall.
Cowdry 695. 芝罘

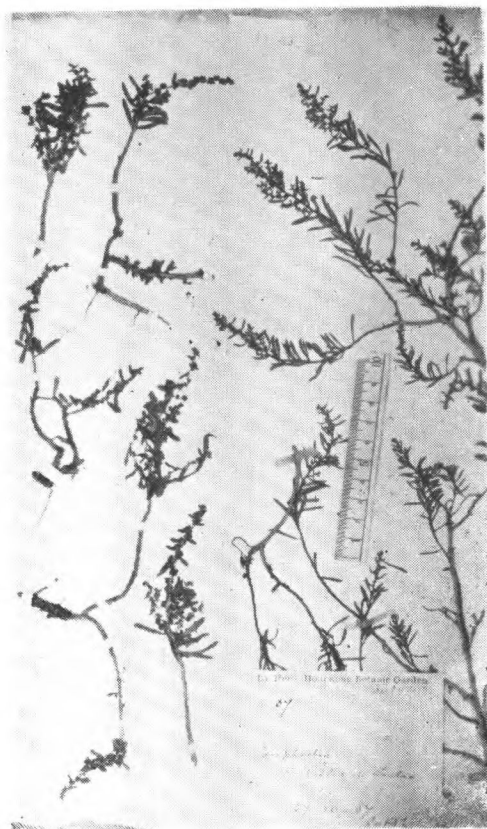


Salsola ruthenica Iljin
辽宁瀋阳

鹼蓬属 *Suaeda* Forsk.



Suaeda glauca Bge.
Bge. (cotype) 中国北部



Suaeda monoica Forsk.
C. Ford 37. 香港