



PLATE I. AGNOLO GADDI. LOUVRE, 758.



PLATE II. FRA ANGELICO, BRITISH MUSEUM, 162.



PLATE III. FRA ANGELICO, WINDSOR, 163.



PLATE IV. FRA ANGELICO, WINDSOR, 163 verso.



PLATE V. DOMENICO DI MICHELINO, LOUVRE, 1753.



PLATE VI. BENOZZO, DRESDEN, 532.



PLATE VII. BENOZZO, BRITISH MUSEUM, 54o.



PLATE VIII. BENOZZO, UFFIZI, 537.



PLATE IX. BENOZZO, BRITISH MUSEUM, 542.



PLATE X. PIER FRANCESCO FIORENTINO, UFFIZI, 1868.



PLATE XII. UCCELLO, UFFIZI, 2675.



PLATE XIII. A. POLLAJUOLO, BRITISH MUSEUM, 1905.



PLATE XIV. A. POLLAJUOLO, UFFIZI, 1503.

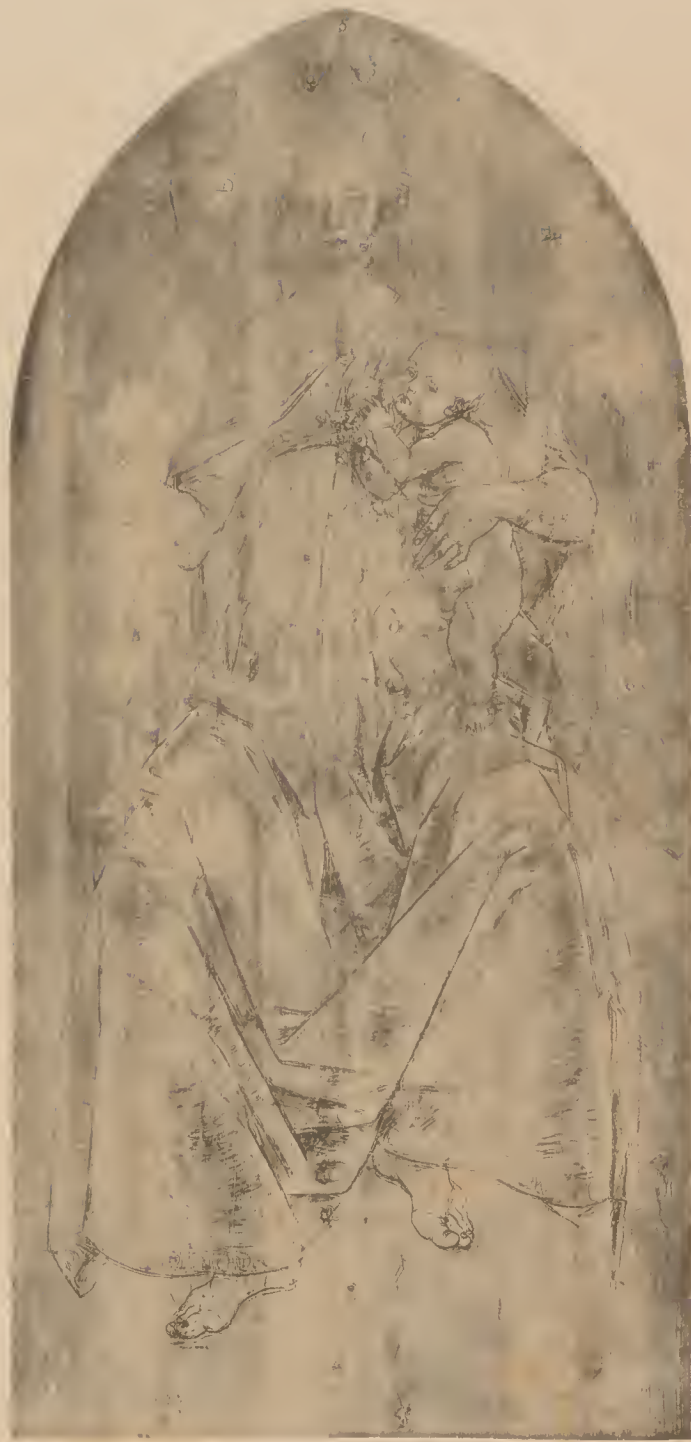


PLATE XV. A. POLLAJUOLO, UFFIZI, 1900.



PLATE XVI. A. POLLAJUOLO, UFFIZI, 1901.



PLATE XVII. A. POLLAJUOLO. UFFIZI, 1902.



PLATE XVIII. A. POLLAJUOLO, BRITISH MUSEUM, 1906.



PLATE XIX. P. POLLAJUOLO, UFFIZI, 1952.



PLATE XXI. SCHOOL OF POLLAJUOLO, M. LÉON BONNAT, PARIS, 1950.

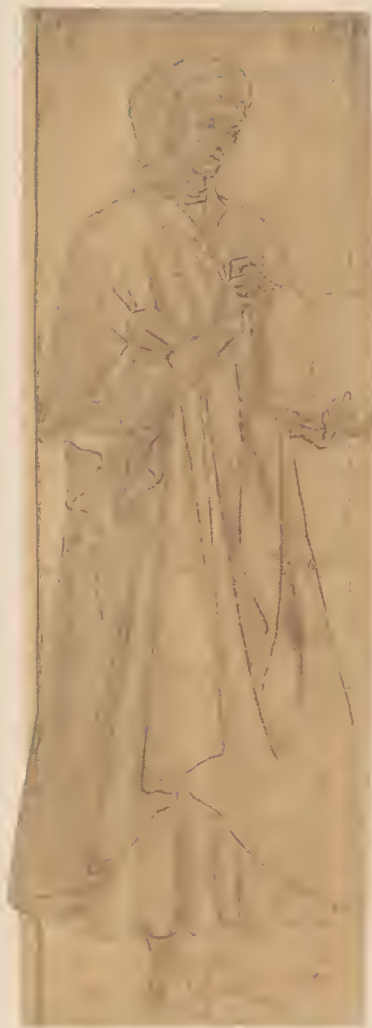


PLATE XXII. SCHOOL OF POLLAJUOLO, CHRIST CHURCH, OXFORD, 1948



PLATE XXIII. VERROCCHIO, LOUVRE, 2691^a and verso.



PLATE XXIV. VERROCCHIO, UFFIZI, 2690.



PLATE XXV. VERROCCHIO, BRITISH MUSEUM, 2691.



PLATE XXVI. SCHOOL OF VERROCCHIO, BRITISH MUSEUM, 2707.



PLATE XXVII. BOTTICINI, BRITISH MUSEUM, 589.



PLATE XXVIII. BOTTICINI, BRITISH MUSEUM, 590.



PLATE XXIX. CREDI, BRITISH MUSEUM, 691.



PLATE XXX. CREDI, LOUVRE, 709.



PLATE XXXI. CREDI, LOUVRE, 715.



PLATE XXXII. CREDI, UFFIZI, 686.

[Faint, illegible handwritten text, likely a letter or document, written in a historical script.]

PLATE XXXIII. FRA FILIPPO, ARCHIVES, FLORENCE, 1385.



PLATE XXXIV. FRA FILIPPO, HAMBURG. 1386.





PLATE XXXV. FRA FILIPPO, BRITISH MUSEUM, 1387.



PLATE XXXVI. PESELLINO, LOUVRE, 1841.



PLATE XXXVII. PESELLINO, UFFIZI, 1838.



PLATE XXXVIII. PESELLINO, DR. G. FRIZZONI, MILAN, 1840.



PLATE XXXIX. COMPAGNO DI PESELLINO, BERLIN, 670.



PLATE XL. BOTTICELLI, BRITISH MUSEUM, 567.



PLATE XLI. BOTTICELLI, UFFIZI, 563.



PLATE XLII. BOTTICELLI, UFFIZI, 564.



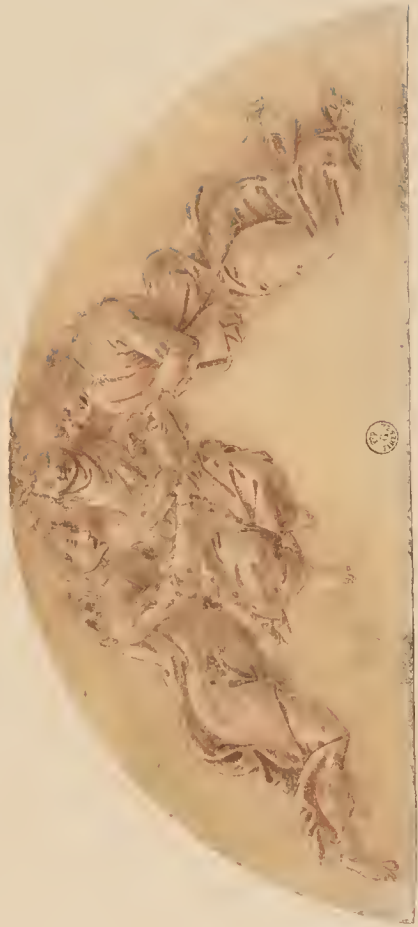


PLATE XLIV. BOTTICELLI, UFFIZI. 562.



PLATE XLV. SCHOOL OF BOTTICELLI, BRITISH MUSEUM, 578.



PLATE XLVI. SCHOOL OF BOTTICELLI, UFFIZI, 577.



PLATE XLVII. GIULIANO DA SANGALLO, SIENA, 2472.



PLATE XLVIII. GIULIANO DA SANGALLO, UFFIZI, 2469.



PLATE XLIX. AMICO DI SANDRO, LOUVRE, 53.



PLATE L. AMICO DI SANDRO, LOUVRE. 54



PLATE LI. AMICO DI SANDRO, UFFIZI. 45.



PLATE LII. AMICO DI SANDRO, BERLIN, 44.



PLATE LIII. SELLAJO, BRITISH MUSEUM, 2508.



PLATE LIV. FILIPPINO LIPPI, UFFIZI, 1285.



PLATE LV. FILIPPINO LIPPI, BRITISH MUSEUM, 1344



PLATE LVI. FILIPPINO LIPPI, UFFIZI, 1498.



PLATE LVII. FILIPPINO LIPPI, DRESDEN, 1279.



PLATE LVIII. FILIPPINO LIPPI, UFFIZI, 1287.



PLATE LIX. FILIPPINO LIPPI, UFFIZI, 1315.



PLATE LX. GARBO, BRITISH MUSEUM. 764.



PLATE LXI. GARBO, CHRIST CHURCH, OXFORD, 768.



PLATE LXII. GARBO, LOUVRE. 769.



PLATE LXIII. CARLI, BRITISH MUSEUM, 640.



PLATE LXIV. ALUNNO DI DOMENICO, UFFIZI, 32.



PLATE LXV. BALDOVINETTI, UFFIZI, 192, 194, 195, 196.

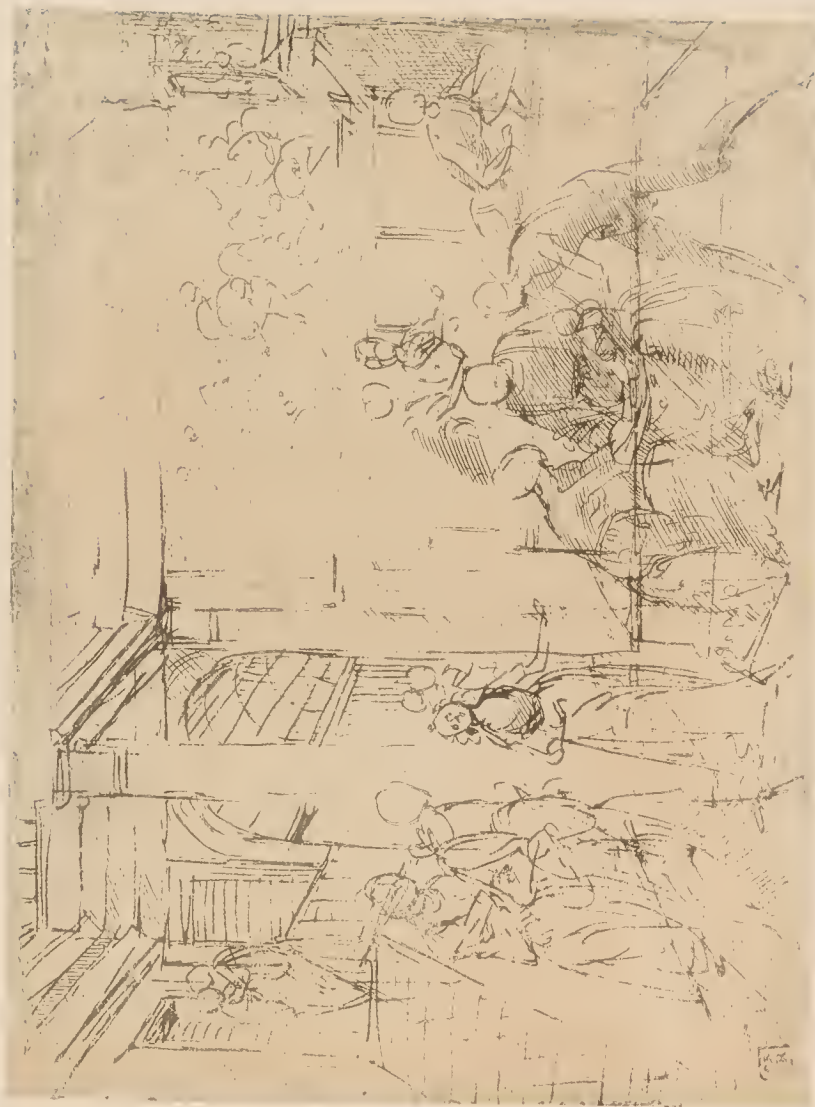


PLATE LXVI. DOMENICO GHIRLANDAJO, BRITISH MUSEUM, 878.



PLATE LXVII. DOMENICO GHIRLANDAJO, WINDSOR. 393.



PLATE LXVIII. DOMENICO GHIRLANDAJO, BRITISH MUSEUM, 881.



PLATE LXIX. DOMENICO GHIRLANDAJO, UFFIZI, 876.



PLATE LXX. DOMENICO GHIRLANDAJO, MUNICH, 885.



PLATE LXXI. MAINARDI, UFFIZI, 1392.



PLATE LXXII. DAVID GHIRLANDAJO, UFFIZI, 797 *verso*.

