

TT

520

.B65

PRACTICAL SYSTEM  
FOR  
DRAFTING

---

*BLAKELY AND PATTON*

---

PART I.



Class TT 520

Book B 65

Copyright N<sup>o</sup> \_\_\_\_\_

COPYRIGHT DEPOSIT.





THE  
PRACTICAL SYSTEM  
FOR  
DRAFTING  
LADIES' AND CHILDREN'S  
CLOTHING

DESIGNED FOR USE IN THE PUBLIC SCHOOLS

BY

MRS. ELIZABETH BLAKELY

*Teacher of Sewing in the Philadelphia Public Schools*

AND

FRANCES PATTON

*Author of "Home and School Sewing"; and Training  
Teacher, Department of Sewing in the  
Philadelphia Normal School*

---

PART I

---

NEW YORK AND PHILADELPHIA  
HINDS, NOBLE & ELDRIDGE

LIBRARY OF CONGRESS  
Two Copies Received  
NOV 27 1907  
Copyright Entry  
*Aug 28 1907*  
CLASS *a* X.C. No.  
*185548*  
COPY B.

Copyright, 1907  
by  
HINDS, NOBLE & ELDREDGE

7-39414

## PREFACE

---

---

THE object of this book is to outline a series of easy and practical lessons in drafting, such as are required in the course of study in the Philadelphia Public Schools.

It is a recognized fact among the teachers of sewing that the making of stitches and applying them to seams is only a small part of the work involved in the teaching of sewing, and that the drafting, cutting, and making of garments must follow as a natural sequence.

The following rules are designed by the authors to enable the pupils to take certain fundamental measurements of the body, and through their knowledge of drawing, apply them to the drafting of a pattern.

The fact that the directions have been frequently and thoroughly tested in the school-room should enhance their value in the opinion of those interested in this line of work.





# LIST OF ILLUSTRATIONS

---

## PART I.

1. Over-sleeve.
2. Sweeping Cap.
3. Plain Bib.
4. Table Bib.
5. Infant's Bib.
6. Clothes Pin Apron.
7. Boy's Working Apron.
8. Infant's Waist with Strap Over the Shoulder.
9. Child's Corset Waist.
10. Infant's Waist with Shoulder Seams.
11. Child's Waist with Shoulder Seams.
12. Child's Waist with Under-Arm and Shoulder Seams.
13. Girl's Waist with One Dart, Under-Arm Seams and Side Form.
14. Sleeve.
15. Girl's Waist with One Dart, Under-Arm Piece and Curved Side Form in the Back.
16. Girl's Dress Skirt, Five Gore (Front).
17. Girl's Dress Skirt, Five Gore (Side Gore).
18. Girl's Dress Skirt, Five Gore (Back).
19. Yoke for Petticoat.
20. Drawers.
21. Infant's Drawers.
22. Infant's Nightgown (Sleeve).
23. Girl's Sacque Apron (Sleeve).
24. Chemise.

25. Girl's Working Apron.
26. Girl's One-Piece Dress.
27. Stocking (Remodeled).
28. Stocking Foot.
29. Night Shirt (Back).
30. Night Shirt (Front).
31. Sleeve.
32. Dress Shirt (Back).
33. Dress Shirt (Front).
34. Sleeve.
35. Infant's Shoe.
36. Infant's Bootie
37. Infant's Cap.

---

NOTE TO THE TEACHER.—In Illustrations 1, 6, 7, 8, 9, 21, 26, 28, 35, 36 and 37 the number of inches will be found on each line instead of in directions.

# PRACTICAL LESSONS IN DRAFTING

## PART I.

### GENERAL SUGGESTIONS

1. Specific directions for taking measures will be found in connection with each lesson.
2. All lines are numbered, and all points are marked by a letter.
3. The word junction is used to designate the intersection of two lines in order to lessen the number of letters used.
4. No seams are allowed in draftings.

*Note to the Teacher.*—As all the draftings taught in Part I. are done with the ruler and free-hand curves, it would be well in the beginning to test the pupils' knowledge of the inch measure and its parts, as an introduction to the first lesson.

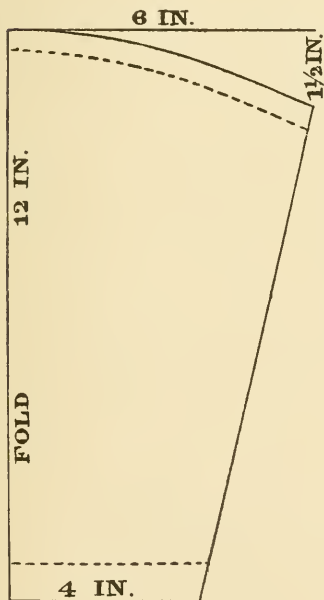


Fig. 1.—Over-sleeve.

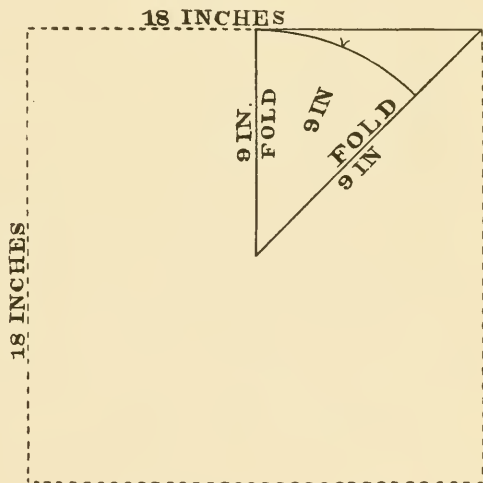


Fig. 2.—Sweeping Cap.

**DIRECTIONS.**—Fold a piece of paper 18 inches square into eighths; measure out from the centre on the folds 9 inches; connect with a curve.

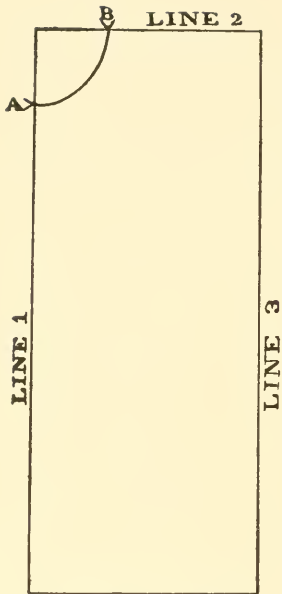


Fig. 3.—Plain Bib.

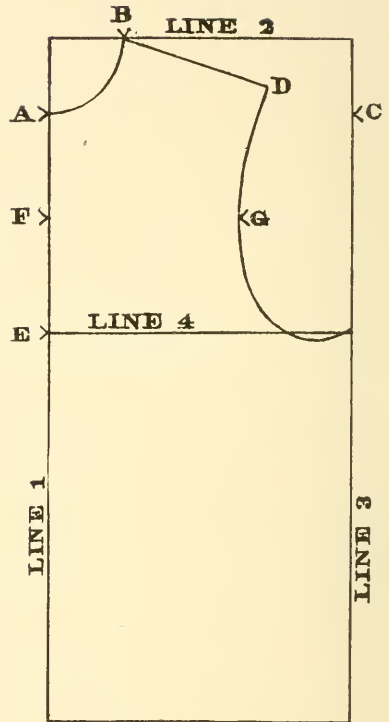


Fig. 4.—Table Bib.

**PLAIN BIB.**

(Fig. 3.)

*Measures:*

1. Length, 18 inches.
2. Width, 12 inches.

*Directions:*

1. Make the width of oblong half the width of bib; height of oblong the length of front.
2. Number lines. Left 1, top 2, right 3.
3. On line 1 make *A*, 2 inches from junction of lines 2 and 1.
4. On line 2 make *B*, 2 inches from junction of lines 1 and 2.
5. Draw a curve for neck from *A* to *B*. (See Fig. 3.)

**TABLE BIB.**

(Fig. 4.)

*Measures:*

1. Length, 20 inches.
2. Width, 16 inches.
3. Shoulder, 4 inches.

*Directions:*

1. Make the width of oblong half the width of bib; the height of oblong the length of front.
2. Number lines. Left 1, top 2, right 3.
3. On line 1, make *A*, 2 inches from junction of lines 2 and 1.
4. On line 2, make *B*, 2 inches from junction of lines 1 and 2.
5. Draw a curve for neck from *A* to *B*.
6. On line 3, make *C*, 2 inches from junction of lines 2 and 3.
7. Place the end of ruler at *B*, edge touching *C*, and draw the shoulder line. Make *D*.
8. On line 1, make *E*, 6 inches below *A*.
9. Draw line 4 from *E*, across the oblong.
10. On line 1, make *F*, half the distance between *E* and *A*.
11. Make *G*, 5 inches to the right of *F*.
12. Draw arm's eye curve from *D* to *G* to end of line 4. (See Fig. 4.)

## INFANT'S BIB.

(Fig. 5.)

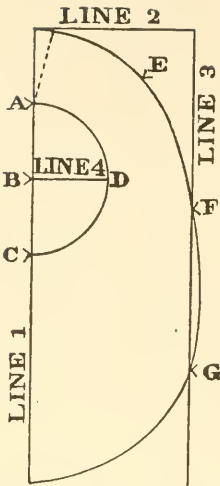


Fig. 5.—Infant's Bib.

### Measures :

1. Length, 12 inches.
2. Width,  $8\frac{1}{2}$  inches.

### Directions :

1. Make the width of oblong half the width of bib ; the height of oblong the length of front.
2. Number lines. Left 1, top 2, right 3.
3. On line 1, make A, 2 inches from junction of lines 2 and 1.

4. Make B, 2 inches below A.

5. Make C, 2 inches below B.

6. Draw line 4 from B 2 inches. Make

D.

7. Draw a circular curve for neck from A to D to C.

8. Place the ruler at B, edge touching junction of lines 2 and 3, and make E, 2 inches to the right of neck curve.

9. On line 3, make F, 5 inches from junction of lines 2 and 3.

10. Make G, 4 inches below F.

11. Draw a curve from junction of lines 1 and 2, to E, to F, to G, to the bottom of line 1. (See Fig. 5.)

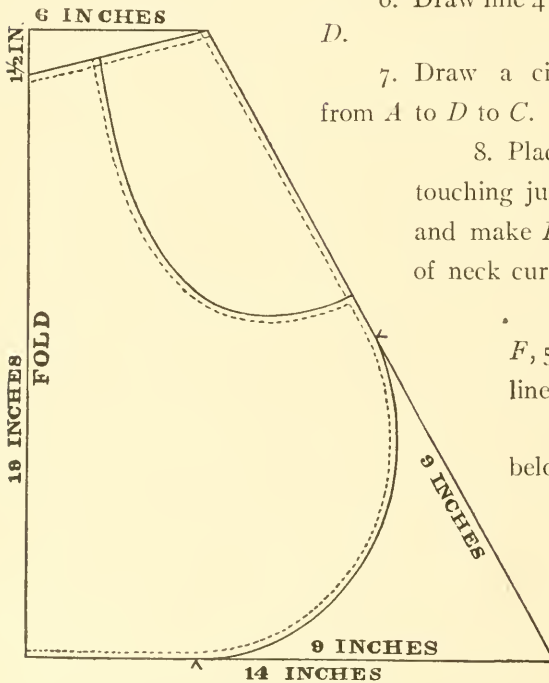


Fig. 6.—Clothes-pin Apron.

NOTE.—No directions required for drafting ; follow measurements on lines.

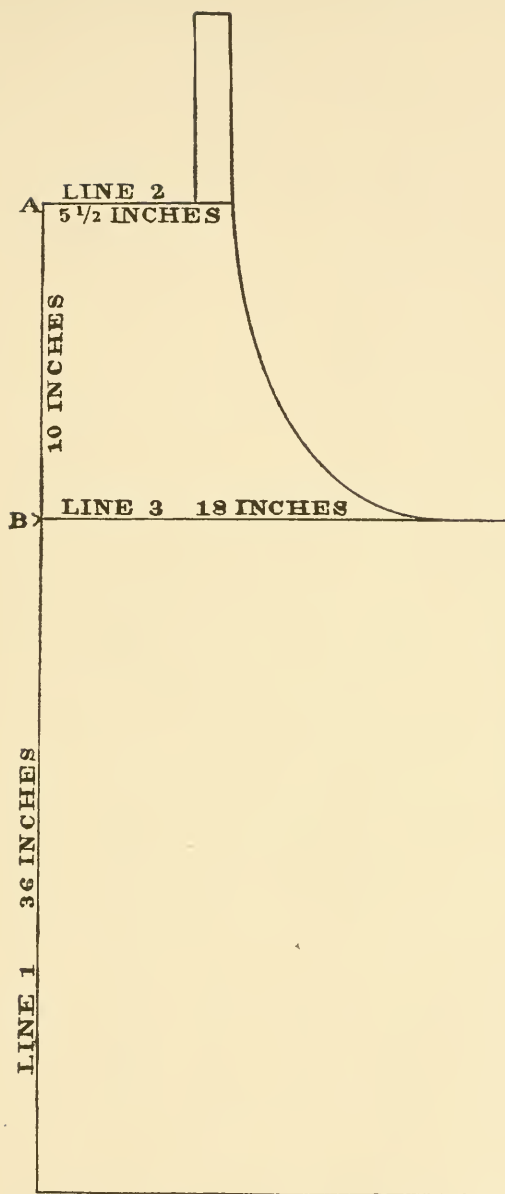


Fig. 7.—Boy's Working Apron.

NOTE.—No directions required for drafting; follow measurements on lines.

## INFANT'S WAIST WITH STRAP OVER THE SHOULDER.

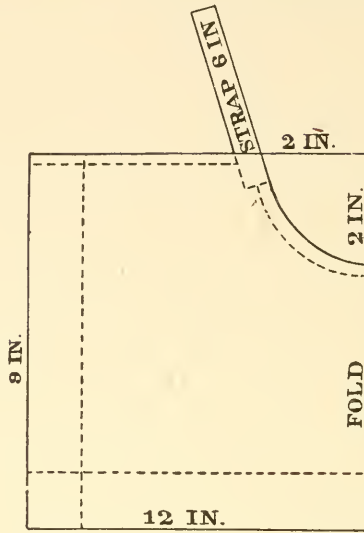


Fig. 8.—One-fourth of pattern.

## CHILD'S CORSET WAIST.

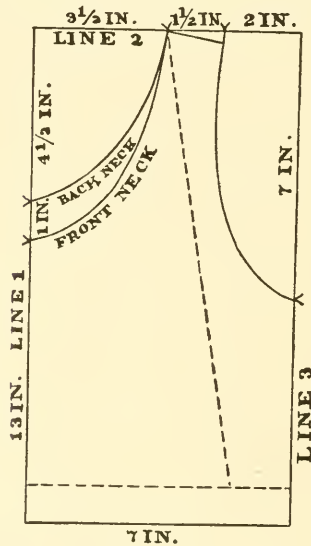


Fig. 9.—One-fourth of pattern.

NOTE.—Dotted lines represent hem on the bottom and double material under arm.



**INFANT'S WAIST WITH SHOULDER SEAMS.**

(Fig. 10.)

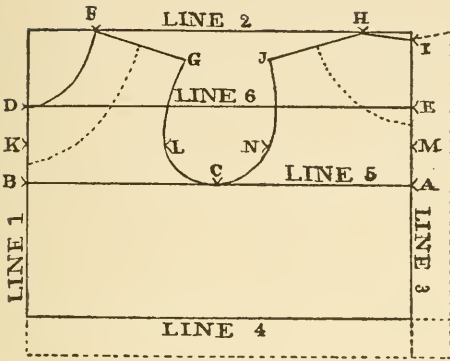


Fig. 10.

*Measures:*

1. Bust, 20 inches (a loose measure).
2. Length of front,  $7\frac{1}{2}$  inches (from top of shoulder at neck to waist line).
3. Under arm, 3 inches (from close up under the arm to waist line).
4. Shoulder,  $2\frac{1}{2}$  inches (from base of neck to point of shoulder).

Use these measures and follow directions for child's waist with shoulder seams. (See Fig. 11.)

**CHILD'S WAIST WITH SHOULDER SEAMS.**

(Fig. 11.)

*Measures:*

1. Bust, 24 inches (a loose measure).
2. Length of front, 11 inches (from top of shoulder at neck to waist line).
3. Under arm  $5\frac{1}{2}$  inches (from close up under the arm to waist line).
4. Shoulder,  $3\frac{1}{2}$  inches (from base of neck down to point of shoulder).

*Directions:*

1. Make the width of oblong half of bust; height of oblong length of front.
2. Number lines. Left 1, top 2, right 3, bottom 4.
3. On line 3, make A, under arm measure from junction of lines 4 and 3.
4. On line 1, make B, under arm measure from junction of lines 4 and 1.

NOTE.—This pattern may be used as a waist for petticoats, or, following the lines of the upper part, for an infant's yoke. (See Fig. 10.)

5. Draw line 5 from *A* to *B*.
6. Divide line 5 in half; make *C*.
7. On line 1, make *D*,  $2\frac{1}{2}$  inches from junction of lines 1 and 2.
8. On line 3, make *E*,  $2\frac{1}{2}$  inches from junction of lines 2 and 3.
9. Draw line 6 from *D* to *E*.
10. On line 2, make *F*, 2 inches from junction of lines 1 and 2.
11. Draw curve for front neck from *F* to *D*.
12. Place the end of ruler at *F*, 7 inches touching line 6. Draw the shoulder line; make *G*.
13. On line 2, make *H*,  $1\frac{1}{2}$  inches from junction of lines 2 and 3.

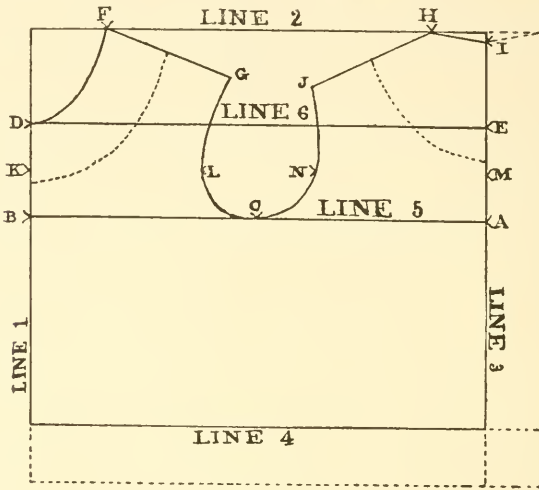


Fig. 11.

14. On line 3, make *I*,  $\frac{1}{4}$  inch from junction of lines 2 and 3.
15. Draw a curve for back neck from *H* to *I*.
16. Place the end of ruler at *H*, 7 inches touching line 6. Draw the shoulder line; make *J*.
17. On line 1, make *K*, half the distance between *D* and *B*.
18. Make *L*, to the right of *K*,  $1\frac{1}{2}$  inches less than *B* is from *C*.
19. On line 3, make *M*, half the distance between *E* and *A*.
20. Make *N*, to the left of *M*,  $1\frac{1}{2}$  inches less than *A* is from *C*.
21. Draw arm's eye curve from *G* to *L*, to *C*, to *N*, to *J*. (See Fig. 11.)

NOTE.—If a low neck is desired, divide the shoulder lines in half and follow dotted lines on diagram.

Hems are outlined on bottom and back by dotted lines.

This waist is frequently used to support all the underclothing that a child wears. It may also be used as a waist for an apron with a full skirt.

## CHILD'S WAIST WITH UNDER ARM AND SHOULDER SEAM.

(Fig. 12.)

*Measures:*

1. Bust, 26 inches (a loose measure).
2. Waist, 24 inches (an easy measure).
3. Length of front, 12 inches (from top of shoulder at neck to waist line).
4. Under arm, 6 inches (from close up under the arm to waist line).
5. Shoulder, 4 inches (from base of neck to point of shoulder).

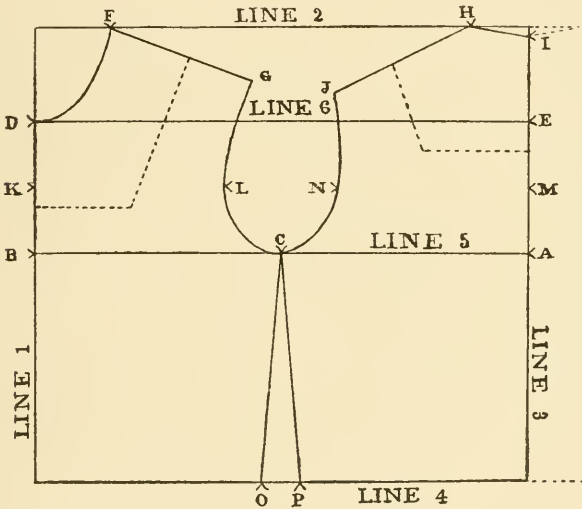


Fig. 12.

Follow directions for drafting preceding waist, as far as No. 21.

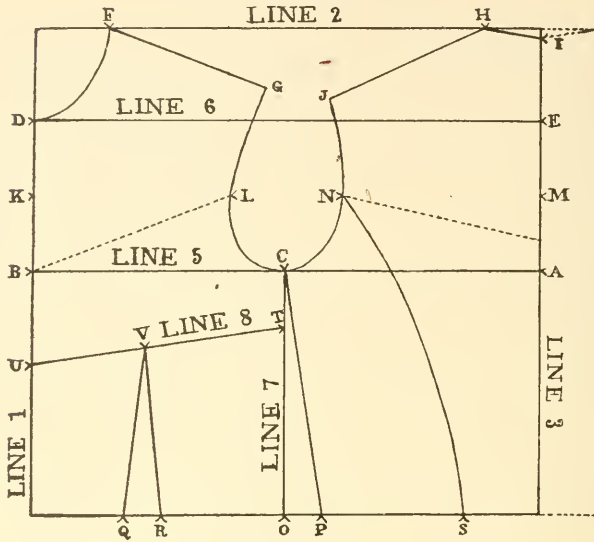
22. Divide line 4 in half; make *O*.

23. One inch to the right of *O*, make *P*. (One inch represents difference between half of bust and half of waist.)

24. Connect *P* and *O* with *C*. (See Fig. 12.)

NOTE.—See dotted lines on diagram for square neck and hem in the back.

GIRL'S WAIST WITH ONE DART, UNDER-ARM SEAMS AND SIDE FORM.



LINE 4

Fig. 13.

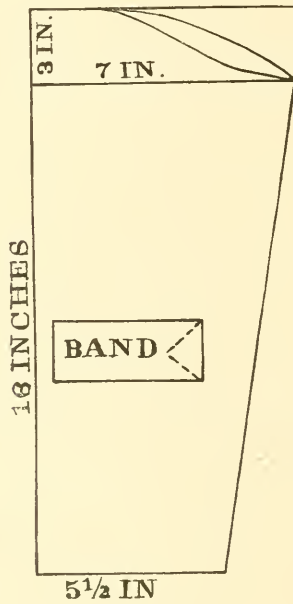


Fig. 14.

## GIRL'S WAIST WITH ONE DART, UNDER-ARM SEAM AND SIDE FORM.

(Fig. 13.)

*Measures:*

1. Bust, 27 inches (a loose measure).
2. Waist, 23 inches (an easy measure).
3. Length of front, 13 inches (from top of shoulder at neck to waist line).
4. Under arm,  $6\frac{1}{2}$  inches (from close up under arm to waist line).
5. Shoulder,  $4\frac{1}{2}$  inches (from base of neck down to point of shoulder).

Follow directions for drafting preceding waists, as far as No. 21.

22. Divide line 4 in half; make *O*.
23. Make *P*, 1 inch to the right of *O*.
24. Make *Q*,  $2\frac{1}{2}$  inches from junction of lines 1 and 4.
25. Make *R*, 1 inch to the right of *Q*.
26. Make *S*, 2 inches from junction of lines 3 and 4.
27. Draw a curve from *N* to *S*.
28. Connect *C* and *P*.
29. Draw line 7 from *C* to *O*.
30. On line 7, make *T*,  $1\frac{1}{2}$  inches below *C*.
31. On line 1, make *U*,  $2\frac{1}{2}$  inches below *B*.
32. Draw line 8 from *U* to *T*.
33. On line 8, make *V*, 3 inches to the right of *U*.
34. Connect *Q* and *R* with *V*. (See Fig. 13.)

NOTE 1.—*P* is obtained by subtracting one-half of waist from one-half of bust and deducting 1 inch for dart.

NOTE 2.—See dotted lines on diagram for pointed yoke and hem in the back. The sleeve accompanying this diagram may be enlarged or made smaller to suit any of this series of waists. (Fig. 14.)

**GIRL'S WAIST WITH ONE DART, UNDER-ARM PIECE  
AND CURVED SIDE FORM IN THE BACK.**

(Fig. 15.)

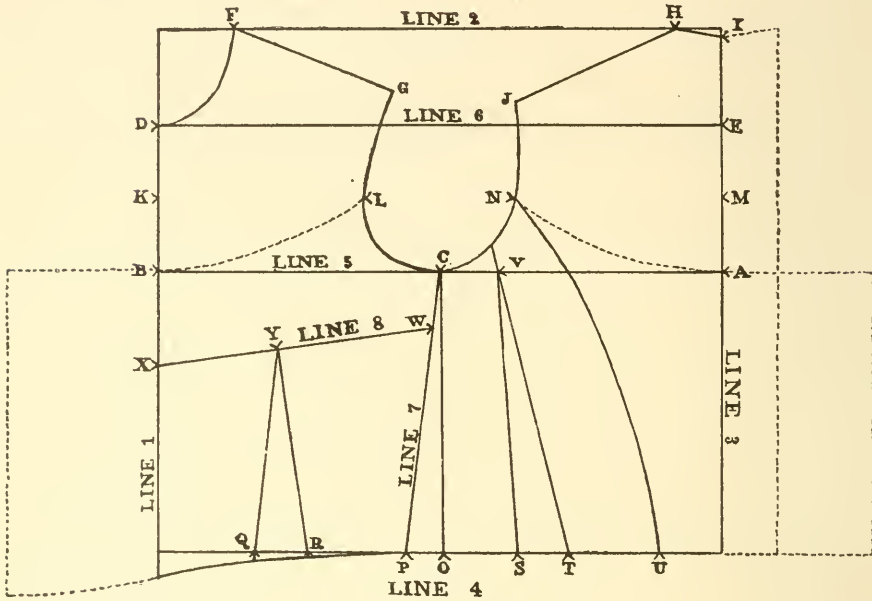


Fig. 15.

*Measures:*

1. Bust, 30 inches (a loose measure).
2. Waist, 22 inches (an easy measure).
3. Length of front, 14 inches (from top of shoulder at neck to waist line).

NOTE.—See lines on diagram for pointed front and dotted lines for round yoke and additional fulness on outside material.

4. Under Arm,  $7\frac{1}{2}$  inches (from close up under arm to waist line).
5. Shoulder,  $4\frac{1}{2}$  inches (from base of neck to point of shoulder).

Follow directions for drafting preceding waists as far as No. 17.

18. Make *L*, to the right of *K*, 2 inches less than *B* is from *C*.
19. On line 3, make *M* half the distance between *E* and *A*.
20. Make *N*, to the left of *M*, 2 inches less than *A* is from *C*.
21. Draw arm's eye curve from *G* to *L*, to *C*, to *N*, to *J*.
22. Divide line 4 in half; make *O*.
23. On line 4, make *P*, 1 inch to the *left* of *O*. Make *Q*,  $2\frac{1}{2}$  inches from the junction of lines 1 and 4. Make *R*,  $1\frac{1}{2}$  inches to the right of *Q*. Make *S*, 2 inches to the right of *O*. Find the difference between half of bust and half of waist; deduct  $2\frac{1}{2}$  inches, which is taken out for under arm and dart, and make *T* the remainder from *S*, in this case  $1\frac{1}{2}$  inches (placing *T* to the right of *S*). Make *U*,  $1\frac{1}{2}$  inches from the junction of lines 3 and 4.
24. Make *V*, on line 5,  $1\frac{1}{2}$  inches to the right of *C*.
25. Draw a curve from *N* to *U*.
26. Connect *T* with arm's eye touching *V*.
27. Connect *V* and *S*.
28. Connect *C* and *O*.
29. Draw line 7 from *C* to *P*.
30. Make *W* on line 7,  $1\frac{1}{2}$  inches below *C*.
31. Make *X* on line 1,  $2\frac{1}{2}$  inches below *B*.
32. Draw line 8 from *X* to *W*.
33. On line 8, make *Y* 3 inches to the right of *X*.
34. Connect *Q* and *R* with *Y*. (See Fig. 15.)

## GIRL'S DRESS SKIRT—FIVE GORE.

FRONT

(Fig. 16.)

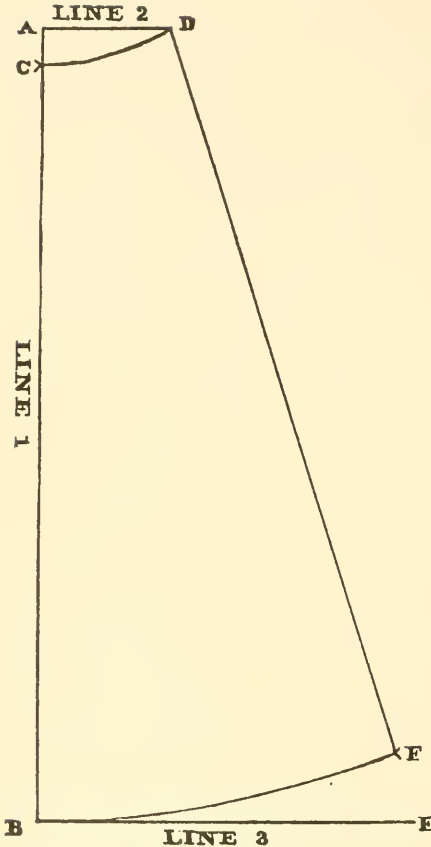


Fig. 16.

*Measures:*

1. Length of skirt, 22 inches (from the waist the desired length).
2. Waist, 24 inches (an easy measure).

*Directions:*

Front Fig. 16.

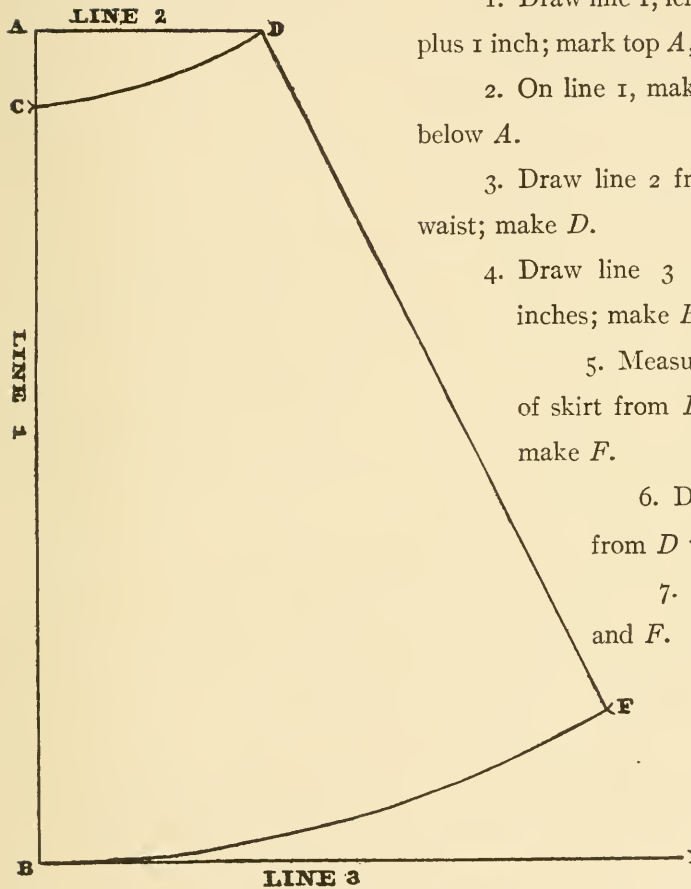
1. Draw line 1, length of skirt plus  $\frac{1}{2}$  inch; mark top *A*, bottom *B*.
2. On line 1, make *C*,  $\frac{1}{2}$  inch below *A*.
3. Draw line 2 from *A*,  $\frac{1}{3}$  of waist; make *D*.
4. Draw line 3 from *B*, 10 inches; make *E*.
5. Measure the length of skirt from *D* toward *E*; make *F*.
6. Connect *D* and *F*.
7. Draw a curve from *D* to *C*.
8. Draw a curve from *F* to *B*. (See Fig. 16.)



## GIRL'S DRESS SKIRT—FIVE GORE.

SIDE GORE.

(Fig. 17.)



1. Draw line 1, length of skirt plus 1 inch; mark top *A*, bottom *B*.

2. On line 1, make *C*, 1 inch below *A*.

3. Draw line 2 from *A*,  $\frac{1}{4}$  of waist; make *D*.

4. Draw line 3 from *B*, 20 inches; make *E*.

5. Measure the length of skirt from *D* toward *E*; make *F*.

6. Draw a curve from *D* to *C*.

7. Connect *D* and *F*.

8. Draw a curve from *F* to *B*. (See

Fig. 17.)

Fig. 17.

## GIRL'S DRESS SKIRT—FIVE GORE.

BACK.

(Fig. 18.)

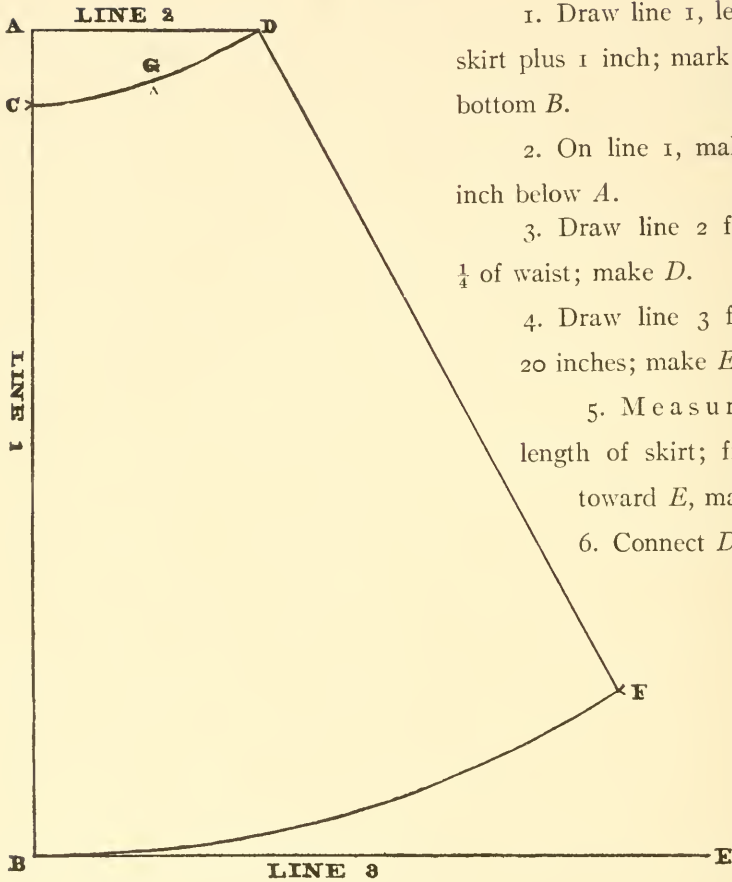


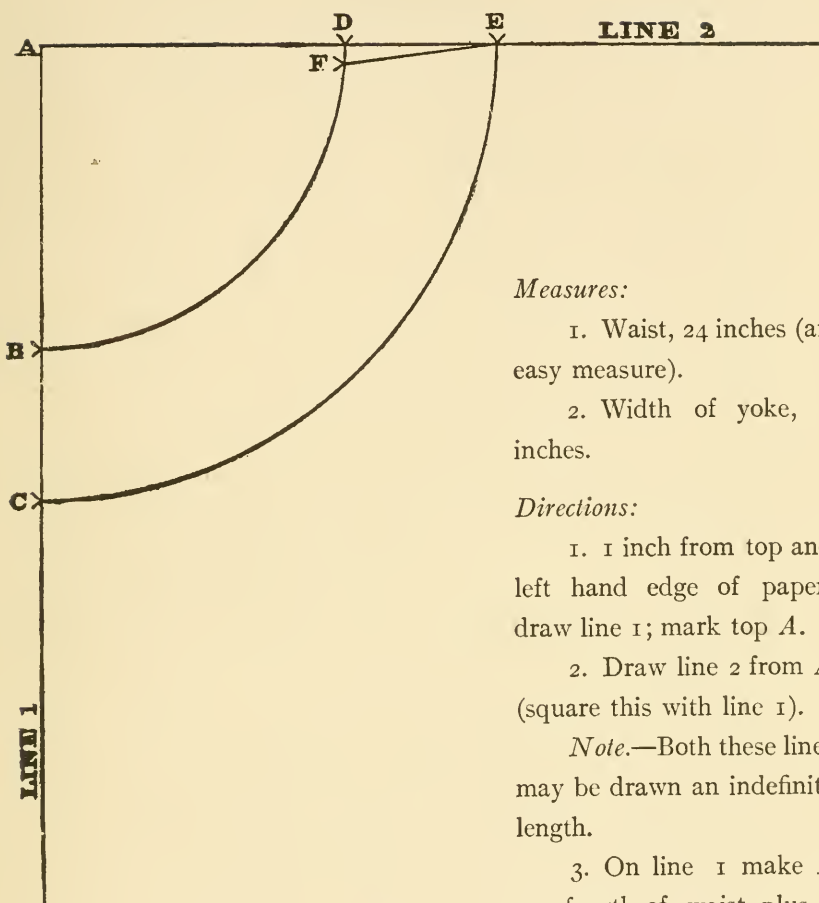
Fig. 18.

1. Draw line 1, length of skirt plus 1 inch; mark top *A*, bottom *B*.
2. On line 1, make *C*, 1 inch below *A*.
3. Draw line 2 from *A*,  $\frac{1}{4}$  of waist; make *D*.
4. Draw line 3 from *B*, 20 inches; make *E*.
5. Measure the length of skirt; from *D*, toward *E*, make *F*.
6. Connect *D* and *F*.
7. Draw a curve from *D* to *C*.
8. Draw a curve from *F* to *B*.
9. Make *G* on curve one-eighth of waist from *C*. (See Fig. 18.)

NOTE.—The space between *G* and *D* is intended for fulness in the back.

## YOKE FOR PETTICOAT.

(Fig. 19.)

*Measures:*

1. Waist, 24 inches (an easy measure).
2. Width of yoke, 4 inches.

*Directions:*

1. 1 inch from top and left hand edge of paper, draw line 1; mark top A.
2. Draw line 2 from A (square this with line 1).

*Note.*—Both these lines may be drawn an indefinite length.

3. On line 1 make B one-fourth of waist plus 2 inches from A.

4. Make C the width of yoke below B.
5. On line 2, make D one-fourth of waist plus 2 inches from A.
6. On line 2, make E the width of yoke from D.
7. Draw a circular curve from D to B.
8. Draw a circular curve from E to C.
9. Measure on top curve from D  $\frac{1}{2}$  inch; make F.
10. Connect F and E. (See Fig. 19.)

## DRAWERS.

(Fig. 20.)

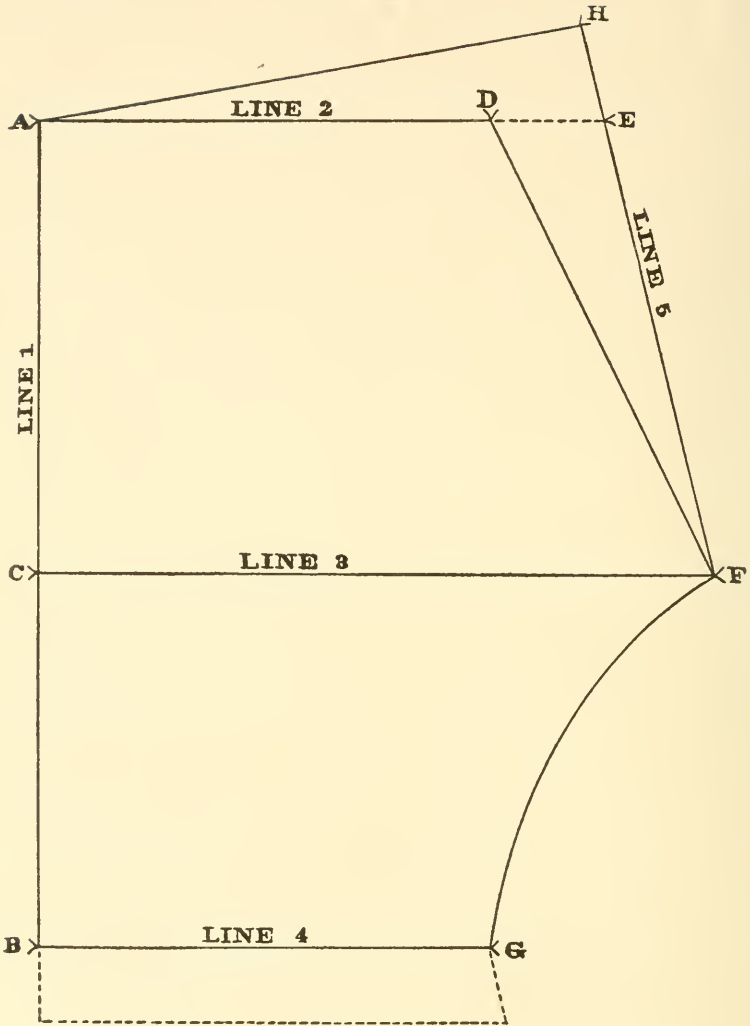


Fig. 20.

---

NOTE.—Dotted line represents 2-inch hem.

*Measures:*

1. Length, 22 inches (measure from hip down 2 inches below the knee).
2. Waist, 24 inches (a loose measure).
3. Hip, 36 inches (a loose measure).

*Directions:*

1. Draw line 1, length of leg; mark top *A*, bottom *B*.
2. On line 1, measure up from *B* half of leg minus 4 inches; make *C*.
3. Draw line 2 from *A* half of waist; make *D*.
4. Extend line two 3 inches; make *E*.
5. Draw line 3 from *C*, half of hip; make *F*.
6. Draw line 4 from *B*, half of waist; make *G*.
7. Draw line 5 from *F* to *E*. Extend line five 4 inches; make *H*.
8. Connect *D* and *F*.
9. Connect *H* and *A*.
10. Draw a curve from *F* to *G*. (See Fig. 20.)

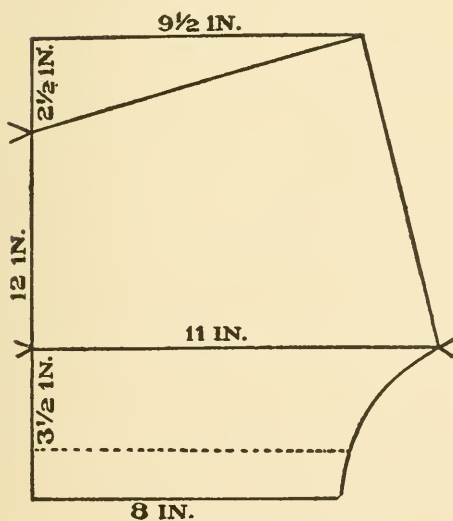


Fig. 21.

**INFANT'S DRAWERS.**

(Fig. 21.)

*Note.*—No directions required for drafting; follow measurements on lines.

**INFANT'S NIGHT GOWN—SLEEVE.**

BACK AND FRONT.

(Fig. 22.)

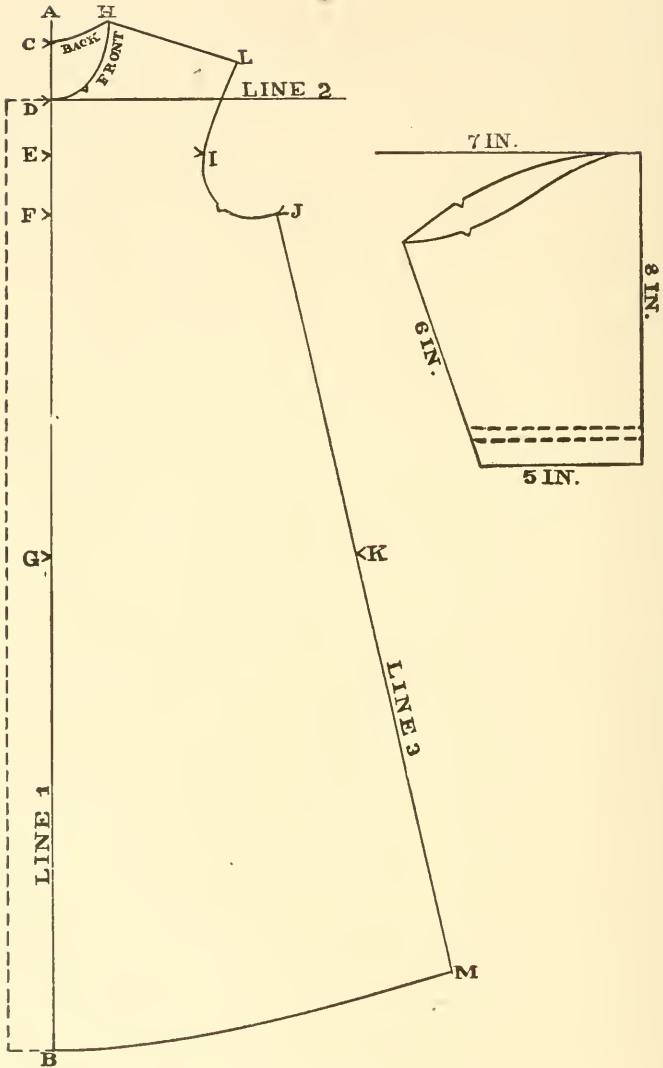


Fig. 22.

NOTE.—Dotted line on front allows for hem and fullness. Make sleeve according to measurements. (See Fig. 22.)

**INFANT'S NIGHT GOWN.**

BACK AND FRONT.

(Fig. 22.)

*Measures:*

1. Length 27 inches.

*Directions:*

1. One inch from top and 3 inches from left hand edge of paper, draw line 1, the length of gown; mark top *A*, bottom *B*.

2. On line 1, make *C*  $\frac{1}{2}$  inch below *A*, make *D* 2 inches below *C*, make *E*  $1\frac{1}{2}$  inches below *D*, make *F*  $1\frac{1}{2}$  inches below *E*, make *G* 9 inches below *F*.

3. Make *H*  $1\frac{1}{2}$  inches to the right of *A*.

4. Make *I*  $4\frac{1}{2}$  inches to the right of *E*.

5. Make *J* 6 inches to the right of *F*.

6. *K* 9 inches to the right of *G*.

7. Draw line 2 from *D*, 9 inches.

8. Place the end of the rule at *H*, 7 inches touching line 2, and draw shoulder line (4 inches), make *L*.

9. Draw curve for back neck from *H* to *C*.

10. Draw curve for front neck from *H* to *D*.

11. Draw arm's eye curve from *L* to *I* to *J*.

12. Draw line 3 from *J*,  $1\frac{1}{2}$  inches less than from *F* to *B*, touching dot *K*, make *M*.

13. Draw a curve from *M* to *B*.

## GIRL'S SACQUE APRON—SLEEVE.

BACK AND FRONT.

(Fig. 23.)

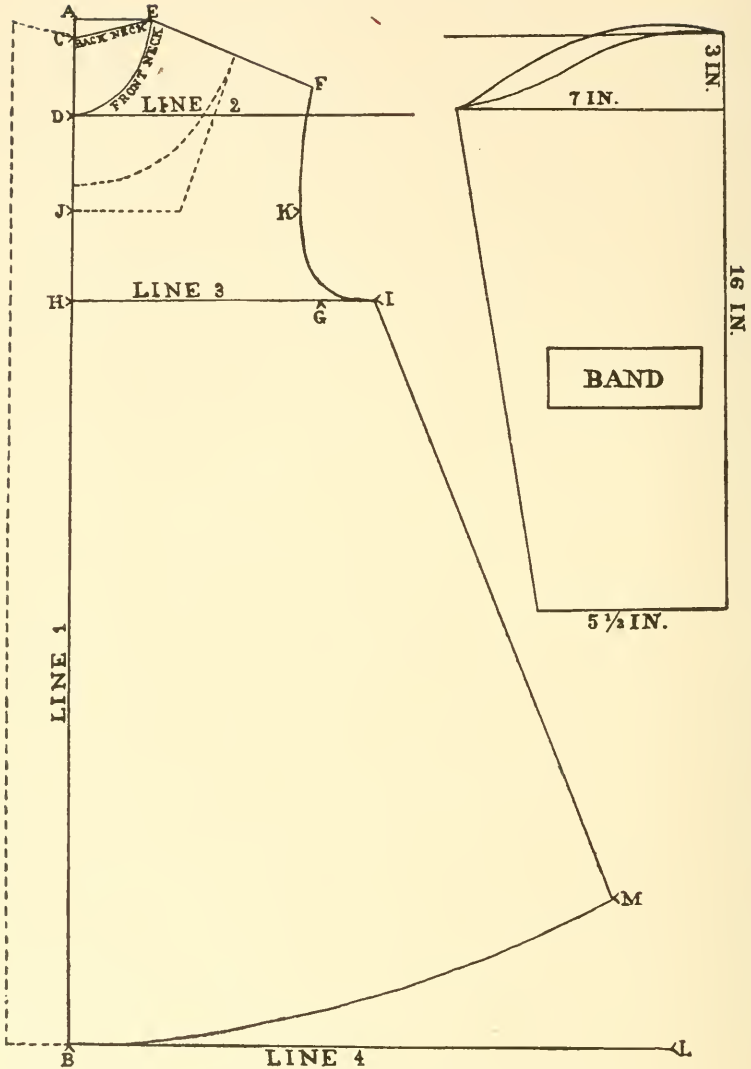


Fig. 23.

NOTE.—See dotted lines for square and round neck and for hems and lap in the back. (See Fig. 23.)

This pattern can be opened down the front instead of the back, and used for a sacque nightgown by making it longer and allowing for fulness if desired.



**GIRL'S SACQUE APRON.**

BACK AND FRONT.

(Fig. 23.)

*Measures:*

1. Length, 27 inches (from top of shoulder at neck to bottom of dress).
2. Bust, 24 inches (an easy measure).
3. Arm's eye, 11 inches (around arm's eye).
4. Shoulder,  $4\frac{1}{2}$  inches (same as for dress).

*Directions:*

1. 1 inch from top and  $1\frac{1}{4}$  inches from left hand edge of paper, draw line 1, the length of apron. Mark top *A*, bottom *B*.
2. On line 1, make *C*  $\frac{1}{2}$  inch below *A*; make *D*  $2\frac{1}{2}$  inches below *A*.
3. Draw a line from *A* 2 inches long; make *E*.
4. Draw line 2 from *D*, 9 inches.
5. Place the end of ruler at *E* 7 inches, touching line 2; draw the shoulder line; make *F*.
6. Measure straight down from *F* half of arm's eye; make *G*.
7. Square end of the ruler on line 1, edge touching *G*, and draw line 3 one-fourth of bust plus  $1\frac{1}{2}$  inches; make *I*. Make *H* on line 1 at the end of ruler.
8. Draw curve for back neck from *E* to *C*.
9. Draw curve for front neck from *E* to *D*.
10. On line 1, make *J* half the distance from *D* to *H*.
11. Make *K*, to the right of *J*, 2 inches less than *H* is from *I*.
12. Draw arm's eye curve from *F* to *K*, to *I*.
13. Draw line 4, from *B* twice as long as line 3; make *L*.
14. Draw a slanting line from *I* towards *L* the same length, minus  $1\frac{1}{2}$  inches, that *H* is from *B* on line 1; mark the end of this line *M*.
15. Draw a curve from *M* to *B*. (See Fig. 23.)

## CHEMISE.

BACK AND FRONT.

(Fig. 24.)

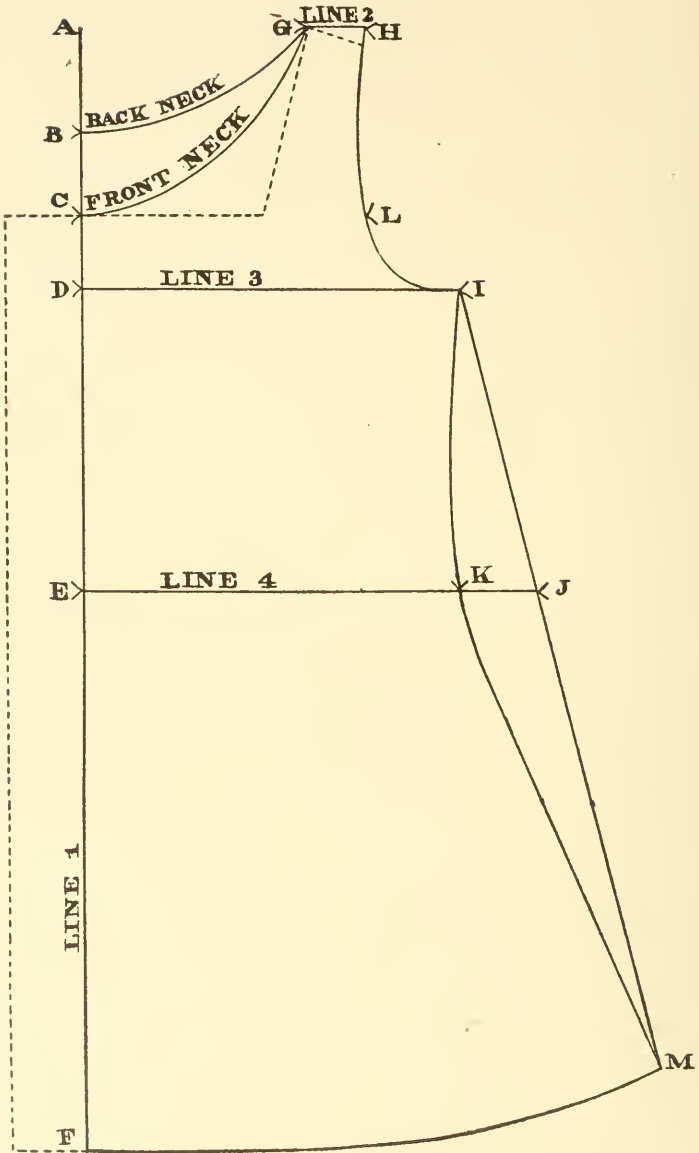


Fig. 24.

**CHEMISE.**

BACK AND FRONT.

(Fig. 24.)

*Measures:*

1. Length, 35 inches (from top of shoulder at neck to knee).
2. Bust, 40 inches (a close measure over arms and bust).
3. Waist, 24 inches (an exact measure).
4. Arm's eye, 14 inches (around arm's eye).
5. Under arm, 8 inches (same as for dress).

*Directions:*

1. 1 inch from top and 3 inches from left hand edge of paper, draw line 1 length of chemise; mark top *A*.

2. On line 1:

Make *B* 2½ inches below *A*.

Make *C* 5 inches below *A*.

Make *D* half of arm's eye below *A*.

Make *E* the under-arm measure below *D*.

Mark end of line 1 *F*.

3. Make *G* to the right of *A* 4 inches less than one-fourth of bust measure.

4. Draw line 2 one and a half inches to the right of *G*; make *H*.

5. Draw line 3 from *D* one-fourth of bust; make *I*.

6. Draw line 4 from *E* one-half of waist; make *J*.

7. Measure back on line 4 two inches; make *K*.

8. Make *L* to the right of *C* 2½ inches less than from *D* to *I*.

9. Draw a curve from *G* to *B* (back neck).

10. Draw a curve from *G* to *C* (front neck).

11. Draw a curve from *H* to *L*, to *I* (arm's eye curve).

12. Draw a slanting line from *I* touching *J*, the same length (minus 1½ inches) that *D* is from *F* on line 1; mark end of this line *M*.

13. Draw a curve from *I* to *K*, to *M*.

14. Draw a curve from *F* to *M*. (See Fig. 24.)

---

NOTE.—This garment may be shortened and gathered at the waist-line for a corset cover, or it may be trimmed on the bottom and used as a combined corset cover and skirt. See dotted line on front neck for additional fulness. Cut on curved line from *I* to *M* for corset cover and skirt combined. For corset cover cut the skirt off 6 inches below line 4 (Fig. 24).

## GIRL'S WORKING APRON.

(Fig. 25.)

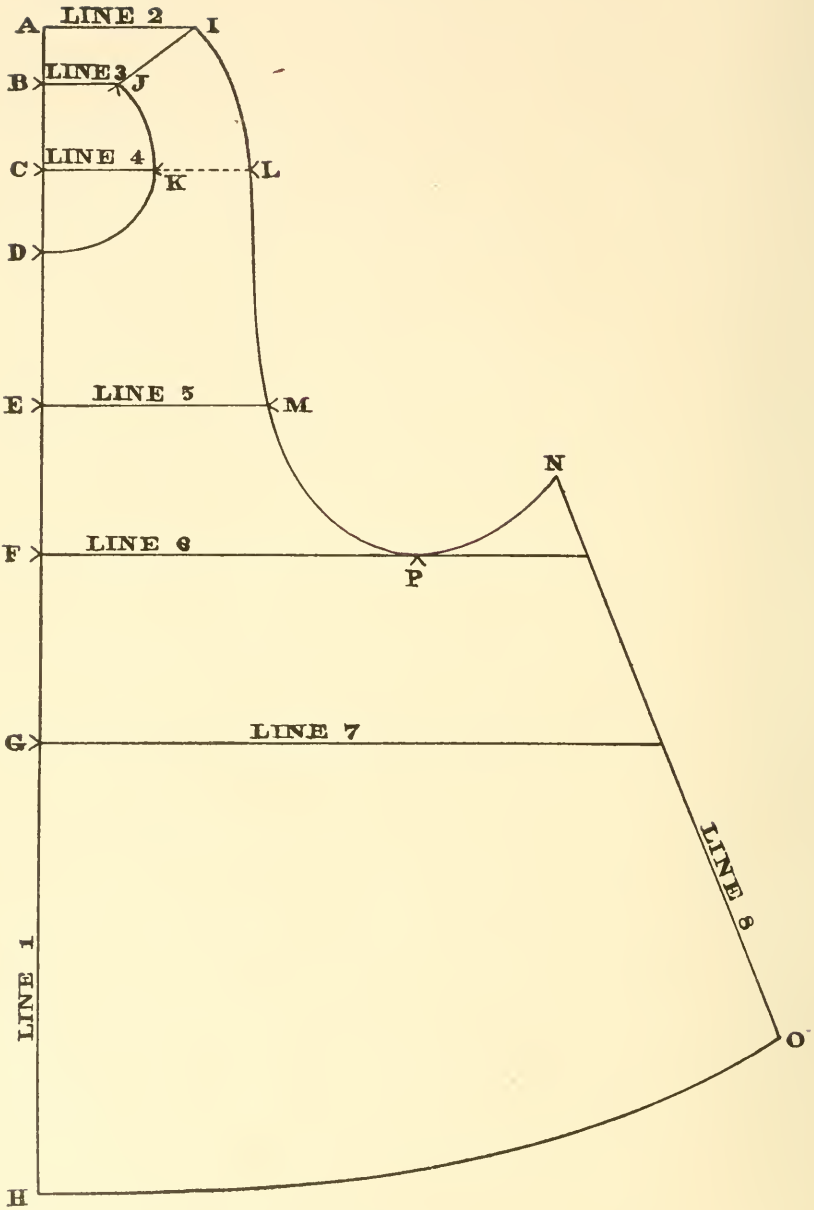


Fig. 25.

**GIRL'S WORKING APRON.**

(Fig. 25.)

*Measures:*

Length of apron, 34 inches (from prominent bone in the back of the neck down to bottom of the *front* of dress).

Waist, 24 inches (a loose measure).

*Directions:*

1. 1 inch from top and left-hand edge of paper draw line 1 the length of apron; mark top *A*.
2. On line 1:
  - Make *B*  $1\frac{1}{2}$  inches below *A*.
  - Make *C*  $2\frac{1}{4}$  inches below *B*.
  - Make *D*  $2\frac{1}{4}$  inches below *C*.
  - Make *E* 4 inches below *D*.
  - Make *F* 4 inches below *E*.
  - Make *G* 5 inches below *F*.
  - Mark the end of line 1 *H*.
3. Draw line 2 from *A* 4 inches long; make *I*.
4. Draw line 3 from *B* 2 inches; make *J*.
5. Draw line 4 from *C* 3 inches; make *K*, extend this line  $2\frac{1}{2}$  inches; make *L*.
6. Draw line 5 from *E* 6 inches; make *M*.
7. Draw line 6 from *F* half of waist plus 3 inches.
8. Draw line 7 from *G* half of waist plus 6 inches.
9. Place the end of the ruler  $2\frac{1}{2}$  inches above line 6, edge touching line 7, and draw line 8 one inch less than the distance between *F* and *H*; mark the top of line 8 *N*, bottom *O*.
10. On line 6, make *P* 10 inches from *F*.
11. Connect *I* and *J*.
12. Draw a curve for neck from *J* to *K*, to *D*.
13. Draw a curve from *I* to *L*, to *M*, to *P*, to *N*.
14. Draw a curve from *O* to *H*. (See Fig. 25.)

## GIRL'S ONE-PIECE DRESS.

(Fig. 26.)

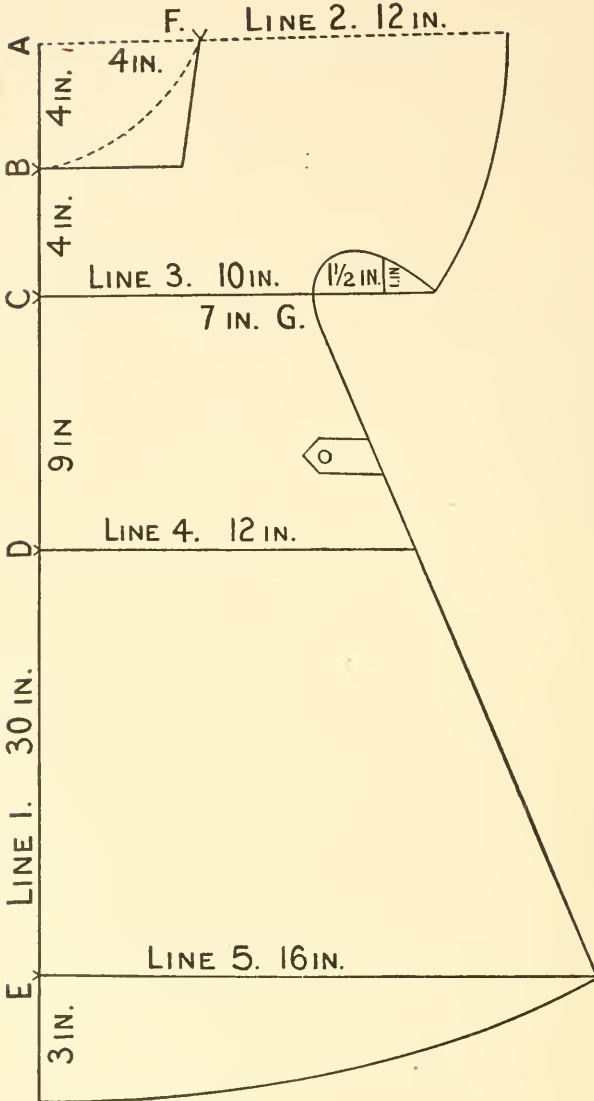


Fig. 26.

NOTE.—Take twice the length of the pattern and fold it crosswise, then fold the doubled material lengthwise, and place straight edges of pattern to folds of material and cut.

**STOCKING.**

REMODELED.

(Fig. 27.)

*Measures:*

1. Length, 22 inches (length of leg plus the foot).
2. Foot, 7 inches (from heel to toe).

*Directions:*

1. Draw line 1 the length of stocking; mark top A, bottom B.
2. On line 1:
  - Make C  $1\frac{1}{2}$  inches less than size of foot above B.
  - Make D 3 inches above C.
  - Divide C and B into three equal parts; mark each part by a point.
  - Divide A and D into three equal parts; mark each part by a point.
3. Draw horizontal lines from each point according to measurements on Fig. 27.

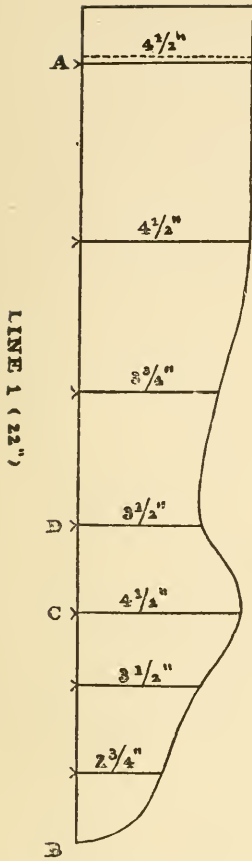
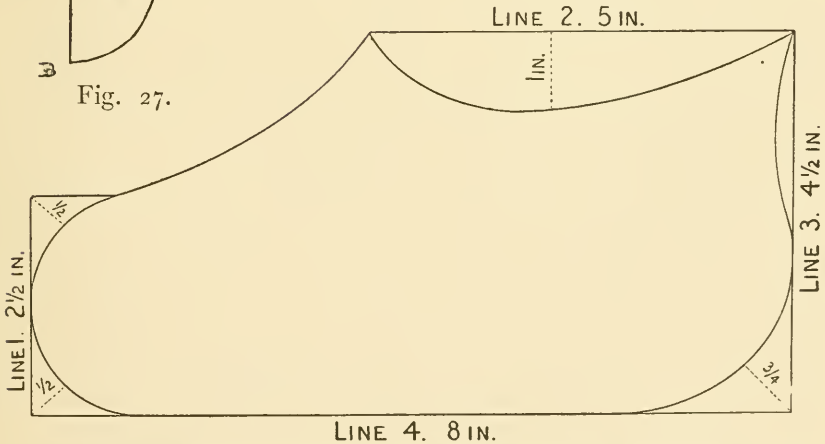


Fig. 27.

**STOCKING FOOT.**

(Fig. 28.)



NOTE.—To increase the width of the stocking, add one-fourth inch to each horizontal line; decrease it by deducting one-fourth inch from each horizontal line.

NOTE.—This foot pattern can be used to remodel a stocking or as a bed slipper.

**NIGHT SHIRT.**

BACK.

(Fig. 29.)

*Measures:*

1. Neck, 15 inches (measure loosely at base of neck).
2. Breast, 40 inches (a loose measure entirely around the body plus 4 inches).
3. Arm's eye, 16 inches (around the arm to point of shoulder).
4. Shoulder, 5 inches (from base of neck to point of shoulder).
5. Length of shirt, 48 inches (from front of neck the desired length).
6. Length of sleeve, 23 inches (from shoulder to wrist with arm bent at elbow).
7. Around the hand, 10 inches (a loose measure).

## SCALE FOR BACK NECK.

Back neck on line 1.	Top back neck on line 2.
10 in. neck requires $1\frac{1}{4}$ in.	10 in. neck requires $2\frac{1}{4}$ in.
11 in. neck requires $1\frac{3}{8}$ in.	11 in. neck requires $2\frac{1}{2}$ in.
12 in. neck requires $1\frac{1}{2}$ in.	12 in. neck requires $2\frac{3}{4}$ in.
13 in. neck requires $1\frac{5}{8}$ in.	13 in. neck requires 3 in.
14 in. neck requires $1\frac{3}{4}$ in.	14 in. neck requires $3\frac{1}{4}$ in.
15 in. neck requires $1\frac{7}{8}$ in.	15 in. neck requires $3\frac{1}{2}$ in.
16 in. neck requires 2 in.	16 in. neck requires $3\frac{3}{4}$ in.
17 in. neck requires $2\frac{1}{8}$ in.	17 in. neck requires 4 in.

*Directions:*

1. 1 inch from top and 2 inches from right hand edge of paper, draw line 1 the length of shirt plus  $1\frac{1}{2}$  inches; mark top *A*, bottom *Z*.

2. On line 1:

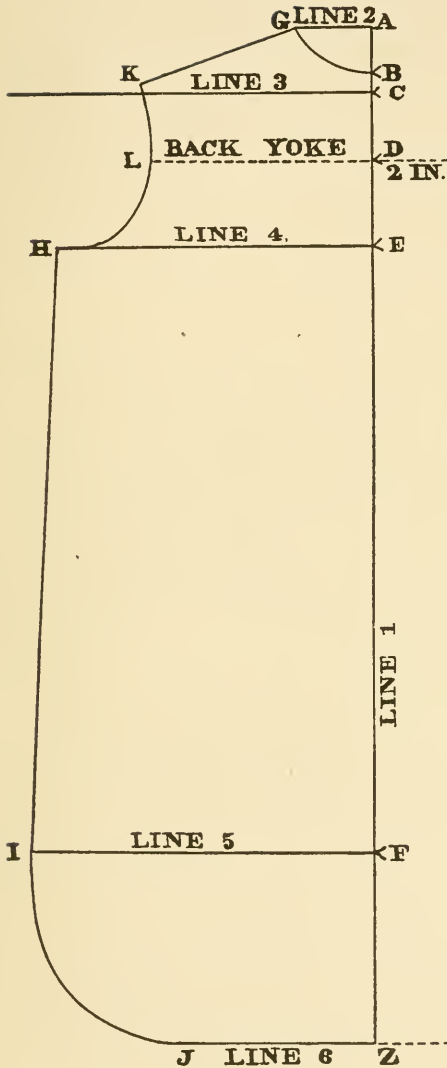
Make *B* according to back neck scale below *A*. (See scale above.)



## NIGHT SHIRT.

BACK.

(Fig. 29.)

*Directions:*

Make  $C$   $2\frac{1}{2}$  inches below  $A$ .

Make  $D$  2 inches below  $C$ . (This defines the yoke.)

Make  $E$  half of arm's eye below  $C$ .

Make  $F$  8 inches above  $Z$ .

3. Draw line 2 from  $A$  according to top back neck scale; make  $G$ . (See scale on page 36.)

4. Draw line 3 from  $C$  12 inches.

5. Draw line 4 from  $E$  one-fourth of breast; make  $H$ .

6. Draw line 5 from  $F$  one-fourth of breast; make  $I$ .

7. Draw line 6 from  $Z$  two-thirds of line 5; make  $J$ .

8. Draw curve for back neck from  $G$  to  $B$ .

9. Place the end of ruler at  $G$ , 7 inches touching line 3 draw the shoulder line; make  $K$ .

10. Make  $L$  to the left of  $D$  2 inches less than the distance between  $E$  and  $H$ .

11. Draw arm's eye curve from  $K$  to  $L$ , to  $H$ .

Fig. 29.

12. Connect  $H$  and  $I$ .

13. Draw curve from  $I$  to  $J$ . (See Fig. 29.)

NOTE.—See dotted line for yoke and for fulness in the back if desired.

NIGHT SHIRT.

FRONT.  
(Fig. 30.)

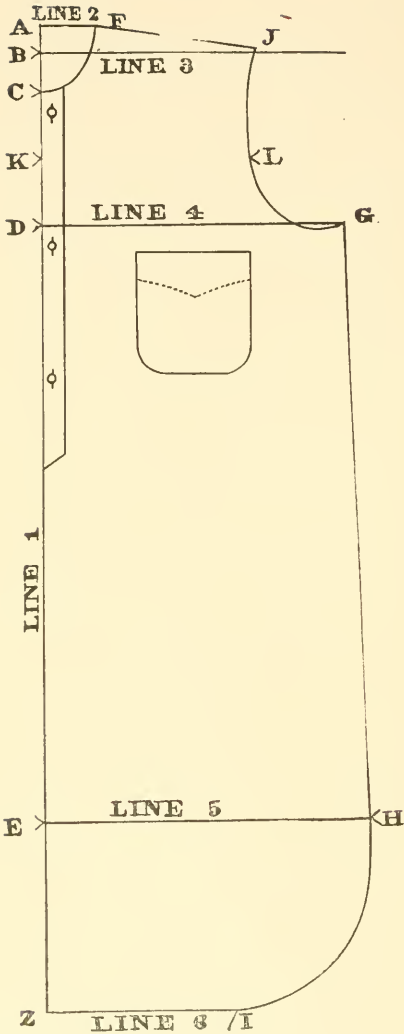


Fig. 30.

Directions:

- Scale for front neck.
- Front neck on line 1.
- 10 in. neck requires  $1\frac{3}{4}$  in.
- 11 in. neck requires  $1\frac{7}{8}$  in.

SLEEVE.  
(Fig. 31.)

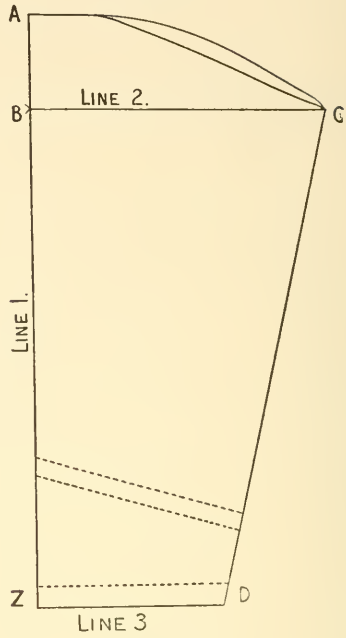


Fig. 31.

- 12 in. neck requires 2 in.
- 13 in. neck requires  $2\frac{1}{8}$  in.
- 14 in. neck requires  $2\frac{1}{4}$  in.
- 15 in. neck requires  $2\frac{3}{8}$  in.
- 16 in. neck requires  $2\frac{3}{4}$  in.
- 17 in. neck requires  $2\frac{7}{8}$  in.

Front top neck on line 2.

- 10 in. neck requires  $1\frac{3}{8}$  in.
- 11 in. neck requires  $1\frac{1}{2}$  in.
- 12 in. neck requires  $1\frac{5}{8}$  in.
- 13 in. neck requires  $1\frac{3}{4}$  in.
- 14 in. neck requires  $1\frac{7}{8}$  in.
- 15 in. neck requires 2 in.
- 16 in. neck requires  $2\frac{1}{8}$  in.
- 17 in. neck requires  $2\frac{1}{4}$  in.

**NIGHT SHIRT.**

FRONT.

(Fig. 30.)

1. One inch from top and left hand edge of paper, draw line 1 the length of shirt; mark top *A*, bottom *Z*.
2. On line 1:  
Make *B* 1 inch below *A*.  
Make *C* according to front neck scale below *A*. (See scale on page 38.)  
Make *D* half of arm's eye below *B*.  
Make *E* 8 inches above *Z*.
3. Draw line 2 from *A* according to top front neck; make *F*. (See scale on page 38.)
4. Draw line 3 from *B* 12 inches long.
5. Draw line 4 from *D* one-fourth of breast; make *G*.
6. Draw line 5 from *E* one-fourth of breast; make *H*.
7. Draw line 6 from *Z* two-thirds of line 5; make *I*.
8. Draw a curve from *F* to *C* (for front neck).
9. Place the end of ruler at *F*, 7 inches touching line 3, draw the shoulder line; make *J*.
10. On line 1, make *K* half the distance between *C* and *D*.
11. Make *L* to the right of *K*,  $2\frac{1}{2}$  inches less than the distance between *D* and *G*.
12. Draw arm's eye curve from *J* to *L*, to *G*.
13. Connect *G* and *H*.
14. Draw a curve from *H* to *I*. (See Fig. 30.)

**SLEEVE FOR NIGHT SHIRT.**

(Fig. 31.)

1. Draw line 1 the length of sleeve; mark top *A*, bottom *Z*.
2. On line 1, make *B* 3 inches below *A*.
3. Draw line 2 from *B* half of arm's eye plus 3 inches; make *C*.
4. Draw line 3 from *Z* half of hand plus 2 inches; make *D*.
5. Connect *D* and *C*.
6. Draw a curve from *A* to *C*.

NOTE.—Cut 17 inches down the center of front for the vent.

NOTE.—Follow dotted line on sleeve for cuff.

**DRESS SHIRT.**

BACK.

(Fig. 32.)

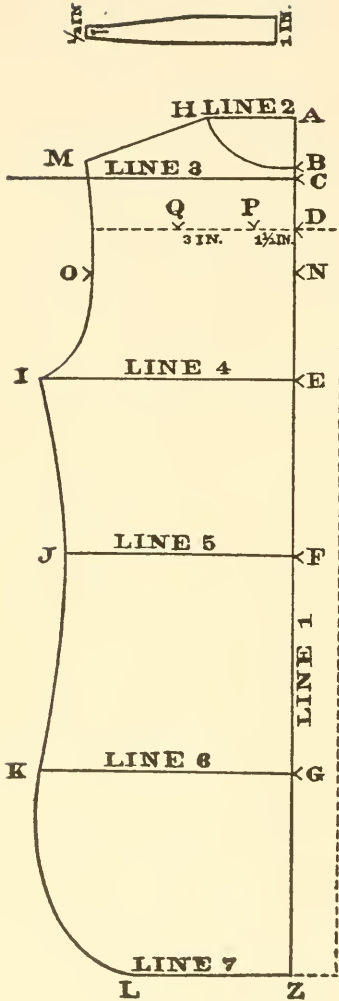


Fig. 32.

*Measures :*

1. Neck, 15 inches (use size of collar or measure loosely at the base of neck).

2. Breast, 40 inches (a loose measure taken entirely around the body).

3. Arm's eye, 16 inches (around the arm to point of shoulder).

4. Under arm, 7 inches (from close up under arm down to hip).

5. Shoulder, 5 inches (from base of neck to point of shoulder).

6. Length of shirt, 32 inches (from front of neck the desired length).

7. Length of sleeve, 23 inches (from shoulder to wrist with arm bent at elbow).

8. Around hand, 10 inches (a loose measure).

Back. (See Fig. 32.)

*Directions:*

1. 1 inch from top and 2 inches from right hand edge of paper, draw line 1 length of shirt plus  $1\frac{1}{2}$  inches; mark top A, bottom Z.

NOTE.—Make vent by cutting down the center of the back the desired length.

**DRESS SHIRT.**

BACK.

(Fig. 32.)

*Directions:*

2. On line 1:

Make *B* according to back neck scale below *A*. (See scale on page 36.)

Make *C*  $2\frac{1}{2}$  inches below *A*.

Make *D* 2 inches below *C*. (This gives the yoke.)

Make *E* half of arm's eye below *C*.

Make *F* under arm measure below *E*.

Make *G* one-half the distance between *F* and *Z*.

3. Draw line 2 from *A* according to top back neck scale; make *H*.

(See scale on page 36.)

4. Draw line 3 from *C* 12 inches.5. Draw line 4, from *E* one-fourth of breast; make *I*.6. Draw line 5 from *F* one-fourth of breast minus 1 inch; make *J*.7. Draw line 6 from *G* one-fourth of breast; make *K*.8. Draw line 7 from *Z* two-thirds of line 6; make *L*.9. Curve from *H* to *B* for back neck.10. Place the end of ruler at *H*, 7 inches touching line 3, draw shoulder line; make *M*.11. On line 1, make *N* half the distance between *C* and *E*.12. Make *O* to the left of *N*, 2 inches less than the distance between *E* and *I*.13. Draw arm's eye curve from *M* to *O*, to *I*.14. Draw curve from *I* to *J*, to *K*, to *L*.15. Make dotted line from *D* for yoke; extend this line 2 inches to the right; gather additional material into yoke between points *P* and *Q*.

(See Fig. 32.)

## DRESS SHIRT.

FRONT.

(Fig. 33.)

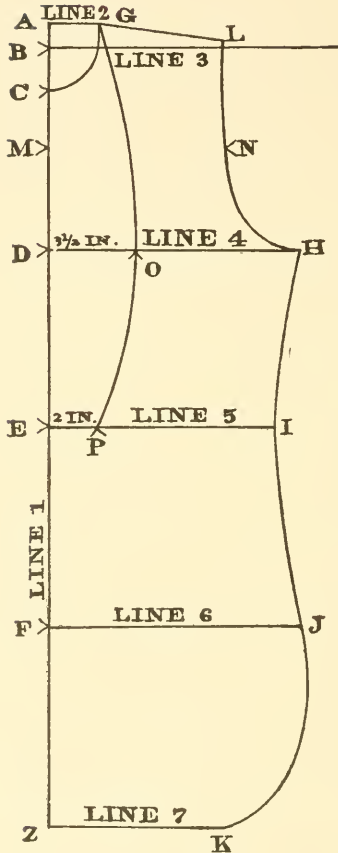


Fig. 33.

*Directions:*

1. 1 inch from top and left-hand edge of paper, draw line 1 the length of shirt; mark top *A*, bottom *Z*.

**DRESS SHIRT.**

## FRONT.

(Fig. 33.)

2. On line 1:
  - Make *B* 1 inch below *A*.
  - Make *C* according to front neck scale below *A*. (See scale on page 38.)
  - Make *D* half of arm's eye below *B*.
  - Make *E* the under-arm measure below *D*.
  - Make *F* one-half the distance between *E* and *Z*.
3. Draw line 2 from *A* according to top front neck scale; make *G*.  
(See scale on page 38.)
4. Draw line 3 from *B* 12 inches long.
5. Draw line 4 from *D* one-fourth of breast; make *H*.
6. Draw line 5 from *E* one-fourth of breast, minus 1 inch; make *I*.
7. Draw line 6 from *F* one-fourth of breast; make *J*.
8. Draw line 7 from *Z* two-thirds of line 6; make *K*.
9. Draw front neck curve from *G* to *C*.
10. Place the end of ruler at *G*, 7 inches touching line 3, draw shoulder line; make *L*.
11. On line 1, make *M* half the distance between *C* and *D*.
12. Make *N*, to the right of *M*,  $2\frac{1}{2}$  inches less than the distance between *D* and *H*.
13. Draw arm's eye curve from *L* to *N*, to *H*.
14. Draw curve from *H* to *I*, to *J*, to *K*. (See Fig. 33.)

## BOSOM.

(Fig. 33.)

1. On line 4, make *O*  $3\frac{1}{2}$  inches from *D*.
2. On line 5, make *P* 2 inches from *E*.
3. Draw a curve from *G* to *O*, to *P*.

**SLEEVE.**

(Fig. 34.)

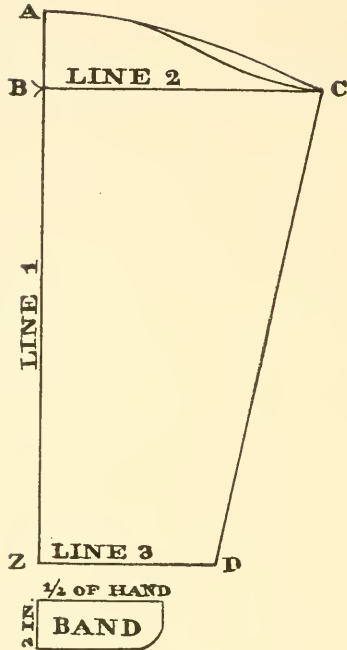


Fig. 34.

*Measures:*

1. Draw line 1 the length of sleeve; mark top *A*, bottom *Z*.
2. On line 1, make *B* 3 inches below *A*.
3. Draw line 2 from *B* one-half of arm's eye plus 3 inches; make *C*.
4. Draw line 3 from *Z* half of hand plus 2 inches; make *D*.
5. Connect *D* and *C*.
6. Draw a curve from *A* to *C*.



### INFANT'S SHOE.

(Fig. 35.)

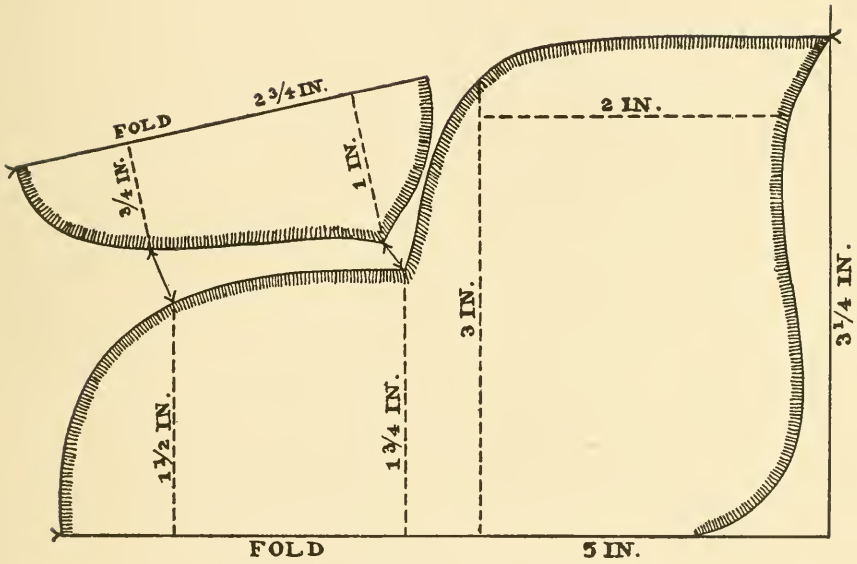


Fig. 35.

NOTE.—No directions required for drafting; follow measurements on lines.

# INFANT'S BOOTE.

(Fig. 3(.))

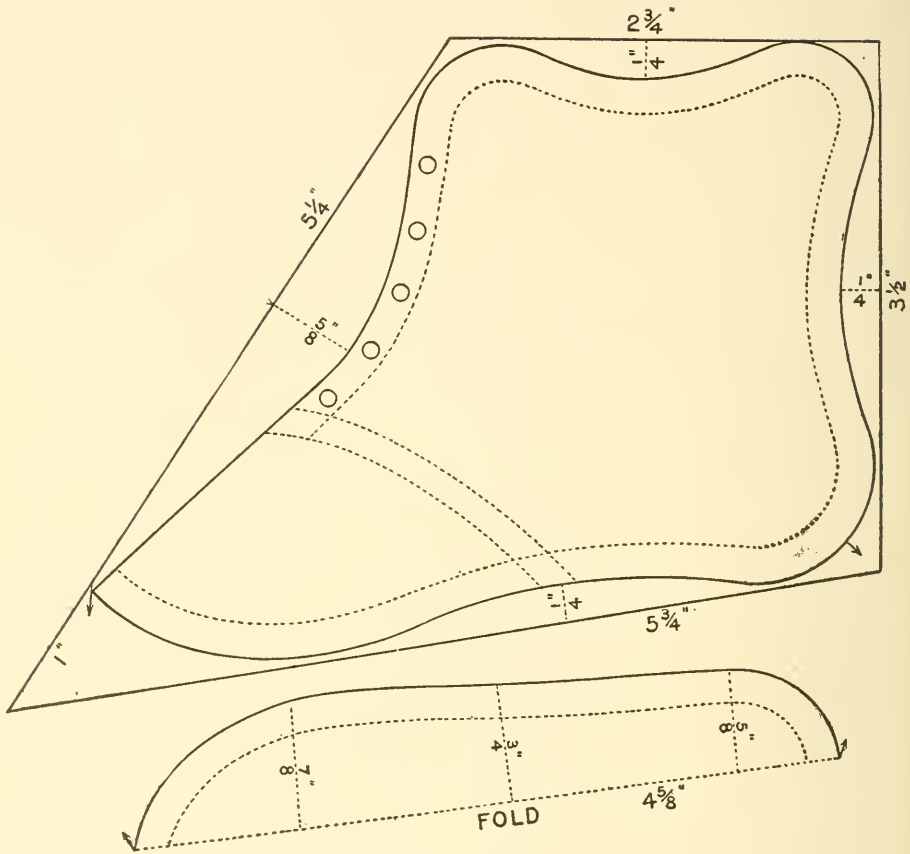


Fig. 36.

### INFANT'S CAP.

(Fig. 37.)

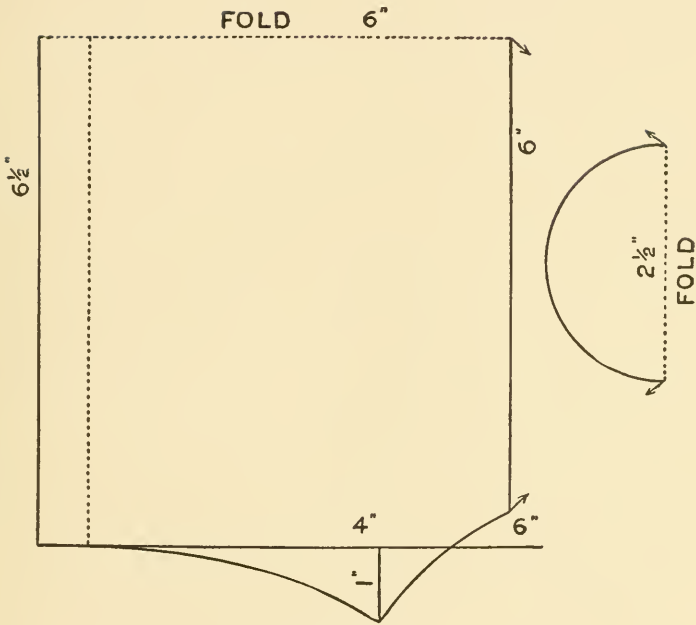
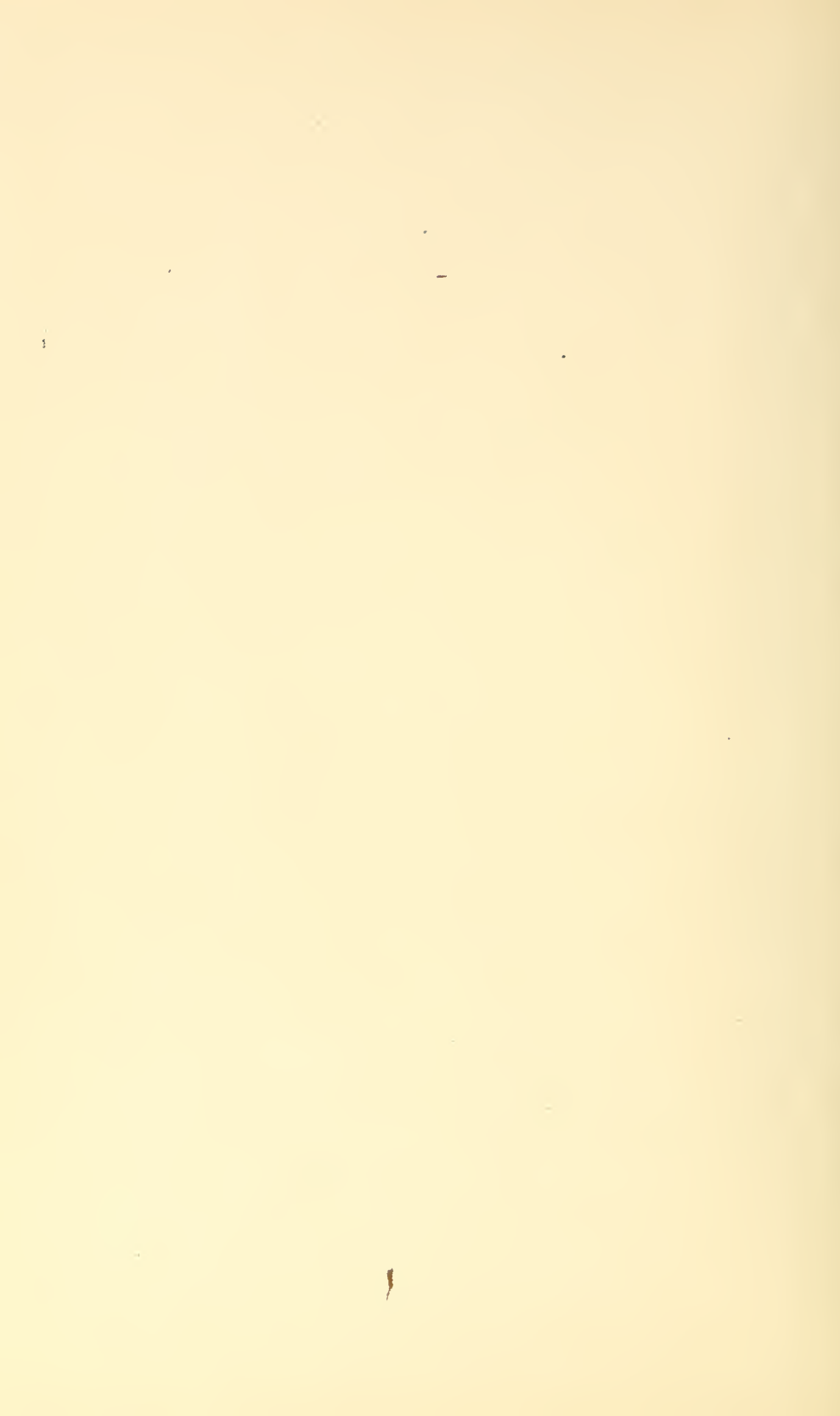


Fig. 37.

NOTE.—No directions required for drafting; follow measurements on lines.





NOV 27 1905



LIBRARY OF CONGRESS



0 014 061 886 A

