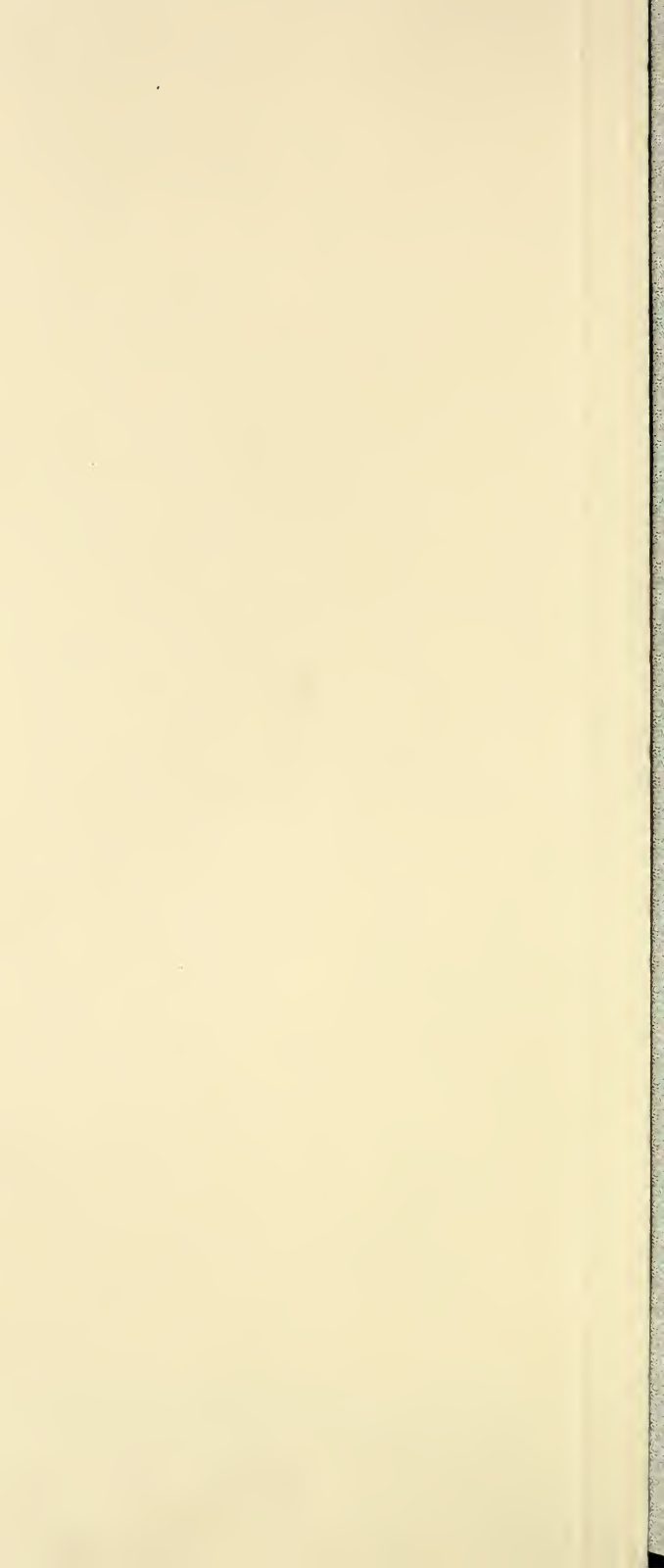


## **Historic, Archive Document**

Do not assume content reflects current scientific knowledge, policies, or practices.



SEASON 1929

LIBRARY  
RECEIVED

MAR 21 1929

U. S. Department of Agriculture

# Gladiolus Bulbs

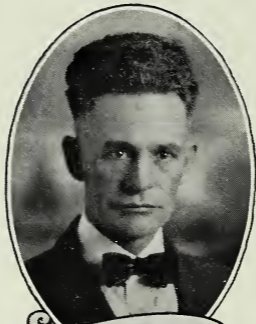


WHOLESALE  
AND RETAIL

**JOHN H. McKIBBIN**

1309 Division St.

**GOSHEN, INDIANA**



John H. McKibbin

## ◀ GREETING ▶

IT is likely that no other industry has been advancing and progressing as rapidly during the past few years as has the Gladiolus industry. As time goes on we find our ideals gradually undergoing changes, sometimes so subtle that they remain unnoticed until we sit down to a sort of retrospection of passing trends and events.

In my list for 1928, I announced some lacinated varieties and predicted their popularity. In this I was entirely correct for others also announced a few lacinated kinds and stated their belief in the coming popularity of this type.

This year I offer for your gardens, several new varieties, plain, ruffled and lacinated, which have stood the test of time in my Trial Grounds. These new introductions have all been registered with American Gladiolus Society and will doubtless be shown at the American Show this year, and these few new ones have been scrupulously chosen as the best from many growing in my Trial Gardens. I have no fear of their reception with you after you compare them with others.

In the firm belief that no other practical way has been found to definitely decide a dividing line between a "wholesale" and "retail" buyer, I have printed in my list this year, a price schedule which ranges from one bulb to a thousand. I do this in the belief that the *quantity* purchaser is entitled to better prices regardless of his status as a grower. May I venture a prediction that I am right in this belief and that many other growers will soon be using the same method.

Our gardens (35 acres) are located at the west city limits of Goshen, Indiana, just a block from the main highway over which more than 5,000 autos pass each day during the summer season. You will find a real welcome awaiting you here and it will be a real pleasure to show you most of the other better originations as well as our own fine things.

Sincerely yours,

JOHN H. McKIBBIN.

## What SIZE Do You Want to Buy?

We offer bulbs in THREE SIZES at retail this year. Large, Medium, and Small, except where otherwise noted.

**LARGE.** This size is indicated by "L" in connection with prices. The bulbs in the "L" size will be  $1\frac{1}{4}$  inches and up in diameter.

**MEDIUM.** Abbreviated to "M" as used with prices. The bulbs in the "M" size will average about No. 3 Size (1 to  $1\frac{1}{4}$  inches).

**SMALL.** These "S" bulbs will average from  $\frac{1}{2}$  to  $\frac{3}{4}$  inches in diameter.

If you want to buy Gladioli bulbs to get the most and best blooms which 95% of the people do who buy in the small quantity, the large bulbs are the ones to buy. It stands to reason that a full sized matured bulb will produce a taller spike and larger bloom with many more florets to the spike and also more spikes. Many varieties produce from two to four spikes per bulb. The medium size will produce a good spike and large bloom, but not so many spikes, and a few more bulblets which most people throw away.

Most of the small size will bloom, but the spike will not be so tall nor so many florets to the spike and will not bloom as early as the larger bulbs, but you can grow them to full size No. 1 bulbs the first year. So take your choice and we will do our best to please you.

---

## NOTICE

### Please Read Before Ordering.

No retail order filled for less than \$1.00 as all orders for less than \$1.00 are filled at a loss.

Where offered by the dozen, six may be ordered at half the dozen price. Less than six at single rate, or as otherwise stated in price list.

### SPECIAL OFFER FOR EARLY ORDERS

On all orders received before April 1st, I will give an additional quantity of bulbs free of charge as follows:

10% extra on orders up to \$10.00.

15% extra on orders from \$10.00 to \$25.00.

20% extra on orders of \$25.00 or more.

I reserve the right to make the selections in extras, either in varieties ordered or other varieties just as good. If you have a preference please mention it with order and we will do our best to serve you.

### SUBSTITUTION

If any varieties are out of stock when your order is received, I will substitute a similar or more expensive variety. If this is not satisfactory, please advise when ordering.

Safe arrival of bulbs is guaranteed to any point within the U. S. A. and Canada.

### TERMS

Remittances must accompany all orders.

Send bank draft, express or postal money order, or if more convenient for you, we will accept your personal check.



CAPTAIN KIDD is both ruffled and lacinated, has large wide open flowers nicely placed on long wiry stems. Beautiful clear deep red color. You will note that this is altogether a new and distinct type of gladiolus. They are as life-like as butterflies, as graceful as orchids.



## New Introductions for 1929

I N INTRODUCING more of my new originations, I would like to have a word with my friends and customers in regard to my seedlings.

In my trial grounds last season I had over three thousand separate varieties that I have grown separately from two to ten years. These varieties consist of plain petaled, ruffled, lacinated, ruffled and lacinated combined and the branching or tree type.

Many of these will be named and dessiminated. Others will be sold in a mixture, and others will just be the grand-parents of future generations, and when that has been accomplished they will be discarded altogether. Many others after being tested for a few years and fail to measure up to a good standard in every way, are left out to freeze.

In producing a few varieties that will stand the test of a good, high rating thousands will have to be discarded.

Many people wonder why a new variety should be so high priced. As a rule when a new variety is placed on the market it is priced at actual cost of production. This may seem strange but consider the thousands that have been carried along for several years, then thrown away in order to get the one good variety. Usually when this variety is placed on the market, the stock is very limited. Charge the cost of producing the discards to the cost of the new one and it is easily seen why the price is high. I would say right here that for the commercial grower as an investment, the introductory price is invariably the lowest.

As to how my seedlings compare with other new productions, I would call your attention to my winnings at the A. G. S. show held at Toledo, Ohio, Aug., 1928. Section E. in Class No. 66—For the best collection of Seedlings displayed, not less than 10 varieties (The only class I entered). There was plenty of competition in this class, growers entering from 15 to over 500 varieties. I entered 17 varieties, and won third on display. The medal shown above was awarded by the A. G. S. as third prize in this class.

*John A. McKibbin*



**New Introductions for 1929.**

(L.—Large. M.—Medium. S.—Small.)

**BETTY McKIBBIN**—A deep, rose pink, slightly lighter towards the throat on the upper petals while the lower petals are marked with a pure rose colored plume. Slightly ruffled. Well shaped, long tapered petals, well placed florets on a straight, stiff spike. Exhibition type.

L. ea. \$5.00. M. ea. \$3.00. S. ea. \$1.50.

**CORAL LUSTER**—Primulinus Grand. type. A deep strawberry pink blending to salmon-pink with a feather of soft rose-red on the lower petals. Its shape is such as gives it the appearance of a half open rose bud. Quality and texture are of such natures that it withstands extreme heat and adverse conditions without drooping in the hottest sun. A long, slender, graceful spike. A most unusual and beautiful combination and blend of colors and form. A rapid propagator.

L. ea. \$2.00. M. ea. \$1.00. S. ea. 50c.

**MARY LOU**—Exhibition type. A soft rose-pink with a stripe of tyrian rose on the lower petals. Well ruffled, well formed and placed florets on a strong, straight spike. Five or more open at a time. Sixteen to twenty florets on the spike. One of those color combinations which under artificial light gives the impression of a beautiful orchid color. A rapid multiplier.

L. ea. \$2.00. M. ea. \$1.00. S. ea. 50c.

**RIPPLES**—A deep rose-pink blending to a shrimp pink on the upper petals. Lower petals tinting to a soft, creamy white with delicate carmine pencilings in the throat. All midribs are white lined. It is quite well ruffled and slightly lacinated. From 4 to 7 beautifully shaped, well placed florets open at once on a straight, though graceful spike. A very rapid propagator.

L. ea. \$5.00. M. ea. \$3.00. S. ea. \$1.50.

**ROSE DOREE**—Color a shiny soft rose-doree with the upper petals blending to a little lighter throat and lower petals marked with a lovely carmine stripe on the midrib. The carmine stripe stippled with pale olive buff, which also specks and stripes the throat of the lower petals. A well opened, plain petalled variety with the petals slightly recurved. A vigorous plant and increases very rapidly.

L. ea. 75c. M. ea. 40c. S. ea. 20c.

**RED ALATUS**—A pure spectrum red with a slightly darker stripe on the midrib of the lower petals. Florets about four inches across, and open slowly. The spike is strong, slender and willowy. This is one of the red "glads" that does not sun burn, and is a very good cut-flowery variety.

L. ea. 50c. M. ea. 25c. S. ea. 10c.

**Some of My Recent Introductions**

**CAPTAIN KIDD**—Captain Kidd has in its long wiry stems all the grace of carriage suitable to a King. It is a King in its very own class. It is both ruffled and lacinated, has large wide-open flowers, nicely placed on strong yet graceful stems. The beautiful red color reminds one of its namesake, so fearless, daring and bold. It is not only extraordinary beautiful but a very good seed producer and a rapid propagator. Illustrated on page 4.

L. ea. \$50.00. M. ea. \$30.00. S. ea. \$15.00.

All orders shipped prepaid.

**DAINTY QUEEN**—Queen of the dainties. The beautiful dainty shell-pink color, the tall graceful spike, the beautiful lacinated blooms, measuring from four to five inches, gracefully combine to make it one of the most beautiful gladioli among the new creations. Illustrated on page 8.

L. ea. \$2.50. M. ea. \$1.50. S. ea. 75c.

**DR. SUMNER A. EDMANDS**—A well ruffled deep blush-pink shading to golden-salmon-rose on edges of petals. Lower petals slightly darker pink and marked with a carmine stripe. Edges softly flaked carmine. Is of unusually heavy texture and an excellent all-round gladiolus. Illustrated on page 14.

L. ea. \$2.50. M. ea. \$1.50. S. ea. 75c.

**I. O. WOOD**—A beautiful plain petaled variety of Tyrian rose color, blended to a satiny pink in the throat of the upper petals. Throat of lower petals of slightly deeper rose, with soft red stripes. Tips of petals flaked with soft red and the entire bloom overlaid with a violet sheen. The large blooms are wide-open with a trace of recurve. Plant large, and of unusual stamina, and a strong grower under all conditions. Illustrated on page 16.

L. ea. \$1.50. M. ea. 75c. S. ea. 35c.

**LONE EAGLE**—A living, glowing orange-vermilion with soft carmine stripes on lower petals. Upper petals shaded to a delicate pink in the throat. Well ruffled and overlaid with a satiny silver sheen. An outstanding variety in every way and under any conditions. Stock very limited. Illustrated on page 10.

L. ea. \$10.00. M. ea. \$6.00. S. ea. \$3.00.

**LOCARNO**—A 1926 introduction. One of the very best. Most refined lavender with deeper throat markings on lower petals. The most pleasing and peaceful color imaginable. Tall spike, large, wide open flowers, many open at a time. A wonderful cut-flower and florist variety. Illustrated on page 20.

L. ea. \$1.50. M. ea. 75c. S. ea. 35c.

All orders shipped prepaid.



Engraving as shown on back of Medal.



#### DAINTY QUEEN

Queen of the dainties. The beautiful dainty shell-pink color, the tall graceful spike, the beautiful laciniate blooms, measuring from four to six inches, gracefully placed combine to make it one of the most beautiful gladioli among the new creations.

## Description and Prices

(L.—Large. M.—Medium. S.—Small.)

**ALBANIA**—One of the best pure white gladiolus. Flowers are large, widely opened, of good substance and placed well on the stem.

L. ea. 10c; doz. \$1.00. M. 2 for 12c; doz. 60c.

**ALICE TIPLADY**—A grand, large primulinus of most beautiful orange saffron color. Very choice.

L. 3 for 15c; doz. 50c. M. doz. 30c.  
S. doz. 20c.

**ALTAIR**—Extra tall primulinus of finest salmon saffron. A grand color.

L. 3 for 15c; doz. 50c. M. doz. 30c.  
S. doz. 20c.

**ANNA EBERIOUS**—Velvety violet purple, throat deeper color. This variety has created a sensation with growers and amateurs alike.

L. ea. 10c; doz. \$1.00.

**AL SHIRA**—Large, deep wine red lower petals and throat almost black. Pansy-like shape. Very attractive.

L. 3 for 25c; doz. 80c. M. doz. 60c.  
S. doz. 40c.

**ARDEN**—Tall, large flowered, gracefully placed, many open, deep watermelon-red.

L. 3 for 25c; doz. 80c. M. doz. 60c.  
S. doz. 40c.

**A. E. KUNDERD**—It is a very strongly ruffled variety, tall and stately. A rapid multiplier. In color the richest salmon-rose, lighter toward the center of throat with very beautiful markings on three lower petals.

L. ea. \$2.50; doz. \$25.00. M. ea. \$2.00; doz. \$20.00.

**BUMBLE BEE**—Large, broadly expanded flower of purest salmon rose pink. Grand penciled blue, magnificent throat of deeper color.

L. ea. 15c; doz. \$1.50. M. ea. 10c; doz, \$1.00,  
S. doz. 50c.

**BUCKEYE**—Very large, massive bloom of fine rose-pink color with tint of old-rose at edge of petals. A beautiful, large rose-red throat. Very good.

L. ea. 15c; doz. \$1.50. M. 2 for 25c; doz. \$1.20.  
S. 3 for 25c; doz. 80c.

**BATTLE CREEK**—An attractive, almost self-colored deep-violet, a little deeper in throat. Good size and many open at a time. A showy flower.

L. ea. 15c; doz. \$1.50. M. 2 for 25c; doz. \$1.20.  
S. 3 for 25c; doz. 80c.

**BUTTERFLY**—(Primulinus.) A delicate salmon-pink, nicely ruffled, very strong and vigorous. The blooms resemble a giant butterfly.

L. ea. 8c; doz. 80c. M. ea. 6c; doz. 60c.  
S. 3 for 12c; doz. 40c.

**BYRON L. SMITH**—One of the very best. Most refined lavender pink on white ground. Exceedingly fine as a cut flower. Color equal to a very choice atteya orchid.

L. ea. 15c; doz. \$1.50.

All orders shipped prepaid.



#### LONE EAGLE

A living, glowing orange-vermilion with soft carmine stripes on lower petals. Upper petals shaded to a delicate pink in the throat. Well ruffled and overlaid with a satiny silver sheen. An outstanding variety in every way.

**BARON J. HULOT**—Tall plant, medium size flowers, dark, velvety purple.

L. ea. 10c; doz. \$1.00. M. ea. 8c; doz. 80c.  
S. 3 for 20c; doz. 70c.

**BROADCASTER**—A 1924 introduction. A very strong, vigorous plant, almost a solid white, with slight magenta markings in throat, large, wide open blooms, nicely ruffled, many open at a time. A bouquet of itself.

L. ea. 20c; doz. \$2.00. M. ea. 15c; doz. \$1.50.

**CHALLENGER**—Very large and vigorous plant. Giant, dark, rich, velvety-red, solid color. An extraordinary fine variety.

L. ea. 10c; doz. \$1.00. M. ea. 8c; doz. 80c.  
S. ea. 6c; doz. 60c.

**CRIMSON GLOW**—Immense open flowers of intense rich crimson. Tall, vigorous and perfectly formed. The very finest of its color.

L. ea. 8c; doz. 80c. M. ea. 6c; doz. 60c.  
S. 3 for 12c; doz. 40c.

**CHICAGO WHITE**—A very early, choice florist's variety.

L. ea. 5c; doz. 50c. M. 3 for 10c; doz. 35c.  
S. doz. 25c.

**CHARLES F. FAIRBANKS**—Another new red, a distinct and beautiful variety. Introduced in 1925 by Mr. A. E. Kunderd. Tall, vigorous plant, large, wide open bloom, many open at a time.

L. ea. 10c; doz. \$1.00. M. ea. 8c; doz. 80c.  
S. 3 for 15c; doz. 50c.

**DR. VAN FLEET**—Extra tall and splendid plant, flowers of remarkable form and large size. A magnificent shade of delicate rose-pink, deeper at edges of all petals. Throat of softest canary yellow or cream tint beautifully blended. A very choice variety.

L. ea. 10c; doz. \$1.00. M. ea. 7c; doz. 70c.  
S. ea. 5c; Doz. 50c.

**DR. J. H. NEELEY**—Tall, massive plant. Very large and refined flower of finest blushed white. Throat clear and clean, pure, soft white, tinted softest light canary-yellow or cream. A grand variety.

L. ea. 10c; doz. \$1.00. M. ea. 8c; doz. 80c.  
S. doz. 50c.

**DEFIANCE**—Very large plant. Tall spike, many open. Delicate bluish-white, fine throat. A very choice variety.

L. ea. 10c; doz. \$1.00. M. ea. 8c; doz. 80c.  
S. ea. 6c; doz. 60c.

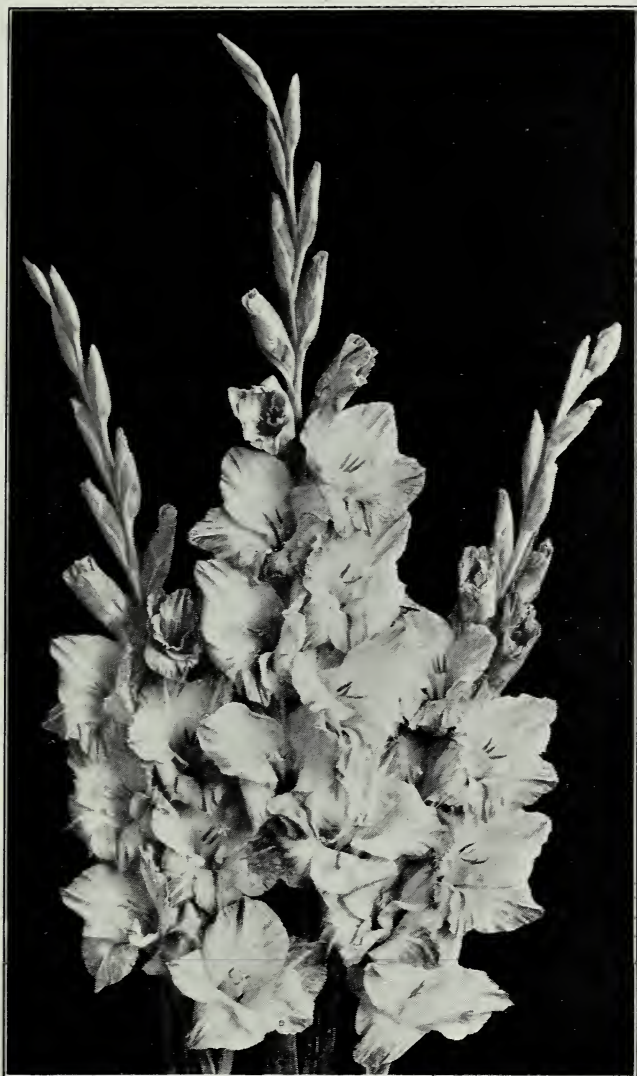
**DR. NELSON SHOOK**—Giant plant and flower. Color of deep tyrian rose, nicely ruffled, many florets open at a time, and a prize winner anywhere.

L. ea. 75c; doz. \$7.50. M. ea. 60c; doz. \$6.00.

**DOROTHY McKIBBIN**—The new ruffled pink. A pure apple blossom tint, extraordinarily early, elegantly ruffled, with many open at a time. Cannot be excelled as a cut flower variety.

L. ea. 6c; doz. 60c. M. 3 for 12c; doz. 40c.  
S. 4 for 10c; doz. 25c.

**All orders shipped prepaid.**



#### DOROTHY McKIBBIN

Dorothy McKibbin has been tested by florists and pronounced first class for forcing purposes, has long, straight, wiry stems, the flowers growing well out of the foliage; extremely early, elegantly ruffled and of a most beautiful shade of pink; has a pure apple blossom tinted throat, blending to bright pink around the outer edges of the petals. It has a wide open flower with many open at a time.

**DR. ELKINS**—A Pendleton sport. Large white flowers with distinctive purple blotches on lower petals, very beautiful.

L. ea. 20c; doz. \$2.00. M. 2 for 30c; doz. \$1.50.

**DR. F. E. BENNETT**—Deep peach red overlaid with flame scarlet. Most fiery red imaginable. Flowers of the very largest size with many opening at once.

L. ea. 30c; doz. \$3.00. M. ea. 25c; doz. \$2.50.  
S. ea. 15c; doz. \$1.50.

**ELORA**—(Originated by Luther Burbank.) Color creamy white with rich cream spot in throat. On lower petals these spots are overlaid with dainty featherings of American Beauty pink. Blooms measure 4½ to 5 inches in diameter. Very early and prolific. A remarkable variety.

L. ea. 8c; doz. 80c. M. ea. 6c; doz. 60c.  
S. 3 for 10c; doz. 35c.

**EVELYN KIRTLAND**—Rose pink, deeper at edges fading to shell pink at center, with brilliant scarlet blotches on lower petals. Very tall spikes. One of the best for cut flowers.

L. ea. 6c; doz. 60c. M. 3 for 12c; doz. 40c.  
S. doz. 25c.

**ELIZABETH TABOR**—Extra tall spikes. Large flowers of delicate rose-pink, lower petals have a brilliant crimson blotch which is tipped with soft yellow. Exceedingly early.

L. ea. 15c; doz. \$1.50. M. ea. 12c; doz. \$1.10.  
S. 3 for 25c; doz. 80c.

**E. J. SHAYLOR**—A beautiful, pure, deep rose pink, tall, strong plant, large blooms, nicely ruffled, with many open at a time.

L. 3 for 15c; doz. 60c. M. 4 for 15c; doz. 40c.  
S. doz. 25c.

**FIRE RIBBON**—Tall, with many blooms open at a time. The spike is a long, fiery band of glowing red. Exceedingly rich and strikingly showy.

L. ea. 10c; doz. \$1.00. M. ea. 8c; doz. 80c.  
S. doz. 40c.

**FAVORITE**—Beautiful orange salmon, deeper in throat, tall, strong, vigorous plant with many finely ruffled flowers open at a time. Very fine.

L. ea. 20c; doz. \$2.00. M. ea. 15c; doz. \$1.50.  
S. doz. \$1.00.

**FLAMING VALE**—Very tall; long spikes with large, deep cardinal-red flowers. Throat a little deeper. Pure self-color effect. Very good.

L. ea. 15c; doz. \$1.50. M. ea. 10c; doz. \$1.00.  
S. doz. 60c.

**GOSHEN**—A medium deep silvery rose-pink color. Large, showy rose-red blotches, many large blooms open at a time. Very choice.

L. ea. 15c; doz. \$1.50. M. ea. 10c; doz. \$1.00.  
S. doz. 60c.

**GOLDEN MEASURE**—Conceded by many to be the finest golden yellow gladiolus. Extra tall spikes. Large, wide open golden yellow blooms, deeper throat. No markings. Extra fine.

L. ea. 10c; doz. \$1.00. M. ea. 6c; doz. 60c.

**All orders shipped prepaid.**





## DR. SUMNER A. EDMANDS

A well ruffled deep blush-pink shading to golden-salmon-rose on edges of petals. Lower petals slightly darker pink and marked with a carmine stripe. Edges softly flaked carmine. Is of unusually heavy texture and an excellent all around gladiolus.

**GOLD DROP**—(Primulinus.) An extra large pure yellow with beautiful red line on petals. Beautifully ruffled. Spikes from 4 to 5 feet tall.

L. ea. 10c; doz. \$1.00. M. ea. 7c; doz 70c.  
S. doz. 40c.

**GOLDEN FRILLS**—(Primulinus hybrid). A large and open flower. Deep rich daffodil-yellow with slight pink lines on lower petals. Intensely ruffled and is very choice. One of the finest varieties for basket work I have ever seen. (Stock limited).

L. ea. \$2.00; doz. \$20.00. M. ea. \$1.50; doz. \$15.00.  
S. ea. \$1.00; doz. \$10.00.

**GOV. HANLY**—A first-class cut flower and bedding variety. Early, showy, tall, rich, cardinal red. with deeper throat color.

L. ea. 8c; doz. 80c. M. 2 for 10c; doz. 50.  
S. doz. 25c.

**HERADA**—Large flower of a deep, soft lilac color, tall spike. A very good cut flower variety.

L. ea. 8c; doz. 80c. M. 2 for 10c; doz. 50c.  
S. doz. 25c.

**HELGA**—Fine salmon rose, deeper rose and cream on white ground. Unusually graceful spike, tall and handsome plant.

L. ea. 10c; doz. \$1.00. M. ea. 8c; doz. 80c.  
S. doz. 40c.

**HIGHLAND LADDIE (1925)**—Large, massive and beautiful pink of a decided and pleasing shade. A very choice kind and a rapid multiplier.

L. ea. 15c; doz. \$1.50. M. ea. 10c; doz. \$1.00.  
S. doz. 60c.

**HENRY FORD**—Very dark rhodamine purple shading into deeper tones near the center. Color very clear like Anna Eberious but much larger and clearer. Multiplies very rapidly.

L. ea. 15c; doz. \$1.50. M. ea. 10c; doz. \$1.00.  
S. doz. 50c.

**INDIAN MAID**—Tall plant and fine stem. Flowers of beautiful peach-blossom pink with beautiful deeper throat. Very choice and distinct.

L. ea. 10c; doz. \$1.00. M. ea. 8c; doz. 80c.  
S. doz. 40c.

**JOE COLEMAN**—Very large and vigorous. Rich, red, ruffled, very choice.

L. ea. 6c; doz. 60c. M. 3 for 12c; doz. 40c.  
S. doz. 20c.

**KUNDERDI GLORY**—Large, ruffled, beautiful creamy apricot with light tint of pink and fine markings of red on lower petals.

L. ea. 8c; doz. 80c. M. 3 for 15c; doz. 50c.  
S. doz. 30c.

**K'S YELLOW**—Very large rich sulphur yellow, nicely ruffled, with slight red markings in the throat. Six to eight open at a time.

L. ea. 10c; doz. \$1.00. M. ea. 8c; doz. 80c.  
S. doz. 40c.

**LOS ANGELES**—A beautiful shrimp-pink. Just a little salmony, tinted orange. A most sturdy, rank, healthy grower. Many blossoms open at a time.

L. ea. 15c; doz. \$1.50. M. ea. 10c; doz. \$1.00.  
S. 2 for 10c; doz. 50c.

All orders shipped prepaid.



I. O. WOOD

A beautiful plain petaled variety of Tyrian rose color, blended to a satiny pink in the throat of the upper petals. Throat of lower petals of slightly deeper rose, with soft red stripes. Tips of petals flaked with soft red and the entire bloom overlaid with a violet sheen. The large blooms are wide open with a trace of recurve. Plants large, and of unusual stamina, and a strong grower.

**LUSTRE**—Tall, large flowered orange-vermilion. Grand and beautiful.

L. ea. 10c; doz. \$1.00. M. ea. 8c; doz. 80c.  
S. doz. 40c.

**LILY WHITE**—A pure all white forcing variety. Very early. As pure as a lily. Grand.

L. ea. 6c; doz. 60c. M. 3 for 12 c; doz. 40c.  
S. doz. 25c.

**LE MARSHALL FOCH**—Beautiful soft lavender pink. Blooms five to six inches in diameter.

L. ea. 6c; doz. 60c. M. 3 for 12c; doz. 45c.  
S. doz. 20c.

**LACINATUS**—Flowers with beautiful rose-pink color. Long slender petals exquisitely lacinated. Spike is slender, graceful and of good height. Very artistic and especially adapted for fine floral work in dainty decorations.

L. ea. 20c; doz. \$2.00. M. 2 for 25c; doz. \$1.20.  
S. doz. 60c.

**MARY JANE**—A wonderful plain petaled variety. A beautiful silvery pink with a light lavender sheen. Delicate, clear throat and many large, perfectly placed flowers open at a time. This variety won first prize for best new seedling at the A. G. S. Show, Kalamazoo in 1922.

L. ea. \$2.00; doz. \$20.00. M. ea. \$1.50; doz. \$15.00.  
S. ea. \$1.00; doz. \$10.00.

**MRS. LEON DOUGLAS**—Ground color begonia rose striped with flame and brilliant scarlet. Lip pale lemon slightly specked with ruby. Extra large wide open flowers, well set on long spikes, many open at a time. An extra choice florist variety.

L. ea. 15c; doz. \$1.50. M. ea. 10c; doz. \$1.00.  
S. doz. 60c.

**MARSHAL FOCH**—(Kunderds.) An exhibition and florist variety. Many giant flowers open at a time on very strong stem and spike. Color of finest salmon-pink, almost self-color. Winner of many awards.

L. ea. 15c; doz. \$1.50. M. ea. 10c; doz. \$1.00.  
S. doz. 60c.

**MACK'S CARDINAL**—A magnificent, self-colored cardinal. Tall plant, straight, wiry spikes. Flowers large and of splendid form and placement, five to seven open at a time. An A-1 cardinal. Destined to become very popular as a cut flower and garden variety

L. ea. 10c; doz. \$1.00. M. 3 for 20c; doz. 60c.  
S. doz. 30c.

**MYSTIC**—Tall, slender, graceful plant and spike. Dainty rose-pink color, open petals flaked deeper, lower petals and throat light shell-pink, many open at a time.

L. ea. 10c; doz. \$1.00. M. ea. 7c; doz. 70c.  
S. doz. 40c.

**MISS SPOKANE**—Extra large plant, tall spike with many large beautiful salmon pink blooms open at once.

L. ea. 10c; doz. \$1.00. M. 3 for 20c; doz. 60c.  
S. doz. 35c.

All orders shipped prepaid.



#### MACK'S CARDINAL

A 1924 introduction. A magnificent, self-colored cardinal. Tall plant, straight, wiry spikes. Flowers large and of splendid form and placement, five to seven open at a time. An A-1 cardinal. Destined to become very popular as a cut flower and garden variety.

**MOTTLED BEAUTY**—Extra large, well ruffled bloom, and vigorous plant. The flower has a most strikingly mottled and flaked ground color, with large and beautiful penciled blotches in throat. Reminds one of a Speciosum Lily.

L. ea. 25c; doz. \$2.50. M. ea. 15c; doz. \$1.50.  
S. ea. 10c; doz. \$1.00.

**MRS. FRANK PENDLETON**—Bright rose-pink on white background. A giant blotch of richest carmine red on lower petals. No grander variety in existence.

L. 3 for 20c; doz. 60c. M. 4 for 15c; doz. 40c.  
S. doz. 25c.

**MARY FENNEL**—A large, wide open bloom of deep lilac shading, paler to a soft yellow throat. Very beautiful.

L. ea. 10c; doz. \$1.00. M. 2 for 12c; doz. 60c.

**MARY PICKFORD**—An extraordinary flower of most delicate cream-white. Finest soft sulphur-yellow throat. Good-sized blooms. Many open at a time. A grand white.

L. ea. 8c; doz. 80c. M. 2 for 10c; doz. 50c.  
S. doz. 25c.

**MRS. GEORGE MOULTON**—A grand cerise, deeper throat, almost a solid color, large plant, tall, straight spike and many open at a time.

L. ea. 10c; doz. \$1.00. M. 2 for 12c; doz. 60c.  
S. doz. 30c.

**MRS. DR. NORTON**—Tall, stately plant. Blooms of the finest cream and pink. Lower petals soft sulphur-yellow flushed with pink. Very beautiful.

L. ea. 8c; doz. 80c. M. 2 for 10c; doz. 50c.  
S. doz. 25c.

**MIDSUMMER DREAM**—A large, beautiful geranium-red. Showy, fine.

L. ea. 10c; doz. \$1.00. M. 2 for 10c; doz. 50c.  
S. doz. 30c.

**MAGIC**—Tall, large, rich purple throat blotches. Finest lavender blue. Very fine. Shown on back cover.

L. ea. 8c; doz. 80c. M. 2 for 10c; doz. 50c.  
S. doz. 25c.

**NIGHTINGALE**—Tall, graceful plant with softest rose-pink blooms. Delicate creamy white, blended with pink in the throat.

L. 2 for 12c; doz. 60c. M. 3 for 10c; doz. 40c.  
S. doz. 25c.

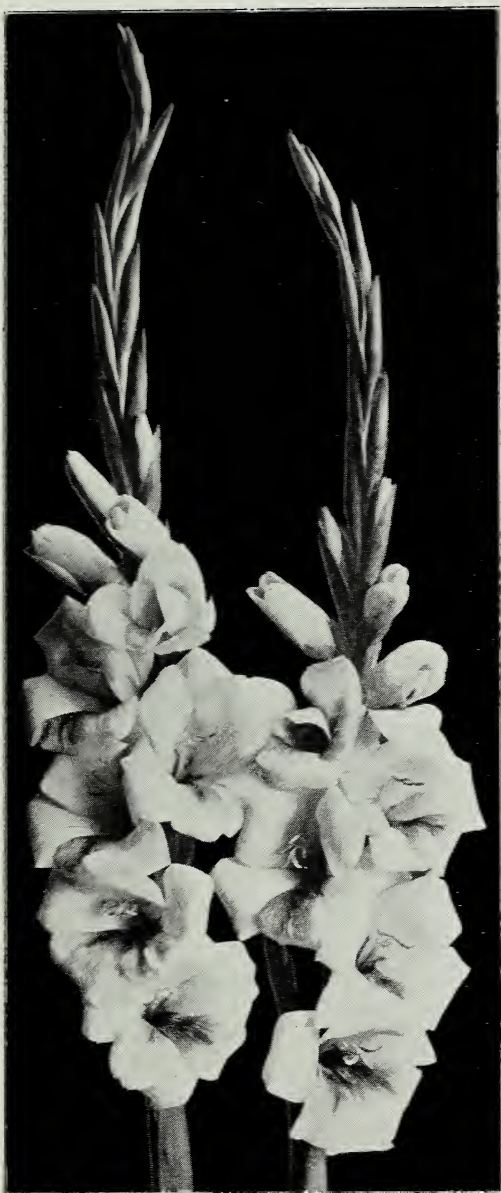
**NEGERFURST**—Tall, dark red, large, wide open blooms, many open at one time. A very good cut flower variety.

L. ea. 20c; doz. \$2.00. M. 2 for 30c; doz. \$1.50.

**OPALESCENT (G)**.—Pale rose-lavender. A pure self color with narrow lines of lilac radiating from the center of the flower. The flowers are large, of excellent substance, and are well placed upon the spike. It makes a good strong growth.

L. ea. 10c; doz. \$1.00. M. ea. 8c; doz. 80c.

All orders shipped prepaid.



## LOCARNO

A 1926 introduction. One of the very best. Most refined lavender with deeper throat markings on lower petals. The most pleasing and peaceful colors imaginable. Tall spike, large wide open flowers, many open at a time. A wonderful cut-flower and florist variety. This peaceful glad was named after the modest little Swiss town that was made famous by the signing of the great peace pact.

**ORANGE GLORY**—Large ruffled, grand orange colored, with beautiful lighter throat. Very rich and striking color.

L. ea. 15c; doz. \$1.50. M. ea. 10c; doz. \$1.00.

**PURPLE GLORY**—A giant gladiolus of remarkable color, deepest velvety maroon red, faint shading of purple with almost black throat. Beautifully ruffled, with many open at a time. A giant in size. Truly wonderful.

L. ea. 20c; doz. \$2.00. M. ea. 15c; doz. \$1.50.  
S. doz. \$1.00.

**PURPLE QUEEN**—A deep violet-purple beauty. Throat darker, medium ruffled, many open at a time. Extra fine for decorative work.

L. ea. 50c; doz. \$5.00. M. ea. 30c; doz. \$3.00.

**PURPLE SPOT**—Large, violet-red with very conspicuous dark blotches. Early, showy.

L. ea. 10c; doz. \$1.00. M. 2 for 10c; doz. 50c.

**PATRICIA CARTER**—(Primulinus Grandiflora). Tall fine plant, rugged in its growth and very beautiful. Tall spike with five and six perfectly spaced flowers open at a time. Flowers are of most beautiful tone of softest light shrimp-pink color. No markings. The most beautiful Primulinus ever introduced. A prize winner everywhere!

L. ea. \$1.50; doz. \$15.00. M. ea. \$1.00; doz. \$10.00.  
S. ea. 60c; doz. \$6.00.

**PANAMA**—An "America" seedling. Taller plant, larger bloom and brighter pink. Very beautiful.

L. ea. 8c; doz. 80c. M. 2 for 10c; doz. 50c.  
S. doz. 25c.

**PINK WONDER**—Gaint pale pink. Blooms 6½ inches in diameter. Tall, graceful spike. Extra fine.

L. ea. 8c; doz. 80c. M. 2 for 10c; doz. 50c.  
S. doz. 30c.

**PRIMUNELLA**—A grand ruffled butterfly, orchid-like flower, orange saffron color.

L. ea. 15c; doz. \$1.50. M. ea. 10c; doz. \$1.00.  
S. 3 for 15c; doz. 50c.

**PEACH ROSE**—An extra choice and distinct deep pink of remarkable color and appearance. Was awarded First Class Certificate of Merit by Mass. Horticultural Society, summer 1919. Winner of many awards. A very beautiful variety.

L. ea. 20c; doz. \$2.00. M. ea. 15c; doz. \$1.50.  
S. ea. 8c; doz. 80c.

**ROMANCE**—Large orange, salmon, rose, red, and yellow throat. Wine-blue bordered patals. Unusually distinct and showy. Strong grower, tall spike, and many flowers open at a time.

L. ea. 15c; doz. \$1.50. M. ea. 10c; doz. \$1.00.  
S. doz. 50c.

**ROBERT M. LAFOLLETTE**—A 1925 introduction. Large royal purple red, from five to eight large blooms open at a time. Medium height plant. Good straight spikes. A rapid propagator. Showy and conspicuous.

L. ea. 20c; doz. \$2.00. M. ea. 15c; doz. \$1.50.

All orders shipped prepaid.





## ROBERT M. LA FOLLETTE

1925 introduction. Large, royal purple red, from five to eight large blossoms open at a time. Medium height plant. Good straight spikes. A rapid propagator. Showy and conspicuous.

**ROSE ASH**—Corinthian red shading into ashes of roses on the outer edges. Lower petals light yellow speckled with ruby. Many large flowers open at a time.

L. ea. 10c; doz. \$1.00. M. 2 for 12c; doz. 50c.

**RED COPPER**—Large flowers, deep copper heavily flaked blue lower petals, copper red, white and yellowed lined and flushed with blue. A very choice novelty.

L. ea. 8c; doz. 80c. M. 2 for 12c; doz. 60c.  
S. doz. 30c.

**ROSE GLORY**—A very large and beautiful ruffled variety. Purest rose-pink color, deeper throat, extra fine.

L. ea. 10c; doz. \$1.00. M. 2 for 12c; doz. 60c.  
S. doz. 30c.

**RACINE**—Very dark red, flaked deeper, almost black, white in throat.

L. ea. 10c; doz. \$1.00. M. 2 for 12c; doz. 60c.  
S. doz. 30c.

**ROSY GLOW**—Giant plant, massive flower of fine rose-pink on white ground. Very beautiful.

L. ea. 15c; doz. \$1.50. M. ea. 10c; doz. \$1.00.  
S. 2 for 12c; doz. 60c.

**1910 ROSE**—Extra large flower, pure rose-pink of a very fine shade. Lower petals marked with narrow white line through center. Very fine.

L. 2 for 10c; doz. 50c. M. 4 for 12c; doz. 30c.  
S. doz. 20c.

**ROANOKE**—A vigorous and large, rich, yellow primulinus. Many open at a time. Very fine.

L. 2 for 10c; doz. 50c. M. 4 for 12c; doz. 30c.  
S. doz. 20c.

**RUTH HUNTINGTON**—Beautiful violet lilac with deeper lilac markings on lower petals. Beautifully ruffled, large strong plant with tall, fine spikes.

L. ea. 20c; doz. \$2.00. M. ea. 15c; doz. \$1.50.

**SNOW BOY**—Tall and stately; pure white. Many flowers open at a time. Often has only one beautiful blotch on lower petal. Large flower of finest form. Beautiful.

L. ea. 15c; doz. \$1.50. M. ea. 10c; doz. \$1.00.  
S. 2 for 12c; doz. 60c.

**SPLENDORRA**—Splendid, very dark wine-black. A fine, rich, distinct sort.

L. ea. 10c; doz. \$1.00. M. 2 for 12c; doz. 60c.  
S. doz. 40c.

**SWEET ROSE**—Very massive flowers on tall strong plant, of purest deep-rose pink with extra large beautiful red throat. A wonderful rose-pink! Has been awarded many prizes for best rose-pink.

L. ea. 75c; doz. \$7.50. M. 50c; doz. \$5.00.

**SULPHUR FRILLS**—Tall, many medium sized flowers open at a time. Beautifully ruffled, of finest pure, soft sulphur shade. Very beautiful!

L. ea. 30c; doz. \$3.00. M. ea. 20c; doz. \$2.00.  
S. ea. 15c; doz. \$1.50.

All orders shipped prepaid.

**SOVEREIGN**—Deep violet blue. Medium size flowers. Five and six open at a time. Tall, graceful spike. Very rare.

L. ea. 30c; doz. \$3.00. M. ea. 20c; doz. \$2.00.  
S. ea. 15c; doz. \$1.50.

**SENTINEL**—Very tall, strong plant. Large, pure rose-pink, with elegantly white penciled, iris-like throat. Very showy.

L. 2 for 12c; doz. 60c. M. 3 for 12c; doz. 40c.  
S. doz. 25c.

**TEMPA**—Pink ground. Old rose. Bronzy lavender throat. Distinct and fine. A popular variety at the A. G. S. show. Rochester, Aug., 1925.

L. ea. 15c; doz. \$1.50. M. ea. 10c; doz. \$1.00.  
S. doz. 60c.

**TYRIAN BEAUTY**—(Magenta.) A beautiful, large flower near "American Beauty" rose color. Grand. Awarded first prize for best plain petaled variety at the Mid-western Gladiolus Show, Des Moines, Sept., 1925.

L. ea. 15c; doz. \$1.50. M. ea. 10c; doz. \$1.00.  
S. doz. 60c.

**UHLAN CHIEF**—Tall, graceful, slender spike. Flower of most intense brilliant vermilion-scarlet. Lower petals deeper color and beautifully dark feathered, a magnificent red.

L. ea. 10c; doz. \$1.00. M. 2 for 12c; doz. 60c.  
S. doz. 35c.

**VIRGINIA HALE**—Beautiful, soft creamy salmon-rose, deeper toward border of all petals. Very refined and beautiful variety.

L. ea. 20c; doz. \$2.00. M. ea. 15c; doz. \$1.50.  
S. ea. 8c; doz. 80c.

**W. H. PHIPPS**—La France pink, overlaid with light rose salmon, lighter toward the center. Lower petals very faintly striped and speckled with ruby. Flowers enormous, many open at a time. A masterpiece in Gladioli.

L. ea. 25c; doz. \$2.50. M. 20c; doz. \$2.00.  
S. ea. 10c; doz. \$1.00.

**WHITE KING**—Tall, very rich sulphur-white, splendidly ruffled and nicely marked on lower petals.

L. 2 for 10c; doz. 50c. M. 4 for 12c; doz. 30c.  
S. doz. 20c.

**WHITE GLORY**—A gorgeous pure white of extra size. Nicely ruffled with beautiful iris blue throat. Grand.

L. ea. 20c; doz. \$2.00. M. ea. 15c; doz. \$1.50.

**WHITE WONDER**—A gigantic white bloom with delicate veinings of pink. A great show variety.

L. ea. 10c; doz. \$1.00. M. 2 for 12c; doz. 60c.

**YOUELL'S FAVORITE**—One of Henry Youell's (Sec'y Am. Gladiolus Society) favorites among our ruffled varieties. Large flower and plant. Striking rosy lavender-pink. Conspicuous and fine.

L. ea. 20c; doz. \$2.00. M. 2 for 25c; doz. \$1.25.  
S. doz. 70c.

All orders shipped prepaid.

## Gladioli in Mixture

**IDEAL MIXTURE**—To have the greatest variety and beauty in Gladiolus, it is very necessary to grow them in mixture as well as in separated varieties.

Our **IDEAL** mixture is made up of thousands of varieties, mostly named kinds, with a few choice unnamed kinds put in to give it a greater range and variety of color.

**L. per doz. 50c. M. per doz. 30c. S. 2 doz. for 25c.**

**SUPREME MIXTURE**—Here is a mixture composed of my own un-named originations only. Just those worthy ones that are in a class with the new and improved named varieties that are selling at many times the price asked for this mixture. This mixture has been made up of about one thousand varieties which have been growing in separated lots in my test gardens for several years and are all worthy of a place in any flower garden. It is indeed a "SUPREME" mixture!

We are going to keep up the high standard of quality in this mixture by adding to it each year, such seedlings from our test gardens as are worthy of having a place with the other better kinds.

**L. per doz. \$1.00. M. per doz. 50c. S. per doz. 25c.**

## Special Collections

### Choice Ruffled Collection No. 1

1 A. E. Kunderd .....	\$ 2.50
1 Dr. Nelson Shook .....	.75
1 Golden Frills .....	2.00
1 Purple Giory .....	.20
6 Dorothy McKibbin .....	.30
6 E. J. Shaylor .....	.30
Total value .....	\$ 6.05
Properly labeled and pre-paid for <b>\$5.00.</b>	

### Collection No. 2

To introduce these new ones, I will ship this \$12.75 collection all properly labeled for only \$10.00.

1 Dr. Sumner A. Edmands .....	\$ 2.50
1 Betty McKibbin .....	5.00
1 Mary Lou .....	2.00
1 Rose Doree .....	.75
1 Red Alatus .....	.50
1 Coral Luster .....	2.00
Total value .....	\$12.75
Pre-paid for <b>\$10.00.</b>	

### Collection No. 3

Another lot of new things at a bargain.

1 Dainty Queen .....	\$ 2.50
1 Golden Frills .....	2.00
1 I. O. Wood .....	1.50
1 Locarno .....	1.50
1 Mary Jane .....	2.00
1 Patricia Carter .....	1.50
Total value .....	\$11.00
Correctly labeled and pre-paid for <b>\$9.00.</b>	

**THESE COLLECTIONS** will be filled with all large size young bulbs, full of PEP.

**All orders shipped prepaid.**

## CARE AND CULTURE OF THE GLADIOLUS

**T**HE Gladiolus possesses great vigor and tenacity of life, growing and blooming even under adverse and unfavorable circumstances. The hardiness of the bulb is remarkable.

This does not make it any less true that it is wise to give it the best of care, and it will well repay such care.

### Preparing the Soil.

The soil should be made fine and mellow to a considerable depth, plowing or spading 10 to 12 inches deep.

### Fertility of Soil.

If not already in a good state of fertility the soil should be made so by a liberal manure dressing. For best results this should be applied in the fall previous to the planting in the spring. In applying manure in the spring it should be done as early as possible before planting time. Some good commercial fertilizer such as bone meal or prepared sheep manure worked into the soil before planting is a great advantage to the plants.

While the Gladiolus will grow in almost any fertile soil, it succeeds best in a sandy or gravelly loam, with good drainage, and will also thrive in a clay loam if the subsoil be not too compact.

If the season be dry it is well to water thoroughly occasionally, up to the period of bloom, avoiding the trampling or stirring of the ground while wet.

### Planting.

If the flowers are desired mainly for cutting for bouquets or decorative work they may be planted in rows eighteen or twenty inches apart, or wider if desired and placing the bulbs four to six inches apart in the row. A convenient way to do this is to make a furrow with a small hand plow and place the bulbs in the bottom not less than four inches deep, covering with the mellow soil. This affords the most convenience in after care and cultivation.

Planting should be done as early as the ground can be brought into good condition in the spring. A safe rule is to plant when ordinary farm crops, such as corn and oats are being planted.

### Cultivation.

Treatment after planting is simple, but neglect is no part of it. Weeds are to be absolutely kept down and the soil finely cultivated and stirred once a week, keeping the surface level until bloom ap-



### SENTINEL

A wonderful Gladiolus with its large, dark green drooping foliage and the tall straight spikes and from 4 to 7 large open blooms of bright pink with beautiful iris penciled throat, will attract the attention of the least concerned. And under the most unfavorable weather conditions it has never failed to produce the finest kind of cut flowers. Florists prefer it to roses for floral work.

pears after which it is well to throw a little soil to the rows, hilling up a little as this enables the plant to stand up during storms.

#### Cutting the Blooms.

The spikes should be cut near the base, leaving from three to five leaves on the plant, as soon as the lower or first flower expands. Cut thus in the bud they may be shipped great distances and in a vase of water will continue to bloom for ten days. With most varieties the delicacy of color is enhanced by blooming thus. The purest white, for instance, is only attained by this method and other colors are finer.

#### Digging and Storing.

Bulbs should be dug before the plants are too ripe in the fall before the hard frosts. Dig the bulbs and cut off the tops closely against the bulbs. Dry well in the air and sunshine, cure thoroughly indoors for a few weeks, then store in a cool dry place. It is best not to place bulbs more than four inches deep while in storage. Florists' flats are very suitable for this purpose. Extremes of dampness and dryness are alike to be avoided. If they sprout they are too warm, if they shrivel they are too dry, while freezing destroys them at once.

---

---

I heartily recommend that every  
Gladiolus grower belong to

## American Gladiolus Society

Annual Membership costs \$2.00  
which includes a year's subscription to

## "THE GLADIOLUS REVIEW"

the magazine published monthly  
by the Society and which  
everyone should read.

Mail your application and \$2.00 to  
ROSCOE HUFF, Secretary,  
Goshen, Indiana.

# WHOLESALE PRICES OF LARGE LOTS Of Gladiolus Bulbs and Bulblets

## GENERAL 1929 LIST

### READ CAREFULLY BEFORE ORDERING

Orders at the 100 rate will be shipped pre-paid in the United States. Orders at the 1000 rate will be shipped F. O. B. Goshen.

25 bulbs of one variety and size at the 100 rate.

250 bulbs of one variety and size at the 1000 rate.

For the 1000 rate multiply the 100 rate by 7. Most growers charge 9 times the 100 rate, which makes a big difference in the price of bulbs per 1000, so you more than save the price of transportation by my method.

In ordering bulblets, pints will be sold at quart rate.

### PRICE PER ONE HUNDRED

NAME	No. 1	No. 2	No. 3	No. 4	No. 5	No. 6	Bulb-lets per Qt.
	1½ in. and up	1¼ to 1½ in.	1 to 8¼ in.	¾ to 1 in.	½ to ¾ in.	under ½ in.	
Albania .....	\$ 4.00	\$ 3.00					
Alice Tiplady .....	2.75	2.00	\$ 1.50	\$ 1.00	\$ 0.75	\$ 0.50	\$0.75
Bumble Bee .....	6.00	5.50	5.00	4.00	3.00	2.00	2.50
Chicago White ...		1.75	1.25	1.00	.75	.50	.50
Dorothy McKibbin	4.00	3.50	2.50	2.00	1.50	1.00	1.00
Defiance .....	5.00	4.50	4.00	3.50	3.00	2.00	2.00
Dr. Van Fleet ....	5.00	4.50	4.00	3.50	3.00	2.00	2.00
Elora .....	4.00	3.50	3.00	2.50	2.00	1.50	1.50
E. J. Shaylor .....	3.50	3.00	2.50	2.00	1.50	1.00	1.00
Fairbanks, C. F. ...	6.00	5.50	5.00	4.00	3.00	2.00	2.00
Gov. Hanly .....	4.00	3.50	3.00	2.50			
Helga .....	5.00	4.50	4.00	3.50	3.00	2.00	2.00
Joe Coleman .....	4.00	3.50	3.00	2.50	1.50	1.00	1.00
Kunderdi Glory ...	4.00	3.50	3.00	2.50	1.50	1.00	1.00
Lilywhite .....		2.00	1.50	1.00	.75	.50	1.00
Le Marshal Foch .	2.00	1.75	1.50	1.00	.50	.35	.75
Mack's Cardinal ..	4.00	3.50	3.00	2.00	1.50	1.00	1.00
Mrs. F. Pendleton.		2.50	2.00	1.00	1.00	.75	1.00
Magic .....	3.50	3.00	2.50	2.00	1.50	1.00	1.00
Mary Pickford ...	4.00	3.50	3.00	2.50	2.00	1.00	1.00
Mid Summer Dream.	6.00	5.50	4.50	4.00	3.00	2.00	2.00
Nightingale .....	3.50	3.00	2.50	2.00	1.50	1.00	1.00
Opalescent .....	5.00						
Red Copper .....	5.50	5.00	4.50	4.00	3.00	2.00	2.00
Racine .....	6.00	5.50	5.00	4.00	3.00	2.00	2.00
Rose-1910 .....	3.00	2.50	2.00	1.50	1.00	.50	.75
Rose Glory .....	4.00	3.50	3.00	2.50	2.00	1.50	1.50
Roanoke .....	2.50	2.00	1.50	1.00	.50	.35	.50
Sentinel .....	3.50	3.00	2.50	2.00	1.50	1.00	1.00
Tyrian Beauty ...	6.00	5.50	5.00	4.50	4.00	3.00	3.50
Uhlan Chief .....	5.00	4.50	4.00	3.50	3.00	2.00	2.00
Supreme Mixture	3.50	3.00	2.50	2.00	1.50	1.00	1.00
Ideal Mixture ....	2.50	2.00	1.50	1.00	.50	.25	.35

### WHOLESALE PRICES

## McKIBBIN'S New Varieties Introduced for First Time in 1929

"VARIETIES OF EXCEPTIONAL MERIT"

### PRICE PER TEN

Betty McKibbin ..	25.00	23.00	20.00	16.00	11.00	6.00	2.00
Coral Luster .....	10.00	9.50	8.00	7.00	6.00	4.50	1.00
Mary Lou .....	10.00	9.50	8.00	7.00	6.00	4.50	1.00
Ripples .....	25.00	23.00	20.00	16.00	11.00	6.00	2.00
Rose Doree .....	3.75	3.25	2.75	2.25	1.50	1.00	.30
Red Altus .....	2.50	2.20	1.90	1.50	1.10	.70	.25

Five Bulbs will be supplied at One-Half the Ten rate.



## Some of My New and Rare Varieties Recently Introduced

No orders will be accepted for Less than Five at these rates.

## PRICE PER TEN

NAME	No. 1	No. 2	No. 3	No. 4	No. 5	No. 6	Bulb-lets per 10
	1 $\frac{1}{2}$ in. and up	1 $\frac{1}{4}$ to 1 $\frac{1}{2}$ in.	1 to 1 $\frac{1}{4}$ in.	$\frac{3}{4}$ to 1 in.	$\frac{1}{2}$ to $\frac{3}{4}$ in.	under $\frac{1}{2}$ in.	
Captain Kidd.....	250.00	225.00	200.00	175.00	150.00	125.00	25.00
Dainty Queen.....	12.50	10.50	9.50	8.50	7.00	6.00	1.50
Dr. S. A. Edmands	12.50	10.50	9.50	8.50	7.00	6.00	1.50
I. O. Wood.....	7.50	6.50	5.00	4.00	3.00	2.00	.40
Lone Eagle.....	50.00	46.00	40.00	30.00	20.00	12.00	3.00
Locarno.....	7.50	6.50	5.50	4.50	3.00	2.00	.50

## A Few of KUNDERD'S Rare and Recent Introductions

## AT WHOLESALE

## PRICE PER TEN

A. E. Kunderd ...	12.50						1.00
Dr. Nelson Shook .	3.80						.40
Golden Frills.....	10.00	9.00	8.00	7.00	6.00	5.00	1.00
Mary Jane.....	10.00	9.00	8.00	7.00	6.00	5.00	1.00
Patricia Carter ...	7.50	6.50	5.50	4.50	3.50	2.00	.50

Five Bulbs will be supplied at One-Half the Ten rate.

No orders will be accepted for Less than Five at these rates.

## Our "Wholesale Prices"

GROWERS and dealers in bulbs always find it a hard matter to exactly discriminate between those who are rightly entitled to wholesale or retail prices, and many times business is lost to the dealer through his inability to make proper discrimination in the two classes.

Because of the number of our friends who buy for growing and resale purposes, and who are not devoting all their time and efforts to this, and who, therefore, are not listed or rated with the usual Commercial Rating Agencies, we think it fair to all to not discriminate, but to sell at wholesale prices to those who buy in wholesale quantities.

All dealers have their own method of listing the buyers as either wholesale or retail. The average method of listing is an arduous and costly, as well as a delicate matter, and to be fair to all we use the "quantity purchase" method as our guide. We cannot deviate from the prices and quantities as listed in our wholesale list for they are made possible by quantity purchases only.

Larger quantities of bulbs a matter of correspondence.

Prices quoted subject to stock being unsold on receipt of order.

A discount of 5% will be allowed on all orders received with full remittance. Orders for more than \$10.00 will be held on deposit of 25% for spring shipment (up to April 1st), C. O. D. for balance.

No packing charges. No substitutions, unless second choice is mentioned with order.

Stock is guaranteed to be of best quality and true to name. Will replace any bulbs that do not come true to name.

**No order accepted for less than \$2.00.**



MAGIC



**JOHN H. McKIBBIN**

1309 Division St.

GOSHEN, INDIANA