

It's on Meta, but discoverable

Organizational knowledge in a structured form

Wikimedia Sverige

Tore Danielsson
Alicia Fagerving

**WIKIMANIA
SINGAPORE**

2023-08-18



Managing our own knowledge

A **Wikimedia chapter** does a lot of things and generates a lot of documentation:

- Projects...
- Partners...
- Topics...
- Reports...
- Publications...

Wikimedia Sverige's **own wiki** keeps growing!

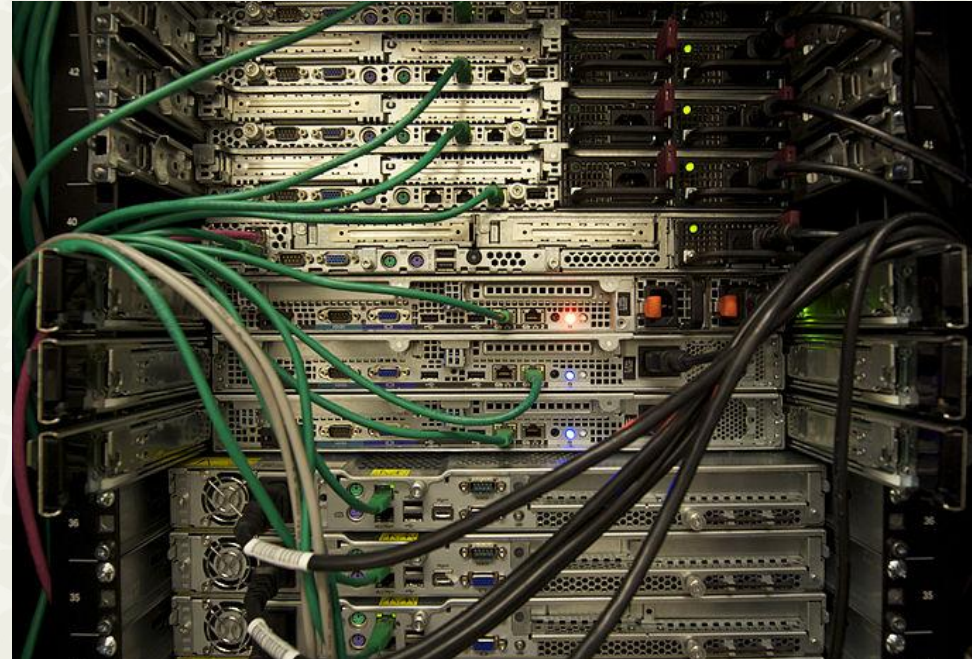
**WIKIMANIA
SINGAPORE**



Tore Danielsson



Alicia Fagerving





Kategori:Projekt 2022

[redigera ingress]

This page was la

Subcategories

This category has the following 28 subcategories, out of 28 total.

B

- Buggrapportering och översättning 2022 (6 P)

E

- En gemenskap för alla 2022 (1 C, 6 P)
- Erfarenhetsutbyte 2022 (8 P)
- Experimentella partnerskap 2022 (4 P)

F

- FOSS för föreningen 2022 (5 P)
- Föreläsningar 2022 (7 P)
- Föreningsengagemang 2022 (1 C, 8 P)
- Förtroende 2022 (5 P)

G

- GLAM 2022 (1 C, 12 P, 1 F)

I

- Internationell upphovsrätt 2021 (11 P, 1 F)
- Internationell upphovsrätt 2022 (5 P)

K

- Kalmar läns museum 2022 (3 P)
- Kunskap i krissituationer 2022 (5 P)

N

- Nordiska museet 2022 (5 P)

O

- Organisationsutveckling 2022 (10 P)

P

- Partnerskap för WikiGap 2022 (3 P)
- Påverkansarbete 2022 (5 P)

S

- Stöd för innehållspartnerskap 2021
- Stöd till den Europeiska hubben 20
- Stöd till gemenskapen 2022 (18 P)
- Synlighet 2022 (5 P)

U

- Utvecklingsstöd 2022 (5 P)

W

- Wiki Loves 2022 (5 P)
- Wikidata för auktoritetskontroll 202
- Wikipedia för hela Sverige 2022 (2
- Wikipedia i utbildning 2022 (7 P)
- Wikispeech – Taldatainsamlaren 20
- Wikispeech – Underhåll och suppor

Pages in category "Projekt 2022"

The following 2 pages are in this category, out of 2 total.

- Ledningsrapport 2022
- Projekt 2022

Donate
 Bli medlem
 Om föreningen
 Lediga jobb
 Current events
 Press
 Blogg
 Funktionärer

Navigation
 Bybrunnen
 Projekt
 Help
 Recent changes

Tools
 What links here
 Related changes
 Upload file
 Special pages
 Permanent link
 Page information

Print/export
 Create a book
 Download as PDF
 Printable version

In other languages

Add links



Kategori:Projekt 2022

[redigera ingress]

Subcategories

This category has the following

B

[Buggrapportering och översä](#)

E

[En gemenskap för alla 2022](#)

[Erfarenhetsutbyte 2022 \(8 P\)](#)

[Experimentella partnerskap 2](#)

F

[FOSS för föreningen 2022 \(5](#)

[Föreläsningar 2022 \(7 P\)](#)

[Föreningsengagemang 2022](#)

[Förtroende 2022 \(5 P\)](#)

G

[GLAM 2022 \(1 C, 12 P, 1 F\)](#)

Pages in category "Projekt 2022"

The following 2 pages are in this category, out of 2 total.

- [Ledningsrapport 2022](#)
- [Projekt 2022](#)

Projekt:Föreningsengagemang 2022/Projektdata

< [Projekt:Föreningsengagemang 2022](#)

[redigera ingress]

| Föreningsengagemang 2022 [redigera] [rensa sidcachen] | | | |
|--|------------|-----------------------------------|------------|
| Projekt nr. | 226102 | Ansvarig | Eric |
| Projektstart | 2022-01-01 | Projektslut | 2022-12-31 |
| Finansiär | | Budget | |
| Wikimedia Foundation (WCF) | | 270000 | |
| Lägesrapport: | | | |
| Uppdaterad senast | | STATUS | |
| Utförda aktiviteter | | Måluppfyllnad | |
| Viktigt nästa månad | | Öppna huvudsakliga problem | |
| Aktuell kostnad | | Dragna erfarenheter | |
| För aktuella kostnader se Ekonomiska rapporter 2022 . | | | |
| Kommentar från verksamhetschefen | | | |

This page was last

ispartnerskap 2021

opeiska hubben 20

kapen 2022 (18 P)

(5 P)

2022 (5 P)

2 (5 P)

toritetskontroll 202

la Sverige 2022 (2

ndning 2022 (7 P)

aldatainsamlaren 20

nderhåll och suppor

Donate

Bill medlem

Om föreningen

Lediga jobb

Current events

Press

Blogg

Funktionärer

Navigation

Bybrunnen

Projekt

Help

Recent changes

Tools

What links here

Related changes

Upload file

Special pages

Permanent link

Page information

Print/export

Create a book

Download as PDF

Printable version

In other languages

Add links

**Wikibase in a box
– for everyone!**

**WIKIMANIA
SINGAPORE**



**WIKIBASE
CLOUD**



Main Page

Metabase is a platform (a Wikibase instance in Wikibase Cloud [↗](#)) managed by **Wikimedia Sverige** whose goal is to collect information about the activities and document Linked Open Data.

The first stage of its development, which is currently ongoing as of 2023, is to focus on the content produced by Wikimedia Sverige, such as data about its reports, even stored on the chapter's wiki [↗](#) in text form. By making the data structured, we hope to be able to get a better overview of what the chapter has done over the years.

In later stages, once the ingestion of WMSE's data is done, we hope we can build further on this foundation to invite other Wikimedia chapters, user groups and interested data.

Get started by learning about **what sort of data is included and how it is modeled**.

Contents [\[hide\]](#)

- 1 Find data
- 2 Example items
- 3 SPARQL
- 4 Tools

metabase.wikibase.cloud

Find data [\[edit\]](#)

You can use these queries to find all the data of a particular type that's already in Metabase:

[Index terms](#) [↗](#)

[Locations](#) [↗](#)

[Document types](#) [↗](#)

[Types of activities and events](#) [↗](#)

[Organizations](#) [↗](#)

[Humans](#) [↗](#)

[Projects](#) [↗](#)

[Events](#) [↗](#)

[Documents](#) [↗](#)

Example items [\[edit\]](#)

- Main page
- Recent changes
- Random page
- Help about MediaWiki
- Modelling

Forms for new items

Index term

Project

WMSE project

Event

Document

Organization

Human

Tools

What links here

Related changes

Special pages

Printable version

Permanent link

Page information

Wikibase

New Item

New Property

New Schema

All Properties

What goes there?

- Projects
- People and organizations
- Events
 - workshops
 - edit-a-thons
 - lectures
- Documents
 - white papers
 - reports

WIKIMANIA
SINGAPORE

Item [Discussion](#)

Metadata edit-a-thon at the Swedish Air Force Museum (Q82)

No description defined [✎ edit](#)

[▼ In more languages](#)
Configure

| Language | Label | Description | Also known as |
|----------|--|------------------------|---------------|
| English | Metadata edit-a-thon at the Swedish Air Force Museum | No description defined | |
| Swedish | Metadatataga på Flygvapenmuseum | No description defined | |

Statements

| | |
|--------------------|--|
| instance of |  edit-a-thon ✎ edit |
| | ▼ 0 references + add reference |
| |  in-person event ✎ edit |
| | ▼ 0 references + add reference |
| | + add value |

| | |
|----------------------|--|
| point in time |  27 April 2023 ✎ edit |
| | ▼ 0 references + add reference |
| | + add value |

| | |
|-------------------------|--|
| manager / leader |  Josefine Hellroth Larsson ✎ edit |
| | ▼ 0 references + add reference |
| | + add value |

...and what doesn't?

We don't need, or **want**, to duplicate what's on Wikidata.

If there's an equivalent Wikidata item, we use a **sameAs on Wikidata** property to link there.

Item [Discussion](#)

Josefine Hellroth Larsson (Q85)

No description defined

[In more languages](#)
[Configure](#)

| Language | Label | Description | Also known as |
|----------|---------------------------|------------------------|------------------|
| English | Josefine Hellroth Larsson | No description defined | |
| Swedish | Josefine Hellroth Larsson | No description defined | Josefine Larsson |

Statements

| | | |
|--------------------|------------------------------|---------------------------------|
| instance of | human | edit |
| | 0 references | + add reference |
| | | + add value |

| | | |
|---------------------------|------------------------------|---------------------------------|
| sameAs on Wikidata | Q10540931 | edit |
| | 0 references | + add reference |
| | | + add value |
| | | + add statement |

Power of federation

This enables us to use **federated SPARQL queries** to retrieve more information from Wikidata.

Such as the **coordinates** of the cities where we've had edit-a-thons.

<https://metabase.wikibase.cloud/query/>

Browse the **example queries** to see it in action!



The screenshot shows a web interface for a query service. At the top, it says "Query Service: metabase.wikibase.cloud" with buttons for "Examples" and "More tools". Below this is a code editor with a SPARQL query. The query is as follows:

```
1 PREFIX wb: <https://metabase.wikibase.cloud/entity/>
2 PREFIX wbt: <https://metabase.wikibase.cloud/prop/direct/>
3 #defaultView:Map
4 SELECT DISTINCT ?item ?itemLabel ?place ?placeLabel ?coords
5 WHERE
6 {
7   ?item wbt:P5/wbt:P4* wb:Q40 .
8   ?item wbt:P27 ?place.
9   ?place wbt:P1 ?wikidataQ.
10  BIND(URI(concat("http://www.wikidata.org/entity/", ?wikidataQ)) AS ?wikidata_iri)
11
12  SERVICE <https://query.wikidata.org/sparql> {
13    ?wikidata_iri wdt:P625 ?coords.
14  }
15  SERVICE wikibase:label { bd:serviceParam wikibase:language "sv,en". }
16 }
```

At the bottom of the interface, there is a "Map" button.

Filling it with data

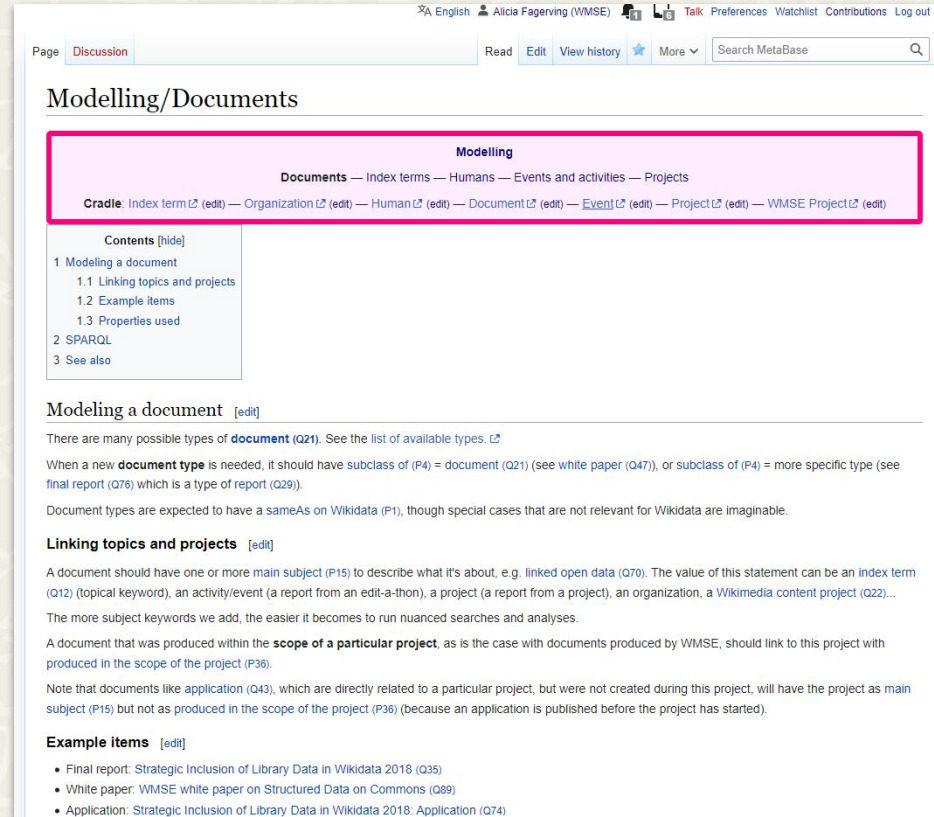
Right now, there isn't much actual data in there.
Just a couple example items for each type.

We've focused on creating an **ontology** from scratch that both:

- fulfills our needs
- is compatible with Wikidata as much as possible

...as well as compiling **documentation** pages.

WIKIMANIA
SINGAPORE



The screenshot shows the Wikidata page for 'Modelling/Documents'. At the top, there is a navigation bar with 'Page' and 'Discussion' tabs, and a search box for 'Search MetaBase'. Below this is the main title 'Modelling/Documents'. A pink highlight box surrounds the navigation bar and the main title area. The navigation bar includes links for 'Modelling', 'Documents', 'Index terms', 'Humans', 'Events and activities', and 'Projects'. The main title area includes links for 'Cradle', 'Index term', 'Organization', 'Human', 'Document', 'Event', 'Project', and 'WMSE Project'. Below the navigation bar is a 'Contents' table with the following items:

| Contents [hide] |
|---------------------------------|
| 1 Modelling a document |
| 1.1 Linking topics and projects |
| 1.2 Example items |
| 1.3 Properties used |
| 2 SPARQL |
| 3 See also |

Below the contents table is the section 'Modeling a document' with an edit link. The text below this section reads: 'There are many possible types of **document** (Q21). See the list of available types. [edit]'. This is followed by a paragraph explaining that a new **document type** should be a subclass of (P4) = document (Q21) or a subclass of (P4) = more specific type (see final report (Q76) which is a type of report (Q29)). A note states that document types are expected to have sameAs on Wikidata (P1), though special cases that are not relevant for Wikidata are imaginable. The next section is 'Linking topics and projects' with an edit link. The text below this section explains that a document should have one or more main subject (P15) to describe what it's about, e.g. linked open data (Q70). The value of this statement can be an index term (Q12) (topical keyword), an activity/event (a report from an edit-a-thon), a project (a report from a project), an organization, a Wikimedia content project (Q22)... The more subject keywords we add, the easier it becomes to run nuanced searches and analyses. A paragraph follows stating that a document produced within the **scope of a particular project**, as is the case with documents produced by WMSE, should link to this project with **produced in the scope of the project** (P36). A note states that documents like application (Q43), which are directly related to a particular project, but were not created during this project, will have the project as main subject (P15) but not as **produced in the scope of the project** (P36) (because an application is published before the project has started). The final section is 'Example items' with an edit link. It lists three items: 'Final report: Strategic Inclusion of Library Data in Wikidata 2018 (Q35)', 'White paper: WMSE white paper on Structured Data on Commons (Q89)', and 'Application: Strategic Inclusion of Library Data in Wikidata 2018: Application (Q74)'.

Now what?

Fall 2023: the model we developed will be **tested in practice** as we put all the data from our wiki in Metabase.

We love that **QuickStatements** works on Wikibase.cloud!

That way we'll learn whether our idea – and the documentation :) – is any good.

**WIKIMANIA
SINGAPORE**



And in the future?

Will others join us?

**WIKIMANIA
SINGAPORE**



The background is a light beige color with a subtle, repeating pattern of small, irregular shapes. Overlaid on this is a large, stylized illustration of a pink rose with a red center, surrounded by various other flowers and leaves in shades of yellow, green, and brown. A white rectangular box is centered on the page, containing the main text and contact information.

Thank you!

Get in touch with us:

- tore.danielsson@wikimedia.se
- alicia.fagerving@wikimedia.se

**WIKIMANIA
SINGAPORE**