

130°02'

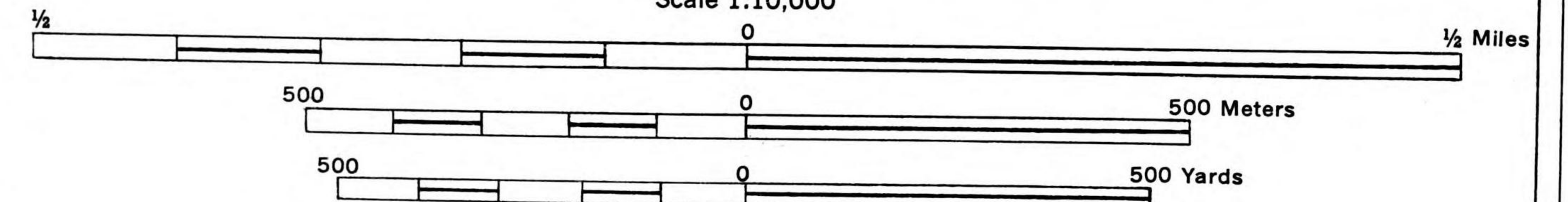
03'

130°04'

RESTRICTED

ISAHAYA NAGASAKI PREFECTURE, KYŪSHŪ, JAPAN

Scale 1:10,000



POLYCONIC PROJECTION
CONTOUR INTERVAL 10 METERS

Office of the Assistant Chief of Air Staff, Intelligence, Washington, D.C.
 Compiled for the Commanding General, U. S. Army Air Forces, under the direction of the
 Aeronautical Chart Service by the Lake Survey Branch, Army Map Service, July 1944
 Compiled from 1. Japan 1:25,000, Japanese Imperial Land Survey, Isahaya (1929). Kompiradake (1929)
 2. Intelligence Information
 Names transcribed according to
 modified Hepburn (Romaji) system

| LEGEND | |
|--|---------------|
| Factory | ⊗ |
| Hospital | ⊕ |
| Shrine | 卍 |
| Temple | 卍 |
| Chimney | ⊗ |
| Cemetery | ⊕ |
| Monument | ⊕ |
| School | ⊕ |
| Water Mill | ⊕ |
| Post Office | ⊕ |
| Police Station | ⊕ |
| Densely Populated | ⬤ |
| Sparsely Populated | ⬤ |
| 3'6" Gauge, Single Track | —+—+—+— |
| 3'6" Gauge, Double Track | —+—+—+—+—+—+— |
| Railroad Station | ⊕ |
| National or Prefectural Road generally Metalled, over 4 m. wide | — |
| Other Roads 2-4 m. wide | - - - - - |
| Road, Track or Trail Less than 2 m. wide | ⋯ |
| Rice | ⬤ |
| Woodland | ⬤ |
| Grassland | ⬤ |

HEIGHTS AND DEPTHS IN METERS

32°51'

32°51'

32°50'

32°50'

130°02'

03'

130°04'

RESTRICTED

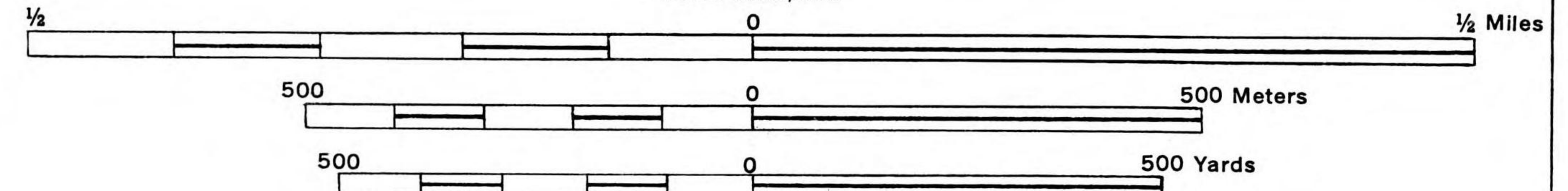
FOR USE WITH AAF AIR OBJECTIVE FOLDERS KURUME 90.35 AND SASEBO 90.36

NOTE: Officers using this chart will mark hereon corrections and additions
 which come to their attention and mail direct to "AERONAUTICAL CHART
 SERVICE, HEADQUARTERS ARMY AIR FORCES, WASHINGTON, D. C."

ARMY MAP SERVICE, U. S. ARMY, WASHINGTON, D. C. 340427
 8-44 1944

ISAHAYA NAGASAKI PREFECTURE, KYŪSHŪ, JAPAN

Scale 1:10,000



POLYCONIC PROJECTION
CONTOUR INTERVAL 10 METERS

Office of the Assistant Chief of Air Staff, Intelligence, Washington, D.C.
 Compiled for the Commanding General, U. S. Army Air Forces, under the direction of the
 Aeronautical Chart Service by the Lake Survey Branch, Army Map Service, July 1944
 Compiled from 1. Japan 1:25,000, Japanese Imperial Land Survey, Isahaya (1929), Kompiradake (1929)
 2. Intelligence Information
 Names transcribed according to modified Hepburn (Romaji) system

HEIGHTS AND DEPTHS IN METERS

LEGEND

- Factory
- Shrine
- Temple
- Chimney
- Cemetery
- Monument
- School
- Water Mill
- Post Office
- Police Station
- Densely Populated
- Sparsely Populated
- 3'6" Gauge, Single Track
- 3'6" Gauge, Double Track
- Railroad Station
- National or Prefectural Road
generalized Metalled, over 4 m wide
- Other Roads 2-4 m. wide
- Road, Track or Trail
Less than 2 m. wide
- Rice
- Woodland
- Grassland

