

5 10 15 20

浮世の

うら

名画

一袖

河井素

柳多景

梅鶴樓画



四笈

紅英堂



A 387  
2



萬吉梓

40-4057



上篇  
下篇



梅彦綴  
名通  
油  
の  
腹

國貞







11  
 12  
 13  
 14  
 15  
 16  
 17  
 18  
 19  
 20  
 21  
 22  
 23  
 24  
 25  
 26  
 27  
 28  
 29  
 30  
 31  
 32  
 33  
 34  
 35  
 36  
 37  
 38  
 39  
 40  
 41  
 42  
 43  
 44  
 45  
 46  
 47  
 48  
 49  
 50  
 51  
 52  
 53  
 54  
 55  
 56  
 57  
 58  
 59  
 60  
 61  
 62  
 63  
 64  
 65  
 66  
 67  
 68  
 69  
 70  
 71  
 72  
 73  
 74  
 75  
 76  
 77  
 78  
 79  
 80  
 81  
 82  
 83  
 84  
 85  
 86  
 87  
 88  
 89  
 90  
 91  
 92  
 93  
 94  
 95  
 96  
 97  
 98  
 99  
 100



11  
 12  
 13  
 14  
 15  
 16  
 17  
 18  
 19  
 20  
 21  
 22  
 23  
 24  
 25  
 26  
 27  
 28  
 29  
 30  
 31  
 32  
 33  
 34  
 35  
 36  
 37  
 38  
 39  
 40  
 41  
 42  
 43  
 44  
 45  
 46  
 47  
 48  
 49  
 50  
 51  
 52  
 53  
 54  
 55  
 56  
 57  
 58  
 59  
 60  
 61  
 62  
 63  
 64  
 65  
 66  
 67  
 68  
 69  
 70  
 71  
 72  
 73  
 74  
 75  
 76  
 77  
 78  
 79  
 80  
 81  
 82  
 83  
 84  
 85  
 86  
 87  
 88  
 89  
 90  
 91  
 92  
 93  
 94  
 95  
 96  
 97  
 98  
 99  
 100

Handwritten text in a cursive script, likely a form of shorthand or a specific dialect, located at the top of the left page.

Handwritten text in a cursive script, continuing from the top of the left page, located at the bottom of the left page.



Handwritten text in a cursive script, located at the top of the right page.

Handwritten text in a cursive script, located at the bottom of the right page.





Handwritten text in a cursive script, likely a form of Japanese calligraphy, arranged in vertical columns. The text is densely packed and covers most of the page area.



Handwritten text in a cursive script, arranged in vertical columns. The text is densely packed and covers most of the page area.



Handwritten text in a cursive script, likely a transcription of a Japanese text, located on the right page of the manuscript. The text is arranged in vertical columns, reading from right to left. It appears to be a detailed account or a list of items, possibly related to the illustration of a woman in armor.



Handwritten text in a cursive script, likely a transcription of a Japanese text, located on the left page of the manuscript. The text is arranged in vertical columns, reading from right to left. It appears to be a detailed account or a list of items, possibly related to the illustration of a man in armor.



Handwritten text or a small illustration located at the bottom left corner of the left page.

Handwritten text or a small illustration located at the bottom right corner of the left page.



Vertical text columns on the left page, written in a stylized script, likely representing dialogue or a narrative. The text is arranged in several columns, starting from the top left and moving downwards.

Vertical text columns on the right page, continuing the narrative or dialogue from the left page. The text is arranged in several columns, starting from the top right and moving downwards.

Vertical text columns on the left page, positioned below the seated figure. The text is arranged in several columns, continuing the narrative or dialogue.

Vertical text columns on the right page, positioned below the seated figure. The text is arranged in several columns, continuing the narrative or dialogue.

Small text block at the bottom left corner of the page, possibly a signature or publisher's mark.

Small text block at the bottom right corner of the page, possibly a signature or publisher's mark.

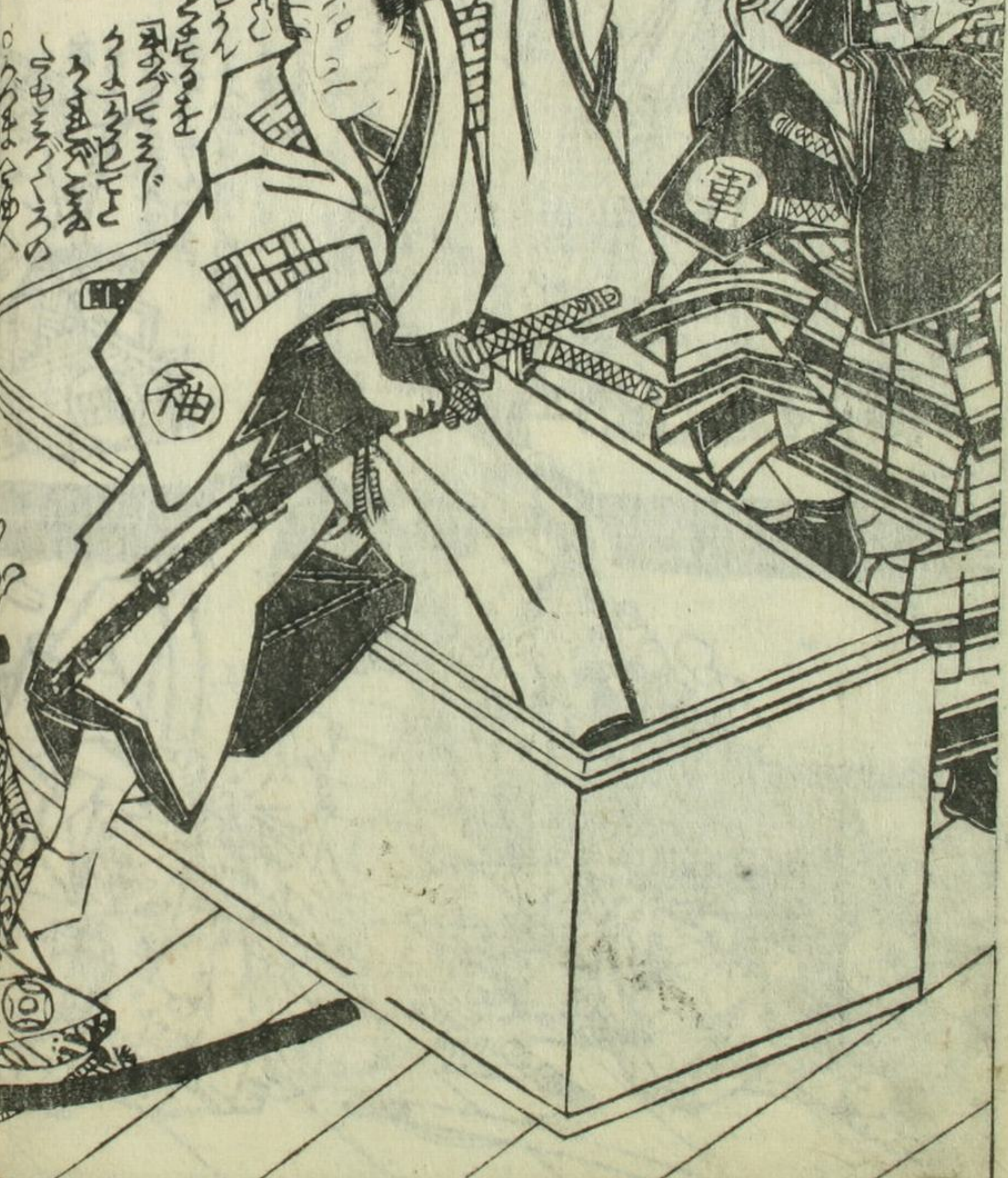


Handwritten text in a cursive style, likely a transcription of a story or dialogue. The text is arranged in vertical columns, starting from the right side of the page and moving left.



1 田 11

Handwritten text in a cursive style, continuing the transcription from the previous page. The text is arranged in vertical columns, starting from the right side of the page and moving left.



車 三

九

# 柳屋梅彦綴 一畫可齋所國貞画

此の人物は、  
 柳屋梅彦の  
 一畫可齋所國貞  
 画の人物に  
 似て居る。



此の人物は、  
 柳屋梅彦の  
 一畫可齋所國貞  
 画の人物に  
 似て居る。



此の人物は、  
 柳屋梅彦の  
 一畫可齋所國貞  
 画の人物に  
 似て居る。



The first page of the manuscript contains a dense block of handwritten text in a cursive script, likely a form of shorthand or a specific dialect. The text is arranged in several columns, with some lines appearing to be part of a dialogue or a narrative. The ink is dark and the paper shows signs of age and wear.



The second page of the manuscript continues the handwritten text. It features a large, detailed illustration of a man in a dark kimono and a white haori, holding a long staff or sword. He is looking towards the right. Below him, another figure is partially visible, also in traditional clothing. The text is interspersed with the illustration, following the same columnar layout as the first page.









Handwritten text in a cursive style, likely a transcription of a story or dialogue. The text is arranged in vertical columns, reading from right to left. It includes various characters and symbols, possibly representing specific words or actions in the scene.



Handwritten text in a cursive style, continuing the narrative from the left page. The text is arranged in vertical columns, reading from right to left. It includes various characters and symbols, possibly representing specific words or actions in the scene.

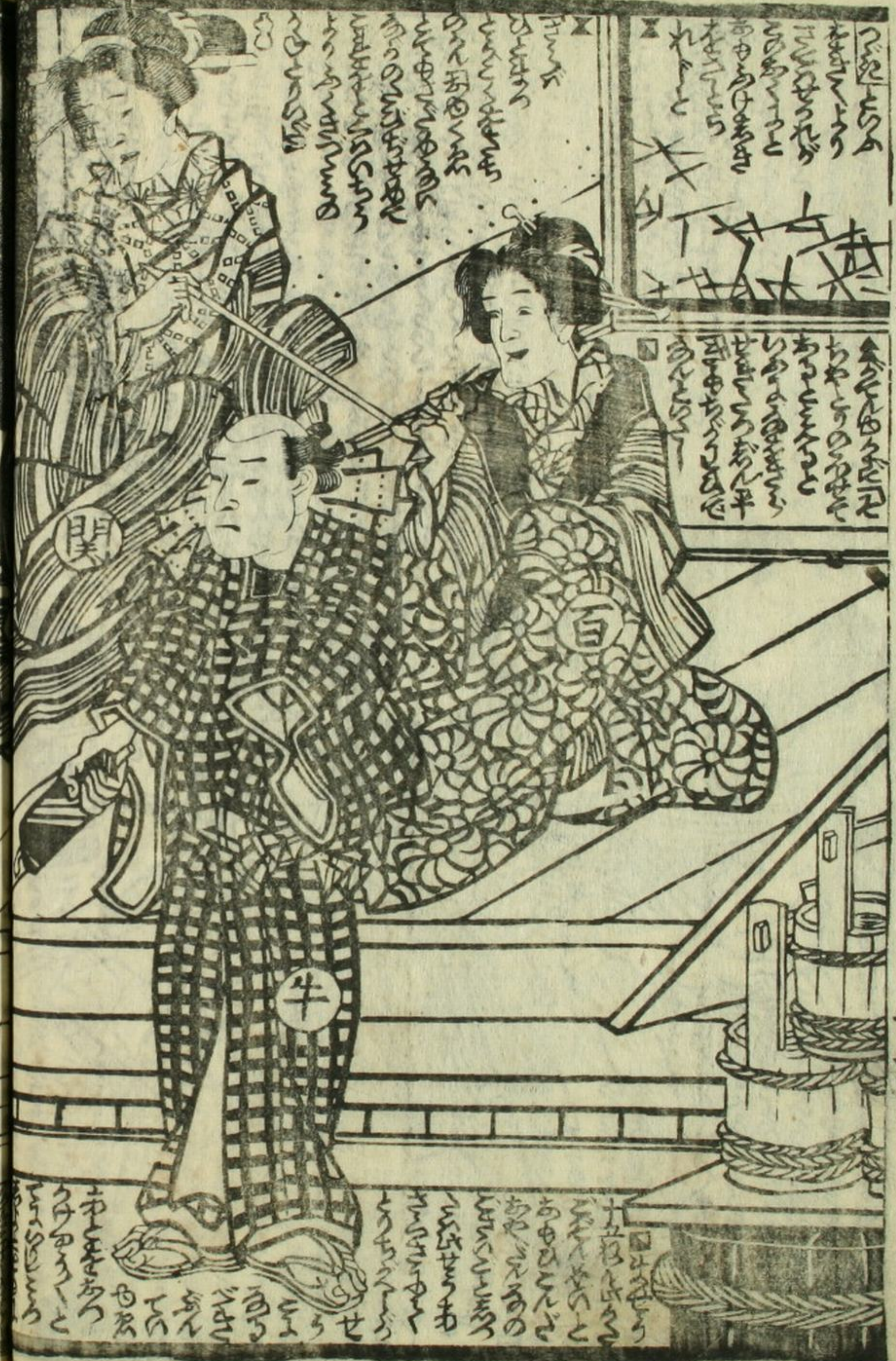


此の  
 一  
 二  
 三  
 四  
 五  
 六  
 七  
 八  
 九  
 十  
 十一  
 十二  
 十三  
 十四  
 十五  
 十六  
 十七  
 十八  
 十九  
 二十  
 二十一  
 二十二  
 二十三  
 二十四  
 二十五  
 二十六  
 二十七  
 二十八  
 二十九  
 三十  
 三十一  
 三十二  
 三十三  
 三十四  
 三十五  
 三十六  
 三十七  
 三十八  
 三十九  
 四十  
 四十一  
 四十二  
 四十三  
 四十四  
 四十五  
 四十六  
 四十七  
 四十八  
 四十九  
 五十  
 五十一  
 五十二  
 五十三  
 五十四  
 五十五  
 五十六  
 五十七  
 五十八  
 五十九  
 六十  
 六十一  
 六十二  
 六十三  
 六十四  
 六十五  
 六十六  
 六十七  
 六十八  
 六十九  
 七十  
 七十一  
 七十二  
 七十三  
 七十四  
 七十五  
 七十六  
 七十七  
 七十八  
 七十九  
 八十  
 八十一  
 八十二  
 八十三  
 八十四  
 八十五  
 八十六  
 八十七  
 八十八  
 八十九  
 九十  
 九十一  
 九十二  
 九十三  
 九十四  
 九十五  
 九十六  
 九十七  
 九十八  
 九十九  
 一百

# 心算



此の  
 一  
 二  
 三  
 四  
 五  
 六  
 七  
 八  
 九  
 十  
 十一  
 十二  
 十三  
 十四  
 十五  
 十六  
 十七  
 十八  
 十九  
 二十  
 二十一  
 二十二  
 二十三  
 二十四  
 二十五  
 二十六  
 二十七  
 二十八  
 二十九  
 三十  
 三十一  
 三十二  
 三十三  
 三十四  
 三十五  
 三十六  
 三十七  
 三十八  
 三十九  
 四十  
 四十一  
 四十二  
 四十三  
 四十四  
 四十五  
 四十六  
 四十七  
 四十八  
 四十九  
 五十  
 五十一  
 五十二  
 五十三  
 五十四  
 五十五  
 五十六  
 五十七  
 五十八  
 五十九  
 六十  
 六十一  
 六十二  
 六十三  
 六十四  
 六十五  
 六十六  
 六十七  
 六十八  
 六十九  
 七十  
 七十一  
 七十二  
 七十三  
 七十四  
 七十五  
 七十六  
 七十七  
 七十八  
 七十九  
 八十  
 八十一  
 八十二  
 八十三  
 八十四  
 八十五  
 八十六  
 八十七  
 八十八  
 八十九  
 九十  
 九十一  
 九十二  
 九十三  
 九十四  
 九十五  
 九十六  
 九十七  
 九十八  
 九十九  
 一百



此の  
 一  
 二  
 三  
 四  
 五  
 六  
 七  
 八  
 九  
 十  
 十一  
 十二  
 十三  
 十四  
 十五  
 十六  
 十七  
 十八  
 十九  
 二十  
 二十一  
 二十二  
 二十三  
 二十四  
 二十五  
 二十六  
 二十七  
 二十八  
 二十九  
 三十  
 三十一  
 三十二  
 三十三  
 三十四  
 三十五  
 三十六  
 三十七  
 三十八  
 三十九  
 四十  
 四十一  
 四十二  
 四十三  
 四十四  
 四十五  
 四十六  
 四十七  
 四十八  
 四十九  
 五十  
 五十一  
 五十二  
 五十三  
 五十四  
 五十五  
 五十六  
 五十七  
 五十八  
 五十九  
 六十  
 六十一  
 六十二  
 六十三  
 六十四  
 六十五  
 六十六  
 六十七  
 六十八  
 六十九  
 七十  
 七十一  
 七十二  
 七十三  
 七十四  
 七十五  
 七十六  
 七十七  
 七十八  
 七十九  
 八十  
 八十一  
 八十二  
 八十三  
 八十四  
 八十五  
 八十六  
 八十七  
 八十八  
 八十九  
 九十  
 九十一  
 九十二  
 九十三  
 九十四  
 九十五  
 九十六  
 九十七  
 九十八  
 九十九  
 一百

Handwritten text in a cursive script, likely a form of shorthand or a specific dialect, filling the left page of the manuscript. The text is arranged in vertical columns, with some characters appearing to be stylized or abbreviated.

田 11

1

Handwritten text in a cursive script, likely a form of shorthand or a specific dialect, filling the right page of the manuscript. The text is arranged in vertical columns, with some characters appearing to be stylized or abbreviated.

田 11

1



Handwritten text in a cursive style, likely a list or index, located at the top of the left page. The text is arranged in vertical columns and includes various characters and symbols.



Handwritten text in a cursive style, likely a list or index, located at the bottom of the left page. The text is arranged in vertical columns and includes various characters and symbols.



Handwritten text in a cursive style, likely a list or index, located at the bottom of the right page. The text is arranged in vertical columns and includes various characters and symbols.

車

Vertical columns of handwritten text in the upper right section of the right page, likely serving as a title or introductory text for the scene.



Vertical columns of handwritten text in the lower right section of the right page, continuing the narrative or providing commentary on the illustration.

Vertical columns of handwritten text in the upper left section of the left page, likely serving as a title or introductory text for the scene.



Vertical columns of handwritten text in the lower left section of the left page, continuing the narrative or providing commentary on the illustration.

其水案

梅彦綴國貞画



弘法大師  
筆跡新詠

筆海四國聞書

柳亭種彦作  
梅咲樓國貞画

推現堂  
堤復警

假名情談戀畦倉

願川如皋作  
梅咲樓國貞画

何時次郎  
何浦里

明鴉墨画迺禰禰

三亭春馬合作  
梅咲樓國貞画

童謡妙々車

種彦作  
國貞画

花封卷玉章

種彦作  
國貞画

薄傍幻日記

春水作  
國貞画

尖傳大公所紙

柳亭種彦作  
國貞画

地本草紙問屋

南傳馬町堂  
葛屋吉藏板



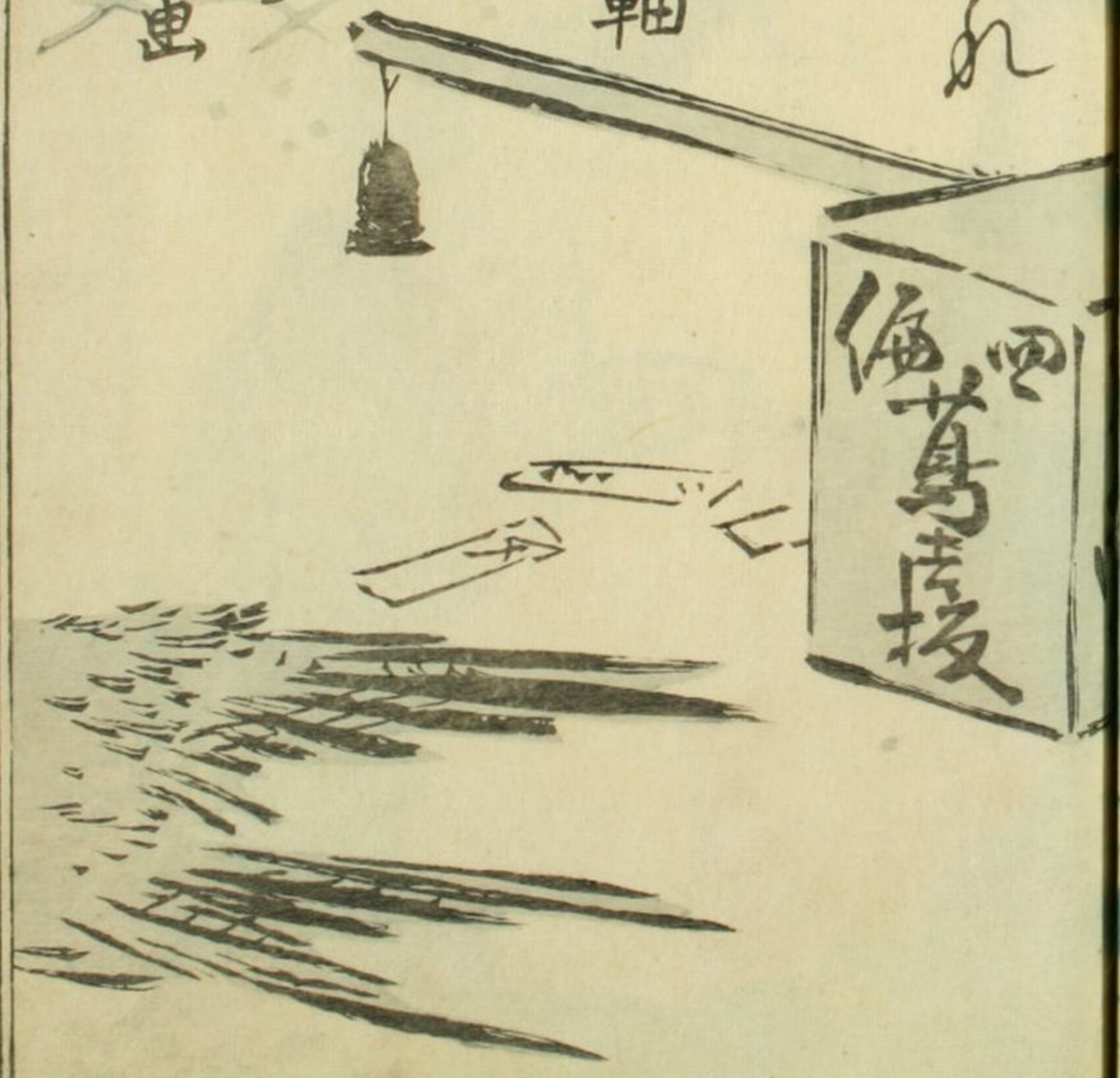
月見のよめ

のり

一軸

梅をうつる

玉文画



名一四上  
運油編下

柳屋  
綴



蝶樓筆









Handwritten text in the left column of the left page, written vertically in a cursive style.



Handwritten text in the right column of the left page, written vertically in a cursive style.



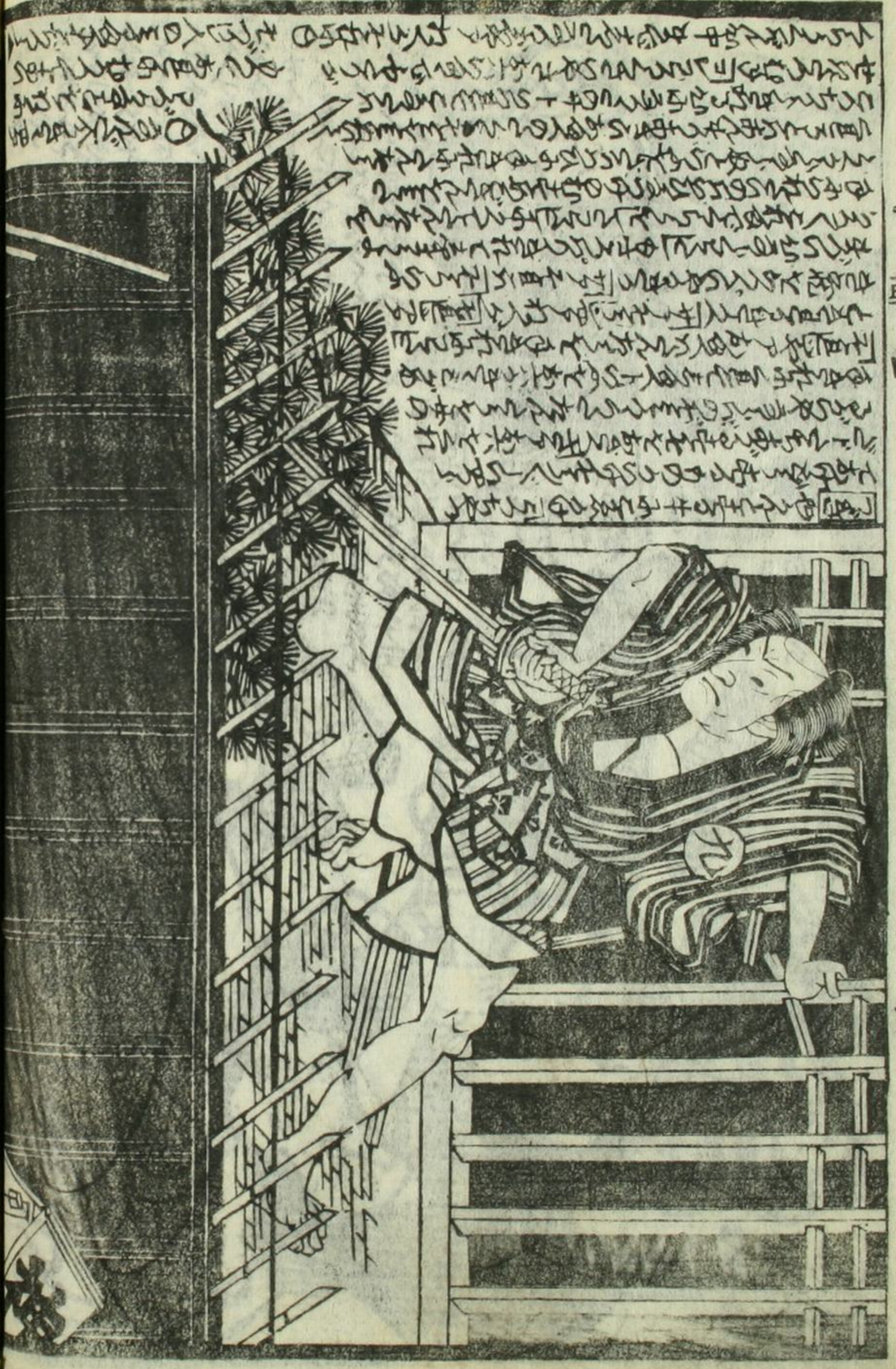
Handwritten text at the bottom of the left page, written horizontally.

Handwritten text at the bottom of the right page, written horizontally.















一由日



車







あつちのまゝ  
せうごう  
うわらへん  
ねのあつち  
そごうに  
さくごう

あつちのまゝ  
せうごう  
うわらへん  
ねのあつち  
そごうに  
さくごう

あつちのまゝ  
せうごう  
うわらへん  
ねのあつち  
そごうに  
さくごう

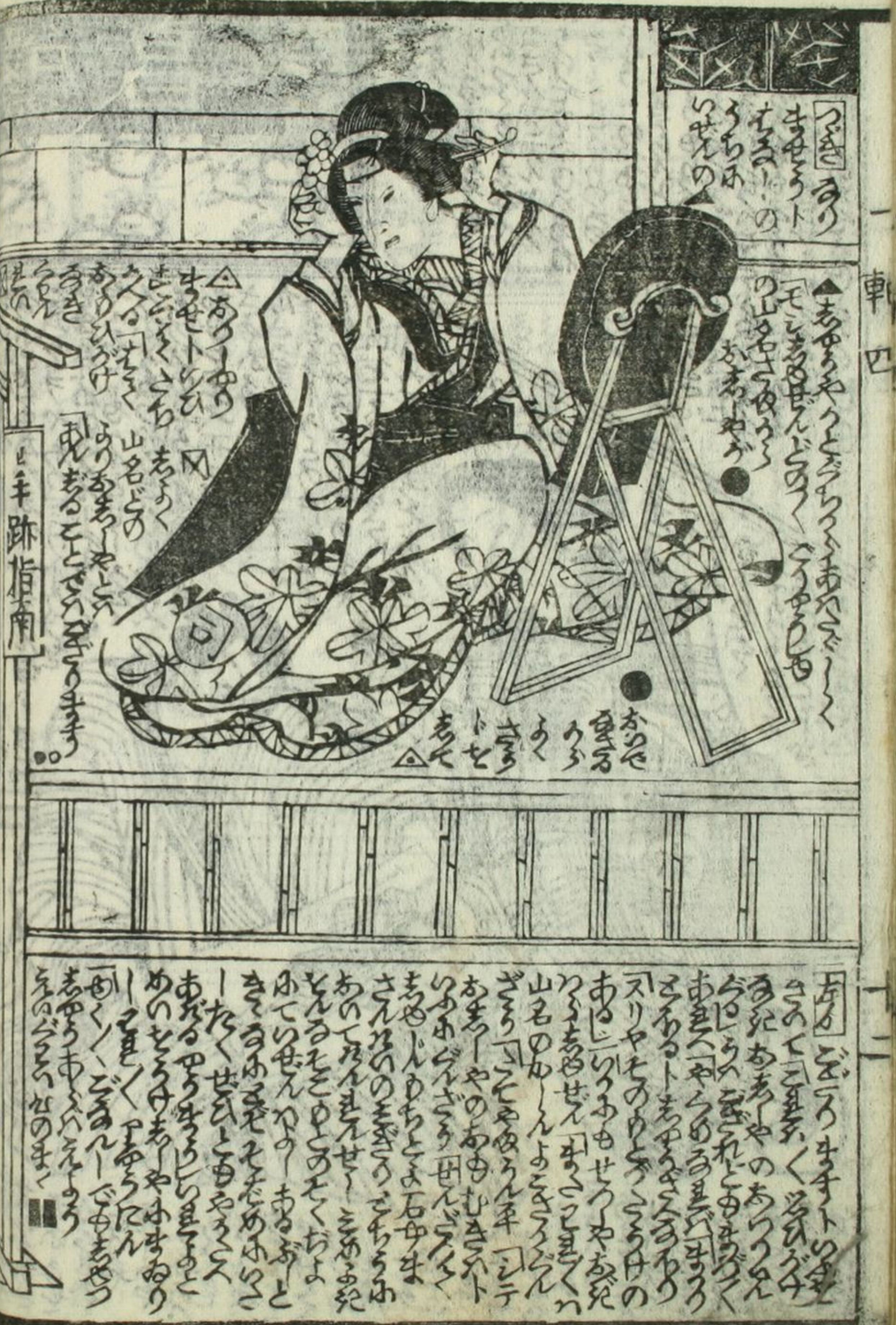
あつちのまゝ  
せうごう  
うわらへん  
ねのあつち  
そごうに  
さくごう

あつちのまゝ  
せうごう  
うわらへん  
ねのあつち  
そごうに  
さくごう

あつちのまゝ  
せうごう  
うわらへん  
ねのあつち  
そごうに  
さくごう

由四

一三



あつちのまゝ  
せうごう  
うわらへん  
ねのあつち  
そごうに  
さくごう

あつちのまゝ  
せうごう  
うわらへん  
ねのあつち  
そごうに  
さくごう

あつちのまゝ  
せうごう  
うわらへん  
ねのあつち  
そごうに  
さくごう

あつちのまゝ  
せうごう  
うわらへん  
ねのあつち  
そごうに  
さくごう

あつちのまゝ  
せうごう  
うわらへん  
ねのあつち  
そごうに  
さくごう

車四

















010190518081

支久二年戊戌陽春開板標目

弘法大師  
筆跡新話

筆海四國聞書

柳亭種彦作  
梅蝶樓國貞画

推現堂  
堤復誓

假名情談戀畦倉

瀬川如皋作  
梅蝶樓國貞画

何時次郎  
阿浦里

明鴉墨画迺衲襠

三草春馬合作  
梅蝶樓國貞画

童謡妙車

十四編の種彦作  
十二編の國貞画

花封卷玉章

六編種彦作  
七編國貞画

薄倂幻日記

九編春水作  
十一編國貞画

尖傳犬の舛紙

三編柳亭録  
四編國貞画

地本草紙問屋

鳥屋吉藏板



