

FRICK ART REFERENCE LIBRARY



3 1072 00225372 4

fmb

E

N48

Am39an7

(39-40)

1906-07



No. 562

CURIOSITY—GEORGE W. MAYNARD, A.W.C.S.

New York (City) American water color
society

020.1748

Am39an7

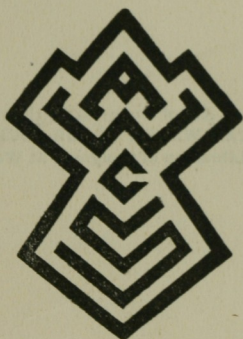
ILLUSTRATED CATALOGUE

OF THE THIRTY-NINTH
ANNUAL EXHIBITION OF THE

1906-07

(39-40)

AMERICAN WATER COLOR
SOCIETY



AT THE AMERICAN FINE ARTS GALLERIES

215 WEST 57TH STREET

FROM MAY THIRD TO MAY TWENTY-SIXTH

NEW YORK

1906

Entered according to Act of Congress, in the year 1906, by the
AMERICAN WATER COLOR SOCIETY
in the Office of the Librarian of Congress, at Washington, D. C

OFFICERS
OF THE
AMERICAN WATER COLOR SOCIETY

1905-1906

J. C. NICOLL, *President.*
CARLTON T. CHAPMAN, *Secretary.*
JAMES SYMINGTON, *Treasurer.*

BOARD OF CONTROL.

HENRY B. SNELL,
W. GRANVILLE SMITH,

GEO. WHARTON EDWARDS,
E. IRVING COUSE.

JURY OF SELECTION

GEO. W. MAYNARD,
COLIN CAMPBELL COOPER,
J. FRANCIS MURPHY,
J. G. BROWN,

CHAS. C. CURRAN,
B. WEST CLINEDINST,
IRVING R. WILES,
W. G. SCHNEIDER,

WM. H. LIPPINCOTT,
ARTHUR I. KELLER,
F. S. CHURCH,
W. MERRITT POST.

HANGING COMMITTEE.

FRANK RUSSELL GREEN, F. K. M. REHN,
F. LUIS MORA.

COMMITTEE ON DECORATIONS.

GEO. WHARTON EDWARDS,

JULES GUÉRIN,

COMMITTEE ON ETCHINGS AND DRAWINGS FOR ILLUSTRATIONS.

B. W. CLINEDINST,

CHAS. F. W. MIELATZ,

JAMES D. SMILLIE.

CATALOGUE COMMITTEE.

CARLTON T. CHAPMAN,

W. H. DRAKE,

W. GRANVILLE SMITH.

NOTICES.

For information in regard to works for sale, inquire at the desk in the gallery.

All payments should be made before the close of the exhibition, to the order of JAMES SYMINGTON, Treasurer.

A. W. C. S. Member of the American Water Color Society.

PRICES INCLUDE FRAMES

TO EXHIBITORS

The Society is indebted to the generosity of Mr. Wm. T. Evans for a prize of \$300.00, the condition being that it shall be awarded by the Jury of Selection for the most meritorious water color in the exhibition painted in this country by an American artist, without limit as to age; the recipient of the prize to be thereafter ineligible.

The prize has been awarded as follows :

1888	Horatio Walker	. . .	Evening.
1889	Geo. W. Maynard	. . .	Sirens.
1890	Wm. T. Smedley	. . .	Thanksgiving Dinner
1891	A. H. Wyant	. . .	An Afternoon Ramble
1892	C. Morgan McIlhenney	. . .	Old Friends
1893	Sarah C. Sears	. . .	Romola
1894	J. Francis Murphy	. . .	Under Gray Skies
1895	Walter L. Palmer	. . .	Vale of Tawasentha
1896	W. L. Lathrop	. . .	Twilight in Connecticut
1897	Irving R. Wiles	. . .	The Green Cushion
1898	C. Harry Eaton	. . .	The Brook
1899	Albert Herter	. . .	The Gift of Roses
1900	B. West Clinedinst	. . .	Long Ago
1901	Edward H. Potthast	. . .	A Reverie
1902	Arthur I. Keller	. . .	The Finishing Touches
1903	Colin Campbell Cooper	. . .	Sky Scrapers, Broad St., New York
1904	Charles Mente	. . .	The Old Mill Dam in Winter
1905	W. Granville Smith	. . .	The Bay

LIST OF ILLUSTRATIONS

NO.	PICTURE	ARTIST
4.	Monhegan Fisherman	George Wharton Edwards
20.	Leaving the Old Southern Home	Walter Satterlee
40.	A Revelation	Alfred Fredricks
57.	A Woman of Oulid Nails	Addison T. Millar
115.	A Swedish Peasant Woman	T. De Thulstrup
119.	An Indian Shepherd Boy	E. Irving Couse
172.	Cherry Street	Chas. F. W. Mielatz
389.	Colossal Statue of Rameses II at Luxor Temple	Joseph Lindon Smith
437.	The First Snow	Horatio Walker
456.	A Dutch Village	Chas. Warren Eaton
466.	Ready for the Automobile	James Symington
494.	An Intermission	Arthur I. Keller
539.	To the Absent One	E. Percy Moran
545.	Im Walde	Wm. J. Whittemore
553.	A Puritan	C. Y. Turner
558.	Amsterdam	Everett L. Warner
560.	Edge of the Woods, in Melting Snow	Charles Mente
562.	Curiosity (Frontispiece)	Geo. W. Maynard



No. 119 AN INDIAN SHEPHERD BOY—E. IRVING COUSE, A.W.C.S.



No. 40 A REVELATION—ALFRED FREDRICKS, A.W.C.S.

THE AMERICAN
WATER COLOR SOCIETY
CATALOGUE

SOUTH GALLERY

MORAN, LÉON, A. W. C. S.

1. An Old-Time Melody
\$150

HARDENBERGH, ELIZABETH R.

2. Wall-Flowers
\$50

BREWSTER, ANNA RICHARDS

3. Near Carlyle's House, Cheyne Walk,
London
\$100

EDWARDS, GEORGE WHARTON, A. W. C. S.

4. Monhegan Fisherman

BROWNSCOMBE, JENNIE

5. Strictly Confidential
\$200

POTTHAST, EDWARD H., A. W. C. S.

6. Reflections
\$200

ARTHUR, ROBERT

7. Late Afternoon
\$75

SMITH, W. GRANVILLE, A. W. C. S.

8. October
\$300

BURLEIGH, S. R.

9. In the Irish Highlands
\$200

WHITTEMORE, WILLIAM J., A. W. C. S.

10. The Bead Necklace
\$500

BLOODGOOD, ROBERT F.

11. Midwinter
\$75

POTTHAST, EDWARD H., A. W. C. S.

12. Sunset, Venice
\$300

BROWSE, MABEL ELIZABETH

13. Apples
\$80

ROBINSON, ALEXANDER

14. Canal, Bruges

STEELE, Z. DeL.

15. Night
\$75

DILLAYE, BLANCHE

16. High Street, Ipswich
\$200

LITTLE, JOHN WESLEY

17. June
\$150



No. 4 MONHEGAN FISHERMAN—GEORGE WHARTON EDWARDS

CHAPMAN, CARLTON T., A. W. C. S.

18. The Galleon
\$75

SPONG, W. B.

19. Old Segovia
\$100

SATTERLEE, WALTER, A. W. C. S.

20. Leaving the Southern Home
\$400

MYER, MARIE SHIELDS

21. A Pike County Meadow
\$50

WRIGHT, NELLIE B.

22. A Cornish Courtyard
\$75

TRASK, MARY C.

23. Alcazar Garden

ROBINSON, WILLIAM S., A. W. C. S.

24. In the Woods
\$100

MANLEY, THOMAS R.

25. Lengthening Shadows
\$150

BRICHER, A. T., A. W. C. S.

26. Daisy Field
\$75

CRANE, FREDERICK

27. A Hazy Morning
\$75

REHN, F. K. M., A. W. C. S.

28. The Beach in Moonlight
\$75

HASLER, WILLIAM N.

29. November
\$85

NICHOLLS, RHODA HOLMES, A. W. C. S.

30. Home from the Grand Banks
\$100

ESTÉ, FLORENCE

31. Autumn Sunshine

SHURTLEFF, R. M., A. W. C. S.

32. Golden Autumn
\$400

ESTÉ, FLORENCE

33. Brittany Dunes, September

SCHMITT, ALBERT FELIX

34. In Wonderland
\$250

BULL, CHARLES LIVINGSTON

35. Bagheera
\$125

MOSER, JAMES HENRY, A. W. C. S.

36. On the Housatonic
Owner, Peter Schem, Esq.

DOUGLAS, WALTER

37. Morristown Hills
\$150

YATES, CULLEN, A. W. C. S.

38. Approaching Storm
\$95



No. 20 LEAVING THE OLD SOUTHERN HOME—WALTER SATTERLEE, A.W.C.S.

JOSEPHI, I. A.

39. The Market Garden
\$125

FREDERICKS, ALFRED, A. W. C. S.

40. A Revelation
\$350

SMILLIE, GEORGE H., A. W. C. S.

41. Lake Zell, Austrian Tyrol
\$50

HEIL, CHARLES E.

42. Puritan
\$75
43. Girl in Gray
\$150

TURNER, ROSS, A. W. C. S.

44. Spring-Time
\$500

MALONE, BLONDELLE

45. Cherry Blossoms, Yokohama

MORSE, EDWARD LIND

46. Eagle Rocks, Shenandoah Valley
\$100

HEIL, CHARLES E.

47. The Lady and the Collie
\$150
48. Indian Pipe
\$75

WEILL, EDMOND

49. Winter Afternoon
\$50

- SMILLIE, N. S. J., A. W. C. S.
50. At Bethel, Vt.
\$50
- DE CORDOBA, MATHILDE
51. The First Party Dress
Loaned by Dr. J. Johnson
- SYMINGTON, JAMES, A. W. C. S.
52. Trixy and Nixie
\$100
- MANLEY, THOMAS R.
53. Chenango Valley, New York
\$75
- POST, W. MERRITT, A. W. C. S.
54. A Willow-tufted Bank
\$175
- YETO, GENJIRO
55. Spring in the Country
\$75
- ROBINSON, ALEXANDER
56. Wet Day, Piazza San Marco
\$100
- MILLAR, ADDISON T.
57. A Woman of Oulad Nails
\$100
- PALMER, WALTER L., A. W. C. S.
58. Oak Leaves
\$200
- TURNER, ROSS, A. W. C. S.
59. An Old Mill
\$150

GRUPPÉ, CHARLES P.

60. Twilight
\$250

SATTERLEE, WALTER, A. W. C. S.

61. At Feeding Time
\$200

TURNER, ROSS, A. W. C. S.

62. First Snow
\$150

REHN, F. K. M., A. W. C. S.

63. After the Storm
\$75

ESTÉ, FLORENCE

64. Late Afternoon

POST, W. MERRITT, A. W. C. S.

65. End of a November Day
\$75

66. A Blustering Day
\$60

SCHMITT, ALBERT FELIX

67. Master MacIvor Reddie
\$250

KETCHAM, SUSAN M.

68. The In-coming Tide, Ogunquit
\$75

BULL, CHARLES LIVINGSTON

69. Mountain Hunters
\$150

BRALEY, C. E.

70. Scallop Boats
\$50

DANA, CHARLES E.

71. An Old Swiss Friend
\$150

ROBINSON, WILLIAM S., A. W. C. S.

72. Coast of Holland
\$150

COOKMAN, C. E.

73. A Monarch
\$100

COOPER, COLIN CAMPBELL, A. W. C. S.

74. The Plaza, New York
\$150

ROBINSON, ALEXANDER

75. Amalfi, Evening
\$100

YATES, CULLEN, A. W. C. S.

76. Evening
\$100

HULBERT, CHARLES ALLEN

77. Early Spring
\$100

VAN LAER, A. T.

78. Near Scarsdale
\$150

BULL, CHARLES LIVINGSTON

79. "Where the little spotted fawn came to
drink"
\$150



No. 115 SWEDISH PEASANT WOMAN—T. DE THULSTRUP, A.W.C.S.

WALKLEY, DAVID

80. On the Sand Dunes, Katwijk

FITLER, W. C.

81. Under Gray Skies
\$85

SNELL, HENRY B., A. W. C. S.

82. A Snug Lee
\$250

BICKNELL, E. M.

83. A Foggy Morning
\$200

SCOTT, E. M., A. W. C. S.

84. From Grandmother's Garden
\$85

DAWSON, GEORGE WALTER

85. A Venetian Garden
\$75

DEWEY, CHARLES MELVILLE

86. November Day

ROBINSON, WILLIAM S., A. W. C. S.

87. Evening
\$100

COOKMAN, C. E.

88. Purple and Gold
\$50

MORAN, E. PERCY, A. W. C. S.

89. A Mexican Madonna

FIELD, E. LOYAL

90. The Willows
\$200

MITCHILL, NEIL

91. Moonlight
\$125

BALLIN, HUGO

92. Woman and Child
\$200

DOUGLAS, WALTER

93. The Cock Pit
\$50

YATES, CULLEN, A. W. C. S.

94. Late Autumn
\$250

STEELE, Z. DeL.

95. The Shower (Vermont Hills)
\$100

NICHOLLS, RHODA HOLMES, A. W. C. S.

96. Fisherman Returning
\$100

BAKER, JULIA E.

97. Geraniums
\$60

TRISCOTT, S. P. ROLT

98. The Headland
\$250

FISHER, ANNA

99. Italian Market
\$150

NEEDHAM, CHARLES AUSTIN

100. Wild Hyacinths



No. 57

A WOMAN OF OULID NAÏLS
ADDISON T. MILLAR

WILSON, ROBERT BURNS

101. The Elegy Plowman
\$300

GRANT, GORDON

102. The Spook
\$150

PLATT, ALETHEA HILL

103. Mr. Wyant's Studio
\$100

BULL, CHARLES LIVINGSTON

104. Mountain Goats
\$150

DUNSMORE, JOHN WARD

105. The Spinster
\$400

KENNEDY, ANDREW DWIGHT

106. Still Life
\$100

BURR, GEORGE ELBERT

107. Gathering Storm, Brunen
\$90

SCOTT, ANNA PAGE

108. Moonlight Night
\$80

MARBLE, J. N.

109. Marguerite
\$150

NICHOLLS, RHODA HOLMES, A. W. C. S.

110. Portrait, Mrs. W. B. S.
Loaned by Miss De Peyster

MIELATZ, CHARLES F. W.

111. A Fire

WETMORE, MARY M.

112. Dutch Girl Knitting
\$50

EATON, CHARLES WARREN, A. W. C. S.

113. The Edge of a Pine Wood
\$125

OVIATE, ANNA P.

114. Wood Interior
\$100

THULSTRUP, T. DE, A. W. C. S.

115. Swedish Peasant Woman
\$300

BREWSTER, ANNA RICHARDS

116. Lily Pond, Hadspen Hall, Somerset
\$80

MENTE, CHARLES, A. W. C. S.

117. Melting Snow and Willows
\$100

JOSEPHI, I. A.

118. Evening
\$100

COUSE, E. IRVING, A. W. C. S.

119. An Indian Shepherd Boy
\$350

NEWELL, GEORGE GLENN

120. The Yoke
\$500

POTTHAST, EDWARD H., A. W. C. S.

121. The Lone Fisherman

\$175

EATON, CHARLES WARREN, A. W. C. S.

122. In Heather Land

\$100

DERRICK, WILLIAM R.

123. Landscape

\$150

ARNOLD, F. McINTOSH

124. Misty Morning

\$150

VAN DER VEER, MARY

125. The Old Miniature

\$75

KING, PAUL

126. Reflections

\$175

PETERSEN, M.

127. Across the Canal

\$400

DE GOLIER, K. E.

128. Flood on Cheat River

\$100 .

CENTRAL GALLERY

ETCHINGS

SMILLIE, J. D., A. W. C. S.

129. A Shaded Hillside
\$15

YALE, L. M.

130. At Watcha Beach
Loaned by Dr. A. G. Gustin
131. The Rocky Swale

SMILLIE, J. D., A. W. C. S.

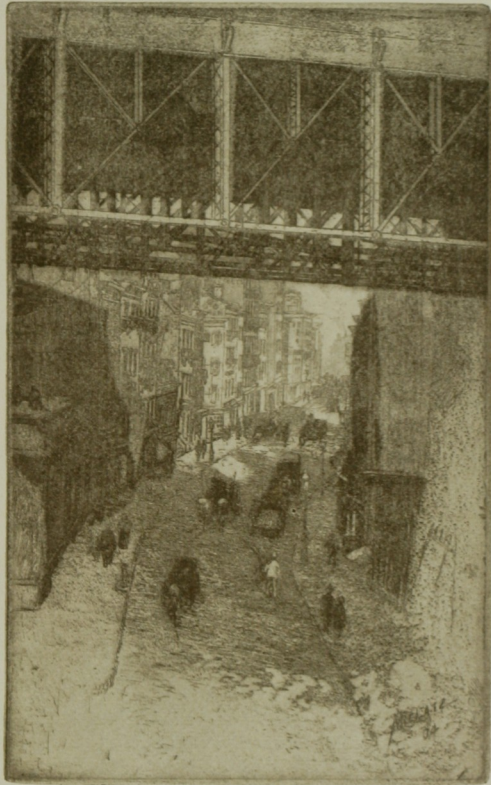
132. Chapel at Campino
\$15
133. Tower on the Rhine
134. Peonies. Study in Dry Point
\$15

YALE, L. M.

135. An Erratic Neighbor
136. An Old Pinkey
Loaned by Dr. A. G. Gustin

ARONSON, HARRY H.

137. Portrait of F. C.
\$12



No. 172

CHERRY STREET
CHAS. F. W. MIELATZ

ZIMMERMAN, MARCO

138. A Village Patriarch
\$10

ARONSON, HARRY H.

139. Head
\$12

SCHOLL, EDWARD

140. Reflections
\$15

ZIMMERMAN, MARCO

141. Inspired Moment
\$10

ARONSON, HARRY H.

142. Head
\$16

SCHOLL, EDWARD

143. Etching
\$18

GOLDTHWAITE, ANNE

144. Mother and Child
\$18

ARONSON, HARRY H.

145. Head
\$12

ZIMMERMAN, MARCO

146. A Study
\$10

GOLDTHWAITE, ANNE

147. Scissors Grinders
\$15

ARONSON, HARRY H.

148. Head

149. P. P.

\$12

ROTH, ERNEST D.

150. The Fish Baskets, Venice

\$12

GOLDTHWAITE, ANNE

151. Poplars

\$18

152. Bohemian Peasant

ROTH, ERNEST D.

153. Off the Guidecca, Venice

\$12

YALE, L. M.

154. The Little Oak

Loaned by Dr. A. G. Gustin

WHITE, CHARLES HENRY

155. Royal Street, New Orleans

\$20

ROTH, ERNEST D.

156. A Quiet Canal, Venice

\$12

157. Abbazia San Gregorio, Venice

\$12

ZIMMERMAN, MARCO

158. The Landing

\$10

WASHBURN, CADWALLADER

- 159. Casa Cecchino
\$17
- 160. A Tokio Beauty
- 161. Street in Havana
\$15
- 162. Business House in Havana
\$15
- 163. Devout Disciple of Buddha
\$25
- 164. Court Yard, Ducal Palace

MIELATZ, CHARLES F. W.

- 165. The Oyster Market
\$20
- 166. New York from the Bay
\$25
- 167. West Washington Market
\$20
- 168. Old Tom's
\$20
- 169. Jumel House
\$20
- 170. Restaurant, Mott Street
\$20
- 171. The Lych Gate
\$20
- 172. Cherry Street
\$30

MIELATZ, CHARLES F. W.

173. Porch of the Custom House
\$20
174. Poe's Cottage at Fordham
175. The Toy Shop
\$20
176. St. Paul's
\$20
177. A Door in Houston Street
\$20
178. The Little Church
\$20

MAC LAUGHLIN, D. SHAW

179. The Coppersmith
\$22
180. Ponte Ticino, Pavia
\$18

MIELATZ, CHARLES F. W.

181. Near South Ferry, East River
\$15

MAC LAUGHLIN, D. SHAW

182. La Petite Tour, St. Surplice
\$22
183. Rouen Cathedral
Loaned by F. Luis Mora

VAN LAER, A. T.

184. Canal Street, New York
\$10

MAC LAUGHLIN, D. SHAW

185. Sleeping Rag Gatherer
\$17

186. Pavia
\$22

MIELATZ, CHARLES F. W.

187. The Witch House, Salem
\$15

VONDROUS, JOHN C.

188. The Whaler
\$50

WASHBURN, CADWALLADER

189. Market Place, Havana
\$10

VONDROUS, JOHN C.

190. Lumber Wharf
\$50

PENNELL, JOSEPH,

191. The British Museum
\$14

192. Whistler's House
\$14

193. Albert Hall
\$14

194. The Shrine
\$14

195. At Richmond
\$14

196. The Dock Head
\$14

PENNELL, JOSEPH,

- 197. Park Row
\$14
- 198. The Steps, British Museum
\$14
- 199. The Royal Entrance, Westminster
\$14
- 200. London Bridge Stairs
\$14
- 201. Greenwich Park
\$14
- 202. The Tower Bridge
\$14
- 203. The Golden Cornice
\$14
- 204. Lower Broadway
\$14
- 205. The Trinity Building
\$14
- 206. The Stock Exchange
\$14

VONDROUS, JOHN C.

- 207. Mathieson Wharf, Provincetown
\$50

WHITE, CHARLES HENRY

- 208. A Bit of Charles Street, New Orleans
\$20

VONDROUS, JOHN C.

- 209. The Tenements
\$50

VONDROUS, JOHN C.

210. A Portrait
\$50

WHITE, CHARLES HENRY

211. Hatteras Fisherman, New York
\$20

VONDROUS, JOHN C.

212. Where Nets Are Tarded
\$50
213. My Street
\$50

SLOAN, JOHN

214. Fifth Avenue Critics
215. The Show Case

WHITE, CHARLES HENRY

216. South Street, New York
\$20

SLOAN, JOHN

217. Memory of Last Year
\$15
218. Connoisseurs at a Print Exhibition
219. Fun One Cent
220. The Little Bride
221. The Man-Monkey

WHITE, CHARLES HENRY

222. The Kills, Harlem
\$20

LIPPINCOTT, WILLIAM H., A. W. C. S.

223. Man's Head
\$10
224. Landscape, Baldwin, Me.
\$10

SCHNEIDER, OTTO J.

225. Portrait, Mr. B.

WHITE, CHARLES HENRY

226. Washington Market, Philadelphia
\$20
227. "Bill Conklin's," Harlem
\$20
228. The Harlem River
\$20
229. The Old Spanish Prison
\$20
230. An Old Courtyard, New Orleans
\$20
231. Water Street, Philadelphia
\$20
232. St. Peter's, Philadelphia
\$20
233. Fulton Street, New York
\$20
234. Fulton Market, New York
\$20
235. Along the Schuylkill
\$20

SCHNEIDER, OTTO J.

- 236. A Reverie
- 237. Portrait of My Sister
- 238. Portrait of Elbert Hubbard
- 239. An American Type
- 240. Portrait, Mr. W.
- 241. Portrait, Dr. Q.
- 242. Il Penseroso

EAST GALLERY

DRAWINGS FOR ILLUSTRATION

IN BLACK AND WHITE, AND COLOR

WYMAN, FLORENCE

243. The Knight

ABBATT, AGNES DEAN, A. W. C. S.

244. Old Timpson House, Westchester
Loaned by F. W. Jackson, Esq.

ANDERSON, KARL

245. The Gardener
\$75

PEIXOTTO, E. C.

246. Bassin du Dragon
Loaned by *Scribner's Magazine*.

WALKER, HORATIO, A. W. C. S.

247. Landscape and Cattle
Loaned by Salmagundi Club

VAN LAER, A. T.

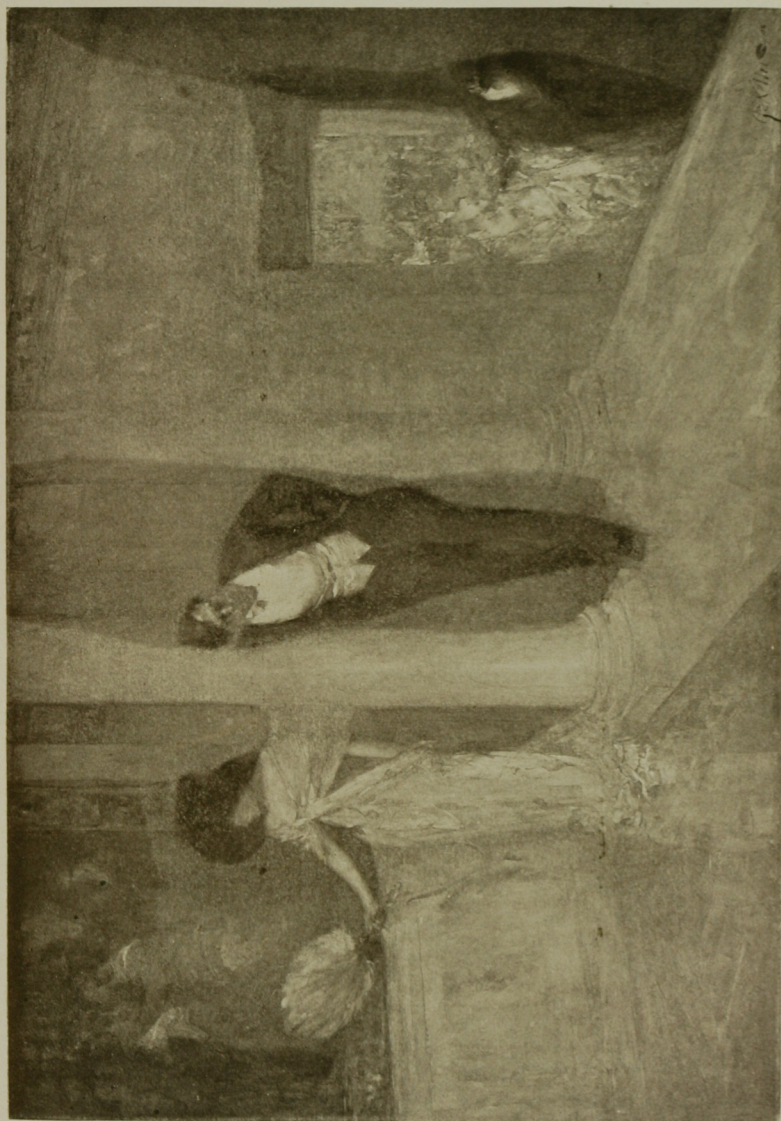
248. Evening on the Meadow
\$75

WRIGHT, GEORGE

249. In Warwickshire
\$75

REUTERDAHL, HENRY

250. "When we hit the light we shook off"
Loaned by *Scribner's Magazine*



No. 494

AN INTERMISSION—ARTHUR I. KELLER

WYMAN, FLORENCE

251. Bread and Jam

ABBATT, AGNES DEAN, A. W. C. S.

252. Old Underhill Burying Ground, Westchester

Loaned by F. W. Jackson, Esq.

DAWSON, GEORGE WALTER

253. The Stone Pine, Villa Lante
\$100

SMITH, W. GRANVILLE, A. W. C. S.

254. A Bronzed Officer Appeared

Loaned by The Century Company

ABBATT, AGNES DEAN, A. W. C. S.

255. Ferris Burying Ground and Old St. Peter's, Westchester

Loaned by F. W. Jackson, Esq.

YOHAN, F. C.

256. Deftly tied the two ends of string

Loaned by *Scribner's Magazine*

ABBATT, AGNES DEAN, A. W. C. S.

257. The Old Mill, Westchester

Loaned by F. W. Jackson, Esq.

JACOBS, W. L.

258. And run he did

Loaned by The Century Company

ABBATT, AGNES DEAN, A. W. C. S.

259. The Old Village Store, Westchester

Loaned by F. W. Jackson, Esq.

MORA, F. LUIS, A. W. C. S.

260. Spanish Hill-top
\$200

MYRBACH, F.

261. Mme. Bonaparte Receiving Ambassadors
Loaned by The Century Company

JACOBS, W. L.

262. A Box of Balloons
Loaned by The Century Company

ABBATT, AGNES DEAN, A. W. C. S.

263. Old Tory House, Westchester
Loaned by F. W. Jackson, Esq.

WALCOTT, H. M.

264. Men who have to buy frames
Loaned by *McClure's Magazine*

ABBATT, AGNES DEAN, A. W. C. S.

265. Old Hicksite Meeting House, Westchester
Loaned by F. W. Jackson, Esq.

REUTERDAHL, HENRY

266. Norse Night, Midnight

ABBATT, AGNES DEAN, A. W. C. S.

267. Old Hunt House, Grove Farm, Westchester
Loaned by F. W. Jackson, Esq.

HEIL, CHARLES E.

268. Edge of the Pond
\$75

SCHMITT, ALBERT FELIX

269. Gray Day

\$50

STOWELL, M. LOUISE

270. Remembered

\$75

CONANT, LUCY S.

271. St. Nicola Girgenti

HUTT, HENRY

272. Waiting

Loaned by *Scribner's Magazine*

MOSER, JAMES HENRY, A. W. C. S.

273. Twilight

\$100

HARDING, CHARLOTTE

274. Why do you use so much water?

Loaned by *McClure's Magazine*

MYRBACH, F.

275. Building the Bridge at Loban

Loaned by The Century Company

YOHAN, F. C.

276. It seems much to me, M'sieur

Loaned by *Scribner's Magazine*

277. "Indeed it was clear that"

Loaned by *Scribner's Magazine*

TAYLOR, WALTER

278. The Return of the Gypsy

Loaned by *McClure's Magazine*

JACOBS, W. L.

279. After Church
Loaned by The Century Company

ABBEY, EDWIN A., A. W. C. S.

280. Romeo and Juliet
281. Garden Scene, Richard II.

MUCHA, ALPHONSE

282. Le Pater

MYRBACH, F.

283. Napoleon Dining With the Queen
of Prussia
Loaned by The Century Company

TAYLOR, WALTER

284. The Return of the Gypsy
Loaned by *McClure's Magazine*

TAYLOR, W. L.

285. "I don't believe it"
Loaned by *McClure's Magazine*

ANDERSON, KARL

286. Illustration for "A Heroine"
Loaned by *American Illustrated Magazine*

WRIGHT, GEORGE

287. "Right in front of ye" she answered
Loaned by *Scribner's Magazine*

REUTERDAHL, HENRY

288. Our Future Citizens

CHELMINSKI, JAN V.

289. Napoleon Surprised by Cossacks
Loaned by The Century Company

HAMBRIDGE, JAY

290. Monte San Giuliano
Loaned by The Century Company

CONANT, LUCY S.

291. In the Rufolo Gardens, Ravello

FAULKNER, H. W.

292. Kitchen in House Where Titian was
Born
\$100

CONANT, LUCY, S.

293. Ravello Towers

EYTINGE, SOL

294. Bob Cratchit and Tiny Tim
\$125

STEVENS, BEATRICE

295. A Gest of Robyn Hode
Loaned by *Scribner's Magazine*

CLARK, WALTER APPLETON

296. Blind Man
\$100

CHOATE, FLORENCE

297. Rogar
\$15
298. Annie
\$15

CLARK, WALTER APPLETON

- 299. Illustration for "A Lover of Music"
\$150
- 300. "Black Care"
\$50
- 301. Mexican Legends
\$150
- 302. Illustration
\$50
- 303. Three Monks
\$175
- 304. Illustration for "A Lover of Music"
\$125

PAPE, ERIC

- 305. French Soldiers Voting for the Republic
Loaned by The Century Company

CLARK, WALTER APPLETON

- 306. Mexican Legends
\$100

SARKA, CHARLES

- 307. Oil and Water
Loaned by *McClure's Magazine*

CLARK, WALTER APPLETON

- 308. Three Men Drinking
\$150
- 309. "Death"
\$25
- 310. Illustration for "Sanctuary"
\$75

WILLIAMS, T. L. G.

311. Harbor Boat

CHOATE, FLORENCE

312. Dorothea
\$15

ABBEY, EDWIN A., A. W. C. S.

313. A Love Song
\$350

WYMAN, FLORENCE

314. Yon House
Loaned by Mrs. C. C. Rice

315. The Boat

ABBATT, AGNES DEAN, A. W. C. S.

316. Pelham Bay and Meadows from Givan
House
Loaned by F. W. Jackson, Esq.

WYMAN, FLORENCE

317. Fairy Tales

TOASPERN, O.

318. Suggestion for Picture Portrait
\$75

HATHERELL, W.

319. A Jumble in Divinities
Loaned by *McClure's Magazine*

HATHERELL, W.

320. A Jumble in Divinities
Loaned by *McClure's Magazine*

CRAIG, FRANK

321. McAllister's Data of Ethics
Loaned by *McClure's Magazine*

SULLIVAN, E. T.

322. "It's the Toothache He Had"
Loaned by *McClure's Magazine*

HATHERELL, W.

323. A Jumble in Divinities
Loaned by *McClure's Magazine*

MUCHA, ALPHONSE

324. Le Pater

WYMAN, FLORENCE

325. Little Sister

EYTINGE, SOL.

326. Sam Weller, Old Weller and Stiggins,
Pickwick Papers
\$100

WYMAN, FLORENCE

327. The Violincello

SLOAN, JOHN

328. The Mountebanks Frighten Pierre



COLOSSAL STATUE OF RAMESES II. AT LUXOR TEMPLE

No. 389

JOSEPH LINDON SMITH

WEST GALLERY
DRAWINGS FOR ILLUSTRATION

IN BLACK AND WHITE, AND COLOR.

LIPPINCOTT, WM. H., A. W. C. S.

329. Shadows
\$25

WOLF, HENRY

330. The Morning Star, original engraving
331. "Mr. Joseph Pulitzer" after Sargent,
engraved for his private use
332. "Little Lady Sophie of Soho," after
Whistler

VAN LAER, A. T.

333. Mending the Plow
\$75

WOLF, HENRY

334. The Roadside, after R. Swain Gifford

ANDERSON, KARL

335. Illustration for "Prisoners"
Loaned by *American Illustrated Magazine*
336. Illustration for "Prisoners"
Loaned by *American Illustrated Magazine*

WOLF, HENRY

337. Thomas Carlyle, after Whistler

WOLF, HENRY

338. "My Mother," after Whistler

SENSENEY, GEORGE

339. Evening

340. White Marsh

CORDOBA, MATHILDE DE

341. Evelyn

WRIGHT, GEORGE

342. A Rescue

\$100

WILLIAMS, GEORGE A.

343. A Game of Checkers

Loaned by The Century Company

HAMBRIDGE, JAY

344. Water vendor at Palermo

Loaned by The Century Company

ANDERSON, KARL

345. The Flower Woman

\$100

ABBEY, EDWIN A., A. W. C. S.

346. Illustration

WYMAN, FLORENCE

347. The Soldiers

MARS, E.

348. Old Horse

\$11

SMEDLEY, W. T., A. W. C. S.

349. A Winter Twilight

\$150

SMEDLEY, W. T., A. W. C. S.

350. On the Avon near Stratford
Loaned by *Scribner's Magazine*

HUTT, HENRY

351. The Lace Camisole
Loaned by The Century^o Company

WATKINS, MAY WILSON

352. A Pompadour Angel
Loaned by *McClure's Magazine*

WYMAN, FLORENCE

353. Helena

MARS, E.

354. Tiger
\$8

FOGARTY, THOMAS

355. In Lovers Meeting
Loaned by *McClure's Magazine*

McLANE, M. JEAN

356. The Sugar Plum Tree
Loaned by *Scribner's Magazine*

COLEMAN, C. C.

357. Gathering Olives near Ana Capri
Loaned by ^oThe^o Century Co.

WILLIAMSON, SHIRLEY

358. The Marshes
\$50

OGDEN, HELENA EASTMAN

359. Portrait
Loaned by Henry Lauterbach, Esq.

FEINBERG, ALFRED

360. The Lakeside
\$50

CLARK, WALTER APPLETON

361. Nun Reading
\$150

REUTERDAHL, HENRY

362. Caleb stood on the platform waving

MUCHA, ALPHONSE

363. Le Pater

MYRBACH, F.

364. Bonaparte and Coignet
Loaned by The Century Company

MYRBACH, F.

365. Napoleon Traveling
Owner, The Century Company

KELLER, ARTHUR I., A. W. C. S.

366. Home From College
\$100

367. Illustration, Bret Harte's "Her Letter"
\$50

368. Illustration, Bret Harte's "Her Letter"
\$75

368. Illustration, Bret Harte's "Her Letter"
\$75

369. An Illustration, The Quarrel
\$75

370. Well, how many of you are married?
Loaned by *Scribner's Magazine*

KELLER, ARTHUR I., A. W. C. S.

371. A Municipal District Court
Loaned by The Century Company

HASSAM, CHILDE, A. W. C. S.

372. Les Anglais

KELLER, ARTHUR I., A. W. C. S.

373. Illustration, Bret Harte's "Her Letter"
\$75
374. Illustration, Bret Harte's "Her Letter"
\$75
375. Illustration, "The Curse"
\$100
376. Illustration, Bret Harte's "Her Letter"
\$50

MUCHA, ALPHONSE

377. Le Pater

MYRBACH, F.

378. Napoleon at Tivoli Garden, Cairo
Loaned by The Century Company

ROSSI, LUCIUS

379. Entrance of Ferdinand into Madrid
Loaned by The Century Company

OGDEN, HELENA EASTMAN

380. Portrait
Mr. L. Ross

FOGARTY, THOMAS

381. Illustration

SCHETTER, CHARLOTTE O.

382. Portrait Sketch

PENFIELD, EDWARD

383. On Through the Lingerin Twilight
Loaned by *Scribner's Magazine*

ANDERSON, KARL

384. Illustration for "Prisoners"
Loaned by *American Illustrated Magazine*

BAUMGARD, GEORGE

385. My Studio Wall

REUTERDAHL, HENRY

386. With the Night Mail
Loaned by *McClure's Magazine*

SMITH, JOSEPH LINDON

387. Rameses II at Abou Simbel, Nubia
\$75

ORANGE, M.

388. Arrest of Goday
Loaned by The Century Company

SMITH, JOSEPH LINDON

389. Colossal Statue of Rameses II at Luxor
Temple
\$500
390. Figure of Rameses II at Luxor
\$150
391. Figure of Isis from the Temple of
Philoe
\$350
392. Figure of Rameses II at Abydos
\$250
393. Study of a Chair Found in the Tomb
of Queen Tii's Parents
\$700

SMITH, JOSEPH LINDON

394. Head of Antinous in the National Museum, Rome
\$250

STEPHENS, ALICE BARBER

395. A Symphony in Coal
Loaned by *McClure's Magazine*

ROSSI, LUCIUS

396. Napoleon Learning to Waltz
Loaned by The Century Company

BAUMGARD, GEORGE

397. Robes or Rags?

REUTERDAHL, HENRY

398. Battle of Lake Champlain
Loaned by *Scribner's Magazine*

KELLER, ARTHUR I., A. W. C. S.

399. Illustration, Bret Harte's "Her Letter"
\$65

WYMAN, FLORENCE

400. Dorothy

MILLAR, ADDISON T.

401. Evening, The Old Cherry Tree
\$30
402. The Beech Tree
\$25

MIELATZ, CHARLES W.

403. A Balcony in Pell Street
\$125

PHILLIPS, HARRIET S.

404. The Dragon Fly, Etching
\$25

MIELATZ, CHARLES F. W.

405. Coenties Slip
\$125

406. Governor Clinton's House
\$100

407. Door, St. Bartholomew's
\$150

408. The Butcher's Shop
\$100

HASSAM, CHILDE, A. W. C. S.

409. Kathleen

WYMAN, FLORENCE

410. Lydia
Mrs. Albert Herter

MIELATZ, CHARLES F. W.

411. Washington Square
\$125

412. Van Cortlandt Manor House
\$100

MIELATZ, CHARLES F. W.

413. Ericsson's House
\$100

SENSENEY, GEORGE

414. Peasant, Normandie

MILLAR, ADDISON T.

415. A Winter Evening
\$30

416. A Breezy Day, Blaricum
\$30



No. 466

READY FOR THE AUTOMOBILE
JAMES SYMINGTON, A.W.C.S.

VANDERBILT GALLERY

COFFIN, WILLIAM A.

417. October Afternoon, Jennerstown, Pa.
\$75

SCOTT, E. M., A. W. C. S.

418. Phlox
\$85

CHAPMAN, CARLTON T., A. W. C. S.

419. Waiting for the Tide, St. Malo
\$150

MCCORD, GEORGE H., A. W. C. S.

420. Holford Vale, England
\$60

EDWARDS, GEORGE WHARTON, A. W. C. S.

421. Sime's Fortune
\$200

FITLER, W. C.

422. Fading Day
\$125

SHURTLEFF, R. M., A. W. C. S.

423. Forest Shades
\$225

ROBINSON, ALEXANDER

424. Clearing after Storm, Amalfi
\$100

REHN, F. K. M., A. W. C. S.

425. Surf Breaking among the Rocks
\$250

BRIDGES, FIDELIA, A. W. C. S.

426. A Lily Pond
\$150

SHURTLEFF, R. M., A. W. C. S.

427. Into the Woods
\$100

SCOTT, E. M., A. W. C. S.

428. Yellow Roses
\$85

SMILLIE, GEORGE H., A. W. C. S.

429. Distant Bellagio, Lake Como
\$175

COUSE, E. IRVING, A. W. C. S.

430. Sun and Shade
\$150

BRIDGES, FIDELIA, A. W. C. S.

431. A Spring Rain
\$150

MORAN, E. PERCY, A. W. C. S.

432. "It was a lover and his lass."
Loaned by *Scribner's Magazine*



No. 437

THE FIRST SNOW—HORATIO WALKER



No. 456

A DUTCH VILLAGE—CHAS. WARREN EATON

- HASSAM, CHILDE, A. W. C. S.
433. The Letter Box
\$100
- MORAN, LÉON, A. W. C. S.
434. A Flirt
\$60
- DRAKE, W. H., A. W. C. S.
435. The Haunt of the Lions
\$150
- MCCORD, GEORGE H., A. W. C. S.
436. Mortoe Cliffs, England
\$70
- WALKER, HORATIO, A. W. C. S.
437. The First Snow
\$1,200
- COOPER, COLIN CAMPBELL, A. W. C. S.
438. Street in Vitré, France
\$75
- DRAKE, W. H., A. W. C. S.
439. The Fox Hunt
\$175
- POST, W. MERRITT, A. W. C. S.
440. Bright November Day
\$60
441. A Stony Brook
\$100
- HOMER, WINSLOW, A. W. C. S.
442. The Turkey Buzzard
\$300

SMITH, F. HOPKINSON, A. W. C. S.

443. A May Morning
\$500

MORAN, E. PERCY, A. W. C. S.

444. A Toiler of the Field

HASSAM, CHILDE, A. W. C. S.

445. Venetian Night

HUNTER, L. C.

446. Roses
\$75

HASSAM, CHILDE, A. W. C. S.

447. Ticonderoga
\$125

McCORD, GEORGE H., A. W. C. S.

448. Wells Abbey Ruins
\$75

DOUGLAS, WALTER

449. The New Rooster
\$100

McCORD, GEORGE H., A. W. C. S.

450. At Jamaica Bay
\$50

BURGESS, RUTH PAYNE

451. Agatha
\$100

DANA, CHARLES E.

452. An Old Doorway, Freiburg
\$75

ABBATT, AGNES D., A. W. C. S.

453. "When evening brings the twilight
hour"
\$60

JOSEPHI, I. A.

454. After the Rain
\$100

STARR, SIDNEY

455. A Country Studio, J. G. Brown, N.
A. at Work
\$200

EATON, CHARLES WARREN, A. W. C. S.

456. A Dutch Village
\$125

ANNAN, A. H.

457. The Close of Day
\$100

EATON, CHARLES WARREN, A. W. C. S.

458. The Interior of a Wood
\$250

WHITE, BELLE CADY,

459. Chrysanthemums
\$75.

CHILD, ROBERT COLEMAN

460. The Home Field
\$175

EATON, CHARLES WARREN, A. W. C. S.

461. Willows at Sluis, Holland
\$175

SYMINGTON, JAMES, A. W. C. S.

462. Portrait, Countess DeF

McCORD, GEORGE H., A. W. C. S.

463. Canadensis Brook
\$60

SMITH, F. HOPKINSON, A. W. C. S.

464. The King's Birthday
\$350

DOUGLAS, WALTER

465. Mr. Foster's Fowl
\$150

SYMINGTON, JAMES, A. W. C. S.

466. Ready for the Automobile
\$60

SMILLIE, GEORGE H., A. W. C. S.

467. At Bread Loaf, Vermont
\$60

DAY, FRANCIS

468. Vanity
\$225

HASSAM, CHILDE, A. W. C. S.

469. London Bridge

WHITTEMORE, WILLIAM J., A. W. C. S.

470. The Dreel Kirk, Anstruther
\$60

NICHOLLS, RHODA HOLMES, A. W. C. S.

471. Pond Lily
\$100



No. 553

A PURITAN—C. Y. TURNER

MORAN, LÉON, A. W. C. S.

472. Madonna and Child
\$125

MOSER, JAMES HENRY, A. W. C. S.

473. Winter
\$100

EATON, CHARLES WARREN, A. W. C. S.

474. Holland Sketch
\$100

LIPPINCOTT, WILLIAM H., A. W. C. S.

475. A Kitchen Garden
\$125

DANA, CHARLES E.

476. Sunset Shadows on the Matterhorn
\$75

DRAKE, W. H., A. W. C. S.

477. Lost
\$150

WHITTEMORE, WILLIAM J., A. W. C. S.

478. St. Monans
\$50

COUSE, E. IRVING, A. W. C. S.

479. The Enchanted Wood
\$600

NEWELL, HUGH, A. W. C. S.

480. A Barefoot Boy
\$100

MORAN, E. PERCY, A. W. C. S.

481. Waiting for the Ferry

- FENN, HARRY, A. W. C. S.
482. The Street of Arms, Cairo
\$60
- DRAKE, W. H., A. W. C. S.
483. After the Duel
\$150
- WHITTEMORE, WILLIAM J., A. W. C. S.
484. The River Ware, Durham
\$60
- WELDON, C. D., A. W. C. S.
485. "Lucky Dog!"
\$175
- SCHMITT, ALBERT FELIX
486. Among the Rocks
\$100
- CHURCH, F. S., A. W. C. S.
487. The Tourist
\$250
- SMILLIE, GEORGE H., A. W. C. S.
488. Ballagio, Lake Como
\$125
- ROBINSON, WILLIAM S., A. W. C. S.
489. Mountain Pasture
\$200
- SMITH, F. HOPKINSON, A. W. C. S.
490. An All Night Stand
\$300
- HASSAM, CHILDE, A. W. C. S.
491. The River
\$850

- McCORD, GEORGE H., A. W. C. S.
492. Moret, France
\$65
- SMILLIE, GEORGE H., A. W. C. S.
493. Weierburg Castle
\$50
- KELLER, ARTHUR I., A. W. C. S.
494. An Intermission
\$600
- SMITH, F. HOPKINSON, A. W. C. S.
495. The Edge of the Forest
\$350
- REHN, F. K. M., A. W. C. S.
496. High Tide, Atlantic City
\$150
- VAN LAER, A. T.
497. Near Princeton, New Jersey
\$150
- JONES, H. BOLTON, A. W. C. S.
498. Spring
\$125
- ROBINSON, WILLIAM S., A. W. C. S.
499. When the Boats go Out
\$100
- SCHNEIDER, W. G., A. W. C. S.
500. Days Agone
\$300
- PLATT, ALETHEA HHILL
501. After the Daylight
\$75

SCHMITT, ALBERT FELIX

502. Symphony in Blue
\$150

MOSER, JAMES HENRY, A. W. C. S.

503. Sumac
\$100

ABBAY, EDWIN A., A. W. C. S.

504. Iago

MORAN, LÉON, A. W. C. S.

505. The Serenade
\$100

ABBAY, EDWIN A., A. W. C. S.

506. Death of Mercutio

WHITE, BELLE CADY

507. Still Life
\$80

ABBAY, EDWIN A., A. W. C. S.

508. Richard III.

BOGERT, JULIA

509. Still Life
\$30

EATON, CHARLES WARREN, A. W. C. S.

510. The Entrance to a Wood
\$125

MOSER, JAMES HENRY, A. W. C. S.

511. November Evening
\$100

HILDEBRANDT, H. L.

512. Sally
Owner, Page Chapman, Esq.

MOSER, JAMES HENRY, A. W. C. S.

513. Late in September
\$100

KING, PAUL

514. High Tide
\$175

EDWARDS, GEORGE WHARTON, A. W. C. S.

515. Edge of the Village, Nightfall
\$175

MOSER, JAMES HENRY, A. W. C. S.

516. Hickory Ledge
\$200

ROBINSON, ALEXANDER

517. Boats on the Giudecca, Venice
\$125

SMEDLEY, WILLIAM T., A. W. C. S.

518. Their Devotions
\$175

MUEDEN, MATHILDE

519. Old Houses in Copenhagen
\$75

GREEN, FRANK RUSSELL, A. W. C. S.

520. The Sentinel of Night
\$600

ESTÉ, FLORENCE

521. Evening

ESTÉ, FLORENCE

522. Brittany Dunes, November

NICOLL, J. C., A. W. C. S.

523. Near Kennebunkport, Maine
\$125

MOSER, JAMES HENRY, A. W. C. S.

524. Rain on Marcy . .
Loaned by Emlen Roosevelt, Esq.

PALMER, WALTER L., A. W. C. S.

525. Greendale Bridge
\$200

ABBATT, AGNES DEAN, A. W. C. S.

526. In the Point Lot
\$60

JONES, FRANCIS C., A. W. C. S.

527. Feeding the Fish
\$150

BROWSE, MABEL ELIZABETH

528. Old Stairway, Casa Frollo, Venice
\$95

PENMAN, EDITH

529. A Golden Gate Rose
\$50

EYTINGE, SOL

530. Little Em'ly (David Copperfield)
\$100

HASSAM, CHILDE, A. W. C. S.

531. The Trio
\$150



No. 560 EDGE OF THE WOODS, IN MELTING SNOW—CHARLES MENTE

PEIRCE, H. WINTHROP

532. Sleep
\$75

NEWELL, HUGH, A. W. C. S.

533. On Deer Creek, Ohio
\$75

CHAPMAN, CARLTON T., A. W. C. S.

534. The Wasp and The Reindeer
\$500

BRICHER, A. T., A. W. C. S. . .

535. A Sultry Morning
\$50

DE LUCE, PERCIVAL, A. W. C. S.

536. A Colonial Girl
\$60

HEIL, CHARLES E.

537. Circus Tents
\$75

NEWELL, HUGH, A. W. C. S.

538. In Summer Time
\$75

MORAN E. PERCY, A. W. C. S.

539. "To the Absent One"

HASSAM, CHILDE, A. W. C. S.

540. The Turquoise Sea
\$125

COOPER, COLIN CAMPBELL, A. W. C. S.

541. Carding Wool, Holland
\$200

- HOMER, WINSLOW, A. W. C. S.
542. Black Bass, Florida
\$300
- EATON, CHARLES WARREN, A. W. C. S.
543. Under the Pines
\$150
- FENN, HARRY, A. W. C. S.
544. The Oaks of Pelham Bay
\$125
- WHITTEMORE, WILLIAM J., A. W. C. S.
545. Im Walde
\$400
- TURNER, ROSS, A. W. C. S.
546. A Stiff Breeze
\$150
- WOODBURY, CHARLES H.
547. An Ocean Steamer
\$300
- RITSCHER, WILLIAM
548. Autumn
\$100
- COOPER, COLIN CAMPBELL, A. W. C. S.
549. Clisson, France
\$150
- BRICHER, A. T., A. W. C. S.
550. Summer Afternoon, Orr's Island
\$75
- NICOLL, J. C., A. W. C. S.
551. Moonlight, October
\$500



No. 545

IM WALDE
WM. J. WHITTEMORE

- REHN, F. K. M., A. W. C. S.
552. Moonlight Night at Sea
\$75
- TURNER, C. Y., A. W. C. S.
553. A Puritan
\$1,000
- SNELL, HENRY B., A. W. C. S.
554. Passing Sails
\$250
- REDMOND, JOHN J.
555. Among the Clouds in the Alps
\$100
- SCHNEIDER, ARTHUR
556. The Henna Market, Fez
\$300
- NICOLL, J. C., A. W. C. S.
557. On Block Island
\$125
- WARNER, EVERETT L.
558. Amsterdam
\$175
- ESTÉ, FLORENCE
559. The Dunes at St. Briac
- MENTE, CHARLES, A. W. C. S.
560. Edge of the Woods in Melting Snow
\$150
- DAWSON, GEORGE WALTER
561. Garden at Ravello
\$75

MAYNARD, GEORGE W., A. W. C. S.

562. Curiosity
\$250

MOSER, JAMES HENRY, A. W. C. S.

563. Pond Hill
\$200

GRUPPÉ, CHARLES P.

564. November Afternoon
\$300

NICOLL, J. C., A. W. C. S.

565. A Mountain Meadow
\$100

MORAN, E. PERCY, A. W. C. S.

566. A Toiler of the Field

SLOAN, MARIANNA

567. Marshy Land
\$150

CHAPMAN, CARLTON T., A. W. C. S.

568. The Battle Squadron
\$75

HASSAM, CHILDE, A. W. C. S.

569. The Minuet

ROWELL, FANNY

570. Carnations
\$75

OCHTMAN, LEONARD, A. W. C. S.

571. An Afternoon in Winter
\$1,000

ABBATT, AGNES DEAN, A. W. C. S.

572. In Early Summer
\$60

HASSAM, CHILDE, A. W. C. S.

573. The Children

CHAPMAN, CARLTON T., A. W. C. S.

574. The Yacht Race
\$50

FIELD, E. LOYAL

575. A Wet Day
\$50

FAULKNER, B.

576. Val D'Aniene, Rome
\$250

DERRICK, WILLIAM R.

577. Evening
\$150

BRICHER, A. T., A. W. C. S.

578. Cliff Island Pines
\$80

HASSAM, CHILDE, A. W. C. S.

579. The Chestnut Vendor

EDWARDS, GEORGE WHARTON, A. W. C. S.

580. The Little Red House
\$150

SYMINGTON, JAMES, A. W. C. S.

581. At Trinidad, W. I.
\$60

POTTHAST, EDWARD H., A. W. C. S.

582. A Fresh Breeze
\$300

SATTERLEE, WALTER, A. W. C. S.

583. A Tight Place
\$250

MORA, F. LUIS, A. W. C. S.

548. The Keeper of the Bulls
\$250

CORNELL, GRACE

585. Boats at Amalfi
\$100

SMITH, W. GRANVILLE, A. W. C. S.

586. Reflections
\$300

BRICHER, A. T., A. W. C. S.

587. On the Cliffs
\$75

SMITH, F. HOPKINSON, A. W. C. S.

588. A Passing Shower
\$400

ENGLISH, M. B.

589. Oaks in November
\$50

MASTERS, FRANK B.

590. The Brook, January Morning
\$100

SCHNEIDER, W. G., A. W. C. S.

591. Moonlight

\$75

HOMER, WINSLOW, A. W. C. S.

592. Taking on Provision

\$300

HUNTER, L. C.

593. Roses

\$125

American Water Color Society

1906

ACTIVE MEMBERS

Abbatt, Agnes D.	Earle, L. C.
Abbey, Edwin A.	Eaton, Chas. Warren
Anderson, A. A.	Edwards, Geo. Wharton
Anthony, A. V. S.	
	Fenn, Harry
Beckwith, J. Carroll	Fredericks, Alfred
Blashfield, Edwin H.	Freer, Frederick W.
Bricher, A. T.	
Bridges, Fidelia	Green, Frank Russell
Brown, J. G.	Guerin, Jules
Chapman, Carlton T.	Hamilton, Hamilton
Chase, Wm. M.	Hassam, Childe
Church, F. S.	Hennessy, W. J.
Clinedinst, B. West	Henry, E. L.
Colman, Samuel	Herter, Albert
Cooper, Colin Campbell	Homer, Winslow
Couse, E. Irving	
Crane, Bruce	Jones, Francis C.
Curran, Charles C.	Jones, H. Bolton
De Luce, Percival	Keller, Arthur I.
De Thulstrup, T.	
Dielman, Frederick	LaFarge, John
Drake, W. H.	Lippincott, Wm. H.

Magrath, William
Maynard, George W.
McCord, George H.
Mente, Charles
Metcalf, William L.
Millet, F. D.
Mora, F. Luis
Moran, Leon
Moran, Percy
Moran, Thomas
Moser, James Henry
Muhrmann, Henry
Murphy, J. Francis

Newell, Hugh
Nicoll, J. C.

Ochtman, Leonard

Palmer, Walter L.
Parsons, Charles
Parton, Arthur
Perry, E. Wood
Platt, Charles A.
Post, W. Merritt
Potthast, Edward H.
Pranishnikoff, Ivan P.
Proctor, A. Phimister

Ranger, Henry W.
Rehn, F. K. M.
Robinson, Will S.
Satterlee, Walter

Schilling, Alexander
Schneider, W. G.
Shelton, George F.
Shirlaw, Walter
Shurtleff, R. M.
Smedley, William T
Smillie, George H.
Smillie, James D.
Smillie, N. S. J.
Smith, F. Hopkinson
Smith, Henry P.
Smith, W. Granville
Snell, Henry B.
Stern, Albert
Symington, James

Tiffany, Louis C.
Tryon, D. W.
Turner, A. M.
Turner, C. Y.
Turner, Ross

Walker, Horatio
Waterman, Marcus
Weir, J. Alden
Weldon, C. D.
Whittemore, Wm. J.
Wiggins, Carleton
Wiles, Irving R

Yates, Cullen

Zogbaum, Rufus F.

ASSOCIATE MEMBERS

Nicholls, Rhoda Holmes Sherwood, Rosina Emmet
Scott, Mrs. E. M.

DECEASED MEMBERS

Baldwin, A. H.	Fitz, Benjamin R.
Bellows, A. F.	Fraser, John A.
Blum, Robert	
Bobbet, Albert	Gibson, W. Hamilton
Boughton, Geo. H.	Gifford, R. Swain
Brown, Walter	
Bunner, Andrew F.	Hart, William
Burling, Gilbert	Hind, James F.
	Hovenden, Thomas
Cabot, E. C.	
Champney, J. Wells.	Jones, Alfred C.
Chase, Harry	
Clark, Geo. M.	Kappes, Alfred
Craig, William	
Cranch, Christopher P.	Linton, William J.
Cropsey, Jasper F.	
	McCutcheon, S. G.
Darley, F. O. C.	McDonald, Miss M. J.
De Haas, M. F. H.	McIllhenney, C. Morgan
	Moran, Edward
Eaton, C. Harry	Morgan, Matt.
Eaton, J. O.	
	Perkins, Granville
Falconer, John M.	
Farrer, Henry	Quartley, Arthur
Farrer, T. C.	

Reinhart, Charles S.
Richards, Wm. T.
Robbins, H. W.
Robinson, Theodore
Rondell, Frederick

Sonntag, Wm. L.
Sonntag, W. Louis

Van Elten, Kruseman
Van Ingen, Henry

Scott, William Wallace
Silva, Francis A.
Snell, George

Ward, Charles C.
Weir, Prof. Robert W.
Wyant, Alexander H.

NAMES AND ADDRESSES OF ARTISTS

REPRESENTED IN THE PRESENT EXHIBITION

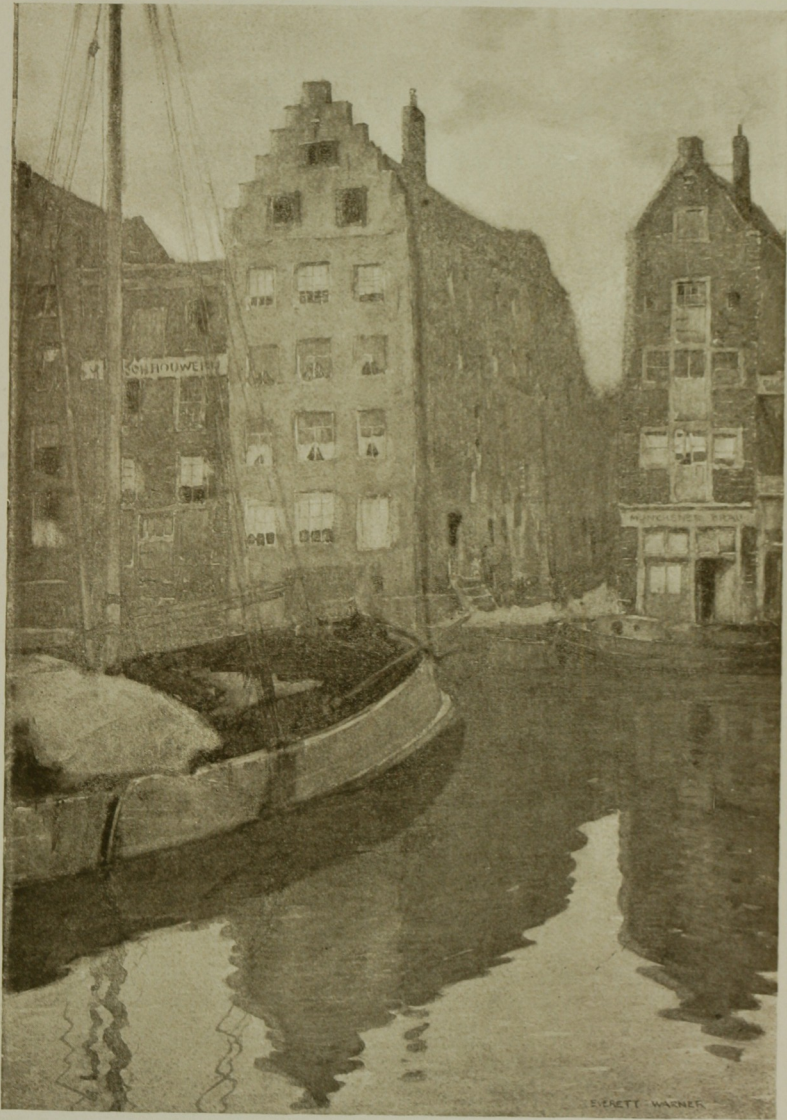
The figures following the addresses refer to the numbers in the Catalogue.

- Abbatt, Agnes Dean, A. W. C. S., Westchester, New York,
244, 252, 255, 257, 259, 263, 265, 267, 316, 453, 526, 572.
Abbey, Edwin A., A. W. C. S., Fairford, England, 280, 281,
313, 346, 504, 506, 508.
Anderson, Karl, 57 East 59th Street, 245, 286, 335, 336, 345, 384.
Annan, A. H., Carnegie Hall, 457.
Arnold, F. McIntosh, 70 Fifth Avenue, 124.
Aronson, Harry H., 241 East 116th Street, 137, 139, 142, 145,
148, 149.
Arthur, Robert, 7 West 43d Street, 7.
Baker, Mrs. Julia E., 345 West 106th Street, 97.
Ballin, Hugo, 146 West 55th Street, 92.
Baumgard, George, 260 West 39th Street, 385, 397.
Bicknell, E. M., 55 West 33d Street, 83.
Bloodgood, Robert F., 55 East 59th Street, 11.
Bogert, Julia, 571 Sterling Place, Brooklyn, 509.
Braley, C. E., 25 N. 2d Street, New Bedford, 70.
Brewster, Mrs. Anna Richards, 628 West 114th Street, 3, 116.
Bricher, A. T., A. W. C. S., 2 West 14th Street, 26, 535, 550,
578, 587.

Bridges, Fidelia, A. W. C. S., Canaan Ct., 426, 431.
 Brownscombe, Jennie, 96 Fifth Avenue, 5.
 Browse, Mabel Elizabeth, 96 Fifth Avenue, 13, 528.
 Bull, Charles Livingston, 867 East 180th Street, 35, 69, 79, 104.
 Burgess, Mrs. Ruth Payne, 323 West 57th Street, 451.
 Burleigh, S. R., Fleur-de-Lys, Providence, R. I., 9.
 Burr, George Elbert, Toms River, N. J., 107.

 Chapman, Carlton T., A. W. C. S., 58 West 57th Street, 18, 419,
 534, 568, 574.
 Chelminski, Jan V., care of The Century Co., 33 East 17th Street,
 289.
 Child, Robert Coleman, 1727 19th Street, Washington, D. C.,
 460.
 Choate, Florence, 1947 Broadway, 297, 298, 312.
 Church, F. S., A. W. C. S., Carnegie Hall, 487.
 Clark, Walter Appleton, 33 West 67th Street, 296, 299, 300,
 301, 302, 303, 304, 306, 308, 309, 310, 361.
 Coffin, William A., 58 West 57th Street, 417.
 Coleman, C. C., care of The Century Co., 33 East 17th Street,
 357.
 Conant, Lucy S., Boston, Mass., 271, 291, 293.
 Cookman, C. E., 146 West 55th Street, 73, 88.
 Cooper, Colin Campbell, A. W. C. S., 58 West 57th Street, 74,
 438, 541, 549.
 de Cordoba, Mathilde, 102 West 84th Street, 51, 341.
 Cornell, Grace, 33 Alsop Street, Jamaica, N. Y., 585.
 Couse, E. Irving, A. W. C. S., 58 West 57th Street, 109, 430, 479.
 Crane, Frederick, 33 West 67th Street, 27.
 Craig, Frank, London, England, 321.

 Dana, Charles E., 2013 DeLancey Place, Philadelphia, 71, 452,
 476.
 Dawson, George Walter, 3903 Sansom Street, Philadelphia, 85,
 253, 561.
 Day, Francis, 27 West 67th Street. 468.
 DeGolier, K. E., 222 West 23d Street, 128.
 de Luce, Percival, A. W. C. S., 114 East 23d Street, 536.
 Derrick, William R., 152 West 57th Street, 123, 577.
 Dewey, Charles Melville, 222 West 23d Street, 86.



No. 558

AMSTERDAM—EVERETT L. WARNER.

Dillaye, Blanche, 10 South 18th Street, Philadelphia, 16.
 Douglas, Walter, 134 West 23d Street, 37, 93, 449, 465.
 Drake, W. H., A. W. C. S., 37 West 22d Street, 435, 439, 477,
 483.
 Dunsmore, John Ward, 96 Fifth Avenue, 105.
 Eaton, Charles Warren, A. W. C. S., 318 West 57th Street, 113,
 122, 456, 458, 461, 474, 510, 543.
 Edwards, George Wharton, A. W. C. S., 86 Trinity Place, 4,
 421, 515, 580.
 English, M. B., 210 Fern Street, Hartford, Ct., 589.
 Este, Florence, 31, 33, 64, 521, 522, 559.
 Eytinge, Sol., 294, 326, 530.
 Faulkner, B., care of M. Knoedler & Co., 355 Fifth Avenue,
 576.
 Faulkner, H. W., 292.
 Feinberg, Alfred, 268 East 10th Street, 360.
 Fenn, Harry, A. W. C. S., 284 Park Street, Upper Montclair,
 N. J., 482, 544.
 Field, E. Loyal, Arkville, N. Y., 90, 575.
 Fisher, Anna, 939 Eighth Avenue, 99.
 Fitler, W. C., 12 East 15th Street, 81, 422.
 Fogarty, Thomas, 38 East 22d Street, 355, 381.
 Fredericks, Alfred, A. W. C. S., 445 Eastern Parkway, Brook-
 lyn, 40.
 Goldthwaite, Anne, 40 West 93d Street, 144, 147, 151, 152.
 Grant, Gordon, 27 West 67th Street, 102.
 Green, Frank Russell, A. W. C. S., 211 West 85th Street, 520.
 Gruppé, C. P., The Hague, Holland, 60, 564.
 Hambridge, Jay, care of The Century Co., 33 East 17th Street,
 290, 344.
 Hardenbergh, Elizabeth, 939 Eighth Avenue, 2.
 Harding, Charlotte, 274.
 Hasler, William N., Caldwell, N. J., 29.
 Hassam, Childe, A. W. C. S., 27 West 67th Street, 372, 409,
 433, 445, 447, 469, 491, 531, 540, 569, 573, 579.
 Hatherell, W., London, England, 319, 320, 323.
 Heil, Charles E., 171 Belgrade Avenue, Roslindale, Mass., 42,
 43, 47, 48, 268, 537.

- Hildebrandt, H. L., 27 West 67th Street, 512.
- Homer, Winslow, A. W. C. S., Scarboro, Me., 442, 542, 592.
- Hulbert, Charles Allen, South Egremont, Mass., 77.
- Hunter, L. C., 58 West 57th Street, 446, 593.
- Hutt, Henry, care of The Century Co., 33 East 17th Street, 272, 351.
- Jacobs, W. L., care of The Century Co., 33 East 17th Street, 258, 262, 279.
- Jones, Francis C., A. W. C. S., 33 West 67th Street, 527.
- Jones, H. Bolton, A. W. C. S., 33 West 67th Street, 498.
- Josephi, I. A., 54 West 39th Street, 39, 118, 454.
- Keller, Arthur I., A. W. C. S., 40 West 130th Street, 366, 367, 368, 369, 370, 371, 373, 374, 375, 376, 399, 494.
- Kennedy, Andrew Dwight, 215 Lafayette Avenue, Brooklyn, 106.
- Ketcham, Susan M., Carnegie Hall, 68.
- King, Paul, 107 East 27th Street, 126, 514.
- Lippincott, William H., A. W. C. S., 7 West 43d Street, 223, 224, 329, 475.
- Little, John Wesley, Picture Rocks, Pa., 17.
- MacLaughlan, D. Shaw, care of F. Keppel & Co., 4 East 39th Street, 179, 180, 182, 183, 185, 186.
- Malone, Blondelle, 1517 East Gervais Street, Columbia, S. C., 45.
- Manley, Thomas, 151 Midland Avenue, Montclair, N. J., 25, 53.
- Marble, J. N., 58 West 57th Street, 109.
- Mars, E., 625 South 7th Street, Springfield, Ill., 348, 354.
- Masters, Frank B., 21 West 24th Street, 590.
- Maynard, George W., A. W. C. S., 156 East 36th Street, 562.
- McCord, George H., A. W. C. S., 114 East 23d Street, 420, 436, 448, 450, 463, 492.
- McLane, M. Jean, care of Scribner's Magazine, 536.
- Mente, Charles, A. W. C. S., Congers, N. Y., 117, 560.
- Mielatz, Charles F. W., 135 East 15th Street, 111, 165 to 178, 181, 187, 403, 405 to 408, 411 to 413.
- Millar, Addison T., 124 West 23d Street, 57, 401, 402, 415, 416.
- Mitchill, Neil, Westport. Ct., 91.
- Mora, F. Luis, A. W. C. S., 142 East 18th Street, 260, 584.
- Moran, E. Percy, A. W. C. S., 331 Lexington Avenue, 89, 432, 444, 481, 539, 566.

- Moran, Leon, A. W. C. S., 34 Grove Street, Plainfield, N. J.,
1, 434, 472, 505.
- Morse, Edward Lind, 2133 R Street, Washington, D. C., 46.
- Moser, James Henry, A. W. C. S., 934 F Street, Washington,
D. C., 36, 273, 473, 503, 511, 513, 516, 524, 563.
- Mucha, Alphonse, 15 East 59th Street, 282, 324, 363, 377.
- Mueden, Mathilde, 913 F Street, Washington, D. C., 519.
- Myer, Marie Shields, 1341 Bedford Avenue, Brooklyn, 21.
- Myrbach, F., care of The Century Co., 33 East 17th Street, 261,
275, 283, 364, 365, 378.
- Needham, Charles Austin, 145 East 23d Street, 100.
- Newell, George Glenn, 58 West 57th Street, 120.
- Newell, Hugh, A. W. C. S., 1415 Centre Street, Wilkinsburg,
Pa., 480, 533, 538.
- Nicholls, Mrs. Rhoda Holmes, A. W. C. S., 913 Seventh Ave-
nue, 30, 96, 110, 471.
- Nicoll, J. C., A. W. C. S., 51 West 10th Street, 523, 551, 557,
565.
- Ochtman, Leonard, A. W. C. S., Carnegie Hall, 571.
- Ogden, Helena Eastman, 939 Eighth Avenue, 359, 380.
- Orange, M., care of The Century Co., 33 East 17th Street, 388.
- Oviate, Anna P., 450 Franklin Avenue, Cleveland, Ohio, 114.
- Palmer, Walter L., A. W. C. S., 5 Lafayette Street, Albany,
N. Y., 58, 525.
- Pape, Eric, care of The Century Co., 33 East 17th Street, 305.
- Peirce, H. Winthrop, East Billerica, Mass., 532.
- Peixotto, E. C., care of Scribner's Magazine, 246.
- Penfield, Edward, care of Scribner's Magazine, 383.
- Penman, Edith, 939 Eighth Avenue, 529.
- Pennell, Joseph, London, England, 191 to 206.
- Petersen, M., 42 West 60th Street, 127.
- Phillips, Harriet S., 96 Fifth Avenue, 404.
- Platt, Alethea Hill, 939 Eight Avenue, 103, 501.
- Post, W. Merritt, A. W. C. S., 27 West 67th Street, 54, 65, 66,
440, 441.
- Potthast, Edward H., A. W. C. S., 318 West 57th Street, 6, 12,
121, 582.
- Redmond, John J., 58 West 57th Street, 555.

Rehn, F. K. M., A. W. C. S., 222 West 23d Street, 28, 63, 425, 496, 552.

Reuterdaahl, Henry, 250, 266, 288, 362, 386, 398.

Ritschel, William, 59 East 59th Street, 548.

Robinson, Alexander, Bruges, 14, 56, 75, 424, 517.

Robinson, William S., A. W. C. S., 202 West 74th Street, 24, 72, 87, 489, 499.

Rossi, Lucius, care of The Century Co., 33 East 17th Street, 379, 396.

Roth, Ernest D., care of C. F. W. Mielatz, 135 East 15th Street, 150, 153, 156, 157.

Rowell, Mrs. Fanny, 96 Fifth Avenue, 570.

Sarka, Charles, care of McClure's Magazine, 307.

Satterlee, Walter, A. W. C. S., 96 Fifth Avenue, 20, 61, 583.

Schetter, Charlotte O., 75 Highland Avenue, Orange, N. J., 382.

Schmitt, Albert Felix, 221 Columbus Avenue, Boston, 34, 67, 269, 488, 502.

Schneider, Arthur, 400 West 23d Street, 556.

Schneider, Otto J., Carnegie Hall, 225, 236 to 242.

Schneider, W. G., A. W. C. S., 107 East 27th Street, 500, 591.

Scholl, Edward, 59 Beaver Street, Brooklyn, 140, 143.

Scott, Anna Page, Cutler Building, Rochester, N. Y., 108.

Scott, Mrs. E. M., A. W. C. S., 142 East 18th Street, 82, 418, 428.

Senseney, George, 58 Richmond Road, Tompkinsville, N. Y., 339, 340, 414.

Shurtleff, R. M., A. W. C. S., 44 West 22d Street, 32, 423, 427.

Sloan, John, 165 West 23d Street, 214, 215, 217 to 221, 328.

Sloan, Marianna, Fort Washington, Pa., 567.

Smedley, W. T., A. W. C. S., Carnegie Hall, 518, 349, 350.

Smillie, George H., A. W. C. S., 156 East 36th Street, 41, 429, 467, 488, 493.

Smillie, James D., A. W. C. S., 156 East 36th Street, 129, 132, 133, 134.

Smillie, N. S. J., A. W. C. S., 156 East 36th Street, 50.

Smith, F. Hopkinson, A. W. C. S., 150 East 34th Street, 443, 464, 490, 495, 588.

Smith, Joseph Lindon, The Ludlow, Boston, 387, 389 to 394.

Smith, W. Granville, A. W. C. S., 96 Fifth Avenue, 8, 254, 586.

Snell, Henry B., A. W. C. S., 37 West 22d Street, 82, 554.



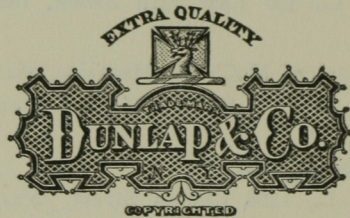
No. 539

TO THE ABSENT ONE

E. PERCY MORAN

- Spong, W. B., Amityville, N. Y., 19.
- Starr, Sidney, 752 West End Avenue, 455.
- Steele, Mrs. Z. DeL., 379 Ocean Avenue, Brooklyn, 15, 95.
- Stephens, Alice Barber, care of McClure's Magazine, 395.
- Stevens, Beatrice, care of Scribner's Magazine, 295.
- Stowell, M. Louise, 714 Insurance Building, Rochester, N. Y., 270.
- Sullivan, E. J., London, England, 322.
- Symington, James, A. W. C. S., 58 West 57th Street, 52, 462, 466, 581.
- Taylor, Walter, care of McClure's Magazine, 278, 284, 285.
- de Thulstrup, T., A. W. C. S., 287 Fourth Avenue, 115.
- Toaspern, O., 19 East 14th Street, 318.
- Trask, Mary C., 139 West 64th Street, 23.
- Triscott, S. P. Rolt, Monhegan, Me., 98.
- Turner, C. Y., A. W. C. S., Carnegie Hall, 553.
- Turner, Ross, A. W. C. S., Boston, 44, 59, 62, 546.
- Van der Veer, Mary, 10 South 18th Street, Philadelphia, 125.
- Van Laer, A. T., 30 East 57th Street, 78, 184, 248, 333, 497.
- Vondrous, John C., 336 East 74th Street, 188, 190, 207, 209, 210, 212, 213.
- Walcott, H. M., care of McClure's Magazine, 264.
- Walker, Horatio, A. W. C. S., care of N. E. Montross, 372 Fifth Avenue, 247, 437.
- Walkley, David, New York, 80.
- Warner, Everett L., 1468 Chapin Street, Washington, D. C., 558.
- Washburn, Cadwallader, care of F. Keppel & Co., 4 East 39th Street, 159 to 164, 189.
- Watkins, May Wilson, care of McClure's Magazine, 352.
- Weill, Edmond, 1132 Hancock Street, Brooklyn, 49.
- Weldon, C. D., A. W. C. S., 51 West 10th Street, 485.
- Wetmore, Mary M., 152 West 57th Street, 112.
- White, Belle Cady, 959 Bedford Avenue, Brooklyn, 459, 507.
- White, Charles Henry, 158 Waverly Place, 155, 208, 211, 216, 222, 226 to 235.
- Whittemore, William J., A. W. C. S., 318 West 57th Street, 10, 470, 487, 484, 545.

Williams, George A., care of The Century Co., 33 East 17th Street, 343.
Williams, J. L. S., 120 East 23d Street, 311.
Williamson, Shirley, 163 West 74th Street, 358.
Wilson, Robert Burns, 38 East 21st Street, 101.
Wolf, Henry, 152 East 86th Street, 330 to 332, 334, 337, 338.
Woodbury, Charles H., 194 Clarendon Street, Boston, 547.
Wright, George, 126 East 23d Street, 249, 287, 342.
Wright, Nellie B., Portville, N. Y., 22.
Wyman, Florence, 360 West 22d Street, 243, 251, 314, 315, 317, 325, 327, 347, 353, 400, 410.
Yale, L. M., 432 Madison Avenue, 130, 131, 135, 136, 154.
Yates, Cullen, A. W. C. S., 939 Eighth Avenue, 38, 76, 94.
Yeto, Genjiro, 6 East 17th Street, 55.
Yohn, F. C., care of Scribner's Magazine, 256, 276, 277.
Zimmerman, Marco, 28 West 118th Street, 138, 141, 146, 158.



CELEBRATED HATS

For Ladies and Gentlemen

—AND—

THE DUNLAP SILK UMBRELLA


178 and 180 Fifth Ave., bet. 22d and 23d Sts.,
567-569½ Fifth Ave. (Windsor Arcade), and
181 Broadway, near Cortlandt St., New York.

Palmer House, Chicago.
914 Chestnut St., Philadelphia.

Accredited Agencies in all Principal Cities of the World.



No. 512 THE GOLDEN WEDDING—ARTHUR I. KELLER, A.W.C.S.



Illustrated Catalogue
of the Fortieth Annual
Exhibition of the
American Water
Color Society



At the American Fine Arts Galleries
Two Fifteen West Fifty-seventh Street New York
From MAY SECOND *to* MAY TWENTY-SIXTH
NINETEEN HUNDRED AND SEVEN

Entered according to the Act of Congress, in the year 1907, by the
AMERICAN WATER COLOR SOCIETY
in the Office of the Librarian of Congress, at Washington, D. C.



Arranged and Printed by
HOLBROOK-SCHAEFER
225 Fourth Avenue N. Y.

OFFICERS

OF THE

American Water Color Society

1906-1907

J. C. NICOLL, *President.*

CARLTON T. CHAPMAN, *Secretary.*

JAMES SYMINGTON, *Treasurer.*

BOARD OF CONTROL.

GEO. WHARTON EDWARDS,

F. LUIS MORA,

E. IRVING COUSE,

ALEXANDER SCHILLING.

JURY OF SELECTION.

E. IRVING COUSE,

CULLEN YATES,

R. M. SHURTLEFF,

W. H. DRAKE,

FRANCIS C. JONES,

CHAS. MENTE,

HENRY B. SNELL,

WM. S. ROBINSON,

WM. T. SMEDLEY,

JULES GUERIN,

CHAS. WARREN EATON,

WALTER SHIRLAW.

HANGING COMMITTEE.

EDWARD H. POTTHAST, W. GRANVILLE SMITH, LEONARD OCHTMAN.

COMMITTEE ON DECORATIONS.

GEO. WHARTON EDWARDS, WM. H. LIPPINCOTT, F. LUIS MORA.

COMMITTEE ON ETCHINGS AND DRAWINGS FOR ILLUSTRATIONS.

EDWARD PENFIELD,

CHAS. F. W. MIELATZ,

CATALOGUE COMMITTEE.

CARLTON T. CHAPMAN, W. H. DRAKE, FRANK RUSSELL GREEN.

Notices

For information in regard to works for sale, inquire at the desk in the gallery.

All payments should be made before the close of the exhibition, to the order of JAMES SYMINGTON, Treasurer.

A. W. C. S. Member of the American Water Color Society.

PRICES INCLUDE FRAMES

To Exhibitors

The Society is indebted to the generosity of Mr. Wm. T. Evans for a prize of \$300.00, the condition being that it shall be awarded by the Jury of Selection for the most meritorious water color in the exhibition painted in this country by an American artist, without limit as to age; the recipient of the prize to be thereafter ineligible.

The prize has been awarded as follows:

1888	Horatio Walker	Evening
1889	Geo. W. Maynard	Sirens
1890	Wm. T. Smedley	Thanksgiving Dinner
1891	A. H. Wyant	An Afternoon Ramble
1892	C. Morgan McIlhenney . .	Old Friends
1893	Sarah C. Sears	Romola
1894	J. Francis Murphy	Under Gray Skies
1895	Walter L. Palmer	Vale of Tawasentha
1896	W. L. Lathrop	Twilight in Connecticut
1897	Irving R. Wiles	The Green Cushion
1898	C. Harry Eaton	The Brook
1899	Albert Herter	The Gift of Roses
1900	B. West Clinedinst	Long Ago
1901	Edward H. Potthast	A Reverie
1902	Arthur I. Keller	The Finishing Touches
1903	Colin Campbell Cooper . .	Sky Scrapers, Broad St., New York
1904	Charles Menté	The Old Mill Dam in Winter
1905	W. Granville Smith	The Bay
1906	H. L. Hildebrandt	Sally

List of Illustrations

NO.	TITLE	ARTIST
512.	The Golden Wedding . . .	Arthur I. Keller, A. W. C. S.
43.	Cloudy Afternoon . . .	Melbourne H. Hardwick
111.	November Evening . . .	Charles P. Gruppé
118.	Christmas Eve . . .	Léon Moran, A. W. C. S.
392.	For Distant Lands . . .	Edward H. Potthast, A. W. C. S.
449.	The Weaver . . .	Emma Lampert Cooper
467.	Aphrodite . . .	Childe Hassam, A. W. C. S.
475.	At a Moorish Fountain . . .	Arthur Schneider, A. W. C. S.
525.	Pan's Pipes . . .	William J. Whittimore, A. W. C. S.





No. 43

CLOUDY AFTERNOON—NORTH SEA
MELBOURNE H. HARDWICK.





STREET SCENE — SAN GIMIGNANO

The American Water Color Society Catalogue

South Gallery

GRANT, GORDON

1. Mischief Afoot
\$250

ROGERS, MARY

2. Evening

NEWELL, HUGH, A. W. C. S.

3. A Friend
\$100

HALLETT, HENDRICKS A.

4. In Ye Olden Time
\$200.

CLARK, ELIOT CANDEE

5. Evening
\$100

REHN, F. K. M., A. W. C. S.

6. The Path of the Moon
\$75

JOSEPHI, I. A.

7. Haying
\$125

MORAN, PERCY, A. W. C. S.

8. Boon Companions

PENMAN, EDITH

9. Daffodils
\$50

NEWELL, G. GLENN

10. Blazing the Way
\$375

BURGY, FRED. S.

11. In the Catskills
\$125

COOKMAN, C. E.

12. A White Azalea
\$75

EATON, CHARLES WARREN, A. W. C. S.

13. Pines at Evening
\$150

BRALEY, CLARENCE E.

14. A Short Street
\$125

CHURBUCK, L. M.

15. Marine
\$60

YETO, GENJIRO

16. Plum Tree and Peasant's Home
\$75

GARRETT, EDMUND H.

17. A Beautiful Tudor House
\$500

PETERSEN, M.

18. Snow
\$75

COPELAND, CHARLES

19. Monarch of the Wilderness
\$150

COLBURN, J. ELLIOTT

20. Afterglow
\$150

SHAW, SYDNEY DALE

21. The Shower's Over
\$100

HAYDOCK, MAY S.

22. Decorative Study, Virginia Creeper
\$50

EATON, CHARLES WARREN, A. W. C. S.

23. November Afternoon
\$250

ZEIGLER, LEE WOODWARD

24. The Last Lover
\$250

PHILLIPS, J. CAMPBELL

25. The New Moon
\$150

HAYDOCK, MAY S.

26. Decorative Study, Chrysanthemums
\$50

SPONG, W. B.

27. Street Scene, Cairo
\$150

ARTHUR, ROBERT

28. The Wave
\$75

HASSAM, CHILDE, A. W. C. S.

29. The Chalk Cliffs of England
\$650

SATTERLEE, WALTER, A. W. C. S.

30. Among the Hollyhocks
\$125

SCHMITT, ALBERT FELIX, A. W. C. S.

31. The Bathers
\$250

COOPER, EMMA LAMPERT

32. Below the Chateau Wall
\$125

HARDWICK, MELBOURNE H.

33. Sorting Fish on the North Sea
\$100

WILLIAMSON, SHIRLEY

34. The Waning of the Year
\$100

SHURTLEFF, R. M., A. W. C. S.

35. Morning
\$375

DERRICK, WILLIAM R.

36. Homeward
\$150

OCHTMAN, MINA FONDA

37. Still Life
\$75

HASLER, WILLIAM N.

38. A Quiet Harbor
\$125

GARRETT, EDMUND H.

39. Berkeley Castle
\$200

HULBERT, KATHERINE ALLMOND

40. The Old Willow Tree
\$125

COOPER, COLIN CAMPBELL, A. W. C. S.

41. Fifth Avenue and Fifty-ninth Street,
New York
\$175

BLOODGOOD, ROBERT F.

42. A Flirtation at the Zoo
\$80

HARDWICK, MELBOURNE H.

43. Cloudy Afternoon, North Sea
\$125

HALLETT, HENDRICKS A.

44. Winter Morning
\$60

STARR, SIDNEY

45. Sweet Peas
\$50

NEEDHAM, CHARLES AUSTIN

46. Gate of Twilight

REDMOND, JOHN J.

47. After the Housework Is Done
\$50

- GREEN, FRANK RUSSELL, A. W. C. S.
48. Cheese Market, Alkmaar, Holland
\$500
- COLLIER, C. MYLES
49. Stranded
\$150
- BRIDGES, FIDELIA, A. W. C. S.
50. Spring
\$70
- HUNTER, LIZBETH C.
51. An Old Street
\$50
- SATTERLEE, WALTER, A. W. C. S.
52. Psyche
\$225
- OWEN, ESTHER, S. D.
53. The Huckleberry Pasture
\$75
- ROBINSON, FLORENCE
54. St. Germain de l'Auxerois, Paris
\$150
- MIELATZ, CHARLES F. W.
55. Captiva Pass
\$300
- BRICHER, A. T., A. W. C. S.
56. The Pirate's Cove, Bailey's Island
\$100
- ARTHUR, ROBERT
57. Afternoon
\$75

NICOLL, J. C., A. W. C. S.

58. Morning
\$125

GARRETT, EDMUND H.

59. Venice
\$175

ROBINSON, ALEXANDER, A. W. C. S. (Elect)

60. Low Tide, Flemish Fishing Boats
\$250

DAY, FRANCIS

61. The Blue Ribbon
\$350

SMITH, F. HOPKINSON, A. W. C. S.

62. Out of the Wet
\$350

MORSE, EDWARD L.

63. A Virginia Hillside
\$100

FENN, HARRY, A. W. C. S.

64. Market Place, Vittoria
\$150

BREWSTER, ANNA RICHARDS

65. A Wood Road
\$125

GAY, EDWARD

66. Ready for the Reapers

SYMINGTON, JAMES, A. W. C. S.

67. Sketch
\$75

ROBINSON, ALEXANDER, A. W. C. S. (Elect)
68. The Gay Colored Boats by the Mer-
gellina (Naples)
\$140

CUSHMAN, ALICE
69. Driving Wind
\$50

ROBINSON, ALEXANDER, A. W. C. S. (Elect)
70. Bruges, Autumn Evening
\$175

BICKNELL, FRANK A.
71. Poplars, Morning
\$200

EATON, CHARLES WARREN, A. W. C. S.
72. Burnham Beeches
\$125

SARTAIN, HARRIET
73. Midsummer Reflections
\$110

DUNSMORE, JOHN WARD
74. Reminiscence
\$350

DOUGLAS, WALTER
75. On His Own Hill
\$125

HUNTER, LIZBETH C.
76. Convent Court
\$150

NEWELL, G. GLENN
77. Alone in the World
\$175

- RITSCHER, WILLIAM
78. On the Beach of Katwijk
\$200
- REDMOND, JOHN J.
79. The Yungfrau
\$150
- SCHNEIDER, ARTHUR, A. W. C. S.
80. A Street in Fez
- FRY, GEORGIA TIMKEN
81. Gathering Seaweed.
\$125
- BROWN, J. G., A. W. C. S.
82. The Confab
\$400
- FITLER, W. C.
83. Twilight
\$115
- HASLER, WILLIAM N.
84. The Hillside
\$125
- FISHER, ANNA
85. Low Tide
\$100
- NICHOLLS, RHODA HOLMES, A. W. C. S.
86. Sunset on the Harbor
\$125
- YETO, GENJIRO
87. A Rainy Day, Nikko
\$75

- COOPER, COLIN CAMPBELL, A. W. C. S.
88. Interior of a Church at Rotterdam
\$60
- SNELL, FLORENCE FRANCIS
89. Cliff and Pier in Sunshine
\$50
- POST, W. MERRITT, A. W. C. S.
90. Windy Weather
\$45
- TURNER, C. Y., A. W. C. S.
91. The Miniature
\$500
- WILLIAMSON, SHIRLEY
92. The Incoming Tide
\$100
- MATHEWSON, FRANK C.
93. The Kobohlzellerthor, Rothenburg
\$125
- WARNER, EVERETT L.
94. In the Italian Quarter
\$65
- MATHEWSON, FRANK C.
95. Eglise St. Julien le Pauvre, Paris
\$50
- POST, W. MERRITT, A. W. C. S.
96. Late Afternoon, Gray Day
\$45
- WARNER, EVERETT L.
97. The Shop by the Water's Edge
\$175

- MORAN, PERCY, A. W. C. S.
98. The Stirrup Cup
- LANG, ANNIE TRAQUAIR
99. Approaching Storm
\$120
- POTTHAST, EDWARD H., A. W. C. S.
100. Autumn Tints
\$200
- SCHILLE, ALICE
101. Nico
\$100
- ROBINSON, FLORENCE
102. Old Court in Provence
\$100
- ROBINSON, ALEXANDER, A. W. C. S. (Elect)
103. The Stable, Old Flanders
\$125
- JONES, VILLA
104. Red Roses
\$50
- BALLIN HUGO
105. A Pastoral
\$1,000
- WHITE, BELLE CADY
106. Still Life
\$80
- BURLEIGH, S. R.
107. Nightfall in Donegal
\$200

BLOODGOOD, ROBERT F.

108. The Green Jug
\$60

HARDENBERGH, ELIZABETH

109. Pansies
\$50

O'KELLY, ALOYSIUS

110. A Canal Driver and Donkey Boy, Cairo
\$150

GRUPPE, CHARLES P.

111. November Evening
\$300

ARTHUR, ROBERT

112. Toward Evening
\$250

O'KELLY, ALOYSIUS

113. Doorway of a Mosque
\$100

HIRST, CLAUDE RAGUET

114. Paul and Virginia, 1796
\$125

MORAN, PERCY, A. W. C. S.

115. An Old-time Melody

MORAN, LEON, A. W. C. S.

116. Gladys
\$50

PALMER, WALTER L., A. W. C. S.

117. The Last Rays
\$200

- MORAN, LEON, A. W. C. S.
118. Christmas Eve
\$150
119. Peggy
\$50
- MORAN, PERCY, A. W. C. S.
120. On a Venetian Lagoon
- MORAN, LEON, A. W. C. S.
121. Sylvia.
\$75
- SMILLIE, N. S. J., A. W. C. S.
122. The First Snow Flurry
\$50
- COOPER, COLIN CAMPBELL, A. W. C. S.
123. At Beaupré, Canada
\$60
- SONN, ALBERT H.
124. A Brown Study
- FITLER, W. C.
125. Autumn
\$55
- SMITH, F. HOPKINSON, A. W. C. S.
126. A Venetian Cab Stand
\$350
- POTTHAST, EDWARD H., A. W. C. S.
127. The Beach, Watch Hill
\$300
- TITCOMB, M. BRADISH
128. Landscape at Lyme
\$50

COLT, MORGAN

129. The Catskills

BICKNELL, E. M.

130. On the Beach
\$125

ANNAN, A. H.

131. Late October
\$50

POST, W. MERRITT, A. W. C. S.

132. A Winter Day
\$200

PETERSEN, M.

133. Winter
\$150

COLLIER, C. MYLES

134. A Toiler
\$75

RION, HANNA

135. The Autumn Brigade
\$100

COUSE, E. IRVING, A. W. C. S.

136. The White Aspens
\$300

SPAFARD, MYRA B.

137. Petunias
\$50

GRISWOLD, CELESTE

138. The Understudy
\$60



CHRISTMAS EVE—LÉON MORAN, A.W.C.S.

NEWELL, HUGH, A. W. C. S.

139. Gathering Apples
\$100

TITCOMB, M. BRADISH

140. A Corner of the Village, Gloucester
\$50

COX, HELEN MORTON

141. Phlox
\$50

HILDEBRANDT, H. L., A. W. C. S.

142. Mending the Nets
\$200

TAKACH, BELA DE

143. South-head Lighthouse, Grand Manan
\$75

Central Gallery

ETCHINGS

HILDER, G. HOWARD

144. Study
\$15

145. Study of Old Man
\$15

146. Girl Sailing
\$15

OLSON-NORDFELDT, BROR J.

147. North River
\$15

CLIREHUGH, A. LaV.

148. Study

MEDAY, H. AUGUSTA

149. Study of Gypsy Girl

HILDER, G. HOWARD

150. Peasant
\$15

ROTH, ERNEST D.

151. Old Houses on the Arno
\$12

152. The Passage
\$12

ROSS, ERNEST D.

- 153. Ponte Vecchio
\$14
- 154. Reflections
\$12
- 155. The Gate
\$12
- 156. An Arcaded Street
\$12
- 157. The Wooden Bridge, Venice
\$12

MYGATT, R. K.

- 158. A Sandy Road
- 159. Sunset
- 160. Among the Dunes
- 161. The River from My Window
- 162. The Road in the Woods
- 163. Autumn Woods
- 164. Salt Meadows
- 165. The Squall
- 166. Evening

MANLEY, THOMAS R.

- 167. November
\$15

WARNER, EVERETT L.

- 168. Old Mills at Montreuil
\$10
- 169. The Cavée St. Firmin
\$10

MANLEY, THOMAS R.

- 170. The Clump of Locusts
\$15
- 171. The Passaic from Kearney Bridge
\$15

WARNER, EVERETT L.

- 172. Outside the Porte de Boulogne, Mon-
treuil-sur-Mer
\$8

MANLEY, THOMAS R.

- 173. The Sandy Road
\$15

BLUM, A. ALADAR

- 174. The Ghetto
\$10.

HUNT, LEIGH

- 175. Edge of the Woods
\$10

PENNELL, JOSEPH

- 176. No. 230 Strand
\$14
- 177. The Haymarket Theatre
\$14
- 178. Waterloo Bridge and Somerset House
\$14
- 179. Hall Door, Lincoln Inn
\$14
- 180. St. John's Gate, Clerkenwell
\$14
- 181. St. Paul's, London
\$14

PENNELL, JOSEPH

- 182. Tower Bridge, London
\$14
- 183. The House where Whistler died
\$14
- 184. St. Bartholomew's Gate
\$14
- 185. Old Court, Lincoln
\$14
- 186. Classic London
\$14
- 187. Great Cranes, South Kensington
\$14
- 188. Exeter Hall
\$14

HUNT, LEIGH

- 189. Dobbs' Ferry
\$10

WARNER, EVERETT L.

- 190. Notre Dame from the Tour Dagobert
\$10

WRIGHT, JOHN

- 191. A Yorkshire Beck
\$10

HUNT, LEIGH

- 192. A Flemish Farm
\$15

WRIGHT, JOHN

- 193. Sheep Under a Tree
\$10

HUNT, LEIGH

194. Sunset
\$10

MIELATZ, CHARLES F. W.

195. On the Beach at Scheveningen
(Dry Point, after Otto Wolff)
\$25
196. A Long Island Woodpath
(Dry Point)
\$25
197. Old Mill, Block Island
\$25
198. The Lock, Mott Haven
\$20
199. The Battery, New York
\$20
200. Trout Pond, Moorsfield
(Dry Point)
\$25
201. Coenties Slip
\$30
202. Poe's Cottage
(Finished State)
\$60
203. Kingsbridge on the Harlem
\$20
204. Grand Central Station at Night
\$20
205. Rainy Night, Madison Square
\$20
206. The Tombs
\$25

MIELATZ, CHARLES F. W.

207. Road to the Bay
\$20
208. Still Life
(On Zinc)
\$20
209. Roses
(Dry Point)
\$50
210. Winter in Narragansett
\$15
211. Near the Nets, Newport Harbor
\$20

VONDROUS, JOHN C.

212. Manta Wharf, Provincetown
\$12
213. Wash-lines
\$12
214. Shipyard
\$12

VANDERHOOF, CHARLES A.

215. Westward Ho!
\$12
216. A Water-fowl
\$12
217. The First Snow
\$8
218. Afternoon
\$18
219. Moonrise
\$15

ROTH, ERNEST D.

220. Ponte di Rialto
\$12

VANDERHOOF, CHARLES A.

221. The Passing Storm
\$12
222. The Fish Hawk's Nest
\$12

WHITE, CHARLES HENRY

223. A Bit of Mount Vernon Street
\$20

MILLAR, ADDISON T.

224. Winter Evening, Laren
\$30
225. Dock Street
\$15
226. Riverside Park
\$20
227. St. James
\$20
228. The Old Portico
\$20
229. Belle Isle
\$20
230. Brimstone Corner
\$20

WINSLOW, HENRY

231. Through the Bridge
\$20

WHITE, CHARLES HENRY

- 232. Old Richmond
\$15
- 233. Boston Slums
\$20
- 234. Tea Wharf
\$20
- 235. The Condemned Tenement
\$15

WINSLOW, HENRY

- 236. The Northwest Wind
\$25
- 237. The Trestle
\$25
- 238. The Loafers
\$25

Cast Gallery

DRAWINGS FOR ILLUSTRATION

IN BLACK AND WHITE, AND COLOR

PENFIELD, EDWARD, A. W. C. S.

239. Heading
Loaned by Charles Scribner's Sons

KIMBALL, ALONZO

240. Lucy of the Stairs
Loaned by Charles Scribner's Sons

PENFIELD, EDWARD, A. W. C. S.

241. Spanish Wine Shop
Loaned by Charles Scribner's Sons

FROST, A. B.

242. Illustration

KNIGHT, CHARLES

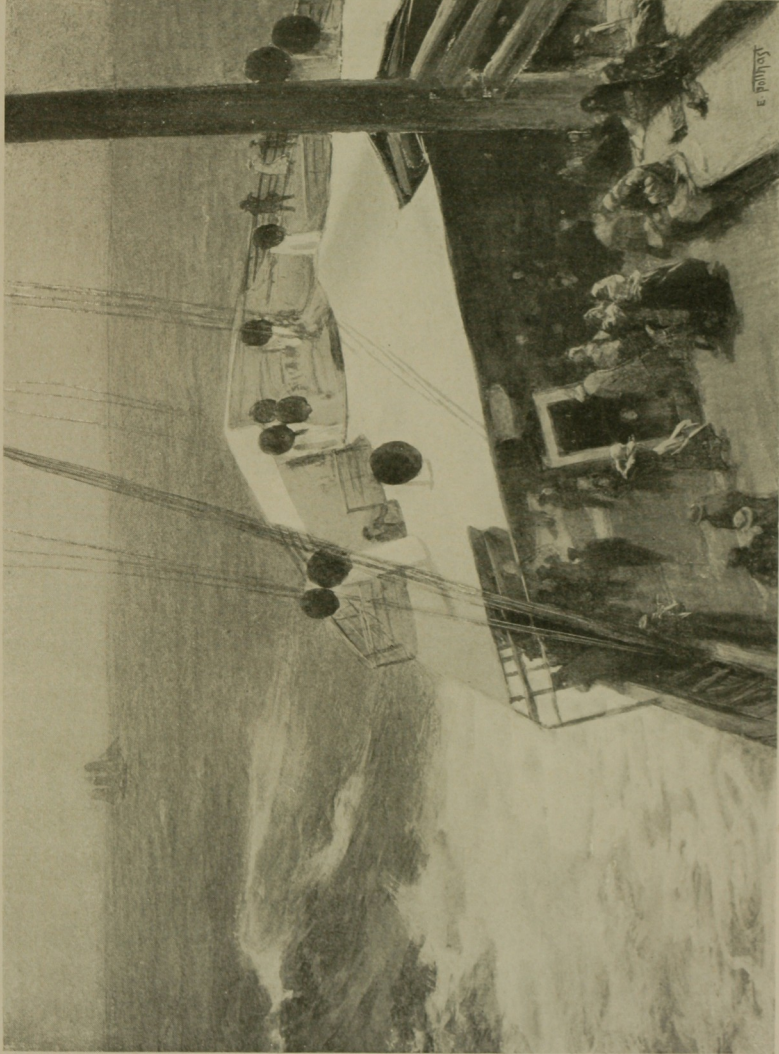
243. Bermuda Fish
\$200

SHINN, EVERETT

244. Madison Square
Loaned by Charles Scribner's Sons

HUTT, HENRY

245. The Custom of the Captain



No. 392

FOR DISTANT LANDS—EDWARD H. P. POTTHAST, A.W.C.S.

PEIXOTTO, ERNEST C.

246. Sketches in Sicily
\$200

SMITH, JESSIE WILCOX

247. Illustration

DEREMEAUX, IRMA

248. The Burial of the Guns
Loaned by Charles Scribner's Sons

MASTERS, FRANK B.

249. Little Millions
Loaned by Charles Scribner's Sons

SCHULMAN, A. G.

250. Sunlight in the Forest
\$125

FROST, A. B.

251. Illustration

KELLER, ARTHUR I., A. W. C. S.

252. An Illustration
\$75

253. An Illustration
\$75

254. "Well, How Many of You Are Married?"

255. George Washington's last Birthday

REUTERDAHL, HENRY

256. Illustration to a Russian Sea Story

SCHULMAN, A. G.

257. A Clump of Cedars
\$100

SMEDLEY, WILLIAM T., A. W. C. S.

258. Illustration
Loaned by Harper Brothers

OSTERTAG, B.

259. Guy of Warwick
Loaned by Doubleday,, Page & Com-
pany

FLAGG, JAMES MONTGOMERY

260. A Little Canal

CHURBUCK, L. M.

261. Fishing Hamlet, Cape Ann
\$50

DUNCAN, WALTER JACK

262. North River
\$300

ABBAY, EDWIN A., A. W. C. S.

263. The Funeral of Henry V. Enter a
Messenger
Loaned by Harper Brothers
264. Hamlet. The Churchyard
Loaned by Harper Brothers
265. Hamlet. "Now might I do it pat,
now he is praying."
Loaned by Harper Brothers

HOWELLS, MILDRED

266. Birds of a Feather

ABBAY, EDWIN A., A. W. C. S.

267. Emilia and Desdemona
Loaned by Harper Brothers
268. La Pucelle
Loaned by Harper Brothers

DUNCAN, WALTER JACK

269. Grand Central Yards
\$300

PEIXOTTO, ERNEST C.

270. In the Souks, Tunis
\$100

DUNCAN, WALTER JACK

271. Washington Square
\$300

RUSH, OLIVE

272. The Spirit of Christmas

STEELE, FREDERIC DORR

273. An East Side Politician
\$75

CHOATE, FLORENCE

274. "Could I love her if she were my child?"

FLAGG, JAMES MONTGOMERY

275. "An' George says to me, he says,"
\$150

RUSH, OLIVE

276. The Lullaby Mother, Night
Loaned by the Butterick Publishing
Company, Limited

STEELE, FREDERIC DORR

277. A Comforter
\$75

CHOATE, FLORENCE

278. Portrait Sketch

CRAIG, FRANK

279. Girl in White
Loaned by Harper Brothers
280. Three Illustrations for Hennebout and
the Fleet
Loaned by Charles Scribner's Sons
281. Shooting the Ghost
Loaned by Collier's Weekly
282. Illustration
Loaned by Harper Brothers

STEELE, FREDERIC DORR

283. Letitia, U. S. A.
\$75

SCHETTER, C. O.

284. A Portuguese Girl
\$16

STEELE, FREDERIC DORR

285. Sherlock Holmes
Loaned by Collier's Weekly

RUSH, OLIVE

286. The Lullaby Mother, Day
Loaned by the Butterick Publishing
Company, Limited

WILLIAMS, GEORGE ALFRED

287. Scrooge and Marley's Ghost
\$100

BLUM, R.

288. A Little Clay Backyard
Loaned by Charles Scribner's Sons

DUNCAN, WALTER JACK

289. Snowy Weather

Loaned by Charles Scribner's Sons

PERCY, ISABELLE C.

290. A Street in Bruges

\$50

LABOURER, J. E.

291. The Three Wise Men

\$12

DUNCAN, WALTER JACK

292. Madison Square

Loaned by Charles Scribner's Sons

NORDFELDT, B. J. OLSSON

293. Pussy Willows

\$10

WILLIAMS, GEORGE ALFRED

294. The Source

\$300

BRADLEY, WILL H.

295. 296. Two Decorations

Loaned by Collier's Weekly

MACAULEY, ELLEN

297. Problème, ou Ballade de la Fortune.
Villon

\$60

WOODRUFF, JOHN KELLOGG

298. "Little Venice"

\$60

MACAULEY, ELLEN

299. Problème, ou Ballade de la Fortune.
Villon

\$60

LABOURER, J. E.

300. Le Quartier Neuf
\$20

MACAULEY, ELLEN

301. Problème ou Ballade de la Fortune.
Villon
\$60

LABOURER,, J. E.

302. Jeune Homme a la Rose
\$12

West Gallery

DRAWINGS FOR ILLUSTRATION

IN BLACK AND WHITE, AND COLOR

BULL, CHARLES LIVINGSTON

303. The White Wanderer
\$175

GALLATIN, ALBERT

304. St. Patrick's Cathedral

SHELDON, RUFUS

(Monotypes)

305. A Pine
\$50
306. In the Woods
307. Old Mill
\$100
308. At Canaan
\$100
309. Monotype
\$100
310. Near Auburn
311. An Impression

SARKA, CHARLES

312. In Nuanu Valley
\$60
313. Tahiti Wahine
\$60

GOODWIN, PHILIP R.

314. Caribou
\$50

HAMBRIDGE, JAY

315. The Sick Child
Loaned by The Century Company

HARTING, GEORGE W.

316. Resting

FLAGG, JAMES MONTGOMERY

317. Portrait of Mr. Clausen Primm

SARKA, CHARLES

318. Hawaian Idyl
\$100

WRIGHT, GEORGE

319. Against Order

HANNA, T. K.

320. Fata Morgana
Loaned by Charles Scribner's Sons

SMEDLEY, WILLIAM T., A. W. C. S.

321. Leaving for the City
Loaned by Collier's Weekly

WOODING, J. J.

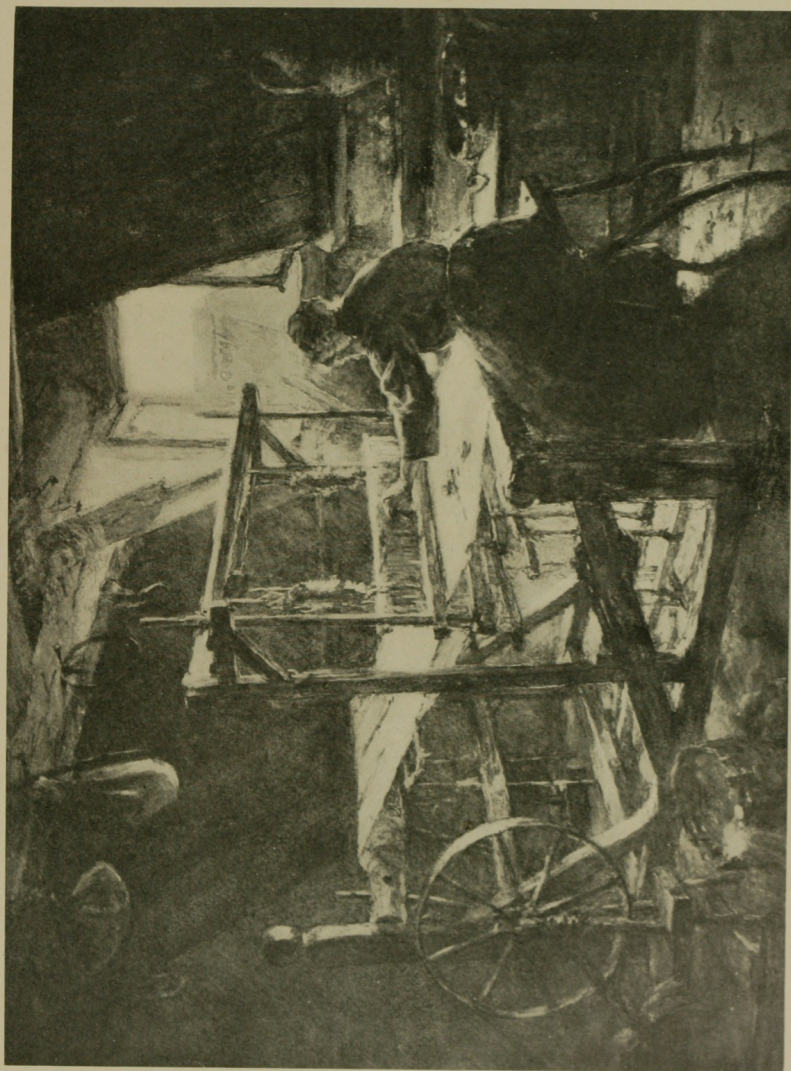
322. Old Cherry Tree
\$60

PYLE, HOWARD

323. Fishing of Thor and the Giant

MUCHA, ALPHONSE

324. Girl with Flowers
\$300



No. 449

THE WEAVER—EMMA LAMPERT COOPER.

REUTERDAHL, HENRY

325. A Day with the Admiral
Loaned by Collier's Weekly

HARTING, GEORGE W.

326. An Old Studio

COMINS, EBEN F.

327. A Symphony Motive, Borghese Pines
\$150

WALKER, M. MULFORD

328. A Study
\$50

BULL, CHARLES LIVINGSTON

329. Decorative Panel, Peacock
\$200

SARKA, CHARLES

330. Illustration
Loaned by Harper Brothers

REUTERDAHL, HENRY

331. Illustration to a Russian Sea Story

SMEDLEY, WILLIAM T., A. W. C. S.

332. The Meeting
Loaned by Harper Brothers

REUTERDAHL, HENRY

333. A Page of Naval Humor
\$75

JACOBS, W. L.

334. Captured Santa Claus
Loaned by Charles Scribner's Sons

LANGTRY, MARY

335. The Sun falls low
\$50

KNIGHT, CHARLES R.

336. Red Stag
\$150

GUERIN, JULES, A. W. C. S.

337. Telegraph Hill
Loaned by Collier's Weekly

HAYDOCK, MAY S.

338. Decorative Study, Sumach
\$50

MUCHA, ALPHONSE

339. Beatitudes
\$5,000

STEVENS, BEATRICE

340. "Yet if His Majesty"
341. Magazine Cover
342. Design

LEYNDECKER, FRANK X.

343. The Orchard
Loaned by Collier's Weekly

PETERSEN, M.

344. Chinese
\$50

LANGTRY, MARY

345. The Poplars
Loaned by Mr. Arthur Wesley Dow
346. Summer, "The year's glad noon"
\$50

KNIGHT, CHARLES R.

347. Elephant
\$100

MASTERS, FRANK B.

348. The Terror on the Boiling Water
Loaned by Charles Scribner's Sons

OTIS, AMY

349. Sketch of Mr. Orlando Rouland

HAYDOCK, MAY S.

350. Decorative Study, Wood Lilies
\$50

KOBBE, M. O.

351. Hetty

HAYDOCK, MAY S.

352. Decorative Study, Huckleberries
\$50

KOBBE, M. O.

353. Malcolm

SONN, ALBERT H.

354. Friend Sano
\$100

SENSENEY, GEORGE

- (Etching in Color)
355. Vista Moon
\$12

CHOATE, FLORENCE

356. Miss S.

SENSENEY, GEORGE

(Etchings in Color)

357. Hauling up the Boat
\$35
358. On the Severn
\$18
359. Cedars
\$12

CHOATE, FLORENCE

360. Helen
Loaned by Mr. J. Taylor

BECKWITH, J. CARROLL, A. W. C. S.

361. Study of a Head

SENSENEY, GEORGE

(Etching in Color)

362. Evening in Normandy
\$18

WILLIAMS, GEORGE ALFRED

363. Gabriel Grub
\$150

NORDFELDT, B. J. OLSSON

364. The Fishermen
\$10

BECKWITH, J. CARROLL, A. W. C. S.

365. Girl Reading

TANNAHILL, MARY H.

366. Colored Drawing of Mr. W. K.

PRESTON, MAY WILSON

367. Illustration
Loaned by Charles Scribner's Sons

PRESTON, JAMES

- 368. Munich
\$50
- 369. Paris
\$50
- 370. Montmartre
\$50
- 371. A Street in Paris
\$50

WOLF, HENRY

- 372. Joseph Jefferson as Dr. Pangloss, after
Sargent

BECKWITH, J. CARROLL, A. W. C. S.

- 373. Nymph

WOLF, HENRY

- 374. Miss Alexander, after Whistler
\$21
- 375. The Evening Star
Original Engraving
\$18

PRESTON, MAY WILSON

- 376. Illustration
Loaned by Charles Scribner's Sons

WOLF, HENRY

- 377. Through the Looking Glass
After J. Alden Weir

BECKWITH, J. CARROLL, A. W. C. S.

- 378. Lady Decolleté

PRESTON, JAMES

379. Paris
\$50

380. Munich
\$50

SONN, ALBERT H.

381. "Old Gardner"
\$75

PRESTON, MAY WILSON

382. Illustration
Loaned by Charles Scribner's Sons

PRESTON, JAMES

383. Old Munich
\$50

Vanderbilt Gallery

GAY, EDWARD

384. The Evening Hour

MANLEY, THOMAS R.

385. Otsego Hills
\$100

NEEDHAM, CHARLES AUSTIN

386. The Plagal Chord
\$350

SARTAIN, HARRIET

387. Venetian Days
\$50

OCHTMAN, MINA FONDA

388. A Cosy Corner
\$100

BUNNER, RUDOLPH K.

389. Jack o' Lantern's Home
\$50

EATON, CHARLES WARREN, A. W. C. S.

390. The Pine Grove
\$150

SMILLIE, GEORGE H., A. W. C. S.

391. Old Inn, Goring-on-Thames
\$60

- POTTHAST, EDWARD H., A. W. C. S.
392. For Distant Lands
\$300
- AETON, CHARLES WARREN, A. W. C. S.
393. Evening, Belgium
\$200
- EATON, CHARLES WARREN, A. W. C. S.
394. The Wood Road
\$150
- SMILLIE, GEORGE H., A. W. C. S.
395. Old Houses at Baveno, Lake Maggiore
\$60
- MORA, F. LUIS, A. W. C. S.
396. Before the Bull Fight
\$500
- BICKNELL, E. M.
397. Dordrecht
\$125
- MASON, MAUD M.
398. Road in Brittany
\$75
- ROBINSON, WILLIAM S., A. W. C. S.
399. On the Canal
\$60
- CLINEDINST, B. WEST, A. W. C. S.
400. The Old Homestead
\$175
- BICKNELL, FRANK A.
401. The Loing at Moret
\$150



No. 467

APHRODITE—CHILDE HASSAM, A.W.C.S.

SMILLIE, GEORGE H., A. W. C. S.

402. At Bushey, England
\$60

HASSAM, CHILDE, A. W. C. S.

403. McTaggart's Field
\$350

NEEDHAM, CHARLES AUSTIN

404. Wings of Night Folding
\$150

FIELD, A. LOYAL

405. A September Day
\$300

LANGTRY, MARY

406. "The Shadows of the waning day come
on"
\$50

MILLAR, ADDISON T.

407. An Arab Street, Algiers
\$75

THULSTRUP, T. de, A. W. C. S.

408. A Disputed Hand
\$250

HAITE, GEORGE C.

409. Cottage in Hampshire
\$150

NEEDHAM, CHARLES AUSTIN

410. Hills of Gold
\$150

ANNAN, A. H.

411. Chrysanthemums

- WILLIAMSON, H. G.
412. View of Zieripzee
\$100
- BROWN, J. G., A. W. C. S.
413. See-saw
\$400
- COLT, MORGAN
414. Low Water
\$75
- SHURTLEFF, R. M., A. W. C. S.
415. The Heart of the Woods
\$250
- BRICHER, A. T., A. W. C. S.
416. Mackerel Cove, Bailey's Island
\$100
- EDWARDS, GEORGE WHARTON, A. W. C. S.
417. Fisherman (Sketch)
\$100
- SHURTLEFF, R. M., A. W. C. S.
418. A Summer Day on Lake Champlain
\$375
- SMILLIE, GEORGE H., A. W. C. S.
419. Lake Garda, near Riva, Austria
\$125
- SYMINGTON, JAMES, A. W. C. S.
420. Hattie
\$75
- BEAL, REYNOLDS
421. Shipbuilding
\$300

BRIDGES, FIDELIA, A. W. C. S.

422. Near the Sea
\$150

ROBINSON, ALEXANDER, A. W. C. S. (Elect)

423. Little Mothers of Volendam
\$400

BEAL, REYNOLDS

424. Cape Neddick
\$300

MATHEWSON, FRANK C.

425. Chrysanthemums
\$150

BRICHER, A. T., A. W. C. S.

426. Gathering Storm
\$100

ROBINSON, ALEXANDER, A. W. C. S. (Elect)

427. Gossip
\$350

HORE, ETHEL

428. Sketch
\$50

ROBINSON, WILLIAM S., A. W. C. S.

429. The Boat Landing
\$100

CRANE, FREDERICK

430. Drifting Mists
\$150

LAUBER, JOSEPH

431. Sketch of the Transfiguration

VER BECK, FRANK

432. An Omelette
\$150

PARTON, ARTHUR, A. W. C. S.

433. The Bed of a Brook
\$100

BEMENT, ALON

434. Study in Gray, France
\$100

BRICHER, A. T., A. W. C. S.

435. The Firs, Bailey's Island
\$100

PLATT, ALETHEA HILL

436. Nearly Tea Time
\$150

HART, HARRIET LOUISE

437. Roses and Fan
\$50

CLARK, ELIOT CANDEE

438. Twilight
\$125

HAWKINS, HELEN H.

439. The Pond
\$85

PARRISH, CLARA WEAVER

440. A Festival
\$100

SYMINGTON, JAMES, A. W. C. S.

441. Jessie
\$75

LIPPINCOTT, WILLIAM H., A. W. C. S.

442. Nature's Pathway
\$700

HILDEBRANDT, H. L., A. W. C. S.

443. Loading the Nets
\$200

MUCHA, ALPHONSE M.

444. Indian Girl
\$500

NEWELL, HUGH, A. W. C. S.

445. His Earnings
\$100

HASSAM, CHILDE, A. W. C. S.

446. Katydid Lane
\$250

BEMENT, ALON

447. Nocturne, France
\$75

WILKINSON, R.

448. Under the Skylight

COOPER, EMMA LAMPERT

449. The Weaver, Near Quebec
\$250

GRANT, GORDON

450. The Prodigal
\$200

HENOCH, S. STELLA

451. Still Life and Flowers
\$50

WHITE, BELLE CADY

452. The Blue Vase
\$50

ROBINSON, WILLIAM S., A. W. C. S.

453. On the Beach
\$100

DEMING, ADELAIDE

454. A Row of Trees
\$100

MENTE, CHARLES, A. W. C. S.

455. The Oak
\$85

HARDENBERGH, ELIZABETH

456. Phlox
\$50

CHURCH, F. S., A. W. C. S.

457. The Love Letter
\$200

VAN LAER, A. T., A. W. C. S.

458. The Meadow
\$80

DRAKE, W. H., A. W. C. S.

459. The Lion's Lair
\$350

BROWN, CARROLL BUTLER

460. Iris Pond, Nantucket
\$125

MORA, F. LUIS, A. W. C. S.

461. The Passing of a Landmark
\$500

ENGLISH, M. B.

462. Gull Rock
\$50

VAN LAER, A. T., A. W. C. S.

463. After an April Snow Storm
\$125

HORE, ETHEL

464. Roses
\$50

REHN, F. K. M., A. W. C. S.

465. Land's End, Cape Ann
\$150

DERRICK, WILLIAM R.

466. Early Spring
\$150

HASSAM, CHILDE, A. W. C. S.

467. Aphrodite
\$1,500

SCOTT, MRS. E. M., A. W. C. S.

468. Damask Roses
\$60

EDWARDS, GEORGE WHARTON, A. W. C. S.

469. Monhegan, Early Morning
\$350

EDWARDS, GEORGE WHARTON, A. W. C. S.

470. Edge of the Village, Nightfall
\$250

YATES, CULLEN, A. W. C. S.

471. The Pond
\$150

HAYDOCK, MAY S.

472. Marigolds
\$100

SMITH, F. HOPKINSON, A. W. C. S.

473. Old Groote Kirk
\$450

WIGGINS, GUY C.

474. Squally Weather
\$50

SCHNEIDER, ARTHUR, A. W. C. S.

475. At a Moorish Fountain
\$300

MASON, M. M.

476. French Peasant Women
\$75

SMITH, W. GRANVILLE, A. W. C. S.

477. Bellport
\$350

GARRETT, EDMUND H.

478. Clevedon Court
\$200

TURNER, C. Y., A. W. C. S.

479. Beatrice
\$500

HULBERT, KATHERINE ALLMOND

480. December Evening
\$50

COOPER, COLIN CAMPBELL, A. W. C. S.

481. Venice
\$125

RAU, WILLIAM

482. The Cedar Wood Road
\$75

LAUBER, JOSEPH

483. Spring

PURSSELL, MARIE LOUISE

484. Killarney Roses
\$50

PRENDERGAST, MAURICE B.

485. The Marble Bridge
\$200

HAITE, GEORGE C.

486. On the Lagoon
\$100

DOUGLAS, WALTER

487. Fowl
\$100

SCHMITT, ALBERT FELIX, A. W. C. S.

488. The White Birches
\$200

REUTERDAHL, HENRY

489. The Finish of the Yacht Race
\$200

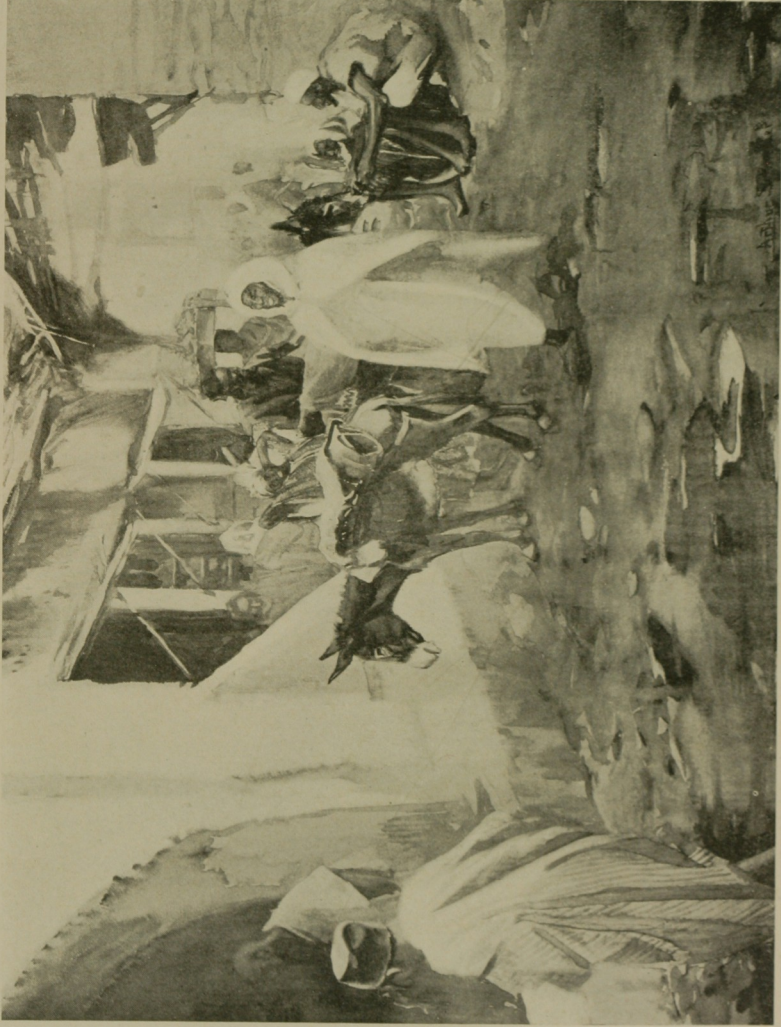
BELCHER, HILDA

490. Sibyl
\$75

HARDY, WALTER M.

491. Old Fort Constitution Gate
\$150

- COUSE, E. IRVING, A. W. C. S.
492. A Pueblo Housetop
\$600
- BROWSE, MABEL E.
493. English Barnyard
\$100
- SCOTT, MRS. E. M., A. W. C. S.
494. Yellow Roses
\$50
- WILKINSON, R.
495. Portrait, Miss D.
Owner, Miss J. Man
- TAKACH, BELA DE
496. The Hour of Rest
\$75
- SNELL, HENRY B., A. W. C. S.
497. Drying the Sails, Polperro
\$250
- CHILD, ROBERT COLEMAN
498. Sentinel Pines
\$75
- HILDEBRANDT, H. L., A. W. C. S.
499. Be Quiet
\$125
- SYMINGTON, JAMES, A. W. C. S.
500. On the Delaware
\$75
- MOSER, JAMES HENRY, A. W. C. S.
501. Morning in the Hills
\$350



No. 475 AT A MOORISH FOUNTAIN—ARTHUR SCHNEIDER, A.W.C.S.

- RITSCHER, WILLIAM
502. Outward Bound
- SHEAFER, FRANK W.
503. Afterglow and Moonrise
\$200
- GARRETT, EDMUND H.
504. Dover
\$100
- SCHNEIDER, W. G., A. W. C. S.
505. Natalie
\$300
- SPONG, W. B.
506. Tramps
\$100
- ROBINSON, ALEXANDER, A. W. C. S. (Elect)
507. The Rosy Village
\$125
- CHURBUCK, L. M.
508. A Mountain Brook
\$50
- MOSER, JAMES HENRY, A. W. C. S.
509. October
\$200
- YATES, CULLEN, A. W. C. S.
510. Hillside
\$95
- COLBURN, J. ELLIOTT
511. Upland Pastures
\$75

KELLER, ARTHUR I., A. W. C. S.

512. The Golden Wedding, from The Hanging of the Crane
Loaned by Houghton, Mifflin & Company

PALMER, WALTER L., A. W. C. S.

513. Gold and Gray
\$200

MOSER, JAMES HENRY, A. W. C. S.

514. Clearing Up
\$200

FIELD, E. LOYAL

515. Autumn
\$100

YETO, GENJIRO

516. Spinning Silk
\$50

COOPER, COLIN CAMPBELL, A. W. C. S.

517. Antwerp, Evening
\$150

CHURBUCK, L. M.

518. White Birches
\$60

PROCTOR, A. PHIMISTER, A. W. C. S.

519. Lying in Wait

SHURTLEFF, R. M., A. W. C. S.

520. Autumn
\$100

NICHOLLS, RHODA HOLMES, A. W. C. S.

521. Evening on the Harbor
\$150

LIPPINCOTT, WILLIAM H., A. W. C. S.

522. Dolce far Niente
\$75

PARTON, ARTHUR, A. W. C. S.

523. Mountain Mists
\$150

PETERSEN, M.

524. Across the Hill
\$250

WHITTEMORE, WILLIAM J., A. W. C. S.

525. Pan's Pipes
\$400

SMILLIE, GEORGE H., A. W. C. S.

526. The Yungfrau, Swiss Alps
\$75

SNELL, FLORENCE FRANCIS

527. Sunday Evening
\$75

MANLEY, THOMAS R.

528. Misty Moonlight
\$100

ALBRIGHT, ADAM EMORY

529. In the Firelight
\$250

POST, W. MERRITT, A. W. C. S.

530. After the Rain
\$85

YATES, CULLEN, A. W. C. S.

531. The Lake
\$475

ROBINSON, ALEXANDER, A. W. C. S. (Elect)
532. The Fleet at Home, Sunday, Volendam
\$100

HAMBRIDGE, JAY
533. Street Characters in Khiva

POST, W. MERRITT, A. W. C. S.
534. Early Evening
\$100

PENFIELD, EDWARD, A. W. C. S.
535. A Street in Amsterdam
\$75

MORAN, PERCY, A. W. C. S.
536. An Old-time Courtship

BOGERT, JULIA
537. The House Guard
\$50

POST, W. MERRITT, A. W. C. S.
538. First Touch of Spring
\$200

EDWARDS, GEORGE WHARTON, A. W. C. S.
539. April Shower, Monhegan
\$250

SATTERLEE, WALTER, A. W. C. S.
540. The Weary Load
\$200

ABBATT, AGNES DEAN, A. W. C. S.
541. Canterbury Bells
\$50

SCOTT, MRS. E. M., A. W. C. S.

542. Roses
\$150

SMILLIE, GEORGE H., A. W. C. S.

543. On Lake Como
\$85

PETERSON, JENNIE C.

544. Polperro Boats, Evening
\$150

SPAFARD, MYRA B.

545. Trumpet Creepers
\$75

FELDMANN, CLAIRE

546. Still Life
\$50

SMILLIE, GEORGE H., A. W. C. S.

547. At Dorking, Surrey
\$100

THULSTRUP, T. De., A. W. C. S.

548. British Officer in Khaki
\$250

PARTON, HULDA

549. Killarney Roses
\$50

NICOLL. J. C., A. W. C. S.

550. A Lonely Lake
\$500

COUSE, E. IRVING, A. W. C. S.

551. Evening
\$150

MORAN, LEON, A. W. C. S.

552. A Belle of the Eighteenth Century
\$75

COMAN, CHARLOTTE B.

553. A Country Home
\$75

DOUGLAS, WALTER

554. The Combat
\$60

BROWNSCOMBE, JENNIE

555. Morning
\$175

DREYFOUS, FLORENCE

556. Miss L.
\$150

HILDEBRANDT, CORNELIA ELLIS

557. Mr. William Starr
Loaned by Mr. William Starr

CROSS, SALLY

558. Miniature Portrait
\$200

KELLY, HANNAH R.

559. June
\$75

MAUST, ADELE VAN GUNTEN

560. Marjorie
Loaned by Mrs. C. L. Harris

CROSS, SALLY

561. Miniature Portrait
\$200

American Water Color Society

1907

Active Members

Abbatt, Agnes D.	Fenn, Harry
Abbey, Edwin A.	Freer, Frederick W.
Anderson, A. A.	
	Green, Frank Russell
Beckwith, J. Carroll	Guerin, Jules
Bricher, A. T.	
Bridges, Fidelia	Hamilton, Hamilton
Brown, J. G.	Hassam, Childe
	Hennessy, W. J.
Chapman, Carlton T.	Henry, E. L.
Chase, Wm. M.	Herter, Albert
Church, F. S.	Hildebrandt, H. L.
Clinedinst, B. West	Homer, Winslow
Colman, Samuel	
Cooper, Colin Campbell	Jones, Francis C.
Couse, E. Irving	Jones, H. Bolton
Crane, Bruce	
Curran, Charles C.	Keller, Arthur I.
De Luce, Percival	Lippincott, Wm. H.
De Thulstrup, T.	
Dielman, Frederick	Magrath, William
Drake, W. H.	Maynard, George W.
	McCord, George H.
Earle, L. C.	Mente, Charles
Eaton, Chas. Warren	Metcalfe, William L.
Edwards, Geo. Wharton	Millet, F. D.
	Mora, F. Luis

Moran, Leon
Moran, E. Percy
Moran, Thomas
Moser, James Henry
Muhrmann, Henry
Murphy, J. Francis

Newell, Hugh
Nicoll, J. C.

Ochtman, Leonard

Palmer, Walter L.
Parsons, Charles
Parton, Arthur
Penfield, Edward
Perry, E. Wood
Platt, Charles A.
Post, W. Merritt
Potthast, Edward H.
Pranishnikoff, Ivan P.
Proctor, A. Phimister

Ranger, Henry W.
Rehn, F. K. M.
Robinson, Will S.

Satterlee, Walter
Schilling, Alexander
Schmitt, Albert Felix
Schneider, Arthur
Schneider, W. G.

Shelton, George F.
Shirlaw, Walter
Shurtleff, R. M.
Smedley, William T.
Smillie, George H.
Smillie, James D.
Smillie, N. S. J.
Smith, F. Hopkinson
Smith, Henry P.
Smith, W. Granville
Snell, Henry B.
Sternner, Albert
Symington, James

Tiffany, Louis C.
Tryon, D. W.
Turner, A. M.
Turner, C. Y.
Turner, Ross

Van Laer, Alexander T.

Walker, Horatio
Waterman, Marcus
Weir, J. Alden
Weldon, C. D.
Whittemore, Wm. J.
Wiggins, Carleton
Wiles, Irving R.

Yates, Cullen

Zogbaum, Rufus F.

Associate Members

Nicholls, Rhoda Holmes

Sherwood, Rosina Emmet

Scott, Mrs. E. M.

Deceased Members

Anthony, A. V. S.	Hovenden, Thomas
Baldwin, A. H.	Jones, Alfred C.
Bellows, A. F.	Kappes, Alfred
Blum, Robert	Linton, William J.
Bobbet, Albert	McCutcheon, S. G.
Boughton, Geo. H.	McDonald, Miss M. J.
Brown, Walter	McIlhenney, C. Morgan
Bunner, Andrew F.	Moran, Edward
Burling, Gilbert	Morgan, Matt
Cabot, E. C.	Perkins, Granville
Champney, J. Wells	Quartley, Arthur
Chase, Harry	Reinhart, Charles S.
Clark, Geo. M.	Richards, Wm. T.
Craig, William	Robbins, H. W.
Cranch, Christopher P.	Robinson, Theodore
Cropsey, Jasper F.	Rondell, Frederick
Darley, F. O. C.	Scott, William Wallace
De Haas, M. F. H.	Silva, Francis A.
Eaton, C. Harry	Snell, George
Eaton, J. O.	Sonntag, Wm. L.
Falconer, John M.	Sonntag, W. Louis
Farrer, Henry	Van Elten, Kruseman
Farrer, T. C.	Van Ingen, Henry
Fitz, Benjamin R.	Ward, Charles C.
Fraser, John A.	Weir, Prof. Robert W.
Fredericks, Alfred	Wood, Thomas W.
Gibson, W. Hamilton	Wyant, Alexander H.
Gifford, R. Swain	
Hart, William	
Hind, James F.	

Names and Addresses of Artists

Represented in the
Present Exhibition

Names and Addresses of Artists

REPRESENTED IN THE PRESENT EXHIBITION

The figures following the addresses refer to the numbers in the Catalogue.

- Abbatt, Agnes Dean, A. W. C. S., Westchester, New York City, 541.
Abbey, Edwin A., A. W. C. S., Morgan Hall, Fairford, Gloucester, England, 263, 264, 265, 267, 268.
Albright, Adam Emory, Edison Park, Ill., 529.
Annan, A. H., Carnegie Studios, 131, 411.
Arthur, Robert, 7 West 43d Street, 28, 57, 112.
Ballin, Hugo, 146 West 55th Street, 105.
Beal, Reynolds, 318 West 57th Street, 421, 424.
Beckwith, J. Carroll, 58 West 57th Street, 361, 365, 373, 378.
Belcher, Hilda, 153 East 62d Street, 490.
Bement, Alon, 939 Eighth Avenue, 434, 447.
Bicknell, E. M., 55 West 33d Street, 130, 397.
Bicknell, Frank A., 58 West 57th Street, 71, 401.
Bloodgood, Robert F., 55 East 59th Street, 42, 108.
Blum, A. Aladar, 2188 Amsterdam Avenue, 174.
Blum, R., 288.
Bogert, Julia, 571 Sterling Place, Brooklyn, 537.
Bradley, William H., care Collier's Weekly, 295, 296.
Brale, Clarence E., New Bedford, Mass., 14.
Brewster, Mrs. Anna Richards, 628 West 114th Street, 65.
Bricher, A. T., A. W. C. S., 32 Union Square East, 56, 416, 426, 435.
Bridges, Fidelia, A. W. C. S., Canaan, Conn., 50, 422.
Brown, Carroll Butler, 939 Eighth Avenue, 460.



No. 525 PAN'S PIPES—WILLIAM J. WHITTEMORE, A.W.C.S.

- Brown, J. G., A. W. C. S., 51 West 10th Street, 82, 413.
- Brownscombe, Jennie, 96 Fifth Avenue, 555.
- Browse, Mabel E., 160 East 91st Street, 493.
- Bull, Charles Livingston, Oradell, N. J., 303, 329.
- Bunner, Rudolph K., Ridgefield, Conn., 389.
- Burgy, Fred S., 65 West 183d Street, 11.
- Burleigh, S. R., Fleur de Lys, Providence, R. I., 107.
- Child, Robert Coleman, 1727 19th Street, Washington, D. C., 498.
- Choate, Florence, 2237 Broadway, 274, 278, 356, 360.
- Churbuck, L. M., Brockton, Mass., 15, 261, 508, 518.
- Church, F. S., A. W. C. S., Carnegie Studios, 457.
- Clark, Eliot Candee, 939 Eighth Avenue, 5, 438.
- Clinedinst, B. West, A. W. C. S., 1000 Madison Avenue, 400.
- Clirehugh, A. La V., 439 Manhattan Avenue, 148.
- Colburn, J. Elliott, Highland Park, Ill., 20, 511.
- Collier, C. Myles, 939 Eighth Avenue, 49, 134.
- Colt, Morgan, 44 Stuyvesant Street, 129, 414.
- Coman, Mrs. Charlotte B., 939 Eighth Avenue, 553.
- Comins, Eben F., 106 Fenway Studios, Boston, Mass., 327.
- Cookman, C. E., 146 West 55th Street, 12.
- Cooper, Colin Campbell, A. W. C. S., 58 West 57th Street, 41, 88,
123, 481, 517.
- Cooper, Emma Lampert (Mrs. C. C. Cooper), 58 West 57th Street,
32, 449.
- Copeland, Charles, Studio Building, Boston, Mass., 19.
- Couse, E. Irving, A. W. C. S., 58 West 57th Street, 136, 492, 551.
- Cox, Helen Morton, 408 Albemarle Road, 141.
- Craig, Frank, care Harper Brothers, 279, 280, 281, 282.
- Crane, Frederick, 33 West 67th Street, 430.
- Cross, Sally, 480 Boylston Street, Boston, Mass., 558, 561.
- Cushman, Alice, 1340 Walnut Street, Philadelphia, Pa., 69.
- Day, Francis, 27 West 67th Street, 61.
- Deming, Adelaide, West Chester, 454.

- Deremeaux, Irma, care Charles Scribner's Sons, 248.
- Derrick, William R., 152 West 57th Street, 36, 466.
- Douglas, Walter, 134 West 23d Street, 75, 487, 554.
- Drake, W. H., A. W. C. S., 37 West 22d Street, 459.
- Dreyfous, Florence, 840 West End Avenue, 556.
- Duncan, Walter Jack, 252 West 11th Street, 262, 269, 271, 289, 292.
- Dunsmore, John Ward, 96 Fifth Avenue, 74.
- Eaton, Charles Warren, A. W. C. S., 318 West 57th Street, 13, 23, 72, 390, 393, 394.
- Edwards, George Wharton, A. W. C. S., 86 Trinity Place, 417, 469, 470, 539.
- English, M. B., 210 Fern Street, Hartford, Conn., 462.
- Feldmann, Claire, 817 Park Place, Brooklyn, 546.
- Fenn, Harry, A. W. C. S., 284 Park Street, Upper Montclair, N. J., 64.
- Field, E. Loyal, 2 East 33d Street, 405, 515.
- Fisher, Anna, 939 Eighth Avenue, 85.
- Fitler, W. C., 12 East 15th Street, 83, 125.
- Flagg, James Montgomery, 33 West 67th Street, 260, 275, 317.
- Frost, A. B., Convent Station, N. J., 242, 251.
- Fry, Georgia Timken, 204 West 55th Street, 81.
- Gallatin, Albert, 670 Fifth Avenue, 304.
- Garrett, Edmund H., care Walter Kimball, 31 Beacon Street, Boston, Mass., 17, 39, 59, 478, 504.
- Gay, Edward, Mount Vernon, N. Y., 66, 384.
- Goodwin, Philip R., 131 West 23d Street, 314.
- Grant, Gordon, 135 East 66th Street, 1, 450.
- Green, Frank Russell, A. W. C. S., 211 West 85th Street, 48.
- Griswold, Celeste, Great Neck, N. Y., 138.
- Gruppé, Charles P., Katwijk a Zee, Holland, 111.
- Guérin, Jules, A. W. C. S., 90 Grove Street, 337.
- Haite, George C., care William Clausen, 381 Fifth Avenue, 409, 486.
- Hallett, Hendricks A., Fenway Studios, Boston, Mass., 4, 44.

- Hambridge, Jay, 340 Oak Street, Richmond Hill, L. I., 315, 533.
Hanna, T. K., care Charles Scribner's Sons, 320.
Hardenbergh, Elizabeth, 939 Eighth Avenue, 109, 456.
Hardwick, Melbourne H., 110 Tremont Street, Boston, Mass, 33, 43.
Hardy, Walter M., Brewer, Me., 491.
Hart, Harriet Louise, 407 Rahway Avenue, Elizabeth, N. J., 437.
Harting, George W., 51 West 10th Street, 316, 326.
Hasler, William N., Caldwell, N. J., 38, 84.
Hassam, Childe, A. W. C. S., 27 West 67th Street, 29, 403, 446, 467.
Hawkins, Helen H., 63 East 59th Street, 439.
Haydock, May S., 239 West Preston Street, Baltimore, Md., 22,
26, 338, 350, 352, 472.
Henoch, S. Stella, 241 Ryerson Street, Brooklyn, 451.
Hildebrandt, Cornelia Ellis, 27 West 67th Street, 557.
Hildebrandt, H. L., A. W. C. S., 27 West 67th Street, 142, 443, 499.
Hilder, G. Howard, 12 West 109th Street, 144, 145, 146, 150.
Hirst, Claude Raguët, 12 East 15th Street, 114.
Hore, Ethel, 939 Eighth Avenue, 428, 464.
Howells, Mildred, Hotel Regent, 70th Street and Broadway, 226.
Hulbert, Katherine Allmond, South Egremont, Mass., 40, 480.
Hunt, Leigh, 45 West 11th Street, 175, 189, 192, 194.
Hunter, Lizbeth C., 58 West 57th Street, 51, 76.
Hutt, Henry, 245.

Jacobs, W. L., care Charles Scribner's Sons, 334.
Jones, Villa, 432 3d Street, Brooklyn, 104.
Joseph, I. A., 54 West 39th Street, 7.

Keller, Arthur I., A. W. C. S., 40 West 130th Street, 252, 253,
254, 255, 512.
Kelly, Hannah R., 1708 Chestnut Street, Philadelphia, Pa., 559.
Kimball, Alonzo, care Charles Scribner's Sons, 240.
Knight, Charles R., 1 West 102d Street, 243, 336, 347.
Kobbé, M. O., New Brighton, N. Y., 351, 353.

- Labourer, J. E., 29 West 25th Street, 291, 300, 302.
- Lang, Annie Traquair, 1714 Chestnut Street, Philadelphia, 9.
- Langtry, Mary, 241 Ryerson Street, Brooklyn, 335, 345, 346, 406.
- Lauber, Joseph, 51 West 10th Street, 431, 483.
- Leyndecker, Frank X., care Collier's Weekly, 343.
- Lippincott, Wm. H., A. W. C. S., 7 West 43d Street. 442, 522.
- Macauley, Ellen, care Booth & Co., 88 Gold Street, 297, 299, 301.
- Manley, Thomas R., 151 Midland Avenue, Montclair, N. J., 167,
170, 171, 173, 385, 528.
- Mason, Maud M., 48 East 26th Street, 398, 476.
- Masters, Frank B., 21 West 24th Street, 249, 348.
- Mathewson, Frank C., 318 West 57th Street, 93, 95, 425.
- Maust, Adele van Gunten, 350 West 120th Street, 560.
- Meday, H. Augusta, 348 West 118th Street, 149.
- Mente, Charles, A. W. C. S., Congers, N. Y., 455.
- Mielatz, Charles F. W., 135 East 15th Street, 55, 195 to 211.
- Millar, Addison T., 124 West 23d Street, 224, 407.
- Mora, F. Luis, A. W. C. S., 142 East 18th Street, 396, 461.
- Moran, Léon, A. W. C. S., 34 Grove Street, Plainfield, N. J., 116,
118, 119, 121, 552.
- Moran, Percy, A. W. C. S., 348 Central Park West, 8, 98, 115,
120, 536.
- Morse, Edward L., Stockbridge, Mass., 63.
- Moser, James Henry, A. W. C. S., 802 F Street, Washington, D. C.,
501, 509, 514.
- Mucha, Alphonse M., 15 East 59th Street, 324, 339, 444.
- Mygatt, R. K., 15 East 32d Street, 158 to 166.
- Needham, Charles Austin, 145 East 23d Street, 46, 310, 386, 404.
- Newell, G. Glenn, 58 West 57th Street, 10, 77.
- Newell, Hugh, A. W. C. S., Wilkinsburg, Pa., 3, 139, 445.
- Nicholls, Mrs. Rhoda Holmes, A. W. C. S., 913 Seventh Avenue,
86, 521.
- Nicoll, J. C., A. W. C. S., 51 West 10th Street, 58, 550.
- Nordfeldt, B. J. Olsson, 3 Fifth Avenue, 147, 293, 364.

Ochtman, Mina Fonda (Mrs. Leonard Ochtman), Coscob, Conn.,
37, 388.

O'Kelly, Aloysius, 729 Sixth Avenue, 110, 113.

Ostertag, B., care Doubleday, Page & Co., 259.

Otis, Amy, 10 South 18th Street, Philadelphia, 349.

Owen, Esther S. D., Goodwin Building, Hartford, Ct., 53.

Palmer, Walter L., 5 Lafayette Street, Albany, N. Y., 117, 513.

Parrish, Mrs. Clara Weaver, 939 Eighth Avenue, 440.

Parton, Arthur, A. W. C. S., 489 Fifth Avenue, 433, 523.

Parton, Hulda, 489 Fifth Avenue, 549.

Peixotto, Ernest C., 19 East 59th Street, 246, 270.

Penfield, Edward, A. W. C. S., 163 West 23d Street, 239, 241, 535.

Penman, Edith, 939 Eighth Avenue, 9.

Pennell, Joseph, care Frederick Keppel & Co., 176 to 188.

Percy, Isabelle C., 1230 Amsterdam Avenue, 290.

Peterson, Jennie C., 103 West Lanvale Street, Baltimore, Md., 544.

Petersen, M., 437 West 59th Street, 18, 133, 344, 524.

Phillips, J. Campbell, Carnegie Studios, 25.

Platt, Alethea Hill, 939 Eighth Avenue, 436.

Post, W. Merritt, A. W. C. S., 27 West 67th Street, 90, 96, 132,
530, 534, 538.

Potthast, Edward H., A. W. C. S., 318 West 57th Street, 100,
127, 392.

Prendergast, Maurice B., 56 Mount Vernon Street, Boston, 485.

Preston, James, 58 West 57th Street, 368 to 371, 379, 380, 383.

Preston, May Wilson, 58 West 57th Street, 367, 376, 382.

Proctor, A. Phimister, A. W. C. S., care N. E. Montross, 372
Fifth Avenue, 519.

Purssell, Marie Louise, 343 Main Street, Orange, N. J., 484.

Pyle, Howard, Wilmington, Del., 323.

Rau, William, 1276 Lexington Avenue, 482.

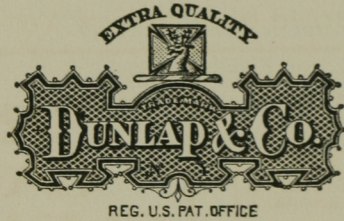
Redmond, John J., 58 West 57th Street, 47, 79.

Rehn, F. K. M., A. W. C. S., 222 West 23d Street, 6, 465.

- Reuterdaahl, Henry, Clifton Park, Weehawken, N. J., 256, 325, 331, 333, 489.
- Rion, Hanna, care Mr. Roberts, 226 Fifth Avenue, 135.
- Ritschel, William, 400 West 23d Street, 78, 502.
- Robinson, Alexander, A. W. C. S. (Elect), Bruges, Belgium, 60, 68, 70, 103, 423, 427, 507, 532.
- Robinson, Florence, 270 Ocean Street, Lynn, Mass., 54, 102.
- Robinson, William S., 202 West 74th Street, 399, 429, 453.
- Rogers, Mary, 2643 Broadway, 2.
- Roth, Ernest D., care Edmund Weill, 1132 Hancock Street, Brooklyn, 151 to 157, 220.
- Rush, Olive, Broom and Chestnut Streets, Wilmington, Del., 272, 276, 286.
- Sarka, Charles, Darien Ct., 312, 313, 318, 330.
- Sartain, Harriet, 1020 Chestnut Street, Philadelphia, 73, 387.
- Satterlee, Walter, A. W. C. S., 96 Fifth Avenue, 30, 52, 540.
- Schetter, C. O., 75 Highland Avenue, Orange, N. J., 284.
- Schille, Alice, 1166 Bryden Road, Columbus, Ohio, 101.
- Schmitt, Albert Felix, A. W. C. S., 221 Columbus Avenue, Boston, 31, 488.
- Schneider, Arthur, A. W. C. S., 107 East 27th Street, 80, 475.
- Schneider, W. G., A. W. C. S., 107 East 27th Street, 505.
- Schulman, A. G. 788 Broadway, 250, 257.
- Scott, Mrs. E. M., A. W. C. S., 142 East 18th Street, 468, 494, 542.
- Senseney, George, 316 Second Avenue, 355, 357, 358, 359, 362.
- Shaw, Sydney Dale, 161 West 12th Street, 21.
- Sheafer, Frank W., 3900 Walnut Street, Philadelphia, 503.
- Sheldon, Rufus, 611 West 112th Street, 305 to 311.
- Shinn, Everett, care Charles Scribner's Sons, 244.
- Shurtleff, R. M., A. W. C. S., 44 West 22d Street, 35, 415, 418, 520.
- Smedley, William T., A. W. C. S., Bronxville, N. Y., 528, 321, 332.
- Smillie, George H., A. W. C. S., 156 East 36th Street, 391, 395, 402, 419, 526, 543, 547.

- Smillie, N. S. J. (Mrs. Geo. H. Smillie), A. W. C. S., 156 East 36th Street, 122.
- Smith, F. Hopkinson, A. W. C. S., 150 East 34th Street, 62, 126, 473.
- Smith, Jessie Wilcox, Allen Lane, Philadelphia, 247.
- Smith, W. Granville, A. W. C. S., 96 Fifth Avenue, 477.
- Snell, Florence Francis (Mrs. Henry B. Snell), 37 West 22d Street, 89, 527.
- Snell, Henry B., A. W. C. S., 37 West 22d Street, 497.
- Sonn, Albert H., 89 Sherman Place, Jersey City, N. J., 124, 354, 381.
- Spafard, Myra B., 142 East 18th Street, 137, 545.
- Spong, W. B., Amityville, N. Y., 27, 506.
- Starr, Sidney, 752 West End Avenue, 45.
- Steele, Frederic Dorr, 53 West 24th Street, 273, 277, 283, 285.
- Stevens, Beatrice, 49 West 55th Street, 340, 341, 342.
- Symington, James, A. W. C. S., 58 West 57th Street, 67, 420, 441, 500.
- Takach, Bela de, Carnegie Studios, 143, 496.
- Tannahill, Mary H., 939 Eighth Avenue, 366.
- Thulstrup, T. de, A. W. C. S., 287 Fourth Avenue, 408, 548.
- Titcomb, M. Bradish, 201 Clarendon Street, Boston, 128, 140.
- Turner, C. Y., A. W. C. S., Carnegie Studios, 91, 479.
- Vanderhoof, Charles A., 1907 Seventh Avenue, 215 to 219, 221, 222.
- Van Laer, A. T., A. W. C. S., 30 East 57th Street, 458, 463.
- Ver Beck, Frank, care Mr. Roberts, 226 Fifth Avenue, 432.
- Vondrous, John C., 336 East 74th Street, 212, 213, 214.
- Walker, Mrs. M. Mulford, 381 Central Park West, 328.
- Warner, Everett L., 400 West 57th Street, 94, 97, 168, 169, 172, 190.
- White, Belle Cady, 247 Ryerson Street, Brooklyn, 106, 452.
- White, Charles Henry, 158 Waverly Place, 223, 225 to 230, 232, 233, 234, 235.
- Whittemore, William J., A. W. C. S., 318 West 57th Street, 525.
- Wiggins, Guy C., 1151 Broadway, 474.

Wilkinson, R., Lawrence Park, Bronxville, N. Y., 448, 495.
Williams, George Alfred, Lock Box 5, Chatham, N. J., 287, 294, 363.
Williamson, H. G., 19 West 24th Street, 412.
Williamson, Shirley, 163 West 74th Street, 34, 92.
Winslow, Henry, 308 West 22d Street, 231, 236, 237, 238.
Wolf, Henry, 110 East 91st Street, 372, 374, 375, 377.
Wooding, J. J., 17 Church Street, Belfast, Me., 322.
Woodruff, John Kellogg, 348 Clermont Avenue, Brooklyn, 298.
Wright, George, care Charles Scribner's Sons, 319.
Wright, John, Abroad, 191, 193.
Yates, Cullen, A. W. C. S., 939 Eighth Avenue, 471, 510, 531.
Yeto, Genjiro, 6 East 17th Street, 16, 87, 516.
Zeigler, Lee Woodward, 141 East 23d Street, 24.



CELEBRATED HATS

For Ladies and Gentlemen

—AND—

THE DUNLAP SILK UMBRELLA

178 and 180 Fifth Ave., bet. 22d and 23d Sts.,
567-569½ Fifth Ave. (Windsor Arcade), and
181 Broadway, near Cortlandt St., New York
Palmer House, Chicago.
914 Chestnut St., Philadelphia.

Accredited Agencies in all Principal Cities of the World.

