

Historic, archived document

Do not assume content reflects current scientific knowledge, policies, or practices.

62.83

JAN 15 1925

Jackson's

QUALITY BRAND

Seeds

1925 ANNUAL

O. P. Jackson Seed Co. Inc.

W. A. REYNAUD, Gen. Mgr.
305 Travis St., Opp. City Market

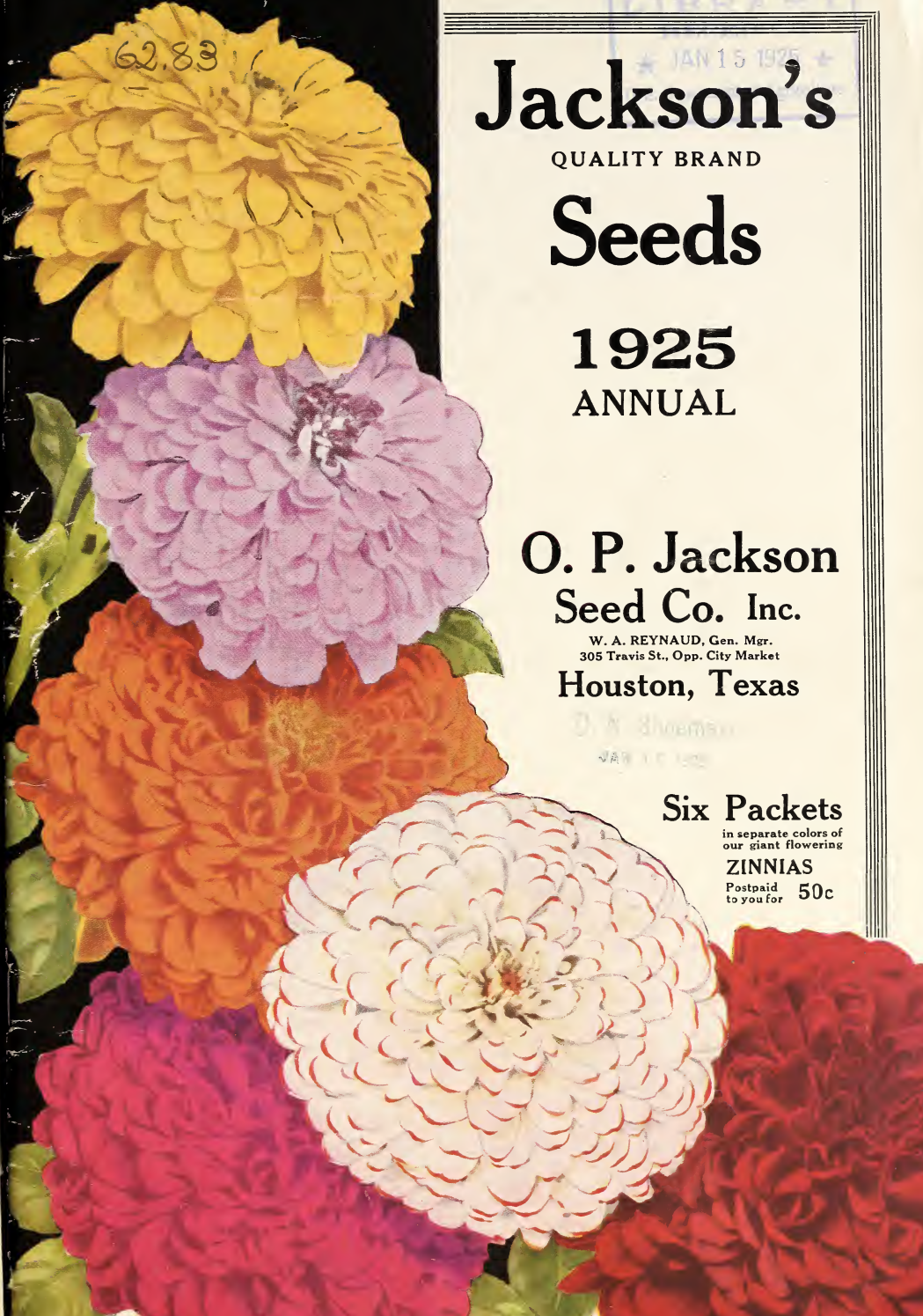
Houston, Texas

Six Packets

in separate colors of
our giant flowering

ZINNIAS

Postpaid to you for 50c





Giant Spencer Sweet Peas.

Calendula—Pot Marigold

A free flowering dwarf, bushy annual, that we highly recommend for our Texas climate. The bright colored flowers are borne on long stems, excellent for cut flowers. By all means plant a packet or two.

- ORANGE KING.** Large flowered, double, rich orange in color. Pkt. 10c.
- LEMON QUEEN.** Equally double and handsome, but a clear lemon shade. Pkt. 10c.
- ALL COLORS DOUBLE MIXED.** Pkt. 10c.

Giant Spencer Sweet Peas

California nows leads the world in producing the best Sweet Peas, and the Giant Spencer Sweet Peas that we list below are highly recommended for Texas and Texas climate.

This strain of our Sweet Peas bears three or four very large flowers on long still stems.

GOLD MEDAL MIXTURE. This mixture contains a great assortment of shades and colors, many of the flowers are ruffled and wavy, so if you want Sweet Peas of many colors, try some of these. Pkt. 10c, oz. 25c, 1/2 lb. \$1.25.

KING EDWARD. A wonderful red that is the most beautiful of all Sweet Peas. Pkt. 10c; oz. 35c.

KING OF THE WHITES. The clearest and prettiest of all white sweet peas. Pkt. 10c; oz. 35c.

MRS. HARDCASTLE SYKES. The prettiest of all the pinks. Pkt. 10c; oz. 35c.

SALMON. Pkt. 10c; oz. 35c.

PURPLE. Pkt. 10c; oz. 35c.

BLUE. Pkt. 10c; oz. 35c.

LAVENDER. Pkt. 10c; oz. 35c.



Calendula—Pot Marigold.



Giant Flowering Dwarf or Bush Nasturtiums

Like our Sweet Peas our Nasturtiums are grown in California and our mixture is made from named varieties, containing shades and colors that you do not see in field run seed. Our strain is greatly improved in size, as well as in colors and markings. Pkt. 10c; oz. 20c; 1/4 lb. 70c; lb. \$2.00.

PRICES SUBJECT TO CHANGE WITHOUT NOTICE

FIELD SEEDS: WE DO NOT PAY EXPRESS OR FREIGHT ON FIELD SEEDS. PRICES BELOW ARE F. O. B. HOUSTON. :: JANUARY 1, 1925

ALFALFA

ALFALFA, HAIRY PERUVIAN A new type that does well in Texas. 1 lb. 40c postpaid. Not postpaid, 10 lbs. \$3.50; 50 lbs. \$15.00; 100 lbs. \$28.50.

CLOVERS

BURE CLOVER (Re-cleaned) A very valuable grazing crop. Write for prices.

WHITE BLOSSOM SWEET CLOVER 1 lb. 40c postpaid. Not prepaid, 10 lbs. \$2.50; 100 lbs. \$22.00.

WHITE DUTCH CLOVER A dwarf low growing variety. 1 lb. \$1.00 postpaid. Not prepaid, 10 lbs. \$7.50.

SEED CORN

SURECROPPER A good white variety. 1 qt. 30c postpaid. Not prepaid, 1 peck \$1.15; bushel \$3.75.

GIANT WHITE (Red Cob). A standard crop variety. 1 quart 30c postpaid. Not prepaid, peck \$1.15; bushel \$3.75.

GIANT YELLOW A large grain yellow corn. Quart 30c postpaid. Not prepaid, 1 peck \$1.15; bushel \$3.75.

TEXAS TUXPAN A very hard, with a flint cast, white corn. Quart, 30c postpaid. Not prepaid, peck \$1.15; bushel \$3.75.

OKLAHOMA WHITE WONDER A large white corn from Oklahoma. Quart 30c postpaid. Not prepaid, peck \$1.15; bushel \$3.75.

SQUAW A blue grain corn. Quart 30c postpaid. Peck \$1.15; bushel \$3.75, not prepaid.

BLOODY BUTCHER A large red corn. Quart, 30c postpaid. Not prepaid, peck \$1.15; bushel \$3.75.

STRAWBERRY A calico colored corn. Quart 30c postpaid. Not prepaid, peck \$1.15; bushel \$3.75.

HICKORY KING A large flat grain corn.

IOWA YELLOW DENT A 90-day variety. Quart 30c postpaid. Not prepaid, peck \$1.00; bushel \$3.25.

IOWA WHITE PEARL A small white variety. Quart 30c postpaid. Not prepaid, peck \$1.00; bushel \$3.25.

IOWA SILVERMINE A large white corn. Quart 30c postpaid. Not prepaid, peck \$1.00; bushel \$3.25.

JUNE CORN White. Quart 30c postpaid. Not prepaid, peck \$1.15; bushel \$3.75.

SWEET CORN

ADAMS EARLY (Large). Packet 10c; 1 lb. 35c; 2 lbs. 65c postpaid. Not prepaid, 1 peck \$2.00.

COW AND FIELD PEAS

WHIPPOORWILLS Lb. 25c postpaid.

CLAY Lb. 25c postpaid. Write for prices in larger quantities.

CREAM OR LADY PEAS Lb. 35c postpaid.

LARGE BLACKEYE Lb. 35c postpaid. Not prepaid, 10 lbs. \$1.85.

CROWDER PEAS (Very scarce). 1 lb. 40c postpaid.

FIELD BEANS

VELVET BEANS Early speckled. Write for prices

VELVET BEANS, OSCEOLA Write for prices.

SOY OR SOJA BEANS Write for prices.

COTTON SEED

ROWDEN BIG BOLL \$2.75 bushel; 9 or more bushels, \$2.50 bu., not prepaid.

MEBANE \$2.75 bushel; 9 or more bushels \$2.50 bushel, not prepaid.

ACATA \$2.75 bushel; 9 or more bushels \$2.50 bushel; not prepaid.

LONE STAR \$2.75 bushel; 9 or more bushels \$2.50 bushel, not prepaid.

GRASS SEEDS

RHODES GRASS 1 lb. postpaid, 90c; 10 lbs., not prepaid, \$8.00.

SUDAN GRASS (Fancy) 1 lb. 30c postpaid. 50 lbs. \$4.50; 100 lbs. \$9.50, not prepaid.

JOHNSON GRASS SEED Write for prices.

BERMUDA GRASS 1 lb. \$1.00; 10 lbs. \$7.50, prepaid.

ENGLISH RYE 1 lb. 40c; 5 lbs. \$1.75, postpaid.

ITALIAN RYE 1 lb. 40c; 5 lbs. \$1.75, postpaid.

RED TOP OR HERDS GRASS 60c pound postpaid.

CANE OR SORGHUM

HONEY DRIP OR JAPANESE VARIETY 1 lb. 20c postpaid. Not prepaid, 10 lbs. \$1.50; 100 lbs. \$10.00.

EARLY AMBER 50 lbs. \$1.90; 100 lbs. \$3.50, not prepaid.

FANCY RE-CLEANED RED TOP AFRICAN OR SUMAC

CANE 50 lbs. \$2.10; 100 lbs. \$3.90, not prepaid.

NON-SACCHARINE SORGHUM

EGYPTIAN WHEAT OR SHALLU 25c pound, postpaid. 10 lbs. \$1.75, not postpaid.

DWARF MILO MAIZE 10 lbs. 70c; 50 lbs. \$2.25, not prepaid.

WHITE KAFFIR CORN 10 lbs. 70c; 50 lbs. \$2.25, not prepaid.

FETERITA 10 lbs. 80c; 50 lbs. \$2.50, not prepaid.

PEANUTS

SPANISH Not prepaid, \$7.00 cwt. (30 lbs., 1 bu., \$2.25).

TENNESSEE REDS 1 lb. 35c, postpaid. Not prepaid, 10 lbs. \$1.75; 100 lbs. \$15.00.

JUMEO 1 lb. 35c, postpaid. Not prepaid, 10 lbs. \$1.75.

MILLET

BIG LIBERTY (German Millet). Not prepaid, 10 lbs. \$1.10; 50 lbs. \$4.00; 100 lbs. \$7.50.

SEED OATS

RUST PROOF Not prepaid, 1 bushel \$1.25; 5-bushel sack, \$5.50.

RAPE

DWARF ESSEX 1 lb. 30c; 5 lbs. \$1.15 postpaid.

SEED SWEET POTATOES

PORTO RICAN YAMS Write for prices.

NANCY HALL Write for prices.

SEED IRISH POTATOES

MAINE TRIUMPHS 11-peck sacks \$5.50.

MAINE COBBLERS 11-peck sacks \$5.50.

MINNESOTA TRIUMPHS 10-peck sacks \$5.00.

MINNESOTA COBBLERS 10-peck sacks \$5.00.

All f. o. b. Houston, Not Prepaid.

FERTILIZERS, F. O. B. HOUSTON

BONE MEAL \$4.25 cwt.; \$65.00 ton.

NITRATE OF SODA Fer 100 lbs. \$5.50; \$90.00 ton.

ACID PHOSPHATE (16%) Fer 100 lbs. \$1.50; \$28.50 ton.

TEXAS TRUCKER (8-247-3) Fer 100 lbs. \$2.40; \$43.15 ton.

POULTRY SUPPLIES

SWIFT'S BEEF SCRAPS Fer 100 lbs. \$5.75, not prepaid.

COARSE OYSTER SHELL Fer 100 lbs. \$1.25, not prepaid.

FINE OYSTER SHELL Fer 100 lbs. \$1.25, not prepaid.

PEARL GRIT Fer 100 lbs. \$2.25, not prepaid.

CONKEY'S BUTTERMILK FEED 2½-lb. packages 30c; 5

lbs 55c; 100-lb. sack \$8.00, not prepaid.

FRAT'S BUTTERMILK FEED 2½-lb. packages 35c; 5 lbs. 65c; 100 lbs. \$8.25, not prepaid.

Seed Order Blank for 1925

Please do not write in above space.

O. P. JACKSON SEED CO., Inc., Houston, Texas,
305 Travis Street, Opposite City Market

**READ DIRECTIONS BEFORE
ORDERING**

Enclosed find.....for

Seeds to be sent by.....

Name.....

Post Office.....

R. F. D. No..... Box No..... State.....

Express or Freight Office.....

DON'T WRITE IN ABOVE SPACE

O. P. Jackson Seed Co., Inc., give no warranty, expressed or implied, as to description, type, purity, productiveness, or any other matter of any Seeds, Plants, Bulbs, Trees or Shrubs we send out, and we will not be in any way responsible for the crops grown therefrom. If the purchaser does not accept the goods on these terms, they are at once to be returned and the money that has been paid for the same will be refunded.

Quantity	Names of Seeds and Other Articles Wanted	Dollars	Cents
----------	--	---------	-------

We Thank You

Jackson's Seeds Grow Better

INSTRUCTIONS FOR ORDERING

NON-WARRANTY

O. P. Jackson Seed Co., Inc., give no warranty, express or implied, as to description, type, purity, productiveness, or any other matter of any seeds, plants, trees or bulbs we send out, and we will not be in any way responsible for the crops grown therefrom. If the purchaser does not accept the goods on these terms, they are at once to be returned and the money that has been paid for the same will be refunded.

HOW TO SEND MONEY

Money can be sent safely either by postoffice order, bank draft, express draft, express order or registered letter. If your order amounts to \$1.00 or more it is best to send by one of the above methods. Postage stamps taken in amounts less than one dollar. Never send coin in the mail unless in registered letter.

We do not send goods C. O. D. Cash must accompany your order.

ORDER EARLY

It is important to order as soon after you get the catalog as convenient, then you will have your seeds on hand for planting when you want them.

GIVE YOUR FULL ADDRESS

We frequently receive orders without the name of the sender or with insufficient address. Customers should be particular to give full name, postoffice, county and state, number of street, P. O. box, and the nearest express office.

PRICES

All prices named in this catalog are subject to change without notice, and all sales made are payable in Houston, Texas.

DO YOU WANT THIS CATALOG?

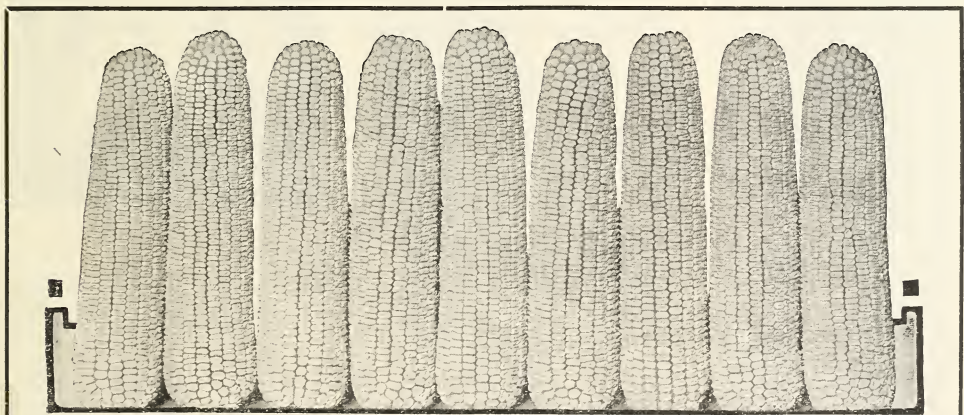
Be sure and send us an order for seeds if you want this catalog next year. If you do not send us an order your name is taken from our mailing list, believing you have changed your address, or you may have come to the store, where you can get a catalog at the counter. We prefer to have you on our list as an annual customer; then you will always get our catalog as soon as it comes from the press.

WHEN YOU CHANGE YOUR ADDRESS NOTIFY US IF YOU WANT THIS CATALOG.

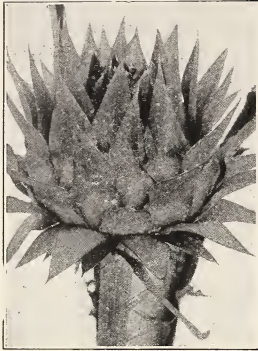
INDEX

Ageratum	19
Alyssum	16
Amaranthus	16
Ampelopsis	16
Antirrhinum	17
Aquilegia	17
Artichokes	2
Asparagus	2
Asparagus Fern	17
Asters	17
Balloon Vine	17
Balsam	17
Balsam Apple	17
Balsam Pear	17
Beans	2, 3
Beets	4
Begonia	17
Bells	17
Bird Supplies	31, 32
Borecole	8
Broccoli	4
Brussels Sprouts	4
Cabbage	5
Cabbage Plants	5
Calendula	18
Callopsis	18
Candytuft	18
Cantaloupe	6
Canterbury Bells	18
Cardinal Climber	18
Carnation	18
Carrots	7
Cauliflower	5
Celery	6
Centaura	18
Chinese Cabbage	18
Chinese Woolflower	19
Chrysanthemums	19
Clematis	19
Cockscomb	19
Coleus	19
Collards	7
Corn, Pop	8
Corn, Sweet	8
Cosmos	19
Cucumber	7
Cyclamen	19
Cypress Vine	19
Dahlia	19
Dianthus	20
Dimorphotheca	20
Dog Remedies	30
Egg Plant	8
Endive	8
Euphorbia	8
Flower Seeds	16-25
Four O'Clock	20
Foxglove	20
Gaillardia	20
Garlic	5
Geranium	20
Giadoli	3rd Cover
Golden Rod	20
Gomphrena	20
Gourds	20
Grasses, Oriental	23
Gypsophila	20
Helichrysum	20
Heliotrope	7
Herbs	5
Hibiscus	20
Hollyhock	21
Hyanth	21
Ice Plant	21
Japanese Hop	21
Job's Tears	21

Pumpkins	13
Pyrethrum	24
Radishes	13
Ricinus	24
Salpiglossis	24
Salsify	14
Salvia	24
Scarlet Runner Bean	24
Shasta Daisy	19
Sowrite Seed Sower	22
Spinach	14
Sprayers and Spray	
Material	29
Squash	14
Stim-U-Plant	21
Stocks	24
Strawberry Plants	14
Sunflower	25
Sweet Peas	25
Sweet Potatoes	12
Sweet Potato Slips	12
Sweet Sultan	24
Sweet William	24
Thunbergia	25
Tobacco	14
Tomatoes	15
Torenia	25
Turnips	15
Vegetables	1-15
Verbena	25
Vinca	26
Viola	25
Wallflower	25
Watermelon	26
Wild Cucumber	26
Wild Flowers	26
Wisteria	26
Wong Bok	5
Xeranthemum	26
Zinnias	26



We handle a complete line of high grade field seeds, and carry in stock Alfalfa, Clovers, all kinds Seed Corn, Cow Peas, Velvet Beans, Soy Beans, Cotton Seed, all kinds of Grass Seed, Cane Seed, Peanuts, Maize, Kaffir Corn, etc. Write for our Special Field Seed Price List.



Green Globe Artichoke.

Artichokes

CULTURE. Seed may be sown indoors and set out in the garden on the approach of warm weather, or the seed can be sown in hills outside and thinned to one plant to hill. Plants should be set in rows 3 feet apart and 2 to 3 feet apart in the rows. Use 1½ ounce to 100 feet of row.

GREEN GLOBE. The best variety for the Southwest. Pkt., 15c; oz., 90c, postpaid.

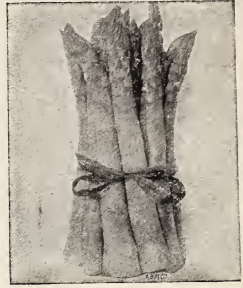
JERUSALEM or TUBER ROOTED. An excellent hog feed; use 4 bushels to the acre. Ask for prices.

Asparagus

CULTURE. Asparagus roots may be purchased in the Spring or may be grown from seed sown in March, in good soil, in drills 12 to 14 inches apart. The permanent bed should be very rich with well-rotted manure, and thoroughly worked over to a depth of 2 feet. One ounce will sow 50 feet of drill.

CONOVER'S COLOSSAL. The old standard variety, good for all purposes and especially for canning; it makes a large, thick, white shoot of delicious flavor. Pkt., 10c; oz., 20c, postpaid.

ASPARAGUS ROOTS. You can save at least a year and a half by getting two-year-old roots. 50 roots will plant 100 feet of row. 45c per doz.; \$2.50 per 100, postpaid.

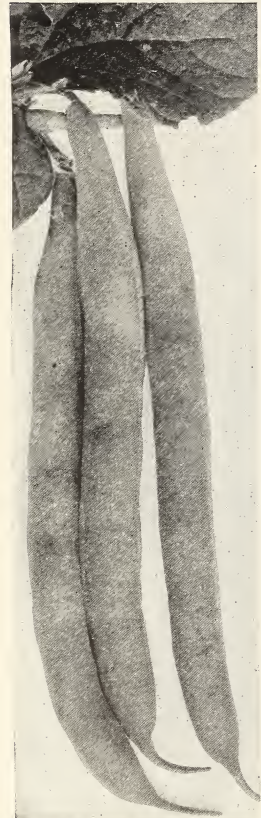


Conover's Colossal Asparagus.

Bush or Bunch Green Pod Beans

CULTURE. Sow in rows 2 to 3 feet apart, plants about 8 inches apart in rows, cover about 2 inches. One pound of seed will sow a 100-foot row; one bushel (60 pounds) to the acre.

GIANT STRINGLESS GREEN POD. From its first cultivation it has been a favorite. Pods round, about five inches long, dark green in color, very brittle and absolutely stringless. Dried seeds are of a yellowish brown color. Pkt., 10c; ½ lb., 25c; 1 lb., 45c; 2 lbs., 80c; 5 lbs., \$1.75, postpaid.



Giant Stringless Green Pod Beans.

JACKSON'S EARLY RED VALENTINE. Earliness is the feature of this variety; round, little stringy, but of extra good quality, especially when picked young. Dried seed pink, marbled with red. Pkt., 10c; ½ lb., 25c; 1 lb., 45c; 2 lbs., 80c; 5 lbs., \$1.75, postpaid.

BURPEE'S STRINGLESS GREEN POD. The plants grow from 12 to 15 inches, very erect and productive, pods round, about 5 inches long, strictly stringless and real tender. Pkt., 10c; ½ lb., 25c; 1 lb., 45c; 2 lbs., 80c; 5 lbs., \$1.75, postpaid.

LONGFELLOW. Unsurpassed for home and market use. Pods are long, round, straight and very solid. In production, very prolific. The plants grow from 14 to 16 inches high, bearing edible pods in 35 to 40 days. Pkt., 10c; ½ lb., 25c; 1 lb., 45c; 2 lbs., 80c; 5 lbs., \$1.75, postpaid.

Bush Wax or Yellow Pod Beans

One lb. to 100 feet of drill; 60 lbs. per acre.

DAVIS KIDNEY WAX. A fine Bean for home use; pods long, straight and flat, of a light yellow color and very attractive, and when young are crisp and tender. Pkt., 10c; ½ lb., 25c; 1 lb., 45c; 2 lbs., 80c; 5 lbs., \$1.75, postpaid.

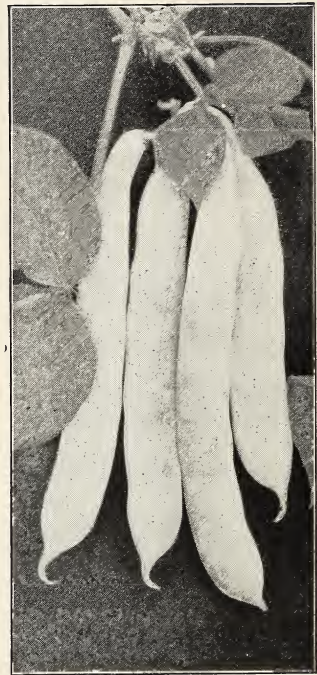
PENCIL POD BLACK WAX. This is a handsome black wax sort and is medium early. A good Bean for market gardeners, whose trade is near by and desire a Bean of high quality. Pods are round, fleshy and bright yellow; about 6 inches in length. Pkt., 10c; ½ lb., 25c; 1 lb., 45c; 2 lbs., 80c; 5 lbs., \$1.75, postpaid.

GIANT STRINGLESS YELLOW POD. The pods of this wonderful new Bean measure from 5 to 6 inches, they are entirely stringless, round, light yellow in color, very brittle and attractive in appearance and of the finest quality. It is one of the earliest Wax Beans grown, being very productive, usually in about 40 days. Be sure and include some of this new type of Bean in your order. Pkt., 10c; ½ lb., 25c; 1 lb., 45c; 2 lbs., 80c; 5 lbs., \$1.75, postpaid.

IMPROVED GOLDEN WAX. An old time favorite; pods are of a medium length and of golden color; bears in 45 to 50 days. Pkt., 10c; ½ lb., 25c; 1 lb., 45c; 2 lbs., 80c; 5 lbs., \$1.75, postpaid.

WARDWELL'S KIDNEY WAX. A very early variety of Wax Beans, which needs no recommendation; matures in 5 to 6 weeks. Pkt., 10c; ½ lb., 25c; 1 lb., 45c; 2 lbs., 80c; 5 lbs., \$1.75, postpaid.

ROUND POD KIDNEY WAX. A very early, round podded Bean for market gardeners as well as home gardeners; the fleshy, round pods hang thickly on the plants, and are of a fine flavor, stringless and free from rust; the pods are of a beautiful lemon-yellow, larger than those of Wardwell's, which mature at the same time. Pkt., 10c; ½ lb., 25c; 1 lb., 45c; 2 lbs., 80c; 5 lbs., \$1.75, postpaid.



Wardwell's Kidney Wax Beans.

Pole or Climbing Beans

Pole Beans require more care and labor than Bush Beans, but bear usually for a longer period than the dwarf sorts and are generally more productive; they are more sensitive to cold and wet than the dwarf varieties. Plant in hills 2 to 5 feet apart, 3 to 4 beans to every hill. $\frac{1}{2}$ pound to 100 feet of row; 30 pounds to the acre.

STRIPED CREASEBACK. This is the best green podded cornfield Bean ever produced, being very hardy and very productive; the vines are very sturdy and of good climbing habit, with small, medium, deep green leaves. The pods are long, usually about 6 inches, round and very tender. Pkt., 10c; $\frac{1}{2}$ lb., 25c; lb., 45c; 2 lbs., 80c; 5 lbs., \$1.75, postpaid.

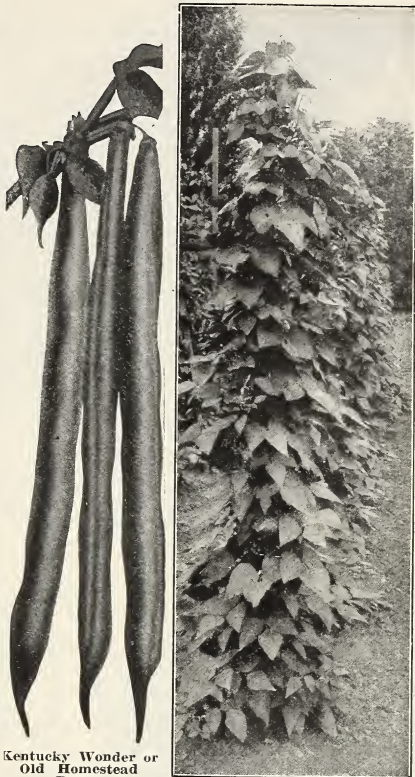
KENTUCKY WONDER WAX POLE BEAN. The pods of this variety are very long, thick, meaty, deeply saddle-backed, entirely stringless and of a bright yellow color. Pkt., 10c; $\frac{1}{2}$ lb., 25c; lb., 45c; 2 lbs., 80c; 5 lbs., \$1.75, postpaid.



Henderson's Bush Lima Beans.

KENTUCKY WONDER or OLD HOMESTEAD. This is the best known Bean on the market today; the vines are vigorous, climbing well and very productive, bearing pods in large clusters. The pods being medium in size, light green in color, often measuring 9 to 10 in. in length, curved and somewhat twisted but nearly round and very crisp when young. Pkt., 10c; $\frac{1}{2}$ lb., 25c; lb., 45c; 2 lbs., 80c; 5 lbs., \$1.75, postpaid.

WHITE CREASEBACK. An early green podded variety. Pods 5 to 6 inches in length, deeply creased and saddle-backed and borne in clusters. Pkt., 10c; $\frac{1}{2}$ lb., 25c; lb., 45c; 2 lbs., 80c; 5 lbs., \$1.75, postpaid.



Kentucky Wonder or Old Homestead Beans.

Bush Butter or Lima Beans

Every one uses Butter Beans or Bush Limas in their home, easy to grow so why not produce your wants, they make one of the finest foods and in the green stage when nice and tender are really superior to the snap Beans and when fully matured as a dried Bean they have no equal. One pound to 100 feet of drill.

HENDERSON'S BUSH LIMA. This popular variety is two weeks earlier than any of the climbing sorts, being very hardy and productive; they will produce an abundant crop under a wider range of climate and soil conditions than any other Lima, and we urge that every garden have some of them planted. Pkt., 10c; $\frac{1}{2}$ lb., 25c; lb., 45c; 2 lbs., 80c; 5 lbs., \$1.75, postpaid.

JACKSON'S BUTTER BEAN. A small white Butter Bean of the bush type; pods are flat and beans very tender, plant withstands drought better than other sorts. Very early beginning to bear in about 60 days from planting; fine for home use, also excellent as a dried Bean. Pkt., 10c; $\frac{1}{2}$ lb., 25c; lb., 45c; 2 lbs., 80c; 5 lbs., \$1.75, postpaid.

TEXAS SPECKLED BUSH LIMA. This flat speckled Butter Bean is often known as "Jackson's Wonder," being very prolific and one of the best speckled Beans you can plant. Pkt., 10c; $\frac{1}{2}$ lb., 25c; lb., 45c; 2 lbs., 80c; 5 lbs., \$1.75, postpaid.

BURPEE'S IMPROVED BUSH LIMA. A bush form of very large, white Limas, which grow about 20 inches high. The Beans are large and of an excellent quality, and if you like a large Lima Bean, this variety is the one you should plant. Pkt., 10c; $\frac{1}{2}$ lb., 25c; lb., 45c; 2 lbs., 80c; 5 lbs., \$1.75, postpaid.

Celestial or Yard Long Beans

A good table Bean as well as a curiosity. It is very prolific and a rank grower. Should have ample arbor or climb upon it should be grown more extensively in the home garden. It is of Chinese origin and one of the best vegetables emanating from that source. It is also absolutely rust-proof. Pkt., 15c; oz., 30c; postpaid.



Pole Lima or Butter Beans

Pole Limas are usually later in maturing but much more productive than the bush type, easy to grow and every fence in the garden should be used to produce Beans for the table. One pound to 100 feet of drill.

CAROLINA or SIEVA. The old type of small Pole Lima or Butter Bean; a sure cropper of small, dark green pods about 3 inches long, somewhat curved and flat, having small, white seed with a light tinge of yellow. The dried Beans are excellent for cooking. Pkt., 10c; $\frac{1}{2}$ lb., 25c; lb., 45c; 2 lbs., 80c; 5 lbs., \$1.75, postpaid.

FLORIDA BUTTER BEAN. This resembles the old type of colored Butter Beans that your mother planted when you were a child. The seed of this wonderful variety has for the last year or so been scarce and hard to get, and our supply for this season is very limited. We would suggest that you order early, some of these true Pole Butter Beans. Pkt., 10c; $\frac{1}{2}$ lb., 25c; lb., 45c; 2 lbs., 80c; 5 lbs., \$1.75, postpaid.

LARGE WHITE LIMA. A rather late but excellent variety; can be used either green or dry. Pkt., 10c; $\frac{1}{2}$ lb., 25c; lb., 45c; 2 lbs., 80c; 5 lbs., \$1.75, postpaid.



Yard Long Beans.

Jackson's Superior Beet Seed

CULTURE. Beets should be planted on a deep, rich, sandy loam, sowing in rows 18 inches apart, covering about $\frac{1}{2}$ inch deep, pressing the soil firmly over seed. When plants are well established, thin to 4 to 6 inches in the row. About 60 days in maturing, according to variety. One ounce to 50 feet of row; 6 to 8 pounds per acre.

IMPROVED EARLY BLOOD TURNIP BEET. The most popular variety for home use and near-by market, the color being a deep blood-red, a fine even form, and very uniform in growth, being very tender and productive, free from strings and very sweet. We highly recommend this variety. Pkt., 10c; oz., 15c; $\frac{1}{2}$ lb., 40c; lb., \$1.00, postpaid.

DETROIT DARK RED. This fine dark red Beet is good for canning, fine for home use and a great favorite with the truckers. The tops are small, dark green and red, the roots globular, the flesh a deep red, shading with blackish red zone. Pkt., 10c; oz., 15c; $\frac{1}{2}$ lb., 40c; lb., \$1.00, postpaid.

CROSBY'S EGYPTIAN. An old time variety that is still very popular, being very early, the shape is nearly round, very smooth, a rich red, fine grained and of extra quality. The tops being small, enables the trucker to make fine bunches. Pkt., 10c; oz., 15c; $\frac{1}{2}$ lb., 40c; lb., \$1.00, postpaid.

ECLIPSE. This is another good all round Beet, very popular, small tops with medium sized, round, bright red roots, sweet and very tender. Pkt., 10c; oz., 15c; $\frac{1}{2}$ lb., 40c; lb., \$1.00, postpaid.

SWISS CHARD or SPINACH BEET. This variety is grown for its leaves only, as it does not make an edible root like other varieties; the leaves grow upright and very large, and as the outer leaves are cut more are produced from the center. The leaf part can be cooked like spinach or turnip greens, and the almost white mid-rib or center stem can be cooked and served like asparagus. This wonderful vegetable is gaining in popularity each year, being easy to grow and we highly recommend every one trying at least a package of same. Pkt., 10c; oz., 20c; $\frac{1}{2}$ lb., 50c; lb., \$1.50, postpaid.

Improved Early Blood Turnip Beet.

Mangels or Stock Beets

FARMERS AND STOCK RAISERS ATTENTION.

Too much cannot be said about this wonderful feed and every dairy and every farm

and every stock raiser should have at least an acre or two of stock Beets—the returns will be surprising. Sow early in the Spring and again in the Fall, give the ground thorough cultivation. After first cultivation, thin out, so as to stand 6 inches apart in the row, then cultivate same as you would corn. Sow 5 pounds to the acre, in rows 2½ feet apart.

MAMMOTH LONG RED. No other variety of Mangels can compare with this in yield.

It grows well above the ground, is easily harvested, the deep red roots are straight, well formed and solid. Especially well adapted for deep soil. On good soil they will sometimes grow 18 inches long, the leaves are dark, the flesh white, being veined with rings of rose-pink. An excellent keeper and a wonderful milk producer when fed to dairy cows. Oz., 10c; $\frac{1}{2}$ lb., 40c; lb., 70c; 5 lbs., \$3.00, postpaid.

GOLDEN TANKARD.

The best known and grown yellow Mangel and we especially recommend this variety to dairy-men on account of its milk producing properties. The flesh is firm and solid and a rich golden yellow in color. Grows well above the ground and is easily pulled. Yields particularly well on light soil. Oz., 10c; $\frac{1}{2}$ lb., 40c; lb., 70c; 5 lbs., \$3.00, postpaid.

GIANT HAY STACK. This is by many considered the greatest Beet for feeding stock, it is richer in sugar than the mangels and not so rich as the sugar Beet. It grows about one-half out of the ground and is an excellent feed. Oz., 10c; $\frac{1}{2}$ lb., 40c; lb., 70c; 5 lbs., \$3.00, postpaid.

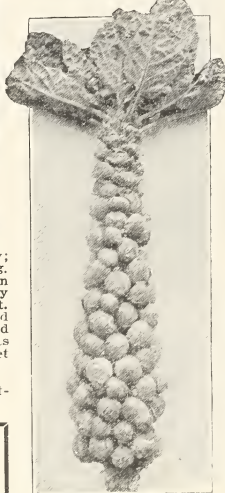


Swiss Chard or Spinach Beet.

Brussels Sprouts

A member of the cabbage family; fine for Spring and Fall planting. The sprouts are nothing more than miniature cabbages growing very closely on the stalks of the plant. The plants are very hardy and grow from 2 to 3 feet high and should be cultivated the same as cabbage. $\frac{1}{4}$ ounce to 100 feet of row.

Price, pkt., 10c; oz., 40c, postpaid.



Brussels Sprouts.

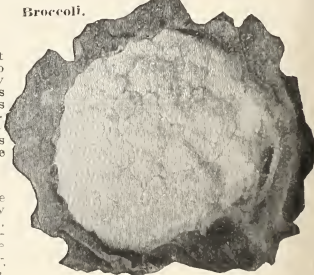


Detroit Dark Red Beet.

Broccoli

This is a vegetable that is very closely related to the cauliflower, but very much harder; it grows larger and withstands more extremes of temperature than the cauliflower. Cultivate same as you would cauliflower. One ounce to 2000 plants.

CAPE BROCCOLI. The heads of this variety are white, compact, hard and of an excellent quality, being the best variety for our section. Pkt., 15c; oz., 75c, postpaid.



Order Your Seed
Early

Jackson's Tested Cabbage Seed for the South

CULTURE. We pride ourselves on our high grade Cabbage seed and we know that the seed comes from one of the most reliable growers of Cabbage in America. Sow seed early in January in hotbeds and transplant out in the open the last of February and March, or later varieties can be sown in the open in March and April; then again, Cabbage can be sown in the open in the Fall months. One ounce of seed will produce about 1000 plants or one pound of seed to the acre.

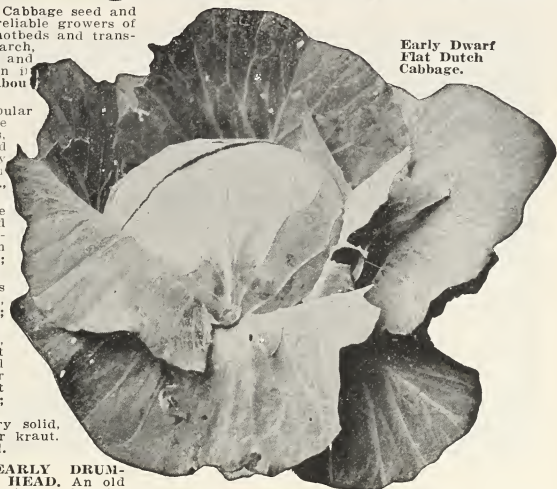
EARLY DWARF FLAT DUTCH. This is the most popular variety in our great Southwest; it belongs to the second early sorts, maturing in about 110 days; grows compact and upright, the leaves are few and short, solid heads, which are somewhat flat, very large for the size of the plant. For home use or a shipper, this variety has no equal. Pkt., 10c; oz., 25c; ¼ lb., 75c; lb., \$2.50, postpaid.

ALL SEASONS. Heads of this wonderful type are large and very solid, round and somewhat flattened at top. The name is given it because it is a variety that good results can be obtained from when either planted in the Spring or Fall. Pkt., 10c; oz., 25c; ¼ lb., 75c; lb., \$2.50, postpaid.

SUREHEAD. This type is a favorite with the truckers and large planters of Cabbage; it produces a large, round, flat head. Pkt., 10c; oz., 25c; ¼ lb., 75c; lb., \$2.50, postpaid.

COPENHAGEN MARKET. The heads are very solid, flat, with a small core, and of fine quality. It matures as early as the Charleston Wakefield and will give a much heavier yield than that popular variety; the plant is short stemmed, leaves are light green and very tightly folded. Pkt., 10c; oz., 35c; ¼ lb., 90c; lb., \$3.00, postpaid.

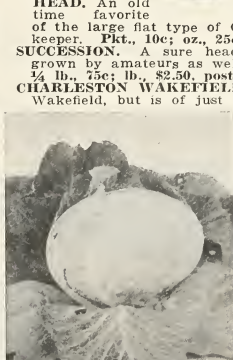
ALLHEAD EARLY. Heads are deep, flat and very solid, very uniform in color and size. A fine variety for kraut. Pkt., 10c; oz., 25c; ¼ lb., 75c; lb., \$2.50, postpaid.



Early Dwarf
Flat Dutch
Cabbage.



Early Jersey Wakefield Cabbage.



Copenhagen Market Cabbage.

EARLY DRUM-HEAD. An old time favorite of the large flat type of Cabbages; very solid heads and an excellent keeper. Pkt., 10c; oz., 25c; ¼ lb., 75c; lb., \$2.50, postpaid.

SUCCESSION. A sure heading sort; heads large and round, can be grown by amateurs as well as market gardeners. Pkt., 10c; oz., 25c; ¼ lb., 75c; lb., \$2.50, postpaid.

CHARLESTON WAKEFIELD. Not quite as early as the Early Jersey Wakefield, but is of just as good quality, the heads being somewhat larger and a little more flat. Pkt., 10c; oz., 25c; ¼ lb., 75c; lb., \$2.50, postpaid.

EARLY JERSEY WAKEFIELD. The head of this variety is very solid, comparatively small and running to a small point at the top. Has very few outer leaves and is one of the earliest sorts. We highly recommend this type for home use and market garden. Pkt., 10c; oz., 25c; ¼ lb., 75c; lb., \$2.50, postpaid.

EARLY SUMMER. A second early variety, producing large, solid heads of the finest quality and flavor. Pkt., 10c; oz., 25c; ¼ lb., 75c; lb., \$2.50, postpaid.

Cabbage Plants

We grow quite an assortment of Cabbage plants in season, and we would be very pleased to have you write us and we will gladly quote you prices.

Wong Bok or Chinese Cabbage

This wonderful variety produces a beautiful, crisp, celery-like head that bleaches easily.

As a salad it rivals the finest lettuce grown; when cooked like spinach or cabbage makes excellent "greens." Sow seed in any good soil, making the rows 24 to 38 inches apart and thinning to 12 inches apart in the rows. It will not stand frost, so sow early in the Fall and again in the Spring. Be sure and try some of this wonderful variety, as it is easy to grow. Pkt., 10c; oz., 40c, postpaid.

Cauliflower

Cauliflower can be planted in the open in the Fall months or in hotbeds in the early Spring months; transplant when 4 or 5 inches high and water frequently, especially in dry weather. ¼ ounce to 100 feet of row; 4 ounces to the acre.

WIBOLTS EXPRESS SNOWBALL. This wonderful variety of fast growing, perfect heads of Cauliflower is produced in Denmark, and we would like you to read what the grower has to say: "I have at last succeeded in obtaining this grand stock; it is the result of a series of experiments which have gradually improved the seed to the highest grade of perfection. My Express Snowball is the earliest of all the Snowballs, the most dwarf, the most compact in habit of growth, the surest header; it gives the largest, most snow-white, cleanest heads and is a good keeper in dry weather." Pkt., 20c; oz., \$2.50, postpaid.



Chinese Cabbage.



Express Snowball Cauliflower.

Jackson's Money-Making Cantaloupe Seed



Pollock 10-25 Cantaloupes.

EXTRA EARLY HACKENSACK. This type is the earliest of the Muskmelon family, being very large; the melons sometimes weighing from 5 to 6 pounds, the ribs being very prominent, the flesh being of a pale green and of an excellent quality. Pkt., 10c; oz., 15c; ¼ lb., 45c; lb., \$1.40, postpaid.

BANANA CANTALOUPE. A Cantaloupe that tastes like a banana; grows from 18 to 30 inches in length and 4 to 6 inches in diameter. Pkt., 10c; oz., 20c; ¼ lb., 50c; lb., \$1.50 postpaid.



Banana Cantaloupe.

Honey Dew Melon

This new Melon has created a sensation throughout the entire country. The flesh is an emerald-green, very thick and fine grained, can be eaten to the rind. It is of medium size, weighing 5 to 6 pounds. One of the best keepers, which makes it of special value to large growers as they can be kept until Winter months for marketing, when prices are high. Honey Dew is



Golden Self Blanching Celery.

the result of crossing the Rocky Ford Cantaloupe with a South African Melon resembling the Casaba. Resembles the Casaba but surpasses it in quality. Pkt., 10c; oz., 20c; ¼ lb., 65c; lb., \$2.00, postpaid.

Celery

CULTURE. Celery is slow to germinate and ample time must be given. Sow thinly, cover lightly and keep constantly moist. When seedling plants are 3 inches high, clip for stocky growth or else transplant. ¼ ounce to 100 feet of row; 4 ounces to the acre.

GOLDEN SELF BLANCHING. We use the French grown seed of this fine strain; the plants are compact and stocky, with a yellowish green foliage, stalks are perfectly solid, of fine flavor and it attains a good size and is very handsome. Pkt., 15c; oz., \$1.00; ¼ lb., \$3.25, postpaid.

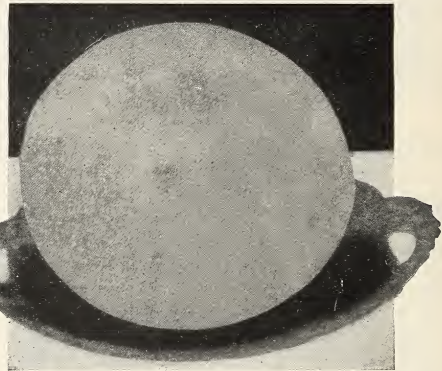
WHITE PLUME. Naturally white or light foliage, requires very little banking-up to bleach. Pkt., 10c; oz., 45c; ¼ lb., \$1.25, postpaid.

CULTURE. Cantaloupes thrive best in a light, rich soil; they should be planted as soon as the ground is warm, in hills 4 to 6 feet apart. In each hill apply well-rotted manure or a handful of commercial fertilizer, well mixed with the soil, plant about 14 seeds to each hill, covering about one inch deep. When plants are pretty well developed, thin out to about 3 plants to the hill. Cultivate frequently. One ounce to 60 hills; 2 to 3 pounds to the acre.

POLLOCK 10-25 (Salmon Fleshed). This is the most popular melon used by the growers of Rocky Ford for home use and shipping to distant markets. It is very uniform in size and shape and does not develop soft spots like some other varieties; the flesh is sweet and very delicious, being very deep and fine grained and more salmon colored than the Pollock 25. The seed cavity is exceedingly small. Netting is heavy and even from stem to blossom. Matures early and is a rust resister. Cuts with a golden center generally shading to a light green near the rind, and by all odds the best Cantaloupe introduced. The last year and to truckers as well as home gardeners we highly recommend this new wonderful type of Cantaloupe. Pkt., 10c; oz., 20c; ¼ lb., 60c; lb., \$1.75, postpaid.

UP-TO-DATE ROCKY FORD. A very handsome Cantaloupe in appearance, being slightly ribbed and laced and interlaced with thick netting outside; the flesh is of a thick green in color, very delicious. Pkt., 10c; oz., 15c; ¼ lb., 40c; lb., \$1.25, postpaid.

EDEN GEM. A variety that gives perfect satisfaction to the home gardener and the trucker, having green flesh of a fine flavor, and thick netting outside, which enables it to resist the rust. Pkt., 10c; oz., 15c; ¼ lb., 45c; lb., \$1.40, postpaid.



Honey Dew Melon.

Order Your Seeds Early

Nice Tender Carrots

and How to Grow Them

CULTURE. Every garden should have Carrots. Carrots are one of the first vegetables that medical science recommends for young children, and is equally as fine a food for the older ones. Carrots do best in a rather sandy loam soil, should be planted in drills 2 feet apart and thinned to 2 inches. In our section they can be planted in both the Fall and Spring. Our Carrot seed is the best that money can buy. One ounce will sow 100 feet of row; 4 pounds of seed are required for an acre.

JACKSON'S SELECTED DANVERS. This is a splendid strain which produces a fine, broad-shouldered Carrot about 6 inches long, very uniform in shape, the color being a beautiful orange-red. The skin is smooth. In quality it has no superior. The flesh is close grained, sweet and of good flavor. Pkt., 10c; oz., 15c; ¼ lb., 45c; lb., \$1.25, postpaid.

OXHEART or GUERANDE. Tops very small for the size of the roots, which are comparatively short, usually about 4 inches long, but very thick and heavy, terminating very abruptly in a small tap root; the flesh is bright orange, fine grained and sweet. Pkt., 10c; oz., 15c; ¼ lb., 45c; lb., \$1.25, postpaid.

LARGE WHITE BELGIAN. This is the best Carrot for stock feeding on the market today; grows about one-third above the ground with small top, the flesh being rather coarse. If you have never tried Carrots as a stock feed, put in a small amount this year and see for yourself what an excellent feed Carrots make. Pkt., 10c; oz., 15c; ¼ lb., 35c; lb., 90c, postpaid.



Jackson's Selected Danvers Carrots.

Oxheart Carrots.

Jackson's Improved Cucumber Seed

CULTURE. Form low flat hills, 6 feet apart each way, scatter one each hill 15 or 20 seeds, or one every inch along the row, cover about ½ inch deep, pressing the soil firmly. 2 ounces for 100 feet of drill; 2 pounds for one acre.

KLONDYKE. A medium early Cucumber of handsome, intensely dark green color and of excellent quality for slicing; the vines are very hardy and prolific; the matured fruit is often 8 inches long and 2 ½ inches in diameter. Very uniform in size and shape. Fruit will mature in about 60 days. This is the best market Cucumber we know of and we highly recommend it as a shipper for northern markets. Pkt., 10c; oz., 15c; ¼ lb., 45c; lb., \$1.40, postpaid.

DAVIS PERFECT. The fruits of this type are very deep green in color, rather long, averaging about 10 or more inches in length and quite slender. Flesh is crisp, tender and of fine quality. Ready for market in about 60 days. Pkt., 10c; oz., 15c; ¼ lb., 50c; lb., \$1.50, postpaid.

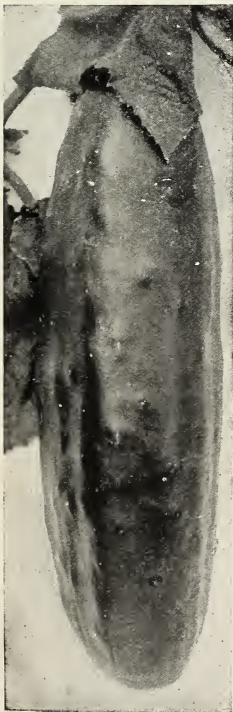
EARLY FORTUNE. An excellent shipper and very popular in the Corpus Christi section. Fruits are very early, dark green and about 7 to 8 inches in length; flesh very thick and firm, with very small seed. Pkt., 10c; oz., 15c; ¼ lb., 50c; lb., \$1.50, postpaid.

CHICAGO PICKLING. A very early pickling strain that is the standard everywhere; retains its freshness for a long period, tender and of excellent flavor, matures in about 50 days. Pkt., 10c; oz., 15c; ¼ lb., 50c; lb., \$1.50, postpaid.

IMPROVED LONG GREEN. The fruits of this popular Cucumber are very long, often measuring 12 to 15 inches when mature, very uniform, slender and of a beautiful green color. This variety furnishes some fruits very early but matures the bulk of its crop rather late; fine for slicing and excellent for pickles. Very popular as a market gardeners Cucumber and for home garden. Pkt., 10c; oz., 15c; ¼ lb., 60c; lb., \$1.75, postpaid.

JAPANESE CLIMBING. The fruits of this excellent variety are usually about 12 inches long, the fruit being well shaped, straight and of dark green color; flesh is pure white and tender; can be grown on a trellis. Ready for table in about 70 days. Pkt., 10c; oz., 15c; ¼ lb., 60c; lb., \$1.75, postpaid.

GHERKINS. Not a Cucumber proper, but a little round, prickly fruit that grows on a pretty vine with leaves somewhat like a watermelon vine; excellent for pickling. Pkt., 10c; oz., 20c; ¼ lb., 75c, postpaid.



Improved Long Green Cucumber.

Collards

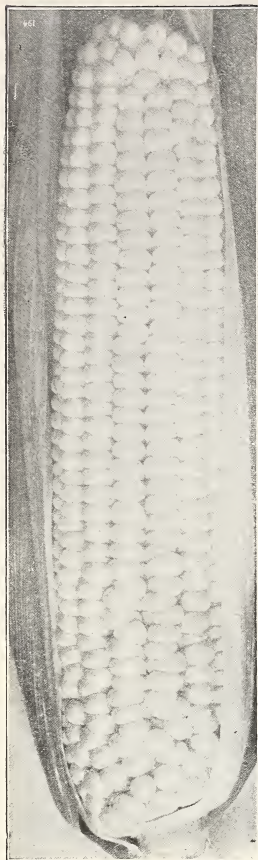
CULTURE. As old as the hills but still an old standby in the Southwest. For Winter greens it has no equal. Not in its best condition until touched by frost. Sow in the Spring and Fall. When plants are 6 inches high, transplant, setting them 2 feet apart in rows. Cultivate the same as cabbage. ¼ ounce to 100 feet of row; one pound to the acre.

SOUTHERN or CREOLE. A variety adapted to all parts of the South; will make a good crop where the soil is too poor to grow cabbage; hardy, standing Winters without serious injury in the southern states. Pkt., 10c; oz., 20c; ¼ lb., 50c; lb., \$1.25, postpaid.



Collards.

WE HANDLE ONLY ONE KIND OF SEEDS,
BEST BY TEST.



Golden Bantam Sweet Corn.

The Sweet or Garden Corn

One pound to 100 hills; 15 pounds to the acre.

GOLDEN BANTAM. This is a dwarf-growing early variety, with rich, golden kernels of the most delicious flavor. A plant attains a height of 3 to 4 feet, bearing 2 or more ears, about 5 inches long. Pkt., 10c; lb., 40c; 2 lbs., 75c; 5 lbs., \$1.50, postpaid.

COUNTRY GENTLEMAN. An old time favorite, very rich in flavor, with plump, nearly white kernels, of a great depth. Pkt., 10c; lb., 50c, postpaid.

STOWELL'S EVERGREEN. This Sweet Corn is distinguished by its large ears and long, deep kernels. In flavor it is very sugary and rich. Pkt., 10c; lb., 50c, postpaid.

ADAMS' EARLY. This type is very popular with market gardeners, being a very rapid maturing Corn. The ears are of medium size and very handsome, the stalk averaging about 7 feet in height. Pkt., 10c; lb., 35c; 2 lbs., 65c; 5 lbs., \$1.35, postpaid.

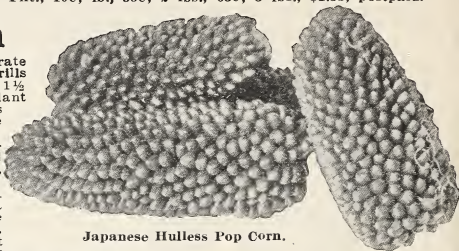
Pop Corn

CULTURE. Plant at the rate of 12 pounds to the acre, in drills 3 feet apart, dropping seed 1½ feet apart in the rows, or plant in hills, using 6 to 8 pounds to the acre. Cultivate same as field corn.

GOLDEN QUEEN. This variety has yellow grains and pops nicely. Pkt., 10c; lb., 35c; 5 lbs., \$1.30, postpaid.

JAPANESE HULLESS. A dwarf-growing Corn, being a heavy yielder of attractive ears, very peculiar in form, nearly as thick as long. It has no equal as a popping Corn. Pkt., 10c; lb., 35c; 5 lbs., \$1.30, postpaid.

WHITE RICE. Widely cultivated. Short ears with long pointed kernels; an old time favorite with everyone. Pkt., 10c; lb., 35c; 5 lbs., \$1.30, postpaid.



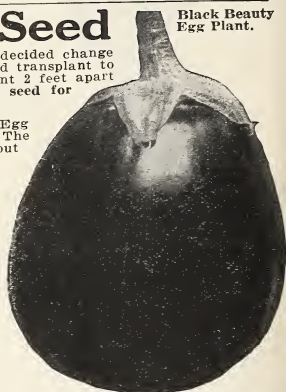
Japanese Hulless Pop Corn.

Tested Egg Plant Seed

CULTURE. A very delicious vegetable that gives decided change in diet. Sow seed in hotbeds early in the Spring and transplant to the open after all danger of frost is over. Transplant 2 feet apart each way and cultivate frequently. One ounce of seed for 2000 plants; 8 ounces of seed for an acre.

BLACK BEAUTY. This is a very early, large Egg Plant, usually maturing in about 120 days. The fruit is jet black, the average weight being about 2 to 3 pounds, very dwarf in growing habit, bearing its fruit close to the main stem; an excellent variety for truckers. Pkt., 10c; oz., 50c; ¼ lb., \$1.50, postpaid.

NEW YORK IMPROVED SPINELESS. This type is very early and entirely spineless, bearing extra large fruits of a deep purple color; very smooth with white delicious flesh. Pkt., 10c; oz., 50c; ¼ lb., postpaid.



Black Beauty Egg Plant.

Endive

Similar to lettuce. Endive has all the good points of Lettuce yet is more attractive, certainly more highly flavored and when served with salad dressing it cannot be surpassed. Cultivate the same as lettuce. One ounce will sow 100 feet of row; 2 pounds to the acre.

GREEN CURLED. This is the hardest and most vigorous type, very quick to mature and more upright than the other sorts; very crisp and tender. Pkt., 10c; oz., 25c; ¼ lb., 75c, postpaid.

Garlic

Garlic is very pungent in taste, and has the strongest odor of the onion family. Esteemed for flavor. Prepare the ground as for onions, plant the divided "cloves" in rows 3 inches apart and 4 inches apart in the rows. Lb., 40c; 5 lbs., \$1.75, postpaid.

Kale or Borecole

CULTURE. Kale is used for greens; a large producer. Sow in the Spring and when down for Fall crop, usually beginning in September. Plant in drills 2 feet apart, thin out to 8 inches in the row and cultivate same as cabbage. One ounce to 100 feet; 1 pound per acre.

DWARF GREEN. The leaves of this variety are as curly as Parsley, tender and of a fine flavor. Deep green in color, growing about 30 inches high, stands cold, which improves it. Pkt., 10c; oz., 15c; ¼ lb., 50c, postpaid.

Kohlrabi

CULTURE. A peculiar vegetable belonging to the cabbage family and forming a turnip-shaped bulb above the ground, which is used in the same manner as turnips. Cultivate the same as cabbage; should be used when young and tender. One packet to 400 feet of row; 4 pounds per acre.

EARLY WHITE VIENNA. The flesh of this variety is white and very tender; a standard sort for both home use and market gardener. Fine for forcing, having short tops and forms a bulb quickly. Pkt., 10c; oz., 30c; ¼ lb., 50c, postpaid.

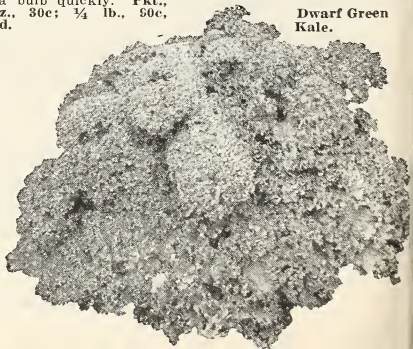
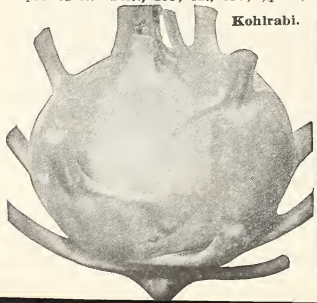
Dwarf Green Kale.

Kohlrabi.

HERBS

Used for seasoning should be cut on a dry day just before they come into full blossom. Tie in bunches and keep where they will dry quickly.

Anise Fohrebound
Balm Lavender
Basil Marjoram, Sweet
Borage Rosemary
Cainip Rue
Coriander Sage
Dandelion Tansy
Dill Thyme
Fennel Wormwood
Pkt., 10c; oz., 40c, postpaid.



Jackson's Lettuce Seed for the Southwest



CULTURE. Lettuce is so easily grown and requires such small space in the garden that every family should have a plentiful supply throughout the season. In our immediate section, when sown in the Spring of the year, the heading varieties have to be transplanted in order to form heads, especially if the weather is warm, the seed does not always germinate readily, and if you experience trouble in getting it to germinate, dampen a cloth and spread the seed on same, placing it in the ice box for several days until the seed germinates, then plant the sprouted seed in the open ground, sprinkling a little soil over them lightly. $\frac{1}{2}$ ounce to 100 feet of row; 2 pounds to the acre.

ORDER YOUR SEEDS EARLY.

New York or Wonderful Lettuce.

BIG BOSTON (Heading Variety). This is the most popular sort in Texas. It is a light green cabbage variety, slightly tinged with brown in the head, making a beautiful golden, buttery head. Pkt., 10c; oz., 20c; $\frac{1}{4}$ lb., 65c; lb., \$2.00, postpaid.

EARLY CURLED SIMPSON (Loose Bunching Variety). This is a very hardy type, easy to grow, forms no definite head, having light green, curled leaves. Pkt., 10c; oz., 20c; $\frac{1}{4}$ lb., 65c; lb., \$2.00, postpaid.

JACKSON'S ICEBERG (Heading Variety). This type is light green in color, the red tinged leaves are somewhat curled, forming heads that are very large but not solid, being very tender and crisp and of excellent flavor. Pkt., 10c; oz., 20c; $\frac{1}{4}$ lb., 65c; lb., \$2.00, postpaid.

CALIFORNIA CREAM BUTTER (Heading Variety). An extremely solid heading variety, highly prized for table use, leaves are thick and of a buttery, sweet flavor. Pkt., 10c; oz., 20c; $\frac{1}{4}$ lb., 65c; lb., \$2.00, postpaid.

PARIS WHITE COS-ROMAINE (Loose Bunching Variety). Easy

to grow and a different type of Lettuce from all other sorts; has long, narrow, spoon-shaped leaves, forming a loose, conical head; very crisp and tender. Pkt., 10c; oz., 20c; $\frac{1}{4}$ lb., 65c; lb., \$2.00, postpaid.

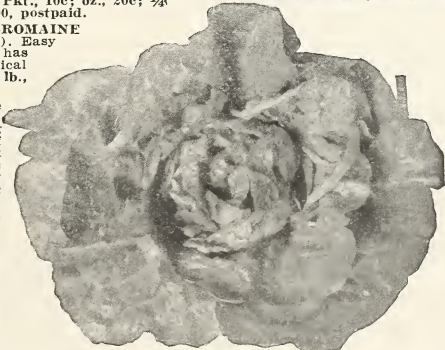
NEW YORK or WONDERFUL (Heading Variety). This Lettuce is sometimes called the "Los Angeles Market." It is the largest and most solid variety on the market, often weighing $2\frac{1}{2}$ pounds a head. This is the most popular variety of Lettuce on today's market with the truckers; also an excellent Lettuce for home use. Being a poor seeder, the price is usually higher than other sorts. Our supply of this variety is very limited and we suggest ordering early. Pkt., 10c; oz., 35c; $\frac{1}{4}$ lb., \$1.00; lb., \$3.50, postpaid.

MAY KING (Heading Variety). A very early sort, forming fine heads which are very hard. Fine for late Spring planting. Pkt., 10c; oz., 20c; $\frac{1}{4}$ lb., 65c; lb., \$2.00, postpaid.

ALL OF OUR SEEDS ARE SECURED FROM THE MOST RELIABLE SOURCES OF SUPPLY, AND ARE CAREFULLY TESTED FOR GERMINATION.



Paris White Cos Lettuce.



Big Boston Lettuce.

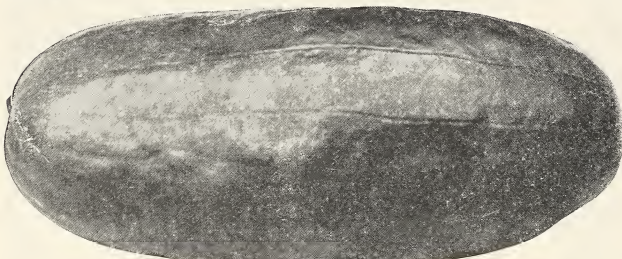
Southern Grown Watermelon Seed

CULTURE. Our Watermelon seed is all southern grown and is far superior to northern grown seed. A light, sandy soil, with good exposure to the sun is the best for Watermelons. It should be prepared deep, but receives shallow cultivation; hoe often. Plant in hills 8 to 10 feet apart each way, plant about 10 seeds to the hill, usually thinning out to 3 strong plants to the hill. $\frac{1}{2}$ ounce to 100 feet of row; 2 pounds to the acre.

NEW WONDER WATERMELON.

This new variety of Melons is about 5 or 6 years old, and is gaining in popularity each year. It is a large and long Melon, somewhat resembling the Watson. The rind is a dark, solid green, being thin but very tough. The flesh is a beautiful red, having a solid heart which does not show a hollow. An exceptionally fine eating Melon, good for home use and fine for market. The seed is white with but few in the Melons, being very prolific. We highly recommend it to our customers and know they will be well pleased with it. It is not susceptible to the white heart and is undoubtedly the most handsome and delicious Melon on today's market. Being a poor seeder, naturally price is higher than other varieties. Stocks are very limited and should be ordered early. Pkt., 10c; oz., 20c; $\frac{1}{4}$ lb., 50c; lb., \$1.75; 5 lbs., \$7.50, postpaid.

ALABAMA SWEET. An old time popular Melon; the dark green, thin rind makes it a favorite with the shippers, and the dark red flesh, free of strings, makes it a ready seller with the trade. Pkt., 10c; oz., 15c; $\frac{1}{4}$ lb., 30c; lb., \$1.00, postpaid.



Irish Grey Watermelon.



New Wonder Watermelon.

GEORGIA RATTLESNAKE. This is a large, oblong Melon, bright green in color, mottled and striped with a lighter shade, having a thin rind with dark red flesh of a v-v-y delicious flavor. Pkt., 10c; oz., 15c; $\frac{1}{4}$ lb., 40c; lb., \$1.25, postpaid.

IMPROVED IRISH GREY. This "brand new" Melon is very large and the vines are free of runts or small ones. In color the Melon is of a yellowish gray and the rind is as tough as a citron, making an ideal Melon to ship to distant markets or for home use. The fruit is of a sparkling red color, being very sweet and free from strings. The outside appearance is not as attractive as some other Melons, but when once eaten you will be convinced that it is one of the sweetest Melons you have ever tasted. If you are just going to plant a "patch" or a field of Melons this year, be sure and try the Irish Grey, and we know that you will then be a booster for this new variety. Pkt., 10c; oz., 15c; $\frac{1}{4}$ lb., 50c; lb., \$1.50; 5 lbs., \$6.25, postpaid.

HALBERT'S HONEY. This is unquestionably the sweetest long, dark, glossy Melon we know of. The flesh is crimson, very sweet and of a delicious flavor. Vigorous in growth and a heavy fruiter. An excellent Melon for home use and small patches. Pkt., 10c; oz., 15c; $\frac{1}{4}$ lb., 40c; lb., \$1.25, postpaid.

KLECKLEY SWEETS. An excellent variety which is unsurpassed for home use or nearby market; the fruits are medium to large, oblong, tapering slightly towards the stem end, dark green. The flesh is very bright, rich red and exceedingly sweet. Pkt., 10c; oz., 15c; $\frac{1}{4}$ lb., 40c; lb., \$1.25, postpaid.

TOM WATSON. An old time favorite with many on account of its popularity; it need not be described. Pkt., 10c; oz., 15c; $\frac{1}{4}$ lb., 30c; lb., \$1.00, postpaid.

Mustard

CULTURE. Sow as early in the Spring as the ground will permit, or again in the Fall, in drills 18 inches apart, covering $\frac{1}{2}$ inch deep, using $\frac{1}{2}$ ounce to 100 feet of row, or 2 pounds to the acre. The crop of Mustard seed was practically a failure this year and stocks are very limited, so order early.

CHINESE BROAD LEAF MUSTARD. A very hardy, broad leaf variety. The leaves are thick, broad, white mid-rib, remains in a fine condition for use; rapid in growth and very tender. Pkt., 10c; oz., 15c; $\frac{1}{4}$ lb., 40c; lb., \$1.25, postpaid.

SOUTHERN GIANT CURLED. A large variety, forming a giant mass of beautiful leaves, which are ruffled and finely curled on the edges; very hardy and vigorous. Pkt., 10c; oz., 15c; $\frac{1}{4}$ lb., 40c; lb., \$1.25, postpaid.

WHITE or YELLOW MUSTARD. A variety of Mustard whose seed is used extensively for spicing, pickling and other culinary purposes. Pkt., 10c; oz., 15c; $\frac{1}{4}$ lb., 30c, postpaid.



Chinese Broad Leaf Mustard.

USE NITRATE OF SODA FOR FINE WATERMELONS. SEE PAGE 27.

High Grade Onion Seed for Texas

CULTURE. Onions thrive best in a deep, rich, fertile soil. Plant seed in early Spring and early Fall. The ground should be thoroughly worked, well fertilized and well pulverized. Onions from seed will mature in about 140 days. One ounce to 100 feet of row; 4 pounds to the acre.

CRYSTAL WHITE WAX BERMUDA. This is the genuine pure white type of the Bermuda Onion family. Our seed of this variety comes directly from Tenerife. This Onion is very mild in flavor, having a clear white skin; being deliciously tender, a heavy yielder, consequently a profitable crop to grow. Pkt., 10c; oz., 60c; ¼ lb., \$1.75; lb., \$6.00, postpaid.

IMPORTED RED BERMUDA. A pale waxy red; the best variety where a red Onion is preferred; very mild in flavor. Pkt., 10c; oz., 40c; ¼ lb., \$1.25; lb., \$4.00, postpaid.

IMPORTED WHITE or YELLOW BERMUDA. A very popular type of Bermuda Onion; it is a standard variety with large commercial growers in southwest Texas, being a light straw colored Onion, ripening early and very prolific. Pkt., 10c; oz., 40c; ¼ lb., \$1.25; lb., \$4.00, postpaid.

JACKSON'S GENUINE RED CREOLE. Our seed of this distinct type of Onion comes direct from Louisiana, the home of the Creole Onions. Around New Orleans this is a very important crop and hundreds of acres are planted every Fall. The skin is brownish red, the flesh is very solid and fine grained, being rather hot or strong in flavor. A heavy yielder and an excellent keeper. We know our seed of this type is the finest that money can buy. Pkt., 10c; oz., 45c; ¼ lb., \$1.35; lb., \$1.50, postpaid.



Crystal White Wax Bermuda Onion.



Jackson's Genuine Red Creole Onion.

Onion Sets

While it is cheaper to raise Onions from seed, many prefer Onion sets. They will produce early Spring Onions quick. In the Spring of the year we have what is called the Western Sets. No Bermudas offered in the Spring. One quart to 100 feet of row; 8 bushels to the acre.

YELLOW and RED SETS. 30c per qt.; 3 qts., 85c, postpaid.
WHITE SETS. 35c per qt.; 3 qts., \$1.00, postpaid.

We can only supply Bermuda Onion Sets in the Fall of the year, not in the Spring.



Onion Sets.

Bermuda Onion Plants

The usual manner in growing green Onions has, in the past, been by planting sets, but various tests have proven that the Onion plant is preferable. The set has to be absorbed by the new growth before it begins to form the new Onion, whereas the plant begins to grow as soon as it is planted and makes more headway than the set, producing delicious young Onions for table use during late Fall, Winter and Spring. Onions grown from plants are larger and do not run to seed in the Spring like sets. Onions like rich soil, so the ground should be liberally fertilized. Plant in rows about 15 inches apart and 3 or 4 inches apart in the row. 30c per 100; \$1.25 per 500; \$2.25 per 1000; 5000 and over at \$1.75 per 1000. Ready January 1st.



Bermuda Onion Plants.

Okra

CULTURE. Very easy to grow; a plant that insects and pests do not bother much. Okra is a very profitable market crop, always being in good demand. Bringing good returns for the time and money invested. So if you are looking for a good money, truck crop, we urge that you plant an acre or two of Okra and you will be surprised at the returns. One ounce of seed will sow 50 feet of drill; 6 pounds to the acre.

WHITE VELVET. Pods are greenish white, very tender, never prickly and a heavy yielder. The best variety for home use and for market gardeners. Pkt., 10c; oz., 15c; ¼ lb., 25c; lb., 75c; 3 lbs., \$1.75, postpaid.

PERKINS' LONG POD. This is a very prolific variety, bearing pods of unusual length; very slim and very tender. Pkt., 10c; oz., 15c; ¼ lb., 25c; lb., 75c; 3 lbs., \$1.75, postpaid.

DWARF GREEN. This is a dwarf type, growing about 14 inches in height, bearing thick, green pods of fine flavor. Pkt., 10c; oz., 15c; ¼ lb., 25c; lb., 75c; 3 lbs., \$1.75, postpaid.



White Velvet Okra.



Double Curled Parsley.

Parsley

CULTURE. Parsley is used as a garnish for meats and salads, also adds a pleasing flavor to soup. If seeds are soaked in warm water several hours before planting, facilitates them to germinate readily. Plant in rows 8 inches each way covering about $\frac{1}{8}$ inch deep. 1 ounce of seed to 100 ft. row, 3 pounds per acre.

DOUBLE CURLED. The old-time standard variety, a favorite with the market gardeners, the plants are dwarf, of compact habit, leaves heavily curled and crimped and of dark green. Pkt., 10c; oz., 15c; $\frac{1}{4}$ lb., 45c; lb., \$1.25, postpaid.

PLAIN OR SINGLE. Leaves of this variety are deeply cut, not curled, dark green in color. Pkt., 10c; oz., 15c; $\frac{1}{4}$ lb., 45c; lb., \$1.25, postpaid.

Parsnips

CULTURE. Sow early in the Spring in rows 18 inches apart and in the Gulf Coast country, again in September, using 1 ounce of seed to 100 foot row; 5 pounds to the acre.

HOLLOW CROWN. This is the favorite sort to grow, it frequently grows a foot long, is very tender and has a particularly good flavor. Pkt., 10c; oz., 15c; $\frac{1}{4}$ lb., 40c; lb., \$1.25, postpaid.



Hollow Crown Parsnips.

Garden or English Peas

CULTURE. The smooth sorts such as Alaska, First and Best, can be planted very early as it takes a hard freeze to kill them, the wrinkled types are more sensitive and should be planted later. A pound and a half of seed to 100 ft. row; 1 to 1 $\frac{1}{2}$ bushels to acre. Cover about 1 to 2 inches.

EARLY ALASKA. This smooth blue pea is one of the most popular sorts with market gardeners, the vines are of medium height, about 2 $\frac{1}{2}$ to 3 ft., bearing pods of a good size, about 2 $\frac{1}{2}$ to 3 in. long. This type matures its crop all at once. We highly recommend it to the gardeners as well as home users. Pkt., 10c; $\frac{1}{2}$ lb., 25c; lb., 45c; 2 lbs., 80c, postpaid.

FIRST AND BEST. The vines are vigorous, hardy, of medium height, standing about 30 to 35 inches high. Pods straight, of good size, containing 5 to 7 medium size smooth peas of good quality, for so early a variety. Pkt., 10c; $\frac{1}{2}$ lb., 25c; lb., 45c; 2 lbs., 80c, postpaid.

TELEPHONE. An old-time wrinkled Pea that is a favorite, vines are large and coarse, 40 to 50 in. high, producing pods 4 $\frac{1}{2}$ in. long, containing 6 to 7 large Peas of sweet flavor. The seed of this type are large green and wrinkled. Pkt., 10c; $\frac{1}{2}$ lb., 25c; lb., 45c; 2 lbs., 80c, postpaid.

SUTTON'S EXCELSIOR. The plants are dwarf, about 14 in. high, very stout. Exceedingly productive and the quality is all that can be desired. The pods are quite large for so dwarf a variety and well filled. Pkt., 10c; $\frac{1}{2}$ lb., 25c; lb., 45c; 2 lbs., 80c, postpaid.

LARGE WHITE MARROWFAT. Vines are about 5 ft. high, and of strong growth. Pods large, rough and light colored and well filled. Ready for picking in about 35 days from planting. Pkt., 10c; $\frac{1}{2}$ lb., 25c; lb., 45c; 2 lbs., 80c, postpaid.



Alaska Peas.



Telephone Peas.

Seed Sweet Potatoes

We are prepared to furnish the very best Sweet Potatoes that can be had for seed purposes, being especially selected for seed. We handle the Porto Rican Yams and the Nancy Halls and other varieties; when ready to buy, write us for prices.

Sweet Potato Slips

We handle thousands of the very best slips procurable and when ready to buy drop us a card and we will gladly quote you our prices. 75 slips to 100 ft. row, 10,000 to the acre.

Seed Irish Potatoes

In season we handle the Red Bliss Triumph, the Irish Cobbler and Early Rose, as the market changes so much it is impossible to name prices. Write us. 3 pounds to 100 ft. row, 8 to 10 bu. to acre.

Peppers - Hot Ones and Sweet Ones

CULTURE. Plant seed $\frac{1}{2}$ in. deep in hotbeds in early Spring or in boxes in the house; when all danger of frost is over, transplant out in the open $1\frac{1}{2}$ ft. apart in rows, 2 to 3 ft. wide. 1 packet to 100 feet, $\frac{1}{2}$ pound to the acre.

CHINESE GIANT. Thousands of market gardeners plant this beautiful Pepper which sells at sight. It is the largest Sweet Pepper grown, the flesh is very tender, thick and has no equal; it is undoubtedly the best Pepper for home use as it slices fine and on account of its mild flavor can be eaten raw like tomatoes. Pkt., 10c; oz., 60c; $\frac{1}{4}$ lb., \$3.00, postpaid.

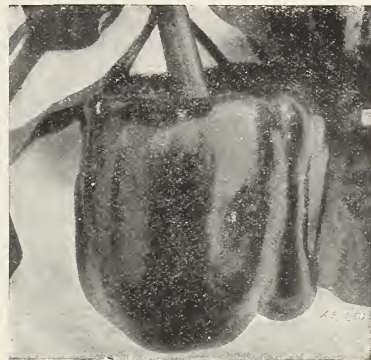
BELL OR BULL NOSE. This variety is excellent for home use but should not be confused with the Chinese Giant; it is very similar in shape but scarcely more than half as large. Pkt., 10c; oz., 40c; $\frac{1}{4}$ lb., \$1.25, postpaid.

MIXED PEPPERS. On account of the demand from home gardeners, we are offering a mixture of Peppers, containing both the sweet and hot varieties. This gives you an excellent assortment and you can certainly use all varieties for cooking, pepper sauces, etc. Pkt., 10c; oz., 50c, postpaid.

TABASCO PEPPER. This is the variety which the famous Tabasco sauce is made from. The tall, bushlike growth produces a great number of small, slender, very hot and fiery fruits, about 1 inch long, bright scarlet in color. Pkt., 10c; oz., 70c; $\frac{1}{4}$ lb., \$2.25, postpaid.

MEXICAN CHILLI. A very hot medium size, pear-shaped Pepper, which turns bluish black when dried. Pkt., 10c; oz., 50c, postpaid.

LONG RED CAYENNE. A well known hot, medium early variety. Very prolific, bearing fruits from 4 to 5 in. long in color, deep green turning to a red when ripe. Pkt., 10c; oz., 40c; $\frac{1}{4}$ lb., \$1.25, postpaid.



Chinese Giant Peppers.

Pumpkins - The Good Ones for Pies

CULTURE. Pumpkins are cultivated the same as melons or cucumbers, they are raised between hills of corn, but may be planted with success in fields by themselves. $\frac{1}{2}$ ounce to 100 ft. row, 3 pounds to the acre.

SMALL SUGAR. Fruits are of small size, averaging about 10 in. in diameter, of excellent keeping qualities; flattened and slightly ribbed. Skin deep orange-yellow, flesh very sweet, fine grained, and one of the best varieties for pies. Pkt., 10c; oz., 15c; $\frac{1}{4}$ lb., 40c; lb., \$1.25, postpaid.

LARGE CHEESE OR KENTUCKY FIELD. This is undoubtedly the best field Pumpkin grown, the ripe fruits are flat and of a rich creamy yellow, measuring about 2 ft. in diameter. The flesh is tender and of excellent quality. Fine for stock feed. Pkt., 10c; oz., 15c; $\frac{1}{4}$ lb., 85c, postpaid.

TENNESSEE SWEET POTATO. A bell-shaped Pumpkin of a delicious flavor, excellent for pies. Pkt., 10c; oz., 15c; $\frac{1}{4}$ lb., 50c; lb., \$1.65, postpaid.

MAMMOTH TOURS OR BIG TOM. This is the largest Pumpkin that grows, a good keeper and an excellent feed for live stock. Pkt., 10c; oz., 20c; $\frac{1}{4}$ lb., 50c; lb., \$1.65, postpaid.

GREEN STRIPED CUSHAW. Nothing in the Pumpkin family can compare with this sweet, delicious vegetable, the fruit is long with green and white stripes, ready to eat in about 40 days after planting. Very easy to grow and to those who have unsightly spaces that need covering, we recommend the Cushaw. A packet or two of seed will be sufficient. Pkt., 10c; oz., 20c; $\frac{1}{4}$ lb., 50c; lb., \$1.50, postpaid.



Green Striped Cushaw.

Radishes - Crisp and Tender Sorts

CULTURE. To have crisp and tender Radishes, they must be grown quickly, and should be planted in very rich soil and have plenty of water, commencing early in Spring and sown at intervals of about a week or ten days, and again in the Fall, usually starting in August, using the same methods as in Spring planting. $1\frac{1}{2}$ ounces to 100 feet of row; 8 pounds to the acre.

EARLY SCARLET TURNIP WHITE TIP. (21 days). Roots are slightly flattened on the under side; color very deep scarlet with distinct white tips; the flesh is white and of best quality. Pkt., 10c; oz., 15c; $\frac{1}{4}$ lb., 30c; lb., 90c, postpaid.

EARLY LONG SCARLET SHORT TOP. (35 days). This is the standard long sort of Radish for either home or market gardeners; tops are short and comparatively small. Pkt., 10c; oz., 15c; $\frac{1}{4}$ lb., 30c; lb., 90c, postpaid.

EARLY SCARLET TURNIP. A round, red, turnip-shaped Radish, with small tops; color almost crimson; flesh white, crisp and very tender. A rapid grower. Pkt., 10c; oz., 15c; $\frac{1}{4}$ lb., 30c; lb., 90c, postpaid.

FRENCH BREAKFAST. (25 days). A quick growing, small, olive-shaped Radish, about $1\frac{1}{2}$ inches long by $\frac{3}{4}$ inch in diameter when fully grown. In color it is a beautiful scarlet except near the tip, where it is pure white. Pkt., 10c; oz., 15c; $\frac{1}{4}$ lb., 30c; lb., 90c, postpaid.



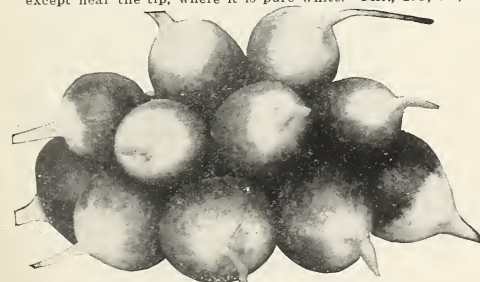
Icicle Radishes.

LONG BLACK SPANISH. (50 days). Roots from 7 to 10 inches long and 2 to 3 inches in diameter; skin is black; flesh white, firm and pungent. A good keeper. Pkt., 10c; oz., 15c; $\frac{1}{4}$ lb., 30c; lb., 90c, postpaid.

CHINA ROSE. (50 days) A very large, bright rose Radish for Winter use. Pkt., 10c; oz., 15c; $\frac{1}{4}$ lb., 30c; lb., 90c, postpaid.

ICICLE. (25 days). This Radish grows about 4 to 5 inches long; is of transparent whiteness with short leaves, making its growth very quickly; of excellent flavor and equally as desirable for home use as well as market garden. Pkt., 10c; oz., 15c; $\frac{1}{4}$ lb., 30c; lb., 90c, postpaid.

JACKSON'S MIXED RADISH. Some people like a patch of mixed Radishes, and in order to accommodate our customers who desire such, we have made a mixture containing all sorts of the best varieties. Pkt., 10c; oz., 15c; $\frac{1}{4}$ lb., 30c; lb., 90c, postpaid.



Early Scarlet Turnip White Tip Radishes.

Salsify

How to Grow the Oyster Plant

CULTURE. Sow the seed in the Spring in drills 1 ft. apart and 1 in. deep, thinning out plants to 4 in. It succeeds best in light, enriched soil. 1 ounce of seed to 50 ft. of drill.

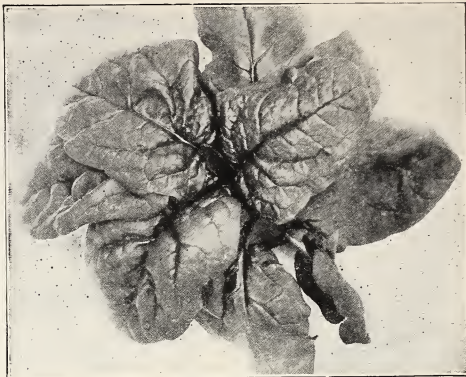
MAMMOTH SANDWICH ISLAND (95 days). The roots of this variety are large, strong growing, smooth, white and tapering. Of excellent quality and delicate in flavor. Pkt., 40c; oz., 25c; ¼ lb., 75c, postpaid.

Spinach

For Winter and Summer

CULTURE. Should be planted in very rich ground; for early Spring use sow early in the Fall and for later use, sow early in the Spring, sowing in drills 1 ft. apart and begin thinning out the plants when the leaves are an inch wide. 1 ounce of seed to 50 ft. of drill, 10 to 12 pounds per acre.

BLOOMSDALE (45 days). A very early productive variety, with large, glossy, dark green leaves which are crumpled or blistered like savoy cabbage. Rather prone to run quickly to seed. The best variety for Fall, Winter or extremely early Spring.



Bloomsdale Spinach.

Thousands of acres of this variety are planted each year in Texas for northern market. Pkt., 10c; oz., 15c; ¼ lb., 25c; lb., 50c; 5 lbs., \$2.00, postpaid.

NEW ZEALAND. This is strictly a Summer variety, popular with the truckers and home gardeners, the stems and leaves are soft, thick and fleshy. This wonderful variety of Spinach is available in the Summer months when the other varieties fail. Pkt., 10c; oz., 15c; ¼ lb., 40c; lb., \$1.25, postpaid.

Squash - The Varieties You Like

CULTURE. Squash should not be planted until all danger of frost is past; plant in hills 5 feet apart for bush varieties and 6 or 8 feet apart for running varieties, putting 6 to 8 seeds in the hill, finally thinning out to three plants. One ounce to 25 hills; 4 pounds to the acre.

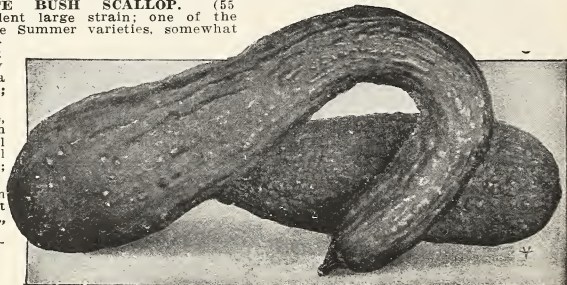
EARLY WHITE BUSH or PATTY PAN. This is the earliest of all Squashes. Very productive; skin and flesh a light cream color; an exceedingly popular variety with all market gardeners on account of its keeping qualities, which enables them to ship to distant markets. Pkt., 10c; oz., 15c; ¼ lb., 45c; lb., \$1.25, postpaid.

MAMMOTH WHITE BUSH SCALLOP. (45 days). An excellent large strain; one of the handsomest of the Summer varieties, somewhat flattened and scalloped. The fruit is uniformly warty and of a Pkt., 10c; oz., 15c;

beautiful, clear, waxy color. Pkt., 10c; oz., 15c; ¼ lb., 45c; lb., \$1.25, postpaid.

YELLOW SUMMER CROOKNECK. An old time, well known crookneck variety; very popular with the market gardeners as well as the small gardeners. A good shipper, fruits being small and of a light yellow color. Pkt., 10c; oz., 15c; ¼ lb., 50c; lb., \$1.50, postpaid.

IMPROVED HUBBARD. This variety matures in about 65 days from planting, and is the most popular of the Winter varieties. Pkt., 10c; oz., 15c; ¼ lb., 50c; lb., \$1.50, postpaid.



Yellow Summer Crookneck Squash.

Strawberry Plants

We can supply you in the Fall of the year, when ready to buy. Write for prices.



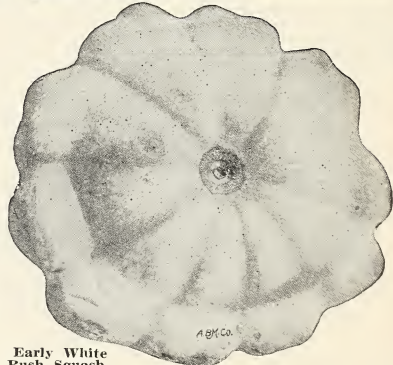
Tobacco as it Grows in the Field.

Tobacco

HAVANA IMPORTED. The best type for making cigars. Pkt., 15c; oz., 50c, postpaid.

WHITE BURLEY. Excellent for wrappers. Pkt., 15c; oz., 50c, postpaid.

"IF YOU ARE
LOOKING FOR
RESULTS IN
YOUR GARDEN,
THEN PLANT
JACKSON'S
SEEDS."



Early White Bush Squash.

Tomatoes - The Big Red Ones

CULTURE. Sow seed in early Spring in hotbeds and transplant when 2 or 3 inches high into pots; when 5 or 6 inches high, and the ground has become warm, transplant to the open ground, on a rainy or cloudy day; water freely at time of transplanting and give frequent and thorough cultivation. One packet to 100 feet of row; **1/2 pound to the acre.**

REDFIELD BEAUTY. A decided favorite for either home market or for shipping purposes, being early, hardy and a great yielder. The fruit is large, always smooth, perfect in shape and of excellent quality; in color the fruit is a glossy crimson-purple, growing in clusters of 4 to 6 large fruits, which are very firm, having somewhat tough skin; it seldom rots or cracks, like some of the tender-skinned sorts. Pkt., 10c; oz., 35c; 1/4 lb., \$1.10; lb., \$3.50, postpaid.

ACME. This is a purple sort of Tomato, maturing in about 95 days, being one of the earliest purple fruited Tomatoes on the market; the fruits are produced in clusters of four and five, free from crack; the flesh is remarkably solid and stands long distance shipping well. Pkt., 10c; oz., 35c; 1/4 lb., \$1.10; lb., \$3.50, postpaid.

PONDEROSA. Purple. The largest variety of practical value, ripening its solid, almost seedless fruit early.



Dwarf Champion Tomatoes.

The fruit is very neat, fine grained and free from acid. Pkt., 10c; oz., 50c; 1/4 lb., \$1.75, postpaid.

DWARF CHAMPION. (100 days). Purple. This popular dwarf Tomato combines more good qualities than any other upright variety. It is dwarf in habit, making compact, stiff, upright plants, which carry the fruit well above the ground. The fruit is medium large, somewhat of a purplish pink in color, being always round and smooth. A type well adapted for home use as well as for market gardeners. Pkt., 10c; oz., 45c; 1/4 lb., \$1.40; lb., \$4.50, postpaid.

YELLOW PEAR. A small Tomato used for preserving. Pkt., 10c; oz., 50c, postpaid.

JUNE PINK. A pink type of Tomato that ripens as early as Sparks' Earliana. An enormous bearer, having clusters of 6 to 8 fruits, being borne both at the crown and at the forks of the branches. Fruit is medium in size, very uniform, smooth and of attractive shape. Pkt., 10c; oz., 40c; 1/4 lb., \$1.25; lb., \$4.00, postpaid.

McGEE. This wonderful Tomato originated in Texas and has stood the test in many ways and been found to be satisfactory. Very productive, of average size, bearing bright crimson colored, solid fruits of an excellent flavor. Pkt., 10c; oz., 40c; 1/4 lb., \$1.25; lb., \$4.00, postpaid.

DWARF STONE. The best large fruited, dwarf Tomato, producing exceedingly smooth, bright red Tomatoes; rather late in maturing, but desirable for home use as well as for truckers. Pkt., 10c; oz., 45c; 1/4 lb., \$1.40; lb., \$4.50, postpaid.

SPARKS' EARLIANA. (90 days). Bright red. The earliest smooth, bright red Tomato of good size. The Tomatoes are uniform, fleshy, solid and excellent for shipping purposes. Sparks' Earliana is nearly seedless, containing one-fourth less seeds than other varieties. Pkt., 10c; oz., 35c; 1/4 lb., \$1.10; lb., \$3.25, postpaid.



Redfield Beauty Tomato.

Turnips - Everyone Should Grow Them

CULTURE. Turnips can be planted with great success in the Spring, but the main crop should be planted in the early Fall. The Spring sown seed germinates rapidly and Turnips are ready for use very early, and being sown under more favorable conditions, they are sweeter and more tender than those grown in the Fall. For Spring use, plant winter in drills from January to March, and for Fall or Winter use from August on. One ounce of seed to 100 feet of row; 3 pounds to the acre.

PURPLE TOP GLOBE. This is the best variety for both home and market use in Texas. It is a large, globe-shaped variety, being purple above the ground, very handsome and of excellent quality. A type of Turnip we highly recommend. Pkt., 10c; oz., 15c; 1/4 lb., 30c; lb., 80c, postpaid.

EARLY WHITE FLAT DUTCH. An old standby of the Strap Leaf family. Of medium size and a quick grower; flesh and skin white, fine grained and very sweet. Pkt., 10c; oz., 15c; 1/4 lb., 30c; lb., 80c, postpaid.

YELLOW or AMBER GLOBE. The best yellow Turnip producing a globe-shaped root with smooth skin and light yellow flesh, which is very firm and sweet. Pkt., 10c; oz., 15c; 1/4 lb., 30c; lb., 80c, postpaid.

PURPLE TOP STRAP LEAF. This is a round, flat Turnip, white on the bottom and a reddish purple above the ground; a quick grower and an excellent table sort. Pkt., 10c; oz., 15c; 1/4 lb., 30c; lb., 80c, postpaid.

WHITE GLOBE. The color is pure white, shape being round, large and very solid; extremely quick in growth. Pkt., 10c; oz., 15c; 1/4 lb., 30c; lb., 80c, postpaid.

SEVEN TOP. The tops are used as spinach, the root is of no value, however, the greens are excellent. Pkt., 10c; oz., 20c; 1/4 lb., 60c, postpaid.

AMERICAN PURPLE TOP RITABAGA. This strain is of American origin, bred to a smaller top and a shorter neck; the bulbs are of a large size; the flesh is yellow with a purple crown. A very desirable sort for home use as well as market gardeners. Pkt., 10c; oz., 15c; 1/4 lb., 35c; lb., \$1.00, postpaid.



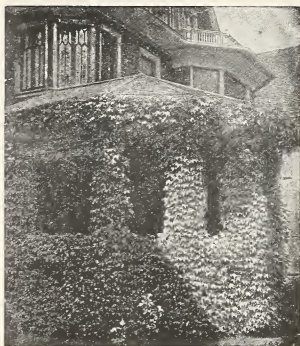
Purple Top Globe Turnip.



Early Giant
Flowering Cosmos.

Beautify the Home With Choice Flowers

We specialize in flower seeds and list only varieties which have been tried and proven successful in our section of the country. A home can hardly be called a home without some bright colored flowers blooming in the yard, and adding cheer to the surroundings. Flowers, when care is exercised and when common sense is used, are not hard to grow, and every home, every farm and every park should abound in them, and the school yards should be a source of pride and beauty. Plant shrubs, but don't plant all shrubs and no flowers as so many do, as you need bright flowers for a contrast in color. One thing should be borne in mind, flower seeds should never be planted in a cold, wet ground, as they are delicate and will not readily germinate in adverse weather conditions. They should never be planted deep and the ground should be thoroughly prepared. A little care and attention will work wonders in a flower garden.



Ampelopsis Veitchi—Boston Ivy.

Amaranthus

An odd plant with many colors, being useful for tall borders and grouped with other foliage. The leaves and stems are of a different shade of red, blended with green, usually growing from 2 to 3 feet high. Sow seed early in the Spring.

TRICOLOR (Joseph's Coat). An excellent variety for poor soil. The leaves are red, yellow and green. **Pkt., 10c.**

CAUDATUS (Love-Lies-Bleeding). A rapid grower of about 3 feet high. **Pkt., 10c.**

CREUNTUS (Princess Feather). A peculiar feathered type of about 3 feet high. **Pkt., 10c.**

Ampelopsis Veitchi - Boston Ivy

This is one of the finest climbers for covering walls, as it clings firmly to the smoothest surface, covering it closely with overlapping foliage, giving it the appearance of being shingled with green leaves. **Pkt., 10c.**

Ageratum - Floss Flower

An annual which is very hardy and of easy culture; fine for bedding, as it is literally covered with blossoms all Summer. Sow in boxes early in the Spring or out in the open when danger of frost is past.

BLUE PERFECTION. A deep blue; about 1 foot high. **Pkt., 10c.**
MIXED COLORS. **Pkt., 10c.**

Sweet Alyssum

A fragrant, hardy annual, bearing spikes of beautiful, small, white flowers in great profusion throughout the Winter, Spring and Summer; without a doubt the best border plant for our section. Beautiful when planted in solid beds; blooms very quickly.

CARPET OF SNOW (Compactum procumbens). A very compact variety, growing about 3 inches high, one plant often having a diameter of 15 inches. **Pkt., 10c; oz., \$1.00.**

LITTLE GEM (Maritimum compactum). The plants of this sort grow about 6 inches high producing hundreds of flowers, forming a compact mass of blooms, usually about 15 or 16 inches in diameter. **Pkt., 10c; oz., \$1.00.**

LILAC QUEEN. A dwarf type which is of a beautiful, delicate lilac shade. **Pkt., 10c; oz., \$1.00.**



Alyssum, Carpet of Snow.

"ALL OUR SEEDS ARE SECURED FROM THE MOST RELIABLE SOURCES OF SUPPLY AND ARE CAREFULLY TESTED FOR GERMINATION."

California Giant Asters

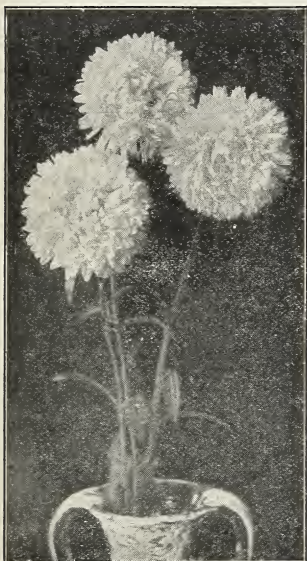
This type of Asters is of the largest and most beautiful variety, often measuring 4 to 5 inches across the top of the flower. Their immense size and beauty as well as their long and sturdy stems make them very attractive as cut flowers. This is something new in the aster family and no garden will be complete without them. You cannot appreciate the beauty of them until you have grown them.

PEACH BLOSSOM. An exquisite flower with a wonderful bloom; in color similar to a peach blossom. Pkt., 25c.

LIGHT BLUE. The flowers are large, light bright blue, something out of the ordinary. Pkt., 25c.

DEEP ROSE. Nothing more beautiful. The flowers are giants, of a deep purplish rose color. Pkt., 25c.

DARK PURPLE. A beautiful artistic dark purple of the very largest size in form. Pkt., 25c.



California Giant Asters.

Queen of the Market Asters

This type of Asters has proven very popular in this section, being a very early flowering type. Plants are of the branching habit, bearing from 10 to 15 flowers of medium size, being very pretty.

BLUSH PINK. A pleasing shade. Pkt., 10c.

CRIMSON. An attractive red. Pkt., 10c.

DARK BLUE. A very beautiful color. Pkt., 10c.

LAVENDER. Very desirable. Pkt., 10c.

ROSE. A pleasing bright rose. Pkt., 10c.

WHITE. A beauty. Pkt., 10c.

FINEST MIXED. All shades mixed. Pkt., 10c.

Antirrhinum - Snapdragon

The Snapdragon is now one of the most popular flowers. It is easily grown from seed and does exceptionally well in our section; they may be had in a great variety of separate colors or you can plant them mixed for a brilliant array of color. By all means include a packet or two in your order.

BUTTERFLY STRIPED. A pretty striped variety. Pkt., 10c.

BRILLIANT. A velvety crimson with a yellow throat. Pkt., 10c.

TALL MIXED. Including all the new shades. Pkt., 10c.

DWARF MIXED. Pkt., 10c.



Tall Mixed Snapdragon.

Balsam or Lady Slipper

A very tender annual with brittle stems and foliage, flowering both single and double, being very bright and of various colors, growing close to the stem. Can be planted in the Spring, Summer and Fall.

DOUBLE WHITE. Very pretty. Pkt., 10c.

DOUBLE SCARLET. A bright color. Pkt., 10c.

DOUBLE ROSE. A pleasing shade. Pkt., 10c.

TALL MIXED COLORS. A variety of colors. Pkt., 10c.

DWARF MIXED COLORS. Low growing plants in all colors. Pkt., 10c.

Bellis Perennis ENGLISH DAISY

This dwarf, double form of true daisy is a charming little plant for edging and low borders. The bright little pompon or flower buttons are a delight in the Spring and early Summer. Plant early.

DOUBLE WHITE. The flowers are pure white. Pkt., 10c.

DOUBLE ROSE. The best of all pinks. Pkt., 10c.

DOUBLE MIXED. All colors. Pkt., 10c.

Begonia

A tender perennial, usually grown in a greenhouse. Some varieties are especially attractive on account of their foliage, but most varieties for their exquisitely waxlike flowers, both single and double. The seed is very small and rather difficult to germinate and must be planted in boxes or pots indoors. If you like Begonias, be sure to include a packet in your order. Pkt., 25c.

Asparagus Fern

The ornamental varieties of Asparagus are highly valued for their foliage. When potted they make excellent house plants. The seed does not germinate readily and should be soaked in lukewarm water before planting.

PLUMOSUS NANUS. A dwarf variety and preferred on account of its beautiful, dense sprays of feathery green. Pkt., 10c.

SPRENGERI (Emerald Feather). An early, easily grown feathery leaf variety with drooping branches. The best variety for hanging baskets. Pkt., 10c.

Aquilegia - Columbine

A hardy perennial of graceful habit, growing about 2 feet high; the flowers are very attractive, fine for cut flowers. If sown early in the Spring they will often flower same season.

MIXED COLORS. Pkt., 10c.

Balloon Vine

A rapid and graceful climber, bearing small, white flowers; excellent for porches and trellis. Pkt., 10c.

Balsam Apple

A climbing annual growing about 10 feet high, having very graceful and ornamental foliage. Pkt., 10c.

Balsam Pear

This is another good climbing annual, excellent for porches or fences. Thrives well in hot sections. Pkt., 10c.



Bellis Perennis—
English Daisy.



The "Ball" Calendula.

Calendula

An old-fashioned popular flower that has greatly improved in recent years, being very easy to grow, succeeding well in most any soil and blooming profusely from early Spring until late Fall. Excellent for cut flowers and very attractive when planted in solid beds or can be used as borders. Plant in the Fall or early Spring.

ORANGE KING. A new one that bears giant flowers sometimes three inches in diameter. In color it is of a beautiful orange. Pkt., 10c.

LEMON QUEEN. A large type, bearing a beautiful lemon shaded flower. Pkt., 10c.

DOUBLE MIXED. A fine mixture containing many different shades of yellow and orange, some clear colors and some shaded. Pkt., 10c.



Giant White Hyacinth-Flowered Candytuft.

The "Ball" Calendula This new introduction is a very double flower of a beautiful orange, shading to a light center. This type of Calendula has only been offered to florists and we were fortunate in getting a small amount from the grower this year for our trade; so if you want something beautiful and something new in the Calendula line, order a packet or two before our limited supply is exhausted. Pkt., 20c.

Calliopsis or Coreopsis

An annual that will grow luxuriantly in our section, affording a constant supply of richly marked flowers for cutting.

MIXED COLORS. Pkt., 10c.

Canary Bird Vine

A beautiful climber, with charming little canary colored blossoms. Pkt., 10c.

Cardinal Climber

A most brilliant annual climber, being a strong and rapid grower, attaining a height of 30 feet or more, with beautiful, deeply incised foliage and literally covered with a blaze of circular cardinal-red flowers until frost. The flowers are about 1½ inches in diameter and are borne in clusters of 7 to 11 blossoms each. If you are in need of an excellent climber, be sure and include a packet of this in your order. Pkt., 15c.



Marguerite Carnations.

Candytuft - Iberis

This wonderful, showy, delicate looking plant thrives and does well in our section; in fact one would almost think it was a native. Solid beds as well as borders planted in Candytuft have no equal. Their wide range of colors make them very desirable in every flower garden.

LILAC. A pleasing shade. Pkt., 10c.

CARMINE. Just imagine a bed of this shade. Pkt., 10c.

EMPRESS WHITE. A solid bed of this is as white as snow. Pkt., 10c.

ROSE CARDINAL. A deep shade of rose. Pkt., 10c.

CHOICE MIXED. All colors in this mixture. Pkt., 10c.

Giant White Hyacinth-flowered Candytuft

This is a beautiful new variety of the Candytuft family. The grower has been working on it since 1816, and has finally perfected it. The blooms are giant in size, bearing immense snow-white spikes, which often measure 10 inches or more; so if you want a treat, give this one a trial. Pkt., 15c.

Canterbury Bells

A very handsome flower. Plants are of a stately, branching habit, having a profusion of blooms, which makes an excellent background for beds. Flowers are bell-shaped, of a very rich color. Will bloom from seed the second year.

SINGLE BLUE. A very striking, clear blue. Pkt., 10c.

DOUBLE MIXED COLORS. The finest type. Pkt., 10c.

Carnation - Marguerite

This is decidedly the best type of carnation for our section, being an extra vigorous race and especially adapted to outdoor culture. The plants are trim in habit, and flower abundantly in about five months from sowing of seed. Sow late in the Fall and early Spring in boxes and transplant later.

DOUBLE PINK. Nothing prettier. Pkt., 10c.

DOUBLE DARK RED. A wonderful shade. Pkt., 10c.

DOUBLE WHITE. Pure as snow. Pkt., 10c.

DOUBLE YELLOW. An odd shade. Pkt., 10c.

CHOICE DOUBLE MIXED. A variety of colors. Pkt., 10c.

Centaurea Cyanus

Sometimes called Cornflower or Bachelor's Button. This is an old-fashioned, hardy annual and still a great favorite for cutting purposes. Are very easily cultivated; the seed should be sown in the Spring where they are to remain and thin them to 3 or 4 inches.

DOUBLE WHITE. This is a new variety. It is absolutely pure white and very double; splendid as a cut flower. Pkt., 10c.

DOUBLE BLUE. A pleasing shade of blue, much prettier than the single kinds. Height 2 to 3 feet. Pkt., 10c.

DOUBLE PINK. A beautiful shade of bright pink. Pkt., 10c.

DOUBLE MIXED. All colors. Pkt., 10c.

Chinese Woolflower - Celosia

A new annual of great merit, the flowers resemble huge balls of wool. Height about 15 inches.

MIXED COLORS. Pkt., 10c.



Chinese Woolflower.

Chrysanthemums

Annual Varieties

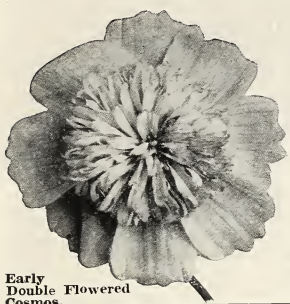
These are not the shaggy or double flowers that you see in the florist's window in the Fall of the year, but are handsome plants of 1 to 2 feet high. Covered with bright colored single flowers, sometimes called "Painted Daisy."

PAINTED DAISY (Carinatum). These daisy-like flowers are red, yellow and white with rings around the center of contrasting color. Very attractive flowers and especially valuable for cutting.

MIXED COLORS. Pkt., 10c.



Chrysanthemum—Painted Daisy.



Early Double Flowered Cosmos.

Early Double Flowered Cosmos

This is something new but being a hybrid, only about 40 per cent of the flowers are double, the balance being large, single flowers, which are very attractive. Early double Cosmos flowers, aside from their novelty and beauty, are of lasting substance, both as cut flowers and on the plant; by all means send for a packet of this remarkable new Cosmos.

DOUBLE WHITE. A very handsome white. Pkt., 25c.

DOUBLE CRIMSON. An exquisite red. Pkt., 25c.

DOUBLE PINK. A beautiful shade of pink. Pkt., 25c.

EARLY DOUBLE MIXED. All colors mixed. Pkt., 25c.

Cosmos

This is an old time annual, one of the most showy and beautiful of all flowers. There are two distinct types of Cosmos, the Early Blooming type and the Late Blooming type. The Early Blooming type may be planted from early Spring until Fall, and the Late Blooming type should be planted in the late Spring for Fall blooming. Plant out in the open where the flowers are intended to bloom.

KLONDYKE. The late blooming type, which should be planted in the Spring and will bloom in the Fall. In color a beautiful yellow. Pkt., 10c.

EARLY GIANT FLOWERING PINK. A beautiful pink for either Spring or Fall planting. Pkt., 10c.

EARLY GIANT FLOWERING WHITE. A pure white for Spring or Fall planting. Pkt., 10c.

EARLY GIANT FLOWERING CRIMSON. A wonderful red for Spring or Fall planting. Pkt., 10c.

EARLY FLOWERING MIXED. All colors for either Spring or Fall planting. Makes a wonderful bed as a background in mixed colors. Pkt., 10c.



Shasta Daisies.

Cockscomb *CELISTA*

An old and picturesque class of plants having colored foliage gracefully arranged like plumes and sometimes more dense, like a cock's comb. They are very easily grown and should be planted outdoors when the ground is warm; they make an extreme contrast to shrubbery when planted here and there among them. **DWARF GIANT EMPRESS.** This beautiful dwarf plant has bronze leaves and forms very large, crimson combs; height usually about one foot. Pkt., 10c. **TALL COCKSCOMB.** Choice mixed of many types. Pkt., 10c. **DWARF MIXED.** A mixture of the best growing dwarf sorts. Pkt., 10c.

Coleus

The handsomest foliage plant obtained from seed. The leaves often measure 10 inches in length and 8 inches in width, heart-shaped and handsomely crimped, toothed and frilled. Their color combination is remarkably rich; a plant that thrives and grows luxuriantly in our climate. Plant in hotbeds and transplant later. **MIXED COLORS.** Pkt., 15c.

Clematis

An old, well known climber that is much admired for its graceful and attractive flowers; splendid for porches. Seed germinates very slowly. **CHOICE LARGE FLOWERING MIXED.** Pkt., 10c.

Cyclamen

Sometimes known as the Alpine Violet. A beautiful house plant with fine foliage, having rich colored, fragrant flowers. Sow in the Fall or Early Spring. Pkt., 10c.

Cypress Vine

A most beautiful rapid climber with delicate, dark green leaves and many bright, star-shaped flowers. **SCARLET.** Pkt., 10c. **WHITE.** Pkt., 10c. **MIXED COLORS.** Pkt., 10c.

Shasta Daisy

A splendid hardy variety with flowers rarely less than four inches across, of the purest glistening white with yellow center, broad overlapping petals and borne on long stems. A beautiful cut flower, remaining in a good condition a week or more. **ALASKA.** The finest type. Pkt., 10c.

Giant Flowering Dahlias

Although not generally known, Dahlias are easily grown from seed. If planted early in a hotbed and transplanted broad overlapping petals and borne on long stems. A beautiful cut flower, remaining in a good condition a week or more. **ALASKA.** The finest type. Pkt., 10c.

Dahlia - Smaller Type

The medium size or smaller single flowers. Pkt., 10c.
The medium size or smaller double flowers. Pkt., 10c.



Giant Flowering Cactus Dahlias.



Chinensis Double Mixed Pinks.

Dimorphotheca AFRICAN DAISY

A very showy annual from South Africa, which has become a great favorite on account of its easy culture and beautiful flowers. The colors include all shades of yellow, orange, cream and white, and when massed in beds or wide borders they have a very brilliant effect. They may be planted during the Fall, Spring or Summer.

HYBRIDS, MIXED COLORS. Pkt., 10c.

Euphorbia Variegata (SNOW-ON-THE-MOUNTAIN)

A very pretty foliage plant. Pkt., 10c.

Four O'clock - Marvel of Peru

A well known favorite plant bearing freely, funnel-shaped, white, red and striped flowers.

MIXED COLORS. Pkt., 10c.

Foxglove - Digitalis

A hardy perennial, old-fashioned border plant, forming dense spikes of brilliantly colored, thimble-like or bell-shaped flowers, three to five feet high.

FINEST MIXED. Pkt., 10c.



Bachelor's Button.



Helichrysum—Strawflower.

Helichrysum - Strawflower

A free flowering hardy annual growing from 1 1/2 to 2 feet tall, having an abundance of flowers that are round, flat but thick, very full of short, stiff, incurved petals, surrounding a depressed center.

CHOICE MIXED. This mixture contains the latest types. Pkt., 10c.

Heliotrope

Highly valued for the fragrance of their flowers and duration of bloom. Tender perennials; one foot high. Easily grown from seed; blooming first Summer if sown early.

FINEST MIXED. A mixture of the best type in shades of white and purple. Pkt., 10c.

Hibiscus

A beautiful ornamental plant growing from 2 to 4 feet high, having beautiful bell-shaped flowers, ranging in color from a white and rose to a deep scarlet. Sow in open ground after all danger of frost is over.

MIXED COLORS. We offer the latest varieties. Pkt., 10c.

Hyacinth or Jack Beans

A rapid growing annual climber, flowers freely, followed by ornamental seed pods.

PRINCESS HELEN. A beautiful snow-white variety. Pkt., 10c.

COCCINEA. A brilliant red. Pkt., 10c.

MIXED COLORS. Pkt., 10c.

Dianthus or Pinks

The family of Pinks is unrivalled for brilliancy and rich variety of color. The plants are bushy, of symmetrical form, blooming profusely until Fall, rendering them very satisfactory for Summer flower gardens.

CHINENSIS DOUBLE MIXED. This is a double annual sort of beautiful colors. Pkt., 10c.

HEDDEWIGI DOUBLE MIXED. This is another type that is beautiful. Pkt., 10c.

SINGLE GRASS PINKS MIXED. This is a perennial type, but very pretty. Pkt., 10c.

Gaillardia - Blanket Flower

A beautiful, showy plant, remarkable for the profusion, size and brilliancy of its flowers, continuing in bloom from early Summer until late in the Fall. Excellent for beds, borders or for cutting. Height about 13 inches.

SINGLE MIXED. Pkt., 10c.

DOUBLE MIXED. Pkt., 10c.

Geranium

A half-hardy perennial, flowering the first year from seed if sown very early. A gorgeous flower of numerous shades and colors. Bearing continuously renders this one of the most popular plants grown.

MIXED LARGE FLOWERS. This choice mixture includes many of the newest and finest sorts. Pkt., 25c.

Golden Rod

The American National Flower. Gracefully arched sprays of golden yellow. Pkt., 10c.

Gomphrena (BACHELOR'S BUTTON)

Entirely different in appearance from any of the everlasting flowers, being very attractive, having globe-shaped flowers resembling a clover blossom, which, when cut and dried, hold their shape and color well.

MIXED COLORS. Pkt., 10c.

Gourds

So many people desire Gourds where vines are desired quickly and we have made a mixture containing all sorts and types.

ORNAMENTAL MIXED. Pkt., 10c.

Gypsophila

A delicate, free flowering plant covered with star-shaped flowers; valuable for mistlike effects and as trimming in bouquets.

ELEGANS. A beautiful type of pure white. Pkt., 10c.

MURALIS. A pretty rose-pink. Pkt., 10c.

ELEGANS MIXED. A good mixture. Pkt., 10c.



Gypsophila—Baby's Breath.

Hollyhock

A hardy perennial, very stately. The seeds should be planted in the Fall and will bloom the following Spring; it is generally sown in a seedbed and then transplanted.

SINGLE EVERBLOOMING MIXED.
This contains the latest sorts. Pkt., 10c.

DOUBLE EVERBLOOMING MIXED.
The most beautiful varieties of the doubles. Pkt., 10c.

Ice Plant

A pretty little creeping flower for baskets or boxes; grows about 6 inches high, having flowers of white and pink; the leaves are covered with crystal-like drops, shining brightly in the sun. The foliage is remarkable. Pkt., 10c.



Hollyhocks.

Larkspur

TALL DOUBLE STOCK-FLOWERED

This is the finest strain for our section and will produce a wonderful show in any flower garden. The double flowering varieties, with their long spikes, are excellent for cut flowers. They should be planted in beds, or as a background for other small plants; with their great varieties of colors one may carry out most any color scheme desired and the bright shades will add a touch of beauty to the garden that will be a pleasure to note. They are easy to grow and we know of no flower that will produce a greater show. By all means include an assortment of our Larkspurs in your garden for early Spring blooming.

DARK BLUE. A rich deep blue. Pkt., 10c.

WHITE. A pure white. Pkt., 10c.

LUSTROUS CARMINE. A new type of a beautiful glowing color. Pkt., 10c.

TALL STOCK-FLOWERED MIXED. This contains a fine mixture of all shades. Pkt., 10c.

ROSE. A soft rose-pink. Pkt., 10c.

PERENNIAL MIXED. This is the true Delphinium type. Pkt., 10c.

Exquisite A brand new Larkspur of the double stock-flowered, tall variety, which has recently been introduced by the grower under the name of "Exquisite" and it is justly entitled to that name as it is something marvelous. The color of this charming new Larkspur is a beautiful soft pink. Our supply of seed is limited and we suggest that you order early. Pkt., 25c.

Japanese Hop or Humulus

A rapid Summer climber, attaining a height of 20 to 30 feet in about 4 weeks, making a dense covering. Pkt., 10c.

Japanese Kudzu Vine

The fastest growing hardy climbing plant. The foliage is large and covers well, bearing a small rosy purple pea-shaped blossom; a wonderful variety for covering porches and trellises, a type we highly recommend. Pkt., 10c.

Job's Tears

An annual, curious, ornamental grass. Very hardy. 3 feet high. Pkt., 10c.



Stock-Flowered Larkspur.

Lantana

A very popular free blooming, rapid growing plant, with flower heads of various colors which are continually changing. Plants are completely loaded with blossoms succeeded by berries which, when ripe, turn deep blue. Used largely for bedding out in Summer and also fine for Winter blooming plants. Start seed in hotbeds. Pkt., 10c.

LOBELIA

This charming little hardy annual grows from 4 to 6 inches high and is of very compact growth, being literally covered with small bright flowers.

CRYSTAL PALACE. Undoubtedly the finest dwarf blue for bedding. Pkt., 10c.

OUR CHOICE MIXED COLORS. Pkt., 10c.

Lavender LAVANDULA VERA

A much prized, highly perfumed border plant. Makes an excellent dried plant. Pkt., 10c.

STIM-U-PLANT

PLANT STIMULANT TABLET

The Magic Fertilizer in Tablet Form

GLORIOUS GARDENS PERFECT HOUSE PLANTS

STIM-U-PLANT is the only complete plant food in tablet form. Guaranteed analysis 11 per cent Nitrogen, 12 per cent Phosphoric Acid, 15 per cent Potash—all of which elements are water-soluble and immediately available to the feeding root-hairs of the plant.

TABLET FORM OF GREAT VALUE

1. They give an EXACT FEEDING UNIT.
2. No MESSY MIXING.
3. No UNPLEASANT ODOR.
4. MAXIMUM EFFICIENCY because no food-value lost in scattering, leaching, or run-off of soil surface-water.
5. Makes REPOTTING of plants UNNECESSARY as it replaces the food withdrawn by the growing plant.

EASY TO USE

Simply insert tablets in soil about 3 inches from stem of plant, or dissolve in water at the rate of four tablets to the gallon and apply as liquid manure. Complete directions with every package.

Order STIM-U-PLANT tablets with your seed and plant order. Price, 30 tablets 25c; 100 tablets 75c.



Lobelia, Crystal Palace.



Double Tall African Marigold.

Linum SCARLET FLAX

One of the most attractive and showy bedding plants of long duration, having fine foliage and delicate stems, with brilliant scarlet flowers. Pkt., 10c.

Lupins or Lupinus

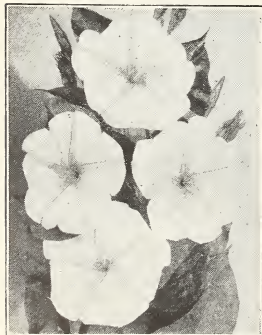
Annual sorts. Free flowering, easily grown, having graceful spikes of rich and various colored, pea-shaped flowers; valuable for mixed borders.

TALL MIXED. Pkt., 10c.

DARK BLUE. Pkt., 10c.

Mignonette

No garden is complete without the Mignonette. It is a hardy annual, growing 6 to 12 inches high, being very easy to grow. The flowers are pyramid-shaped spikes, which are very fragrant. MIXED COLORS. Pkt., 10c.



Moonflowers.

Moonflower

WHITE MOONFLOWER. (Ipomoea). This is a greatly improved variety of the popular Moonflower vine, producing much larger flowers in a greater profusion, with immense saucer-shaped flowers from 7 to 8 inches across. Pkt., 10c.

BLUE MOON VINE (Bona Nox). Sometimes called an Evening Glory. A beautiful, large, violet flower. Pkt., 10c.

GIANT PINK. The soft lilac-pink flowers are produced abundantly all Summer. Pkt., 10c.

Morning Glory

One of the easiest of the vines to grow, being very hardy and a very rapid climber. Highly recommended for fences, trellises and porches.

BLOOD RED. A beautiful red. Pkt., 10c.

BRAZILIAN BLUE. A large beautiful blue type. Pkt., 10c.

JAPANESE MIXED. The best Morning Glory for strong growth and varying colors. Pkt., 10c.

OUR CHOICE MIXED. Lots of shade. Pkt., 10c.

Mourning Bride

(SCABIOSA)

Sometimes called the Pin Cushion plant. An old time favorite, having beautiful soft shaded flowers. MIXED. Pkt., 10c.

Nicotiana

(ORNAMENTAL
TOBACCO)

A beautiful hardy annual, fine for its sweet scented and ornamental flowers. Pkt., 10c.

Marigold

Marigolds are hardy annuals, in dwarf and tall varieties, growing from 6 inches to 3 feet high. The flowers are of various shades of yellow and brown. The tall varieties are excellent for tall bedding or background work, while the dwarf varieties are fine for borders. Marigolds do so well in our section you can almost call them native flowers. Easy to grow, and every flower garden should have some.

DOUBLE TALL AFRICAN MARIGOLDS

AFRICAN TALL DOUBLE ORANGE. A beautiful flower of gigantic size; a very bright orange color, plant usually growing about 2 to 3 feet high. A very popular sort. Pkt., 10c.

AFRICAN TALL DOUBLE LEMON. A lemon shade that is beautiful. Pkt., 10c.

AFRICAN TALL DOUBLE MIXED. Containing all shades. Pkt., 10c.

DWARF FRENCH MARIGOLDS

The French type are much smaller flowering than the African, but greatly prized for borders or bedding.

DWARF FRENCH GOLDEN BALL. A double golden yellow of very compact growth, blooming very profusely. Height about 1 foot. Pkt., 10c.

DWARF FRENCH DOUBLE MIXED. A fine mixture, having a wonderful lot of colors in it. Pkt., 10c.

Mexican Fire Bush - Kochia

This beautiful plant forms regular pyramids from 2 to 3 feet in height, having a cypress-like appearance. It makes an excellent background or fine for planting along the edge of the walk. Stays green all during the Summer and in the Fall or Winter turns fiery red.

CHILDSEI IMPROVED. This is the latest type of Kochia. Pkt., 10c.

MAKE YOUR GARDEN A WONDER GARDEN. USE STIM-U-PLANT. SEE PAGE 21.



Mexican Fire Bush.

Sowrite Sower
Sows Seeds at a Touch!

This little flower seed sower is what the planter has been needing for years. It is made of Fibreloid, which is nonbreakable, and has a graduating hole which controls the outflow of the finest seeds and enables an even distribution. Don't waste expensive flower seed when for \$1.00 you can buy this new flower seed sower. Price, \$1.00, postpaid.



Nasturtiums

For cut flowers they are unequalled, for a border along flower beds, nothing is better. We have in our mixture this year the finest shades that have ever been offered, our mixture having been grown for us by one of the very best growers, he making the mixture from only the very best named varieties, and in offering you this mixture, we know that we are offering you something that is "classy" in the Nasturtium line.

DWARF NASTURTIIUMS MIXED. Pkt., 10c; oz., 20c; ¼ lb., 70c; lb., \$2.00, postpaid.

TALL or TRAILING NASTURTIIUMS MIXED. Pkt., 10c; oz., 20c; ¼ lb., 75c.

Nigella - Love-in-a Mist

A compact, free flowering plant with finely cut foliage, having curious looking flowers and seed pods. Pkt., 10c.

Ornamental Grasses

When planted among annuals or as a background, or in flower beds, they make a very attractive effect. We have selected only the best grasses that do well in our section. MIXED. Pkt., 10c.



Nasturtiums.

GENERAL DODD. A rich blood-red. The flowers are large and erect; a free bloomer. Pkt., 10c.

LARGE FLOWERING HYBRID MIXED. This is one of the best mixtures on the market today. Pkt., 10c.

HOWARD'S STAR IMPROVED. A beautiful velvety purple Petunia, with a white star; makes a very striking bed or border. Pkt., 15c.

LORD COURTNEY. A fine brilliant rose colored Petunia with a yellow throat; flowers are very large and showy. One of the best varieties we offer. Pkt., 15c.

PURPLE PRINCE. A large, gorgeous velvety Petunia, something new and beautiful; when massed in beds nothing more exquisite; fine for window boxes and borders. Try a packet or two and be convinced. Pkt., 15c.

PRIDE OF PORTLAND. A new strain of Petunias. Fine for bedding and window boxes. In color they are a large, deep rose-pink and somewhat fringed. Pkt., 15c.

DOUBLE LARGE FLOWERING MIXED. This is a mixture of the best large flowering, fringed, double Petunias. All double seed will not produce double flowers, but a large percentage can be expected to do so. Pkt., 50c.

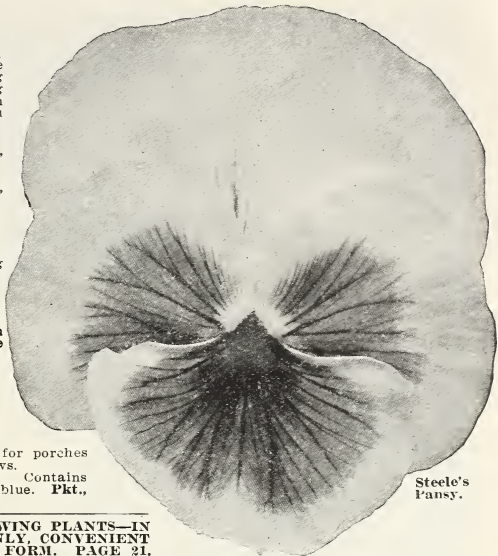
RUFFLED GIANT PETUNIAS MIXED. The most wonderful Petunia that you have ever seen; their rich colors and gigantic size make them the most beautiful of all Petunias. The edges are ruffled and the flowers are of the largest size. Pkt., 50c.

Passion Flower

A beautiful vine for porches and around windows.

MIXED COLORS. Contains both white and blue. Pkt., 10c.

FOOD FOR GROWING PLANTS—IN THE MOST CLEANLY, CONVENIENT AND EFFECTIVE FORM. PAGE 21.



Steele's Pansy.

How to Grow Giant Pansies

Pansies thrive best in a moist, sunny location in rich, loamy soil. The seed should be sown in the Fall for early Spring blooms, or can be sown early in the year for good flowers later in the Spring. The plants must be transplanted twice in order to get the largest flowers; once from the seed box to a chosen bed and again to the open ground where they are to bloom; this is very necessary to get the large sized blooms. Use manure very liberally.

STEELE'S GREENHOUSE MIXTURE. This is the very largest type of Pansy grown; the many shades and colors and the enormous size of the blooms make it the most sought after Pansy in America today. The seed is grown in the Puget Sound country, where the climatic conditions are ideal for it to reach the zenith of perfection. By all means include a sack of these wonderful Pansies in your order this season. Pkt., 50c; ¼ oz., \$5.00; oz., \$8.00.

TRIMARDEAU MIXED. This is the best all around Pansy that we know of; the blooms reach a very nice size and the colors are excellent. Pkt., 10c; ¼ oz., \$2.50; oz., \$4.00.

YELLOW with a dark center. An exceedingly pretty Pansy. Yellow with a dark eye, which is very attractive. Pkt., 10c.

KING OF THE BLACKS. A very large black Pansy, that has a velvety appearance. Pkt., 10c.

AZURE BLUE. A soft shaded Pansy that is very pretty. Pkt., 10c.

KING OF THE WHITES. A very large, nice white Pansy. Pkt., 10c.

BRONZE. A beauty. Pkt., 10c.

Petunias

Petunias are one of our specialties and we pride ourselves on having the best types procurable; types that are adapted to our section of the country. Petunias are unsurpassed for massing in beds, they are also used along the walks and driveways, and can be used very extensively in window boxes. Sow seed early in the Spring.

PURE WHITE. This is of the Hybrid type, being of excellent size and pure white. Pkt., 10c.



Large Flowering Hybrid Mixed Petunias.

Phlox Drummondii

The Phlox is the showiest and most easily raised of all annuals. Seed should be sown in the ground as soon as all danger of frost is over, and in a few weeks the beds are a blaze of glory.

WHITE. Very pretty. Pkt., 10c.

BRILLIANT SCARLET. A beautiful red. Pkt., 10c.

SPLENDENS. A large, bright red. Pkt., 10c.

STARRED and FRINGED. A beautiful star-shaped flower with a fringed edge. Sometimes called the "Texas Star." Pkt., 10c.

CHOICE MIXED. Pkt., 10c.

PERENNIAL HARDY. A hardy type of perennial Phlox in mixed colors. Pkt., 10c.



Phlox Drummondii.

Poppies

The different varieties of Poppies are always favorites for outdoor display, and the cultivation of them being so extremely simple, entitles them to a place in every garden. They should be planted in the late Fall or very early in the Spring, as in our section they burn out as Summer comes on.

SHIRLEY MIXED. This is a beautiful type of satiny flowers with a wide range of colors. Pkt., 10c.

THE BRIDE. A single, pure white Poppy that resembles a Tulip. Pkt., 10c.

SPLENDENS. A beautiful single rose colored Poppy. Pkt., 10c.

MILADO. A beautiful Japanese double Poppy, with brilliant scarlet and white, curled petals; very similar to the Japanese Chrysanthemum. Pkt., 10c.

CARNATION-FLOWERED. Of large size; flowers very double; of many colors. Pkt., 10c.

ICELAND. This is a perennial type and very hardy. Mixed colors. Pkt., 10c.

CALIFORNIA POPPY or EGGSCHELTZIA. A very beautiful annual with finely cut, feathery foliage, having a velvet cup-shaped flower. When planted in late Fall or early Spring they do fairly well in our section, producing an abundance of pretty flowers. All colors mixed. Pkt., 10c.

AMERICAN LEGION. This is a new single Shirley Poppy; is of a dazzling orange-scarlet in color and of enormous size; flowers are borne on long, stout stems. The plants are very erect, robust growth. Pkt., 15c.

Portulaca - Moss Flower

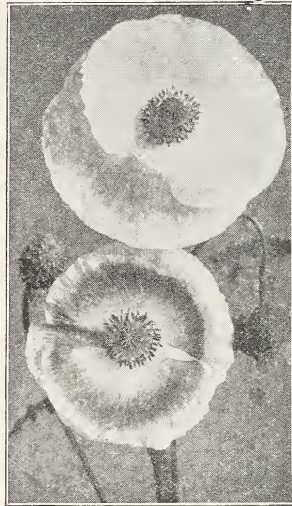
One of the best low growing annuals for hot and sunny places; will grow and bloom profusely in the Summer time when other flowers are dead. Sow after all danger of frost is over.

SINGLE MIXED. Many beautiful colors. Pkt., 10c.

DOUBLE MIXED. All shades and colors of double flowers. Pkt., 10c.



Giant Portulaca, Parana.



American Legion Poppies.

Pyrethrum

An excellent plant for edging, growing about 6 inches high, producing a beautiful yellow foliage. Pkt., 10c.

Salpiglossis

This beautiful popular annual is sometimes called the "Painted Tongue," and it well deserves its name, as it produces an abundance of trumpet-shaped flowers on long stems. The flowers are in different shades of white, pink, red and purple. In our section they should be planted very early in the Spring. **ALL COLORS MIXED.** Pkt., 10c.

Salvia - Scarlet Sage

A beautiful annual, having bright red flowers from early Spring until killed by frost in the late Autumn. Easy to grow and its many uses make it a very valuable and popular flower.

SPLENDENS. A beautiful bright scarlet. Pkt., 10c.

FIREBALL. Very compact; covered with scarlet spikes. Pkt., 10c.

Scarlet Runner Bean

A rapid growing annual climber, bearing sprays of brilliant scarlet, pea-shaped blossoms. The seed may be planted outdoors when all danger of frost is past. Vines grow from 10 to 12 feet high. Pkt., 10c.

Stocks

Considered almost indispensable where a fine display of flowers is wanted, and valuable for edging, bedding and pot culture.

WHITE PERPETUAL. Pkt., 10c.

EARLY LARGE FLOWERING TEN WEEKS STOCKS MIXED. Pkt., 10c.

Sweet William

Extensively used in old-fashioned gardens. Flowers are borne in large clusters of the most brilliant colors.

DOUBLE MIXED. Pkt., 10c. **SINGLE MIXED.** Pkt., 10c.

Sweet Sultan

A very hardy annual. Plants are of a spreading habit and one plant will produce enough cut flowers to keep an average home supplied the whole Summer.

CHOICE MIXED. Pkt., 10c.

Ricinus - Castor Bean

This magnificent foliage plant is picturesque, showy and imposing in its very ornamental foliage. Pkt., 10c.

Giant Portulaca, Parana

This wonderful strain produces flowers that are twice as large as other Portulacas. A very dazzling purple-scarlet; flowers are produced in the greatest profusion. Be sure and try a packet of this beautiful Portulaca. Pkt., 15c.



Salvia—Scarlet Sage.

California Grown Sweet Peas

We list only the standard Giant Spencer type of Sweet Peas. This strain of Sweet Peas produces the largest blooms and longest spikes of any type in our section. This strain of Sweet Peas bears three and four very large flowers on long, stiff stems; many of the flowers are ruffled and wavy and the great assortment of shades make them a remarkable strain for all purposes.

GOLD MEDAL MIXTURE OF SWEET PEAS. This mixture is composed of the very best colors of the named types of Spencers; you will be surprised at the number of shades and colors in this mixture. Pkt., 10c; oz., 25c; ½ lb., \$1.25.

ALFRED WATKINS. A beautiful clear lavender shade. Pkt., 10c; oz., 35c.

KING EDWARD. The most beautiful red in the Spencer Sweet Pea family. Pkt., 10c; oz., 35c.

KING OF THE WHITES. The clearest and prettiest of all white Sweet Peas. Fine for floral work. Pkt., 10c; oz., 35c.

MRS. HARDCASTLE SYKES. A beautiful large bluish pink. Pkt., 10c; oz., 35c.

ROBERT SYDENHAM. A beautiful orange-salmon. Pkt., 10c; oz., 35c.

MRS. TOM JONES. The best azure-blue. Pkt., 10c; oz., 35c.

Christmas Flowering Sweet Peas

This is a dwarf type that is planted early in the Fall or late Summer, that blooms at Christmas time. Very nice bloom with medium-long stems. The varieties we name below are the best Spencers from the Christmas-flowering types.

COLUMBIA. A beautiful salmon-rose standard, with white wing. Pkt., 25c; oz., 75c.

LIBERTY. A large crimson. Pkt., 25c; oz., 75c.

ROSE QUEEN. A beautiful rose-pink. Pkt., 25c; oz., 75c.

SNOW STORM, IMPROVED. The best white. Pkt., 25c; oz., 75c.

ASTA OHN. A grayish lavender. Pkt., 25c; oz., 75c.

MIXED. Contains the best types. Pkt., 25c; oz., 75c.

Sunflower - Helianthus

A stately, hardy annual of easy culture. Useful as a background or for a fence. The new types produce very showy flowers and nothing is prettier or brighter than to have a few of these ornamental varieties growing and blooming around the home.



New Red Sunflower.

CHRY'S ANTHEMUM SUNFLOWER. Simply wonderful for a Sunflower; you have to see them to appreciate what they are. Pkt., 10c.

THE NEW RED SUNFLOWER. This is a new type; the plant is of a free-branching habit with well shaped, dark centered flowers of bright chestnut red, merging to a yellow at tips of the petals. Height about 6 feet. Pkt., 10c.

SINGLE SUNFLOWER. A very pretty single. Pkt., 10c.

Verbena

An old time bedding and border plant, having brilliant colored flowers blooming from early Spring until late Fall. We are offering this year a new type of Verbena, with the same characteristics as the old type except each flower in the cluster is much larger. The old type having flowerets of about the size of a ten-cent piece, while the new type is of the size of a twenty-five-cent piece. By all means order a few packets of this new strain of Verbena.

- MAMMOTH PINK SHADES. Pkt., 10c.
- MAMMOTH WHITE SHADES. Pkt., 10c.
- MAMMOTH PURPLE SHADES. Pkt., 10c.
- MAMMOTH BLUE SHADES. Pkt., 10c.
- MAMMOTH STRIPED. Pkt., 10c.
- MAMMOTH SCARLET WITH WHITE EYE. Pkt., 10c.
- MAMMOTH MIXED. All shades. Pkt., 10c.

Verbena Hybrid Lucifer

This is a new type of the most brilliant scarlet that has yet been seen in a Verbena. The strain is new on the market, being minus the little white eye in most scarlet Verbenas, and having flowerets of a very large size. We have been able to secure only a limited amount of seed, so if you want something in the brilliant scarlet type that is a pure red, be sure and order some of it immediately. Pkt., 15c.

Viola - Tufted Pansies

The tufted Pansies do not produce as large flowers as the regular types, yet they bloom more profusely and for a much longer period. MIXED COLORS. Pkt., 10c.



Sweet Peas.

Torenia

Bushy, globular plants, growing about 10 inches high, literally covered with richly colored flowers of a sky-blue shade. They are excellent for beds, pots or hanging baskets. Pkt., 10c.

Thunbergia

A rapid growing, trailing plant, used extensively for hanging baskets, window boxes and for covering porches. Flowers of a buff-white and orange color with a black eye. Pkt., 10c.



Verbenas.

Plant Zinnias

Can be planted as late as September and will bloom until frost.

We have specialized in Zinnias for the past four years and our selected strains of the Giant Zinnias, Dahlia Flowered and Picotee Zinnias have met with such great success, that we know what we offer in the Zinnia line is the best that money can buy. Nothing that you can plant will beautify and brighten up your garden more than Zinnias, they are very easy to grow, but one thing must be borne in mind, that is not to plant them until the ground is warm, as Zinnias checked in their growth when young never amount to very much.

Giant Zinnias

This is an improved Giant Double Zinnia, that often measures 6 inches across the surface, we have them in the following shades:

CRIMSON. A wonderful dark red shade.

GOLDEN YELLOW SHADES. This type has the finest shades of yellows found in the Giant Zinnias.

SALMON ROSE. A new shade which you should plant by all means.

PURPLE. A very odd shade, which is beautiful.

SCARLET. The brightest red we have. A solid bed of scarlet makes a wonderful effect.

WHITE. This is a giant; much desired by florists.

MIXED. Our mixture contains all the above shades with many others not found in the so-called mixtures.

Prices of Giant Zinnias: Pkt., 10c; any 6 for 50c; ½ oz., 80c; oz., \$1.50, postpaid.

Rose Queen

This is an improved type of the Giant Zinnia, the centers being almost perfect and of a beautiful light rose shade.

Pkt., 15c.



Giant Flowered Zinnia.

YOU CAN PLANT ZINNIAS IN MARCH, April, May, June, July, August, September, and sometimes in October.



Picotee Zinnia.

Picotee Zinnias

A distinct novelty in the Zinnia line, not quite as large as the Double Giants, but extremely beautiful and graceful in appearance, as the edges of the petals are all well marked with a different color to the body of the flower. The seed does not all produce a true Picotee flower, nor more than 60 per cent, but those that do not come true are exquisite. All colors mixed, including a new shade. Pkt., 25c.

Dwarf Double Zinnias or Lilliput

This strain is a new one of small double flowers which can be used to a good advantage for borders or bedding. The flowers are very small, the bush being of a dwarf nature, producing an abundance of blooms. Be sure and try some of them.

CANARY YELLOW. Pkt., 10c; 3 for 25c; ½ oz., 80c; oz., \$1.50, postpaid.

DARK CRIMSON. Pkt., 10c; 3 for 25c; ½ oz., 80c; oz., \$1.50, postpaid.

SCARLET GEM. Pkt., 10c; 3 for 25c; ½ oz., 80c; oz., \$1.50, postpaid.

WHITE GEM. Pkt., 10c; 3 for 25c; ½ oz., 80c; oz., \$1.50, postpaid.

MIXED SHADES. Pkt., 10c; 3 for 25c; ½ oz., 80c; oz., \$1.50, postpaid.

Quilled Zinnias

This is simply a beautiful type and stands out all alone. Each petal of this beautiful Zinnia is peculiarly quilled and twisted. The various shades of rose and lilac, when the petals twist, reflect very pleasing colors. Pkt., 25c.

Vinca (Periwinkles)

These are very attractive, bushy plants with glossy green foliage, producing an abundance of handsome, round or saucer-shaped, single flowers. Can be planted from early Spring till late Fall; thrives and does extra well in the Summer time. Excellent for borders.

PURE WHITE. Pkt., 10c.

PINK. Pkt., 10c.

ROSEA. Rose with a crimson eye. Pkt., 10c.

MIXED COLORS. Pkt., 10c.

Dahlia Flowered Zinnias

This is the latest thing in the Zinnia line and undoubtedly the most handsome Zinnia that has been propagated. They are very large and the many shades and colors which they come in and with that Dahlia appearance make them simply indescribable. This is the second year that anyone has offered Dahlia-flowered Zinnias in separate colors and our supply is very limited and would suggest that you order immediately.

EXQUISITE. This is the most interesting of the Dahlia-flowered Zinnias; a light rose shade with a deep rose center.

GOLDEN STATE. A very rich orange-yellow.

SCARLET FLAME. A large, beautiful bright scarlet, with a delightful blending of orange throughout the petals.

CRIMSON MONARCH. By far the largest and best shade of red.

DREAM. A fine lavender, turning to a purple—a new and desirable shade in Zinnias.

POLAR BEAR. A very large and pure white; the best white seen in a Zinnia.

Prices of Dahlia-flowered Zinnias: Pkt., 25c; any 6 for \$1.25; ½ oz., \$1.75.

SPECIAL MIXTURE. This mixture contains the above six named varieties and other varieties, containing colors and shades that are not often found in Zinnias, and too much cannot be said about our wonderful Dahlia-flowered Zinnias. Pkt., 25c; 6 for \$1.25; oz., \$3.00, postpaid.



Wildflowers

We have made up an assortment of Wildflowers that is well adapted to our section. Fine for beautifying vacant lots, etc.

MIXED COLORS. Pkt., 10c.

Wallflowers

A well known half-hardy perennial, easily grown and lasts a long time as a cut flower.

SINGLE MIXED. Pkt., 10c.

DOUBLE MIXED. Pkt., 10c.

Wild Cucumber

This is the quickest growing climber on our list, having fragrant, white flowers. Pkt., 10c.

Wisteria

A very popular hardy climber. Long clusters of purple flowers. Pkt., 10c.

Xeranthemum

Very bright and pretty, with silvery foliage and silky flowers in pink, white and purple. Pkt., 10c.

"DON'T PLANT YOUR FLOWER SEEDS TOO DEEP."
"DON'T PLANT SEED IN SOIL THAT IS NOT WELL PREPARED."
"DON'T PLANT VARIETIES THAT WILL NOT DO WELL IN THIS SECTION."
"DON'T PLANT CHEAP SEEDS."



Hints for Making and Caring for Lawns

Houston is noted for its beautiful lawns, and so few people appreciate that a Winter lawn can be made to look as attractive as a Summer lawn, and be green the entire Winter. So do not let another Winter go by with that old, dead grass on your lawn. English Rye and Italian Rye are good Winter grasses and stay green all through the Winter.

ENGLISH RYE. This is the foremost Winter grass and the foundation of all Winter lawn mixtures, and we know of no better grass for Winter lawn than English Rye Grass. English Rye should not be planted until the weather is cool, as it will not germinate in the hot months. Plant seed using one pound to a space 10 by 15 feet. It is easy to grow and makes one of the most wonderful lawns with that beautiful, green, velvety cast, such a contrast to other vegetation that is dead for the Winter, which surrounds most lawns. The seed should be broadcasted, following same with a thin coating of dirt, then wetting it down and in a few days the seed will begin to germinate. Just for your own satisfaction, seed your lawn down this Winter in Winter Grass. **Lb., 40c; 5 lbs., \$1.75, postpaid.**

RED TOP. This variety of Winter grass has been used in the North for years, and until recently it was never planted in Texas, but is now a very popular Winter grass. It is used extensively in mixtures and on most all golf links. A fine variety for shady places. A mixture of English Rye and Red Top makes the best Winter lawn mixture you can buy. Use at the rate of one pound to a space 10 by 25 feet. **Lb., 60c; 5 lbs., \$2.75, postpaid.**

ITALIAN RYE. A Winter grass that is very similar to English Rye. Sow and plant the same as English Rye. **Lb., 40c; 5 lbs., \$1.75, postpaid.**

WHITE CLOVER. Also called "White Dutch Clover." This is the small, low-growing Clover that is so much desired for lawns, nothing is more beautiful than a little white Clover dotting a beautiful green lawn here and there. Used extensively in lawn mixtures. **Lb., \$1.00; 5 lbs., \$4.75, postpaid.**

OUR LAWN GRASS MIXTURE. This special mixture produces a beautiful and permanent lawn. It is made from our own formula and composed of grasses which are adapted for the purpose of producing a turf which retains its rich green color and velvety appearance throughout a long season. **Lb., 75c; 5 lbs., \$3.25, postpaid.**

BERMUDA GRASS. This variety is strictly a hot weather grass and is the only kind that will withstand the hot sun in the Summer time. Often people are under the impression that Bermuda Grass seed is mixed with weed seed, as they have gotten weeds, nut grass, etc., in their lawn after sowing the Bermuda seed, but such is not the case. Bermuda seed is tested for purity and is usually free from weed seed, and the weeds, etc., that come up in the lawn are from fillings or applying new dirt to the lawn, and by gradually working the weeds and foreign matter out, and allowing the Bermuda to grow, they will in time be choked out and you will get a permanent Bermuda lawn. Sow in the Spring of the year, when the ground becomes warm, or any time in the Summer, using one pound of seed to a space 10 by 50 feet. A beautiful green lawn can be obtained from the seed much cheaper than by sodding. Landscape men and those who have charge of golf links, appreciate this and have almost entirely ceased using sod, as a more even turf can be obtained from the seed than by sodding. The seed will germinate very readily when the weather is warm by sprinkling every day, as plenty of water is necessary. **Lb., \$1.00; 10 lbs., \$7.50, postpaid.**

NITRATE OF SODA. A little Nitrate of Soda lightly sprinkled over the lawns, adds new life to them, and all lawns are like everything else, they occasionally need renovating, and when your lawn needs new life, or you have dead spots in it, use Nitrate of Soda. **Lb., 15c; 2 lbs., 25c; 50 lbs., \$3.00; 100 lbs., \$5.50, not prepaid.** By express or freight only; cannot be sent through the mail.

BONE MEAL. Ground bone or Bone Meal is very necessary to all lawns; it should be the foundation of lawns. It takes about six months to decay, but when it does, it adds the required life that all lawns need. **Lb., 10c; 10 lbs., 75c; 50 lbs., \$2.75; 100 lbs., \$4.25, not prepaid.**

Field Seeds

We carry in stock a complete line of field seeds but due to fluctuation in prices it is impossible for us to name them in this catalog. Should you desire Cotton Seed, Southern grown Seed Corn, Northern grown Seed Corn, Sudan Grass Seed, Rhodes Grass, Sorghum or Cane Seed, Egyptian Wheat, Maize, Kaffir or Feterita, Velvet Beans, Soy Beans or any kind of Cow Peas, such as Clays, Whippoorwills, drop us a line and we will be glad to name you our lowest market price.

The put-down article relates as to when to plant seeds is a pretty hard proposition on account of the wide area we are covering—various soils and climatic conditions. This Calendar is intended for South Texas, but cannot always be followed to the minute even in our Gulf Coast Territory.

MONTHLY TABLE FOR SOWING SEEDS, PLANTING BULBS, ETC.

GARDEN SEEDS

January	February	March	April	May	June	July	August	September	October	November	December
In Holed Beets Cabbage Cauliflower Cucumber Celery Celeriac Lettuce Melons Onions Pumpkin Squash Tomatoes	Transplant Beets Cabbage Cauliflower Cucumber Celery Lettuce Melons Onions Pumpkin Squash Tomatoes	Arbuckle Asparagus beans Cabbage Cauliflower Celery Collards corn Salad Melons Sweet Corn Onions Pumpkin Squash Tomatoes	Arbuckle Asparagus Beets Cabbage Cauliflower Cucumber Celery Collards Sweet Corn Onions Pumpkin Squash Tomatoes	Arbuckle Asparagus Beans Cabbage Cauliflower Cucumber Celery Collards Corn Salad Cucumber Eggplant Melons Mustard Onions Peas Parsley Parsnip Potatoes Pumpkin Parsley Pepper Pumpkin Raddish Squash Tomatoes Turnips	Arbuckle Beans Cabbage Carrot Cauliflower Cucumber Celery Collards Corn Cucumber Eggplant Herbs Kale Kohlrabi Lettuce Melons Mustard Onions Parsley Parsnip Potatoes Pumpkin Raddish Squash Tomatoes Turnips	Arbuckle Beans Cabbage Carrot Cauliflower Cucumber Celery Collards Corn Cucumber Eggplant Herbs Kale Kohlrabi Lettuce Melons Mustard Onions Parsley Parsnip Potatoes Pumpkin Raddish Squash Tomatoes Turnips	Beans Beets Cabbage Cauliflower Cucumber Celery Collards Corn Salad Cucumber Eggplant Herbs Kale Kohlrabi Lettuce Melons Mustard Onions Parsley Parsnip Potatoes Pumpkin Raddish Squash Tomatoes Turnips	Beans Beets Cabbage Cauliflower Cucumber Celery Collards Corn Salad Cucumber Eggplant Herbs Kale Kohlrabi Lettuce Melons Mustard Onions Parsley Parsnip Potatoes Pumpkin Raddish Squash Tomatoes Turnips	Cabbage Carrot Collards Cucumber Eggplant Kale Kohlrabi Lettuce Melons Mustard Onions Parsley Parsnip Potatoes Pumpkin Raddish Squash Tomatoes Turnips	Cabbage Carrots Celery Collards Eggplant Kale Kohlrabi Lettuce Melons Mustard Onions Parsley Parsnip Potatoes Pumpkin Raddish Squash Tomatoes Turnips	Beets Carrots Collards Kale Kohlrabi Melons Mustard Onions Parsley Parsnip Potatoes Pumpkin Raddish Squash Tomatoes Turnips

FLOWER SEEDS AND BULBS

Hardy Perennials P. Annuals G. Bulbs Dahlias Nasturtium Columbine Shasta Daisy Phlox Petunias Mignonette Calendula Verbena Alyssum Poppies Scabiosa Candytuft Larkspur Snapdragons Asters	Flower Seeds Summer Lawn Grass Gladiolus Bulbs Dahlias Tuberose Nasturtium Poppies Petunias Phlox Verbena	All Flower Seeds Summer Lawn Grass Zinnias Flowers Dahlias Seed Set Out Bedding Petunias Verbena	All Annual Flowers Summer Zinnias Lawn Grass Cosmos Set Out All kinds Verena	All Annual Flowers Summer Zinnias Lawn Grass Cosmos Set Out Bedding Petunias Verbena	Popular Varieties of Flowers Cockscomb Galliardia Comperna Chalipist Zinnias Cosmos Sunflower Marigolds Vines Cockscomb Marrigolds	All Winter and Spring Flowering Bulbs and Flower Seeds Alyssum Carnetula Tangut Zinnias Cosmos Pansy Daisies Alyssum Tangut Sweet Peas Hyacinth Bulbs Tulips Daisies Pinks Narcissus Easter Lilies Galla Lilies Pinks Daisy Alyssum Poppies Petunias Snapdragons Larkspur
Hardy Perennials P. Annuals G. Bulbs Dahlias Nasturtium Columbine Shasta Daisy Phlox Petunias Mignonette Calendula Verbena Alyssum Poppies Scabiosa Candytuft Larkspur Snapdragons Asters	Flower Seeds Summer Lawn Grass Gladiolus Bulbs Dahlias Tuberose Nasturtium Poppies Petunias Phlox Verbena	All Flower Seeds Summer Lawn Grass Zinnias Flowers Dahlias Seed Set Out Bedding Petunias Verbena	All Annual Flowers Summer Zinnias Lawn Grass Cosmos Set Out All kinds Verena	All Annual Flowers Summer Zinnias Lawn Grass Cosmos Set Out Bedding Petunias Verbena	Popular Varieties of Flowers Cockscomb Galliardia Comperna Chalipist Zinnias Cosmos Sunflower Marigolds Vines Cockscomb Marrigolds	All Winter and Spring Flowering Bulbs and Flower Seeds Alyssum Carnetula Tangut Zinnias Cosmos Pansy Daisies Alyssum Tangut Sweet Peas Hyacinth Bulbs Tulips Daisies Pinks Narcissus Easter Lilies Galla Lilies Pinks Daisy Alyssum Poppies Petunias Snapdragons Larkspur

SPRAYERS AND SPRAY MATERIALS

All poisonous Insecticides are shipped by Express Only as it is against the Postal Laws to forward Poison by Parcel Post. "BLACK LEAF 40" CANNOT BE SENT THROUGH THE MAILS; being a POISON. Please do not include with your mail orders. This is the insecticide that is so highly recommended by Experiment Stations for destroying all sucking insects, as lice, aphids, thrips, etc. Most efficient on Melon and Squash enemies, green lice on Roses, etc., without injuring foliage. Price F. O. B. Houston: 1 oz., 35c; makes 6 gallons spray. ½ lb., \$1.25; makes 40 to 120 gallons spray. 2 lbs., \$3.50; makes 160 to 500 gallons spray. 10 lbs., \$13.50; makes 800 to 2,500 gallons spray.

SLUG SHOT. A light composite, finely powdered, easily distributed either by duster or bellows. Thoroughly reliable in killing potato bugs, cabbage worms, slugs, sow bugs, etc. Price, 1 lb. pkg., 25c—not mailed; 5 lbs., 85c.

HAMMOND'S GRAPE DUST kills mildew and blight on flowers and fruit. For use on roses and flowers in general, and vegetables of all kinds. Grape Dust is a reliable diffusible lightweight powder fungicide. 1 lb. pkg., 50c, not prepaid.

GRAFTING WAX used for grafting. Also good to rub over any wounds that are made on the bark or in pruning. Price, ½ lb., 50c; 1 lb., \$1.00, postpaid.

DRY LIME SULPHUR SOLUTION. A perfect scale and fungus destroyer; special for plum and peach trees, which need Fall and Spring treatment. 1 lb., 70c, not prepaid.

BORDEAUX MIXTURE (Paste). Prevents blight, rot, mildew, specks and spots. Increases crop yield 15 to 25 per cent. By adding water it is ready for use. One gallon will make one barrel of liquid. 1 qt. can, 85c, not prepaid.

The 19th Century Insecticide

Compounded by L. V. Touchy

This Insecticide, if applied properly will prevent and control all sapping, sucking, biting or eating insects that assail trees, shrubs and plants in the early Spring and Summer. It is truly the fruit grower's, farmer's and truck farmer's friend if properly used and directions followed. Price, ¼ gal., 50c; ½ gal., 75c; 1 gal., \$1.35, F. O. B. Houston, Texas.

"BLACK LEAF" F-1 NICOTINE DUST. Fine for dusting on plants. 5 lbs., \$1.75, not postpaid.

"BLACK LEAF" F-2 NICOTINE DUST. Fine for dusting on plants 5 lbs., \$2.25, not postpaid.

PARIS GREEN. Write for prices.

FISH OIL SOAP. Destroys lice on house plants, mealy bugs, scale on palms and San Jose scale. 1 lb., 60c, postpaid.

TOBACCO DUST. If dusted on the foliage it destroys rose lice, cabbage and turnip fleas. Price, lb., 15c; 10 lbs., \$1.00, express charges extra.

POWDERED ARSENATE OF LEAD. Especially against the cotton worm in the South this is the most popular and quickly killing insecticide, as it is most readily eaten by insects and acts most rapidly to destroy them. By Express, not prepaid, ½ lb., 40c; 1 lb., 70c.

LONDON PURPLE. A good poison for dusting on, also fine for mites on chickens. Not prepaid, ½ lb., 40c; lb., 70c.

PYROX. Pyrox kills leaf eating insects, bugs and worms. It prevents rot and fungus. 1 lb., 60c, not postpaid.



PERFECTION SPRAYERS

Tank, 7½ inches diameter, 20 inches high; capacity approximately 4 gallons. Made of first quality prime galvanized iron or brass.

No. 110-G Galvanized Steel Tank, Price each, \$7.75, postpaid.

No. 110-B Brass Tank. Price each, \$10.75, postpaid.

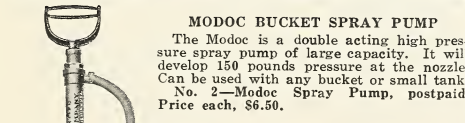
JUNIOR SPRAYER

Tank, 6½ inches diameter, 17 inches long; capacity about 2½ gallons. Made of first quality galvanized or brass sheets as ordered. Tested under actual working conditions at the factory.

No. 140G Galvanized, \$6.25, postpaid.

No. 140B, All Brass, \$8.25, postpaid.

HELP VEGETATION BY SPRAYING

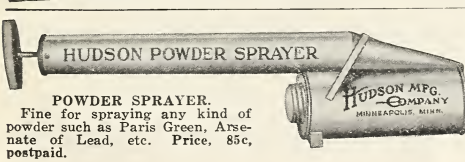
MODOC BUCKET SPRAY PUMP

The Modoc is a double acting high pressure spray pump of large capacity. It will develop 150 pounds pressure at the nozzle. Can be used with any bucket or small tank. No. 2—Modoc Spray Pump, postpaid, Price each, \$6.50.



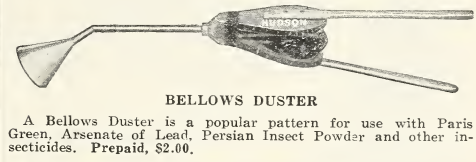
MIDGET

For household. A small, well made sprayer for general purposes and especially adapted for use in and about the home. Will handle all kinds of liquids satisfactorily. Postpaid, 45c.



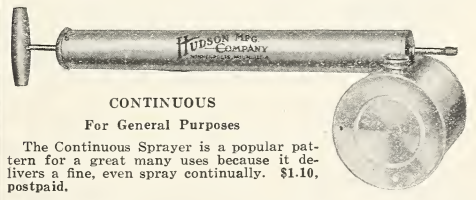
POWDER SPRAYER.

Fine for spraying any kind of powder such as Paris Green, Arsenate of Lead, etc. Price, 85c, postpaid.



BELLOWS DUSTER

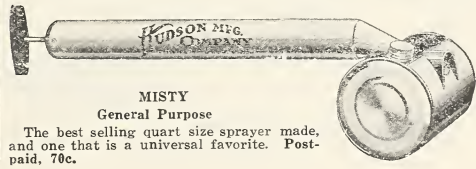
A Bellows Duster is a popular pattern for use with Paris Green, Arsenate of Lead, Persian Insect Powder and other insecticides. Prepaid, \$2.00.



CONTINUOUS

For General Purposes

The Continuous Sprayer is a popular pattern for a great many uses because it delivers a fine, even spray continually. \$1.10, postpaid.



MISTY

General Purpose

The best selling quart size sprayer made, and one that is a universal favorite. Postpaid, 70c.



Dog Remedies



FREE DOG BOOK

Polk Miller's famous Dog Book on Diseases of Dogs with symptom Chart and instructions on care, feeding and breeding, also Senator Vest's celebrated "Tribute to a Dog." Write for a copy.

Chart Showing What Ails Your Dog and What to Do for Him

AILMENT	MEDICINES	PRICE	USUAL SYMPTOMS
DISTEMPER CHOREA	Sergeant's Distemper Medicine Sergeant's Condition Pills\$1.2060	Early signs: Cough, fever, dry nose, vomiting, loss of weight, thirsty, hot skin, slight desire for food, dull coat, tendency to sleep. Later symptoms: Discharge from eyes and nose, quick breathing, dark, loose stool, pustules on skin and abdomen. Chorea usually follows distemper. Jerking or twitching of the muscles of any part of the body.
WORMS (Round, Pin Whip and Hook)	Sergeant's Sure Shot Capsules60	Bad breath, watery eyes, ravenous appetite, pinched expression of face, pale inner lips, frequent bowel movement of slime-like matter, pot-belly, twitching while asleep; fits; slight soft cough; changeable appetite, with tendency to eat sticks, stones or grass. Eczema and skin eruptions may be noted.
TAPE WORM	Sergeant's Tape Worm Medicine60	Symptoms largely similar to those of worms. Segments of worm may be noticed hanging to anus or about it. Tapeworm is white and flat.
WEAKNESS AND GEN'L DEBILITY	Sergt's Arsenate and Iron Pills Sergeant's Condition Pills6060	Listlessness, laziness, sluggishness; loss of appetite; coat dull and dry; avoidance of all companionship; sulkiness and irritability; nervousness.
MANGE AND ECZEMA	Sergeant's Mange Medicine Sergeant's Arsenate and Iron Pills Sergeant's Skip Flea Soap656025	Mange: Acute itching caused by parasites attacking head, feet, legs or body. Redness, pimples, sores from scratching, thick skin with scaly crusts. Eczema: Hot skin, dog scratches irritations, rash or redness, skin tender, pustules, scabs, raw, moist patches, hair drops out, scaly skin.
EAR CANKER	Sergeant's Canker Wash Sergt's Arsenate and Iron Pills6060	Ear hot, swollen, tender, fever inside ear, dark, foul discharge.
BLACK TONGUE SORE MOUTH	Sergeant's Well Mouth Sergeant's Pepsin Tablets6060	Black Tongue: Very red, sore patches on lips or tongue, dropping of rosy saliva, tries to eat and drink, emaciates, fever, bad color, ulcers, foul smelling stools. Sore Mouth: Many sore mouths are caused by defective teeth. It is well always to examine the teeth often and have the diseased or decayed teeth extracted.
EYE TROUBLES	Sergeant's Eye Wash60	Blue or opaque eyes with pus or matter in corners caused by indigestion, fever or worms. An ulcer is a small, grayish white spot. Eye troubles are painful, cause fear of light, lids gummy or glued, eye-ball or lids blood-shot.
COLDS AND COUGHS	Sergeant's Cough Medicine Sergeant's Condition Pills Sergt's Constipation Capsules606060	Nose hot and dry, throat tender when pinched, coughs easily. In distemper the cough is husky with accumulations of mucus. May vomit.
RHEUMATISM LUMBAGO	Sergeant's Rheumatic Pills Sergeant's Dog Rub6060	Rheumatism affects the muscles and joints in any part of the body. It sets in abruptly with pains in the joints, stiff gait, short steps, chills, fever, thirst, off-feed, constipation, and highly colored urine. In Lumbago there will be pain in the loins, stiff neck or shoulders, very sore muscles and often the dog is unable to turn over, move or walk upstairs.
INDIGESTION	Sergeant's Pepsin Tablets60	Vomits after eating, sometimes in the morning before breakfast, unusual thirst, tongue dry and brick colored. May be diarrhoea or constipation. Full of wind, is dull and listless.
DIARRHOEA	Sergeant's Diarrhoea Pills Sergeant's Pepsin Tablets Sergeant's Sure Shot Capsules606060	Diarrhoea results from worms, overfeeding, improper foods, colds or distemper.
FITS	Sergeant's Sure Shot Capsules Sergeant's Condition Pills6060	Animal clamps jaws and froths at mouth, muscles jerk and throws body to floor with four legs rapidly moving. Lasts a few seconds or minutes. Dog rises and is stupid. May be starting of distemper, or caused by worms.
RUNNING FITS	Sergeant's Run Fit Medicine 2.00	Dog begins acting in a strange way, as if greatly frightened; looks around and begins barking and running; he will continue going, barking or yelping until lost or is in a dazed state; he will endeavor to find a dark retreat and does not appear for some time.
CONSTIPATION	Sergt's Constipation Capsules .. Sergeant's Condition Pills6060	Slow, painful movements of hard, dry, chalky stools, and straining without results. A passage of black slime shows bowel obstruction.
FLEAS LICE, TICKS AND HARVEST BUGS	Sergeant's Skip-Flea Soap Sergeant's Skip-Flea Powder Sergeant's Disinfectant252525	Little black insects running through the hair on the skin cause intense itching and other troubles. Lice are blue and most frequently found on puppies about the head and necks. Ticks, first small and flat, but filled with drops of dog's blood and appear fat and pale blue.

DOG BREAD

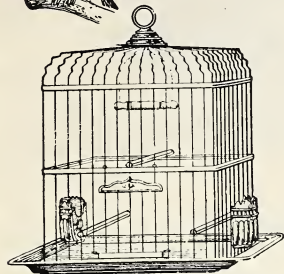
Austin Dog Bread, in bulk, 3 lbs., postpaid, 65c; not postpaid, in 25-pound lots 12c lb.; 100-pound lots, 10c lb.

DOG FOOD

Perfection Dog Food, 3 pounds postpaid, 45c; 25 pounds, \$2.25; 50 pounds, \$4.00; 100 pounds, \$7.50, F. O. B. Houston.

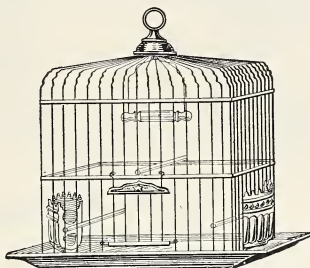
Bird Supplies

We are headquarters for all kinds of Bird Seeds and Bird Supplies. All of our Bird Seeds are thoroughly cleaned and are free from obnoxious matter that is very injurious to cage birds.



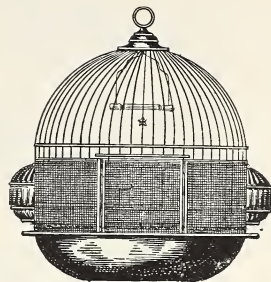
If by mail add 25c postage.

No. 241 7½x7½ inches\$1.85
No. 242 8 x8 inches 2.20
No. 243 8½x8½ inches 2.45
No. 244 9¼x9¼ inches 2.85



If by mail add 25c postage.

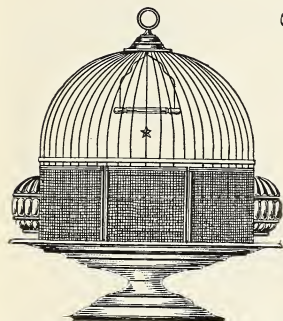
No. 270 9 x6 inches\$1.85
No. 271 9¼x6¼ inches 2.20
No. 272 10 x7 inches 2.45
No. 273 10½x7½ inches 2.85
No. 274 11 x8 inches 3.10
No. 275 11¼x8¼ inches 3.60



Japanese Lantern Cage
If by mail add 25c postage.

No. 2235 10¼-in. diameter\$4.30
No. 2236 11 -in. diameter 4.75
No. 2237 11¾-in. diameter 5.25

Ivory white, gold trimmed, brass wire guard, opal shell cups.

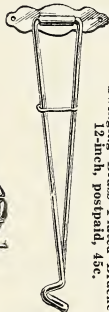


DOMES CAGES

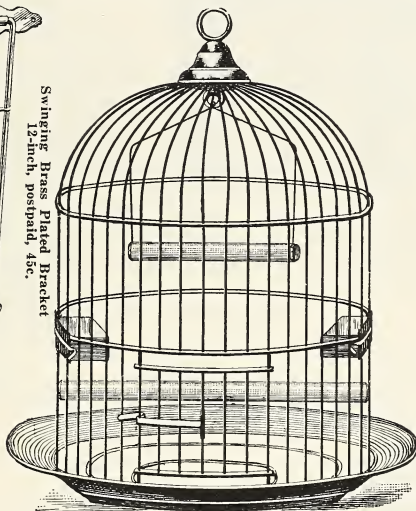
If by mail add 25c postage

No. 2225 10¼-in. diameter\$4.75
No. 2226 11 -in. diameter 5.25
No. 2227 11¾-in. diameter 5.60

Ivory White, Gold Trimmed, Brass Wire Guard, Brass Knob, Opal Shell Cups.



Swinging Brass Plated Bracket
12-inch, postpaid, 30c.



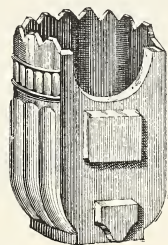
PARROT CAGES

By Express only, not prepaid.

Our Parrot Cages are constructed of No. 12 Tinned Wire, running through holes drilled into Solid Tinned Wire Rails, which make them indestructible, and have extra large bottoms, to prevent birds from throwing their food beyond them.

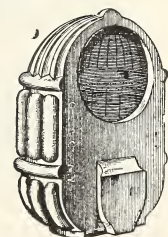
No. 2 13 in. diameter, three rails\$5.85
No. 3 14½ in. diameter, three rails 7.45
No. 4 16 in. diameter, four rails 9.25
No. 5 17½ in. diameter, four rails11.00

These cages have Brass Knobs and Tin Washers, Heavy Hangers with Brass Nuts, Hardwood Perches and Swings, Heavy Zinc Bottoms. Tinned Iron Feed Cups.

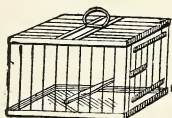


No. 2
Feed or Water Cups

Open end in glass or opal. 20c, postpaid; 2 for 35c.



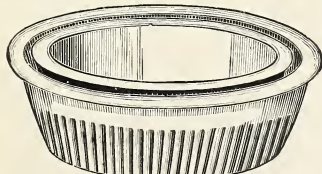
No. 1
Feed or Water Cups
We have them in either glass or opal. Postpaid, 20c; 2 for 35c.



CANARY TRAVELING CAGE

Japanned tin, white only, 8½x6¼x4½ inches high, \$1.45.

If by mail add 25c postage.

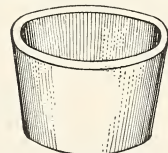


CANARY BATHS—GLASS

We have them in two sizes. Large, 35c; small, 30c, postpaid.

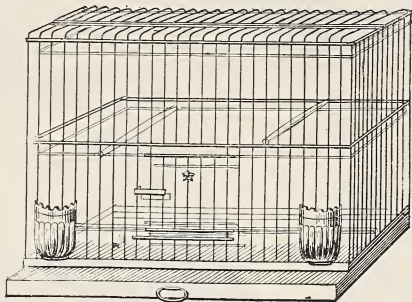


Extra Heavy Cage Brass Spring. Postpaid, 30c.



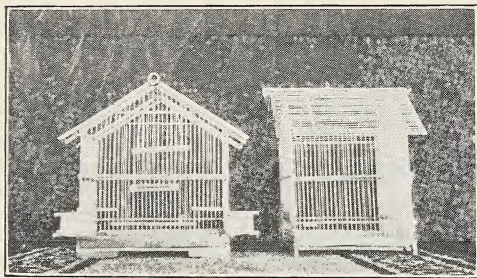
Round Canary Cups
2 inches diameter.
Opal. 15c, postpaid.

TINNED BREEDING



- No. 11 14x7½ inches, single\$4.40
- No. 12 16x8 inches, single 5.10
- No. 13 18x8½ inches double 5.65
- No. 14 20x9 inches, double 6.10

Not prepaid by Express only.
Our Breeding Cages are constructed of Solid Wire Rails and lacquered. Vermin Proof, tapered perches and zinc drawers, order wire nests with swivels, as they are not included.



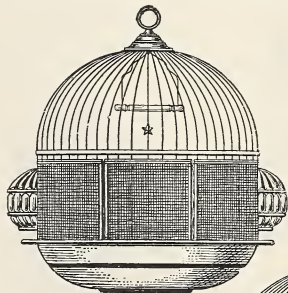
A BEAUTIFUL BAMBOO CAGE

An imported Japanese Bamboo Cage, that is a "beauty," nothing prettier for a sun parlor or sleeping porch. Size 11½x12x9. Price, \$4.25, postpaid to you.

BRASS DOME CAGES

If by mail add 25c postage.

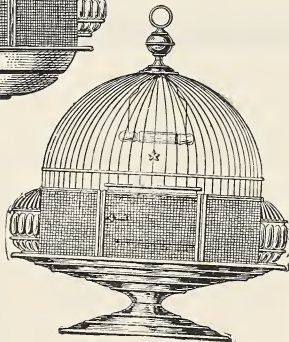
- 2525 10¼ in. diam., \$4.40; 2526 11 in. diam., \$5.15; 2527 11¾ in. diam., \$5.90.



A BRASS BEAUTY

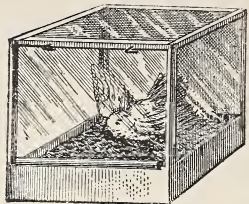
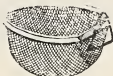
The prettiest Brass Cage you ever saw for the money.

- No. 2535, 10 in. in diam., \$4.15; No. 2536, 11 in. in diam., \$4.90; No. 2537, 11¾ in. in diam. \$5.65. If by mail add 25c postage.



WIRE NESTS

These vermin - proof nests fit very nicely into Breeding Cages having Nest Boards. Plain, 25c, postpaid; Swivel, 30c.



NO. 2 CANARY BATH HOUSE

White Enameled Tin and three removable glass lights. 4x4 in. \$1.35, postpaid.



SCREW BRACKETS

For Parrot Cages and Hanging Flower Baskets. Japanned in Brown. No. 5. 12 inches. 50c, postpaid.

INCUBATOR THERMOMETER

We carry the very best Incubator and Brooder Thermometers you can buy. 90c.

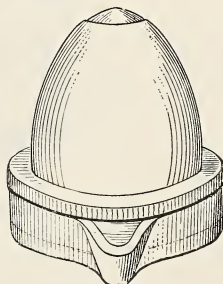
BIRD SEED AND BIRD REMEDIES

We are the largest handlers of Bird Supplies in the Southwest. If you are in need of any item we have not listed, drop us a card.

- | | |
|---|----------|
| | Postpaid |
| Bird Bitters, per bottle | \$.32 |
| Mite Powder, per box | .32 |
| Mocking Bird Food, per bottle | .60 |
| Song Restorer, per bottle | .42 |
| Bird Manna, per box | .18 |
| Moulting Pepper, per box | .30 |
| Nesting Hair, per box | .15 |
| Orange Color, per box | .40 |
| Nesting Food, per box | .40 |
| Mexican Salve, per box | .36 |
| Bird Dusters (for Mite Powder), each | .85 |
| Fish Food, per box | .15 |
| Red Sand, per box | .25 |
| Silver Sand, per box | .25 |
| Re-cleaned Sunflower Seed, for Parrots. 1 lb., 30c; 2 lbs., 50c, postpaid; 5 lbs., not postpaid, 90c. | |

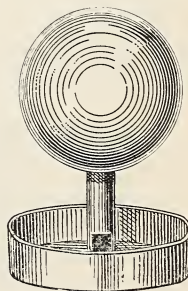
"QUALITY BRAND" Mixed Bird Seed—Re-cleaned

- HEMP—Re-cleaned. FLAX SEED—Re-cleaned.
- BIRD MILLET—Re-cleaned. BIRD RAPE—Re-cleaned.
- PLAIN SICILY—Re-cleaned.
- 1 lb., 30c; 2 lbs., 55c, postpaid. 5 lbs., \$1.00; 10 lbs., \$1.70, not postpaid.



INSIDE FOUNTAIN

Total height, 2½ inches. Crystal glass. 55c, postpaid. Fill with water, place saucer on opening, then turn over. It will hold enough water to last a bird five days.



GLOBE FOUNTAIN

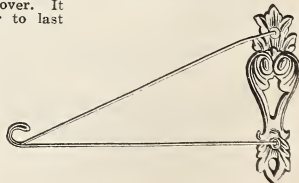
With a Japanned metal base for seed or water. Postpaid, \$1.00.

PORTABLE HOOK.

Postpaid, 45c.

Try our bulk bird seed.

We specialize in mail orders for bird seed.



Portable Hook

Conkey's

THE ORIGINAL

BUTTERMILK STARTING FEED

Raises Husky Chicks

A Ready Prepared Mash for baby chicks and all self-feeding young fowls. This remarkable feed—originated by Conkey and prepared through processes controlled and used exclusively by Conkey is a complete ration—containing all the elements needed for safely starting baby chicks, ducklings, goslings, poult, guineas, pheasants, etc.



HIS superior chick mash was the first commercial poultry feed containing buttermilk—that is why we call it the only ORIGINAL buttermilk starting feed.

Conkey's did not "just happen"—it is scientifically-balanced feed as clean and wholesome and as conscientiously-prepared as "infant food." Selected, plump grains, ground to proper fineness, are combined with other ingredients so as to make the feed readily digestible, palatable and nutritious. TASTE it, SMELL it, that's the way to judge a chick feed.

Conkey's carries buttermilk in just the right proportion as an aid in prevention of bowel troubles, White Diarrhea, "leg weakness," etc. The buttermilk is Semi-Solid buttermilk, blended with the other ingredients by the ORIGINAL process in such a way as to preserve the appetizing, tonic, and other properties of the newly-churned product.

The moisture in the buttermilk is drawn off by the exclusive Conkey process in such a way as not to subject it to the terrific heat usually required in "drying" buttermilk.

Lactic acid in buttermilk is described as an "Intestinal Broom" which sweeps away unfriendly bacteria and disease germs in the delicate digestive tract. Buttermilk is also rich in one of the vitamins necessary to growing birds. It is a wonderful appetizer, aid to digestion, and flesh builder.

However, it is not the buttermilk nor the other ingredients alone that causes people to declare that their chicks grow twice as fast on Conkey's.

GUARANTEED ANALYSIS

Crude Protein, 12%; Crude Fibre, 4%; Crude Fat 3%; Nitrogen Free Extract, 56%; Carbohydrates, 60%.

Ingredients

Semi-Solid Buttermilk, pinhead oatmeal, a special wheat middlings, whole corn meal, corn feed meal and granulated bone.

It is not the buttermilk alone that protects the chicks from disease during the first critical eight weeks. The secret is in the combination of these materials by the Conkey method—the balancing of the ration, as Conkey alone knows how.

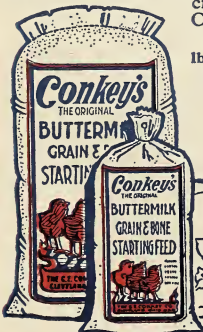
Don't be influenced by "cheaper" imitations labeled "buttermilk"—that word may be used to deceive unwary buyers—to cover up a multitude of "sinful" grains, mill sweepings, poisonous weed seeds, musty screenings, worthless by-products, or other poor material having little or no nutritive value.

Conkey's is so palatable that one poultryman said it ought to be used for "breakfast food." One woman wrote: "My chicks just love Conkey's. It is so tasty, and my, how they do grow! Better still, we didn't have a single loss in the present hatch, no White Diarrhea or other bowel troubles like before we began using Conkey's."

FEED IT FIRST 8 WEEKS

Conkey's is all the chicks need the first eight weeks except greens, charcoal, grit, clean water and some fine scratch grains in the litter for exercise. Give grit and water from the start. During the second week add green stuff and in the fourth week finely cracked grains, like Conkey's Chick Grains.

Packed in convenient sizes from 2½ lbs. up. Buy 1½ lbs. for every chick. Ask or write for prices.



DONT BREAK THE CONKEY CHAIN

When ordering any remedy by mail always send *postpaid* prices.

Conkey's NOX-I-CIDE

Dip and Disinfectant



Every poultry yard, farm, home, factory, stable, store, office building—in fact, every place where sanitation is necessary to health—needs Conkey's Nox-i-cide every day in the year.

For poultrymen, Conkey's Nox-i-cide has a large variety of uses as a disinfectant and germicide. It is approved by poultry experts everywhere.

For spraying during the "weekly clean-up," as a preventive of disease and a help in keeping down red mites, ticks, blue bugs, etc., Conkey's Nox-i-cide is practically unexcelled. In fact, some poultrymen declare it to be indispensable, since proper sanitary conditions are the very foundation of successful poultry operations. In addition, Conkey's Nox-i-cide is very effective for washing incubators, brooders, fountains and other utensils.

EASTERN PRICES—Pint 50c; Quart 80c; ½ Gallon \$1.30; Gallon \$2.00; 5 Gallons \$9.25; 10 Gallons \$17.75. Parcel post, express or freight charges extra.

COLORADO and WEST—Pint 50c; Quart 80c; ½ Gallon \$1.30; Gallon \$2.00; 5 Gallons \$9.50; 10 Gallons \$18.00. Parcel post, express or freight charges extra.

Conkey's Nox-i-cide is also widely used and highly recommended as a dip for hogs, sheep, cattle and other animals. Swine owners are generous in their praise of Conkey's Nox-i-cide for fighting hog lice, both as a dip and as a disinfectant for wallows, houses and general uses.

Try Conkey's Nox-i-cide for household uses—for assisting in driving out ants, destroying odors, routing out bedbugs and cockroaches, for making sinks, cess-pools, garbage containers, etc., sanitary and safe.

A money-back guarantee covers Conkey's Nox-i-cide as well as all other Conkey products. Take a can home and if you are not satisfied we will refund your money.



Conkey's Sorehead Remedy

For dangerous, contagious sorehead or chicken pox, pigeon pox, warts and pian. Attacks the trouble from two angles—a powder for the blood and a salve for the sores.

EASTERN PRICES—Pkgs. 25c, 50c; or 30c, 55c postpaid; breeder size (1 lb. salve, 5 lbs. powder), \$3.50; \$3.65 postpaid; 10 lbs. powder only, \$3.50; \$3.65 postpaid.

COLORADO and WEST—Pkgs. 30c, 60c; or 35c, 65c postpaid; breeder sizes, \$3.50; \$3.65 postpaid.



Conkey's Blackhead Remedy

Turkey breeders should have a package on hand as Blackhead is deadly in advanced stages. Should be given regularly to growing poults.

EASTERN PRICES—Pkg. 50c; or 55c postpaid.

COLORADO and WEST—Pkg. 60c; or 65c postpaid.



Conkey's Poultry Worm Remedy

This prescription rids birds of many troublesome worms, thus promoting a return to healthy conditions. Give it as soon as you see suspect worms—it will help the whole flock.

EASTERN PRICES—Pkgs. 25c, 50c; or 30c, 55c postpaid; breeder size (5 lbs.), \$2.75; or \$2.85 postpaid.

COLORADO and WEST—Pkgs. 30c, 60c; or 35c, 65c postpaid; breeder size, \$2.75; or \$2.85 postpaid.



Conkey's Poultry Laxative

Wherever a laxative or purgative is needed this remedy is just the thing for birds—by varying the dosage you can produce eit er a mild or a strong effect. Works without a debilitating after-effect.

Experts say, and we have found through experiments, that a poultry laxative given every week or two not only keeps birds in better condition but also increases the egg yield very materially.

EASTERN PRICES—Pkgs. 25c, 50c; or 30c, 55c postpaid; breeder size (5 lbs.), \$2.75 or \$2.90 postpaid.

COLORADO and WEST—Pkgs. 30c, 60c; or 35c, 65c postpaid; breeder size, \$2.75 or \$2.90 postpaid.

Conkey's White Diarrhea Remedy



Once you have used this old reliable preparation, you will never be without it. As a preventive of bowel troubles, White Diarrhea and other digestive complaints, it has given great satisfaction for many years.

After getting a start diarrhetic conditions often sweep away the whole hatch—hundreds of chicks. Play safe—keep this remedy in the drinking water until the danger period is past.

This remedy is also recommended as a preventive measure and in treatment of coccidiosis, a diarrhetic condition which attacks chicks similarly to White Diarrhea, but which differs from White Diarrhea in that a principal symptom is bloody droppings rather than white.

PRICES—30c, 60c, \$1.20; or 35c, 65c, \$1.30 postpaid. Breeder size (1200 Tablets), \$4.00; or \$4.10 postpaid. These prices prevail in both Eastern and "Colorado and West" territory.

When ordering any remedy by mail always send *postpaid* prices.

Have a Conkey Corner in Your Poultry House



Raising poultry is pleasant and profitable when "good luck" is with you. Good luck, however, is not merely a matter of chance, but of BEING PREPARED. For more than twenty-five years Conkey has been THE POULTRY DOCTOR. Take his advice. Install a Conkey Corner of remedies in your poultry house as insurance against disease, trouble, loss and disappointment.

We sell Conkey's Poultry and Stock Remedies because we know they are reliable and we can guarantee them as follows:

Your money refunded cheerfully if any Conkey remedy does not satisfy.

CONKEY'S POULTRY BOOK FREE if you call at our store, or mailed for 6 cents in stamps.



Conkey's ROUP REMEDY

When Roup breaks out there's no time to experiment—start treatment at once—the disease is very contagious. Cold, rainy weather and changeable conditions intensify Roup. When birds sneeze, froth in eyes, or run at nose put Conkey's Roup Remedy in the drinking water. Sick birds doctor themselves and others are protected from catching the disease. Better still, always at the first sign of "roupy weather" place Con-

key's Roup Remedy in fountains—it's a great preventive.

PRICES—Pks. 30c, 60c, 1.20; or 35c, 65c, 1.30 postpaid; 1½ lb. can \$2.50 postpaid; breeder size (5 lb. can) \$5.75 postpaid. These prices prevail in both Eastern and "Colorado and West" territory.

Conkey's Roup Pills

For treating individual cases and for use at shows when birds develop colds. These pills have saved many a valuable bird.

PRICES—Pks. 30c, 60c, 1.20; or 35c, 65c, 1.30 postpaid; breeder size (1000 pills) \$3.00; or \$3.10 postpaid. These prices prevail in both Eastern and "Colorado and West" territory.



Conkey's Canker and Bronchitis Remedy

This splendid remedy checks cankerous growths and sores and soon restores the bird to normal. This remedy is Conkey's Specific for bronchitis. Also desirable in treating individual cases of Roup and for use at shows for colds.

EASTERN PRICES—Pkg. 50c; or 55c postpaid.
COLORADO and WEST—Pkg. 60c; or 65c postpaid.



Conkey's Cholera Remedy

So-called Cholera, bowel troubles, indigestion, diarrhea and kindred ailments often kill a whole flock in a few days. Diarrhea, a drowsy, listless appearance and great thirst—these are the signals to put Conkey's Cholera Remedy in the drinking water.

EASTERN PRICES—Pks. 25c, 50c, 1.00; or 30c, 55c, 1.10 postpaid; breeder size (5 lbs.) \$2.50; or \$2.65 postpaid.
COLORADO and WEST—Pks. 30c, 60c, 1.20; or 35c, 65c, 1.30 postpaid; breeder size (5 lbs.) \$3.00; or \$3.15 postpaid.



Conkey's FLY KICKER For Cows and Horses

Dairymen, horsemen, cattlemen and sheep raisers declare this to be the best investment they make—animals free from insects do better in milk and butter fat production, while growing stock unquestionably fattens faster when relieved from disease-spreading insects.

Conkey's Fly Kicker for many years has held the confidence of persons having animals under their care as an "always reliable" repellent. Conkey's is not a

"cheap" product when the price is compared with inferior imitations, but many declare it to be very economical because of its superior lasting qualities.

We sell Conkey's Fly Kicker on this guarantee: Buy a can, try it for 15 days, then if you are not satisfied we will refund your money.

EASTERN PRICES—Cans, qt. 60c; ½ gal. 90c; gal. \$1.50; 5 gal. \$7.25; 10 gal. \$14.00. Parcel post, express or freight extra.

COLORADO and WEST—Cans, qt. 70c; ½ gal. \$1.15; gal. \$1.75; 5 gal. \$8.00; 10 gal. \$15.50. Parcel post, express or freight extra.

When ordering any remedy by mail always send *postpaid* prices.

Conkey's POULTRY TONIC



Every bird from chick to maturity will be more productive, healthier and more profitable if given a good tonic and regulator. Conkey's Poultry Tonic helps birds to get more out of their feed; they produce more eggs and better flesh on LESS FEED, through better digestion and assimilation.

Conkey's Tonic is all medicine—free from filler, red pepper, and "hot stuff" to overstimulate the birds and break down their health. Conkey's builds on a natural healthy basis, inducing steady and persistent laying. Keeps the young chicks growing, makes molting easy, strengthens the bird for bad weather and generally maintains a high health average.

EASTERN PRICES—Packages, 1½ lbs., 25c; ¾ lbs., 50c; 7 lbs., \$1.00; pails, 12 lbs., \$1.60; 25 lbs., \$3.00; bags, 50 lbs., \$5.00; 100 lbs., \$9.50. Parcel post, express or freight charges extra.

COLORADO and WEST—Packages, 1½ lbs., 30c; ¾ lbs., 60c; 7 lbs., \$1.20; pails, 12 lbs., \$2.00; 25 lbs., \$3.50; bags, 50 lbs., \$6.00; 100 lbs., \$11.00. Parcel post, express or freight charges extra.

Conkey's Gape Remedy



Don't try to extract gapes with a wire or feather when you can get such an effective remedy as Conkey offers. This remedy comprises two powders—both in same box for one price—one sifted over chicks causes them to dislodge the worms in windpipe by coughing, the other is a tonic powder which is mixed in the feed—to help the bird build up its resisting powers.

EASTERN PRICES—Pkgs. 25c, 50c; or 30c, 55c postpaid.

COLORADO and WEST—Pkgs. 30c, 60c; or 35c, 65c postpaid.

Conkey's Limberneck Remedy



For limberneck (or ptomaine poisoning) this remedy should be on hand in your Conkey Corner at all times as Limberneck must be treated promptly.

EASTERN PRICE—Pkg. 50c; or 55c postpaid.

COLORADO and WEST—Pkg. 60c; or 65c postpaid.

Conkey's Poultry Conditioner



Highly concentrated fowl-regulator, blood-purifier and nerve food, to build up birds in a rundown condition or for fowls recovering from disease. Splendid for putting birds in condition for shows, and sustaining them during exhibition.

EASTERN PRICES—Pkgs. 25c, 50c; or 30c, 55c postpaid.

COLORADO and WEST—Pkgs. 30c, 60c; or 35c, 65c postpaid.

Conkey's Scaly Leg Remedy



This ointment applied to birds' legs in a few treatments will kill the parasites responsible for the trouble and heal up the legs with a healthy lustre.

EASTERN PRICE—Pkg. 25c; or 30c postpaid.

COLORADO and WEST—Pkg. 30c; or 35c postpaid.

Conkey's Y-O. Yeast With Cod Liver Oil

A new Conkey product made to supply vitamins A, B and D which are essential to the life of poultry and live stock. The Conkey process seals the cod liver oil so that the potency of the cod liver oil is preserved. Conkey's Y-O should be added to every feeding ration.

Poultry is especially benefited by Conkey's Y-O. Extreme methods employed to increase egg production and force breeding stock robs poultry of vitamins which this product restores.

PRICES—Pkgs. 1 lb., \$1.50; 2 lbs., \$2.75; 5 lbs., \$6.25; or sent postpaid for \$1.60; \$2.90; \$6.45.

The following larger sizes parcel post charges extra—will be sent collect, if express or freight: 25 lb. drum, \$23.75; 50 lb. drum, \$45.00; 100 lb. drum, \$85.00.

These prices prevail in both Eastern and "Colorado and West" territory.

Conkey's Stock Tonic

EASTERN PRICES—Pkgs. 25c, 50c, \$1.00; pails, 12 lbs. \$2.10; 25 lbs. \$3.45; bags, 50 lbs. \$5.25; 100 lbs. \$10.00. Parcel post, express or freight extra.

COLORADO and WEST—Pkgs. 30c, 60c, \$1.20; pails, 12 lbs. \$2.50; 25 lbs. \$4.25; bags, 50 lbs. \$6.25; 100 lbs. \$11.50. Parcel post, express or freight charges extra.

Conkey's LICE POWDER

(Contains Sodium Fluoride)

For dusting hens, nests, growing chicks—wherever body lice must be overcome.

EASTERN PRICES—Pkgs. 20c, 35c, 75c; pails 12 lbs. \$2.60; 25 lbs. \$5.00. Parcel post, express or freight extra.

COLORADO and WEST—Pkgs. 25c, 45c, 90c; pails 12 lbs. \$3.00; 25 lbs. \$5.75. Parcel post, express or freight extra.



Conkey's Mite Liquid

For painting roosts, fittings, inside of house, nest boxes and wherever mites congregate.

PRICES—Cans, qt. 60c; 2 qt. 90c; gal. \$1.50; 5 gal. \$7.00. Parcel post, express or freight extra. These prices prevail in both Eastern and "Colorado and West" territory.

Conkey's Head Lice Ointment

For overcoming and preventing the murderous head louse which "eats up" baby chicks.

EASTERN PRICES—Pkgs. 10c, 25c; or 15c, 30c postpaid.

COLORADO and WEST—Pkgs. 15c, 30c; or 20c, 35c postpaid.

Conkey's Lice Fix

A preparation in ointment form for fighting body lice. One application lasts a month.

EASTERN PRICES—Pkgs. 25c, 50c; or 30c, 55c postpaid.

COLORADO and WEST—Pkgs. 30c, 60c; or 35c, 65c postpaid.



Jackson's Beautiful Gladioli

This class of Spring and Summer Flowering Bulbs makes one of the most imposing and most gorgeous of displays. They make a brilliant show in the flower beds and supply a mass of cut flowers. They grow best in rich light soil exposed to plenty of sunlight. Easy to grow and cheap in comparison to the blooms that you get.

Our RAINBOW Mixture

This mixture is the best mixture of the most beautiful Gladioli grown. The size of the bulbs is very large and consequently they produce blooms that are remarkable both in size and color. Don't compare our prices with the small bulbs as our bulbs are large and sure bloomers. Price, Doz. \$1.00 postpaid, not postpaid, 50, \$3.00; 100, \$5.50

AMERICA. An old time favorite, a soft lavender pink, bulbs of a good size and good bloomers. Price; Doz., \$1.00, postpaid; 50 for \$3.00 or 100 for \$5.50, not postpaid.

MRS. FRANCIS KING. A beautiful brilliant vermilion scarlet, a very effective variety for all occasions. Per Doz., \$1.00, postpaid; 50 for \$3.00 or \$5.50 per 100, not postpaid.

CHICAGO WHITE. A beautiful white Gladiolus, with lavender marking in the throat. Price per Doz., \$1.00, postpaid.

MRS. FRANK PENDLETON. A wonderful bloomer of a delicate flushed salmon pink, the color extending to the reverse side as well as the center. Dozen, postpaid, \$1.25.

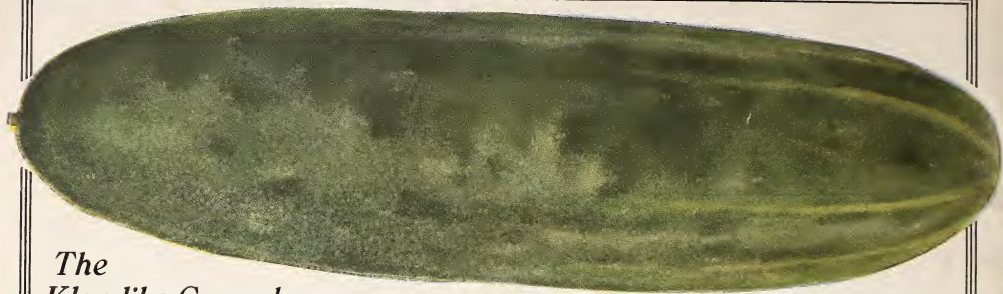
PANAMA. A new one which is a great improvement over the America, producing the largest and most beautiful spike of all pink sorts. The bulbs are of good size and sure bloomers. Price, postpaid, \$1.25 Doz.

MARGARET. A brilliant carmine with a large white blotch on the lower petals, the white and carmine blending into a violet tint. The spike is straight and strong, never twisted or deformed. The bulbs are very large. Price, each, 25c, or \$2.75 per Doz., postpaid.

PRIMULINUS HYBRIDS. A wide range of colors is found in this type from a light yellow to the deepest orange and from the softest salmon pink to a rich crimson; the colors are simply beautiful. Price per doz., postpaid, \$1.00.

BARON J. HULOT. A beautiful dark velvet purple. Doz., \$1.25, postpaid.

Gladioli make wonderful cut flowers. Bulbs can be planted, January, February, March, April, and May.



*The
Klondike Cucumber*

Pkt. 10c; oz., 15c; postpaid.



*Early
Dwarf
Flat Dutch
Cabbage*

*Pkt. 10c; oz., 25c;
Postpaid*



*Redfield
Beauty
Tomato*

*Pkt. 10c; oz., 35c;
Postpaid.*



*Wonder
Melon*

*Pkt. 10c; oz., 20c;
¼ lb., 60c; lb.,
\$2.00; Postpaid.*

Giant Stringless Wax Bush Bean

Pkt. 10c; lb., 45c; postpaid.

