



LIBRARY OF THE
JOHN G. JOHNSON COLLECTION
CITY OF PHILADELPHIA

ILLUSTRATED CATALOGUE
OF
HIGHLY IMPORTANT
OLD AND MODERN PAINTINGS
OF STERLING ARTISTIC DISTINCTION

TO BE SOLD BY DIRECTION OF
JOHN M. FREEMAN, ESQ., EXECUTOR OF THE ESTATE OF THE LATE

MR. DAVID T. WATSON
OF PITTSBURGH, PENNSYLVANIA

THE FARMERS LOAN AND TRUST COMPANY, TRUSTEE OF THE LATE
GUSTAV REICHARD

THE REPRESENTATIVES OF THE LATE
MR. JOHN T. SPERRY AND THE LATE MR. JULIUS WADSWORTH

THE EXECUTOR OF A PROMINENT NEW YORK COLLECTOR

AND

MESSRS. ELKINS & HENRIQUES, ATTORNEYS, LONDON

TO BE SOLD AT UNRESTRICTED PUBLIC SALE
IN THE GRAND BALLROOM OF
THE HOTEL PLAZA
ON THE EVENINGS HEREIN STATED

THE SALE WILL BE CONDUCTED BY

MR. THOMAS E. KIRBY

AND HIS ASSISTANT, MR. OTTO BERNET, OF THE

AMERICAN ART ASSOCIATION, MANAGERS

6 EAST 23rd STREET, MADISON SQUARE SOUTH

NEW YORK



THE AMERICAN ART ASSOCIATION
DESIGNS ITS CATALOGUES AND DIRECTS
ALL DETAILS OF ILLUSTRATION
TEXT AND TYPOGRAPHY

CONDITIONS OF SALE

1. **Any bid** which is merely a nominal or fractional advance may be rejected by the auctioneer, if, in his judgment, such bid would be likely to affect the sale injuriously.

2. **The highest bidder** shall be the buyer, and if any dispute arise between two or more bidders, the auctioneer shall either decide the same or put up for re-sale the lot so in dispute.

3. **Payment** shall be made of all or such part of the purchase money as may be required, and the names and addresses of the purchasers shall be given immediately on the sale of every lot, in default of which the lot so purchased shall be immediately put up again and re-sold.

Payment of that part of the purchase money not made at the time of sale shall be made within ten days thereafter, in default of which the undersigned may either continue to hold the lots at the risk of the purchaser and take such action as may be necessary for the enforcement of the sale, or may at public or private sale, and without other than this notice, re-sell the lots for the benefit of such purchaser, and the deficiency (if any) arising from such re-sale shall be a charge against such purchaser.

4. **Delivery** of any purchase will be made only upon payment of the total amount due for all purchases at the sale.

Deliveries will be made on sales days between the hours of 9 A. M. and 1 P. M., and on other days—except holidays—between the hours of 9 A. M. and 5 P. M.

Delivery of any purchase will be made only at the American Art Galleries, or other place of sale, as the case may be, and only on presenting the bill of purchase.

Delivery may be made, at the discretion of the Association, of any purchase during the session of the sale at which it was sold.

5. **Shipping, boxing or wrapping** of purchases is a business in which the Association is in no wise engaged, and will not be performed

by the Association for purchasers. The Association will, however, afford to purchasers every facility for employing at current and reasonable rates carriers and packers: doing so, however, without any assumption of responsibility on its part for the acts and charges of the parties engaged for such service.

6. **Storage** of any purchase shall be at the sole risk of the purchaser. Title passes upon the fall of the auctioneer's hammer, and thereafter, while the Association will exercise due caution in caring for and delivering such purchase, it will not hold itself responsible if such purchase be lost, stolen, damaged or destroyed.

Storage charges will be made upon all purchases not removed within ten days from the date of the sale thereof.

7. **Guarantee** is not made either by the owner or the Association of the correctness of the description, genuineness or authenticity of any lot, and no sale will be set aside on account of any incorrectness, error of cataloguing, or any imperfection not noted. Every lot is on public exhibition one or more days prior to its sale, after which it is sold "as is" and without recourse.

The Association exercises great care to catalogue every lot correctly, and will give consideration to the opinion of any trustworthy expert to the effect that any lot has been incorrectly catalogued, and, in its judgment, may either sell the lot as catalogued or make mention of the opinion of such expert, who thereby would become responsible for such damage as might result were his opinion without proper foundation.


AMERICAN ART ASSOCIATION,

American Art Galleries,

Madison Square South,

New York City.

CATALOGUE



Digitized by the Internet Archive
in 2013

<http://archive.org/details/oldmodernpaintin00amer>

FIRST EVENING'S SALE

MONDAY, APRIL 16, 1917

IN THE GRAND BALLROOM OF

THE PLAZA

FIFTH AVENUE, 58TH TO 59TH STREET

BEGINNING PROMPTLY AT 8.15 O'CLOCK

Catalogue Nos. 1 to 83, inclusive

Franz von Defregger

GERMAN: 1835—

1—*THE SMOKER*

Panel: Height, 8½ inches; width, 6¼ inches

HEAD and bust of a Tyrolean peasant, with brown velvet trimmed jacket and red waistcoat with brass buttons, in full face view. He is smoking a pipe with brass cover, which he holds to his mouth with his left hand.

Signed at the upper right, DEFREGGER.

Collection of the late MR. JULIUS WADSWORTH, New York.

A. Sas

2—*THE CAVALCADE*

Panel: Height, 9 inches; width, 6½ inches

A PARTY of gaily costumed ladies and gentlemen coming forward on a road which leads from a chateau seen on an eminence in the upper left hand corner of the composition. The foremost figure is a lady mounted on a sorrel horse, her falcon on her left wrist, the horse led by a page with a greyhound beside him. The roadway leads through a park and the hunting party is evidently a large one, for figures and horses are issuing from the gates of the chateau, a considerable distance away.

Signed at the lower left, A. SAS, MONACO, and dated 1885.

By order of the Executor of the late MR. DAVID T. WATSON, Pittsburgh, Pennsylvania.

Jean Gustave Jacquet

FRENCH: 1846—1909

3—*IN THE PARK*

Panel: Height, 8¼ inches; width, 6¼ inches

A SEATED, three-quarter-length figure of a young lady holding a closed fan, her costume consisting of a blue robe with ample skirt, blue velvet jacket embroidered with silver, and a small head-dress of blue with a white feather. Behind her appear the head and shoulders of a young man with wine-colored cloak and beret, who is speaking to her. The young woman's head is turned to the spectator's left as she looks at the young man, who seems to be an intruder.

Signed at the right, G. JACQUET.

By order of the Executor of the late MR. DAVID T. WATSON, Pittsburgh, Pennsylvania.

William Adolphe Bouguereau

FRENCH: 1825—1905

4—*THE COPY BOOK*

Water Color: Height, 10 inches; width, 6½ inches

A SEATED figure, in full face view, of a little girl with dark hair and eyes. She wears a waist of white, bodice of gray with shoulder straps and a skirt of gray-blue. Her feet are bare. On her lap she holds an open, paper-covered book and she looks up from it with pensive expression. The head, hands and feet show the skilful, exact drawing of the French master.

Signed at the upper right, W. BOUGUEREAU, and dated 1884.

By order of the Executor of the late MR. DAVID T. WATSON, Pittsburgh, Pennsylvania.

Alexander H. Wyant, N.A.

AMERICAN: 1836—1892

5—*LANDSCAPE*

Water Color: Height, 6½ inches; length, 12 inches

A WYANT of his earlier period. The foreground is occupied by the water of a river which traverses the middle distance; on rising ground at the right is a group of trees. In the distance appear an island with trees, and the farther shore. Overhead is a tenderly painted sky of gray clouds.

Signed at the lower right, A. H. WYANT.

Property of the Estate of the late GUSTAV REICHARD.



Eduardo Zamacois

SPANISH: 1842—1871

6—*PORTRAIT OF JOLIET*

Panel: Height, 8½ inches; width, 6½ inches

A FULL-LENGTH standing figure of a young man. His costume consists of a tunic of light gray fastened with silver buttons, black velvet trousers, high buff leather boots and a wide-brimmed gray hat with crimson and white plume. Over the left shoulder is flung a scarlet cloak, and with the right hand he holds the hilt of a sword which is clasped under his left arm. This little picture is notable for its attractive color scheme and for the somewhat broader handling than characterizes the later work of the celebrated artist.

Signed at the left, À MON AMI JOLIET, ED. ZAMACOIS, 1864.

Collection of the late Mr. JULIUS WADSWORTH, New York.



Jean Baptiste Édouard Detaille

FRENCH: 1848—1912

7—A *HUSSAR*

Height, 9¾ inches; width, 7¼ inches

A FULL-LENGTH standing figure of a cavalryman in dark blue uniform trimmed with red and with steel buttons and wearing a bear-skin cap with red plume. He stands in full face to the spectator beside his black horse, with his right arm resting on the saddle.

Signed at the lower right, E. DETAILLE.

By order of an Executor.

Henri Baron

FRENCH: 1816—1885

8—*THE REVELATION*

Panel: Height, 9¼ inches; length, 13 inches

Two ladies, one in yellow, the other in white and blue, advancing through a wood from the left, have stopped beside the trunk of a large tree growing on a little eminence and are looking through the bushes at a gentleman with crimson cloak and red cap who is cutting letters on the trunk of a birch tree at the right of the picture, thus surprising him in the act. On the left, in the other part of the canvas, are forest trees and a gray-blue sky.

Signed on a rock at the lower center, H. BARON.

By order of an Executor.

Jean Charles Meissonier, fils

FRENCH: 1852—1917

9—*LOVERS' LANE*

Height, 12¾ inches; width, 9¾ inches

A PATHWAY lined with rustic palings leads from the middle foreground between the trees of a park and mounts a slope to a chateau with white walls. Near the middle of the picture, walking away from the spectator, are a gentleman and lady, dressed in the styles prevailing in the 80's. Above the tree tops is a sky with white clouds and spaces of blue.

Signed at the lower left, CHARLES MEISSONIER FILS.

Purchased from Messrs. M. Knoedler & Co., New York, 1881.

Collection of the late MR. JULIUS WADSWORTH, New York.

Henri Harpignies

FRENCH: 1819—1916

10—*BOUQUET D'ARBRES*

Panel: Height, 10¼ inches; width, 8½ inches

A MASSED group of trees on the brow of a hill. Two rough narrow footpaths, one passing between the group of trees, and the other to the right, lead to a valley in the distance; other clumps of trees are seen in the background.

Signed, and dated 1905, at lower left.

By order of MESSRS. ELKINS & HENRIQUES, Attorneys, London.

J. B. Van Hove

DUTCH: 1790—1880

11—*DUTCH INTERIOR*

Panel: Height, 13 inches; width, 9½ inches

IN the foreground are the walls of a room paneled in square blocks of brown, in which are a sideboard, a prie-dieu with a Bible upon it, two mirrors, and a painting in a black frame. Through an open doorway in the right center of the composition there is a view of a hall with white walls lit up with sunlight from a window on the left. A clock hangs on the wall. About to open a door, which presumably opens into another room or out of doors, stands a woman in black with a metal hod, covered by a white cloth, on her right arm.

Signed at the lower right, J. B. VAN HOVE.

By order of an Executor.



Jean Jacques Henner

FRENCH: 1829—1905

12—HEAD OF A YOUNG WOMAN

Panel: Height, 10 $\frac{3}{4}$ inches; width, 8 $\frac{1}{2}$ inches

A HEAD and bust picture of a young woman with dark auburn hair, her face seen in profile view. She wears a red jacket and black low-cut waist with the edge of a white chemise showing above it.

Signed at the upper right, J. J. HENNER.

By order of the Executor of the late MR. DAVID T. WATSON, Pittsburgh, Pennsylvania.



Ernest Jean Aubert

FRENCH: 1824—1906

13—*THE FOUNTAIN OF LOVE*

Height, 13¼ inches; width, 9¼ inches

A FULL-LENGTH figure of a young woman, partly draped in light gray, standing beside a rock-basin and holding her hands before her so as to form a cup from which a little Cupid, with white wings, is drinking. The background consists of a plain, a line of hills and a sky in light pale tints with some pale blue above.

Signed at the left, JEAN-AUBERT.

Purchased from Messrs. Goupil & Co., 1883.

Collection of the late Mr. JULIUS WADSWORTH, New York.



Charles François Daubigny

FRENCH: 1819—1878

14—PEASANT WOMAN WITH TWO COWS

Panel: Height, 8 inches; length, 14¼ inches

A BLEAK and bare plateau on a winter afternoon, with a peasant woman tending two cows watering and grazing; a rough winding road passes over the hills to the left. The clouds are charged with an impending storm.

Signed, and dated 1874, at the lower left.

From the collection of Alexander Young, Esq., London.

By order of MESSRS. ELKINS & HENRIQUES, Attorneys, London.



Alberto Pasini

ITALIAN: 1826—1899

(French School)

15—SCENE IN THE ORIENT

Height, 10 inches; length, 14½ inches

A WHITE building with archway entrance and dome, and a wall enclosing a park, appear on the right of the picture. On the left is a grove of trees in full summer foliage. In the foreground, before the doorway, are several figures and horses; on the left, at the edge of the grove, are two other figures. Above is a sky of blue and white clouds.

Signed at the lower left, A. PASINI.

Property of the Estate of the late GUSTAV REICHARD.

Jean Béraud

FRENCH: 1849—

16—*BOULEVARD HAUSSMANN*

Panel: Height, 10 inches; length, 14¼ inches

A VIEW taken from the middle of the highway of the Boulevard Haussmann in the autumn. Many figures are seen in the foreground crossing the Boulevard or waiting at an aisle of safety, where there is a Sergent de Ville leaning against the lamp-post with pneumatic clock. The picture was painted before the advent of automobiles and cabs and omnibuses fill the roadway. The buildings lining the street are seen stretching away in perspective. Above is a sky of gray.

Signed at the lower left, JEAN BÉRAUD.

Purchased from the late Adolph Kohn, New York, 1883.

Collection of the late MR. JULIUS WADSWORTH, New York.

Prosper Étienne Berne-Bellecour

FRENCH: 1838—1910

17—*A SENTINEL*

Panel: Height, 14¾ inches; width, 10½ inches

A FULL-LENGTH figure of a French chasseur in the now discarded uniform of dark blue tunic, light blue trousers, blue kepi, and green epaulettes, resting on his bayoneted rifle as he stands near a roadside on duty. Beyond is a landscape prospect with a piece of woods and a hillside, and above is a sky of gray.

Signed at the lower right, E. BERNE-BELLECOUR, and dated 1907.

Property of the late MR. J. T. SPERRY.

Cesare Detti

ITALIAN: 1848—1915

(French School)

18—*MUSIC HATH CHARMS*

Panel: Height, 10 inches; length, 16 inches

IN the middle of the picture, in a park, is a marble balustrade by the side of a lake. A lady, with a gown of straw-color figured with pink and embroidered with silver, stands leaning against the balustrade on the left of the picture, while on the other side of it, behind her, are the head and shoulders of her duenna, who wears a costume of crimson velvet. Seated on a rock near by, at the water side, a young cavalier, in crimson and blue, is playing on a lute for the delectation of the ladies. Beyond are the trees and shrubbery of the park, and a sky with white clouds and spaces of blue.

Signed at the lower right, C. DETTI, and dated '83.

By order of an Executor.

D. Hernandez

SPANISH: CONTEMPORARY

19—*THE OPERA BOX*

Height, 12¾ inches; width, 9½ inches

A THREE-QUARTER-LENGTH seated figure of a young woman in white satin evening gown in a loge at the opera. Leaning with her left elbow resting on the crimson upholstered railing of the box, she is sweeping the audience with an opera glass. Behind her appear the stalls and gallery of one side of the theatre.

Signed at the upper left, D. HERNANDEZ, ROMA.

By order of the Executor of the late MR. DAVID T. WATSON, Pittsburgh, Pennsylvania.

Erman Semenonsky

CONTEMPORARY

20—*SPRING*

Panel: Height, 12 $\frac{3}{4}$ inches; width, 9 $\frac{1}{4}$ inches

A HEAD and bust picture of a young woman with blond hair, wearing a gray hat trimmed with spring blossoms and a V-shaped waist of blue edged with white.

Signed at the lower left, ERMAN SEMENONSKY, and dated at the lower right, PARIS, 1884.

By order of the Executor of the late MR. DAVID T. WATSON, Pittsburgh, Pennsylvania.

Erman Semenonsky

CONTEMPORARY

21—*SUMMER*

Panel: Height, 12 $\frac{3}{4}$ inches; width, 9 $\frac{1}{4}$ inches

A HEAD and bust picture of a young woman with blond hair, wearing a bonnet of brown trimmed with roses and fastened under her chin with a bow of brown tulle. Her corsage of brown, edged with white, is ornamented by a bunch of roses and other flowers.

Signed at the lower right, ERMAN SEMENONSKY, PARIS, 1884.

By order of the Executor of the late MR. DAVID T. WATSON, Pittsburgh, Pennsylvania.

Léon Perrault

FRENCH: 1832—

22—*LA PETITE PAUVRETTE*

Height, 15 $\frac{3}{4}$ inches; width, 13 inches

A HEAD and bust picture of a little girl with flowing golden hair and blue eyes, in full face view, wearing a jacket of dark gray and a white handkerchief around her neck, tied in a knot under her chin.

Signed at the upper left, L. PERRAULT, and dated at the upper right 1881.

Purchased from the late Adolph Kohn, New York, 1883.

Collection of the late MR. JULIUS WADSWORTH, New York.

Unknown Artist

23—*MADONNA AND CHILD*

RUSSIAN ICON

Height, 14 $\frac{1}{2}$ inches; width, 12 $\frac{1}{2}$ inches

THE faces are seen through openings in an ornamental setting of gilded metal which represent the halos and draperies of the two figures. Below, on the metal work, is an inscription from the Greek Church ritual: "Image of the very Holy Mother of God at Riazan."

Purchased through Chevob & Co., Geneva, Switzerland, in 1911, who procured it from a Russian priest who had taken it from a Russian church.

By order of the Executor of the late MR. DAVID T. WATSON, Pittsburgh, Pennsylvania.

Jean Léon Gérôme

FRENCH: 1824—1904

24—*THE LION AND THE BUTTERFLY*

Circle: Diameter, 14 inches

A BEAUTIFULLY drawn seated lion, on an eminence overlooking the desert. Fluttering in the sky is a butterfly, upon which the King of Beasts, with head erect, fixes his interested gaze. The blue horizon line of the desert crosses the picture a little below the middle of the circle and above is a sky of dull blue with gray clouds.

Signed at the lower left, J. L. GÉRÔME.

Purchased from the late Charles F. Haseltine, Philadelphia, 1890.

By order of the Executor of the late MR. DAVID T. WATSON, Pittsburgh, Pennsylvania.

Antonio Casanova y Estorach

SPANISH: 1847—1896

(French School)

25—*THE CHEERING GLASS*

Height, 16¼ inches; width, 12¾ inches

A HALF-LENGTH picture of a monk in brown robe, his smiling face turned to the spectator as he holds up a glass of wine in his right hand.

*Signed at the upper left, ANTONIO CASANOVA Y ESTORACH,
PARIS, 1882.*

By order of the Executor of the late MR. DAVID T. WATSON, Pittsburgh, Pennsylvania.

Karl Pierre Daubigny

FRENCH: 1846—1887

26—FISHERMEN'S COTTAGES

Panel: Height, 9½ inches; length, 17 inches

THATCH-ROOFED fishermen's cottages occupy the right foreground from where the view overlooks a stretch of country and, on the right, the blue waters of the sea. Overhead is a sky of blue-gray with warmer tints near the horizon.

Signed at the lower left, KARL DAUBIGNY, and dated 1886.

By order of the Executor of the late MR. DAVID T. WATSON, Pittsburgh, Pennsylvania.

Alexander H. Wyant, N.A.

AMERICAN: 1836—1892

27—WOOD INTERIOR

Height, 15½ inches; width, 12 inches

IN the foreground is a little opening in a forest where white wild-flowers are growing. On either side is green shrubbery, and rising above are the trunks and green foliage of trees in a wood. Through openings in the foliage appears a gray sky.

Signed at the lower left, A. H. WYANT, and dated 1879.

Property of the Estate of the late GUSTAV REICHARD.

William Collins

BRITISH: 1788—1847

28—*CROMER SANDS*

Panel: Height, 13 inches; length, 17 inches

A SEASHORE town with a group of fisher-folk gathered about a large rock on the right of the picture. The sands stretch away through the middle of the composition with a headland, on the left, to the distant sea. In the sky of qualified blue are masses of cumulus and cirrus cloud.

Signed on the lower left, W. COLLINS.

Purchased from Messrs. Wallis & Son, London, 1899.

*By order of the Executor of the late MR. DAVID T. WATSON, Pitts-
burgh, Pennsylvania.*

Frank Mura

AMERICAN: 1861—

29—*FEEDING CHICKENS*

Canvas: Height, 15 inches; width, 11½ inches

A MILLET-LIKE scene with a paddock in which a red-cuffed peasant woman is feeding chickens and other poultry; a cottage is seen to left, and trees on either side.

Signed at the lower left.

By order of MESSRS. ELKINS & HENRIQUES, Attorneys, London.



Henri Fantin-Latour

FRENCH: 1836—1904

30—PEONIES IN A GLASS VASE

Canvas: Height, 15 inches; width, 13½ inches

A BOUQUET of pink and red peonies and leaves loosely arranged in a globular-shaped glass vase: gray background.

Signed at the lower left.

From the collection of Sir William Eden, Bart.

By order of MESSRS. ELKINS & HENRIQUES, Attorneys, London.

Alonso Perez

SPANISH: CONTEMPORARY

31—VILLAGE COURTSHIP

Panel: Height, 16½ inches; width, 13¼ inches

A GROUP of two figures, a pretty girl in pink and white, wearing a white cap trimmed with pink ribbon and holding a blue-green parasol in front of her as she sits on a garden bench with a basket of fruit and flowers beside her, and a young man, with light blue coat and tricorne hat who, while leaning against the back of the bench, turns his head as he addresses his companion. Back of the group is the shrubbery on the outskirts of a park surrounding a chateau which appears on the right of the picture in the distance; overhead is a sky of gray clouds tinged with pale pink. Reflections on the pathway in the foreground indicate that a shower has just passed.

Signed at the lower right, ALONSO-PEREZ, PARIS.

By order of the Executor of the late MR. DAVID T. WATSON, Pittsburgh, Pennsylvania.

J. G. Brown, N.A.

AMERICAN: 1831—1913

32—A CASE OF SALIAGE

Height, 18¼ inches; width, 12 inches

A FULL-LENGTH figure of a little bootblack carrying his box in his left hand while, in his right, he holds up admiringly a broken green vase which has an ornamental handle made by a little pottery figure of a monkey with a red jacket.

*Signed at the lower left near the bottom of the barrel,
J. G. BROWN, N.A., and dated 1882.*

Property of the late MR. J. T. SPERRY.

Alexander H. Wyant, N.A.

AMERICAN: 1836—1892

33—ON THE SEASHORE

Height, 12 inches; length, 20 inches

A VIRILE example of the earlier period of Wyant. In the foreground, amid green pastures, is a large rock formation with shrubbery growing about it; at the extreme left is another rock. The middle distance is occupied by a flat sandy beach with an inlet and the blue expanse of the ocean appears beyond. A little way off shore, near the middle of the picture, is a rocky ledge upon which the sea is breaking with white foam. A few sails are indicated on the horizon and above is a sky of light gray.

Signed at the lower left, A. H. WYANT.

Property of the Estate of the late GUSTAV REICHARD.

Edmund G. Hammen

GERMAN: 1821—

34—THE ARMORER

Panel: Height, 17½ inches; width, 14¼ inches

A YOUNG man, dressed in black and scarlet with black hat and brown plume, stands in the middle of the composition, replacing a sword in its scabbard which is belted around his waist. Leaning over a counter on the left is the bald, gray-bearded armorer, and back of him stands his daughter with a distaff. Leaning against the counter and the walls of the room are various pieces of armor—breast-plates, helmets, swords—and a portfolio of papers.

Signed at the lower right, ED. HAMMEN.

By order of an Executor.



Adolf Schreyer

GERMAN: 1828—1899

35—A HALT BY THE ROADSIDE

Height, 13 inches; length, 20¾ inches

A WAGON loaded up with goods and drawn by three horses has stopped before the door of a thatch-roofed building on the roadside and the driver, having left his seat, is seen readjusting the harness and saddle of the horse nearest the spectator. A stretch of level country extends into the distance on the left and the picture is completed by a stormy sky with gray clouds.

Signed at the lower right, AD. SCHREYER.

By order of the Executor of the late MR. DAVID T. WATSON, Pittsburgh, Pennsylvania.



David Johnson, N.A.

AMERICAN: 1827—1909

36—ON THE RIVER AT COS COB, CONNECTICUT

Height, 14 inches; length, 22 inches

A VERY carefully painted landscape with the smooth waters of the Mianus River in the right foreground, and at the left a great oak and other trees on the bank. In the middle distance on the farther shore are some buildings and trees, and near the extreme right, where the river empties into the Sound, a vessel with bare masts is indicated. In the foreground is a blue skiff, near the shore, with two women seated in the stern and a man engaged in crabbing from the bow.

Signed at the lower left with the monogram D.J.

By order of an Executor.



J. A. Walker

FRENCH: CONTEMPORARY

37—FRENCH CAVALRYMEN

Height, 19¾ inches; width, 15½ inches

IN the foreground, on a roadway, are two French troopers in uniform of the Third Empire, consisting of dark blue jackets, red kepis and red breeches terminating in loose leather boots. One of them stands beside his white horse, and the other remains astride his mount, a chestnut. On the left, along the roadside, appears the body of cavalry to which the two troopers belong,—the horses stopping at rest with their riders dismounted. Above is an early evening sky showing gray clouds tinged with yellow and rose.

Signed at the lower right, J. A. WALKER.

Collection of the late MR. JULIUS WADSWORTH, New York.



Ferdinand Roybet

FRENCH: 1840—

38—THE CASQUE

Panel: Height, 21 inches; width, 14½ inches

A FULL-LENGTH figure of a gentleman wearing a rich costume of the Louis Treize period, of red, white and gray, standing before a table and examining a casque, or helmet, which he holds up with both hands. On the table, which is covered with a piece of red drapery, is another casque; an arm-chair is seen on the left behind the figure and a circular steel ornamented shield hangs on the wall at the upper right.

Signed at the lower left, F. ROYBET.

By order of an Executor.

Prosper Étienne Berne-Bellecour

FRENCH: 1838—1910

39—*EPISODE OF THE SIEGE OF PARIS, 1870-71*

Panel: Height, 14 inches; length, 18½ inches

BEHIND the walls of an improvised fortress in the foreground, overlooking the environs of Paris, are three French artillerymen and a cannon, on the right. One of the soldiers seated beside the gun is looking over the rampart, while the other two, on the left of the picture, are in restful attitudes. Above the rampart a belt of trees is seen on the left hand, and on the right is a distant hill. The sky, with tints of pale yellow and blue-gray, shows that it is the hour of evening.

Signed at the lower left, E. BERNE-BELLECOUR.

By order of the Executor of the late MR. DAVID T. WATSON, Pittsburgh, Pennsylvania.

Philippe Rousseau

FRENCH: 1816—1887

40—*LANDSCAPE*

Panel: Height, 10½ inches; length, 29½ inches

AN eminence in the foreground on the left, with a tree broken by the wind; on the right, a roadway in which a covered wagon drawn by two horses is passing. Through the middle of the picture a wide stretch of flat country extends to the sea, which appears on the left. On the right, in the distance, is rising ground with two church spires. Over all is a sky of finely modeled gray clouds with some blue-gray in the upper portion.

Signed at the lower left, PH. ROUSSEAU.

By order of an Executor.

Barend Cornelis Koekkoek

DUTCH: 1803—1862

41—*LANDSCAPE*

Panel: Height, 12 inches; length, 16 inches

A HIGHLY finished landscape showing a hillock in the right foreground and some tall trees growing within a yard fenced with palings, where are seen the roof of a building and a couple of low stacks. In the middle foreground is a pool through which passes a roadway. Three hunters, with their dogs, are approaching near the middle of the picture. On the left is another hillock with slender trees, and in the distance appear a level plain with a flock of sheep and shepherd, and a range of hills. The sky shows warm-tinted clouds with spaces of blue in the upper portion.

Signed at the lower left, B. C. KOEKKOEK.

By order of an Executor.

Henri Fantin-Latour

FRENCH: 1836—1904

42—*DAHLIAS IN BLUE VASE*

Canvas: Height, 19 inches; width, 17½ inches

AN effectively grouped bouquet of red, white and variegated dahlias, with buds and leaves, arranged in a green glass vase which rests on a table; dark background.

Signed in red, FANTIN, and dated '74 in lower left.

By order of MESSRS. ELKINS & HENRIQUES, Attorneys, London.

A. T. J. Monticelli

FRENCH: 1824—1886

43—*RÉUNION DANS UN PARC*

Panel: Height, 15 inches; length, 23½ inches

A WELL-WOODED park with trees and shrubs in autumnal tints, peopled by a crowded group of numerous figures of ladies in bright costumes. Two nude children, probably intended for Cupids, are sketched in the center of the picture.

Signed at the lower left.

The reverse side of the panel is almost entirely unplanned and is characteristic of Monticello's indifference to the material on which he painted.

By order of MESSRS. ELKINS & HENRIQUES, Attorneys, London.



A. T. J. Monticelli

FRENCH: 1824—1886

44—*LE JARDIN D'AMOUR*

Panel: Height, 16½ inches; length, 23½ inches

AN unusually well defined group of sixteen small whole-length female figures. Nearly all are in golden dresses and are disposed in various attitudes near a terrace at the edge of a forest. Here and there the artist has dashed in a few strokes of green as if to mellow down the richness of the whole picture.

By order of MESSRS. ELKINS & HENRIQUES, Attorneys, London.





Prosper Étienne Berne-Bellecour

FRENCH: 1838—1910

45—*THE RESTING PLACE*

Panel: Height, 16 inches; length, 24½ inches

IN the foreground on the right, leaning against the trunk of a tree, is a French cavalryman in uniform of light blue tunic, with white *galons*, and red trousers terminating in loose boots. Occupying the center of the composition are another soldier in the same uniform and two horses, which are attached by tethering ropes to the trunk of the tree on the left. The cavalryman beside the horses is adjusting the saddle and trappings of one of the mounts.

Signed at the lower right, E. BERNE-BELLECOUR, and dated 1907.

Property of the late MR. J. T. SPERRY.

Cesare Detti

ITALIAN: 1848—

(French School)

46—CAVALIER WITH TWO-HANDED SWORD

Height, 22 inches; width, 15 inches

A FULL-LENGTH standing figure of a cavalier, his left hand resting on his hip and the right on the hilt of a great two-handed sword which he holds beside him. His rich costume comprises a blue velvet beret with brown plume, white ruff, buckskin, laced jacket, dark blue velvet breeches, yellow-brown stockings and buckskin shoes. About his waist is a pink sash and, by an ornamented belt over his right shoulder, a sword and pouch are suspended on his left side.

Signed at the lower right, C. DETTI.

By order of an Executor.

Jean Charles Meissonier, fils

FRENCH: 1852—1917

47—TROOPERS IN A TAVERN

Panel: Height, 21 $\frac{1}{4}$ inches; width, 18 inches

A GROUP of three men wearing Louis Treize costumes of gray, blue and yellow, seated about a table, with a jug and glasses of wine. One of them, on the right, is playing on a lute for the delectation of his two companions; back of them stands the tavern-keeper in white shirt with sleeves rolled up, and breeches and apron of gray.

Signed at the lower right, CHARLES MEISSONIER, FILS, and dated 1885.

Purchased from Messrs. Knoedler & Co., New York, 1881.

Collection of the late MR. JULIUS WADSWORTH, New York.



Homer D. Martin, N.A.

AMERICAN: 1836—1897

48—*KEENE VALLEY, ADIRONACKS*

Height, 16 inches; length, 24½ inches

THE foreground and part of the middle distance lying in shadow overlook a stretch of forest. The dead trunks of several trees indicate that the foreground timber has been burned over. The view is eastward at early evening, and a part of the forest in the middle distance, and a mountain range beyond, receive the light from the last rays of the sun. On the left and on the right of the picture rising smoke indicates forest fires. Overhead is a sky of tempered green-blue with masses of pink-tinted clouds.

Signed at the lower right, H. D. MARTIN.

Painted to order for Ezra Babcock, Esq., 1882.

Property of the Estate of the late GUSTAV REICHARD.



George Inness, N.A.

AMERICAN: 1825—1894

49—*ALEXANDRIA BAY ON THE
ST. LAWRENCE, 1878*

Millboard: Height, 16 inches; length, 24 inches

A LANDSCAPE with figures, belonging to the earlier period of Inness's work. In the foreground, seated near the middle of the picture on a rocky shore, are two women, and at the left, standing on a little landing-place on the shore of the Bay, the waters of which fill the left of the picture, is another woman. Two pine trees appear near the middle of the picture, and on the left is a wooded island in the bay; beyond, on the farther shore, is a range of hills. The sky, of a yellow-gray tone, indicates that an evening effect is depicted.

Signed at the lower right, G. INNESS.

Property of the Estate of the late GUSTAV REICHARD.

Félix Ziem

FRENCH: 1821—1911

50—*VENETIAN FISHING BOATS*

Panel: Height, 14 $\frac{1}{4}$ inches; length, 22 $\frac{1}{4}$ inches

IN the right foreground a number of fishermen, in their row-boat, are drawing in a net; on the left two sloops with lateen sails; on the shores of the blue waters, which occupy the first plane of the picture, buildings are indicated, and beyond is a range of hills. The sky is gradated from a warm light tone at the horizon into strong blue above.

Signed at the lower right, ZIEM.

From the Governor E. D. Morgan Collection, New York, 1886.

Collection of the late Mr. JULIUS WADSWORTH, New York.



Charles Émile Jacque

FRENCH: 1813—1894

51—*MOUONS DANS LA CAMPAGNE:*
TEMPS ORAGEUX

Canvas: Height, 17½ inches; length, 21½ inches

A STORM-TOSSED landscape with trees on either side. In a clearing which forms the foreground is seen a flock of sheep grazing; a red-capped shepherd girl is seated on a bank; the sky is overcast with masses of rolling clouds.

Signed and dated 1874 to lower right.

With signed and dated certificate by the artist on back of canvas.

By order of MESSRS. ELKINS & HENRIQUES, Attorneys, London.



Frederik Hendrik Kaemmerer

FRENCH: 1839—1902

52—*LOVING GLANCES*

Height, 23½ inches; width, 15¾ inches

Two full-length figures, a young man and a young woman, advancing arm in arm on a pathway by the shore of a lake. The costumes are of the French Directory. The young man, with brown coat, white waistcoat, buff breeches and black chapeau, carrying his cane, turns his head to his companion, a young woman in robe of white, her hands clasped on her lover's left arm as she looks up in his face.

Signed at the lower right, F. H. KAEMMERER.

By order of the Executor of the late MR. DAVID T. WATSON, Pittsburgh, Pennsylvania.

William Adolphe Bouguereau

FRENCH: 1825—1905

53—*A ROMAN BEAUTY*

Height, 22¾ inches; width, 18 inches

A HEAD and bust picture of a Roman girl with black hair, the head turned to the left in three-quarter view. She wears a cape of gray-blue over a bodice of dark blue with pleated chemise of white. Her hair is bound with a gold band, and around her neck is a double string of pearls.

Signed at the lower right, W. BOUGUEREAU, and dated 1872.

Purchased from the late Adolph Kohn, New York, 1883.

Collection of the late MR. JULIUS WADSWORTH, New York.

Frank Mura

AMERICAN: 1861—

For many years past a resident of Paris

54—*IN THE FIELDS, NEUVILLE*

Canvas: Height, 14 inches; length, 27 inches

A VIEW in early springtime over a flat country at a high altitude, with spindly wind-blown trees across the foreground. Two teams of horses are ploughing the uneven ground, and a group of cottages is seen to the right.

Signed at the lower right.

Exhibited at the Derby, 1914.

By order of MESSRS. ELKINS & HENRIQUES, Attorneys, London.

Jehan Georges Vibert

FRENCH: 1840—1902

55—*THE FEAST OF THE ANNUNCIATION*

Panel: Height, 24½ inches; width, 19½ inches

IN a courtyard overhung with vines a white-robed monk with bald head and white beard, and another who is younger, wearing a straw hat and a blue apron, are engaged in decorating and adorning with freshly cut flowers a richly dressed statue of the Virgin and Child. The figure is placed on a pedestal which is draped with rich crimson embroidered drapery and garlands of white flowers. The older monk, standing on the right, is engaged with some detail of the long blue flowered cloak which forms a part of the costume of the statue.

Signed at the lower right, J. G. VIBERT.

Purchased through Mr. C. L. Carstairs, now of Messrs. Knoedler & Co.

By order of the Executor of the late MR. DAVID T. WATSON, Pittsburgh, Pennsylvania.



Meyer von Bremen, Johann Georg

GERMAN: 1813—1886

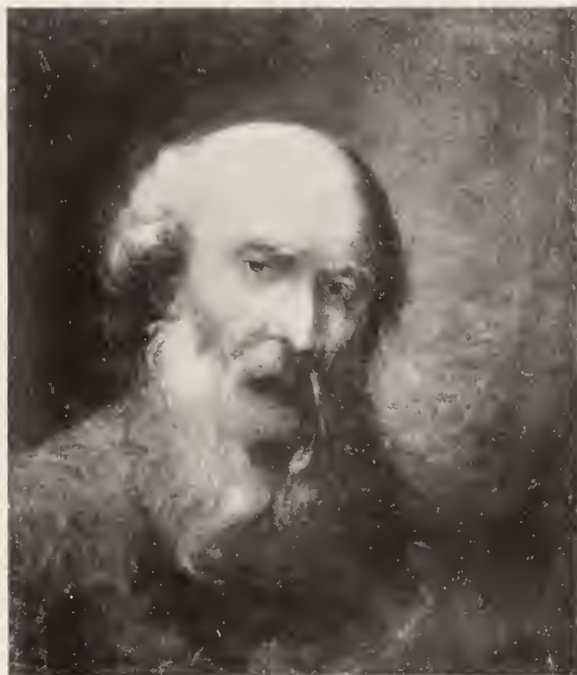
56—*THE WAYSIDE SHRINE*

Height, 25 $\frac{3}{4}$ inches; width, 20 $\frac{1}{2}$ inches

A GROUP of two children, a little girl and little boy, kneeling in the roadway before a wayside shrine which appears on the left of the picture. The girl, with her arms around the little boy, has her hands clasped on his right shoulder, while the little boy's hands are folded before him. The children are evidently travelers, for the boy has a basket on his arm and the little girl has a bundle tied in a blue check cloth slung over her shoulder. At the foot of the shrine also are another bundle, a stone jug, and a walking stick which they have been carrying.

Signed at the lower left, MEYER VON BREMEN, and dated 1866.

Collection of the late Mr. JULIUS WADSWORTH, New York.



Thomas Sully

AMERICAN: 1783—1872

57—*ST. JEROME*

Height, 20 inches; width, 24 inches

A HEAD and bust picture of an elderly man, the top of the head bald, and gray hair on the temples and a gray beard. The shoulders are covered with a cloak of dark red. The head, inclined slightly forward, is seen in three-quarter view to the right; background of brown.

Collection of the late MR. JULIUS WADSWORTH, New York.



Mlle. Rosa Bonheur

FRENCH: 1822—1899

58—*A SUMMER DAY*

Height, 19½ inches; length, 29 inches

THE composition shows a grass-covered eminence in the foreground with a willow tree and a drinking-place on the left. On the right of the picture is a farmer mounted on a bay horse who is looking at his herds and flocks which are under the watchful eye of a shepherd dog, who looks up at him. Sheep and lambs are seen in the foreground and farther up on the slope, at the left, are several cows. On the left, in the distance, is a range of hills, and the summer sky shows white and gray clouds illumined by the sunlight.

Signed at the lower left, R. BONHEUR.

Purchased from Messrs. M. Knoedler & Co., New York, 1894.

By order of the Executor of the late MR. DAVID T. WATSON, Pittsburgh, Pennsylvania.

Jacob Simon Hendrik Kever

MODERN DUTCH: 1854—

59—*LA COUTURIÈRE*

Canvas: Height, 25¼ inches; width, 19½ inches

VIEW of the interior of a cottage with a small whole-length figure of a Dutch peasant woman seated, mending a garment; a doorway is seen to the left, a large window to the right.

Signed in lower left.

By order of MESSRS. ELKINS & HENRIQUES, Attorneys, London.

August Hagborg

SWEDISH: 1852—

60—*FISHER FOLK*

Height, 24 inches; length, 26½ inches

IN the foreground, on a flat sandy beach, are a fisherman with blue sweater and oilskin hat carrying his oilskin coat on his right arm, and a young woman with him who is talking as she stands with her elbows resting on a long-handled spade used for clam digging. Far away, on the left, is another girl at work. Beyond lies the expanse of the sea, with numerous boats, under a gray sky.

Signed at the lower right, HAGBORG.

Property of the late MR. J. T. SPERRY.

Cesare Detti

ITALIAN: 1848—1915

(French School)

61—*HALTED*

Height, 21¼ inches; length, 29 inches

A MONK, of sleek, well-fed appearance, riding on his donkey and accompanied by a peasant girl, has been halted in the roadway by a party of soldiers at an outpost on the edge of a woods. The costumes are of the period of Henri Deux. One of the men holds the donkey by his leading-rope, while another with steel cuirass is interrogating the monk, who raises his outstretched palms with a gesture of innocent surprise and general denial. Beyond, on the right, is a glimpse of a town and a river. The trees are in late autumn foliage and the sky is filled with gray clouds.

Signed at the lower left, C. DETTI, PARIS, '88.

By order of an Executor.

Frederic Remington, A.N.A.

AMERICAN: 1861—1909

62—*A PLAINSMAN*

Height, 24 inches; width, 20 inches

IN the foreground is a man mounted on a dark chestnut horse, seen in side view and casting a blue shadow on the yellow desert sands of Arizona. On the right is a troop of pack-mules with their burdens on their backs, and in the distance, on the left, a mounted man is rounding up one of the mules which has run away from its companions. In the upper part of the composition are sand-dunes and a blue sky.

Signed at the lower left, FREDERIC REMINGTON, ARIZONA T.Y.

Purchased from the National Academy Exhibition.

Property of the late MR. J. T. SPERRY.

José Jiminez y Aranda

SPANISH: 1832—

(French School)

63—*THE SURPRISE*

Panel: Height, 21 inches; length, 26½ inches

A PARTY of a dozen soldiers, in the picturesque costume of the French Revolution period, have been playing cards in their barracks, which is the interior of a church with stone floor and pillar and carved screens. In the left center of the composition one of the small doors in the great entrance-doors of the church has been opened by the sentries outside who announce some startling news. Their game interrupted, the soldiers are springing from their seats as they listen to what one of their number, near the doorway, is shouting out, with one hand held up beside his mouth.

Signed at the lower left, J. ARANDA, PARIS, 1884.

By order of an Executor.

George H. McCord, A.N.A.

AMERICAN: 1848—1909

64—*SUNSET IN VENICE*

Height, 29 inches; width, 24 inches

IN the waters of a canal which fill the foreground, fishing boats with red, brown and yellow sails are anchored on the right of the composition. Beyond is a footbridge over the canal, and on either side are buildings. Among those on the left is a church with a tower and spire.

Signed at the lower right, G. H. McCORD, A.N.A., VENICE, 1906.

Purchased from the Executor of the Artist's Estate.

Property of the late MR. J. T. SPERRY.

Alexander Hay Ritchie

SCOTCH-AMERICAN: 1822—

65—EXCOMMUNICATION OF ST. PAUL

Height, 28 inches; length, 36 inches

A COMPOSITION with many figures of men and women assembled in a church for a ceremony representing the excommunication of St. Paul. The bearded man, with bald head, impersonating St. Paul, stands, dressed in a long white robe, on a shelf-bench on the front of a pulpit in the left of the composition, where a preacher in gray robe and cape, holding a document in Latin in his left hand, with his right designates the accused. Several priests are grouped beyond the pulpit on the left, and the townsfolk are seated on benches, or standing, or occupying places in a gallery in that part of the church where the ceremony is taking place. The figure of St. Paul holds a lighted candle in the left hand and a book in the right; on the floor, at his feet, are vestments, books, and a bundle of fagots. The costumes indicate that the ceremony is taking place in some part of Germany about the time of the Reformer, Luther.

Signed with initial, at the lower right, R.

By order of the Executor of the late MR. DAVID T. WATSON, Pittsburgh, Pennsylvania.

Étienne Adolphe Piot

FRENCH: CONTEMPORARY

66—GOOD MORNING!

Height, 32 inches; width, 23 inches

A THREE-QUARTER-LENGTH life-size figure of a little girl wearing a white slip and with her hands clasped before her. The body is in three-quarter view to the right and the head is inclined to the left over the right shoulder. Background of dark blue.

Signed at the lower left, A. PIOT.

By order of an Executor.

Alexandre Marie Guillemin

FRENCH (OR BELGIAN): CONTEMPORARY

67—*THE SLEEPING CHILD*

Panel: Height, 33 $\frac{3}{4}$ inches; width, 17 $\frac{3}{4}$ inches

THREE Italian peasants, two young women and a man, have come upon a little girl who has gone to sleep on a heap of dried herbage in a room of a peasant dwelling. By the side of the child is her basket in which are some wild flowers she has gathered. One of the young women, kneeling on the floor in the center of the picture, holds a sieve with which she has been sifting seed on to a white cloth.

Signed at the lower left, A. GUILLEMIN.

Purchased from the late Charles F. Haseltine, Philadelphia, 1895.

By order of the Executor of the late MR. DAVID T. WATSON, Pittsburgh, Pennsylvania.

George H. McCord, A.N.A.

AMERICAN: 1848—1909

68—*VENETIAN FISHING BOATS*

Height, 20 inches; length, 30 inches

A GROUP of fishing boats, with red, brown, gray, white and yellow sails, is seen in the middle of the picture near a wharf where there is a building with red-tiled roof. Farther away, in the right center, is another group of boats. In the distance, at the extreme right, buildings on the shore are indicated.

Signed at the lower left, G. H. McCORD, A.N.A., VENICE, and dated 1907.

Purchased from the Executor of the Artist's Estate.

Property of the late MR. J. T. SPERRY.

Ralph Albert Blakelock, N.A.

AMERICAN: 1847—

69—*MORNING, WHITE MOUNTAINS*

Height, 20 inches; length, 32 inches

AN important example of the earlier period of Blakelock, depicted with great fidelity in the drawing of the various features of the landscape. The right foreground is occupied by a hillside with rocks and trees forming the shore of a lake, which appears in the left foreground. On the opposite shore appear the trees on the edge of a forest, which continues upward on a mountainside on the left and extends in the right center to a misty distance. The foliage shows autumn tints and in the sky of warm yellow-gray the sun is seen through the mists well up from the horizon. Just above the sun, in the upper middle portion of the composition, is a cluster of little clouds.

Signed at the lower left, R. A. BLAKELOCK, and dated 1868.

Property of the Estate of the late GUSTAV REICHARD.

Henri Harpignies

FRENCH: 1819—1916

70—*L'ALLIER À HERISSON*

Canvas: Height, 26 inches; length, 32 inches

AN extensive landscape with a background of irregular and barely clad hills. A shallow river passes through the foreground of the picture, and on the near banks are three groups of tall branching trees. The blue sky is charged with clouds, and the rays of sunset are reflected on the banks of the river.

Signed and dated 1906 to lower left.

By order of MESSRS. ELKINS & HENRIQUES, Attorneys, London.



Ferdinand Jan Monchablou

FRENCH: 1855—1903

71—*LANDSCAPE*

Height, 29 inches; length, 39½ inches

AN important example of the landscape work of Monchablou, marked by his usual careful rendering of detail and comprehensive grasp of general effect. The picture shows fields of many different crops on rolling country; some fields of wheat in the middle distance are being harvested by the farm laborers. In the distance, on the left, is another stretch of country that is not cultivated but is diversified by pastures and woods. Overhead is a summer sky evenly gradated from luminous light warm gray at the horizon into pale blue above, with a few clouds floating in the sunlight.

Signed at the lower right, JAN MONCHABLOU, and dated 1886; also signed at the lower left, OEUVRE L.

Purchased from M. Knoedler & Co., New York, by the Holland Galleries, who sold the picture to the late owner.

Property of the late MR. J. T. SPERRY.

Jules Adolphe Breton

FRENCH: 1827—1906

72--*RETURNING FROM WORK*

Height, 36 inches; width, 28 $\frac{3}{4}$ inches

A FULL-LENGTH figure of a French peasant girl depicted in side view as she walks toward the left, carrying under her left arm a sheaf of grain and with her right holding a water-jug on her shoulder. The setting for the figure is composed of a field with a growing green crop and a sunset sky with a band of brilliant pink cloud half way up from the horizon, and other clouds of fainter pink above.

Signed at the lower left, JULES BRETON, and dated 1896.

By order of the Executor of the late MR. DAVID T. WATSON, Pittsburgh, Pennsylvania.



Adolf Schreyer

GERMAN: 1828—1899

73—ARAB CAVALIERS: CHIEF'S STAFF

Height, 28 inches; length, 40 inches

AT the foot of a rugged slope, the hill visible above and behind them at the right, and a vast, uneven country extending beyond them in the distance, a company of Arab horsemen in their picturesque garb are gathered about their chief. The halt is at the border of a river, an edge of which appears in the foreground at the left. The standard is borne by a rider on a black horse, who stands nearest the onlooker, beside the chief who is mounted on a dappled gray. The others, seven in number, have reined up about and behind them, all armed and each alert, the light falling strongest on the foremost members of the group. The ground is a yellowish-brown, with suggestions of green, the sky revealing blue in places but largely overborne by white and dusky-gray clouds which thicken and darken over the hilltop at the right.

Signed at the lower right, AD. SCHREYER.

Purchased by Mr. Stanley P. Gifford from M. Knoedler & Co., New York.

Purchased from the Stanley P. Gifford Sale, New York, 1913, by the Holland Galleries.

Property of the late Mr. J. T. SPERRY, who purchased the picture from the Holland Galleries.



Hector Le Roux

FRENCH: 1829—1900

74—*THE DEPARTURE FROM PAUSILIPPE*

Height, 26¼ inches; length, 44 inches

A CLASSICAL composition with a group of two young women, in the right foreground, on a terrace shaded by a large olive tree and overlooking the city and the sea. While one of the young women extends her right hand in a gesture of farewell to a departing shallop the other clings to her in grief and affection. On the extreme right of the terrace, looking over its enclosing wall, is a little lad, nude except for a leopard skin about his loins. The Greek costume of the two young women are, in the case of the taller one, with arm extended, pink, blue and white, and the other's, white and light blue.

Signed at the lower right, HECTOR LE ROUX.

By order of an Executor.



Otto von Thoren

GERMAN: 1828—1889

75—*DRIVING THE COWS*

Panel: Height, 30 $\frac{1}{4}$ inches; length, 35 $\frac{1}{4}$ inches

IN the foreground in the middle of the picture is a herdsman with light blue smock, in back view to the spectator, with his dog trotting along at his side, driving three cows homeward across the pastures. The cows on either side of the driver are dark red with white markings, and one, ahead of them, is white with a spot or two of black. On the left, in the middle distance, is a thatched cottage; in the distance, on the right, a range of hills, and overhead a sky of gray with some blue in the upper portion.

Signed at the lower right, O. v. THOREN.

Collection of the late MR. JULIUS WADSWORTH, New York.



Ch. Johnson



Emil Keyser

GERMAN: CONTEMPORARY

76—CHILDREN'S FROLIC

Height, 31¾ inches; length, 48½ inches

A DOZEN or more little girls, with a boy in the middle of the long line they form across the greensward of the foreground by holding each other's hands, are sweeping along with dancing steps on a day in May. On the left of the picture, back of the long row of children, is a little girl who is crying because she has been left behind in the onward sweep of the play. The setting for the figures consists of green meadows and a gray sky. In the immediate foreground on the borders of a little pool are cowslips with their yellow blossoms.

Signed at the lower left, EMIL KEYSER.

Purchased from the late Charles F. Haseltine, Philadelphia, 1893.

By order of the Executor of the late MR. DAVID T. WATSON, Pittsburgh, Pennsylvania.



Cesare Detti

ITALIAN: 1848—1915

(French School)

77—*THE INTERRUPTED DUET*

Height, 34 inches; length, 44 inches

A YOUNG woman with salmon-pink robe trimmed with fur is seated on the left of the composition in a great throne-chair, her feet resting on a blue cushion, and has stopped playing on a lute which she has placed at her side. On the right, seated beside her on a couch, is a young man in costume of red, blue-gray and white, who continues his playing on another lute of different style, and has apparently come to a passage in the music filled with meaning. The lady turns her head away with pensive expression. On the left, lying on the floor, are music-books and in the background of the apartment is a piece of furniture with a decanter on it and a large metal vase with pink laurel blossoms.

Signed at the lower right, C. DETTI, and dated PARIS, '89.

By order of an Executor.



Léon Perrault

FRENCH: 1832—

78—*FAIRY TALES*

Height, 42½ inches; width, 33½ inches

Two little French peasant girls, one with dark hair with white bodice and blue skirt; the other with light blond hair, white bodice and purple-brown skirt, seated close together on a stone by the roadside. The girl with brown hair, who has blue eyes and looks up directly out of the picture, holds a paper-covered book in her lap while her little companion, her hand on the other's shoulder, is reading from its pages. In the background are warm shadows and the leaves of plants and vines.

Signed at the lower left, L. PERRAULT, and dated 1837.

By order of an Executor.



Jules Joseph Lefebvre

FRENCH: 1834—1912

79—*THE WHITE DOVE*

Height, 47 inches; width, 30½ inches

A THREE-QUARTER-LENGTH life-size figure of a beautiful young woman with light brown hair, wearing a Grecian robe of diaphanous white confined by a sash of yellow. Her hair is bound with a garland of white morning-glories. The body is in three-quarter view to the right, and the head, inclined forward, is seen in *profil perdu*. The young woman holds, with both hands, gently against her breast, a white dove with wings partly extended and head stretched back as it looks into the face of its mistress. The picture shows the beautiful drawing characteristic of the work of Lefebvre.

Signed at the lower left, JULES LEFEBVRE, and dated at the lower right, PARIS, 1880.

By order of an Executor.

Étienne Adolphe Piot

FRENCH: CONTEMPORARY

80—*LESBIA*

Height, 32½ inches; width, 23½ inches

A THREE-QUARTER-LENGTH life-size seated figure of a young woman, the face in full view to the spectator, wearing a skirt of white and white drapery about her shoulders. With her left hand she is caressing a pink rosebud which is fastened in her corsage and her right hand rests in her lap, where there is a bunch of pink roses and green leaves. The background is a crimson curtain.

Signed on the left, A. PIOT.

By order of an Executor.

Matteo Vittorio Corcos

SPANISH: CONTEMPORARY

(French School)

81—*WAITING*

Height, 41 inches; width, 25½ inches

A HALF-LENGTH life-size figure of a pretty young woman who, with head turned to the spectator's right as she leans against the rail of a balcony overlooking a public garden, seems to be waiting for the arrival of an expected friend. The light, falling from the sky, illumines her blond hair and filters through the trees of the park. The young woman wears a Spanish shawl with figured pattern lace, a black ribbon at her neck and black net mitts.

Signed at the lower right, V. CORCOS.

*By order of the Executor of the late MR. DAVID T. WATSON, Pitts-
burgh, Pennsylvania.*



Mihaly de Munkacsy

HUNGARIAN: 1846—1900

82—*LANDSCAPE*

Height, 37 $\frac{3}{4}$ inches; length, 56 $\frac{3}{4}$ inches

A LANDSCAPE in France, depicted in sunlight, showing a broad roadway bordering a little stream leading from the foreground into the middle of the picture, where there is an arched stone gateway at the entrance to the grounds surrounding a country church which appears on the left. On the right of the gateway a crossroad leads between stone park and garden walls to the entrance of a house which, with its out-buildings, is seen amid the trees on the right of the picture. Bordering the stream is a hedge and a row of tall poplars and in the middle portion of the picture, back of the villa and the gateway, are the poplars and other tall trees of a park. Although the celebrated artist, Munkacsy, is known chiefly by his figure subjects, he painted many landscapes, of which this one is a representative example.

Signed at the lower right, M. MUNKACSY.

Purchased from the late Charles F. Haseltine, Philadelphia, 1890.

*By order of the Exceutor of the late MR. DAVID T. WATSON, Pitts-
burgh, Pennsylvania.*

Pierre Grivolas

FRENCH: CONTEMPORARY

83—*THE MOTET*

Height, 79 inches; width, 53 inches

THE scene represents a religious procession of many young girls all clothed in white and wearing white veils, who are descending the steps of a steep street, proceeding from a church seen between the walls of the buildings on either side of the narrow passageway. Each of the girls holds a song-book in her hands, and in the immediate foreground, on the right, is an elderly priest who, with hands uplifted, is beating time for the singing. On his right, seated against the wall of a house, with an open window in which appears a young mother holding a child in her arms, are several other young women who have not taken part in the procession. The effect is in strong sunlight, in the south of France, which lights up the walls on the right of the picture and throws into shadow those on the left. Above the roofs and the top of the church is a space of blue sky.

*Signed at the lower left, on the face of a stone step,
P. GRIVOLAS, and dated 1881.*

*By order of the Executor of the late MR. DAVID T. WATSON, Pitts-
burgh, Pennsylvania.*

SECOND AND LAST EVENING'S SALE

TUESDAY, APRIL 17, 1917

IN THE GRAND BALLROOM OF

THE PLAZA

FIFTH AVENUE, 58TH TO 59TH STREET

BEGINNING PROMPTLY AT 8.15 O'CLOCK

Catalogue Nos. 84 to 168, inclusive

Alphonse Marie de Neuville

FRENCH: 1836—1885

84—A FRENCH CAVALRYMAN

Height, 9½ inches; width, 5¾ inches

A FULL-LENGTH standing figure of a French cavalryman of the time of the First Republic, or the early years of the Napoleonic period. In the left hand he grasps a sword which is carried by a wide belt. The uniform consists of a high green shako with tricolor rosette in front, green fur-trimmed jacket with gold frogs and chevrons and red trousers reinforced with leather.

Signed at the lower right, A. DE NEUVILLE, and dated 1875.

*By order of the Executor of the late MR. DAVID T. WATSON, Pitts-
burgh, Pennsylvania.*

Alexander H. Wyant, N.A.

AMERICAN: 1836—1905

85—*THE CHURCH ON THE HILL*

Height, 10 inches; width, 8 inches

IN the foreground, rich autumn herbage; in the middle distance, a hillside crowned with belts of trees. At the left, at the top of the hill, is a church with a belfry. The hour is evening, and the picture is completed by a sunset sky with tints of yellow and gray-pink near the horizon, and gray clouds, amid spaces of blue in the upper part.

Signed at the lower left, A. H. WYANT.

Property of the Estate of the late GUSTAV REICHARD.

Jean Jacques Henner

FRENCH: 1829—1905

86—*HEAD OF A YOUNG WOMAN*

Panel: Height, 10¾ inches; width, 8½ inches

A HEAD and bust picture of a young woman with auburn hair, her face in full view to the spectator as she looks over her left shoulder with a very searching glance from her large dark eyes. Red drapery covers the right shoulder and the left arm.

Signed at the upper right, J. J. HENNER.

By order of the Executor of the late MR. DAVID T. WATSON, Pittsburgh, Pennsylvania.



Winslow Homer, N. A.

AMERICAN: 1836—1910

87—A GOOD POOL: SAGUENAY RIVER

Water Color: Height, 9½ inches; length, 18¾ inches

IN a canoe managed by two guides, one with paddle at the bow and the other at the stern, is a fisherman casting his line in the blue waters of the river, which traverses the picture. The immediate foreground shows a shore of shelving rock. Above the canoe and figures, and in close view to the spectator, is a fine specimen of speckled trout, leaping through the air. The fish is in relief against a dark clouded sky, and on the farther shore of the river high rocky formations are indicated.

Signed at the lower left, HOMER, 1895.

Property of the Estate of the late GUSTAV REICHARD.

Alexander H. Wyant, N.A.

AMERICAN: 1836—1892

88—*THE EDGE OF THE WOODS*

Height, 12 inches; length, 15¼ inches

SAPLINGS, denuded of leaves, and small trees and undergrowth showing early autumn tints in the foliage, occupy the middle ground. In the forward plane of the landscape the sod is still green, having not yet been bitten by the frost. A sky of gray appears above the leaves and branches of the trees.

Signed at the lower right, A. H. WYANT.

Property of the Estate of the late GUSTAV REICHARD.



Winslow Homer, N.A.

AMERICAN: 1836—1910

89—*ST. JOHN'S RIVER, FLORIDA*

Water Color: Height, 14 inches; length, 20 inches

IN the foreground the waters reflect the blue of a clear sky and the heavy dark foliage of palm trees growing on the river bank in the middle portion of the picture. Along the edge of the shore are water lilies, vividly green. In the distance, on the left, a line of low hills—and, on the right, the blue silhouette of one of the winter resort hotels.

Signed at the lower left, WINSLOW HOMER, and dated 1890.

Property of the Estate of the late GUSTAV REICHARD.



Alexander H. Wyant, N.A.

AMERICAN: 1836—1892

90—*THE ENVIRONS OF A CITY: EVENING*

Height, 12 inches; width, 16 inches

ROLLING lands of autumn-brown occupy the foreground, with a little stream in the right center. Beyond, appearing in silhouette against an evening sky, pale gray in the upper portion and showing pink clouds above, are buildings and hill-tops. From a chimney of one of the buildings smoke is blown by the wind to the right.

Signed at the lower left, A. H. WYANT.

Purchased from R. C. & N. M. Vose, Boston.

Property of the Estate of the late GUSTAV REICHARD.

Alexander H. Wyant, N.A.

AMERICAN: 1836—1892

91—*LANDSCAPE*

Height, 14 inches; length, 20 inches

THE forward plane of the composition is occupied by fields sloping upward to the left with a roadway, wet by recent rain, on the right. A wide-spreading oak appears on the left at the top of the slope, and beyond is seen, on the right, a distant range of hills. The sky shows broken clouds of warm gray with one or two small spaces of blue in the upper portion. The picture presents a unified ensemble of sober tints.

Signed at the lower right, A. H. WYANT.

Property of the Estate of the late GUSTAV REICHARD.



James Baker Pyne

BRITISH: 1800—1870

92—*VIEW OF HEIDELBERG*

Height, 15½ inches; length, 21¾ inches

FROM a point of view in the right foreground, high up on the hillside, the view extends over the river which traverses the middle of the picture and comprises the opposite shores with the castle perched high amid the trees. Along the opposite shore are the buildings of the town, and in the distance, on the right, a bridge with archways crosses the river. In the distance on the left a high hill is in silhouette against the summer sky of grayish-blue with warm tints on the right where the sun is indicated.

Signed at the lower left, J. B. PYNE, and dated 1867.

Purchased from Wm. Scott & Son, Montreal, 1896.

By order of the Executor of the late MR. DAVID T. WATSON, Pittsburg, Pennsylvania.

Winslow Homer, N.A.

AMERICAN: 1836—1910

93—*WATCHING FROM THE CLIFFS*

Water Color: Height, 14 inches; length, 20 inches

ON a great shelving rock, brown and pink in tone, sloping downward to the right, two young women, seated and holding a large fisherman's basket, are looking seaward, the foremost figure holding her hand at her brow to shield her anxious gaze. Back of them, on the left, is another young woman, standing and holding her baby in her arms. Still farther away, on the left, are some other seated figures, and just showing above the rocky cliff is the red roof of a fisherman's cottage. Overhead is a fine sky of white and gray, showing patches of blue as it clears after a storm, and white sea gulls are flying.

Signed at the lower left, WINSLOW HOMER, and dated 1892.

Property of the Estate of the late GUSTAV REICHARD.





Prosper Etienne Berne-Bellecour

FRENCH: 1838—1910

94—*CUIRASSIERS*

Panel: Height, 16 $\frac{1}{4}$ inches; length, 24 $\frac{1}{4}$ inches

A GROUP of three French cavalymen of whom one, on the left of the picture, is an officer. He is standing by while he watches two of his soldiers, one of whom is holding a horse by the bridle while the other adjusts the saddle and trappings. The two troopers wear the old-fashioned breast-plate of steel and helmets with horse-hair plumes, blue tunics, and red trousers terminating in loose boots. The officer, in uniform of red and blue, holds his light cane in his hands behind his back. The setting for the figures is a pleasing landscape in sunlight, showing a winding road on the right, a group of trees on the left, and a distant hillside beyond. Over all is a gray sky.

Signed at the lower right, E. BERNE-BELLECOUR, and dated 1907.

Property of the late MR. J. T. SPERRY.

Alexander H. Wyant, N.A.

AMERICAN: 1836—1892

95—*AUTUMN LANDSCAPE*

Height, 12½ inches; length, 15 inches

FOREGROUND meadows of brown; a glimpse of a stream in middle distance; trees on the right and the left, and a brown hillside beyond. Over all is a fine sky of gray with a bit of pale blue in the upper central portion.

Signed at the lower right, A. H. WYANT.

Property of the Estate of the late GUSTAV REICHARD.

Narcisse Virgile Diaz de la Peña

FRENCH: 1807—1876

96—*THE SULTANA*

Height, 12¾ inches; width, 9¾ inches

A FULL-LENGTH figure of a young woman in full face view to the spectator, dressed in rich Oriental robes. Jewels ornament her jacket and head-dress. She is depicted leaning against a rock, and in the background are other rock formations. A distant mountain peak and a glimpse of blue sky.

Signed at the lower left, N. DIAZ.

George I. Seney Collection, New York, 1891, Catalogue No. 154.

M. Knoedler & Co. Collection, New York, 1893, Catalogue No. 146.

By order of the Executor of the late MR. DAVID T. WATSON, Pittsburgh, Pennsylvania.

A. T. J. Monticelli

FRENCH: 1824—1886

97—*RUBENS AT THE COURT*

OF PHILIP III, 1603

Panel: Height, 17½ inches; width, 11 inches

A GROUP of ten characteristic figures, of which nine are ladies richly appareled in golden and blue dresses, in a park, and near a marble gateway with pillars. To give a touch of versimilitude to the original title of the picture “*Rubens et les Dames de qualité de la cour le Philippe III, 1603,*” the great artist is seen in one of the porticoes and is apparently conducting the party to the Park. The background is formed of masses of tall growing trees which impart a feeling of immensity and solemnity to the scene.

Signed in lower right in red.

By order of MESSRS. ELKINS & HENRIQUES, Attorneys, London.



Henri Harpignies

FRENCH: 1819—1916

98—*LE BOIS DE TRÉMELLIÈRE*

Canvas: Height, 21¼ inches; width, 17 inches

A LATE spring landscape seen from the edge of a wood, with tall spindly fir and other trees to left. A rough cartway leads to a well-wooded dell in the middle distance; by the roadside a girl in gray dress and pink hat is seated reading a book. There is a distant view of undulating hills.

Signed and dated '90 to left.

By order of MESSRS. ELKINS & HENRIQUES, Attorneys, London.





Jean Baptiste Camille Corot

FRENCH: 1796—1875

99—*RICHMOND ON THE THAMES*

Canvas: Height, 8 inches; length, 13½ inches

A VIEW of both sides of the river, with a terrace of houses, figures and a beached sailing boat on the left. The center of the picture is formed of a range of graceful trees with early summer effects. An edging of brushwood, in which are seen two figures, passes along the right side of the bank, and in the meadow two female figures, one with a dark and the other with a light shawl, are walking away from the spectator.

Signed at lower left.

Painted in 1862. This is the finest of the three pictures painted by Corot in England. Described and illustrated in "L'Oeuvre de Corot" by Alfred Robaut and Moreau-Nélaton, No. 1326.

From the collections of M. Mayer, M. Lovedin, and Dr. Cornelius Herz.

By order of MESSRS. ELKINS & HENRIQUES, Attorneys, London.



Pierre Étienne Théodore Rousseau

FRENCH: 1812—1867

100—*AN ITALIAN PASS*

Canvas: Height, 8½ inches; length, 12½ inches

IN this picture the artist breaks away somewhat from his usual environment, and has painted a view of a narrow roadway on a high altitude, with a low stone edge on the left on which two figures are seen. Other figures are indicated further on. On either side are high craggy declivities, and in the distance a deserted plain with mound. The time selected is a summer evening. It is a little gem from one of the most famous collections ever formed by an English collector.

Signed in full.

From the collection of the late Sir John Day.

By order of MESSRS. ELKINS & HENRIQUES, Attorneys, London.



Émile Van Marcke

FRENCH: 1827—1890

101—*LANDSCAPE WITH COWS*

Panel: Height, 9½ inches; length, 12½ inches

Two cows, one dark red and white, the other black with white markings, standing in a pool in the foreground. Beyond, on the right, is the edge of a forest, and on the left a level plain. In the left upper half of the picture is a sky with gray clouds and a little space of blue.

Signed at the lower left, EM. VAN MARCKE.

Purchased from the late Adolph Kohn, New York, 1883.

Collection of the late Mr. JULIUS WADSWORTH, New York.



Charles Émile Jacque

FRENCH: 1813—1894

102—INTERIOR OF SHEEPFOLD

Panel: Height, 9½ inches; length, 12¾ inches

BEFORE a rack on the left stands a ewe with two lambs and, on the right, lying down in the straw is another ewe. A black hen is pecking in a feed-trough on the right. The lighting of the sheep-stable is from a window on the left, outside of the picture.

Signed at the lower left, CH. JACQUE.

By order of the Executor of the late MR. DAVID T. WATSON, Pittsburgh, Pennsylvania.



Narcisse Virgile Diaz de la Peña

FRENCH: 1807—1876

103—*A LADY WITH PERROQUET AND DOG*

Height, 13 $\frac{1}{4}$ inches; width, 10 $\frac{1}{4}$ inches

A FULL-LENGTH figure of a young woman with blond tresses, in side view to the spectator, walking to the left. The costume shows a long cloak of pink, the sleeve of a blue jacket embroidered with gold, and a skirt of white, with head-dress of white and blue. Perched on the forefinger of her right hand is a green perroquet, and the left hand is extended as if to quiet the little pet dog who is seen at her side.

Signed at the lower right, N. DIAZ.

Purchased from the late Mr. S. P. Avery, New York, 1883.

Collection of the late MR. JULIUS WADSWORTH, New York.



Jean Baptiste Camille Corot

FRENCH: 1796—1875

104—BOULOGNE-SUR-MER: UN COIN DE VILLE

Panel: Height, 10 inches; length, 14½ inches

AN extensive summertime view over the irregular sand dunes of Boulogne-sur-Mer with a church and houses, forming the "coin de ville," partly hidden amid trees in the foreground; other houses and cliffs are seen in the distance; the sky is filled with fleecy clouds.

Signed at lower left.

Described and illustrated in "L'Oeuvre de Corot" by Alfred Robaut and Moreau-Nélaton, No. 957.

By order of MESSRS. ELKINS & HENRIQUES, Attorneys, London.

Narcisse Virgile Diaz de la Peña

FRENCH: 1807—1876

105—*IN THE FOREST OF FONTAINEBLEAU*

Panel: Height, 13½ inches; length, 18 inches

THERE is a pool in the middle foreground, in a clearing of the forest; the figure of a peasant woman bending over appears near the middle of the picture, and in the middle distance the ground and the trees are illuminated by bright sunlight, while the grass and foliage of the trees in the foreground are in shadow, with a ray of sunlight gleaming on the trunks of birch trees on either side. A little patch of sky, with gray, white and blue, appears in the upper part of the composition.

Signed at the lower right, N. DIAZ.

Purchased from the late Mr. S. P. Avery, New York, 1883.

Collection of the late MR. JULIUS WADSWORTH, New York.



Jean Baptiste Camille Corot

FRENCH: 1796—1875

106—*WILLOWS*

Height, 10 $\frac{1}{4}$ inches; length, 15 $\frac{3}{4}$ inches

IN the left center is a full-foliaged tree with two pollard willows on the left of it; in the right center, a sapling with sparse foliage. At the foot of the large tree are two small figures of peasant women. A stream runs through the picture from the left and a range of hills shows in the distance on the right. The sky is filled with gray clouds.

Signed at the lower right, COROT.

From the sale of the Mosler Collection, Bankers, Paris, 1876.

Collection of the late MR. JULIUS WADSWORTH, New York.



Charles François Daubigny

FRENCH: 1819—1878

107—*ON THE OISE*

Panel: Height, 12¼ inches; length, 22½ inches

THE river, as it makes a bend, occupies the left portion of the composition. On the banks, on the right, are a number of women washing clothes. A roadway follows the bank and a few buildings are seen along it while, on the farther side at the right, a hill rises crowned with a country church. In the middle distance, on the left, is a timbered island, and the sky shows gray clouds tinged with yellow by the setting sun.

Signed at the lower left, DAUBIGNY.

Purchased from the late Adolph Kohn, New York, 1887.

Collection of the late MR. JULIUS WADSWORTH, New York.





Narcisse Virgile Diaz de la Peña

FRENCH: 1807—1876

108—*LADY AND CHILD*

(Companion picture to No. 109)

Panel: Height, 18 inches; width, 11¾ inches

A FULL-LENGTH seated figure of a young woman in Oriental costume consisting of a crimson robe, white under-dress and head-dress, and a scarlet and gold cap. At her side and leaning on her right knee is a child in dress of dark blue, gray-yellow and white. The setting for the figures shows autumn foliage and glimpses of sky.

Signed at the lower left, N. DIAZ, and dated '66.

Purchased from Messrs. Wallis & Son, London, 1890.

*By order of the Executor of the late MR. DAVID T. WATSON, Pitts-
burgh, Pennsylvania.*



Narcisse Virgile Diaz de la Pena

FRENCH: 1807—1876

109—*THE NECKLACE*

(Companion picture to No. 108)

Panel: Height, 18 inches; width, 11¾ inches

A FULL-LENGTH standing figure of a young woman in Oriental costume of blue and white with an embroidered sash and cap of scarlet and gold. Leaning against a pillar, she holds up in her left hand a necklace, which a child at her side, in white and crimson, reaches up to receive. The setting for the figures is composed of dark foliage.

Signed at the lower left, N. DIAZ, and dated '66.

Purchased from Messrs. Wallis & Son, London, 1890.

By order of the Executor of the late MR. DAVID T. WATSON, Pittsburgh, Pennsylvania.



Henri Harpignies

FRENCH: 1819—1916

110—*BORDS DE L'YONNE*

Canvas: Height, 18 inches; width, 15 inches

A PLACID evening scene with a bend of the river partly hidden by several tall wind-blown derelict trees. The rocky banks, which form almost a circle around the water, are green with spring-growing plants, and in the distance are groups of trees and shrubs. Blue sky with fleecy clouds.

Signed and dated 1907 to bottom left.

By order of MESSRS. ELKINS & HENRIQUES, Attorneys, London.



Constant Troyon

FRENCH: 1810—1865

111—*A BRITTANY FARMYARD*

Height, 18½ inches; width, 15¾ inches

ON the right, before her cottage door, sitting in the shadow cast by the midday sun, is a peasant woman with her distaff. Beyond, on the right, are farm buildings with heavily thatched roofs; near the middle of the picture is the barnyard gate, and on the left are trees in dark green foliage. Above are gray and white clouds in a sky of clear blue.

Signed at the lower left, C. TROYON.

From the collection of R. Meldrum, Esq., of Glasgow.

Purchased from Messrs. Wallis & Son, London, 1892.

By order of the Executor of the late Mr. DAVID T. WATSON, Pittsburgh, Pennsylvania.

Charles Émile Jacque

FRENCH: 1813—1894

112—*SHEEP ENTERING THE FOLD*

Height, 21¾ inches; width, 18¼ inches

A FLOCK of sheep coming from the right of the picture, entering the doorway of a stable with masonry and plaster walls. On the right of the picture, leaning against the doorway, is the shepherd, with blue blouse and staff in hand and his dog beside him. On the sill of a small window in the stable, on the right, is a brown hen.

Signed at the lower right, CH. JACQUE.

Collection of the late MR. JULIUS WADSWORTH, New York.



Charles François Daubigny

FRENCH: 1819—1878

113—*LA MARE AUX HÉRONES*

Panel: Height, 12 inches; length, 21¼ inches

A BROAD and uneven landscape in summertime. The background is taken up with a range of hills, whilst the herons, whence the picture gets its title, are seen disporting themselves in the shallow marsh which occupies most of the foreground. A boat is seen on the bank to right; cloudy sky with late afternoon effects.

Signed and dated 1872 at lower right.

By order of MESSRS. ELKINS & HENRIQUES, Attorneys, London.



Jean Baptiste Camille Corot

FRENCH: 1796—1875

114—*LA MÈRE*

Height, 23¼ inches; width, 17 inches

A ROAD leading from the right foreground passes through a little grove of trees where there are some low-roofed buildings used as stables or cow-sheds. On the left, in the meadows of the foreground, a woman is milking a cow and, on the right, in the roadway, a young woman with a baby on her arm and accompanied by a little girl, has stopped to speak to another woman who is bundling fagots. The woman with the child gives the title to the picture. The foliage of the trees reaches up to the top of the canvas, being relieved against a sky of qualified blue with white clouds. In the distance, on the left, is a glimpse of a stream and a belt of trees.

Signed at the lower right, COROT.

Purchased from Messrs. Durand-Ruel, Paris, 1896.

By order of the Executor of the late MR. DAVID T. WATSON, Pittsburgh, Pennsylvania.





Constant Troyon

FRENCH: 1810—1865

115—*LANDSCAPE AND CATTLE*

Height, 18½ inches; width, 15 inches

IN the waters of a stream which fills the foreground are two cows, one dun color and the other dark red with white face. On the bank at the left, near a group of trees, are a peasant woman and a child. In the middle distance rises a stretch of level country with a village beyond, on the right. The upper half of the canvas is filled with a fine sky of great masses of gray and white clouds with some blue above.

Signed at the lower left, C. TROYON.

Purchased from Messrs. M. Knoedler & Co., New York, 1900.

*By order of the Executor of the late MR. DAVID T. WATSON, Pitts-
burgh, Pennsylvania.*



Charles François Daubigny

FRENCH: 1819—1878

116—*THE SEASHORE*

Panel: Height, 15¼ inches; length, 26½ inches

THE foreground is occupied by a flat sandy beach with straight rows of seaweed which has been carried in by the tide. In the middle distance is the expanse of the sea, with several sails and a headland on the right. Over all a sky of gray, tempered with blue in the upper portion.

Signed at the lower right, DAUBIGNY.

Purchased from the late Charles F. Haseltine, Philadelphia, 1893.

By order of the Executor of the late MR. DAVID T. WATSON, Pittsburg, Pennsylvania.

Pierre Étienne Théodore Rousseau

FRENCH: 1812—1867

117—*THE WINDING ROAD*

Panel: Height, 16¼ inches; length, 25¼ inches

A VERY remarkable landscape by Rousseau with detail depicted with exact fidelity to nature and the general effect of the picture at the same time presenting a unified ensemble. In the right foreground a road winds into the middle distance, disappearing beyond two fine oak trees on the left. The foreground on both sides of the road presents greensward and herbage with a boulder or two. Near the middle of the composition a peasant woman is coming along the road bearing a great sheaf of greens on her head. Beyond lies a stretch of level country with trees and roofs and a church spire indicated in the distance. Over all rises a sky which is filled with gray clouds, except for some spaces of misty blue, and showing its warmest tints near the low horizon. At the sides of the roadway water in a gutter and ruts reflect this sky. It would be impossible to draw with greater accuracy the features of a landscape than are displayed in this example of the great French painter.

Signed at the lower right, TH. ROUSSEAU, with date.

From the collection of E. H. Cuthbertson, London.

Purchased from Messrs. M. Knoedler & Co., New York, 1909.

By order of the Executor of the late MR. DAVID T. WATSON, Pittsburgh, Pennsylvania.



Jean Baptiste Camille Corot

FRENCH: 1796—1875

118—*ENVIRONS OF ETRETAT*

Height, 18 $\frac{1}{4}$ inches; length, 24 inches

THE composition shows a hillside on the left with peasants' cottages at its base; figures of two women and a child in the foreground and tall trees on the hillside with foliage reaching up against a sky of pale blue with gray and white clouds. On the right appears the expanse of the sea.

Signed at the lower left, COROT.

From the collection of the late Madame Monot, Paris, to whom the picture was presented by Corot.

Purchased from Messrs. M. Knoedler & Co., Paris, 1895.

By order of the Executor of the late MR. DAVID T. WATSON, Pittsburgh, Pennsylvania.



5092

Constant Troyon

FRENCH: 1810—1865

119—*SHEPHERDESS AND FLOCK*

Panel: Height, 18 inches; length, 23¼ inches

A FLOCK of sheep and two or three goats are at rest in the foreground, grouped about a monumental stone standing in their pasture near the middle of the picture. On a rock on the shore of a river, which traverses the composition, is the seated figure of the shepherdess with her dog lying down beside her. On the opposite shore of the river is a timbered hillside and above is a summer sky of blue and white. The effect is in sunlight.

Signed at the lower left, C. TROYON.

From the Robert Graves Collection, New York, 1887, Catalogue No. 196.

By order of an Executor.



Narcisse Virgile Diaz de la Peña

FRENCH: 1807—1876

120—*GATHERING FAGOTS: OUTSKIRTS OF
THE FOREST OF FONTAINEBLEAU*

Height, 16½ inches; length, 24 inches

IN the right foreground, by the side of a road which leads into the middle of the picture, is a woman on her knees tying up a bundle of fagots; another woman is seen farther away walking along the road. There are trees and bushes here and there in the foreground and in the level lands of the middle distance. Beyond is the line of the great forest and overhead is a luminous sky with warm-tinted white clouds in the lower portion; gray clouds and spaces of blue in the upper.

Signed at the lower left, N. DIAZ, and dated, '63.

From the Laurent-Richard Collection, Paris, 1878, Catalogue No. 25.

Etched by T. C. Lemaire and reproduced in the catalogue of the Laurent-Richard Sale.

By order of an Executor.



Jean Baptiste Camille Corot

FRENCH: 1796—1875

121—*ENVIRONS OF ARLEUX*

Height, 18 $\frac{1}{4}$ inches; length, 25 $\frac{1}{4}$ inches

ON the foreground shore, at the left of a lake which occupies the middle distance, is a group of trees, with three peasant women in the shade. On the farther shore is a white walled house and a belt of trees, and in the distance a range of low hills. The summer sky is filled with grayish white clouds except for spaces of pale tempered blue in the upper portion.

Signed at the lower left, COROT.

From the collection of Sir John D. Milburn, England.

Purchased from Messrs. M. Knoedler & Co., New York, 1909.

By order of the Executor of the late MR. DAVID T. WATSON, Pittsburgh, Pennsylvania.



Constant Troyon

FRENCH: 1810—1865

122—*THE HOUSE BY THE RIVER*

Pastel: Height, 24½ inches; width, 20½ inches

On the right, on the shore of a river, the waters of which fill the foreground and the left middle distance, is a thatched cottage standing amid great oak trees, the upper branches reaching nearly to the top of the picture. A punt, with two men, a woman and a child, has just been sculled up to the landing-place before the cottage, and a man is seen mounting the slope which leads to the door. There he is being welcomed by a woman with red bodice and white cap. On the left, in the river, is a wooded island and, in the distance, the farther shore appears with a stretch of woods and a hill. The picture is completed by a summer sky with warm-tinted white clouds in the lower portion and blue above.

Signed at the lower left, C. TROYON.

Property of the Estate of the late GUSTAV REICHARD.



Charles François Daubigny

FRENCH: 1819—1878

123—*ALONG THE RIVER OISE*

Panel: Height, 17 inches; length, 29½ inches

THE waters of the river with some reeds and lily pads occupy the immediate foreground and the left middle portion of the picture. On the right, amid green trees on the sloping green banks, a house, a small figure, and some cattle are seen. On the left, in the distance, are the opposite shore and a range of hills. The sky is filled with clouds of warm white and gray.

Signed at the lower left, DAUBIGNY, and dated 1875.

By order of an Executor.



Dundee 1878

Jean Baptiste Camille Corot

FRENCH: 1796—1875

124—*LE BAC*

Height, 17¾ inches; length, 26 inches

THE foreground is occupied by the waters of a stream in which, on the left, two cows are wading. On the right, near the shore, is a punt with a figure. On the right also a large tree spreads its branches upward toward the left, and the middle distance shows a strip of country with other trees and the roof of a house. A distant hill is indicated beyond and the sky, with warm-tinted white clouds, shows a space of pale blue in the upper part.

Signed at the lower left, COROT.

From the collection of Mr. Anthony Roux, Paris.

Purchased from Messrs. M. Knoedler & Co., Paris, 1897.

By order of the Executor of the late MR. DAVID T. WATSON, Pittsburgh, Pennsylvania.



Charles Émile Jacque

FRENCH: 1813—1894

125—*OUTSKIRTS OF FONTAINEBLEAU*

Height, 32 inches; width, 26 inches

A FLOCK of sheep, guarded by a young shepherdess and her dog, advances while grazing across the foreground. In the middle portion of the picture are some great forest trees with their branches and foliage filling the upper part of the canvas. Beyond, on the right, is a stretch of the level country near Fontainebleau Forest and a distant line of hills. A gray sky shows on the left and through the interstices of the foliage.

Signed at the lower left, CH. JACQUES.

Purchased from Messrs. Wallis & Son, London, 1894.

By order of the Executor of the late MR. DAVID T. WATSON, Pittsburgh, Pennsylvania.



Jean Baptiste Camille Corot

FRENCH: 1796—1875

126—*LE SOIR*

Height, 29 inches; width, 23 $\frac{3}{4}$ inches

A COROT pastoral of restful aspect. On the right of the composition is a group of large trees with wide-spreading foliage and branches reaching half way across the picture and nearly to the top of the canvas. In the level meadow of the foreground are the figures of three peasant women, a cow and two goats. Beyond, on the left, is a glimpse of a stream and a distant hillside with several classical-looking buildings. The evening sky, with light gray clouds in the upper portion, gradates from pale qualified blues downward to the horizon where there are warmer tints.

Signed at the lower left, COROT.

From the collection of the late Mr. A. Donatis, Director of La Providence Insurance Co., of Paris.

Purchased from Messrs. M. Knoedler & Co., Paris, 1898.

By order of the Executor of the late MR. DAVID T. WATSON, Pittsburgh, Pennsylvania.



Constant Troyon

FRENCH: 1810—1865

127—GOING TO MARKET

Height, 32 inches; width, 25½ inches

A CHARMING pastoral depicting an effect of early morning with the light of the sun penetrating the mist and casting long shadows. In the middle foreground a peasant girl, mounted on a donkey with panniers filled with garden truck, advances along a road. Grouped about and following is a flock of sheep and some cows, while a dog, guarding and directing the flock, springs forward from the right of the picture. On the high ground by the roadside is a cottage with steep thatched roof: on the right are the sloping grassy borders of the roadway, and on either side, framing in the pleasing picture of the girl and donkey, the foliage of trees is seen through the morning mists. Over all is a luminous sky of pale warm gray.

Signed at the lower left, C. TROYON.

From the collection of Sir Bache Cunard, London.

Purchased from Messrs. M. Knoedler & Co., New York, 1898.

By order of the Executor of the late MR. DAVID T. WATSON, Pittsburgh, Pennsylvania.



Jean Baptiste Camille Corot

FRENCH: 1796—1875

128—*VILLE-D'AVRAY: LE BOULEAU*

Height, 20½ inches; length, 31 inches

A SIMPLE motive, dignified by the choice of effect and arrangement of masses. A pond, overshadowed on the right by a group of trees and bordered by rankly rich meadows, reflects in its narrow extent the light of the sky and a hint of the colored roofs of farm-houses beyond the water. Breaking the line of hills on the left are pollarded willows growing near a large boulder, and a graceful birch tree lifts on the right its feathery crown against the clouds. The sunlight touches crisply the silvery bark of the birch, illuminates the bright-colored garments of a peasant woman kneeling by the pond, and flickers on the wild flowers which are scattered over the broken ground.

Signed at the right, COROT.

Exposition de l'École des Beaux Arts, 1875.

Recorded and reproduced in "L'Oeuvre de Corot," by Alfred Robaut and Étienne Moreau-Nélaton, Vol. III, No. 1490. Painted between 1865 and 1870.

Collection of the late David C. Lyall, New York, 1903, Catalogue No. 75.

By order of Executors.



Jules Dupré

FRENCH: 1812—1896

129—*SUNSET IN THE FOREST*

Height, 32 inches; length, 39½ inches

IN the middle foreground is a stream with cattle drinking, with masses of trees on either side which reach well up in the composition, their foliage relieved against an evening sky filled with gray clouds. In the lower portion of the sky, occupying the middle of the picture, the clouds are illuminated by the last rays of the sun which has set beyond distant hills. This portion of the sky makes a reflected note of high light in the water in the middle foreground. The picture, with a rich and sombre general tone, is impressive in aspect.

Signed at the lower left, JULES DUPRÉ.

Purchased from Messrs. Wallis & Son, London, 1896.

*By order of the Executor of the late MR. DAVID T. WATSON, Pitts-
burgh, Pennsylvania.*



Charles Émile Jacque

FRENCH: 1813—1894

130—*THE APPROACHING STORM*

Height, 29 inches; length, 39½ inches

TURBULENT storm clouds indicate the speedy approach of a violent tempest. Their dark masses obscure most of the sky. Along a broad sandy road a shepherd is urging his flock of sheep, going from the spectator, assisted by his active dog, who barks vigorously at the heels of the laggards. A flash or slant of vivid sunshine strikes upon the sheep and the shepherd, and flecks the landscape with spots of light. In the immediate foreground on the left a sturdy oak tree with scarred trunk and broken branches rises out of the picture, and across the road along which the sheep are hurrying, on the right, is a low bank with scattered boulders and some trees of dense summer foliage. Seen against the horizon, a low line of wooded hills bounds the meadow toward which the shepherd is hastening his flock.

Signed at the lower left, CH. JACQUE.

From the collection of Sir Horatio Davis, London.

Exhibited at the French Exhibition in the Guildhall, London, 1898.

From the Scott & Fowles Sale, 1907.

Purchased from the Stanley P. Gifford Sale, New York, 1913, by the Holland Galleries.

Property of the late MR. J. T. SPERRY, who purchased the picture from the Holland Galleries.





Gustave Courbet

FRENCH: 1819—1877

131—*THE SHADY GLEN*

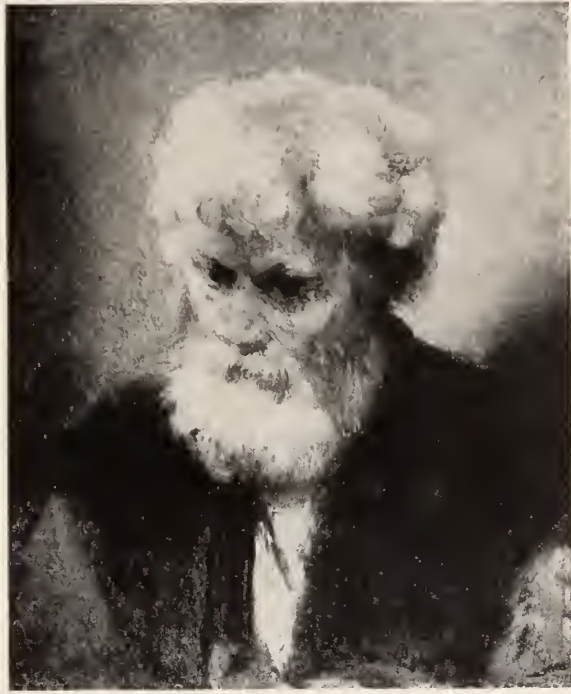
Height, 25¾ inches; length, 32 inches

FROM under a rocky cliff on the right of the picture proceeds a stream which fills the right half of the foreground: on its borders are rocks and bushes. On the left of the picture a great rock juts out from a hillside and the foliage of trees growing about it reaches up in relief against a sky of strong blue with white clouds. Notable for the firm construction characteristic of Courbet and for naturalistic rendering.

Signed at the lower left, G. COURBET.

Purchased through Mr. Charles S. Carstairs, now of Messrs. M. Knoedler & Co., New York.

By order of the Executor of the late MR. DAVID T. WATSON, Pittsburgh, Pennsylvania.



School of Rembrandt

132—HEAD OF AN OLD MAN

Panel: Height, 10 inches; width, 8 inches

A SMALL head and shoulders of an elderly thin-faced man of the beggar-type. He is looking intently downwards and has unkempt long gray hair and gray beard; his brownish coat is partly opened at the breast, showing the border of his shirt. The background is warm in tone.

By order of MESSRS. ELKINS & HENRIQUES, Attorneys, London.

Pietro Longhi

ITALIAN: 1702—1762

133—*INTERIOR WITH FIGURES*

Canvas: Height, 16 inches; width, 14 inches

A GROUP of four small whole-length figures. In the center a lady in yellowish dress is seated in a red plush chair and is working at a spinning wheel. Behind her is a gallant in a blue dress richly embroidered with gold, holding his hat in his right hand; he is bending toward the lady as if conveying proposals of an amorous character. To the right a spectacled old lady in blue dress and white cap is seated in an arm-chair and is reading from an open book and entirely indifferent to the two central figures. By her side stands a child in red holding a book.

By order of MESSRS. ELKINS & HENRIQUES, Attorneys, London.

John Crome

(OLD CROME)

BRITISH: 1768—1821

134—*MILL ON THE YARE, OR SCENE IN NORFOLK*

Height, 24¼ inches; width, 20¼ inches

THE waters of the river fill the left foreground and the substantial buildings of the mill appear on the bank at the right. A sailing vessel is tied to the wharf by the side of the mill; trees reach up above the roofs; in the middle distance, on the left, is the river bank with trees, and in the foreground-waters three ducks are swimming. The sky in the lower portion is filled with warm-tinted clouds through which penetrate rays of sunlight.

Collection of William Hudson, Esq., of Great Yarmouth, England.

Purchased from Messrs. Wallis & Son, London, 1892.

By order of the Executor of the late MR. DAVID T. WATSON, Pittsburgh, Pennsylvania.

George Morland, A.R.A.

BRITISH: 1763—1804

135—*GATHERING FAGOTS*

Height, 17¼ inches; width, 14 inches

AN English peasant, in yellow smock and black hat, on his hunkers in the foreground gathering up fagots at the foot of a tree on the left of the picture. Behind him, on the right, is a boy with blue jacket who holds up a bunch of fagots, and by the side of the man is a liver-color and white pointer.

Signed at the lower right, G. MORLAND.

From the collection of E. Kensington, Esq., London.

Purchased from H. Koekkoek, Jr., & Co., through Wallis & Son, London, 1894.

*By order of the Executor of the late MR. DAVID T. WATSON, Pitts-
burgh, Pennsylvania.*

George Morland, A.R.A.

BRITISH: 1763—1804

136—*BRINGING IN FAGOTS*

Height, 17¼ inches; width, 14 inches

AN English peasant girl, with red cloak, accompanied by a smaller girl in blue and a house dog, are crossing the snow-covered foreground on their way to the village, some of the houses of which appear in the middle distance on the right. The larger girl is carrying a bunch of fagots which she holds with her hands in her apron.

Signed at the lower right centre, G. MORLAND.

From the collection of E. Kensington, Esq., London.

Purchased from H. Koekkoek, Jr., & Co., through Wallis & Son, London, 1894.

*By order of the Executor of the late MR. DAVID T. WATSON, Pitts-
burgh, Pennsylvania.*

Gabriel Metsu

DUTCH: 1630—1667

137—AN INTERIOR WITH TWO FIGURES

Panel: Height, 14 inches: width, 12 inches

Two small nearly whole-length figures, seated in an interior. A cavalier with long hair and brown dress and breeches, white collar with tassels, is accepting a glass of wine which is being handed to him by a fair-haired woman, at whom he is looking with an amorous expression. She is in a brown dress and wears a white cap, mantle and apron; her left arm rests on a red cloth covered table, on which is a plate of grapes, and in her hand is a gray jug.

Signed over the doorway to right.

Examined by Dr. Hofstede de Groot, and noted for inclusion in future editions of his "Catalogue Raisonné."

The name of a former owner and the date "C. C. Williams, May 4, 1881," is written on a slip of paper and pasted on the back of the panel.

By order of MESSRS. ELKINS & HENRIQUES, Attorneys, London.





James Stark

BRITISH: 1794—1859

138—*A WOODLAND GLADE: NEAR NORWICH*

Millboard: Height, 18¼ inches; length, 23½ inches

ON the left of the picture a road leads through great forest trees and on the right there is a stream where two cows are drinking. The farther shore is bordered by a belt of trees. Overhead is a summer sky of blue with white clouds.

From the collection of William Hudson, Esq., of Great Yarmouth, England.

Purchased from Messrs. Wallis & Son, London, 1892.

By order of the Executor of the late MR. DAVID T. WATSON, Pittsburgh, Pennsylvania.



Bonifazio Veneziano

ITALIAN: 1491—1553

139—*THE INFANT MOSES BROUGHT TO PHARAOH'S PALACE*

Canvas: Height, 9¾ inches; length, 40 inches

A GROUP of sixteen small whole-length figures in a spacious hall or balcony. On the left Moses is seen sleeping in a cradle, near which are three women, two kneeling and one standing, while a fourth is stepping out from behind a curtain. In the center Pharaoh approaches the cradle, led by his daughter, and followed by three male and female attendants; other figures are ascending steps on the right, while in the extreme right-hand corner two women are appearing from behind a curtain. The scene is laid in a large hall and an undulating landscape is seen in the distance on the right.

Exhibited at Burlington House, London, 1881, No. 202.

From the collection of Charles Butler, Esq., England, 1911.

A "Very charming picture, wholly Venetian in its colour, movement and sumptuous accessories."—The Athenæum, January 22, 1881.

By order of MESSRS. ELKINS & HENRIQUES, Attorneys, London.

Gaspar Poussin (Dughet)

FRENCH: 1613—1675

140—*LANDSCAPE WITH BUILDINGS*

Canvas: Height, 13 $\frac{3}{4}$ inches; length, 18 $\frac{1}{4}$ inches

A LANDSCAPE with a group of red-tiled buildings, apparently a caserne or prison, and a high square tower, across the background and by the edge of a stream with overhanging trees. The middle distance is occupied with an uneven gravelly stretch of land through which a shepherd is driving his flock of sheep, while other figures are also seen. In the forepart of the picture is a scantily attired angler fishing and two other men are on the bank. On the left low-growing bushes and trees.

From the collection of the famous wealthy hermit, G. E. Dering, Esq., of Lockleys, Welwyn, Hertfordshire.

By order of MESSRS. ELKINS & HENRIQUES, Attorneys, London.



Caspar Netscher

DUTCH: 1639—1684

141—*PORTRAIT OF A LADY*

Canvas: Height, 21 inches; width, 17 inches

A SMALL whole-length portrait of a young lady, seated in an armchair on a balcony, looking at the spectator. She is in a low-cut dark bodice and white satin shirt with white sleeves, her brown curly hair falls in ringlets over her ears and shoulders and is adorned with pearl ornaments; her earrings, bracelets and necklace are also of pearls. To the left is a table with a rich red cover on which rests a basket of fruit held by a negro page. In the background are seen, through a balcony, rose trees and clouds, with red curtain and pillar to left.

From the collection of Miss M. A. Driver, of Sunninghill, Berkshire, England.

By order of MESSRS. ELKINS & HENRIQUES, Attorneys, London.



Meindert Hobbema

DUTCH: 1638—1709

142—*WOODY RIVER SCENE, WITH FIGURES*

Panel: Height, 18¾ inches; width, 22 inches

A SUMMERTIME view of a bend in a placid river, with ancient red-tiled houses and a densely-branching tall tree on the left; close by and on the edge of the river is a hut from which two men in a boat are starting. On the right are other trees and houses, but the most conspicuous feature is an improvised wood-crane, near a landing stage, from which a man in a boat is pushing off; a hamlet is seen in the distance; cloudy sky. Rich in quality.

From the collections of the Comte de Marcy, Paris; and Lord Grimthorpe, London.

Mentioned in Hofstede de Groot's "Catalogue of Dutch Painters," Vol. IV, 1912; since examined and authenticated by Dr. Hofstede de Groot, and will be described at length in a Supplementary volume.

By order of MESSRS. ELKINS & HENRIQUES, Attorneys, London.



George Romney, R.A.

BRITISH: 1734—1802

143—*LADY HAMILTON AS SIGISMUNDE*

Height, 25 inches; width, 20 inches

HEAD and bust picture of Lady Hamilton with a white head-dress, her blond curls framing in her face, which is turned to the spectator's right, and wearing a low-neck gown of white with notes of pink. Her gaze is intently fixed on something outside of the picture, and her beautiful blue eyes and delicate features are pictured in an attractive harmony of blond color.

Purchased from Messrs. Wallis & Son, London, 1895.

By order of the Executor of the late MR. DAVID T. WATSON, Pittsburgh, Pennsylvania.



Sir Henry Raeburn, R.A.

BRITISH SCHOOL: 1756—1823

144—*PORTRAIT OF A GENTLEMAN*

Canvas: Height, 29 inches; width, 24½ inches

HALF figure of a handsome middle-aged, clean-shaven man, with gray hair and slight side-whiskers, looking nearly full-face at the spectator. He is dressed in a black coat with broad collar, and wears a white cravat. The portrait is said to represent Lord Liverpool, the famous English politician.

By order of MESSRS. ELKINS & HENRIQUES, Attorneys, London.



Sir Joshua Reynolds, P.R.A.

BRITISH: 1723—1792

145—*LADY JULIANA PENN*

Lady Juliana Fermor, fourth daughter of Thomas, 2nd Baron Pomfret, created Earl of Pomfret in 1721; born, May 21, 1729; married, August, 1751, Thomas Penn, of Stoke Park, co. Buckingham, son of William Penn, the founder of Pennsylvania. Sat for the portrait in January, 1755, February, 1764, and February, 1767.

Height, 30 $\frac{1}{4}$ inches; width, 25 inches

A HALF-LENGTH life-size portrait of a lady with black hair, with a string of pearls which, passing around the back of her neck, falls to the center of her corsage and disappears under her right arm. The body is in full-face view to the spectator and the head is turned in three-quarter view to the right. The costume consists of a yellow cape over a white low-neck bodice, with a pink rose and jewel fastened in the center. About the right arm is folded a blue velvet coat with ermine lining. In the background on the right, a pillar; on the left a sky of dark clouds with a bit of blue.

This portrait is mentioned in the artist's diary, where it is stated that the lady gave sittings to Sir Joshua in February, 1767, and other dates; and it is also mentioned in Graves' "History of the Works of Sir Joshua Reynolds," Vol. II, page 737.

Purchased from Messrs. Wallis & Son, London, 1901.

*By order of the Executor of the late MR. DAVID T. WATSON, Pitts-
burgh, Pennsylvania.*



Thomas Gainsborough, R.A.

BRITISH: 1727—1788

146—*COUNTESS OF HARBOROUGH*

Height, 30 inches; width, 25 inches

A HALF-LENGTH life-size portrait of a lady with gray hair dressed high in the fashion of the eighteenth century, wearing a gown of blue with square-cut neck filled in with delicate lace. About her neck is a fluted blue ribbon, and in the right ear appears an earring of lapis lazuli. The lady's face, in nearly full view to the spectator, is notable for careful drawing of the features and its placid, reserved expression.

“Portrait of the Countess of Harborough, aunt of the third lady de Braye, from the collection of the present Lord Braye, fifth Baron.”

Purchased from Messrs. Wallis & Son, London, 1896.

*By order of the Executor of the late MR. DAVID T. WATSON, Pitts-
burgh, Pennsylvania.*



Sir Joshua Reynolds, P.R.A.

BRITISH: 1723—1792

147—*THE SHEPHERD BOY*

Height, 30 inches; width, 25 inches

A THREE-QUARTER-LENGTH figure in side view, with head turned to the left in three-quarter view, of a boy with auburn locks and clad in a smock of reddish-brown. His hands, appearing just under his chin, clasp his shepherd crook and in the lower half of the composition, standing close about him, are several lambs. In the background, in the upper half of the picture, there is a sky of dark blue with gray clouds and the green foliage of a tree, the trunk of which appears on the left. The expression of the child's face is winsome and the low tone of the picture reveals harmonious color qualities.

Bought direct from Sir Joshua Reynolds by Mr. Stephen Sullivan, from whose grandson, Mr. C. S. Sullivan, the picture was purchased in 1893 by a Mr. Vokins, who sold the painting the same year to Messrs. Wallis & Son, of London, who in 1895 sold the work to Messrs. Durand-Ruel, of Paris.

Exhibited at the British Institute, London, in 1817, under No. 102, in 1824 under No. 169, in 1850 under No. 50.

Mentioned in "The History of the Works of Sir Joshua Reynolds," by Algernon Graves, Volume III, page 1205.

Purchased from Messrs. Durand-Ruel, Paris, 1897.

By order of the Executor of the late MR. DAVID T. WATSON, Pittsburgh, Pennsylvania.



Thomas Gainsborough, R.A.

BRITISH: 1727—1788

148—*TOBLAS FRERE, ESQ.*

Height, 30 inches; width, 25½ inches

A HALF-LENGTH life-size portrait of a gentleman with gray wig and dark blue coat, the face in nearly full view to the spectator. A white collar and lace are about the neck and a lace cuff is seen at the wrist where the right hand is thrust under the front of the coat. Held under the left arm is a black three-cornered hat with gold braid.

Purchased from Messrs. Wallis & Son, London, 1897.

*By order of the Executor of the late MR. DAVID T. WATSON, Pitts-
burgh, Pennsylvania.*



Sir Anthony Van Dyck

FLEMISH: 1599—1641

149—*COUNTESS LERCARI*

Height, 30 inches; width, 24½ inches

A HALF-LENGTH life-size portrait of a lady with dark auburn hair, the body in full front view and the head turned to the left in three-quarter view. The right hand appears in the lower part of the picture on the left, the fingers touching a necklace of beads. A red rose is seen in the lady's hair over her left ear and she wears an earring ornamented with pearl. Around her neck is a white fluted ruff edged with lace; the gown is black and the background is filled by a dark red curtain. The eyes look directly at the spectator; the features and the hand show masterly drawing and the color effects produce a unified and charming ensemble.

From the collection of Marquis Coccopani of Modena.

Purchased from Messrs. Laurie & Co., London, 1904.

By order of the Executor of the late MR. DAVID T. WATSON, Pittsburgh, Pennsylvania.





Elisabeth Louise Vigée-Le Brun

FRENCH: 1755—1842

150—YOUNG WOMAN WITH DIRECTOIRE HAT

Height, 25¾ inches; width, 21½ inches

A HEAD and bust picture of a comely young woman with dark hair, wearing a blue bodice and white fichu. On her head is a great wide-brimmed straw hat trimmed in voluminous bows of broad ribbon of red, black and white stripes. The body is in three-quarter view and the head is turned to the right so that the face is in full view to the spectator.

Purchased from Messrs. Laurie & Co., London, 1904.

By order of the Executor of the late MR. DAVID T. WATSON, Pittsburgh, Pennsylvania.



Sir A. W. Calcott, R.A.

BRITISH:

151—*SCENE IN THE CHANNEL*

Height, 27 inches; length, 39½ inches

A MARINE with the green waters of the English Channel tossing in the foreground where, on the right, is seen a sailing vessel advancing as it rides over the waves. Four men in a rowboat are about to board it. On the left, farther away, is a frigate proceeding under half sail, and in the distance are seen a three-masted vessel near the center of the picture and a sailboat near the extreme right. A high sky of gray and white clouds, with a space of pale blue at the top of the canvas, completes the picture.

From the Price Sale, London, 1895. Catalogue No. 20.

Purchased from L. Crist Delmonico, New York, 1896.

*By order of the Executor of the late MR. DAVID T. WATSON, Pitts-
burgh, Pennsylvania.*

John Constable, R.A.

BRITISH: 1776—1837

152—*THE GLEBE FARM*

Height, 25½ inches; length, 35½ inches

THE Glebe Farm is seen on an eminence amid the trees on the right of the picture. On the left is a group of fine trees with the foliage rising to the top of the canvas. In the foreground are the waters of a stream with a donkey drinking. On his back is a boy with a sack before him and on the shore at the right is a farm-dog. Overhead is a sky of gray and white clouds with a space of blue in the upper portion.

From the collection of Miss Coustable, daughter of the artist.

Purchased from Messrs. Wallis & Son, of Loudon and Paris, 1892.

*By order of the Executor of the late MR. DAVID T. WATSON, Pitts-
burgh, Pennsylvania.*



Bartolomé Estéban Murillo

SPANISH: 1618—1682

153—*MADONNA AND CHILD*

Height, 42½ inches; width, 32½ inches

A THREE-QUARTER-LENGTH life-size seated figure of the Madonna about to suckle the Child, whom she holds on her knee. The Madonna is of the brunette type and her costume includes white drapery about her neck and wrists, a gown of red and a piece of dark blue drapery spread over her knees. Her head is inclined forward and turned to the spectator's right, while the head of the Child appears in nearly full face to the spectator.

Mentioned in "Art Treasures in Britain," Volume II. Waagen, page 223, "Annals of the Artists of Spain." Stirling Maxwell, Volume IV, page 1611, "Velasquez and Murillo," by Curtis, page 158.

Said to be the picture which is mentioned in Murillo's will as ordered by "a weaver of Seville, who had paid nine yards of satin on account, toward the price," and with other Spanish pictures bequeathed to Louis Philippe, and eventually sold with other pictures of his collection, at Christie's in 1853 as the "Standish Collection."

Standish Collection, Christie's of London, 1853, when it was purchased by Captain Richard Ford.

From the collection of Francis Clare Ford, Esq., London, grandson of Captain Richard Ford.

Purchased from Messrs. M. Knoedler & Co., 1911.

By order of the Executor of the late Mr. DAVID T. WATSON, Pittsburgh, Pennsylvania.



Bartolomé Estéban Murillo

SPANISH: 1618—1682

154—*BOY WITH FRUIT AND BREAD*

Height, 43 $\frac{3}{4}$ inches; width, 30 $\frac{1}{2}$ inches

A LIFE-SIZE figure of a boy, who is sparsely clad with a white shirt and brown breeches, seated by the road-side at the foot of a tree with landscape background showing hilly country and a sky with dark clouds and some spaces of dull blue. The boy, in his uplifted right hand, is holding a date which he is about to drop into his mouth as he looks upward. In his left hand, placed on a stone on the road-side, he holds a white dish filled with dates and on the right near his left foot are two oranges and a hunk of bread.

Purchased from Messrs. Sully & Co., London, 1905, who procured the picture from an old family of Seville, Spain. Messrs. Sully & Co. state that this picture was seen before this purchase by Sir Walter Armstrong, Director of the National Gallery of Ireland, who strongly advised them to buy the painting.

By order of the Executor of the late MR. DAVID T. WATSON, Pittsburgh, Pennsylvania.



Sir Peter Paul Rubens

FLEMISH: 1577—1640

155—*PORTRAIT OF A GENTLEMAN*

Panel: Height, 42½ inches; width, 30½ inches

A THREE-QUARTER-LENGTH portrait of an intellectual-looking young gentleman of quality. He is standing directed slightly to right and is looking at the spectator three-quarter face. His well-groomed appearance suggests a gentleman of the court. He is dressed in black, with white lace sleeves, and wears an elaborately starched and gauffered ruff or collar. His golden red hair is closely cropped and his small beard is neatly trimmed. His left hand is resting on the back of a chair, and his right is against his hip.

Canvas inscribed "Ætatis 28, Ao. 1640."

From the collection of the Hon. Claude Ponsonby, England.

By order of MESSRS. ELKINS & HENRIQUES, Attorneys, London.



John Crome

(OLD CROME)

BRITISH: 1768—1821

156—*THE MILL POND*

Height, 34¼ inches; length, 44 inches

THE old mill, with thatched roof, is placed in the left center of the picture and the waters of the pond fill the foreground. Trees in full foliage embower the mill, and on the right is a view of distant Norfolk country. The sky shows on the right a mass of gray cloud and on the left a space of blue.

From the collection of the Reverend George Custance, of Norwich, England, for whom the picture was painted.

Purchased from W. Scott & Sons, Montreal, 1896.

By order of the Executor of the late MR. DAVID T. WATSON, Pittsburgh, Pennsylvania.



T. Klimesch

AUSTRIAN:

157—*PORTRAIT OF CHRISTOPH WILLIBALD RITTER VON GLUCK (1714-1787)*

Canvas: Height, 39 inches; length, 31 inches

The eminent author of many operas. Born at a small village in Bavaria on the Bohemian frontier; educated at Prague University, where he adopted music as a profession, and whence he passed to Vienna, where he wrote seven operas in five years. Visited London in 1745, resided in Paris from about 1769 to 1779, where the patronage of his former pupil, Marie Antoinette, contributed much to his great success as a musician.

A HALF-LENGTH figure, seated at a harpsichord on which he is playing, the artist having transfixed the musician at a moment of inspiration. He is an elderly, clean-shaven man and is wearing a green shot-silk gown, white frilled ruffle, neckband and cuffs, with gray curly wig.

This is a version of the famous portrait, now in the Imperial Gallery at Vienna, painted in Paris by Duplessis in 1775. It is believed to be the one which Gluck had done for Joh. Friedrich Reichardt in 1783. Little if anything is known concerning the Klimesch who painted this admirable version.

*Signed and dated on the side of the harpsichord, VIENNA
1783.*

Exhibited at the Berlin Theatrical Exhibition, 1910-11.

By order of MESSRS. ELKINS & HENRIQUES, Attorneys, London.

Antoine Vollon

FRENCH: 1833—1900

158—*PAYSAGE D'AUTOMNE*

Canvas: Height, 28 inches; length, 41 inches

AN autumnal view over a flat meadow with a background of trees and partly hidden houses; to the right is seen a group of golden-tinted trees. A white cart-horse forms a conspicuous feature on the left side of the scene. The blue sky is charged with cloud effects.

Signed at the lower left.

By order of MESSRS. ELKINS & HENRIQUES, Attorneys, London.

Josef Israels

DUTCH: 1824—1911

159—*PREPARING THE MEAL*

Height, 23 inches; length, 33 inches

IN the humble interior of a Dutch cottage, a young peasant mother on the right of the picture is cooking the family soup, while her children, a boy with a little girl on his knee, and another little girl seated on a low chair, are waiting and looking on. The cooking fire is in a brazier placed on the floor and the deep saucepan which the mother holds by its handle with her left hand is suspended over the fire by a crane which hangs from the ceiling. The general tone of the picture is cast in the warm grays characteristic of Josef Israels, enlivened by notes of dull blue in some parts of the clothing of the figures.

Signed at the lower left, JOSEF ISRAELS.

Purchased from Messrs. Wallis & Son, London, 1894.

By order of the Executor of the late MR. DAVID T. WATSON, Pittsburgh, Pennsylvania.



Félix Ziem

FRENCH: 1821—1911

160—*GRAND CANAL, VENICE*

Height, 26 inches; length, 32 inches

IN the waters of the foreground where, near the wharfs on the right, are many yellow sails, lie two ships with tall rakish masts, the nearer one showing a crimson flag and having a band of bright green ornamental work on the stern. On the left a gondola is swiftly passing as it is propelled by its rower. In the distance are the walls and domes of Venice with St. Mark and the Campanile near the center of the composition. Overhead is a high summer sky with tints of blue above gradating into warm color in the lower part.

Signed at the lower left, ZIEM.

From the collection of Charles Jourdiat, Paris.

Purchased from Messrs. Arnold & Tripp, Paris, through M. Knoedler & Co., Paris, 1898.

By order of the Executor of the late MR. DAVID T. WATSON, Pittsburgh, Pennsylvania.



Adolf Schreyer

GERMAN: 1828—1899

161—ARABIAN HORSEMEN

Height, 34 inches; length, 46½ inches

A LARGE company of Arabs, mounted and armed, are descending from the mountains at the right, in close but confused order, their many-colored horses plunging wildly over the uneven slope of rocks and short herbage. Their guns are held ready for instant use, and a number of the riders keep a sharp lookout back over the left shoulder, as though expecting an attack from that quarter or to detect an appearance of an enemy over there. The nearest horsemen have fierce, dark, strongly defined features, and their apparel is brilliant in color, as is the caparisoning of their mounts.

Signed at the lower right, AD. SCHREYER.

From Boussod, Valadon & Co., 1888, who purchased it direct from the artist.

Purchased from the sale of the Estate of the late Mrs. Sue McLure Clark, New York, 1913, by the Holland Galleries.

Property of the late Mr. J. T. SPERRY, who purchased the picture from the Holland Galleries.



Claude Monet

FRENCH: 1840—

162—ÉGLISE DE VÉRANGEVILLE

Height, 26 inches; length, 32 inches

A MONET landscape, attractive in color and strikingly composed, showing a hillside and cliffs on the left overlooking the sea, which appears on the right. In the foreground, rising from a mass of shrubbery are two slender trees with dark-foliaged tops. On the crown of the hillside at the left is the old stone church of Vérangeville with its roofs and tower in relief against the sky, which indicates gray weather by its moving warm-tinted, light gray clouds.

Signed at the lower right, CLAUDE MONET, and dated '82.

Purchased from Messrs. Durand-Ruel, Paris, 1898.

By order of the Executor of the late MR. DAVID T. WATSON, Pittsburgh, Pennsylvania.



Chadwick, N. H.

Adolf Schreyer

GERMAN: 1828—1899

163—*THE ADVANCE*

Height, 34 inches; length, 48 inches

A PARTY of Arab horsemen are coming forward on the right of the picture, approaching a pool in the left foreground where, mounted on a splendid white stallion, their leader awaits them. With the group of approaching troopers is a pack-horse heavily laden with camp paraphernalia. Above the low horizon, which appears in the left of the picture, is a sky of gray clouds with a space of blue in the upper portion.

Signed at the lower right, AD. SCHREYER.

Collection of the late MR. JULIUS WADSWORTH, New York.



William Adolphe Bouguereau

FRENCH: 1825—1905

164—*RESISTANCE TO CUPID*

Height, 32½ inches; width, 22½ inches

THE composition shows the seated figure of a young woman of brunette type, on the left, with blue drapery over her knees, with arms stretched out before her and pushing away from her a nude blond Cupid with white wings, who, with his left knee on her lap and his arrow poised in his right hand, has evidently attempted to stab her unawares. The setting for the picture comprises a square stone seat in the left foreground, a tree with foliage spreading over the upper part of the canvas, a mountainside in the distance, and a sky of pale blue with delicate gray notes tinged with pink at the horizon.

Signed at the left, on the stone seat, W. BOUGUEREAU.

By order of an Executor.



Adolf Schreyer

GERMAN: 1828—1899

165—*THE HALT AT THE FOUNTAIN*

Height, 31 inches; length, 51 inches

A COMPANY of Arab horsemen have stopped on the outskirts of a town to water their horses at a large fountain-basin outside the city walls. On the right is a chieftain mounted on a fine gray, the bridle held by a follower, and in the middle of the composition are two beautiful Arabs, one white, the other gray, whose riders have dismounted. On the left another horseman approaches on a sorrel, and beyond are numerous other members of the party. In the immediate foreground, on the left, is a pool filled by the waste water, and over all is a sky of blue with white clouds.

Signed at the lower right, AD. SCHREYER.

By order of an Executor.



Alexandre Gabriel Decamps

FRENCH: 1803—1860

166—*THE FRIGHTENED CHILDREN*

Height, 36¾ inches; length, 54½ inches

AT the foot of stone steps, which lead from a farm courtyard in the middle of the picture to the foreground, are two little children, a boy and a girl, who shrink back against the wall, frightened by the growling of a mother-hound who, surrounded by her puppies, is emerging from her kennel on the left. Some chickens are seen in the courtyard and also, through its green doors, in the roadway outside. Through the partly open doors some trees and a bit of sky are also seen. Sunlight falls on the foreground, illuminating the figures of the children and casting shadows over the dog-kennel.

Signed with the initials at the center left, on the dog-kennel, D.C.

Awarded a medal at the Salon of 1831.

Collection of M. Albert, Paris, 1866.

Collection of Moreau, Paris, 1890.

Purchased from Messrs. Knoedler & Co., New York, 1890.

By order of the Executor of the late MR. DAVID T. WATSON, Pittsburgh, Pennsylvania.



Bartolomé Estéban Murillo

SPANISH: 1618—1682

167—*TRIUMPH OF RELIGION*

Panel: Height, 48½ inches; width, 38½ inches

A DECORATIVE composition showing two flying angel-boys, one bearing a bishop's crosier, and the other holding up a white, gold-ornamented mitre with a large blue jewel set on its front side. This composition was apparently a part of some important altarpiece and doubtless occupied a place in its upper portion.

From the collection of Sir Charles Turner, K. C. I. E., London.

Exhibited at the Exhibition of Spanish Art, London, 1895-96.

Previously in the possession of the late Alexander Dennistoun, of Hellensburgh, N. B., who obtained it from a private source in Spain.

Purchased from Messrs. Wallis & Son, London, 1896.

By order of the Executor of the late Mr. DAVID T. WATSON, Pittsburg, Pennsylvania.



Richard Westall, R.A.

BRITISH: 1765—1836

168—*CUPID AND PSYCHE*

Height, 59½ inches; length, 79 inches

THE figures are life-size and Cupid, nude, is depicted lying asleep on a couch, while Psyche, her body mostly nude but partly covered by diaphanous white drapery which falls from her head over her shoulders and is wrapped about her thighs, is kneeling at his side looking at him intently as she holds up in her left hand a lighted Grecian lamp. The background displays a red curtain, fruits and flowers and, on the right, some hanging foliage and a glimpse of a landscape view. In the left upper corner of the composition is a small space of sky with a crescent moon and fluttering above the head of Psyche is a gray butterfly.

From the collection of Lord Dorchester, England.

Purchased from Messrs. Wallis & Son, London, 1894.

*By order of the Executor of the late MR. DAVID T. WATSON, Pitts-
burgh, Pennsylvania.*

AMERICAN ART ASSOCIATION,

MANAGERS.

THOMAS E. KIRBY,

AUCTIONEER.

LIST OF ARTISTS REPRESENTED
AND THEIR WORKS

LIST OF ARTISTS REPRESENTED
AND THEIR WORKS

	CATALOGUE NUMBER
AUBERT, ERNEST JEAN The Fountain of Love	13
BARON, HENRI The Revelation	8
BERAUD, JEAN Boulevard Haussmann	16
BERNE-BELLECOUR, PROSPER ÉTIENNE A Sentinel	17
Episode of the Siege of Paris, 1870-71	39
The Resting Place	45
Cuirassiers	94
BLAKELOCK, RALPH ALBERT, N.A. Morning, White Mountains	69
BONHEUR, Mlle. ROSA A Summer Day	58
BOUGUEREAU, WILLIAM ADOLPHE The Copy Book	4
A Roman Beauty	53
Resistance to Cupid	164
BRETON, JULES ADOLPHE Returning From Work	72
BROWN, J. G., N.A. A Case of Salvage	32

CALCOTT, SIR A. W., <i>R.A.</i>	
Scene in the Channel	151
CASANOVA Y ESTORACH, ANTONIO	
The Cheering Glass	25
COLLINS, WILLIAM	
Cromer Sands	28
CONSTABLE, JOHN, <i>R.A.</i>	
The Glebe Farm	152
CORCOS, MATTEO VITTORIO	
Waiting	81
COROT, JEAN BAPTISTE CAMILLE	
Richmond on the Thames	99
Boulogne-sur-Mer: un Coin de Ville	104
Willows	106
La Mère	114
Environs of Étretat	118
Environs of Arleux	121
Le Bac	124
Le Soir	126
Ville-d'Avray: Le Bouleau	128
COURBET, GUSTAVE	
The Shady Glen	131
CROME (OLD CROME), JOHN	
Mill on the Yare, or Scene in Norfolk	134
The Mill Pond	156
DAUBIGNY, CHARLES FRANÇOIS	
Peasant Woman with Two Cows	14
On the Oise	107

DAUBIGNY, CHARLES FRANÇOIS—*Continued*

La Mare aux Hérons	113
The Seashore	116
Along the River Oise	123
DAUBIGNY, KARL PIERRE	
Fishermen's Cottages	26
DECAMPS, ALEXANDRE GABRIEL	
The Frightened Children	166
DEFREGGER, FRANZ VON	
The Smoker	1
DETAILLE, JEAN BAPTISTE ÉDOUARD	
A Hussar	7
DETTI, CESARE	
Music Hath Charms	18
Cavalier with Two-handed Sword	46
Halted	61
The Interrupted Duet	77
DIAZ DE LA PEÑA, NARCISSE VIRGILE	
The Sultana	96
A Lady with Perroquet and Dog	103
In the Forest of Fontainebleau	105
Lady and Child	108
The Necklace	109
Gathering Fagots: Outskirts of the Forest of Fontainebleau	120
DUPRÉ, JULES	
Sunset in the Forest	129

FANTIN-LATOUR, HENRI	
Peonies in a Glass Vase	30
Dahlias in Blue Vase	42
GAINSBOROUGH, THOMAS, <i>R.A.</i>	
Countess of Harborough	146
Tobias Frere, Esq.	148
GEROME, JEAN LÉON	
The Lion and the Butterfly	24
GRIVOLAS, PIERRE	
The Motet	83
GUILLEMIN, ALEXANDRE MARIE	
The Sleeping Child	67
HAGBORG, AUGUST	
Fisher Folk	60
HAMMEN, EDMUND G.	
The Armorer	34
HARPIGNIES, HENRI	
Bouquet d'Arbres	10
L'Allier à Hérisson	70
Le Bois de Trémellière	98
Bords de l'Yonne	110
HENNER, JEAN JACQUES	
Head of a Young Woman	12
Head of a Young Woman	86
HERNANDEZ, D.	
The Opera Box	19

HOBBEEMA, MEINDERT	
Woody River Scene, with Figures	142
HOMER, WINSLOW, <i>N.A.</i>	
A Good Pool: Sagenay River	87
St. John's River, Florida	89
Watching From the Cliffs	93
INNESS, GEORGE, <i>N.A.</i>	
Alexandria Bay on the St. Lawrence, 1878	49
ISRAELS, JOSEF	
Preparing the Meal	159
JACQUE, CHARLES ÉMILE	
Moutons dans la Campagne: Temps orageux	51
Interior of Sheepfold	102
Sheep Entering the Fold	112
Outskirts of Fontainebleau	125
The Approaching Storm	130
JACQUET, JEAN GUSTAVE	
In the Park	3
JIMINEZ Y ARANDA, José	
The Surprise	63
JOHNSON, DAVID, <i>N.A.</i>	
On the River at Cos Cob, Connecticut	36
KAEMMERER, FREDERIK HENDRIK	
Loving Glances	52
KEVER, JACOB SIMON HENDRIK	
La Couturière	59

KEYSER, EMIL	
Children's Frolic	76
KLIMESCH, T.	
Portrait of Christoph Willibald Ritter von Gluck (1714-1787)	157
KOEKKOEK, BAREND CORNELIS	
Landscape	41
LEFEBVRE, JULES JOSEPH	
The White Dove	79
LE ROUX, HECTOR	
The Departure from Pausilippe	74
LONGHI, PIETRO	
Interior with Figures	133
MARTIN, HOMER D., <i>N.A.</i>	
Keene Valley, Adirondacks	48
MCCORD, GEORGE H., <i>A.N.A.</i>	
Sunset in Venice	64
Venetian Fishing Boats	68
MEISSONIER, FILS, JEAN CHARLES	
Lovers' Lane	9
Troopers in a Tavern	47
METSU, GABRIEL	
An Interior with Two Figures	137
MEYER VON BREMEN, JOHANN GEORG	
The Wayside Shrine	56

MONCHABLON, FERDINAND JAN	
Landscape	71
MONET, CLAUDE	
Église de Vérangeville	162
MONTICELLI, A. T. J.	
Réunion dans un Parc	43
Le Jardin d'Amour	44
Rubens at the Court of Philip III, 1603	97
MORLAND, GEORGE, <i>A.R.A.</i>	
Gathering Fagots	135
Bringing in Fagots	136
MUNKACSY, MIHALY DE	
Landscape	82
MURA, FRANK	
Feeding Chickens	29
In the Fields, Neuville	54
MURILLO, BARTOLOMÉ ESTÉBAN	
Madonna and Child	153
Boy with Fruit and Bread	154
Triumph of Religion	167
NETSCHER, CASPAR	
Portrait of a Lady	141
NEUVILLE, ALPHONSE MARIE DE	
A French Cavalryman	84
PASINI, ALBERTO	
Scene in the Orient	15

	CATALOGUE NUMBER
PEREZ, ALONSO	
Village Courtship	31
PERRAULT, LÉON	
La Petite Pauvrette	22
Fairy Tales	78
PIOT, ÉTIENNE ADOLPHE	
Good Morning!	66
Lesbia	80
POUSSIN (DUGHET), GASPAR	
Landscape with Buildings	140
PYNE, JAMES BAKER	
View of Heidelberg	92
RAEBURN, SIR HENRY, <i>R.A.</i>	
Portrait of a Gentleman	144
REMBRANDT (SCHOOL OF)	
Head of an Old Man	132
REMYNGTON, FREDERIC, <i>A.N.A.</i>	
A Plainsman	62
REYNOLDS, SIR JOSHUA, <i>P.R.A.</i>	
Lady Juliana Penn	145
The Shepherd Boy	147
RITCHIE, ALEXANDER HAY	
Excommunication of St. Paul	65
ROMNEY, GEORGE, <i>R.A.</i>	
Lady Hamilton as Sigismunde	143

ROUSSEAU, PIERRE ÉTIENNE THÉODORE	
An Italian Pass	100
The Winding Road	117
ROUSSEAU, PHILIPPE	
Landscape	40
ROYBET, FERDINAND	
The Casque	38
RUBENS, SIR PETER PAUL	
Portrait of a Gentleman	155
SAS, A.	
The Cavalcade	2
SCHREYER, ADOLF	
A Halt by the Roadside	35
Arab Cavaliers: Chief's Staff	73
Arabian Horsemen	161
The Advance	163
The Halt at the Fountain	165
SEMENONSKY, ERMAN	
Spring	20
Summer	21
STARK, JAMES	
A Woodland Glade: Near Norwich	138
SULLY, THOMAS	
St. Jerome	57
THOREN, OTTO VON	
Driving the Cows	75

	CATALOGUE NUMBER
TROYON, CONSTANT	
A Brittany Farmyard	111
Landscape and Cattle	115
Shepherdess and Flock	119
The House by the River	122
Going to Market	127
 UNKNOWN ARTIST	
Madonna and Child	23
 VAN DYCK, SIR ANTHONY	
Countess Lercari	149
 VAN HOVE, J. B.	
Dutch Interior	11
 VAN MARCKE, ÉMILE	
Landscape with Cows	101
 VENEZIANO, BONIFAZIO	
The Infant Moses Brought to Pharaoh's Palace	139
 VIBERT, JEHAN GEORGES	
The Feast of the Annunciation	55
 VIGÉE-LE BRUN, ELISABETH LOUISE	
Young Woman with Directoire Hat	150
 VOLLON, ANTOINE	
Paysage d'Automne	158
 WALKER, J. A.	
French Cavalrymen	37
 WESTALL, RICHARD, R.A.	
Cupid and Psyche	168

WYANT, ALEXANDER H., N.A.

Landscape	5
Wood Interior	27
On the Seashore	33
The Church on the Hill	85
The Edge of the Woods	88
The Environs of a City: Evening	90
Landscape	91
Autumn Landscape	95

ZAMACOIS, EDUARDO

Portrait of Joliet	6
--------------------	---

ZIEM, FÉLIX

Venetian Fishing Boats	50
Grand Canal, Venice	160



