

Historic, archived document

Do not assume content reflects current scientific knowledge, policies, or practices.



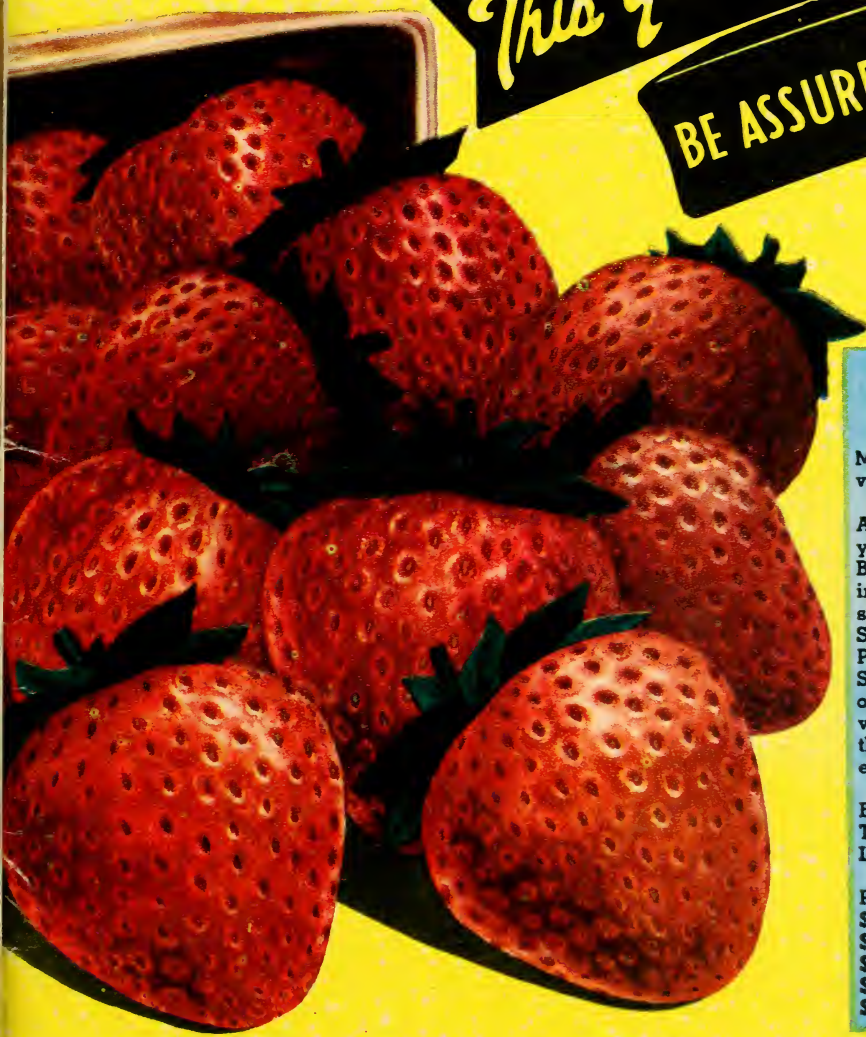
62,37

TOWNSEND'S



1949
CATALOG OF FRUITS

This Year! PLANT THE BEST
BE ASSURED OF RESULTS!



PREMIER

(See Page No. 6)

Most popular early strawberry variety ever originated.

A Townsend speciality for 32 years, since introduced at Belchertown, Mass. Our planting stock is of the original strain. Our method of Plant Selection has kept Townsend Premier, the "largest yielding Strain grown today." Many of our customers report harvesting at the rate of more than 1 1/2 quarts of berries from each original plant set.

Buy All Your Plants And Trees This Year From The World's LARGEST AND SAVE.

PRICES:—25 plants 90c; 50 for \$1.70; 100 for \$2.65; 200 for \$4.50; 250 for \$5.25; 400 for \$7.25; 500 for \$8.25; 1,000 for \$12.95; 5,000 plants for only \$11.95 per 1,000.

Townsend Nurseries, Inc.

PLANT FARMS

L. SHERMAN TOWNSEND, Mgr.

SALISBURY, MARYLAND

YOU'LL SAY

It's Easy



To Grow Your Own
STRAWBERRIES



Famous

Streamliner

CERTIFIED Select Strain VARIETY

EVERBEARING Streamliner, best quality and highly productive variety, is a definite 'must' for every complete garden. Yields extra large, beautiful red berries in early mid-summer, 10 weeks after planting, and continues to the frost season. Townsend Nurseries, Inc. select strain of this famous strawberry variety invokes praise from coast to coast, such as ". . . probably the very largest of all strawberries," ". . . delightfully sweet and flavorful, too," ". . . solid red color, all the way through," "superb for canning—excellent for freezing," ". . . so firm," ". . . incomparable skin texture," "Productivity? Say, I'll take all I can get!"

FREE GROWING DIRECTIONS

New Low Prices!

25 Plants - - - \$.98

50 Plants - - - 1.95

100 Plants - - - 3.75

Complete Prices Page 52

Copyright 1948 Townsend Nurseries, Inc.



Guaranteed Free of Disease

One FIELD of Our Huge Streamliner Plantings



Townsend Nurseries

Inc.

1949

INDEX

Apples	Page 26-27
Apricots	33
Asparagus	46
Bearing-Age Plants	43
Blackberries	40-43-55
Blueberries	24-25-56
Boysenberries	41-55
Bush Cherries	34
Cherries	32
Chestnut Trees	35
Figs	35
Filberts	35
Grapes	42-43-55
Horse Radish	46
Jumbo Fruit Trees	28-29
Nectarines	33
New Fruits	2-8-9-14-17-23
	34-37-39-41-51
Peaches	30-31
Pears	33
Pecans	35
Plums	33
Raspberries	36-37-38-39
	43-55
Raspberries-Prices	55
Rhubarb	46
Strawberries:	
(Early Varieties)	6-7-8-9
	10-11-17-51
(Mid-Season)	12-13-15-51
(Late to Very Late)	14-16-50
(Everbearing)	2-22-23
Gardens	20-21
Culture	48-49
Strawberries-Prices	54
Vegetable Plants	44-45
Walnuts	35

L. SHERMAN TOWNSEND, President

R. B. TOWNSEND, Secy.-Treas.

W. BENDELL HUMPHREYS, Vice Pres.

Townsend Nurseries
INC.
PLANT FARMS

Growers of Selected Strain Strawberry Plants
Blackberry Plants
Raspberries
Blueberries
Dewberries
Grapes
Asparagus
Fruit Trees
Rhubarb
Chestnut Trees

DOING BUSINESS AT THE SAME "OLD STAND" SINCE 1911

P. O. Box 110
SALISBURY, MARYLAND

Dear Friend:

I like to think that each of our customers is a friend! I'm sure this is proven by the sensational rise in our customer mailing list --- a growth that reflects the confidence placed in us by you and thousands of other users of our products all over the country! Our tremendous volume of business in 1948 --- we are the World's Largest Growers - Shippers of Strawberry Plants --- has enabled us to staff our organization with the finest nurserymen and propagating experts available. And, our packing facilities have been so enhanced by the most modern packing house as to allow us to give each and every order, regardless of size, the prompt and individualized attention that Townsend Nurseries "satisfied customers" have a right to expect.

Half a century of accumulated "Know-How" goes into the propagation of Townsend's famous Select Strain varieties --- your assurance of healthy, true-to-name varieties in plants, trees, vegetables, and other nursery products grown under the personal supervision of L. Sherman Townsend. We point with pride to our unparalleled record of having filled large and small orders faithfully with guaranteed record of having filled large are sure to arrive in a vigorous, ready-to-grow condition.

We've been fortunate during the past year in that weather conditions have been highly conducive for the production of berry plants. So, regardless of the continued rise in production costs, we have millions of real quality, Select Strain, energetically vigorous and heavily-rooted berry plants to ship "at no increase in prices on a single item", but have lowered prices wherever possible. Our lists feature the tried and proven varieties that pay off in bumper crops for commercial growers and abundant table delicacies for home gardeners. You can be assured that when you buy Townsend Select Strain Plants, you'll be shipped only the quickest growing, heaviest yielding plants that are dug. In keeping with our "Money Back if Not Satisfied" guarantee, we discard plants that do not meet with Townsend standards. We have only one grade "The Best".

It is a pleasure for us to serve our old customers, and if you have never ordered from us, all we ask is that you give us a trial order. We're confident in our ability to make you another "Townsend Satisfied Customer".

Sincerely yours,
TOWNSEND NURSERIES, INC.

PRESIDENT

We ask for your order "fully confident" that we can make you a

TOWNSEND'S
LST•HMA

Buy Direct from one of the largest Growers and Shippers of Nursery Stock in the country. Top Quality Plants and Trees at reasonable prices.



L. SHERMAN TOWNSEND

"ONLY WHEN YOU HAVE THE COMBINATION OF HIGH QUALITY AND LOW PRICES DOES REAL VALUE EXIST"

SAVE MONEYBuy *All*Your Garden Needs
From**TOWNSEND NURSERIES****THE WORLD'S LARGEST**

Growers and Shippers of

STRAWBERRY PLANTS!

WHEN you purchase Townsend plants you know that you are going to receive plants that are disease-free and just waiting to demonstrate the vigorous, healthy and vitalized growing properties that 47 years of growing experience can produce. Tens of thousands of satisfied customers enable us to operate one of the largest growing and shipping businesses in the world. We, in our turn, endeavor each year to show our appreciation of this confidence entrusted in us by selling only plants that are authentically true to name and reflect our reputation by being the best plants that money can buy. Streams of letters from satisfied customers continuously praise the hardiness and the superior yielding qualities of Townsend plants. There is no secret behind these proven facts. You will find that Townsend Select Strain plants of approved varieties, will provide you with increased yields also.

We Will Help You Get Started

Since our best recommendations are not written—but grown—we are very definitely interested in the results that you get with our plants. We want to number you along with other thousands of satisfied customers, so allow us to make your problem ours. Even an inexperienced grower can enjoy the satisfaction (and profit) incurred by growing bumper crops. Ordinary care by you, coupled with the 47 years of growing experience that is behind the instruction under Culture Directions on Pages 6 and 7 by us, can get you the desired results. Any instructions we have failed to include will be gladly sent to you, free of charge, upon request. We also issue a complete culture guide. This booklet is free and yours for the asking.

WE NEVER SACRIFICE QUALITY FOR PRICE!

Every plant that has ever left our establishment, regardless of price, has been a true representation of the unequalled quality literally built into Townsend plants. Townsend's lasting trade, a tribute to our policy of fair and courteous treatment, was built up through the years by consistent shipping of quality plants at the lowest possible prices despite the ever changing trend of the times. We have tried to pack both confidence and value into every package that we have ever sent out, thus assuring you of a square deal every time.

● Our Packing Method

When you order your plants from us, you are assured of receiving your order in a fresh, growing condition. The management of Townsend Nurseries has not spared any expense on research work pertaining to the shipping of perishable plants. Our **NEW MODERN PACKING HOUSE**, with **CONTROLLED STORAGE** assures our customers beyond any doubt that our plants are kept fresh, from the hour they come from the fields, until they are pre-cooled just before being delivered to the transportation companies enroute to you. Plants are packed into light (but desirable) packages and ventilated crates. A portion of fine, cool damp spagnum moss is placed around all the roots, to preserve the moisture, and to keep the plants perfectly cool while in transit.

● Fibrous Roots

The fibrous root system is an important factor in getting a 100% stand after setting. To grow such a plant, proper soils and plant food must be used such as that on our plant farms. Our forty-seven years of experience in growing berry plants has given us valuable information on growing a properly balanced plant—one that will grow and produce the yields you have a right to expect.

● Prompt Service Quick Deliveries

One and a half million plants a day . . . that's our daily digging capacity! Weather permitting, our large crew is on the job 24 hours a day throughout the shipping season. This immense productive capacity is your guarantee of prompt attention and shipment of your order, regardless of size. A trial this year will convince you that with us, **SERVICE** is much more than just a word.

● Clean Trimming of Plants Makes Easy Setting

Plants received from the nurseries well trimmed, not only save customers time when setting, but also saves them extra transportation charges that must be paid for excessive decayed foliage on improperly trimmed plants. There is very often the added loss of the plants themselves, caused by the heating of this foliage in transit, which in turn, causes bud decay or dried roots. This thorough cleaning of all plants is an important part played by our experienced plant diggers each year, and helps our customers to get big yields of quality fruit.

\$1.00 ONE DOLLAR DIVIDEND \$1.00

TOWNSEND'S NURSERIES, INC., SALISBURY, MARYLAND

in appreciation of your patronage

HEREBY ISSUES A DIVIDEND IN THE AMOUNT OF \$1.00

as a credit toward your next purchase of nursery stock from TOWNSEND'S NURSERIES, INC. You may apply this certificate, on any order that amounts to \$6.50 or more, just as if it were cash. (Not applicable to Special Garden Offers.)

TOWNSEND'S NURSERIES, INC.

GOOD until February 10th, 1949 P. O. Box 110, Salisbury, Md.

(Trade Mark)

YOWNSEND Nurseries, Inc. is the old original Townsend establishment, which business has been active for 49 years, and are the world's largest growers—shippers of berry plants. Do not confuse this old reliable Nursery with others of similar name.

You take no risk when you mail your order to Townsend Nurseries, Inc. "Our Trade Mark and broad Guarantee protects you."

● **TRUTH**

The good name of this firm and good will of its customers have been built and preserved by always handling nothing but the highest grade stocks available. Every plant or tree is the best that can be produced.

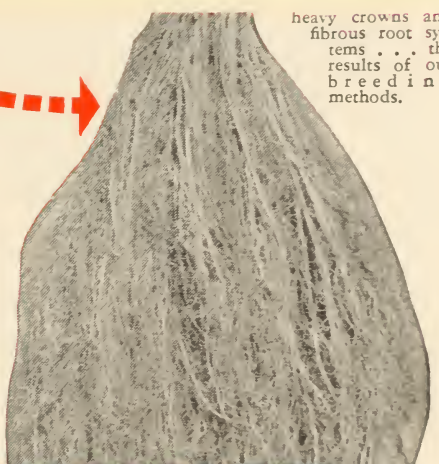
● **QUALITY**

Old customers know that they will always get the variety they order. They have faith in us and we will not break it.

● **HEALTH**

● **PRODUCTIVITY**

Every plant that goes into our propagation fields is selected for its heavy fruiting crowns. In this manner our stock is kept on its high level, in both productivity and vitality. All plants are carefully packed so that you receive them in condition to grow strongly and to produce as you have the right to expect from plants bearing the original Townsend Trade Mark. Any stock received by you that does not meet these high stand-



heavy crowns and fibrous root systems . . . the results of our breeding methods.



Profitable FRUIT GROWING

Why trees do not bear—How to prune—Why fruit drops prematurely—How to get size and color. These and many other problems in fruit growing are answered in America's leading fruit magazine—published monthly on the first of each month. Subscription rate is 3 years for \$1.00.

3 Years \$1.00

THIS COUPON

AMERICAN FRUIT GROWER

1370 Ontario Street • Cleveland 13, Ohio

Attached is \$1.00 for 3 year subscription.

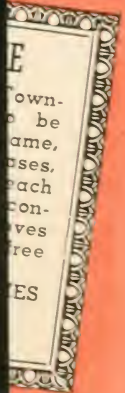
Name.....

Address.....

City..... State.....

MAIL

Good only in U.S.A.



\$1.00 ONE DOLLAR DIVIDEND \$1.00

TOWNSEND'S NURSERIES, INC., SALISBURY, MARYLAND

in appreciation of your patronage

HEREBY ISSUES A DIVIDEND IN THE AMOUNT OF \$1.00

as a credit toward your next purchase of nursery stock from TOWNSEND'S NURSERIES, INC. You may apply this certificate, on any order that amounts to \$6.50 or more, just as if it were cash. (Not applicable to Special Garden Offers.)

TOWNSEND'S NURSERIES, INC.

GOOD until February 10th, 1949 P. O. Box 110, Salisbury, Md.

WHEN you purchase Townsend plants you know that you are going to receive plants that are disease-free and just waiting to demonstrate the vigorous, healthy and vitalized growing properties that 47 years of growing experience can produce. Tens of thousands of satisfied customers enable us to operate one of the largest growing and shipping businesses in the world. We, in our turn, endeavor each year to show our appreciation of this confidence entrusted in us by selling only plants that are authentically true to name and reflect our reputation by being the best plants that money can buy. Streams of letters from satisfied customers continuously praise the hardiness and the superior yielding qualities of Townsend plants. There is no secret behind these proven facts. You will find that Townsend Select Strain plants of approved varieties, will provide you with increased yields also.

We Will Help You Get Started

Since our best recommendations are not written—but grown—we are with our thousands problem of satisfaction Ordinary experience Directions results. gladly ser issue a c yours for

FRUIT GROWERS

It's easy to grow perfect fruit if you know how. We would like to tell you how it's done and help you solve your fruit problems.

Here are a few things we told our readers in recent issues: Identifying Insect Injuries, The Insecticide DDT for Fruit Insect Control, Picking Insecticide Injuries, How to Handle a Picking Injury Disease Injuries, How to Handle a Picking Injury Disease Injuries, How Much Cold Can Fruit Take and How to Identify Varieties.

How to know what varieties are best to plant? Do you know what varieties are best to plant? Do you know what varieties are best to plant?

Do you know what varieties are best to plant? Do you know what varieties are best to plant? Do you know what varieties are best to plant?

Do you know what varieties are best to plant? Do you know what varieties are best to plant? Do you know what varieties are best to plant?

Do you know what varieties are best to plant? Do you know what varieties are best to plant? Do you know what varieties are best to plant?

Do you know what varieties are best to plant? Do you know what varieties are best to plant? Do you know what varieties are best to plant?

● **Our Packing Method**

When you order your plants from us, you are assured of receiving your order in a fresh, growing condition. The management of Townsend Nurseries has not spared any expense on research work pertaining to the shipping of perishable plants. Our NEW MODERN PACKING HOUSE, with CONTROLLED STORAGE assures our customers beyond any doubt that our plants are kept fresh, from the hour they come from the fields, until they are pre-cooled just before being delivered to the transportation companies enroute to you. Plants are packed into light (but desirable) packages and ventilated crates. A portion of fine, cool damp spagnum moss is placed around all the roots, to preserve the moisture, and to keep the plants perfectly cool while in transit.

● **Fibrous Roots**

The fibrous root system is an important factor in getting a 100% stand after setting.

WE N

Every less equal Tow and by c sible We eve you

Recommended by

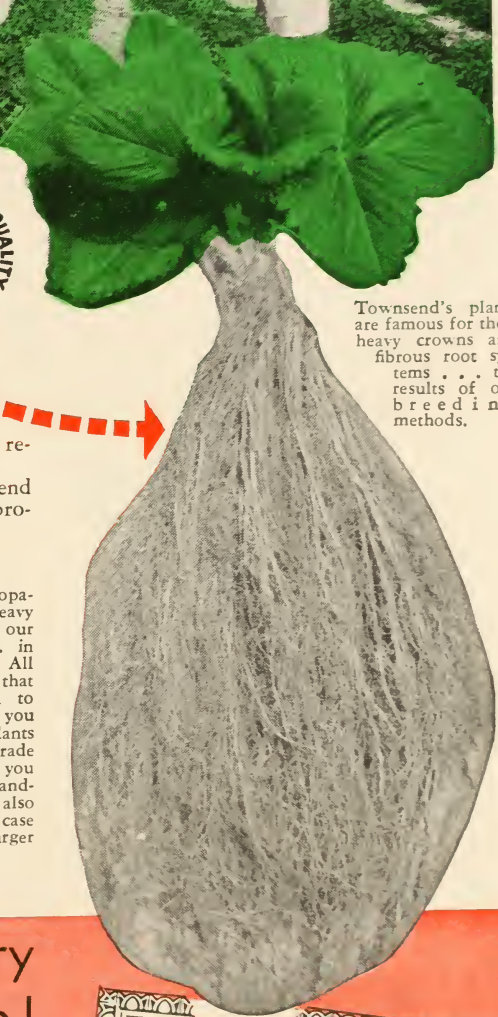
TOWNSEND NURSERIES

Salisbury, Maryland



**Townsend's Select Strain
Plants Are PROTECTED
By This Trade-Mark**

Certified For Quality and Productivity



Townsend's plants are famous for their heavy crowns and fibrous root systems... the results of our breeding methods.

YOWNSEND Nurseries, Inc. is the old original Townsend establishment, which business has been active for 49 years, and are the world's largest growers—shippers of berry plants. Do not confuse this old reliable Nursery with others of similar name.

You take no risk when you mail your order to Townsend Nurseries, Inc. "Our Trade Mark and broad Guarantee protects you."

- **TRUTH**
The good name of this firm and good will of its customers have been built and preserved by always handling nothing but the highest grade stocks available. Every plant or tree is the best that can be produced.
- **QUALITY**
Old customers know that they will always get the variety they order. They have faith in us and we will not break it.
- **HEALTH**
Every plant we ship is healthy, thrifty, and free from all injurious disease. Diseased plants will produce dividends for neither you nor us.
- **PRODUCTIVITY**
Every plant that goes into our propagation fields is selected for its heavy fruiting crowns. In this manner our stock is kept on its high level, in both productivity and vitality. All plants are carefully packed so that you receive them in condition to grow strongly and to produce as you have the right to expect from plants bearing the original Townsend Trade Mark. Any stock received by you that does not meet these high standards will be replaced free. It is also understood and agreed that in no case will we be liable for any sum larger than the purchase price.

We Pack Goodwill in Every Bundle of Plants We Ship!

For almost half a century the name of Townsend has been synonymous with "square deal." value and top quality in the nursery business. We have tried to pack confidence into every package of plants that we have ever sent out. As an indication of the effectiveness of this extended practice, a good will, unparalleled in its extent, has been established almost from the very beginning. In order to hold this enviable position, Townsend must continue giving the same "square deal" every time you come to us with your order.



OUR GUARANTEE

Every plant shipped by Townsends' is guaranteed to be strictly first class, true-to-name, free from all injurious diseases, and carefully packed to reach you in a good growing condition. Any stock that proves otherwise we will replace free of charge.*

**TOWNSEND NURSERIES
INC.
Salisbury Maryland**

* In no case will we be liable for any amount larger than the purchase price.



MILLIONS OF SELECTED STRAIN PREMIER ARE GROWN ANNUALLY AT OUR PLANT FARMS



Still the Greatest Commercial Early Berry of Them All

PREMIER

NOW -- ONLY \$11.95 per 1000 in 5000 Lots

NEW
LOW
PRICES
ON
PAGE 52

FAIR—TREATMENT
BIG—YIELDS
“AT NO EXTRA COST”

Adams County, Pa.
Aug. 16th, 1948

Mr. L. Sherman Townsend
Townsend Nurseries, Inc.,
Dear Sir:

Kindly book my order for 20,000 Premier strawberry plants for Spring 1949 delivery. Understand that berry plants will be short for '49 planting, and we don't want to be left on TOWNSEND'S PLANTING STOCK.

Picked rate of about 16,000 quarts berries per acre from your plants last Spring Harvest. Have good prospects for coming season. Thanks for the personal attention you give orders, as well as the very reasonable prices for your higher quality berry plants.

Yours Sincerely, O. D. D.

THE Premier strawberry is still the queen, and retains its popularity with thousands of individual growers because it puts a big crop of fine appearing berries on the market first every time, and does it under climatic conditions that often kill other varieties. No other variety can supplant Premier for all around superiority. Superiority as a money maker. Superiority inasmuch as Premier eliminates crop failure, and by fruiting and ripening days and often a week earlier, Premier never fails to command—and get—the highest price. Premier has everything that its name implies, and by our select strain method of growing, we have maintained all of the high qualities that made Premier the immediate sensation of the strawberry world when it was first introduced, and has kept it there ever since.

Our Strain of PREMIER is True-to-Name, Double Inspected, State Certified!

Every bundle of Townsend's Premier has been double inspected and certified by the Maryland State Dept. of Entomology. Our strain of Premier is direct from the original planting and has been consistently bred each year for heavier yields. Our new ground planting of Premier is one of the

largest in the country—the quality has never been better. If you are seeking bigger, heavier yielding crops of large fine fruit, plant Townsend's original strain of HEAVY YIELDING PREMIER. We will reserve plants for you, digging and shipping whenever you are ready.

COLOR—An attractive, bright, scarlet red, capped by a colorful green calyx that serves to accentuate the berries' color when eyed by prospective buyers.

SIZE—Uniformly large, and under favorable growing conditions, the berries run to extra large sizes, holding up well throughout the entire ripening season and up until the last picking.

FIRMNESS—Classed as a long distance shipper where trucks are em-

ployed, Premier is ideal for the market gardener because of its lasting firmness.

VIGOR—Premier is a strong healthy grower, making a good fruiting bed on a wide range of soils and climatic conditions.

QUALITY—A constant demand over a period of years serves to rank Premier among the foremost for flavor and quality. Recommended for home use, local sales or commercial markets.

SEASON OF RIPENING—Premier berries are among the first varieties to ripen, and comes on the market when other strawberries are practically non-existent or in their earliest stages.

FROST RESISTANT—Premier is practically immune to late spring frosts. This is due to the peculiar plant growth which it makes, almost completely hiding the blossom and protecting it from severe cold.

PLANT TOWNSEND'S DOUBLE INSPECTED STATE CERTIFIED

BLAKEMORE

Yellow-Resistant
BLAKEMORE
Is The Ideal
Commercial
Variety



PRICES
ON
PAGE 52

ORIGINATED several years ago by the U. S. Department of Agriculture, this hardy strain has achieved remarkable popularity in states south of the Mason-Dixon line and as far north as Pennsylvania and the Ohio Valley. For an early, solid production that will be both economical and profitable, the Blakemore should be your outstanding choice. It is so sturdy that it will withstand heavy rains with small loss of fruit, so enduring that heavy plant growth can be accomplished in practically any soil, and vigorous enough to withstand more abuse and neglect in growth, picking or shipping than any other variety. The fact that the new yellow resistant Blakemore is held in high esteem is unquestionable. The sensational evidence is in the survey that revealed twice as

many acres are planted in Blakemore than any other variety. As a matter of fact, 25% of all commercial strawberry acreages are planted in Blakemore.

As a scientific cross between Premier and Townsend's Missionary, its sizing is from medium to large fruit. Its yield is abundant. The fact that 80% of its crop is produced one week after the first picking makes it invaluable to producers of large quantities for the extra-early market.

The perfect commercial berry, it's tops in choice by canners and preservers. Because of its firmness, Blakemore can withstand long distance hauls and maintain its robust appearance.

We reserve plants on order and ship when you are ready to set—so order . . . NOW.

Our Loss is Your Gain--Here's Real Value In

SURPLUS STRAWBERRY PLANTS



As is the case in any other business where large quantities of diversified types (or varieties) of products are concerned, naturally a slight overage or surplus is realized. Since our business policy does not allow us to carry plants that have already been dug over to the next day, we must dispose of this surplus. We, therefore, are in a position to make this potential loss of ours your gain. The grower who is not especially particular about varieties can buy these plants at a sensational and tremendous saving. Every plant is freshly dug, labeled, and true to name. Because of these low prices, we regret that we cannot assume any responsibility for variety selection—please do not ask for particular varieties.

1000
Plants **\$9.00**

5000
Plants **\$8.00** Per
1000

EVERY BUNDLE LABELLED
AND OF APPROVED VARIETIES



This Field Yielded Average of 8740 Quarts of Sparkle Berries per Acre.

Sparkle

New

Truly Magnificent!

A Mid-Season Berry

for Home and Market

Developed by the New Jersey Agricultural Station

IN OUR 1948 Catalog we stated that SPARKLE was in its infancy—now we can state definitely that this is quickly developing as one of America's outstanding varieties. Sparkle has captured the praise of large strawberry growers, particularly in such states as New York, New England States, New Jersey, Pennsylvania, Ohio, and West Virginia. Sparkle has been used with great success in certain parts of these states where Catskill does not produce sufficient fruiting beds for a large commercial crop of mid-season berries. Sparkle is a beautiful growing plant, making a fine fruiting bed on almost any type of soil. Be sure to include some Sparkle plants in your 1949 settings.

- BRED FOR HEAVY YIELDS
- IMMUNE FROM DISEASE

QUALITY —Berries firm, flavor is rich, beautiful sparkling appearance.

PRODUCTIVITY —One of the largest producers in the strawberry field, Sparkle ranks with Premier-Temple and Catskill.

SIZE —On fertile soil with plenty of moisture, Sparkle is larger than Catskill. Average conditions the variety is somewhat smaller, and the grower should not let the fruiting bed make too heavy of a matted row of plants where larger berries are wanted.

DISEASE RESISTANT —Sparkle is immune to red stele root disease which some soils are plagued. Truly a variety for Ohio, New York State and some parts of New England where this red stele disease has been found. Sparkle will grow and produce where other varieties fail.

PRICE LIST ON PAGE 52

Townsend's *Select Strain*
Plants are **TRUE-TO-NAME**

Satisfaction Guaranteed



MIDLAND

*Sensational
Vigorous
Grower!*



The **NEW**

**EARLY
BERRY**

M IDLAND, first introduced in 1946 on a purely experimental basis, has proven itself to be an all-around superior early variety well worth your investment. Especially recommended for quick freezing. Our reports from various sections of the country warrant us in highly endorsing Midland to customers who have learned to rely on the Townsend Nurseries' word.

MIDLAND Succeeds Where others fail!

- **QUALITY**—Has rich strawberry flavor, not too sweet and certainly not classed as a sour berry.
- **SEASON OF RIPENING**—Early, about same season as PREMIER.
- **VIGOR**—Makes a strong fruiting plant, rather than a matted row of small plants. A beautifulgrowing plant.
- **SIZE**—Berries average better than large, with 22 to 28 select berries filling a quart basket.
- **FIRMNESS**—Extremely firm berries, can be shipped long distance. Berries have that fresh look 2 to 3 days after picked. Ideal for market.
- **FREEZING**—One of the better varieties of strawberries for quick-freezing—where you want the berries sliced before freezing.
- **PRODUCTIVENESS**—Produces tremendous heavy yields. Reported as much as 2 quarts of berries from each plant originally set.

We Report to You as Follows:

OHIO—Plants strong grower, berries extra large, big cropper.

KANSAS—Plants vigorous grower, berries large to extra large, does not make as ready a fruiting bed as Premier.

MISSOURI—Larger berries than Premier, about the same in yields.

WEST VIRGINIA—Likes MIDLAND, for extra large berries, and heavy producer.

PENNSYLVANIA—Midland seems to do better on the lower fertile soils of this State, than the average variety of the same season. For average Pennsylvania soils, PREMIER is preferred for the early variety.

NEW YORK—Midland has had a little frost trouble in this State on the very early blooms. Folks like the large bright berries.

NEW JERSEY—On light soils not so good — heavy soils the berries are large and bring premium prices.

NEW ENGLAND STATES—Still prefer PREMIER — as a whole for the early variety. Have some very outstanding reports for MIDLAND in the States of Connecticut and Massachusetts.



20 acre block of
Select Strain
Dorsett grown
by Mr. L. Sher-
man Townsend

DORSETT

Leading *Early* Strawberry



Developed from a cross of Royal Sovereign X Premier (Howard 17) by the U. S. Dept. of Agriculture. This relatively new variety has rapidly attained widespread popularity in every berry growing section in the country.

Taking its place high in the ranks of leading early berries, Dorsett strawberries are widely planted in every State in the union. Commercial growers know that its ready adaptability to almost any type of soil; its vigorously abundant growth (assuring good crops even in poor seasons) make Dorsett the kind of berry that comes through with paying crops. Its rich, attractive, bright red color, and its ability to retain firmness long after picking, makes Dorsett an excellent shipper (even over exceptionally long hauls) and the kind of strawberry that buyers pay more for. Each year more and more growers find that Dorsett strawberries are one of the best profit yielding early berries that is possible to grow. To meet the ever growing demand for Dorsett, Townsend grows one of the largest plantings in the country. Literally millions of Townsends' Select Strain Dorsett are grown annually (Note: the above photo shows a twenty acre block of new-ground grown Dorsett), and shipped to Dorsett-wise growers the Nation over.

DORSETT HAS EVERY DESIRABLE FEATURE!

Townsends' Select Strain Dorsett are Double Inspected, State Certified and true to name. Popular as an early ripening, big and regular crop, this "in demand" variety has been bred for larger yields. Regardless of how large or small your order may be — — send it in. We will be glad to service it for you. We can reserve plants and ship when you are ready to set.



Price
List on
Page 52



A large acreage of Certified Fairfax developed under the personal supervision of Mr. L. Sherman Townsend

PRICE LIST ON PAGE 52

FAIRFAX

Famous for Heavy Yields in the *Early Market*

YOU can tell the worthiness of any variety by its continued popularity. Sensational rise in sales of Fairfax has served as a barometer-like indication of the admirable results enjoyed by growers of this fine berry. Much of this success is undoubtedly due to the rugged hardiness of Fairfax. Even during seasons of drought, this variety will continue to thrive and produce money-making crops when other strawberries fail to survive. Leading all others in firmness, Fairfax is ideally equipped by nature for shipment to any part of the country, and its honey-sweet flavor has earned Fairfax the reputation of being "the most deliciously flavored of them all." Behind our recommendation of this variety lies years of careful plant selection that makes this variety more than equal to any berry for commercial planting. Devote a goodly portion of your acreage to Fairfax, thus insuring yourself a good crop of desirable strawberries regardless of weather conditions.

TOWNSEND'S Select Strain Fairfax are Double Inspected and State Certified to be true to name, and recognized by leading growers as the heaviest yielding strain grown. Let us reserve some of these plants for you. We will ship whenever you are ready to plant.

FAIRFAX is Superior Because - - -

QUALITY is so outstanding that Fairfax leaves nothing to be desired.

Firmness plus is the word for Fairfax. Ideal for commercial marketing.

Flavor that is truly delicious. The finest eating berry on the market.

Productivity that more than compares with such popular beauties as Dorsett and Premier.

Size of fruit is very large and very uniform. Brings "top dollar" on any market.

Vigorous in its growing habits, Fairfax is noted for its abundantly flourishing foliage and hardy root system. The long and fibrous characteristics of its root system accounts for the amazing growth of Fairfax even under drought conditions.



SPECIAL ASSORTMENT For Your Early Berry Garden

Be the first in your neighborhood to have large delicious strawberries; order one of these gardens today at special prices.

50 Sparkle, 50 Fairfax,
50 Premier
—150 Plants All for

\$3.95
Cat. Value \$5.10

2 GARDENS
for

\$6.45
Cat. Value \$7.95

PROFITS IN EXCESS OF \$2000.00 PER ACRE IN 1948 AMAZE MANY GROWERS

NEW TEMPLE

ONLY
\$11.00 Per
1000

In 5000 Lots

SEE PRICE LIST
ON PAGE 52



A GROWING FAVORITE with Commercial Growers BECAUSE IT'S A

SEVERAL years ago, the northern half of this country found itself locked in the throes of a very serious plant disease. This disease, known as the Red-Steale root rot, played havoc with the then growing strawberry crops, and as a result, acre after acre of plants were destroyed. With the help of Professor C. E. Temple, of the University of Maryland, a new variety of strawberry plants evolved from the cross-breeding of plants that were the most resistant to the disease. This work has been carried on cooperatively by the University of Maryland and the U. S. Department of Agriculture, whose efforts finally produced this grand, disease resistant variety. As an acknowledgment for his part in the producing of this berry, the new variety bears his name—Temple.

BRED FOR HEAVY YIELDS ● IMMUNE FROM DISEASE

Quality —Peerless and unsurpassed by any variety on our lists. An attractive looking deep red with excellent keeping qualities. Firm and admirably suited for shipment.

Size —Noted for its extra large fruit that is further accentuated by a rich looking dark green calyx. It is generally referred to as one of the most attractive looking of all strawberries.

Production —Being the result of a cross between Aberdeen and Fairfax, both of which are outstanding for their growing habits, Temple therefore naturally possesses the vigor and vitality of its parents. Its foliage is a beautiful dark green and is resistant to leaf spot. The new Temple can be classed as a free plant maker and is an extra heavy yielding variety coming into fruit about the same time as Dorsett, and a far better shipper than Dorsett. Thus, we conclude that with commercial growers, the new Temple will eventually take the place of Dorsett.

- DEEP FEEDER
- DROUGHT STRAIN
- GOOD PLANT MAKER
- HEAVY YIELDER

"WE ASSURE YOU THAT IT WAS OUR PLEASURE—TO RECOMMEND TEMPLE"

Delaware Co., O., July 7, 1948
Mr. L. Sherman Townsend
Townsend Nurseries, Inc.

Dear Sir:

You were correct about the TEMPLE berry for our locality. Our 1947-48 crops were bigger than ever off of Temple, than when we grew other varieties years ago. We have disease in our soil, where other old varieties fail to grow. You certainly kept us in the berry business when you recommended TEMPLE.

Look for many orders from this section next year. Its a pleasure to recommend You, and your plants.

Yours very truly, F. L. Voss

Catskill

The KING OF MID-SEASON STRAWBERRIES

- FROST RESISTANT
- SUPER CROPPER

CATSKILL—The sugar flavored strawberry proclaimed as the heaviest yielding mid-season variety. The rise in popularity of this highly productive berry has been nothing short of phenomenal. Its fame with growers as a "super cropper", and its large, bright, shiny red fruit, has established for Catskill the highest record among all marketable, mid-season berries. Its adaptability to a wide range of soils and climatic conditions has served to further make it an all around favorite. While our strain of Catskill is direct from the originators at Geneva, New York, we have, through careful plant selection, produced a strain that is considered by some of the largest growers in the country to be far superior in vigorous growing habits and heavier yielding qualities than any other strain of this same variety. In recommending this variety, we do not hesitate in assuring you that our strain of Catskill is one that is certain to prove more than satisfactory.

Millions of Select Strain
Catskill, All Double Inspected,
Await Your Order

To insure the filling of your order and to meet the increased demands for Townsend's Select Strain Catskill, we have once more increased our acreage. Our plants look fine and healthy, and are amply demonstrating Catskill's lush growing characteristics with abundant heavy crowns and hardy, fibrous roots. To get the pick of the crop—order early.

ONLY \$11.95 Per 1000

(In 5000 Lots)

SEE COMPLETE
PRICE LIST
ON PAGE 52



Champion on 3 Counts
SIZE
YIELD
PROFITS

Superlative for Canning and Freezing

RICH COLOR—Bright, shiny red, similar to Big Joe. A double cap of green and its size and coloring make an attractive looking appearance when offered to the buyer.

SIZE—The extra large size of Catskill, from a commercial grower's standpoint, is undoubtedly its greatest attribute. This fact makes Catskill a more than outstanding value, and causes it to demand higher prices at market time. Catskill keeps its size well until the last fruit is harvested.

QUALITY—Its very fine texture, and its ability in holding up well after picking, makes this variety an admirably suited berry for long distance shipping—a fact that is appreciated by berry growers. On a par with such outstanding berries as Premier, Dorsett, Fairfax, Chesapeake and Big Joe, the flavor of Catskill makes it a much-in-demand commercial value.

PRODUCTIVITY—Big profits in every state east of the Mississippi—and in several states west, have lent substantial support to the general enthusiasm voiced by growers of this prolific variety. Due to results realized in our own test plots, we heartily agree with these growers that Catskill is the heaviest producing mid-season variety ever grown. We cannot see how any grower can fail to make big profits. Nothing short of an outright calamity can keep Catskill from coming through with bumper crops.

FAVORITE in Pa., N. Y., and New England States

2 BIG

MONEY MAKERS



FAIRPEAKE

TOPS IN FLAVOR — LARGE IN SIZE

EVERY home garden as well as farm should have Fairpeake strawberries growing. A cross of the top flavor berry Fairfax and Chesapeake, an old favorite late variety, we believe that Fairpeake has taken the place of Chesapeake as a top quality late variety, for most growers. We recommend Fairpeake for a new top quality strawberry.

VIGOR —Strong vigorous grower producing big plants, with large leaves.

SIZE —VERY, VERY LARGE BERRIES, that are beauties.

QUALITY —Tops in flavor, produces morethan Chesapeake.

FIRMNESS —Good shipper, sound berry. Like moist soil.



FIELD SELECT STRAIN STRAWBERRY PLANTS GROWN BY L. SHERMAN TOWNSEND

Gandy

OLD FAVORITE
EXTRA *Late*
VARIETY

TOWNSEND'S STRAIN OF GANDY
FAR AHEAD OF OLD STRAIN
IN YIELDS AND QUALITY

IN THE early days of Gandy, just after it was originated in New Jersey several years ago, its production was not quite as good as has been expected. However, we soon remedied this situation by Townsend selection of our heaviest producing plants and using them for propagating stock. As a result, the productive capacity was more than doubled within a very short time. The news of our sensational success spread like wildfire and today our extensive planting of Gandy is one of the largest in the United States. The fruit has always been of good quality and now is really excellent. The quality, size and shipping qualities have always met with instantaneous success wherever Gandy has been introduced. Berries are of wonderful quality, large to extra-large in size; bright red with dark double green caps. Ripening usually takes place about two weeks after Premier and Dorsett.



COMPLETE PRICES ON PAGE 52

MID-SEASON TO LATE FAVORITE

BIG JOE

DEPENDABLE
OLD-TIME
FAVORITE

PRICE LIST ON PAGE 52

For twenty-two years this dependable old timer has been coming through with paying crops for growers throughout the country. Ripening at the height of the season just about the time of the last picking of Premier and Dorsett, this variety comes upon the market just when large fancy berries—like Big Joe—can command top market prices. The size and appetizing beauty of this variety and its appeal to the public—an appeal measured in cash returns—has brought Big Joe nothing but continued praise.

OUTSTANDING WITH GROWERS THE NATION OVER BECAUSE OF:

- **SIZE** —Large to very large berries.
- **COLOR** —Rich, beautiful, double green cap.
- **QUALITY** —None better — ranks with the best. Tops for flavor and shipping.
- **PRODUCTIVENESS** —Under favorable growing conditions, cannot be equalled.
- **VIGOR** —Strong grower on most all types of soil. At its best on clay, or well drained, springy loam soil.

Senator Dunlap

(DR. BURRILL)

Medium Early VARIETY

One of the leading varieties for Western states, this beautiful, glossy, dark red berry is deliciously sweet in flavor, and the ideal berry for canning and preserves. We grow, annually, hundreds upon hundreds of thousands of this popular western favorite, and always find ourselves sold out long before planting season is over. This in itself is mute testimony to the virtue of Senator Dunlap. The tremendous demand of our western trade speaks eloquently of the unequalled popularity enjoyed by this variety in that territory.

Vigorous Grower —Dunlap's deep feeding habit makes it possible for Dunlap to withstand considerable amount of dry weather; more so than any other variety. This reason makes it especially suited to western climatic conditions. It usually makes an excellent fruit bed under favorable growing conditions.

Fruit —A beautiful, glossy, bright red color with plenty of firmness for long distance shipping. Splendid quality when grown in regions adapted to it.

COMPLETE STRAWBERRY PRICES PAGE 52



TOWNSEND'S
SELECT STRAIN
DUNLAP PLANTS

Have Won a Reputation
In the West for Heavy Yields

STANDS ALONE AT THE TOP OF ITS CLASS

TOWNKING
PRIDE OF AMERICA



The MOST PERFECT *Late* STRAWBERRY!

**Comparing TOWNKING
with other Late Varieties**

"TOWN KING BEST BERRY"

Warsaw, Ill.

April 10th, 1948

The 2,000 TOWN KING plants received in fine condition. All planted and started growth already. I will say again—TOWN KING are the best strawberries to grow for late.

Harry D. Johnson

**"EVERYTHING WE SAY THEY
ARE—WANTS TOWN KING
AGAIN!"**

Holyoke, Mass.

May 1st, 1948

Enclosed is another order for your TOWN KING. They are everything you say they are, so want them again.

Wilfrid Pelletier

**TOWNKING PRICES
ON PAGE 52**

T

OWNKING stands alone for money-making qualities. From the Atlantic to the Pacific, from Main to Florida, including Texas, Townking stands as the undisputed king among profit yielding late berries. Premium prices, regardless of locality of the market, are always paid for this variety. Its outstanding color, shape, size and appearance are the prominent factors behind its appeal. Without a doubt, Townking definitely stands alone as the most perfect late strawberry ever grown. Cash in on this tremendous planting opportunity. Get your share—give it a trial this year.

Compare These Points of Superiority:

- **PRODUCTIVENESS**—Tops the list of late varieties, for yields.
- **GROWTH**—Produces excellent fruiting beds under ordinary growing conditions. Foliage is free from rust and is dark green color.
- **SIZE**—Berries large to exceptionally large. Appealing and attractive to buyers.
- **COLOR**—A lustrous rich red berry.
- **FIRMNESS**—Excellent for long distance shipping, ideal for roadside market. Remains fresh on vines several days after ripening.
- **QUALITY**—Surpasses Chesapeake, Gandy, Lupton and Big Joe.

OUR CUSTOMERS RECOMMEND TOWNKING! SO DO WE!

POLAR QUEEN



Trade Mark

The "QUEEN" of All Strawberries for Quick Freezing

VERSATILITY—Admirably adapted to prosper and thrive in any locality where strawberries are produced. Not only a competitor to such berries as Blakemore, Premier, Fairfax, and Catskill, but definitely superior on many counts. A truly versatile strawberry inasmuch as it flourishes in any type soil, however, like most varieties, it grows best in damp, fertile soil.

SIZE—In comparison to such popular strawberries as the Blakemore and Fairfax, the Polar Queen fruit is oftentimes as much as 40 per cent larger and holds its size well, even to the last picking, thus insuring top prices on any market.

EYE-APPEAL—Especially appealing to a buyer's eye because of its beautiful, bright, shining red color that goes through to the very core; its complete absence of a green tip; its solid firmness and the tendency for the green cap to grow well away from the berry, making it easy to remove. Its solid

red color runs well up under the cap showing a minimum of light red. Polar Queen is a combination of outstanding features that can't be beaten.

VIGOROUS PRODUCTIVITY—Polar Queen makes a strong and healthy fruiting bed on a wide range of soils, and its extra-heavy yields are the talk of the trade.

"ANOTHER LARGE GROWER PREFERS POLAR-QUEEN"

Oswego Co., N. Y., July 22nd, 1948
Without any question POLAR-QUEEN, is the best early strawberry grown today. Berries are medium to large, the largest producing variety known. Plants make a good fruiting bed, have produced over 17,000 quarts per acre. Jerry A. Hawkins

AN EXCLUSIVE BERRY INTRODUCED BY L. SHERMAN TOWNSEND

Almost instantly acclaimed as the ideal berry for home use or market freezing, Polar Queen (trade mark registered) has more than made its mark since its recent introduction by L. Sherman Townsend. Growers in state after state have been quick to realize the tremendous profit yielding potentialities of this truly superlative berry. Specifically developed for quick freezing, Polar Queen is the real Queen of them all. Don't miss this opportunity to be among the foremost to cash in on an assured profitable planting.

GROW POLAR QUEEN for MARKET and FREEZING

PRICES ON PAGE 52



NEW YORK
Herald Tribune

ACCLAIMED BY NEW YORK HERALD-TRIBUNE for All Around Superiority

One of the greatest honors that can be bestowed upon any fruit variety was awarded to Polar Queen in February 1948 when the New York Herald-Tribune, through its board of leading nursery authorities, printed its recognition of Polar Queen as an outstanding variety in its class! Polar Queen is even superior to such old-time favorites as Blakemore, Premier, Fairfax, and Catskill!

POLAR-QUEEN PLANTS ARE SOLD ONLY FOR THE PRODUCTION OF BERRIES

These Plants are not to be Used for Propagation by Anyone

VALUE-QUALITY

Satisfied Customers

Value cannot be measured by price alone. If quality is lacking, value is destroyed. But when you are offered the combination of low prices and high quality, only then does the value of that product exist.



Townsend's Plants are known the country over as one of the heaviest yielding strains grown

"MANHASSET FARM TRUCK-LOAD BUYERS"

Calverton, L. I., N. Y.

Dear Mr. Sherman:

Plants arrived here yesterday, extremely good looking. More orders will follow.

Heinrich Meyjes.

"PICKS OVER 2 QUARTS FROM EACH PLANT SET"

Cleves, Ohio

Dear L. Sherman:

Cannot praise your PREMIER and TOWN KING too highly. Picked over 2 quarts of berries from each plant originally set. Customers have already placed their orders for next season.

Dewey L. Steele

"A TOWNSEND CUSTOMER FOR OVER 15 YEARS"

Lincoln Park, N. J.

Gentlemen:

For over 15 years your plants have been satisfactory. Picked from your 3,000 TEMPLE and CATSKILL, berries just swell, sold for over 48 cents per quart.

Francis Hagmam.

TOWNSEND NURSERIES, INC., are known the country wide, for better quality plants that produce bigger crops at no extra cost. Careful plant selection by our Mr. L. Sherman Townsend, has made the Townsend Nurseries, Inc., the "world's largest shippers of berry plants," plus tops in service, and fair treatment at all times to our customers.

A few letters we are printing on these pages, we have thousands more in our files, of satisfied customers.

"YOUR ORGANIZATION IS TOPS"

York, Pa.

Dear Mr. L. Sherman:

Will you accept my thanks, and I must say that your organization is tops, and will remain that way with such fine treatment as accorded me. I will surely recommend Townsend Nurseries, Inc., to my friends.

Don F. Strong



Our Mr. Humphrey's inspects a field of over 5,000,000 Select-Strain Plants.



Another Field of Top Quality Fruit Trees

TOWNSEND'S PLANTS

Preferred by Successful Growers Everywhere

S TRAWBERRIES are the first fruit to ripen in the Spring. Nothing is more delicious than fresh picked berries from your own garden. What is nicer than to have a nice size strawberry patch coming along in the Spring before any other crops are ready to harvest, to give you extra cash income. Be the strawberries in a garden plot or an acre on the farm.

Our new improved varieties, make it easier than ever before to grow strawberries for pleasure as well as profit. You will find our culture instructions (shown in this catalog) very easy to follow. Why not plan to plant berry plants this Spring? If there are any questions, please write us, we are here to serve you, as we have helped thousands of others get started growing fruits.



Strawberry Harvest Time in New England From Townsend Nurseries, Inc., Selected Plants.



Townsend's Select Strain strawberry plants growing on farm in Massachusetts.

"TOWNSEND NURSERIES, INC.
FOR FAIR TREATMENT"

East Thetford, Vermont
Gents:
All plants received in fine condition, thanks for fair treatment. Will send future orders.

Parkey D. Kelley

"TOWNSEND CUSTOMER FOR 29 YEARS

Middlesex Co., Conn.

Dear Sirs:
For over 29 years your plants have always given best results. Order enclosed for 8,000 Premier and 6000 Catskill.

B. A. Goodburn



Putting The Finishing Touch On A Field Of Select-Strain Strawberry Plants Under Careful Supervision of our Mr. L. Sherman Townsend.

Order These

Big Bargain

"No Matter
Where
You Live—
There's a
Townsend
Strawberry
Garden
For You"



STRAWBERRY GARDENS

Pick Delicious Strawberries
Every Day From Your Garden

Chosen by berry experts, these garden collections embrace hardy, proven varieties, selected for all-around productivity and fruiting superiority.

NORTHERN STRAWBERRY PATCH

25 FAIRFAX
25 PREMIER
25 CATSKILL
25 RED STAR

100 Select Plants

Catalog
Value \$3.85

\$2.98

2 COMPLETE
GARDENS
AS ABOVE **\$4.95**

50
OF EACH
VARIETY

TOWNSEND'S BIG CROPPING FALL-BEARING GARDENS

SMALL BACK YARD
FALL-BEARING GARDEN

50 MASTODON
50 TOWN-KING

100 Select Strain Plants

All For **\$3.95**

LARGE BACK YARD
FALL-BEARING GARDEN

Will furnish plenty of delicious
berries for the average family.

100 Premier 100 Gem

200 Plants for Only **\$5.95**

500 STREAMLINER
500 GEM

Big Profit-Making Fall-Bearing Garden 1000 Plants only **\$24.95**

PROPAGATED UNDER IDEAL CLIMATIC CONDITIONS

Salisbury, Maryland, long established as the largest strawberry propagating center in America, has held this coveted position because of its ideally situated locale. Located on the Eastern Shore of Maryland 30 miles from the North Atlantic Ocean, Salisbury is subjected to varying intensities of climatic conditions throughout the year. Therefore, it can be readily understood that anything that can be propagated in this particular locality, can be successfully grown in any other part of the country —

permitting, of course, the presence of the proper type of soil. Our plants are preferred by growers in Maine, New Hampshire, Canada and other areas where temperatures drop to 20 degrees below zero. Townsend Nurseries, Inc., located in Salisbury, is the largest growers and shippers of strawberry plants in the world. Any nursery product bearing the Townsend label has to be the best obtainable, because Townsend's 48 years of Nursery experience stands behind every product.



PLEASE ORDER STRAWBERRY GARDENS BY NAME



GROW FRESH BERRIES



From TOWNSEND NURSERIES, Inc. Best Garden Selections

Special Test GARDEN

You can be the First in Your Neighborhood to Pick Ripe Strawberries

Here's two of the greatest budding, early fruiting varieties ever introduced. The quality of fruit is of the best and all strong vigorous growers, that have proven a success in practically all states. Set this Garden and have the first berries in your section.

250 BLAKEMORE

250 PREMIER

\$6.95

500 Plants — for only

Catalog Value \$9.10

TOWNSEND'S BEST OFFER

50 Plants Best Early

50 Plants Best Mid-Season

50 Plants Best Late

150 plants for only **\$2.50**

GARDEN OF BIG BERRIES

This garden will yield extra large berries of the very best quality and plenty of them from early season to late.

100 Premier 100 Temple
100 Dorsett 100 Town-King

400 Plants for only **\$6.85**

Catalog Value \$10.85

TOWNSEND'S FAMOUS X X OFFER

100 SPARKLE

100 TOWN-KING

200 Select Plants only **\$3.45**

All Season Garden

This garden will furnish the average family with rich red, delicious berries from early in the season to late fall.

25 PREMIER
25 CATSKILL
25 TOWNKING
25 GEM-EVERBEARING

Will plant 6-25 ft. rows

100 Plants Special

\$2.95

WHEN ORDERING STRAWBERRY GARDENS PLEASE IDENTIFY BY STATING NAME OF GARDEN



TRUCK GARDENER'S SPECIAL

500 PREMIER
500 SPARKLE
500 CATSKILL
500 TOWN KING

2000 PLANTS
Catalog Value \$34.15
\$28.95

Spare Time Garden

With little attention you can realize a nice profit from this garden, should pick at least 400 quarts.

50 PREMIER
50 FAIRFAX
50 SEN. DUNLAP
50 TOWNKING

Requires Only 1000 sq. ft. Space

200 Plants Only
Catalog Value \$6.80

\$4.85





PLANTS SET
THIS SPRING

*Fruit in
10 Weeks*

Plenty of Fruit Until Snow Flies

The most practical solution to year 'round profits unquestionably lies with everbearing varieties. Beginning as early as just 10 weeks after planting, Townsend's Select Strain Everbearing varieties, Gem, Gemzata, Streamliner, New Evermore, and Mastodon start making money for you. Amazing? Yes, but profits in the pocket of everbearing-wise growers cannot be denied. After the plants are set in early Spring, they fruit the entire Summer, continue through the Fall, and fruit heavily again in the Spring. Who could ask more? Townsend's everbearers give so much for so little in care and expense. No home garden or commercial grower's acreage is complete without these famous everbearers.



EVERBEARING STRAWBERRIES

Pick Big, Red, Deliciously Flavored Berries
SIX MONTHS IN THE YEAR

JUST think . . . within a few short months after your plants are set, you are ready to pick big, dark red all the way through **FRESH STRAWBERRIES!** And, best of all, you can continue to pick them from —

JULY until NOVEMBER

These rugged, everbearing varieties have literally taken the country by storm. Remember — with these varieties you do not have to wait a year for fresh berries.

Everbearing
Gardens

50 STREAMLINER
50 EVERMORE
50 GEMZATA

OFFER "A"

150 Select Plants

For Only **\$6.85**

Catalog Value \$8.10

Get Acquainted Strawberry Garden
25 GEMZATA (Everbearing)
25 Town King (Late Spring)

50 of Best Varieties
For Only **\$1.95**

Catalog Value \$3.05



OFFER
"B"

50 EVERMORE
50 GEMZATA

100 Select Plants

For Only **\$3.95**

Catalog Value \$6.15

CULTURE
DIRECTIONS
WITH
EVERY
ORDER

THE NEAREST THING TO YEAR 'ROUND PROFITS

POPULAR EVERBEARING

GEM

OUR REPUTATION IS BEHIND THIS RECOMMENDATION

One of the finest everbearing varieties of recent introduction, and a true "gem" of nature. The fine flavor and rich quality of



A BOWL OF DELICIOUS GEM

this berry promises to establish it high in the ranks of everbearing leaders in short order. Gem is a heavy yielding, rugged plant maker, and in its long season of ripening, it fruits extra large, rich red berries that can't be equalled. Especially adapted for planting in northern states, this variety also flourishes as far west as Missouri, and produces during a long season—well into freezing weather.



Mastodon

THE GIANT THAT REIGNS SUPREME

Still proving itself to be a dependable, profitable investment—year after year—Mastodon's luscious, giant berries stand behind its fame. Just think—you can harvest a crop 10 WEEKS after planting—AND—Mastodon continues to fruit throughout the entire Summer and Fall—AND—then fruits again in the Spring.

NEW EVERMORE

KEEPS WELL AFTER PICKING

Developed by the Minnesota Experiment Station, the New Evermore is solid red through and through—with a typical spring strawberry flavor—which most everbearing strawberries lack. And too, the New Evermore continues to produce until the snow begins to fly.

PRICES ON PAGE 52

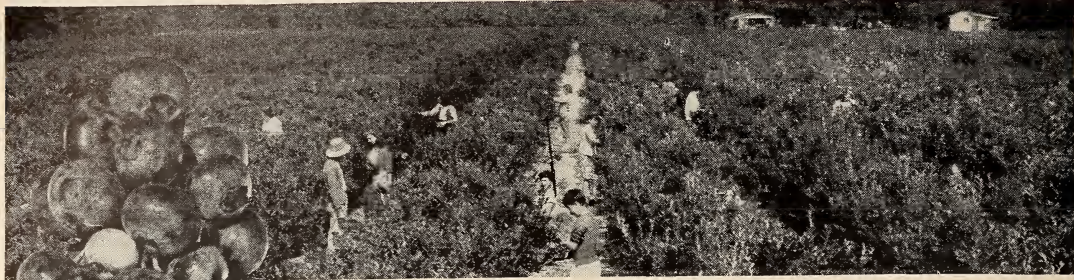


NEW GEMZATA

New Gemzata

A TRIBUTE TO BETTER BREEDING

The development of a cross between Gem and Wayzata. Gemzata is a definite triumph in plant breeding. Being, in all probability, the greatest everbearing strawberry of all, our recommendation of this variety can only be at its best a gross understatement. Our own method of propagation has undoubtedly brought out the best qualities of this superior berry. The fruit of Gemzata resembles Gem but averages larger, and has a fine, sweet flavor. A vigorous grower, it is resistant to leaf spot and produces constantly throughout the summer months. Gemzata is truly a fine everbearing berry and we recommend it highly.



BLUEBERRIES ARE ORNAMENTAL AS WELL AS HIGHLY PROFITABLE



FREE
CULTURE GUIDE
WITH
EVERY ORDER

● **CABOT** (Early) One of the earliest of all varieties, this highly prolific blueberry plant is an established favorite with growers. Its dependable and heavy bearing habits, coupled with the extra large size of its well formed attractive berries, account for Cabot's popularity. A vigorous grower, Cabot develops naturally to well formed plants.

● **RANCOCAS** (Medium Early) This unusually heavy fruiting variety has a tendency to produce extra heavy crops on young plants. In fact, the yield is so heavy that special care must be taken to prune the bushes severely in order to insure a good crop in the following year. Rancocas ripens later than Cabot but earlier than Stanley, and the berries often exceed 19 mm in size.

● **CONCORD** (Mid-season) Often attaining height in excess of six feet, Concord is of upright habit and matures at about the same time as Stanley. Its berries are often three-quarters of an inch in diameter, and when its large clusters all ripen at the same time, they resemble Concord grapes. Concord berries are delicious to the taste, and if allowed to remain on the bush until they are fully ripe, they lose the excessive acidity they possess when they first turn blue. Not only does Concord possess tremendous commercial value, but it is also an attractive, eye-catching, ornamental plant.

● **STANLEY** (Early Mid-season) This grand variety has replaced the Pioneer, blueberry as far as the better grower is concerned. Stanley is a very vigorous, tall growing plant, and is a good pollenizer for other varieties. Beautiful foliage producer of very large berries, that is considered to be the best flavored of all.

● **RUBEL** (Large Mid-season Variety) Recognized as the best of all commercial varieties, Rubel is undoubtedly one of the finest of the wild selections. The bush is upright, very vigorous, hardy and productive. Many of the present hybrid varieties can trace their parentage to this variety. Rubel is widely planted, and a profitable and popular favorite with thousands of commercial growers because of the excellent, though somewhat acidic, quality of its berries, which not only ship well but are in constant demand. With Rubel blueberries as your product—you can't miss in a profit yielding market.

● **JERSEY** (Season Late) The berries of Jersey are unquestionably the largest of all the varieties, however until dead ripe, they are too acid for the taste of most persons. Jersey is a firm, robust berry that stands up well in transit, and is considered by growers to be one of the leading late varieties. Its light blue berries ripen about one week later than Rubel, and Jersey's remarkably beautiful growth also makes it attractive as an ornamental plant when grown in any home garden.

CULTIVATED
BLUEBERRIES
ARE GROWN
SUCCESSFULLY
FROM
MAIN TO
NORTH CAROLINA

- 1949 -

NEW LOW PRICES

Townsend Nurseries Select Strain Giant Blueberries

	Each	3-9 Plants Each	10-29 Plants Each	30-99 Plants Each	100-299 Plants Each	300-999 Plants Each	1000 or More Plants Each
1 year 3- 6 inch grade -----	\$0.50	0.45	0.40	0.35	0.30	0.29	0.28
2 year 9-12 inch grade -----	.95	0.85	0.70	0.60	0.55	0.53	0.50
3 year 12-18 inch grade -----	1.35	1.15	0.95	0.80	0.60	0.58	0.55
4 year 18-24 inch grade -----	2.00	1.75	1.50	1.25	1.00	0.98	0.95
5 year 24-36 inch Jumbo size -----	3.75	3.65	3.60	3.55	3.50	3.45	3.40

WE HAVE OVER 625,000 BLUEBERRY PLANTS FROM WHICH TO SELECT YOUR ORDER!



Cluster of Jersey Variety
Hardy and Attractive

Townsend's Cultivated GIANT Blueberries

Easy TO GROW!

BLUEBERRIES can be classed as one of the easiest plants to transplant. For the home planting, set the plants about 5 ft. apart, (for commercial plantings, set in rows 8 to 10 ft. apart and space plants 4 ft. apart down the row). Blueberries require a somewhat ACID SOIL, (ranging in test P.H. 3.8 to 5.5). If your soil is not acid, it may be made so very easily by mixing with some pulverized PEAT and sand, half and half, mix thoroughly with water, and place in hole where the plant is to be set, below the root and above the roots. Fruit ripens over a period of several weeks.

THESE GIANT BLUEBERRIES—TOWNSEND'S BEST—lead all the rest in profit yields and delicious eating properties. Plant this season and be assured of getting a large yield of choice, luscious berries by next Spring. These select plants bear for many seasons — bigger and better yields each time—thus your first cost covers everything.

The large, delicious berries can be eaten right off the bush, and are ideal for either canning or quick freezing. Plant two or more varieties for cross-pollenization. If you plant for commercial reasons, the fact that these berries will bring up to, and often far beyond, 75 cents per pint will undoubtedly interest you. Blueberries demand and get the highest prices on the fruit market.

**CULTURE DIRECTIONS
FREE WITH EVERY ORDER**

HOME GARDEN OFFER

Just the right size blueberry garden for the average family. These varieties have been selected especially for their adaptability to any section of the country. We will ship at your proper planting time—Order now!

- 1—Cabot (Early)
- 1—Rancocas (Med-Early)
- 1—Rubel (Mid-season)
- 1—Concord (Mid-season)
- 1—Jersey (Late)
- 5 Plants 7-12 inch grade

**Only
\$3.15**

Catalog
Value
\$4.25



Harvesting Blueberries From a Commercial Planting

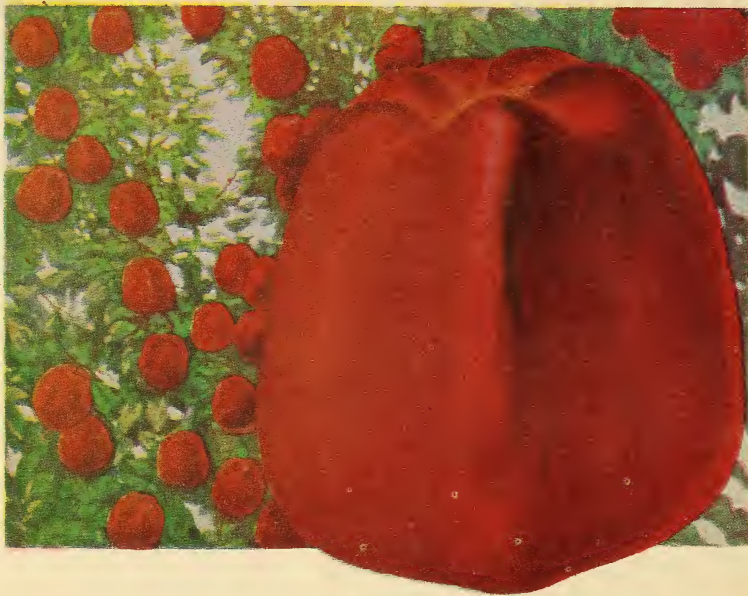
SEE BACK COVER FOR OTHER BLUEBERRY OFFERS

KING OF ALL RED APPLES!



**DOUBLE
RED
DELICIOUS**

- Colors Earlier
- Grows nearly everywhere
- Trees vigorous
- Large size
- Big cropper
- Eye appeal, shape
- Good for storage
- Extra fancy fruit
- Flavor Rich



Finest Flavored Red Apple Grown!

COLORS much earlier than the old standard Delicious apple, thus the fruit can be picked earlier while it is quite firm and will keep better in storage.

Large in size, solid red color, and outstanding for

its 5-knob end which makes it popular on any market and sells readily to consumer.

Picking season early September and keeps in storage until March. Every home and orchardist should plant Double Red Delicious this year.

**YELLOW
DELICIOUS**

Bears Young - Big Crops!

A SHINING GOLDEN YELLOW

Queen of all winter apples; this grand variety bears fruit young and can be picked in the early days of September. Keeps well in storage until March.

Our trees of Yellow Delicious are propagated from buds selected from a famous early bearing Yellow Delicious orchard, which bears consistently big crops every year.

GOOD REASON FOR PLANTING

- | | |
|---------------------------|------------------------|
| 1-Bears young-fast grower | 5-Real appetite appeal |
| 2-Disease resistant | 6-Premium prices |
| 3-Big crops every year | 7-Excellent polonizer |
| 4-Top money maker | 8-Vigorous grower |



Prices on
Page 27
Jumbo Trees
Prices on
Page 29

Townsend's Improved Strains **APPLES**

For Commercial and Home Planting

- **YELLOW TRANSPARENT** Deliciously mild and juicy. Early, and easily the best yellow apple.
- **LODI** Reports indicate that there is a big future in store for this new, extra large summer apple. Lodi bears very young and ripens about the same time as Transparent, however the fruit is much larger and more firm. Early bearing.
- **EARLY McINTOSH** Resembling McIntosh in appearance, but bearing earlier, this firm, appetizing, handsome Red is tops for flavor.
- **IMP. ALL RED JONATHAN** For growers that want deeper color, richer looking Reds, this variety is definitely the answer. Bears a medium sized apple of superlative quality—appealingly attractive, and an excellent keeper.
- **IMP. ALL RED McINTOSH** A definite improvement on already famous McIntosh apples. The color is a solid red and commences to color weeks earlier. Highly recommended because of excellent shipping and storage qualities.
- **GRIMES GOLDEN** Known and acknowledged as the very best home orchard apple, Grimes Golden needs no introduction. Its sub-acid delicious flavoring has been a source of eating delight to those who eat apples raw, and it is unsurpassed for cooking. This variety is golden yellow in color, a Fall apple, firm and highly recommended by Townsend.

**ALL RED
McINTOSH**



APPLE TREE PRICES

2 Year Certified Stock

	1-9	10-49	50 or more
	Each	Each	Each
Super 5-6 feet	\$1.35	\$1.20	\$.75
Fancy 4-5 feet	1.20	1.00	.65
Select 3-4 feet	.90	.85	.60

JUMBO TREES PAGE 29

- **DOUBLE RED STAYMAN** A completely new red addition to the already popular Stayman. Unparalleled for cold storage keeping, and growers can pick a full three weeks before the older Winesap variety ripens. A big cropper and just fine for home cooking or commercial markets.
- **GALLIA BEAUTY (Red Rome)** A solid red, brilliantly colored apple that produces fancy fruit. Remarkable keeping qualities. One of the best, juicy and very large—a real honey of an apple.
- **BALDWIN** Highly regarded as an eating and cooking apple because of its sub-acid and aromatic flavoring, Baldwin for many years has been a popular northern favorite. Recommended highly by our New England customers for its white, meaty flesh and heavy yielding habits, Baldwin has been a winner every time.

CRAB APPLES

- **DOLGO** New, unusual fruit of strikingly beautiful, firey red. Makes ruby red jellies.
- **HYSLOP** Fruits large, excellent for jelly.



**RED
STAYMAN**



**RED
ROME
BEAUTY**

PLANT THE BEST IN 1949! SAVE 2 to 3 YEARS BY PLANTING SUPER-SIZE, SUPER-GROWING FRUIT TREES AT HOME!

JUMBO FRUIT TREES

BIG ROOTS · BIG TRUNKS



Selected Specimen Trees

For Orchard Replantings or Home Orchards



Plant Jumbo Size Trees and Pick Large, Juicy Apples in a Surprisingly Short Time.

2 to 3

**SAVE TIME! BEAT THE MARKET!
SAVE MONEY!**

COMMERCIAL replanting or making replacement trees for HOME ORCHARD PLANTING. If trees are wanted, they are selected after planting. Customers have selected trees fruited first year selected for their well developed root system. They are all 30 feet in height with heavy trunk.

WHAT WE OFFER FOR YOUR

- A Superior Grown Tree!
- Grown Expressly for Specimen

Where the Planter Wants
Growth and Best Fruit

A Quick-Bearing Jumbo Apple Tree

TOWNSEND GUARANTEE

On our Quick-Bearing, Jumbo trees you take no chance. If trees do not meet with your approval when they arrive, just re-pack them properly and return them to us within 24 hours, and your money will be refunded, when they arrive at our express office in good condition.

WE MAKE THIS BROAD GUARANTEE KNOWING THAT OUR TREES WILL PLEASE

Townsend Nurseries

Inc.
"Home of Selected"

all Fruit
Years
earlier!

YOU'LL AGREE

IT'S EASY
TO GROW

Luscious

FRUIT AT
HOME

FRUIT QUICKER
ONLY FEW CENTS MORE



Use this size tree in
young trees that have
variation. FOR THE
G where quick re-
sult, producing large
fruiting in short time
written us that their
Townsend's Quick
grows really grown and
tops and heavy
trees 5 to 8



**TOWNSEND'S
SELECT STRAIN
JUMBO FRUIT TREES**
Are CERTIFIED For
QUICK GROWTH And
DOUBLE INSPECTED
For HARDY FRUITING

EARLIEST
YELLOW
FREESTONE

REDHAVEN

CHOICE VARIETIES JUMBO FRUIT TREES

Listed in order of Ripening

APPLES Yellow Transparent, Lodi, Early McIntosh, Imp. All Red Jonathan, Imp. All Red McIntosh, Grimes Golden, Double Red Delicious, Yellow Delicious, Double Red Stayman, Gallia Beauty (Red Rome), Baldwin.
Prices: Jumbo Size 6 to 7 ft., heavily branched Apple trees, \$3.00 each; 3 for \$8.70; 6 for \$16.50; 10 for \$25.00; 25 for \$58.75; 50 for \$100.00; 100 for \$175.00.

PEACHES Red Haven, Golden Jubilee, Hale Haven, Early Elberta, Belle of Georgia, Elberta, Brackett, Lizzie.
Prices: Jumbo Size, 6 to 8 ft., heavily branched Peach trees, \$3.00 each; 3 for \$8.70; 6 for \$16.50; 10 for \$25.00; 25 for \$58.75; 50 for \$100.00; 100 for \$175.00.

PEARS Bartlett, Kieffer.
Prices: Jumbo Size, 5 to 7 ft., heavily branched Pear trees, \$3.75 each; 3 for \$10.95; 6 for \$21.00; 10 for \$32.50.

PLUMS Abundance, Burbank, Stanley Prune, French Damson, Italian Prune (Fellenberg).
Prices: Jumbo Size, 6 to 8 ft., heavily branched Plum trees, \$3.75 each; 3 for \$10.95; 6 for \$21.00; 10 for \$32.50.

CHERRIES Black Tartarian, Napoleon, Montmorency (Sour), Windsor.
Prices: Jumbo Size, 5 to 7 ft., heavily branched Cherry trees, \$3.75 each; 3 for \$10.95; 6 for \$21.00; 10 for \$32.50.

APRICOTS Early Golden, Moorpark.
Prices: Jumbo Size, 5 to 7 ft., heavily branched Apricot trees, \$3.75 each; 3 for \$10.95; 6 for \$21.00; 10 for \$32.50.

NECTARINES Sure Crop.
Prices: Jumbo Size, 6 to 7 ft., heavily branched Nectarine trees, \$3.75 each; 3 for \$10.95; 6 for \$21.00; 10 for \$32.50.

ONEY

Trade!
Quick

!

nts and Trees"

PLANT THE BEST IN 1949! SAVE 2 to 3 YEARS BY PLANTING SUPER-SIZE, SUPER-GROWING FRUIT TREES AT HOME!

JUMBO FRUIT TREES

BIG ROOTS · BIG TRUNKS

Selected Specimen Trees
For Orchard Replantings or Home Orchards

Will Fruit 2 to 3 Years Earlier!



Plant Jumbo Size Trees and Pick Large, Juicy Apples in a Surprisingly Short Time.

SAVE TIME! BEAR FRUIT QUICKER
SAVE MONEY! COST ONLY FEW CENTS MORE

COMMERCIAL growers use this size tree in making replacement of Young Trees that have died or injured in cultivation. **FOR THE HOME ORCHARD PLANTING** where quick results are wanted, they are ideal, producing large crops of delicious fruit in a surprisingly short time after planting. Customers have written us that their trees fruited first year set. Townsend's Quick Bearing Fruit Trees have been especially grown and selected for their well developed tops and heavy root system. They are all Specimen Trees 5 to 8 feet in height with heavy trunks.



WHAT WE OFFER FOR YOUR MONEY

- A Superior Grown Tree!
- Grown Expressly for Special Trade!

Where the Planter Wants Quick Growth and Best Fruiting!

Townsend Nurseries Inc.

"Home of Selected Plants and Trees"

A Quick-Bearing Jumbo Apple Tree
TOWNSEND GUARANTEE
 On our Quick-Bearing, Jumbo trees you take no chance. If trees do not meet with your approval when they arrive, just re-pack them properly and return them to us within 24 hours, and your money will be refunded, when they arrive at our express office in good condition.
WE MAKE THIS BROAD GUARANTEE KNOWING THAT OUR TREES WILL PLEASE

YOU'LL AGREE

IT'S EASY TO GROW *Luscious* FRUIT AT HOME



EARLIEST YELLOW FREESTONE

REDHAVEN

TOWNSEND'S SELECT STRAIN JUMBO FRUIT TREES
 Are **CERTIFIED** For **QUICK GROWTH** And **DOUBLE INSPECTED** For **HARDY FRUITING**

CHOICE VARIETIES JUMBO FRUIT TREES

Listed in order of Ripening

APPLES Yellow Transparent, Lodi, Early McIntosh, Imp. All Red Jonathan, Imp. All Red McIntosh, Grimes Golden, Double Red Delicious, Yellow Delicious, Double Red Stayman, Gallia Beauty (Red Rome), Baldwin.
 Prices: Jumbo Size 6 to 7 ft., heavily branched Apple trees, \$3.00 each; 3 for \$8.70; 6 for \$16.50; 10 for \$25.00; 25 for \$58.75; 50 for \$100.00; 100 for \$175.00.

PEACHES Red Haven, Golden Jubilee, Hale Haven, Early Elberta, Belle of Georgia, Elberta, Brackett, Lizzie.
 Prices: Jumbo Size, 6 to 8 ft., heavily branched Peach trees, \$3.00 each; 3 for \$8.70; 6 for \$16.50; 10 for \$25.00; 25 for \$58.75; 50 for \$100.00; 100 for \$175.00.

PEARS Bartlett, Kieffer.
 Prices: Jumbo Size, 5 to 7 ft., heavily branched Pear trees, \$3.75 each; 3 for \$10.95; 6 for \$21.00; 10 for \$32.50.

PLUMS Abundance, Burbank, Stanley Prune, French Damson, Italian Prune (Fellenberg).
 Prices: Jumbo Size, 6 to 8 ft., heavily branched Plum trees, \$3.75 each; 3 for \$10.95; 6 for \$21.00; 10 for \$32.50.

CHERRIES Black Tartarian, Napoleon, Montmorency (Sour), Windsor.
 Prices: Jumbo Size, 5 to 7 ft., heavily branched Cherry trees, \$3.75 each; 3 for \$10.95; 6 for \$21.00; 10 for \$32.50.

APRICOTS Early Golden, Moorpark.
 Prices: Jumbo Size, 5 to 7 ft., heavily branched Apricot trees, \$3.75 each; 3 for \$10.95; 6 for \$21.00; 10 for \$32.50.

NECTARINES Sure Crop.
 Prices: Jumbo Size, 6 to 7 ft., heavily branched Nectarine trees, \$3.75 each; 3 for \$10.95; 6 for \$21.00; 10 for \$32.50.



LEADING VARIETIES OF SELECTED

PEACHES

For Home or Commercial Use

Hale Haven

Ripens Two Weeks Before Elberta

POPULAR because of its admirable coloring, luscious, juicy, yellow flesh and free-stone. Excellent shipping qualities and extreme hardiness in bud. This variety is recognized in almost every peach growing locale as "THE BEST PEACH FOR 'QUICK FREEZING'."

Red Haven

Earliest Yellow Free-Stone Peach

THIS new and most promising early free-stone that ripens just before the old favorite Golden Jubilee. Bears heavy crops of almost fuzzless fruit. A superbly hardy variety. Red Haven has successfully weathered temperatures as low as 13 degrees below zero, and STILL borne full crops. It's rich, yellow skin that is almost entirely covered by a dark red flush, and its uniformity of size tend to cause this variety to sell on sight.

Golden Jubilee

NONE MORE DELICIOUS

GOLDEN Jubilee has been tried and proven to be one of the most valuable early, yellow free-stone peaches of recent introduction. Supreme flavor, attractive coloring, and firm enough to be classed as a long distance shipper. Tree is vigorous grower; is outstanding for hardiness. Truly an outstanding variety for both commercial and home growers. Ripens four weeks before Elberta.

Our reputation on Strawberry plants has been earned equally as well for our Certified Peach trees. Our infallible system of grading and inspecting is your guarantee of satisfaction every time.

Prices of TOWNSEND CERTIFIED Peach Trees

	1-9 Trees Each	10-49 Trees Each	50-300 Trees Each
Super Size 5-6 ft. $\frac{1}{8}$ in. and up	\$1.35	\$1.20	\$.75
Large Select 4-5 ft. $\frac{1}{8}$ - $\frac{1}{4}$ in.	.90	.80	.65
Extra Fancy 3-4 ft. $\frac{1}{8}$ - $\frac{1}{4}$ in.	.70	.60	.50
Select Planters 2-3 ft. $\frac{1}{8}$ - $\frac{1}{4}$ in.	.65	.55	.40

JUMBO SIZE PEACH TREES SEE PAGE 29

Special Home Orchard

8-Super Size Trees
1 each of the Following

- | | |
|----------------|------------------|
| HALE HAVEN | BELLE OF GEORGIA |
| RED HAVEN | ELBERTA |
| GOLDEN JUBILEE | BRACKETT |
| EARLY ELBERTA | LIZZIE |

ALL FOR \$7.95



GOLDEN JUBILEE

ORCHARDISTS PREFER Townsend's Grown Fruit Trees!Townsend Nurseries **ORIGINAL** Select Strain
ELBERTA*America's Favorite* **PEACH**IT'S A **Yellow**
FREESTONE!

ELBERTA ripens about mid-season. Fruit is large to extra large, yellow flesh, free-stone; skin golden yellow with brilliant red shades and dark red blush where the peach is exposed to the sun. Elberta has been nationally recognized as being the practically perfect peach. Its uniform large size makes it attractive to the buyer. Elberta usually commands a premium price on any market.

Uniform Shape—High Color

- Best Canning Peach
- Supreme Commercial Variety
- Tree Vigorous Grower
- Excellent Long Distance Shipper
- Brilliant Colored, Yellow Flesh
- Rich in Flavor, Large in Size
- Grows in Widely Different Areas
- Dependable Sure Cropper

4 SENSATIONAL VARIETIES

EARLY ELBERTA—When true quality is desired, **PLANT TOWNSEND'S ORIGINAL STRAIN OF EARLY ELBERTA** (unusual size too). Ripening about 2 to 8 days before regular Elberta, this splendid variety bears consistently. Its yellow fleshed, large sized fruit is made more attractive by its fine skin that bears a soft blush of red. You can't go wrong with this Townsend original Freestone.

BELLE OF GEORGIA Home canners prefer the "Belle". Known as the most popular of all peaches, this variety ripens in mid-season and is a consistent market favorite. Tree vigorous and highly productive. The best of all white peaches. Ripens 5 days before Elberta.

BRACKETT Grand for canning and a fine market peach. Excellent quality and a freestone. This variety follows Elberta by about 5 days.

LIZZIE Late, about 12 to 16 days after Elberta, and a distinctive freestone. In size it is large or larger than Elberta. When a late peach is wanted, Lizzie more than fills the bill.



TOWNSEND'S Fruit Trees are propagated from the best strains of bearing orchards plus their bud selection from bearing trees. Plant these certified trees this year; see the vast difference in **TOWNSEND'S CERTIFIED** trees compared with just ordinary fruit trees. Our prices are reasonable and the quality is high.

BE SAFE!**PLANT TOWNSEND'S ORIGINAL SELECT STRAIN PEACH FOR SURE RESULTS!**

Townsend Nurseries Brings You America's

BEST

Cherries

BUY DIRECT!

ORDER EARLY FOR
GUARANTEED
SELECTIONS

MONTMORENCY *Best Sour Cherry*

UNIVERSAL favorite, the only profitable sour cherry to plant regardless of your location. Trees of Montmorency are strong, vigorous, disease resistant, very hardy and usually start to bear fruit in 2 years. Large in size, ripens mid-season, red, slightly acid. Best sour cherry for pies, canning and commercial market.



**New Low
Cherry Prices**

2 year Select Varieties

Healthy, vigorous trees produced under the famous Townsend standard of vital, select strain development.

	1-9 Trees	10-50 Trees
4-6 ft. $\frac{11}{16}$ - $\frac{7}{8}$ in. cal. --	\$1.95	\$1.65
4-5 ft. $\frac{9}{16}$ - $\frac{11}{16}$ in. cal. --	1.65	1.40

Write for Prices Larger Lots.

For Jumbo Cherry Trees,
See page 29

NAPOLEON (Royal Ann) Sweet Cherry

NAPOLEON Best golden sweet cherry, known in some localities as Royal Ann. Large in size, sweet delicious flavor, prolific bearer, ripens mid-season.

BLACK TARTARIAN Favorite in most parts of the country, very large, sweet, purplish black color, rich flavor, bears large crops, ripens early, vigorous grower.

GOVERNOR WOOD Bears bumper crops, large yellow, sweet flavor. Fruits in mid-season, an old favorite.

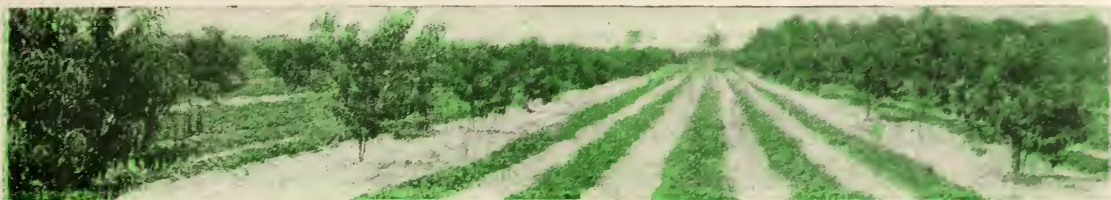
YELLOW SPANISH Large, golden hued fruit attractively tinted with crimson. Ripens end of June—just fine for canning.

SCHMIDT Large, sweet, black, and fine flavor. Ripens mid-season.

WINDSOR Valuable late commercial sweet cherry. Hardy, extra firm.



BLACK TARTARIAN



Strawberries are grown successfully as an intercrop on young orchard plantings, bring in more dollars per acre, cut down cost of production.

PEAR-PLUM-QUINCE-APRICOT-NECTARINE

Prices Strong Sturdy Trees

5 to 6 Ft. Heavy Selects	1-9 \$1.95 Each	10-49 \$1.65 Each	50 or more \$1.15 Each
3 to 5 Ft. Fancy Trees	1.75	1.45	.95

JUMBO SIZE FRUIT TREES - See Page 29



STANLEY (Favorite)

PLUMS

ABUNDANCE (Japanese) Probably the best oriental plum, this distinctive variety ripens late August to Early September, and yields an abundance of aromatic, tender but firm, cherry red, medium sized fruit.

BRADSHAW. Bradshaw's very large sized fruit is constantly in demand because of its large, dark violed red, yellow fleshed fruit that possesses remarkable keeping qualities and excellent shipping standards. Exceedingly productive and a hardy vigorous grower. August ripening.

BURBANK. A triumph of the genius of "The Master Horticulturist." Remarkably successful all over the country. It seems to succeed in any soil. Fruit large, dark red or purplish with thin lilac bloom. Flesh amber yellow with rich sugary flavor. It's a dandy.

FRENCH DAMSON. A large beautiful plum of good quality surpassing all other plums in this class.

HALL. Dark purple, large, greenish yellow flesh, good quality excellent for roadside stands or market.

ITALIAN PRUNE (Fellenberg). Excellent for drying, preserving or desert. Large fine fruit that is firm, sweet and delicious. We have nothing to offer that will take its place. Every home should have a few trees.

STANLEY. Dark blue, with splendid quality for desert or culinary purposes.

ALL 2 YEAR GROWN PEAR TREES HEAVILY ROOTED

- **ANJOU.** A late variety that is tops for yield and excellent keeping qualities. Fruit has the finest of flavor and is very juicy.
- **BARTLETT.** This golden yellow, red cheeked dandy is undoubtedly the most popular pear for both home use and market purposes. Truly fine for deserts or eating raw. If you plant pears, don't miss up on this wonderful variety.
- **CLAPPS FAVORITE.** Resembling Bartlett in fine shape and beautiful coloring, this variety is very hardy and does well everywhere. Its fruit is evenly grained with a fine, rich texture and is sweet and highly flavored.
- **DUCHESS.** (d'Angouleme) Dull yellow and appealingly mottled with russet. Extra large and trees are blight-resistant and very productive.
- **KIEFFER.** Late bearing, extremely hardy, large yellow fruit of excellent quality.
- **SECKEL.** Its richness of flavor more than makes up for its smallness of size. Very desirable for pickling or preserving. Trees vigorous, bears late.



BARTLETT PEAR

QUINCE

CHAMPION. Trees very hardy, vigorous grower; fruit large, pear-shaped; skin greenish-yellow; a very good keeper. Trees bear at an early age, fruits late.

ORANGE. Early to mid-season fruiting variety, fruit golden yellow, pale yellow flesh, tender, mild subacid; an excellent variety for North; perfectly hardy.

APRICOTS

EARLY GOLDEN. Small pale orange, flesh orange, sweet, good juicy; early productive and hardy.

MOORPARK. Just about the largest apricot grown. Tree large, robust, vigorous grower; Skin tender with specks of orange and yellow, flesh yellow, juicy and sweet; ripens August.



NECTARINES

SURE CROP. The fruit is large, rounish, white background overlaid with a bright attractive red. Very richly flavored, ripening in late July—early August.



Townsend Nurseries
**BLIGHT-RESISTANT
 CHESTNUT
 TREES**
 Are Here to Stay



Propagated from parent trees which average 38 to 42 nuts per pound (Natural average 75 to 90)

Something New for the Younger Generation

• The sight of these trees once again flourishing cannot fail but to evoke many memories from the older element, whereas they will be something entirely new for the younger people. Of course the pleasure of roaming the woods at Autumn and gathering these tasty nuts is probably gone forever, but this fact does not prevent either commercial or home growers from realizing their own crops.

ANY WELL DRAINED SOIL WILL DO! Townsend's thoroughly Blight-Resistant chestnut trees are disease free—and easy to grow. These trees require practically no care after once being set, and thrive vigorously in any well drained soil. No spraying is necessary.

PRICES

1 to 5 trees - - \$1.95 each

6 to 10 trees - \$1.75 each

11 or more trees \$1.50 each



Select Bush Cherries



LARGE, glistening black, sweet, hybrid Bush Cherries. Good to eat fresh or canned. They bear in cold climates, where standard Cherries fail. Borne in great quantities on low-growing bushes. The white blooms in spring make them very ornamental. Leaves color red in autumn. Trim to desired shape and size. Set bushes 3 feet apart. Thrive in any good garden soil, or in the shrub border.

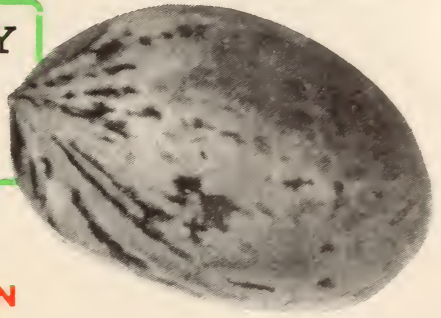
PRICE: 2-yr., field-grown (QUICK-BEARING BUSHES):

69c each

3 for \$1.79

PLANT TOWNSEND'S HARDY NUT TREES

For Food and Shade



HARDY PECAN

A BEAUTIFUL growing shade tree, as well as famous for top flavor nuts. We have a limited supply of HARDY PECAN trees that are hardy except in extreme northern climate. Shells thin, open easily. Tree strong grower yields big crops. 2 to 3 feet trees \$1.85 each; 2 or more trees \$1.50 each.

HARDY ENGLISH WALNUT

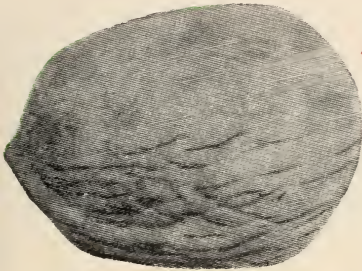
Vary some what in size from the California grown walnut, being larger in most instances. Hardy in CANADA, where the nut falls free from the hull. A heavy producer of top quality nuts, hardy grower, does not need too much room. We suggest two trees for cross pollination. Be sure to get your order placed early supply limited. PRICES: 2 1/2-3 ft. trees, \$2.75 each, 2 or more \$2.25 each.

PAPER SHELL PECAN

For warmer climates we offer this larger size nut in the paper shell pecan, in varieties Stuart, Schley and Success. This type of pecan should not be planted where winter temperatures drop below 20 degrees, for best results. PRICES: 2 to 3 ft. trees \$2.85 each; 2 trees or more \$2.50 each.

THOMAS GRAFTED BLACK WALNUT

Improved grafted Black Walnut, not to be confused with the old hard shell type. This is a grand variety bearing large meat, in thin shells that are easy to open, top walnut flavor. Bear soon after planted. PRICES: 3-4 ft. trees \$3.00 each; 2 trees or more \$2.75 each.



THOMAS BLACK WALNUT

CHESTNUT TREES

On
Page 34



AMERICAN FILBERT (Or Hazelnut)

Our well rooted, heavily branched trees will bear nuts in two years after planted. Bushy type growth can be planted in the lawn as an ornamental shrub. Bears large crops of nuts, in beautiful bronze and scarlet foliage. PRICES: 18-24 inch, 3 year branch trees \$.80 each; 3 for \$2.25; 10 for \$6.75.

EVERBEARING FIG

Not hardy in 20 degrees temperature, but if winter killed will start again from the roots, thus figs are very widely planted. Bears usually first year planted; large fruits, sweet and delicious; excellent for preserves, canning and drying or eat fresh from the plant. PRICES: 2-3 feet trees \$.80 each; 3 for \$2.25; 10 for \$6.75.



EVERBEARING FIG

Order With Confidence! Now!

FRUIT GROWERS

in 48 States

Set Townsend's Select Strain RASPBERRY PLANTS In 1948

Townsend's
Certified
SELECT
STRAIN

Raspberry Plants
Is Your Insurance
for
Bigger Profits



A fine block of Townsend's Certified Cumberland that averaged 5,300 pints of berries first years crop. Get good plants. Treat them right and profitable yields will be yours.

TOWNSEND'S



Be Sure to Grow
Cumberland

KING OF ALL BLACK RASPBERRIES

TRULY the breadwinner of the black cap family, this variety is undoubtedly the most widely planted black raspberry grown today. Cumberland's outstanding leadership stems from continuous and consistent profits realized by commercial growers year after year. Unsurpassed for market value, this variety's large, plump and tasty fruit has proven itself to be a true family table delight. Cumberland is practically free from seedliness and crumbling, with exceedingly desirable firm texture, which makes it a fine shipper. The ripening season extends from mid-season to late, and its vigorous, hardy bushes are admirably capable of supporting Cumberland's large crop of fruit. Our stock this year of Certified Cumberland plants is exceptionally fine, and we are confident of the fine results that you will obtain from this variety. For a profitable fruit crop covering a long period, plant Cumberland.

PRICE LIST
ON
PAGE 55

NEW LOW PRICES
ON CUMBERLAND
THE BEST THAT
MONEY CAN BUY

**Double
Inspected
State
Certified**

BLACK RASPBERRIES

Get in on Profits Yielded From One of America's Most Popular Small Fruits

A PROLIFIC fruiting good black raspberry patch cannot be equalled. Black raspberries unquestionably have established themselves as one of the most

profitable of all farm crops. This is especially true when you set strong, healthy canes that are capable of maturing large crops. Our Select Strain certified raspberry plants are beyond a doubt the finest obtainable, and will lead the field in almost any respect regardless of the section they are planted in. These plants are "tops" in value, unsurpassed for quality, and a bargain you can't pass up.

Diseased and run out fields average only from 800 to 1600 pints per acre—while healthy, disease-free plants will yield from 3200 to 6000 pints per acre. These figures tell the story. Invest in Townsend's Select Strain certified plants so as to profit from this big difference.

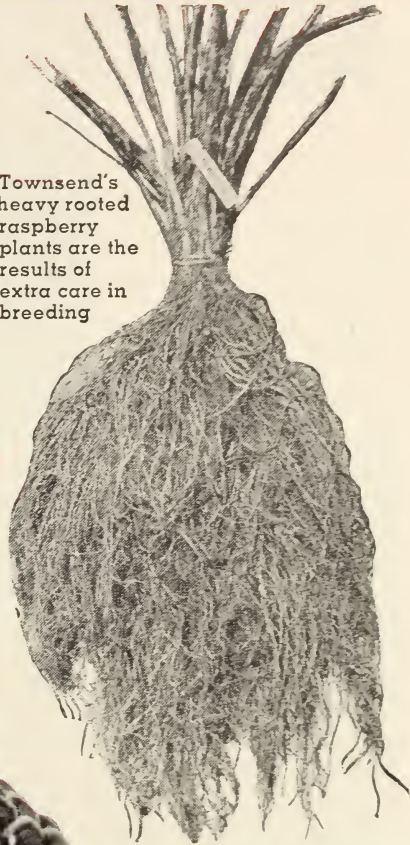
Place your order now. We'll ship when you're ready to set.

FOR LOWER PRODUCTION COSTS and HIGHER PROFITS

New Mammoth **MORRISON**

MORRISON fruits the largest berries of any known variety — it is firm throughout with a fine rich texture, has less seeds than other black raspberries. A top variety for quick freezing and canning. This, in conjunction with Morrison's tremendous yields, makes it highly profitable variety in any field.

Townsend's heavy rooted raspberry plants are the results of extra care in breeding



PRICE LIST
ON
PAGE 55

PLEASE
PLACE
YOUR
ORDER
EARLY

**SPECIAL
OFFER**

12 LATHAM
12 MORRISON

ALL FOR \$3.25



The Largest Size and Heaviest Yielding Raspberry **Latham**



● Latham has been the standard by which raspberries have been judged for years. This Blue Ribbon winner is unexcelled and unchallenged. Unprecedented enthusiasm and a demand that far surpasses the supply, has made this sensational berry a veritable king in the berry world. Latham, without a doubt, is the finest looking berry on the market, and is famous with commercial growers because it produces more berries than any other variety — and does so with an AMAZINGLY SMALL AMOUNT OF CARE.

Sensational profits are a glowing tribute to Latham's king size, luscious red fruit — so appealing to buyers because of its appealing appearance and delightful flavor. This tremendously productive variety is a tall, vigorous grower, and planters report that an average of \$1000 per acre of plants is realized with Latham. In addition to this, Latham's firmness and lasting qualities make it an excellent shipper. Free from mosaic, Townsend's Latham's is one variety you can't afford to pass up. Order some today—we'll hold them until you're ready to plant. Latham can't miss—whether you raise to sell or to serve.

this big value
RED RASPBERRY OFFER
12 NEW CHIEF, 1 Year Size
12 LATHAM, 1 Year Size
Special Price
24 Select Plants **\$2.75**

25 SELECT LATHAM
25 SELECT CHIEF
Special Price **\$5.25**
50 Plants



1949
NEW LOW
PRICES
SEE PAGE 55



Sunrise *Early Raspberry*

Bright, glowing red, and extra large berries make this New variety stand out above any other early red-raspberry. Plants are healthy and good growers. Fruit fine for shipping or canning. Introduced by the New Jersey Experiment Station. Supply limited order early.

Townsend's Raspberries Are Certified FREE of Disease

**Absolutely Hardy —
Easy to Grow**

**FOR QUICK FRUITING
SEE PRICES ON PAGE 43**



**READY FOR MARKET
WHEN PRICES ARE
HIGHEST**

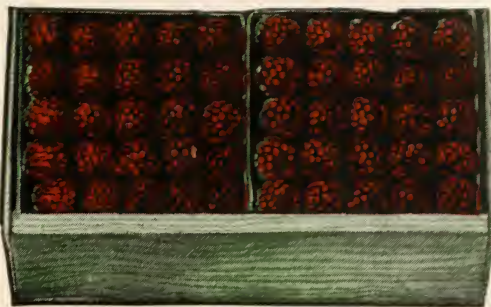
CHIEF ripens 10 days earlier than Latham, the fruit while not quite as large as Latham, is firm bright red color, and excellent shipper, tops for quick freezing and when grown commercially reaches the market when berries are at a premium. And of course, Chief is nearly immune to mosaic and mildew diseases. Like Latham its parent, is an unusually heavy producer. All of these facts add up to an imposing score, and make Chief a good money maker on any market, also a red raspberry which every home garden should have.



Fallbearing

RASPBERRIES

Pick Berries Summer and Fall



Pick Berries Summer and Fall!



Field of Indian Summer—Leading Red Everbearing Variety That Produces Good Results Every Year

THOUSANDS of growers in practically every state east of the Mississippi are reaping sensational profits by being able to harvest and pack berries for market throughout early Spring and the entire Summer and again in the Fall. Amazing? Yes—but it's easy to do when you plant Fallbearing varieties. Townsend's Fallbearing raspberries are easily grown, fruit the very first year set—and continue to do so for a number of years thereafter. Both commercial growers and home gardeners alike have found these varieties to be profitable investments. (To increase Fall production, the new growth should be sheared back about 18 inches after the Spring crop is harvested.)

Indian Summer MAMMOTH RED EVERBEARER

A tremendous sensation because of its giant size, delicious taste and appealing beauty. And, sensational also in that it bears a bumper crop in June and an immense crop again in the Fall. Its wonderful keeping qualities and its unusually large, glossy red, cone shaped berries have earned for Indian Summer the reputation of being the greatest all-purpose raspberry yet. This variety is certainly a worthwhile investment. Be sure to order a good supply.

SPECIAL
HOME PLANTING OFFER

- 12 Sunrise
- 12 Indian Summer
- 24 Best Plants
- 1 Yr. No. 1

\$3.95

KATHERINE

DESIRABLE
EVERBEARING RED

Numbered among the best red raspberries ever grown, Katherine is a consistently prolific producer from early Spring to late Fall. Fruits an uncommonly large, firm and attractive berry of excellent flavor. You can't go wrong with Katherine. Order early.

ST. REGIS

AN EVERBEARING RED IN
GREAT DEMAND

This variety ripens within 80 days of setting and flourishes in most any type of soil. Fruits well from initial ripening in early Spring and throughout the Summer. Produces mightily again in the Fall. St. Regis is a valuable investment for both market or home growers.

A Distinctive Pair -- Outstanding

MARCY THE BIGGEST YET

Its long, conically shaped, moderately firm and thick fleshed fruit makes Marcy a highly desirable berry as well as an excellent shipper. The plants are tall and exceptionally hardy with stalky canes that hold fruit well. Berries produced in test lots show Marcy to be the largest of all leading varieties.

TAYLOR

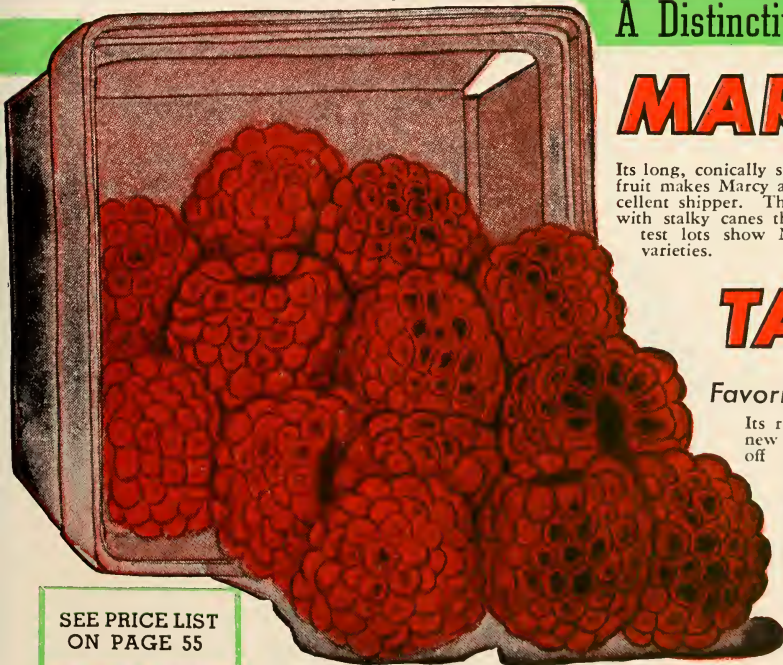
Favorite of the Future

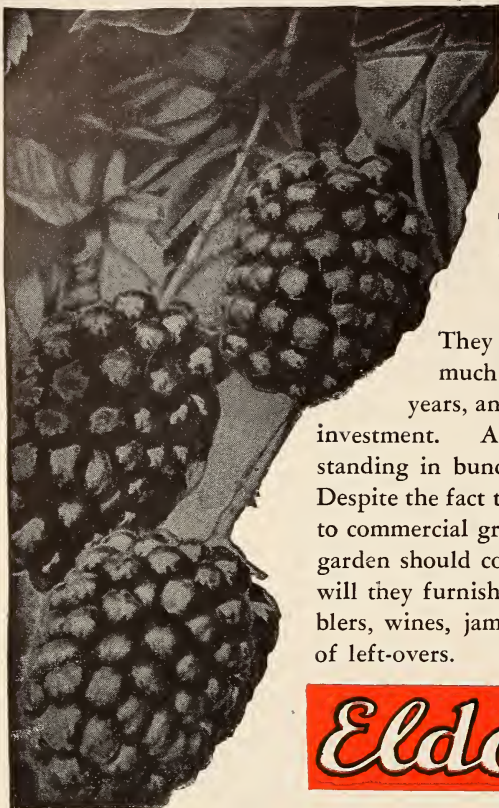
Its rigid tree-like canes hold its bright red, new oblong shaped, giant sized berries well off the ground. For luscious flavor and crumble-free fruit, Taylor is all that you could ask for. Taylor is dependable and always comes through with heavier yields and greater profits.

SPECIAL OFFER

- 12 Marcy
- 12 Taylor
- 24 Select Plants for **\$3.95**

SEE PRICE LIST
ON PAGE 55





TOWNSEND'S

SELECT STRAIN

BLACKBERRIES

● All Grown from Root Cuttings

They make a much more fibrous rooted plant and grow off much quicker after setting. One planting lasts for several years, and the first crop generally more than pays for the entire investment. After the first crop, blackberry plants grow upright, standing in bunches and often attaining heights in excess of 6 feet. Despite the fact that we sell hundreds of thousands of blackberry plants to commercial growers every year, we sincerely believe that every home garden should contain several of these easily grown plants. Not only will they furnish plenty of big, tasty berries for making luscious cobblers, wines, jams and jellies, but will also enable you to sell plenty of left-overs.

Eldorado

THE MOST WIDELY
PLANTED OF ALL
BLACKBERRIES

Eldorado

IT LEADS THE FIELD

Famous for being the most widely planted of all commercial blackberries, Eldorado's unexcelled productiveness cannot be beaten. Its fragrant, jet black, large sized, practically coreless berry is in demand wherever and whenever blackberries are marketed. Eldorado does exceptionally well even under extreme cold weather, and you can depend upon this hardy variety for satisfaction far beyond your greatest expectations. Eldorado is a mid-season to late variety and is superb for making pies, jams, jellies and wines.

FOR
PRICES
BEARING
AGE
Blackberries
SEE PAGE
43

New Alfred

SUCCEEDS ALMOST EVERYWHERE

Known to have successfully withstood 35 degrees below zero, the New Alfred's hardiness cannot be adequately evaluated. This rugged producer of large, sweet, coreless berries ripens a few days earlier than Eldorado. Alfred's northern locale origination has made it adaptable to all sections. Growers in all of the northwestern states as well as in Ohio, West Virginia, Indiana, Illinois, New York and Pennsylvania are loud in their praises as of the merits of this new variety. We recommend the New Alfred highly, and in our estimation, for a fine mid-season variety, there is none better.

Early Harvest

The Earliest Of All Blackberries

This variety is unquestionably the most productive of all the early ripening blackberries. Its growth is superlatively abundant and vigorous, and the canes are very hardy. It fruits a medium

large but very firm berry that is excellently suited for shipping purposes. For a high quality early blackberry — plant Early Harvest.



COMPLETE PRICES ON PAGE 55

Blowers

Always A Profitable Investment

Its vigorous and hardy vine, and its heavy fruiting qualities have established for Blowers the reputation of being one of the leading commercial varieties on the market. Its berries are borne in large clusters and are sweet and melting to the taste. Blowers is a heavy producer — especially in the northern states. Get in on Blowers profits this season. Order early.



NEW BOYSENBERRY

THAT ARE COMPLETELY

THORNLESS

**BOYSENBERRIES
ARE LUSCIOUS**

THE GREATEST VINE BERRY FOR HOME — MARKET

SENSATIONAL PROFITS FOR COMMERCIAL OR HOME PLANTING

JUSTLY reputed to be the largest and finest berry ever produced, the Boysenberry is a grower's answer to certain profits. This newest addition to the berry family came as a result of crossing blackberries, raspberries and loganberries. Possessing the best attributes of its parents, the Boysenberry is a veritable giant — often growing more than 2 inches in length, and 1 inch in diameter. Its flavor is a subtle and absolutely delicious blending of its parent berries, and the tremendous yields, plus its excellent crop, spell success for the Boysenberry in a big way. And, tremendously important also is the fact that — it comes into bearing the next year after planting and one planting lasts for many years.

Commercial growers share with home gardeners their enthusiasm and delight in the abundant growth and remarkable quality of Boysenberry. The fruiting season generally lasts for as long as two months and it is not unusual to pick 20 baskets of berries to the plant the second year after planting. We strongly recommend that you give this extraordinary berry a trial. You're bound to be amazed at the results.

- By Far the Largest and Heaviest Producing Berry of the Blackberry or Dewberry Family.
 - Berries Often Exceed 2 Inches in Length.
 - 2200 Pints Picked From 100 Two-Year-Old Plants.
 - Average — 35 Berries Per Quart Box.
 - Gross Returns — \$1760.00 From One Acre!
- IDEAL FOR QUICK FREEZING!**

**Don't Miss
This Special
Boysenberry
Garden Offer**

12 BOYSENBERRY
12 YOUNGBERRY
24 Strong 1 yr. Plants
Special Price **\$3.45**

2 Collections for \$6.25

COMPLETE CULTURE GUIDE ON REQUEST ● PRICE LIST ON PAGE 55

DEWBERRIES

**HARDY
PRODUCTIVE
PROFITABLE**



MARKET prices in recent years are reasons why every commercial grower should plant Dewberries. Townsend's Select Strain Dewberry stock is in fine shape this year and just waiting to turn themselves into ready profits for thousands of market growers and home gardeners. The Dewberry is a trailing blackberry and a little less hardy. However, Dewberries ripen much earlier than blackberries, are a much larger fruit, and they have a finer flavor. It has been successfully grown on a large scale in the central and southern states, however since the advent of the Youngberry, the Boysenberry and the Nectarberry varieties, the planting section of the Dewberry has been advanced some two hundred miles north. Growers have been reporting excellent results as far north as Rhode Island and western New York. Due to the very fine texture of Dewberries, long hauls should be avoided and they should be placed on the market soon after picking.

● YOUNGBERRY

A new trailing variety of the Dewberry family. Combining all of the best features of the Raspberry, Blackberry and Dewberry, this new variety has a rich, spicy flavor that is delightful to the taste, and unsurpassed for sheer productivity. Its large, uniform, and practically seedless fruit place it among the highest price drawing fruit on any market. Excellent for jellies, canning, or eating fresh, Youngberry is tops for either commercial growers or home gardeners.

● LUCRETIA

Remarkably productive and exceptionally hardy, this variety is reputed to be the best of this class of fruit. Lucretia ripens early and its fruit are large, firm and meltingly delicious. Grown successfully and on a large scale in the south, this variety has also been a profitable winner in northern states.



THORNY BOYSENBERRY

THORNY-BOYSENBERRY

Same type of berry as its off-spring, the Thornless Boysenberry the old type does have thorns. Where the planter does not care about picking berries in thorns, then he can save a little in purchasing plants of the thorny type. We have plenty plants.
PRICES ON PAGE 55

Allegheny Co., Pa.

Dear Sirs:
Your Thornless Boysenberry, bear big crops, large berries. Never lost a single plant in 1947 planting.

Lester J Holmes

EXTRA PROFITS IN HARDY, DEPENDABLE

GRAPE VINES

Bigger and Better than Ever Before!

4 "CHOICE" NEW VARIETIES

The best by far of the new — AND — approved by Townsend's for superior yields, quality fruit, and early fruiting habits. All of recent introduction.

CACO (A Better Red)

This prolific new, amber red is considered the best and hardiest of its kind ever produced. Its bunches are large, and the flavor of its fruit can be compared with the finest for rich, sweet qualities. Holds fruit well after ripening.

FREDONIA (A Fancy Black)

A fancy quality blue-black, and one of the earliest to ripen, Fredonia's juicy, but solid fruit grow abundantly on hardy vines and its large, compact bunches are real money-makers for any commercial grower.

CHAMPAGNE (Richest Amber Yet)

Being all that its name implies, this new variety is unsurpassed for rich, very fine flavor. It produces large, beautifully colored amber grapes in tight, compact bunches. This variety is destined to become an all around favorite. Its vigorously growing, strong vines fruit at an early age. Champagne is one of the best varieties on our list.

PORTLAND (White)

This new variety ripens earlier than any other known grape. Portland's call to fame lies in the taste of its grapes. Its large, beautiful, yellow colored fruit contain so much sugar that they can be eaten long before they are fully ripe.

TOPS for

- QUALITY and
- HEAVY YIELD

Townsend's Select Standard Varieties

The Famous **CONCORD (Black)** This famous, ever dependable, sure cropper variety is the standard by which all other varieties are judged. Regardless of whatever other varieties are grown, no vineyard or arbor can really be called complete without a liberal planting of Concord. For almost a hundred years this old, reliable variety has been a constant money-maker, and it is still referred to as the "King" of all grapes. Its wonderful adaptability to all soils and its ready flourishing under varying climatic conditions go a long way in accounting for Concord's long-time popularity. Concord ripens mid-season to late and is unsurpassed for vigorous growing habits and productivity. For commercial growers, Townsend's winter-hardened Concord stands supreme.

The Mellow **CATAWBA (Red)** This variety keeps better than other grapes now being cultivated. A late ripening, very sweet, copper red fruit, Catawba is used extensively for wine making.

MOORE'S EARLY Money-making Black Ripening two weeks earlier than Concord, this seedling of Concord is an extra heavy producer of large excellent quality black fruit. It is planted extensively by commercial growers.

The Magnificent **NIAGARA (White)** Receiving most of its characteristics from its parent Concord, this magnificently flavored, white grape is a true off-spring of the "King". Its impressive, compact clusters ripen with Concord.

The Heavily Fruiting **WORDEN (Black)** This ever popular, thin skinned variety is famous for tremendous yields, and is one of the earliest ripening of all varieties. Excellently flavored, Worden is a hardy growing, bluish-black variety.

Big Value Grape Offers

Select varieties to give you a fine all-around high quality grape garden. Perfect for ornamental effect.

ALL 2-YEAR SELECT VINES

1 Fredonia, Black	Select Vines All for
1 Caco, Red	
1 Champagne, Amber	
1 Moore's Early Black	
1 Niagara, White	
1 Catawba, Red	
1 Worden, Black	\$2.65
1 Concord, Black	
2 COLLECTIONS \$5.00	
<hr/>	
2 Champagne, Amber	Select Vines All for
2 Caco, Red	
2 Fredonia, Black	
2 Portland, White	
2 Concord, Black	
2 Moore's Early	
2 Catawba, Red	\$3.25
2 COLLECTIONS \$5.95	

2 YEAR GRAPE VINE LIST ON PAGE 55

BEARING AGE VINES ON PAGE 43

FOR FRUIT THE FIRST SEASON -- SET TOWNSEND'S



Bearing Age PLANTS

SELECTED For Quicker Results

Fruits The First Season

HURRY - HURRY - HURRY!

Tremendously increased demand for Bearing age plants has seriously limited our supply. We try to grow enough stock to take care of all our customers, but we must impress growers with the necessity of ordering early—while they last. We feel certain that we shall be sold out early in the season, so don't delay—ORDER NOW.

BEARING AGE GRAPE COLLECTION

- 2 NEW CACO, Red
- 2 NEW PORTLAND, White
- 2 NEW FREDONIA, Black
- 2 CONCORD, Blue

8 SELECT VINES \$4.65

BEARING AGE RASPBERRY OFFER

- 12 HEAVY YIELDING LATHAM, Red
- 12 SUNRISE, Black
- 12 ST. REGIS, Everbearing, Red

36 Plants \$9.95
Special Price

BEARING AGE BLACKBERRY OFFER

- 12 ELDORADO BLACKBERRY
- 12 BOYSENBERRY DEWBERRY

24 PLANTS \$4.75
ALL FOR

By the time we have transplanted Bearing-age plants into our nursery rows, we have grown them a full year under the most idealistic growing conditions possible. A special twenty acre irrigation system nurtures them from original setting until transplanting, and in order to guarantee our customers well balanced, healthy plants, plenty of humus is added to the soil before setting. Cultivation and pruning is carefully carried out throughout the entire season, and a carefully supervised method of tying, bundling, and wrapping (the full length of the cane) is also performed in order to give a maximum amount of protection to the plants so that the customer will receive them in perfect condition. Bearing-age plants will more than pay for the slight difference in cost.

SPECIAL ANNOUNCEMENT TO ALL HOME GARDENERS

Quick fruiting results, the first season set, make Bearing-Age plants specifically adapted for home growers. And, too, Raspberry, Blackberry and Dewberry plants will produce excellent crops every year from three to five years from original planting, thereby providing your table with plenty of fresh, delicious berries directly from your own garden at an amazingly low cost. Bearing-age grapes bear from eight to twelve years. Be sure and include some of these Bearing-age plants in your next order, and to make sure your garden is complete, don't forget our Fall-bearing varieties in order to have fruit from early Spring clear through to November.



Bearing Age Grape Vines Strong Healthy Crops that will fruit this year.

PRICES BEARING AGE PLANTS

BEARING AGE RED RASPBERRY PLANTS

	6 Plants	12 Plants	25 Plants	50 Plants	100 Plants
CHIEF	\$2.25	\$3.90	\$6.15	\$10.60	\$18.50
INDIAN SUMMER EVERBEARING	2.25	3.90	6.15	10.60	18.50
LATHAM	2.25	3.90	6.15	10.60	18.50
SUNRISE	2.25	3.90	6.15	10.60	18.50

BEARING AGE BLACK-RASPBERRY PLANTS

CUMBERLAND	2.25	3.90	6.15	10.60	18.50
MORRISON (NEW)	2.50	4.35	6.95	11.45	19.95

BEARING AGE BLACKBERRY AND DEWBERRY PLANTS

ALFRED BLACKBERRY	1.75	2.95	4.65	7.95	13.45
ELDORADO BLACKBERRY	1.75	2.95	4.65	7.95	13.45
EARLY HARVEST (Earliest)	1.75	2.95	4.65	7.95	13.45
BOYSENBERRY—NEW THORNLESS	2.25	3.90	6.15	10.60	18.50

BEARING AGE GRAPES

	Each Plant	3 Plants	6 Plants	12 Plants	25 Plants
CONCORD—Blue	\$.90	\$2.25	\$3.65	\$6.25	\$12.75
CACO—Red	.90	2.25	3.65	6.25	12.75
CHAMPAGNE—Amber	.90	2.25	3.65	6.25	12.75
FREDONIA—Black	.90	2.25	3.65	6.25	12.75
MOORES EARLY—Black	.90	2.25	3.65	6.25	12.75
NIAGARA—White	.90	2.25	3.65	6.25	12.75
PORTLAND—White	.90	2.25	3.65	6.25	12.75
WORDEN—Black	.90	2.25	3.65	6.25	12.75

• FOR PARCEL POST RATES ON ABOVE STOCK — PAGE 55

**HARDY
FIELD
GROWN**

VEGETABLE PLANTS



TOMATO PLANTS

Grown from Ferry-Morse certified seed. Our big vigorous plants are sprayed regularly and come to you free from all disease. Plants ready for shipment April 15th; numbers after varieties named shows days to maturity.

● **EARLIANA - 64**—The earliest ripening tomato, valuable for home garden and early market. Our strain superior in earliness and quality, medium size globe shape, deep scarlet red.

● **GARDEN STATE - 84**—Plant vigorous and partly resistant to wilt and late blight, this grand variety developed by a large soup company of New Jersey. Fruits flattened globe shape, thick skin, very attractive bright color.

● **MARGLOBE - 75**—Our strain is superb of this old favorite, fruit uniform, valuable for shipping and canning. Bears large crops, deep scarlet, fruit globe shape.

● **RUTGERS - 73**—Highly recommended as a second early maturing variety for canning and tomato juice, probably grown more extensively than any other variety of tomatoes.

● **STOKESDALE - 70**—Fruits large, sub-globe shape, smooth and well colored. Where length of growing season is less than average, then this variety is the best.

ONION PLANTS

Grow big, early onions from our frost-proof plants for sweetness and mildness of flavor. After transplanting these plants, they will withstand temperatures of 20 degrees above zero. Plants ready for immediate shipment.

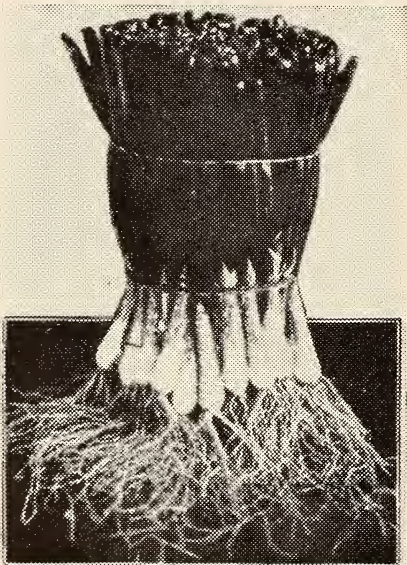
● **YELLOW BERMUDA**—Most widely planted variety, grown in Texas for early market, will produce in any climate. Light straw colored, flesh white and mild.

● **CRYSTAL WAX BERMUDA**—Similar to Yellow Bermuda, except skin which is pure white. A very popular variety for home and market.

● **YELLOW SWEET SPANISH**—Best of the very large mild varieties, good keeper, deep amber orange and globular shape.

● **WHITE SWEET SPANISH**—Similar to above except that the skin is white. Globular shape.

● **EARLY YELLOW GLOBE**—Ready for harvest normally 2 weeks ahead of other yellow varieties. Vigorous, and productive, excellent globe shape.



TOMATO

50 plants less than **17c** in lots of 2,000

50 plants each variety per bundle. Kindly give shipping date desired and varieties. All prices prepaid except 2,000 plants or more, these shipped express collect.

50 plants	Postpaid	-----	\$.68
100 plants	Postpaid	-----	.79
200 plants	Postpaid	-----	1.58
500 plants	Postpaid	-----	2.68
1,000 plants	Postpaid	-----	4.48
2,000 plants	Ex. Coll.	-----	6.79

ONION

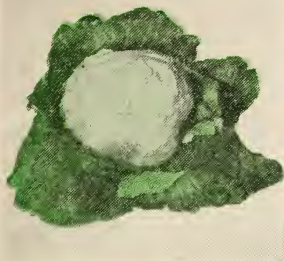
100 plants less than **10c** in lots of 6,000

Ready for immediate delivery - 100 plants of variety to a bundle. Prices postpaid up to 6,000 plants, then express collect.

100 plants	Postpaid	-----	\$.38
200 plants	Postpaid	-----	.66
300 plants	Postpaid	-----	.93
500 plants	Postpaid	-----	1.36
1,000 plants	Postpaid	-----	2.36
2,000 plants	Postpaid	-----	3.86
6,000 plants	Ex. Coll.	-----	5.96

HEAVY Rooted Weather Hardened Dependable Yielders Guaranteed!

CABBAGE PLANTS



COPENHAGEN MARKET

Frost Proof Cabbage Plants that have been winter hardened in the fields will save you 3 to 4 weeks growth on tender seedling plants. All of our plants are grown from Ferry-Morse certified seed. These plants will carry over without injury in temperatures as low as 20 degrees above zero after transplanting.

● **EARLY JERSEY WAKEFIELD**—62—Extremely early variety, very valuable for home and market. Heads conical, firm, and weighs 2 to 2 1/4 lbs.

● **COPENHAGEN MARKET**—66—Our Select strain is extra early, ideal for early market, valuable as an early kraut variety. Heads uniformly round, firm, usually weigh 3 to 3 1/2 lbs., inside clear white with excellent quality.

● **GOLDEN ACRE**—66—Earliest round headed variety especially for early market. Heads round, firm, 6 to 7 in. in diameter and weighs 3 to 3 1/2 lbs. Interior clear white and excellent quality.

● **CHARLESTON OR LARGE WAKEFIELD**—71—Valuable home and market variety, heads broad heart shaped, 8 in. long, firm, weighs 4 to 5 lbs.

● **JERSEY QUEEN (YELLOW RESISTANT)**—62—About the same type as Early Jersey Wakefield, exceptionally resistant to yellows, and we recommend the variety to commercial growers where they are troubled with yellows in cabbage.

PRICES

50 Plants **12 1/2 c** in lots
Less than of 6,000

Not less than 50 plants of each variety sold. Plants ready for immediate shipment. State shipping date and variety.

50 plants Postpaid .	\$.49
100 plants Postpaid .	.79
150 plants Postpaid .	.99
200 plants Postpaid .	1.26
500 plants Postpaid .	2.39
1,000 plants Postpaid .	3.39
2,000 plants Ex. Coll. .	5.32
6,000 plants Ex. Coll. .	14.94

SWEET POTATO PLANTS

We grow millions of sweet potato plants. There is usually not enough plants to go around; thus we urgently request that you place your orders as early as possible for vegetable plants.

● **PORTO RICAN**—An extremely sweet flavored variety when thoroughly dried out before cooking, it is a yam type of potato and is one of the best flavored potatoes for home use that is grown to-

day. Plants ready for shipping about May 20th.

● **MARYLAND GOLDEN**—Specifically good for northern climates because of its early maturing habits. Its coloring is a rich yellow that remains with the potato even after cooking. It is a medium wet type of potato and is grown on a large commercial scale along the Atlantic seaboard. Plants ready about May 25th.

CAULIFLOWER

SNOWBALL--

● The most popular early strain of Snowball Cauliflower. Plants of medium height with rather waved and crumpled leaves, inner leaves covering head well, foliage is medium green. Heads a good depth of solid ivory white and fine quality. From the date plants are set, about 55 days to mature.

● **SNOWBALL X**—Adapted for use under wide range of conditions. Considered the most satisfactory strain for fall harvest. Heads are large, smooth, very deep, and solid, pure white, 65 days to maturity.

PEPPER PLANTS

These plants will be ready for shipment about May 10th. Figures after varieties named show date of maturity counting the days from setting plants.

● **CALIFORNIA WONDER**—72—A sweet pepper that is the standard of excellence. Commercial growers set more plants of this variety than any other sweet pepper. Plants a good grower, fruits very large, smooth and uniform shape, commonly 4 1/2 in. long and 3 1/2 in. through. Deep green becoming bright crimson when left on the vines.

● **RUBY KING**—65—Standard sweet pepper for home, and shipping. Fruits large 4 1/2 to 5 in. long and 2 1/2 in. through, early fruit deep green becoming bright red as season progresses.



CALIFORNIA WONDER

BROCCOLI

Plants ready for shipment about May 20th.

● **CALABRESE, EARLY GREEN SPROUTING**—First heads usually ready for cutting in 55 days from date plants are set. Vigorous grower, firm and large compact central heads, popular item for the home garden as well as for the market gardener.

PRICES

SWEET POTATO	-	PEPPER
* CAULIFLOWER	-	BROCCOLI

50 plants Postpaid . . . \$.90	500 plants Postpaid . . . \$2.98
100 plants Postpaid . . . 1.10	1,000 plants Postpaid . . . 4.98
200 plants Postpaid . . . 1.89	2,000 plants Ex. Coll. . . . 7.48

* Cauliflower Plants Double above Prices.

Season-to-Season Profits With One Investment

Select Strain **ASPARAGUS**

Plant These Varieties for Your Permanent Vegetable Crop!

- **PARADISE**—This sensational new variety is drawing raves wherever it is planted. Growers are amazed to see the straight, large stalks that grow from roots set the previous Spring. Top quality crisp, tender stalks and exceptionally mild flavor, pays off at harvest time. Make sure your garden or farm acreage includes this new and superior money maker.
- **MARY WASHINGTON**—Truly the "blue-blood" of the Asparagus world. Its extra heavy crowns and strong giant stalks have made it exclusive with commercial growers. Mary Washington is an exceptionally strong grower, its stalks are a rich green in color, and are as tender as can be. This much in demand variety is considered to be highly rust-resistant.
- **MARTHA WASHINGTON**—A result of select strain breeding, this versatile strain contains much of the original Washington characteristics, in addition to having a heavier stalk, being a better producer, and being practically blight-resistant.

New Low Prices on Asparagus Roots

	25	50	100	250	500	1000
1 Year No. 1 Grade	\$1.00	\$1.75	\$2.75	\$5.75	\$9.25	\$14.50
2 Year No. 1 Grade	1.75	2.85	4.75	9.65	14.85	24.00
3 Year-Jumbo Grade	2.95	4.65	7.95	16.85	25.00	41.75

Townsend's Select Strain **RHUBARB**

- **McDONALD**—You'll want some of this new, early producing, red, sweet rhubarb. Originated in Canada, McDonald outyields most other varieties. Milder to the taste, McDonald produces stalks two feet tall that are red all the way down.
- **GIANT CHERRY**—This colorful rhubarb, a cherry red along the entire length of the stalk, was originated in California, and the stalks are so tender that they need no peeling when cooked. The stalks are extra large and less acid and better flavored than most varieties.
- **MYATTS LINNÆUS**—An early variety possessing a tangy flavor making it admirably suited for pies and sauce. Produces big crops of large tender stalks.

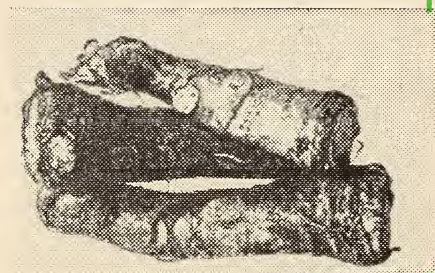
RHUBARB PRICES

McDONALD AND GIANT CHERRY: Each 60c; 3 for \$1.65; 6 for \$3.00; 12 for \$5.75; 25 or more for only 45c each.

MYATTS LINNÆUS AND QUEEN: Each 30c; 6 for \$1.65; 12 for \$3.00; 25 for \$5.75; 50 for \$9.95; 100 for \$19.50.



- **QUEEN**—Vigorous grower. Produces extremely large stalks of high quality. A really tremendous commercial variety.



Townsend's

HORSE RADISH

Set it Once - Thrives for Years

Now it is possible to grow your own "fresh horseradish" in your back yard. Once planted will last for years, giving you a continuous supply, for your table as well as to your friends. Just plant the roots in any garden soil and after the first year's growth you can cut off a few roots from each plant then grind them up, for your home product.

Home grown Bohemian horseradish is superior, because it is fresh and pure. Set the roots about 6 inches apart, maintains beautiful bluff foliage.

Place your order today — we will ship at the proper planting time.

PRICES:—6 for 49c.; 12 for 79c.; 25 for \$1.39; 50 for \$2.48; 100 for \$4.44; 200 for \$7.49; 500 for \$16.98; 1000 for \$32.50.



Candid CAMERA HIGHLIGHTS

TAKEN AT THE WORLD'S LARGEST GROWERS — SHIPPERS OF STRAWBERRY PLANTS



Widow of the Founder Active In Business

Widow of the founder of the original Townsend nursery, Mrs. E. W. Townsend, Sr., the mother of L. Sherman Townsend, Manager of Townsend Nurseries, Inc., at 69 years of age is still actively engaged in the job that she started as far back as 1900. This is an example of the down-to-earth personalized type of organization that services Townsend customers. A service that has become famous over many years for integrity of purpose and faithfulness of intent.



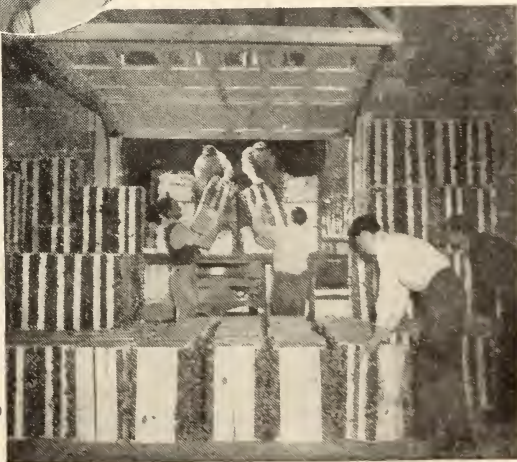
L. Sherman Townsend

In the growing season you will find him on the farms, producing top quality plants and trees. Spring shipping season will find him in the fields and Nursery Packing Houses, supervising the digging and packing thousands of orders for prompt shipment.



DIGGING AND CLEANING PLANTS is done by experienced labor. Only the plants showing abundant foliage and vigorous growth are retained for shipment. Digging capacity as much as 1,500,000 a day.

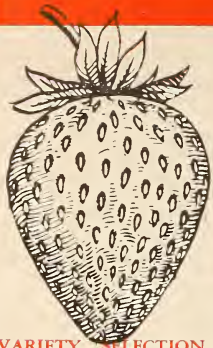
DAILY SHIPMENTS of plants dug the same day. This is a typical scene depicting daily activity at Townsend Nurseries, Inc. Prompt 24 Hour Service.



Townsend Nurseries Inc.

INTEGRITY • RELIABILITY • HONESTY

Strawberry CULTURE Directions



Just Right



Too Deep



Too High

Write us if you are confronted with any special problems.

VARIETY SELECTION. Perhaps the most important task in berry growing is proper variety selection. Every single variety listed in our catalog has been thoroughly tested throughout the nation. We will not list a variety until we have had this variety tried for several years, under various conditions. Therefore a careful study of variety recommendations in this catalog will eliminate the possibility of purchasing varieties that are not profit makers if you are growing berries for the commercial market, or a complete success in your home garden. At any time that you are in doubt as to variety selection just write Townsend Nurseries.

SOIL PREPARATION. Strawberries are very easy to grow, but like other growing plants, prefer fertile soil. Strawberries usually do well after vegetable crops, and we prefer the land to be plowed in late winter or extra early in the spring for commercial plantings. Plantings in the home garden the soil can be plowed or padded to a depth of about seven inches in the early spring. Potato fields, tomato and bean fields are fine for strawberry growing after these crops.

Barn-yard manure, of course is fine when broadcasted over the soil in the late fall or winter months and plowed under, or worked thoroughly into the soil after the land is plowed. We find that a complete fertilizer mixture of about a 4-8-5 and 5-10-5 analysis, (either one) applied on the soil after it has been plowed or worked up, at the rate of 1,000 to 1200 pounds per acre, and then disc'd or worked into the soil, AT LEAST TWO WEEKS BEFORE PLANTS ARE SET, three weeks is much better. Now in the home garden this would be applying the fertilizer at the rate of 2½ pounds per 100 square feet, using the same system as described above. After the fertilizer has been applied and worked into the soil for two to three weeks, then you are ready for your plants.

SET PLANTS IN ROWS. For commercial plantings mark your rows 3½ feet apart some growers prefer 4 feet, with either a row marker or other equipment suitable. The plants can be set with either a hand trowel, spade, or on a large scale planting with horse drawn transplanters, as well as larger tractor transplanters. Which ever means you set the plants, makes little difference, but always pack the soil firmly around the roots, and set the roots of the plants straight down into the deep soil, keeping in mind that the top of root near the crown of the strawberry plants should be level with the ground, this one point is important, but of course very easy to take care of in the progress of setting plants.

TIME TO PLANT. Every grower is just about insured with top success with berry plants when they are set into the soil in the very early spring. Meaning that as soon as the first days come along that you can prepare your soil in the Spring, do so, so that your soil will be all ready when the plants arrive. Townsend strawberry plants are hardy, and will withstand any freezing weather that you might have after transplanted in the Spring, since our plants are all winter hardened in the fields.

CARE OF PLANTS ON ARRIVAL.

Townsend plants come to you properly cleaned, and bunched into neat bundles, ready to set in your garden or field. Our plants are grown on deep loose fertile soil, and the full length of the root system you will receive. When the plants are set with a spade the roots going down straight into the soil, you can leave all the roots on the plant. When the setting is done by a garden trowel or transplanter the roots will have to be trimmed by clipping off a portion of the ends with a sharp knife, leaving the roots about 6 inches long, so they can be planted straight down into your soil.

Set the plants at once if possible when they arrive, dampen the roots just before setting, and keep the wind and Sun from the roots, by keeping your plants covered and keep them moist.

In case you cannot set the plants on arrival, then open the package or crate which ever the case may be, and unpack the shipment. Dampen the roots of the plants but not the foliage.

Keep the plants in a cool place like a cellar for a day or two, if you find that the plants will have to be kept out of the ground longer than two days then place them into cold storage where the temperature is about 32 to 40 degrees.

MATING VARIETIES. All varieties of berry plants that we offer are perfect flowering, and thus will produce a full crop when planted alone. Varieties will not mix, when planted side by side.

MULCHING STRAWBERRIES

In regions of heavy snowfall Strawberries should have a mulch to keep the ground from freezing and thawing in early winter and in the spring. In the Northern part of the Middle West all varieties should be protected in the winter against severe drying winds, which occur in those regions. A mulch conserves moisture in the spring and in certain localities the crop may be increased from one-third to one-half by its use.

The mulch should be applied as soon as the ground is frozen from one to two inches deep. In some localities growers have found it unsafe to await freezing weather because of the danger of severe storms or heavy falls of snow which remain throughout the winter, mulch being put on as soon as active growth has ceased. The mulch should be scattered over the fields so that some will fall on the plants, but more of it between the rows. In the spring the plants will grow up through the straw and the berries will be kept clean. If mulch is put on heavy, some of it should be raked off into the middle of rows at time growth starts. Wheat, rye, oats and buckwheat straw are more commonly used. From 3 to 5 tons of straw is required per acre. Marsh hay is also used to advantage when obtainable, 1 to 3 tons per acre being required.

ONE OF THE SECRETS In Growing Strawberries

While there should be no secrets in the growing of Strawberries when every grower is exchanging ideas with his neighbors, there seems to be one point that has not been given enough publicity by the neighbor, journals and nurserymen. With the majority of the plant growers in the North it has always been a practice to hold off setting plants until all frosts and freezing is over. On low springy type soils this probably is a logical practice. However, on land with a good drainage and which dries out early in the spring this practice should not be followed. Strawberry plants, when properly grown and hardened, will stand considerable cold weather after setting.

● NUMBER PLANTS REQUIRED TO SET AN ACRE

	Number Plants	Plant Spacing
Strawberries, Field Culture	8000	3/2x1½
Strawberries, Garden Culture	-----	2½x1½
Everbearing Strawberries, Field	8000	3/2x1½
Everbearing, Double Hill Row System	16000	2½x1½x2½
Everbearing Strawberries, Garden	-----	1½x1
Blackberries	1700	8x 3 ft.
Red Raspberries, Hedge Row	2400	6x 3
Red Raspberries, Hill System	1800	5x 5
Black Raspberries	1700	7x 3½
Dewberries & Boysenberries	2400	6x 3
Blueberries, Field Culture	1360	8x 4
Blueberries, Garden Planting	-----	4x 4
Grapes	490	9x10
Asparagus	3200	7x 2
Asparagus, Home Planting	-----	4x 2

● Complete Culture Guide on Small Fruits Will Be Sent Free to Anyone Requesting This Booklet

/STRAWBERRIES/ ARE EASILY GROWN

GROW THEM FOR BOTH PLEASURE AND PROFIT

Photo of a Well Grown Field of Select Strain Strawberry Plants

Strawberry Culture Directions -- Continued from Page 48

CULTIVATION. Tillage in newly planted strawberry fields or the garden, should start within ten days after the plants are planted into your soil. In commercial plantings, horse drawn cultivators are used, also garden tractors and light two row tractor cultivators. In the home garden, a small hand cultivator with two handles works very nicely. Plants should be hand hoed after the first cultivation, so as to break any crust that may form and to preserve moisture. Strawberry plants should be either cultivated or hoed every week or ten days, until the bed is formed about 30 inches wide, then usually the hoe work drops out about mid-July and the cultivator will take care of the cultivation. Keep all weeds and grass out of your strawberry patch.

Keep in mind with using the cultivator to use same shallow, this applies to the hoe also. Strawberries like shallow, but frequent cultivation.

REMOVING BLOSSOMS. After your plants become started after planting, there will appear on the plant flower stems commonly known as blossoms. Keep all blossoms removed from the plant soon as they appear. If blossoms are left on the plants, then the plants will become stunted. It requires only a little work and is a important factor in growing strawberries.

EVERBEARING VARIETIES and BLOSSOMS. KEEP ALL BLOSSOMS REMOVED FROM YOUR NEWLY SET PLANTS UNTIL THE LATTER PART OF JUNE. This will let your plants become permanently established quickly. After this date let the blossoms remain on the plants and they will form into berries for your late Summer and Fall harvest.

FERTILIZING IN THE FALL. Putting an application of 5-8-12 commercial fertilizer on your strawberry field in the fall will make the grower larger profits than spring fertilizing. We have found that an application of the above fertilizer at the rate of 800 to 1,000 pounds per acre, applied on the beds the latter part of August up until September 10th, will make your fruit buds in the strawberry plants larger, and at the same time make you more fruit buds, for your coming Spring berry crop.

Apply the fertilizer, on the foliage when the foliage of the plants are PERFECTLY DRY, and then use a bush or burlap bag and gently brush the fertilizer off the plants foliage, so fertilizer will not 'burn the plants.' In the Spring apply only 400 pounds of a 6-8-6 analysis fertilizer to the acre, when the plants are dormant, usually about MARCH 1st, in normal Spring.

The home gardener can use the same practice as described above for field culture using 2 1/2 pounds fertilizer per 100 square feet of space planted to strawberries. In the Spring apply about ONE POUND per the 100 square feet. For the home gardener, when there has not been any fertilizer applied to the strawberry beds in the FALL, then we recommend 3 pounds of 6-8-6 fertilizer applied in the late winter or very early Spring, before the buds start growth. When the above mixtures are not available in fertilizers, we then recommend that you use VIGORO, adding 30 percent more than you do the above mixtures.

Territorial Adaptability of Townsend's Varieties Strawberries

Varieties marked with * are the leaders and ones most widely planted

Variety	Approved For	Season of Ripening	Description on Page
Arrowhead	All States except Florida — Gulf States	Mid-Season	51
Blakemore	All States except New England, N. Y., Penna.	Extra Early	7
Big Joe	All berry sections except extreme South	Mid-Season	15
Catskill	All States except extreme South. A favorite	Mid-Season	13
Chesapeake	New England, W. Va., Ohio, Ill., Penna., N. Y., Ind., Wis.	Late	48
Dorsett	All strawberry sections except Fla. and Ga.	Early	10
Evermore, Everbearing	Central, Western, and all Northern States	Fall	23
Fairfax	All States except Fla. and Gulf States	Early	11
Fairland	W. Va., Ohio, Penna., N. Y., N. J., Md., New England States	Early	49
Fairpeake	Being tested, widely favors Central and Northern States	Late	14
Gandy	All States east of Miss. River, except Ga., Fla., La	Late	14
Gem, Everbearing	Planted in all States except the South	Fall	23
Gemzata, Everbearing	All States except Fla. and Ga.	Fall	23
Howard 17	(One and the same variety as PREMIER)	Early	6
Lupton	Del., N. J., Penna., Ohio, W. Va., Conn.	Late	14
Mastodon, Everbearing	All States except in warm Southern sections	Fall	23
Midland	Wherever PREMIER will grow.		
	(All sections except deep South and Far West)	Early	9
Missionary	Fla., N. C., S. C., La., Texas	Early	17
Premier	All sections except extreme South	Early	6
Polar Queen	The ONE AND ONLY NATIONALLY PLANTED STRAWBERRY	Early	17
Senator Dunlap	Kansas, Iowa, Mo., Mich., Ind., Ill., Wis., Ohio	Mid-Season	15
Sparkle	Mo., Kan., Ohio, W. Va., Penna., N. Y., N. J., N. Eng. States	Mid-Season	8
Streamliner, Everbearing	All States except Fla., Ga., La., Miss.	Fall	2
Temple	All States except the deep Southern States	Early	12
Town-King	All States except Gulf States	Late	16
XTralate	All States except Gulf and Southern States	Extra Late	50

TOWNSEND SELECT-STRAIN PLANTS ARE GROWN THROUGHOUT THE NATION AND ARE KNOWN FOR THEIR HARDINESS AND BIGGER YIELDS "AT NO EXTRA COST"

OUR 48 YEARS EXPERIENCE IN BERRY CULTURE IS AT YOUR SERVICE

WORLD'S LARGEST GROWERS AND SHIPPERS OF STRAWBERRY PLANTS



XTRALATE

- ✓ EXTRA GOOD
- ✓ LATEST FRUITING

Especially developed by Townsend to meet the great demand for a truly later than late berry. Xtralate not only fruits later than any known existing strawberry, but has proven itself to be one of the heaviest yielding and hardiest varieties on the market. For added profits, we strongly urge the planting of this variety. Thousands of planters have been amazed at the sight of this plant laden with fruit when all other varieties are through — why not you.



NO OTHER STANDARD VARIETY IS AS LATE AS

XTRALATE

- COLOR—Rich, bright red
- SIZE—Large to Extra-Large
- QUALITY—The Very Best



Chesapeake

AN OLD FAVORITE

late variety, sure cropper, excellent shipper. Does not discolor after picking, retains bright rich red color for several days. Berries large to extra large, distinctive high quality which brings top market prices.





FAIRLAND • Deep Feeder • Drought Resistant
 • Good Plant Maker • Peavy Yields
ORIGINATED BY THE UNITED STATES DEPT. OF AGRICULTURE

A CROSS between Aberdeen and Fairfax and has been tested about 7 years in various parts of the United States under the supervision of the U. S. Department of Agriculture, known as variety No. 3205 at the time. It is an early berry, rather large, bright red fruit. Fairland is very productive, good plant maker. Berries are firmer than Catskill and Premier, being not as firm as Temple. It was held back for commercial production in this area, but so many other states testing Fairland, liked this variety so well that the Department of Agriculture more or less had to name it and to release the variety for propagation.

Fairland resists red stele disease and is a very favorable variety for most sections of the country, where strawberries are grown when the shipping distance is not an important factor. We recommend a few plants of this variety in every one's back yard garden and feel that every commercial planter should grow a few thousand Fairland.

ARROWHEAD


The Arrowhead strawberry is being introduced as a new variety, because of its plant characteristics of hardiness, vigor and runner setting ability and its fruit qualities of attractiveness, large size and desirability for market, FREEZING and jam making. It is June bearing variety, medium productive, whose time of harvest is mid season to medium late.



**NEW
 ARROWHEAD**

TOWNSEND'S

ORIGINAL SELECT STRAIN
OF STRAWBERRY PLANTS

TRUE TO NAME
PLANTS

1949 PRICES

GUARANTEED
SATISFACTION

STRAWBERRY PLANTS

All prices quoted below are F.O.B. Salisbury, Maryland, and in effect from January 1st until December 31, 1949. Customers ordering plants sent Parcel Post prepaid. See Parcel Post Rates on page 55. We ship a limited number of strawberry plants in late summer and fall. Customers wanting plants for planting at that time, may send their order along any time after June 15th. All plants are tied 25 to bundle. No less than 25 plants of variety sold.

Description of varieties
on page

	25 Plants	50 Plants	100 Plants	200 Plants	250 Plants	400 Plants	500 Plants	1000 Plants	3000 Plants of One Variety Per 1000	5000 Plants of One Variety Per 1000
EARLY VARIETIES										
7	BLAKEMORE -----	\$.60	\$ 1.10	\$ 1.85	\$ 3.25	\$ 3.85	\$ 4.75	\$ 5.85	\$ 8.95	\$ 8.35
10	DORSETT -----	.90	1.70	2.70	4.60	5.50	7.50	8.40	13.50	12.50
11	FAIRFAX -----	.90	1.70	2.65	4.50	5.25	7.25	8.25	12.95	12.35
51	FAIRLAND (NEW) -----	1.15	1.90	3.00	5.00	5.95	7.95	9.25	15.00	14.40
6	HOWARD 17 -----	.90	1.70	2.65	4.50	5.25	7.25	8.25	12.95	12.35
9	MIDLAND (NEW) -----	.90	1.70	2.75	4.95	5.95	7.95	9.25	15.00	14.40
6	MISSIONARY -----	.60	1.10	1.85	3.25	3.85	4.75	5.85	8.95	8.35
17	POLAR-QUEEN (NEW) -----	2.30	3.80	6.00	10.00	11.90	15.90	18.50	29.00	25.00
6	PREMIER -----	.90	1.70	2.65	4.50	5.25	7.25	8.25	12.95	12.35
MID-SEASON VARIETIES										
51	ARROWHEAD (NEW) -----	2.30	3.80	6.00	10.00	11.90	15.90	18.50	29.00	25.00
15	BIG JOE -----	.90	1.60	2.50	4.45	5.10	6.75	7.95	12.95	12.35
13	CATSKILL -----	.90	1.70	2.65	4.50	5.25	7.25	8.40	12.95	12.35
15	SENATOR DUNLAP -----	.90	1.50	2.40	4.20	4.80	6.50	7.50	12.00	11.40
8	SPARKLE (NEW) -----	.90	1.70	2.65	4.50	5.25	7.25	8.25	12.95	12.35
12	TEMPLE -----	.90	1.60	2.50	4.45	5.10	6.75	7.95	12.95	12.35
LATE TO VERY LATE										
50	CHESAPEAKE -----	1.15	1.90	3.00	5.25	6.00	8.00	9.40	15.00	14.50
14	FAIRPEAKE -----	1.15	1.90	3.00	5.25	6.00	8.00	9.40	15.00	14.50
14	GANDY -----	1.00	1.75	2.75	4.85	5.50	7.50	8.75	14.00	13.50
14	LUPTON -----	1.00	1.75	2.75	4.85	5.50	7.50	8.75	14.00	13.50
16	RED STAR -----	1.15	1.90	3.00	5.25	6.00	8.00	9.40	15.00	14.50
50	TOWN-KING -----	1.15	1.90	3.00	5.00	5.95	7.95	9.25	15.00	14.40
7	XTRALATE -----	1.20	2.00	3.20	5.60	6.40	8.65	10.00	16.00	15.40
SURPLUS PLANTS—NOT LESS THAN 1000 Plants Sold at These SPECIAL LOW PRICES										
EVERBEARING (OR FALL BEARING) VARIETIES										
23	EVERMORE (MINN. 1166) ---	1.75	3.00	4.85	8.25	9.00	12.00	14.95	24.00	23.00
23	GEM -----	1.25	2.00	3.50	5.75	6.75	9.60	11.50	20.00	19.00
23	GEMZATA -----	1.90	3.15	5.00	8.75	9.50	12.85	14.95	27.50	26.50
23	MASTODON -----	1.75	3.00	4.85	8.25	9.00	12.00	14.95	24.00	23.00
2	STREAMLINER -----	.98	1.95	3.75	7.00	8.50	11.50	13.50	25.00	24.00

We Are The
Original

Make All Checks or Money Orders Payable to:

Your Visit

is

TOWNSEND NURSERIES, Inc.

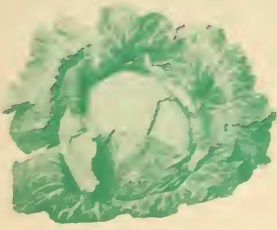
Invited

L. Sherman Townsend, Mgr. P. O. Box 110, Salisbury, Maryland

● WRITE FOR SPECIAL PRICES ON LARGER QUANTITIES THAN QUOTED ABOVE

Townsend's plants are used exclusively by the largest strawberry associations in the country. Any association, group of growers who wish to pool their orders, or any large grower interested in purchasing a variety in larger quantities than quoted above, should write us for our special price. When writing, just give Variety or Varieties wanted and approximately amount needed. You will be under no obligation to buy. It is part of Townsend's Service which we are rendering our customers, and which has helped us to build our business to the present standing as The World's Largest Growers—Shippers of Strawberry Plants.

ORDERS CAN BE BOOKED IN ADVANCE OF SHIPPING DATE. You can send along your order on receipt of this catalogue. A 25% deposit will reserve stock to you. We will dig and ship whenever we receive your shipping instructions. Thousands of our customers annually take advantage of this service. On long lists of varieties it insures them of getting varieties wanted.



EARLY JERSEY WAKEFIELD

Our Cabbage plants are Frost-Proof, winter hardened, can be planted from February until May 1st.

ALL PLANTS FRESHLY DUG—AND SHIPPED SAME DAY. GUARANTEED TO ARRIVE IN GOOD CONDITION, ANY THAT FAIL TO DO SO WE WILL REPLACE FREE.

OUR



VEGETABLE GARDEN

FROST-PROOF PLANTS

50 CABBAGE	Requires Only
200 ONIONS	12x15 Ft.
ALL POSTPAID	Space



YELLOW SPANISH ONION

Onions grown from plants are sweeter and usually much larger than when grown from sets. Set in rows 3 inches apart, rows can be spaced 12 inches apart.

OUR PLANTS ARE FROST-PROOF. CAN BE PLANTED ANYTIME FROM FEBRUARY until MAY 1st.

MAIL

AMERICAN FRUIT GROWER

1370 Ontario Street • Cleveland 13, Ohio

Attached is \$1.00 for 3 year subscription.

Name.....

Address.....

City..... State.....

Good only in U.S.A.

THIS COUPON



Profitable FRUIT GROWING

3 Years \$1.00

Why trees do not bear—How to prune—Why fruit drops prematurely—How to get size and color. These and many other problems in fruit growing are answered in America's leading fruit magazine—published monthly on the first of each month. Subscription rate is 3 years for \$1.00.

AMERICAN FRUIT GROWER



OUR CERTIFIED TOMATO PLANTS

ARE GROWN FROM SEEDS THAT HAVE BEEN CERTIFIED FREE FROM DISEASE AND TRUE TO NAME.

You will find this true in all of our plants grown from seed, on **VEGETABLE PLANTS PAGES 44 - 45.**

Listing - Pepper - Onion - Cauliflower Broccoli - Cabbage, as well as Sweet Potato plants.

MILLIONS OF PLANTS AWAIT YOUR ORDER. BE YOUR ORDER LARGE OR SMALL, MAIL TODAY, SO WE CAN RESERVE YOUR PLANTS.

FRUIT GROWERS

It's easy to grow perfect fruit if you know how. We would like to tell you how it's done and help you solve your fruit problems.

Here are a few things we told our readers in recent issues: Identifying Insect Injuries, The Insecticide DDT for Fruit Insect Control, Identifying Disease Injuries, How to Handle a Picking Crew, How Much Cold Can Fruit Take and How to Identify Varieties.

Do you know what varieties are best to plant? Do you know what varieties are best to store?

Are you planning for something new in fruit?

Are you looking for something and many others packages? These questions and many others

will be answered in future issues of **AMERICAN FRUIT** leading fruit magazine, the **AMERICAN FRUIT GROWER**.

No place can you get so much for so little... 36 profusely illustrated issues packed full of timely information for every fruit grower, and for only \$1.00.

Mail the coupon today with your remittance (at our risk) direct to the **AMERICAN FRUIT GROWER**, 1370 Ontario St., Cleveland 13, Ohio.

Recommended by

TOWNSEND NURSERIES

Salisbury, Maryland

See Townsend's
Selective Strain
Approved Varieties

Growing all the new and
better varieties berry
plants

Townsend Nurseries

PLANT FARMS

DOING BUSINESS AT THE SAME "OLD STAND" SINCE 1911

Growers of Selected Strain

STRAWBERRY PLANTS
BLUEBERRY PLANTS
RASPBERRIES
BLACKBERRIES
DEWBERRIES
GRAPES
ASPARAGUS
FRUIT TREES
RHUBARB

P. O. BOX 110
SALISBURY, MARYLAND

Dear Friend:

Your valuable inquiry asking for our new Berry Book was received this morning and I want to thank you for the opportunity given us to serve you. This Free Berry Book is going forward in today's mail and I hope it reaches you promptly.

The writer and his associates have spent considerable time checking the varieties of fruits that are offered in this book. And we realize the importance of listing only varieties of outstanding merit that will give our customers the best yields when grown over a wide range of soils and climates.

From the thousands of reports received from our customers annually and with the kind help of various State agricultural colleges, Government agricultural officials and our own extensive trial grounds, we are positive that the varieties of berry plants and other items offered in this new book provide the most complete assortment of the truly outstanding varieties on the market today, and will give you the best yields when grown under ordinary average conditions. You can order any variety in our book with full confidence that they will be satisfactory.

While we have tried to give you as accurate description and as complete growing information as space in our catalogue will allow, I want you to feel free to write me at any time that you may have problems in fruit growing. I will do my best to help you.

I want you to know that I appreciate receiving your inquiry and will be just as pleased to have further opportunities of serving you whenever the occasion arises.

With kindest regards, I am

Sincerely yours,

TOWNSEND NURSERIES



L. Sherman Townsend, Mgr.

We ask for your order "fully confident" that we can please you.

Journal of the Royal Society of Medicine

Volume 45, Part 1, 1952

CONTENTS

1. The Role of the General Practitioner in the Management of the Patient with a Fracture of the Hip
by Sir James Spence, F.R.C.S. and Sir John Stannard, F.R.C.S.

2. The Pathology of the Human Eye
by Sir Robert MacAlister, F.R.C.S.

3. The Pathology of the Human Ear
by Sir Robert MacAlister, F.R.C.S.

4. The Pathology of the Human Nose
by Sir Robert MacAlister, F.R.C.S.

5. The Pathology of the Human Throat
by Sir Robert MacAlister, F.R.C.S.

6. The Pathology of the Human Larynx
by Sir Robert MacAlister, F.R.C.S.

7. The Pathology of the Human Trachea
by Sir Robert MacAlister, F.R.C.S.

8. The Pathology of the Human Bronchi
by Sir Robert MacAlister, F.R.C.S.

9. The Pathology of the Human Lungs
by Sir Robert MacAlister, F.R.C.S.

10. The Pathology of the Human Pleura
by Sir Robert MacAlister, F.R.C.S.

11. The Pathology of the Human Peritoneum
by Sir Robert MacAlister, F.R.C.S.

12. The Pathology of the Human Liver
by Sir Robert MacAlister, F.R.C.S.

13. The Pathology of the Human Gallbladder
by Sir Robert MacAlister, F.R.C.S.

14. The Pathology of the Human Pancreas
by Sir Robert MacAlister, F.R.C.S.

15. The Pathology of the Human Stomach
by Sir Robert MacAlister, F.R.C.S.

16. The Pathology of the Human Duodenum
by Sir Robert MacAlister, F.R.C.S.

17. The Pathology of the Human Small Intestine
by Sir Robert MacAlister, F.R.C.S.

18. The Pathology of the Human Large Intestine
by Sir Robert MacAlister, F.R.C.S.

19. The Pathology of the Human Rectum
by Sir Robert MacAlister, F.R.C.S.

20. The Pathology of the Human Spleen
by Sir Robert MacAlister, F.R.C.S.

21. The Pathology of the Human Kidney
by Sir Robert MacAlister, F.R.C.S.

22. The Pathology of the Human Uterus
by Sir Robert MacAlister, F.R.C.S.

23. The Pathology of the Human Vagina
by Sir Robert MacAlister, F.R.C.S.

24. The Pathology of the Human Cervix
by Sir Robert MacAlister, F.R.C.S.

25. The Pathology of the Human Ovary
by Sir Robert MacAlister, F.R.C.S.

26. The Pathology of the Human Testis
by Sir Robert MacAlister, F.R.C.S.

27. The Pathology of the Human Prostate
by Sir Robert MacAlister, F.R.C.S.

28. The Pathology of the Human Penis
by Sir Robert MacAlister, F.R.C.S.

29. The Pathology of the Human Scrotum
by Sir Robert MacAlister, F.R.C.S.

30. The Pathology of the Human Penis
by Sir Robert MacAlister, F.R.C.S.

**Certified
PLANTS**

PRICE LIST

**Approved
VARIETIES**

FOR SPRING AND FALL 1949

● **RASPBERRIES**

● **BLACKBERRIES**

● **DEWBERRIES**

● **GRAPES**

● All prices quoted below are F. O. B. Salisbury, Maryland, and in effect from January 1st, 1949 until December 31st, 1949. Customers ordering plants sent PARCEL POST, PREPAID, see PARCEL POST RATES at bottom of page.

Description of varieties on page

RED RASPBERRY PLANTS

For Prices on Bearing Age Plants, See Page 43

	5	12	25	50	100	250	400	500	1000
	Plants	Plants	Plants	Plants	Plants	Plants	Plants	Plants	Plants
38 LATHAM, Select 1 year No. 1	\$.70	\$1.25	\$2.50	\$4.45	\$ 7.95	\$17.45	\$25.95	\$29.85	\$52.50
39 TAYLOR, Select 1 year No. 1	1.20	2.15	4.10	6.95	12.35	22.50	37.50	42.95	74.95
38 CHIEF, Select 1 year No. 1	1.20	2.15	4.10	6.95	12.35	22.50	37.50	42.95	74.95
39 MARCY, Select 1 year No. 1	1.20	2.15	4.10	6.95	12.35	22.50	37.50	42.95	74.95
38 SUNRISE, Select 1 year No. 1	.85	1.50	2.75	4.95	8.95	17.75	26.85	31.50	64.75
39 KATHERINE (Evg), Sel. 1 yr. No. 1	1.20	2.15	4.10	6.95	12.35	22.50	37.50	42.95	74.95
39 ST. REGIS (Evg), Sel. 1 yr. No. 1	.85	1.50	2.75	4.95	8.95	17.75	26.85	31.50	64.75
39 INDIAN SUMMER (Evg) Sel. 1 yr. No. 1	1.20	2.15	4.10	6.95	12.35	22.50	37.50	42.95	74.95

BLACK RASPBERRY PLANTS

For Prices on Bearing Age Plants, See Page 43

36 CUMBERLAND, Select 1 year No. 1	.70	1.50	2.85	4.95	8.95	19.75	27.95	31.50	47.85
37 NEW MORRISON, Select 1 year No. 1	1.15	1.95	3.25	5.75	9.95	20.55	29.95	33.50	59.95

BLACKBERRY PLANTS

For Prices on Bearing Age Plants, See Page 43

40 ALFRED, Select 1 year No. 1	.70	1.50	2.85	4.95	8.95	19.75	27.95	31.50	47.85
40 BLOWERS, Select 1 year No. 1	.70	1.50	2.85	4.95	8.95	19.75	27.95	31.50	47.85
40 ELDORADO, Select 1 year No. 1	.70	1.50	2.85	4.95	8.95	19.75	27.95	31.50	47.85
40 EARLY HARVEST, Select 1 year No. 1	.70	1.50	2.85	4.95	8.95	19.75	27.95	31.50	47.85

BOYSENBERRY—DEWBERRY PLANTS

For Prices on Bearing Age Plants, See Page 43

41 BOYSENBERRY THORNLESS, 1 yr. No. 1	.85	1.95	3.25	4.95	8.45	19.95	31.00	37.50	69.95
41 BOYSENBERRY, (Std. Type) 1 yr. No. 1	.85	1.85	2.95	4.50	8.00	19.75	30.50	36.50	65.00
41 LUCRETIA, 1 year No. 1	.75	1.50	2.75	4.00	7.50	14.50	24.50	26.50	45.00
41 YOUNGBERRY, 1 year No. 1	.85	1.85	2.95	4.50	8.00	19.75	30.50	36.50	65.00

GRAPES

For Prices on Bearing Age Plants, See Page 43

	3	6	12	25	50
	Each	Vines	Vines	Vines	Vines
42 CONCORD, 2 yr. No. 1	\$.30	\$.66	\$1.20	\$2.32	\$4.45
42 CATAWBA, 2 yr. No. 1	.35	1.00	1.85	3.50	5.95
42 MOORE'S EARLY, 2 yr. No. 1	.35	1.00	1.85	3.50	5.95
42 NIAGARA, 2 yr. No. 1	.35	1.00	1.85	3.50	5.95
42 WORDEN, 2 yr. No. 1	.35	1.00	1.85	3.50	5.95
42 CACO, 2 yr. No. 1	.35	1.00	1.85	3.50	5.95
42 CHAMPAGNE, 2 yr. No. 1	.35	1.00	1.85	3.50	5.95
42 FREDONIA, 2 yr. No. 1	.35	1.00	1.85	3.50	5.95
42 PORTLAND, 2 yr. No. 1	.35	1.00	1.85	3.50	5.95

**STRAWBERRY
PLANT PRICES
SEE PAGE 52**

● **Customers Ordering Plants By Mail, Use following Tables for Approximate Postage.**

Be sure to include sufficient postage for your order if plants are to be sent Parcel Post Prepaid. We will return every penny due you, or send extra plants if you send too much. If insufficient postage is sent, we will credit amount paid and send balance C. O. D.

Parcel Post Rates on Strawberry Plants

	Add for Postage
25 Plants	.13 cents
50 Plants	.14 cents
100 Plants	.17 cents
200 Plants	.21 cents
300 Plants	.25 cents
400 Plants	.30 cents
500 Plants	.38 cents
750 Plants	.56 cents
1000 Plants	.79 cents

Parcel Post Rates on Grape Vines, Raspberries, Blackberries, Blueberries and Dewberries

	Add for Postage
2 Plants	.11 cents
3 to 6 Plants	.17 cents
7 to 21 Plants	.20 cents
13 to 20 Plants	.27 cents
21 to 30 Plants	.30 cents
31 to 50 Plants	.37 cents
51 to 75 Plants	.41 cents
76 to 100 Plants	.47 cents

● These figures are average—the rate varies according to variety. On all orders of 500 or more plants, the rate is cheaper by Express beyond 2nd zone.

● On all orders of 100 plants or more of above stock, rate is cheaper by Express beyond 2nd zone.

Fruit and Nut trees are too large for Parcel Post shipment, these are shipped Express Collect.

Low In Price - - High In Quality



Everybody Likes

BLUEBERRIES



5 YEAR READY TO BEAR - JUMBO SIZE

SPECIAL OFFER Save 20%	1—RUBEL	ONLY \$8.75
	1—RANCOCAS	
	1—JERSEY	
ALL 3 JUMBO PLANTS		

Townsend Nurseries, Inc.
PLANT FARMS

SALISBURY, MARYLAND

World's Largest Growers and Shippers of Strawberry Plants