

YOU'RE THE CREAM IN MY COFFEE

ALEX. A. AARONS & VINTON FREEDLEY

PRESENT
THE NEW MUSICAL COMEDY

HOLD EVERYTHING!

WORDS AND MUSIC BY B. G. DE SYLVA, LEW BROWN & RAY HENDERSON



BOOK BY
B. G. DE SYLVA
AND
JACK MCGOWAN

DANCES & ENSEMBLES BY
JACK HASKELL
AND
AM ROSE

DE SYLVA, BROWN AND HENDERSON, INC.
Music Publishers
DE SYLVA, BROWN AND HENDERSON BUILDING 745 SEVENTH AVENUE NEW YORK

YOU'RE THE CREAM IN MY COFFEE
TO KNOW YOU IS TO LOVE YOU
DON'T HOLD EVERYTHING
(LET EVERYTHING GO)
TOO GOOD TO BE TRUE

Vp-006649
1928
You're

2 From "Hold Everything"

You're The Cream In My Coffee

Tune Ukulele
A D F# B
Put capo on 1st fret

By
B.G. DE SYLVA, LEW BROWN
and RAY HENDERSON

Moderato

VOICE

Boy: I'm not a po-et How well I know it
 Girl: You have a great way An up-to-date way

PIANO

I've nev-er been a rav-er But when I speak of you
 Of tell-ing me you love me It gives me such a thrill

I rave a bit it's true. I'm wild a-bout you
 I know it al-ways will My head is turn-ing

Arr. by Joseph M. Weiss

Copyright 1928 by De Sylva, Brown and Henderson Inc., 745 Seventh Ave., New York
 Copyrighted in South America by Harry Kosarin, Rio de Janeiro
 International Copyright Secured Made in U.S.A.

Bagaduce Music
 Lending Library
 Blue Hill, Maine
 871

I'm lost with-out you You give my life its fla - vor
And just from learn - ing Your es - ti - ma - tion of - me

What sug - ar does for tea That's what you do for me
And as for you, I'll say I feel the self same way

CHORUS

You're the cream_ in my cof - fee You're the salt_ in my
You're the cream_ in my cof - fee You're the salt_ in my

p-f

stew You will al - ways be my ne - ces - si - ty
stew You will al - ways be my ne - ces - si - ty

R.H.

I'd be lost with-out you. You're the starch in my col - lar
 I'd be lost with-out you. You're the starch in my col - lar

You're the lace_ in my shoe You will al - ways be
 You're the lace_ in my shoe You will al - ways be

my ne - ces - si - ty I'd be lost_ with - out you.
 my ne - ces - si - ty I'd be lost_ with - out you.

Most men_ tell love - tales_ And each_ phrase dove - tails_
 You give_ life sav - or_ Bring out_ its fla - vor_

You've heard each known way dear, This way is
So this is clear, dear, You're my Wor-

— my own way dear, You're the sail of my love - boat
- cester - shire, dear, You're the sail of my love boat

You're the eap - tain and crew You will al - ways be
You're the cap - tain and crew You will al - ways be

my nec - es - si - ty I'd be lost with-out you. you.
my nec - es - si - ty I'd be lost with-out you. you.

R.H.



OUTSTANDING SONG HITS

From

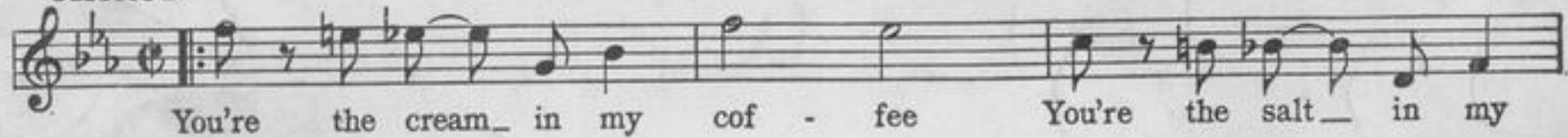
THE NEW MUSICAL SENSATION

HOLD EVERYTHING!

By B.G. DE SYLVA, LEW BROWN AND RAY HENDERSON

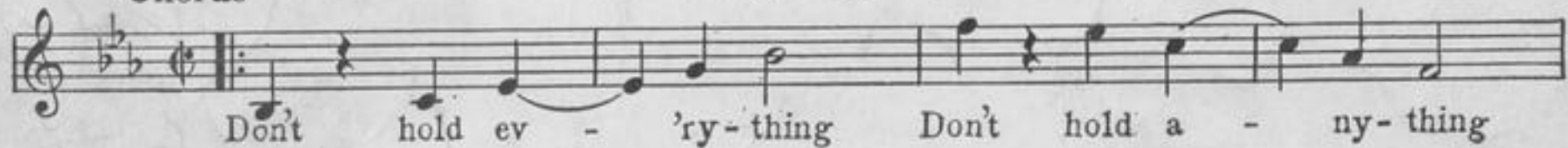
YOU'RE THE CREAM IN MY COFFEE

CHORUS



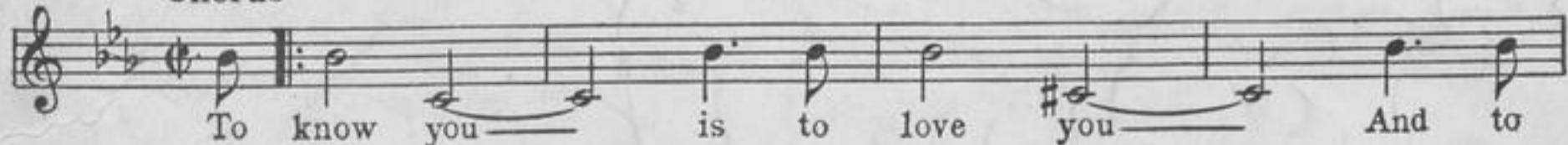
Don't Hold Everything (Let Everything Go)

Chorus



To Know You Is To Love You

Chorus



Copyright 1928 by De Sylva, Brown and Henderson Inc. 745 Seventh Ave., N.Y.C.

COPIES ON SALE WHEREVER MUSIC IS SOLD
THESE NUMBERS CAN ALSO BE HAD FOR YOUR PHONOGRAPH AND PLAYER PIANO

DE SYLVA, BROWN AND HENDERSON, INC.
Music Publishers

DE SYLVA, BROWN AND HENDERSON BUILDING

745 SEVENTH AVENUE NEW YORK