

## Historic, archived document

Do not assume content reflects current scientific knowledge, policies, or practices.



1967  
92C78  
Page 2  
VOL. 22 No. 5

February 4, 1972

# Cooperative Economic Insect Report

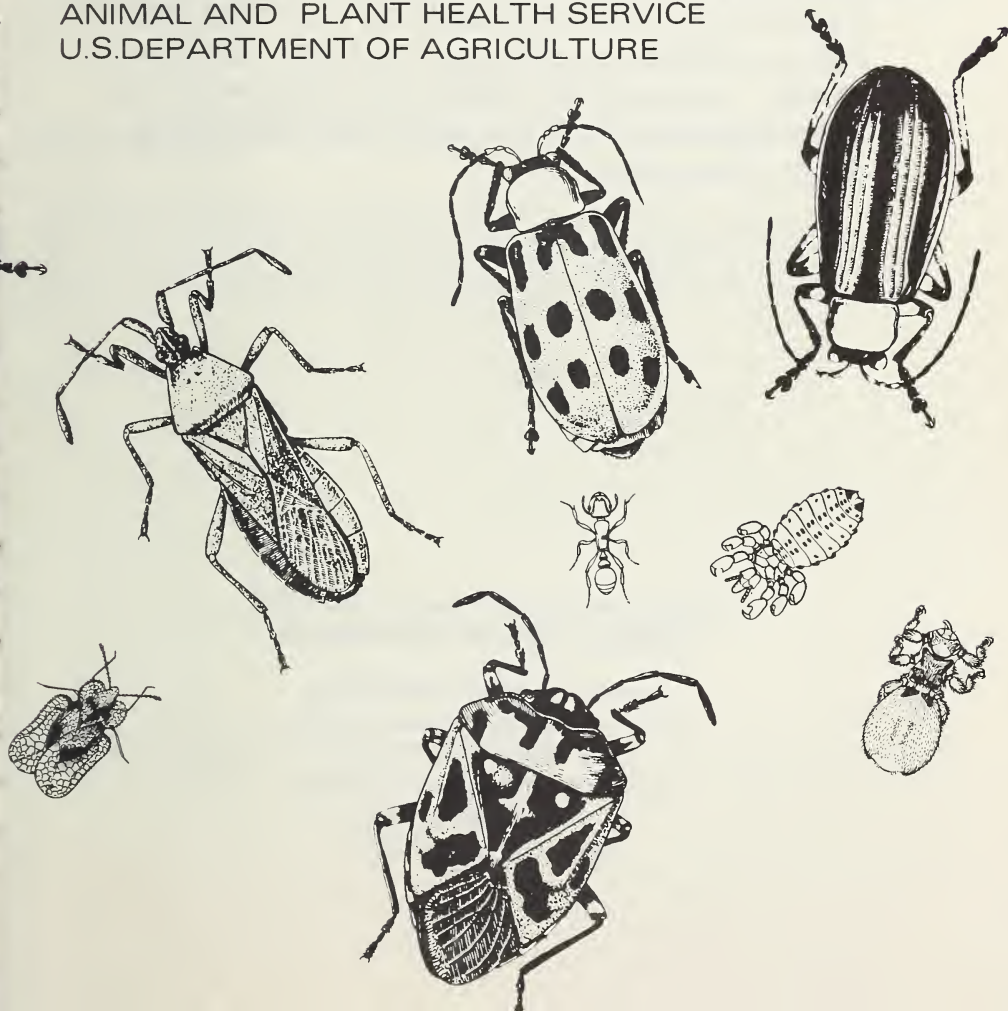
U. S. DEPT. OF AGRICULTURE  
NATIONAL CONSULTATION LIBRARY

FEB 23 1972

PROCUREMENT SECTION  
CURRENT SERIAL RECORDS

Issued by

PLANT PROTECTION AND QUARANTINE PROGRAMS  
ANIMAL AND PLANT HEALTH SERVICE  
U.S. DEPARTMENT OF AGRICULTURE



ANIMAL AND PLANT HEALTH SERVICE  
PLANT PROTECTION AND QUARANTINE PROGRAMS  
ECONOMIC INSECT SURVEY AND DETECTION STAFF

The Cooperative Economic Insect Report is issued weekly as a service to American Agriculture. Its contents are compiled from information supplied by cooperating State, Federal, and industrial entomologists and other agricultural workers. In releasing this material the Service serves as a clearinghouse and does not assume responsibility for accuracy of the material.

All reports and inquiries pertaining to this release,  
including the mailing list, should be sent to:

Economic Insect Survey and Detection  
Plant Protection and Quarantine Programs  
Animal and Plant Health Service  
United States Department of Agriculture  
Federal Center Building  
Hyattsville, Maryland 20782

**COOPERATIVE ECONOMIC INSECT REPORT****HIGHLIGHTS**Current Conditions

GREENBUG remains light in small grain in Oklahoma and New Mexico. (p. 19).

EUROPEAN CORN BORER mortality light in portions of North Carolina. (p. 19).

Special Report

EUROPEAN CORN BORER increased in 8 of 15 States reporting in 1971. Decreases were recorded in Maryland, Kansas, Minnesota, Ohio, South Dakota, and Michigan. The population in Illinois is 28 percent higher than the average for the past 10 years. (pp. 22-28).

Reports in this issue are for week ending January 28 unless otherwise indicated.

## CONTENTS

|  |    |
|--|----|
| Special Insects of Regional Significance.....  | 19 |
| Insects Affecting                              |    |
| Corn, Sorghum, Sugarcane.....                  | 19 |
| Small Grains.....                              | 19 |
| Forage Legumes.....                            | 19 |
| Potatoes, Tomatoes, Peppers.....               | 19 |
| Cole Crops.....                                | 19 |
| General Vegetables.....                        | 19 |
| Man and Animals.....                           | 19 |
| Stored Products.....                           | 20 |
| Hawaii Insect Report.....                      | 20 |
| Corrections.....                               | 20 |
| Light Trap Collections.....                    | 21 |
| Status of the European Corn Borer in 1971..... | 22 |

---

### WEATHER OF THE WEEK ENDING JANUARY 31

Reprinted from Weekly Weather and Crop Bulletin supplied by Environmental Data Service, NOAA.

**HIGHLIGHTS:** Arctic cold spread far southward during the week. Heavy local snows occurred in Oswego County, New York. The heaviest rains occurred in Kentucky and over the lower Mississippi River Valley.

**PRECIPITATION:** A large winter storm swung out of the central Rocky Mountains across the Great Plains and Great Lakes to southeastern Canada early in the week. It brought stormy weather to much of the Nation. Heavy snow fell from the northern Rocky Mountains to the nearby Great Plains accompanied by gale winds. South of the Snow Belt, freezing rain glazed roads, trees, wires, and other outdoor objects. Several inches of new snow accumulated in the North Central States. Winds at Worthington, Minnesota, gusted to 63 m.p.h. Monday afternoon. Strong winds picked up fallen snow piled in deep drifts and in some places reduced the visibility to zero. Heavy rains soaked coastal sections of the Pacific Northwest and snow fell in the nearby hills and mountains. Cold air spilled over the Continental Divide and caused snow along the northern Pacific coast. Five inches accumulated at Quillayutte, Washington, in 6 hours late Monday and 6-12 inches fell in the Seattle area. The deep snow snarled the traffic west of the divide. The snow continued Tuesday and by Tuesday evening, Olympia, Washington, lay beneath 20 inches of snow and 12-18 inches covered Seattle. Paradise Ranger Station received 1.5 feet of new snow, bringing the depth there to 22 feet. Meanwhile, heavy snow was falling in the Great Lakes area. At Duluth, Minnesota, 11 inches of snow fell accompanied by strong winds which piled the snow in drifts up to 4 feet deep. Snow also began falling in the Northeast where strong winds drifted the snow and cut visibility to zero. White Plains, New York, clocked wind gusts which peaked at 76 m.p.h. and at Syracuse, New York, the gusts reached 70 m.p.h. Strong winds and snow continued Wednesday in the Northwest and in the southwestern deserts. Where there was no snow, winds filled the air with sand and dust. Boonville, New York, received a foot of new snow Tuesday afternoon with severe blowing and drifting. At Mt. Desert Rock, Maine, the gusts reached 93 m.p.h. Blizzards

Weather of the week continued on page 21.



## SPECIAL INSECTS OF REGIONAL SIGNIFICANCE

GREENBUG (Schizaphis graminum) - NEW MEXICO - Ranged 1-4 per linear foot on barley in Chaves County. (Mathews). OKLAHOMA - Light in Cotton County wheat. None in fields checked in Texas County. (Okla. Coop. Sur.). ARKANSAS - Survey in small grain negative in northwest, northeast, and east-central areas. (Boyer et al.).

SPOTTED ALFALFA APHID (Therioaphis maculata) - NEW MEXICO - Light on new alfalfa at Roswell, Chaves County. (Mathews).

## CORN, SORGHUM, SUGARCANE

EUROPEAN CORN BORER (Ostrinia nubilalis) - NORTH CAROLINA - Surveys show light winter mortality in 110 fields with standing stalks in Wake, Johnston, and Harnett Counties. (Hunt).

## SMALL GRAINS

ENGLISH GRAIN APHID (Macrosiphum avenae) - ARKANSAS - Very light on small grain, occasional aphid found in northwest and northeast areas. (Boyer, Kimbrough).

## FORAGE LEGUMES

ALFALFA WEEVIL (Hypera postica) - MISSOURI - Egg count per square foot by county: Wright 553.4, Barton 48.4, and Cedar 65.8. Counts above economic levels in southern area. (Munson). ARKANSAS - Survey still negative in northwest areas. (Boyer). KENTUCKY - Eggs averaged 126 per square foot in Fayette County fields, 56 per square foot in Nelson County field. (Barnett).

PEA APHID (Acyrtosiphon pisum) - NEW MEXICO - Light in alfalfa at Roswell, Chaves County. (Mathews).

## POTATOES, TOMATOES, PEPPERS

GREEN PEACH APHID (Myzus persicae) - FLORIDA - Still problem on sweet peppers in eastern Palm Beach County. (Genung).

## COLE CROPS

SOUTHERN GREEN STINK BUG (Nezara viridula) - FLORIDA - Increased to moderate populations, damaged Chinese cabbage past 14 days at Belle Glade, Palm Beach County. (Janes).

## GENERAL VEGETABLES

GREEN PEACH APHID (Myzus persicae) - MARYLAND - Overwintering populations ranged 1-10 per row yard in 600 acres of spinach near Vienna, Dorchester County. (U. Md., Ent. Dept.).

## MAN AND ANIMALS

SCREWORM (Cochliomyia hominivorax) - Total of 4 cases reported in U.S. January 23-29, in TEXAS: Brewster 3 and Webb 1. Total of 101 laboratory-confirmed cases reported in portion of Barrier Zone in Republic of Mexico January 16-22 as follows: Sonora 32, Chihuahua 2, Coahuila 3, Nuevo Leon 2, Tamaulipas 62. Total of 9 cases reported in Mexico south of Barrier Zone. Barrier Zone is

area where eradication operation underway to prevent establishment of self-sustaining population in U.S. Sterile screwworm flies released: Texas 7,608,000; Mexico 85,560,000. (Anim. Health).

CATTLE LICE (Haematopinus spp.) - OKLAHOMA - Mainly Haematopinus eurysternus (shortnosed cattle louse) common on cattle in most areas, moderate to heavy in Pontotoc, Marshall, Hughes, Cotton, and Texas Counties. (Okla. Coop. Sur.).

COMMON CATTLE GRUB (Hypoderma lineatum) - OKLAHOMA - Heavy on cattle in Marshall County. Moderate in Hughes County. (Okla. Coop. Sur.).

WINTER TICK (Dermacentor albipictus) - OKLAHOMA - Moderate on cattle in Marshall County. (Okla. Coop. Sur.).

#### STORED PRODUCTS

CONFUSED FLOUR BEETLE (Tribolium confusum) - KENTUCKY - Adults averaged 171 per bushel of oats in Nelson County. (Barnett).

SAWTOOTHED GRAIN BEETLE (Oryzaephilus surinamensis) - KENTUCKY - Adults averaged 1,600 per bushel of oats in Nelson County. (Barnett).

---

#### HAWAII INSECT REPORT

Corn - CORN EARWORM (Heliothis zea) infestation trace in 1.5 acres of sweet corn at Waianae, Oahu. (Kawamura).

General Vegetables - Adults of LEAF MINER FLIES (Liriomyza spp.) averaged 2 per leaf in 0.5 acre of cucumber seedlings at Waianae, Oahu. Larval mines moderate on first 2 older leaves of seedlings; light on younger leaves. Trace in adjacent 0.25 acre of mature lettuce; adults averaged 6 per head. Mixed populations of BEE T ARMYWORM (Spodoptera exigua) and Liriomyza spp. were light to moderate in most green onion fields at Waianae, Oahu. Trace in isolated one acre planting in same area. (Kawamura).

Fruits and Nuts - Mixed populations of AN ARMORED SCALE (Phenacaspis cockerelli) and FLORIDA RED SCALE (Chrysomphalus aonidum) light to moderate on 200+ coconut trees at Lahaina, Maui; about 5-10 scales on pinnae of older fronds. (Ah Sam). FULLER ROSE BEETLE (Pantomorus cervinus) damage moderate to heavy to young avocado and citrus trees at Kokomo and Makawao, Maui. (Miyahira).

Forest and Shade Trees - AN ADELGID (Pineus pini) reinfested Pinus spp. plants at Kula and Makawao, Maui; chemically treated several times. (Ah Sam, Miyahira).

#### CORRECTIONS

CEIR 22(1-4):5, 6 - A CECIDOMYIID (Olesicoccus coccidiora) - FLORIDA - ... should read ... A CECIDOMYIID (Olesicoccus coccidiora) - FLORIDA. (PP).



## LIGHT TRAP COLLECTIONS

FLORIDA - Gainesville, 1/21-27, BL - Black cutworm (Agrotis ipsilon) 1, granulate cutworm (Feltia subterranea) 2, yellow-striped armyworm (Spodoptera ornithogalli) 1. MISSISSIPPI - Stoneville, 1/13-27, Temp. 12-79° F., precip. 0.18, BL - Black cutworm 3, granulate cutworm 17, variegated cutworm (Peridroma saucia) 3, armyworm (Pseudaletia unipuncta) 11, yellowstriped armyworm 24.

Weather of the week continued from page 18.

continued over the central Great Plains and Great Lakes Wednesday and spread eastward Thursday. Freezing rain iced an area south of the Snow Belt with glaze. In some areas it accumulated at about 0.1 inch per hour. At midnight Thursday, the glaze was affecting a wide belt from the middle Mississippi River Valley to the Ohio River Valley and northeastward to southern New England. Very heavy snow squalls occurred locally in Oswego County, New York, Wednesday to Friday and on Sunday. Some localities received 50-70 inches in the first period and 30 additional inches on Sunday. Rain fell from Alabama to Virginia. The precipitation slackened somewhat over the Pacific Northwest over the weekend, but light snow continued from the northern Rocky Mountains to New England and generous rains fell in the Deep South from eastern Texas to the Carolinas. Wide areas from southern California to New Mexico received no rain during the week.

TEMPERATURE: A heat wave continued in Texas early in the week, with afternoon temperatures mostly in the 70's and 80's. Bitter cold plunged southward behind a storm system which moved from the central Rocky Mountains to the Great Lakes and into Canada. Tuesday afternoon, maximum temperatures ranged from -20° at Devils Lake, North Dakota, to 84° at Fort Myers and Palm Beach, Florida. With a deep low over southeastern Canada and a large high over western Canada, the bitter cold moved from Montana, the Dakotas, Minnesota, and Wisconsin southward to the central Great Plains. Most of Kansas remained below freezing Wednesday afternoon and on Thursday most of Oklahoma continued below freezing. A sharp contrast existed between northern and southern Texas Thursday, when Abilene registered 29° and Austin 83°. Cold air spilled over the Continental Divide into the Great Basin. Subzero weather occurred in northeastern Oregon Thursday morning. Temperatures Wednesday ranged from -40° at International Falls to 84° at Fort Myers, Florida. Most of the Nation continued cold over the weekend. The main exception was the eastern portion of the gulf coast and the Florida Peninsula. The maximums along the gulf Sunday afternoon ranged from the 40's in Texas to the 70's and 80's in Florida. Typical afternoon temperatures Sunday were; Houston, Texas 42°, New Orleans, Louisiana 59°, Pensacola, Florida 66°, Tampa, Florida 78°. Temperatures averaged above normal over the southern Rocky Mountains and Rio Grande Valley along the Gulf of Mexico and the middle and southern Atlantic Coast. Most of the other areas averaged colder than normal. Most of the area from the northern Rocky Mountains to the Great Lakes averaged 10°-20° or more colder than normal.

# Status of the European Corn Borer in 1971 <sup>1/</sup>

Introduction: Surveys to determine the abundance of European corn borer (*Ostrinia nubilalis* (Hubner)) in the fall of 1971 were conducted by cooperating agencies in 15 States. All survey data, summaries, or records of field observations were processed by the Economic Insect Survey and Detection Staff in Hyattsville, Maryland. Personnel of Entomology Research Division, Agricultural Research Service, kindly reviewed the material after completion.

The 1971 European corn borer survey was conducted during late summer and early fall. The survey is designed to measure the fall populations of European corn borer larvae and is conducted during a favorable time to include a high percentage of late instars, wherever possible. Except for some minor differences in compiling data, the accepted survey methods were followed in all cases. The survey was continued on a district basis whenever possible in 1971. A district is usually a group of counties within a State, in most cases based on Crop Reporting Districts.

New Distribution: European corn borer was reported for the first time from thirteen counties during 1971; however, the counties were in the States already known to be infested. This was eight more than reported the previous year. There were three new counties in Alabama, one county in Nebraska, and five from Kansas. South Dakota reports distribution now statewide.

Abundance: Fall populations of European corn borer increased in 8 of 15 States reporting in the survey. Decreases were recorded in Maryland, Kansas, Minnesota, Ohio, South Dakota, and Michigan. Kentucky reported abundance for the first time this year. The average number of borers per hundred plants increased in Indiana, attributed to the increase in early planted corn. Second generation populations were the heaviest since 1957 and reflect in part the ample free water available to females at the critical egg laying period. In Illinois, populations were 50 percent higher this year than last. Only 1 of 9 districts had a lower population than 1970; this was the west district. The 1971 population is 28 percent higher than the average for the past 10 years. Counts were the heaviest in the southern portion of Illinois. Populations increased in all the 5 major corn producing counties in southeastern North Dakota. In 1970, the average borers per 100 plants was 57, compared with 130 for 1971. Surveys in Iowa indicated the percent infestations were lower than last year in the southern district; elsewhere increased.

The European corn borer population in Kansas was about the same as in 1970, except for the increase in the east-central district. In Michigan, the population decreased from 142 borers per 100 plants in 1970 to 104 this year; heaviest counts were in the

1/ Survey data provided by State agricultural agencies. Data compiled and summarized by Economic Insect Survey and Detection Staff, Plant Protection Programs, Animal & Plant Health Service, United States Department of Agriculture.

southern areas. Second generation populations in Minnesota were not as heavy as last year. Populations in Missouri were similar to those of 1970, as were those in Nebraska and South Dakota. There was a slight decrease in abundance in Maryland and Ohio. In Delaware, there was an increase from 283 borers per 100 plants to 358.

Table 1. Summary by States of European Corn Borer Abundance in Corn, Fall of 1971, Compared with Data for 1970

| States               | 1970                         |                                      | 1971                        |                              | Comparable Districts or Counties     |                             |
|----------------------|------------------------------|--------------------------------------|-----------------------------|------------------------------|--------------------------------------|-----------------------------|
|                      | :No. of Districts : Surveyed | :Average No. of Borer Per 100 Plants | :No. of Counties : Surveyed | :No. of Borer Per 100 Plants | :Average No. of Borer Per 100 Plants | :No. of Counties : Surveyed |
| <u>Eastern</u>       |                              |                                      |                             |                              |                                      |                             |
| Delaware             | 1                            | 283                                  | 3                           | 1                            | 358                                  | 1                           |
| Maryland             | 3                            | 134                                  | 16                          | 3                            | 102                                  | 3                           |
| Total                | 4                            |                                      | 19                          |                              |                                      |                             |
| Average 1/           |                              |                                      |                             |                              |                                      | 209                         |
| <u>North Central</u> |                              |                                      |                             |                              |                                      |                             |
| Illinois             | 7                            | 76                                   | 39                          | 9                            | 128                                  | 7                           |
| Indiana              | 12                           | 47                                   | 92                          | 12                           | 100                                  | 12                          |
| Iowa                 | 12                           | 241                                  | 99                          | 12                           | 321                                  | 12                          |
| Kansas               | 3                            | 96                                   | 30                          | 6                            | 54                                   | 3                           |
| Minnesota            | 7                            | 130                                  | 34                          | 7                            | 99                                   | 7                           |
| Missouri             | 7                            | 130                                  | 38                          | 7                            | 133                                  | 7                           |
| Nebraska             | 5                            | 396                                  | 25                          | 5                            | 401                                  | 5                           |
| North Dakota         | 1                            | 57                                   | 5                           | 1                            | 130                                  | 1                           |
| Ohio                 | 5                            | 99                                   | 33                          | 5                            | 99                                   | 5                           |
| South Dakota         | 6                            | 214                                  | 35                          | 6                            | 204                                  | 6                           |
| Wisconsin            | 9                            | 102                                  | 52                          | 9                            | 275                                  | 9                           |
| Total                | 74                           |                                      | 482                         |                              |                                      |                             |
| Average 1/           |                              |                                      |                             |                              |                                      | 145                         |
| <u>Southern</u>      |                              |                                      |                             |                              |                                      |                             |
| Kentucky             |                              | 2/                                   |                             | 1                            | 35                                   | 8                           |
| <u>Other</u>         |                              |                                      |                             |                              |                                      |                             |
| Michigan             | 1                            | 148                                  | 14                          | 5                            | 104                                  | 1                           |
|                      |                              |                                      |                             |                              |                                      | 148                         |
|                      |                              |                                      |                             |                              |                                      | 104                         |

1/ Weighted average based on districts surveyed.

2/ Not included in the 1970 status report.

Table 2 - European Corn Borer Abundance in Corn  
Fall of 1971, Compared with Data for 1970

| State<br>(Districts<br>or Counties)   | Average Number:<br>of Borers Per : |               | State<br>(Districts<br>or Counties)  | :Average Number<br>:of Borers Per |               |
|---|------------------------------------|---------------|--|-----------------------------------|---------------|
|   | 100 Plants                         | :             |  | : 100 Plants                      | :             |
|   | 1970                               | 1971:         |  | :1970                             | 1971          |
| <u>Delaware</u><br>(Agr. Expt. Sta.)  |                                    |               | <u>Iowa (Cont.)</u>  |                                   |               |
| New Castle  | 255                                | 157           | District IV  | 346                               | 413           |
| Kent  | 347                                | 427           | District V   | 241                               | 564           |
| Sussex  | <u>248</u>                         | <u>489</u>    | District VI  | 131                               | 180           |
| Average   | 283                                | 358           | District VII   | 528                               | 443           |
|   |                                    |               | District VIII  | 94                                | 426           |
|   |                                    |               | District IX  | 79                                | 340           |
|   |                                    |               | District X   | 353                               | 209           |
|   |                                    |               | District XI  | 286                               | 217           |
|   |                                    |               | District XII   | <u>211</u>                        | <u>153</u>    |
|   |                                    |               | Average  | 241                               | 321           |
| <u>Illinois</u><br>(Natural History Survey,<br>Ext. Ser.)   |                                    |               | <u>Kansas</u><br>(Ins. Sur.)   |                                   |               |
| Northwest   | 87                                 | 169           | Northeast  | 100                               | 70            |
| Northeast   | 61                                 | 89            | North Central  | 135                               | 70            |
| West  | 130                                | 108           | East Central   | 52                                | 111           |
| Central   | 27                                 | 67            | Central  | <u>4/</u>                         | 32            |
| East  | 33                                 | 109           | Southeast  | <u>4/</u>                         | 34            |
| West-southwest  | 105                                | 112           | South Central  | -                                 | 4             |
| East-southeast  | 92                                 | 135           | Average  | 96                                | 54            |
| Southwest   | <u>4/</u>                          | 178           |  |                                   |               |
| Southeast   | <u>4/</u>                          | 239           |  |                                   |               |
| Average   | 76 <u>1/</u>                       | 128 <u>1/</u> |  |                                   |               |
| <u>Indiana</u><br>(Ext. Ser., Expt. Sta.)   |                                    |               | <u>Kentucky</u>  |                                   |               |
| North-northwest   | 38                                 | 180           | Surveyed counties  | -                                 | 35            |
| North-northcentral  | 162                                | 102           |  |                                   |               |
| North-northeast   | 57                                 | 117           | <u>Maryland</u><br>(Agr. Ext. Ser.; Ins. Sur.)   |                                   |               |
| Northwest   | 12                                 | 106           | Eastern Shore  | 140                               | 104           |
| North Central   | 38                                 | 107           | Southern   | 104                               | 58            |
| Northeast   | 54                                 | 108           | Central and Western<br>areas   | <u>158</u>                        | <u>112</u>    |
| Southwest   | 58                                 | 78            | Average  | 141 <u>3/</u>                     | 102 <u>3/</u> |
| South Central   | 13                                 | 88            |  |                                   |               |
| Southeast   | 34                                 | 101           | <u>Michigan</u><br>(Ins. Sur.)   |                                   |               |
| South-southwest   | 39                                 | 91            | Surveyed counties  | 148 <u>2/</u>                     | 104 <u>2/</u> |
| South-southcentral  | 24                                 | 74            |  |                                   |               |
| South-southeast   | <u>39</u>                          | <u>47</u>     |  |                                   |               |
| Average   | 47                                 | 100           |  |                                   |               |
| <u>Iowa</u><br>(State Dept. Agr.; Ext.<br>Ser.; Ent. Dept., Iowa<br>State Univ.; ENT, ARS,<br>USDA) |                                    |               | <u>2/</u> Averages based on field averages<br>rather than district averages.             |                                   |               |
| District I  | 306                                | 319           | <u>3/</u> Average based on averages for 16<br>counties rather than district<br>averages. |                                   |               |
| District II   | 181                                | 436           | <u>4/</u> Not included in the 1970 status<br>report.                                     |                                   |               |
| District III  | 132                                | 155           |  |                                   |               |

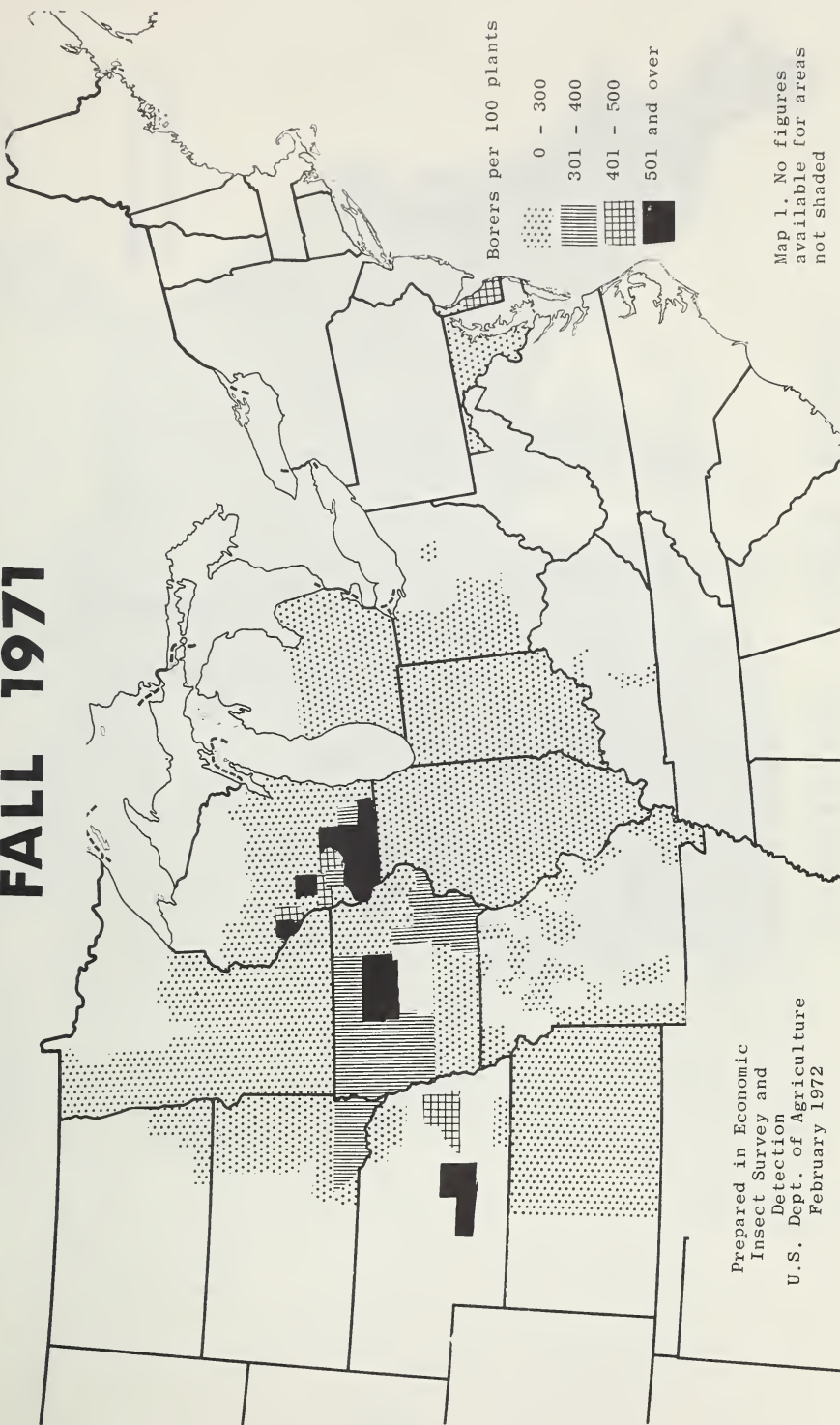
1/ Average based on 46 comparable counties surveyed in 1970 and 1971, rather than districts.



Table 2 (Continued)

| State<br>(Districts<br>or Counties)                           | Average Number:<br>of Borers Per : |              | State<br>(Districts<br>or Counties)                  | :Average Number<br>:of Borers Per |            |
|---|------------------------------------|--------------|--|-----------------------------------|------------|
|   | 100 Plants                         | :            |  | : 100 Plants                      | :          |
|   | 1970                               | 1971:        |  | :1970                             | 1971       |
| <u>Minnesota</u><br>(State Dept. Agr.)                        |                                    |              | <u>South Dakota</u><br>(Agr. Expt. Sta., Ext. Ser.)  |                                   |            |
| Southwest   | 246                                | 102          | North Central  | 235                               | 171        |
| South Central   | 222                                | 171          | Northeast  | 150                               | 189        |
| Southeast   | 131                                | 95           | Central  | 100                               | 67         |
| West Central  | 105                                | 179          | East Central   | 279                               | 221        |
| Central   | 57                                 | 61           | Southeast  | 457                               | 342        |
| East Central  | 89                                 | 40           | South Central  | <u>62</u>                         | <u>232</u> |
| Northwest   | <u>57</u>                          | <u>44</u>    | Average  | 214                               | 204        |
| Average   | 130                                | 99           | <u>Wisconsin</u><br>(State Dept. Agr.)               |                                   |            |
| <u>Missouri</u><br>(Ext. Ser., Ins. Sur.)                     |                                    |              | Northwest  | 104                               | 118        |
| District I  | 122                                | 151          | North Central  | 110                               | 82         |
| District II   | 187                                | 165          | West Central   | 187                               | 204        |
| District III  | 189                                | 147          | Central  | 102                               | 394        |
| District IV   | 94                                 | 123          | Southwest  | 118                               | 555        |
| District V  | 138                                | 129          | South Central  | 125                               | 208        |
| District VI   | <u>4/</u>                          | 98           | Southeast  | 77                                | 315        |
| District VII  | 93                                 | 78           | East Central   | 58                                | 449        |
| District IX   | <u>88</u>                          | <u>157</u>   | Northeast  | <u>35</u>                         | <u>150</u> |
| Average   | 130                                | 133          | Average  | 102                               | 275        |
| <u>Nebraska</u><br>(Agr. Expt. Sta.; Ext.<br>Ser., Ins. Sur.) |                                    |              | <u>4/</u> Not included in the 1970 status<br>report. |                                   |            |
| Northeast   | 600                                | 215          | <u>5/</u> Average based on counties surveyed.        |                                   |            |
| East  | 522                                | 459          |  |                                   |            |
| Southeast   | 336                                | 297          |  |                                   |            |
| Central   | 260                                | 527          |  |                                   |            |
| South   | <u>261</u>                         | <u>509</u>   |  |                                   |            |
| Average   | 396                                | 401          |  |                                   |            |
| <u>North Dakota</u><br>(State Dept. Agr.)                     |                                    |              |  |                                   |            |
| Southeast   | 57                                 | 130          |  |                                   |            |
| <u>Ohio</u><br>(Ext. Ser.; ARS, USDA)                         |                                    |              |  |                                   |            |
| Northwestern  | 132                                | 117          |  |                                   |            |
| West Central  | 96                                 | 55           |  |                                   |            |
| Central   | 57                                 | 28           |  |                                   |            |
| Southwestern  | 59                                 | 51           |  |                                   |            |
| Northeastern  | <u>198</u>                         | <u>77</u>    |  |                                   |            |
| Average   | 108                                | 67           |  |                                   |            |
|   | 99 <u>5/</u>                       | 73 <u>5/</u> |  |                                   |            |

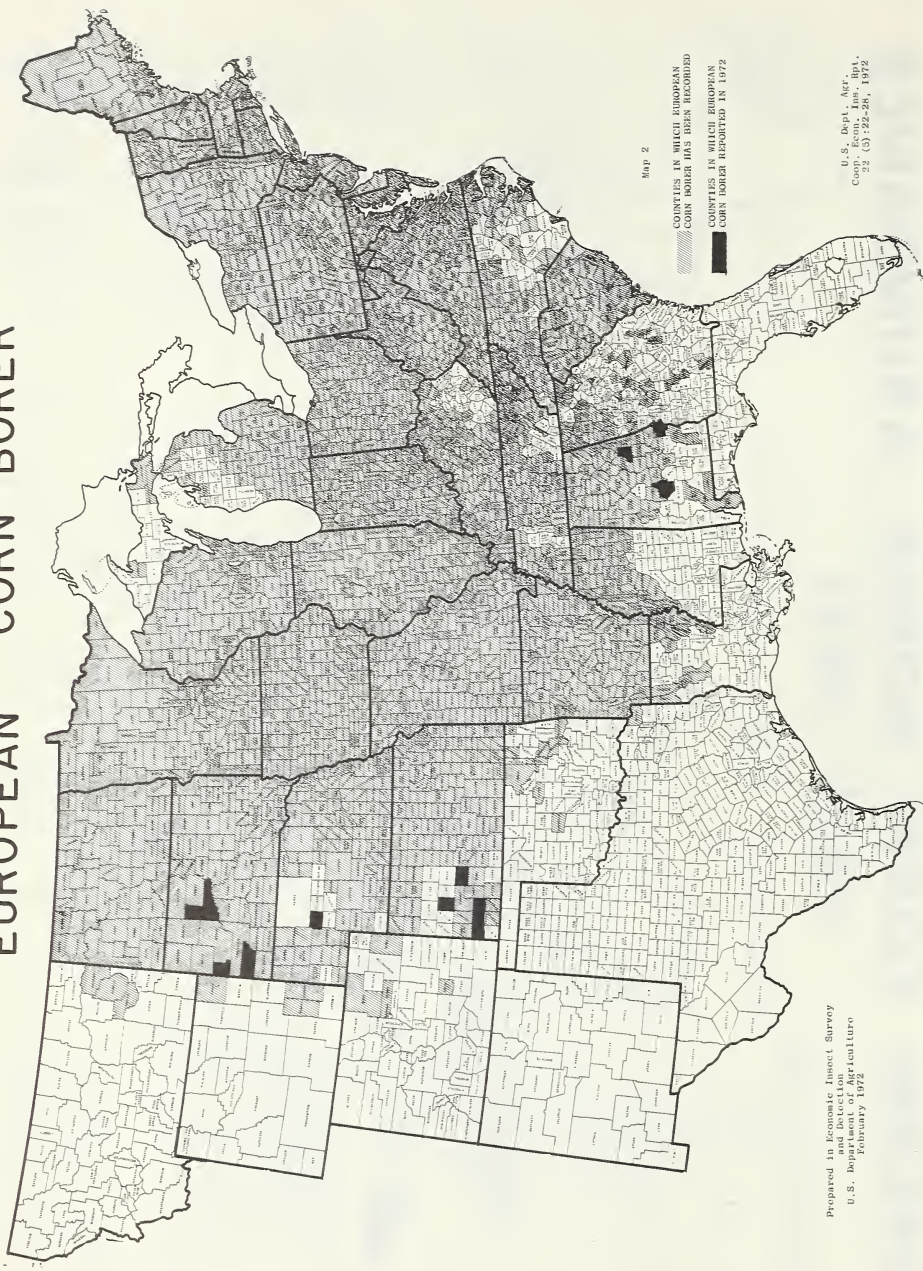
# EUROPEAN CORN BORER ABUNDANCE FALL 1971



Map 1. No figures available for areas not shaded

Prepared in Economic  
Insect Survey and  
Detection  
U.S. Dept. of Agriculture  
February 1972

# EUROPEAN CORN BORER



Map 2

COUNTIES IN WHICH EUROPEAN  
CORN BORER HAS BEEN RECORDED  
COUNTIES IN WHICH EUROPEAN  
CORN BORER RECORDED IN 1972

Prepared in Economic Insect Survey  
U.S. Department of Agriculture  
February 1972

U.S. Dept., Agric.  
Washington, D.C.  
23 (3) 22-26, 1972





U.S. DEPARTMENT OF AGRICULTURE  
HYATTSVILLE, MARYLAND 20782

OFFICIAL BUSINESS  
PENALTY FOR PRIVATE USE, \$300

POSTAGE AND FEES PAID  
U.S. DEPARTMENT OF  
AGRICULTURE

