

208

787

續ひびき毛十編

中

續膝栗毛十二編

中冊

しづむ娘兒かの。出る。頼り。その。小。懸。各の。強。し。ま。も。

出。ひ。つ。文。本。村。ふ。ら。ら。世。は。久。下。の。次。命。お。出。せ。が。母。屋。

の。世。は。つ。と。そ。あ。あ。の。回。者。ま。さ。ら。一。懸。強。あ。し。つ。う。

と。あ。と。う。け。て。し。つ。い。へ。し。く。ま。ま。お。す。ま。さ。の。ま。ま。さ。

い。の。く。し。つ。い。へ。し。く。ま。ま。お。す。ま。さ。の。ま。ま。さ。の。ま。ま。さ。

ひ。や。と。し。つ。い。へ。し。く。ま。ま。お。す。ま。さ。の。ま。ま。さ。の。ま。ま。さ。

と。あ。と。う。け。て。し。つ。い。へ。し。く。ま。ま。お。す。ま。さ。の。ま。ま。さ。

10. 正 未 購





Handwritten text in a cursive script, likely a historical document or manuscript. The text is arranged in approximately 10 lines, starting from the top right and moving downwards. The script is dense and characteristic of early modern European handwriting.

Handwritten text in a cursive script, similar to the one on the right page. This page contains several lines of text, with some lines appearing to be organized into columns or sections. There are some smaller, possibly marginal or interlinear, markings and symbols interspersed within the main text.



سنة ١٢٠٠ هـ في شهر ربيع الثاني  
في يوم الاثنين ١٠ من الشهر المذكور  
في الساعة السادسة من المساء  
في دار السلام في مدينة القاهرة  
في عهد السلطان محمد بن عبد الله  
في سنة ١٢٠٠ هـ في شهر ربيع الثاني  
في يوم الاثنين ١٠ من الشهر المذكور  
في الساعة السادسة من المساء  
في دار السلام في مدينة القاهرة  
في عهد السلطان محمد بن عبد الله

في سنة ١٢٠٠ هـ في شهر ربيع الثاني  
في يوم الاثنين ١٠ من الشهر المذكور  
في الساعة السادسة من المساء  
في دار السلام في مدينة القاهرة  
في عهد السلطان محمد بن عبد الله  
في سنة ١٢٠٠ هـ في شهر ربيع الثاني  
في يوم الاثنين ١٠ من الشهر المذكور  
في الساعة السادسة من المساء  
في دار السلام في مدينة القاهرة  
في عهد السلطان محمد بن عبد الله





Handwritten text in a cursive script, likely a religious or philosophical treatise. The text is arranged in several lines, with some words appearing to be in a different script or dialect. The lines are roughly parallel to each other, following the curve of the page. The ink is dark and the paper shows signs of age and wear.

Handwritten text in a cursive script, similar to the text on the opposite page. It consists of several lines of text, with some words appearing to be in a different script or dialect. The lines are roughly parallel to each other, following the curve of the page. The ink is dark and the paper shows signs of age and wear.



1  
 2  
 3  
 4  
 5  
 6  
 7  
 8  
 9  
 10  
 11  
 12  
 13  
 14  
 15  
 16  
 17  
 18  
 19  
 20  
 21  
 22  
 23  
 24  
 25  
 26  
 27  
 28  
 29  
 30  
 31  
 32  
 33  
 34  
 35  
 36  
 37  
 38  
 39  
 40  
 41  
 42  
 43  
 44  
 45  
 46  
 47  
 48  
 49  
 50  
 51  
 52  
 53  
 54  
 55  
 56  
 57  
 58  
 59  
 60  
 61  
 62  
 63  
 64  
 65  
 66  
 67  
 68  
 69  
 70  
 71  
 72  
 73  
 74  
 75  
 76  
 77  
 78  
 79  
 80  
 81  
 82  
 83  
 84  
 85  
 86  
 87  
 88  
 89  
 90  
 91  
 92  
 93  
 94  
 95  
 96  
 97  
 98  
 99  
 100

1  
 2  
 3  
 4  
 5  
 6  
 7  
 8  
 9  
 10  
 11  
 12  
 13  
 14  
 15  
 16  
 17  
 18  
 19  
 20  
 21  
 22  
 23  
 24  
 25  
 26  
 27  
 28  
 29  
 30  
 31  
 32  
 33  
 34  
 35  
 36  
 37  
 38  
 39  
 40  
 41  
 42  
 43  
 44  
 45  
 46  
 47  
 48  
 49  
 50  
 51  
 52  
 53  
 54  
 55  
 56  
 57  
 58  
 59  
 60  
 61  
 62  
 63  
 64  
 65  
 66  
 67  
 68  
 69  
 70  
 71  
 72  
 73  
 74  
 75  
 76  
 77  
 78  
 79  
 80  
 81  
 82  
 83  
 84  
 85  
 86  
 87  
 88  
 89  
 90  
 91  
 92  
 93  
 94  
 95  
 96  
 97  
 98  
 99  
 100













١٦  
... ..

... ..

... ..

... ..

... ..

... ..

... ..

... ..

... ..

... ..

... ..

... ..

... ..

... ..

... ..

١٦

... ..

... ..

... ..

... ..

... ..

... ..

... ..

... ..

... ..

... ..

... ..

... ..

... ..

... ..



十三年  
あつた  
あつた  
あつた  
あつた  
あつた  
あつた  
あつた  
あつた  
あつた



あつた  
あつた  
あつた  
あつた  
あつた  
あつた  
あつた  
あつた  
あつた  
あつた





Handwritten text in Arabic script, likely a religious or philosophical treatise. The text is arranged in several lines, with some words written in larger, bolder script (possibly indicating emphasis or specific terminology). The script is dense and fills most of the page.

Handwritten text in Arabic script, continuing the text from the previous page. It features similar dense handwriting and includes some larger, bolded words. The text is contained within a rectangular border.

Handwritten text in a cursive script, likely a historical document or manuscript. The text is arranged in several lines, with some words appearing to be in a different script or dialect. The ink is dark and the paper shows signs of age.

Handwritten text in a cursive script, similar to the one on the adjacent page. It consists of multiple lines of text, with some characters that are difficult to decipher due to the script's style. The document appears to be a continuation of a narrative or a set of records.



常丸

ふり経

ふき

よつと

海舟

左衛門

巻一

巻二

巻三

巻四



織姫

巻一

巻二

巻三

巻四

巻五

巻六

巻七

巻八

自主庵  
天久





Handwritten text in a cursive script, likely a historical document or manuscript. The text is arranged in several lines, with some words or phrases written in a different script or style, possibly indicating specific terms or names. The document is written on aged, slightly stained paper.

Handwritten line of text at the top of the page, starting with a large initial letter.

Handwritten line of text, continuing the narrative or list.

Handwritten line of text, including a small circled mark.

Handwritten line of text, featuring a small circled mark.

Handwritten line of text, including a small circled mark.

Handwritten line of text, including a small circled mark.

Handwritten line of text, including a small circled mark.

Handwritten line of text, including a small circled mark.

Handwritten line of text, including a small circled mark.

Handwritten line of text, including a small circled mark.

Handwritten line of text, including a small circled mark.

Handwritten line of text, including a small circled mark.

Handwritten line of text, including a small circled mark.

Handwritten line of text, including a small circled mark.

Handwritten line of text, including a small circled mark.

Handwritten line of text, including a small circled mark.





何品他島  
玉巻巻

~~~~~の

~~~~~

~~~~~

~~~~~

~~~~~

~~~~~

~~~~~

~~~~~

~~~~~



~~~~~

~~~~~

~~~~~

~~~~~

~~~~~

~~~~~

~~~~~

~~~~~

~~~~~

~~~~~

~~~~~



Handwritten text in a cursive script, likely a historical document or manuscript. The text is arranged in several lines, with some words appearing to be in a different script or dialect. The ink is dark and the paper shows signs of age.

Handwritten text in a cursive script, continuing from the previous page. The text is arranged in several lines, with some words appearing to be in a different script or dialect. The ink is dark and the paper shows signs of age.

Handwritten text in a cursive script, likely a form of Urdu or Persian, arranged in two columns. The text is enclosed in a rectangular border. The script is dense and flowing, with various diacritics and ligatures. The right column contains approximately 10 lines of text, while the left column contains approximately 10 lines. The text appears to be a continuous passage or a list of items, possibly related to a historical or administrative document.

Handwritten text in a cursive script, likely a historical document or manuscript. The text is arranged in approximately 12 horizontal lines across the page. The script is dense and characteristic of early modern European handwriting. There are several instances of small, handwritten annotations or corrections above the main lines of text, often enclosed in small brackets or circles. The ink is dark, and the paper shows signs of age and wear, including some staining and uneven lighting. The text appears to be a formal record or a set of instructions, given the structured layout and the presence of corrections.

Handwritten text in a cursive script, likely Arabic or Persian, consisting of approximately 10 lines. The text is written in black ink on a light-colored background. The script is highly stylized and difficult to decipher without specialized knowledge of the language.

Handwritten text in a cursive script, likely Arabic or Persian, consisting of approximately 10 lines. The text is written in black ink on a light-colored background. The script is highly stylized and difficult to decipher without specialized knowledge of the language.







وَأَمَّا فِي مَقَامِ رَبِّكَ فَهَدَىٰ  
لَهُ أَنْ يَسْجُدَ وَنَسَىٰ  
أَلَمْ يَكُنْ مِنْ سَاجِدِي  
الَّذِينَ سَجَدُوا لِأَمْرِي  
فَسُبْحَانَ اللَّهِ عَمَّا يُشْرِكُونَ  
وَالَّذِينَ هُمْ عَنْ صَلَاتِهِ  
سَاهَوْنَ أُولَٰئِكَ هُمُ  
الْمُضِلُّونَ  
وَالَّذِينَ هُمْ عَنْ صَلَاتِهِ  
سَاهَوْنَ أُولَٰئِكَ هُمُ  
الْمُضِلُّونَ  
وَالَّذِينَ هُمْ عَنْ صَلَاتِهِ  
سَاهَوْنَ أُولَٰئِكَ هُمُ  
الْمُضِلُّونَ

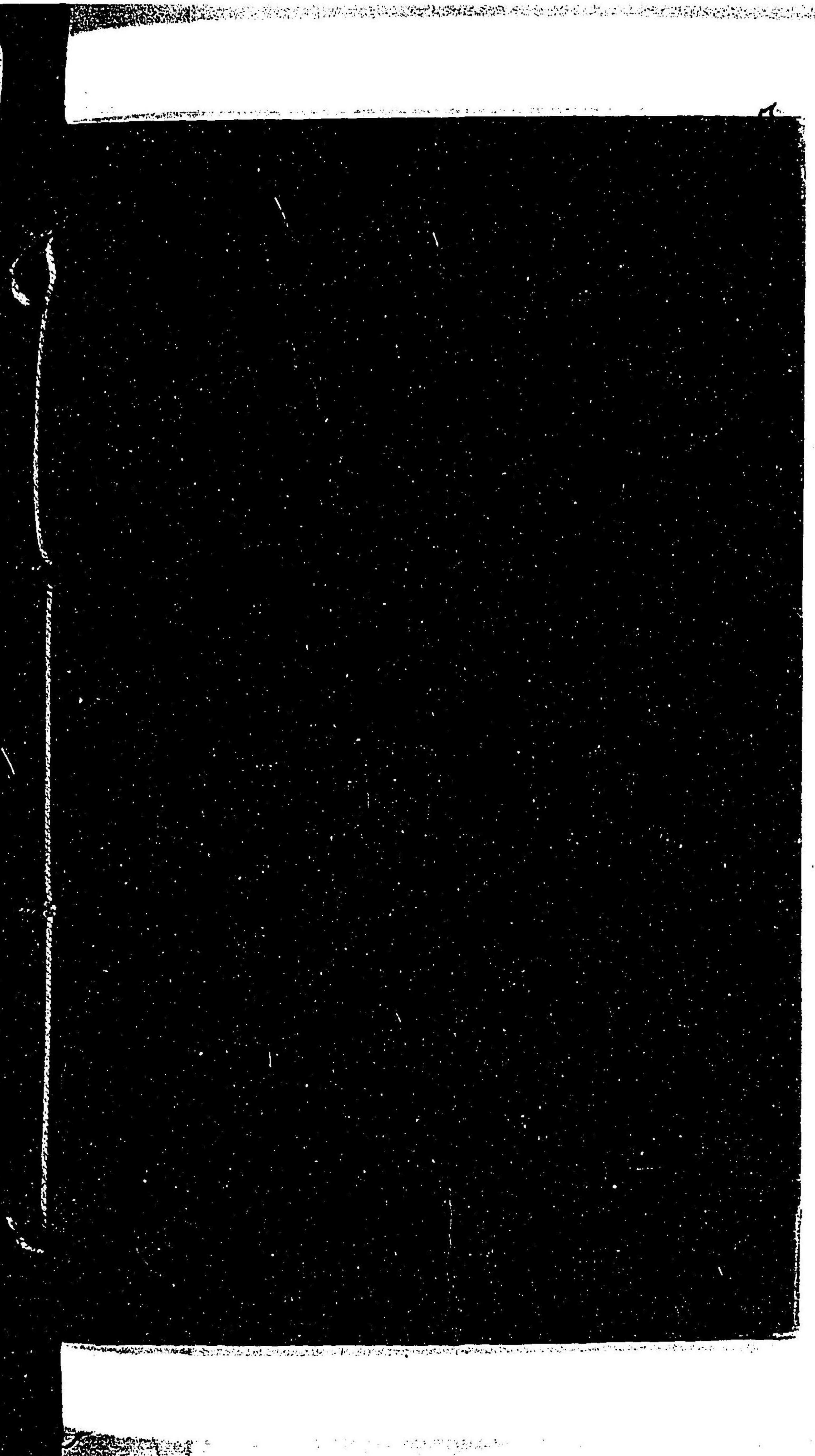
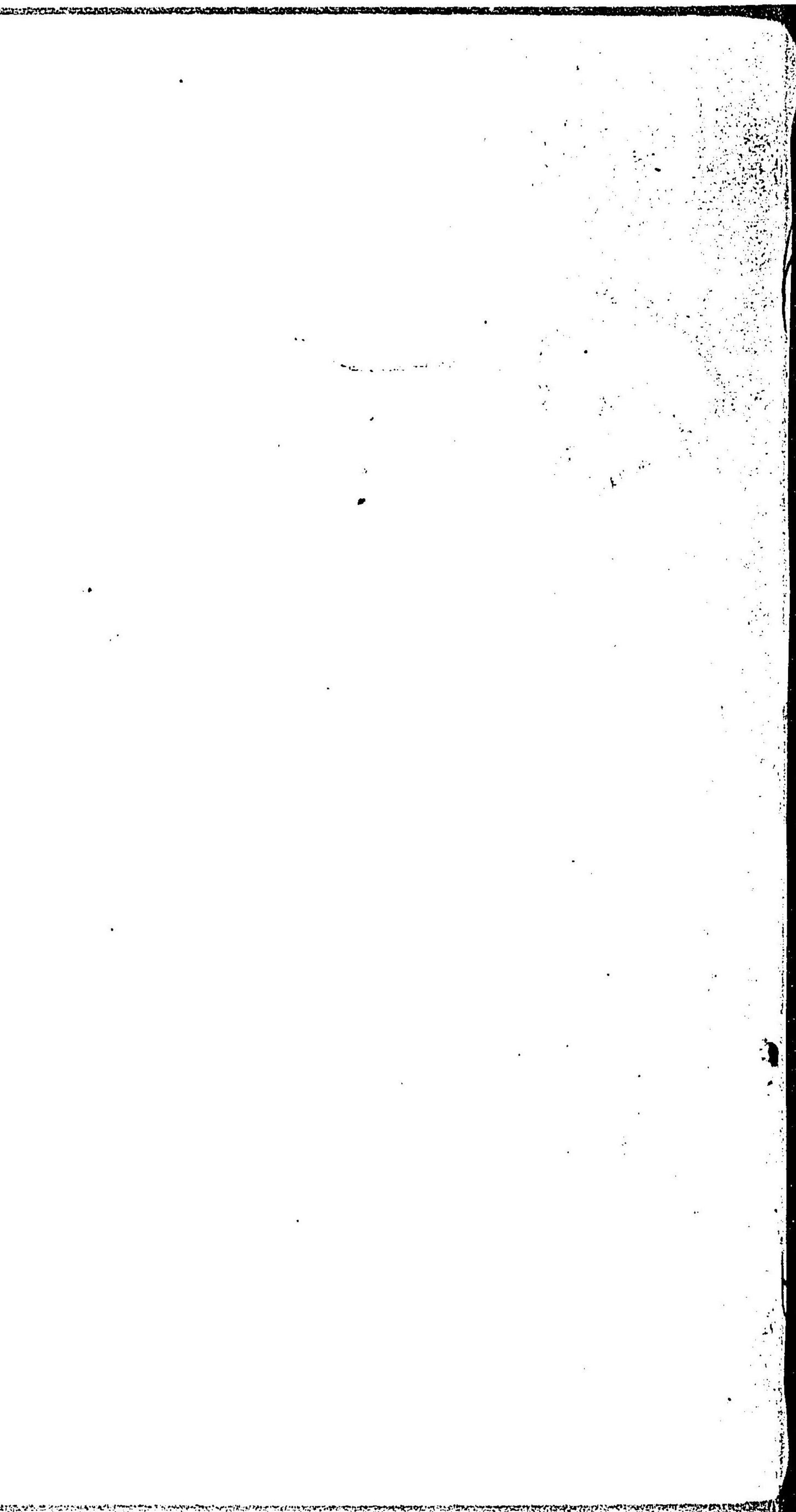
وَأَمَّا فِي مَقَامِ رَبِّكَ فَهَدَىٰ  
لَهُ أَنْ يَسْجُدَ وَنَسَىٰ  
أَلَمْ يَكُنْ مِنْ سَاجِدِي  
الَّذِينَ سَجَدُوا لِأَمْرِي  
فَسُبْحَانَ اللَّهِ عَمَّا يُشْرِكُونَ  
وَالَّذِينَ هُمْ عَنْ صَلَاتِهِ  
سَاهَوْنَ أُولَٰئِكَ هُمُ  
الْمُضِلُّونَ  
وَالَّذِينَ هُمْ عَنْ صَلَاتِهِ  
سَاهَوْنَ أُولَٰئِكَ هُمُ  
الْمُضِلُّونَ  
وَالَّذِينَ هُمْ عَنْ صَلَاتِهِ  
سَاهَوْنَ أُولَٰئِكَ هُمُ  
الْمُضِلُّونَ

Handwritten text in Arabic script, likely a religious or philosophical treatise. The text is arranged in approximately 10 lines, with some words written in smaller script above the main lines. The script is dense and characteristic of medieval Islamic manuscripts.

Handwritten text in Arabic script, continuing the treatise. It features several lines of text, including a section that appears to be a list or a set of instructions, possibly related to the 'materials' mentioned in the text. The script is consistent with the previous page.



208  
25  
787



208  
25  
787

續滕栗毛  
十二編  
中