

原名浸會大學

滬江大學章程

在上海楊樹浦

ECNULIB



10009818243452

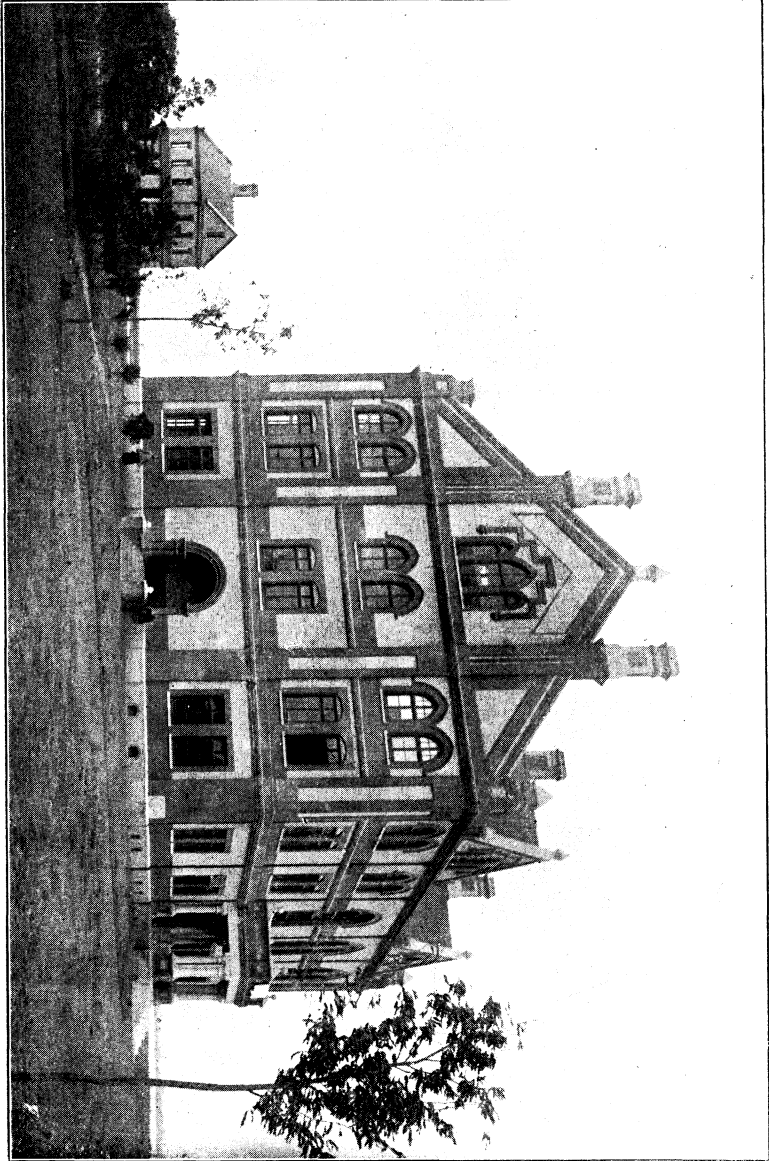
中華民國四年

滬江道學書院
大學校
合章

西歷一千九百十五年

上海美華書館擺印

YATES HALL



滬江大學校道學書院合章

道學書院

緣起及目的

上海爲人才薈萃之地其商務之興盛文明之發達於中國首屈一指大美國浸禮差會有見於是故於上海黃浦江邊離城市較遠之處購地百六十五畝開辦大學校與道學書院俾來受學者於衛生益智上固能得益而於蕩檢踰閑之事亦可無勞杞憂也

本校既爲南北浸禮差會倡捐而立故其辦法均由差會所公舉之董事商議以定惟恐董事于中國學務不得週知故請江浙二大議會選舉董事四位以輔理之

南北浸禮差會除開辦本校外亦於江浙二省設立中小各學以爲本校儲材地步由小學而升中學由中學而升大學步級以上庶免躐等之弊

本校內分三部卽大學正科預科及道學科是也大學部所最注重之科學有三

(甲)國文 本校於國文一科加意注重使學生無偏重西文之弊且按程度分班不拘學級如國文已畢業而他科未畢業者另設一特別科以教之

(乙) 英文 此科均由西國專門教員擔任每日按課教授其正科及預科高級生之算學理化等科亦一律用英文課本至畢業時學生於英文一途不難窺其底蘊

(丙) 格致 此科由美國格致專家梅選士主理于化學試驗室內諸生各有檯桌以便試驗新式儀器逐時添購格致課堂本年亦大加擴充以便學生之練習

其餘各門均聘美國科學專家以担任之使諸生於各科皆能精益求精以免畸重畸輕之弊

本校宗旨首先注重德育所教學生雖將來有傳道者有行醫者有充教員者有再入專門大學肄業者或有人政界商界者事業雖殊莫不望其同具受役於人之思想以達其愛國愛人之目的也

校歷

民國四年

大學校	道學書院	開課	正月二號
大學校	道學書院	寒假	二月六號
大學校	招考	插班生	三月一號
大學校	道學書院	開課	三月二號
大學校	暑假		六月十九號
大學校	招考	新生	六月二號
大學校	補考	新生	九月八號
大學校	開課		九月九號

董事台銜

易君文士(會長)

南京

於君友朋

湖州

雷君比義

揚州

樂君靈生

上海

慕君珥

杭州

麥君嘉祺

蘇州

宋君愛文

寧波

賴君德懋

湖州

萬君應遠

上海

施君德馥

上海

倪君鴻文

湖州

趙君景卿

上海

君

君

魏君馥蘭

本校校長

董君景安

本校副校長

韋君雅谷

書記員

職員教員台銜

職員

校長

魏君馥蘭

副校長

董君景安

會計員

耆君荷福

書記員

梅君佩禮

博物科主理員

梅君佩禮

藏書室主理員

汪君宗海

運動會主理員

葛君學溥

藏書室辦事員

嚴君齊富

英文書啟員

陶女士

華文書啟員

教員

哲學兼神道學科

魏君馥蘭

道學博士

美國

史學兼道學科

董君景安

茂才

浙江鄞縣

道學科

戴君佐施

文學秀士

美國

理化科

梅君佩禮

文學選士

美國

道學科

韋君雅谷

道文 學秀士

美國

英文科

汪君宗海

文學選士

美國

道學科

李君佳思

文學秀士

美國

道學科

衛君禮生

道文 學秀士

美國

史學兼計學科

海君納森

文學選士

美國

道學兼德文科

者君荷福

文學秀士

美國

英文兼社會學科

葛君學普

文學選士

美國

算學科

伊君文士

文學秀士

美國

國文科

林君朝翰

拔貢

浙江鄞縣

國文兼道學科

潘君子放

茂才

江蘇句容

英文科

白君德茂

文學秀士

美國

英文科

陶女士

道學院畢業生

美國

國文兼史學科

張君立民

茂才

浙江鄞縣

國文科

王君風人

江蘇江都

史學兼道學科

鄔君志堅

浙江奉化

理化科

于君壽春

江蘇上海

理化科

馮君顯章

山東青州

國文兼國語科

段君仁里

湖北漢陽

算學科

鮑君吉慶

浙江鎮海

算學科

嚴君齊富

浙江鄞縣

茂才

廣文大學畢業生

本校畢業生

本校畢業生

本校畢業生

本校畢業生

大學校課程表

預科

科目

第一年(擬於本年九月開班)

上學期每
週時間表

下學期每
週時間表

國文

五經節讀

二小時

二小時

中學國文讀本

二小時

二小時

作策論

三小時

三小時

國語

一小時

一小時

算學

數學

三小時

三小時

英文

文法

三小時

三小時

讀本

二小時

二小時

作論

一小時

一小時

格致

地文學

三小時

三小時

史學

中國史

三小時

三小時

聖道

基督比喩

二小時

二小時

第一年

國文

五經節讀

二小時

二小時

中學國文讀本

二小時

二小時

作策論

三小時

三小時

國語

一小時

一小時

算學

初等代數

三小時

三小時

格致

生理學

三小時

三小時

植物學

三小時

英文

文法

三小時

三小時

讀本

二小時

二小時

讀本

二小時

二小時

作論

一小時

一小時

史學

中國史

三小時

三小時

聖道

舊約史記

二小時

二小時

第四年

國文

五經節讀

二小時

二小時

中學國文讀本

二小時

二小時

作策論

三小時

三小時

國語

一小時

一小時

算學

立體幾何

三小時

三小時

格致

化學

三小時

三小時

英文

文法

三小時

三小時

讀本

二小時

二小時

作論

一小時

一小時

史學

萬國通史

三小時

三小時

聖道

使徒言行傳

二小時

二小時

正科

科目

上學期每週時間表

下學期每週時間表

第一年

正科內除國文科外所有科學均用英文課本

國文

經學節讀

二小時

二小時

選讀名家論說

二小時

二小時

作策論 雜著

三小時

三小時

算學

平面三角

三小時

三小時

圓面三角

三小時

格致

化學

三小時

三小時

英文

文法

三小時

文辭法程

三小時

讀本

二小時

二小時

作論

二小時

二小時

史學

英國史

三小時

三小時

聖道

耶穌言行傳

二小時

二小時

第一年

國文

經學節讀

二小時

二小時

選讀名家論說

二小時

二小時

作策論 雜著

三小時

三小時

算學

測量

三小時

天學

三小時

格致

生物學

三小時

三小時

英文

文辭法程

四小時

四小時

讀本

二小時

二小時

作論

二小時

二小時

史學

美國史

三小時

三小時

聖道

使徒史畧

二小時

二小時

第二年

國文

學術史

二小時

二小時

選讀名家論說

二小時

二小時

作策論 雜著

三小時

三小時

格致

高等物理

三小時

三小時

英文

泰西文學史

二小時

二小時

名家著作

二小時

二小時

色司比耳

一小時

一小時

英文論

二小時

二小時

理學

名學

二小時

二小時

性理

二小時

政學

理財

三小時

三小時

法政

三小時

聖道

使徒書信

二小時

二小時

選課

分晰幾何

第四年

國文

學術史

二小時

二小時

選讀名家論說

二小時

二小時

作策論 雜著

三小時

三小時

英文

泰西文學史

二小時

二小時

名家著作

二小時

二小時

預科課程簡表

算學		國文	科 目	
			班 次	每 週 時 間
數 學		五經節讀 中學國文讀本 作策論 國語	第一 年	每 週 八 時 間
初 等 代 數		五經節讀 中學國文讀本 作策論 國語	第 二 年	每 週 八 時 間
高 等 代 數	平 面 幾 何	五經節讀 中學國文讀本 作策論 國語	第 三 年	每 週 八 時 間
立 體 幾 何		五經節讀 中學國文讀本 作策論 國語	第 四 年	每 週 八 時 間

英文	聖道	史學	格致
文讀作法 法本論	基督比喩	中國史	地文學
時小六	時小二	時小三	時小三
文讀作法 法本論	馬可福音 路加福音	中國史	生理學 植物學
時小六	時小二	時小三	時小三
文讀作法 法本論	舊約史記	中國史	物理
時小六	時小二	時小三	時小三
文讀作法 法本論	使徒言行傳	萬國通史	化學
時小六	時小二	時小三	時小三

正科課程簡表

正科內除國文科外所有科學均用英文課本

算學		國文	科 目	班 次
圓面三角	平面三角	經學節讀 選讀名家論說 作策論 雜著	第一	第一
時小三	時小三	時小七	間時週每	年
天學	測量	經學節讀 選讀名家論說 作策論 雜著	第二	第二
時小三	時小三	時小七	間時週每	年
分晰幾何		學術史 選讀名家論說 作策論 雜著	第三	第三
時小三	時小三	時小七	間時週每	年
微分積分		學術史 選讀名家論說 作策論 雜著	第四	第四
時小三	時小三	時小七	間時週每	年

英文	格致	史學	聖道	哲學
文法 文辭 法程 讀本 作論	化學	英國史	耶穌言行傳	
時小七	時小三	時小三	時小二	
文辭 法程 讀本 作論	生物學	美國史	使徒史畧	
時小八	時小三	時小三	時小二	
泰西文學史 色司比耳 名家著作 作論	高等物理 理財 法政	名學 性理學	使徒書信	
時小七	時小三	時小三	時小二	
泰西文學史 名家著作 色司比耳 作論	工藝化學 萬國公法	程非學 教授法 社會學	基督教證據 哲學史	
時小七	時小三	時小二	時小二	

大學校章程

入學程度

- 一所收學生以年在十五歲以上二十五歲以下者爲合格
- 二凡來肄業諸生除蘇州晏成中學杭州惠蘭中學寧波浸會中學上海清心中學以及監理會中學之畢業生隨帶薦書與文憑者不必考試外其餘由他校來之學生均須考試合格方可收錄
- 三新生來校必先同介紹人報名登冊考試收錄後必須具志願書
- 四招考新生日期除載於校歷外亦預登於日報以便欲來肄業者報名投考每名繳報名費一元無論取與不取概不給還又報名時隨帶照片以昭慎重

學費

- 一本校學膳費每年英洋八十元均於上下學期開學日分兩期交納但上學期須先繳五十元下學期再繳三十元惟下學期插班生則按半年照算須繳四十元自民國四年九

月起取入新生全年一百元上學期六十元下學期四十元插班生五十元

二每學期各生須繳運動費一元正科一二年級習化學諸生每學期須另繳試驗費二元又預存費一元此費乃備賠償損壞儀器之用如損壞之數過於一元則當於學期大考前按數加繳若該學期內並無損壞儀器等情此費可以收還又正科三四年級諸生習讀物理化學或生物學者每學期須各繳試驗費一元以上諸費須與學費同時交納交納後給以上課證券未得此證券者即不得上課

三開學日下午三點鐘為諸生派定臥室之時凡不付交學費雜費及前學期散學時不付留位費者皆不在派定之列

四學生犯規被逐或自行中止者所繳之費概不退還又遲到之學生其費亦不得減繳

減免學費

一本校普通減免學費之例乃為教中寒素子弟而設其課績均分須在八十分以上且願訂立圖書讀畢課程者始可酌減至少須付五十元為限但額數之多寡須視本校經費

而定又本校如有義務學生所能担任者該減免學費諸生亦當照力盡勞以養成自立自助之資格

二本校另有特別免費獎勵專爲浸會中學畢業生中品學兼優者而設每名減費六十元
本年准獎四名卽蘇州安成中學一名杭州惠蘭中學一名寧波浸會中學一名又本校預科一名凡願得此獎勵者須遵下列三條

- 甲 學生須具品學兼優之資格且其家中寒素非得獎勵有不能進入大學者
- 乙 必得該中學校長允許者
- 丙 第二年能仍得獎勵與否須視該生第一年之品行與分數而定

考試

- 一每學期月考三次不到考者或分數不足者均無重考之例
- 二每學期大考一次考時無論何課其分數不到六十五分者必須回家重習俟下次開學前重行補考又年假大考時如有三種功課均在六十五分以下者不得補考亦不能升

班

- 三 考試後其均分數填寫考單報告該生父兄或保證人藉察勤惰
- 四 每年終國文分數最多者校長獎洋五元英語演說最出色者汪教員獎洋五元各科均分最多者本校獎五元

聖道

- 一 諸生須守本校教規每晨禮拜及主日上下午均當恭詣禮堂以昭慎重
- 二 本校設有青年會入會與否各聽其便

閱報室

- 一 藏書閱報二室本年大加擴充藏書室內中英書已有四千餘部閱報室內之報凡三十餘種且有專員以司其事每日上午七時三十分至下午九時四十五分學生入內閱看惟須守內懸之規則爲要

運動會

一 本校運動場特別廣大以便學生練習體育而得衛生之益故各生每年應納運動費洋二元隨同學費繳納

二 全體學生於下午放學後皆當入場運動如有學生不願習跳高賽跑等大運動者須習柔軟體操使校內學生無一不得體育之益

三 運動會內有幹事員部經理會務與一切用欸等事其選舉法乃由教員中公舉一二位其餘學生代表由學生自行公舉

四 本校擬組織童子軍由伊文士君辦理以振起尙武精神發抒濟人主義

告假

一 諸生平日不得擅自出外惟禮拜六日下午如得校長允准始可出外必於當晚六時前回校此出外權利約以一月一次爲限至於家中要事不得不告假者當先由父兄或保證人具函說明真實理由逕交校長察奪可否不得附入學生函內轉交所荒功課應於歸校後補足然告假之事非萬不獲已不宜率請此理當亦各父兄所共知也

二凡正科生每日下午四時後例許在校外左近散步以暢天機（預科生不在此例）惟出入須領繳名券而返校亦當在六時前並在外不得有不規則之舉動違者停止其應享之散步權甚且記過以示之懲

懲勸

一諸生無論何時何地往來交涉皆當以謙讓為主不得妄自尊大不然重則斥革輕則記過或面責

二凡烟酒賭博鬪毆毀罵及考試夾帶等事本校視爲最大之過犯者必受嚴譴或斥退
三嚴禁私行聚會卽交誼遊戲音樂等會雖與本校規則無違亦必稟准校長始得開聚
四臥房膳堂另有規則實貼違者記過

五凡違規則者除記過外或罰遊息或受他罰由校長臨時酌定

六一學期內凡記五十過者黜退

附則

一各生來校應備之物如左 四季衣服羅帳面盆書燈梳刷巾布等又絲巾十條以備拭唾之用此外稗官小說與一切珍貴及無用之物均不准攜帶

二在校諸生擬來年聯續者統須於年假前預付留位費二元此款即於來年學費內扣除 凡不付者如遇額滿即在不能收錄之列

三諸生於開學日均須齊到以免曠課如開學日不到即記五過以後每日遲到一天即記一過至三禮拜後仍不到者則不准入學矣

四學生如遲到其留位費二元作罰概不給還

道學書院入學資格

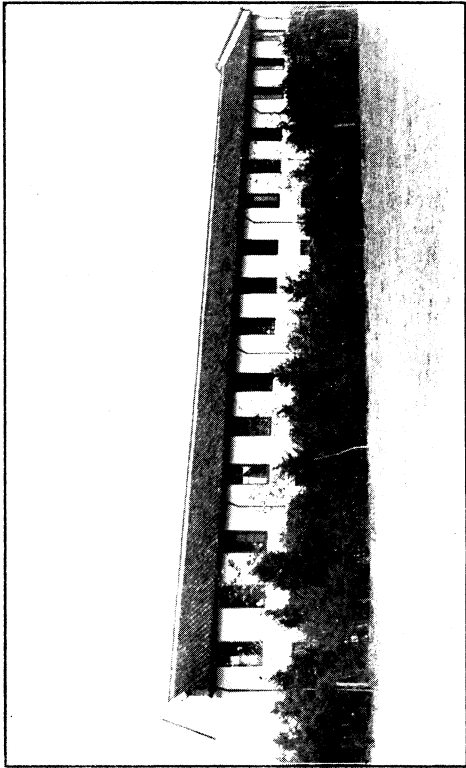
道學書院爲培植教會人材之地凡有學問之人可令他來學以備將來傳教他地之用本院設有三科卽備科正科特科是也

一備科 凡品行端方身體強壯年富而有口才之學生其程度參差不能入正科者可入此科以一年爲限休業後考試合格始准升入正科

二正科 凡多年信道已明聖經大義且其國文科學有高等小學畢業及相當程度者可入此科課程以四年爲限休業時給以正科畢業文憑

三特科 凡大學校正科第三年級學生有志學道者可入此科除讀本科課程外兼讀大學校一半之課程二年後可得大學校畢業文憑如要得道學書院特科文憑須再專習高等道學科一年

本院注重教授法與主日學課已定爲正當功課使學生畢業後可用善法教人每學生每禮拜須作教授程式俟教員評定後用之



NORTH DORMITORY

道學書院課程

備		科	
一		年	
一		課	
程		科	
科目	每週時間	聖經	二小時
		地理	二小時
		算術	二小時
		格致	一小時
科目	每週時間	國文	十小時
		樂歌	
		佈道	

科		特
年三第	年二第	年一第
新約 舊約 神道 教章	新約 舊約 宣道 教史	新約 舊約 宣道 教史
宗教考 希臘文 聖經 聖日課 教授法 樂歌	是非學 社會學 希臘文 樂歌	個人傳道法 希臘文 樂歌

道學書院章程

入學

凡欲來院肄業必須攜帶本公會與西教士之薦書其程度合格與否乃憑本院教習考試爲定

聖日課

各地教會聖日學堂日漸興盛故本院亦注重培植聖日學堂領袖每禮拜諸生除讀教授法外在主日特往各支堂教授聖日課師範班以資習練

講道

本院諸生每主日亦當在外講道以便練習講道之法或講於鄰近村鄉或講於本院所設支堂與上海各堂均隨本院分派不得托故推諉因上海地廣人衆稼多工少故也

聚會

本院每主日上午正式講解下午聖日課以及禮拜三晚間祈禱青年會及自願查經班等會除出外講道不能到者外各生均須一律聚集以免參差不齊之弊又主日晚上聚會報告各人所作之工

津貼

本院不收學費惟膳費雜費等例應自備如真力有不逮則可與經濟委酌商議視其家境之豐嗇定津貼之多寡惟不得過於下列之數耳

無家室之學生每月得津貼洋五元二角半有妻室之學生每月得津貼洋七元半如有子女必恃該生育養者每口每月得津貼洋一元

如有學生不攜妻孥同來院者所得之津貼洋與無家室者同

諸生於經濟委酌處所領之津貼費按照陽歷計算而於假期時亦仍按例給付諸生往來川資本院概不給貼

冬夏假期各生所作之工須與本公會中西教牧商酌定奪

大學校學生姓名錄

正科四年級

藉貫 通信處

傅清和 湖州浸會堂

甘義基 上海 上海江灣北弄嚴恒升米號轉交

馬承鈞 揚州 揚州浸會堂

沈人和 蘇州 蘇州唯亭浸會堂

竺廷琅 寧波 寧波西門芳嘉橋

正科三年級

陳子初 蘇州 蘇州閭門學士街三百七十三號

陳元龍 溫州 溫州三角門內

錢嘉集 定海 寧波定海錢順房

周維新 寧波

定海真神堂

樊正康 鎮海

上海塘山路卅七百七十六號

顧振亞 蘇州

蘇州東白塔子巷七號

嚴其華 寧波

寧波西門內嚴天錦甯莊

凌永泉 蘇州

蘇州城內臨頓路萍花橋寶超泰號

繆秋生 寧波

寧波江東東湖濟繆宅

嚴恩椿 上海

上海江灣北弄嚴恒升米號

嚴聖才 寧波

上海法界皮少乃路五十四號

宋光 寧波

寧波邑廟前大梁街宋風記號

鄔時浚 寧波

寧波北門外梁橋下耶穌教堂內

姚傳法 寧波

寧波小沙泥街集賢里口

于壽根 無錫

上海小東門福昌里六號

正科二年級

錢宗德 寧波 上海外虹橋西首千一百十號元昌五金號

戚正成 寧波 寧波梅墟鎮成恒康酒號

許子沂 安徽 上海新重慶路咸益里四五二號

吳詠騏 寧波 寧波千歲坊章巷巷胡宅

劉頤年 寧波 寧波糖行街裕源錢莊

陸麟書 蘇州 蘇州城內小曹家巷三號

虞秉榮 寧波 上海蓬路九百九十六號董神堂

王公蕃 舟山 上海下德路六百零四號丁寓

郁康榮 寧波 上海虹口源昌路源昌里一街郁全記

樂視祥 寧波 寧波鎮海米行街樂順興

正科一年級

鄭蓮生 寧波 寧波湖西虹橋頭演武廳後進

陳禹平 鎮江 本校

錢振亞 鎮江 上海愛而近路均益里二街九十八號

葉子漁 寧波 法界新開河張大海味行

應元道 寧波 湖州袁家灘耶穌堂

賴祖光 福建 上海法大馬路賴益興和

賴毓堦 福建 上海法大馬路賴益興和

林兆棠 南京 上海東袋角五百零一號

陸鳳眉 上海 上海大場中市

陸仲儀 蘇州 蘇州閶門內砂皮巷三十九號

陸攸同 紹興 紹興錢橋鎮楊慶興松記花行豐文後梅湖

沈文鴻 寧波 寧波慈北沈師橋老塘角斗

董承琅 寧波 本校

張惠迪 上海 上海克四費路十六號張師母

卓文祥 蘇州 蘇州濂溪坊一百五十一號

鄔華棠 寧波 寧波西塢鄔怡順號

吳光培 鎮江 鎮江小碼頭芝壇宮隔壁

吳文元 寧波 上海虹口師善里二千六百六十三號

鄔禹友 寧波 寧波西塢

預科四年級

鄭世察 寧波 寧波半浦大屋內

經達人 南京 寧波浙海新關

經士英 南京 寧波浙海新關

經道修 南京 寧波浙海新關

樊繹培 江蘇 江蘇崇明城內南街

江聲 寧波 寧波鄞江橋新長興號

江紹原 安徽 上海成都路頁吉里

郭祖聞 浙江 浙江諸暨江東蒲荷棚下

呂膚敏 蘇州 蘇州天庫前九十九號

勵遵復 紹興 紹興嶺山

梁錫瑗 寧波 寧波江東百丈街米行橋上梁宅

倪世賢 浙江 浙江石門州泉鎮

倪世堦 浙江 浙江石門州泉鎮

石磊 浙江 上海法租界

吳光德 鎮江 鎮江小碼頭芝壇宮隔壁

蔡全祚 福建 北四川路橫濱橋四百七十九號

葉其秦 上海 新關路第一千七百四十九號

徐豪 江蘇 貝勒路五十五號唐寓

謝其章 寧波 上海新關青島路三十二號

陳乾元 寧波 上海英界長浜三十六號

何亞杰 上海 上海楊樹浦長安里

預科三年級

周鼎華 湖州 浙江湖州彩鳳坊瑞源金號

洪家秀 餘姚 餘姚候青門內

尹寶明 山東 上海馬立司重慶路公義成毛毯行

羅人達 浙江 上海開北大統路發祥里一家

嚴學通 陝西

翁紀康 江蘇 上海開北寶山路寶海里二弄二家

施光裕 江蘇 上海英大馬路德仁里一弄三百零七號

沈經 嘉興 浙江嘉興南門內河東街

宋復 寧波 寧波邑廟前大梁街宋鳳記

唐啟宇 揚州 揚州新城六巷

湯嗣貞 寧波 寧波城內祝都橋湯五房

湯嗣緯 寧波 寧波城內祝都橋湯三房

唐映廬 金華 上海貝勒路五十號

唐仁德 上海 上海徐家匯豫豐橋恒新米號

鄧志鴻 廣東 揚州南河下

丁廉楨 湖州 湖州府前黃河路中英大藥房

董承璵 寧波 本校

臧林 湖州 湖州月河街陸宅南首二家

張之颯 餘姚 上海阿拉白司麗路北長康里百九十七號

朱道衍 寧波 上海東盤商書館對門九十二號

楊星垣 廣東 上海北四川路紫賢里三十三號

阮神鐸 廣東 上海南市十六鋪經昌機器廠

俞錫林 紹興 上海北蘇州路德安里一百四十五號

祝立權 龍游 蘭谿上楊埠

預科一年級

陳其儀 湖州 南門外袁家祥源源醬園號

金守仁 上海 西門內金家坊十號

顧溥森 湖州 東門浸會高等學校內

古為重 廣東 蕉詒縣倡文學校

梁景華 廣東 嘉應廣益高等小學

陸浚賢 崇明 上海法界金利源碼頭興隆行

施振林 湖州 東街華樓橋普濟醫局對門施宅

孫超烜 崇明 崇明城內孫家齋

孫瑞璜 崇明 崇明城內孫家衙

戴愛跋 寧波 西門真神堂鄰交

董培林 紹興 上海白克路登賢里七百二十七號

張宏祖 寧波 上海外虹橋復泰五金號

張永餘 寧波 方井頭張信黃酒號

張兆熊 寧波 上海鐵馬路成大街餘順里一衛四十九號

車燧興 上海 上海梵王渡德大布莊

王德溥 舟山 上海下德路六百零四號丁寓

王熾昌 廣東 廣東嘉應廣益高等小學

姚祖恩 寧波 上海海寧路福壽里一千六百五十三號

虞和育 寧波 上海五馬路棋盤街科學儀器館

徐振東 江蘇 貝勒路五十五號廣寓

朱士琛 湖州 湖州武康邑洛舍鎮同泰號鄰交杜橋村

潘福成 湖州

道學書院學生姓名錄

特科第一年

凌永泉

蘇州

宋光

寧波

鄔時俊

寧波

嚴其華

寧波

特科第二年

鮑哲慶

寧波

嚴其富

寧波

沈仁和

蘇州

正科第一年

馮滙丹

鎮江

王奠成

鎮江

馬申甫

鎮江

童輝

鎮江

沈厚善

杭州

許國仁

汕頭

廖鍾秀

汕頭

廖遠宿

汕頭

正科第二年

沈笑寰

上海

鄒茂林

鎮江

蔡吉卿

上海

范敬道

上海

錢復生

上海

王希純

上海

正科第三年

陳顯鈞

上海

劉邦瑞

蘇州

繆彼得

鎮江

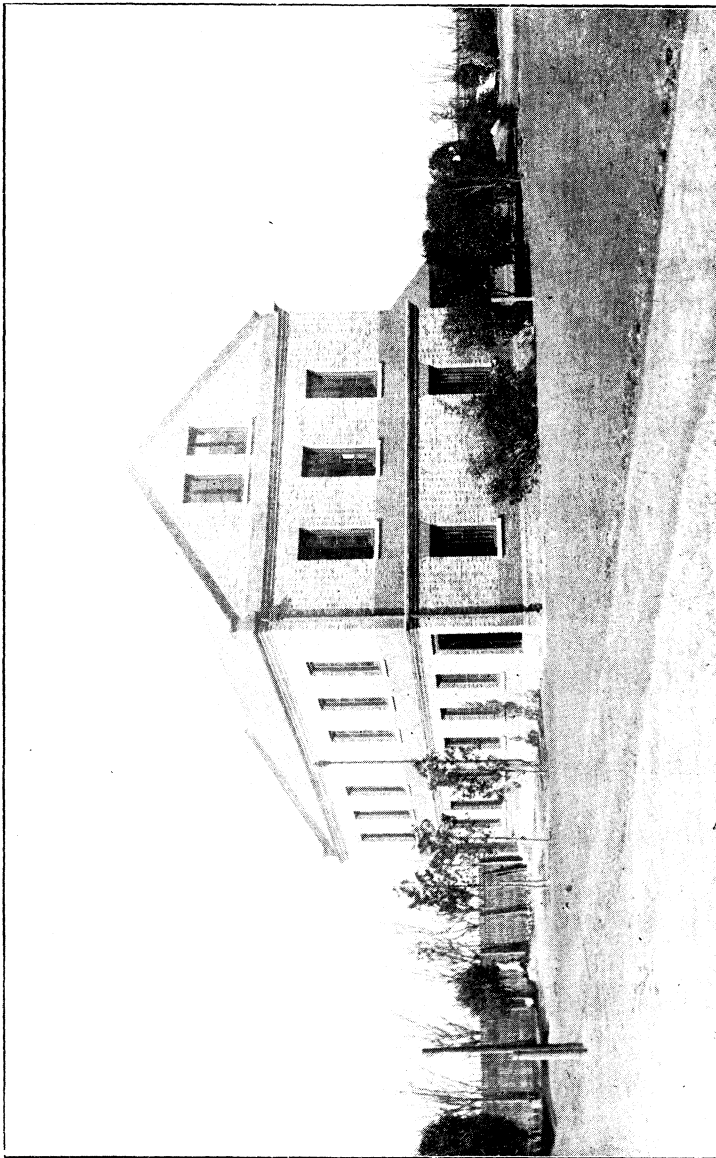
正科第四年

趙忠文

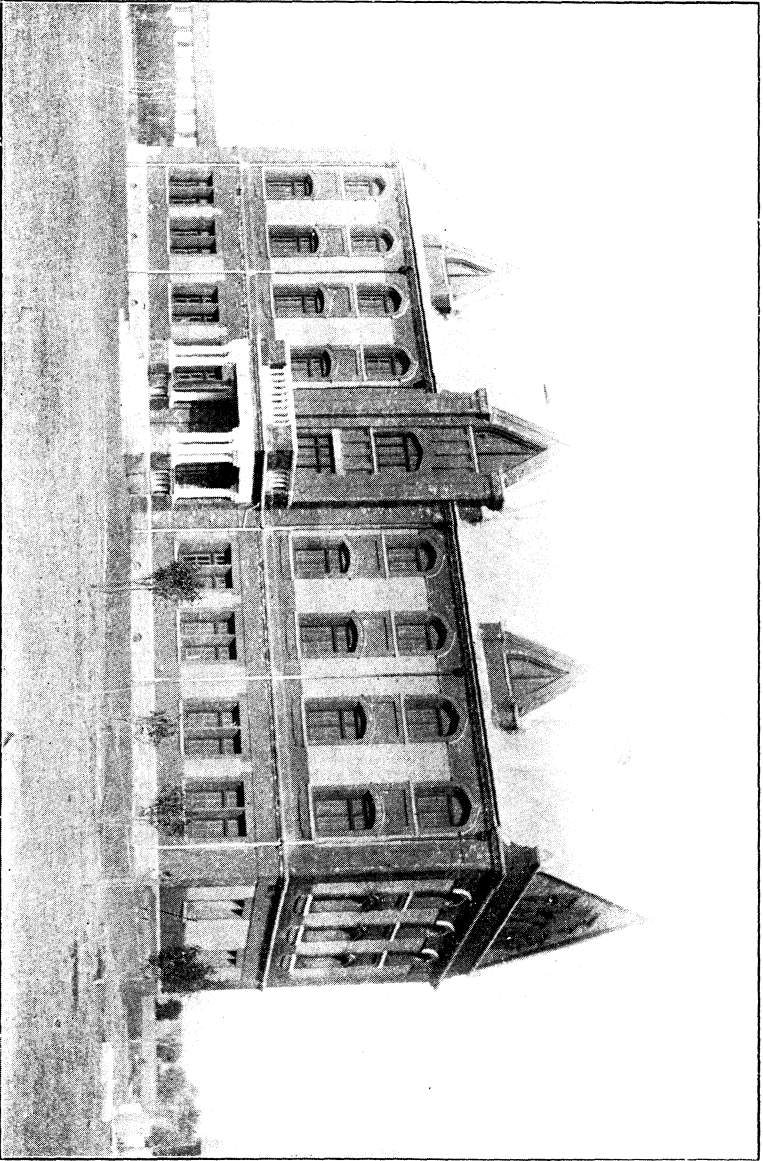
金華

賀成銘

杭州



DINING HALL.



BRECKER HALL

CONTENTS.

	Page
Calendar	2
Trustees	3
Faculties	4
Introduction	9
THE COLLEGE :	
Curriculum of Middle School	12
Curriculum of College	14
Description of Courses	16
REGULATIONS :	
Conditions of Admission	29
Tuition and Expenses	29
Scholarships	30
Prizes	31
Examinations	31
Religious Services... ..	32
Library and Reading Room	32
Toilet Requisites	32
Leave of Absence	33
General Rules	33
Registration	34
THE THEOLOGICAL SEMINARY :	
Course of Instruction	40
Department of Religious Pedagogy and Sunday School	
Method	41
The Women's Bible School	42
Evangelistic Work	42
Meetings	43
Conditions of Admission	43
COURSES OF STUDY :	
Preparatory Year	45
Regular Course	45
Advanced Course	47
ROLL OF STUDENTS :	
The Seminary	48
The Middle School	37
The College	35

CALENDAR.

- Saturday, February 6th, 1915 ... Fall Term Closes.
- Monday, March 1st, 1915 ... Entrance Examinations.
Supplemental Examinations.
- Tuesday, March 2nd, 1915 ... Spring Term Opens.
- Saturday, June 2nd, 1915 ... Entrance Examinations.
- Saturday, June 19th, 1915 ... Spring Term Closes.
- Wednesday, September 8th, 1915. Entrance Examinations.
Supplemental Examinations.
- Thursday, September 9th, 1915. Fall Term Opens.

THE BOARD OF TRUSTEES.

P. S. EVANS, M.D., <i>Chairman</i>	NANKING.
REV. M. D. EUBANK, M.D.	HUCHOW.
REV. A. Y. NAPIER	YANGCHOW.
REV. CHAS. G. MCDANIEL	SOOCHOW.
REV. R. T. BRYAN, D.D.	SHANGHAI.
PRIN. P. R. MOORE	HANGCHOW.
REV. J. V. LATIMER	HUCHOW.
REV. E. E. JONES	NINGPO.
MR. R. D. STAFFORD, <i>Treasurer</i>	SHANGHAI.
REV. NYI HONG WEN	HUCHOW.
MR. DZAO CHING CH'ING	SHANGHAI.
REV. FRANK RAWLINSON	SHANGHAI.
PRES. F. J. WHITE, <i>Ex-officio</i>	SHANGHAI.
VICE-PRES. TONG TSING EN, <i>Ex-officio</i>	SHANGHAI.
REV. J. B. WEBSTER, <i>Secretary</i>	SHANGHAI.

OFFICERS OF ADMINISTRATION.

President, FRANCIS JOHNSTONE WHITE, M.A., D.D.

Vice-President, TONG TSING EN, Siu Tsai.

Treasurer, ERNEST KELHOFER, B.A.

Secretary, FRED CARLETON MABEE, M.A.

THE FACULTY.

FRANCIS JOHNSTONE WHITE, M.A., D.D., *President*,
Professor of Systematic Theology and Philosophy.

TONG TSING EN, Siu Tsai, *Vice-President*,
Professor of Church History and Biblical Interpretation.

EZRA FRANCIS TATUM, B.A.,
Professor of Biblical Interpretation.

FRED CARLETON MABEE, M.A.,
Professor of Natural Sciences.

JAMES BENJAMIN WEBSTER, B.A., B.D.,
Professor of New Testament Interpretation and Sunday School Method.

CHARLES HART WESTBROOK, Jr., M.A.,
Professor of English Language and Literature.

CHARLES LUCAS BROMLEY, B.A.,
Professor of New Testament Interpretation.

JAMES EDWARD WILLS, B.A., B.D.,
Professor of Old Testament Interpretation.

VICTOR HANSON, M.A.,
Professor of History and Economics.

ERNEST KELHOFER, B.A.,
Assistant Professor of Bible and German.

DANIEL HARRISON KULP, II, M.A.,
Acting Professor of English and Sociology.

EDWARD EVANS, Jr., B.A.,
Assistant Professor of Mathematics.

PUN TS FANG, Siu Tsai.
*Instructor in Chinese Language and Literature and Biblical
Interpretation.*

THOMAS COTTON BRITTON, Jr., B.A.,
Instructor in English.

LEONTINE JOSEPHINE DAHL,
Instructor in English.

LING DZAO HAN, Yiu Ling,
Instructor in Chinese Language and Literature.

TSANG LIH MING, Siu Tsai,
Instructor in Chinese Language and Literature.

WANG HWA,
Instructor in Chinese Language and Literature.

WU TS CHI, Graduate of Shanghai Baptist College,
Instructor in History and Bible.

YU SHIU CHING, Graduate of Shanghai Baptist College,
Instructor in Natural Sciences.

FENG WEN TS'AN, Graduate of Shantung Christian
University.
Instructor in Natural Sciences.

TANG REN LI,
Instructor in Chinese Language and Literature.

BAO CHIH CHING, Graduate of Shanghai Baptist College,
Assistant in Mathematics.

NI CHI FU, Graduate of Shanghai Baptist College,
Assistant in Mathematics.

F. C. MABEE, *Curator of the Museum*
C. H. WESTBROOK, Jr., *Librarian.*
D. H. KULP, II, *Supervisor of Athletics.*
. *Chief Assistant Librarian.*
MISS L. J. DAHL, *Office Secretary.*
NI CHI FU, *Chinese Office Secretary.*

LECTURERS, 1914-1915.

PROFESSOR ALEXANDER LEE, A.B., "The Relation of Science to Religion."

REV. E. G. TEWKSBURY, "Pedagogical Methods."

MR. C. H. HAN, Siu Tsai, "Sound."

MR. W. W. LOCKWOOD, Ph.B., "Results of Social Surveys in Shanghai."

DR. G. B. FRYER, "Work for the Blind in China."

MISS CHEN, Y. W. C. A., "The Needs of the Womanhood of China."

COLLEGE PREACHERS, 1914-1915.

REV. JAMES VALE, Chinese Tract Society, Shanghai.

REV. PROF. TSANG, Nanking School of Theology, Nanking.

REV. NYU S DZAE, Boone Road Baptist Church, Shanghai.

REV. J. E. WILLIAMS, D.D., Nanking University, Nanking.

MR. LI CHI FAN, Y. M. C. A., Shanghai.

MR. TSOH CHIEN TANG, Soochow Baptist Church, Soochow.

MR. C. T. WANG, Secretary, General Committee, National Y. M. C. A., Shanghai.

REV. W. S. SWEET, Wayland Academy, Hangchow.

REV. MR. WANG, Student Volunteer Movement, Nanchang.

REV. CHEN CHING YI, Secretary China Continuation Committee, Shanghai.

缺 页

THE SHANGHAI BAPTIST COLLEGE AND THEOLOGICAL SEMINARY.

The Shanghai Baptist College and Seminary is located in the suburbs of the city of Shanghai, the metropolis of Eastern China. Shanghai is situated near the Pacific seaboard in the great Yangtse Valley. Shanghai, a city of more than a million population, is growing rapidly by a constant influx from every quarter of this largest nation of the world. Students, too, are attracted to Shanghai from all parts of China.

The campus is six miles from the center of Shanghai, with a beautiful outlook upon the broad expanse of the Whangpoo with its waters enlivened both with Chinese junks and the great ocean carriers of all nations. The first sight that greets the visitor to Shanghai by ship is that of the buildings of the Shanghai Baptist College and Seminary.

The campus contains twenty-seven acres of land which is nearly one half mile long and with a frontage on the river of 800 feet. Thousands of trees have been planted and the main part of the campus is now a well kept lawn with suitable walks and roads.

The buildings on the campus consist of :

1. **YATES HALL**, a three-storied building 64 by 110 feet with offices, guest room, library, reading room, science laboratories, class rooms, and a chapel with a seating capacity of over 300.

2. **BREAKER HALL**, a three-storied building 42 by 102 feet, erected by the Baptists of Missouri for the Seminary. It contains a convenient sized assembly hall and five class rooms on the first floor with dormitory rooms on the other floors for more than 90 students.

3. NORTH HALL, a large dormitory for students and teachers' residence.

4. THE DINING HALL, 30 by 60 feet with a sanitary kitchen adjoining. The whole of the upper floor with windows on all four sides is the dining room while the lower floor is used entirely as a lavatory.

5. THE MISSOURI WOMAN'S BUILDING, two stories high, 30 by 75 feet, erected by the Baptist women of Missouri, contains a small assembly room, four class rooms, and eighteen rooms for the accommodation of the families of the married theological students.

6. COLES BELL TOWER, with bronze bell, the gift of J. Ackerman Coles, M.D., New York.

7-10. FOUR DWELLINGS, each containing eight rooms, with kitchen and servants' quarters.

The institution was founded by the American Baptist Foreign Mission Society and the Southern Baptist Convention, and is conducted by them through a Board of Trustees chosen by the two mission bodies and the two Chinese Associations in Eastern Central China. The trustees are assisted by a Chinese Advisory Board elected by the Kiangsu and Chekiang Baptist Associations.

The two Missions supporting the institution are developing four academies—at Soochow, Chinkiang, Haugchow, and Ningpo; and five intermediate boarding schools—at Shao-hsing, Kinhwa, Huchow, Yangchow, and Shanghai; as well as numerous day schools. Thus the institution in Shanghai is the culmination of a well planned system of education. The College is also fed by many other Christian and government schools in Shanghai, Ningpo, and elsewhere.

The institution has three main departments; the Academy, the College, and the Theological Seminary. While located on the same campus, these departments are kept distinct.

The Academy and College.

The aim of these departments is to give our students a thorough education in all modern branches. But the dominating purpose of the institution is to prepare students for the highest service to their own country. To this end special emphasis is laid upon the study of the Chinese language and literature. Many important changes have been recently made in order to put this department upon the most efficient basis. As far as possible all Chinese instruction is given in Mandarin.

Aside from the study of the Chinese language and literature, all courses in the four college years and several courses in the Academy are given in English. English, as such, is taught every day throughout the course by Americans. Students are able to read, write, and speak English with ease before graduation from the College.

Strong emphasis is laid upon the study of Natural Sciences, and all other departments that enter into a college course, such as Mathematics, History, Economics, Sociology, are being developed as rapidly as possible. Since the erection of Breaker Hall, the whole of the third floor of Yates Hall is devoted to the department of Natural Sciences.

The one object never forgotten is the moral development of each student. The object of the whole course is to prepare young men for a useful life. Whatever the calling into which they enter, we hope all will look upon life as a service for others.



THE MIDDLE SCHOOL.

(ACADEMY)

CURRICULUM.

FIRST YEAR.

First Term :

	Hours.
Chinese Language and Literature	8
English Language and Literature	5
Mathematics, Review of Arithmetic	3
Science, Review of Geography	3
History of China	3
Bible, The Gospels	2

Second Term :

Chinese Language and Literature	8
English Language and Literature	5
Mathematics, Elementary Algebra	3
Science, Physical Geography	3
History of China	3
Bible, The Gospels	2

SECOND YEAR.

First Term :

Chinese Language and Literature	8
English Language and Literature	5
Mathematics, Algebra	3
Science, Physiology and Hygiene	3
History of China	3
Bible, Acts... ..	2

Second Term :

Chinese Language and Literature	8
English Language and Literature	5
Mathematics, Algebra	3
Science, Elementary Botany	3
History of China	3
Bible, Acts... ..	3

THIRD YEAR.

First Term :

			Hours
Chinese Language and Literature	8
English Language and Literature	5
Mathematics, Plane Geometry	3
Science, Elementary Physics	3
History of Japan	3
Bible, Old Testament History	2

Second Term :

Chinese Language and Literature	8
English Language and Literature	5
Mathematics, Plane Geometry	3
Science, Elementary Physics	3
History, Ancient—Renouf	3
Bible, Old Testament History	2

FOURTH YEAR.

First Term :

Chinese Language and Literature	8
English Language and Literature	5
Mathematics, Solid Geometry	3
Science, Elementary Chemistry	3
History, Mediæval—Renouf	3
Bible, Corinthians...	2

Second Term :

Chinese Language and Literature	8
English Language and Literature	5
Mathematics, Higher Algebra	3
Science, Elementary Chemistry	3
History, Modern—Renouf	3
Bible, Corinthians...	2

Regulations.

All the regulations of the College apply to the Academy except as noted. For these regulations and other information see page 29.

For description of courses, see pages 16 to 28.

THE COLLEGE

CURRICULUM.

FRESHMAN YEAR.

First Term :

	Hours.
Chinese Language and Literature	8
English Language and Literature	5
Mathematics, Plane Trigonometry	3
Science, Chemistry	4*
History, English	3
Bible, Life of Christ	2

Second Term :

Chinese Language and Literature	8
English Language and Literature	5
Mathematics, Spherical Trigonometry... ..	3
Science, Chemistry	4*
History, English	3
Bible, Life of Christ	2

SOPHOMORE YEAR.

First Term :

Chinese Language and Literature	8
English Language and Literature	5
Mathematics, Astronomy	3
Science, Biology	3
History, American	3
Bible, History of Apostolic Times	2

Second Term :

Chinese Language and Literature	8
English Language and Literature	5
Science, Biology	3
History, American	3
Bible, History of Apostolic Times	2
Electives : Astronomy or Surveying	3

*Two hours per week are devoted to lectures and recitations, and four hours per week to laboratory work. The four laboratory hours are reckoned as two credit hours.

JUNIOR YEAR.

First Term :

	Hours.
Chinese Language and Literature	7
English Language and Literature	5
Logic	2
Political Economy... ..	3
Bible, Studies in the Epistles	2
Electives: Analytical Geometry or Physics ...	3*

Second Term :

Chinese Language and Literature	7
English Language and Literature	5
Psychology... ..	2
Government	3
Bible, Studies in the Epistles	2
Electives: Analytical Geometry or Physics ...	3*

SENIOR YEAR.

First Term :

Chinese Language and Literature	7
English Language and Literature	3
History of Philosophy	2
Ethics	2
Sociology	2
Theory and Practice of Teaching	2
Electives: Calculus or Geology	3

Second Term :

Chinese Language and Literature	7
English Language and Literature	3
Outlines of Christian Doctrine and Evidences of Christianity	2
International Law... ..	3
Sociology	2
Electives: Calculus or Chemistry	3

*Two hours per week are devoted to Physics lectures and recitations and two hours per week to laboratory work.

DESCRIPTION OF COURSES.

CHINESE LANGUAGE AND LITERATURE.

LING DZAO HAN, Instructor

TSANG LIH MING, Instructor

WANG HWA, Instructor.

NOTE: Each student is assigned to a class in the department of Chinese according to his proficiency as ascertained by examination and regardless of his standing in other classes.

To graduate from the Academy, a student must have completed the third class in this department. A student who on graduation from the Academy has completed the fourth class in the department of Chinese will receive special mention.

To graduate from the College a student must have completed the sixth class in this department. A student who completes the eighth class before graduation from the College will be assigned to special study in Chinese.

A student who on graduation from the College has completed the eighth class in the department of Chinese will receive special mention.

1.—Writing essays, three hours. Chinese National Readers. Selections from the Five Classics. Composition. A study of the spoken Mandarin. Lectures and recitations, five hours per week.

2.—Writing essays, three hours. Chinese National Readers. Selections from the Five Classics. Composition. A study of the spoken Mandarin. Lectures and recitations, five hours per week.

3.—Writing essays, three hours. This course is a continuation of Course 1. Lectures and recitations, five hours per week.

4.—Writing essays, three hours per week. Selections from the Five Classics. Selections from Ancient and Modern Chinese Literature. Composition. Mandarin. Lectures and recitations, five hours per week.

5.—Writing essays, three hours per week. This is a continuation of Course 4. Lectures and recitations, five hours per week.

6.—Writing essays, three hours. History of Chinese Literature. Selections from Ancient and Modern Chinese Literature. Composition. Lectures and recitations, four hours per week.

7.—Writing essays, three hours per week. This is a continuation of Course 6. Lectures and recitations, four hours per week.

8.—This is a continuation of Course 7. Lectures and recitations, four hours per week.

ENGLISH LANGUAGE AND LITERATURE.

CHARLES HART WESTBROOK, JR., M.A., Professor*

DANIEL H. KULP, II, M.A., Acting Professor

LEONTINE J. DAHL, Instructor

THOMAS C. BRITTON, JR., B.A., Instructor.

1.—GRAMMAR, READING, and COMPOSITION. First Year, Middle School. Three hours per week are given to the study of grammar and two hours to reading. Written exercises, consisting of the different kinds of sentences and illustrating various grammatical principles are required several times a week. Texts: Mother Tongue No. 2; Stepping Stones to Literature, No. 3.

2.—GRAMMAR, READING, and COMPOSITION. Second Year, Middle School. Three hours per week are given to the

*On leave of absence.

study of grammar and two hours to reading. Written exercises, consisting of the different kinds of sentences and illustrating various grammatical principles, together with exercises in the single paragraph, are required several times a week. Texts: Reed and Kellogg's Higher Lessons in English; Gee's Science Readers.

3.—GRAMMAR. Third Year, Middle School. Three hours per week in the study of the elements of sentences. One composition a week is due from each student.

4.—READING. Two hours per week. Third Year, Middle School. In this course special emphasis is laid upon spelling and pronunciation. Conversation.

5.—GRAMMAR and COMPOSITION. Fourth Year, Middle School. Review of Grammar and study of Rhetoric. Text: Lockwood and Emerson. Three hours per week.

6.—READING. Fourth Year, Middle School. Reading of selections from stories or novels. Two hours per week.

COLLEGE.

1.—RHETORIC and COMPOSITION. Designed primarily to secure clear and correct expression. Training in the fundamentals of prose composition. Lectures, recitations, themes, and consultations. Text: Herrick and Damon. Three hours. First Semester. Freshman Year.

2.—RHETORIC and COMPOSITION. A continuation of Course 1. Emphasis upon choice of words, elements of style, planning and developing the chief forms of composition. Lectures, recitations, themes, and consultations. Text: Herrick and Damon; Opdycke. Three hours. Second Semester. Freshman Year.

3 and 4.—COMPOSITION. Second Course. Intended to supplement courses 1 and 2 by further practice in the use of

the principles of rhetoric so as to secure lucidity and force. Themes. Two hours. Through the year. Required of all Sophomores.

5 and 6.—COMPOSITION. Advanced course. Practice in writing and criticism. Themes and consultations. One hour. Through the year. Required of all Juniors.

7 and 8.—COMPOSITION. Continuations of 5 and 6. Emphasis upon special forms of writing. Themes, criticism, and consultations. One hour. Through the year. Required of all Seniors.

9 and 10.—READING. Training in rapid reading with accurate pronunciation and expression. Text: Stepping Stones to Literature No. 7. Two hours. Through the year. Required of all Freshmen.

11 and 12.—ENGLISH LITERATURE. A study of English essays by Macaulay, Burke, Carlyle, etc., so as to secure a mastery of the thought as well as of the principles of rhetoric and composition contained therein. Three hours. Through the year. Required of all Sophomores.

13.—ENGLISH LITERATURE. An outline course in the history of English literature from the beginning through the Victorian Age, with reading and study of the greater writers. Lectures, recitations, reports, and criticisms. Four hours. First semester. Required of all Juniors.

14.—AMERICAN LITERATURE. A course similar to 13 in American Literature. Four hours. Second semester. Required of all Juniors, and of Seniors in 1915.

15.—SHAKESPEARE. A careful study of a few plays with a view to exact interpretation and an appreciation of Shakespeare as a dramatist and poet. Two hours. First semester. Required of all Seniors.

NATURAL SCIENCE.

FRED CARLETON MABEE, M.A., Professor
YU SHIU CHING, Instructor
FENG WEN 'TS'AN, Instructor.

CHEMISTRY.

1.—ELEMENTARY CHEMISTRY. Middle School, fourth year. This course, while complete in itself, serves also as an introduction to the metals and non-metals given in Chemistry 2. Text (Chinese): Elementary Study of Chemistry, McPherson and Henderson. Lectures, demonstrations, and recitations, three hours per week.

2.—INORGANIC CHEMISTRY. College, Freshman year, both terms. The occurrence, preparations, and properties of the more important elements and their compounds are studied in class with the help of lecture table experiments, charts, and models. This is supplemented by work in the laboratory in which each student performs independent experiments. Texts: Chinese and English copies of Elementary Study of Chemistry, McPherson and Henderson. Lectures and recitations, two hours per week; laboratory, four hours per week.

3.—SANITARY AND INDUSTRIAL CHEMISTRY. College, elective, first term of Senior year. In this course the principles acquired in Chemistry 2 are applied to the problems of public health and of industry. Water supply, fuels, foods, ceramics, soap, leather, oils, textiles, and the manufacture of iron, steel, gold, and silver are among the topics treated. Text: Bailey's Sanitary and Applied Chemistry. Alternating with Physics 2. Omitted in 1916. Lectures, demonstrations, and recitations, three hours per week.

BIOLOGY.

1.—PHYSIOLOGY. Middle School, second year, first term. An elementary study of the human body and the laws

of health. Text: New Hygienic Physiology, Commercial Press. Lectures and recitations, three hours per week.

2.—ELEMENTARY BOTANY. Middle school, second year, second term. A study of a number of the type forms of the plant kingdom. Text: New Treatise on Elementary Botany, Commercial Press. Lectures and recitations, three hours per week.

3.—GENERAL BIOLOGY. College, Sophomore year, both terms. The first term is devoted to Botany. Attention is given to morphology, physiology, relationship, etc. A limited amount of field and laboratory work is provided. Zoology is studied in the second term. During the later part of the course Human Anatomy and Hygiene are given considerable attention. Text: Bailey's Biology. Lectures, demonstrations, and recitations, three hours per week.

PHYSICS.

1.—ELEMENTARY PHYSICS. Middle School, third year, both terms. A study of the fundamental laws of the science. Models and demonstrations are used in the class room work. Text: Millikan and Gale's First Course in Physics (introduced in 1913). Lectures and recitations, three hours per week.

2.—GENERAL PHYSICS. College, Junior year, both terms. This course is designed to give a comprehensive view of the field of Physics. The branches studied are as follows: Mechanics, Hydrostatics, Sound, Light, Heat, Magnetism, Electricity, and Radio-activity. Prerequisites, Elementary Physics and Plane Trigonometry. Text: Millikan and Gale's First Course in Physics. Alternating with Chemistry 3. Omitted in 1915. Lectures and recitations, two hours per week; laboratory, two hours per week.

GEOLOGY.

1.—GENERAL GEOLOGY. College, elective, Senior year, second term. The first part of the course covers dynamical

and structural geology; the second deals with historical geology as revealed in the succession of strata with the evidences of plant and animal life contained in them. A knowledge of Botany and Zoology is desirable for this course. Alternating with Physics 2. Omitted in 1916. Text: Norton's Elements of Geology. Lectures and recitations, three hours per week.

MATHEMATICS.

EDWARD EVANS, Jr., B.A., Assistant Professor

BAO CHIH CHING, Assistant

NI CHI FU, Assistant.

1.—ALGEBRA. Middle School, first year, both terms. Review of Arithmetic and Elementary Algebra. Text: Wentworth's Elementary Algebra. Lectures and recitations, three hours per week.

2.—ALGEBRA. Middle School, second year, both terms. This course includes a wide variety of subjects arranged in such order as to effect a coherent plan. Text: Wentworth's Elementary Algebra. Lectures and recitations, three hours per week.

3.—PLANE GEOMETRY. Middle School, third year, both terms. Study of six books with numerous exercises. Text: Wentworth's Plane and Solid Geometry. Lectures and recitations, three hours per week.

4.—SOLID GEOMETRY. Middle School, fourth year, first term. A study of four books with numerous exercises. Text: Wentworth's Plane and Solid Geometry. Lectures and recitations, three hours per week.

5.—HIGHER ALGEBRA. Middle School, fourth year, second term. This course is a continuation of Course 2. Lectures and recitations, three hours per week.

6.—PLANE TRIGONOMETRY. College, Freshman year, first term. This course combines theoretical and practical work and covers the field of plane trigonometry. Text: Wentworth's Trigonometry and Surveying. Lectures and recitations, three hours per week.

7.—SPHERICAL TRIGONOMETRY. College, Freshman year, second term. Text: Wentworth's Trigonometry and Surveying. Lectures and recitations, two hours per week.

8.—ASTRONOMY. College, Sophomore year; first term required, second term elective. The aim of this course is to give a general view of the facts of astronomy and some idea of the astronomical theories and methods. Text: Todd's New Astronomy. Lectures and recitations, three hours per week.

9.—SURVEYING. College, Sophomore year; second term elective. A study of the principles and practice of surveying. Part of the time is spent in field work in connection with which a theodolite is used. Text: Wentworth's Trigonometry and Surveying. Lectures, recitations, and field work, three hours per week. Two hours of field work count as one credit hour.

10.—ANALYTICAL GEOMETRY. College, Junior year, elective. This course consists of an analytical treatment of the straight line and conic sections. Lectures and recitations, three hours per week.

11.—CALCULUS. College, Senior year, elective. An elementary treatment of the principles and formulas of the differential and integral calculus, with their application to practical problems. Lectures and recitations, three hours per week.

NOTE: Students who have engineering in view are advised to take courses 10 and 11.

HISTORY AND POLITICAL ECONOMY.

VICTOR HANSON, M.A., Professor

WU T'S CHI, Instructor.

TSANG LIH MING, Instructor

1.—HISTORY OF CHINA. Middle School, first year. This study continues the History of China carried on in the higher primary schools. Lectures and recitation, two hours per week.

2.—HISTORY OF CHINA. Continuation of Course 1. Middle School, second year. Lectures and recitations, two hours per week.

3.—HISTORY OF JAPAN. Middle School, third year, first term. Especial emphasis is placed on the development of modern Japan. Lectures and recitations, two hours per week.

4.—ANCIENT HISTORY. Middle School, third year, second term. Lectures and recitations, three hours per week.

5.—MEDIÆVAL HISTORY. Middle School, fourth year, first term. This course consists of a study of Mediæval History to the Discovery of America in 1492. Text: Outlines of General History, Renouf. Lectures and recitations, three hours per week.

6.—MODERN HISTORY. Middle School, fourth year, second term. This course begins with the Discovery of America and extends to the present time. Text: Outlines of General History, Renouf. Lectures and recitations, three hours per week.

7.—HISTORY OF ENGLAND. College, Freshman year. This course is a study of the growth of the English Constitution and of Liberties of the English Race. Text: Leading Facts of English History, Montgomery. Lectures and recitations, three hours per week.

8.—HISTORY OF THE UNITED STATES OF AMERICA. College, Sophomore year. This course is a study of the growth of the American Republic, especially in the political

aspects. Text: American History, Muzzey. Lectures and recitations, two hours per week.

9.—POLITICAL ECONOMY. College, Junior year, first term. Text: Laughlin. Lectures and recitations, three hours per week.

10.—GOVERNMENT. College, Junior year, second term. Text: Boynton. Lectures and recitations, three hours per week.

11.—INTERNATIONAL LAW. College, elective, Senior year, second term. Lectures and recitations, two hours per week.

SOCIAL SCIENCE.

DANIEL H. KULP, II, M.A., Acting Professor.

1.—ANTHROPOLOGY. Deals with the origin and general distribution and differentiation of races and mankind. Lectures and readings. Two hours, first term, first half. Required of all Seniors.

2.—SOCIOLOGY.—A thorough introductory course to 3, 4, and 5. Based on Dealey's Sociology. Two hours, first term, second half. Seniors.

3.—SOCIAL INSTITUTIONS. A discussion of the more important social institutions in the West with an attempt at an application of the teachings regarding these to institutions in China. Lectures, readings, and reports. Two hours, second term, first half, Seniors.

4.—SOCIAL PATHOLOGY. A treatment of poverty, crime, housing, sanitation, with a discussion of the latest and most efficient methods of dealing with these problems in the West, and the present day movements in China. Lectures, readings, and reports. Two hours. Second term, second half. Seniors.

5.—SOCIAL INVESTIGATION. A course to train the student in methods of gathering, selecting, and handling data in the study of social problems. Consultation. Through the year. Seniors.

PHILOSOPHY.

FRANCIS JOHNSTONE WHITE, M.A., D.D., Professor.

1.—LOGIC. Junior year, first term. Text: Jevons, A Primer of Logic. Lectures and recitations, two hours per week.

2.—PSYCHOLOGY. Junior year, second term. Lectures and recitations, two hours per week.

3.—PHILOSOPHY. Senior year, first term. Lectures and recitations, two hours per week.

4.—ETHICS. Senior year, first term. Lectures and recitations, two hours per week.

5.—THEORY AND PRACTICE OF TEACHING. Senior year, first term. Lectures and recitations, two hours per week.

6.—OUTLINES OF CHRISTIAN DOCTRINE and EVIDENCES OF CHRISTIANITY. Senior year, second term. Lectures and recitations, two hours per week.

THE BIBLE.

ERNEST KELHOFER, B.A., Assistant Professor

WU TS CHI, Instructor.

1.—THE GOSPELS. First Year, Middle School, two hours per week.

2.—THE ACTS. Second Year, Middle School, two hours per week.

3.—STUDIES IN OLD TESTAMENT HISTORY. Third Year, Middle School, two hours per week. Text: L. J. Davies.

4.—CORINTHIANS. Fourth Year, Middle School, two hours per week.

5.—THE LIFE OF CHRIST. Freshman Year, two hours per week. This is mainly an historical study, omitting the longer doctrinal passages. Text: Stevens and Burton's Harmony of the Gospels.

6.—HISTORY OF APOSTOLIC TIMES. Sophomore Year, two hours per week. This is an historical study of the founding of the Christian Church. Texts: The American Revised Version of the New Testament and a Short History of the Christian Church in the Apostolic Age, by Geo. H. Gilbert.

7.—STUDIES IN THE EPISTLES. Junior Year, two hours per week. This is a doctrinal study of the shorter epistles of Paul and also of Peter and James. Text: The American Revised Version of the New Testament.

PHYSICAL TRAINING.

D. H. KULP, II, Supervisor
E. H. KELHOFER, Assistant
T. C. BRITTON, Jr., Assistant
EDWARD EVANS, Jr., Assistant.

For the physical training of the students some form of exercise is provided throughout the year. Attendance is required at all work. Those who desire may select what major athletics they wish to participate in, while the remainder play tennis or are led in class work. All the physical training is under the direction of the Supervisor of Athletics, who makes a careful and thorough examination of each student at the beginning of each term. The principal work from September to November is baseball with the other students playing tennis. There are now eight courts on the campus. Beginning with November, football is the major sport. Class work consists of drills, dumb-bells, sticks, and games. The chief work in the spring is track and tennis. The aim in all work is not only to develop strength, health, and vitality, but also manliness and a love of play. Once a year at least each student is given a thorough medical examination, which is followed up in his physical training. Spacious wash rooms, shower baths, and dressing rooms, heated in winter, are adequate to meet all the needs of the students.

All branches of athletics are under the management of the Shanghai Baptist College Athletic Association, a duly constituted body, and are controlled by an Athletic Board composed of students elected by the Association, and several members of the faculty. All students of the Middle School and College are members of this Association and are required to pay the fee of \$2 per year. Members of the Theological Seminary have the privilege of joining on payment of the regular fee. A splendid athletic field, well-drained and cared for, surrounded by a cinder track, affords opportunity for work in the major sports, which are under the constant direction of coaches.

A band of Boy Scouts will be formed under the supervision of Assistant Professor Evans as Chief Scout Master.



REGULATIONS.

CONDITIONS OF ADMISSION.

1. Only students over 15 years and under 25 years of age will be admitted.
2. Graduates of Soochow Baptist Academy ; Wayland Academy, Hangehow; Ningpo Baptist Academy; the Academic Course of the English Methodist College and Lowrie High School will be admitted into the Freshman year without examination upon presentation of their diplomas with a letter of recommendation from their principal. All other applicants must pass the entrance examination.
3. Applicants for admission must secure a satisfactory middleman and, after passing the entrance examination, must sign an agreement prepared by the College, to observe all the rules of the College; this agreement to bear the signature of the middleman.
4. Students are charged a fee of \$1.00 for the privilege of taking this entrance examination.

TUITION AND EXPENSES.

1. The annual fee, which includes tuition, board, laundry, and baths, beginning September 1st, 1915, is \$100.00 payable in advance, in half yearly instalments, \$60.00 for the first term and \$40.00 for the second term. Students entering the second term must pay \$50.00. In addition, there is an annual fee of \$1.00 per term for the Athletic Association. Students taking Chemistry 2 are also required to pay, along with their ordinary tuition fees, a laboratory fee of \$2.00 per term and a deposit of \$1.00 per term. The latter is designed to cover materials consumed or apparatus broken. Any balance from the deposit remaining at the end of the year will be returned to the student. In case, at that time, the student owes more than the total deposit, he must pay the balance before taking

the final examination. Students taking Physics 2, Chemistry 3, and Biology 3 are also required to pay along with their ordinary tuition fees a laboratory fee of \$1.00 per term. On payment of fees, the student will be supplied with a card entitling him to registration in all classes.

2. Students entering late will be required to pay the whole term fees.

3. In case a student is expelled, or leaves the College of his own accord, his fees will not be returned to him.

4. In the allocation of rooms in the dormitories, first choice is given to those who (1) pay the registration fee of \$2.00 at the close of the previous term, (2) pay their fees and are present on registration day. The allocation of rooms takes place at 3:00 p.m. on registration day.

ORDINARY SCHOLARSHIPS.

A limited number of scholarships—not to exceed \$50.00 each—will be given by the Faculty to worthy pupils in need, who sign an agreement to finish the entire course and whose class room standing and deportment is at least 80 per cent. Recipients of these scholarships are required to render such assistance as the Faculty may decide.

COLLEGE SCHOLARSHIPS.

One "College" scholarship of \$60.00 is to be awarded in 1915 to a graduate of each of the following Middle Schools: Soochow Baptist Middle School, Ningpo Baptist Middle School, Wayland Academy, and Shanghai Baptist Middle School, under the following conditions:

1. The award is to be based on scholarship, character and need of assistance.
2. The scholarship is to be granted on recommendation of the Principal of the Middle School.
3. Renewal of the scholarship is dependent upon the conduct and scholarship of the student.

PRIZES.

1. A prize of \$5.00 per annum is given by President White to that student who in the judgment of the Faculty does the best work in the Department of Chinese Language and Literature.

2. A prize of \$5.00 per annum is given by Professor C. H. Westbrook, Jr., for excellence in Public Speaking.

3. A prize of \$5.00 is given by the College to that student in the Academy or College who attains the highest average grade in all studies.

EXAMINATIONS.

1.—*Hour Examinations.* Three hour examinations are held each term. Each examination covers approximately the work of the preceding month. Students missing these examinations or receiving a low grade will not be given the opportunity to take another examination.

2.—*Final Examination.* A final examination covering the work of the whole term is held at the end of each term. A student failing to attain a grade of 65 per cent. in any study will be conditioned in that study. He shall take an examination in this study at the discretion of the Faculty. A student failing to attain a grade of 65 per cent. in more than two studies at the final examination of the second term shall not be permitted to pass to the next higher grade.

3.—*Supplementary Examinations.* A student whose term average is below 65% in one or two courses shall take the supplementary examinations in those subjects at the beginning of the following term. For dates of these examinations see calendar.

4.—*Grade Cards.* Grade cards are sent to parents or guardians of all students at the close of each term.

RELIGIOUS SERVICES.

1. All students are required to attend the regular morning worship held in the College chapel, worship on Sunday morning, and Sunday School on Sunday afternoon. Unless otherwise announced by the Faculty, attendance on all other religious services is voluntary.

2. There is among the students a Young Men's Christian Association, membership in which is voluntary.

LIBRARY AND READING ROOM.

The erection of Breaker Hall makes it possible to increase the space devoted to the use of the Library.

A large, well lighted room on the first floor of Yates Hall accommodates the Reading Room. More than thirty periodicals are maintained on file. A useful list of reference books including the best dictionaries and the new Encyclopedia Britannica are also kept in this room for constant use.

The library stacks are located in an adjoining room, where there are now nearly four thousand volumes in Chinese and English. A good number of volumes have been added to the library during the year by gift and purchase.

Beginning with March 1915, a paid library assistant will be employed who, with the help of student assistants, will keep the library open from 7:30 a.m. to 9:45 p.m.

TOILET REQUISITES.

Each student on entering the institution must bring with him, in addition to an ample supply of bedding and clothing for all seasons of the year, the following articles: bobinette mosquito net, wash basin, soap, three towels, tooth-brush, comb, hair brush, and ten handkerchiefs.

LEAVE OF ABSENCE.

1. Students are not allowed to leave the College compound without a written permit from the President. They may go to Shanghai on Saturday afternoon, not oftener than once a month, upon permit of the President, but must return by 6 p.m. Students may be permitted to return to their homes upon the receipt of a written request from parents or guardians sent direct to the President and not included in a letter to the student, stating the reason for the request. Students will be given permission for only the most pressing reasons. Class room work lost during leave of absence must be made up before examination. Parents are urged not to require the absence of their sons, as work lost can seldom be made up. Students who are absent too much are liable to be dropped.

2. Students in the College classes, upon securing a gate permit from the President, may pass out of the front gate and walk on the road leading to the College from four to six in the evening. This privilege, however, may be withdrawn for violations of the rule to return at six o'clock. This rule does not apply to students in the Middle School.

GENERAL RULES.

1. Students under all circumstances and everywhere, both in their relations to one another and to teachers and others, are expected to observe all ordinary rules of good conduct, and failure to do so will be punished by demerits or otherwise.

2. Dishonesty in examinations, card-playing, smoking, wine drinking, gambling, etc., are considered serious offences, and will be punished with severity.

3. No general meetings of the student body may be held, nor may any societies be organized among the students or by the students without the permission of the President. Before

any entertainment is given by the students the full program must be submitted to the President for his approval.

4. Rules are posted in the dormitories and in the Dining Hall, which must be observed by all students.

5. For violations of rules in the class rooms, in the Dining Hall, in the dormitories, or elsewhere, students will be demerited.

6. A student receiving more than fifty demerits in the course of a term will be dismissed.

REGISTRATION.

1. The date of the entrance examination will be announced in the Chinese daily papers. Students may register for this examination any time prior to taking the examination.

2. Students who wish to return the following year must, previous to the close of the fall term, register and make a deposit of \$2.00 to insure that a place will be held for them. On their return, this \$2.00 will apply on the regular school fee.

3. Students registering after the day appointed will begin their record with five demerits with one additional demerit for every additional day late. Students more than three weeks late will not be admitted. Students registering late must also pay \$2.00 additional registration fee.



ROLL OF STUDENTS.

COLLEGE.

SENIOR.

Fu Ching-ho	Huchow, Chekiang.
Kan Ni-chi	Shanghai, Kiangsu.
Ma Chen-kun	Yangchow, Kiangsu.
Sen Ren-ho	Soochow, Kiangsu.
Tsoh Ting-lang	Ningpo, Chekiang.

JUNIOR.

Chen Ts-tsu	Soochow, Kiangsu.
Chen Yun-long	Wenchow, Chekiang.
Chien Chia-chih	Tinghai, Chekiang.
Chow We-hsing	Ningpo, Chekiang.
Fan Chen-kang	Chinghai, Chekiang.
Ku Chen-yia	Soochow, Kiangsu.
Ling Yung-chien	” ”
Miao Chow-seng	Ningpo, Chekiang.
Ni Chi-hwa	” ”
Ni Eu-ching	Shanghai, Kiangsu.
Ni Sen-tsaе	Ningpo, Chekiang.
Song Kwang	” ”
Wu Z-ching...	” ”
Yao Chuan-fah	” ”

SOPHOMORE.

Chien Tsong-teh	Ningpo, Chekiang.
Chih Ching-ching	” ”
Hsu Ts-i	Yangchow, Kiangsu.
Hu Yung-chi	Ningpo, Chekiang.
Liu P ⁿ ien	” ”
Loh Ling-s	Soochow, Kiangsu.
Nyu Ping-yung	Shanghai, Kiangsu.
Wang Kong-fan	” ”
Yuoh Kang-yung	Ningpo, Chekiang.
Yuoh S-hsiang	” ”

FRESHMAN.

Chen Lien-seng	Ningpo, Chekiang.
Chen Yu-ping	Chinkiang, Kiangsu.
Chien Tsen-yia	" "
Ih Ts-yu	Ningpo, Chekiang.
Ing Yun-dao	Huchow, Chekiang.
Lae Tsu-kwang	Foochow, Fukien.
Lae Yuoh Hsien	" "
Ling Zao-tang	Nanking, Kiangsu.
Loh Fong-me	Shanghai, Kiangsu.
Loh Tsong-i	Soochow, Kiangsu.
Loh Yiu-tong	Shaohsing, Chekiang.
Sing Wen-hong	Ningpo, Chekiang.
Tong Ching-lang	Shanghai, Kiangsu.
Tsang We-tih	" "
Tsoh Wen-hsiang	Soochow, Kiangsu.
Wu Hwa-tang	Ningpo, Chekiang.
Wu Kwang-pe	Chinkiang, Kiangsu.
Wu Wen-yun	Shanghai, Kiangsu.
Wu Yu-yiu	Ningpo, Chekiang.
Seng Tsae-yiah	Soochow, Kiangsu.
Liang Tsong-hsu	Dipu, Chekiang.
Loh Lih-hong	Ningpo, Chekiang.
Ni Pao-tsen	Shanghai, Kiangsu.
Tsang Tsah-tsong	" "
Tsang Tsuan-hwe	Ningpo, Chekiang.
Tseng Lu	Nanking, Kiangsu.
Tsu Ken-tang	Peking, Chihli.
Wu Yiao-yiu	Ningpo, Chekiang.
Yiang Shih-ling	Soochow, Kiangsu.
Nyuh Ching-ling	Huchow, Chekiang.

SPECIAL STUDENT.

Yu Shiu-ken	Shanghai, Kiangsu.
-------------	-----	-----	-----	--------------------

THE ACADEMY.

FOURTH YEAR.

Chen Hsu-tsah	Ningpo	Chekiang.
Ching Teh-jing	"	"
Ching Tao-shiu	"	"
Ching Ts-ying	"	"
Fan Tsah-pe	Denming,	Kiangsu.
Ho Yao-chih	Shanghai,	Kiangsu.
Kiang Seng...	Ningpo,	Chekiang.
Kiang Zao-nyun	Anking,	Anhwei.
Koh Tsu-wen	Shaohsing,	Chekiang.
Li Fu-ming	Soochow,	Kiangsu.
Li Tsing-foh	Shaohsing,	Chekiang.
Liang Shih-yun	Ningpo,	Chekiang.
Ni Hsu-hsien	Hangchow,	Chekiang.
Ni Hsu-yin	"	"
Shih Lae	Shaohsing,	Chekiang.
Wu Kwang-teh	Chinkiang,	Kiangsu.
Yih Chi-tsang	Shanghai,	Kiangsu.
Zi Hao	"	"
Zia Chi-tsang	Ningpo,	Chekiang.
Chen Chi-yun	Shanghai,	Kiangsu.
Tsa Chuen-tsu	Foochow,	Fukien.
Tsao Kweng	Shenkiang,	Kiangsu.
Tong Teh-tsong	Ningpo,	Chekiang.

THIRD YEAR.

Chow Ting-hwa	Huchow,	Chekiang.
Hong Gia-hsiu	Yuyao,	Chekiang.
Ing Pao-ming	Loechow,	Shantung.
Lo Seng-teh	Ningpo,	Chekiang.
Ni Hsiao-tung	Sien,	Shensi.
Ong Chi-kang	Shanghai,	Kiangsu.
S Kwang-yu	Soochow,	Kiangsu.
Seng Ching	Kaising,	Chekiang.

Song Voh	Ningpo, Chekiang.
Tang Chi-yu	Chinkiang, Kiangsu.
Tang Ts-ching	Ningpo, Chekiang.
Tang Ts-we	" "
Tang Yu-lu	Shanghai, Kiangsu.
Tang Zeng-teh	" "
Teng Ts-hong	Yangchow, Kiangsu.
Ting Lin-tsen	Huchow, Chekiang.
Tong Ching-yu	Shanghai, Kiangsu.
Tsang Ling	Huchow, Chekiang.
Tsang Tsa-fan	Yuyao, Chekiang.
Tsu Dao-yin	Ningpo, Chekiang.
Yiang Sing-wun	Kwangchow, Kwantung.
Yun Seng-teh	Canton, Kwantung.
Yu Shih-ling	Shaoshing, Chekiang.
Tsoh Lih-chuen	Kinhwa, Chekiang.
Kah Ting-ts... ..	Nanking, Kiangsu.
Li Tsong-ming	Chengt'u, Szechwan.
Tsao Hsiang-ting	Shanghai, Kiangsu.
Wu Ching-lae	Ningpo, Chekiang.
Wu Wen-yao	" "
Yiao Chen-kong	Yunnan, Yunnan.
Yu Tseng	Shanghai, Kiangsu.

SECOND YEAR.

Chen Chi-ni... ..	Huchow, Chekiang.
Ching Shiu-zeng	Shanghai, Kiangsu.
Ku Pu-seng... ..	Huchow, Chekiang.
Ku We-ching	Tsaoling, Kwantung.
Liang Ching-hwa	" "
Loh Tsen-yin	Denming, Kiangsu.
S Tsen-ling	Huchow, Chekiang.
Seng Tsao-shiu	Denming, Kiangsu.
Seng Ze-hwang	" "
Tae Ae-fah	Ningpo, Chekiang.

Tong Pe-ling	Shaoshing, Chekiang.
Tsang Hong-tsu	Ningpo, Chekiang.
Tsang Yung-yu	„ „
Tsang Zao-yung	„ „
Tso Zae-shing	Shanghai, Kiangsu.
Wang Teh-pu	Tinghai, Chekiang.
Wang Chih-chang	Tsaoling, Kwantung.
Yao Tsu-eng	Ningpo, Chekiang.
Yu Wu-yuh...	„ „
Zi Tseng-tong	Shanghai, Kiangsu.
Ching Ae-yang	Yuyao, Chekiang.
Tsu S-seng	Fuchow, Kiangsi.
Pun Foh-tsen	Huchow, Chekiang.



THE THEOLOGICAL SEMINARY.

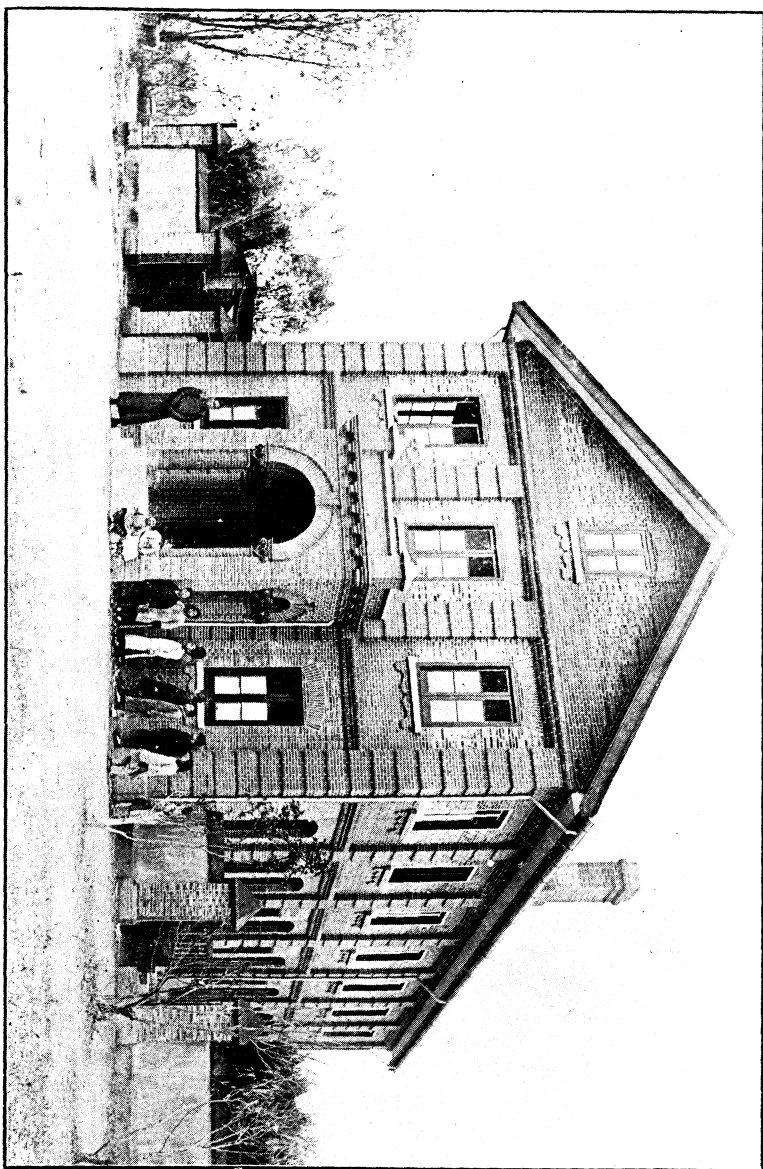
Course of Instruction.

The Theological Seminary aims to equip those men who have offered themselves for direct Christian service so that they may be more efficient in that service. Some of these men have only enough training to pass the entrance requirements for the preparatory year; some have had a good Chinese education; some have had a complete college course. The seminary course is intended, not only to increase their own knowledge of Christian truth, but also to give the students a vision of the importance and the honor of making this truth known so that they shall feel that the greatest service that they can render is to spread God's truth among their fellow-countrymen.

The seminary recognizes the fact that the evangelization of China presents opportunities for earnest consecrated men of varying talents and different degrees of training. It receives all those men who give promise of leadership and endeavors to train them in this direction. The work is more than Bible study for Christians. The Chinese Church needs men who can lead it into a fuller knowledge of Christian truth and a richer Christian experience. To this end there are offered one year of Preparatory work, a Regular Course of four years, and an Advanced Course of three years.

The Preparatory year offers those branches necessary to fit students to enter the Regular Course. Students who are deficient in any of the entrance requirements of the Regular Course are given this opportunity to make up those deficiencies. If, at the end of this year's work, the student has not given sufficient promise of future usefulness in the work, he will not be permitted to begin the work of the Regular Course. Those who are proficient in the common branches

MISSOURI WOMEN'S BUILDING



may take more hours of Chinese, while those who are proficient in Chinese may take certain studies in the college instead of the Chinese.

The Regular Course is designed for those students whose training in Western branches has been insufficient to allow them to enter the Advanced Course. At present, the majority of the students are taking this Course. The Regular Course Diploma is given on a satisfactory completion of the four years of study.

The Advanced Course is provided for regular graduates of the College. Nearly all of the work in the course is given in English and, in addition, the students are introduced to the study of Greek. The students of the College, having completed the Sophomore year, may elect half of their studies in this course and will be given credit on their college diplomas. After completing the College Course, by taking one extra year in this Course the Seminary Diploma may also be secured. Satisfactory completion of the three years of work gives the student the Advanced Course Diploma.

Department of Religious Pedagogy and Sunday School Method.

In order that the work in these two courses may be more practical, there has been established a Department of Religious Pedagogy and Sunday School Method. This department has recently been introduced into the regular work to meet the new opportunities of the Christian Church and its pastors. With the increased interest among all classes in the study of the Bible there is a new demand for men who are not only trained in Biblical knowledge themselves, but are trained in the methods of imparting that knowledge to others. Greater emphasis is being placed on the work of the Sunday School and Christian nurture. To deal successfully with these new conditions, every evangelist needs a working knowledge of the main principles of pedagogy and psychology.

This department is intended to meet these needs. It covers the theory and the practice of Sunday School work. The students are required to prepare their own plan for teaching each lesson and hand it to the professor for criticism and correction. Then, one hour a week is given to the Teacher Training Class where the text of the lesson and the problems of teaching are discussed. The students all have regular classes on Sunday and there, under the supervision of a foreign and a Chinese teacher, they put into practice at once what they learned in the Training Class.

The students are also encouraged to organize and lead small Teacher Training Classes in the several small Sunday Schools connected with the seminary evangelistic work. In this way they acquire practice in finding and developing leaders in their churches.

The Women's Bible School.

It is recognized that the evangelist's wife can do much to help or to hinder his work. If she is to be helpful she must understand her husband's work, she must be sympathetic and must have some training in the ways in which she can help in the work. For this reason there has been provided a course in Bible study and Sunday School work for the wives of the students which covers a period of four years. Since the women have their family duties in addition to their studies, the course is not so thorough as the regular seminary work but is sufficient to fit them to work sympathetically and effectively with their husbands when they take up the duties of a pastor. A certificate is given when the women have completed the course in a satisfactory manner.

The Evangelistic Work.

All students spend at least Sunday in the actual evangelistic work of conducting these Sunday Schools and preaching. Some go out on Saturday to do pastoral work among the

people. The seminary conducts work in five different places within easy reach of the institution. Some of the students are engaged in the work in these small chapels; some have work on the campus; still others assist in the regular organized work in Shanghai.

There is a splendid field here for evangelistic work. Including the city of Shanghai, there is a population of perhaps two millions to which the seminary has access. The territory to the north and east of Shanghai where the work of the seminary lies, is not occupied by any other mission and is teeming with a dense population. The location offers an exceptional opportunity for the students to study the problems of both city and country fields.

Meetings.

A regular preaching service is held Sunday morning and a Sunday School on Sunday afternoon. The weekly prayer meeting is held on Wednesday evening. The Seminary Young Men's Christian Association holds weekly meetings. Volunteer classes are held regularly for the devotional study of the Bible. Each Sunday evening the students meet to report the work of the day with discussion of methods and prayer. Lectures are given by the Faculty and others.

Conditions of Admission.

Students applying for admission must bring letters of recommendation from their local churches and from the missionaries in the stations from which they come, and must also pass the required examinations.

Each student who shall be in need of such assistance may receive five dollars and twenty-five cents per month.

Married students may receive seven dollars and fifty cents per month with an addition of one dollar per month for each child not at work and dependent.

If the student's wife does not accompany him to the Seminary the husband shall receive only the allowance of an unmarried student.

The travelling expenses of the students to and from the seminary must be paid by themselves or by the church or mission from which they come.

Students are expected to work during their vacations under the direction of the mission or the stations from which they come.

All monthly aid will continue throughout the year unless otherwise stipulated.



COURSE OF STUDY.

Preparatory Year.

FIRST YEAR :

The Bible	2 hours
Geography	2 ,,
Arithmetic	2 ,,
Science : elementary	1 ,,
Chinese Language and Literature ...	10 ,,
Music.	
Evangelistic Work.	

Regular Course.

To enter this course the student must be able to pass an examination in the following :

1. Read and explain the meaning of the Commercial Press "Kaotung Siao Hsia" series (10 books).
2. Write a composition of 200 characters.
3. Give an outline of the Gospel.
4. Read and explain the meaning of any characters in the Bible.
5. Arithmetic to Division.

FIRST YEAR :

New Testament; Geography of Palestine, Introduction to the Gospel, The Life of Christ, studied historically from the Harmony	4 hours
Old Testament, The Historical Books ...	4 ,,
General History	2 ,,
Chinese Language and Literature ...	5 ,,
Sunday School Pedagogy	2 ,,
Music.	
Evangelistic Work.	

SECOND YEAR :

New Testament ; Early Church History and the Life of Paul from the Acts and Epistles	4	hours
Old Testament ; 1st term, Historical Books; 2nd term, Prophetical Books	3	„
Homiletics	2	„
Chinese History	2	„
Chinese Language and Literature ...	4	„
Sunday School Pedagogy	3	„
Music.		
Evangelistic Work.		

THIRD YEAR :

New Testament; Corinthians, Thessaloni- ans, Philippians, Colossians, Romans	3	„
Old Testament ; Prophetical Books ...	2	„
Homiletics and History of Preaching ...	2	„
Polity and Work	1	„
Church History	3	„
Chinese Language and Literature ...	4	„
Sunday School Pedagogy... ..	3	„
Music.		
Evangelistic Work.		

FOURTH YEAR :

New Testament ; Hebrews, Timothy, Titus, John, Peter, James, and Revelation	3	„
Old Testament ; 1st term, Prophetical Books ; 2nd term, Poetical Books ...	2	„
Theology	2	„
Comparative Religion and Apologetics...	1	„
Science : advanced... ..	2	„
Chinese Language and Literature ...	4	„
Sunday School Pedagogy... ..	3	„
Music.		
Evangelistic Work.		

Advanced Course.**FIRST YEAR :**

New Testament ; The Gospel of John and the General Epistles.

Old Testament ; Historical Books.

Homiletics.

Church History.

Greek.

Sunday School Pedagogy.

Music.

Evangelistic Work.

SECOND YEAR :

New Testament ; Corinthians, Thessalonians, Philippians, Colossians, Romans.

Old Testament ; Prophetical Books.

Homiletics and History of Preaching.

Church History.

Ethics and Sociology.

Theology.

Greek.

Sunday School Pedagogy.

Music.

Evangelistic Work.

THIRD YEAR :

New Testament ; Ephesians, Pastoral Epistles, Hebrews, Revelation.

Old Testament ; 1st term, Prophetical books ; 2nd term, Poetical Books.

Theology.

Comparative Religion and Apologetics.

New Testament (Greek)

Sunday School Pedagogy.

Music.

Evangelistic Work.

ROLL OF STUDENTS.

SEMINARY.

Advanced Course.

SECOND YEAR.

Bao Chih-ching	Ningpo, Chekiang.
Sen Ren-ho	Soochow, Kiangsu.
Ni Chi-fu	Ningpo, Chekiang.

FIRST YEAR.

Ling Yung-Chuen	Soochow, Kiangsu.
Wu Shi-kun	Ningpo, Chekiang.
Sung Kwang	" "
Ni Chi-hwa	" "

Regular Course.

FOURTH YEAR.

Tsao Tsong-wen	Kinhwa, Chekiang.
Ho Chen-ming	Shaohsing, Chekiang.

THIRD YEAR.

Miao Hsiah-wen	Chinkiang, Kiangsu.
Chen Hsien-kun	" "
Liu Pang-sui	Soochow, Kiangsu.

SECOND YEAR.

Seng Hsiao-hwan	Shanghai, Kiangsu.
Tsai Chih-tsin	" "
Chien Poh-seng	Ningpo, Chekiang.
Chow Mo-ling	Chinkiang, Kiangsu.
Fai Gin-dao	Shanghai, Kiangsu.
Wang Hsi-swen	" "

FIRST YEAR.

Feng Hwei-tan	Chinkiang, Kiangsu.
Ma Shen-fu	" "
Seng How-san	Hangchow, Chekiang.
Liao Tsong-hsiu	Kaying, Kwangtung.
Wang Dien-chen	Chinkiang, Kiangsu.
Tung Hwei	" "
Hsu Koh-ren	Kaying, Kwantung.
Liao Yuen-hsiu	" "

The
Tenth Annual
Catalogue
of the

Shanghai Baptist College

and

Theological Seminary

Shanghai, China

1915