



Handwritten text in a cursive script, likely a historical document or manuscript, covering the majority of the page.

Handwritten text at the top left, possibly a title or header.

Vertical columns of handwritten text on the left side of the page.



Main body of handwritten text, including a large block of text in the center and smaller sections on the right side.

Handwritten text at the bottom of the page, possibly a signature or a concluding statement.

Large, stylized characters or symbols at the very bottom of the page, possibly a signature or a decorative flourish.

Handwritten text at the top of the page, possibly a title or header.

Main body of handwritten text, consisting of approximately 15 lines of dense script.

Handwritten text block located below the main body of text.

Handwritten text at the bottom of the page, including what appears to be a signature or date.

Handwritten text in a cursive script, likely a historical document or manuscript. The text is written in dark ink on aged, yellowish paper. It consists of several lines of text, with some words appearing to be in a different script or dialect than the surrounding text.

Handwritten text in a cursive script, possibly a signature or a specific heading. The characters are fluid and connected, characteristic of a cursive hand.

Handwritten text in a cursive script, continuing the flow of the document. The ink is dark and the paper shows signs of age and wear.

Handwritten text in a cursive script, featuring a large, stylized initial or decorative element at the beginning of the line. The text is dense and fills most of the line.

Handwritten text in a cursive script, appearing as a separate line or section. The script is consistent with the rest of the page.

Handwritten text in a cursive script, with a large, decorative flourish or initial at the start. The text is written in a fluid, connected style.

Handwritten text in a cursive script, possibly a concluding line or a specific note. The characters are well-defined and legible.

Handwritten text in a cursive script, including a large, stylized initial and several lines of text. The overall appearance is that of a formal or significant document.

In nomine domini Amen
1. M. P. M.



Handwritten text in a cursive script, likely a historical document or manuscript. The text is arranged in approximately 12 lines, with some lines featuring decorative flourishes and initials. The script is dense and difficult to decipher without specialized knowledge of the language or dialect used.

Handwritten text in a cursive script, likely a historical document or manuscript. The text is arranged in several lines, with some words appearing to be in a different script or dialect. The ink is dark, and the paper shows signs of age and wear.

Handwritten text on the left edge of the page, including the letters 'm', 'n', 'v', and 'p'.





2

2





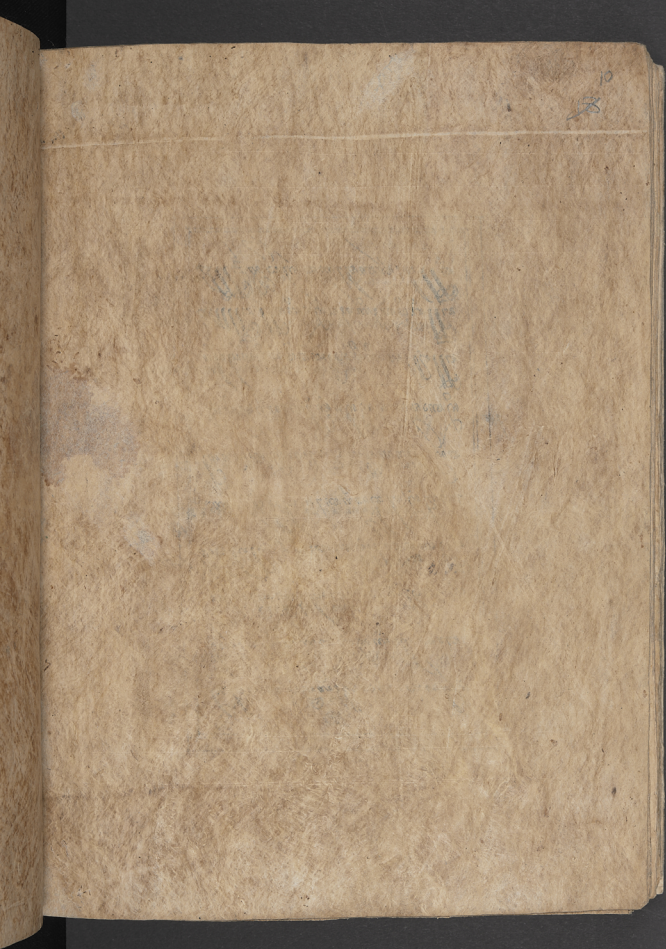


سوال ۲۰









Handwritten text in a cursive script, enclosed in a rectangular border. The text is arranged in approximately 12 lines, with some lines starting with large, decorative initial letters. The script is dense and characteristic of a historical European cursive style, possibly from the 15th or 16th century. The text is written in a dark ink on aged, yellowish paper. The border is a simple double-line rectangle. The text is mostly contained within the border, with some characters extending slightly beyond the top and bottom edges.

၅၅၅
တရားတို့ကို မြေညီမျှစေရန်
အားတို့ကို မြေညီမျှစေရန်
အားတို့ကို မြေညီမျှစေရန်

အစွမ်းတော်ထူးကို ပေးအပ်ခြင်း
အစွမ်းတော်ထူးကို ပေးအပ်ခြင်း
အစွမ်းတော်ထူးကို ပေးအပ်ခြင်း

အစွမ်းတော်ထူးကို ပေးအပ်ခြင်း
အစွမ်းတော်ထူးကို ပေးအပ်ခြင်း
အစွမ်းတော်ထူးကို ပေးအပ်ခြင်း

အစွမ်းတော်ထူးကို ပေးအပ်ခြင်း
အစွမ်းတော်ထူးကို ပေးအပ်ခြင်း
အစွမ်းတော်ထူးကို ပေးအပ်ခြင်း

အစွမ်းတော်ထူးကို ပေးအပ်ခြင်း
အစွမ်းတော်ထူးကို ပေးအပ်ခြင်း
အစွမ်းတော်ထူးကို ပေးအပ်ခြင်း

Handwritten text in a cursive script, likely a historical document or manuscript. The text is arranged in approximately 15 horizontal lines across the page. The script is dense and characteristic of early modern European handwriting. The paper shows signs of age, including yellowing and some staining.

1. 2. 3. 4. 5. 6. 7. 8. 9. 10. 11. 12. 13. 14. 15. 16. 17. 18. 19. 20. 21. 22. 23. 24. 25. 26. 27. 28. 29. 30. 31. 32. 33. 34. 35. 36. 37. 38. 39. 40. 41. 42. 43. 44. 45. 46. 47. 48. 49. 50. 51. 52. 53. 54. 55. 56. 57. 58. 59. 60. 61. 62. 63. 64. 65. 66. 67. 68. 69. 70. 71. 72. 73. 74. 75. 76. 77. 78. 79. 80. 81. 82. 83. 84. 85. 86. 87. 88. 89. 90. 91. 92. 93. 94. 95. 96. 97. 98. 99. 100.

Handwritten text in Khmer script, likely a historical document or manuscript. The text is arranged in approximately 15 horizontal lines across the page. The script is dense and characteristic of traditional Khmer writing. There are several large, stylized characters or symbols interspersed within the lines of text, which may represent specific words, titles, or decorative elements. The paper shows signs of age, including some staining and discoloration.

1. 2. 3. 4. 5. 6. 7. 8. 9. 10. 11. 12. 13. 14. 15. 16. 17. 18. 19. 20. 21. 22. 23. 24. 25. 26. 27. 28. 29. 30. 31. 32. 33. 34. 35. 36. 37. 38. 39. 40. 41. 42. 43. 44. 45. 46. 47. 48. 49. 50. 51. 52. 53. 54. 55. 56. 57. 58. 59. 60. 61. 62. 63. 64. 65. 66. 67. 68. 69. 70. 71. 72. 73. 74. 75. 76. 77. 78. 79. 80. 81. 82. 83. 84. 85. 86. 87. 88. 89. 90. 91. 92. 93. 94. 95. 96. 97. 98. 99. 100. 101. 102. 103. 104. 105. 106. 107. 108. 109. 110. 111. 112. 113. 114. 115. 116. 117. 118. 119. 120. 121. 122. 123. 124. 125. 126. 127. 128. 129. 130. 131. 132. 133. 134. 135. 136. 137. 138. 139. 140. 141. 142. 143. 144. 145. 146. 147. 148. 149. 150. 151. 152. 153. 154. 155. 156. 157. 158. 159. 160. 161. 162. 163. 164. 165. 166. 167. 168. 169. 170. 171. 172. 173. 174. 175. 176. 177. 178. 179. 180. 181. 182. 183. 184. 185. 186. 187. 188. 189. 190. 191. 192. 193. 194. 195. 196. 197. 198. 199. 200. 201. 202. 203. 204. 205. 206. 207. 208. 209. 210. 211. 212. 213. 214. 215. 216. 217. 218. 219. 220. 221. 222. 223. 224. 225. 226. 227. 228. 229. 230. 231. 232. 233. 234. 235. 236. 237. 238. 239. 240. 241. 242. 243. 244. 245. 246. 247. 248. 249. 250. 251. 252. 253. 254. 255. 256. 257. 258. 259. 260. 261. 262. 263. 264. 265. 266. 267. 268. 269. 270. 271. 272. 273. 274. 275. 276. 277. 278. 279. 280. 281. 282. 283. 284. 285. 286. 287. 288. 289. 290. 291. 292. 293. 294. 295. 296. 297. 298. 299. 300. 301. 302. 303. 304. 305. 306. 307. 308. 309. 310. 311. 312. 313. 314. 315. 316. 317. 318. 319. 320. 321. 322. 323. 324. 325. 326. 327. 328. 329. 330. 331. 332. 333. 334. 335. 336. 337. 338. 339. 340. 341. 342. 343. 344. 345. 346. 347. 348. 349. 350. 351. 352. 353. 354. 355. 356. 357. 358. 359. 360. 361. 362. 363. 364. 365. 366. 367. 368. 369. 370. 371. 372. 373. 374. 375. 376. 377. 378. 379. 380. 381. 382. 383. 384. 385. 386. 387. 388. 389. 390. 391. 392. 393. 394. 395. 396. 397. 398. 399. 400. 401. 402. 403. 404. 405. 406. 407. 408. 409. 410. 411. 412. 413. 414. 415. 416. 417. 418. 419. 420. 421. 422. 423. 424. 425. 426. 427. 428. 429. 430. 431. 432. 433. 434. 435. 436. 437. 438. 439. 440. 441. 442. 443. 444. 445. 446. 447. 448. 449. 450. 451. 452. 453. 454. 455. 456. 457. 458. 459. 460. 461. 462. 463. 464. 465. 466. 467. 468. 469. 470. 471. 472. 473. 474. 475. 476. 477. 478. 479. 480. 481. 482. 483. 484. 485. 486. 487. 488. 489. 490. 491. 492. 493. 494. 495. 496. 497. 498. 499. 500. 501. 502. 503. 504. 505. 506. 507. 508. 509. 510. 511. 512. 513. 514. 515. 516. 517. 518. 519. 520. 521. 522. 523. 524. 525. 526. 527. 528. 529. 530. 531. 532. 533. 534. 535. 536. 537. 538. 539. 540. 541. 542. 543. 544. 545. 546. 547. 548. 549. 550. 551. 552. 553. 554. 555. 556. 557. 558. 559. 560. 561. 562. 563. 564. 565. 566. 567. 568. 569. 570. 571. 572. 573. 574. 575. 576. 577. 578. 579. 580. 581. 582. 583. 584. 585. 586. 587. 588. 589. 590. 591. 592. 593. 594. 595. 596. 597. 598. 599. 600. 601. 602. 603. 604. 605. 606. 607. 608. 609. 610. 611. 612. 613. 614. 615. 616. 617. 618. 619. 620. 621. 622. 623. 624. 625. 626. 627. 628. 629. 630. 631. 632. 633. 634. 635. 636. 637. 638. 639. 640. 641. 642. 643. 644. 645. 646. 647. 648. 649. 650. 651. 652. 653. 654. 655. 656. 657. 658. 659. 660. 661. 662. 663. 664. 665. 666. 667. 668. 669. 670. 671. 672. 673. 674. 675. 676. 677. 678. 679. 680. 681. 682. 683. 684. 685. 686. 687. 688. 689. 690. 691. 692. 693. 694. 695. 696. 697. 698. 699. 700. 701. 702. 703. 704. 705. 706. 707. 708. 709. 710. 711. 712. 713. 714. 715. 716. 717. 718. 719. 720. 721. 722. 723. 724. 725. 726. 727. 728. 729. 730. 731. 732. 733. 734. 735. 736. 737. 738. 739. 740. 741. 742. 743. 744. 745. 746. 747. 748. 749. 750. 751. 752. 753. 754. 755. 756. 757. 758. 759. 760. 761. 762. 763. 764. 765. 766. 767. 768. 769. 770. 771. 772. 773. 774. 775. 776. 777. 778. 779. 780. 781. 782. 783. 784. 785. 786. 787. 788. 789. 790. 791. 792. 793. 794. 795. 796. 797. 798. 799. 800. 801. 802. 803. 804. 805. 806. 807. 808. 809. 810. 811. 812. 813. 814. 815. 816. 817. 818. 819. 820. 821. 822. 823. 824. 825. 826. 827. 828. 829. 830. 831. 832. 833. 834. 835. 836. 837. 838. 839. 840. 841. 842. 843. 844. 845. 846. 847. 848. 849. 850. 851. 852. 853. 854. 855. 856. 857. 858. 859. 860. 861. 862. 863. 864. 865. 866. 867. 868. 869. 870. 871. 872. 873. 874. 875. 876. 877. 878. 879. 880. 881. 882. 883. 884. 885. 886. 887. 888. 889. 890. 891. 892. 893. 894. 895. 896. 897. 898. 899. 900. 901. 902. 903. 904. 905. 906. 907. 908. 909. 910. 911. 912. 913. 914. 915. 916. 917. 918. 919. 920. 921. 922. 923. 924. 925. 926. 927. 928. 929. 930. 931. 932. 933. 934. 935. 936. 937. 938. 939. 940. 941. 942. 943. 944. 945. 946. 947. 948. 949. 950. 951. 952. 953. 954. 955. 956. 957. 958. 959. 960. 961. 962. 963. 964. 965. 966. 967. 968. 969. 970. 971. 972. 973. 974. 975. 976. 977. 978. 979. 980. 981. 982. 983. 984. 985. 986. 987. 988. 989. 990. 991. 992. 993. 994. 995. 996. 997. 998. 999. 1000.

Handwritten text in a cursive script, likely a medieval manuscript. The text is arranged in approximately 15 horizontal lines. The script is dense and features many flourishes and ligatures. The paper is aged and shows some staining and wear. The text appears to be a form of Latin or a related medieval language, possibly a liturgical or legal document. The lines are roughly as follows:

Line 1: ...
Line 2: ...
Line 3: ...
Line 4: ...
Line 5: ...
Line 6: ...
Line 7: ...
Line 8: ...
Line 9: ...
Line 10: ...
Line 11: ...
Line 12: ...
Line 13: ...
Line 14: ...
Line 15: ...

1. 2. 3. 4. 5. 6. 7. 8. 9. 10. 11. 12. 13. 14. 15. 16. 17. 18. 19. 20. 21. 22. 23. 24. 25. 26. 27. 28. 29. 30. 31. 32. 33. 34. 35. 36. 37. 38. 39. 40. 41. 42. 43. 44. 45. 46. 47. 48. 49. 50. 51. 52. 53. 54. 55. 56. 57. 58. 59. 60. 61. 62. 63. 64. 65. 66. 67. 68. 69. 70. 71. 72. 73. 74. 75. 76. 77. 78. 79. 80. 81. 82. 83. 84. 85. 86. 87. 88. 89. 90. 91. 92. 93. 94. 95. 96. 97. 98. 99. 100. 101. 102. 103. 104. 105. 106. 107. 108. 109. 110. 111. 112. 113. 114. 115. 116. 117. 118. 119. 120. 121. 122. 123. 124. 125. 126. 127. 128. 129. 130. 131. 132. 133. 134. 135. 136. 137. 138. 139. 140. 141. 142. 143. 144. 145. 146. 147. 148. 149. 150. 151. 152. 153. 154. 155. 156. 157. 158. 159. 160. 161. 162. 163. 164. 165. 166. 167. 168. 169. 170. 171. 172. 173. 174. 175. 176. 177. 178. 179. 180. 181. 182. 183. 184. 185. 186. 187. 188. 189. 190. 191. 192. 193. 194. 195. 196. 197. 198. 199. 200. 201. 202. 203. 204. 205. 206. 207. 208. 209. 210. 211. 212. 213. 214. 215. 216. 217. 218. 219. 220. 221. 222. 223. 224. 225. 226. 227. 228. 229. 230. 231. 232. 233. 234. 235. 236. 237. 238. 239. 240. 241. 242. 243. 244. 245. 246. 247. 248. 249. 250. 251. 252. 253. 254. 255. 256. 257. 258. 259. 260. 261. 262. 263. 264. 265. 266. 267. 268. 269. 270. 271. 272. 273. 274. 275. 276. 277. 278. 279. 280. 281. 282. 283. 284. 285. 286. 287. 288. 289. 290. 291. 292. 293. 294. 295. 296. 297. 298. 299. 300. 301. 302. 303. 304. 305. 306. 307. 308. 309. 310. 311. 312. 313. 314. 315. 316. 317. 318. 319. 320. 321. 322. 323. 324. 325. 326. 327. 328. 329. 330. 331. 332. 333. 334. 335. 336. 337. 338. 339. 340. 341. 342. 343. 344. 345. 346. 347. 348. 349. 350. 351. 352. 353. 354. 355. 356. 357. 358. 359. 360. 361. 362. 363. 364. 365. 366. 367. 368. 369. 370. 371. 372. 373. 374. 375. 376. 377. 378. 379. 380. 381. 382. 383. 384. 385. 386. 387. 388. 389. 390. 391. 392. 393. 394. 395. 396. 397. 398. 399. 400. 401. 402. 403. 404. 405. 406. 407. 408. 409. 410. 411. 412. 413. 414. 415. 416. 417. 418. 419. 420. 421. 422. 423. 424. 425. 426. 427. 428. 429. 430. 431. 432. 433. 434. 435. 436. 437. 438. 439. 440. 441. 442. 443. 444. 445. 446. 447. 448. 449. 450. 451. 452. 453. 454. 455. 456. 457. 458. 459. 460. 461. 462. 463. 464. 465. 466. 467. 468. 469. 470. 471. 472. 473. 474. 475. 476. 477. 478. 479. 480. 481. 482. 483. 484. 485. 486. 487. 488. 489. 490. 491. 492. 493. 494. 495. 496. 497. 498. 499. 500. 501. 502. 503. 504. 505. 506. 507. 508. 509. 510. 511. 512. 513. 514. 515. 516. 517. 518. 519. 520. 521. 522. 523. 524. 525. 526. 527. 528. 529. 530. 531. 532. 533. 534. 535. 536. 537. 538. 539. 540. 541. 542. 543. 544. 545. 546. 547. 548. 549. 550. 551. 552. 553. 554. 555. 556. 557. 558. 559. 560. 561. 562. 563. 564. 565. 566. 567. 568. 569. 570. 571. 572. 573. 574. 575. 576. 577. 578. 579. 580. 581. 582. 583. 584. 585. 586. 587. 588. 589. 590. 591. 592. 593. 594. 595. 596. 597. 598. 599. 600. 601. 602. 603. 604. 605. 606. 607. 608. 609. 610. 611. 612. 613. 614. 615. 616. 617. 618. 619. 620. 621. 622. 623. 624. 625. 626. 627. 628. 629. 630. 631. 632. 633. 634. 635. 636. 637. 638. 639. 640. 641. 642. 643. 644. 645. 646. 647. 648. 649. 650. 651. 652. 653. 654. 655. 656. 657. 658. 659. 660. 661. 662. 663. 664. 665. 666. 667. 668. 669. 670. 671. 672. 673. 674. 675. 676. 677. 678. 679. 680. 681. 682. 683. 684. 685. 686. 687. 688. 689. 690. 691. 692. 693. 694. 695. 696. 697. 698. 699. 700. 701. 702. 703. 704. 705. 706. 707. 708. 709. 710. 711. 712. 713. 714. 715. 716. 717. 718. 719. 720. 721. 722. 723. 724. 725. 726. 727. 728. 729. 730. 731. 732. 733. 734. 735. 736. 737. 738. 739. 740. 741. 742. 743. 744. 745. 746. 747. 748. 749. 750. 751. 752. 753. 754. 755. 756. 757. 758. 759. 760. 761. 762. 763. 764. 765. 766. 767. 768. 769. 770. 771. 772. 773. 774. 775. 776. 777. 778. 779. 780. 781. 782. 783. 784. 785. 786. 787. 788. 789. 790. 791. 792. 793. 794. 795. 796. 797. 798. 799. 800. 801. 802. 803. 804. 805. 806. 807. 808. 809. 810. 811. 812. 813. 814. 815. 816. 817. 818. 819. 820. 821. 822. 823. 824. 825. 826. 827. 828. 829. 830. 831. 832. 833. 834. 835. 836. 837. 838. 839. 840. 841. 842. 843. 844. 845. 846. 847. 848. 849. 850. 851. 852. 853. 854. 855. 856. 857. 858. 859. 860. 861. 862. 863. 864. 865. 866. 867. 868. 869. 870. 871. 872. 873. 874. 875. 876. 877. 878. 879. 880. 881. 882. 883. 884. 885. 886. 887. 888. 889. 890. 891. 892. 893. 894. 895. 896. 897. 898. 899. 900. 901. 902. 903. 904. 905. 906. 907. 908. 909. 910. 911. 912. 913. 914. 915. 916. 917. 918. 919. 920. 921. 922. 923. 924. 925. 926. 927. 928. 929. 930. 931. 932. 933. 934. 935. 936. 937. 938. 939. 940. 941. 942. 943. 944. 945. 946. 947. 948. 949. 950. 951. 952. 953. 954. 955. 956. 957. 958. 959. 960. 961. 962. 963. 964. 965. 966. 967. 968. 969. 970. 971. 972. 973. 974. 975. 976. 977. 978. 979. 980. 981. 982. 983. 984. 985. 986. 987. 988. 989. 990. 991. 992. 993. 994. 995. 996. 997. 998. 999. 1000.

Handwritten text in a cursive script, likely a historical document or manuscript. The text is densely packed and spans most of the page. It appears to be written in a form of Arabic or Persian script, possibly a dialect or a specific regional variety. The ink is dark, and the paper shows signs of age and wear. The text is organized into several lines, with some larger characters or symbols interspersed throughout. The overall appearance is that of a well-used, aged manuscript page.

Handwritten text in a cursive script, likely a historical document or manuscript. The text is densely packed and spans most of the page. It appears to be written in a historical form of a South Asian script, possibly Grantha or Tamil, given the character shapes and the use of diacritics. The text is organized into several lines, with some lines starting with a large, decorative initial character. The ink is dark, and the paper shows signs of age and wear.

Handwritten text in a cursive script, likely a historical document or manuscript. The text is written in a dark ink on aged, yellowish paper. It consists of approximately 15 lines of text, with some lines containing large, stylized characters or symbols that may represent specific words or initials. The script is dense and difficult to decipher without specialized knowledge of the language or dialect used.

Handwritten text in a cursive script, likely a form of shorthand or a specific dialect. The text is arranged in approximately 15 horizontal lines. The characters are dense and often resemble loops or stylized letters. There are several large, decorative initial letters or symbols at the beginning of lines, possibly marking the start of new sections or paragraphs. The overall appearance is that of a manuscript page, possibly a ledger or a collection of notes.

Handwritten text in a cursive script, likely a manuscript page. The text is arranged in approximately 12 horizontal lines. The script is dense and features many flourishes and ligatures. The paper is aged and shows some staining and wear. The text is written in a dark ink, possibly iron gall or a similar dark pigment. The overall appearance is that of a historical document or a page from an old book.

Handwritten text in a cursive script, likely a historical document or manuscript. The text is arranged in approximately 15 horizontal lines across the page. The script is dense and characteristic of early modern European handwriting. The paper shows signs of age, including yellowing and some staining. The text is written in a dark ink, possibly iron gall. The lines of text are roughly parallel, with some variations in spacing and alignment. The overall appearance is that of a well-preserved but aged historical document.

Handwritten Burmese script with large characters and frequent use of the letter 'ဝ', arranged in approximately 15 horizontal lines across the page.

Vertical handwritten Burmese script along the left margin of the page.

Handwritten text in a cursive script, likely a form of Arabic or Persian, covering the entire page. The text is densely packed and includes several large, stylized characters or symbols interspersed within the lines. The script is written on aged, yellowed paper.

Handwritten text in a cursive script, likely a form of Hebrew or Arabic, covering the entire page. The text is arranged in approximately 12 horizontal lines. Each line contains several large, stylized characters, possibly representing letters or syllables. The script is dense and fills most of the page area. The paper shows signs of age, including yellowing and some staining.

Handwritten text in a cursive script, likely a medieval manuscript. The text is arranged in approximately 15 horizontal lines across the page. The script is dense and features many ligatures and flourishes. The paper is aged and shows some staining and wear, particularly along the left edge and in the lower half of the page. The text appears to be a form of Latin or a related medieval language, possibly a liturgical or legal document. The lines of text are roughly parallel to each other, though some are slightly indented or have varying lengths. The overall appearance is that of a well-used, historical document.

Handwritten text in a cursive script, likely a historical document or manuscript. The text is written in dark ink on aged, yellowish paper. It consists of approximately 15 lines of dense, flowing script. The characters are highly stylized and interconnected, characteristic of a cursive hand. There are several large, decorative initials or flourishes interspersed throughout the text, particularly at the beginning of lines. The overall appearance is that of a well-used, possibly legal or administrative, document from a past era.

Handwritten text in a cursive script, likely a historical document or manuscript. The text is densely packed and spans the entire page. The script is highly stylized and difficult to decipher without specialized knowledge of the language and script. The document appears to be a page from a larger book, as evidenced by the binding on the left and the adjacent page on the right.

Handwritten text in a cursive script, likely a medieval manuscript. The text is arranged in approximately 15 horizontal lines across the page. The script is dense and characteristic of Gothic or similar medieval bookhands. The paper shows signs of age, including staining and some loss of material at the top edge. The text appears to be a continuous passage, possibly a liturgical or legal document, given the formal nature of the script and the structure of the lines.

Handwritten musical notation on aged paper, featuring a large decorated initial 'A' and several staves of notes.

The page contains approximately 12 lines of handwritten musical notation. The notation is written in a cursive, historical style, likely from a manuscript. A prominent feature is a large, highly decorated initial letter 'A' at the top right, which is embellished with intricate scrollwork and floral patterns. The notes themselves are written in a fluid, connected script, with stems and beams indicating pitch and rhythm. The paper shows signs of age, including yellowing and some staining.

Handwritten marks or symbols in the top right corner.

Main body of handwritten text in a cursive script, likely a historical or religious document.

Partial view of handwritten text from the adjacent page on the left.

1. 2. 3. 4. 5. 6. 7. 8. 9. 10. 11. 12. 13. 14. 15. 16. 17. 18. 19. 20. 21. 22. 23. 24. 25. 26. 27. 28. 29. 30. 31. 32. 33. 34. 35. 36. 37. 38. 39. 40. 41. 42. 43. 44. 45. 46. 47. 48. 49. 50. 51. 52. 53. 54. 55. 56. 57. 58. 59. 60. 61. 62. 63. 64. 65. 66. 67. 68. 69. 70. 71. 72. 73. 74. 75. 76. 77. 78. 79. 80. 81. 82. 83. 84. 85. 86. 87. 88. 89. 90. 91. 92. 93. 94. 95. 96. 97. 98. 99. 100. 101. 102. 103. 104. 105. 106. 107. 108. 109. 110. 111. 112. 113. 114. 115. 116. 117. 118. 119. 120. 121. 122. 123. 124. 125. 126. 127. 128. 129. 130. 131. 132. 133. 134. 135. 136. 137. 138. 139. 140. 141. 142. 143. 144. 145. 146. 147. 148. 149. 150. 151. 152. 153. 154. 155. 156. 157. 158. 159. 160. 161. 162. 163. 164. 165. 166. 167. 168. 169. 170. 171. 172. 173. 174. 175. 176. 177. 178. 179. 180. 181. 182. 183. 184. 185. 186. 187. 188. 189. 190. 191. 192. 193. 194. 195. 196. 197. 198. 199. 200. 201. 202. 203. 204. 205. 206. 207. 208. 209. 210. 211. 212. 213. 214. 215. 216. 217. 218. 219. 220. 221. 222. 223. 224. 225. 226. 227. 228. 229. 230. 231. 232. 233. 234. 235. 236. 237. 238. 239. 240. 241. 242. 243. 244. 245. 246. 247. 248. 249. 250. 251. 252. 253. 254. 255. 256. 257. 258. 259. 260. 261. 262. 263. 264. 265. 266. 267. 268. 269. 270. 271. 272. 273. 274. 275. 276. 277. 278. 279. 280. 281. 282. 283. 284. 285. 286. 287. 288. 289. 290. 291. 292. 293. 294. 295. 296. 297. 298. 299. 300. 301. 302. 303. 304. 305. 306. 307. 308. 309. 310. 311. 312. 313. 314. 315. 316. 317. 318. 319. 320. 321. 322. 323. 324. 325. 326. 327. 328. 329. 330. 331. 332. 333. 334. 335. 336. 337. 338. 339. 340. 341. 342. 343. 344. 345. 346. 347. 348. 349. 350. 351. 352. 353. 354. 355. 356. 357. 358. 359. 360. 361. 362. 363. 364. 365. 366. 367. 368. 369. 370. 371. 372. 373. 374. 375. 376. 377. 378. 379. 380. 381. 382. 383. 384. 385. 386. 387. 388. 389. 390. 391. 392. 393. 394. 395. 396. 397. 398. 399. 400. 401. 402. 403. 404. 405. 406. 407. 408. 409. 410. 411. 412. 413. 414. 415. 416. 417. 418. 419. 420. 421. 422. 423. 424. 425. 426. 427. 428. 429. 430. 431. 432. 433. 434. 435. 436. 437. 438. 439. 440. 441. 442. 443. 444. 445. 446. 447. 448. 449. 450. 451. 452. 453. 454. 455. 456. 457. 458. 459. 460. 461. 462. 463. 464. 465. 466. 467. 468. 469. 470. 471. 472. 473. 474. 475. 476. 477. 478. 479. 480. 481. 482. 483. 484. 485. 486. 487. 488. 489. 490. 491. 492. 493. 494. 495. 496. 497. 498. 499. 500. 501. 502. 503. 504. 505. 506. 507. 508. 509. 510. 511. 512. 513. 514. 515. 516. 517. 518. 519. 520. 521. 522. 523. 524. 525. 526. 527. 528. 529. 530. 531. 532. 533. 534. 535. 536. 537. 538. 539. 540. 541. 542. 543. 544. 545. 546. 547. 548. 549. 550. 551. 552. 553. 554. 555. 556. 557. 558. 559. 560. 561. 562. 563. 564. 565. 566. 567. 568. 569. 570. 571. 572. 573. 574. 575. 576. 577. 578. 579. 580. 581. 582. 583. 584. 585. 586. 587. 588. 589. 590. 591. 592. 593. 594. 595. 596. 597. 598. 599. 600. 601. 602. 603. 604. 605. 606. 607. 608. 609. 610. 611. 612. 613. 614. 615. 616. 617. 618. 619. 620. 621. 622. 623. 624. 625. 626. 627. 628. 629. 630. 631. 632. 633. 634. 635. 636. 637. 638. 639. 640. 641. 642. 643. 644. 645. 646. 647. 648. 649. 650. 651. 652. 653. 654. 655. 656. 657. 658. 659. 660. 661. 662. 663. 664. 665. 666. 667. 668. 669. 670. 671. 672. 673. 674. 675. 676. 677. 678. 679. 680. 681. 682. 683. 684. 685. 686. 687. 688. 689. 690. 691. 692. 693. 694. 695. 696. 697. 698. 699. 700. 701. 702. 703. 704. 705. 706. 707. 708. 709. 710. 711. 712. 713. 714. 715. 716. 717. 718. 719. 720. 721. 722. 723. 724. 725. 726. 727. 728. 729. 730. 731. 732. 733. 734. 735. 736. 737. 738. 739. 740. 741. 742. 743. 744. 745. 746. 747. 748. 749. 750. 751. 752. 753. 754. 755. 756. 757. 758. 759. 760. 761. 762. 763. 764. 765. 766. 767. 768. 769. 770. 771. 772. 773. 774. 775. 776. 777. 778. 779. 780. 781. 782. 783. 784. 785. 786. 787. 788. 789. 790. 791. 792. 793. 794. 795. 796. 797. 798. 799. 800. 801. 802. 803. 804. 805. 806. 807. 808. 809. 810. 811. 812. 813. 814. 815. 816. 817. 818. 819. 820. 821. 822. 823. 824. 825. 826. 827. 828. 829. 830. 831. 832. 833. 834. 835. 836. 837. 838. 839. 840. 841. 842. 843. 844. 845. 846. 847. 848. 849. 850. 851. 852. 853. 854. 855. 856. 857. 858. 859. 860. 861. 862. 863. 864. 865. 866. 867. 868. 869. 870. 871. 872. 873. 874. 875. 876. 877. 878. 879. 880. 881. 882. 883. 884. 885. 886. 887. 888. 889. 890. 891. 892. 893. 894. 895. 896. 897. 898. 899. 900. 901. 902. 903. 904. 905. 906. 907. 908. 909. 910. 911. 912. 913. 914. 915. 916. 917. 918. 919. 920. 921. 922. 923. 924. 925. 926. 927. 928. 929. 930. 931. 932. 933. 934. 935. 936. 937. 938. 939. 940. 941. 942. 943. 944. 945. 946. 947. 948. 949. 950. 951. 952. 953. 954. 955. 956. 957. 958. 959. 960. 961. 962. 963. 964. 965. 966. 967. 968. 969. 970. 971. 972. 973. 974. 975. 976. 977. 978. 979. 980. 981. 982. 983. 984. 985. 986. 987. 988. 989. 990. 991. 992. 993. 994. 995. 996. 997. 998. 999. 1000.

Handwritten text in a cursive script, likely a medieval manuscript. The text is arranged in approximately 18 horizontal lines. It features a mix of dark and light ink, with some lines appearing faded or lighter than others. The script is dense and difficult to decipher, but it appears to be a continuous narrative or a list of entries. The paper shows signs of age, including discoloration and some wear at the edges.

Handwritten text in a cursive script, likely a historical document or manuscript, consisting of several lines of text.



Handwritten text below the profile drawing, possibly a name or a signature.

Handwritten text below the profile drawing, possibly a name or a signature.

80
49

[Faint, illegible handwritten text in Devanagari script, possibly bleed-through from the reverse side of the page.]

سنة ١٠٥٥ هـ من سنة ١٠٥٥ هـ

سنة ١٠٥٥ هـ من سنة ١٠٥٥ هـ

سنة ١٠٥٥ هـ من سنة ١٠٥٥ هـ

سنة ١٠٥٥ هـ من سنة ١٠٥٥ هـ

سنة ١٠٥٥ هـ من سنة ١٠٥٥ هـ

سنة ١٠٥٥ هـ من سنة ١٠٥٥ هـ

سنة ١٠٥٥ هـ من سنة ١٠٥٥ هـ

سنة ١٠٥٥ هـ من سنة ١٠٥٥ هـ

سنة ١٠٥٥ هـ من سنة ١٠٥٥ هـ

لَقَدْ نَزَّلْنَا آيَاتِنَا بِالْحَقِّ وَالْحَقُّ أَكْبَرُ مِنْ
الْبُاطِلِ نَزَّلْنَا الْقُرْآنَ بِالْحَقِّ وَالْحَقُّ أَكْبَرُ مِنْ
الْبُاطِلِ نَزَّلْنَا الْقُرْآنَ بِالْحَقِّ وَالْحَقُّ أَكْبَرُ مِنْ
الْبُاطِلِ نَزَّلْنَا الْقُرْآنَ بِالْحَقِّ وَالْحَقُّ أَكْبَرُ مِنْ

الْبُاطِلِ

نَزَّلْنَا الْقُرْآنَ بِالْحَقِّ وَالْحَقُّ أَكْبَرُ مِنْ
الْبُاطِلِ نَزَّلْنَا الْقُرْآنَ بِالْحَقِّ وَالْحَقُّ أَكْبَرُ مِنْ
الْبُاطِلِ نَزَّلْنَا الْقُرْآنَ بِالْحَقِّ وَالْحَقُّ أَكْبَرُ مِنْ
الْبُاطِلِ نَزَّلْنَا الْقُرْآنَ بِالْحَقِّ وَالْحَقُّ أَكْبَرُ مِنْ

بِسْمِ اللَّهِ الرَّحْمَنِ الرَّحِيمِ

الحمد لله الذي هدانا لهذا

الذي كنا لنهتدي لولا أن هدانا الله

والحمد لله رب العالمين

بِسْمِ اللَّهِ الرَّحْمَنِ الرَّحِيمِ

الحمد لله الذي هدانا لهذا

الذي كنا لنهتدي لولا أن هدانا الله

والحمد لله رب العالمين

بِسْمِ اللَّهِ الرَّحْمَنِ الرَّحِيمِ

كَلِمَاتٍ فِيهَا نَسِيحَةٌ وَمِنْهَا
الَّتِي تَقْرَأُ فِيهَا كَلِمَاتٌ

مُتَشَابِهَةٌ لِمَا كُنْتَ تَقْرَأُ

فِي الْكِتَابِ الْمُبِينِ

وَمِنْهَا الَّتِي تَقْرَأُ فِيهَا
كَلِمَاتٌ مُتَشَابِهَةٌ

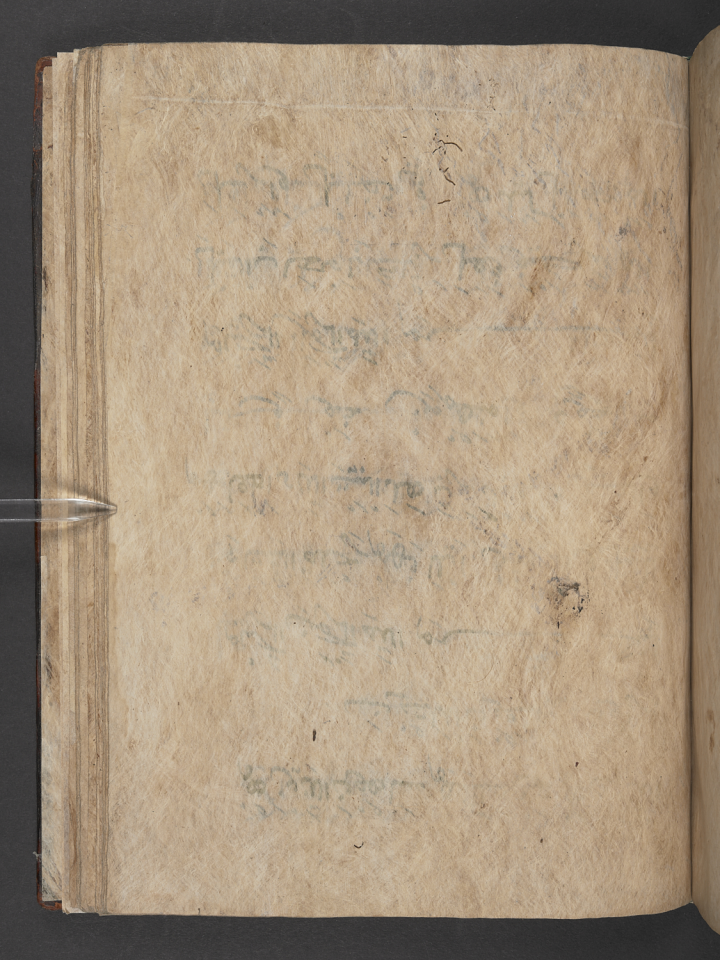
لِمَا كُنْتَ تَقْرَأُ فِي الْكِتَابِ

الْمُبِينِ

وَمِنْهَا الَّتِي تَقْرَأُ فِيهَا
كَلِمَاتٌ مُتَشَابِهَةٌ

لِمَا كُنْتَ تَقْرَأُ فِي الْكِتَابِ

الْمُبِينِ



一、...
 二、...
 三、...
 四、...
 五、...
 六、...
 七、...
 八、...
 九、...
 十、...

| | | | | |
|----------|---------------|----------|----------|----------|
| أَفْعَلْ | لَا تَفْعَلْ | مَنْعَلْ | مَنْعَلْ | مَنْعَلْ |
| أَكْرَمَ | لَا تَكْرَمُ | مَكْرَمٌ | مَكْرَمٌ | مَكْرَمٌ |
| أَمَدًا | لَا تَمُدُّ | مَمْدٌ | مَمْدٌ | مَمْدٌ |
| أَفْضَرَ | لَا تُفْضِرُ | مُفْضِرٌ | مُفْضِرٌ | مُفْضِرٌ |
| أَخَصَّ | لَا تُخْصِ | مُخْصٍ | مُخْصٍ | مُخْصٍ |
| أَوْعَدَ | لَا تُؤْعِدُ | مَوْعِدٌ | مَوْعِدٌ | مَوْعِدٌ |
| أَيْسَرَ | لَا تُؤَسِّرُ | مَوْسِرٌ | مَوْسِرٌ | مَوْسِرٌ |
| أَكَنَ | لَا تُكِنِّي | مُكَانٌ | مُكَانٌ | مُكَانٌ |
| أَبَعَ | لَا تُابِعُ | مُبَاعٌ | مُبَاعٌ | مُبَاعٌ |
| أَغْرَى | لَا تُغْرِي | مُغْرًا | مُغْرًا | مُغْرًا |
| أَمْرَمَ | لَا تُمْرِمُ | مُرْمِيٌ | مُرْمِيٌ | مُرْمِيٌ |
| أَسْوَى | لَا تُسْوِي | مُسْوِيٌ | مُسْوِيٌ | مُسْوِيٌ |
| أَوْقَى | لَا تُؤْقِي | مَوْقِيٌ | مَوْقِيٌ | مَوْقِيٌ |

| | | | | | |
|-------|-----------|-------------|-----|-----------|--------------------|
| افعل | يَفْعَلُ | افْعَالًا | فهو | مَفْعُولٌ | وَذَلِكَ مَفْعُولٌ |
| الكرم | يَكْرُمُ | الْكَرَامًا | فهو | مَكْرُمٌ | وَذَلِكَ مَكْرُمٌ |
| امد | يَمُدُّ | اِمْدَادًا | فهو | مُمِدُّ | وَذَلِكَ مُمِدُّ |
| افتر | يَفْتَرُ | اِفْتِرَاءً | فهو | مُفْتَرٌ | وَذَلِكَ مُفْتَرٌ |
| اعطى | يُعْطِي | اِعْطَاءً | فهو | مُعْطٍ | وَذَلِكَ مُعْطٍ |
| اوعد | يُوعِدُ | اِيعَادًا | فهو | مُوعِدٌ | وَذَلِكَ مُوعِدٌ |
| ايسر | يُوسِرُ | اِيسَارًا | فهو | مُوسِرٌ | وَذَلِكَ مُوسِرٌ |
| اكان | يَكْنِي | الْكِنَاةَ | فهو | مَكْنِيٌّ | مُكْنِيٌّ |
| اباع | يَبِيعُ | اِبْيَاعًا | فهو | مَبِيعٌ | مُبَاعٌ |
| اغتر | يَغْتَرِي | اِغْتِرَاءً | فهو | مَغْتَرٍ | مُغْتَرٍ |
| امرئ | يَأْمُرِي | اِامْرَاءً | فهو | مَأْمُرٌ | مُأْمَرٌ |
| اسوعد | يُسْوِي | اِسْوَاءً | فهو | مُسْوٍ | مُسْوٍ |
| اوتي | يُؤْتِي | اِئْتِاقًا | فهو | مُؤْتٍ | مُؤْتٍ |

مَنْعُولٌ اِفْعَلٌ لَا تَفْعَلُ مَنْعُولٌ مَنْعُولٌ مَنْعُولٌ
مَعْلُومٌ اِنْعَامٌ لَا تُعَامُ مَعَامٌ مَعَامٌ مَعَامٌ

مَنْعُولٌ اِفْعَلٌ لَا تَفْعَلُ مَنْعُولٌ مَنْعُولٌ مَنْعُولٌ
مَنْعُومٌ اِنْعَمٌ لَا تَنْعَمُ مَنْعَمٌ مَنْعَمٌ مَنْعَمٌ

مَنْعُولٌ اِفْعَلٌ لَا تَفْعَلُ مَنْعُولٌ مَنْعُولٌ مَنْعُولٌ
مَنْعُوعٌ اِمْنَعُ لَا تَمْنَعُ مَمْنَعٌ مَمْنَعٌ مَمْنَعٌ

فَعَلَ يَفْعَلُ فِعْلًا فَهُوَ فَاعِلٌ وَذَلِكَ
عَلِمَ يَعْلَمُ عِلْمًا فَهُوَ عَالِمٌ وَذَلِكَ

فَعَلَ يَفْعَلُ فِعْلًا فَهُوَ فَاعِلٌ وَذَلِكَ
نَعِمَ يَنْعَمُ نِعْمًا فَهُوَ نَاعِمٌ وَذَلِكَ

فَعَلَ يَفْعَلُ فِعْلًا فَهُوَ فَاعِلٌ وَذَلِكَ
مَنَعَ يَمْنَعُ مَنَعًا فَهُوَ مَانِعٌ وَذَلِكَ

افعل لا تفعل مفعل مفعل مفعل
اضرب الاضرب مضرب مضرب مضرب

افعل لا تفعل مفعل مفعل مفعل
احم الاحمم مكم مكم مكم

افعل لا تفعل مفعل مفعل مفعل
انصر الانصر منصر منصر منصر

صفتان فعل مضارع

وهو تسمى في غير المسبوق
بفعل مضارع

فَعْلٌ يَنْفَعُلُ فَعْلًا فَهُوَ فَاعِلٌ وَذَلِكَ مَفْعُولٌ

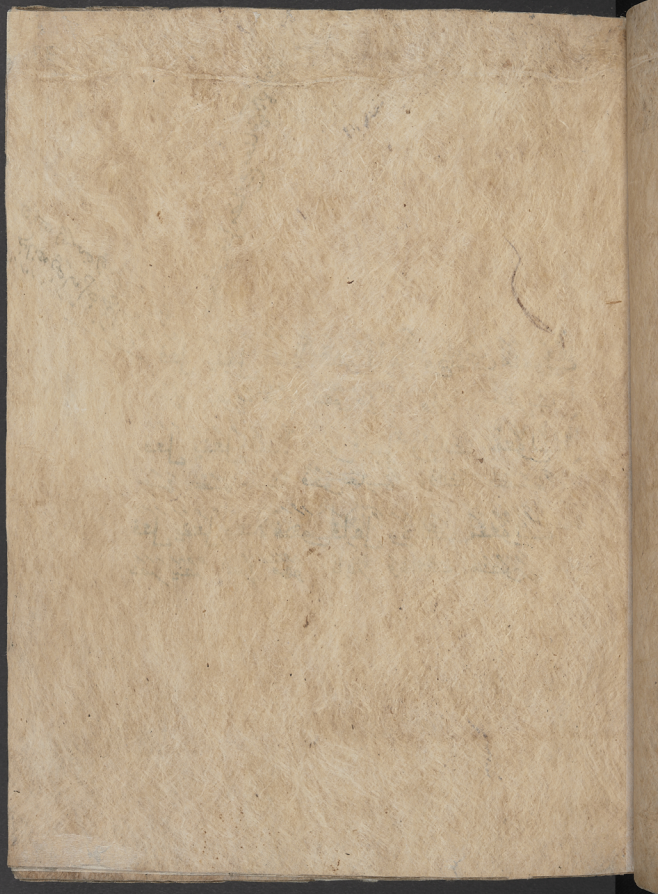
ضَرَبَ يَضْرِبُ ضَرْبًا فَهُوَ ضَارِبٌ وَذَلِكَ مَضْرُوبٌ

فَعْلٌ يَفْعَلُ فَعْلًا فَهُوَ فَاعِلٌ وَذَلِكَ مَفْعُولٌ

حَمَى يَحْمِي حِمًى فَهُوَ حَامٍ وَذَلِكَ مَحْمٍ

فَعْلٌ يَفْعَلُ فَعْلًا فَهُوَ فَاعِلٌ وَذَلِكَ مَفْعُولٌ

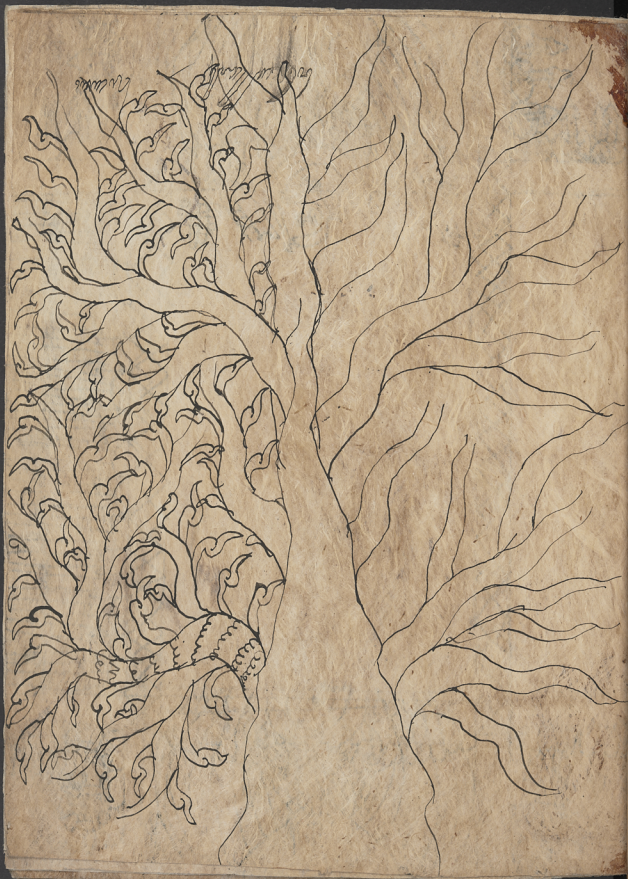
نَصَرَ يَنْصُرُ نَصْرًا فَهُوَ نَاصِرٌ وَذَلِكَ مُنْصَوْرٌ



38









[Faint, mostly illegible handwritten text in a cursive script, possibly Italian or Spanish, covering the upper and middle portions of the page.]



11
 The following is a list of the
 names of the persons who
 were present at the meeting
 held on the 10th of the
 month of November 1893

J. G. Gallop
 Secy

41 F
 Replaced
 11/10/93
 A. G. Gallop

Handwritten text in a cursive script, likely a historical document or manuscript, written on aged, stained paper. The text is arranged in two lines, with the second line appearing to be a continuation or a separate entry. The script is dark and somewhat faded, and the paper shows significant signs of wear, including large brown stains and a horizontal tear near the top edge.



30 30

Handwritten notes in a cursive script, possibly Javanese or Dutch, including the number 77.

Oriental Mss

JAVANESE

INDIA OFFICE
LIBRARY

10L Neg 2419

MICROFILM

The History of Yogyakarta

Javanese M.S.
XI.
(Keyzer)

11

11

