

Fig. 4.  
Position of the screw.  
(B)

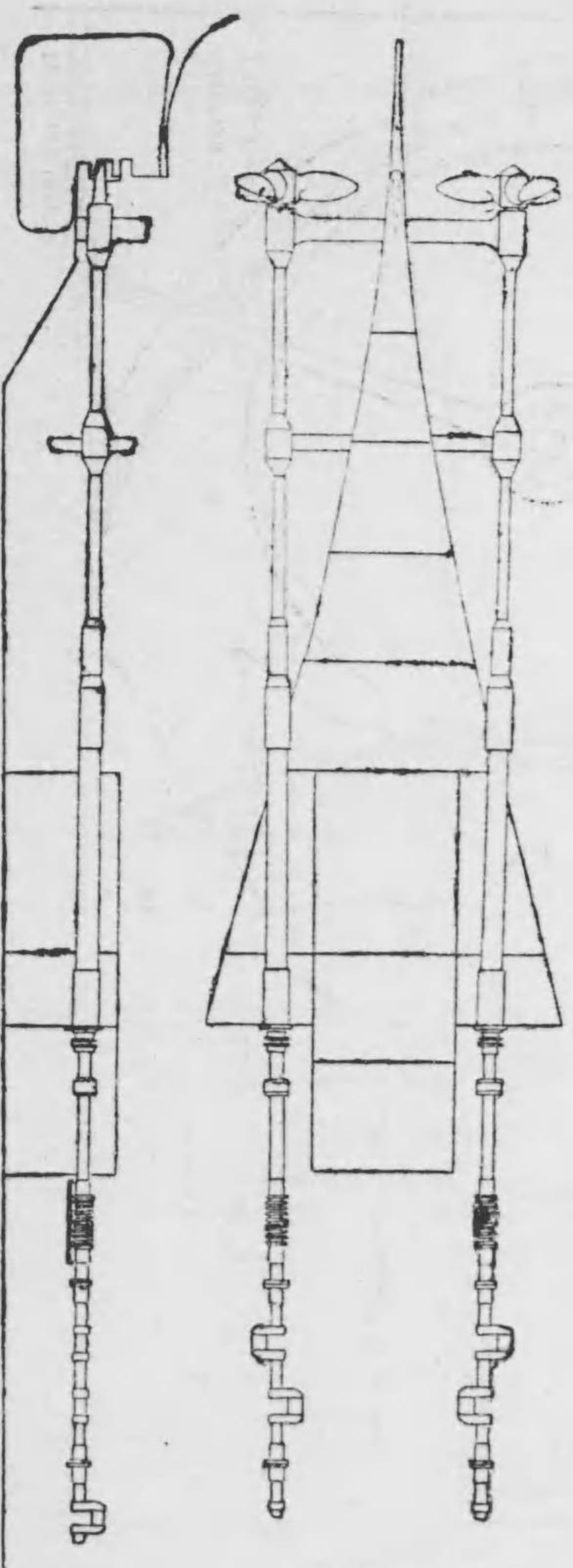


Fig. 5.  
Squat and change of the trim.

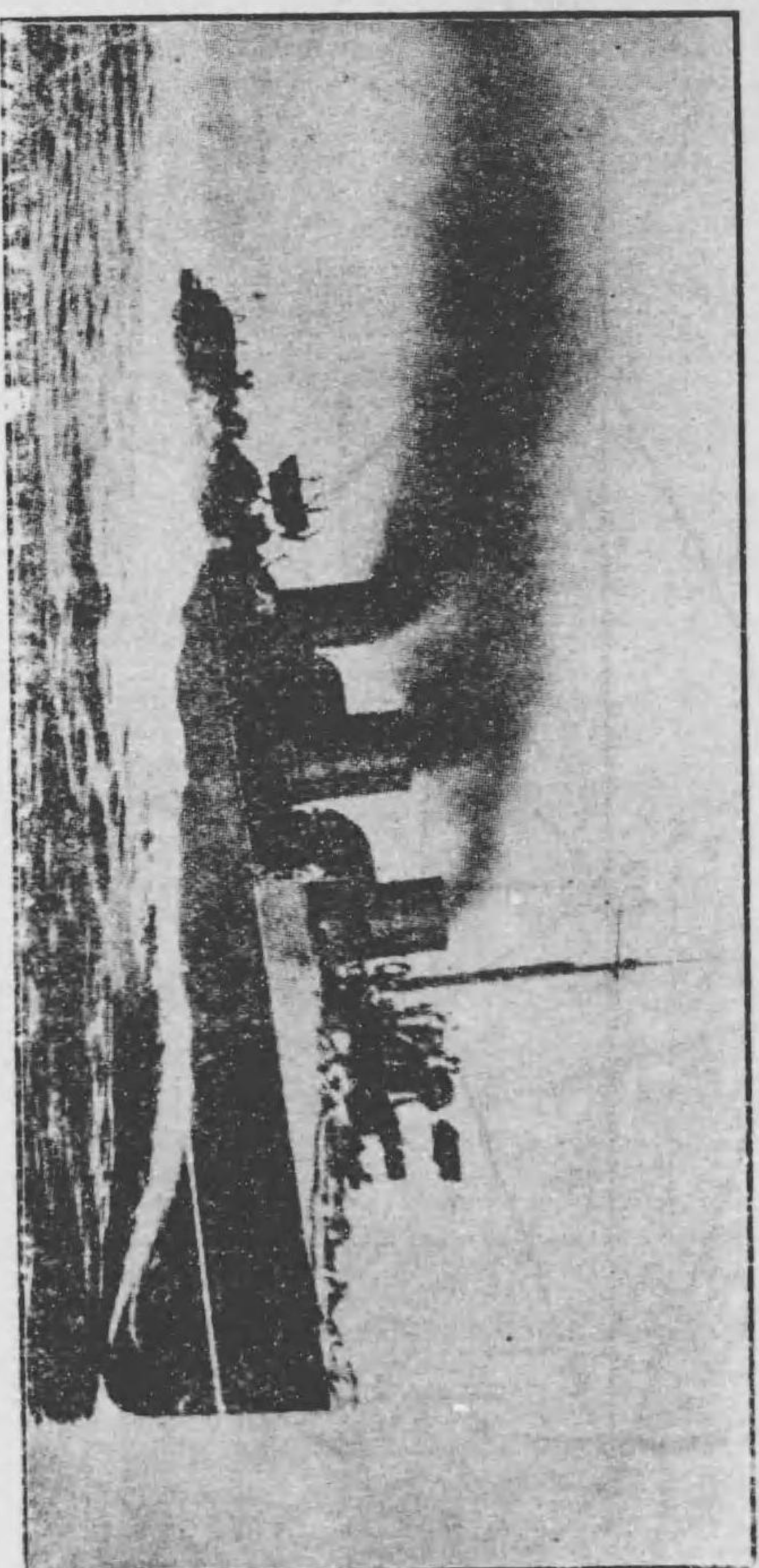
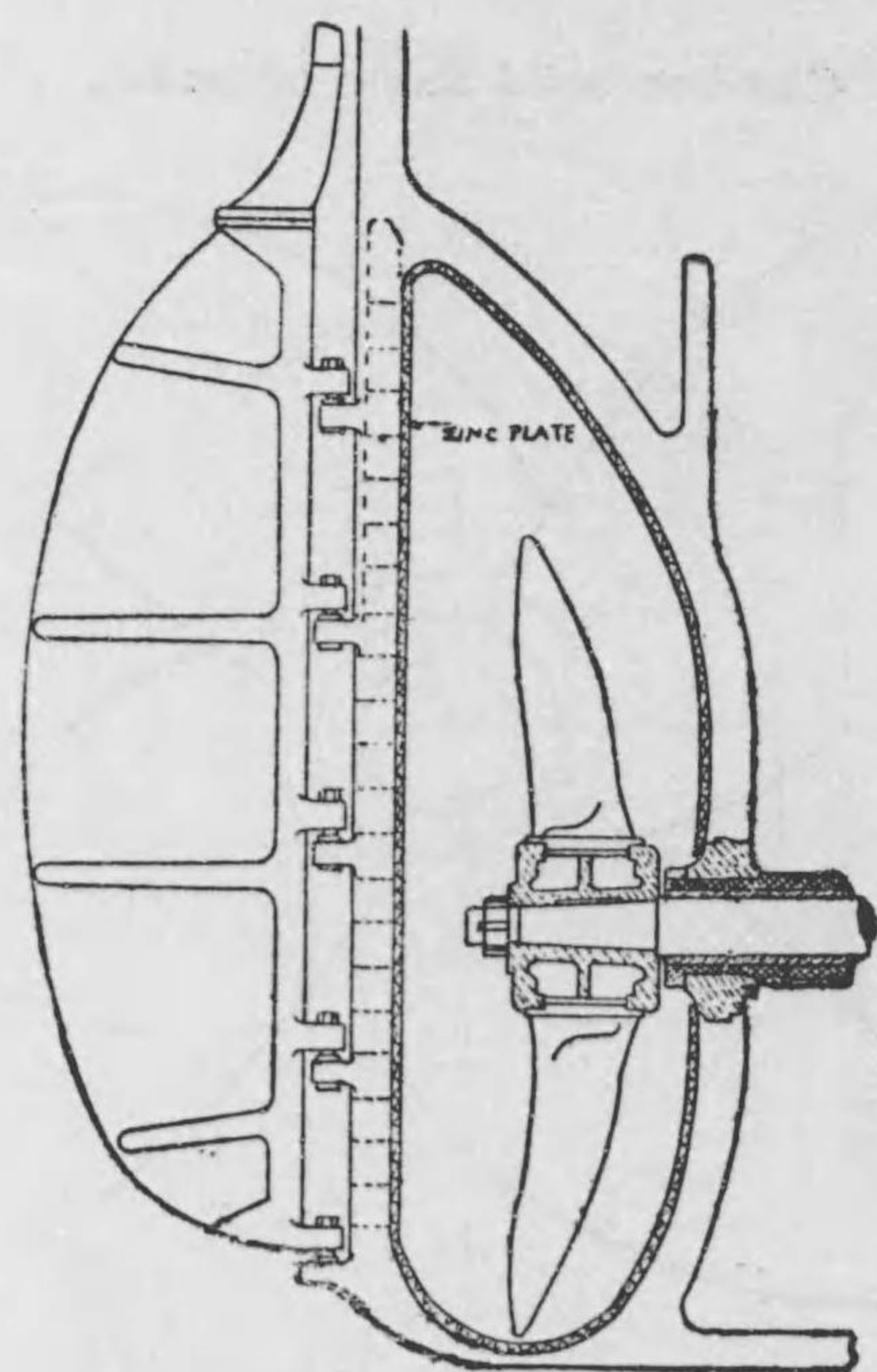




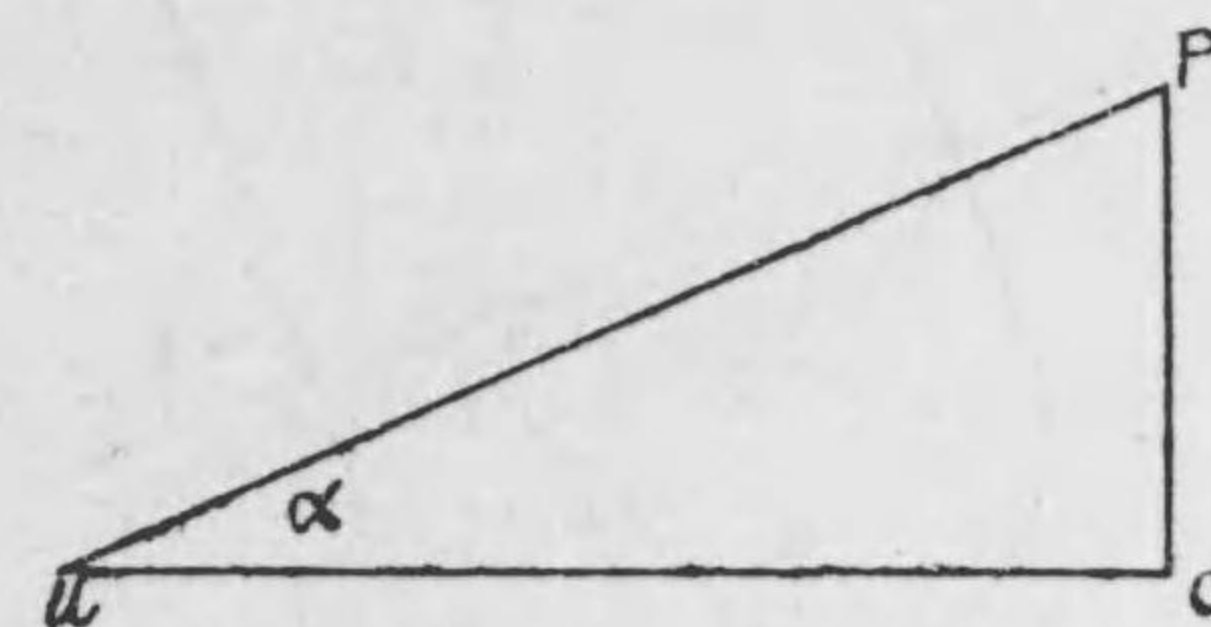
Fig. 8.  
Protection of the screw apertnre.



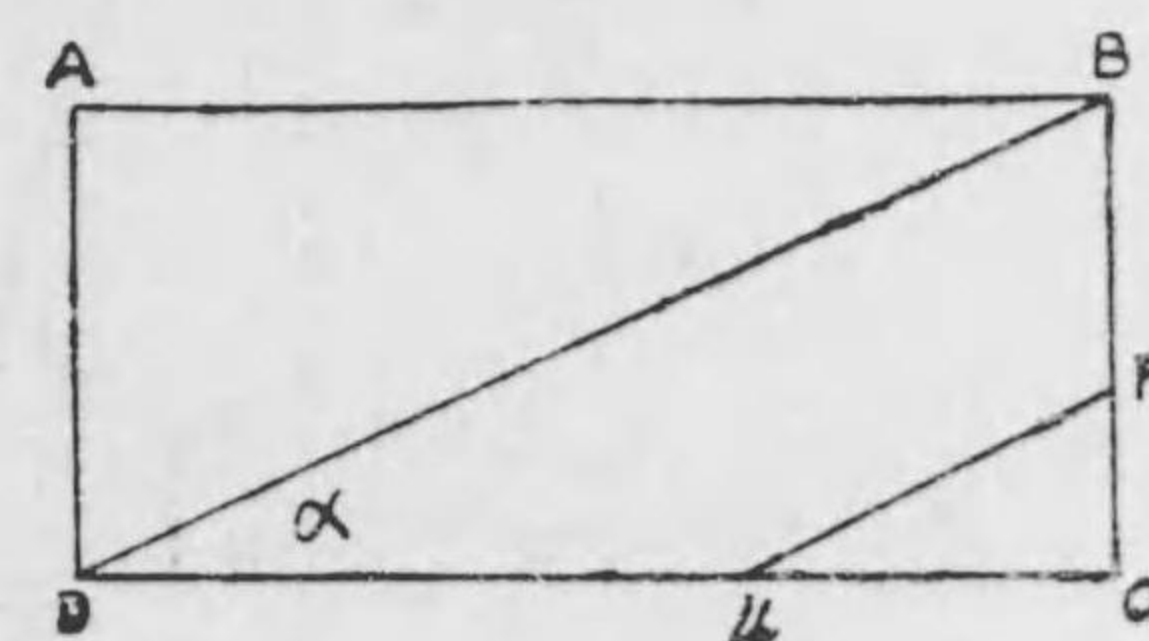
1 图 1

Fig. 7.  
Guide irons for three bladed propeller.

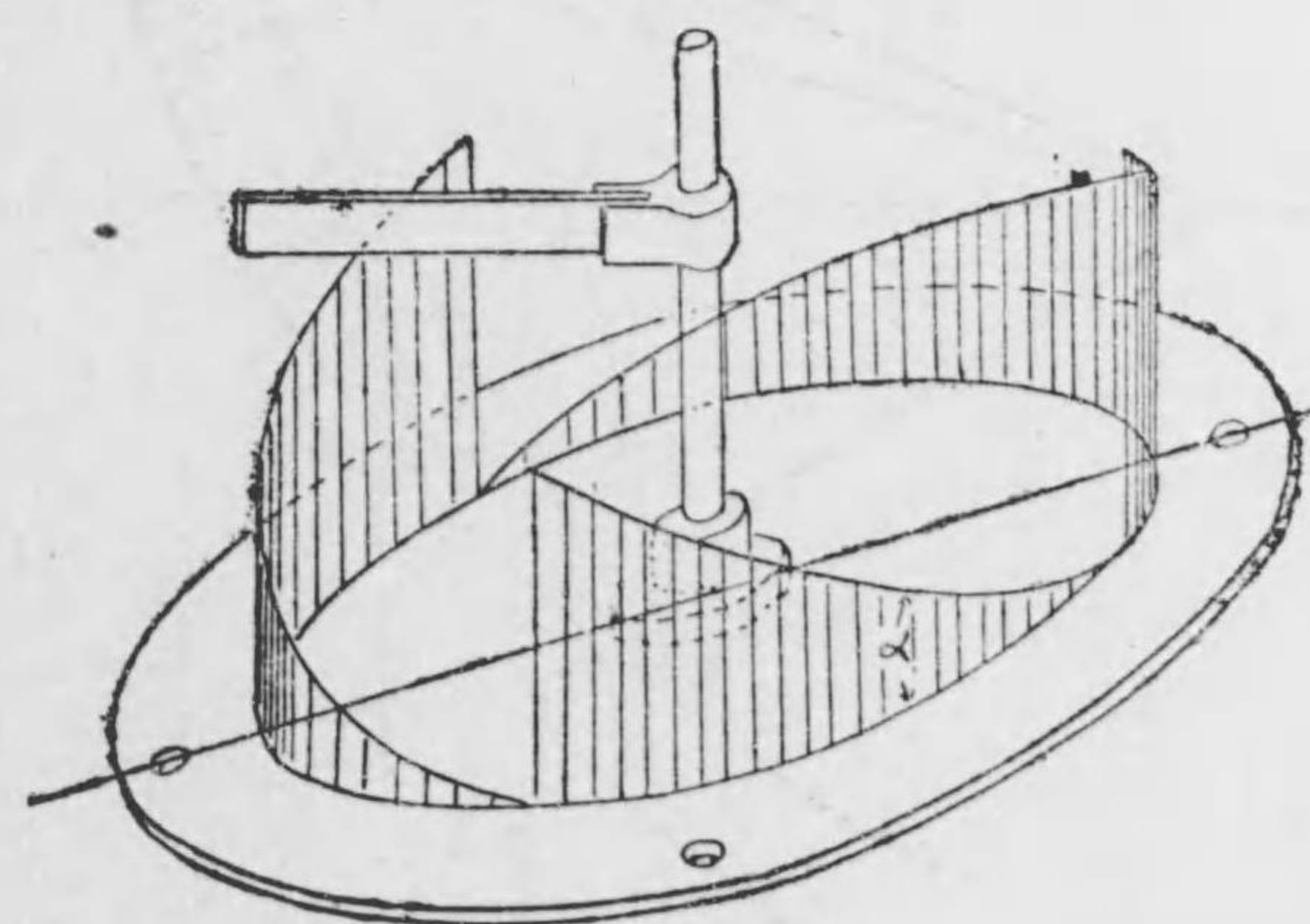
(A)



(B)



(C)



1 图 1

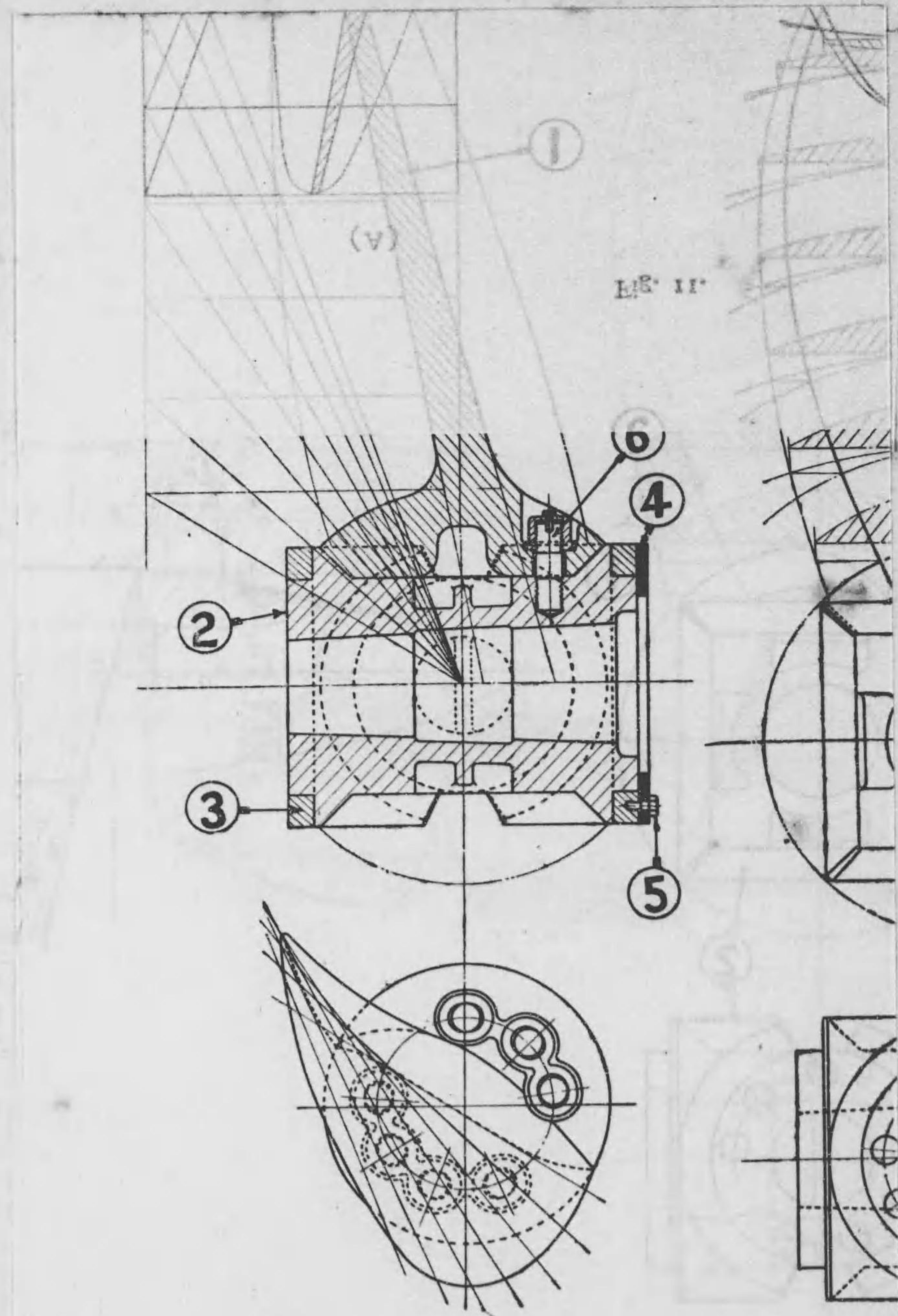


Fig. 9.  
Cast-iron solid screw propeller.

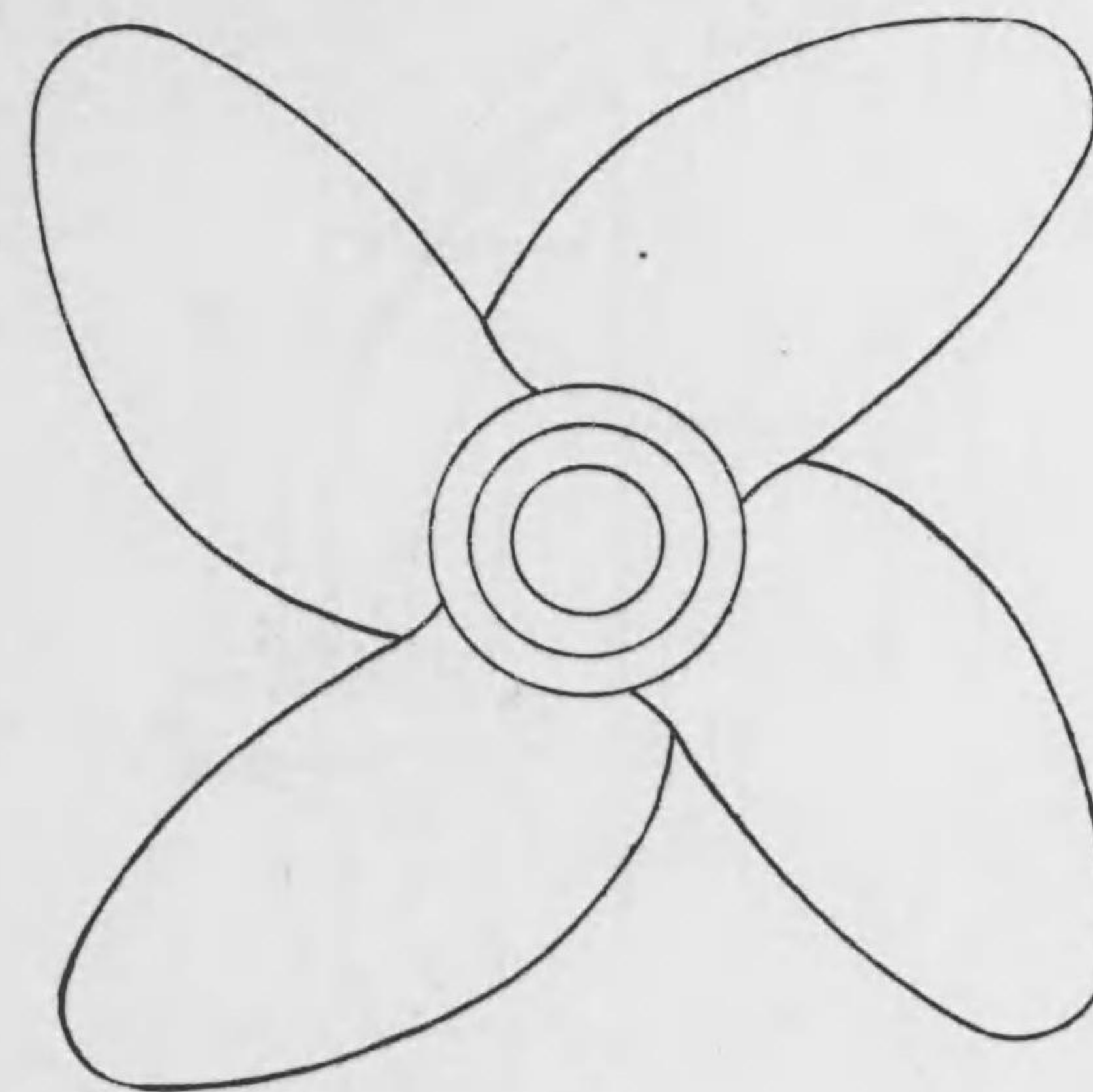


Fig. 11.

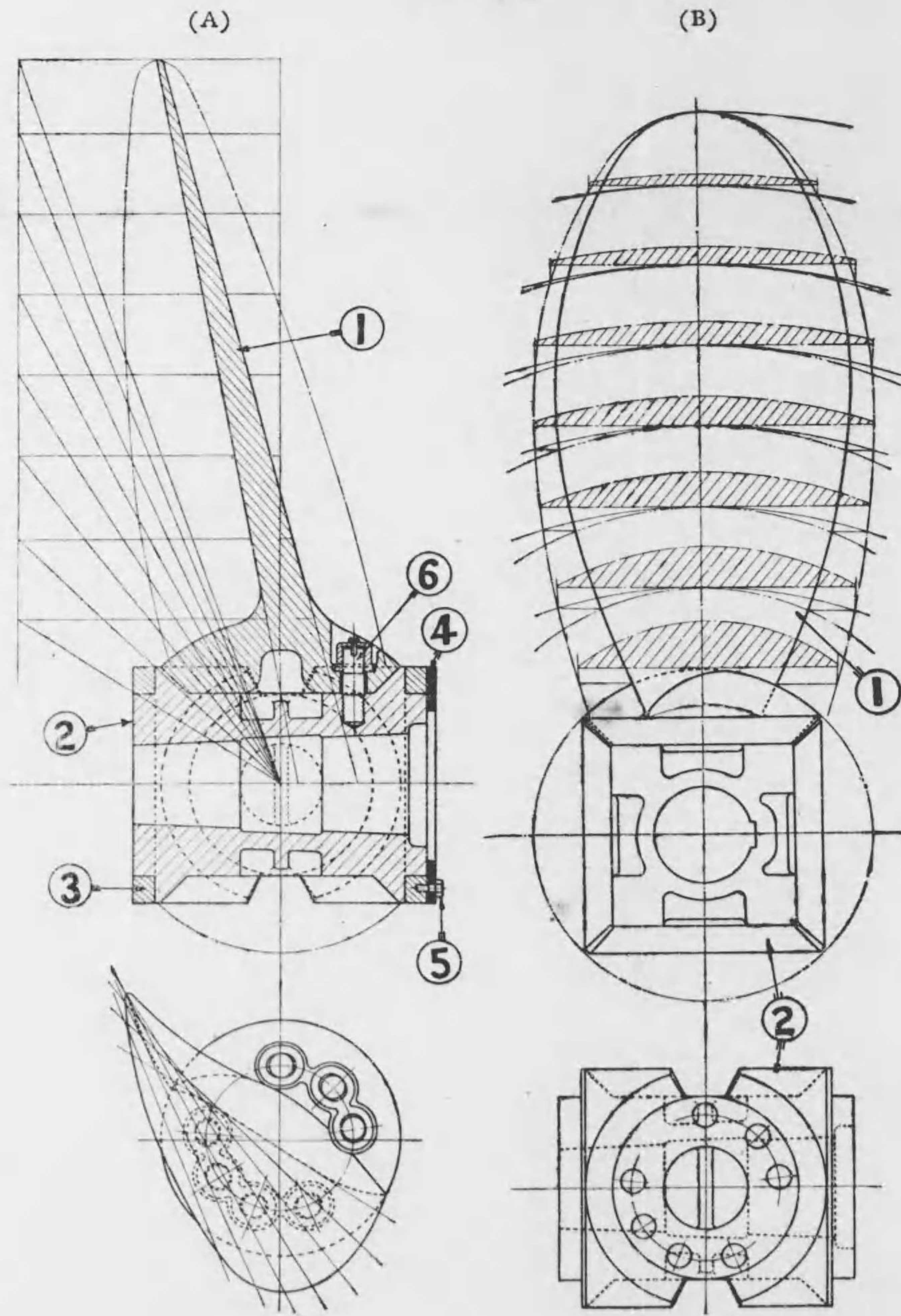


Fig. 10.  
Screw propeller for turbine.

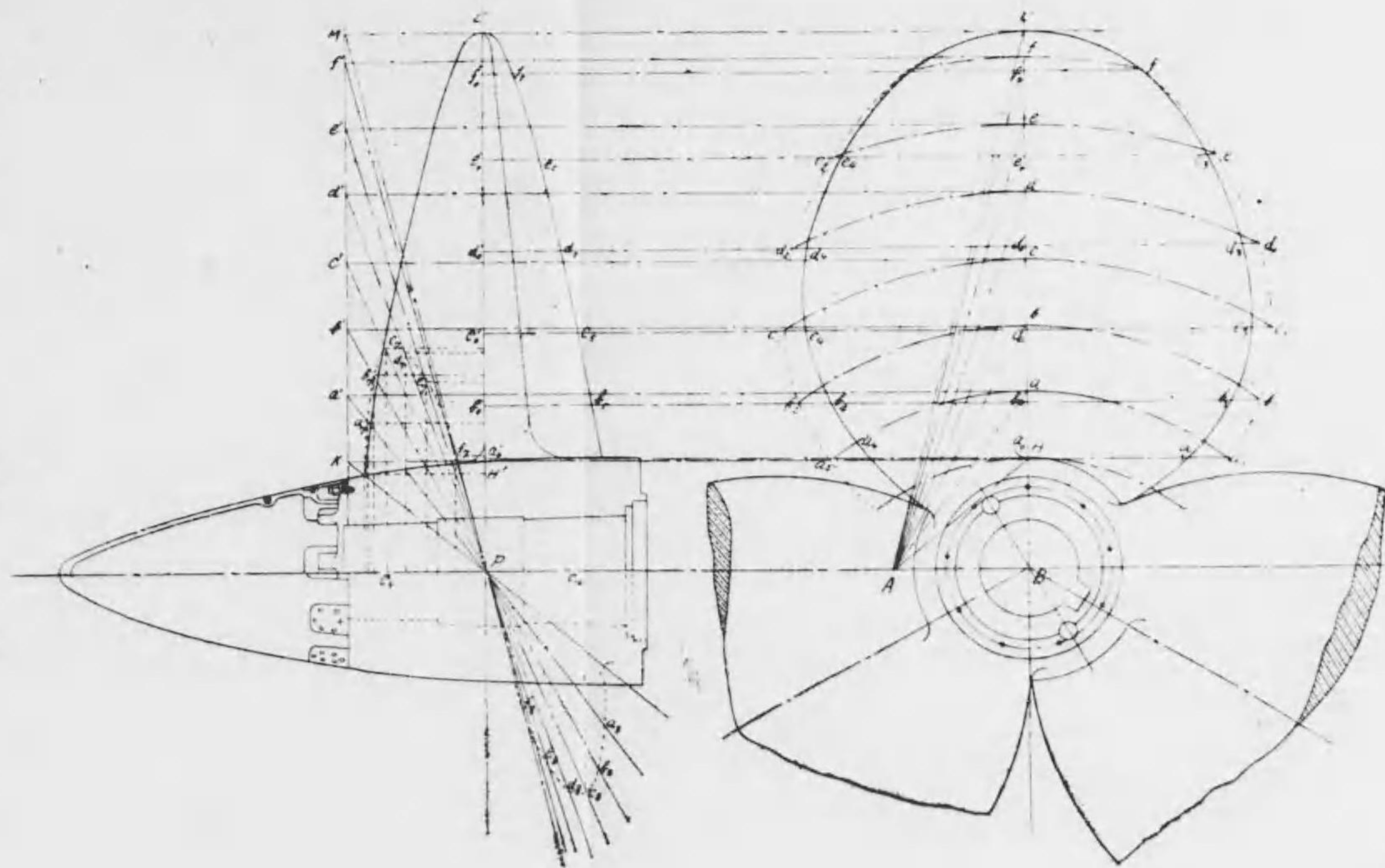


Fig. 12.  
Stern tube.

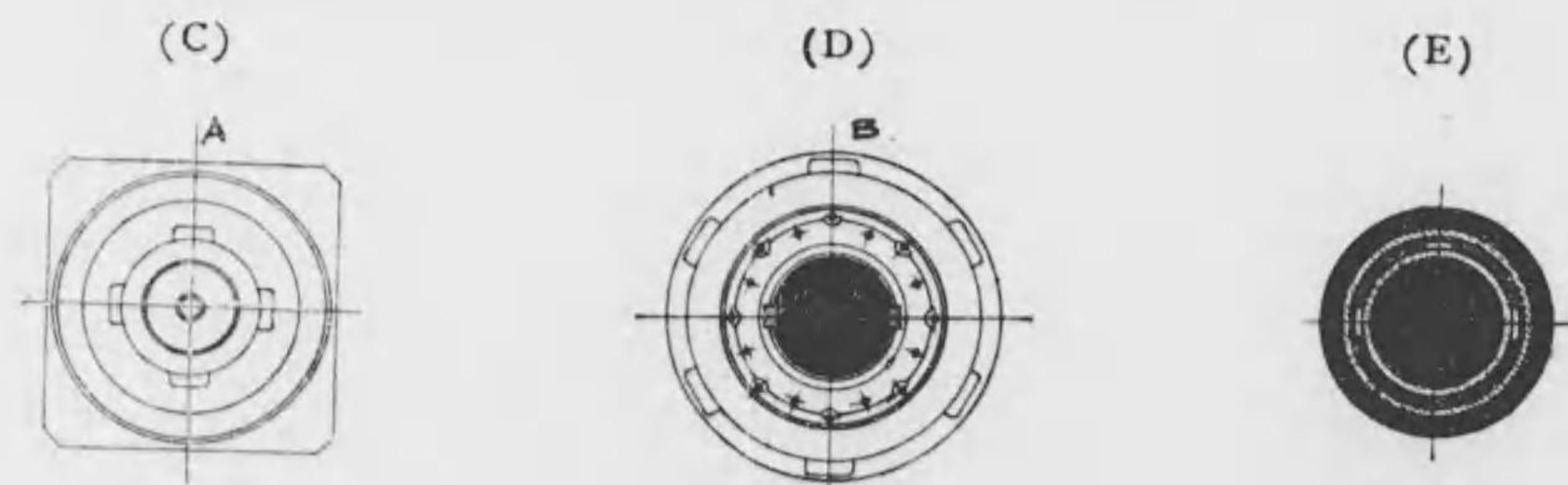
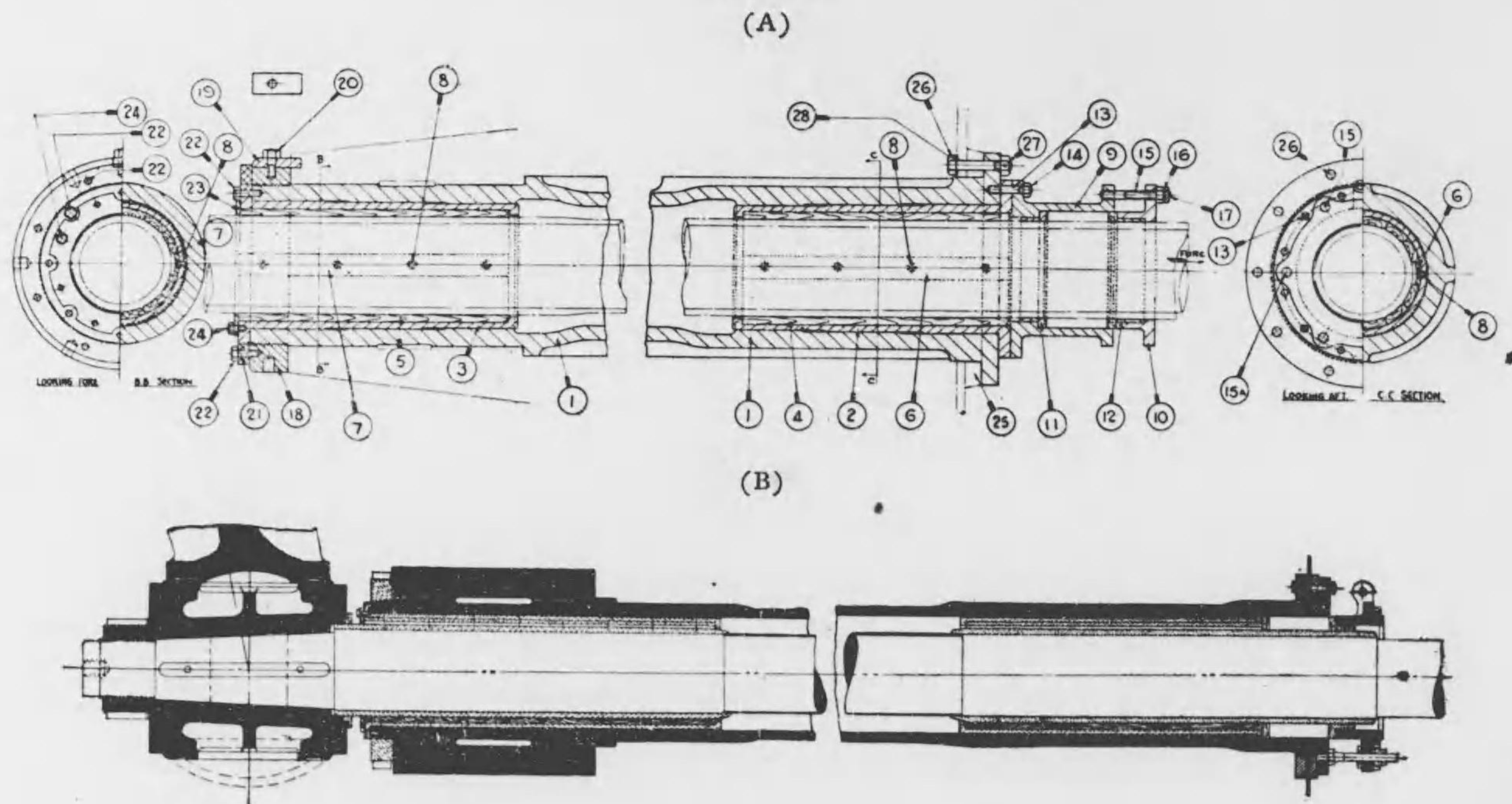
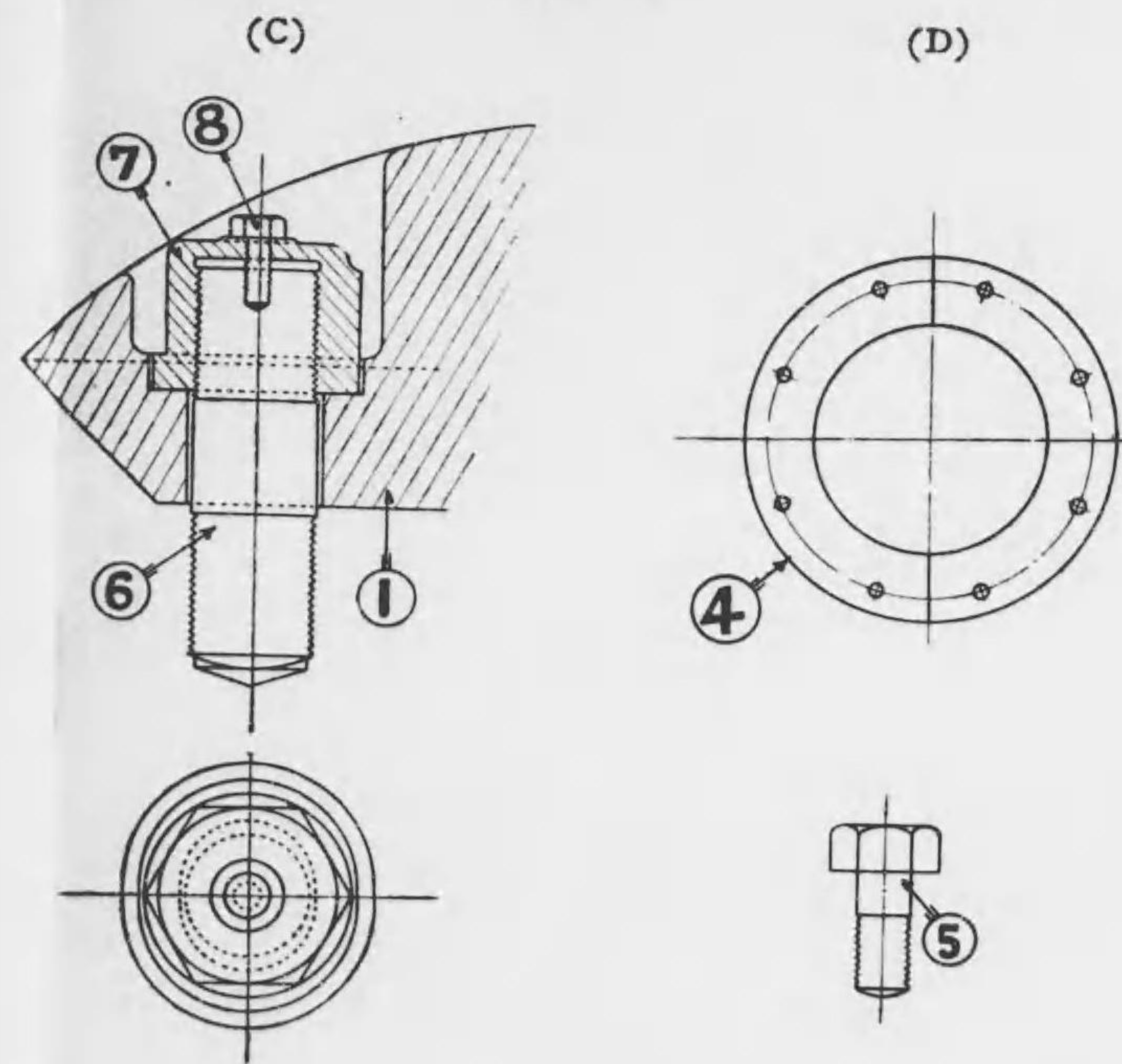


Fig. 11.



PORT PROPELLER.

BLADE	PITCH WIDTH THICKNESS	AT THE DIAMETER OF						MEAN PITCH
		3'-0"	4'-0"	5'-0"	6'-0"	7'-0"	8'-0"	
A	P.	10'-1"	10'-1"	10'-0"	10'-0"	10'-0"	10'-0"	10'-3333
	W.	11 1/2" x 11"	12 1/2" x 12"	13 1/2" x 12 1/2"	13 1/2" x 12 1/2"	12 1/2" x 11 1/2"	9 1/2" x 8 1/2"	
	T.	3 1/2"	2 1/2"	2 1/2"	1 1/2"	1 1/2"	1 1/2"	
B	P.	10'-2"	10'-1 1/2"	10'-1"	10'-0"	10'-0"	10'-0"	10'-75
	W.	11 1/2" x 11"	12 1/2" x 12"	13 1/2" x 12 1/2"	13 1/2" x 12 1/2"	12 1/2" x 11 1/2"	9 1/2" x 8 1/2"	
	T.	3 1/2"	2 1/2"	2 1/2"	1 1/2"	1 1/2"	1 1/2"	
C	P.	10'-1 1/2"	10'-1 1/2"	10'-1"	10'-0"	9'-11 1/2"	10'-0"	10'-5233
	W.	11 1/2" x 11"	12 1/2" x 12"	13 1/2" x 12 1/2"	13 1/2" x 12 1/2"	12 1/2" x 11 1/2"	9 1/2" x 8 1/2"	
	T.	3 1/2"	2 1/2"	2 1/2"	1 1/2"	1 1/2"	1"	
D	P.	10'-2"	10'-1 1/2"	10'-1"	10'-1"	9'-11 1/2"	10'-0"	10'-5233
	W.	11 1/2" x 11"	12 1/2" x 12"	13 1/2" x 12 1/2"	13 1/2" x 12 1/2"	12 1/2" x 11 1/2"	9 1/2" x 8 1/2"	
	T.	3 1/2"	2 1/2"	2 1/2"	1 1/2"	1 1/2"	1"	

MEAN OF MEAN PITCH 10'-5233  
SAY 10'-0 1/2"

STARBOARD PROPELLER.

BLADE	PITCH WIDTH THICKNESS	AT THE DIAMETER OF						MEAN PITCH
		3'-0"	4'-0"	5'-0"	6'-0"	7'-0"	8'-0"	
A	P.	10'-1 1/2"	10'-1"	10'-0"	10'-0"	10'-0"	10'-0"	10'-4233
	W.	11 1/2" x 11"	12 1/2" x 12"	13 1/2" x 12 1/2"	13 1/2" x 12 1/2"	12 1/2" x 11 1/2"	9 1/2" x 8 1/2"	
	T.	3 1/2"	2 1/2"	2 1/2"	1 1/2"	1 1/2"	1 1/2"	
B	P.	10'-0"	10'-0"	10'-0"	10'-0"	10'-0"	10'-0"	10'-0"
	W.	11 1/2" x 11"	12 1/2" x 12"	13 1/2" x 12 1/2"	13 1/2" x 12 1/2"	12 1/2" x 11 1/2"	9 1/2" x 8 1/2"	
	T.	3 1/2"	2 1/2"	2 1/2"	1 1/2"	1 1/2"	1"	
C	P.	10'-2"	10'-1"	10'-1"	10'-0"	10'-0"	9'-11 1/2"	10'-5233
	W.	11 1/2" x 11"	12 1/2" x 12"	13 1/2" x 12 1/2"	13 1/2" x 12 1/2"	12 1/2" x 11 1/2"	9 1/2" x 8 1/2"	
	T.	3 1/2"	2 1/2"	2 1/2"	1 1/2"	1 1/2"	1"	
D	P.	10'-1"	10'-0"	10'-0"	10'-0"	10'-0"	10'-0"	10'-25
	W.	11 1/2" x 11"	12 1/2" x 12"	13 1/2" x 12 1/2"	13 1/2" x 12 1/2"	12 1/2" x 11 1/2"	9 1/2" x 8 1/2"	
	T.	3 1/2"	2 1/2"	2 1/2"	1 1/2"	1 1/2"	1"	

MEAN OF MEAN PITCH 10'-546  
SAY 10'-0 1/2"

Fig. 14.

Course of the trial-trips.

FIGURES SHOW DEPTHS OF WATER IN FATHOMS

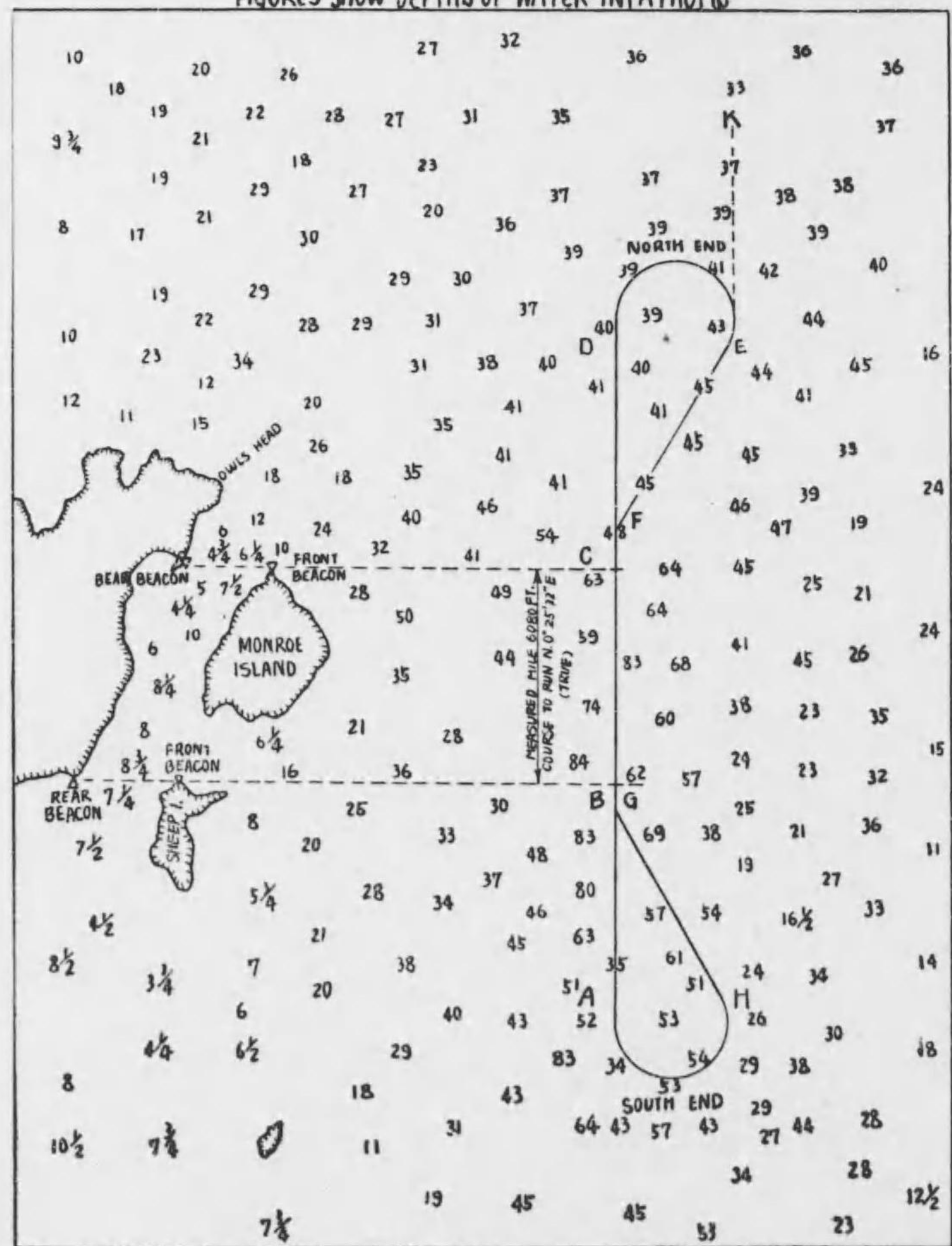


Fig. 13.

Strat.

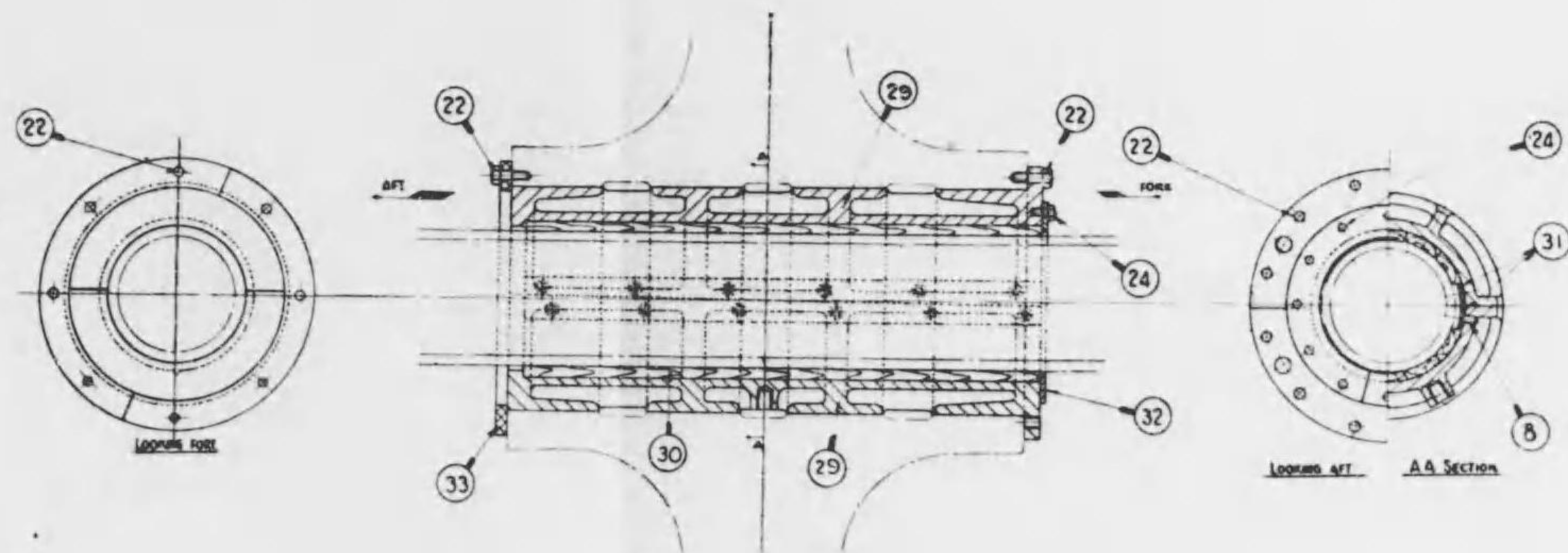


Fig. 13.

Cedervall's stern tube.

(B)

(A)

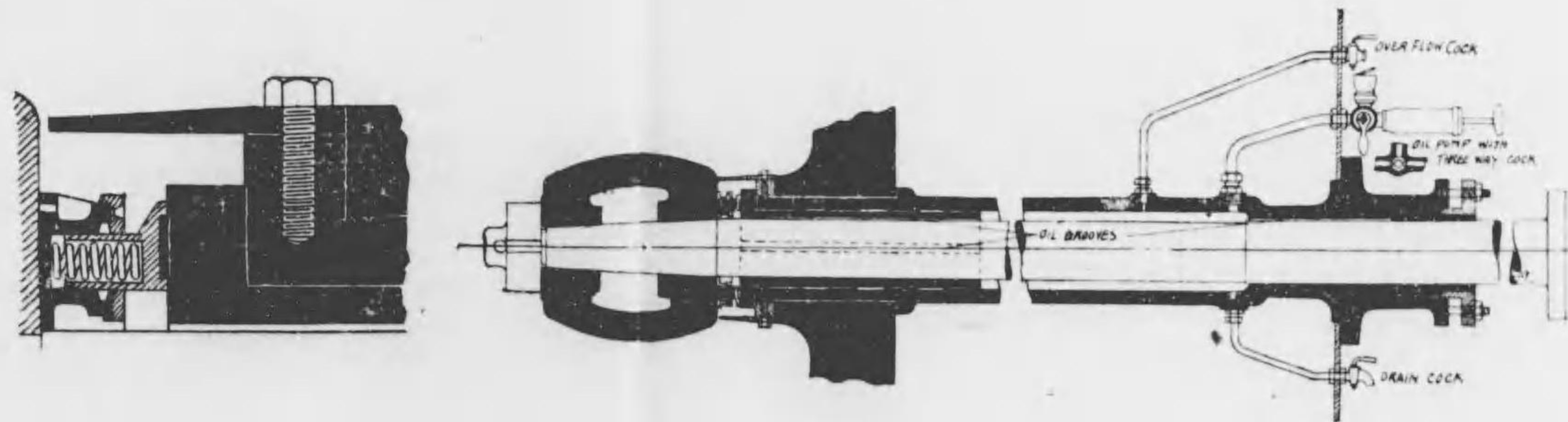


Fig. 13.  
Stern

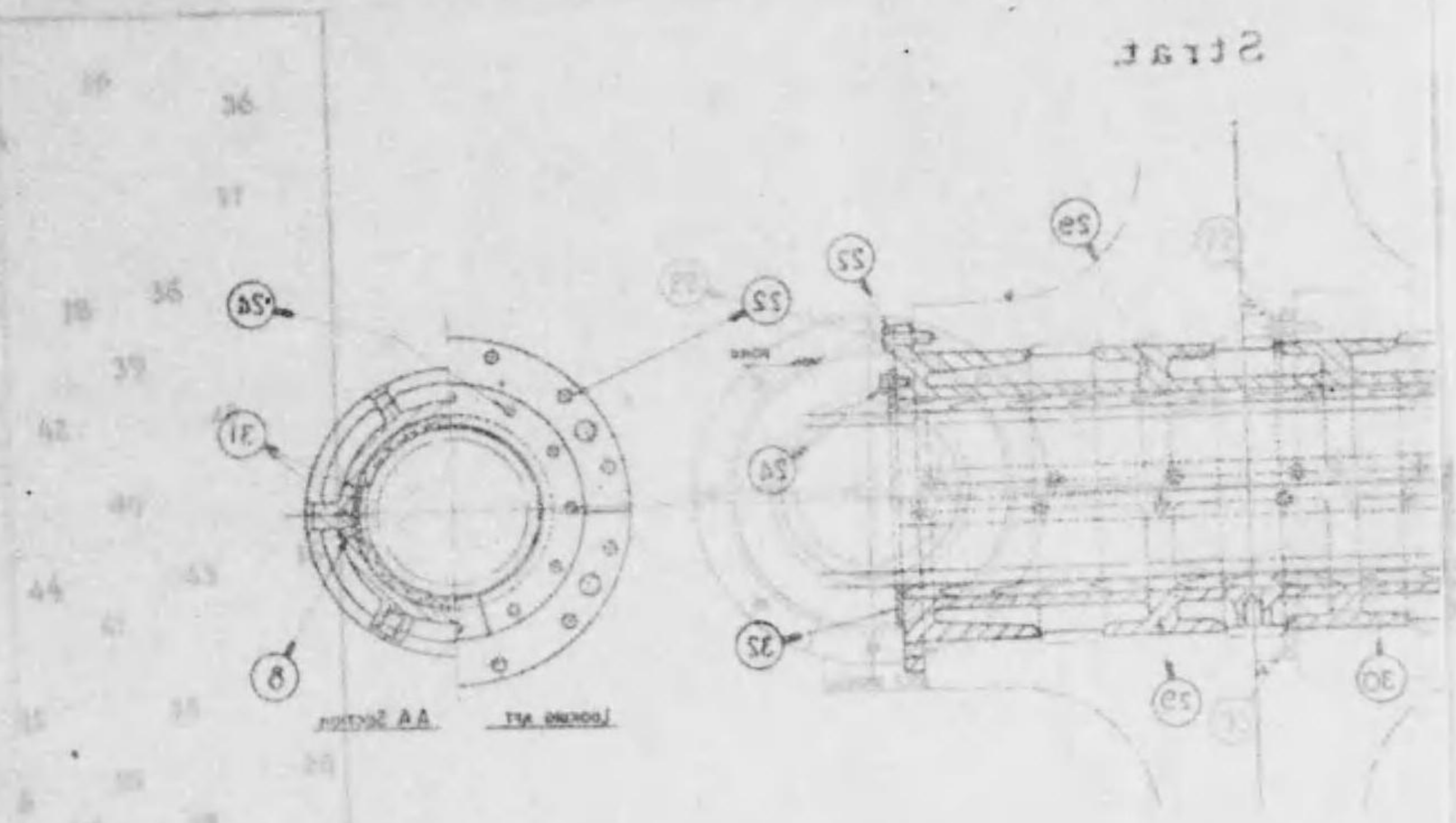
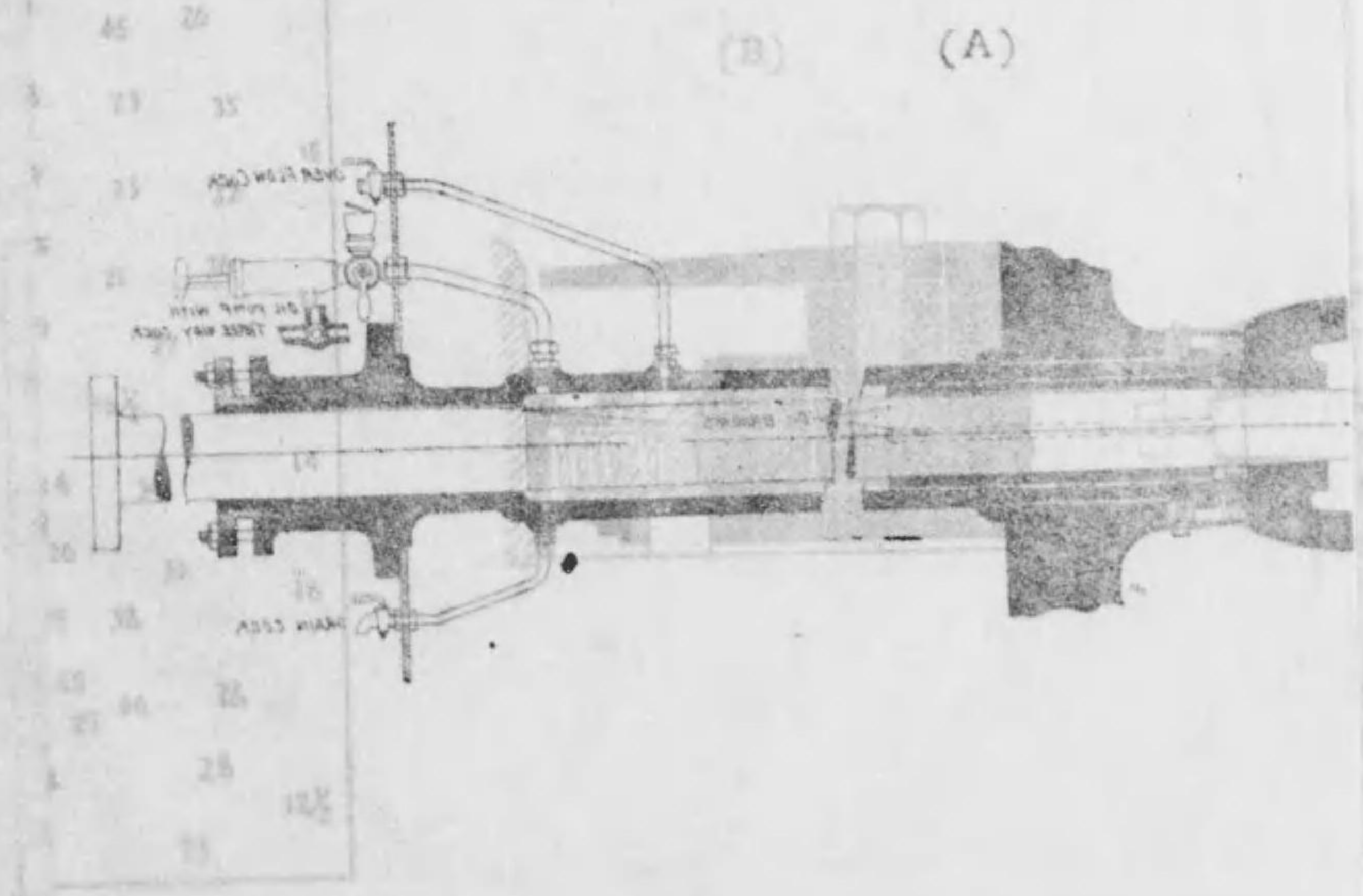


Fig. 13.  
Cedervall's stern tube.



昭和十一年三月廿五月初版發行  
昭和十三年三月廿五日再版印刷  
昭和十三年三月三十日再版發行

定價壹圓六拾五錢

著者 吉利巖

發行者 海事教育振興會理事 篠崎 認三

印刷者 兵庫縣武庫郡本庄村深江七五〇 後藤 富之助

發行所 兵庫縣武庫郡本庄村深江 神戶高等商船學校內 海事教育振興會

不 許  
製 復





終

