



LIBRARY OF THE  
JOHN G. JOHNSON COLLECTION  
CITY OF PHILADELPHIA





ON FREE PUBLIC VIEW  
AT THE  
AMERICAN ART GALLERIES  
MADISON SQUARE SOUTH, NEW YORK

BEGINNING WEDNESDAY, MARCH 1st, 1916

AND CONTINUING UNTIL THE MORNING OF  
THE DATE OF SALE, INCLUSIVE.

NEARLY FIVE HUNDRED PAINTINGS  
FROM THE  
BLAKESLEE GALLERIES

TO BE SOLD AT UNRESTRICTED PUBLIC SALE  
IN THE GRAND BALLROOM OF

THE PLAZA HOTEL  
FIFTH AVENUE, 58th TO 59th STREET, NEW YORK

ON MONDAY EVENING, MARCH 6th, 1916

BEGINNING PROMPTLY AT 8 O'CLOCK

AND CONTINUING

AT THE AMERICAN ART GALLERIES  
MADISON SQUARE SOUTH

ON TUESDAY, WEDNESDAY, THURSDAY AND FRIDAY EVENINGS  
MARCH 7th, 8th, 9th AND 10th

BEGINNING PROMPTLY AT 8 O'CLOCK



Digitized by the Internet Archive  
in 2013

<http://archive.org/details/nearlyfivehundre00amer>

ILLUSTRATED CATALOGUE  
OF  
NEARLY FIVE HUNDRED PAINTINGS  
OF THE EARLY ENGLISH, FRENCH, FLEMISH, DUTCH,  
ITALIAN, SPANISH AND AMERICAN SCHOOLS

FROM THE WIDELY KNOWN

BLAKESLEE GALLERIES

OF WHICH, ON APPLICATION OF THE COLUMBIA TRUST COMPANY AND  
MRS. THERON J. BLAKESLEE, ADMINISTRATORS OF THE LATE THERON J. BLAKESLEE  
SURROGATE COHALAN HAS ORDERED A PUBLIC SALE TO BE MADE

THE UNRESTRICTED PUBLIC SALE WILL BE HELD

IN THE GRAND BALLROOM OF THE

PLAZA HOTEL

FIFTH AVENUE, 58th TO 59th STREET

AND WILL CONTINUE

AT THE AMERICAN ART GALLERIES

MADISON SQUARE SOUTH

ON THE EVENINGS HEREIN STATED

THE SALE WILL BE CONDUCTED BY

MR. THOMAS E. KIRBY

AND HIS ASSISTANT, MR. OTTO BERNET, OF

THE AMERICAN ART ASSOCIATION, MANAGERS

NEW YORK

1916



THE AMERICAN ART ASSOCIATION  
DESIGNS ITS CATALOGUES AND DIRECTS  
ALL DETAILS OF ILLUSTRATION  
TEXT AND TYPOGRAPHY



## CONDITIONS OF SALE

1. Any bid which is merely a nominal or fractional advance may be rejected by the auctioneer, if, in his judgment, such bid would be likely to affect the sale injuriously.

2. The highest bidder shall be the buyer, and if any dispute arise between two or more bidders, the auctioneer shall either decide the same or put up for re-sale the lot so in dispute.

3. Payment shall be made of all or such part of the purchase money as may be required, and the names and addresses of the purchasers shall be given immediately on the sale of every lot, in default of which the lot so purchased shall be immediately put up again and re-sold.

Payment of that part of the purchase money not made at the time of sale shall be made within ten days thereafter, in default of which the undersigned may either continue to hold the lots at the risk of the purchaser and take such action as may be necessary for the enforcement of the sale, or may at public or private sale, and without other than this notice, re-sell the lots for the benefit of such purchaser, and the deficiency (if any) arising from such re-sale shall be a charge against such purchaser.

4. Delivery of any purchase will be made only upon payment of the total amount due for all purchases at the sale.

Deliveries will be made on sales days between the hours of 9 A. M. and 1 P. M., and on other days—except holidays—between the hours of 9 A. M. and 5 P. M.

Delivery of any purchase will be made only at the American Art Galleries, or other place of sale, as the case may be, and only on presenting the bill of purchase.

Delivery may be made, at the discretion of the Association, of any purchase during the session of the sale at which it was sold.

5. Shipping, boxing or wrapping of purchases is a business in which the Association is in no wise engaged, and will not be performed by the Association for purchasers. The Association will, however, afford to purchasers every facility for employing at current and reasonable rates carriers and packers; doing so, however, without any assumption of responsibility on its part for the acts and charges of the parties engaged for such service.

6. Storage of any purchase shall be at the sole risk of the purchaser. Title passes upon the fall of the auctioneer's hammer, and thereafter, while the Association will exercise due caution in caring

for and delivering such purchase, it will not hold itself responsible if such purchase be lost, stolen, damaged or destroyed.

Storage charges will be made upon all purchases not removed within ten days from the date of the sale thereof.

7. **Guarantee** is not made either by the owner or the Association of the correctness of the description, genuineness or authenticity of any lot, and no sale will be set aside on account of any incorrectness, error of cataloguing, or any imperfection not noted. Every lot is on public exhibition one or more days prior to its sale, after which it is sold "as is" and without recourse.

The Association exercises great care to catalogue every lot correctly, and will give consideration to the opinion of any trustworthy expert to the effect that any lot has been incorrectly catalogued, and, in its judgment, may either sell the lot as catalogued or make mention of the opinion of such expert, who thereby would become responsible for such damage as might result were his opinion without proper foundation.

#### SPECIAL NOTICE.

Buying or bidding by the Association for responsible parties on orders transmitted to it by mail, telegraph or telephone, will be faithfully attended to without charge or commission. Any purchase so made will be subject to the above Conditions of Sale, which cannot in any manner be modified. The Association, however, in the event of making a purchase of a lot consisting of one or more books for a purchaser who has not, through himself or his agent, been present at the exhibition or sale, will permit such lot to be returned within ten days from the date of sale, and the purchase money will be returned, if the lot in any material manner differs from its catalogue description.

**Orders** for execution by the Association should be written and given with such plainness as to leave no room for misunderstanding. Not only should the lot number be given, but also the title, and bids should be stated to be so much *for the lot*, and when the lot consists of one or more volumes of books or objects of art, the bid per *volume* or *piece* should also be stated. If the one transmitting the order is unknown to the Association, a deposit should be sent or reference submitted. Shipping directions should also be given.

**Priced copies** of the catalogue of any sale, or any session thereof, will be furnished by the Association at a reasonable charge.

AMERICAN ART ASSOCIATION,

American Art Galleries,  
Madison Square South,  
New York City.

# CATALOGUE

IMPORTANT NOTICE

THE FIRST SESSION

OF THE

BLAKESLEE GALLERIES SALE

WILL TAKE PLACE

ON MONDAY EVENING, MARCH 6th, 1916

BEGINNING PROMPTLY AT 8 O'CLOCK

IN THE GRAND BALLROOM OF THE PLAZA

AND

THE CONCLUDING SESSIONS

WILL BE HELD

ON TUESDAY, WEDNESDAY, THURSDAY AND FRIDAY EVENINGS

MARCH 7th, 8th, 9th AND 10th

AT 8 O'CLOCK

AT THE AMERICAN ART GALLERIES

MADISON SQUARE SOUTH

# FIRST EVENING'S SALE

MONDAY, MARCH 6, 1916

IN THE GRAND BALLROOM OF

## THE PLAZA

FIFTH AVENUE, 58<sup>TH</sup> TO 59<sup>TH</sup> STREET

BEGINNING PROMPTLY AT 8 O'CLOCK

---

EMIL RAU

GERMAN: 1858—

### 1—INTERIOR

*Height, 19 inches; width, 15 inches*

INTERIOR with three German figures, man standing with pipe in left hand and glass in right, toasting a girl to left; another man playing zither to right.

*Signed at the lower right, E. RAU, MÜNCHEN.*

WILLIAM KEITH

AMERICAN: 1839—1911

### 2—AUTUMN: CALIFORNIA

*Height, 16 inches; length, 24 inches*

GOLDEN-TONED view with group of trees to left, cattle watering in broad placid river.

*Signed at the lower right, W. KEITH, S.F.*

JOHANNES HENDRIK WEISSENBRUCH

DUTCH: 1824—1880

3—*LANDSCAPE*

*Panel: Height, 8 inches; length, 12 inches*

SCENE in a well-wooded dell, with spring effects.

*Signed with initials J. H. W. in lower right-hand corner.*

WILLIAM KEITH

AMERICAN: 1839—1911

4—*GOLDEN SUNSET*

*Height, 16 inches; length, 24 inches*

LANDSCAPE with shallow river and cattle watering in center, masses of trees on right and left banks.

*Signed at the lower right, W. KEITH, S.F.*

EUGÈNE JOSEPH VERBOECKHOVEN

GERMAN: 1799—1881

5—*SHEEP*

*Panel: Height, 24 inches; width, 19 inches*

LANDSCAPE with five sheep in the foreground, other sheep and house in the distance, hill to left; early autumn.

*Signed at the lower left, EUGÈNE VERBOECKHOVEN, and dated 1878. With the artist's attestation signed and dated BRUSSELS pasted on the back of the panel.*



## SCHOOL OF CLOUET

### 6—*PORTRAIT OF A YOUNG LADY*

*Height, 16 inches; width, 13 inches*

SMALL head and shoulders of a lady of quality, gray and black dress with elaborate design in gold and other threads, white close-fitting ruffle, fair curly hair dressed flat with gray headdress, three-row pearl necklace. In a Renaissance frame.

*From the Gavet Collection, Paris.*

## COSIMO TURA

ITALIAN: 1420(?)—1495

### 7—*DEATH OF LUCRETIA*

*Panel: Height, 9 inches; length, 32 inches*

CASSONE front with the subject of the Death of Lucretia; a composition of numerous equestrian and other figures; distant view of hills and river with boats.



## GEORGE PENCZ

### 8—*PORTRAIT OF A LADY*

*Panel: Height, 25 inches; width, 18 inches*

SMALL half-length of a lady in black tight-fitting dress, collar and corsage embroidered with gold, gold chain and necklace with portrait medallion pendant, right hand with several rings, elaborately embroidered gold and silver head-dress.

*Inscribed at top left-hand corner: "Anno ætatis XXII."*

## GERARD TERBURG

DUTCH: 1617—1681

### 9—*THE MANDOLIN PLAYER*

*Height, 14 inches; length, 18 inches*

SMALL whole-length of a lady in white satin dress with gold plush jacket trimmed with white fur, seated to left playing a guitar and singing from an open piece of music which rests on table to right; brownish hair tied with red ribbon.

*A version of the picture in the Cassel Gallery.*





SIR JOSHUA REYNOLDS, P.R.A.

ENGLISH: 1723—1792

10—*COUNTESS OF STRAFFORD*

*Height, 29 inches; width, 24 inches*

Lady Anne Campbell, daughter of the Duke of Argyle; born in 1715, married in 1741 William Wentworth, Earl of Strafford; died in 1785.

HALF-FIGURE, in white low dress with two strings of pearls and precious stones; blue and ermine cloak over right shoulder, pearl earrings, blue neck ribbon with double row of pearls.

*Engraved by J. McArdell, 1762, and others.*

*From Thomas McLean's Collection, London, 1908.*

*Purchased from Messrs. Agnew & Sons, London.*



SIR THOMAS LAWRENCE, P.R.A.  
(PERIOD OF)

11—*PORTRAIT OF A LADY*

*Height, 30 inches; width, 25 inches*

HALF-FIGURE to front, age about thirty; dark blue low dress with short puffed sleeves and red band, ruby brooch at center of corsage; black curly hair, red curtain background.



ANTOINE VESTIER

FRENCH: 1740—1824

12—*PORTRAIT OF A YOUNG LADY*

*Height, 35 inches; width, 29 inches*

HALF-LENGTH, seated, pink and white dress, black hat with white feathers and pink rose; right hand on toy dog.

GEORGE HENRY HARLOW

ENGLISH: 1787—1819

13—*MRS. DIXON*

*Height, 30 inches; width, 25 inches*

HALF-FIGURE, creamy white dress cut square, with high waist, mauve belt; pearl necklace, dark curly hair bound with pink ribbon.



HERMAN VANDERMYN

Dutch: 1684—1741

14—*PORTRAIT OF A LADY*

*Height, 32 inches; width, 26 inches*

THREE-QUARTER length, seated at a balcony, white low dress and blue cloak, flat hat trimmed with black, pearl earrings and bracelet; fruit on lap.

*Purchased from Sully & Co., London.*

FRANCIS COTES, R.A.

English: 1726—1770

15—*PORTRAIT OF A LADY*

*Height, 30 inches; width, 25 inches*

HALF-FIGURE in an oval, face in profile, creamy white low dress, sleeves slashed with red, white collar, dark hair with feathers and pearl fastener, pearl drop earring.



NICHOLAS MAES

DUTCH: 1632—1693

16—*A GROUP*

*Height, 35 inches; width, 26 inches*

YOUNG man in red dress, and pink sandals, holding staff in left hand, girl in blue dress and hat trimmed with ostrich feathers holding bow in left hand; the two figures separated by a greyhound; landscape background.

*From Lord Buckland's Collection, England.*



JOHN CONSTABLE, R.A.  
(ATTRIBUTED)

16A—*DEDHAM VALE*

*Height, 28 inches; length, 36 inches*

A MISTY green and brown landscape stretches away from the spectator. The country is rolling and dotted with single and scattered rows of trees. At the left two gossips pause midway on a path leading to the left, and near by are sheep. In the foreground a pool, and at the right a thatched shed and a man in a red jacket.

*Painted in England about 1805.*



GERARD VAN HONTHORST

Dutch: 1590—1656

17—*THE MUSICIAN*

*Height, 34 inches; width, 30 inches*

HALF-FIGURE of young lady playing a violin and singing, brown dress, white neckerchief, black felt hat, long dark hair.



JOHN SINGLETON COPLEY, R.A.

ENGLISH: 1737—1815

18—*PORTRAIT GROUP*

*Height, 34 inches; width, 28½ inches*

FATHER and son in blue dresses and gray wigs, the elder's right hand resting on back of chair, the son holding a drawing of a classical head; writing material and a paper with figures on table.

This group was purchased privately in Boston, and is traditionally said to represent the artist and his son.



SIR BENJAMIN WILLIAMS LEADER, R.A.

ENGLISH: 1831—

19—*SKIRTS OF A WORCESTERSHIRE COMMON*

*Height, 19 inches; length, 30 inches*

EVENING effects on a common with pool in front of cottage to left, figures and cattle in the distance.

*Signed at the lower left, B. W. LEADER, and dated 1906.*

SIR THOMAS LAWRENCE, P.R.A.

(PERIOD OF)

20—*LADY LYNDHURST*

*Height, 29 inches; width, 24 inches*

Sarah Garay, daughter of Charles Brunsten; married firstly Lieut.-Col. Charles Thomas, of the 1st Foot Guards, who was killed at Waterloo; and secondly in 1819, Sir John S. Copley, Baron Lyndhurst, Lord Chancellor of England, 1827-30; died January 15, 1834.

HALF-FIGURE of middle-aged lady, face almost in profile; low greenish dress, short puffed sleeves trimmed with white, brown fur-edged cloak thrown back, rose at center of corsage; dark curly hair, bound with pinkish ribbon, hands folded.

*Purchased from Wallis & Son, London.*

EDWARD MORAN

AMERICAN: 1829—1901

21—*SUNRISE, NEW YORK HARBOR*

*Height, 23 inches; length, 41 inches*

EARLY morning with sunrise effects on the water, numerous rigged sailing ships and other craft and figures.

*Signed at the lower left, EDWARD MORAN, and dated 1873.*



SIR THOMAS LAWRENCE  
(PERIOD OF)

22—*THE COUNTESS OF GALLOWAY*

*Height, 36 inches; width, 28 inches*

Jane, daughter of Henry 1st Earl of Uxbridge; born Sept. 1, 1774, married April 18, 1787, Admiral George Stewart afterwards Earl of Galloway; died June 30, 1842.

HALF-FIGURE seated, dark-brown V-shaped low dress trimmed with blue and edged with white; brown curly hair, lace head-dress with long white satin streamers that fall over left shoulder and are held by right hand, left arm resting on table; brown curtain to right.

*From the Earl of Galloway's Collection.*



RICHARD COSWAY, R.A.

ENGLISH: 1740—1821

23—*LADY SEATED IN A LANDSCAPE*

*Height, 49 inches; width, 39 inches*

THREE-QUARTER length of a lady from twenty-five to thirty, seated in a landscape beneath a tree, white low dress with short puffed sleeves and white fichu, pink bow at center of corsage; gray shawl, powdered curly hair; large black felt hat trimmed with pink ribbon and white feathers; left hand holding partly opened fan; distant landscape to left.

SIR WILLIAM Q. ORCHARDSON, R.A.

ENGLISH: 1835—1910

(*Four oil sketches from the artist's sale*)

24—*NOVEMBER, OR SOLITUDE*

*Height, 49 inches; width, 30½ inches*

WINTER landscape with tall trees and shrubs, in the center of which stands a lady in gray long cloak and "Dolly Varden" hat.

25—*IN THE GLOAMING*

*Height, 28 inches; length, 47 inches*

EVENING scene, with a lady dressed in furs and with fur muff and dark hat seated in an open carriage, and passing through a valley, landscape and towers in the distance. Apparently a sketch for "Lady in Brougham" reproduced in J. E. Little's "Life and Work of W. Q. Orchardson, R.A.," 1897, p. 14.

26—*FISHING BOATS*

*Height, 26 inches; length, 46 inches*

MOONLIGHT scene with numerous fishing boats putting out to sea.

27—*FLOTSAM AND JETSAM*

*Height, 23 inches; length, 38 inches*

STORMY seashore with peasant girl hauling in wreckage.

SIR GODFREY KNELLER

(AFTER)

28—*EDWARD HYDE, EARL OF CLARENDON*

*Height, 39 inches; width, 39 inches*

THREE-QUARTER figure, seated near a balcony, in Chancellor's robes, long fair hair, mustache and chin tuft.

## SALOMON VAN RUYSDAEL

DUTCH: ABOUT 1600—1670

### 29—*LANDSCAPE*

*Height, 31 inches; width, 42 inches*

EXTENSIVE summer view of shallow river with boat and well-wooded banks, cows watering.

*Signed with initials and dated (indistinct) in lower right-hand corner.*

*Purchased from Sully & Co., London.*

## ADRIAEN HANNEMAN

DUTCH: 1601—1670

### 30—*PORTRAIT OF A LADY*

*Height, 41 inches; width, 31 inches*

THREE-QUARTER length of a young lady, seated in armchair to front, old-gold dress cut low with white satin trimming and pearl pendants at corsage, blue cloak, dark hair, pearl earrings, gold necklace, left hand holding red rose.

## ATTRIBUTED TO JOHN OPIE

### 31—*PORTRAIT OF A LADY*

*Height, 47 inches; width, 35 inches*

THREE-QUARTER length figure of a lady seated under trees, in low white dress and black fur scarf, holding fan in left hand.

## SPANISH SCHOOL, XVII CENTURY

### 31A—*PORTRAIT OF AN INFANTA*

*Height, 28½ inches; length, 36 inches*

BUST portrait of a young woman. Three-quarter view to the right. Her dark hair is rolled and carried far down over her ears. High, stiff ruff and a triple string of pearls over an old-gold bodice.



JOHN RAPHAEL SMITH

ENGLISH: 1752—1812

32—*GIRL WITH DOG*

*Height, 49 inches; width, 39 inches*

WHOLE-LENGTH figure of a little girl about four or five, seated in the corner of a blue upholstered sofa, looking at spectator; low white dress with broad blue sash, and fondling a spaniel which is gazing up into the child's face; brown curtain to right.

John Raphael Smith, the famous mezzotint engraver, painted several pictures of this type.

## JACOB HOUSMAN (OR HUYSMANS)

ENGLISH: 1633—1696

### 33—MRS. BLOUNT

*Height, 52 inches; width, 35½ inches*

THREE-QUARTER length, walking to right, in a landscape: old gold shot-silk low dress edged with white and fastened with pearl buttons, short sleeves trimmed with white: brownish gray cloak fastened with brooch: brown curly hair with pearl ornament: pearl necklace and earrings: left hand holding a sheet of music.

*Inscribed to left in gold letters: MRS. BLOUNT.*

*Purchased from Hodgkin, Paris.*

## FRANCESCO BOTTICINI

FLORENTINE SCHOOL: 1446—1497

### 33A—MADONNA AND CHILD

*Panel: Circular, 38 inches*

HALF-LENGTH figure of the golden-haired Virgin, seated to front, in yellow, blue and green draperies, the blue mantle embroidered in gold at the edge: the Infant, with left foot on a cushion which rests on his mother's lap, the right held by her left hand, in white garment, standing and embracing her: to left a saint in white and red draperies, and to right one in red, each holding a lily branch: blue background.

*The attribution to Botticini confirmed by Mr. Berenson.*

## JOSEPH HIGHMORE

ENGLISH: 1692—1780

### 34—PORTRAIT OF A LADY

*Height, 50 inches; width, 40 inches*

THREE-QUARTER length, blue low dress embroidered with gold and edged with white, blue hat with flowers, brown shawl over right arm, left hand holding miniature of elderly gentleman in red coat and long wig.

## NICOLAS DE LARGILLIÈRE

FRENCH: 1656—1746

### 35—*LADY IN BLACK*

*Height, 54 inches; width, 41 inches*

THREE-QUARTER length portrait of middle-aged lady in gold-patterned black gown cut to V-shape, hat with feathers; fan in right hand, black mask in left.

## LOUIS GALLAIT

BELGIAN: 1810—1887

### 36—*ART AND LIBERTY*

*Height, 58 inches; width, 43 inches*

NEARLY whole-length figure of a young man standing by the wall of a lake, in black jacket and white shirt sleeves, a violin in left hand and bow in right; to left writing materials and sheet of music inscribed "Arte & Liberta"; marble column, inscribed "Maria," with vine branches.

*Signed at the lower right, LOUIS GALLAIT, and dated 1865.*

## MARTIN CREGAN, P.R.I.A.

ENGLISH: 1788—1870

### 37—*MRS. HAWKINS AND CHILDREN*

*Height, 46 inches; length, 60 inches*

The wife and children of Captain J. Hawkins, of the Bombay Engineers.

GROUP of five figures. The mother seated, in low blue silk dress and scarlet cloak, the youngest child in white on her lap; the elder girl, also in white, rests her right hand on the child's shoulder and points with a rose to left; the second youngest stands by a red-covered table and holds a spray of flowers; to right boy in blue dress and white lace collar; landscape background.

*From the collection of Admiral Hawkins, and probably the picture exhibited at the Royal Academy in 1819.*



PAUL DELAROCHE

FRENCH: 1797—1856

38—*FRANCE AND GREECE*

*Height, 45 inches; length, 57 inches*

EMBLEMATIC female figure of France holding standard, lifeless Greek figure on her lap with broken sword inscribed "La Grèce en 1826."

VAN DYCK SCHOOL

39—*GOVERNOR JACOBUS RAGHEIP*

*Height, 60 inches; width, 46 inches*

THREE-QUARTER figure of elderly man in black dress and hat, white gaufered collar and cuffs, gray mustache and chin tuft; to right pedestal with coat-of-arms, name of personage and date "M D C XVIII."

LUIS FALERO

SPANISH: 1851—1901

40—*SCULPTURE*

*Height, 66 inches; width, 42 inches*

WHOLE-LENGTH nude female figure, seated on yellow patterned drapery, chiseling a figure.

*Signed at the upper right, L. FALERO, and dated 1892.*

LUIS FALERO

SPANISH: 1851—1901

41—*PAINTING*

*Height, 42 inches; length, 76 inches*

WHOLE-LENGTH nude figure of young woman with yellow drapery, seated, holding palette and brushes and painting on a canvas which rests on an easel; long flowing dark hair.

*Signed at the upper right, FALERO, and dated 1892.*



## FRANS DENIS

BELGIAN: ABOUT 1610—AFTER 1655

### 42—*FAMILY GROUP*

*Canvas: Height, 49 inches; length, 66 inches*

PORTRAITS of a gentleman of quality in black dress with white sleeves, white lace collar and cuffs, standing to left, and his wife in black dress with broad lace collar seated in red chair; in the center a child holding a spray of cherries.

*Signed to right on ledge of pedestal, FRANS DENIS, and dated 1651.*

*Purchased from Asher Wertheimer, London.*

## PIETER BOEL

FLEMISH: 1622—1674

### 43—*FOWLS SURPRISED BY EAGLE*

*Height, 47 inches; length, 69 inches*

AN animated scene caused by the sudden descent of an eagle among a group of roosters. The foster-mother of the frightened chickens is hastening to attack the invader, who has its claws fastened into the cockerel.

## GERARD DE LAIRESSE

Dutch: 1640—1711

### 44—*THE MARLBOROUGH FAMILY*

*Height, 48 inches; length, 68 inches*

GROUP of husband, wife and three children.

## SIR ANTHONY VAN DYCK

FLEMISH: 1599—1641

### 45—*VIRGIN AND CHILD WITH ANGELS*

*Height, 63 inches; width, 52 inches*

MADONNA seated on clouds, in blue draperies with flowing dark shawl above head, holding the Infant who has one foot placed on a globe; to left an angel child in scarlet robe playing a guitar, to right another child angel.

This is probably the picture described in Smith's "Catalogue Raisonné," No. 335; and in the "Supplement" of the same, No. 118, as being in the possession of Mr. D. W. Aeraman of Bristol and as formerly in that of M. Robit of Paris, 1801. It was engraved by Ballin and Beckett. The version at St. Luke's, Venice, differs in some small details, notably the serpent on the globe in the Venice picture does not appear in this.

## GUIDO RENI

ITALIAN: 1575—1642

### 46—*ALLEGORICAL GROUP*

*Height, 64 inches; width, 51½ inches*

FEMALE figure as Fortune with pinkish drapery, accompanied by Cupid, flying over the globe.

*Purchased from Henry Graves & Co., London.*

## ROBERT WALKER MACBETH, R.A.

SCOTCH: 1848—1910

### 47—*THE MILLER'S DAUGHTER*

*Height, 55½ inches; length, 67 inches*

VALLEY with cottage and shallow river, girl with long red curly hair, pink bodice and white petticoat, seated on a bank fishing, red hat and sleeping dog by her side; church and other buildings to right.

*Signed at the lower right with initials R. M. and dated 1889.*

*Exhibited at the Royal Academy, 1889, No. 763.*

*Purchased from Arthur Tooth & Sons, London.*

## THOMAS HUDSON

ENGLISH: 1701—1779

### 48—*FAMILY GROUP*

*Height, 59 inches; length, 64 inches*

NEARLY whole-length portrait of a gentleman in red dress, with white cuffs and neckerchief, standing to right; a lady in low white dress and blue cloak to left; and near her a little girl in white dress and cap, holding flowers in her left hand; background pillar and sculptured vase.

## FLEMISH SCHOOL

### 49—*THREE LADIES*

*Height, 59 inches; length, 60 inches*

WHOLE-LENGTH portraits of a lady in red dress and wearing a crown, with two other women, one kneeling and the other carrying a basket of flowers.

DOMENICO ZAMPIERI DOMENICHIINO

ITALIAN: 1581—1641

50—*MARRIAGE OF ST. CATHERINE*

*Height, 69 inches; width, 60 inches*

GROUP of six figures. The Virgin in pinkish and blue draperies, holding the Infant, who is placing the ring on the finger of St. Catherine, the latter in red and white draperies; St. Joseph and two angels in the background.

MASTER OF SAN MINIATO

FLORENTINE

51—*DEATH OF CHRIST*

*Panel, arched top: Height, 63 inches; length, 64 inches*

GROUP of ten whole-length life-size figures. The Dead Christ across the lap of his mother, who is attended by male and female saints, one of whom holds a crown of thorns.

GERBRAND VAN DEN EECKHOUT

DUTCH: 1621—1674

52—*FIGURES*

*Height, 31 inches; length, 71 inches*

FIGURE of three men, one standing in Oriental dress and white turban, looking up at another figure only partly seen. A fragment of a large picture.

CORNELIS DE VOS

FLEMISH: 1585—1651

53—*GROUP OF FIGURES*

*Height, 75 inches; width, 34 inches*

ELDERLY priest in white and scarlet robes cutting off the hair of a girl who is kneeling; portions of other figures to right.

## FRANCISCO JOSÉ DE GOYA Y LUCIENTES

SPANISH: 1746—1828

### 54—*PORTRAIT OF THE PRINCE OF PEACE*

*Height, 96 inches; width, 76 inches*

WITH right hand outstretched and apparently delivering an address is an officer in full dress uniform. His dark coat is heavily braided with gold and his breast covered with orders and a brilliant sash. Before him on a lower plane are several men, some with drawing and stone-cutting instruments, and between them an unfinished marble wall. At the lower left is an inscribed tablet, a portion of which is as follows: *EISma Sor Principe de la Paz Generalisimo de la Educacion de España é yndias Restaurador de la Educacion Española.*

*Painted in Spain about 1814; bought of Mr. Marezell Nemes, Budapest, August, 1911.*

*In an antique Louis XIV frame.*

## ITALIAN SCHOOL

### 55—*CHRIST ON THE CROSS*

*Height, 39 inches; length, 70 inches*

AN over-door, with the Dead Christ on the Cross surrounded by numerous figures; the Dove and angels overhead.

## FEDERIGO ZUCCHERO

ITALIAN: 1543—1609

### 56—*PORTRAIT OF A PRINCESS*

*Height, 41 inches; length, 78 inches*

WHOLE-LENGTH, standing to front, red dress elaborately embroidered, black overmantle with gold buttons, black hat with white feathers, white collar, gloves and handkerchief in left hand, King Charles spaniel on right; yellow curtain background.



NO. 54—PORTRAIT OF THE PRINCE OF PEACE  
BY FRANCISCO JOSÉ DE GOYA Y LUCIENTES

## JUAN BAUTISTA DEL MAZO

SPANISH: 1620—1667

### 57—*PORTRAIT OF A LADY*

*Height, 79 inches; width, 41 inches*

WHOLE-LENGTH figure of a young lady, standing, looking at spectator, in black hooped dress with broad over-sleeves elaborately embroidered and garnished with pearl ropes; dark massed hair bound with white, white chiffon collar, right hand resting on back of red-upholstered chair, left hand holding fan; red curtain to right.

*Probably a copy of a portrait by Velasquez.*

## PAUL TILLIER

FRENCH: CONTEMPORARY

### 58—*NUDE WOMAN*

*Height, 45 inches; length, 78 inches*

WHOLE-LENGTH nude figure of young woman with flowing flaxen hair, near a balcony on which her pink fur-lined cloak rests; background of trees and flowers.

*Signed at the lower left, PAUL TILLIER.*

*Exhibited at the Salon, Paris, 1908.*

## JUSTUS SUSTERMANN

FLEMISH: 1597—1681

### 59—*PORTRAIT OF A GENTLEMAN OF FRANCE*

*Height, 77 inches; width, 47 inches*

FULL-LENGTH facing the right—doublet of black velvet embroidered with gold and silver, crimson hose and sleeves; standing by a table on which is his casque. The actual *casque* exists in the Metropolitan Museum of New York, whilst the bearer of the casque is in an English private collection.

*From the Charles Butler Collection, London, 1911.*

*Purchased of Asher Wertheimer, London.*





NO. 57—PORTRAIT OF A LADY  
BY JUAN BAUTISTA DEL MAZO

## IL GAROFALO

ITALIAN: 1481—1559

### 60—*THE WISE MEN*

*Panel: Height, 47 inches; length, 66½ inches*

GROUP of seven whole-length figures of men, women and a child in a landscape: the two foremost men walking to left and carrying presents.

## VENEZIANO BONIFAZIO

ITALIAN: 1555—1599

### 61—*TWO SAINTS*

*Height, 80 inches; width, 23 inches*

ST. PETER holding the key and accompanied by another saint in monastic costume.

## UNKNOWN

### 62—*EUROPA AND THE BULL*

*Height, 52 inches; length, 70 inches*

WHOLE-LENGTH of Europa in light flowing draperies, seated on the Bull, and accompanied by an infant; distant landscape.

## REV. MATTHEW WILLIAM PETERS, R.A.

ENGLISH: 1759—1814

### 63—*VISIT TO BABY*

*Height, 73 inches; width, 54 inches*

A GOLDEN-TONED group of four figures in an interior. Three fair-haired young ladies, the eldest of whom is richly dressed, visiting an infant lying in its cradle to left; window and red curtain background.



NO. 63—VISIT TO BABY  
BY REV. M. W. PETERS, R.A.

## MIGNARD SCHOOL

### 64—*THE EDUCATION OF A YOUTH*

*Height, 70 inches; width, 53 inches*

YOUTH in armor seated to left, female figure in red and white robes pointing to a map; cupids overhead.

## WILLEM EVERS DYCK

DUTCH

### 65—*FAMILY GROUP*

*Height, 53½ inches; length, 75 inches*

GROUP of five figures in a landscape, with various trophies of shooting. The father and mother to left, two children to right, one holding up a dead rabbit.

*Signed.*

## SIR ANTHONY VAN DYCK

FLEMISH: 1599—1641

### 66—*DAUGHTER OF THE COUNT OF HOLLAND*

*Height, 80 inches; width, 46 inches*

WHOLE-LENGTH, life-size portrait, age about thirty, standing directed to left, low white silk dress, the corsage garnished with pearl ropes, blue ribbon waistband; brown curly hair tied with blue ribbon, pearl earrings and necklace, left hand holding fold of dress, right holding red rose; scarlet curtain to left, column with landscape to right.

*From the Earl of Dunmore's Collection.*

*Purchased from Sully & Co., London.*

Another version, in which there is a pet dog to left, and is illustrated in the *Klassiker der Kunst* volume on Van Dyck, page 411, belongs to the Earl of Pembroke.



No. 66—DAUGHTER OF THE COUNT OF HOLLAND  
BY SIR ANTHONY VAN DYCK

## SIR ANTHONY VAN DYCK

(AFTER)

FLEMISH: 1599—1641

### 67—*JAMES STUART, DUKE OF GORDON AND LENOX*

*Height, 82 inches; width, 49 inches*

Son of Esmé Duke of Lenox, born in 1612; created Duke of Richmond 1641; a devoted adherent of Charles I; died in 1655.

WHOLE-LENGTH, life size, standing to front, black satin dress showing white at sleeves and breast, broad white plain collar, long fair hair; black cloak with star over left arm and wearing the insignia of the Order of the Garter; curtain and architectural background.

*Inscribed at the lower left, JAMES STUART, DUKE OF RICHMOND AND LENOX. B. 1612; D. 1655.*

*From the collection of the Earl of Clarendon, Grove Park.*

A version of the Duke of Buccleuch's picture, exhibited at Burlington House, London, 1900, No. 18, and reproduced in the *Klassiker der Kunst* volume on Van Dyck, page 372.

## CLAUDIO COELLO

SPANISH: 1635—1693

### 68—*FERDINAND OF AUSTRIA*

*Height, 81 inches; width, 43 inches*

WHOLE-LENGTH, in armor, white ruff, long boots with spurs, one hand on sword hilt, the other holding baton, order suspended from neck; helmet on table to left; red curtain at top to right and left.



No. 67—JAMES STUART, DUKE OF GORDON AND LENOX  
AFTER VAN DYCK

## JUSTUS SUSTERMANN

FLEMISH: 1597—1681

### 69—*PORTRAIT OF A YOUNG GENTLEMAN*

*Height, 82 inches; width, 47 inches*

WHOLE-LENGTH, standing, in demi-suit of armor, black breeches and stockings, buff shoes, one hand on vizor with white and red feathers, the other on hilt of sword; red curtain to right.

## REV. MATTHEW WILLIAM PETERS, R.A.

ENGLISH: 1759—1814

### 70—*LADY AND ANGELS*

*Height, 41 inches; length, 87 inches*

YOUNG lady in white draperies, with angels in attendance.

## WILLIAM DOBSON

(AFTER VAN DYCK)

ENGLISH: 1610—1646

### 71—*LORD JOHN AND LORD BERNARD STUART*

*Height, 85 inches; width, 48 inches*

SONS of Esmé, third Duke of Lenox. Two whole-length, life-size figures standing in front of a pillar and blue curtain; the younger brother looking to left, in scarlet dress, brown cloak, leather top boots; the elder in white satin dress, stockings and shoes, blue cloak over left shoulder, wearing sword.

*A good copy of the famous picture until 1912 in the Cobham Hall Collection of the Earl of Darnley.*



## CARLE ANDRÉ VAN LOO

FRENCH: 1705—1765

### 72—*EMPRESS OF AUSTRIA*

*Height, 87 inches; width, 49 inches*

WHOLE-LENGTH, about forty, in state robes of gray satin low dress and short sleeves, elaborately garnished with pearls and precious stones; black gold-embroidered under-skirt, scarlet and white cloak across shoulders; crown and orb on table to left.

## CARLE ANDRÉ VAN LOO

FRENCH: 1705—1765

### 73—*EMPEROR OF AUSTRIA*

*Height, 87 inches; width, 49 inches*

WHOLE-LENGTH when young, standing, in state robes of gold-patterned coat and breeches, white stockings, black shoes with jeweled buckles, long flowing gold embroidered cloak, gray wig, white collar; order of the Golden Fleece suspended by red ribbon; crown, orb and scarlet and ermine cloak on table to right.

## SPANISH SCHOOL

### 74—*PORTRAIT OF A LADY*

*Height, 83 inches; width, 50 inches*

WHOLE-LENGTH, standing by a table, with writing materials, black dress with an exceptionally large circular lace ruff; fan in right hand, left resting on a Book of Hours.

*From the Bethell Walrond, 1878; and Charles Butler, 1911, collections.*

## SIR GODFREY KNELLER

ENGLISH: 1648—1723

### 75—*PORTRAIT OF A QUEEN OF ENGLAND*

*Height, 85 inches; width, 50 inches*

WHOLE-LENGTH portrait of stout middle-aged Queen in state robes with ermine cloak, right hand resting on crown on table to left, left holding cloak; pillar to right.

## SIR WILLIAM BEECHEY, R.A.

(ATTRIBUTED TO)

ENGLISH: 1753—1839

### 76—*THE EVENING STAR*

*Height, 86 inches; width, 51 inches*

WHOLE-LENGTH, life-size figure of a young woman, symbolizing a star, floating in mid-air, in dark-brown dress with jeweled star over forehead, brown hair; right arm upraised, left hand holding a phial from which incense is pouring.

## WILLIAM HOGARTH

(PERIOD OF)

### 77—*AN INTERIOR WITH FIGURES*

*Height, 52 inches; length, 87 inches*

PROBABLY a scene from a play. Interior with five figures; the central one, a youth in red breeches, white stockings, yellow waistcoat and brown coat is asleep on a couch; a young woman in blue and white dress and mob cap with pink ribbons is anxiously gazing into his face, and in her haste to reach him has upset a small round tea-table, a complete catastrophe being prevented by a negro page boy; on the right is a lady in flower-patterned dress and holding a fan; to left an elderly lady in white dress and pink cloak, her hands extended and alarm depicted on her face; red curtain to right.



MICHAEL JANSZEN VAN MIEREVELDT

ДУТЧИ: 1567—1641

78—*PORTRAIT GROUP*

*Height, 77½ inches; width, 68 inches*

GROUP of a father, three sons and daughter. The father, a middle-aged man, with broad white lace collar, gold-patterned brown jacket, black striped breeches and spurred boots, holds the little girl's hand, his left arm on youngest boy's shoulder; the children are in dark dresses with white lace collars; brown curtain.

## LOUIS TRISTAN

SPANISH: 1586—1640

### 79—ADORATION OF THE MAGI

*Height, 90 inches; width, 44 inches*



GROUP of ten figures in front of the stable. To right, the Virgin, in rich deep red gown with blue overmantle, is holding the Child; one of the Wise men, in flowing gold-patterned robes, is kissing the feet of the Infant, whilst another, also richly appareled, is offering a gold casket, and the Ethiopian is carrying another; St. Joseph in golden robes is behind the Virgin; a youth bearing a golden crown is advancing toward the central group; three other figures form part of the composition; camels and trees are seen in the background.

*Signed in full and dated 1620 on ledge at bottom.*

## GAINSBOROUGH DUPONT

ENGLISH: 1767—1797

### 80—LANDSCAPE

*Height, 78 inches; length, 88 inches*

DENSELY wooded landscape divided by a valley in the center; man carrying a fagot of sticks, to right a thatched cottage with peasant woman outside; sunset effect.

## ABRAHAM VAN DIEPENBEECK

FLEMISH: 1596—1675

### 81—*DUKE OF MOLINO*

*Height, 83 inches; width, 57 inches*

WHOLE-LENGTH, life-size of middle-aged man, standing on a balcony, black cloak with long gold chain, white lace collar and cuffs, left hand on hilt of sword; coat-of-arms to left.

## DANIEL MYTENS

DUTCH: ABOUT 1590—1656

### 82—*PORTRAIT OF CHARLES I*

*Height, 89 inches; width, 57 inches*

WHOLE-LENGTH, life-size, standing looking at spectator, in elaborate costume, with scarlet vest, red and white cloak, chain of the order of the Garter with pendant, white lace collar, black hat with white feathers, hands gloved; to right green covered table with crown, scepter and orb.

*From General Buker's Collection, England.*

## DOMENICO ZAMPIERI DOMENICHINO

ITALIAN: 1581—1641

### 83—*DÆDALUS AND ICARUS*

*Canvas: Length, 96 inches; width, 66 inches*

THE elderly winged Dædalus fabricating wings for his son Icarus preparatory to the flight from the Island of King Minos; winged cupids floating in the air.

*Signed DOMENICHINO in scroll in foreground.*

*From Blenheim Palace.*



## SECOND EVENING'S SALE

TUESDAY, MARCH 7, 1916

AT THE AMERICAN ART GALLERIES

BEGINNING AT 8 O'CLOCK

---

PIETER FRANSZ GREBBER

DUTCH: 1600—AFTER 1665

### 84—*VIOLIN PLAYER*

*Height, 15 inches; length, 18 inches*

HALF-FIGURE of a young man seated, in white and blue draperies, playing a violin and looking up to right.

### FLEMISH SCHOOL

### 85—*VIRGIN AND CHILD*

*Panel: Height, 14 inches; width, 11 inches*

SMALL half-figure of the Madonna in dark red and green draperies, nursing the Infant who rests on a cushion and holds a pear in his right hand; gold background.



GEORGE FREDERICK WATTS, R.A.

ENGLISH: 1817—1904

86—*PORTRAIT OF LADY ASHBURTON*

*Panel: Height, 15 inches; width, 12 inches*

HEAD and shoulders, full face, gold-patterned low dress, pearl necklace, dark brown wavy hair with ruby ornament.

GIROLAMO DAI LIBRI

ITALIAN: 1474—1555

87—*MADONNA AND CHILD*

*Panel: Height, 13 inches; width, 17 inches*

SMALL half-length of the Madonna in scarlet dress and greenish cloak, holding the Infant Christ who stands on a ledge; hilly landscape; trees and buildings in background.





PIER FRANCESCO BISSOLO

VENETIAN SCHOOL: 1492—1554

88—*MADONNA AND CHILD*

*Height, 22 inches; width, 19 inches*

THE Madonna seated in a landscape, in white, red and blue draperies, hands clasped, looking down at the Infant asleep in her lap; gray and gold curtain in background.

*From the collection of Henri Harrozé, Paris.*

CHRISTOPH AMBERGER

GERMAN: 1490(?)—1563

89—*HEAD OF CHRIST*

*Panel; Height, 12 inches; width, 10 inches*

HEAD of Christ with long fair hair and beard, crowned with thorns. In an old Renaissance frame.

*Seal on back.*



## MILANESE SCHOOL

### 90—*MADONNA AND CHILD*

*Panel: Height, 20 inches; width, 15 inches*

SMALL whole-length of the Madonna standing, in red and blue robes, nursing the Infant; gray blue background.

*Signed at the lower center, S. F.*

*Purchased from Mason Perkins, Florence, and attribution placed by Dr. Sirén.*

## FRANCESCO BONSIGNORI

ITALIAN: 1455—1519

### 91—*SANTA LUCIA*

*Panel: Height, 18 inches; width, 14 inches*

SMALL head and shoulders of the saint in red dress, her left hand resting on stone ledge, red hair in long ringlets.

## NERI DI BICCI

FLORENTINE: 1419—1491

### 92—*MADONNA AND CHILD*

*Panel, circular top: Height, 29 inches;  
width, 16 inches*

SMALL three-quarter figure of the Virgin in scarlet dress, green cloak edged with gold; the Child standing on a cushion, holding a fruit in right hand.

*Purchased from Mason Perkins, Florence. Attribution verified by Dr. Sirén.*



## JUAN BAUTISTA DEL MAZO

SPANISH: 1620—1667

### 93—*PORTRAIT OF A GIRL*

*Height, 21 inches; width, 18 inches*

HEAD and shoulders in blue dress with lace collar and pearl necklace, fair hair with blue ribbon.

## WATTEAU SCHOOL

### 94—*BLIND MAN'S BUFF*

*Height, 21 inches; length, 25 inches*

LANDSCAPE with numerous figures of young people playing blind man's buff; man seated by trunk of tree to right.

## JEHAN GEORGES VIBERT

FRENCH: 1840—1902

### 95—*CONVENT CHOIR*

*Panel: Height, 15 inches; length, 18 inches*

INTERIOR with group of eight nuns, one playing on a small organ, the others singing and listening.

*Signed at the lower left, GEORGES VIBERT, 1865.*

## LE BOURGUIGNON (JACQUES COURTOIS)

FRENCH: 1621—1676

### 96—*TWO BATTLE SCENES*

*Height, 17 inches; length, 28 inches*

#### 1. BEFORE THE BATTLE

GROUP of mounted and other warriors at halt on a plain, city in the distance.

*Height, 17 inches; length, 28 inches*

#### 2. THE ATTACK

THE heat of the engagement with dead and wounded men, horses fording a stream, church tower and castle in the distance.

## AUGUSTIN THÉODULE RIBOT

FRENCH: 1823—1891

### 97—*GROUP OF FIGURES*

*Height, 28 inches; width, 23 inches*

INTERIOR with five male and female figures, three seated, one reading from a paper. A sketch.



SIR WILLIAM BEECHIEY, R.A.

ENGLISH: 1753—1839

98—*PORTRAIT OF A YOUNG LADY*

*Height, 30 inches; width, 25 inches*

HALF-FIGURE, seated beneath a tree, green low dress with white fichu, yellow gloves, white mob cap with pink ribbon, dark hair falling over forehead.

W. STREETES

(ASCRIBED TO)

ENGLISH

99—*PORTRAIT OF A GENTLEMAN*

*Panel: Height, 28 inches; width, 21 inches*

HALF-FIGURE of a middle-aged man (resembling Henry VIII) in gold-patterned dress with red sleeves, black cap with jeweled ornaments, long chain with pearls and precious stones, and quatrefoil pendant on gold neck-chain.



## HOPPNER PERIOD

### 100—*PORTRAIT OF A LADY*

*Height, 30 inches; width, 25 inches*

HALF-FIGURE of a lady in dark low dress with red shawl across shoulders; gold chain with miniature pendant, auburn hair bound with blue ribbon.

## GILBERT CHARLES STUART

AMERICAN: 1756—1828

### 101—*PORTRAIT OF A GENTLEMAN*

*Height, 28 inches; width, 22 inches*

BUST of a middle-aged man in green coat, white lace stock and neckerchief, powdered wig, dull red curtain to left.



## JUAN CARREÑO DE MIRANDA

SPANISH: 1614—1685

### 102—*PORTRAIT OF A NUN*

*Panel: Height, 19 inches; length, 25 inches*

SMALL half-figure in white with black cloak, seated, holding an open book on which rest three symbolical objects; gold processional cross in background.

## SCHOOL OF CLOUET

### 103—*PORTRAIT OF A LADY*

*Height, 28 inches; width, 23½ inches*

HALF-FIGURE of middle-aged woman, gold-patterned dress with gray and black cloak, elaborately decorated with gold and pearl ornaments, white gauffered ruff, pearl necklace, fair hair decorated with flowers. In Renaissance frame.

*Collection of Ozaire le Rideau.*



ANGIOLO BRONZINO

FLORENTINE: 1502—1572

104—*BIANCA CAPELLA*

*Panel: Height, 26 inches; width, 19 inches*

HEAD and shoulders, greenish dress with red gold embroidered corsage, white lace frilled collar, pearl necklace, dark hair with jeweled ornaments.

JACOBSZ VAN DER LANNEN

FLEMISH: ABOUT 1570—1651

105—*A MUSICALE*

*Panel: Height, 20 inches; width, 25 inches*

INTERIOR with six ladies and gentlemen fashionably attired, a lady playing a guitar, and two others a game.





JAN VAN RAVENSTEYN

DUTCH: 1572—1657

106—*PORTRAIT OF A MAN*

*Panel: Height, 27 inches; width, 21 inches*

HALF-FIGURE of elderly man in dark dress with elaborate white gauffered ruff, brown hair and beard.

ADRIAEN HANNEMAN

DUTCH: 1601—1670

107—*PORTRAIT OF A LADY*

*Height, 26 inches; width, 22 inches*

HEAD and shoulders in an oval, black dress, broad white lace collar, gold chain, pearl and jewel pendant, black hair.



FEDERIGO ZUCCHERO

ITALIAN: 1543—1609

108—*PORTRAIT OF A BOY*

*Panel: Height, 28 inches; width, 21 inches*

NEARLY whole-length of child in red gold-embroidered dress, white lace collar, red hair, hat with feather in left hand.

*Inscribed at top to right: "una Salus Christus," and to left: ". . . actatis sua 6 an. Dni 1632."*

BARTOLOMÉ ESTÉBAN MURILLO

SPANISH: 1617—1682

109—*ST. JOSEPH AND CHILD*

*Height, 27½ inches; width, 21 inches*

SMALL half-figure of St. Joseph in gray drapery, holding the Child in lap.

## GERMAN SCHOOL

### 110—*EMPRESS OF AUSTRIA*

*Height, 29 inches; width, 23 inches*

HEAD and shoulders in an oval, red dress, white corsage with precious stones, blue and white mantle, black ribbon neckband with pearl drop, powdered hair with brilliants, crown on red cushion to right.

## SIR JOSHUA REYNOLDS, P.R.A.

(AFTER)

### 111—*THE STRAWBERRY GIRL*

*Height, 30 inches; width, 25 inches*

NEARLY whole-length of child in white dress in a landscape, hands clasped, basket of strawberries on right arm.

## REYNOLDS SCHOOL

### 112—*SIMPLICITY*

*Height, 30 inches; width, 25 inches*

NEARLY whole-length of a child seated on a bank under a tree, in white dress, blue sash and mob cap.

## LAWRENCE SCHOOL

### 113—*LADY MACKENZIE*

*Height, 30 inches; width, 25 inches*

HALF-FIGURE, age about thirty, seated near a balcony, white low dress dark overmantle, gold bracelets, left elbow resting on ledge of balcony, dark curly hair, pillar to right.

*From a sale at Christie's, June 3, 1909.*



SIR WILLIAM BEECHEY, R.A. (?)

ENGLISH: 1753—1839

114—*PORTRAIT OF COLONEL LORD HOWDEN*

John Francis Cradock (or Caradoc), only son of the Archbishop of Dublin, born 1762; entered the army and became Colonel of the 43rd Regiment of Foot, served with distinction in Egypt; created Baron Howden, October 19, 1819; died 1839.

*Height, 30 inches; width, 25 inches*

HALF-FIGURE of middle-aged man in uniform with epaulettes and numerous orders and decorations; arms folded, gloves in right hand; dark curly hair and side whiskers; plumed helmet on table to left.

This is probably the portrait painted by Thomas Cleurent Thompson, R.H.A., and exhibited at the Royal Academy, 1823.

## EARLY ENGLISH SCHOOL

### 115—*PORTRAIT OF A YOUNG LADY*

*Height, 30 inches; width, 25 inches*

HALF-FIGURE. Cosway-like portrait, white low dress with short sleeves and golden shawl, large yellow hat with white feathers, dark curly hair.

## SPANISH SCHOOL

### 116—*PORTRAIT OF A LADY*

*Height, 30 inches; width, 25 inches*

HEAD and shoulders, in an oval, black low dress, sleeves slashed with white, white muslin collar, large brooch at center of corsage; dark hair.

## JOHN NEAGLE

AMERICAN: 1799—1865

### 117—*PORTRAIT OF WASHINGTON IRVING*

*Height, 30 inches; width, 25 inches*

HALF-LENGTH, seated to right looking to left, middle-aged, black dress and stock, white front and collar, clean shaven, dark hair.

## ABRAHAM VAN DIEPENBEECK

FLEMISH: 1596—1675

### 118—*HOLY FAMILY*

*Height, 42 inches; width, 37½ inches*

HOLY Family with St. Elizabeth, also the child St. John in foreground, offering a bunch of grapes to the Infant Christ, who is asleep at His Mother's breast. Joseph is in the background, resting his right arm on the Child's cradle. Transferred from panel to canvas.

## TITIAN SCHOOL

### 119—*MADONNA AND CHILD*

*Height, 30 inches; width, 25 inches*

MADONNA seated in a landscape, the Infant on her lap holding an apple in his raised right hand; a female figure fondling him.

## WILLIAM HOGARTH

(ASCIBED TO)

### 120—*PORTRAIT OF A YOUNG LADY*

*Height, 30 inches; width, 25 inches*

HALF-LENGTH, gray and white dress with broad satin trimming, roses in corsage; white close-fitting lace cap with flowers, earrings and necklace of rubies; dark hair.

## GOVAERT FLINCK

DUTCH: 1615—1660

### 121—*PORTRAIT OF A GIRL*

*Height, 31 inches; width, 25 inches*

HALF-FIGURE of a young woman in dark brown patterned low dress, white collar, gold chain, pearl earrings, dark brown hair, gloved hands clasped.

## SPANISH SCHOOL

### 122—*PORTRAIT OF A YOUNG GENTLEMAN*

*Height, 34 inches; width 27 inches*

HALF-LENGTH, standing, in gold dress with blade open sleeves showing white shirt, white cuffs with black ribbon, white collar, long black hair falling over shoulders.

SIR JOHN WATSON GORDON, R.A.

ENGLISH: 1798(?)—1864

123—*THE YOUNG HIGHLANDER*

*Height, 36 inches; width, 28 inches*

THREE-QUARTER length of youth standing under a tree, in Highland dress, cap in left hand.

GEORGE ROMNEY

ENGLISH: 1734—1802

124—*HON. WM. FLETCHER*

*Height, 36 inches; width, 28 inches*

HALF-LENGTH of elderly man, green dress, white neckerchief, gray wig.

JAMES INSKIPP

ENGLISH: 1790—1868

125—*LADY WITH RED POPPY*

*Height, 28 inches; length, 36 inches*

THREE-QUARTER length of a young lady in dark gray low dress, white corsage, large black hat, dark hair with large red poppy, left hand holding red bag.

ADRIAN DE VRIES

DUTCH: 1601—AFTER 1643

126—*INTERIOR OF A PALACE*

*Height, 30 inches; width, 27 inches*

THE corridors of a Palace with marble columns, six figures of men and women walking about, porchway entrance to gardens in background.

*Signed at the lower right, ADRIAN DE VRIES, and dated 1594.*

GOVAERT FLINCK

DUTCH: 1615—1660

127—*PORTRAIT OF A PHILOSOPHER*

*Height, 36 inches; width, 28 inches*

HALF-LENGTH of gray-bearded old man, yellow cloak, holding pen and book.

JACOPO DA PONTE BASSANO

ITALIAN: 1510—1592

128—*PORTRAIT OF A MAN*

*Height, 37 inches; width, 28 inches*

HALF-LENGTH of middle-aged man, dark dress with fur edging, dark hair.

PARIS BORDONE

ITALIAN: 1500—1570

129—*PALMA'S DAUGHTER*

*Height, 36½ inches; width, 27 inches*

IN dark green and white dress thrown loosely around her and holding red cloak with left hand, architectural background.

*From the collections of G. P. Boyce, 1897; and Charles Butler, 1911.*

SIR W. BEECHEY

(PERIOD OF)

130—*PORTRAIT OF MR. PATTON*

*Height, 36 inches; width, 28 inches*

HALF-LENGTH of elderly man, seated, dark coat embroidered with gray, white neckerchief and collar, gray hair.



## SIR W. BEECHY, R.A.

ENGLISH: 1753—1839

### 131—*PORTRAIT OF A CHILD*

*Height, 36 inches; width, 28 inches*

WHOLE-LENGTH of a child about four or five, seated in a landscape near a wall, in white dress, blue sash, red shoes; colored ball in left hand.

## EARLY ITALIAN

### 132—*VIRGIN AND CHILD*

*Panel, circular: Height, 31 inches; width, 31 inches*

HALF-FIGURE of Virgin in green and gold robes, the Infant on her lap holding flower spray in right hand and looking up to a female saint who holds a tiny box.

## ITALIAN SCHOOL

### 133—*FLORA*

*Height, 38 inches; width, 31 inches*

THREE-QUARTER figure of young lady, in blue, white and scarlet robes, basket of flowers in lap, and posy of flowers to right.

## LE VALENTIN

FRENCH SCHOOL: 1591—1634

### 134—*CARD PLAYERS*

*Height, 32 inches; length, 39 inches*

Two seated figures playing cards: youth to left in dark gold-embroidered dress with white lace gauffered collar, black hat with feathers; lady to right in pink, yellow and blue dress; in front table with cards and coins.

SIR ANTHONY VAN DYCK

(AFTER)

135—*PORTRAIT OF AN ITALIAN NOBLEMAN*

*Height, 38 inches; width, 36 inches*

THREE-QUARTER length, seated near a pillar, black dress, white sleeves, dark hair, fair mustache and chin tuft, left hand resting on hilt of sword.

EARLY ITALIAN SCHOOL

136—*MADONNA AND CHILD*

*Height, 42 inches; width, 22 inches*

THREE-QUARTER figure of seated Madonna in pink dress and green cloak, holding the nude Infant; red background.

WALTER ULLMANN

ENGLISH: 1861--1882

137—*LADY IN A LANDSCAPE*

*Height, 45 inches; width, 27 inches*

SMALL whole-length of a lady in white dress, long yellow gloves and black hat with blue feathers, standing in a landscape; houses and trees in background.

*Signed at the lower left, WALTER ULLMANN*

WILLIAM EDWARD NORTON

AMERICAN: 1843—

138—*SEASCAPE*

*Height, 27 inches; length, 47 inches*

FULLY rigged sailing ship heeling over in the wind, other vessels in the distance; chalk cliffs to left.

*Signed at the lower left, W. E. NORTON, and dated "76."*

## EARLY ITALIAN SCHOOL

### 139—*VIRGIN AND CHILD*

*Height, 40 inches; width, 30 inches*

THREE-QUARTER length figure of Virgin, standing in rocky landscape, red dress and blue cloak, holding right hand of Infant who is asleep on green draperies.

THOMAS PHILLIPS, R.A.

(PERIOD OF)

### 140—*PORTRAIT OF A YOUNG LADY*

*Height, 40 inches; width, 32 inches*

HALF-LENGTH figure, seated in an armchair, white low dress with short sleeves, blue sash, gold bracelets, red background.

JUSTUS SUSTERMANN

DUTCH: 1597—1681

### 141—*PORTRAIT OF AN OFFICER*

*Height, 42 inches; width, 30 inches*

THREE-QUARTER length of middle-aged man in demi-suit of armor, and gold-handled sword, white lace collar, black wig.

JAN VAN RAVENSTEYN

DUTCH: 1572—1657

### 142—*PORTRAIT OF A LADY*

*Height, 46 inches; width, 34 inches*

THREE-QUARTER figure, low rich green and red dress, stiff lace collar and cuffs, pearl necklace, pearl and gold bracelets, lace handkerchief in left hand.

*Coat-of-arms with coronet and motto "At Firmamento" in top right-hand corner.*

## SCHOOL OF THE MARCHES

(Circa 1530)

### 143—*MADONNA AND CHILD*

*Panel: Height, 33 inches; length, 48 inches*

THREE-QUARTER length of the Madonna seated in an alcove, red dress and green cloak, the Infant standing on her lap and holding pear in right hand.

### BERNARDO STROZZI

ITALIAN: 1581—1644

### 144—*CHRIST BLESSING BREAD*

*Height, 34 inches; length, 46 inches*

THREE-QUARTER figure of Christ in scarlet dress and green robes, standing, hands raised, invoking blessing on the loaf of bread on table to left.

### CARLO MARATTI

ITALIAN: 1625—1713

### 145—*PORTRAIT OF A CARDINAL*

*Height, 47 inches; width, 34 inches*

NEARLY whole-length of middle-aged man, seated, in Cardinal's dress.

*From the Michael Palace, St. Petersburg.*

### NICHOLAS HILLIARD

ENGLISH: 1547—1619

### 146—*PORTRAIT OF A LADY*

*Panel: Height, 45 inches; width, 35 inches*

THREE-QUARTER length of elderly lady in brilliant red patterned dress, white lace ruff and cuffs, gloves in right hand and fan in left, dark hair with jewel, green curtain to left.

PAULUS MOREELSE

DUTCH: 1571—1638

147—*YOUNG LADY IN RICH COSTUME*

*Height, 47 inches; width, 35 inches*

NEARLY whole-length, green gold-embroidered dress, white lace collar, four-row pearl chain and pearl necklace, fair hair with pearl band; right hand holding small volume.

W. DOBSON

(AFTER VAN DYCK)

ENGLISH: 1610—1646

148—*PORTRAIT OF SIR A. VAN DYCK*

*Height, 39 inches; length, 40 inches*

THREE-QUARTER length, standing on a balustrade, right arm leaning on pedestal, red dress and dark green cloak, long fair hair.

*A version of the Duke of Grafton's picture.*

JEAN MARC NATTIER

(AFTER)

149—*LADY PLAYING GUITAR*

*Height, 45 inches; width, 37 inches*

THREE-QUARTER length of a young lady in red low dress and black cloak, seated in the open playing a guitar.

STEPHEN SLAUGHTER

(DIED 1765)

150—*PORTRAIT OF A YOUNG LADY*

*Height, 46 inches; width, 37 inches*

THREE-QUARTER length, standing by a balcony, pink low dress, black over-dress and white chiffon sleeves with pink bows, black hat with yellow feathers, feather in right hand, red curtain to left.

*From the Kraemer Collection, London.*

JOHN RILEY

ENGLISH: 1646—1691

151—*THE DUKE OF BEAUFORT*

*Height, 48 inches; width, 37 inches*

HALF-LENGTH standing to front, in gold-embroidered dark dress, scarlet neck ribbon with pendant, black hat with white feathers and pearl ornament, gloved left hand holding hilt of sword.

JOSEF DE RIBERA

SPANISH: 1588—1656

152—*MONK HOLDING PEN*

*Height, 48 inches; width, 37 inches*

THREE-QUARTER length of elderly man in black, holding pen in right hand and open paper in left.

JEAN MARC NATTIER

(AFTER)

153—*LADY WITH BOOK*

*Height, 48 inches; width, 37 inches*

THREE-QUARTER length, in loose white and blue draperies, seated in a landscape, left arm resting on open book, index finger of right hand extended.

MELCHIOR HONDECOETER

DUTCH: 1636—1695

154—*BARNYARD*

*Height, 49 inches; width, 38 inches*

FARMYARD or aviary with fountains and pools with ducks, ducklings, pigeons and other birds.

JEAN FRANÇOIS DE TROY

FRENCH: 1679—1752

155—*PORTRAIT OF A LADY*

*Height, 49½ inches; width, 39½ inches*

THREE-QUARTER length, middle-aged, standing, blue low dress with short sleeves trimmed with lace, red cloak over shoulder, right hand pointing and holding flower.

SCHOOL OF FILIPPO LIPPI

156—*HOLY FAMILY*

*Panel, circular: Diameter, 43 inches*

VIRGIN in green and gold cloak, standing before the Child who rests on a green cushion; St. Joseph in adoration to right; choir of singing angels above, stable with cattle and conventional trees in background.

## POLIDORO DA CARAVAGGIO

ITALIAN: ABOUT 1490—1543

### 157—*ST. MATTHEW AND THE ANGEL*

*Height, 41 inches; length, 47 inches*

THE Saint in red and brown drapery, seated at a green-covered table writing in an open book, directed by a youthful angel.

## JACOB GERRITZ CUYP

DUTCH: 1575—1650

### 158—*BOY IN RED*

*Height, 50 inches; width, 29 inches*

WHOLE-LENGTH in red dress, sleeves slashed with white, white lace collar and stockings, yellow shoes with red bows, ball in right hand.

## CORNELIS VAN DELFF

DUTCH: 1571—1645

### 159—*WOMAN WITH TULIP*

*Height, 50 inches; width, 34 inches*

MIDDLE-AGED woman in black dress, white lace collar and cuffs and black hat, holding tulip flower in right hand.

## RICHARD WILSON, R.A.

ENGLISH: 1713—1782

### 160—*LAKE OF NEMI*

*Height, 34 inches; length, 52 inches*

VIEW of the lake with castellated and other buildings, valley with arched bridge and buildings in the distance to left; in the foreground ruins of ancient temple, figures and cattle.





ALLAN RAMSAY

ENGLISH: 1713—1784

161—*PORTRAIT OF MRS. RAMSAY*

*Height, 50 inches; width, 40 inches*

THREE-QUARTER length, seated, in low creamy white dress with short sleeves trimmed with deep lace, pink shawl, rose at center of corsage, fan in left hand; pearl bracelet set with miniature portrait of a man; pink bonnet, large pearl earring, pearl necklace.

RICHARD WILSON, R.A.

(PERIOD OF)

162—*LANDSCAPE*

*Height, 36 inches; length, 54 inches*

ROCKY valley scene with broad river, from which two men are hauling a trunk of a tree; overhanging rocky cliffs to right.

HYACINTHE RIGAUD

FRENCH: 1659—1743

163—*PORTRAIT OF LOUIS XIV*

*Height, 51 inches; width, 37½ inches*

THREE-QUARTER length, standing, in full robes with breastplate, sword and black wig; right hand holding baton.

EARLY ITALIAN SCHOOL

164—*A SAINT*

*Height, 53 inches; width, 39 inches*

NEARLY whole-length of a female saint in gray, red and brown, kneeling in a landscape and holding palm branch.

FRANCIS WHEATLEY, R.A.

ENGLISH: 1747—1801

165—*MISS PRICE, DAUGHTER OF  
THE REV. MR. PRICE OF GLYNN*

*Height, 50 inches; width, 40 inches*

WHOLE-LENGTH figure of a child in white dress, pink sash and shoes, walking in a landscape, straw hat in left hand.



WILLEM VAN DE VELDE

DUTCH: 1633—1707

166—*VESSELS IN PORT*

*Height, 39 inches; length, 57 inches*

CROWDED bay scene with numerous partly rigged battleships with pennants flying.

*Signed and dated 1660 in lower right-hand corner.*

BARTHOLOMEUS VANDER HELST

DUTCH: 1613—1670

167—*PORTRAIT OF AN ADMIRAL*

*Height, 50 inches; width, 40 inches*

THREE-QUARTER length of stout middle-aged man in black dress with gold sash over right shoulder, gold-hilted sword, dark hair and mustache.

## GEORGE HENRY HARLOW

ENGLISH: 1787—1819

### 168—*LADY CARTERET AND CHILDREN*

Harriet daughter of William Viscount Courtenay, wife of George, Lord Carteret.

*Height, 50 inches; width, 40 inches*

THREE-QUARTER length of Lady Carteret, seated, low white dress, green cloak and white flowing head-dress; curly fair-haired child to left offering her mother a spray of violets, the second child peeping over elbow of chair to right.

## ENGLISH SCHOOL

### 169—*PORTRAIT OF A GENTLEMAN*

*Height, 54 inches; width, 44 inches*

NEARLY whole-length of elderly gentleman, gray dress and red dressing gown, seated at a table, pointing to a passage in the Bible on the table to left.

## SCHOOL OF PAUL VERONESE

### 170—*PORTRAIT OF A LADY*

*Height, 54 inches; width, 44 inches*

THREE-QUARTER length, standing, dark dress cut square and trimmed with lace, red wristbands with white lace trimming; fair curly hair, pearl necklace and gold chain; red curtain background, sea with boats to left.

*From the Butler Collection, London, 1911.*

## DUTCH SCHOOL

### 171—*LANDSCAPE*

*Height, 39 inches; length, 53 inches*

LAKE with high hills and masses of rocks, boat with figures.



ENGLISH SCHOOL (ABOUT 1830)

172—*THREE CHILDREN*

*Height, 57 inches; width, 39 inches*

THREE fair-haired young children standing in a landscape: boy in red dress, cap, and white collar, elder girl in pink and white, holding gold necklace with right hand and marguerite flower in left; younger girl in white and blue holding garden rake.

## A. M. HIESCHIG

GERMAN SCHOOL

### 173—*DOMESTIC SCENE*

*Height, 39 inches; length, 58 inches*

INTERIOR of a kitchen with two Dutch peasant children seated near a stove.

*Signed at the lower right, A. M. HIESCHIG.*

## BRONZINO SCHOOL

### 174—*JUDITH*

*Height, 57 inches; width, 43 inches*

NEARLY whole-length figure of Judith in rich flowing robes of gold and other colors, long red hair, sword in right hand, letter in left; an old woman with white nun's headdress, to right.

## TINTORETTO SCHOOL

### 175—*PORTRAIT OF A DOGE*

*Canvas: Height, 44 inches; width, 56 inches*

THREE-QUARTER length portrait of elderly man with long white beard, seated, in Doge's official dress and cap; right hand holding volume which rests upright on knee.

*From the Charles Butler Collection.*

## DOMENICO ZAMPIERI DOMENICHINO

ITALIAN: 1581—1641

### 176—*LOT AND HIS DAUGHTERS*

*Height, 46 inches; length, 60 inches*

LOT in scarlet cloak, one of the two daughters carrying an earthenware urn.

## IL GUERCINO

ITALIAN: 1591—1666

### 177—*TANCRED AND ARMIDA*

*Height, 43 inches; length, 59 inches*

BASED on a passage in Tasso's "Jerusalem Delivered," canto xx, verse 127. Tancred in helmet and red draperies holding Armida, in a golden dress, by the right arm; other portions of the warrior's armor and quiver of arrows to right.

## MIGNARD SCHOOL

### 178—*THE FORTUNE TELLER*

*Height, 54 inches; length, 61 inches*

GROUP of three female figures in the open; two seated to right in white and gold dresses; the Fortune-teller in red dress to left holding a wand.

## J. T. PEARSON, JR.

BRITISH

### 179—*UNDER THE WEEPING WILLOW*

*Height, 50 inches; length, 63 inches*

TRUNK and branches of a weeping willow tree, with bird perched on a stem and duck below.





# THIRD EVENING'S SALE

WEDNESDAY, MARCH 8, 1916

AT THE AMERICAN ART GALLERIES

BEGINNING AT 8 O'CLOCK

---

ADRIAAN VAN DE VELDE

(IN THE MANNER OF)

DUTCH: 1635—1672

180—*CATTLE AND LANDSCAPE*

*Panel: Height, 10 inches; length, 12 inches*

WOODED summer landscape, with cowshed and trees, cows and sheep grazing.

MICHAEL VAN MUSSCHER

DUTCH: 1645—1705

181—*DUTCH TAVERN SCENE*

*Panel: Height, 8½ inches; width, 8¾ inches*

THREE figures of boors smoking and drinking; playing cards on the floor.

*Exhibited at Syracuse by Mr. D. de Kay.*

## GIOVANNI BUONCONSIGLIO

ITALIAN: AFTER 1530

### 182—*ST. JOHN*

*Height, 14 inches; width, 13 inches*

SMALL head and shoulders, in green dress edged with gold, scarlet cloak, long reddish hair; background of blue and gray cloud effects.

## FRANS VAN MIERIS

DUTCH: 1635—1681

### 183—*YOUNG LADY AT HER TOILET*

*Height, 12 inches; width, 11 inches*

SMALL three-quarter figure, red cloak edged with fur, seated at her dressing table, left hand holding lock of hair; servant girl to right.

## JACOPO DA PONTE BASSANO

ITALIAN: 1510—1592

### 184—*VENETIAN HEAD*

*Height, 20 inches; width, 16 inches*

BUST of elderly man in red dress, white collar and red cap edged with white.

## LAWRENCE SCHOOL

### 185—*HEAD OF A BOY*

*Panel: Height, 17 inches; length, 21 inches*

SMALL bust of golden-haired boy in white dress with red waistband, right arm extended.



ADRIAAN VAN DE VELDE  
(IN THE MANNER OF)

186—*MARINE SUBJECT*

*Height, 10 inches; length, 13 inches*

OPEN sea with two full-rigged ships, a man-of-war and a schooner flying pennants.

C. HOECGEEEST

DUTCH: 1610—1651

187—*CHURCH INTERIOR*

*Panel: Height, 10 inches; length, 14 inches*

INTERIOR of a church with priests celebrating mass, numerous figures.



JAN VAN RAVENSTEYN

Dutch: 1572—1657

188—*PORTRAIT OF A LADY*

*Panel: Height, 22 inches; width, 18 inches*

Bust of a young lady in black with broad white lace collar, dark hair.

*Dated 1615 in top right-hand corner.*

FRAGONARD SCHOOL

189—*HEAD OF A GIRL*

*Height, 21 inches; width, 17 inches*

HEAD of a young girl in brown and blue dress with white gauffered collar.



GEORGE B. WILLCOCK

ENGLISH: 1820—1852

190—*LANDSCAPE*

*Panel: Height, 17 inches; length, 21 inches*

RICH summer view of an extensive valley, with densely wooded scene to left; cottages and figures harvesting.

*Signed at the lower left, G. B. WILLCOCK.*

IGNACIO LEON Y ESCOSURA

SPANISH: 1834—1901

191—*WAITING FOR THE QUEEN*

*Panel: Height, 21 inches; length, 29 inches*

VIEW in a long portrait gallery, lined with ladies and gentlemen in sixteenth century costumes; two guards partly clad in armor on sentry duty at the door.

*Signed and dated.*



RICHARD WILSON, R.A.

(PERIOD OF)

192—*ITALIAN LAKE*

*Height, 17 inches; length, 23 inches*

LAKE scene with overhanging hill to left and man taking his horse to water, tall tree with seated female figure on bank to right.

SALVATOR ROSA

ITALIAN: 1615—1673

193—*LANDSCAPE WITH WATERFALL*

*Height, 23 inches; width, 17½ inches*

FOAMING over the stones, the water from a fall at the left spreads over the foreground. At the right is a cave opening and vines and other foliage hang from the rocks above.

*Authenticated by Dr. Sirén.*

SIR JOSHUA REYNOLDS, P.R.A.

ENGLISH: 1723—1792

194—*THE REV. ZACHARIAH MUDGE*

*Height, 24 inches; width, 20 inches*

Bust in dark dress, a white collar, gray wig, chin resting on right hand.

MARINUS (VAN REYNERSWALE)

ABOUT 1497—AFTER 1567

195—*ST. JEROME*

*Height, 20 inches; length, 26 inches*

SMALL half-length, seated in his study with an open book, index finger of left hand on a skull.

HENRY LADBROOKE

NORWICH SCHOOL: 1800—1870

196—*COTTAGE AND FARM*

*Height, 21½ inches; length, 28 inches*

EARLY autumnal scene with laborer's cottage, dense group of trees and farmhouse with figures, distant view of hilly country.

WILLIAM DOBSON

ENGLISH: 1610—1646

197—*PORTRAIT OF THE EARL OF PEMBROKE*

*Height, 29 inches; width, 22½ inches*

HEAD and shoulders of young man in black dress and white collar, long dark hair, right hand holding fold of cloak.



REV. MATTHEW WILLIAM PETERS, R.A.

ENGLISH: 1759—1814

198—*MASTER HADDEN BROWN*

*Height, 22 inches; width, 18 inches*

HALF-LENGTH of golden haired child of three or four, seated in a landscape; white dress, blue sash, holding posy of flowers.

LUIS FALERO

SPANISH: 1851—1901

199—*LADY READING*

*Height, 25 inches; length, 26 inches*

HALE-FIGURE of a young woman, with light transparent drapery across shoulder, reading from an open volume in left hand; bright red hair.

*Signed at the upper right, FALERO.*



## IL SASSOFERRATO

ITALIAN: 1605—1685

### 200—*MADONNA AND CHILD*

*Height, 23 inches; length, 27 inches*

VIRGIN in blue cloak, kneeling in adoration before the sleeping Child, who is reclining on red couch.

## CHARLES FRANCOIS DAUBIGNY

FRENCH: 1817—1878

### 201—*MARINE*

*Height, 20 inches; length, 32 inches*

BROAD seascape with numerous sailing craft, lady holding parasol and accompanied by a dog walking on the beach to left.

*Signed at the lower right, DAUBIGNY, and dated 1874.*

## JAMES BAKER PYNE

ENGLISH: 1800—1870

### 202—*MARINE*

*Height, 22 inches; length, 30 inches*

A TURNERESQUE study of sunlight effects on sea, with shipping.

## ENGLISH SCHOOL

### 203—*CHILD WITH DOG*

*Height, 33 inches; width, 21 inches*

WHOLE-LENGTH seated figure of a child in white lace cap under straw hat, fondling a dog; portion of a second figure to right.

## CORNELIS JANSSEN

DUTCH: 1593—1664

### 204—*PORTRAIT OF A MAN*

*Panel: Height, 30 inches; width, 24 inches*

HEAD and shoulders in an oval of a young man in dark patterned dress, white lace collar, long brown hair, fair mustache.

*Inscribed: "Anno .Aetatis Suae XXVII, 1631."*

## SIR WILLIAM BEECHEY, R.A.

ENGLISH: 1753—1839

### 205—*PORTRAIT OF A CHILD*

*Height, 30 inches; width, 23½ inches*

WHOLE-LENGTH figure of a child in white, black hat, fair hair.

## ROBERT TOURNIÈRES

FRENCH: 1668—1752

### 206—*PORTRAIT OF A LADY*

*Height, 30 inches; width, 25 inches*

HALF-FIGURE in red low dress with short sleeves, blue cloak, powdered hair with red rose spray, right hand on shoulder.

## REYNOLDS SCHOOL

### 207—*PORTRAIT OF DR. GOODALL*

*Height, 30 inches; width, 25 inches*

HEAD and shoulders of elderly man in eighteenth century clerical dress, gray curly wig.

ENGLISH  
EARLY 19TH CENTURY

208—*PORTRAIT OF A LADY*

*Height, 30 inches; width, 25 inches*

HALF-FIGURE, white low dress in black muslin shawl, pearl necklace, dark curly hair.

HOPPNER PERIOD

209—*MASTER DAVID*

*Height, 30 inches; width, 25 inches*

HALF-FIGURE of youth walking in a landscape, red coat, pinkish waistcoat, white collar, reddish hair, bird perched on left hand.

DUTCH SCHOOL

210—*COBBLER'S SHOP*

*Height, 30 inches; width, 25 inches*

WHOLE-LENGTH figure of shoemaker in his shop, mending a shoe and smoking a clay pipe.

*From the Buckley Collection.*

HOPPNER PERIOD

211—*PORTRAIT OF A BOY*

*Height, 30 inches; width, 25 inches*

HALF-LENGTH, in blue coat, white waistcoat, long brown hair, right arm resting on ledge, holding walking stick.

JOHN RUSSELL, R.A.

ENGLISH: 1745—1806

212—*PORTRAIT OF A YOUNG LADY*

*Height, 30 inches; width, 25 inches*

HALF-FIGURE in an oval; white dress, broad green sash, long brown hair bound with white ribbon; landscape background.

THOMAS PHILLIPS, R.A.

ENGLISH: 1770—1845

213—*PORTRAIT OF A LADY*

*Height, 30 inches; width, 25 inches*

HALF-LENGTH; white satin low dress with scarlet mantle, brown curly hair.

SCHOOL OF SIR THOMAS LAWRENCE

214—*PORTRAIT OF LORD ARUNDEL*

*Height, 30 inches; width, 25 inches*

HALF-FIGURE of middle-aged man looking up to left; dark dress, white stock, brown hair and side whiskers, left hand pointing.

FRENCH SCHOOL, XVIII CENTURY

215—*FÊTE CHAMPÊTRE*

*Height, 30 inches; width, 25 inches*

GROUP of five figures, in a finely wooded landscape, with two richly attired ladies, two men playing guitar and flute, the third holding a sunshade.

FRANCIS WHEATLEY, R.A.

ENGLISH: 1747—1801

216—*BOY PLAYING A HARP*

*Height, 30 inches; width, 25 inches*

Boy in red dress, blue sash and broad white collar playing a harp.

JONATHAN RICHARDSON

ENGLISH: 1665—1745

217—*ALEXANDER POPE THE POET*

*Height, 30 inches; width, 25 inches*

HEAD and shoulders; in pink lined blue robe, white shirt, pink cap, right elbow resting on volume, hand on forehead.

*From General Bucker's Collection.*

KAREL FABRITIUS

DUTCH: 1624—1654

218—*PORTRAIT OF A YOUNG MAN*

*Height, 32 inches; width, 25 inches*

HALF-LENGTH, black dress and white collar, and long golden hair, slight mustache and chin tuft.

*From the Humphry Ward Collection.*

LOUIS TOCQUÉ

FRENCH: 1696—1772

219—*PORTRAIT OF A GENTLEMAN*

*Height, 32 inches; width, 25 inches*

HALF-LENGTH of middle-aged man, with breastplate, gray dress embroidered with gold, long flowing blue cloak, white neckerchief, long gray curly wig.

JAMES INSKIPP

ENGLISH: 1790—1868

220—*NEAPOLITAN FRUIT-SELLER*

*Height, 32 inches; width, 25 inches*

SMALL whole-length seated figure of a fruit-seller in brown dress with black jacket and white cross-over, fruit on table to right.

*Signed in the center with initials J. I., and dated 1838 to right.*

*Purchased from Dowdeswell & Dowdeswell, London.*

JOSEF DE RIBERA

SPANISH: 1588—1656

221—*ST. ANDREW*

*Height, 32 inches; width, 26 inches*

HALF-FIGURE of elderly gray-bearded man in blue and red draperies, with staff, left hand on breast.

SIR WILLIAM BEECHEY

(AFTER SIR JOSHUA REYNOLDS)

222—*PORTRAIT OF CHARLES JAMES FOX*

*Height, 32 inches; width, 27 inches*

HALF-FIGURE, seated, blue coat, yellow waistcoat, white stock, gray hair; scarlet background.

OLD PAUL

NORWICH SCHOOL

223—*LANDSCAPE NEAR NORWICH*

*Height, 30 inches; width, 27 inches*

SUMMER landscape with cottage among tall trees, woman feeding chickens, stream to right with figures and church.

## SCHOOL OF CLOUET

### 224—*PORTRAIT OF A LADY*

*Panel: Height, 35 inches; width, 25 inches*

HALF-LENGTH; brown dress cut square and slashed with pink, red hair, yellowish flat head-dress with ornaments of precious stones, red cloak.

*From the Huybrechts Collection, Antwerp.*

## WILLEM VAN HONTHORST

DUTCH: 1604—1666

### 225—*WILLIAM II PRINCE OF ORANGE*

*Height, 28 inches; width, 23 inches*

HALF-FIGURE of youth, in the costume of an archer, red hat with white ostrich feathers, bow and arrow in left hand; long hair.

## LAWRENCE SCHOOL

### 226—*PORTRAIT OF A YOUNG LADY*

*Height, 34 inches; width, 28 inches*

THREE-QUARTER length, red low dress, gold waistband, pearl necklace, right arm resting on pedestal, black hair, green curtain and landscape background.

## SIR GODFREY KNELLER

ENGLISH: 1646—1723

### 227—*PORTRAIT OF A GENTLEMAN*

*Height, 34 inches; width, 30 inches*

HALF-FIGURE of a young man (said to be Charles II) in state robes with green shot silk mantle, long curly hair flowing over shoulders.

EARLY ENGLISH SCHOOL  
(ATTRIBUTED TO PATRICK NASMITH)

228—*LANDSCAPE*

*Panel: Height, 26 inches; length, 37 inches*

SPRING landscape, with ruins of a castle on top of a hill, densely wooded valley, with horsemen leading cattle to water.

IL GAROFALO

ITALIAN: 1481—1559

229—*MADONNA AND CHILD*

*Panel: Height, 35 inches; width, 26 inches*

YOUTHFUL Madonna in blue, red and white, holding Infant; St. Joseph to left.

ENGLISH SCHOOL

230—*MISS MELVILLE*

*Height, 37 inches; width, 26 inches*

WHOLE-LENGTH of a little golden-haired child in white dress and black shoes, seated in a landscape.

FRANCIS COTES, R.A.

ENGLISH: 1726—1770

231—*PORTRAIT OF A BOY*

*Height, 36 inches; width, 28 inches*

THREE-QUARTER length, in blue dress and white shirt, right arm resting on trunk of a tree, left hand holding gray hat; long brown hair.

*Purchased from Charles Sedelmeyer, Paris.*



## FEDERIGO ZUCCHERO

ITALIAN: 1543—'609

### 232—*PORTRAIT OF A LADY*

*Panel: Height, 34 inches; width, 28 inches*

HALF-FIGURE of a lady (probably Mary, Queen of Scotland) in elaborate black dress lined with gold and garnished with pearls, white gauffered ruff, white lace cuffs, auburn hair, large dark patterned head-dress trimmed with lace, book of devotions in right hand.

*Inscribed in red at top right-hand: "Not for myself but for my friend; all flesh is mortal and death is our end."*

## REMBRANDT SCHOOL

### 233—*A RABBI*

*Height, 28 inches; length, 36 inches*

HALF-LENGTH of elderly man, dark dress, yellowish cloak, black cap, gray beard, hands clasped.

## FREDERICK YATES HURLESTONE

ENGLISH: 1800—1869

### 234—*AMEDA*

*Panel: Height, 39 inches; width, 28 inches*

HALF-LENGTH figure of a young woman in green, red and white draperies, long black unkempt hair, child looking up to her to left.

## LELY PERIOD

### 235—*PORTRAIT OF A YOUNG NOBLEMAN*

*Height, 39 inches; width, 25 inches*

THREE-QUARTER length, elaborately gold-embroidered blue dress and white lace neckerchief, powdered wig; holding a sealed letter.

LOUIS DERRICK

236—*LANDSCAPE*

*Height, 28 inches; length, 39 inches*

SUMMER view of flat landscape, with willows and other trees, winding rivulet in center, pathway with figures to right, cows pasturing.

*Signed at the lower left, LOUIS DERRICK, and dated "1872 Antwerp."*

PHILIPPE MERCIER

GERMAN: 1689—1760

237—*LADY PLAYING PIANO*

*Height, 39 inches; width, 29 inches*

HALF-LENGTH figure in blue, low dress with white corsage and short sleeves trimmed with white; powdered hair, blue ribbon neckband, right hand holding piece of music, left on keys of spinet.

ADRIAAN THOMASZ KEY

FLEMISH: 1544—1590

238—*PORTRAIT OF A DUTCH LADY*

*Panel: Height, 39 inches; width, 30 inches*

THREE-QUARTER figure of a middle-aged lady, standing, looking to left, in dark dress, cloak trimmed with black fur, white wrist-bands and gaufered collar and cap; gold waist-chain, hands clasped.

NICOLAS POUSSIN

FRENCH: 1594—1665

239—*LANDSCAPE*

*Height, 30 inches; length, 40 inches*

CLASSICAL landscape with extensive view of river, distant hills and buildings to right, and figures.

*From the Buckland Collection.*

WILLIAM DOBSON

ENGLISH: 1610—1646

240—*COMEDY NURSING THE  
INFANT SHAKESPEARE*

*Height, 35 inches; length, 39 inches*

THREE-QUARTER length figure of Comedy in loose classical robes, her hair adorned with flowers; the infant Shakespeare asleep on blue mantle.

GUIDO RENI

ITALIAN: 1575—1642

241—*MAGDALEN*

*Height, 42 inches; width, 34 inches*

THREE-QUARTER length, seated figure, partly draped in red and white, long fair hair, brown curtain to left.

FRENCH SCHOOL

242—*THE MANDOLIN PLAYER*

*Height, 33 inches; length, 43 inches*

SCENE in a park with stone steps and fountain; youth in golden dress and red cloak, seated playing a mandolin, lady in pink seated and holding open music book.

JACOPO MARIESCHI

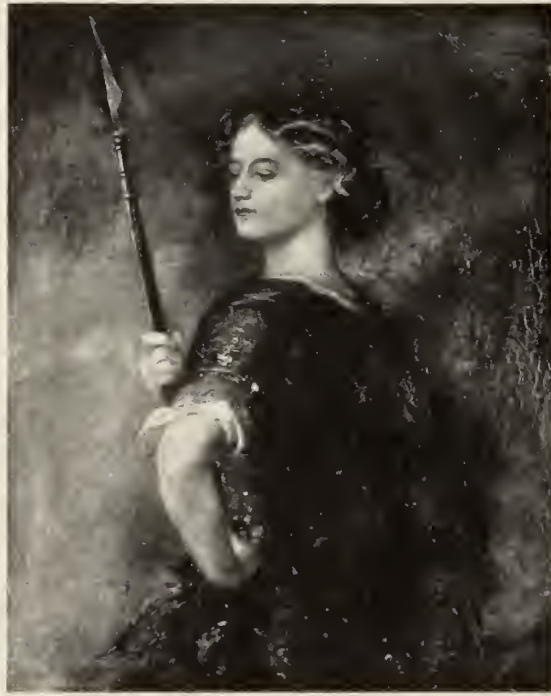
ITALIAN: 1711—1794

243—*THE PLAZZA, VENICE*

*Height, 31 inches; length, 45 inches*

EVENING scene in the Piazza, with numerous figures.

*Purchased from Agnew & Sons, London.*



SIR JOHN EVERETT MILLAIS, P.R.A.

(ASCIBED TO)

244—*FLORA MACDONALD*

*Height, 42 inches; width, 34 inches*

HALF-LENGTH of a young lady in Scotch plaid dress, directed to left, head inclined over left shoulder, ruddy hair, right hand holding spear.

GAINSBOROUGH DUPONT

ENGLISH: 1767—1797

245—*LANDSCAPE*

*Height, 32 inches; length, 44 inches*

SUMMER landscape with trees and bridge over a river, on the banks of which cows are grazing; church tower in the distance.



GIOVANNI PAOLO PANNINI

ITALIAN: 1695—1764

246—*EXTERIOR OF A PALACE*

*Height, 47 inches; width, 36 inches*

THE exterior of a palace, with high massive columns and colonnades, numerous figures in semi-classical costumes.

GIOVANNI PAOLO PANNINI

ITALIAN: 1695—1764

247—*INTERIOR OF A PALACE*

*Height, 47 inches; width, 36 inches*

EVENING scene with chief entrance to a palace; figures in semi-classical costumes, two page boys holding torches at foot of the steps and two men with musical instruments in a pulpit, probably announcing the opening of a ball or reception.

## JOSEF DE RIBERA

SPANISH: 1588—1656

### 248—*MAN WITH STAFF*

*Height, 48 inches; width, 35 inches*

Portrait of a young ecclesiastic with long black hair, in dark brown dress and greenish cloak, holding staff in left hand, and in right paper inscribed: "Descedes ad inferos tertia die Resurrexit a Mortuis."

## G. H. HARLOW PERIOD

### 249—*GROUP OF CHILDREN*

*Height, 48 inches; width, 36 inches*

THREE curly-haired girls in the open, in red and white dresses, the eldest playing a violin.

## FRANCOIS LE MOYNE

FRENCH: 1688—1737

### 250—*VERTUMNUS AND POMONA: AN OVERDOOR*

*Height, 37 inches; length, 49½ inches*

POMONA in blue, white and yellow classical draperies, seated on a bank, with implements of the garden; Vertumnus, in red robe and green head covering, to left.

*Collection of H. M. W. Oppenheim, London, June, 1913.*

*Purchased from Asher Wertheimer, London.*



## CANALETTO SCHOOL

### 251—*VENICE*

*Height, 25 inches; length, 40 inches*

VIEW of Canal in Venice, with figures, gondolas and other vessels, mountains in distance.

## FRANZ POURBUS

(STYLE OF)

### 252—*LADY WITH DOG*

*Height, 43 inches; width, 28½ inches*

THREE-QUARTER length of young lady, gold-embroidered dress, black mantle, lace ruffle, pearl earrings and necklace: King Charles spaniel on table to left.

## SIR WILLIAM BEECHEY, R.A.

ENGLISH: 1753—1839

### 253—*WOMAN PLAYING CHESS*

*Height, 35 inches; length, 39 inches*

HALF-FIGURE of young woman in white low dress, seated, playing a game of chess.

## THOMAS HUDSON

ENGLISH: 1701—1779

### 254—*MRS. GRAHAM AND CHILD*

*Height, 47 inches; width, 38 inches*

THREE-QUARTER length of young woman, seated, blue low dress trimmed with white, white head-dress with red flowers, infant in white on lap.

## FRENCH SCHOOL

### 255—*PORTRAIT OF A PRINCESS PALATINE*

*Height, 49 inches; width, 40 inches*

THREE-QUARTER length seated in a red chair in Court robes, with blue cloak, pearl necklace and hair ornaments, spray of flowers in right hand; coronet on red cushion to left.

## FRANCIS COTES, R.A.

ENGLISH: 1726—1770

### 256—*PORTRAIT OF MISS HASTINGS*

*Height, 49½ inches; width, 39½ inches*

THREE-QUARTER length of a young lady, standing in a landscape, white dress, broad white gauffered collar, straw hat edged and trimmed with blue, black lace shawl under left arm.



WALTER ULLMANN

ENGLISH: 1861—1882

257—*LANDSCAPE*

*Height, 51 inches; width, 36 inches*

AUTUMNAL view of a clearing in a wooded glade.

*Signed at the left, E. WALTER ULLMANN.*

JOHN SHAW

258—*LANDSCAPE*

*Height, 37 inches; length, 51 inches*

EXTENSIVE view over an undulating country with houses in the middle distance; to front woman and child riding a donkey and conversing with a peasant boy.

*Signed at the lower right, J. SHAW, and dated 1810.*

GEORGE HENRY HARLOW

ENGLISH: 1787—1819

259—*PORTRAIT OF DR. HOMAN,  
PHYSICIAN TO GEORGE IV*

*Height, 50 inches; width, 40 inches*

THREE-QUARTER length, seated in a red chair near a balcony, dark coat with gold buttons, white neckerchief, open letter in right hand; red curtain to left, distant landscape.

SIR JOHN WATSON GORDON, R.A.

ENGLISH: 1790—1864

260—*THE MARQUESS OF WELLESLEY*

*Height, 50 inches; width, 40 inches*

THREE-QUARTER length seated figure, to front, dark dress, white collar and black stock, gray hair, red handkerchief on lap; left arm resting on table.

SIR GODFREY KNELLER

ENGLISH: 1646—1723

261—*PORTRAIT OF JUDGE LEVINS*

Sir Crosswell Levins, Knt. and Serjeant-at-Law, Justice of the Common Pleas and Council for the Seven Bishops, Knighted at Whitehall, Oct. 2, 1678; died Jan. 29, 1700-1.

*Height, 50 inches; width, 40 inches*

THREE-QUARTER length of elderly man, seated, black dress, white cuffs, long fair curly wig, right hand holding a scroll.

LOUIS TOCQUÉ

(ATTRIBUTED)

262—*CATHERINE OF RUSSIA*

*Height, 50 inches; width, 40 inches*

NEARLY whole-length, seated in gilt and blue upholstered fauteuil, in low white dress elaborately embroidered in gold, scarlet sash, powdered hair with pearl ornaments, and pearl bracelets; spray of narcissus in left hand.

## ALLAN RAMSAY

ENGLISH: 1713—1784

### 263—*SIR JOSEPH BRANDT*

*Height, 50 inches; width, 40 inches*

THREE-QUARTER figure standing, elaborately patterned grayish brown dress and cuffs, gray wig, hat under left arm.

## SIR GODFREY KNELLER

ENGLISH: 1646—1723

### 264—*PORTRAIT OF A LADY*

*Height, 50 inches; width, 40 inches*

THREE-QUARTER length figure of a lady (said to be a Countess of Salisbury) seated in a landscape, black dress with white trimmings, black veil.

## LELY SCHOOL

### 265—*BOY IN BLUE*

*Height, 50 inches; width, 40 inches*

WHOLE-LENGTH, standing on a balcony, blue dress, white stockings and black shoes, bird perched on left hand.

*From the Earl of Sheffield's Collection.*

## KNELLER PERIOD

### 266—*LADY AND CHILD*

*Height, 50 inches; width, 40 inches*

THREE-QUARTER length figure of a lady in blue low dress, holding on her lap child in brown and white.

*From the Earl of Sheffield's Collection.*

WILLEM VAN DE VELDE

DUTCH: SEVENTEENTH CENTURY

267—*SEASCAPE*

*Height, 51 inches; width, 41 inches*

ROUGH sea with partly rigged ship scudding through the waves; other vessels to right and left.

WILLIAM LINTON

ENGLISH: 1791—1876

268—*LANDSCAPE AND SEA*

*Height, 37 inches; width, 59 inches*

MOONLIGHT scene on a rocky coast, with ruins of ancient castle and buildings to left.

*Signed at the lower left, W. LINTON.*

LATE ITALIAN SCHOOL

269—*CLASSICAL SCENE: AN OVERDOOR*

*Height, 43 inches; width, 59 inches*

PARTLY draped female figure in white and blue robes, holding up a flower in her right hand, and attended by three cupids.

VENEZIANO BONIFAZIO

ITALIAN: 1555—1599

270—*BISHOP AND SAINT*

*Height, 66 inches; width, 26 inches*

WHOLE-LENGTH figure of Saint in red and Bishop wearing mitre.

## SCHOOL OF HYACINTHE RIGAUD

### 271—*PORTRAIT OF A GENTLEMAN*

*Height, 59 inches; width, 49 inches*

NEARLY whole-length of a gentleman in black gold-patterned dress, rich short silk scarf, white lace neckerchief with scarlet ribbons, dark wig; scarlet curtain to left.

## SCHOOL OF HYACINTHE RIGAUD

### 272—*PORTRAIT OF A LADY*

*Height, 59 inches; width, 49 inches*

THREE-QUARTER length of middle-aged lady in Court robes, dark hair a curl of which she holds with her left hand; jewel casket with pearl rope on table to right; yellow curtain.

## ENGLISH SCHOOL

### 273—*OFFICER ON HORSEBACK*

*Height, 55 inches; width, 46 inches*

OFFICER in uniform on horseback, pointing with sword, troops in background.

## DANIEL SEGHIERS

FLEMISH: 1590—1661

### 274—*STILL LIFE*

*Height, 48 inches; length, 62 inches*

PLASTER bust of a lady decorated with bright-colored flowers; melons and other fruit are strewn around, to left a paroquet.



# FOURTH EVENING'S SALE

THURSDAY, MARCH 9, 1916

AT THE AMERICAN ART GALLERIES

BEGINNING AT 8 O'CLOCK

---

NARCISSE VIRGILE DIAZ DE LA PEÑA

FRENCH: 1809—1860

275—*LANDSCAPE*

*Panel: Height, 5 inches; length, 6½ inches*

LANDSCAPE with trees and two cottages, red-capped figure at foot of a hill, gray and blue sky effect.

WILLIAM ETTY, R.A.

ENGLISH: 1787—1849

276—*OPHELIA*

*Panel: Height, 12 inches; width, 10 inches*

SMALL half-figure walking in a landscape, yellowish dress, long hair with flowers.

## SCHOOL OF A. DÜRER

### 277—*HEAD OF CHRIST*

*Panel: Height, 14 inches; width, 10 inches*

HEAD of Christ with crown of thorns.

*Signed at the lower center, A. D. 1465.*

## DUTCH SCHOOL

### 278—*HEAD OF A MAN*

*Panel: Height, 15 inches; width, 10 inches*

HEAD of a young man in dark dress, white neckerchief and red cap bound with fur.

## FLEMISH SCHOOL

### 279—*THE DEAD CHRIST*

*Height, 15 inches; width, 12 inches*

THE Dead Christ surrounded by female saints, warriors and other figures.

## C. VON STETTEN

GERMAN: CONTEMPORARY

### 280—*LADY WITH RED FAN*

*Height, 16 inches; width, 11 inches*

SMALL half-figure of a lady seated, red and green shot silk dress, black high crowned hat and yellow gloves, holding red fan.

*Signed at the upper right, C. v. STETTEN, and dated, PARIS, "86."*



## MODERN FRENCH SCHOOL

### 281—*STUDY OF NATURE*

*Millboard; Height, 13 inches; length, 16 inches*

STUDY of rushes and pool.

## LUCAS DE HERRE

GERMAN: ABOUT 1534—1584

### 282—*PORTRAIT OF A LADY*

*Panel; Height, 14 inches; width, 11 inches*

SMALL bust portrait of an elderly woman in black dress, white sleeves, white gauffered collar and black hat.

## CORNELIS CORNELISZ OF HAARLEM

DUTCH: 1562—1638

### 283—*TWO HEADS*

*Panel; Height, 18 inches; width, 14 inches*

BUSTS of woman and man holding two birds.

## VAN DYCK SCHOOL

### 284—*PORTRAIT OF A GENTLEMAN*

*Height, 18 inches; width, 15 inches*

SMALL head of a gentleman in dark dress with white gauffered collar, brown hair and beard.

## GREUZE SCHOOL

### 285—*BACCHANTE*

*Height, 18 inches; width, 15 inches*

HEAD and shoulders of infant bacchante, with ivy leaves in hair and fur drapery.

## ANTONIO MORO

(ATTRIBUTED)

### 286—*PORTRAIT OF MAXIMILIAN II*

*Height, 19 inches; width, 17½ inches*

SMALL bust, dark dress, white lace gauffered collar, two-row gold neckchain, black flat hat, brown hair and beard.

*Exhibited at the Armada-Elizabethan Exhibition, 1889; and Tudor Exhibition, 1890.*

## LOUIS PICARD

FRENCH: CONTEMPORARY

### 287—*GIRL ASLEEP*

*Height, 14 inches; length, 23 inches*

BUST of peasant girl in brown, head reclining against wall, blue background.

*Signed at the upper left, LOUIS PICARD.*

*Purchased from the artist.*

## GASPAR DE CRAEYER

DUTCH: 1582—1669

### 288—*THE CHRIST CHILD*

*Panel: Height, 22 inches; width, 15½ inches*

WHOLE-LENGTH of golden-haired child, standing to front with red draperies, holding in left hand glass globe surmounted by a Cross.

## RUBENS SCHOOL

### 289—*LIONS*

*Panel: Height, 17½ inches; length, 23½ inches*

Two lions on the backs of which are seated two children holding lighted torches.

## GREUZE SCHOOL

### 290—*LOUISE DE LA VALLIÈRE*

*Height, 25 inches; width, 21 inches*

HALF-FIGURE of young lady in blue and white low dress, golden hair falling over shoulders, right hand against cheek, left on gold casket.

## ARTHUR HOEBER, A.N.A.

AMERICAN: 1854—1915

### 291—*MARINE*

*Height, 12 inches; length, 24 inches*

SEASCAPE with waves breaking on the shore, gray sky.

*Signed at the lower right, ARTHUR HOEBER.*

## WILLIAM HENRY HILLIARD

AMERICAN: 1836—1905

### 292—*LANDSCAPE*

*Height, 24 inches; width, 15 inches*

SPRING landscape with poplar and other trees reflected in the pool in front, and red-roofed cottage.

*Signed at the lower left, W. H. HILLIARD.*

## FLEMISH SCHOOL

### 293—*FLOWERS*

*Height, 23 inches; width, 18½ inches*

BASKET of white and blue flowers.

## SIR JOSHUA REYNOLDS

(PERIOD OF)

### 294—*MAN IN COCKED HAT*

*Height, 23 inches; width, 18 inches*

HEAD and shoulders of middle-aged man in profile, in naval uniform, powdered hair, blue and gold cocked hat.

## SIR ANTHONY VAN DYCK

(AFTER)

### 295—*MADONNA AND CHILD*

*Height, 28 inches; width, 18 inches*

SMALL three-quarter figure of the Virgin in blue and red, holding the Infant.

## SPANISH SCHOOL

### 296—*MADONNA AND SAINTS*

*Height, 28 inches; width, 19½ inches*

SMALL whole-length of Virgin seated in a niche and crowned, in gold-embroidered wide robes, holding figure of Infant; male saint to right and left.

ARTHUR HOEBER, A.N.A.

AMERICAN: 1854—1915

297—*THE BEACH AT EAST ORLEANS*

*Height, 19 inches; length, 29 inches*

BROAD expanse of blue rolling waves, and masses of gray clouds.

*Signed at the lower right, ARTHUR HOEBER.*

THOMAS GIRTIN

ENGLISH: 1775—1802

298—*HEAD OF A YOUNG MAN*

*Height, 24 inches; width, 20 inches*

SMALL head and shoulders, dark coat, yellow waistcoat, long hair.

REYNOLDS SCHOOL

299—*PORTRAIT OF DR. SAMUEL JOHNSON*

*Height, 26 inches; width, 20 inches*

HALF-FIGURE as an old man, dark dress, white narrow neckerchief and wristband, right hand only seen, gray wig.

FLEMISH SCHOOL

300—*THE FLAGELLATION*

*Height, 26 inches; width, 20 inches*

GROUP of six figures, with the Saviour in the center holding a palm branch; golden background.

FRANCIS COTES, R.A.

ENGLISH: 1726—1770

301—*PORTRAIT OF A YOUNG MAN*

*Height, 25 inches; width, 21 inches*

SMALL head and shoulders of young gentleman in deep red coat embroidered with gold; white lace collar.

FRA ANGELICO SCHOOL

302—*THE ANNUNCIATION*

*Height, 21 inches; width, 26 inches*

THE Virgin in red and green draperies, seated to right, the angel to left, overhead the Dove resting on pole of a curtain.

RICHARD WESTALL, R.A.

ENGLISH: 1765—1836

303—*CASSANDRA*

*Height, 28 inches; width, 22 inches*

HEAD and shoulders of woman in white dress with brown and gold draperies, face in profile looking to left, black hair of which a pleat falls over left shoulder; scarlet background.

RICCI

304—*VIRGIN AND CHILD*

*Height, 29 inches; width, 22 inches*

GROUP of numerous figures, the Virgin in pink and white draperies, seated in the center holding Child.

## VAN DYCK SCHOOL

### 305—*CUPIDS*

*Height, 24 inches; length, 29 inches*

GROUP of eight cupids playing; dark cloudy background.

## PIERRE MIGNARD

FRENCH: 1610—1695

### 306—*THE DUKE OF BURGUNDY*

*Height, 29 inches; width, 24 inches*

HEAD and shoulders of young man in elaborately patterned brown and white dress, long flowing brown wig.

## REYNOLDS SCHOOL

### 307—*NUDE STUDY*

*Height, 31 inches; width, 25 inches*

NUDE female figure, face in profile looking to right.

## ENGLISH SCHOOL

### 308—*PORTRAIT OF A GENTLEMAN*

*Height, 30 inches; width, 25 inches*

HALF-FIGURE of elderly man, seated, black coat with gold buttons, white neckerchief.

## ENGLISH SCHOOL

### 309—*PORTRAIT OF A YOUNG LADY*

*Height, 30 inches; width, 25 inches*

HALF-FIGURE, green dress with brown fur edging, large black hat with white feathers, brown curly hair.

## FRANCIS COTES, R.A.

ENGLISH: 1726—1770

### 310—*PORTRAIT OF LADY OLIVE*

*Height, 26 inches; width, 22 inches*

HEAD and shoulders, yellow dress and white fichu, powdered curly hair, large black felt hat with feathers.

## ENGLISH SCHOOL

### 311—*PORTRAIT OF A GENTLEMAN*

*Height, 30 inches; width, 25 inches*

HALF-FIGURE of middle-aged man, seated, black coat, yellow waistcoat, white stock, brown hair and side-whiskers.

## HARLOW PERIOD

### 312—*LADY BEFORE AN EASEL*

*Height, 30 inches; width, 25 inches*

HALF-FIGURE of a lady, white dress, yellow shawl, brown curly hair, seated holding an easel.



CORNELIS JANSSEN

Dutch: 1593—1664

313—*PORTRAIT OF THE EARL OF WINCHESTER*

*Height, 30 inches; width, 25 inches*

HALF-FIGURE, black dress with gold belt, white gauffered ruff, long brown hair, mustache and pointed beard, right hand only seen.

JOHN JACKSON, R.A.

English: 1778—1831

314—*PORTRAIT OF A YOUNG MAN*

*Height, 30 inches; width, 25 inches*

HALF-FIGURE, brown dress, white stock, red hair.

SIR GODFREY KNELLER

English: 1646—1723

315—*PORTRAIT OF A JUDGE*

*Height, 30 inches; width, 25 inches*

HALF-FIGURE in an oval of elderly man in chocolate color robes, white lace neckerchief, long black wig.

SIR GODFREY KNELLER

English: 1646—1723

316—*GENTLEMAN IN ARMOR*

*Height, 30 inches; width, 25 inches*

HALF-FIGURE of gentleman in armor with white neckerchief, star of an order suspended with red ribbon, long brown wig.

SIR GODFREY KNELLER

ENGLISH: 1646—1723

317—*KING WILLIAM III*

*Height, 27½ inches; width, 23 inches*

HEAD and shoulders in an oval, robes, black wig.

LAWRENCE SCHOOL

318—*LADY IN BLACK*

*Height, 30 inches; width, 25 inches*

HALF-FIGURE, black low dress with puffed sleeves, black curly hair bound with blue ribbon.

SIR WILLIAM BEECHEY, R.A.

ENGLISH: 1753—1839

319—*PORTRAIT OF A CHILD*

*Height, 24 inches; width, 30 inches*

WHOLE-LENGTH of little child in a woody landscape, in white dress, a fir cone in right hand.

STYLE OF GEORGE MORLAND

320—*BOAR HUNTING*

*Height, 25 inches; length, 30 inches*

LANDSCAPE with boar attacking a dog and set on by three other dogs.

*Dated 1790.*

THOMAS PHILLIPS, R.A.

ENGLISH: 1770—1845

321—*PORTRAIT OF A LADY*

*Height, 30 inches; width, 25 inches*

HEAD and shoulders of middle-aged lady, seated in red chair, dark dress, white fichu, gold chain with monocle suspended, dark curly hair, white chiffon bonnet with flowers.

REYNOLDS SCHOOL

322—*MIRANDA*

*Height, 30 inches; width, 25 inches*

HALF-FIGURE of young lady looking to left, in golden draperies, brown wind-blown hair.

EARLY ENGLISH SCHOOL

323—*PORTRAIT OF A YOUNG LADY*

*Height, 30 inches; width, 25 inches*

HALF-LENGTH, seated, in blue low dress, gold bracelets, partly opened book in left hand, brown curly hair.

FRANCIS COTES, R.A.

ENGLISH: 1726—1770

324—*LADY IN BLUE*

*Height, 30 inches; width, 25 inches*

HALF-LENGTH of elderly lady, blue dress trimmed with gold, white fichu, gold-patterned white head-dress.

## EARLY ITALIAN

### 325—*HOLY FAMILY*

*Diameter, 33 inches*

THE Virgin in scarlet robe and blue cloak, kneeling in adoration before The Infant, who is reclining on red drapery; St. Joseph in red robes and the Infant St. John; cattle at a manger to right, distant hills and figures.

## THOMAS HUDSON

(PERIOD OF)

### 326—*PORTRAIT OF A GENTLEMAN*

*Height, 32 inches; width, 26 inches*

HALF-LENGTH, yellow and white fur coat, white lace neckerchief, gray wig.

## EARLY SPANISH

### 327—*ADORATION OF THE MAGI*

*Panel: Height, 34 inches; width, 25 inches*

GROUP of six figures; the Madonna, Child and St. Joseph to left, two of the Wise men kneeling before the Virgin, landscape seen through open window.

## JOHN JACKSON, R.A.

ENGLISH: 1778—1831

### 328—*STUDY OF A MAN*

*Height, 36 inches; width, 28 inches*

HALF-LENGTH study of an elderly man in dark dress, dark hair and beard, face in profile, right arm on chair.

THOMAS PHILLIPS, R.A.

ENGLISH: 1770—1845

329—*PORTRAIT OF A LADY*

*Height, 36 inches; width, 28 inches*

HALF-FIGURE of young lady seated near a balcony, black low dress with white sleeves, flowers at corsage, brown hair with rose, pearl and gold necklace.

THOMAS PHILLIPS, R.A.

ENGLISH: 1770—1845

330—*SIR JOHN ROSS, THE EXPLORER*

*Height, 35 inches; width, 27 inches*

HALF-FIGURE, seated, in blue uniform with white collar and black stock, gold belt and epaulettes, fur cloak across back; rocky landscape background.

SIR WILLIAM BEECHEY, R.A.

ENGLISH: 1753—1839

331—*CHILD WITH DOG*

*Height, 36 inches; width, 29 inches*

WHOLE-LENGTH of child in white dress and red shoes, holding forepaw of a dog.

VELASQUEZ SCHOOL

332—*PORTRAIT OF CARDINAL LANACRIS*

*Height, 35 inches; width, 27 inches*

HALF-LENGTH of middle-aged man, in ecclesiastical dress, dark hair, mustache and chin-tuft.

VAN DYCK SCHOOL

333—*PORTRAIT OF A GENTLEMAN*

*Height, 36 inches; width, 29 inches*

HALF-LENGTH, in red and gold draperies, long fair hair.

JAN DE BAEN

DUTCH: 1633—1702

334—*PORTRAIT OF RUTGER EICHOLTZ*

*Height, 39 inches; width, 28 inches*

HALF-FIGURE of an elderly man in dark dress and broad pointed white collar with tassels; brown hair, mustache and chin tuft, right hand against breast.

JAN DE BAEN

DUTCH: 1633—1702

335—*PORTRAIT OF WIFE OF RUTGER EICHOLTZ*

*Height, 39 inches; width, 28 inches*

HALF-FIGURE of middle-aged woman in dark dress with broad white collar, white cuffs, black lace tight-fitting cap, gold enameled and pearl earrings, gloves in left hand.

CARLO MARATTI SCHOOL

336—*PORTRAIT OF A CARDINAL*

*Height, 28 inches; length, 36 inches*

HALF-LENGTH seated figure of a young man in cardinal's robes and biretta, plain white collar, long dark hair, black mustache and chin-tuft.

## REMBRANDT SCHOOL

### 337—*CHRIST ON THE CROSS*

*Height, 33 inches; width, 28 inches*

THE Dead Christ with men in armor and medieval costumes.

## FLEMISH SCHOOL

### 338—*MADONNA AND CHILD*

*Height, 36 inches; width, 28 inches.*

THE Virgin seated in the open, in red dress, green cloak and white flowing head-dress; the Child seated on his mother's lap, holding a small wreath.

## FLEMISH SCHOOL

### 339—*MADONNA AND CHILD*

*Panel; Height, 37 inches; width, 28 inches*

THE Virgin seated, in blue and red, holding Infant, St. John to left.

## LOUIS TOCQUÉ

FRENCH: 1696—1772

### 340—*PORTRAIT OF A NOBLEMAN*

*Height, 36 inches; width, 28 inches.*

HALF-LENGTH of elderly man, gray coat, pink waistcoat embroidered with gold, white neckerchief and ruffles, gray flowing wig.

## THOMAS BARKER OF BATH

ENGLISH: 1769—1847

### 341—*PORTRAIT OF JOSEPH WRIGHT, OF DERBY, THE ARTIST*

*Height, 38 inches; width, 28 inches*

HALF-LENGTH, middle-aged, brown coat, yellow waistcoat and white neckerchief; gray hair.

## CARLE ANDRÉ VAN LOO

FRENCH: 1705—1765

### 342—*THE MINIATURE*

*Height, 39 inches; width, 28 inches*

THREE-QUARTER length of a young man in yellow and white dress, powdered hair, resting his left hand on the shoulder of a young lady in blue and yellow dress; she has a violin on her lap, and is holding a miniature of an elderly man; red curtain and pillar background.

## VAN DYCK SCHOOL

### 343—*CUPID*

*Height, 39 inches; width, 23 inches*

WHOLE-LENGTH of golden-haired cupid, blue drapery held in right hand.

## DUTCH SCHOOL

### 344—*FLEMISH SOLDIERS*

*Height, 35 inches; length, 38 inches*

NUMEROUS figures with two soldiers in armor.



CARLE ANDRÉ VAN LOO

FRENCH: 1705—1765

345—*LADY AND DOG*

*Height, 45 inches; width, 25 inches*

THREE-QUARTER length of elderly lady, seated, brown low dress, black shawl over head, holding toy dog.

LUDOLF BACKHUYSEN

DUTCH: 1631—1708

346—*THE SHIPWRECK*

*Height, 26 inches; length, 40 inches*

ROCKY coast with storm-tossed waves, a vessel driven on rocks, boat with sailors and other vessels to left and in distance.

CHRISTIAN WILHELM ERNST DIETRICH

GERMAN: 1712—1774

347—*LANDSCAPE*

*Height, 26 inches; length, 40 inches*

LANDSCAPE with the remains of an aqueduct in the center, figures and cattle in foreground, cottage and trees to left.

AART DE GELDER

DUTCH: 1645—1727

348—*A STUDENT*

*Length, 37 inches; width, 33 inches*

ELDERLY man in yellowish dress and fur-trimmed cloak and hat, seated at a table with books and writing material, spectacles in right hand.

FRENCH  
18TH CENTURY SCHOOL

349—*WOMAN WITH MASK*

*Height, 39 inches; width, 32 inches*

HALF-LENGTH of a lady in red silk dress with creamy white overmantle and powdered hair; black mask in right hand.

WILLIAM ETTY, R.A.

ENGLISH: 1787—1849

350—*STUDY OF NUDE FIGURE*

*Height, 41 inches; width, 24 inches*

WHOLE-LENGTH study of nude female figure, walking to left, flowers in right hand, dark hair adorned with flowers, green cloak to right, scarlet curtain background.

FLEMISH SCHOOL

351—*DESCENT FROM THE CROSS*

*Panel, arched top; Height, 52 inches; width, 27 inches*

GROUP of four figures, three of whom are assisting at the Deposition, the Cross forming the chief feature of the background.

DUTCH SCHOOL

352—*LANDSCAPE AND WINDMILL*

*Height, 42 inches; width, 27 inches*

SUMMER landscape with group of trees and windmill to left, shepherd watering sheep to right.

## ADAM VAN NOORDT

FLEMISH: 1562—1621

### 353—*PORTRAIT OF A GENTLEMAN*

*Height, 44 inches; width, 32 inches*

THREE-QUARTER length, standing, dark dress edged with gold, large white ruff, brown hair and short beard, left hand holding hilt of sword, helmet with feathers on table to left.

*Inscribed: "Ætatis 43."*

## RUBENS SCHOOL

### 354—*MADONNA*

*Height, 44 inches; width, 34 inches*

MADONNA in red and blue holding the Infant towards St. John the Baptist.

## ROBERT TOURNIÈRES

FRENCH: 1668—1752

### 355—*PORTRAIT OF A LADY*

*Height, 41 inches; width, 36 inches*

HALF-LENGTH portrait of a young lady standing in a landscape, in white low dress with pink sleeves and blue cloak, powdered hair, her right hand on stone ledge on which are various flowers.

## HYACINTHE RIGAUD

FRENCH: 1659—1743

### 356—*A MAGDALEN*

*Height, 38 inches; length, 43 inches*

THREE-QUARTER length figure of young woman in red robes with green flowing scarf, table with open book, cross and skull, right hand on gold vase.

## SIR ANTHONY VAN DYCK

(AFTER)

### 357—*PORTRAIT OF A GENTLEMAN*

*Height, 46 inches; width, 37 inches*

THREE-QUARTER length of middle-aged man seated, red dress and fur cloak, fair hair and beard.

## IL PARMIGIANO

ITALIAN: 1504—1540

### 358—*PORTRAIT OF A CARDINAL*

*Height, 49 inches; width, 36 inches*

NEARLY whole-length of middle-aged man in Cardinal's robes, seated, hands resting on arms of chair, brown beard.

*From the collection of the Earl of Chichester.*

## DUTCH SCHOOL

### 359—*JOSEPH INTERPRETING THE DREAM*

*Height, 42 inches; width, 38 inches*

INTERIOR of prison with three figures, Joseph seated and manacled to left.

## SIR GODFREY KNELLER

ENGLISH: 1646—1723

### 360—*PORTRAIT OF A GENERAL*

*Height, 39 inches; length, 48 inches*

THREE-QUARTER length of elderly man, in elaborately embroidered dress, red sash, white lace neckerchief and wig, holding baton in right hand; youth handing him his vizor.

## MORONI SCHOOL

### 361—*PORTRAIT OF A GENTLEMAN*

*Height, 46 inches; width, 39 inches*

THREE-QUARTER length of middle-aged man seated by a pillar, dark dress, black hair and beard, open book in left hand.

## DUTCH SCHOOL

### 362—*GROUP OF MEN*

*Height, 40 inches; length, 46 inches*

FIVE men in Eastern robes, one in blue cloak and white turban to left. Portion of a larger picture.

## PAULUS DE VOS

FLEMISH: 1590—1678

### 363—*DOGS*

*Height, 34 inches; length, 57 inches*

Two dogs snarling over the possession of the entrails of an animal, wooden stool to left.

## JEAN GUSTAVE JACQUET

FRENCH: 1846—1909

### 364—*THE CONQUEROR CONQUERED*

*Height, 56 inches; width, 39 inches*

INTERIOR with soldier in demi-suit of armor and black felt hat with red feathers, seated on an upturned drum, and looking intently at a girl in red dress playing a mandolin.

*Signed at the lower left, J. JACQUET.*

## TOCQUÉ SCHOOL

### 365—*PORTRAIT OF A LADY*

*Height, 50 inches; width, 40 inches*

THREE-QUARTER length, seated, playing a mandolin, in flower-patterned pink dress with wide white lace sleeves; organ with open music book to left.

## SIR M. A. SHEE, P.R.A.

ENGLISH: 1769—1850

### 366—*THE FRUIT GIRL*

*Height, 50 inches; width, 40 inches*

PORTRAIT of young girl in white dress, brown jacket and straw hat, seated in the open, with a basket of various fruit, and holding a King Charles spaniel by blue ribbon.

*Purchased from Martin Colnaghi, London.*

## VAN DYCK SCHOOL

### 367—*CHARITY*

*Height, 54 inches; width, 40 inches*

WOMAN in loose blue, white and red draperies, surrounded by three nude infants.

## VENETIAN SCHOOL

### 368—*GROUP OF FIGURES*

*Height, 69 inches; width, 28 inches*

FIGURES of men and women with merchandise.

VENETIAN SCHOOL

369—*MERCHANTS IN THE TEMPLE*

*Height, 68 inches; width, 29 inches*

GROUP of male and female figures with merchandise expelled from the Temple.

FRANCESCO ALBANO

ITALIAN: 1578—1660

370—*CUPIDS*

*Height, 36 inches; length, 68 inches*

AN overdoor with cupids playing various musical instruments.





# FIFTH AND LAST EVENING'S SALE

FRIDAY, MARCH 10, 1916

AT THE AMERICAN ART GALLERIES

BEGINNING AT 8 O'CLOCK

---

## ITALIAN SCHOOL

### 371—*JUDITH AND HOLOFERNES*

*Panel: Height, 10 inches; width, 9 inches*

JUDITH in green draperies looking up to right, holding the head of Holofernes.

### IGNAZ MARCEL GAUGENGIGL

GERMAN: 1856—

### 372—*THE TROUBADOR*

*Panel: Height, 11 inches width, 8 inches*

SMALL whole-length of youth in medieval costume, playing a guitar and singing.

WINCKWORTH ALLAN GAY

AMERICAN: 1821—1910

373—*THE ISLAND, COHASSET HARBOR*

*Millboard: Height, 12 inches; width, 8 inches*

THE island with small sailing boats, in summer time; trees and distant landscape.

*Signed at the lower left, W. ALLAN GAY, and dated 1871.*

IL SASSOFERRATO

(STYLE OF)

374—*HOLY FAMILY*

*Height, 9 inches; length, 12 inches*

LANDSCAPE with Virgin in red and blue dress, the Child and Infant St. John.

ROBERT LAYTON NEWMAN

AMERICAN: 1827—1912

375—*SONG OF THE BIRDS*

*Height, 12 inches; width, 9 inches*

Two girls in red, blue and white draperies, in a landscape looking to right.

*Signed at the lower left, R. L. NEWMAN.*

ROBERT LAYTON NEWMAN

AMERICAN: 1827—1912

376—*MOTHER AND CHILD ON BEACH*

*Height, 9 inches; length, 15 inches*

RECLINING on her right side, a mother gathers to her breast her sleeping babe. She has auburn hair and her fallen mantle is deep blue.

J. ORTEGO

CONTEMPORARY

377—*THE CIRCUS*

*Height, 13 inches; width, 10 inches*

SCENE in the wing of a circus, a clown conversing with an equestrienne; other figures in the distance.

*Signed at the lower left, ORTEGO, and dated 1873.*

*From the J. Abner Harper sale.*

FRANK DE HAVEN, A.N.A.

AMERICAN: 1856—

378—*LANDSCAPE*

*Panel: Height, 10½ inches; length, 14 inches*

EVENING landscape with trees and flock of sheep.

*Signed at the lower left, F. DE HAVEN, and dated 1898.*

MODERN ENGLISH

379—*BETSY PRIG AND SAIREY GAMP*

*Height, 10 inches; length, 14 inches*

THE famous drinking incident, with the teapot, from Dickens' novel.

ENGLISH SCHOOL

380—*INTERIOR OF AN ALEHOUSE*

*Panel: Height, 11½ inches; length, 13½ inches*

GROUP of men, with woman and child; other figures to right drinking.

FRANK DE HAVEN, A.N.A.

AMERICAN: 1856—

381—*LANDSCAPE*

*Height, 12 inches; length, 14 inches*

SUNSET scene over a landscape, with a flock of sheep grazing.

*Signed at the lower left, and dated 1898.*

RICHARD NORRIS BROOKS

AMERICAN: 1847—

382—*LANDSCAPE*

*Millboard: Height, 12½ inches; length, 15 inches*

VIEW of undulating country in springtime.

*Signed at the lower right, R. N. BROOKS.*

GERMAN SCHOOL

383—*MAN PRAYING*

*Panel: Height, 15 inches; width, 12 inches*

SMALL half-figure of elderly man in black dress lined and edged with gold, black hat, hands clasped.

ITALIAN SCHOOL

384—*MADONNA AND CHILD*

*Panel: Height, 16 inches; width, 12 inches*

THE Madonna in red dress holding the Infant.

## ITALIAN SCHOOL

### 385—*PORTRAIT OF A MAN*

*Height, 17 inches; width, 13 inches*

HEAD of a young man, yellow dress and brown hair.

## ENGLISH SCHOOL

### 386—*LANDSCAPE*

*Height, 13 inches; length, 17 inches*

SCENE in a valley with river between two high hills.

## MODERN FRENCH

### 387—*SHEEP*

*Height, 15 inches; length, 16 inches*

A SKETCH in oils of sheep and trees.

## ENGLISH SCHOOL

### 388—*PORTRAIT OF AN OFFICER*

*Height, 12 inches; length, 19 inches*

COPLEY-LIKE, small whole-length of a young English officer, in uniform, scarlet coat, buff waistcoat and breeches, standing and leaning on his gray charger, hat in left hand.

## LAWRENCE SCHOOL

### 389—*HEAD OF A YOUNG MAN*

*Millboard: Height, 19 inches; width, 15 inches*

BUST; black dress and stock, brown curly hair.

## ENGLISH SCHOOL

### 390—*OLD MAN RESTING ON BENCH*

*Panel: Height, 20 inches; width, 14 inches*

SMALL whole-length of gray-haired man seated on a bench in a landscape; dark dress and light breeches.

## VAN DYCK SCHOOL

### 391—*HEAD OF A MAN*

*Height, 18 inches; width, 15 inches*

SMALL bust; black dress, white plain collar, long gray hair.

## JOHN WATTS

ENGLISH: 1770—1820

### 392—*LANDSCAPE WITH CORNFIELD*

*Height, 15 inches; length, 20 inches*

A BROADLY painted sketch of a cornfield. Undoubtedly a study for a larger composition.

## UNKNOWN

### 393—*YOUNG WOMAN RECLINING*

*Height, 18 inches; length, 22 inches*

YOUNG woman in loose blue and white draperies, reclining on a red rug in a landscape.

HENRY SINGLETON

ENGLISH: 1766—1839

394—*RUSTIC SCENE*

*Panel: Height, 21 inches; width, 16 inches*

VIEW outside a country cottage, with seated peasant woman watching a child who is leaning on a dog.

CHARLES WALTER STETSON

AMERICAN: 1858—1911

395—*A JOYOUS PLACE*

*Height, 17½ inches; length, 22½ inches*

LANDSCAPE with figures of dancing girls in classical robes, trees and houses to right.

*Signed at the lower right, C. WALTER STETSON, and dated 1884.*

HERVEY CORREJA

CONTEMPORARY

396—*SPANISH TOREADOR*

*Height, 22 inches; width, 15 inches*

SMALL half-figure of toreador in gala dress, holding a cigarette.

*Signed and dated: PARIS, 1885.*

ISAAC DE MOUCHERON

DUTCH: 1670—1744

397—*LANDSCAPE*

*Height, 20 inches; width, 17 inches*

FOREST scene with overhanging cliffs.

MRS. MARGARET SARAH CARPENTER

ENGLISH: 1793—1872

398—*LITTLE CHILD WITH DOLL*

*Height, 21 inches; width, 17 inches*

FACING directly front, a fair haired, rosy checked child presses her doll to her breast. Her white dress is gathered at the neck with red ribbons and at the back is a green curtain.

THOMAS STOTHARDT, R.A.

ENGLISH: 1755—1834

399—*INTERIOR*

*Height, 23 inches; width, 17½ inches*

INTERIOR of a church with figure of a lady in white kneeling at an altar; a monk in black in the background.

ANDRIES VERMEULEN

DUTCH: 1763—1814

400—*WINTER SCENE*

*Height, 17 inches; length, 23 inches*

FROZEN river scene with bridge and cottage, numerous rustic figures skating and sleighing.

*Signed at the lower right, A. VERMEULEN, and dated 1814.*

ITALIAN SCHOOL

401—*HEAD OF FEMALE SAINT*

*Height, 20½ inches; width, 18½ inches*

HEAD and shoulders, red dress, white flowing head-dress, red hair.



## SPANISH SCHOOL

### 402—*HEAD OF MAN*

*Height, 22 inches; width, 18 inches*

THE face is slightly raised and shows strong lights and shadows. Dark brown hair falling to the shoulders.

## JOHANN ROTTENHAMMER

GERMAN: 1564—1623

### 403—*ST. CECILIA*

*Panel: Height, 16 inches; length, 26 inches*

SMALL whole-length in red and gold draperies, seated playing an organ, a cherub playing bellows.

## FRANCESCO ALBANO

ITALIAN: 1578—1660

### 404—*CUPIDS*

*Height, 18 inches; length, 27 inches*

GROUP of four cupids on clouds, playing instruments and singing from a music-book.

## ENGLISH SCHOOL

### 405—*PORTRAIT OF A LADY*

*Height, 24 inches; width, 19 inches*

SMALL bust of middle-aged lady, in dark dress, white crossover, pink ribbon and red and black turban.

## ITALIAN SCHOOL

### 406—*SAINTE AND ANGEL*

*Height, 21 inches; width, 19 inches*

FEMALE saint, seated in a landscape looking up at an angel.

## EUGÈNE LOUIS GABRIEL ISABEY

FRENCH: 1804—1886

### 407—*PORTRAIT OF A LADY*

*Height, 24 inches; width, 20 inches*

AN unfinished sketch; head and shoulders, dark dress, auburn hair.

*Signed with initials to right, and with the red stamp: "Vente Isabey."*

## ENGLISH SCHOOL

### 408—*HEAD OF A LADY*

*Height, 24 inches; width, 20 inches*

HEAD and shoulders, dark low dress, gold ribbon bow under chin.

## WILLIAM DOBSON

ENGLISH: 1610—1646

### 409—*PORTRAIT OF CHARLES I*

*Height, 24 inches; width, 20 inches*

HEAD and shoulders, dark dress, white collar, gold chain.

## DUTCH SCHOOL

### 410—*PORTRAIT OF A LADY*

*Height, 24 inches; width, 20 inches*

HALF-FIGURE, green low dress with double row of pearls, white lace collar, black cap, brown hair with pearls.

## FLEMISH SCHOOL

### 411—*PORTRAIT OF CHARLES V*

*Height, 24 inches; width, 20 inches*

HEAD and shoulders, black dress embroidered with gold, black cap with white feather.

## JOSEPH STANNARD

ENGLISH: 1797—1830

### 412—*VIEW ON A RIVER*

*Height, 20 inches; length, 24 inches*

VIEW on a broad shallow river, with numerous sailing barges and group of logs, to right windmill and cattle.

## WILLIAM ETTY, R.A.

ENGLISH: 1787—1849

### 413—*STUDY OF NUDE FIGURE*

*Panel: Height, 26 inches; width, 20 inches*

WHOLE-LENGTH female figure in the open lying on pink drapery, sea in distance.

WILLIAM DOBSON

(AFTER)

414—*PORTRAIT OF A YOUNG MAN*

*Height, 26 inches; width, 21 inches*

SMALL bust in red dress, deep white collar, jeweled chain with cross of an order, long fair hair.

DUTCH SCHOOL

415—*LADY HOLDING A FAN*

*Height, 28 inches; width, 22 inches*

HALF-FIGURE, black dress with deep collar and wristband, dark hair with close-fitting black and gold cap, fan in left hand.

*Signature and date indistinctly seen in lower right-hand corner.*

ENGLISH SCHOOL

416—*PORTRAIT OF A LADY*

*Oval: Height, 29 inches; width, 24 inches*

BUST of lady in pink low dress, long black hair.

MODERN AMERICAN SCHOOL

417—*LANDSCAPE AND RIVER*

*Height, 17 inches; length, 31½ inches*

VIEW of a broad placid river with forest of pines and other trees on either side.

ENGLISH SCHOOL

418—*PORTRAIT OF A GENTLEMAN*

*Oval: Height, 29 inches; width, 24 inches*

ELDERLY gentleman in dark dress holding a pigeon in right hand.

ENGLISH SCHOOL

419—*QUEEN MARY*

*Oval: Height, 29 inches; width, 24 inches*

BUST of the Queen in black and white dress with ornaments of pearls and precious stones, pearl necklace.

ENGLISH SCHOOL

420—*PORTRAIT OF A GENTLEMAN*

*Oval: Height, 29 inches; width, 24 inches*

BUST of elderly gentleman in ermine robes and pendant of the Order of St. George.

ITALIAN SCHOOL

421—*MADONNA AND CHILD*

*Height, 30 inches; width, 20 inches*

MADONNA seated nursing the Infant.

ARTHUR HOEBER, A.N.A.

AMERICAN: 1854—1915

422—*THE EARLY MOON*

*Height, 20 inches; length, 30 inches*

BEACH scene with breakers, early sunrise effects.

*Signed at the lower left, ARTHUR HOEBER.*

JOSEF DE RIBERA

SPANISH: 1588—1656

423—*HEAD OF AN APOSTLE*

*Height, 30 inches; width, 22½ inches*

ELDERLY man in green dress and red cloak, brown hair and beard.

KENYON COX, N.A.

AMERICAN: 1856—

424—*BLANCHE ET ROSE*

*Height, 35 inches; width, 20½ inches*

NUDE figure of young girl, with long brown hair bound with pink ribbon, standing on a white rug, jar of pink and white flowers to right.

*Signed at the upper right, KENYON COX, and dated 1881.*

*Exhibited at Boston and at Philadelphia.*

ELISABETTA SIRANI

ITALIAN: 1638—1665

425—*THE DAUGHTER OF HERODIAS*

*Oval: Diameters, 31 and 26½ inches*

SALOME in pink and gold dress and white turban, gold and enameled chain over left shoulder, holding the head of John the Baptist on a gold charger.

*From the collections of A. Barker, 1874; Earl of Malmesbury, 1876; and Charles Butler, 1911.*

ROBERT CROZIER (OF MANCHESTER)

ENGLISH

426—*PORTRAIT OF A YOUNG LADY*

*Height, 33 inches; width, 26 inches*

HALF-FIGURE, seated, pinkish dress with black scarf, bracelet on left wrist, fair hair.

*Signed and dated 1853 in lower right-hand corner.*

SIR GODFREY KNELLER

ENGLISH: 1646—1723

427—*PORTRAIT OF A GENTLEMAN*

*Height, 30 inches; width, 25 inches*

HALF-FIGURE of elderly man in green plush coat, white neckerchief, long fair curly hair.

## ENGLISH SCHOOL

### 428—*MOSES IN THE BULRUSHES*

*Height, 25 inches; length, 30 inches*

NEARLY nude child reclining on draperies amid bulrushes.

## EARLY ENGLISH SCHOOL

### 429—*PORTRAIT OF AN ELDERLY MAN*

*Height, 30 inches; width, 25 inches*

HALF-FIGURE, dull red dress, white stock, gray wig.

## SCHOOL OF FRA ANGELICO

### 430—*CORONATION OF THE VIRGIN*

*Height, 30 $\frac{5}{8}$  inches; length, 53 $\frac{1}{4}$  inches (sight).*

CHRIST is represented in the act of placing the crown on the Virgin's head. Four angels are kneeling in the foreground, one with a musical instrument, all in adoration. Transferred from panel to canvas.

## ENGLISH SCHOOL

### 431—*PORTRAIT OF A LADY*

*Height, 30 inches; width, 25 inches*

HALF-LENGTH, seated, red low dress, gold chain, dark hair in ringlets, hands clasped.



## ENGLISH SCHOOL

### 432—*PORTRAIT OF A LADY*

*Height, 30 inches; width, 25 inches*

HALF-FIGURE, red dress, pearl necklace, black curly hair, white rose in left hand.

## ENGLISH SCHOOL

### 433—*CHILDREN*

*Height, 25 inches; length, 30 inches*

SLEEPING infant watched over by a fair-haired child in red dress.

## VERONESE SCHOOL

### 434—*HEAD OF A WOMAN*

*Height, 30 inches; width, 25 inches*

HALF-FIGURE, low white dress and blue cloak, pearl necklace, fair curly hair.

## SIR WILLIAM BEECHER, R.A.

ENGLISH: 1753—1839

### 435—*FREDERICK EARL OF GUILDFORD*

*Height, 30 inches; width, 25 inches*

HEAD and shoulders, black dress, white stock, blue and red sash, and star of the Order of the Garter.

*From the Earl of Guildford's Collection.*

## ITALIAN SCHOOL

### 436—*MADONNA AND CHILD*

*Height, 29 inches; length, 30 inches*

MADONNA in red, seated, holding the Child.

## SIR WILLIAM BEECHEY

(PERIOD OF)

### 437—*PORTRAIT OF A GENTLEMAN*

*Height, 30 inches; width, 28 inches*

HALF-FIGURE of elderly man, dark dress and white neckerchief, with star of the Order of the Garter; fair curly hair.

## ENGLISH SCHOOL

### 438—*PORTRAIT OF A YOUNG LADY*

*Height, 36 inches; width, 28 inches*

HALF-LENGTH, seated, black low dress with white sleeves, long golden hair, resting her head on a red cushion.

## SIR THOMAS LAWRENCE, P.R.A.

(AFTER)

### 439—*PORTRAIT OF GEORGE IV*

*Height, 36 inches; width, 28 inches*

HALF-LENGTH of the Prince Regent (afterwards George IV) in uniform with numerous orders and decorations.

FRANCIS COTES, R.A.

ENGLISH: 1726—1770

440—*PORTRAIT OF A YOUNG MAN*

*Height, 38 inches; width, 29 inches*

HALF-FIGURE standing by a balcony, brown dress and cloak, white lace collar and cuffs.

ROMNEY PERIOD

441—*PORTRAIT OF A MAN*

*Height, 39 inches; width, 27 inches*

THREE-QUARTER length of elderly gray-bearded, bald-headed man in gray draperies, right hand on left wrist; Oriental tower to right.

ALFRED DE KNYFF

BELGIAN: 1819—1885

442—*HUNTING SCENE*

*Height, 22 inches; length, 33 inches*

A PARK with lake into which hounds are pursuing deer.

*From the artist's sale.*

F. RAUBICHECK

AMERICAN: DECEASED

443—*LANDSCAPE*

*Height, 25 inches; length, 37 inches*

SUMMER impressionist view of field with stacks of hay, trees to right.

*Signed at the lower left, F. RAUBICHECK.*

## VERONESE SCHOOL

### 444—*A GIRL*

*Height, 42 inches; width, 24 inches*

HALF-LENGTH of golden-haired girl in dark dress with short blue-striped sleeves and yellow mantle; pillar to right.

## FÉLIX ZIEM

(MANNER OF)

### 445—*VIEW ON THE ADRIATIC SHORE*

*Height, 26 inches; length, 43 inches*

BROAD view of the Adriatic Sea with mountains in the distance, a fisherman wading towards the beach.

*Signed at the lower left, ZIEM.*

## WILLIAM BROWN

AMERICAN: 1827—

### 446—*GOING TO THE FAIR*

*Height, 27 inches; width, 40 inches*

EXTENSIVE view of a mountainous country, with cattle and peasants resting in a valley.

*Signed at the lower left, W. BROWN, and dated 1853*

## GUSTAV FRIEDRICH PAPPERITZ

GERMAN: 1813—1861

### 447—*NUDE FIGURE*

*Height, 42 inches; width, 23 inches*

SMALL whole-length nude figure of finely modeled woman, standing on the ledge of a swimming pool, holding light draperies, flowing auburn hair, pearl necklace, red curtain background.

*Signed at the lower right, G. PAPPERITZ.*

## MELCHIOR HONDEKOETER

DUTCH: 1636—1695

### 448—*PARROTS IN A FOREST*

*Height, 40 inches; width, 30 inches*

FOREST scene with red parrots and other birds.

## NORWICH SCHOOL

### 449—*UNLOADING A BOAT*

*Height, 40 inches; width, 30 inches*

VIEW at a pier-head of the arrival and unloading of a fishing trawl; numerous figures.

## ITALIAN SCHOOL

### 450—*MOTHER AND CHILD*

*Height, 40 inches; width, 31 inches*

SEATED figure of lady in red dress holding child.

## ENGLISH SCHOOL

### 451—*LANDSCAPE*

*Height, 29 inches; length, 42 inches*

MOONLIGHT effects on a valley with cottages, trees and numerous figures.

A. FOUQUET

FRENCH MODERN

### 452—*MARGARET, WIFE OF ADMIRAL CHRISTOPHER STRACHIEY, R.N.*

*Height, 40 inches; width, 32 inches*

THREE-QUARTER length of elderly lady seated, brown dress, white lace collar and cuffs, brown hat with white feathers over white cap; black handkerchief in left hand.

*Signed and dated: VERDUN 1838.*

LUCA GIORDANO

ITALIAN: 1632—1705

### 453—*MOTHER AND CHILD*

*Height, 40 inches; width, 34 inches*

WOMAN in loose dress holding naked child on lap, children's heads to right and left.

## NEAPOLITAN SCHOOL

### 454—*THREE SHEPHERDS*

*Height, 45 inches; width, 28 inches*

THREE peasant figures, one holding a staff.

## DOMINICUS VAN TOL

DUTCH: BETWEEN 1631 AND 1642—1676

### 455—*MARKET SCENE*

*Height, 43 inches; width, 32 inches*

VILLAGE market scene, evening effect, woman seated at her stall of fowls and game bargaining with a gentleman in black dress, other figures to left.

## ENGLISH SCHOOL

### 456—*PORTRAIT OF A LADY*

*Height, 43 inches; width, 32 inches*

THREE-QUARTER length, seated, white flower-patterned dress, white and black hat with black feathers, rose in right hand, fan in left.

## ROBERT WIGNELL

ENGLISH: 18TH CENTURY

### 457—*PORTRAIT OF MATTHEW GIBBON*

*Height, 44 inches; width, 36 inches*

THREE-QUARTER length of young man, blue, white and yellow robes, long black wig, paper in left hand.

*Signed in full with name of subject in lower left-hand corner, coat-of-arms to right.*

## ITALIAN SCHOOL

### 458—*MOTHER AND CHILD*

*Height, 48 inches; width, 36 inches*

WOMAN in red dress and blue cloak, holding sleeping infant.

## ITALIAN SCHOOL

### 459—*CHRIST ON THE CROSS*

*Height, 50 inches; width, 21 inches*

SMALL whole-length figure of Christ on the cross, skull and bones at foot.

## PIETER BOEL

FLEMISH: 1622—1674

### 460—*STILL LIFE*

*Canvas: Height, 36 inches; width, 51 inches*

DOG keeping guard over dead game and other trophies of hunting.

## JOHANNES LINGELBACH

GERMAN: 1623—1674

### 461—*LANDSCAPE AND FIGURES*

*Height, 48 inches; width, 36 inches*

WOODY uneven landscape, with peasant and cattle watering.

## KNELLER PERIOD

### 462—*PORTRAIT OF A GENTLEMAN*

*Height, 49 inches; width, 39 inches*

THREE-QUARTER length, probably of a shipowner, standing, in brown dress, white neckerchief and cuffs, long gray wig, right hand resting on map of the globe, ships in the distance.

*From the Earl of Sheffield's Collection.*



## ITALIAN SCHOOL

### 463—*SIBILLA PERSICA*

*Height, 39 inches; length, 48 inches*

THREE-QUARTER length figure in red, brown and white draperies and white turban, seated at a table writing; left elbow resting on volume lettered "Sibilla Persica."

*Inscribed on ledge to right: "Guaccinianni."*

## REMBRANDT SCHOOL

### 464—*THE CARPENTER'S FAMILY*

*Height, 48 inches; width, 43 inches*

INTERIOR with carpenter, wife in red dress seated with open book, and cradle with infant.

## BOUCHER SCHOOL

### 465—*THE YOUNG ARTIST*

*Height, 57 inches; width, 38 inches*

INFANT seated at an easel sketching, cupid with flaming torch overhead.

## THOMAS BARBER

ENGLISH: 18TH CENTURY

### 466—*DR. WOODHOUSE, DEAN OF LICHFIELD*

*Height, 50 inches; width, 40 inches*

THREE-QUARTER length, seated in red chair, black dress, white stock, gray hair, left hand resting on open book on table with writing materials and volume lettered "Addison's Works"; red curtain background, Lichfield Cathedral in the distance.

JOHN RILEY

ENGLISH: 1646—1691

467—*PORTRAIT OF A MAGISTRATE*

*Height, 50 inches; width, 40 inches*

THREE-QUARTER length figure, standing, of middle-aged man, in red robe, white lace collar, long brown wig, scroll in right hand; curtain background.

AMERICAN ART ASSOCIATION,

MANAGERS.

THOMAS E. KIRBY,

AUCTIONEER.

LIST OF ARTISTS REPRESENTED AND  
THEIR WORKS



## LIST OF ARTISTS REPRESENTED AND THEIR WORKS

	CATALOGUE NUMBER
ALBANO, FRANCESCO	
Cupids	370
Cupids	404
AMBERGER, CHRISTOPH	
Head of Christ	89
BACKHUYSEN, LUDOLF	
The Shipwreck	346
BAEN, JAN DE	
Portrait of Rutger Eicholtz	334
Portrait of Wife of Rutger Eicholtz	335
BARBER, THOMAS	
Dr. Woodhouse, Dean of Lichfield	466
BARKER OF BATH, THOMAS	
Portrait of Joseph Wright, of Derby, the Artist	341
BEECHEY, SIR WILLIAM, <i>R.A.</i>	
Portrait of a Young Lady	98
Portrait of a Child	131
Portrait of a Child	205
Woman Playing Chess	253
Portrait of a Child	319
Child with Dog	331
Frederick Earl of Guildford	435
BEECHEY, SIR WILLIAM. ( <i>After Sir Joshua Reynolds</i> )	
Portrait of Charles James Fox	222

	CATALOGUE NUMBER
BEECHEY, SIR WILLIAM, R.A. ( <i>Attributed to</i> )	
The Evening Star	76
Portrait of Colonel Lord Howden	114
BEECHEY, SIR WILLIAM. ( <i>Period of</i> )	
Portrait of Mr. Patton	130
Portrait of a Gentleman	437
BASSANO, JACOPO DA PONTE	
Portrait of a Man	128
Venetian Head	184
BICCI, NERI DI	
Madonna and Child	92
BISSOLO, PIER FRANCESCO	
Madonna and Child	88
BOEL, PIETER	
Fowls Surprised by Eagle	43
Still Life	460
BONIFAZIO, VENEZIANO	
Two Saints	61
Bishop and Saint	270
BONSIGNORI, FRANCESCO	
Santa Lucia	91
BORDONE, PARIS	
Palma's Daughter	129
BOTTICINI, FRANCESCO	
Madonna and Child	33A
BOUCHER SCHOOL	
The Young Artist	465
BRONZINO, ANGILO	
Bianca Capella	104

	CATALOGUE NUMBER
BRONZINO SCHOOL Judith	174
BROOKS, RICHARD NORRIS Landscape	382
BROWN, WILLIAM Going to the Fair	446
BUONCONSIGLIO, GIOVANNI St. John	182
CANALETTO SCHOOL Venice	251
CARAVAGGIO, POLIDORO DA St. Matthew and the Angel	157
CARLO MARATTI SCHOOL Portrait of a Cardinal	336
CARPENTER, MRS. MARGARET SARAH Little Child with Doll	398
COELLO, CLAUDIO Ferdinand of Austria	68
CONSTABLE, JOHN, <i>R.A.</i> ( <i>Attributed</i> ) Dedham Vale	16A
COPLEY, JOHN SINGLETON, <i>R.A.</i> Portrait Group	18
COSWAY, RICHARD, <i>R.A.</i> Lady Seated in a Landscape	23
CORNELISZ OF HAARLEM, CORNELIS Two Heads	283
CORREJA, HERVEY Spanish Toreador	396

COTES, FRANCIS, <i>R.A.</i>	
Portrait of a Lady	15
Portrait of a Boy	231
Portrait of Miss Hastings	256
Portrait of a Young Man	301
Portrait of Lady Olive	310
Lady in Blue	324
Portrait of a Young Man	440
COX, KENYON, <i>N.A.</i>	
Blanche et Rose	424
CRAEYER, GASPARD DE	
The Christ Child	288
CREGAN, MARTIN, <i>P.R.H.A.</i>	
Mrs. Hawkins and Children	37
CROZIER (OF MANCHESTER), ROBERT	
Portrait of a Young Lady	426
CUYP, JACOB GERRITZ	
Boy in Red	158
DAUBIGNY, CHARLES FRANÇOIS	
Marine	201
DE HAVEN, FRANK, <i>A.N.A.</i>	
Landscape	378
Landscape	381
DELAROCHE, PAUL	
France and Greece	38
DELFF, CORNELIS VAN	
Woman with Tulip	159
DENIS, FRANS	
Family Group	42



	CATALOGUE NUMBER
DERRICK, LOUIS Landscape	236
DIAZ DE LA PEÑA, NARCISSE VIRGILE Landscape	275
DIEPENBEECK, ABRAHAM VAN Duke of Molino	81
Holy Family	118
DIETRICH, CHRISTIAN WILHELM ERNST Landscape	347
DOBSON, WILLIAM Portrait of the Earl of Pembroke	197
Comedy Nursing the Infant Shakespeare	240
Portrait of Charles I	409
DOBSON, WILLIAM. ( <i>After Van Dyck</i> ) Lord John and Lord Bernard Stuart	71
Portrait of Sir A. Van Dyck	148
DOBSON, WILLIAM. ( <i>After</i> ) Portrait of a Young Man	414
DOMENICHINO, DOMENICO ZAMPIERI Marriage of St. Catherine	50
Dædalus and Icarus	83
Lot and His Daughters	176
DUPONT, GAINSBOROUGH Landscape	80
Landscape	245
DÜRER, A. ( <i>School of</i> ) Head of Christ	277
DUTCH SCHOOL Landscape	171
Cobbler's Shop	210
Head of a Man	278
Flemish Soldiers	344
Landscape and Windmill	352

## DUTCH SCHOOL—Continued

Joseph Interpreting the Dream	359
Group of Men	362
Portrait of a Lady	410
Lady Holding a Fan	415

## EARLY ENGLISH SCHOOL

Portrait of a Young Lady	115
Landscape ( <i>Attributed to Patrick Nasmith</i> )	228
Portrait of a Young Lady	323
Portrait of an Elderly Man	429

## EARLY ITALIAN SCHOOL

Virgin and Child	132
Madonna and Child	136
Virgin and Child	139
A Saint	164
Holy Family	325

## EARLY SPANISH

Adoration of the Magi	327
-----------------------	-----

## EECKHOUT, GERBRAND VAN DEN

Figures	52
---------	----

## ENGLISH SCHOOL

Portrait of a Gentleman	169
Three Children ( <i>About 1830</i> )	172
Child with Dog	203
Portrait of a Lady ( <i>Early 19th century</i> )	208
Miss Melville	230
Officer on Horseback	273
Portrait of a Gentleman	308
Portrait of a Young Lady	309
Portrait of a Gentleman	311
Interior of an Alehouse	380
Landscape	386
Portrait of an Officer	388
Old Man Resting on Bench	390
Portrait of a Lady	405
Head of a Lady	408

	CATALOGUE NUMBER
ENGLISH SCHOOL—Continued	
Portrait of a Lady	416
Portrait of a Gentleman	418
Queen Mary	419
Portrait of a Gentleman	420
Moses in the Bulrushes	428
Portrait of a Lady	431
Portrait of a Lady	432
Children	433
Portrait of a Young Lady	438
Landscape	451
Portrait of a Lady	456
ETTY, WILLIAM, <i>R.A.</i>	
Ophelia	276
Study of Nude Figure	350
Study of Nude Figure	413
EVERSDYCK, WILLEM	
Family Group	65
FABRITIUS, KAREL	
Portrait of a Young Man	218
FALERO, LUIS	
Sculpture	40
Painting	41
Lady Reading	199
LIPPI, FILIPPO. ( <i>School of</i> )	
Holy Family	156
FLEMISH SCHOOL	
Three Ladies	49
Virgin and Child	85
The Dead Christ	279
Flowers	293
The Flagellation	300
Madonna and Child	338
Madonna and Child	339
Descent from the Cross	351
Portrait of Charles V	411

	CATALOGUE NUMBER
FLINCK, GOVAERT	
Portrait of a Girl	121
Portrait of a Philosopher	127
FOUQUET, A.	
Margaret, Wife of Admiral Christopher Strachey, R.N.	452
FRA ANGELICO SCHOOL	
The Annunciation	302
Coronation of the Virgin	430
FRAGONARD SCHOOL	
Head of a Girl	189
FRENCH SCHOOL	
Fête Champêtre ( <i>XVIII century</i> )	215
The Mandolin Player	242
Portrait of a Princess Palatine	255
Woman with Mask ( <i>XVIII century</i> )	349
GALLAIT, Louis	
Art and Liberty	36
GAROFALO (IL)	
The Wise Men	60
Madonna and Child	229
GAUGENGIGI, IGNAZ MARCEL	
The Troubadour	372
GAY, WINCKWORTH ALLAN	
The Island, Cohasset Harbor	373
GELDER, AART DE	
A Student	348
GERMAN SCHOOL	
Empress of Austria	110
Man Praying	383
GIORDANO, LUCA	
Mother and Child	453

	CATALOGUE NUMBER
GIRTIN, THOMAS Head of a Young Man	298
GORDON, SIR JOHN WATSON, <i>R.A.</i> The Young Highlander	123
The Marquess of Wellesley	260
GOYA Y LUCIENTES, FRANCISCO JOSÉ DE Portrait of the Prince of Peace	54
GREBBER, PIETER FRANSZ Violin Player	84
GREUZE SCHOOL Bacchante	285
Louise de La Vallière	290
GUERCINO (IL) Tancred and Armida	177
HANNEMAN, ADRIAEN Portrait of a Lady	30
Portrait of a Lady	107
HARLOW, GEORGE HENRY Mrs. Dixon	13
Lady Carteret and Children	168
Portrait of Dr. Homan, Physician to George IV	259
HARLOW (G. H.) PERIOD Group of Children	249
Lady before an Easel	312
HELST, BARTHOLOMEUS VAN DER Portrait of an Admiral	167
HERRE, LUCAS DE Portrait of a Lady	282
HIESCHIG, A. M. Domestic Scene	173

	CATALOGUE NUMBER
HIGHMORE, JOSEPH Portrait of a Lady	34
HILLIARD, NICHOLAS Portrait of a Lady	146
HILLIARD, WILLIAM HENRY Landscape	292
HOEBER, ARTHUR, <i>A.N.A.</i> Marine	291
The Beach at East Orleans	297
The Early Moon	422
HOECGEEEST, C. Church Interior	187
HOGARTH, WILLIAM. ( <i>Ascribed to</i> ) Portrait of a Young Lady	120
HOGARTH, WILLIAM. ( <i>Period of</i> ) An Interior with Figures	77
HONDECOETER (HONDEKOETER), MELCHIOR Barnyard	154
Parrots in a Forest	448
HONTHORST, GERARD VAN The Musician	17
HONTHORST, WILLEM VAN William II Prince of Orange	225
HOPPNER PERIOD Portrait of a Lady	100
Master David	209
Portrait of a Boy	211
HOUSMAN (OR HUYSMANS), JACOB Mrs. Blount	33

	CATALOGUE NUMBER
HUDSON, THOMAS	
Family Group	48
Mrs. Graham and Child	254
HUDSON, THOMAS. ( <i>Period of</i> )	
Portrait of a Gentleman	326
HURLESTONE, FREDERICK YATES	
Ameda	234
INSKIPP, JAMES	
Lady with Red Poppy	125
Neapolitan Fruit-seller	220
ISABEY, EUGÈNE LOUIS GABRIEL	
Portrait of a Lady	407
ITALIAN SCHOOL	
Christ on the Cross	55
Flora	133
Judith and Holofernes	371
Madonna and Child	384
Portrait of a Man	385
Head of Female Saint	401
Saint and Angel	406
Madonna and Child	421
Madonna and Child	436
Mother and Child.	450
Mother and Child	458
Christ on the Cross	459
Sibilla Persica	463
JACKSON, JOHN, <i>R.A.</i>	
Portrait of a Young Man	314
Study of a Man	328
JACQUET, JEAN GUSTAVE	
The Conqueror Conquered	364

	CATALOGUE NUMBER
JANSSEN, CORNELIS	
Portrait of a Man	204
Portrait of the Earl of Winchester	313
KEITH, WILLIAM	
Autumn: California	2
Golden Sunset	4
KEY, ADRIAAN THOMASZ	
Portrait of a Dutch Lady	238
KNELLER, SIR GODFREY	
Portrait of a Queen of England	75
Portrait of a Gentleman	227
Portrait of Judge Levins	261
Portrait of a Lady	264
Portrait of a Judge	315
Gentleman in Armor	316
King William III	317
Portrait of a General	360
Portrait of a Gentleman	427
KNELLER, SIR GODFREY. ( <i>After</i> )	
Edward Hyde, Earl of Clarendon	28
KNELLER PERIOD	
Lady and Child	266
Portrait of a Gentleman	462
KNYFF, ALFRED DE	
Hunting Scene	442
LADBROOKE, HENRY	
Cottage and Farm	196
LAIRESSE, GERARD DE	
The Marlborough Family	44
LANNEN, JACOBSZ VAN DER	
A Musicale	105



LARGILLIÈRE, NICOLAS DE Lady in Black	35
LATE ITALIAN SCHOOL Classical Scene: An Overdoor	269
LAWRENCE, SIR THOMAS, <i>P.R.A.</i> ( <i>After</i> ) Portrait of George IV	439
LAWRENCE, SIR THOMAS, <i>P.R.A.</i> ( <i>Period of</i> ) Portrait of a Lady	11
Lady Lyndhurst	20
The Countess of Galloway	22
LAWRENCE SCHOOL Lady Mackenzie	113
Head of a Boy	185
Portrait of Lord Arundel	214
Portrait of a Young Lady	226
Lady in Black	318
Head of a Young Man	389
LEADER, SIR BENJAMIN WILLIAMS, <i>R.A.</i> Skirts of a Worcestershire Common	19
LE BOURGUIGNON (JACQUES COURTOIS) Two Battle Scenes	96
LELY PERIOD Portrait of a Young Nobleman	235
LELY SCHOOL Boy in Blue	265
LE MOYNE, FRANÇOIS Vertumnus and Pomona	250

LEON Y ESCOSURA, IGNACIO Waiting for the Queen	191
LIBRI, GIROLAMO DAI Madonna and Child	87
LINGELBACH, JOHANNES Landscape and Figures	461
LINTON, WILLIAM Landscape and Sea	268
MACBETH, ROBERT WALKER, <i>R.A.</i> The Miller's Daughter	47
MAES, NICHOLAS A Group	16
MARATTI, CARLO Portrait of a Cardinal	145
MARIESCHI, JACOPO The Piazza, Venice	243
MARINUS (VAN REYNERSWALE) St. Jerome	195
MASTER OF SAN MINIATO Death of Christ	51
MAZO, JUAN BAUTISTA DEL Portrait of a Lady	57
Portrait of a Girl	93
MIEREVELDT, MICHAEL JANSZEN VAN Portrait Group	78
MIERIS, FRANS VAN Young Lady at Her Toilet	183

	CATALOGUE NUMBER
MIGNARD, PIERRE The Duke of Burgundy	306
MIGNARD SCHOOL The Education of a Youth	64
The Fortune Teller	178
MILANESE SCHOOL Madonna and Child	90
MILLAIS, SIR JOHN EVERETT, <i>P.R.A.</i> ( <i>Ascribed to</i> ) Flora Macdonald	244
MIRANDA, JUAN CARREÑO DE Portrait of a Nun	102
MERCIER, PHILIPPE Lady Playing Piano	237
MODERN AMERICAN SCHOOL Landscape and River	417
MODERN ENGLISH Betsy Prig and Sairey Gamp	379
MODERN FRENCH SCHOOL Study of Nature	281
Sheep	387
MORAN, EDWARD Sunrise, New York Harbor	21
MOREELSE, PAULUS Young Lady in Rich Costume	147
MORLAND, GEORGE. ( <i>Style of</i> ) Boar Hunting	320
MORO, ANTONIO. ( <i>Attributed</i> ) Portrait of Maximilian II	286
MORONI SCHOOL Portrait of a Gentleman	361

	CATALOGUE NUMBER
MOUCHERON, ISAAC DE Landscape	397
MURILLO, BARTOLOMÉ ESTÉBAN St. Joseph and Child	109
MUSSCHER, MICHAEL VAN Dutch Tavern Scene	181
MYTENS, DANIEL Portrait of Charles I	82
NATTIER, JEAN MARC. ( <i>After</i> ) Lady Playing Guitar	149
Lady with Book	153
NEAGLE, JOHN Portrait of Washington Irving	117
NEAPOLITAN SCHOOL Three Shepherds	454
NEWMAN, ROBERT LAYTON Song of the Birds	375
Mother and Child on Beach	376
NOORDT, ADAM VAN Portrait of a Gentleman	353
NORTON, WILLIAM EDWARD Seascape	138
NORWICH SCHOOL Unloading a Boat	449
OLD PAUL Landscape near Norwich	223
OPIE, JOHN. ( <i>Attributed to</i> ) Portrait of a Lady	31

ORCHARDSON, SIR WILLIAM Q., <i>R.A.</i>	
<i>(Four oil sketches from the artist's sale)</i>	
November, or Solitude	24
In the Gloaming	25
Fishing Boats	26
Flotsam and Jetsam	27
ORTEGO, J.	
The Circus	377
PANNINI, GIOVANNI PAOLO	
Exterior of a Palace	246
Interior of a Palace	247
PAPPERITZ, GUSTAV FRIEDRICH	
Nude Figure	447
PARMIGIANO (IL)	
Portrait of a Cardinal	358
PEARSON, J. T., Jr.	
Under the Weeping Willow	179
PENCZ, GEORGE	
Portrait of a Lady	8
PETERS, REV. MATTHEW WILLIAM, <i>R.A.</i>	
Visit to Baby	63
Lady and Angels	70
Master Hadden Brown	198
PICARD, LOUIS	
Girl Asleep	287
PHILLIPS, THOMAS, <i>R.A.</i>	
Portrait of a Lady	213
Portrait of a Lady	321
Portrait of a Lady	329
Sir John Ross, the Explorer	330
PHILLIPS, THOMAS, <i>R.A.</i> ( <i>Period of</i> )	
Portrait of a Young Lady	140

	CATALOGUE NUMBER
POURBUS, FRANZ. ( <i>Style of</i> ) Lady with Dog	252
POUSSIN, NICOLAS Landscape	239
PYNE, JAMES BAKER Marine	202
RAMSAY, ALLAN Portrait of Mrs. Ramsay	161
Sir Joseph Brandt	263
RAU, EMIL Interior	1
RAUBICHECK, F. Landscape	443
RAVENSTEYN, JAN VAN Portrait of a Man	106
Portrait of a Lady	142
Portrait of a Lady	188
REMBRANDT SCHOOL A Rabbi	233
Christ on the Cross	337
The Carpenter's Family	464
RENI, GUIDO Allegorical Group	46
Magdalen	241
REYNOLDS, SIR JOSHUA, <i>P.R.A.</i> Countess of Strafford	10
The Rev. Zachariah Mudge	194
REYNOLDS, SIR JOSHUA, <i>P.R.A.</i> ( <i>After</i> ) The Strawberry Girl	111

	CATALOGUE NUMBER
REYNOLDS, SIR JOSIAH. ( <i>Period of</i> ) Man in Cocked Hat	294
REYNOLDS SCHOOL	
Simplicity	112
Portrait of Dr. Goodall	207
Portrait of Dr. Samuel Johnson	299
Nude Study	307
Miranda	322
RIBERA, JOSEF DE	
Monk Holding Pen	152
St. Andrew	221
Man with Staff	248
Head of an Apostle	423
RIBOT, AUGUSTIN THÉODORE	
Group of Figures	97
RICCI	
Virgin and Child	304
RICHARDSON, JONATHAN	
Alexander Pope the Poet	217
RIGAUD, HYACINTHE	
Portrait of Louis XIV	163
A Magdalen	356
RIGAUD, HYACINTHE. ( <i>School of</i> )	
Portrait of a Gentleman	271
Portrait of a Lady	272
RILEY, JOHN	
The Duke of Beaufort	151
Portrait of a Magistrate	467
ROMNEY, GEORGE	
Hon. Wm. Fletcher	124

ROMNEY PERIOD	
Portrait of a Man	441
ROSA, SALVATOR	
Landscape with Waterfall	193
ROTTENHAMMER, JOHANN	
St. Cecilia	403
RUBENS SCHOOL	
Lions	289
Madonna	354
RUSSELL, JOHN, R.A.	
Portrait of a Young Lady	212
RUYSDAEL, SALOMON VAN	
Landscape	29
SASSOFERRATO (IL)	
Madonna and Child	200
SASSOFERRATO (IL). ( <i>Style of</i> )	
Holy Family	374
SCHOOL OF CLOUET	
Portrait of a Young Lady	6
Portrait of a Lady	103
Portrait of a Lady	224
SCHOOL OF THE MARCHES	
Madonna and Child	143
SEGHERS, DANIEL	
Still Life	274
SHAW, JOHN	
Landscape	258
SHEE, SIR M. A., P.R.A.	
The Fruit Girl	366



	CATALOGUE NUMBER
SINGLETON, HENRY Rustic Scene	394
SIRANI, ELISABETTA The Daughter of Herodias	425
SLAUGHTER, STEPHEN Portrait of a Young Lady	150
SMITH, JOHN RAPHAEL Girl with Dog	32
SPANISH SCHOOL Portrait of an Infanta ( <i>XVII century</i> )	31A
Portrait of a Lady	74
Portrait of a Lady	116
Portrait of a Young Gentleman	122
Madonna and Saints	296
Head of Man	402
STANNARD, JOSEPH View on a River	412
STETSON, CHARLES WALTER A Joyous Place	395
STETTEN, C. VON Lady with Red Fan	280
STOTHARDT, THOMAS, <i>R.A.</i> Interior	399
STREETES, W. ( <i>Ascribed to</i> ) Portrait of a Gentleman	99
STROZZI, BERNARDO Christ Blessing Bread	144
STUART, GILBERT CHARLES Portrait of a Gentleman	101

	CATALOGUE NUMBER
SUSTERMANN, JUSTUS	
Portrait of a Gentleman of France	59
Portrait of a Young Gentleman	69
Portrait of an Officer	141
TERBURG, GERARD	
The Mandolin Player	9
TILLIER, PAUL	
Nude Woman	58
TINTORETTO SCHOOL	
Portrait of a Doge	175
TITIAN SCHOOL	
Madonna and Child	119
TOCQUÉ, LOUIS	
Portrait of a Gentleman	219
Portrait of a Nobleman	340
TOCQUÉ, LOUIS. ( <i>Attributed</i> )	
Catherine of Russia	262
TOCQUÉ SCHOOL	
Portrait of a Lady	365
TOL, DOMINICUS VAN	
Market Scene	455
TOURNIÈRES, ROBERT	
Portrait of a Lady	206
Portrait of a Lady	355
TRISTAN, LUIS	
Adoration of the Magi	79
TROY, JEAN FRANÇOIS DE	
Portrait of a Lady	155
TURA, COSIMO	
Death of Lucretia	7

	CATALOGUE NUMBER
ULLMANN, WALTER	
Lady in a Landscape	137
Landscape	257
UNKNOWN	
Europa and the Bull	62
Young Woman Reclining	393
VALENTIN (LE)	
Card Players	134
VANDERMYN, HERMAN	
Portrait of a Lady	14
VAN DYCK, SIR ANTHONY	
Virgin and Child with Angels	45
Daughter of the Count of Holland	66
VAN DYCK, SIR ANTHONY. ( <i>After</i> )	
James Stuart, Duke of Gordon and Lenox	67
Portrait of an Italian Nobleman	135
Madonna and Child	295
Portrait of a Gentleman	357
VAN DYCK SCHOOL	
Governor Jacobus Ragheip	39
Portrait of a Gentleman	284
Cupids	305
Portrait of a Gentleman	333
Cupid	343
Charity	367
Head of a Man	391
VAN LOO, CARLE ANDRÉ	
Empress of Austria	72
Emperor of Austria	73
The Miniature	342
Lady and Dog	345

VELASQUEZ SCHOOL	
Portrait of Cardinal Lanacris	332
VELDE, ADRIAAN VAN DE. ( <i>In the manner of</i> )	
Cattle and Landscape	180
Marine Subject	186
VELDE, WILLEM VAN DE	
Vessels in Port	166
Seascape	267
VENETIAN SCHOOL	
Group of Figures	368
Merchants in the Temple	369
VERBOECKHOVEN, EUGÈNE JOSEPH	
Sheep	5
VERMEULEN, ANDRIES	
Winter Scene	400
VERONESE SCHOOL	
Portrait of a Lady	170
Head of a Woman	434
A Girl	444
VESTIER, ANTOINE	
Portrait of a Young Lady	12
VIBERT, JEHAN GEORGES	
Convent Choir	95
VOS, CORNELIS DE	
Group of Figures	53
VOS, PAULUS DE	
Dogs	363
VRIES, ADRIAN DE	
Interior of a Palace	126
WATTEAU SCHOOL	
Blind Man's Buff	94

	CATALOGUE NUMBER
WATTS, GEORGE FREDERICK, <i>R.A.</i> Portrait of Lady Ashburton	86
WATTS, JOHN Landscape with Cornfield	392
WEISSENBRUCH, JOHANNES HENDRIK Landscape	3
WESTALL, RICHARD, <i>R.A.</i> Cassandra	303
WHEATLEY, FRANCIS, <i>R.A.</i> Miss Price, Daughter of the Rev. Mr. Price of Glynn Boy Playing a Harp	165 216
WIGNELL, ROBERT Portrait of Matthew Gibbon	457
WILLCOCK, GEORGE B. Landscape	190
WILSON, RICHARD, <i>R.A.</i> Lake of Nemi	160
WILSON, RICHARD, <i>R.A.</i> ( <i>Period of</i> ) Landscape Italian Lake	162 192
ZIEM, FÉLIX. ( <i>Manner of</i> ) View on the Adriatic Shore	445
ZUCCHERO, FEDERIGO Portrait of a Princess Portrait of a Boy Portrait of a Lady	56 108 232



FOR INHERITANCE TAX

AND OTHER PURPOSES

THE AMERICAN ART ASSOCIATION

IS EXCEPTIONALLY WELL EQUIPPED  
TO FURNISH

INTELLIGENT APPRAISEMENTS

OF

ART AND LITERARY PROPERTY  
JEWELS AND PERSONAL EFFECTS OF EVERY  
DESCRIPTION

IN CASES WHERE

PUBLIC SALES ARE EFFECTED

A NOMINAL CHARGE ONLY WILL BE MADE

THE AMERICAN ART ASSOCIATION

MADISON SQUARE SOUTH

NEW YORK

TELEPHONE, 3346 GRAMERCY

COMPOSITION, PRESSWORK  
AND BINDING BY











