

Historic, archived document

Do not assume content reflects current scientific knowledge, policies, or practices.



TOWNSEND'S

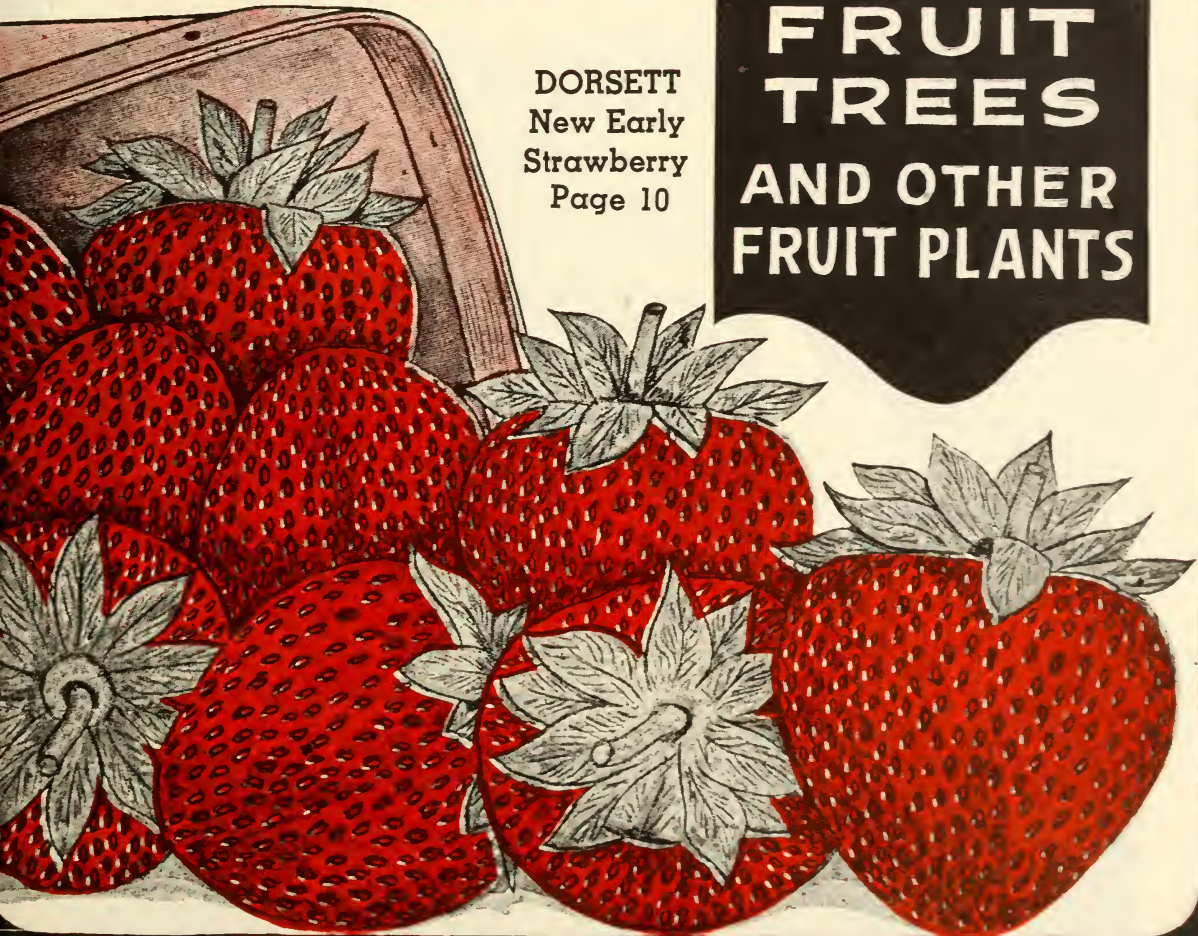


FEB 24 1942

1942 CATALOG OF STRAWBERRY PLANTS

**FRUIT
TREES
AND OTHER
FRUIT PLANTS**

DORSETT
New Early
Strawberry
Page 10



E. W. TOWNSEND SONS
SALISBURY — MARYLAND



Experienced men making Plant Selection in a 35 acre field (on farm No. 6) of new ground Fairfax and Dorsett.

YOU RECEIVE TOWNSENDS' Famous PLANT SELECTION *at no extra cost!*

THE forty years of our experience in growing and propagating small fruit plants has taught us the vital importance of plant "strain". For, in selecting plants, it is just as important to continually improve the "strain" as it is with horses, cows and other animals. Every Townsend plant is an offspring of a selected plant that has special merits back of it. Throughout the year, experienced men under the personal supervision of one of the Townsends' go into the fields and personally select the plants that are to be used for mother plants. Only plants that show outstanding vigor and productiveness for the specific variety, are used. These selected breeding plants are reset into a plot; and during their period of growth (until the following spring), numerous strong, healthy runner plants are produced. These are taken up during the spring at proper planting time and set in large acreages on our farms to grow for our numerous customers throughout the country.

Even after all this we do not consider our work finished. We continue selecting this stock, constantly striving to keep our strain as close to perfection as our forty years experience has taught us. Only in this way can we be sure of giving our customers plants of better quality and greater yield.

PLANTS OF *Strong* CROWN DEVELOPMENT

Recent research has shown that 80% of the fruit buds on strawberry plants are formed in the crown of the plant from September to November of the season before blossoms appear. It is, therefore, important to set nothing but well developed selected strain plants for your fruiting beds—plants that will have sufficient vigor to send out strong-crowned runner plants in which these fruit buds are formed. A strong crown plant will always produce the proper leaf area to insure heavy production, which the U. S. Dept. of Agriculture through recent research work advises us of importance in getting bigger crops of berries the following spring.



State Nursery Inspectors Double Inspecting Block Select Strain Chesapeake.



● A Townsend Select Strain plant—your insurance of Good Stands, Quick Growth and Bigger Crops.

Townsend "SELECT STRAIN" Plants ALL ARE DOUBLE INSPECTED

In late September after plants have matured and again in early spring when new growth starts, the Maryland State Nursery Inspectors carefully examine all our growing plants. These double inspections insure customers of getting disease-free plants, which is necessary if good yields are to be obtained. It costs just as much to plant and cultivate an acre of diseased plants as it does an acre of healthy disease-free plants. The comparative results received usually spell success or failure. This is just another precaution Townsend takes to furnish their customers with the best plants possible to grow and produce for them the heavy yields which they have a right to expect. You pay no more for these double inspected plants than just ordinary plants. Your berry profits are increased at no extra cost to you.



YOU CAN Cash in

- MORE SALES and
- BIGGER PROFITS

with **Townsend's**
SELECT STRAIN PLANTS!

More sales and bigger profits are easy for you with Townsends' select strain plants. Our method of plant selection has been acclaimed in every state in the union for greater yields and hardy growth. No matter in what section you live, you will find several varieties, suitable to your requirements, contained in this catalogue. And regardless of where you live, our low express rates and method of packing insure you safe arrival at cheap transportation costs. This year

we have a particularly fine stock of high quality plants—and respectfully solicit your order
“fully confident that we can please you.”

Northern Growers Recognize the *Hardiness* of TOWNSENDS' *Select Strain* Plants

HERE, at our nurseries the temperature often falls around zero, and even lower. This is very cold weather for any plants—but Townsends' select strain varieties prove their worth even under these conditions by not being affected by this bitter cold! During these spells our plants are not protected by mulch of any kind, but have hardened themselves against frigid temperatures, unlike plants grown by northern nurserymen under mulch. This fact has become so well known that many northern growers are convinced that they cannot obtain hardier plants anywhere else in the country!

TOWNSENDS' PLANTS OUT AHEAD IN TEST

GENTLEMEN: 97% PERFECT St. Peter, Minn.

I find that your plants in test make best growth, than any other nursery, and I have tested eleven nurseries plants in fourteen varieties. One nursery registers Zero—others 40%-80%. Townsends' plants are out ahead at 97% Perfect. I am well pleased with your plants and Promptness in filling orders, in the future you can be sure of my orders.
KONRAD M. OLSON.

CANADA FOLKS—LIKE TOWNSENDS' HARDY PLANTS

DEAR SIR: Woodville, Ontario, Canada.
Years ago I planted your Strawberry Plants, since then, I have used no others. People depend on me for their berries and I get six cents a quart more than my neighbors, and I could have sold several thousand more quarts this year if I had them to offer. Advise me on other varieties to plant if you have any better
E. W. MARSHALL.

TOWNSENDS' SELECT-STRAIN PLANTS PRODUCE—QUALITY—QUANTITY—QUICK SALES

GENTLEMEN: Schenectady Co., N. Y.
I am very much pleased with your Select-Strain Strawberry plants, including QUALITY—QUANTITY and their fruit—which is easy to sell—in fact we could nowhere fill all our orders. I would like to have 2,000 plants of your Premier, how soon can I get them?
LELAND N. SOMERS.

GROWER FROM CONNECTICUT VISITS SALISBURY

DEAR SIR: Fairfield Co., Conn.
I wish at this time to express my appreciation to you for showing me around your plant farms when I visited your nurseries in August.

During my visit, and being interested in growing berries I naturally noticed all strawberry fields. I can truthfully say that yours (Plant Farms) was the best I saw between here and Salisbury. I believe the Townsend method of fertilization and propagation accounts for this. I have been using your plants for 5 years and they have never failed to satisfy. Therefore, after seeing the difference I will use only your stock plants from now on. You may look for another order next Spring.

WILSON B. FAIR.

FINEST STRAWBERRY PLANTS EVER RECEIVED

DEAR SIR: Doniphan Co., Kansas.

I want to thank you for the finest strawberry plants that I ever received. Will have another order for plants later.
ALBERT PHILIPP.

TOWNSENDS' PLANTS MAKING A REPUTATION FOR MR. JOHNSON

DEAR SIR: Plymouth Co., Mass.

Townsends' Strawberry plants have made a wonderful reputation for our roadside fruit & vegetable market. Our customers tell us we have the best berries, passing up many markets along the highway until they reach our place. Your plants always produce larger—brighter berries with big yields.
EDWARD J. JOHNSON.

TOWNSENDS' EXPERIENCED GRADERS & PACKERS SATISFY

DEAR SIR: Ripley County, Indiana
Received plants in fine condition, thanks to the packers for their care in grading and packing, they are the nicest plants I ever transplanted.
JAMES F. HOOVER.

COUNTY AGENT OFFICE RECOMMENDS TOWNSENDS' NURSERIES

GENTLEMEN: Allegheny Co., Penna.
The Office of the County Agent has recommended your nursery as a good place to buy fruit trees, plants. I would appreciate your catalog.
MRS. ETHEL KITCHEN.



Mr. Berry Grower

WHEN E. W. Townsend, Sr., founded the Townsend Nursery forty-one years ago he did so with the realization that planting conditions varied in different sections according to the climatic and soil characteristics of local territories. We have striven since that day to correlate every sale we make to the needs of the individual customer, advising the purchase of those varieties which would be best adapted to each local condition.

In addition to our extensive proving and testing grounds, our records are also kept accurate by reports from our customers; as well as various State experimental stations with whom we are affiliated. These records have proven invaluable to thousands of our customers who wish to be sure before buying that the varieties they selected were adaptable to their local conditions.

The varieties mentioned in this catalog and recommended for the various territories are the result of this painstaking research. Further definite information is available at this office, and will be furnished free to you on request. We are proud of this service, know you will appreciate it, and trust that you will make use of it whenever possible.



Our Strawberry Testing Grounds
Where important data is collected

● PROPER TIME TO SET STRAWBERRY AND OTHER BERRY PLANTS - - - -

We have been recommending the Early Spring setting of Strawberry Plants and other berry plants for over a quarter of a century. This recommendation has led our customers to make bigger profits from their plants than ever before. Fall setting is practiced in several of the Northern States, but is not recommended outside the South.

● PLANTING DATES for DIFFERENT SECTIONS

New England States, April and Early May; N. Y., N. J., Penna., Del., Md., Ohio, Indiana, Illinois, Mich., Tenn., Ky., West Va., D. C., late March or as early in April as possible; Southern States, February and March; all other states in Early April. Give your plants time to establish themselves in the soil while it is cool and before the hot suns start. Plow your land early and be ready to set at the first sign of spring.

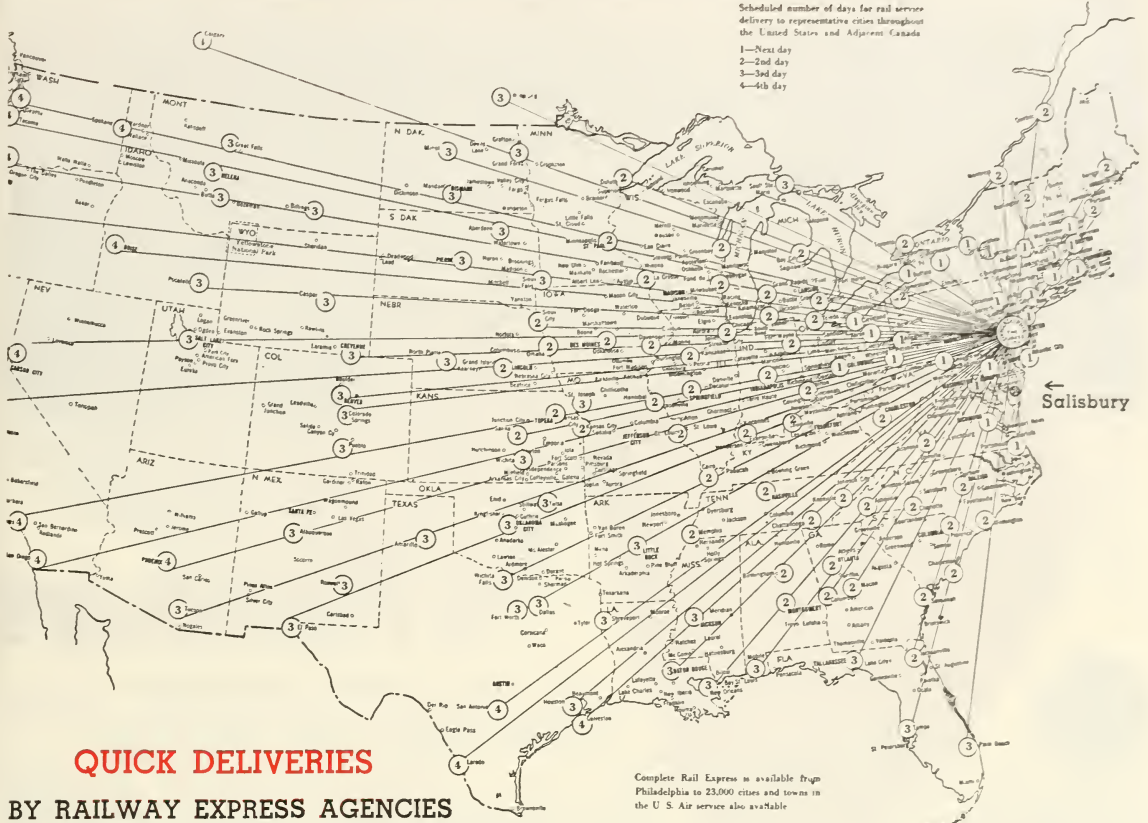
TERRITORIAL ADAPTABILITY OF TOWNSENDS' STRAWBERRY VARIETIES

Varieties marked with * are the leaders and ones most widely planted

Variety	Approved for	Season of ripening	Description on page
Beaver*	Western and Mid-Western States	Extra Early	
Blakemore*	All States with exception New England and New York	Extra Early	17
Daybreak	All Southern and Southwestern States	Extra Early	9
Fairmore*	All Southern and Southwestern States	Extra Early	9
Aberdeen*	New England, N. Y., Pa., Ohio, N. J., Kan., Mo., Ill. Ind.	Early	13
Bellmar	New England States, Texas, Mo. valley section	Early	16
Dorsett*	All Strawberry Sections except Florida	Early	10
Fairfax*	All States except Fla. and Gulf States	Early	11
Grand Champion	Central and Northwestern States	Early	
Howard's Supreme*	New England States, Ohio, West Va., N. Y., Penna.	Early	
Klondyke*	N. C., Georgia, S. C., Ala., Louisiana	Early	16
North Star	All berry growing sections except South	Early	9
Premier*	All sections except extreme South	Early	8
Shelton	New Var. Recommended for New England States	Early	9
Missionary*	Fla., N. C., Va., Md., Tenn., S. C., Texas, La.	Med. Early	16
Big Joe*	All berry sections except extreme south	Med. Early	13
Catskill*	Most all berry sections except south	Med. Early	12
Culver	New England States and North Central, Pa., N. Y.	Med. Early	
Jupiter	Ill., Ind., Ohio, Penna., West Va., Kansas, Mo.	Med. Early	16
Pathfinder*	Recommended for trial in all berry sections	Med. Early	14
Senator Dunlap*	Kansas, Iowa, Mo., Ind., Ill., Ohio, Mich., Wis.	Late	
Ambrosia	Ill., Ind., Wis., Mich., Mo., Recommended for trial in North	Late	16
Aroma*	Tenn., Ky., Ind., Ill., Kan., Ark., Mich., Mo., Northern States	Late	18
Chesapeake*	New England, West Va., Ohio, Ill., Ind., Wis., N. Y., Penna.	Late	19
Ford*	All states except extreme south	Late	14
Gandy*	All States east Miss. River except Ga., Fla., La.	Late	9
Hebron	Originated in Conn. Does well in New England States	Late	16
Lupton*	N. J., Ohio, Pa., N. Y., Conn., W. Va., Ill., Ind.	Late	6
Townking*	All States except Gulf States and Pacific Coast	Late	15
William Belt*	New York, Pa., Ohio, and New England States	Late	
World's Wonder	New England States, Northern N. Y., Penna., West Va.	Late	16
XTRALATE	Being tested in all berry growing States	Extra Late	19
Gem Fallbearing*	Planted in all States except Far South	Fruits Early Summer until fall 1st year set; Fruits following Spring with Med. Ey.	22
Lucky Strike Fallbearing	N. J., Penna., N. Y., Ohio, New England States		
Mastodon Fallbearing*	Planted in all States except Far South		
Wayzata Fallbearing*	Planted in all States except Far South		

Scheduled number of days for rail service delivery to representative cities throughout the United States and Adjacent Canada

- 1—Next day
- 2—2nd day
- 3—3rd day
- 4—4th day



QUICK DELIVERIES

BY RAILWAY EXPRESS AGENCIES

Complete Rail Express is available from Philadelphia to 23,000 cities and towns in the U. S. Air service also available

TOWNSEND'S Nurseries are so located as to give our customers quick deliveries of nursery stock at all times, regardless of section they live in. Our nurseries are very convenient to the Philadelphia Railway Express Terminal, which is one of the largest in the country, servicing some 23,000 cities by direct route. The above delivery chart, compiled by the Railway Express Agency, shows the approximate delivery time for all sections from the Philadelphia Terminal. Within 48 hours after stock is shipped from our packing house you will note deliveries can be made to practically one-half the United States. This company maintains an express office at our packing house where all shipments are weighed, billed, and routed. This special service is another factor that helps us to get our stock through to customers in a fresh growing condition, cutting down considerably on delivery time over the usual express shipments.

• NEW LOW EXPRESS RATES

The Interstate Commerce Commission has recognized Salisbury as one of the leading shipping points for fruit trees and berry plants and, through the cooperation of this department and the Railway Express Agency, we

have a low express rate on strawberry plants shipped from Salisbury. It is a saving of approximately 40% over the usual rate charged by the express companies from points having no commodity rate applied on shipments. This is a big saving and one which should not be overlooked when ordering nursery stock.

• WE WILL QUOTE PREPAID PRICES

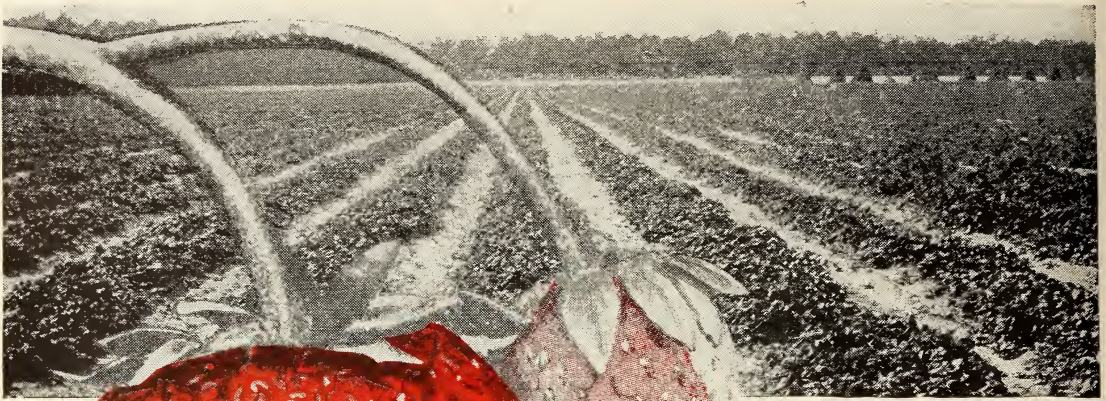
If you would like to know just what your plants, trees, or other items listed in our catalog will cost you laid down at your nearest express office, just write and tell us the amount of stock of each variety you want (giving size where size is noted) and the name of the express office where you wish shipment delivered to, and by return mail we will quote you the exact cost of your order including transportation charges. This will not obligate you in any way. It is part of our service which is free to all.

• SHIPPING SEASON

Climatic conditions in this section of Maryland are favorable for the growing and shipping of nursery stock. Our shipping season opens in late September and continues until June 1. Take advantage of this long shipping season and order your nursery stock from TOWNSEND'S. You will get your stock on time and no delay experienced at planting time. Orders for any stock listed in our catalog can be booked now, stock reserved, and shipment made anytime you are ready to plant.



Double inspection on a block of Premier being made by Maryland State Department of Agriculture. This block pronounced to be the best in the East.



MILLIONS OF SELECT STRAIN
PREMIER ARE GROWN
ANNUALLY AT OUR
PLANT FARMS

Premier

THE MOST WIDELY PLANTED *Early*
STRAWBERRY EVER PRODUCED



COMPLETE
STRAWBERRY PRICES
PAGE 46

TOWNSEND'S

Our strain of Premier is direct from the original planting and has been consistently bred each year for heavier yields.

**DOUBLE INSPECTED—
STATE CERTIFIED**

Every bundle of Townsend's Premier has been double inspected and certified by Maryland State Dept. of Entomology. Why take a chance. Order your premier from Townsend. They cost no more than just ordinary plants.

**TOWNSEND'S PREMIER IN
PENNSYLVANIA**

For 19 years we have purchased our strawberry plants from Townsends; never a crop failure from your Premier plants. They always produce extra-heavy crops, your Select-Strain Premier are producing even larger fruit, better quality and averaging 18,750 quarts berries per acre the past season off of about four acres. We received for this fruit \$.20 to \$.25 per quart, and did not have enough berries for our trade, when my neighbors who bought some plants elsewhere could not sell their berries for even ten cents.

OLIVER J. WEAVER.

Columbia County, N. Y.

Quote me prices on 30,000 Premier, 20,000 Catskill. I bought over 40,000 strawberry plants from you last year and had fine results, even in dry weather.

JOSEPH KUZZYNA.

(Mr. Kuzyna purchased over 77,000 Select-Strain plants.)

received so much praise, enjoyed such universal acceptance under all possible growing conditions. (2) No other variety has made as much money for growers. There may be others that will supplant Premier in certain localities, but for good all-around consistency, we predict that Premier will continue to lead for years to come.

By careful plant selection and our select strain method of growing, we have maintained all the high qualities that made Premier the immediate sensation of the strawberry world when we first introduced it to our trade. Millions of select strain new ground grown Premier plants are grown and shipped annually from our nursery to the Largest Berry Growing Associations and thousands of individual growers in every section of the country. These growers realize the heavy yielding quality of our strain of Premier plants, and today Townsend's are recognized as headquarters for the original strain of **HEAVY YIELDING PREMIER**.

Our new ground planting of Premier is one of the largest in the country and have made a nice growth. The quality was never better. If you are looking for a heavy yielding strain of Premier, send along your order after receiving this catalogue. We will reserve plants for you, digging and shipping whenever you are ready to set.

While Premier is well known by the majority of berry growers, for the benefit of the new planters we describe Premier as follows:

Color—Medium bright red and very attractive with its large green cap that shows off the berry to advantage when placed on the market.

Size—Under favorable growing conditions the berries will run large to extra large and very uniform size, holding up well to the last picking.

Firmness—Premier can be classed as a long distant shipper where trucks are used. For the market gardener its firmness will be found to be very satisfactory.

Vigor—Premier is a strong, healthy

● Premier and Howard 17 are one and the same variety. The variety was originated by A. B. Howard Sons of Belchertown, Mass., and in many sections Premier is known by the name, Howard 17.

● YOU! can increase your yields and profits at "No Extra Cost" by planting Townsend's Select Strain New Ground Grown Premier "Known in every berry growing section as the heaviest yielding strain grown."

ALL DOUBLE INSPECTED—STATE CERTIFIED

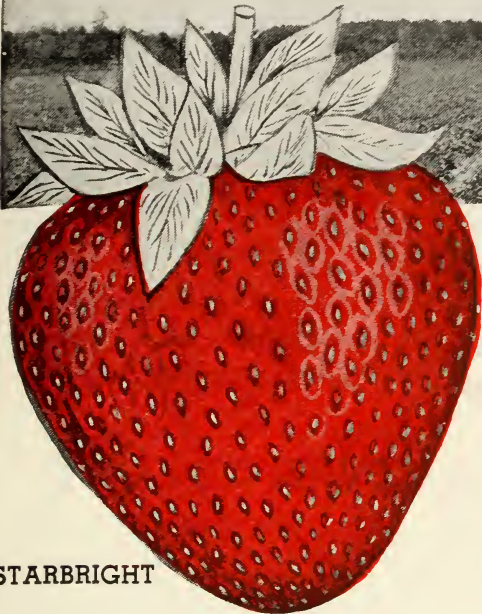
WE SELL ANNUALLY MILLIONS OF TOWNSEND SELECT STRAIN PREMIER

grower, making a good fruiting bed on a wide range of soils and climatic conditions.

Quality—Stands out as one of the best flavored berries grown.

Season of Ripening—In the North Premier is one of the first varieties to ripen. It can be put on the market from a week to ten days ahead of the mid-season varieties.

Frost Resistant—Premier has long been noted for its frost resistance and I have never heard tell of a Premier crop failure due to late frosts.



STARBRIGHT

STARBRIGHT

THE NEW BIG LATE STRAWBERRY

This NEW, splendid variety, was originated by U. S. Dept. of Agri., and sold on the market in 1940-41 at a premium. We sincerely recommend this new variety, and advise our large berry growers, as well as the home gardener to plant this strawberry this SPRING. A cross of Fairfax and Chesapeake, good shipper, fruiting season little earlier than Chesapeake and better plant maker. The berry is lighter in color than Fairfax, very glossy skin, a truly extra fancy strawberry on any market. Prices on page 47.

**We Are Mighty Proud Of The Record Yields Being Made By Our Customers
With Townsend's Select Strain Premier**

**GETS 1400 QUARTS LARGE BERRIES
FROM 1,000 PREMIER SET**

DEAR SIR: St. Lawrence Co., N. Y.
I have wonderful success with your Select-Strain Premier, strawberry plants. I average about 1400 quarts of large berries to 1,000 plants that I set, so I am planting again this year.
MRS. FRANK FULLER.


**LARGE BERRY GROWER GETS 16,000 QUARTS PER
ACRE FROM TOWNSEND'S SELECT-STRAIN**

GENTLEMEN: Cumberland Co., Penna.
Enclosed you will please find our order for 20,000 TOWNSEND'S SELECT-STRAIN PREMIER, strawberry plants. We are sure that you would like to know that we are well pleased with your strain of plants, which yield about 16,000 quarts berries per acre for us.
L. L. WILLIAMS.


TOWNSEND CUSTOMER FOR OVER TWENTY YEARS
GENTLEMEN: Tuscarawas Co., Ohio.
For over twenty years I have used your plants, with great success. They produce good fruiting beds—with big crops of nice large berries which sell readily on the market. The past season we picked over 50,000 quarts off of about 3 1/4 acres. We have never found any Premier plants to come up with yours and you might always expect our future orders. Please find order enclosed for this year's planting.
F. R. NELSON.

TOWNSEND'S PREMIER OUT YIELDS ALL OTHERS
GENTLEMEN: Barnstable Co., Mass.
Attached you will please find order for 15,000 Select-Strain Premier plants—for which kindly book order and ship at proper planting time.
Your plants always out yield all others and the berries are larger and we get larger crops—which mean more profit to us. You can expect many new orders from this neighborhood this year, as growers are turning to your plants all the time.
M. O. RAPOZA.

NEW VARIETIES STRAWBERRIES IT WILL PAY YOU TO GIVE THESE A TRIAL

FAIRMORE  THIS variety was originated by the U. S. Dept. of Agric. and has been extensively tested in North Carolina and other leading berry growing states of the South. It was selected from thousands of seedlings and has been outstanding in the tests made by these colleges. In plant growth it is more vigorous than Blakemore, Klondyke, or Missionary. It ripens about with the Blakemore and earlier than Fairfax. The berries are as large or larger than Blakemore and is considered to be a better variety for markets that pay a top price for extra large size, quality berries. A fine variety for southern plantings.

NORTH STAR  A MIDSEASON variety introduced by the U. S. Dept. of Agric. and recommended for commercial and home garden plantings in all leading berry growing sections. It has been extensively tested in New England States, also in New York and Pennsylvania. The berries are of high flavor and fine quality, especially recommended for sections where Dorsett is killed by early frosts. Berries have a beautiful bright red color which extends through to the center keeping its bright color for several days after picking. Fruit is very firm and will withstand long-distant shipping. They ripen evenly all over, therefore making picking very easy, and when placed on the market makes a very attractive package. Give North Star a trial this year!

DAYBREAK  THIS is the earliest berry grown in the southern states. It is about a week or ten days earlier than the Missionary and several days earlier than Blakemore, usually producing a heavy first crop, producing fruit for the early market when prices are usually highest. It is as productive as Missionary or Blakemore. Fruit equals that of Blakemore and of bright, glossy, crimson red. Can be classed as a good shipper and one worthy of a planting in the southern states. Of U. S. Dept. of Agric. origination.

HEBRON. The fruit of this berry is bright, glossy red. It is of delicious flavor, having strong, heavy stems which hold their fruit well up from the soil. It is a good yielder and one which, we feel, will produce excellent results in the New England States and should be given trial in other berry growing sections. Fruit ripens about the same time as Chesapeake and other late varieties.

SHELTON. This is an early berry, ripening about the same time as the Premier (Howard 17). It is almost as good a producer. Fruit is very firm and has many of the qualities of such high priced market favorites as Chesapeake and Catskill. It is similar in flavor to Chesapeake. Tested in 24 sections of the state of Connecticut before introducing.



Dorsett

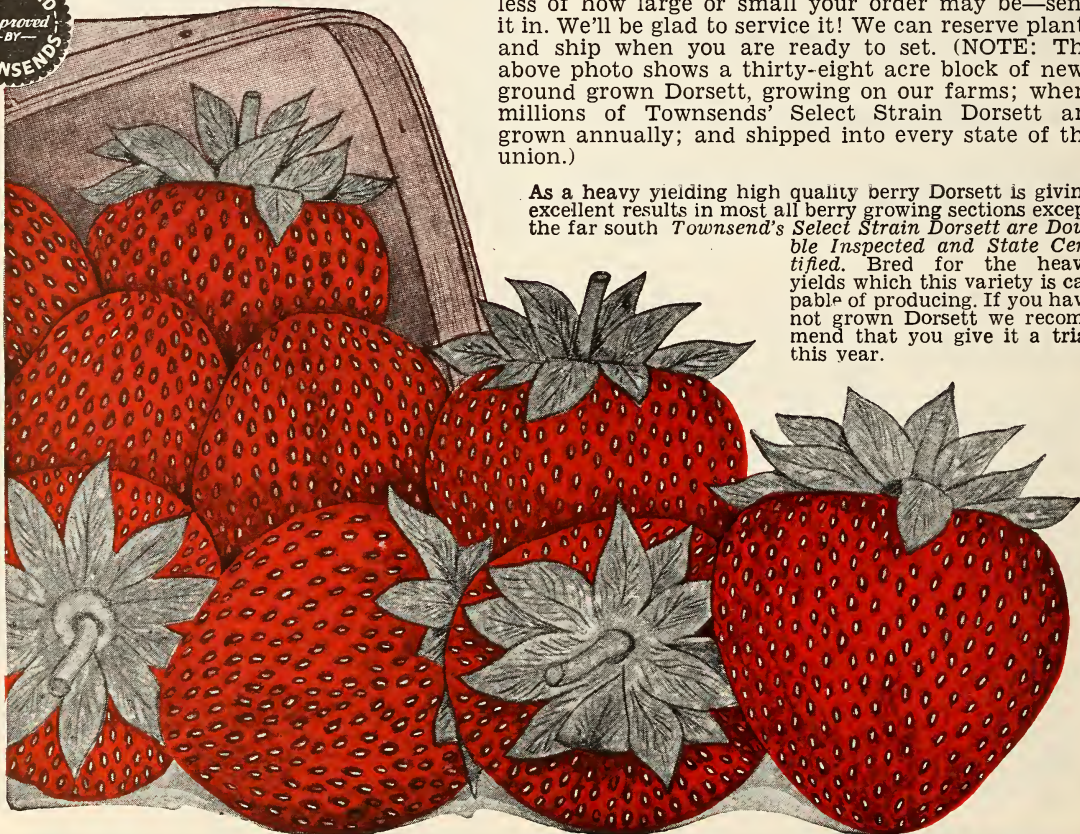
A 38 Acre Block of New Ground
Grown Select Strain Dorsett
Growing on Our Farms

A PROFITABLE NEW *Early* STRAWBERRY

Although the Dorsett was introduced only a few years ago—after its development from a cross of Royal Sovereign X Premier (Howard 17) by the U. S. Dept. of Agriculture—it has been widely planted in practically every berry growing section of the country.

Its ready adaptability to almost any type of soil and climatic conditions; its quick, easy growth; its heavy yielding qualities make Dorsett a popular favorite everywhere. Dorsett strawberries are firm and attractive; and carry well even on long distance hauls. Therefore, we sincerely urge you to try Dorsett. You'll find it one of the best money-making early berries it is possible to grow. Each year finds a greater demand for Dorsett, and each year we grow one of the largest plantings in the country. Regardless of how large or small your order may be—send it in. We'll be glad to service it! We can reserve plants and ship when you are ready to set. (NOTE: The above photo shows a thirty-eight acre block of new-ground grown Dorsett, growing on our farms; where millions of Townsends' Select Strain Dorsett are grown annually; and shipped into every state of the union.)

PRICES OF DORSETT
PLANTS ON PAGE 46



As a heavy yielding high quality berry Dorsett is giving excellent results in most all berry growing sections except the far south *Townsends' Select Strain Dorsett are Double Inspected and State Certified.* Bred for the heavy yields which this variety is capable of producing. If you have not grown Dorsett we recommend that you give it a trial this year.



Millions of Fine Quality Select
Strain Fairfax to Select Your
Order From

Fairfax

A LEADER ON THE *Early* MARKET

The annual rise in sales of Fairfax has been steady and sensational. No doubt much of this success is due to the tough skin texture and consequent good shipping characteristics. Even during the dry weather and droughts of Spring 1936, Fairfax produced crops far above the average. The fine, sturdy appearance, exceptional firmness, and high dessert qualities have made Fairfax famous since its introduction. We earnestly recommend that you devote a good portion of your acreage to Fairfax, thus insuring yourself a good crop of strawberries, regardless of weather conditions. All

of Townsend's Select Strain Fairfax are Double Inspected and State Certified, recognized by leading berry-growers as the heaviest yielding strain grown. Let us reserve some of these plants for you. Will ship whenever you are ready to plant.

Note these Features

Season of Ripening—Fairfax ripens about the same time as Premier. In some few sections two or three days later.

Quality is an outstanding point with FAIR-FAX. Its firmness and wonderful flavor make it ideal for commercial marketing or home consumption. It is without question one of the finest eating berries on the market.

Production—The yield of Fairfax compares favorably with Dorsett and Premier. It probably will not set as much fruit as these two varieties, however it makes up in yield with the size. In the number of crates picked per acre it yields with the best.

Vigorous Grower—The foliage and root system of Fairfax is extremely vigorous. Foliage is a dark green of strong growth protecting berries from hot suns during the harvest season. Its root system is long and fibrous, which accounts for Fairfax giving a good crop of berries during dry seasons. It will make a good fruiting bed in most all types of soils and climates, and is being planted by berry growers over a wide area of the U.S.A.

Size of Fruit—Large to extra large and being very uniform. Makes an attractive package which has always brought top market prices.



FAIRFAX
PRICES
PAGE 46

ORDER THIS ASSORTMENT For Your Early Strawberry Garden

Be the first in your neighborhood to have large delicious strawberries. order one of these gardens today at special prices.

50 Dorsett, 50 Fairfax.
100 Plants All for

2 Gardens
for

\$1.00

\$1.75



A New Ground Planting Townsend's Select Strain Catskill Plants



Catskill

The Ideal *Midseason* Berry—A Proclaimed Winner in Size, Yields and Profits

THE rapid rise in popularity of Catskill has been nothing short of phenomenal. Because of its size, flavor, heavy yields, vigorous growth, and its adaptability to a wide range of soils and climates, this variety has, in a short time, become a universal favorite. While our strain of Catskill is direct from the originators at Geneva, New York, we have thru careful plant selection produced a strain that is considered by some of the largest berry growers in the country to be one of the most vigorous growers and heaviest yielding strains in the country. We do not hesitate in recommending Catskill to you as one midseason variety that is certain to prove satisfactory.

RICH COLOR—Bright rich red, similar to Big Joe. The large double green cap stands up well on the berry and makes a very attractive looking package when offered to the buyer.

SIZE—These rich red berries are large to extra large in size, keeping its size well until the last fruit is harvested. The large size of the Catskill is one of its outstanding values, demanding top of the market prices.

QUALITY—In flavor it compares favorably with such varieties as Premier, Dorsett, Fairfax, Big Joe, and Chesapeake. The texture is such that Catskill can be classed as a long distant shipper. Holding up well after picking, it has a high commercial value appreciated by all berry growers.

PRODUCTIVENESS—Growers in all sections East of the Mississippi River and several states West advises us that it is the heaviest producing midseason berry they have grown, in our own test plots it has proven itself far ahead of any other midseason variety. In fact our test plots gave us more genuine enthusiasm that this was a midseason berry that nothing short of a calamity could keep our customers from making big profits on.

MILLIONS OF SELECT STRAIN CATSKILL, ALL DOUBLE INSPECTED, AWAIT YOUR ORDER

To keep up with the increased demand of Townsend's Select Strain Catskill, we have again increased our acreage, plants at this writing look fine with nice heavy crowns and fibrous roots. We are looking again for a heavy demand for this special Strain of Catskill and would advise placing order early as possible to insure getting your supply needed.

THESE UNSOLICITED TESTIMONIAL LETTERS TELL THE STORY ABOUT OUR SELECT STRAIN CATSKILL AND THEIR ABILITY TO PRODUCE

Oswego Co., N. Y.

The Select Strain Catskill purchased from you last year certainly produced a heavy crop of fine quality berries. I never dreamed that there could be so much difference in plant Selection of Strawberry Plants until I grew your Strain of Catskill, and I have been growing this variety for several years.

O. S. MEYERS.

Cuyahoga Co., Ohio.

In our section we have always wanted an attractive midseason berry to follow up our Early Varieties and want to thank you personally for advising me to plant Catskill. I think it's one of the finest varieties we have ever grown. Some of my neighbors had purchased Catskill from other sources. While the quality of their berries were as good as mine, I picked more than double the amount of berries from the same amount of plants set. In the future nothing but Townsend Select Strain Plants for me. Wish you every success in your propagating of Heavier Yielding Plants.

J. Z. MILLER.

York Co., Pa.

The Catskill plants received this morning and better plants could not be asked for. The root system was perfect and plants were all of one size, something that we are not used to receiving. From now on you get my orders for berry plants as I realize you have a Select Strain that can not be beaten.

A. L. LENTZ.

2 BERRIES YOU CAN'T AFFORD TO PASS UP

Big Joe

Midseason TO Late FRUITING
LARGE FANCY BERRY

THE twenty-one year history of Big Joe has been studded with flattering reports from berry growers throughout the country. Big Joe takes its place as the leading midseason variety along with Premier, the leading early variety and Town King, the leader of the late group. Its size and beauty have brought Big Joe nothing but praise. Big Joe begins to ripen at about the time of the last pickings of Premier and Dorsett—just the time when large fancy berries like Big Joe can command a handsome price on the market. To those who have not been successful with Big Joe, we recommend Catskill.

Some of the Outstanding Good Points About Big Joe
Size—Large to very large berries.
Color—Rich red, double green cap.
Quality—Ranks with the best in flavor and shipping.
Productiveness—Under favorable growing conditions very few varieties its equal.
Vigor—Strong grower on most all types of soil. At its best on clay or well drained, springy loam soil.



Cultivating a 54 Acre block of Aberdeen and Premier



Aberdeen

EARLY TO Midseason FRUITING

A BIG Money Maker FOR THE

NORTHERN GROWER

Approved for New Jersey, Pennsylvania, Ohio, West Virginia, Illinois, Indiana, New York, and the New England States

ABERDEEN, one of the most productive varieties in the strawberry world, ripens about one week later than Premier. Large fruit of bright, shiny red characterize this popular berry. Berries mostly of a top shape having a beautiful green calyx that adds materially to its beauty. Aberdeen planted on any ordinary soil makes a fine fruiting row, and ranks with the best in plant growth. It is very solid, and an excellent shipper when grown in the northern states. Many leading Horticulturists of the North rate Aberdeen ahead of all other varieties. One of the largest berry growers in New York State discovered that of 10 leading varieties fruiting on his farm, Aberdeen was the heaviest yielder, and brought highest prices. A grower in New Jersey advised us that Aberdeen averages better than 11,000 quarts per acre. A fair trial on any ordinary soil will convince you of Aberdeen's superiority.

Complete Prices on Page 46

Senator Dunlap

(DR. BURRILL)

Medium Early VARIETY

SENATOR DUNLAP (or as others call it—Dr. Burrill), one of the leading varieties for western states, has long been one of our popular favorites. We grow, annually, hundreds of thousands of this variety and always find ourselves sold out before the planting season is over. Mute testimony to the virtues of Senator Dunlap! The tremendous demand of our western trade speaks eloquently that Senator Dunlap is unequalled in that territory.

Vigorous Grower—Dunlap has a deep feeding habit and will withstand considerable amount of dry weather; more so than any other variety. For this reason it is well adapted to the Western States. It usually makes a good fruit bed under unfavorable growing conditions.

Fruit is of good size and a beautiful bright red color, with plenty of gloss and very firm. It is a splendid shipper and of excellent quality when grown in the regions adapted to it.

Productiveness—The Western Growers find Senator Dunlap to be an exceptionally heavy yielder on their soils, and when properly fertilized matures practically a 100% crop of fancy fruit.

● **DUNLAP** holds high honors in the West!



**TOWNSEND'S
SELECT STRAIN
DUNLAP PLANTS**

Have Won a Reputation
In the West for Heavy Yields

Prolong Your Berry Season With



Gandy A FAVORITE
EXTRA *Late*
VARIETY

**TOWNSEND'S STRAIN OF GANDY
FAR AHEAD OF OLD STRAIN
IN YIELDS AND QUALITY**

IN THE early days of Gandy, just after it was originated in New Jersey several years ago, its production was not quite as good as has been expected. However, we soon remedied this situation by Townsend selection of our heaviest producing plants and using them for propagating stock. As a result, the productive capacity was more than doubled within a very short time. The news of our sensational success spread like wildfire and today our extensive planting of Gandy is one of the largest in the United States. The fruit has always been of good quality and now is really excellent. The quality, size and shipping qualities have always met with instantaneous success wherever Gandy has been introduced. Berries are of wonderful quality, large to extra-large in size; bright red with dark double green caps. Ripening usually takes place about two weeks after Premier and Dorsett.

● **GENTLEMEN:** Barnstable County, Mass.

Reserve for me 11,000 of your select strain Gandy plants. Will give shipping instructions later. I made more money from my Gandy planting last year than any other variety. Send Catalogue to Mr. W. Piquin. He saw my Gandy berries and wants some plants.

M. GONSALVES

STANDS ALONE

TOWNKING
TRADE MARK COPYRIGHTED



The MOST PERFECT *Late* STRAWBERRY!

Comparing Townking WITH OTHER LATE VARIETIES

Annual Strawberry Report from Allegheny
County Agriculture Extension
Association of Pennsylvania

The Lupton and Townking are similar in most respects and each produce enormously large berries. Lupton is a poor plant maker which probably accounts for its standing. Townking surpassed Big Joe, Chesapeake, and Lupton in yield. Recommend Townking for exceptionally large, late berries.

GETS PREMIUM PRICES FOR TOWNKING

I have grown practically all the late varieties of strawberries and consider Townking far ahead of anything I ever grew. The fruit is attractive and my customers do not mind paying me a premium price for the berries, which always look attractive on the stand.
JAMES GORDON

6400 QUARTS FROM 6000 PLANTS

The 6000 Townking plants fruited this year, and I don't believe there is a berry on the market to equal it. Picked over sixty-four hundred quarts from these plants. No trouble to get pickers to pick Townking. Quality good, and carries to market in first class shape.
THOMAS HUNTER

**TOWNKING PRICES
ON PAGE 46**

TOWNKING stands alone—as the most perfect late strawberry! A strong, healthy grower, it produces a fine fruiting bed on a wide variety of soils and climatic conditions. Regardless of what section of the country you may live in, you know that a good, late fruiting berry is a profitable variety. Realizing this fact, we say with full knowledge of the importance of this claim, that Townking is *the* most profitable late variety on the market today!

Premium prices are always paid for Townking, for its color, shape, size and appearance are all outstanding and attractive. From the Atlantic to the Pacific; and from Maine to Florida and Texas, Townking has taken its rightful place as the King of all late berries. Give it a trial this year.

● SOME OF THE OUTSTANDING POINTS OF TOWNKING

Color—Extra bright, rich red.

Firmness—A good shipper for long-distant markets. Stands up well after picking. Will keep on vines several days after ripe.

Quality—Superior to Lupton or Gandy, and equals Chesapeake.

Productiveness—Stands at the top of the late variety list for yields.

Growth—Makes good fruiting beds under ordinary growing conditions. Foliage free from rust and of dark green color.

Size—Large to extra large, making attractive pack that appeals to buyers.

● You can buy Townking from Townsends' Nurseries only. We guarantee that Townking will please you or money will be refunded.

COULD NOT ASK FOR A BETTER LATE BERRY

Suffolk Co., N. Y.
Please enter my order for 9000 Townking. In all my experience growing strawberries I have never seen anything like it. In size, color, and heavy yields. I could not want for a better late berry.
W. TOMPKINS

FINEST LATE BERRY HE EVER SAW

Washington Co. Ohio
Find enclosed my check for 11,000 Townsends' Select Strain Townking. Please ship at once. If I had to grow only one variety of strawberries it would be Townking. I get yields far above any other late variety and quality fruit that brings top of the market. It's the finest late berry I ever saw.
F. SHAW

● Our Customers recommend Townking as the best late variety. So do We.



90%

of Total Florida
Berry Acreage is
MISSIONARY!

MISSIONARY

Townsend's Select Strain Stock

Are New Ground Grown—Double Inspected

Townsend's Missionary is unquestionably the leading Southern Variety especially in the State of Florida. As introducers of this famous variety we have always taken pride in its achievements in the south. While it is a known fact that varieties (no matter how good they are when introduced) can run down in yields and vitality over a period of years. Through our methods of plant selection and breeding for Heavier Yields, we have succeeded in growing even a better strain of High Yielding Missionary than originally introduced in 1906. Growers in the past have been buying on price. However they have come to realize that this is not always the best investment, and in all Southern States you will now find growers sticking to the Missionary Strain as grown by Townsends'.

7 STRAWBERRY VARIETIES

All Leaders In Certain Sections

THAT we may furnish the berry growers of the country the most selective list of varieties to be found any where, the following varieties are offered to complete our long list. They are well known to the growers in certain sections of the country, producing heavy yields of fine quality fruit. Most of them are considered to be the leading varieties in their respective section.

BELLMAR (Early). Bellmar is recommended for the Southern States, including Texas, Missouri, Kansas, and Nebraska. It ranks high as an early berry because of its bright, rich red appearance and heavy crops produced, even in dry regions.

KLONDYKE (Early). This is an old variety being grown quite extensively now in North Carolina, South Carolina, Southern Illinois, Tennessee, and Alabama. The berries are very bright, round, firm, and an excellent shipper. TOWNSEND'S strain of KLONDYKE is being used by the largest associations in the SOUTH.

POPULAR LATE VARIETIES

LUPTON. A favorite late variety for New Jersey and Penna. Berries are large, attractive in appearance and an excellent shipper. It is not as good a plant maker or producer as Town King; not as heavy producer as Chesapeake. If you have a trade that wants berries with a fancy appearance, Lupton will serve you well, although the eating quality is not as good as some of the other late varieties.

Aroma

FANCY *Late* BERRY for the
NORTHERN and CENTRAL STATES

For greatest return on the dollar invested, we believe that no other strawberry variety compares with Townsends' Select Strain Aroma. Large berry growing associations, whose familiarity with Aroma was already vast, have found our strain superior in quality to all others. Each year we grow millions of plants to supply the enormous Aroma demand by these organizations. If you have not tried this marvelous variety, we urge you to place your order with us now—we know you'll be amazed and pleased at the results!

WORLD'S-WONDER

- The largest berry grown—fruiting season late

The greatest asset to World's Wonder is its size. We know of no other berry that will equal it in this respect. We have picked these berries out of our test plots, when nine berries filled a quart. Quality good, moderate firm and fairly productive, suitable for home use and nearby market. Our supply of this grand variety is limited, so if you are in need of a fancy, large berry, order early.

Pathfinder

Formerly known as N. J. 35
DEVELOPED BY N. J. AGR. COLLEGE

At the New Jersey's State trial grounds, Pathfinder was selected as the outstanding variety. It is an enormous producer of large berries and of fine texture with a good shape. Makes vigorous plant growth and a good fruiting bed. Fruit is uniform in shape, time of ripening about same season as Dorsett and Fairfax. Townsends' Strain of Pathfinder has been propagated from the original strain, direct from New Jersey. We recommend that you give it a trial this year, we will reserve plants when your order is received and ship at proper planting time.

CONN. AND MASS. REPORT EXCELLENT RESULTS WITH PATHFINDER

Blakemore (EXTRA EARLY)

PLANT
TOWNSEND'S
Double Inspected
State Certified
BLAKEMORE



The IDEAL Commercial BERRY

THE BLAKEMORE, originated several years ago by the U. S. Department of Agriculture as a scientific cross between the Premier and Townsends' Missionary, has become one of the leading varieties throughout all states south of the Mason-Dixon line, extending even to Texas, Missouri, Arkansas, and Indiana, and in many instances replacing the Klondyke and Missionary. The Blakemore may also be safely grown in those sections of Pennsylvania and New Jersey where plant control is practiced, but for best results in these sections, the beds should be kept down to a maximum width of two feet.

Shipping Qualities—Fruit of Blakemore is very firm and holds up well on long distance hauls. It will also withstand heavy rains while ripening on the vines, showing very little loss of fruit.

Production—Produces 80% of its crop one week after first picking, making it valuable to berry growers who need a heavy early producer to supply the early berry market in large quantities.

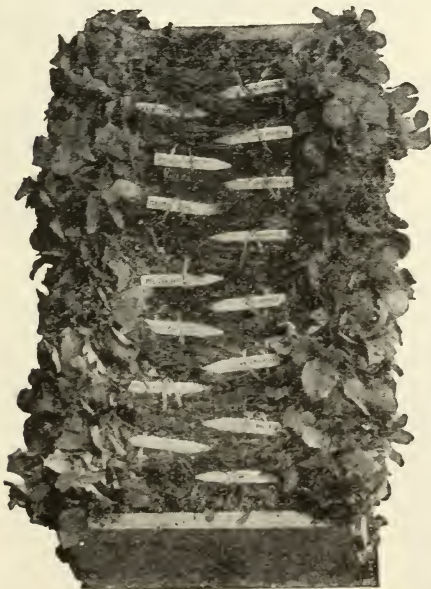
Size—A uniform, medium to large fruit with a sprightly flavor, which has made it a leading canning and preserving variety.

Vigorous Grower—Blakemore will make a heavy plant growth on practically any soil and its rich, dark green foliage stands up well above the berries. For an ideal early variety, we recommend Blakemore.

● BLAKEMORE Now Free of Yellow Leaves!

At last we are able to announce a Blakemore entirely FREE of yellow. Four years of continual searching, elimination, replanting and proper selection have at last resulted in a perfect variety. When you place your order this year for this new, extra select strain Blakemore, you will be buying an outstanding plant, strong, select, sturdy and pure. Success in entirely eliminating all trace of yellow will undoubtedly result in a tremendous demand for Blakemore, so we suggest you place your order early, advising us to ship at your proper planting time.

SEE PAGE 46 FOR PRICES ON YELLOW-RESISTANT STRAIN BLAKEMORE



● HERE'S Real VALUE IN Surplus Strawberry Plants

Very often when filling daily orders we dig a slight surplus of various varieties. Since our business policy does not allow us to carry plants over to the following day, we are in a position to sell these at a sacrifice. The grower who is not especially particular about varieties can buy these plants at a sensational saving. Every plant is freshly dug, labelled and true to name. Because of these low prices, we regret that we cannot assume any responsibility for variety selection—please do not ask for particular varieties.

EVERY BUNDLE OF SURPLUS
PLANTS LABELLED AND OF
APPROVED VARIETIES

SURPLUS STRAWBERRY PLANT PRICES

1000 Plants \$4.50 per 1000
5000 Plants \$4.00 per 1000

PRICE LIST ON PAGE 46
Shows Complete Surplus
Plant Prices



TOWNSENDS'
SELECT STRAIN
Chesapeake
are

Vigorous Growers

Several years ago when Chesapeake was originated, it was noted to be a shy plant maker; however through our method of "plant selection" we have built up the strain of this fine variety to such a high degree of plant making quality that a good fruiting bed under ordinary growing conditions is assured;—meaning larger yields and profits; as Chesapeake is a sure cropper if weather conditions are at all favorable.

Townsend's Plant Farms have become headquarters for Select Strain Chesapeake of outstanding quality, and this year, as always we have a nice stock on hand to take care of your order regardless of whether it be for one hundred or one million.

All Plants Double Inspected

DOMINATES THE *Late* VARIETIES Because

- A**—Sure Cropper.
- B**—Bright rich red color.
- C**—Doesn't discolor after picking and retains bright red color for several days.
- D**—Average size, 20 to 30 berries to a quart.
- E**—Exceptionally late and a good shipper.
- F**—Doesn't come into bearing until all the early varieties are practically through and extends berry season fully two weeks.
- G**—Distinctly a high quality berry, which brings top market price.

• **LATE BERRIES BRING HIGHER PRICES**

IN sections where late berries command higher prices than early varieties, we recommend Chesapeake as a well-known profit-maker. In most sections Chesapeake begins to ripen three or four days after Townking.

Best results can be obtained on rich loam or springy type soil, where Chesapeake produces excellent yields of fine, beautiful berries—attractive in size, color and shape. There is always a ready market for berries of this nature and good prices can easily be obtained.

Enthusiastic growers throughout the Northern States, Illinois, Indiana, Michigan, Wisconsin, Ohio, West Virginia, North Carolina and Virginia report annually increasing demands for Chesapeake. To meet these demands we constantly devote more and more acreage to this fine late variety.

If a superior late fruiting variety is needed in your section be sure to order and set Chesapeake—You'll be delighted with the results.

**HERE'S WHAT
R. W. BRUBAKER THINKS
OF CHESAPEAKE STRAWBERRIES**

GENTLEMEN: Lancaster Co., Pa.

For twenty-five years I have used your plants for setting my berry fields. The Chesapeake have always made me money. But I must say that your new Select-Strain Chesapeake, have been more than satisfactory. They make better fruiting beds—fruit is larger—more attractive—and certainly we have larger yields than ever before, making more profit per acre. After comparing your Chesapeake with some others, and seeing them growing in your fields, you may be assured that Townsend will get all our plant orders from now on.

Yours Sincerely,
R. W. BRUBAKER



XTRALATE

TRADE-MARK REG.

The *Latest* Fruiting
Strawberry *Grown!*

XTRALATE has been developed by Townsends especially to meet the great demand for a strawberry that

would fruit after other varieties were through. The record compiled by Xtralate bears evidence to whether we have been successful in our development. For not only is this variety the latest standard variety existent, but it has proved itself one of the latest and heaviest fruiting varieties on the market. Seven years testing on our trial grounds bear this out. Reduced prices on Xtralate now bring it within the reach of everyone—and we strongly urge you to try it. Thousands of satisfied growers have thrilled at the sight of this plant laden with choice fruit at harvest time—why not you? As Xtralate is an imperfect flowering variety, we recommend setting every two rows alternately through the planting with Catskill—Townking or Chesapeake for pollinizing.



**NO OTHER STANDARD VARIETY
IS AS LATE AS "XTRALATE"**

- COLOR—Rich, Bright Red
- SIZE—Medium Large to Large
- QUALITY—The Very Best

Ford

A *Rust-Proof*

VARIETY

THAT has WITHSTOOD the TEST of YEARS!

WHEN other late varieties are killed by frost Ford stands up and produces! Like Premier it is one of our most frost-resistant varieties. Results from Ford have been so consistently excellent that in all our years shipping Ford plants to thousands of customers throughout the country we have never heard of a case of rust or crop failure. Our New England customers, where late frosts occur, are particularly enthusiastic about this fine, late variety. Ford makes a heavy fruiting bed and, for best results, keep Ford thinned out. **FRUIT.** Fruit is of bright, rich-red, running large to extra large. It is of very good quality and stands up well after picking.



VALUE-QUALITY

Satisfied Customers



Townsend's Plants are known the country over as one of the heaviest yielding strains grown

WELL PLEASED WITH HIS 2000 PEACH TREES

Franklin Co., Pa.
I appreciate the fine quality peach trees sent us last year; have a perfect stand and I don't believe I ever saw trees grow off so quick as these trees did after setting. We are needing 5000 more trees this spring, will book order early.

E. CROUSE.

LOW EXPRESS AND PLANTS PLEASE MR. LEMUIRE

Worcester Co., Mass.
The 5000 strawberry plants arrived in the very best condition, they certainly are nice plants. The express charges were just as little as you stated. Many thanks for your courtesies in handling my order.

HENRY LEMUIRE.

PRICES O.K. PLANTS PRODUCE FANCY BERRIES

Berks County, Penna.
The 4600 Strawberry plants purchased from you took first honors, with Dorsett ahead. Lots of people were surprised when they saw these large berries, as most growers lost their crop due to late frost. But my crop was as large as usual. Your prices are satisfactory and your plants always produce a good crop. That's what counts.

ROGER G. KERCHER.

ONE OF THE LARGEST BERRY ASSOCIATIONS AGAIN FAVORS TOWNSEND'S PLANTS

Upshur Co., West Va.
While two other large Nurseries have given us a lower quotation than you have on several varieties, the Board prefers your plants and you will again receive our orders as usual.

NOTE—To any one interested Complete address of the above Testimonials will be gladly furnished

PRICES OF STRAWBERRIES ARE STEADILY ADVANCING

Strawberries have been making a consistent gain in prices on the Wholesale Market. This means higher prices to the consumer and better prices are obtained at the Roadside Markets. Part of the advance in price is due to short crops and the heavy consuming demand. If you have been getting low yields and unsatisfactory returns from your investment, place your order this year for some of our "Select Strain" stock. Get the yields that you have a right to expect and cash in with a bumper crop, while the demand for this fruit is becoming larger and the prices advancing. You will not be disappointed with the results obtained from Townsend's "Select Strain" stock.

HAS NEVER SEEN A BETTER ROOT SYSTEM GENTLEMEN:

Arena, Wisconsin.

Enclosed please find check for \$15.93, I am very much pleased with the plants already received, I have never seen a better root system on berry plants, and the trees were large and well shaped. Will have another order next year.

IVAN LEY.

HIGH QUALITY AND PROMPT SERVICE

GENTLEMEN:

Decatur Co., Ind.

Your strawberry plants received, and I am well pleased with these nice large, well rooted plants. In the interest of better plants for the grower, I shall praise your high quality plants and prompt service.

JNO. W. BEISLEY.

BEST LOOKING PATCH IN COUNTY

GENTLEMEN:

Henry County, Iowa.

I have been getting plants from you for the last four years and I can truthfully say they are the best that grow. I have the best looking patch in the county.

C. HAVILAND.

PLANTS ALWAYS ARRIVE IN GOOD CONDITION

DEAR SIR:

St. Clair Co., Ill.

Received your strawberry plants in the usual good condition, your service is prompt—and your plants are certainly plenty good.

HENRY SIEGLE.

A FAIR DEAL AND GOOD PLANTS MAKE ANOTHER CUSTOMER

Chautauqua Co., N. Y.

The Raspberry plants were received in good condition and were fine, strong, well grown plants. I am going to have a nice crop of Premier berries off your plants set last year and will want another 10,000 a little later on. After experiencing your fair dealing, I am a Townsend Customer for life.

CLIFFORD DRUMMOND.

ORDERS WITH CONFIDENCE

Buchanan Co., Mo.

I ordered several thousand of your select-strain Premier plants with my neighbor. Plants received in excellent condition and very nice plants. I have used a good many of your plants and know what they will do when harvest time comes.

HARRY BUSH.

CONSIDERS TOWNSEND'S PLANTS FINEST OFFERED

Delaware Co., Ohio.

I have received your quotations on the 8,000 plants. We have decided to set Dorsett, they certainly do well here. We have used your plants for several years and believe them to be the finest offered to the grower.

ROBERT LACHER.



The foundation for your success in berry growing starts at the nursery



Hybrid Blueberry Plant in Bearing



Commercial Blueberry Planting

Photo. by U. S. D. A.

SELECTIVE LIST GIANT HYBRID BLUEBERRIES

THE gradually diminishing supply of blueberries in latter years has created a greater interest in the possibilities of improving the blueberry and growing it under cultivation. In 1908 Dr. F. V. Covill of U. S. Department of Agriculture became interested in this work and his efforts in the determining soil requirements and in breeding and selecting varieties of unusually large size have been of great value in developing the cultivated blueberries. Various State Experimental Stations have taken up the work and are making rapid progress. The improvement over the wild blueberries has been such as to merit the planting on a commercial scale. They are also being grown successfully by the market gardener and are being planted throughout the country for home use. The varieties that we are offering are all introductions made by the Department of Agriculture and cover the season from early to late.

YIELDS—Quite a little depends on varieties and proper soil and cultivation as determining yields. Under good soil and good business management one-third of an acre of seven year old plants yielded at the rate of 96 bushels per acre. Fruit sold for a little over \$10.00 per bushel. The next year this same acre yielded at the rate of 117 bushels per acre. Gross receipts: \$1,280 per acre.

TIME TO PLANT—To insure plants getting off to a good start before hot weather it is best to prepare ground and set as soon as possible in the spring. In the southern states and mid-western states October and November plantings can be made.

FRUITING AGE—Commercial planters usually set strong, one-year plants. Under proper cultivation these produce some fruit the second summer after set. The two-year plants if set in the spring will fruit the second summer, and three-year old plants have been known to set fruit the first year if no great amount of check in transplanting takes place. The size of plants has a great deal to do with the amount of fruit set early after transplanted. However, this has no bearing on the amount of fruit produced from plants after they have been set at least two full years.

Selective List New-Better Varieties Giant Blueberries

● **CABOT (Season Early)**

Cabot is an early variety, for many years the earliest of the named varieties and has been planted very extensively by blueberry growers. It is slightly acid, fruit of attractive purple color, of an unusually large size.

● **CONCORD (Midseason)**

The Concord blueberry was so named because of its large clusters of berries, which, all ripe at the same time, resemble clusters of Concord grapes. Concord berries are delicious when they are allowed to remain on the bush until fully ripe and have lost the excessive acidity they possess when they first turn blue. Concord is a mid-season variety, ripening at about the same time as Pioneer.

● **PIONEER (Midseason)**

Pioneer was so designated because it was the first named variety developed as a result of blueberry breeding. Its berries are of light blue color, sweet, of excellent flavor, and when fully ripe are without acidity. We recommend Pioneer for a fine mid-season variety.

● **RANCOCAS (Medium Early)**

Rancocas is a second-early variety, ripening its berries later than Cabot and earlier than Pioneer. The original bush bore berries up to 18 mm in diameter. Berries in commercial plantations sometimes exceed 19 mm. Rancocas tends to the production of heavy crops on young and healthy bushes, so heavy indeed that unusual care must be taken to prune the bushes severely in order to insure a good crop in the following year. The leaves of Rancocas have finely toothed margins. The berries have a small, dry scar and are very easily picked.

● **RUBEL (Large Mid-season Variety)**

This variety ripens about two weeks later than Cabot. The bush is an upright grower, very vigorous, hardy and productive. Fruit is medium large of a light blue, very firm; can be shipped long distance. Some of the largest Blueberry plantings in New Jersey have a good proportion of their plantings to this variety. The quality is considered to be fairly good, although somewhat acid. From the standpoint of growth, yields and other characteristics this variety can be classed almost ideal.

● **JERSEY (Season Late)**

The berries of Jersey are large to extra large and, until dead ripe, too acid for the taste of most persons. It is a good shipping berry and one which stands up well in transit. It is considered by commercial growers to be one of the leading late varieties. Jersey is of remarkably robust growth and makes an attractive ornamental plant when grown in the home garden.

● **PRICES** ●
**TOWNSEND SELECTED STRAIN
GIANT BLUEBERRIES**

	Plants Each	3 to 9 Plants Each	10 to 29 Plants Each	30 to 100 Plants Each
1 yr. 3-6 in. . . .	\$0.40	\$0.35	\$0.30	\$0.25
2 yr. 7-12 in.75	.65	.50	.45
3 yr. 12-18 in. . . .	1.00	.85	.70	.65
4 yr. 18-24 in. . .	1.50	1.30	1.15	1.00

● Larger Quantity—Write for Special Quotations

● Blueberry culture bulletin mailed free on request

FALL BEARING STRAWBERRIES



43 acre field of Townsend Select Strain Heavy Yielding Mastodon. Photo taken on our farms 9 weeks after set. Note vigorous growth and uniform fruiting beds. All True Blue Stock.



Mr. H. Ryall, Salisbury, Maryland, holding a 30 pt. crate of Mastodons. These berries sold for 26¢ a qt. on New York Market. Photo taken October 16th.

NEW GEM Attractive FALLBEARING Excellent Quality

A heavy fruiting, big, rich, red berry of very fine flavor and quality. It does exceptionally well in all the Northern States and as far West as Missouri. It seems to be a good producer in most any type of soils; and at its best on rich loam. Gem is a little better plant maker than the Mastodon, therefore, would suggest putting the plants a little farther apart in the row, about 16 inches is a good distance. Gem is also a very valuable variety for its spring crop. It produces a nice crop about the same time as the midseason varieties do. We grow several acres on our farms for their berries and like Gem very much. This season we picked Gem as late as November the 14th, and noticed quite a few green berries and blossoms on the plants. It surely will give you a long fruiting season and it takes a mighty cold freeze to stop them.

EVERY HOME GARDEN SHOULD HAVE FALLBEARING

Fallbearing Strawberries require very little space to grow them to perfection. Just space plants 12 inches apart in rows 12 inches wide and you can hardly realize how many berries can be picked from one of our garden collections. The women folks are planting fallbearing in their garden instead of short crop vegetables. They are furnishing the table with fresh delicious berries on a small investment.

Our Service Department has a free Bulletin on Growing Fallbearing Strawberries. A copy will be gladly sent you on request.

"True Blue" MASTODON Plants

The Mastodon is one of the largest and most popular of all fall-bearing varieties. The color of this large berry is of bright rich red, has a nice large green cap which accounts for its attractive appearance that is admired by all who see it. Texture of the berry is good and stands up well after picking. Customers write us that they have averaged one quart of berries from each plant set. While others write us they made as high as \$450.00 from a garden plot.

FALL—SPRING Collection "A"

50 MASTODON
50 TOWNKING

100
Select Plants **\$1.35**

LARGE GARDEN Collection "B"

100 NEW GEM
100 DORSETT

200 Select
Plants Only **\$2.25**



Big Bargain

STRAWBERRY

GARDENS

GROW Fresh "DELICIOUS" STRAWBERRIES IN YOUR OWN GARDEN!



MAKE it a point this year to have a strawberry patch in your own garden. You'll find it a continual source of pleasure and profit at an investment of little money and time. Pies, canning, jams, and cereals will become a pleasure when you can pick your own luscious berries direct in your own garden! These delicious berries require very little space and will grow in corners of your garden, along property lines, or in small or large garden plots. And you will be surprised at how many quarts of berries you can pick from a small planting. Mr. Ben Stanton of Wyoming County, Pa., writes us that he picked 420 quarts from his garden of big berries. Mrs. R. Walker of Penobscot

County, Maine, picked 183 quarts from her All Season Gardens while Mrs. Gene Arnold, Wayne County, New York, canned 67 quarts and sold over \$30.00 worth from a \$2.00 investment! Wherever you may live you will find a "Big Bargain" Garden collection on this page to fit any garden needs. Why not order one or more of these garden collections NOW, and have us make shipment at your proper planting time?

• We have a limited edition of our specially prepared culture guide, "Fruit Garden" on hand. If you would like to have a free copy of this handy booklet, drop us a post card—it's yours for the asking.

1 All Season GARDEN

This garden will furnish the average family with rich red, delicious berries from early in the season to late fall. We give you your preference of Gem or Mastodon Everbearing in this collection.

- 25 Premier
- 25 Catskill
- 25 Townking
- 25 Blakemore

100 Plants **SPECIAL \$1.25**
 CATALOG VALUE \$1.65



2 Garden of Big Berries

This garden will yield extra large berries of the very best quality and plenty of them from early season to late.

- 100 Dorsett (Early)
- 100 Premier (Early)
- 100 Big Joe (Midseason)
- 100 Townking (Late)
- 400 Plants **ONLY \$3.35**

CATALOG VALUE \$4.80

3 Special Test GARDEN

Be the First in Your Neighborhood to Pick Ripe Strawberries

Here's four of the greatest yielding, early fruiting varieties ever introduced. The quality of fruit is of the best and all strong vigorous growers, that have proven a success in practically all states. Set this Garden and have the first berries in your section.

- 250 Fairfax
- 250 Dorsett
- 250 Blakemore
- 250 Premier **\$ ALL FOR \$5.95**
- 1000 Plants

CATALOG VALUE \$8.60

TOWNSENDS' OWN Selection GARDEN



4 Our selection will have a catalog value of \$4.80 or more and contain best varieties suitable for your section.

- 100 Best Extra Early
- 100 Best Early
- 100 Best Midseason
- 100 Best Late
- 100 Best Very Late
- 500 Plants

Special \$3.85

Catalog Value \$5.55 or More

SPARE TIME GARDEN

5 With little attention you can realize a nice profit from this garden. Should pick at least 1000 quarts.

- 200 PREMIER
- 200 DORSETT
- 200 FAIRFAX
- 200 TOWNKING
- 100 XTRALATE

900 PLANTS

Only \$6.45

Catalog Value \$9.45



• PLEASE ORDER STRAWBERRY GARDENS BY NUMBER •

Townsend's
Certified
SELECT
STRAIN
 Raspberry Plants
 Is Your Insurance
 For
 Bigger Profits

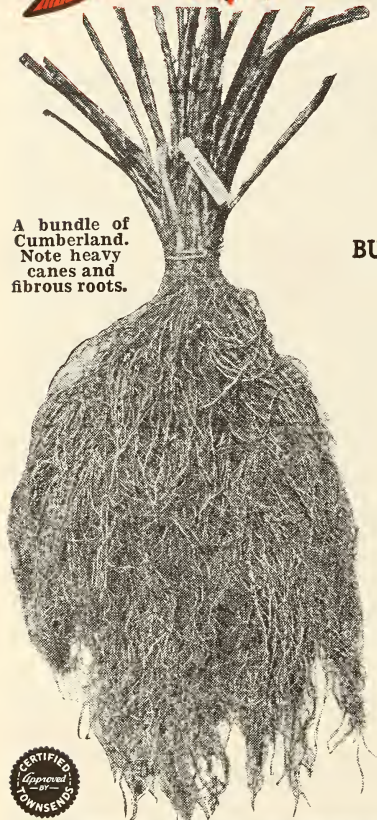
FRUIT GROWERS in 48 States

Set Townsend's Select Strain RASPBERRY PLANTS IN 1941



A fine block of Townsend's Certified Cumberland that averaged 5,300 pints of berries first year's crop. Get good plants. Treat them right and profitable yields will be yours.

A bundle of
 Cumberland.
 Note heavy
 canes and
 fibrous roots.



BUY STATE CERTIFIED DOUBLE INSPECTED RASPBERRY PLANTS **IT PAYS!**

Heavier yields and bigger profits are a sure thing for the raspberry grower who invests in a patch of Townsend's Select Strain certified plants. We leave no stone unturned to grow plants that are worthy of the Townsend's reputation for excellence. Our propagating field is set in proper soil to produce a well balanced plant with vigorous root system and grown under the supervision of a specialist on raspberries. They are carefully watched during the growing season for any kind of disease that might appear. Twice a year State Inspectors visit our plantings and carefully inspect all growing plants. Townsend's plants come to you doubly inspected and carry with them a certified seal pronouncing them free from mosaic and other injurious disease.

Because of this conscientious thorough method of disease-prevention, growers in forty-eight states set Townsend's Raspberry plants last year. Realizing that the one sure method of stepping up their yields was to purchase plants which have been grown right, properly packed, and delivered to them in a fresh growing condition. We feel sure that with normal care after planting that Townsend's Select Strain certified raspberry plants will practically double your yields, thereby cutting cost of production and increasing profits.

A raspberry planting is good for several years, don't gamble on your planting stock, get the best plants obtainable. They will cost you less in the long run. You will find our prices reasonable and we know you will be pleased with the plants we send you.

COMPLETE PRICES ALL VARIETIES
 RASPBERRIES ON PAGE 47



Don't
 OVERLOOK
 "This"

48
 Select 1 Year
 Red Raspberries

FOUR VARIETIES
 12 PLANTS EACH
 LATHAM, KATHERINE,
 NEWBURGH, CHIEF

Reduced Price **\$2.15**



A field double inspected certified Latham 1 year after set.

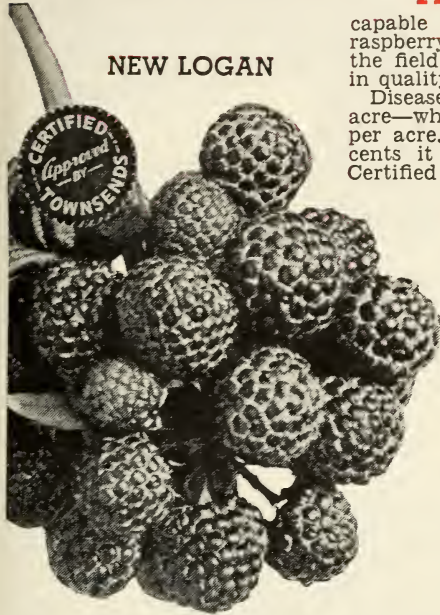
BLACK RASPBERRIES

Double Inspected—State Certified

Refer To Page 47 For Complete Prices All Varieties Raspberry Plants

A GOOD Black Raspberry patch is one of the most profitable of farm crops—providing you have strong, healthy canes capable of maturing a large crop of berries! Our select strain certified raspberry plants are beyond doubt the finest obtainable—and will lead the field in their respective sections. These plants are definitely superior in quality and the greatest bargains ever offered!

Diseased and run out fields average only from 400 to 800 quarts per acre—while strong, disease-free plants will yield from 1600 to 3000 quarts per acre. You can see from these figures how much more in dollars and cents it will mean to you if you invest in Townsends' Select Strain Certified plants. Place your orders now—we'll ship when you're ready to set.



NEW LOGAN

NEW LOGAN

A new black raspberry, famous for two noteworthy characteristics: It ripens about a week earlier than the Cumberland, and is extraordinarily resistant to virus diseases. These fine quality berries are of good size, grow vigorously, and produce extremely well. The New Logan is a favorite in both the North and Central States, and is one of the best of the early varieties.

COLUMBIAN

The leader in the field of purple commercial varieties, its firm, dark purple berries are tangily flavored. A vigorous and exceptionally productive grower, especially popular in the states of New York, Pennsylvania, West Virginia, Ohio, Massachusetts, and Connecticut.

PURPLE

PLUM FARMER

Considered by experienced, large growers in New York, Pennsylvania, and New England States to be the best early black cap variety for that territory. A strong, vigorous, upright grower that is very productive, with good quality, medium to large, exceptionally juicy fruit. Because it ripens its fruit very quickly, the bulk of the crop is removed in four or five pickings.

SODUS PURPLE

Produces some of the most beautiful, largest purple berries we've ever seen. Sodus berries do not crumble, but cling to the branch long after ripening. Its delicious flavor and beautiful texture makes it a top seller to canners. Plants are vigorous growers, very hardy and extremely productive. Entirely free of mosaic.

CUMBERLAND

The outstanding leader among black raspberries—the most widely planted variety grown today! Cumberland is unsurpassed by any other black raspberry in both hardiness and productiveness. The large, sweet flavorful fruit is very firm and can be safely shipped a long distance in spite of its size. The bushes are vigorous, being very capable of supporting their large crop of fruit. The ripening season extends from mid-season to late. For those customers looking for a fine quality, profitable black raspberry, we highly recommend Cumberland. We have a nice stock of Certified Cumberland plants this year at reasonable prices, and are confident of the fine results you will obtain from this fruit. For a continuous fruit crop covering a long period, plant Cumberland and Logan.

New SHUTTLEWORTH

A fine new Black Raspberry being successfully grown in New York State. Fruit is of Extra Large size, fine quality, good producer, and a vigorous grower. Give this new variety a trial this year.



PLANT A

Raspberry Garden

THIS YEAR

Here are 2 fine Raspberry Gardens which we have selected for home plantings. The plants are our best grade of 1 year #1 size and priced to save you money.

- | | |
|---------------------|----------------------|
| 25 Cumberland | 25 Cumberland Black |
| 25 Columbian Purple | 25 Logan Black |
| 25 Logan | 25 Plum Farmer Black |
| 25 Sodus | 25 New Chief Red |
| | 25 Latham Red |
| | 25 St. Regis Red |

ALL FOR **\$3.86**

SPECIAL OFFER **\$4.15**

2 Collections of above \$6.85

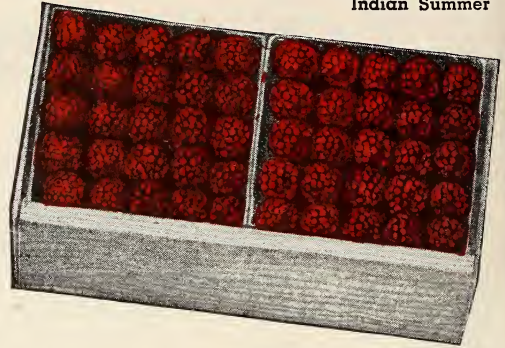
2 Collections of above \$7.80

Fallbearing

RASPBERRIES

FRUITS CONTINUOUSLY FROM
EARLY SUMMER UNTIL LATE FALL

DELICIOUS FLAVOR—EASY TO GROW



Indian Summer

THE fallbearing raspberry is not a novelty by any means. The commercial grower realizes the value of the early spring crop produced, also the advantage in having berries all summer and fall. Market gardeners having a roadside market or local trade will find this class of raspberries to be profitable. For the home garden they are ideal. Plants are hardy, vigorous growers. One-year plants set in spring fruit following summer, until fall. A planting is good for three to five years. We offer here three of the heaviest yielding varieties. All plants double inspected and state certified.

Indian Summer

A fine new fall-bearing recently introduced by New York State Agricultural College. Fruit is large and of good quality. Produces a heavy crop of fruit out of season and is a wonderful cropper in early spring. From past tests this variety is one of the best fallbearing on the market, for commercial or home plantings.

KATHERINE. A large berry of fine quality, fruiting persistently from early summer until late fall. Fruits a heavy spring crop.

ST. REGIS. A fallbearing variety well known to all commercial growers. A heavy producer in spring. Fall fruit is of large size, good quality, and brings top prices on the market.

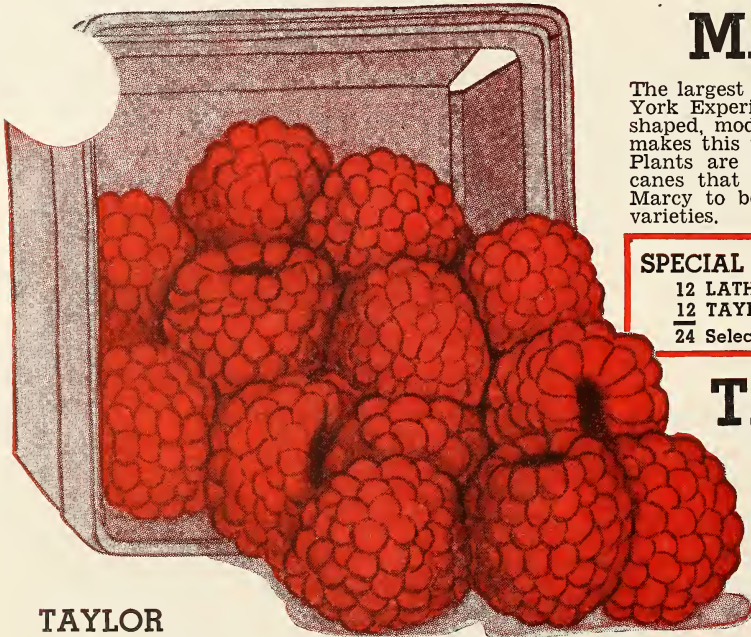
SPECIAL

HOME PLANTING OFFER

12 Indian Summer—12 Katherine

ALL FOR \$1.00

2 Outstanding New Reds



MARCY



The largest raspberry grown by the New York Experimental Station. Long, conic shaped, moderately firm and thick flesh makes this variety an excellent shipper. Plants are tall and hardy with stalky canes that hold fruit well. Test shows Marcy to be the biggest of all leading varieties.

SPECIAL COLLECTION OFFER

12 LATHAM

12 TAYLOR

24 Select Plants for

\$1.50

TAYLOR



Has a record of 10 years New York Exper. Stat. successful testing. Large size, new oblong shaped berries of snappy, luscious flavor. Holds to plant well—no crumbling. Rigid tree-like canes. You can depend on Taylor for heavy yields of beautiful fruit and for greater profits.

TAYLOR

SEE NEW LOWER PRICES—TAYLOR, MARCY PAGE 4.

The Largest Size and Heaviest Yielding Raspberry **Latham**



Don't overlook
this big value

RED RASPBERRY OFFER

25 NEW CHIEF. 1 year size.
25 LATHAM. 1 year size.
50 Select Plants **\$1.45**
Special Price

50 SELECT LATHAM.
50 SELECT CHIEF.
100 Plants **\$2.15**
Special Price

IT'S easy to be enthusiastic about Latham because it is the finest looking berry on the market—and because it produces more berries to the acre than any other variety (and does so with the least amount of care).

This **KING** of all raspberries will mean Real Profits for you. Townsends' Select Strain Latham yields large, luscious rich red fruit—so appetizing in its appearance and flavor that it meets with instant approval! Commercial growers average over \$1,000 per acre of plants. Latham, which is entirely free of mosaic, more than measures up to the most exacting standards, producing firm fruit that is excellent for long distance shipping. Order some Townsends' Latham—you'll be pleased with your success, whether you raise to sell or to serve!

NEWBURGH



EVEN though introduced only a few years ago, Newburgh has met with instantaneous success since its origination by the New York State Agriculture Experiment Station. Newburgh berries, which are attractive and excellent for shipping, cling to the branch long after ripening—do not crumble. Newburgh has been successfully grown in all sections, although we recommend it especially for the extreme Northern States where severe winters have ruined several other varieties. Newburgh is a vigorous grower, is very hardy and robust, and produces beautifully.



PRICES ALL VARIETIES
RASPBERRIES ON PAGE 47

CHIEF the Earliest Raspberry of them all



Absolutely Hardy—Easy to Grow

CHIEF, the earliest raspberry of all, is the only real rival to Latham. It was selected from a planting of 4,000 Latham seedlings by the Minnesota State Breeding Farm, and has become the best early red for general planting, surpassing all others. The fruit, while not quite as large as Latham, is extremely hardy, firm, bright red in color, practically immune from mosaic and mildew, keeps and ships well, and is an unusually heavy producer. Its brilliant coloring and appealing flavor, together with its early ripening, makes Chief a good money maker for the commercial grower, and the home gardener as well.

**READY FOR MARKET
WHEN PRICES ARE
HIGHEST**





TOWNSEND'S

SELECT STRAIN

BLACKBERRIES



• All Grown from Roof Cuttings



THE SAME high standard that we have set for our strawberry plants is duplicated in our blackberry plants, which transplant very easily and produce larger canes and superior fruit than the average nursery grown plants. They are grown from strong root cuttings, because we know that this method of propagating is far superior to sucker plants, making a much more fibrous rooted plant than sucker plants and grow off much quicker after setting. During the first year, the varieties listed on this page grow mostly on the ground, but after the first crop, grow upright, standing in bunches, obtaining a height of 4 to 6 feet. One planting will last you several years, and while we sell several hundred thousand plants to commercial growers each year, we believe that every home garden should contain a few of these easily grown plants, as they will furnish plenty of big, rich-flavored, juicy berries for making delicious cobbles, wines, jams and jellies.

Prices all varieties blackberries page 47

Eldorado

THE MOST WIDELY PLANTED OF ALL BLACKBERRIES

Eldorado, the most widely planted blackberry on the market, is of fine quality with glossy, black berries and very little core, and is unexcelled for making jams, jellies, and pies. Because of its hardiness, it does well in the extreme North. You can depend on Eldorado to give you satisfactions as a midseason to late variety.

New ALFRED Blackberry

LARGE, SWEET AND A HEAVY PRODUCER



A recently introduced, sweet, juicy, extremely large berry, coreless and practically free from seeds. Alfred is grown throughout the Northwestern States, and is heavily planted in Ohio, West Virginia, Indiana, Illinois, New York, and Pennsylvania. For a fine midseason variety we recommend Alfred.

For PRICES BEARING AGE Blackberries SEE PAGE 31

BLOWERS

Heavy Yielding Blackberry



The blowers has proven to be a very profitable blackberry, especially for the Northern States; quality is good; heavy producer; and a very vigorous grower.

EARLY HARVEST



Earliest of all Blackberries

One of the earliest ripening—most productive of the early varieties. Fruit very firm, medium large. Growth vigorous and canes hardy. For a very early blackberry, plant Early Harvest.

GOOSEBERRIES



Selected List Best Paying Varieties

2 Year Plants
GOOSEBERRY PRICES
35c Each
6 to 10 plants 32c each
11 to 50 plants 30c each

WRITE FOR PRICES ON LARGER LOTS THAN QUOTED

8 TWO YEAR BUSHES

Your Choice!

4 Currants
4 Gooseberries

Any varieties listed on this page

\$ 1.76

ALL FOR

2 Collections above for \$3.19

DOWNING. A large, handsome, pale green berry of splendid quality. Fine for both cooking and table use, its plant is strong and usually free from mildew.

RED JACKET. Most mildew free of all leading varieties. A large, smooth, fine flavored red fruit, produced in great abundance.

POORMAN. Largest, healthiest and most vigorous grower—exceedingly productive. Fruit large, red, very attractive.

CURRANTS

APPROVED VARIETIES

2 Year Plants
CURRANT PRICES
35c Each
6 to 10 plants 32c each
11 to 50 plants 30c each



CHERRY. Large berries on short clusters; a robust, fruitful variety. The vigorous, stocky bushes produce large quantities of bright red fruit with thin skins and remarkably fine flavor.

RED CROSS. Large, red, fine. Very productive and of extra high quality. Rich, mild, sub-acid.

RED LAKE. This variety is of recent introduction and is considered to be one of the largest currants grown. Color rich red, fruit solid and of good flavor.

WILDER. Bunch and berries very large, bright, attractive red color, even when dead ripe. Flavor not too acid and fruit continues on bush for quite a period.

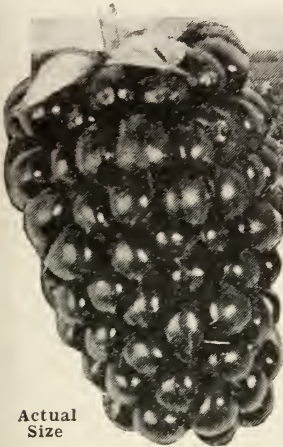
PERFECTION. Beautiful, bright red, holding its large size to end of bunch. Easy to pick—a superior bearer—less acid and of better quality than any other large currant.

WHITE GRAPE. Very large, yellowish white. Mild acid flavor. Extremely valuable for table use.

BEARING AGE SIZE CURRANTS

Fruits Same Year Planted
Prices—Each \$0.45, Three \$1.15, Six \$2.10
Twelve \$3.85, Twenty-five \$7.25

Culture Directions on Gooseberries, Currants and Blackberries mailed FREE on request



NEW BOYSENBERRY

HARDY, QUICK GROWER—HEAVY YIELDER

● Profitable FOR COMMERCIAL OR HOME PLANTING

● A NEW DEWBERRY

By Far the Largest and Heaviest Producing Berry of the Blackberry or Dewberry Family

- Berries measure 2 inches in length
- Averages 35 berries per quart box
- 2200 pints picked from 100 2-year old plants
- Gross returns from one acre \$1760.00

**Don't Miss
This Special
Boysenberry
Garden Offer**

12 BOYSENBERRY
12 YOUNGBERRY
6 NECTARBERRY
—
30 Strong 1 yr. Plants

Special Price
2 Collections **\$2.90**
for \$5.00

COMPLETE CULTURE DIRECTIONS FREE ON REQUEST

PRICES BOYSENBERRY PLANTS ON PAGE 47

DEWBERRIES

THE DEWBERRY is a trailing blackberry and a little less hardy. It is grown on a large commercial scale in the central and southern states. With the introduction of the Youngberry and Boysenberry, and Nectarberry varieties, which are harder than the Lucretia, the planting sections of the Dewberry have been advanced some two hundred miles north, and growers now are reporting good results as far north as Rhode Island and Western New York. Dewberries ripen earlier than Blackberries, are much larger, and have a very fine flavor. We consider the dewberry an ideal addition to the home garden. They are becoming very popular on the market. On account of the texture of the Dewberry it should be placed on the market soon after picking and long hauls be avoided. Unless weather is cool and favorable for such trips, they should not be picked when dew is on or when fruit is damp.

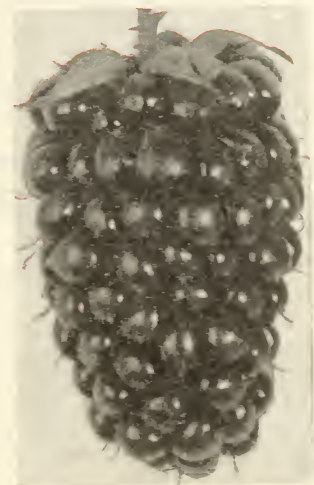
LUCRETIA. Exceptionally hardy vines that may be successfully planted in the Northern States, also grown on large scale in the South—large, firm, juicy fruit.

NEW-THORNLESS BOYSENBERRY. If you are troubled with the thorns when picking some of your dewberries we suggest this grand new thornless variety. This berry bears the same description, as its parent, which we describe at top of this page, only it's thornless.

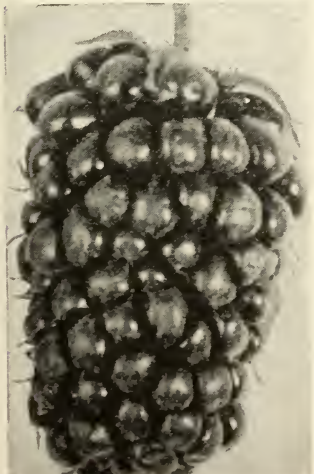
YOUNGBERRY. The Youngberry, a trailing variety of the Dewberry family, has built up for itself a reputation for size and eating qualities, which make it highly prized by growers everywhere. For sheer productivity and high market prices, it's tops. For the home gardener, the Youngberry offers real pleasure from a small investment.

NEW-ACME THORNLESS YOUNGBERRY (Patented Plant Patent #4). The only strain of Youngberry without thorns. The Thornless is equally as productive as the parent thorny type—in some cases has exceeded it, matures fruit few days earlier and continues its season slightly longer, foliage vigorous. Its outstanding point is in the fact that no thorns appear on this variety, making picking very easy.

NEW-NECTARBERRY. This variety of dewberry has proven hardy under drought and cold, being grown in New York without winter injury. Fruit is little larger than Boysenberry, is of fine flavor. Ripens about two weeks later than Youngberry, thereby extending fruiting season of the dewberry. A fine flavored variety, very productive, valuable for market gardeners and home plantings.



NEW NECTARBERRY



YOUNGBERRY (Dewberry)

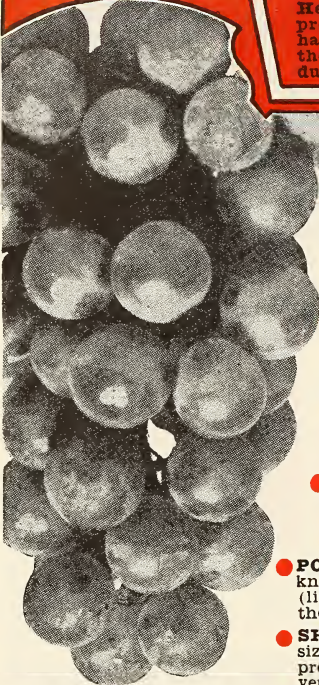
COMPLETE PRICES DEWBERRIES ON PAGE 47

BIGGER YIELDS

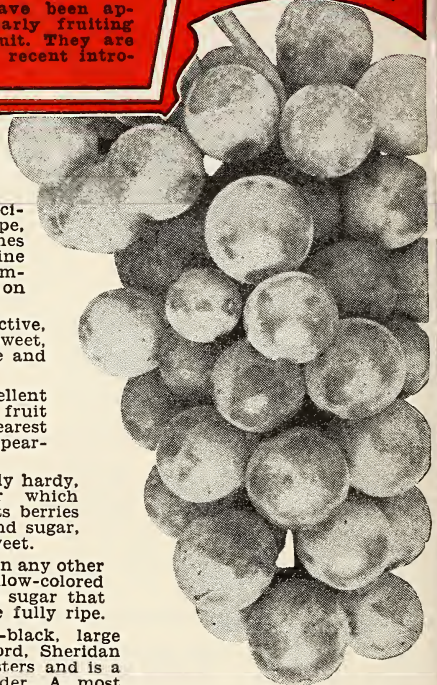
XTRA new VARIETIES GRAPES

BETTER QUALITY

Here are eight new grapes that have been approved by Townsends' for their early fruiting habits, heavy yields, and quality fruit. They are the best of the new, and all are of recent introduction.



NEW CACO



NEW PORTLAND

- **CACO (Red).** A large, red, fine-flavored grape which holds fruit well after ripening.
- **CHAMPAGNE (Amber).** A deliciously flavored amber colored grape, producing large, compact bunches of fruit. The strong growing vine yields fruit at an early age. Champagne is one of the best varieties on our list.
- **FREDONIA (Black).** A very attractive, early-ripening variety with large, sweet, juicy berries. Its bunches are large and compact.
- **GOLDEN MUSCAT (Yellow).** Excellent quality, golden yellow-colored fruit clustered in large bunches. The nearest hardy grape in both taste and appearance to the European varieties.
- **ONTARIO (White).** An exceptionally hardy, very productive, vigorous grower which ripens a few days after Portland. Its berries are an excellent blending of acid and sugar, hence the taste is sprightly, yet sweet.
- **PORTLAND (White).** Ripens earlier than any other known grape. Its large, beautiful yellow-colored (like Niagara) berries contain so much sugar that they can be eaten long before they are fully ripe.
- **SHERIDAN (Black).** A late, bluish-black, large size grape, more attractive than Concord. Sheridan produces large, handsome, compact clusters and is a very vigorous grower and heavy yielder. A most valuable new variety for home or commercial plantings.
- **URBANA (Red).** The flavor and quality equals that of the best European grapes; very sweet and juicy fruit; season late.

LEADING STANDARD VARIETIES OF

GRAPES *all*

OUTSTANDING FOR YIELD & QUALITY!

- **BETA (Black).** An early, vigorous growing, hardy, medium-sized grape, growing in large, compact bunches. A tremendously productive variety, grown extensively in the Northern States.
- **CONCORD (Black).** The most extensively planted black grape. Bunches are compact and of excellent quality, ripening midseason to late. As a commercial variety, Townsends' winter-hardened Concord stands supreme; while the home gardener in any section of the country will find that it brings excellent results.
- **CATAWBA (Red).** A late ripening, large, firm, very sweet, copper-red colored fruit, used extensively for making wine.
- **DELAWARE (Red).** An excellent quality, early ripening, large, sweet, juicy, amber-colored variety with hardy, productive vines.
- **MOORE'S EARLY (Black).** A seedling of Concord which ripens two weeks earlier; a heavy producer of excellent quality large, black fruit, it is planted extensively by commercial planters.
- **NIAGARA (White).** One of the largest white grapes, deliciously flavored, its handsome compact bunches ripen with Concord.
- **WORDEN (Black).** A very popular bluish-black excellently flavored, hardy growing grape whose large, compact bunches ripen two weeks earlier than Concord.

Big value! **GRAPE OFFERS**

GRAPES FOR ARBOR PLANTINGS

PLANT GRAPES FOR ORNAMENTAL EFFECT



- ALL 2-YEAR SELECT VINES!**
- 1 Fredonia, Black
 - 1 Caco, Red
 - 1 Champagne, Amber
 - 1 Moore's Early Black
 - 1 Niagara, White
 - 1 Catawba, Red
 - 1 Worden, Black
 - 1 Concord, Black
- 8** Select Vines All for

\$1.65

2 COLLECTIONS \$2.70

18

Select Vines for

\$3.45

2 COLLECTIONS \$6.15

- 2 Champagne, Amber
- 2 Caco, Red
- 2 Fredonia, Black
- 2 Ontario, White
- 2 Portland, White
- 2 Sheridan, Black
- 2 Concord, Black
- 2 Moore's Early
- 2 Catawba, Red



FOR QUICK RESULTS

SET *Townsend's*
BEARING-AGE
Berry Plants.

PICK FRUIT THE *First* YEAR!

Bearing age plants are selected one year grade when transplanted into our nursery rows. Here we grow them a full year under ideal growing conditions, taking full advantage of our twenty-acre irrigation system. In order that we can supply our customers with a well balanced plant plenty of humus is added to the soil before setting. Careful cultivation and pruning is made throughout the season. We further protect plants by tying them into bundles the full length of cane, wrapping them carefully that they may reach customers in perfect condition. Although the cost of these plants is slightly higher than our one year select stock, the amount of fruit that can be picked from them the first year will more than pay for the difference in price.

MONEY SAVING COLLECTION OFFERS

BEARING AGE GRAPE COLLECTION

- 2 New Caco. Red.
- 1 New Portland. White.
- 1 New Sheridan. Black.
- 1 New Fredonia. Black.
- 1 New Ontario. White.
- 2 Concord. Blue.

8 SELECT VINES \$2.00

BEARING AGE RASPBERRY COLLECTION

- 12 New Chief. Red.
- 12 Heavy Yielding Latham. Red.
- 12 Cumberland. Black.
- 12 New Logan. Black.
- 12 St. Regis, Everbearing. Red.

60 Plants \$2.85 Special Price

TOWNSEND'S SPECIAL BEARING AGE BLACKBERRY OFFER

- 24 Eldorado Blackberry
- 24 Early Harvest Blackberry
- 12 Boysenberry Dewberry
- 12 Lucretia Dewberry

72 PLANTS ALL FOR \$2.60

• BEARING AGE PLANTS ADAPTABLE FOR THE HOME GARDENS

Bearing age plants are especially adapted for the Home Garden. Results are quick, fruiting same season set, increasing in yield as they grow older. Raspberry, Blackberry, and Dewberry plantings will produce good crops every year for three to five years from original planting. Grapes for eight to twelve years. If you are not now enjoying fresh berries from your garden, include some of these ready-to-bear plants in your next order. Better still, have a complete Berry Garden this year by combining a Fallbearing Strawberry Garden listed on page 22. These will also fruit same season set, continuing until cold weather and again following spring. From a small investment you can have plenty of Fresh Delicious Berries direct from your own garden at a cost that will be surprisingly low.

• SUPPLY OF BEARING AGE STOCK

While we try to grow enough Bearing Age Plants to furnish all our customers, the increased demand on them this fall has again cut down our supply considerably. Under the circumstances, we would advise placing your order for this particular stock as soon as possible, for we feel certain that we shall be sold out early in the season.

• PRICES BEARING AGE PLANTS

BEARING AGE RED RASPBERRY PLANTS					
	12 Plants	25 Plants	50 Plants	100 Plants	200 Plants
CHIEF	\$1.20	\$1.90	\$3.00	\$5.00	\$9.10
INDIAN SUMMER	1.65	2.55	4.65	7.50	13.85
LATHAM	1.15	1.95	2.95	4.85	8.75
MARCY	1.65	2.55	4.65	7.50	13.85
ST. REGIS, EVERBEARING	1.20	1.90	3.00	5.00	9.10
KATHERINE, EVERBEARING	1.30	2.00	3.25	5.60	10.25
TAYLOR	1.10	1.95	3.65	5.85	10.70
BEARING AGE BLACK AND PURPLE RASPBERRY PLANTS					
CUMBERLAND	1.20	1.90	3.10	5.20	9.45
LOGAN	1.40	2.20	3.60	5.85	10.75
PLUM FARMER	1.20	1.90	3.10	5.20	9.45
COLUMBIAN PURPLE	1.40	2.20	3.60	5.85	10.75
BEARING AGE BLACKBERRY AND DEWBERRY PLANTS					
ALFRED BLACKBERRY	1.30	2.00	3.00	5.50	10.00
EARLY HARVEST BLACKBERRY	1.00	1.50	2.40	4.00	7.50
ELDORADO BLACKBERRY	1.00	1.60	2.60	4.50	8.25
BOYSENBERRY DEWBERRY	1.90	3.30	6.00	10.70	20.00
BOYSENBERRY THORNLESS DEWBERRY	4.25	8.25	16.00		
YOUNGBERRY DEWBERRY	1.30	2.00	3.00	5.50	10.00
LUCRETIA DEWBERRY	1.00	1.50	2.40	4.00	7.50
ACHIE THORNLESS DEWBERRY	3.20	5.85	10.20		
BEARING AGE GRAPES					
CONCORD—Blue	\$0.25	\$0.65	\$0.95	\$1.45	\$2.35
CATAWBA—Red	.30	.75	1.45	2.15	3.75
DELAWARE—Red	.30	.75	1.40	2.15	3.75
MOORE'S EARLY—Black	.30	.75	1.05	1.50	2.70
NIAGARA—White	.30	.75	1.05	1.50	2.70
UREANA	.50	1.35	2.55	4.75	8.15
WORDEN—BLACK	.30	.75	1.05	1.50	2.70
NEWER VARIETIES BEARING AGE GRAPES					
CACO—Red	.50	1.35	2.55	4.75	8.15
CLAMPAGNE—Amber	.45	1.10	1.85	3.50	6.60
FREDONIA—Black	.50	1.35	2.55	4.75	8.15
ONTARIO—White	.50	1.35	2.55	4.75	8.15
PORTLAND—White	.45	1.10	1.85	3.50	6.60
SHERIDAN—Blue Black	.50	1.35	2.55	4.75	8.15



Bearing Age Red Raspberries Strong, Healthy Canes, That Will Fruit This Year

• Customers wanting any plants on this page sent Parcel Post prepaid, use Postal Rates at bottom of page 47. Prices one year plants above varieties see page 47.

for REAL PROFITS Be Sure To Plant TOWNSENDS' APPLE TREES

A SELECTIVE LIST for COMMERCIAL or HOME PLANTINGS

CONSTANT consumer demand increasing popularity make APPLES the soundest investment any fruit grower can make! In most cases the demand is for a real true-to-type fruit. Townsends' Select Strain Apple Trees are certified and is your most perfect guide to healthy, hardy trees and



Williams
Early Red

subsequent heavy yields of true-to-type fruit. Look through the following Apple list carefully—you'll find it complete and up-to-date. Regardless of how many or how few trees you buy, you may do so "fully confident" of satisfaction.

APPLE PRICES

TOWNSENDS' 2 YEAR OLD CERTIFIED TREES
Can Be Assorted or Alike Your Choice

	1-9 Trees Each	10-49 Trees Each	50-299 Trees Each	300-599 Trees Each	600 & up Trees Each
EXTRA HEAVY 5-6 ft. 11/16 in. and up	\$0.80	\$0.65	\$0.45	\$0.35	\$0.30
LARGE SELECT 4-5 ft. 9/16-11/16 in.70	.60	.40	.30	.25
EXTRA FANCY 3-4 ft. 7/16-9/16 in.60	.50	.35	.25	.20

HEIGHT AND CALIPER. Height given of fruit trees represent average height of most varieties. Slow growing varieties may fall short of height specified, in which case the caliper shall govern.

SUMMER VARIETIES

Listed in order of Ripening

Varieties in larger type are the leading commercial sorts and most widely planted.

• **CRIMSON BEAUTY.** A very hardy variety, originated in Maine, strong grower, very productive, and yields early after planting. We believe it to be the earliest ripening apple grown, color bright red, flesh sub-acid.

• **YELLOW TRANSPARENT.** The most widely planted early yellow apple of medium size. It is grown commercially and for home use, color golden yellow, flavor excellent, trees are hardy and young bearer.

• **LODI.** A new variety of the early Summer season, good grower, dwarf habit, hardy, and early bearing. This grand variety is much larger than the Yellow Transparent, proving an excellent commercial variety and a filler. The skin is bright yellow, white flesh, and slightly acid. Our propagating wood of Lodi comes from a special selected strain of trees from a well known Agricultural College planting.

• **ANOKA.** We believe the trees of this variety to be the earliest bearing apple on the market. It is very common for this new variety to yield beautiful red striped fruit only two years after being planted. It is the ideal apple for home use, bearing of good quality, extremely hardy and dwarf grower.

• **WILLIAMS EARLY RED.** The best early red commercial apple. The fruit colors to a rich, dark red, and can be picked at an earlier stage of ripening for a lighter bright red, if preferred. This grand variety is a large apple, juicy and slightly tart. It comes into bearing early and produces a good crop. This hardy variety can be grown in the New England states very successfully.

• **WILSON RED JUNE.** An immense large, solid red apple. The trees are very hardy and yields heavy yielding. It is a fine home and commercial variety, and we recommend a trial planting.

• **EARLY MCINTOSH.** A new early red apple, originated by the New York Experiment Station. A good hardy variety and grower, also heavy yielding. Characteristics about the same as McIntosh. Trees bear annually. Be sure to include this grand variety.

• **DUCHESS OF OLDENBURG (Xtra Red Strain).** This new strain has all the good points of the popular old strain. Its advantage is in the solid red color that gives it more commercial value, our strain is propagated from buds selected from a True Red Sport Limb growing on a heavy bearing tree in Ohio.

AUTUMN VARIETIES

Listing in order Ripening near as Possible

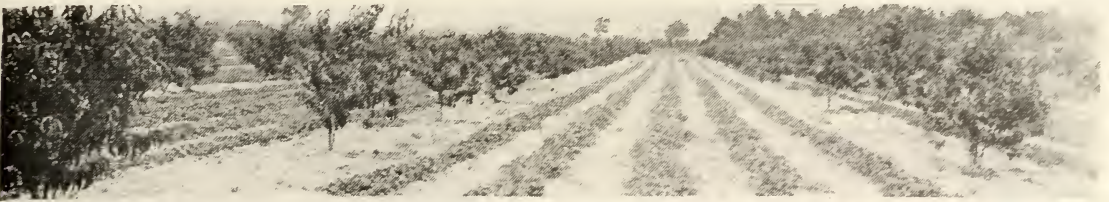
• **WEALTHY.** A beautiful red apple of moderate size and fine quality. It is very hardy and bears early after planting. It is a very good variety to use as a filler.

• **KENDALL.** Another McIntosh seedling coming from the New York Experiment Station. This grand variety seems to stand out well from the rest as a higher type of apple and more attractive, carrying a deep red coloring over the entire surface. The flavor is more sprightly than McIntosh, otherwise it is about the same. It hangs to the tree somewhat better than the McIntosh.

• **LOBO.** We have great faith in this new grand variety of the McIntosh family. Lobo is a beautiful specimen tree growing in the orchard. Its early growth is upright and bears well after planting. The fruit is extra large, well colored, and firm. Its flavor is very much like its parent McIntosh and of good quality. We would like to see our good friends get on to this money-maker at an early date, as it is being planted widely.

• **XTRA RED GRAVENSTEIN.** A bud sport of the Red Gravenstein, this old variety has been widely planted in past years. The new sport's only difference is that it carries a darker red color.

• **TWENTY OUNCE.** A very large red and yellow striped apple. It keeps until February. It is no doubt the largest apple grown.



Strawberries are grown successfully as an intercrop on young orchard plantings; bring in more dollars per acre; cut down cost of production.

Early Winter **APPLE TREES**

**ALL VARIETIES LISTED
IN ORDER OF RIPENING**

OF these varieties, which, from our customers' reports as well as reports of various State Agriculture Colleges and horticulturists, are considered to be the best for commercial purposes as well as home plantings over the widest area of this country. These early winter varieties usually start fruiting about the time the late summer and early autumn varieties are picked, although the ripening season will vary in different sections of the country. The advantage in planting this particular season apple is to fill in the gap between the autumn and late winter varieties so that a continuous supply of apples can be offered the market, or, if for home planting, plenty of apples will be available until the late varieties, such as Delicious, Stayman, and Baldwin, begin to fruit. The quality of these varieties is exceptionally good and are well-known to commercial planters throughout the apple growing section. TOWNSEND'S Select Strain trees, we feel confident, will produce some extra nice fruit from these varieties.

- **NORTH WESTERN GREENING.** A hardy vigorous grower; fruit large; color yellowish-green; flesh yellow, firm and sub-acid flavor. It is a smooth and attractive apple.

- **RHODE ISLAND GREENING.** Good keeper, large yielder of large yellowish-green apples. Our trees are propagated from selected bearing orchards.

- **BALDWIN.** A leading variety that has been widely planted in New England and New York State commercially. The trees are vigorous growers and productive. The fruit is large, bright red, flesh yellowish, firm, rather tender, and juicy. It is an excellent pie apple.

OF THE many varieties of early winter apples now being offered on the market we have selected after careful investigation six

• **BE SURE TO CASH IN ON THESE
SENSATIONAL
APPLE OFFERS**

8 Extra Heavy
5-6 ft. 2 year
Trees, Fruiting From
Early to Late

**10 Super Size
Trees**
Selected From 2 Year
Field, Grade Larger
than 5-6 ft. size.

1 of each
variety:

- Yellow Transparent
- Early McIntosh
- Jonathan
- Xtra-Red Delicious
- Xtra-Red Stayman
- McIntosh Red
- Grimes Golden
- Yellow Delicious

**A Fine Collection
for the
Home Planting.**
3 Xtra-Red McIntosh
2 " " Jonathan
2 " " Delicious
1 " " York
1 " " Stayman
1 Yellow Delicious

**SPECIAL
PRICE \$2.95**

**10 Super
Size TREES \$3.45
for**



**McINTOSH
XTRA-RED STRAIN**

- **McINTOSH (XTRA-Red Strain).** Growers have always wanted a True Red McIntosh, not striped. We have it in this Superior Strain of Extra Red Variety. Apples are uniform in size, bright attractive rich red, with a flesh that is crisp and of fine quality. Trees are extremely hardy and fruits at a young age. Our strain comes direct from one of the largest McIntosh Plantings in New York State. All states where hardness is considered are now planting Extra Red McIntosh. We have the Regular McIntosh for any of our customers who wish them.

- **WINTER BANANA.** A dessert apple too mild for culinary use. The fruit is medium to large, usually roundish and conic shaped, skin smooth and waxy, pale yellow with pinkish-red blush, flesh whitish, tinged with yellow; crisp, juicy, and mildly sub-acid.

- **GRIMES GOLDEN.** Known as the yellow winter apple. Fruit medium size, color golden yellow, sub-acid, aromatic rich flavor and very delicious. It is known for producing very large crops annually. It is an excellent pollinizer for the Winesap, McIntosh families, Cortland, Rome, and Gallia Beauty. We advise every one to include Grimes Golden in their plantings. Our trees are propagated only from carefully recorded selected bearing trees, coming up to our rigid standard of certification.

• **TOWNSENDS' APPLE TREES ARE SELECT STRAIN
and CERTIFIED FOR HIGHER YIELDS & PROFITS!**

Winter APPLE

Varieties Listed In Order of Ripening

The late winter apples are usually classed as varieties coming into bearing after autumn and early winter varieties are about through fruiting. They are usually much better keepers than the other seasonal varieties. For the home plantings some of the winter apples should be included. Commercial planters always select at least two-thirds of their planting of the winter varieties.

● **JONATHAN (Xtra-Red Strain).** This bright rich scarlet colored apple can be put on the market long before the old Strain of Jonathan as it is a perfect red on the trees before the old strain starts to color. For the commercial orchardist this enables him to pick his crop of fruit before dropping starts and while fruit is still hard and solid. It has the same characteristics as the Regular Jonathan in size, shape, and flavor. Its advantage is in its color, earlier maturity, and keeps longer. If Growers prefer the Regular Jonathan Variety we have a nice lot of trees to offer them.

● **NORTHERN SPY (Xtra-Red Strain)** This strain has the characteristics of the True Northern Spy with the exception of its added deep rich red color, quality is good, and we can recommend it as being superior to the old strain, being more attractive and brings better prices on the market.

● **CORTLAND.** A cross of McIntosh and Ben Davis which resembles McIntosh, but is better, larger, and brighter in color. It hangs to the tree well, and is a good keeper. Be sure to add this variety to your list as a real money maker. All our trees are propagated from selected bearing trees and produce only the best fruit each year.

● **DELICIOUS.** A widely planted variety that has proven a big money-maker. The tree is hardy, a vigorous grower, very productive, fruit medium to large roundish conic, flesh yellowish, firm, tender, and juicy. Pleasant flavor of mildly sub-acid, very good. For commercial orchards, we recommend of course, the "XTRA-RED DELICIOUS" which is solid red in color.



● XTRA RED DELICIOUS ●

(DOUBLE RED DELICIOUS)

This grand variety is a sport of the Delicious and has given to the apple planters a delicious, highly colored, red apple, much deeper red than the Delicious, which was introduced some years ago. This grand variety comes into bearing earlier than the Delicious, producing heavy crops year after year of the choicest fruit. It is an extra large apple and produces fruit that is solid red all over, having the usual characteristics of the Delicious type of apples and shape. Its flavor is spicy, juicy, and of the highest quality, a flavor richer than any other known apple.

In season of ripening it's two weeks or more in advance of the regular Delicious, and being a solid red apple it has its advantages in the marketing of this variety over the ordinary Delicious as it can be picked while still green and makes a beautiful package, as the fruit itself will be fully colored long before they are ripe. This variety is not mealy and keeps well in storage. TOWNSENDS' strain of XTRA-RED DELICIOUS comes from bud selections made from some of the finest true red trees in the country.

You can feel assured that when ordering this XTRA-RED DELICIOUS variety from us you will be getting one of the most highly prized strains known by the fruit growers of this country.



TOWNSEND'S STRAIN OF STAYMAN
ARE RICH RED

● **YELLOW DELICIOUS.** A golden color apple that has become popular in all sections of the country, it is truly a delicious apple in every respect. Size is large to extra large, with a rich golden yellow color, it is considered to be the best flavored apple now on the market. Our Trees of Yellow Delicious are propagated from buds selected from one of the most famous Earlybearing Yellow Delicious Orchards in the East which has made a record for producing every year big crops of the very best quality fruit.

● **STAYMAN (Xtra-Red Strain).** A handsome large scarlet apple that is full red several weeks before the old fashion Stayman Strain. Like Extra Red Delicious it has become popular with growers throughout the country. In quality and looks it is considered to be one of the very best varieties on our list. Can be put on the market from two to three weeks earlier than the regular Stayman Strain. We have a nice Bloek of Regular Stayman for any of our customers who wish to order this variety.



Head Propagating Foreman and our Mr. L. S. Townsend inspecting a bearing age apple tree for bud selection

Winter VARIETIES

APPLE TREES



Varieties Listed in Order of Ripening

• **JOAN.** A sensational apple of large size, beautiful, solid red color. Fruits annually and very productive. A good storage apple, keeps longer than Jonathan, its parent. Agricultural Colleges are recommending this variety for trial plantings.

• **SHARON.** This variety is being well received by the fruit grower in sections of the country where it has been fruited. Fruit is well colored and of excellent dessert quality.

• **SECOR.** An apple of exceptionally high quality. It's a seedling of Salome and Jonathan. Very productive fruit, medium red in color, extra good keeper. Storage analysis shows that it will keep two weeks longer than Jonathan and be free from spots.

• **ROME BEAUTY.** A profitable money-maker year in and year out. The fruit is fairly large size and uniform, also excellent keeper. The color is red with stripes, and flavor is well above the average.

• **GALLIA BEAUTY (Red Rome).** A solid red apple of the Rome Beauty family. It is a wonderful apple for those who want a high color on their Rome Beauties. Has the same characteristics as the Rome, but being a solid red can be picked ten days to two weeks earlier. It's an excellent keeper and quality of the very best. Produces fruit and sizes up well into top grade. Our trees are propagated from one of the finest strains of Gallia Beauty to be found anywhere in the country. Order trees from this preferred stock. You will be delighted with the results.

• **ORLEANS.** This is a new Delicious type apple, ripening about the same time as Delicious, but keeps longer. Very attractive. Trees bear young and annually. Recommend for trial.

• **MEDINA.** A Delicious type apple, large and attractive red, ripening later than the Delicious and an excellent variety to prolong the season.

• **LOWRY.** New popular commercial variety, being grown successfully in Virginia. Fruit has a beautiful rich-red color. In shape it's round to oval, mild sub-acid flavor. White flesh slightly tinged to yellow. A good keeper, commercial shipper. Has been bringing top of the market.

• **RED SAUCE.** A beautiful red apple of the highest flavor. We recommend this new variety for trial and home market.

• **SWEET DELICIOUS.** Trees of this variety fruit at an early age. A wonderful apple for the home or small commercial orchard. A highly colored apple with excellent qualities.

• **SMOKEHOUSE.** Fine flavored apple when fully ripe. Mellow and delicious, lacking in acidity. Trees are vigorous growers and come into bearing at an early age. Planted quite extensively in Pennsylvania. The color of fruit is neither distinctly yellow nor red.

• **NERO.** A grand variety that has not been widely planted commercially. Its coloring is of deep bright red, size medium to large, an excellent flavor, and one of the longest keepers in storage.

• **MACOUN.** A McIntosh type of apple, ripening about four weeks later than McIntosh. Hangs well on the trees. A heavy producer of rich red apples of the finest quality. Fruits annually. A variety we recommend to prolong the McIntosh season.

• **YORK IMPERIAL (Xtra-Red Strain).** Our strain of York was secured from one of the finest all red trees in the country. Growers who are looking for a York apple, solid red with same quality, size and shape of the Regular York Variety should order this strain. It is ready for market three weeks ahead of the regular York Variety. We sold 11,000 trees in the York Planting section last year. It's a real money maker.

• **TURLEY.** Originated by the Indiana Horti. Society and is of the Winesap family. It is more highly colored than the Stayman Winesap, somewhat larger, and about the same shape. It is a good keeper and of excellent quality, also vigorous grower and consistent yielder. We advise planting this variety wherever Winesaps are grown.

• **PARAGON (Black Twig).** Large in size, smooth skin, yellowish covered with deep red, sub-acid and of excellent flavor. It is an important commercial variety. We advise planting Red Delicious as pollinizer.

• **GANO (Ben Davis).** Is an old favorite in the commercial orchards. The tree is medium size, grows rapidly, skin tough, waxy bright smooth, usually glossy greenish or yellow colored with bright red splashed with dark carmine. It is a good cooking apple.

• **WINESAP (Old Fashioned).** One of the oldest and most popular apples in the United States. It is widely grown, but has lost ground to the newer varieties. It is a good storage apple, color glossy, bright red, very firm, rather coarse, juicy, and sub-acid.

CRAB APPLES

• **DOLGO.** Bears very early, is a distinctive and splendid ornamental fruit tree of great value, extremely hardy even in full blossom, has survived frost and freezes. Fruit juicy, has a sprightly sweet flavor and makes a very fine, bright, clear red jelly of excellent flavor. Heavy yielder: "45 glasses of jelly and 8 pints of jam from one single peck." (No advance in price for this grand new variety.)

• **YOUNG AMERICA.** A new variety that is proving very popular wherever grown. It is hardy, a reliable cropper and its color is bright red.

• **HYSLOP.** An old reliable variety that has proven itself satisfactory, size large, bright dark red, and very hardy.

• **WHITNEY.** One of the most popular of the large crab apples for the West and North. The skin is light yellow striped with red. It is sub-acid, nearly sweet, and has a good flavor.

• **TRANSCENDENT.** One of the most popular varieties in the East.



XTRA-RED YORK

TOWNSENDS'
Certified
SELECT STRAIN

PEAR TREES

2-Year Grown, Heavy-Rooted Trees

PEAR PRICES

New Low Prices on 2 Year Trees.

	1-9 Trees Each	10-49 Trees Each	50-300 Trees Each
EXTRA HEAVY 2 yr. 5-6 ft. 11/16 in. and up	\$0.90	\$0.75	\$0.60
LARGE SELECT 2 yr. 4-5 ft. 9/16 to 11/16 in.	.75	.60	.50
EXTRA FANCY 2 yr. 3-4 ft. 7/16-9/16 in.60	.50	.40

Above prices all varieties on this page unless otherwise noted.

KIEFFER
Pear



ANJOU. A heavy yielding late variety, good keeper, very juicy, and fine flavor.

BARTLETT. One of the finest dessert and eating pears. Heavy producer. Golden yellow with red cheek.

BUERRE BOSCH. Large, yellow pear with white flesh, good keeper, very delicious flavor.

CLAPPS FAVORITE. Large pale yellow with red cheek. Tree hardy and does well everywhere. Fruit fine grained, sweet and highly flavored.

ORDER TODAY A FEW OF OUR EXTRA HEAVY, GRADE OF PEAR TREES, FOR QUICK FRESH FRUIT.

DUCHESS (d'Angouleme). Dull yellow, netted with russet, very large. Trees blight-resistant and heavy producers.

FLEMISH BEAUTY. Tree strong grower, early and abundant bearer; fruit large; obovate, color pale yellow with reddish-brown covering. Flesh yellowish-white, juicy, sweet. Needs to be harvested early.

GORHAM. New variety, originated by Geneva Agr. Exp. Station. Ripens about two weeks later than Bartlett, and about the same size, color and shape. White flesh, spicy flavored. Very blight-resistant.

KIEFFER. Large yellow of fine quality. Trees hardy and bears very late.

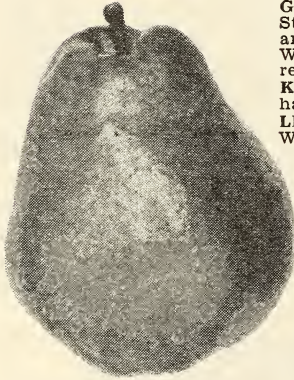
LINCOLN. A valuable pear for the Middle West. Tree hardy and vigorous grower, very productive. Fruit medium size, skin thick greenish-yellow with russet; flesh yellowish tinge, coarse.

NEW! PATTEN. Grows favorable everywhere, fruit large in size, yellow with blush. Flavor juicy, keeps well, extremely blight-resistant, very productive and "bears young", ripens in August.

SECKEL. Small, attractive in color. Trees vigorous, bears late.

NEW DOUGLAS. Beautiful, large, smooth, golden yellow pear flecked with russet, sweet and juicy, blight resistant and hardy in most all climates.

BARTLETT



PATTEN

PEAR OFFER

Large Select Grade

All strong 4-5 ft. trees

1 New Lincoln
1 Bartlett
1 Anjou
1 Kieffer
1 Clapps Fav. ONLY

\$2.98

EARLY BEARING DWARF FRUIT TREES APPLES—PEARS

Dwarf fruit trees are noted for producing heavy crops of fruit at an early age. Trees do not grow as large as the standard type trees. They can be planted 12 to 15 feet apart. While dwarf trees are planted in commercial orchards most of the trees sold are for home plantings. You will be pleased with the results obtained from the dwarf varieties of apples and pears offered below.

DWARF APPLES. McIntosh, Stayman Winesap, Yellow Transparent, Anoka; **PEAR TREES.** Bartlett, Duchess, Seckel, Clapps Favorite.

Prices DWARF FRUIT TREES

	Each	6 to 49 Each
Dwarf Apple, 2 yr. 3-5 ft. . .	\$1.25	\$1.00
Dwarf Pear, 2 yr. 3-5 ft. . .	.75	.60

Larger Quantities Write for Prices

NUT TREES

Grafted Nut Trees produce much earlier than seedlings, some bearing 3 years after planted. All of Townsend's Trees are grafted on whole root stock, "The best money can buy."

SCHLEY PECAN. Excellent flavor, strong grower, and very hardy. The nut is long and well filled with paper-like shell. Bears young. Price 3-4 ft., \$1.25 each; \$10.00 for 10.

STUART PECAN. Extremely hardy Pecan. No doubt the most widely planted variety of the pecans. Nut well filled and of large size, easily opened. Early bearing. Price 3-4 ft., \$1.25 each; \$10.00 for 10.

SUCCESS PECAN. Large, oblong, shell thin, opens easily, very good flavor. A very good pollitizer for other varieties. Bears young. Price 3-4 ft., \$1.25 each; \$10.00 for 10.

BLACK WALNUT. The ordinary common walnut, growing from seed and not grafted, widely planted. Size large, shell hard, nut very rich. Price 3-4 ft., 50c each; \$4.00 for ten trees; 4-5 ft., 65c each; \$5.00 for ten trees.

THOMAS BLACK WALNUT. The largest and finest quality of the black walnuts. When opened the nuts nearly all come out in whole halves. Trees extremely hardy and vigorous growers. All our trees are grafted to be true to type and bear younger than seedlings. Price 3-4 ft., \$1.00 each; \$9.00 for ten.

ENGLISH WALNUTS. We have this famous and widely grown nut in either of the two varieties: FRANQUETTE and

MAYETTE. Nuts thin shelled, full of meated kernels of the highest delicious flavor. Trees are hardy and productive. Valuable for shade as well as nuts. Our grafted varieties will produce large crops for you early. Price 3-4 ft., \$1.00 each; \$9.00 for ten.

AMERICAN FILBERT (Hazel Nut). A favorite nut in the household, grows in bush form, yielding large crops of round nuts. Can well be planted in the shrubby border as it does not grow into a tree. Bears young. Price 2-3 ft., 60c each; 10 for \$5.00.

JAPAN WALNUT. A quick growing, hardy walnut and of very high quality. Bears young, producing large nuts abundantly. Price 2-3 ft., 75c each; \$6.00 for 10.

FIGS

BROWN TURKEY. This variety is very hardy, dwarf, prolific. Size medium to large, pear shaped, skin copper brown, flesh white, shading to pink; quality good. Price 2-3 ft., 75c each; 10 for \$6.00.

CELESTE. The most widely planted variety in the southern fig belts. Hardy, can be grown where less hardy varieties fail. Size medium, pear shaped, skin violet, pulp white to rose color; firm, juicy, sweet; quality excellent. Ripens early. Price 2-3 ft., 75c each; 10 for \$6.00.

Quick Bearing

FRUIT TREES

Extra Large Sizes

Selected Specimen Trees

Recommended for Orchard Replantings or Home Orchards;

Will Fruit Two to Three Years Earlier

COMMERCIAL growers use this size tree in making replacement of Young Trees that have died or injured in cultivation. FOR THE HOME ORCHARD PLANTING where quick results are wanted, they are ideal, producing large crops of delicious fruit in a surprisingly short time after planting. Customers have written us that their trees fruited first year set. Townsend's Quick Bearing Fruit Trees have been especially grown and selected for their well developed tops and heavy root system. They are all Specimen Trees 6 to 8 feet in height with heavy trunks.

SAVE TIME!

COST ONLY A FEW PENNIES MORE

The additional cost of these trees is small when time and fruit is considered. You can order all one variety or make your selection of as many varieties as you choose. For example: 3 apple; 3 peach; 2 pear; and 2 cherry trees can be purchased at 10 rate. Let us book your order now while we have all varieties offered in stock. We will reserve trees for you and ship whenever you are ready to plant.

We Can Furnish Only Following Varieties In Quick Bearing Selected Trees

Descriptions Of Varieties Offered Can Be Found On
Fruit Tree Pages Under Their Respective Headings

APPLES. Wilson Red June, Xtra Red Jonathon, Xtra Red McIntosh, Baldwin, Gano, North Western Greening, Macoun, Grimes Golden, Xtra Red Stayman, Yellow Delicious, Xtra Red Delicious, Medina.

PEACHES. Elberta, Belle of Georgia, Golden Jubilee, Hale Haven, Red Bird, Cumberland, Brackett.

PLUMS. Abundance, Lombard, Burbank, Bradshaw, Shropshire Damson.

PEARS. Bartlett, Gorham, New Patten, Kieffer.

CHERRIES. Montmorency (Red), Early Richmond (Red), Black Tartarian, Yellow Spanish.



A QUICK BEARING APPLE TREE

PRICES

QUICK BEARING FRUIT TREES

All 6 to 8 Feet Specimen Trees

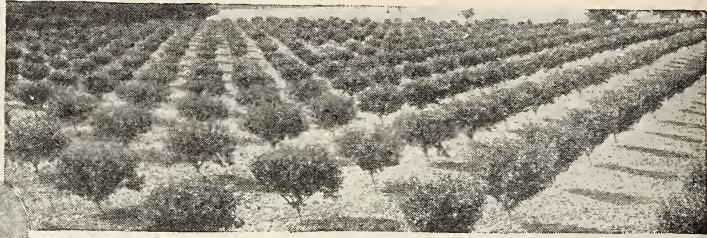
\$1.45 each; 3 trees for \$3.75; 6 trees for \$7.25; 10 trees for \$9.75; twenty-five trees or more ordered at any one time only \$.80 per Select Tree. BE SURE TO INCLUDE A FEW IN YOUR ORDER TODAY.

New! American Highbush Cranberry

Larger. More highly flavored; than the regular cranberry which requires special soils. This variety is perfectly hardy and can be grown on all type soils and locations. Fruit large to extra large, bright scarlet. Fruit will hang on bushes all winter, very ornamental, as well as a fancy cranberry for your own sauce and jelly. Plants are easier to grow, more productive than the regular cranberry variety. Everyone interested in such fruit should have a few plants of this marvelous new creation that nature has given us. Second year after planting you should pick plenty of delicious berries.

PRICES 2-3 Ft. BUSHES

\$1.25 each, 3 for \$3.25, 6 for \$5.00. Twelve or more bushes ordered at one time \$0.75 each. Book order early as stock of this new variety is scarce.



HALE HAVEN

A very hardy, frost-resistant deliciously flavored, attractive yellow freestone peach which fruits at an early age, ripening two weeks earlier than Elberta. We recommend Hale Haven as one of the best peaches for commercial or home planting.

PEACHES

Early Varieties



Our Peach Trees are all propagated from buds taken from Bearing Trees that were outstanding for hardiness and growth. The Townsend Select Strain Certified Seal guarantees True-to-type fruits and heavy yields.

• Varieties of peaches are listed in description in order of ripening season. With weather conditions and different regions of the country, ripening periods of some varieties will vary a few days.

• Varieties in larger type denotes most widely planted by commercial growers.

• **JUNE ELBERTA.** (Mikado). Hardy productive, early yellow peach, ripens about six weeks before Elberta. Medium size, semi-cling, attractive yellow with red blush. Self-sterile, blossom needs to be interplanted.

• **MAYFLOWER.** Earliest of all peaches, clingstone, white, medium size, beautifully colored and dark red all over.

• **RED BIRD.** (Early Wheeler). A large to extra large, very early peach with a highly colored skin, white flesh, cling, good shipper, and a very valuable peach for the commercial grower who wants to get on the early market, also very productive.

• **GREENSBORO.** A highly productive peach with yellow skin splashed with red; flesh white; juicy; good quality; also hardy and early.

• **EARLY ROSE.** A growing favorite with the fruit grower, an early white cling, size medium to large, color good, bright red skin, flavor excellent and a good shipper. It is a strong grower, very productive, hardy, and ripens about five days later than Red Bird.

• **CUMBERLAND.** Originated by the New Jersey Experiment Station, a vigorous grower, and as hardy as Carman. It is an outstanding peach both in color and large size, and is oval in shape. The flesh is white, nearly a freestone, and quality is firm. Certainly this is a fancy peach for the highest type trade.

• **TRIOGEM** (N. J. No. 70). An early oval, red all over, yellow freestone, ripens about two days later than Golden Jubilee. Fruit somewhat smaller than Jubilee. Quality of fruit good, as hardy as J. H. Hale. For best results will require early thinning. Originated by N. J. Exp. Sta.

• **GOLDEN JUBILEE.** Another New Jersey offering. This grand variety is with no doubt the finest and leading variety in its class today. It is an unusually hardy tree, fruiting four to six days ahead of the Carman. It is early, yellow, freestone, and of the highest quality flavor. It has yellow skin, red cheeked, and a good shipper. The fruit buds are hardy and come through the severest winters as well as any other well known variety. It is a cross between the Elberta and Greensboro, and inherited the best points of each of its parents.

Golden Jubilee being grown in practically every peach growing district in the United States has proven to be a real money maker every year. In the markets its praise is sung and claimed to be the best early peach on the market today, always topping the market prices. All our buds are cut from selected trees out of bearing orchards from the original strain of the New Jersey Experimental Station released trees.

• **CARMAN.** An attractive early peach, semi-freestone, oval shaped, yellowish, white skin, with red cheek, flesh white with spicy flavor, hardy, strong grower, a sure cropper and very productive.

• **ROCHESTER.** A fine quality yellow peach, large in size, semi-cling, and ships very well. Tree bears young, a strong grower, very hardy, and widely planted in peach growing sections throughout the United States.

PRICES Select Strain PEACH TREES

	1-9 Trees Each	10-49 Trees Each	50-299 Trees Each	300-599 Trees Each	600 and up Each
Extra Heavy 5-6 ft. 11/16 in. & up. .	\$0.70	\$0.60	\$0.40	\$0.30	\$0.25
Large Select 4-5 ft. 9/16-11/16 in. . .	.40	.35	.25	.20	.18
Extra Fancy 3-4 ft. 7/16-9/16 in.35	.30	.20	.17	.15
Select Planters 2-3 ft. 5/16-7/16 in. .25	.25	.20	.15	.12	.10

• When Larger Quantities Than Above Are Wanted Write For Special Prices.
 • **HEIGHT AND CALIPER**—Height given of fruit trees represents average height of most varieties. Slow growing varieties may fall short of height specifying in price list, in which case the caliper shall govern.

6 Extra Heavy
5 to 6 ft.
PEACH TREES
Fruiting All Season
1 TREE EACH
Belle of Georgia
Brackett
Elberta
Golden Jubilee
Hale Haven
Red Bird Cling

ALL FOR \$3.25

2 Collections for \$5.95
REALLY an OFFER You
Can't Afford to Miss



BLOCK OF TOWNSENDS' SELECT STRAIN ELBERTA
Elberta Proving a Winner for the Commercial Grower

PEACH TREES

● *Medium Early* VARIETIES



10
Extra Heavy
5 to 6 ft.
PEACH TREES

1 Tree Each Variety
June Elberta, Cumberland,
Gol. Jubilee, S. Haven,
Hiley, Ey. Elberta, Elberta,
B. Georgia, Brackett, Ro-
berta

ALL
FOR \$3.95

● **SOUTH HAVEN.** An introduction of the South Haven Experiment Station of Michigan. A thrifty grower, very productive, hardy, yellow flesh, freestone, colors up well about a week to ten days before ready to pick, and can be classed as a good shipper after four days in railroad car. It is just the variety to precede the Early Elberta season, ripens about two weeks in advance of the Elberta and of its same type.

● **VEDETE.** Choice of the Vineland Experiment Station of Canadian varieties. Proven well adapted in various peach belts. Seedling of the Elberta, which it resembles, being more highly colored and some finer quality. Large in size, yellow flesh, freestone. Comes into bearing early, very productive, and earlier than Hiley. Should be a leader in the South, taking the place of Hiley.

● **GOLDEN EAST** (N. J. No. 87). The pride of N. J. Experiment Station, where this new, grand variety originated. A large, firm, oval and highly colored peach. Yellow fleshed and attractive. Ripens about same time as Hiley or 14 to 15 days before Elberta. Fruit hangs to tree well after they become firm, which is an advantage at certain picking dates. Suitable for climates similar to Southern New Jersey.

● **HILEY.** Early commercial freestone with white flesh, medium size, with beautiful red cheek. It ripens before Belle of Georgia. It is a leading commercial variety of the south and a good shipper.

● **CHAMPION.** A very large white freestone peach with the finest flavor. It is just the right peach for the near by market, but not so good under refrigeration. It is very productive and hardy. Plan to plant this variety near your home this year.

● *Mid-Season* VARIETIES

● **EARLY ELBERTA.** The fastest selling peach on the market, ripening about ten days to two weeks ahead of Elberta. It is a yellow freestone, handsomely colored with tough skin to protect such delicious flesh, second to none in sweetness, and very juicy. Early Elberta being such an extra fancy beautiful peach demands top prices just before the Elberta season. Plant this variety without delay for early and handsome profits. Buds are hardier than Elberta.

● **ELBERTA.** The greatest peach that has ever been introduced for the fruit grower. This grand old variety still reigns supreme on the peach market, demanding the top prices always. Elberta yields young, bears large fruit, uniform in size; beautifully colored, bright yellow with brilliant red on the sunny side. Growers do not have any trouble in selling their Elberta peaches due to their attractive appearance and rich flavor along with their large size. Townsends' Elberta are propagated from the best strains of bearing orchards plus their bud selection from carefully recorded bearing trees. Plant these certified trees this year; see the vast difference in TOWNSENDS' CERTIFIED trees compared with just ordinary fruit trees. Our prices are reasonable and the quality is high.

● **CRAWFORD EARLY.** A large yellow fleshed peach with bright, red cheek. The flavor is juicy and sweet and of high quality. It is freestone, ripens in mid-season and is highly prized for canning purposes.

● **FITZGERALD.** An improved Early Crawford, deep yellow, richly flavored, freestone, and skin splashed with red. A much improved strain.



ELBERTA

● Midseason Varieties Continued Next Page.

• MEDIUM *Late* TO *Very Late*
PEACHES

LISTED IN ORDER OF RIPENING

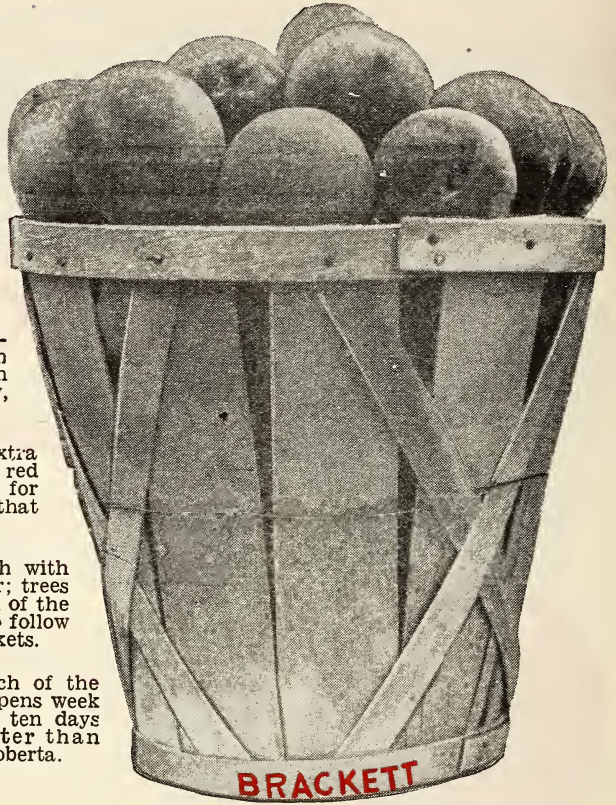
CRAWFORD'S LATE. A late, large yellow peach with deep red cheek. Flesh very yellow and juicy. Very good flavor, freestone, and red at pit.

ROBERTA. A rather new variety that is becoming popular when once fruited. About ten days later than Elberta, which it resembles in some respects. Fruit attractive, of good quality, and freestone.

HEATH CLING. A very late peach and of extra large size with creamy white flesh, round with red blush, very firm, and juicy. It is a favorite for canning and pickling. Just the variety for that Home Orchard.

SHIPPERS LATE RED. Late yellow peach with attractive red blush. Extra hardy, good cropper; trees fruiting very young. A very high quality peach of the Hale type, also freestone. We recommend it to follow Elberta. Good for home and commercial markets.

SALBERTA. A large, freestone, yellow peach of the Elberta type. Color very good, also quality. Ripens week to ten days later than Roberta.



BRACKETT

EXTRA LARGE, LATE YELLOW PEACH

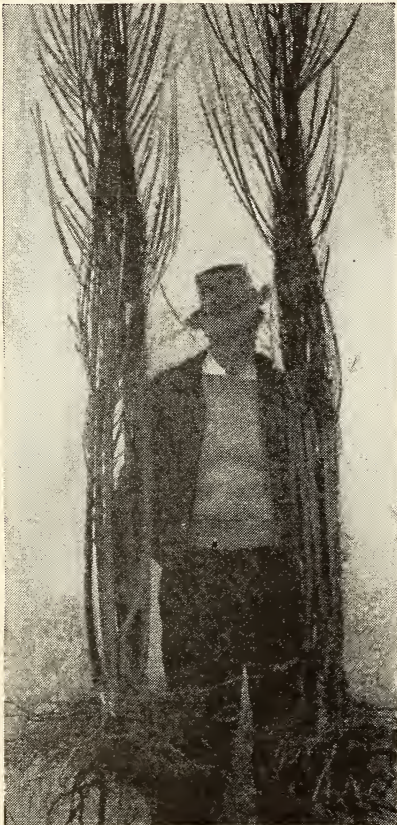
This excellent variety has proven itself as a leading commercial peach to follow Elberta. In size it averages as large or larger than Elberta. Flesh a deep yellow, of excellent quality and flavor. Trees fruit at an early age and very productive. A perfect Freestone peach. If you are looking for a peach to ripen five to eight days after Elberta you will make no mistake in planting Brackett.

BRACKETT BRINGS TOP PRICES

In checking our market reports on peaches, we find Brackett at the top, bringing fancy prices and often topping the famous Elberta 25c a bushel. *Townsend's Brackett trees are propagated from one of the largest and heaviest yielding Brackett orchards in the East—a strain far above the average.* They cost no more than just ordinary trees.

← TOWNSENDS' FRUIT TREES ARE FIBROUS ROOTED

Nowhere in the country will you find fruit trees with more fibrous roots than the stock grown at Townsends'. These facts are acknowledged by some of the largest commercial orchardist, who have visited our nurseries at digging time. Such trees start new growth quickly, fruit earlier. Such trees are sure fire money makers.



Extra Heavy 5-6 Ft. Peach

BELLE of GEORGIA

A HARDY, HEAVY YIELDING PEACH

BEST WHITE PEACH EVER INTRODUCED

All who have planted Belle of Georgia have conceded it to be the best all around, white peach now being offered. Color creamy white, with red cheek on sunny side. Flesh white with pinkish red streaks around pits. Extra large size. Freestone. Ripens a few days before Elberta. For the commercial or home planting Belle will produce delicious quality fruit.

GOOD NORTH OR SOUTH

There are few peaches as well adapted to different climates and soils as the Belle of Georgia. Tree is a strong grower, fruiting at an early age. Some instances noted where trees produced more than a bushel of fruit per tree at 3 years of age. This variety is perfectly hardy withstanding sub-zero weather much better than most varieties, which hardiness insures a good crop of fruit annually.

QUALITY DEMANDS TOP PRICES

The Belle of Georgia is considered by commercial growers as King of all white peaches. It's extra large size and fine quality, demands top market prices. Some markets paying from 20 to 40c a bushel more for Belle than the famous Elberta. Townsend's Certified Belle of Georgia Trees are propagated from buds taken from one of the finest heavy yielding blocks of Belles in the East—a strain far superior to the average strain now being offered.



Townsend "Select Strain" Belle of Georgia

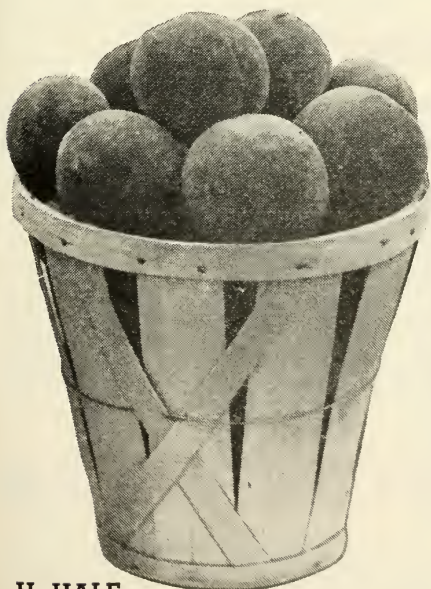
J. H. HALE

The Leading Yellow Peach of its Season

Leads the peach field second only to Elberta. A very valuable commercial variety as well as for home planting. This peach is widely planted throughout the peach growing sections of America and has made a national reputation for itself as a leader and money-maker. Townsend's Strain of J. H. Hale is of the original strain and does need a cross-pollenizer. Most any variety will do, although Belle of Georgia or Hiley are mostly used for this purpose. For proper pollenization plant one tree of Hiley or Bell to every ten trees of J. H. Hale set.

The Quality and Flavor of J. H. Hale is Supreme

Extra large, yellow peach. Ripens about the same time as Belle of Georgia. A perfect Freestone. Skin is of a deep crimson without fuzz, solid, and a good shipper. Flavor of the very best, sweet and juicy. An all-around peach that should be included in your planting this year. We have a nice stock of 1 year J. H. Hale trees in all grades. Root system is exceptionally good and we know you will like the quality.



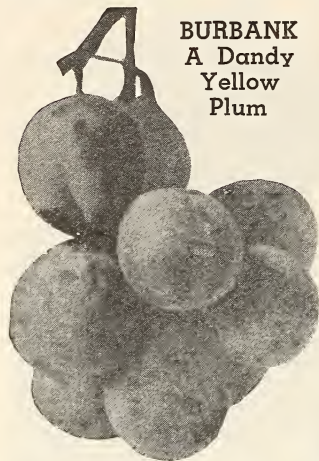
J. H. HALE

SUMMER CREST (*N. J. No. 94*). Large oval, yellow freestone, sweet, free from bitterness. Grows best on light soil with nitrogen withheld until trees come into bearing, with very little added then. If too much nitrogen, the color will be lacking. Originated by N. J. Exp. Station.

GAGE ELBERTA. Disease resistant, bud sport of the famous Elberta, which it resembles. Blooms few days after Elberta, has strong blossom setting in reverse weather conditions, bringing in a crop of fruit under unfavorable conditions. Trees somewhat more dwarf than Elberta. Ripens two to three days later than Elberta. Large plantings are being made of this variety in several states.

OUTLOOK FOR FUTURE PEACH PRICES GOOD

Peach prices for the past five years have been exceptionally good, many Growers realizing \$300.00 to \$500.00 net profit per acre from their peach crop. The acreage now out of Bearing Trees is very small and it will be many years before sufficient trees are planted to catch up with the demand. Large commercial orchardists realize this and are increasing their acreage annually. Taking on some of the newer varieties and increasing their plantings of the standard varieties that have proven profitable in the past. Townsends list contains all the leading and most profitable varieties now on the market, all at reasonable prices. Take advantage of this profitable cash fruit crop and set a block of peaches this year. Order can be placed now, trees reserved for you and shipment made when ever you are ready to set.



BURBANK
A Dandy
Yellow
Plum

PLUM TREES



A delicious fruit and one that is very easily grown in the average soil that is not too wet. The plum is practically free from most diseases, is a free grower, and is productive. Every home should have a few trees planted of this delightful fruit. We have selected as follows, the leading and most profitable varieties as to hardiness, size, appearance and flavor.

These trees are sure to give you a heavy yield of true-to-type, beautiful fruit, rich in flavor, appetizing in appearance and built to stand long distance shipping. Reap the profits of Townsends' unique system of tree propagation—plant our Select Strain Certified Sealed Plum Trees.

PLUM—QUINCE—APRICOT—NECTARINE TREE PRICES

	1-9 Trees Each	10-49 Trees Each	50-300 Trees Each
EXTRA HEAVY 2 yr. 5-6 ft. 11/16 in. and up.....	\$0.90	\$0.75	\$0.60
LARGE SELECT 2 yr. 4-5 ft. 9/16-11/16 in.75	.60	.50
EXTRA FANCY 2 yr. 3-4 ft. 7/16-9/16 in.60	.50	.40

Can furnish Quince in 4-5 ft. only.

ABUNDANCE. Tree large, productive; season early; fruit moderate size, roundish, pinkish-red to dark-red; flesh yellow, juicy, and sweet. Adaptable to a wide range of soils and climate. Must be picked before it is fully ripe.

BURBANK. A triumph of the genius of "The Master Horticulturist." Remarkably successful all over the country. It seems to succeed in any soil. Fruit large, dark red or purplish with thin lilac bloom. Flesh amber yellow with rich sugary flavor. It's a dandy.

BRADSHAW. Tree large vigorous grower; fruit large, oval, attractive, good shipper; light purplish-red to dark reddish purple. Flesh dull yellow with a trace of red; juicy, tender, sweet, pleasant tasting; ripens about middle of the peach season. Regular bearer.

ITALIAN PRUNE. (or Fellsburg). The most popular commercial prune grown today, both in the West and East. One of the best prunes for dessert purposes and excellent when cooked; one of the best prunes when cured. An excellent shipper when freshly picked. A regular bearer, medium to large size fruit of brownish yellow when ripe; deep yellow flesh, tender, sweet; very good quality; ripens mid-season.

GERMAN PRUNE. A very good variety for drying and preserving. Fairly large, oval, purplish-black; flesh yellowish-green, juicy, firm, mild sweetish flavor. Late variety, September.

LOMBARD. A valuable market variety and widely grown in the U. S.; Lombard is much used in canneries, and is planted in sections where none but hardy plums can stand the severe climate. Adapted to light soils; fruit large, firm, sweet, mild, juicy. Oval in shape; light to dark purplish red; flesh yellowish, inferior in quality, a sure cropper, ripens in mid-season.

MONARCH. A vigorous, upright growing tree, producing roundish oval fruit of good size and uniform, dark purplish-red; skin thin, tender; flesh golden yellow, juicy and tender, sweet next to the skin, aromatic good flavor. Season late, hardy.

RED JUNE. A hardy, productive, healthy variety; fruit fairly large, garnet red, tender; flesh light yellow. One of the best early varieties.

SHROPSHIRE DAMSON. Tree vigorous grower, hardy and productive, fruit purplish black, skin thin, tender, flesh golden yellow, juicy and firm; flavor agreeably tart, sprightly, pleasant. Season late.

NEW! STANLEY. Tree healthy grower, fruiting big crop annually. Fruit large, dark blue with heavy bloom. Flesh greenish-yellow, juicy, tender, firm, sweet. Quality good, freestone, ripens mid-season. Originated at N. Y. Experiment Station.

UNDERWOOD. Hardy, bears regularly large crops of big, red plums of excellent quality. Fruit firm, delicious flavor. Freestone. Ripens in August.

WICKSON. Has a long fruit ripening period; variable in size, extra large fruit; color dark red over yellow; flesh yellow to amber; juicy, coarse somewhat fibrous, firm sweet; early mid-season.

**SPECIAL
PLUM
OFFER
No. 1**

1 BURBANK
1 BRADSHAW
1 MONARCH
1 ABUNDANCE

4 Extra Heavy
5-6 ft. trees

\$2.25

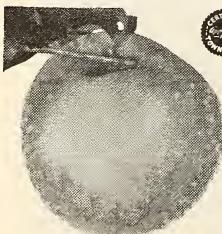
APRICOTS



EARLY GOLDEN. Small, pale orange; flesh orange, sweet, good, juicy; early productive and hardy.

MOORPARK. Just about the largest apricot grown. Tree large, robust, vigorous grower; skin tender with specks of orange and yellow, flesh yellow, juicy and sweet; ripens August.

SUPERB. One of the leading varieties adapted to a wide range of soil and very popular. Fruit is yellow, with a slightly red blush, very richly flavored and juicy. Hardy and firm.



QUINCE

CHAMPION. Trees very hardy, vigorous grower; fruit large, pear-shaped; skin greenish-yellow; a very good keeper. Trees bear at an early age, fruits late.

ORANGE. Early to midseason fruiting variety; fruit golden yellow, pale yellow flesh, tender, mild subacid; an excellent variety for North; perfectly hardy.

NECTARINES



SURE CROP. The fruit is large, roundish, white background overlaid with a bright attractive red. Very richly flavored, ripening in late July—early August.



CHERRY TREES

IN THE CHOICEST VARIETIES

We are offering only those trees that we know to be heavy producers of delicious, wholesome fruit. All trees are sealed as being True-to-Name.

NEW LOW PRICES ON CHERRY TREES

	1-9 Trees Each	10-49 Trees Each	50-300 Trees Each
Extra Heavy 2 yr. 4-6 ft. 11/16 in. up...	\$0.90	\$0.75	\$0.60
Extra Fancy 2 yr. 3-5 ft. 9/16-11/16 in....	.75	.60	.50
Select Medium 2 yr. 2-3 ft. 7/16-9/16 in...	.50	.40	.35

Write for Special Prices on Larger Quantities

The above prices are for all cherries listed on this page unless otherwise noted.

• Sweet CHERRIES •

THE BEST IN THE SWEET CHERRY CLASS

BLACK TARTARIAN. A heavy producer, ripens in late June. Fruit is purplish color, rich and juicy.
GOVERNOR WOOD. Large yellow fruiting covered with bright red. A popular sweet variety.
NAPOLEON. The leading sweet cherry, flesh firm. Fruit is of pale yellow with red overcast, handsome, and of high quality.
YELLOW SPANISH. Ripens end of June. Fine for canning. Fruit large with golden coloring tinted with crimson.
WINDSOR. Large, dark purplish red, flesh firm, crisp, sweet, good quality and an excellent shipper, fruits late.

Large Montmorency

• Sour CHERRIES •

Plant Sour Cherries for QUICK RESULTS

EARLY RICHMOND. June. Sour red, the earliest of Sour Cherries. Fruit round, skin thin, rather tough and easily separated from the pulp and requires small amount of sugar when canning.

ENGLISH MORELLO. Late July and early August. The only real late cherry. Tree grows quite small and of dwarf habit. Fruit good size, nearly black.

LARGE MONTMORENCY. Late June. A commercial variety in popular demand. Tree bears young, within 2 years after planting. Fruit of good size, bright, clear red.

SWEET SEPTEMBER. The first Fallbearing Cherry ever recorded. Ripens in early September and hangs until the snow flies! Fruits delicious beautiful red cherries at a very early age. Plant some Sweet September this year and you'll be the envy of your neighbors. It's easily the biggest sensation in horticultural history!

PRICES—SWEET SEPTEMBER CHERRY

	Each	10 Trees	100 Trees
1 Year 2 to 3 Ft.....	\$1.25	\$1.10 Ea.	\$1.00 Ea.
1 Year 3 to 4 Ft.....	1.40	1.35 Ea.	1.25 Ea.
2 Year 4 to 6 Ft.....	1.75	1.65 Ea.	1.50 Ea.

Patented Under U. S. Patent No. 94

• SELECT Bush CHERRIES •



Here is a variety that is not only a fruit, but also a beautiful ornamental tree. The foliage is a beautiful silvery green which turns to a rich red and gold color in Fall. adds an artist's touch to any landscape. The fruit is large, luscious and delightfully flavored. The juice makes a splendid jelly and a delicious cordial. These cherries are large as any sweet cherry—but plum-shaped. Townsends' Bush Cherries grow and fruit quickly in any soil within one year after planting. They require no more room than a raspberry bush and very often bear as much fruit as a plum tree! Can be planted as close as 4 by 6 feet, grows only 4 or 5 feet high with a 3 to 4 foot spread. Pick from the ground—no ladder is required.

PRICES	Each	3 Plants	10 Plants	25 Plants
Large 2-year Plants	\$0.45	\$1.18	\$2.89	\$6.39
Bearing Size 3-year Plants	1.15	3.19	9.49	20.85

BIG BARGAIN CHERRY COLLECTIONS

OFFER No. 1

All Extra Heavy 5-6 ft. Trees

- 2 Black Tartarian
- 1 Windsor
- 1 Ey. Richmond
- 2 Large Montmorency

6 Trees ONLY **\$3.45**

CHERRY OFFER No. 2

Extra Fancy Trees 3-4 ft.

- 2 Large Montmorency
- 1 English Morello
- 2 Black Tartarian
- 1 Yellow Spanish

6 Trees 3-4 ft. ONLY **\$2.45**

STRAWBERRY

Culture

DIRECTIONS

Write us if you are confronted with any special problems.



Just right



Too deep



Too shallow

VARIETY SELECTION. Perhaps the most important task of all is the correct selection of varieties for the particular territory in which they are to be planted. A careful study of the variety recommendations in this catalog, and personal communication with the Townsend Nurseries will eliminate the possibility of the buyer purchasing varieties which have not the greatest profit-making possibilities in his territory.

SOIL PREPARATION. In the first place, be sure that the land is reasonably fertile and as nearly as possible free of weeds and grass. Plow the land to be used carefully in the fall or spring and spread a liberal coat of barnyard manure over the plot during the winter or early spring. Potato fields, tomato or cow-pea plots, or any site where the land has been enriched by growing truck crops makes an ideal plot for the strawberry patch.

If manure is not available, broadcast a heavy application of commercial fertilizer over the plot just before the plants are set in the spring. (Two or three weeks in advance is just about right). Sheep manure or a mixture of 1500 pounds of tankage and 500 lbs. of acid phosphate is good, distributed at the rate of 1000 lbs. per acre. Raw bone meal will not injure the plant roots and is the only fertilizer recommended for use directly under the plants.

The soil should be worked up into as good condition as possible before setting the plants. If the ground is manured, drag the soil level, marking the rows with a light marker, setting the plants on the side of the mark, using the same side of the mark on each row for equal width.

CARE OF PLANTS ON ARRIVAL. Townsends' plants come to you properly cleaned and bunched ready to set.

If the roots are too long to set in a stony soil, clip off a portion of them cleanly.

If the plants are received before the soil is ready, open the boxes and take the plants out, dampen the roots up to the string, redampen the moss and repack in the same box, place in a cool cellar and the plants, if still dormant, will keep from 7 to 10 days without injury. Heeling in is permissible, if done by an experienced man but it is slow and tedious and the tops and crowns may get wet. The first method is best.

SETTING THE PLANTS. For large plantings, a horse drawn transplanter is good to use if a good operator is available. For small plots, or in stumpy new land, the garden trowel is best to use. On stony soils use a spade. Set the plant roots straight down without crowding and pack the earth firmly around them.

PLANTING DISTANCE FOR MATTED ROW SYSTEM. Generally, the matted row system is considered the best and most practical. Plant rows $3\frac{1}{2}$ to 4 $\frac{1}{2}$ feet apart, depending on varieties used. A matted row should be 3 feet wide when the plants are laid by, and sufficient room should be left for the pickers. Keep the space between the rows cultivated as long as the runner plants form. Plants should be set 15 to 24 inches apart. Good, rank growing varieties like the Premier, Aberdeen, Blakemore, Dunlap, Howard Supreme and Jupiter should be set 24 inches apart in the row, with rows 4 feet apart.

EVERBEARING IN HILL SYSTEM. The hill system is the only way to grow everbearing strawberries successfully. Keep the runner plants cut off, not allowing more than five or six well-spaced runner plants to form. This produces large, vigorous plants, each plant set often yielding a quart of berries during the summer and fall. Space these rows 30 inches apart to allow for horse cultivation. The two rows in the bed are spaced 12 inches apart, and the plants set 18 inches apart down the rows. With this spacing, 16,000 plants will set an acre. Such spacing allows room to work with a hoe around the plants at all times. Plant food can easily be applied as the cultivation continues through the summer months. Feeding the plants while they are fruiting is easily done without injury by broadcasting fertilizer or chicken manure around the plants. Cultivation is easy, as such spacing affords sufficient room around the plants to keep down all grass and properly mulch by shallow working with the hoe during dry weather.

CULTIVATING. Tillage in newly set strawberry fields should be thorough in the early part of the season, in order to preserve moisture so that plants can become established thoroughly in the soil and later in the season to conserve moisture so that the plants can develop runners. Weeds and grass should be kept out of the fields at all times, as they will take the moisture needed by the strawberry plants. Most successful growers use the cultivator as often as once each week throughout the first growing season, and during periods of drought even more frequently. Hoeing should be done as often as it is found necessary to clean out all weeds and grass. Cultivating should be shallow near the plants, both because of the danger of loosening them in the soil and because if too deep the roots near the surface will be broken. The teeth on each side of the cultivator should be shortened, so they will not stir the soil near the row to a depth of more than 1 or 2 inches, as many kinds of weeds continue to grow in late autumn and start to grow in early spring. We advise working the plants until hard frosts occur. The field will then be free from weeds, and in the following year very few will have time to grow before the harvest season.

● ONE OF THE SECRETS IN GROWING STRAWBERRIES

While there should be no secrets in the growing of Strawberries when every grower is exchanging ideas with his neighbors, there seems to be one point that has not been given enough publicity by the neighbor, journals and nurserymen. With the majority of the plant growers in the North it has always been a practice to hold off setting plants until all frosts and freezing is over. On low springy type soils this probably is a logical practice. However, on land with a good drainage and which dries out early in the spring this practice should not be followed. Strawberry plants, when properly grown and hardened, will stand considerable cold weather after setting.

MULCHING STRAWBERRIES

In regions of heavy snowfall Strawberries should have a mulch to keep the ground from freezing and thawing in early winter and in the spring. In the Northern part of the Middle West all varieties should be protected in the winter against the severe drying winds which occur in those regions. A mulch conserves moisture in the spring and in certain localities the crop may be increased from one-third to one-half by its use.

The mulch should be applied as soon as the ground is frozen from one to two inches deep. In some localities growers have found it unsafe to await freezing weather because of the danger of severe storms or heavy falls of snow which remain throughout the winter, mulch being put on as soon as active growth has ceased. The mulch should be scattered over the fields so that some will fall on the plants, but more of it between the rows. In the spring the plants will grow up through the straw and the berries will be kept clean. If mulch is put on heavy, some of it should be raked off into the middle of rows at time growth starts. Wheat, rye, oats and buckwheat straw are more commonly used. From 3 to 5 tons of straw is required per acre. Marsh hay is also used to advantage when obtainable, 1 to 3 tons per acre being required.

● NUMBER PLANTS REQUIRED TO SET AN ACRE

	Number Plants	Plants Spacing
Strawberries, Field Culture	8000	3 $\frac{1}{2}$ x1 $\frac{1}{2}$
Strawberries, Garden Culture	8000	2 $\frac{1}{2}$ x1 $\frac{1}{2}$
Everbearing Strawberries, Field	8000	3 $\frac{1}{2}$ x1 $\frac{1}{2}$
Everbearing Strawberries, Garden		1 $\frac{1}{2}$ x1
Everbearing, Double Row Hill System	16000	2 $\frac{1}{2}$ x1 $\frac{1}{2}$ x12
Blackberries	1700	8x3
Red Raspberries, Hedge Row	2400	6x3
Red Raspberries, Hill System	1800	5x5
Black Raspberries	1700	7x3 $\frac{1}{2}$
Dewberries, Solid Rows	2400	6x3
Grapes	490	9x10
Asparagus	3200	7x2

● Complete Culture Guide on Small Fruits Will Be Sent Free to Anyone Requesting This Booklet

Select ^{Strain} ASPARAGUS ROOTS

MARY—MARTHA—PEDIGREED ASPARAGUS

Your choice, assorted or one kind.....	25	50	100	250	1000	3000
1 year No. 1 Grade.....	\$0.65	\$0.90	\$1.40	\$2.70	\$7.25	\$20.40
2 year No. 1 Grade.....	.85	1.15	1.90	3.45	9.00	26.50
3 year No. 1 Grade.....	1.00	1.50	2.25	4.00	12.00	32.00

500 Plants at 1000 Rate
Write for Quantity Prices on Lots of 5000 or more. If Asparagus is wanted by Parcel Post Add 8c each 25 Roots.

● **MARY WASHINGTON.** A heavy yielding strain, producing uniform, long, tender, rapidly growing shoots. An excellent variety for market or home gardeners.

● **MARTHA WASHINGTON.** A selected strain from the Washington variety, much heavier stalk and a greater producer than the original Washington variety; practically blight-resistant.

● **PEDIGREED WASHINGTON.** A vigorous and heavy yielding asparagus with uniform, good tight buds of bluish purple. Tender and delicious.

PARADISE (New). Matures earlier than any other known variety. Good cuttings can be had one year after planting even from our 2 year size roots. In looks Paradise asparagus is similar to other varieties of the Washington type. The flavor of Paradise is much milder than other varieties. Even if you only have a few square feet of space in your garden set some of the new Paradise this year. You will be well repaid for the small investment made. **PRICES OF PARADISE ROOTS:** Twelve, 75c; twenty-five, \$1.25; fifty, \$2.00; one hundred, \$3.35.



NEW PARADISE

RHUBARB

GIANT CHERRY. This fine Rhubarb was originated in California. Color a beautiful cherry red, entire length of stalks. The stalks are extra large, but so tender they do not require peeling when cooked. Less acid and better flavored than most varieties. Prices: Each, \$3.00; three, \$7.8; six \$12.5; twelve, \$19.5.

McDONALD. A new early producing Rhubarb of exceptionally fine quality, originated in Canada, a true pink variety, and a good forcer. Prices: Each, \$3.00; three, \$7.8; six, \$12.5; twelve, \$19.5.

MYATTS LINNAEUS. Produces large tender stalks, flavor sprightly fine for pies and sauce. **QUEEN.** Extra strong grower, extremely large stalks, color dark pink, a good commercial variety.

RHUBARB PRICES—ABOVE VARIETIES

Each	\$0.10	25 Roots	\$1.50
655	50 Roots	2.50
1285	100 Roots	4.00

Rhubarb by parcel post add 3c each root to cover postage.



Above field: Maryland Golden averaged 415 bushels U. S. No. 1 to the Acre

MARYLAND GOLDEN SWEET POTATOES

We are again offering to our customers thru this small space in our catalogue one of the outstanding sweet potatoes on the market—Maryland Golden. As stated in our last year's catalogue, this variety of potatoes was

just what the country has been looking for and, from the reports received by our customers this year, who ordered Maryland Golden from us, and the market reports throughout the country, we are entirely convinced that there is not a sweet potato on the market today that has the money making possibilities for the commercial grower as well as the satisfaction obtained by the small grower for table use, as the Maryland Golden. The demand far exceeds the supply and we look for it to remain so for a good many years. Be the first in your community to grow this wonderful potato and benefit by the profits you will receive from them.

The color is all that the name implies—a deep, rich, golden yellow with a slight pinkish cast, holding its color perfectly when cooked. It is not of the dry type like Little Stem Jersey or of the wet type like the Nancy Halls or Yams, only, slightly moist at any state of maturity. It produces a crop very early, therefore, is one of the best varieties for our Northern customers to grow where early maturing varieties are a necessity.

We want to tell you more about this variety; however, space will not permit it here. Therefore, we have printed an illustrated folder on Maryland Golden which will be sent to you free on request.

We offer you Maryland Golden plants and certified seed stock at prices shown on the left. Let us reserve your supply early this year as last year found us sold out long before the season was over.



Pink Rhubarb brings top prices at any market

Prices of MARYLAND GOLDEN Sweet Potato Plants

Ready After May the 25th

100 Plants	\$0.75
250 Plants	1.25
500 Plants	2.00
1000 Plants	3.00

CERTIFIED SEED STOCK

For Growers who wish to grow their own plants, we offer this stock. Delivery anytime from our storage house.

\$2.25 Per Bushel

Write for special prices on lots of 10 bushels or more.





TRUE TO NAME PLANTS **1942 PRICES** GUARANTEED SATISFACTION
STRAWBERRY PLANTS

All prices quoted below are F.O.B. Salisbury, Maryland, and in effect from January the 1st until June 1st, 1941. Customers ordering plants sent Parcel Post prepaid, See Parcel Post Rates on page 55. We ship a limited number of strawberry plants in late summer and fall. Customers wanting plants for planting at that time, ask for our Special Late Summer and Fall Price List. All plants are tied 25 to bundle. No less than 25 plants of variety sold.

Description of varieties on page EARLY VARIETIES

	25 Plants	50 Plants	100 Plants	200 Plants	300 Plants	400 Plants	1000 Plants	Lots of 3000 Plants Per 1000	Lots of 4000 Plants Per 1000	Lots of 5000 Plants Per 1000
13 ABERDEEN	\$0.35	\$0.50	\$0.80	\$1.50	\$2.10	\$2.60	\$6.00	\$5.80	\$5.65	\$5.50
Beaver35	.50	.75	1.30	1.80	2.20	5.00	4.80	4.65	4.50
16 Bellmar35	.50	.75	1.30	1.80	2.20	5.00	4.80	4.65	4.50
17 BLAKEMORE35	.50	.75	1.30	1.80	2.20	5.00	4.80	4.65	4.50
9 Daybreak35	.50	.75	1.30	1.80	2.20	5.00	4.80	4.65	4.50
10 DORSETT45	.70	1.20	2.00	2.70	3.45	7.50	7.30	7.15	7.00
11 FAIRFAX45	.70	1.20	2.00	2.70	3.45	7.50	7.30	7.15	7.00
9 Fairmore35	.50	.75	1.30	1.80	2.20	5.00	4.80	4.65	4.50
8 HOWARD-1745	.70	1.20	2.00	2.70	3.45	7.50	7.30	7.15	7.00
16 Klondyke35	.50	.75	1.20	1.65	2.00	4.50	4.30	4.15	4.00
16 Missionary35	.50	.75	1.20	1.65	2.00	4.50	4.30	4.15	4.00
9 North Star45	.70	1.20	2.00	2.70	3.45	7.50	7.30	7.15	7.00
8 PREMIER45	.70	1.20	2.00	2.70	3.45	7.50	7.30	7.15	7.00
9 Shelton45	.70	1.20	2.00	2.70	3.45	7.50	7.30	7.15	7.00
MEDIUM EARLY TO LATE										
13 BIG JOE45	.70	1.20	2.00	2.70	3.45	7.50	7.30	7.15	7.00
12 CATSKILL45	.70	1.20	2.00	2.70	3.45	7.50	7.30	7.15	7.00
14 DR. BURRILL35	.50	.75	1.30	1.80	2.20	5.00	4.80	4.65	4.50
16 Pathfinder45	.70	1.20	2.00	2.70	3.45	7.50	7.30	7.15	7.00
14 SENATOR DUNLAP35	.50	.75	1.30	1.80	2.20	5.00	4.80	4.65	4.50
LATE TO VERY LATE										
16 AROMA35	.50	.75	1.30	1.80	2.20	5.00	4.80	4.65	4.50
16 CHESAPEAKE50	.75	1.25	2.10	3.00	3.80	8.00	7.80	7.65	7.50
19 FORD40	.65	1.20	1.95	2.45	3.15	7.00	6.80	6.65	6.50
14 GANDY40	.65	1.20	1.95	2.45	3.15	7.00	6.80	6.65	6.50
9 Hebron45	.70	1.20	2.00	2.70	3.45	7.50	7.30	7.15	7.00
16 Lupton45	.70	1.20	2.00	2.70	3.45	7.50	7.30	7.15	7.00
9 STARBRIGHT50	.80	1.50	2.80	4.00	4.90	10.00	9.80	9.65	9.50
15 TOWNKING40	.65	1.20	1.95	2.45	3.15	7.00	6.80	6.65	6.50
16 World's Wonder50	.75	1.25	2.10	3.00	3.80	8.00	7.80	7.65	7.50
19 XTRALATE (Imp.)50	.80	1.50	2.80	4.00	4.90	10.00	9.80	9.65	9.50
17 Surplus Plants. Not less than 1000 plants sold at these prices.							4.50	4.30	4.15	4.00
FALL BEARING VARIETIES										
22 Gem70	1.15	1.85	3.25	4.50	6.25	12.50	12.30	12.15	12.00
Luckystrike			Sold Out							
22 MASTODON70	1.15	1.85	3.25	4.50	6.25	12.50	12.30	12.15	12.00
Wayzata			Sold Out							

500 PLANTS OF ONE VARIETY SOLD AT THE 1000 RATE

WRITE FOR SPECIAL PRICES, ON LARGER QUANTITIES THAN QUOTED ABOVE

Townsend's plants are used exclusively by the largest strawberry associations in the country. Any association, group of growers who wish to pool their orders, or any large grower interested in purchasing a variety in larger quantities than quoted above, should write us for our special price.

When writing, just give Variety or Varieties wanted and approximately amount needed. You will be under no obligation to buy. It is part of Townsend's Service which we are rendering our customers, and which has helped us to build our business to the present standing as The World's Largest Growers—Shippers of Strawberry Plants.

ORDERS CAN BE BOOKED IN ADVANCE OF SHIPPING DATE. You can send along your order on receipt of this catalogue. A 25% deposit will reserve stock for you. We will dig and ship whenever we receive your shipping instructions. Thousands of our customers annually take advantage of this service. On long lists of varieties it insures them of getting varieties wanted.

Certified PLANTS

PRICE LIST OF

Approved VARIETIES

Spring 1942 Delivery January until June 15th

RASPBERRIES—BLACKBERRIES DEWBERRIES—GRAPES

Fall 1942 Delivery After November 1st

All prices quoted below are F.O.B. Salisbury, Maryland, and in effect from January 1st, 1942, until December 30th, 1942. Customers ordering plants sent PARCEL POST, PREPAID, see PARCEL POST RATES at bottom of page.

Description of varieties on page

RED RASPBERRY PLANTS
For Prices on Bearing Age Plants, see Page 31
Table listing varieties like LATHAM, TAYLOR, CHIEF, MARCH, etc. with prices for 12, 25, 50, 100, 200, 300, 400, 500, 1000 plants.

BLACK RASPBERRY PLANTS

For Prices on Bearing Age Plants, see Page 31
Table listing varieties like CUMBERLAND, LOGAN, PLUM FARMER with prices for 12, 25, 50, 100, 200, 300, 400, 500, 1000 plants.

PURPLE RASPBERRY PLANTS

For Prices on Bearing Age Plants, see Page 31
Table listing varieties like SODUS, COLUMBIAN PURPLE with prices for 12, 25, 50, 100, 200, 300, 400, 500, 1000 plants.

BLACKBERRY PLANTS

For Prices on Bearing Age Plants, see Page 31
Table listing varieties like ALFRED, BLOWER, BLDORADO, EARLY HARVEST with prices for 12, 25, 50, 100, 200, 300, 400, 500, 1000 plants.

DEWBERRY PLANTS

For Prices on Bearing Age Plants, see Page 31
Table listing varieties like ACME THORNLESS YOUNGBERRY, BOYSENBERRY, LUCREATIA, NECTARBERRY, YOUNGBERRY with prices for 12, 25, 50, 100, 200, 300, 400, 500, 1000 plants.

GRAPES

For Prices on Bearing Age Plants, see Page 31
Table listing varieties like Beta, Concord, Catawba, Delaware, Moore's Early, Niagara, Worden with prices for 3, 6, 12, 25, 50, 100, 200, 300, 400, 500, 1000 vines.

NEWER VARIETIES OF GRAPES

Table listing varieties like Caco, Champagne, Fredonia, Golden Muscat, Ontario, Portland, Sheridan, Urbana with prices for 12, 25, 50, 100, 200, 300, 400, 500, 1000 vines.

Take advantage of these low prices on Grape Vines. Your order will be filled from one of the largest plantings in the country.

Customers Ordering Plants By Mail, Use Following Tables for Correct Postage

Be sure to include sufficient postage for your order if plants are to be sent Prepaid. We will return every penny due you if you send too much. If insufficient postage is sent, we will credit amount paid and send balance C.O.D.

FRUIT TREE SHIPMENTS. Owing to height and size of our fruit trees we can not ship Parcel Post. We advise express or freight shipments.

Parcel Post Rates on Strawberry and Potato Plants

Table showing parcel post rates for 100, 200, 300, 400, 500, 600, 700, 800, 900 plants across zones 1-8.

Parcel Post Rates on Grape Vines, Raspberries, Blackberries, Currants, Gooseberries and Dewberries

Table showing parcel post rates for 1 to 100 plants across zones 1-8.

These figures are average—the rate varies according to variety. On all orders of 500 or more plants, the rate is cheaper by Express after the second zone.

On all orders of 100 plants or more of Cane Stock items listed above, the rate is cheaper by Express after the second zone.



Townking

TRADE MARK — REGISTERED

5 REASONS WHY TOWN KING

is the Outstanding Late Berry

Makes good fruiting beds on most any soil; easy to grow.

Fruit is bright rich red; large and attractive.

Produces immense crop of berries late in the season.

Fine keeping variety; excellent shipper.

A profitable late berry both for commercial and home growing.

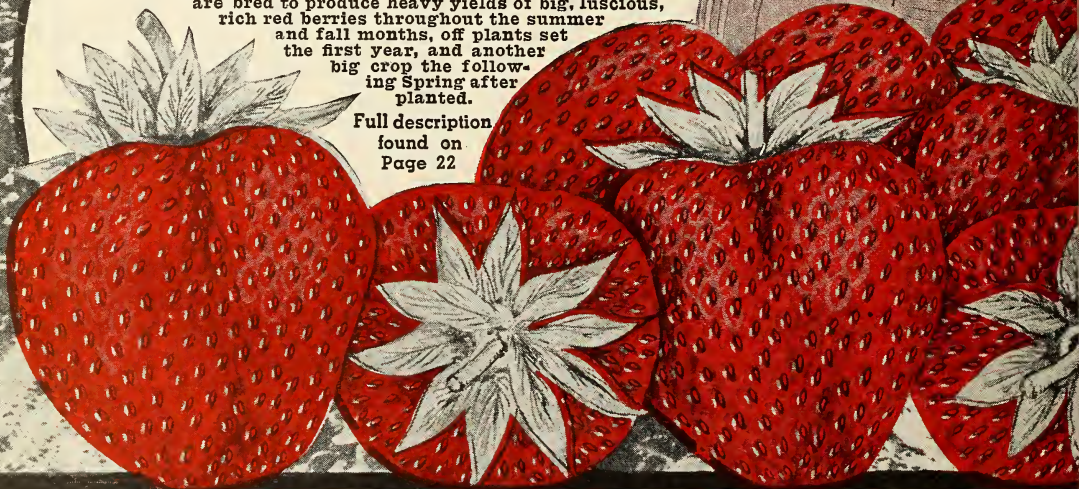
SEE PAGE 15

MASTODON FALLBEARING

Pick Berries 10 Weeks After Set—
Plenty of Them Until Snow Flies

Townsend's selected strain double yield Mastodon are bred to produce heavy yields of big, luscious, rich red berries throughout the summer and fall months, off plants set the first year, and another big crop the following Spring after planted.

Full description
found on
Page 22



E. W. TOWNSEND SONS
SALISBURY ~ MARYLAND