



THE CRYSTAL  
1919

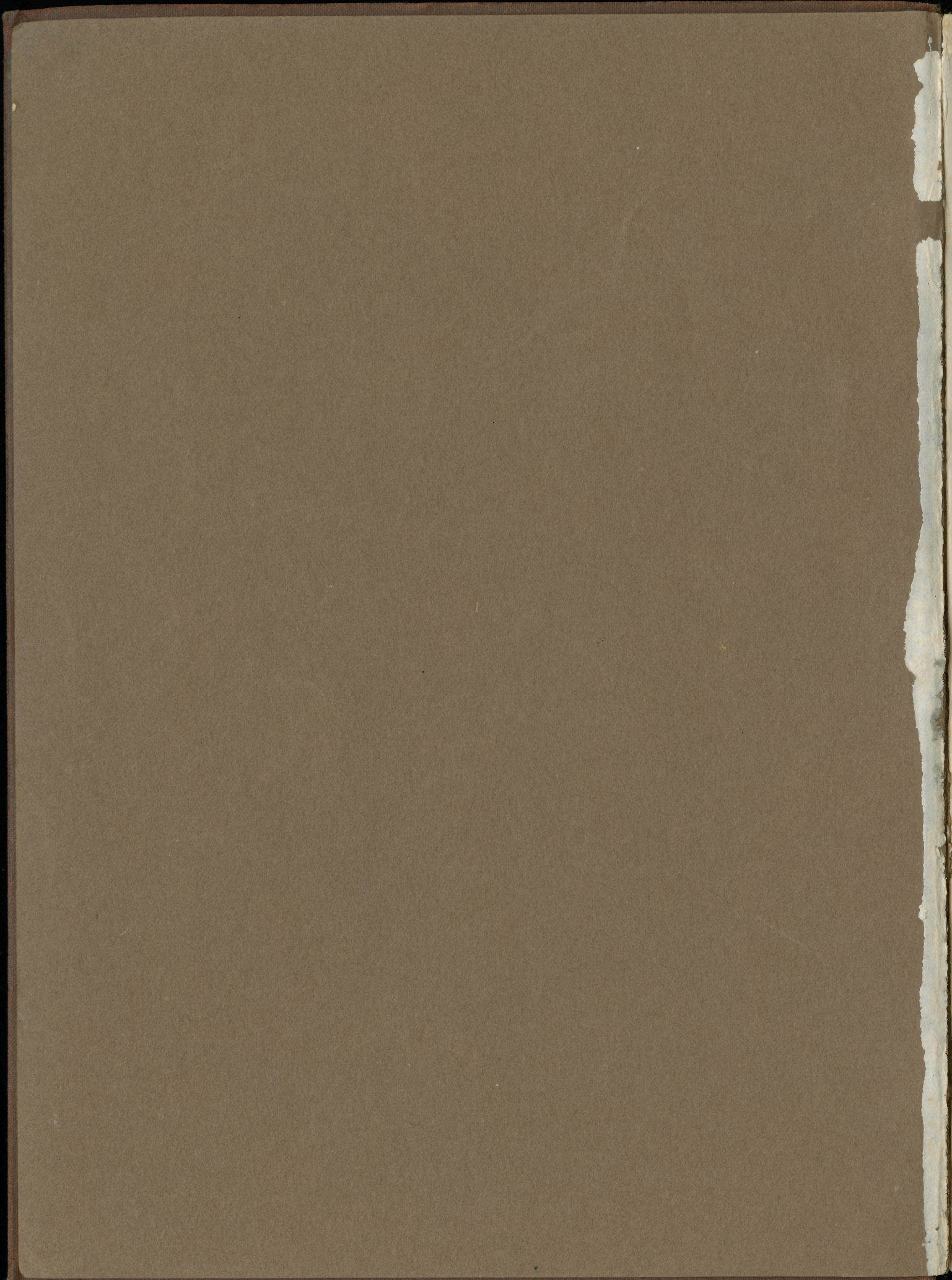






2506.7192.04







Presented

by

Martha Adams Partee

6/28/88

Mrs. Martha Partee

P.O. Box 402

Social Circle, GA 30279

I was Freshman

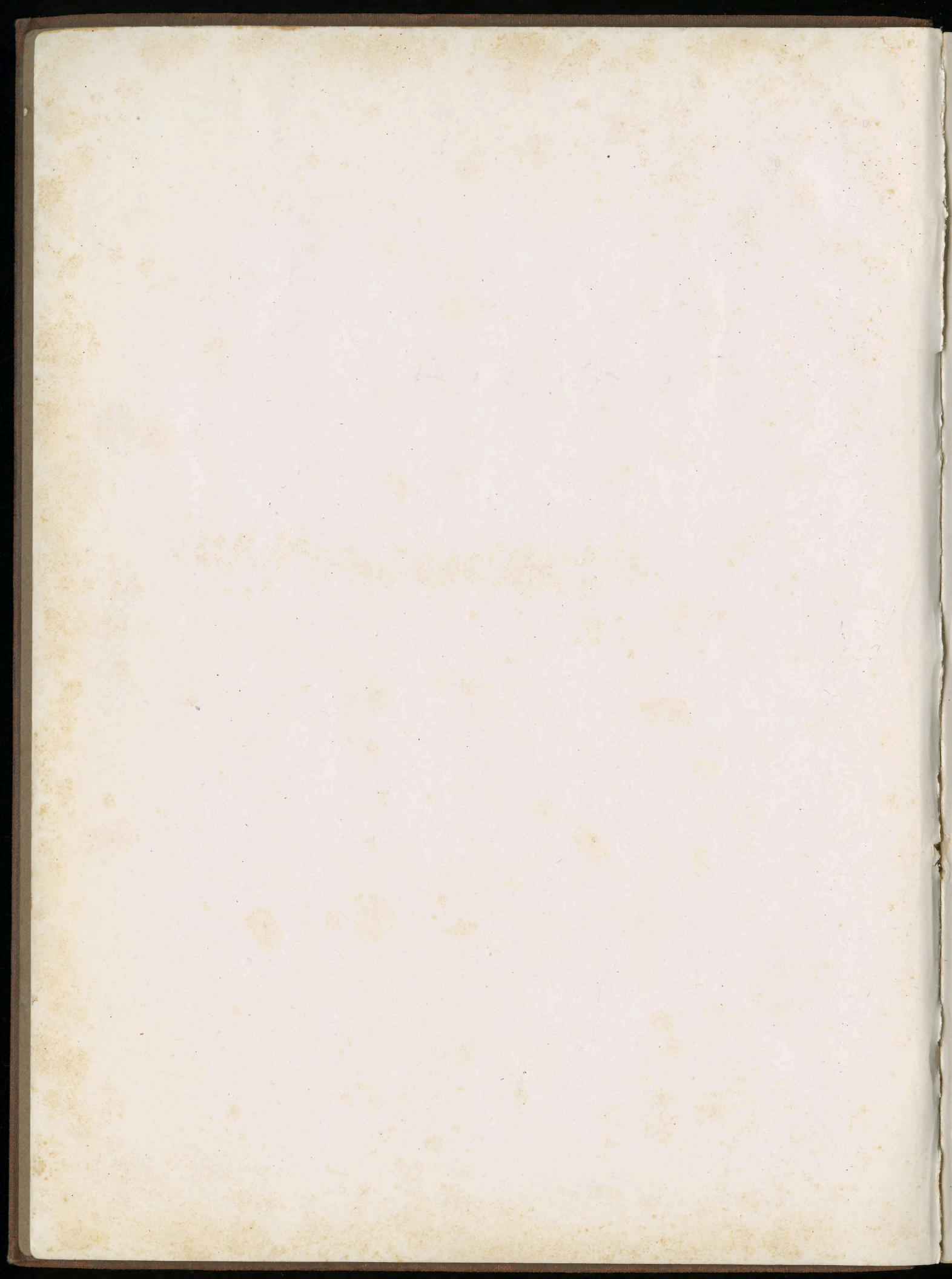
in 1919

I was there when

Peace was declared

Nov. 11 1918





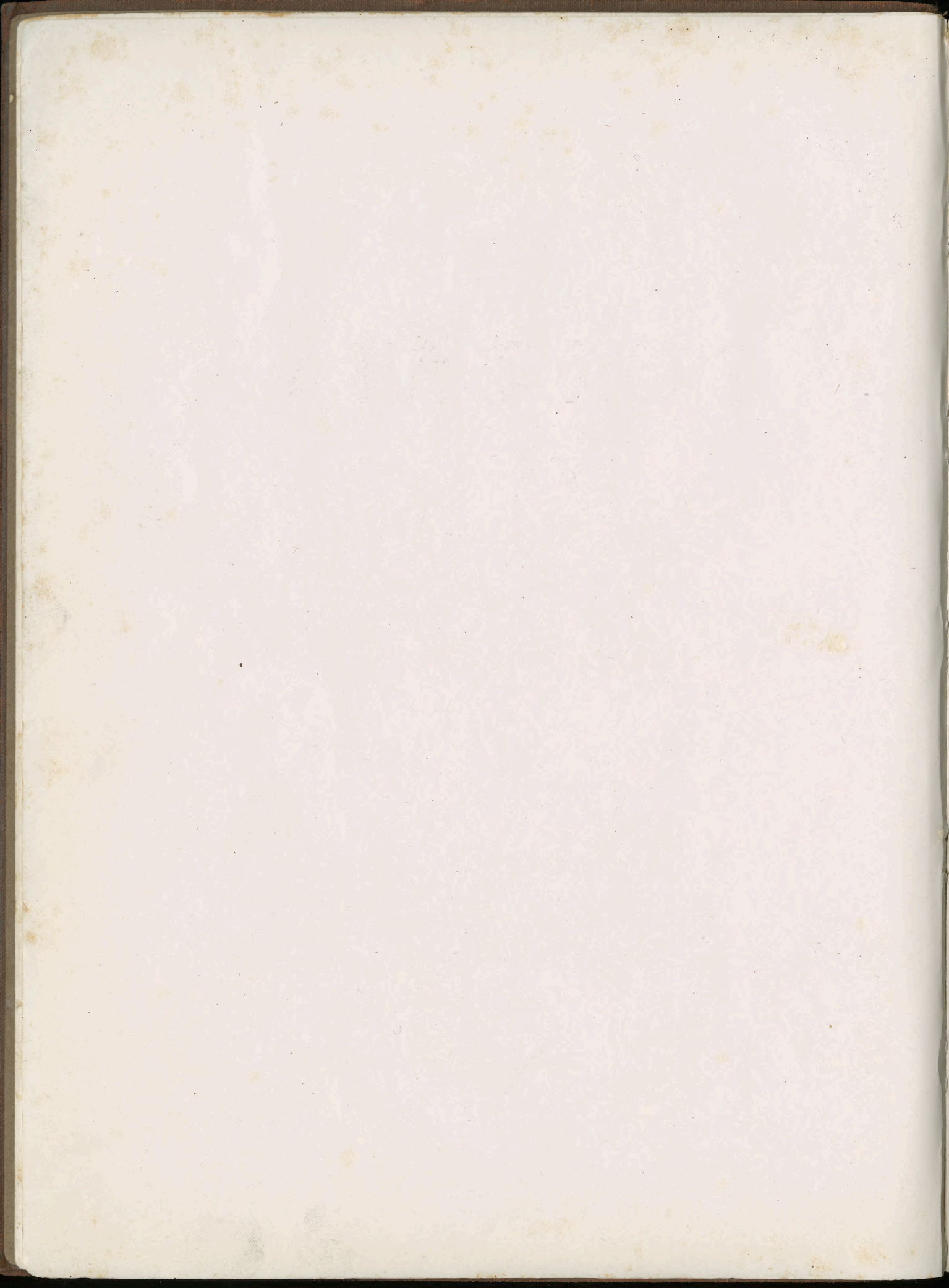


The  
CRYSTAL



PUBLISHED BY THE  
STUDENTS *of*  
THE STATE NORMAL SCHOOL  
ATHENS, GEORGIA







# CONTENTS



## Table of Contents

Dedication	Classes
Board of Trustees	Clubs and Organizations
Faculty	Jokes
Editorial Staff	Calendar
Ads	



Crystal



1919



Strickland Thurmond

---

Crystal

---

Dedicated  
to  
Margaret May Zeigler

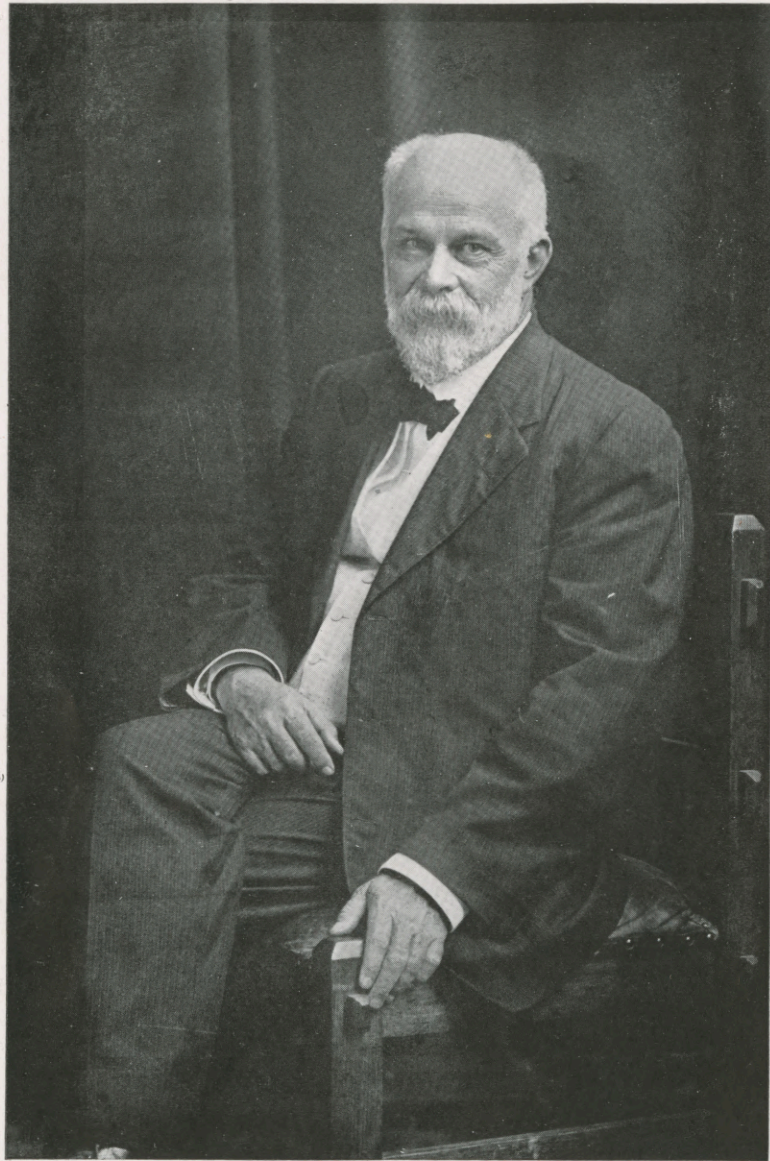
“It is to you and what you  
have stood for and what you  
have meant to us that we,  
in love, adoration and high  
esteem dedicate this annual.

“May it ever keep strong  
the tie of love and comrade-  
ship that binds us.”

The Senior Class '19



Crystal



CHANCELLOR D. C. BARROW

1919



Crystal

Board of Trustees

B. S. MILLER, Columbus, Ga. . . . . President
S. B. BROWN, Albany, Ga. . . . . Vice-President
G. A. MELL, Athens, Ga. . . . . Secretary and Treasurer

MEMBERS EX-OFFICIO

GOVERNOR HUGH M. DORSEY, . . . . . Atlanta, Ga.
M. L. BRITTAIN, Atlanta, Ga. . . . . State Superintendent of Schools
DAVID C. BARROW, Athens, Ga. . . . . Chancellor University of Georgia

MEMBERS-AT-LARGE

A. B. GREENE . . . . . Fort Valley, Ga.

MEMBERS CITY OF ATHENS

A. H. DAVISON . . . . . Athens, Ga.
E. J. BONDURANT . . . . . Athens, Ga.

MEMBERS REPRESENTING TRUSTEES OF UNIVERSITY OF GEORGIA

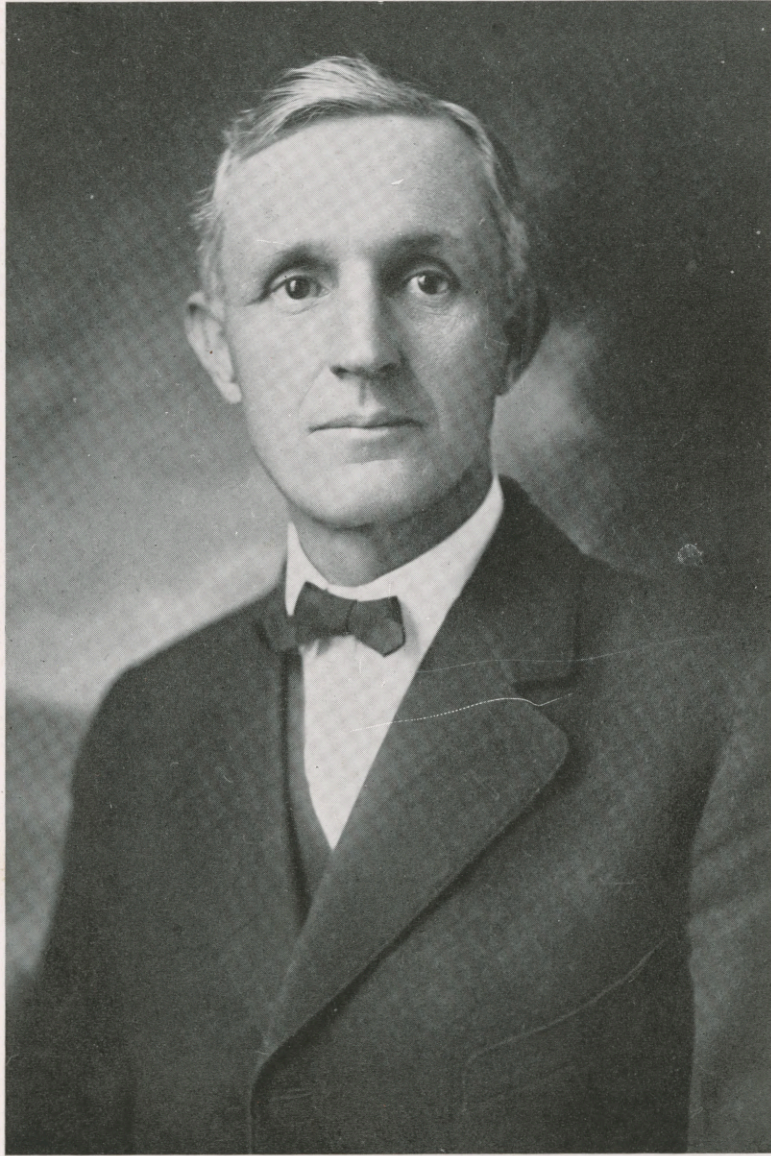
JUDGE LOYD CLEVELAND . . . . . Griffin, Ga.
JUDGE ANDREW J. COBB . . . . . Athens, Ga.
J. E. HAYES . . . . . Montezuma, Ga.

MEMBERS REPRESENTING CONGRESSIONAL DISTRICTS

JOSEPH W. SMITH, First District . . . . . Manassas, Ga.
S. B. BROWN, Second District . . . . . Albany, Ga.
J. M. COLLUM, Third District . . . . . Americus, Ga.
B. S. MILLER, Fourth District . . . . . Columbus, Ga.
H. Y. MCCORD, Fifth District . . . . . Atlanta, Ga.
J. C. BEAUCHAMP, Sixth District . . . . . Williamson, Ga.
E. S. GRIFFITH, Seventh District . . . . . Buchanan, Ga.
S. B. YOW, Eighth District . . . . . Lavonia, Ga.
L. M. BRAND, Ninth District . . . . . Lawrenceville, Ga.
T. C. CULBRETH, Eleventh District . . . . . Tarver, Ga.
JUDGE W. W. LARSEN, Twelfth District . . . . . Dublin, Ga.



Crystal



PRESIDENT JERE M. POUND

1919



Crystal

Faculty and Officers

DAVID C. BARROW, LL.D., Chancellor of the University of Ga. . . . . Chancellor Ex-Officio
JERE M. POUND, A.B., LL.D. . . . . President
H. B. RITCHIE, A.B. . . . . Dean
ALEXANDER RHODES . . . . . Business Manager
MRS. H. C. DOOLITTLE . . . . . Registrar
MISS BESSIE BUCHWALD . . . . . Stenographer

H. B. RITCHIE, A.B.
Psychology and Pedagogy
Director of Elementary Training School

PETER F. BROWN, A.M.
English

MRS. GERTRUDE A. ALEXANDER, A.M.
Expression Assistant in English

T. E. HOLLINGSWORTH, A.B.
Mathematics

DAVID L. EARNEST, A.M.
Elementary Science

MISS ROBERTA HODGSON
History

HAROLD D. MEYER, A.M.
Geography and Economics

E. S. SELL, B.S.A.
Agriculture

MISS HELEN L. SPROUT
Latin and Greek
Director of Correspondence Department

JOSEPH LUSTRAT, BACH. ES LETT.
French and Spanish

MISS BESS BAIRD
Household Arts

MISS ANNIE LINTON
Manual Arts

MISS LURA B. STRONG
Physical Education

MRS. AGNES EBERHART
Instrumental Music



# Crystal

MISS FRANCES LEIBING  
*Voice Public School Music*

MISS EVELYN LEWIS  
*Oratory*

MRS. EDITH ANDREWS  
*Department of Extension Work*

MISS MAY ZEIGLER, A.B.  
*Assistant in Department of Pedagogy*

MISS SARAH M. WEBB, PH.B.  
*Assistant in Department of Psychology and Pedagogy*

MISS IRIS CALLAWAY  
*Assistant in Department of Mathematics*

MISS KATHLEEN DRAKE  
*Assistant in Department of Mathematics and Physical Education*

MISS GLADYS BURLESON, A.B.  
*Assistant in Department of Elementary Science*

MISS MARY WOODS  
*Assistant in Department of History and Geography*

MRS. JOSEPHINE ROZAR, A.B.  
*Assistant in Department of English*

MISS RUTH C. BRIGGS  
MISS PARNA B. HILL

MISS KATHLEEN MAXWELL  
MISS MYRTLE RICHARDS

*Assistants in Department of Household Arts*

MISS ANNIE MAE HOLLIDAY  
*Assistant in Department of Manual Arts*

MISS EDITH GULL  
*Assistant in Department of Physical Education*

MRS. J. W. BAILEY  
*Assistant in Department of Instrumental Music*

MRS. JOHN MORRIS  
*Violin*

MISS KATE HICKS  
*Principal Elementary School*

MISS MAGNOLIA SCOVILLE  
*Critic Teacher of Seventh and Eighth Grades*



# Crystal

MISS HATTIE SMITH  
*Critic Teacher of Fifth and Sixth Grades*

MISS ELIZABETH YOUNG  
*Critic Teacher of Third and Fourth Grades*

MISS VIRGINIA LOTT  
*Critic Teacher of First and Second Grades*

MISS ADA JANE DOLAN  
*Assistant in Upper Grades*

MISS LAURA ELDER  
*Teacher of Rural School*

MISS AGNES GOSS  
*Librarian*

MISS LUCILLE COBB  
*Assistant Librarian*

MISS MAY ZEIGLER  
MISS EVELYN LEWIS  
*Matrons of Miller Hall*

MISS MOINA MICHAEL  
MISS ELIZABETH YOUNG  
*Matrons of Winnie Davis Hall*

MISS NELLIE COLBERT  
MISS GLADYS BURLESON  
*Matrons of Gilmer Hall*

MISS VIRGINIA LOTT *my matron*  
*Matron of Senior Hall*

MRS. MAGGIE LAMBDIN  
MISS FRANCES LEIBING  
*Matrons of Bradwell Hall*

MISS MARY WOODS  
*Matron of Off Campus*

MISS MAMIE DAVIS  
MISS LUCY BRYANT  
*Trained Nurses*

MISS EMMIE JONES  
*Bookkeeper*

MISS MOINA MICHAEL  
*Y. W. C. A. Secretary*

MRS B. H. KINNEBREW  
*Housekeeper*



Crystal





Crystal





Crystal





Crystal



1919



---

## Crystal

---

### Farewell!

Farewell—thy Mater tells—farewell!  
Ere thou sett'st sail on yonder sea.  
Still like a dreamy fairy spell,  
Sweet thoughts shall linger here—of thee.  
    Whilst thou art sailing far and free,  
May Eurus lend thee pleasant gale,  
And waft thy bark on peacefully,  
    And whisper soft, whilst thou dost sail,  
    Thy Mater's love in metric tale.

Be smooth the way which thou shalt wend.  
May peace and joy thy bark surround,  
And Sol and Luna thee attend  
To light thine ocean "one around.  
    Thou—like Euterpe, laurel crowned,  
With Lydian lyre of soft, sweet strain,  
In snowy sea foam mantle gowned;  
    Sing softly, sailing o'er Life's main,  
    Thine Alma Mater's sweet refrain.

In azure heavens o'er thy head  
The Pleiades at eve shall shine,  
And balmy billows shall embed  
Thee when in sleep thou dost recline.  
    Sea-nymphs shall weave thee dreams sublime,  
Whilst Triton trilleth, clear and sweet,  
Soft lays of fair Hellenic rhyme—  
    Awaking—mayst thou surely greet  
    Utopia's shore—where bliss is meet.

Upon that shining sunlit shore,  
Where Vacuna, fair sylvan reigns—  
May life be thine forevermore.  
O'er mystic and Elysian plains,  
    Wander thou till daylight wanes  
With fairy comrade, Youthful Fay;  
Let woodland ring with sportive strains,  
    And raising praise at close of day  
    Sing soft thine Alma Mater's lay.

These blessings from thy Mater take,  
"God speed to thee"—she sweet doth tell.  
Oh! never—child—her love forsake,  
    Tho she must tell—farewell—farewell.

—LILLIAN M. CONAWAY, *Class '20.*



Lucas Strickland Thurmond, 94,  
at 447 Highland Ave. ...

Crystal



GREETINGS  
*Our Mascot* . . . . . H. B. RITCHIE, JR.



Crystal





Editorial Staff

- CARRIE LAW CLAY . . . . . *Editor-in-Chief*
- BESSIE CORINNE SHARP . . . . . *Business Manager*
- ANNIE BYRD BALDWIN . . . . . *Art Editor*
- HELEN MORGAN . . . . . *Advertising Editor*
- MARGUERITE BEALE . . . . . *Literary Editor*
- ANNIE MAE LAYFIELD . . . . . *Local Editor*
- PAULINE MAULDEN . . . . . *Joke Editor*
- MILDRED KENT . . . . . *Assistant Editor-in-Chief*
- MARGARET MYDDLETON . . . . . *Assistant Business Manager*
- HELEN QUARTERMAN . . . . . *Assistant Art Editor*
- BERTHA HUDMON . . . . . *Assistant Advertising Editor*
- ETHEL REID . . . . . *Assistant Local Editor*
- MRS. GERTRUDE A. ALEXANDER . . . . . *Associate Faculty Member*



Crystal





Crystal

School Calendar, 1918-'19

- Sept. 4 Opening of School
'' 5-6 Classification of Students
'' 7 Classes Begin
'' 15 Seniors Appear in Robes
'' 16 Millie and Altioria Reception
Oct. 7 Lyceum
'' 18 Moving Day in Miller Hall
'' 21 Kid Party in the Gym
Nov. (?) The Flu Flew
'' 9 Opening of Theatrical Season: Mr. Bob.
'' 11 Peace Celebration
'' 18 Lyceum
'' 23 The Girl from Upper Seven
'' 26 The Minstrel
Dec. 4 Masks removed
'' 7 Aunt Maggie's Will; Lottie Sees It Through; How the Story Grew.
'' 9 Altioria Play
'' 15 Mid-Term Exams Begin
'' 19 The Farmerette
'' 20 Christmas Holidays Begin
Jan. 6 Spring Term Begins.
'' 18 Daddy Long Legs
Feb. 1 The Slacker
'' 12 Georgia Day
'' 15 Mrs. Tubbs Does Her Bit
Mar. 1 Somewhere in France
'' 7 Annual Goes to Press
'' 15 Adorable Elizabeth
Mar. (?) Field Day
Mar. (?) Seventeen
April 7 Millie Play
'' 14 Oratory Recital
May 12 Last Semester Exams Begin
'' 25 Commencement Sermon
'' 26 Annual Concert
'' 27 Annual Meeting of Board of Trustees
'' 28 Faculty Reception to Alumni
'' 28 Graduating Exercises
'' 29 "Home"



---

---

# Crystal

---

---

## Class Poem

Dear Alma Mater, greatest school,  
From thee we now must go.  
Good-bye to each and every rule,  
The good in thee, we know.

And to the teachers, ever kind,  
So loyal and so true,  
We wish that joy you'll find  
In all the work you do.

We leave you now, and go afar,  
To fields for which we're trained,  
But you will ever be the star  
To which our work is chained.

And as we do as you have taught  
That all may see the light—  
Which education alone has wrought,  
'Tis through your aid, we win the fight.

We'll live our lives to prove to you  
All that we find so hard to tell,  
So watch o'er us in what we do,  
And now, oh, School—farewell!

FLORELLE HOLT.



Crystal



Youth is ever  
Commencement. Through  
its idealism alone may be  
caught the vision of the  
Holy Grail, realization of  
human potentiality.  
To meet failure triumphant,  
knowing human victory is but the  
sum of individual defeats; to be  
conscious of the inevitable personal  
failure of attainment, but to know every  
individual battle for Truth is so much in the evolution of  
God's Man; and to ever Seek: is the Quest of the Holy Grail.



Crystal

SENIOR



MOTTO: We'll find a way or make one

COLORS: White and Gold

FLOWER: Daisy

OFFICERS

- ETHEL REID . . . . . President
- ELEANOR ESTES . . . . . Vice-President
- SARA BURNS . . . . . Secretary
- MARGUERITE BEALE . . . . . Treasurer



■
Crystal
■



LUCILE AGNEW, A A Σ  
 Menlo, Ga.

*Academic*

"Silence is the perfectest herald of  
 joy!  
 I were but little happy  
 If I could say how much."

JOSIE ALMAND, M P Σ  
 Comer, Ga.

*Academic*

"The little cares that fretted me,  
 I lost them yesterday."





Crystal



LOIS ALMON, A Λ Σ  
Gay, Ga.  
*Academic*

“Speak less than thou knowest.”

HELEN ARNOLD, A Λ Σ  
Stathem, Ga.  
*Academic*

“Better than riches or worldly wealth  
Is a heart that is always jolly.”





Crystal



WILLETTA ARNOLD, A Λ Σ  
Columbus, Ga.  
*Academic*

“She was in logic a great critic,  
Profoundly skilled in analytic.”

RUBY AVRET, M P Σ  
Social Circle, Ga.  
*Academic*

“All the world’s a stage  
And all the people players.”





Crystal



FRANCES BAKER, A Λ Σ  
Sparta, Ga.

*Academic*

“Begone dull care, I prithee, begone  
from me;  
Begone dull care, thou and I shall  
never agree.”

ANNIE BYRD BALDWIN, A Λ Σ  
Waverly Hall, Ga.

*Industrial*

“There’s sunshine in the heart of  
me.”





Crystal



HATTIE BALDWIN, A Λ Σ  
Dawson, Ga.

*Academic*

“Loveliness needs not the foreign aid  
of ornament.”

GENEVIEVE BARBER, M P Σ  
Athens, Ga.

*Academic*

“Skies are fair to all whose souls are  
fair within.”





Crystal



ALICE KENLEY BARNES, A Λ Σ  
Savannah, Ga.

*Academic*

“Gentle in manners, firm in reality.”

MARGUERITE BEALE, A Λ Σ  
Savannah, Ga.

*Academic*

“Born for success she seemed  
With grace to win, with heart to hold,  
With shining gifts that took all  
eyes.”





# Crystal



MAUDE BECK, M P Σ

Bowden, Ga.

*Academic*

ANNIE MAE BILES, A Λ Σ

Griffin, Ga.

*Academic*

“Her ways are ways of pleasantness,  
and all her paths are peace.”

“So very kind and yet so shy.”





Crystal



LENA BRANTLEY, A A Σ  
Sylvania, Ga.  
*Academic*

LOUISE BRASELTON, A A Σ  
Pendergrass, Ga.  
*Academic*

“A loving heart is the beginning of  
all knowledge.”

“Oh, we'll be gay! A bright today  
Will make a bright tomorrow.”





Crystal



ILA BURCH, A Λ Σ  
Dublin, Ga.

*Academic*

“Kindness has resistless charms.”

VIVIAN WHEELER, A Λ Σ

*Special in Music*

“Music hath charms to soothe the savage breast,  
To soften rocks or bend a knotted oak.”





Crystal



EDITH BURGE, A Λ Σ  
Atlanta, Ga.

*Academic*

“She had so many languages in store  
That only fame shall speak of her in  
more.”

SARAH BURNS, A Λ Σ  
Maysville, Ga.

*Industrial*

“Ah! how skillfu! grows the hand  
That obeyeth love’s command,  
It is the heart and not the brain  
That to the highest doth attain.”

