

## **Historic, archived document**

Do not assume content reflects current scientific knowledge, policies, or practices.



# ● HART'S ●

## 1934 CATALOG

LIBRARY  
RECEIVED  
MAY 11 1934 ★  
Dept. of Agriculture.



PREMIER—The Most Profitable Strawberry

### FOUR THINGS TO REMEMBER

1. Remember we specialize in the growing of Strawberry and Raspberry plants.

2. Remember we are willing to let you compare our plants in quality and price with any others.

3. Remember we are in the heart of the Middle West and the time and cost of getting plants to you is less.

4. Remember we are not bragging about the beauty of our catalog, but it is home-made and tells the truth.

## HART'S NURSERY, Spencerville, Ind.



CLYDE HART

CARL HART

## *WE THANK YOU!*

**W**E SEND YOU this catalog with our best wishes. We believe that 1934 is going to be a Happier and More Prosperous year than any since 1929.

We are proud to say our 1933 business exceeded our 1932 business in volume—if not in profit—this could not have happened had we not given you real values in the past.

You will find all information and variety descriptions in this book accurate and dependable. We do not boost any variety of stock unless it will give good results, for we want you to keep ordering from us year after year.

In closing, we wish to extend our sincere thanks to the many customers who have so generously placed their orders with us in the past and made this business possible. We trust we may have the pleasure of serving you during the coming year.

Sincerely yours,

HART'S NURSERY,

---

### HART'S GUARANTEE

**W**E GUARANTEE every Tree, Plant, or Vine sold by us to be strong, vigorous and healthy, and to deliver them to you in good condition. If, for any reason, you are not absolutely satisfied with your stock when it is received, advise us at once, and we will gladly replace the items or refund your money.

---

### OUR BUSINESS METHOD

In looking at and studying catalogs for many years we are convinced that many statements made therein, and illustrations used, are over-drawn. We believe this is unfair to the buyer, and opposed to sound business methods.

Why lead people to believe you can make 12 to 15 hundred dollars profit from an acre of strawberries? We do not say this is impossible, but we do say it is improbable. Why not tell the buyer what he may reasonably expect if he gives his planting good care? This catalog was written with that thought in mind. You will not be misled.



A Field of Our Premier Plants

## The Outlook for 1934

**T**HE GROWING SEASON of 1933 was not so good for strawberry plants as 1932; many varieties did not make as many plants as they should have made. In traveling about we see many beds where the mother plants made but few new runners, and they show a very narrow row. No doubt strawberries will sell at a much higher price this year.

Our plants made a good growth, but not so many in a row as they did in 1932; but the quality and root growth is the best we have ever produced.

Raspberry Plants did better than usual. The dry season caused the root growth to be very heavy, the canes are large and smooth as glass. Our acreage is larger than usual. We will have about 175,000 plants for sale this year.

Fruit trees, grapes, shrubs and roses did quite well, but there is a shortage of some items, especially of apple and peach trees—these will be somewhat higher in price this year.

---

### WHERE THRIFTY, HEAVY-ROOTED PLANTS GROW

**W**E ARE LOCATED in Northeastern Indiana, 6 miles from Ohio and 30 miles from Michigan state lines. The St. Joe river has its source in Southern Michigan, then crosses Northwestern Ohio, flowing to the Southwest, toward Ft. Wayne, where it unites with the St. Marys to form the Maumee.

This was an early route for the Indian, and on this farm where we grow plants was an Indian village. The sand hills are covered with burned stones, showing where they had their camp. The boys who work in our field pick up many hammers and flints used by the Redmen.

Close by is a spring, gushing out along the river, which was probably his source of drinking water.

The soil is rather light sand and produces roots of most astounding length and vigor. You will also find that these roots are white and when transplanted, start growing most vigorously.

By growing all our plants it is possible to give them our personal supervision from the time the plants are set, till dug for your order. Our plants are kept thoroughly hoed and cultivated, not a weed is permitted to grow. Every plant that goes out is fresh dug. We have pleased others—we can please you.

# STRAWBERRIES

We list only Perfect Flowering Varieties. That is, you can plant all of our Strawberries alone and they will bear.

**P**ERFECTION has not been reached in anything. No strawberry is perfect, but like people, some come closer to it than others. We have attempted, with our experience, to tell you the virtues of each variety, as well as their faults.

Many people seem to think because varieties are new that they must be superior to the old. This is not always true. Certain kinds of wheat, for instance Pool, has been raised for years, and is still a standard variety, ranking far above some of the newer varieties. Reed's yellow dent corn is another variety that still ranks high among corn raisers, though many new varieties are on the market.

Nevertheless, we should always be on the lookout for newer and better varieties.

---

## HOW TO RAISE STRAWBERRIES

In planting strawberries, care should be taken to avoid frosty locations. Any soil that will produce good field crops is suitable for strawberries. The land should be well drained and fairly rich. We prefer late fall plowing, six to eight inches deep, before the ground freezes. Early in the spring, the ground should be thoroughly harrowed, followed immediately with a heavy roller, thereby firming the soil, which is very important.

Plants should be set 18 inches apart in the row, with the rows 4 feet apart. Approximately 6000 plants are required to the acre.

Plant with a common garden spade. Openings should be nearly the depth of the spade. If conditions are right, you will have a V-shaped opening, which will readily receive the roots of the plants. Plants should be held by the upper part of the crown and placed in the spade opening at about the same depth they grew, which will bring the crown even with the surface.

Soon after planting, cultivation should begin and be continued throughout the season, never allowing the surface to crust. However, it is necessary to do some hard work with the hoe, in order to loosen all surface and keep down weeds. The latter is very important.

The blossoms should be picked out of all spring set plants the first summer.

---

## Premier

**THE MOST POPULAR BERRY**—No strawberry in recent years has gained the popularity that has come to Premier. It has given more general satisfaction than any variety ever introduced—as a market berry it has outclassed all others, though not so well suited for long distance shipping as some other varieties.

When you come to earliness, size, shape, attractiveness, and quality it is hard to beat.

One essential in having a big crop of berries is to have good healthy foliage, without this no variety can produce a good crop. You will find the foliage on Premier just as green at the end of the picking season as at the beginning.

If Premier has any fault it is this: Many have difficulty in getting sufficient plants to make a wide row. They should be planted very early to overcome this difficulty.

We have a large acreage of Premier plants and you will make no mistake in planting liberally of this variety.

**PRICE**—25 for 25c; 100 for 75c; 500 for \$2.25; 1000 for \$4.00.

## SENATOR DUNLAP

**THE DARK COLORED BERRY**—Senator Dunlap has been a household word for many years. It is referred to as "That dark red berry." It is not, however, planted so extensively as it was a few years ago, but when it comes to quality and color no other berry can equal it.

Those who wish to grow berries for use in the home can find nothing that equals Dunlap.

The fault with this variety is that it is too productive of plants and in dry weather the berries have a tendency to become small as the season advances.

The plants should be planted much farther apart than such varieties as Premier, Cooper and Gibson, and the rows kept narrowed down by cutting off the new plants after the row is of sufficient width.

If you have never grown strawberries try Dunlap. You can not fail with them. We have a fine stock of plants of this variety.

**PRICE**—25 for 25c; 100 for 65c; 500 for \$1.65; 1,000 for \$2.75.

## GIBSON

**THE HEAVIEST ROOTED PLANT**—Gibson is another of the old favorites. They make a wide row of dark green plants, the leaves look like they had been varnished. The berries are very large, handsome in appearance and very sweet. They are valuable for canning and preserving. The berries grow on very short stems, and should be mulched with straw so they may be kept clean.

No plant produces such long roots as Gibson, and they can be planted very late and will produce a fine fruiting row. They do exceptionally well on heavy ground.

**PRICE**—25 for 25c; 100 for 70c; 500 for \$2.00; 1,000 for \$3.50.

## BEAVER

Beaver is a new variety which was originated in Wisconsin. It is a very hardy variety, producing a good fruiting row. The berries are of good size, bright red and very firm. It resembles Premier in many ways. In fact it is a cross of Premier and Dunlap. The plant growth resembles Dunlap, while the berry has all of the characteristics of the Premier.

**PRICE**—25 for 25c; 100 for 70c; 500 for \$2.00; 1,000 for \$3.50.

## BLAKEMORE

This variety is one of the newer varieties introduced by the U. S. Department of Agriculture. We do not think it as good as Premier in the northern part of the country, but in the south it has been received with great favor. It produces the most plants of any variety known. The foliage remains green all through the season.

Blakemore is an ideal shipping berry, it ripens early, and is of a rather light color. Success with this variety demands that they be kept thinned. Try a few plants—they may surprise you.

**PRICE**—25 for 25c; 100 for 70c; 500 for \$2.00; 1,000 for \$3.50.

## BEAUTY

Beauty was rightly named. A row of them from a distance resembles a row of potatoes. The plants are immense in size, measuring 15 inches high, with leaves as large as your hand. It does not make many plants, but they produce berries rivaling in beauty those found in pictures. The berries are large in size, dark red, very firm, and remarkable keepers. It is worthy of a trial by all berry producers.

**PRICE**—25 for 25c; 100 for 70c; 500 for \$2.00; 1,000 for \$3.50.

## COOPER

Cooper plants resemble Beauty in many ways, but are not quite so large. It does not make a large number of plants, but produces berries of immense size. I would not advise a large planting of this variety, but if you wish to surprise your friends with berries of stupendous size plant a few. It is not suited for long distance shipping, but suitable for near-by markets. Cooper makes exceptionally long roots and is able to produce berries in very dry weather.

**PRICE**—25 for 25c; 100 for 70c; 500 for \$2.00; 1,000 for \$3.50.

## PEARL

Without doubt the latest berry in existence, often ripening its berries as late as the Fourth of July. It makes the longest runners of any variety I have ever known. The fruit is everything that could be desired. It is large in size, dark red to the heart, and very firm. Its prominent yellow seeds makes it very attractive to the buyer. When Pearl begins to bear, most other varieties are off the market, and the price received is much higher than mid-season varieties.

**PRICE**—25 for 25c; 100 for 70c; 500 for \$2.00; 1,000 for \$3.50.

## AROMA

Aroma, like Senator Dunlap, is one of the old stand-bys. It has been a great favorite in the south and middle states.

The berries are light red, always perfectly shaped. The calyx is dark green, giving it a pleasing appearance, making it a good seller.

It is an excellent shipping berry.

**PRICE**—25 for 25c; 100 for 70c; 500 for \$2.00; 1,000 for \$3.50.

---

The following three varieties are of somewhat recent introduction. They received a lot of high-powered advertising to which a large number of people fell. They each have some good points, but in other ways they are not so good.

## RED GOLD

This variety ripens early, has a fine flavor, the stems are very long; they make plants freely and up to ripening time do very well, but they do not seem able to mature their crop. The foliage does not seem to stand up under the June sun, and the berries remain small and inferior. However, we have some fine plants if you wish to try them.

**PRICE**—25 for 25c; 100 for 70c; 500 for \$2.00; 1,000 for \$3.50.

## HARVEST KING

Harvest King is best suited for localities where the soil is somewhat heavy and where difficulty is experienced in getting a fruiting row. The plants produce a large amount of very sweet berries, but many are inferior in size. The foliage is deficient and many berries sunburn.

**PRICE**—25 for 25c; 100 for 70c; 500 for \$2.00; 1,000 for \$3.50.

## WASHINGTON

Washington is the sweetest berry we have ever known, and up to the fruiting time gives promise of an exceedingly good crop, but from then on they seem to deteriorate. We do know that far north of us they have produced a fine crop of berries.

We can furnish plants to those who wish to try them. However, we do not recommend them.

**PRICE**—25 for 25c; 100 for 70c; 500 for \$2.00; 1,000 for \$3.50.



NO. 1

**STRAWBERRY 1/2 ACRE**

This collection will plant 1/2 acre.

1,000 Premier	}	<b>ALL FOR .....\$12.00</b> Not Postpaid
1,000 Dunlap		
1,000 Gibson		
1,000 Pearl		

NO. 3

**MIXED COMMERCIAL PLANTING**

Requires 2 Acres

**Strawberry**

1,000 Premier	1,000 Gibson
1,000 Pearl	1,000 Dunlap

**Raspberry**

1,000 Cumberland Black  
1,000 Latham Red

**ENTIRE COLLECTION \$30.00**  
Not Postpaid

NO. 6

**BLACK RASPBERRY GARDEN SPECIAL**

25 Cumberland	}	75 Plants for \$1.25 Not Postpaid
25 Plum Farmer		
25 Logan		

NO. 8

**TOWN GARDEN COLLECTION**

50 Premier Early  
50 Harvest King Mid-Season  
50 Pearl Late  
50 Mastodon Everbearer

**ALL FOR \$1.85, Not Postpaid**

NO. 2

**STRAWBERRY 1 ACRE**

This collection will plant one acre.

2,000 Premier	}	<b>ALL FOR .....\$23.00</b> Not Postpaid
2,000 Dunlap		
2,000 Gibson		
2,000 Pearl		

NO. 4

**SMALL GARDEN COLLECTION**

100 Premier	}	<b>ALL FOR .....\$2.25</b> Not Postpaid
100 Dunlap		
100 Gibson		
100 Pearl		

NO. 5

**LARGE GARDEN COLLECTION**

200 Premier	}	<b>ALL FOR .....\$3.25</b> Not Postpaid
200 Dunlap		
200 Gibson		
200 Pearl		

NO. 7

**MIXED BLACK & RED RASPBERRY Collection**

25 Cumberland	}	100 Plants for \$1.50 Not Postpaid
25 Logan		
25 Cuthbert		
25 Latham		

NO. 9

**CITY LOT COLLECTION**

25 Premier Early  
25 Harvest King Mid-Season  
25 Pearl Late  
25 Mastodon Everbearer

**ALL FOR \$1.00, Not Postpaid**

NO. 10

**COMPLETE FRUIT COLLECTION**

12 Cumberland Black Raspberry	}	<b>ALL FOR \$1.75</b> Not Postpaid
12 Latham Red Raspberry		
50 Premier Strawberry		
50 Mastodon Everbearing Strawberry		

## SECRETS

We are glad to tell any one the things we have learned in growing small fruit. There is one point that has not been stressed by nursery men. Unless your ground is low, and a springy type of soil, your plants should be planted much earlier than is the usual practice. Heavy frosts will not hurt them and they will stand light freezes. A snow on newly set plants is of great benefit. The plants we set early in 1931 and 1932 all went through freezing weather and a snow storm, and they were the best beds of plants we ever raised; while our late plantings were not nearly so good.

Here is one question asked more often than any other: "What shall I do with the blossoms that come on my newly set plants?" Wait until about half the berries have begun to develop, then cut off the berries and remaining blossoms. You may have to go over them once more in about a week, but you will find it time well spent, as this is the most valuable time for the plants to develop runners, looking to a good crop the next spring.

Do you have trouble getting sufficient plants to make a fruiting row? Strawberry plants are made by the mother plant making new runners. If this new plant does not make roots soon after the new leaves are formed, the under side, where the root-lets form, becomes woody and no roots form. If the weather is damp or rainy no difficulty will be experienced, but if it is dry a little earth should be drawn to the plant and this difficulty will be overcome. These early plants are the most valuable plants for fruiting.

---

## ADVICE

**Now here is our advice:** Never go into a business on a big scale that you know little or nothing about. Go slowly. We would much rather sell you 100 plants and see you make a success than sell you 10,000 plants and have you make a failure.

If you have been unsuccessful with Mastodon Everbearer you will probably find the reason given below.

1. Your ground was not suitable. I would not advise planting them on heavy clay ground, but only on loose loam or sand.

2. You may have planted them too late. I would not advise planting later than May 1st. Plantings made in March and early April are best.

3. You may have planted too near trees. Trees sap the moisture for great distances. Capillary moisture is necessary to produce berries in dry weather.

4. You did not give them proper cultivation. It is absolutely necessary to give Mastodon plants thorough cultivation and conserve every drop of moisture in the soil, especially in dry weather.

5. You did not keep the blossoms picked off the newly set plants. It is absolutely necessary to pick the blossoms off until July 1st, so that the plants may throw out sufficient runners to make a good fruiting row.

6. You did not have a good strain of plants. Occasionally there are Mastodons that seem to have lost their Everbearing qualities. Six years ago we planted Mastodon plants which were bought from two different nurseries; one lot produced abundance of berries while the others were almost a total failure. We produce every Mastodon strawberry plant that we sell and know that they are absolutely true to name and are the offspring of a mother plant that is a strong producer of berries.



## MASTODON

**THE WORLD'S BEST EVERBEARER**—We hope you will plant some of our heavy-yielding strain of guaranteed true-to-name Mastodon. We grew the largest crop of berries from this strain of Mastodon we have ever had the pleasure to pick and the demand was so great we were unable to supply our trade with these large improved berries. However, during the season of 1933 they did not give as good returns as in 1932.

Mastodon is a strong, vigorous grower, producing big, juicy, sparkling red berries of the most delicious flavor, with a bright green cap, and are firm enough to carry hundreds of miles in perfect condition and command top prices in any market. Mastodon begins fruiting 90 days after the plants are set and keep right on till hard freezing weather in the fall, fruit again with the standard varieties the next spring, and after a lay off of 2 or 3 weeks start fruiting again and with careful attention will produce for another season, or possibly longer. We have selected our plants for the past six years and now feel we have the best Mastodon plants that can be found. We sold thousands of these plants last year and have a fine supply for the coming season.

**PRICE**—25 for 30c; 100 for \$1.00; 500 for \$4.00; 1,000 for \$7.00.

---

## CHAMPION EVERBEARER

Champion, though not the largest everbearer, is one of the best in quality grown. It is the most prolific of all. The runners will begin to bear before they take root. In shape and color they resemble the Dunlap. There has never been a crop failure of this variety known—a trial planting will convince you of this fact.

**PRICE**—25 for 30c; 100 for 90c; 500 for \$3.00; 1,000 for \$5.50.

# BLACK RASPBERRIES

**HOW TO GROW THEM.** The soil should be well drained, and not too heavy. Prepare the same as for any other berry plants, and plant in early spring. Should be planted in rows 7 feet apart, and about 3 feet in the row, which requires 2,000 plants per acre. For home use and in the garden they may be planted closer. Get the roots well below the surface and cut off the old stock a few inches from the ground. When the new growth reaches a height of about 18 to 24 inches, cut off the tip, which will cause them to throw out lateral branches, and stay more upright. The following spring, before leaf growth starts, trim all lateral branches back to about 8 inches in length, and leave about four good stalks to a hill. When through fruiting, cut out and burn all old fruiting canes.

## CUMBERLAND

Cumberland Black Raspberries have been a standard for years in judging other black raspberries, in fact more Cumberlands are planted than all other varieties combined. They are noted for flavor, size and productiveness, and always bring top price on the market. Cumberland has never failed to produce a big crop for us but one year, and that was caused by a very late freeze, but many latent buds brought some fruit. We have sold thousands of Cumberland Raspberry plants in the past and they give perfect satisfaction because they are healthy, heavily rooted, and fresh dug. We never dig our Raspberry plants in the fall because they often become heated in storage and fail to give good results for the planter. Try them—we guarantee satisfaction.

**PRICE**—25 for 40c; 100 for \$1.50; 500 for \$6.00; 1,000 for \$10.00.

## NEW LOGAN

New Logan is one of the newer varieties but has been grown in Ohio for several years. The canes and berries resemble Cumberland in many respects. The advantages of this variety over others is that it is a week earlier than other varieties and is the most disease resistant of all. Those who have marketed know the advantage of earliness in any product—it brings a much higher price than the later varieties. The berries are large, jet black, and most delicious. Our advice to you is to grow some Logan along with Cumberland and profit by their earliness.

**PRICE**—25 for 50c; 100 for \$1.75; 500 for \$7.00; 1,000 for \$12.00.

## KANSAS

This variety originated in Kansas and is one of the earliest Black Caps. It is being grown extensively in some parts of the country, but we recommend it highly for any locality. One of the advantages of this variety is it is very hardy and can be grown in any climate—it will not freeze back and has withstood temperatures of 30 degrees below zero without injury. They do not bear as heavy as some varieties, have a short fruiting season, but the berries are of immense size, very black and as sweet as sugar.

**PRICES**—25 for 40c; 100 for \$1.50; 500 for \$6.00; 1,000 for \$10.00.

---

## BLACK RASPBERRY GARDEN COLLECTION

12 Cumberland	} All for \$1.00 Postpaid
12 Logan	
12 Kansas	

**CUTHBERT**

## RED RASPBERRIES

### LATHAM

This variety originated in the hardy climate of Minnesota and is without doubt the most popular red raspberry grown. It is a strong, sturdy grower, healthy canes and foliage. Latham holds its shape, does not crumble, and has a most delicious flavor. Excellent for table use and jams. Those who are looking for a market berry will find Latham superior to all others. We guarantee our plants strictly true-to-name and free from disease.

**PRICE**—25 for 40c; 100 for \$1.50; 500 for \$6.00; 1,000 for \$10.00.

### CHIEF

When looking for an early Red Raspberry stop with this variety, as none other can equal it. Chief was originated in Minnesota; this proves its hardiness. Chief begins bearing before strawberries stop and bridges the gap in berry growing. The outstanding characteristics of Chief are earliness, large size, excellent flavor and disease resistance. The price of Chief plants in the past has been very high, but now they are very reasonable. Try them—they will please you.

**PRICE**—25 for 50c; 100 for \$2.00; 500 for \$7.00; 1,000 for \$13.00.

### CUTHBERT

Cuthbert is an old stand-by and has been planted for years. It will always be popular. The plants are strong, vigorous growers, having a tendency to branch, which increases the bearing wood. The berries are somewhat cone-shaped, very dark red, and most delicious. They do not bear quite so freely as Latham nor are the berries so large, but when quality is wanted no variety can equal Cuthbert.

**PRICE**—25 for 40c; 100 for \$1.50; 500 for \$6.00; 1,000 for \$10.00.

---

## RED RASPBERRY GARDEN COLLECTION

12 Latham	} All for \$1.00 Postpaid
12 Cuthbert	
12 Chief	

# PURPLE RASPBERRY

## ROYAL PURPLE

This variety is considered the best of purple raspberries. Some people do not like the flavor of purple raspberries, while others are delighted with them. Royal Purple is a strong, upright grower, with very heavy stalks and loads of fine quality berries. The fruiting season is a few days later than the black caps.

**PRICE**—25 for 50c; 100 for \$2.00.

---

# BLACKBERRIES

## ALFRED

This variety has been on the market only a few years, but in this short length of time has become so popular in many parts of the country that it is fast replacing the old standard kinds. Alfred bears young, producing nearly a full crop of fruit the year after planting. It is a vigorous grower, producing strong, well branched canes, perfectly capable of carrying the big crop of fruit produced. It is perfectly hardy, and can be grown anywhere. The color is a glossy, jet black, and the flavor sweet and delicious.

**PRICE OF BLACKBERRIES**—25 for 60c; 100 for \$2.00; 500 for \$8.00; 1,000 for \$15.00

## ELDORADO

This is one of the leading commercial varieties that has long been popular on account of its hardiness, productiveness and freedom from disease, being especially immune to orange rust, the common enemy of all Blackberries. Berries are of good size, color, flavor and quality, holding up well for shipping, and as it fruits over a long season, produces heavy yields that insure a good profit to the grower. There are quite probably more acres of Eldorado now under cultivation than of all other Blackberries combined.

---

## RHUBARB

**MYATT'S LINNAEUS**—Those who have grown this variety will hardly recognize the old "pie plant". It is an early, tender variety without being tough or stringy, with a mild, sub-acid flavor. A dozen plants are enough for the average family. **PRICE:** 6 for 75c; 12 for \$1.00; 25 for \$1.75; 50 for \$2.50.

## ASPARAGUS

**MARY WASHINGTON**—Wherever possible plant in rows rather than beds. Set out in fall or spring with crowns about three inches below surface of ground, 10 to 12 inches by 2 ft. apart. A bed once made will last for years if properly attended to and well fertilized. We offer only Mary Washington, as it has proven successful in every way, being rust resistant, early, and very tender. We offer heavy roots. **PRICE:** 2 yr. roots, 10 for 25c; 20 for 40c; 100 for \$1.25.

## CURRANTS

**PERFECTION**—The latest introduction, being a cross between Fay's Prolific and White Grape, combining the best qualities of both. Berry bright red and large. The clusters average longer and the size of berry is maintained to the end of the bunch. In quality it is said to be superior to anything in the market today, being of a rich, mild, sub-acid flavor. **PRICE:** Each 15c; 6 for 75c; 12 for \$1.50.

## GOOSEBERRIES

**DOWNING**—A seedling of Houghton. Large and handsome, pale green berry; of splendid quality for dessert or cooking. Bush vigorous and exceedingly productive. Excellent for family use and profitable for market. **PRICE:** Each 20c; 6 for \$1.00; 12 for \$1.75.

## DEPENDABLE NORTHERN GROWN FRUIT TREES

Why plant southern grown trees when you can get northern trees that will grow, budded from heavy bearing orchards. We are listing the best and most popular varieties. Our prices are less than half the usual prices asked by agents. All trees are 7/16 to 9/16 inch, 2-yr. old, and cannot be sent by Parcel Post; must be sent by Express.



**JONATHAN**

### APPLES

**DELICIOUS: A Winter Apple.** Brilliant dark red shading to yellow at the blossom end. Large to very large with white, tender, juicy flesh of wonderfully rich sub-acid flavor.

**JONATHAN:** Late Fall. Brilliant red, fine grained, white, juicy flesh of excellent flavor. Medium to large size.

**DUCHESS OF OLDENBURG:** Summer. Yellow, streaked with red. Its white, juicy flesh and wonderful flavor have made it famous wherever apples are grown. A fine apple both for market and home use.

**YELLOW TRANSPARENT.** Early bearing variety that has proved both popular and profitable. Fruit large and yellow with crisp, sub-acid flavor.

**GRIMES GOLDEN.** Winter Apple; skin golden yellow; delicious, sparkling flavor that cannot be described. Tree very hardy and productive.

We have many other varieties of apples. Write for prices on large lots of trees.

### PEARS

**BARTLETT.** The most popular Pear for home use and market, a leader among canning Pears. Should be in every garden and orchard. Large, golden yellow with reddish blush on the sunny side.

We can also supply you with Bosc, Kieffer and Seckel Pears.

### PLUMS

**GERMAN PRUNE.** The most delicious of all Plums. Extra large size, often two inches in diameter. Early and abundant bearer. Combines hardiness, immense size, delicious quality, long keeping, beautiful color.

### SOUR CHERRIES

**LARGE MONTMORENCY.** Best late Sour Cherry, ripening about ten days later than Richmond. The fruit is extra large, bright red, firm and fine for shipping.

**EARLY RICHMOND.** Medium size, dark red; acid flavor. One of the most popular sour Cherries, and is unsurpassed for cooking purposes. Very hardy. Ripens in June.

### SWEET CHERRIES

**BING.** The popular, new Sweet Cherry with dark brown, nearly black color. Extra large fruit. Flesh solid, fine flavor. One of the best Cherries for shipping.

### PRICES ON 2-YEAR-OLD FRUIT TREES

Not Prepaid

Apples .....	each 40c; 10, \$3.50
Cherries .....	each 45c; 10, \$4.00
Plums .....	each 45c; 10, \$4.00
Pears .....	each 45c; 10, \$4.00
Peach .....	each 30c; 10, \$2.50
Apricot .....	each 40c; 2, \$ .75

## PEACHES

**ROCHESTER.** An unusually early free-stone peach of wonderful sweetness. Ripens in early August. Hardy and prolific. Keeps and ships well.

**ELBERTA.** Large to extra large. Free-stone. Golden yellow flesh, red at the pit, firm, juicy. Has no equal as a prolific bearer.

**J. H. HALE.** Yellow, extra large, globular; thick skin; colors to a rosy tint. Deep yellow, fine-grained, very firm flesh of excellent quality.

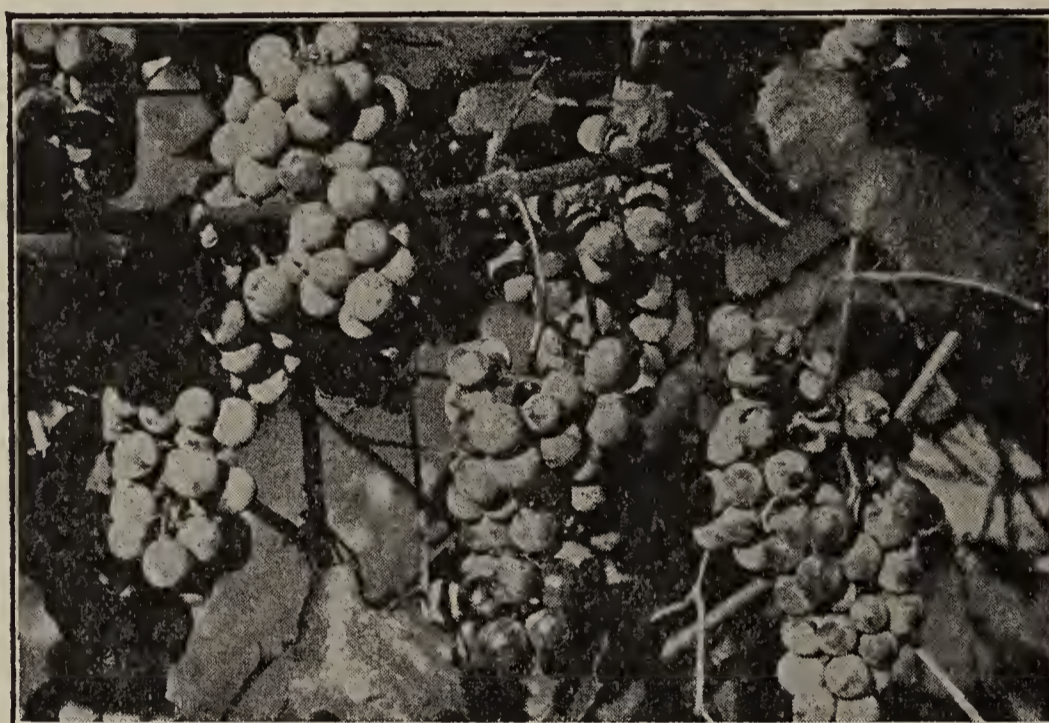
**SOUTH HAVEN.** A new sort with exceptionally fine flavor. Flesh yellow and sweet. Its showy exterior combined with its earliness makes it a real money-maker.

We can supply you with many other varieties of fruit trees.

## SUPERB APRICOT

The best Apricot on the market. Tree grows large and spreading and is immensely productive of beautiful orange colored fruit with firm flesh and excellent flavor. Two or more trees should be planted as they are only partly self-fertilizing.

Fruit Tree Prices on Page 13



CONCORD GRAPE

## GRAPES

**CONCORD,** The Standard Commercial Grape. The fine old popular market variety and the leading commercial grape of today. A large, purplish black grape, very hardy and productive.

**NIAGARA,** The Leading White Grape. This is the best of all white Grapes, and is very similar to Concord in habit of growth and bearing. Fruit a light amber color, with light bloom.

**MOORE'S EARLY,** The Old Favorite Early Grape. Ripens about a week or ten days earlier than the Concord and is fully as good in quality. The berries and bunch are extra large, fruit is very sweet and fine flavored.

**CACO.** New, widely advertised Red Grape. Bears enormous bunches of unusually large berries of a rich wine-red and amber color. Flavor of the finest, very rich and sweet. Ripens early in September. Stock of this variety is limited. Order early.

**DELAWARE.** The red table grape is one of the most delicious of all grapes, but rather small.

### PRICES ON GRAPE VINES

Concord, Niagara, Moore's Early, and Delaware, 2 yr. old, each 15c; 10 for \$1.25; 25 for \$2.75. Caco, each 25c; 10 for \$2.00.

We can supply 1 yr. old grape vines for less money.



# ROSES

HARDY NORTHERN GROWN ROSES—ROSES YOU WILL LOVE



PAUL NEYRON

## Hardy Climbing Roses

**CRIMSON RAMBLER.** Very hardy. Blooms are of fiery red color and in clusters the whole length of the vine.

**DOROTHY PERKINS.** Pink. The best pink and a profuse bloomer. Double and sweet scented.

**DR. W. VAN FLEET.** Blossoms extra large. In color a delicate flesh-pink changing when full blown to a flesh-white shade.

**CLIMBING AMERICAN BEAUTY.** Flowers of large size, good form, of rich, red color passing to crimson. Very fragrant. Good foliage and absolutely hardy.

**BABY RAMBLER.** We have Baby Rambler. It is in bloom all the time, flowers in large clusters of bright crimson. It grows to a height of eighteen inches and hides the plant with its bloom.

**PAUL'S SCARLET.** The most intense red Rose that grows. By far the finest red climbing Rose with long strong canes. Never fades out in the hottest sun, retaining its vivid and brilliant color at all times.

**PRICE OF ROSES:** Each 35c, 5 for \$1.50.

## Hybrid Perpetual Bush

**PAUL NEYRON.** Peony rose. The largest rose of all. Blossoms of clear pink shading to rose. Plant erect, strong and heavy grower, blooming repeatedly.

**FRAU KARL DRUSCHKI.** Very large; perfect form and snow white; vigorous grower, a free bloomer.

**AMERICAN BEAUTY.** H. T. Deep pink, approaching crimson color. Exquisite form and fragrance, large blossoms. A prize winner.

**PRESIDENT HOOVER.** A new rose with large flowers of a very charming combination of cerise-pink, flame, scarlet, and yellow, with broad, thick petals, retaining this characteristic for days after the flowers have opened; very fragrant.

**SOUV. DE CLAUDIUS PERNET** (Pernetiana). The most satisfactory yellow Rose ever produced. Flowers are a strong, sunflower-yellow, even deeper toned at center. In growth it is vigorous, erect and branching, with brilliant foliage and almost thornless stems.

**TALISMAN.** One of the most vividly colored roses ever introduced. Brilliant red and gold buds, opening to well-shaped, double bloom of scarlet-orange and rich yellow. It has fine green foliage and is a free bloomer.

---

NO. 11

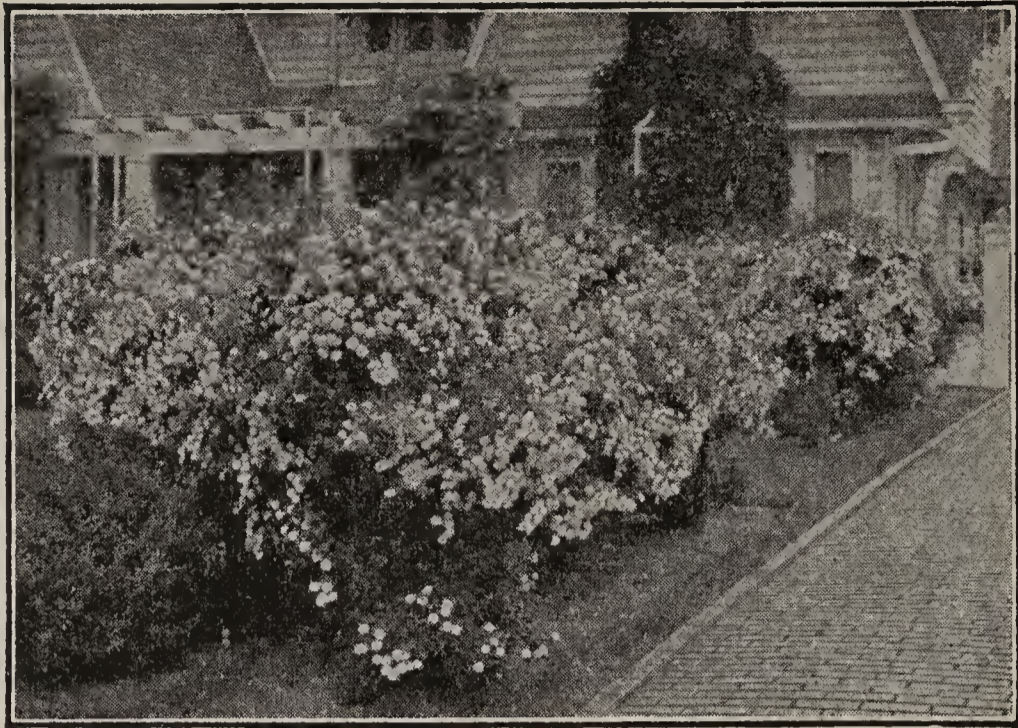
## ROSE COLLECTION

10 ROSE BUSHES

Your Choice

Only \$2.50

---



SPIREA VAN HOUTTEI

## NORTHERN GROWN SHRUBS

Shrubs here offered are all hardy, thrifty, two-year-old stock, 18 to 24 inches high. However, we can supply either larger or smaller size. The larger size sells at somewhat higher price and the smaller much lower.

In case you are planting a large amount of Shrubs get our price first. We can save you money on a large order.

**SPIREA VAN HOUTTEI.** Finest of all the Spireas, giving a most graceful appearance when out of bloom. The flowers are pure white, and borne in dense clusters along the whole length of the branches.

**PRICE:** 18-24 in., 15c each; 10 for \$1.00. 2 to 3 ft., 25c each; 10 for \$2.00. Not Prepaid.

**SPIREA ANTHONY WATERER.** A dwarf variety, growing 15 to 20 inches high, covered with large heads of crimson flowers. Foliage is very handsome, being variegated with creamy white or yellow.

**ALTHEA.** (Rose of Sharon)—Handsome late summer blooming shrubs, coming into bloom when few shrubs are in flower. Large showy flowers.

**BUDDLEIA.** Butterfly Bush. Will mature to full size the first year. Branches usually freeze back during the winter, but the new growth starts readily from the roots the following spring. 4 to 5 ft. high, with spikes of bluish violet flowers.

**DEUTZIA.** Pride of Rochester. Large double rose like flowers in June. It excels all other sorts in size of flowers, profusion of bloom and vigorous in habits.

**DEUTZIA GRACILIS.** Dwarfest growing of all Deutzias; dense and bushy. Its drooping branches are wreathed with pure white flowers in May.

**FORSYTHIA.** Golden Bell. One of the earliest shrubs to blossom in spring. Branches are covered with golden yellow flowers before leaves appear.

**HONEYSUCKLE.** Tartarian. The best of all bush Honeysuckles, upright spreading branches, bright green foliage, bright pink flowers in May and June, followed by showy red berries.

**HYDRANGEA ARBORESCENS.** Hills of Snow. The flowers are in a large way similar to the familiar "Snowball" in appearance; conspicuously white and imposing.

**HYDRANGEA.** Paniculata Grandiflora. One of the finest and most popular shrubs grown. Blooms from August until frost, flowers in large panicles.

**LILAC.** Persian Purple. A thrifty growing bush with slender leaves and deep purple flowers.

**PHILADELPHUS.** Golden Leaf Mock Orange. Dwarf compact habit with bright golden leaves that are most attractive. The blossoms are white.

**SNOWBERRY.** Common Snowberry. White. Small rose colored flowers in June and July, followed by large clusters of milk white fruits, which remain far into the winter.

Special Prices on Shrubs in large lots.

**WEIGELA EVA RATHKE.** A charming new variety, reaching a height of 3 to 4 feet. Flowers are a brilliant crimson.

**AMoor RIVER PRIVET.** Hardest of all Privets. Foliage dark, glossy green, not subject to blight. Resistant to insect pests. Leaves retained far into the winter. White flowers followed by berries.

**PRICE:** 18-24 in., 10c each; 12 for \$1.00.  
Not Prepaid

#### PRICES OF SHRUBS

Extra good specimens, 18 to 24 inch., 30c; 4 for \$1.00. Not Prepaid.

---

## HART'S PERENNIALS HARDY FLOWERS

Your yard or flower garden is not complete unless you plant several beds of perennials. These flowers bloom year after year without replanting. They die down in the fall and send new shoots from the roots in the spring. Very little protection is needed to keep them from freezing out in the winter. Our plants are strong, healthy plants, and most varieties will bloom the first year and continue to do so as long as they are cared for. The varieties we list here are standard varieties that have proven satisfactory in this climate and are sure to satisfy.



**TRITOMA**

**TRITOMA (Red Hot Poker).** Pfitzeri. Rich orange scarlet blooms with stems 3 ft. high. Very attractive for massed planting or in single plants. Also fine for cutting. The blooms are formed of a solid spike of bright orange red. The flower stems grow 2 or 3 ft. tall. Blooms from August to October.

**BLAZING STAR, Gay Feather.** A perfectly hardy perennial of luxuriant growth, doing well in any kind of soil, poor or rich, moist or dry. Produces richly colored purple flowers on stout stalks 5 to 6 ft. high in graceful spikes a foot long. Blooms in July and August.

**PRICE—**Each 15c; 8 for \$1.00.

(Perennials continued on next page)



### AQUILEGIA

**AQUILEGIA, Columbine.** Mrs. Scott Elliott Hybrids. One of the most beautiful hardy perennials. The peculiarly shaped flowers are borne on slender, graceful stems well above the handsome foliage. Plants grow 2 or 3 feet high. Blooms in May and June.

**HIBISCUS.** Large, single, light pink flowers, which measure from 5 to 10 inches in diameter, and grow profusely along the stem. Blooms from early July until frost. Plants grow from three to five feet tall under ordinary circumstances.

**SWEET WIVELSFIELD.** Similar to Sweet Williams but hardier. They grow in large clumps and are just covered with bloom nearly all summer. They grow about a foot and a half high. They come in mixed colors.

**GAILLARDIA.** (Blanket Flower). Flowers are of the most gorgeous coloring. Center dark brown. Plants marked with brilliant crimson orange and vermilion. Blooms all summer.

**COREOPSIS.** Large golden yellow fringed flowers on long wiry stems, fine for cutting, and blooming practically all summer. One of the showiest and best of all perennials. They grow about 2 ft. high. Blooms all summer.

**GYPSOPHILA.** Hardy Baby's Breath, *Paniculata Single.* Immense panicles of delicate white gauze-like flowers from June to August. Very desirable for mixing with other cut flowers. Perfectly hardy and easily grown. 2 ft.

**HARDY CARNATION.** Red Grenadin. These plants are quite hardy, requiring protection only in exposed locations. The large, double flowers are of rich dark red color.

**DELPHINIUM.** Hardy Perennial Larkspur. It is almost impossible to convey anything like an adequate description of the improved Delphiniums. Their greatest charm lies in the wonderful stateliness of growth, and the rich colors and tints of their striking flowers. Nothing in blue can compare with Delphiniums, and for their value in hardy borders they are unsurpassed.

**PYRETHRUM.** Painted Daisy. Most attractive hardy perennials which have become very popular. Valuable border plants with many stems about 2 ft. high, each surmounted with handsome flowers in the brightest shades of rose, flesh-pink, crimson, etc. It blooms from May to July.

**SHASTA DAISY.** This magnificent white daisy is the largest flowered of its class, blooms frequently measuring 6 inches across with very broad petals of great substance. 2½ to 3 ft. Splendid for florists.

**ELDER DAISY.** Very valuable early variety as you can cut flowers in May for Memorial Day. Flowers not quite as large as Shasta but more are produced on each plant.

**PRICE—Each 10c; 12 for \$1.00.**

# ROCK GARDEN PLANTS

Rock Gardening enjoys great popularity at the present time and it surely is a very interesting pastime. Flower lovers have found that a small, simple Rock Garden can be just as delightful as an elaborate one. Out of an almost limitless list of plants suitable for the Rock Garden we have selected the following:

**PHLOX-AMOENA.** Dwarf growing plant which spreads over rocks forming a dense mat which is covered with pink flowers during April and May. Foliage is deep green, it is attractive even when not blooming.

**PHLOX-SUBLATA.** Just the plant to use in cemetery work as it is in full bloom on Decoration Day. The plant is so entirely covered with delicate pink star-like flowers during full bloom that the light green moss-like foliage is entirely hidden.

**GYPSOPHILIA-REPENS.** Dwarf growing form of the popular Baby's Breath. Light green foliage. Has white single flowers covering plant during June and July.

**VERONICA-SPICATA.** Erect growing plant bearing beautiful blue flowers in June and July on spikes which protrude through the dark green foliage. Height 1½ ft.

**DIANTHUS-DELTOIDES.** One of the delightful pinks bearing red or pink flowers, has dark green foliage. In height 1 ft. Blooms in May and June.

**DIANTHUS-PLUMARIUS,** or Grass Pinks, the kind our grandmothers used to raise. They make a fine border plant and the flowers which are very fragrant may be used to decorate the table. The flowers vary in color but generally have a white border and pink center.

**FESTUCA-GLAUCA (Blue Fescue).** This is one of the most unique rock plants that grows. This little tufted grass has silvery blue foliage and grows only 10 inches tall. The plants are evergreen.

**SATUREIA (Calamintha) ALPINA.** Small green-leaved foliage, bearing small rosy-purple flowers. Grows 8 in. tall.

**CERASTIUM-TOMENTOSUM. (Snow in Summer).** Low growing silver foliaged, dense growing plant, bearing myriads of small white flowers in June.

**CERASTIUM-ARVENSE.** Low growing, green-leaved plant, which stands hot, dry weather. Slow spreading variety.

**SEMPERVIVUM—Hen & Chickens.** Pale green leaves surrounded by small rosette like offshoots. Stands hot, dry weather better than any other variety and is used in flower boxes for decorative purposes.

**SEDUM STAHLI.** One of the best sedums. Slow spreading. Beautiful green in summer and red in winter, has small white flowers on short stems.

**SEDUM FOSTORIUM.** Blue-green, slow-spreading sedum; very different from other varieties.

**SEDUM-SARMANTOSUM.** Fast-growing, having light green foliage and yellow flowers.

**SEDUM, Acre.** Yellow blooms from May to July. Slowly spreading plants with attractive deep green, fleshy, small leaves.

**SEDUM, Spurium Coccineum.** Beautiful rosy crimson flowers during July and August. Of creeping habit; 6 inches.

**SEDUM, Album.** A dwarf, spreading plant with thick, waxy foliage. Pure white flowers in July.

**SEDUM, Sexangulare.** Very much like Sedum Acre, but with brown foliage. Vivid yellow flowers.

**THYME, Blue.** Thyme of any variety is the most beautiful creeping plant that grows. It is the same color both winter and summer. It spreads slowly and is very hardy. If you do not have thyme in your rock garden you have omitted one of the most beautiful and outstanding rock plants. Blue thyme is used as a herb as well as a rock plant. The foliage is a decided blue color.

**THYME, White.** Green foliage, having tiny white blossoms in July and August, otherwise same as Blue Thyme.

**THYME, Purple.** Same as White Thyme, except it has purple flowers in place of white.

**ALL ROCK PLANTS, 10c each, or  
12 for \$1.00**

## HARDY PERENNIAL PHLOX

One of the most useful flowers for summer decorations. Colors vary from pure white to deep crimson. Exceedingly hardy. Once planted, they require no further attention for several years, but it is advisable to renew them about every fifth year. They flower from early July to middle of September, and 1 to 4 ft. tall.

**BEACON.** Truly magnificent flowers of a brilliant cherry-red.

**BRIDESMAID.** An excellent variety producing very large trusses of beautiful pure white flowers with distinct crimson eye.

**B. COMTE.** A brilliant and showy variety. Color a brilliant deep French purple.

**EUROPA.** A strong grower. The blooms are white, with a fine light crimson eye in the center.

**ECLAIREUR.** Purple-crimson. Reliable for continuous color effect.

**NICHOLAS FLAMMEL.** Beautiful new red. Bright carmine with golden salmon suffusion and crimson eye.

**RHEINLANDER.** A rare salmon-pink intensified by a distinct claret-red eye.

**ROSENBERG.** A tall grower, very showy with its large, round and somewhat distended trusses in the conspicuous color of wine purple.

**RHINESTROM.** Bright crimson-pink, immense flowers.

**R. P. STRUTHERS.** A tall variety of rich coloring. Bright rosy-carmine with orange-scarlet shadings and claret-red eye.

PRICE—Each 10c; 12 for \$1.00.

NO. 12

## BARGAIN IN PHLOX

2 each of the 10 named varieties listed above, all labelled. 20 plants in all.

For Only \$1.50

## SIMPLIFY YOUR GARDEN WORK

By Using the ALL-IN-ONE Garden Tool  
Combination Hand Rake, Dibble,  
Weeder, Lawn Trimmer and  
Bulb Planting Scale

May be used in reaching difficult positions in Rock Gardens, Borders and for Weeding and Planting by attaching an old Broom Handle.

Just the TOOL with which to set  
**STRAWBERRY PLANTS**  
PRICE—50c Postpaid

## HONEY ROCK MUSKMELON

Muskmelons, usually referred to as "Cantaloupes" by the trade, are now being raised in Northeastern Indiana and Northwestern Ohio in large quantities, many growers raising a hundred acres or more. In going through this section you will find most of them raising the new variety called Honey Rock.

Honey Rock is not the earliest muskmelon grown, but is of the most striking appearance, best quality, most productive, and the best shipper of any variety grown. A truck load of Honey Rock melons on a market commands more attention than any load of produce that can be shown. They are so uniform in shape that you can hardly tell one from another—they are almost round, medium in size and have no ribs. The color is yellow, overlaid with a heavy uniform netting, flesh is dark orange, and the quality is supreme. It matures its fruit in 85 to 90 days from planting.

Seed that is of pure strain, true to type, uniform and of high vitality is the first essential to the growing of a good crop of muskmelons.

We have several hundred pounds of seed grown by the above standard, and we want you to give it a trial this spring and convince you that Honey Rock Muskmelons are far in advance of all other varieties. This section being the home of the Honey Rock you can be assured of the pure strain.

PRICES—oz., 15c; ¼ lb., 30c; ½ lb., 50c;  
1 lb., \$1.00.



# Instructions to Customers

It has always been our desire to give every customer prompt, efficient service and you can aid us greatly in doing this if you will exercise care and accuracy in making out your order.

Our ideal location and soil enable us to start digging and shipping a week to ten days earlier than most northern nurseries. There are no storage cellars on our farms. All stock is fresh dug as needed.

**WHEN TO ORDER**—As there may be a shortage of the particular varieties you want it is best to make up your order and send it in as quickly as possible. Stock will then be reserved and shipped at specified time. Strawberry and Raspberry plants are a short crop in many localities this year and for your own protection this stock should be ordered early.

**HOW TO ORDER**—An order blank is provided with each catalog. However, any ordinary writing paper will do. In order to save unnecessary correspondence, always give complete name and full address, shipping point, etc.

**TERMS OF PAYMENT**—Our low prices for high quality stock are for cash only. Please do not request C. O. D. shipments. We will book early orders with a cash payment to show good faith, and balance may be remitted before shipment is wanted.

**REMITTANCE**—The safest way to remit is by postal or express money orders. Cash may be sent in registered letters and personal checks will be accepted if carefully made out. Please do not send stamps.

**OUR REFERENCES**—Farmers & Merchants State Bank, Spencerville, Ind., the Post Master, Express Agent, or any business house in Spencerville, Ind.

**SHIPPING SEASONS**—Spring shipping season usually begins in March and continues until June.

**HOW TO SHIP**—Large tree and cane plant orders can be shipped safely early in the spring by freight. Order shipment in March and trench or heel in the stock until you are ready to plant. For Strawberry plants and small orders of other stock, express or parcel post shipment is necessary. If not particular, tell us to ship "cheapest way."

**SAFE ARRIVAL GUARANTEED**—All stock guaranteed to reach you in perfect condition, as we use plenty of damp moss, waterproof paper and strong, wire-bound crates and boxes.

**IN CASE OF ERROR**—We are not satisfied until you are. As soon as stock arrives check it over carefully and in case of error notify us immediately and same will be corrected.

## NUMBER OF PLANTS PER ACRE

The following table shows the distances we recommend for planting different fruits:

	Distance between rows	Distance apart row	No. plants per acre
Strawberries	3½ ft.	1½ ft.	8,000
Raspberries	7 ft.	3 ft.	2,000
Blackberries	7 ft.	4 ft.	1,550
Grapes	10 ft.	8 ft.	550

**TRANSPORTATION CHARGES NOT PREPAID.** Our customers order from nearly every state in the Union, and we cannot in all fairness quote a prepaid price. If we did, those of our customers living in our own or neighboring states would have to help pay the charges for those in far distant states. We ship all packages C. O. D. for carrying charges, whether by mail or express, and you can pay the mail man or express agent when plants are delivered. Specify whether mail or express shipment is wanted, or leave it to our judgment and we will ship the cheapest way.

However, we will be glad to make you a postpaid price on anything in the catalog. Just write a postcard telling what you wish to order and you will receive a prompt answer.

**NON-WARRANTY** While we take every precaution to have all plants absolutely true-to-name, it is understood between the purchaser and ourselves that should any prove otherwise, we shall not be liable for more than the first cost of plants. We agree to deliver plants in satisfactory growing condition, but will not in any way be responsible for growth of same.



# GLADIOLUS

We are presenting for your consideration twelve of the most valuable gladiolus. We raise many varieties and can supply you with most any variety, but these twelve are outstanding for beauty and cut flowers. The bulbs we send you are not small sized, but range from 1¼" to 2". They are also free from thrips.

## HOW TO GROW GLADIOLUS

In the spring, spade your garden 10 or 12 inches deep and when danger of freezing is past, plant the bulbs in rows about 18 or 20 inches apart to admit free and intensive cultivation and 6 inches apart in the row, covering it 3 or 4 inches with soil. Be sure that the covering soil is mellow. In winter store in a place where they will not dry out or freeze.

### YELLOW

**GOLDEN DREAM.** Very beautiful clear deep yellow. Several blooms open at once. Very tall, straight, vigorous plant. One of the very best yellows on the market.

### ORANGE

**ALICE TIPLADY.** A large, open flowered Primulinus. Saffron orange in color. The lower petals slightly lighter in shading. One of our most popular varieties.

**ORANGE QUEEN.** A lovely copper orange, one of the best for cut flowers.

### RED AND ROSE

**CRIMSON GLOW.** The name is the best description of its color. It has straight spikes of many flowers, which open 4 or 5 at once. This habit makes it a wonder variety for cut flowers.

**SHELIA.** Light coral red fading to flesh pink in throat.

**DR. SHOOK.** One of the rarest colors. It is a dark Tyrian Rose.

### VIOLET

**VIOLET BEAUTY.** Is one of the outstanding varieties; always a favorite.

### WHITE

**PEACE.** Large, white flowers, with pale lilac pencilings, very tall and stately.

### PINK

**LOS ANGELES.** Shrimp pink tinted orange with a crimson stripe down the throat. This variety is an exceptionally strong bloomer. It usually throws two to three flowers from each bulb.

**8351 RICHARD DIENER.** Large blooms of a pure Geranium-pink shade with a light sprinkling of ruby-red in the throat.

**PRICE**—4c each; 12 for 35c; 100 for \$2.00. Postpaid.

### ALPINE MIXTURE

This collection is made up of many varieties, all large Bulbs. A wonderful collection of varied colors of beauty. 1 to 2 inch bulbs.

12 Bulbs for .....	\$ .30
25 Bulbs for .....	.50
50 Bulbs for .....	.75
100 Bulbs for .....	1.00

All bulbs will be sent to you early in the spring, **delivered** by prepaid parcel post.

---

## Certificate of Nursery Inspection

The Department of Conservation, Division of Entomology

No. 187

Indianapolis, Indiana, Date August 23, 1933

This is to Certify that the nursery stock grown by Clyde Hart & Son located at Spencerville, Indiana, consisting of 20 acres, has been inspected by the undersigned or his authorized representative, on August 8, 1933, in compliance with Chapter 177, page 291, Indiana Acts of 1907, and has been found apparently free from destructively injurious insects and plant diseases.

This certificate covers General Nursery Stock and is valid unless revoked for cause, until August 1, 1934.

Signed FRANK N. WALLACE,  
State Entomologist.

# HART'S • NURSERY

Spencerville, Indiana

B  
E  
A  
U  
T  
I  
F  
U  
L



G  
L  
A  
D  
I  
O  
L  
U  
S

## TWO DISTINCT VARIETIES OF GLADIOLUS

The two varieties listed below are the most beautiful of all gladiolus. We displayed baskets of them at several fairs and flower shows last Fall. They were viewed by thousands of people and pronounced the most beautiful they had ever seen.

**W. H. PHIPPS.** The masterpiece in Gladiolus. LaFrance pink overlaid with light rose salmon lighter toward the center. Lower petals fairly striped and speckled with ruby. Flowers enormous. It is a tall grower and will open up to 20 blooms at once. Truly the wonder glad.

**GLORIANA.** Golden Salmon with clear yellow throat. A rose bud type. Stems are tall and makes most beautiful bouquets. It is a beauty and should be planted by all lovers of beautiful flowers. This variety will not disappoint you.

Price for 1 $\frac{1}{4}$  to 2 inch bulbs—Each 6c; 12 for 60c; 100 for \$3.00. Postpaid.