

- I. *An Account of the præternatural Delivery of a Fœtus at the Anus; communicated by Mr. Nourse, one of the Assistant Surgeons to St. Bartholomew's-Hospital; Demonstrator of Anatomy at Surgeons-Hall, and F. R. S.*

TH E kind Invitation I had from Mr. *Giffard* the Surgeon, to assist at the Opening of a Patient of his, gives me an Opportunity to lay before this Society, a Case as extraordinary, and I believe very like what *Monf. Littre* has given us in the Memoirs of the Royal Academy of Sciences at *Paris, Ann. 1702; (viz.)* where a *Fœtus* had no other *Nidus* than the *Ovary*; and was brought forth through the *Rectum*. The Symtoms previous to this præternatural Birth, the forementioned Gentleman has very faithfully drawn up; be pleased therefore to take them in his own Words.

‘ I was sent for about the middle of *August* last, to
 ‘ a Woman who then judged herself to be between
 ‘ three and four Months gone with Child; she had all
 ‘ the Symptoms preceding a Miscarriage, and upon
 ‘ touching, I found the *Os Tincæ* somewhat dilated and
 ‘ spread, from whence I concluded a Miscarriage would
 ‘ ensue, and therefore ordered what I thought proper
 ‘ to promote it; but I was sometime after informed by
 ‘ her Husband, that although she before believed that
 ‘ she had miscarried, yet that she now thought herself
 ‘ Quick; as feeling somewhat to move within her Belly,
 ‘ agreeable to what she had perceived after former
 ‘ Quickenings. Thus it passed on for about six or seven
 N n n ‘ Weeks;

Weeks; in which Time she grew much bigger, and
 the Motion more perceptible; so that there remained
 no Doubt of her being with Child. About the third
 of *October* she was seized with violent Pains in her
 Belly and Back; which daily increasing, her Sister,
 by her Desire, came to me on the sixth, when I went
 to her, and found her labouring under very great
 Pains, and other Complaints like those preceding a
 Miscarriage or Delivery: But to be better satisfied,
 and to strengthen my Opinion, I passed up two Fin-
 gers into the *Vagina*, to examine by the Touch, whe-
 ther the *Os Tincæ* began to open and spread. I there
 felt a large and unusual Fulness and Tension, which
 I then judged to be the Body of the *Uterus* sunk low
 into the *Vagina*, and much distending it, and extend-
 ing backwards, and pressing against the *Rectum*, so
 that the Excrements could not readily pass, neither
 could she, from its Pressure upon the Neck of the
 Bladder, freely make Water. I could not find the *Os*
Tincæ, although I very carefully examined all a-
 bout with the Ends of my Fingers; wherefore I then
 judged that the *Fundus Uteri* must have receded
 from its natural Position, and be bent backwards to-
 wards the *Rectum*: In which Opinion I was the
 more strengthened from the Fulness I before observed,
 stretching backwards; and therefore concluded that
 the *Os Tincæ* must be very forward: Wherefore I en-
 deavoured to pass my Fingers between the *Os Pu-*
bis and the Fulness which pressed against the upper
 Edge of the said Bone: This with some Difficulty I
 effected, and at length about two or three Inches a-
 bove the said Bone, I felt the *Os Tincæ* with the
 Ends of my Fingers. The Cause of this Situation will

more

‘ more clearly appear in the Pursuit of this Account.
 ‘ I ordered her anodyne and quieting Medicines to re-
 ‘ lieve her Pain, which she was obliged to repeat at
 ‘ least every twelve Hours, with proper Cordials to sup-
 ‘ port Nature ; and sometimes Clysters. Thus matters
 ‘ continued to the twentieth of the said Month, only
 ‘ that for some Days before, a Water tinged with Blood
 ‘ came away, as she imagined, through the *Anus*, and
 ‘ which she believed proceeded from the Piles, with
 ‘ which she was sometimes troubled.

On the twentieth, her Husband came to me about
 ‘ six of the Clock in the Morning, telling me that the
 ‘ Midwife had brought away a *Fœtus*, but could not
 ‘ compleat her Business; whereupon I immediately
 ‘ went to the Midwife, who upon my coming told me
 ‘ that a *Fœtus* was protruded through the *Anus*; and
 ‘ to confirm it, desired me to examine, which I did im-
 ‘ mediately, and found the *Funis Umbilicalis* hanging
 ‘ out about two or three Inches beyond the *Anus*,
 ‘ and passing up through the same: I therefore passed my
 ‘ two fore Fingers by the String into the *Anus*; when
 ‘ I found about three Inches up, an Opening, as I then
 ‘ judged, into the *Uterus*, wide enough to admit the
 ‘ Ends of three or four Fingers, and the *Funis Um-*
 ‘ *bilicalis* passing into it; from hence I was assured that
 ‘ the *Fœtus* came out that Way. I endeavoured, with
 ‘ my Fingers passed into the Opening, to bring away
 ‘ the *Placenta*; but as it was very rotten, it tore a-
 ‘ way between my Fingers, so that I was forced to
 ‘ bring it in small Pieces, and was at last obliged to
 ‘ leave a large Part of it. The *Septum* or Partition
 ‘ between the *Anus* and *Vagina* was entirely whole,
 ‘ and no Perforation through it. From these Appear-

‘ ances I then concluded that a Mortification must have
 ‘ begun in the *Uterus*, and so from its Contiguity
 ‘ be communicated to the *Rectum*; so that Nature en-
 ‘ deavouring to expel what was contained, and forcing
 ‘ it against this Part already mortified, and consequent-
 ‘ ly ready to give way and separate upon any Pressure
 ‘ made against it, produced this Opening, and the Pro-
 ‘ trusion of the *Fœtus* through it into the *Rectum*, and
 ‘ so on through the *Anus*.

‘ There was a large Discharge of grumous Blood
 ‘ and other Substances through the *Anus*, which con-
 ‘ tinued coming away until the twenty-sixth of the
 ‘ aforesaid Month, when the Woman died about three
 ‘ of the Clock in the Afternoon.

‘ I should have observed that there was a Fulness
 ‘ and Hardness very perceptible, to be felt outwardly
 ‘ in the fore-part of the Belly, some distance below
 ‘ the Navel, from the Time that the *Fœtus* came away
 ‘ to her Death; which upon opening the Body, I was
 ‘ well assured, was the *Uterus* forced upwards and
 ‘ forwards by a *Sacculus*, which being large and di-
 ‘ stended filled up the *Pelvis*; and by its Bulk pressed
 ‘ the *Uterus* forwards. The *Fœtus* was perfect in all
 ‘ its Parts; but much wasted and shrunk from its be-
 ‘ ing some time dead; and consequently putrified.’

This we thought necessary to premise an Examination
 of the Parts (which I have here brought) whose Ap-
 pearances upon Dissection, were as follow.

The *Vagina*, *Uterus*, *Ligamenta Rotunda*, left
Ovary, *Fallopian Tube*, and *Ligamentum Latum* on
 that side, together with the Hypogastrick, and Sper-
 matick Vessels on the same Side, were in a natural
 State. The *Fallopian Tube* on the right Side, we
 traced

traced from the *Fundus Uteri* almost to the *Morsus Diaboli*; where it was confusedly united with, and opened into the *Sacculus* hereafter to be described. The *Ovary* on this side with the *Ligamentum Latum*, was dilated into a large *Sacculus* of an irregular Form, extending itself behind the *Uterus* (to the posterior Paries of which it adhered) and passing on towards the left, was connected to that Part of the *Colon* that terminates in the *Rectum*, and the *Rectum*. In this *Sacculus* we found great part of the *Placenta*, and the Remains of lacerated Membranes, besides the Aperture of the *Fallopian Tube* mentioned before, and another about four Inches in Diameter into the Middle of the *Rectum*: That part of the *Ureter* on the right Side which lies between the *Ovary* and the *Kidney* was dilated, and so was that part of the *Rectum* between the Aperture into it, and the End of the *Colon*; both which were caused from the Contents of these Canals being obstructed in their Passage.

FIG. I.

Shews the *Uterus*, with the *Sacculus* behind it, part of the *Colon* and the *Rectum*; the *Fallopian Tubes*, *Ovary* on the left Side; *Ligamenta Rotunda*; and the *Vagina* laid open to the *Os Tincæ*.

A The *Uterus*.

B The *Fallopian Tube* on the left Side.

C The *Ovary* on the same Side.

D The *Ligamenta Rotunda*

E The *Vagina* laid open.

F That part of the *Colon* that terminates in the *Rectum*.

G The *Rectum* continued to the *Anus* under the *Vagina*.

H The

H The *Fallopian Tube* on the right Side, whose Extremity opens into the *Sacculus* formed from the *Ovary*.

I The *Sacculus* extending itself behind the *Uterus*; wherein we found the *Placenta* and several lacerated Membranes; and from whence there was a large Opening into the *Rectum*.

FIG. II.

Shews the Inside of the *Sacculus* and its Aperture into the *Rectum*.

A The Intestine.

B The *Sacculus* adhering to it.

C The Opening from the *Sacculus* into the *Rectum*.

D The Membranes found within the *Sacculus*.

E The *Vagina* turned to the Right.

II. *An Extract of a Letter from Mr. William Stevenson to Benj. Hoadly, M. D. F. R. S. Containing an Account of an Observation of an Eclipse of the Moon, on July 29, 1729, made in Barbados by Mr. Stevenson's Brother.*

‘ **H** E took care to regulate a very good Clock, and
‘ brought it to true Time about 14 Days
‘ before the Eclipse. On the Day it happened, he
‘ saw the Sun set, and found the Clock right, accord-
‘ ing to the mean Time, Refraction allowed. At the
‘ Beginning of the Eclipse, the Moon was clouded.
‘ At 7 H. 18 M. (in the Evening) apparent Time,
‘ he saw the Moon 2 Digits Eclipsed, about 30 Degr.

Fig. 1.

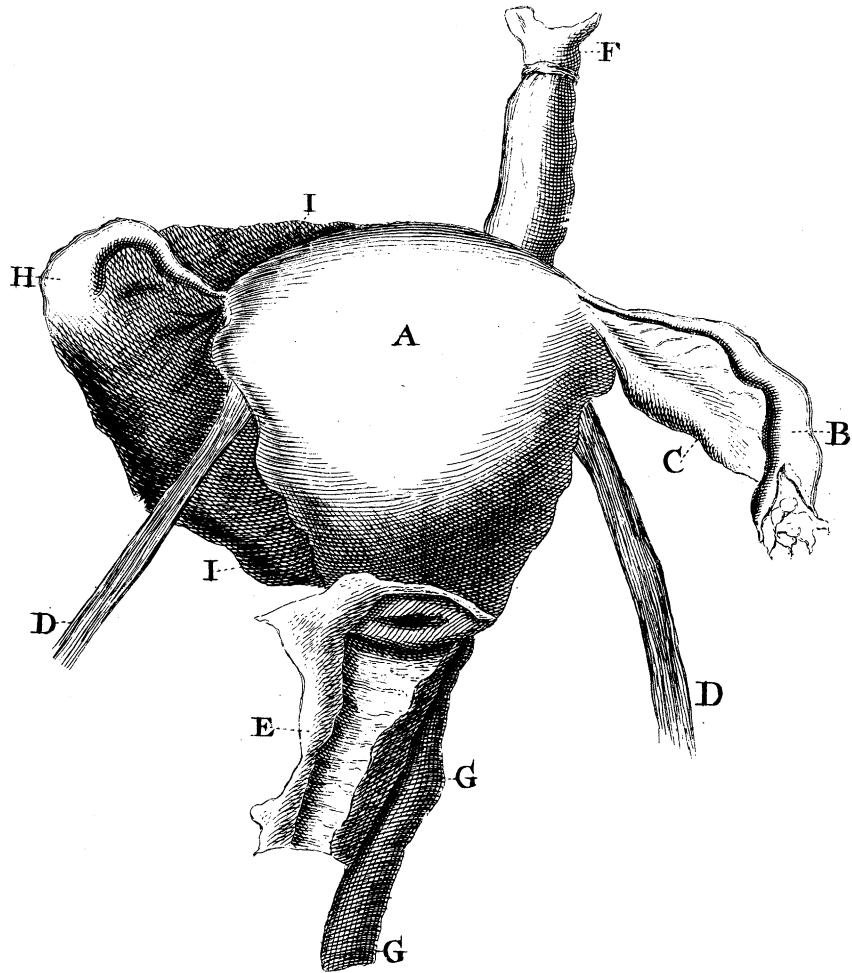


Fig. 2.

