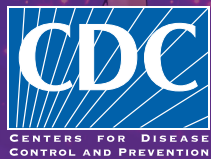


The  
**JUNIOR DISEASE  
DETECTIVES**

**OPERATION: OUTBREAK**







## Acknowledgments

### 4-H, NIFA, USDA Subject Matter Experts and Contributors

Lisa Lauxman, Ph.D.

Amy McCune, Ph.D.

### USDA-APHIS Subject Matter Experts and Contributors

Tracey Dutcher, DVM

Tom Gomez, DVM

Ellen Kasari, DVM

### CDC Subject Matter Experts and Contributors

Alicia Budd, MPH

Erin Burns, MA

Emily Eisenberg Lobelo, MS

Joe Gregg, MA

Dan Jernigan, MD, MPH

Michael Jhung, MD, MPH

James Kile, DVM, MPH

Lisa Koonin, DrPH, MN, MPH

Josh Mott, Ph.D.

Sonja Olsen, Ph.D.

Lexi Sowers, MA

Jerry Tokars, MD, MPH

Sue Trock, DVM, MPH

Abbey Wojno, Ph.D.

Special thanks to Tolani Francisco, DVM, MPH





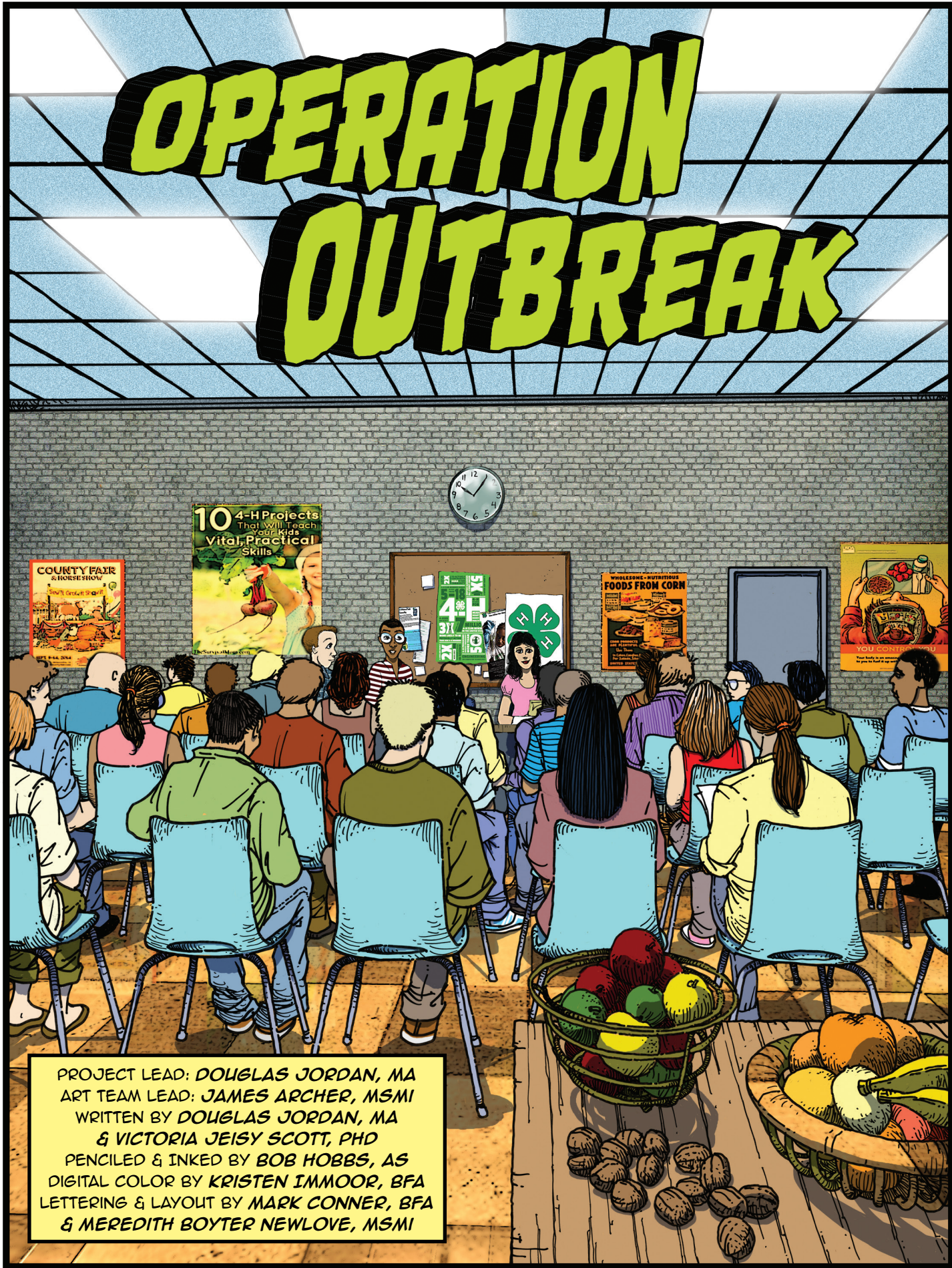
## Foreword

The following story is a work of fiction, but real public health threats and diseases are presented. CDC hopes that this story raises youth awareness of infectious diseases and the public health risks they pose. In addition, CDC hopes that this story helps to encourage youth interest in the many different career paths available in public health at the local, state and federal levels.

Lastly, CDC hopes that this story promotes youth education and interest in science and public health. We at CDC hope that readers are inspired to become the next generation of real life disease detectives and public health superheroes.

This graphic novel is the result of a partnership between the Centers for Disease Control and Prevention (CDC), 4-H, and the U.S. Department of Agriculture (USDA). 4-H is the nation's largest youth development program. 4-H is a public-private partnership with federal, state, local and non-profit support. Youth and their families access 4-H programs at a community or county level through the cooperative extension division of their land-grant university. 4-H offers a youth development experience for all youth ages 5–19. For more information, please see <https://nifa.usda.gov/program/4-h-positive-youth-development>.





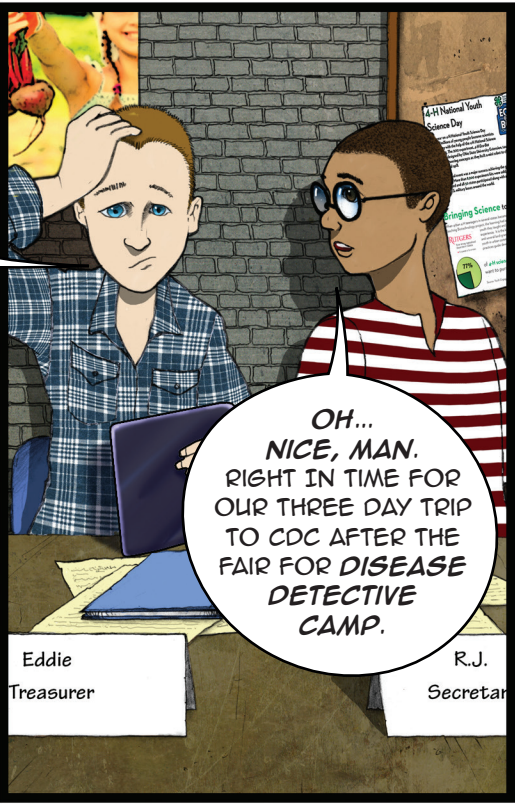
PROJECT LEAD: DOUGLAS JORDAN, MA  
 ART TEAM LEAD: JAMES ARCHER, MSMI  
 WRITTEN BY DOUGLAS JORDAN, MA  
 & VICTORIA JEISY SCOTT, PHD  
 PENCILED & INKED BY BOB HOBBS, AS  
 DIGITAL COLOR BY KRISTEN IMMOOR, BFA  
 LETTERING & LAYOUT BY MARK CONNER, BFA  
 & MEREDITH BOYTER NEWLOVE, MSMI





WHAT ARE YOU DOING, EDDIE?

OH, I'M PLAYING THIS COOL CENTERS FOR DISEASE CONTROL AND PREVENTION APP THAT LETS YOU SOLVE THE SOURCE OF DIFFERENT OUTBREAKS AND I'M STUMPED ON THIS CURRENT OUTBREAK SCENARIO.



OH... NICE, MAN. RIGHT IN TIME FOR OUR THREE DAY TRIP TO CDC AFTER THE FAIR FOR DISEASE DETECTIVE CAMP.

Eddie Treasurer

R.J. Secretary

YES, EXCELLENT TIMING! I'M REALLY LOOKING FORWARD TO IT!



Emily President

YEAH! I CAN'T WAIT! SO LET'S START THIS 4-H MEETING OFF WITH A DISCUSSION OF THE CDC CAMP AS WELL AS WHAT WE ARE DOING FOR THE COUNTY FAIR.

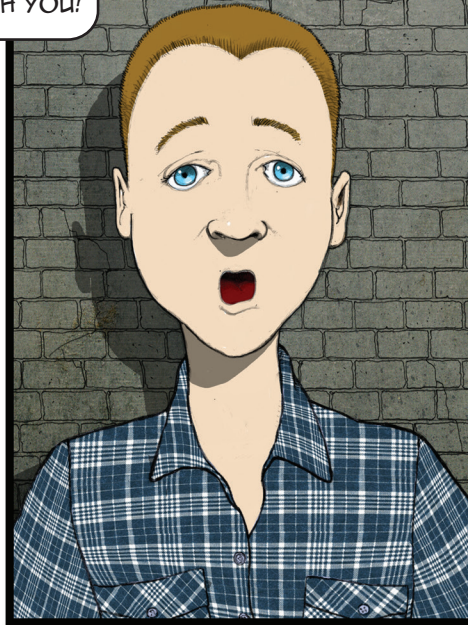




I HAVE AN **IDEA** TO MAKE THINGS **INTERESTING!** LET'S EACH **IMAGINE** THAT WE ARE FACING A MAJOR **PUBLIC HEALTH THREAT** AND WE ARE THE **HEROES**. EDDIE, LET'S START WITH YOU!



HMM... OK. WELL, I'M PICTURING AN **OUTBREAK** OF A NEW **SCARY DISEASE** THAT HAS ALREADY INFECTED HALF OF THE CITY'S **POPULATION!**

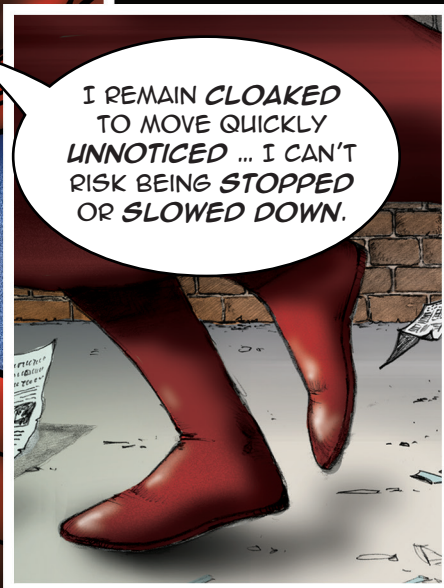


...AND I'M **GERM SLAYER**. THE **GERM-FIGHTING SUPERHERO** WHO HAS THE **CURE!**

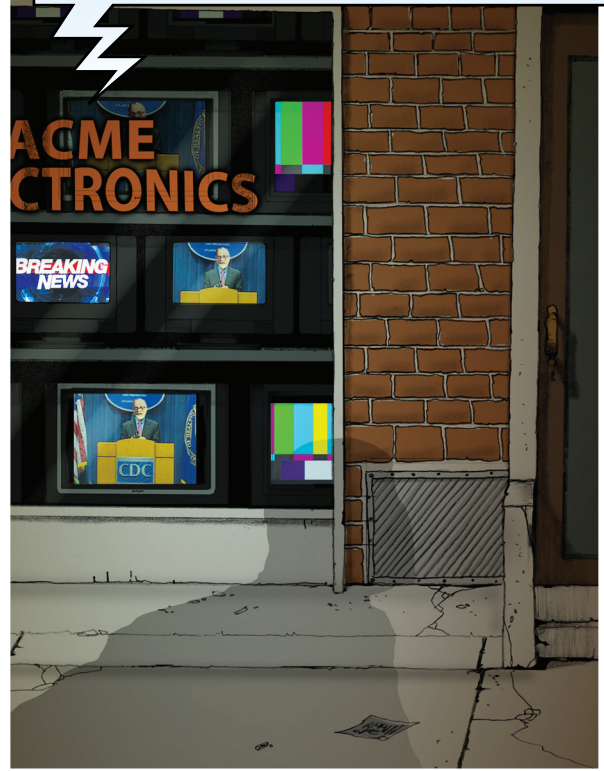


I'M THE ONLY **HOPE** TO **DELIVER** IT ON **TIME!**

I REMAIN **CLOAKED** TO MOVE **QUICKLY UNNOTICED** ... I CAN'T RISK BEING **STOPPED** OR **SLOWED DOWN**.



Hospitals and clinics are currently overwhelmed and in some cases people are actually being turned away...



City streets are largely deserted with the exception of locations near medical facilities.







AND HERE I AM!  
JUST IN TIME  
TO DELIVER THE CURE  
FROM THE CDC!



FUN, EDDIE!  
...ERR ... I MEAN  
GERM SLAYER!  
I LIKE IT!

NEXT, IT'S YOUR  
TURN, R.J.

I'M A  
MEDIEVAL ARCHER  
AND YOU GUYS ARE  
THERE WITH ME!



OK,  
I'VE GOT THIS!





HEY GUYS,  
IT'S EDDIE! WOW...  
I'M IN A SUIT  
OF ARMOR. ISN'T THIS  
SUPPOSED TO BE  
PUBLIC HEALTH  
RELATED, R.J.?

WHERE ARE YOU  
GOING WITH THIS?

OH R.J., HA!  
THIS IS NERDY,  
BUT I LIKE  
MY OUTFIT!



YEAH...  
WHAAAAAT?

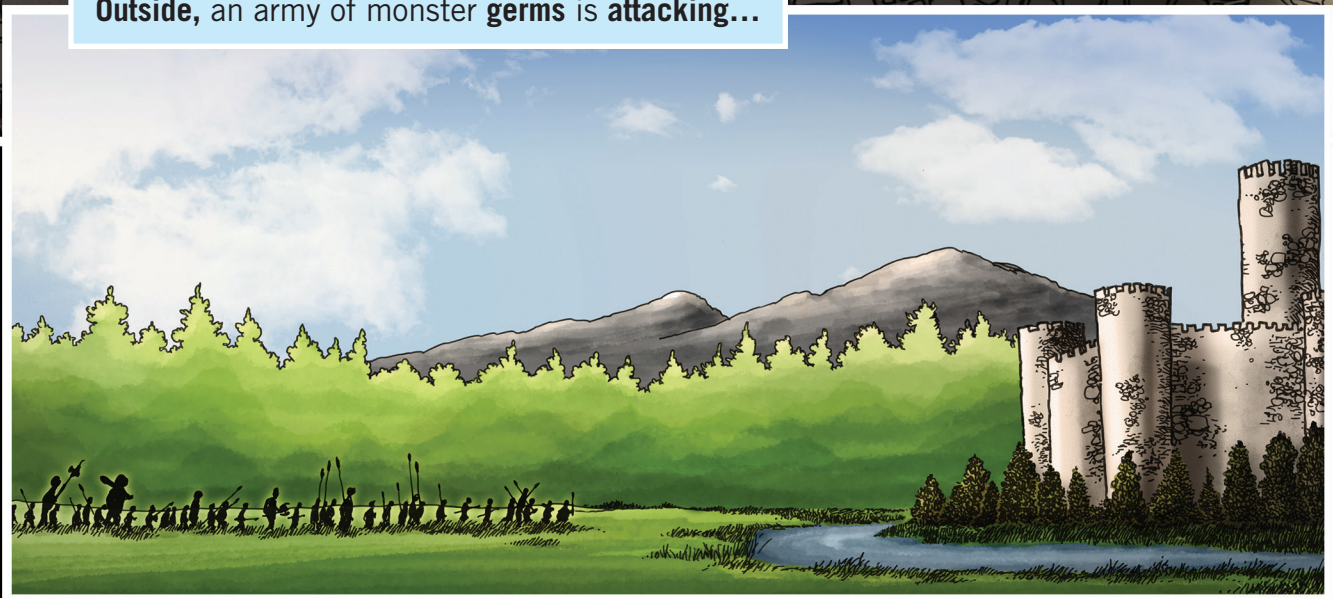


HANG ON,  
GUYS...  
I PROMISE  
THIS IS  
PUBLIC HEALTH  
RELATED.

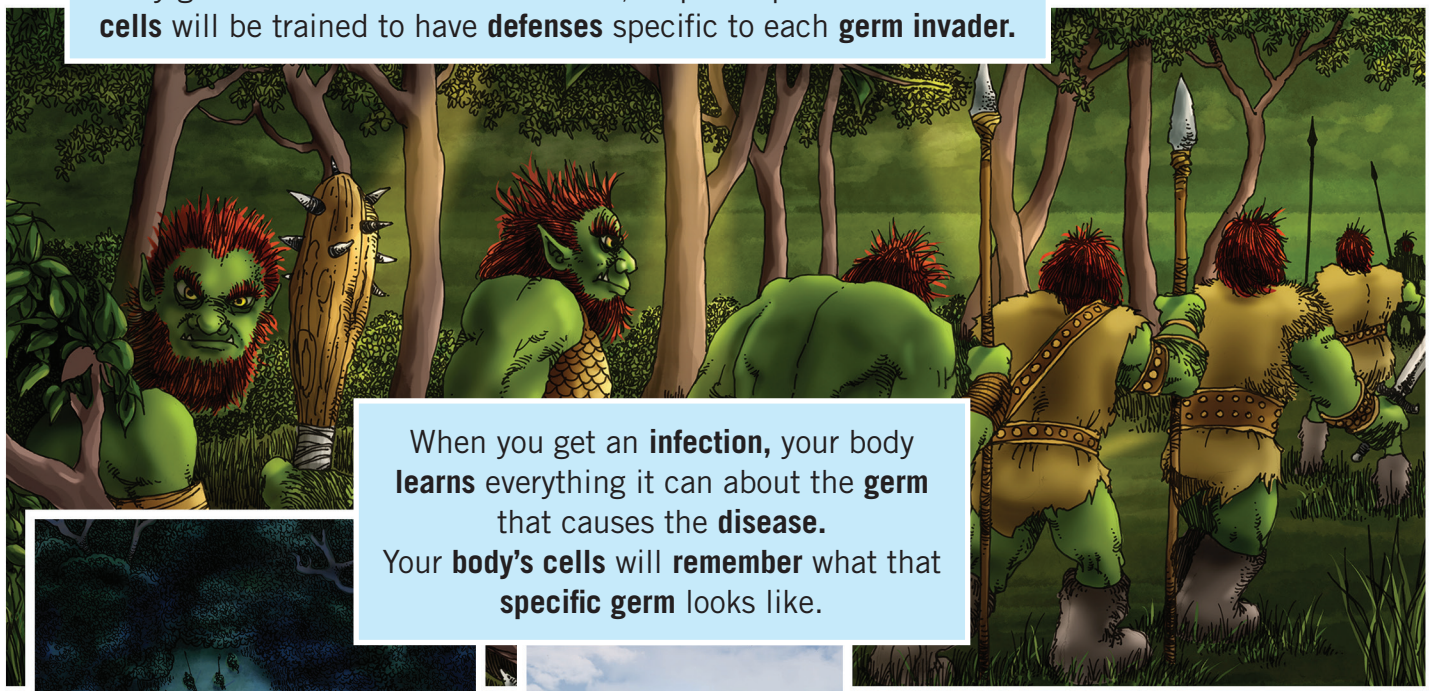
HA! HA!  
OH, BY THE WAY,  
IT'S ME KRIS.  
I JUST GOT  
TO THE  
MEETING...  
AND WHAT  
TIMING!



Outside, an army of monster germs is attacking...



Every germ is different. To **combat** this, a special platoon of **immune cells** will be trained to have **defenses** specific to each **germ invader**.



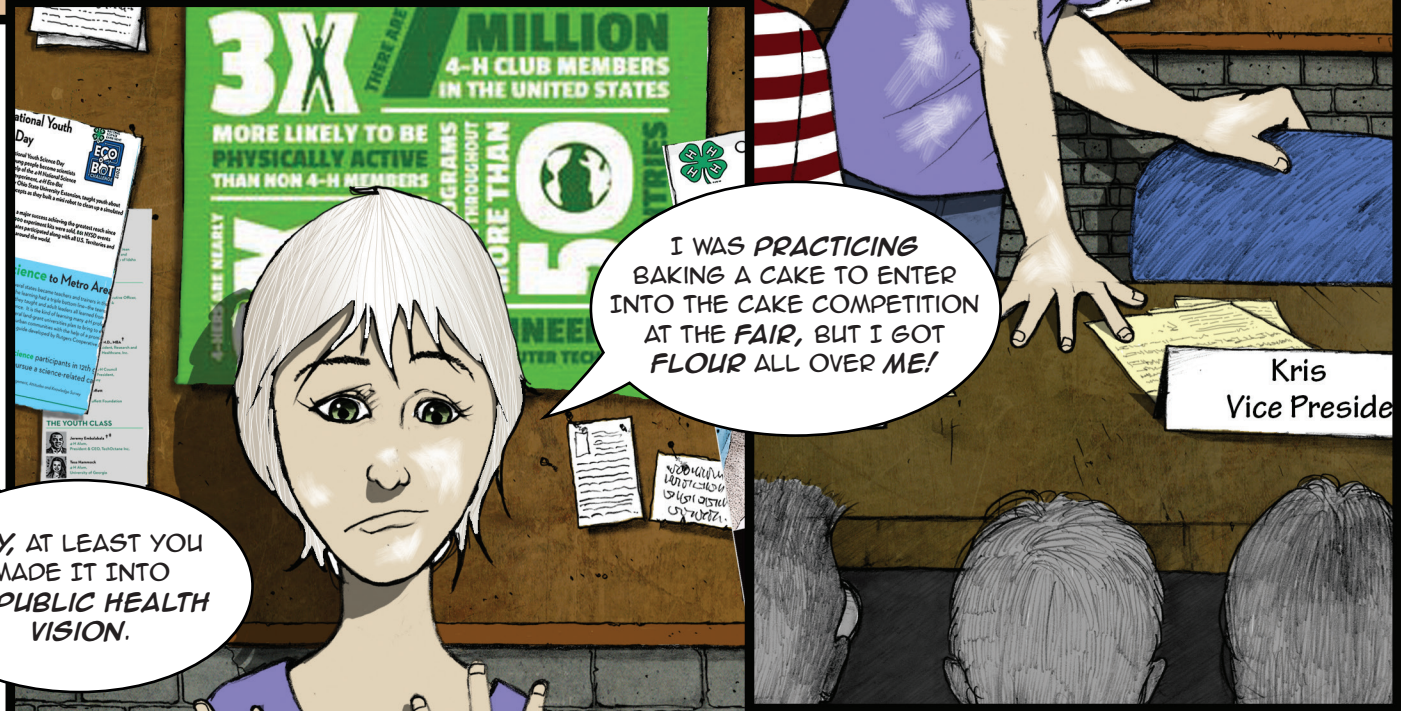
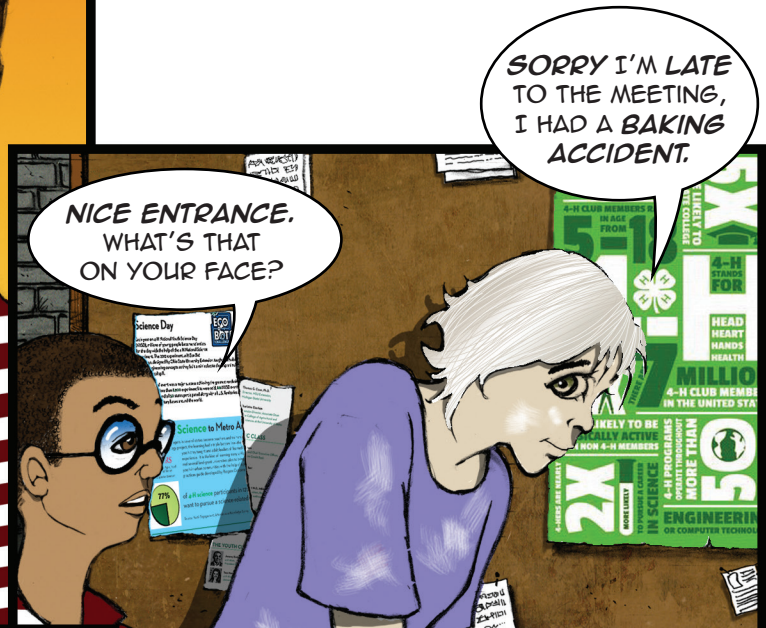
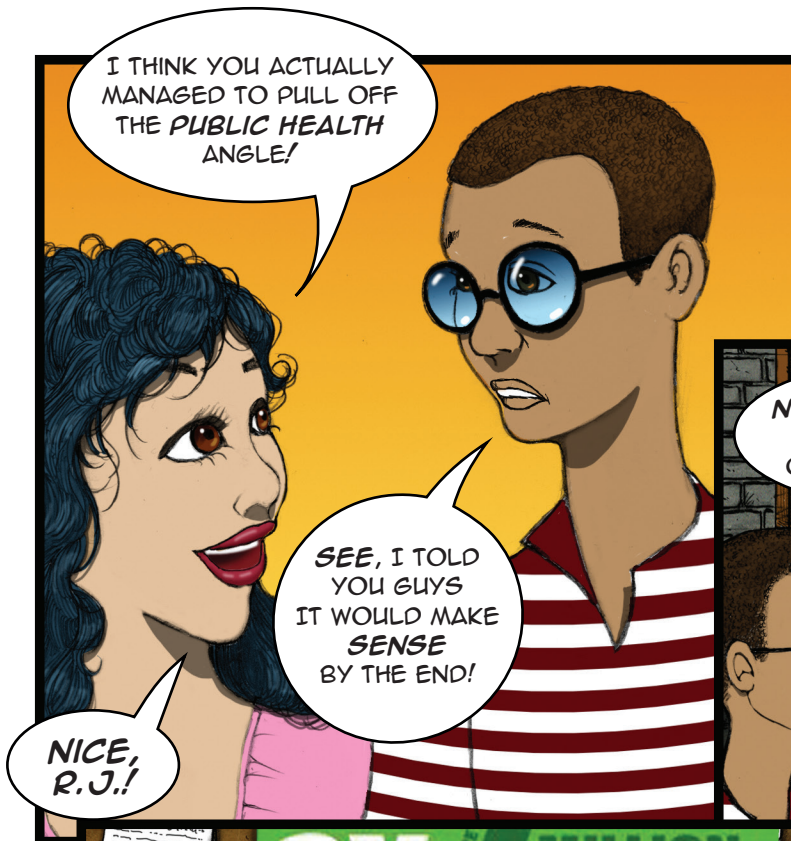
When you get an **infection**, your body **learns** everything it can about the **germ** that causes the **disease**. Your **body's cells** will **remember** what that **specific germ** looks like.



Your **immune cells** are constantly on the lookout for **invading germs**.

When **germs** are spotted and **recognized** by the **immune system**, we must leap into action to **fight the infection!**







SO, I GATHER THIS IS A **PUBLIC HEALTH** IMAGINATION EXERCISE? CAN I GO NEXT?

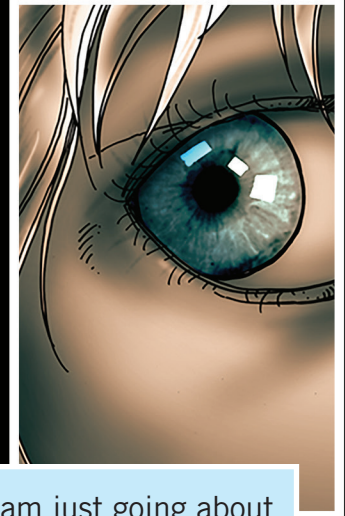
OK, GUYS. I'M ON A **SPACE STATION...**



WOW! AND WE THOUGHT R.J.'S WAS OUT THERE...



"The space station is full of people **infected** with an **alien virus**, but I am completely unaware."



"I am just going about my **business**. Little do I know that the space station is **contaminated** with the **virus**. Just by being in the environment, I'm being **exposed** to the **virus!**"

"If you are in a **contaminated environment** and don't take the **proper precautions**, you can get **sick**, too."

"The **virus** can enter a person's eyes, nose or mouth to cause **infection**."



"Oh no! The **virus** has gotten to **me**. It's trying to **infect** me!"

"However, I know that I'll be **safe** because I have been **vaccinated**. **Vaccines** work by causing your **immune system** to recognize and **fight** against the **attacking virus**."





OH, WOW! KRIS!  
THAT WAS SCARY.  
I GUESS BEING  
COVERED IN FLOUR  
GOT YOU THINKING  
ABOUT BEING  
COVERED  
IN A VIRUS!



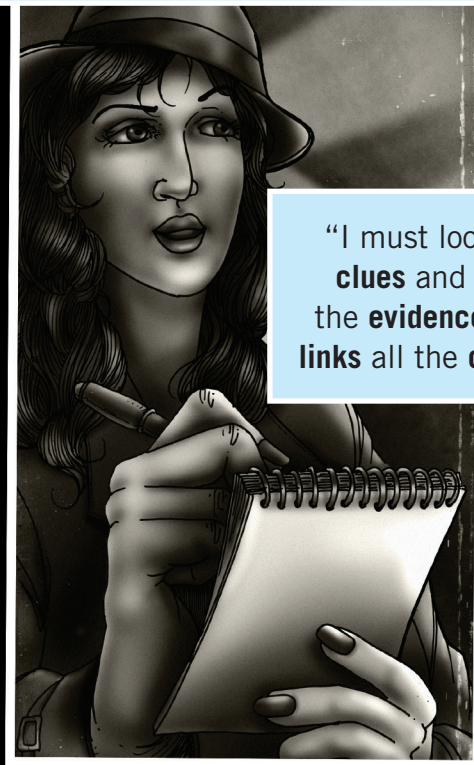
HMM,  
MY TURN ALREADY?  
LET'S SEE...



OK, I'M PICTURING MYSELF AS A **DETECTIVE**.  
I'M GOING TO TRY AND KEEP IT FOCUSED ON  
**PUBLIC HEALTH** FROM THE START... UNLIKE  
YOU GUYS!... SO LET'S SAY I'M A **DISEASE  
DETECTIVE**.



“There has been an **outbreak** of **foodborne illness**. I have been doing some studying prior to **CDC camp**, so I know that foodborne illness is caused by consuming **contaminated** food or beverages and sometimes it can be spread from person to person.”



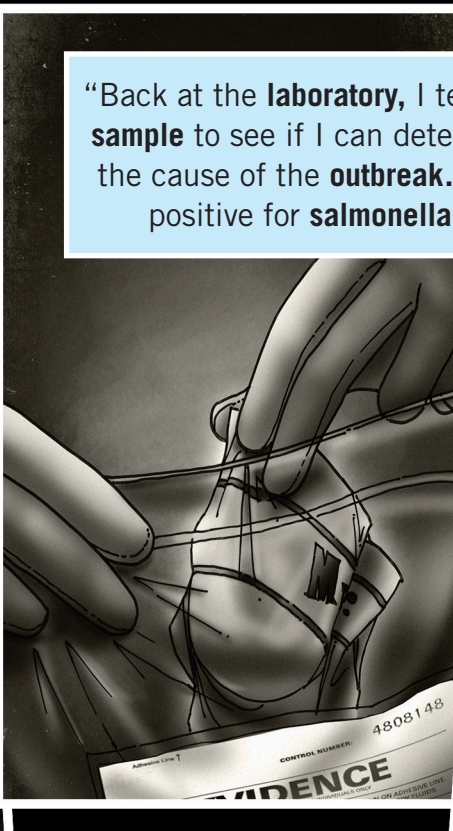
“I must look for **clues** and find the **evidence** that **links** all the **cases!**”



“Everyone who has gotten **sick** ate at this **restaurant!**”



“I find a **sample** of food to take back to the **lab.**”



“Back at the **laboratory**, I test the **sample** to see if I can determine the cause of the **outbreak...** it's positive for **salmonella!**”



“Now I need to **reach out** and see who else may have **eaten** at this **restaurant**, and I need to **protect** people who could be at **risk.**”



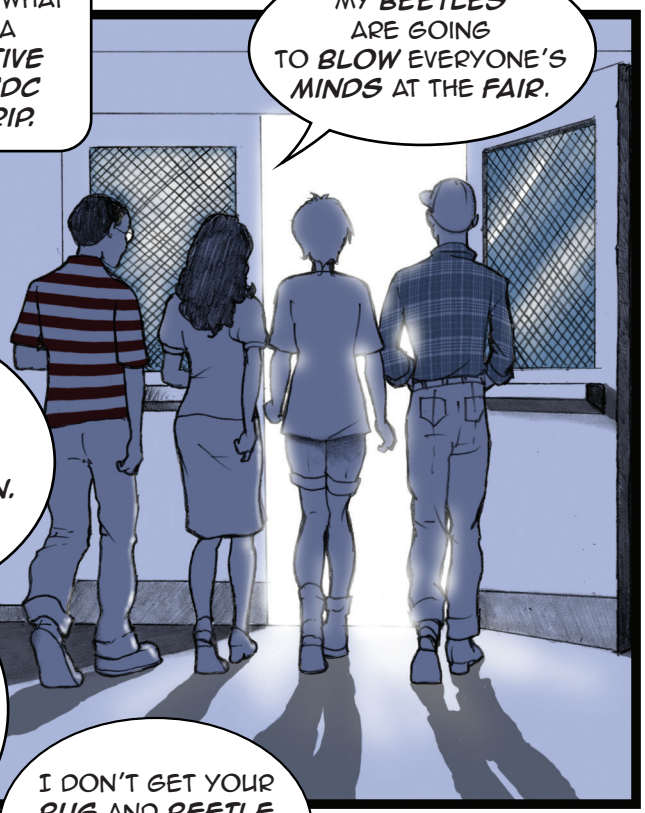
Emily  
President

THAT WAS *FUN*, EVERYONE!  
I'M SURE WE WILL GET  
A MORE REALISTIC  
UNDERSTANDING OF WHAT  
IT'S LIKE TO BE A  
*DISEASE DETECTIVE*  
ONCE WE GO TO *CDC*  
FOR THE *FIELD TRIP*.

NOW, LET'S TALK  
ABOUT THE  
*COUNTY FAIR*.  
I'LL PRESENT  
MY *BUG COLLECTION*.  
EDDIE WILL BE  
SHOWING HIS *PIG*.

KRIS IS ENTERED  
INTO THE *CAKE*  
*BAKING*  
*COMPETITION*,  
AND R.J. WILL  
BE EXHIBITING  
HIS *CHICKEN*.  
ANY QUESTIONS?

MY *BEEYLES*  
ARE GOING  
TO *BLOW EVERYONE'S*  
*MINDS AT THE FAIR*.



I DON'T GET YOUR  
*BUG AND BEETLE*  
*FASCINATION*,  
EM... IT'S KIND  
OF *WEIRD*.

LATER ON...



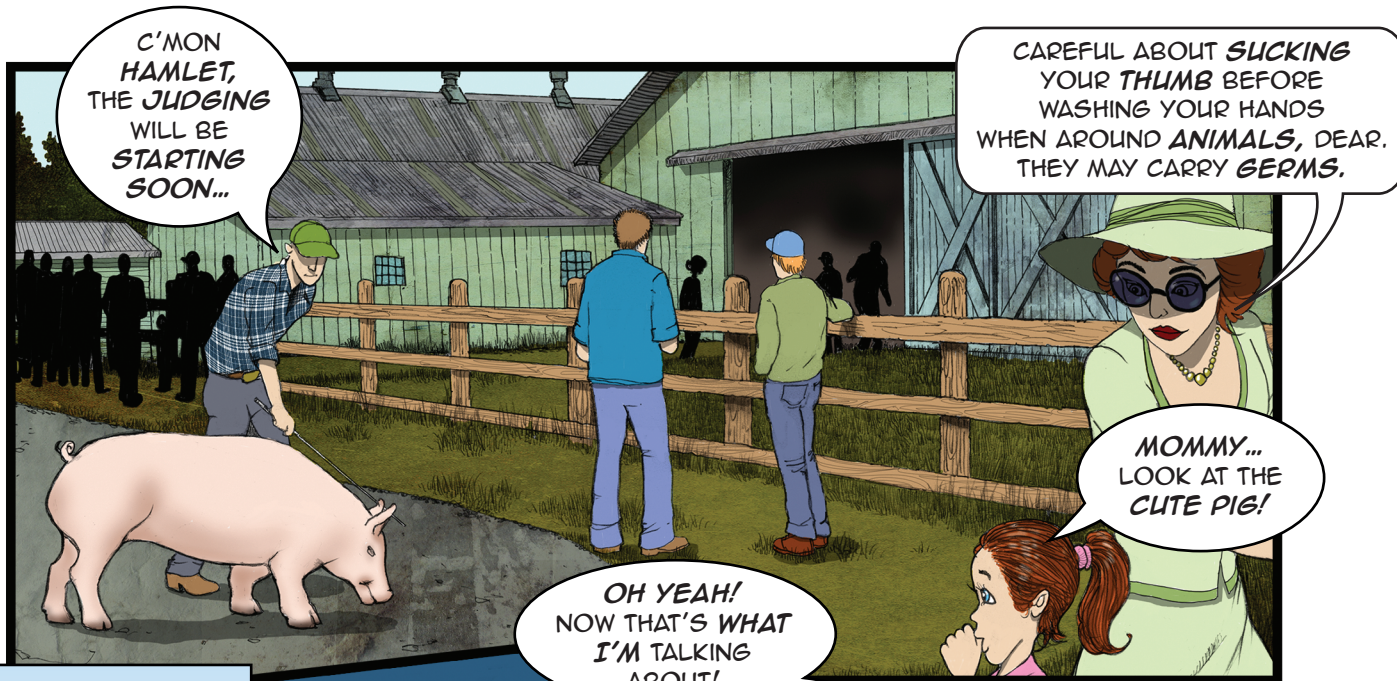
OK, MR.  
*MEDIEVAL ARCHER*  
*GERM ANALOGY GUY*.



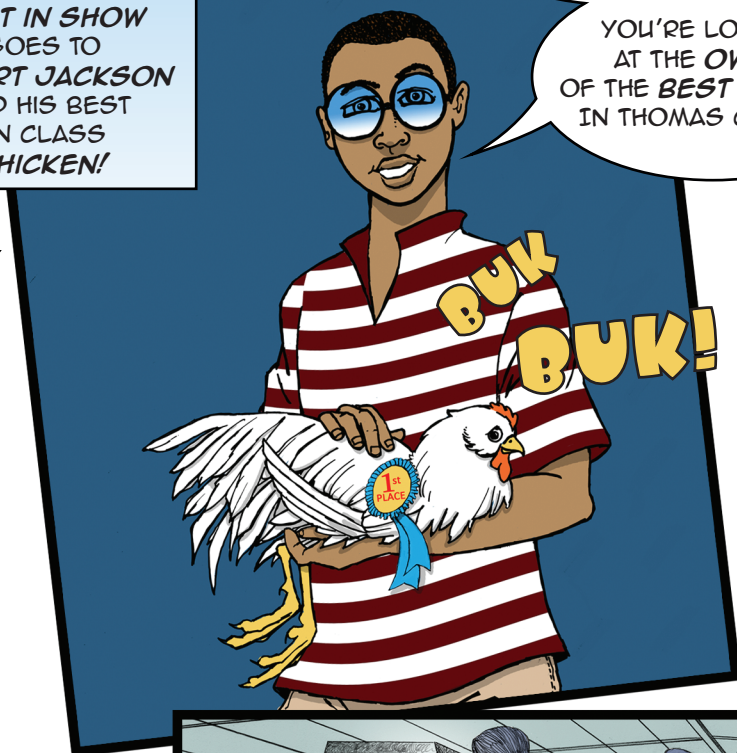


AT THE THOMAS COUNTY FAIR...



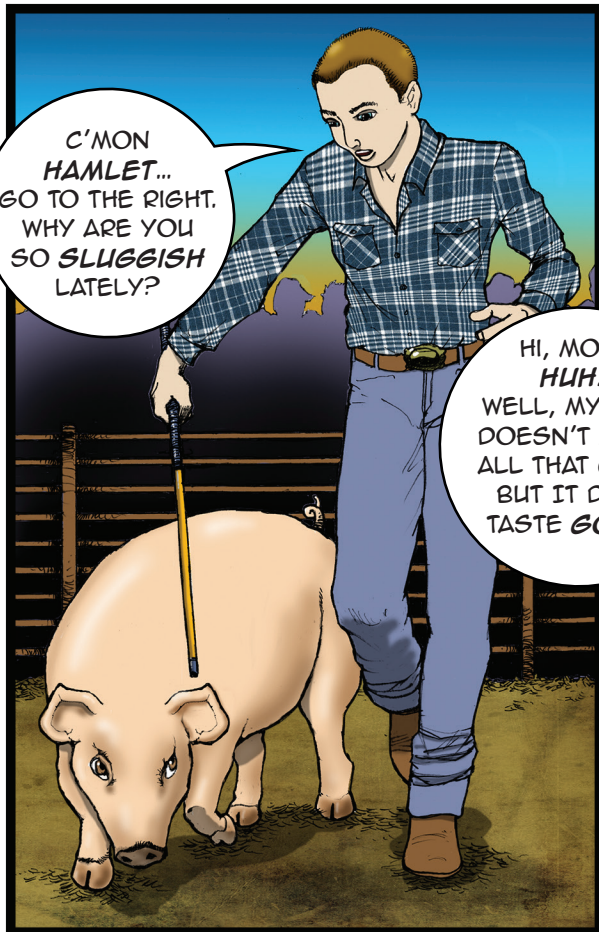


AND THE **BEST IN SHOW** GOES TO **ROBERT JACKSON** AND HIS **BEST IN CLASS CHICKEN!**



YOU'RE LOOKING AT THE **OWNER** OF THE **BEST CHICKEN** IN THOMAS COUNTY!



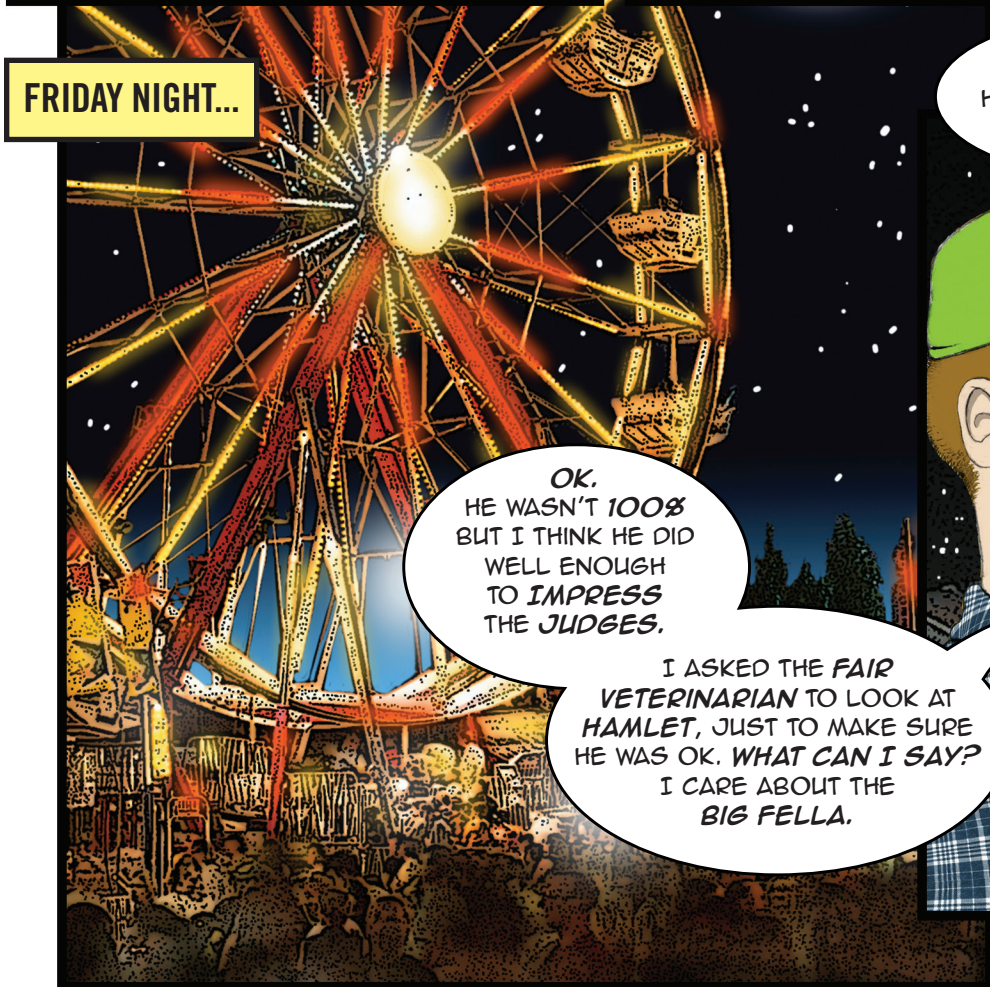


C'MON  
HAMLET...  
GO TO THE RIGHT.  
WHY ARE YOU  
SO *SLUGGISH*  
LATELY?

HI, MOM...  
*HUH?*  
WELL, MY CAKE  
DOESN'T LOOK  
ALL THAT GREAT.  
BUT IT DOES  
TASTE *GOOD!*



CAKE  
DECORATING  
COMPETITION



FRIDAY NIGHT...

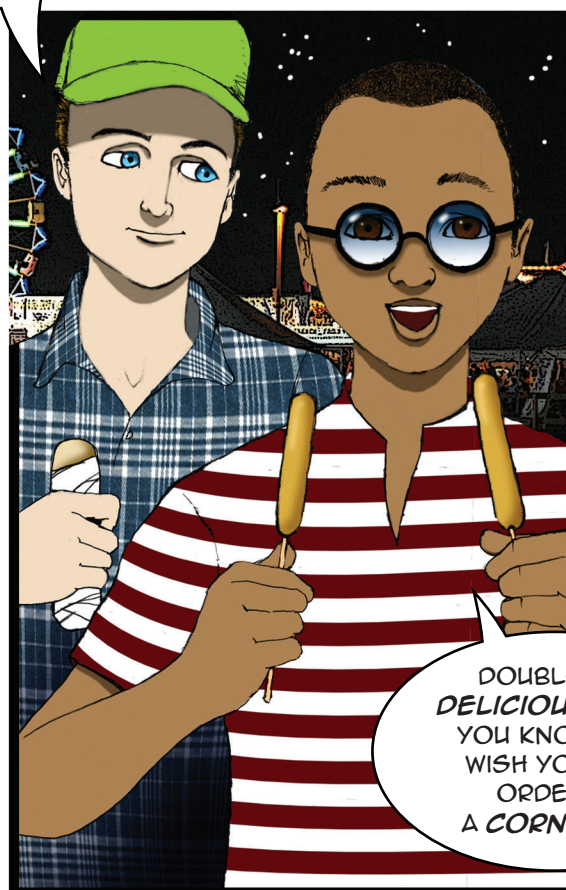
OK.  
HE WASN'T 100%  
BUT I THINK HE DID  
WELL ENOUGH  
TO *IMPRESS*  
THE *JUDGES.*

I ASKED THE *FAIR*  
*VETERINARIAN* TO LOOK AT  
HAMLET, JUST TO MAKE SURE  
HE WAS OK. *WHAT CAN I SAY?*  
I CARE ABOUT THE  
*BIG FELLA.*



WELL, EDDIE...  
HOW DID HAMLET  
DO TODAY?







HEY, YOU GUYS UP FOR THE HOUSE OF HORRORS? YOU'RE NOT SCARED, ARE YOU?

I DON'T KNOW ABOUT THIS, YOU GUYS...



N-NOTHING TO WORRY ABOUT... THOSE ARE JUST ACTORS... I THINK...



FEELKI



COUGH!  
COUGH!

MY ASTHMA IS KICKING IN, IT MAY BE THE FOG MACHINES IN HERE.



HA!... I CAN'T BELIEVE THOSE TWO ARE REALLY SCARED!

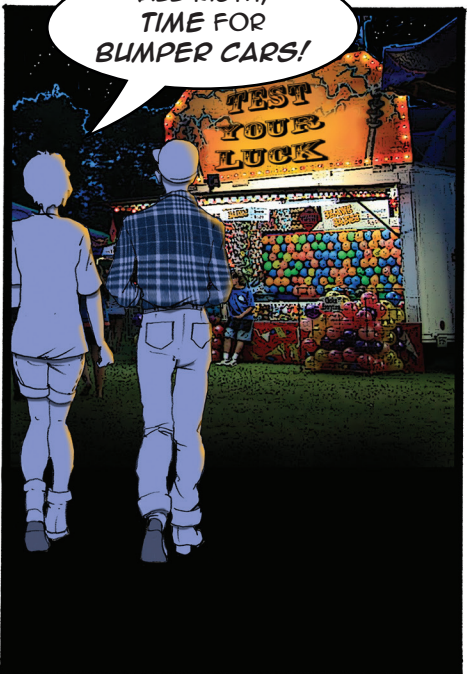


L-LET'S GO TRY THE BUMPER CARS... OKAY?

Y-YES... LET'S...



PUFF



ALL RIGHT, TIME FOR BUMPER CARS!







AWESOME!  
I LOVE  
BUMPER CARS!



WHOA... DUDE!

HE'LL LIVE.  
MORE ROOM FOR  
FUNNEL CAKES,  
EH MAN?



...WOW, I'M REALLY  
NOT FEELING WELL  
YOU GUYS...

BURRITOS  
AND BUMPER CARS...  
PROBABLY NOT A GOOD  
COMBINATION.



EDDIE ...  
YOU OK?

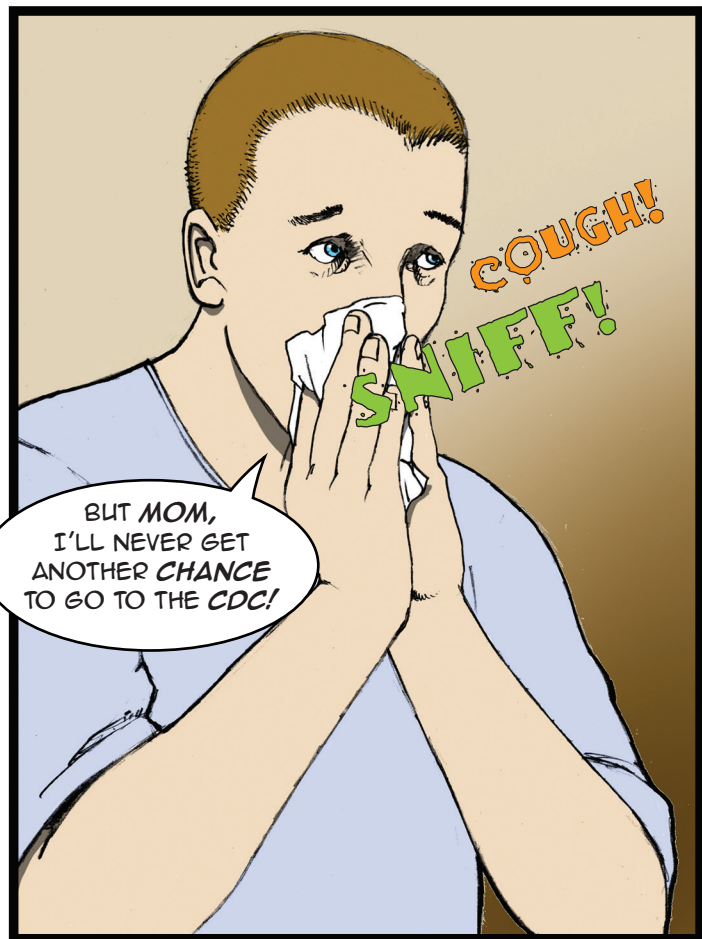
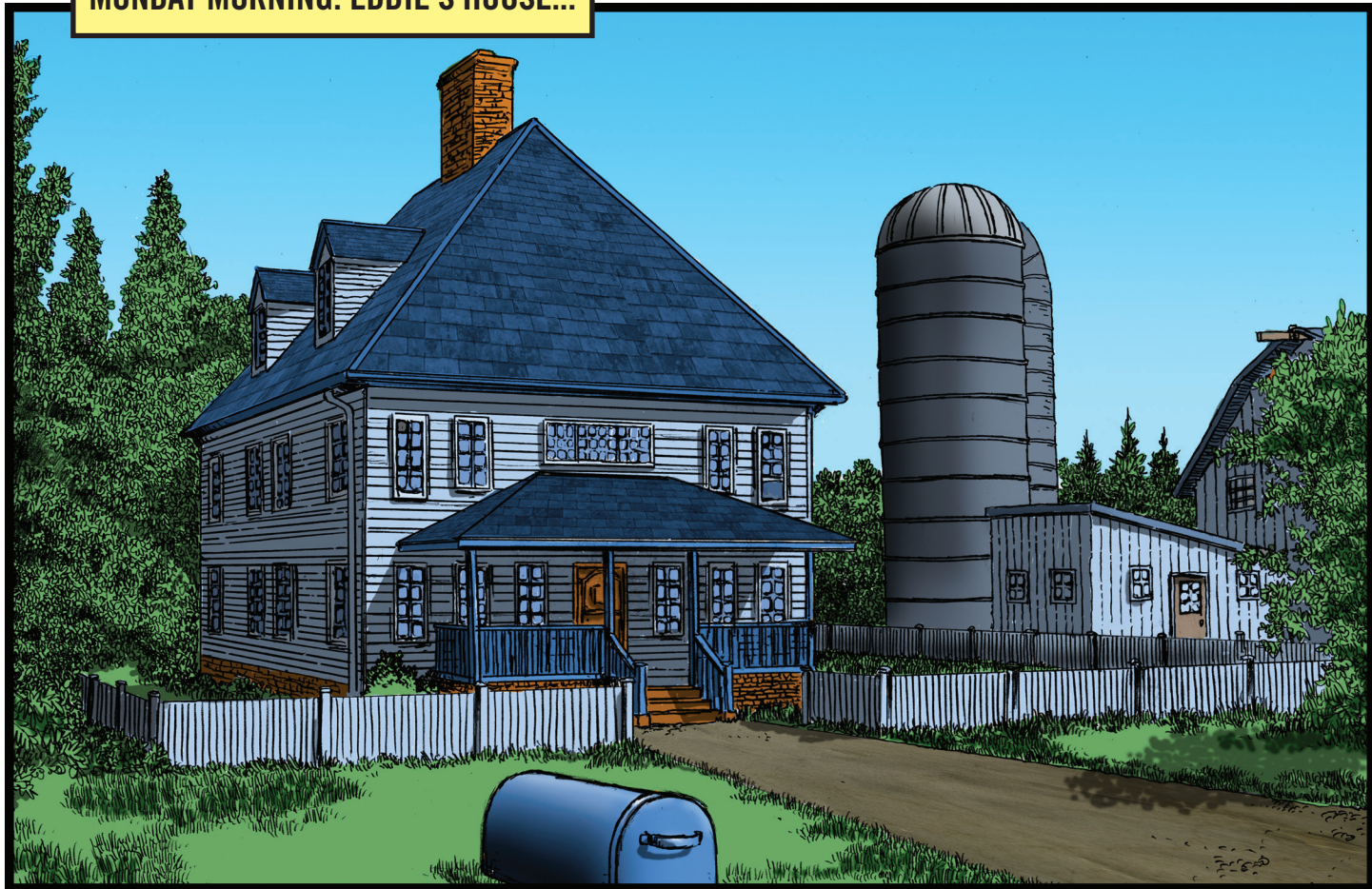


UGH,  
EDDIE IS  
THROWING UP.  
I THINK IT'S TIME  
TO CALL IT A  
NIGHT!



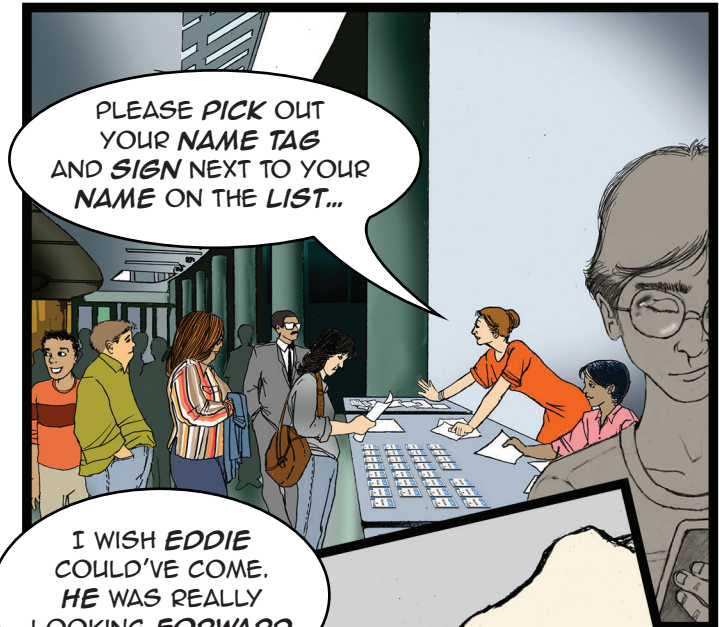


MONDAY MORNING: EDDIE'S HOUSE...





**CENTERS FOR DISEASE CONTROL AND PREVENTION HEADQUARTERS, ATLANTA...**





HELLO, I'M DR. LEE.  
WELCOME TO THE CDC.

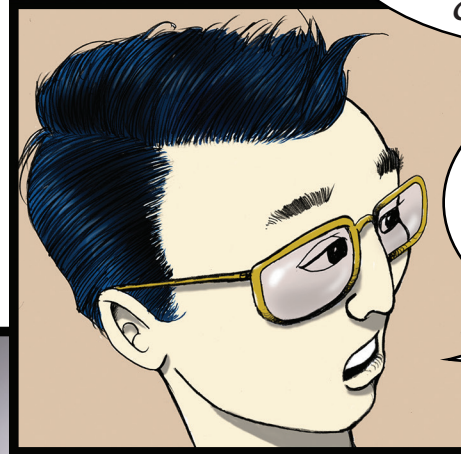
I ALONG WITH THE  
**EIS OFFICERS**  
STANDING BESIDE  
ME, WILL TEACH YOU  
ABOUT **INFECTIOUS  
DISEASES** AND HOW  
TO BE A **DISEASE  
DETECTIVE**. MEET  
DRS. ALISON, ALEX,  
AND KIM.

HELLO  
EVERYONE, I'M  
DR. ALISON.

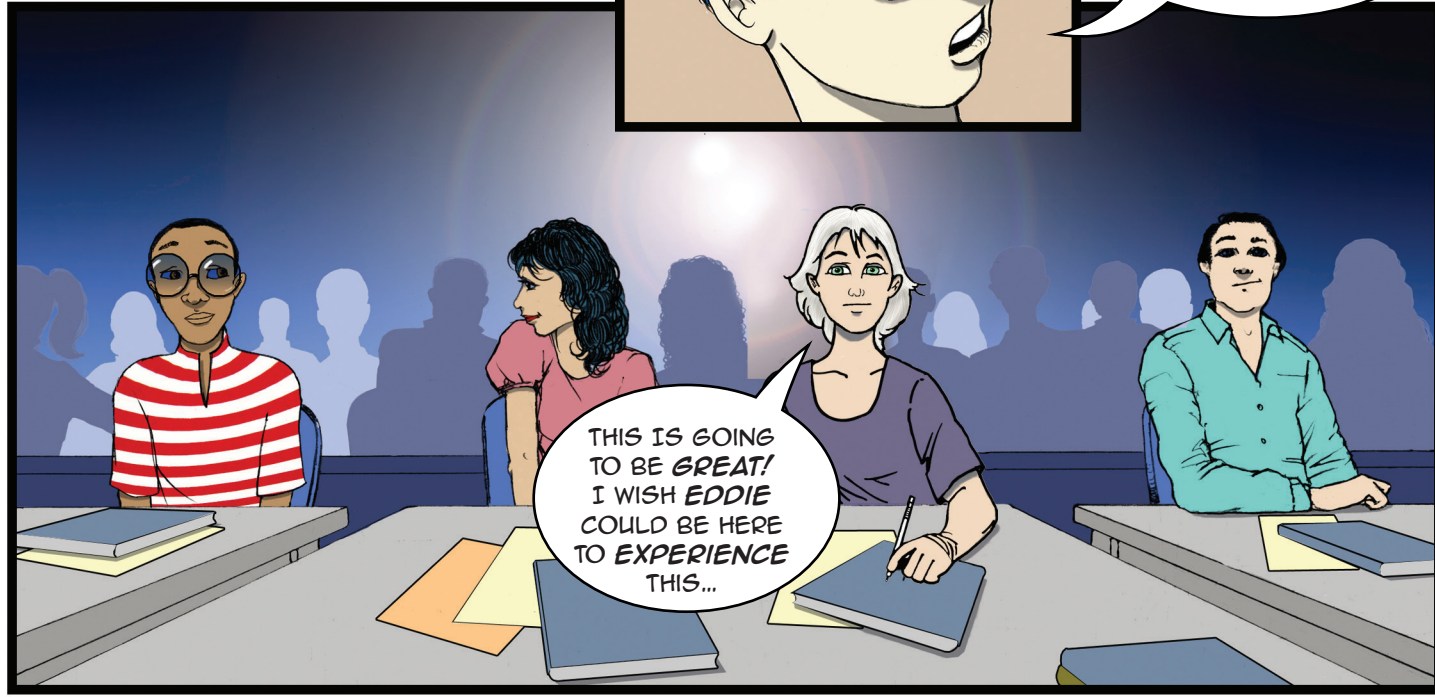
I'M  
DR. ALEX.

AND I'M DR. KIM.  
WE ARE CDC  
EIS OFFICERS...

...WHICH STANDS  
FOR **EPIDEMIC  
INTELLIGENCE SERVICE**.  
WHEN DISEASE OUTBREAKS  
OR OTHER PUBLIC HEALTH  
THREATS EMERGE, WE ARE  
**ON THE SCENE**.




BY THE END OF THIS  
**COURSE**, YOU'LL KNOW  
ABOUT DIFFERENT KINDS OF  
**INFECTIOUS DISEASES**  
AND HOW **CDC**  
**PROTECTS THE PUBLIC**.



THIS IS GOING  
TO BE **GREAT!**  
I WISH **EDDIE**  
COULD BE HERE  
TO **EXPERIENCE**  
THIS...



# WHAT IS PUBLIC HEALTH?

**PUBLIC HEALTH WORKERS**

- Community Health
- Focus on Preventing Diseases
- Investigate Diseases in Groups of People

**CLINICIANS**

- Individual Health
- Focus on Treating Diseases
- Diagnose and Treat Disease in One Patient

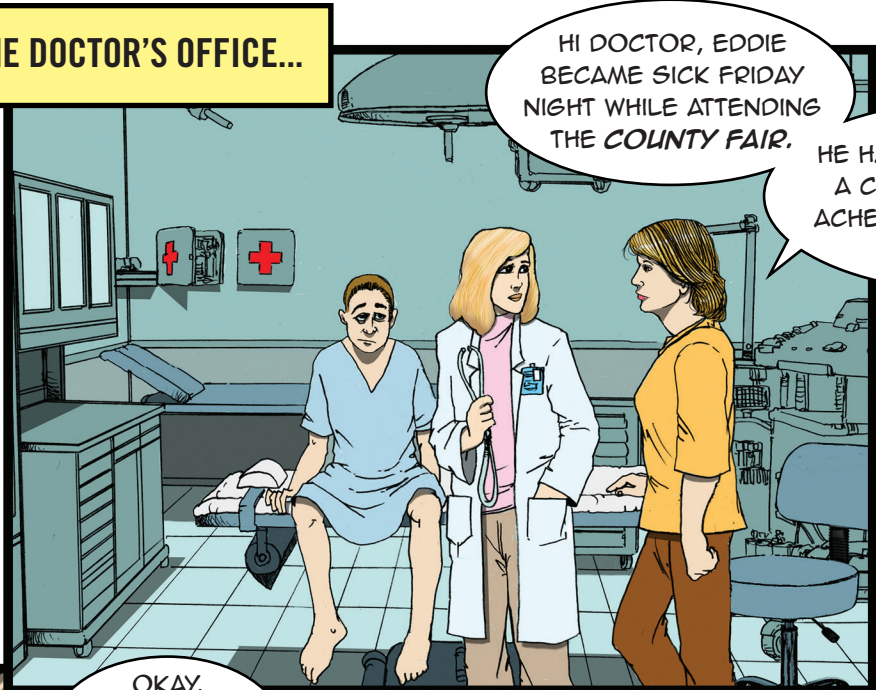
NEXT, I'D LIKE TO TELL YOU HOW WE AT CDC FIGHT DISEASE.

CDC FOCUSES ON PUBLIC HEALTH, PROTECTING THE HEALTH AND SAFETY OF GROUPS OF PEOPLE.





LATER MONDAY AT THE DOCTOR'S OFFICE...

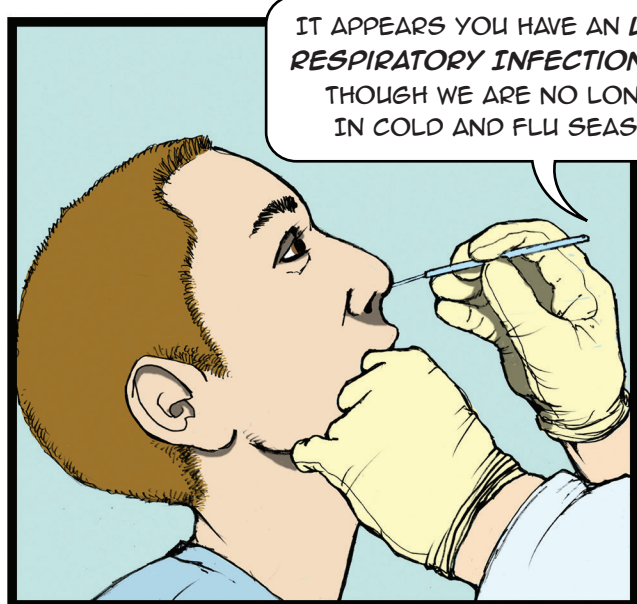


HI DOCTOR, EDDIE BECAME SICK FRIDAY NIGHT WHILE ATTENDING THE COUNTY FAIR.

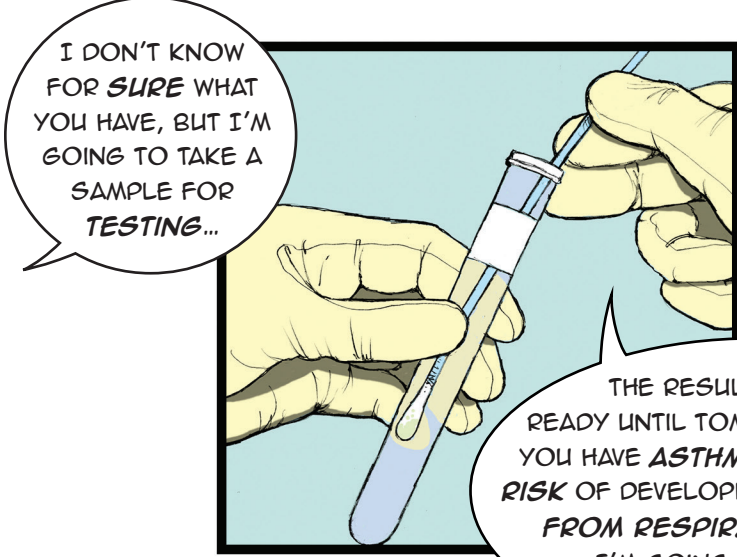
HE HAS HAD A 101° FEVER, A COUGH, AND MUSCLE ACHES. HE ALSO SUFFERS FROM ASTHMA.



OKAY, JUST BREATHE NORMALLY FOR ME.



IT APPEARS YOU HAVE AN UPPER RESPIRATORY INFECTION, EVEN THOUGH WE ARE NO LONGER IN COLD AND FLU SEASON.



I DON'T KNOW FOR SURE WHAT YOU HAVE, BUT I'M GOING TO TAKE A SAMPLE FOR TESTING...

THE RESULTS WON'T BE READY UNTIL TOMORROW, BUT SINCE YOU HAVE ASTHMA AND ARE AT HIGH RISK OF DEVELOPING COMPLICATIONS FROM RESPIRATORY DISEASE, I'M GOING TO PRESCRIBE YOU THIS MEDICATION.



PLEASE CALL THE OFFICE IF EDDIE STARTS TO FEEL WORSE.

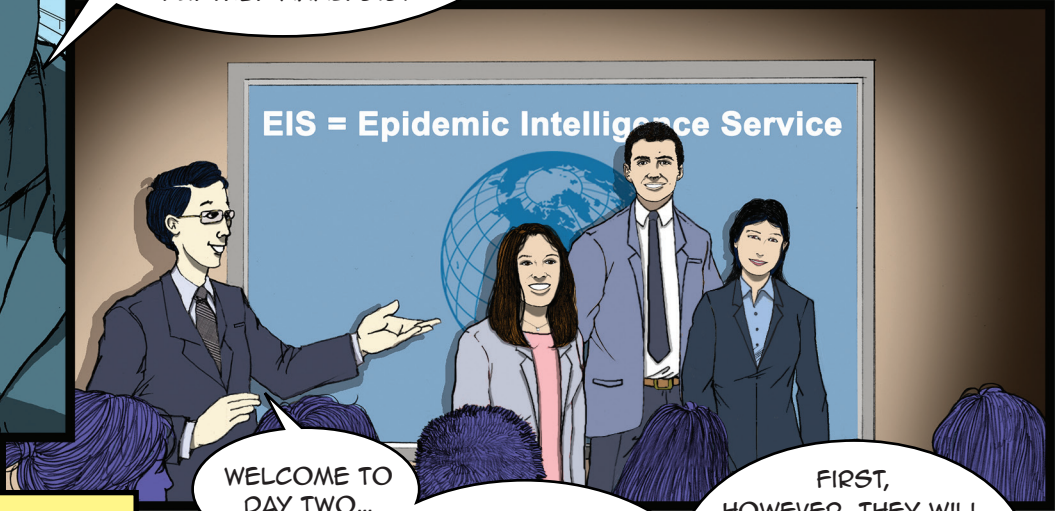




LATER TUESDAY AT THE LOCAL LABORATORY...



HELLO, DR. WALKER. YOU KNOW THAT SPECIMEN YOU SENT US FROM EDDIE SCHWARTZ? OUR TESTS WERE **UNABLE TO IDENTIFY** IT. I'M SENDING IT TO THE **STATE LABORATORY** FOR FURTHER ANALYSIS.



WELCOME TO DAY TWO...

FIRST, HOWEVER, THEY WILL TAKE YOU ON A TOUR THROUGH CDC'S **DAVID J. SENCER MUSEUM**.

MEANWHILE, AT CDC...

CLASS, TODAY OUR **EIS OFFICERS, ALISON, ALEX, AND KIM**, WILL WALK YOU THROUGH SOME OUTBREAK INVESTIGATIONS.



# Malaria: Blood, sweat, and tears

Malaria will kill at least 700,000 children this year. In 2009, a minimum of 520,000,000 people contracted the disease, and almost half of the world's population is at risk. Malaria does more than impact health; its devastating economic toll has decreased untold lives.

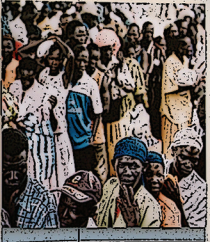
The only way to avoid getting malaria is to avoid getting bitten. Though this is easier said than done, the illness is easy to diagnose and cure, the majority of people must at least have limited resources. Many are unable to properly feed their families, much less pay for a doctor or the cost of the subway ride to the United Nations to see this exhibit would be so, possibly travel and medication, the only way to avoid malaria is to avoid getting bitten.

In 1960, more than half of the United States population was infected with malaria, as it is an easily preventable and curable disease.

No longer affects wealthier nations. It is often not seen as a major global health threat after 9/11, often in their own countries. At least 90% less than malaria in 2000, yet EIS's prevention has reduced the disease and significantly more media attention. Ultimately, it is a question of priorities: more resources spent on preventing diseases than has been developed for malaria in a single year.

and funding devoted to malaria control have not been remarkable gains, but the disease still remains a major cause of child mortality in Africa, and it is the world's most widespread parasite. And only in Africa. And that's the disease costs Africa alone an estimated US\$12 billion annually in lost productivity. Malaria's impact on economic activities only reinforces poverty, destroying the chances for people to achieve better lives.

World malaria. Historically, among such as malaria fever and more than 200 million people around the world. Malaria means only one of the most deadly diseases in the world, with the exception of West Nile virus.



CDC OFTEN INVESTIGATES VECTOR-BORNE DISEASES, SUCH AS MALARIA, AS WELL AS ZOOONOTIC DISEASES, SUCH AS RABIES, TUBERCULOSIS AND INFLUENZA, A.K.A., THE FLU.

ZOOONOTIC PATHOGENS CAN INFECT BOTH ANIMALS AND PEOPLE. SOME CAN MAKE PEOPLE **REALLY SICK**, EVEN IF INFECTED ANIMALS **DON'T LOOK SICK**.



PEOPLE CAN GET ZOOZONIC DISEASES THROUGH **CLOSE CONTACT** WITH AN **INFECTED ANIMAL**, ITS **ENVIRONMENT** OR OTHER **INFECTED PEOPLE**.

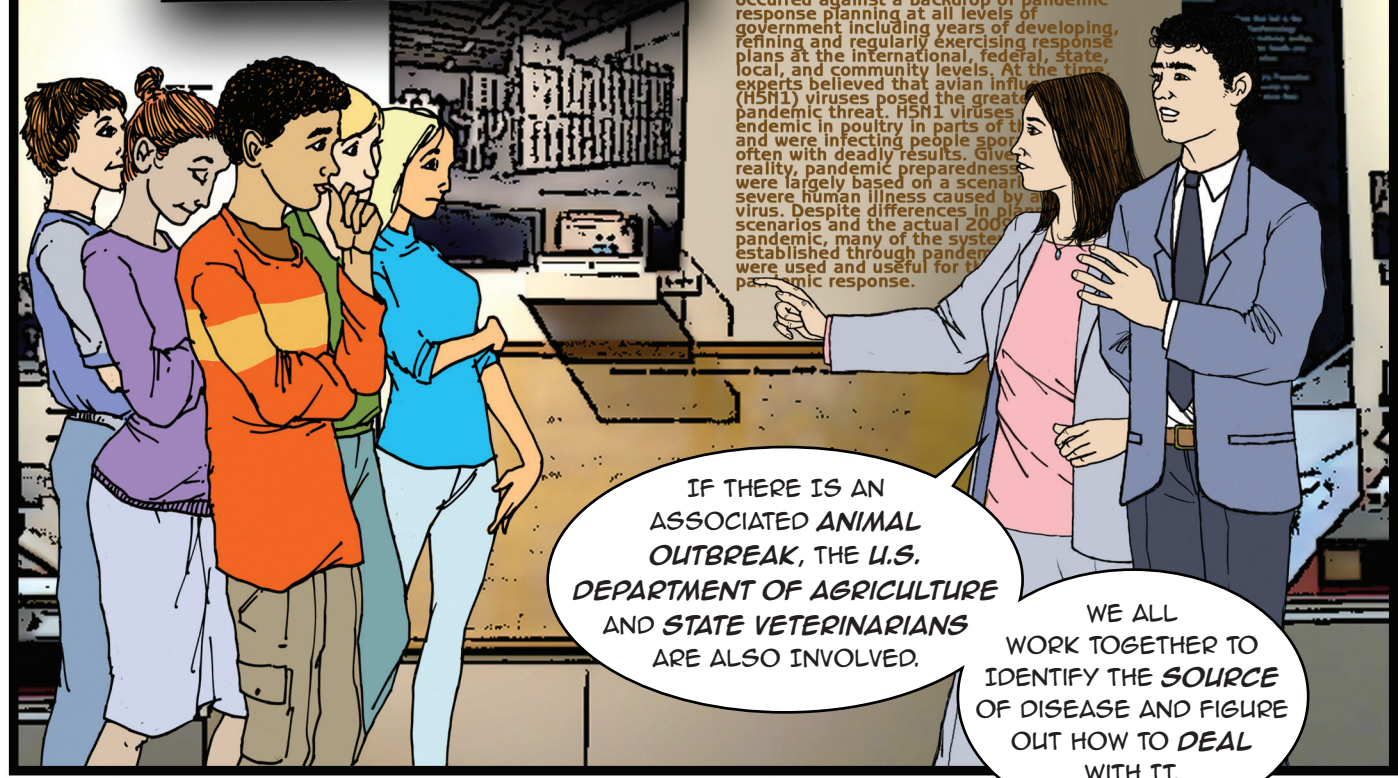
MANY **FOODBORNE** DISEASES ARE ALSO **ZOOZONIC** IN ORIGIN.

DO YOU THINK **EDDIE** COULD HAVE GOTTEN SICK FROM A **FOODBORNE** OR **ZOOZONIC** DISEASE?

HMM... **MAYBE**.



**CDC** COLLABORATES WITH OUR **STATE PUBLIC HEALTH PARTNERS** WHO ARE OFTEN THE FIRST TO IDENTIFY A POTENTIAL PROBLEM.



## 2009 H1N1 Flu Pandemic

The 2009 H1N1 influenza (flu) pandemic occurred against a backdrop of pandemic response planning at all levels of government including years of developing, refining and regularly exercising response plans at the international, federal, state, local, and community levels. At the time, experts believed that avian influenza (H5N1) viruses posed the greatest pandemic threat. H5N1 viruses endemic in poultry in parts of the world and were infecting people sporadically, often with deadly results. Given reality, pandemic preparedness were largely based on a scenario of a severe human illness caused by a novel influenza virus. Despite differences in planning scenarios and the actual 2009 pandemic, many of the systems established through pandemic response were used and useful for the 2009 pandemic response.

IF THERE IS AN ASSOCIATED **ANIMAL OUTBREAK**, THE **U.S. DEPARTMENT OF AGRICULTURE** AND **STATE VETERINARIANS** ARE ALSO INVOLVED.

WE ALL WORK TOGETHER TO IDENTIFY THE **SOURCE** OF DISEASE AND FIGURE OUT HOW TO **DEAL** WITH IT.



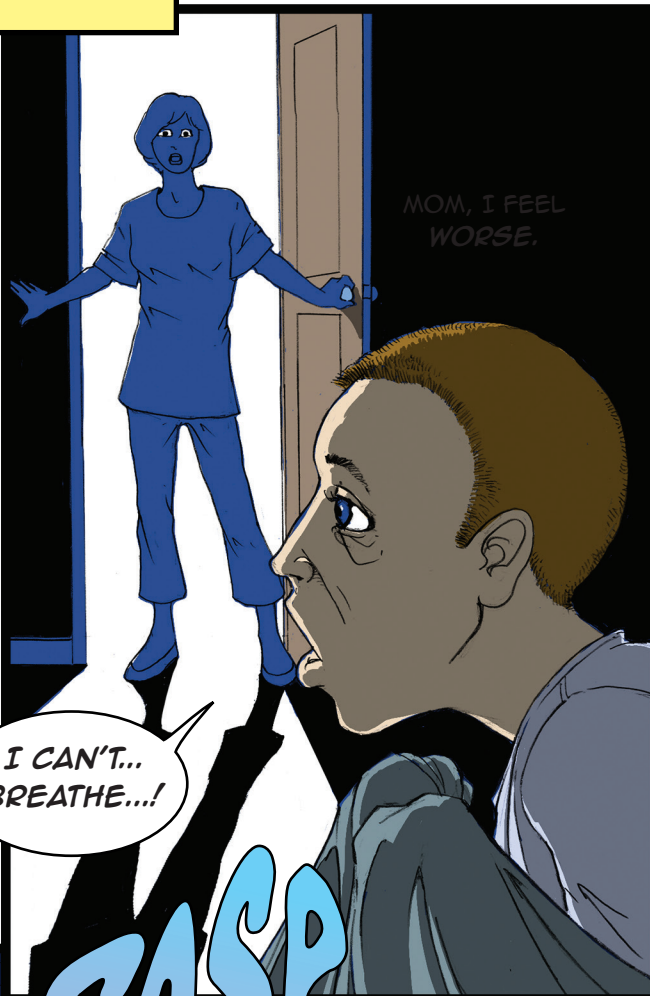




BACK AT EDDIE'S HOUSE...



EDDIE?  
WHAT'S  
WRONG?!



MOM, I FEEL  
WORSE.

I CAN'T...  
BREATHE...!

**GASP**

WEDNESDAY, EARLY MORNING...







RING RING

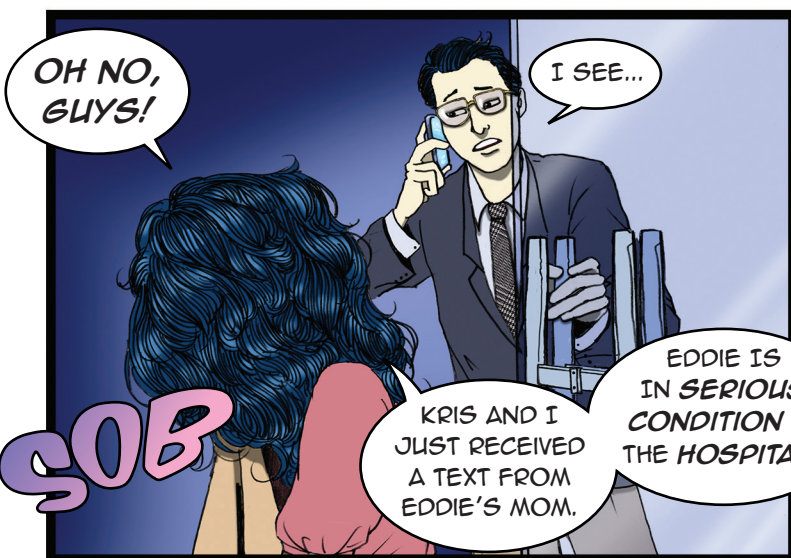
EXCUSE ME, I HAVE TO TAKE THIS...



DR. LEE, THIS IS JIM JEFFERIES WITH THE STATE HEALTH DEPARTMENT.

OUR STATE LABORATORY HAS JUST REPORTED TESTING A VIRUS THAT WE CANNOT IDENTIFY.

THE VIRUS WAS OBTAINED FROM A 17-YEAR-OLD BOY WHO GOT SICK FRIDAY NIGHT. THIS BOY IS CURRENTLY IN **SERIOUS CONDITION** IN THE **ICU**. WE WOULD LIKE YOUR ASSISTANCE WITH TESTING THE VIRUS AND PERFORMING A CASE INVESTIGATION.



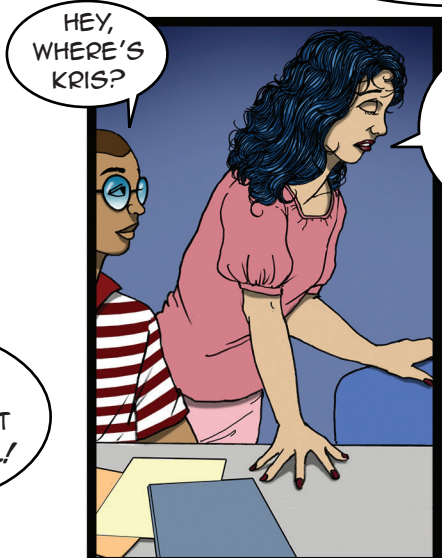
OH NO, GUYS!

SOB

I SEE...

KRIS AND I JUST RECEIVED A TEXT FROM EDDIE'S MOM.

EDDIE IS IN **SERIOUS CONDITION** AT THE **HOSPITAL!**



HEY, WHERE'S KRIS?

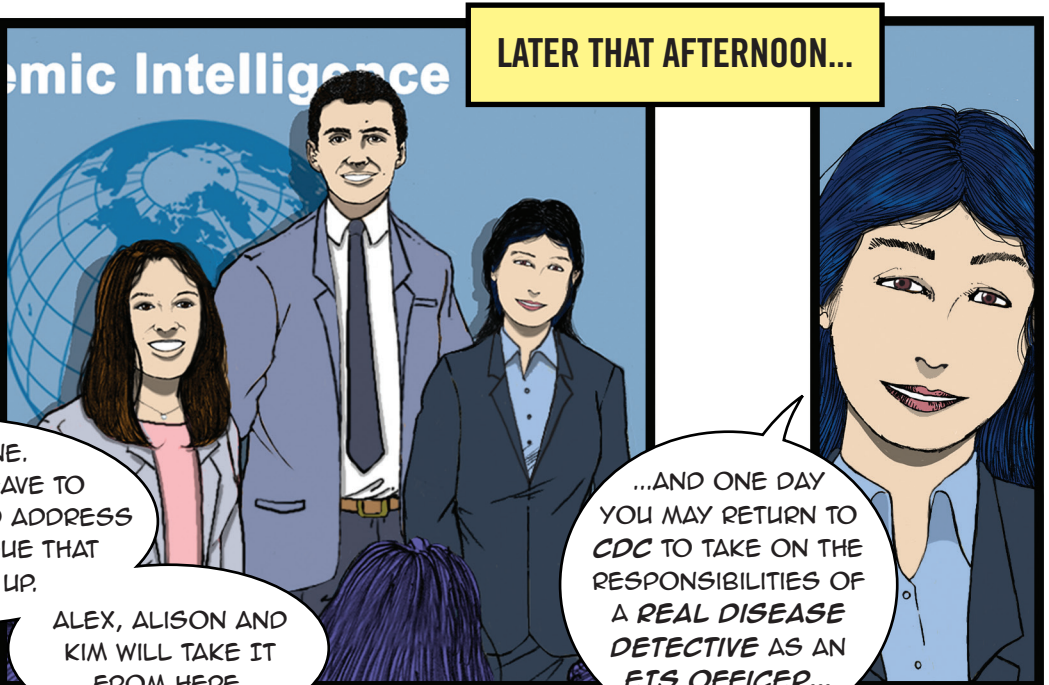
YOU KNOW HOW SHE AND EDDIE ARE **DATING?**

SHE FELT LIKE SHE COULDN'T SIT BY WHILE EDDIE IS **SO SICK.**

I HOPE HE'S GOING TO BE OK.



HI EVERYONE. I'M GOING TO HAVE TO EXCUSE MYSELF TO ADDRESS AN **URGENT** ISSUE THAT JUST CAME UP.



LATER THAT AFTERNOON...

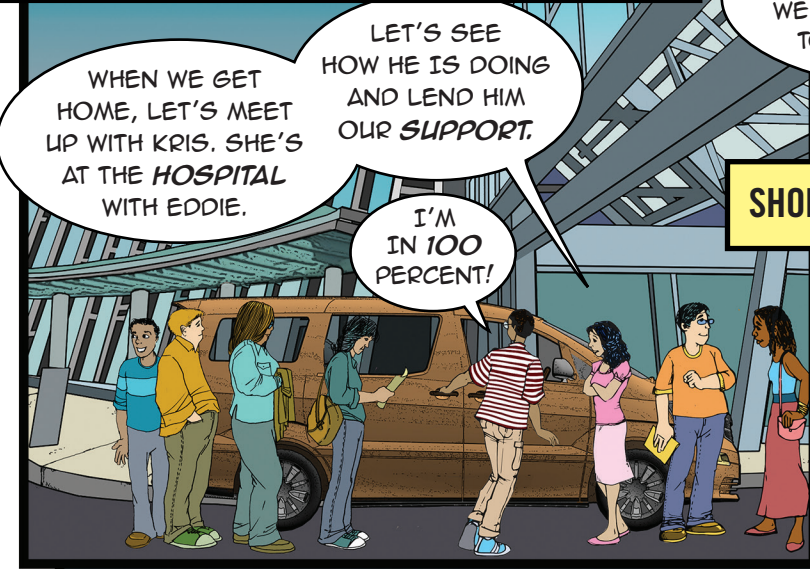
ALEX, ALISON AND KIM WILL TAKE IT FROM HERE.

...AND ONE DAY YOU MAY RETURN TO **CDC** TO TAKE ON THE RESPONSIBILITIES OF A **REAL DISEASE DETECTIVE** AS AN **EIS OFFICER...**





**THE KIDS LEAVE CDC DISEASE DETECTIVE CAMP...**



WHEN WE GET HOME, LET'S MEET UP WITH KRIS. SHE'S AT THE HOSPITAL WITH EDDIE.

LET'S SEE HOW HE IS DOING AND LEND HIM OUR SUPPORT.

I'M IN 100 PERCENT!

LET'S DISCUSS THE CASE DURING THE DRIVE. WE WILL DRIVE STRAIGHT TO THOMAS COUNTY.

FROM THERE, WE'LL MEET UP WITH REPRESENTATIVES FROM THE STATE PUBLIC HEALTH DEPARTMENT AND THE STATE VETERINARIAN'S OFFICE TO DISCUSS NEXT STEPS.

**SHORTLY AFTER...**



TIME FOR A ROAD TRIP IN THE CDC VAN...

**THE EIS OFFICERS PREPARE TO LEAVE FOR THOMAS COUNTY...**



OK, LET'S SUMMARIZE WHAT WE KNOW ABOUT THE SITUATION SO FAR.

WELL, WE HAVE AN UN-IDENTIFIABLE VIRUS WE HAVEN'T SEEN BEFORE...

YES, AND RIGHT NOW WE ARE DEALING WITH A SINGLE CASE OF SEVERE RESPIRATORY ILLNESS IN A 17-YEAR-OLD MALE WHO GOT SICK FRIDAY NIGHT.

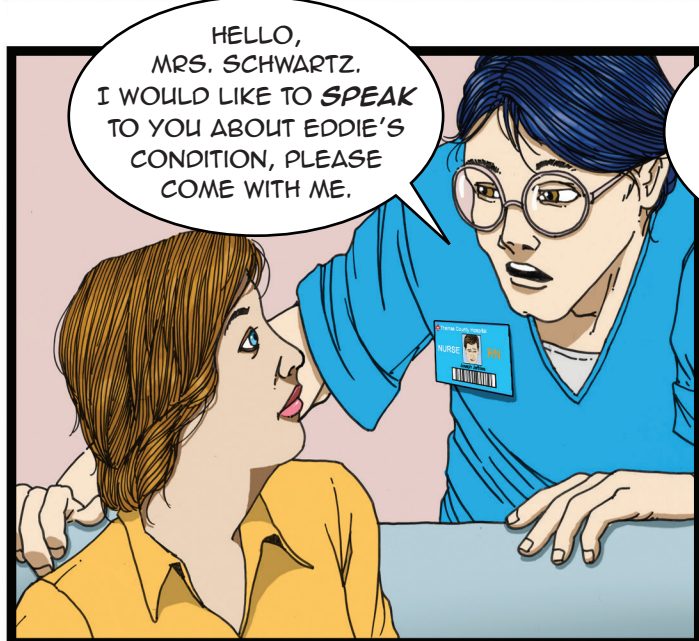


DR. LEE SAID THE PATIENT'S VIRUS SAMPLE HAS BEEN SHIPPED TO CDC. WE'LL KNOW MORE ONCE THE CDC LAB ANALYZES THE VIRUS.



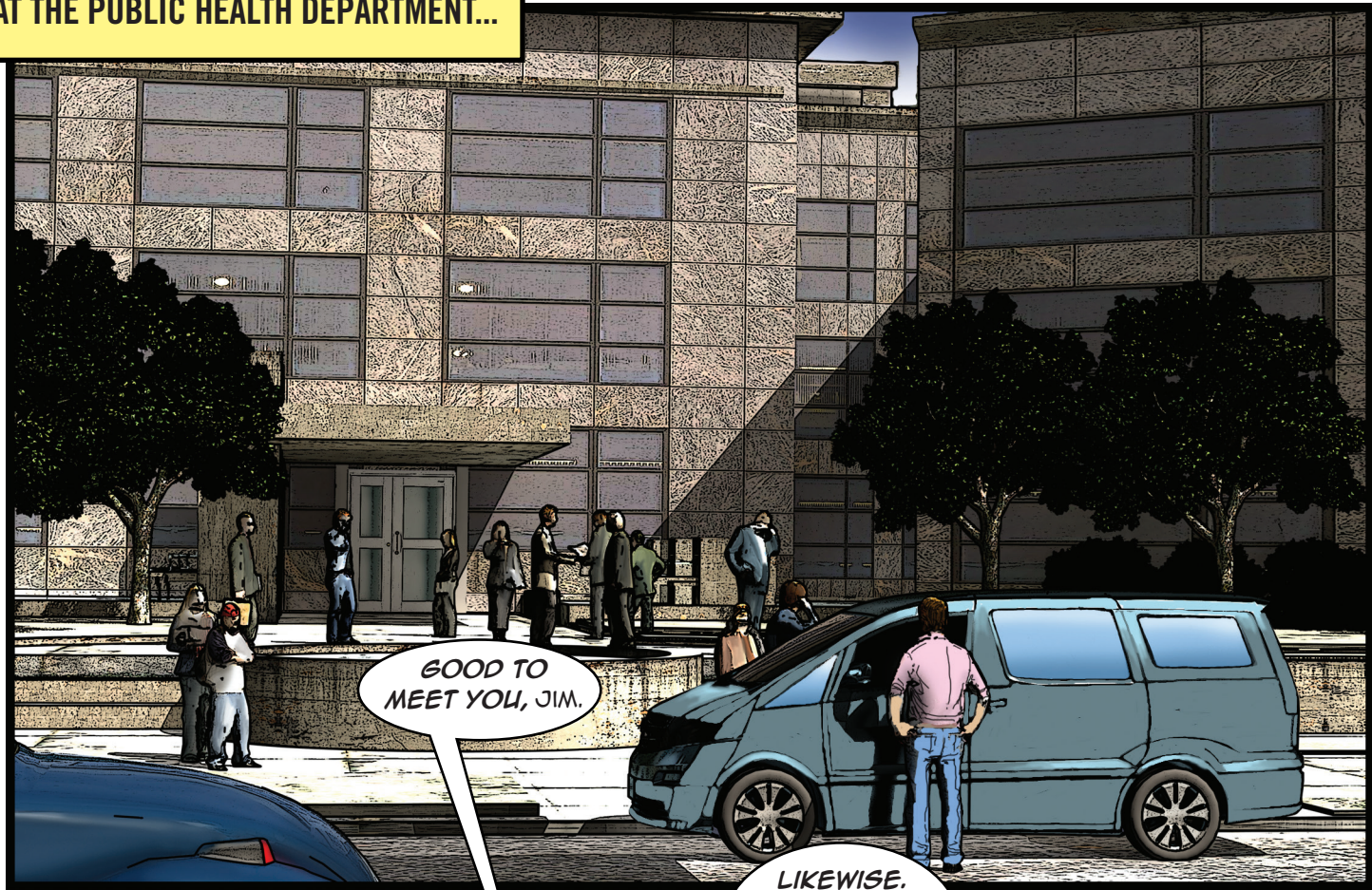


LATER AT THE EMERGENCY ROOM WHERE EDDIE IS BEING TREATED...





**AT THE PUBLIC HEALTH DEPARTMENT...**

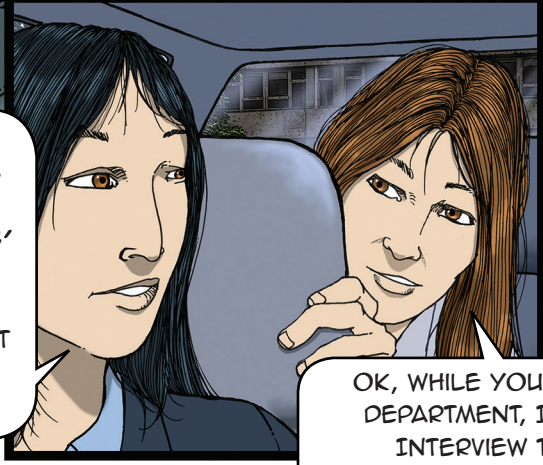


GOOD TO MEET YOU, JIM.

LIKELIKE. WE'LL GET YOU UNPACKED AT OUR OFFICE.



ONCE INSIDE, LET'S FIND OUT IF THE HEALTH DEPARTMENT HAS HAD A CHANCE TO CONTACT LOCAL HOSPITALS AND DOCTORS' OFFICES TO SEE IF THERE HAVE BEEN ANY OTHER UNUSUAL RESPIRATORY CASES IN THE LAST FEW DAYS. IF NOT, WE CAN HELP THEM MAKE THOSE CALLS.

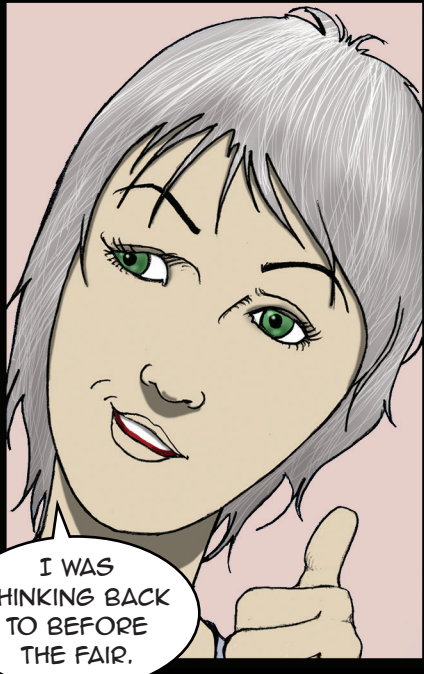


OK, WHILE YOU TWO GET SET UP AT THE HEALTH DEPARTMENT, I'LL HEAD TO THE HOSPITAL TO INTERVIEW THE BOY'S FAMILY, CHECK HIS MEDICAL CHART AND SPEAK WITH HIS PHYSICIAN.

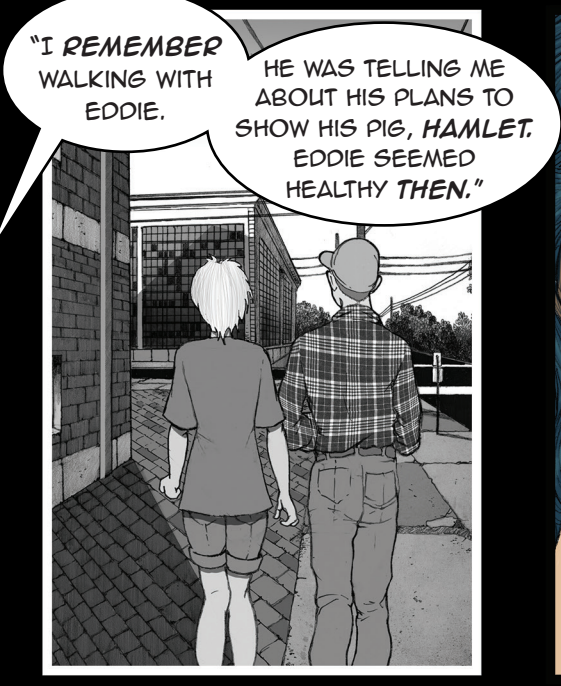




**AT THE EMERGENCY ROOM...**

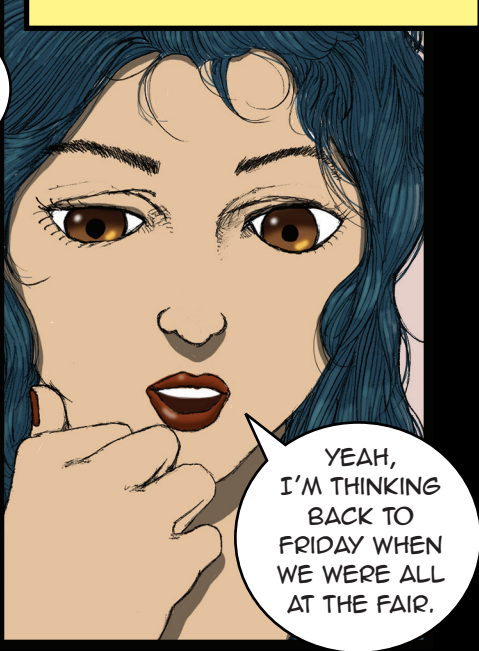


I WAS THINKING BACK TO BEFORE THE FAIR.



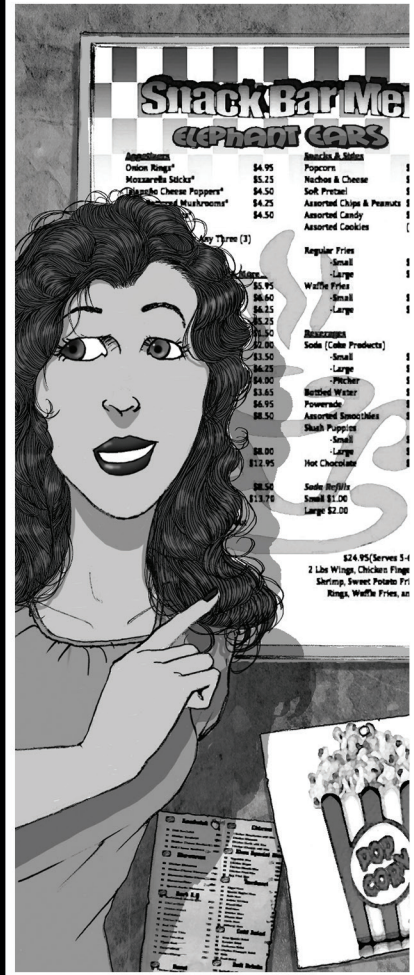
"I REMEMBER WALKING WITH EDDIE."

HE WAS TELLING ME ABOUT HIS PLANS TO SHOW HIS PIG, HAMLET. EDDIE SEEMED HEALTHY THEN."



YEAH, I'M THINKING BACK TO FRIDAY WHEN WE WERE ALL AT THE FAIR.

"I remember we all had eaten together at the snack bar. I had a soda, and you and Eddie got ice cream."



**Snack Bar Mel**  
**elephant ears**

Assorted		Banana & Bites	
Onion Rings*	\$4.95	Popcorn	
Mozzarella Sticks*	\$5.25	Nachos & Cheese	
Cheddar Cheese Poppers*	\$4.50	Soft Pretzel	
Cheddar Mushroom*	\$4.75	Assorted Chips & Peanuts	
		Assorted Candy	
		Assorted Cookies	
Soft Pretzel (2)	\$2.50		
Small	\$1.50	Regular Fries	
Medium	\$2.00	Small	
Large	\$2.50	Large	
Waffle Fries	\$6.60	Waffle Fries	
Small	\$6.25	Small	
Large	\$6.25	Large	
Hot Chocolate	\$1.50		
Assortment	\$2.00	Recesses	
Soda (Coke Products)	\$3.50		
Small	\$3.50		
Large	\$6.25		
Water	\$4.95		
Bottled Water	\$3.85		
Powerade	\$6.95		
Assorted Smoothies	\$8.50		
Shake Popcorn			
Small	\$8.00		
Large	\$12.95		
Hot Chocolate			
Soda Refill	\$8.50		
Small \$1.00	\$13.70		
Large \$2.00			



SO FROSTY DELICIOUS.

SLURP

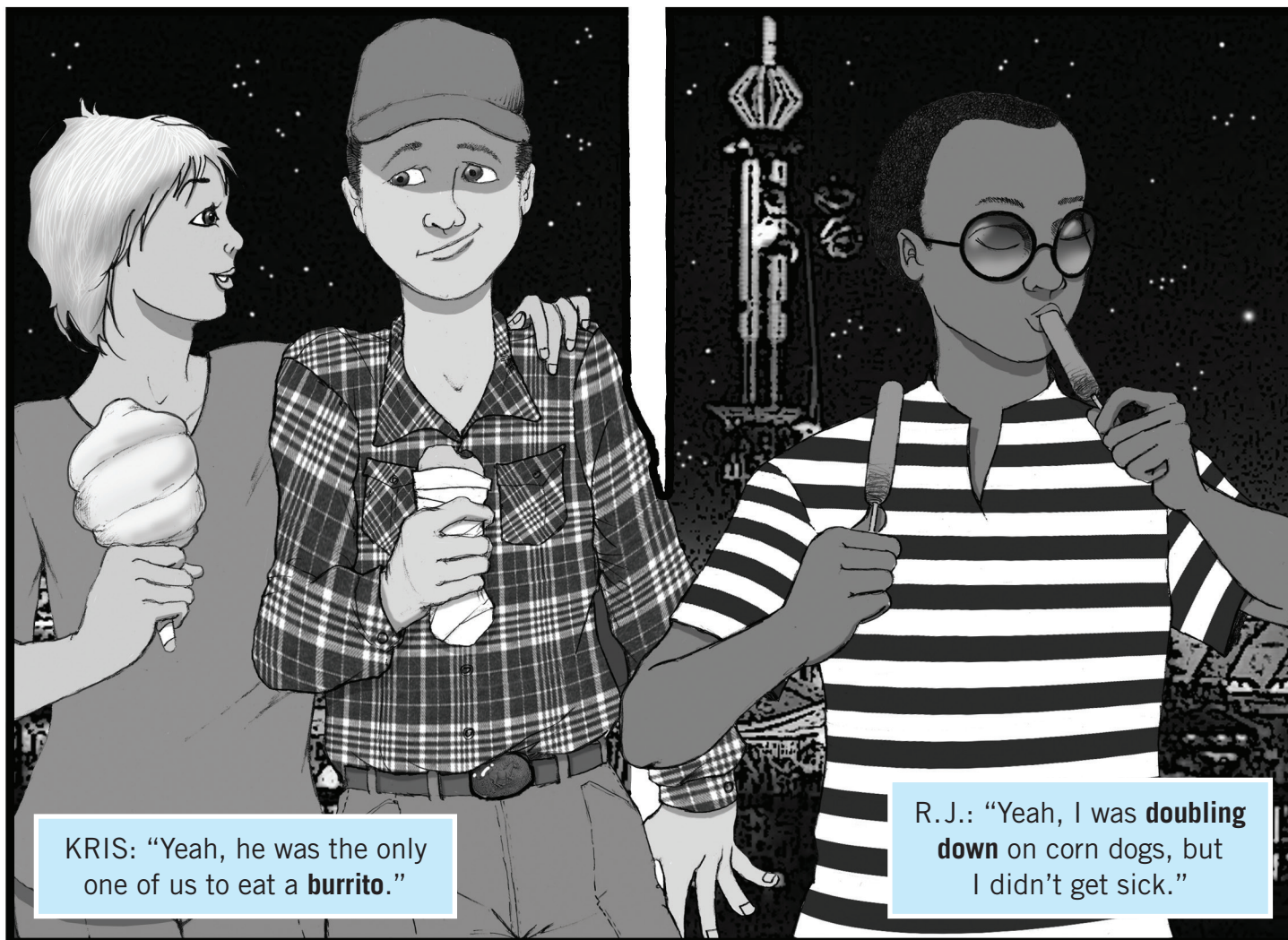
OW!



HANDS OFF!

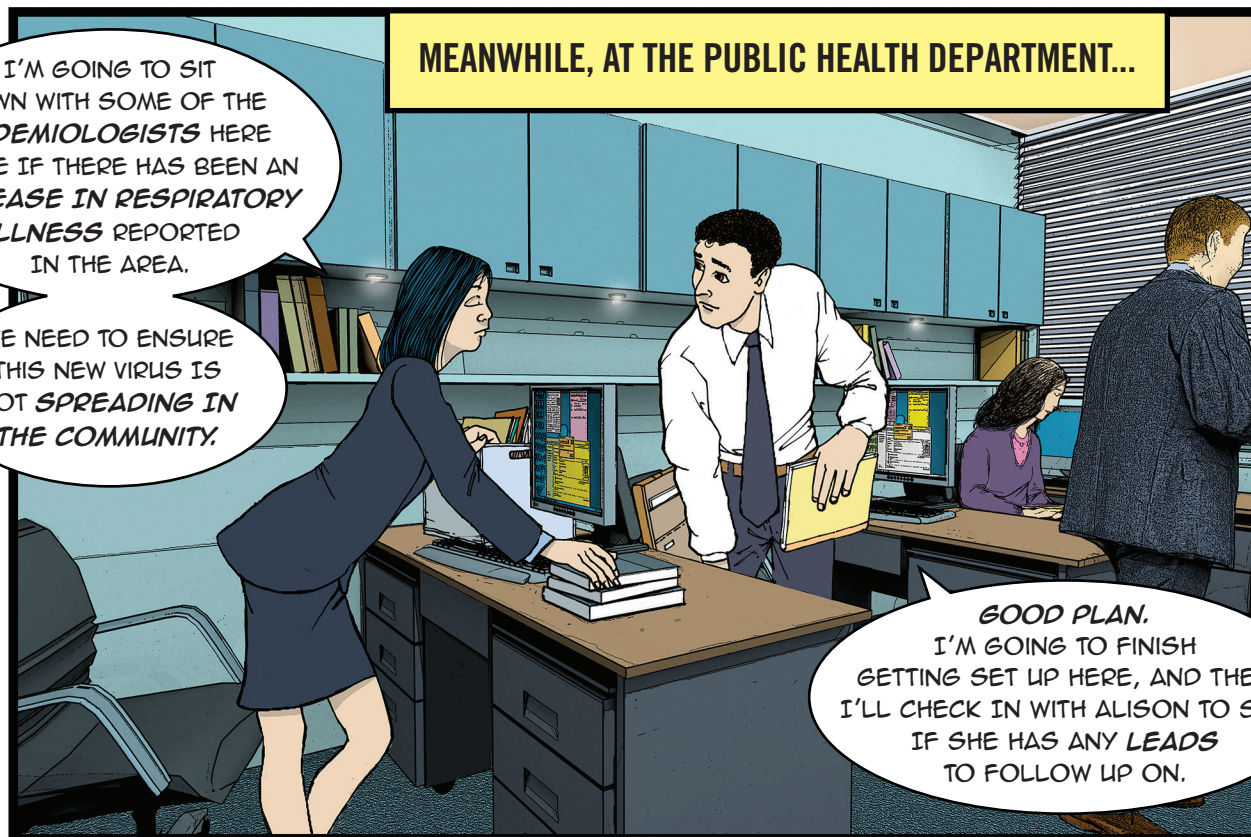
SMACK!

"Well, I think we can rule out ice cream because I had it too and didn't get sick."



KRIS: "Yeah, he was the only one of us to eat a **burrito**."

R.J.: "Yeah, I was **doubling down** on corn dogs, but I didn't get sick."



**MEANWHILE, AT THE PUBLIC HEALTH DEPARTMENT...**

I'M GOING TO SIT DOWN WITH SOME OF THE **EPIDEMIOLOGISTS** HERE TO SEE IF THERE HAS BEEN AN **INCREASE IN RESPIRATORY ILLNESS** REPORTED IN THE AREA.

WE NEED TO ENSURE THIS NEW VIRUS IS NOT **SPREADING IN THE COMMUNITY**.

**GOOD PLAN.** I'M GOING TO FINISH GETTING SET UP HERE, AND THEN I'LL CHECK IN WITH ALISON TO SEE IF SHE HAS ANY **LEADS** TO FOLLOW UP ON.



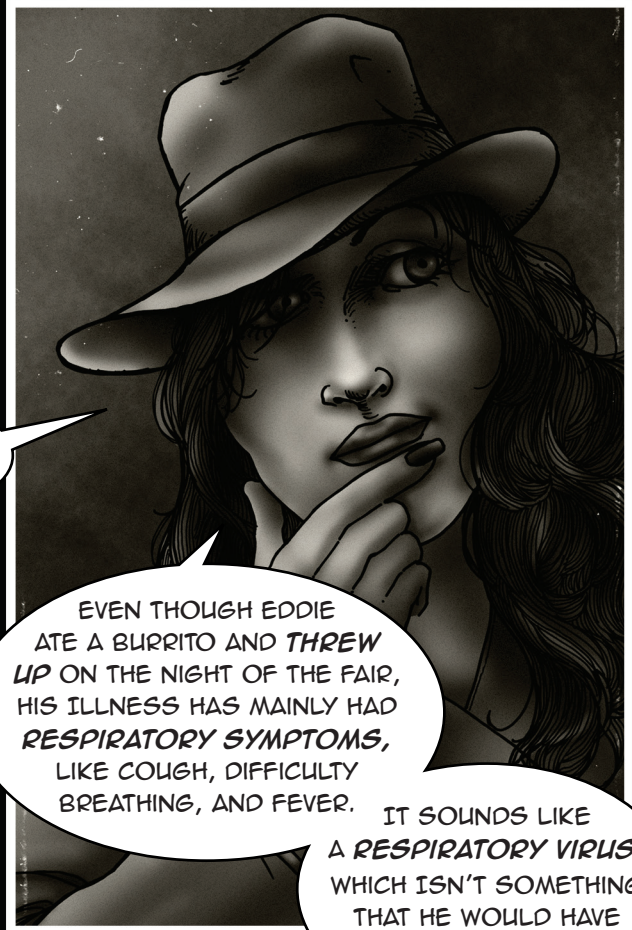


BACK AT THE  
EMERGENCY ROOM...



OK,  
I HAVE TO  
THINK LIKE  
A **DISEASE  
DETECTIVE!**

HMMM...



EVEN THOUGH EDDIE  
ATE A BURRITO AND **THREW  
UP** ON THE NIGHT OF THE FAIR,  
HIS ILLNESS HAS MAINLY HAD  
**RESPIRATORY SYMPTOMS,**  
LIKE COUGH, DIFFICULTY  
BREATHING, AND FEVER.

IT SOUNDS LIKE  
A **RESPIRATORY VIRUS,**  
WHICH ISN'T SOMETHING  
THAT HE WOULD HAVE  
GOTTEN FROM  
**FOOD.**

WHAT WAS EDDIE  
**EXPOSED** TO THAT  
WE WEREN'T?

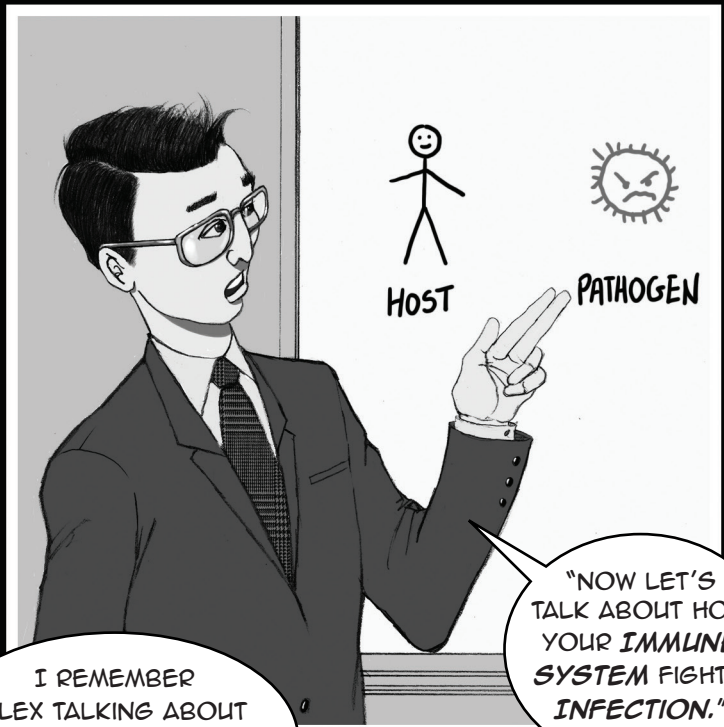
BUT **WHERE** WOULD  
HE HAVE GOTTEN A  
**RESPIRATORY ILLNESS?**  
WE WERE ALL HANGING  
OUT **TOGETHER.**

**YOU ARE  
RIGHT, EM!**



DO YOU  
GUYS REMEMBER  
DR. LEE TALKING  
ABOUT DIFFERENT  
**PATHOGENS?**

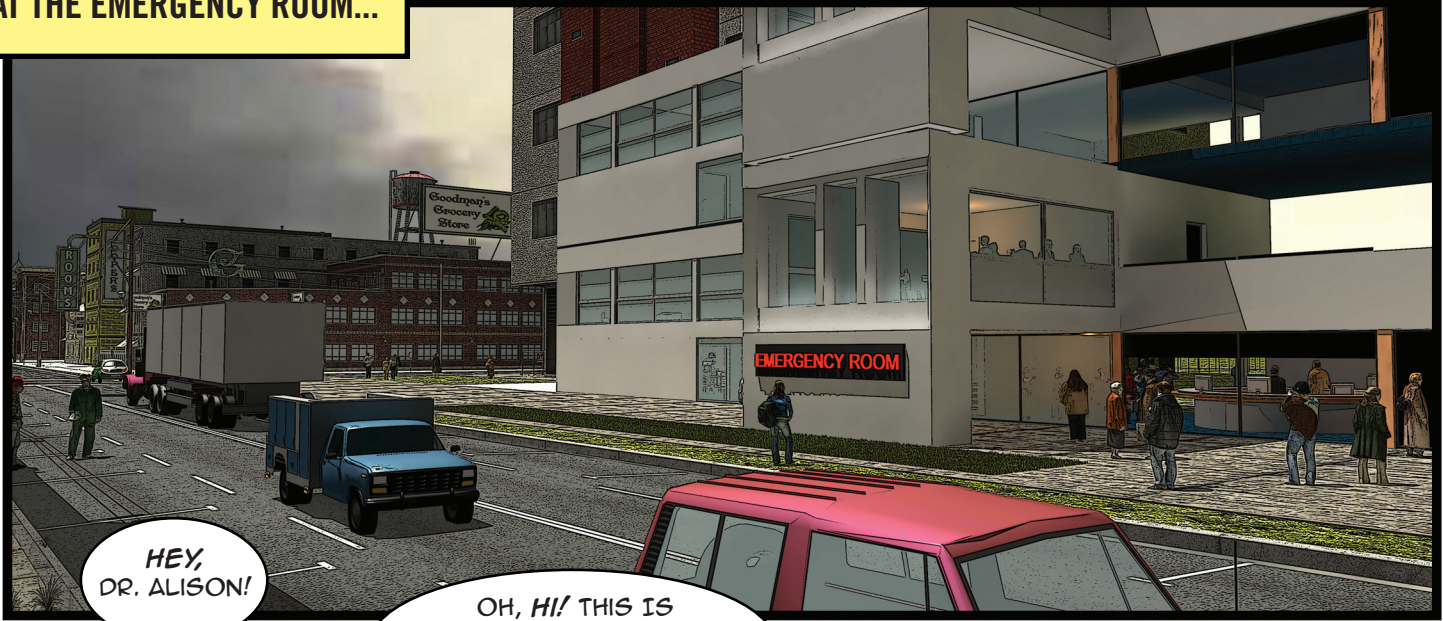
I REMEMBER  
ALEX TALKING ABOUT  
**ZOO NOTIC DISEASES**  
IN THE **CDC MUSEUM.**



"NOW LET'S  
TALK ABOUT HOW  
YOUR **IMMUNE  
SYSTEM** FIGHTS  
**INFECTION.**"

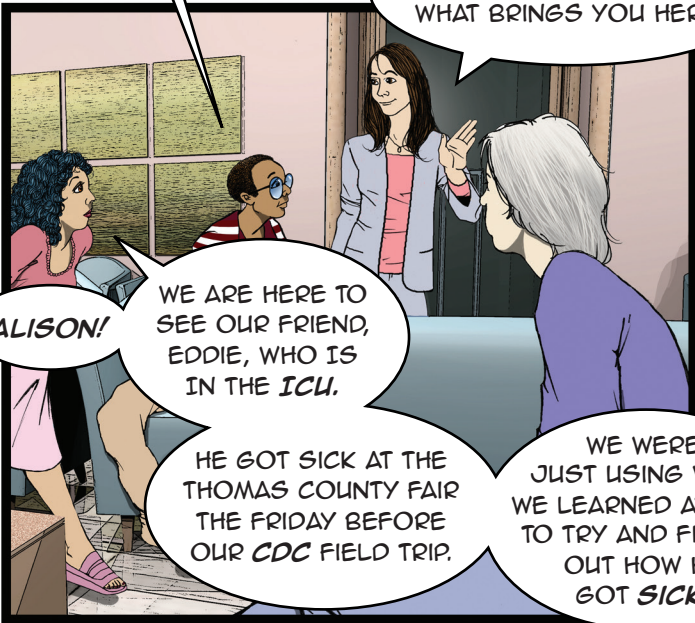


**AT THE EMERGENCY ROOM...**



HEY,  
DR. ALISON!

OH, HI! THIS IS  
QUITE A *COINCIDENCE*.  
WHAT BRINGS YOU HERE?

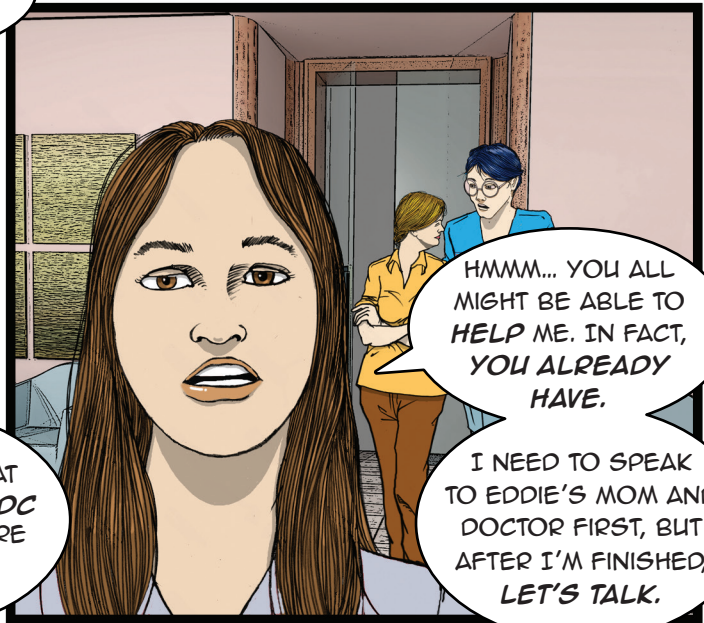


ALISON!

WE ARE HERE TO  
SEE OUR FRIEND,  
EDDIE, WHO IS  
IN THE ICU.

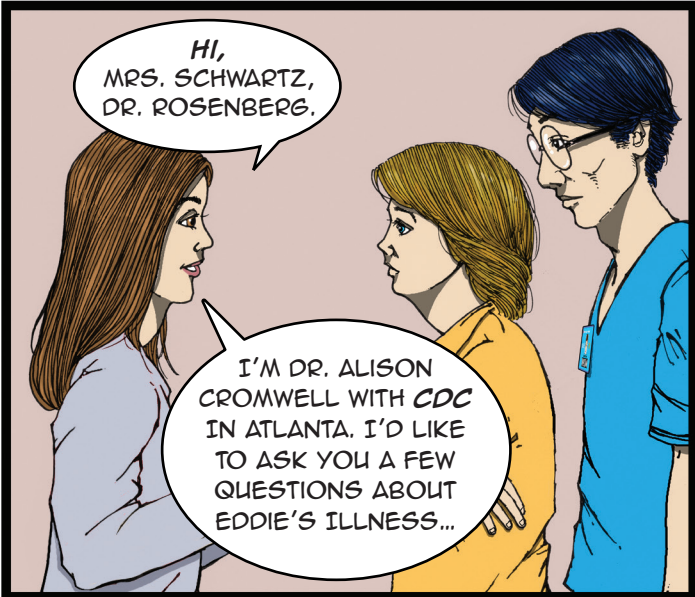
HE GOT SICK AT THE  
THOMAS COUNTY FAIR  
THE FRIDAY BEFORE  
OUR *CDC* FIELD TRIP.

WE WERE  
JUST USING WHAT  
WE LEARNED AT *CDC*  
TO TRY AND FIGURE  
OUT HOW HE  
GOT SICK.



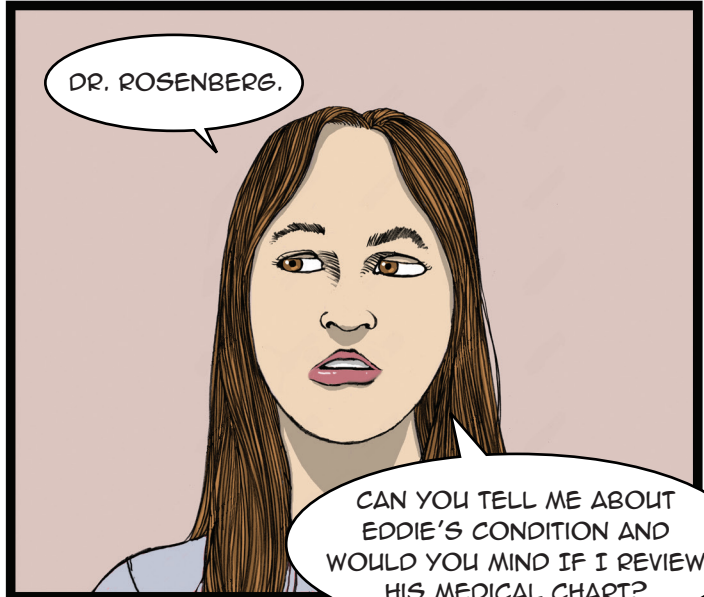
HMMM... YOU ALL  
MIGHT BE ABLE TO  
HELP ME. IN FACT,  
YOU ALREADY  
HAVE.

I NEED TO SPEAK  
TO EDDIE'S MOM AND  
DOCTOR FIRST, BUT  
AFTER I'M FINISHED,  
LET'S TALK.



HI,  
MRS. SCHWARTZ,  
DR. ROSENBERG.

I'M DR. ALISON  
CROMWELL WITH *CDC*  
IN ATLANTA. I'D LIKE  
TO ASK YOU A FEW  
QUESTIONS ABOUT  
EDDIE'S ILLNESS...



DR. ROSENBERG.

CAN YOU TELL ME ABOUT  
EDDIE'S CONDITION AND  
WOULD YOU MIND IF I REVIEW  
HIS MEDICAL CHART?





**MINUTES LATER...**

HEY ALEX,  
IT'S ALISON.

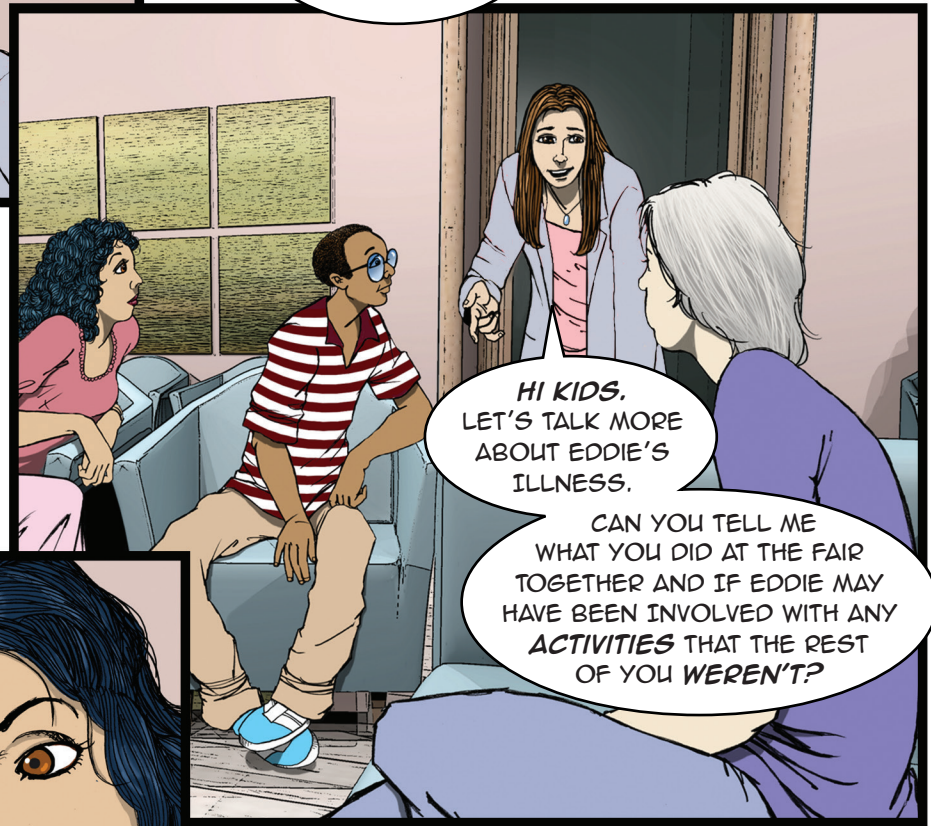


I'VE SPOKEN  
TO EDDIE'S MOTHER,  
HIS PHYSICIAN AND HIS  
FRIENDS HERE AT THE HOSPITAL,  
WHO COINCIDENTALLY WERE  
AT THE *CDC DISEASE  
DETECTIVE CAMP*.

THEY HAVE ALL  
**CONFIRMED** THAT EDDIE  
WAS AT THE THOMAS  
COUNTY FAIR THE NIGHT  
HE BECAME *SICK*.

I'M ABOUT TO  
SIT DOWN WITH  
THE KIDS TO **FIND  
OUT** MORE...

**ALEX: WOW!**  
OK, I'LL FOLLOW  
UP WITH OUR *STATE  
PUBLIC HEALTH  
COLLEAGUES* TO  
GET A HOLD OF THE  
*FAIR ORGANIZER*.



**HI KIDS.**  
LET'S TALK MORE  
ABOUT EDDIE'S  
ILLNESS.

CAN YOU TELL ME  
WHAT YOU DID AT THE FAIR  
TOGETHER AND IF EDDIE MAY  
HAVE BEEN INVOLVED WITH ANY  
**ACTIVITIES** THAT THE REST  
OF YOU *WEREN'T*?

ALISON,  
WE WERE  
**JUST** TALKING  
ABOUT THIS.

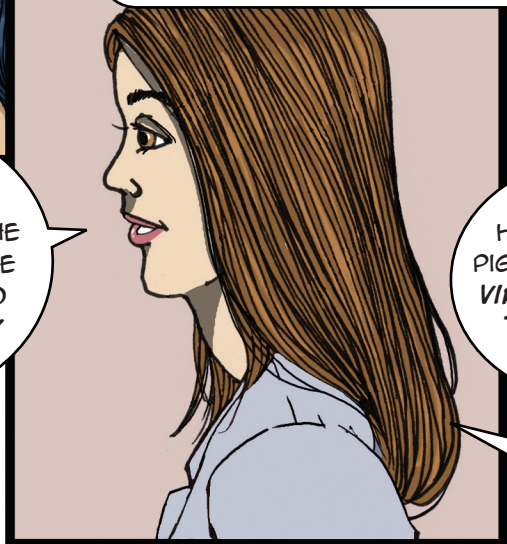
WE ATE AT THE  
**SAME PLACES**  
AS EDDIE, EVEN  
THOUGH HE HAD A  
BURRITO AND **NO  
ONE ELSE** DID.

I JUST  
POINTED OUT THAT  
HIS ILLNESS HAD  
**SYMPTOMS** ASSOCIATED  
WITH *RESPIRATORY  
DISEASE*, LIKE HIS  
COUGH...



**VERY ASTUTE,**  
EMILY. WHAT WAS  
EDDIE DOING AT THE  
FAIR THAT MAY HAVE  
**EXPOSED** HIM TO  
A *RESPIRATORY  
VIRUS*?

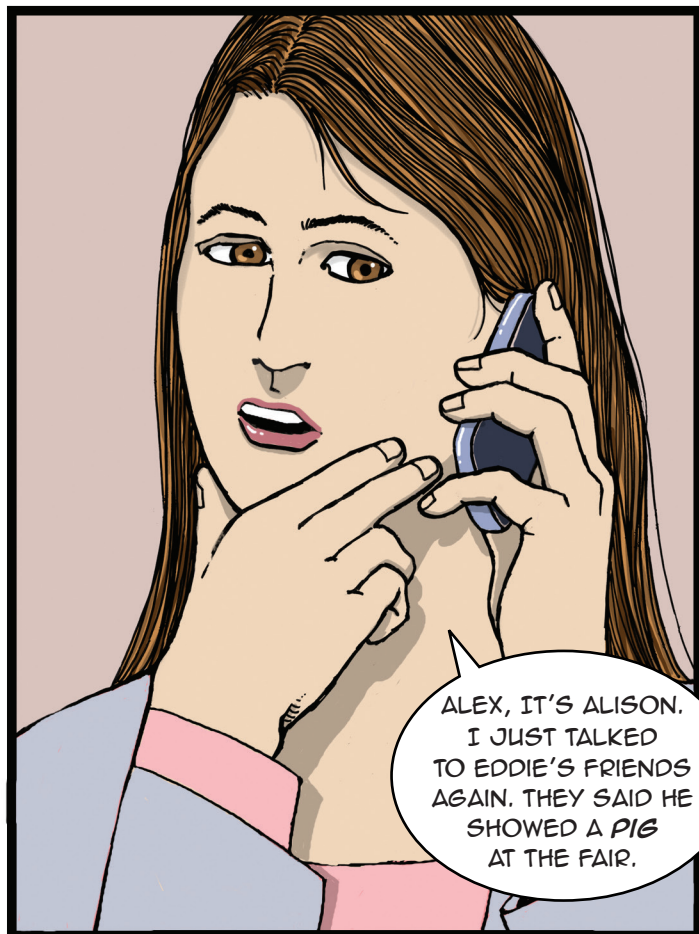
HMM... WELL EDDIE'S MAIN ACTIVITY AT THE FAIR WAS  
SHOWING HIS PIG, **HAMLET**. EDDIE MENTIONED THAT  
HAMLET WASN'T **100 PERCENT**. HE EVEN ASKED THE  
*FAIR VETERINARIAN* TO TAKE A LOOK AT **HAMLET**.



THIS IS  
HELPFUL, EMILY.  
PIGS CAN **SPREAD  
VIRUS** EVEN WHEN  
THEY **APPEAR  
HEALTHY**.

I'M GOING TO  
**FOLLOW UP** WITH  
MY FELLOW *EIS  
OFFICER*, ALEX.





SEVERAL HOURS LATER...



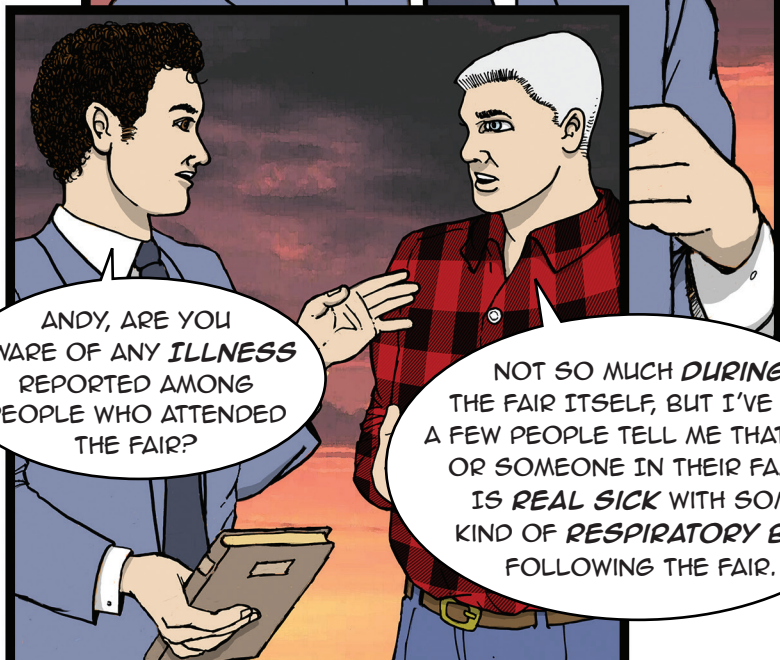


WELL, WE HAD THREE HORSES WITH COLIC AND A FEW CASES OF RINGWORM IN THE COWS.

WHEN I EXAMINED THE PIGS, A FEW HAD A MILD FEVER.

I TOOK SAMPLES FROM THEM, WHICH ARE CURRENTLY BEING TESTED AT THE STATE ANIMAL HEALTH LABORATORY.

GREAT WORK! I'M INTERESTED TO KNOW THE RESULTS OF THOSE TESTS.



ANDY, ARE YOU AWARE OF ANY ILLNESS REPORTED AMONG PEOPLE WHO ATTENDED THE FAIR?

NOT SO MUCH DURING THE FAIR ITSELF, BUT I'VE HAD A FEW PEOPLE TELL ME THAT THEY OR SOMEONE IN THEIR FAMILY IS REAL SICK WITH SOME KIND OF RESPIRATORY BUG FOLLOWING THE FAIR.



HMMM... COULD YOU GIVE ME SOME CONTACT NAMES AND NUMBERS SO I CAN FOLLOW UP?



YOU HAVE THE RESULTS?

HMM... I SEE... THANK YOU.



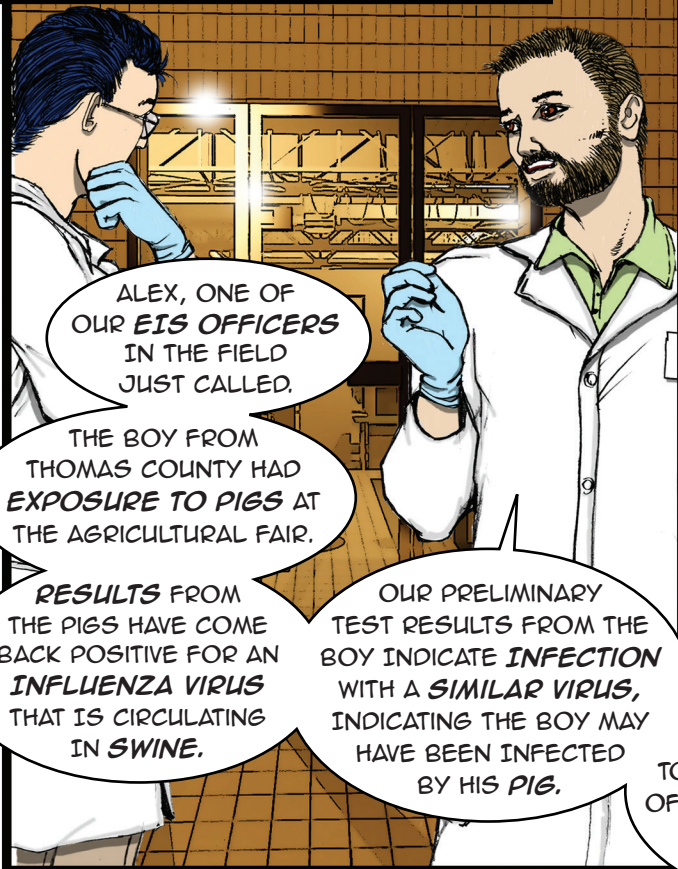
THAT WAS THE STATE ANIMAL HEALTH LABORATORY CALLING WITH THE SWINE TEST RESULTS...

YOU ARE GOING TO WANT TO HEAR THIS...





SOON AFTER, AT CDC'S LABORATORY...



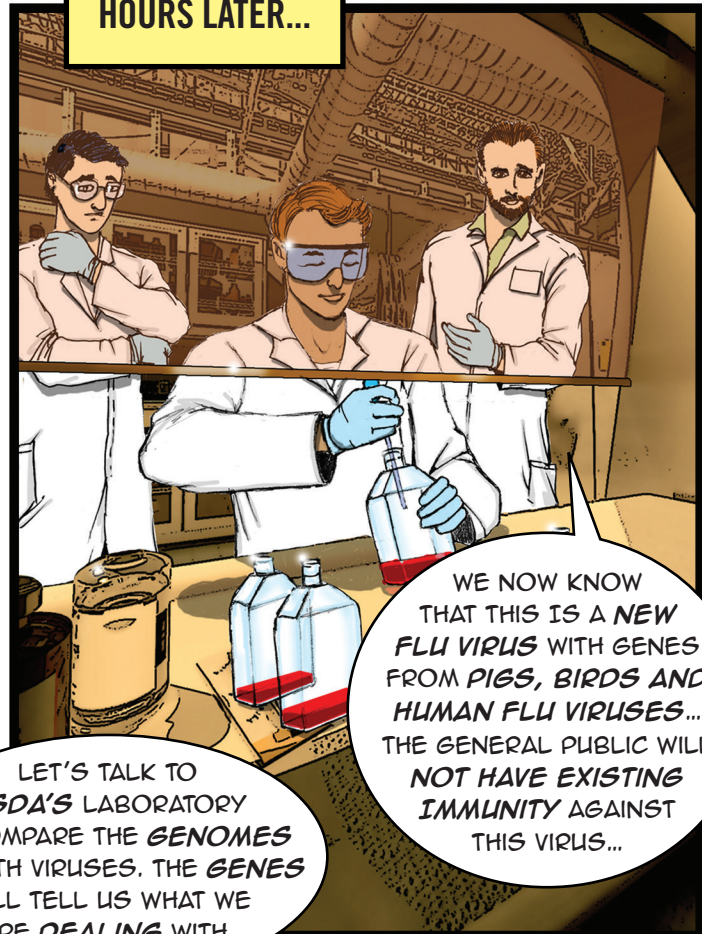
ALEX, ONE OF OUR **EIS OFFICERS** IN THE FIELD JUST CALLED.

THE BOY FROM THOMAS COUNTY HAD **EXPOSURE TO PIGS** AT THE AGRICULTURAL FAIR.

**RESULTS** FROM THE PIGS HAVE COME BACK POSITIVE FOR AN **INFLUENZA VIRUS** THAT IS CIRCULATING IN **SWINE**.

OUR PRELIMINARY TEST RESULTS FROM THE BOY INDICATE **INFECTION** WITH A **SIMILAR VIRUS**, INDICATING THE BOY MAY HAVE BEEN INFECTED BY HIS **PIG**.

HOURS LATER...



WE NOW KNOW THAT THIS IS A **NEW FLU VIRUS** WITH GENES FROM **PIGS, BIRDS AND HUMAN FLU VIRUSES**... THE GENERAL PUBLIC WILL **NOT HAVE EXISTING IMMUNITY** AGAINST THIS VIRUS...

LET'S TALK TO **USDA'S** LABORATORY TO COMPARE THE **GENOMES** OF BOTH VIRUSES. THE **GENES** WILL TELL US WHAT WE ARE **DEALING** WITH.

CALL ALEX, ALISON AND KIM. WE NEED TO **LET THEM KNOW** WHAT WE ARE **DEALING** WITH HERE. WE WILL NEED TO CALL OUR **STATE HEALTH COLLEAGUES** AS WELL.



090 21 53 07  
DAYS HOURS MINUTES SECONDS

IF THIS VIRUS HAS THE ABILITY TO **SPREAD EASILY FROM PERSON TO PERSON**, IT COULD START A **PANDEMIC**...

A **GLOBAL OUTBREAK** OF DISEASE...

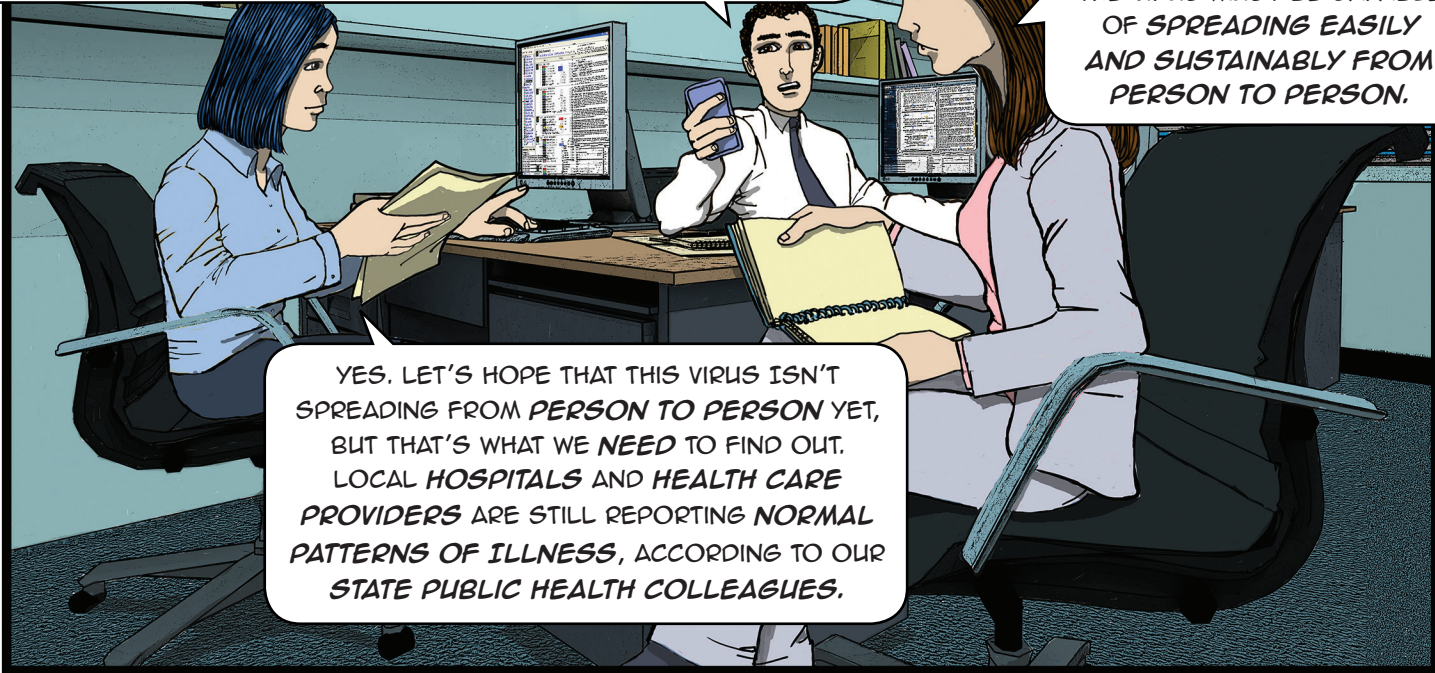




**BACK AT THE PUBLIC HEALTH DEPARTMENT...**

I JUST HEARD BACK FROM HEADQUARTERS. CDC'S LABORATORY IN ATLANTA AND USDA'S LABORATORY HAVE OBTAINED PRELIMINARY TEST RESULTS THAT INDICATE A POSSIBLE MATCH BETWEEN EDDIE'S VIRUS AND THE VIRUS OBTAINED FROM HIS PIG. THEY ARE SAYING THIS VIRUS HAS PANDEMIC POTENTIAL...

FOR A VIRUS TO CAUSE A PANDEMIC, THE MAJORITY OF THE WORLD'S POPULATION MUST NOT HAVE EXISTING IMMUNITY AGAINST IT, AND THE VIRUS MUST BE CAPABLE OF SPREADING EASILY AND SUSTAINABLY FROM PERSON TO PERSON.



YES. LET'S HOPE THAT THIS VIRUS ISN'T SPREADING FROM PERSON TO PERSON YET, BUT THAT'S WHAT WE NEED TO FIND OUT. LOCAL HOSPITALS AND HEALTH CARE PROVIDERS ARE STILL REPORTING NORMAL PATTERNS OF ILLNESS, ACCORDING TO OUR STATE PUBLIC HEALTH COLLEAGUES.

THE FAIR MANAGER SAID SOME PEOPLE REPORTED GETTING SICK FOLLOWING THE FAIR, AND HE ALSO SAID MORE PIGS HAVE TESTED POSITIVE.

NOPE, WE'RE JUST GETTING STARTED...



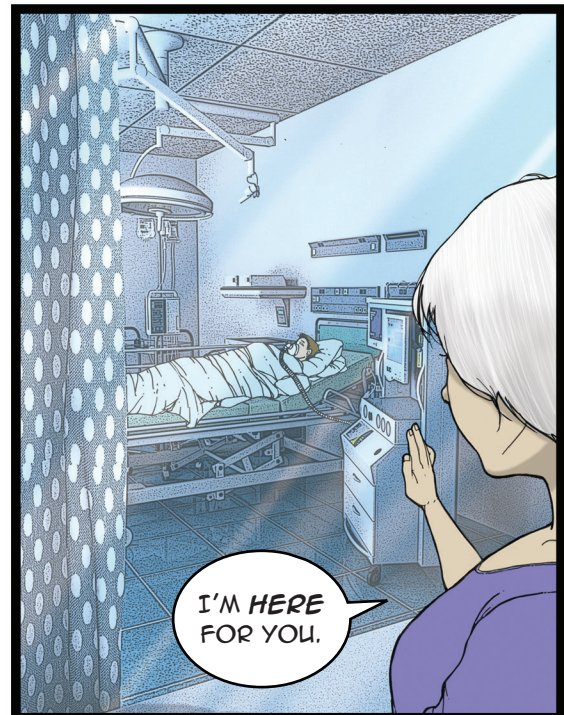
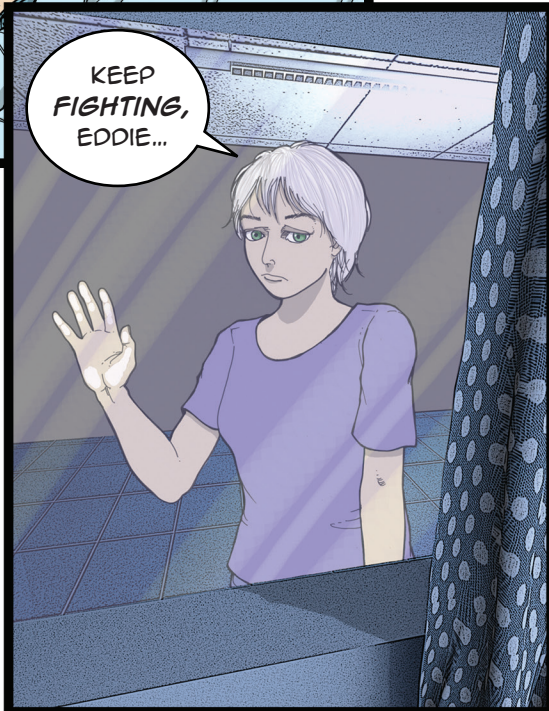
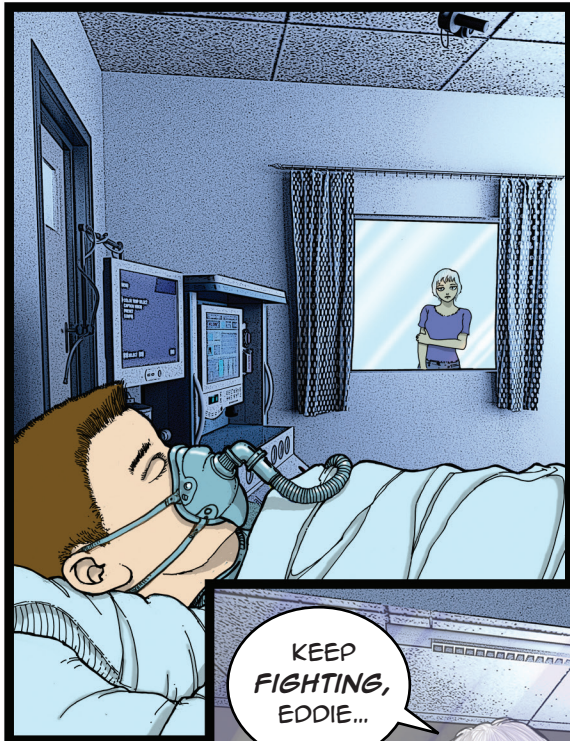
OKAY. LOOKS LIKE OUR JOB ISN'T OVER.

YES. WE WILL NEED TO FOLLOW UP WITH HIM AND OUR STATE PUBLIC HEALTH PARTNERS TO SEE IF WE CAN LEARN MORE ABOUT THEIR ILLNESS AND POSSIBLY GET THOSE PEOPLE TESTED. LET'S GO AHEAD AND ALSO COORDINATE WITH THE STATE PUBLIC HEALTH DEPARTMENT AND HEALTH CARE PROVIDERS. WE CAN ASK THEM TO TAKE SAMPLES FOR TESTING FROM ANY PATIENTS WITH FLU-LIKE ILLNESS THAT HAVE HAD RECENT CONTACT WITH PIGS. WE SHOULD ALSO SET UP A PHONE CALL WITH STATE AND FEDERAL ANIMAL HEALTH OFFICIALS.





**BACK AT THE HOSPITAL...**





MEANWHILE, A SUBCONSCIOUS EDDIE RACES TO FIND A WAY TO  
ACTIVATE HIS IMMUNE SYSTEM AGAINST THE ATTACKING VIRUSES...



THESE VIRUSES  
ARE RIGHT ON  
MY TAIL...

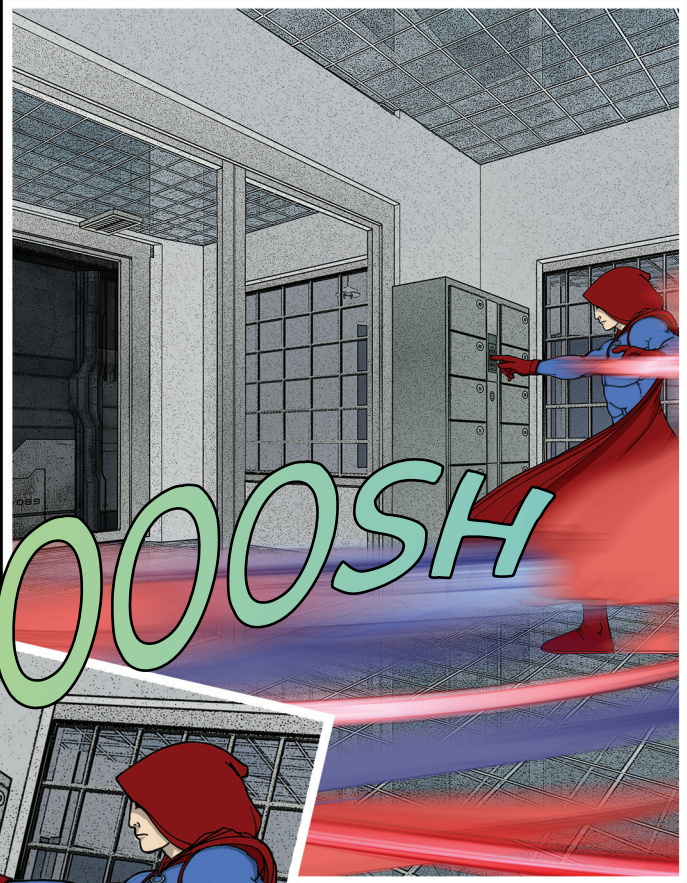
**RAAAAW**

**WRRRRRRRR**

I MUST FIND THE  
CURE BEFORE  
IT'S TOO LATE!



I MUST BE CLOSE...



WHOOOSH

THIS INPUT PANEL MUST OPEN ACCESS TO THE ROOM HOUSING THE CURE!

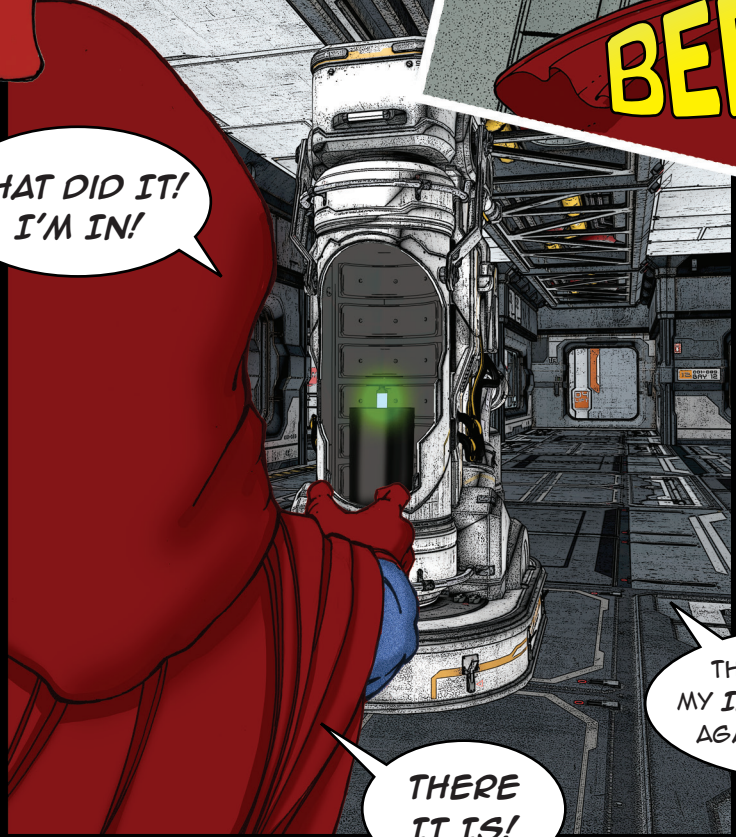


CLICK  
CLICK  
CLICK  
CLICK

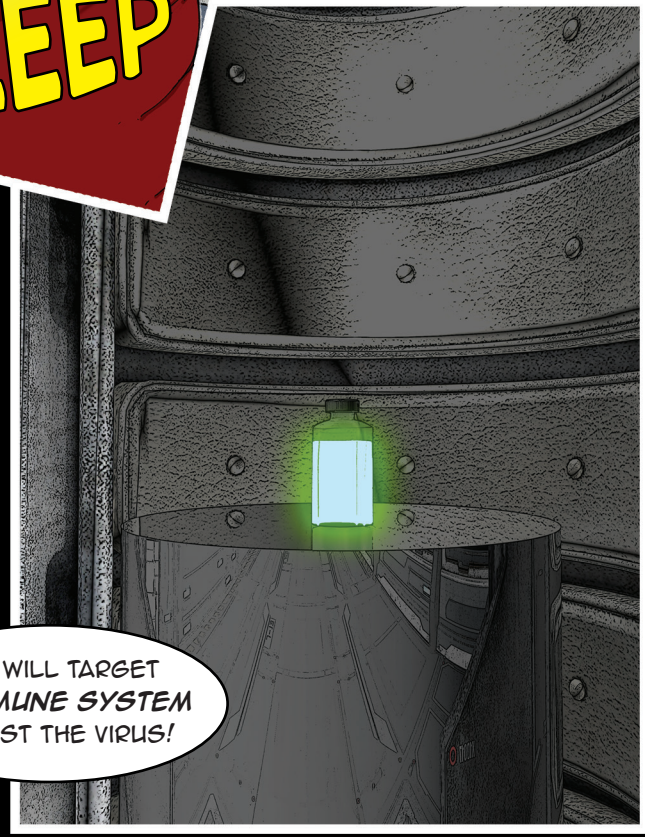
ACCESS GRANTED!

BEEEEEP

THAT DID IT!  
I'M IN!



THERE IT IS!



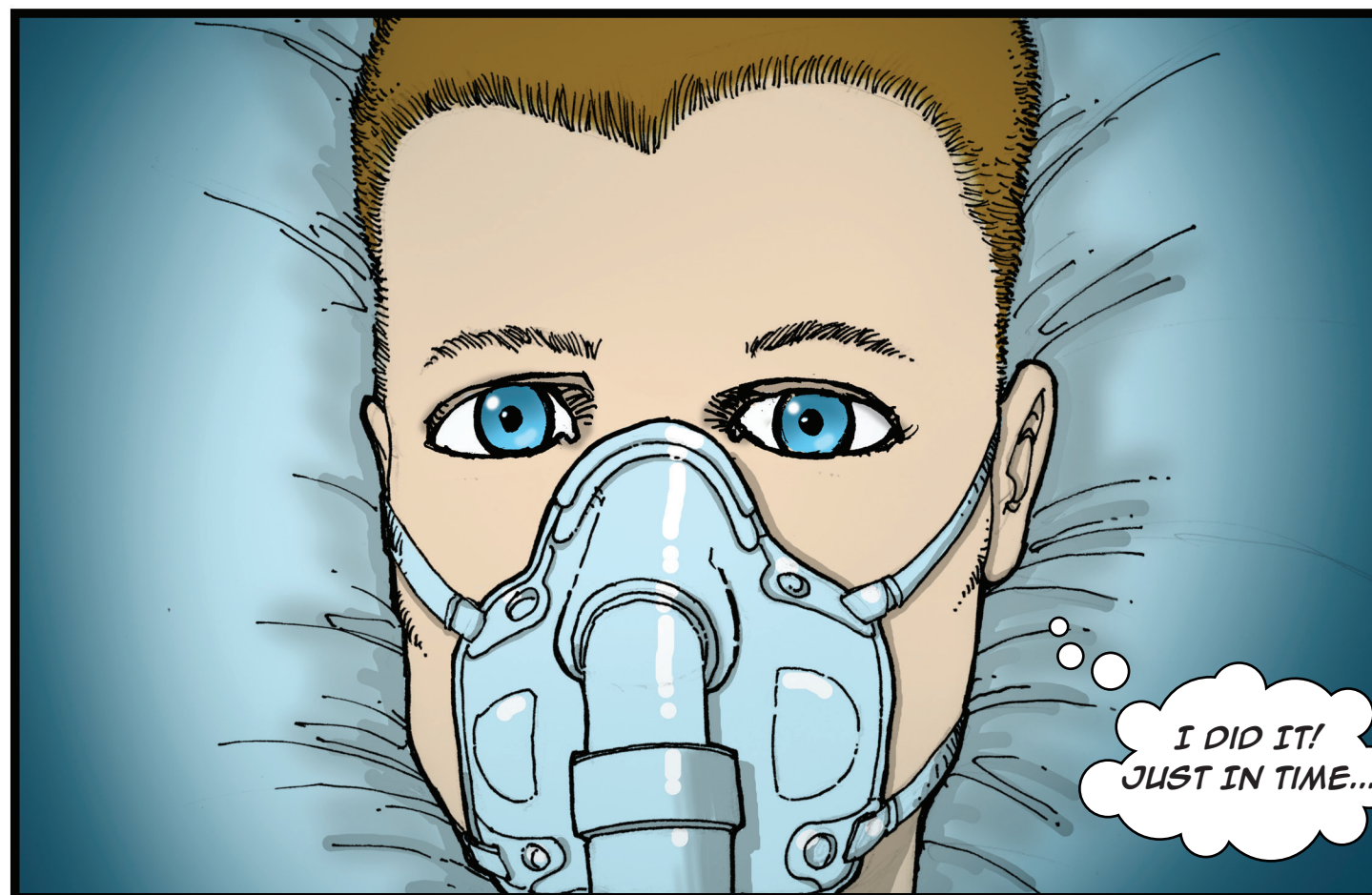
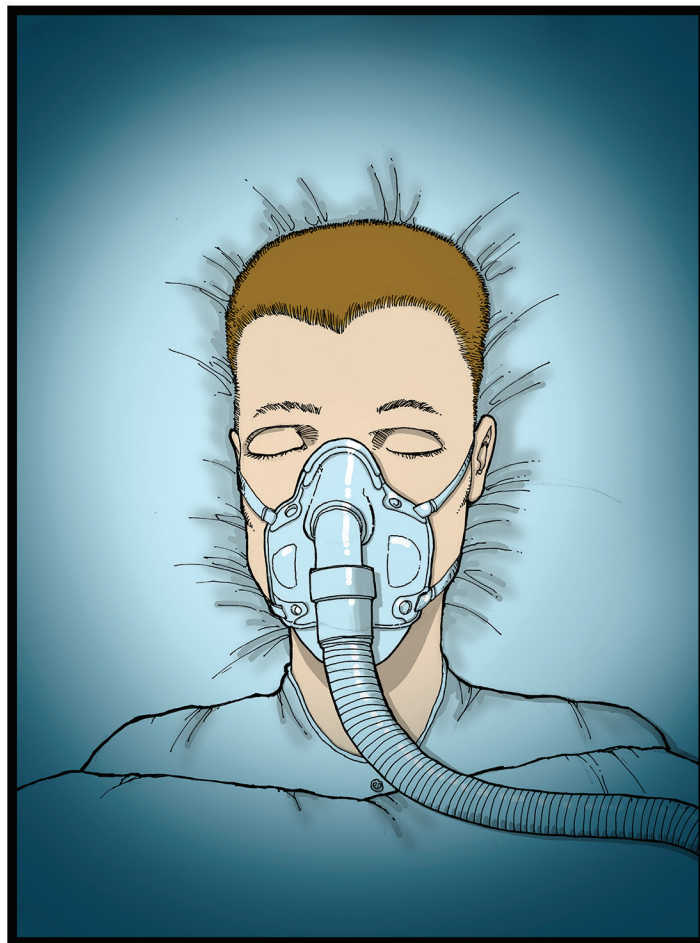
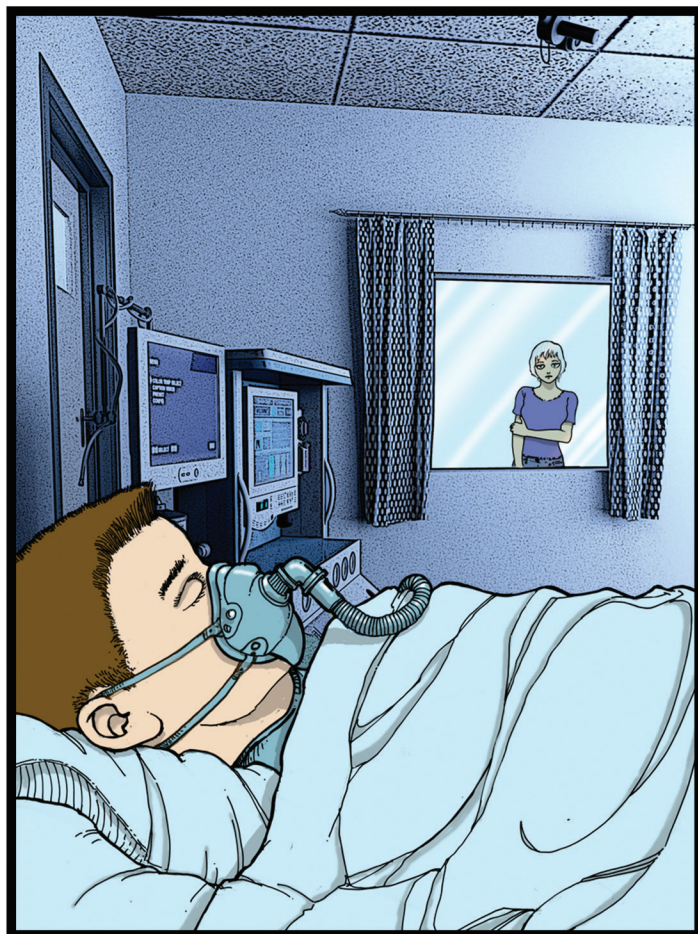
THIS WILL TARGET MY IMMUNE SYSTEM AGAINST THE VIRUS!

NOT A MOMENT  
TOO SOON!



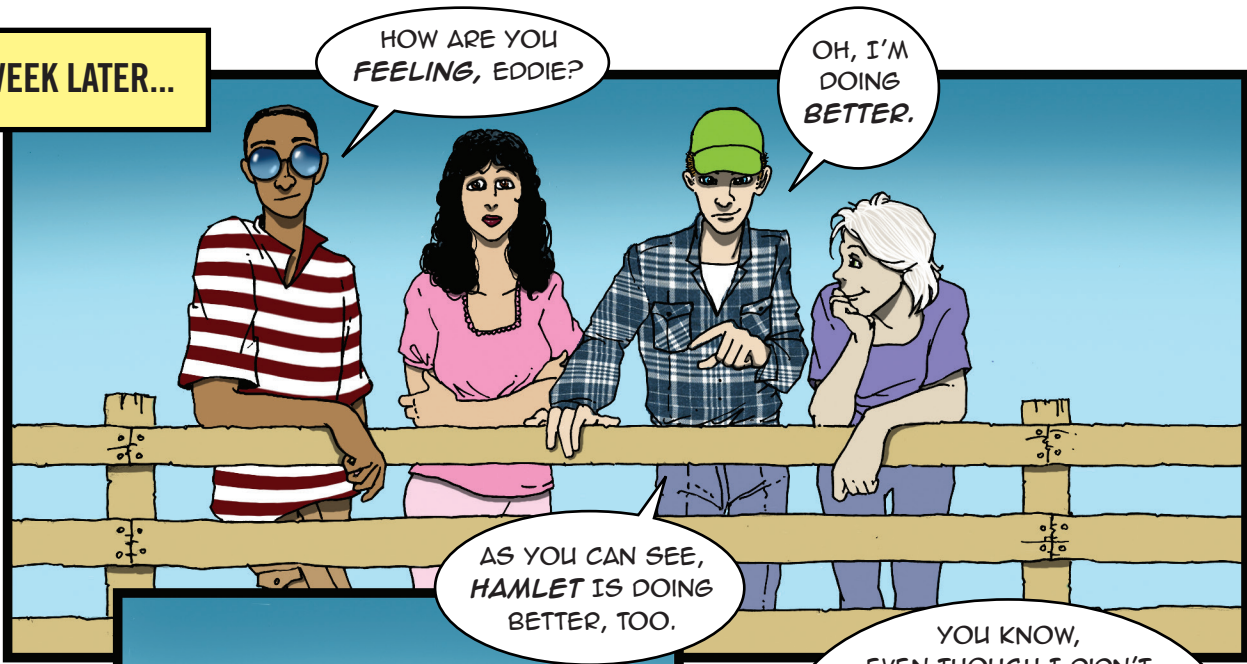
**RAAAWWWWRRRRRRR**







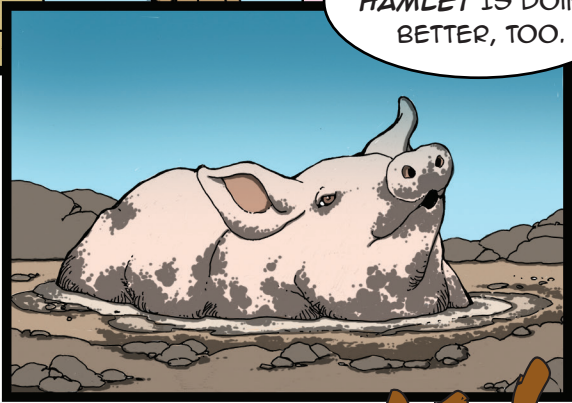
A WEEK LATER...



HOW ARE YOU FEELING, EDDIE?

OH, I'M DOING BETTER.

AS YOU CAN SEE, HAMLET IS DOING BETTER, TOO.



YOU KNOW, EVEN THOUGH I DIDN'T GET TO GO TO CDC'S DISEASE DETECTIVE CAMP, I LEARNED A LOT FROM THIS EXPERIENCE...

FOR ONE, I LEARNED THAT I COULD CATCH A FLU VIRUS FROM HAMLET, AND NOT ONLY THAT, HAMLET CAN GET INFECTED WITH FLU VIRUSES FROM US AND FROM OTHER PIGS AT THE FAIR, TOO.



I ALSO LEARNED THAT DUE TO HAVING ASTHMA, I AM AT HIGH RISK OF SERIOUS FLU ILLNESS. TRUST ME, I'LL REMEMBER THAT TO TRY AND AVOID ANOTHER TRIP TO THE HOSPITAL.

OINK!

THAT'S TRUE, EDDIE. ALISON TOLD ME THAT CDC RECOMMENDS FOR HIGH RISK PEOPLE AT AGRICULTURAL FAIRS TO AVOID ENTERING THE SWINE BARN AND TO AVOID PIGS WHILE AT THE FAIR.



REALLY? BUT WHAT ABOUT ME RAISING HAMLET AT HOME?

SO... ALISON SAID THAT IT'S OK FOR PEOPLE AT HIGH RISK TO RAISE PIGS AT HOME. SHE SAID THE PRIMARY CONCERN IS WHEN LARGE NUMBERS OF PIGS AND PEOPLE COME TOGETHER AT AGRICULTURAL EVENTS. THAT'S WHEN THESE VIRUSES ARE MOST LIKELY TO SPREAD BETWEEN PIGS AND PEOPLE.





OH, I SEE. THAT MAKES SENSE. BUT HOW DO PEOPLE KNOW IF THEY ARE AT HIGH RISK?



ALISON SAID TO CHECK *CDC'S FLU WEBSITE* IF WE HAD ANY QUESTIONS.

I REMEMBER HER SAYING THAT IN ADDITION TO PEOPLE WITH *ASTHMA*, PEOPLE AT HIGH RISK INCLUDED KIDS *YOUNGER THAN 5 YEARS OLD*, *PREGNANT WOMEN*, AND PEOPLE WITH OTHER *LONG TERM HEALTH CONDITIONS*, LIKE *DIABETES*, TO NAME A FEW.

THAT'S GOOD TO KNOW. SO IS THERE ANYTHING ELSE THEY *RECOMMEND DOING TO PREVENT GETTING SICK* WITH ONE OF THESE VIRUSES?



WELL, THE *EIS OFFICERS* SAID THAT *PIGS* DON'T ALWAYS *APPEAR SICK* WHEN THEY HAVE THE *FLU*, SO *WASHING YOUR HANDS* BEFORE AND AFTER HANDLING THEM IS A *GOOD IDEA*.

THEY ALSO SAID YOU SHOULDN'T *EAT* OR PUT ANYTHING IN YOUR *MOUTH* WHEN AROUND *PIGS*. THIS DOESN'T REALLY APPLY TO ANY OF US, BUT THEY ALSO SAID *NOT TO BRING ANY KIDS' TOYS, PACIFIERS AND STROLLERS* INTO *ANIMAL AREAS* AT FAIRS.



AH! I SEE. *DR. TOLANI THE FAIR VETERINARIAN* TOLD ME THAT THEY TAKE PRECAUTIONS ON THE *ANIMAL HEALTH* SIDE, AS WELL.

SHE SAID IT TAKES EVERYONE WORKING TOGETHER TO *KEEP ANIMALS AND PEOPLE HEALTHY*.

THAT'S WHY THERE ARE *SO MANY RULES* WE FOLLOW WHEN WE RAISE AND SHOW OUR ANIMALS, SUCH AS NOT KEEPING THE *PIGS* AT THE FAIR LONGER THAN *THREE DAYS*.

SHE SAID THAT HELPS *REDUCE SPREAD OF DISEASE* AMONG *PIGS* AND PEOPLE.





WHILE EDDIE WAS IN THE *HOSPITAL*, ALISON TOLD ME A FEW MORE THINGS.

SHE SAID WHEN *FLU VIRUSES* FROM *PIGS* INFECT PEOPLE, IT'S CALLED A "*VARIANT FLU VIRUS*" INFECTION.

SHE SAID *VARIANT VIRUS* INFECTIONS DON'T HAPPEN OFTEN, BUT SOME OCCUR *EVERY YEAR*, PARTICULARLY DURING *FAIR SEASON*.

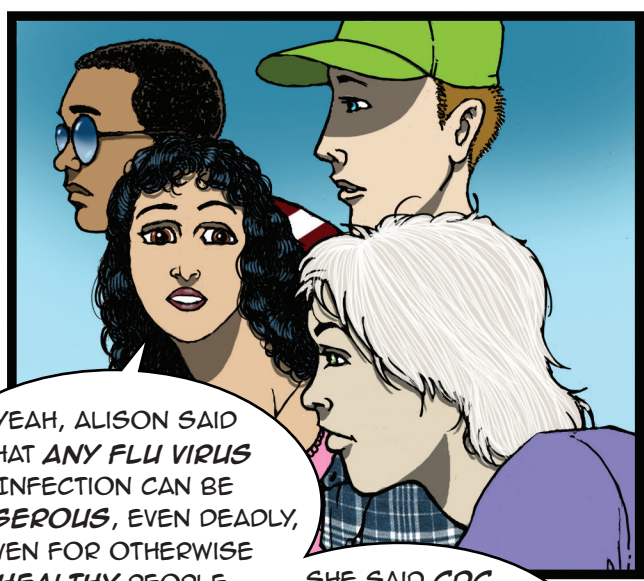
ALISON ALSO SAID THAT *VARIANT VIRUSES* ARE *DIFFERENT* FROM THE *FLU VIRUSES* THAT NORMALLY MAKE PEOPLE SICK DURING THE *FLU SEASON*. SINCE PEOPLE AREN'T OFTEN *EXPOSED* TO *VIRUSES* FROM *PIGS*, MOST *DON'T HAVE ANTIBODIES* THAT PROTECT AGAINST *VARIANT VIRUSES*.

AS WE LEARNED DURING *DISEASE DETECTIVE CAMP*, OUR BODIES' *IMMUNE SYSTEM* PRODUCES ANTIBODIES TO FIGHT AGAINST INFECTION, AND THE *SAFEST* WAY TO GET ANTIBODIES IS THROUGH *VACCINATION*. ALTHOUGH THE *FLU VACCINE* ISN'T DESIGNED TO PROTECT AGAINST *VARIANT FLU*, IT IS STILL *IMPORTANT* TO GET, BECAUSE IT CAN HELP *PROTECT* US FROM GETTING THE *FLU* AND SPREADING IT TO OTHERS, INCLUDING *HAMLET*.

OH WOW! HOW OFTEN DO PEOPLE GET REALLY *SICK* FROM THESE *VIRUSES*, LIKE I DID?



NOT TOO OFTEN. ALISON SAID THAT *MOST* PEOPLE WITH *VARIANT FLU* JUST HAVE *TYPICAL FLU* ILLNESS, BUT JUST AS WITH ANY TYPE OF *FLU*, SOME PEOPLE WILL GET *REALLY SICK* FROM *VARIANT FLU*. THIS IS PARTICULARLY IMPORTANT FOR PEOPLE AT *HIGH RISK*, LIKE YOU.



YEAH, ALISON SAID THAT *ANY FLU VIRUS* INFECTION CAN BE *DANGEROUS*, EVEN DEADLY, EVEN FOR OTHERWISE *HEALTHY* PEOPLE.

SHE SAID *CDC* WAS INVESTIGATING TO SEE IF THE *VIRUS* YOU HAD IS *SPREADING BETWEEN PEOPLE*...

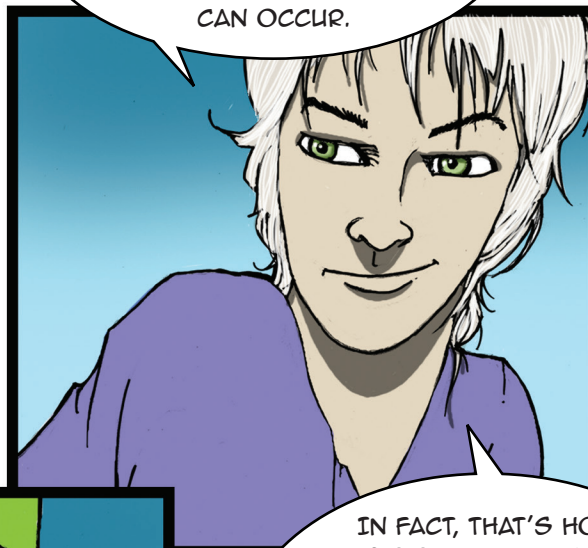


ON THAT POINT, ALISON SAID THAT THEY **ALWAYS** TRY TO INVESTIGATE VARIANT VIRUS INFECTIONS TO SEE IF THEY ARE SPREADING FROM PERSON-TO-PERSON.

SHE SAID **MOST** VARIANT VIRUSES SPREAD FROM AN **INFECTED PIG** TO A **PERSON**, BUT THESE VIRUSES USUALLY ARE **NOT ABLE** TO SPREAD EASILY FROM PERSON TO PERSON, LIKE **SEASONAL FLU**.



OH, YEAH! WHEN A FLU VIRUS FROM **ANIMALS** GAINS THE ABILITY TO SPREAD EASILY FROM **PERSON TO PERSON**, THAT'S WHEN A **PANDEMIC** CAN OCCUR.



IN FACT, THAT'S HOW THE **2009 FLU PANDEMIC** OCCURRED. ALEX TOLD ME THE 2009 **H1N1 VIRUS** HAD A MIX OF GENES FROM **NORTH AMERICAN PIGS**, **PIGS FROM EUROPE AND ASIA**, **BIRDS**, AND EVEN **HUMANS**.

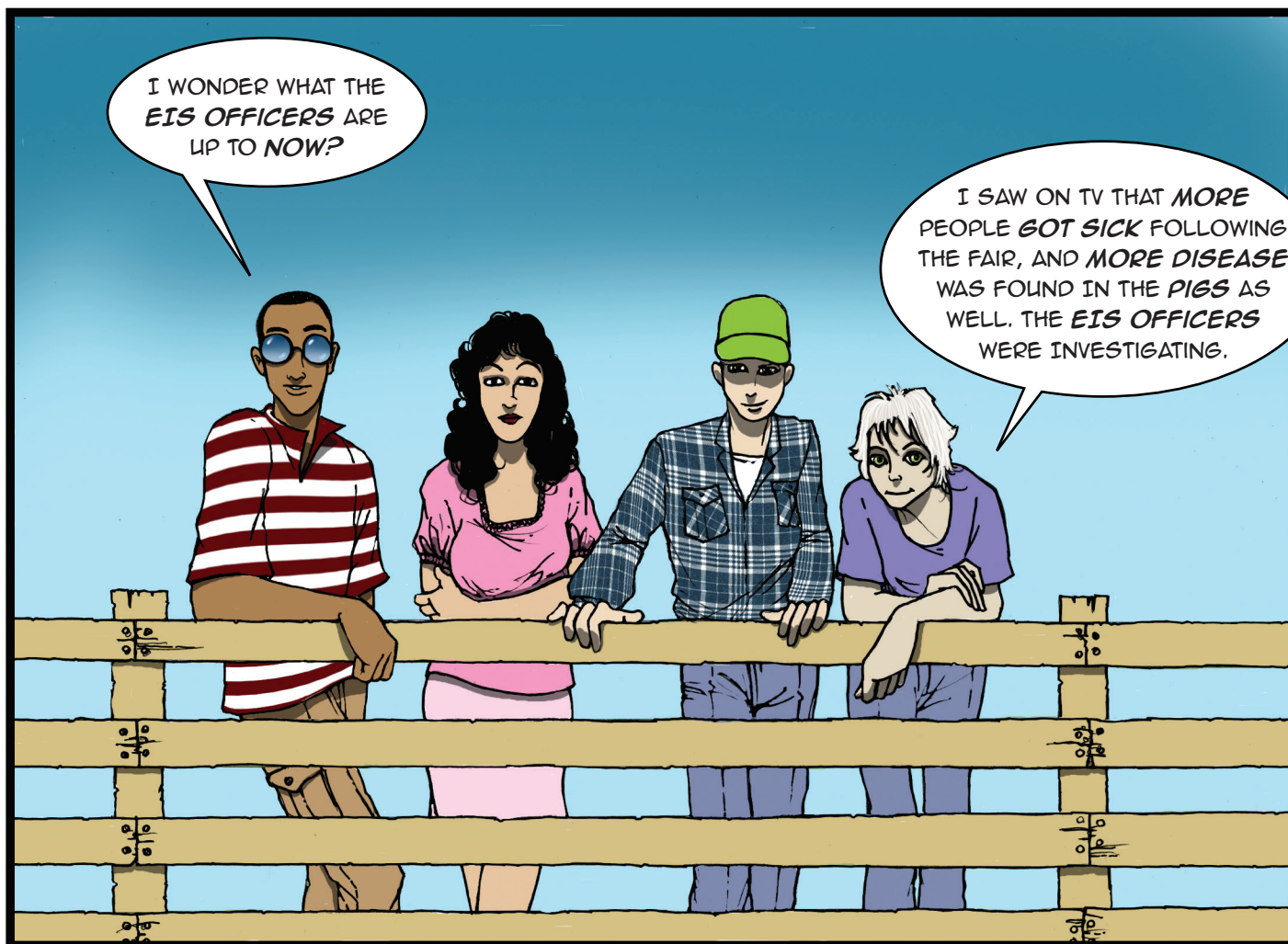
THAT'S... **KIND OF CRAZY!**



**WOW!** YOU GUYS JUST TAUGHT ME A LOT!









## ADDENDUM

Please visit the following websites for additional information about health topics and recommendations discussed in *The Junior Disease Detectives: Operation Outbreak*.

### **CDC WEBSITE RESOURCES:**

**CDC Flu Website:** <https://www.cdc.gov/flu/>

**CDC Swine/Variant Flu Website:** <https://www.cdc.gov/flu/swineflu/index.htm>

**What People Who Raise Pigs Need to Know About Influenza (Flu):**

<https://www.cdc.gov/flu/swineflu/people-raise-pigs-flu.htm>

**Key Facts about Human Infections with Variant Viruses:**

<https://www.cdc.gov/flu/swineflu/keyfacts-variant.htm>

**Key Facts about Swine Influenza in Pigs:**

[https://www.cdc.gov/flu/swineflu/keyfacts\\_pigs.htm](https://www.cdc.gov/flu/swineflu/keyfacts_pigs.htm)

**Key Facts for People Exhibiting Pigs at Fairs:**

[https://www.cdc.gov/flu/pdf/swineflu/fair\\_exhibitor\\_factsheet.pdf](https://www.cdc.gov/flu/pdf/swineflu/fair_exhibitor_factsheet.pdf)

**Take Action to Prevent the Spread of Flu Between Pigs and People:**

<https://www.cdc.gov/flu/pdf/swineflu/prevent-spread-flu-pigs-at-fairs.pdf>

**CDC Healthy Pets Healthy People Website:** <https://www.cdc.gov/healthypets/index.html>

**CDC Zoonotic Diseases Website:** <https://www.cdc.gov/onehealth/basics/zoonotic-diseases.html>

**CDC Pandemic Flu Website:** <https://www.cdc.gov/flu/pandemic-resources/index.htm>

### **USDA WEBSITE RESOURCES:**

**Zoonotic Influenza and Measures for Prevention at Fairs:**

<http://nasphv.org/documentsCompendiaZoonoticInfluenza.html>

**Influenza in Swine:** <https://www.usda.gov/topics/animals/one-health/influenza-swine>

**USDA Surveillance for Influenza A Virus in Swine Update:**

[https://www.aphis.usda.gov/aphis/ourfocus/animalhealth/sa\\_animal\\_disease\\_information/sa\\_swine\\_health/ct\\_siv\\_surveillance/](https://www.aphis.usda.gov/aphis/ourfocus/animalhealth/sa_animal_disease_information/sa_swine_health/ct_siv_surveillance/)







CS270753-B

