



88012885

10/19/84
20-00012885

1260 (943)

United States Department of the Interior



BUREAU OF LAND MANAGEMENT

OREGON STATE OFFICE

825 NE Multnomah Street
P. O. Box 2905
Portland, Oregon 97208

#17
731
#1576
715

MAR 08 1985

Memorandum

To: Director, ALMRS PROCUREMENT ANALYSIS

From: State Director OREGON STATE OFFICE

Subject: ALMRS Equipment Analysis

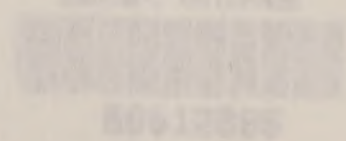
As per your instruction memorandum DSC-85-07 dated January 21, 1985, we have prepared the ALMRS Equipment Analysis based on the format developed jointly by the Idaho State Office and DSC.

If you have any questions, please contact Harold Baranda (943) 779 429-6255 or Pat Green (935) 779 429-3317.

ASSOCIATE STATE DIRECTOR

Enclosure

BUREAU OF LAND MANAGEMENT LIBRARY

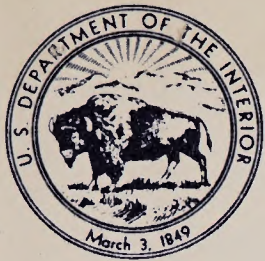


88012885

BLM Library
B-5521, Building 50
Denver Federal Center
P. O. Box 25047
Denver, CO 80225-0047

Blank rectangular area at the top right of the page.





#16949504
EO: 68001-2885

United States Department of the Interior

IN REPLY REFER TO:

1260 (943)

BUREAU OF LAND MANAGEMENT

OREGON STATE OFFICE

825 NE Multnomah Street

P.O. Box 2965

Portland, Oregon 97208

HD
221
A4576
1985

MAR 08 1985

Memorandum

To: Director, Denver Service Center (150)

From: State Director, Oregon

Subject: ALMRS Equipment Analysis

As per your instruction memorandum DSC-85-87 dated January 23, 1985, we have prepared the ALMRS Equipment Analysis based on the format developed jointly by the Idaho State Office and DSC.

If you have any questions, please contact Harold Berends (943) FTS 429-6255 or Pat Green (955) FTS 429-5317.

ASSOCIATE STATE DIRECTOR

Enclosure

BUREAU OF LAND MANAGEMENT LIBRARY

Denver, Colorado



88012885

BLM Library
D-553A, Building 50
Denver Federal Center
P. O. Box 25047
Denver, CO 80225-0047

(25-cent stamp)

United States Department of the Interior



BUREAU OF LAND MANAGEMENT

GRAND STAIRCASE

612 West Main Street

P.O. Box 250

Provo, Utah 84601

NOV 19 1982

TO: [Illegible]

FROM: [Illegible]

SUBJECT: [Illegible]

[Illegible body text]

[Illegible body text]

[Illegible signature]

[Illegible title]

[Illegible text]

THE NATIONAL ARCHIVES
College Park, Maryland 20740
Provo, Utah 84601
P.O. Box 250
Provo, UT 84601-0250

ALMRS PROCUREMENT ANALYSIS

Oregon State Office

Table of Contents

<u>Chapter</u>	<u>Page</u>
Executive Summary	1
Introduction	2
Assumptions	3
Equipment Needs Analysis	4
Area-by-Area Analysis	
Oregon State Office	5
Burns District Office	15
Coos Bay District Office	16
Eugene District Office	17
Lakeview District Office	18
Medford District Office	19
Prineville District Office	20
Roseburg District Office	21
Salem District Office	22
Spokane District Office	23
Vale District Office	24
Baker Resource Area	25
Klamath Falls Resource Area	26
Tillamook Resource Area	27
Wenatchee Resource Area	28
Summary Tables	
Table 1 - Priority 1 Procurement	29
Table 2 - Priority 2 Procurement	30
Table 3 - Priority 3 Procurement	31
Table 4 - Total Procurement	32
ADP and Telecommunications Equipment Analysis	
Narrative	33
Telecommunications Diagrams	
Figure 1 - Present Situation	35
Figure 2 - Priority 1	36
Figure 3 - Priority 2	37
Figure 4 - Priority 3	38
Summary Tables	
Table 5 - Priority 1 Procurement	39
Table 6 - Priority 2 Procurement	40
Table 7 - Priority 3 Procurement	41
Table 8 - Total Procurement	42

ALIAS PROGRAMS ANALYSIS

Oregon State Office

Table of Contents

<u>Page</u>	<u>Chapter</u>
1	Executive Summary
2	Introduction
3	Assumptions
4	Equipment Needs Analysis
	Area-by-Area Analysis
5	Oregon State Office
12	Boone District Office
16	Boone Bay District Office
17	Boone District Office
18	Labadie District Office
19	Medford District Office
20	Prineville District Office
21	Roseburg District Office
22	Salem District Office
23	Seaside District Office
24	Vain District Office
25	Washburn Area
26	Clatsop Falls Resource Area
27	Williamson Resource Area
28	Washburn Resource Area
	Summary Tables
29	Table 1 - Priority 1 Procurement
30	Table 2 - Priority 2 Procurement
31	Table 3 - Priority 3 Procurement
32	Table 4 - Total Procurement
	ADP and Telecommunications Equipment Analysis
33	Narrative
	Telecommunications Programs
35	Figure 1 - Present Situation
36	Figure 2 - Priority 1
37	Figure 3 - Priority 2
38	Figure 4 - Priority 3
	Summary Tables
39	Table 5 - Priority 1 Procurement
40	Table 6 - Priority 2 Procurement
41	Table 7 - Priority 3 Procurement
42	Table 8 - Total Procurement

INTRODUCTION

EXECUTIVE SUMMARY

The Automated Land and Mineral Record System (ALMRS) has evolved since April, 1982. The oil and gas case records was automated as an aid to This Automated Land and Mineral Record System (ALMRS) Procurement Analysis reviews Oregon/Washington needs for equipment during ALMRS development, beginning this fiscal year (1985). The crux of this analysis is contained in the "Assumptions" and "Equipment Needs Analysis" sections. These sections describe the basic premises and objectives for ALMRS development and estimate what staff and equipment will be performing what type of functions in the State, volume of work to be performed, anticipated use of the system, existing compatible equipment, and additional equipment needed. Equipment need is described in terms of terminals and printers, concomitant telecommunications and ADP equipment. An overview of ALMRS development is provided in the "Introduction."

Summary tables at the end of this document condense these equipment needs into three priorities:

Priority 1 - The minimum to initiate land status; minimum case processing capability; equipment for the State Office; a total of 1 terminal and 4 printers.

Priority 2 - Increase capability in Oregon State Office and provide additional equipment to six district offices and one Resource Area Office; an additional 12 terminals and 10 printers.

Priority 3 - Optimize capability at the State Office, and additional equipment for two district offices; an additional 4 terminals and 4 printers.

The procurement analysis spans approximately three years, totals approximately \$378,050. If all priorities were funded by the ALMRS office in DSC (D-150), it would mean the purchase of 17 terminals and 18 printers; \$57,100 in telecommunication upgrades; \$310,000 in ADP equipment upgrades; and \$10,950 1/ in maintenance contracts. The major ADP upgrade is in Priority 2 in the amount of \$300,000.

This analysis was completed cooperatively by Branch of Lands and Minerals Operations (943) and Branch of Information Services (955).

1/ This is a per year maintenance cost estimate.

EXECUTIVE SUMMARY

This Automated Land and Mineral Record System (ALMRS) Procurement Analysis reviews Oregon/Washington needs for equipment during ALMRS development beginning this fiscal year (1985). The crux of this analysis is contained in the "Assumptions" and "Equipment Needs Analysis" sections. These sections describe the basic premises and objectives for ALMRS development and estimate what staff and equipment will be performing what type of functions in the State, volume of work to be performed, anticipated use of the system, existing compatible equipment, and additional equipment needed. Equipment needs is described in terms of terminals and printers, concomitant telecommunication and ADF equipment. An overview of ALMRS development is provided in the "Introduction".

Summary tables at the end of this document condense these equipment needs into three priorities:

Priority 1 - The minimum to initiate land status; minimum case processing capability; equipment for the State Office; a total of 1 terminal and 4 printers.

Priority 2 - Increase capability in Oregon State Office and provide additional equipment to six district offices and one Resource Area Office; an additional 12 terminals and 10 printers.

Priority 3 - Optimize capability at the State Office, and additional equipment for two district offices; an additional 4 terminals and 4 printers.

The procurement analysis spans approximately three years, total approximately \$378,050. If all priorities were funded by the ALMRS office in OSC (0-150), it would mean the purchase of 17 terminals and 18 printers; \$27,100 in telecommunication upgrades; \$310,000 in ADF equipment upgrades; and \$10,950 in maintenance contracts. The major ADF upgrade is in Priority 2 in the amount of \$300,000.

This analysis was completed cooperatively by Branch of Lands and Minerals Operations (943) and Branch of Information Services (922).

INTRODUCTION

The Automated Land and Mineral Record System (ALMRS) has evolved since April, 1982. The oil and gas case records was automated as an aid to managing and processing the backlog of cases. Today's ALMRS mission is to develop and implement an efficient system for recording, maintaining, and retrieving legal land description, ownership, status, and title information in support of Federal programs and public resource users.

ALMRS is being developed incrementally from a manual records system to a fully automated system. It will incorporate three major components: legal land description, ownership/status data, and case management/processing. ALMRS will eventually be integrated with a geographic information system (GIS), being developed in DSC, for graphic display of the components listed above. The legal land description component will describe parcels of land by recognized methods such as the Public Land Survey, metes and bounds, parcel numbering, and tracting. The ownership/status component will describe rights to use and enjoy property, transfer title, and availability of a tract for governmental or private use or disposal. The management/processing component will allow input, manipulation, retrieval, and reformatting of data for reports, records, billings, etc. The definition of records and other terms is included in Appendix 1.

Presently ALMRS is a case recordation system that has been operational since June of 1982. It only uses 38 of the 102 data elements to be used by ALMRS. Operating limitations have been identified by users and technical review committee and temporary solutions are being developed.

Manual records such as the Historical Index, Serial Register Page, and some updates to the Master Title Plat will be displayed on computer terminals in the future. Legal descriptions for 4,941 townships in Oregon/Washington will be available, as well as associated status. Lands and Minerals case file and mining claim data will also be available. Stipulations will be compiled for case processing, adjudication, and management decisions.

ALMRS will allow BLM to quickly validate legal land descriptions in applications, adjust total acres in cases as lands are added or deleted, and streamline steps in the adjudication process. It will quickly produce comprehensive reports and eliminate labor-intensive, redundant manual compilations. Status data will be more consistent, errors identified and corrected, and accuracy of statistical reports will be greatly improved.

With equipment in place, records can be quickly and easily updated at any Bureau office with the authority to take an action affecting land and case status. The public will be encouraged to go to district/resource area managers for action on their requests. ALMRS will provide field managers with a modernized records system to facilitate use of the authority delegated to their offices.

ALMRS outputs will be more understandable to the public, BLM, and other agencies. A narrative description of status by section, township, and range will facilitate land record use and understanding by all users. ALMRS will add a new dimension to the public land records because it can aggregate and manipulate land status data. Knowledge of title ownership or use will be obtained from BLM in a timely and consistently accurate manner.

ALMRS will provide an interface with, and automated transfer of, data to the Simultaneous Oil and Gas program and to the Financial Management System. It will promote coordination and exchange of data among Minerals Management, AFS/PAAS systems, USGS, Forest Service, and other governmental entities who rely on BLM for land status statistics.

ASSUMPTIONS

1. The plan addresses equipment needs for FY 85 through FY 90 based on the following priorities:

Priority 1 procurement consists of all terminals and printers needed to provide a minimum operation in the State, districts, and resource area offices for collection of new and remaining case data, update survey data, and to begin capturing status data. It represents a minimal equipment and staffing configuration.

Priority 2 procurement increases the minerals and mining systems staffs' capability to track and query the data base.

Priority 3 procurement provides for full implementation of tracking and querying systems at all levels of the State and completes the extent of this analysis based on ALMRS development specifications and the assumptions of this analysis.

2. This analysis assumes that ALMRS will have sufficient telecommunications and computer processing support.

3. The plan addresses needs based on optimum configuration for implementation excluding GIS, because GIS technology has not fully been defined.

4. Optimum configuration means every office (SO Division, SO Branch, DO, RA, etc.) should have access to ALMRS data and be able to print out information in a convenient location based on user needs. This also includes adequate public use. Consider volume, location, and shared terminal vs. constant access.

5. Implementation will be completed within this five-year period and involves all legal land description or survey work being done in-house and all status work being completed either by contract or in-house at the State's option. ALMRS will fund the collection of survey and status input.

These matters will be very important to the public, and they
should be handled in a way that is both fair and equitable.
The Commission will be working to ensure that the public
has a voice in the process and that the process is
transparent and accountable. We will be holding public
hearings and will be providing information to the public
as we move forward.

The Commission will be working to ensure that the public
has a voice in the process and that the process is
transparent and accountable. We will be holding public
hearings and will be providing information to the public
as we move forward.

The Commission will be working to ensure that the public
has a voice in the process and that the process is
transparent and accountable. We will be holding public
hearings and will be providing information to the public
as we move forward.

The Commission will be working to ensure that the public
has a voice in the process and that the process is
transparent and accountable. We will be holding public
hearings and will be providing information to the public
as we move forward.

The Commission will be working to ensure that the public
has a voice in the process and that the process is
transparent and accountable. We will be holding public
hearings and will be providing information to the public
as we move forward.

The Commission will be working to ensure that the public
has a voice in the process and that the process is
transparent and accountable. We will be holding public
hearings and will be providing information to the public
as we move forward.

The Commission will be working to ensure that the public
has a voice in the process and that the process is
transparent and accountable. We will be holding public
hearings and will be providing information to the public
as we move forward.

The Commission will be working to ensure that the public
has a voice in the process and that the process is
transparent and accountable. We will be holding public
hearings and will be providing information to the public
as we move forward.

The Commission will be working to ensure that the public
has a voice in the process and that the process is
transparent and accountable. We will be holding public
hearings and will be providing information to the public
as we move forward.

The Commission will be working to ensure that the public
has a voice in the process and that the process is
transparent and accountable. We will be holding public
hearings and will be providing information to the public
as we move forward.

6. Future interagency needs are not represented in this analysis and will be addressed by other means.
7. A very elementary workload analysis is needed at this time to assess the ALMRS workload and thus the necessary equipment (Priority 1) for FY 85. For example, a workload of inputting survey information for 2,100 townships requires approximately 8,400 hours or 4.1 employees per year. Equipment necessary for four employees would include three terminals, a planometer, work space, office equipment, storage area for plats, hanging rack for printouts, etc.
8. Final ALMRS implementation will eliminate Serial Register Pages, the Historical Index, and Mining Claim Microfiche. The microfiche indexes used in the Minerals Operations Section may still be available in an improved version if it is not possible to eliminate them entirely.
9. For this analysis, do not consider the use of OMRON or RAMTEK terminals or mini- or microcomputers.
10. ALMRS will only pay for first-year maintenance of terminals.
11. Down loading of all state-related case recordation, mining claim, survey, and status data will continue on to the Level-6 Computer.

EQUIPMENT NEEDS ANALYSIS (Terminals and Printers)

Based on the assumptions for implementation of ALMRS, workload and equipment needed have been estimated for all of Oregon/Washington in the subsequent area-by-area equipment analysis. Because the location of ALMRS work to be done is a key factor in identifying equipment needs, terminal and printer requirements have been identified by specific areas within the State and district offices.

Need is based on both current and future workload requirements. The ALMRS workload of each area is described in the "Need" paragraphs on each page. Identified users are based on assumptions regarding automation of the manual lands system. The volume/usage paragraph on each page reflect estimates from present experience. The additional equipment is based on need, location, and volume of workload.

Priority 1 procurement consists of all terminals and printers needed to provide a minimum operation in the State and district/RA offices for collection of the remaining case data and updating survey data. It represents a minimal equipment and staffing configuration.

Priority 2 procurement increases the minerals and mining staffs' capability to track and query the data base.

Priority 3 procurement provides for full implementation of tracking and querying systems at all levels of the State, District, and Resource Areas and completes the extent of this analysis based on ALMRS development specifications and the assumptions of this analysis.

It should be noted that the data reported in this analysis are preliminary and subject to change.

The data reported in this analysis are preliminary and subject to change. The data reported in this analysis are preliminary and subject to change.

The data reported in this analysis are preliminary and subject to change. The data reported in this analysis are preliminary and subject to change.

The data reported in this analysis are preliminary and subject to change. The data reported in this analysis are preliminary and subject to change.

The data reported in this analysis are preliminary and subject to change. The data reported in this analysis are preliminary and subject to change.

Summary of Findings

The data reported in this analysis are preliminary and subject to change. The data reported in this analysis are preliminary and subject to change.

The data reported in this analysis are preliminary and subject to change. The data reported in this analysis are preliminary and subject to change.

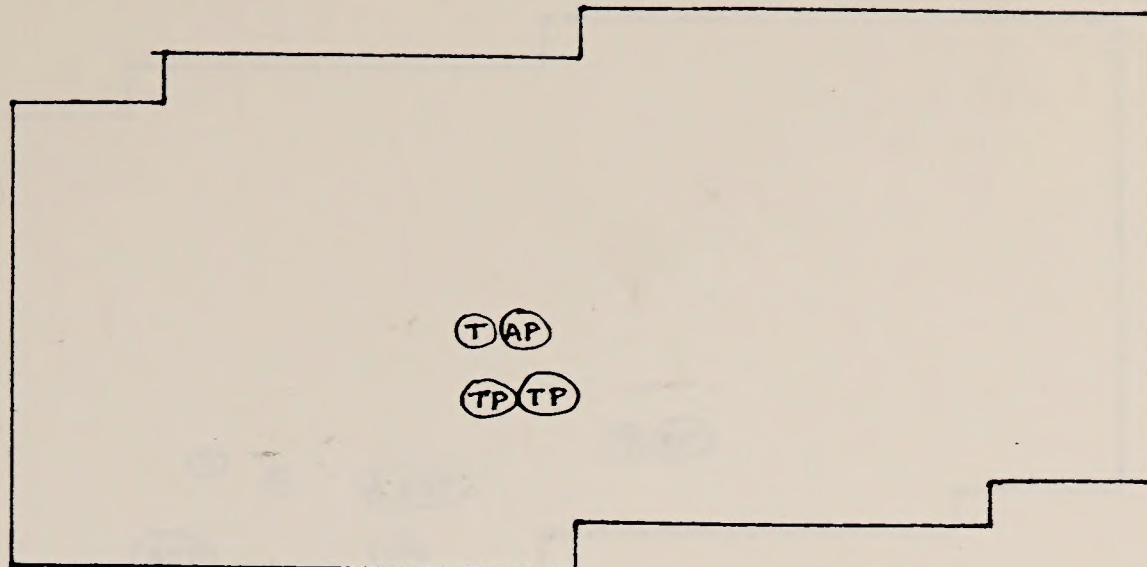
The data reported in this analysis are preliminary and subject to change. The data reported in this analysis are preliminary and subject to change.

The data reported in this analysis are preliminary and subject to change. The data reported in this analysis are preliminary and subject to change.

The data reported in this analysis are preliminary and subject to change. The data reported in this analysis are preliminary and subject to change.

Division of Operations
- Public Room -

S



NEED:

This office is the center of resource-user activity on federal lands in Oregon and Washington. The public has access to Master Title and Use plats, Historical Indices, Serial Register Pages, geographic and activity reports, and a variety of supplemental and retired records. Record formats include paper, mylar, roll film, microfiche, aperture cards and printouts. Most requests for public land information is generated in response to telephone, mail or in-person contacts by the public, other agencies or BLM office staff. Public inquiries are expected to greatly increase with the downloading of mining claim and survey data to the state office computer. Public attitudes toward the automated records has been overwhelmingly positive with expanded case data and report outputs eagerly awaited.

USERS:

Primary users are the public and one Public Contact Representative. Secondary users are the Public Assistance & Records Staff.

LEVEL OF USE:

The two terminals and one printer presently in use are operated an average of 2-3 hours a day. An additional terminal and printer will be installed shortly. Downloading of the mining claim and survey data base is expected to double public use of the equipment.

EXISTING EQUIPMENT:

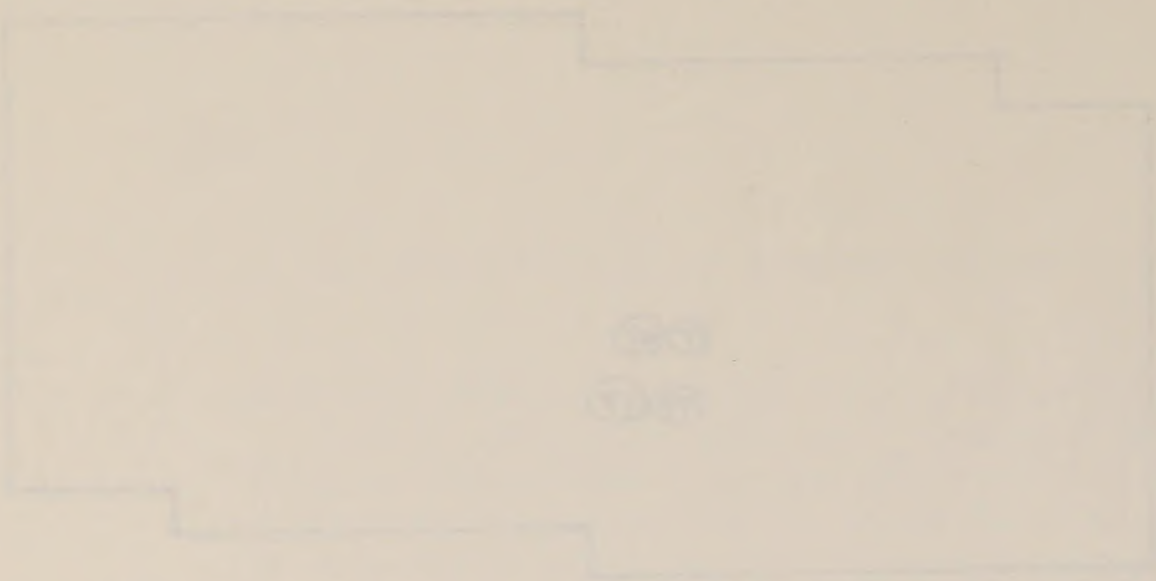
3 Terminals, 2 Printers (TP) (T)

ADDITIONAL EQUIPMENT:

- Priority 1: 1 High-Speed Printer (AP)
- Priority 2: None
- Priority 3: None

ADDITIONAL COMMENTS:

A high-speed printer is needed to satisfy public demands for comprehensive reports or extensive record copies that are impracticable to run on the low-volume (slaved) printers. In the absence of a full-time computer operator, large runs must be retrieved from the 7th floor computer center; requiring a record technician to detailed on a 5-10 minute trip for each request.



Technical drawing

This drawing is a technical drawing of a stepped shaft. The shaft is oriented vertically and consists of three main sections. The top section has a diameter of 1.5 inches and a length of 2.0 inches. The middle section has a diameter of 1.0 inch and a length of 1.5 inches. The bottom section has a diameter of 1.5 inches and a length of 2.0 inches. The shaft is shown with a chamfered end on the top section. The drawing is a perspective view showing the shaft from the front-left. The drawing is labeled with '1.5' and '2.0' in the center, which likely refer to the diameters of the top and bottom sections respectively.

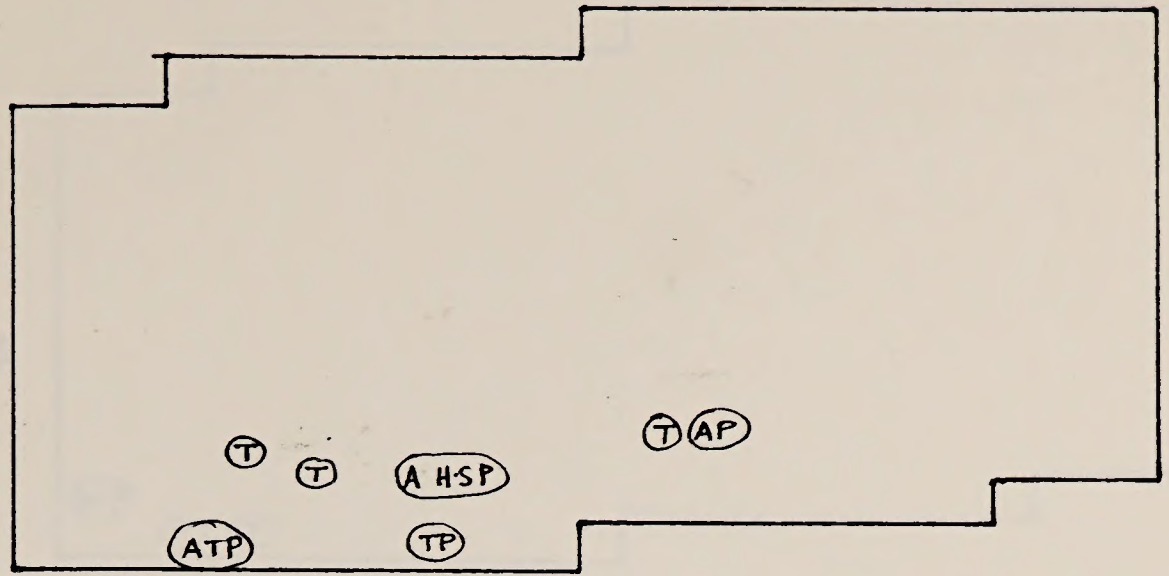
The drawing is a technical drawing of a stepped shaft. The shaft is oriented vertically and consists of three main sections. The top section has a diameter of 1.5 inches and a length of 2.0 inches. The middle section has a diameter of 1.0 inch and a length of 1.5 inches. The bottom section has a diameter of 1.5 inches and a length of 2.0 inches. The shaft is shown with a chamfered end on the top section. The drawing is a perspective view showing the shaft from the front-left. The drawing is labeled with '1.5' and '2.0' in the center, which likely refer to the diameters of the top and bottom sections respectively.

1.5
2.0

A technical drawing of a stepped shaft. The shaft is oriented vertically and consists of three main sections. The top section has a diameter of 1.5 inches and a length of 2.0 inches. The middle section has a diameter of 1.0 inch and a length of 1.5 inches. The bottom section has a diameter of 1.5 inches and a length of 2.0 inches. The shaft is shown with a chamfered end on the top section. The drawing is a perspective view showing the shaft from the front-left. The drawing is labeled with '1.5' and '2.0' in the center, which likely refer to the diameters of the top and bottom sections respectively.

Division of Operations
- Records, Accounts, Docket -

S



NEED:

This office is the functional point-of-control for the state ALMRS operations. This office is responsible for serialization, financial accounting and manual record notation of all land and mineral cases, as well as the initial input of all cases originating in the State Office. Until a state-wide communication network is operational, all initial data input or updates for the districts and resource areas will be performed by this staff. Other ALMRS responsibilities include maintaining the data element dictionary and name file; verification of proprietor, action code, legal description and acreage; orientation and training for BLM, other agency and public record users; case record and ALMRS/ORCA file compatibility audits; support public room inquiries; coordinate the state ALMRS effort with other ORCA states and the DSC ALMRS staff. This unit will input about 50-60% of all Oregon and Washington cases.

USERS:

1 Public Assistance & Records Chief, 1 Application Examiner/Cashier, 1 Supervisory Records Specialist, 3 Miscellaneous Documents Examiners, 4 Cartographic Technicians, 1 File Clerk.

LEVEL OF USE:

4 Terminals and 1 Printer are used 7-8 hours a day.

EXISTING EQUIPMENT:

4 Terminals, 1 Printer (TP) (T)

ADDITIONAL EQUIPMENT NEEDED:

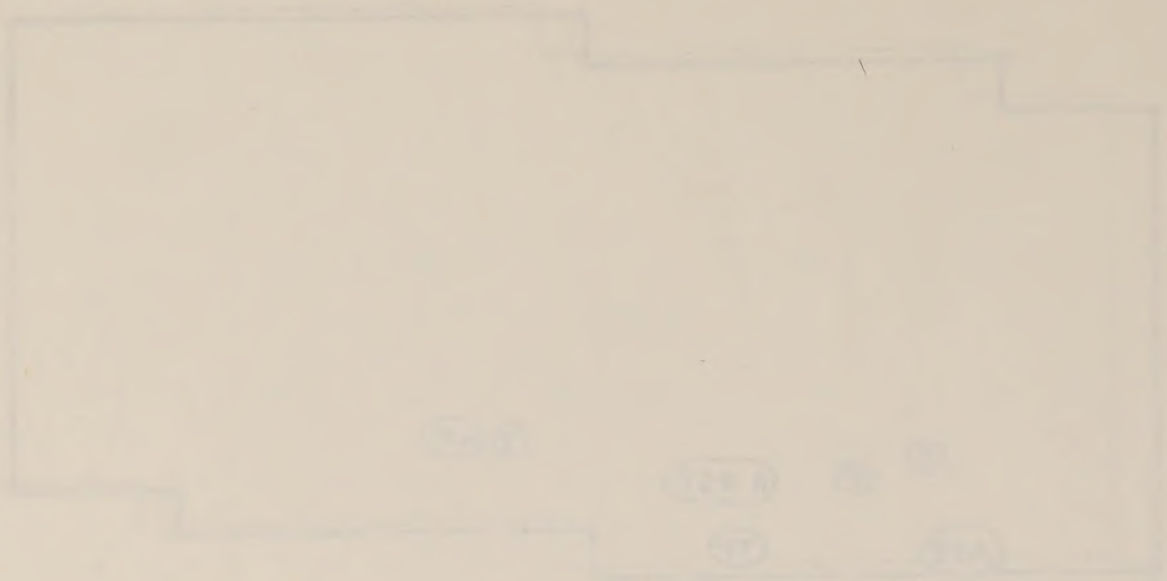
Priority 1: 1 High-Speed Printer, 1 (slaved) Printer (AH-SP) (AP)

Priority 2: 1 Terminal, 1 Printer (ATP)

Priority 3: None

ADDITIONAL COMMENTS:

A High-Speed Printer for ALMRS File Controller is necessary for case audits and state-wide reports. Another (slaved) printer is needed at the point of initial data input because serial pages are still needed for new cases, status and district updates even though the public room posting ceased on February 19, 1985. A second terminal in records is needed for consistent verification of update and close-out actions; the additional printer will be shared by records and docket.



This office is now transferred to the new location at the corner of 1st and 2nd streets, St. Louis, Missouri. The office is now equipped with the latest in office machinery, including a typewriter, a adding machine, and a filing cabinet. The office is now open for business on all days of the week, except on Sundays and public holidays. The office is now under the management of the undersigned, who is a qualified and experienced office manager. The office is now open for business on all days of the week, except on Sundays and public holidays. The office is now under the management of the undersigned, who is a qualified and experienced office manager.

I hereby certify that the above is a true and correct copy of the original document. Witness my hand and seal this 1st day of January, 1911.

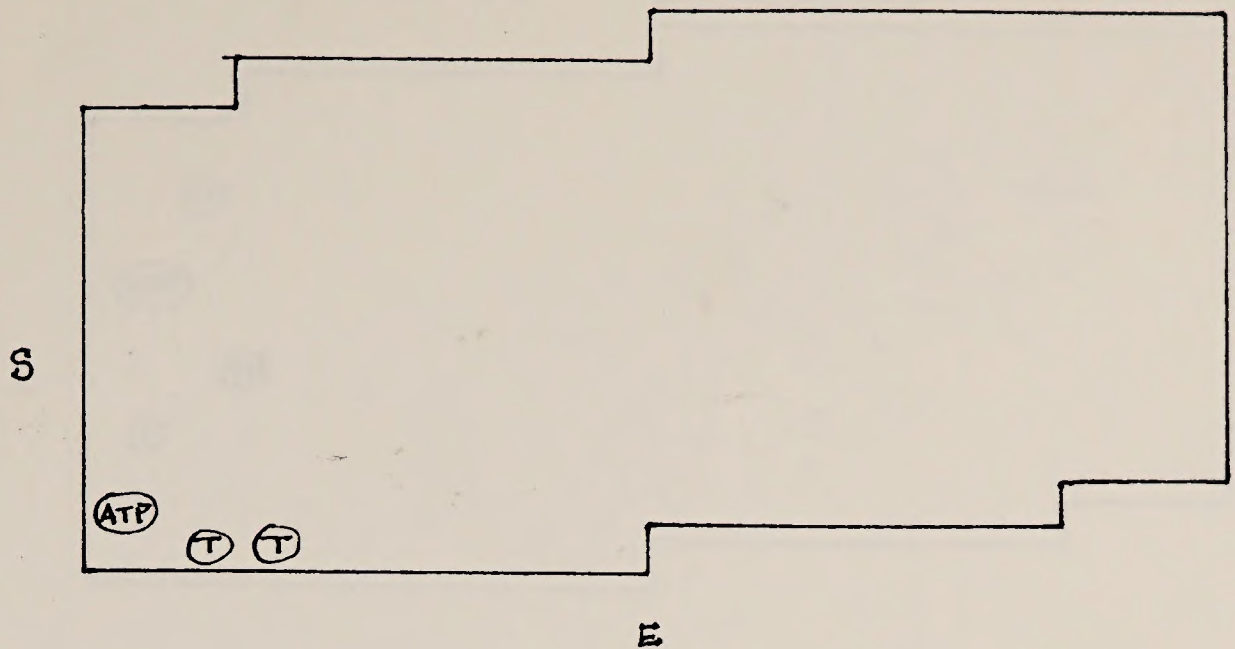
Attest my hand and seal this 1st day of January, 1911.

(Signature)

(Seal)

I hereby certify that the above is a true and correct copy of the original document. Witness my hand and seal this 1st day of January, 1911.

Division of Operations
- Mining Claim Recordation -



NEED:

This office is the central receiving and recording point for all mining claims located on federal lands in Oregon and Washington. New mining claims are entered into an automated record system after serialization. All update actions, assessments, transfers of interest, state-wide reports and record audits are performed by this staff. Inquiries from the public or other agencies that are case-specific are handled by this office. The supervisor will be responsible for the close coordination of mining claim record entry into the ALMRS system and the eventual downloading of that database to the state office computer. Other responsibilities include the input of interim actions, pending actions, use conflicts, petitions for the deferment of assessment, status checks, quarterly progress reports and the coordination with district and resource area offices for multiple use management.

USERS:

1 Supervisory Conveyance Examiner, 3 Conveyance Examiners and 1 File Clerk.

LEVEL OF USE:

2 Terminals are used 7-8 hours a day.

EXISTING EQUIPMENT:

2 Terminals (see comments) (T)

ADDITIONAL EQUIPMENT NEEDED:

Priority 1: None

Priority 2: 1 Terminal, 1 Printer (ATP)

Priority 3: None

ADDITIONAL COMMENTS:

Downloading the mining claim record database to the state office computer will necessitate the replacement of existing OMRON terminals with Tannbergs. In addition, reporting capabilities not presently available will then become highly desirable to other agencies and the public alike. An additional terminal and printer will be needed for responding to inquiries and requests for reports.

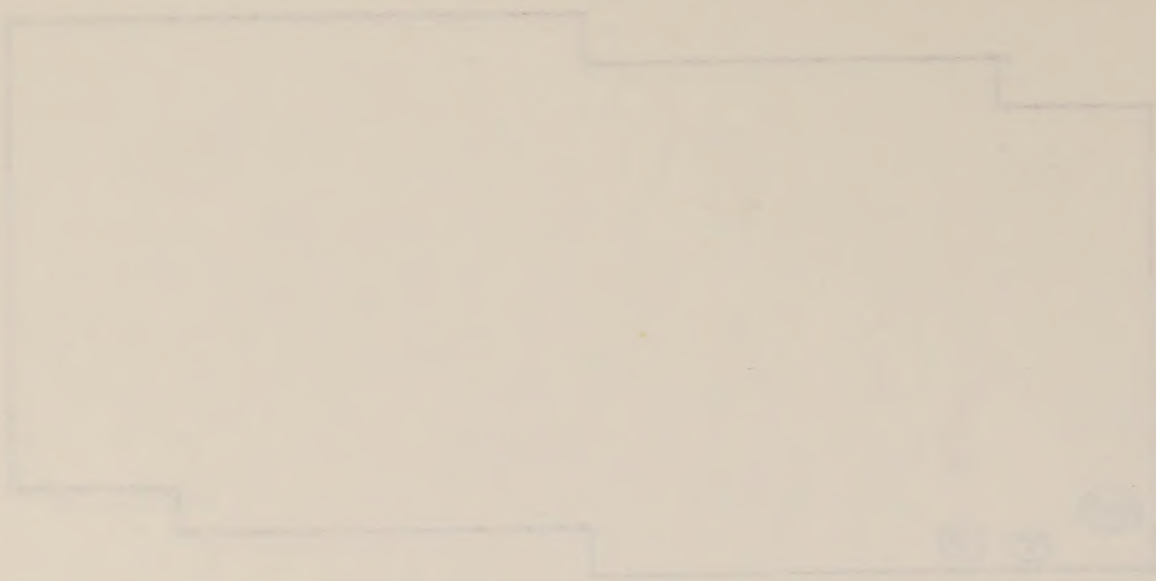


Figure 1: Profile of the part.

The drawing shows the profile of the part. The part has a flat top surface, a sloped side, a vertical section, and a bottom surface with a small circular feature. The drawing is oriented vertically on the page.

The drawing shows the profile of the part. The part has a flat top surface, a sloped side, a vertical section, and a bottom surface with a small circular feature.

The drawing shows the profile of the part. The part has a flat top surface, a sloped side, a vertical section, and a bottom surface with a small circular feature.

The drawing shows the profile of the part. The part has a flat top surface, a sloped side, a vertical section, and a bottom surface with a small circular feature.

The drawing shows the profile of the part. The part has a flat top surface, a sloped side, a vertical section, and a bottom surface with a small circular feature.

The drawing shows the profile of the part. The part has a flat top surface, a sloped side, a vertical section, and a bottom surface with a small circular feature.

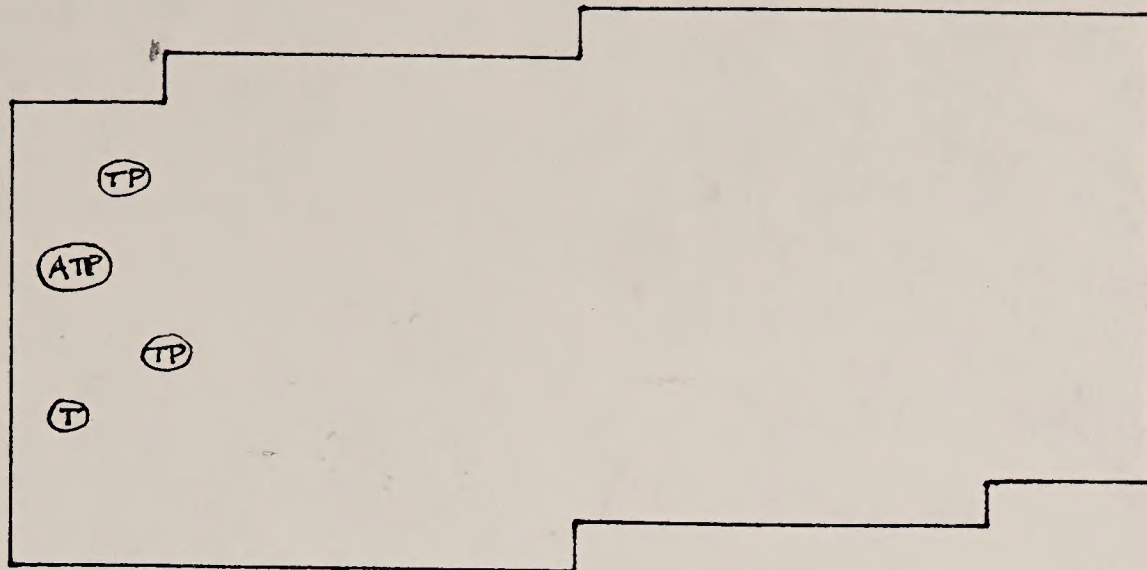
The drawing shows the profile of the part. The part has a flat top surface, a sloped side, a vertical section, and a bottom surface with a small circular feature.

The drawing shows the profile of the part. The part has a flat top surface, a sloped side, a vertical section, and a bottom surface with a small circular feature.

The drawing shows the profile of the part. The part has a flat top surface, a sloped side, a vertical section, and a bottom surface with a small circular feature. The drawing is oriented vertically on the page.

Division of Operations
- Mineral Leasing -

S



NEED:

This office is responsible for all adjudicative actions related to the mineral leasing program on federal lands in Oregon and Washington. Responsibilities include identifying land management conflicts, tracking bond and qualification files, monitoring and updating the stipulations database, maintaining case call-up tickler files, answer public and interagency inquiries about case-specific actions, processing assignments and applications for mineral leases. This staff verifies the initial data input of new cases, enters any pending and interim actions on pending cases, and input all update and close-out actions taken on cases as they occur.

USERS:

1 Mineral Operations Chief, 1 Geologist, and 7 Land Law Examiners.

LEVEL OF USE:

2 Terminals and 1 Printer are used an average of 2-3 hours a day each.

EXISTING EQUIPMENT:

2 Terminals and 1 Printer are presently in use, an additional 2 Terminals and 2 Printers will be installed shortly. (TP) (T)

ADDITIONAL EQUIPMENT NEEDED:

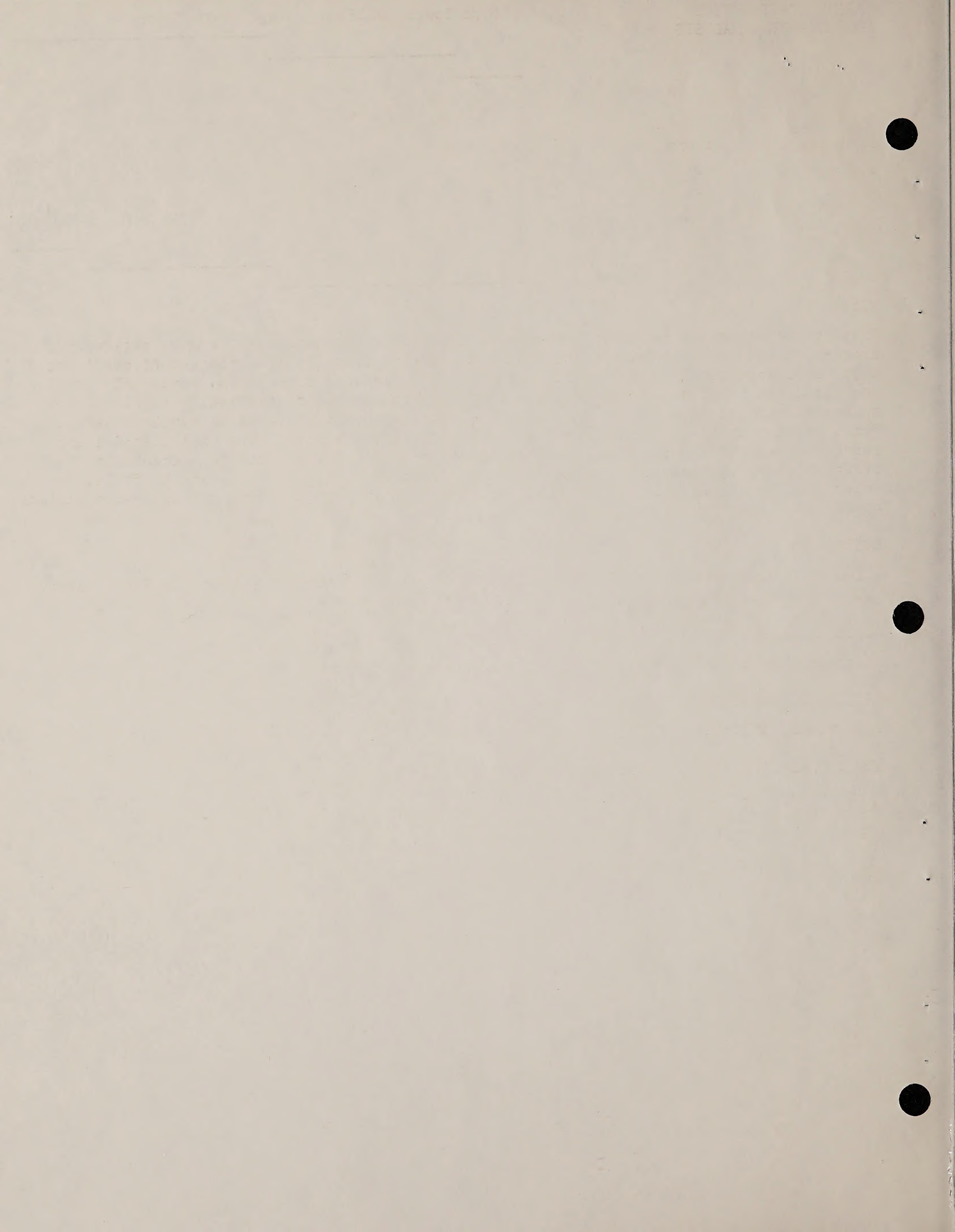
Priority 1: None

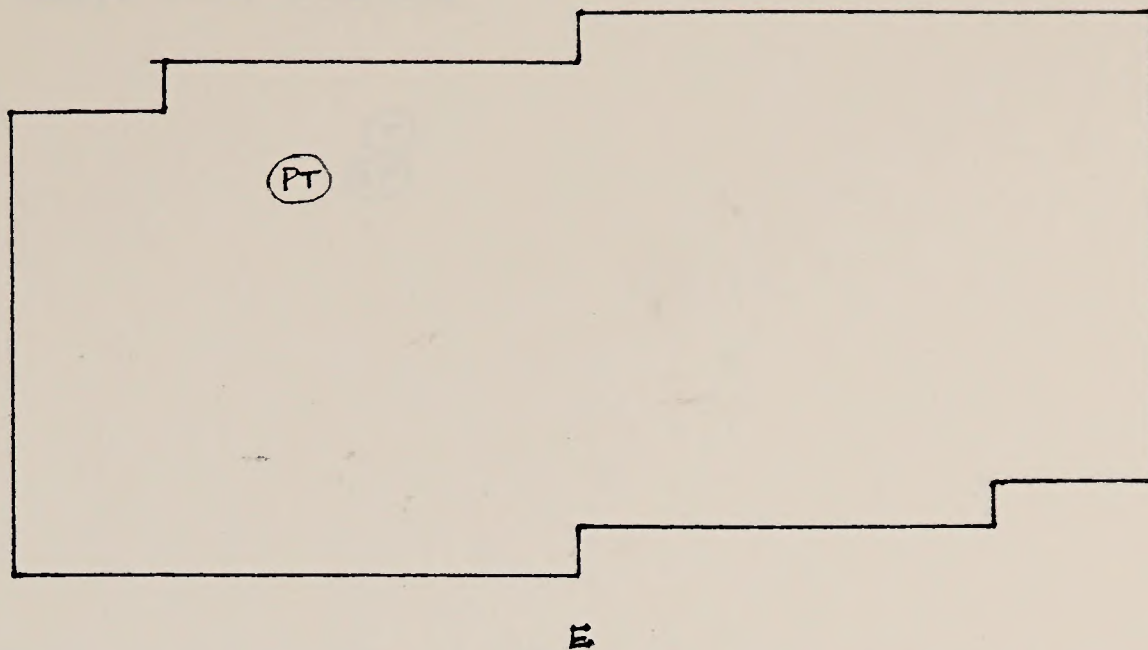
Priority 2: 1 Terminal, 1 Printer (ATP)

Priority 3: None

ADDITIONAL COMMENTS:

Increased responsibility for verification and input of record actions will have a corresponding effect on equipment usage. Completion of mineral patent, validity and mineral prospecting cases will expand the automated record coverage dramatically and necessitate the increased involvement of the mineral leasing staff in computer input/outputs.





Division of Operations

- Land Operations -
- Access Staff -

NEED:

These two offices are responsible for the Bureau's land and acquired access programs in Oregon and Washington. The staffs check land status, identify land management conflicts, monitor classifications, adjudicate pending and authorized case files, review the actions taken by district and resource area offices, maintain case callup tickler files, answer public and interagency inquiries about case-specific actions, audit land record data, produce state-wide progress and status reports, and coordinate with district and resource area offices for multiple use management purposes. In addition, these two offices verify the initial data entry of new cases originating in the state office, enter pending and interim actions on pending cases, and input update and close-out actions on case files as they occur.

USERS:

1 Land & Mineral Operations Branch Chief, 1 Land Operations Chief, 1 Access Staff Chief, 1 Conveyance Examiner, and 2 Land Law Examiners.

LEVEL OF USE:

Estimated use is 3-4 hours per day, upon installation.

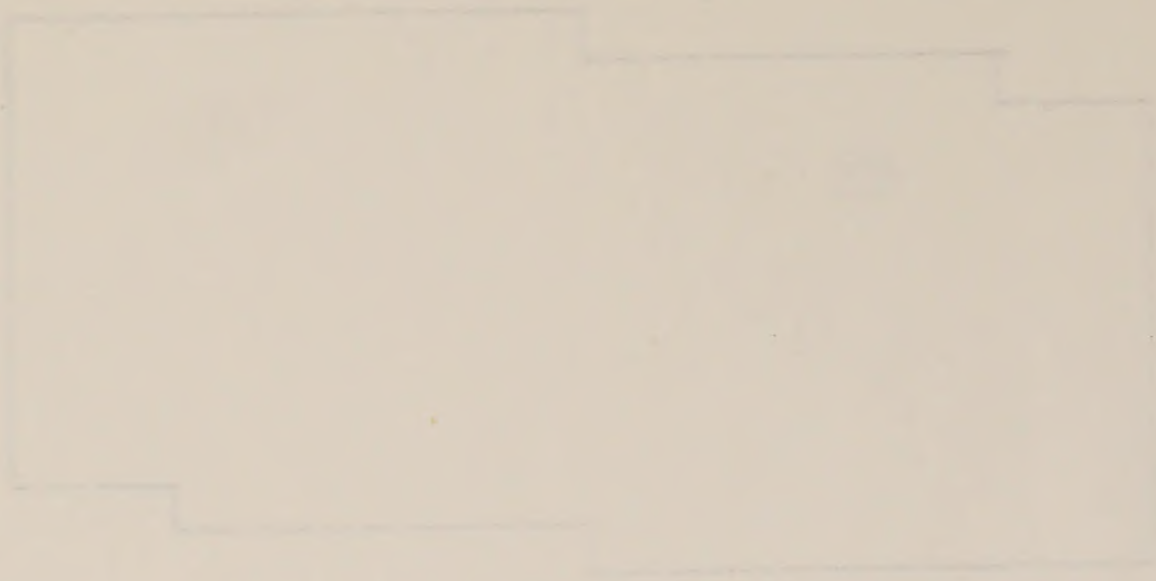
EXISTING EQUIPMENT:

1 Terminal, 1 Printer (TP)

ADDITIONAL EQUIPMENT NEEDED:

- Priority 1: None
- Priority 2: None
- Priority 3: None

ADDITIONAL COMMENTS:



Faint header text at the top right of the page.

Faint text block located in the upper right quadrant.

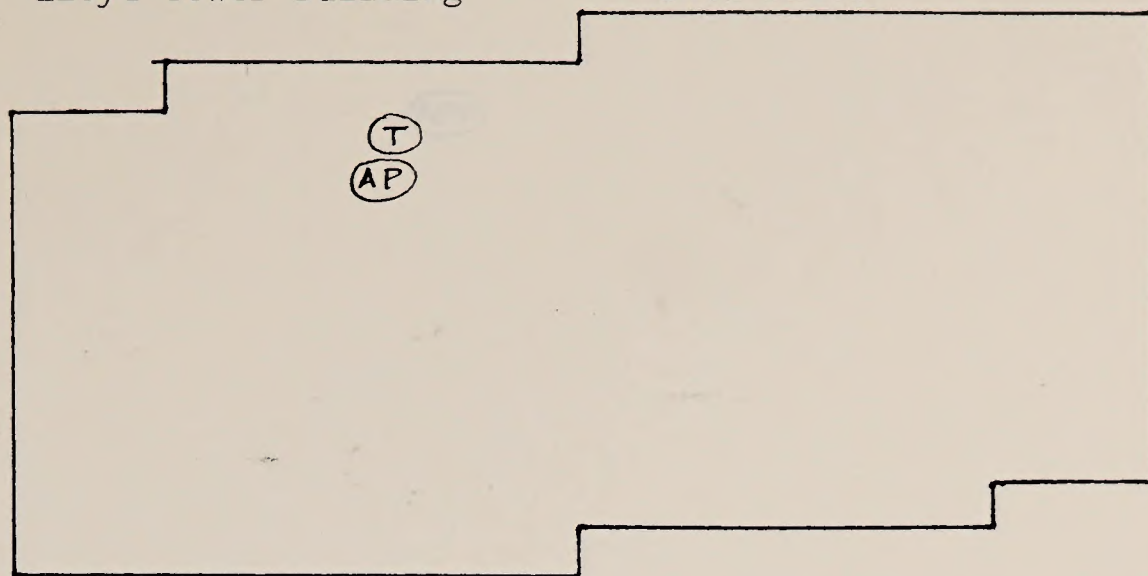
Faint text located on the right side of the page.

Main body of faint text, appearing to be a paragraph or two of a document.

Faint text block in the lower middle section of the page.

Lower section of faint text, possibly a list or detailed notes.

Bottom section of faint text, including what might be a footer or concluding remarks.



Division of Operations
- Withdrawal Review -

NEED:

This office is responsible for the adjudication and review of all federal agency withdrawals in Oregon and Washington. This unit has taken inventory of all withdrawals, classifications, and revocation/restoration cases; and begun the review process as required by FLPMA. In addition to adjudication, this office audits case record data, produces state-wide progress and status reports, maintains case call-up tickler files, answers public and interagency inquiries about case-specific actions, and coordinates with BLM and other agency offices for multiple use management purposes. This staff verifies initial case data entry, enters pending and interim actions for pending cases, and inputs update and case close-out actions as they occur.

USERS:

1 Withdrawal Review Chief, 2 Land Law Examiners, 2 Realty Specialists.

LEVEL OF USE:

1 Terminal 1-2 hours per day.

EXISTING EQUIPMENT:

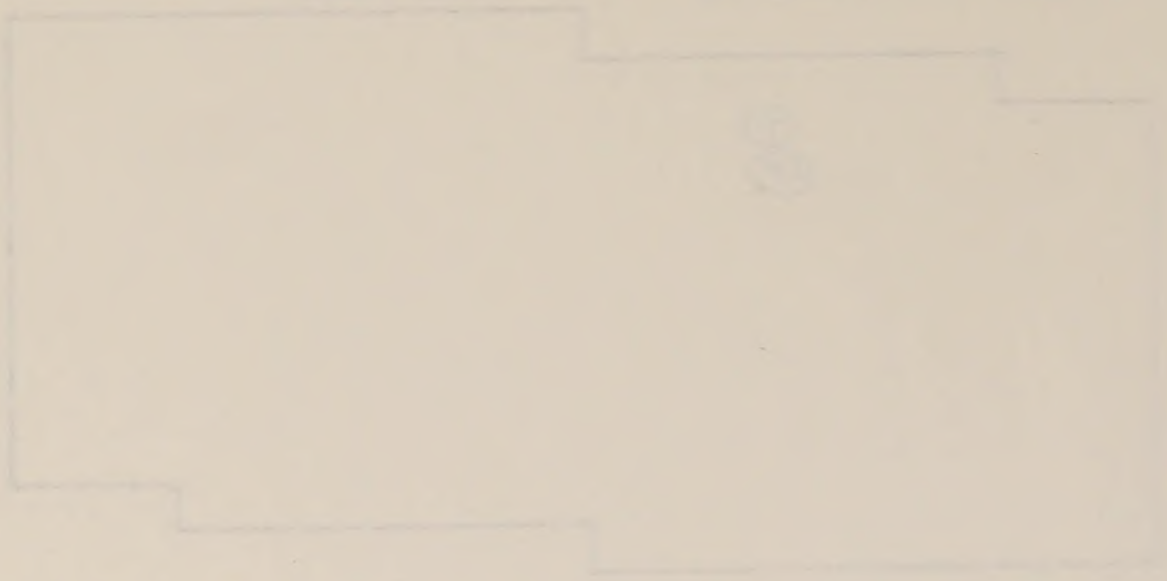
1 Terminal (T)

ADDITIONAL EQUIPMENT NEEDED:

Priority 1: 1 Printer (AP)
Priority 2: None
Priority 3: None

ADDITIONAL COMMENTS:

Printer is needed for audit and reporting purposes. Less than 5% of the withdrawal and classification cases have been input to date; terminal usage and need for a printer will grow in proportion to expanding database.



10/10/2012 10:10:12 AM
10/10/2012 10:10:12 AM

This document contains information that is confidential and may be subject to the Freedom of Information Act. This information is provided for your information only and is not to be distributed outside of your organization. If you have any questions regarding this information, please contact the appropriate authority. This information is provided for your information only and is not to be distributed outside of your organization. If you have any questions regarding this information, please contact the appropriate authority.

10/10/2012 10:10:12 AM
10/10/2012 10:10:12 AM

10/10/2012 10:10:12 AM
10/10/2012 10:10:12 AM

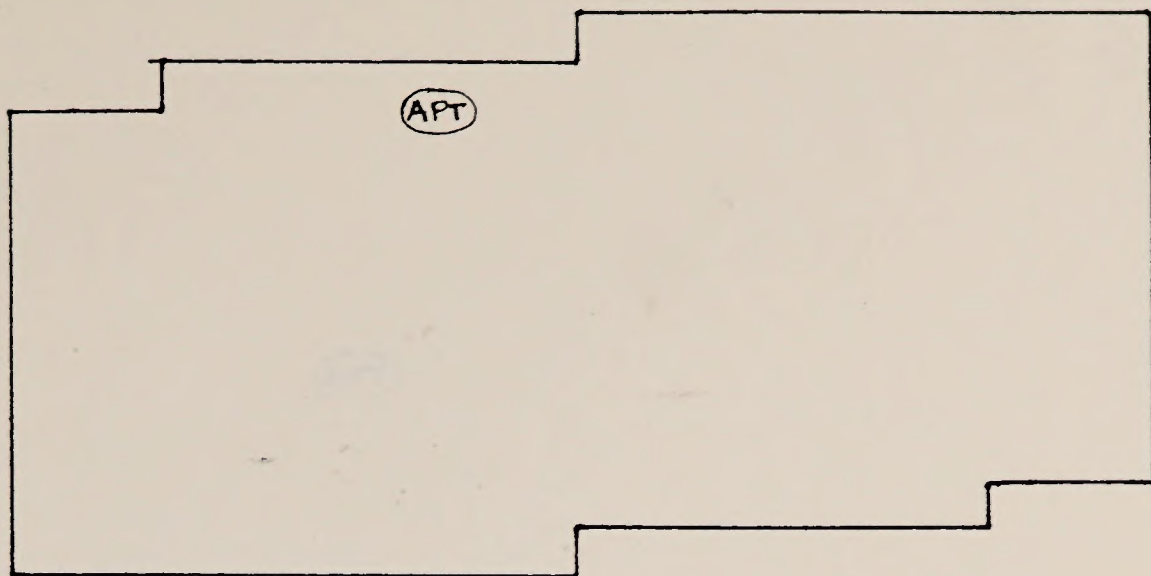
10/10/2012 10:10:12 AM
10/10/2012 10:10:12 AM

10/10/2012 10:10:12 AM
10/10/2012 10:10:12 AM

10/10/2012 10:10:12 AM
10/10/2012 10:10:12 AM

10/10/2012 10:10:12 AM
10/10/2012 10:10:12 AM

This document contains information that is confidential and may be subject to the Freedom of Information Act. This information is provided for your information only and is not to be distributed outside of your organization. If you have any questions regarding this information, please contact the appropriate authority. This information is provided for your information only and is not to be distributed outside of your organization. If you have any questions regarding this information, please contact the appropriate authority.



Division of Operations
- Appraisal Staff -

NEED:

This office has the appraisal and review authority for all BLM^E lands cases in Oregon and Washington. The staff would review current land case loads for the scheduling of work assignments, review recent appraisals and current rate changes, update appraisal information in land case files, input and verify initial values or changes.

USERS:

1 Appraisal Staff Chief, 2 Appraisers

LEVEL OF USE:

Estimated use is 1-2 hours per day, when installed.

EXISTING EQUIPMENT:

None

ADDITIONAL EQUIPMENT NEEDED:

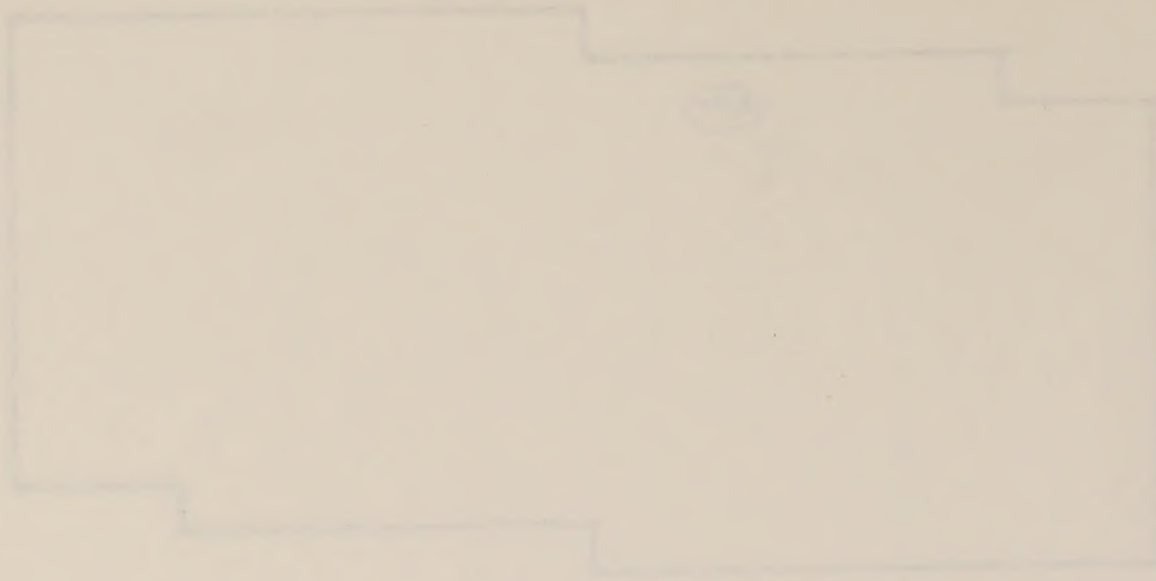
Priority 1: None

Priority 2: None

Priority 3: 1 Terminal, 1 Printer (APT)

ADDITIONAL COMMENTS:

Installation will occur will the integration of case recordation, survey and land status databases.



100-100000-100000

100-100000-100000

100-100000-100000

100-100000-100000

100-100000-100000

100-100000-100000

100-100000-100000

100-100000-100000

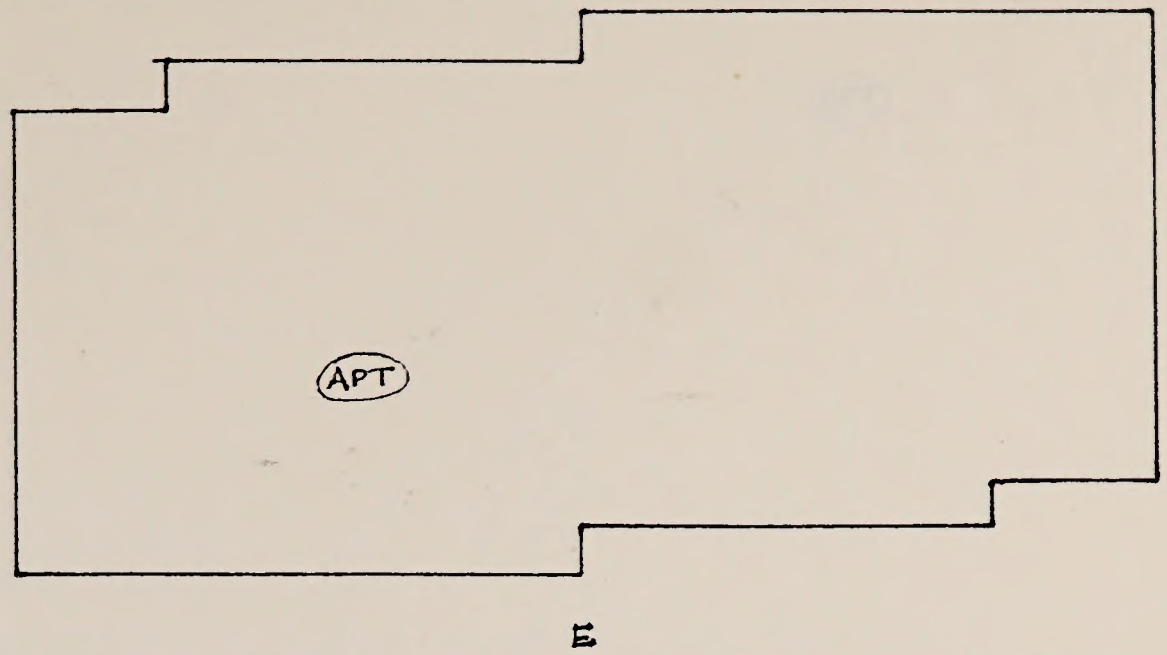
100-100000-100000

100-100000-100000

100-100000-100000

100-100000-100000

100-100000-100000



Division of Operations
- Cadastral Survey -

NEED:

This office is responsible for all cadastral survey in Oregon and Washington, including reimbursable work for other federal agencies. This office also produces, reviews, distributes and maintains cadastral survey records in the form of plats, notes and special instructions. The original survey database was compiled by the Records Improvement Project in 1978-1979. This staff will continually update the existing database when new surveys are approved, correct existing records and make the appropriate adjustments for jurisdictional changes.

USERS:

2 Cartographic Technicians

LEVEL OF USE:

2-3 hours per week under normal circumstances

EXISTING EQUIPMENT:

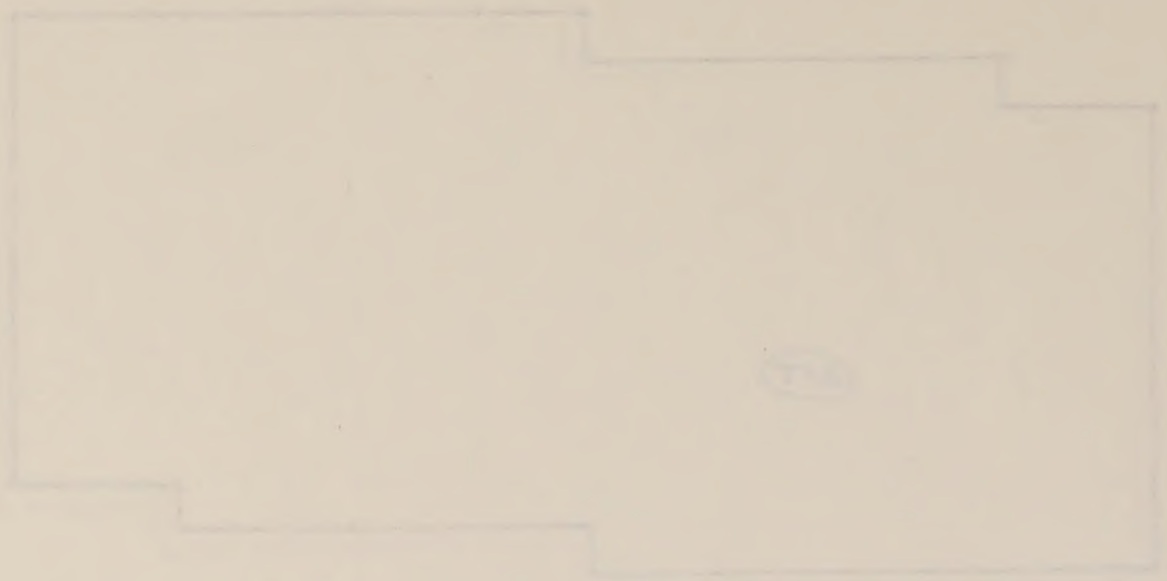
1 Terminal (see comment)

ADDITIONAL EQUIPMENT:

- Priority 1: 1 (replacement) Terminal, 1 Printer (APT)
- Priority 2: None
- Priority 3: None

ADDITIONAL COMMENTS:

The existing VIP 7200 terminal will be replaced with a Tannberg and Tally Printer after downloading of the survey database.



(A)

Section of Drawing

1. Sectional View

NOTE

This drawing is prepared for the purpose of showing the general appearance of the part and is not intended to be used for manufacturing purposes. The drawing is not to scale and is not intended to be used for manufacturing purposes. The drawing is not to scale and is not intended to be used for manufacturing purposes. The drawing is not to scale and is not intended to be used for manufacturing purposes.

NOTE

1. Sectional View

NOTE

1. Sectional View

NOTE

1. Sectional View

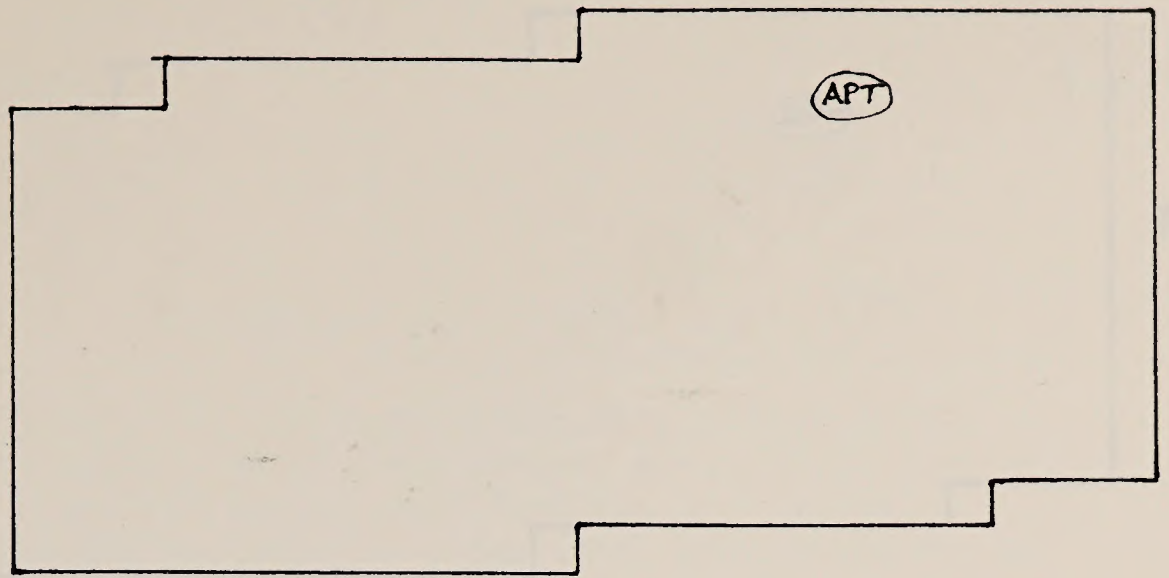
NOTE

1. Sectional View

NOTE

1. Sectional View

The drawing is not to scale and is not intended to be used for manufacturing purposes. The drawing is not to scale and is not intended to be used for manufacturing purposes. The drawing is not to scale and is not intended to be used for manufacturing purposes.



Division of Mineral Resources

NEED:

This office is responsible for the management of all federal mineral resources in Oregon and Washington; primarily policy development, budget allocations, and resource inventory and evaluation. The staff will monitor and update specific mineral case types, particularly post-authorization leases. The unit has potential for tracking mineral resource uses on federal lands by monitoring mining claims, mineral leases, prospecting permits mineral patent applications, withdrawals, protected areas and permitting systems.

USERS:

Mineral Specialists in the Division.

LEVEL OF USE:

Estimated use is 3-4 hours a day, upon installation.

EXISTING EQUIPMENT:

None

ADDITIONAL EQUIPMENT NEEDED:

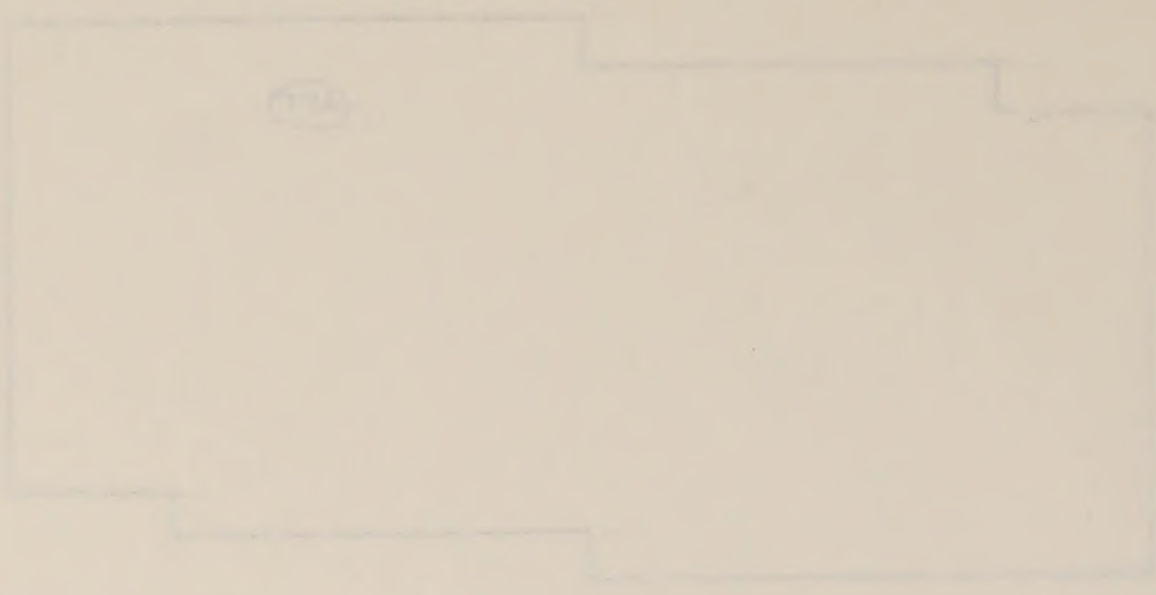
Priority 1: None

Priority 2: 1 Terminal, 1 Printer (APT)

Priority 3: None

ADDITIONAL COMMENTS:

Installation will occur with the integration of case recordation and survey databases, and the initiation of land status collection.



Division of Special Services

This report is prepared for the purpose of providing information regarding the activities of the various units of the organization. The information is based on the reports of the various units and is intended to provide a general overview of the organization's activities.

Division of Special Services

Division of Special Services

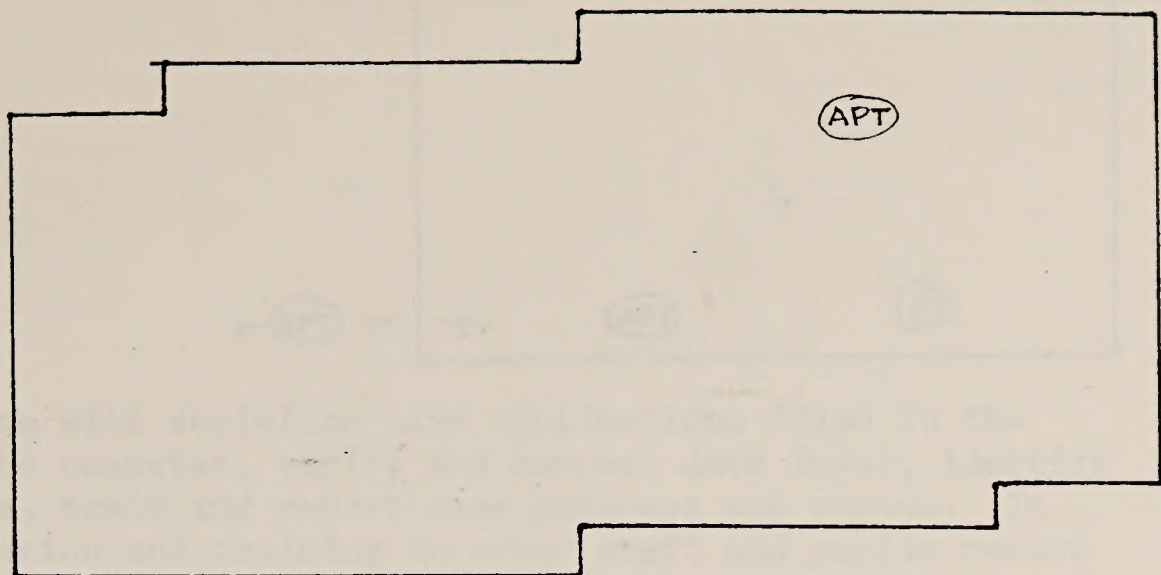
Division of Special Services

Division of Special Services
 1951-1952

This report is prepared for the purpose of providing information regarding the activities of the various units of the organization. The information is based on the reports of the various units and is intended to provide a general overview of the organization's activities.

Division of Lands and
Renewable Resources

S



NEED:

This office is responsible for the management of all BLM land and renewable resources in Oregon and Washington; primarily policy development, budget allocations, resource inventory and evaluation, and program direction and review. The staff will monitor and update specific land case types such as trespass, grants, permits and leases. This unit has potential for tracking other resource management values on federal lands by monitoring rights-of-way, lease and permitting systems, protected areas, wilderness, withdrawal review, and mining activity in key environmental areas.

USERS:

Resource Specialists in the Division.

LEVEL OF USE:

Estimated use is 2-3 hours a day, upon installation.

EXISTING EQUIPMENT:

None

ADDITIONAL EQUIPMENT NEEDS:

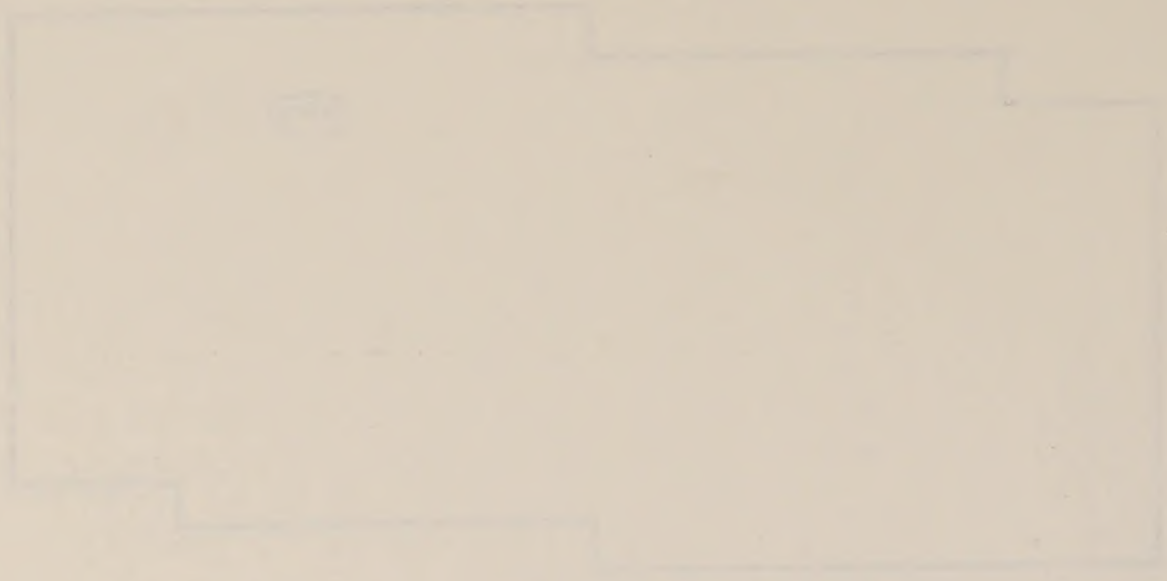
Priority 1: None

Priority 2: None

Priority 3: 1 Terminal, 1 Printer (APT)

ADDITIONAL COMMENTS:

Installation will occur with the integration of case recordation, survey and land status databases.



The following information is for the use of the...
The following information is for the use of the...
The following information is for the use of the...
The following information is for the use of the...
The following information is for the use of the...

The following information is for the use of the...

The following information is for the use of the...

The following information is for the use of the...

The following information is for the use of the...

The following information is for the use of the...

The following information is for the use of the...

The following information is for the use of the...

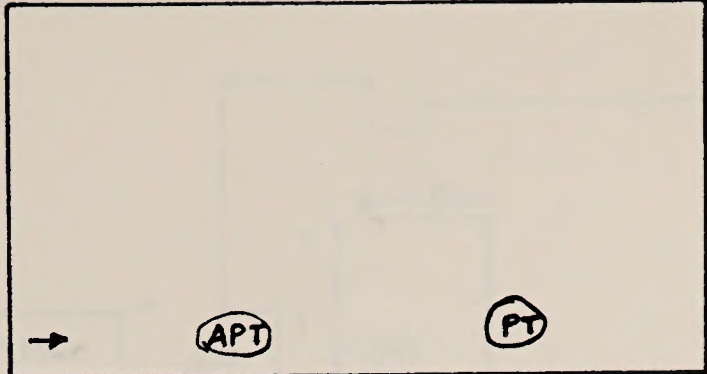
The following information is for the use of the...

The following information is for the use of the...

The following information is for the use of the...

The following information is for the use of the...

The following information is for the use of the...



NEEDS:

Realty & Records Staff*- This office will serialize land applications filed in the district, code and enter data to the computer, verify and correct data input, identify suitability and conflicting filings, track and report case progress and status. In addition, they will provide orientation and training to other staff and public record users; respond to public and other agency requests for case status and reports.

Resource Management - The future integration of the present case recordation system with the survey and land status databases will give resource specialists and managers a tool to monitor specific case types, trends in public resource uses, activity in sensitive environmental areas, and rapidly report or display that information.

USERS:

Resource Specialists, Management and the Public.

LEVEL OF USE:

Estimated use is 2-3 hours per day by the public if mining claims is downloaded, 1-2 hours if it isn't; 3-4 hours per day by staff, upon installation.

EXISTING EQUIPMENT:

1 Terminal, 1 Printer awaiting installation of communication network (PT)

ADDITIONAL EQUIPMENT NEEDED:

- Priority 1: None
- Priority 2: 1 Terminal, 1 Printer
- Priority 3: None

ADDITIONAL COMMENTS:

Two Resource Area offices are presently located in another building several blocks away, so an additional terminal and printer is necessary for effective operations. If all staff are consolidated into a single building, the additional terminal and printer will be located in a separate public room.

*Because the first installation of equipment must serve both areas of responsibility these functions are viewed together; though most districts and resource areas locate realty personnel in Resources, and recordkeeping and public contact positions in Administration.



MEMBER

... This office will ...
... and ...
... and ...
... and ...
... and ...
... and ...
... and ...
... and ...
... and ...
... and ...

MEMBER

... and the ...
... and ...
... and ...
... and ...
... and ...
... and ...
... and ...
... and ...
... and ...
... and ...

MEMBER

... and ...
... and ...
... and ...
... and ...
... and ...
... and ...
... and ...
... and ...
... and ...
... and ...

MEMBER

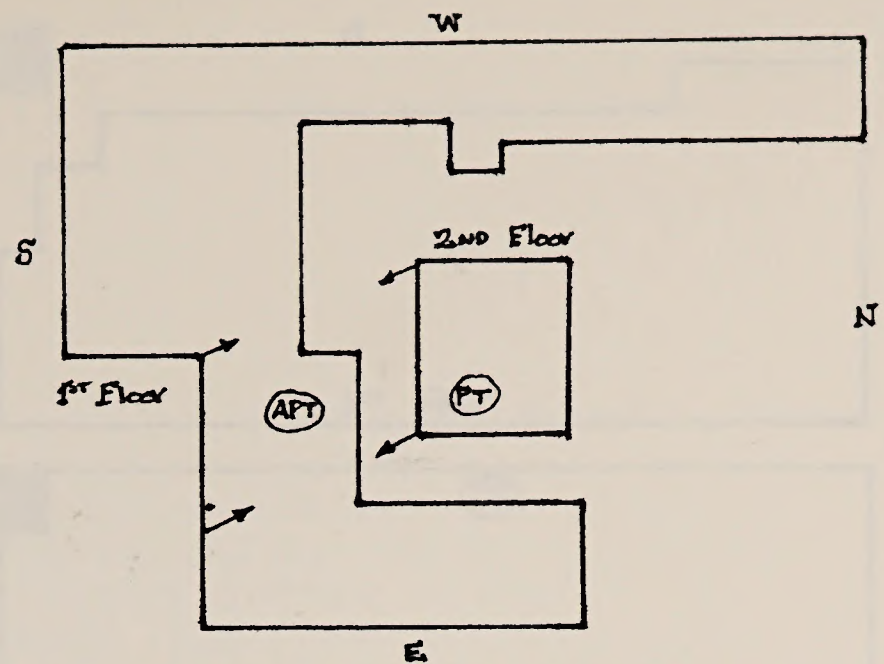
... and ...
... and ...
... and ...
... and ...
... and ...
... and ...
... and ...
... and ...
... and ...
... and ...

MEMBER

... and ...
... and ...
... and ...
... and ...
... and ...
... and ...
... and ...
... and ...
... and ...
... and ...

MEMBER

... and ...



NEEDS:

Realty & Records Staff*- This office will serialize land applications filed in the district, code and enter data to the computer, verify and correct data input, identify suitability and conflicting filings, track and report case progress and status. In addition, they will provide orientation and training to other staff and public record users; respond to public and other agency requests for case status and reports. Resource Management - The future integration of the present case recordation system with the survey and land status databases will give resource specialists and managers a tool to monitor specific case types, trends in public resource uses, activity in sensitive environmental areas, and rapidly report or display that information.

USERS:

Resource Specialists, Management and the Public.

LEVEL OF USE:

Estimated use is 2-3 hours per day by the public and 3-4 hours per day by the staff upon installation.

EXISTING EQUIPMENT:

1 Terminal, 1 Printer awaiting installation of communication network.

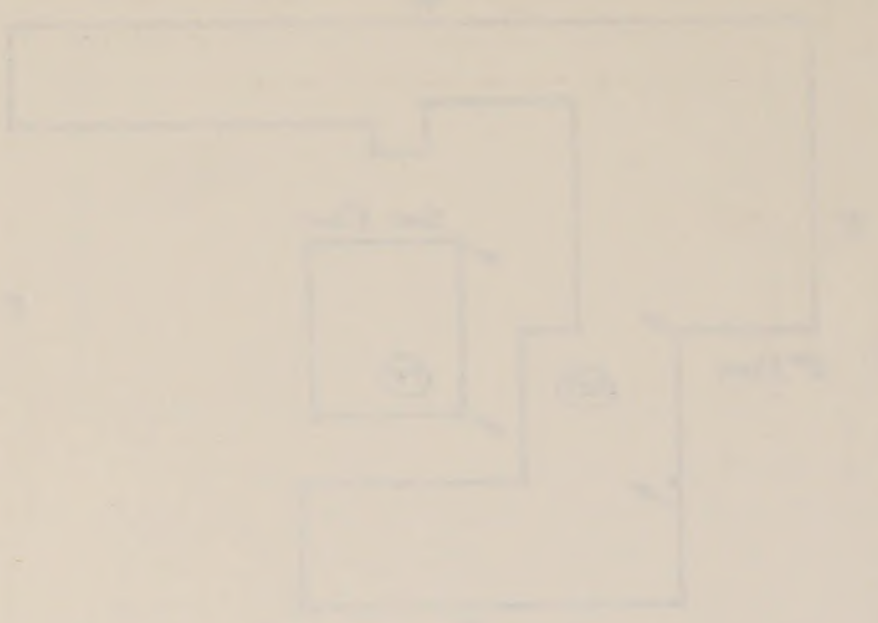
ADDITIONAL EQUIPMENT NEEDED:

- Priority 1: None
- Priority 2: 1 Terminal, 1 Printer
- Priority 3: None

ADDITIONAL COMMENTS:

An expanding case recordation database and the downloading of survey and mining claims is expected to significantly increase public and staff demands for record access and reports.

*Because the first installation of equipment must serve both areas of responsibility, these functions are viewed together; though most districts and resource areas locate realty personnel in Resources, and the recordkeeping and public contact positions in Administration.



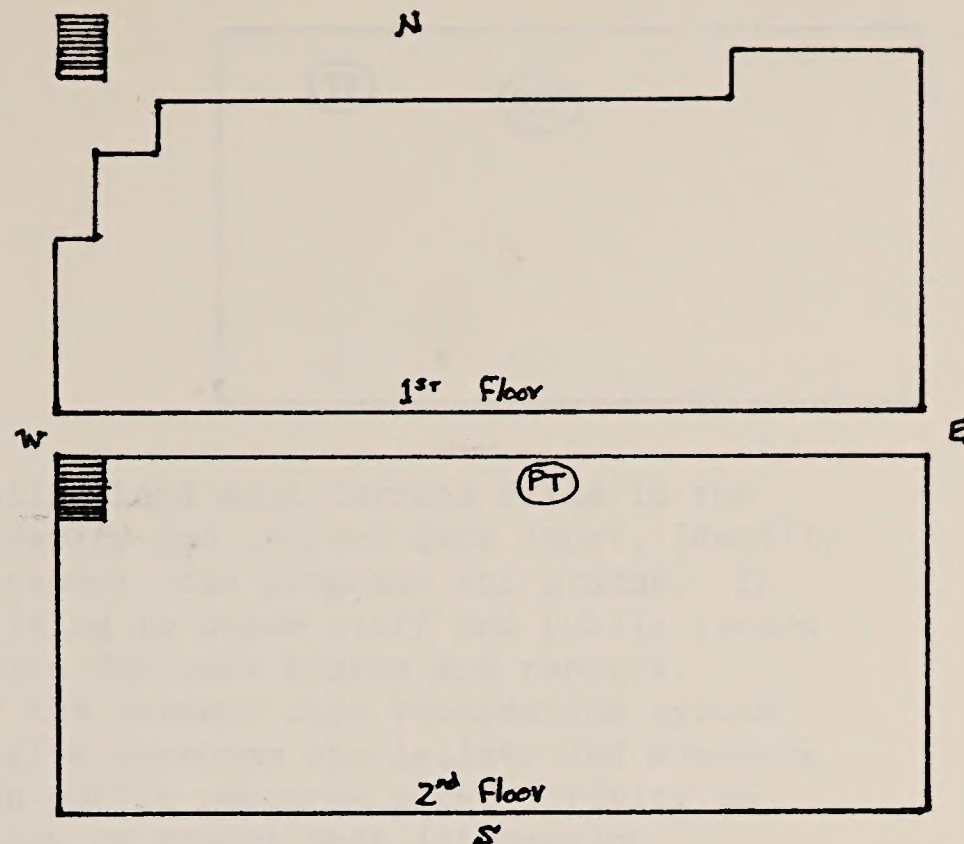
The diagram illustrates a one-way street lighting system. The main line is controlled by a single switch, which allows all lights to be turned on or off simultaneously. This is a simple and effective way to manage the lighting of a street.

The system is designed to be easy to install and maintain. The use of a single switch for the entire line simplifies the wiring and reduces the number of components that need to be replaced.

The diagram shows the layout of the streetlights and the placement of the switches. The main line runs along the length of the street, with branches leading to individual lights. This layout ensures that the lighting is uniform and that the system is easy to access for maintenance.

The system is a good example of how simple design can be used to solve a common problem. By using a single switch, the lighting of a street can be managed in a way that is both efficient and easy to understand.

The diagram is a clear and concise representation of the system. It shows the flow of electricity and the placement of the components in a way that is easy to understand. This makes it a valuable tool for anyone who is interested in street lighting systems.



NEEDS:

Realty & Records Staff*- This office will serialize land applications filed in the district, code and enter data to the computer, verify and correct data input, identify suitability and conflicting filings, track and report case progress and status. In addition, they will provide orientation and training to other staff and public record users; respond to public and other agency requests for case status and reports. Resource Management - The future integration of the present case recordation system with the survey and land status databases will give resource specialists and managers a tool to monitor specific case types, trends in public resource uses, activity in sensitive environmental areas, and rapidly report or display that information.

USERS:

Resource Specialists, Management and the Public.

LEVEL OF USE:

Estimated use is 1-2 hours a day by the public, 2-3 hours a day by the staff upon installation.

EXISTING EQUIPMENT:

1 Terminal, 1 Printer awaiting installation of communication network. (TP)

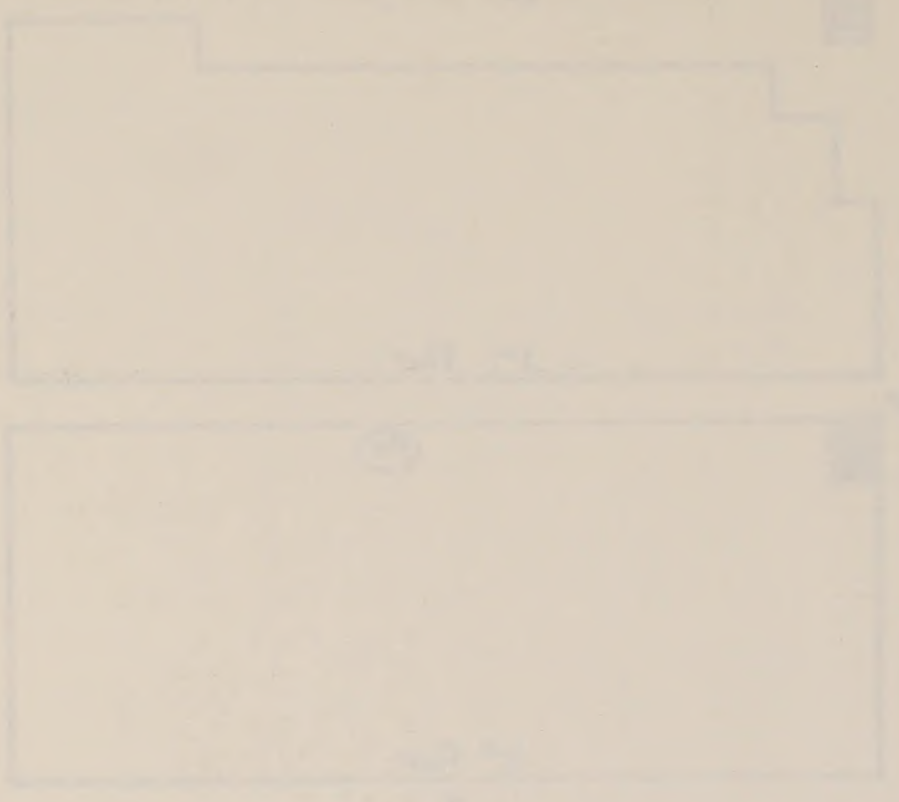
ADDITIONAL EQUIPMENT NEEDED:

- Priority 1: None
- Priority 2: None
- Priority 3: None

ADDITIONAL COMMENTS:

Mining claim and land status inquiries have been very low and no significant increase is anticipated with the installation of a terminal in the district.

*Because the first installation of equipment must serve both areas of responsibility these functions are viewed together; though most districts and resource areas locate realty personnel in Resources, and recordkeeping and public contact positions in Administration.



The following information was obtained from the files of the [redacted] office. It is being furnished to you for your information and is not to be disseminated outside your agency. The information is being furnished to you in confidence and is not to be used for any purpose other than that for which it was furnished. It is being furnished to you in confidence and is not to be used for any purpose other than that for which it was furnished. It is being furnished to you in confidence and is not to be used for any purpose other than that for which it was furnished.

Very truly yours,

[Signature]

Enclosed for you are [redacted] copies of the report of the [redacted] staff.

I enclose a copy of the report of the [redacted] staff.

[Redacted signature block]

[Redacted text]

The following information was obtained from the files of the [redacted] office. It is being furnished to you for your information and is not to be disseminated outside your agency. The information is being furnished to you in confidence and is not to be used for any purpose other than that for which it was furnished. It is being furnished to you in confidence and is not to be used for any purpose other than that for which it was furnished.

The following information was obtained from the files of the [redacted] office. It is being furnished to you for your information and is not to be disseminated outside your agency. The information is being furnished to you in confidence and is not to be used for any purpose other than that for which it was furnished. It is being furnished to you in confidence and is not to be used for any purpose other than that for which it was furnished.

TP

ATP

NEEDS:

Realty & Records Staff*- This office will serialize land applications filed in the district, code and enter data to the computer, verify and correct data input, identify suitability and conflicting filings, track and report case progress and status. In addition, they will provide orientation and training to other staff and public record users; respond to public and other agency requests for case status and reports.

Resource Management - The future integration of the present case recordation system with the survey and land status databases will give resource specialists and managers a tool to monitor specific case types, trends in public resource uses, activity in sensitive environmental areas, and rapidly display or report that information.

USERS:

Resource Specialists, Management and the Public

LEVEL OF USE:

Estimated use is 5-6 hours per day upon installation

EXISTING EQUIPMENT:

1 Terminal, 1 Printer awaiting installation of communication network TP

ADDITIONAL EQUIPMENT NEEDED:

Priority 1: None

Priority 2: 1 Terminal, 1 Printer ATP

Priority 3: None

ADDITIONAL COMMENTS:

Availability of case recordation status and reports is expected to significantly increase demand for terminal access. In particular, downloading survey and mining claim databases would double anticipated public demand for record access. Second terminal and printer would be located in public room to free first one for staff use.

*Because the first installation of equipment must serve both areas of responsibility, these functions are viewed together; though most districts and resource areas locate realty personnel in Resources, and the recordkeeping and public contact positions in Administration.



...the ... of ... and ...
...the ... of ... and ...
...the ... of ... and ...
...the ... of ... and ...
...the ... of ... and ...

...the ... of ... and ...

...the ... of ... and ...

...the ... of ... and ...

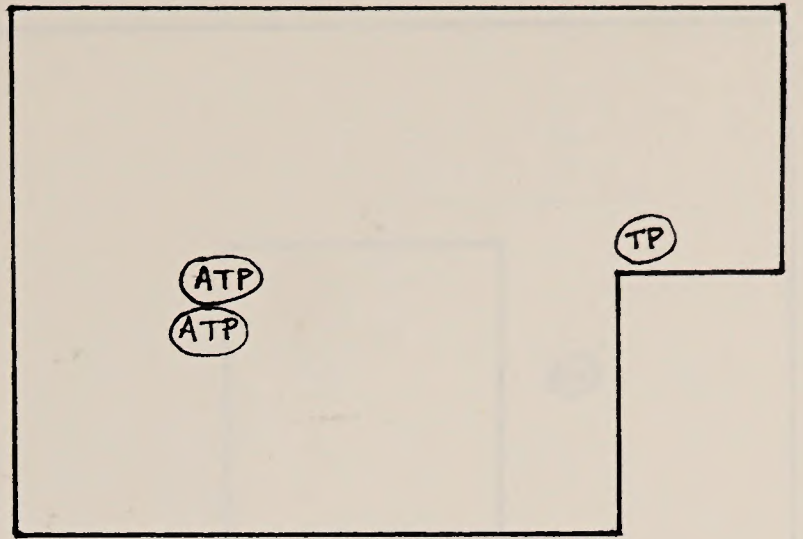
...the ... of ... and ...

...the ... of ... and ...

...the ... of ... and ...
...the ... of ... and ...
...the ... of ... and ...
...the ... of ... and ...

...the ... of ... and ...
...the ... of ... and ...
...the ... of ... and ...
...the ... of ... and ...

...the ... of ... and ...
...the ... of ... and ...
...the ... of ... and ...
...the ... of ... and ...



NEEDS:

Realty & Records Staff*- This office will serialize land applications filed in the district, code and enter data to the computer, verify and correct data input, identify suitability and conflicting filings, track and report case progress and status. In addition, they will provide orientation and training to other staff and public record users; respond to public and other agency requests for case status and reports.

Resource Management - The future integration of the present case recordation system with the survey and land status databases will give resource specialists and managers a tool to monitor specific case types, trends in public resource uses, activity in sensitive environmental areas, and rapidly report or display that information.

USERS:

Resource Specialists, Management and the Public

LEVEL OF USE:

Estimated use will be 8+ hours per day upon installation

EXISTING EQUIPMENT:

1 Terminal, 1 Printer awaiting installation of communication network (TP)

ADDITIONAL EQUIPMENT NEEDED:

Priority 1: None

Priority 2: 1 Terminal, 1 Printer (ATP)

Priority 3: 1 Terminal, 1 Printer (ATP)

ADDITIONAL COMMENTS:

Existing equipment is adjudged inadequate to meet even present demands for case access and reports. With current record demands of the public, an additional terminal and printer in the public room is needed to ensure sufficient access to the database by public and staff alike. With downloading of survey and mining claim records, another terminal and printer are needed for lands and minerals staff to update records and retrieve reports.

*Because the first installation of equipment must serve both areas of responsibility these functions are viewed together; though most districts and resource areas locate realty personnel in Resources, and the recordkeeping and public contact positions in Administration.



Section 1. The purpose of this report is to provide a detailed description of the experimental setup and results. The data presented here is based on a series of measurements taken over a period of several weeks. The results show a clear correlation between the variables studied, and the data is consistent with the theoretical model proposed. The following sections will discuss the methodology used, the data analysis, and the conclusions drawn from the study.

Page 1

Section 2. The purpose of this report is to provide a detailed description of the experimental setup and results.

Page 2

Section 3. The purpose of this report is to provide a detailed description of the experimental setup and results.

Page 3

Section 4. The purpose of this report is to provide a detailed description of the experimental setup and results. The data presented here is based on a series of measurements taken over a period of several weeks. The results show a clear correlation between the variables studied, and the data is consistent with the theoretical model proposed. The following sections will discuss the methodology used, the data analysis, and the conclusions drawn from the study.

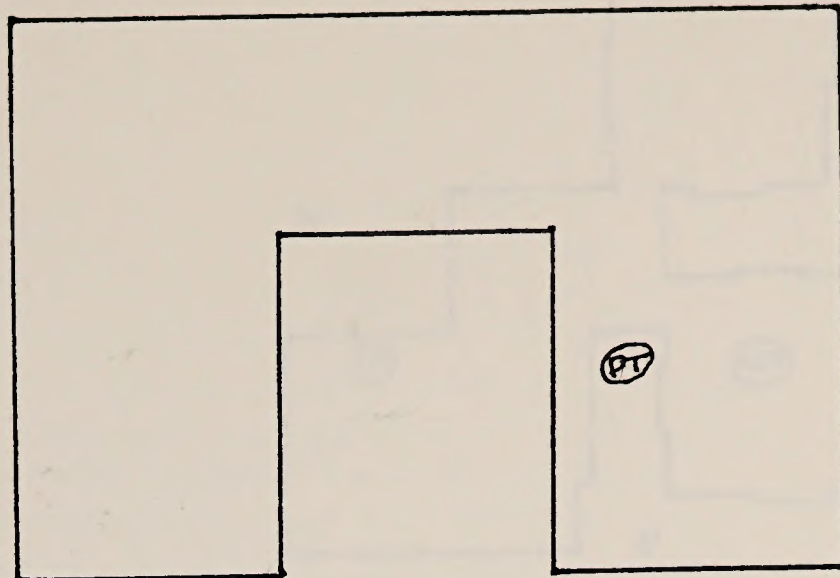
Page 4

Section 5. The purpose of this report is to provide a detailed description of the experimental setup and results. The data presented here is based on a series of measurements taken over a period of several weeks. The results show a clear correlation between the variables studied, and the data is consistent with the theoretical model proposed. The following sections will discuss the methodology used, the data analysis, and the conclusions drawn from the study.

Page 5

Section 6. The purpose of this report is to provide a detailed description of the experimental setup and results. The data presented here is based on a series of measurements taken over a period of several weeks. The results show a clear correlation between the variables studied, and the data is consistent with the theoretical model proposed. The following sections will discuss the methodology used, the data analysis, and the conclusions drawn from the study.

Section 7. The purpose of this report is to provide a detailed description of the experimental setup and results. The data presented here is based on a series of measurements taken over a period of several weeks. The results show a clear correlation between the variables studied, and the data is consistent with the theoretical model proposed. The following sections will discuss the methodology used, the data analysis, and the conclusions drawn from the study.



NEEDS:

Realty & Records Staff*- This office will serialize land applications filed in the district, code and enter data to the computer, verify and correct data input, identify suitability and conflicting filings, track and report case progress and status. In addition, they will provide orientation and training to other staff and public record users; respond to public and other agency requests for case status and reports. Resource Management - The future integration of the present case recordation system with the survey and land status databases will give resource specialists and managers a tool to monitor specific case types, trends in public resource uses, activity in sensitive environmental areas, and rapidly report or display that information.

USERS:

Resource Specialists, Management and the Public

LEVEL OF USE:

Estimated use will be 1-2 hours per day by public, 2-3 hours per day by staff upon installation.

EXISTING EQUIPMENT:

1 Terminal, 1 Printer awaiting installation of communication network (PT)

ADDITIONAL EQUIPMENT NEEDED:

- Priority 1: None
- Priority 2: None
- Priority 3: None

ADDITIONAL COMMENTS:

Availability of terminal to the public and/or downloading of survey and mining claims is not expected to significantly increase public or staff demands for record access reports.

*Because the first installation of equipment must serve both areas of responsibility, these functions are viewed together; though most districts and resource areas locate realty personnel in Resources and the recordkeeping and public contact positions in Administration.



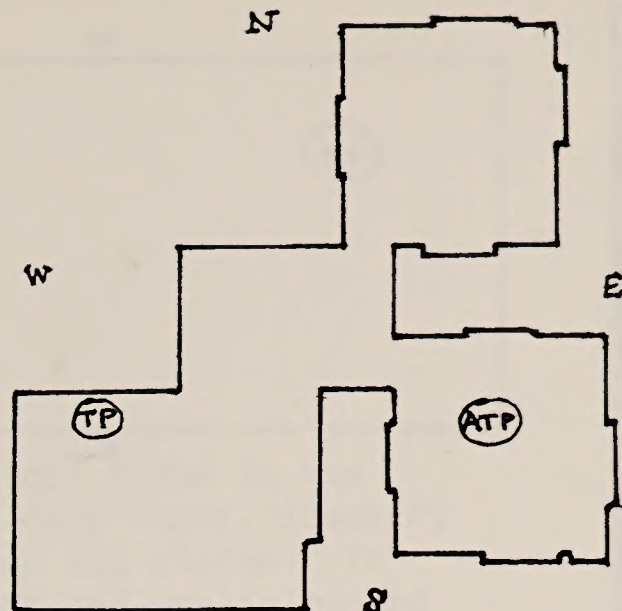
The first part of the report discusses the background and objectives of the study. It highlights the importance of understanding the factors that influence the performance of the system under investigation. The study aims to identify the key variables that affect the system's efficiency and to develop strategies to optimize its performance. The methodology used in this study is described in detail, including the experimental design and the data collection process. The results of the study are presented in the following sections, showing a clear correlation between the variables studied and the system's performance. The conclusions drawn from the study are discussed, along with the implications for future research and practical applications.

The second part of the report focuses on the analysis of the data collected during the experiment. It presents the results of the statistical tests performed to determine the significance of the differences between the groups. The findings indicate that there are significant differences in the performance of the system across the different conditions tested. The most significant factor influencing the system's performance is identified as the variable X, which has a strong positive effect on the system's efficiency. These results are consistent with the theoretical expectations and provide valuable insights into the system's behavior.

The third part of the report discusses the implications of the study and the conclusions drawn. It emphasizes the need for further research to explore the underlying mechanisms of the observed effects and to develop more effective optimization strategies. The study has provided a solid foundation for understanding the system's performance and has identified key areas for future investigation. The findings have practical implications for the design and optimization of similar systems, and they contribute to the overall knowledge in the field. The authors express their gratitude to the funding agency and the participants who made this study possible.

The final part of the report includes the references and the appendix. The references list the key sources used in the study, and the appendix provides additional information related to the experiment, such as the raw data and the detailed description of the experimental setup. The report concludes with a summary of the main findings and a final statement on the significance of the work.

The authors would like to thank the following individuals for their assistance and support during the course of the study: [Name], [Name], and [Name]. The research was supported by the [Funding Agency] grant [Number].



NEEDS:

Realty & Records Staff*- This office will serialize land applications filed in the district, code and enter data to the computer, verify and correct data input, identify suitability and conflicting filings, track and report case progress and status. In addition, they will provide orientation and training to other staff and public record users; respond to public and other agency requests for case status and reports.

Resource Management - The future integration of the present case recordation system with the survey and land status databases will give resource specialists and managers a tool to monitor specific case types, trends in public resource uses, activity in sensitive environmental areas, and rapidly display or report that information.

USERS:

Resource Specialists, Management and the Public.

LEVEL OF USE:

Estimated use is 3-4 hours per day upon installation

EXISTING EQUIPMENT

1 Terminal, 1 Printer awaiting installation of communication network

ADDITIONAL EQUIPMENT NEEDED:

Priority 1: None

Priority 2: None

Priority 3: 1 Terminal, 1 Printer

ADDITIONAL COMMENTS:

Public land status and mining claim record requests are at a low level. Installation of a terminal is expected to have a gradually increasing impact on the number of inquiries received.

*Because the first installation of equipment must serve both areas of responsibility these functions are viewed together; though most districts and resource areas locate realty specialists in Resources and the recordkeeping and public contact positions in Administration.



SECRET

The first section of the report is a general overview of the project. It discusses the objectives, scope, and the organization of the project. The second section provides a detailed description of the methodology used in the study. This includes the data collection methods, the analysis techniques, and the validation procedures. The third section presents the results of the study, which are discussed in the context of the project objectives. The final section is a conclusion that summarizes the findings and provides recommendations for future work.

SECRET

SECRET

SECRET

SECRET

SECRET

SECRET

SECRET

SECRET

SECRET

SECRET

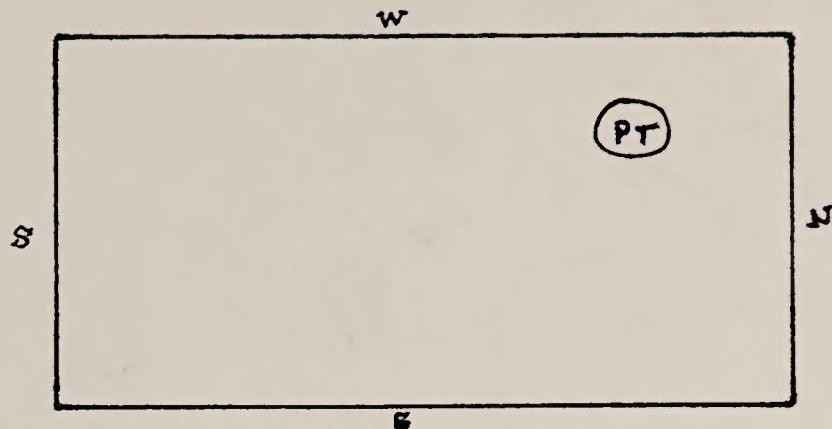
SECRET

The project was conducted in accordance with the approved protocol. The results of the study are consistent with the hypothesis. The findings suggest that there is a significant relationship between the variables studied. The study has several limitations, and further research is needed to address these. The authors would like to thank the funding agency for their support.

SECRET

The first section of the report is a general overview of the project. It discusses the objectives, scope, and the organization of the project. The second section provides a detailed description of the methodology used in the study. This includes the data collection methods, the analysis techniques, and the validation procedures. The third section presents the results of the study, which are discussed in the context of the project objectives. The final section is a conclusion that summarizes the findings and provides recommendations for future work.

SECRET



NEEDS:

Realty & Records Staff*- This office will serialize land applications filed in the district, code and enter data to the computer, verify and correct data input, identify suitability and conflicting filings, track and report case progress and status. In addition, they will provide orientation and training to other staff and public record users; respond to public and other agency requests for case status and reports.

Resource Management - The future integration of the present case recordation system with the survey and land status databases will give resource specialists and managers a tool to monitor specific case types, trends in public resource uses, activity in sensitive environmental areas, and rapidly display or report that information.

USERS:

Resource Specialists, Management and the Public.

LEVEL OF USE:

Estimated use is 3-4 hours per day upon installation

EXISTING EQUIPMENT:

1 Terminal, 1 Printer awaiting installation of communication network. (TP)

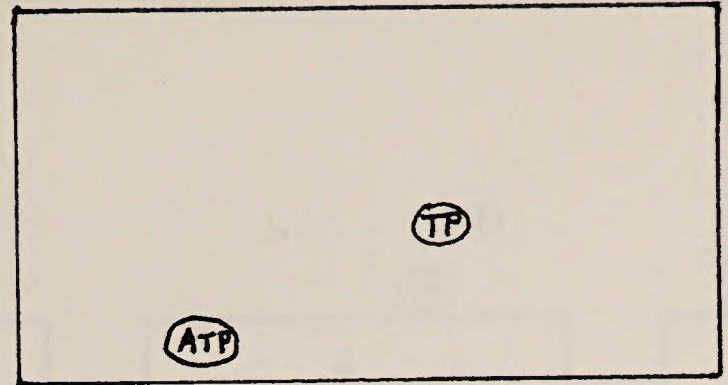
ADDITIONAL EQUIPMENT NEEDED:

- Priority 1: None
- Priority 2: None
- Priority 3: None

ADDITIONAL COMMENTS:

Public mining claim and land status inquiries have been very low and no significant increase is anticipated with the installation of a terminal in the district.

*Because the first installation of equipment must serve both areas of responsibility these functions are viewed together; though most districts and resource areas locate realty personnel in Resources and recordkeeping and public contact positions in Administration.



NEEDS:

Realty & Records Staff*- This office will serialize land applications filed in the district, code and enter data to the computer, verify and correct data input, identify suitability and conflicting filings, track and report case progress and status. In addition, they will provide orientation and training to other staff and public record users; respond to public and other agency requests for case status and reports.

Resource Management - The future integration of the present case recordation system with the survey and land status databases will give resource specialists and managers a tool to monitor specific case types, trends in public resource uses, activity in sensitive environmental areas, and rapidly display and report that information.

USERS:

Resource Specialists, Management and the Public

LEVEL OF USE:

Estimated use is 4-5 hours a day upon installation

EXISTING EQUIPMENT:

1 Terminal, 1 Printer awaiting installation of communication network (TP)

ADDITIONAL EQUIPMENT NEEDED:

Priority 1: None

Priority 2: 1 Terminal, 1 Printer (ATP)

Priority 3: None

ADDITIONAL COMMENTS:

Public demand for terminal access will increase as availability becomes known, in particular, the downloading of mining claim database would have significant impact on public computer access.

*Because the first installation of equipment must serve both areas of responsibility, these functions are viewed together; though most districts and resource areas located realty personnel in Resources, and the recordkeeping and public contact positions in Administration.



Faint, illegible text at the top of the page, possibly a header or introductory paragraph.

A single line of faint text, possibly a section header or a specific reference.

A line of faint text, likely a continuation of the document's content.

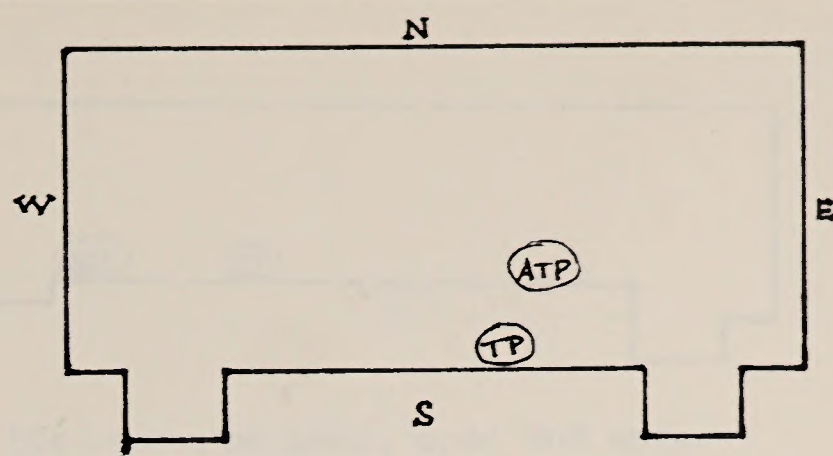
A line of faint text, possibly a date or a specific note.

A line of faint text, possibly a signature or a reference.

A block of faint text, possibly a paragraph or a list of items.

A block of faint text at the bottom of the page, possibly a footer or concluding remarks.

VALE DISTRICT OFFICE ANALYSIS



NEEDS:

Realty & Records Staff*- This office will serialize land applications filed in the district, code and enter data to the computer, verify and correct data input, identify suitability and conflicting filings, track and report case progress and status. In addition, they will provide orientation and training to other staff and public record users; respond to public and other agency requests for case status and reports.

Resource Management - The future integration of the present case recordation system with the survey and land status databases will give resource specialists and managers a tool to monitor specific case types, trends in public resource uses, activity in sensitive environmental area, and rapidly report or display that information.

USERS:

Resource Specialists, Management and the Public.

LEVEL OF USE:

Estimated use is 5-6 hours a day upon installation.

EXISTING EQUIPMENT:

1 Terminal, 1 Printer awaiting installation of communication network (TP)

ADDITIONAL EQUIPMENT NEEDED:

Priority 1: None

Priority 2: 1 Terminal, 1 Printer (ATP)

Priority 3: None

ADDITIONAL COMMENTS:

Availability of terminal for case access and reports is expected to increase public and other staff demands for use; in particular, downloading of survey and mining claims will dramatically increase demands for records access. With land status collection to begin in southeastern Oregon, future needs for title and use records will necessitate an additional terminal and printer at an early date.

*Because the first installation of equipment must serve both areas of responsibility, these functions are viewed together; though most districts and resource areas locate realty personnel in Resources, and the recordkeeping and public contact positions in Administration.



The following information was obtained from the files of the Federal Bureau of Investigation, Department of Justice, Washington, D. C., on the subject of the above-captioned case. It is noted that the subject of this case is a person who has been identified as having been active in the activities of the Communist Party, U. S. A., and its various branches and units. The subject is a male, born [redacted], and is currently residing at [redacted]. The subject is a member of the Communist Party, U. S. A., and has been active in the activities of the Party for many years. The subject is a member of the Communist Party, U. S. A., and has been active in the activities of the Party for many years. The subject is a member of the Communist Party, U. S. A., and has been active in the activities of the Party for many years.

The following information was obtained from the files of the Federal Bureau of Investigation, Department of Justice, Washington, D. C., on the subject of the above-captioned case.

The following information was obtained from the files of the Federal Bureau of Investigation, Department of Justice, Washington, D. C., on the subject of the above-captioned case.

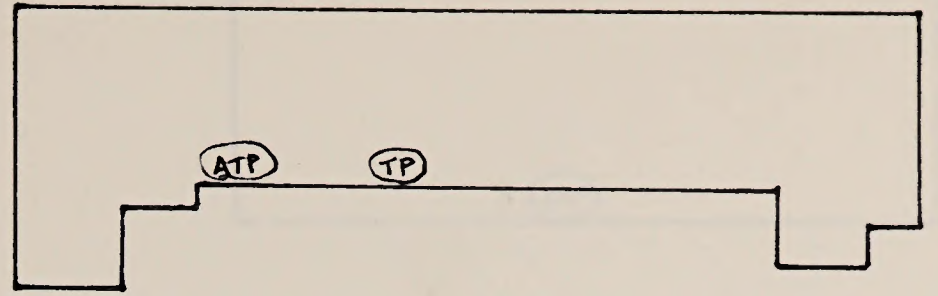
The following information was obtained from the files of the Federal Bureau of Investigation, Department of Justice, Washington, D. C., on the subject of the above-captioned case.

The following information was obtained from the files of the Federal Bureau of Investigation, Department of Justice, Washington, D. C., on the subject of the above-captioned case.

The following information was obtained from the files of the Federal Bureau of Investigation, Department of Justice, Washington, D. C., on the subject of the above-captioned case. It is noted that the subject of this case is a person who has been identified as having been active in the activities of the Communist Party, U. S. A., and its various branches and units. The subject is a male, born [redacted], and is currently residing at [redacted]. The subject is a member of the Communist Party, U. S. A., and has been active in the activities of the Party for many years. The subject is a member of the Communist Party, U. S. A., and has been active in the activities of the Party for many years. The subject is a member of the Communist Party, U. S. A., and has been active in the activities of the Party for many years.

The following information was obtained from the files of the Federal Bureau of Investigation, Department of Justice, Washington, D. C., on the subject of the above-captioned case. It is noted that the subject of this case is a person who has been identified as having been active in the activities of the Communist Party, U. S. A., and its various branches and units. The subject is a male, born [redacted], and is currently residing at [redacted]. The subject is a member of the Communist Party, U. S. A., and has been active in the activities of the Party for many years. The subject is a member of the Communist Party, U. S. A., and has been active in the activities of the Party for many years. The subject is a member of the Communist Party, U. S. A., and has been active in the activities of the Party for many years.

BAKER RESOURCE AREA ANALYSIS



NEEDS:

This office will serialize land applications filed in the resource area, code and enter data to the computer, verify and correct data input, identify suitability and conflicting filings, track and report case progress and status. In addition, they will provide orientation and training to other staff and public record users; respond to public and other agency requests for case status and reports. The future integration of the present case recordation system with the survey and land status databases will give resource specialists and managers a tool to monitor specific case types, trends in public resource uses, activity in sensitive environmental areas, and rapidly display or report that information.

USERS:

Resource Specialists, Management and the Public.

LEVEL OF USE:

Estimated use is 4-5 hours per day upon installation

EXISTING EQUIPMENT:

1 Terminal, 1 Printer awaiting installation of communication network (TP)

ADDITIONAL EQUIPMENT NEEDED:

Priority 1: None

Priority 2: 1 Terminal, 1 Printer (ATP)

Priority 3: None

ADDITIONAL COMMENTS:

Baker is historically and currently an active mining area; the public has an active interest in land status and mining activity. Installation of a terminal for access to active case records and reports is expected to generate additional public demand for status and progress reports. In particular, if mining claim records are downloaded the level of public interest will be significantly greater.



This figure illustrates the basic principle of the proposed system. The system is designed to provide a controlled environment for the growth of plants. The main components of the system are the growth chamber, the nutrient solution, and the light source. The growth chamber is a rectangular box with a transparent front panel. The nutrient solution is contained in a reservoir at the bottom of the chamber. The light source is positioned above the chamber. The system is designed to provide a constant level of light and nutrient to the plants. The plants are grown in a controlled environment, which allows for the study of their growth and development. The system is also designed to be easy to use and maintain.

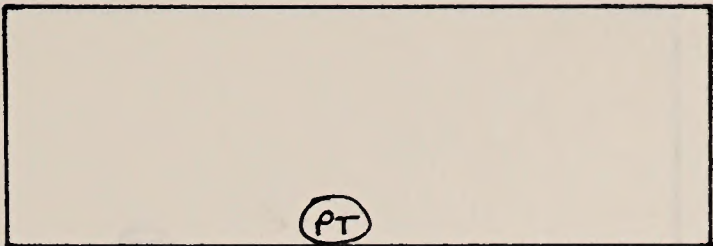
The system is designed to be used in a laboratory or greenhouse setting. It is suitable for the growth of a wide range of plants, including vegetables, fruits, and ornamentals. The system is also suitable for the study of plant growth and development. The system is designed to be easy to use and maintain. The main components of the system are the growth chamber, the nutrient solution, and the light source. The growth chamber is a rectangular box with a transparent front panel. The nutrient solution is contained in a reservoir at the bottom of the chamber. The light source is positioned above the chamber. The system is designed to provide a constant level of light and nutrient to the plants. The plants are grown in a controlled environment, which allows for the study of their growth and development. The system is also designed to be easy to use and maintain.

The system is designed to be used in a laboratory or greenhouse setting. It is suitable for the growth of a wide range of plants, including vegetables, fruits, and ornamentals. The system is also suitable for the study of plant growth and development. The system is designed to be easy to use and maintain. The main components of the system are the growth chamber, the nutrient solution, and the light source. The growth chamber is a rectangular box with a transparent front panel. The nutrient solution is contained in a reservoir at the bottom of the chamber. The light source is positioned above the chamber. The system is designed to provide a constant level of light and nutrient to the plants. The plants are grown in a controlled environment, which allows for the study of their growth and development. The system is also designed to be easy to use and maintain.

The system is designed to be used in a laboratory or greenhouse setting. It is suitable for the growth of a wide range of plants, including vegetables, fruits, and ornamentals. The system is also suitable for the study of plant growth and development. The system is designed to be easy to use and maintain. The main components of the system are the growth chamber, the nutrient solution, and the light source. The growth chamber is a rectangular box with a transparent front panel. The nutrient solution is contained in a reservoir at the bottom of the chamber. The light source is positioned above the chamber. The system is designed to provide a constant level of light and nutrient to the plants. The plants are grown in a controlled environment, which allows for the study of their growth and development. The system is also designed to be easy to use and maintain.

The system is designed to be used in a laboratory or greenhouse setting. It is suitable for the growth of a wide range of plants, including vegetables, fruits, and ornamentals. The system is also suitable for the study of plant growth and development. The system is designed to be easy to use and maintain. The main components of the system are the growth chamber, the nutrient solution, and the light source. The growth chamber is a rectangular box with a transparent front panel. The nutrient solution is contained in a reservoir at the bottom of the chamber. The light source is positioned above the chamber. The system is designed to provide a constant level of light and nutrient to the plants. The plants are grown in a controlled environment, which allows for the study of their growth and development. The system is also designed to be easy to use and maintain.

The system is designed to be used in a laboratory or greenhouse setting. It is suitable for the growth of a wide range of plants, including vegetables, fruits, and ornamentals. The system is also suitable for the study of plant growth and development. The system is designed to be easy to use and maintain. The main components of the system are the growth chamber, the nutrient solution, and the light source. The growth chamber is a rectangular box with a transparent front panel. The nutrient solution is contained in a reservoir at the bottom of the chamber. The light source is positioned above the chamber. The system is designed to provide a constant level of light and nutrient to the plants. The plants are grown in a controlled environment, which allows for the study of their growth and development. The system is also designed to be easy to use and maintain.



NEEDS:

This office will code and enter case file data to the computer, verify and correct data input, identify suitability and conflicting filings, track and report case progress and status. In addition, they will provide orientation and training to other staff and public record users; respond to public and other agency requests for case status and reports. The future integration of the present case recordation system with the survey and land status databases will give resource specialists and managers a tool to monitor specific case types, trends in public resource uses, activity in sensitive environmental areas, and rapidly display or report that information.

USERS:

Resource Specialists, Management and the Public.

LEVEL OF USE:

Estimated use is 2-3 hours per day upon installation

EXISTING EQUIPMENT

1 Terminal, 1 Printer awaiting installation of communication network (TP)

ADDITIONAL EQUIPMENT NEEDED:

- Priority 1: None
- Priority 2: None
- Priority 3: None

ADDITIONAL COMMENTS:

Public mining claim and land status inquiries have been low and no significant increase is anticipated with the installation of a terminal in the resource area office.



1911

This office will not be held responsible for the accuracy of the information furnished hereon, and the user of this information is advised to verify the same by other means. In addition, the user is advised to consult the original source of the information for the most complete and accurate information. The Bureau of the Census is not responsible for the accuracy of the information furnished hereon, and the user of this information is advised to verify the same by other means. In addition, the user is advised to consult the original source of the information for the most complete and accurate information.

1912

1913

1914

1915

1916

1917

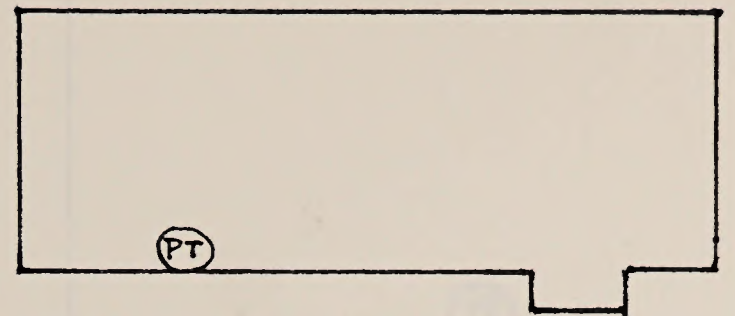
1918

1919

1920

1921

This office will not be held responsible for the accuracy of the information furnished hereon, and the user of this information is advised to verify the same by other means. In addition, the user is advised to consult the original source of the information for the most complete and accurate information.



NEEDS:

This office will code and enter case file data to the computer, verify and correct data input, identify suitability and conflicting filings, track and respond to public and other agency requests for case progress and status. In addition, they will provide orientation and training to other staff and public resource users; respond to public and other agency requests for case status and reports. The future integration of the present case recordation system with the survey and land status databases will give resource specialists and managers a tool to monitor specific case types, trends in public resource uses, activity in sensitive environmental areas, and rapidly display or report that information.

USERS:

Resource Specialists, Management and the Public.

LEVEL OF USE:

Estimated use is 2-3 hours per day upon installation

EXISTING EQUIPMENT:

1 Terminal, 1 Printer awaiting installation of communication network (TP)

ADDITIONAL EQUIPMENT NEEDED:

- Priority 1: None
- Priority 2: None
- Priority 3: None

ADDITIONAL COMMENTS:

Public mining claim and land status inquiries have been very low and no significant increase is anticipated with the installation of a terminal in the resource area office.



This system will also... (faint text, likely a header or introductory paragraph)

Department of... (faint text, possibly a title or department name)

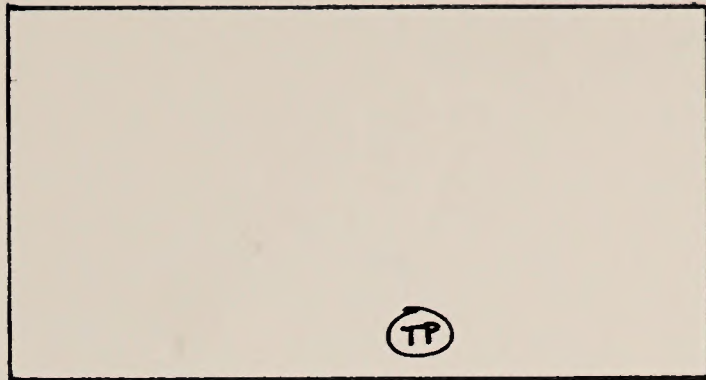
Enclosed... (faint text, possibly a reference to an enclosure)

Very truly yours... (faint text, possibly a closing phrase)

⑤ (faint text, possibly a signature or a specific reference)

1-...
2-...
3-... (faint text, possibly a list or details)

Enclosed... (faint text, possibly a reference to an enclosure)



TP

NEEDS:

This office will code and enter case file data to the computer, verify and correct data input, identify suitability and conflicting filings, track and respond to public and other agency requests for case progress and status. In addition, they will provide orientation and training to other staff and public resource users; respond to public and other agency requests for case status and reports. The future integration of the present case recordation system with the survey and land status databases will give resource specialists and managers a tool to monitor specific case types, trends in public resource uses, activity in sensitive environmental areas, and rapidly display or report that information.

USERS:

Resource Specialists, Management and the Public

LEVEL OF USE:

Estimated use is 2-3 hours per day upon installation

EXISTING EQUIPMENT:

1 Terminal, 1 Printer awaiting installation of communication network

TP

ADDITIONAL EQUIPMENT NEEDED:

- Priority 1: None
- Priority 2: None
- Priority 3: None

ADDITIONAL COMMENTS:

Request from the public and other agencies have been very low and no significant increase is anticipated with the installation of a terminal in the resource area office.



1111

This office will have the honor to acknowledge the receipt of your letter of the 10th inst. and in reply to inform you that the same has been forwarded to the proper authorities for their consideration. It is requested that you continue to keep this office advised of any further developments in this matter.

Very respectfully,
Special Agent in Charge

Enclosed for you are 2-1/2 copies of the report.

I am, Sir, very truly,
Your obedient servant,
Special Agent in Charge

Very truly yours,
Special Agent in Charge

Very truly yours,
Special Agent in Charge

TABLE 1
 SUMMARY TABLE
 Terminals/Printer Needs
 Priority 1 Procurement

<u>OFFICE</u>	<u>LOCATION</u>	<u>PRIME USERS</u>	<u>TERMINALS</u>	<u>PRINTERS</u>
OSO	14th Floor	Records, Accts, Docket	0	1
	14th Floor	Mining Claim Record.	3	1/
		Public Room	0	1
		Mineral Leasing	1	1
		Withdrawal Review	0	1
	15th Floor	Mineral Resources	2/	1
	16th Floor	Cadastral Survey	1	1
		Mining Claims & Resources	1	1
			<hr/>	<hr/>
		Mining Claims & Resources	11	4
		Mining Claims & Resources	1	1
		Mining Claims & Resources	1	1
		Mining Claims & Resources	1	1
		Mining Claims & Resources	1	1
		Mining Claims & Resources	1	1
			<hr/>	<hr/>
			12	10

1/ High Speed Printer
 2/ Replacement of VIP 7200

1/ One new Orion and two replacements.

TABLE 1
 SUMMARY TABLE
 Terminals/Printer Needs
 Priority 1 Procurement

PRINTERS	TERMINALS	PRIME USERS	LOCATION	OFFICE
1	0	Records, Accts, Docket	14th floor	020
<u>1</u>	0	Public Room		
1	0	Withdrawal Review		
1	<u>2</u>	Casualty Survey	16th floor	
<hr/>	<hr/>			
4	1			

✓ High Speed Printer
 ✓ Replacement of V19 7200

TABLE 2
 SUMMARY TABLE
 Term SUMMARY TABLE Needs
 Terminals/Printer Needs
 Priority 2 Procurement

<u>OFFICE</u>	<u>LOCATION</u>	<u>PRIME USERS</u>	<u>TERMINALS</u>	<u>PRINTERS</u>
OSO	14th Floor	Mining Claim Record.	3 ^{1/}	1
	16th Floor	Mineral Leasing Staff	1	1
Medford	15th Floor	Mineral Resources	1	1
Burns		Mining Claims & Resources	1	1
Coos Bay		Mining Claims & Resources	1	1
Lakeview		Mining Claims & Resources	1	1
Medford		Mining Claims & Resources	1	1
Spokane		Mining Claims & Resources	1	1
Vale		Mining Claims & Resources	1	1
Vale (Baker Resource Area)		Mining Claims & Resources	1	1
			12	10

1/ One new Omron and two replacements.

TABLE 2

SUMMARY TABLE
Terminals/Printer Needs
Priority 2 Procurement

PRINTERS	TERMINALS	PRIME USERS	LOCATION	OFFICE
1	3	Mining Claim Record.	14th floor	OSO
1	1	Mineral Leasing		
1	1	Mineral Resources	12th floor	
1	1	Mining Claims & Resources		Burns
1	1	Mining Claims & Resources		Coos Bay
1	1	Mining Claims & Resources		Lakeview
1	1	Mining Claims & Resources		Medford
1	1	Mining Claims & Resources		Spokane
1	1	Mining Claims & Resources		Vale
1	1	Mining Claims & Resources	Vale (Baker Resource Area)	Vale
<u>10</u>	<u>12</u>			

One new Omron and two replacements.

TABLE 3
 SUMMARY TABLE
 Terminals/Printer Needs
 Priority 3 Procurement

<u>OFFICE</u>	<u>LOCATION</u>	<u>PRIME USERS</u>	<u>TERMINALS</u>	<u>PRINTERS</u>
OSO	14th Floor	Appraisal Staff	1	1
	16th Floor	Land Resources Staff	1	1
Medford		Resources	1	1
Roseburg		Resources	1	1
			<hr/>	<hr/>
		Appraisal Staff	4	4
	15th Floor	Mineral Resources	1	1
	16th Floor	Cadastral Survey	1	1
		Land Resources	1	1
Burns		Mining Claims & Resources	1	1
Lareview		Mining Claims & Resources	1	1
Medford		Mining Claims & Resources	2	2
Cook Bay		Mining Claims & Resources	1	1
Roseburg		Mining Claims & Resources	1	1
Spokane		Mining Claims & Resources	1	1
Vale		Mining Claims & Resources	1	1
Vale (Basin Resource Area)		Mining Claims & Resources	1	1
			<hr/>	<hr/>
			17	18

TABLE 3
SUMMARY TABLE
Terminals/Printer Needs
Priority 3 Procurement

<u>PRINTERS</u>	<u>TERMINALS</u>	<u>PRIME USERS</u>	<u>LOCATION</u>	<u>OFFICE</u>
1	1	Appraisal Staff	14th floor	OSO
1	1	Land Resources Staff	16th floor	
1	1	Resources		Medford
1	1	Resources		Roseburg
<hr/> 4	<hr/> 4			
1	1			
1	1			
1	1			
1	1			
1	1			
<hr/> 7	<hr/> 7			

ADP AND TELECOMMUNICATIONS EQUIPMENT ANALYSIS

TABLE 4

SUMMARY TABLE
 TERMINALS/PRINTER NEEDS
 Total Procurement

OFFICE	LOCATION	PRIME USERS	TERMINALS	PRINTERS
OSO	14th Floor	Records, Accts, Docket	0	1
		Public Room	0	1
	15th Floor	Withdrawal Review	0	1
		Mining Claim Recordation	3	1
16th Floor	Mineral Leasing	1	1	
	Appraisal Staff	1	1	
Burns	14th floor	Mineral Resources	1	1
		Cadastral Survey	1	1
Lakeview	14th floor	Land Resources	1	1
		Mining Claims & Resources	1	1
Medford	14th floor	Mining Claims & Resources	2	2
		Mining Claims & Resources	2	2
Coos Bay	14th floor	Mining Claims & Resources	1	1
		Mining Claims & Resources	1	1
Roseburg	14th floor	Mining Claims & Resources	1	1
		Mining Claims & Resources	1	1
Spokane	14th floor	Mining Claims & Resources	1	1
		Mining Claims & Resources	1	1
Vale	14th floor	Mining Claims & Resources	1	1
		Mining Claims & Resources	1	1
Vale (Baker Resource Area)		Mining Claims & Resources	1	1
			17	18

The total cost to support Priority 1 would be \$51,350, plus the cost of 1 CRT and 3 printers (the printer is included in the above figures).

TABLE 4
SUMMARY TABLE
TERMINALS\PRINTER NEEDS
Total Procurement

<u>PRINTERS</u>	<u>TERMINALS</u>	<u>PRIME USERS</u>	<u>LOCATION</u>	<u>OFFICE</u>
1	0	Records, Accts, Docket	14th Floor	OSO
1	0	Public Room		
1	0	Withdrawal Review		
1	3	Mining Claim Recordation		
1	1	Mineral Leasing		
1	1	Appraisal Staff		
1	1	Mineral Resources	15th Floor	
1	1	Cadastral Survey	16th Floor	
1	1	Land Resources		
1	1	Mining Claims & Resources		Burns
1	1	Mining Claims & Resources		Lakeview
2	2	Mining Claims & Resources		Medford
1	1	Mining Claims & Resources		Coos Bay
1	1	Mining Claims & Resources		Roseburg
1	1	Mining Claims & Resources		Spokane
1	1	Mining Claims & Resources		Vale
1	1	Mining Claims & Resources	Vale (Baker Resource Area)	Vale
<hr/> 18	<hr/> 17			

ADP AND TELECOMMUNICATIONS EQUIPMENT ANALYSIS

ADP and telecommunications equipment is prioritized in the same order as equipment needed to support ALMRS in Oregon. The equipment identified is in direct support of the ALMRS program. However, the Level-6 computer and the telecommunications network support other users in this state.

Figure 1 identifies our present situation in terms of ALMRS related terminals, printers and communications devices. This is not the configuration today, but a projection to the end of this FY. Oregon is installing the telecommunication equipment identified on Figure 1 at this time. We have not identified the number of data line to each site on the network. Our network, as being installed, can be upgraded to support 32 data lines from each office on the network by installing multiplexer port cards. In addition, the Rixon switch can be upgraded to support 1000s of terminals. Therefore, we have identified mux. and switch port cards to support ALMRS in this analysis. The TC network requires either hardware or short haul modems to the multiplexer. We have assumed that all CRTs will require a pair of short haul modems. This requirement is a function of the actual distance from the CRT to the Mux.

Priority 1

To support essential CRTs and printer needs under priority 1 and existing ALMRS devices, we have identified

1. Mux. port cards for OSO 16th floor.
2. Printer drivers for the HS printer on the 14th floor.
3. Two modems for the CRT on 16th floor.
4. A high speed printer for the public room
5. Maintenance for the above printer
6. Maintenance for the Crts and printers identified.
7. An additional MLCP for our level-6 computer
8. Port cards for the Rixon switch to connect the additional Level-6 ports to the switch.

The additional MLCP is needed to support 14 remote offices and the OSO ALMRS needs. Currently we have one MLCP with 16 ports and 28 ALMRS crts. The switch will allow users to contend for free ports. However, we are limited to 16 maximum at any time. The MLCP will double the access to the Level-6.

For the purpose of this analysis we used the current cost of maintenance for the ALMRS crts and printers (\$150/ year crt and \$300/ year for printers).

The total cost to support Priority 1 would be \$51,350, plus the cost of 1 CRT and 3 printers (HS printer is included in the above figures).

ADP and telecommunications equipment is prioritized in the same order as equipment needed to support ALMRS in Oregon. The equipment identified is in direct support of the ALMRS program. However, the Level-6 computer and the telecommunications network support other users in this state.

Figure 1 identifies our present situation in terms of ALMRS related terminals, printers and communications devices. This is not the configuration today, but a projection to the end of this FY. Oregon is installing the telecommunications equipment identified on Figure 1 at this time. We have not identified the number of data lines to each site on the network. Our network, as being installed, can be upgraded to support 32 data lines from each office on the network by installing multiplexer port cards. In addition, the Rixon switch can be upgraded to support 1000s of terminals. Therefore, we have identified mux. and switch port cards to support ALMRS in this analysis. The TC network requires either hardware or short haul modems to the multiplexer. We have assumed that all CRTs will require a pair of short haul modems. This requirement is a function of the actual distance from the CRT to the MUX.

Priority 1

To support essential CRTs and printer needs under priority 1 and existing ALMRS devices, we have identified

1. Mux. port cards for OSO 14th floor.
2. Printer drivers for the RS printer on the 14th floor.
3. Two modems for the CRT on 14th floor.
4. A high speed printer for the public room
5. Maintenance for the above printer
6. Maintenance for the CRTs and printers identified.
7. An additional MLCP for our level-6 computer
8. Port cards for the Rixon switch to connect the additional level-6 ports to the switch.

The additional MLCP is needed to support 14 remote offices and the OSO ALMRS needs. Currently we have one MLCP with 16 ports and 38 ALMRS CRTs. The switch will allow users to contend for free ports. However, we are limited to 16 maximum at any time. The MLCP will double the access to the level-6.

For the purpose of this analysis we used the current cost of maintenance for the ALMRS CRTs and printers (\$150\ year CRT and \$300\ year for printers).

The total cost to support Priority 1 would be \$21,350, plus the cost of 1 CRT and 3 printers (RS printer is included in the above figures).

Priority 2

To establish full State Office capability and improve capability at the seven high volume sites, additional upgrades in telecommunications and ADP equipment are required, specifically:

1. Mux. port cards for OSO 14th and 16th floors, and all offices identified in Figure 2.
2. Modems to support these CRTs.
3. Maintenance for the CRTs and printers.
4. An upgrade for the OSO Level-6 computer.

In order to support the 41 ALMRS CRTs which would be online under this proposal, we need a bigger computer. Based on experience in other States and in Oregon the Level-6 could not handle this workload.

The total cost to support this level is \$323,700 plus the cost of 12 CRTs, 10 printer and Priority 1.

Priority 3

This level would require modems, CRT and printer maintenance. The total cost is \$3000, plus the cost of Priority 1 & 2.

BLM OREGON/WASHINGTON DATA COMMUNICATION NETWORK

ALMRS MULTIPLEXER
PRESIDENT SEATTLE

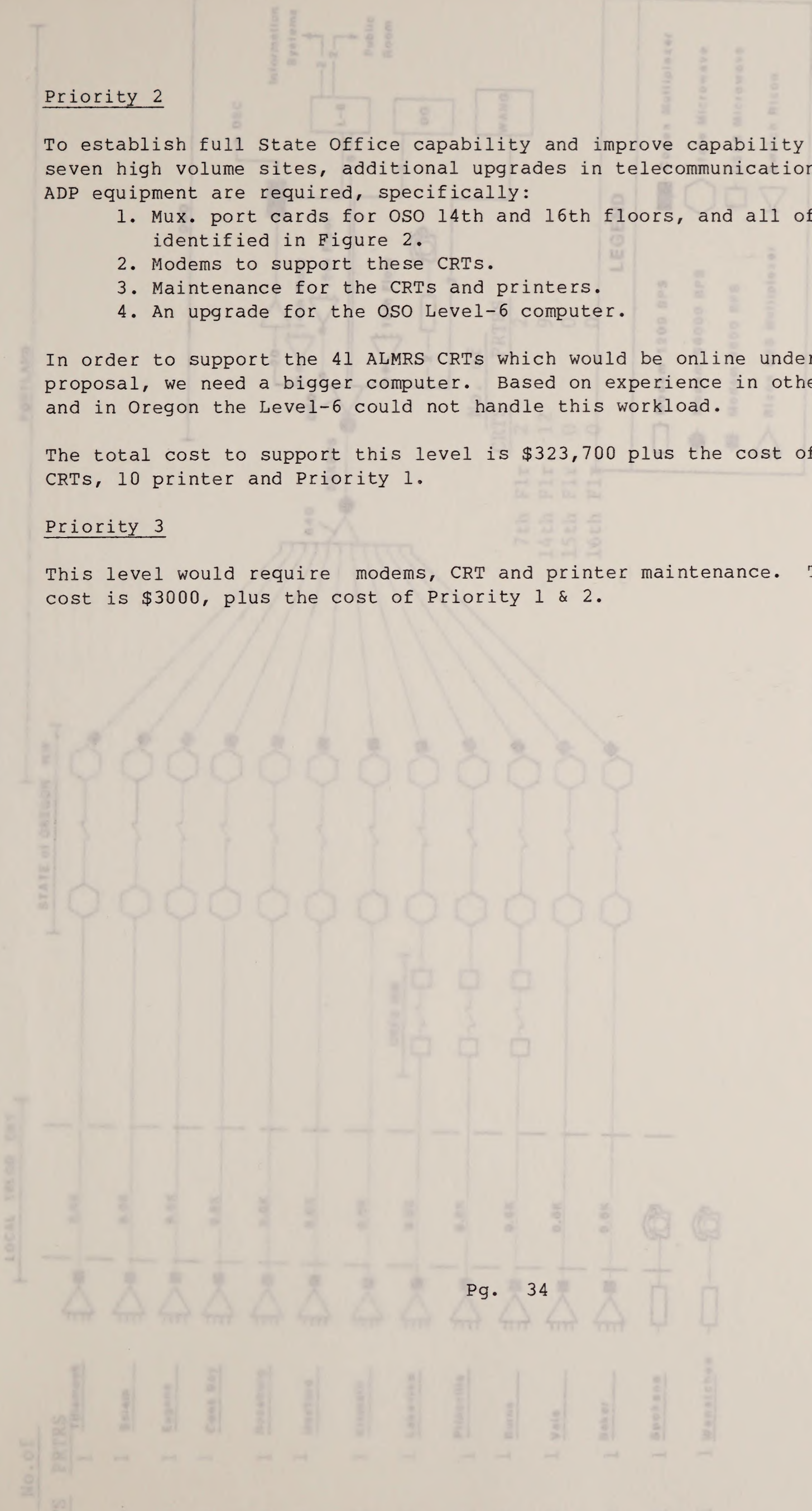


Figure 1, Page 35

To establish full State Office capability and improve capability at the seven high volume sites, additional upgrades in telecommunications and ADP equipment are required, specifically:

- 1. Mux. port cards for OSO 14th and 16th floors, and all offices identified in Figure 2.
- 2. Modems to support these CRTs.
- 3. Maintenance for the CRTs and printers.
- 4. An upgrade for the OSO Level-6 computer.

In order to support the 41 ALMRS CRTs which would be online under this proposal, we need a bigger computer. Based on experience in other States and in Oregon the Level-6 could not handle this workload. The total cost to support this level is \$323,700 plus the cost of 12 CRTs, 10 printer and Priority 1.

Priority 3

This level would require modems, CRT and printer maintenance. The total cost is \$3000, plus the cost of Priority 1 & 2.

BLM OREGON/WASHINGTON DATA COMMUNICATION NETWORK

ALMRS DIAGRAM PRESENT SITUATION

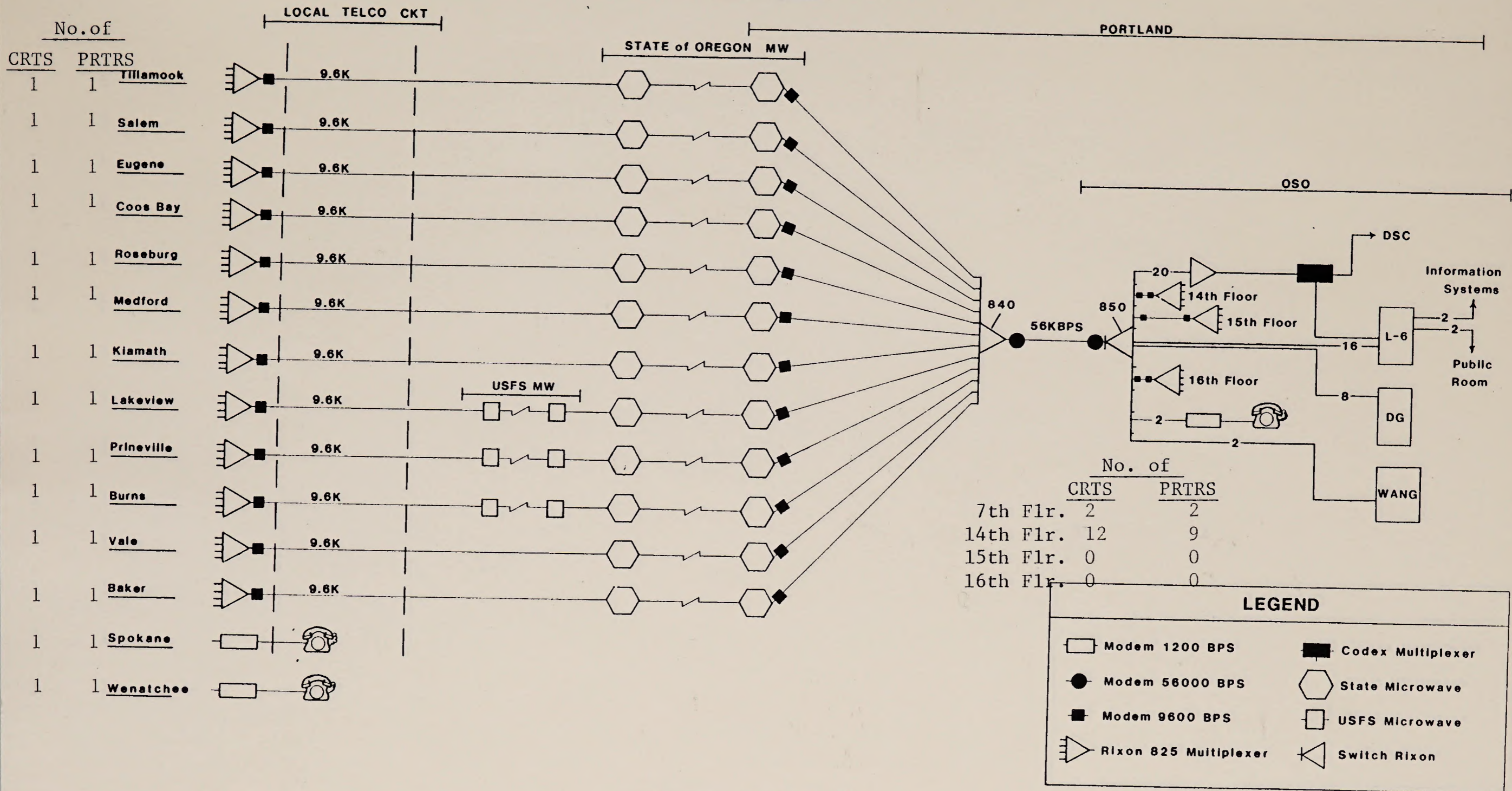


Figure 1, Page 35

Figure 1 (cont.)



THE UNIVERSITY OF MICHIGAN
 LIBRARY

BLM OREGON/WASHINGTON DATA COMMUNICATION NETWORK

ALMRS DIAGRAM
PRIORITY 1

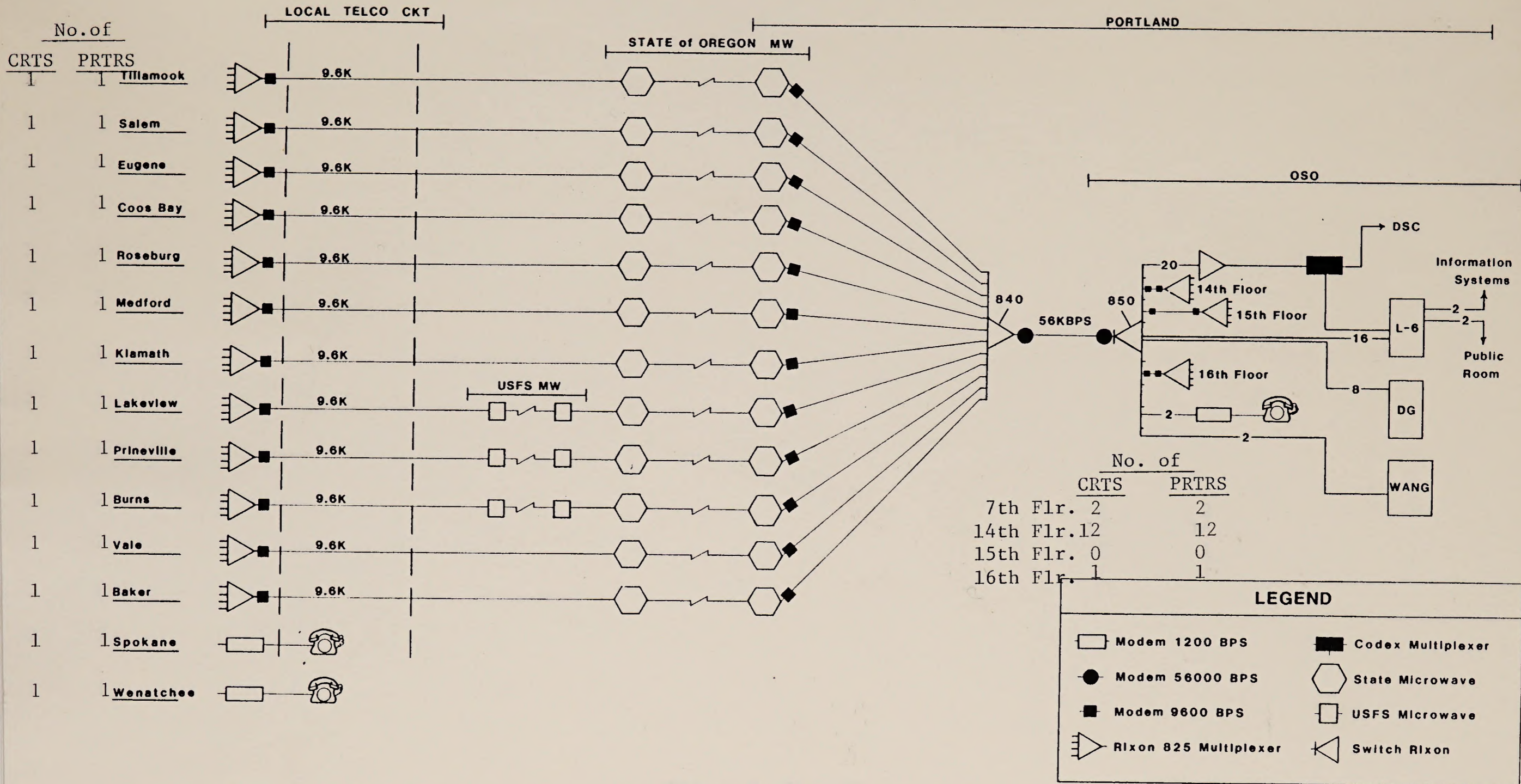
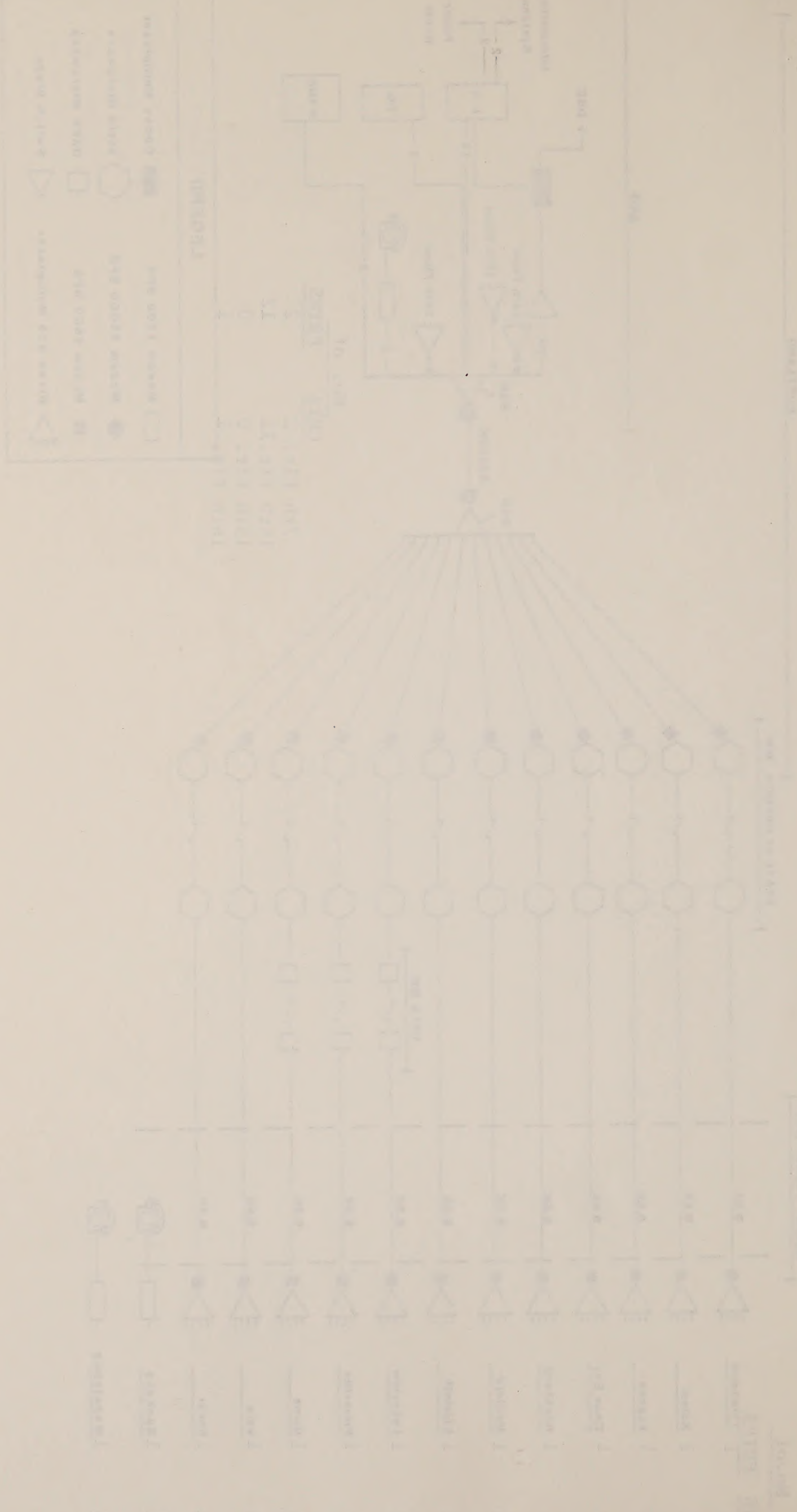


Figure 2, Page 36

APPENDIX 2 - 20



APPENDIX 2 - 20

NOTICE: THE INFORMATION CONTAINED HEREIN IS UNCLASSIFIED EXCEPT WHERE SHOWN OTHERWISE

BLM OREGON/WASHINGTON
DATA COMMUNICATION NETWORK

ALMRS DIAGRAM
PRIORITY 2

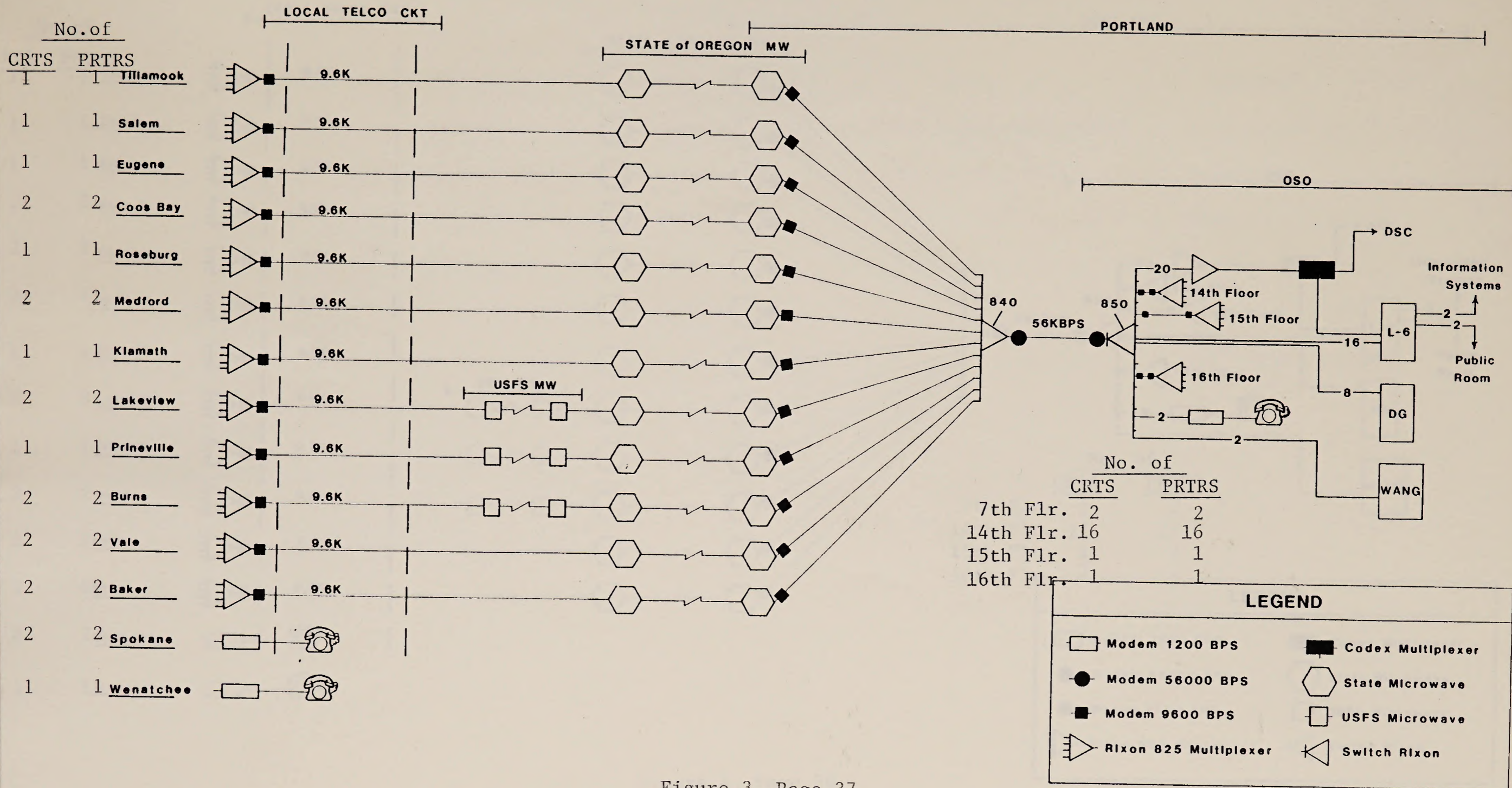


Figure 3, Page 37

BLM OREGON/WASHINGTON
DATA COMMUNICATION NETWORK

ALMRS DIAGRAM
PRIORITY 3

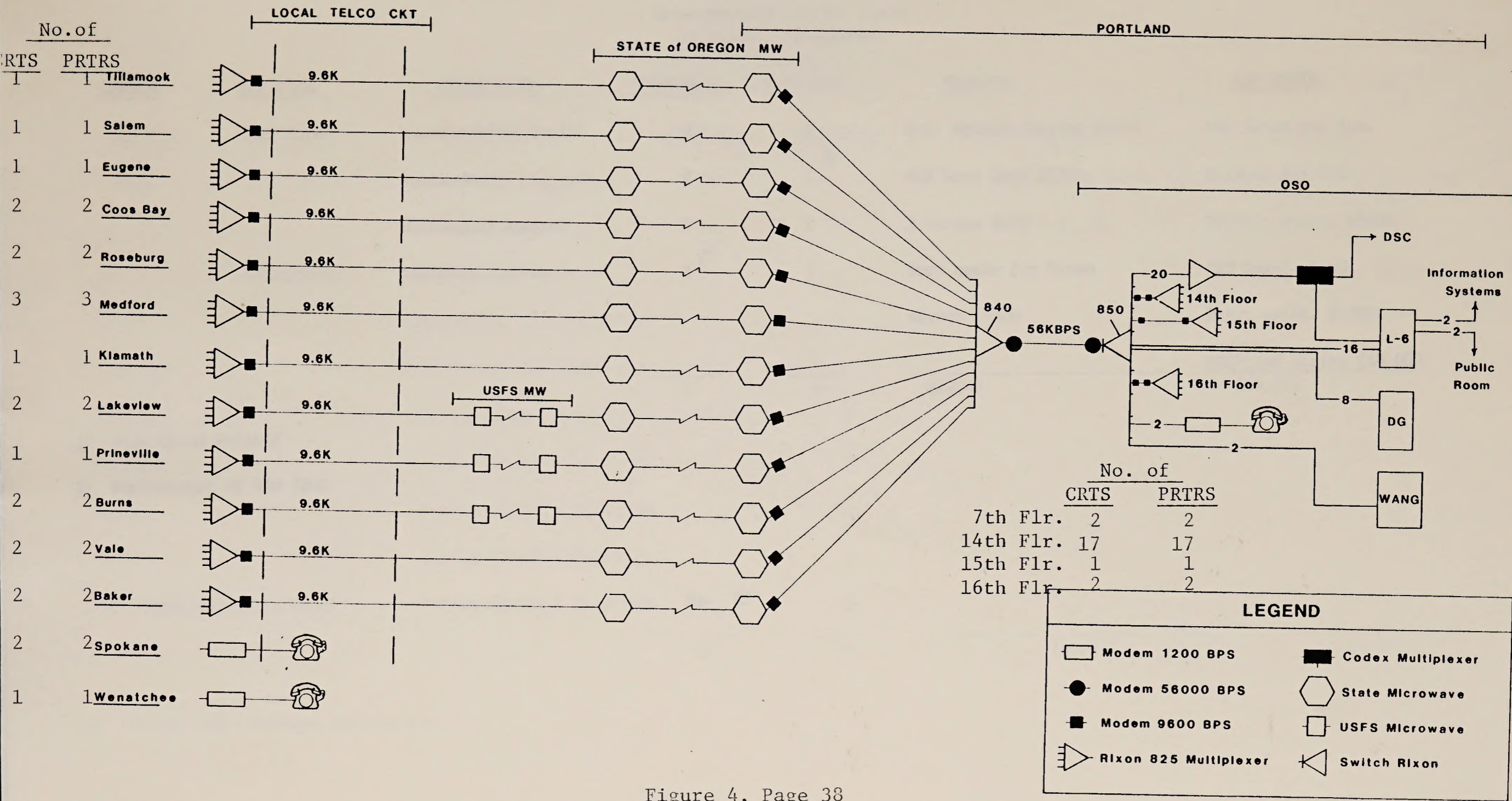


Figure 4, Page 38

Figure 1: 10/10/70



Figure 2: 10/10/70

OVER 2000 copies of this article have been distributed.

TABLE 5
SUMMARY TABLE
Telecommunication/ADP Needs
Priority 1 Procurement

<u>OFFICE</u>	<u>LOCATION</u>	<u>PRIME USERS</u>	<u>TERMINALS</u>	<u>PRINTERS</u>	<u>TELECOM.</u>	<u>ADP EQUIP</u>
OSO	14th Floor	Records, Accts, Docket	0	1	H.S. Printer Driver \$4000	900 Lines per Min.
OSO	14th Floor	Public Room	0	1 ^{1/}	MUX Port Card \$1700	Printer \$25,000
		Withdrawal Review	0	1	2 Modems \$300	Printer Maint. \$3000
	16th Floor	Cadastral Survey	1 ^{2/}	1	Port cards for Rixon	CRT Maint. \$150
		Mining Claims & Resources	1	1	switch \$6000	Prtr. maint. \$1200
		Mining Claims & Resources	1	1		MLCP and wiring \$10,000
			1	4	\$12000	\$39,350
		Mining Claims & Resources	1	1		
		Mining Claims & Resources	1	1		
		Mining Claims & Resources	1	1		
		Mining Claims & Resources	1	1		
		Mining Claims & Resources	Pg. 39	1		
			12	10	\$18,900	\$304,800

^{1/} High Speed Printer
^{2/} Replacement of VIP 7200

^{1/} One new and two Oxon replacements.

Бд* 30

3) Replacement of LIB 1300

IV High Speed Printer

	1	4		\$13000	\$30,320
					ИТСБ 919 91119 \$10,000
				printer \$9000	Print. print. \$1300
	1	1		Roll cards for Nixon	Roll print. \$120
	0	1	3A	3 months \$300	Printer print. \$3000
	0	1		MAX Roll card \$1,000	Printer \$52,000
080	0	1	IV	H.S. Printer Direct \$4000	200 Lines per min.
OFFICE				TELECOM	LIB B0115

Бюджет 1 1981г
 Департамент Юстиции\УИВ Иеве
 СОММАРИ ЛИНЕ
 ЛИНЕ 2

TABLE 6

SUMMARY TABLE
Telecommunications/ADP Needs
Priority 2 Procurement

<u>OFFICE</u>	<u>LOCATION</u>	<u>PRIME USERS</u>	<u>TERMINALS</u> <u>1/</u>	<u>PRINTERS</u>	<u>TELECOM</u>	<u>ADP EQUIP</u>
OSO	14th Floor	Mining Claim Record.	3	1	9 MUX Port Cards \$15,300	\$300,000 upgrade from Level-6 to DPS-6 CRT Maint. \$1800
		Mineral Leasing	1	1	24 Modems \$3,600	
	15th Floor	Mineral Resources	1	1		Prtr Maint. \$3000
Burns		Mining Claims & Resources	1	1		
Coos Bay		Mining Claims & Resources	1	1		
Lakeview		Mining Claims & Resources	1	1		
Medford		Mining Claims & Resources	1	1		
Spokane		Mining Claims & Resources	1	1		
Vale		Mining Claims & Resources	1	1		
Vale (Baker Resource Area)		Mining Claims & Resources	1	1		
			12	10	\$18,900	\$304,800

1/ One new and two Omron replacements.

IV Описания и условия выполнения работ

№ п/п	Содержание работ	Единица измерения	Кол-во	Стоимость работ
№ п/п	Содержание работ	Единица измерения	Кол-во	Стоимость работ
1	Удаление грунта (всего)	м ³	10	2304,800
2	Удаление грунта	м ³	1	
3	Удаление грунта	м ³	1	
4	Удаление грунта	м ³	1	
5	Удаление грунта	м ³	1	
6	Удаление грунта	м ³	1	
7	Удаление грунта	м ³	1	
8	Удаление грунта	м ³	1	
9	Удаление грунта	м ³	1	
10	Удаление грунта	м ³	1	
11	Удаление грунта	м ³	1	
12	Удаление грунта	м ³	1	
13	Удаление грунта	м ³	1	
14	Удаление грунта	м ³	1	
15	Удаление грунта	м ³	1	
16	Удаление грунта	м ³	1	
17	Удаление грунта	м ³	1	
18	Удаление грунта	м ³	1	
19	Удаление грунта	м ³	1	
20	Удаление грунта	м ³	1	
21	Удаление грунта	м ³	1	
22	Удаление грунта	м ³	1	
23	Удаление грунта	м ³	1	
24	Удаление грунта	м ³	1	
25	Удаление грунта	м ³	1	
26	Удаление грунта	м ³	1	
27	Удаление грунта	м ³	1	
28	Удаление грунта	м ³	1	
29	Удаление грунта	м ³	1	
30	Удаление грунта	м ³	1	
31	Удаление грунта	м ³	1	
32	Удаление грунта	м ³	1	
33	Удаление грунта	м ³	1	
34	Удаление грунта	м ³	1	
35	Удаление грунта	м ³	1	
36	Удаление грунта	м ³	1	
37	Удаление грунта	м ³	1	
38	Удаление грунта	м ³	1	
39	Удаление грунта	м ³	1	
40	Удаление грунта	м ³	1	
41	Удаление грунта	м ³	1	
42	Удаление грунта	м ³	1	
43	Удаление грунта	м ³	1	
44	Удаление грунта	м ³	1	
45	Удаление грунта	м ³	1	
46	Удаление грунта	м ³	1	
47	Удаление грунта	м ³	1	
48	Удаление грунта	м ³	1	
49	Удаление грунта	м ³	1	
50	Удаление грунта	м ³	1	
51	Удаление грунта	м ³	1	
52	Удаление грунта	м ³	1	
53	Удаление грунта	м ³	1	
54	Удаление грунта	м ³	1	
55	Удаление грунта	м ³	1	
56	Удаление грунта	м ³	1	
57	Удаление грунта	м ³	1	
58	Удаление грунта	м ³	1	
59	Удаление грунта	м ³	1	
60	Удаление грунта	м ³	1	
61	Удаление грунта	м ³	1	
62	Удаление грунта	м ³	1	
63	Удаление грунта	м ³	1	
64	Удаление грунта	м ³	1	
65	Удаление грунта	м ³	1	
66	Удаление грунта	м ³	1	
67	Удаление грунта	м ³	1	
68	Удаление грунта	м ³	1	
69	Удаление грунта	м ³	1	
70	Удаление грунта	м ³	1	
71	Удаление грунта	м ³	1	
72	Удаление грунта	м ³	1	
73	Удаление грунта	м ³	1	
74	Удаление грунта	м ³	1	
75	Удаление грунта	м ³	1	
76	Удаление грунта	м ³	1	
77	Удаление грунта	м ³	1	
78	Удаление грунта	м ³	1	
79	Удаление грунта	м ³	1	
80	Удаление грунта	м ³	1	
81	Удаление грунта	м ³	1	
82	Удаление грунта	м ³	1	
83	Удаление грунта	м ³	1	
84	Удаление грунта	м ³	1	
85	Удаление грунта	м ³	1	
86	Удаление грунта	м ³	1	
87	Удаление грунта	м ³	1	
88	Удаление грунта	м ³	1	
89	Удаление грунта	м ³	1	
90	Удаление грунта	м ³	1	
91	Удаление грунта	м ³	1	
92	Удаление грунта	м ³	1	
93	Удаление грунта	м ³	1	
94	Удаление грунта	м ³	1	
95	Удаление грунта	м ³	1	
96	Удаление грунта	м ³	1	
97	Удаление грунта	м ³	1	
98	Удаление грунта	м ³	1	
99	Удаление грунта	м ³	1	
100	Удаление грунта	м ³	1	

Итого: 100 единиц измерения, стоимость работ 2304,800 руб.

Составлено: 10.10.2010 г.

Подпись: _____

М.П. _____

TABLE 7
 SUMMARY TABLE
 Telecommunication/ADP Needs
 Priority 3 Procurement

OFFICE	LOCATION	PRIME USERS	TERMINALS	PRINTERS	TELECOM	ADP EQUIP
OSO	14th Floor	Appraisal Staff	1	1	8 modems \$1200	CRT Maint. \$600
	16th Floor	Land Resources Staff	1	1		Prtr. Maint. \$1200
Medford		Resources	1	1		
Roseburg		Resources	1	1		
			<hr/>	<hr/>	<hr/>	<hr/>
			4	4	\$1200	\$1800
Burns		Mining Claims & Resources				
Lakeview		Mining Claims & Resources	1	1		
Medford		Mining Claims & Resources	2	2		
Cook Bay		Mining Claims & Resources	1	1		
Roseburg		Mining Claims & Resources	1	1		
Spokane		Mining Claims & Resources	1	4		
Vale		Mining Claims & Resources	1	1		
Vale (Baker Resources Area)		Mining Claims & Resources	1	1		
			<hr/>	<hr/>	<hr/>	<hr/>
			17	18	\$12,000	\$345,950

Pg. 41

BLM Library
 914 Laramie St
 Denver Federal Center
 Denver, CO 80202
 P. O. Box 25047
 Denver, CO 80225-0047

OFFICE	POSITION	NAME	GRADE	STATUS	DATE	AMOUNT	REMARKS
OEO	TECH STAFF	Resources	I	I		\$1800	
		Resources	I	I		\$1800	
		TECH STAFF	I	I		\$1800	
		TECH STAFF	I	I		\$1800	
OEO	TECH STAFF	Resources	I	I		\$1800	
		Resources	I	I		\$1800	
OEO	TECH STAFF	Resources	I	I		\$1800	
		Resources	I	I		\$1800	
OEO	TECH STAFF	Resources	I	I		\$1800	
		Resources	I	I		\$1800	

БИОЛЮГ 3 БЛОКЦИМЕНТ
 ТЕХНИЧЕСКИЕ РАБОТЫ
 РАБОТЫ РАБОТЫ
 РАБОТЫ РАБОТЫ

TABLE 8
SUMMARY TABLE
Telecommunication/ADP Needs
Total Procurement

<u>OFFICE</u>	<u>LOCATION</u>	<u>PRIME USERS</u>	<u>TERMINALS</u>	<u>PRINTERS</u>	<u>TELECOM</u>	<u>ADP EQUIP</u>
OSO	14th Floor	Records,Accts,Docket	0	1	HS Printer Driver \$4000	\$10,000 MLCP
		Public Room	0	1	10 MUX Port cards \$17.000	\$25,000 printer
		Withdrawal Review	0	1	34 Modems \$5100	\$3000 printer maint.
		Mining Claim Recordation	3	1	Port Cards for Switch \$6000	CRT Maint.\$2550
		Mineral Leasing	1	1		Prtr.Maint.\$5400
	15th Floor	Appraisal Staff	1	1		DPS-6 \$300,000
		Mineral Resources	1	1		
	16th Floor	Cadastral Survey	1	1		
		Land Resources	1	1		
	Burns		Mining Claims & Resources	1	1	
Lakeview		Mining Claims & Resources	1	1		
Medford		Mining Claims & Resources	2	2		
Coos Bay		Mining Claims & Resources	1	1		
Roseburg		Mining Claims & Resources	1	1		
Spokane		Mining Claims & Resources	1	1		
Vale		Mining Claims & Resources	1	1		
Vale (Baker Resource Area)		Mining Claims & Resources	1	1		
			17	18	\$32,100	\$345,950

BIM Library
Building 50
D-553A, Building Center
Denver Federal Center
Denver, CO 80225-0047
P. O. Box 25047
Denver, CO 80225-0047

\$33,100

\$26,243

BLM Library
 D-553A, Building 50
 Denver Federal Center
 P. O. Box 25047
 Denver, CO 80225-0047

BLM Library
 D-553A, Building 50
 Denver Federal Center
 P. O. Box 25047
 Denver, CO 80225-0047

OFFICE	LOCATION	BUYER ORDER	DEPARTMENT	ESTIMATE	STATUS	ESTIMATE
080	14th Floor	Records, Yacht, Docker		0		1
		Public Room		0		1
		Mirrored Bellini		0		1
		Mirrored Chair, Recordation		3		1
		Mirrored Dressing		1		1
		Mirrored Staff		1		1
		Mirrored Resources		1		1
		Corporate Mail Service		1		1
		Living Resources		1		1

D52-2 \$300,000

PLT. Wiring, \$2400

CKL Wiring, \$3220

Wiring

\$3000 Printer

\$52,000 Printer

\$10,000 MYCB

UDF ESNIP

LETSON

Legal Procurement

Telecommunications/UDF Needs

STANDARD LINE

PAGE 8