

170

Abbildungen
neuer oder unvollständig bekannter
Amphibien,
nach der Natur oder dem Leben entworfen,
herausgegeben
und mit einem erläuternden Texte begleitet

von

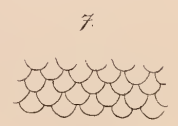
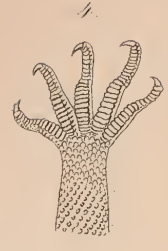
Dr. H. Schlegel,
Conservator des Niederländischen Reichs-Museums &c. &c.

Düsseldorf,
Verlag v. Arnz & Comp^{nie}
1837-1844.

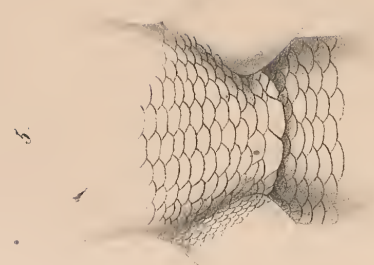
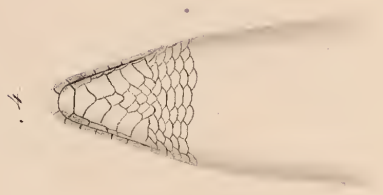
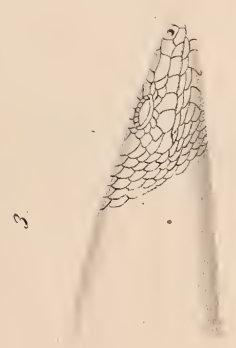
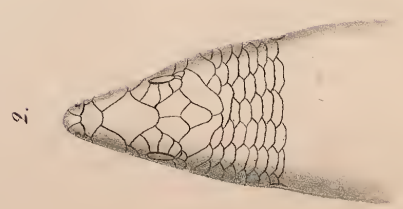


Crocodilus hyperocatus.

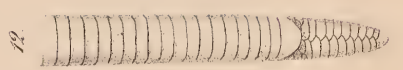
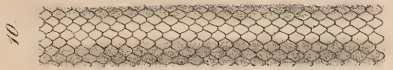
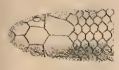
DSI



Gymnodactylus marmoratus.



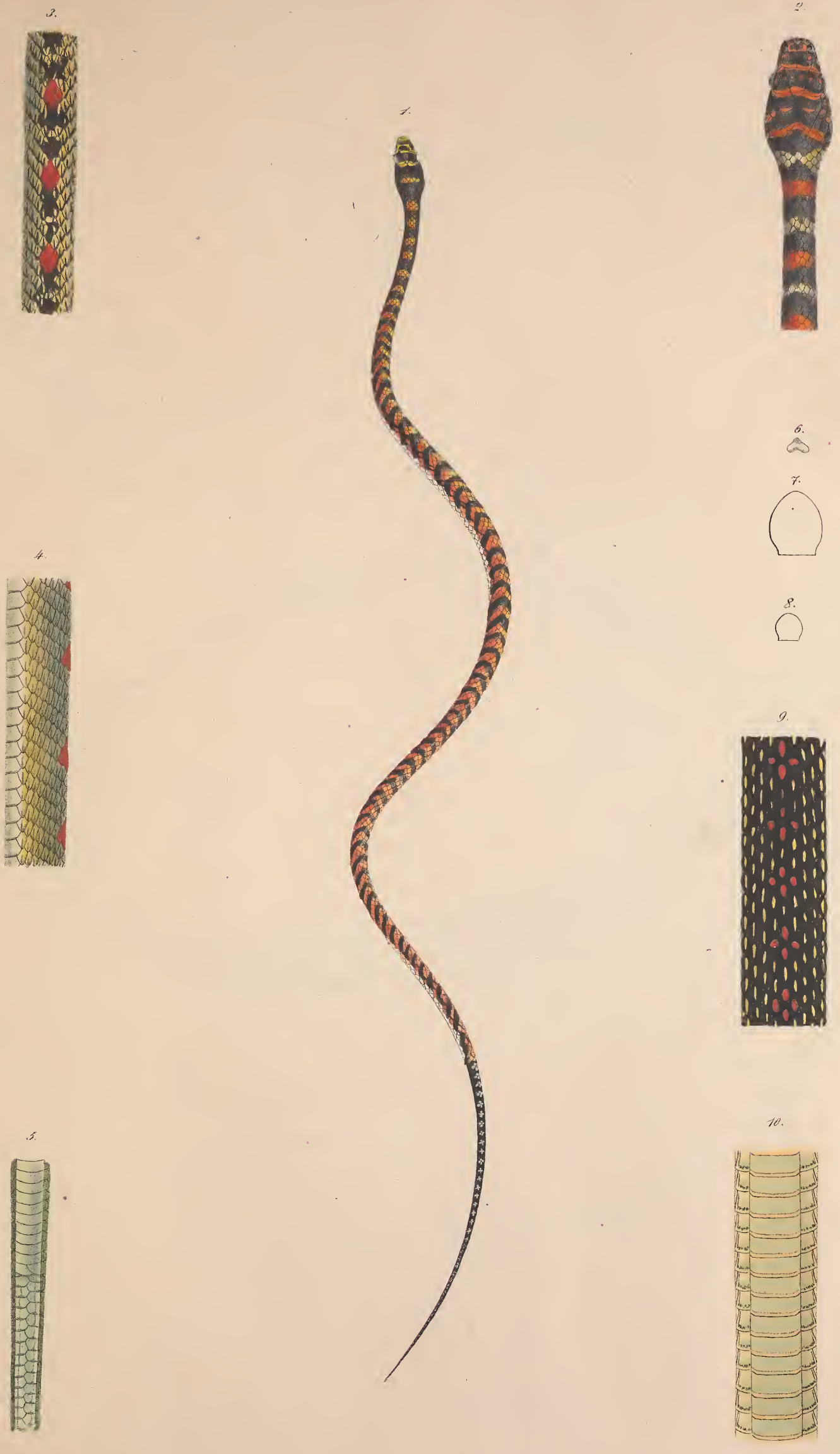
Triturus. Mulleri.



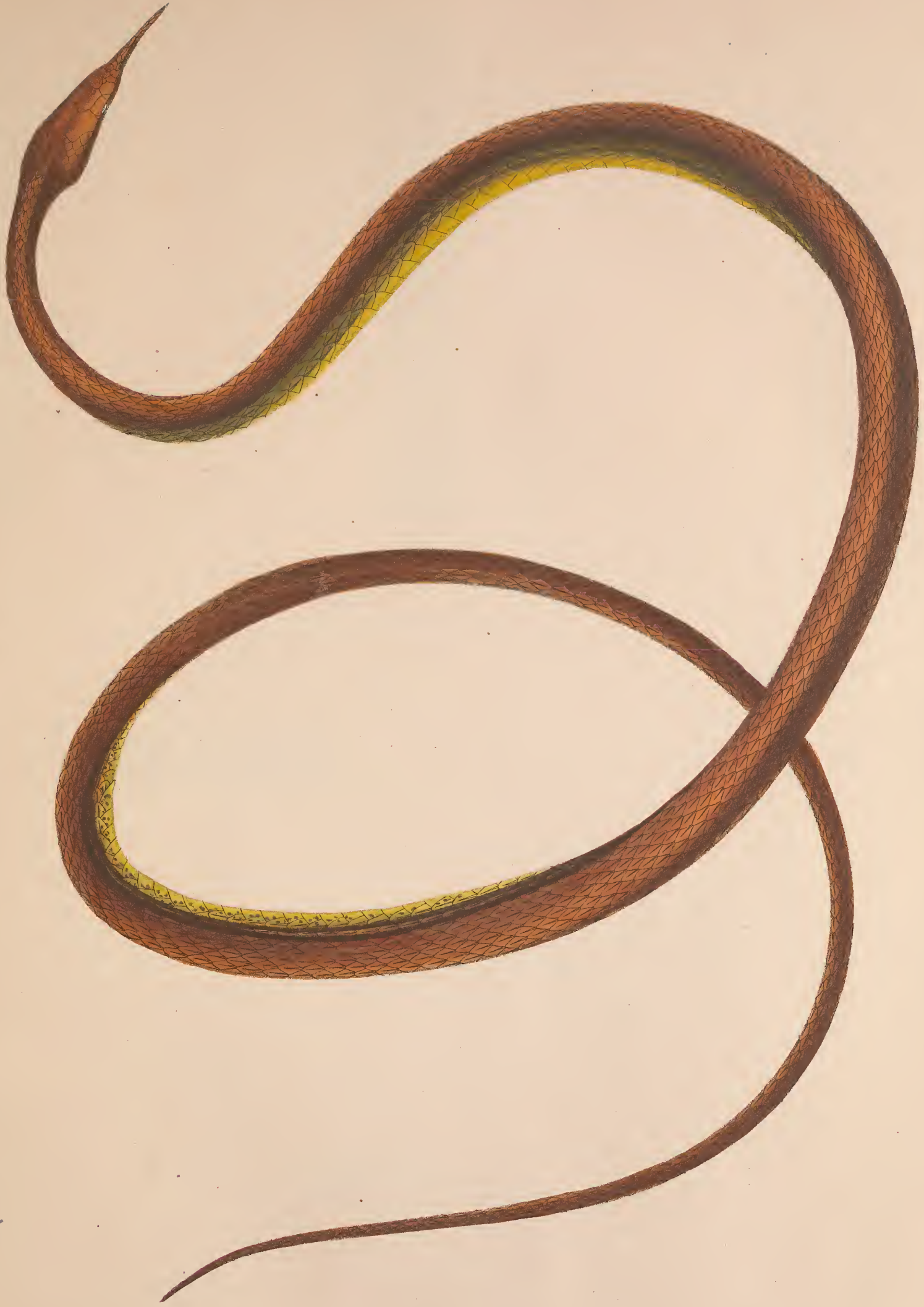
Columaria Simoni



Coluber melanurus.



Dendrophis ornata.



Naja Langaha.



Dryiophis
1-6. *D. prasina*. 7-11. *D. Langaha*



Hyla.

1. *H. chalconotus.* 2. *H. cyanica.* 3. *H. erythraea.* 4. *H. aurifasciata.*

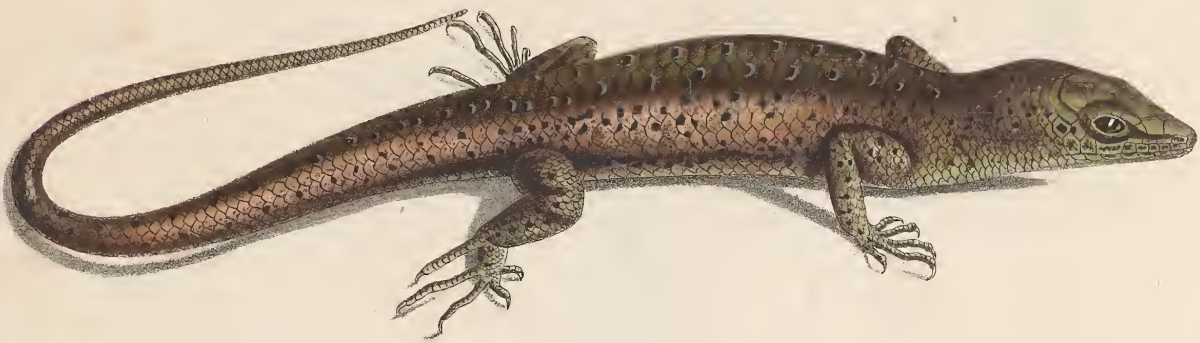


Ceratophrys
1. 2. *C. cornuta*. 3. *C. montana*. 4. *C. turpicola*.

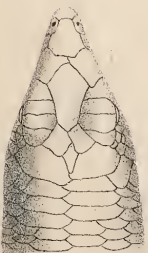
1.



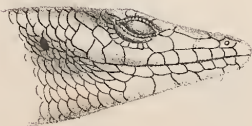
2.



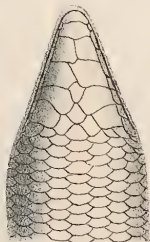
3.



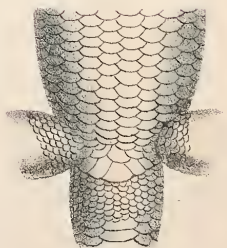
4.



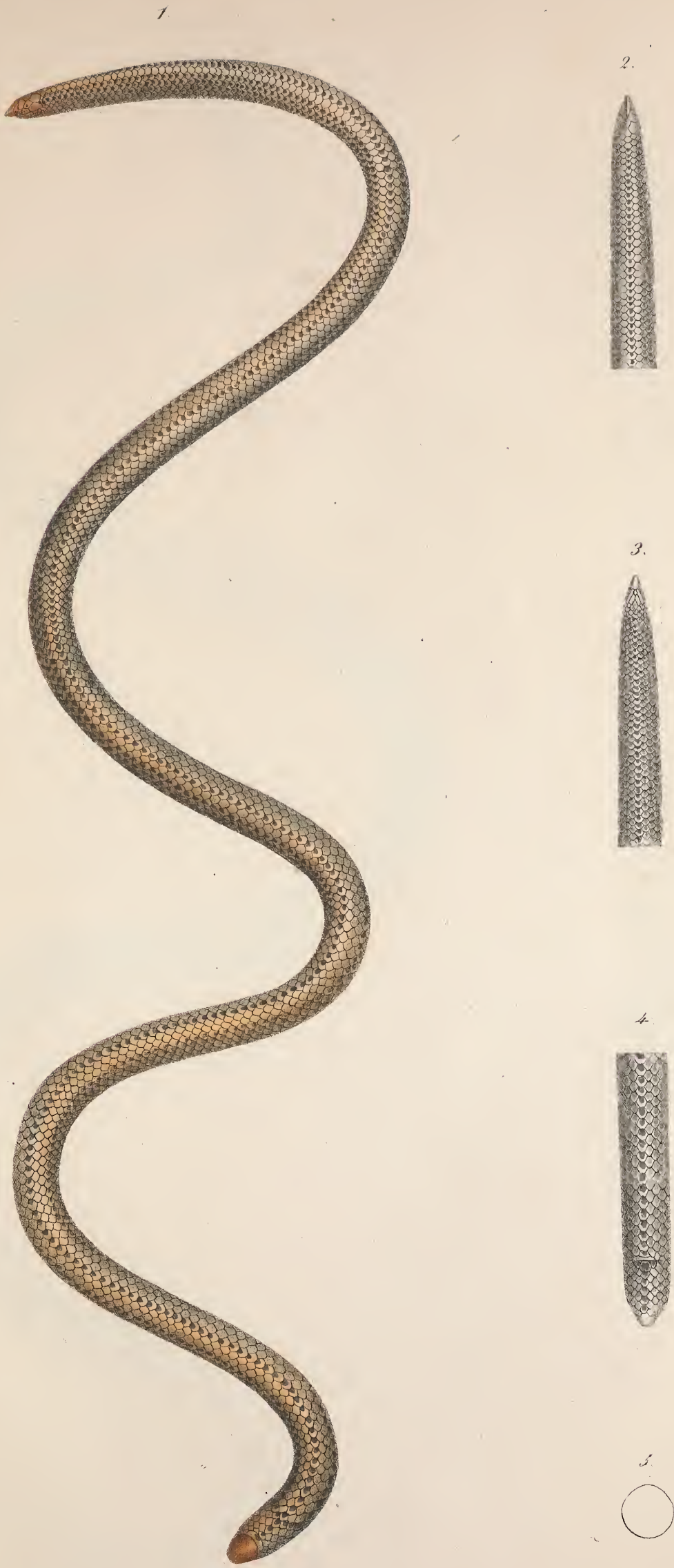
5.



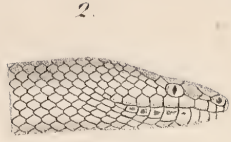
6.



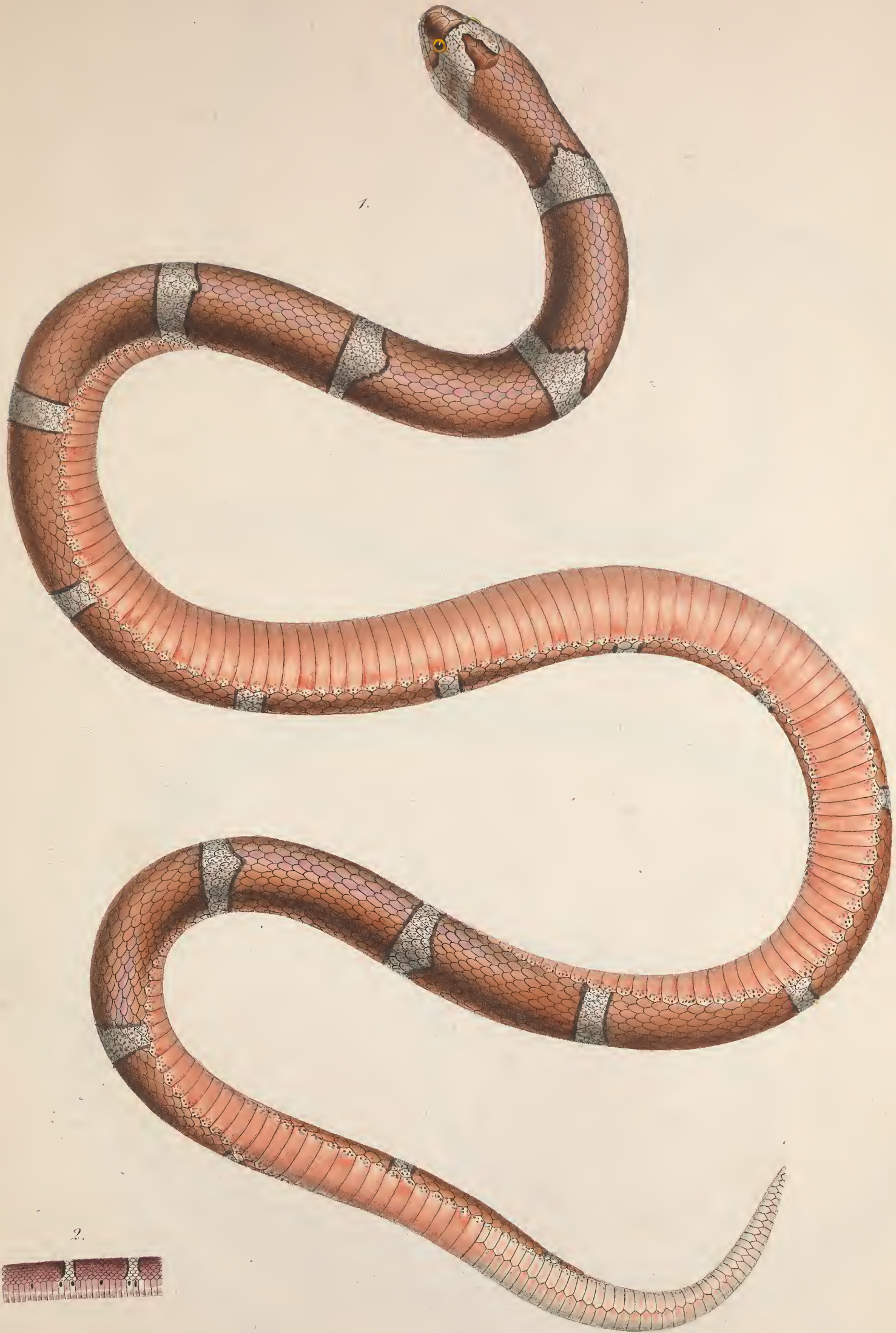
Scincus Smaragd.



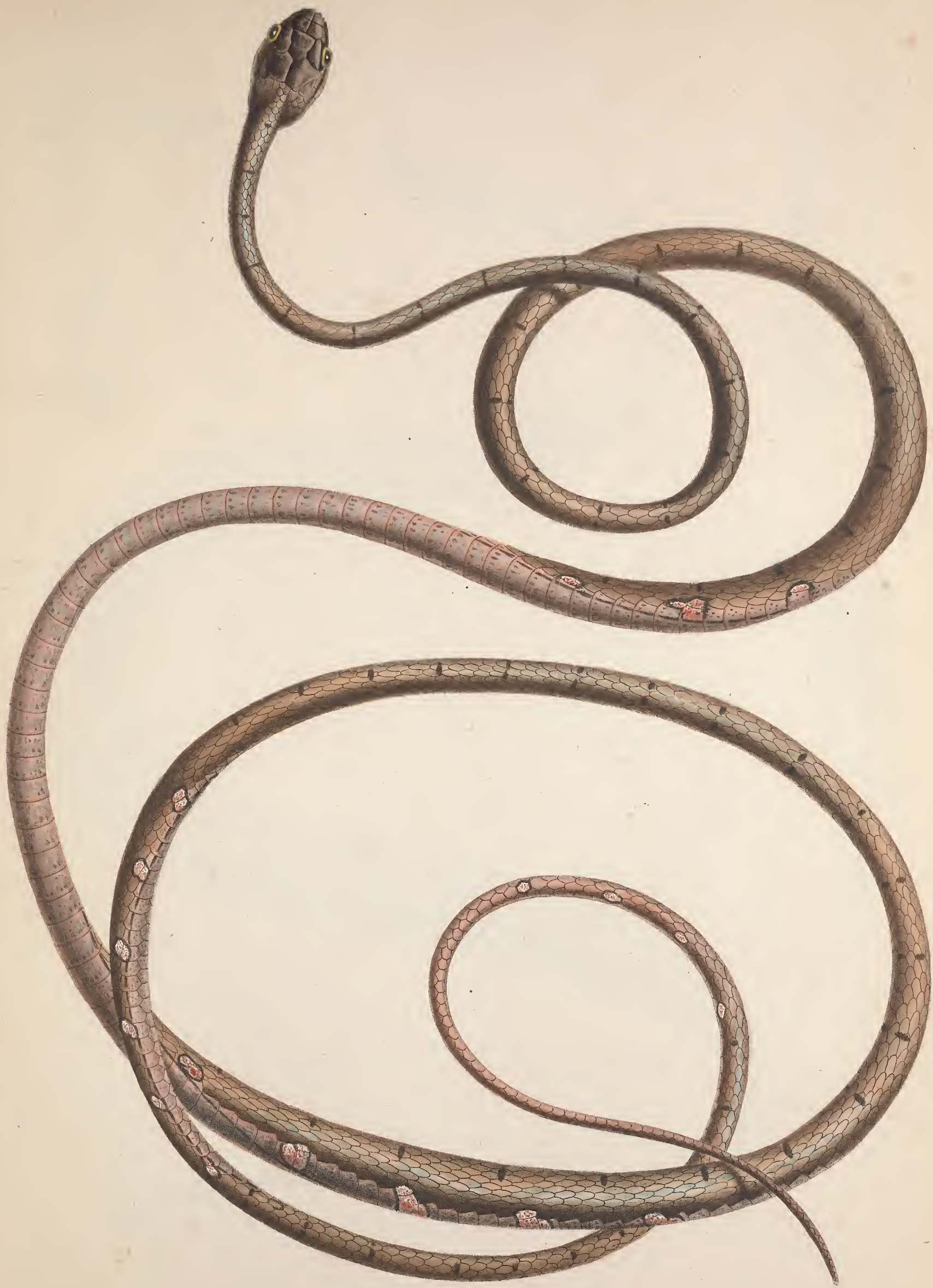
Pseudo-Typhlops oxyrhynchus.



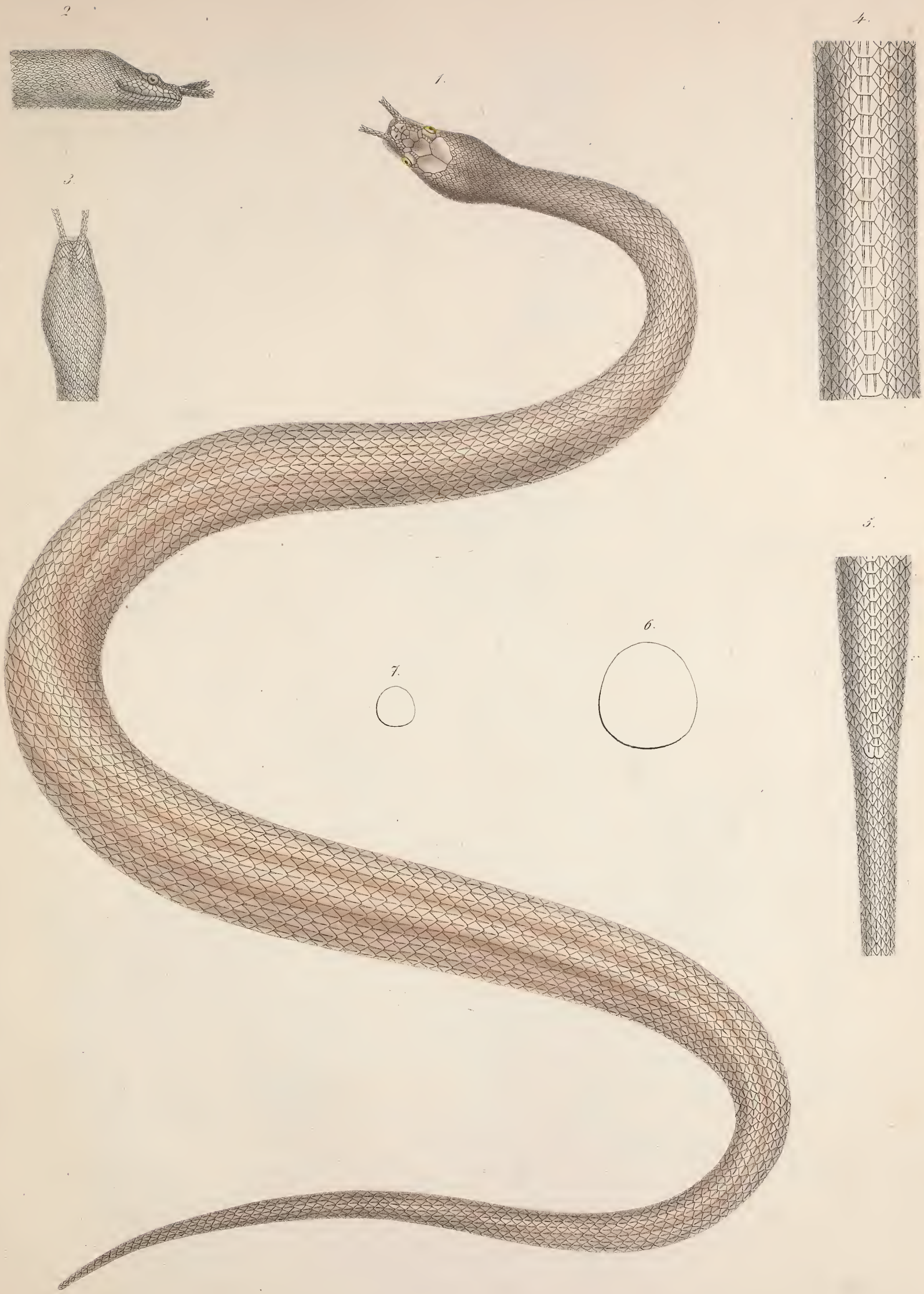
Tortrix Boa.



Xenodon purpurascens.



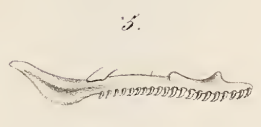
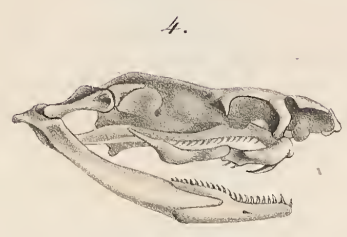
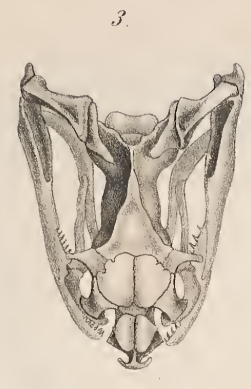
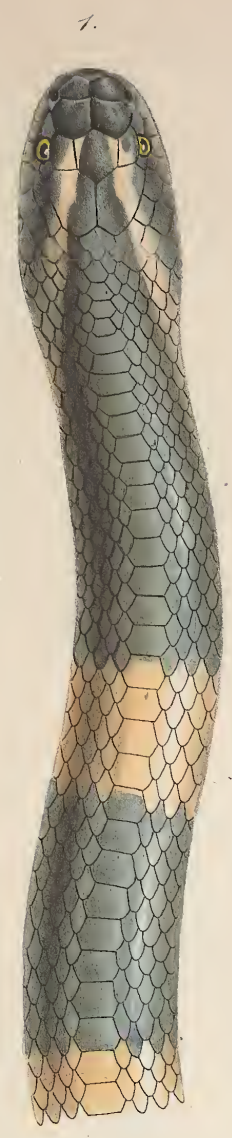
Dipsas Drapiezii.



Homalopsis Herpeton.



1-5. *Boa Dussumieri*. 6-7. *Boa carinata*. 8-10. *Boa murina*.
 11. *Python birittatus*. 12.-14. *Acrochordus javanicus*.



Bungarus.

fig. 1-5. *B. annularis.* fig. 6-10. *B. semifasciatus.*



Trigonocephalus rhodostema.

1.



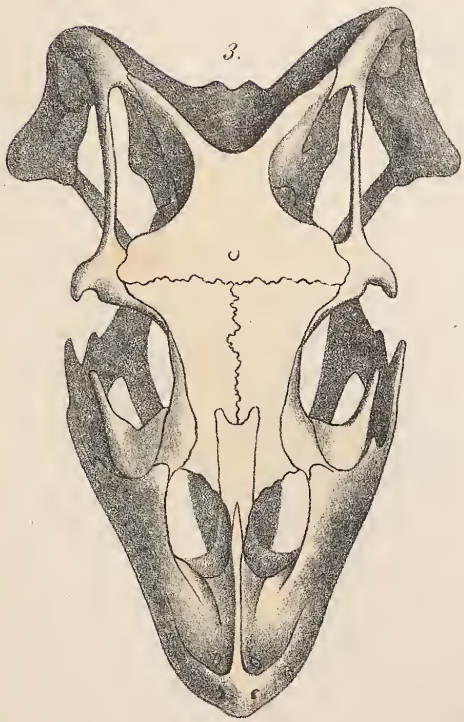
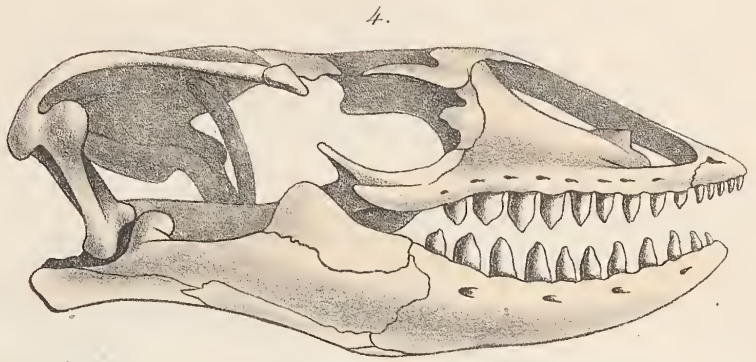
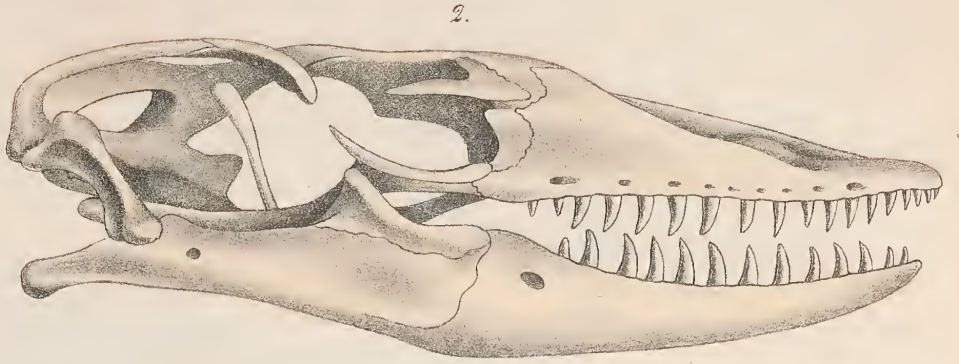
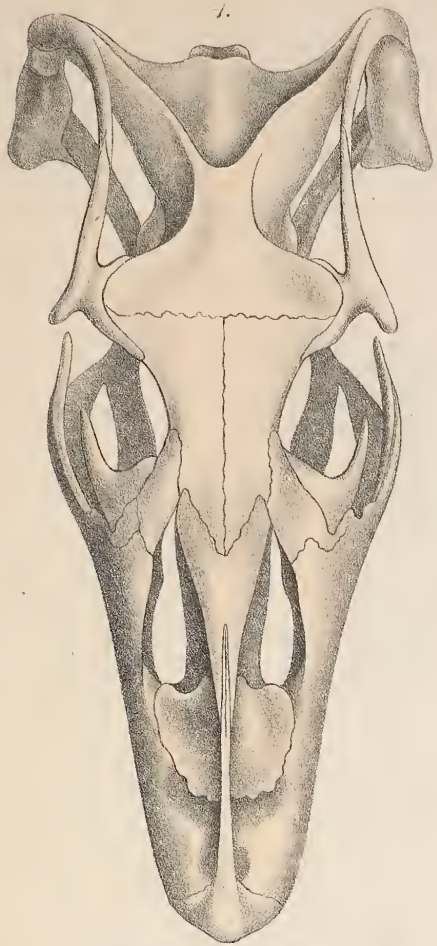
2.



Bufo.
1. *B. asper.* 2. *B. scaber.*



Monitor bivittatus.



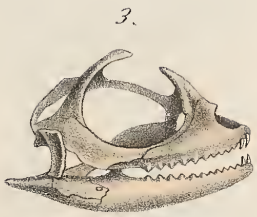
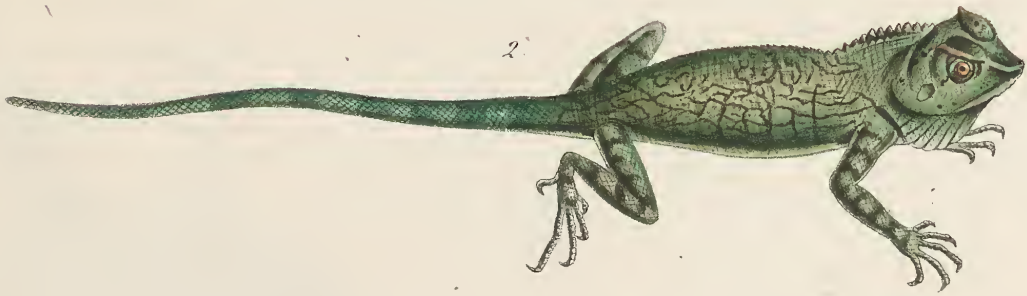
Monitor?

1-2. *Mon. bivittatus.*

3-4. *M. exanthematicus, cap.*

5. *M. prasinus.*

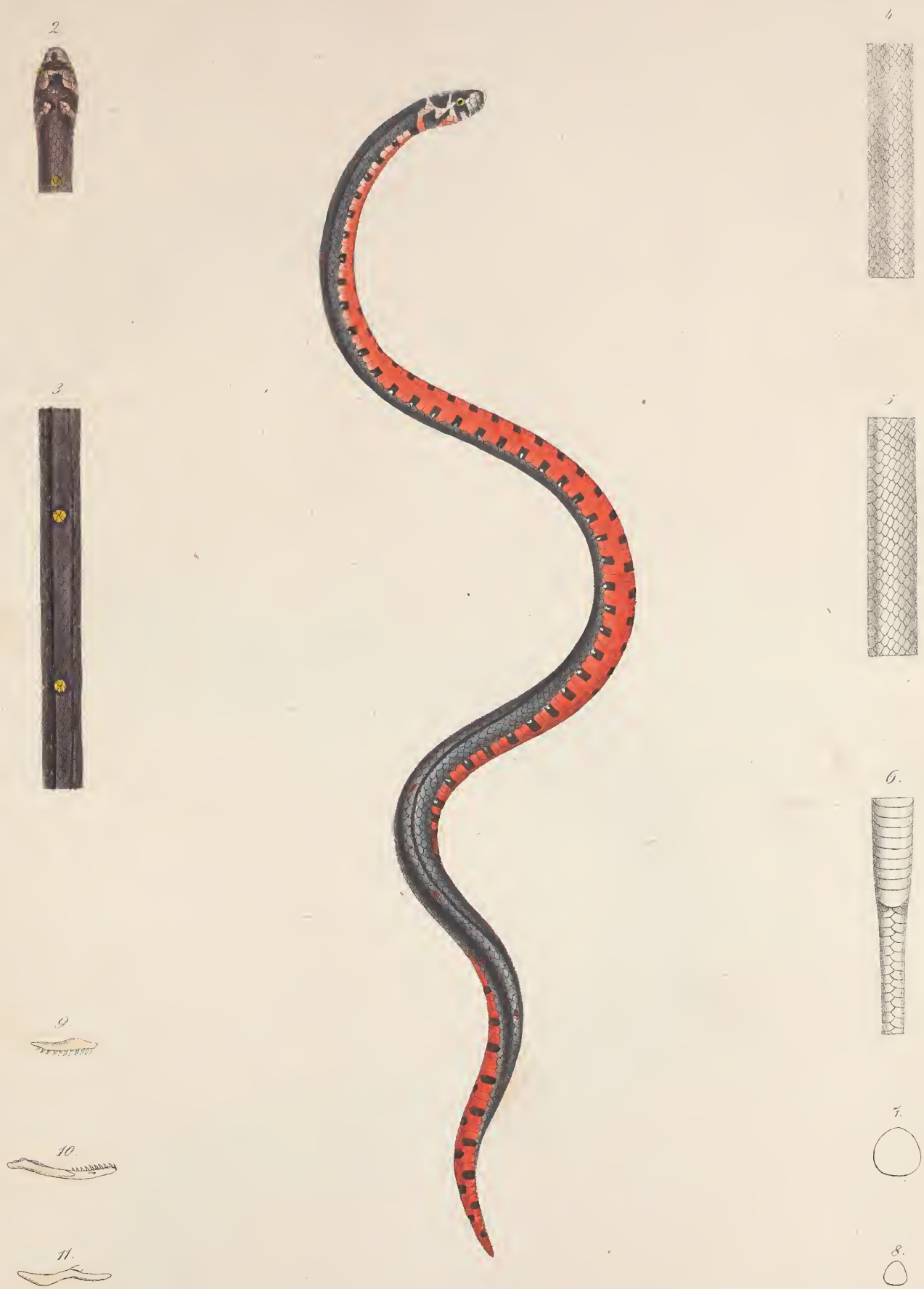
6. *M. chlorostigma.*



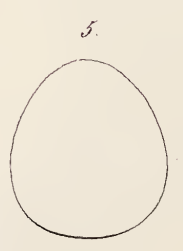
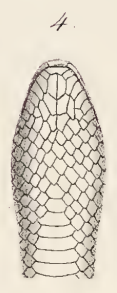
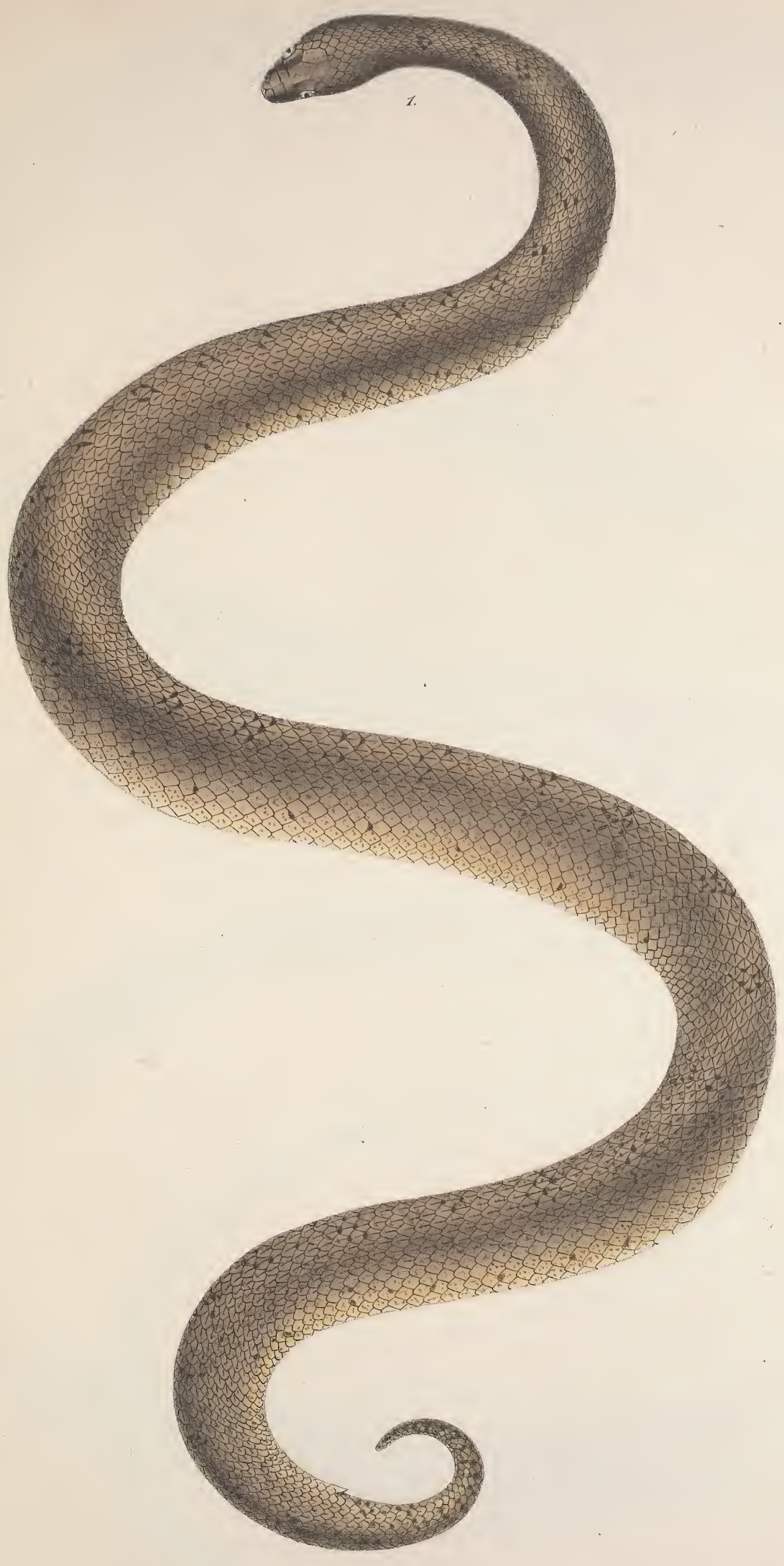


Diacc.

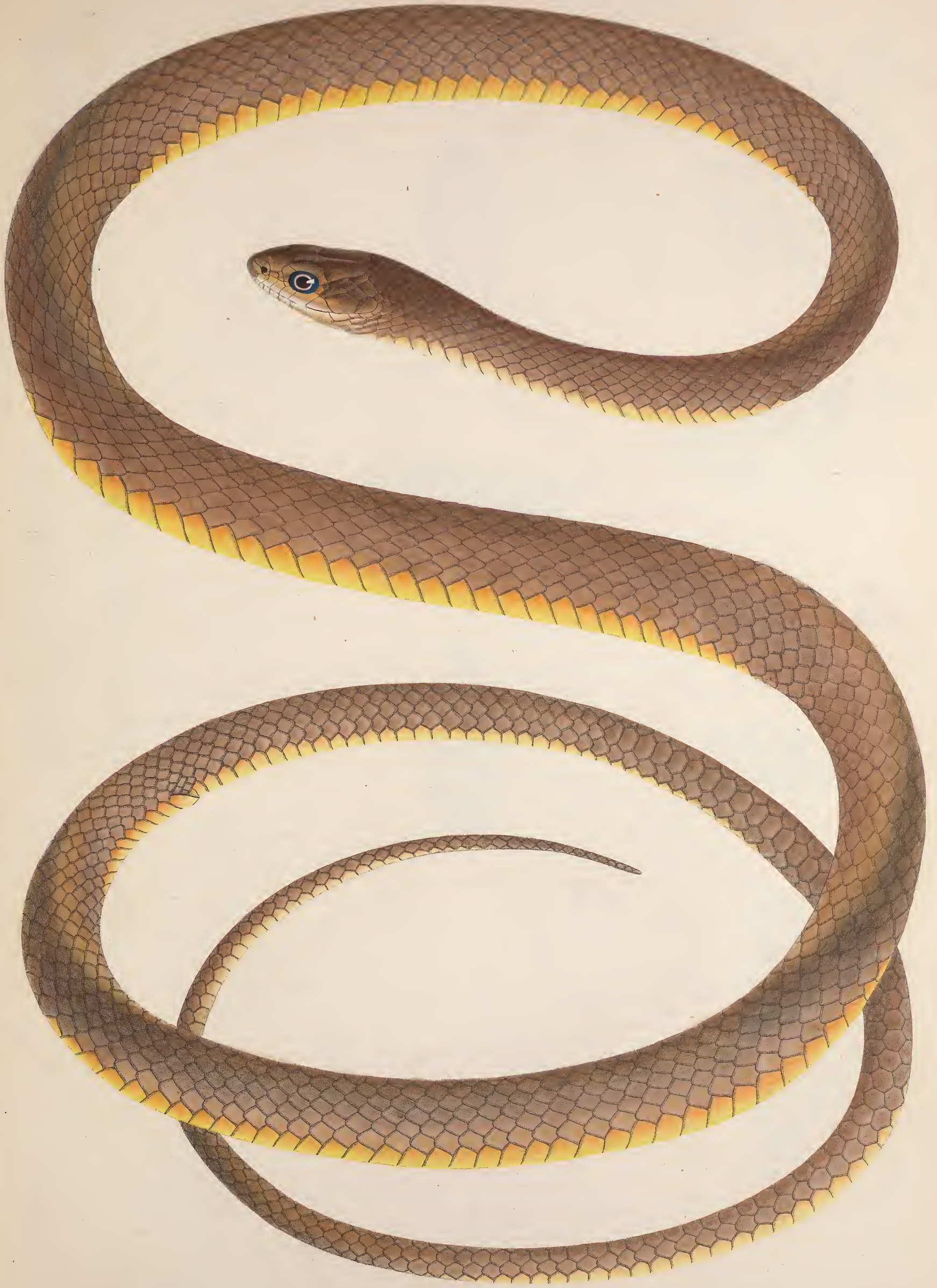
1. *Dr. vivida*. 2.3.4. *Dr. fimbriatus*. 5. *Dr. lineatus*.
 6-9. *Dr. haematopogon*.



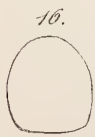
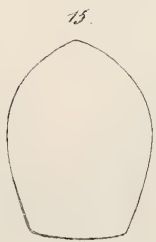
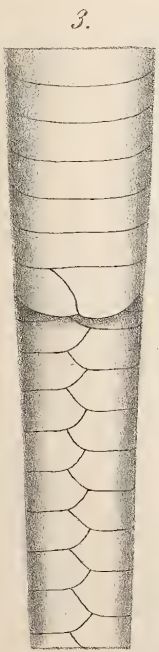
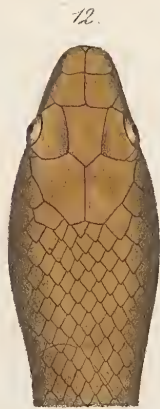
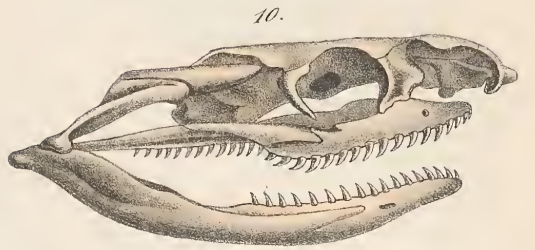
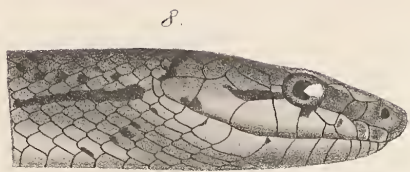
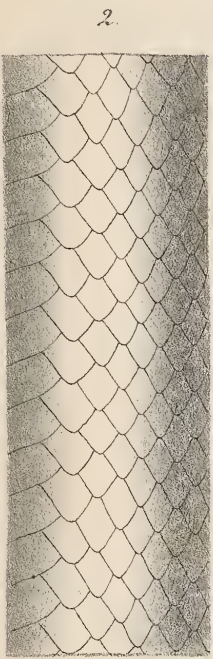
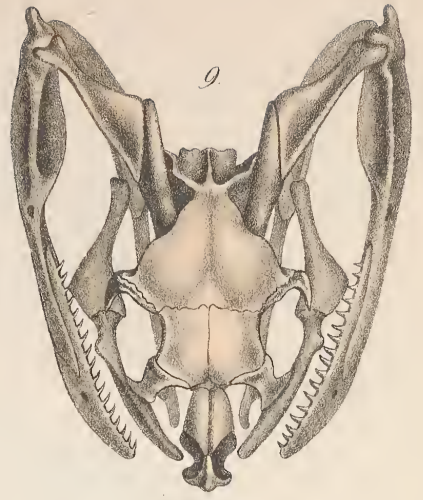
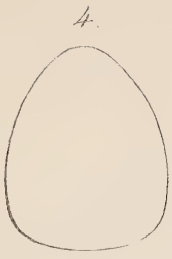
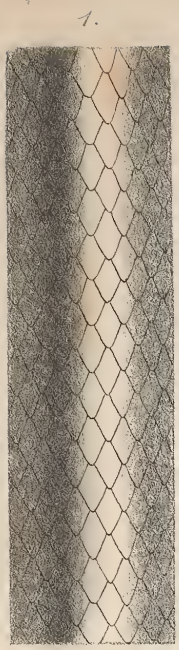
Calamaria Oligodon.



Boa melanura.



Coluber Porros.



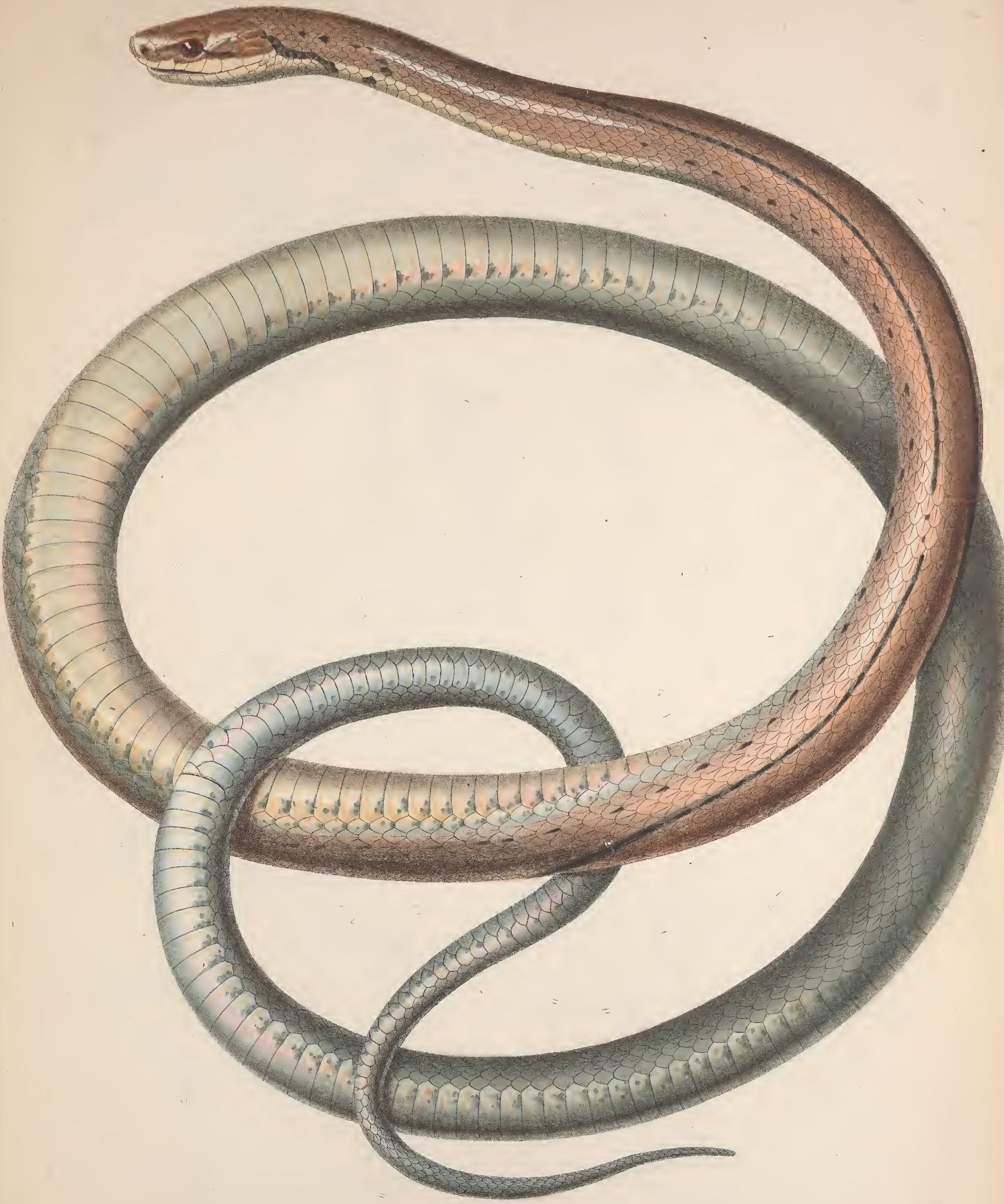
Coluber.

1-6. *Col. Horros.*

7, 8. *C. subradiatus.*

9-11. *C. Corais.*

12-16. *C. miniatus.*

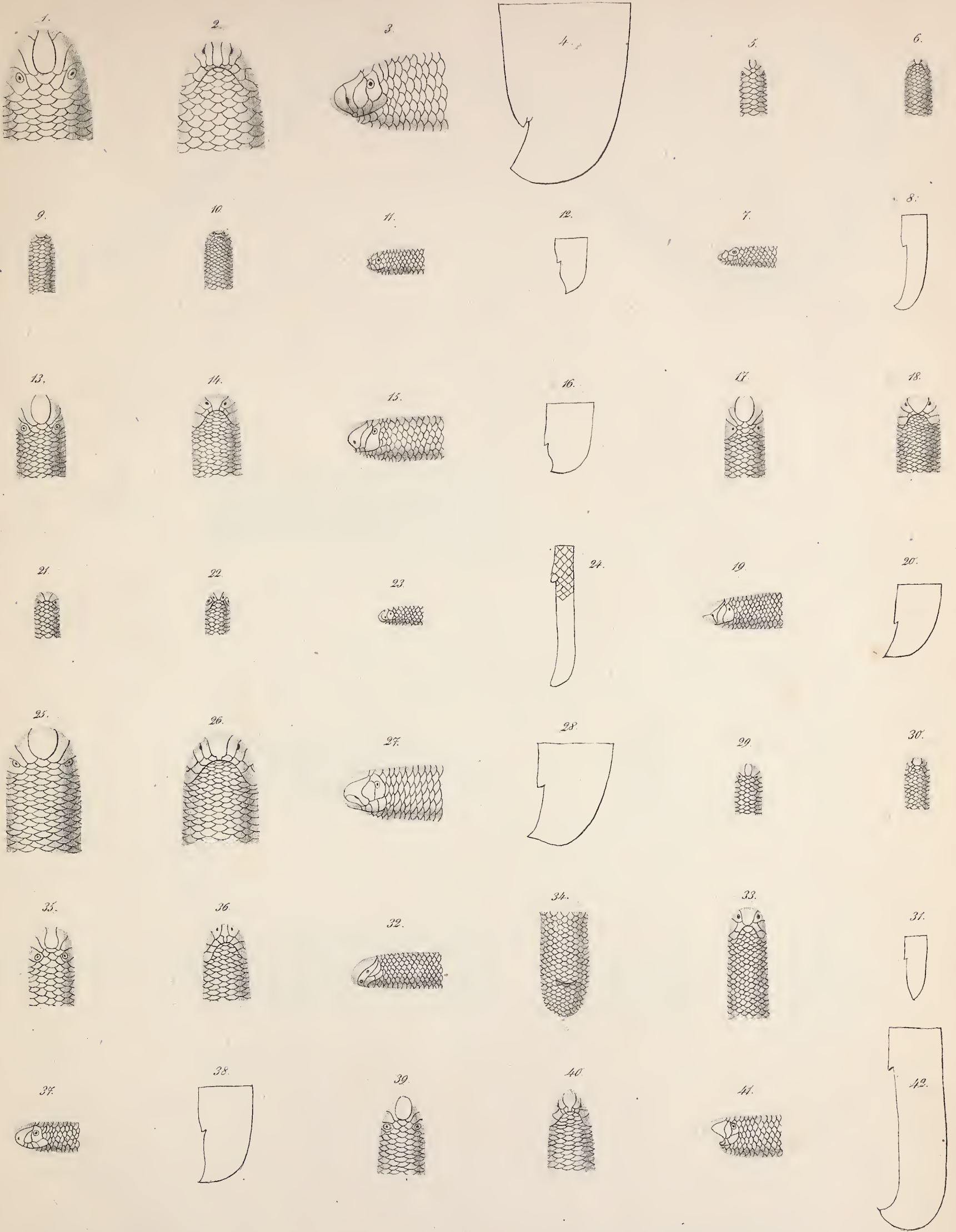


Coluber subradiatus.



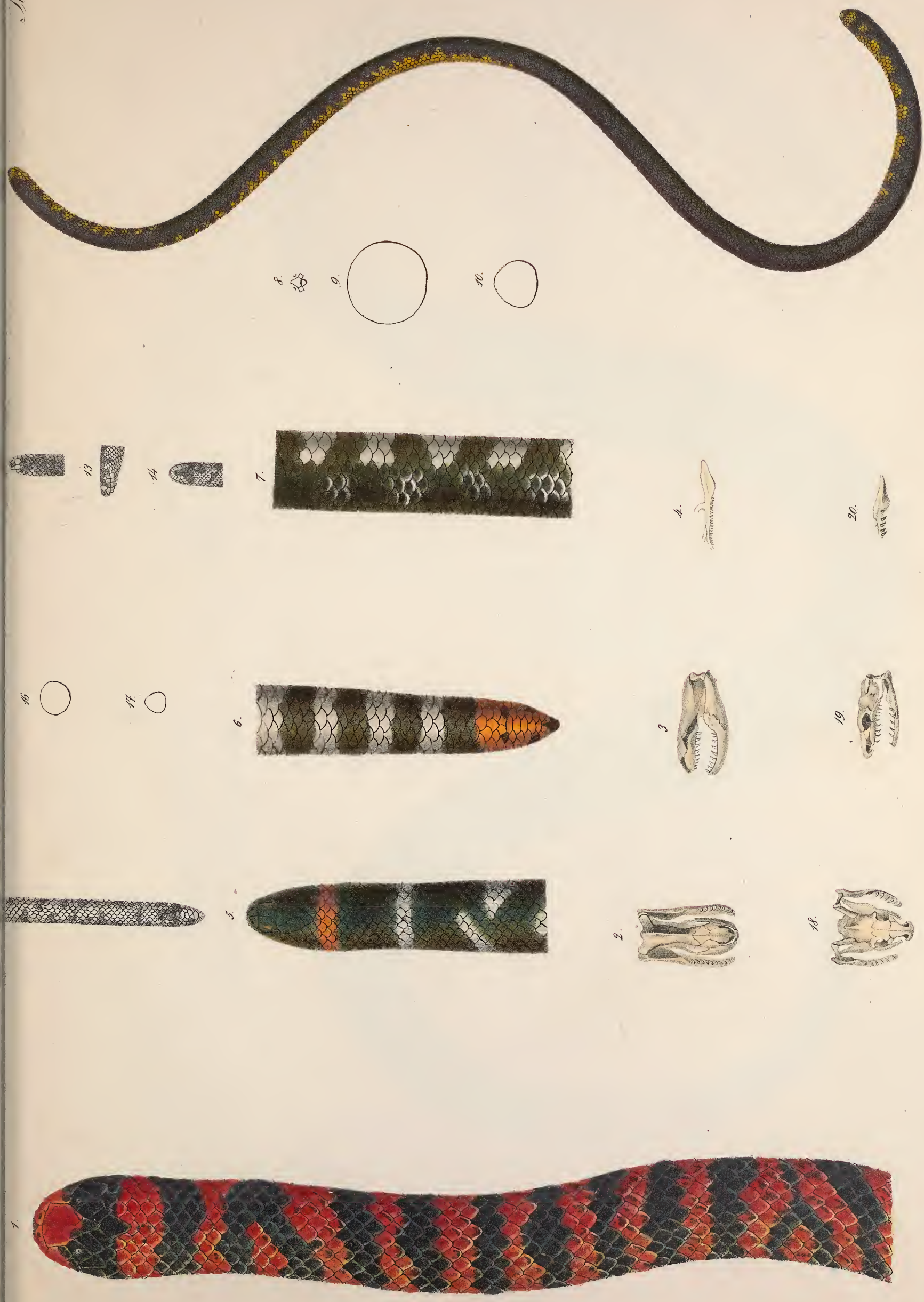


Trionyx japonicus.



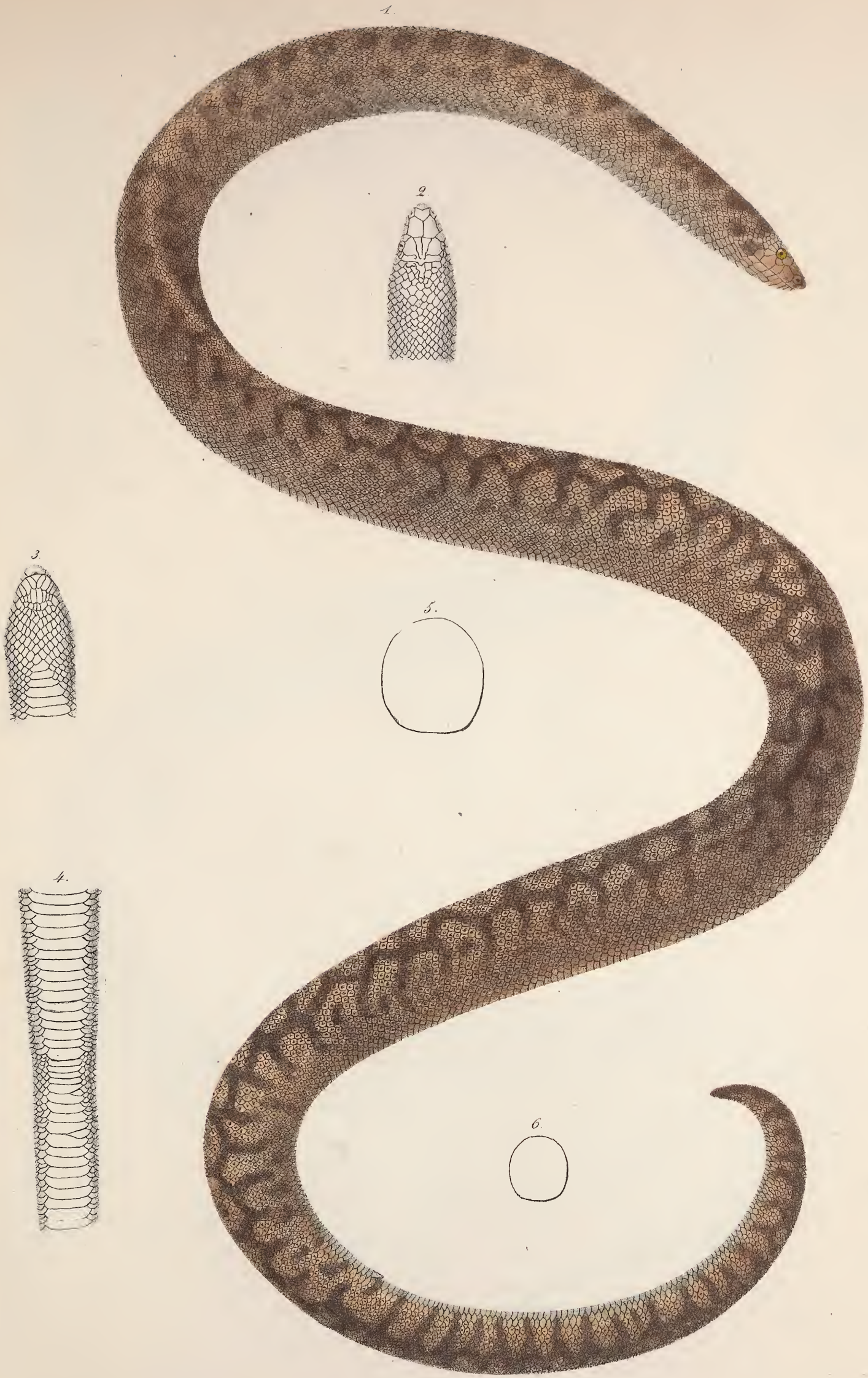
Typhlops.

1-4. *T. lumbricalis.* 5-8. *T. bilineatus.* 9-12. *T. squamosus.* 13-16. *T. Eschrichtii.*
 17-20. *T. Lalandei.* 21-24. *T. nigricans.* 25-28. *T. Müllerii.* 29-31. *T. ater.*
 32-34. *T. lineatus.* 35-38. *T. polygrammicus.* 39-42. *T. multilineatus.*

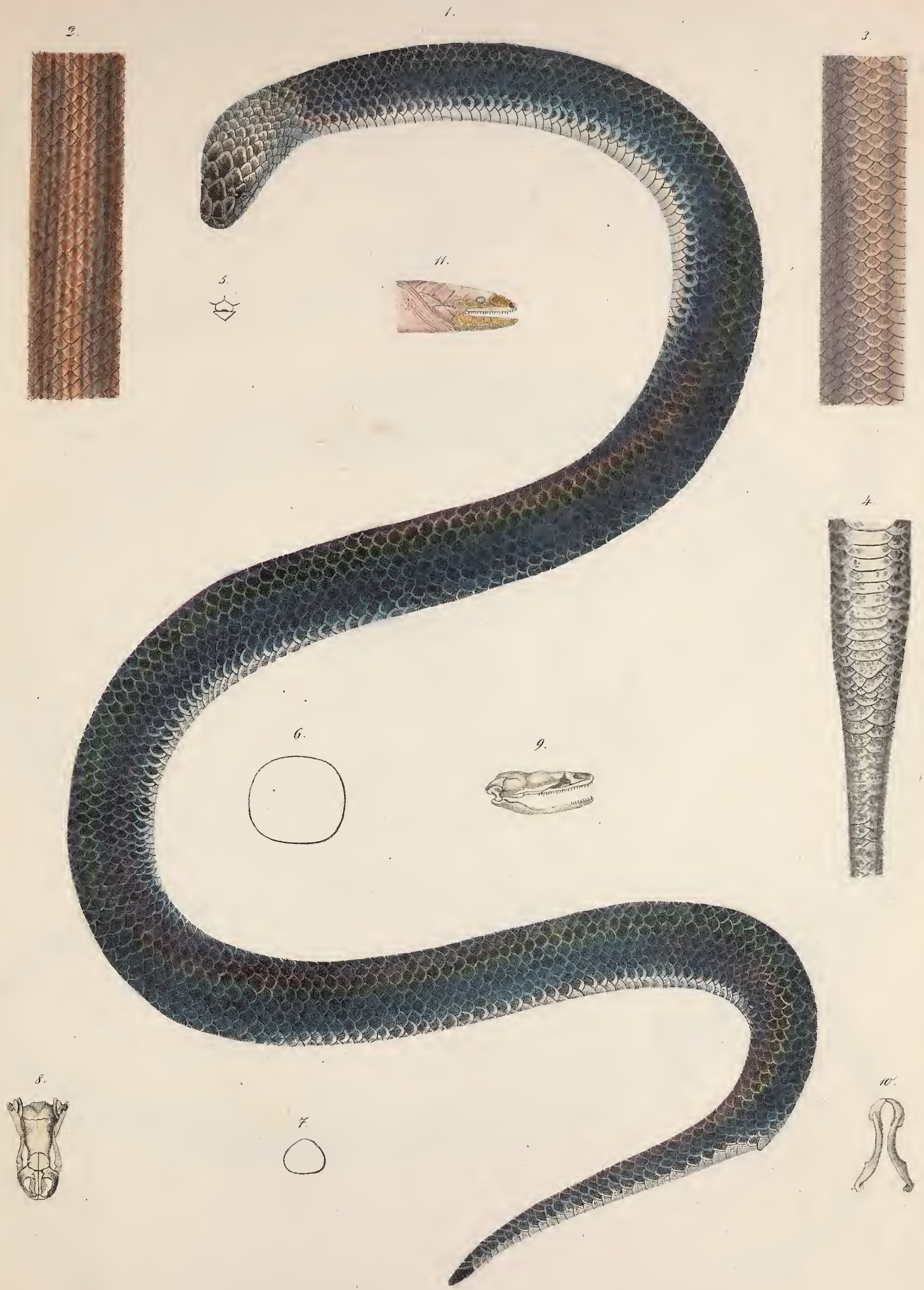


Forsteria.

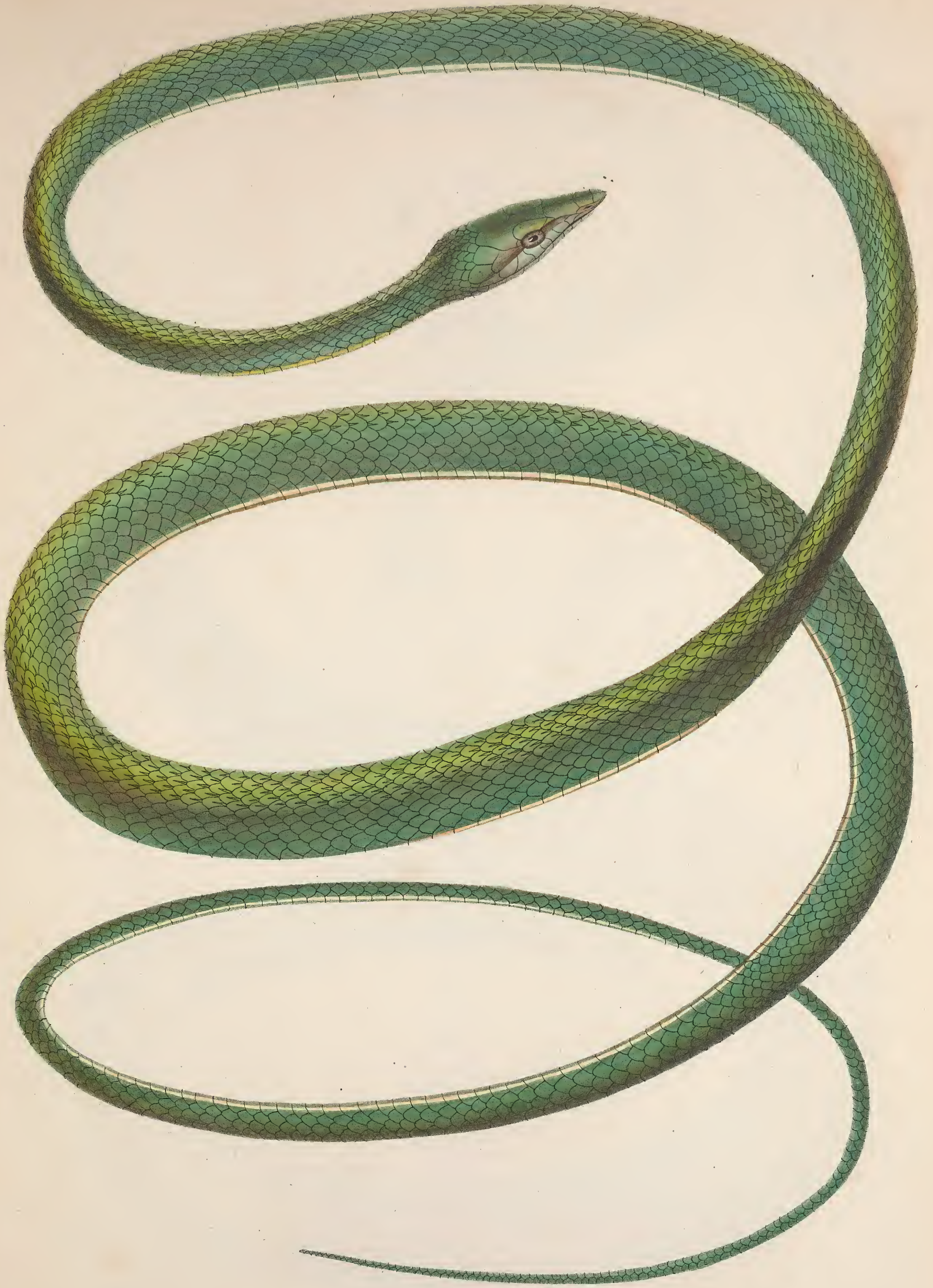
1-4. *F. septata*. 5-10. *F. rufa*, var. *lava*. 11-17. *F. rufa* var. *albata*. 18-20. *F. Engr.*



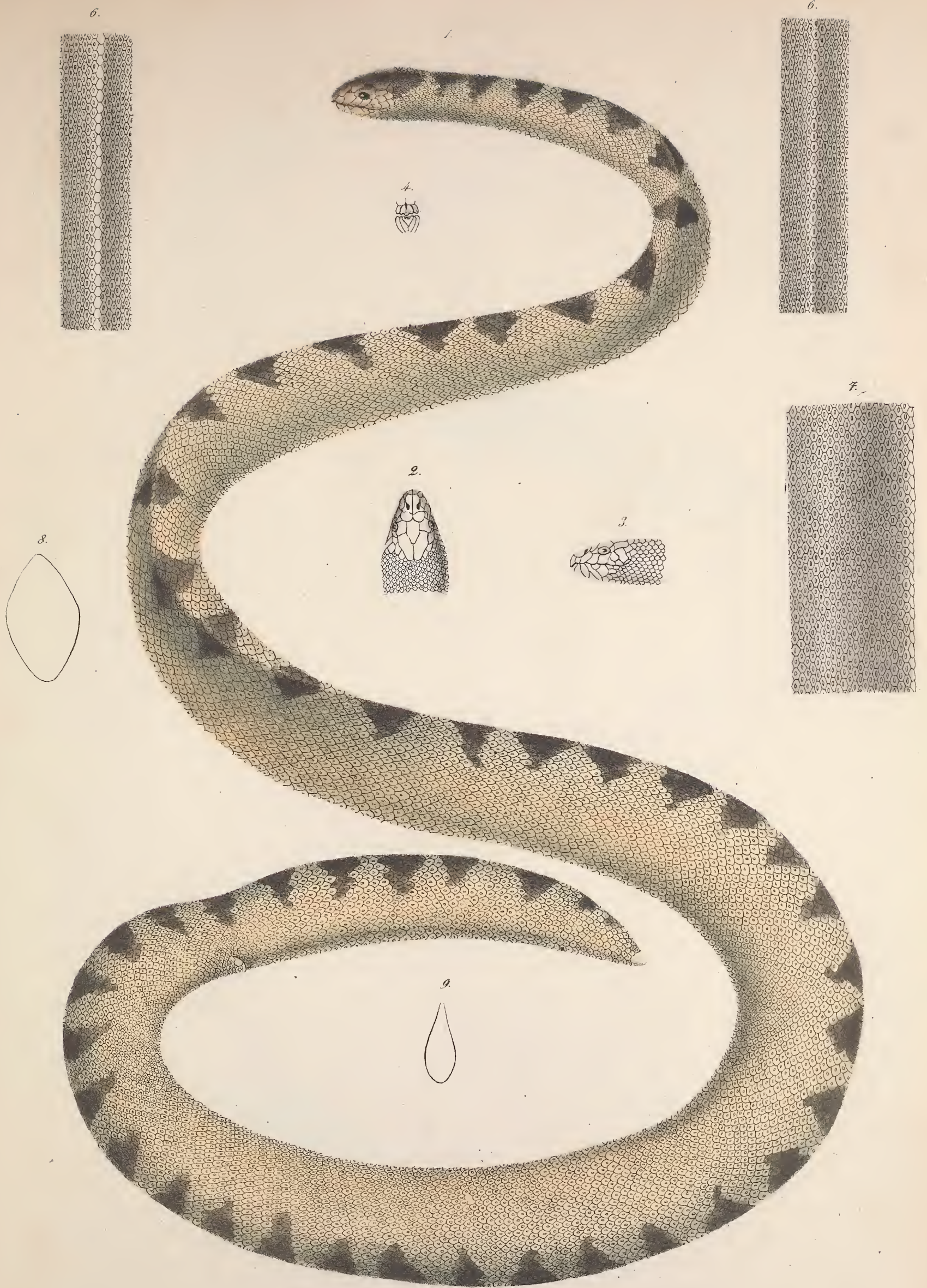
Tortrix pseudo-eryx.



Tortrix Kenopeltis.



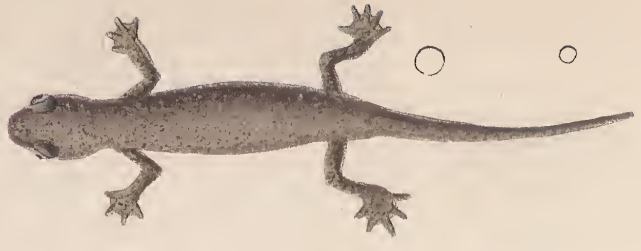
Dryophis Catesbyi.



Hydrophis hibrida.



Trigonocephalus puniceus.



1. *Coccitia hypocyanea*. pull. 2, 3, *Salamandra pleurodeles*. 4. *Sal. macrura*. 5. 6. *Sal. Ineri*.



○ ○ ○ ○ ○



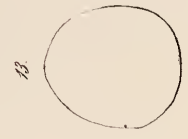
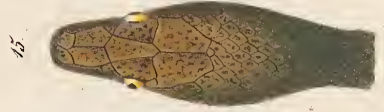
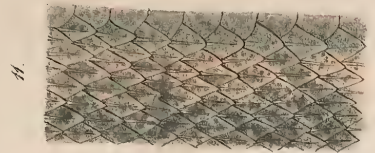
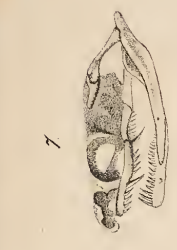
1-3. *Salamandria subcrustata*. 4-6. *S. scutata*. 7-10. *Sal. nebulosa*.



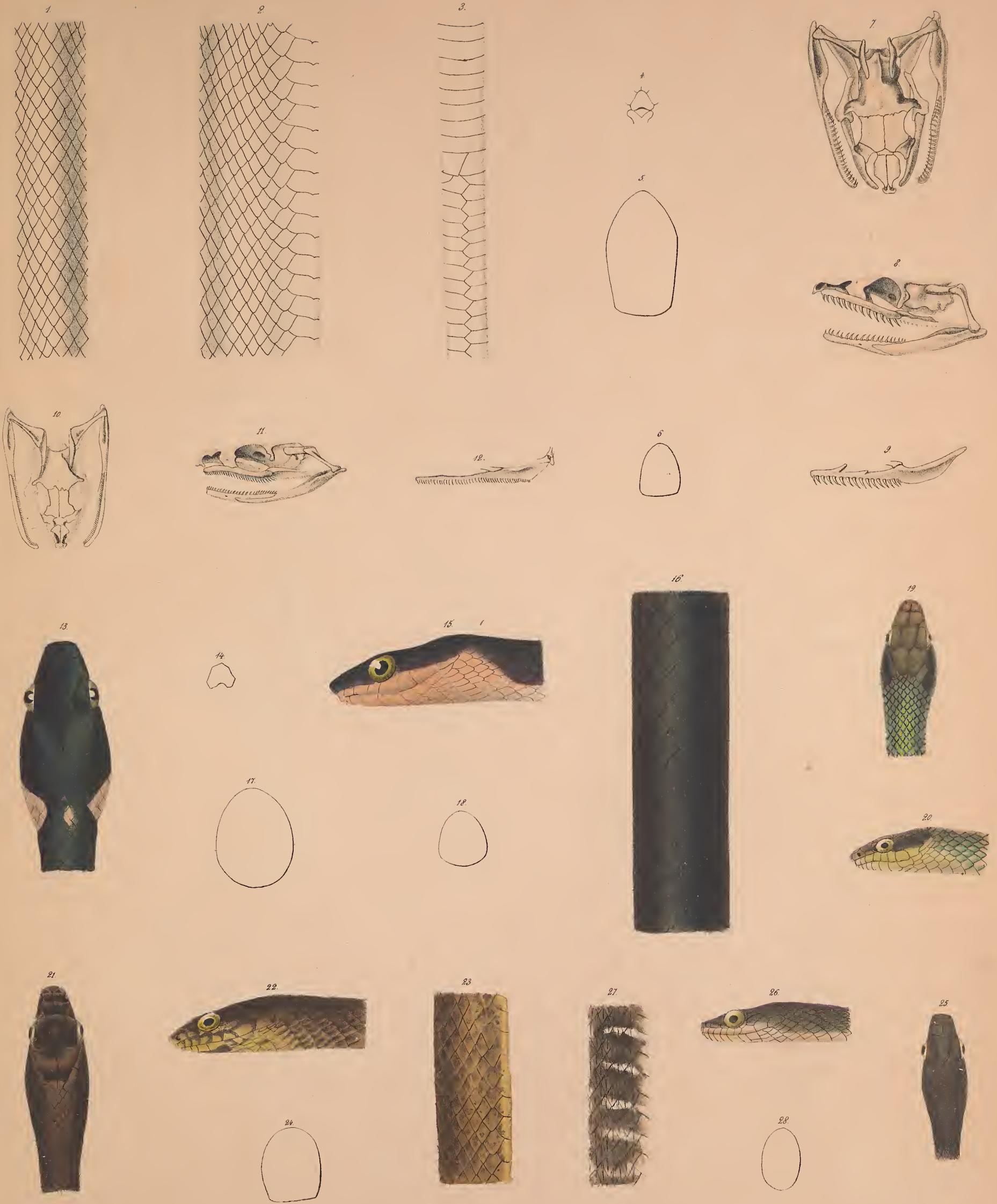
Emys vulgaris japon.



Emys vulgaris picta.



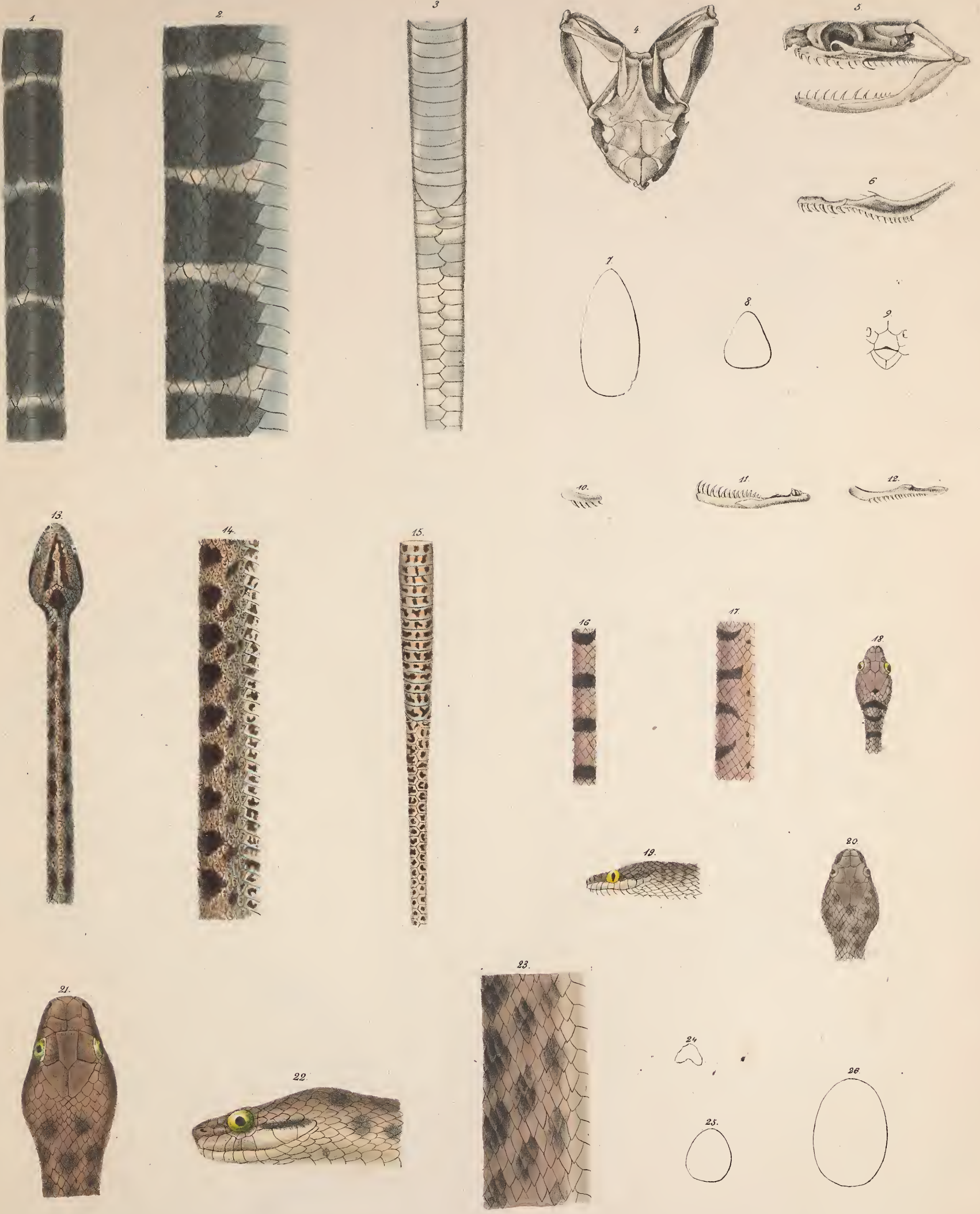
Psammophis
1-5 *Ps. pulverulenta*. 6-8 *Ps. moniliger*. 9-11 *Ps. seychellensis*.
12-16 *Ps. elegans*.



Herpodesrijas.

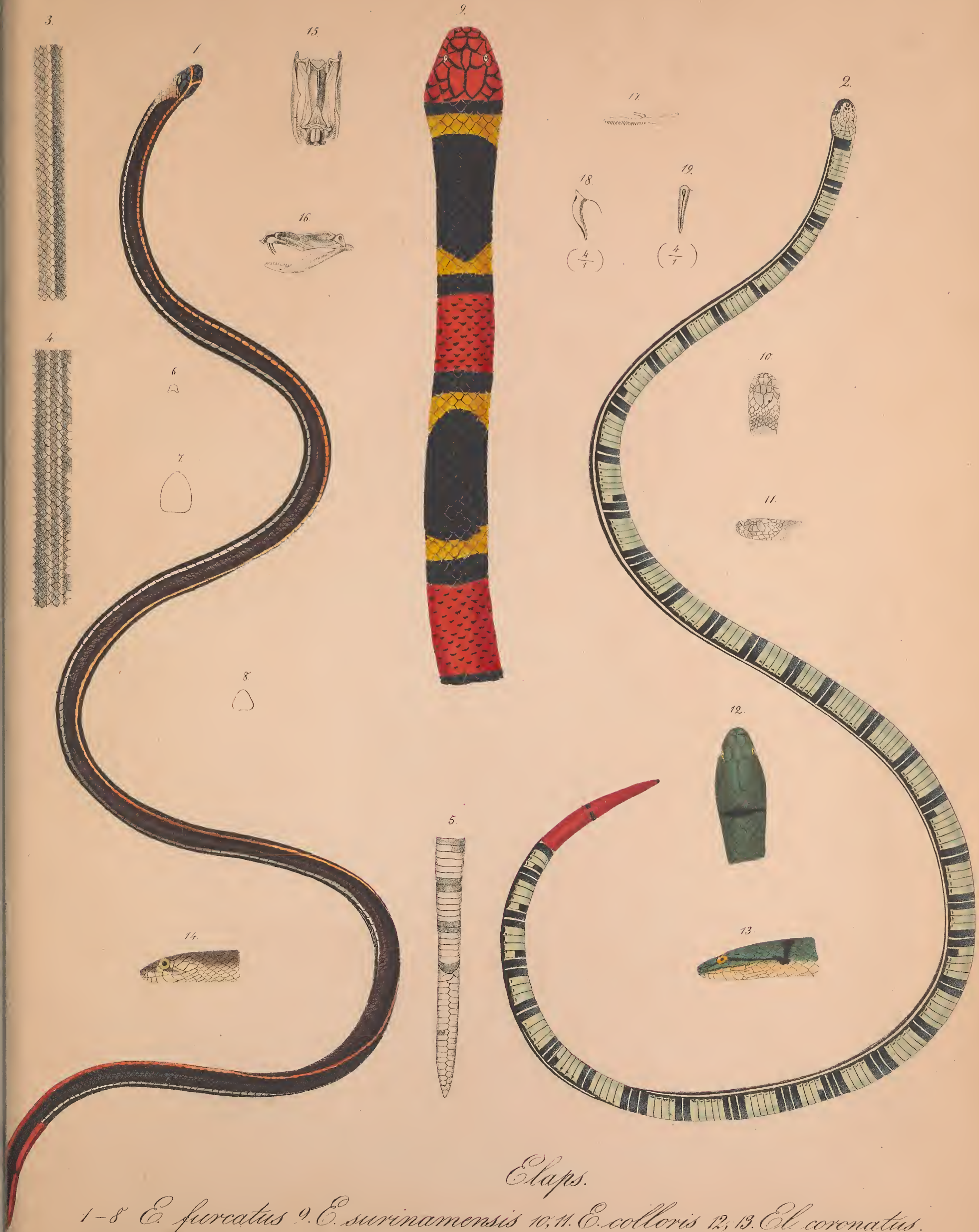
1-9 *H. oxycephalus.* 10-12 *H. carinatus.* 13-18 *H. Dipsas.*

19-20 *H. margaritifera.* 21-24 *H. Pammophis.* 25-28 *H. Dendrophis.*



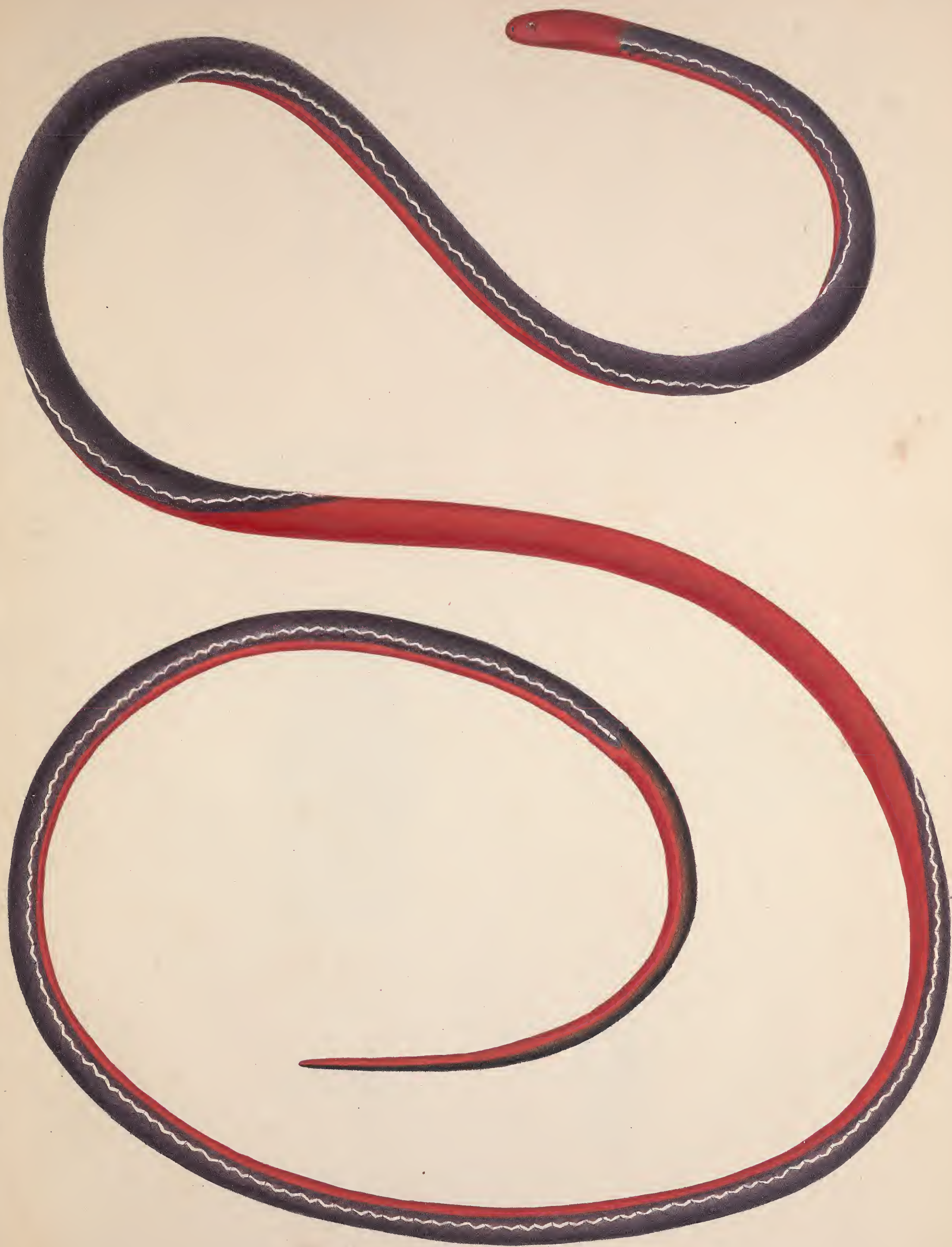
Dipsas

1-9. *D. dendrophila*. 10-12. *D. carinata*. 13-15. *D. multimaculata*.
 16-18. *D. Gaimardii*. 19-20. *D. aegyptiaca*. 21-26. *D. colubrina*.

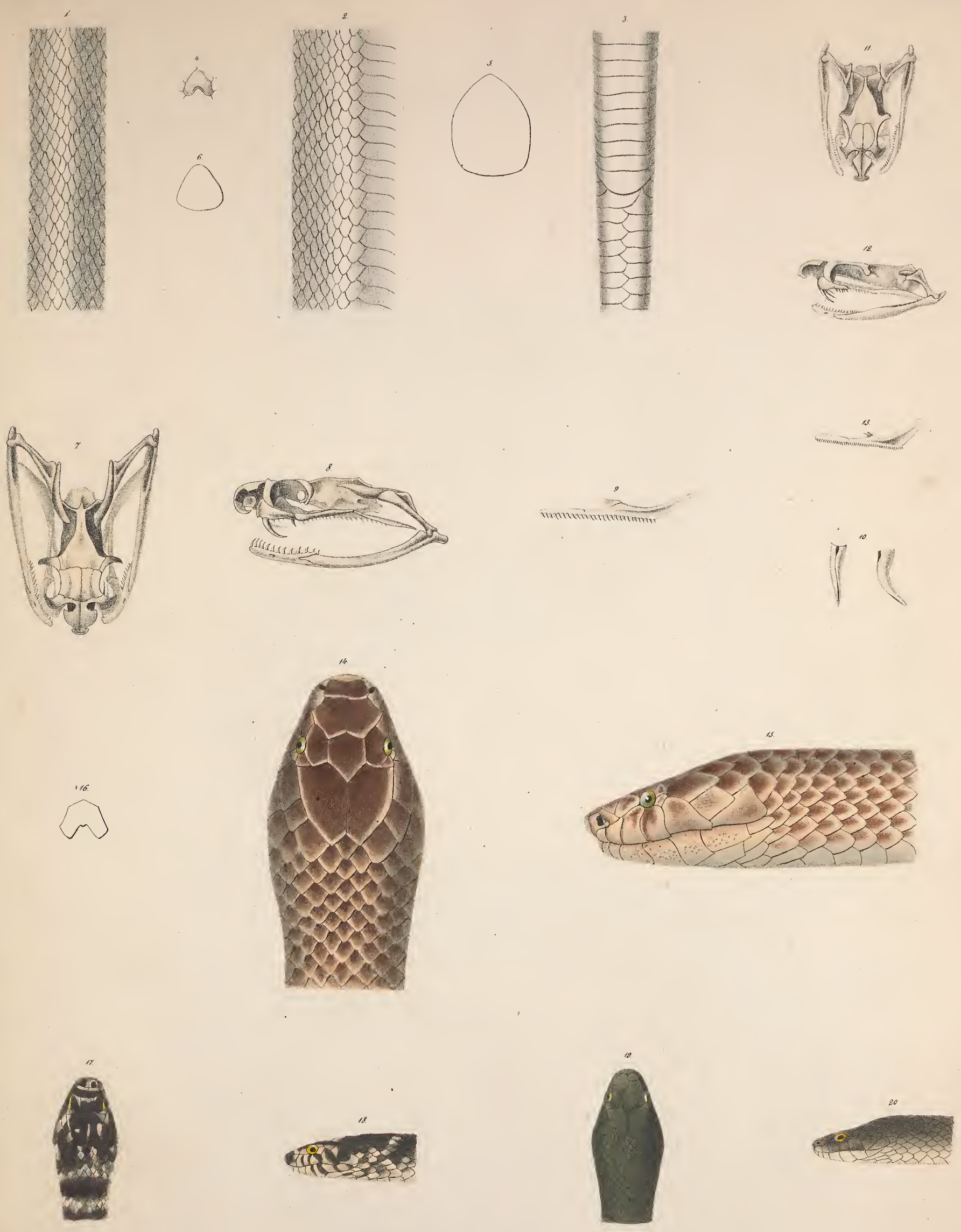


Elaps.

1-8 *E. furcatus* 9. *E. surinamensis* 10, 11. *E. collaris* 12, 13. *E. coronatus*.
 14 *E. Pammophilis* 15-19. *E. Lemniscatus*



Elaps bivirgatus



Naja.
 1-10. *N. tripudians.* 11-13. *N. porphyrea.* 14-16. *N. Elaps.*
 17-18. *N. Bungaroides.* 19-20. *N. curta.*



Figurocephalus rhodostoma



Hyla.

Fig. 1-4. *H. leucomystax.* Fig. 5. *H. Bürgeri.*



SMITHSONIAN INSTITUTION LIBRARIES



3 9088 01506 7929