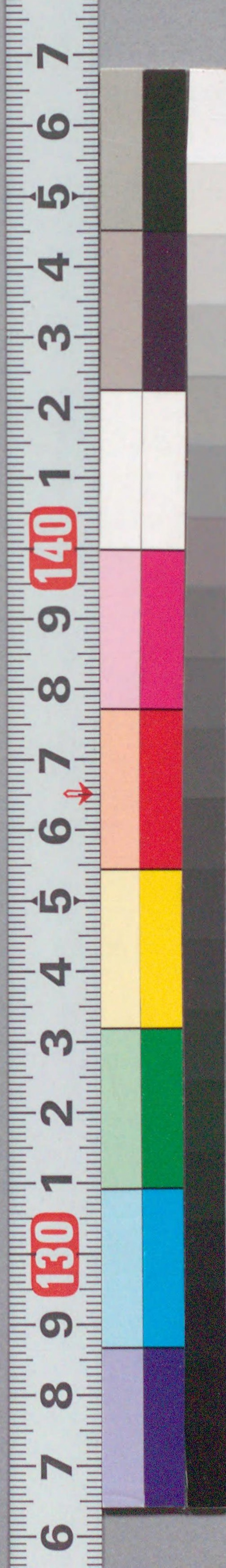


国立国会図書館 心学早染艸：3巻 207-240



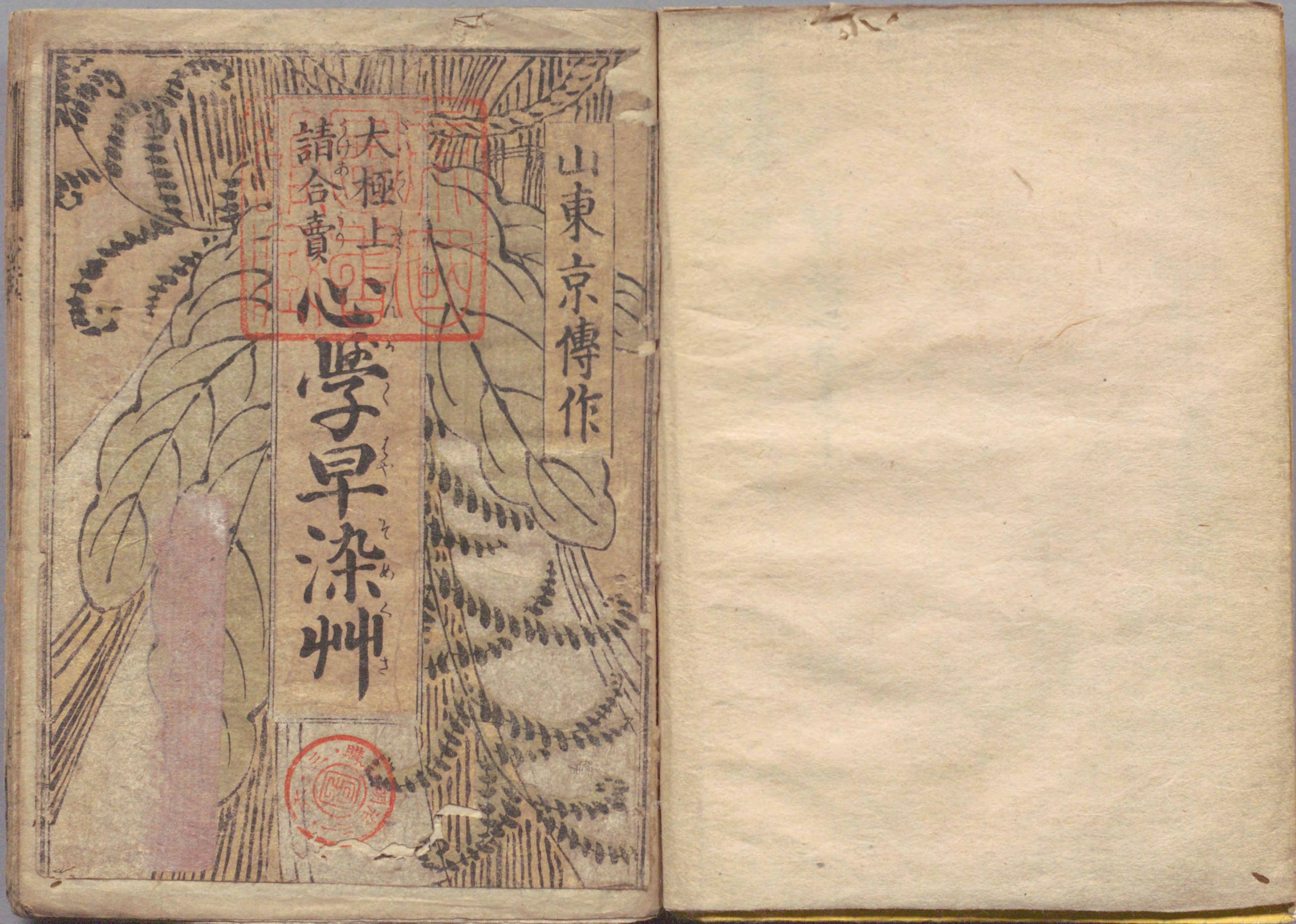
ガラス使用

大極上
心学早染
卷三

寛政二年

207
240

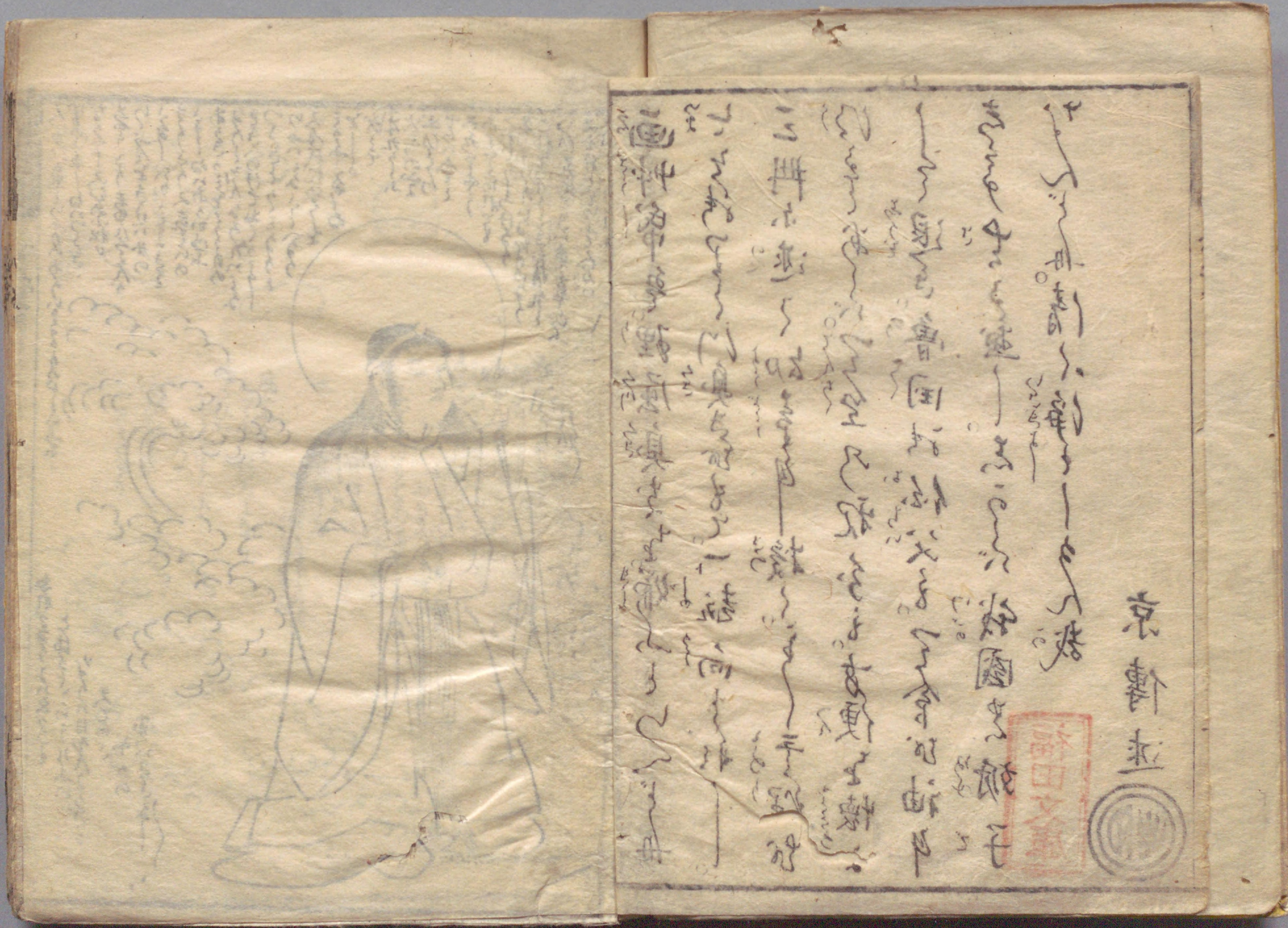


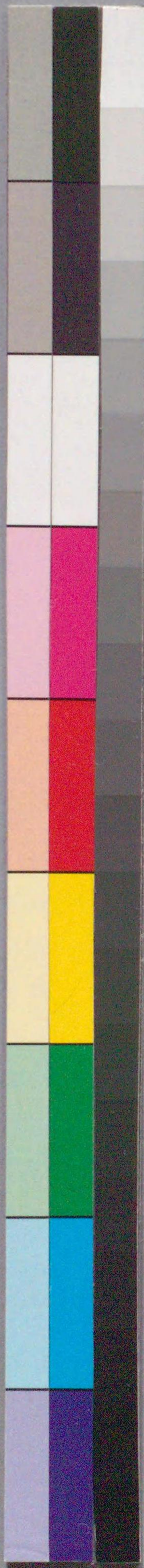


画艸帛多理屈眞を嫌ふとらんど母。
 こと法ア〜に眞を以て一転向とれし。
 三冊亦述く知事〜授く〜手程は
 けりあ〜つて空乃親分も。方便を懐
 しく退き魯国法伝父も。今が袖は
 ちもすち〜画し。志つて我國の
 けんど母。清く浄く〜まん哉

京傳述







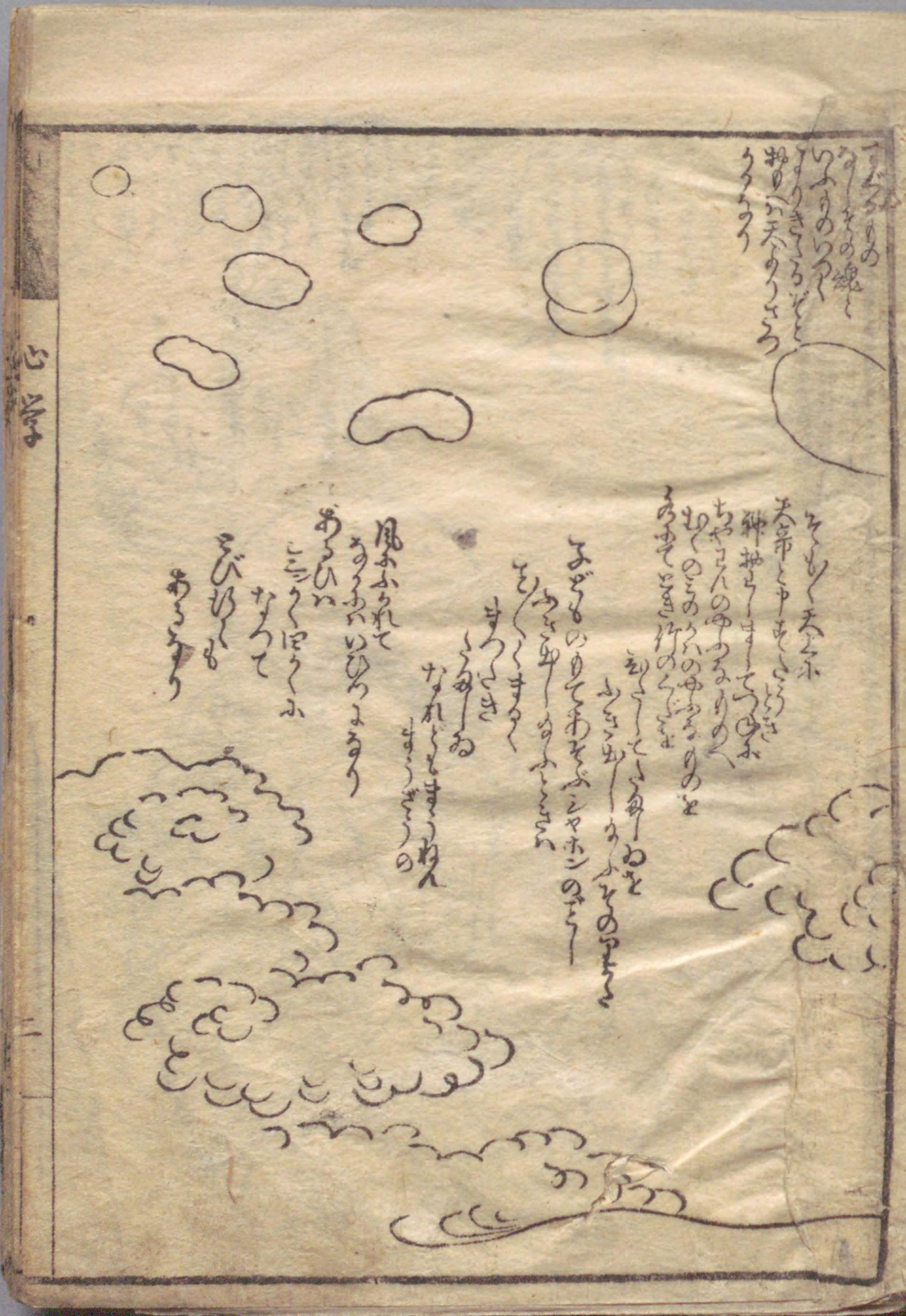
53 Nov

Handwritten text in cursive script, including several circular diagrams at the top left.

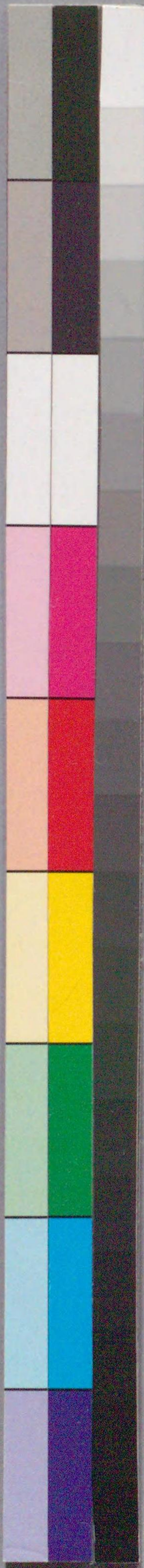


Large area of handwritten text in cursive script, appearing as a continuation of the text on the left page.















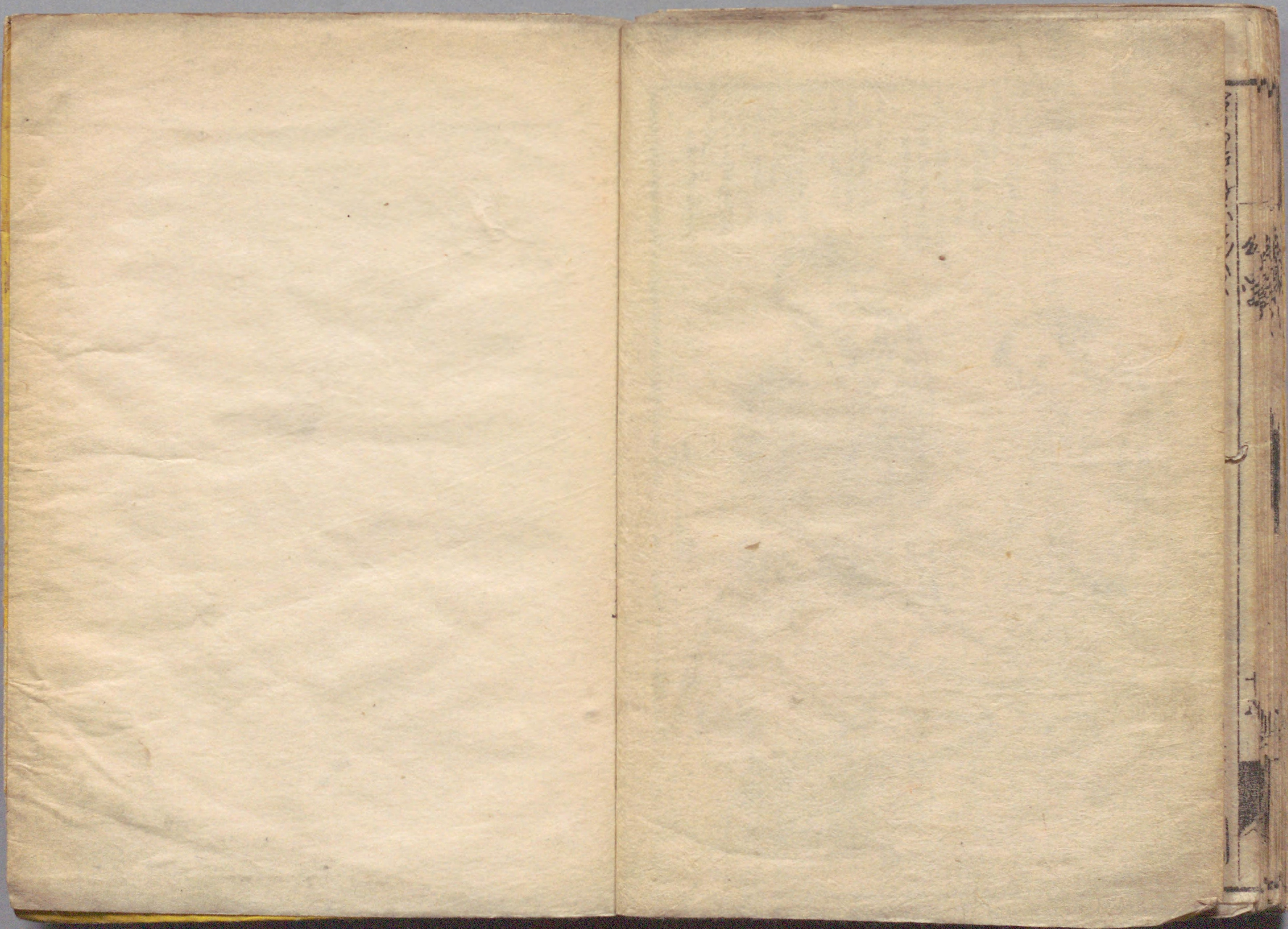
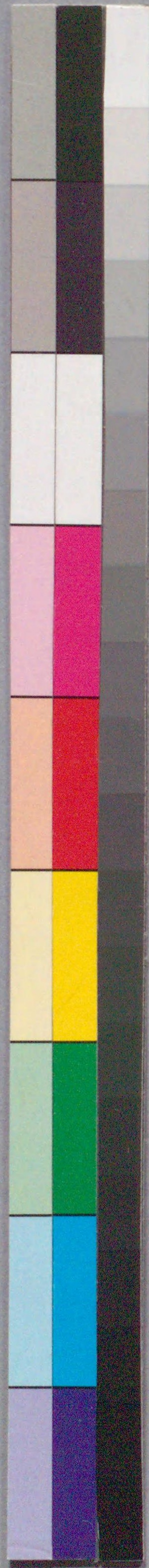






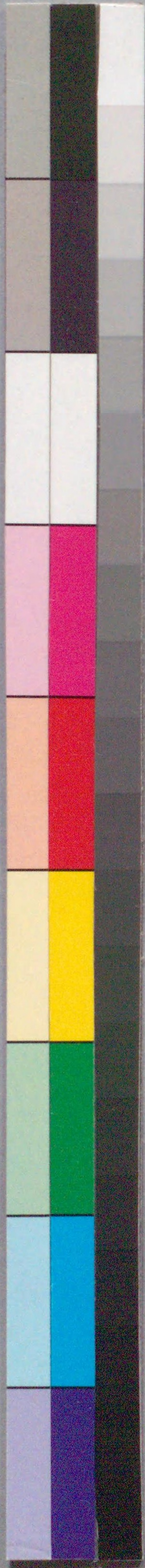
207
240





国立国会図書館 心学早染艸：3巻 207-240

ガラス使用



国立国会図書館 心学早染艸：3巻 207-240



ガラス使用

