

F
264
.A8R7

ROGERS'
Asherville

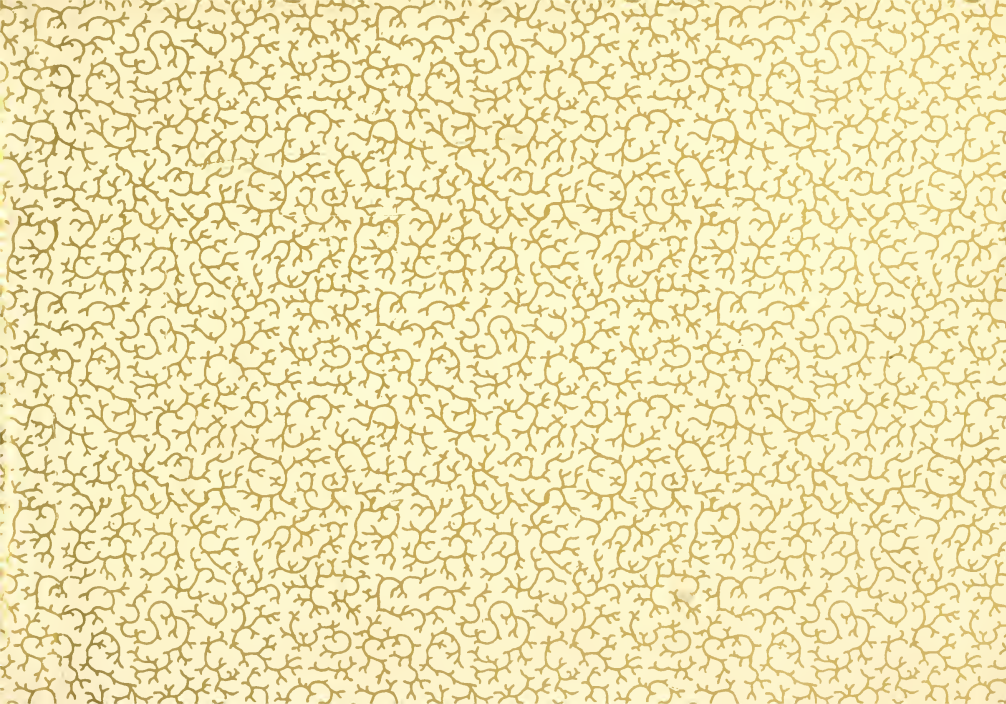


LIBRARY OF CONGRESS.

Class. 261 Copyright No. -

Shelf. A. 111

UNITED STATES OF AMERICA.





ROGERS

ASHEVILLE

PHOTO-GRAVURES

COPYRIGHT 1920 BY H. TITLBY ROGERS, BOOKSELLER AND STATIONER,

20 S. MAIN STREET, ASHEVILLE, N. C.

THE ALBERTUS CO.,
15 LAIGHT ST., N. Y.



+

1864

1865

ASHEVILLE was named in honor of Governor Samuel Ashe, of revolutionary fame, and has been the county seat of Buncombe County since 1794. It occupies an undulating plateau of a mean elevation of 2350 feet above sea level, 18 miles west of the highest portion of the Blue Ridge and close to its monarch Mount Mitchell, which is the highest crest east of the Rockies. The mountains, lofty though they be, are clothed with verdure to their tops, and present at all seasons the beautiful vistas of a sunny clime. When a night shower or rainstorm has shed its bounty over the region, and a fresh morning breeze wafts the forests' piny perfume, the visitor will enjoy for hours to lounge on a veranda and watch the legions of vapors slowly ascending from the base of the mountains, join into garlands, then flit above the crests and gather themselves into the massive white clouds that deepen the blue of the sky and render the day glorious. It is this spectacle, here often repeated, which has contributed to the naming of the region "The Land of the Sky."

On the west, Asheville, with her railroad depot and cotton mills, reaches to the banks of the French Broad River, renowned for its placid beauty in parts, its saults and leaps through the rugged hills above and below Hot Springs, and skirted all along by the Southern Railway. No more charming ride can be had anywhere than the few hours' trip along the French Broad, one romantic view chasing another, and like links of a chain tying the memory forever to this one of the pleasantest spots on earth.

Soft and romantic as the name, Swannanoa, two miles south of Asheville, is a truly Southern river, embowered in dense verdure, full of witchery and quiet charm. As an oriental bride, it is guarded from unbidden eyes, until it meets and merges into the French Broad, a short distance below Connally's. To this fine old mansion the cabman will drive you without the asking, and you will be welcome to drink in the delight of the view, as long as your fancy will bid you to.

To your left is *Biltmore*, the princely manor of Mr. Geo. W. Vanderbilt of New York. He has selected this section of the Western North Carolina mountains to create the lordly domain which his architects, engineers and a horde of artisans and workmen are constructing, to the delight of the Ashevilleans, who greatly prefer this newer progeny to the older variety of the carpet-bag. Frederick Law Olmsted, of New York Central Park fame, directs the great work of landscape architecture and forestry.

The *Biltmore* estate proper contains about 9000 acres, and the Pink Beds and adjacent tract of Mr. Vanderbilt's hunting preserve comprise some 84,000 acres, known as Pisgah Forest. An arboretum embracing twelve miles of winding road traverses the Biltmore estate. To complete its planting 6,000,000 plants will be required, many of which are now being propa-

gated. Already 4,300,000 plants and young trees have been produced in the Biltmore nurseries for use on the estate. The Vanderbilt mansion nears completion and is a chateau of the French Renaissance, with features similar to the famous chateau of Blois, having extensive walled terraces, fountains and statues. It will be the grandest private residence in the United States and rival the palaces of the old world, apart from the perfection of modern appointments, the variety of the domain and its incomparable situation.

To visit the estate, a permit is necessary. It may be obtained by applying by post or in person to the office of the Biltmore Estate at Biltmore Station.

As your physician, or your intuition, has sent you here, and Asheville's climate has probably benefited you already, we will spare you a synopsis of the temperature and weather, or tedious statistics, or the analysis and testimonials of celebrities. Asheville, to-day possesses plenty of celebrity to stand forth unattested. To sufferers from lung diseases and catarrhs especially, Asheville offers a greater chance for recovery than most of the country's health resorts. The temperature in winter, with few exceptions, rises during mid-day to 30 degrees or higher, and in sheltered places with southern exposure to 70 or 80 in the sun.

There are fifteen hotels and many boarding houses to receive the stranger, twenty-five churches, four public and a number of private schools and higher institutions of learning; a Young Men's Christian Association and numerous societies with church affiliation, also a public library. There are water works, a good sewer system, gas and electric lighting, electric street railways, telephone exchange, fire department and fire alarm telegraph, six miles of brick paved streets and a multitude of good drives.

The native people are kind to the stranger and will greatly interest him by their unspoiled simplicity of speech and person; the shaggy-haired mountaineer with his tiny wood-cart, the oxen-span, or the cow paired with a mule, measuredly tugging away at the canvas-thatched family wagon. On the other hand, the cultivated Southern families will hospitably receive the stranger within their circle, and there are many other residents of refinement hailing from all parts of the country.





ROUND KNOX RIVER ROAD AT F. POINTS





HOTEL, FOUNTAIN AND VIADUCT AT ROUND BAY.





ASHEVILLE, FROM BEAUMONT.





COURT HOUSE.

CITY HALL.

FIRST NATIONAL BANK.





BATTERY PARK HOTEL.





MOUNT PISGAH AND THE RAT, FROM BATTERY PARK HOTEL.





SWANNANOA HOTEL.





KENILWORTH INN.



1875 - 1880 - 1885 - 1890



1885 - 1890 - 1895 - 1900



1900 - 1905 - 1910 - 1915



FEMALE SEMINARY.





VIEW TOWARD BEAUNETTE, FROM FEMALE SEMINARY.





POST OFFICE.





VIEW OF TULLY LINE.





ASHEVILLE, FROM THE WEST SHORE OF THE FRENCH BROAD.





THE NORMAN AND COLEMAN'S INSTITUTE





A GLIMPSE OF THE SWANNAPOA, FROM BILTMORE BRIDGE.





THE BILTMORE ESTATE FROM CORNWALLS.



REDEMPTION CO. FROM THE SWISS BROS. FARM





OFFICES OF THE BILTMORE ESTATE.



NURSERIES OF THE BILTMORE ESTATE.





OLD PATTO HOUSE (THE HAUNTED HOUSES)



SWINNAVA FORD





Gen. W. VAN DERBILT'S BILTMORE HOUSE - MICHIGAN





CONNALLY RESIDENCE.





JUNCTION OF THE SWANRIVER WITH THE FRESH BROOK, FROM DANVILLE





UNCLE TOM'S CABIN.





VIEW OF THE MOUNTAIN SIDE



PLOWING WITH BULL
MOUNTAIN SIDE





A WOOD CART.





ALONG THE SWANNOGA RIVER.





GATHERING SHELLS ON THE SWANANOA.



MOUNTAIN ISLAND FALLS.





UNION BRIDGE ACROSS THE FRESH BRANCH



BAILEY'S BEND FRENCH BROAD.





VIEW AMONG THE THOUSAND ISLANDS OF THE FRENCH BROAD.





SOUTHERN RAILWAY BRIDGE OVER THE FIBERO DRAIN BY STARBUCK.





Leanne's Look, N. 114 Spruce.





MOUNTAIN PARK HOTEL. HOT SPRINGS.





ON THE FRENCH BRIDGE.





THE FRENCH BRIDGE, BELOW HOT SPRINGS.





ABOVE THE CLOUDS.





CLINCH MOUNTAIN & DOME.





MITCHELL'S MONUMENT.

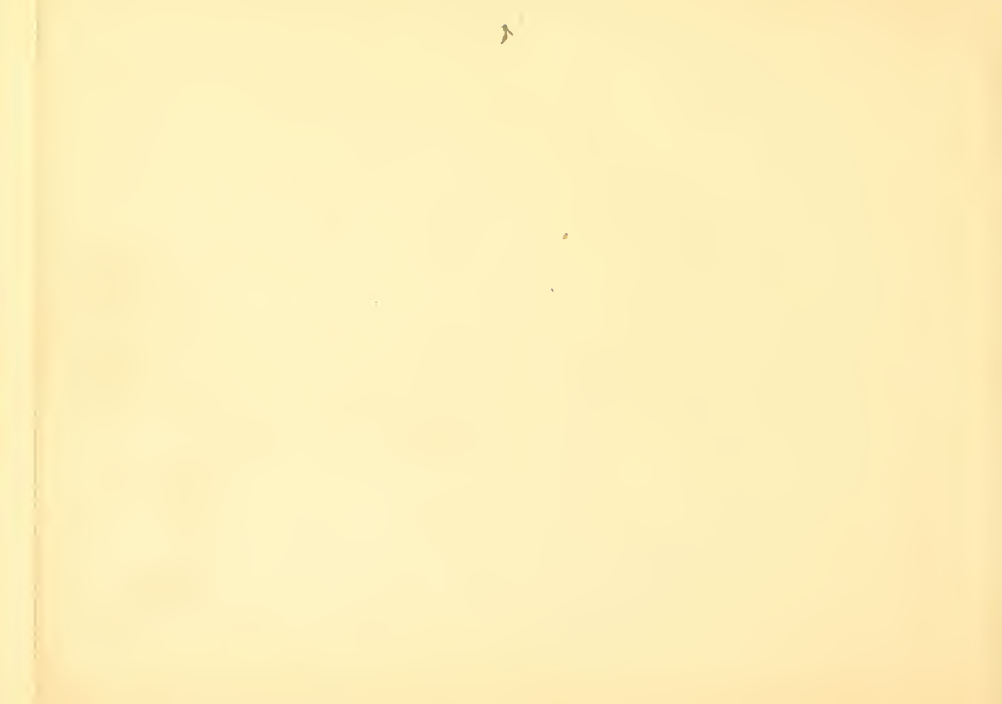


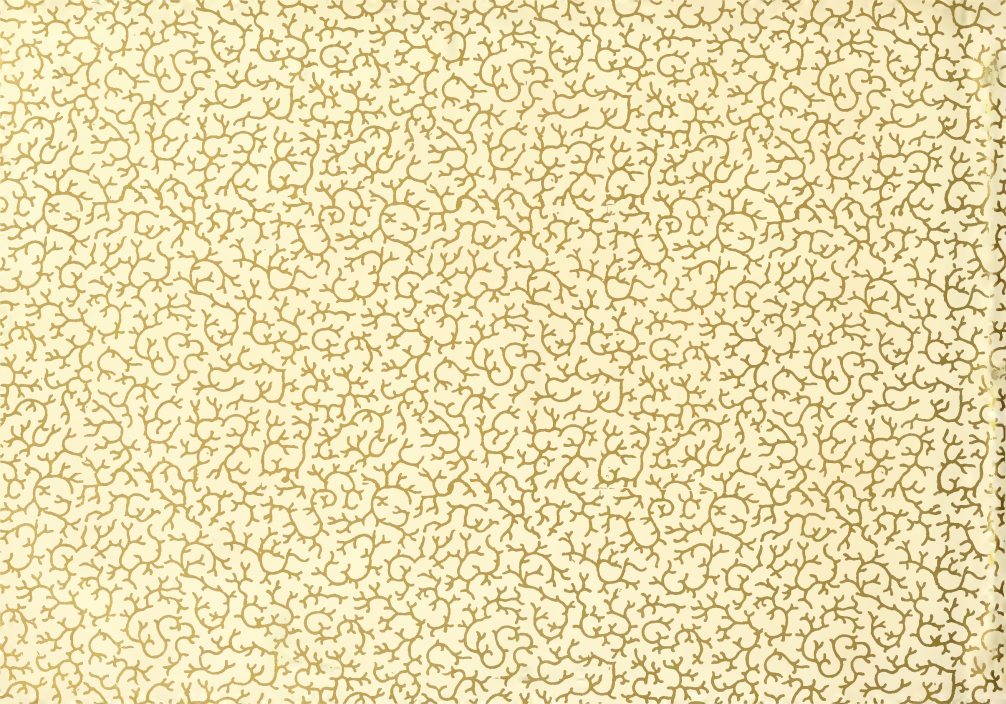
MOUNT MITCHELL.
THE SIGNS, NEAR EAST OF THE ROCKS.

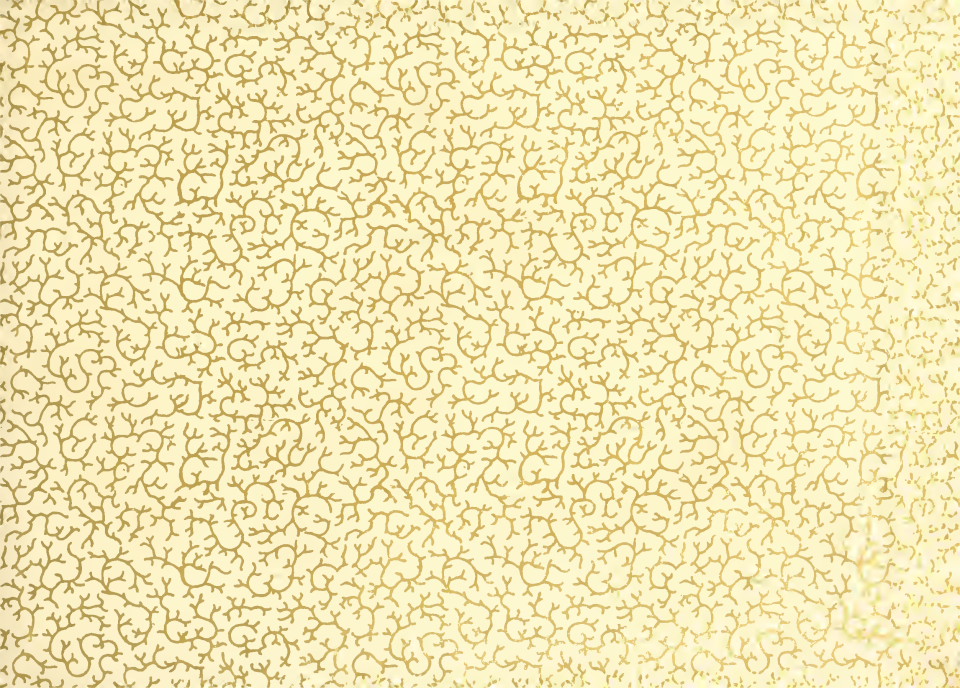




THE LINNILLE GORGE







LIBRARY OF CONGRESS



0 014 434 038 3

