

Some Indonesian maps are ... problematic

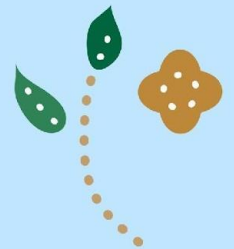
**WIKIMANIA
SINGAPORE**

17 August 2023
Rima H - [LinkedIn](#)



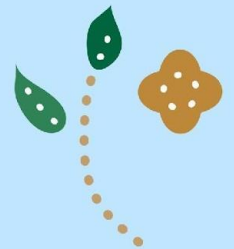
Sundanese style of *ngabodor*

WIKIMANIA
SINGAPORE



10-minute ~~rap~~ map god

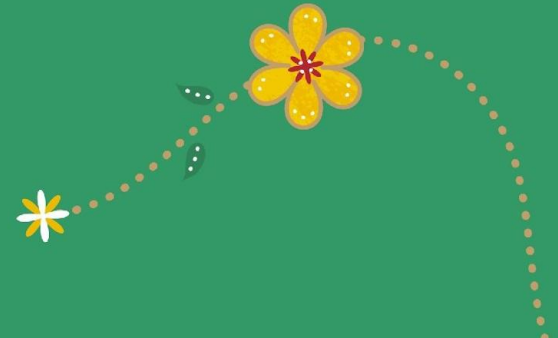
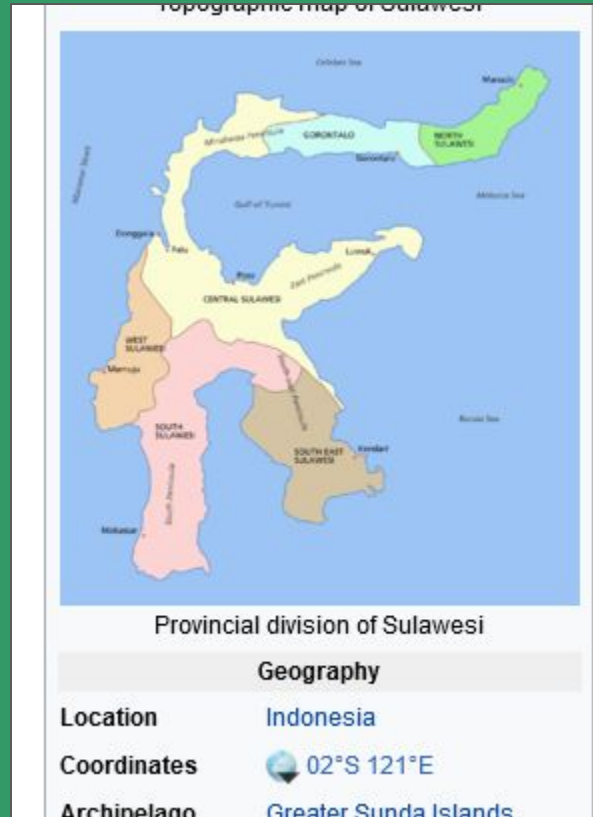
WIKIMANIA
SINGAPORE



Sulawesi



Sulawesi



https://commons.wikimedia.org/wiki/File:Indonesia_provinces_blank_map.svg





Menui, Central Sulawesi (Q24879652)

-3.59444, 123.11222
Pop.: 7,022 (2019)

WIKIMANIA
SINGAPORE



Sumatra



Location map of Java

name	Java		
border coordinates	-4.5		
	104.8	↔	116.5
	-10.7		
map center	 7.6°S 110.65°E		
image	Indonesia Java location map.svg		



image1

[Java Relief Map.svg](#)

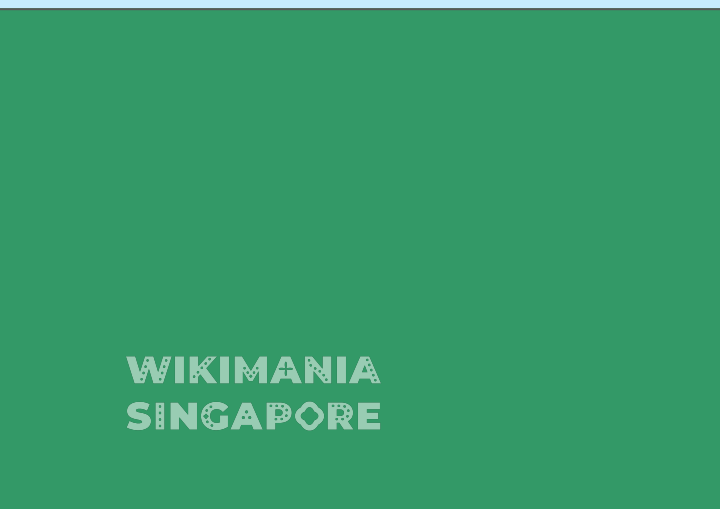


Java





0 50 100 km

A horizontal scale bar with three segments, labeled '0', '50', and '100 km'.

**WIKIMANIA
SINGAPORE**



0 50 100 km

A horizontal scale bar with three segments, labeled '0', '50', and '100 km'.

Having a lot of islands means it is a challenge to map Indonesia accurately. When we do not provide equitable knowledge for readers with diverse places of origin, our knowledge is not diverse. There is the generalization principal of cartography but there are some places still worth noting when creating our content in Wikimedia projects, not limited to maps.

No island left behind.

Context matters.

**WIKIMANIA
SINGAPORE**

