



Chicago

Francis  
C. ...





Souvenir of Chicago  
In Colors

V.O. HAMMON PUBLISHING CO.  
215 WABASH AVE.  
CHICAGO

## CHICAGO

Truly "The City Wonderful"—Great in its growth and great in its achievements.

In 1835, within the memory of men now living, Chicago had a population of 500.

In 1897 it had increased to over 2,000,000, a growth greater than that of any city in the history of mankind. In 1850 she was twentieth in population of cities in the United States; today she is second and will, if present conditions continue, become the first at a time not far remote.

The secret of this wonderful growth is partly found in the city's commanding position at the southern end of Lake Michigan at a point where the railways crossing the country from the East to the Northwest naturally touch, and where the southern roads connecting with the Great Lakes find their natural terminal.

So situated, the city has become the greatest collecting and distributing center in the world. She is easily the greatest of all railway centers, being the terminus of 32 railway lines operating 65,000 miles of main track. She is, also, one of the greatest of ports, the aggregate tonnage of her harbors in 1900 being 15,405,200 tons.

Chicago is the largest cattle market in the world and has the largest packing houses. Single day's receipts of the Union Stock Yards show 44,445 cattle, 59,362 hogs, and 59,302 sheep.

In manufactures she is surpassed only by London and by New York, and her convenient location with respect to the iron ore regions of Lake Superior and the great coal fields of Illinois, together with her advantage as the foremost collecting and distributing center of the continent, insures her future as a manufacturing city.

She leads commercially, owing much of her greatness to the energy, the daring enterprise, and the untiring zeal of her business men. She has the largest trade in agricultural implements, hardware, men's furnishing goods, ready-made clothing, and in many other lines; and, in her immense mail trading business, leads all other cities.

She has the largest and finest retail department store in the world, and has produced the prince of all merchants.

Chicago has more Germans than any city in Germany, Berlin and Hamburg excepted; more Bohemians than any city except Prague; more Scandinavians than any city except Stockholm; and more Jews than can be found in Palestine.

After her baptism by fire in 1871 her citizens met the situation with a spirit and courage that overcame all obstacles. 7,540 buildings were destroyed, and \$200,000,000 lost; but in three years the whole burned district was rebuilt, and the city set out upon a career of progress and growth unexampled in the history of all the world.

Though her natural location as the industrial, commercial, manufacturing, and agricultural capital of this nation has been generally recognized, few have realized that Chicago is rapidly becoming one of the most beautiful of cities.

Even now her system of parks and boulevards is unexcelled by that of any city in the country, and the great improvements and additions now under way are indeed the most important in the city's history.

The new park now being created adjacent to the downtown business district, and stolen from the waters of Lake Michigan, will be the pride of the city.

The proposed boulevard drive to be built in the lake, connecting the Lake Front Park (Grant Park) with Jackson Park will give the city an almost continuous parkway along its entire 30 miles of lake shore.

In strange contrast to the congested downtown district are the beautiful residential and suburban districts of the city. While the former aims more for utility and business convenience, the latter attest the cultivated tastes of her citizens and their strong love of home. All that wealth and refinement can bestow are found in the beautiful homes adorning her boulevards and suburban districts.

During the last decade Chicago has made unusual advances as an educational and musical center. Her great Chicago University is one of the most liberally endowed institutions of learning in the world and its 31 buildings and 100 acres of ground are valued at \$25,000,000.

If space permitted, mention might be made of other great universities and colleges located in Chicago or her suburbs, of the many great professional schools and musical colleges, of the Art Institute, the Thomas Orchestra, and other educational influences contributing so much to Chicago's real greatness and power.

He who would study America must come to Chicago, where beats the heart of this great, nervous, fast growing and ambitious nation. From out this whirlpool of business old Father Time emerges, battle-scarred and bruised, for here his passage is jealously contended, and every step vigorously opposed.

No mere idler can be happy in Chicago; here is the spirit of work, and every man, woman and child feel it.



5089



NEW POST OFFICE BUILDING.

This beautiful building covers an entire city block, is built of granite and was completed in 1905 at cost of \$5,000,000. The dome is 288 feet high.



#### CHICAGO IN 1833.

Seventy-five years ago the place where now stands a city of over 2,000,000 people, was little more than a trading post. Indians were numerous but white men few. No other city on earth has grown with such rapidity.

NEW  
COUNTY  
BUILDING

A view from the Washington street side, showing a portion of the old City Hall, which is to be replaced by an imposing structure somewhat similar to the County Building.







### LA SALLE STREET STATION.

By far the finest and costliest railway station in the city. The terminal for five different roads. Built at a cost of \$3,500,000.



**PUBLIC LIBRARY.**

Situated on Michigan Boulevard. Contains a circulating library of 340,000 volumes. Has a large and commodious reading room on the second floor. In the year ending May 31, 1907, 1,414,292 books were drawn for home use.





STATE STREET NORTH FROM MADISON.

A scene of the greatest activity on earth; a wide street crowded constantly during the day with throngs of humanity, surging up and down, and guarded at the street crossings by giant policemen.



UNDERGROUND TUNNEL AT STREET INTERSECTION, SHOWING LOADED FREIGHT CARS.

From sixty to ninety feet beneath the downtown business district of Chicago are Tunnels running in every direction and used to convey freight from one point to another, relieving the congestion of the streets above.

*Samuel S. Sample*



AUDITORIUM HOTEL AND ANNEX.

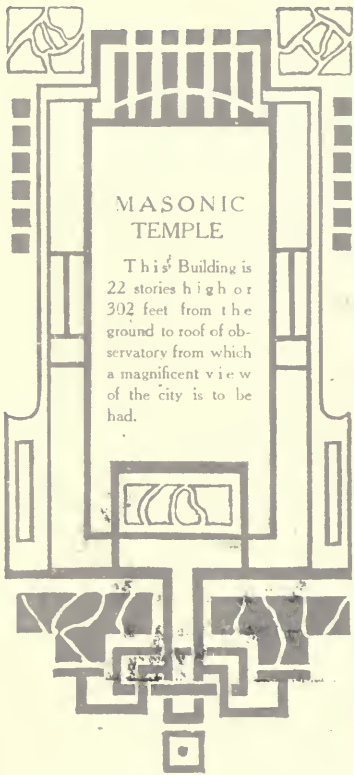
The finest hotel property in the United States. Building on right covers an acre and a half of ground and contains the grandest opera house in the world, seating over 4,000 people. A splendid view is to be had from the tower.





#### ENTRANCE TO CHICAGO HARBOR AT NIGHT.

Many excursion steamships leave and arrive in Chicago both night and day for resorts in Wisconsin and Michigan. At night with bands playing, the ships brilliantly lighted and filled with merry crowds, they present a most interesting spectacle.



## MASONIC TEMPLE

This Building is  
22 stories high or  
302 feet from the  
ground to roof of ob-  
servatory from which  
a magnificent view  
of the city is to be  
had.







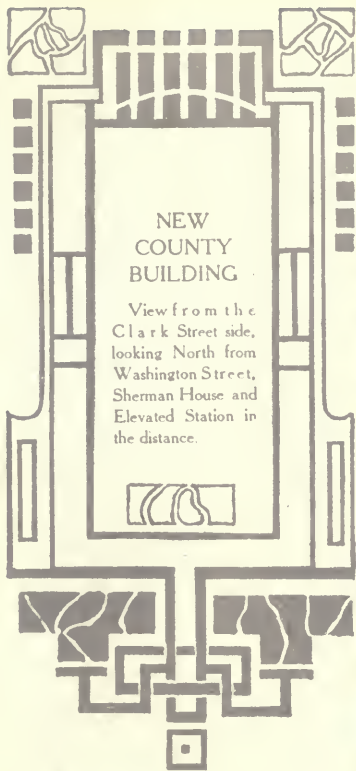
THE COLISEUM. WABASH AVE. NEAR 16TH STREET.

An immense structure for use of Conventions, Business Shows, Circuses, etc., and in the Summer is used as a Summer Garden where one can hear the best brass bands in the world.



ENTRANCE TO STOCK YARDS.

Chicago is the largest cattle market in the world, has the largest packing houses and handles three-fourths of the meat products of the United States.







PROMENADE IN FLORAL GARDEN, GARFIELD PARK.

This view represents some recent improvements made in the West Side's most popular park. Large sums have been spent in adding to the beauty of this Park, which now contains 187 acres.



WABASH AVE., NORTH FROM MONROE STREET.

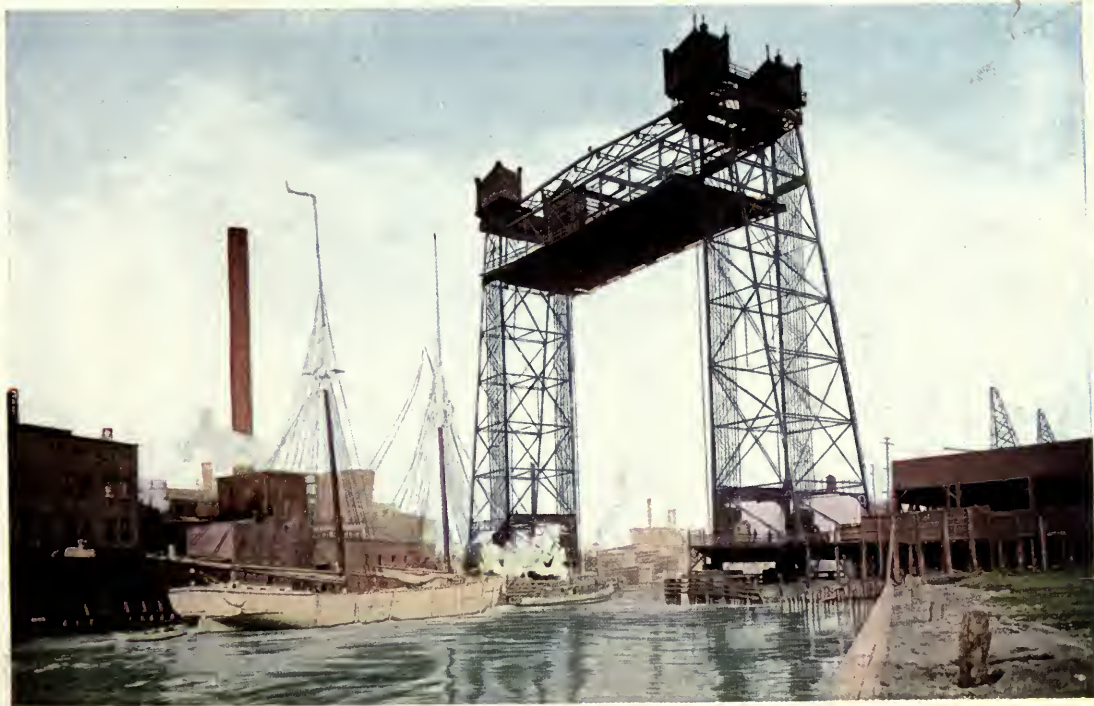
One of the city's busiest thoroughfares. The Elevated Railway extends from Lake to Van Buren streets on Wabash Avenue, and at the early morning and evening hours presents a scene of great interest to visitors to the city.





#### UNION STOCK YARDS.

The stock yards of Chicago cover many acres of ground. Single day's receipts of the Union Stock Yards show 44,445 cattle, 72,610 hogs, 59,362 sheep. There are hundreds of such pens as shown in picture.



HALSTED STREET LIFT BRIDGE.

This great bridge is lifted in midair by powerful machinery, thus allowing vessels with tall masts to pass underneath.



EXCHANGE AVENUE, STOCK YARDS.

There are hundreds of pens such as are shown to the right in the picture. During 1906, 16,483,903 live animals valued at \$295,217,514 were received in the city, being the equivalent of 310,117 car loads.





THE ACCIDENT - CHICAGO STREET LIFE.

From a Painting.



REVOLVING HOG WHEEL AT ARMOUR'S.

An ingenious contrivance used to facilitate the rapid handling of hogs in preparing them for the market.





MARSHALL FIELD & CO. STATE STREET FRONT.

Is the largest and finest retail store in the world. Occupies almost an entire city block and has 35 acres of floor space. Employs 7,000 people.



STEAMSHIP CHRISTOPHER COLUMBUS IN CHICAGO RIVER.

Leaving Chicago on its regular trip to Milwaukee, 80 miles distant. Boat is 292 feet long, has four decks and carries 4,000 people.



CHICAGO  
ATHLETIC ASSOCIATION  
BUILDING  
ON MICHIGAN  
BOULEVARD  
FACING GRANT  
PARK

A beautiful building of white limestone and terra cotta trimmings, magnificently finished and furnished throughout. Has 3,400 resident and non-resident members.

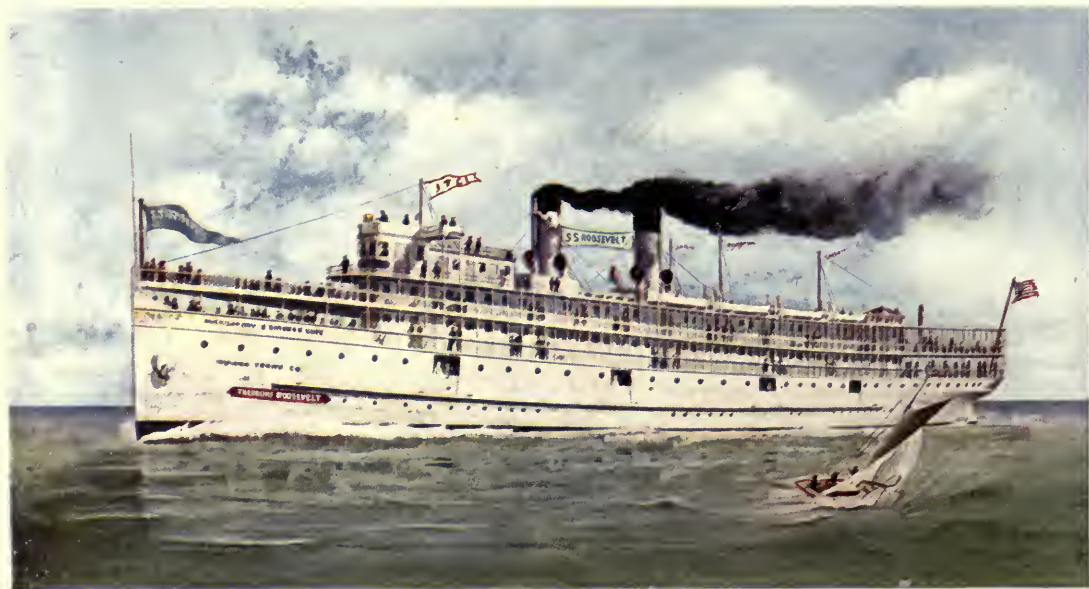


ILLINOIS  
ATHLETIC CLUB AND  
MUNICIPAL  
COURT  
BUILDING  
ON MICHIGAN  
BOULEVARD  
FACING GRANT  
PARK

Two beautiful buildings completed recently. The Athletic Club contains swimming pool, splendid gymnasium, and all the appointments necessary to a first class Athletic Club. It is said to have the most beautiful dining room of any club in the United States.







STEAMER THEODORE ROOSEVELT.

A new and magnificent passenger excursion steamer, plying between Chicago and Michigan City, Ind. It carries 3,500 passengers and makes the trip to Michigan City in two hours.



CITY AND LAKE FROM MAJESTIC BUILDING.

This view taken with circuit camera overlooks many of the principal buildings on State Street, Wabash Avenue and Michigan Boulevard, and, also Lake Michigan.



MADISON STREET BRIDGE.

This is one of the busiest bridges of the city. It is opened and closed by machinery located in the little structure at the top of the bridge.



DEARBORN  
STREET  
NORTH FROM  
JACKSON  
BOULEVARD

There are many imposing vistas among Chicago's sky-scrapers, this being one of the best. It shows a portion of several of the most important buildings in the city, the Monadnock Block, the Post Office, Marquette Building and the First National Bank on the left and the Great Northern Hotel on the right.





WELLS STREET BRIDGE AND NORTHWESTERN DEPOT.

Hundreds of thousands of people ride over this bridge every day, being used both for the elevated and the surface cars. From the Northwestern depot 325 trains arrive and depart daily, carrying about 50,000 people.



THE ELEVATED R. R., LOOKING NORTH ON WABASH AVE.

Showing the interlocking tower of the elevated roads where all the North, South and West Side trains turn in making the circuit of the loop. About 2,105 trains pass this point every day, carrying 437,400 people.



GREAT  
NORTHERN  
HOTEL AND  
BUILDING

One of the most popular hotels in Chicago just opposite the Post Office on Dearborn Street. A magnificent pipe organ plays in the lobby every evening between six and eight.





INTERIOR VIEW OF THE FIRST NATIONAL BANK.  
Columns and arches built of white marble; skylight beautifully colored glass;  
cornice and capitals framed in gilt and the floor of beautiful inlaid Mosaic. Capital  
\$10,000,000; deposits \$115,000,000.



#### GRANT PARK AND ILLINOIS CENTRAL STATION.

When finished, Grant Park will cover 205 acres of land. It will extend from Randolph to Twelfth Street and one-third of a mile from Michigan Boulevard to the shore line of the lake. In this park will be built the new Field Columbian Museum.





MAIN CORRIDOR NEW COUNTY BUILDING.

The floors of this corridor are of mosaic, inlaid in beautiful pattern, while the walls and ceiling are of marble and mosaic in soft blending colors.



STATE STREET BASCULE BRIDGE LIFTED FOR STEAMSHIP SOO CITY.

This style of bridge, at first a great innovation and curiosity in the city, is coming more and more into general use. Steamship Soo City of the Indiana Transportation Line, runs from Chicago to Michigan City, Indiana.

MADISON  
STREET  
EAST  
FROM  
DEARBORN

The important buildings seen in this view are the Boston Store, Mandel Bros. and Montgomery Ward on the left—McVicker's Theatre and Carson Pirie Scott on the right and in the distance the Madison Street "L" Station.







#### GOODRICH DOCKS.

A scene in summer of most unusual interest; great passenger boats arriving from and departing frequently for various resorts in Wisconsin and Michigan. Happy the people who live by the Great Lakes



CARSON, PIRIE, SCOTT & CO.'S BUILDING (Retail.

This beautiful and imposing building houses one of the best known and most rapidly growing dry goods firms in the city.



#### ART INSTITUTE.

A classic building in Grant Park, containing many works of art in painting and sculpture, and is also the home of one of the most flourishing art schools in the country, with average daily attendance of 1,800 pupils.



## MAJESTIC BUILDING

A magnificent building towering high above its neighbors, containing many suites of offices besides a large vaudeville theatre on the ground floor. Located on Monroe near State Street.



## THEODORE THOMAS ORCHESTRA HALL

The home of the Thomas Orchestra, so long identified with Chicago, and built in honor of the great orchestra leader, whose name it bears. On Michigan Boulevard opposite the Art Institute.





CHICAGO NORMAL COLLEGE.

One of the most beautiful buildings in the city, devoted to educational purposes and but recently completed

ILLINOIS CENTRAL  
DEPOT

The terminal for  
six great lines of rail-  
roads, beautifully  
located on the lake  
front at the south end  
of Grant Park.







STEAMSHIP CITY OF SOUTH HAVEN.

This view shows the boat leaving Chicago for South Haven, Mich., a trip of 78 miles. She carries 3,000 passengers and makes the trip in four hours.



LEWIS INSTITUTE (on West Madison Street.)

A School of Technology and Liberal Arts. Has an average attendance of 2,000 pupils. Many successful mechanical engineers, architects and electrical experts have been graduated from the institution, which is growing rapidly in strength and usefulness.



U. S. LIFE SAVING STATION.

Located just beyond the mouth of Chicago River. Many precious lives have been saved by this crew of brave men.



ELECTRIC  
LOCOMOTIVE  
IN UNDER-  
GROUND  
TUNNEL

Showing the  
horsepower electrical  
power motors used  
in propelling the  
freight cars used  
throughout the Illi-  
nois Underground  
Tunnel. Capable  
of drawing 85 tons  
of freight.





#### THE GHETTO OF CHICAGO.

The Ghetto of Chicago, inhabited largely by Jewish people, is in the west part of the city. Nearly all of the shops on Jefferson Street, between Van Buren and Twelfth Streets, are kept by Jews, and for several blocks east and west of Jefferson street the majority of the population is Jewish.



SOUTH WATER STREET.

One of the most interesting sights of the city and a walk along the street from State to Market will convince anyone that Chicago, is indeed, the greatest fruit and produce market in the United States.





COBB LECTURE HALL.

One of the prominent buildings of the University of Chicago, located on the south side of the campus; used for class rooms and offices

NEW  
FEDERAL  
BUILDING,  
CHICAGO

A glimpse of Chicago's magnificent new Post Office building looking from State Street down Quincy. It is regrettable that there is not more open space around this majestic building so that the beauty of its architecture could be better appreciated.





RYERSON PHYSICAL LABORATORY.

Situated on the north side of campus. There are 42 rooms in the building devoted to Physical Research.





THE EAST BOARD WALK, SOUTH OF TOWER, WHITE CITY, CHICAGO.

The little train of cars shown in the picture, and carrying many people, is drawn by a diminutive locomotive, not so big, in fact, as the man who runs it. The boat shown in the water is just landing with a party who shot the Chutes.



#### LION IN LINCOLN PARK.

This is Old Leo, well known for many years to all animal lovers who frequent Lincoln Park. He sat for his photograph willingly and almost smiled in compliance with the photographers request to look pleasant.



NEW COUNTY BUILDING.

This imposing building covers half a block in the heart of the business district, corner-stone laid 1906, occupied in fall of 1907. Cost about \$5,000,000.





LOOKING OVER LAGOON, WASHINGTON PARK.

A beautiful and pleasing scene in one of Chicago's most delightful playgrounds. A row in a boat through the lagoons and lakes of this park reveals many such scenes as this. Washington Park contains 371 acres.

MONROE  
STREET,  
WEST FROM  
WABASH  
AVENUE

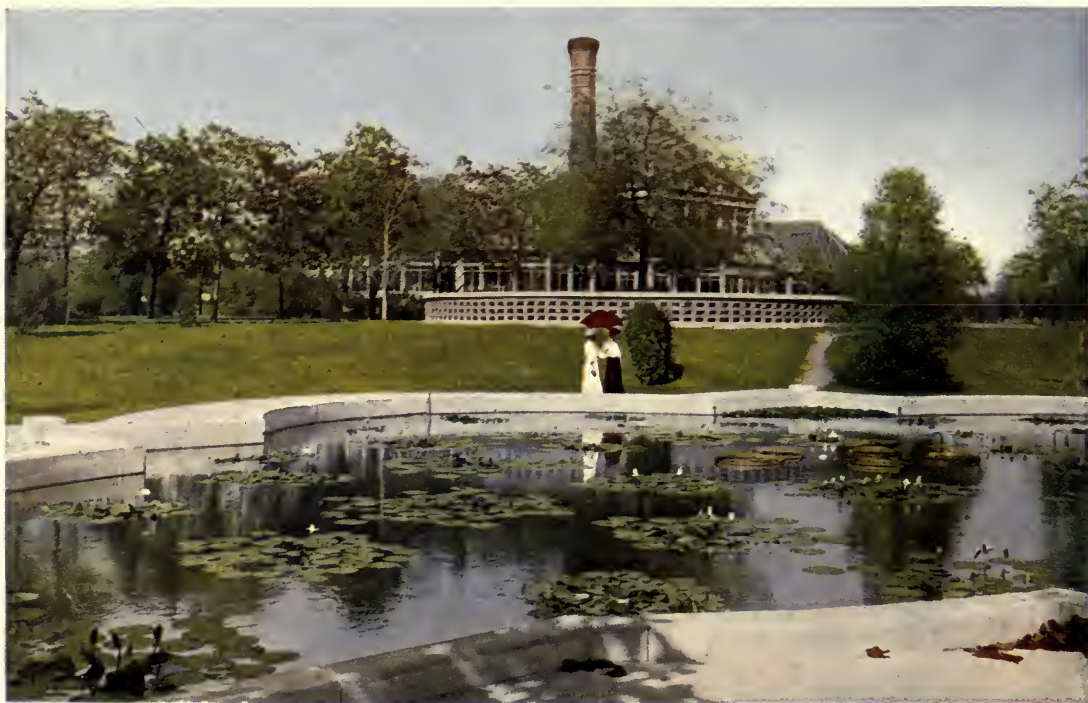
A most artistic  
view of this partic-  
ular point of inter-  
est. The tall white  
building to the right  
is the Majestic and  
the next beyond the  
First National Bank  
building and the  
Palmer House to the  
left.



MONROE ST. WEST FROM WABASH AV.

CHICAGO

ALLEN W. WATSON



LILY POND AND CONSERVATORY, DOUGLAS PARK.

Douglas Park is in the southwestern part of the city. Humboldt on the northwest and Garfield on the west side between the two. All are connected by beautiful wide boulevards. Douglas Park contains 181 acres.





CORNER OF STATE AND MADISON STREETS, CHICAGO.

The busiest corner in the world situated as it is, in the very heart of the retail business district. Mandel Bros. to the left, Carson, Pirie, Scott to the right and Boston Store on the N. W. corner.

LINCOLN  
STATUE,  
LINCOLN  
PARK

A work of art  
by St. Gaudens and  
is one of the finest  
statues in the city.  
Stands at the south  
end of the park near  
the Clark Street en-  
trance. Lincoln  
Park is the largest  
park in the city and  
contains 317 acres.





METROPOLITAN TRAINS CROSSING BASCULE BRIDGE OVER  
CHICAGO RIVER.

This bridge opens in the center, each half being lifted straight into the air by electric power, leaving a clear space entirely across the river.





FIELD COLUMBIAN MUSEUM, JACKSON PARK.

A relic of the World's Fair still doing noble duty as the home of the Great Field Museum. As seen through the trees and across the water the graceful lines of this classic building are brought out in bold relief.

WABASH  
AVENUE AND  
ELEVATED  
RAILWAY  
LOOKING  
NORTH FROM  
VAN BUREN  
STREET

The cars shown  
are just turning from  
Van Buren Street on  
Wabash Avenue,  
making the circuit of  
the loop. A large  
part of the down  
town workers de-  
pend for transporta-  
tion on the Elevated  
trains.





VIEW FROM REFECTORY, HUMBOLDT PARK.

This park is situated in the northwest side and is one of the beautiful playgrounds of the city. It contains 205 acres. Some additions and many improvements are now being made.





THE STRATFORD HOTEL.

On the corner of Michigan and Jackson Boulevard. One of the leading hotels of the city.



LAKE SHORE DRIVE, LINCOLN PARK.

This beautiful view shows the drive as it winds along the lake shore. On Saturday and Sunday afternoon in summer the boulevard is thronged with pedestrians, automobiles and carriages.

STATE ST.  
SOUTH  
FROM  
RANDOLPH

Illustrates the heavy traffic of one of the busiest streets in the World and shows the Masonic Temple, Marshall Field & Co.'s Store and the Columbus Memorial Building.







BEACH IN JACKSON PARK.

Not the least of the attractions in Jackson Park is its fine beach along the shore of Lake Michigan. When a storm rages on the lake it is very fascinating to watch the waves break on the shore.

# THE ELECTRIC TOWER

## WHITE CITY

This tower is 227 feet high and has 22,000 electric lights upon it. When illuminated at night it lights up the entire White City and can be seen for miles around.





GRANT MONUMENT, LINCOLN PARK

A beautiful and costly monument on the Lake Shore Drive, overlooking Lake Michigan. It stands on an elevation and can be seen from all parts of the south end of the park.



TIFFANY  
MOSAIC  
DOME  
MARSHALL  
FIELD'S  
FIELD'S  
RETAIL STORE  
STATE STREET  
BUILDING

Largest single piece  
of Favrite Mosaic  
glass in the world.  
Has 6,000 square  
feet composed of  
1,000,000 pieces.  
First dome ever built  
of iridescent glass.





JACKSON PARK FROM BOAT HOUSE.

This is one of the finest parks in the city and is the site of the World's Columbian Exposition. Its extensive lakes and lagoons are kept pure by flowing water from Lake Michigan. It contains 539 acres.



#### COOK COUNTY HOSPITAL.

The second largest hospital in the United States. About 1,200 patients are treated here daily and the total for 1906 was 29,000. There are 200 trained nurses, 70 attending physicians and 48 internes.



HOTEL  
MAJESTIC

Located near the  
Chicago Post Office,  
the dome of which  
shows at the right of  
the view. A 16-  
story fire-proof hotel  
in the heart of the  
city.





SITE OF MARSHALL FIELD & CO.'S STORE IN 1839.

Men now living can remember Chicago when she was no more than is shown in above picture. In 1835 Chicago had a population of only 500. In 1908 it had increased to over 2,000,000, a growth greater than that of any city in the history of mankind.



HIGH BRIDGE, LINCOLN PARK.

This fine bridge, spanning one of the lagoons in Lincoln Park, rises to a height of 42 feet above the water level and from it one may have a beautiful view over Lake Michigan and the entire park.






GERMAN BUILDING, JACKSON PARK.

This building was erected by the German Government at the World's Columbian Exposition. It was well and substantially built in characteristic German style of architecture, adding much to the beauty of this portion of Jackson Park.



SHORES OF  
LAKE  
MICHIGAN

For miles along the North shore there are high sandy bluffs and a fine beach extending almost to Milwaukee. In places the bluffs are more than 80 feet above the water level.





LAKE FRONT VIEW OF CHICAGO AT NIGHT.

From the deck of a steamer at night this lake front view of illuminated Chicago is both wonderful and fascinating.





INTERIOR LINCOLN PARK CONSERVATORY.

A veritable kaleidoscope of color—chrysanthemums of every shade and a perfect bower of beauty that charms the eyes of all behold-ers.



MARSHALL FIELD & CO.'S RETAIL STORE.  
This view is taken from Wabash Avenue and Washington Street.



UNION STATION, (on Canal Street from Madison to Jackson Boulevard.)  
This station is used by five different roads. Trains arrive and depart daily.





A 4-11 FIRE ALARM.

A common sight in a great city and yet one of intense interest to even the oldest inhabitants. A 4-11 call means a serious fire and everything has to make way for the fire laddies.



INTERIOR OF COLISEUM DURING FLOWER SHOW.

An annual exhibit that is beautiful and interesting as well as in-structive to all lovers of flowers and plants. The great interior space of the coliseum makes it an ideal place for shows of this kind.



WEST BOARD WALK, WHITE CITY, CHICAGO.

On any nice Summer afternoon an endless procession of people promenading up and down the board walks at White City presents a most interesting and pleasing spectacle. In the evening, under the brilliant electrical illumination, bands playing and everybody gay and happy, the scene is especially bright and charming.





FLOWER GARDEN FROM CONSERVATORY, LINCOLN PARK.

In the summer and autumn these flower gardens are a wonderful sight and should be seen by all strangers in the city. Great care is taken and much money is expended to keep the flower beds in the best possible condition.

A WINTER  
DAY  
IN CHICAGO

From a painting  
by Fleury, whose  
artist eye sees beauty  
in all things and  
whose skill brings  
poetry even into the  
structure of the El-  
evated R. R.





#### LAKE SHORE DRIVE.

This beautiful boulevard is Chicago's pride. On one side homes of great beauty and great cost, on the other the uninterrupted view of Lake Michigan. At the south end a beautiful parkway lies between the boulevard and the lake.



WOODED  
PATH BY THE  
DESPLAINES  
RIVER

Of all the proposed additions to Chicago's extensive park-system, not the least important is the region along both banks of the Desplaines River, where for miles are delightful foot paths shaded by great forest trees.





JAGUAR, LINCOLN PARK.

This is one of the finest specimens of this animal in captivity. The artist has caught him in a characteristic pose, showing the expression of the face and the peculiar markings of the body to the best advantage.



STEAMSHIP CHRISTOPHER COLUMBUS (Whaleback) ENTERING HARBOR AT CHICAGO.

This boat was built for passenger service at the time of the World's Fair and will carry 4,000 passengers. Of late years it has been in commission carrying passengers between Chicago and Milwaukee, owned by the Goodrich Transportation Company, of Chicago.



PARK BARNS  
AND LILY  
POND, HUM-  
BOLDT PARK

There are many beautiful scenes in this park and in the freshness of a summer morning there is pleasure in a walk along its winding foot paths among the trees, by the lakes and among the ponds.





WENDELL PHILLIPS HIGH SCHOOL (on Prairie Avenue and 39th Street.

This modern style building of great beauty and utility and similar to many other school buildings in Chicago and her suburbs, illustrates the enthusiasm of this city in popular education.

POTTER  
PALMER'S  
MAUSOLEUM  
IN GRACELAND  
CEMETERY

Situated in one of the most picturesque spots of this most beautiful of burial grounds, this handsome mausoleum built of granite presents a very striking appearance.







MICHIGAN BOULEVARD FROM AUDITORIUM ANNEX.

Another interesting vista. Chicago's most beautiful Boulevard, showing the Auditorium Hotel and Annex in the foreground, and beyond the Fine Arts Building and Chicago Club, Railway Exchange, Montgomery Ward's and the Art Institute.



BIRDSEYE VIEW OF CHICAGO FROM HARBOR.

The view shows the extensive freight yards of the Illinois Central Railway and the business section of the city in the distance.



MRS. POTTER PALMER'S RESIDENCE.  
Located on the Lake Shore Drive. One of the finest residences in the city.





CHILDREN'S DAY IN LINCOLN PARK.

On a hot day in midsummer this place presents a very animated scene. Thousands of children avail themselves of the privilege here offered of a free bathing beach. The building in the distance is the Babies' free Sanatorium.



THE CHUTES, WHITE CITY.

Surely it would bring a laugh out of a mummy to take a ride down the Chutes at the White City. Anyone troubled with melancholia may get the blue ghost jolied out of him by shooting down this incline into the water.



LINCOLN PARK HERD OF BUFFALO.

This is one of the largest herd of Buffalo now in captivity. Numbers 12 cows and 7 bulls. Most of them have been bred in the park.





