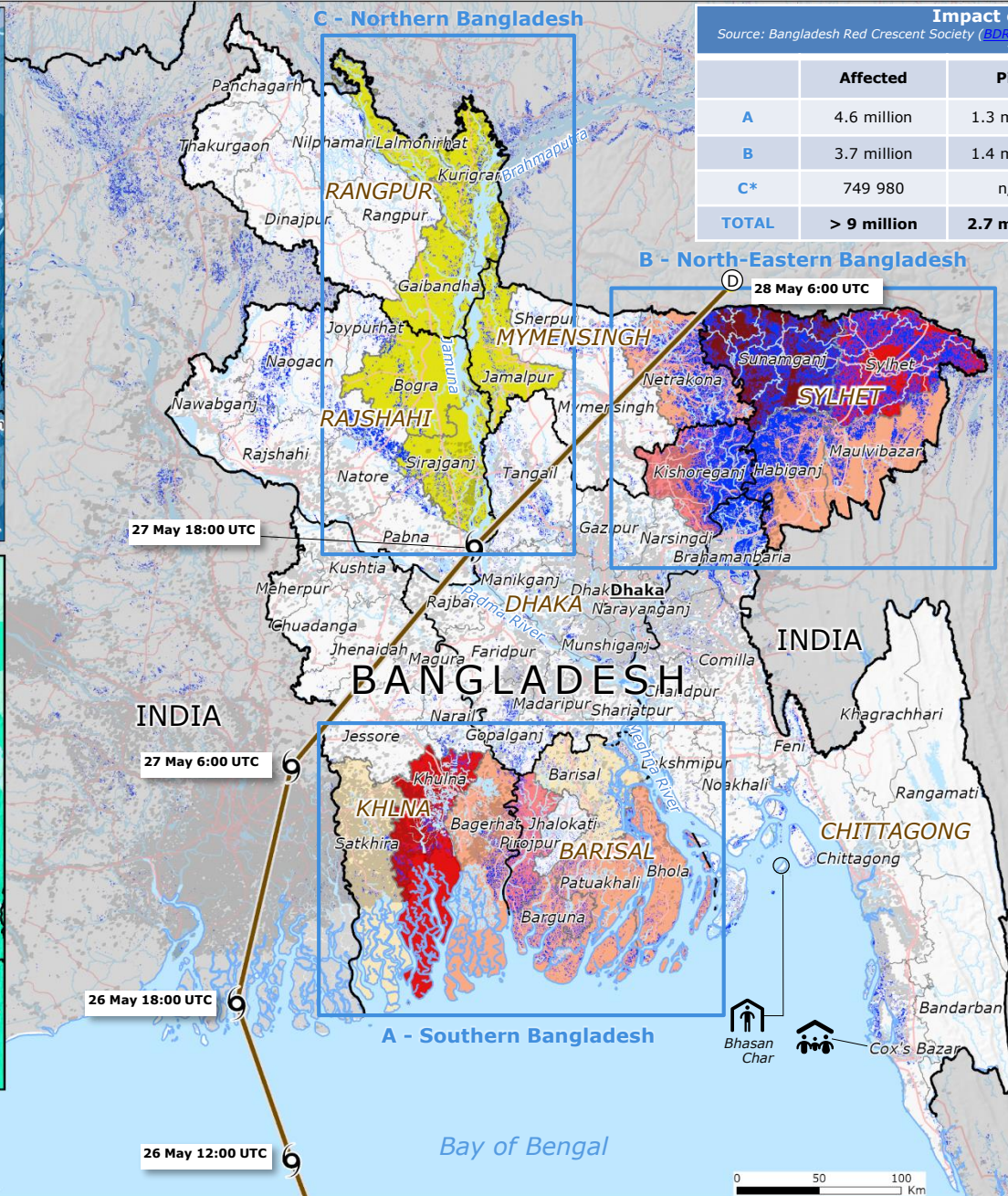
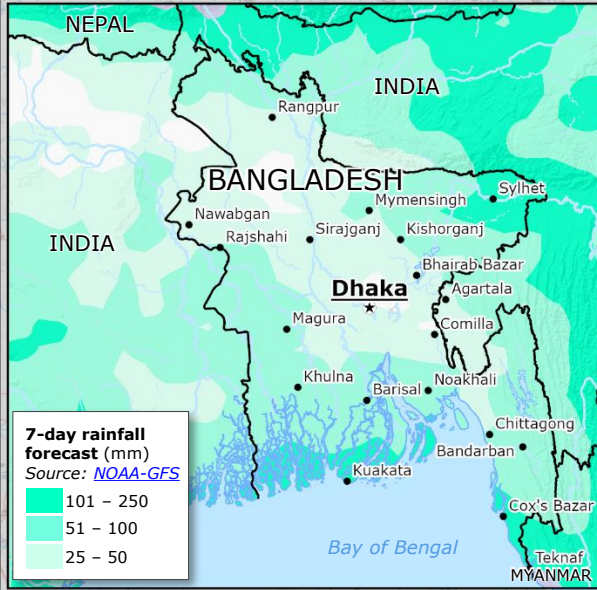
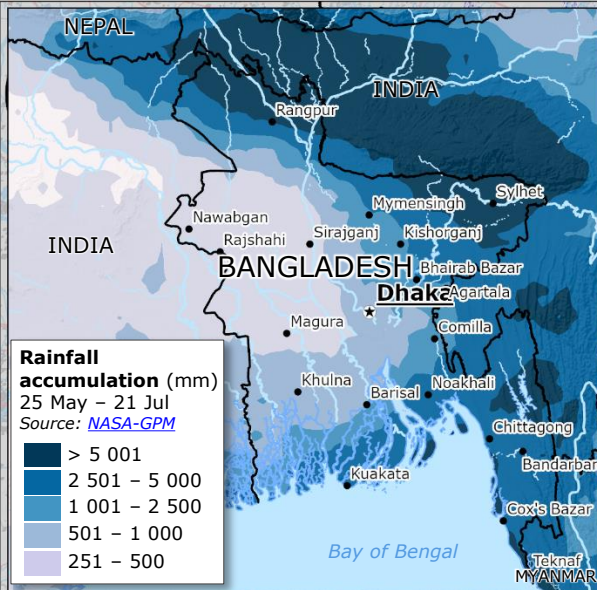


# Bangladesh | Severe weather and floods



**Impact overview<sup>1</sup>**  
Source: Bangladesh Red Crescent Society (BDRCS) as of 8 July, UNRC/UNCT Bangladesh as of 14 July

	Affected	PiN	Displaced people	Evacuated (in shelters)
<b>A</b>	4.6 million	1.3 million	278 100	657 300
<b>B</b>	3.7 million	1.4 million	264 900	310 400
<b>C*</b>	749 980	n/a	n/a	13 958
<b>TOTAL</b>	<b>&gt; 9 million</b>	<b>2.7 million</b>	<b>543 000</b>	<b>&gt; 981 000</b>

<sup>1</sup>Due to the passage of the TC REMAL in Southern Bangladesh and monsoon season in North-Eastern and Northern Bangladesh.

**People in Need (PiN)\* per district** 25 May – 14 Jul  
Source: [UNRC/UNCT](#)

- 400 000 – 449 000
- 300 000 – 399 999
- 200 000 – 299 999
- 100 000 – 199 999
- 7 500 – 99 999

**Affected district\***  
25 May – 14 Jul  
Source: [BDRCS](#)

Flooded area, as detected by satellites, over 25 May – 22 Jul  
Source: [Copernicus EMS GloFAS](#)

**Tropical Cyclone (TC) REMAL**

- Track 25- 28 May  
Source: [GDACS](#)
- 63 – 118 km/h Tropical storm
- Ⓣ < 63 km/h Tropical depression

- Rohingya refugees Mega Camp\*\*  
Shelter hosting 30 700 Rohingya refugees relocated from Cox's Bazar  
Source: [USAID](#)
- Built-up area  
Source: [Copernicus EMS GHSL](#)
- Main roads  
Source: [OSM](#)
- River  
Source: [OSM](#)
- District boundary
- Division boundary
- Country boundary

\*Assessment for people affected and people in need along the Jamuna River basin is ongoing.

\*\*The Mega Camp includes the registered camp (Kutupalong RC) and expansion sites, subdivided in numbered camps IOM-managed.  
© European Union, 2024. Map produced by the JRC. The boundaries and the names shown on this map do not imply official endorsement or acceptance by the European Union.

