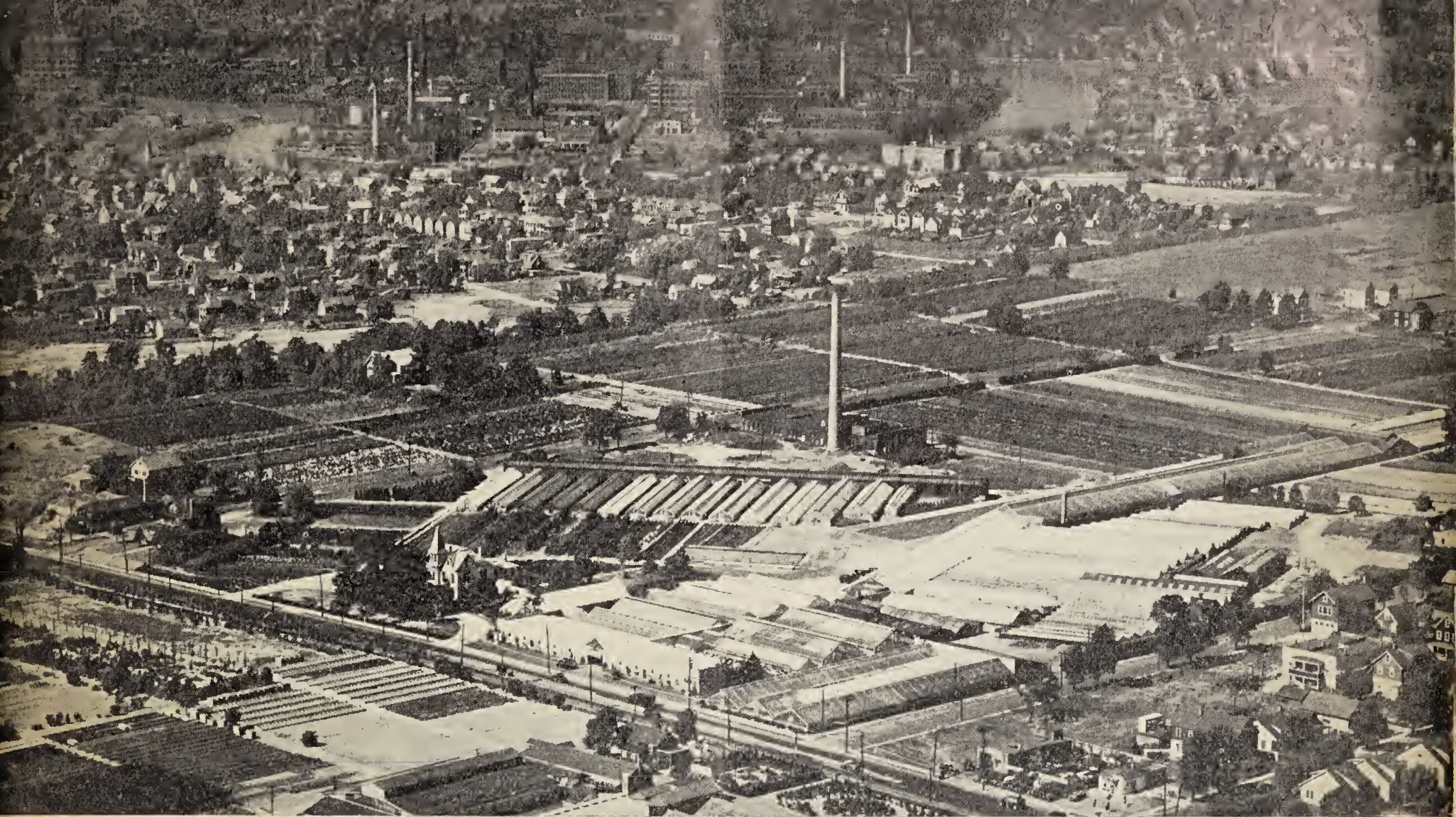


## **Historic, Archive Document**

Do not assume content reflects current scientific knowledge, policies, or practices.





## General List of Plants for the Home, Conservatory, and Garden

Does the large planted acreage and the many rows of greenhouses, as viewed from the cockpit of your plane, awaken in you an interest to come down and look the place over closely—inside and out? If it does, our purpose has been fulfilled.

No catalogue or description can satisfactorily impart to those really interested in plants, either for selling or home culture, the many varieties and beauty of the great selection of rare plants that have interested our visitors for the past fifty years and have brought them back again and again to enjoy a few hours in one of America's Greatest and Most Interesting Nurseries.

Anticipating a renewed demand for many varieties of Greenhouse plants that have been out of the market for a number of years, we have added a large number of varieties to our collection. We are not attempting to give much descriptive matter, but are using a key to cover the general characteristics of the various types of plants.

Of particular interest today is our tropical garden with its many varieties of exotic plants grown under as near natural conditions as possible, bringing out their real characteristics of color and growth which is not always possible in small pots.

### WHEN ORDERING

Of those plants that are not priced we have only a limited number or stock plants and would ask you to kindly write for sizes and prices. In the Greenhouse section we have endeavored to show pot sizes and heights where possible, but due to the fact that this class of plants is always, (except at their rest period) in the growing state,

it is always well, when ordering, to signify a range of sizes so that we can fill the orders from stock in either larger or smaller pots.

### PRICE LISTS

In addition to this catalogue, we also issue special lists for Christmas, Easter and Mother's Day, as well as monthly lists of plants in season, copies mailed on request.

### AN INVITATION

You are always welcome to come out and should feel under no obligation to us for doing so. We believe that a knowledge of the many plants available and their culture will suggest to our visitors many changes for their solariums and conservatories and to our retailers a means of increasing sales by the introduction of new items.

### TABLE OF CONTENTS

I. GREENHOUSE PLANTS	-	-	-	2-17
Kentias	-	-	-	11
Phoenix	-	-	-	14
Azaleas	-	-	-	3
II. CACTUS AND SUCCULENTS	-	-	-	18-20
III. BEDDING PLANTS	-	-	-	20-21
IV. NURSERY STOCK	-	-	-	22-29
Boxwood	-	-	-	23
V. SUPPLIES	-	-	-	29
VI. TERMS	-	-	-	31
VII. INDEX	-	-	-	30



ALPHABETICAL LIST  
OF  
GREENHOUSE PLANTS



	EACH	TEN
<b>BUTILON</b> variegata. C. fol. 20c to \$1.00		
<b>ACACIA</b> pubescens. C. fl. 5 to 6 inch pots.....\$4.00 to \$6.00		
The following varieties we have in limited quantities only. Price on application.		
armata pendula	longifolia	
heterophylla	macrantha	
latifolia	paradoxa	
	platyptera	
<b>ACALYPHA</b> wilkesiana macfeeana. W. Bronze foliage. \$1.50 to 3.00.		
sanderiana. Red Fox Tail. \$2.00 to \$4.00.		
<b>ACANTHUS</b> montanus. W. Mountain Thistle. \$1.50 to \$3.00.		
<b>ACORUS</b> gramineus albivariatus. W. fol. 30c to \$1.00.		
gramineus pusillus. W. fol. (Green) 30c to \$1.00.		
calamus variegatus. Sweet Flag.		
<b>ADIANTUM</b> cuneatum. C. Maiden Hair Fern.		
farleyense. W.		
wrightii. W.		
<b>AECHMEA</b> . See Bromeliaceae, page 4.		
<b>AESCHYNANTHUS</b> pulchra. W. fl. Scarlet flowering trailer.		
2½ inch pots.....\$ .60 \$ 5.00		
3 " " ..... .80 7.00		
<b>AGAPANTHUS</b> umbellatus. C. (Blue Lily of the Nile). 6 inch pots to 8 inch tubs; \$3.00 to \$7.00.		
<b>AGLAONEMA</b> commutatum. W. fol. 3 to 5 inch pots \$1.00 to \$3.00.		
costatum. W. fol.		
2½ inch pots.....\$ .60 \$ 5.00		
3 " " ..... .80 7.00		
nitida. \$3.00 to \$5.00.		
pictum tricolor. Blue and silver. Rare. \$3.00 to \$5.00.		
sinensis. (Chinese Evergreens).		
2½ in. pot, 4 in. high...\$ .40 \$ 3.00		
" " " 8 " " ..... .50 4.00		
" " " 12-15 in high .60 5.00		
3 " " ..... 80c and up		
4 " " ..... \$1.00 " "		

Abbreviations: fl.—Flowering greenhouse plants  
fol.—Foliage plants  
C.—Cool house plants  
W.—Warm house plants

Example: C. fl. Cool flowering greenhouse plant  
Ten rate applies on orders of six or over.

	EACH	TEN
<b>ALLAMANDA</b> . W. Climbers. Funnel shaped yellow golden flowers.		
cathartica.		
3 inch pots.....\$ 1.50		
4 " " ..... 2.50		
5 " " ..... 4.00		
6 " " ..... 6.00		
hendersoni.		
3 inch pots..... 1.00		
4 " " ..... 2.00		
5 " " ..... 3.00		
6 " " ..... 5.00		
7 " " ..... 7.00		
williamsi.		
3 inch pots..... 1.50		
4 " " ..... 2.50		
5 " " ..... 4.00		
6 " " ..... 6.00		
<b>ALOCASIA</b> . W. fol.		
arborescens	macrorrhiza variegata	
cuprea	violacea	
<b>ALPINIA</b> sanderae. W. fol. \$1.50 to \$3.00		
vittata. W. fol. \$3.00 to \$5.00.		
<b>ALSOPHILA</b> australis. W. Australian tree fern. \$3.00 to \$12.00.		
<b>AMARYLLIS</b> . C. Select American Hybrids. Available in the fall as bulbs and in early spring in pots. Bulbs, 60c to \$1.00; Pots, \$2.50 to \$3.00.		
<b>AMOMUM</b> cardamon. W. Ginger plant. Fragrant foliage, good for indoor window boxes.		
2¼ inch pots.....\$ .40 \$ 3.00		
3 " " ..... .60 3.00		
4 " " ..... .80 7.00		
5 " " ..... 1.20 10.00		
<b>ANANAS</b> . See Bromeliaceae, page 4.		
<b>ANGELONIA</b> salicariaefolia. W. fl. 50c to \$1.00.		
<b>ANTHERICUM</b> mandaianum. W. fol.		
2¼ inch pots.....\$ .40 \$ 3.00		
3 " " ..... .60 5.00		
4 " " ..... .80 7.00		
vittatum. fol.		
4 inch pots..... .80 7.00		
<b>ANTHURIUM</b> andreanum. W. fl. \$10.00 to \$30.00.		
" giganteum (orange)		
" roseum		
" rubrum		
andreanum Mr. Julius Roehrs. \$50.00 up.		
Souvenir De Gand. \$50.00 up		
crystallinum. Velvety foliage, white ribs, \$3.00 to \$5.00.		
scherzerianum. \$5.00-\$10.00.		
album	Madame Dalliere	
Atro-rubra	roseum	
giganteum	rothschildianum	
spathyphyllum clevelandii. White free flowering, \$3.00 to \$7.00.		
<b>ANTIGONON</b> leptopus. Lovers chain. Climber.		
3 inch pots..... \$1.00		
5 to 6 inch baskets and pyramids ..... \$3.00 to \$5.00		
<b>APHELANDRA</b> . W. fol.		



# Julius Reehrs Co

At The Sign of The Tree

Rutherford  
New Jersey



	EACH	TEN
ARALIA. W. fol.		
balfouriana		
elegantissima		
guilfoylei		
ARAUCARIA excelsa. C. fol. (Norfolk Island Pine)		
5 inch pots.....	\$1.50 to	\$2.00
5½ " " .....	3.00	
6 " " .....	4.00	
7 " " .....	5.00	
8 " tubs.....	6.00	
AREGELIA. See Bromeliaceae page 4.		
ARDISIA crenulata. W. fl.		
ARISTOLOCHIA. C. Climber. Dutchman's pipe.		
3 to 6 inch pots.....	\$1.50 to	\$7.00
elegans		
galeata		
ARUNDINARIA. W. (Bamboo)		
ASPARAGUS duchesnei. C. Coarse climbing fern,		
\$3.00 to \$5.00.		
falcatus		
plumosus nanus		
2¼ inch pots.....	20c each,	\$1.50 per 10,
\$12.00 per 100		
sprengeri		
2¼ inch pots.....	20c each,	\$1.50 per 10,
\$12.00 per 100		
ASPIDISTRA lurida. C. fol.		
5 inch pots.....	\$1.50	
7 " " .....	3.00	
lurida variegata		
7 inch pots.....	3.00	
ASPLENIUM nidus-avis. C. Bird's Nest Fern.		
4 inch pots.....	\$1.10	\$10.00
5 " " .....	1.60	15.00
6 " " .....	2.00	



CALATHEA  
(MARANTA) ORNATA ROSEILINEATA  
(See Marantaceae, page 11)

	EACH	TEN
AUCUBA japonica variegata. C. fol.		
3 inch to 8 inch pots.....	50c to	\$3.00
crotonifolia. 3, 4 and 5 inch pots.....	70c to	\$1.50
AZALEA indica. C. fl.		
We grow large quantities of Azaleas for Christmas and Easter, and devote about 50,000 feet of glass to this culture alone. Sizes and prices for Christmas varieties will appear in our Christmas list and same applies for Easter and Mother's Day. Below is a list of the leading varieties that we grow:		
Chas. Encke. (8A133) Light salmon pink.		
Ernest Thiers. (8A104) Crimson.		
Empress of India. (8A109) Semi-double, salmon.		
Fred Sanders. (8A106) Dark rose.		
Hexe. (8A134) (Firefly) Fringed, single crimson.		
Hinodegiri. (8A132) Cherry red.		
Jean Peeters. (8A116) Double brilliant red.		
Jean Haerens. (8A114) Rosy carmine, very double.		
Memoire de Louis Van Houtte. (8A108) Double, carmine.		
Mme. Petrick. (8A101) Double, light rose.		
Mme. Van der Cruyssen. (8A130) Double, deep rose.		
Mons. Morreaux. (8A107) Large, salmon pink, semi-double.		
Prof. Wolters. (8A103) Large, single pink dark center and fringed edges.		
Romain de Smet. (8A110) Fringed, pink striped white.		
Simon Mardner. (8A105) Large, light pink flowers.		
Temperance. (8A115) Large, mauve, semi-double.		
Vervaeneana. (8A112) Large, double, rose salmon with white margin.		
Vervaeneana, alba. (8A113) Large, double white.		
RHODODENDRON Pink Pearl. Of all the forcing varieties of Rhododendrons Pink Pearl is considered the best, and can be supplied in pots and tubs from \$7.50 to \$20.00.		



EGONIA argenteo guttata. C. fol. Spotted leaves, 70c to \$2.00.

bunchii. fol., 70c to \$2.00.

fuchsiioides. Tiny foliage, 30c to \$2.00.

glaucophylla scandens. For hanging baskets, \$1.00 to \$2.00.

goegoensis. Red and green waxy foliage, \$1.50 to \$3.00.

haageana. fol., 70c to \$2.00.

hybrida. Christmas Begonias. fl.

    Gloire de Lorraine

    Gloria

    Glory of Cincinnati

    Lady Mac

    Melior



# Julius Rehrs Co

At The Sign of The Tree

Rutherford  
New Jersey



**BEGONIA hybrida (Continued).**

	EACH	TEN
Peerless Turnford Hall		
On 2¼ inch stock for growing on, prices will be sent upon request in the spring.		
On 5 and 6 inch stock for Christmas, send for Christmas price list.		
imperialis. Green velvety foliage	\$1.50 to	\$3.00
Otto Forster. olive green with dark red veins,	\$1.50 to	\$3.00.
incarnata rubra Arthur Mallet. Rare. Metallic red foliage,	\$10.00.	
manicata aureo-maculata. Variegated foliage,	\$1.50 to	\$3.00.
metallica. fol.,	70c to	\$2.00.
rex. fol. assorted varieties.		
3 inch pots.....	\$ .60	\$ 5.00
4 " " .....	.80	7.00
5 " " .....	1.10	10.00
ricinifolia		
semperflorens. Everblooming. in season.		
gracilis luminosa		
striegau		
winter romance		
tuberhybrida. Tuberous rooted. (in season)		
4 inch pots.....	\$ .60	\$ 5.00
<b>BELOPERONE guttata.</b> W. fl. (Brazilian shower plant)		
3 inch pots.....	\$ .80	\$ 7.00
4 " " .....	1.10	10.00
5 " " .....	1.60	15.00
<b>BERTOLONIA marmorata.</b> W. fol.		
<b>BIGNONIA argyraeo-violescens.</b> W. climber, \$3.00 to \$6.00.		
callistegioides. W. climber.		
3 to 7 inch pots.....	\$1.50 to	\$7.00
grandiflora. Hardy climber,	\$3.00.	
venusta. W. climber.		
3 to 7 inch pots.....	\$1.50 to	\$7.00
<b>BILLBERGIA.</b> See Bromeliaceae, page 4.		
<b>BOUGAINVILLEA crimson lake.</b> W. Red flower.		
glabra sanderiana. fl. Blood red.		
3 inch pots.....	\$ .70	\$4.00
6 " " globes, baskets and pyramids.....	5.00	
7 inch pots, globes, baskets, and pyramids.....	6.00	
harrisii. W. Variegated foliage.		
2¼ inch pots.....	\$ .40	\$3.00
3 " " .....	.60	5.00
5-6 " " .....	2.00 to	3.00
praetoriensis. fl. Orange.		

**BOUVARDIAS.** C. fl. Pink, red and white (Humboldtii) in 2¼ inch pots for Summer delivery.

**BROMELIACEAE.** We make up combinations of these unique and enduring Epiphytes, popularly called Natural Vase Plants, in containers such as cork bark and on limbs of trees which produce a most tropical effect.

**BROMELIACEAE (Continued).**

	EACH	TEN
Aechmea barleei (3A105).....		\$10.00
calyculata (3A107).....		10.00
fasciata (3A110) (Billbergia Rhodocyanea) .....		7.00
fulgens (3A105) .....	\$5.00 to	7.00
fulgens discolor (3A106).....		5.00
speciosa miniata (3A108).....		4.00
thibauti (3A103).....		7.00
tinctoria (3A101).....		5.00
viminalis (3A102).....	7.00 to	10.00
weilbachia (3A109).....		6.00
Ananas bracteatus (3A203)		
sativus (3A201) .....	\$5.00 to	\$ 7.00
sativus cochinchinensis (3A202)		
Aregelia spectabilis (3A301).....	\$5.00 to	7.00
marmorata (3A302).....	7.00 to	10.00
tristis (3A303) .....		6.00
Billbergia alberta (3B107).....	1.50 to	3.00
forgetii (3B103) (variegated) .....	7.00 to	12.00
leopoldii (3B112)		
macrocalyx (3B101).....	1.00 to	3.00
morelli (3B106) (Scarlet & Blue) .....	.70 to	3.00
nutans (3B104) (narrow leaves) .....	7.00 to	1.50
pallescens (3B108) .....	1.00 to	2.00
pallida (3B109) .....	3.00 to	5.00
perringeana (3B110) .....		10.00
quintitissima (3B105).....	.70 to	1.50
Rhodocyanea (See Aechmea)		
sanderi (3B102) .....		3.00
soarii (3B111) .....		
Cryptanthus acaulis (3C503).....	.50 to	1.00
acaulis bromelioides (3C505)	1.00 to	1.50
diversifolius (3C506) .....	1.00 to	1.50
ruber (3C504) .....	.50 to	1.00
beuckeri (3C508) .....	1.00 to	1.50
bivittatus (3C507) .....	1.00 to	1.50
roseus pictus (3C509)		
In flats .....	.20 to	.30
2¼ inch pots.....		.40
3 " " .....		.50
terminalis (3C510) .....	.70 to	1.00
zonatus (3C501) .....	1.50 to	3.00
zebrinus (3C502) .....	3.00 to	5.00
Dyckia sulfurea (3D101).....		.50 up
Guzmania lingulata (Caraguata) (3G103)		
musaica (3G102) .....		10.00
Zahnii (3G101) .....		3.00
Hechtia argentea (3H102).....		.50
roseana (3H101) .....		.50
Hohenbergia distans (3H301)		
Hoplophytum robustum (3H201)		
	15.00 to	20.00
Nidularium amazonica (3N101)..	7.00 to	15.00
striatum (3N102) .....		5.00
Pitcairnia aphelandriflora (3P103)	3.00 to	5.00
whitei (3P101) .....	5.00 to	7.00



**Julius Roehrs Co**  
At The Sign of The Tree

**Rutherford**  
New Jersey



**TILLANDSIA LINDENIANA**

<i>Tillandsia fasciculata</i> (3T104).....	2.00 to	7.00
<i>juncea</i> (3T103) .....		1.00
<i>lindeniana</i> (3T101) (Blue Flowers, red fol.).....		5.00
<i>usneoides</i> (3T102) (Spanish Moss) .....		2.00
<i>Vriesea bromeloides</i> (3V106).....	3.00 to	4.00
<i>hieroglyphica</i> (3V102)		
<i>hybrida erecta</i> (3V104).....		10.00
<i>favorite</i> (3V103).....	7.00 to	10.00
<i>magnifica</i> (3V105)		
<i>splendens</i> (3V101)		

**BROWALLIA sepiosa major.** C. Blue flowering trailer, in season, in pots and baskets.

**BUDDLEYA.** (Isle de France) C. fl.



**ACTUS.** See Cactus and Succulent list page 18-20.

**CALADIUMS.** W. fol. Imperial fancy leaved. They are available nine months of the year, from February on, in 44 named varieties.

4 inch pots.....	\$1.10	\$10.00
5 " " .....	1.60	15.00

**CALATHEA.** See Maranta, page 11.

**CALLA aethiopica.** W. Large White Flowers in 7 to 9 inch pots.

EACH TEN

**CALLA** (Continued).

*elliottiana.* W. Yellow Flowers. Plants ready in March and April, \$1.50 to \$2.00.

*Godfrey.* W. Smaller white flowers, but more prolific than the *Aethiopica*. In 6 to 8 inch pots.

**CAMELLIA japonica.** C. fl.

5 inch pots.....	\$ 3.00
10 " tubs.....	10.00

**CALCEOLARIA hybrida.** C. fl. Easter and Mothers' Day. Send for price list.

**CAREX elegantissima.** C. Variegated grass for filling.

2 inch pots.....	.40	3.00
------------------	-----	------

**CELOSIA plumosa, Pride of Castle Gould.** Late summer flowering plant in yellow and red.

6 inch pots.....	1.10	10.00
------------------	------	-------

*cristata*, \$1.10 to \$10.00.

**CESTRUM parqui.** W. Night blooming Jasmine.

3 inch pots.....	\$1.00
4 " " .....	2.00
5 " " .....	3.00
6 " " .....	4.00

**CHEIRANTHUS cheiri.** C. fl. (Wall flower).

5 inch pots.....	.60	5.00
------------------	-----	------

**CHERRIES**—See Solanum, page 16.

**CHINESE Evergreens.** See *Aglaonema sinensis*, page 2.

**CHORIZEMA ilicifolium.** C. fl.

2¼ inch pots.....	\$ .70
3 " " .....	1.00
5 " " .....	4.00

**CHRYSANTHEMUM hortorum.** C. fl.

We grow practically only varieties suitable for pot culture and this year have added about double the varieties listed below which we are trying out, and if found suitable for pot culture, will include them in next year's list. Depending upon the flowering season, the pot plants will be ready for sale, starting about October 10th until after Thanksgiving, and we will have them available in the following size pots:

	per 100	Each	Ten
3 inch pots.....	\$24.00	\$ .40	\$ 3.00
5 " " .....		1.10	10.00
5½ " " .....		1.60	15.00
6 & 6½ in. pots, \$1.50 to	2.00		
7 inch pots.....	2.00 to	3.00	
8 " " .....		4.00	

Flowering Early

**Golden Bronze** (1C605)  
**Golden Lode** (1C604)  
**Pacific** (1C683)  
**Sealine** (1C606)

Flowering Mid-Season

**Beatrice Canning** (1C622)  
**Betty Rose** (1C614)



# Julius Roehrs Co

At The Sign of The Tree

Rutherford  
New Jersey



	EACH	TEN
<b>CHRYSANTHEMUM hortorum. C. fl. (Continued)</b>		
Butler's Caprice. (1C607-11) Bronze, red, lilac, and rose pink.		
Celestra (1C612)		
Garza Supreme (1C645)		
George Holiday (1C613)		
Greystone (1C616)		
Helios (1C680)		
Ohio State (1C627)		
Pink Pompon (1C636)		
Quaker Maid (1C626)		
Shasta (1C623)		
Flowering Late		
American Beauty (1C628)		
Baby Pompon (1C684)		
Brutus (1C617)		
Coed (1C634)		
Gladys Pearson (1C681)		
Goacher's Crimson (1C618)		
Graf Von Oriola (1C615)		
Sun Gold (1C619)		
Frank Wilcox (1C620)		
Yellow Garza (1C678)		
Cascade Varieties		

**CHRYSANTHEMUM Frutescens.** See Daisies, page 7.

<b>CIBOTIUM schiedei. fol. Fern.</b>		
3 inch pots.....	\$ 1.50	
4-4½ " " .....	2.00	
5 " " .....	3.00	
6 " " .....	4.00	
7 " " .....	5.00 to \$ 6.00	
7 " tubs.....	8.00	
8 " " .....	10.00	
9-10 " " .....	12.00 to \$15.00	

<b>CINERARIA hybrida. C. fl.</b>		
<b>hybrida grandiflora.</b>		
5 inch pots.....	\$ .80	\$ 7.00
6 " " .....	1.10	10.00
7 " " .....	1.60	15.00
<b>hybrida multiflora nana.</b>		
5 inch pots.....	.80	7.00
6 " " .....	1.10	10.00
7 " " .....	1.60	15.00

<b>CISSUS discolor.</b> Most beautiful tropical vine with leaves similar to Begonia Rex.		
2¼-3 inch pots.....	\$ .50-\$ .70	
5 " " .....	2.00	
Hanging baskets, 8 inch	3.00	
" " 10 "	4.00	

<b>albo-nitens.</b>		
<b>nijegerensis.</b>		
3 inch .....	.70	
7 " baskets .....	3.00	
7 " pyramids .....	3.00	

**sicyoides**

**CITRUS taitensis.** W. Otaheite Orange. In 4, 5 and 6 inch pots, priced according to the number of fruits. Send for Christmas price list.

**ponderosa. (Lemon).**  
Bush and half standards, \$3.00 to \$10.00.

**CITRUS Tubbed Plants.** Ask for special price list.

	EACH	TEN
<b>CLERODENDRON colebrookianum. W.</b>		
fallax. Scarlet flower.		
hybrida. Red flowers.		
thomsonae (Balfouri). Climber, white and scarlet trusses of flowers.		
3 inch pots.....	\$1.00	
6 " " .....	3.00	
thomsonae variegata.		
3 inch pots.....	1.00	
4 " " .....	2.00	
5 " " .....	3.00	
6 " " .....	4.00	
<b>CLIVIA miniata. W. fl.</b>		
<b>COLEUS rehneltianus superbus. W.</b>		
4 inch pots.....	.40	\$3.00
Also see bedding plants, page 21.		
<b>COLOCASIA antiquorum fontanesii. W. fol.</b>		
antiquorum illustris.		
<b>COPROSMA baueriana. C. fl. Variegated.</b>		
<b>COSTUS zebrinus. W. fol. Stepladder plant with velvety foliage.</b>		



**CROTON FRED SANDER**

**CROTONS.** Of all the tropical foliage plants Crotons have the most varied colors and shapes of leaves. In the larger sizes they can be used very successfully as individual plants of high decorative value; in the smaller





# Julius Roehrs Co

At The Sign of The Tree

Rutherford  
New Jersey



**CROTONS (Continued).**

sizes they can be used in combinations to lend a vivid color contrast which cannot be obtained in any other way, this being especially true for Christmas baskets.

App'leaf (1C115)		
Aucubifolia (1C102)		
Bergmannii (1C104)		
Craigii (1C120)		
Etna (1C124)		
Fascination (1C112)		
New York (1C113)		
Norwood Beauty (1C132)		
Pere Charon (1C133)		
Philadelphia (1C135)		
Functatum Aureum (1C134)		
Sinitziana (1C140)		
Warrenii (1C141)		
	2 1/4 inch pots.....	\$ .60    \$ 5.00
	3    "    " .....	.80    7.00
	4    "    " .....	1.10    10.00

Bruxelliense (1C106)		
Craigii Supreme (1C121)		
Fred Sander (1C118)		
Golden Streak (1C122)		
Interruptum (1C123)		
Masterpiece (1C128)		
Mme. Fernand Kohl (1C129)		
Mme. Julia Delarney (1C125)		
Monsieur Ernest Delarney (1C130)		
Queen Victoria (1C116)		
Reidii (1C144)		
Schutii (1C138)		
Undulatum (1C114)		
Weismannii (1C143)		
	2 1/4 inch pots.....	\$ .80    \$ 7.00
	3    "    " .....	1.10    10.00
	4    "    " .....	1.60    15.00

Anitumense (1C101)		
Baron James Rothschild (1C103)		
Comte de Castelaine (1C108)		
Edmontonense (1C109)		
Edwin T. Meredith (1C110)		
Elaine (1C111)		
Gloriosum (1C107)		
Maryland (1C127)		
Mrs. Wm. F. Dreer (1C131)		
Rex (1C136)		
Robert Lavalois (1C137)		
Souvenir De Thos. Rockford (1C139)		
	2 1/4 inch pots.....	\$ 1.10    \$ 10.00
	3    "    " .....	1.60    15.00
	4    "    " .....	2.20    20.00
	Large and specimen plants.....	\$3.00 to 20.00

**CRYPTANTHUS.** See Bromeliaceae page 4.

**CUPHEA platycentra.** W. fl.

**CURCULIGO recurvata.** W. fol.

C.—Cool House.

**CYCLAMEN. C.** In flower in all colors in November, December and January.

	2 1/4 inch pots, May and June delivery.	
	4-4 1/2 inch pots.....	\$1.00-1.50
	5    "    " .....	2.00
	6    "    " .....	4.00

<b>CYPERUS alternifolius.</b> W. fol. Umbrella plant.		
	2 1/2 inch pots.....	\$ .40    \$ 3.00
	4    "    " .....	.80    7.00
	5    "    " .....	1.10    10.00
	6    "    " .....	1.60    15.00

<b>alternifolius nanus.</b>		
	2 inch pots.....	.50    4.00
	4    "    " .....	1.60    15.00

<b>alternifolius variegatus.</b>		
	3 inch pots.....	.80    7.00
	4    "    " .....	1.10    10.00

**papyrus.** \$1.50 to \$3.00.

<b>CYRTOMIUM rochfordianum.</b> W. Holly Fern.		
	2 1/4 inch pots.....	\$ .24    \$ 2.00
	3    "    " .....	.36    3.00
	4    "    " .....	.60    5.00



**DAISIES.** (*Chrysanthemum Frutescens*).  
Send for Easter Price List.

White (Marguerites). 5, 6 and 7 inch pots.  
Bosten (Yellow).

**DARLINGTONIA californica.** W. fol. Fly trap of weird shape, \$2.00 to \$3.00.

<b>DAVALLIA fijiensis.</b> W. Long lasting and graceful Fern.		
	5 inch pots.....	\$ 2.00
	6    "    " .....	3.00
	7    "    " .....	5.00

<b>fijiensis plumosa</b>		
	5 inch pots.....	4.00

**DIEFFENBACHIA barraquiniana (1D101).** W. fol. Green with white stem.

	4 inch pots.....	\$ 1.00
	5    "    " .....	1.50

**bausei. (1D102).** Olive green, white and dark green marbled.

	3 inch pots.....	\$ 1.00
	4    "    " .....	2.00

**feurnieri. (1D103).** Elegant, dark metallic variety with ivory design.

	3 inch pots.....	\$ 1.50
	4    "    " .....	\$2.00 to 3.00

**imperialis. (1D104).** Largest, \$4.00 to \$10.00.

**leonii. (1D105)** ..... \$1.50 to \$3.00

**picta. (1D106).** Large, dark green blade with white spots. Equals *Dracaena Massangeana* as a house plant.

	3 inch pots.....	\$ .80    \$ 7.00
	4    "    " .....	1.10    10.00

	5    "    " .....	1.50 to 2.00
	6    "    " .....	2.50 to 4.00

**picta jenmannii. (1D107).**

**picta memoria corsi. (1D108).**

	4 inch pots.....	1.50
	5    "    " .....	3.00

W.—Warm House.



# Julius Reehrs Co


At The Sign of The Tree


Rutherford  
New Jersey



	EACH	TEN
<b>DIEFFENBACHIA</b> (Continued).		
<i>seguine nobilis</i> . (irrorata).		
4 inch pots.....	\$ 1.00	
6 " " .....	3.00	
<i>splendens</i> (Rex). Soft velvety emerald leaf.		
3 inch pots.....	\$ 1.00	
4 " " .....	2.00	
<b>DIMORPHOTHECA</b> <i>ecklonis</i> . C. (Blue Daisy).		
<b>DIPLACUS</b> <i>glutinosus</i> . (Mimulus). C. fl.		
<b>DRACAENA</b> <i>australis</i> . (1D201). C. fol.		
<i>australis</i> Prince Albert. (1D202).		
9 in. tubs, 3 to 3½ ft. tall	\$10.00	
10 " " 4 to 4½ " "	12.00	
16 " " 10 " "	36.00	
Colored Dracaenas. For those interested in fancy tropical Dracaenas, we are growing a limited number of the collection listed below.		
<i>Amabilis</i> (1D203)		
<i>Andreira</i> (1D204)		
<i>Bertha Andre</i> (1D205)		
<i>Baptistii</i> (1D206)		
<i>Firebrand</i> (1D207)		
<i>Gen. Pershing</i> (1D208)		
<i>Gov. Towner</i> (1D209)		
<i>Gracilis</i> (1D233)		
<i>Haagei</i> (1D234)		
<i>Harmony</i> (1D210)		
<i>Hookeriana rothiana</i> (1D235)		
<i>Imperialis</i> (1D211)		
<i>Kelleri</i> (1D237)		
<i>Lord Wolseley</i> (1D212)		
<i>Madame Eugene Andre</i> (1D238)		
<i>Marginata</i> (1D213)		
<i>Margaret Storey</i> (1D214)		
<i>Mrs. Rufus Scott</i> (1D215)		
<i>Pres. Hoover</i> (1D216)		
<i>Porto Rico</i> (1D217)		
<i>Red Wing</i> (1D218)		
<i>Red Cloud</i> (1D219)		
<i>Torch</i> (1D220)		
<i>Terminalis</i> (1D241)		
<i>Torch</i> (1D220)		
<i>Tricolor</i> (1D221)		
<i>Youngi</i> (1D222)		
<i>deremensis</i> . (1D224). W. fol. \$1.50 to \$5.00		
<i>deremensis alba</i> . (1D225) W. fol.		
<i>deremensis warneckii</i> . (1D226). W. fol. \$3.00 to \$6.00.		
<i>fragrans</i> . (1D227). W. fol. Green foliage.		
4 to 6 inch pots....	.70 to 1.50	
<i>fragrans lindeniana</i> . (1D228). W. fol. Green leaf, golden bands on edges.		
5 inch pots.....	\$ 1.50	
6 " " .....	3.00	
12 " tubs .....	15.00	
<i>fragrans massangeana</i> . (1D229). W. fol. Green leaf, gold center stripe.		
2¼ inch pots.....	\$ .60	\$ 5.00
3 " " .....	.80	7.00
4 " " .....	1.10	10.00
5 " " .....	1.60	15.00
6 " " .....	2.00	
7 " " .....	3.00	
8 to 9 inch tubs	\$4.00 to 6.00	

	EACH	TEN
<b>DRACAENA</b> <i>fragrans victoriae</i> . W. fol. \$5.00 to \$15.00.		
<i>godseffiana</i> . W. fol.		
2¼ inch pots.....	.60	5.00
3 " " .....	.80	7.00
<i>goldieana</i> . Rarest of all Dracaenas.		
<i>indivisa</i> . 70c to \$1.50.		
<i>Madame Eugene Andre</i> . W. fol.		
3 inch pots.....	.80	7.00
4 " " .....	1.10	10.00
5 " " .....	\$1.50 to 2.00	
6 " " .....	2.00 to 3.00	
<i>sanderiana</i> . W. fol.		
2¼ inch pots.....	.36	3.00
5 " pans, combinations .....	1.60	15.00
<i>surculosa punctulata</i> .		
2½ inch pots.....	.60	5.00
3 " " .....	1.10	10.00
<i>terminalis</i> . W. fol.		
3 inch pots.....	.80	7.00
4 " " .....	1.60	15.00
5 " " .....	2.00	
5½ " " .....	3.00	
6½ " " .....	\$4.00 to 5.00	
<b>DYCKIA</b> . See Bromeliaceae, page 4.		

 <b>PISCIA</b> <i>cupreata</i> . W. fol. Velvety leaf with pink center.		
2¼ inch pots.....	\$ .60	\$ 5.00
3 " " .....	.80	7.00
<i>coccinea</i> (metallica). W. fol. Silver center.		
2¼ inch pots.....	\$ .60	\$ 5.00
3 " " .....	.80	7.00
<b>ERICA</b> <i>melanthera</i> . C. fl. In season.		
<i>ovata</i> . C. fl. In season.		
<i>vilmoreana</i> . C. fl. In season.		
<b>ERLANGEA</b> <i>tomentosa</i> . W. fl.		
<b>EUCHARIS</b> <i>amazonica</i> ... (Amazon Lily) W. fl. Bulbous plant, \$2.00 to \$4.00.		
<b>EUGENIA</b> <i>mycrophylla</i> . W. fol. \$2.00 to \$6.00.		
<i>myrtifolia</i> . W. fol.		
10 inch tubs.....	12.00	
14 " " .....	20.00	
<b>EUONYMUS</b> <i>japonica aurea</i> . C. fol.		
<i>japonica alba</i> . C. fol.		
<i>radicans</i> . Hardy creeper used in miniature gardens.		
2¼ inch pots.....	\$ .30	\$ 2.00
<b>EUPHORBIA</b> <i>splendens</i> . See Cactus and Succulent List, page 19.		
<b>EXACUM</b> <i>affine</i> . C. Profuse, small blue flowers, \$1.00 to \$2.00.		

 <b>ARFUGIUM</b> <i>argentea</i> . (Ligularia). C. fol.		
<b>FELICIA</b> <i>amelloides</i> . Blue Daisy. C. fl.		

**FERNS**  
*Adiantum*, page 2.  
*Alsophila*, page 2.  
*Asparagus*, page 3.  
*Asplenium*, page 3.



# Julius Roehrs Co


At The Sign of The Tree

Rutherford  
New Jersey



	EACH	TEN
<b>FERNS (Continued).</b>		
Cibotiums, page 6.		
Cyrtomium, page 7.		
Davallia, page 7.		
Goniophlebium, page 9.		
Lygodium, page 11.		
Nephrolepis, page 12.		
Phymatodes, page 14.		
Platynerium, page 15.		
Polypodium, page 15.		
Polystichum, page 15.		
Pteris, page 15.		
Scolopendrium, page 16.		
Selaginella, page 16.		
<b>FICUS altissima. W. fol.</b>		
australis. Variegated. W. fol.		
elastica. India Rubber Tree.		
6 inch pots.....	\$1.10	\$10.00
7 " " (branched)....	1.60	15.00
elastica aureimarginata. \$3.00 to \$5.00.		
pandurata. Fiddleleaf Fig.		
6 inch pots, 2½ ft. high	5.00	
7 " " 3 " "	6.00	
8 " " 4 " "	8.00	
8 " tubs, 5 to 6 feet high	\$10.00-12.00	
quercifolia. W. fol.		
radicans. Vine.		
4 inch pots.....	\$ .80	\$7.00
radicans variegata. (rostrata) Large leaved vine.		
2½ inch pots.....	\$ .60	\$5.00
3 " " .....	.80	7.00
repens. (pumila). Creeping Fig.		
2¼ inch pots.....	.60	5.00
4 " " .....	.80	7.00
retusa. W. fol.		
utilis. Zulu Fig.		
8 inch tub.....	\$5.00 to	6.00
10 and 12 inch tubs.....	7.50	

<b>FITTONIA argyroneura. W. fol. Silver veins, 40c to 50c.</b>		
verschaffelti. Red veins, 40c to 50c.		
verschaffelti Pearcei. Metallic pink, 40c to 50c.		
<b>FRANCISCEA floribunda. W. fl. Blue.</b>		
3 inch pots.....	\$1.50	
4 " " .....	3.00	
5 " " .....	5.00	
<b>FUCHSIA. C. Bush and Standards.</b>		
Others, see Bedding List, page 21.		

 <b>ARDENIA grandiflora. W. fl.</b>		
mystery.		
veitchii.		
3 to 6 inch pots.....	.70 to	4.00

**GAZANIA splendens hybrida grandiflora. W. fl.**  
**GENISTAS.** Cool house plant grown for their great profusion of yellow flowers. All sizes are available throughout the year. Prices mentioned herein, for sizes 4 inch and up, are for plants in flower at Easter.

	EACH	TEN
<b>GENISTAS (Continued).</b>		
<b>canariensis.</b>		
2¼ inch pots.....	\$16.00	per 100
3 " " .....	30.00	per 100
4 " " .....	\$ .80	\$ 7.00
5 " " .....	1.10	10.00
6 to 6½ inch pots, 1.50 to 2.00		
7 inch pots.....	3.00	
8 " tubs .....	4.00 to	5.00
9 to 10 inch tubs	8.00 to	10.00
6 to 7 inch pots, standards	6.00 to	8.00
<b>fragrans.</b>		
2¼ inch pots.....	.30	2.00
3 " " .....	.50	4.00
4 " " .....	1.10	10.00
<b>hybrida.</b>		
2¼ inch pots.....	.30	2.00
3 " " .....	.50	4.00
4 " " .....	1.10	10.00
<b>johnstowni. Novel. Silver grey foliage.</b>		
2¼ inch pots.....	.30	2.00
3 " " .....	.50	4.00
4 " " .....	1.10	10.00
<b>mentor.</b>		
2¼ inch pots.....	.30	2.00
3 " " .....	.50	4.00
4 " " .....	1.10	10.00
<b>racemosa.</b>		
2¼ inch pots.....	\$16.00	per 100
3 " " .....	30.00	per 100
4 " " .....	\$ .80	\$ 7.00
5 " " .....	1.10	10.00
6 " " .....	\$1.50 to	2.00
Standards .....	\$6.00 to	8.00

**GERBERA jamesonii. W. fl. (African Daisy) \$2.00 to \$3.00.**

**GLORIOSA roehrsiana. W. fl. African climbing Lily.**  
 8 inch pots.....\$ 4.00  
 Tubers .....\$1.50 to 2.00

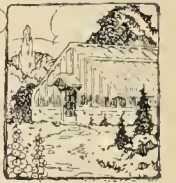
**GLOXINIA hybrida. C. fl. Easter, Mother's Day and Summer.**  
 4 inch pots.....\$ .80 \$ 7.00  
 5 " " .....

**GONIOPHLEBIUM subauriculatum. W. fern. Long hard drooping fronds.**  
 3 inch pots.....\$ 1.50  
 8 to 10 inch hanging baskets.....\$5.00 to 15.00

**GREVILLEA robusta. C. fl. (Silk Oak) \$2.00 to \$4.00.**

**GUZMANIA.** See Bromeliaceae, page 4.

**GYNURA aurantiaca. W. fol. (Velvet Tree) \$2.00 to \$3.00.**



**HEMANTHUS** King Albert of Saxony.  
W. fol.  
(Blood Lily) Flowers in late summer and fall, \$7.00 to \$10.00.

**HECHTIA.** See Bromeliaceae, page 4.

**HEDERA conglomerata.** C. (Japanese Ivy).  
2 1/4 inch pots..... \$ .40 \$3.00  
3 " " ..... .60 5.00  
**helix.** (English Ivy)  
4" pots, .....\$ .60 \$ 5.00  
5" " 4' high, staked 1.50  
6" " 5' " " 3.00  
7" " 5' " " 5.00  
9" tubs, 4' " pyramids 8.00  
12" " 5' " " 12.00  
12" " 6' " " 20.00  
14" " 6' " " 30.00  
16" " 6' " " 40.00  
16" " 8' " " 50.00

**hibernica**  
4 inch pots..... .80 7.00  
5 " " ..... 1.10 10.00

**marmorata**  
2 inch pots..... .40 3.00

The list below covers a number of the small leaved ivies which we have mostly in smaller sizes in limited quantities only, and on which we will quote upon request.

**baltica** **gracilis**  
**cordata** **maderensis variegata**  
**digitata** **niagara**  
**elegantissima**

**HELICONIA aureo-striata.** W. fol. Yellow, \$3.00 to \$6.00.

**Edwardus Rex.** W. fol. Dark red \$4.00 to \$7.00  
**ilustris rubricaulis.** W. fol. Red, white and green, \$3.00 to \$6.00.

**HELXINE soleirolii.** W. Creeper. (Baby's tears) 70c to \$1.00.

**HEMEOGRAPHUS colorata.** W. Vine. Metallic blue foliage.  
4 inch pots..... \$ .80 \$ 7.00

**HIBISCUS rosa sinensis cooperi.** W. fol. Beautiful marbled foliage.  
2 1/4 inch pots..... \$ .60 \$ 5.00  
3 " " ..... .80 7.00  
4 " " ..... 1.10 10.00  
5 " " ..... 1.60 15.00

**HIBISCUS regia maxima.** C. Very free flowering and exotic. Large red, single flowered.  
2 1/4 to 3 inch pots, .50 to .70  
15 inch tubs, 6 1/2 to 7 feet high, 5 to 6 feet spread, 2 to 2 1/4 feet stem ..... 20.00

**HOFFMANNIA ghiesbreghtii.** W. fol. Velvet green, tall.  
3 to 6 inch pots \$1.50 to 5.00  
**refulgens.** Red velvet foliage, low and broad.  
4 to 5 inch pots \$3.00 to 5.00

**HOHENBERGIA.** See Bromeliaceae, page 4.

**HOMALOMENA picturata.** W. fol. Tall, hard, silver and grey foliage.  
4 to 6 inch pots \$3.00 to 8.00  
**wallisii.** W. fol.  
3 to 5 inch pots \$2.00 to 5.00

**HOPLOPHYTUM.** See Bromeliaceae, page 4.

**HOYA carnosa.** W. fl. (Wax Plant).  
2 1/4 inch pots.....\$ .50  
6 " baskets ..... 4.00  
**carnosa variegata.** Rare.  
2 1/4 inch pots..... 2.00  
3 " " ..... 3.00

**HYACINTHS.** In flower for early spring.

**HYDRANGEA hortensis.** C. fl. We specialize in standard commercial varieties and the varieties listed will be available for Easter and Mother's Day. Prices are for finished plants in flower. Prices for dormant plants for growing on will be quoted on request.

4 1/2 inch pots (single)....\$ .80 \$ 7.00  
5 " " ..... 1.10 10.00  
5 1/2 " " ..... 1.60 15.00  
6 " " ..... 2.20 20.00  
6-6 1/2 inch pots....\$3.00 to 4.00  
7 " " ..... 6.00  
8 " tubs, \$6.00, \$8.00 and \$10.00.

**Ami Pasquier (1H201)** **Mein Liebling (1H209)**  
**Avalanche (1H202)** **Niedersachsen (1H210)**  
**Deutschland (1H203)** **Otaksa (1H211)**  
**Gertrude Glahn (1H204)** **Parsifal (1H212)**  
**Helge (1H205)** **Rubis (1H213)**  
**Lorelei (1H206)** **Trophee (1H214)**  
**Marshal Foch (1H207)** **Vibraye (1H215)**  
**M. Baardse (1H208)**

**POMOEA horsfalliae.** W. fl. Red flowering climber.  
3 inch pots.....\$ 2.00  
4 " " ..... 4.00  
5 " " ..... 7.00

**ISOLEPIS gracilis.** W. fl. (Scirpus). Bullrush.  
2 1/4 inch pots.....\$ .30 \$ 2.00  
3 " " ..... .40 3.00

**IXORA coccinea.** W. fl.  
**duffii.** W. Small orange flowers.  
3 to 6 inch pots \$1.50 to 6.00  
**Westii.** W. fl. Salmon Rose flowers.  
3 to 6 inch pots \$1.00 to 5.00  
Standards .....\$3.00 to 7.00  
**williamsii.** W. Reddish Salmon flowers.  
\$1.50 to \$3.00.

**ACOBINIA carnea.** (Justicia) W. fl.  
Trusses of large pink flowers in early winter, \$2.00 to \$4.00.



# Julius Roehrs Co

At The Sign of The Tree

# Rutherford

New Jersey



- |   | EACH      | TEN     |
|---|-----------|---------|
| JASMINUM gracillimum. (Spanish Jasmine). C. fl. Sweet scented.                      |           |         |
| 3 to 7 inch pots  | \$1.00 to | \$ 6.00 |
| grandiflorum. W. fl. White flowering climber.                                       |           |         |
| 3 to 6 inch pots  | \$1.00 to | \$ 5.00 |
| nitidum. W. fl. Climber. Large white flowers, sweeter scented than the gracillimum. |           |         |
| 3 to 7 inch pots  | \$1.00 to | \$ 6.00 |
| primulinum. Yellow flowers.   |           |         |
| 3 inch pots.....  | 1.50      |         |
| revolutum. (Humile). W. fl. Shrub-like plant with yellow flowers.                   |           |         |
| 3 to 6 inch pots  | \$1.00 to | \$5.00  |
| stephanense. C. Climber. Pink flower.   |           |         |
| 3 to 5 inch pots  | \$1.00 to | \$ 4.00 |



## KENTIA FORSTERIANA

2½ in. pots, single	10-12 in. high	.....\$	.40
4 " " "	24-26 " "	.....	1.00
4 " " "	32-34 " "	.....	1.50
5 " " made up	26-28 " "	.....	3.00
5 " " "	32-36 " "	.....	4.00
7 " " "	38-44 " "	.....	7.00
7 " tubs, "	46-52 " "	.....	10.00
8 " " "	54-62 " "	.....	15.00
8 " " "	66-72 " "	.....	16.00
10 " " "	6½-7 ft.	.....	30.00
12 " " "	6½-7 " "	\$20.00-24.00	
12 " " "	7-8 " "	24.00-30.00	
14 " " "	8-9 " "	30.00-36.00	
16-18 " " "	10 " "	50.00-60.00	
16-18 " " "	12 " "	70.00	
18-24 " " "	12-18 " "	100.00-400.00	

C.—Cool House.

We have a few plants of the following Palms, mostly of Botanical interest, on which we will be glad to quote sizes and prices on request.

- |                     |                         |
|---------------------|-------------------------|
| Areca lutescens     | Macrozamia flexiosa     |
| Caryota urens       | Nunnezharia pumila      |
| Chamaedorea elegans | Ptychosperma macarthuri |
| Cocos australis     | Rhapis humilis          |
| Cocos flexuosa      | Sabal palmetto          |
| Cycas revoluta      | Seaforthia elegans      |
| Latania borbonica   | Zamia lehmanni skinneri |



LANTANAS. See Bedding Plants, page 21.

LAURUS nobilis. (Bay Trees). C. fol.

12 feet high, 6 feet head,  
specimens .....\$400.00

LIGULARIA kaempferi aureo-maculatus. (Far-fugium). C. fol. Leopard plant, Old timer, \$1.50 to \$3.00.

LILIUM longiflorum giganteum and formosum erabu. C. fl. We grow several houses of Lilies for Easter and they can be purchased by the bud or plant. Ask for our Easter price list.

LYGODIUM scandens. W. Climbing fern 70c to \$2.00



MALTHIGHIA coccigera. C. fl. Small holly like foliage with dainty pink flowers. 70c to \$3.00

MALUS scheideckeri. Hardy flowering shrub. Tub grown. Forced to bloom during winter. 14 inch tub, 6 to 7 feet high .....\$15.00

MANETTIA bicolor. W. Climber covered with tiny red and yellow flowers.

2 to 4 inch pots..... \$ .50 to \$1.50  
Baskets ..... 3.00 to 4.00

MARANTACEAE. Warm area loving greenhouse plants with varied colored foliage, used as individual plants in the home or conservatory and for make up work at Christmas.

Calathea.

lindeniana.

lietzei. Olive green with dark spots, hard. \$1.50 to \$2.00.

ornata roseolineata. Pink veined, metallic leaves. \$1.50 to \$3.00.

picturata Van den Hecke. Silver and green minute leaves.

princeps. Upright, silver. \$1.50 to \$3.00.

sanderiana. W. fol. White veined metallic, upright leaves. \$1.50 to \$3.00.

zebrina. Most glorious of all of this type; large velvety leaves with distinct markings. \$3.00 to \$5.00.

Ctenanthe.

oppenheimiana tricolor. White, green and red foliage. \$2.00 to \$3.00.

W.—Warm House.



# Julius Roehrs Co

At The Sign of The Tree

# Rutherford

New Jersey



## MARANTACEAE (Continued).

EACH TEN

### Maranta.

- arundinacea. W. green foliage. \$1.50.
- kerchoveana. W. fol. Green foliage with dark chocolate colored spots. \$1.00 to \$2.00.
- luciana. W. fol. Silver and green. \$1.00 to \$1.50.
- arundinacea aurea. W. Yellow and green \$1.50 to \$2.00.
- bicolor. Green with dark green spots, low growing. \$1.00.

**MARCGRAVIA paradoxa.** W. A most unusual warm house climber with round leaves clinging close to the trunks of trees. \$2.00 to \$4.00.

**MARICA magnificum.** W. fl. \$1.50 to \$2.00.  
**tristis.** Poor man's orchid. \$1.00 to \$2.00.

**MATTHIOLA incana flore plano.** C. fl. Winter stocks. \$1.00 to \$1.50.

**MAURANDIA.** C. fl. \$1.00 to \$3.00.

**MEDINILLA magnifica.** W. fl. Large showy pink trusses in winter. \$7.00 to \$15.00.

**MIMOSA pudica.** (Sensitive plant) W. fl. \$1.00 to \$3.00.

**MUEHLENBECKIA complexa.** W. Climber resembling the maiden hair fern \$1.50 to \$3.00  
**platyclada.** W. Tape Worm plant. \$1.50 to \$3.00

**MUSA cavendishii.** W. fol. Heavy and compact.  
**sapientum.** Banana Tree.

6 in pots to 14 in. tubs \$4.00 to \$36.00

**MYOPORUM insulare.** C. fol. \$1.00 to \$1.50.

**MYRTUS communis.** W. fl.

3 inch .....	\$ .40	\$3.00
4 " .....	.60	5.00
Standards .....	\$3.00 to 5.00	



**NEPENTHES.** W. Tropical pitcher plant. (Fly- Trap).  
**mastersii.**  
**maxima.** (curtisii) Largest species.

3 inch pots.....	\$3.00
4 " " .....	5.00
5 to 6 inch pots	\$7.00 to 10.00

### morganiae.

3 inch pots.....	\$ 4.00
4 " " .....	6.00
5 to 6 inch pots	\$10.00 to 15.00

**morganiae superbum.**

**patersonii.**

**rafflesiana.**

**williamsii.**

3 inch pots.....	\$ 4.00
4 " " .....	6.00
5 to 6 inch pots	\$10.00 to 15.00

**NEPETA hederacea.** W. Variegated trailer..... 30c

**NEPHROLEPIS.** W. Fern. Ask for special list.  
 From 2¼ inch pots to 12 inch tubs and baskets.

<b>bostoniensis</b>	<b>scotti</b>
<b>bostoniensis compacta</b>	<b>Teddy, Jr.</b>
<b>norwoodi</b>	<b>whitmanni</b>
<b>roosevelti</b>	<b>verona</b>
<b>philippinensis</b>	

**NEPHTHYTIS liberica.** W. Very enduring house creeper giving an oriental effect.

2¼ inch pots.....	\$ .40	\$3.00
3 " " .....	.60	5.00
4 " " .....	.80	7.00
6 inch combinations on cork bark .....	\$3.00 to 4.00	

**picturata.** W. fol.

**triphylla.** W. Creeper. Finely cut leaf with silver variegation.

2¼ inch pots.....	\$ .60	\$ 5.00
3 " " .....	.80	7.00
4 " " .....	1.10	10.00

**NERINE sarniensis.** C. fol. Guernsey Lily. \$2.00 to \$3.00.

**NERIUM.** C. fl. (Oleander)

**odorum Alba plena.** (Double White) \$1.00 to \$2.00.

— **Bush.** 16 inch tubs, 5 to 6 feet high, 4½ to 5 feet spread.....\$20.00

**Pyramids.** 16 inch tubs. 7 to 7½ feet high, 2½ ft. stem, 3 ft. heads \$20.00

— **carneum.** Salmon.

— **lutescens.** Yellow. \$1.00 to \$2.00.

— **oleander fol. var.** \$1.50 to \$3.00.

— **rosea plena.** (Double Rose Pink) \$1.00 to \$2.00  
 Bush. 16 inch tubs, 6½ to 7 feet high, 5½ to 6 feet spread. \$20.00.

**Pyramids.** 16 inch tubs, 7 to 7½ feet high, 2½ ft. stem, 3 ft. heads \$20.00

**NERTERA depressa.** W. Coral plant \$2.00

**NIDULARIUM.** See Bromeliaceae, page 4.



**OLEA osmanthus fragrans.** W. fl.

3 inch pots.....	\$2.00
4 " " .....	4.00
5 " " .....	7.00

**OLEANDERS.** See Nerium, page 12.

**OPHIPOGON jaburan.** W. fol. and fl. 70c to \$1.50

**jaburan aureus variegatus.** \$1.00 to \$2.00.

**japonicus.** (Snake's Beard). Low dark green. 70c to \$1.50.

**ORANGES.** See Citrus, page 6.



**Julius Roehrs Co**  
At The Sign of The Tree

**Rutherford**  
New Jersey



CYPRIPEDIUMS

**ORCHIDS.** We have a small collection of these aristocrats of the flower kingdom of which the following are the leading genera. We shall be glad to receive your requests for quotations.

- |                 |               |
|-----------------|---------------|
| Brassia         | Lycaste       |
| Brasso-Cattleya | Maxillaria    |
| Calanthe        | Odontoglossum |
| Cattleya        | Oncidium      |
| Coelogyne       | Phalaenopsis  |
| Cymbidium       | Platyclinis   |
| Cypripedium     | Schomburgkia  |
| Dendrobium      | Selenipedium  |
| Epidendrum      | Sobralia      |
| Laelia          | Stanhopea     |
| Laelio-Cattleya | Vanilla       |

**PALMS.** See pages 11 and 14.  
**PANAX fruticosum victoriae.** W. fol.  
4 inch pots..... \$2.00  
5 " " ..... 3.00  
6 " " ..... \$5.00 to 6.00

**PANDANUS baptistii aureus.** W. fol.  
4 inch pots..... 1.50  
5 " " ..... 2.00  
6 to 8 inch pots, \$3.00 to 10.00  
**pacificus.** W. fol. Broadleaved and compact.  
\$2.00 to \$4.00.  
**sanderi.** 4 inch to 8 inch pots and 8 inch to 12 inch tubs. \$1.00 to \$12.00.  
**sanderi roehrsiana.** Our own introduction. Even smallest sizes show attractive golden stripe. 4 inch pots at \$2.00 up to specimens in tubs, \$100.00.  
**stenophyllus.** W. fol. Narrow leaves with thorns.  
**utilis.** \$5.00 to \$12.00.

**PANDANUS** (Continued). EACH TEN  
**veitchii.** W. fol. Best known. Green foliage with white stripes.  
2½ inch pots.....\$ .40 \$3.00  
3 " " ..... .60 5.00  
4 " " ..... .80 7.00  
5 " " ..... 1.10 10.00  
6 " " ..... \$1.50 to 2.00  
7 " " ..... 3.00  
8 " " ..... \$4.00 to 5.00  
8 " " ..... 6.00 to 8.00  
Specimens ..... 10.00 to 15.00

**PANICUM americanum.** W. White, green and lavender variegated grass.  
2¼ inch pots..... \$ .30 \$2.00  
3 " " ..... .50 3.00

**PASSIFLORA coerulea grandiflora.** W. \$2.00 to \$4.00  
**pfordtii.** W. Blue Passion Flower.  
3 to 6 inch pots, \$1.00 to \$5.00  
Baskets and  
Pyramids ..... 4.00 to 6.00  
**quadrangulais variegata.** Large yellow variegated leaves.  
3 to 5 inch pots, \$1.00 to \$4.00  
**racemosa.** W. Red Passion Flower.  
3 to 6 inch pots, \$1.00 to \$5.00  
**tacsonia latifolia.** W. An unusual leaf formation. \$1.50 to \$3.00.

**PAULLINIA thalictrifolia.** W. Climber. Dainty fern-like foliage similar to maiden hair.  
3 to 5 inch pots, \$2.00 to \$4.00

**PAVONIA multiflora.** W. fl. \$2.00 to 4.00

**PELARGONIUM capitatum.** C. fl. Sweet scented varieties. \$1.00 to \$2.00.  
**denticulatum** Dr. Livingston  
**graveolens roseum** (rose)  
**limoneum** (Lemon)  
**odoratissimum** (nutmeg)  
**quercifolium** (Oakleaved)  
**vitifolium** (Balm)

**grandiflorum.** (Martha Washington Geraniums)  
In 4, 5 and 6 inch pots during Spring at market price in the following varieties:

- Easter Greeting
- Edith North
- Gardeners Joy
- German Glory
- Lucy Becker
- Pride of Ouedlinburg
- Prince Bismarck
- Springtime
- Swabian Maid

**peltatum.** See Bedding Plants, page 21.  
**zonale.** See Bedding Plants, page 21.

**PELLIONIA daveauana.** W. fol. Creeper. Bronzy olive green, green center.  
4 inch pots..... \$ .80 \$7.00  
**pulchra.** Blackish center and veins.  
4 inch pots..... .80 7.00



# Julius Roehrs Co

At The Sign of The Tree

Rutherford  
New Jersey



	EACH	TEN
PENTAS musaendoides. W. fl.	\$2.00.	
PEPEROMIA magnolifolia. W. fol.		
obtusifolia.		
2 1/4 inch pots.....	\$ .30	\$2.00
3 " " .....	.50	4.00
4 " " .....	.80	7.00
perucatti		
sandersi (arifolia argyrea). W. fol. Silver striped on gray leaf.		
2 1/4 inch pots.....	\$ .60	\$ 5.00
3 " " .....	.80	7.00
4 " " .....	1.10	10.00
5 " " .....	1.60	15.00
6 " " .....	2.10	20.00
velutina.		
PERISTROPHE angustifolia variegata. W. fl. Golden yellow foliage for vases.		
2 1/2 inch pots.....	\$ .40	\$3.00
4 " " .....	.60	5.00
PETREA volubilis. W. fol. Purple Wreath. Our most beautiful climber.	\$5.00 to \$10.00.	
PETUNIAS. See Bedding Plants, page 21.		
PHILODENDRON acuminata. W. fol. 70c to \$2.00.		
andreaum. Velvety bronze green.		
cordatum. Vine. Small heart shaped foliage.		
2 1/4 inch pots....	\$ .40-\$ .50	\$3.00-\$4.00
4 " " .....	.60- .80	5.00- 7.00
7 in. baskets, \$4.00 to \$5.00		
corsinianum. Large bronze.		
dubia. Deeply serrated. \$1.50 to \$4.00.		
fimbriata. Large cut leaf.		
gloriosum.		
lacerum. \$2.00 to \$5.00.		
pertusum (Monstera deliciosa). Mexican Bread-fruit.		
5 inch pots to 14 inch tubs .....	\$4.00 to \$50.00	
verrucosum. Velvety emerald green. \$3.00 to \$5.00.		

## PHOENIX CANARIENSIS

10 inch tubs, 5-5 1/2 feet high.....	\$14.00
12 " " 5 1/2-6 " " .....	20.00
14 " " 7-8 1/2 " " .....	30.00
16 " " 7 1/2-9 " " .....	36.00

## PHOENIX ROEBELINI

3 inch pots .....	\$ .70
4 inch pots, single.....	1.00
5 " " " .....	1.50
7 " " " .....	5.00
7 " " made up, 22-24 inches high ....	7.00
7 " tubs, " " 24-26 " " .....	8.00
14 " " single 60-66 " " .....	30.00
16 " " " 6-7 feet " " .....	50.00
16 " " made up 6-7 " " .....	60.00
18 " " single 6 1/2 " " .....	70.00
18 " " " 8-8 1/2 " " .....	100.00
20 " " single and made up, 8-9 feet high	150.00



PHOENIX ROEBELINI

	EACH	TEN
PHYMATODES irioides. W. Fern.		
PILEA muscosa. W. fol. (Artillery Plant) 30c to \$1.00.		
serpyllifolia. Finer foliage, low plant.		
PIPER magnificum. W. fol. Tall, dark metallic green. \$5.00 to \$7.00.		
nigrum. W. Climber. (Black Pepper) \$1.50 to \$2.00.		
ornatum. Tropical trailer, pink spots on silver foliage.		
2 1/4 inch pots.....	\$ .50	
PITCAIRNIA. See Bromeliaceae, page 4.		
PITTOSPORUM tobira. W. fol. (Japanese Pittosporum).		
4 inch pots.....	\$1.00	
6 " " .....	2.00	
tobira variegatum.		
4 inch pots.....	1.50	





# Julius Roehrs Co

At The Sign of The Tree

# Rutherford

New Jersey



	EACH	TEN
<b>PLATYCERIUM.</b> (Stag Horn Fern) C. fol. aethiopicum.		
on blocks .....	\$5.00 to	\$12.00
<b>alcicorne.</b> Best for cool temperature.		
5 to 6 inch pots, \$3.00 to	5.00	
on blocks .....	4.00 to	15.00
<b>grande.</b>		
<b>hillii.</b> .....	5.00 to	10.00
" <b>major.</b> .....	7.00 to	15.00
<b>majus.</b> Best commercial variety.		
3 inch pots.....	\$ 1.50	
5 to 6 inch pots,		
(on cork) .....	\$3.00 to	5.00
Blocks .....	4.00 to	15.00
Swans .....	4.00 to	5.00
<b>willinckii.</b>		
Blocks .....	5.00 to	12.00
<b>PLUMBAGO capensis.</b> W. fl. Blue flower.		
<b>coccinea.</b> W. fl. Red flower. \$1.50 to \$3.00.		
<b>POINCIANA gilliesii.</b> W. fl. Peacock flower. \$2.00 to \$3.00.		
<b>POINSETTIA pulcherrima.</b> W. Christmas flowering plant. We grow about 90,000 of these and have them in single plants in 2¼, 3 and 4 inch pots and in combinations in 4 inch to 12 inch pans and in tubs. For specific sizes and prices send for our Christmas price list.		
<b>Christmas Red</b>		<b>Oakleaf</b>
<b>Henrietta Ecke, double</b>		<b>Pink</b>
<b>Mrs. Paul Ecke</b>		<b>White</b>
<b>POLYPODIUM knightii.</b> C. Fern. Long fine fronds; pots and baskets...\$2.00 to \$10.00		
<b>mandaianum.</b> Bluish colored.		
<b>POLYSTICHUM tsus-sinense.</b> C. Fern. \$1.00 to \$1.50.		
<b>coriaceum.</b> \$2.00 to \$3.00.                      ?		
<b>POTHOS argyraeus.</b> W. Climber. Gray velvet leaf with silver edge and veins.		
2 inch pots.....	\$ .60	\$5.00
6 " on cork .....	3.00	
<b>aureus.</b> Very enduring.		
2¼ to 2½ inch pots.....	.40	3.00
3½ to 4 " " .....	.60-.80	5.00-7.00
<b>aureus Wilcoxi.</b>		
2¼ inch pots.....	.60	5.00
<b>PRIMULA obconica.</b> (Primrose). C. Winter and Spring flowering.		
5 inch .....	\$ .80	\$ 7.00
6 " .....	1.10	10.00
<b>malacoides eriksonii baby rose</b>		
<b>veris</b>		
<b>PTERIS.</b> (Table ferns). W.		
2¼ inch pots.....	\$ .20	
<b>alexandria</b>		
<b>rivertoniana</b>		
<b>tremula</b>		
<b>wilsonii</b>		
<b>victoria</b>		
<b>PUNICA granatum nana.</b> (Dwarf Pomegranate). C. fl. \$1.50 to \$3.00.		

C.—Cool House.

	EACH	TEN
<b>R</b> <b>EINECKIA carnea variegata.</b> C. fol. \$ .70 to \$1.50		
<b>RHODODENDRON Pink Pearl.</b> See Azaleas, page 3.		
<b>RHOEO discolor.</b> W. fol. 50c to \$1.00.		
<b>discolor vittata.</b> Gold stripes. \$1.50 to \$3.00.		
<b>RHYNCHOSPERMUM jasminoides.</b> (African Star Jasmine). W. fl. Fragrant white.		
3 inch pots.....	\$1.50	
4 " " .....	3.00	
5 " " .....	5.00	
6 " " .....	7.00	
<b>jasminoides variegatum.</b>		
<b>ROSA chinensis minima.</b> (Fairy Rose). C.		
<b>ROSES:</b> For the holiday season, Easter, Mother's Day, and Decoration Day, we have pot grown Roses: Ramblers in both bush and basket form from \$3.00 to \$10.00; Hybrid Teas and Baby ramblers from \$1.50 to \$2.50. These Roses will be listed in our Easter Price List which will be issued about a month to 6 weeks before Easter.		
<b>ROSMARINUS officinalis.</b> C. fl. 50c to \$3.00.		
<b>RUBUS reflexus pictus.</b> C. Climber. Rich velvety green, variegated silver and brown.		
3 inch pots.....	\$ 1.50	
4 " " .....	3.00	
5 " " .....	5.00	
6 " " .....	\$7.00 to	10.00
<b>RUELLIA portellae.</b> W. fol. 1.00 to 2.00		
<b>S</b> <b>AINTPAULIA amethyst.</b> C. fl.		
3 inch pots.....	\$ .80	\$ 7.00
4 " " .....	1.10	10.00
<b>ionantha.</b>		
3 inch pots.....	.80	7.00
4 " " .....	1.10	10.00
<b>kewensis.</b>		
3 inch pots.....	.80	7.00
4 " " .....	1.10	10.00
<b>supreme.</b> New Hybrids.		
<b>SALVIA.</b> See Bedding plants, page 21.		
<b>SANCHEZIA nobilis glaucophylla.</b> W. fl. and fol. Variegated yellow...\$3.00 to \$5.00		
<b>SANSEVIERIA Laurenti.</b> W. fol.		
3 in. pots, 3 leaves.....	\$ .40	\$ 3.00
4 " " 3 " .....	.50	4.00
5 " " 3-4 " .....	.60	5.00
5½ " " made up 3 plants	.80	7.00
5½ " " " " 4 " .....	1.10	10.00
6 " " " " 5 " .....	1.60	15.00
7 " pans, " " 7 " .....	2.20	20.00
8 " " " " 10 " .....	3.00	

In strawberry jars, \$2.00 and \$3.00.  
Other Sansevierias listed on page 20.

W.—Warm House.



# Julius Rehrs Co

At The Sign of The Tree

Rutherford  
New Jersey



	EACH	TEN
SAXIFRAGA ceratophylla. C. fol. sarmentosa. C. fl. 2 1/4 inch pots.....	\$ .30	\$2.00
SCHISMATOGLOTTIS calyptrata. W. fol. Silver foliage. neo-guineensis. Variegated yellow. roebelini. W. fol. Silver and green. 4 inch pots.....	\$3.00	
5 " " .....	5.00	
6 " " .....	7.00	
SCOLOPENDRIUM cristatum. (Hart's tongue). C. Fern. \$3.00 to \$5.00.		
SELAGINELLA caulescens. W. Fern. Hard, broad- leaved. 2 1/4 inch pots.....	\$ .60	\$5.00
3 " " .....	.80	7.00
cuspidata. Hard leaved, upright and finer. 2 1/4 inch pots.....	\$ .60	\$5.00
3 " " .....	.80	7.00
denticulata. (Lycopodium) 5 inch pans.....	\$ .80	\$7.00
emmeliana. Best known. 2 1/4 inch pots.....	\$ .40	\$3.00
3 " " .....	.60	5.00
3 " " .....	.80	7.00
kraussiana Brownii. Dainty, mosslike cushions. 2 1/4 inch pots.....	\$ .40	\$3.00
3 " " .....	.60	5.00
uncinata. Bluish creeper. \$1.00 to \$2.00		
wildenovii. Metallic blue climbing fern. 3 inch pots.....	\$2.00	
5 " " .....	4.00	
6 " " .....	7.00	
SINNINGIA barbata. W. fl. Metallic red. \$2.00 to \$4.00.		
SMITHIANTHA zebrina discolor. W. fl. Velvety green leaves, dark red center, red and yel- low flower. \$2.00 to \$3.00.		
SOLANDRA spectabilis. W. fl. Half climber. Gigantic fragrant, creamy flower. \$2.00 to \$4.00.		
SOLANUM capsicum annuum. W. Peppers. 4 inch pots.....	\$ .60	\$5.00
5 " " .....	.80	7.00
capsicum abbreviatum Acorn. Compact, early. — Bird's Eye. Tiny fruit, smallest of all peppers. — Celestial. Medium size, pointed, the size of a cherry. — Christmas Chameleon. fasciculatum. Long Hot Peppers. pseudo-capsicum clevelandi. (Christmas Cher- ries). Red or yellow. 5 1/2 inch pots.....	\$ .80	\$ 5.00
6 " " .....	1.10	10.00
6 1/2 " " .....	1.60	15.00
SPARMANNIA africana. W. fl. Indoor Linden. \$2.00 to \$5.00.		

	EACH	TEN
STENOTAPHRUM americanum. (St. Augustine Grass) W. fol. 2 1/2 inch pots.....	\$ .30	\$2.00
3 " " .....	.36	3.00
STIGMAPHYLLON ciliatum. W. Golden Butterfly vine. 3 inch pots.....	\$ 1.50	
4 " " .....	3.00	
5 " " .....	5.00	
6 " " .....	\$7.00 to 10.00	
STEPHANOTIS floribunda. W. Flowering climber. Exotic white fragrant flowers. 3 inch pots.....	\$ 1.50	
4 " " pyramids.....	3.00	
5 " " " .....	5.00	
6 " " " .....	\$7.00 to 10.00	
STRELITZIA augusta. W. fl. Blue and white. 8 to 10 in. tubs, \$10.00 to \$20.00 reginae. W. fl. Bird of Paradise. Blue and Orange flowers. 7 in. pots to 14 in. tubs, \$10.00 to \$50.00		
STREPTOSOLEN jamesoni. C. fl. 3 inch pots.....	\$ .70	
6 " " .....	3.00	
STROBILANTHES dyerianus. W. fl. Wonderful metallic blue and red foliage. \$2.00 to \$4.00.		
SUCCULENTS. See Cactus and Succulent list, pages 18-20.		
SWAINSONA galegifolia albiflora. W. fl. \$1.00 to \$3.00. galegifolia rosea. W. fl. \$1.00 to \$3.00		



<b>F</b> ALINUM patens variegata. W. fl. Fleshy white variegated foliage. 2 1/4 inch pots.....	\$ .30
THUNBERGIA alata. W. fl. (Black Eyed Susan). Blue flower. Bush. erecta. 3 inch pots.....	\$1.50
4 " " .....	3.00
5 " " .....	5.00
harrisii. \$3.00 to \$7.00. laurifolia. Blue flowering climber. 3 inch pots.....	\$1.50
4 " " .....	3.00
5 " " .....	5.00
6 " " .....	7.00
TIBOUCHINA semidecandra. W. fl. Velvety foliage with a large dark blue flower. 3 to 6 inch pots, \$1.50 to \$7.00	
TILLANDSIA. See Bromeliaceae, page 5.	
TRACHELOSPERMUM jasminoides. See Rhynchos- permum, page 15.	



EACH TEN

**TRADESCANTIA.** (Wandering Jew). C. fol.  
*albiflora aureo-vittata.* Variegated yellow and green.  
*albo-vittata.* Variegated white and green.  
 4 inch pots..... \$ .30 \$2.50  
*aurea.* All yellow.  
*dracaenaefolia.* Largest, for vases. Marked chocolate. 70c to \$2.00.  
*fuscata.* Broad hairy. \$1.00 to \$2.00.  
*hirtum brachiphyllum.*  
 2 to 3 inch pots, .30 to .70  
*lanceolata.* Large green.  
*reginae (Dichorisandra).*  
 2¼ inch pots..... \$3.00  
 3 " " ..... 5.00  
*somaliense.* Low and hairy.  
 2¼ inch pots..... \$ .20  
**TRICHOSTIGMA peruvianum.** W. fl.  
**TULIPS.** In pans. Early and Darwin. In flower winter and early spring.



**ANILLA planifolia variegata.** W. fl.  
 2¼ inch pots..... \$1.00  
 6 " " on cork..... 3.00  
 Baskets and pyramids.... 5.00

**VERBENAS.** See Bedding plants, page 21.

**VINCA major.** W. Flowering trailer, for vases.  
 4 inch pots..... \$ .80 \$7.00

**VITIS (Cissus) rhombifolia.** W. fol.  
 2¼ in. pots..... \$ .40 \$3.00  
 3 " " ..... .60 5.00  
 5 " " ..... .80 7.00  
 6 " " pyramids, 3 ft. 3.00  
 10 " tubs, " 4 " 7.00



**ANTHOSOMA lindeni.** W. fol. Variegated.



**UCCA recurvata gloriosa.** C. fol.  
 5 to 6 inch pots, \$3.00 to \$4.00  
 10 inch tubs..... 10.00



**ZEBRINA pendula.** W. fol. Silver and red Wandering Jew.  
 4 inch pots..... \$ .30 \$2.50  
*quadricolor.* Green, silver, red and white.  
 4 inch pots..... \$ .60 \$5.00  
*purpusii.* Red.  
 4 inch pots..... .30 2.50



**NEPENTHES (Pitcher Plant)**  
See Page 12.



EACH TEN  
**CACTUS AND SUCCULENTS**

The varied uses of both Succulents and Cactus are increasing every year. Besides those listed below, we have many other varieties which can be quoted on upon request. Many of these are used in so-called Japanese Gardens and in made up dishes, and for this reason we have thrown the two classes together. We do not list the gardens or made up dishes as they come in so many styles and shapes that space does not permit a separate listing, but they range in price from \$2.00 to \$30.00. To make a selection we would suggest a visit to our Greenhouses to pick out the type that suits your fancy.



**A** **GAVE americana marginata variegata**  
(5A302) .....\$1.00 to \$1.50

*attenuata* (5A304) ..... .50 to 3.00  
*sisalana* (5A303) .....  
*victoriae reginae* (5A301)..... .70 up

**ALOE arborescens** (5A423).

2¼, 3 and 6 inch pots, \$.40, \$.70 and 3.00

*brevifolia* (5A428)..... .40 up  
*ciliaris* (5A424) ..... .30 up  
*ferox* (5A405) ..... .50 up  
*hanburiana* (5A406) ..... .70 up  
*hereroensis* (5A407) ..... .50 up  
*humilis* (5A427) ..... .40 up  
*longistyla* (5A409) ..... .70 up  
*microstigma* (5A410) ..... .50 up  
*schlechteri* (5A416) ..... .50 up  
*speciosa* (5A414) ..... .70 up  
*spinosissima* (5A426) ..... .40 up  
*variegata* (5A418) ..... .50 up

**ANACAMPSEROS filamentosa** (5A601).... .50 up  
*lanceolata* (5A602) ..... .70 up

**ARGYRODERMA testiculare** (5A901) ..... .50 up

**ARIOCARPUS retusus** (5A1001) ..... .30 up  
*trigonus* (5A1002) ..... .50 up

**ASTROPHYTUM asterias** (5A1301) ..... .50 up  
*myriostigma* ..... .50 up  
*myriostigma tetragona* (5A1302) ..... .50 up  
*ornatum Mirbelli* (5A1304) ..... .50 up  
*potosina* (5A1303) ..... .50 up



**B** **RYOPHYLLUM truncatum** (5B101)  
..... .30 up



**C** **EPHALOCEREUS hoppenstedtii** (5C402)  
..... 1.00 up

*palmeri* (5C401) ..... .50 up  
*senilis* (5C403) (old man cactus)..... .50 up

fl.—Flowering plants.

EACH TEN

**CEREUS azureus** (5C301) .....\$ .20 up  
*geometrizzans* (5C303) ..... .30 up  
*hassleri* (5C304) ..... .20 up  
*marginatus* (5C305) ..... .30 up  
*nycticalus* (5C306) ..... .30 up  
*pruinosis* (5C308) ..... .30 up  
*rhodacanthus* (5C309) ..... .30 up  
*spachianus* (5C310) ..... .40 up  
*straussii* (5C311) ..... .70 up

**CEROPEGIA bulbosa.** (5C603)

*fusca* (5C601)  
*woodii.* (String of Hearts) (5C602)  
2¼ and 3 inch pots, \$.70 and 1.00  
4 inch Strawberry Jars..... 2.00

**CHEIRIDOPSIS cigarettifera** (5C801)..... .30 up

**CORYPHANTHA asterias** (5C901) ..... .40 up  
*grandiflora* (5C902) ..... .50 up  
*valida* (5C903) ..... .70 up  
*werdermannii* (5C904) ..... .50 up

**COTYLEDON orbiculata** (5C1002) \$ .20 and .30

**CRASSULA arborescens.** (5C1510)

2¼, 3 and 6 inch pots...\$.14 to 2.00  
12 inch tubs, specimens..... 15.00

*domestica* (5C1516) ..... .20 up  
*falcata* (Rochea) (5C1502).....\$.30 and .50  
*lycopodioides* (5C1512) ..... .14 up  
*obvolata* (5C1514) ..... .20 up  
*pebra* (5C1505) ..... .14 up  
*perfoliata* (5C1506) ..... .20 up  
*perfossa* (5C1508) ..... .14 up  
*pseudolycopodioides* (5C1513) ..... .14 up  
*punctata* (5C1517) ..... .50 up



**D** **ASYLIRION spec.** (5D101)..... .30 up

**DENDROIDEUM cristata** (5D401) ..... .30 up

**DUVALIA radiata** (5D1101) ..... .50 up



**E** **CHEVERIA de smetiana** (5E501) ..... .30 up

*glauca* (5E510) ..... .30 up  
*macrophylla* (5E502) ..... .50 up  
*metallica* (5E503) ..... .30 up  
*secunda glauca* (5E509) ..... .30 up  
*setosa* (5E505) ..... .30 up

**ECHINOCACTUS beguinii variegata**

*senilis* (5E201) .....\$ .70 up  
*electracanthus* (5E204) ..... .50 up  
*grusonii* (5E205) ..... .50 up  
*ingens* (5E215) ..... .50 up  
*kurtzianus* (5E207) ..... .70 up  
*maassii* (5E208) ..... .40 up

fol.—Foliage plants.



# Julius Roehrs Co

At The Sign of The Tree

# Rutherford

New Jersey



	EACH	TEN
ECHINOCEREUS blankii (5E301)	\$ .50 to	1.00
de Laetii (5E302)	.....	.50 up
engelmannii (5E303)	.....	.50 up
pectinatus rigidissimus (5E304)	.....	.50 up
ECHINOPSIS aurea (5E401)	.....	.70 up
EPIPHYLLUM truncatum (5E703)		
2 1/4 inch pots	.....	.50 up
grafted standards, 5-6 in.	\$4.00 to	5.00
EUPHORBIA caput medusae (5E909)	.....	.70 up
cereiformis (5E911)	.....	.70 up
jacquinaeflora (5E912)		
lactea (5E904)	\$ .70 to	1.50
mamillaris (5E902)	.....	.14
splendens. (Crown of Thorns) (5E 905)	.70 to	\$1.50.
9 " tubs, \$5.00, \$6.00 and	8.00	
9 " jardiniere	8.00 to	10.00
14 " tubs, specimens	50.00	
tirucalli (5E907)	.....	.70 up



FUCARIA tigrina (5F101) ..... .70 up

FENESTRARIA rhopalophylla (5F201) .... .70 up



ASTERIA brevifolia (5G102)..... .50 up

  disticha (5G103) ..... .50 up

  marmorata (5G107) ..... .50 up



HAWORTHIA aloefolia (Cymbiformis) (5H206) ..... .70 up

  arachnoides (5H201) ..... .70 up

  hilifera (5H204) ..... .70 up

  margaritifera (5H202) ..... 1.00 up

  reticulata (5H205) ..... .70 up

HEURNIA schneideriana (5H401) ..... 1.00 up



KALANCHOE crenata (5K101) .... .20 up

  flammea (5K102) ..... .20 up

  globulifera coccinea (Blossfeldiana) (5K105)

    2-5 inch pots ..... \$ .20 to 1.50

  tubillosa (5K104) ..... .20 up

KLEINIA acanlis (5K202) ..... .50 up

  articulatus (5K203) ..... .50 up

  repens (5K201) ..... .30 up

  tropaeolifolius (5K204) ..... .30 up



LITHOPS (Living Stones).

  Comptonii (5L406) ..... \$ .70 up

  eberlanzii (5L401) ..... 1.00 up

  lesliei (5L402) ..... 1.00 up

  mandtii (5L403) ..... .70 up

  pseudotruncatella (5L404) ..... .70 up

  terricolor (5L405) ..... 1.00 up



AMMILLARIA bicolor (5M101) .. .70 up

  caput medusae (5M104) ..... .50 up

  hahniana (5M107) ..... .70 up

  schiedeana (5M111) ..... .70 up

MESEMBRYANTHEMUM aguinum

  (5M510) ..... .30 up

  alba (5M507) ..... .30 up

  cordifolium (5M505) ..... .20 up

  crystallinum (5M503) ..... .20 up

  deltoides (5M502) ..... .20 up

  echinatum (5M511) ..... .30 up

  edule (5M504) ..... .20 up

  linguina (5M506) ..... .30 up

  uncinatum (5M508) ..... .30 up

  vilpinum (5M512) ..... .30 up



NOPALEA dejecta (5N101) ..... .30 up

NYCTOCEREUS serpentinus (5N102) ..... .30 up



OBREGONIA denegrii (5O201) ..... .70 up

OPUNTIA brasiliensis (5O505) ..... .20 up

  cylindrica (5O518) ..... .30 up

  echinocarpa (5O515) ..... .30 up

  fragilis (5O516) ..... .30 up

  leptocaulis (5O508) ..... .20 up

  monocantha (5O504)

  indica

    2 1/4 and 3 inch pots, \$ .14 and .30

  monocantha, variegata ..... .30 up

  orpetii (5O519) ..... .30 up

  rafinesquii (5O501) ..... .30 up

  tetracantha (5O514) ..... .30 up

  ursina (5O517) ..... .30 up



PACHYPHYTUM bracteatum

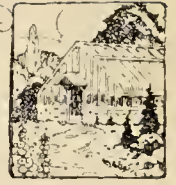
  (5P101) ..... .50 up

  compactum (5P102) ..... .70 up

PEDILANTHUS planifolius (5P402) ..... .14 up

  " " variegata .... .14 up

PERESKIA aculeata (5P201) ..... .50 up



**PHYLLOCACTUS.**

In the following varieties.....\$ .70 up

- Adonis (5P1004)
  - Agathe (5P1020)
  - Aida (5P1015)
  - Argus (5P1007)
  - Bella (5P1001)
  - Brilliant (5P1010)
  - Cleopat (5P1018)
  - Cooperi (5P1006)
  - Deutsche Zauberin (5P1012)
  - Gloria (5P1008)
  - Latona (5P1002)
  - Lilacinus (5P1016)
  - Magenta (5P1013)
  - Miranda (5P1019)
  - Montezuma (5P1009)
  - Neckla (5P1003)
  - Orion (5P1017)
  - Pfau (5P1014)
  - Resetta (5P1021)
  - Rose perfection (5P1005)
  - Sacuntala (5P1011)
- PILOCEREUS celsianus** (5P1101) ..... .50 up  
**chrysacanthus** (5P1102) ..... .50 up  
**fossulatus** (5P1103) ..... .70 up
- PLEIOSPILOS holusii** (5P1301) ..... .50 up  
**nelii** (5P1302) ..... .70 up
- PORTULACARIA afra** (5P1401) ..... .14 up



**APHION diversicata** (5R101) ..... .40 up

- RHIPSALIS cassytha** (5R302) ..... 2.00 up
- heteroclada** (5R303) ..... 2.00 up
- pigmatica zanzibaria** (5R304)..... 2.00 up
- rhombea** (5R301) ..... .30 up
- schottmuelleri** (5R305) ..... 2.00 up

- ROCHEA coccinea** (5R701) *Crassula rubicunda*).  
 2 1/4 and 3 inch pots, \$ .20 and .30  
**falcata** (*Crassula falcata*) (5C1502).... .30 up



**SANSEVIERIA humilis** (5S204) - .30 up  
**pumila** (5S208) .....\$ .70 to 2.00  
**laurentii** (5S201) See Sansevierias,  
 page.....

- para** (5S205) ..... 2.00 up
- subspecita** (5S207) ..... 2.00 up
- sulcata** (5S202)
- Zeylanica** (5S206) 2 1/4 inch pots..... .20 up
- “ **Mandaianum** (5S203)

- SEDUM adolphi** (5S609) ..... .30 up
- dasyphyllum** (5S602) ..... .20 up
- lineare** (5S606) ..... .20 up
- palmeri** (5S610) ..... .20 up
- sarmentosum** (5S614) ..... .20 up
- sexangulare** (5S605) ..... .20 up
- trelesi** (5S612) ..... .20 up

- SEMPERVIVUM arachnoideum** (5S702).... .20 up
- cooperi** (5S705) ..... .20 up
- haworthia** (5S706) ..... .20 up
- SENECA longipes** (5S801) ..... .14 up
- STAPELIA asterias** (5S1001) ..... .30 up
- variegata** (5S1007) ..... .20 up



**UMBILICUS chrysanthus** (5U101) \$ .50 up



**UCCA aloifolia** (5Y101) ...\$2.00 to 3.00  
 “ **variegata** (5Y102)  
**filamentosa** (5Y103)



**ZYLOCACTUS ackermanni.** (Red Flower)  
 (5Z101).

2 1/4 inch pots..... .50 up  
 in tubs .....\$7.00 to 15.00



**BEDDING PLANTS**

Certain Bedding plants are available throughout the year, but others are grown specially for the Spring season at which time we issue a special circular. The following is a list of the plants we grow at that time, but to obtain prices and sizes, please ask for special list.

**ACHYRANTHES**

**AGERATUM**

**ALOYSIA citriodora** (Lemon Verbena).

**ALTERNANTHERA**, yellow and red.

**ALYSSUM**, sweet.

**AMARANTHUS.** Molten Fire.

**ANTIRRHINUM.** (Snap Dragon).

**ASTERS**

**BEGONIA semperflorens.** See general list, page 4.

**CANNAS, President**

King Humbert  
 Wyoming



**COLEUS**

Beauty of Lyon	Olympic
Bethwith Gem	Rehneltianus superbus
Butterfly	Robert Roy
Firebrand	Rockville Centre
Gettysburg	Salvador
Golden Bedder	Trailing Queen
Harding	Verschaffelti
	Victory

**DAHLIA**

<b>FUCHSIA</b> Hybrida	
Black Prince	Pride of Orion
Lavender Beauty	Irwins Giant Pink
Little Beauty	Speciosa
Lord Byron	Single Lavender
	Trophee

**GERANIUM.** See Pelargonium, page 21.

**GERMAN IVY** (Senecio mikanioides)

**HELIOTROPE** Centefleur  
Madame Bruant  
Royal Fragrance

**IREFINE** Lindeni

<b>LANTANAS</b>	
Delicatissima	Orlando
Jacob Schultz	Radiation
M. Schmidt	Mixed Varieties

**LOBELIA** Emperor William  
Erinus Crystal Palace Compacta  
Pendula Sapphire

**MARIGOLD**

**PELARGONIUM** Capitatum)  
Grandiflorum ) See page 13.  
Hortorum Madame Salleroi  
peltatum. Ivy Geranium.  
zonale. Geranium.  
Boston Happy Thought  
Fiat  
Madame Buchner  
Madame Landry  
Beautee Poitevine  
Radio Red  
Ricard  
S. A. Nutt  
Sensation

**PETUNIAS.** Bedding, Balcony and Double.

**SALVIA**

**VERBENA** Beauty of Oxford.  
Ellen Willmot  
Mayflower

**VINCA** rosea  
Major

**VIOLA** tricolor, (Pansies).

**ZINNIA** elegans. fl. pl.



In the arrangement of a small greenhouse, it is always advisable to have a few orchids which can very easily be grown in a house of this kind. In as much as Orchids have very unattractive foliage, it is always best for the inbetween seasons, to have a collection of highly colored tropical plants to add to the attractiveness of your conservatory. Let us submit suggestions.



**Julius Roehrs Co**  
At The Sign of The Tree

**Rutherford**  
New Jersey



# GENERAL LIST OF NURSERY STOCK



## NURSERY STOCK

Realizing the difficulties of the average person to make a selection of plants for his garden, we have what we call a "Nursery Shop." This is a lath enclosed structure covering about a quarter of an acre, into which, as soon as the frost is out of the ground, we bring together plants from the field, placing them in bins with the roots protected with peat moss and ready to be lifted out of the bin and planted in the garden.

We have now operated this for two years and find that the stock that is handled in this manner gives far better satisfaction to the buyer than stock that is dug directly from the field.

And, of course, you can well realize that it is simpler and easier to make a selection out of a quarter of an acre than to walk over 100 acres.



EACH TEN

<b>ABIES Brachyphylla. (Homolepis) (Fir).</b>		
2	to 2½ feet high.....	\$ 5.00 \$ 40.00
2½	to 3 " " .....	6.25 50.00
3	to 3½ " " .....	7.50 60.00
3½	to 4 " " .....	10.00 80.00
<b>Concolor. (White Fir).</b>		
1½	to 2 feet high.....	3.75 30.00
2	to 2½ " " .....	5.00 40.00
2½	to 3 " " .....	6.25 50.00
3	to 4 " " .....	7.50 60.00
4	to 4½ " " .....	10.00 80.00
4½	to 5 " " .....	12.50 100.00
<b>Douglasi. (Douglas's Fir).</b>		
2½	to 3 feet high.....	3.75 30.00
3	to 3½ " " .....	5.00 40.00
3½	to 4 " " .....	6.25 50.00
4	to 4½ " " .....	7.50 60.00
4½	to 5 " " .....	8.75 70.00
5	to 6 " " .....	11.25 90.00
6	to 7 " " .....	15.00 120.00
7	to 8 " " .....	18.75 150.00
<b>ACER Platinoides. (Norway Maples).</b>		
10 to 12 feet high, 1½ to 1¾ in. cal. ....		4.00 35.00
<b>Polymorphum.</b>		
5 to 6 feet high x 5 to 6 feet		20.00 160.00
6 to 7 " " x 6 to 7 "		40.00 320.00
7 to 8 " " x 7 to 8 "		60.00 480.00
<b>— Atropureum Saguineum.</b>		
2 to 2½ feet high, 7 to 8 inch pots .....		5.00 40.00
<b>AMPELOPSIS Quinquefolia. (Virginia Creeper or Woodbine).</b>		
5 inch pots.....		.70 5.00
<b>Veitchii (Boston or Japanese Ivy)</b>		
4 inch pots.....		.70 5.00
<b>ANDROMEDA Catesbaei. (See Leucothoe).</b>		
<b>Floribunda.</b>		
12 to 15 inch spread.....		2.50 20.00
15 to 18 " " .....		3.10 25.00
18 to 24 " " .....		5.00 40.00
1½ to 2 feet " " .....		7.50 60.00
2 to 2½ " " .....		10.00 80.00
2½ to 3 " " .....		12.50 100.00
3 to 3½ " " .....		15.00 120.00
<b>Japonica.</b>		
15 to 18 inches high.....		2.50 20.00
18 to 24 " " .....		3.75 30.00
2 to 2½ feet " " .....		5.00 40.00
2½ to 3 " " .....		7.50 60.00
3 feet high, specimens.....		10.00 80.00
<b>ARALIA Spinosa. (Hercules Club).</b>		
10 to 12 feet high.....		20.00 160.00
<b>AZALEA Amoena.</b>		
8 to 10 inch spread.....		\$ 1.50 \$ 12.00
10 to 12 " " .....		2.00 15.00
12 to 15 " " .....		2.50 20.00
<b>Calendulacea. (Flame Azalea).</b>		
1½ to 2 feet high, clumps....		3.10 25.00

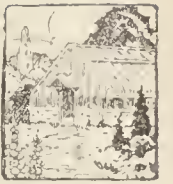




# Julius Roehrs Co

At The Sign of The Tree

Rutherford  
New Jersey



AZALEA (Continued)	EACH	TEN
<b>Kaempferi.</b>		
15 to 18 inches high.....	2.50	20.00
24 to 30 " " .....	5.00	40.00
<b>Mollis, Miss Louisa Hunnewell.</b>		
15 to 18 inches high.....	3.75	30.00
— <b>Mixed Varieties.</b>		
12 to 15 inches high.....	1.90	15.00
15 to 18 " " .....	2.50	20.00
18 to 24 " " .....	5.00	40.00
<b>Mucronulatum.</b>		
12 to 15 inches high.....	2.50	20.00
<b>Pontica Hybrids. (Hardy Ghent Azaleas).</b>		
15 to 18 inches high.....	2.50	20.00
18 to 24 " " .....	3.75	30.00
2 feet " " .....	5.00	40.00
2½ " " .....	6.25	50.00
3 " " .....	8.75	70.00
3½ " " .....	12.50	100.00
<b>Vaseyi.</b>		
2 to 2½ feet high.....	5.00	40.00
2½ to 3 " " .....	6.25	50.00
<b>Viscosa.</b>		
18 to 24 inches high.....	2.50	20.00
<b>Yodogawa.</b>		
18 to 24 inches high.....	3.50	30.00



<b>BERBERIS Thunbergii.</b>		
15 to 18 inches high..	.15	1.20
1½ to 2 feet " ..	.25	2.00
2 to 2½ " " ..	.40	3.00

<b>BUXUS Sempervirens. (Boxwood).</b>		
Bush Form.		
12 to 14 in. high, 6 to 8 in. spr.	.90	7.00
15 to 18 " " 12 to 14 " "	1.90	15.00
18 to 21 " " 14 to 15 " "	2.50	20.00
21 to 24 " " 15 to 18 " "	3.75	30.00
24 " " 18 to 21 " "	5.00	40.00
24 " " 24 " "	6.25	50.00
Pyramids.		
24 to 28 in. high, 15 to 16 in. sp.	5.00	40.00
28 to 32 " " 16 to 18 " "	6.00	50.00
32 to 36 " " 18 to 20 " "	7.50	60.00

**CATALPA Bungei.**  
5 to 6 feet stem, 5 year heads \$ 1.50 \$ 10.00

**CHAMAECYPARIS.** See Retinospora, page 26.

**CHERRY.** See Prunus, page 26.

**CRAB APPLE.** See Malus, page 25.

**CRATAEGUS Oxycantha. (English Hawthorne).**

Pauls Scarlet, single white.		
6 to 8 feet high.....	6.25	60.00
8 to 10 " " .....	7.50	70.00

B. & B. extra charge.

<b>CRYPTOMEREA Japonica Lobbi Compacta.</b>		
(Japanese Cedar).		
2 to 2½ feet high.....	3.10	25.00
3½ to 4 " " .....	3.75	30.00
4 to 5 " " .....	6.25	50.00
5 to 6 " " .....	8.75	70.00
6 to 7 " " .....	11.25	90.00

<b>ENKIANTHUS Campanulatus. (Redvein Enkianthus).</b>		
2 to 2½ feet high.....	3.00	24.00

	EACH	TEN
<b>EUONYMUS Alatus. (Cork Bark Euonymus).</b>		
3½ to 4 feet high.....	1.25	10.00



**AGUS Sylvatica Purpurea. (Purple Leaved Beech).**  
12 to 16 feet high,  
specimens ...\$120.00 to \$200.00

<b>FRAXINUS Americana. (Ash).</b>		
15 to 20' high, 2 to 2½" caliper	7.50	60.00

**FRUIT Trees. (Trained) Specimens.**

Double Horizontal Cordons.

— Apples .....	35.00
Baldwin	
Delicious	
Duchess of Oldenburg	
Fameuse	
McIntosh	

— Pears .....	35.00
Bartlett	
Beurre d'Anjou	
Flemish Beauty	

Single U Forms.

— Apples .....	20.00
Baldwin	
Duchess of Oldenburg	
McIntosh	

— Pears .....	20.00
Bartlett	
Beurre d'Anjou	
Beurre Bosc	
Flemish Beauty	

Vertical Cordon.

— Apples .....	\$15.00
Baldwin	
Delicious	
McIntosh	
R. I. Greening	

— Pears .....	15.00
Bartlett	
Beurre Bosc	
Duchess d'angouleme	
Duchess Herode	

Four Armed Palmette Verrier.

— Apples .....	35.00
Baldwin	
Delicious	
McIntosh	

— Pears .....	35.00
Bartlett	
Flemish Beauty	

Fan Shape.

— Apples .....	30.00
Fameuse	

— Cherries .....	50.00
Black Tartarian	

— Nectarine .....	50.00
Lord Napier	

— Apricot .....	50.00
Golden	

— Plum .....	35.00
Tosker	



# Julius Roehrs Co

At The Sign of The Tree

Rutherford  
New Jersey



	EACH	TEN
<b>INKGO Biloba.</b> (Saliburia adiantifolia) Maiden Hair Tree.		
8 to 10' high, 1 to 1 1/4" cal.	5.60	45.00
10 to 12' " 1 1/2 to 1 3/4" "	7.50	60.00
12 to 15' " 1 3/4 to 2" "	10.00	80.00
<b>HYDRANGEA Paniculata grandiflora.</b>		
3 to 4 feet high.....	1.50	10.00
4 to 5 " ".....	2.50	20.00
Standard or tree, 20 in. stem	3.50	30.00
<b>ILEX Crenata (Fortunei).</b> (Japanese Holly).		
3 feet high.....	12.50	100.00
3 1/2 " ".....	14.00	120.00
4 " ".....	18.75	150.00
<b>Opaca.</b> (American Holly).		
18 to 24 inches high.....	3.00	25.00
<b>JUNIPERUS.</b>		
<b>Chinensis.</b> (Chinese Juniper).		
2 1/2 to 3 feet high.....	3.75	30.00
3 to 3 1/2 " ".....	5.00	40.00
3 1/2 to 4 " ".....	6.25	50.00
<b>— Albo Variegata.</b>		
1 to 1 1/2 feet high.....	2.50	20.00
1 1/2 to 2 " ".....	3.75	30.00
<b>Chinensis Columnaris.</b> (Column Juniper).		
1 1/2 to 2 feet high.....	\$ 2.50	\$ 20.00
2 to 2 1/2 " ".....	3.10	25.00
2 1/2 to 3 " ".....	5.00	40.00
3 to 3 1/2 " ".....	6.25	50.00
<b>— Fortunei (sphaerica).</b>		
1 to 1 1/2 feet high.....	1.90	15.00
1 1/2 to 2 " ".....	2.50	20.00
2 to 2 1/2 " ".....	3.10	25.00
2 1/2 to 3 " ".....	3.75	30.00
<b>— Japonica.</b>		
1 1/2 to 2 feet high.....	3.75	30.00
2 1/2 to 3 " ".....	6.25	50.00
<b>— Aurea.</b>		
12 to 15 inch spread.....	2.50	20.00
<b>— Keteleeri.</b>		
1 1/2 to 2 feet high.....	2.50	20.00
2 to 2 1/2 " ".....	3.75	30.00
3 to 3 1/2 " ".....	6.25	50.00
6 to 7 " ".....	10.00	80.00
7 to 8 feet high, specimens	12.50	100.00
8 to 9 " " ".....	18.75	150.00
9 to 10 " " ".....	25.00	200.00
<b>— Pfitzeriana.</b>		
1 to 1 1/2 feet high.....	2.50	20.00
1 1/2 to 2 " ".....	3.10	25.00
2 to 2 1/2 " ".....	3.75	30.00
2 1/2 to 3 " " specim's	5.00	40.00
3 to 3 1/2 " " ".....	6.25	50.00
3 1/2 to 4 " " ".....	8.75	70.00
4 to 4 1/2 " " ".....	11.25	90.00
4 1/2 to 5 " " ".....	15.62	125.00
5 to 6 " " ".....	18.75	150.00
<b>Communis Depressa.</b>		
2 to 2 1/2 feet spread.....	2.50	20.00
2 1/2 to 3 " ".....	3.10	25.00

	EACH	TEN
<b>Communis Depressa (Continued).</b>		
<b>— Aurea.</b> (golden prostrate Juniper).		
2 to 2 1/2 feet spread.....	2.50	20.00
2 1/2 to 3 " ".....	3.10	25.00
3 to 3 1/2 " ".....	3.75	30.00
<b>— Hibernica.</b> (Irish Juniper).		
2 to 2 1/2 feet high.....	1.90	15.00
2 1/2 to 3 " ".....	2.50	20.00
<b>Excelsa Stricta.</b> (Spiny Greek Juniper).		
15 to 18 inches high.....	1.90	15.00
18 to 20 " ".....	2.50	20.00
<b>Sabina.</b> (Savin Juniper).		
15 to 18 inches high.....	1.50	12.00
<b>Tamariscifolia.</b> (Tamarisk leaved Juniper).		
1 1/2 to 2 feet spread.....	2.50	20.00
2 to 2 1/2 " ".....	3.75	30.00
2 1/2 to 3 " ".....	5.00	40.00
3 to 3 1/2 " ".....	6.25	50.00
3 1/2 to 4 " ".....	7.50	60.00
<b>Scopulorum.</b> (Sabina Scopulorum).		
2 1/2 to 3 feet high.....	\$ 6.25	\$ 50.00
3 to 3 1/2 " ".....	7.50	60.00
<b>Squamata Meyerii.</b>		
15 to 18 inch spread.....	3.10	25.00
<b>Virginiana.</b> (Red Cedar).		
7 to 8 feet high.....	20.00	160.00
8 to 9 " ".....	22.50	180.00
9 to 10 " ".....	25.00	200.00
Collected Cedars, prices on application.		
<b>— Cannarti.</b>		
2 1/2 to 3 feet high.....	3.75	30.00
3 to 3 1/2 " ".....	5.00	40.00
4 to 5 " ".....	10.00	80.00
5 to 6 " ".....	12.00	100.00
<b>— Glauca.</b> (Silver Juniper or Blue Virginia Cedar).		
1 1/2 to 2 feet high.....	2.50	20.00
2 1/2 to 3 " ".....	5.00	40.00
3 1/2 to 4 " ".....	7.50	60.00
4 1/2 to 5 " ".....	10.00	80.00



<b>ALMIA Latifolia.</b> (Mountain Laurel).		
2 to 3 ft. high, N'sery grown	5.00	40.00
3 to 4 " " " ".....	7.50	60.00
4 to 4 1/2 " " " ".....	10.00	80.00
<b>Angustifolia.</b> (Sheep Laurel).		
2 to 3 feet high.....	3.10	25.00
<b>LARIX Europaea.</b> (European Larch).		
10 to 12 feet high.....	7.50	60.00
12 to 15 " ".....	10.00	80.00
<b>Kaempferi.</b> (Japanese Larch).		
18 to 20 ft. high, 4 in. caliper	70.00	
<b>LEUCOTHOE Catesbaei.</b> (Drooping Andromeda).		
12 to 15 inch high, clumps	1.50	12.00
15 to 18 " " ".....	2.00	16.00



# Julius Roehrs Co

At The Sign of The Tree

Rutherford  
New Jersey



	EACH	TEN
<b>LIGUSTRUM Ovalifolium.</b> (California Privet).		
2 to 3 ft. high, 2 year .....	.20	1.50
2 to 3 " " 4 year, clumps..	1.00	7.00
4 to 5 " " 5 year, bush ..	2.00	15.00
5 to 6 " " bush .....	5.00	40.00
6 to 7 " " " .....	9.00	70.00
<b>Columnar Form.</b>		
4 feet high.....	2.50	20.00
5 " " .....	3.75	30.00
6 " " .....	5.00	40.00
<b>Pyramidal Form.</b>		
4 feet high.....	2.50	20.00
5 " " .....	3.75	30.00
8 to 10 feet high, specimens	25.00	
<b>Standard Form.</b>		
5 to 5½' high, 4 to 4½' stem,		
2 to 2½ ft. head diameter	3.75	30.00
4 to 5 " " " .....	15.00	



## MAGNOLIA.

Alba Superba.

2 to 2½ feet high.....\$ 3.50 \$ 30.00

**Soulangiana.**

2 to 2½ feet high..... 3.50 30.00

**Soulangiana Nigra.**

2 to 2½ feet high..... 5.00 60.00

**Stellata.**

2 to 2½ feet high..... 6.00 50.00

2½ to 3 " " .....

**Assorted named varieties.**

3½ to 6½ feet high,  
specimens .....\$20.00 to 40.00

## MALUS Atrosanguinea.

6 to 7 feet high...\$ 6.00 to 7.50

7 to 8 " " .... 10.00 to 15.00

8 to 10 " " .... 20.00 to 25.00

**Floribunda.**

5 to 6 feet high.... 3.00 to 4.00

8 to 8 " " .....

specimens ..... 10.00 to 15.00

8 to 10 feet high,

specimens ..... 20.00 to 25.00

**Ioensis.** (Bechtel's Crab).

2 to 3 feet high..... 1.25 10.00

6 to 7 " " ....\$ 6.00 to 7.50

7 to 8 " " .... 10.00 to 15.00

**Niedzwetzkyana.** (Red-Vein Crab).

6 to 7 feet high.... 6.00 to 7.50

7 to 8 " " .....

specimens ..... 10.00 to 15.00

**Schedeckeri.**

5 to 6 feet high.... 3.00 to 4.00

6 to 7 " " .... 6.00 to 7.50

7 to 8 " " .....

specimens ..... 10.00 to 15.00

**Spectabilis.**

7 to 8 feet high,

specimens ..... 10.00 to 15.00

8 to 10 feet high... 20.00 to 25.00

	EACH	TEN
<b>MORUS Alba Pendula.</b> (Weeping Mulberry).		
6 to 7 ft. high, 4 year heads	3.75	30.00
6 to 7 " " 3 in. caliper		
specimens .....	10.00	



## PACHYSANDRA Terminalis. (Ground cover).

Field grown ..... .25 2.00

## PICEA. (Spruce).

**Engelmanni.** (Engelmann's Spruce).

15 to 18 inches high..... 2.50 20.00

**Excelsa.** (Norway Spruce).

12 to 18 inches high..... .90 7.00

1 to 1½ feet high..... 1.00 8.00

1½ to 2 " " .....

2 to 2½ " " .....

2½ to 3 " " .....

3 to 3½ " " .....

3½ to 4 " " .....

4½ to 5 " " .....

5½ to 6 " " .....

6½ to 7 " " .....

7½ to 8 " " .....

— **Gregoryana.**

6 to 10 inches high..... 3.50 30.00

15 to 18 " " .....

**Pungens.** (Colorado Green Spruce).

2½ to 3 feet high..... 3.75 30.00

3 to 3½ " " .....

3½ to 4 " " .....

4 to 4½ " " .....

4½ to 5 " " .....

**Pungens Glauca.** (Colorado Blue Spruce).

1½ to 2 feet high.....\$ 3.75 \$ 30.00

2 to 2½ " " .....

2½ to 3 " " .....

3 to 3½ " " .....

3½ to 4 " " .....

4 to 4½ " " .....

4½ to 5 " " .....

5½ to 6 " " .....

— **Kosteri.** (Koster's Blue Spruce).

1½ to 2 feet high..... 5.00 40.00

2 to 2½ " " .....

2½ to 3 " " .....

4 to 4½ " " .....

4½ to 5 " " .....

5½ to 6 " " .....

## PINUS Austriaca. (Austrian Pine).

2½ to 3 feet high..... 5.00 40.00

3½ to 4 " " .....

4½ to 5 " " .....

5½ to 6 " " .....

6½ to 7 " " .....

7 to 8 " " .....

8 to 9 " " .....

9 to 10 " " .....

10 to 11 " " .....

11 to 12 " " .....



# Julius Roehrs Co

At The Sign of The Tree

Rutherford  
New Jersey



	EACH	TEN
<b>PINUS (Continued)</b>		
Cembra. (Swiss Stone Pine).		
12 to 15 inches high.....	3.75	30.00
Densiflora. (Japanese Red Pine).		
3 to 3½ feet high.....	3.75	30.00
7 to 8 " ".....	18.75	150.00
8 to 9 " ".....	21.25	170.00
9 to 10 " ".....	25.00	200.00
10 to 11 " ".....	31.25	250.00
11 to 12 " ".....	37.50	300.00
Montana. (Mugho Dwarf or Swiss Mountain Pine).		
12 to 15 inches spread.....	1.25	10.00
15 to 18 " ".....	1.90	15.00
18 to 24 " ".....	2.50	20.00
2 to 2½ feet spread.....	3.75	30.00
2½ to 3 " ".....	6.00	50.00
3 to 3½ " ".....	9.00	80.00
3½ to 4 " ".....	12.00	100.00
— Mughus. (Upright Mugho Pine).		
2 to 3 feet high.....	5.00	40.00
3 to 4 " ".....	7.50	60.00
4 to 5 " ".....	10.00	80.00
Resinosa. (Red or Norway Pine).		
3½ to 4 feet high.....	5.00	40.00
4½ to 5 " ".....	7.50	60.00
5½ to 6 " ".....	10.00	80.00
6½ to 7 " ".....	12.50	100.00
7 to 8 " ".....	15.00	120.00
Strobus. (White Pine).		
2½ to 3 feet high.....	2.50	20.00
3 to 4 " ".....	3.75	30.00
4 to 5 " ".....	5.00	40.00
5 to 6 " ".....	7.50	60.00
6 to 6½ " ".....	11.25	90.00
6½ to 7 " ".....	15.00	120.00
7 to 8 " ".....	18.75	150.00
8 to 9 " ".....	21.25	170.00
9 to 10 " ".....	25.00	200.00
10 to 11 " ".....	31.25	250.00
11 to 12 " ".....	37.50	300.00
Sylvestris. (Scotch Pine).		
5½ to 6 feet high.....	\$12.50	\$100.00
6 to 7 " ".....	15.00	120.00
7 to 8 " ".....	18.75	150.00
8 to 9 " ".....	25.00	200.00
9 to 10 " ".....	31.25	250.00
10 to 12 " ".....	37.50	300.00
Tanyosho. (Japanese Table Pine).		
2 to 2½ feet spread.....	6.25	50.00
2½ to 3 " ".....	7.50	60.00
6 to 7 feet by 8 feet, spec.	100.00	
Thunbergi. (Japanese Black Pine).		
5½ to 6 feet high.....	12.50	100.00
6½ to 7 " ".....	15.00	120.00
<b>PLATINUS Orientalis. (Oriental Plane).</b>		
10 to 12 feet high, 1½ to 1¾ inch caliper.....	2.50	20.00
10 to 12 feet high, 1¾ to 2 inch caliper.....	5.00	40.00
<b>POPULUS Monilifera. (Carolina Poplar).</b>		
15 to 20 feet high, 2 to 3 inch caliper ....	3.00 to 5.00	

	EACH	TEN
<b>PRUNUS Serrulata James Veitch. (Japanese Flowering Cherry). Double Rose-flowered.</b>		
8 to 10 feet high.....	10.00	80.00
<b>PSEUDO-TSUGA Douglasi. See Abies Douglasi, page 22.</b>		



## RETINOSPORA.

Obtusa. (Hinoki Cypress).

1 to 1½ feet high.....	2.50	20.00
1½ to 2 " ".....	3.10	25.00
2 to 2½ " ".....	3.75	30.00
2½ to 3 " ".....	5.00	40.00
— Gracilis. (Obtuse-leaved Cypress).		
15 to 18 inches high.....	2.50	
9 to 10 feet high.....	60.00	
10 to 11 " ".....	70.00	
11 to 12 " ".....	80.00	
— Cripsii. (Cripps Golden Cypress).		
1 to 1½ feet high.....	3.75	30.00
1½ to 2 " ".....	5.00	40.00
2 to 2½ " ".....	6.25	50.00
2½ to 3 " ".....	7.50	60.00
Pisifera. (Pea-Fruited Japanese Cypress).		
1½ to 2 feet high.....	1.90	15.00
2 to 2½ " ".....	2.50	20.00
2½ to 3 " ".....	3.10	25.00
3 to 3½ " ".....	3.75	30.00
3½ to 4 " ".....	5.00	40.00
4 to 4½ " ".....	6.25	50.00
4½ to 5 " ".....	7.50	60.00
5 to 6 " ".....	10.00	80.00
6 to 7 " ".....	12.50	100.00
Pisifera Aurea. (Golden Pea-Fruited Japanese Cypress).		
2 to 2½ feet high.....	\$ 2.50	\$ 20.00
2½ to 3 " ".....	3.10	25.00
3 to 3½ " ".....	3.75	30.00
3½ to 4 " ".....	5.00	40.00
4 to 4½ " ".....	6.25	50.00
4½ to 5 " ".....	7.50	60.00
5 to 6 " ".....	10.00	80.00
6 to 7 " ".....	12.50	100.00
— Filifera. (Thread-branched Cypress).		
2 to 2½ feet high.....	3.10	25.00
2½ to 3 " ".....	3.75	30.00
3 to 3½ " ".....	4.40	35.00
3½ to 4 " ".....	5.00	40.00
— — Aurea. (Golden Thread-branched Cypress).		
12 to 15 inch spread.....	1.90	15.00
18 to 24 " ".....	2.50	20.00
24 to 30 " ".....	3.75	30.00
Plumosa. (Plume-like Japanese Cypress).		
1½ to 2 feet high.....	1.25	10.00
2 to 2½ " ".....	1.90	15.00
2½ to 3 " ".....	2.50	20.00
3 to 3½ " ".....	3.10	25.00
3½ to 4 " ".....	3.75	30.00
4 to 4½ " ".....	6.25	50.00
4½ to 5 " ".....	7.50	60.00
5½ to 6 " ".....	10.00	80.00



# Julius Reehrs Co

At The Sign of The Tree

Rutherford  
New Jersey



	EACH	TEN
<b>RETINOSPORA Plumosa (Continued).</b>		
— Aurea. (Golden Plume-like Japanese Cypress).		
1½ to 2 feet high.....	1.90	15.00
2 to 2½ “ “ .....	2.50	20.00
2½ to 3 “ “ .....	3.10	25.00
3 to 3½ “ “ .....	3.75	30.00
3½ to 4 “ “ .....	5.00	40.00
4 to 4½ “ “ .....	6.25	50.00
4½ to 5 “ “ .....	7.50	60.00
5 to 6 “ “ .....	10.00	80.00
6 to 7 “ “ .....	12.50	100.00
— Sulphurea. (Sulphur plume Cypress).		
12 to 15 inch spread.....	1.25	10.00
15 to 18 “ “ .....	1.50	12.00
18 to 24 “ “ .....	1.90	15.00
<b>Squarrosa Veitchii. (Silver-leaved Japanese Cypress).</b>		
1½ to 2 feet high.....	1.90	15.00
2 to 2½ “ “ .....	2.50	20.00
2½ to 3 “ “ .....	3.10	25.00
3 to 3½ “ “ .....	3.75	30.00
<b>RHODODENDRON Arbutifolium.</b>		
15 to 18 inches high.....	8.00	
3 to 3½ feet high, spec.....	60.00	
<b>Carolinianum.</b>		
1½ to 2 feet high.....	4.40	35.00
2 to 2½ “ “ .....	5.62	45.00
2½ to 3 “ “ .....	6.25	50.00
3 to 3½ “ “ .....	8.75	70.00
3½ to 4 “ “ .....	11.25	90.00
<b>Catawbiense.</b>		
8 to 12 inches high.....	2.25	15.00
1½ to 2 feet “ “ .....	5.00	40.00
3 to 4 “ “ .....	12.00	90.00
<b>RHODODENDRON Maximum. (Nursery grown).</b>		
2 to 2½ feet high.....	\$ 3.75	\$ 30.00
3 to 4 “ “ .....	6.25	50.00
4 to 4½ “ “ .....	8.75	70.00
— Roseum.		
15 to 18 inches high.....	4.50	40.00
<b>Wilsoni.</b>		
2 to 3 feet high.....	10.00	80.00
<b>RHODODENDRON Hybrid Seedlings (mixed).</b>		
1 to 1½ feet high.....	2.50	20.00
1½ to 2 “ “ .....	3.00	25.00
2 to 2½ “ “ .....	4.00	30.00
3 to 4 “ “ .....	6.50	60.00
4 to 4½ “ “ .....	9.00	80.00
<b>RHODODENDRON Specimen Hybrids. (Named Variety).</b>		
<b>Album Elegans.</b>		
18 to 24 inches high.....	3.50	30.00
2 to 2½ feet high.....	5.00	40.00
2½ to 3 “ “ .....	6.25	50.00
3 to 3½ “ “ .....	12.50	100.00
3½ to 4 “ “ .....	15.00	120.00
4 to 4½ “ “ .....	18.75	150.00
4½ to 5 “ “ .....	25.00	200.00
5 to 5½ “ “ .....	31.25	250.00
<b>Abraham Lincoln.</b>		
15 to 18 inches high.....	3.00	25.00

	EACH	TEN
<b>RHODODENDRON (Continued)</b>		
<b>Album Grandiflorum.</b>		
18 to 20 inches high.....	3.75	30.00
2 to 2½ feet high.....	5.00	40.00
2½ to 3 “ “ .....	7.50	60.00
3 to 3½ “ “ .....	10.00	80.00
<b>Album Novum.</b>		
18 to 24 inches high.....	5.00	40.00
2½ to 3 feet high.....	7.50	60.00
<b>Amphion.</b>		
2 to 2½ feet high.....	6.25	50.00
<b>Boule de Niede.</b>		
18 to 24 inch diameter.....	7.50	60.00
2 feet “ “ .....	10.00	80.00
2½ “ “ .....	12.50	100.00
3 “ “ .....	15.00	120.00
<b>Catawbiense.</b>		
3 feet high.....	7.50	60.00
3½ “ “ .....	10.00	80.00
4 “ “ .....	15.00	120.00
— Alba.		
2 to 2½ feet high.....	6.25	50.00
2½ to 3 “ “ .....	7.50	60.00
<b>Catawbiense Grandiflora.</b>		
15 to 18 inches high.....	\$ 3.75	\$ 30.00
2 to 2½ feet high.....	7.50	60.00
3 to 3½ “ “ .....	15.00	120.00
<b>Charles Bagley.</b>		
15 to 18 inches high.....	3.75	30.00
4½ feet high.....	25.00	200.00
<b>Charles Dickens.</b>		
18 to 24 inches high.....	5.00	40.00
2½ to 3 feet high.....	9.00	80.00
<b>Dr. Torrey.</b>		
15 to 18 inches high.....	3.75	30.00
2 to 2½ feet high.....	6.25	50.00
3 to 3½ “ “ .....	15.00	120.00
<b>E. S. Rand.</b>		
18 to 24 inches high.....	4.50	30.00
2 to 2½ feet high.....	6.25	50.00
<b>F. D. Godman.</b>		
15 to 18 inches high.....	4.50	30.00
18 to 24 “ “ .....	5.00	40.00
2 to 2½ feet high.....	6.25	50.00
2½ to 3 “ “ .....	10.00	80.00
3½ to 4 “ “ .....	18.75	150.00
4 to 4½ “ “ .....	25.00	200.00
<b>General Grant.</b>		
15 to 18 inches high.....	3.50	30.00
3 to 3½ feet high.....	10.00	80.00
<b>Giganteum.</b>		
15 to 18 inches high.....	3.50	30.00
18 to 24 “ “ .....	5.00	40.00
<b>Ignatius Sargent.</b>		
18 to 24 inches high.....	5.00	40.00
<b>Kettledrum.</b>		
18 to 24 inches high.....	5.00	40.00
2 to 2½ feet high.....	6.25	50.00
<b>Lady Armstrong.</b>		
15 to 18 inches high.....	3.75	30.00
2 to 2½ feet high.....	6.25	50.00
3 to 3½ “ “ .....	10.00	80.00



# Julius Roehrs Co

At The Sign of The Tree

Rutherford  
New Jersey



RHODODENDRONS (Continued).	EACH	TEN
<b>Lee's Dark Purple.</b>		
2 to 2½ inches high.....	6.00	50.00
<b>Macranthum.</b>		
3 feet high.....	8.00	70.00
3½ " ".....	10.00	80.00
4 " ".....	15.00	120.00
<b>Mrs. C. S. Sargent.</b>		
15 to 18 inches high.....	3.50	30.00
2 to 2½ feet high.....	6.25	50.00
3½ " ".....	15.00	120.00
4 " ".....	18.75	150.00
<b>Mrs. Milner.</b>		
2 to 2½ feet high.....	\$ 6.25	\$ 50.00
2½ to 3 " ".....	8.00	75.00
<b>Old Port.</b>		
18 to 24 inches high.....	5.00	40.00
2 feet high.....	6.25	50.00
2½ " ".....	7.50	60.00
3 " ".....	10.00	80.00
3½ " ".....	15.00	120.00
<b>Parsons Gloriosum.</b>		
18 to 24 inches high.....	5.00	40.00
3 to 3½ feet high.....	15.00	120.00
<b>— Grandiflorum.</b>		
18 to 24 inches high.....	5.00	40.00
2 to 2½ feet high.....	7.50	60.00
<b>President Lincoln.</b>		
18 to 24 inches high.....	5.00	40.00
2 feet high.....	6.25	50.00
2½ " ".....	7.50	60.00
<b>Purpureum Grandiflorum.</b>		
2½ feet high.....	7.50	60.00
<b>Roseum Elegans.</b>		
1½ to 2 feet high.....	6.25	50.00
2 to 2½ " ".....	7.50	60.00
<b>Roseum Superbum.</b>		
18 to 24 inches high.....	5.00	40.00
2 to 2½ feet high.....	7.50	60.00
<b>RHODODENDRON Hybrid Mixed Seedlings.</b>		
15 to 18 inches high.....	1.90	15.00
18 to 24 " ".....	2.50	20.00
2 feet high.....	3.10	25.00



## SYRINGA Vulgaris. (Lilac).

Mixed Hybrid Varieties.

3 to 4 feet high XX.....	.90	7.00
4 to 5 " " XX.....	2.00	15.00
5 to 6 " " XX.....	3.50	40.00
6 to 7 " " XX.....	5.00	45.00

## TAXUS.

### Cuspidata.

12 to 15 inch spread.....	1.90	15.00
15 to 18 " ".....	2.50	20.00
18 to 24 " ".....	3.75	30.00
2 to 2½ feet spread.....	7.50	60.00
3 to 3½ " ".....	12.50	100.00
3½ to 4 " ".....	15.00	120.00
4 to 4½ " ".....	18.75	150.00
4½ to 5 " ".....	25.00	200.00
5 to 6 " ".....	30.00	

## TAXUS (Continued).

	EACH	TEN
<b>— Brevifolia. (Abrupt-leaved Japanese Yew).</b>		
1 to 1½ feet spread.....	5.00	40.00
1½ to 2 " ".....	7.50	60.00
2 to 2½ " " spec.....	10.00	80.00
2½ to 3 " ".....	18.75	150.00
3½ to 4 " ".....	25.00	200.00
4 to 4½ " ".....	30.00	
4½ to 5 " ".....	40.00	
<b>Cuspidata Capitata. (Upright Japanese Yew).</b>		
15 to 18 inches high.....	\$ 2.50	\$ 20.00
18 to 24 " ".....	3.75	30.00
2 to 2½ feet high.....	5.00	40.00
2½ to 3 " ".....	6.25	50.00
3 to 3½ " ".....	7.50	60.00
3½ to 4 " ".....	10.00	80.00
4 to 4½ " " Spec.....	12.50	100.00
4½ to 5 " ".....	15.00	120.00
5 to 5½ " ".....	18.75	150.00
<b>— Intermedia.</b>		
12 to 15 inch spread.....	1.90	15.00
15 to 18 " ".....	2.50	20.00
2 to 2½ feet " ".....	7.50	60.00
3 to 4 " ".....	15.00	120.00
4 to 4½ " ".....	18.00	150.00
4½ to 5 " ".....	25.00	200.00
5 to 6 " ".....	30.00	

## THUJA.

### Occidentalis. (American Arbor-Vitae).

18 to 24 inches high.....	.90	7.00
2 to 2½ feet high.....	1.25	10.00
2½ to 3 " ".....	1.90	15.00
3 to 3½ " ".....	2.50	20.00
3½ to 4 " ".....	3.10	25.00
4 to 4½ " ".....	3.75	30.00
4½ to 5 " ".....	4.40	35.00
5 to 5½ " ".....	5.00	40.00
5½ to 6 " ".....	6.00	50.00
6 to 7 " ".....	7.50	60.00
7 to 8 " ".....	10.00	80.00
8 to 9 " ".....	12.00	100.00
9 to 10 " ".....	15.00	125.00

### — Columbia. (Columbia Arbor-Vitae).

1½ to 2 feet high.....	2.00	15.00
2 to 2½ " ".....	2.50	20.00
2½ to 3 " ".....	3.00	25.00
3 to 3½ " ".....	3.75	30.00

### — Globosa. (Globe Arbor-Vitae).

12 to 15 inch spread.....	1.25	10.00
24 inches x 24 inches.....	3.75	30.00

### — Hoveyi. (Hovey's Arbor-Vitae).

12 to 15 inch spread.....	.90	7.00
15 to 18 " ".....	1.25	10.00
18 to 21 " ".....	1.90	15.00
21 to 24 " ".....	3.10	25.00

### — Lutea. (George Peabody's Golden Arbor-Vitae).

1½ to 2 feet high.....	1.90	15.00
2 to 2½ " ".....	2.50	20.00
2½ to 3 " ".....	3.10	25.00



# Julius Roehrs Co

At The Sign of The Tree

Rutherford  
New Jersey



	EACH	TEN
<b>THUJA Occidentalis (Continued).</b>		
— <b>Pyramidalis.</b> (Pyramidal Arbor-Vitae).		
1½ to 2 feet high.....	1.25	10.00
2 to 2½ " " .....	1.90	15.00
2½ to 3 " " .....	2.50	20.00
3 to 3½ " " .....	3.10	25.00
3½ to 4 " " .....	3.75	30.00
4 to 4½ " " .....	4.40	35.00
— <b>Rosenthalii.</b> (Rosenthal's Arbor-Vitae).		
1½ to 2 feet high.....	\$ 1.90	\$ 15.00
2 to 2½ " " .....	2.50	20.00
— <b>Vervaeneana.</b> (Vervaenes's Arbor-Vitae).		
2½ to 3 feet high.....	3.10	25.00
3 to 3½ " " .....	3.75	30.00
3½ to 4 " " .....	5.00	40.00
4 to 4½ " " .....	6.25	50.00
<b>Orientalis.</b> (Biota).		
— <b>Aurea Nana.</b> (Chinese Golden Arbor-Vitae).		
12 to 15 inches high.....	1.50	12.00
15 to 18 " " .....	2.50	20.00
30 " " .....	6.25	50.00
— <b>Elegantissima.</b> (Chinese Golden tipped Arbor-Vitae).		
2 to 2½ feet high.....	2.50	20.00
2½ to 3 " " .....	3.10	25.00
3 to 3½ " " .....	3.75	30.00
3½ to 4 " " .....	5.00	40.00
5 to 6 " " .....	10.00	80.00
6 to 7 " " .....	12.00	100.00
7 to 8 " " Spec.....	18.75	150.00
<b>Plicata Atrovirens.</b> (Lobbii).		
3½ feet high.....	4.00	35.00
<b>Standishi.</b> (Japanese or Sitka Arbor-Vitae).		
2½ to 3 feet high.....	3.00	25.00
3 to 3½ " " .....	4.00	30.00
3½ to 4 " " .....	5.00	40.00
4 to 5 " " .....	7.50	60.00
5 to 6 " " .....	10.00	80.00
6 to 7 " " .....	12.00	100.00
7 to 8 " " .....	15.00	120.00
<b>Wareana.</b> (Siberian Arbor-Vitae).		
15 to 18 inches high.....	1.25	10.00
2½ to 3 feet high.....	3.75	30.00
3 to 3½ " " .....	4.40	35.00

**TSUGA.** (Hemlock).

**Canadensis.**

2½ to 3 feet high.....	2.50	20.00
3 to 4 " " .....	4.00	35.00
4 to 5 " " .....	9.00	85.00
5 to 6 " " .....	12.50	100.00
6 to 7 " " .....	15.00	120.00
7 to 8 " " .....	18.75	150.00
8 to 10 " " .....	25.00	200.00
10 to 12 " " .....	31.25	250.00

**Caroliniana.**

4 to 5 feet high.....	10.00	80.00
5 to 6 " " .....	12.00	100.00
6 to 7 " " .....	14.00	120.00

**TSUGA (Continued).**

**Diversifolia.**

4 to 5 feet high, specimens	40.00
5 to 6 " " " "	50.00
6 to 7 " " " "	70.00
7 to 8 " " " "	90.00

**VIBURNUM Opulus sterilis.** (Common Snowball).  
4 to 5 feet XX.....\$ 2.00 \$ 18.00

**WISTERIA Sinensis.** (Chinese Purple).

5 inch pots.....	1.25	10.00
7 inch tubs.....	5.00	40.00
10 " " .....	\$8.00 to	10.00

**STANDARD POTS**

2 inch.....	\$ .04	5 inch.....	\$ .14
2¼ " .....	.06	5½ " .....	.18
2½ " .....	.06	6 " .....	.22
3 " .....	.08	6½ " .....	.28
3½ " .....	.08	7 " .....	.34
4 " .....	.10	8 " .....	.50
4½ " .....	.12	9 " .....	.76

**LEAF MOLD**

Per Bag (100 lbs.).....\$4.00

**SOIL**

Per Bag (100 lbs.)..... 1.50

**TUFA ROCK**

Per Hundred in 100 lb. lots..... 4.00  
" " " 1000 lb. lots..... 3.00

<b>A.</b>		Clivia .....	6	Ipomoea .....	10	Pittosporum .....	14
Abies .....	22	Cocos .....	11	Iresine .....	21	Platinus .....	26
Abutilon .....	2	Coleus .....	6 & 21	Isolepis .....	10	Platycerium .....	15
Acacia .....	2	Colocasia .....	6	Ixora .....	10	Pleiospilos .....	20
Acalypha .....	2	Coprosma .....	6	<b>J.</b>			
Acer .....	22	Coryphantha .....	18	Jacobinia .....	10	Plumbago .....	15
Acanthus .....	2	Costus .....	6	Juniperus .....	24	Poinciana .....	15
Achyranthes .....	20	Cotyledon .....	18	<b>K.</b>			
Acorus .....	2	Crab Apple .....	13 & 25	Kalmia .....	24	Poinsettia .....	15
Adiantum .....	2	Crassula .....	18	Kalanchoe .....	19	Polypodium .....	15
Aechmea (Bromeliaceae) .....	4	Crataegus .....	23	Kentias .....	11	Polystichum .....	15
Aeschynanthus .....	2	Crotons .....	6	Kleinia .....	19	Populus .....	26
Agapanthus .....	2	Cryptanthus (Bromeliaceae) .....	4	<b>L.</b>			
Agave .....	18	Cryptomerea .....	23	Lantanas .....	21	Portulacaria .....	20
Ageratum .....	20	Cuphea .....	7	Larix .....	24	Pothos .....	15
Aglaonema .....	2	Curculigo .....	7	Latania .....	11	Primula .....	15
Allamanda .....	2	Cycas .....	11	Laurus .....	11	Prunus .....	26
Alocasia .....	2	Cyclamen .....	7	Leucothoe .....	24	Pseudo Tsuga .....	22 & 26
Aloe .....	18	Cyperus .....	7	Ligularia .....	11	Pteris .....	15
Aloysia .....	20	Cyrtomium .....	7	Ligustrum .....	25	Ptychosperma .....	11
Alpinia .....	2	<b>D.</b>		Lilium .....	11	Punica .....	15
Alsophila .....	2	Dahlia .....	21	Lithops .....	19	<b>R.</b>	
Alternanthera .....	20	Daisies .....	7	Lobelia .....	21	Raphion .....	20
Alyssum .....	20	Darlingtonia .....	7	Lygodium .....	11	Reineckia .....	15
Amaranthus .....	20	Dasylyrion .....	18	<b>M.</b>			
Amaryllis .....	2	Davallia .....	7	Macrozamia .....	11	Rhaphis .....	27
Amomum .....	2	Dendroideum .....	18	Magnolia .....	25	Rhizophora .....	26 & 27
Ampelopsis .....	22	Dieffenbachia .....	7 & 8	Malpighia .....	11	Rhipsalis .....	20
Anacampseros .....	18	Dimorphothea .....	8	Malus .....	11 & 25	Rhododendron .....	3, 27 & 28
Ananas (Bromeliaceae) .....	4	Diplacus .....	8	Mammillaria .....	19	Rhoeo .....	15
Andromeda .....	22	Dracaena .....	8 & 9	Manettia .....	11	Rhynchospermum .....	15
Angelonia .....	2	Duvalia .....	18	Marantaceae .....	11 & 12	Rochea .....	20
Anthericum .....	2	Dyckia (Bromeliaceae) .....	4	Maranta .....	12	Rosa .....	15
Anthurium .....	2	<b>E.</b>		Maregravia .....	12	Roses .....	15
Antigonon .....	2	Echeveria .....	18	Marigold .....	21	Rosmarinus .....	15
Antirrhinum .....	20	Echinocactus .....	18	Matthiola .....	12	Rubus .....	15
Aphelandra .....	2	Echinocereus .....	19	Maurandia .....	12	Ruellia .....	15
Aralia .....	3 & 22	Echinopsis .....	19	Medinilla .....	12	<b>S.</b>	
Araucaria .....	3	Enkianthus .....	23	Mesembryanthemum .....	19	Sabal .....	11
Areca .....	11	Epiphyllum .....	19	Mimosa .....	12	Saintpaulia .....	15
Areghia .....	4	Episcia .....	8	Morus .....	25	Salvia .....	21
Ardisia .....	3	Erica .....	8	Muehlenbeckia .....	12	Sanchezia .....	15
Argyroderma .....	18	Erlangea .....	8	Musa .....	12	Sansevieria .....	15 & 20
Ariocarpus .....	18	Eucharis .....	8	Myoporum .....	12	Saxifraga .....	16
Aristolochia .....	3	Eugenia .....	8	Myrtus .....	12	Schismatoglottis .....	16
Arundinaria .....	3	Euonymus .....	8 & 23	<b>N.</b>			
Asparagus .....	3	Euphorbia .....	8 & 19	Nepenthes .....	12	Scolopendrium .....	16
Aspidistra .....	3	Exacum .....	8	Nepeta .....	12	Seaforthia .....	11
Asplenium .....	3	<b>F.</b>		Nephrolepis .....	12	Sedum .....	20
Asters .....	20	Fagus .....	23	Nephthytis .....	12	Selaginella .....	16
Astrophytum .....	18	Farfugium .....	8	Nerine .....	12	Sempervivum .....	20
Aucuba .....	3	Faucaria .....	19	Nertera .....	12	Seneca .....	20
Azalea .....	3, 22 & 23	Felicia .....	8	Nidularium .....	4	Sinningia .....	16
<b>B.</b>		Fenestraria .....	19	Nopalea .....	19	Smithiantha .....	16
Begonias .....	3, 4 & 20	Ferns .....	8 & 9	Nunnezharia .....	11	Solandra .....	16
Beloperone .....	4	Ficus .....	9	Nyctocereus .....	19	Solanum .....	16
Berberis .....	23	Fittonia .....	9	<b>O.</b>			
Bertolonia .....	4	Franciscea .....	9	Obregonia .....	19	Talinum .....	16
Bignonia .....	4	Fraxinus .....	23	Olea .....	12	Taxus .....	28
Billbergia .....	4	Fruit Trees .....	23	Oleanders .....	12	Thuja .....	28 & 29
Bougainvillea .....	4	Fuchsia .....	9 & 21	Ophiopogon .....	12	Thunbergia .....	16
Bouvardia .....	4	<b>G.</b>		Opuntia .....	19	Tibouchina .....	16
Bromeliaceae .....	4 & 5	Gardenia .....	9	Oranges .....	12	Tillandsia (Bromeliaceae) ..	5
Browallia .....	5	Gasteria .....	19	Orchids .....	13	Trachelospermum .....	15 & 16
Bryophyllum .....	18	Gazania .....	9	<b>P.</b>			
Buddleia .....	5	Genistas .....	9 & 10	Pachyphytum .....	19	Tradescantia .....	17
Buxus .....	23	Geraniums .....	13 & 21	Pachysandra .....	25	Trichostigma .....	17
<b>C.</b>		Gerbera .....	9	Palms .....	11 & 14	Tsuga .....	29
Cactus .....	18-20	German Ivy .....	21	Panax .....	13	Talips .....	17
Caladiums .....	5	Ginko .....	24	Pandanus .....	13	<b>U.</b>	
Calathea (Marantaceae) .....	11	Gloriosa .....	9	Panicum .....	13	Umbilicus .....	20
Calla .....	5	Gloxinia .....	9	Passiflora .....	13	<b>V.</b>	
Camellia .....	5	Goniophlebium .....	9	Paulinia .....	13	Vanilla .....	17
Calceolaria .....	5	Grevillea .....	9	Pavonia .....	13	Verbenas .....	21
Cannas .....	20	Guzmannia (Bromeliaceae) .....	4	Pedilanthus .....	19	Viburnum .....	29
Carex .....	5	Gynura .....	9	Pelargonium .....	13 & 21	Vinca .....	17 & 21
Caryota .....	11	<b>H.</b>		Pellionia .....	13	Viola .....	21
Catalpa .....	23	Haemanthus .....	10	Pentas .....	14	Vitis .....	17
Celosia .....	5	Haworthia .....	19	Peperomia .....	14	<b>W.</b>	
Cephalocereus .....	18	Hechtia (Bromeliaceae) .....	4	Pereskia .....	19	Wistaria .....	
Cereus .....	18	Hedera .....	10	Peristrophe .....	14	<b>X.</b>	
Ceropegia .....	18	Heliconia .....	10	Petrea .....	14	Xanthosoma .....	17
Cestrum .....	5	Heliotrope .....	21	Petunias .....	21	<b>Y.</b>	
Chamaecyparis (Retinospora) .....	26	Helixine .....	10	Philodendron .....	14	Yucca .....	17 & 20
Chamaedorea .....	11	Hemeographus .....	10	Phoenix .....	14	<b>Z.</b>	
Cheiranthus .....	5	Hibiscus .....	10	Phyllocactus .....	20	Zamia .....	11
Cheiridopsis .....	18	Hoffmannia .....	10	Phymatodes .....	14	Zebrina .....	17
Cherries (Solanum) .....	16	Hohenbergia .....	10	Pilea .....	14	Zinnia .....	21
Cherry (Prunus) .....	26	Homalomena .....	10	Pilocereus .....	20	Zylocactus .....	20
Chinese Evergreens .....	5 & 2	Hoplophytum .....	4	Pinus .....	25 & 26		
Chorizema .....	5	Hoya .....	10	Piper .....	14		
Chrysanthemums .....	5 & 6	Hyacinths .....	10	Pitcairnia (Bromeliaceae) ..	4		
Cibotium .....	6	Hydrangeas .....	10 & 24				
Cineraria .....	6	<b>I.</b>					
Cissus .....	6	Ilex .....	24				
Citrus .....	6						
Clerodendron .....	6						



## HOW TO GET TO THE NURSERY

### BY AUTOMOBILE

Due to the fact that Wallington has no Post Office Address, we have always used Rutherford as the location of our Nursery. The nursery, however, is in the Borough of Wallington, located on Paterson Avenue between East Rutherford and Passaic.

Our suggestion for those coming from New York would be to follow road signs leading to Rutherford and East Rutherford.

To get to the Jersey side, use the following means, depending upon your location:

#### From Uptown New York and Westchester:

George Washington Bridge  
Dyckman Street Ferry  
125th Street Ferry

#### From Midtown:

42nd Street Ferry  
23rd Street Electric Ferry

#### Downtown:

Holland Tunnel  
Chambers Street Ferry

Those traveling from the direction of Morristown, Montclair, and the Oranges should follow the sign posts to Passaic and then take Paterson Avenue from Passaic to East Rutherford.

From the direction of Tuxedo it is best to take the new highway, following the Holland Tunnel signs to East Rutherford. Turn right on Paterson Avenue and it will take you past the Nursery which is located on the right hand side.

### BY BUS

Either the Inter City Transit Line or the Public Service Line marked "Rutherford" at terminals at 44th Street and Broadway (Hotel Astor), 36th Street and Sixth Avenue, 33rd Street and Seventh Avenue (Nevins Terminal), and 23rd Street and Eighth Avenue (Cornish Arms). These buses do not pass the Nursery. Get off in East Rutherford, corner Hackensack Street and Paterson Plank Road, take bus or trolley going toward Passaic or Paterson, riding about a mile to directly in front of the nursery. Otherwise, continue on the New York bus to Rutherford Station and take a taxi from there.

### BY TRAIN

Take the Hudson and Manhattan Tube to Erie Station in Jersey City; the first stop on the Main Line is Rutherford; taxi from Rutherford.

## CONDITIONS OF SALE

All prices are understood F.O.B. our Nursery. Many exceptions are made to this rule, however, depending upon the value of the order and the point of delivery. We have a fleet of trucks making deliveries in the metropolitan area and these trucks are scheduled to cover certain points each day and if delivery can be scheduled to fit in, we deliver free.

**Terms**—Where satisfactory credit has been established, bills are payable thirty days from date of shipment.

Goods desired C.O.D. must be accompanied by a remittance equal to 25% of the total value of order to guarantee acceptance.

All goods are offered subject to failures, shortages, or other causes beyond our control and to being unsold on receipt of order, and we reserve the right to change prices without notice.

**Special Selection**—Plant materials especially selected at the nursery will be sold at prices commensurate with the value of the specimens chosen, irrespective of the listed prices.

**Claims**—No claims will be entertained unless made within two days after receipt of goods.

**Non-Warranty**—Julius Roehrs Co. gives no warranty, expressed or implied, as to description, quality, productiveness, or any other matter, of any Trees, or Plants they sell, and will not be in any way responsible for the crop. If the purchaser does not accept the goods on these terms, they are to be returned at once.

#### Telephones:

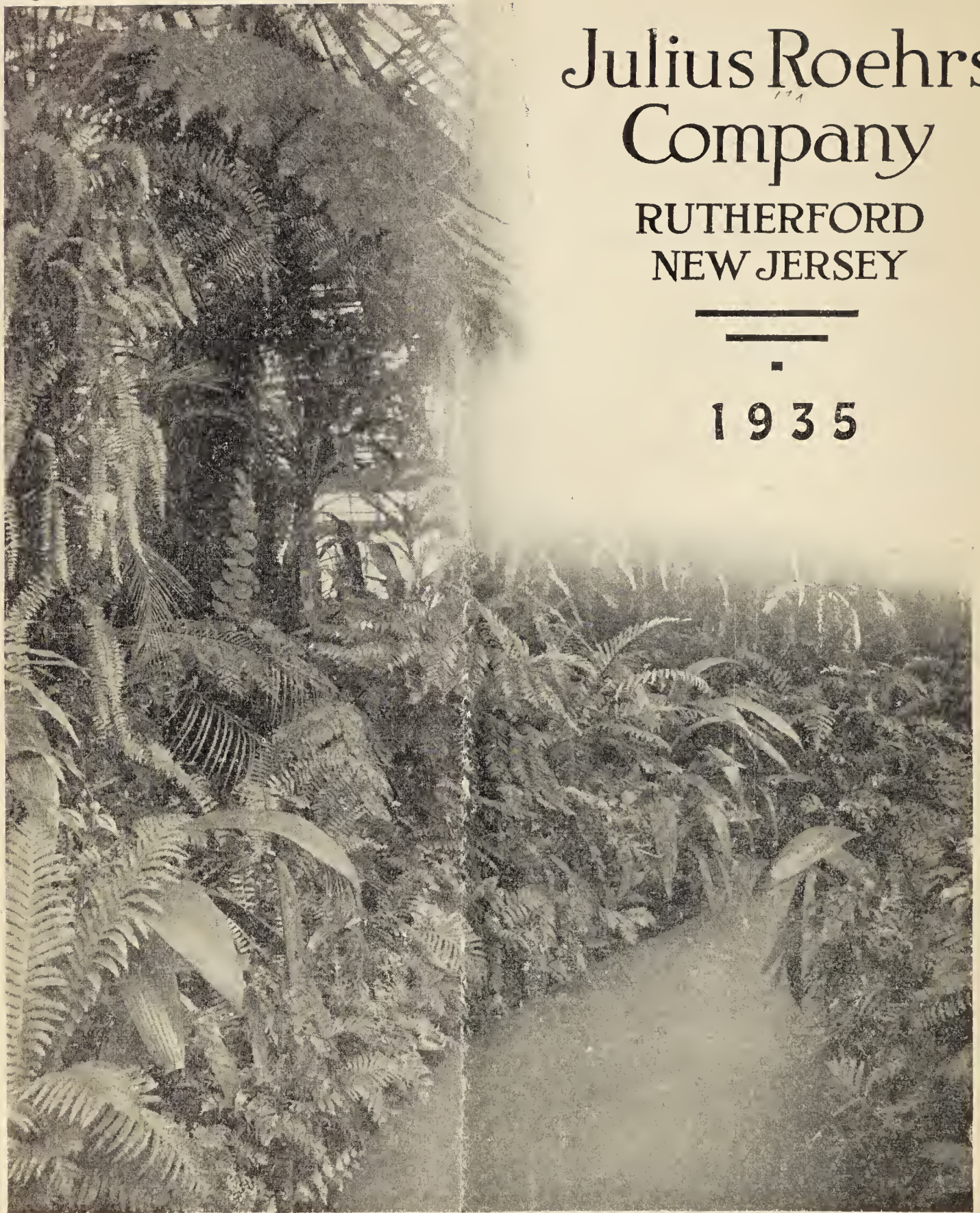
New Jersey—Rutherford 2-0090  
Rutherford 2-0091  
New York — Longacre 5-4228

The prices quoted cancel all previous offers.

JULIUS ROEHRS CO.

January 1, 1935.

6257



Julius Roehrs  
Company

RUTHERFORD  
NEW JERSEY



1935