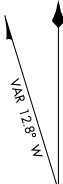


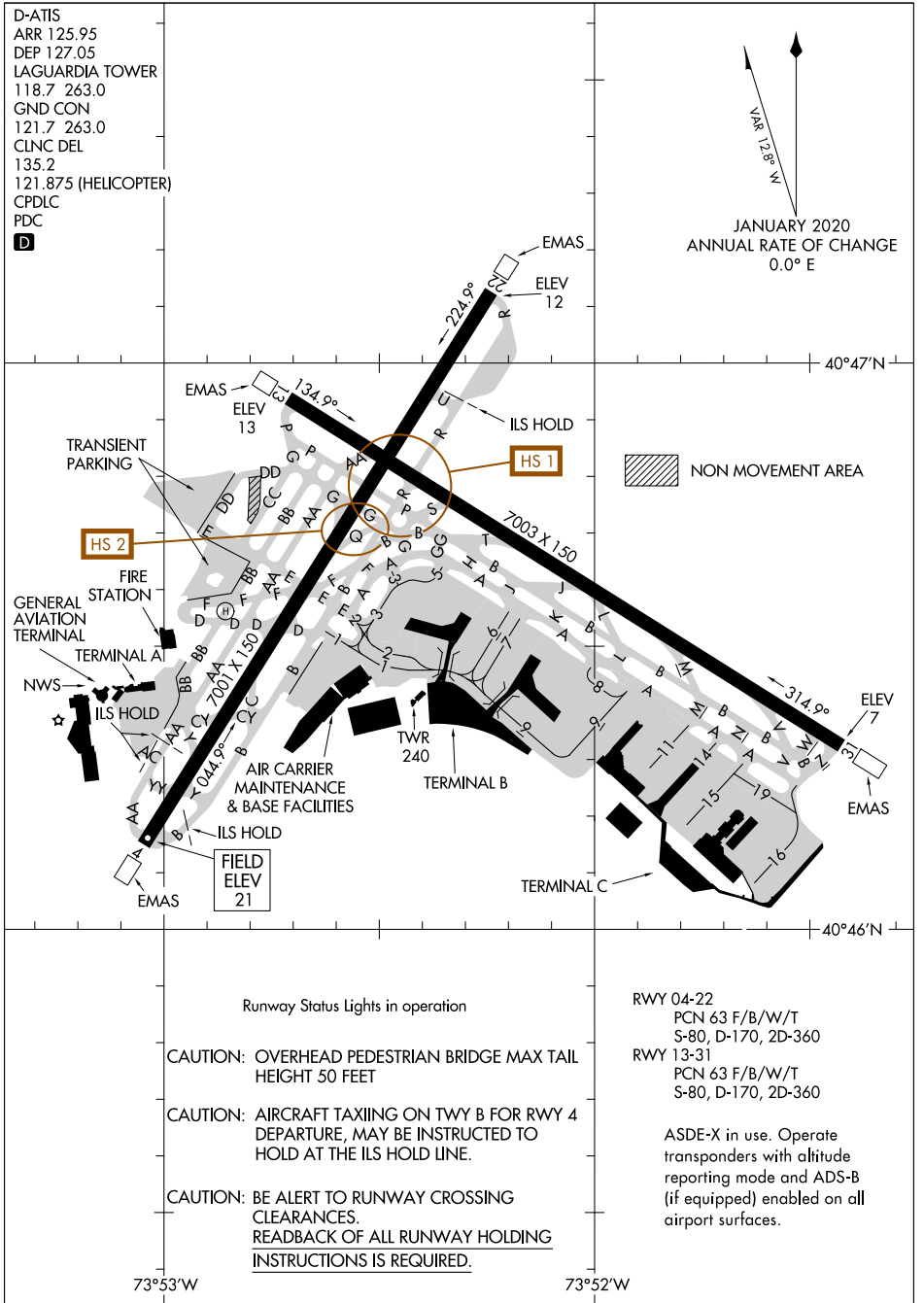
AIRPORT DIAGRAM

AL-289 (FAA)

LAGUARDIA (L.G.A)
NEW YORK, NEW YORK

D-ATIS
 ARR 125.95
 DEP 127.05
 LAGUARDIA TOWER
 118.7 263.0
 GND CON
 121.7 263.0
 CLNC DEL
 135.2
 121.875 (HELICOPTER)
 CPDLC
 PDC
D


 JANUARY 2020
 ANNUAL RATE OF CHANGE
 0.0° E



NE-2, 14 JUL 2022 to 11 AUG 2022

NE-2, 14 JUL 2022 to 11 AUG 2022

Runway Status Lights in operation

CAUTION: OVERHEAD PEDESTRIAN BRIDGE MAX TAIL HEIGHT 50 FEET

CAUTION: AIRCRAFT TAXIING ON TWY B FOR RWY 4 DEPARTURE, MAY BE INSTRUCTED TO HOLD AT THE ILS HOLD LINE.

CAUTION: BE ALERT TO RUNWAY CROSSING CLEARANCES. READBCK OF ALL RUNWAY HOLDING INSTRUCTIONS IS REQUIRED.

RWY 04-22
 PCN 63 F/B/W/T
 S-80, D-170, 2D-360

RWY 13-31
 PCN 63 F/B/W/T
 S-80, D-170, 2D-360

ASDE-X in use. Operate transponders with altitude reporting mode and ADS-B (if equipped) enabled on all airport surfaces.

73°53'W

73°52'W

AIRPORT DIAGRAM

NEW YORK, NEW YORK
LAGUARDIA (L.G.A)