

025811-000-6

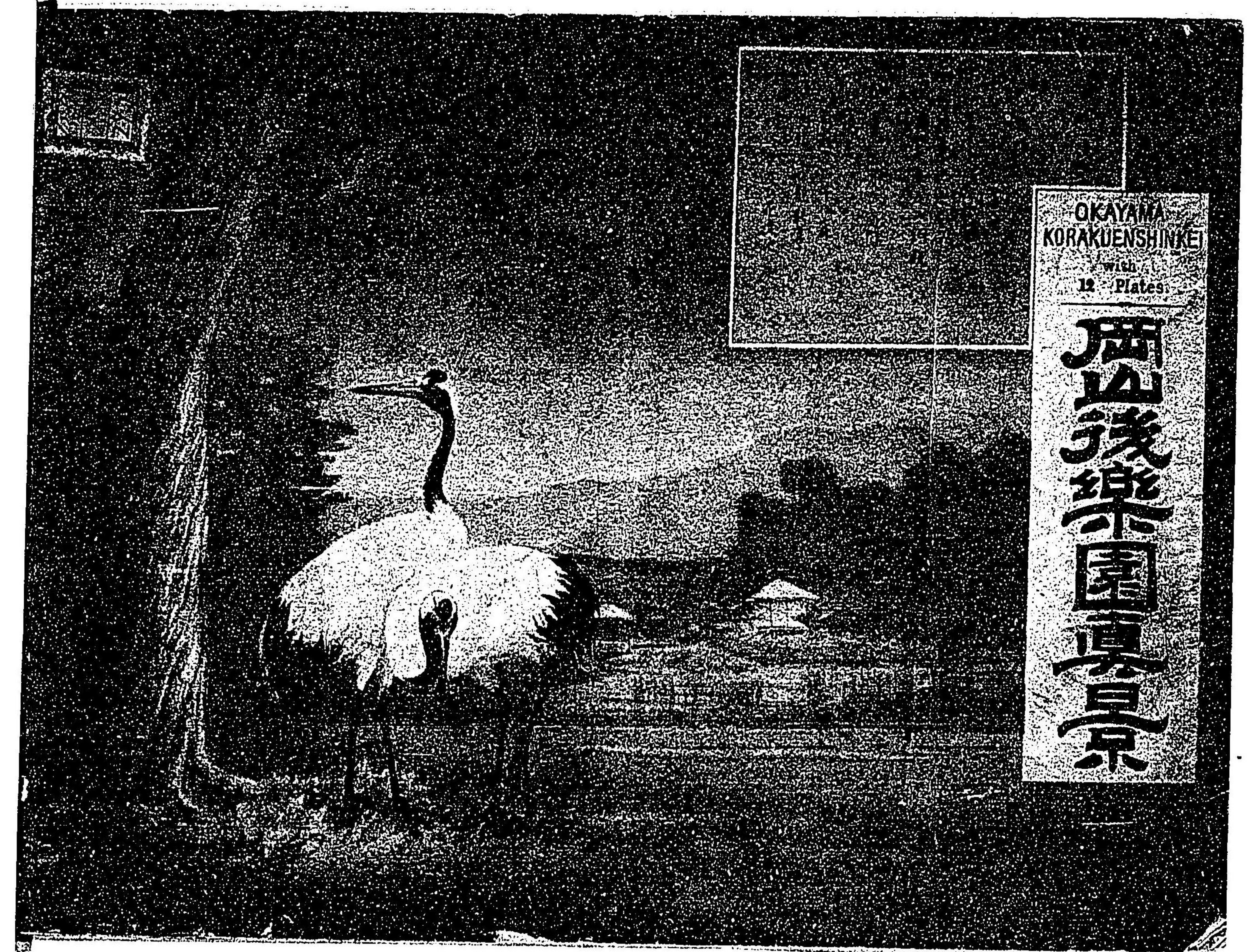
特55-440

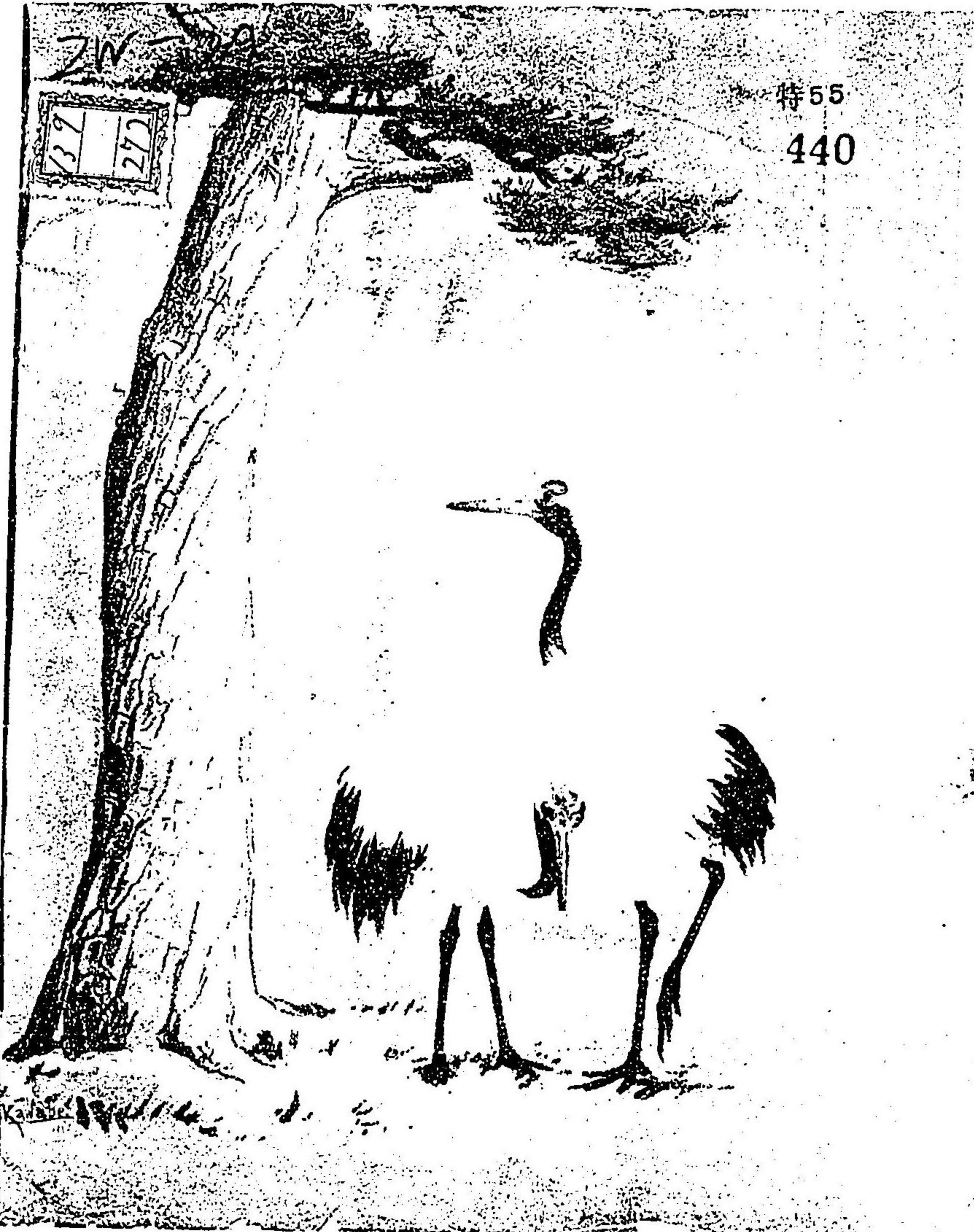
岡山後樂園真景

河辺 正夫/画

M27

ADC-3352



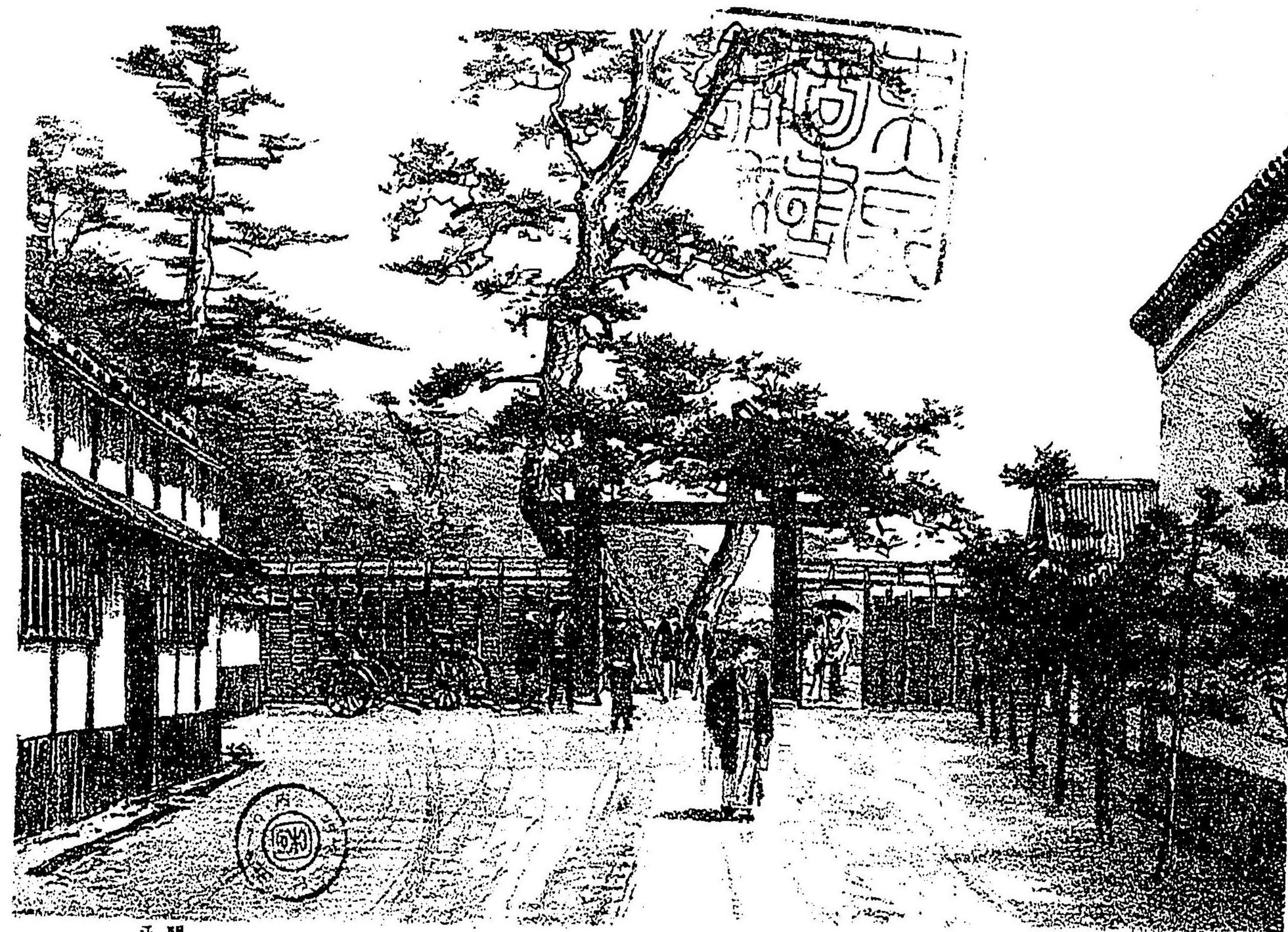


- 一 正門
- 二 鶴鳴館
- 三 延壽亭及び茶室
- 四 茶室及び花石
- 五 花葉池大石
- 六 鳥の茶屋及び釣殿
- 七 唯心山
- 八 蓮池軒及び南門
- 九 流石
- 十 新殿及び千八森
- 十一 馬場及び観音亭
- 十二 利休堂及び花交池

岡山後樂

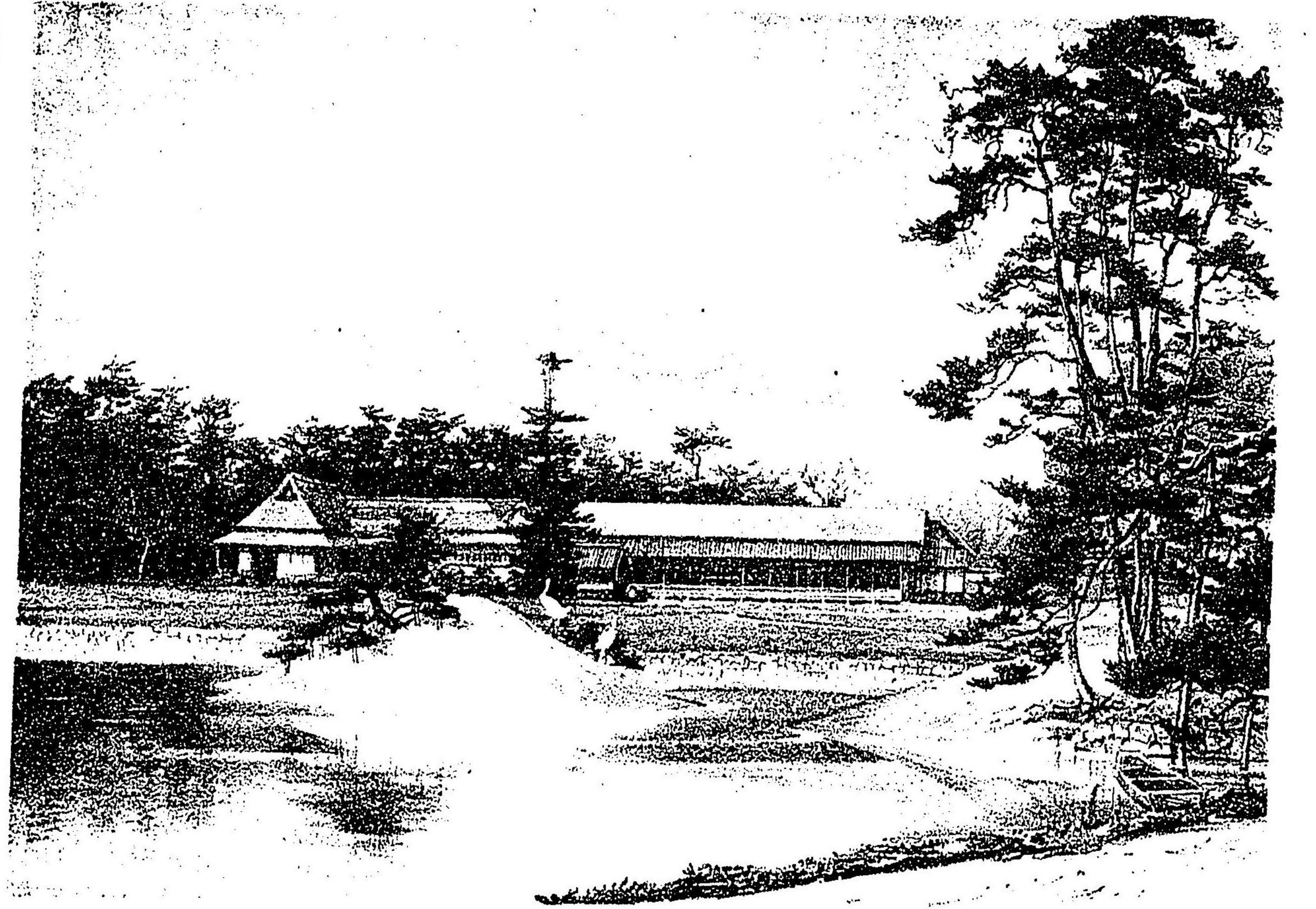
OKAYAMA
KORAKUENSHINKEI
with
12 Plates.

岡山後樂園真景



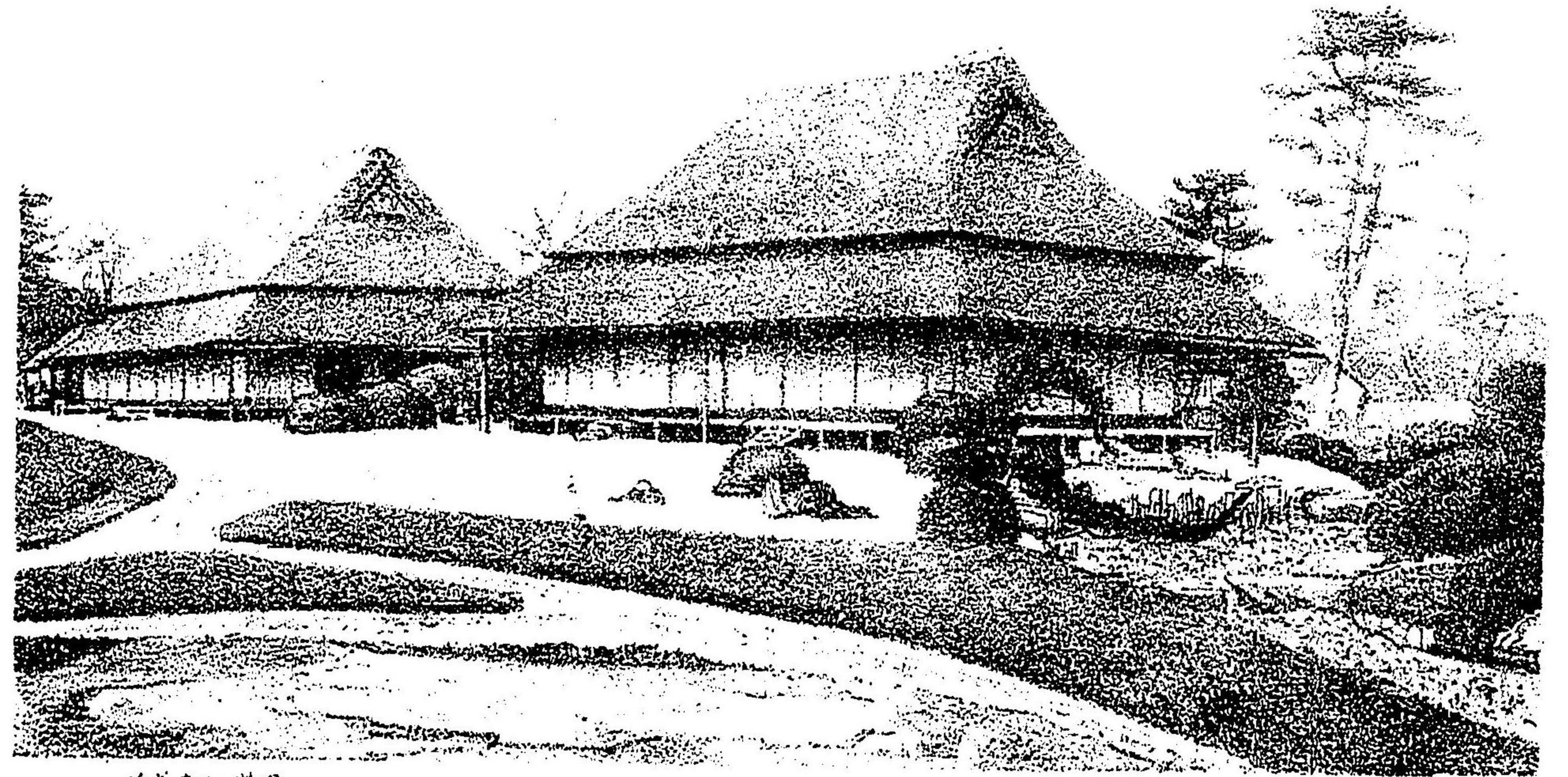
正門

Front gate



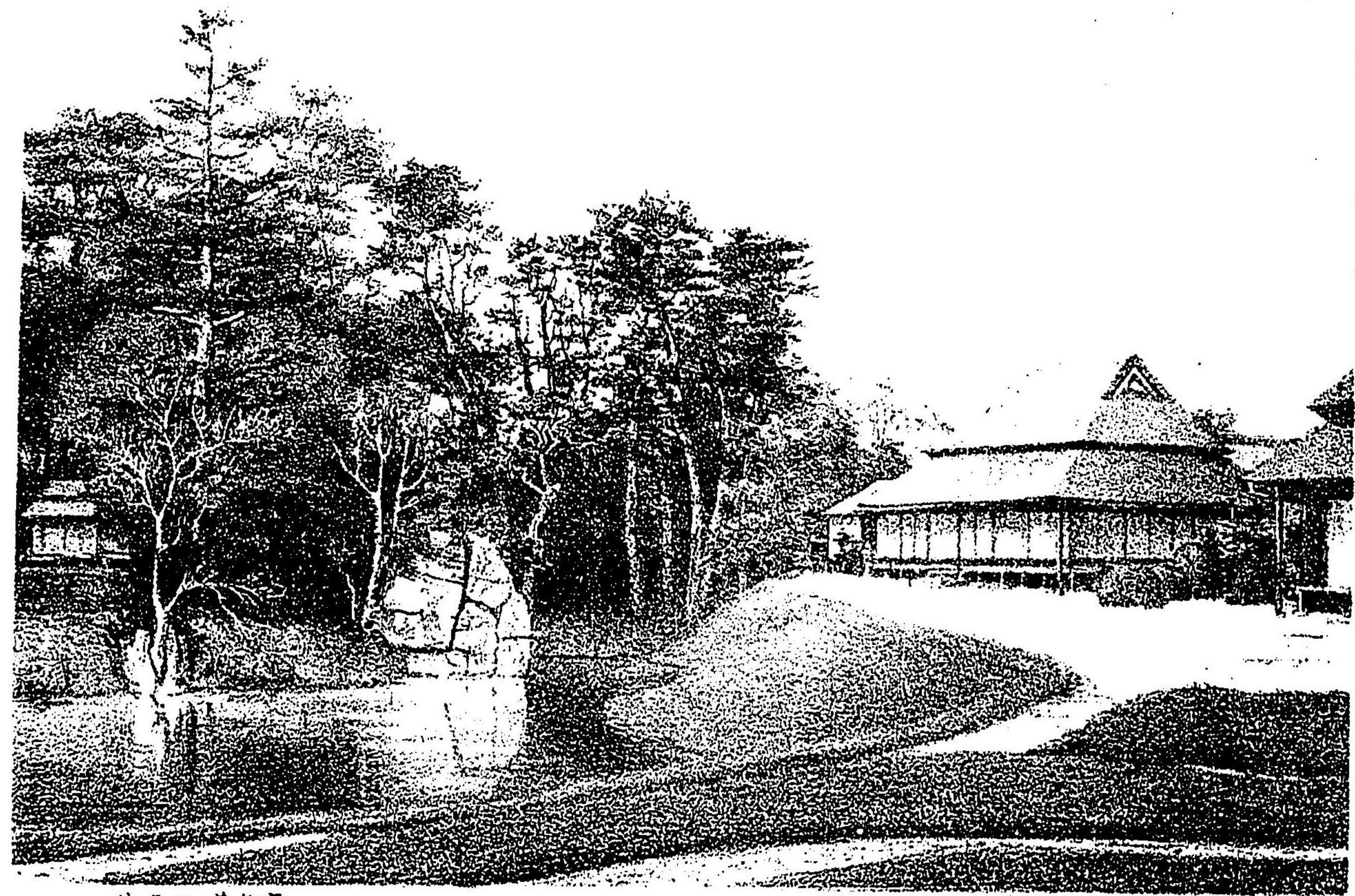
池東ヨリ鶴鳴館及中ノ新ヲ望ム

Hurumikan and Nakanoshima from east side of the pond.



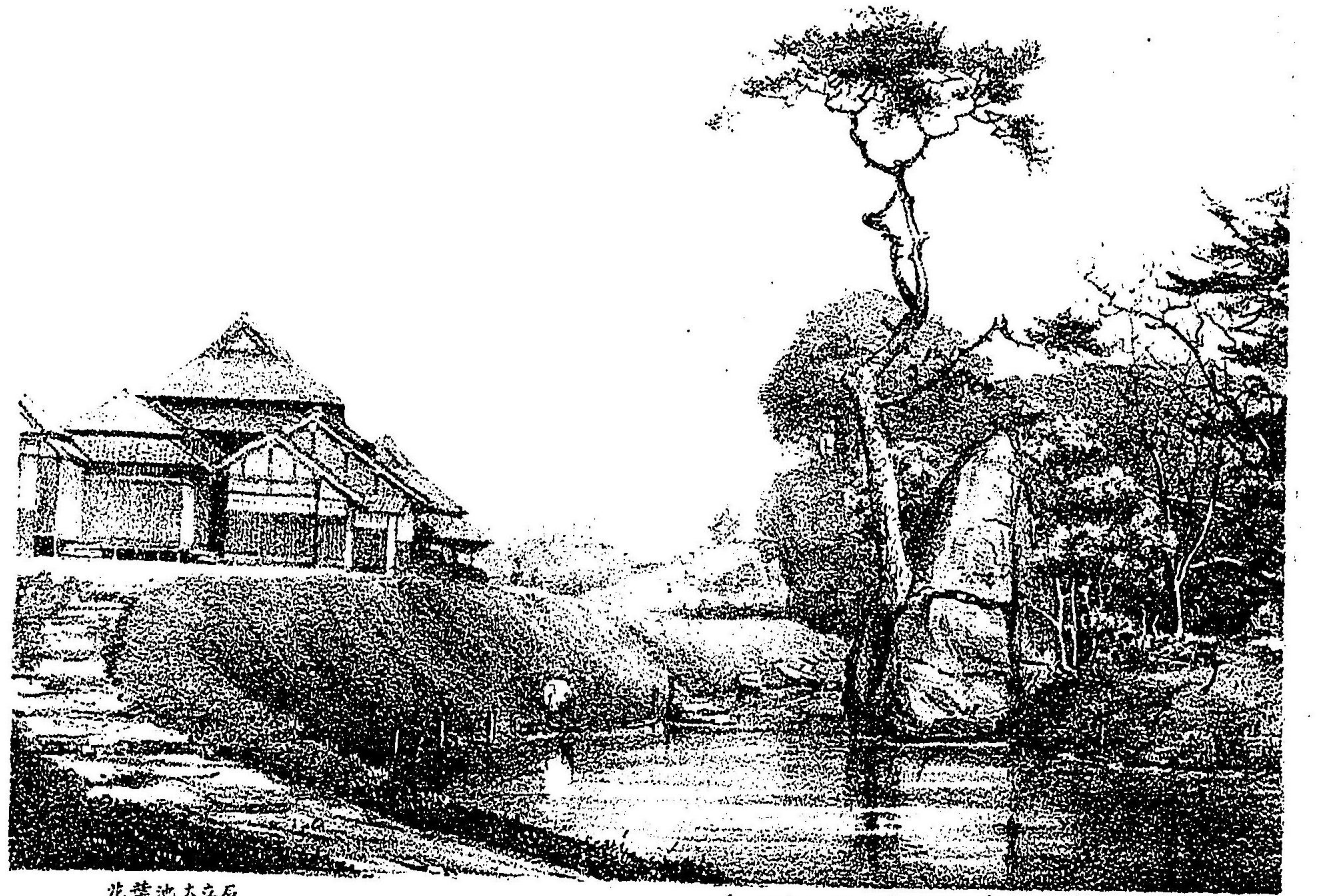
延茶亭及心深閣

Enyotei and Geisho.



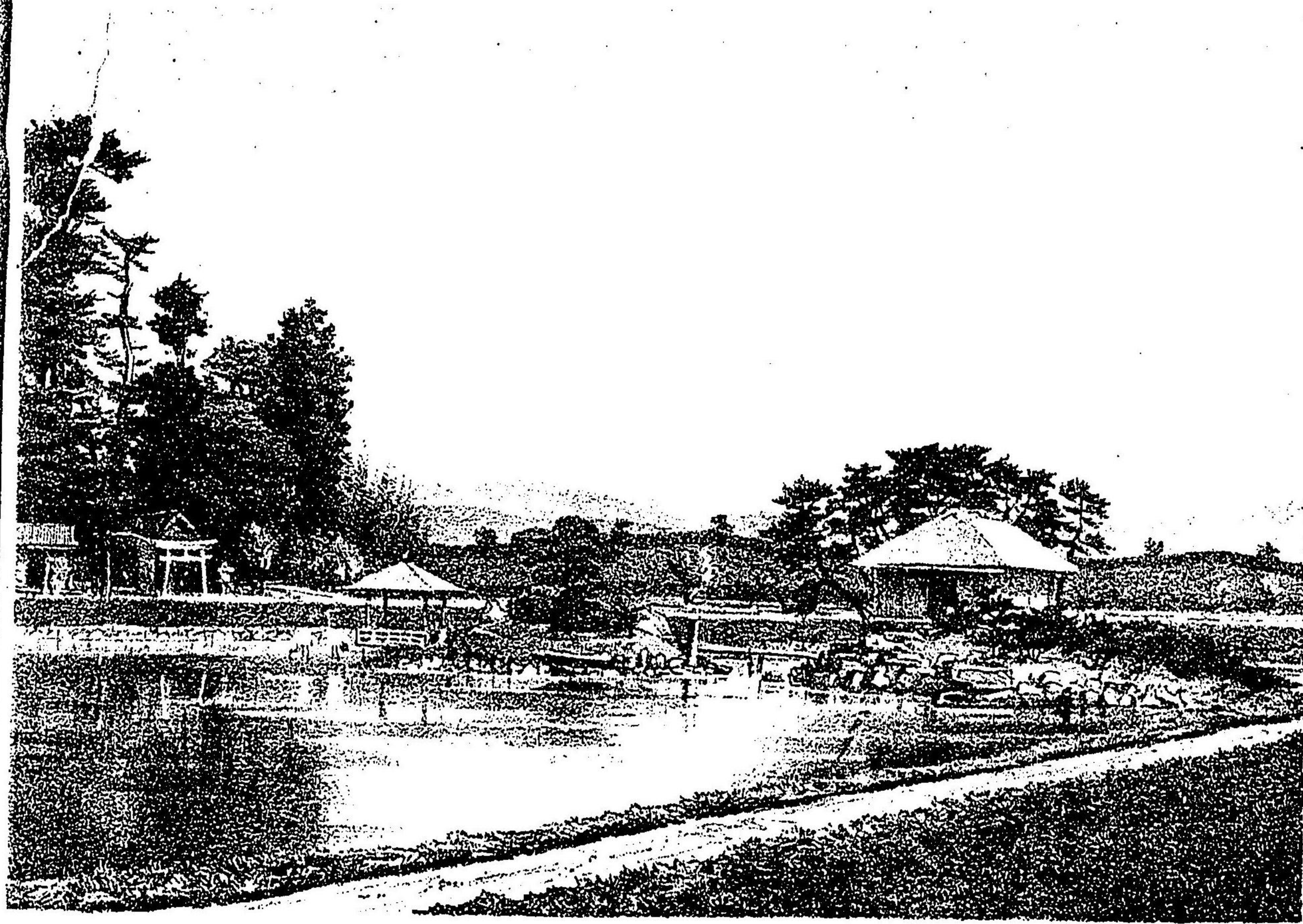
茶唱及松庵

Teicho and Moshuan.



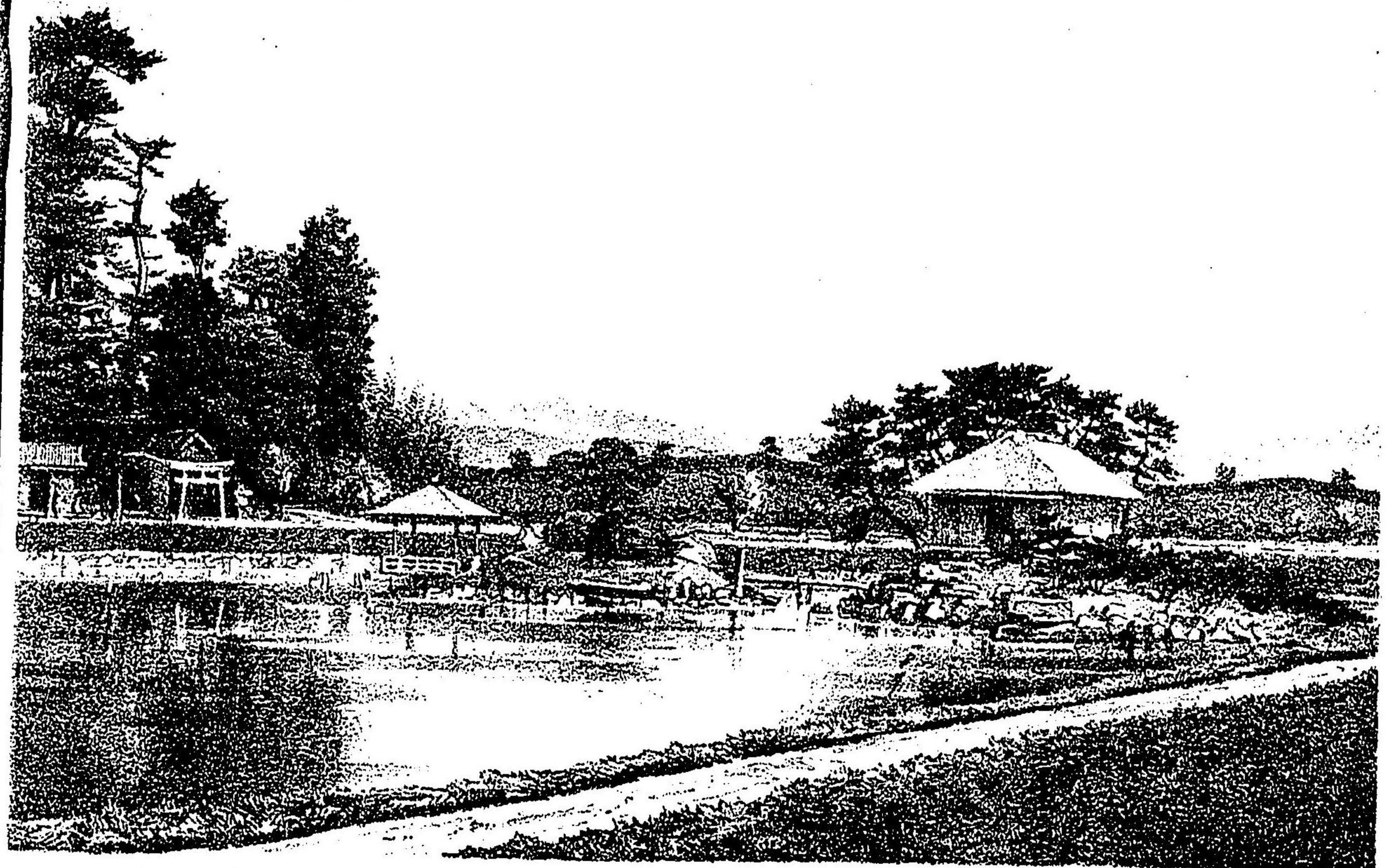
花葉池大立石

Great Standing Rock by the pond Haymoike.



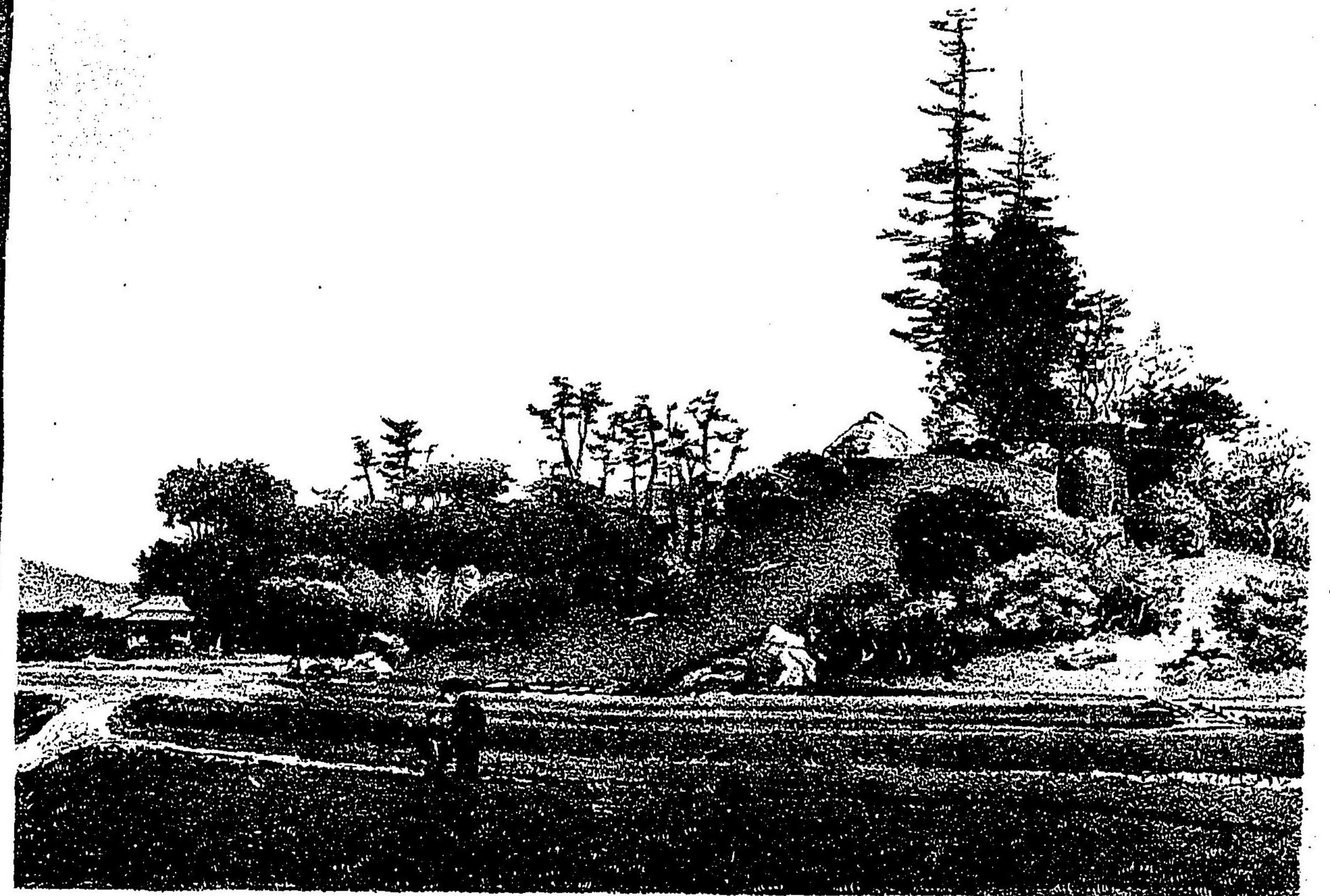
海池西南岸の島、茶屋の殿及び由加神社の望み

View from south west side of the pond.



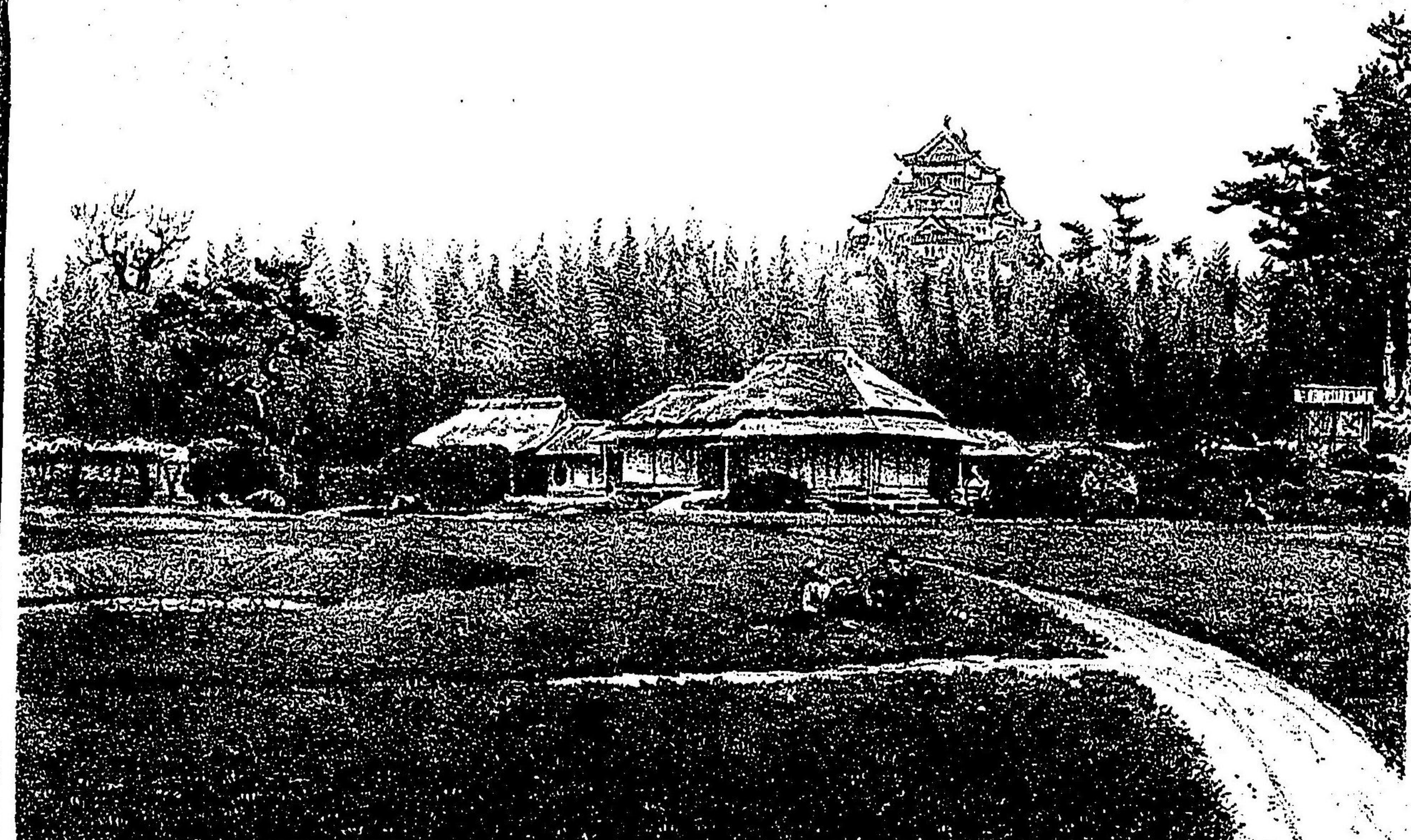
海池西南岸ヨリ島・茶屋・船及由加神社ヲ望ム

View from south west side of the pond.



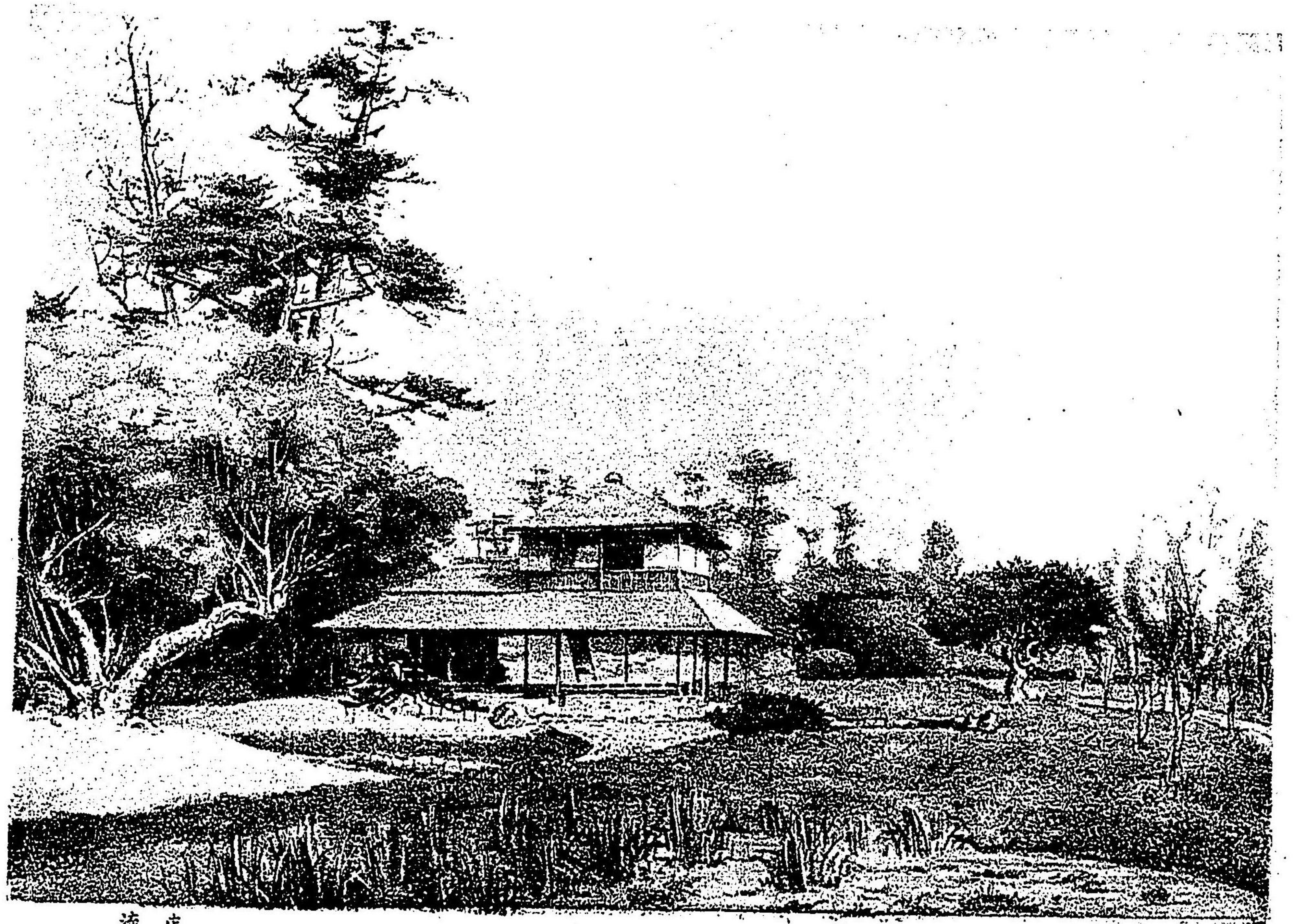
西部の唯心山を望む

Yuishin hill from the west.



澤池西南岸の蓮池新及天主閣の望

Panchoiken and the castle from south west side of the pond.



流店

Riuten.



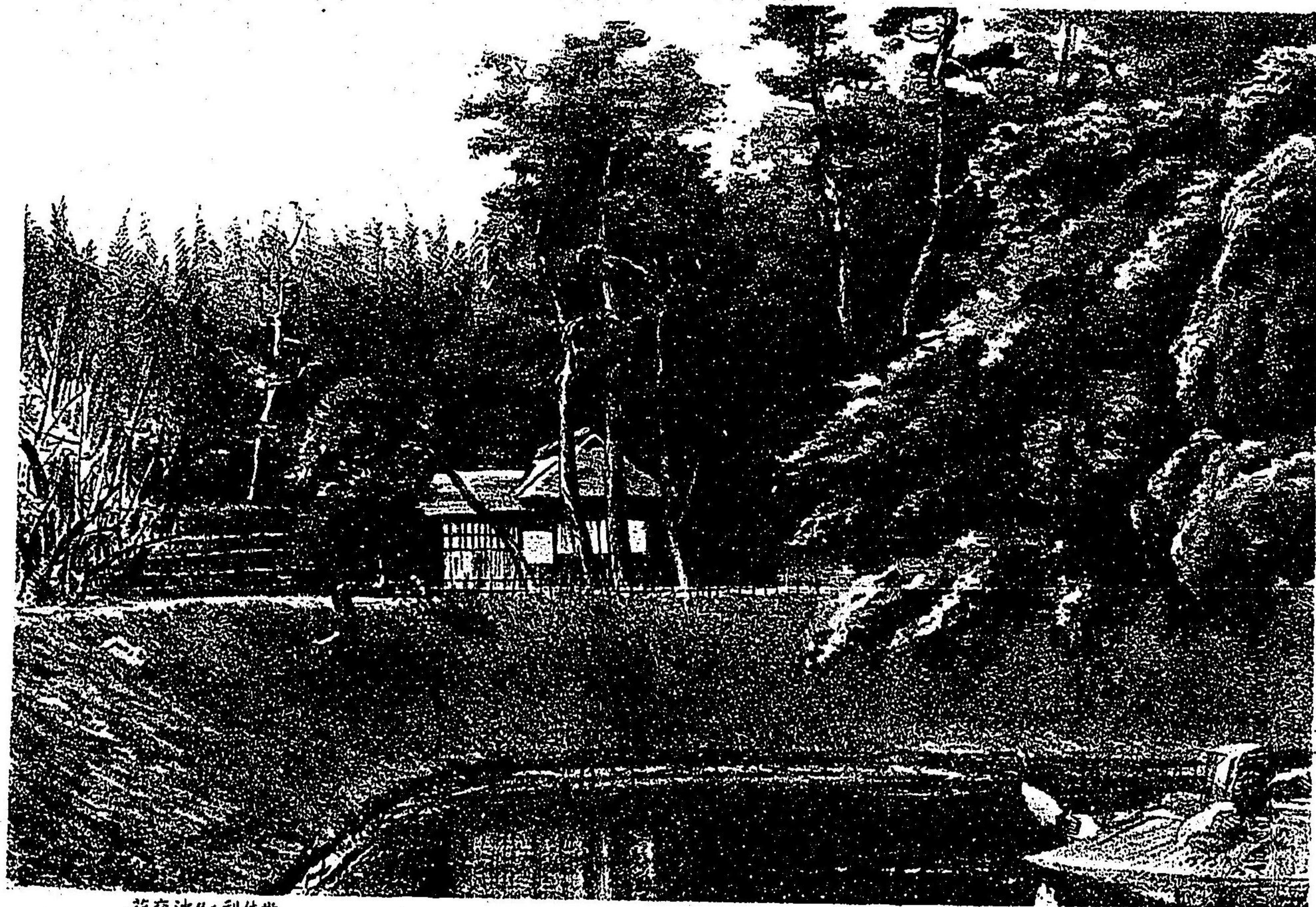
新殿千八森及茶園

Shinden, Chishinomori, and tea farm.



馬場及口觀騎亭

Race track and Hanjira.



花交池及利休堂

Kakoiike and Rikyudo.

