

- 1 gun testing cement bldg.

8. End view of hospital.

9. Roof view of Bldg 31 showing heavy cutting of supports.

10. Closeup of pillar, Bldg 33.

11. Closeup from ground of same pillar.

~~12. Closeup of cut pillar in Bldg~~  
End view of wooden bldg 36, showing craters.

Negative No.

1. ~~Closeup of pillar showing fragmentation~~  
cuts, Bldg 45

2. Semi closeup of cut pillar.

3. Interior shot of Bldg 45 showing heavy cutting of roof steel.

4. Corner view of Bldg 45, showing bomb damage to structure.

5. Roof shot of Bldg 56 showing cuts in steel

6. Complete destruction of wooden bldgs.

20  
CE 9 to CE 12

109

2137

UNIT Physical Damage No. TARGET

DATE TAKEN Oct 31st 1945

WHERE TAKEN Kawana City, Japan

GIVE COMPLETE STORY OF PICTURE

Include following where applicable:

Names, with initials or first names, rank and hometown; DETAILS of occasion or action; ALTITUDE flown and FOCAL LENGTH of lens (in all aerial photos).

OFFICIAL U. S. NAVY PHOTOGRAPH.

Kawanishi Aircraft  
(Nakarazuka Plant)  
Kawana City, Japan

PART 4-P.D.D. 73  
1-17 INCH

Negatives 7 through 12.

CALVIN

CE 19 to CE 22

109

2137

UNIT Physical Damage No. TARGET

DATE TAKEN Oct 31st 1945

WHERE TAKEN Kawana City

GIVE COMPLETE STORY OF PICTURE

Include following where applicable:

Names, with initials or first names, rank and hometown; DETAILS of occasion or action; ALTITUDE flown and FOCAL LENGTH of lens (in all aerial photos).

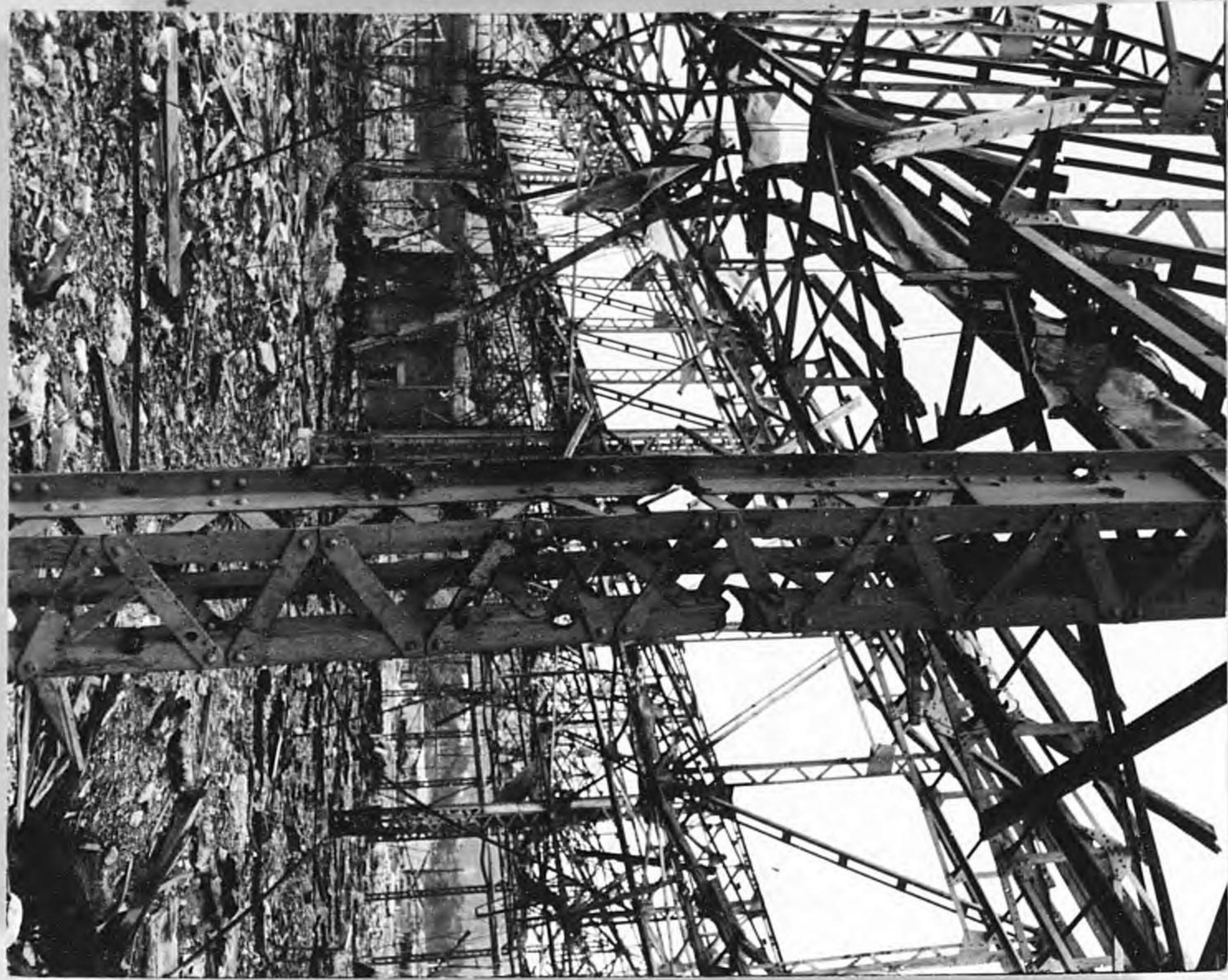
OFFICIAL U. S. NAVY PHOTOGRAPH.

Kawanishi Aircraft  
(Nakarazuka Plant)  
Kawana City

PART 4-P.D.D. 73  
1-17 INCH

Negatives 1 through 6

CALVIN



UNIT \_\_\_\_\_ No. \_\_\_\_\_

DATE TAKEN \_\_\_\_\_

WHERE TAKEN \_\_\_\_\_

**GIVE COMPLETE STORY OF PICTURE**

Include following where applicable:

Names, with initials or first names, rank and hometown; DETAILS of occasion or action; ALTITUDE flown and FOCAL LENGTH of lens (in all aerial photos).

**OFFICIAL U. S. NAVY PHOTOGRAPH.**

*Prints on target*

*No. 2137*

*Kawanishi Aircraft  
(Osarazuka Plant)*

*Kawana City*

UNITED STATES STRATEGIC BOMBING SURVEY  
 PHYSICAL DAMAGE DIVISION TEAM NO. 3

21

PHOTO NOTES  
 TARGET 90.25 - 2137

PHOTO	BLDG. NO.	BOMB NO.	DIR.	REMARKS
1	45	298	040	double bent column and break in end of building
2	45	294	300	cut column
3	45	291	315	frag. cut opening
4	45	287,290	295	blasted and cut column
5	56	43	290	fragmentation cutting
6	<del>59</del> 89	area(92)	070	downed wooden building
7	51	2,3	320	fragmentation and blast in reinforced concrete building
8	<del>40</del> 93	239	140	blasted wooden building
9	31	389 340	085	hole in building
10	33	347	270	cut column
11	33	347	040	" "
12	33	344,383	310	" "
13	36	351	300	Blasted wooden building
14	31	341		cut column
15	56	38	080	direct hit on machine
16	45	296,298	080	two E-W bays
17	56	42	300	column and crater

**UNITED STATES STRATEGIC BOMBING SURVEY  
PHYSICAL DAMAGE DIVISION TEAM NO. 3**

**PHOTO NOTES  
TARGET 90.25 - 2137**

PHOTO	BLDG. NO.	BOMB NO.	DIR.	REMARKS
①	45	298	040	double bent column and break in end of building
2	45	294	300	cut column
3	45	291	315	frag. cut opening
4	45	287,290	295	blasted and cut column
5	56	43	290	fragmentation cutting
6	59	area(92)	070	downed wooden building
7	51	2,3	320	fragmentation and blast in reinforced concrete building
8	40	239	140	blasted wooden building
9	31	389	085	hole in building
10	33	347	270	cut column
11	33	347	040	" "
12	33	344,383	310	" "
13	36	351	300	Blasted wooden building
14	31	341		cut column
15	56	38	080	direct hit on machine
16	45	296,298	080	two E-W bays
17	56	42	300	column and crater

0 INDICATES THAT PHOTO HAS BEEN INSERTED IN REPORT