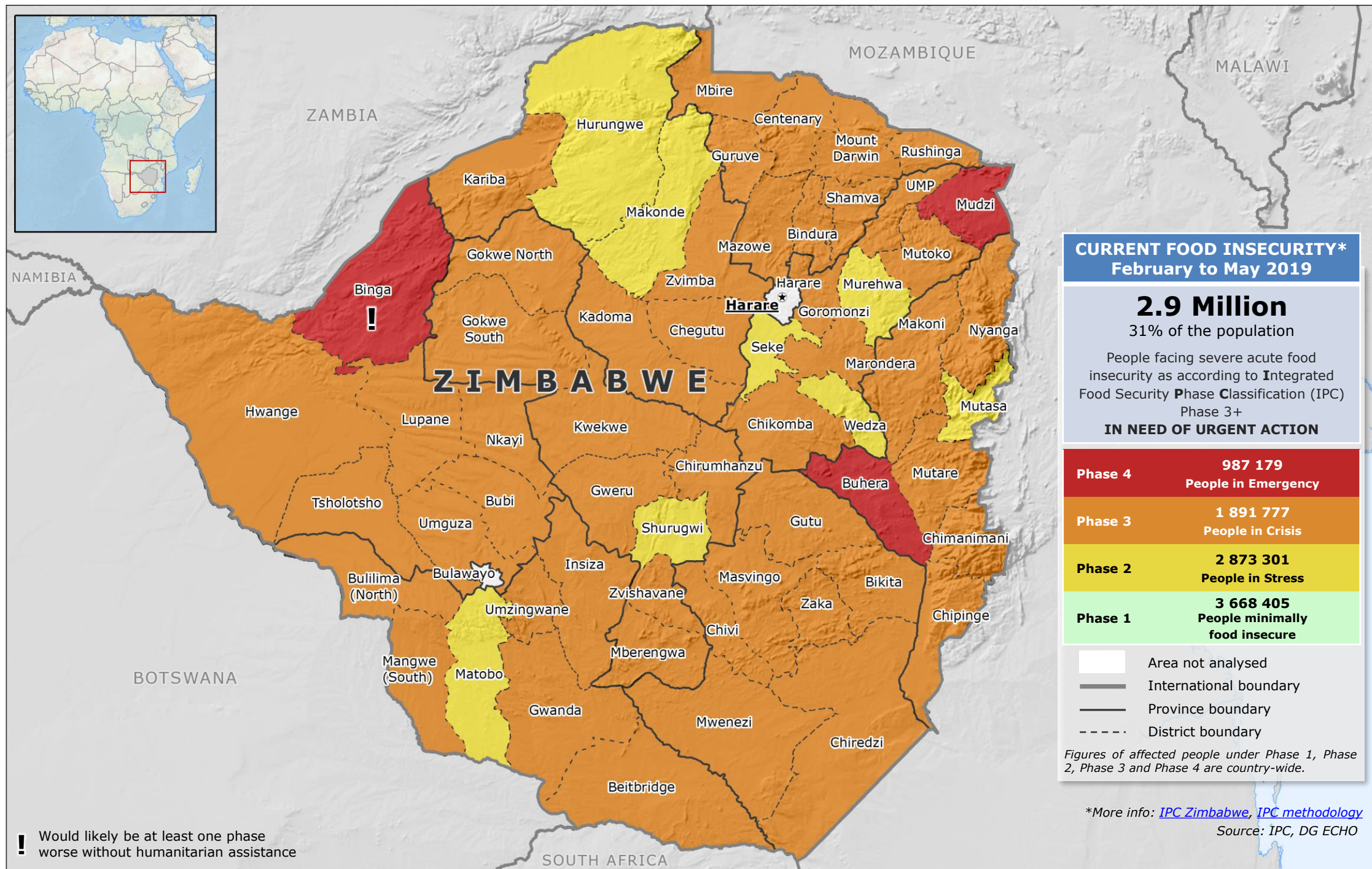


Zimbabwe | Food Insecurity Situation



CURRENT FOOD INSECURITY*
February to May 2019

2.9 Million
31% of the population

People facing severe acute food insecurity as according to Integrated Food Security Phase Classification (IPC) Phase 3+
IN NEED OF URGENT ACTION

Phase 4	987 179 People in Emergency
Phase 3	1 891 777 People in Crisis
Phase 2	2 873 301 People in Stress
Phase 1	3 668 405 People minimally food insecure

- Area not analysed
- International boundary
- Province boundary
- District boundary

Figures of affected people under Phase 1, Phase 2, Phase 3 and Phase 4 are country-wide.

*More info: [IPC Zimbabwe](#), [IPC methodology](#)
Source: IPC, DG ECHO

! Would likely be at least one phase worse without humanitarian assistance

