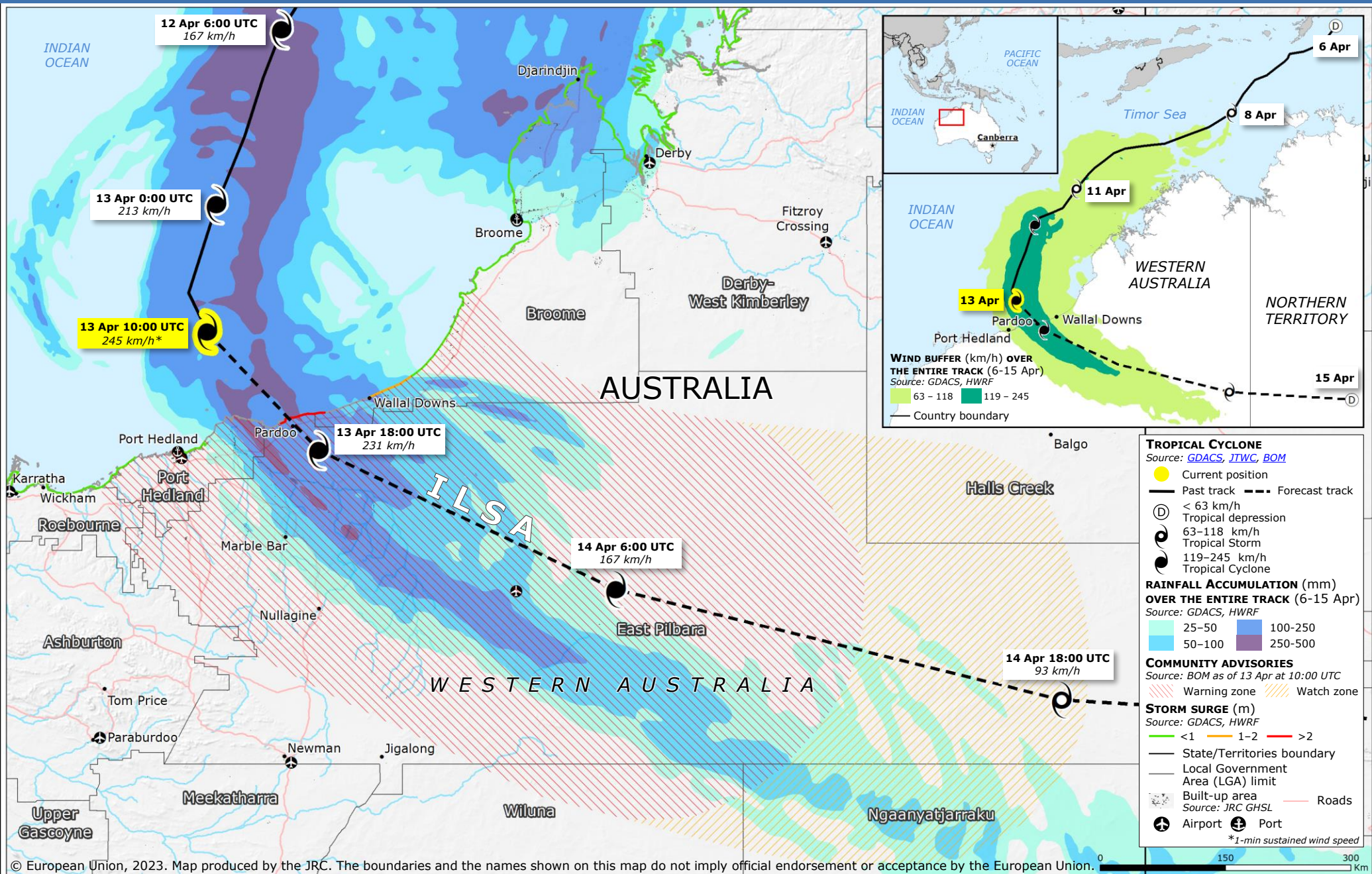


# Australia | Tropical Cyclone ILSA



**TROPICAL CYCLONE**  
Source: GDACS, JTWC, BOM

- Current position
- Past track — — Forecast track
- Ⓧ < 63 km/h Tropical depression
- Ⓧ 63-118 km/h Tropical Storm
- Ⓧ 119-245 km/h Tropical Cyclone

**RAINFALL ACCUMULATION (mm) OVER THE ENTIRE TRACK (6-15 Apr)**  
Source: GDACS, HWRF

- Light Blue: 25-50
- Medium Blue: 50-100
- Dark Blue: 100-250
- Purple: 250-500

**COMMUNITY ADVISORIES**  
Source: BOM as of 13 Apr at 10:00 UTC

- Red hatching: Warning zone
- Yellow hatching: Watch zone

**STORM SURGE (m)**  
Source: GDACS, HWRF

- Green: < 1
- Yellow: 1-2
- Red: > 2

— State/Territories boundary  
— Local Government Area (LGA) limit  
● Built-up area  
Source: JRC GHSL  
Ⓧ Airport Ⓧ Port

\*1-min sustained wind speed