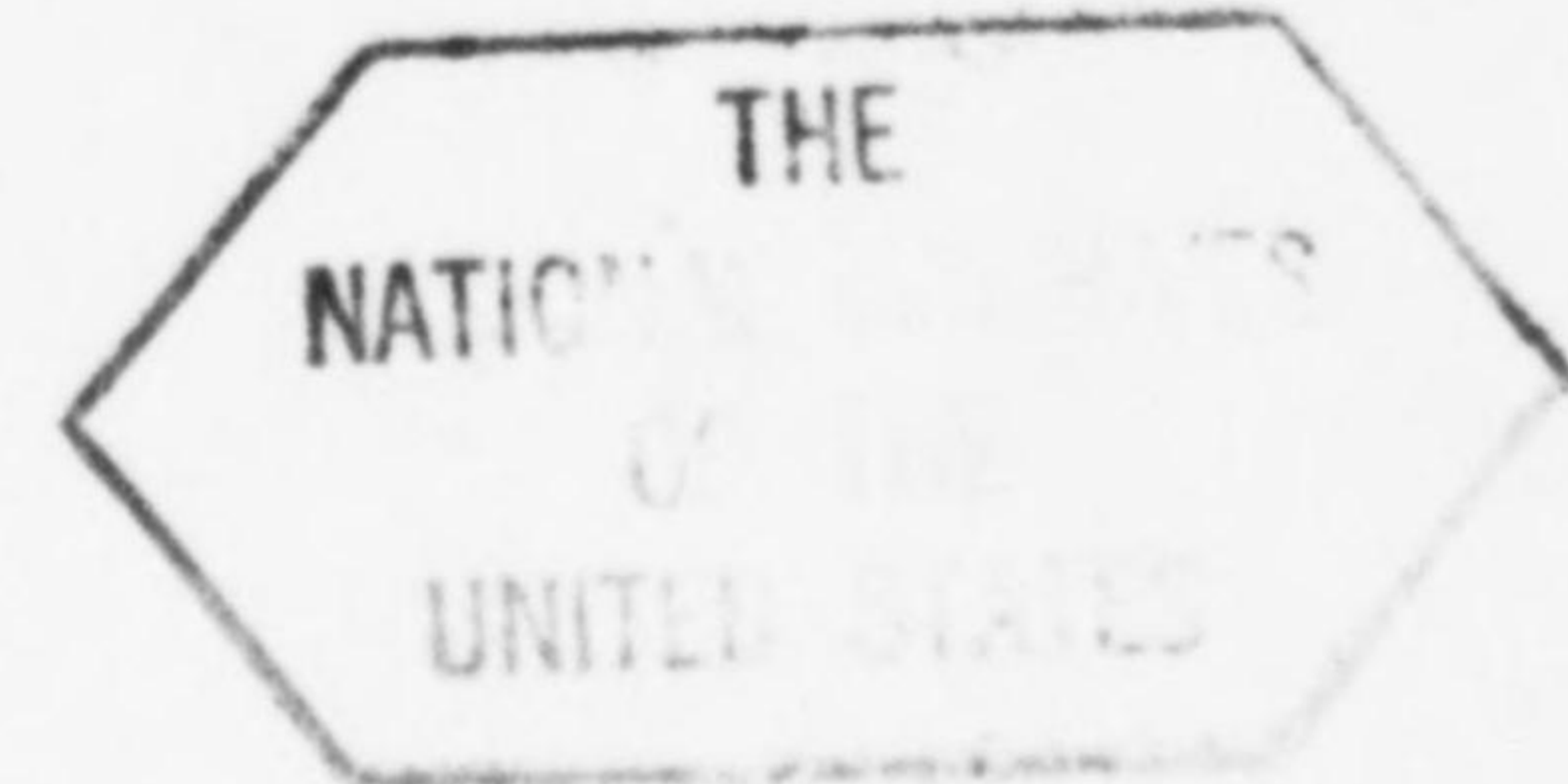


**GHQ/SCAP Records(RG 331)**  
Description of contents



- (1) Box no. 2581
- (2) Folder title/number: (8)  
Miyagi Disaster Plan
- (3) Date: Nov. 1947 - Apr. 1951

(4) Subject:

Classification	Type of record
9440, 9450 (M)	c

- (5) Item description and comment:  
M: Miyagi

(6) Reproduction:  Yes  No

(7) Film no. \_\_\_\_\_ Sheet no. \_\_\_\_\_

P. sc

SUBJECT: Fire Report

FROM: Sendai City Fire Protection  
Headquarters

TO: Welfare Section,  
Tohoku Civil Affairs Region  
APO 547

PLACE: Aramaki, Sendai

TIME: Started 0145 hrs, 11 May  
controlled 0300 hrs., 11 May

DAMAGE: 24 households (111 people) involved  
2 wings of repatriates' dormitory completely destroyed

CASUALTY: 3 persons burnt to death

Fire Report

by Miss Nishikata  
(CE)

brok out 2:40, 22 April 51

Controlled about 5:30

110 houses burned (including half-burned)

{ 15 Tachimachi district

{ 88 Kinachi "

{ 7 Kamisugiyama "

(10,000 tenbo in all)

501 sufferers. (homeless)

at 6:00 within the city Government  
the counter-measure head quarter  
was set up. and Chosei-in and  
Kokuei Gakuen were decided  
for the temporary residence for  
sufferers.

at 6:00 Bread was ordered for their  
breakfast.

at 8:00 Breakfast was distributed.  
In each district Sufferers  
Consultation Centre (Sodan sho) was

set up and they issued the certification of the fire-sufferers.

at 1400 lunch was given

Daily necessities and clothings were distributed to the sufferers.

Kettles, pans, basin, knife, geta, candle, match, soap.

Working garments, childrens garments, underwears, rubber shoes, towel, etc.

The injured were taken care in the city hospital.

At present (14:00) only one family stayed at the temporary residence.

(Others went to the relatives or friends)

City Assembly will open tomorrow

City recieved the citizens contributions

370,000 ¥ { 300,000 ¥ from 77 Bank

70,000 ¥ from the Fujisaki

Fire Disaster Report

Chief, TCAR

Public Welfare Section

5 February 1951

Received fire disaster report from Sendai Fire Department Headquarters at 1600 hours, 5 February 1951.

Location: Sendai Market, Higashi Ichibancho

Damaged Area: About 200 tsubo. Half of the market, Toka Toilet Article Co., and a dance hall. About ten households involved.

Cause of Fire: Fire seems to have started from the 2nd floor of the Toka Toilet Article Company, but not sure. Details are under investigation.

Estimated loss and refugees: Details are under investigation. Details will be reported later.

----- PETER G. CROES *PC* -----

---

COUNTER-DISASTER SETUP  
AND  
ACTIVITY PROGRAMS

---

- 1949 -

MIYAGI PREFECTURAL GOVERNMENT

COUNTER-DISASTER SETUP  
AND  
ACTIVITY PROGRAM

C-O-N-T-E-N-T-S

	(Page)
I. Regulations for Miyagi Prefec- tural Counter-Disaster Board	----- 1
Designated Members of Miyagi Prefectural Counter-Disaster Board	----- 5
II. Regulations for Miyagi Prefec- tural Disaster Relief Troop	----- 6
(1) Organization of the Main Troop and Divisional Duties	----- 10
(2) Regulations for Miyagi Prefectural Disaster Re- lief Troop's District Office or City Branch or _____ Town or Village Sub-branch	----- 23
( Various Forms )	----- 31
III. Outline of Miyagi Prefectural Disaster Relief Program	----- 35
IV. Activity Plan of Miyagi Prefec- tural Disaster Relief Troop	----- 42

	(Page)
(1) Emergency Headquarters -----	45
(2) Respective Programs of Component Divisions -----	46
1. General Affairs and Welfare Division -----	46
2. Fire-Control Division -----	59
3. Land Public Safety Division -----	67
4. Maritime Public Safety Division -----	75
5. Health Division -----	81
6. Economics First Division -----	92
7. Economics Second Division -----	94
8. Railway Transportation Division -----	99
9. Land Transportation Division -----	101
10. Maritime Transportation Division -----	124
11. Communication Division -----	125
12. Engineering Division -----	133
13. Meteorological Division -----	142
14. Broadcasting Division -----	143
15. Electric Engineering Division -----	145
16. Cooperative Division -----	150



I. REGULATIONS FOR MIYAGI PREFECTURAL  
COUNTER-DISASTER BOARD

Article 1. On the basis of the provisions of the Disaster Law, Article 3, a Miyagi Prefectural Counter-Disaster Board ( hereinafter referred to as "Board" ) shall be instituted in Miyagi Prefecture.

Article 2. The Board shall take charge of the following duties :

1. Collection of informations concerning emergency disasters and their remedial activities and report of them to respective organs concerned.
2. Establishment of emergency programs concerning the provision and storage of labor, equipment, funds and materials as needed in case of any emergency disaster.
3. Establishment of emergency programs concerning the procurement, distribution and transportation of labor, equipment, funds and materials as needed in case of any emergency disaster.
4. Establishment of plans for urgent measures other than those as referred to in paragraph 2, above.

5. Promotion of the execution of the plans as mentioned in above paragraphs 2 through 4.

Article 3. The Board shall consist of a president and several members.

Article 4. The presidency of the Board shall be assumed by the Prefectural Governor.

The president shall preside over the affairs of the Board, and in case he is prevented from discharging his duties, a member designated by him in advance shall act for him.

Article 5. The members of the Board shall be commissioned by the president, or the Governor, from among chiefs of related administrative agencies and the chief of the Japan Red Cross Miyagi Branch as designated by the Prime Minister, and persons of learning and experience.

Article 6. The tenure of the members from persons of learning and experience as referred to in the preceding article shall cover two (2) years.

Article 7. The Board shall have a secretarial bureau with the following staff assigned thereto :

Director	-	one
Deputy director	-	one
Clerk	-	Several
Secretary	-	Several

The directorship shall be assumed by the Prefectural Vice-Governor through appointment by the Governor.

The vice-directorship shall be assumed by the Prefectural Welfare Department chief through appointment by the Governor.

Clerks and secretaries shall be appointed or commissioned by the president, or the Governor, from among officials of related administrative agencies and staff officials of the Japan Red Cross Miyagi Branch.

Article 8. The director shall take charge of the affairs of the bureau upon order of the president.

The vice-director shall help the director and act for him, in case the director is prevented from discharging his duties.

Clerks and secretaries, upon order of their senior officers, shall manage the business of the bureau.

Article 9. The Secretarial Bureau of the Board shall have its office in the Miyagi Prefectural Government building.

Article 10. Matters necessary for the enforcement of this set of regulations shall be fixed by the president, or the Governor.

#### Supplementary Provisions

This set of regulations shall come into force as from the day of its promulgation.

The Board members who were commissioned on the basis of the regulations for the Miyagi Prefectural Counter-Disaster Board as provided for on February 18, 1948, shall be regarded as newly commissioned on the day of the promulgation of this set of regulations.

DESIGNATED MEMBERS OF MIYAGI PREFECTURAL  
COUNTER-DISASTER BOARD

Members of the Miyagi Prefectural Counter-Disaster Board as designated by the Prime Minister on the basis of the provisions of the Disaster Law, Article 17 :

Director, Tohoku Regional Construction Bureau.

Director, Sendai Finance Bureau.

Chief, Tohoku Medical Affairs Branch Office,  
Welfare Ministry.

Chief, Sendai Food Office.

Chief, Sendai Charcoal Office.

Chief, Sendai Branch, Material Adjustment Office,  
Agriculture and Forestry Ministry.

Director, Sendai International Trade and Industry  
Bureau.

Director, Sendai Railways Bureau.

Director, Sendai Regional Land Transportation  
Bureau.

Director, Tohoku Regional Maritime Bureau.

Director, Tohoku Telecommunications Bureau.

Regional Director, National Rural Police.

Director, Sendai Regional Economic Stabilization  
Bureau.

Chief, Japan Red Cross Miyagi Branch.

II. REGULATIONS FOR MIYAGI PREFECTURAL  
DISASTER RELIEF TROOP

Article 1. A Miyagi Prefectural Disaster Relief Troop ( hereinafter referred to as "Relief Troop" ) shall be instituted on the basis of the provisions of the Disaster Law, Article 22, paragraph 2, and also those of the Ordinance for the execution thereof, Article 7.

Article 2. The Relief Troop has for its purpose execution in case of any emergency disaster of prompt and pertinent relief programs for the sufferers by keeping a tight and close relation between various quarters staging relief activities.

Article 3. The Relief Troop shall be organized by the Prefectural Government, related administrative agencies and various organizations staging relief activities.

Article 4. The Relief Troop shall comprise a main troop, local branches ( one each at the city or district office district ) and sub-branches ( one each at the town or village district ).

Article 5. The Main Troop shall be composed of the

following setup :

Commandant-General	-	one
Vice-Commandant-General	-	one
Division chief	-	several
Company members	-	several

The Governor and the Vice-Governor shall name the commandant-general and the vice-commandant-general, respectively.

The Commandant-General shall appoint or commission division chiefs from among the Prefectural departmental chiefs or among officials of related administrative agencies and staff officials of the Japan Red Cross Miyagi Branch, and troop members from among personnel of the organizations established on the Law, Article 3, and of the Japan Red Cross Miyagi Branch and among persons with relation to relief activities.

Article 6. The Commandant-General shall preside over the affairs of the Relief Troop and take charge of its command and supervision.

The Vice-Commandant-General shall assist the Commandant-General in his duties and act for him in case he is prevented from discharging his duties.

The division chief shall, upon order of the Commandant-General, manage the affairs of his division.

The Troop members shall, upon order of their senior officers, engage in the business of the troop.

Article 7. The Main Troop shall have an operation council.

The operation council, composed of the Commandant-General, Vice-Commandant-General and division chiefs, shall forward views, spontaneously or in answer, to the Commandant-General in regard to the promotion of relief activities.

Article 8. Organizations of each division and divisional duties shall be fixed separately.

Article 9. The division chief must frame an activity plan the next fiscal year with regard to the setup and jurisdictional activities of his division and submit it to the Commandant-General by the end of February.

Article 10. City mayors, district office chiefs, and town and village headmen must each organize a local branch or sub-branch as set for in Article 4.



The provisions of Article 9 shall apply mutatis mutatis .mutandis to the case of the local branch sub-branch chief, with the submission deadline set at March 10.

Article 11. The Commandant-General must put into action a synthetic rescue program on demand of any particular disaster and file reports on its setup and the suffering status with the Ministries concerned and the Tohoku Civil Affairs Region Headquarters, besides referring it to the Prefectural Disaster Board for relevant coordination of related local agencies to the emergency setup.

Article 12. The branch chief must always be in contact with the status of any disaster within his jurisdiction for sporadic prompt reports of it to the Commandant-General.

Article 13. The disaster report must be in accord with the form No. 1 and through as speedy media as available.

Article 14. Each troop unit must prepare ledgers in separate forms as necessary for relief activities.

Supplementary Provisions

This set of regulations shall come into force as from the day of its promulgation.

(1) Organization of the Main Troop and Divisional Duties

(1) Organization of the Main Troop :

1. General Affairs and Welfare Division -

( Chief : Prefectural General Affairs Department chief )

With the Prefectural General Affairs and Welfare Departments as the center, this division will comprise :

- General Affairs Branch (Governor's Secretariat Section and Documents Section)
- Information Branch (Information Section)
- Budget Branch (General Affairs Sect.)
- Guidance Branch (Local Affairs Sect. and Protection Sect.)
- Investigation Branch (Researches and Statistics Sect.)

Provision Branch	(Accounts Sect.)
Relief Branch	(Protection Sect. and Children's Sect.)
Liaison Branch	(First Sect., Liaison Office)

2. Fire-Control Division -

( Chief : Prefectural General Affairs  
Department chief )

With the Prefectural General Affairs Department  
as the center, this division will comprise :

Fire Control Branch	(Local Affairs Sect. and Miyagi-ken Fire Control Assoc.)
Contacting Branch	(Local Affairs Sect. and Miyagi-ken Fire Control Assoc.)

3. Land Public Safety Division -

( Chief : Director, Miyagi Prefectural  
NRP Headquarters )

With the Miyagi Prefectural NRP Headquarters  
and the Regional Headquarters, NRP, as the center,  
this division will comprise :

General Affairs Branch	(Police Guard Section)
Equipment Branch	(Personnel and Equipment Section)
Police Guard Branch	(Police Guard Section)

Information Branch (Police Guard Section  
and Communication Section,  
Regional Headquarters,  
NRP)

Traffic Branch (Traffic Section)

Criminal Affairs Branch (Investigating Section)

Crime Prevention Branch (Crime Prevention and  
Criminal Statistics  
Section)

4. Maritime Public Safety Division -

( Chief : Patrol and Rescue Division,  
Shiogama Maritime Safety  
Headquarters )

With the Patrol and Rescue Division, Shiogama  
Maritime Safety Headquarters as the center, this  
division will comprise :

General Affairs Branch (General Affairs Section  
and Pref. Fisheries  
Administration Section)

Police Guard Branch (Police Affairs Section)

Rescue Branch (Patrol Section)

Contacting Branch (Headquarters)

5. Health Division -

( Chief : Prefectural Health Department  
chief )

With the Prefectural Health Department as the  
center, this division will comprise :

General Affairs Branch (Medical Affairs Section)  
 Accounts Branch (Medical Affairs Section)  
 Relief Branch (Disease Prevention Section)  
 Contacting Branch (Public Health Section)  
 Materials and Supplies Branch (Pharmaceutical Affairs Section)

6. Economics First Division -

( Chief : Prefectural Economics Department chief )

With the Prefectural Economics Department chief as the center, this division will comprise :

General Affairs Branch (Food Section)  
 Food Branch (Food Section and Fisheries Section)  
 Forestry Branch (Forestry Affairs Section)

7. Economics Second Division -

( Chief : Prefectural Commerce and Industry Department chief )

With the Prefectural Commerce and Industry Department chief as the center, this division will comprise :

General Affairs Branch (Commerce and Industry Section)

Fiber Products Branch (Commerce and Industry  
Section)

Daily Necessities  
Branch (Commerce and Industry  
Section)

8. Railway Transportation Division -

( Chief : Sendai Railways Sub-division  
chief )

With the Sendai Railways Sub-division as the  
center, this division will comprise :

General Affairs Branch (General Affairs Section)

Transportation Branch (Transportation Section)

Operation Branch (Operation Section)

Rails Maintenance  
Branch (Rails Maintenance  
Section)

9. Land Transportation Division -

( Chief : Chief, Supply and Equipment  
Division, Sendai Regional  
Land Transportation Bureau )

With the Supply and Equipment Division of  
Sendai Regional Land Transportation Bureau as the  
center, this division will comprise :

General Affairs Branch (General Affairs Section  
and Equipment and  
Supply Section)

Transportation Branch (Transportation Section)

Fuel Branch (Fuel Section)

10. Maritime Transportation Division -

( Chief : Chief, Marine Transportation  
Division, Tohoku Regional  
Maritime Bureau )

With the Marine Transportation Division, Tohoku  
Regional Marine Bureau, and the Prefectural Fish-  
eries Department as the center, this division will  
comprise :

General Affairs Branch (Documents Section;  
General Affairs Section  
and Accounts Section)

Transportation Branch (Transportation Section)

Port Branch (Port Section)

Ship-building Branch (Ship-building Section)

Materials Branch (Materials Section)

Ship Branch (Ship Section and Pref.  
Fisheries Equipment  
Section)

Labor Administration  
Branch (Labor Administration  
Section)

11. Communication Division -

( Chief : Chief, Miyagi Telecommunications  
Division )

With the Miyagi Telecommunications Division  
as the center, this division will comprise :

General Affairs Branch (Traffic Engineering  
and Operation Section)

Maintenance Engineering  
Branch (Maintenance Engineering  
Section)

12. Engineering Division -

( Chief : Prefectural Civil Engineering  
Department chief )

With the Prefectural Civil Engineering Depart-  
ment as the center, this division will comprise :

General Affairs Branch (Supervision Section)

Road Branch (Road Section)

River Branch (River and Harbor Section  
and Torrents Control  
Section)

Port and Harbor Branch (River and Harbor Section  
and Fisheries Equipment  
Section)

Building Branch (Building Section and  
Housing Section)

City Planning Branch (Planning Section)

13. Meteorological Division -

( Chief : Chief, Sendai Regional Meteorological  
Observatory )



With the Sendai Regional Meteorological Observatory as the center, this division will comprise :

General Affairs Branch (General Affairs Section)  
Observation Branch (Observation Section)  
Forecasting Branch (Forecasting Section)  
Survey Branch (Survey Section)

14. Broadcasting Division -

( Chief : Chief, Broadcasting Division, Sendai Central Broadcasting Station )

With the Sendai Central Broadcasting Station as the center, this division will comprise :

General Affairs Branch (Business Operation Section)  
Broadcasting Branch (Broadcasting Section)

15. Electric Engineering Division -

( Chief : Chief, Power Division, Sendai International Trade and Industry Bureau )

With the Power Division, Sendai International Trade and Industry Bureau as the center, this division will comprise :

General Affairs Branch (Electric Administration Section)

Electric Administration Branch (Electric Administration Section)

Plant Engineering Branch (Plant Engineering Section)  
Supply-Demand Branch (Supply-Demand Section)  
Engineering Branch (Head Office, Tohoku Haiden Co. and Tohoku Branch Office, Nippon Hassoden Co.)

16. Cooperative Division -

( Chief : Chief, Miyagi Branch, Japan Red Cross )

With the Japan Red Cross Miyagi Branch as the center, this division will comprise :

General Affairs Branch (General Affairs Section)  
Relief Branch (Relief Section)  
Accounts Branch (Accounts Section)

(2) Divisional Duties :

1. General Affairs and Welfare Division -

- 1) Coordination of different divisions.
- 2) Collection and filing of informations.
- 3) Framing of budgets.
- 4) Liaison through the branches and sub-branches.
- 5) Planning of relief activities.
- 6) Issuance of official orders.

- 7) Steering of the Operation Council.
- 8) Contact-keeping with the Miyagi Prefectural Disaster Board.
- 9) Contact-keeping with the Occupation Forces.
- 10) Other matters outside the jurisdiction of any other division.

2. Fire Control Division -

- 1) Fire control activities.
- 2) Coordination of communal anti-disaster fire-fighting activities.
- 3) Cooperation in flood-control activities.

3. Land Public Safety Division -

- 1) Police guarding and information within the jurisdiction of the Regional Police.
- 2) Contact-keeping with city, town and village police and the Maritime Public Safety Division.
- 3) Maintenance of public peace and order.
- 4) Administration of activities for rescue and refuge.

4. Maritime Public Safety Division -

- 1) Maintenance of maritime peace and order.
  - 2) Administration of activities for rescue and refuge.
  - 3) Contact-keeping with the Land Public Safety Division.
5. Health Division -
- 1) Medical relief and epidemics control.
  - 2) Allocation of medical and sanitary supplies and epidemics control supplies.
6. Economics First Division -
- 1) Procurement of relief food, fuel and daily necessities.
  - 2) Local checking of the above materials.
7. Economics Second Division -
- 1) Procurement of relief fiber products and daily commodities.
  - 2) Local checking of the above materials.
8. Railway Transportation Division -
- 1) Arrangement for emergency transportation of relief supplies and rehabilitation materials.

- 2) Transportation by rail of refugees.
  - 3) Transportation by rail of rescue members.
  - 4) Procurement of materials for railway transportation.
  - 5) Railway engineering.
  - 6) Contact-keeping with the Land Transportation and Maritime Transportation Division.
9. Land Transportation Division -
- 1) Emergency transportation by road of relief supplies and rehabilitation materials.
  - 2) Transportation by road of refugees.
  - 3) Transportation by road of rescue members.
  - 4) Procurement of materials for auto transportation.
  - 5) Mobilization of various organs concerned with the land transport activities.
  - 6) Contact-keeping with the Railway Transportation Division and the Maritime Transportation Division.
10. Maritime Transportation Division -
- 1) Matters concerning maritime freight.

- 2) Mobilization of various organs concerned with maritime freight activities.
- 3) Procurement of materials for maritime freight.
- 4) Contact-keeping with the Railway Transportation Division and the Land Transportation Division.

11. Communication Division -

- 1) Administration of emergency communications.
- 2) Communication maintenance engineering.

12. Engineering Division -

- 1) Emergency rehabilitation of roads, bridges, etc.
- 2) Organization of engineering teams.
- 3) Flood-control activities.
- 4) Construction of emergency installations.
- 5) Preparation of various engineering materials.

13. Meteorological Division -

- 1) Special meteorological warning.
- 2) Meteorological information.

14. Broadcasting Division -

- 1) Disaster broadcasting.
- 2) Publicity for settling public feelings. ✓

15. Electric Engineering Division -

- 1) Emergency supply of electric power.
- 2) Organization of electric engineering teams.

16. Cooperative Division -

- 1) Coordination of cooperative activities of various bodies other than public organizations.
- 2) Medical treatment and mid-wife activities.
- 3) Invitation of charity donations.

- (2) Regulations for Miyagi Prefectural Disaster Relief Troop's \_\_\_\_\_ District Office or City Branch or \_\_\_\_\_ Town or Village Sub-branch

Article 1. In accordance with the provisions of Article 10 of the Regulations for the Miyagi Prefectural Disaster Relief Troop, Miyagi Prefectural Disaster Relief Troop's \_\_\_\_\_ District Office, City, Town, or Village branch or

sub-branch ( hereinafter referred to as "branch" or "sub-branch" ) shall be instituted.

\_\_\_\_\_ District Office Branch shall, upon order of senior agencies, promote within its jurisdiction the Miyagi Prefecture Governor-initiated relief activities.

The city branch ( or the sub-branch ) shall assist in the Miyagi Prefecture Governor-initiated relief activities in regard to the relief of those in need of rescue within the jurisdiction the city, town or village concerned.

Article 2. The branch ( or the sub-branch ) shall have the following staff and members :

Commandant.

Vice-commandant.

Division chief.

Members.

The commandant may, when deemed necessary, institute a councilor or councilors in addition to the staff and members as mentioned in the preceding paragraph.



Article 3. The post of commandant shall be assumed by the chief or mayor of \_\_\_\_\_ District Office, City, Town or Village. The commandant shall, upon order of the Commandant of the Main Troop, or the Governor of Miyagi Prefecture, ( and the commandant of the branch, or the district office chief, ) preside over the affairs of the branch ( or the sub-branch ).

The post of vice-commandant shall be assumed by the district office's general affairs section chief or by the deputy-mayor. The vice-commandant shall assist the commandant in his duties and act for him in case he is prevented from discharging his duties. Division chiefs shall be appointed or commissioned by the commandant from among departmental and section chiefs of the district office or municipal office ( or town and village officers ) concerned, officials of related governmental agencies, members of the local Red Cross committee, and persons of learning and experience. The division chief shall, upon order of the commandant, manage the affairs of his division.

Article 4. The branch ( or sub-branch ) shall have the following divisions :

- 1) General Affairs and Welfare Division.
- 2) Fire Control Division.
- 3) Economics Division.
- 4) Health Division.
- 5) Engineering Division.
- 6) Transportation Division.
- 7) Communication Division.
- 8) Cooperative Division.

The commandant may, when deemed necessary, institute a division or divisions in addition to those as mentioned in the preceding paragraph.

Article 5. Divisional duties of the divisions referred to in the preceding article shall be as follows :

1. General Affairs and Welfare Division -
  - 1) Coordination of different divisions.
  - 2) Matters concerning emergency relief activities in general.
  - 3) Informations.
  - 4) Administration of activities for rescue and refuge.
  - 5) Other matters outside the jurisdiction of any other division.

2. Fire Control Division -
  - 1) Fire control activities.
  - 2) Cooperation in flood-control activities.
3. Economics Division -
  - 1) Administration of relief materials.
4. Health Division -
  - 1) Administration of emergency medical care and epidemics control.
5. Engineering Division -
  - 1) Emergency installation and repair of roads, bridges, embankments.
  - 2) Flood-control activities.
6. Transportation Division -
  - 1) Transportation of relief supplies and materials for emergency repair.
  - 2) Transportation of refugees and relief teams.
7. Communication Division -
  - 1) Administration of emergency communications.
8. Cooperative Division -
  - 1) Coordination of cooperative activities furnished by organizations and individuals.

The commandant is entitled, when deemed necessary, to alter expediently a part of the divisional duties referred to in the preceding paragraph.

Article 6. The branch and sub-branch shall have each a operation council.

The operation council, composed of the commandant, vice-commandant, and division chiefs, shall forward views, spontaneously or in answer, to the commandant in regard to the promotion of relief activities.

Article 7. In order to bring more effective the cooperative activities of individuals and various organizations other than local public bodies at the time of disaster and to practise training at ordinary times, the Cooperative Division may, when necessary, have under its fold cooperative teams such as the following :

1. Relief Cooperative Team.
2. Nursing Cooperative Team.
3. Boiled-rice Service Cooperative Team.
4. Commodity Distribution Cooperative Team.
5. Refugee Leading Cooperative Team.
6. Sufferer Receiving Cooperative Team.
7. Information-Contact Cooperative Team.

Cooperative teams as referred to in the preceding paragraph shall develop their cooperative activities at the time of disaster in accordance with respective jurisdictions under the instructions of division chiefs as mentioned in Article 4.

Article 8. The division chief must frame a complete activity plan to meet any disaster for the next fiscal year with regard to the operation of his jurisdictional duties and submit it to the commandant by February 15.

Article 9. Matters necessary for the operation of this set of regulations shall be fixed by the commandant.

#### Supplementary Provisions

This set of regulations shall come into force as from the day of its promulgation.

FORMS OF REPORT AND OTHERS

- |   |       |            |
|---|-------|------------|
| 1. Disaster Report  | ----- | Form No. 1 |
| 2. List of Governmental and<br>Public Agencies and Related<br>Organizations | ----- | Form No. 2 |
| 3. Lineup List  | ----- | Form No. 3 |
| 4. Name List of Duty-members<br>to Receive Activity Order                   | ----- | Form No. 4 |
| 5. Ledger of Emergency Relief<br>Materials                                  | ----- | Form No. 5 |
| 6. Inventory of Materials to<br>Receive Requisition Order                   | ----- | Form No. 6 |
| 7. List of Producing Agencies   | ----- | Form No. 7 |
| 8. List of Refuges  | ----- | Form No. 8 |
| 9. List of Relief Centers   | ----- | Form No. 9 |
| 10. Ledger of Stored Relief<br>Materials                                    | ----- | Form No.10 |

Form No. 1	Disaster Report	<u>Name of Unit</u>
Sufferer Total		_____ person
Human Suffering		_____ person
Death		_____ person
Missing		_____ person
Injured : Slight		_____ person
Serious		_____ person
Total		_____ person
Housing Suffering		
Utterly destroyed :	Sufferer	_____ person
	House	_____ unit
Washed away :	Sufferer	_____ person
	House	_____ unit
Partially destroyed: ( Burnt )	Sufferer	_____ person
	House	_____ unit
Flooded :		
Above floor -	Sufferer	_____ person
	House	_____ unit
Below floor -	Sufferer	_____ person
	House	_____ unit
Total :	Sufferer	_____ person
	House	_____ unit

Form No. 2 List of Governmental and Public Agencies and Related Organizations

<u>Name</u>	<u>Address</u>	<u>Tel.</u>	<u>Remarks</u>

Form No. 3 Lineup List

<u>Duty</u>	<u>Govt or public office</u>	<u>Tel.</u>	<u>Duty place</u>	<u>Home address</u>	<u>Tel.</u>	<u>Remarks</u>

Form No. 4 Name List of Duty-Members to Receive Activity Order

<u>Organi- zation</u>	<u>Business category</u>	<u>Duty-member</u>			<u>Office address</u>	<u>Tel.</u>	<u>Head of Org.</u>	<u>Home address of Head</u>
		<u>M</u>	<u>F</u>	<u>T</u>				

Form No. 5 Ledger of Emergency Relief Materials

<u>Date as of</u>	<u>Item</u>	<u>Qt.</u>	<u>Location</u>	<u>Owner</u>	<u>Address</u>	<u>Tel.</u>	<u>Remarks</u>



Form No. 6 Inventory of Materials to  
Receive Requisition Order

---

<u>Date</u> <u>as of</u>	<u>Item</u>	<u>Qt.</u>	<u>Location</u>	<u>Owner</u>	<u>Address</u>	<u>Tel.</u>	<u>Remarks</u>
-----------------------------	-------------	------------	-----------------	--------------	----------------	-------------	----------------

---

Form No. 7 List of Producing Agencies

---

<u>Production</u> <u>item</u>	<u>Daily or</u> <u>monthly</u> <u>output</u>	<u>No. of</u> <u>employees</u>	<u>Manager</u> <u>or agent</u>	<u>Address</u>	<u>Tel.</u>	<u>Remarks</u>
----------------------------------	--	-----------------------------------	-----------------------------------	----------------	-------------	----------------

---

Form No. 8 List of Refuges

---

<u>Name of</u> <u>building</u>	<u>Owner</u>	<u>Address</u>	<u>Tel.</u>	<u>Accommodation</u> <u>capacity</u>	<u>Remarks</u>
-----------------------------------	--------------	----------------	-------------	---	----------------

---

Form No. 9 List of Relief Centers

---

<u>Name of</u> <u>building</u>	<u>Owner</u>	<u>Address</u>	<u>Tel.</u>	<u>Accommodation</u> <u>capacity</u>	<u>Feature</u>	<u>Remarks</u>
-----------------------------------	--------------	----------------	-------------	---	----------------	----------------

---

Form No. 10 Ledger of Relief Materials

---

<u>Item</u>	<u>Qt.</u>	<u>date</u>	<u>Stored Storage location</u>	<u>Custodian</u>	<u>Address</u>	<u>Remarks</u>
-------------	------------	-------------	--------------------------------	------------------	----------------	----------------

---

### III. OUTLINE OF MIYAGI PREFECTURAL DISASTER RELIEF PROGRAM

#### (1) Policy

1. This program will be worked out to set up previous arrangements necessary for putting into action relief activities for sufferers on the basis of the Disaster Law, Article 22, paragraph 2, and the Ordinance pertaining to the execution thereof, Article 7, paragraph 2, and to prepare material and equipment necessary therefor, in a concerted effort to carry out immediate and pertinent relief activities for sufferers in case of disaster.

2. The program will be established in anticipation of the following disaster categories :

First category	-	Flood
Second category	-	Fire
Third category	-	Earthquake

3. Each district office, city, town, and village will work out its own relief program after this prefectural program.

(2) Pre-estimation of Sufferers

1. Numbers of Victim-Households and Sufferers :

Disaster category	Victim house- holds	Sufferers included	Classification					Total
			M.F.	Baby	Infant	School children	Others	
First (Flood)	10,000	50,000	(M)	728	1,940	1,697	19,885	24,250
			(F)	772	2,060	1,803	21,115	25,750
Second (Fire)	300	1,500	(M)	22	58	51	597	728
			(F)	23	62	54	633	772
Third (Earth- quake)	10,000	50,000	(M)	728	1,940	1,697	19,885	24,250
			(F)	772	2,060	1,803	21,115	25,750
Gross Total	20,300	101,500	(M)	1,478	3,938	3,445	40,367	49,228
			(F)	1,567	4,182	3,660	42,863	52,272

Remarks :

- 1) Rate of M : F = 97 : 100
- 2) Birth rate - 3 to 100
- 3) Infants - 8 to 100
- 4) School children - 7 to 100

2. Degree of Relief Need :

Victim-households in need of relief - 8,400

A-class ( Totally destroyed  
or washed away ) - 400 ( 2 % )

B-class ( Partially destroyed  
or flooded above  
floor ) - 8,000 (40 %)

(3) Previous Checkups

1. Checkup of persons to engage in relief activities :
  - 1) Physicians ( surgeons ), dentists, and pharmacists.
  - 2) Public health nurses, mid-wives, and nurses.
  - 3) Civil engineers and building engineers.
  - 4) Carpenters, plasterers and acrobatic laborers.
  - 5) Civil engineering agencies, building agencies and their employees.
  - 6) Local railways agencies and their employees.
  - 7) Rail managers and their employeers.
  - 8) Auto transport agencies and their employees.
  
2. Checkup of institutions regarded necessary in enforcing relief activities :
  - 1) Hospitals, clinics and lying-in hospitals.
  - 2) Hotels, inns and eating establishments.
  - 3) Temples, shrines, schools and assembling halls.

3. Checkup of other persons regarded necessary in enforcing relief activities :
  - 1) Persons engaged in production of commodities.
  - 2) Persons engaged in collection of commodities.
  - 3) Persons engaged in sale of commodities.
  - 4) Persons engaged in distribution of commodities.
  - 5) Persons engaged in the business of commodity custody.
  
4. Checkup of other matters regarded necessary in enforcing relief activities :
  - 1) Matters necessary in the preparation of data for the relief program and possible modification thereof in the current fiscal year.
  - 2) Matters necessary in the adjustment of the business regarding the issuance of compulsory orders and the enforcement of relief activities.
  - 3) Collection of records and statistics of relief activities in other areas and other data available for reference.
  - 4) Sporadic checkup of other matters regarded necessary.

(4) Program regarding Relief Materials

1. Storage :

Relief materials to be supplied to A-class sufferers in accordance with the criterion set by the Welfare Ministry will be secured in store.

2. Procurement :

Relief materials to be supplied to B-class sufferers in accordance with the criterion set by the Welfare Ministry will be arranged so as to be available immediately at the time of disaster.

(5) Program regarding Accommodation  
of Refugees

1. Establishment of Refuges :

1) Schools, temples, citizens public halls and other existing buildings will be made available for accommodation of refugees with those having free relatives led to these sources.

2) In case where the number of available buildings proves too small to take in all of the sufferers, shanty refuges will be built to accommodate them.

2. Boiled-rice Service :

1) The mayor of the city, town or village in the victim area will, as a rule, take charge of serving boiled-rice to sufferers.

2) Items necessary for boiled rice service will include the following and be secured in each troop unit to meet its emergency need :

Kettle.	Ladle.
Spoon.	Bucket.
Cask.	

(6) Medical Care ( Mid-wife Service )  
and Anti-Epidemics Program

1. Medical Care ( Mid-wife Service ) :

Medical relief activities will be developed on a bilateral program, one under the responsibility of medical machineries of governmental or public establishment and the other on the initiative of medical



establishments responsible to the Japan Red Cross Miyagi Branch, both on the following formula :

1) Medical facilities as available will be utilized for the medical relief activities.

2) Medical activities of relief teams will cover the gap where there are no medical facilities available.

2. Anti-epidemics Program :

Epidemics preventive and control activities will be developed with the local health center as the nucleus.

3. Medical and Anti-epidemics Supplies :

1) Medical and sanitary supplies to a total of 7,500 persons will previously be allocated to respective health centers.

2) Anti-epidemics supplies to a total of 7,000 households will previously be procured.

IV. ACTIVITY PLAN OF MIYAGI PREFECTURAL  
DISASTER RELIEF TROOP

Organizational Setup of the Miyagi  
Prefectural Disaster Relief Troop :

Commandant-General ( Governor )

Deputy Commandant-General ( Vice-Governor )

(1) General Affairs and Welfare Div.

( Chief : Chief, Pref. General Affairs Dept.)

( Secretary : Chief, Pref. Secretariat Sect.)

Tel. 1,401

(2) Fire Control Div.

( Chief : Chief, Pref. General Affairs Dept.)

( Secretary : Chief, Pref. Local Affairs  
Dept.)

(3) Land Public Safety Div.

( Chief : Director, Miyagi Pref. NRP  
Headquarters )

( Secretary : Chief, Police Guard Sect.)

(4) Maritime Public Safety Div.

( Chief : Chief, Patrol and Rescue Div.,  
Shiogama Maritime Safety  
Headquarters )

( Secretary : Chief, Patrol Sect. )

Tel. 666

## (5) Health Div.

( Chief : Chief, Pref. Health Dept. )

( Secretary : Chief, Medical Affairs Sect. )

## (6) Economics First Div.

( Chief : Chief, Pref. Economics Dept. )

( Secretary : Chief, Pref. Food Sect. )

Tel. 683

## (7) Economics Second Div.

( Chief : Chief, Pref. Commerce and  
Industry Dept. )( Secretary : Chief, Pref Commerce and  
Industry Sect. )

Tel. 686

## (8) Railway Transportation Div.

( Chief : Chief, Sendai Railways Sub-division )

( Secretary : Chief, General Affairs Sect. )

Tel. 3130

## (9) Land Transportation Div.

( Chief : Chief, Supply and Equipment Div.,  
Sendai Regional Land Transportation  
Bureau )

( Secretary : Chief, General Affairs Sect. )

Tel. 3316

- (10) Maritime Transportation Div.  
( Chief : Chief, Marine Transportation Div.,  
Tohoku Regional Maritime Bureau )  
( Secretary : Chief, Document Sect. )  
Tel. 720
- (11) Communication Div.  
( Chief : Chief, Miyagi Telecommunications  
Div. )  
( Secretary : Chief, Traffic Engineering  
and Operation Sect. )  
Tel. 1050
- (12) Engineering Div.  
( Chief : Chief, Pref. Civil Engineering  
Dept. )  
( Secretary : Chief, Pref. Supervision Sect. )
- (13) Meteorological Div.  
( Chief : Chief, Sendai Regional  
Meteorological Observatory )  
( Secretary : Chief, Forecasting Sect. )  
Tel. 3283
- (14) Broadcasting Div.  
( Chief : Chief, Broadcasting Div., Sendai  
Central Broadcasting Station )  
( Secretary : Chief, Broadcasting Sect. )  
Tel. 2878

## (15) Electric Engineering Div.

( Chief : Chief, Power Div., Sendai International Trade and Industry Bureau )

( Secretary : Chief, Electric Administration Sect. )

Tel. 3450

## (16) Cooperative Div.

( Chief : Chief, Miyagi Branch, Japan Red Cross )

( Secretary : Chief, Relief Sect. )

## Policy Steering Machineries :

Central Disaster Board ( Secretarial Bureau )

Miyagi Prefectural Disaster Board  
( Secretarial Bureau )

## Operational Setup :

Disaster Relief Troop — Main Troop

Local Branch — City, District Office

Sub-branch — Town, Village

## (1) Emergency Headquarters

1. In case any disaster occurs, an emergency counter-disaster headquarters will be set up in the Prefectural

Secretariat Section to coordinate each division with regard to the promotion of concerted relief activities to accord with the emergency policy decided by the Disaster Board.

2. The emergency headquarters will have a contacting member dispatched from each division and designate "emergency telephone" numbers for the sleeky operation of relief activities with closer interrelations kept among various divisions.

3. Various information programs and accomplishments will be reported to the Tohoku Civil Affairs Region and the Central Disaster Board to receive instructions or cooperations, when necessary.

4. The emergency headquarters will, as a rule, be closed twenty (20) days after its birth, its extension or contraction depending upon particular circumstances.

(2) Respective Programs of  
Component Divisions

1. General Affairs and Welfare Division.

1) Disaster Information :

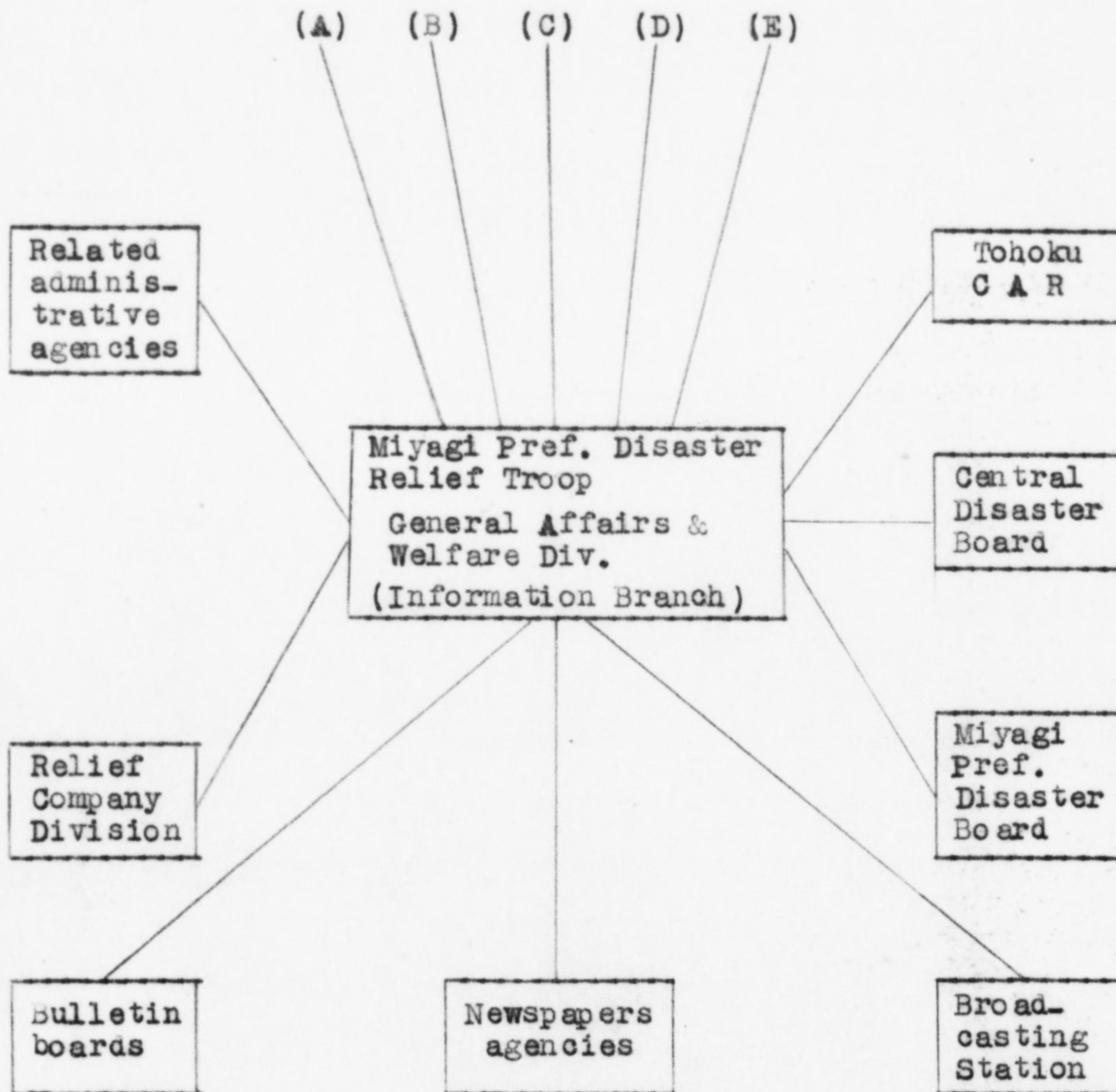
(1) Informations on particular disasters from varied sources will most speedily arranged so as to get data as precise as available for information to related agencies.

(2) Previous arrangements will be settled so that the information-contact can be made by operation of autobicycles or bicycles when the communications service is disrupted.

(3) Previous considerations will be paid so that the information-contact can be available by air through the goodwill of the Tohoku Civil Affairs Region, if the worst comes to the worst.

(4) Information channels :

- (A) Weather - Meteorological Div.
- (B) Guard - Land Public Safety Div.
- (C) Guard - Maritime Public Safety Div.
- (D) Fire - Fire-Control Div.
- (E) Disaster - Victim districts





- 2) Relief Activities :
- (1) Refugee Accommodation -
- (a) Operation of refuges :
- With reference to the available refuges as denoted in "Separate List No. 1", arrangements will be made to shelter refugees according to respective capacities.
- (b) Installation of shanty refuges :
- In liaison with the Engineering Division, building materials to the degree of minimum necessity will be secured to bring into being emergency refugee quarters as denoted in "Separate List No. 2 - (A)".
- (c) Institution of relief centers for sufferers :
- The disaster-affected city, town or village office will be instructed to institute relief centers through which to issue mayor-signed "sufferer cards" and make advisory activities for the benefit of sufferers.
- (2) Boiled-rice service and food supply -
- (a) With materials in need procured through liaison with the Economics First Division, boiled-

# CORRECTION

THIS DOCUMENT  
HAS BEEN REPHOTOGRAPHED  
TO ASSURE LEGIBILITY

- 2) Relief Activities :
- (1) Refugee Accommodation -
- (a) Operation of refuges :
- With reference to the available refuges as denoted in "Separate List No. 1", arrangements will be made to shelter refugees according to respective capacities.
- (b) Installation of shanty refuges :
- In liaison with the Engineering Division, building materials to the degree of minimum necessity will be secured to bring into being emergency refugee quarters as denoted in "Separate List No. 2 — (A)".
- (c) Institution of relief centers for sufferers :
- The disaster-affected city, town or village office will be instructed to institute relief centers through which to issue mayor-signed "sufferer cards" and make advisory activities for the benefit of sufferers.
- (2) Boiled-rice service and food supply -
- (a) With materials in need procured through liaison with the Economics First Division, boiled-

rice service and edible supplies ( except evaporated milk for babies ) will be made with the cooperation of the cooperative teams of the Japan Red Cross Miyagi Branch.

Materials for boiled-rice service  
in store :

— "Separate List No. 2 - (B)"

Edible supplies in store :

— "Separate List No. 2 - (C)"

(b) Among food supplies, evaporated milk for babies will be secured in liaison with the Health Division to benefit suffering babies with the cooperation of the cooperative teams of the Japan Red Cross Miyagi Branch.

(3) Storage of Relief Materials -

(a) Relief materials for A-class sufferers will be stored as in "Separate List No. 3 - (A) and (B).

(b) These relief materials will be stocked dispersedly in different warehouses in Sendai City.

Separate List No. 1

Available Refuges (1)

Classifi- cation	Sendai	Ishino- maki	Shio- gama	Katta	Shibata	Igu	Watari	Miya- Kuro
Primary school	30	6	3	34	27	28	41	55
Auditorium ( sq. m. )	2,823	2,482	437	1,224	1,784	986	1,822	2,168
Capacity ( person )	1,411	1,241	218	612	892	493	911	1,084
Junior high	18	141	13	13	8	14	17	20
Auditorium ( sq. m. )	4,175	-	-	422	902	525	2,695	1,336
Capacity ( person )	2,087	-	-	211	451	262	1,047	668
Senior high	16	4	2	2	2	2	2	1
Auditorium ( sq. m. )	9,554	1,161	439	347	626	685	229	198
Capacity ( person )	4,777	580	219	173	313	342	114	99
Temple	125	13	4	33	32	33	78	101
Floor area ( tsubo )	6,212	480	180	1,276	1,238	1,104	2,731	3,425
Capacity ( person )	6,212	480	180	1,276	1,238	1,104	2,731	3,425

Classification	Sendai	Ishino-maki	Shio-gama	Katta	Shibata	Igu	Watari	Miya-Kuro
CPH	1	1	-	10	8	10	9	8
Floor area ( tsubo )	40	70	-	165	121	153	193	138
Capacity ( person )	40	70	-	165	121	153	193	138
Total								
No. of units	190	24	9	52	79	87	147	185
Capacity ( person )	14,527	2,371	617	2,437	3,015	2,354	4,996	5,414

Available Refuges (2)

Classification	Osaki	Toda	Kurihara	Tome	Monoo-Ojika	Moto-yoshi	Total
Primary school	51	21	68	45	71	42	524
Auditorium	3,356	2,062	1,912	2,468	442	317	24,283
Capacity	1,678	1,031	956	1,234	221	158	12,140
Junior high	17	12	30	16	32	22	219
Auditorium	2,328	1,773	1,307	862	491	317	16,533
Capacity	1,164	886	653	431	245	158	8,263

<u>Classifi- cation</u>	<u>Osaki</u>	<u>Toda</u>	<u>Kurihara</u>	<u>Tome</u>	<u>Monoo- Ojika</u>	<u>Moto- yoshi</u>	<u>Total</u>
Senior high	3	2	5	2	1	2	46
Auditorium	1,350	588	1,791	702	165	1,040	18,875
Capacity	675	294	895	351	82	520	9,434
Temple	82	44	79	40	90	44	798
Floor area	2,928	1,515	2,729	1,777	4,196	2,252	32,043
Capacity	2,928	1,515	2,729	1,777	4,196	2,252	32,043
CPH	15	8	10	9	7	10	106
Floor area	185	138	165	183	125	205	1,881
Capacity	185	138	165	183	125	205	1,881
Total							
No. of units	168	87	192	112	201	120	1,693
Capacity ( person )	6,630	3,864	5,398	3,976	4,869	3,273	63,761

Separate List No. 2 - (A)

Materials for Shanties - Emergency Refugee Quarters

Item	Unit	Covering	Quantity	Unit price (¥)	Cost (¥)
Lumber	2 koku per tsubo	6,800 (tsubo)	13,600 (koku)	320.00	4,342,000.00
Nail	1 kilogram per tsubo	6,800 (tsubo)	6,800 (kg)	80.00	544,000.00
Bark, Jap cedar	3 bundles per roof-tsubo	10,200 (tsubo)	30,600 (bundle)	60.00	1,836,000.00
Straw-mat	1 sheet per capita	5,000 (sheet)	5,000 (sheet)	55.00	275,000.00
Total					7,007,000.00

Remarks : Building materials in store will cover 34 shanties, each with 200-tsubo floor area for accommodation of 150 refugees. The total will be available to take in around 5,000 persons or 5 per cent of pre-estimated 101,500 sufferers.

Cooperative sources : Engineering Division  
( Building Branch )



Separate List No. 2 - (B)

Materials for Boiled-Rice Service

Item	Unit	Covering	Quantity	Unit price (¥)	Cost (¥)
Major kettle	-	-	22	500	11,000
Firewood	2 bundle per "to"	648.0 (to)	12,960 (bundle)	50	648,000
Rice	2.5 go per capita per day	240,000 (person)	648 (koku)	5,670	3,674,160
Salt	7 grams per capita per day	240,000 (person)	1,680 (kg)	20	33,600
Dried pulms	15 momme per capita per day	240,000 (person)	3,600 (kan)	126	453,600

( Storage of above 5 items will sustain for 4 days  
 60,000 persons or 60 per cent of pre-estimated  
 98,455 sufferers in need of boiled-rice service  
 excepting babies )

Cask	-	-	100	500	50,000
Ladle	-	-	200	50	10,000
Spoon	-	-	400	30	12,000
Total	-	-	-	-	4,892,360

Separate List No. 2 - (C)

Edible Supplies in Store

Item	Unit	Covering Quantity	Unit price (¥)	Cost (¥)
Rice	2.5 go per capita	120,000 (person)	324 5,670.00 (koku)	1,837,080
Canned food	1 pound per capita	120,000 (person)	120,000 (lbs) 80.00	9,600,000
Misso	6 monme per capita per day	120,000 (person)	720 (kan) 77.00	55,440
Shoyu	0.3 shaku per capita per day	120,000 (person)	36 (koku) 4,150.00	149,400
Pickled food	15 monme per capita per day	120,000 (person)	1,800 (kan) 200.00	360,000

( Storage of above 5 items will be available for supply of food to 60,000 persons for 2 days )

(For baby)

Milk	150 grams per capita per day	6,000 (person)	9,000 (kg) 246.10	2,214,900
Sugar	30 grams per capita per day	6,000 (person)	180 (kg) 475.00	85,500

( Above supplies will be available to feed for 6 days  
bottle-fed 1,000 babies or 50 per cent of pre-  
estimated baby sufferers )

Total 14,302,320.00

---

Separate List No. 3 - (A)

Relief Materials for A-Class Sufferers

- Clothings -

Item	Unit	Covering	Quantity	Unit price (¥)	Cost (¥)
Comforter	Set	400	400	4,000	1,600,000
Blanket	3 sheets	400	1,200	2,220	2,664,000
Working suit	Suit	400	400	2,000	800,000
Shirt	Sheet	400	400	5000	200,000
School children's suit	Suit	400	400	1,500	600,000
Towel	3 sheets	400	1,200	25	300,000
Cloth-wraper	Sheet	400	400	250	100,000
Jikatabi	2 pairs	400	800	200	160,000
Sewing thread	5 momme	400	2,000	1,800	3,600
Total	-	-	-	-	6,427,600

Separate List No. 3 - (B)

Relief Materials for A-Class Sufferers  
 - Daily Necessities other than Clothings -

Item	Unit	Covering	Quantity	Unit price (¥)	Cost (¥)
Kettle	ea	400	400	210	84,000
Pot	ea	400	400	200	80,000
Plate	3	400	1,200	12	14,400
Rice-bow	4	400	2,000	15	30,000
Kitchen knife	ea	400	400	30	12,000
Cooking furnace	ea	400	400	70	28,000
Bucket	ea	400	400	200	80,000
Soap	piece	400	400	10	4,000
Toilet paper	100 quires	400	400	160	64,000
Japanese umbrella	ea	400	400	150	60,000
Candle	5	400	2,000	250	4,000
Total	-	-	-	-	460,400

## 2. Fire Control Division.

1) In a determined effort to minimize the disaster devastation, the division will utilize to the maximum availability communal fire-fighting equipment and personnel in the local fire and flood control activities to take the following steps with the cooperation of the Prefectural Fire Control Association :

(1) Adjustment of Fire Control Equipment : Efforts will be made to encourage local communities in the adjustment of material facilities for the fire and flood control activities.

(2) Checkup of Readiness for Activities : Occasional spot-inspections will be conducted to the communal fire-fighting equipment with specific efforts centered on the standardization of pumps to enhance the efficiency of local fire-fighting activities.

(3) Fire-fighting Training and Maneuvering -

(a) Training :

Each local branch will receive instructions to hold a fire-control lecture course on its own responsibility and the fire-control chiefs conference and the fire-brigade chiefs

conference once each on the basis of three (3) blocs grouped of the whole prefecture area to practise a fire-fighting training in each city, town and village unit.

(b) Maneuvering :

Each local branch will observe a joint maneuver to learn the advanced fire-control strategy with improved equipment.

(4) Inter-fire-brigade Cooperation : Relations between fire-control units in cities, towns and villages will be coordinated so as to be available for extention of fire-control activities at any time to the disaster-affected area.

Cooperation between sub-branches and that between branches will be promoted on the initiative of the branch concerned and the Headquarters, respectively.

(5) Agreement of Cooperation between police and fire-brigades : Previous agreements will be arranged between the police and fire-brigades to effect a synthetic cooperation in combating the disaster devastation in view of their duties aiming at the maintenance of public peace and order.

2) Administration of Fire-Brigades -

Activities of fire-brigades will be coordinated to particular cases of fire disaster with the categories previously set in accordance with the degree :

(1) Conflagrations in City Districts :

(a) Sendai City -

The fire-brigade units responsible to the Sendai Branch will mobilize all their machinery to effect a most efficient operation under the cooperation of the Occupation Forces' fire-fighting unit. Cooperative fire-brigade forces surrounding the city will extend defending reinforcements in accordance with the following order : ( A total of 34 fire-engines set aside for the cooperative forces will be allocated as in brackets )

First Grade ( Assigned 3 fire-engines )

Shiogama Branch ..... (3)

Second Grade ( Assigned 13 fire-engines )

Watari-Natori Branch :

Iwanuma Sub-branch ..... (1)

Yuriage Sub-branch ..... (1)

Narushima Sub-branch ..... (1)

Masuda Sub-branch ..... (1)

Sengan Sub-branch .....	(1)
Shibata Branch :	
Ogawara Sub-branch .....	(1)
Funaoka Sub-branch .....	(1)
Tsukinoki Sub-branch .....	(1)
Miyagi-Kurokawa Branch :	
Tagajo Sub-branch .....	(1)
Matsushima Sub-branch .....	(2)
Yoshioka Sub-branch .....	(1)
Third Grade ( Assigned 18 fire-engines )	
Ishinomaki Branch .....	(3)
Mono-o-Ojika Branch :	
Yamato Sub-branch .....	(1)
Watari-Natori Branch :	
Aikuma Sub-branch .....	(1)
Watari-Natori Sub-branch .....	(1)
Arahama Sub-branch .....	(1)
Sakamoto Sub-branch .....	(2)
Yamashita Sub-branch .....	(2)
Shibata Branch :	
Kawasaki Sub-branch .....	(1)



Katta Branch :

Shiroishi Sub-branch ..... (3)

Osaki Branch :

Furukawa Sub-branch ..... (1)

Toda Branch :

Nango Sub-branch ..... (1)

(b) Ishinomaki City -

The fire-brigade units responsible to the Ishinomaki Branch, with agreements previously set with the fire-brigades of the Yamoto Sub-branch and the Watanoha Sub-branch, will mobilize all their machinery to effect a most efficient fire-fighting operation. Cooperative fire-brigades surrounding the city will extend defending reinforcements in accordance with the following order : ( A total of 20 fire-engines set aside for the cooperative forces will be allocated as in brackets )

First Grade ( Assigned 7 fire-engines )

Shiogama Branch ..... (3)

Monoo-Ojika Branch :

Onagawa Sub-branch ..... (3)

Iinokawa Sub-branch ..... (1)

Second Grade ( Assigned 5 fire-engines )

Miyagi-Kurokawa Branch :

Tagajo Sub-branch ..... (1)

Matsushima Sub-branch ..... (2)

Toda Branch :

Nango Sub-branch ..... (1)

Monoo-Ojika Branch :

Ayukawa Sub-branch ..... (1)

Third Grade ( Assigned 8 fire-engines )

Sendai Branch ..... (7)

Osaki Branch :

Nango Branch ..... (1)

(c) Shiogama City -

The fire-brigade units responsible to the Shiogama Branch, with agreements previously set with the Tagajo and Matsushima Sub-branches, will mobilize all their machinery to develop a most efficient fire-fighting operation. Surrounding forces will form on demand of the situation a Shiogama City-defending reinforcement in accordance with the following order :  
 ( A total of 22 fire-engines set aside for the cooperative forces will be allocated as in brackets )

First Grade	( Assigned	7 fire-engines )
Sendai Branch	.....	(7)
Second Grade	( Assigned	8 fire-engines )
Ishinomaki Branch	.....	(3)
Toda Branch :		
Nango Sub-branch	.....	(1)
Monoo-Ojika Branch :		
Yamoto Sub-branch	.....	(1)
Watari-Natori Branch :		
Iwanuma Sub-branch	.....	(1)
Shibata Branch :		
Ogawara Sub-branch	.....	(2)
Funaoka Sub-branch	.....	(1)
Third Grade	( Assigned	7 fire-engines )
Monoo-Ojika Branch :		
Watanoha Sub-branch	.....	(1)
Onagawa Sub-branch	.....	(2)
Miyagi-Kurokawa Branch :		
Yoshioka Sub-branch	.....	(1)
Katta Branch :		
Shiroishi Sub-branch	.....	(3)

(2) Conflagrations in Town and Village Districts :

Each Branch chief will establish a program after the formula of the preceding paragraph (1) to combat conflagrations in towns and villages under its jurisdiction.

3) Cooperation in Flood-Control Activities -

The Fire-Control Division will set up arrangements to attain a satisfactory effect in the flood control program in cooperation with the Engineering Division. Special emphasis will be put on the priority training of the following local branches, which will have a special flood-control team each to fight with surging water :

Kurihara Branch.

Tome Branch.

Osaki Branch.

Toda Branch.

Miyagi-Kurokawa Branch.

Watari-Natori Branch.

Igu Branch.

Motoyoshi Branch.

3. Land Public Safety Division.

1. Preparatory Arrangements

A. Mobilization of Police Force.

(a) In the guarding activities the Land Public Safety Division develops to meet a disaster, priority will be given to the following points :

- 1) Saving of lives.
- 2) Leading of refugees.
- 3) Prevention of crimes
- 4) Control of rumors.

(b) The police force to meet the above duties will in principle be covered by all the lineup of police constables and personnel on duty with the Miyagi Prefectural NRP Headquarters.

(c) In case the police force as referred to in the preceding paragraph proves insufficient to cope with any particular situation, cooperation of municipal police and fire-fighting forces will be called for on the basis of the agreements as settled with municipal public safety commissions and police fire-brigades with regard to inter-jurisdiction cooperation.

(d) The formula for mobilization of the police force and regulations of outfit and equipment will be governed with necessary modification by the regulations for the emergency mustering of the Miyagi Prefectural Police Troop.

B. Regimentation of Special Units.

(a) The following special units will be organized for the purpose of effectuating successful guarding activities in case of disasters :

- 1) Rescue Unit.
- 2) Destruction Engineering Unit.
- 3) Traffic Adjustment Unit.
- 4) Guarding Unit.
- 5) Information-Contact Unit.
- 6) Investigation and Identification Unit.

The regimentation of the above units will be governed with necessary modification by the regulations for the Miyagi Prefectural Emergency Police.

C. Information Contact.

(a) Information contact will, as a rule, be kept by police telephone and wireless. But, in anticipation of the possible paralysis of these communication facilities at the time of disaster, subsidiary means such as pigeon message and personal carrying of message will be prepared to be ready at any time, parallel with the training of police members in hand-flag signing and use of police dogs.

(b) In the information-contact activities, special stress will be put on the following points :

1) The police member at the police station, branch station, or police-box will report as exactly as possible the fact he or she witnessed.

2) The police station chief, on receiving reports, will immediately take remedial steps and report the effect to the Prefectural Police Troop Commander.

3) Reports will be made grouped into the following major items :

(1) Date and place of the disaster outbreak and its scope.

- (2) Causes and process.
- (3) Prospects.
- (4) Cooperative activities of reinforcements.
- (5) Suffering status and casualties.
- (6) Other pertinent remarks.

D. Transportation.

(a) A plan will be mapped out to effectuate a most efficient transportation program with a maximum mobility in regard to the location of guarding forces, reinforcements and materials needed hereto to respective activity fields.

(b) In an arrangement to carry out the foregoing plan successfully, available civilian cars will all be contracted previously for emergency cooperation with police cars, with prearrangements hereto settled through related transportation machineries. These cars will usually be cared so as to be able to meet enlistment at any time.

(c) Fuel necessary for the transportation program will always be secured in store.



E. Provision of Material and Equipment.

(a) The following articles in need for the guarding activities will always be secured and maintained in acceptable standard :

- (1) Bicycles. Auto-bicycles. Autos. Horses.
- (2) Electric torches. Destructive implements.  
Rescue equipment.
- (3) Pistols. Police-sticks.
- (4) Other necessary machines and implements.

F. Education and Training.

(a) In parallel with the routine training of police regarding physical and technical improvement as available to cope with the emergency program, a curriculum for enhancement of their cultural level will be emphasized in view of refined mental readiness no less important in case of emergency.

(b) Such police cultural training, as a rule, will be exercised in the responsibility of the Police Education Section and respective police station chiefs. But

occasional general training on a prefecture-wide basis will be practised on the initiative of the Prefectural Police Troop commander.

(c) In such training, a part or the whole of the following programs will be practised under a presumption of actual cases :

- (1) Assembling in meeting a mobilization order.
- (2) Regimentation of emergency units.
- (3) Transportation of units.
- (4) Assignment of guarding forces.
- (5) Rescue operation.
- (6) Conversion of duties.
- (7) Dispatch of reinforcements.
- (8) Information contact.

(d) The Prefectural Police Troop Commander and police station chiefs will train their subordinate staff members through maneuvering on a map to make them skilled in local commanding of operation units.

(e) In view of the success or failure in emergency mustering programs exerting a considerable influence over all the phase of police guarding activities,

repeated training in regard hereto will be practised to curtail the time required as much as practicable.

2. Emergency Setup in Case of Disaster

G. Guarding Activities.

(a) In staging police guard activities in case of disaster, priority stress will be placed on the protection of citizens' lives and properties to reduce victims to the minimum with the final aim of keeping public peace and order. Every ingenuity available will be squeezed out to attain this goal as soon as possible.

(b) Taking into consideration possible paralysis of communications service in case of disaster, field commanders will be entitled to take initiative steps to cope with any particular status.

(c) The chief of the police station in the disaster source will file out an information team to collect accurate informations as speedily as possible.

(d) The chief of the police station in the disaster source will file out a special investigation team

and a photo team, the members of which will engage in collection and maintenance of identical evidences, in parallel with counter-criminal activities.

(e) In the program of controlling virulent rumors, their channels and objective conditions brewing up such rumors will be traced thoroughgoingly. And along with efforts for extermination of virus sources, pertinent informations will be made public for earlier restoration of public peace and order.

(f) For the purpose of easing fire-fighting and rescue activities, thoroughfare will be banned or restricted on demand of a situation.

(g) Police guard members will be ordered to patrol or keep watch around strategic points to prevent and control pilferage and virulent rumors.

(h) The guarding duties will further include leading and protection of refugees, along with efforts to search the missing and identify the dead.

4. Maritime Public Safety Division.

1) Establishment of Disaster-Relief Setup.

A. Targets of Disaster Relief Activities :

The disaster relief activities of the Maritime Public Safety Division will cover the sea surface, ports and harbors, and further extend, when necessary, to rivers and canals, centering around the following defined duties :

- (1) Relief activities in meeting a disaster on the sea.
- (2) Relief activities in meeting a disaster ranging from the sea to the coast.
- (3) Preventive measures on meteorological warnings.

B. Scope of Activities :

In addition to the following relief activities, efforts will be made to restore public peace and order :

- (1) Relief of wrecked ships.
- (2) Mooring of floating ships.
- (3) Saving of lives.
- (4) Pooling of floating bodies.
- (5) Maintenance of peace and order on the sea.

- (6) Prevention and control of crimes, roundup of criminals and collection and security of identical evidences.

C. Setup of Maritime Police Force :

The maritime police force for relief activities and maintenance of public peace and order at the time of a disaster will comprise :

Personnel setup : Members of Maritime Safety Shiogama Headquarters and crew of patrol boats.

Material setup :

- a. Ship - Patrol boats. Barges. Boats.  
Designated civilian boats.
- b. Equipment - Marine glasses. Telescopes.  
Search-lights. Life-jacket.  
Life-buoys. Life-preservers.  
Fire-extinguishers.
- c. Communication equipment -  
Wireless equipped to patrol boats.  
Wireless equipped to the Headquarters. Telephones. Signing-flags.

d. Liaison - Autos. Bicycles.

D. Organizations of Relief Troops and Teams.

For the purpose of gaining successful achievements in the relief and public safety program with orderly and speedy mobility, the following troops and teams will be organized : ( Classification into troops and teams comes only from the consideration of scale )

- (1) Relief and guard troop.
- (2) Crime prevention and investigation troop.
- (3) Supervising team.
- (4) Mobilization team.
- (5) Information-contact team.
- (6) Equipment adjustment team.

E. Mobilization and Mustering Programs.

( Including request for Reinforcements )

- 1) Mobilization -
  - a. Mobilization of Headquarters members.
  - b. Mobilization of crew.
- 2) Mustering -
  - a. Mustering of persons during duty-hours.
  - b. Mustering of persons while out of duty-hours.

- c. Mustering of patrol boats while on voyage.
- d. Operation order to designated civilian boats.
- e. Request to adjacent regional maritime headquarters.

For the purpose of effectuating accuracy and readiness in the above mobilization programs, previous arrangements will be settled in regard to duties, addresses, contact means, various signals, and equipment concerning individual members as available for reference at any time.

F. Adjustment of Materials.

Fuel, oil, foodstuffs, life-equipment for boats and crew as well as for sufferers will always be secured to meet emergency relief activities at any time.

2) Training.

A. A formula will be worked out to train duty members, mentally and technically, to develop successful relief activities at the time of a disaster.

B. Real circumstances of the past disasters will be studied so that the scrutinized general trend will benefit relief activities in the future.



3) Emergency Setup in Case of Disaster.

(1) Operation of patrol boats -

Patrol boats, on receiving order, will rush to the disaster scene with prompt adjustment of equipment and provisions.

(2) Priority grade -

a. In the activities of salvaging wrecked or floating ships, priority will be given first to lives, second to ship-bodies, and third to loads.

b. For the rescue activities on the sea at the time of tidal-waves and floods, the priority grade as in paragraph a, above, will be observed.

(3) Information-contact and communications -

a. Patrol boats will contact by wireless the informations of suffering scenes with the headquarters.

b. In case communications service is disrupted in the suffering coastal area, ship-wireless will be served to keep information-contact.

(4) Guarding -

Vigilant patrol off the suffering coast will be kept to maintain public peace and order.

(5) Crime-prevention -

In cooperation with the police, efforts will be made to assist police in their duties including the control of crimes, virulent rumors, and economic disturbance.

(6) Relief of refugees -

In case the people on the suffering coast and islands need refuge, patrol boats will take in them or lead them to a safe place.

(7) Transportation of relief materials -

In case of emergency in the maritime transportation setup, patrol boats will cooperate in an emergency marine freight program, in so far as their original duties are not hampered.

(8) Relief and guard activities within ports -

All available barges and boats will cooperate with patrol boats in a disaster occurring in a port.

(9) Relief and guard activities on rivers and canals -

In the relief and guard activities on river, canals, and flooded areas, available barges, boats and Japanese-style ships will be used expediently in accordance with respective water depths.

(10) Cooperation -

Close relations with other divisions will be kept, with priority given to those with the Land Public Safety Division, Maritime Transportation Division, Meteorological Division, Communications Division, and the Prefectural Fisheries Department.

5. Health Division.

1) Medical Relief Setup ( Organization of Medical Relief Teams and Their Duties ) :

(1) Headed by the Prefectural Health Department chief, an emergency medical relief headquarters will be organized with Health Dept. section chiefs directly responsible thereto.

(2) The Medical Relief Headquarters will have the following five (5) branches with corresponding

divisional duties :

- i. General Affairs Branch ( Medical Affairs Section )
  - General affairs and account business.
- ii. Relief Branch ( Disease-Prevention Section )
  - Coordination of anti-epidemics teams, medical relief teams, and refuge clinics.
- iii. Materials Branch ( Pharmaceutical Affairs Section and Public Health Section )
  - Securance and supply of medical relief materials.

(3) With one (1) or two (2) physician(s), one (1) pharmacist, three (3) nurses and one (1) clinical official as the basic components, the medical relief team ( mobile system ) will be formed as follows :

i. Sendai district -

	<u>No. of teams</u>
Tohoku University Medical Dept.	1
Sendai Municipal Hospital	1
Tohoku Medical Bureau Detachment, welfare Ministry (National Sendai Hospital)	4
Japan Red Cross Hospital Sendai Branch	5

ii. Other districts - ( The management is placed under the responsibility of the Japan Red Cross Sendai Branch )

(4) Each health center chief will previously sit in conferences with chiefs of the district office and police station concerned regarding the assignment of team members and their field duties

(5) The anti-epidemics teams will be installed two (2) in the Prefecture Office and one (1) in each health center, each one consisting of one (1) physician, one (1) pharmacist ( 2 particularly for the Prefecture Office team ) and three (3) sanitary technicians ( 5 for the Prefecture Office team ).

(6) Materials for the anti-epidemics and medical relief activities will be stocked in each health center and delivered out by the chief in meeting the request from chiefs of medical relief teams and refuge clinics.

When relief teams and refuge clinics consumed out the supplies on hand, they will ask the health center chief for further supplies.

(7) The health center chief will keep close contact with the branch chief for successful staging of anti-epidemics and clinical relief programs.

(8) Any shift in the lineup of a team must immediately be filled in and the revised roster reported to the chief of the Health Division, Disaster Relief Main Troop.

Form of Team-Member List :

<u>Category</u>	<u>Specialty</u>	<u>Post</u>	<u>Name</u>	<u>Date of birth</u>	<u>Sex</u>	<u>Remarks</u>
-----	-----	-----	-----	-----	-----	-----

2) Organization of Anti-Epidemics Teams and their Duties :

- (1) Setup of anti-epidemics teams directly responsible to the Health Div. -
  - i. In the Health Division, two (2) anti-epidemics teams will be instituted.
  - ii. Each team will have one (1) physician (chief), two (2) pharmacists (one of them as deputy chief) and five (5) sanitary technicians, with the equipment of one (1) car to effectuate

mobility.

- (2) Setup of anti-epidemics teams responsible to the health center -

Each health center will have one (1) anti-epidemics team, composed of one (1) physician (chief), one (1) pharmacist (deputy chief), and three (3) sanitary technicians.

- (3) The duties of each anti-epidemics team -

- i. Securance of drinking water.
- ii. Control of contagious diseases.

- 3) Provision and Supply of Materials Needed in Medical Relief Activities :

- (1) Relief materials -

Medical and epidemics-control supplies to meet any emergency disaster will be stocked in existing medical machineries and, at the same time, taking into consideration traffic facilities a certain amount of them will be secured in each health center.

( As detailed in a separate list )

(2) Distribution of medical relief supplies -

i. In meeting the request from the medical relief team and the refuge clinic chief, the health center chief will distribute his stock of medical supplies in accordance with the degree of suffering in any particular disaster. In case the stock at the health center becomes short of meeting the requirement in the face of a particular disaster, the chief will notice the fact to the Headquarters chief and upon his designation will replenish the stock through supply from local pharmacies. Such emergency deliveries from local agencies will be refilled officially.

ii. Anti-epidemics materials will as a rule be procured by the Health Division, but on demand of the situation, local health centers may procure them on their own initiative with the effect contacted to the division chief.



Anti-Epidemics Supplies to be Procured to Health Centers

Health Center	Cresol kg	Lime kg	Chloride of lime kg	Kerosene gal	DDT powder lb	For
Shiroishi	50	2,000	25	500	500	500 homes
Ogawara	50	2,000	25	500	500	"
Kakuda	50	2,000	25	500	500	"
Iwanuma	50	2,000	25	500	500	"
Shiogama	50	2,000	25	500	500	"
Ishinomaki	50	2,000	25	500	500	"
Furukawa	50	2,000	25	500	500	"
Iwadeyama	50	2,000	25	500	500	"
Tome	50	2,000	25	500	500	"
Wakayanagi	50	2,000	25	500	500	"
Kesenuma	50	2,000	25	500	500	"
Sendai	150	6,000	75	1,500	1,500	"
Rate	50 g to 5 homes	20 kg to 5 homes	50 g per home	1 gal per home	1 lb per home	
Total	700	28,000	350	7,000	7,000	

(3) Medical and sanitary supplies to be stocked in each health center -

<u>Health Center</u>	<u>Package</u>	<u>Health Center</u>	<u>Package</u>
Shiroishi	1	Ishinomaki	2
Ogawara	1	Tome	2
Kakuda	1	Wakayanagi	2
Iwanuma	1	Kesenuma	2
Shiogama	2	Health Div.	8
Furukawa	2		
Iwadeyama	1	Total	25

Remarks : Contents of the package are as denoted in the separate list.

(4) Local major pharmacies within jurisdictions of respective health centers -

<u>Health Center</u>	<u>Pharmacy</u>
Shiroishi	Shiseido Pharmacy
Ogawara	Sekiya "
Kakuda	Kurayama "
Iwanuma	Kamo "
Tome	Suzuhiko "

<u>Health Center</u>	<u>Pharmacy</u>
Wakayanagi	Okuyama Pharmacy
Kesennuma	Yamatomo "
	Fujino "
Shiogama	Yoshida "
	Konno "
Furukawa	Koneki "
Iwadeyama	Ishin "
Ishinomaki	Kikuya "
	Inomata "
Sendai	Sennando "
	Futami "
	Koizumi "
	Mitsumaru Commercial Co.
	Miyagi Medicine Sales Co.

Separate List ( Contents of Health Center-Secured  
Package )

<u>Item</u>	<u>Quantity</u>	<u>Unit price (¥)</u>	<u>Cost (¥)</u>
Alcohol disinfection	500 g - 3	705.60	2,116.80
Cresol, liquid	500 g - 3	237.16	711.48
Tincture of iodide	250 g - 2	506.66	1,013.32
Marcurochrome	500 g - 1		155.92
Zinc oxide	500 g - 4	218.54	874.16
Boric acid ointment	500 g - 1		475.38

<u>Item</u>	<u>Quantity</u>	<u>Unit price (\$)</u>	<u>Cost (\$)</u>
Tar & sulfarpaste	500 g - 1		<u>351.24</u>
Scopolio (inj.)	10 A - 5	<u>132.30</u>	<u>661.50</u>
Vita camphur	10 A - 5	<u>242.00</u>	<u>1,210.00</u>
Flavored castor oil	500 g - 2	<u>221.22</u>	<u>442.44</u>
Ringer's solution	500 g - 2	<u>171.50</u>	<u>343.00</u>
Dextrose (inj.)	20% 5A x 20 -10	<u>171.54</u>	<u>1,715.40</u>
Sulfachiazol	20 T -10	<u>537.61</u>	<u>3,376.10</u>
Sulfaguanidin	20 T -10	<u>172.80</u>	<u>1,728.00</u>
Acetylsalicylic acid	20 T -10	<u>40.25</u>	<u>402.50</u>
Sodium bicarbonate	100 T -20	<u>24.50</u>	<u>490.00</u>
Sodium chloride	500 g - 2	<u>127.40</u>	<u>254.80</u>
Boracic acid	500 g - 1		<u>81.50</u>
Bromural	100 T - 1		<u>97.51</u>
Bismuth subnitrate	100 T - 2	<u>58.80</u>	<u>117.60</u>
Scopolio extract	100 T - 2	<u>53.90</u>	<u>107.80</u>
Ipecac	100 T - 1		<u>73.99</u>
Distilled water	10A x 20 - 2	<u>111.76</u>	<u>223.52</u>
Vitamin B	3m 10-10	<u>71.78</u>	<u>717.80</u>
Omnish	10 A - 5	<u>83.30</u>	<u>416.50</u>