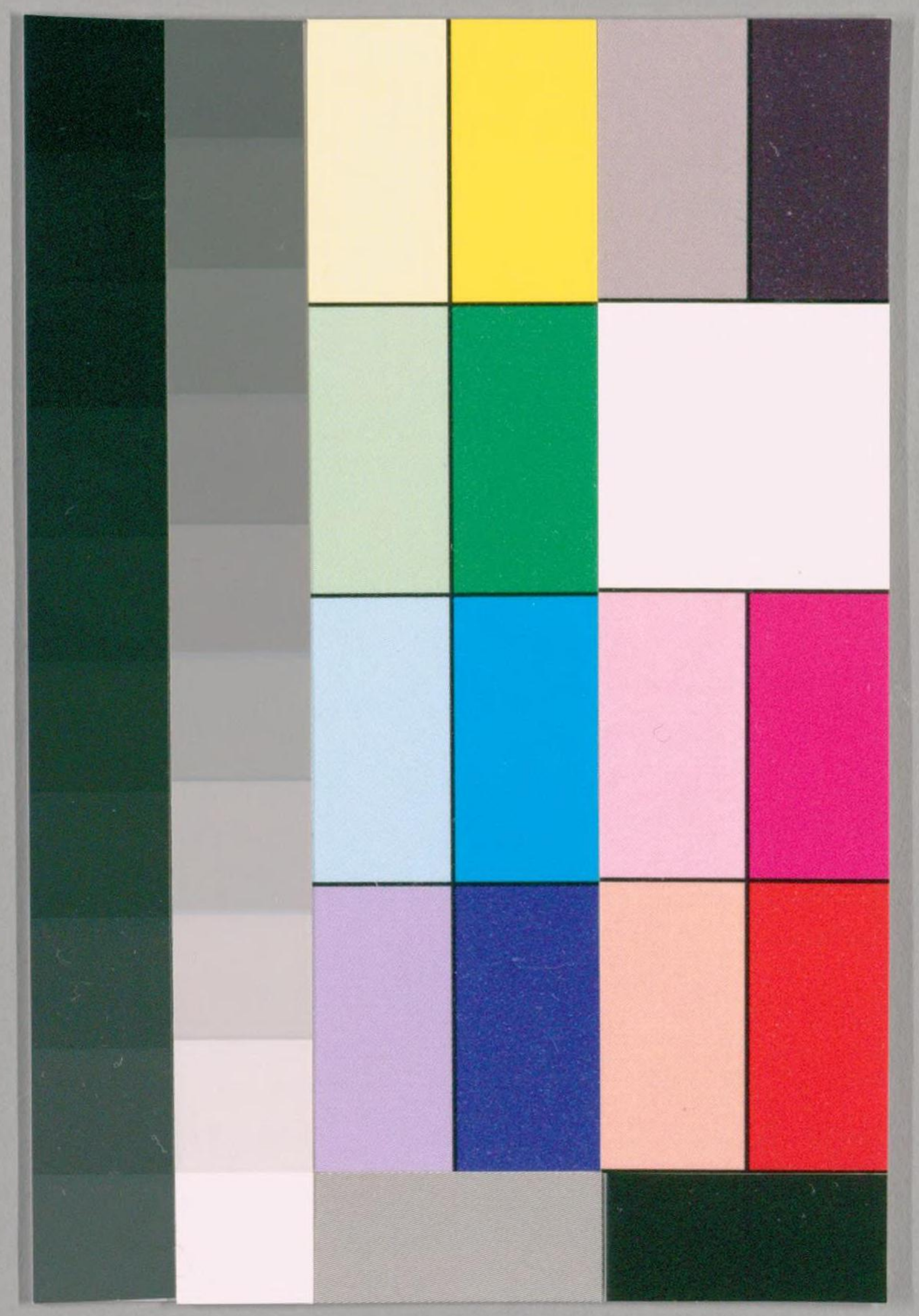




公平山伏問答  
完

に辨別  
58



国立国会図書館 タイトル『公平山伏問答』 請求記号 に-58

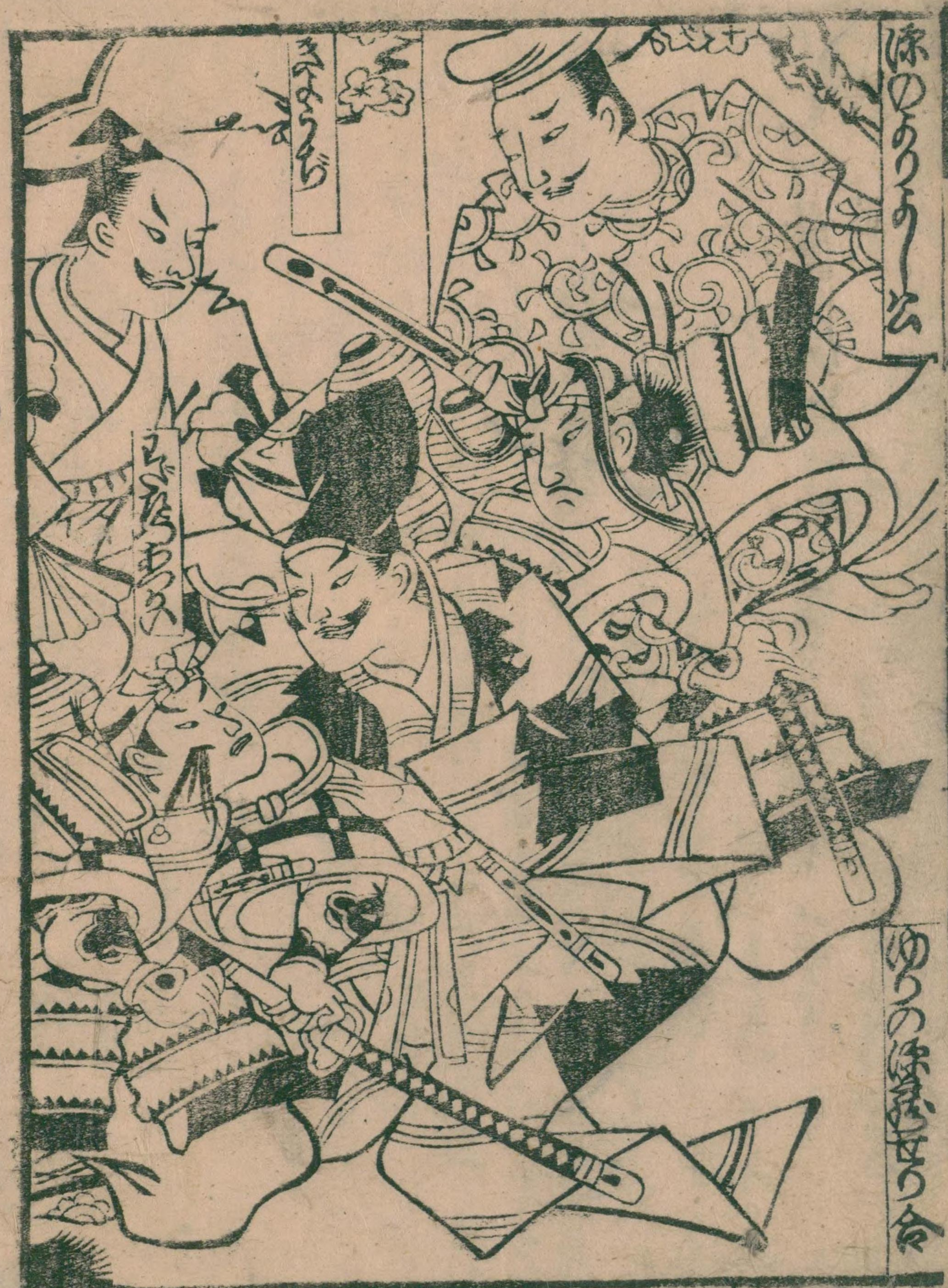
ガラス使用

Handwritten text in a cursive script, likely a form of Japanese calligraphy (sōsho). The text is arranged in vertical columns, reading from right to left. The characters are dense and fluid. There are several red ink markings: a large red circle around the top right portion of the text, and a red square seal at the bottom right corner.

金平山伏問答

初版





23 24 25 26 27 28 29 30 31 32 33 34 35 36 37 38 39 40 41 42 43 44 45 46 47 48 49 50 51 52 53 54 55

Handwritten text in a cursive script, likely a form of Arabic or Persian, filling the left page of the manuscript. The text is densely packed and covers most of the page area.

Handwritten text in a cursive script, likely a form of Arabic or Persian, filling the right page of the manuscript. The text is densely packed and covers most of the page area.



Handwritten text in a cursive script, likely a form of Arabic or Persian, filling the page.

Handwritten text in a cursive script, likely a form of Arabic or Persian, filling the page.





Handwritten text in Arabic script, likely a religious or philosophical treatise. The text is densely packed and covers the entire page.

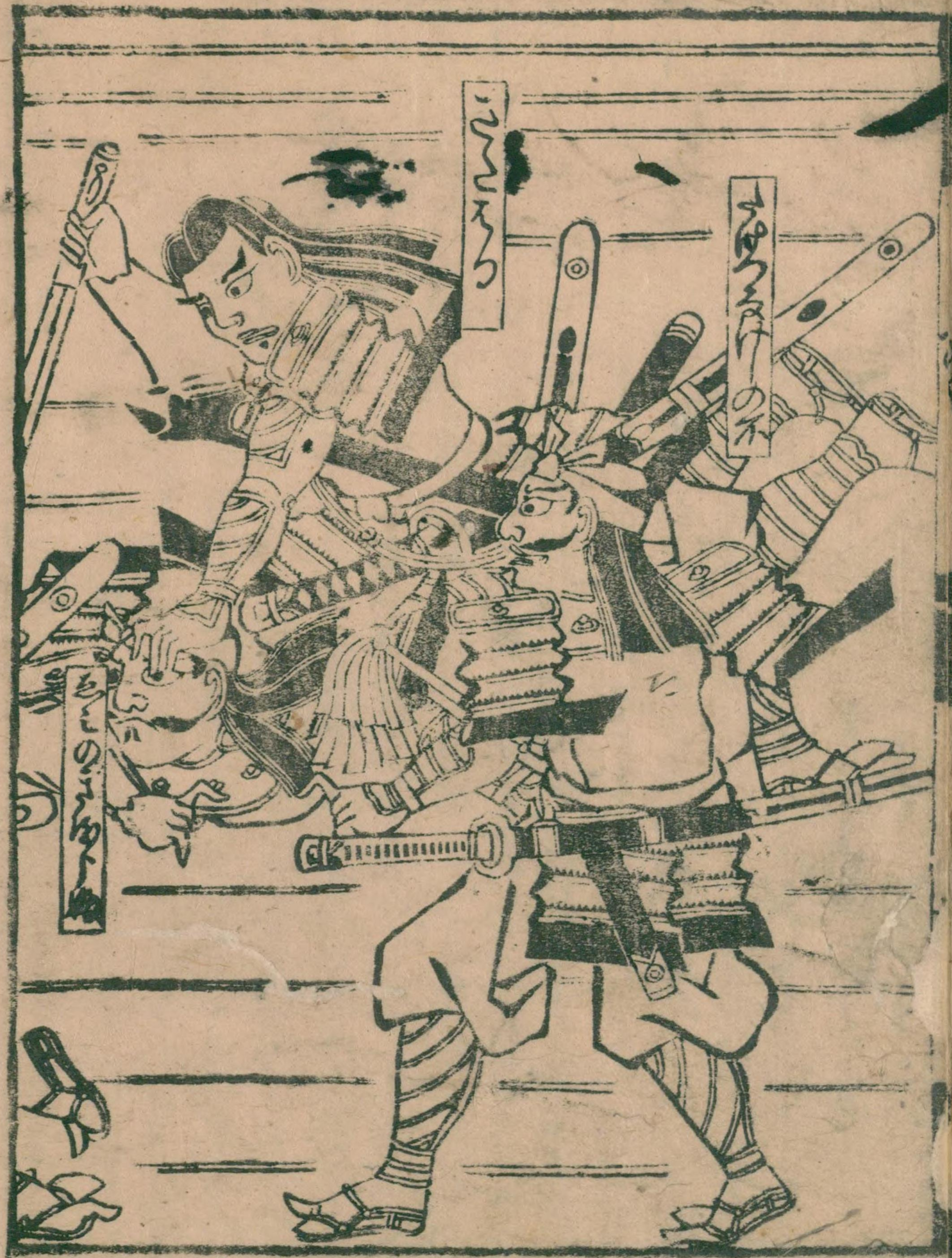
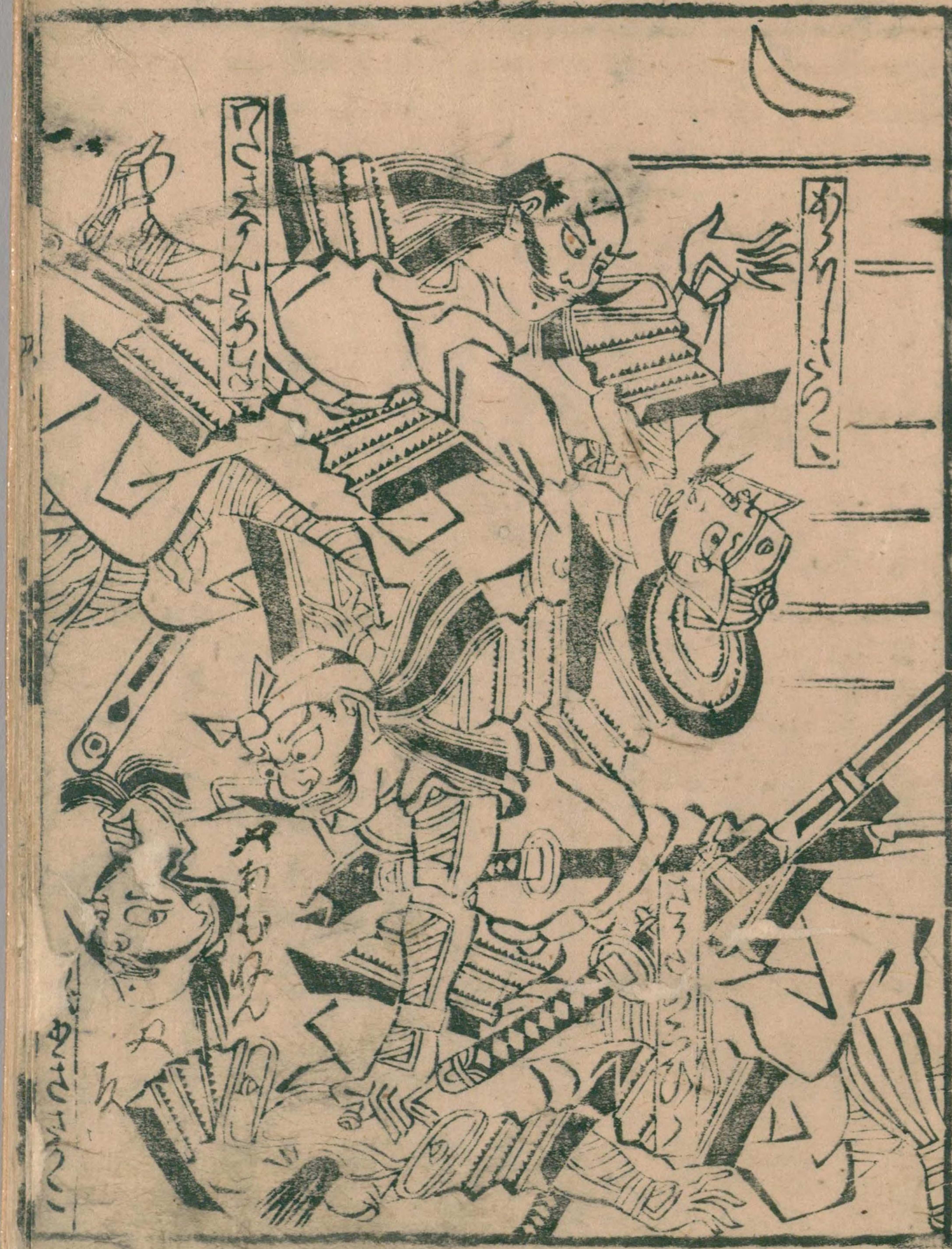
Handwritten text in Arabic script, likely a religious or philosophical treatise. The text is densely packed and covers the entire page.

Handwritten text in Arabic script, likely a manuscript page. The text is densely packed and covers most of the page area.

Handwritten text in Arabic script, likely a manuscript page. The text is densely packed and covers most of the page area.







Handwritten text in a cursive script, likely a form of Arabic or Persian. The text is arranged in approximately 28 lines. There are some larger, decorative characters interspersed within the lines, possibly serving as section markers or initials. The script is dense and fills most of the page area.

Handwritten text in a cursive script, likely a form of Arabic or Persian. The text is arranged in approximately 28 lines. There are some larger, decorative characters interspersed within the lines, possibly serving as section markers or initials. The script is dense and fills most of the page area.

Handwritten text in a cursive script, likely a form of Arabic or Persian, filling the left page of the manuscript. The text is densely packed and covers most of the page area.

Handwritten text in a cursive script, likely a form of Arabic or Persian, filling the right page of the manuscript. The text is densely packed and covers most of the page area.



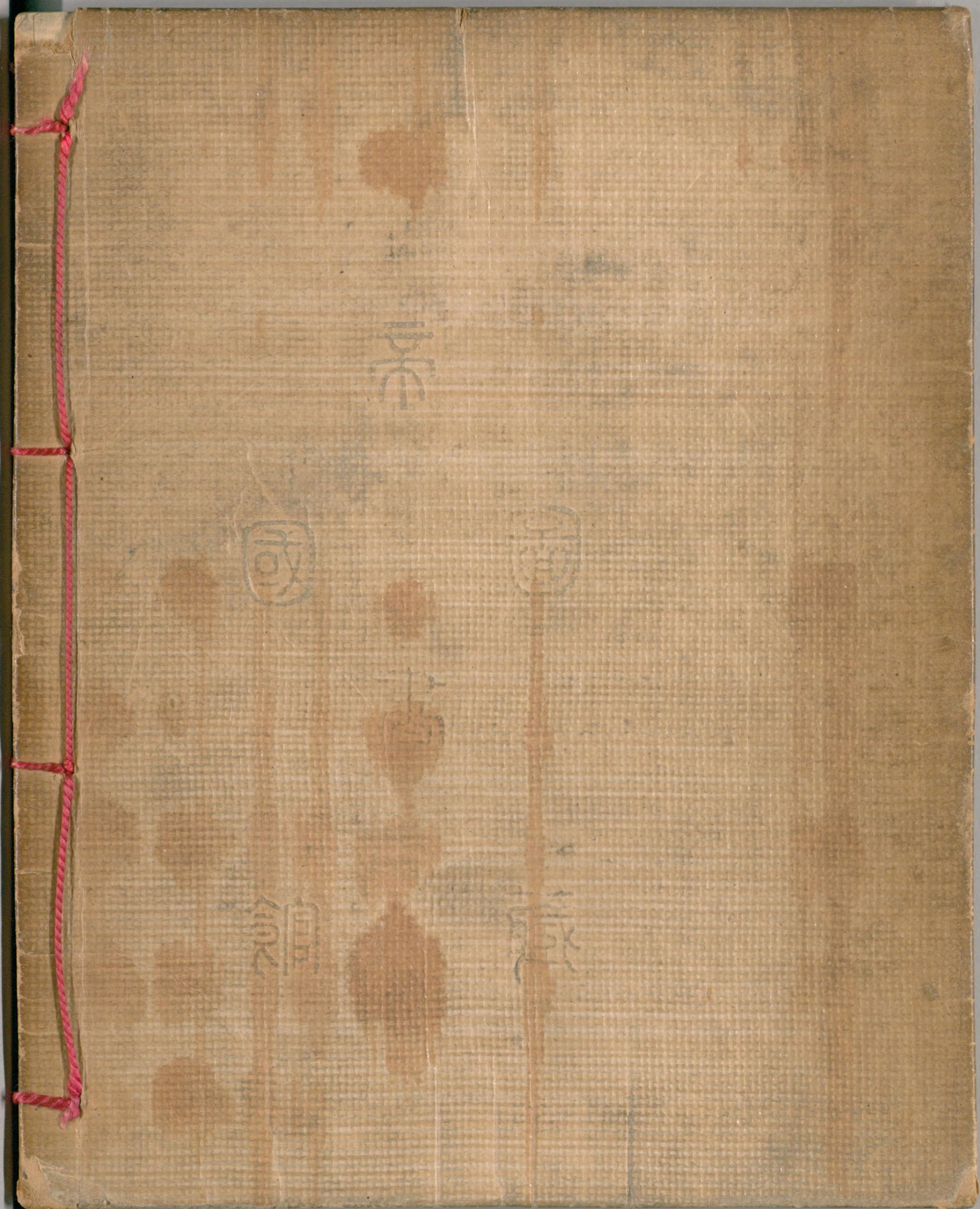
特別  
に  
58

此の書は... 用後者也  
石の... 正月七日

古くは者 丹波少掾平正信

Handwritten text in cursive script (sōsho) filling the right side of the page.





国立国会図書館 タイトル『公平山伏問答』 請求記号 に-58

ガラス使用