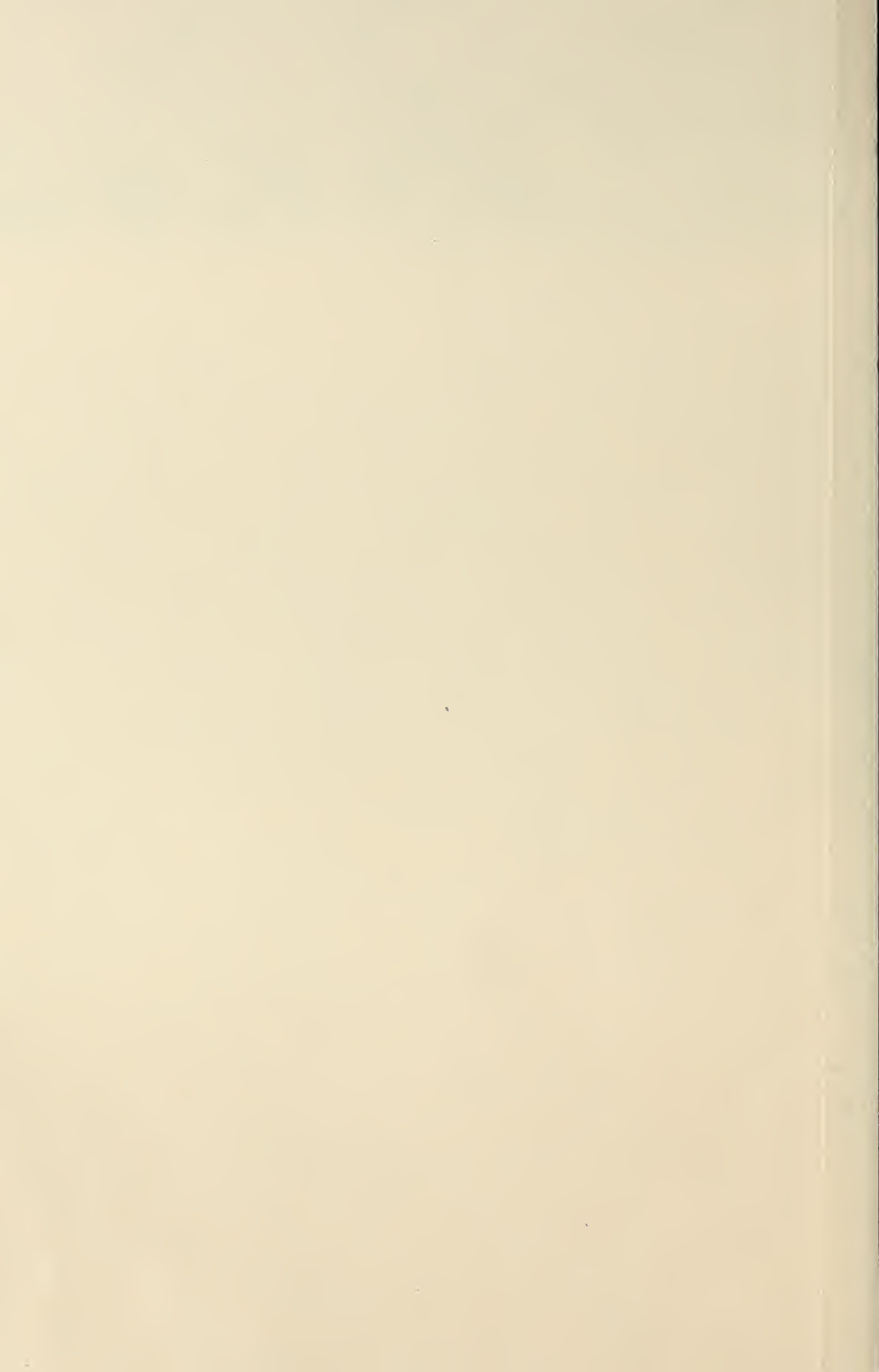


Historic, archived document

Do not assume content reflects current scientific knowledge, policies, or practices.



62,43

LIBRARY
MAY 24 1924
Agriculture.



Schuster's

**TREES, SHRUBS, SMALL
FRUITS, VEGETABLE
PLANTS, CUT FLOWERS
FUNERAL DESIGNS
WEDDING BOUQUETS**

— 1924 —

**EDWARD W. SCHUSTER
CROOKSTON, MINNESOTA**

Floral Designs

The use of flowers as a means of conveying sympathy is undisputed. The practical experience we have daily, making up of various floral arrangements, insures artistic as well as skillful ideas in making sprays, casket covers and funeral designs. Our aim is to fill your order as near as possible according to your wishes. Below will be found approximate prices of all designs. Any special design will be made to order.

Our New Cut Flower Catalog listing all designs separately will be gladly sent on your request. This catalog is issued at a large expense and can only be sent on request.

Measurement of Standing Designs Includes Height

	12-in.	15-in.	18-in.	21-in.	24-in.	30-in.	36-in.
Anchor Flat	\$5.00	\$ 8.00	\$10.00	\$12.00	\$15.00	\$20.-\$25.	\$30.-\$50.
Anchor on Stand		10.00	12.50	15.00	18.00	20.- 25.	35.- 75.
Anchor on Easel		8.00	10.00	12.00	15.00	20.- 25.	30.- 50.
Broken Column			15.00	20.00	25.00	30.00	40.- 50.
Broken Wheel		10.00	12.00	15.00	18.00	25.00	35.- 50.
Crosses Flat	4.00	5.00	7.00	10.00	15.00	20.00	25.- 50.
Cross of Magnolia Leaves for Grave Use (With Flowers \$2.00 Extra)	2.00	3.00	4.00	5.00			
Crosses Standing			10.00	15.00	20.00	25.00	35.- 50.
Cross, Maltese	5.00	6.00	8.00	12.00	15.00		
Cross, Casket		10.00	12.00	15.00	20.00		
Cross and Sickle on Stand							20.- 50.
Cross and Crown			15.00			25.00	
Door Badge, \$3.00, \$4.00 and \$5.00							
Door Badge Wreath	4.00	5.00	6.00				
Crescent	5.00	8.00	10.00	12.00	15.00		
Crescent and Star on Stand		12.00	15.00	20.00	25.00		
Gates Ajar		12.00	15.00	20.00	25.50	35.00	50.-100.
Harp on Stand		10.00	12.00	15.00	20.00	25.00	35.00
Heart Solid	5.00	6.00					
Heart Open	5.00	6.00	8.00	10.00			
Lyre on Base		10.00	12.00	15.00	20.00	25.00	
Pillows	6.-8.	8.-10.	12.-15.	15.-18.	20.-25.	25.-35.	40.- 50.
Sickle	5.00	6.00	10.00	12.00	15.00		
Star, Flat	5.00	7.00	12.00	15.00	20.00		
Star on Base, \$2.00 extra				15.00	18.00	25.00	
Star on Crescent and Easel				18.00	21.00	28.00	
Star and Crescent on Base							
Sheaf Wheat		2.00	2.50	3.00	4.00		
Sheaf Wheat with Flowers		3.00	4.00	5.00	8.00	10.00	
Sheaf on Base, Standing			8.00	10.00	15.00		
Sickle on Easel with Sheaf Wheat and Sago Palm Leaves					12.00	15.00	15.00
Sickle and Sheaf on Panel of Galyx				12.00	15.00	20.00	
Shield	6.00	7.50		10.00	15.00		
Shield of Galyx or Magnolia Leaf on Easel with Emblem			10.00	12.00	15.00		
Scroll			15.00	18.00	20.00		
Wreaths on Panel				10.00	12.00	15.00	
Broken Wreath on Base			10.00	12.00	15.00		
Wreath of Carnations with Cluster Roses		10.00	12.00	15.00	20.00		
Wreath of all Roses or all Carnations	10.00	12.00	15.00	18.00	20.00	25.00	
Wreath Reclining on Easel	10.00	12.00	15.00	18.00	20.00	25.00	35.- 50.
Wreath on Stand, height with Dove, \$1 extra				15.00	18.00	20.00	25.-150.
Wreath Crescent, price same as Stand- ard Wreaths.							
Wreath of Palm Leaves		5.00	6.50	8.00	10.00		
Wreath of Ivy Magnolia or Galyx Leaves with clusters of flowers	5.00	6.00	7.00	8.00	10.00	15.00	
Wreaths of Assorted Flowers, 10 Inch, \$3	5.00	8.00	10.00	15.00	20.00	25.00	35.- 50.
Wreaths Reclining on Easel with Palm Leaves, \$2.00 extra each size.							
SPECIAL LODGE DESIGNS							
Epworth League	6.00	8.00	10.00	12.00			
Knights of Pythias	6.00	8.00	10.00	12.00	15.00	20.00	
Knights Templar, Maltese Cross with Cross and Crown					25.00		
Maltese Cross (see Crosses)							
Order Eastern Star	6.00	8.00	10.00	15.00	20.00	25.00	
Elks' Dial				15.00	20.00		
G. A. R. Wreath	5.00	6.00	8.00	10.00			
Odd Fellows		8.00	10.00	15.00	20.00		
Masonic	8.00	10.00	15.00	20.00	25.00		
M. W. A. Axe with Bettle on Shield			10.00	12.00	15.00		
Royal Arcanum			7.00				
Other Lodge Designs made to order at reasonable prices. If mounted on Easel with Palm, \$2.00 extra.		8.00	10.00	12.00	15.00		

Casket Covers or blankets used for covering the entire casket or just the lower part of the casket. Price varies according to time of year and size of cover. Small for children, \$25, \$30, \$50; large for grown persons, \$100 to \$500.

An Annual for Our Friends

Flowers for Every Home. A Shrub for Every Lawn

Cut flowers for funerals, weddings, receptions and every occasion. Plants, ornamental shrubs, shade trees and vegetable plants.

We again thank you for your past favors and patronage the past year. The increased demand for our plants and flowers the past year has proven to us that it pays only to send out quality stock. We ask you only for a trial order and after this we know that you will always be one of our customers. Our motto is and has been since we established in business—"a satisfied customer."

Order Early—We aim to fill all orders as soon as received, but during the rush season in April, May and first part of June delays are unavoidable; which, however, can be overcome by ordering your wants early.

All trees, plants, roots and bulbs are forwarded by express, purchaser paying charges, which rates are very reasonable.

Heavy plants, if shipment is large enough, may be sent by freight.

Small packages may be sent by parcel post. For packages you wish to be forwarded by parcel post add 10% of order for postage.

Cash With Order—Please send check, money order, or draft with order to cover the whole. We decline sending goods "Collect on Delivery," unless remittance be made on account to guarantee acceptance.

Correspondence—We try and give prompt attention to all proper letters of inquiry regarding anything in our line. We want to assist you to be successful with your plantings. However, we ask as a favor that all questions be stated clearly and briefly.

January 1, 1924.

EDWARD W. SCHUSTER.

Cut Flowers

We are the leading florists of the North and Northwest. In design work and cut flowers we are better than ever prepared to care for your wants. With our competent artists and long experience we place our work in competition with the best in the land. We furnish and execute in the most modern manner all kinds of designs for funerals, weddings, table, house or church. All orders entrusted to us will be executed promptly in the latest styles and at reasonable prices. If you are undecided as to what to order leave the selection to us, stating what you wish them for.

Sunday Mail—If your order is sent by mail for Monday shipment be sure and affix a special delivery stamp if letter is liable to be sent in on Sunday, as we do not receive our Sunday mail until Monday morning.

How to Order—When time is limited always order by telephone or telegraph. If order by mail is for immediate shipment affix special delivery stamp.

Flowers By Express—All cut flowers, designs, etc., packed to carry long distance safely, either winter or summer.

Flowers By Mail—On request we often send small boxes of flowers by mail. As a rule they reach their destination all right, but we do not guarantee these shipments by parcel post, and much prefer sending by express, as flowers carry better.

If order goes out by mail, add 10 cents postage and 10 cents extra for special delivery.



Flowers for the House

You enjoy having flowers in the house and having them on the table when you have a few friends in. We make it easy for you to have them whenever you like.

A Birthday. Have you a friend you would love to remember? Then "Say it With Flowers." The most beautiful remembrance. Our DeLuxe Boxes are very choice at \$1.50, \$2.00, \$3.00, \$4.00 and \$5.00.

We know you will be pleased.

Very Important

How to Keep Your Cut Flowers

All design work—Leave in the boxes and set in a cool cellar until ready to use.

Loose Flowers—Remove from the box at once, clip ends of stems and put them in water, using a deep vase with plenty of water at the bottom, and see that the stems are down in the water. These precautions taken will add greatly to the duration of your flowers. Flowers set in a cool place at night will also add to the keeping of them.

Bridal Bouquets

One can prepare her wedding gown and be sure that it is perfect, but the bride's bouquet is something which only a florist who is a true artist, can create to most becomingly set off the grace of the bride.

Whatever your requirements may be, whether for the bridal bouquet, the boutonniere for the groom and groomsmen, the bouquets for the bridesmaids, the decorations for home and church, we can provide just what



you most desire within whatever amount you have planned to spend.

Bridal Bouquets, each.....\$3.00 to \$10.00
 Bridal Shower Bouquets, each. 5.00 to 25.00
 Bridesmaid Bouquets, each..... 3.00 to 15.00
 Ladies' Corsage Bouquets, each 2.00 to 25.00
 Buttoniere for the Groom, each .25 to .50
 Buttoniere for the Best Man, ea. .25 to .50
 Basket for Flower Girl, each.... 1.50 to 5.00
 Wedding Bells, each, \$5.00, \$10.00, \$15.00, \$20.

Corsage Bouquet

Always appropriate, as a Bride's Bouquet, a gift for the woman of taste, or to be worn at special social occasions. Each \$2.50, \$3.00, \$4.00, \$5.00.

Annuals, the Flowers We Love HELPFUL SUGGESTIONS

Annuals for Showy Beds—

Asters	Bachelor Button
Snapdragon	Larkspur
Scabiosa	Nasturtium
Salpiglossis	Sweet Peas
Marigold	Zinnias
Cosmos	

Annuals for Cutting—

Asters	Stocks
Snapdragon	Pansies
Ageratum	Zinnias
Pinks	Schizanthus
Salvia	Salpiglossis
Verbena	Petunias

Border Plants for Bedding—

Alyssum	Coleus
Ageratum	Lobelia
Begonia	Mdm. Saleroi
Centaurea	Pansies
(Dusty Miller)	Verbenas



General List of Bedding and House Plants

AGERATUM—Blue Perfection—For border plant 6 to 8 inches apart. Each, 10c; \$1.00 per dozen; \$8.00 per 100.

ALYSSUM—Little Gem—The plants, which are only a few inches high, grow so dense and are completely covered with snow-white blossoms. For borders plant 6 to 8 inches apart. \$1.00 per dozen; \$6.00 per 100.

ANTIRRHINUM—Snapdragon—This is now one of the most important of garden flowers, ranking with the aster and peony for long and continuous blooming season, whether intended for cutting or for show in the garden. Mammoth White, Purple, Red and Pink shades. Transplanted seedlings, 75c per dozen; \$5.00 per 100. Potted plants, each, 15c; \$1.50 per dozen; \$10.00 per 100.

Asters

We grow the finest assortment of all varieties and colors. These are all strong, transplanted seedlings from soil.



Asters

BALSAMS—Lady Slipper—Everyone knows the Balsam. The large flowers are double and perfect, the branches being perfect pyramids of bloom. The Balsam is one of the most beautiful and easily grown annuals. Transplanted plants, 50c per dozen, \$3.50 per 100.

BACHELOR'S BUTTON—It is not a pretentious plant, but will always charm by its simple beauty. May be used for cutting and naturalizing purposes. Transplanted plants, 50c per dozen, \$3.50 per 100.

CALENDULA—One of the best and showiest free-flowering hardy annuals; covered with orange blossoms. Transplanted seedlings, 75c per dozen, \$5.00 per 100.

CANDYTUFT—Giant white Hyacinth. A grand border plant, bearing very large bold spikes of snowy white flowers. Transplanted seedlings, 50c per dozen, \$3.50 per 100.



Giant Crego—A branching variety with flowers of immense size; separate colors; white, pink, purple and rose. Strong transplanted seedlings, 50c per dozen; \$3.50 per 100.

Late Branching—Very fine for cutting. White, pink, purple and lavender.

American Beauty—Color of the American Beauty rose.

Sensation—A fine red aster.

Asterum—These flowers are nearly as large as chrysanthemums; separate colors, white, pink and lavender.

BEGONIA—Vernon—Red, pink and white. **Gloire de Chatelaine**—Brilliant pink; from 3 inch pots; 25c each; \$2.50 per dozen.



Calendula

Carnations

Plant in the open ground or sow as soon as the ground can be worked in the spring. If wanted to flower during the summer and fall, as soon as the flower shoots appear, tie to small stakes. Our list of varieties are the best.

Enchantress—A splendid light pink, deepening toward the center. Each, 20c; \$2.00 per dozen.

Aviator—Intense bright scarlet, very prolific bloomer. Each, 20c; \$2.00 per dozen.

Matchless—Fringed white; deep, sturdy grower; very fragrant. Each, 20c; \$2.00 per dozen.

Mrs. C. W. Ward—Dark clear pink. Fine. Each, 20c; \$2.00 per dozen.

Cannas

No bedding plant is equal to the Cannas; are easily grown, and attain large size in ordinary soil. Plant in good, rich garden soil, about the end of May, when all danger of frost is past. Water sparingly for first two weeks after planting. Set the plants 18 inches apart each way, and where more than one kind is used, be careful to set the dwarf growing varieties at outside of bed. Should be taken up in the fall when the tops are killed by the frost, and stored away in a dark, cool place. Our stock is very large, numbers many thousands, and all true to name, each variety being the best of its kind.

There is nothing more beautiful than a bed of Cannas, with their gorgeous flowers of all colors, which are produced above their rich, glossy foliage. No park or landscape planting is complete without several beds of these indispensable plants. Aside from the fact of its magnificent foliage display, it is exceedingly valuable on account of the great clusters of flowers which are produced the entire summer.

King Humbert—Bronze foliage; bright orange scarlet streaked with crimson. Each, 35c, dozen, \$4.00.

Florence Vaughan—Yellow flowers dotted



Carnations

with bright red. Each, 35c; dozen, \$4.00.

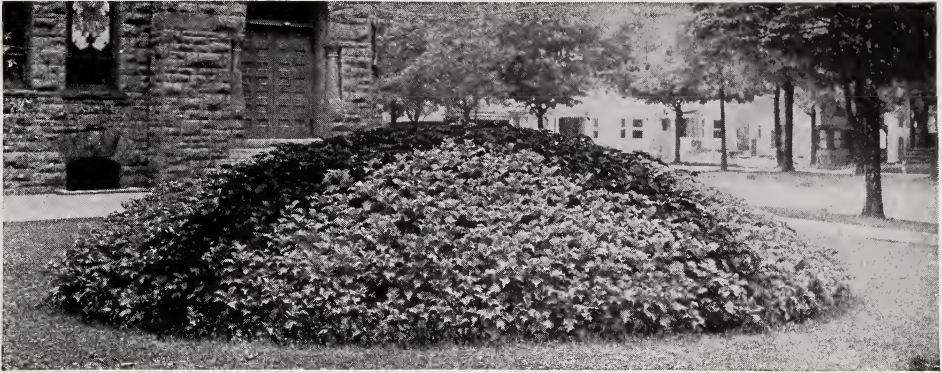
Charles Henderson—Crimson flower and a good bedder. Each, 35c; dozen, \$4.00.

Hungaria—Rosy pink; a very free bloomer. Each, 35c; dozen, \$4.00.

The President—A great Canna. Immense bright red flowers in fine clusters; unquestionably the most sensational introduction of recent years. Each, 35c; dozen, \$4.00.



Bed of Cannas



Bed of Coleus

Coleus

Every lover of foliage should have a bed or border of these. They are fine for edging or massed by themselves. The Coleus will give more pleasure at less cost than any other plant. Very tender and therefore should not be planted until all danger of frost is past.

Beckwick's Gem—Four shades of color: center maroon, border red, edge green and yellow.

Golden Bedder—Yellow. This is the best Coleus for bedding; deep gold in the sun; deep.

Verschaffelti—The oldest, still one of the best; rich velvety crimson.

Brilliancy—The finest giant Coleus ever offered. Bright carmine shading to deep maroon; margin of leaf yellow and green; leaves have a rich velvety luster, giving a most beautiful effect; habit strong and vigorous.

Prices of Coleus: Each, 10c; 1 dozen, \$1.00; 100, \$6.00.



Cosmos

CASTOR BEAN (Ricinus)—For tropical foliage trees; well adapted as center plants for groups of cannas, dahlias, etc. Each, 35c; 3 for \$1.00; \$4.00 per dozen.



Chrysanthemums

Chrysanthemums

The Chrysanthemum is without doubt the queen of the autumn flowers. Their large flowers of every character and form attract the attention of all who are interested in flowers. They are the most popular flower.

STANDARD VARIETIES

Golden Glow—The earliest yellow variety; fine incurved solid flower of golden yellow.

Smith Advance—The earliest large flowering white.

Chrysolora—Early; deep yellow; fine.

Chieftain—The loveliest pink of them all.

Chas. Razier—Tall, strong grower; pure white, sometimes tinted lavender; flower very full.

Harvard—Very dark crimson.

Mrs. E. A. Seidwitz—Beautiful incurving deep pink.

Tekonsha—Immense size; reddish brown.

Golden Mistletoe—Incurved; very late golden orange and yellow.

Mistletoe—Of largest size; very deep; heavy flower; light pink, turning almost white.

Nagoya—Bronze yellow; solid compact flower.

W. H. Chadwick—A large, Japanese white, occasionally tinted pink.

Yellow Chadwick—Similar to white Chadwick except color which is rich yellow.

CAP VARIETIES

Especially suitable for pot culture, as they row dwarf and bushy; flowers double and good size.

Lilac Cap, Purple Cap, Bronze Cap, and White Cap.

Pompon and Anemones

A great deal of interest is now centered on these varieties; are very easily grown, require only good pinching back early, and the large variety of colors and form make them prized very much by the amateur grower.

Golden Mensa—Large single yellow.

White Mensa—Large single white.

Lillian Doty—Very full round flower; pink.

Mrs. Frank Blair—Late bronze with yellow center.

Golden Lida Thomas—Very late; a wonderful clear yellow pompon.

Lorraine Warren—A grand bronze.

Western Beauty—A fine late pink.

Prices on all Chrysanthemums: Each, 20c; 3 for 50c; per dozen, \$2.00.

EVERLASTING FLOWER (Helichrysum)—

Strong growing annual for beds of tall growing plants or mixed border. Noted particularly for their lasting quality and winter bouquets. The foliage is exceedingly ornamental. Transplanted plants, 50c per dozen; \$3.50 per 100.

FUCHSIAS—Easy of culture in partially shaded locations; single and double. 35c each; \$4.00 per dozen.

FEVERFEW—Double White. Fine for window boxes. Potted plants, 25c each; \$2.50 per dozen; larger plants, 35c each; \$4.00 per dozen.



Feverfew

FORGET-ME-NOT (Myosotis)—Beautiful for shady nooks and quiet beds and exquisite for cutting. Like the peony, there is something almost human in the expression of these modest flowers that looks you frankly in the eyes as though they had something to tell you. Transplanted plants, 75c per dozen; \$5.00 per 100.

Geraniums

Geraniums are the best known and most extensively used of all bedding plants. They continue to bloom throughout the hot summer months. They thrive best in a bright, sunny situation and produce an abundance of bloom throughout the summer.

Unless noted: Each, 35c; dozen, \$4.00; specimen plants: Each, 50c; dozen, \$5.50.

Alphonse Ricard—Semi-double, dwarf and branching, bright orange red.

Beauty of Poitevine—Rosy salmon, nicely shaded and tinted from deep orange to pure salmon.

Jean Viaud—Dwarf, compact habit of growth; large trusses, bright rose pink blossoms.

Mme. Buchner—Very large trusses; snow white.

Madam Jaulin—The lovely "Apple Blossom" geranium; in color a varying combination of peach-pink and blush-white.

S. A. Nutt—The standard dark red; compact growth and more largely used for bedding than any other variety.

Mme. Landry—Brilliant shade of apricot salmon shading to copper, with white eye; certainty in blooms.

Edmond Blanc—One of the newer geraniums that is attracting attention wherever seen on account of its handsome coloring; being the most brilliant of the cerise shades.

Ivy Leaf Geranium—Assorted varieties. Each, 25c; \$2.50 per dozen. Larger size: Each, 35c; per dozen, \$4.00.

Scented Geranium—Each 25c; dozen, \$2.50. Large size: Each, 35c; dozen, \$4.00.

Silver Leaf (Mme. Salleroi)—Silvery foliage; very effective for borders. Each, 10c; dozen, \$1.00; per 100, \$8.00.

HELIOTROPE CENTIFLEUR—A universal favorite on account of its fragrance. Purple, and one of the best. Each, 35c; \$4.00 per dozen.

MARIGOLD—The extra large flowers are perfectly rounded, of nearly ball-like form. The brightness of coloring and perfection of form make them resemble a large double Dahlia. This fine old plant was potted by our grandmother, neglected by our mother, and is now enjoying the popularity it well deserves. Transplanted plants, 75c per dozen; \$5.00 per 100.



Geranium

LOBELIA—Crystal Palace—Blue; fine for border; plant 6 inches apart. 15c each; \$1.50 per dozen.

Sapphire—Trailing; especially fine for window and porch boxes. 15c each; \$1.50 per dozen.

MARGUERITE—Paris Daisy—The old time favorite; very fine bloomer. 25c each; \$2.50 per dozen; larger size, 35c each; \$4.00 per dozen.

Mrs. F. Sander—Double; pure white. 35c each; \$4.00 per dozen.



MARGUERITE



Marigolds



Nasturtiums

NASTURTIUMS—King of the Tom Thumbs
—Dwarf growing and the most profuse blooming variety. Transplanted plants, 75c per dozen; \$5.00 per 100.

Tall—Best climbing varieties. Transplanted plants, 75c per dozen; \$5.00 per 100.

NICOTIANA (Sweet Scented Tobacco Plant)
—Potted, each, 15c; dozen, \$1.50.

PANSIES (Mastodon)—You surely will be pleased with our pansy plants which have been grown from the choicest seeds, transplanted and hardened off; in bud and bloom at time of shipment, and should continue to bloom throughout the whole season if planted and cared for properly. Assorted colors, 60c per basket (one dozen in a basket); 12 baskets, \$6.00.



Pansies

Petunias

The Petunia is well known and admired by all. It is always popular as it is one of the most profuse bloomers in the summer garden.

Rosy Morn—Rose pink.

Ruffled Varieties—Assorted colors.

Snowball—A dwarf growing pure white.

Balcony Queen—Fine purple; very free.

Transplanted plants, 75c per dozen; \$5.00 per 100. Potted plants, 15c each; \$1.50 per dozen.

Double Petunias—Free blooming double varieties; variegated; beautifully mottled and blotched. Each, 35c; \$4.00 per dozen.



Double Petunias, Fringed

SALVIA (Scarlet Sage)—A splendid bedding plant, producing scarlet showy flowers.

Bonfire—A most excellent variety. Flower fiery scarlet.

Zurich—Dwarf and earliest to bloom. Each, 15c; \$1.50 per dozen; \$10.00 per 100.

SALPIGLOSSIS (Painted Lady)—Undoubtedly one of the most attractive annuals and should be in every garden. The blossoms are tube-shape, much like a petunia, but rivalling the latter in the beautiful colors displayed. Each flower is veined with a glint of gold, and it is the only flower to our knowledge possessing its own characteristic. The Salpiglossis is deservedly known as the Orchid of Hardy Annuals. If you are not familiar with this, try a dozen. Transplanted plants, 75c per dozen; potted plants, each 15c; \$1.50 per dozen.

SCABIOSA (Mourning Bride)—Commonly known as the Pincushion Plant. The flower stems are long and the blossoms keep well in water. The soft shades predominate. When given plenty of room and the seed vessels are kept regularly picked off, it will last through the whole of the summer. Owing to its sweetness the bees are very fond of it and its floral flavors also attract all the most beautiful types of butterflies in the neighborhood. Transplanted plants, 75c per dozen.

PELARGONIUM—A valuable class of house and garden plant, related to the geranium, resembling them closely in character, habit and treatment. Each, 35c; dozen \$4.00.

STOCKS (Cut and Come Again)—The Stocks represent all the desirable qualities of a flower. The plants have good habits, fine dull or glossy leaves. The flowers appear on long, stiff stalks like small rosettes; are exceedingly fragrant and range through a most complete scale of all the soft and distinct shades of white, pink, purple and lavender. Potted plants, each, 15c; dozen, \$1.50.

VERBENAS—Verbena is one of the most popular garden annuals and lends itself willingly to many uses. For beds, borders, mounds, vases and window boxes it is particularly fine. The clusters of showy and often fragrant flowers are borne in constant succession from June until frost, not being affected by the first early frosts in the fall of the year. All colors, white, pink, purple, lavender and red. Transplanted plants, dozen, 75c. Potted plants, each, 15c; dozen, \$1.50; 100, \$10.00.

ZINNIAS—These attractive and decorative hardy annuals are most desirable plants for



mixed borders or bedding purposes, and are remarkable for the profusion and duration of their flowers which are extremely useful for bouquets. Assorted colors. Transplanted plants, dozen, 75c; 100, \$5.00.

Decorative Plants

They're as necessary as beautiful furniture. They lend cheerfulness to every home.

Ferns

ASPARAGUS PLUMOSUS (Lace Fern)

The whole plant is of a bright cheerful green, and one of the most distinct and effective decorative plants; of easy culture, thriving best in full light. After plants become large they throw large tendrils 4 to 6



Fern, *Asparagus Plumosus*

feet long, which are beautiful for decoration. 50c, \$1.00 and \$1.50 each.

ASPARAGUS SPRENGERI

A grand trailing plant, especially useful to grow as a pot plant for home decoration or for planting in hanging baskets or window boxes, where it makes a graceful drooping plant with branches or limbs 4 to 5 feet in length, of a rich shade of green. 50c, \$1.00 and \$1.50 each.

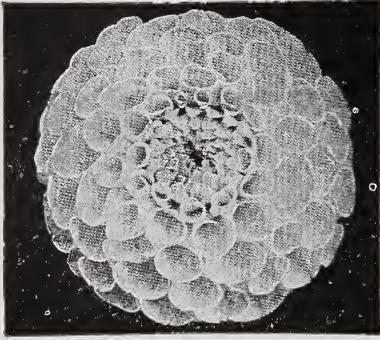
Table Ferneries—Made up of an assortment of ferns. Each, \$1.00, \$1.50 and \$2.00.

Boston Ferns—The most popular house plant in cultivation. Each, \$1.00, \$1.50, \$2.00, \$3.00 and \$4.00.

Whitmanii (Ostrich Plume)—Has beautiful plume like fronds. Each, \$1.00, \$1.50, \$2.00, \$3.00.

Palm

Kentia—This is in our estimation one of the very best palms for house culture, being most graceful and handsome. Each, \$1.00, \$1.50, \$2.00, \$3.00.



Dahlia

Gladioli

The most attractive and useful of our summer flowering bulbs. It is a flower of easy culture and does well in any soil, but should be planted in full exposure to the sun. Deep planting is to be preferred, set a depth of 4 to 6 inches. The ease of culture, great variety of color, succession of bloom and many other points in their favor makes the gladiolus a universal favorite. We list only a few of the best sorts of each color.

Halley—A most attractive early blooming sort, with large well opened flowers of delicate salmon pink. Per dozen, 75c; \$5.00 per 100.

Mrs. F. King—The best light scarlet. Per dozen, 75c; \$5.00 per 100.

Mrs. Frank Pendleton—Flowers of largest size, borne on strong, straight spikes; color of a lovely salmon pink, with brilliant deep red blotches in the throat. 75c per dozen; \$5.00 per 100.



Mrs. Frank Pendleton Gladiolus

Dahlias

This well-known fall-blooming plant is deservedly becoming very popular. It takes first place among autumn-flowering plants. Any good, rich garden soil, not too wet, will grow good dahlias. Plant dahlia tubers about the latter part of May, if weather is favorable. If ground is cold and wet defer planting until a later date. Always stake your plants as soon as they are tall enough, using a good stout stake at least 4 feet high. In the fall, after hard frost, cut the tops off within 3 inches from the ground, take up and store in a cool cellar free from frost. Any vegetable cellar is O. K. Red, white and yellow. Each, 35c; \$4.00 per dozen.



Halley Gladiolus

American—Beautiful, large, flesh pink. Too much cannot be said in favor of this one. Per dozen, 75c; \$5.00 per 100.

Augusta—Pure white, with blue anthers. Per dozen, 75c; \$5.00 per 100.

Baron Hulot—One of the finest blue gladioli. Per dozen, \$1.00; \$8.00 per 100.

Chicago White—White, with lavender marking in throat. 75c per dozen; \$5.00 per 100.

Panama—The new pink that has created such a sensation on account of its rich rose pink color. \$1.00 per dozen; \$7.00 per 100.

Princes—Immense, dazzling scarlet, with white center, \$1.00 per dozen; \$7.00 per 100.

Assorted colors, our selection, 75c per dozen; \$5.00 per 100.

FANCY VARIETIES OF GLADIOLI

Herada—Pure mauve with deeper markings in throat and lower petals. A fine large flower. 20c each; \$2.00 per dozen.

Alice Tiplady—A brilliant, large orange-vermilion flower that attracts the eye immediately. 25c each; \$2.50 per dozen.

Evelyn Kirkland—A beautiful shade of rosy pink, darker at the edges fading to shell-pink at the center with brilliant scarlet blotches on lower petals, the entire flower showing a glistening, sparkling lustre. 15c each; \$1.50 per dozen.

Mary Fennell—Light lavender flower, lower petals blotched a primrose yellow with penciling of deep lavender. Tall, slender spikes. 20c each; \$2.00 per dozen.

Prince of Wales—Beautiful coral pink, a beautiful and pleasing shade. 20c each; \$2.00 per dozen.

Mrs. Watt—American Beauty shade, a striking, distinct color. \$1.00 per dozen.

Le Marschal Foch—A most sensational flower, color flesh pink. Flowers are large and blooms early. 20c each; \$2.00 per dozen.

War—Deep blood red, shading to a deep crimson black. Tall, erect grower. 10c each; \$1.00 per dozen.

Wilbrink—Soft shell pink with faint yellow blotch on lower petals, a very popular and pleasing color. 15c each; \$1.25 per dozen.



Gladiolus



Tiger Lilies

Yellow Hammer—Yellow, red mark in throat. 10c each; \$1.00 per dozen.

Empress of India—Rich, satiny, maroon, red, shading to almost black. 15c each; \$1.50 per dozen.

Mr. Mark—Light blue with darker blotch in throat. 20c each; \$2.00 per dozen.

Gladioli Mixture. This is comprised of the best standard sorts. We can recommend this mixture to all who do not care for the named varieties. Very choice. 75c per dozen; \$5.00 per 100.

Lilies

Tigrinum Splendens—The dear old single Tiger Lily. 20c each; \$2.00 per dozen.

Calla Godfrey (Everblooming)—Flowers are large as the largest and outbloom the others three to one; pure white. Each, 50c; large plants, \$1.00.

Calla Elliottiana—Leaves dark green with creamy white spots; flowers a rich lustrous golden yellow. Each, 50c.

Peonies

There is no plant which equals the peony in beauty and usefulness. They are perfectly hardy in the extreme North. Once you have them planted the flowers and plants increase in size and beauty with age. The peony rivals the rose in brilliant coloring, sweet fragrance and perfection of flower. We would advise our customers to beware of "cheap" peonies. An inferior variety will take as much care and space as a choice one, and the first cost of a peony is nothing to the disappointment after years of waiting. An important point to observe is not to plant too deeply. The roots should be placed so that the crowns (or eyes) are covered with two or three inches of soil. Planting too deep is often the cause of too shy blooming. Plant as early as possible in the spring, as they sprout very quickly. It is better to plant in September and October than too late in the spring. If your order is received too late for planting we will hold that part of your order and deliver in early fall.



Peonies

Albert Crousse—Bomb type, late, delicate sea shell-pink without fleck or markings whatsoever; indeed it is rather a tint than a color or shade; in this regard it is indeed remarkable and unapproachable by any other variety. Each, \$1.25.

Asa Gray—Large, lilac with darker lilac spots. Distinct and different. Very fine—delicately fine. Each, \$1.00.

Monsieur Dupont—Semi-rose type; mid-season. Very large, well-built, cup shaped bloom; ivory white; center petals splashed with huge drops of carmine and lit up with golden stamens at base of petals. Each, \$1.00.

Felix Crousse—Bright red, distinct color, very large and massive; very free bloomer; one of our grandest varieties. Each, \$1.00.

Festiva Maxima—The best known peony. Flowers of immense size, 7 to 8 inches in diameter, snow white, with some red spots on the edges of the center petals; very fragrant. Each, 75c.

Edulis Superba—Soft pink, very early. Each 75c.

Madame de Verneville—Medium sized, globular flower petals, crispy and semi-transparent; creamy, white throughout, flaked with purple at center. Each, 75c.

L'Indispensable—Very massive, solid blush pink flowers. Each, 75c.

Officinalis Rubra—This is the old-fashioned red, the most brilliant of all red peonies; early and a splendid cut flower. Each, 75c.

Venus—A delicate shell-pink; tall free-blooming, considered by many to be one of the best peonies introduced. Each, \$1.50.

Dorchester—Rose-type; very late, color salmon pink, a color that is very rare in peonies. Each, \$1.25.

Couronne d'Or—Semi-rose type. Late mid-season. Color snow-white reflecting golden-yellow stamens that show through the petals when looking at the flower from the side. Lovely and one of the very choicest and best Peonies in cultivation. Each, \$1.25.

Baroness Schroeder—Very large, globular rose-type. Color flesh white tinting to milk white. Fall, strong growth, very free bloomer and fragrance magnificent. Each, \$1.50.

Spencer Sweet Peas

Orchid Flowering or Giant Wonder

A wonderful type, quite distinct from the old sorts, with beautifully formed huge, open and upright standards and immense wings, the flowers measuring from 2 to 2½ inches across. Both standards and wings are daintily waved. A very large percentage of these varieties bearing four or more of these immense flowers to the stem, making them unsurpassed as cut flowers. The following are the best of the new and old sorts:

King White—Immense blooms, faultlessly waved and frilled.

Hercules—A lovely soft rosy pink, large flowers.

Florence Nightingale—The largest and finest, pure lavender.

Barbara—A beautiful rich salmon.

Blanche Ferry—A very fine pink and white, of very large size.

King Edward's Spencer—The best pure red.

Royal Purple—Rich, royal purple.

King Manuel—Maroon or dark chocolate.

Packet, each, 10c; 6 for 50c.



Spencer Sweet Peas

Hardy Perennials

The care with which this class of plants may be grown and the great variety offered is making them more popular each year. They can be worked in here and there among other ornamentals and produce pleasing effects. They delight in rich soils and appreciate a mulch of manure as soon as the ground freezes. Many varieties such as phlox, achillea, daisies and gypsophilas should be divided and transplanted every third or fourth season.

AQUILEGIA (Columbine)

One of the showiest and most desirable of the hardy garden plants; colors range in all shades of white, blue, red and yellow. Each, 25c; dozen, \$2.50.

ACHILLEA (The Pearl)

Very hardy, producing a wonderful profusion of double white flowers throughout the entire summer; beautiful and particularly for gardens or in groups among shrubbery. Each, 25c; dozen, \$2.50.

ANTHEMIS (Tinctoria)

Succeeds on any soil and produces a bountiful supply of yellow and white aster-like flowers throughout the summer. Each, 25c; dozen, \$2.50.



Myosotis Palustris (Forget-Me-Nots)

CHRYSANTHEMUM MAXIMUM (Shasta Daisy)

Requires some covering to insure wintering over or must be transplanted every other season to keep up its vitality. The blooms are very graceful, large, and a wavy white, having long stems. They keep a long time after being cut and bloom throughout the season. Each, 25c; dozen, \$2.50.

COREOPSIS (Lanceolata)

A very popular hardy plant producing a golden yellow, daisy-like flower; blooms from June until frost. Each, 25c; dozen, \$2.50.



Shasta Daisies

DIANTHUS (Sweet William)

This popular old-fashioned flower is one of the choicest of our biennials. They bloom in June, coming single and double in a great variety of colors. Each, 25c; dozen, \$2.50.

DIELYTRA SPECTABILIS (Bleeding Heart)

One of the most delightful of all the early spring flowering plants, bearing numerous rosy red, heart-shaped flowers in drooping racemes. Each, 50c; dozen, \$5.00.

DIANTHUS (Hardy Garden Pinks)

Profuse bloomers of sweet single and double clover-scented flowers. In bloom May and June. Each, 25c; dozen, \$2.50.

MYOSOTIS PALUSTRIS (For-get-me-not)

The true "For-get-me-not" appealing in its modest, azure beauty and cherished for its sentiment; blooms profusely during early summer. Each, 25c; dozen, \$2.50.

GAILLARDIA (Blanket Flower)

A very showy, daisy-like flower that continues in bloom all summer. Flower, dark, reddish-brown; petals vary from scarlet orange to crimson. Each, 25c; dozen, \$2.50.

GYPSOPHILA (Baby's Breath)

Blooms during August and September, forming a mass of minute mist-like flowers; very graceful and dainty; puts the finishing touches on bouquets. Each, 25c; dozen \$2.50.



Sweet Williams

HEMEROCALLIS (Day Lilies)

Hemerocallis (Day Lilies)—Well known family, resembling lilies in character and bloom, usually sweet scented and bearing a great quantity of yellow flowers during long periods of summer, varying with the variety. Decorative, iris-like foliage.

Aurantiaca—Grows 3 to 4 feet high and blooms freely during June and July. Flowers large, trumpet shaped, orange with bright yellow stamens and reverse. 25c each; \$2.50 per dozen.

Flava—(Lemon Lily) — Beautiful lemon colored flowers 3 to 4 inches in diameter and delightfully fragrant—3 feet. Each, 25c; dozen, \$2.50.

Middendorffii—Dwarf growing, with clusters of lily flowers 5 to 6 inches long; bright yellow. Each, 25c; dozen, \$2.50.

Seiboldi—A fine up-standing variety with large flowers of light orange yellow, medium height. Each, 25c; dozen \$2.50.

Thunbergi—Funnel shaped flowers of buttercup yellow in July, 4 feet. Each, 25c; dozen, \$2.50.

HOLLYHOCKS

This well known biennial is always admired and in demand for its attractive spikes. For planting among shrubbery or as a background it has no equal. Each, 25c; dozen, \$2.50.

LYCHNIS CALCEDONICA**(Rose Campion)**

A very hardy plant, growing from 2 to 3 feet; very free flowering; large heads of the brightest scarlet. Each, 25c; dozen, \$2.50.

LARKSPUR (Delphinium)

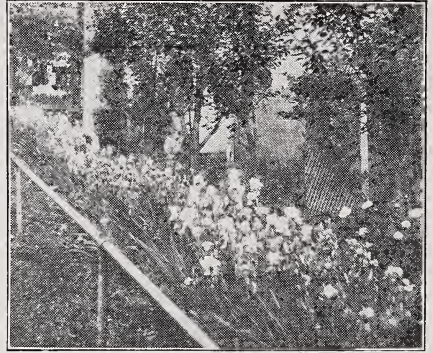
One of the most attractive and satisfactory of the hardy perennials; their long spikes of flowers appear from June until frost, if not allowed to go to seed. Each, 35c; dozen \$4.00.

POPPY (Oriental)

Brilliant and free bloomers; for a gorgeous display no other flower equals them. Flowers are very large, crimson; after blooming in June the plants die back and do not reappear until September, at which time they transplant most safely. Each, 25c; dozen, \$2.50.

PYRETHRUM HYBRIDUM

Single and double daisy-like flowers that

**Hedge of Iris**

are very graceful and pretty. There are mixed shades of white, red and pink and are splendid for cut flowers lasting a long time. Each, 25c; dozen, \$2.50.

RUDBECKIA (Golden Glow)

Well worthy of a place in every garden; grows to a height of about six feet; flowers yellow, large aster-like and produces in great profusion during August and September; valuable for use as a background with other flowers or for a quick growing screen. Each, 35c; dozen, \$4.00.

LILY-OF-THE-VALLEY

A well known little favorite; does best in shady places. Clumps, each, 25c; dozen, \$2.50.

PERENNIAL PHLOX

The beauty and usefulness of these grand plants give them a deservedly first place among the hardy plants. The best expected to be had with phlox are produced by planting masses of each color. A very wide range of color is now to be had and planting them in this manner the phlox will be the pride of the garden.

Each, 25c; \$2.50 per dozen.

Bridesmaid—Pure white, large crimson eye.

Eclairer—Brilliant, rosy magneta, with lighter halo.

Jeanne d'Arc—Pure white; one of the best.

Pantheon—Deep salmon rose; very fine.

Elizabeth Campbell—Bright salmon pink.

IRIS FLEUR-DE-LIS

These are all sun lovers and delight in a well-drained situation. They almost out rival the orchid in delicacy and richness of coloring. They are splendid for beds, borders or front of shrubbery. Plant in bold groups for best effect. Avoid planting too deep, barely covering the rhizomes (creeping root stem), being quite sufficient.

Each, 20c; \$2.00 per dozen.

"S" refers to the three standard, or upright curling petals; "F" to three falls or drooping petals.

Hector "S"—Soft clouded yellow.

"F"—Velvety crimson; showy; 30 inches.

Celeste—Fine satiny blue. This is one of the most beautiful iris.

Pharaoh—Lilac; very fine.

Her Majesty—Standard old rose, falls white striped rosy lilac; very large flower. Each, 20c; dozen, \$2.00.

Florentina Alba—Sweet scented, free flowering; white. Each, 20c; dozen, \$2.00.

**Phlox**

Hardy Ornamental Shrubs

Nothing is more beautiful on the lawn or in the flower garden. Our stock is very large and fine and we feel sure that they will give our customers satisfaction in every way. There is nothing which so quickly and for so little cost adds to the beauty and cheerfulness of the surroundings as an assortment of hardy shrubs.

ALMOND (Flowering)—Spring flowering shrubs, gaily in full bloom before the leaves appear. When in bloom completely hidden by beautiful, double flowers of rose or white, snuggling tight to the twigs. Double white, each, \$1.00. Double Pink, each, \$1.00.

BARBERRY (Thunbergi)—This Barberry is not under the ban for eradication. Very pretty and useful in front of taller shrubs. Each, 75c.

CURRANT (Flowering)—A pleasing old favorite, blooming freely in May and June; a choice ornamental. Each, 75c.

CROCUS (Dogwood)—Siberia—The best red bark shrub we have; valuable for hedges, or to liven up groups of other ornamental shrubs; strong plants, 60c each; dozen \$6.00.

Elegantissima Variegata—Purple red branches and beautiful silver variegated foliage. Each, 75c; dozen, \$8.00.

CARAGANA ARBORESCENS (Siberian Pea Shrub)—Grows 10 to 12 feet high and makes a splendid show with its bright green compound leaves and numerous clusters of small yellow flowers. Each, 60c; dozen \$6.00.

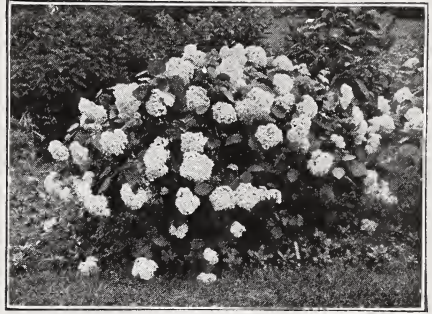
ELDER (Sambucus)—Although the Elders are attractive in flower and fruit, they are chiefly grown for their beautiful leaves. Tall growing and robust.

Golden Elder (Aurea)—Our finest tall, golden leaved shrub. Very valuable for effect in groups. Flowers white in July, followed by black berries. Naturally grows tall but can be pruned into a neat, compact little bush. Each, 75c; dozen, \$8.00.

CUT LEAVED ELDER (Acutiloba)—A very graceful cut-leaf variety that is perfectly hardy; white fragrant flowers in June and July, followed by large clusters of fruit. Each 75c; dozen, \$8.00.

Hydrangea

The massiveness of bloom on these valuable shrubs assure them a place in every grouping when solid white effects are required.



Hydrangea Arborescens Grandiflora

Paniculata Grandiflora—Producing an abundance of immense clusters of bloom in August. If they are cut back nearly to the ground each spring, larger and finer clusters will be obtained. Use a little protection in our section. Each, 85c; dozen, \$10.00.

Arborescens Grandiflora (Hills of Snow)—The flowers are in a large way similar to the familiar "Snowball" in appearance; season, July and August. Each, 85c; dozen, \$10.00.

Lilac (Syringa)

Best beloved of all the old time garden shrubs whose flowers never fail to charm with their delicate beauty or refresh with their delicate fragrance.

Purple Lilac—Each, 60c; dozen, \$5.00. Larger size, each, 75c; dozen, \$9.00.

White Lilac—Each, 60c; dozen, \$6.00. Larger size, each, 75c; dozen, \$9.00.

Persian Lilac—Dwarf growing with slender branches and narrow leaves. Each, 60c; dozen, \$6.00. Larger size, each, 75c; dozen, \$9.00.

Syringa

(*Philadelphus*) or Mock Orange

—One of the best and popular of our shrubs.

Grandiflora—Produces very large flowers in June and July. Each, 60c; dozen, \$6.00. Larger size, each, 75c; dozen, \$9.00.

Aurea (Golden Syringa)—A dwarf variety, having a rich, yellow foliage; the best hardy dwarf golden foliage shrub. Each, 85c; dozen, \$10.00.

RHUS (Sumac)—Every lover of nature thrills at recollections of the picturesque, gnarly, wind-bent rows of Sumac familiarized since childhood in many a romantic sky-line. And the vines, the hillside copse, never blazed so redly as when autumn painted the Sumac leaves and brought forth its gorgeous prints. Each, 60c, dozen, \$6.00.

SNOWBERRY (*Symphoricarpus*)—June and July; followed by large clustered milk white fruits which remain far into the winter. The combination of pink flowers and white berries on the same twig is charming. Each, 60c, dozen, \$6.00.

HIGH BUSH CRANBERRY—Handsome, dense brilliant green foliage; a rich setting for large bunches of crimson berries which enliven the late summer. Each, 60c; dozen, \$6.00. Larger size, each, 75c; dozen, \$8.00.

Spirea

All the *Spireas* bloom with riotous extravagance which makes them quite striking. Their individual style, color and habits of growth differ so markedly, that a collection of varieties will insure bloom the entire season and still evade the monotony of repetition.

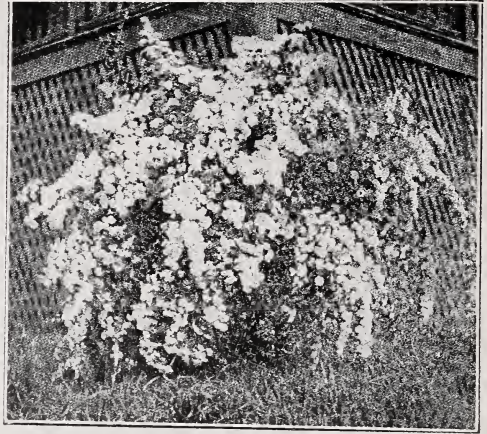
Van Houttei—The most attractive and graceful hardy shrub we have. Produces an abundance of drooping sprays of white flowers early in June. Sometimes called "Bridal Wreath." Each, 60c; dozen, \$6.00. Larger size, each, 75c; dozen, \$8.00.

Thunberg's—The earliest to bloom. Its fine foliage, which takes on a rich fall color, makes it a very charming hedge plant or ornamental. Each, 75c; dozen, \$8.00.

Prunifolia, or Bridal Wreath—A choice double white sort. Blooms just before the *Van Houttei*. Each, 60c; dozen, \$6.00. Larger size, each, 75c; dozen, \$8.00.

Golden, or Op. Aurea—A variety of the latter. One of our best golden foliage shrubs. At its best in sunny places. Each, 75c; dozen, \$8.00.

Anthony Waterer—A dwarf form. Blooms throughout summer in flat terminal clusters of rose red color. Very popular for low borders. Each, 75c; dozen, \$8.00.



Spirea Van Houttei

Callosa Alba—Similar to the latter, only very dwarf, compact grower and has white bloom. Each, 75c; dozen, \$8.00.

Billardi Red—Flowers in terminal, rose colored spikes from July until frost. Vigorous and hardy. Each, 60c; dozen, \$6.00.

Ash-Leaved, or Sorbifolia—A very distinct variety, having light, fern-like foliage; handsome spikes of white flowers in July and August. Hardy and thrifty. Each, 60c; dozen, \$6.00. Larger size, each, 75c; dozen, \$8.00.

VIBURNUM — Snowball (*Sterilis*)—This well known favorite is perfectly hardy. Filled with a mass of white balls of bloom during May. Each, 60c; dozen, \$6.00. Larger size, each, 75c; dozen, \$8.00.

Lonicera

(**Bush Honeysuckle**)—The upright *Honeysuckle* have bright and pretty fragrant flowers followed by showy berries that last through the fall. Make very desirable and attractive hedges.

Tartarica—A tall growing class, attaining 8 to 10 feet if left unpruned; the red sort is very bright in early summer with its flowers; all varieties resplendent during the fall with great quantities of red and orange berries. Each, 60c; dozen, \$6.00. Large size, each, 75c; dozen, \$8.00.

Tartarica Alba—Flowers blush white. Each, 60c; dozen, \$6.00; large size, each, 75c; dozen, \$8.00.

Tartarica Grandiflora—Deep rose pink flowers. Each, 60c; dozen, \$6.00. Large size, each, 75c; dozen, \$8.00.



Snowball Bush

Hardy Climbing Vines

Ampelopsis

Ampelopsis Quinquifolia (American Ivy)—A hardy and vigorous grower; one of the best for covering porches, walls or unsightly spots; foliage colors very brilliantly in the fall; purple berries. Each, 50c; dozen, \$5.00.

A. Englemanni—A rapid grower, often climbing ten feet in a single season. This is best vine known for covering stone or brick-work. Each, 50c; dozen, \$5.00.

Clematis

C. Paniculata—A very hardy, white clematis; the large clusters remain in bloom for a long time, fairly covering the entire plant and they are very fragrant. Each, 90c.

C. Jackmanii—Flowers deep, violet purple; a very popular and desirable variety; needs winter protection. Each, \$1.00.



Clematis Paniculata

Roses

You all are aware we have very severe winters for roses. Therefore must use judgment as to what varieties we should plant which will stand our extreme winter. However, all varieties should be laid down and covered with earth before the ground freezes in the fall. Or, if too large, wrap with hay or straw. An occasional soaking during dry weather is a great help to them.

Baby Rambler—Best of all roses. Blooms in clusters from June until frost. Valuable also as a pot plant. Two-year-old strong plants; each, \$1.00.

Hybrid Perpetual Roses

Strong Two-year-old Plants: Each, \$1.00

Gruss an Teplitz—The best rich crimson; very persistent bloomer; strong grower and very fragrant.

Paul Neyron—Deep pink; very double, fragrant; blooms all summer. Flowers the largest of any variety.



Frau Karl Druschki, the best white rose. Pure, snow white, with long buds and immense, perfectly double flowers. Hardy anywhere that roses grow.

Harrison Yellow—Flowers bright, clear golden yellow. A magnificent sight in the spring. In early spring its blooms coming in such abundance as almost to cover the bush.

Climbing Roses

Strong 3-year-old Plants: Each, \$1.00
\$10.00 per Dozen.

Crimson Rambler—This rose needs no description. Everybody knows it. Produces its flowers in pyramidal clusters of large numbers. Remains in bloom a long time. The profusion of bloom is marvelous, and the variety deserves the popularity and praise it receives.

Dorothy Perkins—The best of all climbing roses; has a strong, vigorous growth; flowers are borne in clusters of a beautiful shell pink, full double, and of a large size for a cluster rose.

Prairie Queen—If you want a rose for your porch this is the one. Bright red, vigorous grower and profuse bloomer. A favorite everywhere.

Baltimore Belle—One of the best of climbing roses. Will grow 10 to 15 feet in a year, and be covered with clusters of large double flowers of pale pink color. Each \$1.00.

Hardy Moss Roses

Blanche Moreau—White flowers, large and full.

Crested Moss—Pole rose, flowers full and exquisitely mossed.

Henri Martin—Medium sized flower, bright rosy red. Free bloomer.

Hedge Plants

Buckthorn—This is the hardiest of all of our hedge plants, and can be trimmed to any shape desired. Two to 3 feet; \$25.00 per 100; 3 to 4 feet, \$35.00 per 100.

Rosa Rugosa—Forms a beautiful hedge; large, dark green, glossy foliage. Flowers are large, single fragrant and produced in abundance until frost, followed by large scarlet fruit. Two to 3 feet; \$6.50 per dozen; \$50.00 per 100.

Willow Golden—Showy variety with golden bark of high color, making it very conspicuous during the winter. Two to 3 feet; \$8.00 per 100.

Small Fruit Department

Currants

Hardy, easily cultivated, standing neglect well and liberally responding to cultivation and generous treatment. Your garden is not complete without them.

Cherry Currant—The standard variety. The growth is strong, stout and erect; the fruit is of large size, deep red and rather acid; very productive; strong 2-year-old plants. Each, 30c; \$2.50 per dozen.

White Grape Currant—The best variety of white currants. The bushes are thrifty and productive, bearing large white currants of the very sweetest flavor; fine for culinary purposes. Two-year-old plants, each, 30c; \$2.50 per dozen.

Perfection—The greatest of all currants. The berries are rich, mild sub-acid and few seeded. It is one of our most profitable currants. Two-year-old plants, each, 35c; \$4.00 per dozen.

Gooseberries

This fruit requires practically the same cultivation as the currant; hardy, vigorous and reliable.

Downing—Fruit large, roundish, light green, with distinct veins; skin smooth; splendid for both cooking and table use. Each, 35c; \$4.00 per dozen.

Carrie—The best all around gooseberry introduced to date. Vigorous grower; free from disease; great producer of good size, mild-acid, light red berries. Each, 50c; \$5.00 per dozen.

Raspberries

When properly cultivated is quite profitable. Plant in good, rich soil; cultivate well or mulch heavily. For field, rows six feet apart, four feet in the row.

Latham—A great red raspberry, very hardy, thrifty, large, dark red; holds-up well. An ideal berry for home use or commercially. Dozen \$1.50; \$8.00 per 100.

Sunbeam—Hardest red raspberry; fruit of good size, dark red, rather acid and of an everlasting habit. Dozen, \$1.50; \$8.00 per 100.

Everbearing Strawberries

They have come to stay. Their productivity is almost beyond belief. The variety offered below is of American origin, and under ordinary conditions produce their main crop of fruit at the same time as the other varieties and keep on bearing until frost. Good cultivation is essential to bring about the best results.

Progressive—The strongest and most prolific fruiting of all varieties. 75c per 25; \$2.50 per 100.

Grapes (Beta)

We are listing only one grape, which we have found to be perfectly hardy. Also very early, ripening about September. Its thrift, hardiness and productiveness make it especially valuable for general planting in the Northwest. Each, 40c; \$4.00 per dozen.



Raspberries

King—Very hardy, thrifty and productive; berries are large, light red, firm and of good quality; one of the best. Dozen, \$1.50; \$8.00 per 100.

St. Regis—A genuine, practical profitable and continuous bearer; berries bright crimson, large size, firm and meaty, sugary; a grand variety. Dozen, \$1.50; \$8.00 per 100.

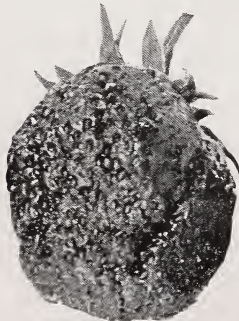
Older—A very hardy, medium early and reliable bearer; fruit black and large, having very small seeds and of fine quality. Dozen, \$1.50; \$8.00 per 100.

Strawberries

First of all the small fruits comes the beautiful, wholesome and appetizing strawberry. They will succeed in any soil that is adapted to ordinary farm or garden crops; soil should be thoroughly prepared to a good depth, well drained and enriched; ground should always be kept clean and well cultivated.

Standard and tested varieties for the North and Northwest.

Senator Dunlap—One of the best all round sorts and without question is the most popular variety; berries medium size, firm, dark colored, uniform and very productive; one of the best for canning. 50c per 25; \$1.50 per 100.



Progressive



Beta Grapes

Fruit Trees

Please do not compare prices of our trees with cheaper and inferior stock.

Apple

Duchess—Very hardy, early and prolific bearer. Fruit large, handsomely striped with crimson; fine for cooking and eating. The standard early commercial sort.

Patten's Greening—Very hardy, free from blight, vigorous, spreading grower, bears early and abundantly. Fruit large, yellow; good eating and cooking apple. One of the best all around varieties.

Wealthy—One of the most popular grown in this state. Very hardy. Fruit large, red.

Good strong trees of any of the above, each, \$1.10.

Crab Apple

Hyslop—Fruit medium; heavy shadings of deep crimson and splashes of maroon; flesh fine, firm, yellow; bears abundantly.

Florence—A hardy spreading tree; color carmine; flesh yellowish, acid; excellent for cooking; a fine jelly crab, and valuable for early market as well as home use.

Whitney No. 20—Hardy, thrifty upright grower; fruit large, handsome and of good quality for eating.

Minnesota—One of the most desirable. Bears liberally with age and is growing in favor; fruit large, light yellow, often mottled with blush on sunny side when allowed to fully ripen. Delicious for eating and very desirable for culinary purposes. Strong trees each, \$1.20.

Plum

They are perfectly hardy and will thrive any where in the Northwest. By all means plant a dozen or two plum trees, which have proven the test of our extreme and severe winters.

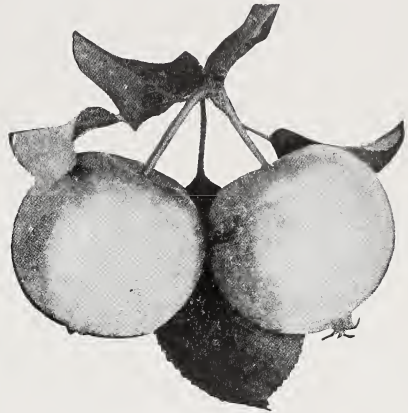
Cheney—Very early red and one of the largest.

Forest Garden—Reddish yellow. Fruit of good quality.

Wolf—Tree vigorous and hardy. Fruit large and hard to equal for cooking purposes.

Stoddard—Very productive. Large, round and red. Good quality.

Wyant—Fruit medium to large, slightly oblong and distinctly flattened; purplish red. A very heavy yielder.



Crab Apples

Surprise—One of the best. Meaty, fine flavor; very large and red, with many light dots on the skin. A good bearer and a good keeper. Fine for culinary purposes.

De Soto—The old stand-by. Tree perfectly hardy. Color red, ripening very early. A great bearer.

Strong trees of any of the above; each, \$1.20.

Compass Cherry

A very desirable fruit and perfectly hardy. It usually bears the first year after planting. Can be grown anywhere in the Northwest. Fruit dark red. Good for eating and canning.

Strong trees; each, \$1.20.



Wyant Plums

Deciduous Ornamental Trees

White Birch, 6 to 8 feet; each, \$1.50; dozen, \$15.00.

Elm, American, 6 to 8 feet; each, \$1.50; dozen, \$12.00.

Linden, American, 6 to 8 feet; each, \$1.50; dozen, \$15.00.

Mountain Ash, 6 to 8 feet; each, \$1.50; dozen, \$15.00.

Norway Poplar, 6 to 8 feet; each 85c; dozen, \$9.00.

Golden Willow, 4 to 5 feet; each, 50c; dozen, \$5.00.

Box Elder, 6 to 8 feet; each, 75c; dozen, \$8.00.

Don't imagine your house is finished when the plumber has finished—then commence the work of converting it into a comfortable, picturesque home for your family. Trees and shrubs play a big part in accomplishing this. **Plant this year if possible.**

Window and Porch Boxes

They make home more homelike.

The pretty blossoms, the restful foliage, the grateful response in refreshing growth to the attention given them—all unite to lend an atmosphere of hominess, a suggestion of a pleasant abode to live in—and, obtainable at such a trifling cost, every home might well have several window boxes installed.

We make special groupings and assortments of growing plants to suit shaded, as well as sunny windows, no matter in what direction they face.

Galvanized iron, self-watering boxes made to order. Send size you wish and we will be pleased to quote you prices on them.

Vincas (trailing), **Asparagus Sprengeri**

(trailing), **Ivy Geranium, Geraniums, Daisies, Petunias**—Nice size for boxes. Each, 35c; dozen, \$4.00.

Our Selection

Lobelia, Sweet Alyssum, Single Petunias—For boxes. Each, 15c; dozen, \$1.50.

Where selection is left to us, we can supply plants and vines \$1.50 per running foot. However, this does not include the box. In ordering, state the width and length of the box and we will send plenty of plants to give an immediate effect.

Lawn and Cemetery Vases

We carry in stock a complete line of Iron Lawn and Cemetery Vases. They are used on the grounds of private homes, about public buildings, in city parks, and particularly in cemeteries. They are always in harmony with the most elaborate monument.

Beauty

1. Height to top of handle, 30 inches; diameter of vase, 22 inches; base, 17 inches; complete with reservoir holding 1½ gallons of water. Each, \$32.00.

2. Height to top of handle, 24 inches; otherwise similar to the above. Each, \$30.00.

Bell

Height to top of handle, 36 inches; vase, 21 inches; base, 17 inches; complete with a reservoir holding 2½ gallons of water. Each, \$35.00.

Plants for Lawn and Cemetery Vases

These consist of notable blooming plants

and trailing vines that thrive throughout the season. We supply them in various collections at prices ranging from \$4.00 to \$10.00 each.

SPECIAL—With your purchase of either one of the vases described on this page we will furnish you with a complete collection of 7 plants for planting of same with no extra charge.

Hanging Baskets

Wired baskets, moss lined and filled with geraniums, vines, etc. Each, \$3.50 to \$5.00.

Filled with ferns for shady places. Each, \$5.00 to \$7.00.

Galvanized iron, self-watering hanging boxes, non-drip; filled with an assortment of plants. Each, \$5.00.

Gold Fish and Supplies

We carry in stock a fine lot of gold fish. **Gold Fish**, 20c each, 6 for \$1.00.

Pail for shipping add 25c. By express only.

Fish Tone, 15c per package. Postage 5c.

Pebbles and Shells, 15c per package, postage 5c.

Fish Moss, Cabomba, 10c per bunch. Postage 5c.

Fish Globes, each, 50c, \$1.25 and \$2.00 by express only.

Larger glass fish aquarium, each, \$7.50, \$9.00 and \$12.00.

Insect Destroyers

NICOTINE POWDER, or Tobacco Dust—For green, black fly, and sucking insects on roses, sweet peas, melons, egg plants, etc. Per pkg., 25c; postage, 4c.

SLUG SHOT—One of the best known remedies for cabbage and currant worms. Per pkg., 25c; postage, 4c.

SURE NOXEM—A very effective remedy for insects on garden plants, shrubs, vines, melons, cucumbers, cauliflowers, etc. Per pound pkg., 25c; postage, 4c.

TOBACCO TABLETS—For insects on house plants. Per pkt., 15c; postage, 2c.

TOBACCO SOAP—A fine cleansing agent for flowering and decorative plants such as palms, ferns, rubber plants. A scale preventive and aphid remedy. Per pkt., 15c; postage, 2c.

PLANT LIFE—A liquid plant food and tonic. Promotes the growth of foliage and bloom. Especially good for house plants. Per can, 50c; postage, 5c.

\$1.50 Bargains

Prepaid any one lot

- 100 Dunlap strawberry plants.
- 50 Progressive Everbearing strawberry plts.
- 4 Beta grape vines.
- 6 Rhubarb.
- 100 Asparagus roots.
- 50 Raspberries.
- 8 Iris (assorted colors).
- 3 Peonies (assorted colors).

- 3 Spirea (Bridal Wreath).
- 3 Honeysuckle.
- 3 Snowball.
- 2 Hydrangea (Hills of Snow).
- 3 Lilacs (assorted).
- 3 Ampelopsis (climbing vines).
- 8 Cannas (assorted).
- Any four of the above collections prepaid for \$5.00.

Vegetable Plants

We make a specialty of raising the most superior grade of vegetable plants. Our plants are started early and grown in a cool temperature, transplanted and thoroughly hardened; produced from the best seed. By our perfect system of packing can guarantee their safe arrival by express. We recommend for you to have your plants sent by express.

MINT

Leaves are used for seasoning. Clumps: Each, 20c; dozen, \$1.50.

CHIVES

They are grown for their small leaves which are produced very early in the spring and are used for giving a mild onion flavor to various dishes. Each, 20c; dozen, \$1.50.

RHUBARB

Linnaeus—It is the first article of the season from the garden and no garden is complete without it. Clumps, 25c each; \$2.50 per dozen.

ASPARAGUS

Conover's Colossal—A large variety of quick growth. Dozen, 50c; \$1.50 per 100.

HORSE RADISH

Each, 20c; dozen, \$1.50.

	Per Doz.	Per 100	Per Exp.
CABBAGE			
Early Jersey Wakefield	\$ 0.25	\$ 1.50	\$10.00
Danish Baldhead, late....	.25	1.50	10.00
Flat Dutch, late.....	.25	1.50	10.00
CAULIFLOWER			
Early Snowball35	2.00	12.00
CELERY			
Golden Self-Bleaching....	.25	1.50	6.00
EGG PLANT			
Black Beauty, potted..... (10c each)	1.00		
PEPPER			
Mango Sweet Potted..... (10c each)			
GROUND CHERRY			
Huck Tomato50	2.25	12.50
TOMATOES			
Earliana50	2.25	12.50
John Baer50	2.25	12.50
Bonny Best50	2.25	12.50
Ponderosa50	2.25	12.50
Golden Fig. small yellow	.50	2.25	12.50
Potted Tomato Plants....			
3-inch pots.....	1.00		
Potted Tomato Plants....			
4-inch pots.....	1.50		
Potted Tomato Plants....			
5-inch pots.....	2.00		
(By express only).....			
Parsley Plants,			
Moss Curley50	2.25	

Inspection completed June 26, 1923.

Minnesota State Department of Agriculture

OFFICE OF STATE ENTOMOLOGIST

St. Paul, Minn., November 16, 1923.

CERTIFICATE OF NURSERY INSPECTION

No. 1646.

This is to certify that in accordance with Sec. 1, Chapter 206, Session Laws of 1913, the nursery stock and premises of Schuster Nursery of Crookston, Minnesota, E. W. Schuster, proprietor, have been carefully examined by a duly authorized inspector and found apparently free from dangerously injurious insects and contagious plant diseases.

This certificate is good until November 1, 1924, unless revoked, and covers only stock actually on the premises when examined.

N. J. HOLMBERG, Commissioner.

A. G. RUGGLES, State Entomologist.



HOME BEAUTIFYING SUGGESTIONS—

Beautiful Grounds Must Be
Well Planned—All Land-
scape Operations Are in the
Nature of Problems to Be
Solved.

WE DO THIS FOR YOU

EDWARD W. SCHUSTER

Crookston,

Minnesota