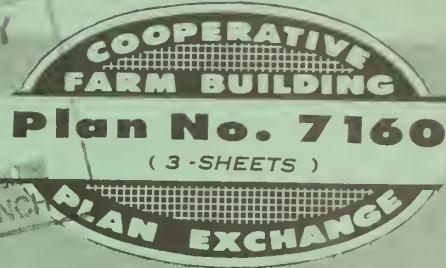
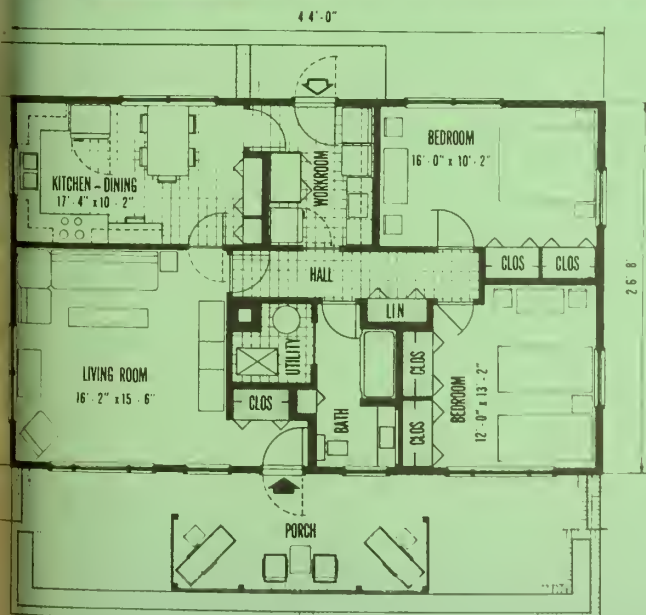


# 2 - Bedroom FARMHOUSE

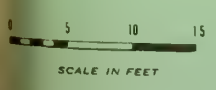
with 'slab-on-grade' construction



LIBRARY  
RECEIVED  
JAN 25 1963  
J. ANTHONY & KATHLEEN  
TABLE BRANCH



FLOOR PLAN



House Areas:	Square Feet
Living .....	1170
Porch .....	410

Here is a new design of a modern, compact farmhouse suitable for a young family or an elderly couple.

The front entrance is protected by the roofed portion of the brick terrace. It opens into a well-lighted living room through a small entry that contains a roomy coat closet.

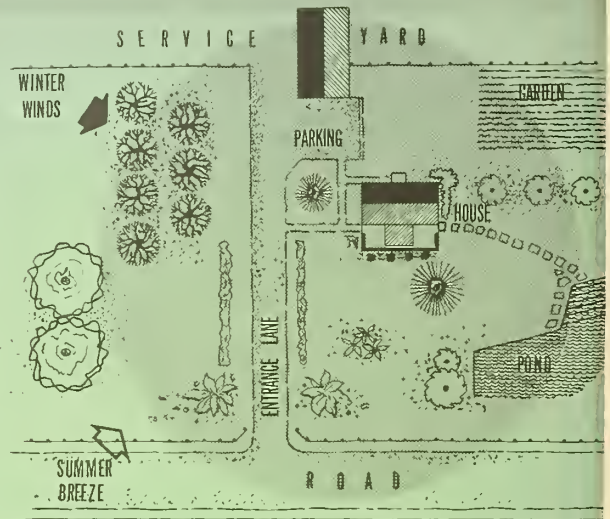
The kitchen-dining area is generous in size and well lighted and ventilated. The U-shaped kitchen, together with the various closet and storage spaces throughout the house, is based on results of research by State experiment stations and the Institute of Home Economics of the U.S. Department of Agriculture. The dining portion of the area contains space for a desk where farm and home records may be kept.

The workroom doubles, in part, as the rear entrance to the house. It contains the washer, drier, freezer, a closet for work clothes; and a small sink.

The two bedrooms are similar in size; both are well ventilated for comfortable sleeping, and are provided with more than adequate closet space.

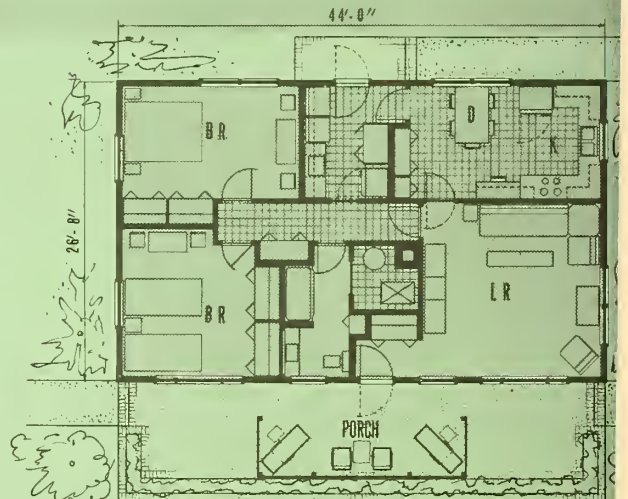
## ... site plan

In the usual urban arrangement the back yard is the recreation area; however, in this layout, the back yard, toward the service buildings, is the work area. The more formal and neatly landscaped front yard is the outdoor living area. The design of this house is adapted to a southerly front exposure, although it need not be restricted to this orientation. Shade from the east and west is always desirable for protection from the summer sun. This is especially important for the kitchen side of the house.



## ... reverse plan

The construction details for this house may be reversed with no changes in any of the built-in features. In the original plan, the refrigerator hinges on the left and the freezer, if an upright is used, hinges on the right. For the reverse plan, the refrigerator should hinge on the right, the freezer on the left. If you wish to build the reverse, a copy of the drawings printed in reverse to supplement those with the notes and dimensions shown directly may help the contractor avoid any errors.



Complete working drawings may be obtained through your county agent or from the Extension agricultural engineer at most State Agricultural Colleges. There is usually a small charge.

### ORDER PLAN NO. 7160, 2-BEDROOM FARMHOUSE

If working drawings of this plan are not available in your State, write to the U.S. Department of Agriculture, Agricultural Engineering Research Division, Plant Industry Station, Beltsville, Maryland. The U.S. Department of Agriculture does not distribute drawings, but will direct you to a State that does distribute them.



Developed by:  
AGRICULTURAL ENGINEERING RESEARCH DIVISION  
CLOTHING AND HOUSING RESEARCH DIVISION

UNITED STATES DEPARTMENT OF AGRICULTURE

For a similar house with a basement,  
ask for Plan No. 7159.

For sale by the Superintendent of Documents, U.S. Government Printing  
Washington, D.C. - Price 5 cents



