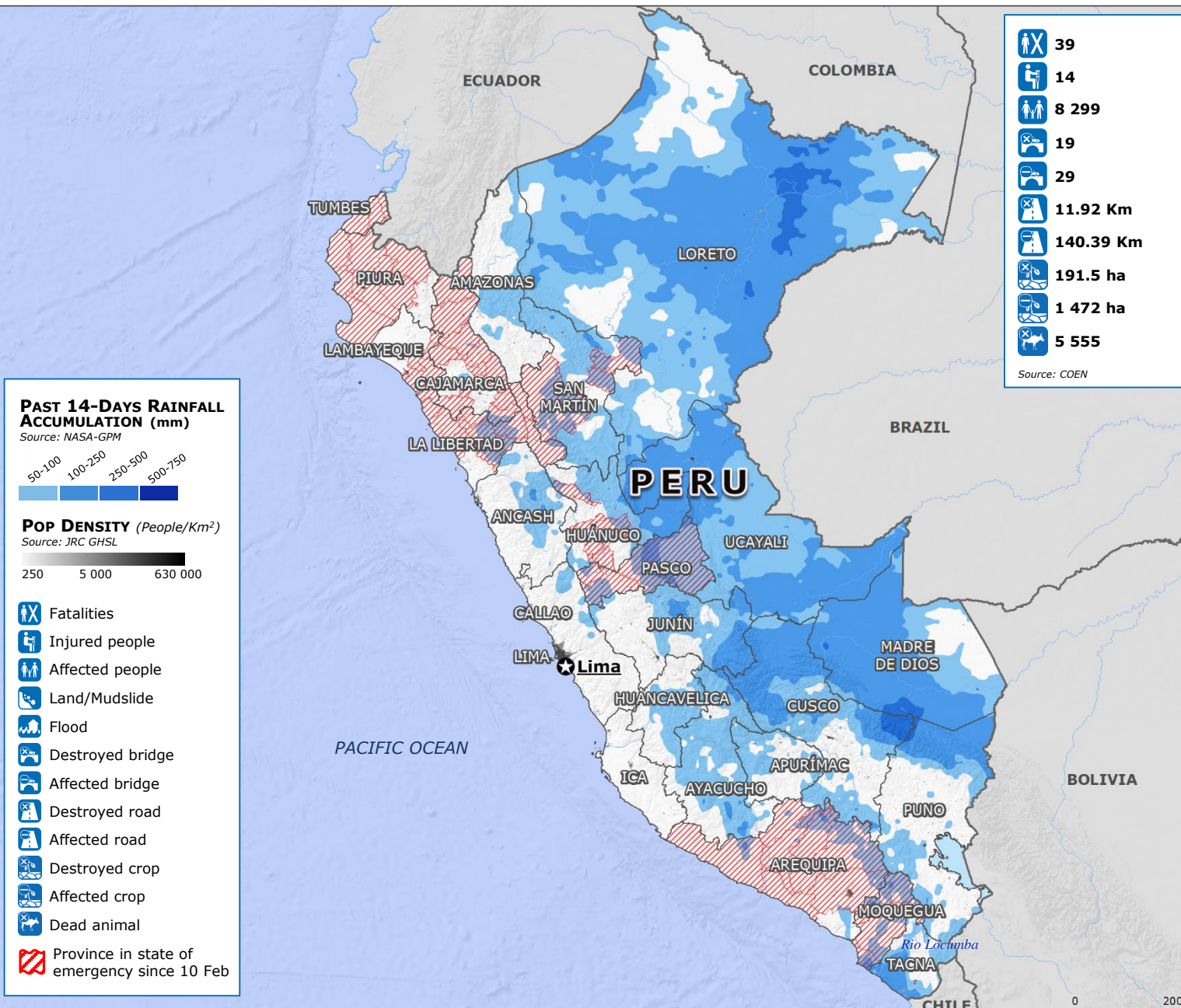


Peru | Severe Weather and Floods



- 39
- 14
- 8 299
- 19
- 29
- 11.92 Km
- 140.39 Km
- 191.5 ha
- 1 472 ha
- 5 555

Source: COEN

SITUATION OVERVIEW

- Heavy rainfall has been affecting southern Peru over the last weeks, causing rivers to overflow (especially the Rio Locumba), triggering floods, landslides and mudslides.
- Over the next 72 hours, moderate to heavy rainfall, winds and thunderstorms could especially affect the following regions: Apurimac, Arequipa, Ayacucho, Cusco, Huancavelica, Ica, Lima, Moquegua, Puno, Tacna.

Sources: DG ECHO, SENAMHI, National Centre for Emergency Operation (COEN)

