

AIRCRAFT ACTION REPORT

RESTRICTED
(Reclassify when filled out)

I. GENERAL

(a) Unit Reporting VT-49 (b) Based on or at USS SAN JACINTO (c) Report No. 18
 (d) Take off: Date 15 July 1945 Time (LZT) 0633(-9) (Zone); Lat. 40-42 N Long. 144-08 E
 (e) Mission Bomb Area Area, Obihiro, Hokkaido. (f) Time of Return 1057(-9) (Zone)

II. OWN AIRCRAFT OFFICIALLY COVERED BY THIS REPORT.

| TYPE (a) | SQUADRON (b) | NUMBER | | | BOMBS AND TORPEDOES CARRIED (PER PLANE) (f) | FUZE, SETTING (g) |
|-------------|-----------------|----------------------|------------------------------|----------------------------|---|--|
| | | TAKING OFF (c) | ENGAGING ENEMY A/C (d) | ATTACKING TARGET (e) | | |
| TBM-3 | VT-49 | 8 | 0 | 8 | 4-5000 G.P. | Inst. Fuse (selective)* .01 sec delay tail* |
| F6F-5P | VF-49 | 1 | 0 | 1 | Wing guns only. | --- |

III. OTHER U. S. OR ALLIED AIRCRAFT EMPLOYED IN THIS OPERATION.

| TYPE | SQUADRON | NUMBER | BASE | TYPE | SQUADRON | NUMBER | BASE |
|------|----------|--------|---------------|------|----------|--------|------|
| | | | | | | | |
| SB2C | VB-94 | 15 | USS LEXINGTON | | | | |
| F4U | VF-94 | 8 | USS LEXINGTON | | | | |

IV. ENEMY AIRCRAFT OBSERVED OR ENGAGED (By Own Aircraft Listed in II Only).

| (a) TYPE | (b) NO OBSERVED | (c) NO. ENGAGING OWN A/C | (d) TIME ENCOUNTERED | (e) LOCATION OF ENCOUNTER | (f) BOMBS, TORPEDOES CARRIED; GUNS OBSERVED | (g) CAMOUFLAGE AND MARKING |
|---------------|-----------------------|--------------------------------|----------------------------|---------------------------------|---|----------------------------------|
| None airborne | | | | | | |
| | | | (ZONE) | | | |
| | | | (ZONE) | | | |
| | | | (ZONE) | | | |

(h) Apparent Enemy Mission(s) _____

(i) Did Any Part of Encounter(s) Occur in Clouds? _____ If so, Describe Clouds _____
(BASE IN FEET, TYPE AND TENTHS OF COVER)

(j) Time of Day and Brilliance of Sun or Moon _____ (NIGHT, BRIGHT MOON; DAY, OVERCAST; ETC.) (k) Visibility _____ (MILES)

V. ENEMY AIRCRAFT DESTROYED OR DAMAGED IN AIR (By Own Aircraft Listed in II Only).

| (a) TYPE ENEMY A/C | (b) DESTROYED OR DAMAGED BY: | | | GUNS USED | (c) WHERE HIT, ANGLE | (d) DAMAGE CLAIMED |
|--------------------------|------------------------------|----------|-----------------|-----------|-------------------------|--------------------------|
| | TYPE A/C | SQUADRON | PILOT OR GUNNER | | | |
| None | | | | | | |
| | | | | | | |
| | | | | | | |
| | | | | | | |
| | | | | | | |
| | | | | | | |
| | | | | | | |
| | | | | | | |
| | | | | | | |
| | | | | | | |
| | | | | | | |
| | | | | | | |
| | | | | | | |
| | | | | | | |
| | | | | | | |
| | | | | | | |

AIRCRAFT ACTION REPORT

REPORT No. 18

VI. LOSS OR DAMAGE, COMBAT OR OPERATIONAL, OF OWN AIRCRAFT (of those listed in II only).

| (a) TYPE OWN A/C | (b) SQUADRON | (c) CAUSE: TYPE ENEMY A/C, TYPE GUN, OR OPERATIONAL CAUSE | (d) WHERE HIT, ANGLE (List armor, self-sealing tanks, equipment hit) | (e) EXTENT OF LOSS OR DAMAGE, (Give Bureau serial number of planes destroyed) |
|---------------------|-----------------|---|--|---|
| 1 | | | | |
| 2 | None | | | |
| 3 | | | | |
| 4 | | | | |
| 5 | | | | |
| 6 | | | | |
| 7 | | | | |
| 8 | | | | |
| 9 | | | | |
| 10 | | | | |
| 11 | | | | |
| 12 | | | | |
| 13 | | | | |
| 14 | | | | |

VII. PERSONNEL CASUALTIES (in aircraft listed in II only; identify with planes listed in VI by Nos. at left).

| (a) NO. | (b) SQUADRON | (c) NAME, RANK OR RATING | (d) CAUSE | (e) CONDITION OR STATUS |
|------------|-----------------|-----------------------------|--------------|----------------------------|
| | None | | | |
| | | | | |
| | | | | |
| | | | | |
| | | | | |
| | | | | |
| | | | | |
| | | | | |
| | | | | |
| | | | | |
| | | | | |
| | | | | |
| | | | | |

VIII. RANGE, FUEL, AND AMMUNITION DATA FOR PLANES RETURNING

| (a) TYPE A/C | (b) MILES OUT* | (c) MILES RETURN* | (d) AV. HOURS IN AIR | (e) AV. FUEL LOADED | (f) AV. FUEL CONSUMED | (g) TOTAL AMMUNITION EXPENDED | | | | (h) NO. OF PLANES RETURNING |
|--------------------|----------------------|-------------------------|----------------------------|---------------------------|-----------------------------|-------------------------------|-------|------|----|-----------------------------------|
| | | | | | | .30 | .50 | 20MM | MM | |
| TBII-3 | 220 | 160 | 4.4 | 401 | 270 | --- | 1,380 | -- | -- | 8 |
| F6F-5P | 220 | 160 | 4.4 | 400 | 260 | --- | 150 | -- | -- | 1 |

* Extra mileage to alternate target, direct return course.

IX. ENEMY ANTI-AIRCRAFT ENCOUNTERED (Check one block on each line).

| CALIBER | NONE | MEAGER | MODERATE | INTENSE |
|---|------|--------|----------|---------|
| HEAVY — Time-fused shells, 75mm and over | X | | | |
| MEDIUM — Impact-fused shells, 20mm-50mm | X | | | |
| LIGHT — Machine gun bullets, 6.5mm-13.2mm | X | | | |

X. COMPARATIVE PERFORMANCE, OWN AND ENEMY AIRCRAFT (use check list at left).

SPEED, CLIMB,
at various altitudes

None encountered

URNS
DIVES
CEILINGS
RANGE
PROTECTION
ARMAMENT

AIRCRAFT ACTION REPORT

RESTRICTED
(Reclassify when filled out)

(OMIT THIS SHEET IF NO ATTACK WAS MADE)

REPORT No. 18

XI. ATTACK ON ENEMY SHIPS OR GROUND OBJECTIVES (By Own Aircraft Listed in II Only).

- (a) Target(s) and Location(s) Ikeda Town, Hokkaido. (b) Time Over Target(s) 0900(-9) (Zone)
(FOR SHIPS INCLUDE ALL IN AREA UNDER ATTACK)
- (c) Clouds Over Target Clear generally at target but closed in all around up to 4,000 feet.
(BASE IN FEET, TYPE AND TENTHS OF COVER)
- (d) Visibility of Target Partially obscured by scattered clouds. (e) Visibility 10
(CLEAR, HAZY, PARTIALLY OBSCURED BY CLOUDS, ETC.) (MILES)
- (f) Bombing Tactics: Type Glide Bomb Sight Used 2-None
(LEVEL, GLIDE OR DIVE) (TYPE)
- Bombs Dropped per Run Average-2 Spacing Varied Altitude of Bomb Release 1,500-2,500
(NUMBER) (FEET) (FEET)
- (g) Number of Enemy Aircraft Hit on Ground: Destroyed _____ Probably Destroyed _____ Damaged _____

| (h) AIMING POINT | (i) DIMENSIONS OR TONNAGE | (j) NO A/C ATTACKING (k) SQUADRON | (l) BOMBS AND AMMUNITION EXPENDED, EACH AIMING POINT | (m) NO HITS On Aiming Point | (n) DAMAGE (None, slight, serious, destroyed or sunk) |
|--|---------------------------------|--------------------------------------|--|-----------------------------------|--|
| 1 U-shaped building | 200 feet square | 7 VT-49 | 22-500# G.P. | 2 | Serious. destroyed by explosion. Results not observed. |
| 2 Unidentified long building. | 200 feet X 30 feet | 1 VT-49 | 1-500# G.P. | 1 | |
| 3 Base of bridge across the Tokachi Kawa | | 1 VT-49 | 2-500# G.P. | | |
| 4 4 or 5 sheds in Ikeda town. | 75 X 20' each | 1 VT-49 | 3-500# G.P. | 1 | Destroyed 1 shed by fire Add'l damage unobserved. |
| 5 Lumber yard bldg in Ikeda town. | -- | 2 VT-49 | 4-500# G.P. | 2 | |
| 7 | | | | | |
| 8 | | | | | |

*Actual area about 22,000 sq. feet.

- (o) RESULTS: (For all hits claimed on ship targets and for land targets of special interest, draw diagram, top or side view or both, as appropriate, showing type and location of hits. For all targets give location and effect of hits, and identify by numbers above. Use additional sheets if necessary).
- (1) Exhibit (A) shows this installation before bombing; Exhibit (B) shows it after the direct hits on one wing. Construction suggests a school being converted to barracks or for industrial or military use.
- (4) Exhibit (C) is going away shot of the long sheds possibly a storage or barracks area, showing one fire and another bomb burst.

(p) Were Photographs Taken? Yes Photographs of Damage, When Taken, Should Be Attached By Staple.

S-E-C-R-E-T



Exhibit (A)

SAN 341K JULY 15-45 0915-9 K20 678 ALT VAR IKEDA TOWN HOKKAIDO CONF

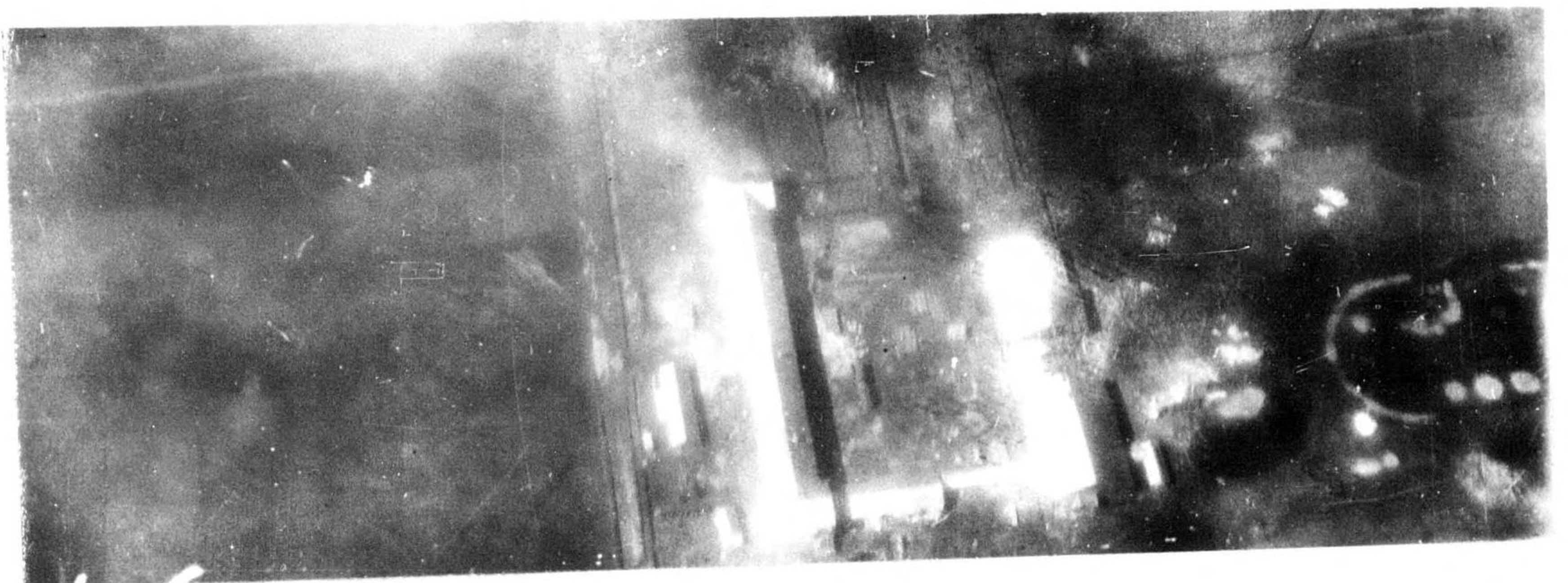


Exhibit (B)



Exhibit (C)

AIRCRAFT ACTION REPORT

REPORT No. 18

XII. TACTICAL AND OPERATIONAL DATA. (Narrative and comment. Describe action fully and comment freely, following applicable items in check list at left. Use additional sheets if necessary.)

ENGAGEMENT WITH ENEMY

OWN AIRCRAFT

- Disposition
- Altitudes
- Speeds
- Approach Tactics
- Use of Cover, Deception
- Angles of Attack and Their Effectiveness
- Distance of Opening Fire
- Defense Tactics and Their Effectiveness

ENEMY AIRCRAFT

- Method of Locating, Distance
- Disposition
- Altitudes
- Speeds
- Approach Tactics
- Use of Cover, Deception
- Angles of Attack
- Distance of Opening Fire
- Defensive Tactics

COMMENTS AND RECOMMENDATIONS

- Own Weaknesses
- Enemy Weaknesses
- Offensive Tactics, Own
- " " Enemy
- Defensive Tactics, Own
- " " Enemy
- Flexible Gunnery, Own
- Escort Tactics
- Fighter Direction
- Use of Radar
- Night Fighting
- Recognition, Aircraft

ATTACK

OWN TACTICS

- Method of Locating Target
- Approach to Target
- Altitudes, Speeds
- Approach
- Dive
- Pull-Out
- Dive Angle
- Strafing
- Retirement
- Defensive Tactics
- Use of Jamming

DEFENSE, ENEMY

- Evasive Tactics, Ships
- Concealment
- Searchlights
- Night Fighter Tactics
- Use of Jamming

COMMENTS AND RECOMMENDATIONS

- Bombing Tactics
- Torpedo Tactics
- Effectiveness of Bombs, Torpedoes
- Selection of Targets
- Fuzing
- Strafing Tactics
- Defensive Tactics
- Use of Radar
- Reconnaissance
- Photography
- Briefing

OPERATIONAL

- Navigation
- Homing
- Rendezvous
- Recognition, Ships
- Communications
- Flight Operations
- Search and Tracking
- Base Operations
- Maintenance

On the morning of 16 July, eight FORTY-NINERS started out as part of a larger flight to locate and bomb a newly discovered arsenal and ammo. dump near the San Jacinto's primary airfield target of Obihiro. Weather had so far prevented either photographic or bomb coverage of Hokkaido's most important Army air base, and this day was no exception. Finding all of Obihiro and its fields blanketed, the strike leader from the LEXINGTON, with whom our flight joined up, led the forty-five planes through a hole in the 2,500 foot cover, to the town of Ikeda, where various flights were given targets for their initial runs.

This squadron was assigned to a large, U-shaped building on the western outskirts of town, which at first looked like a warehouse being enlarged or altered. The flight had only 4,500 feet altitude and in general the runs made on this assigned target were disappointing, a combination of "off-day" bombing and too little speed, too shallow runs. Only two damaging hits were scored with the 500-pounders, one of which, however, demolished a section of one wing from the second story roof to the ground. Photographic coverage later indicated a school under conversion, probably to military use for barracks.

Further runs made in the town itself resulted in the burning of several long storage sheds, Northeast of the center, damage to a lumber yard, and the explosion of another unidentified building.

Lt(jg) Hampton of VF-49, pressed into service as a photo pilot, succeeded in getting some obliques of the town and the targets after the bombing, and the flight rendezvoused to the East, along the Tokachi Kawa, returning to the carrier after almost four and one-half hours.

Ikeda, thought by the leader to be Pombetsu, was one of the towns assigned to the San Jac for reconnoitering. It was only by chance that the Torpedo Squadron had the first look at it. It presented little of military significance except the not uncommon railroad junction, and a lumber mill of some size. These planes succeeded in setting fire to parts of the village but the railroad installations, the best apparent targets away from the coastal town, got a very light load. Disruption of rail traffic, in the absence of aircraft or shipping, would seem to have a higher tactical value in the smaller towns and villages.

AIRCRAFT ACTION REPORT

RESTRICTED
(Reclassify when
filled out)

REPORT No. 18

XIII. MATERIAL DATA. (Comment freely on performance or suitability, following check list at left.
Use additional sheets if necessary).

ARMAMENT

- Guns, Gunsights
- Turrets
- Ammunition
- Bombs, Torpedoes
- Bomb Sights
- Bomb Releases

None

COMMUNICATIONS

- Radio, Radar
- Homing Devices
- Visual Signals
- Codes, Ciphers

RECOGNITION

- IFF
- Signals
- Battle Lights
- Procedures

PROTECTION

- Armor; Points and Angles
of Fire Needing Further
Protection
- Leak Proofing

EMERGENCY EQUIPMENT

- Parachutes
- Life Belts, Life Rafts
- Safety Belts
- Emergency Kits
- Rations, First Aid

NAVIGATIONAL EQUIPMENT

- Compasses
- Driftsights
- Octants
- Automatic Pilots
- Charts
- Field Lighting

INSTRUMENTS

- Flight
- Power Plant

OXYGEN SYSTEM

**CAMOUFLAGE AND
DECEPTION DEVICES**

STRUCTURE

- Airframe
- Control Surfaces
- Control System
- Dive Flaps
- Landing Gear
- Heating System
- Flight Characteristics
At Various Loadings

POWER PLANT

- Engines
- Engine Accessories
- Propellers
- Lubricating System
- Starters
- Exhaust Dampers

HYDRAULIC SYSTEM

ELECTRICAL SYSTEM

- Auxiliary Plant
- Lights

FUEL SYSTEM

FLIGHT CLOTHING

MAINTENANCE

BASE FACILITIES

- Plane Servicing Equipment
- Personnel Facilities

REPORT PREPARED BY:

APPROVED BY:

Charles N. Fuller, Lt(jg), USNR., ACIO

Carl H. Peters, Lieut(A1), USNR. Comdg.,

16 July 1945.

SIGNATURE

RANK AND DUTY

SIGNATURE

RANK AND DUTY

DATE