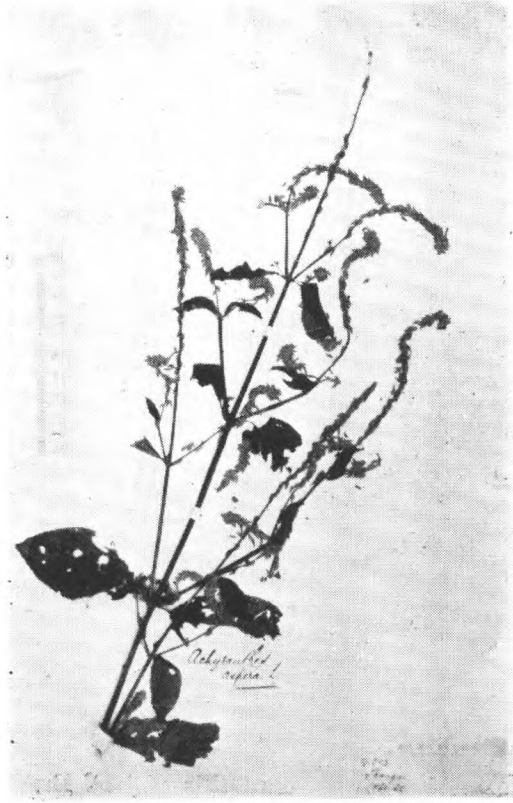
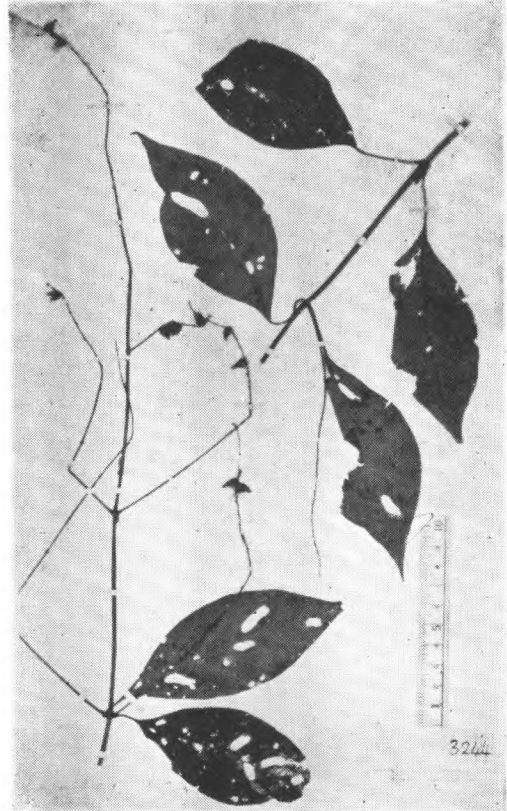


35. 莧科 *Amarantaceae*

牛膝屬 *Achyranthes* L.

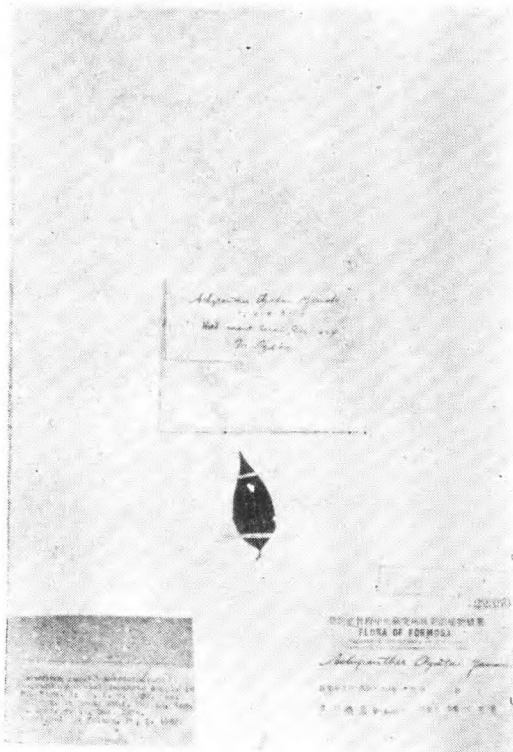


Achyranthes aspera L.
Maingay 502 上海

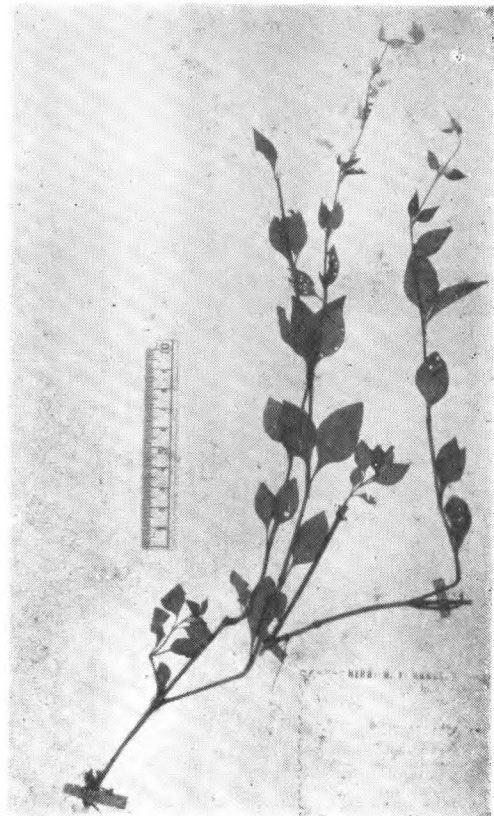


Achyranthes bidentata Blume
Henry 3244 湖北宜昌

意伐屬 *Aerva* Forska.

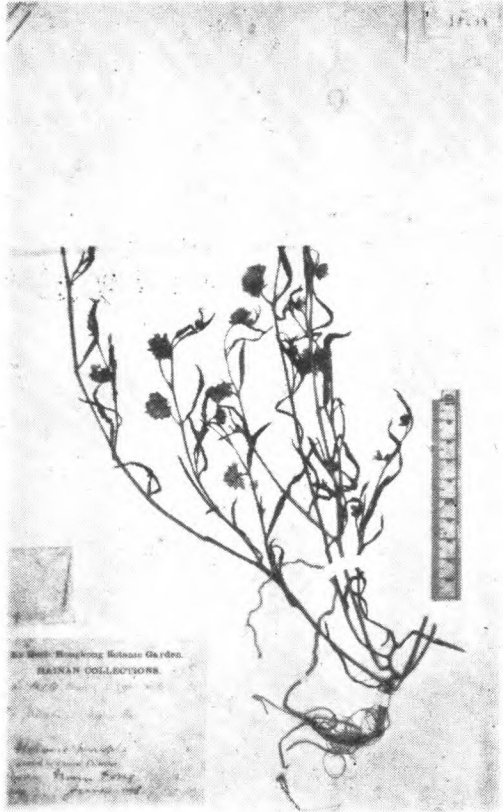


Achyranthes Ogatai Yamamoto
M. Ogata 无号 Taihoku, in monte-Urai,
(merotype), 台湾



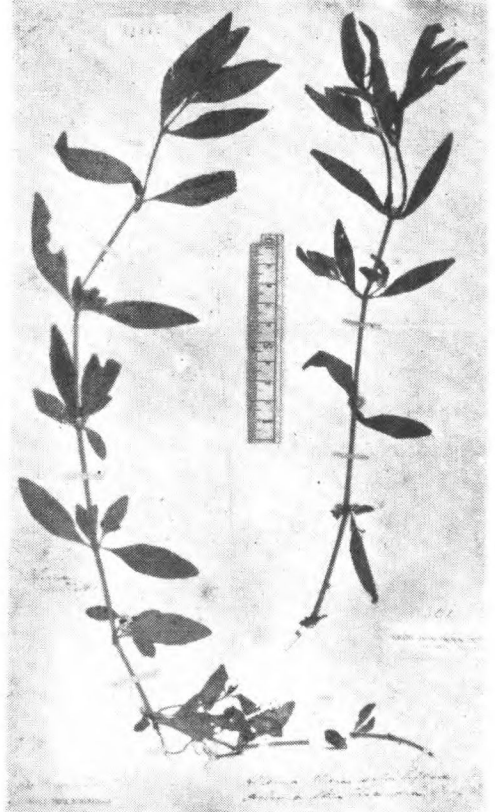
Aerva scandens (Roxb.) Wall.
Sampson et Hance 13772 广东北江

阿蔓屬 *Allmania* R. Br.



Allmania nudiflora (L.) R. Br.
Ford 414 海南

滿天星屬 *Alternanthera* R.Br.

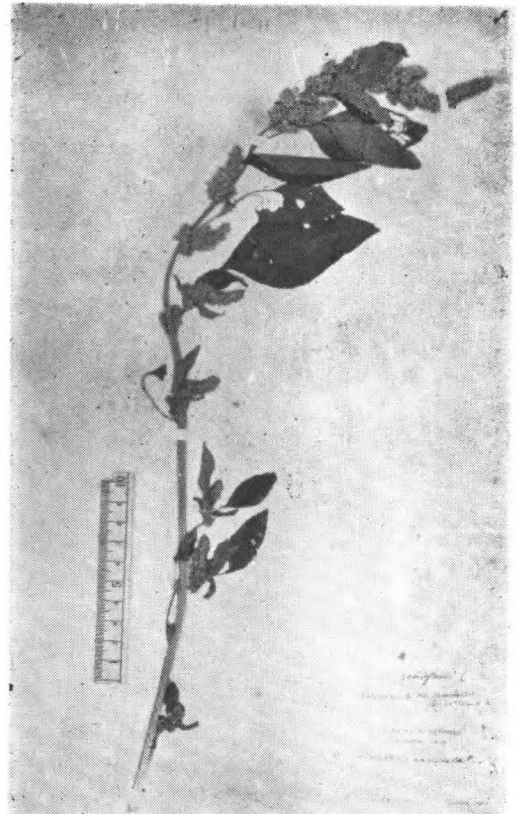


Alternanthera sessilis (L.) R. Br.
Henry 301 湖北宜昌

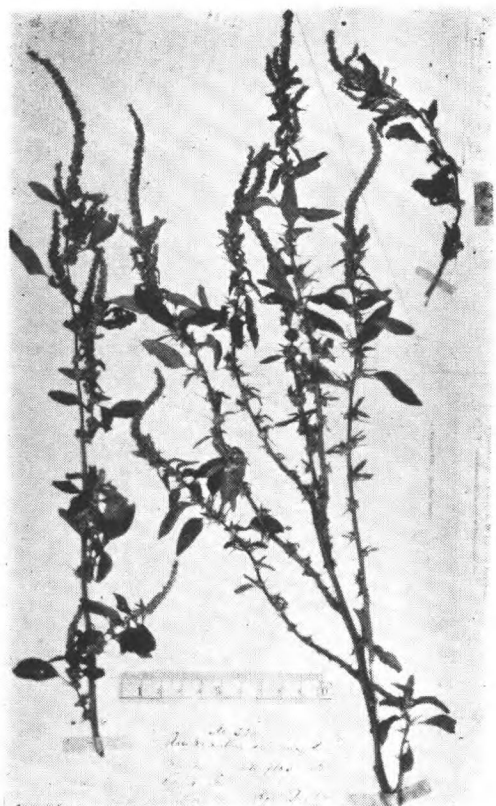
莧屬 *Amaranthus* L.



Amaranthus caudatus L.
Henry 7517 湖北襄陽, Websyer 230,
沈阳到鴨綠江



Amaranthus retroflexus L.
Licent 1089, H. Smith 中国北部



Amaranthus spinosus L.
Wilford 230 香港, C. Wright 244 琉球
Oldham 417. 台湾淡水

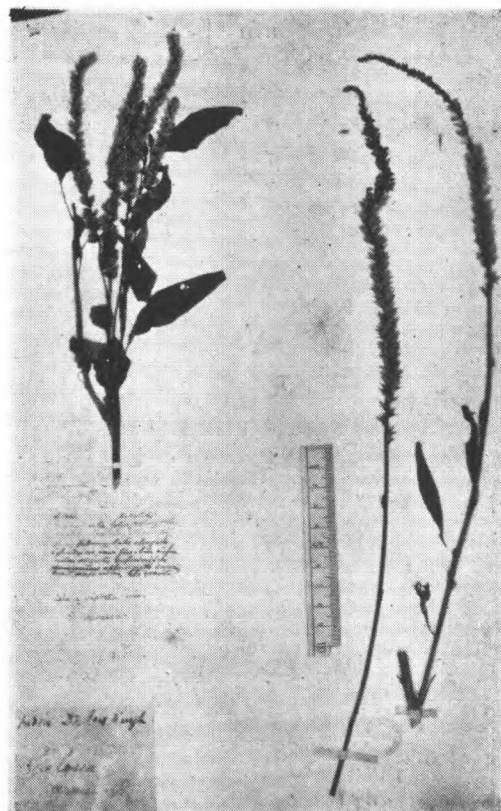


Amaranthus tricolor L.
Bretschneider 664, 634, 北京, F.
S. A. Bourne 15 重庆

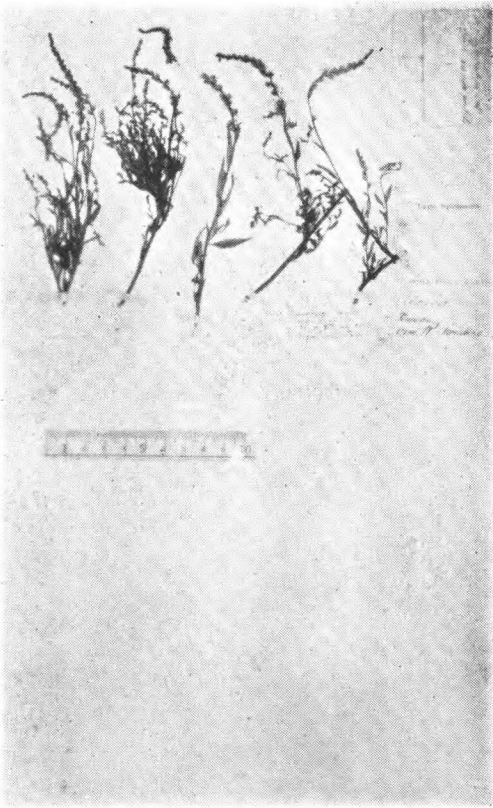
青葙屬 *Celosia* L.



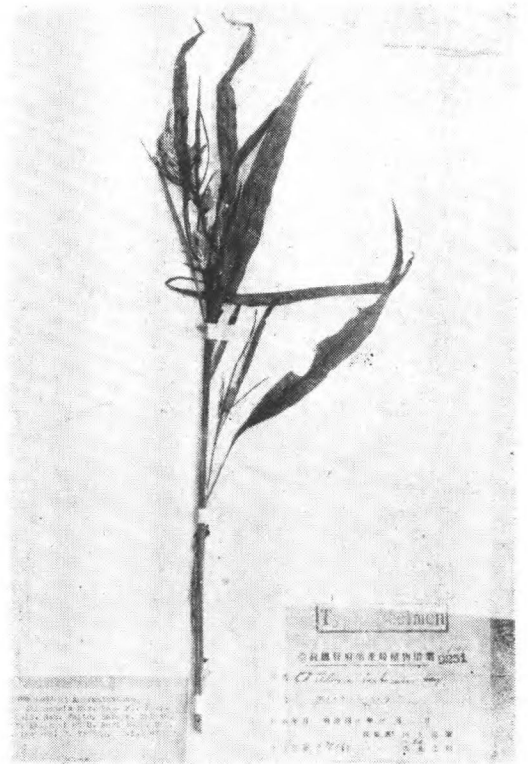
Celosia argentea L.
Vaehall. 中国



Celosia cristata L.

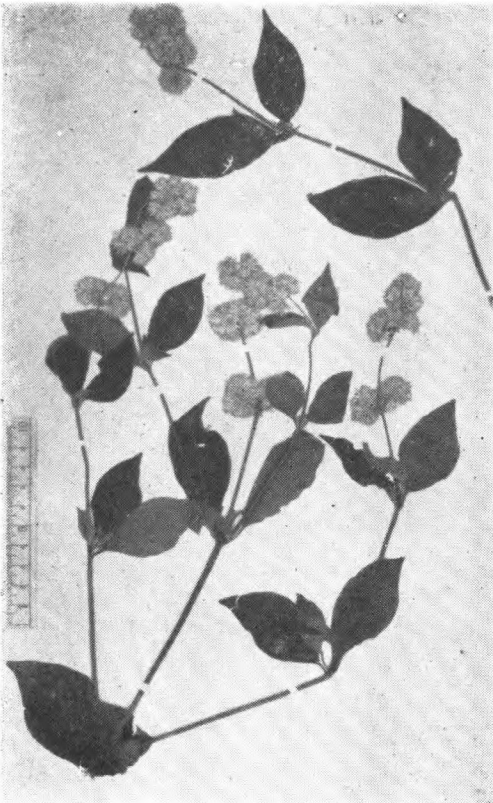


Celosia Swinhoei Hemsl.
Swinhos (type) 海南



Celosia taitoensis Hay.
T. Kawakami et U. Mori 6005, (isotype)
台湾 Taito.

苋草屬 *Cyathula* Bl.

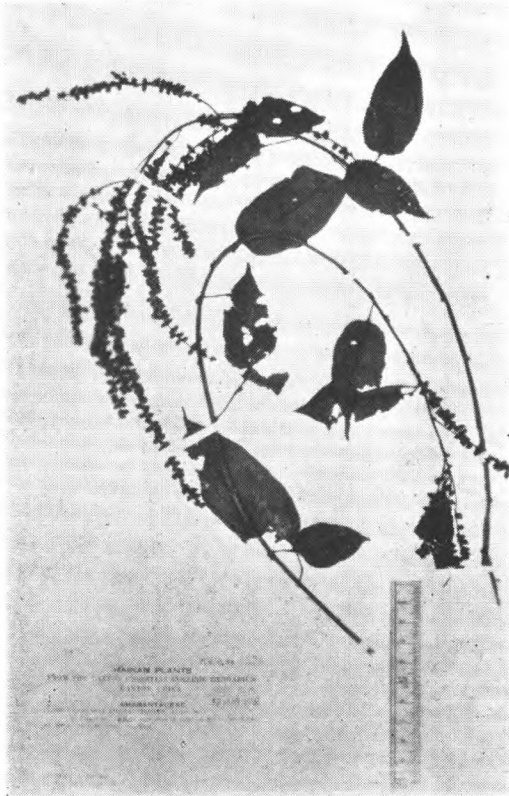


Cyathula capitata (Wall.) Miq.
Forr. 6431. 云南西北

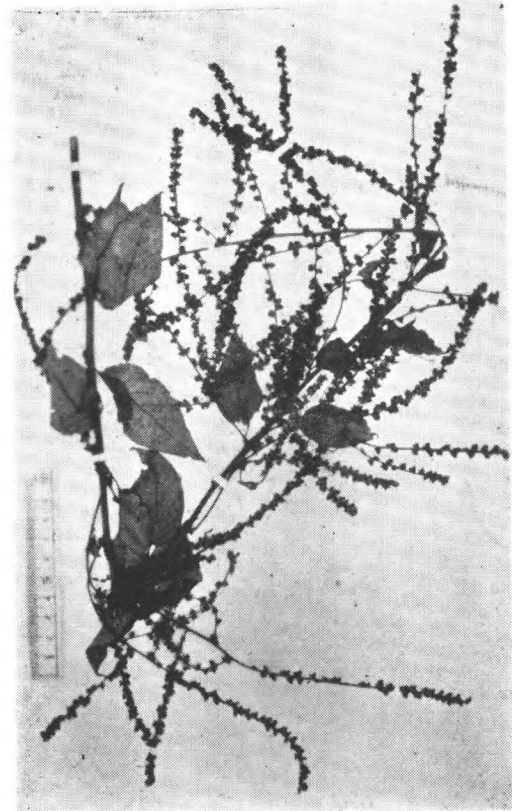


Cyathula prostrata (L.) Blume
Wilford 324, 香港, Tate 185. 广东

地灵莧屬 *Deeringia* R.Br.



Deeringia amaranthoides (Lam.) Merrill
McClure 8538 海南五指岭

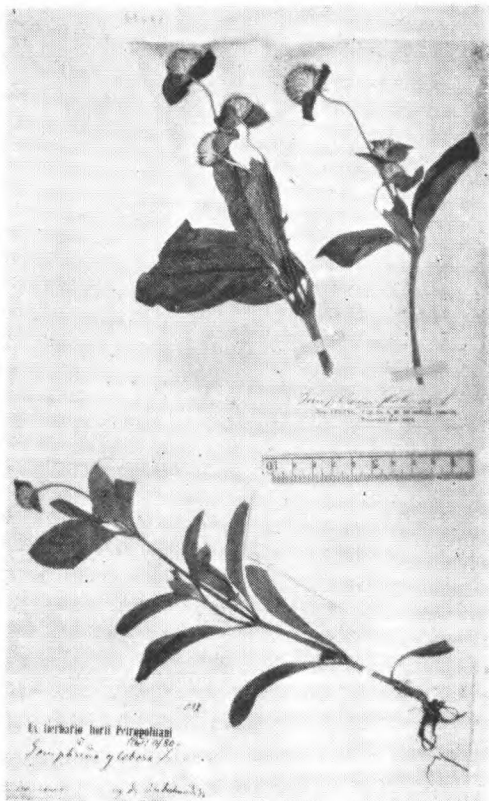


Deeringia amaranthoides (Lam.) Merrill
Forr. 11404. 云南

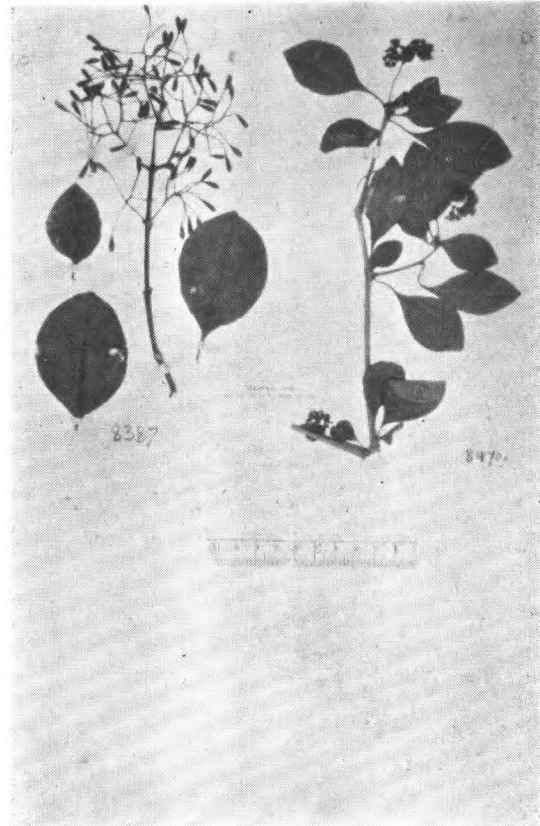
36. 紫茉莉屬 *Nyctaginaceae*

避霜花屬 *Pisonia* L.

千日紅屬 *Gomphrena* L.

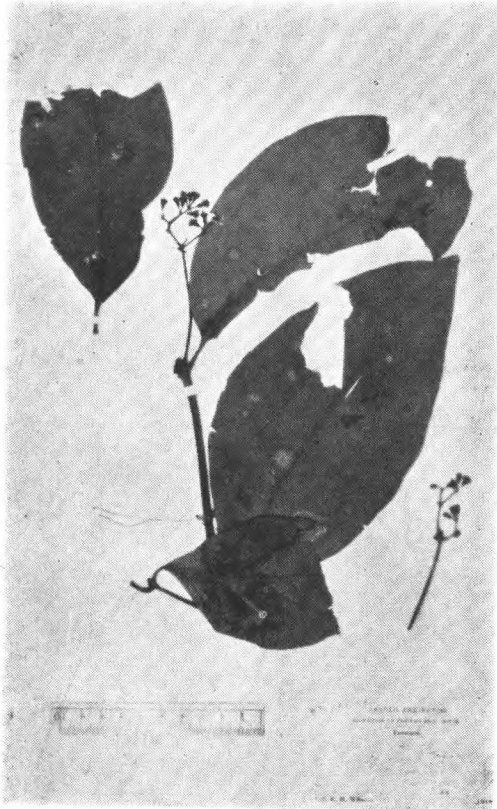


Gomphrena globosa L.
Bretschneider 637. 北京. Bashell 北京



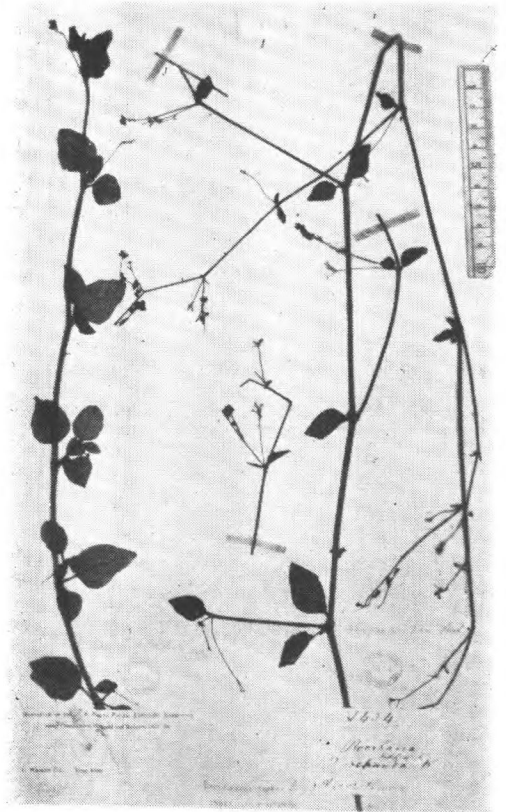
Pisonia aculeata L.
Henry No. 8387. 8470.

Calpidia Du Petit Thou.



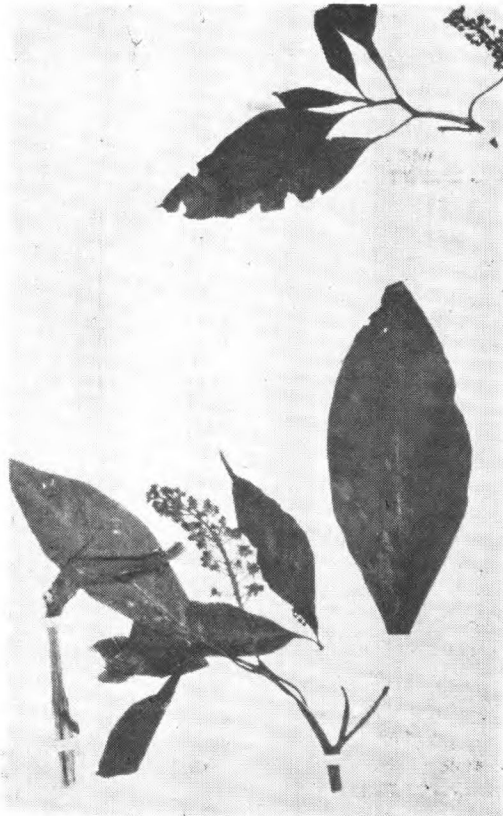
Calpidia excelsa (Bl.) Heimerl.
Wils. 11048. 台湾

黄細心屬 *Boerhaavia* Vaill ex L.



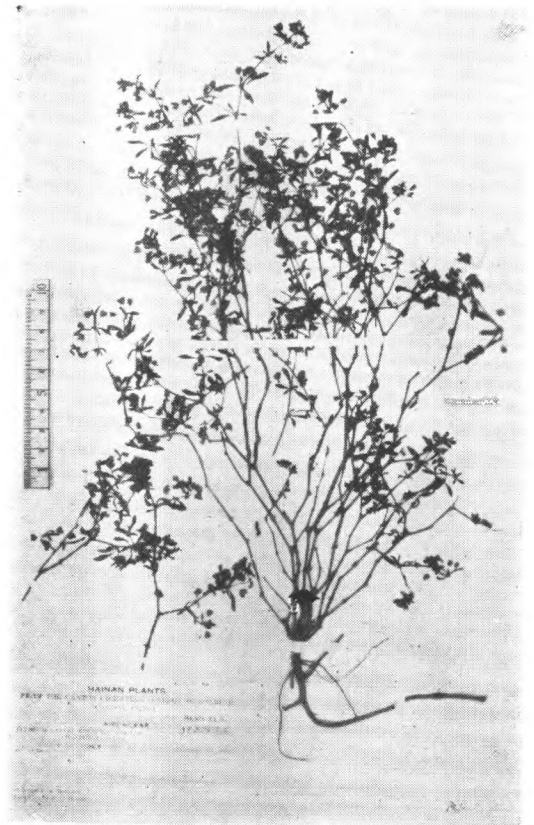
Boerhaavia diffusa L.
Coll. Wright

37. 商陸科 *Phytolaccaceae*
商陸屬 *Phytolacca* L.



Phytolacca acinosa Roxb.
Henry 5511 and B. 四川南巫山

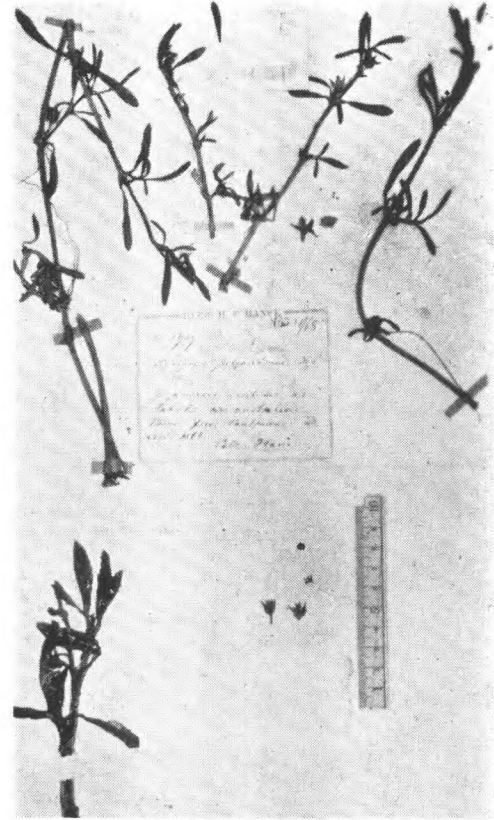
38. 番杏科 *Aizoaceae*
Glinus L.



Glinus oppositifolius (L.) Ang.
F. A. McClure 8897. 海南定安河

粟米草屬 *Mollugo* L.

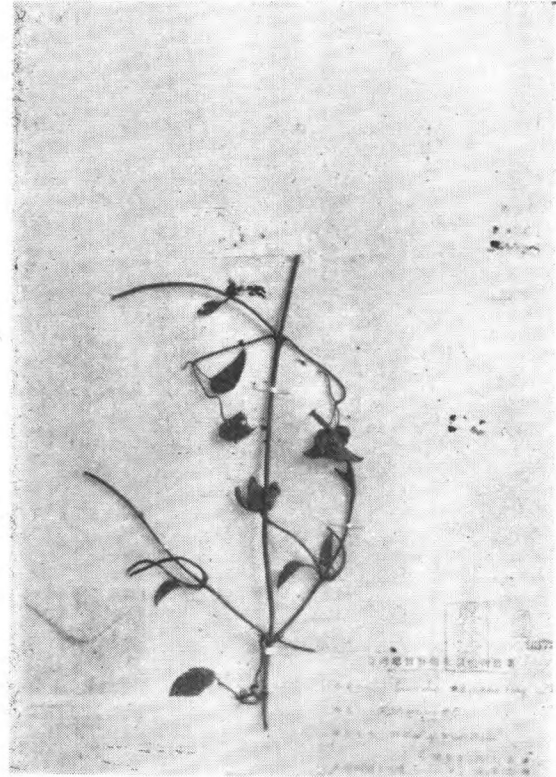
Mollugo pentaphylla L.
E. Faber 972. 四川岷江

海馬齒屬 *Sesuvium* L.

Sesuvium portulacastrum (L.) L.
Hance 1919, 广东, Playfair 174 台湾

番杏屬 *Tetragonia* L.

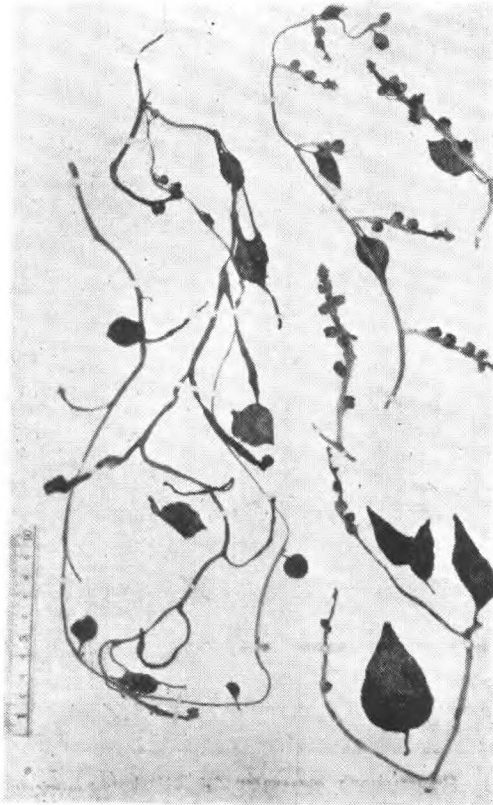
Tetragonia expansa Murr.
Herb. Hance, 10139, 广东

39. 馬齒莧科 *Portulacaceae*馬齒莧屬 *Portulaca* L.

Portulaca formosana Hay.
B. Hay. 无号, 台湾

40. 落葵科 Basellaceae

落葵屬 *Basella* L.

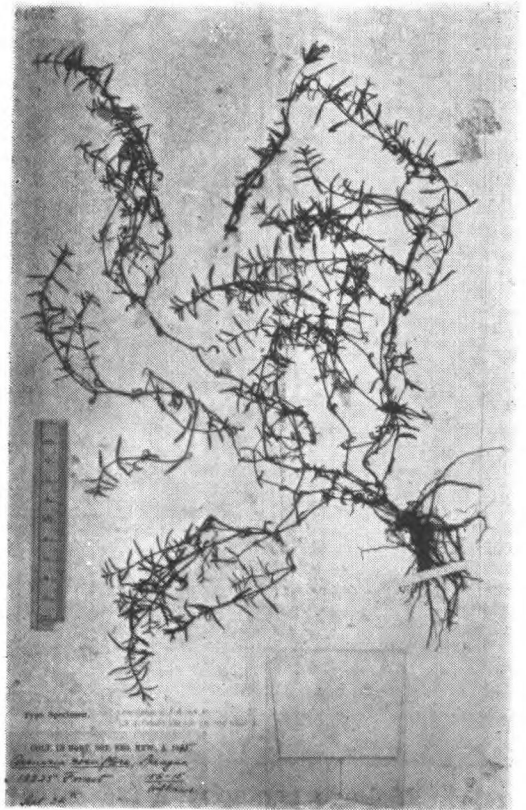


Basella rubra L.

Playfair 11289 Pakhoi Wenyon 广东

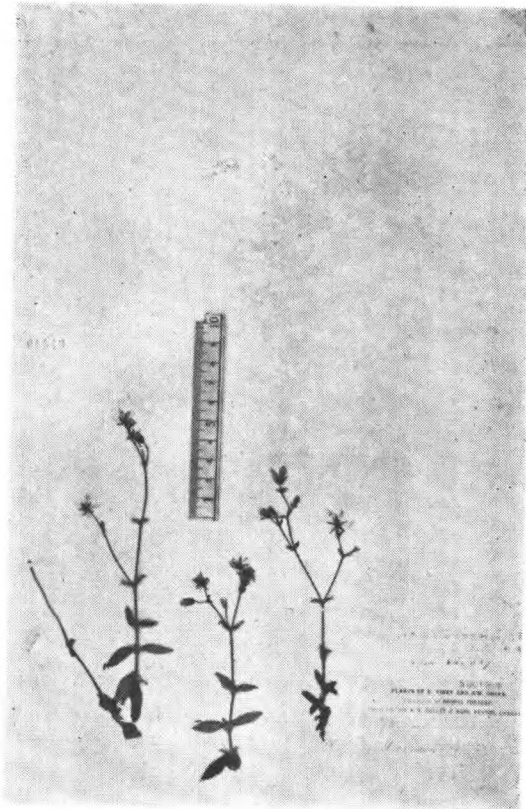
41. 石竹科 Caryophyllaceae

蚤缀屬 *Arenaria* L.



Arenaria roseiflora Sprague

Forr. 13225 (type)



Arenaria barbata Fr.

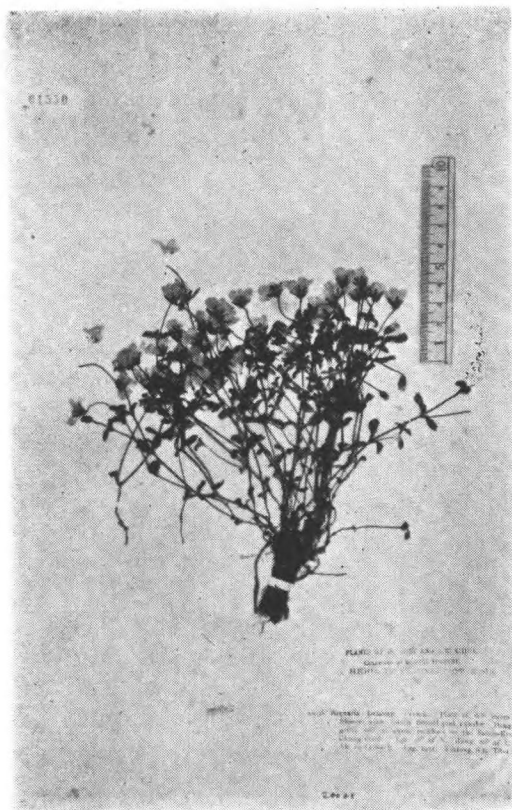
Forrest 75 云南



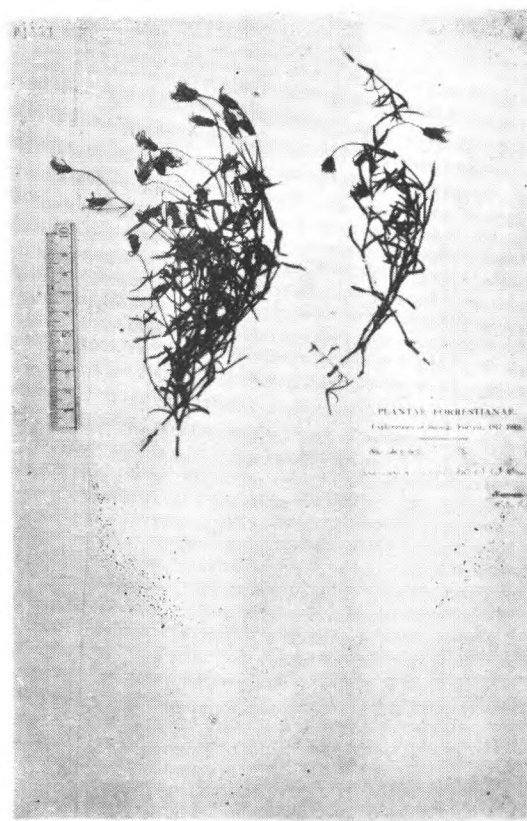
Arenaria barbata Fr. var.

hirsutissima W. W. Sm.

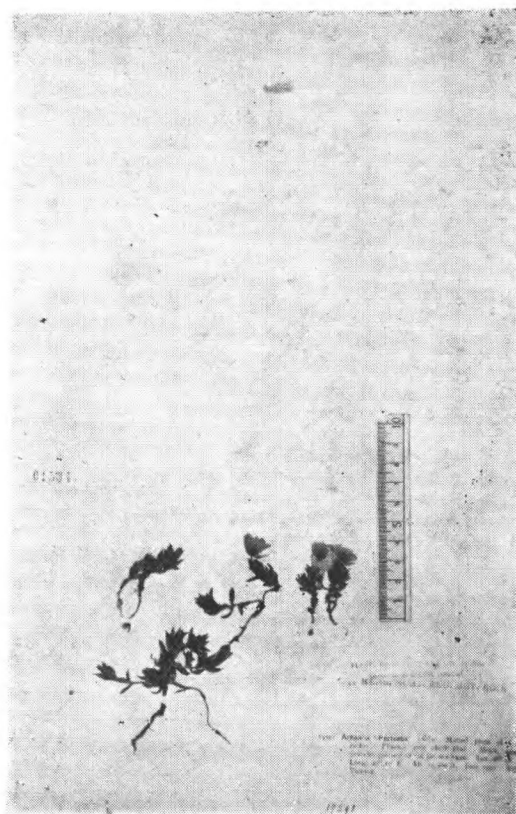
Forrest 6299 (cotype) 云南



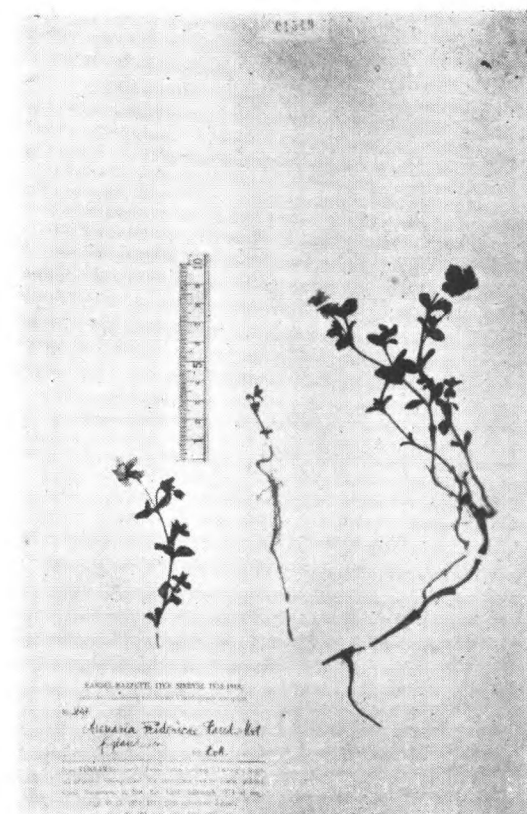
Arenaria Delavayi Fr.
Forrest 20038 云南怒江察瓦龙



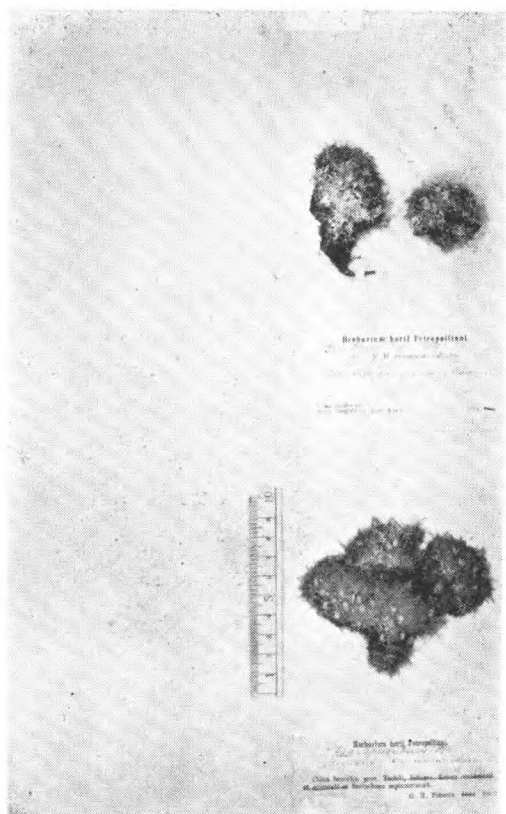
Arenaria euodonta Smith
Forrest 14640 云南澜沧江怒江



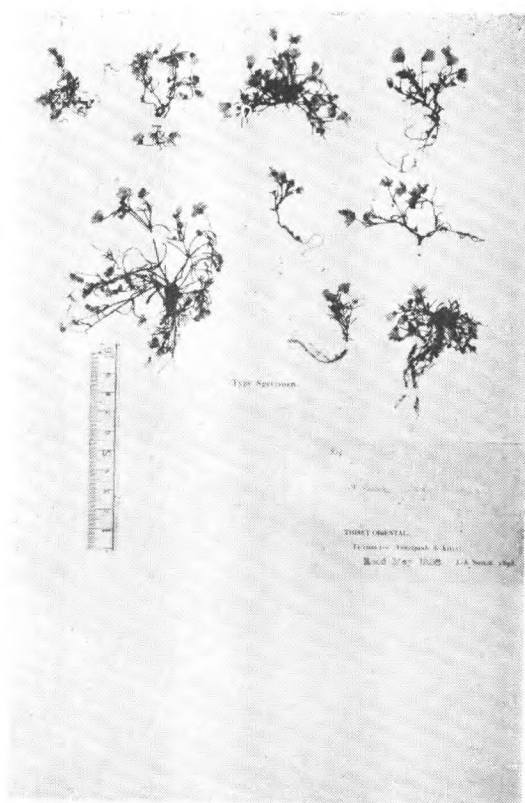
Arenaria Forrestii Diels
Forrest 19591. 云南白马山



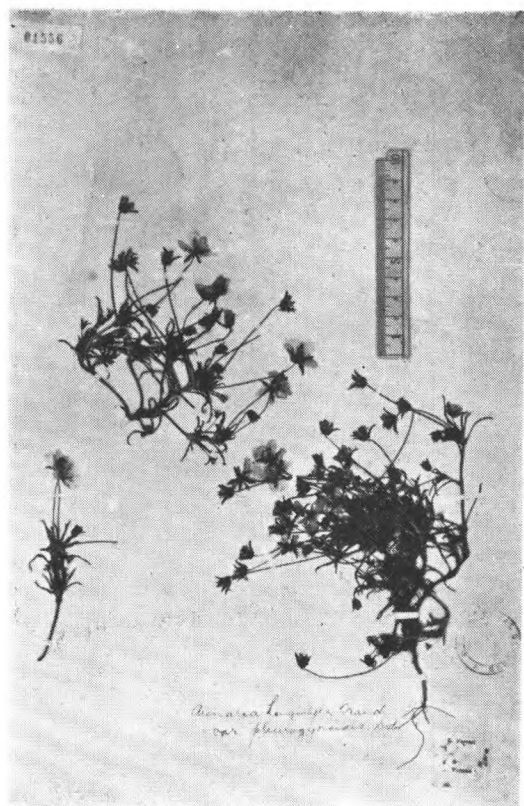
Arenaria Fridericae H.-M.
H.-M. 3697 云南丽江玉龙山



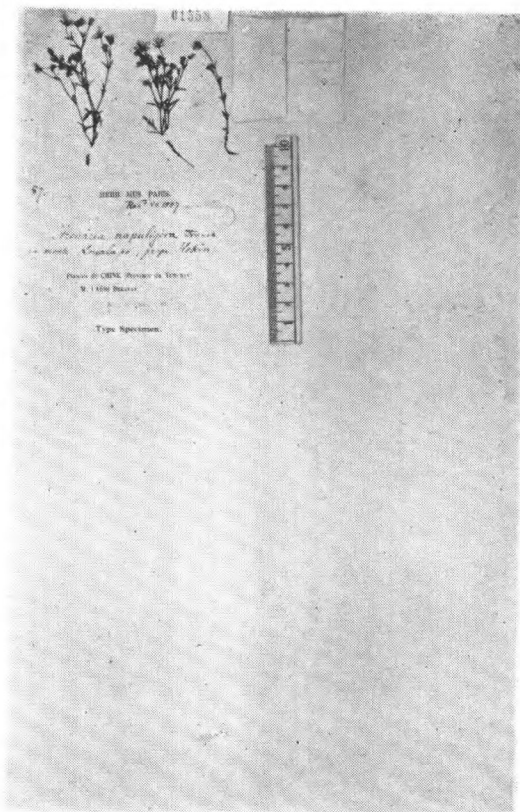
Arenaria kansuensis Maxim.
Przewalski (cotype.) 甘肃



Arenaria linearifolia Franch.
Soulie 814 (type.)



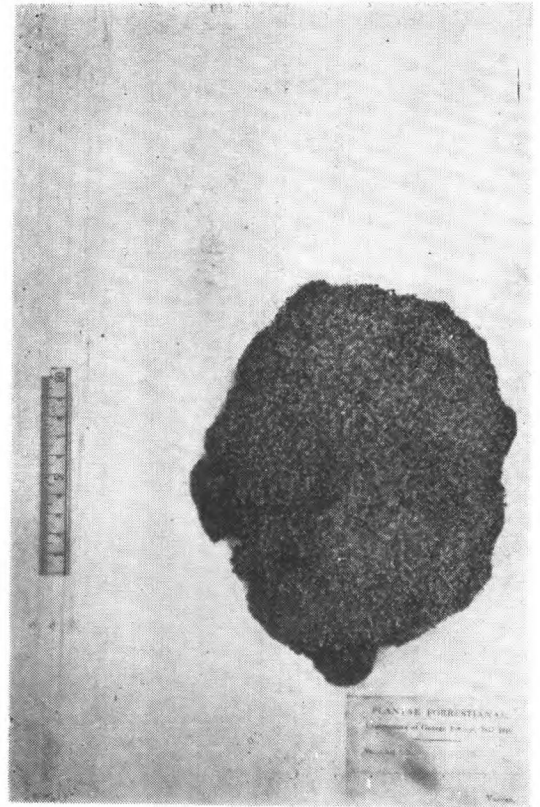
Arenaria longistyla Fr. var.
pleurogynoides Diels
Forrest 11148 云南



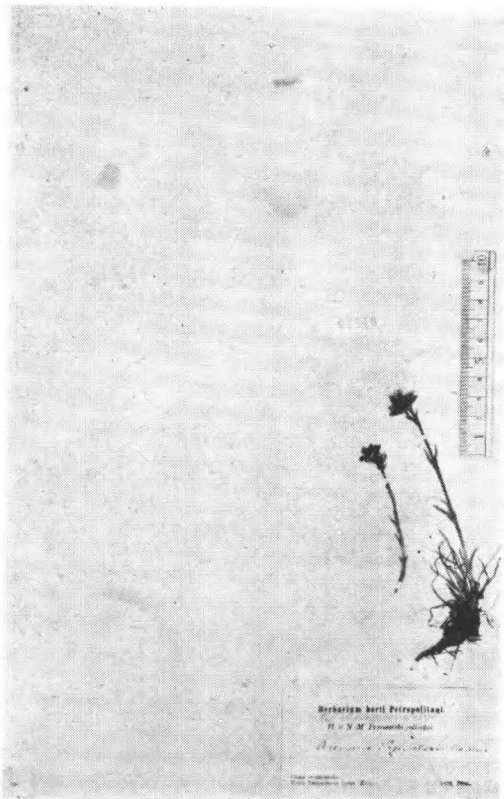
Arenaria napuligera Fr.
Delavay 87 (cotype.) 云南



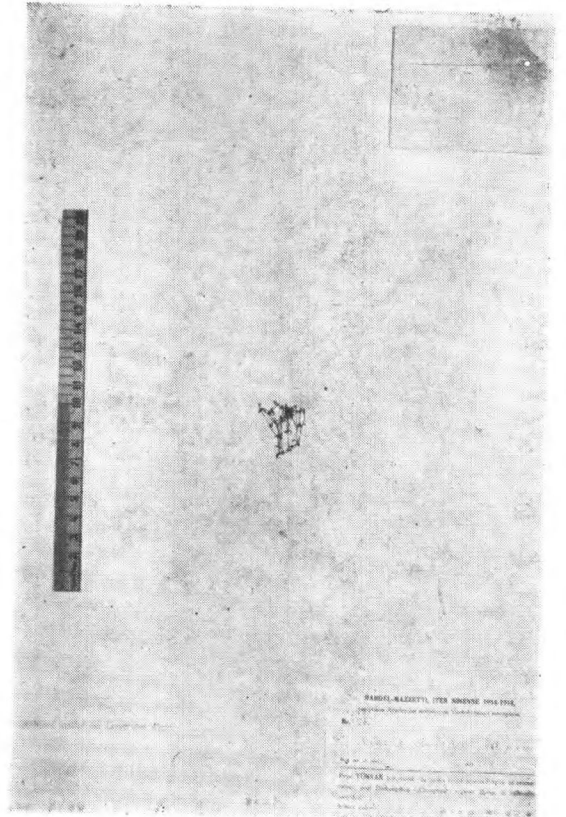
Arenaria nigricans H.-M.
H.-M. 7609 (type.) 云南永宁中甸



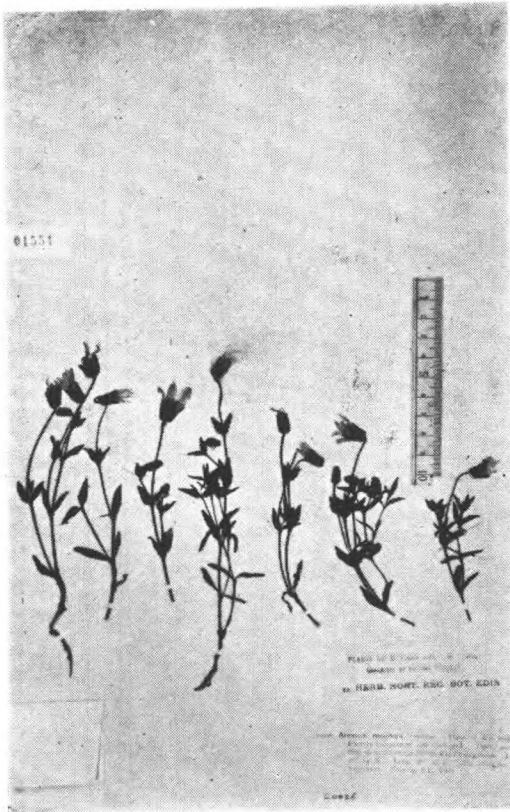
Arenaria polytrichoides Edgew.
Forrest 13982 云南白馬山



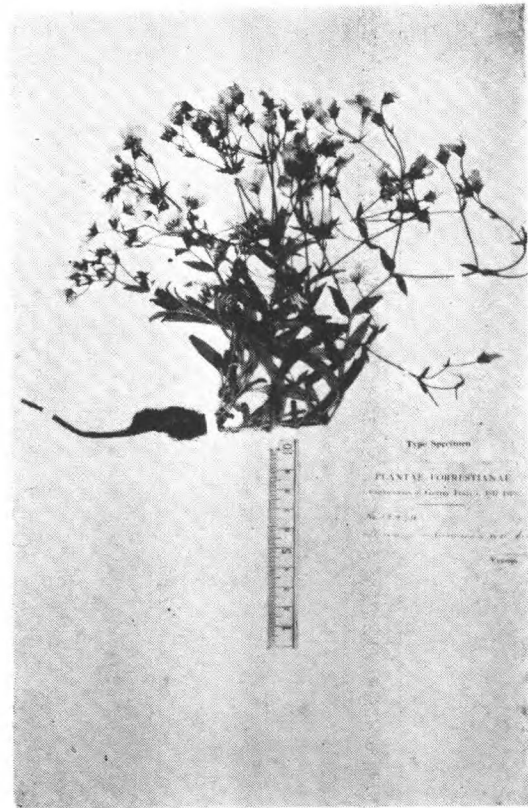
Arenaria Przewalskii Maxim.
Przewalski 1872 (cotype) 甘肃



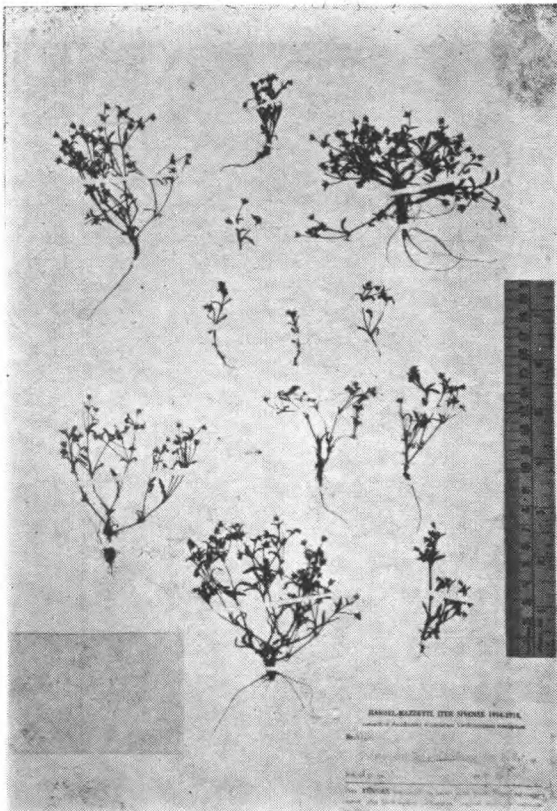
Arenaria reducta H.-M.
H.-M. 4725



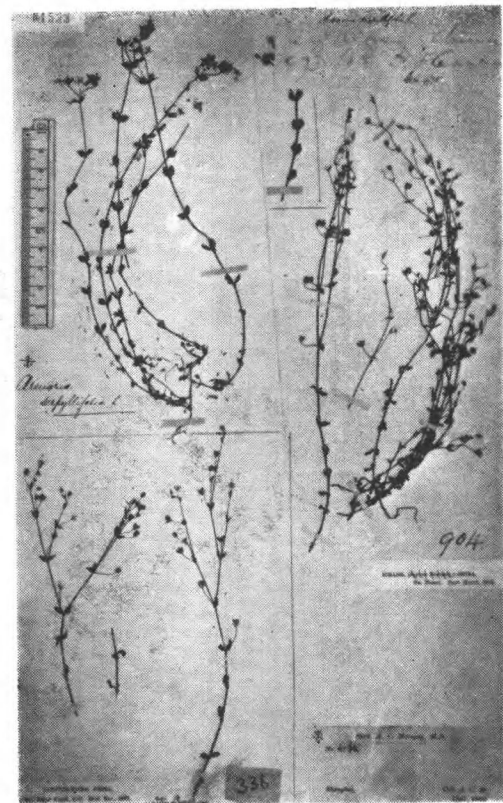
Arenaria roseiflora Sprague
云南中甸



Arenaria salweenensis W. W. Sm.
Forrest 18474 (cotype.) 云南



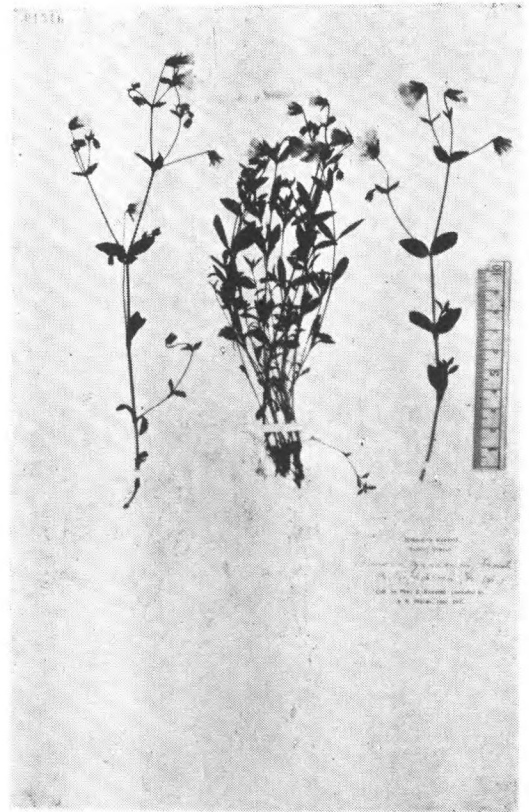
Arenaria Schneideriana H.-M.
H.-M. 4724 (type.) 云南中甸
Piepur 山西坡



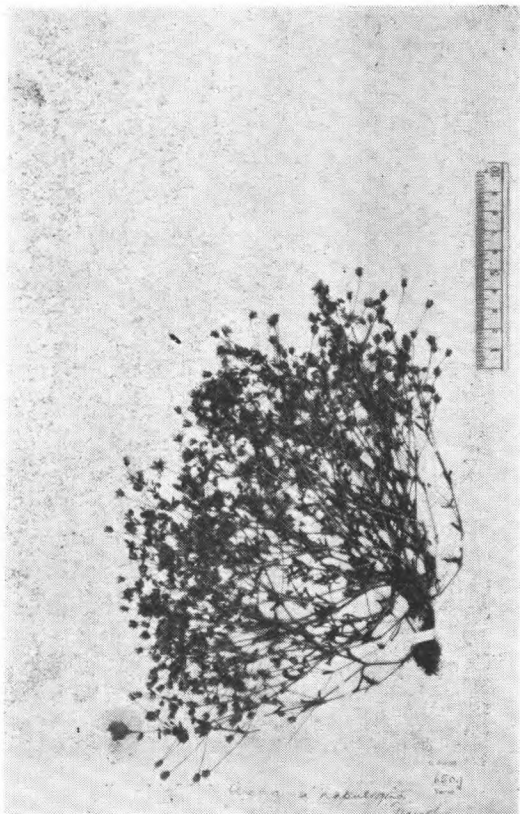
Arenaria serpyllifolia L.
C. A. Maingay 4164, 上海
Henry 904, 湖北宜昌
E. Faber 336, 四川,
Shearer 18731 江西九江



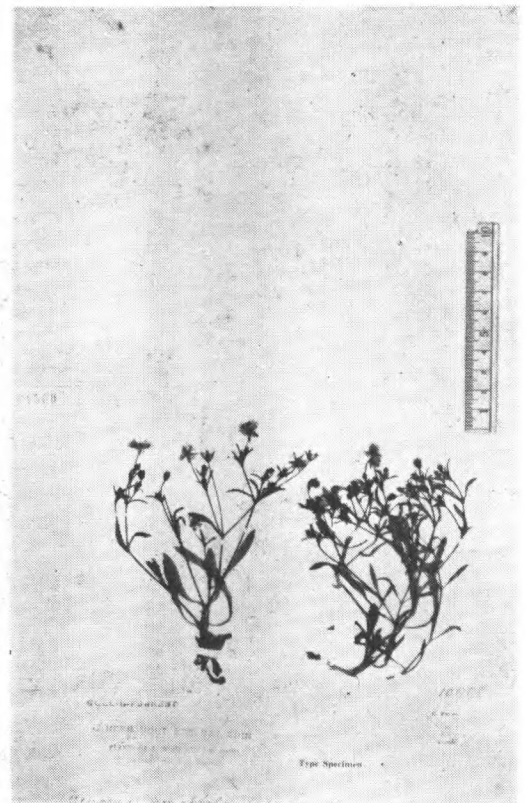
Arenaria Smithiana Mattf.
Forrest 20533 云南 (西北)



Arenaria trichophora Fr.
T. Monberg 云南

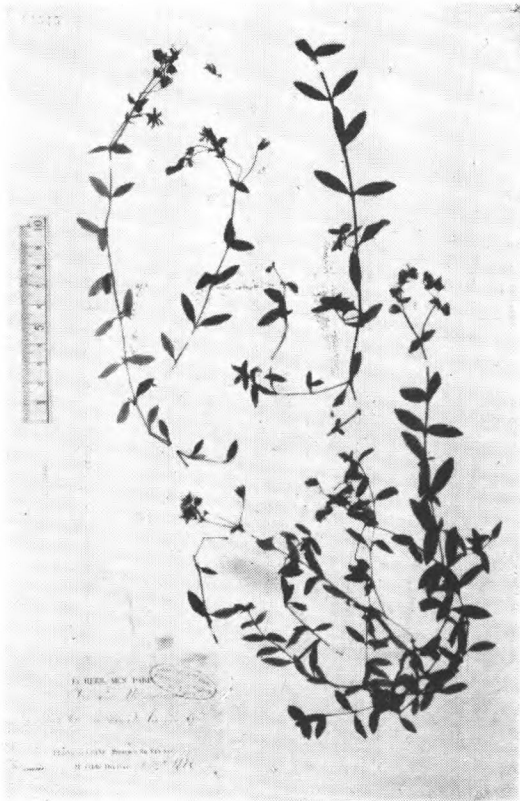


Arenaria trichophora Fr. var.
angustifolia Fr.
Forrest 6509. 云南

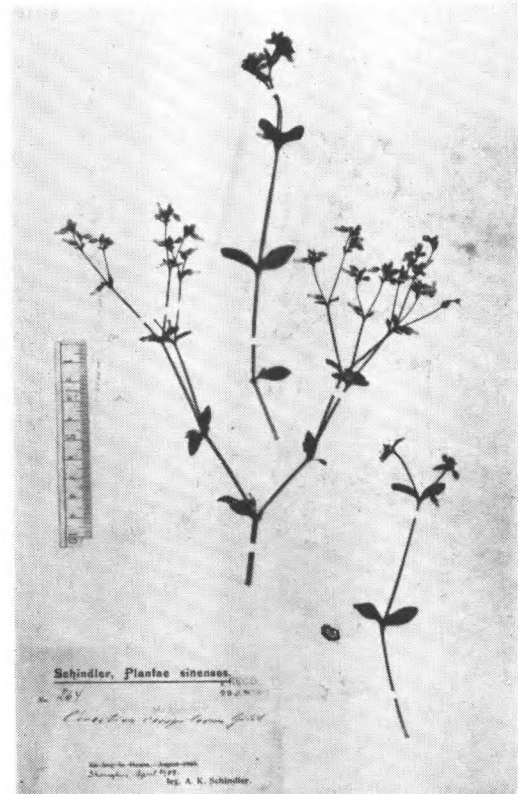


Arenaria xerophila W. W. Smith.
Forrest 10998 (cotype.) 云南

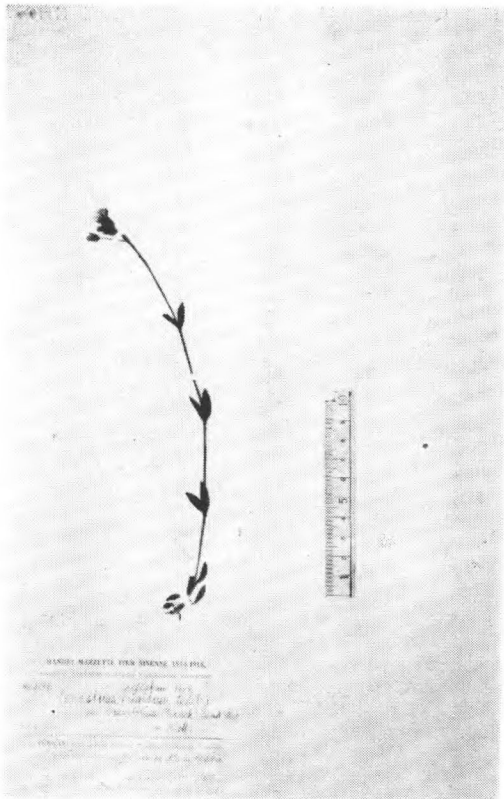
卷耳屬 *Cerastium* L.



Arenaria yunnanensis Fr.
Delavay n. 3. (cotype.)



Cerastium caespitosum Gilib.
Schindler 267 上海

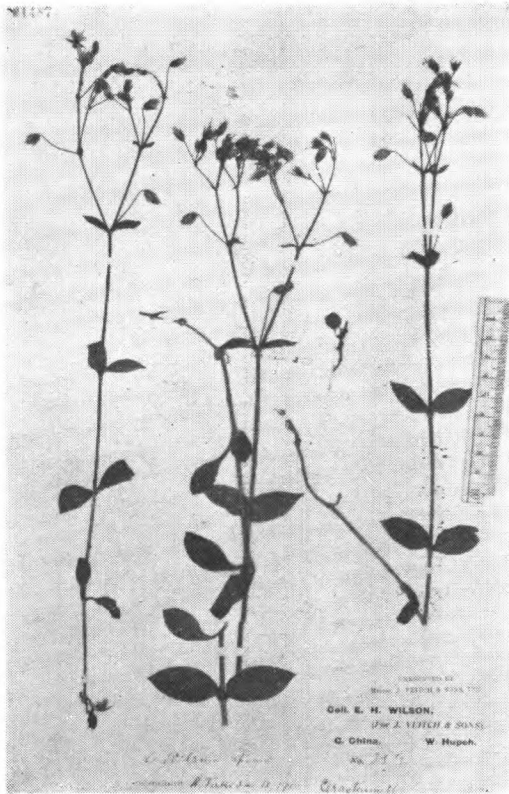


Cerastium rubescens Mettfield
H.-M. 3274. 云南永北永宁間
(新营盘)

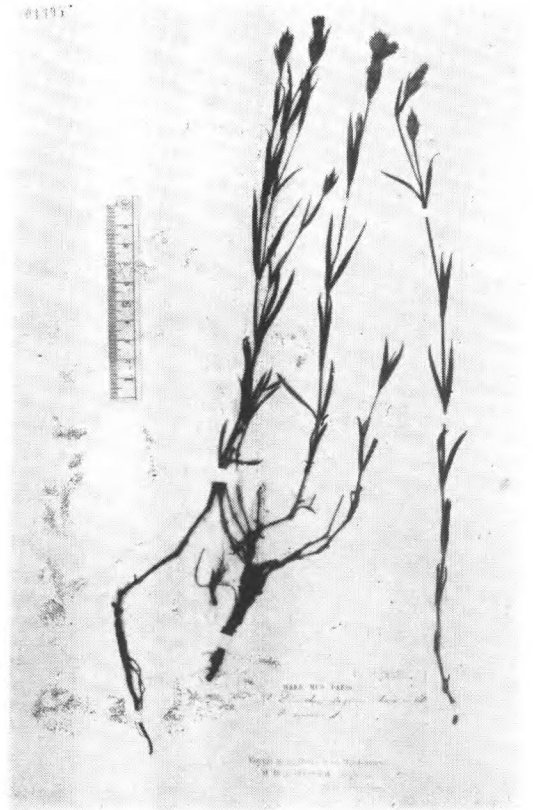


Cerastium subpilosum Hay.
T. Kawakami et U. Mori (isotype)
无号, 台湾摩利嵩山

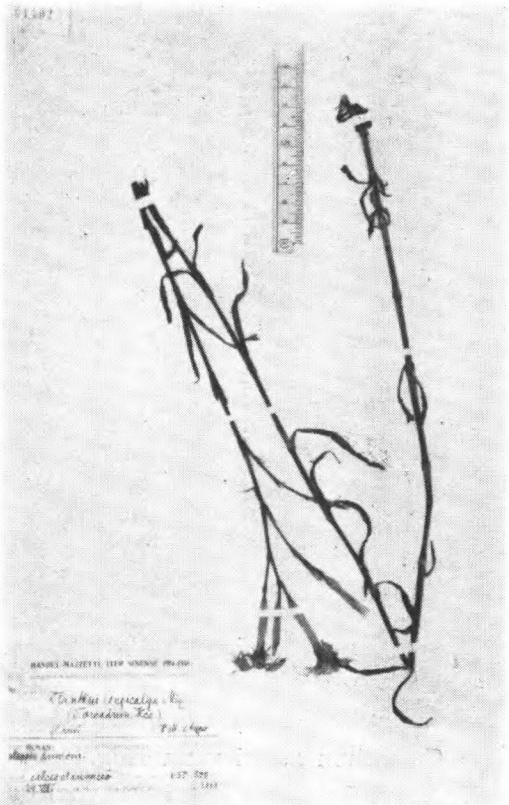
石竹屬 *Dianthus* L.



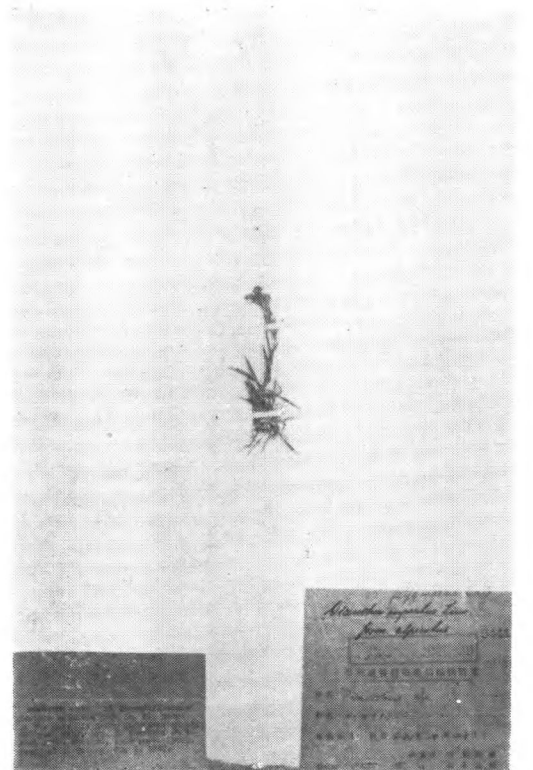
Cerastium Wilsoni Takeda
Wilson 259 (type.) 湖北西部



Dianthus chinensis L.
Bohnh of 92 东北兴凯湖



Dianthus longicalyx Miq.
H.-M.: 12586 湖南新化錫礦山

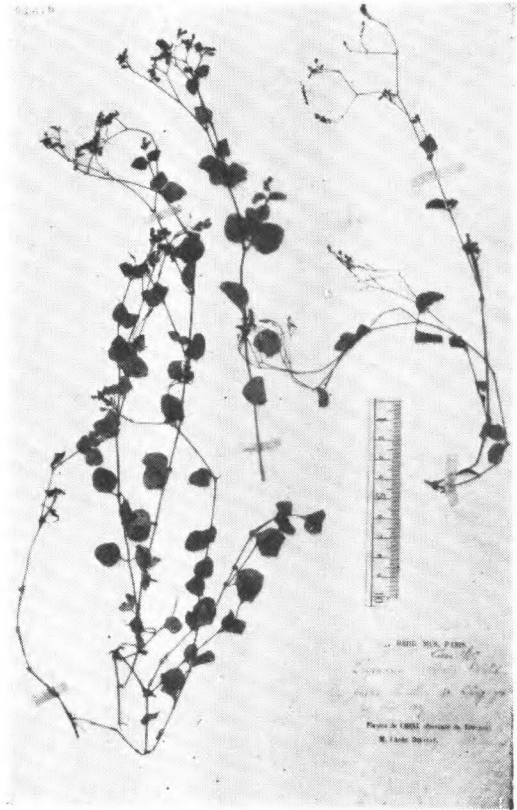


Dianthus pygmaeus Hay.
T. Kawakami et U. Mori, 2259, (isotype.)
台灣摩利嵩山

荷蓮豆菜屬 *Drymaria* Willd.

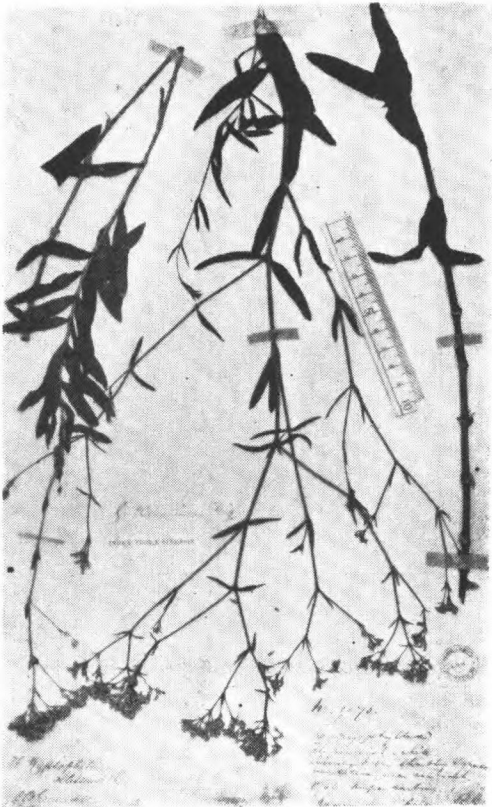


Dianthus superbus L.
Hancock 40 浙江天台山, Faber 357 浙江
宁波



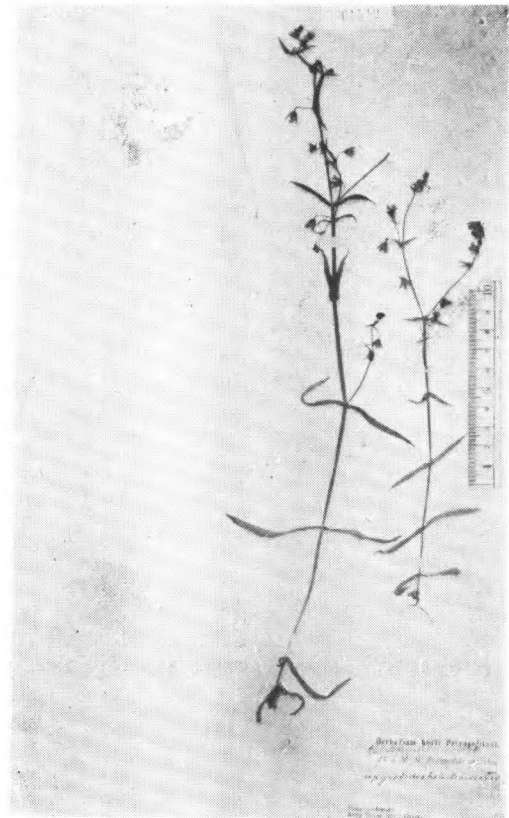
Drymaria cordata (L.) Willd.
Delavay 云南姜营

絲石竹屬 *Gypsophila* L.



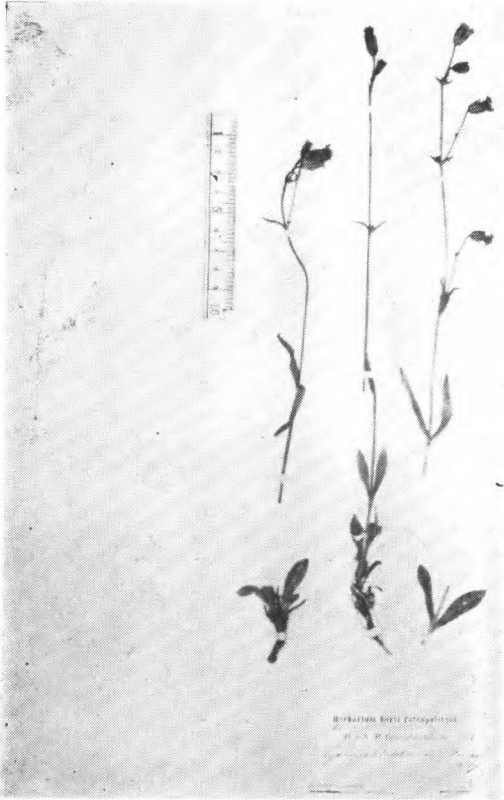
Gypsophila Oldhamiana Miquel.
Oldham 76 (cotype.) 朝鮮群島

Lepyrodiclis Fenzl.



Lepyrodiclis crassiuscula (Camb.) Wu
Przewalski. 甘肃

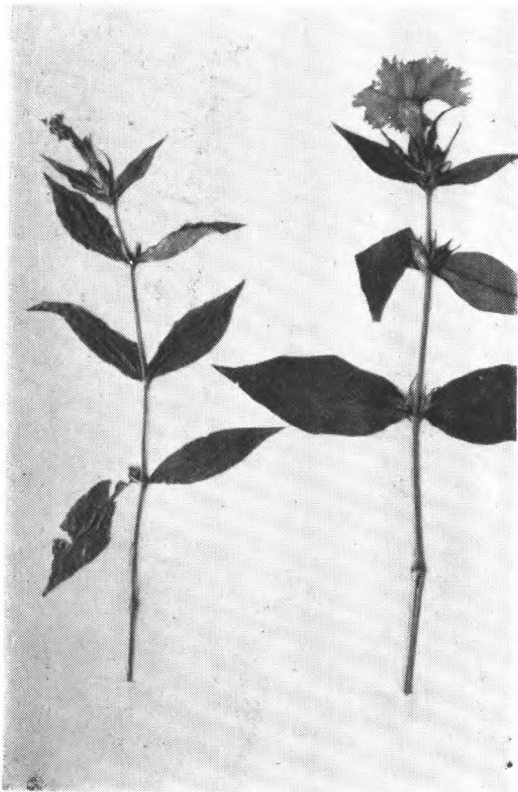
剪秋罗属 *Lychnis* L.



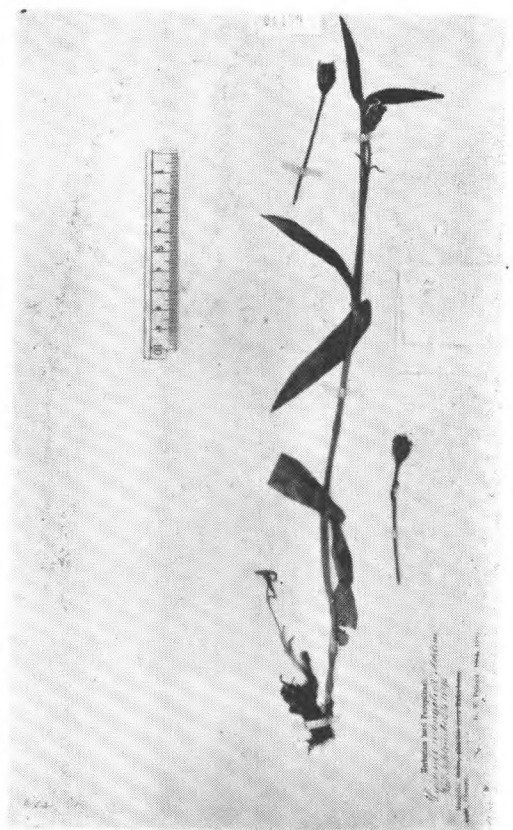
Lychnis alasahanica Maxim.
Przewalski (cotype.) 甘肃贺兰山



Lychnis Bungeana (D. Don) Fisch.
Bunge (type.) 北京



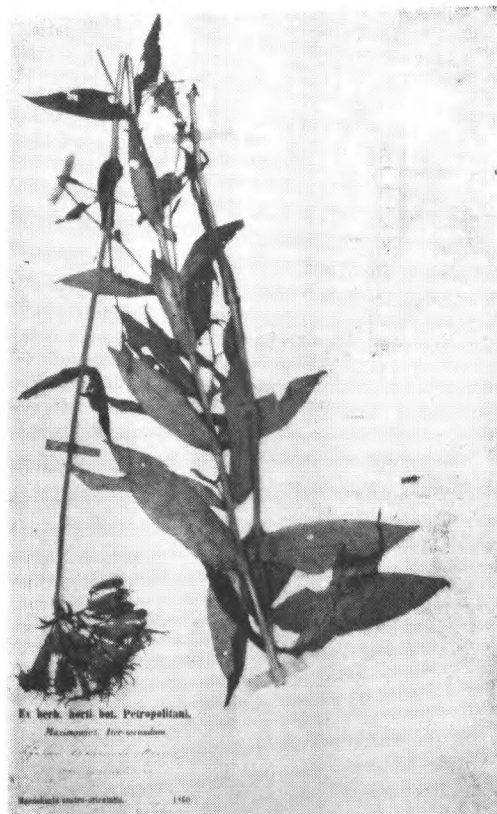
Lychnis coronata Thbg.
Thbg. 日本 (type.)



Lychnis mongolica Maxim.
Potanin (cotype) 蒙古 Changai



Lychnis saxatilis Turcz.
Turcz. (cotype) 伯力



Lychnis alashanica Maxim.
Maxim. (cotype) 东北 (东南)

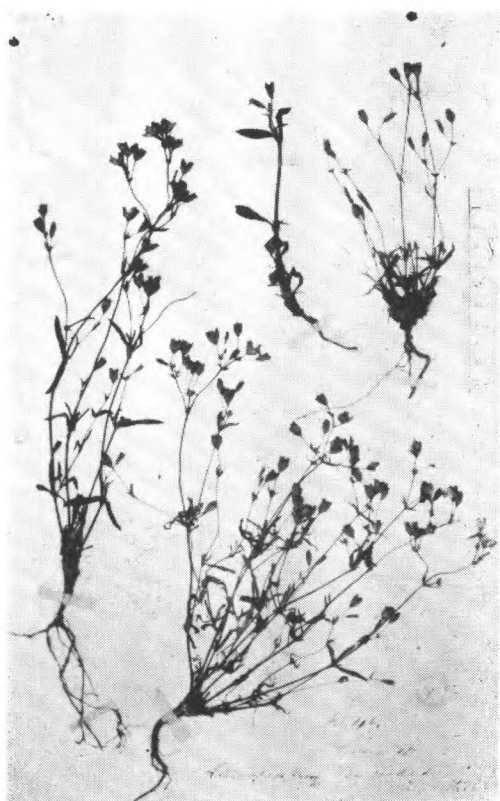
女婁菜屬 *Melandryum* Roehl.



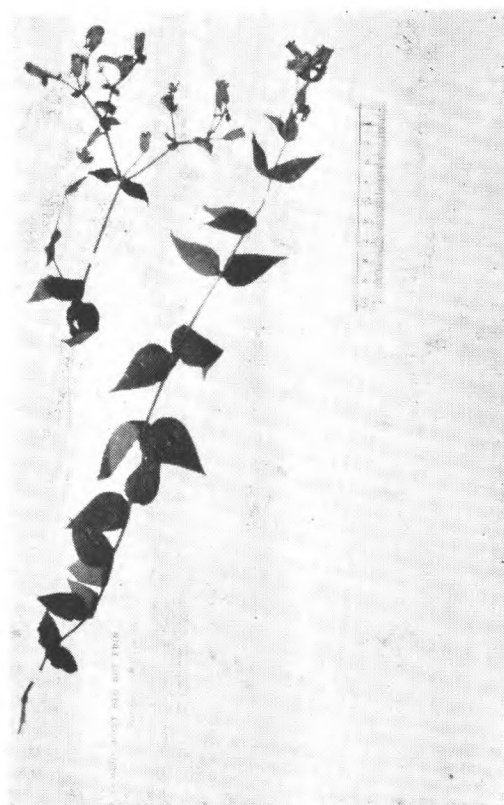
Melandryum adenanthum (Fr.) H.-M.
Delavay 1910. (cotype) 云南浪穹黑山門



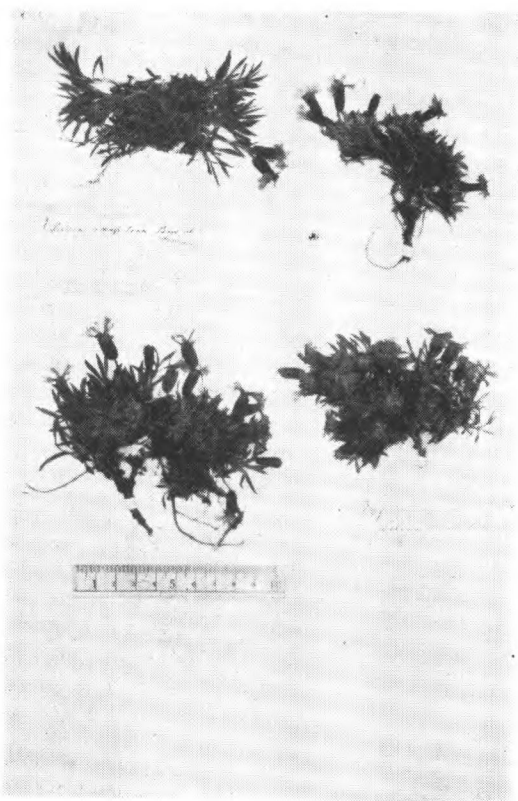
Melandryum afracastareum (Diels)
H.-M.
Forrest 6722 (cotype) 云南



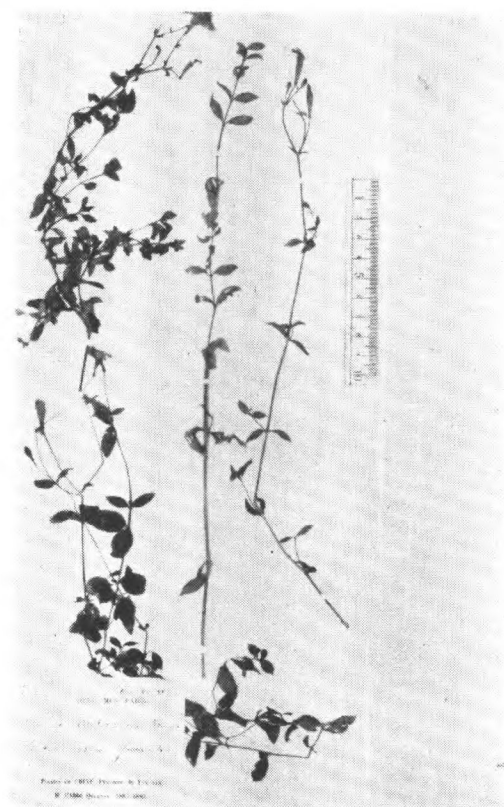
Melandrium apricum Rohrb.
Oldham 46 (cotype.) 朝鮮



Melandryum asclepiadea Fr.
Forrest 4308. 云南大理



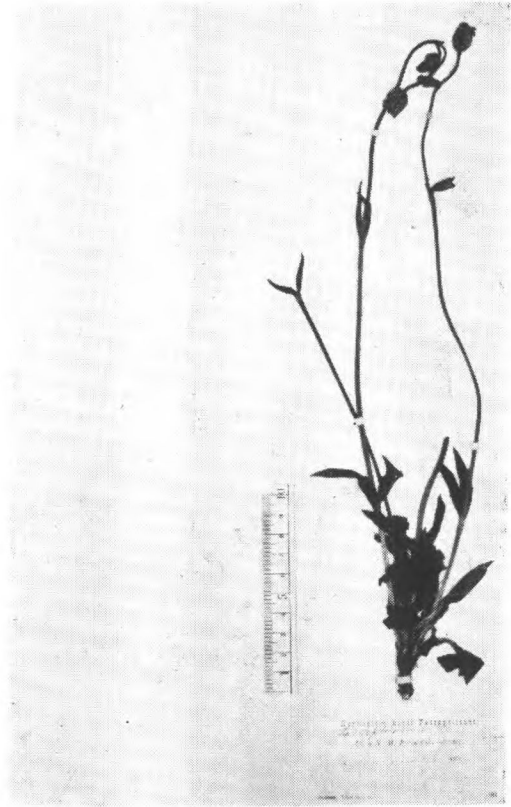
Melandryum caespitosum (Bur. et Fr.)
Wills. A. E. Pratt 537, 559 西康打箭爐



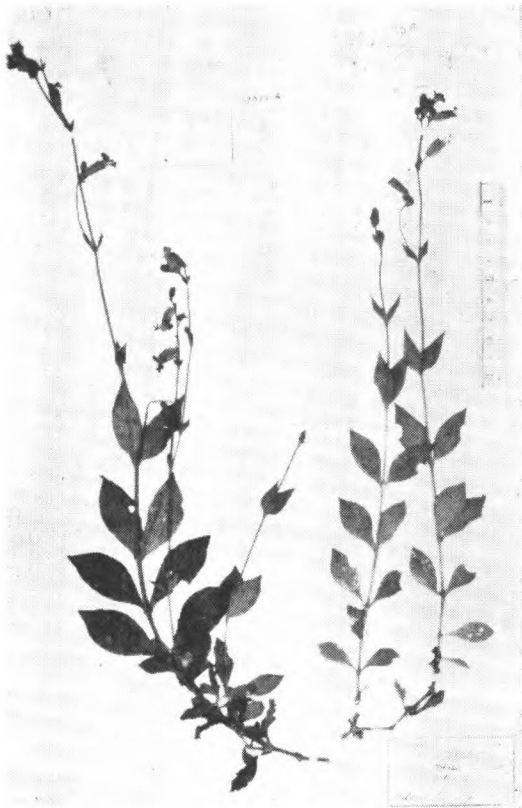
Melandryum cardiopetalum (Fr.) H.-M.
Delavay 1119 (cotype.) 云南鹤庆



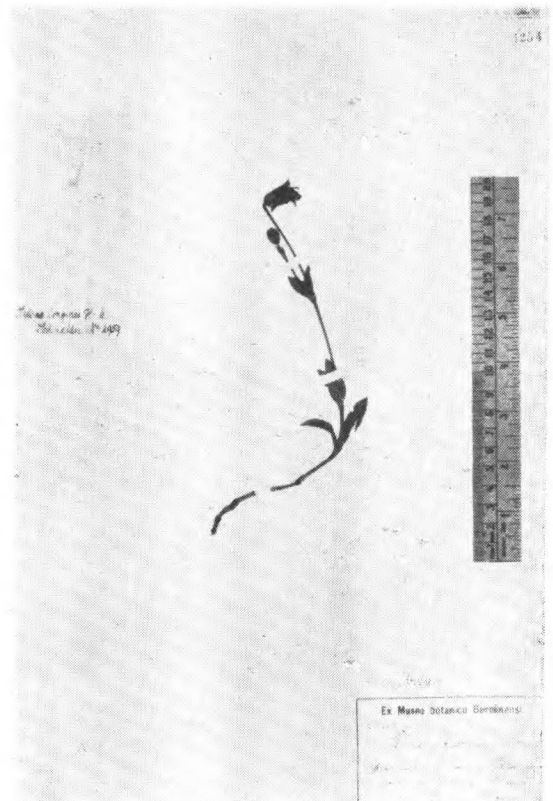
Melandryum Delavayi (Fr.) H.-M.
Delavay 767 (cotype.) 云南浪穹黑山門



Melandryum glandulosum (Maxim.)
Wils.
Przewalski (1884) 西藏北部



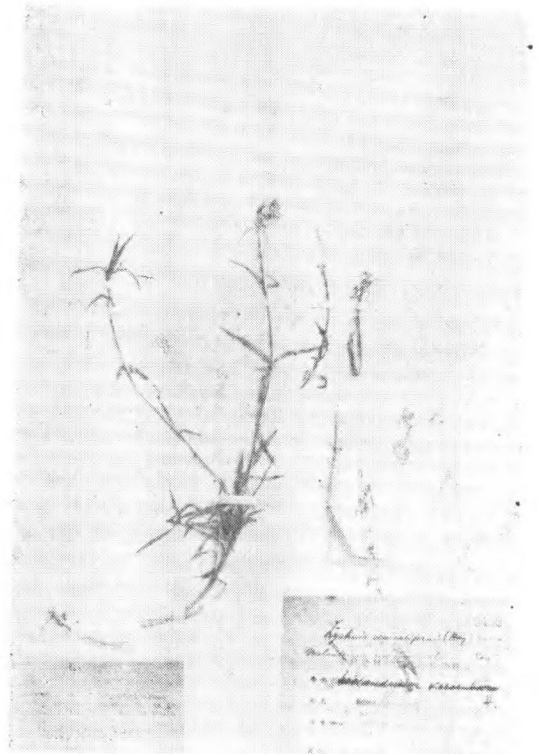
Melandryum lankongense (Fr.) H.-M.
Henry 9625, A. 云南(丽江浪、盐丰)



Melandryum longipes H.-M.
Schneider 2147 云南丽江



Melandryum melananthum (Fr.) H.-M.
Delavay 3239 云南鹤庆



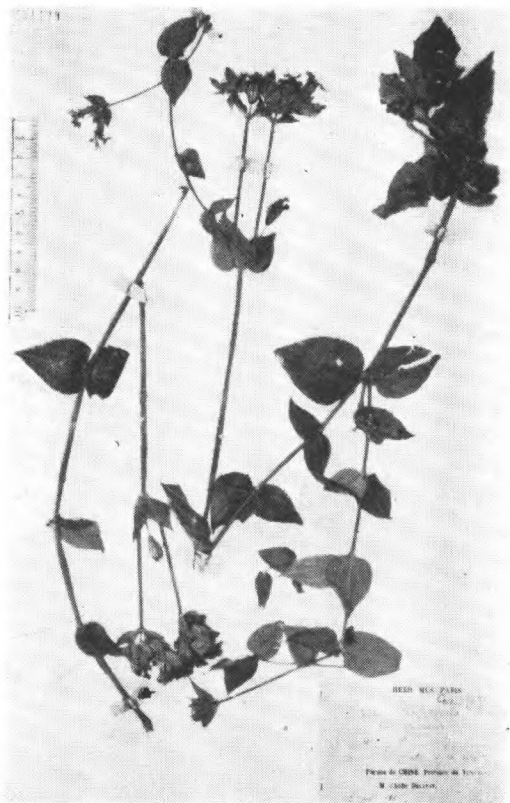
Melandrium morrisonmontanum Hay.
S. Sasaki 无号 (isotype.) 台湾摩利 嵩山



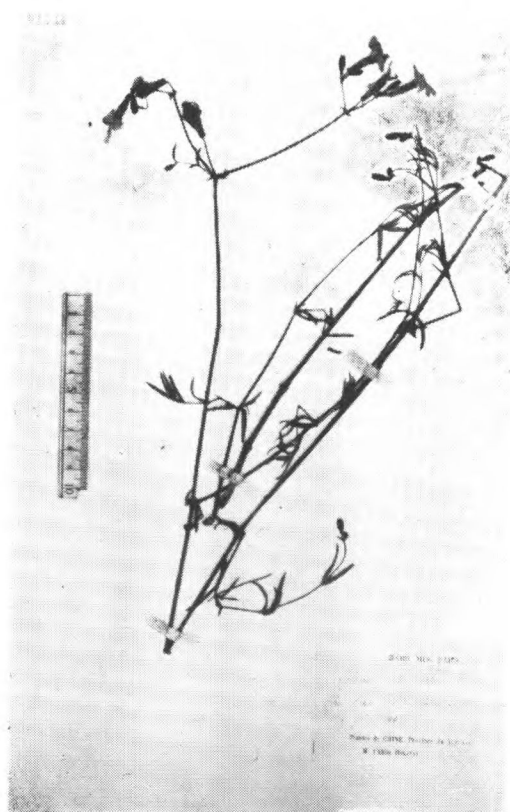
Melandryum napuligerum (Fr.) H.-M.
Delavay 云南



Melandrium apetalum (L.) Fenzl.
Giraldi 陕西太白山



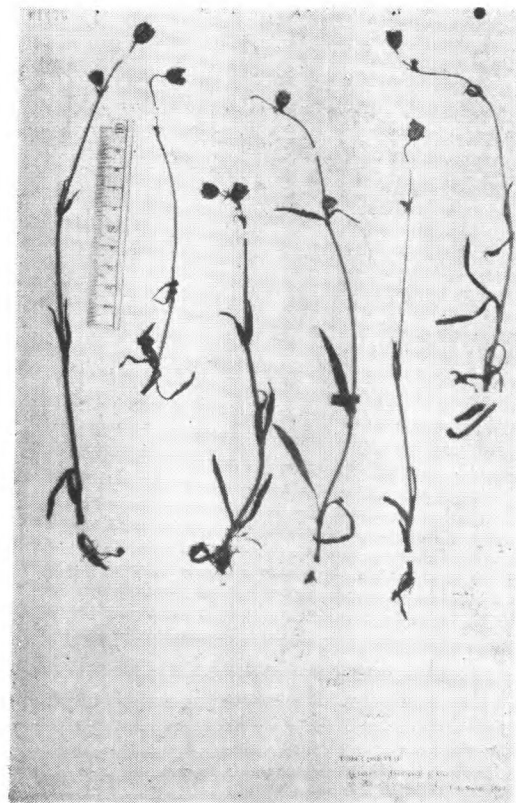
Melandryum platyphyllum (Fr.) H.-M.
Delavay (cotype.) 云南大坪子



Melandryum rubicundum (Fr.) H.-M.
Delavay (cotype.)
云南大坪子 Che-tcho-tze



Melandryum scopulorum (Fr.) H.-M.
Delavay 123 云南大理苍山



Melandryum Souliei Wills.
Soulie 820 (cotype.) 西康打箭炉

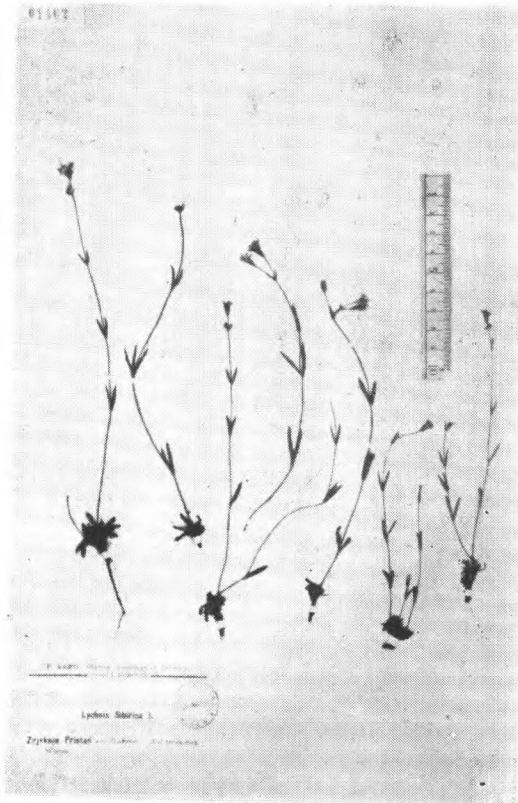


Melandryum viscidulum (Bur. et Fr.) Williams
Forrest 7809 云南



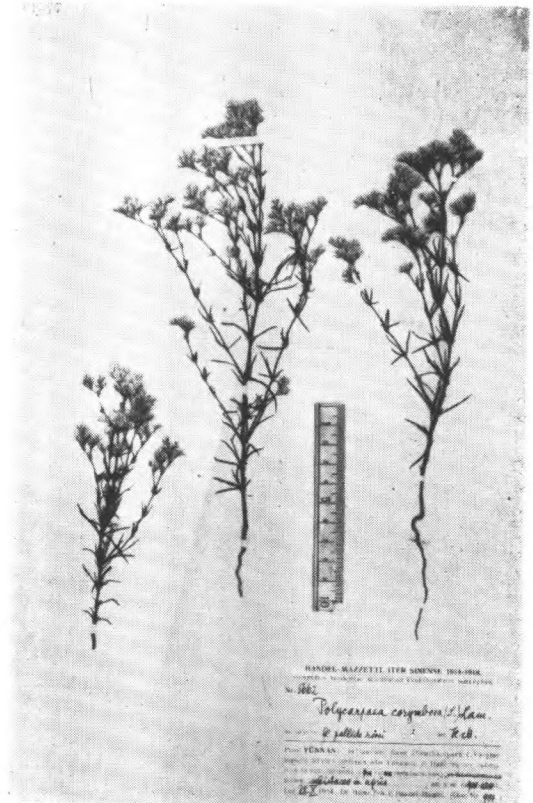
Melandryum viscidulum (Fr.) Williams
var. *szechuenense* (Wills.) H.-M.
J. A. Soulie 111 (type.) 西康打箭炉

Moehringia L.



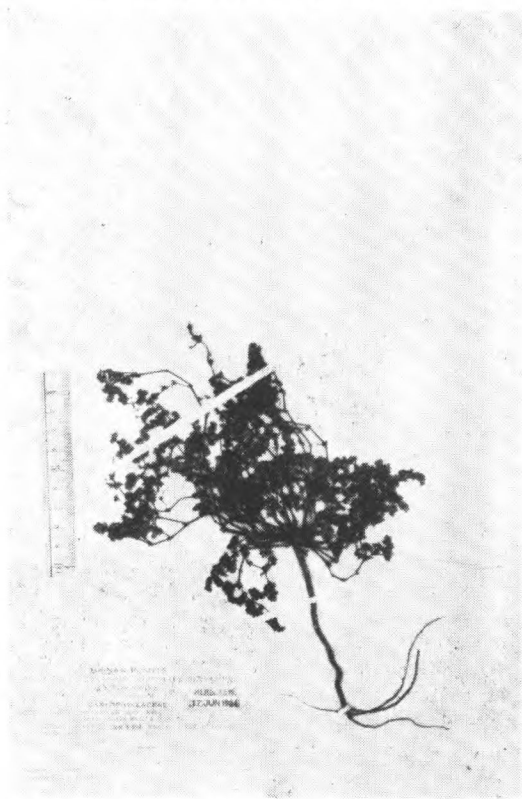
Lychnis sibirica L.
Karo.

白鼓釘屬 *Polycarpaea* Lamark.



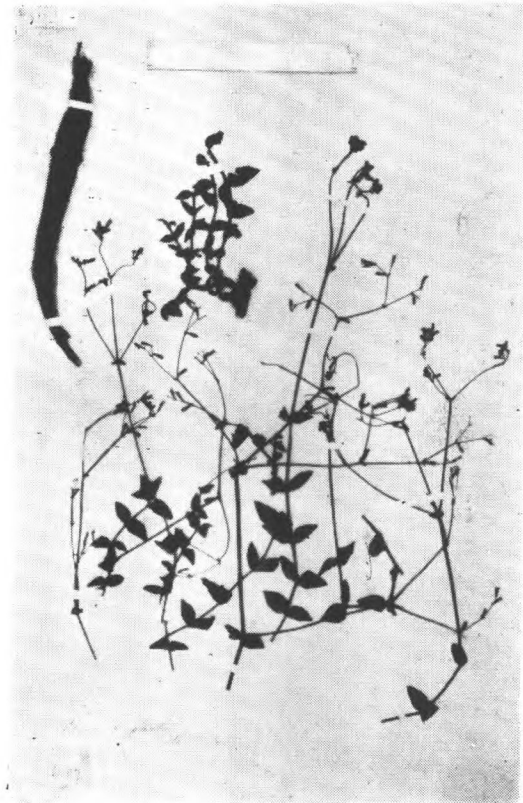
Polycarpaea corymbosa (L.) Lamarck
H.-M. 5662 云南昆明金沙江边

多莢草屬 *Polycarpon* L.



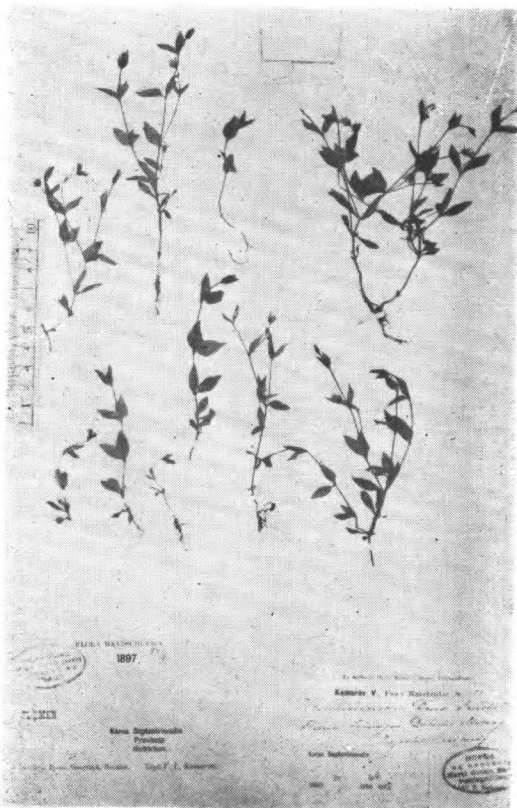
Polycarpon indicum (Retz.) Merrill
F. A. McClure 3298. 海南定安河

金鐵鎖屬
Psammosilene W. C. Wu et C. Y. Wu.



Psammosilene tunicoides W. C. Wu et
C. Y. Wu.
Forrest 6407 云南丽江 (paratype.)

假繁縷屬 *Pseudostellaria* Pax

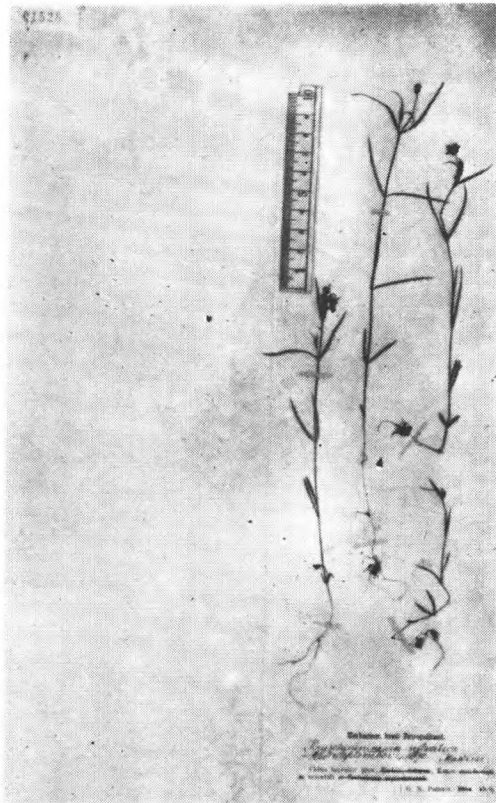


Pseudostellaria Davidii Pax
Komarov 605 朝鮮 (圖門江)

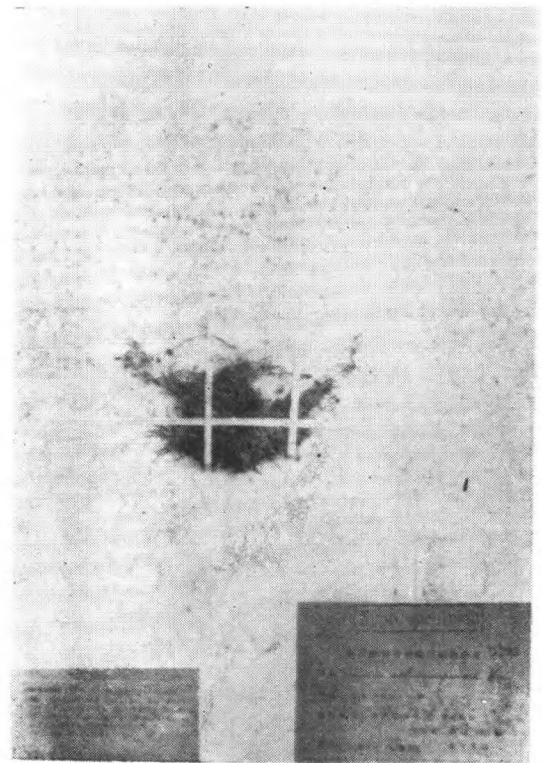


Pseudostellaria heterophylla (Miq.) Pax
Oldham 80 (cotype.) 朝鮮

漆姑草屬 *Sagina* L.

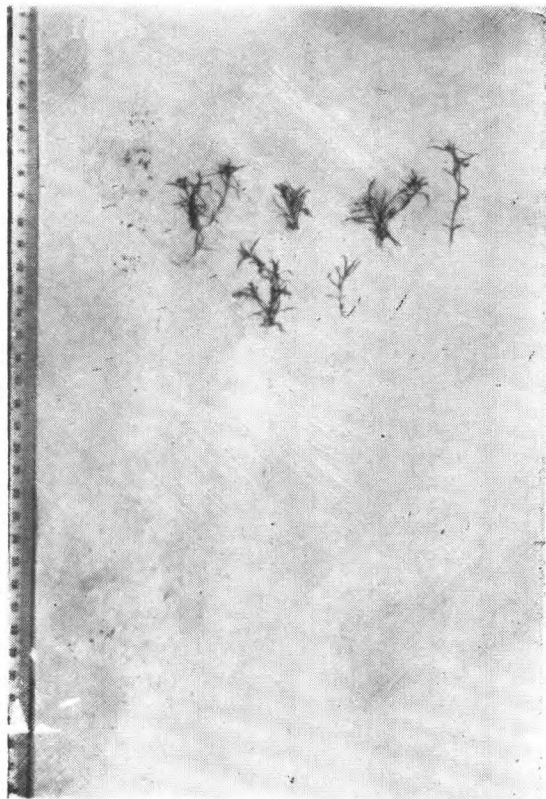


Pseudostellaria sylvatica (Maxim.) Pax
Potanin 1885 甘肃东部

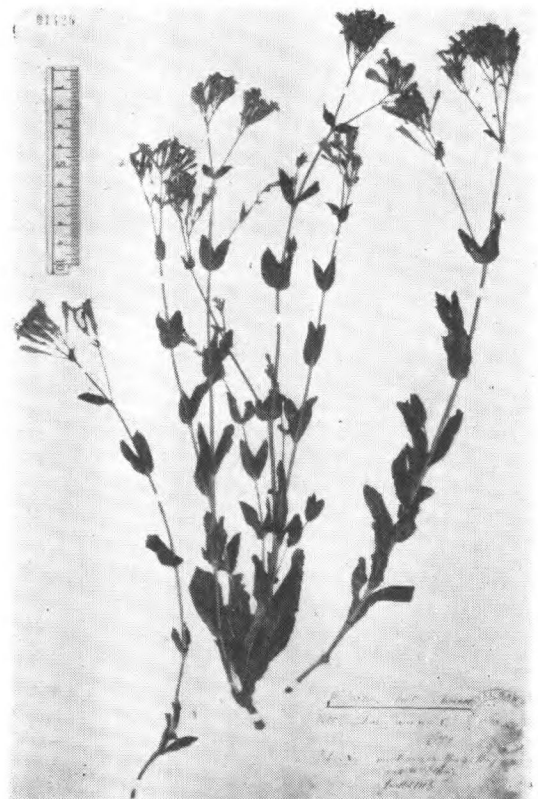


Sagina echinosperma Hay.
S. Sasaki 无号 (iso-syntype.)
台湾摩利嵩山

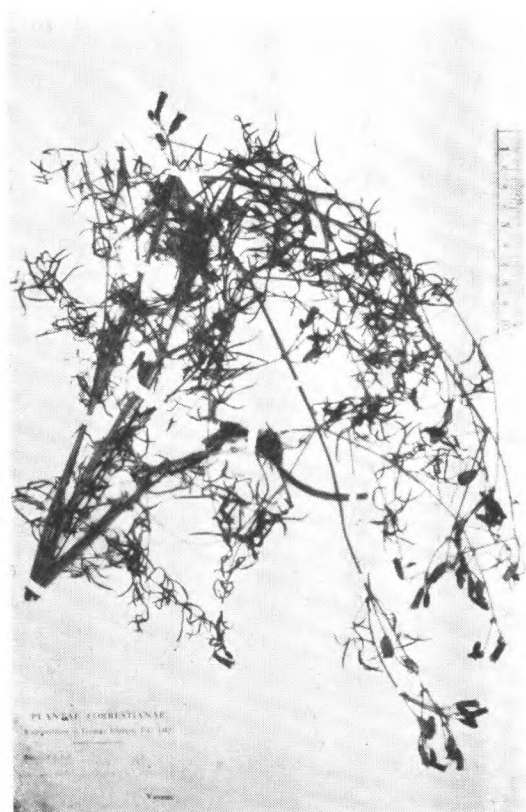
蠅子草屬 *Silene* L.



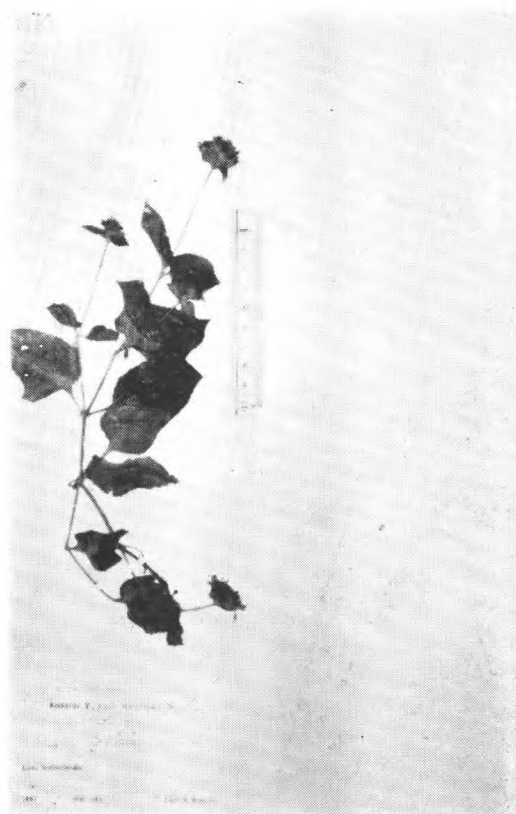
Sagina japonica (Sw.) Ohwi.
Thbg. (type) 日本



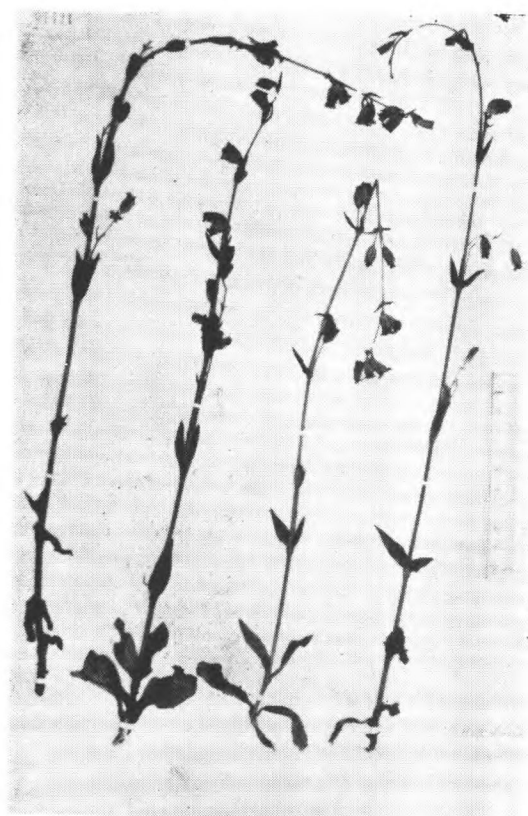
Silene Armeria L.
Serre 1435 北京



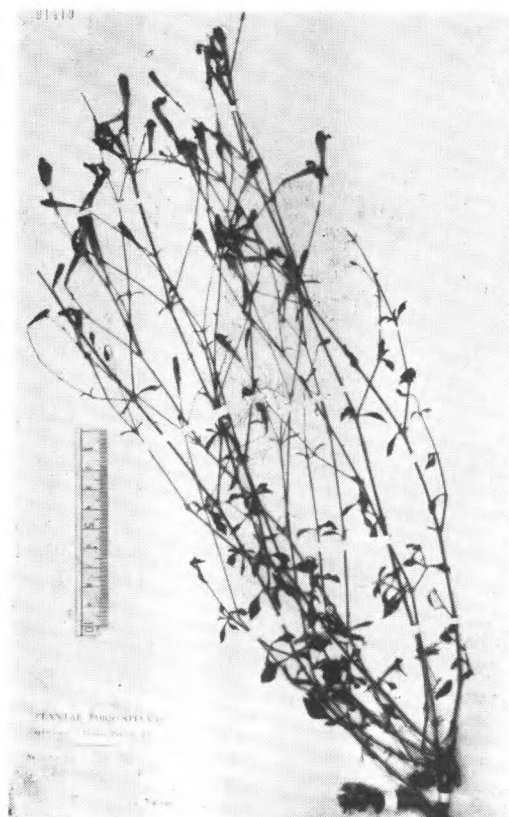
Silene bilingua W. W. Sm.
Forrest 14322 云南白馬山 (cotype)



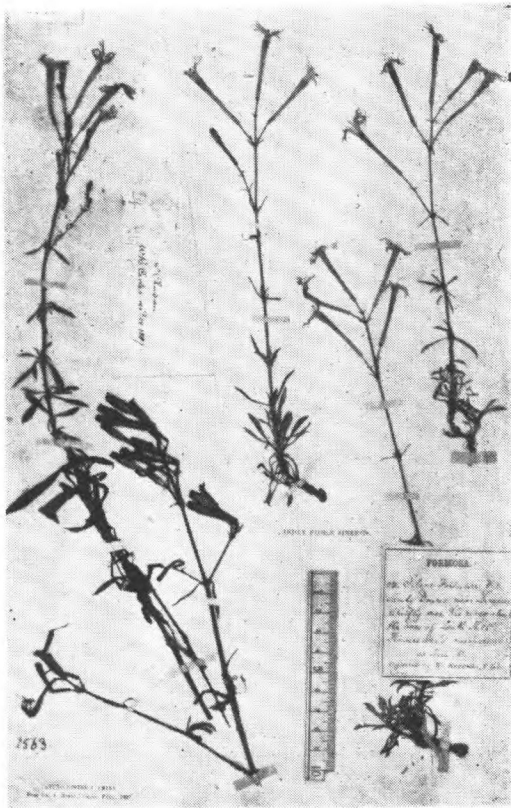
Silene capitata Kom.
V. Komarov 633 (cotype.) 朝鮮北鴨
綠江谷



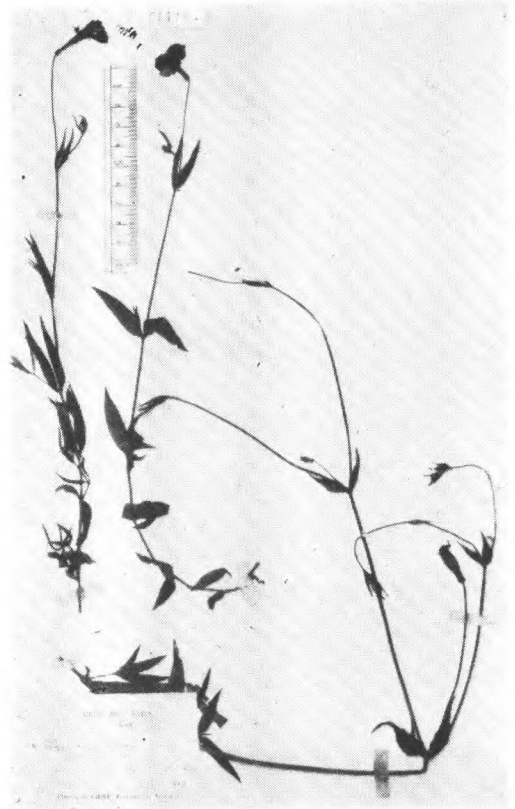
Silene chungtienensis W. W. Sm.
Forrest 11270 (cotype) 云南西北中甸



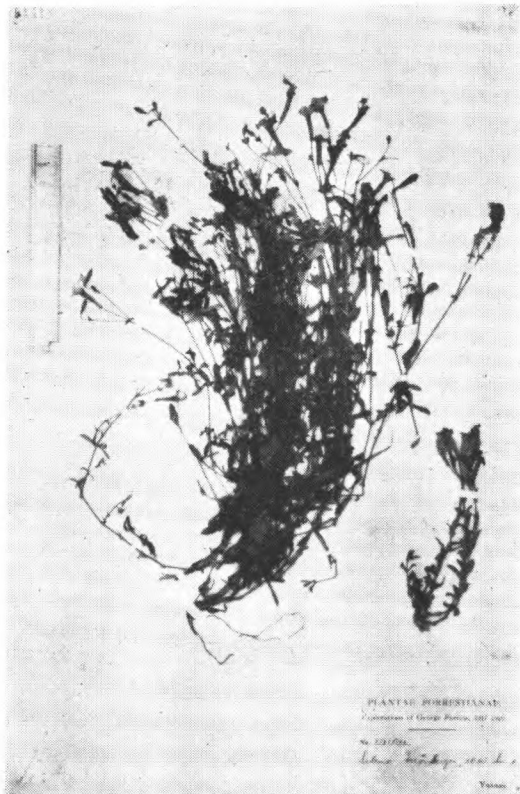
Silene esquamata W. W. Sm.
Forrest 14609 (cotype.) 云南瀾滄江



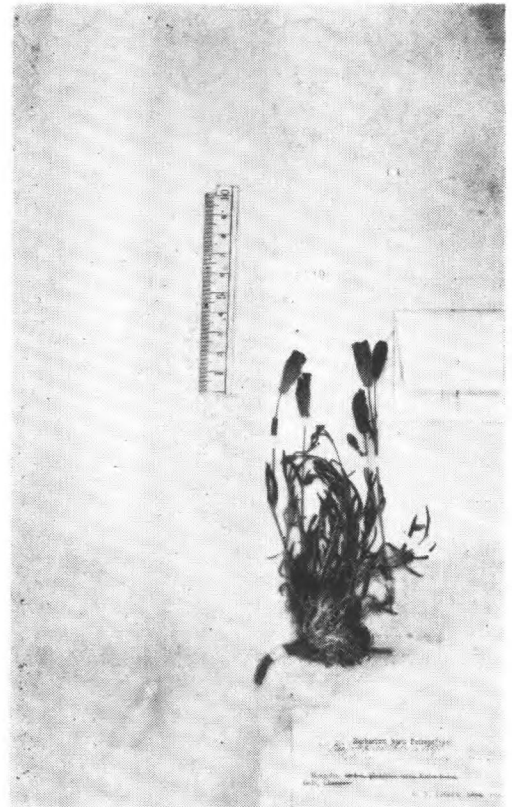
Silene Fortunei Visiani
Henry 2563, 湖北巴东 Hancock 23,
Carles 24. Chusan



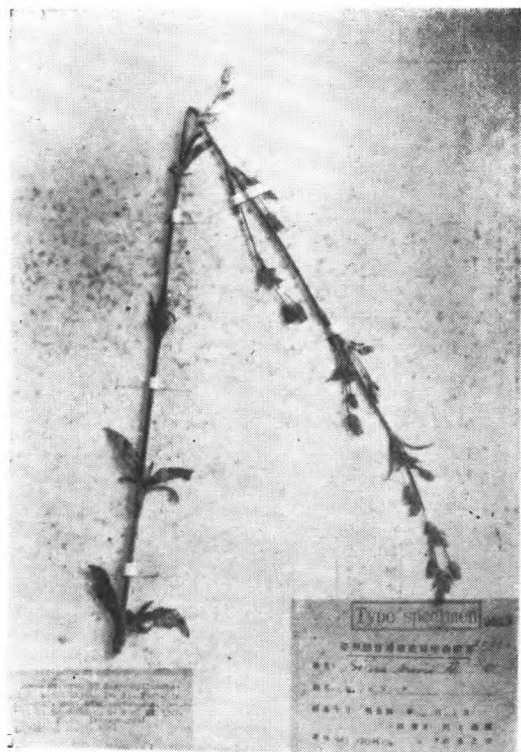
Silene grandiflora Fr.
Delavay 76. (cotype) 云南鹤庆



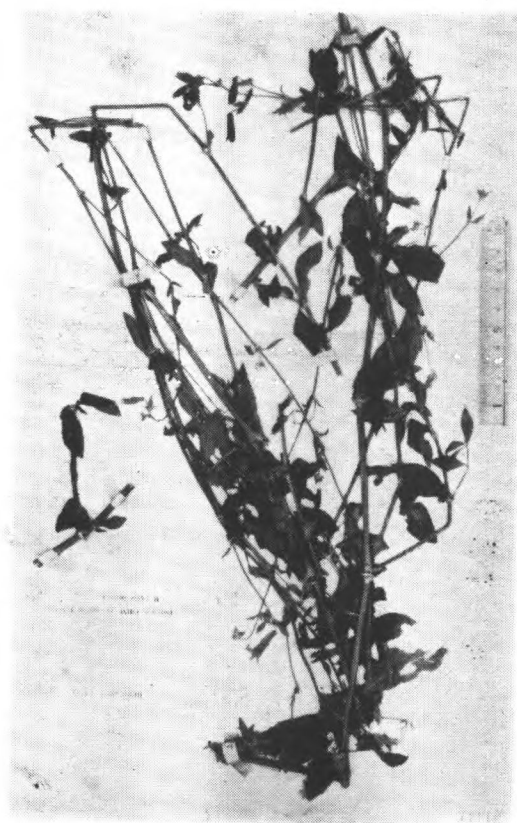
Silene Monbeigii W. W. Sm.
Forrest 14104 (cotype.) 云南澜沧



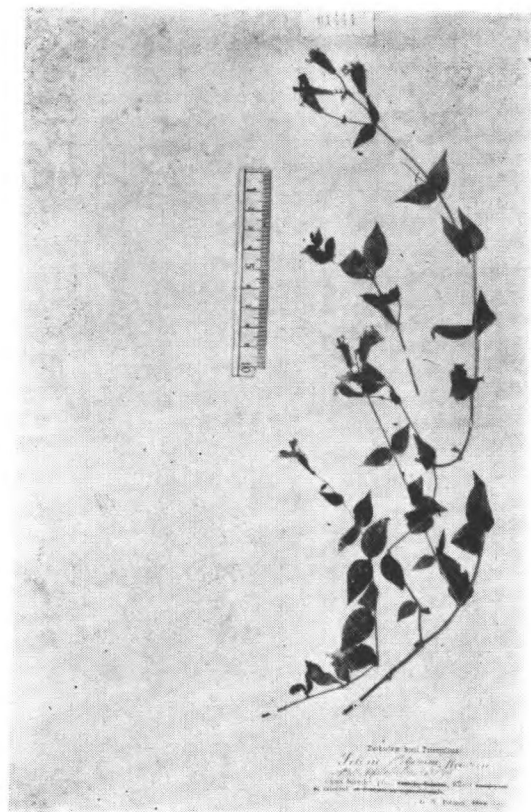
Silene mongolica Maxim.
G. N. Potanin 1885 (cotype.) 蒙古戈壁



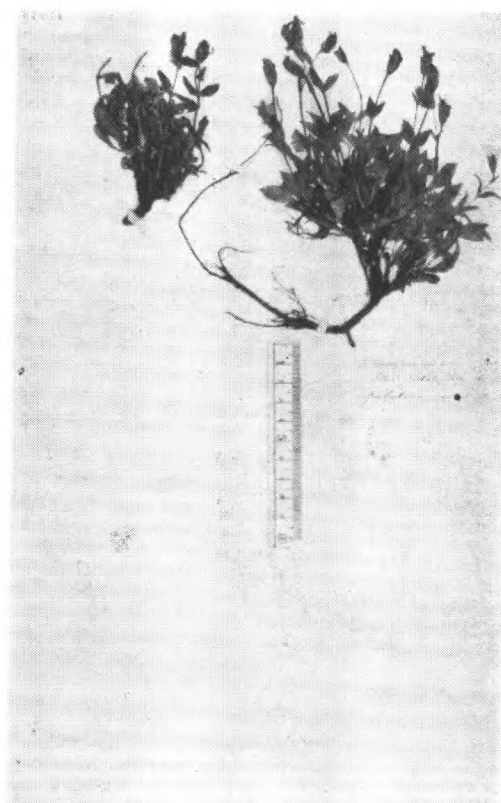
Silene Morii Hay.
Kawakami et U. Mori 3567 (iso-syntype)
台湾



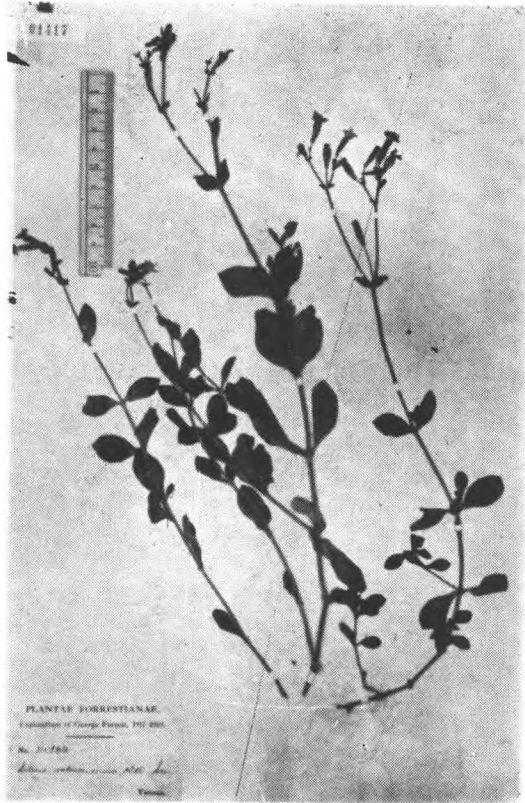
Silene otodonta Fr.
Delavay 1905 (cotype) 云南大坪子



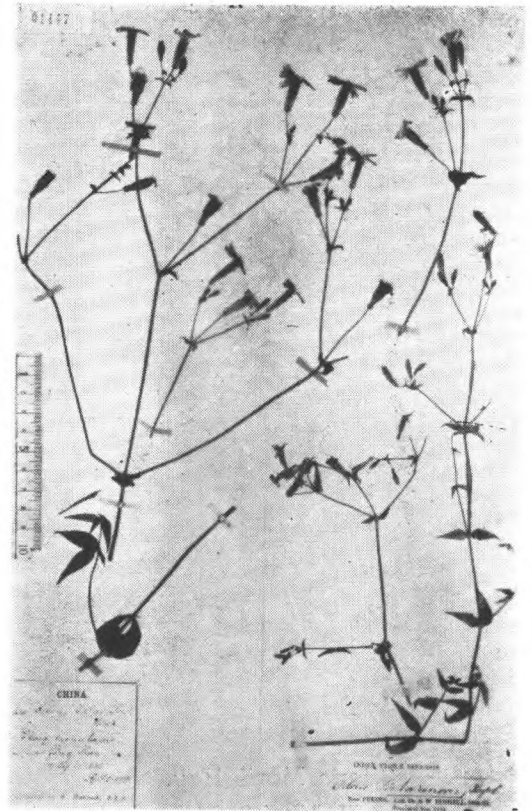
Silene Potani Maxim.
Potanin (1885) (cotype) 甘肃东部



Silene sachalinensis Fr. Schmidt
Fr. Schmidt (cotype) Sachalin



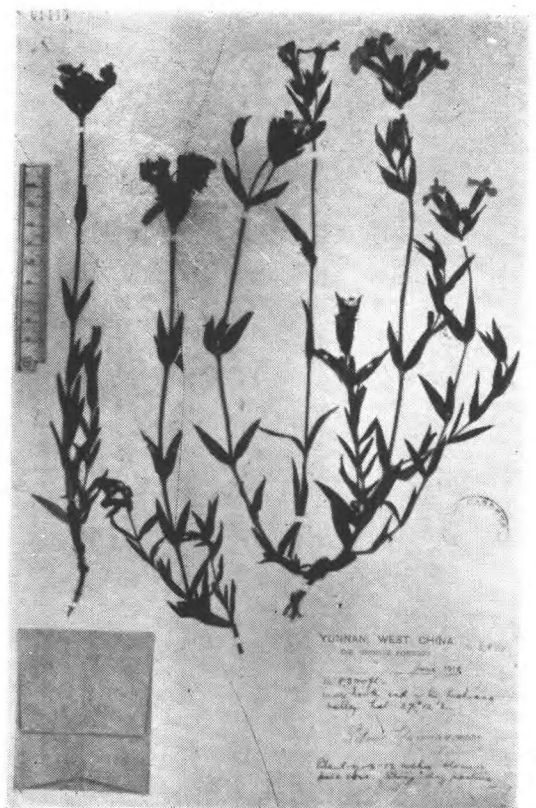
Silene salweenensis W. W. Smith
Forrest 14764 (cotype.) 云南



Silene Tatarinowii Regel
Hancock 64 北京妙峰山



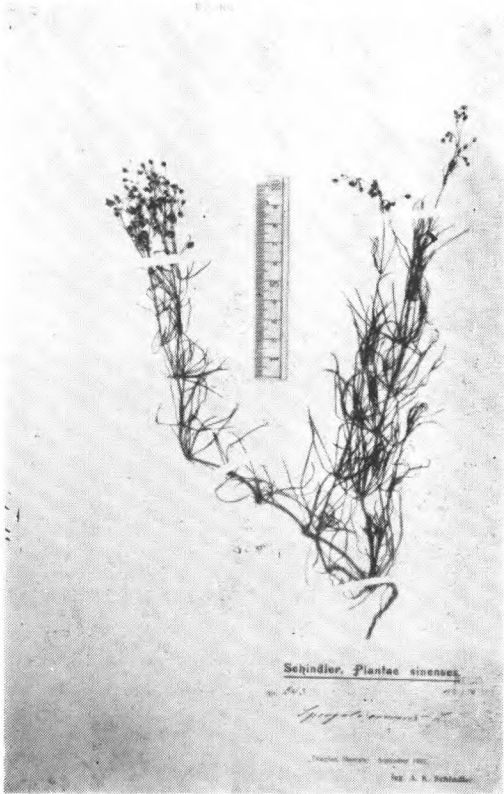
Silene tenuis Willd.
Delavay 125 (cotype.) 云南鹤庆



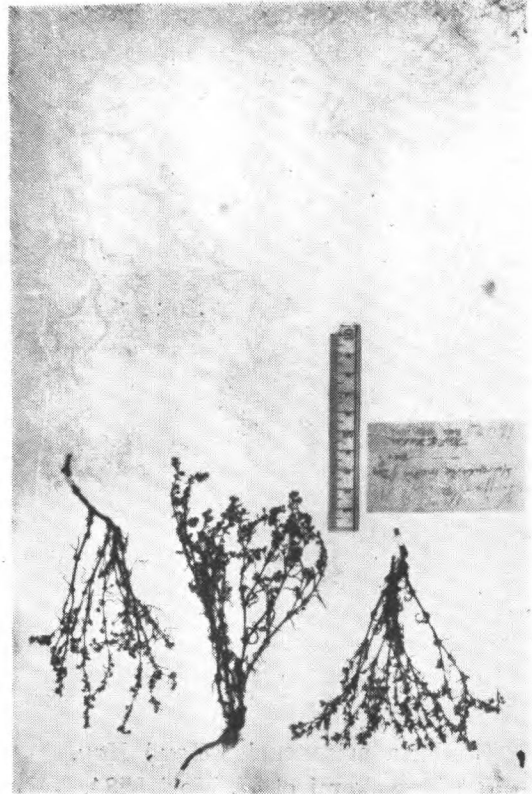
Silene yunnanensis Fr.
Forrest 5895 云南丽江谷北端

大爪草屬 *Spergula* Linn.

擬漆姑屬 *Spergularia* J. et C. Presl.

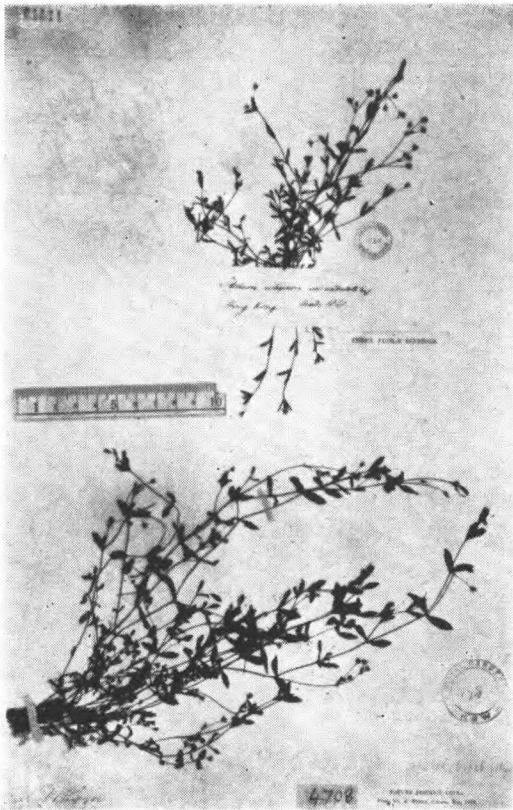


Spergula arvensis L.
Schindler 243 山东青島

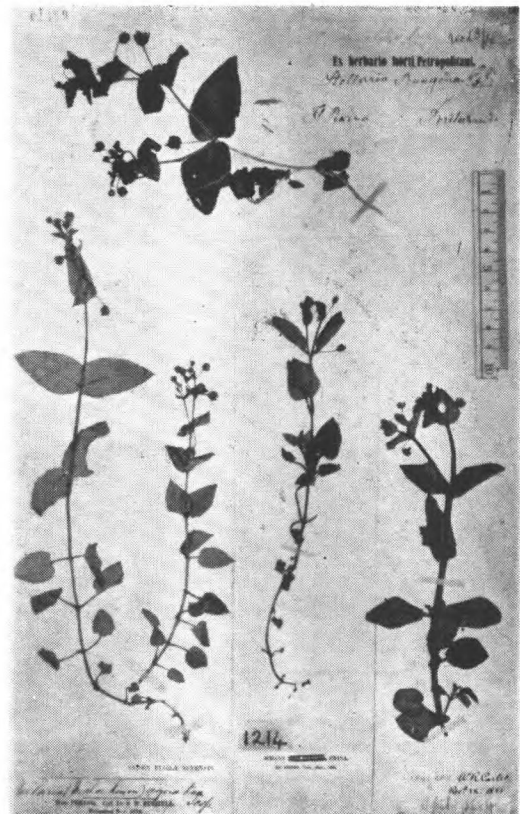


Spergularia salina C. et S.
Faber 浙江宁波

繁縷屬 *Stellaria* L.



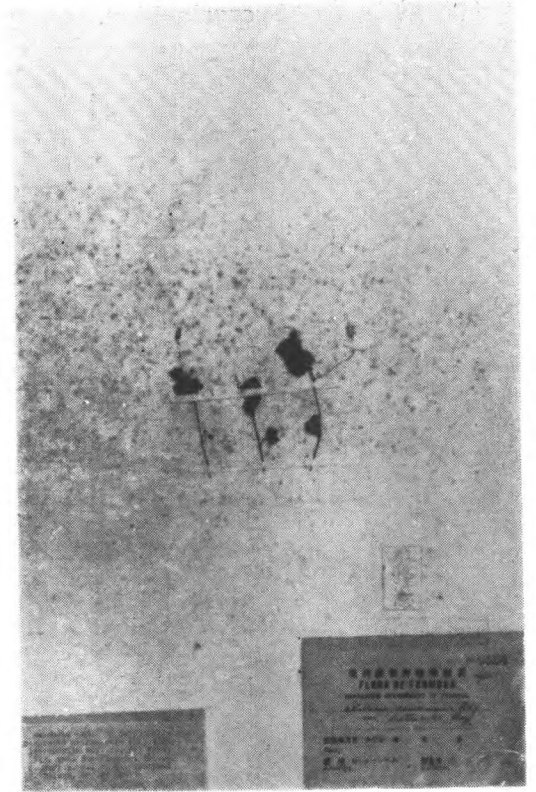
Stellaria alsine Grimm.
Henry 4708 湖北巴东 Hinds 香港



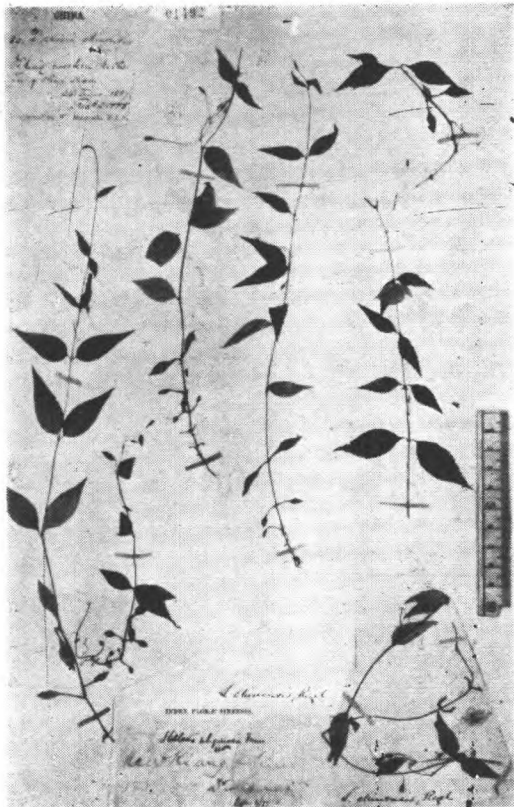
Stellaria aquatica (L.) Scopoli
Bretschneider 95 北京
Henry 1214 湖北宜昌



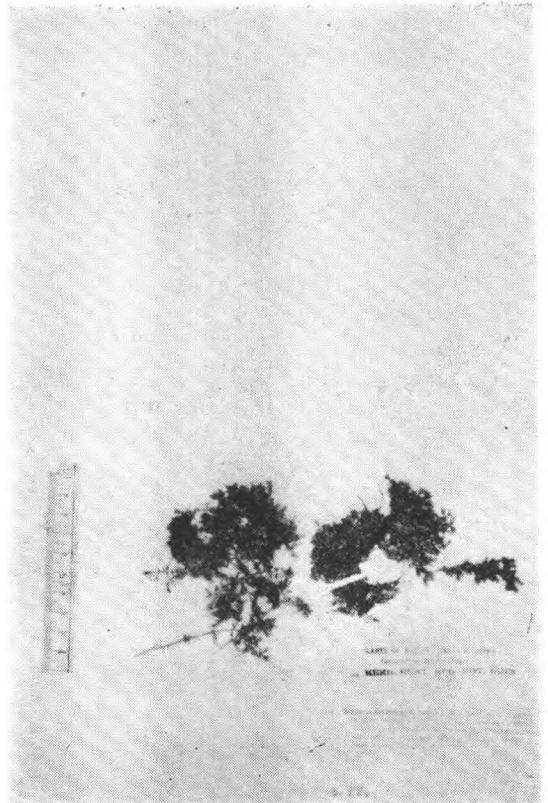
Stellaria arisanensis (Hay.) Hay.
T. Kawakami et U. Mori 3584,
(Merotype.) 台湾阿里山



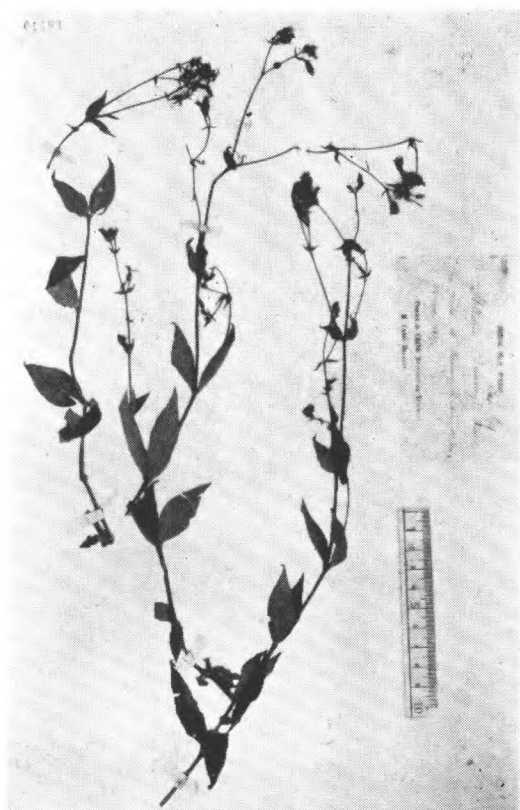
Stellaria arisanensis (Hay.) Hay. var.
leptophylla Hay.
U. Mori 无号 (isotype) Rontabunsan 台湾



Stellaria chinensis Regel.
Hancock 北京西山 Fung Shui Shan,
Shearer 1873 江西九江



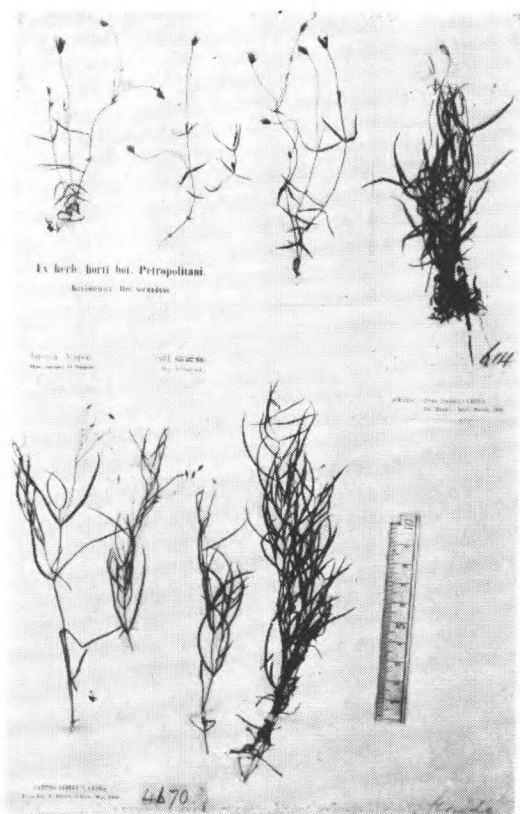
Stellaria decumbens Edgew.
Forr. 20263 云南怒江察瓦龙



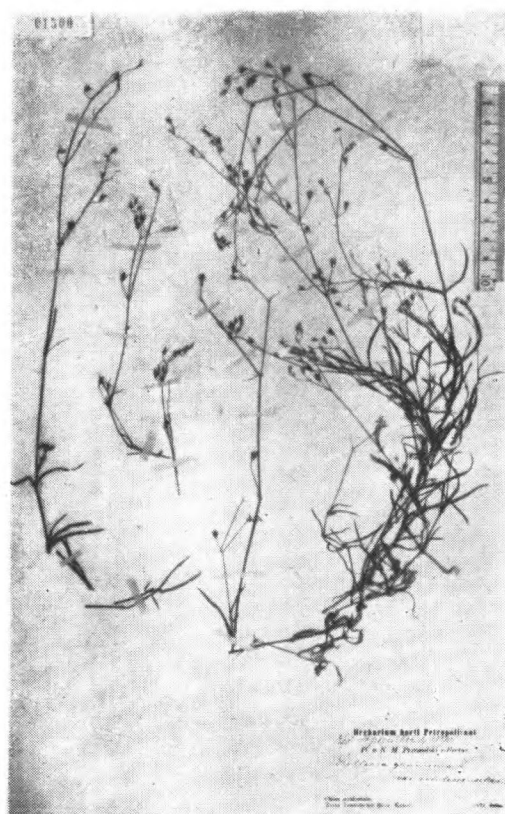
Stellaria Delavayi Fr.
Delavay 3131 (isotype) 云南黄欒坪



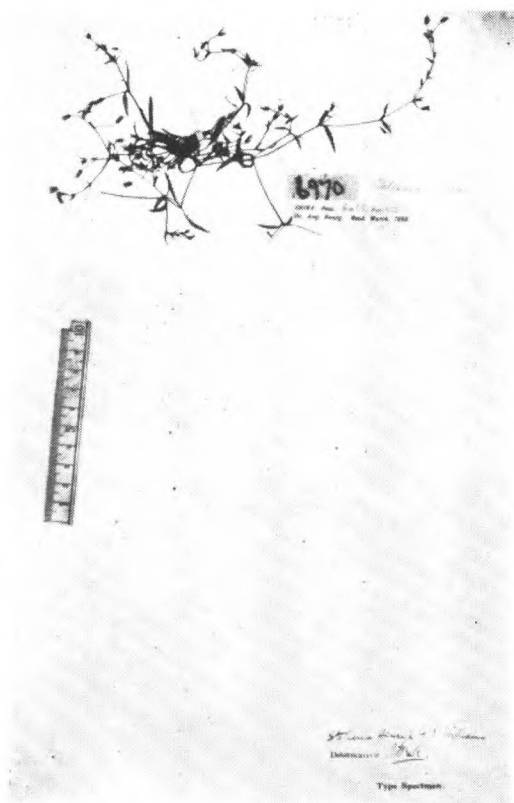
Stellaria dichasioides F. N. Williams.
J. A. Soulie 215 (type.) 西康
(Tongolo-Kiala)



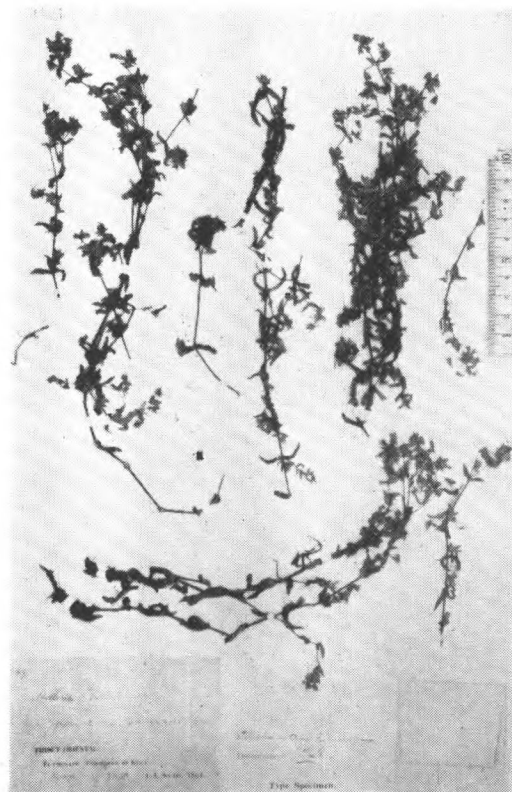
Stellaria florida Fisch.
Henry 614, 湖北宜昌 4670 湖北巴东



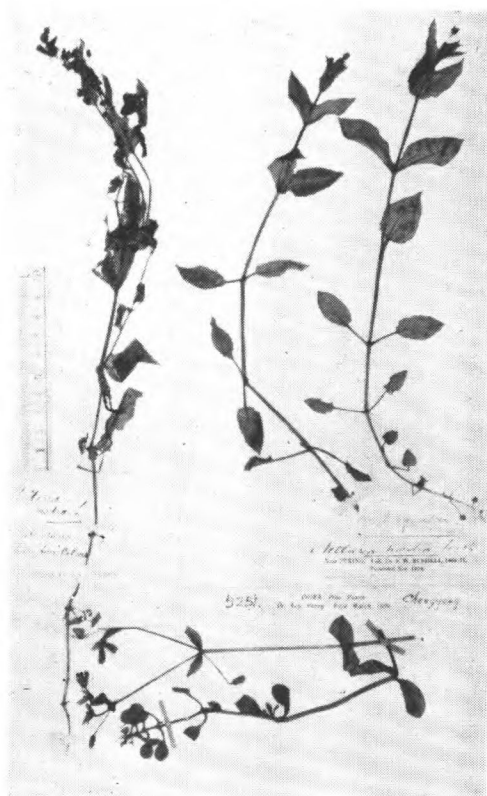
Stellaria graminea L.
Przewalski 1872 (isotype) 甘肃



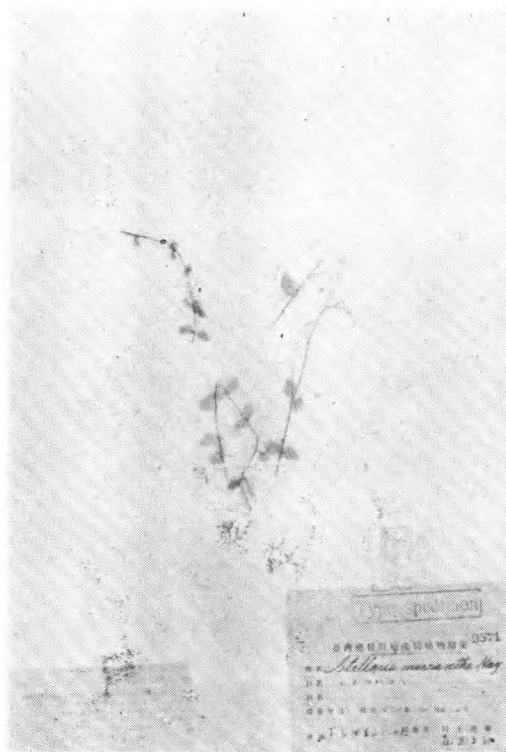
Stellaria Henryi F. N. Williams
Henry 6970 (type.) 湖北



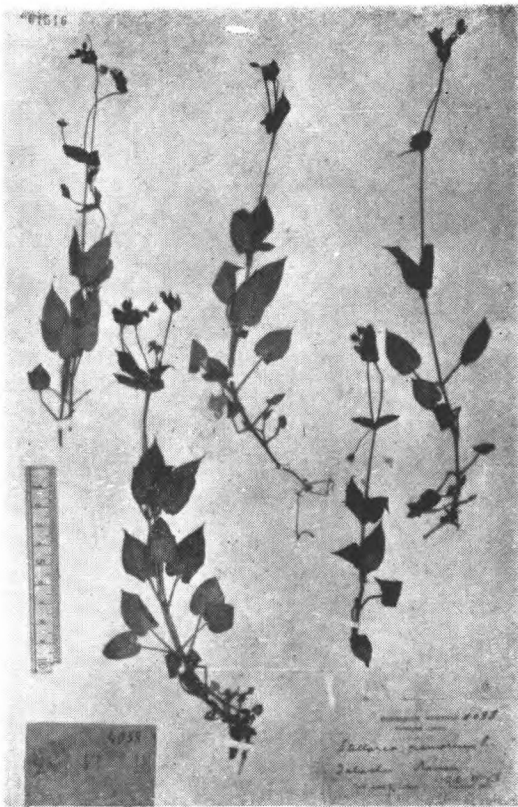
Stellaria infracta Maxim.
Soulie 549 (syntype.) 西康打箭炉



Stellaria media (L.) Cyrillus
Henry 5251 湖北襄阳



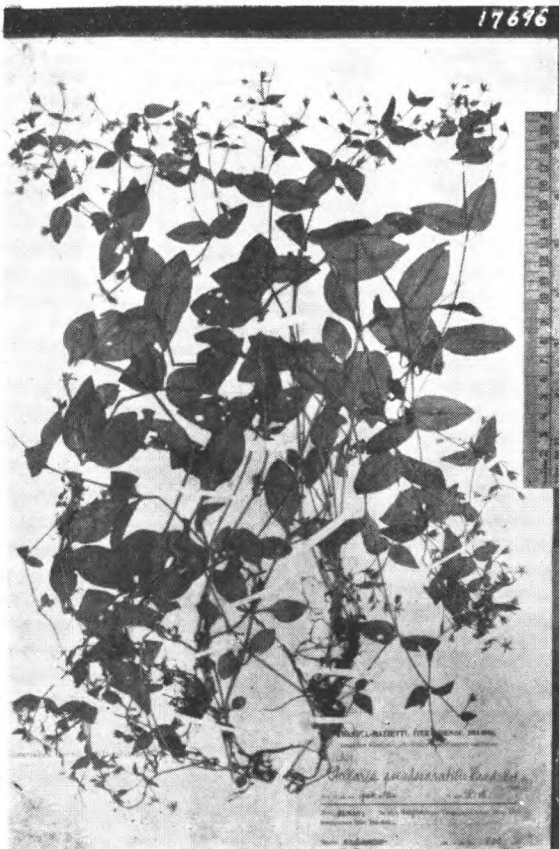
Stellaria micrantha Hay.
T. Kawakami et U. Mori (isotype.)
台湾阿里山



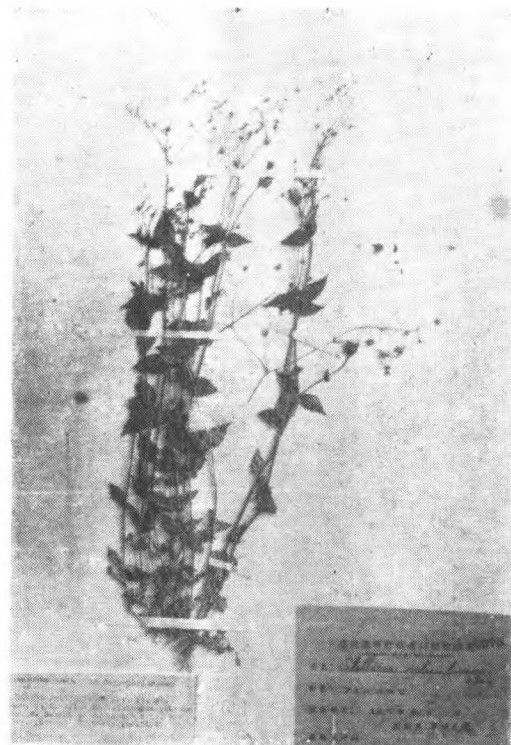
Stellaria nemorum L.
Licent 8038 甘肃 Talachu.



Stellaria pilosa Fr.
Dclavay (isotype.) 云南



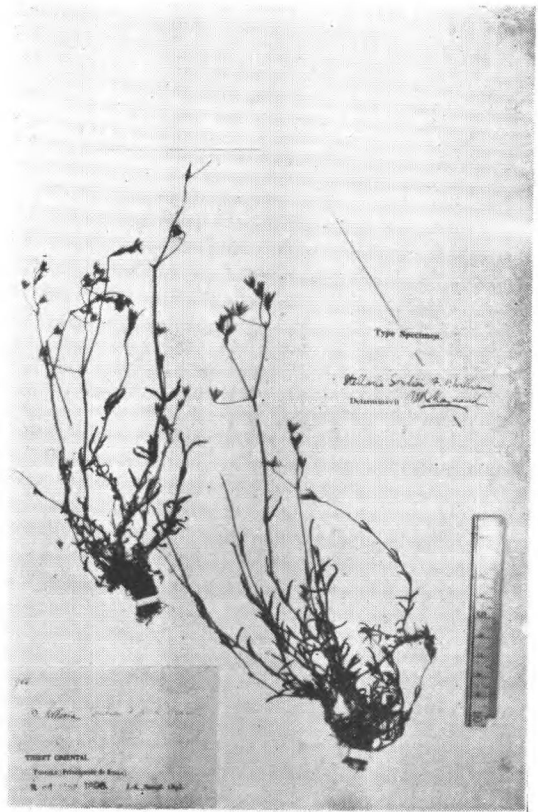
Stellaria pseudosaxatilis H.-M.
H.-M. 11839 (type.) 湖南新化錫矿山童家牌



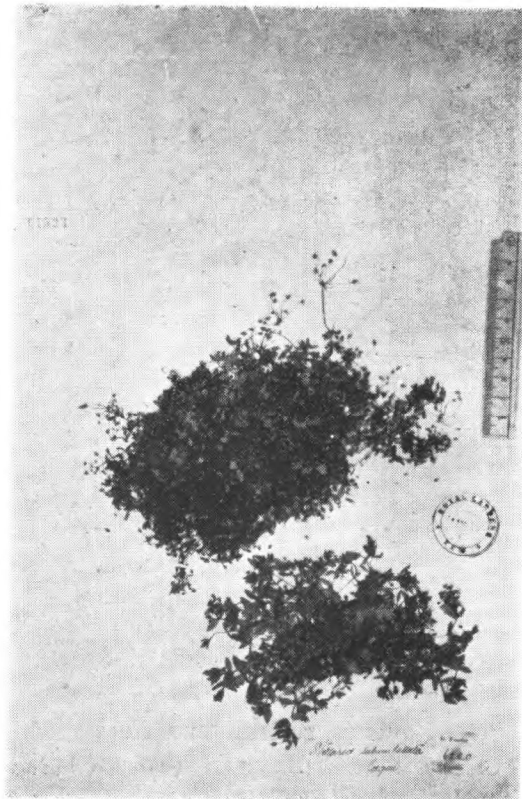
Stellaria reticulivena Hay.
S. Sasaki et B. Hay. 无号 (isotype.) 台湾
Taihazan



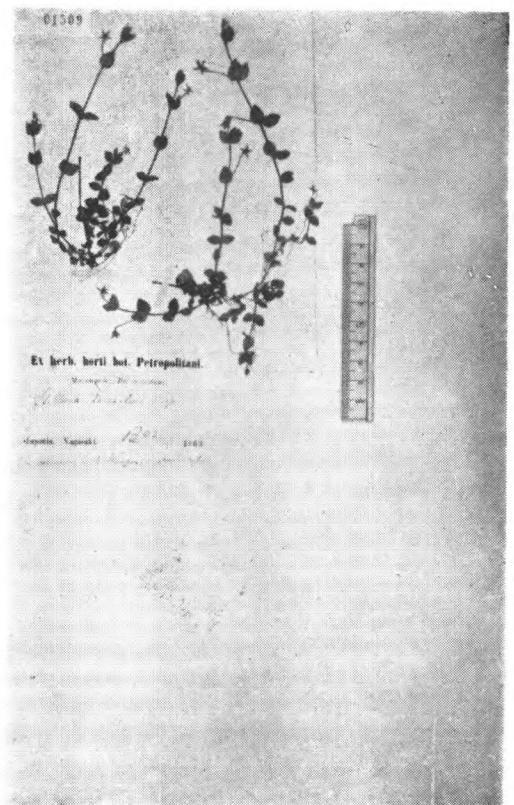
Stellaria saxatilis Ham. var.
amplexicaulis H.-M.
H.-M. 3300 (type.) 云南永北



Stellaria Souliei F. N. Wills.
J. A. Soulie 914 (type.) 西康
Tongolo, Kiala.



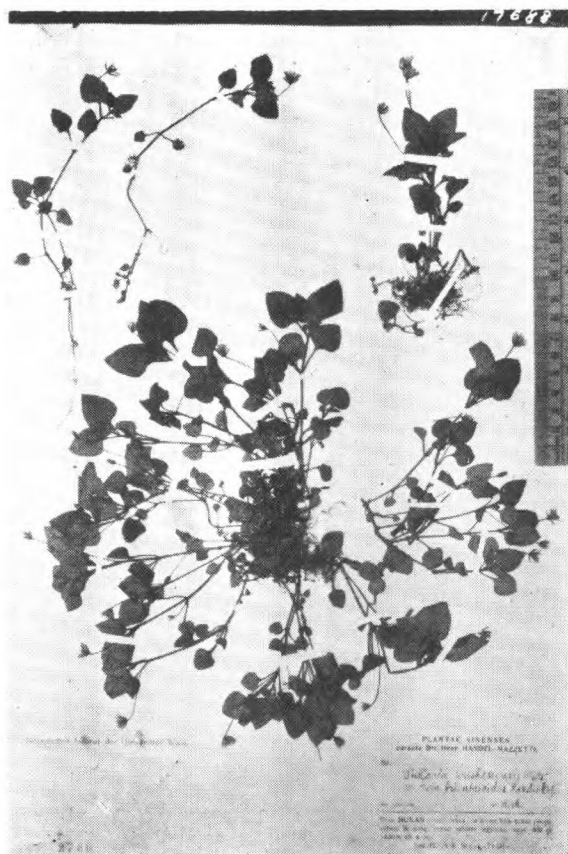
Stellaria subumbellata Edgew.
Forr. 6220. 云南



Stellaria tomentella Ohwi
Maxim. (cotype.) 日本长崎

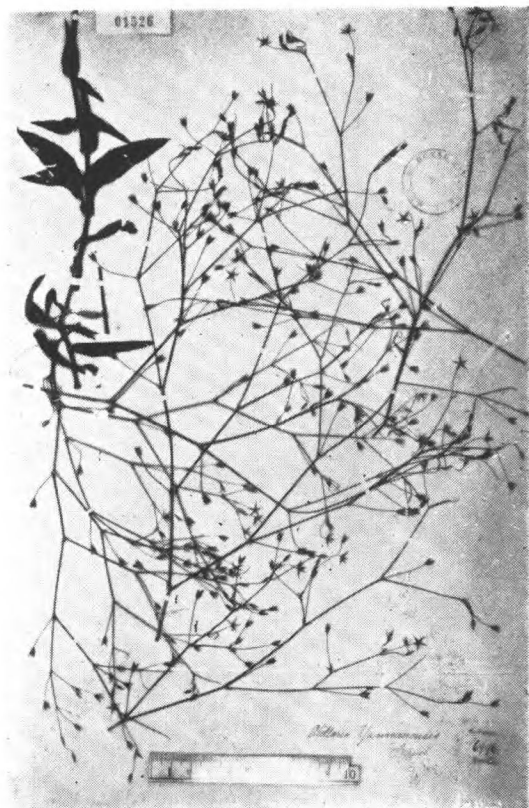


Stellaria wushanensis Williams.
Henry 7047 (type.) 四川巫山

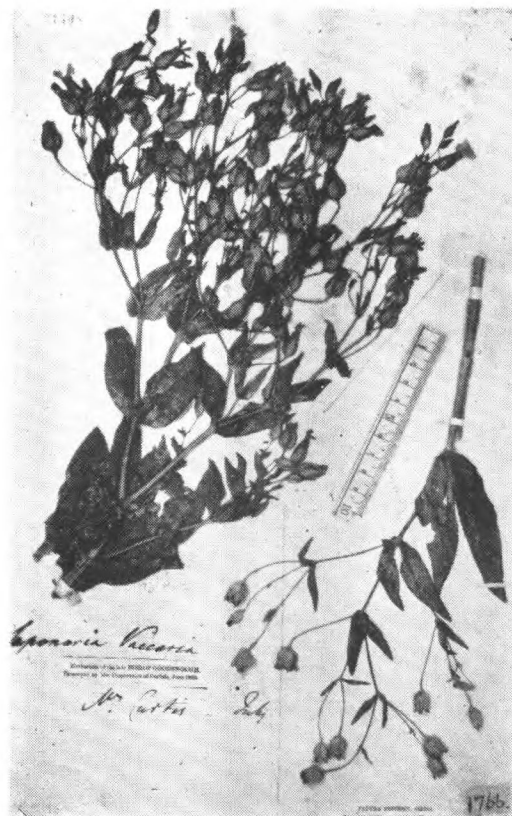


Stellaria wushanensis Wills. War.
trientaloides H.-M.
王德輝, H.-M. 91 (type.) 湖南武岡云山

王不留行屬 *Vaccaria* Medik.



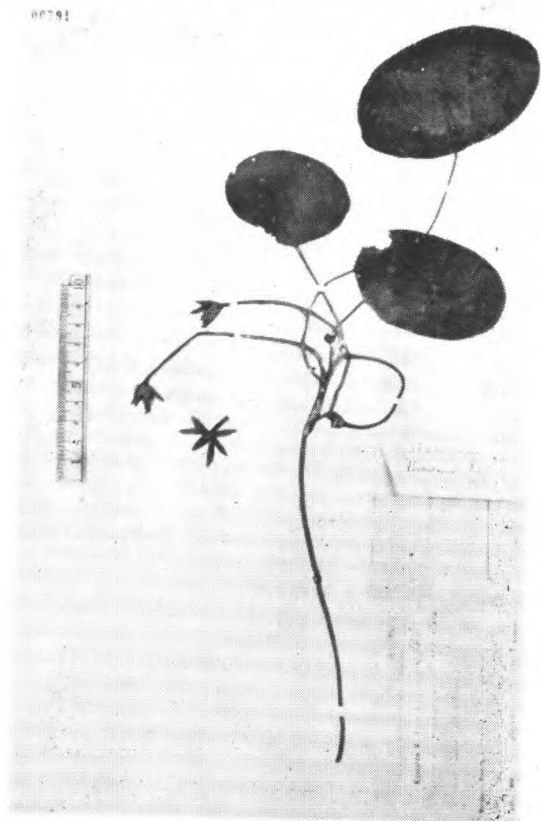
Stellaria yunnanensis Fr.
Forr. 6996 云南



Vaccaria pyramidata Medik.
Henry 1766 湖北巴东

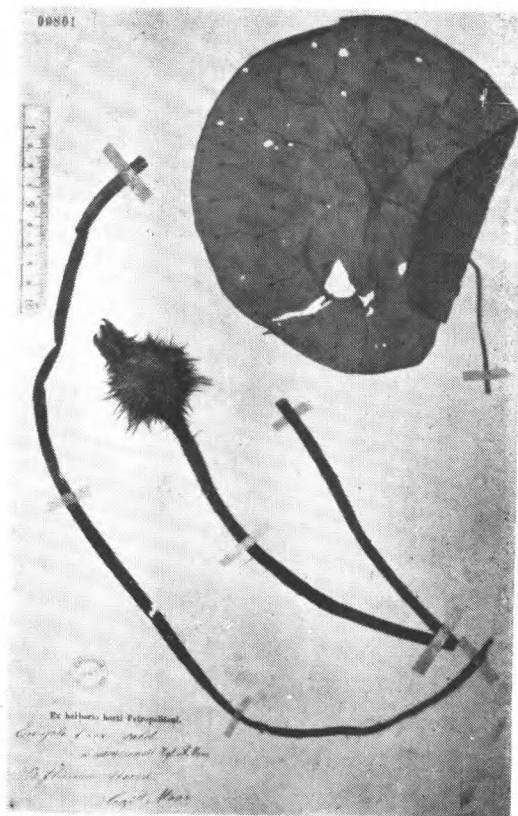
42. 睡蓮科 Nymphaeaceae

蓴屬 *Brasenia* Schreber.



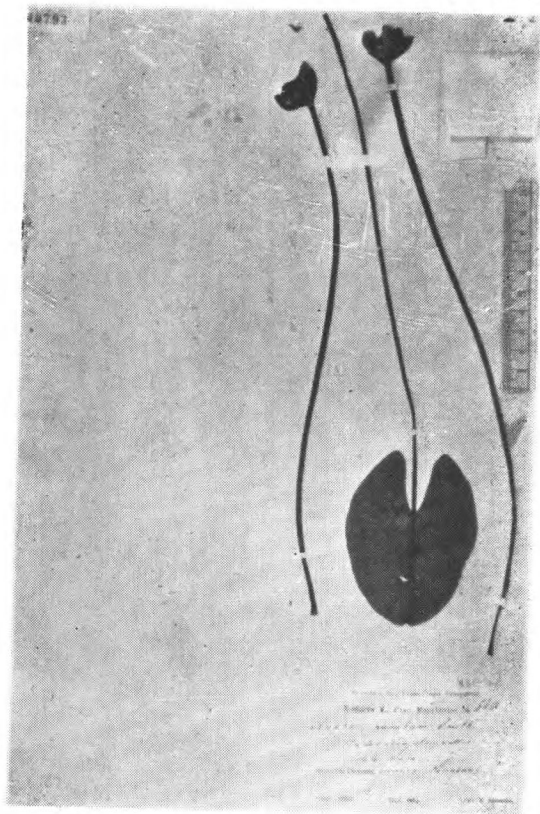
Brasenia purpurea (Michaux) Caspary
Komarov 646

芡屬 *Euryale* Salisb.

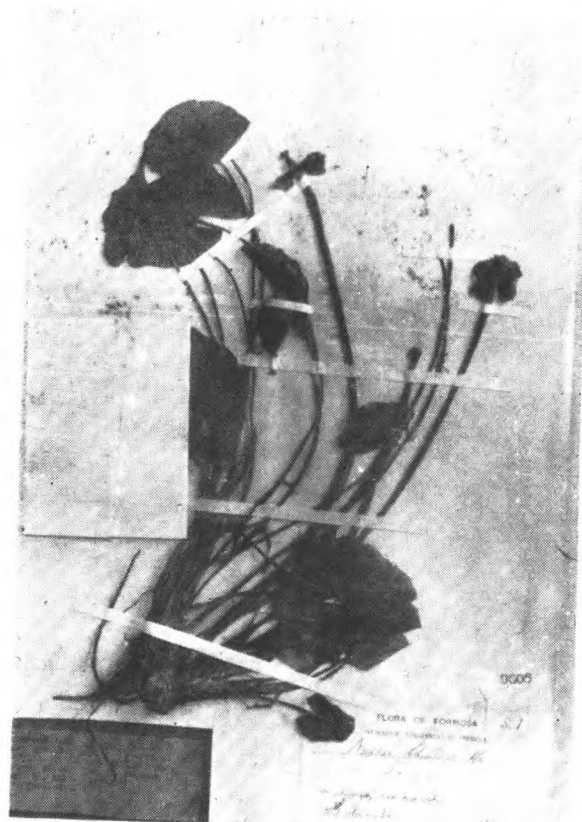


Euryale ferox Salisb.
Maack, Ussuri.

萍蓬草屬 *Nuphar* Sibth. et Smith

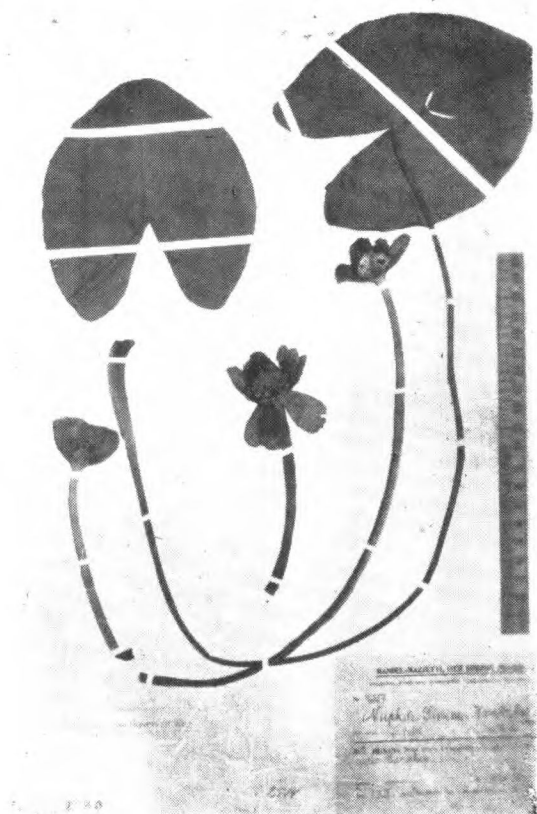


Nuphar pumilum (Hoffm.) DC.
V. Komarov 649. 吉林宁安县宁古塔

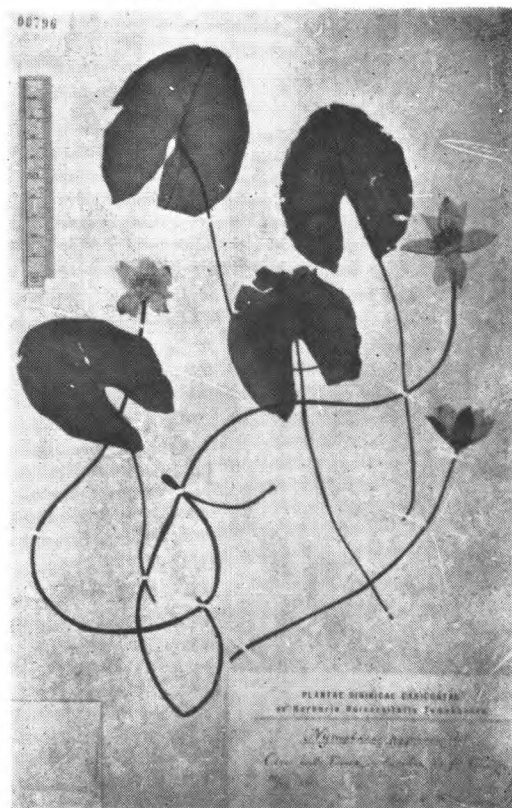


Nuphar Shimadai Hay.
Y. Shimada, 台湾 Shinchikucho, Shimpo,

睡蓮屬 *Nymphaea* L.



Nuphar sinense H.-M.
H.-M. 11357 (type.) 长沙



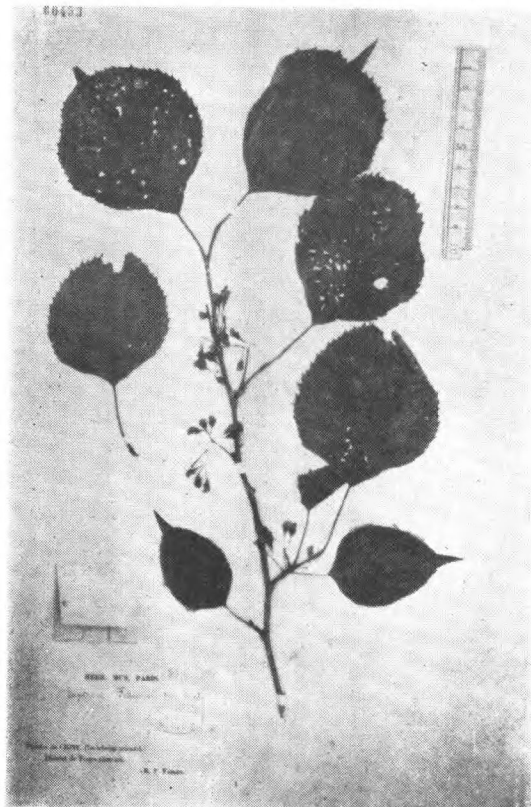
Nymphaea tetragona Georgi
Kuminova

43. 金魚屬科 *Ceratophyllaceae*
金魚藻屬 *Ceratophyllum* L.



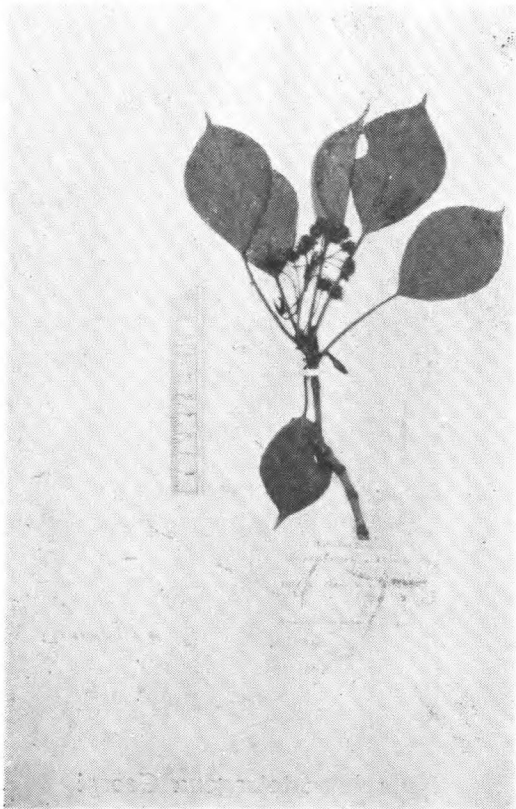
Ceratophyllum demersum Linn.
Komarov. 650. 鴨綠江

44. 昆欄樹科 *Trochodendraceae*
云叶屬 *Euptelea* Sieb. et Zucc.



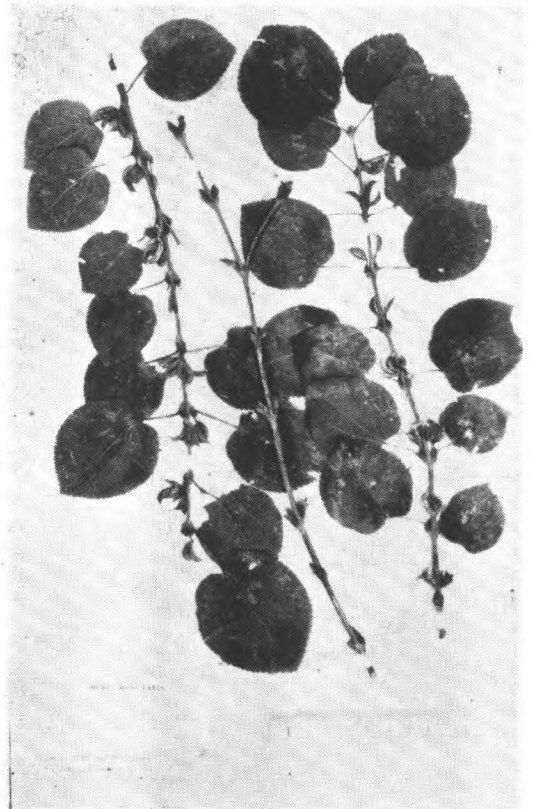
Euptelea Franchetii van Tieghem
Farges (isotype.) 四川城口

昆欄樹屬 *Trochodendron* S. et Z.



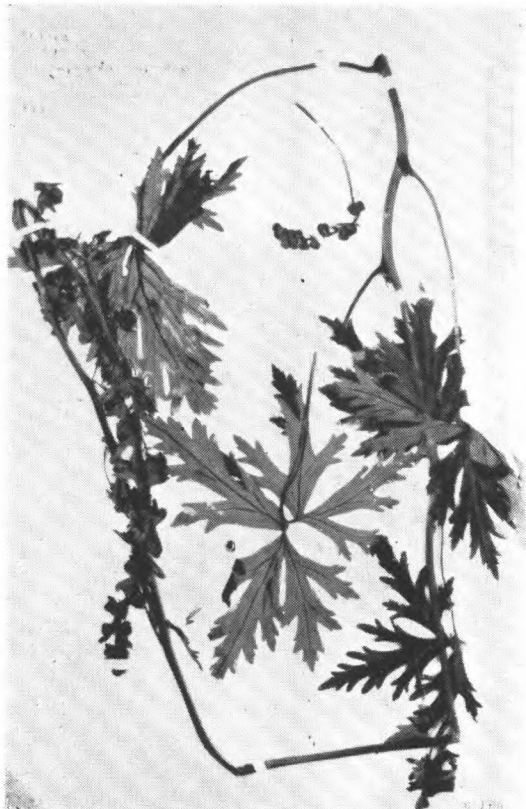
Trochodendron aralioides Sieb. et Zucc.
Siebold (isotype) 日本

45. 連香樹科 *Cercidiphllaceae*
連香樹屬 *Cercidiphyllum* Sieb. et Zucc.

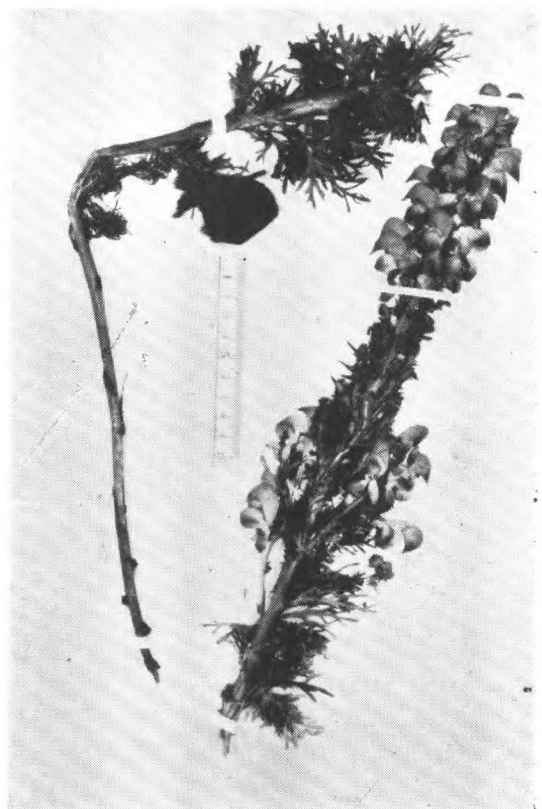


Cercidiphyllum japonicum Sieb. et Zucc.
Farges. 四川城口

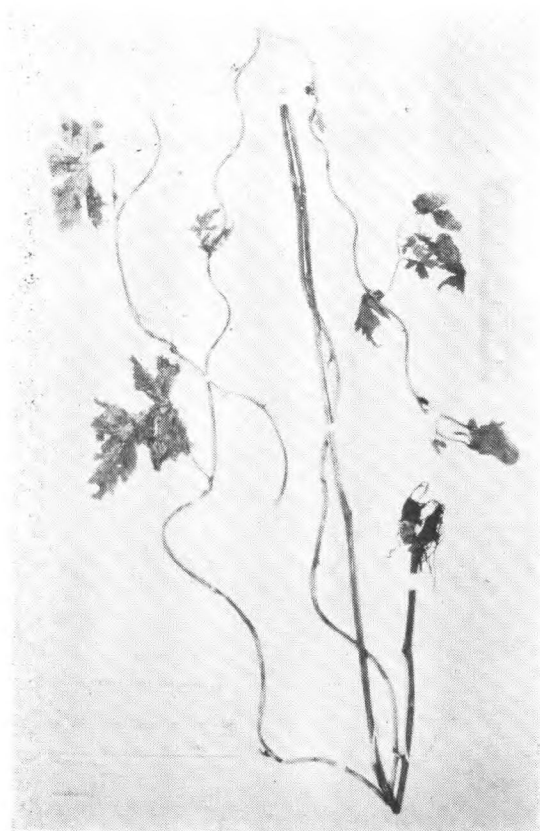
46. 毛茛科 *Ranunculaceae*
烏頭屬 *Aconitum* L.



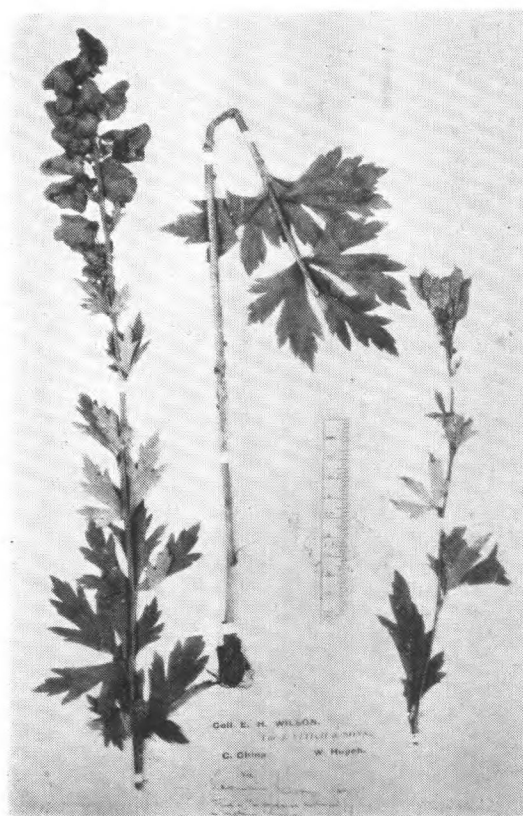
Aconitum barbatum Pers.
Licent 538 山西北部



Aconitum brachypodum Diels
Forr. 22368. 劍——瀾



Aconitum bulbiferum H.-M.
H.-M. 5202. (cotype.) 四川东南



Aconitum Carmichaeli Debx.
Wils. (Vietch) 1718 (type.) 湖北西部



Aconitum chinense Part.
Type of Bot. Mag. t. 7130.



Aconitum Delavayi Fr.
Delavay (cotype.) 黑山門



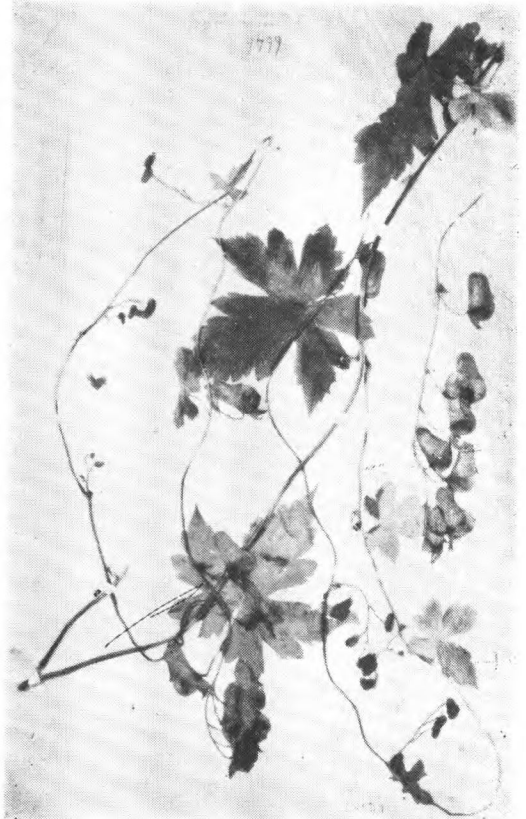
Aconitum Forrestii Stapf
Forrest (type)



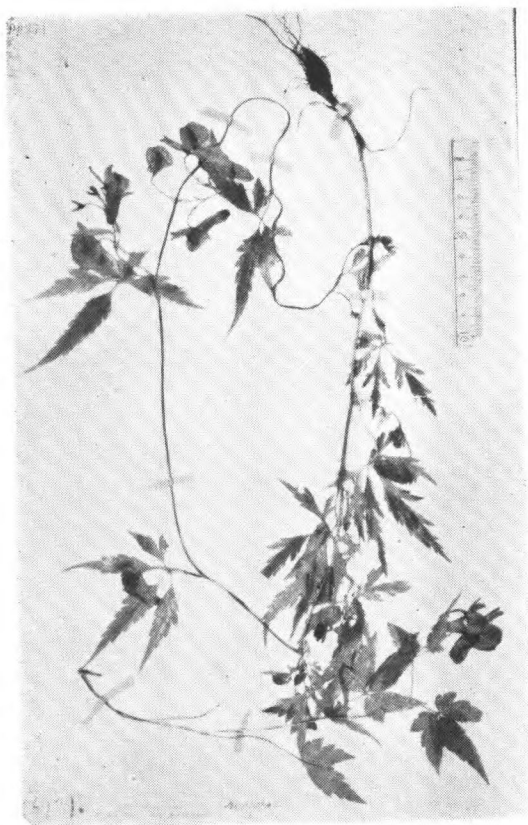
Aconitum Fukutomei Hay.
K. Fukutome 无号 (isotype.)
Kitaishuzan, 台湾



Aconitum gymnanthum Maxim.
Potanin 四川北部



Aconitum Hemsleyanum Pritz.
Henry 6646 (type.) 湖北房县



Aconitum Henryi C. Pritz.
Henry 6979 (type.) 湖北兴山



Aconitum jaluense Kom.
Komarov 679 (isotype.)
鴨綠江长津江下游



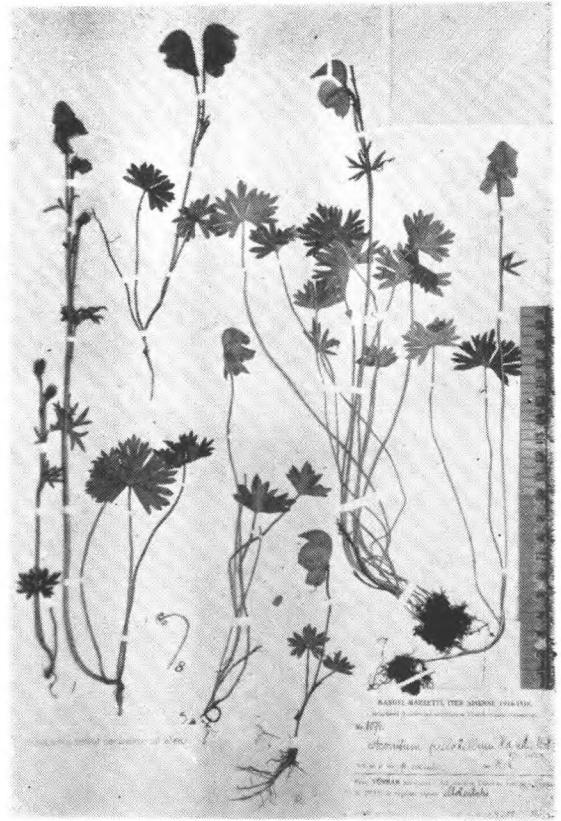
Aconitum jucundum Diels
Forrest 18481. 云南西南



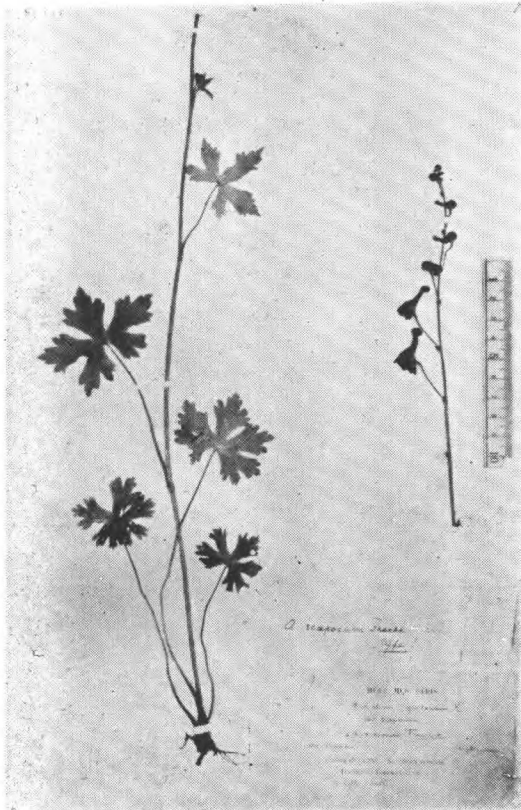
Aconitum phyllostagium H.-M.
Forr. 21419 (cotype?) 四川



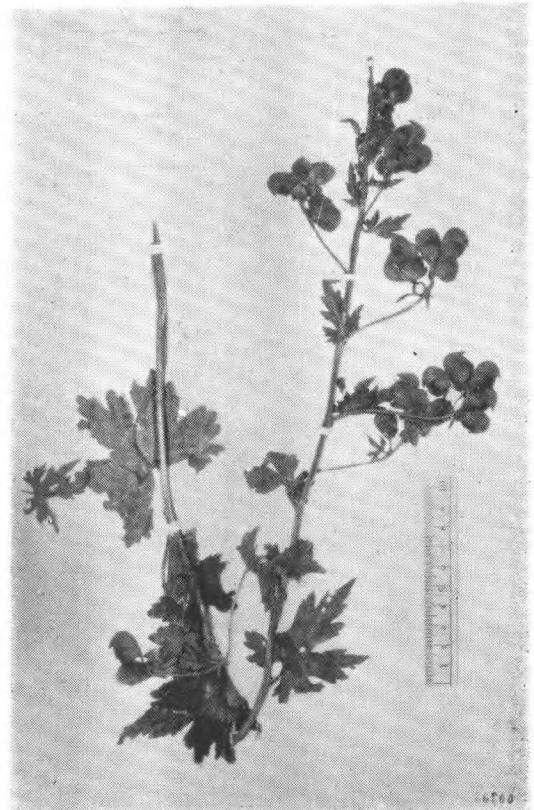
Aconitum piepuense, H.-M.
H.-M. 4578 (type.) 云南



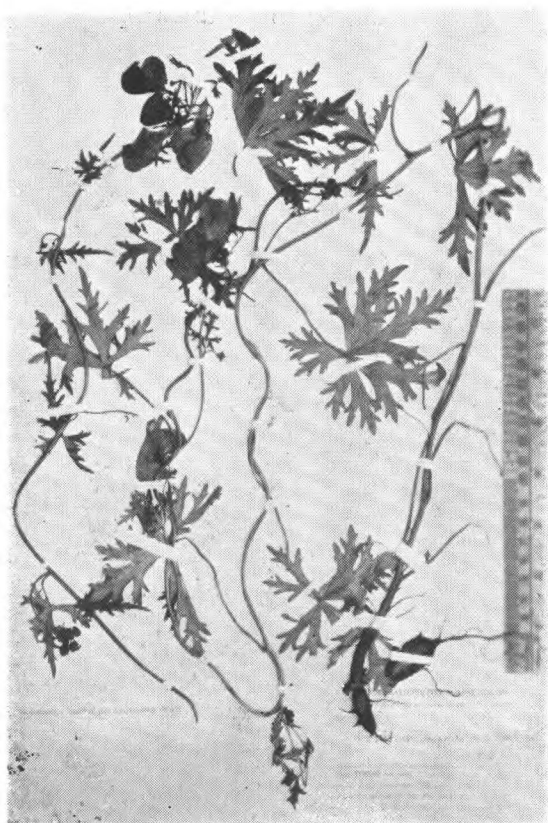
Aconitum pulchellum H.-M.
H.-M. 8074 (type.) 云南



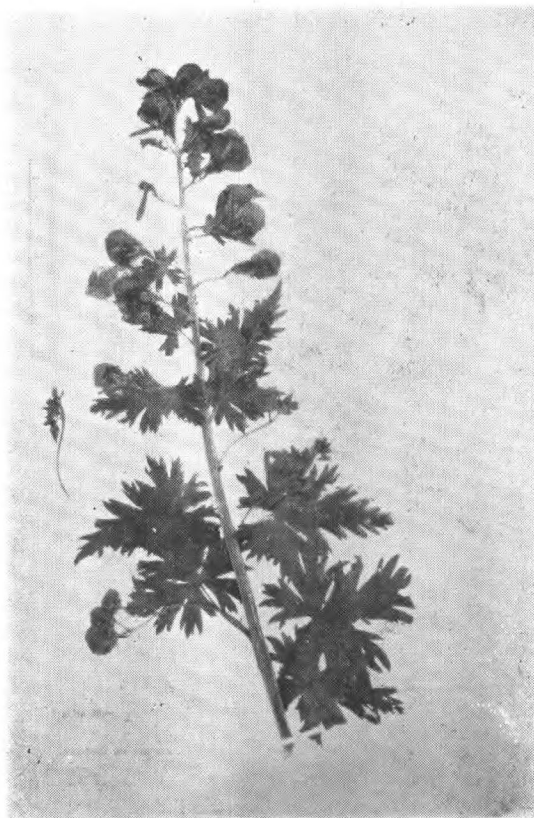
Aconitum scaposum Fr.
Farges 7 (cotype.) 四川城口



Aconitum Souliei Fin. et Gagn.
Soulie 1115 (type) 四川城口



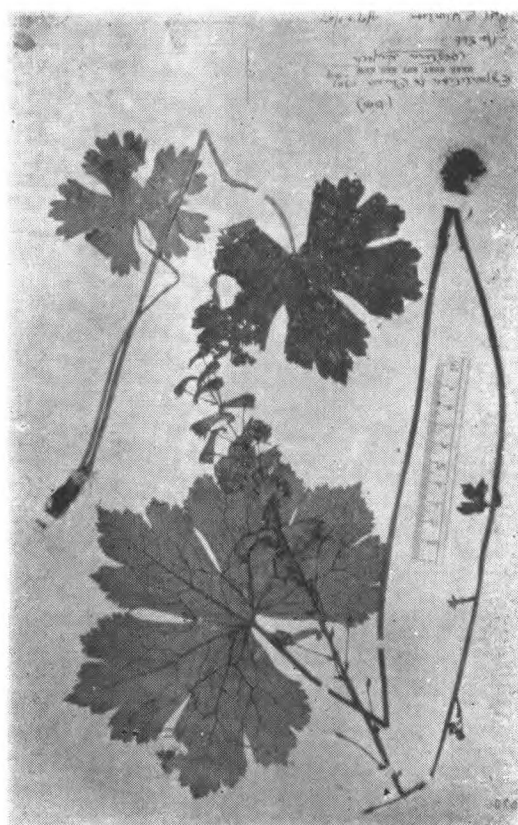
Aconitum Stapfianum H.-M.
H.-M. 4108 (type.) 丽江玉龙山



Aconitum stylosum Stapf
Monbeig (type.) 云南西北



Aconitum tanguticum (Maxim.) Stapf
Potanin (Syntype) 四川北部



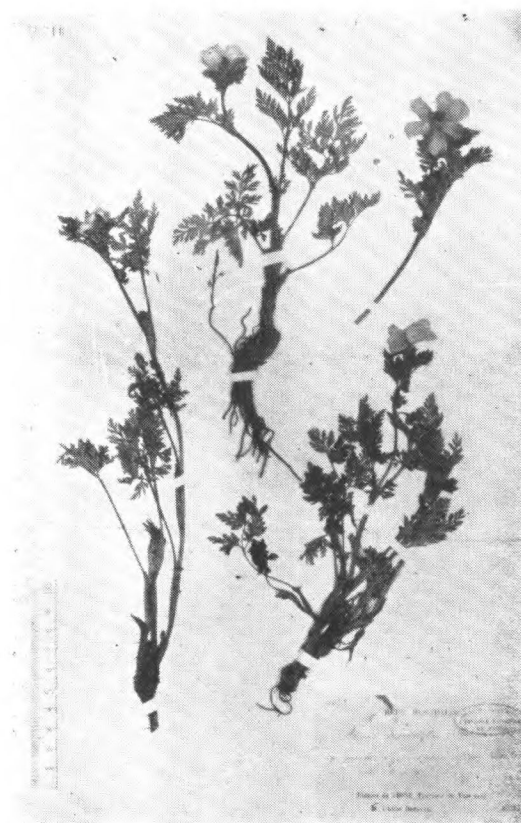
Aconitum vaginatum E. Pritz.
Wils. 566. 湖北西部

类叶升麻屬 *Actaea* L.



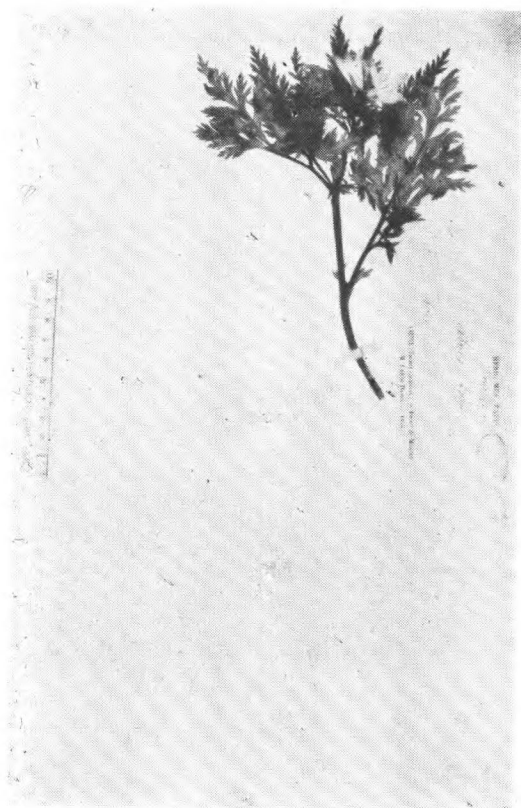
Actaea spicata L.
Wils 539 鄂西

側金盞花屬 *Adonis* L.

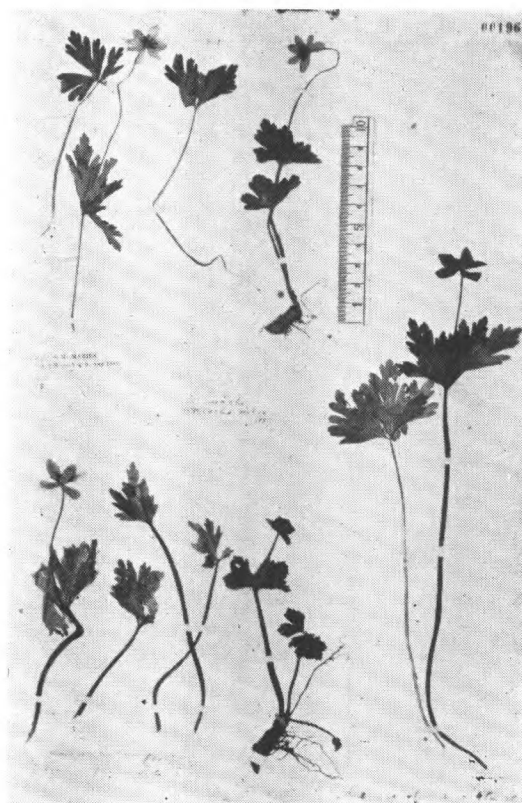


Adonis brevistyla Fr.
Delavay 2073 (isotype.) 云南

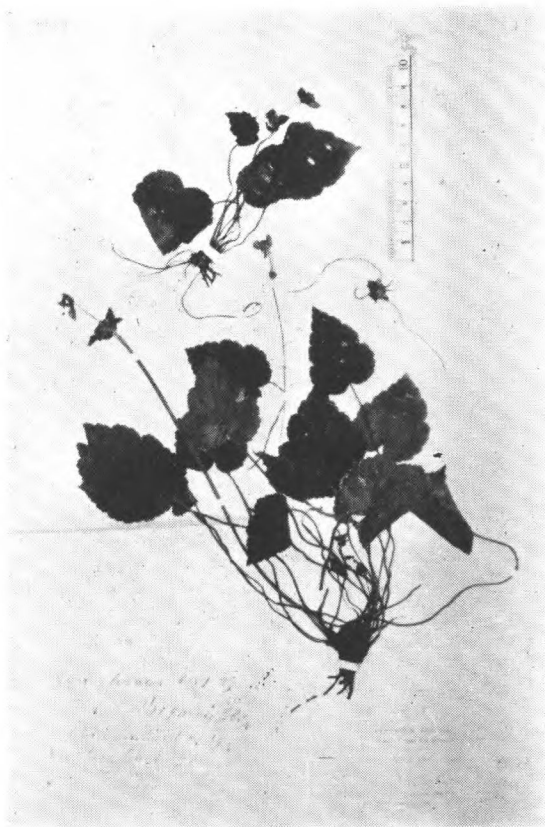
銀蓮花屬 *Anemone* L.



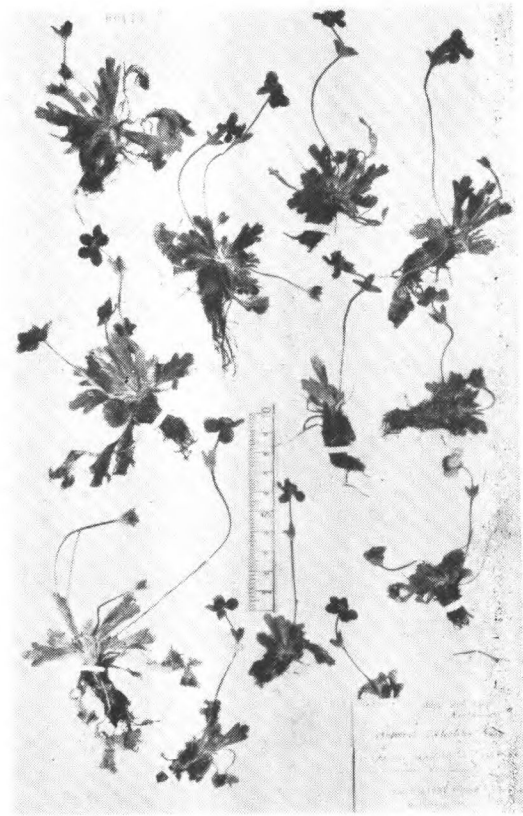
Adonis Davidii Franch.
David (type.) 四川穆坪



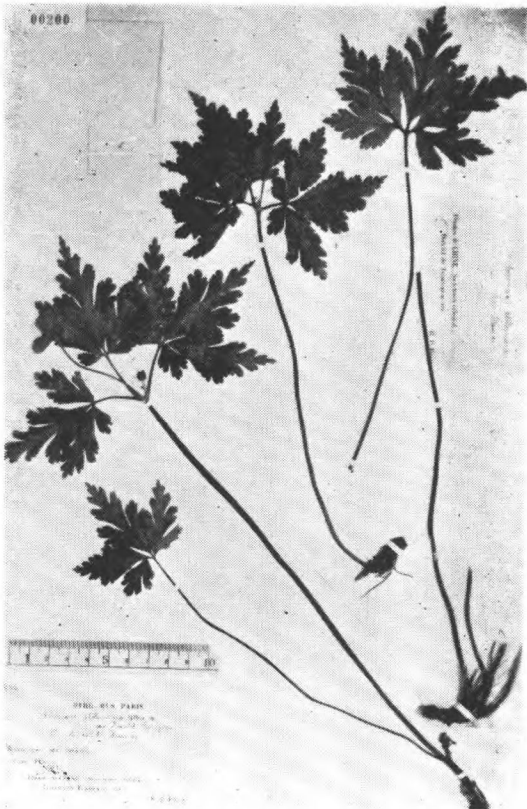
Anemone baicalensis Turcz.
R. Carles 安徽太湖



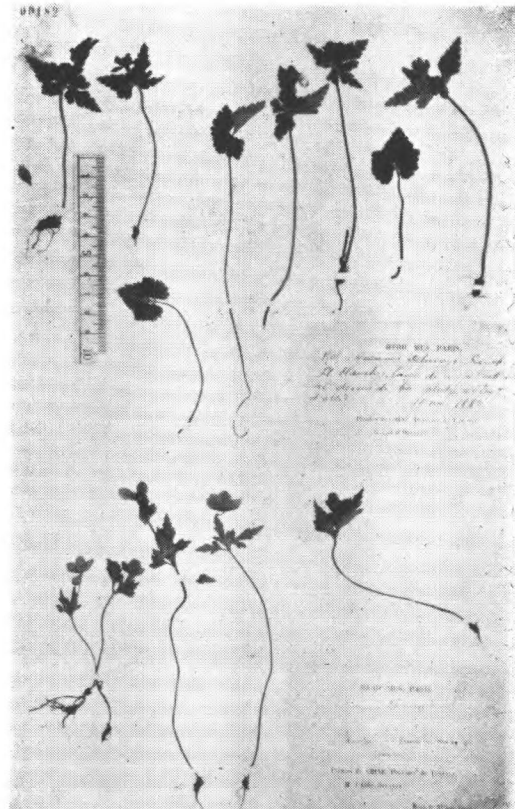
Anemone begoniifolia Lévl. et Van.
Cavalerie 7866. 貴州



Anemone coelestina Franch.
Delavay 1034 (syntype.) 云南黑山門



Anemone Delavayi Fr.
Delavay 1505 (isotype.) 云南大坪子



Anemone Davidii Fr.
Farges 946. 四川城口