

487

中 華 書 局 有 限 公 司 概 況

A DESCRIPTION

OF

CHUNG HWA BOOK CO., LTD

SHANGHAI, CHINA

上海圖書館藏書

上海图书馆藏书



A541 212 0018 8366B

中 華 書 局 有 限 公 司 概 况

A DESCRIPTION

OF

CHUNG HWA BOOK CO., LTD

SHANGHAI, CHINA



~~266934~~

中華書局有限公司概況

成立 中華民國元年

資本 國幣四百萬元

房屋

- 一 總公司與總廠 上海澳門路四六九號
- 二 分廠 香港九龍馬頭角北帝街四十號
- 三 中華教育用具製造廠 上海昆明路七二一號
- 四 發行所 上海福州路
- 五 分局 南京杭州廣州太原天津北平青島重慶梧州等處房屋均係自建

組織

- 一 董事會 董事十一人
- 二 監察二人

337897

三 總經理一人 其下分設一處三所

(一) 總辦事處 設五部

1. 總務部 2. 造貨部 3. 帳務部 4. 會計部 5. 承印部

(二) 編輯所 分五部

1. 總編輯部 2. 教科圖書部 3. 普通圖書部 4. 辭典部 5. 雜誌部

(三) 印刷所 分四部

1. 事務部 2. 營業部 3. 工務部 4. 印鈔部

(四) 發行所 分四部

1. 上海發行部 2. 分局發行部 3. 事務部 4. 供應部

(五) 分局及支局 全國各省會及商埠均設分局凡四十餘處分銷處凡千餘

營業項目

一 出版 出版圖書共計五千餘種一萬餘冊略述如左

1. 教科用書 大中小學師範學校之教科與教師用書計六百餘種

2. 兒童讀物 叢書文庫及單行本共一千餘冊
3. 編輯新書 叢書文庫及單行本共二千餘種
4. 精印古書
 - 甲 四部備要 凡三百五十一種都一萬一千餘卷中裝二千五百冊
洋裝布面一百冊紙面二百八十冊
 - 乙 古今圖書集成 爲彙編者六爲典三十二爲部六千有零共一萬
卷三開大本分訂八百冊
5. 雜誌 中華教育界 新中華 少年週報 出版月刊 小朋友週刊
小朋友畫報 中華英文週報
6. 字典辭典 普通中西字典二十餘種專科辭典十餘種其中八百萬字之辭海
新舊辭搜羅詳備解釋正確並用新式標點
7. 外國文書籍 英法德日文讀本文法會話字典等共一百餘種

8. 碑帖書畫

歷代碑帖名人墨蹟畫冊共三百餘種

9. 函授學校

已開科者國文英文日文算學商業五科學員六千餘人

二 印 刷

總廠有大小印機二百餘架職工二千餘人各種印刷設備完全不但爲國內第一卽國外亦鮮有如此完備者香港分廠有印機數十架職工數百人印鈔部有世界最新最大之凹凸版機專印凹版凸版如證券債券鈔票郵票及印花稅票等

三 儀器文具

本局創設中華教育用具製造廠裝置新式機器延聘專家設計研究製造理化儀器標本模型風琴樂器運動器械測繪儀器電表及各種文具復先後發明三用複印器兩用蠟紙月日星期時辰鐘八用鐘及仿宋華文打字機

CHUNG HWA BOOK COMPANY, LIMITED

A DESCRIPTION

ESTABLISHED: In the year of 1911.

PAID-UP CAPITAL: \$4,000,000.00.

LAND AND BUILDING:

Head Office and Main Works at 469 Macao Road, Shanghai.

Branch Works at 40 Pak Tai Street, Ma-Tau-Kok, Kowloon, Hongkong.

Educational Instruments Manufacturing Factory at 721 Quenming Road, Shanghai.

Sales Office at the corner of Foochow and Honan Roads, Shanghai.

Branch Sales Offices at Nanking, Hangchow, Canton, Taiyuen, Tientsin, Peiping, Tsingtau, Lanchow, Hankow, Chungking, Hongkong, Singapore, etc., over 40 places, most of them having own buildings.

ORGANIZATION:

Board of Directors - Eleven directors.

Two supervisors.

General Manager in charge of four main departments, viz.

1. General Affairs Department with five divisions, (A) General Office (B) Production (C) Bookkeeping (D) Accounting (E) Job Printing.
2. Editorial Department with five divisions, (A) Main Editorial (B) Textbooks (C) Common Books (D) Dictionaries (E) Magazines.
3. Printing Department of four divisions, (A) General Affairs (B) Business (C) Works (D) Security Printing.
4. Sales Department of four divisions, (A) Shanghai Sales (B) Branch Sales (C) General Affairs (D) Supply.
5. Branch Sales Offices, over 40 places and 1,000 sub-agents.

SCOPE OF BUSINESS:

1. Publications, already published books of over 5,000 kinds in over 10,000 volumes classified as follows:
 - (A) Text books and manuals for elementary, middle, normal schools and universities in 13 series of over 600 kinds.
 - (B) Children books in series and single copies of 1,000 volumes.
 - (C) New books in series and single copies of 2,000 kinds.
 - (D) Old Classics re-printed-"Condensed Series of Four Libraries" in 351 kinds of over 11,000 volumes, "The Chinese Encyclopedia" of 10,000 volumes, bound into 800 copies.
 - (E) Magazines: "Educational World Monthly," "New China Semi-Monthly," "Youth Weekly," "Publication Monthly," "Little Friend Weekly," "Little Friend Pictorial" and "English Weekly".
 - (F) Dictionaries and encyclopaedias in many kinds, the latest issue being "The Sea of Terms" in two huge volumes of over eight million characters.
 - (G) Foreign language books in English, German, French, and Japanese for readers, grammars, conversations and dictionaries of over one hundred kinds.
 - (H) Stone rubbings, calligraphic and painting works of masterpieces for many generations in over 300 kinds.
 - (I) Correspondence school of five courses: Chinese, English, Japanese, Mathematics and Business with over 6,000 students.
2. Printing: Main Works has over 200 machines and the number of workers exceeds two thousand. It is fully equipped to undertake all kinds of printing with great efficiency. Hongkong Branch Works has also many high speed presses and several hundred of staff and workers. The Security Printing Division is specially organized with the most up-to-date and largest intaglio and relief printing machines in the world for printing of banknotes, postage stamps, revenue stamps and government bonds.
3. Educational Instruments and Stationaries: We have established a special factory to manufacture modern educational instruments, that is, The Chung Hwa Educational Instruments Manufacturing Factory. Its products consist of physical and chemical instruments, models, specimens, organs, musical instruments, gymnastic instruments, surveying instruments and electric meters. The factory is also known for its new inventions, especially the "Triplicate Mimeograph", "Two-use Duplicating Paper", "Calendar Clock" and "Fancy Sung Type Chinese Typewriter".

現任職員

PRESENT STAFF

董 事
BOARD OF DIRECTORS

孔祥熙 H. H. Kung
吳有倫 Y. L. Wu
胡懋昭 M. C. Woo
舒新城 Milton S. C. Hsu

唐紹儀 S. Y. Tang
王志莘 T. S. Wong
汪伯奇 P. C. Wong
陸費達 Lofee Pahong

高時顯 S. S. Kao
李叔明 Sumin Lee
沈樂康 L. K. Shen

監 察
SUPERVISORS
總 經 理
GENERAL MANAGER

徐士淵 S. Y. Hsu
陸費達 Lofee Pahong

黃景范 C. V. Hwang

編 輯 所 長
EDITOR-IN-CHIEF

舒新城 Milton S. C. Hsu

印 刷 所 長
MANAGER OF
PRINTING WORKS

王瑾士 C. S. Wong

發 行 所 長
MANAGER OF
GENERAL SALES OFFICE

陸費達 Lofee Pahong



CHUNG HWA BOOK CO., LTD. MAIN PRESS WORKS

廠總司公限有局書華中

廠分港香
HONGKONG BRANCH WORKS





所行發
GENERAL SALES OFFICE

CHUNG HWA BOOK CO., LTD

司公限有局書華中

局分州廣
 局分南寧
 局分封開
 局分原太
 局分州福
 局分州杭
 局分加星
 局分京南

局分
 處錄十四
 BRANCH SALES OFFICES
 OVER FORTY

州蘭	安西	慶重	都成	州梧	港香	州潮	頭汕	門廈	德常
州衡	沙長	口漢	江九	嶺蕉	慶安	州溫	州鄭	封開	台煙
島青	莊家石	遠鏡	口家張	陽瀋	台邢	定保	津天	平北	州徐

總辦事處
GENERAL AFFAIRS DEPARTMENT



編輯之所一
EDITORIAL DEPARTMENT-1





發 行 所 門 市 部 之 一

GENERAL SALES OFFICE

CASH SALE DEPARTMENT - 1

發 行 所 門 市 部 之 二

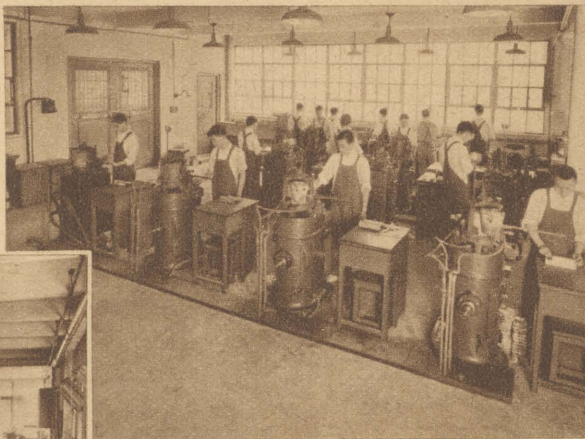
GENERAL SALES OFFICE

CASH SALE DEPARTMENT - 2



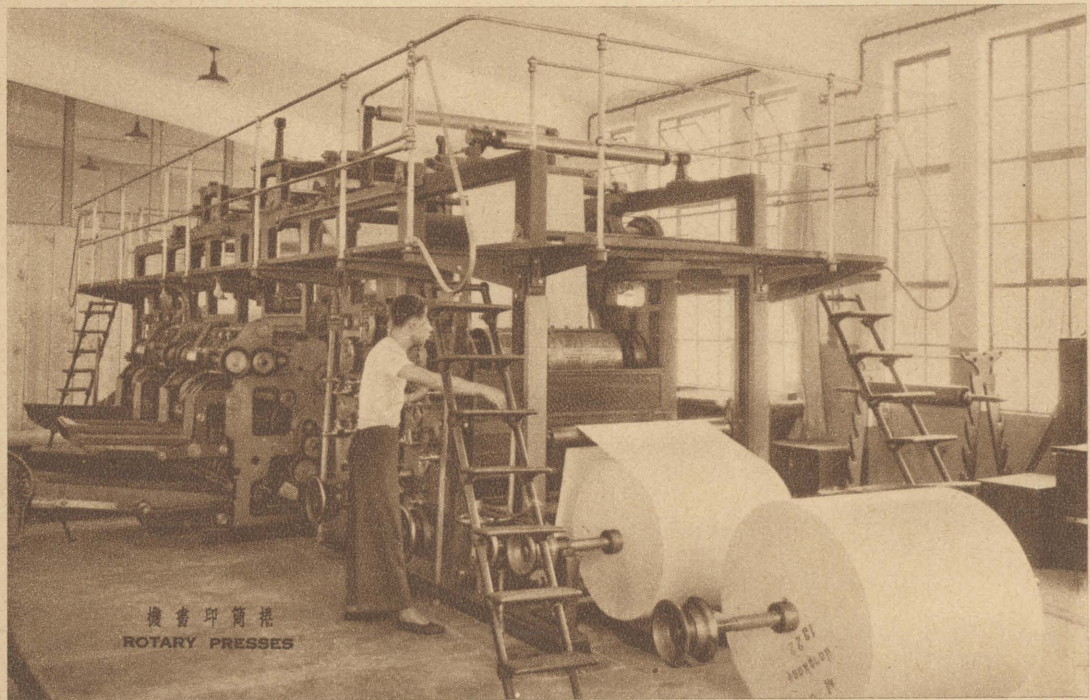
課字排

COMPOSING ROOM

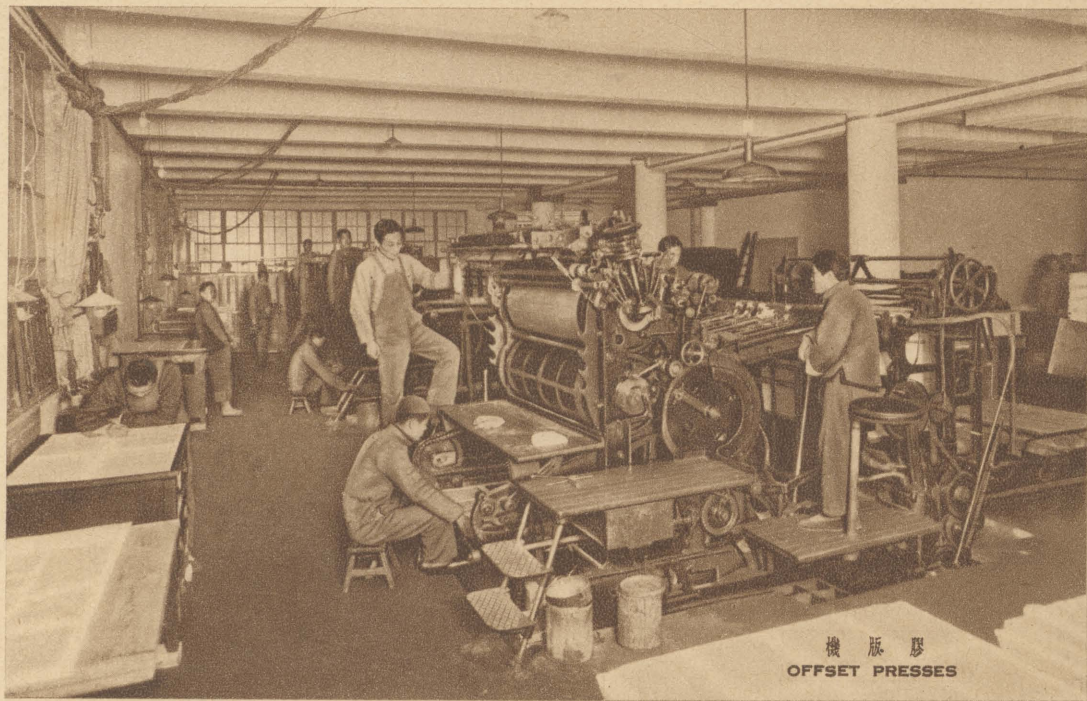


課字鑄

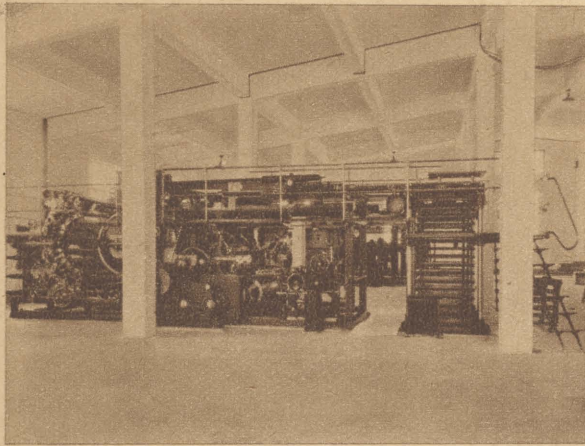
CASTING ROOM



機書印筒捲
ROTARY PRESSES



機版膠
OFFSET PRESSES

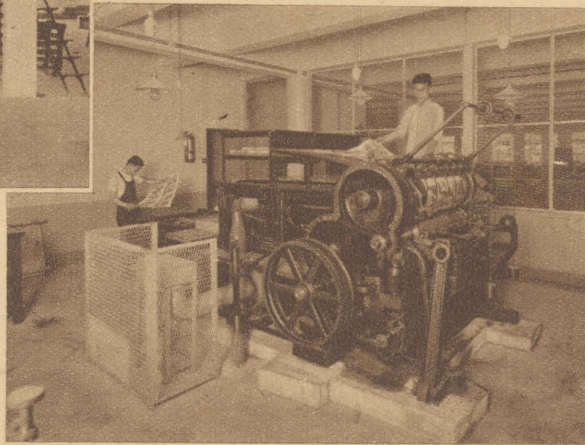


機版凸色四

"IRIS" FOUR COLOUR MACHINE

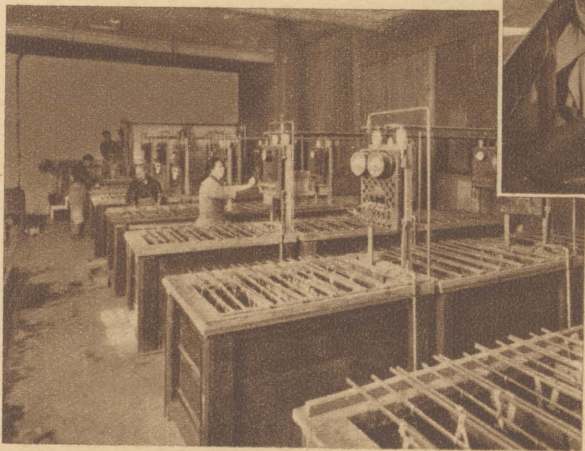
機版四相照

ROTOGRAVURE PRESS



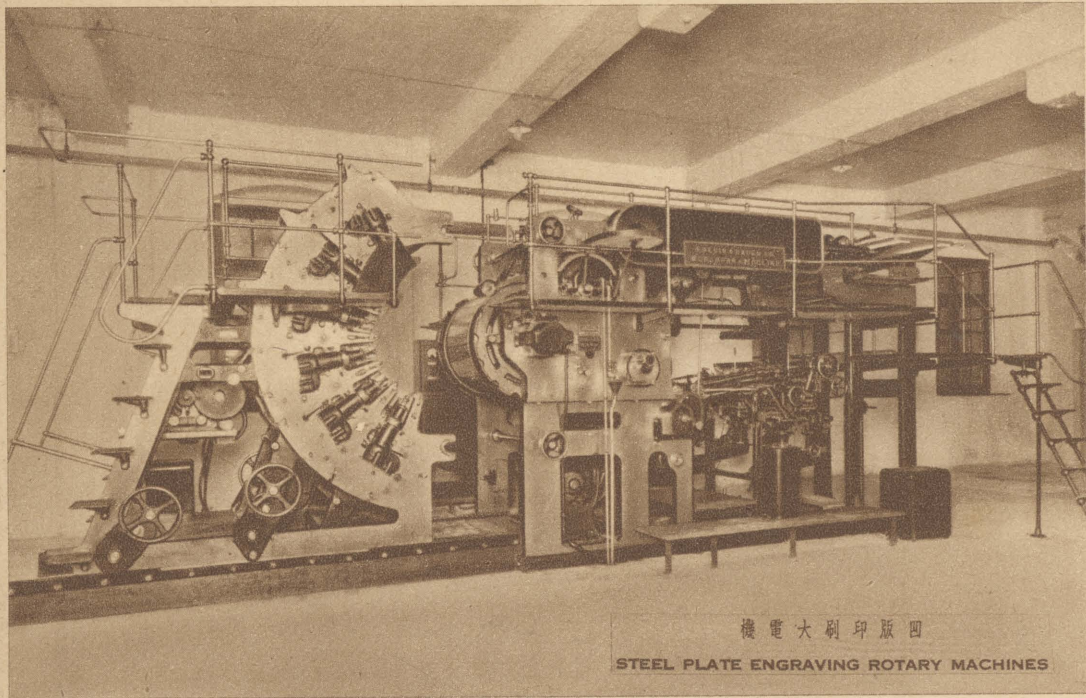
電 鍍

ELECTRO PLATING



刻 雕

ENGRAVING



機電大刷印版四

STEEL PLATE ENGRAVING ROTARY MACHINES



一之訂裝

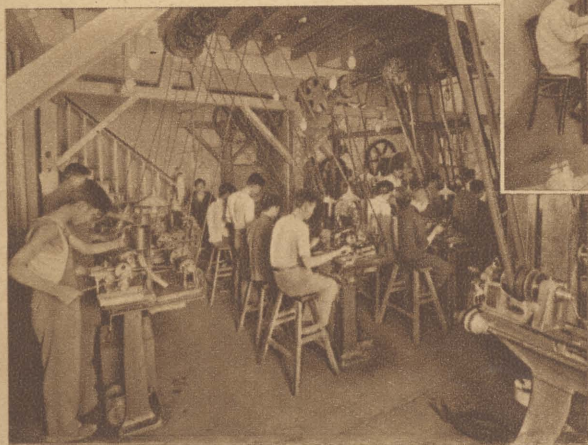
BOOK BINDING-1

二之訂裝

BOOK BINDING-2



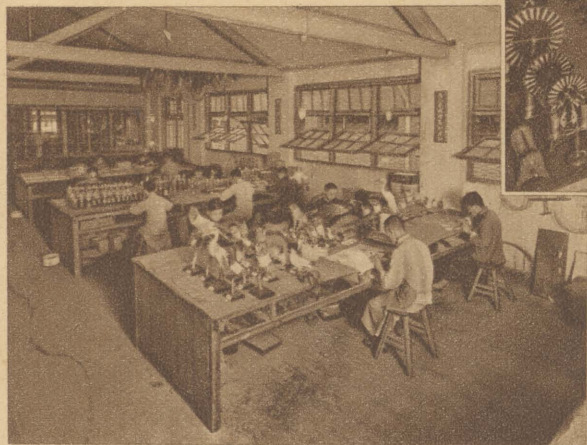
部造製機字打文華宋仿
CHINESE TYPEWRITER



部鐘製
CALENDAR CLOCK

部造製型模本標

MICROSCOPIC SLIDES AND MODELS WORKS



部造製器儀化理

PHYSICAL & CHEMICAL APPARATUS WORKS

上海图书馆藏书



A541 212 0018 8366B

動 運

RECREATION



診 療 室

DOCTOR ROOM

標商冊註



TRADE MARK

337897

CHUN