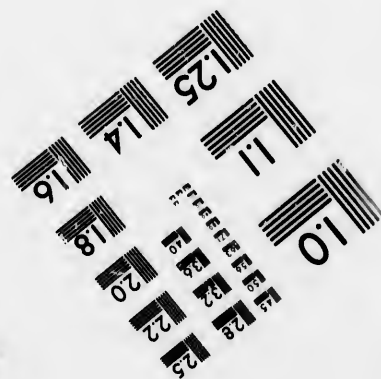
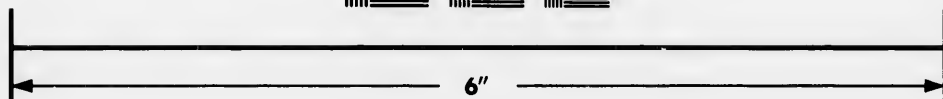
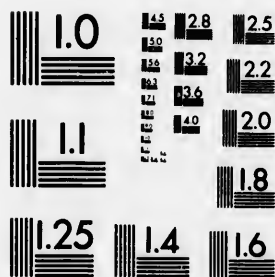


**IMAGE EVALUATION  
TEST TARGET (MT-3)**



**Photographic  
Sciences  
Corporation**

23 WEST MAIN STREET  
WEBSTER, N.Y. 14580  
(716) 872-4503



**CIHM/ICMH  
Microfiche  
Series.**

**CIHM/ICMH  
Collection de  
microfiches.**



Canadian Institute for Historical Microreproductions / Institut canadien de microreproductions historiques



**© 1982**

Technical and Bibliographic Notes/Notes techniques et bibliographiques

The Institute has attempted to obtain the best original copy available for filming. Features of this copy which may be bibliographically unique, which may alter any of the images in the reproduction, or which may significantly change the usual method of filming, are checked below.

L'Institut a microfilmé le meilleur exemplaire qu'il lui a été possible de se procurer. Les détails de cet exemplaire qui sont peut-être uniques du point de vue bibliographique, qui peuvent modifier une image reproduite, ou qui peuvent exiger une modification dans la méthode normale de filmage sont indiqués ci-dessous.

- |   |   |
|---|---|
| <input type="checkbox"/> Coloured covers/<br>Couverture de couleur  | <input type="checkbox"/> Coloured pages/<br>Pages de couleur  |
| <input type="checkbox"/> Covers damaged/<br>Couverture endommagée   | <input type="checkbox"/> Pages damaged/<br>Pages endommagées  |
| <input type="checkbox"/> Covers restored and/or laminated/<br>Couverture restaurée et/ou pelliculée   | <input type="checkbox"/> Pages restored and/or laminated/<br>Pages restaurées et/ou pelliculées   |
| <input type="checkbox"/> Cover title missing/<br>Le titre de couverture manque  | <input checked="" type="checkbox"/> Pages discoloured, stained or foxed/<br>Pages décolorées, tachetées ou piquées  |
| <input type="checkbox"/> Coloured maps/<br>Cartes géographiques en couleur  | <input type="checkbox"/> Pages detached/<br>Pages détachées   |
| <input type="checkbox"/> Coloured ink (i.e. other than blue or black)/<br>Encre de couleur (i.e. autre que bleue ou noire)  | <input checked="" type="checkbox"/> Showthrough/<br>Transparence  |
| <input type="checkbox"/> Coloured plates and/or illustrations/<br>Planches et/ou illustrations en couleur   | <input type="checkbox"/> Quality of print varies/<br>Qualité inégale de l'impression  |
| <input checked="" type="checkbox"/> Bound with other material/<br>Relié avec d'autres documents   | <input type="checkbox"/> Includes supplementary material/<br>Comprend du matériel supplémentaire  |
| <input type="checkbox"/> Tight binding may cause shadows or distortion along interior margin/<br>La reliure serrée peut causer de l'ombre ou de la distortion le long de la marge intérieure  | <input type="checkbox"/> Only edition available/<br>Seule édition disponible  |
| <input type="checkbox"/> Blank leaves added during restoration may appear within the text. Whenever possible, these have been omitted from filming/<br>Il se peut que certaines pages blanches ajoutées lors d'une restauration apparaissent dans le texte, mais, lorsque cela était possible, ces pages n'ont pas été filmées. | <input type="checkbox"/> Pages wholly or partially obscured by errata slips, tissues, etc., have been refilmed to ensure the best possible image/<br>Les pages totalement ou partiellement obscurcies par un feuillet d'errata, une pelure, etc., ont été filmées à nouveau de façon à obtenir la meilleure image possible. |
| <input type="checkbox"/> Additional comments:/<br>Commentaires supplémentaires:   |   |

This item is filmed at the reduction ratio checked below/  
Ce document est filmé au taux de réduction indiqué ci-dessous.

10X	14X	18X	22X	26X	30X
<input type="checkbox"/>	<input type="checkbox"/>	<input checked="" type="checkbox"/>	<input type="checkbox"/>	<input type="checkbox"/>	<input type="checkbox"/>
12X	16X	20X	24X	28X	32X

The co  
to the

The im  
possibl  
of the  
filming

Origina  
beginn  
the las  
sion, o  
other c  
first pa  
sion, a  
or illus

The las  
shall c  
TINUED  
whiche

Maps,  
differen  
entirely  
beginni  
right an  
require  
method

The copy filmed here has been reproduced thanks to the generosity of:

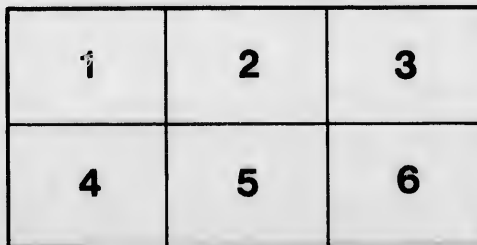
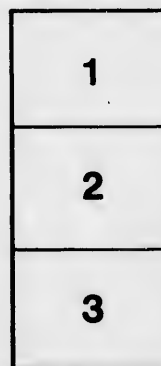
Library of the Public  
Archives of Canada

The images appearing here are the best quality possible considering the condition and legibility of the original copy and in keeping with the filming contract specifications.

Original copies in printed paper covers are filmed beginning with the front cover and ending on the last page with a printed or illustrated impression, or the back cover when appropriate. All other original copies are filmed beginning on the first page with a printed or illustrated impression, and ending on the last page with a printed or illustrated impression.

The last recorded frame on each microfiche shall contain the symbol  $\rightarrow$  (meaning "CONTINUED"), or the symbol  $\nabla$  (meaning "END"), whichever applies.

Maps, plates, charts, etc., may be filmed at different reduction ratios. Those too large to be entirely included in one exposure are filmed beginning in the upper left hand corner, left to right and top to bottom, as many frames as required. The following diagrams illustrate the method:



L'exemplaire filmé fut reproduit grâce à la générosité de:

La bibliothèque des Archives  
publiques du Canada

Les images suivantes ont été reproduites avec le plus grand soin, compte tenu de la condition et de la netteté de l'exemplaire filmé, et en conformité avec les conditions du contrat de filmage.

Les exemplaires originaux dont la couverture en papier est imprimée sont filmés en commençant par le premier plat et en terminant soit par la dernière page qui comporte une empreinte d'impression ou d'illustration, soit par le second plat, selon le cas. Tous les autres exemplaires originaux sont filmés en commençant par la première page qui comporte une empreinte d'impression ou d'illustration et en terminant par la dernière page qui comporte une telle empreinte.

Un des symboles suivants apparaîtra sur la dernière image de chaque microfiche, selon le cas: le symbole  $\rightarrow$  signifie "A SUIVRE", le symbole  $\nabla$  signifie "FIN".

Les cartes, planches, tableaux, etc., peuvent être filmés à des taux de réduction différents. Lorsque le document est trop grand pour être reproduit en un seul cliché, il est filmé à partir de l'angle supérieur gauche, de gauche à droite, et de haut en bas, en prenant le nombre d'images nécessaire. Les diagrammes suivants illustrent la méthode.



**FAL**  
**FO**

*Being*

**CALCULAT**  
**SC**

Containing  
and the  
5



**D**  
**A**  
**R**  
**A**



THE  
**FARMER'S ALMANACK.**

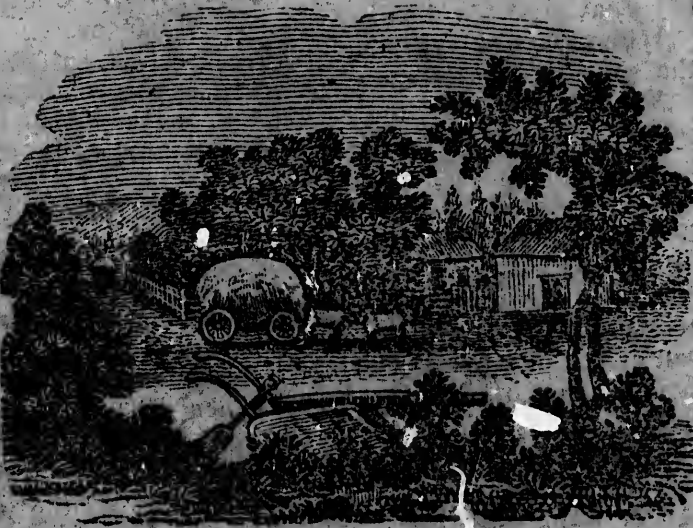
FOR THE YEAR OF OUR LORD,

**1830;**

*Being the second after Bissextile, or Leap Year ;*

CALCULATED FOR THE MERIDIAN OF HALIFAX IN NOVA-  
SCOTIA. BUT WILL SERVE FOR ANY PART  
OF THE PROVINCE.

Containing, besides the large number of Ast. onomical Calculations  
and the Farmer's Calendar for every month in the year, a  
great variety of useful and entertaining matter.



“Fleety passeth the year. The seasons come  
Duly as they are wont,—the gentle Spring,  
And the delicious Summer, and the cool,  
Rich Autumn, with the nodding of the grain,  
And Winter like an old and hoary man.”

——  
**HALIFAX, N. S.**

SOLD BY C. H. BELCHER.

*Directions for sailing up Halifax Harbour.*

**S**AMBRO Island and Light House is in lat. 44 deg. 30 min. N. and long. 63 deg. 42 min. W.

From the westward, bring the Light to bear N. E. ; if it bears more easterly, stretch to the southward till it bears N. E. (and as much northerly as you please, there being no shoal or ledge to the southward) then keep it open on your larboard bow ; give it more than a mile and a half birth, as much more as you please.

**NOTE.**—The easternmost of the western ledges lie from the Light S. W. distant 2 miles ; the other W. S. W. about one league the eastern ledges lie in a range nearly, some above water, the outermost one mile and a half from the Light, bearing from it E. N. E.,

When the Light bears north, distant about 2 miles, run N. E. 4 miles, then north, will carry you to Chebucto Head, at a proper distance clear of all danger.

When abreast of Chebucto Head, run N. half W. for the south point of George's Island.

When within half a mile of George's Island, you may enter the harbour west of it in 12 fathoms, or east of it in 15 fathoms water.

In passing between Sandwich Point and Manger's beach run nearest the Point, to shun a shoal which runs off S. W. from the beach.

There is also a shoal lying one mile south of Sandwich point.—Coming from the eastward run for the Light, and you cannot fail seeing Chebucto Head as you open Halifax Harbour: the Light being 4 miles distant from the Head to the S. W. of it.

The Light House erected on the Tower at the west end of Manger's Beach, at the entrance of Halifax Harbour is for the express purpose of leading vessels up the harbour, the greater part of the eastern side is darkened, viz—from N. E. by N. to S. half E.—The following are the directions published by the Commissioners of Light Houses, :—

“Vessels coming from the Eastward must keep Sambro Light open to the southward of Chebucto head, and until the Light opens on Manger's beach, which will then bear N. W.—they will then be to the westward of Thrum

Cap Sh  
ways ke  
starboar  
see this  
Chebucto  
bow, it  
appear  
other on  
level of

## Signals

One ball  
vessel  
One ball  
Two do  
Two do  
A penda  
A do und  
[The ab  
the quarte  
centre of  
of the foll

An Un  
Do. wi  
Do. wi  
Do. wi  
A red  
A blue  
A red  
A whi  
A blue  
A whi  
A blue  
A red,  
A red  
An Un  
detained  
A whi  
A ball  
should in

Made on  
which ve  
A red

Cap Shoals, and may shape a course up the harbour, always keeping the Light on the Beach open, and on the starboard bow.—Vessels coming from the westward will see this Light when they are as far to the eastward as Chebucto head, by keeping it open and on the starboard bow, it will lead them up to the beach.—This Light will appear of a red colour, which will distinguish it from any other on the coast. It is fifty eight feet high from the level of the sea.”

—X—

### Signals made at Fort George when Vessels are coming up the Harbour.

One ball close for a square rigged vessel	A do over a do half hoisted for 7 do
One ball half hoisted for 2 do	A do under 2 do close for 8 do
Two do close for 3 do	A do between 2 do seperated for 9 do
Two do seperated for 4 do	A flag of any colour for 10 or more do
A pendant of any colour for 5 do	
A do under a ball for 6 do	

[The above are hoisted at the east or west yard arm, according to the quarter the vessel first appears in, with the addition of a ball at the centre of the yard, until the vessel can be seen, when one or more of the following descriptive colours will be hoisted at the mast head.]

An Union for a flag ship, with or without a squadron.

Do. with a red pendant over it, for a two decker.

Do. with a blue pendant over it, for a frigate.

Do. with a white pendant over it, for a small armed vessel.

A red flag pierced white, for a packet.

A blue pendant, for a merchant ship.

A red do, for a merchant brig.

A white do, for a topsail schooner or sloop.

A blue and white flag, horizontally divided, neutral fleet.

A white and blue pendant, neutral man of war.

A blue flag, neutral merchant ship.

A red, white and blue flag, an enemy's fleet.

A red flag, an enemy's merchantman.

An Union Jack over neutral or enemy's signals, vessel is detained, or prize.

A white flag over any signal, vessel bears a flag of truce.

A ball at the mast head, vessel is on shore in distress—should immediate aid be necessary, guns are to be fired.

### *Explanation of Signals*

Made on the Ensign Staff at Fort George, to denote the part which vessels entering the harbour have arrived from.

A red flag from Great Britain.



- A red and white do, the Mediterranean.  
 A red pendant, the Continent of Europe.  
 A white and red pendant, Madeira, Canary, or Western Isles.  
 A blue flag, West Indies.  
 A blue pendant, Bermudas, Bahamas, or Turk's Islands.  
 A blue and white flag, United States.  
 A white flag, Newfoundland.  
 A red and white flag, horizontally divided, Quebec, or Gulf of St Lawrence.  
 A blue and white flag, horizontally divided, New Brunswick, or Bay of Fundy.  
 A white and blue pendant, vessel has an English mail on board.  
 A white pendant, coasts of Nova Scotia and Cape Breton.
- Repeat from Out Posts at Fort George.*
- For a square rigged vessel, two balls of one size.  
 A ship, a large ball at the end of the yard with a small ball in the centre.  
 A lozenge in the centre close up, a sloop or schooner.  
 Do. half hoisted, two or more schooners.

*Merchant's Private Signals—Port of Halifax.*

- BLUE, &c.—JH Tidmarsh, a blue flag.  
 Joseph Allison & Co. } a blue burgee,  
 E. Collins & Co }  
 A. Belcher & Co. a blue flag crossed white.  
 James Foreman, jr do crossed white diagonally.  
 S. Cunard & Co. do. centre a white star.  
 Wm. Pryor & Co. a blue and white flag, blue uppermost.  
 M. Richardson, a blue and red flag, blue next the mast.  
 Wm Story, a blue flag, centre a white square.  
 John Clark, do crossed white diagonally.  
 George P Lawson, a blue and white chequered flag.  
 Wm Deblois, a blue flag bordered white, letter D. in the centre enclosed by two triangles reversed.  
 G. & A. Mitchell, a blue and white flag, blue uppermost.  
 Conrad West, a blue burgee, centre a white star.  
 RED, &c.—D. & E. Starr, a red flag.  
 J. & M. Tobin, a red flag, crossed white.  
 Creighton & Grassie, do, crossed white diagonally.  
 Deblois & Mitchell, do. centre a white square.  
 Frasers & Co. red and white, white, next the mast.  
 John Brown, a red burgee, centre letter B.  
 Boggs & Hartshorne, a red and white chequered flag.  
 L'Epousie & Hall, a red and white chequered flag.  
 C. & W Roche. a red flag, centre a white diamond.  
 Thomas & Michael Tobin, red and white flag crossed diagonally.  
 Thos Laidlaw, a red white and red flag, red uppermost.

WH  
 J. L.  
 Fairl  
 John  
 Hall  
 gee, wh  
 Wm.  
 Fran  
 Jame  
 Wm.  
 mast.  
 Reyn  
 Fidd  
 J & H  
 Wm

YEL  
 tre a bl

The f  
 arriving  
 similar  
 arms of  
 it, desc

FR  
 FR  
 S

WES

M  
 A Coa  
 lis for Ke  
 At 5 o'clock  
 Aug. to 2  
 from 8th  
 A Coa  
 Windsor  
 Wednesd  
 only goes  
 an extra  
 which aff  
 to be hop  
 induce th

**WHITE, &c.**—J & T Williamson, a white flag.  
 J. L. Starr & Co. do centre a blue star.  
 Fairbanks & McNab, do. crossed blue.  
 John Tremain, do crossed blue diagonally.  
 Halifax Packet Company, a white, blue, white and red burgee, white next the mast.  
 Wm. & Robt Lawson, blue & white flag, crossed diagonally.  
 Francis Stevens, blue, white and blue, blue next the mast.  
 James Lyons & Co. white and red flag, white uppermost.  
 Wm. Strachan, white, red and white ditto, white next the mast.  
 Reynolds & Co- a white burgee, crossed red.  
 Fiddes & Robertson, white and red flag, red uppermost.  
 J & H Grant, a white flag, centre G S.  
 Wm Stairs, a white flag pierced blue.

**YELLOW, &c.**—Temple & Lewis Piers, a yellow flag, centre a blue ball.

The foregoing Signals are worn at the main. Upon vessels arriving in sight from the Light House so wearing a signal, a similar one is hoisted on the Telegraph Staff, or at the yard arms of the Signal Staff at Fort George, with a pendant under it, descriptive of the class of vessels to which she belongs.

STAGE



COACHES.

**WESTERN LINE—CONVEYING THE ROYAL  
 MAILS—FROM HALIFAX TO ANNAPOLIS.**

A Coach leaves Halifax for Windsor and Kentville, and Annapolis for Kentville, on Tuesday, Thursday, and Saturday, each week. — At 5 o'clock, a.m. from 12th May to 12th Aug.; at 6, from 13th Aug. to 22d Sept.; at day light, from 22d Sept. to 8th Feb.; and at 6, from 8th Feb. to 12th May.

A Coach also leaves Kentville for Annapolis, and another for Windsor and Halifax, at the hours above mentioned, on Monday, Wednesday and Friday in each week. During the Winter the Coach only goes twice in each week. From 18th May to 10th Nov. 1828, an extra Coach ran between Halifax and Windsor, 3 times a-week, which afforded a daily communication between these places; and it is to be hoped, that it met with sufficient encouragement in that time, to induce the Proprietors to continue it in future.

From Halifax to Windsor,	45 miles	~~~~~	\$3½	
„ „	Kentville,	71 „	~~~~~	\$5½
„ „	Annapolis,	180 „	~~~~~	\$10
„ Windsor,	Kentville,	26 „	~~~~~	\$2½
„ Kentville,	Annapolis,	60 „	~~~~~	\$5½

Agents—Halifax, John Harvie; Windsor, Henry Goudge; Kentville, John Hutchinson; Annapolis, — Mossman.

**EASTERN LINE—HALIFAX TO PICTOU.**

A Coach starts from Halifax every Monday, Wednesday and Friday morning at 6 o'clock—Arrives at Truro the same evening at 7 o'clock—Leaves Truro at 9 o'clock next morning, and arrives in Pictou at 5, p. m. same day—Leaves Pictou every Monday, Wednesday and Friday at 10, a. m.—Arrives at Truro at 6 o'clock same day—Leaves Truro next morning at 6 o'clock, and arrives in Halifax at 7 p. m. same day.

Fares—Halifax to Truro, \$5. Truro to Pictou, \$3.

Agents—Halifax, John Harvie. Truro, E. Blanchard. Pictou, N. Beck.

**TRURO TO DORCHESTER, N. B.**

A Weekly Stage runs between the above places—Leaves Truro at 7 o'clock on Thursday, Amherst at 11 o'clock on the same day, and arrives at Dorchester on Friday at 3, a. m. and returns again immediately.

Fares—Truro to Amherst, \$6. Amherst to Dorchester, \$3.

Agents—Thomas Atkinson and Michael Sommers.

The Steam Boat "St. John," Robert Wiley, master, leaves St. John, N. B. for Digby and Annapolis every Monday, and returns on Tuesday, for Eastport and St. Andrews on Thursdays, and returns on Saturdays.

Fare from Annapolis to St. John, \$3½.



ROADS to the Principal Towns in the Province, with the names of Innkeepers and distances, and the roads to St. John and Fredericton, N. B.

Halifax to Digby,	Northrup's	4	Crane's,	8		
Northrup's,	3	Mrs Wilcox, Wind-	Harris's,	1		
Birch Cove Hotel,	} sor, (45)	5	Gibbon's,	12		
Donaldson's,	{ 2	Songster's, Fal-	Leonard's,	10		
Rockingham,	1	mouth bridge,	4	Bridgetown,	5	
Fultz's,	5½	Smith's.	1	Annapolis, (180)	15	
Hamilton's	½	Northrup's	5	Ditmars,	8	
Hiltz's	9	Martin's	4	Winchester's,	5	
Fitzmaurice's	1½	Graham's,	Horton,	6	Bear River,	7
Pence's,	3½	Fowler's	6	Digby, Ruggles'	7	
M'Lellan's,	4	Hamilton's,	Kent-		149	
Trefry's, Newport	5	Bragg's,	ville,	6	Annapolis to Shel-	
Road, (35)	5	(72)	(72)	6	burne.	
Wallace's,	1	Sharp's,	7	7	Clement's Church,	9

Bear Riv  
Read's,  
Everet's  
mouth  
Cosman  
mouth  
Journie  
Cosman  
Terrian  
gan Co  
Corning  
River,  
Parry's,  
Lakes  
Smith's  
Yarmou  
Blanvel  
Nickers  
etic riv  
Spinney  
Bay.  
Larkin  
Kendric  
ringto  
Powell  
Hargra  
burne.

Hx. to  
Fultz's,  
Fletche  
Shultz's  
Hall's  
Keys'  
McKee  
Corbet  
Miller  
Pollock  
Polly's  
Clark's  
Witter  
Blanch  
Gourley  
Yewill  
Villag

Bear River Bridge, 8	Clark's, foot of } 6	To Cumberland via
Read's, Digby 9	Cob. Mountains } 6	Parrsboro'
Everet's, Wey- } 13	Purdy's, top of do. 6	Windsor, 45
mouth road, }	Hewson's, Riv- } 9	Parrsboro' by wa-
Cosman's, Wey- }	ter Philip, }	ter, Randall's, † 30
mouth Church, } 6	Stewart's, 10	Fullerton's, 11
Journie's, Scissiboo 4	Bent's, Amherst, 10	Jenks' 2
Cosman's, Clare, 4	Wetherhead's. 7	Furlong's, Macan
Terrian's, Monta-		Bridge, 6½
gan Cove, 15		Pugsley's, Napan, 9
Corning's, Bear } 14	Halifax to Lunen-	Bent's, Amherst, 9
River, }	burg.	Wetherhead's,
Parry's, Yarmouth	Prospect Row, 9	Fort Cumberland, 7
Lakes, 8	Johnson's, Ham-	118
Smith's—Richan's,	mond's plains, 4½	Halifax to Pictou,
Yarmouth Church, 5	McLean's, Marga-	Blanchard's,
Blanvelt's, Tusketo 10	ret's Bay, 17½	Witter's, Truro, 64
Nickerson's, Apub-	Crandle's, head of	Lyons', 7
tic river, 8	Chester Basin, 16	Archibald's, Sal-
Spinney's, Apublic	Lovett's, Chester, 6	mon River, 8
Bay, 5	Zwicker's, head of	Stewart's, Mount
Larkin's, Pubnico 10	Mahone Bay, 15	Tom, 10
Kendrick's, Bar-	Berringer's, Lu-	Blanchard's, West
rington, 13	nenburg, 6	River, 3
Powell's, riv. Clyde, 5		Pictou, 10
Hargraves, Shel-		102
burne, 16	There is a road	
	162	
Hx. to Cumberland.	from Windsor to	Halifax to Pictou via
Fultz's, 11½	Chester, but the pub-	Musquodoboit.
Fletcher's 6	lisher has not been	Dartmouth Ferry, 1½
Shultz's 5	able to obtain a list	Preston, Bradley's 6
Hall's 3	of the Innkeepers &	Putnam's farm, 5
Keys' 6	distances.	Hart's, 5
McKeen's 3½	From Lunenburg to	M'Keen's, 11
Corbett's, Gay's 3	Liverpool.	Leckic's, 13
Miller's, River, 3	Miller's ferry La-	Archibald's 4
Pollock's 9	have River, 7	Geddes' 4
Polly's 3	Manning's, 7	Heney's, 4
Clark's 7	Conrod's, ferry,	Dunbar's W. branch
Witter's, Tru- 7	Port Medway, 7	E. River, Pictou, 26
Blanchard's, ro, 7	Mack's 6	M'Kay's, 8
(64).	Ball's, Herring	Fraser's. 7
Gourley's, Onslow, 5	Cove, 8	Across the harbour
Yewill's, Lower } 14	Liverpool 2	to Walmsley Court
Village, }		House, 1
		954

ge ; Kent-  
TOU.  
y and Fri-  
ning at 7  
arrives in  
, Wednes-  
same day  
Halifax at  
  
Pictou,  
  
s Truro at  
e day, and  
mediately.  
r, \$3.  
  
er, leaves  
and returns  
s, and re-  
  
the names  
John and  
8  
1  
12  
10  
n, 5  
(180) 15  
8  
r's, }  
er, } 5  
ggles' 7  
149  
to Shel-  
e.  
Church, 9

Cross roads from Ar-	To Fredericton, NB.	Gilles, head of	
chibald's to Scott's 20	Bent's, Anherst 125	Bellisie,	5
Halifax to Antigo-	Wells', Hewson's,	Cromwell's,	5
nish.	Tantramare	Watson's, Washa-	
Blanchard's, West	Marsh, 10	domoak,	8
River, Pictou, 92	Bass' "London Ta-	Nevers' & Oakley's	
Chisholm's New	vern," Sackville, 9	Gimseg,	7
Glasgow 10	Morrison's "Dor-	Tilly's,	10
Sutherland's, Meri-	chester Arms,"	Widow Purley's,	10
gomish, 7	Dorchester, 9	Fredericton,	10
Murray's 10	Joseph Black's 3		
Mc Donald's, Gulf	Ben Charters', 5		292
Shore, 10	Harper's & Kelly's,	To St. John, N. B.	
Mrs Simmond's and	bend of the Petti-	Baxter's at the Fin-	
Wolmesley's, 16	codiack river, 15	ger Board, 237	
	Jacques' 15	From Baxter's to	
	Major Scott's 3	De Forrest's,	
	Blakeney's 7½	Hampton Ferry, 12	
	Pittfield's 10	Beatie's, Hammond	
The road over the	Cougles', Sussex	River, 10	
Antigonish moun-	Vale, 13½	St. John, 14½	
tains shortens the	Baxter's Finger		
above distance a-	Board 12		273½
bout 10 miles.			

\*The Parrsboro' Packet sails regularly to Windsor and Horton every week, from the 1st April to Christmas ; leaves Parrsboro' on Monday (wind and weather permitting) so as to be at Windsor on Tuesday, and will sail from thence (for Parrsboro') the first high water that happens at or after 8 o'clock in the morning—leaves Parrsboro' on Thursday, so as to be at Horton on Friday, and will sail from thence for Parrsboro' the first high water after 8 o'clock in the morning. The packet frequently goes to Windsor twice a week.

*Lodges under the Jurisdiction of the Provincial Grand Lodge of Nova-Scotia.*

**ON THE REGISTRY OF ENGLAND.**

- No 188, St. Andrew's, held at Halifax, 1st Tuesday in the month
- No 265, St John's, held at Halifax, 1st Monday in ditto

**ON THE REGISTRY OF NOVA-SCOTIA.**

- No 1, Union, held at Halifax, 2d Monday in the month.
- No 2, Virgin, at do, 4th do do
- No 7, Temple, at Guysborough, 1st Tuesday do.
- No 10, Hiram, at Shelburne, 2d Monday do.
- No 11, St. George's at Cornwallis, 1st do do.
- No 19, St. George's at Mougerville, N B. 2d Tuesday do.
- No 12, Sion, at Sussx Vale, N B first Monday after full moon.

No 22, S  
 No 26, S  
 No 28, H  
 No 29 S  
 No 31,  
 No 34, O  
 No 35, M  
 No 36, a  
 No 37, H  
 No 38, U  
 No 39, I  
 No 40, M  
 No 43, S  
 No 44, U  
 No 45, H  
 No 46, M  
 No 47, M  
 No 48, C  
 No 49, C  
 No 50, G  
 No 51, C  
 No 52, A  
 No 54, C  
 No. 55 S

☾ Arie  
 ☽ Tau  
 ♀ Gem  
 ☽ Can  
 ♀ Leo  
 ♀ Virg

☾ The  
 ☽ The  
 ♀ Mer  
 ♀ A  
 ☽ T  
 ♀ C

- No 22, Solomon, at Fredericton, N B 1st Tuesday after full moon  
 No 26, St John's, at Charlotte Town, P E Island, 2d do do  
 No 28, Harmony, at Sydney, C B, 1st Wednesday do.  
 No 29 St John, at St John, N B. 1st Tuesday do.  
 No 31, Midian, at Kingston, N B. 2d do  
 No 34, Orphan's Friend, at St. Stephen's N B, 2d Wednesday after every full moon.  
 No 35, New Caledonia, at Pictou, 2d Tuesday in the month  
 No 36, at Newport, 1st Tuesday after every full moon  
 No 37, Eastern Star, at St Andrews, N B. every Wednesday before full moon  
 No 38. Union, at John, N B. every 2d Tuesday in the month  
 No 39, Royal Standard, at Halifax, 2d do do  
 No 40, Musquodobit, at Musquodobit, every Tuesday before the full moon.  
 No 43, St Lawrence, at Liverpool, N. B. 1st do in the month  
 No 44, Unity, at Lunenburg, 1st do do  
 No 45, Fort Edward, at Windsor, 2d Monday do  
 No 46, Morning Star, at Woodstock, N B. Tuesday before full moon  
 No 47, Moira, at Rawdon, Monday before do  
 No 48, Colchester Union, at Truro, 1st Tuesday in the month  
 No 49, Concord, at Barrington, 1st Monday do  
 No 50, Golden Rule, at Hopewell, N B. 1st Wednesday after full moon  
 No 51, Cumberland Harmony, at Amherst, 1st Tuesday in the month  
 No 52. Albion, at St John, N B. 1st Monday do  
 No 54, Oxfordshire Light Infantry, Travelling Warrant 52d Regt 1st Thursday in the month  
 No. 55 St. Mary's, at Digby 2d Tuesday in the month

Signs of the Zodiac.

- |                  |                       |
|------------------|-----------------------|
| ♈ Aries—head.    | ♎ Libra—reins.        |
| ♉ Taurus—neck.   | ♏ Scorpio—secrets.    |
| ♊ Gemini—arms.   | ♐ Sagittarius—thighs. |
| ♋ Cancer—breast. | ♑ Capricornus—knees.  |
| ♌ Leo—heart.     | ♒ Aquarius—legs.      |
| ♍ Virgo—belly.   | ♓ Pisces—feet.        |

The Planets and their relations.

- |             |              |             |
|-------------|--------------|-------------|
| ☉ The Sun.  | ♀ Venus.     | ♃ Jupiter.  |
| ☾ The Moon. | ♁ The Earth. | ♄ Saturn.   |
| ☿ Mercury.  | ♂ Mars.      | ♆ Georgian. |

♋ A Planet's ascending node.

♌ The descending node.

♍ Conjunction, or Planets situated in the same longitude.

□ Quadrature, or Planets situated in longitudes differing 3 signs from each other.

♁ Opposition, or Planets situated in opposite longitudes, or differing 6 signs from each other.

The Planet Venus (♀) will be evening star till March 7th, thence morning star till Dec. 20th, and then again evening star.

Jupiter (♃) will be morning star till July 5th, thence evening star through the year.

Mars (♂) also will be morning star till Sept. 19th, thence evening star to the end of the year.

—————  
\*\*\*\*\*  
—————  
**Chronological Cycles for 1830.**

Dominical Letter,	C Solar Cycle,	19
Lunar Cycle, or golden numb.	7 Roman Indiction,	3
Epact,	6 Julian Period.	6543

**Ember Days.**

March 3, 5, & 6.	September 15, 17, & 18.
June 2, 4, & 5.	December 15, 17, & 18.

**Moveable Feasts.**

Septuagesima Sun. Feb. 7.	Low Sunday, April 18.
Quinq. or Shrove Sun. Feb. 21.	Rogation Sun. May 16.
Ash Wed. or 1st day Lent, 24.	Ascen. Day or Holy Th. May 20.
Mid. Lent. Sun. March 21.	Whit Sunday, May 30.
Palm Sunday, April 4.	Trinity Sunday, June 6.
EASTER DAY, April 11.	Advent Sunday, Nov. 28.

**Holidays at the Public Offices.**

1st Jan. New Year's Day.	31st May, Whit Monday.
20th ,, K. Geo. IV's access.	1st June, Whit Tuesday.
17th March, St Patrick.	19th July, Geo 4th crowned.
9th April, Good Friday.	5th Nov. Powder Plot.
12th ,, Easter Monday.	30th ,, St Andrew.
13th ,, Easter Tuesday.	25th Dec. Christmas Day.
23d ,, St. George. K. Geo. 4 b.d.k.	

“ H  
Th’  
On  
Of  
Th  
Of  
Hea  
Fro

To shew  
ted by the  
World by  
lutely visio  
of the histo  
ward, till,  
cording to  
race,—to  
the realms  
least by its

This ‘ g  
about the  
when all  
was in the  
from the 2  
Ursa Maj  
the wander  
Holley, w  
ing uncert  
the forme  
latter, fro  
it re-appe  
only 19 d  
exhibit an  
dates, it  
years, the

From

Allowing  
stated as  
remotest  
its neares  
so early  
during th  
tion of o  
nomers g  
as well

## THE COMET OF 1832, 3 or 4.

“Hast thou ne'er seen the comet's flaming flight ?  
 Th' illustrious stranger passing, terror sheds  
 On gazing nations, from his fiery train  
 Of length enormous; takes his ample round  
 Through depths of ether; coasts unnumbered worlds  
 Of more than solar glory; doubles wide  
 Heaven's mighty cape, and re-visits Earth  
 From the long travel of a thousand years.”—YOUNG.

To shew those who may have been infected with the terrors excited by the Parisian Astronomers, who predict the destruction of our World by a Comet, in 1832,—to shew the grounds of this, not absolutely visionary alarm, we have been induced to give a slight sketch of the history of that baleful star, which is now winging its way earthward, till, in the year 1832, 3 or 4, it is expected to arrive, and, according to some philosophers, to breathe desolation on the human race,—to hurry this earth nearer to the sun,—or rush with it, through the realms of ether, to the utmost confines of the solar system,—or at least by its shock, to reduce this beautiful frame to its original chaos.

This ‘great and fearful star’ was first observed in the year 1305, about the season of Easter, it returned again in the summer of 1456, when all Europe beheld it with fear and amazement. Its next visit was in the years 1531 and 1607, in this latter year continuing visible from the 26th Sept to the 5th Nov. following: its course was through Ursa Major, Bootes, Serpentis, and Ophiuchus. In the year 1682 the wanderer again visited this hemisphere, and was observed by Dr. Halley, who predicted its return in 1757 or 58, the precise time being uncertain, from the attractive influence of Saturn and Jupiter, the former, lengthening the period of the Comet 100 days, and the latter, from his superior quantity of matter, not less than 510 days: it re-appeared, accordingly, about the end of Dec. 1758, deviating only 19 days from the calculated time. On this occasion it did not exhibit any remarkable appearance. From a comparison of these dates, it is evident that the period of this Comet is about 75 or 76 years, there being the following variations:—

From 1531 to 1607 // 76 years 62 days.

1607 to 1682 // 74 „ 323 „

Allowing for the attraction of the larger planets, its period may be stated as 76 years 192 days, in which time it describes an orbit, the remotest point of which is 3420 millions of miles from the Sun, and its nearest not more than 47 millions. This Comet may not return so early as 1832, but there is scarcely any doubt of its re-appearance during the year 1833 or '34. As to its being the agent in the destruction of our globe, it is certain that this is not the opinion of astronomers generally. Many causes may operate to affect these elements, as well as alter the period assigned, or even to prevent the return of



the Comet altogether. In its vast excursions into space, 1620 millions of miles beyond the orbit of Uranis, it may encounter the attractions of other bodies, so as to carry it off from our system, or, coming in contact with another Comet, its matter may be entirely dissipated, and its atoms scattered through space, till, falling within the attractive influence of other bodies, may constitute aeroliths or meteors. This supposition is grounded on the non-appearance of the Comet of 1770, which ought, by calculation, to have returned 10 times; but which, since that date, has never been seen. But we can assure those whose terrors have been excited by anticipating such an awful visitant, upon so dire an errand, that there is more cause of alarm, from another Comet, whose path is nearer the orbit, than the one to which we have been principally referring;—we mean the Comet of 1819: its period is only 3 years and 107 days, and it never ranges beyond the orbit of Jupiter; it approaches nearer Mercury than any other of the planets, and crosses the earth's orbit more than 60 times in the course of a century; and certainly it is within the limits of chance, that some collision may occur between this comet and the earth. The consequence of such an event would, according to some, more than realise the terrors which superstition has conceived of it. The earth's period of revolution, in all probability would be changed, either by carrying it nearer to, or farther from, the sun; a different inclination of the axis might be given, and there would be a consequent change of the seasons; the diurnal motion might be either accelerated or retarded, by which the length of the days would be affected; the vast continents of the globe would again be covered with the ocean, which deserting its bed, would rush towards the new equator.

[TO BE RESUMED IN OUR NEXT.]

EXPLANATION OF THE CALENDAR PAGES.

*Left hand Page*—First column contains the days of the month. Second, days of the week. Third, rising of the sun. Fourth, setting of the sun. Fifth, length of days in hours and minutes. Sixth, Sun's declination in degrees and minutes. Seventh, Moon's rising or setting. Eighth, Moon's southing, and also the time of High Water at Windsor, Horton, &c. Ninth, Moon's place in the signs. Tenth, high water at Halifax.

*Right hand Page*.—First column, days of the month. Second, Holidays, Weather, &c. Third, Farmer's Calendar.

The top of the columns on each page shows the moon's phases, or the times of new and full moon, and of the first and last quarter or two quadratures with the sun.

There  
two of the  
I. The  
16m. high  
high north  
visible on

II. The  
at 9h. 11m  
low the h  
ern part o  
traliasia, i  
darkness

III. Th  
at 10h. 24  
south latit  
and visible  
at Patago  
be eclipse

IV. The  
Wednesda  
reason afc  
S. Americ

V. The  
day, Sept.  
eclipsed, v  
perceived  
Beginning  
Total dar

Middle .  
Ecliptic o  
The D  
shadow, i  
40' 30''.

VI. T  
Sept. 16th  
invisible.  
ceptible a  
Asia, whe  
of the ☉'s

☞ A  
since 180  
Feb. bet  
nearly to  
If the atr  
veral of t  
a little ea  
appear v

SOLAR AND LUNAR ECLIPSES.

There will be six Eclipses this year, *four* of the Sun, and *two* of the Moon, as follows:—

I. The first will be of the Sun on Monday 22d Feb. at 12h 16m. night, consequently invisible. By reason of the Moon's high north latitude, it will be but a very small eclipse, and visible only to a portion of the northern region.

II. The second will be of the Moon on Tuesday 9th March, at 9h. 11m. in the morning, invisible, as the moon will be below the horizon. On the N.W. coast of N. America, the Eastern part of Asia, the Sandwich and Society Islands, and Australasia, it will be a great, visible, and total eclipse—total darkness continuing 44m.

III. The third will be of the Sun on Wednesday March 24th at 10h. 24m. in the morning, invisible by reason of the Sun's south latitude. It will be but small, to any part of the earth, and visible only in high southern latitudes—about two digits at Patagonia, Terra del Fuego, and the Islands adjacent, will be eclipsed on the Sun's southern limb.

IV. The fourth will also be of the Sun, a small eclipse; on Wednesday. August 18th; at 7h 33m. morning, invisible by reason aforesaid. At Cape Horn, the southern extremity of S. America, the Sun will rise with one digit eclipsed.

V. The fifth will be of the Moon, a great eclipse, on Thursday, Sept. 2d. partly visible. The moon will rise totally eclipsed, when the going off of the earth's shadow may be perceived.

Beginning at . . . . .	4h. 30m.	Moon rises . . . . .	6h. 50m.
Total darkness begins	5 28	End of total darkness	7 8
Middle . . . . .	6 17	End of the Eclipse . .	8 6
Ecliptic opposition . .	6 18		

The Moon will pass through near the centre of the earth's shadow, inclining to the northern side.—Digits eclipsed 21° 40' 30".

VI. The sixth and last will be of the Sun, on Thursday Sept. 16th, at 10h 8m eve. Sun below the horizon, of course invisible. It will be but a very small eclipse, and hardly perceptible at any place on the earth. In the northern part of Asia, where it will be greatest, there will be about two digits of the Sun's northern limb eclipsed on the meridian.

☞ A greater eclipse of the Sun, than has happened since 1806, will take place next year, 1831, on the 12th Feb. between noon and two o'clock, p. m. visible and nearly total. It will be about 11 1-3 digits eclipsed.—If the atmosphere should be clear, it is probable that several of the Fixed Stars will be seen. The planet Venus a little east, and Jupiter a little west of the Sun, will also appear very brilliant.



First Quar. 1st d. 10h. 20m eve. Full Moon 8th d. 11h 18m. eve.

D	D	☉	☽	Days	Sun's	C R.	C	C's	High
M	W	rises	sets	len'th	dec.S	& S.	south.	place.	water
1	Fr	7 38	4 22	8 41	23 1	morn.	5 47	head	0 57
2	Sa	7 38	4 22	8 44	22 56	0 17	6 38	head	1 48
3	C	7 38	4 22	8 44	22 51	1 35	7 30	neck	2 40
4	M	7 37	4 23	8 46	22 45	2 49	8 23	neck	3 33
5	Tu	7 36	4 24	8 46	22 38	3 59	9 17	arms	4 27
6	W	7 35	4 25	8 50	22 31	5 3	10 11	arms	5 21
7	Th	7 35	4 25	8 50	22 24	6 2	11 6	arms	6 16
8	Fr	7 34	4 26	8 52	22 16	rises.	11 59	breast	7 9
9	Sa	7 33	4 27	8 54	22 8	5 13	morn.	breast	7 52
10	C	7 33	4 27	8 54	21 59	6 8	0 51	heart	8 32
11	M	7 32	4 28	8 56	21 50	7 9	1 40	heart	9 0
12	Tu	7 31	4 29	8 58	21 40	8 12	2 27	belly	9 37
13	W	7 31	4 29	8 58	21 30	9 17	3 12	belly	10 22
14	Th	7 30	4 30	9 0	21 20	10 22	3 55	belly	11 5
15	Fr	7 29	4 31	9 2	21 9	11 27	4 37	reins	11 47
16	Sa	7 28	4 32	9 4	20 58	morn.	5 19	reins	morn.
17	C	7 28	4 32	9 4	20 47	0 32	6 2	secrets	1 12
18	M	7 27	4 33	9 6	20 35	1 35	6 46	secrets	1 56
19	Tu	7 26	4 34	9 8	20 22	2 35	7 31	secrets	2 41
20	W	7 25	4 35	9 10	20 9	3 33	8 19	thighs	3 29
21	Th	7 24	4 36	9 12	19 56	4 31	9 10	thighs	4 20
22	Fri	7 23	4 37	9 14	19 43	5 26	10 4	knees	5 14
23	Sa	7 22	4 38	9 16	19 29	6 18	10 59	knees	6 9
24	C	7 21	4 39	9 18	19 15	sets	11 55	legs	7 5
25	M	7 20	4 40	9 20	19 0	6 15	eve	51 legs	8 1
26	Tu	7 19	4 41	9 22	18 45	7 30	1 46	feet	8 56
27	W	7 18	4 42	9 24	18 30	8 47	2 40	feet	9 50
28	Th	7 17	4 43	9 26	18 14	10 5	3 33	head	10 43
29	Fr	7 15	4 45	9 30	17 58	11 22	4 26	head	11 36
30	Sa	7 14	4 46	9 32	17 42	morn.	5 18	neck	eve 28
31	C	7 12	4 48	9 36	17 25	0 36	6 11	neck	1 21

Winter.

Forth  
The ch  
And d  
From

Stands  
The fr

Eye th  
With l  
Dig for

Last Quar

DM | Holic

J Circum

2

C 2d Sun

4

5

6 Epiphany

7 D runs l

8 Lucian.

9

C 1st Sun

11

12

13 ♂ ♀ ♀

14

15 D apogee

16 Battle of

C 2d Sun

18

19 ☉ enters

20

21 D runs lo

22

23

C 3d Sun

25 Convers.

26 ♂ ☉ ♀

27 D. of Suss

28 ♂ gr elong

29 K. Geo IV

30 K. Char I.

C 4th Sun



Winter. JANUARY begins on Friday. 15

Forth goes the woodman, leaving unconcerned,  
 The cheerful haunts of man; to wield the axe,  
 And drive the wedge in yonder forest drear,  
 From morn to eve his solitary task.

Drooping, the labourer or  
 Stands covered o'er with snow, and then demands  
 The fruit of all his toil.

The bleating kind,  
 Eye the bleak heaven, and next the glistening earth,  
 With looks of dumb despair; then sad, dispersed,  
 Dig for the withered herb thro' heaps of snow.

Last Quar. 16th d. 11h. 49m. eve | New Moon 24th d. 0h. 40m. eve  
 First Quar. 31st d. 6h. 33m. morn

Sm. eve.	High water
0	57
1	48
2	40
3	33
4	27
5	21
6	16
7	9
7	52
8	32
9	0
9	37
10	22
11	5
11	47
morn.	
1	12
1	56
2	41
3	29
4	20
5	14
6	9
7	5
8	1
8	56
9	50
10	43
11	36
eve	28
1	21

DM	Holidays, Weather, &c.	FARMER'S CALENDAR.
1	Circumcision. ☽ per.	It is said that in attempting to
2	<i>beautiful</i>	trace the origin of Agriculture, we
C 2d	Sun af Christmas	are lost in the fables which
4	<i>and long</i>	obscure the annals of antiquity.
5	<i>evenings</i>	One thing we have full and cer-
6	Epiphany	tain proof of, viz: that it has at-
7	☽ runs high	tracted the assiduous attention and
8	Lucian. High Tides	concern of the most wise and pow-
9	<i>rough</i>	erful nations of the world. Man-
C 1st	Sun af Epiphany	ny believe it to be a criterion by
11	<i>winds, with</i>	which we may judge of the mor-
12		als, prosperity and civilization
13	♁ ♃ ♀	of any of age or country. The
14	<i>some snow</i>	ancients, we read, venerated the
15	☽ apogee	plough, and their most distinguish-
16	Battle of Corunna, 1809. Low	ed and illustrious men thought it
C 2d	Sun af Eph. [tides.	no means a degradation, but a high
18	<i>milder and</i>	mark of honour to be seen in the
19	<i>perhaps more snow</i>	fields with implements of hus-
20	☺ enters ☽	bandry in their hands. These
21	<i>now comes</i>	were men of truly noble minds,
22	☽ runs low	who were not ashamed to be seen
23	<i>a storm</i>	at home. The plough, the rake,
C 3d	Sun af Eph. High tides	the hoe, the spade were their fre-
25	Convers. of St Paul	quent companions and it was their
26	♁ ☺ ♀	delight to walk over their fields
27	D. of Sussex b. 1773. ☽ per	and plantations, and see the full
28	♃ gr elong	and cheering evidence of a remu-
29	K. Geo IV Acc. 1820	neration for the labour of their
30	K. Char I. martyr. <i>snow</i>	own hands, and realize that they
C 4th	Sun af. Eph. K. Geo IV	were created for usefulness and to
	[proc. 1820.	be a benefit to their fellow crea-



Full Moon 7th d. 3h. 28m. eve. Last Quar. 15th d. 8h. 12m. eve

D	D	☺	☾	Days	Sun's	☾ R.	☾	☾'s	High
M	W	rises	sets	len'th	dec. S	& S.	south.	place.	water
1	M	7	9 4	51 9	42 17	81	47 7	4 neck	2 14
2	Tu	7	8 4	52 9	44 16	51 2	51 7	58 arms	3 7
3	W	7	7 4	53 9	46 16	34 3	50 8	52 arms	4 2
4	Th	7	5 4	54 9	50 16	16 4	43 9	45 breast	4 55
5	Fr	7	4 4	55 9	52 15	58 5	30 10	37 breast	5 46
6	Sa	7	3 4	56 9	54 15	40 6	12 11	27 heart	6 37
7	C	7	2 4	57 9	56 15	21 rises.	morn.	heart	7 25
8	M	7	1 4	59 9	58 15	26	8 0	15 heart	7 55
9	Tu	6	59 5	1 10	2 14	43 7	7 1	1 belly	8 35
10	W	6	58 5	2 10	4 14	24 8	8 1	45 belly	9 10
11	Th	6	56 5	4 10	8 14	4 9	10 2	28 reins	9 46
12	Fr	6	55 5	5 10	10 13	44 10	13 3	10 reins	10 21
13	Sa	6	53 5	7 10	14 13	24 11	16 3	53 reins	11 3
14	C	6	52 5	8 10	16 13	4 morn.	4 36	secrets	11 46
15	M	9	51 5	9 10	18 12	44 0	18 5	21 secrets	morn.
16	Tu	6	49 5	11 10	22 12	23 1	19 6	7 thighs	1 17
17	W	6	48 5	12 10	24 12	2 2	17 6	56 thighs	2 6
18	Th	6	47 5	13 10	26 11	41 3	11 7	47 knees	3 37
19	Fr	6	45 5	15 10	30 11	20 4	2 8	41 knees	3 50
20	Sa	6	44 5	16 10	32 10	58 4	47 9	36 knees	4 46
21	C	6	42 5	18 10	36 10	37 5	31 10	32 legs	5 42
22	M	6	41 5	19 10	38 10	15 sets.	11 29	legs	6 39
23	Tu	6	39 5	21 10	42 9	53 6	18	eve 25 feet	7 25
24	W	6	38 5	22 10	44 9	31 7	33 1	21 feet	8 31
25	Th	6	36 5	24 10	48 9	9 8	50 2	16 head	9 26
26	Fr	6	34 5	26 10	52 8	46 10	9 3	11 head	10 21
27	Sa	6	33 5	27 10	54 8	24 11	26 4	6 neck	11 16
28	C	6	31 5	29 10	58 8	1 morn.	5	1 neck	levell

Winter.  
Let V  
The dark  
Though  
And the  
Yet shall  
With me  
And whe  
The ice-  
How brig  
Blaze on

New Mod  
DM | Hol  
1 ♂ sta  
2 Purif.  
3 ☺  
4 ♀ run  
5  
6 High t  
C Septua  
8 Mary C  
9  
10 Ld. Dar  
11 Inf & t  
12 ♀ apog  
13 ♀ stat  
C Sexage  
15 Low tid  
16  
17  
18 ☺ ente  
19 ♀ runs  
20  
C Quinq.  
22 Tides v  
23 Shrove  
24 Ash We  
25 Earl Es  
26  
27  
28 1st Sun

Month



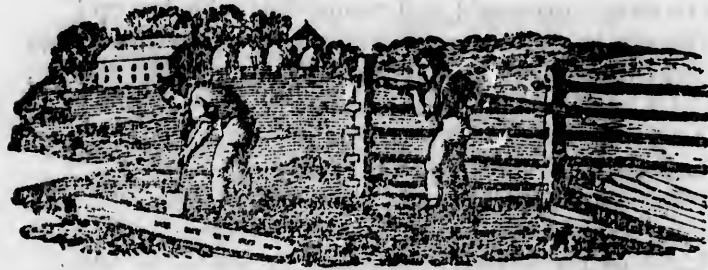
Let Winter come ! let polar spirits sweep  
 The dark'ning world, and tempest-troubled deep !  
 Though boundless snows the withered heath deform,  
 And the dim Sun scarce wanders through the storm ;  
 Yet shall the smile of social love repay,  
 With mental light, the melancholy day,  
 And when its short and sullen moon is o'er,  
 The ice-chained waters slamb'ring on the shore,  
 How bright the faggots in the little hall  
 Blaze on the hearth, and warm the pictured wall !

New Moon 33d d. 0h 22m morn

2m.eve

High water  
 2 14  
 3 7  
 4 2  
 4 55  
 5 46  
 6 37  
 7 25  
 7 55  
 8 35  
 9 10  
 9 46  
 10 21  
 11 3  
 11 46  
 morn.  
 1 17  
 2 6  
 2 37  
 3 50  
 4 46  
 5 42  
 6 39  
 7 25  
 8 31  
 9 26  
 10 21  
 11 16  
 evell

DM	Holidays, Weather, &c.	FARMER'S CALENDAR.
1	♄ stat. <i>a storm</i>	Dress out hemp and flax, and
2	Purif. of B V Mary <i>of</i>	see that your spinning wheels
3	8 ♀ ☺ ♀ <i>snow</i>	come nearly up to perpetual mo-
4	♃ runs high	tion. For every shilling saved
5	<i>may now be</i>	in domestic manufactures you
6	High tides. <i>expected.</i>	gain at least three. One you
7	C Septuagesima Sun.	gain by the greater durability of
8	Mary Q. of Scots, behd.1586	homespun articles; one you
9	<i>a pleasant sun</i>	save of cash not paid for the pur-
10	Ld.Darnly mur. 1567 <i>but</i>	chases; and one, or perhaps more,
11	Inf ♀ ☺ ♀. <i>cutting winds</i>	by bringing up your girls to habits
12	♃ apogee.	of thrift and industry Nurse your
13	♀ stat <i>wet weather</i>	lambs by feeding your ewes, as
14	C Sexagesima Sun. Valentine.	every sheep-owner knows, is ve-
15	Low tides.	ry requisite. The coarser ma-
16	<i>becomes</i>	terials intended for fodder, such
17	<i>colder with</i>	as husks, cut straw, &c. should
18	☺ enters ♃ <i>rain.</i>	be given out while the cold
19	♃ runs low.	weather gives your cattle an ap-
20	<i>some snow</i>	petite somewhat sharper than the
21	C Quinq. Sun. ♃ ♀	jokes of Joe Miller.—'The mer-
22	Tides very high. ☺ ecl.invis	ciful man is merciful to his beast,'
23	Shrove Tuesday. <i>mild</i>	—this means, firstly that if you
24	Ash Wed. D.Cam.b.'74. Dper	will have a sleigh-ride, the noble
25	Earl Essex behd.1601. ♀ stat	animal that ministers to your
26	<i>fine weather</i>	pleasure must not be abused by
27	<i>for the</i>	hard-driving; and 2ndly, when
28	1st Sun in Lent <i>season</i>	you stop, See him properly
		covered with a rug, and sheltered
		from the chilling blast.



First Quar. 1st d 3h 43m eve. Full Moon 9th d 9h 17m morn

D	D	☉	☉	Days'	Sun's	C R.	C	C's	High
M	W	rises	sets	len'th	dec. S	& S.	south.	place.	water
1	M	6 29	5 31	11 2	7 39	0 37	5 56	arms	1 6
2	Tu	6 28	5 32	11 4	7 16	1 40	6 50	arms	2 0
3	W	6 27	5 33	11 6	6 53	2 35	7 44	breast	2 54
4	Th	6 25	5 35	11 10	6 30	3 23	8 36	breast	3 46
5	Fr	6 24	5 36	11 12	6 7	4 6	9 26	heart	4 36
6	Sa	6 23	5 37	11 14	5 44	4 44	10 14	heart	5 22
7	C	6 21	5 39	11 18	5 20	5 18	11 1	heart	6 10
8	M	6 19	5 41	11 22	4 57	5 47	11 45	belly	6 50
9	Tu	6 18	5 42	11 24	4 34	rises	morn.	belly	7 30
10	W	6 16	5 44	11 28	4 10	7 10	0 29	reins	8 15
11	Th	6 15	5 46	11 30	3 47	8 11	1 12	reins	8 48
12	Fr	6 13	5 47	11 34	3 23	9 11	1 54	reins	9 28
13	Sa	6 12	5 48	11 36	3 0	10 10	2 37	secrets	9 40
14	C	6 10	5 50	11 40	2 36	11 9	3 22	secrets	10 32
15	M	6 9	5 51	11 42	2 12	morn.	4 7	thighs	11 17
16	Tu	6 7	5 53	11 40	1 49	0 54	54	thighs	morn.
17	W	6 5	5 55	11 50	1 25	0 59	5 44	thighs	0 54
18	Th	6 4	5 56	11 52	1 1	1 50	6 35	knees	1 45
19	Fr	6 2	5 58	11 56	0 38	2 38	7 28	knees	2 38
20	Sa	6 1	5 59	11 58	0 14	3 23	8 23	legs	3 33
21	C	5 59	6 1	12 2	0 9	4 5	9 18	legs	4 28
22	M	5 58	6 2	12 4	0 33	4 44	10 13	feet	5 23
23	Tu	5 56	6 4	12 8	0 56	5 21	11 9	feet	6 19
24	W	5 54	6 6	12 12	1 20	sets	eve	5 head	7 15
25	Th	5 53	6 7	12 14	1 43	7 42	1 2	head	8 12
26	Fr	5 51	6 8	12 18	2 7	8 55	1 59	neck	9 9
27	Sa	5 50	6 10	12 20	2 30	10 6	2 57	neck	10 7
28	C	5 48	6 12	12 24	2 54	11 12	3 54	arms	11 4
29	M	5 46	6 14	12 28	3 17	morn.	4 51	arms	eve 1
30	Tu	5 45	6 16	12 30	3 41	0 11	5 46	breast	0 56
31	W	5 43	6 17	12 34	4 4	1 4	6 40	breast	1 50

And s  
A heig  
Warm  
And g  
And d  
Yet fr  
And h  
T

Last Qua

dm/ Hol  
1 St Dav  
2 John W  
3 runs  
4  
5  
6  
C 2d Sun  
8 High t  
9 Dd. Riz  
10 8 gr e  
11 apog  
12 Gregor  
13  
C 3d Su  
15  
16 Low tid  
17  
18 runs  
19  
20 ☉ ente  
C 4th Sun  
22  
23 High ti  
24 D per.  
25 Annunc  
26  
27 ♀ stat.  
C 5th Sun  
29  
30  
31 runs  
Low tid

Winter flies !

And see, the source of life and light uprise !  
 A height'ning arch o'er southern hills he bends;  
 Warm on the cheek the slanting beam descends,  
 And gives the reeking mead a brighter hue,  
 And draws the modest primrose bud to view.  
 Yet frosts succeed, and winds impetuous rush  
 And hail-storms rattle through the budding bush.

Thus constant Providence divine

In ev'ry change new lovè displays ;

And all in one great end combine,

The creature's good—the maker's praise.

Last Quar 17th d. 1h 22m morn | New Moon 24th d. 10h 30m morn  
 First Quar 31st d. 2h 44m morn

Day	Holidays, Weather, &c.	FARMER'S CALENDAR.
1	St David. Low tides.	It is now time for the farmer to assume all the energies, regulated by all the prudence which are indispensably requisite for the successful prosecution of the highly honorable pursuits of his vocation.— He should drive and not be driven by the labours requisite for each season as it passes. Finish cutting, splitting and piling your wood. Overhaul repair, paint sharpen and put in order your implements of husbandry Look to your drains and water courses, and contrive to monopolize and spread over your grass grounds as much of the wash of the highway as you can, without robbing your neighbours. Procure the very best seeds for the ensuing season. If you have not good seeds, good fences, and good breeds of animals, you can never mature a crop, possess a good dairy or brooder, deserve the name, nor realize the profits of a good farmer.— Set out fruit trees as soon as the weather will permit, Set out cabbage stumps for early greens, and a few of the best cabbages for seed.
2	John Wesley died 1791 snow	
3	Moon high. rather unpleasant for March. but soon	
4	2d Sun in Lent. Inf ♂ ☉ ♀ grows fine.	
5	High tides.	
6	Dd. Rizzio assass. 1566 Dec. in	
7	♂ gr elong. sudden	
8	☾ apogee. changes	
9	Gregory Martyr. may now be expected	
10	3d Sun in Lent	
11	a storm of snow or rain	
12	Low tides.	
13	☾ runs low more changeable	
14	☉ enters op.	
15	4th Sun in Lent. Mid L Sun but generall fine	
16	High tides	
17	☾ per. ☉ ecl. inv.	
18	Annunc. of B V Mary rainy, dull and wet weather	
19	☾ stat.	
20	5th Sun in Lent.	
21	☾ runs high	
22	Low tides. finer	

High water
1 6
2 0
3 54
4 46
5 36
6 22
7 10
8 50
9 30
10 15
11 48
12 28
13 40
14 32
15 17
morn.
16 54
17 45
18 38
19 33
20 28
21 23
22 19
23 15
24 12
25 9
26 7
27 4
28 eve 1
29 56
30 50





Full Moon 8th d. 3h. 15m. morn. Last Quar. 15th d. 2h 35m morn

D	D	☺	☺	Days	Sun's	C R.	C	C's	High
M	W	rises	sets	len'th	dec.N	& S.	south.	place.	water.
1	Th	5 42	6 18	12 36	4 27	1 51	7 31	breast	2 41
2	Fr	5 40	6 20	12 40	4 50	2 34	8 20	heart	3 30
3	Sa	5 39	6 21	12 42	5 13	3 13	9 7	heart	4 17
4	C	5 37	6 23	12 46	5 36	3 47	9 52	belly	5 2
5	M	5 36	6 24	12 48	5 59	4 18	10 35	belly	5 45
6	Tu	5 35	6 25	12 50	6 22	4 46	11 18	belly	6 28
7	W	5 34	6 26	12 52	6 44	5 10	morn.	reins	7 3
8	Th	5 32	6 28	12 56	7 7	rises.	0 1	reins	7 44
9	Fr	5 31	6 29	12 58	7 29	8 10	0 44	secrets	8 14
10	Sa	5 29	6 31	13 2	7 51	9 9	1 27	secrets	8 57
11	C	5 27	6 33	13 6	8 14	10 6	2 13	secrets	9 36
12	M	5 26	6 34	13 8	8 36	11 1	2 59	thighs	10 14
13	Tu	5 24	6 36	13 12	8 57	11 53	3 47	thighs	10 57
14	W	5 22	6 38	13 16	9 19	morn.	4 37	knees	11 47
15	Th	5 21	6 39	13 18	9 41	0 41	5 29	knees	morn
16	Fr	5 20	6 40	13 20	10 2	1 25	6 21	legs	1 31
17	Sa	5 13	6 42	13 21	10 23	2 5	7 14	legs	2 24
18	C	5 17	6 42	13 26	10 44	2 43	8 8	legs	3 18
19	M	5 15	6 45	13 30	11 5	3 19	9 1	feet	4 11
20	Tu	5 14	6 46	13 32	11 26	3 53	9 56	feet	5 6
21	W	5 18	6 47	13 34	11 46	4 26	10 51	head	6 1
22	Th	5 11	6 49	13 38	12 7	sets.	11 48	head	6 53
23	Fr	5 10	6 50	13 40	12 27	7 58	eve	46 neck	7 56
24	Sa	5 9	6 51	13 42	12 47	9 9	1 44	neck	8 54
25	C	5 7	6 53	13 46	13 6	10 15	2 43	arms	9 53
26	M	5 6	6 54	13 48	13 26	11 16	3 41	arms	10 51
27	Tu	5 5	6 55	13 50	13 45	morn.	4 38	breast	11 48
28	W	5 3	6 57	13 54	14 4	0 10	5 31	breast	ev 41
29	Th	5 2	6 58	13 56	14 23	0 57	6 22	heart	1 32
30	Fr	5 0	7 0	14 0	14 42	1 33	7 10	heart	2 20

Spring

See, A  
 Circling h  
 Pranked  
 Like a yo  
 She ushers  
 Advancing  
 Flowers of  
 Where'er  
 Delight, or  
 Sweet Hop  
 Anticipat

New Moon

dm | Holiday

1 | All fools'

2 |

3 |

C | 6th Sun in

5 | ☐ ☺ ♃

7 | ☽ apogee.

8 | Tides rise

9 | Good Frid

10 |

C | Easter Day

12 | Easter Mor

13 | Easter Tue

14 | ☽ runs low

15 | Low tides

16 |

C | 1st Sun af.1

19 | Lord Byron

20 | ☺ enters ♀

21 | High tides

22 | ☽ per. Su

23 | St George.

24 | Very high t

C | 2d Sun af.E

26 | ☽ runs high

27 | ☽ ♀ ♀

28 |

29 | Low tides

30 | ☐ ☺ ♀

See, April comes ! a primrose coronal  
 Circling her sunny temples, and her vest  
 Pranked with the hare-bell and the violet :  
 Like a young widow, beautiful in tears,  
 She ushers in the Spring !  
 Advancing SPRING profusely spreads abroad  
 Flowers of all hues, with sweetest fragrance stored ;  
 Where'er she treads, love gladdens every plain,  
 Delight, on tiptoe, bears her lucid train ;  
 Sweet Hope, with conscious brow, before her flies,  
 Anticipating wealth from summer skies.

New Moon 22d d 7h 13m eve. First Quar. 29th d 2h 41m ev

DM	Holidays, Weather, &c.	FARMER'S CALENDAR.
1	All fools' day,	A man who has any thing of a
2	<i>much finer.</i>	farm to carry on, should seem to
3	<i>serene and pleasant</i>	have as many eyes in his head, as
C 6th	Sun in Lent. Palm Sun.	there are spots in the tail of a pea-
8	<i>light evenings</i>	cock, and keep a sharp look out
6	☐ ☉ ♃	from every one of them—said
7	☽ apogee. <i>rather</i>	eyes connected with a head of
8	Tides rise. <i>rough with</i>	observation, and a voice of au-
9	Good Friday <i>high winds</i>	thority, are worth more to their
10	<i>showers</i>	owner than the best pair of hands
C 12th	Easter Day	that were ever employ'd in the la-
12	Easter Monday. <i>unsteady</i>	bour's of industry. You must look
13	Easter Tuesday. <i>h<sup>2</sup> stat</i>	over every part of your premises,
14	☽ runs low. <i>and variable</i>	but not over look any thing of
15	Low tides	consequence. Plant a few early
16	<i>sunshiny and</i>	potatoes in a warm soil and situa-
17	<i>pleasant</i>	tion, that your swine may have a
C 19th	1st Sun af. East. Low Sun	good start before Indian corn is
19	Lord Byron died 1824. <i>rain</i>	ripe enough to finish their fat-
20	☉ enters ♄ <i>warm</i>	tening. Your fences should
21	High tides <i>and</i>	be subjected to the ordeal of a cri-
22	☽ per. Sup. ☉ ☽	tical review, and every fault in
23	St George. K. Geol V b d kpt	their style and composition
24	Very high tides. <i>showery</i>	should be corrected. Cattle when
C 26th	2d Sun af. East. St Mark. Ds	they first leave their winter quar-
26	☽ runs high. [of Glou. b 1776	ters, are commonly lean and raven-
27	♄ ♂ ♀ <i>by turn</i>	ous, have no objection to a few
28		capers, and will perhaps, rival
29	Low tides <i>to the end of</i>	the cow which jumped over the
30	☐ ☉ ♀ <i>the month</i>	moon, for the purpose of doing
		mischief, and filling their insides
		with green herbage.



Full Moon 7th d. 7h 48m eve | Last Quar. 16th d. 0h 4m morn

D	M	☉	☽	Days'	Sun's	☾ R.	☾	☾'s	High
M	W	rises	sets	len'th	decN	& S.	south.	place.	water
1	Sa	4 59	7 1	14 2	15 0	2 11	7 56	belly	3 6
2	C	4 58	7 2	14 4	15 18	2 40	8 40	belly	3 50
3	M	4 56	7 4	14 8	15 36	3 6	9 23	belly	4 33
4	Tu	4 55	7 5	14 10	15 53	3 30	10 5	reins	5 15
5	W	4 54	7 6	14 12	16 11	3 53	10 47	reins	5 57
6	Th	4 53	7 7	14 14	16 28	4 17	11 31	secrets	6 41
7	Fr	4 52	7 8	14 16	16 44	rises.	morn.	secrets	7 25
8	Sa	4 51	7 9	14 18	17 1	8 5	0 15	secrets	8 10
9	C	4 49	7 11	14 22	17 17	9 3	1 2	thighs	8 42
10	M	4 48	7 12	14 24	17 33	9 59	1 49	thighs	9 25
11	Tu	4 47	7 13	14 26	17 49	10 51	2 39	knees	10 5
12	W	4 45	7 15	14 30	18 4	11 37	3 29	knees	10 44
13	Th	4 44	7 16	14 32	18 19	morn.	4 21	knees	11 31
14	Fr	4 43	7 17	14 34	18 34	0 17	5 13	legs	morn.
15	Sa	4 43	7 17	14 34	18 43	0 52	6 4	legs	1 14
16	C	4 42	7 18	14 36	19 2	1 24	6 56	feet	2 6
17	M	4 40	7 20	14 40	19 16	1 55	7 48	feet	2 58
18	Tu	4 39	7 21	14 42	19 29	2 24	8 41	head	3 51
19	W	4 38	7 22	14 44	19 43	2 54	9 35	head	4 45
20	Th	4 37	7 23	14 46	19 55	3 27	10 30	neck	5 40
21	Fr	4 36	7 24	14 48	20 8	4 11	11 27	neck	6 37
22	Sa	4 35	7 25	14 50	20 20	sets	eve	26 arms	7 36
23	C	4 34	7 26	14 52	20 32	9 1	11 25	arms	8 35
24	M	4 33	7 27	14 54	20 43	9 56	12 24	breast	9 34
25	Tu	4 32	7 28	14 56	20 54	10 46	13 20	breast	10 30
26	W	4 31	7 29	14 58	21 5	11 31	14 14	heart	11 24
27	Th	4 31	7 29	14 58	21 15	morn.	5 4	heart	eve
28	Fr	4 30	7 30	15 0	21 25	0 9	5 51	heart	1 1
29	Sa	4 29	7 31	15 2	21 35	0 42	6 36	belly	1 46
30	C	4 28	7 32	15 4	21 44	1 11	7 20	belly	2 30
31	M	4 27	7 33	15 6	21 53	1 38	8 2	reins	3 12

Spri

Lo  
Ha  
A  
M  
M  
A  
W  
B

And  
New

DM|H

1 | St  
C | 3d  
3 | 2  
4 | Se  
5 | Na  
6 | St  
7 | Hi  
8 | □  
C | 4th  
10 | ●  
11 | 6  
12 |  
13 |  
14 |  
15 | Lo  
C | 5th  
17 | ♀  
18 |  
19 |  
20 | As  
21 | ☉  
22 | Ps  
C | Su  
24 | D  
25 |  
26 |  
27 |  
28 | Lo  
29 | K  
C | W  
31 | W

Look forth, where those eternal planets roll  
 Harmonious, through the pathless heaven, and trace  
 A power that guides and animates the whole ;  
 Mark with what prodigality of grace  
 Majestic nature clothes her varied face,  
 And say what hand adorned that rolling ball  
 What voice was His, that, from the depths of space,  
 Bade worlds awake at his creating call,  
 And breathed the breath of life and vigour thro' them all?  
 New Moon 22d 3h 59m morn | First Quar 29th d 6h 34m morn



4m morn

's	High
ce.	water
3	6
3	50
4	33
5	15
5	57
6	41
7	25
8	10
8	42
9	25
10	5
10	44
11	31
morn.	
1	14
2	6
2	58
3	51
4	45
5	40
6	37
7	36
8	35
9	34
10	30
11	24
eve	
14	1
1	1
1	46
2	30
3	12

DM | Holidays, Weather, &c. | FARMER'S CALENDAR.

1	St Philip & St James		The avocations of a husbandman
C	3d Sun of East.	☐ ☺ ♄	are now becoming multifarious,
3	☿ stat	<i>mild</i>	and he must attend to every thing,
4	Seringapatam taken 1769		or something will suffer. Soak
5	Nap Bonaparte died '21. Dap.		seed corn in copperas water.—
6	St John, Evan.	♂ ♀ ☿	Good fruit is raised as easily, and
7	Higher tides	<i>rain</i>	is often worth five times as much
8	☐ ☽ ☺	<i>appearance</i>	as bad ; you will therefore graft
C	4th Sun of East	<i>of a</i>	such trees as bear fruit, which are
10	☉ runs low		worth but little for cider, and less
11	♂ ☽ †	<i>storm</i>	for the table. "Graft always as
12			high as possible, to guard against
13		<i>the warmth of the</i>	cattle and to raise the head of the
14		<i>spring increases</i>	tree, so as to admit the sun and air
15	Low tides	<i>daily</i>	as freely as possible upon your un-
C	5th Sun of East. Rog Sun	<i>more</i>	dergrowth, whatever it may be ;
17	♀ gr elong	<i>more</i>	it will also improve your fruit,
18		<i>signs of showers</i>	in size and quantity." Do not
19		<i>with thunder</i>	undertake to graft too many limbs
20	Asc. Day. Holy Thurs. ☽ per		at a time, lest you kill the tree, by
21	☉ enters ☐ 10h 35m fore		destroying the requisite proportion
22	Ps of Homburg b 1770 ♂ ☽ ☿		between the roots and the top.—
C	Sun of Asc. Day		Now is the time, with your wife's
24	☽ runs high		leave, to grow rich by your dairy.
25		<i>frequent showers</i>	It is said by some foreign writers,
26			that a field of mowing ground in
27		<i>fine growing</i>	good heart, mown, & the grass eat-
28	Low tides	<i>season</i>	en green, will produce treble the
29	K. Charles II restored		quantity of milk it would have
C	Whit Sunday	<i>mild as</i>	done if pastured, and four times
31	Whit Monday	<i>butter milk</i>	as much as it would do in the



Full Moon 6th d. 10h. 5m. morn | Last Quar. 13th d. 6h. 34m eve

D	D	☉	☉	Days'	Sun's	☾ R.	☾	☾'s.	High	
M	W	rises	sets	len'th	dec. N	& S.	south.	place	water	
1	Tu	4 27 7	33 15 6	22 1 2	4 8	44	reins	3	54	
2	W	4 26 7	34 15 8	22 9 2	30 9	27	reins	4	37	
3	Th	4 25 7	35 15 10	22 17 2	57 10	11	secrets	5	21	
4	Fr	4 25 7	35 15 10	22 24 3	25 10	50	secrets	6	4	
5	Sa	4 24 7	36 15 12	22 31 3	55 11	43	thighs	6	48	
6	C	4 24 7	36 15 12	22 38	rises.	morn.	thighs	7	30	
7	M	4 23 7	37 15 14	22 44 8	52 0	33	thighs	8	15	
8	Tu	4 23 7	37 15 14	22 50 9	40 1	23	knees	8	56	
9	W	4 22 7	38 15 16	22 55 10	22 2	15	knees	9	40	
10	Th	4 22 7	38 15 16	23 0 10	59 3	7	legs	10	25	
11	Fr	4 22 7	38 15 16	23 4 11	32 3	59	legs	11	9	
12	Sa	4 21 7	39 15 18	23 8	morn.	4	feet	morn.		
13	C	4 21 7	39 15 18	23 12 0	0 5	41	feet	0	51	
14	M	4 21 7	39 15 18	23 15 0	26 6	32	head	1	42	
15	Tu	4 20 7	40 15 20	23 18 0	52 7	23	head	2	33	
16	W	4 20 7	40 15 20	23 21 1	27 8	16	neck	3	26	
17	Th	4 20 7	40 15 20	23 23 2	1 9	10	neck	4	20	
18	Fr	4 20 7	40 15 20	23 25 2	40 10	7	arms	5	17	
19	Sa	4 20 7	40 15 20	23 26 3	23 11	4	arms	6	14	
20	C	4 20 7	40 15 20	23 27	sets	eve	3	breast	7	13
21	M	4 20 7	40 15 20	23 27 8	40 1	0	breast	8	10	
22	Tu	4 20 7	40 15 20	23 27 9	25 1	56	breast	9	6	
23	W	4 20 7	40 15 20	23 27 10	6 2	49	heart	9	59	
24	Th	4 20 7	40 15 20	23 26 10	41 3	38	heart	10	48	
25	Fr	4 20 7	40 15 20	23 25 11	10 4	25	belly	11	35	
26	Sa	4 20 7	40 15 20	23 23 11	36 5	10	belly	eve	20	
27	C	4 20 7	40 15 20	23 21	morn.	5	reins	1	3	
28	M	4 20 7	40 15 20	23 18 0	0 6	35	reins	1	45	
29	Tu	4 21 7	39 15 18	23 15 0	24 7	17	reins	2	27	
30	W	4 21 7	39 15 18	23 12 0	49 8	1	secrets	3	11	

Summ  
At  
Young  
When  
Fear n  
Rich,  
Waves  
And sh  
To brin  
'Tis wi  
Throug  
Of ail s  
To tha  
'The w  
Past sp

---

New Mo  
dm | Ho

1 | Whit  
2 | Peace  
3 | ♀ sta  
4 |  
5 | D of C  
C | Trinit  
7 | D run  
8 |  
9 |  
10 |  
11 | St Bar  
12 | Low ti  
C | 1st Su  
14 | Battle  
15 | Inf 6  
16 |  
17 | St Alb  
18 | Battle  
19 | Magna  
C | 2d Sun  
21 | Battle V  
22 |  
23 |  
24 | Nativit  
25 |  
26 |  
C | 3d Sun  
28 |  
29 | St Pete  
30 |

At this sweet time, the glory of the spring,  
 Young verdurous June's delightful opening;  
 When leaves are loveliest, and young fruits and flowers  
 Fear not the frosts of May's uncertain hours;  
 Rich, rife, luxuriant, yet with tenderest hues,  
 Waves the full foliage; and with morning dews,  
 And showers that gush down from the radiant skies,  
 To bring below the air of Paradise,  
 'Tis wise to let the touch of nature thrill  
 Through the full heart; 'tis wise to take your fill  
 Of all she brings, and gently to give way  
 To that within your soul she seems to say:  
 'The world grows rich in beauty, and in bliss;  
 Past springs were welcome, none so sweet as this.'

New Moon 20th d 10h 48m morn | First Quar 27th d 11h 1m eve

DM | Holidays, Weather, &c. | FARMER'S CALENDAR.

1	Whit Tuesday. D apogee	Hay making will soon claim
2	Peace signed at Paris 1814	your attention, and you should
3	♀ stat <i>very pleasant.</i>	even now, have every thing in
4	<i>vegetation</i>	ample order. As you have now
5	D of Cumb b 1771 <i>will</i>	finished all your sowing, planting
C	Trinity Sun High tides	Indian corn, &c. you have leisure
7	D runs low. <i>now</i>	to enter in earnest on the culture
8	<i>advance rapidly.</i>	of the potatoe. It is undoubtedly
9		the most profitable crop that the
10	<i>this is the time for</i>	farmer can raise; and may be plan-
11	St Barnabas <i>show rs.</i>	ted any time after the frost is out
12	Low tides	of the ground, till the 6th July.
C	1st Sun af Trinity. <i>pleasant</i>	Break up all waste or fallow
14	Battle of Marengo 1800 <i>again</i>	ground you can spare, and plant
15	Inf ♂ ☉ ♀	it with potatoes, with or without
16	<i>changeable</i>	manure. One hoeing will gener-
17	St Alban, D perigee <i>with</i>	ally be sufficient—and the
18	Battle Waterloo 1815 <i>high</i>	ground will be rather enriched
19	Magna Charta signed 1215	than impoverished, even tho'
C	2d Sun af Trinity <i>winds</i>	little or no manure be used; but
21	Battle Vittoria, 1813 ☉ on ☽	a little of any kind of manure in
22	<i>very fine</i>	the hill will greatly improve the
23	<i>once more</i>	crop. A patch of potatoes, with
24	Nativity of St John Bapt	pumpkins, near your hog-pens,
25	<i>with</i>	will be very useful in Sept. in
26	<i>very great</i>	bringing forward your hogs.—
C	3d Sun af Trin. Tides low. <i>signs of a</i>	Guard the orchard carefully
28		against nest-worms, and if any
29	St Peter D apogee	of your trees are bark-bound, slit
30	<i>continuance</i>	it with a knife thro' the outer, but
		not thro' the inner bark.



Full Moon 5th d. 10h. 10m. eve | Last Quar. 12th d. 11h. 23m. eve

D	D	☺	☺	Days'	Sun's	C	R.	C	C's	High
M	W	rises	sets	len'th	dec. N	& S.	south.	place	water	
1	Th	4 22 7	38	15 16	23 8	1 16	8 45	secrets	3 55	
2	Fr	4 22 7	38	15 16	23 4	1 45	9 32	thighs	4 42	
3	Sa	4 22 7	38	15 16	23 0	2 20	10 20	thighs	5 30	
4	C	4 23 7	37	15 14	22 55	3 2	11 11	thighs	6 16	
5	M	4 23 7	37	15 14	22 50	rises.	morn.	knees	7 10	
6	Tu	4 23 7	37	15 14	22 44	8 11	0 3	knees	7 55	
7	W	4 24 7	36	15 12	22 38	8 51	0 56	legs	8 40	
8	Th	4 24 7	36	15 12	22 31	9 26	1 49	legs	9 26	
9	Fr	4 25 7	35	15 10	22 24	9 57	2 41	feet	10 5	
10	Sa	4 26 7	34	15 8	22 17	10 26	3 33	feet	10 49	
11	C	4 26 7	34	15 8	22 10	10 55	4 24	feet	11 34	
12	M	4 27 7	33	15 6	22 1	11 25	5 15	head	morn.	
13	Tu	4 28 7	32	15 4	21 53	11 56	6 7	head	1 17	
14	W	4 29 7	32	15 4	21 44	morn.	7 0	neck	2 10	
15	Th	4 29 7	31	15 2	21 35	0 31	7 54	neck	3 4	
16	Fr	4 30 7	30	15 0	21 26	1 14	8 49	arms	3 59	
17	Sa	4 31 7	29	14 58	21 16	2 3	9 46	arms	4 56	
18	C	4 32 7	28	14 56	21 5	2 58	10 43	breast	5 53	
19	M	4 33 7	27	14 54	20 55	sets.	11 39	breast	6 49	
20	Tu	4 33 7	27	14 54	20 44	8 8	eve 35	heart	7 43	
21	W	4 34 7	26	14 52	20 33	8 51	1 25	heart	8 35	
22	Th	4 35 7	25	14 50	20 21	9 28	2 13	belly	9 23	
23	Fr	4 36 7	24	14 48	20 9	9 59	3 0	belly	10 10	
24	Sa	4 37 7	23	14 46	19 56	10 27	3 47	belly	10 57	
25	C	4 39 7	21	14 42	19 44	10 52	4 27	reins	11 37	
26	M	4 40 7	20	14 40	19 31	11 18	5 9	reins	level 19	
27	Tu	4 41 7	19	14 38	19 17	11 43	5 52	secrets	1 2	
28	W	4 43 7	18	14 36	19 4	morn.	6 36	secrets	1 46	
29	Th	4 43 7	17	14 34	18 50	0 12	7 22	secrets	2 32	
30	Fr	4 44 7	16	14 32	18 36	0 44	8 9	thighs	3 19	
31	Sa	4 45 7	15	14 30	18 21	1 20	9 0	thighs	4 10	

Sum  
Re  
Ta  
Do  
An  
Sun  
Sat  
An  
'Mi  
Lon  
Oh  
Ye  
Of  
Is e  
And  
New M  
DM | H  
1  
2 Visi  
3  
C 4th S  
5 High  
6  
7  
8 ♀ g  
9  
10  
C 5th S  
12 Tide  
13  
14 D po  
15  
16  
17 ● ru  
C 6th S  
19 K. Ge  
20 Marg  
21  
22 Mag  
23 ☺ en  
24 Low  
C 7th S  
26 St A  
27 D ap  
28  
29  
30  
31

Receded hills afar of softened blue,  
 Tall bowing trees, through which the sun-beams shoot  
 Down to the viewless lake, birds never mute,  
 And wild-flowers all around of every hue !  
 Sure, 'tis a lovely scene. There, knee-deep, stand,  
 Safe from the fierce sun, the o'ershadowed kine ;  
 And, to the left, where cultured fields expand,  
 'Mid tufts of scented thorn, the sheep recline :  
 Lone quiet farmsteads, haunts that ever please,—  
 Oh, how inviting to the wanderer's eye.  
 Ye rise on yonder uplands 'mid your trees  
 Of shade and shelter ! Every sound from these  
 Is eloquent of peace, of earth, and sky,  
 And pastoral beauty, and A cadian ease.

New Moon 20th d 8h 0m eve | First Quar 27th d 4h 22m eve

DM	Holidays, Weather, &c.	FARMER'S CALENDAR.
1	<i>growing weather</i>	Haying and Harvesting are now
2	Visit. of B V Mary <i>if</i>	pressing avocations, but while the
3	<i>not too dry.</i>	increasing heat & active labour of
C 4	4th Sun af Trin. U. States In.	this month remind us that we are
5	High tides. ☽ ☺ ♃ [1776	doomed to earn our bread by the
6	<i>heat and signs</i>	sweat of our brow; let us remember
7	<i>of a dry</i>	that we cultivate a free soil, and
8	♀ gr elong <i>season.</i>	pay no tithes. Be sure to finish
9		hoeing corn before it begins to
10	<i>looks more</i>	silk or tassel. Nature should then
C 11	5th Sun af Trin. <i>like</i>	be left to herself, or your crop will
12	Tides lower. <i>rain,</i>	be injured. You will also be
13	<i>and if it does</i>	a gainer in the end, by finishing
14	☽ per.	your hoeing before the hurry of
15	<i>the fruits of the</i>	haying commences. To hoe corn
16	<i>earth</i>	late in the season, and in bad wea-
17	● runs high. <i>will</i>	ther, is rather a damage than a
C 18	6th Sun af Trin <i>rapidly</i>	benefit to it. If the kernel of your
19	K. Geo IV crowned, 1821	rye or wheat has become so hard
20	Margaret. H. tides <i>advance to</i>	that you cannot mash it between
21	<i>maturity</i>	the thumb and finger, lose no
22	Magdalen.	time in cutting it down; the ker-
23	☺ enters ♄ <i>good hay</i>	nel is formed into a consistence
24	Low tides <i>weather</i>	and will receive more nutriment
C 25	7th Sun af Trin. St James	from the juices of the stalk in the
26	St Anne.	mow than standing. As soon as
27	☽ apogee <i>thunder, and</i>	harvesting is through, plough in
28	<i>perhaps destructive</i>	such parts of your richest stubble
29	<i>lightning</i>	fields as you intend for turnips,
30		dress it with well-rotted manure,
31	<i>very fine weather</i>	and sow and harrow in the seed
		at the rate of one pound to an acre





Full Moon 4th d. 8h 43m morn | Last Quar. 11th d. 3h 54m morn

D	D	☉	☉	Days	Sun's	☾ R.	☾	☾'s	High
M	W	rises	sets	len'th	dec. N	& S.	south.	place.	water
1	C	4 46	7 14	14 28	18 6	2 2	9 51	knees	5 1
2	M	4 47	7 13	14 26	17 51	2 49	10 44	knees	5 54
3	Tu	4 48	7 12	14 24	17 36	3 43	11 38	legs	6 48
4	W	4 50	7 10	14 20	17 20	rises.	morn.	legs	7 42
5	Th	4 51	7 9	14 18	17 4	8 0	0 32	legs	8 10
6	Fr	4 52	7 8	14 16	16 47	8 34	1 26	feet	8 56
7	Sa	4 53	7 7	14 14	16 31	9 52	19	feet	9 42
8	C	4 54	7 6	14 12	16 14	9 35	3 11	head	10 27
9	M	4 55	7 5	14 10	15 57	10 54	4	head	11 14
10	Tu	4 57	7 3	14 6	15 40	10 37	4 57	neck	morn.
11	W	4 58	7 2	14 4	15 22	11 14	5 51	neck	1 1
12	Th	4 59	7 1	14 2	15 4	11 58	6 45	arms	1 55
13	Fr	5 0	7 0	14 0	14 46	morn.	7 41	arms	2 51
14	Sa	5 2	6 58	13 56	14 28	0 50	8 37	breast	3 47
15	C	5 4	6 56	13 52	14 9	1 47	9 32	breast	4 42
16	M	5 5	6 55	13 50	13 50	2 48	10 27	heart	5 37
17	Tu	5 6	6 54	13 48	13 31	3 54	11 19	heart	6 29
18	W	5 7	6 53	13 46	13 12	sets	eve 8	heart	7 18
19	Th	5 9	6 51	13 42	12 53	7 42	0 56	belly	8 6
20	Fr	5 10	6 50	13 40	12 33	8 13	1 41	belly	8 51
21	Sa	5 11	6 49	13 38	12 13	8 41	2 25	reins	9 35
22	C	5 13	6 47	13 34	11 53	9 9	3 8	reins	10 18
23	M	5 14	6 46	13 32	11 33	9 37	3 51	reins	11 1
24	Tu	5 15	6 45	13 30	11 12	10 7	4 35	secrets	11 45
25	W	5 17	6 43	13 26	10 52	10 40	5 19	secrets	eve 29
26	Th	5 18	6 42	13 24	10 31	11 17	6 6	thighs	1 16
27	Fr	5 20	6 40	13 20	10 10	11 59	6 54	thighs	2 4
28	Sa	5 21	6 39	13 18	9 49	morn.	7 44	thighs	2 54
29	C	5 22	6 38	13 16	9 28	0 46	8 36	knees	3 46
30	M	5 24	6 36	13 12	9 6	1 39	9 30	knees	4 40
31	Tu	5 26	6 34	13 8	8 45	2 37	10 24	legs	4 34

In harve  
Is full of so  
Of gleeson  
The fleetin  
When Dry  
To see the  
Hearing lo  
From sunl

New Moon

DM | Holid

C | 8th Sun a

2 ♀ ☉ W

3

4 High tide

5

6 Transfig

7 Name of

C | 9th Sun a

9 ♂ ♀ h

10 St Lawre

11 Low tides

12 K. Geo I

13 ☽ runs lo

14 ♂ ☉ h

C | 10th Sun

16

17 ♂ stat

18 High tide

19

20

21 D. of Clar

C | 11th Sun

23 ☽ apogee

24 St Bartho

25 Tides qui

26 for some

27

28 ☽ runs lo

C | 12th Sun

30 Tides rise

31

In harvest time when the abounding earth  
 Is full of solemn beauty, and the mirth  
 Of glesome peasants seem to stay awhile  
 The fleeting grace of Summer's radiant smile ;  
 When Dryads from the silent woods look out,  
 To see the jocund rout  
 Hearing loud laughs, and airy voices borne  
 From sunlit fields of thickly piled corn.

New Moon 18th 7h 9m morn | First Quar 26th d 9h 50m mor

DM | Holidays, Weather, &c. | FARMER'S CALENDAR.

C	8th Sun af Trin. Lammas Day	
2	♀ ☉ ♃ ☽ runs low	Some farmers are of opi-
3	<i>more settled</i>	nion that August is as good
4	High tides. Sup ♂ ☉ ♀	a time as any to lay lands
5	<i>high winds</i>	down to grass. Loudon says,
6	Transfig. of our Lord	"Grass seeds sown alone at
7	Name of Jesus. Full tides	this season will generally
C	9th Sun af Trin	succeed better than any o-
9	♂ ♀ ♃ <i>heavy showers</i>	ther, they germinate as well
10	St Lawrence <i>in many</i>	in the spring, but the heats
11	Low tides <i>places</i>	of July often burn up the
12	K. Geo IV b 1762	tender plants."
13	☽ runs low	
14	♂ ☉ ♃ <i>changeable</i>	As soon as you have fin-
C	10th Sun af Trin. <i>weather</i>	ished getting in your grain
16	<i>more signs</i>	and hay, improve every op-
17	♂ stat <i>of rain</i>	portunity of collecting into
18	High tides. ☉ eclips. invis	your cow-yard and hog-pen,
19	<i>warm for</i>	materials for making ma-
20	<i>some days</i>	nure. Spare neither time
21	D. of Clarence b. 1775	nor expense for this, it will
C	11th Sun af Trin. <i>grows</i>	pay better than any thing
23	☽ apogee. ☉ enters ♃	else you can attend to.
24	St Bartholomew <i>cooler</i>	
25	Tides quite low   <i>with high</i>	Preserve your sheep from
26	for some days   <i>winds</i>	the gadfly, which causes
27	<i>and rain</i>	worms in the head, by keep-
28	☽ runs low	ing their noses constantly
C	12th Sun af Trin. St John Bap	smirched with tar, from the
20	Tides rise. [beheaded	middle of August to the last
31	<i>pleasant again</i>	of Sept.



Full Moon 2d d. 6h. 24m. eve | Last Quar. 9th d. 9h. 45m morn.

D	D	☺	☺	Days	Sun's	☾ R.	☾	☾'s	High
M	W	rises	sets	len'th	dec. N	& S.	south.	place.	water.
1	W	5	27 6	33 13	6 8	23 3	41 11	18 legs	6 28
2	Th	5	29 6	31 13	2 8	1 rises.	morn.	feet	7 13
3	Fr	5	31 6	29 12	5 7	39 7	40 13	feet	7 59
4	Sa	5	32 6	28 12	5 7	17 7	39 1	8 head	8 48
5	C	5	33 6	27 12	5 6	55 8	14 2	2 head	9 23
6	M	5	35 6	25 12	5 6	33 8	52 2	57 neck	10 9
7	Tu	5	36 6	24 12	4 6	10 9	33 3	52 neck	11 2
8	W	5	37 6	23 12	4 5	48 10	15 4	48 arms	11 58
9	Th	5	39 6	21 12	4 5	25 11	2 5	44 arms	morn.
10	Fr	5	40 6	20 12	4 5	2 11	52 6	40 breast	1 50
11	Sa	5	42 6	18 12	3 4	40 morn.	7 36	breast	2 47
12	C	5	43 6	17 12	3 4	17 0	47 8	30 breast	3 40
13	M	5	45 6	15 12	3 3	54 1	46 9	22 heart	4 30
14	Tu	5	46 6	14 12	2 8	31 2	49 10	12 heart	5 22
15	W	5	48 6	12 12	2 3	8 3	54 10	59 belly	6 9
16	Th	5	49 6	11 12	2 2	45 sets.	11 45	belly	6 55
17	Fr	5	51 6	9 12	1 2	21 6	28 eve	29 reins	7 39
18	Sa	5	52 6	8 12	1 1	58 6	56 1	13 reins	8 23
19	C	5	54 6	6 12	1 1	35 7	26 1	56 reins	9 6
20	M	5	56 6	4 12	1 1	11 7	59 2	39 secrets	9 49
21	Tu	5	57 6	3 12	1 0	48 8	35 3	24 secrets	10 34
22	W	5	59 6	1 12	0 0	25 9	14 4	9 thighs	11 19
23	Th	6	0 6	0 12	0 0	1 9	57 4	56 thighs	eve 6
24	Fr	6	2 5	5 11	5 8	21 10	44 5	44 thighs	0 54
25	Sa	6	3 5	5 11	5 4	45 11	37 6	34 knees	1 44
26	C	6	5 5	5 11	5 0	8 morn.	7 26	knees	2 38
27	M	6	6 5	5 11	4 1	31 0	35 8	19 legs	3 29
28	Tu	6	8 5	5 11	4 1	55 1	37 9	12 legs	4 22
29	W	6	10 5	5 11	4 2	18 2	42 10	6 feet	5 16
30	Th	6	11 5	4 11	3 2	43 3	52 11	1 feet	6 11

Autumn.

Oh ! it  
Poised  
Mounta  
Around  
And ye  
And, as  
Of ethe  
In calm

New Moon

1 | Giles.  
2 | London.  
3 | High tid  
4 | D perig  
C | 13th Sun  
6 |  
7 |  
8 | Nat. of  
9 | Low tid  
10 | ☉ runs  
11 |  
C | 14th Sun  
13 | ♀ ♀ ♀  
14 | Holy Cro  
15 |  
16 | High tid  
17 | Lambert  
18 |  
C | 15th Sun  
20 | D apoge  
21 | St Matth  
22 | Quite lo  
23 | ☺ crosse  
24 | ☾ runs l  
25 | Low tide  
C | 16th Sun  
27 |  
23 | Tides ris  
29 | St Micha  
30 | ♀ stat

Month  
 Autumn. SEPTEMBER begins on Wednesday. 31

Oh ! it is beautiful to see this world  
 Poised in the crystal air, with all its seas,  
 Mountains and plains, majestically rolling  
 Around its noiseless axis, day by day,  
 And year by year, and century after century ;  
 And, as it turns, still wheeling through the immense  
 Of ether, circling the resplendent sun  
 In calm and simple grandeur.

New Moon 16th d 10h 14m eve | First Quar 25th d 2h 39m morn

pm	Holidays, Weather, &c.	FARMER'S CALENDAR.
1	Giles. Sur. of Copenhagen	Winter rye cannot be sown too
2	London burnt, 1666, OS. Dec.	early in this month ; if it is sow-
3	High tides [total & vis.	ed early, its roots will obtain such
4	D perigee. <i>very fine</i>	firm hold of the soil before winter,
C	13th Sun af Trir. ♀ stat	that it will be less apt to be
6	<i>for travelling</i>	winter-killed in consequence of the
7	<i>mornings and</i>	roots being laid bare by the heav-
8	Nat. of B V Mary <i>evenings</i>	ing of the ground in hard frosts.
9	Low tides <i>begin to</i>	Rye may well be sowed for the
10	♂ runs high <i>grow cool.</i>	purpose of furnishing food for cat-
11		tle and sheep early in the spring.
C	14th Sun af Trin. <i>high winds</i>	When it is meant for this object,
13	♂ ♀ ♀	it should not only be put into the
14	Holy Cross <i>warmer but</i>	ground early in autumn, but it
15	<i>generally fine.</i>	should be sowed thicker than
16	High tides. ☺ ec. invis.	when intended to stand for a crop
17	Lambert. ♀ gr elong	of seed. Stalks of Indian corn,
18	<i>cooler with</i>	if well saved, are an excellent
C	15th Sun af Trin. ♂ ☺ ♂	fodder, equal to or better than
20	D apogee. <i>cold winds.</i>	clover ; but if not properly cur-
21	St Matthew. <i>now begin to</i>	ed, they are of little or no use,
22	Quite low tides. <i>look out for</i>	except for making manure. It is
23	☺ crosses the line 9h 7m morn	a good practice to mix a portion
24	D runs low. <i>a storm,</i>	of straw, particularly the straw
25	Low tides <i>as at this time</i>	of oats, with the second crop of
C	16th Sun af Trin. St Cyprian	grass when it is placed on the
27	<i>one may be</i>	mow. Clear out ditches, and
28	Tides rise. <i>expected.</i>	cart the mud into the barn yard
29	St Michael. Q. of Wirt. b.	and hog pen—put your ground
30	♀ stat <i>looks more settled</i>	in readiness for sowing winter
		grain. Pull onions, and sow oni-
		on seed to stand over winter.

m morn  
 High  
 water.  
 6 28  
 7 13  
 7 59  
 8 48  
 9 23  
 10 9  
 11 2  
 11 58  
 morn.  
 1 50  
 2 47  
 3 40  
 4 30  
 5 22  
 6 9  
 6 55  
 7 39  
 8 23  
 9 6  
 9 49  
 10 34  
 11 19  
 eve 6  
 0 54  
 1 44  
 2 36  
 3 20  
 4 12  
 5 16  
 6 11



Full Moon 2d d. 3h. 43m. morn | Last Quar. 8th d. 6h. 19m. eve

D	D	☺	☺	Days'	Sun's	☾ R.	☾	☾'s	High
M	W	rises	sets	len'th	dec.S	& S.	south.	place.	water
1	Fr	6	13 5	47 11	34 3	5 5	7 11	56 feet	7 6
2	Sa	6	14 5	46 11	32 3	28 rises	morn.	head	7 52
3	C	6	16 5	44 11	28 3	51 6	40 0	52 head	8 38
4	M	6	17 5	45 11	26 4	15 7	15 1	48 neck	9 28
5	Tu	6	19 5	41 11	22 4	38 7	55 2	46 neck	10 13
6	W	6	20 5	40 11	20 5	18 3	38 3	44 arms	10 39
7	Th	6	22 5	38 11	16 5	24 9	26 4	43 arms	11 53
8	Fr	6	23 5	37 11	14 5	47 10	18 5	40 breast	morn
9	Sa	6	25 5	35 11	10 6	10 11	19 6	35 breast	1 45
10	C	6	26 5	34 11	8 6	33 morn.	7 28	heart	2 38
11	M	6	27 5	33 11	6 6	56 0	24 8	18 heart	3 28
12	Tu	6	29 5	31 11	2 7	18 1	31 9	6 belly	4 16
13	W	6	30 5	30 11	0 7	41 2	41 9	52 belly	5 2
14	Th	6	32 5	28 10	56 8	3 3	51 10	36 belly	5 46
15	Fr	6	34 5	26 10	52 8	26 5	2 11	19 reins	6 29
16	Sa	6	35 5	25 10	50 8	48 sets	eve 2	reins	7 12
17	C	6	37 5	23 10	46 9	10 6	0 0	45 secrets	7 55
18	M	6	38 5	22 10	44 9	32 6	32 1	29 secrets	8 39
19	Tu	6	40 5	20 10	40 9	54 7	8 2	14 secrets	9 24
20	W	6	41 5	19 10	38 10	15 7	48 3	0 thighs	10 10
21	Th	6	43 5	17 10	34 10	7 8	33 3	47 thighs	10 57
22	Fr	6	44 5	16 10	32 10	58 9	23 4	36 knees	11 46
23	Sa	6	46 5	14 10	28 11	19 10	18 5	25 knees	eve 35
24	C	6	47 5	13 10	26 11	41 11	18 6	16 knees	1 26
25	M	6	48 5	12 10	24 12	1 morn.	7 7	legs	2 17
26	Tu	6	50 5	10 10	20 12	22 0	23 7	59 legs	3 9
27	W	6	51 5	9 10	18 12	43 1	33 8	51 feet	4 1
28	Th	6	53 5	7 10	14 13	3 2	48 9	44 feet	4 54
29	Fr	6	54 5	6 10	12 13	23 4	4 10	39 head	5 49
30	Sa	9	55 5	5 10	10 13	43 5	20 11	34 head	6 44
31	C	6	57 5	5 10	10 14	2 rises	morn	neck	7 42

Autumn.

Hark ! hea  
Calm day  
The reaper  
And the  
The woods  
The vari  
While the d  
Seems as  
The moon h  
Her gent  
Oh ! could l  
The laug

New Moon

dm | Holid

1 | Uncommo

2 | ☐ ☺ 2/

C | 17th Sun

4 |

5 |

6 | Tides full

7 | ● runs hi

8 | Low tides

9 | St Denys

C | 18th Sun

11 |

12 |

13 |

14 | ♀ stat

15 | ♂ D ♀

16 | Tides rise

C | 19th Sun

18 | St Luke

19 | Common t

20 | ♂ stat

21 | ♂ ♀ ♀.

22 | D runs lo

23 | ☺ enters

C | 20th Sun

25 | Crispin

26 |

27 | ♂ D ♂

28 | St Simon

29 | Full tides

30 | ☐ ☺ ♀

C | 21st Sun

Autumn. OCTOBER begins on Friday. 33

Hark ! hear the murmur of the autumnal wind !  
 Calm days are past: the harvest sheaves are gather'd!  
 The reaper's spoil hath not been left behind,  
 And the pure blossoms by the brook are wither'd.  
 The woods, the changeful woods, are mournful grown,  
 The varied leaves are as the span in heaven;  
 While the deep murmur of the night-wind's tone,  
 Seems as the wail of one whose heart is riven !  
 The moon hath climb'd the horizon and hath pour'd  
 Her gentle light on grove, and glade, and mountain ;  
 Oh ! could her streaming splendours have restor'd  
 The laughing beauty of that summer-fountain !

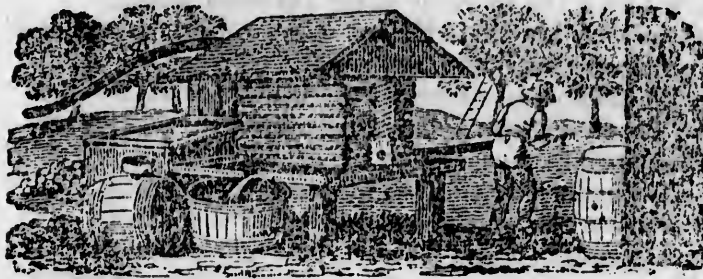
New Moon 16th d 3h 16m eve | First Quar 24th d 6h 6m eve

DM | Holidays, Weather, &c. | FARMER'S CALENDAR.

onth  
 n. eve  
 High  
 water  
 7 6  
 7 52  
 8 38  
 9 28  
 10 13  
 10 59  
 11 53  
 morn  
 1 45  
 2 38  
 3 28  
 4 16  
 5 2  
 5 46  
 6 29  
 7 12  
 7 55  
 8 39  
 9 24  
 10 10  
 10 57  
 11 46  
 eve 35  
 1 26  
 2 17  
 3 9  
 4 1  
 4 54  
 5 49  
 6 44  
 7 42

1	Uncommon high tides	
2	☐ ☉ ♃	good weather
3	17th Sun af Trin.	☽ per
4		for the
5		season.
6	Tides full.	
7	☉ runs high	signs of
8	Low tides.	rain which
9	St Denys	may
10	18th Sun af Trin.	terminate
11		in a cold storm.
12		
13		cold nights, but
14	♄ stat	fine sunny
15	♂ ☽ ♀	days
16	Tides rise	
17	19th Sun af Trin	☽ apogee
18	St Luke	raw winds
19	Common tides	with
20	♂ stat	rain
21	♂ ♀ ♀. ♀ stat	
22	☽ runs low	dull,
23	☉ enters ♍	cloudy,
24	20th Sun af Trin.	Low tides
25	Crispin	wet
26		weather
27	♂ ☽ ♂	
28	St Simon and StJude.	much
29	Full tides for some days.	finer
30	☐ ☉ ♄	again
31	21st Sun af Trin.	☽ perigee

It is not far from the proper time to gather & secure your potatoes. Some however, are apt to err by gathering them too early. The roots continue to grow larger and better after the tops have attained their full growth. Still, however, they should be harvested before the occurrence of those soaking rains which generally precede the setting in of winter. If potatoes are dried in a hot sun, they are apt to turn green, and become unwholesome. Select your seed corn in the field; take the largest, fairest, and ripest ears, which are best filled out and have the smallest cob, choosing them from the most thrifty stalks, that produce two or more ears each. In this way you will not only increase your crop vastly, but bring it forward much earlier. Look to your flax, and turn it if necessary, as the upper surface will rot faaster than the under side.



Full Moon 1st d. 1h. 4m. mru. | Last Quar. 7th d. 6h 39m morn

D	☉	☽	Days'	Sun's	☾ R.	☾	☾'s	High								
M	rises	sets	lent'h	dec.S.	& S.	south.	place.	water								
1	M	6	58	5	2	10	4	14	22	5	54	0	32	neck	8	22
2	Tu	7	0	5	0	10	0	14	41	6	39	1	32	arms	9	7
3	W	7	1	4	59	9	58	15	0	7	29	2	32	arms	9	54
4	Th	7	3	4	57	9	54	15	19	8	23	3	22	breast	10	42
5	Fr	7	4	4	56	9	52	15	37	9	22	4	30	breast	11	40
6	Sa	7	5	4	55	9	50	15	55	10	25	5	25	heart	morn.	
7	C	7	6	4	54	9	48	16	13	11	32	6	17	heart	1	27
8	M	7	7	4	53	9	46	16	31	morn.	7	6	6	belly	2	16
9	Tu	7	9	4	51	9	42	16	48	0	41	7	53	belly	3	3
10	W	7	10	4	50	9	40	17	5	1	53	8	37	belly	3	47
11	Th	7	11	4	49	9	38	17	22	3	5	9	20	reins	4	30
12	Fr	7	13	4	47	9	34	17	39	4	14	10	2	reins	5	12
13	Sa	7	14	4	46	9	32	17	55	5	18	10	45	secrets	5	55
14	C	7	15	4	45	9	30	18	11	6	16	11	28	secrets	6	38
15	M	7	16	4	4	9	28	18	26	sets.	eve	12	12	secrets	7	22
16	Tu	7	17	4	43	9	26	18	42	5	41	0	57	thighs	8	7
17	W	7	18	4	42	9	24	18	57	6	27	1	44	thighs	8	54
18	Th	7	19	4	41	9	22	19	11	7	18	2	32	knees	9	42
19	Fr	7	20	4	40	9	20	19	25	8	13	3	21	knees	10	31
20	Sa	7	22	4	38	9	16	19	39	9	13	4	10	knees	11	20
21	C	7	23	4	37	9	14	19	53	10	18	5	0	legs	eve	10
22	M	7	24	4	36	9	12	20	6	11	28	5	50	legs	1	0
23	Tu	7	25	4	35	9	10	20	19	morn.	6	40	40	feet	1	50
24	W	7	26	4	34	9	8	20	31	0	42	7	30	feet	2	40
25	Th	7	27	4	33	9	6	20	43	1	59	8	21	head	3	31
26	Fr	7	28	4	32	9	4	20	55	3	15	9	14	head	4	24
27	Sa	7	29	4	31	9	2	21	6	4	29	10	9	neck	5	19
28	C	7	30	4	30	9	0	21	17	5	40	11	6	neck	6	16
29	M	7	31	4	29	9	58	21	27	rises.	morn.			arms	7	16
30	Tu	7	31	4	29	9	58	21	37	5	14	0	6	arms	8	0

Autumn.

Pressed  
Pomona  
With th  
Lo! rus  
And you  
Streake

How  
The  
The  
And

NewMoon!

MD	Holid
1	All Saints
2	All Souls
3	Prs Soph
4	☉ runs h
5	Powder H
6	
C	22d Sun a
8	Prs Aug.
9	
10	
11	St Martin
12	
13	☽ apogee
C	23d Sun a
15	Tides rise
16	
17	
18	Common t
19	☉ runs lo
20	
C	24th Sun a
22	St Cecilia
23	St Clemen
24	☐ ☉ h
25	☉ ♂.
26	
27	Tides rise
C	Advent Su
29	Tides ver
30	St Andrev

Autumn... NOVEMBER begins on Monday. 35

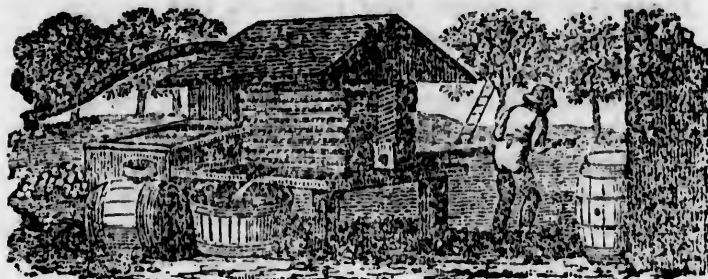
Pressed from th' exub'rant orchard's fruitful bound,  
 Pomona pours a sparkling tide, that vies  
 With the rich juices of the purple vine ;  
 Lo ! russet Labour's busy train, both old  
 And young, shake numerous down the mellow fruit.  
 Streaked with a cheek as ruddy as their own.

How fall'n the glories of these fading scenes !  
 The dusky BEECH resigns his vernal greens ;  
 The yellow MAPLE mourns in sickly hue,  
 And russet woodlands crown the dark'ning view.

New Moon 15th d 9h 42m morn | First Qr. 23d d. 7h 30m morn  
 Full Moon 29th d 10h 55m eve

MD	Holidays, Weather, &c.	FARMER'S CALENDAR.
1	All Saints.	Many a slovenly slubber de-
2	All Souls. <i>the aurora</i>	gullion who is miscalled a far-
3	Prs Sophia b. '77 <i>borealis</i>	mer, but who, instead of ac-
4	● runs high <i>will</i>	quiring any thing by his vo-
5	Powder Plot 1605 <i>probably</i>	cation, mars every thing he
6	<i>be seen these</i>	meddles with, is in the habit
C 22d	Sun af Trin. Low tides	of spoiling good fruit by mak-
8	Prs Aug. Sophia b. 1768	ing it into bad cider, instead
9	<i>evenings</i>	of manufacturing a delectable
10	<i>winter weather</i>	beverage, compared with
11	St Martin <i>approaches.</i>	which even nectar itself is
12	<i>let it not come</i>	naught but non-entity, he
13	D apogee <i>upon us</i>	gives you a villainous com-
C 23d	Sun af Trin. <i>unawares</i>	pound which defies chemical
15	Tides rise.	analysis, but resembles most
16	<i>cooler with rain</i>	a mixture of bilge water, aci-
17		dulated with aquæ fortis, in
18	Common tides. <i>fine</i>	order to avoid this consum-
19	● runs slow <i>again.</i>	mation, devoutly to be depre-
20	<i>fine clear serene</i>	icated, you should proceed as
C 24th	Sun af Trin ♂ ♀ ♀	follows :—For store cider of
22	St Cecilia. ☺ enters †	the first rate, gather your ap-
23	St Clement. Low tides	ples as late as the first Nov.
24	☐ ☺ ♀ <i>moonlight</i>	and let them lie till mellow,
25	● ♂ <i>evenings</i>	but not rotten. Grind them
26		in a trough large enough to
27	Tides rise. <i>rain</i>	hold a cheese and let the
C Advent	Sun. D per	pomace remain therein, before
29	Tides very high. <i>colder</i>	you press it, from 12 to 24
30	St Andrew. <i>and stormy</i>	hours. Press it slowly, and





Last Quar. 6th d. 11h. 22m. eve | New Moon 15th d. 4h. 6m. morn

D	D	☺	☺	Days	Sun's	C R.	C	C's	High
M	W	rises	sets	len <sup>th</sup>	dec. S	& S.	south.	place.	water
1	W	7	32 4	28 8	56	21 47	6 10	1 7	breast 8 17
2	Th	7	33 4	27 8	54	21 56	7 9	2 7	breast 9 16
3	Fr	7	34 4	26 8	52	22 5 8	13 3	5	breast 10 15
4	Sa	7	34 4	26 8	52	22 13 9	21 4	1	heart 11 11
5	C	7	35 4	25 8	50	22 21 10	31 4	53	heart morn.
6	M	7	36 4	24 8	48	22 29 11	43 5	41	belly 0 51
7	Tu	7	36 4	24 8	48	22 36	morn. 6	27	belly 1 37
8	W	7	37 4	23 8	46	22 43 0	55 7	10	reins 2 20
9	Th	7	37 4	23 8	46	22 49 2	4 7	53	reins 3 3
10	Fr	7	38 4	22 8	44	22 54 3	10 8	35	reins 3 45
11	Sa	7	38 4	22 8	44	23 0 4	13 9	17	secrets 4 27
12	C	7	39 4	21 8	42	23 5 5	13 10	0	secrets 5 10
13	M	7	39 4	21 8	42	23 9 6	6 10	45	thighs 5 55
14	Tu	7	39 4	21 8	42	23 13 6	55 11	31	thighs 6 41
15	W	7	39 4	21 8	42	23 16	sets. ev 19	19	thighs 7 29
16	Th	7	40 4	20 8	40	23 19 5	38 1	8	knees 8 18
17	Fr	7	40 4	20 8	40	23 22 6	29 1	57	knees 9 7
18	Sa	7	40 4	20 8	40	23 24 7	25 2	47	legs 9 57
19	C	7	40 4	20 8	40	23 25 8	25 3	37	legs 10 47
20	M	7	40 4	20 8	40	23 26 9	29 4	26	feet 11 36
21	Tu	7	40 4	20 8	40	23 27 10	37 5	15	feet eve 25
22	W	7	40 4	20 8	40	23 27 11	49 6	4	feet 1 14
23	Th	7	40 4	20 8	40	23 27	morn. 6	54	head 2 4
24	Fr	7	40 4	20 8	40	23 26 1	5 7	45	head 2 53
25	Sa	7	40 4	20 8	40	23 25 2	24 8	39	neck 3 49
26	C	7	40 4	20 8	40	23 23 3	43 9	35	neck 4 45
27	M	7	40 4	20 8	40	23 21 5	1 10	34	arms 5 34
28	Tu	7	39 4	21 8	42	23 18 6	16 11	34	arms 6 24
29	W	7	39 4	21 8	42	23 15	rises. morn.	breast	7 10
30	Th	7	39 4	21 8	42	23 11 5	39 0	34	breast 8 0
31	Fr	7	39 4	21 8	42	23 7 6	36 1	32	heart 8 42

Winter.

At last cor  
All nature  
In tippets  
Go shiv'rin  
With fo  
His br  
Old C  
And ay  
Who, wh  
To bla  
And vi

DM	Holiday
1	D runs hi
2	
3	Sup 6 ☺
4	
5	C 2d Sun in
6	Low tides
7	
8	Con. of B
9	
10	D apogee.
11	Rather low
12	C 3d Sun in
13	h stat
14	
15	High tides
16	D runs low
17	
18	
19	C 4th Sun in
20	Sup 6 ☺
21	St Thomas
22	Low tides.
23	
24	
25	Christmas
26	C 1st Sun af
27	St John.
28	Innocents.
29	D runs high
30	
31	

Winter. DECEMBER begins on Wednesday. 37

At last comes dread winter and closes the scene ;  
 All nature is dreary, no beauties are seen ;  
 In tippets and mittens, and muffs, young and old,  
 Go shiv'ring along, and cry " bless me, how cold "

With footsteps slow, in furry pall yclad,  
 His brows enwreathed with holly never sere,  
 Old Christmas comes, to close the wained year ;  
 And aye the farmer's heart to make right glad :  
 Who, when his teeming flocks are homeward had,  
 To blazing hearth repairs, and nut-brown beer,  
 And views well pleased the ruddy prattlers dear.

First Quar 22d d 6h 27m eve | Ful. Moon 29th d 9h 48m morn

DN | Holidays, Weather, &c. | FARMER'S CALENDAR.

n.morn  
 High water  
 8 17  
 9 16  
 10 15  
 11 11  
 morn.  
 0 51  
 1 37  
 2 20  
 3 3  
 3 45  
 4 27  
 5 10  
 5 55  
 6 41  
 7 29  
 8 18  
 9 7  
 9 57  
 10 47  
 11 36  
 eve 25  
 1 14  
 2 4  
 3 53  
 4 40  
 5 34  
 6 24  
 7 10  
 8 0  
 8 42

1	D runs high	<i>fine</i>	put it into casks through straw
2		<i>for a day or two.</i>	or a coaree sieve, and put the
3	Sup ☽ ☽ ♀		cask in a cool place. Leave out
4		<i>rain, if not snow.</i>	the bungs till the fermentation
C	2d Sun in Advent.		principally subsides, then drive
6	Low tides	<i>winter now commences in earnest.</i>	the bungs in tight, but leave a
7			small vent awhile longer, if ne-
8	Con. of B V Mary	<i>more snow.</i>	cessary, to prevent the barrel
9			bursting.
10	D apogee.		The Farmer who has managed
11	Rather low tides		matters to advantage, has a
C	3d Sun in Adv		plenty of every thing, necessary
13	h stat	<i>indications of a heavy fall of snow.</i>	to fill the cup of earthly felicity.
14			He has also time to enjoy life,
15	High tides		with being obliged to snatch at
16	D runs low		innocent and salutary pleasures,
17			See that your roots, garden vege-
18		<i>blustering and unpleasant.</i>	tables, &c. are poperly stowed
C	4th Sun in Adv		away in your cellar, bins, boxes,
20	Sup ☽ ☽ ♀		&c. so that your labours may
21	St Thomas		not be in vain, and the fruits
22	Low tides. ☽ enters ♃	<i>quite cold, but not unpleasant for the season.</i>	thereof become food for rats and
23			other vermin. Let your beef,
24			pork and other good things of
25	Christmas Day.		the soft be so packed and pre-
C	1st Sun af. Chris. St Stephen		served as not to become the prey
27	St John. Dperigee.		of putresence, or the germ of fe-
28	Innocents. High tides.	<i>the year expires with symptoms of a snow storm.</i>	ver. The life of a virtuous and
29	D runs high.		industrious farmer, though he
30			earn his bread by the sweat of
31			his brow, is a life of health, ra-

ment. In the year 1791, the

## PROVINCE OF NOVA-SCOTIA.

Lieutenant-Governor and Commander in Chief of the Province of Nova-Scotia and its Dependencies, and Commander of the Forces in Nova-Scotia, New-Brunswick, Prince Edward Island, &c. &c. &c. His Excellency Lieutenant General Sir PERECCINE MAITLAND, Knight Grand Cross of the Most Honorable Military Order of the Bath, &c. &c. &c.

### HIS MAJESTY'S COUNCIL.\*

Honorable Sampson Salter Blowers, President.

Honourable and Right Reverend John Lord Bishop of Nova Scotia, Hon. Michael Wallace, Richard J. Uniacke, Chas. Morris, James Stewart, Thos. N. Jeffery, Brenton Halliburton, Hibbert N. Binney, Enos Collins, Simon B. Robie and Charles R. Prescott.

Clerk, Sir R. D. George, Bt.; assistant clerk, Wm. Hill Esq; chaplain, Revd Robert Willis, D. D.

### HOUSE OF ASSEMBLY.

S. G. W. ARCHIBALD, Esquire, Speaker.

County of Halifax.—S G W Uniacke, Esqrs  
Archibald, Wm Lawson, Geo Town of Halifax—C R Fairbanks and Beamish Murdoch, Esqrs.

County of Annapolis.—Wm Truro.—C D Archibald, Esq  
H. Roach & ———, Esqrs  
Onslow.—J Crow, Esq

County of Cumberland.— Londonderry.—J Wier Esq  
Alex Stewart and Jos Oxley, Esqrs  
Annapolis—Jas R Lovett Esq

County of Lunenburg.—Lot Digby.—J E Morton, Esq  
Church and Wm Rudolf, Esqrs  
Lunenburg.—J Heckman, Esq

County of Kings.—Wm A Amherst.—Jas S More, Esq  
Chipman and Samuel Bishop, Esqrs  
Horton.—Jas Harris, Esq

County of Queen's.—Jos Free Esq.  
man and John Barss, Esqrs  
Windsor.—David Dill, Esq

County of Hants.—Benj, De- Falmouth.—W H Shey Esq  
wolf and R Smith, Esqrs  
Barrington.—J Homer, Esq

County of Shelburne.—John Liverpool—Jas R Dewolf,  
McKinnon, and Jno Foreman, Esq

County of Sydney.—Thomas Newport—Shubael Dimmock  
Dickson and John Young, Esqrs  
Esq

County of Cape Breton.— Shelburne—J A Barry, Esq  
Lawrence Kavanagh and R J Yarmouth—SS Poole, Esq

Chaplain, Rev F Uniacke, MA. Clerk, John Whidden, Esq; asst do. J F Gray, Esq. Serjeant at Arms, Mr Thos Boyd. Serjeant of the Gallery, Mr M Forrester. Messenger, Mr John Gibbs.

\*The members of his Majesty's Council and the Speaker of the House of Assembly are Justices of the Peace throughout the Province.

Surveyor  
Hon M W  
Hill Esq C

Chancellor  
Rolls, Hon  
Halliburton  
Wiswell an  
Esq; Couns  
of the Supr

Cour  
His Maje  
risters an

Judge, H  
Solicitor G  
Pennell, Es  
J Putman, H  
and Proctor  
Court.

Commissi  
George, Bt.

Court for th

Surrogate  
Spry Morris.

Chief Justi  
Hon B Hallib  
Esq; Associa  
Hon R J Uni  
King's Couns  
Esqrs. Cler  
Province, W

Barristers

Halifax—H  
R J Uniacke,  
Jas W Johnst  
Bliss, Beamis  
Chas Twining  
F Gray, W F  
Harris, Hugh  
John C Hallib  
Smith—Esqrs

*Provincial Officers.*

Surveyor General of Lands, Hon Chas Morris; Treasurer, Hon M Wallace; Sec'y, Sir R D George, Bt.; Dep Sec'y Wm Hill Esq Comr of Crown Lands, John Spry Morris, Esq.

*Court of Chancery.*

Chancellor, His Excellency Sir P, Maitland: Master of the Rolls, Hon S B Robie, L L D: Masters in Chancery, Hon B Halliburton, Hon Jas Stewart; Lewis M Wilkins, Peleg Wiswell and J G Marshall, Esqrs.: Registrar, H H Cogswell, Esq; Counsellors and Solicitors, the Barristers and Attornies of the Supreme Court.

*Court of Error, Marriage and Divorce.*

His Majesty's Council; Advocates and Proctors, the Barristers and Attornies of the Supreme Court.

## COURT OF VICE ADMIRALTY.

Judge, Hon S S Blowers; Advocate Genl. Hon R J Uniacke Solicitor Genl. S G W Archibald, Esq L L D; Registrar, L Pennell, Esq; Dep Registrar, J S Tremain, Esq, Marshall, J Putman, Esq; Dep Marshall, S W Deblois, Esq; Advocates and Proctors, the Barristers and Attornies of the Supreme Court.

*Court of Escheats and Forfeitures.*

Commissioner, Hon Michael Wallace; Registrar, Sir R D George, Bt. Dep Reg. Wm Hill Esq.

*Court for the Probate of Wills and granting Letters of Administration.*

Surrogate General. Hon Chas Morris; Registrar, John Spry Morris, Esq

*Supreme Court.*

Chief Justice, Hon Sampson Salter Blowers; Puisne Judges Hon B Halliburton, Hon Jas Stewart, and Lewis M Wilkins, Esq; Associate Judge, P Wiswell, Esq; Attorney General, Hon R J Uniacke; Sol Gen S G W Archibald, Esq L L D; King's Counsel. R J Uniacke, jr, Wm Hill, and C R Fairbanks, Esqrs. Clerk of the Crown and Prothonotary throughout the Province, Wm Thompson, Esq; Deputy, J W Nutting, Esq.

*Barristers and Attornies at Law of the Supreme**Court residing in the Province*

Halifax—H H Cogswell, D S Clarke, S G W Archibald, R J Uniacke, jun. J W Nutting, William Hill, C R Fairbanks, Jas W Johnston, W Q Sawers, Jas Cochran, N W White, W B Bliss, Beamish Murdoch Alex Primrose, James S Tremain, Chas Twining, Jas B Uniacke, C D Archibald, J J Sawyer, J F Gray, W Fleigher, Jas Stewart Clarke, Wm Young. C W H Harris, Hugh Hartshorne, E H Harrington, Law. O C Doyle, John C Halliburton, W Bowman, W H Keating, & Wm E Smith Esqrs.

Pictou.—Thos Dickson, Jotham Blanchard, Henry Blackadar, R B Dickson, Martin Wilkins, & Wm Sutherland, Esqrs  
Truro—Jonathan Marsters John D Archibald and Geo H Emerson Esqrs.

Annapolis.—H Goldsmith, John Johnston, Jas A Dennison, Alex Winniett, & Wm H Lee, Esqrs.

Digby—G K Nicholls, Esq.

Bridgetown—Steph Bromley and C. T. C. MacColla Esqrs, Amherst.—James S Morse, Alex Stewart, Chas D Roach, and Silas C Morse, Esqrs.

Kentville.—John Whidden, Jno C Hall and Stephen H Moore, Esqrs.

Windsor.—HA Emerson, LM Wilkins, and Harry King. Esqrs  
Newport.—D D Stewart, Esq.

Antigonish.—John Thos Hill and Alex McDougall, Esqrs.

Yarmouth.—John Foreman, Esq.

Guysborough.—F W Des Barres and C W Weeks, Esqrs.

Liverpool.—Wm Sterns S P Fairbanks, & Snow Parker Freeman Esqrs

Arichat.—Wm C Delaney, Esq.

Lunenburg.—Jno Creighton, G F Solomon, Charles B Owen and Charles Bolman, Esqrs

Chester—Wm Greaves, Esq

Non-residents practising in Cumberland—E B Chandlor and James Stewart, Esqrs.

#### *Nova-Scotia Barrister's Society.*

Patrons, his Excellency the Chancellor, the Honorable the Chief Justice.

Honorary Members, the Judges of the Supreme Court ; Treasurer, H H Cogswell, Esq : Secretary and Librarian, J W Nutting, Esq.

Committee for the year 1830. Wm Q Sawers, chairman, Chas Twining & Jas Scott Tremain Esqrs.

#### *Commissioners of the Revenue.*

Hon. M Wallace, Hon S B Robie, Wm Lawson, R J Uniacke, and Law Hartshorne, Esqrs. Wm Newton, Esq Clerk.

#### *Commissioners for Light Houses.*

Saml Cunard, Thos Maynard and John Douglas, Esqrs

#### *Shubenacadie Canal Company.*

President, Hon Michael Wallace. Vice Presidents, Hon T N Jeffery, and Samuel Cunard, Esq. Directors Thos Boggs, LE Piers, S W Deblois, Wm Pryor R J Uniacke jr, Mich Tobin, MG Black, James Bain & J N Shannon Esqrs.—Solicitor and Secreatry, C R Fairbanks, Esq. Dep Sec'y W Flieger. Engineer, Francis Hall, Esq.

#### *King's College Windsor.*

Patron, his Grace the Lord Archbishop of Canterbury.

Visitor, the Lord Bishop of Nova-Scotia.

Governors, his Excellency the Lieutenant Governor, the Right Rev'd the Lord Bishop of Nova-Scotia, the Hon the Chief Justice, the Judge of the Court of Vice Admiralty, the

Speaker  
Solicitor  
President

Preside

Porter, D

and Logi

Metaphys

sar, Rev

Mathema

venson; S

ham Wig

Governor

TERM

ends on th

ends on t

Monday

and ends

The mo

and ends

Gouverne

Presbyter

gland. Tr

Esq L L D

Smith, Jas

Alex Gran

Matthews

Culloch, I

Kinley.

Clergy

The Hon

Brunswick

Halifax—

Paul's; Rev

Wix, M A

Chaplain,—

College; Re

King, MA

Church; Re

Rev John

igonishe; I

Aylesford; I

wallis; Rev

BA Digby;

Weeks, MA

J T T Mood

Rev George

Rev Thos

Weymouth;

yeat, Visitin

Charles Ingl

not fixed.

Speaker of the House of Assembly, the Attorney General, the Solicitor General, the Secretary of the Province, the Revd the President of the College and the Revd Dr. Cochran.

President & Professor of Divinity and Hebrew, the Rev Chas Porter, DD.: Vice President, Professor of Grammar, Rhetoric and Logic, and acting Professor of the moral Sciences and Metaphysics. Rev William Cochran, D D.; Fellow and Bursar, Rev William B King, M A.; Acting Professor of Mathematics, Natural Philosophy and Astromony, John Stevenson; Sec'y & Treasurer, Jas Cochran, Esq; Librarian, Abraham Wiggins, Scholar; Academy under the direction of the Governors of King's College Principal, Rev Fras Salt. M A.

TERMS.—Sept. 1st—Michaelmas Term commences, and ends on the 15th Dec. Jan. 15, Hilary Term commences, and ends on the Saturday preceding Palm Sunday.

Monday after Easter Monday—Easter Term commences. and ends Saturday se'nnight before Whit Sunday.

The morrow of Trinity Sunday—Trinity Term commences and ends on the 1st of July.

#### PICTOU ACADEMY.

Governed by fourteen Trustees, who are to profess, either the Presbyterian system of Religion, or that of the Church of England. Trustees, Hon S B Robie, L L D, S G W Archibald, Esq L L D, Rev Thos McCulloch D D, Duncan Ross, George Smith, Jas MacGregor D. D, Jno McKinley, Jas Foreman Alex Grant, John Patterson, Robt McKay, Jno McLean, Wm Matthewson, and Jas Robson. Head master, Rev Thos McCulloch, D D.; Asst Mr M McCulloch; Sec'y, Rev Jno McKinley.

Clergy of the Established Church in Nova Scotia.

The Hon and Right Rev John, Lord Bishop of Nova Scotia, New Brunswick and their Dependencies.

Halifax—Ven. Robt Willis, DD Archdeacon, and Rector of St. Paul's; Rev Fitz R Uniacke, M A Rector of St George's; Rev Edw Wix, M A Chaplain to the Bishop; Rev J T Twining, DD Garrison Chaplain, —Windsor, Rev Chas Porter, DD President of King's College; Rev Wm Cochran, DD Vice President; Rev W Burgess King, MA Tutor; Rev W Colsel King, MA Rector of University Church; Rev Francis Salt, MA Principal of Collegiate School.

Rev John Milledge, LLD Annapolis; Rev Thos H White, BA Antigonishe; Rev R B Wiggins, BA Amherst; Rev Edwin Gilpin, BA Aylesford; Rev Jas Shreve, BA Chester; Rev John Clarke, BA Cornwallis; Rev Mather B Desbrisay. BA Dartmouth; Rev Roger Viets, BA Digby; Rev Francis Whalley, Granville; Rev Charles W Weeks, MA Guysborough; Rev Joseph Wright, BA Horton; Rev J T T Moody, BA Liverpool; Rev Jas C Cochran, BA Lunenburg; Rev George Morris, BA Rawdon; Rev John Conolly, MA Sackville; Rev Thos B Rowland, LLD Shelburne; Rev Alfred Gilpin, BA Weymouth; Rev Thos A Grantham, MA Yarmouth; Rev John Burnyeat, Visiting Missionary (Truro); Rev Robt Norris, MA retired; Rev Charles Ingles, BA Sydney, C. Breton; Rev Chas Elliott, BA station not fixed.

## Ministers of the Established Church of Scotland.

Halifax— St Matthews. Rev John Scott; St Andrews. Rev John Martin; Dalhousie College, Rev Thos Aitkin, AM; Dartmouth, Rev James Morrison; Shelburne, Rev Gavin Lang; Cornwallis, Rev Wm Forsyth; Horton, Rev Geo Struthers; Pictou Town, Rev Kenneth J McKenzie; East River, Rev Donald A Fraser; Upper Settlement, Rev John McRae; West River, ———; Merigomish, Rev Dugaid McKichan; Cape Breton, Canso & River Inhabitants. Rev Neil McKenzie.

## Ministers of the Presbyterian Church of Nova-Scotia.

Presbytery of Truro—Londonderry, Rev John Brown; Truro, Rev John Waddell; Musquodoboit, Rev John Sprott; Douglas, Rev T S Crowe; Economy, Rev Andrew Kerr.

Presbytery of Pictou—Pictou, Rev John McKinley, M A; East River, Rev James McGregor, DD.; West River, Rev Duncan Ross; River John, Rev John Mitchell; Merigomish, Rev Wm Patrick; Miramichi, Rev Jas Thompson; Dorchester, Rev Thos Trotter; St Mary's, Rev Alex Lewis; Maubou and Port Hood, Rev W Miller; Richibucto, Rev John M'Lean.

Presbytery of Halifax—Upper Shubenacadie, Rev Robt Blackwood.

Presbytery of P E Island—Prince Town, Rev John Kier; St Peter's, Rev Robt Douglas; Richmond Bay, Rev W M'Gregor.

## Clergy of the Roman Catholic Church.

Right Rev. Dr Wm Fraser, Bishop of Tanen, and Vicar Apostolic of Nova Scotia. Rev John Laughnan, Halifax; Rev Dennis Geary, Chezetcook; Rev Jas Dunphy, Prospect; Rev Mr Sygogne, St Mary's Bay; Rev John B Morin, Argyle; Rev Mr Boland, Pictou; Rev James Grant, Manchester; Rev Pere Vincent, Tracadie; Rev Mr Francis, Pomket; Rev George McEageney, Sydney; Rev Mr McLeod, Bras d'Or; Rev Dennis Lawlor, St Peters.

## Wesleyan Missionaries.

Halifax, Rev Wm Croscombe, Rev Robt Young and Rev Wm Black, supernumerary.—Liverpool, Rev H Pope.—Lunenburg, Rev George Miller.—Shelburne, Rev Thos H Davis.—Horton, Rev Robt H Crane.—Windsor, Rev Stephen Bamford.—Newport, Rev Jno Marshall and Rev Wm Bennett, supernumerary.—Parrsboro' Rev Wm Temple.—Wallace, Rev W McDonald.—Yarmouth, Rev Wm Smith, —Sydney, Rev M Cranswick.—Ship Harbour, Rev J G Hennegar.

## Baptist Ministers.

Halifax, Rev John Burton and Rev H K Green, AM.—Cornwallis, Rev Edw Manning and Rev Wm Chipman.—Horton, Rev Theo S Harding.—Rawdon, Rev Rich McClearn.—Newport, Rev George Dimock.—Parrsboro', Rev Wm Barton.—Hammond's Plains, Rev Geo Richardson.—Granville, Rev Thos Ansley.—Annapolis, Rev Wm Elder.—Nictau, Rev Thos H Chipman and Rev J E Bill.—Digby, Rev Peter Crandall.—Clements, Rev Israel Potter and Rev John Austin.—Scissiboo, Rev Danl McGrigor.—Yarmouth, Rev H Harding.—Brier Island, Rev Saml Bancroft.—Rugged Island, Rev John Craig.—Aylesford, Rev Ezekiel Marsters.—Onslow, Rev Jas

Munro.—  
Rev Wm C  
Licentia  
—Robt Dic  
nary at Ho

MF  
ficers, &c.  
which they

Town  
the Cour  
F Gray,  
High C  
Rolls, on  
Supren

3d Tues.  
Inferio  
Sept. and  
sen: Jno

Comm  
month.

main, Jno

Stewart,  
Police

lolidays exc  
and Mat. J

Session  
June, Sep

JUSTICES

J Fore

Saml Hea  
McNab, V

M Richar  
Rayne, H

John Lea  
and Jno S

Com

Hon R  
John Stay

G N Russ  
Pyke, Es

Halifax

Munro.—Amherst, Rev Chas Tupper and Saml McCulley,—Chester, Rev Wm Cunningham and Rev Joseph Dimock.

Licentiates—Ferd. Hably, Lunenburg.—John Bezanson, Chester.—Robt Diekey, Cornwallis.—Asahel Chapen, Principal in the Seminary at Horton.—James Stephens, Horton.

MEMORANDUM.—The Sittings of Courts, Names of Officers, &c. will be found arranged under the respective counties to which they belong.

### COUNTY OF HALIFAX.

Town and district of Halifax Proper—High Sheriff of the County, John James Sawyer, Esq. Coroner, James F Gray, Esq.

High Court of Chancery, held before the Master of the Rolls, on the first Monday in every week.

Supreme Court sits at Halifax on the 2d Tues. of Jan. 3d Tues. of April, 2d Tues. of July, and 3d Tues. of Oct.

Inferior Court sits on the 2d Tues. of March, June, Sept. and Dec.—Judges, Hon M Wallace, J Foreman, sen. Jno Howe, sen. and Wm Lawson, Esqrs.

Commissioners' Court sits the 1st Monday of every month. Comm'rs, J Foreman, sen. Jas Tobin, R Tremain, Jno Liddell, and D S Clarke, Esqrs. Clerk, Jas Stewart, Clarke, Esq.

Police Office open every day throughout the year, (Holidays excepted)—Justices, John Liddell, H Yeomans, and Mat. Richardson, Esqrs. D S Clarke, Esq clerk

Sessions of the Peace held on the 1st Tues. of March, June, Sept and Dec.

JUSTICES OF THE PEACE OF AND FOR THE COUNTY, RESIDING IN THE DISTRICT OF HALIFAX.

J Foreman, sen Cus. Rot.; Jno Howe, sen. R Fairbanks, Saml Head md, Jno Liddell, R Tremain, H Yeomans, Peter McNab, Wm Lawson, Saml Albro, Jno Albro, M Tobin, M Richardson, J D Hawthorne, Thos Holland, Isaac Rayne, H Y Mott, Jas Money, Jno Allan, G N Russell, John Leander Starr, Wm H Roach, Henry A Gladwin, and Jno S Morris, Esqrs. D S Clarke, Esq c p

*Commissioners for visiting the Poor House.*

Hon R J Uniacke, Hon C Morris, Hon T N Jeffery; John Stayner, R Tremain, H Yeomans, J Clark, M Tobin, G N Russell, J Foreman sen., M Richardson, and Thos Pyke, Esqrs

COMMISSIONERS OF STREETS.

Halifax—Jas Foreman, sen J Albro, M Tobin, F Major;



and Sam Cunard, Esqrs. Dartmouth, Saml Albro, Hugh Hartshorne, and E. H. Lowe, Esqrs.

Registrar of Deeds, &c Sir R D George, Bt.

Health Officer for the Port of Halifax, Charles W Wallace, Esq M D

Post Master General for N. Scotia and N. Brunswick, John Howe, Esq jun. Halifax.

Principal Inspector of Pickled Fish for the Province, Jonathan Tremain, Esq

Comm'rs of Schools, the Venerable Archdeacon Willis, DD, Rev Mr Scott, C R Fairbanks, Saml Albro and H Y Mott, Esqrs. Sec'y, A Primrose, Esq

#### *Officers of H. M. Naval Yard.*

A F Jones, Esq master shipwright; John Douglas, Esq master attendant; Mr Jas Ritchie, master shipwright's clerk; Mr J H McEwen, clerk. Mr Jas Matthews, gate porter.

#### *Officers of the Provincial Revenue.*

Hon H N Binney, collector of impost and excise; Andrew Richardson, Esq guager and weigher. Jas Barrett, Robt Hodges, & Geo Sherlock, waiters and shipping officers. Wm Cleaveland, collector of licence duty. Edw Duckett, collector of light duty.

#### *Officers of His Majesty's Customs.*

Hon Thos N Jeffery, collector. John Wallace, Esq comptroller. James Purvis and D H Watson, Esqrs waiters and searchers. Edw Duckett, surveying officer of shipping. F W Acheson & T Holder tide surveyors. R B Young, Errol Boyd, Alex Hays and Terence Connell, tidesmen. Jas Wall and W Hays, boatmen.

Warehouse—Joseph Dean, Esq Keeper. R Dimmett, Locker.

#### *Halifax Banking Company.*

Henry H Cogswell, Esq President. Wm Pryor, Esq Vice President. Hon Enos Collins, Jas Tobin, Samuel Cunard, Jno Clark, Joseph Allison, Martin G Black, Esqrs Directors. N T Hill, Esq cashier. Mr. J C Wilkie clerk. Jos Keefer, messenger.

Discount Days—Tuesdays and Fridays.

Hours of business—from 10 to 3 o'clock. Sundays and Holidays at the Public Offices excepted—Notes for discount to be left the day previous to the discount day, with the cashier

#### *Fire Wardens of the Town of Halifax.*

Rich Tremain, Esq Chairman.—Jno Albro, Esq sec'y & treasurer. South Suburbs, Edw Pryor jr, C R Fairbanks and Jas Tremain, Esqrs.—St Peter's Ward, J Albro, J E Fairbanks and Jas Bain, Esqrs—St Matthew's Ward, J Hartshorne and J A Barry, Esqrs—St Paul's Ward, G N Russell and W A

Black, Esq  
Thos Boggs  
Jos Allison  
Deblois,  
J N Shanley  
Comm  
direct at  
Pryor, and  
direct the

James D  
Lieutena  
Cassedy.  
Treasurer.

Robt Ric  
George Jos  
Peter Hall,  
Mat. Low  
McPherson

Nati  
Acad

MAIL D  
Halifax on  
at 1 o'clock  
The West  
Fridays at 4  
arrive in Ha

Includes the  
districts of Co  
Courts of C  
sion in this

DI  
Supreme  
and 3d Tue  
June and 4t  
Inferior C  
the 3d Tues  
Assistant  
R Lowden,  
the 2d Tue  
Judges, Joh  
Brown, and  
Colchester

Black, Esqrs—County Court House Ward, Jno Dupuy and Thos Boggs, Esqrs—St John's Ward, J Liddell, J Clark and Jos Allison, Esqrs—North Barrack Ward, M Tobin and S W Deblois, Esqrs—North Suburbs, J Dempster, S Cunard, and J N Shannon, Esqrs.

Committee of the Fire Wardens appointed to manage and direct at Fires—Rich Tremain, Thos Boggs, Jno Albro, E Pryor, and J Clarke, Esqrs—E Pryor and J Clarke, Esqrs to direct the Axe-men.

FIRE ENGINE COMPANY

James Dechman, sen. captain.

Lieutenants—First Division, David Hutton. Second, Thomas Cassedy. Third, George Little. Fourth, M Byren. James Smith, Treasurer. A Bigsby, Sec'y.

AXE FIRE-MEN

Robt Richardson, capt. Stephen Hull, lieut. Thos McKie, sec'y. George Jost, Mich Creamer, Jas McNutt, Errol Boyd, John McNeil, Peter Hall, Wm Marvin, Henry Miller, James Grant, Wm Rose, Mat. Lownds, Wu Johnston, Wm Strickland, Pat. Mahony, John McPherson, Sam. George, Wm Fenerty. J Lownds, truckman.

National School ~~~~~ Abel S Gore, } masters  
Acadian School ~~~~~ Rev Jas Morrison, }

MAIL DAYS.—The Eastern and St John, N B. mails arrive in Halifax on Saturday at 3 o'clock, p. m. and made up every Wednesday at 1 o'clock, p. m.

The Western mails are made up at the Post Office on Mondays and Fridays at 4 p. m. and forwarded by the mail coach next morning; they arrive in Halifax every Monday and Friday at 7 p. m.

\*\*\*\*\*  
**EASTERN DIVISION**

Includes the Counties of Cumberland and Sydney, and Districts of Colchester and Pictou. Chief Justice of the Inferior Courts of Common Pleas and President of the Courts of Session in this Division—Jared I. Chipman, Esq.

**COUNTY OF HALIFAX.**

DISTRICTS OF COLCHESTER AND PICTOU.

Supreme Court sits at Pictou on the last Tuesday of May, and 3d Tuesday of Sept. At Truro, on the 1st Tuesday of June and 4th Tuesday of Sept.

Inferior Court and Sessions of the Peace, held at Pictou on the 3d Tuesday of July and 4th Tuesday of January.

Assistant Judges, Hugh Denoon. A McDonald, Geo Smith R Lowden, A M'Cara, & G Johnston Esqrs. And at Truro, on the 2d Tuesday of July and 3d Tuesday of Jan'y—Asst. Judges, John Fulton, Jas Fulton, Jas Archibald, Thomas J Brown, and Robt Dickson, Esqrs; dep proth'ys, Geo Dill, Esq. Colchester; Jas Skinner, Esq Pictou.

*Justices of the Peace*—of and for the County—residing in the Districts of Colchester and Pictou—Hugh Denoon, Jno Stewart, Jas Archibald, Robt Lowden, Sam Tupper, W Cotting, Josh Marsh, John Dickson Wm M'Kay, Geo Roy, Matt Archibald, Went Taylor, Jno Allen, Jas Skinner, Robert Dickson, James McCurdy, George Smith, Jas Benvie, A Archibald, Jno Fraser, Nath Marsters, Thos J Brown, Jas Flemming, J Mahon W Currie, Wm Matthewson, D M'Lean, R M'Kay, And M'Carra, E S Blanchard, Jas Carmichael, Jno Olding, Wm Mortimer, Silas H Crane, Jno Finlayson, Geo McLeod, Alex Campbell, Jos Fulton, D W Crow, Wm Logan, H Hatton, D Crichton, Sam Archibald 3d, Jno Yuill, Jno Holmes, Ken McLean, Adam Carr, and Jas Fraser, Esqrs.

Surrogate Judges—Colchester, S G W Archibald. Pictou, Geo Smith, Esqrs.

Comm'rs for taking Special Bail, on Actions dep'g in the S. Court.—Colchester, J Fulton and G Dill, Esqrs. Pictou, Jas Skinner and H Denoon, Esqrs.

Registrars of Deeds—Colchester, Israel Allison. Pictou, Geo Smith, Esqrs.

Pictou—Col of Light Duties, R Corbett.—Col of Impost and Excise and Pro Col of Customs, H Denoon, Esq.—Ditto for Colchester, J D Archibald, Esq.

Dep Sheriffs—Colchester, Israel Allison. Pictou, J W Harris, Esqrs.

Postmasters.—Pictou, Alex P Ross. Truro, Israel Allison. Gay's River, Samuel Moore, Esqrs.

Comm'rs of Schools—Colchester, Rev J Burnyeat, Rev Jno Waddell, R Dickson, Saml Tupper and J Flemming, Esqrs

Pictou—Rev Dun Ross, Geo Smith, Jas Skinner, Dav Crichton and Jas Carmichael, Esqrs.

#### COUNTY OF SYDNEY.

High Sheriff, Kenneth McDonald, Esq.—Dep. for the Lower District, Wm Heffernan.

Supreme Court sits at Dorchester, on the 2d Tuesday of Sept—dep proth'y Alex McDonald, M D.

Inferior Court and Sessions of the Peace for the Upper District, held at Dorchester, on the last Tuesday of May and 3d Tuesday of Oct. Asst Judges, J W Hierlihy, John Cunningham and Benj Ogden, Esqrs.

Justices of the Peace—J W Hierlihy, John Cunningham, Alex McDonald, M D, John McDonald, Robt Murray, R N Henry, H McDonald and Don. Sinclair, Esqrs. R N Henry, Esq C P.

Surrogate Judge Alex McDonald, M D. Registrar. Ken McDonald, Esq. Dep. Registrar of Deeds, Jno Cunningham, Esq. Coroner, J G Peabody. Dep. Postmaster, R N Henry, Esq. Antigonishe.

Inferior Court and Sessions of the Peace—for the Lower dis—held at Guysboro' on the 2d Tuesday of May and 4th Tuesday of Octr. Asst Judges, Thos Cutler and Jas Marshall, Esqrs. Dep. Proth'y, Wen. Taylor, Esq

Comm' Court—U  
Esqrs  
Justices  
water, Ch  
Lannigan  
bell, H Mc  
Edw Lang  
Esqrs. M  
Deeds, T  
Guysboro  
oner, CW  
and Excise  
Commis  
R. M. Cut  
McColl, Es  
Alex McD  
Donald Es

High Sh  
Supreme  
Inferior  
on the 1st  
Judges, Th  
Baker Esq  
Comm'rs  
Court, Cha  
lane, Esqrs  
Justices  
Edw Baker  
Baker. Jno  
Thos Cook  
Esqrs. S C  
art, Esq. I  
Reg. of D  
Thos. Chap  
Coroners, J  
ters, S H M  
Josh Hustis  
Comm'rs  
McFarlane,

Includes the  
burg. Chie  
and Preside  
C Haliburto

High She

Comm'rs for taking Special Bail on Actions dep'g in the S. Court—Upper dis. Alex McDonald ; Lower dis. Wm Taylor, Esqrs

Justices of the Peace, Thos Cutler, Jos Marshall, Wm Atwater, Christian Miller, Robt M Cutler, Went Taylor, Patrick Lannigan, C Archibald, Wm McKeene, T Glencross, D Campbell, H McDonald, R Hartshorne, Jno Newton, Jos Maxwell, Edw Langley, Jno Whitman, Geo Norris, and Wm Edge, Esqrs. Mr W O Heffernan, C P. Sur Judge and Dep. Reg of Deeds, Thos Cutler, Esq. Postmasters, Robt M Cutler, Esq. Guysboro' Hugh McDonald, Esq. Sherbrooke, St Mary's. Coroner, CW Weeks, Esq. Pro Col of Customs and Col of Impost and Excise, Duncan McColl, Esq.

Commisioners of Schools.—Lower Dis. Rev. C. W. W. , R. M. Cutler, Went Taylor, Robt Hartshorne, and Duncan McColl, Esqrs. Upper Dis. the Right Rev. Bishop Fraser, Alex McDonald, J. W. Hierlihy, Benj Ogden and Hugh McDonald Esqrs.

COUNTY OF CUMBERLAND.

High Sheriff, Joshua Chandler, Esq.

Supreme Court sits at River Philip on the 2d Tues of June.

Inferior Court and Sessions of the Peace, held at Amherst on the 1st Tuesday of Jan'y and last Tuesday of June. Asst Judges, Thos Roach, D McFarlane, R McG Dickey and Wm Baker Esqrs. S H Morse Esq. dep. proth'y.

Comm'rs for taking Special Bail on Actions dep'g in the Sup. Court, Chas Baker, Thos Roach, S H Morse and D McFarlane, Esqrs.

Justices of the Peace—Gilbert Purdy, Custos Rotulorum, Edw Baker, Gabriel Purdy, Thos Roach, D McFarlane, Wm Baker, Jno Black, Wm White, Geo Bergman, James M'Nab, Thos Cooke, Step. Oxley, R M'Gowan Dickey, & Wm Baker, Esqrs. S C Morse, Esq. C P. Surrogate Judge, Alex Stewart, Esq. Registrar Court of Probates, A Stewart, Esq. Dep. Reg. of Deeds, Chas Baker, Esq. Col of Impost and Excise, Thos Chapman, Esq. Col of Customs, Mich Gordon, Esq.—Coroners, Jno Morse and W W Bent, Esqrs. Dep. Postmasters, S H Morse, Esq. Amherst; Geo Bergman, Esq. Pugwash; Josh Hustis, Esq. Wallacee.

Comm'rs of Schools—Rev N Wiggins, Thos Roach, Dan McFarlane, R McG Dickey, and Jos Oxley, Esqrs.

MIDDLE DIVISION

Includes the counties of Hants, King's, Queen's and Lunenburg. Chief Justice of the Inferior Courts of Common Pleas and President of the Courts of Session in this division, Thos C Haliburton, Esq.

COUNTY OF HANTS.

High Sheriff, Terence Cochran, Esq.

Supreme Court sits at Windsor, on the last Tuesday of May and 4th Tuesday of Sept.

Inferior Court and Sessions of the Peace, held at Windsor on the 1st Tuesday of Jany and 1st Tuesday of July. Asst. Judges, Rev Wm Cochran, D. D., R Cunningham, Wm H Shey and Jno Elder, Esqrs.—Dep proth'y. H Jenkins, Esq.

Comm'rs for taking Special Bail on Actions dep'g in the Sup Court, H Jenkins and Patrick Wright, Esqrs.

Justices of the Peace.—Jno. Emerson, Cus Rot. Rich Cunningham, Wm Smith, Shubael Dimock, W Salter, J Walker Caleb Smith, W H Shey, Jas Whidden, Jno Smith, A Scott, J Parker, B Dewolf, W O'Brien, J Withrow, J Allison, J Dimock, J Elder, D Wier, R Smith, T King, B Casey, J Sentell, Benj Shillito, Jno Cochran, & Benj Smith, Esqrs

Sur. Judge, L M Wilkins, Esq. Dep Reg of Deeds, Col of Imp. and Excise, and Dep. Postmaster, W Bowes, Esq.—Col. of Customs; Windsor, P Wright, Esq. Douglas, J D Archibald, Esq. Comm'rs of Streets, P. Wright and D. Dill Esqrs.

Comm'rs of Schools—Rev W C King, L M Wilkins, W H Shey, P Wright and J Allison, Esqrs

#### COUNTY OF KINGS

High Sheriff, Geo Chipman, Esq.

Supreme Court sits at Kentville on the 1st Tuesday of June and 3d Tuesday of Sept. Inferior Court and Sessions of the Peace, held on the 3d Tues. of May and 2d Tues. of Nov.—Asst Judges, Jno Chipman, E Dewolf, W Campbell, W A Chipman and James D Harris, Esqrs. Dep proth'y and Com. for taking Special Bail on Actions dep'g in the Sup. Court, S L Allison, Esq

Justices of the Peace—J Chipman, Cus. Rot.; E Dewolf, W Campbell, J Kerr, W A Chipman, J Ratchford, D Dewolf, S Bishop, J Wells, A Walker, S Dennison, H V Buskirk, J Allison, D Lockart, J D Harris, W Chipman, jr, H Harrington, J Maynard, C H Rand, J Lewis jr. S Beckwith, & D Whidden, Esqrs. W Chipman, C P. Coroners, W C Moore, D Dewolf and Jas Allison, Esqrs. Sur. Judge and Dep Reg of Deeds for Horton, Aylesford and Cornwallis, W Campbell, Esq. Ditto for Parrsboro, J Ratchford, Esq. Col of Imp and Excise and of Castoms D Whidden, Esq. Postmasters, Elisha Dewolf Esq. Wolfville. James Bragg, Esq. Kentville, Jas Ratchford Esq. Parrsboro' Comm'rs of Schools, Rev J. Wright, Saml Bishop, Jas Allison, J. D. Harris, and C. H. Rand, Esqrs.

#### COUNTY OF QUEENS.

High Sheriff, Benjamin Knaut, Esq,

Supreme Court sits at Liverpool on the 1st Tues. of July.— Inferior Court and Sessions of the Peace held on the 4th Tues. of April and 4th Tues. of Oct. Asst Judges, J Newton, Jos Freeman, S Parker, and Jas Dewolf, Esqrs. Dep proth'y. and Com. for taking Special Bail on Actions dep'g in the Sup. Court, J Rogers, Esq.—Justices of the Peace, J Newton, Cus. Rot J R Dewolf, N Tupper, I Dexter, Jos Freeman, S Parker, J Gorham, Jno Barss, and Jas Dewolf, Esqrs. J Rogers, Esq C P. Sur. Judge, Collector of Imp. and Ex., and Col of Cus-

toms, J N  
of Deeds  
Comm'  
Knaut, J  
Com'rs

High S  
Suprem  
Inferior C  
of April a  
ler, & E J  
king Spec  
Esq—Just  
Walker, J  
Heckman  
Owen, Es  
Solomon,  
Imp. and  
Coroner a  
Comm'r  
Heckman  
Comm'r  
Heckman,  
Esq.

Includes th  
tice of the  
the Courts

High Sh  
Supreme  
and 2d Tue  
held on the  
Digby on t  
Judges, E  
Esqrs. De  
dep'g in th  
Justices  
Shaw, R T  
ard, J Whi  
Segoyne, V  
Wheelock,  
dolf, W Ber  
S Hall, T R  
Anthony H  
Esqrs. E C  
Deeds, Eas  
Esqrs. Cor  
Hall, Esqrs.

toms, J Newton, Esq. Coroner, J Whitman, Esq. Dep Reg of Deeds and Dep Postmaster, B Knaut, Esq.

Comm'rs of Schools. Rev. Jno Moody, Joshua Newton, B. Knaut, Jno Barss and Nat Smith Esqrs.

Com'rs of Streets, J R Dewolf, Jno Roberts, & W Sterns, Esqrs

COUNTY OF LUNENBURG.

High Sheriff, John Henry Kaulback, Esq

Supreme Court sits at Lunenburg on the last Tues. of June Inferior Court and Sessions of the Peace held on the 2d Tues. of April and 2d Tues. of Oct. Asst Judges, J Pernette, G Miller, & E James, Esqrs. Dep proth'y. and Comm'r. for taking Special Bail on Actions dep'g in the Sup Court, D Owen, Esq.—Justices of the Peace, E James, Cus. Rot, J Pernette, J Walker, J C Rudolf, John Evans, G Miller, W Alexander, Jno Heckman, T Godfrey, Jno Hunt, & Fried Morris, Esqrs.—C B Owen, Esq. C P. Sur. Judge, J Pernette, Esq. Reg'r, Geo T Solomon, Esq. Dep Reg of Deeds, P Rudolf, Esq. Col. of Imp. and Ex. T Godfrey, Esq. Prev. Officer, A S Bruce, Esq. Coroner and Dep Postm'r, J C Rudolf, Esq.

Comm'rs of Streets, Wm Rudolf, Jno Creighton, and Jno Heckman, Esqrs.

Comm'rs of Schools. Rev J C Cochran, Garret Miller, Jno Heckman, Jno Hunt and Thos Godfrey, Esqrs Clerk, D Owen, Esq.

WESTERN DIVISION

Includes the Counties of Annapolis and Shelburne. Chief Justice of the Inferior Courts of Common Pleas and President of the Courts of Session in this District, THOS RITCHIE, Esq.

COUNTY OF ANNAPOLIS.

High Sheriff, E H Cutler, Esq.

Supreme Court sits at Annapolis on the 2d Tues of June, and 2d Tues of Sept. Inferior Court and Sessions of the Peace, held on the 3d Tues of April. and 1st Tues of Nov. ; and at Digby on the 1st Tues of July and 3d Tues of Dec. Asst. Judges, E Morton, A Snodgras, C U Jones and W F Bonnell Esqrs. Dep proth'y, & Com for taking Special Bail on Actions dep'g in the Sup. Court, E. Cutler, Esq.

Justices of the Peace, E Thorn, Cus Rot. ; Stephen Jones, M Shaw, R T Randolph, B Dodge, J Ruggles, E Morton, S V Bayard, J Whitman, P Lovett, J Morehouse, R Hankinson, J M Segoyne, W Jones, T Ritchie, J Querau, Jno Wiswell, jr. E Wheelock, W F Bonnell, C Jones, J Reed, C Jones, J F Randolph, W Bent, P Sanders, W Delancy, S Campbell, S Chesley S Hall, T Ruggles, jr, J Ditmars, J Robertson, Robt Neiley, Anthony Hannan, Joseph Fitz Randolph, & Thos James, Esqrs. E Cutler, Esq C P. Sur Judge. ———. Dep Reg'rs Deeds, East. Dis, Wm Winniett, Esq. Western, S Jones, Esqrs. Coroners, Sil Snow, Wm Young, J R Lovett, and David Hall, Esqrs. Col of Light Duty; of Imp. and Ex. ; and Col of

Customs, H Goldsmith, Esq. Dep Postm'r, H Goldsmith, Esq, Annapolis, W F Bonnell, Esq Digby.

Comm'r's of Schools.—Eastern Dis. Rev Dr. Milledge, H Goldsmith, T C Haliburton, Timothy Ruggles, and Thos James Esqrs. Western Dis. Rev R Viets, Elk Morton, Wm F Bonnell, Cereno Jones, and Chas McCarthy Esqrs.

COUNTY OF SHELBURNE.

High Sheriff, John Bingay, Esq

Supreme Court sits at Shelburne on the 2d Tues of July.— Inferior Court and Sessions of the Peace for the dis of Yarmouth and Argyle, held at Tuskett Village on the 1st Tues. of May, and at Yarmouth on the 4th Tues. of Sept. Asst. Judges, S S Poole, J Lent, J N Bond, B D'Entremont and H G Farish, Esqrs. Dep proth'y M Huntington, Esq—Ditto for the dis of Shelburne, held at Shelburne on the 2d Tues of May and 2d Tues of Sept.—Asst Judges, G White, W B Sargeant, J V Buskirk and T Crowell, Esqrs. Dep proth'y and com'r for taking special bail on Actions dep'g in the Sup Court, Robt Bingay, Esq—Justices of the Peace, G White, Cus Rot; S S Poole, B D'Entremont, J V Buskirk, Jas Dore, J N Bond, J Lent, Eb Crowell, H G Farish, T Crowell, J Bingay, G V Norden, A Landers, J Kelly, B Bingay, J McKinnon, C Campbell, J Barclay, Robt Currie, Jno Homer, Esqs. R Bingay, Esq C P. Sur. Judge, Gid White, Esq. Dep Reg of Deeds, for the Eastern dis. Robt Bingay, Esq. Western dis, H G Farish, Esq. Col'rs of Imp and Ex.—Yarmouth, H G Farish, Esq—Shelburne, Jacob V. Buskirk, Esq—Weymouth, R Hankinson Esq. Pro Col'rs of Customs,—Shelburne, J V Buskirk—Weymouth, R Hankinson—Barrington, J Homer—Argyle, J Mc Kinnon; Yarmouth, A V S'Forbes, Esqrs. Coroner, G Bingay, Esq.—Dep Postm'r, Jacob Weiser Shelburne,

Comm'r's, of Schools, dis. Shelburne.—Rev Dr T B Rowland Jac V Buskirk, Thos Crowell, Jno Homer and Wm Robertson Esqrs. Dis; Yarmouth, Rev T A Grantham, SS Poole, HG Farish Jno McKinnon, and Jas Lent, jr Esqrs.

COUNTY OF CAPE BRETON.

Chief Justice of the Inferior Courts of Common Pleas, and President of the Cours of Sessions in the County, John G Marshall. Esq.

High Sheriff, Charles R Ward, Esq.

Supreme Court sits at Sydney on the last Tuesday of Aug and at Arichat on the 1st Tueshay. of September.— Inferior Court and Sessions of the Peace for the Northern dis. sits at Sydney on the 2nd Tues of March, and 4th Tues of Oct; for the Southern dis. at Arichat on the 2d Tues of April and 2d Tues of Nov; and for the Western dis, at Port Hood on the 3d Tues April and 3d Tues of Nov. Asst Judges, T Crawley, Lawrence Kavanagh, J Leaver, C Hubert, J Jean & Wm Watts, Esqrs. Proth'y for the County, C E Leonard, Esq Sydney. Dep proth'ys, at Arichat, A Madden, Esq. at Mabou, J L Tremain, Esq. Justices of the Peace, J

G Marsl  
C. Hube  
I. Kavan  
Gammel  
McKeen  
J Jean, l

Esqrs.  
ern, J  
J W Ben  
and Wai  
Light, D  
Esq W  
Jos Noac  
Hood; N  
Sur Jud  
Joseph N  
Barrist  
Arichat.  
Health  
Jean.

Comm'r  
Thos Cra  
Rev mrs  
Madden,  
Jno L Tre

In Nova  
Lieut Ge  
Capt D  
Aides-de  
—Lt Col  
Col. W.  
J Bazalge  
merum, D  
—Jas Sla  
G F Havo  
Asst. Con  
Swain, D  
Barrack M  
Carter, ap  
Lt Cols

Garriso  
Command  
Twining,  
Windso  
Annapo  
Shiels, M

G Marshall, Cus. Rot.; A C Dodd, Thos Crawley, R Gibbons, C. Hubert, J Leaver, C E Leonard, R McKinnon, P H Clarke, L Kavanagh, C Mc Nab, J Campbell, J Dodd, J Cameron, W Gammell, Wm Watts, A Madden, Hugh McDonald, John McKeen, N Paint, N H Martin, T E Chandler, J L Tremain, J Jean, P DeLisle, J S Ingraham, R Gammell, & Irad Hart, Esqrs. Reg'rs of Deeds—Western dis. J L Tremain—Southern, J Turnbull—Northern, C R Ward, Esqs.—Collector, J W Benn, Esq. Comptroller, C E Leonard, Esq. Surveyor and Waiter, J Jean, Esq. Col'rs of Impost. Excise and of Light Duty, Chas E Leonard, Esq. Sydney—J L Tremain, Esq. W district—J Turnbull, Esq. Arichat. Dep Postmasters, Jos Noad, Sydney; Jno Fuller, Arichat; J McKeen, Port Hood; N Clough, Ship Harbour. Surveyor Genl of Lands and Sur Judge, Thomas Crawley, Esq. Coroners.—Jno Smith, Joseph Noad, & Jno McDonald.

Barristers & Attornies, at Sydney R Gibbons, E M Dodd; Arichat. W Pooley, J Turnbull & Wm C Delaurey, Esqrs.

Health Officer for the Port of Sydney, Doctor Thos. E. Jean.

Comm'rs of Schools—Sydney dis. Rev C Ingles, J G Marshall, Thos Crawley, C E Leonard and Wm Duffus, Esqrs. Arichat dis Rev Mr shaw, Rev Mr Potevin, Law Kavanah, C Hubert, Dr Madden; Western dis Rev Mr Lawlor, Wm Watts, J McKeen, Jno L Tremain and Nat Clough, Esqrs.

### STAFF OF THE ARMY,

In Nova-Scotia, under the command of His Excellency Lieut Gen. \*Sir Peregrine Maitland, K C B.

Capt Deedes, 52 f. and Lt Hon. R C Boyle, 30th f. Aides-de-Camp.—Capt. P. Maitland, 74th f. military sec.

—Lt Col. H B Harris, h. p. 86 f. Dep. Adj. Gen.—Lt. Col. W. Beresford, h. p. 31 f. Dep. Q. M. Gen. Bt Maj

J Bazalgette, h. p. 98 f. Major of Brigade.—George Damerum, Dep. Com. Gen.—C. A. Clarke, Asst. Com Gen.

—Jas Slade, O Goldsmith, Wm Low, C Williams, and G F Haversaat, Asst. Com. Gen'ls.—Adolphus Vieth,

Asst. Com. Gen. of Accounts.—Alex. Grant and Chas. Swain, Dep. Asst. Com. Gen'ls of Accts. Jas Blair,

Barrack Master.—Staff Surgeon, C Allen, MD. John Carter, apothecary to the forces, D Pitcairn, Hosp. Asst.

Lt Cols. W G Cochran, h. p.; R R Loring, h. p; and Insp. Field Officers of Militia.

Garrison of Halifax—Col Norecott, C B. Rifle Brigade, Commandant; Lt J MacColla, town major; Rev J T

Twining, DD. Chaplain Windsor.—Arthur McDougall, Barrack Master.

Annapolis.—Jos Norman, Barrack Master. James Skiles, MD hosp. asst.—Rev Jno Milledge, LL D Chaplain.



*Officers of H. M. Ordnance.*

J W Tapp, Esq. storekeeper. H Ince, Esq. dep storekeeper. CH Fife, 1st clerk. J Forrester, 2d do. J E White, 3d do. WH Tapp, jr do. J Rigby, clerk bar: branch. C N Fife, foreman of carpenters. J Plummer, armourer. W Dalling, overseer of labourers.— J Anderson, gate porter.

*Engineer Department.*

G Nicolls, col commanding; G West, captain; C McKenzie S H Wentworth, W H Ford and St Geo L Lyster, lieuts. R Creed, clk of works. Wm Rogers, T Goudge and J G Creed, clks. Wm McDowall, master mason; W Gossip, master smith; Edw Pryor, master carpenter; G Hamilton, foreman of labourers; P Dowling and G Belows, office keepers and messengers

—000X000—

**OFFICERS OF THE ARMY.**

34th (or Cumberland) Regt.	Arthur Horne	"Orthes"	Hon R LePoer
"Albuhera"	T W Newcomen	"Toulouse"	Trench
"Vittoria"	Wm Colt	"Peninsula"	EH F Pocklington
"Pyrenees"	Ensigns	"Waterloo."	ton
"Nivelle"	R H Webster	Colonel	R Two penny
"Nive"	T W Howe	Sir GT Walker,	Geo Hall
"Orthes"	Geo Harford	GCB. Lt gen.	Hon Jno Forbes
"Peninsula"	E P Glubb	Lt Col	*Pay mr J Winterbottom
Sir T Macdougall	John Arnold	Jas Fergusson	Adj G C Swan, lt
Brisbane, K CB	Chas S Eustace	majors	Q mr J Morgan
Lt Gen	J Fordyce	*J McNair	*Sg J B Gibson
Lt Col.	R W Byron	*J Cross	As sg R Tut-
C R Fox	PMG Bedingham	Captains	hill, M D
majors	Adj T W Howe,	*G F B St John	Chas Brown
Rich Greaves	ens.	S D Pritchard	Facings buff—
Hon H S Fane,	Q M. Tho Howe	*G Gawler	Lace Silver
MP	Surg M Farnan	Wm Blois.	Agents
captains	A.S, Cha Bell	W S Moorsom	Greenwood & Co
M McLeod Tew	Facings yellow,	R D King	
Edw Conolly	lace silver.	Geo Montagu	<b>96th REGT,</b>
Rich Airey	Agents, Macdon-	Henry Deedes	Colonel
Geo Buxton	ald & Co	Lord CJFRussell	Sir Jos Fuller, G
C B Brisbane	Ir. do. Cane & Co	R K Hill	CH lt gen
Hen Gascoyne		Lieuts	Lt Col
W N Orange	<b>52d (Oxford-</b>	J Bentham,	*J Fullerton, CB
B J Hooke	shire)	W O Gunning	majors
Wm Considine	Lt. Infantry.	Walter Butler	Hen White
E S Bayly	"Hindocstan"	G W Birch	A Cairncross
lieuts	"Vimiera"	Rich French	Captains
G R Thompson	"Corunna"	C F Norton	Wm Hulme, m.
Jno Elgee	"Busaco"	G C Swan	Rich Gethin
W Lax	"Fuentes d'O-	W J M Hughes	J W S Waller
N R Brown	nor"	S R Streatfield	E H Hill
E Broderick	"Ciudad Rodri-	C W Forester	Wm L Carey
Jno Audjo	go" "Badajoz."	Ensigns	Wm Ouseley
C T Vandeleur	"Salamanca"	J A Vigers	C B Cumberland
St Geo Cromie	"Vittoria"	W Amb Hale	Peter Cheape
*W O Warren	"Nivelle"	Hen S Davis	B H Cumberland
	"Nive"	F G Bull	H F Kennedy
		J Attr	

Lieut  
L F Jones  
Wm Kidd  
E Sutherland  
A Roberts  
P S Nugent  
A McKee  
Jos Telford  
Thos Ablett  
P F de M  
Robt Busby  
J W A W  
R B Warren  
D Kinsley  
Ensign  
E H Finn  
Jas Clyde  
R S Murray  
Edw Barclay  
E Hathaway  
E W Blewett  
This man  
been at W  
as "Penin  
permitted t  
ation of th

Sir Char  
Chief of H  
Haig, Esq.  
**HUSSA**  
Captain; F  
Robt G W  
W L Davie  
M D Surge  
Alex Sande  
Petrie, Pars  
**TYNE,**  
Smyth Griff  
Marines; E  
Asst Surg;  
**COLUM**  
derson and  
ziel, Surgeo  
**ROSE,** 1  
Thos Phillip  
Edm. B Ro  
**CHAMP**  
John S Fore  
geon; Tuos  
**MANLY**  
Master; Jas

Lieuts	Geo Anderson	Facings blue	Blue—facings
L F Jones	Pmr B Scott capt	Lace silver.	red; lace gold,
Wm Kidman	Adj E Sutherland	Ags. Greenwood	Pay. Greenwood,
E Sutherland,	Qm J Murchison	& Co.	Cox & co
A Robertson, d p	Surg J Shorland	<i>Royal Artillery.</i>	<i>Royal Engi-</i>
P S Nugent	As sg A McAn-	"Waterloo"	neers.
A McKenzie	drew	Lt Col A Bredin	Col. G Nicolls
Jos Telford	,, A W Murray	Major	2d Capts
Thos Abbot	Facings yellow;	G Cobbe	Geo West
P F de Meuron	Lace silver.	Captains	Chas Rivers
Robt Bush	agents	H W Gordon	1st Lieuts
J W A Wrag	Greenwood & Co	2d captains.	C MacKenzie
R B Warren		P D Stewart,	S H Wentworth
D Kinsley	<i>Royal Staff</i>	T Grantham	2d Lieuts
Ensigns	<i>Corps.</i>	1st Lieuts	W H Ford
E H Finney	"Egypt"	H Slade, q. m.	St Geo L Lyster
Jas Clyde	"Peninsula"	B O'N. Lyster	Scarlet—facings
R S Murray	"Waterloo"	J Griffith, adjt	blue velvet—
Edw Barclay	captain	Js Turner	lace, gold.
E Hathaway	Henry Piers	Surg W Kobby	
E W Bleacowe			

This mark (\*) prefixed to the names of Officers denote their having been at Waterloo. The words subscribed to the titles of Regiments as "Peninsula," "Waterloo," &c. denote the honorary distinctions permitted to be borne on their colours and appointments, in commemoration of their services.

OFFICERS OF HIS MAJESTY'S SHIPS.

Sir Charles Ogle, Bart. Rear Admiral of the Red, Commander in Chief of His Majesty's Vessels in British North America.—Richard Haig, Esq. Secretary.

HUSSAR, 46. Sir C. Ogle, Bt. Rear Admiral; Edward Boxer, Captain; Phillip Gostling, Commander; Geo Brown, Andrew Smith, Robt G Welch and Wm Barwell, F L. Lieutenants; Wm Haig, and W L Dawes, 1st Lts. Marines; John Jones, Master; W Donnelly, M D. Surgeon; Andrew Morrison, Sup. Sur.; Thos Johnston, asst; Alex Sanderson, Sup. Asst; Revd Hugh Jones, Chaplain; Arch. Petrie, Purser.

TYNE, 28. Sir Richard Grant, Knt. Captain; Wm Gordon, Smyth Griffith and Wm H H Carew, Lieuts; Robert Leonard, 1st; Lt Marines; Edward Rose, Master; Jno Gooch, Surgeon; John M Brown, Asst Surg; David Clow, Purser.

COLUMBINE, 18. John Townshend, Commander; W H Henderson and Edmund Wilson, Lts.; Isaac Mowle, master; W A Datzel, Surgeon; Alex Lyon, Asst.; Robert Wilson, Purser.

ROSE, 18. Eaton Travers, Commander; Arthur Wakefield and Thos Phillips, Lts.; J R Fittock, Master; Jno W Reid, Surgeon; Edm. B Rowly, Asst; George Starr, Purser.

CHAMPION, 18. George Scott, Commander; Henry Smith and John S Foreman, Lts.; Lachlan Gillies, Master; Wm. Theroe, surgeon; Tuos Brenan, Asst.; Henry Ennis, Purser.

MANLY, 12. Henry W Bishop, Lt. Com.; Edw F. Chaffers, Master; Jas Macallister, Asst. Surg.

**MILITIA OF NOVA-SCOTIA.**

His Excellency, Lieut General Sir PEREGRINE MAITLAND,  
 K C B. Commander in Chief.  
 Lieutenant Colonels, Hon T N Jeffery and Sir Rupert D George, Bt.  
 Aides de Camp to the Commander in Chief.  
 Lieut. Colonels Wm G Cochran and R R Loring, Inspecting Field  
 Officers. Lt Col A Y S Forbes, Brigade Maj. to the Western Dis.  
 Adj General, Lieut Col. John McColla. Qr Master General, Major  
 Edward Wallace. Judge Advocate Gen. Hon S B Robie.

**Artillery.**

1st Volunteer Company—Lt Col Richard Tremain. Captain, Rich  
 Scott. 1st Lieuts James Cogswell and Joshua Lee.. 2d Lieutenant  
 Richard Tremain jr.  
 2d Volunteer Company—Captain, James Tremain. 1st Lieut.  
 Wm Foster. 2d Lieut. Alex Farquharson. Surgeon, Matthias Hoffman

**1st Halifax Re-**

**giment.**

Lieut Col.

G N Russell

Majors.

John Dempster

A Richardson,

Captains.

Jas McNab

Wm Pryor, jr

John Slayter adj

Jas Black

Jas G Boggs

Thos Lydiard

Chas De Wolfe

Thos Adams

Law O'C. Doyle

S Binney

1st Lieuts

J H Noonan

A W Flieger

A B Richardson

F Stevens

Robt Romans

Saml Lydiard

Thos Kinnear

E De Wolfe

John Robertson

Adj J Slayter, cpt

Qr mr G T Fillis

Surg A Wallace

Ast do W Grigor

Blue--facings red

lace gold.

**2d Halifax Re-**

**giment.**

Lieut Col.

Saml Cogswell

majors

Chas J Hill

W M. Deblois

Captains

J A Barry, adj

G B Creighton

A G Fraser

M Tobin, jr

Thos Tobin

M Tobin, 2d

J H Clark

John E Starr

J S Clarke

1st Lieuts.

H Pryor

H Mignowitz

A M Della Torre

adj. J A Barry,

captain,

Qr mr. J Dupuy

Surg WBAHmon

MD

Blue--facings red

lace gold.

**3d Halifax Re-**

**giment.**

Lieut Col

J Leander Starr

majors

John E Fairbanks

H A Gladwin

Edw Cunard

Captains

F Y Mott

S W Albro

A Dunbrack

Edw H Low

Jas Allen

J M Chamberlain

E G W Green-

wood, adj

Daniel Starr

Jno Watson

W J Starr

G R Grassie

1st Lieuts

W Hall

G Glawson

C Marks

S Breedin

John Harvie

Wm Albro

R D Clarke

John Leslie

W Anderson

J Brown

A Kent

R A Logan

G P VanBuskirk

2d Lieuts

J Kennedy

W Guild

John Linsie

Alex Taylor

E Duckett jr, pm

J Y Patrick

T Kenney

S G Morse

H Leslie

J H De Wolf

Chas Gladwin

J A Moren

J T Bishop

J E Miller

How. Blades

Pmr E Duckett, jr

2d lieut

Adj EGW Green-

wood, capt

QMr C H Belcher

Surg. S Head, MD

As. do. C Head

Regimentals,

green. Facings,

red. Lace gold

**4th Halifax Re-**

**giment.**

Lt Col J Albro

major W A Black

Captains

E Pryor, 3d adjt

F Dauphiney

John Parker

Wm M Allan

Thos Pyke

D Fletcher

Jas Hearn

Peter Power

W Donaldson

2d L  
 Chas Gre  
 Alex Me  
 Jno Mart  
 J Buchan  
 Pat Purce  
 E Ryan  
 James Sau  
 B C Breh  
 Angus Fr  
 C Hamilto  
 G Dauphi  
 W Dowlin  
 adj E Pry  
 Qr mr T H  
 man  
 Surg J Stin  
 Blue, facin  
 Lace go  
 Colchester  
 giment  
 1st BAT  
 Lt Col. Jas  
 Majors  
 A L Archib  
 Jas D Blair  
 Captain  
 Jas Phillips  
 Wm Ruthe  
 Jos Fulton  
 John Gamm  
 Jas Yuill  
 W C Eaton  
 Geo Corbet  
 Wm Blair,  
 1st Lieut  
 Wm Phillip  
 Jas Rutherf  
 Jas Dunlap  
 John Watson  
 S Archibald  
 Wm Logan  
 Andw Yuill  
 F Parker  
 Alex Kent  
 2d Lieuts  
 Jno Fisher  
 T Putnam  
 Wm McCu  
 A King  
 John Gamm  
 Robt Keat  
 Jas Pollock  
 Adj W C E

TLAND,  
George, Bt.  
cting, Field  
ern Dis.  
eral, Major  
obie.  
ptain, Rich  
Lieutenant  
1st Lieut.  
a: Hoffman  
ishop  
Miller  
Blades  
Duckett, jr  
eat  
GW Green-  
d, capt  
CH Belcher  
S Head, MD  
o. C Head  
mentals,  
Facings,  
Lace gold  
alifax Re-  
iment.  
l J Albro  
WA Black  
captains  
or, 3d adjt  
phiney  
Parker  
I Allan  
Pyke  
cher  
earn  
Power  
aldson  
Stevens  
mans, jr  
Lieuts  
tt  
olland  
th  
h Clarke  
lland  
Hamilton  
Black  
llison

2d Lieuts  
Chas Grey  
Alex McDonald  
Jno Martin  
J Buchannan  
Pat Purcell  
E Ryan  
James Saul  
B C Brehm  
Angus Fraser  
C Hamilton  
G Dauphiney  
W Dowling  
adj E Pryor, capt  
Qr mr T Hoster-  
man  
Surg J Stirling  
Blue, facings red.  
Lace gold.  

---

Colchester Re-  
giments.  
1st BATT.  
Lt Col. Jas Kent  
Majors  
A L Archibald  
Jas D Blair  
Captains  
Jas Phillips  
Wm Rutherford  
Jos Fulton  
John Gammill  
Jas Yuill  
W C Eaton, adj  
Geo Corbet  
Wm Blair, 3d  
1st Lieuts  
Wm Phillips  
Jas Rutherford  
Jas Dunlap  
John Watson  
S Archibald, 3d  
Wm Logan  
Andw Yuill  
F Parker  
Alex Kent  
2d Lieuts.  
Jno Fisher  
T Putnam  
Wm McCulley  
A King  
John Gammill, 2d  
Robt Kent  
Jas Pollock  
Adj W C Eaton,

2d BATT.  
Lt Col RDickson  
majors  
Thos J Brown  
A Campbell  
Captains  
Jas Dickson  
J Flemming  
J Wier  
John Crow  
R McLelland  
R Spenser  
A Thompson  
ED Dickson, adj  
Robt B Dickson  
Jas D Baird  
Alex Vance  
1st Lieuts  
Rufus McNutt  
D Dower  
Wm Baxter  
Alex Conkey  
Robt Flemming  
Thos Corbett  
J Urquhart  
H Munro  
Jno McGrath  
Wm Vance  
Jac. Marsh  
Geo Ross  
J Archibald  
Jas Wilson  
2d Lieut  
D V Crow  
Alex Blair  
Sam Waugh  
WH Wilson  
M Waugh  
Edw Langeal  
L H Crow  
Robt Spenser  
Chas D M Curdy  
Jno McKay  
J M L Dickson  
Robt Corbet  
Jas M Spencer  
Wm Fletcher  
Robt Murray  
D M Lauglan  
Pat Marsh  
Adj. Elish DeW  
Dickeon, capt  
Q mr. W Catten  
Surg Edw Carritt

Pictou Regi-  
ments.  
1st BATT.  
Lt Col Geo Smith  
major  
Robt McKoy  
Captains  
John Douglas  
Geo McDonald  
R Patterson  
John Patterson  
Wm Corbett  
John Gordon  
Wm Mortimer  
D Cameron  
Geo Campbell  
Anthony Smith  
1st Lieuts  
WRankine, art'y  
Mat Langill  
J Mathewson  
David Davison  
Saml Archibald  
Jas Perang  
Jas Dawson  
Wm Clark  
Don Fraser  
2d Lieuts  
Alex Scott  
Thos M' Cabe  
David Ross  
Jas McGill  
R McDonald  
Mat Patterson  
Jas Crichton  
C Patterson  
Jas Robson  
H Douglas  
Wm Campbell, jr  
Wm Mattheson  
A McKenzie  
F McDonald  
Jno Graham  
Jno Campbell  
Geo Grant  
Jas. Primrose  
Wm Murdoch  
adj Geo M' Don-  
ald, capt  
Q mr. H Hutton  
Sg G Johnstone  

---

2d BATT.  
Lt Col  
J Carmichael

majors  
D Murray  
John Olding  
Captains  
A Chisholm  
Rod'k McKay  
D McDonald  
John Finlayson  
A McDonald  
John Smith  
D Mc Lehnan  
T McPherson  
Thos Munro  
Simon McKay  
1st Lieuts  
Simon Fraser  
Robt Walker  
Alex Fraser  
Wm Fraser  
D McDonald  
Jas W Corbett  
Don McDonald  
Wm Chisholm  
Don Robinson  
Don Munro  
Hugh Fraser  
2d Lieuts  
Jacob Olding  
Alex Grant  
Don Sutherland  
John Fraser  
Thos Copeland  
Jas Fraser  
Peter Ross  
Paul Forster  
Don McDougald  
Wm Fraser  
Adj J Holmes,  
Q mr. A Fraser  
Sg D Finlayson  

---

County of Syd-  
ney Regiments.  
1st BATT.  
Lt col Jno Munro  
major  
R N Henry,  
Captains  
D McQueen  
Don McNeill  
J G Peabody  
W H Irish  
D Cunningham  
Joh Symonds  
R Murray

D McDonald  
 Jos Jervise  
 Alex McDonald,  
 Saml Symonds  
 1st Lieuts.  
 Luke Jervise  
 Allan McDonald  
 Alex McDonald  
 Don Chisholm  
 J McMillan  
 Jas Randall  
 Ang McDonald  
 S McDonald  
 Wm Hierlihy  
 A M Chisholm  
 A D Harrington  
 2d Lieuts.  
 J W Forrestall,  
 H McLennan  
 Jas Taylor  
 S McDonald  
 A Kennedy  
 D Dorley  
 Ang McDonald  
 Aug Ogden  
 Alex McDonald  
 James Wilkie  
 J J Marshall  
 Adj J McDonald  
 Sg A McDonald  
 2d BATT.  
 Lt Col R M Cutler  
 major  
 Isaac Wylde  
 Captains  
 A Atwater  
 Jas Lyle  
 C Archibald  
 J K McKeen  
 Chris Ehler  
 Sam McKeen  
 D Atwater  
 W O Heffernan  
 Jno Foster  
 John Grant  
 1st Lieuts  
 Thos Peart  
 Edw Morris  
 Wm Shopel  
 Alex Martin  
 Jno G Peart  
 Jno Hudson  
 Jas Tory, jr  
 Jos Maxwell  
 M Taylor

Wm Bedford  
 Wm Sandon  
 Jas Keag  
 W Atwater  
 Spin. Whitman  
 2d Lieuts.  
 D Martin,  
 J Jamieson, jr  
 John Mitchell  
 J McIntosh  
 A McPherson  
 Jno Stewart  
 Jno Newton, jr  
 Wm Hart  
 Wm Jost  
 Adj Robt Boles  
 Qr mr Jno Jost  
 Sg W Cantrill  
 Cumberland  
 Regiment.  
 Lt Col  
 Thos Roach  
 major  
 And Forshner  
 Captains  
 Wm Chapman  
 T Chapman, adj  
 Geo King  
 Henry Purdy  
 R Mc G Dickey  
 H Purdy 2d  
 Dan King  
 Jas Roberts  
 Jos Black  
 Thos Logan  
 1st Lieuts  
 Josh Hunter  
 Gains Lewis  
 G Lawrence  
 Saml Purdy  
 R Commo  
 W M Nab  
 B Chapman  
 Jos Morse  
 Brown Pipes  
 Anth Taylor  
 R Barker  
 2d Lieuts  
 B Stevens  
 Joshua Bebu  
 Amos Eaton  
 Jos Oxley  
 Jno Dotten  
 The Chapman, 2d  
 Extra Bant

Jas Cotes  
 Tim Weatherby  
 J G Purdy  
 Dan Pugsley  
 Seamans  
 Adj T Chapman  
 capt  
 Surg E Purdy  
 County Hants  
 Regiments.  
 1st BATT.  
 Lt. Col.  
 W H Shey  
 major  
 T Cochran  
 N Jenkins  
 Captains.  
 Wm S Church  
 John Manning  
 Jas Smith  
 Anthy Shaw  
 John Elder  
 E Sandford  
 Danl Lockhart  
 Danl Wier  
 J Songster, adj  
 R McHaffey  
 F Parker  
 1ts Lieuts.  
 J M Smith  
 M Wright  
 D Mouser  
 Elias Payzant  
 Jacob Anthony  
 I Dimock  
 Jno Cochran  
 C Curren  
 T McLatchy  
 R McHaffey  
 S C Palmer  
 H Goudge  
 2d Lieuts  
 F Cochran  
 Jos Northrup  
 G Brightman  
 Jas Sterling  
 A Harvie  
 Geo Hunter  
 P Walker  
 Thos Alline  
 E Carver  
 Adj J Songster  
 Qm T O'Brien  
 Sg Jos Wiley  
 2d BATT.

major  
 Benj Smith  
 Captains.  
 J McLehlan  
 Thos Ellis  
 Wm O'Brien  
 J Withrow  
 C Putnam  
 Alex McPhee  
 1st Lieuts.  
 J Woodworth  
 J Densmore  
 John Grant  
 John Sterling  
 Thos Walker  
 Edw Murphy  
 Alex Ferguson  
 2d Lieuts.  
 Don Grant  
 Jno Densmore  
 Sam Meek  
 J Whitlow  
 John Wallace  
 D Ettengen  
 John McPhee  
 Arch Cox  
 Jas Renly  
 Evan McPhee  
 Thos Knowles  
 Adj B Smith  
 Q mr M Casey  
 Sg F C Pike  
 King's County  
 Regiments.  
 1st BATT.  
 Lt Col  
 Henry Gianer  
 majors  
 W C Moore  
 Jno Wells  
 Captains  
 D Cogswell  
 Jno Morton  
 J E Crane  
 A Beckwith, adj  
 T Barnaby  
 Jona Crane  
 J H Gianer  
 N Woodworth  
 J Newcomb  
 L V Buskirk  
 J H Chipman  
 1st Lieuts.

E M Terry  
 J T Allison  
 John Belche  
 Elias Calkin  
 W C Camp  
 O Cogswell  
 Judah Well  
 J C Magee  
 Wm Pearce  
 R W A Mc  
 D Burbidge  
 Wm Ritchie  
 Saml Sharpe  
 John Presco  
 J H Allison  
 Jer Tupper  
 E Burbidge  
 2d Lieuts  
 T B Campbe  
 Wm Starr  
 Thos Welto  
 B D Calderon  
 Hen Gianer  
 J F Hutchins  
 Rich Starr  
 Wm Miller  
 Dan Huntley  
 Wm Beckw  
 Saml Lowd  
 Dan C Moo  
 Adj A Beck  
 Qm G Lockw  
 Sg W Baxter  
 2d BATT  
 Lt Col S Denn  
 major, J N C  
 Captains  
 Chas Brown  
 Jon Graham  
 Eben Bishop  
 Enoch Forsy  
 J Fuller  
 E Forsyth  
 J Johnston  
 D Rathburn  
 1st Lieuts  
 C Randall  
 Elijah Fowl  
 S Avery, ju  
 C H Rand  
 P M Bejam

E M Terry  
 J T Allison  
 John Belcher  
 Elias Calkin  
 W C Campbell  
 O Cogswell  
 Judah Wells  
 J C Magee  
 Wm Pearce  
 R W A Moore  
 D Burbidge  
 Wm Ritchie  
 Saml Sharpe  
 John Prescott  
 J H Allison  
 Jer Tupper  
 E Burbidge  
 2d Lieuts.  
 T B Campbell  
 Wm Starr  
 Thos Welton  
 B D Caldwell  
 Hen Gisner  
 J F Hutchinson  
 Rich Starr  
 Wm Miller, jr  
 Dan Huntley  
 Wm Beckwith  
 Saml Lowden  
 Dan C Moore  
 Adj A Beckwith  
 Qm G Lockwood  
 Sg W Baxter

2d BATT.  
 Lt Col S Dennison  
 major, J N Crane  
 Captains  
 Chas Brown  
 Jon Graham  
 Eben Bishop  
 Enoch Forsyth  
 J Fuller  
 E Forsyth  
 J Johnston  
 D Rathburne  
 1st Lieuts.  
 C Randall  
 Elijah Fowler  
 S Avery, jun  
 C H Rand  
 P M Benjamin

2d Lieuts.  
 S Parminter  
 O Hamilton  
 Jas Bragg  
 Geo Terry  
 A Bishop  
 Jos Caldwell  
 Dan S Dennison  
 Jas Woodman  
 Eliphilet Fuller  
 Adj J M Terry  
 Q mr J D Harris  
 Sg W Webster

*Parrsborough*  
 Corps.  
 major  
 Jas Ratchford jr  
 Captains.  
 Jesse Lewis  
 Oman Lewis  
 A Thompson  
 Alex Fullerton  
 W E Crane  
 CERatchford, adj  
 1st Lieuts.  
 B Fullerton  
 Eben Kerr  
 W Spratt  
 Wm Marsh,  
 Robt Dewis  
 2d Lieuts.  
 Edw Morrison  
 John Petis  
 Thos P Crane  
 Jno Starr Dewolf  
 J Fulmore jr, q m  
 Danl Dickson  
 Ad CERatchford  
 capt  
 Q mr J Fulmore jr  
 Sg A Gisner

*East Annapolis*  
 County Regts.  
 1st BATT.  
 Lt Col T Ritchie  
 Captains.  
 Timothy Ruggles  
 E Thorne  
 Wm Davis  
 G Robinson  
 J Robertson  
 S Cowling

Robt Spurr  
 E Whitman  
 S Thorne  
 A Troop  
 1st Lieuts.  
 S McCormack  
 Wm Saunders  
 Jacob Bogart  
 Wm Harris  
 S Parker  
 S Chipman  
 A Fowler  
 Edw Hinkle  
 Isaac Ditmars  
 2d Lieuts  
 Jon Woodberry  
 H Gisner  
 J H Ditmars  
 Weston Hall  
 Geo Barteux  
 Jas LeCain  
 Jno Hicks, 2d  
 Jno Kennedy  
 Constant Morse  
 Adj Geo Robert-  
 son, capt  
 Q mr Jas Gray  
 Sg Edm Phelan.

2d BATT.  
 Lt. Col.  
 B R Beardsley  
 major  
 Eze'l Cleaveland  
 Captains.  
 Robt Stone, adj  
 Jas Lynom  
 E Phinney  
 Arch Hicks  
 C Shafner  
 H Parker  
 Foster Bolsor  
 J Armstrong  
 1st Lieuts.  
 Jno Feritzs  
 Jno Hodge  
 Jas Gates  
 Geo Fitch  
 C Banks  
 Zeb Phinney  
 Wm Banks  
 S Leonard  
 2d Lieuts.  
 C Marshall  
 Jno Smith

Jas Hall  
 Jno Shaffner  
 H McGee  
 Hen Dunn  
 Saml Langley  
 Jno Banks  
 Adj R Stone, cap  
 Q mr Jno Ross  
 Sg J V Buskirk

*West Annapolis*  
 Co'y Regts.  
 1st BATT.  
 Lt Col  
 W F Bonnell  
 major, Wm Muir  
 Captains  
 R Turnbull  
 J Timpany  
 T H Ruggles  
 D Rutherford  
 Edw Morgan  
 J E Morton, adj  
 B McConnell  
 1st Lieuts  
 Chas Tucker  
 Chas Budd  
 Hen Stewart  
 Chas C Moody  
 Israel L Bent  
 Jno Ward  
 2d Lieuts  
 M R Hutchinson  
 Jones Morehouse  
 W G Taylor  
 Alpheus Jones  
 Adj J E Morton  
 Q mr W Taylor

2d BATT.  
 Lt Col S Doucett  
 major  
 Saml Campbell  
 Captains  
 H Barr  
 Saml White  
 Jos Terrio  
 F A Robichau  
 J Porter  
 Jno Holden  
 1st Lieuts  
 Jos White  
 Jos Commo  
 Geo Taylor  
 J Parrey

or  
 ith  
 ains.  
 lan  
 lis  
 Brien  
 ow  
 m  
 cPhee  
 Lieuts.  
 worth  
 more  
 ant  
 erling  
 alle e  
 urp  
 erguson  
 Lieuts.  
 ant  
 smore  
 eek  
 ow  
 llace  
 gen  
 cPhee  
 ox  
 ly  
 cPhee  
 knowles  
 Smith  
 Casey  
 Pike  
 County  
 ments.  
 ATT.  
 Col  
 Gisner  
 ors  
 oote  
 ls  
 ains  
 well  
 rton  
 ne  
 with, adj  
 by  
 ane  
 ner  
 lworth  
 omb  
 skirk  
 pman  
 Lieuts.

B Robichau	John Williams	Jos Stoneman	N McIntosh	Jos Rudolf
J Terrio	D Bodreau	Edw Huestis	Jno Fraser	John Hebb
Fras Bournuf	J Hatfield	Ad GBingay, cap	S P Freeman	Geo Fancy
2d Lieuts	S D'Entremont	Q mr J Tooker	2d Lieuts.	John Ernst
Benj White	P D'Entremont	Sg H G Farish	John Cobb	Fras Boehner
Caprean Martin	C Porter	4th BATT.	Jos Ford	Jno Frederick
Sed. Robichau	Sil Porter	Lt Col	Geo Freeman	Garret Miller
Ciriac Belivo	M Jeffery	W B Sargeant	Jno McD-nald	Jos Miller
Benonie White	Jno Rider	Captains	AMcDonald	Chas J Rudoi
Adj H Barr,	2d Lieuts	J P Doane	Jno H Freeman	AdjGT Solom
Q mr H Barr, jr	C Blanvclt	Jas Smith	Jas A Taylor	Q mr D S Gra
<i>Shelburne Re-</i>	G V Buskirk	J Sargeant, adj	Jno Kempton	Sg G Jacobs
<i>giments.</i>	W Larkin	J Osborne	Robt Roberts	
1st BATT.	J-B Bodreau	K Reyr.blds	Adj W Freeman,	2d BATT.
LtColJBBuskirk	JosJ Porter	1st Lieuts	capt	Lt. Col.
Captains	H Nickerson	S Kenney	Q mrJohnH De-	Jno Heckman
I G Ensflow, adj	Chas McLarrin	Jethro Covill	waal	Majors.
Benj Perry	M D'Entremont	E Knowles,	Sg A Webster	John Evans
Wm Holcen	Adj D V Norden	Josh Atwood	Ast.do D Grieve	J Creighton
Jas Barclay	capt	2d Lieuts		Jas S Thomso
P Spearwater	Q mr Jas Lent	Thos Coffin		Captains.
J D W White		Jas Kenney	<i>County Lunen</i>	Geo Burgoyne
1st Lieuts	3d BATT.	J C Crowell	<i>burg Regts.</i>	Hen Ernst, adj
Saml Lock	LtColJnoBingay	Adj J Sargeant,		G Ernst
C Campbell, jr	Major	Q mr S D Doane	1st BATT.	John Hiltz
Wm McMillan	G B V Norden	<i>Queen's County</i>	LtCol JC Rudolf	Jas Walker
Thos Johnston	Captains	<i>Regiment.</i>	Majors.	P Strum
Jas Bingay	Geo Bingay, adj	Lt Col	Garret Miller	Jno Hunt
Jno King	Jas Dane	Jos Freeman	Wm Rudolf	Geo Langille
2d Lieuts.	D Pattin	majors	Captains.	Thos Zwicker
Rich King	Israel Kelly	J R Dewolf	M Morash	Alex Johnston
D Matthev	Benj Lewis	J Whitman	Jno Zwicker	Jno G Thomso
Wm McAlpine	John Cbok	Captains	C Oxner	1st Lieuts
Jas Griffin	M Killum	J Roberts	Jno Anderson	Jno Zwicker
Geo Boole	A Huntingdon	Jon Dewolf	H Kaulback	Geo Ernst
W Muir	1st Lieuts	Wm B Taylor	C J Rrdolf	Geo Zwicker
Adj I G Ensflow,	Jas Allen	John Campbell	P Arrenberg	Robt Mooney
capt	Thos Tooker	W Freeman, adj	P W James	G Metzler
Q mr J Tottin	M Shaw	Jas Morton	F Oxner	Jno B Cummin
2d BATT.	Jos Shaw	Mat Parks	Jos Falt	Jno Crandle
Lt Col	G Bond	1st Lieuts	Casper Finner	L Hurtle
Abram Lent	J Pattin	F Tupper	1st Lieuts	Jos Gates
Major	Z Churchill	T Freeman	Geo Anderson	Chas Evans
J McKinnon	R Robins	N Freeman	Mich Rudolf	John Nans
Captains.	2d Lieuts	Wm Irwin	Geo Creighton	Jos Thomson
D V Norden, adjt	C Lewis	J L Darrow	Fras Rudolf	2d Lieuts
Jas Hatfield	D Gowen	John McViker	Wm Drew	A Zwicker
W Whitehouse	J Hilton	Sam Freeman	Chas Born	Jos Dimmock
J J D'Entremont	A Raymond	Thos P Calkin	M Ernst	Wm Light
J Servan	J Cann	Wm McGill	Nich Oxner	F Hiltz
M Amero	J Crosby	Z Freeman	Thos Boehner	A Lantz
D Bodreau	H Huntingdon	S Freeman	2d Lieuts	Jos Lordley
Theo K Frost	Stayley Brown	Stephen Mack	Jno Harley	L D Gildert
1st Lieuts	H Chipman	Geo Pearson	Phillip Mason	Edw Zwicker
				M Publicover

Jos Rudolf  
John Hebb  
Geo Fancy  
John Ernst  
Fras Boehner  
Jno Frederick  
Garret Miller  
Jos Miller  
Chas J Rudoif  
AdjGT Solomon  
Q mr D S Grant  
Sg G Jacobs

2d BATT.  
Lt. Col.  
Jno Heckman  
Majors.  
John Evans  
J Creighton  
Jas S Thomson  
Captains.  
Geo Burgoyne  
Hen Ernst, adj  
G Ernst  
John Hiltz  
Jas Walker  
P Strum  
Jno Hunt  
Geo Langille  
Thos Zwicker  
Alex Johnston  
Jno G Thomson  
1st Lieuts  
Jno Zwicker  
Geo Ernst  
Geo Zwicker  
Robt Mooney  
G Metzler  
Jno B Cummins  
Jno Crandle  
L Hurtle  
Jos Gates  
Chas Evans  
John Nans  
Jos Thomson  
2d Lieuts  
A Zwicker  
Jos Dimmock  
Wm Light  
F Hiltz  
A Lantz  
Jos Lordley  
L D Gildert  
Edw Zwicker  
M Publicover

Adj H Ernst  
Qm J B Comingo  
Sg Jno Harley  
CAPE BRETON.  
1st Battalion  
Lt Col comm.  
Crawley  
1st Regt.  
Lt Col  
Chas E Leonard  
Major  
Peter H Clarke  
Captains  
Saml Plant  
Hen W. Crawley  
Wm Gammell  
Sam Rigby, adj  
Rich Brown  
C McAlpine  
Wm R Ball  
Chas M. Dodd  
Edm M Dodd  
C Barrington  
Jno Scott  
John Ferris  
Lieuts  
John Bagnall  
Francis Dixon  
Luke Hall  
Lewis Brown  
Geo Rigby  
Josh Weeks  
Wm Gammell  
Chas Dumaresq  
Arnold Holmes  
Jno Hill  
Jno Martell  
Peter Moore  
Syd Barrington  
Jno Marshall  
Dun Currie  
Alex Campbell  
Thos Pembroke  
Neill McNeill  
D McDonald  
Wm Cook  
Aug Mc Gilvery  
Jno McEachran  
Rich Gibbons, jr  
adj S Rigby, capt  
Pmr P DeLysle  
Qr mr John Ball  
Sg Jno White  
as do Wm Haire

2d Regt  
Lt Col  
Clement Hubert  
major J Janvrin  
captains  
M Doyle  
T E Chandler, ad  
Peter de Carteret  
John Ferrier  
John Fuller  
E F Le Montais  
Wm Creighton  
Thos Le Noir  
Lieuts  
John R Smith  
Desire Boudroit  
Jno Balleine  
A Brymer  
J F Wilson  
F Boudroit  
P LeGeys  
Jos Wilson  
B G G Potts  
Victor Terriot, jr  
Isaac Paon  
Thos du Bois  
SimBabin  
Benj Terriot  
Chas Wood  
Chas Terriot  
N Le Mesurier  
adjt Thomas E  
Chandler, capt  
Q mr Jno Walsh  
Sg And. Madde

3d Regt.  
Lt Col  
E Kavanagh,  
captains  
H McMullin  
Nath Clough  
Jno Campbell  
Alex McDonald  
Wm Watts  
Jno Murray  
Jno McKeen  
Law O'Byrne  
Robt Gray  
Robt Patterson  
J L Tremain, adj  
Lts  
Phil LeBrocq  
A McEnnis

Chas Mc Ennis  
H McDonald  
T McDonald  
Jno McDonald  
A Chisholm  
A McDonald  
D Grouchy  
Jas McDonald  
Jas Hawley  
Alex Benton  
Jas Doyle  
A McDonald  
Dun Campbell  
Don Campbell  
D Cameron  
A McIntyre  
Hugh McKay  
Jno McKay  
Adj J L Tre-  
main, capt

2d Batt  
Lt Col comm.  
L Kavanagh  
1st Regt  
captains  
Jon Jones  
G McKay  
Wm Duffus  
Don McLeod  
J McKay  
Don Logan  
lieuts  
J McNeill  
P Hume  
Alex McKinnon  
A Munro  
Wm Jones  
Kenneth M Leod  
R Buckmaster  
Don Carmichael  
J Brown, adj  
Jno McNeill  
Samuel Peters  
Jno Blake  
Dan Logan  
Jno Fraser  
Jas Sparling  
Robt Sutherland  
adj J Brown, cap  
2d Regt  
Lt col  
L Kavanagh, jr



ARMY & NAVY

major Chas M McNab	Jno Mathewson	major (H. B.) Hen Taylor	A Smith
capt Jno Cameron	Jno Smith	captains Don McKinnor	H O Queen
Dougald McNab	Geo Bisset	Jno Campbell	Chas Roudrot
Dani Peller, adjt	Jno Proctor	A McDonald	Dun McRae
Jno B McNeill	N McMullan	A McLellan	M McDonald
Thos Simons	Don Campbell	Wm McLellan	Wm Campbell
M Kavanagh	F McPherson	Jno McDonald	A Mo Lellan
Don Mathewson	J Morrison	A McDonald	A Mc Innie
And Is Brock	R M Pherson	lieuts Jno Ross	Jno Mc Lellan
lieuts Justin Matherget	Don Chisholm	Jno McKinnon	R McDonald
Dav McPherson	Alex Murchison	Jno McFarling	Adj D Campbell
F Boulton	adjt D Peller, cap	Jas McLellan	
Jno McDougall	<b>Sr Regt</b>		
	Li. col		
	Wm McKeen		

Smith  
Queen  
s Roudrot  
McRae  
McDonald  
Campbell  
Mc Lellan  
Mc Lellan  
McDonald  
DCampbell

