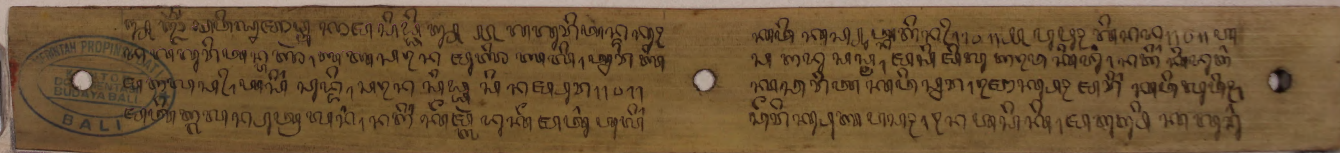


GAGURITAN DUKUH KAWI KSYAPA

Pusat Dokumentasi
Dinas Kebudayaan Provinsi Bali ~ Indonesia



GAGURITAN DUKUH KAWI KSYAPA

Pusat Dokumentasi
Dinas Kebudayaan Provinsi Bali ~ Indonesia

3 1
B

Handwritten text on a palm leaf slip, likely a form of Balinese script (Geguritan). The text is arranged in two columns, with a hole on the left for binding. The script is finely etched into the surface of the leaf.

4 2
A

Handwritten text on a palm leaf slip, likely a form of Balinese script (Geguritan). The text is arranged in two columns, with a hole on the left for binding. The script is finely etched into the surface of the leaf.

GAGURITAN DUKUH KAWI KSYAPA

Pusat Dokumentasi
Dinas Kebudayaan Provinsi Bali ~ Indonesia

8	4
	B

Handwritten Balinese script on a palm leaf, consisting of two columns of text. The script is finely etched and arranged in approximately 10 lines per column.

9	5
	A

Handwritten Balinese script on a palm leaf, consisting of two columns of text. The script is finely etched and arranged in approximately 10 lines per column.

GAGURITAN DUKUH KAWI KSYAPA

Pusat Dokumentasi
Dinas Kebudayaan Provinsi Bali ~ Indonesia

9	5
	B

၉ နတ်ကုသိုလ်တော်အောင်မြင်စေရန်အတွက် နတ်အား
အပ်နှံသော နတ်အား နတ်အား နတ်အား နတ်အား
နတ်အား နတ်အား နတ်အား နတ်အား နတ်အား
နတ်အား နတ်အား နတ်အား နတ်အား နတ်အား
နတ်အား နတ်အား နတ်အား နတ်အား နတ်အား

နတ်အား နတ်အား နတ်အား နတ်အား နတ်အား
နတ်အား နတ်အား နတ်အား နတ်အား နတ်အား
နတ်အား နတ်အား နတ်အား နတ်အား နတ်အား
နတ်အား နတ်အား နတ်အား နတ်အား နတ်အား
နတ်အား နတ်အား နတ်အား နတ်အား နတ်အား

၆	6
	A

၆ နတ်ကုသိုလ်တော်အောင်မြင်စေရန်အတွက် နတ်အား
အပ်နှံသော နတ်အား နတ်အား နတ်အား နတ်အား
နတ်အား နတ်အား နတ်အား နတ်အား နတ်အား
နတ်အား နတ်အား နတ်အား နတ်အား နတ်အား
နတ်အား နတ်အား နတ်အား နတ်အား နတ်အား

နတ်အား နတ်အား နတ်အား နတ်အား နတ်အား
နတ်အား နတ်အား နတ်အား နတ်အား နတ်အား
နတ်အား နတ်အား နတ်အား နတ်အား နတ်အား
နတ်အား နတ်အား နတ်အား နတ်အား နတ်အား
နတ်အား နတ်အား နတ်အား နတ်အား နတ်အား

GAGURITAN DUKUH KAWI KSYAPA

Pusat Dokumentasi
Dinas Kebudayaan Provinsi Bali ~ Indonesia

6
B

Handwritten Balinese script on a palm leaf manuscript strip, consisting of two columns of text.

7
A

Handwritten Balinese script on a palm leaf manuscript strip, consisting of two columns of text.

GAGURITAN DUKUH KAWI KSYAPA

Pusat Dokumentasi
Dinas Kebudayaan Provinsi Bali ~ Indonesia

၆	7
	B

ယုယုတုတု ယုယုတု ၇၀၇၇ ယုယုတုတုတုတုတုတုတုတု
၇၀၇၇ ယုယုတု ယုယုတု ယုယုတု ယုယုတု ယုယုတု
ယုယုတု ၇၀၇၇ ယုယုတု ယုယုတု ယုယုတု ယုယုတု
ယုယုတု ယုယုတု ယုယုတု ယုယုတု ယုယုတု ယုယုတု
ယုယုတု ယုယုတု ယုယုတု ယုယုတု ယုယုတု ယုယုတု

၆	8
	A

ယုယုတု ယုယုတု ယုယုတု ယုယုတု ယုယုတု ယုယုတု
ယုယုတု ယုယုတု ယုယုတု ယုယုတု ယုယုတု ယုယုတု
ယုယုတု ယုယုတု ယုယုတု ယုယုတု ယုယုတု ယုယုတု
ယုယုတု ယုယုတု ယုယုတု ယုယုတု ယုယုတု ယုယုတု

GAGURITAN DUKUH KAWI KSYAPA

Pusat Dokumentasi
Dinas Kebudayaan Provinsi Bali ~ Indonesia

8	8
8	B

Handwritten Balinese script on a palm leaf, consisting of two columns of text. The script is finely etched and arranged in approximately 10 lines per column.

9	9
9	A

Handwritten Balinese script on a palm leaf, consisting of two columns of text. The script is finely etched and arranged in approximately 10 lines per column.

GAGURITAN DUKUH KAWI KSYAPA

Pusat Dokumentasi
Dinas Kebudayaan Provinsi Bali ~ Indonesia

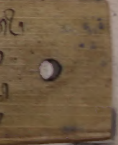
ω	9
	B

Handwritten Balinese script on a palm leaf, consisting of two columns of text. A circular hole is visible on the right side of the leaf. A blue circular stamp is present on the far right edge.



ω	10
	A

Handwritten Balinese script on a palm leaf, consisting of two columns of text. Two circular holes are visible on the leaf. A blue circular stamp is present on the far right edge.



GAGURITAN DUKUH KAWI KSYAPA

Pusat Dokumentasi
Dinas Kebudayaan Provinsi Bali ~ Indonesia

10
B

Handwritten Balinese script on a palm leaf, consisting of two columns of text.

11
A

Handwritten Balinese script on a palm leaf, consisting of two columns of text.

GAGURITAN DUKUH KAWI KSYAPA

Pusat Dokumentasi
Dinas Kebudayaan Provinsi Bali ~ Indonesia

14
B

Handwritten Balinese script on a palm leaf, consisting of two columns of text.

15
A

Handwritten Balinese script on a palm leaf, consisting of two columns of text.

GAGURITAN DUKUH KAWI KSYAPA

Pusat Dokumentasi
Dinas Kebudayaan Provinsi Bali ~ Indonesia

16
B

Handwritten Balinese script on a palm leaf, consisting of two columns of text.

17
A

Handwritten Balinese script on a palm leaf, consisting of two columns of text.

GAGURITAN DUKUH KAWI KSYAPA

Pusat Dokumentasi
Dinas Kebudayaan Provinsi Bali ~ Indonesia

20
B

Handwritten Balinese script on a palm leaf, consisting of two columns of text.

21
A

Handwritten Balinese script on a palm leaf, consisting of two columns of text.

GAGURITAN DUKUH KAWI KSYAPA

Pusat Dokumentasi
Dinas Kebudayaan Provinsi Bali ~ Indonesia

21
B

Handwritten Balinese script on the left side of the palm leaf fragment.

Handwritten Balinese script on the right side of the palm leaf fragment.

22
A

Handwritten Balinese script on the left side of the palm leaf fragment.

Handwritten Balinese script on the right side of the palm leaf fragment.

GAGURITAN DUKUH KAWI KSYAPA

Pusat Dokumentasi
Dinas Kebudayaan Provinsi Bali ~ Indonesia

22
B

Handwritten Balinese script on a palm leaf manuscript strip, labeled 22 B. The text is arranged in two columns, with a small hole on the left and a larger hole on the right. The script is finely etched into the surface of the leaf.

23
A

Handwritten Balinese script on a palm leaf manuscript strip, labeled 23 A. The text is arranged in two columns, with a small hole on the left and a larger hole on the right. The script is finely etched into the surface of the leaf.

GAGURITAN DUKUH KAWI KSYAPA

Pusat Dokumentasi
Dinas Kebudayaan Provinsi Bali ~ Indonesia

25

25

B

Handwritten Balinese script on a palm leaf, consisting of two columns of text.

26

26

A

Handwritten Balinese script on a palm leaf, consisting of two columns of text.

GAGURITAN DUKUH KAWI KSYAPA

Pusat Dokumentasi
Dinas Kebudayaan Provinsi Bali ~ Indonesia

26
B

Handwritten Balinese script on a palm leaf, consisting of two columns of text.

27
A

Handwritten Balinese script on a palm leaf, consisting of two columns of text.

GAGURITAN DUKUH KAWI KSYAPA

Pusat Dokumentasi
Dinas Kebudayaan Provinsi Bali ~ Indonesia

27
B

Handwritten Balinese script on a palm leaf, consisting of two columns of text.

28
A

Handwritten Balinese script on a palm leaf, consisting of two columns of text.

GAGURITAN DUKUH KAWI KSYAPA

Pusat Dokumentasi
Dinas Kebudayaan Provinsi Bali ~ Indonesia

28	B
----	---

Handwritten text in Balinese script on a palm leaf, consisting of two columns of approximately 10 lines each. The script is finely etched into the surface of the leaf.

29	A
----	---

Handwritten text in Balinese script on a palm leaf, consisting of two columns of approximately 10 lines each. The script is finely etched into the surface of the leaf.

GAGURITAN DUKUH KAWI KSYAPA

Pusat Dokumentasi
Dinas Kebudayaan Provinsi Bali ~ Indonesia

29
B

Handwritten text on a palm leaf manuscript strip, likely in Balinese script. The text is arranged in two columns, with a hole on the left side for binding. The script is finely etched into the surface of the leaf.

30
A

Handwritten text on a palm leaf manuscript strip, likely in Balinese script. The text is arranged in two columns, with a hole on the left side for binding. The script is finely etched into the surface of the leaf.

GAGURITAN DUKUH KAWI KSYAPA

Pusat Dokumentasi
Dinas Kebudayaan Provinsi Bali ~ Indonesia

30
B

Handwritten Balinese script on a palm leaf, consisting of two columns of text.

31
A

Handwritten Balinese script on a palm leaf, consisting of two columns of text.

GAGURITAN DUKUH KAWI KSYAPA

Pusat Dokumentasi
Dinas Kebudayaan Provinsi Bali ~ Indonesia

31
B

Handwritten Balinese script on a palm leaf, consisting of two columns of text. The script is finely etched and arranged in approximately 10 lines per column.

32
A

Handwritten Balinese script on a palm leaf, consisting of two columns of text. The script is finely etched and arranged in approximately 10 lines per column.

GAGURITAN DUKUH KAWI KSYAPA

Pusat Dokumentasi
Dinas Kebudayaan Provinsi Bali ~ Indonesia

33
B

B/XXX/19
KSYAPA
GAGURITAN KAWI



GAGURITAN DUKUH KAWI KSYAPA

Pusat Dokumentasi
Dinas Kebudayaan Provinsi Bali ~ Indonesia

