

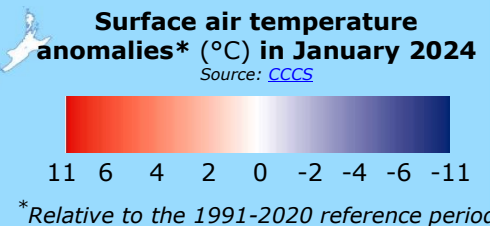
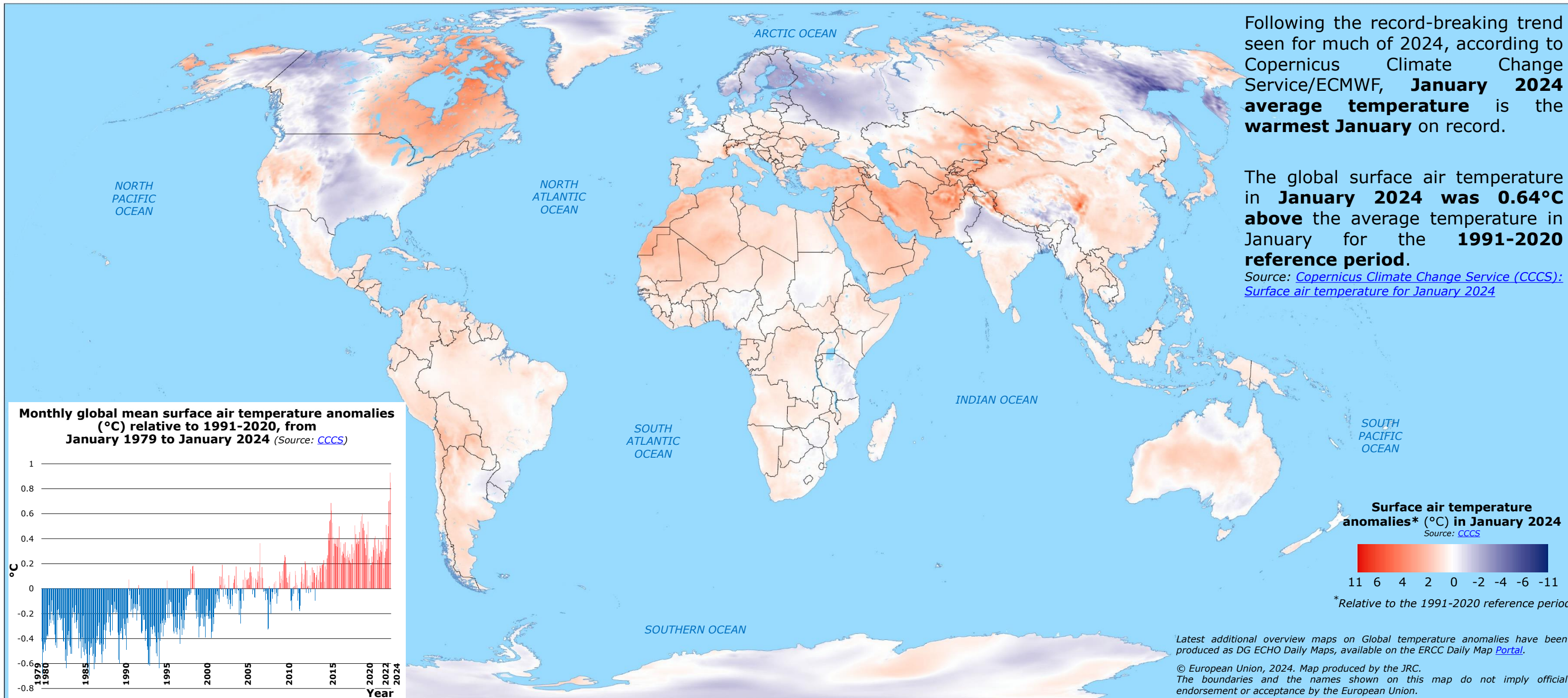
World | Temperature anomalies in January 2024



Following the record-breaking trend seen for much of 2024, according to Copernicus Climate Change Service/ECMWF, **January 2024 average temperature** is the **warmest January** on record.

The global surface air temperature in **January 2024 was 0.64°C above** the average temperature in January for the **1991-2020 reference period**.

Source: [Copernicus Climate Change Service \(CCCS\): Surface air temperature for January 2024](#)

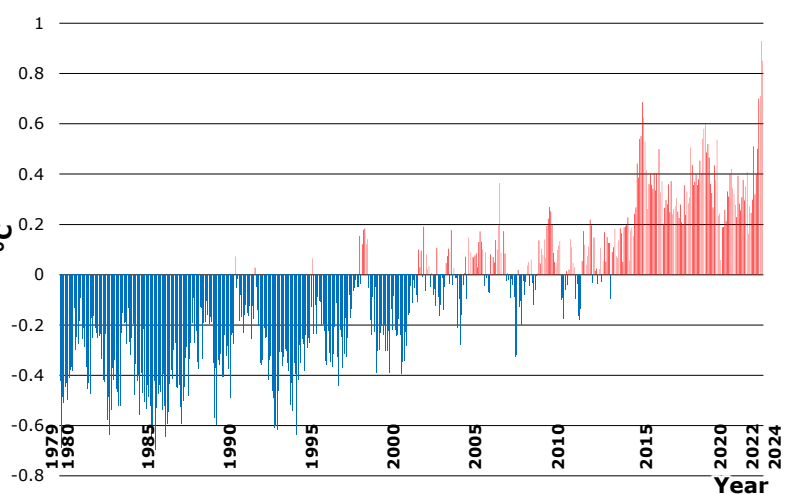


*Relative to the 1991-2020 reference period

Latest additional overview maps on Global temperature anomalies have been produced as DG ECHO Daily Maps, available on the ERCC Daily Map [Portal](#).

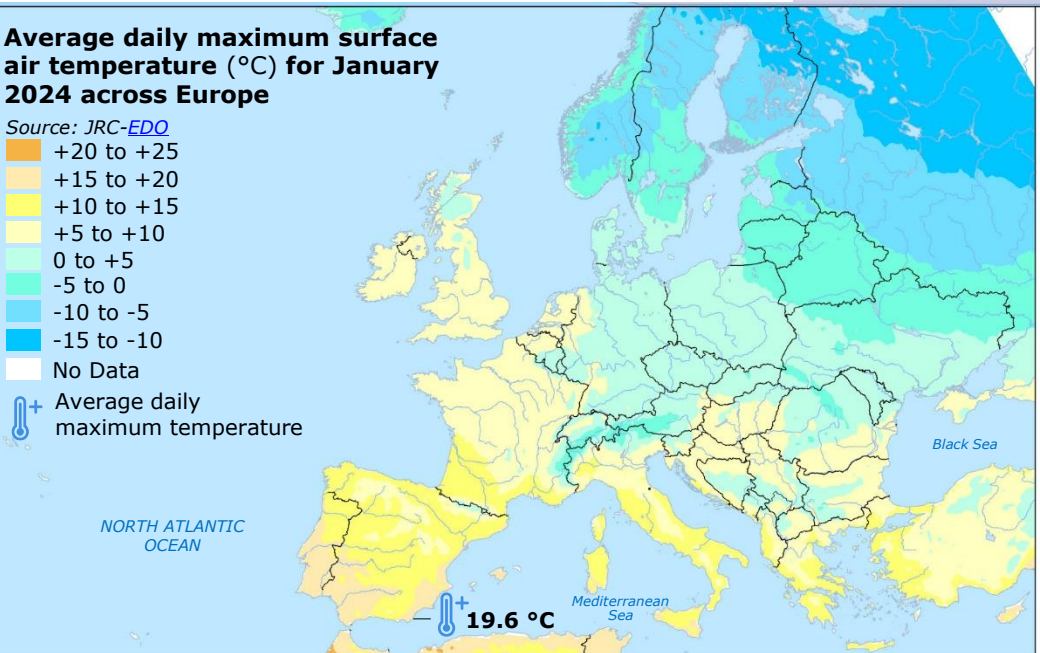
© European Union, 2024. Map produced by the JRC. The boundaries and the names shown on this map do not imply official endorsement or acceptance by the European Union.

Monthly global mean surface air temperature anomalies (°C) relative to 1991-2020, from January 1979 to January 2024 (Source: [CCCS](#))



Average daily maximum surface air temperature (°C) for January 2024 across Europe

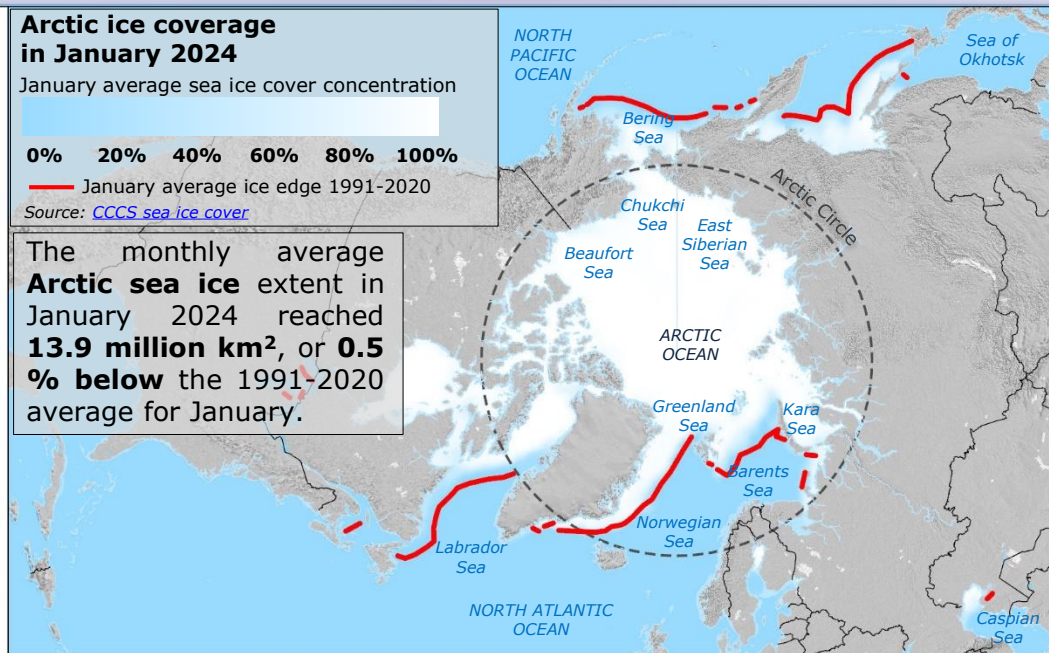
- Source: [JRC-EDO](#)
- +20 to +25
 - +15 to +20
 - +10 to +15
 - +5 to +10
 - 0 to +5
 - 5 to 0
 - 10 to -5
 - 15 to -10
 - No Data
- + Average daily maximum temperature



Arctic ice coverage in January 2024

- January average sea ice cover concentration
- 0%
 - 20%
 - 40%
 - 60%
 - 80%
 - 100%
- January average ice edge 1991-2020
- Source: [CCCS sea ice cover](#)

The monthly average Arctic sea ice extent in January 2024 reached **13.9 million km²**, or **0.5% below** the 1991-2020 average for January.



Antarctic ice coverage in January 2024

- January average sea ice cover concentration
- 0%
 - 20%
 - 40%
 - 60%
 - 80%
 - 100%
- January average ice edge 1991-2020
- Source: [CCCS sea ice cover](#)
- Ice shelf in Antarctica

In January 2024, the **Antarctic sea ice** extent reached **4.5 million km²**, or **18% below** the 1991-2020 average for January.

