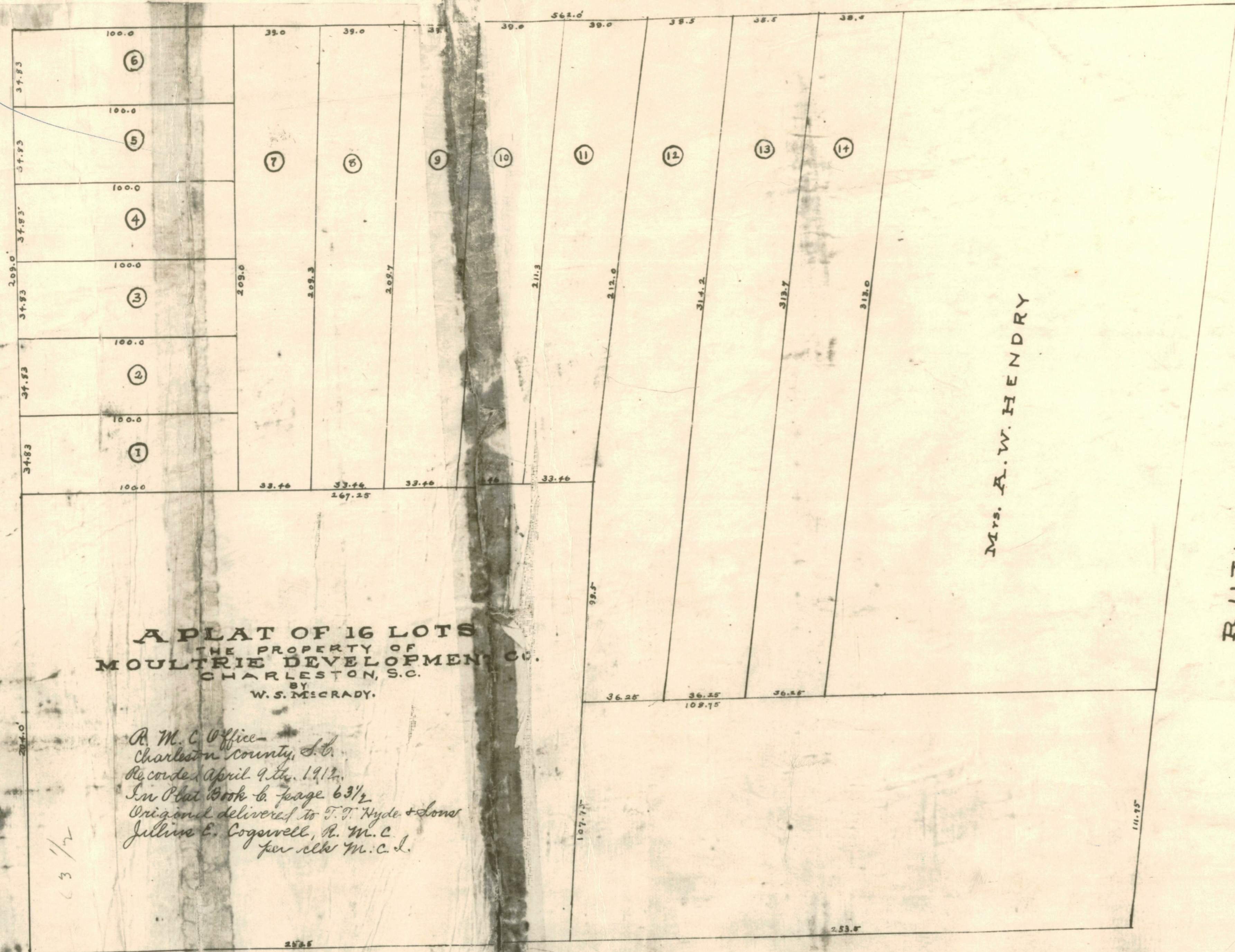


RASHLEY AVE. 50'

MOULTRIE ST.



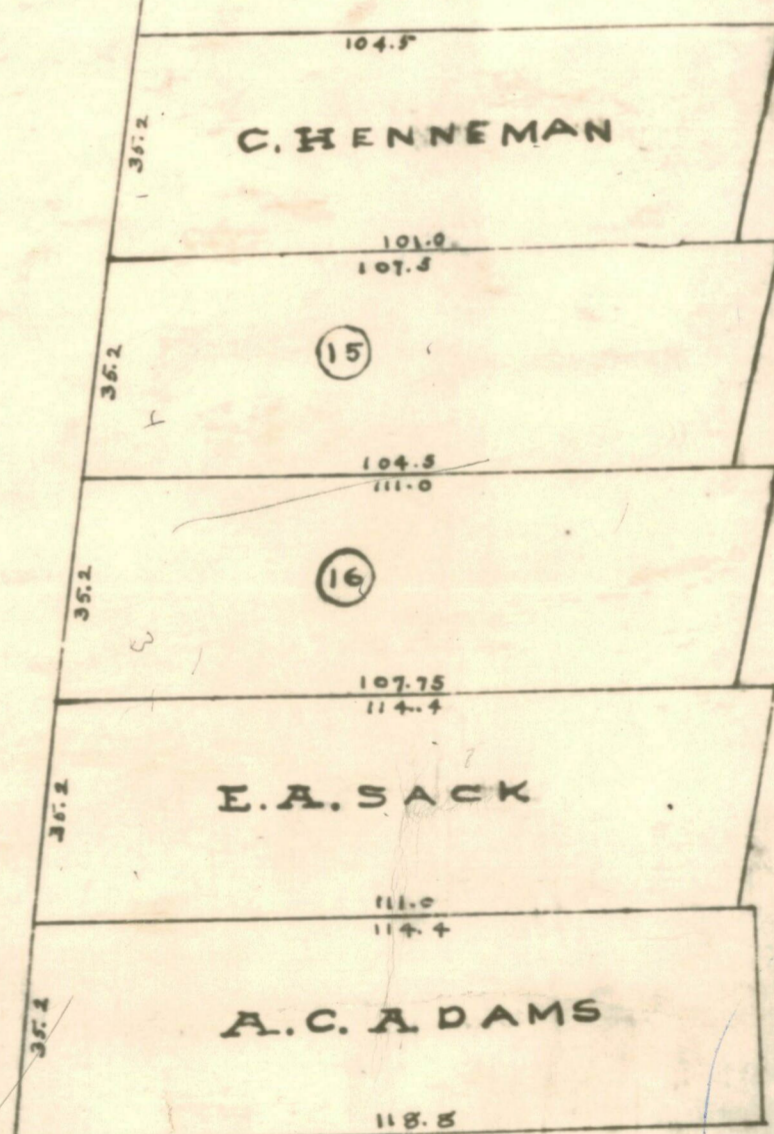
A PLAT OF 16 LOTS
 THE PROPERTY OF
MOULTRIE DEVELOPMENT CO.
 CHARLESTON, S.C.
 BY
W. S. MCCRADY.

*R. M. C. Office -
 Charleston County, S.C.
 Recorded April 9th, 1912.
 In Plat Book C, page 63 1/2
 Original delivered to T. J. Hyde & Sons
 J. L. Cogswell, R. M. C.
 per cks M. C. L.*

63 1/2

Mrs. A. W. HENDRY

RUTLEDGE AVE.



HUGER ST. 50'

Traced by McCrady Bros.