



### SHIP BILL WILL SOON BE BURIED

#### Measure Gets Death Blow And Senate Prepares to Conduct Services

(Continued From Page 1) publican, Washington, chairman of the senate commerce committee and Senator Curtis of Kansas, the Republican "whip" who were in charge of its consideration. Jones declared "everyone knows the matter is ended now."

#### Complete Defeat

After a conference with Senators La Follette, Republican of Wisconsin, and Robinson, Democrat of Arkansas, leaders of the "death battalion," Senator Curtis proposed a funeral service for Monday afternoon. He asked unanimous consent for a vote on the Jones motion, taking the subsidy under consideration for one o'clock Monday afternoon with a proviso that a motion to recommit it would follow immediately.

The filibuster leaders urged the agreement be accepted but Lenroot objected. The attitude of administration leaders was one of complete de-

### Plan Card Party at American Legion Hall

There will be a public card party next Tuesday night, February 27, at the American Legion hall, 810 East Broadway, at 8 o'clock.

Rook and other games will be played and a number of fine prizes, donated by local merchants, will go to the lucky ones. A nominal admission price will be charged, as the affair is a benefit for the Daughters of Veterans Memorial home at Sawtelle.

The committee in charge comprises Misses Audrey Hall and Leona Hibbert, and Mrs. Susie Peck.

### JAIL DRUG PEDDLER

LOS ANGELES, Feb. 24.—Said by federal officers to be the most dangerous and daring peddler of narcotics arrested here in some time, Felix Costello and Ricardo Garlarza were taken into custody at the Plaza this morning by Federal Narcotic Agents Wood and Bright.

Costello was arrested during discussion of the proposed agreement.

"Will this be a final test vote on the bill?" Senator Pittman, Democrat, Nevada, inquired. "That is what it will be," answered Senator Curtis.

### LEGISLATION IS SUBJECT OF TALK

#### Assemblyman Weller Makes Address to Members of American Legion

The regular weekly meeting of Glendale post, the American Legion, held last night in Legion hall, proved to be a very enjoyable occasion.

In the absence of Commander Chalmer D. Day, Past Commander Attorney James F. McBryde presided. The feature of the program was an address by Assemblyman Frank Weller, on "Soldier Legislation."

In view of the patriotic significance of February, Comrade Attorney Wix spoke on Abraham Lincoln and Comrade Mitchell on George Washington. Alas! No Praise! Inasmuch as February 12 is also the birthday of Past Commander McBryde, this witty comrade made several attempts to get some one to deliver an oration in his behalf, but was unsuccessful. Several singing contests by Legion quartets resulted in the cash prize going to Comrades H. P.

### SOLOISTS TO AID COMMUNITY SING

#### Meeting Monday Night Will Be Held in Auditorium of Union High School

Alexander Stewart, community singing director, is to be in charge of the big "sing" scheduled for Monday night at 7:45 o'clock in the auditorium of the Glendale Union high school.

In addition to the general singing there will be the following program of special numbers: Solo, Mrs. J. W. Cotton, selection by the high school quartet, solo by Franz Henry, solo by Glenn Dobberg, solo by H. S. Robinson, tenor soloist of the First Methodist church of Los Angeles, accompanied by Arthur Blakely, organist and composer.

Oriental have lower blood-pressure than Western nations.

Preston, Dr. Kressler, Attorneys Wix and Felano.

The attendance prize, donated by C. A. Fawkes, was won by Comrade Norton.

### Dog Vaccination Law Is Not Contemplated

Glendale will not require dogs to be vaccinated.

A definite promise to this effect was made last night by Councilman Sam Davis, speaking in behalf of the City Council.

Alex Mitchell of 1525 Ben Lomond drive inquired why the city administration desired to be so tyrannical toward the canine kingdom. He was assured that the City Council contemplated the passage of no drastic ordinance at this time. Mr. Davis said that, even if an ordinance should be passed, it would contain no "serum clause."

Councilman Dwight W. Stephenson protested because his name was used as voting in favor of the proposed measure in a publication in a local paper. All councilmen present declared they had not seen the ordinance until its publication.

Councilman A. H. Lapham was emphatic in his declaration that he would "have nothing to do with any serum ordinance."

Paper umbrellas that are collapsible to small size, have been invented.

If you want fit and style in clothes see Fred Minden, 322 E. Broadway.—Advertisement. 2-20 3-5 incl.

### IMPROVEMENTS BY G. & M. RAILWAY

#### Large Sum Will Be Spent by Company, Announces Manager Hatch

(Continued From Page 1) line will handle the traffic on Broadway to Glendale avenue, thus eliminating some of the confusion now existing at Maryland avenue and Broadway.

It will be good news to the residents of Glendale avenue and vicinity to know their hopes for better car service now are at a point of realization.

The Alaskan walrus is as large as an ox and weighs more than a ton.

**Reynolds & Eberle**  
Undertakers  
116 N. Castle Ave.  
Eagle Rock City  
Ph. Garanza 2772  
Ambulance Service



**CHEVROLET**

HIGH IN QUALITY LOW IN PRICE

Place your order with us and be assured of IMMEDIATE DELIVERY

We Give Real Service to Our Customers  
Cars On Display Demonstrations Given

**HOLLEY MOTOR SALES, INC.**

Eagle Rock Branch  
Garanza 1062 222 East Colorado Blvd.

Eagle Rock Electronic Institute  
Abrams Method of Blood Diagnosis and Treatment  
DR. WEDDELL in Charge  
151 South College View Avenue  
Phone Gar. 1033

Glendale Evening News  
Entered as second-class matter January 12, 1922, at the postoffice at Glendale, Calif., under act of congress of March 3, 1879. Published daily except Sunday.

### RENTERS!

#### BUY ONE OF THESE HOMES

THE RENT YOU SAVE WILL SOON PAY FOR IT

PALMER—5-room, all modern house, garage— Lot 50x100.....\$1,000 Cash—\$5,200	CALIFORNIA—3-room, modern house, garage— Lot 50x 60.....\$ 700 Cash—\$2,700
SENECA—4-room modern house, garage— Lot 40x135.....\$ 400 Cash—\$3,600	REVERE—5-room modern house, garage— Lot 50x140.....\$ 500 Cash—\$4,500
CALIFORNIA—Garage house— Lot 50x150.....\$ 500 Cash—\$2,500	BOYNTON—4-room modern house, garage— Lot 48x126.....\$ 900 Cash—\$4,950
LINDEY—5-room modern house, garage— Lot 50x170.....\$1,000 Cash—\$4,750	MILFORD—5-room new mod. house, garage— Corner lot.....\$ 850 Cash—\$6,250
PALMER—5-room modern house— Lot 55x160.....\$ 650 Cash—\$4,000	RALEIGH—6-room modern house, garage— Lot 60x180.....\$ 750 Cash—\$5,000
VINE—4-room modern house, garage— Lot 50x135.....\$1,000 Cash—\$4,450	ADAMS—5-room modern house, garage— Corner lot 70x135.....\$1,000 Cash—\$6,300
ADAMS—5-room new modern house, garage— Beautiful view lot.....\$ 500 Cash—\$6,100	SALEM—6-room modern house, garage— Lot 50x150.....\$2,000 Cash—\$6,000

WE HAVE A GOOD LIST OF HOMES, BUSINESS AND INCOME PROPERTY—VACANT AND ACREAGE TRACTS

**V. E. WEST**  
217 South Brand Phone Glen. 3015

## A GOLDEN FUTURE

We feel proud of Glendale and we have a right to be proud of a city that we, with others, are actively engaged in building up.

Glendale is beautifully situated and fortunately has many natural advantages, but beyond all this the residents of this prosperous city desire credit for a larger share of her substantial and rapid growth.

It is optimism, linked with habits of thrift on the part of her citizens that keeps Glendale in the first ranks as a growing city as compared with sister cities.

Investment and re-investment in the future of your community is the formula for success. Yours is the opportunity which the whole world covets.

If you are not a resident of Glendale, come here and share in its prosperity. If you do live here, exercise the privilege of making this a greater city by displaying your confidence in its future.

## SUNSET GROVE

Full Size Lots. \$975 up.  
\$100 Cash  
\$20 and \$25 Per Month

Beautiful Lots Covered  
With Fruit Trees  
Highly Restricted

—The restrictions are \$3000 and \$3500, and no temporary homes are permitted. The location is ideal, being above Kenneth Road, below Tenth Street, which is a main paved boulevard between Glendale and Burbank. It is one of the best locations in the rapidly developing Northwest section, commanding an unsurpassed panoramic view of the whole valley; water, gas and electricity paid.

**No Temporary Homes**

—All through the sale of our sub-division FAIRVIEW we have had hundreds of calls for lots with trees on them, and also for lots on which temporary homes were not permitted. At last we are able to supply this demand, and at prices so low that there will undoubtedly be in a very short time remarkable increases in values in SUNSET GROVE.

—The terms, \$100 cash, and \$20 and \$25 per month, afford an opportunity to purchase a lot in a beautiful tract at the low opening prices with a very small cash investment.

**For Investors**

—We estimate that there has been \$150,000 of increase in value in our FAIRVIEW subdivision over our opening prices, and we anticipate that the ratio of increase in SUNSET GROVE will be even more.

—It has been consistently our rule to offer lots at a low price with the idea that we desire our purchasers to make as much money as we do, and our experience in FAIRVIEW has fully justified this position.

**Buy a Lot at Opening Prices**

—SUNSET GROVE will appeal to people who desire a more exclusive district, and to those who appreciate the great desirability of property in the beautiful Northwest section of Glendale, where development, improvements, increase of population are going ahead with tremendous strides.

—SUNSET GROVE is selling fast, \$15,000 worth of property sold first three days. Don't delay. Come out at once.

—Drive out Kenneth Road, Grandview Avenue and Tenth Street, direct to Tract Office on South Side of Tenth Street, beyond Linden avenue. Tract Office open all day Sunday. On Saturday afternoon call at our office on Broadway.

**Hamlin & Hepburn**  
203 West Broadway Glen. 996-J

### Why You Should Provide for a Lot in Grand View Memorial Park

"Glendale's Own Cemetery"

- I. A modern park-like burial place, the general appearance of which is restful and entirely wanting in suggestions tending toward morbidity.
- II. A cemetery operated without future expense to the lot owner.
- III. A PERPETUAL CARE fund created by setting aside a percentage from the sale of lots.
- IV. It is a comforting thought to know you have a place of interment secured in Grand View.
- V. Prudence suggests that we look forward to future requirement, as the purchase of a burial lot should be an expense incurred but once in the history of the family.
- VI. No water in graves. Every grave guaranteed to be dry.

Terms made to suit the convenience of purchasers of lots.

Here you will find every service and consideration which should merit your investigation in lieu of those trying times when such facilities as we offer are so necessary. Our private car is at your service without charge when you wish to visit the grounds.

**Grand View Memorial Park**  
LEN C. DAVIS, President  
Grand View and Sixth Street  
Phone Glendale 2697 Glendale, California

### 5-Acre Subdivision

In most desirable foothill district in Glendale. We need one more person with \$2000-\$4000 cash to syndicate this and put it upon the market. A guaranteed profit of at least 50% in sixty to ninety days. If you want to get in on a sure investment for a little money, see us immediately.

**WARREN**  
300 South Brand Blvd.

### Plumbing and Sheet Metal Work

We are at your service any time in short order and at moderate cost. Our years of experience, backed by workmanship of quality, have established for us a reputation of doing every job right. Don't experiment. It's costly. Come to us.

HAVE YOUR PLUMBING DONE RIGHT  
Phone Glendale 885

**Glendale Plumbing Co.**  
P. J. Sheehy, Mgr.  
134-136 S. Orange St.

### Stop Paying Rent —Own Your Home

Your small savings each month, together with your rent money, will enable YOU, through my plan of financing, TO OWN YOUR HOME. I furnish the cash down payment, from \$1800 to \$5000, and the rent money you are now paying takes care of the balance.

**YOUR MONTHLY SAVINGS OF**

\$18 ACQUIRES A \$3000 HOME
\$30 ACQUIRES A \$5000 HOME
\$40 ACQUIRES A \$7500 HOME
\$50 ACQUIRES A \$9500 HOME

INTEREST LESS THAN 6 PER CENT

Income property, bungalow courts, apartment houses financed on same plan. INVESTIGATE NOW.

**Western Mutual Finance Co.**  
Walter T. Haines, General Agent  
F. H. WISWELL, J. C. GREEN, Special Agents  
213 W. Broadway Ph. Glen. 1179. Glendale, Calif

# DAMAGED







NATIONAL CHAMPIONSHIP  
**AUTO RACE**  
 LOS ANGELES SPEEDWAY  
**FEBRUARY 25<sup>TH</sup>**  
 TICKETS ON SALE AT B.H. DYAS CO.  
 AUTO CLUB OF SO. CALIF. AND ITS BRANCHES

**250 Miles**  
 of  
**SPEED**



**Westinghouse  
 Battery Service for  
 Every Make of Car**

Drive In Today for a Battery  
 Test and Inspection  
**Prompt, Efficient Service**

**Westinghouse Battery Service**

306 South Glendale Ave.  
 Phone Glendale 1310-J  
 G. B. Reynolds, Mgr.

Founded in 1897

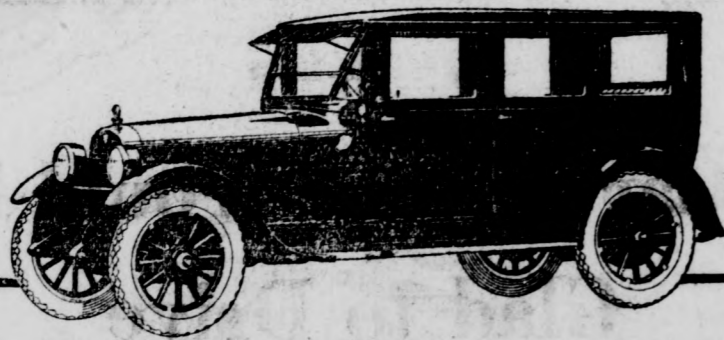
The Oldsmobile Four is as  
 good as it looks—which is  
 saying a lot, but true.

**C. H. HUNTER**

Phone Glendale 2373  
 208 West Broadway, Glendale, Calif.  
 Open Sundays and Evenings

**Oldsmobile**  
 FOUR

K-22-17



Hudson Sedan—All Aluminum Body

Now \$2095 Freight and Tax Extra  
 (Reduced \$200)

**Never Was Such a Car  
 So Favorably Priced**

Old and famous body builders—Biddle & Smart, Amesbury, Mass.—devote all their factories to the production of the Hudson Sedan body. For almost three generations they have turned out the finest custom carriage and automobile bodies. They are masters in design, and careful workmanship.

Now these workmen devote their efforts exclusively to the Hudson Sedan. It gives fine car buyers custombuilt quality at a quantity price.

(All Models Recently Reduced \$100 to \$200)

Speedster, \$1425 7-Pass. Phaeton, \$1475 Coach, \$1525 Sedan, \$2095  
 Freight and Tax Extra

**KELLEY MOTOR CO.**

Phone Glendale 837 Glendale, California 230 NORTH BRAND

**FORD SALES FOR  
 JANUARY 100,118**

Lowest Prices in History  
 Principal Factor in  
 Huge Turnover

January was another 100,000 month for Ford car sales. The total cars sold during January was 100,118, according to advices just received from the Ford Motor Company at Detroit, making the tenth consecutive month in which sales have run over the 100,000 mark, says Jesse E. Smith, local Ford agent.

And while this means that in the last ten months more than one million Ford cars have been sold, the really remarkable feature is that four of those months were fall and winter months during which the average expectation of sales is only about sixty per cent of the spring and summer business.

But since April last, the first month when sales topped the 100,000 line, there has been no slackening, and every month since has brought in sales totaling more than 100,000, something unprecedented in the automobile world.

Several things have contributed to this unusual sales record, principal of which is the fact that since last October Ford prices have been at the lowest level ever reached in the history of the company.

Production at the Ford plant for 1923 will be established at 6000 cars and trucks a day, and this output will be reached about April 1. With the first month in the year starting off with sales in excess of 100,000, indications are that absorption is going to run close to this high production schedule.

**RE-TREADS LOWER  
 MOTORING COSTS**

C. & B. Service Station Has  
 Latest Machinery to  
 Vulcanize Tires

The increased life added to tires by the vulcanizing process is one of the factors that is aiding the C. & B. Service Station, at the corner of South Brand and Colorado, to build up the business among Glendale motorists, and the reduction in motoring costs forms an important factor in the eyes of even those motorists who are financially able to maintain their cars on an up-to-the-minute basis.

In the C. & B. Service Station shop the tires and tubes are vulcanized by the latest process, by machinery that has just been installed, and the firm is also in position to retread any make of tire in a manner that materially lengthens the life of the tire. Only the best of rubber and the most modern methods are used, methods that have been proven and tested by the leading automobile chemists in the country, and the tires that are submitted to the re-treading process carry a guarantee that is generous in the extreme. Any failure of the tire to render the service promised by the firm is made good without question, as the broad policy on which the firm works is one that has been adopted with the sole aim of affording satisfaction to the customer with every job that is turned out in the shop.

News want ads produce results.

**DELIVER CARS TO  
 WAITING BUYERS**

Studebaker Clients Absorb  
 Two Carloads as Soon  
 As They Arrive

Delivery of two carloads of Light Six touring cars by the Packer Auto Co., Studebaker agents at 245 South Brand boulevard, has enabled the firm to satisfy the demands of several of their customers who had placed their orders some time ago, and additional efforts are being made to meet the requirements of the local market for Studebakers by insisting on immediate deliveries from the factory.

This, however, is a matter of some difficulty, according to Steve Packer, as the new models are in such demand in every agency throughout the country that it is almost impossible to promptly deliver cars. The firm now has a Big Six sedan and a Big Six coupe in the show room that can be driven away, but this is all.

Many features have been embodied in the new models that add to the riding comfort of the Studebakers of 1923, and the streamlined bodies enhance the aristocratic appearance of the late models to a point where they compare with any car on the market today, while the intrinsic merit of the Studebaker output is an inherent part of every automobile turned out by the factory.

**SERVICE BACK OF  
 ALL BUICK SALES**

Firm's Nation-Wide Policy  
 Maintains Quality at  
 Minimum Cost

Interest in the new models of the Buick four-passenger Six Coupe, that is now on display in the show rooms of Tanner & Hall, Ltd., 237 South Brand boulevard, among local motorists is keen, and the car is making a distinct and favorable appeal to the discriminating buyers who seek a car that combines a handsome appearance with the power to deliver sustained and consistent service, according to Ray Galvin, manager of the firm. The Coupe is another example of the sterling worth that is embodied in all Buick cars, he states, thoroughbred in appearance inside and out, and possesses the power reserve that is an integral part of all Buick cars.

The authorized Buick service that stands behind every Buick sale is a safeguard for the motorist against less-than-standard performance. Mr. Galvin declares. The service maintains the Buick quality by providing genuine Buick parts to replace the original part whenever it may be needed, and the nation-wide policy that guides all Buick dealers insures that this service will be rendered at the minimum price.

The Buick closed models have definitely taken their place in the ranks of the all-the-year-round cars, and the devices that have been added for the comfort and convenience of both driver and passengers form an important adjunct to the cars.

**SHIP MAXWELL IN  
 TRAINLOAD LOTS**

Winter Output of Factory  
 Maintained as Result of  
 Big Demand

DETROIT.—Maxwell Motor Corporation is literally shipping cars by the trainload—an unusual position for a motor manufacturer to find himself in in the dead of winter.

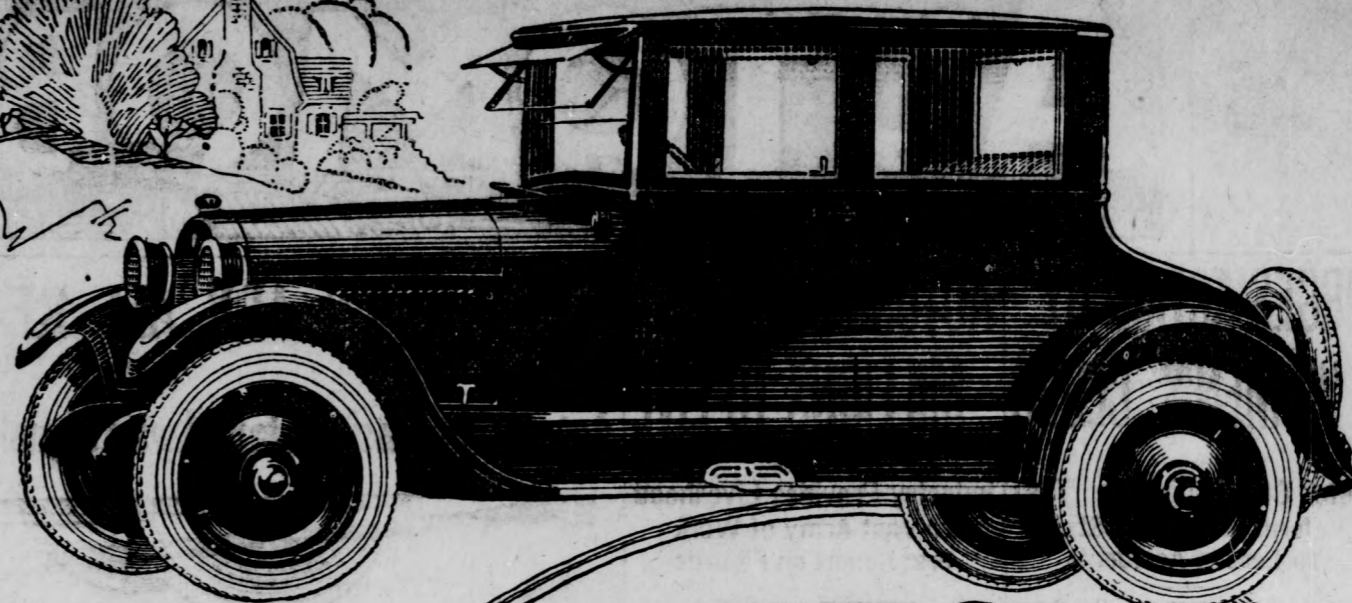
Beginning with the New York show, orders from eastern territory were received which were indicative of a strong continued demand for the Maxwell product in that section. One of these orders—said to be the largest received this year by an individual manufacturer—called for nearly a million dollars' worth of cars, or five trainloads. Shipments were started in January and will continue through March. The entire consignment will be consumed by one dealer for distribution in New Jersey.

At the Chicago show and shortly thereafter, middle western dealers bombarded the Maxwell factory with trainload orders. It is reported, St. Louis has already received one full train and will soon have another on the way. Milwaukee, Des Moines, Rockford, Ill., and Green Bay, Wis., are some of the other points taking cars in trainload lots.

"The information contained in the above press report explains the reason for the shortage of Maxwell cars in this territory," says Lyman P. Clark, of the Glendale Motor Car Company, 124 West Colorado street, Maxwell dealers, "and it explains, particularly, the shortage of Maxwell Sport cars, which have proven so popular and, when exhibited, instantly gained the approval of the American public everywhere."

**TWO-MILE SPEEDWAY**

A two-mile motor speedway is to be constructed at Glen Allen, Va., ten miles from Richmond. The grandstands will accommodate between 60,000 and 75,000 persons.



**REO**  
 The Gold Standard of Values

**Models and Prices**

4-Passenger Coupe  
 \$2110.00

5-Passenger Sedan  
 \$2160.00

New Phaeton Reo  
 \$1895.00

Seven-Passenger Touring Reo  
 \$1735.00

"Four Door Brougham" Reo  
 \$2460.00

DELIVERED HERE  
 WAR TAX PAID

**AN INVITATION**

YOU are cordially invited to visit our display rooms and inspect the complete exhibit of Reo Motor Cars,—representing a model for every motoring need, and typifying automobile goodness at peak point.

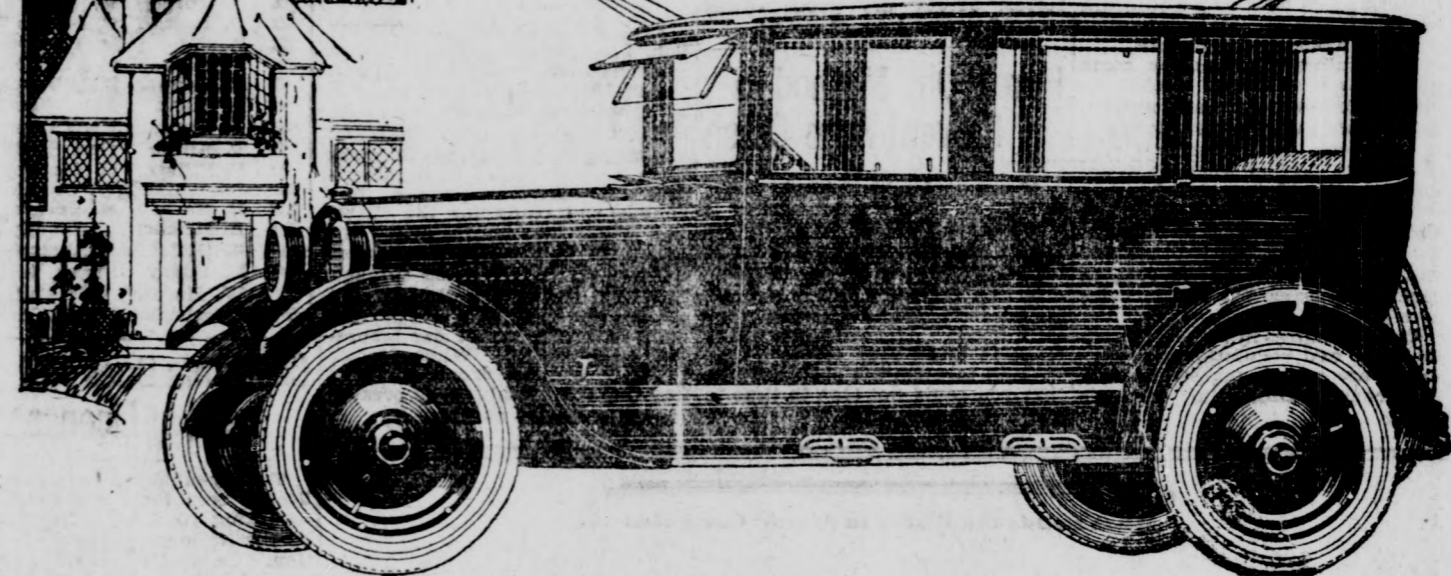
Enduring ruggedness is assured by the double-framed chassis, where power units are cradled in their inner frame mounting.

A guarantee of power and fleetness is the famous 50 h. p. six-cylinder Reo motor, which—with intake valves in head,—large exhaust ports,—a 4-bearing crankshaft, balanced dynamically and statically,—aluminum alloy pistons,—unusual cooling efficiency,—and wonderful accessibility—

Is truly a remarkable achievement in automobile engine design and manufacture.

**Harry E. White, Inc.**

Phone Glendale 2067 GLENDALE, "At The Gate-Way"  
 San Fernando Valley Distributors  
 REO MOTOR CAR COMPANY, Lansing, Michigan



**BUILD EXTENSION  
 TO REO'S AGENCY**

Harry E. White Embodies  
 Latest Ideas in New  
 Shop Department

Additions that have just been completed to the Harry E. White, Inc., Reo agency at the corner of San Fernando and Brand, at a cost of over \$4000, place this establishment in the front rank of automobile depots in Southern California and afford space for every branch of activity in connection with the agency. These new additions include additional space for storage and shop purposes, and the new building extends clear across the White property from the business and salesroom building to the machine shops and tractor department, a distance of nearly 250 feet.

The finishing touches to the steel top or canopy covering the gasoline and service station were added yesterday, and the steel top is said by Mr. White to be the only one of its kind in Southern California and was adopted by him after he had made an exhaustive study of the steel sheds in some of the larger cities in the country.

The gasoline and service station represents an investment of \$5000, and both gasoline and oil are dispensed from glass tanks by air pressure.

Mr. White is a member of the National Automobile Dealers' Association and is therefore "One of a Thousand," the organization that functions strictly on the principle of the Golden Rule.

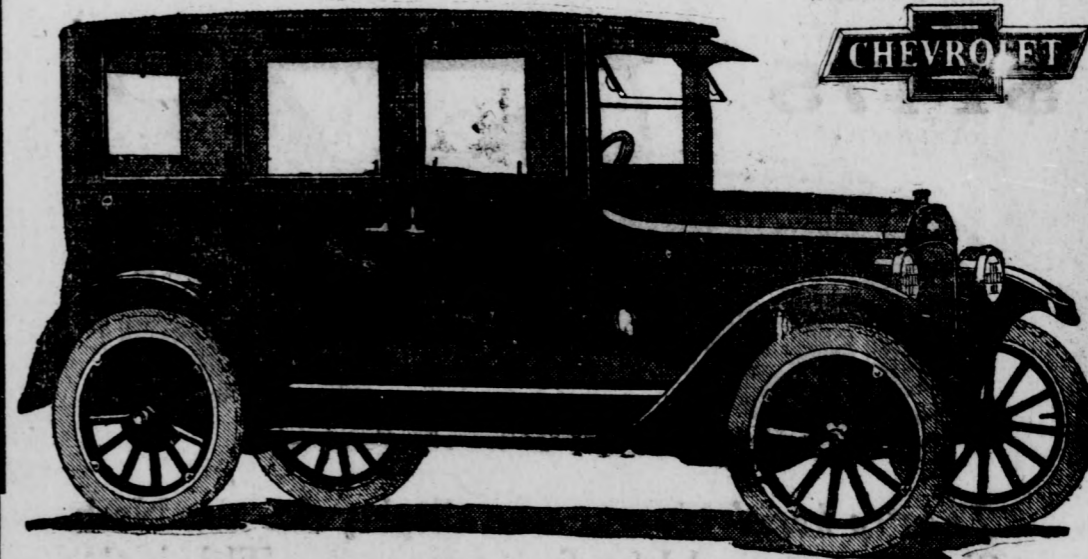
**TIRE, GAS RECORDS**

Keep a careful record of the number of miles run and compare it with the records of each month past for gasoline and tires. In this way it is possible to tell what make of tires gives the best results, and if the number of gallons of "gas" increases, the cause can then be investigated and adjusted.

**1923 Superior Chevrolet Sedan**

The World's Lowest Priced Quality Closed Car

for Economical Transportation



**The 1923 SUPERIOR Chevrolet  
 5-Passenger Sedan**

**\$1065 Here**

—to see it is to admire it.  
 —to sit within its comfortable interior is to want it.  
 —to realize its wonderful economy is to buy it.  
 —it is really the most irresistible closed car offering in the world of motoring.

**Nothing Compares With Chevrolet**

SEE THESE WONDERFUL CARS ON OUR SALESROOM FLOOR AT YOUR EARLIEST CONVENIENCE  
 Competent, Courteous Salesmen to Demonstrate

**C. L. SMITH**

Colorado at Orange

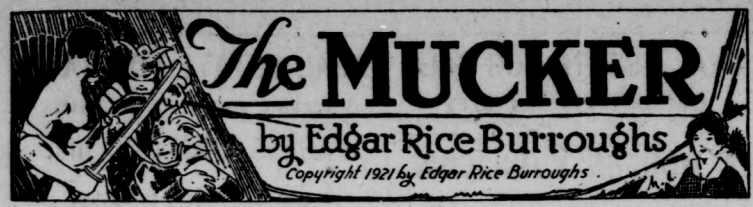
Open Evenings

Glen. 2443









Daylight had come revealing to the watchers in the ranchhouse the figures of the combatants. In the thick of the fight loomed the giant figure of a man in nondescript garb which more closely resembled the apparel of the Peististas than it did the uniforms of the American soldiery, yet it was with them he fought. Barbara's eyes were the first to detect him.

"There's Mr. Byrne," she cried. "It must have been he who brought the troops."

"Why, he hasn't had time to reach the border yet," remonstrated one of the Clark boys, much less get back here with help."

"There he is, though," said Mr. Harding. "It's certainly strange. I can't understand what American troops are doing across the border—especially under the present administration."

The Peististas held their ground for but a moment then they wheeled and fled; but not before Pesita himself had forced his pony close to that of Billy Byrne.

"You shall die for this," and fired point-blank at the American.

"You shall die for this," and fired point-blank at the American.

"You shall die for this," and fired point-blank at the American.

"You shall die for this," and fired point-blank at the American.

"You shall die for this," and fired point-blank at the American.

"You shall die for this," and fired point-blank at the American.

out into the street to take his way to the railroad station that he might procure transportation for three to Galveston. Anthony Harding was going with them. He had listened to Barbara's pleas, and had finally volunteered to back Billy Byrne's flight from the jurisdiction of the law, or at least to a place where, under a new name, he could start life over again and live it as the son-in-law of old Anthony Harding should live.

Among the crowd viewing the havoc wrought by the raiders the previous night was a large man with a red face. It happened that he turned suddenly about as Billy Byrne was on the point of passing behind him. Both men started as recognition lighted their faces and he of the red face found himself looking down the barrel of a six-shooter.

"Put it up, Byrne," he admonished the other coolly. "I don't know you were so good on the draw."

"I'm good on the draw all right, Flannagan," said Billy, "and I ain't drawn for amusement either. I gotta chance to get away and live straight, and have a little happiness in life, and Flannagan, the man who tries to grab my game is goin' to get himself croaked. I'll never go back to stir alive. See?"

"Yep," said Flannagan. "I see; but I ain't tryin' to grab your game. I ain't down here after you this trip. Where you been, anyway, that you don't know the war's over?"

"Well, I'll be!" ejaculated the sleuth, for Billy Byrne was already a hundred yards away and breaking all records in his dash for the sitting-room he had quitted but a few minutes before.

"You are my girl!" he cried hoarsely. "Kiss me!"

"Wait!" she said. "First tell me what you meant by saying that bridge couldn't have me. I never knew that bridge wanted me, and I certainly have never wanted bridge. O Billy! Why didn't you do this long ago? Months ago in New York I wanted you to take me; but you left me to another man whom I didn't love. I thought you had ceased to care, Billy, and since we have been together here—since that night in the room back of the office—you have made me feel that I was nothing to you. Take me, Billy! Take me anywhere in the world that you go. I love you and I'll slave for you—anything just to be with you."

"Barbara!" cried Billy Byrne, and then his voice was smothered by the pressure of warm, red lips against his eyes.

A half hour later Billy stepped

A half hour later Billy stepped

### G. CORNWELL, AGE 84 YEARS, DEAD

#### Resident Here for Long Time; Funeral Services Take Place Monday

(Continued From Page 1)  
 They were born eight children, all still living—Misses Jennie, Carrie and May Cornwell, Albert and Hugh Cornwell of Glendale; Mrs. A. P. Stone, of Denair; and Edward and Curtis C. Cornwell, of Modesto, the latter now on their way down for the funeral.

**Funeral Monday**  
 There are sixteen grandchildren, also all living—Dr. Fay G. Stone, Mrs. Daniel Kelly, Elizabeth Glenn and Philip Cornwell, of Glendale; the others living in northern California. There are, furthermore, nine great-grandchildren.

George Cornwell was a charter member of the General N. P. Banks post of the Grand Army of the Republic, where for many years he was an active and popular comrade. Of late his health had been failing.

Funeral services will be held at 2 o'clock Monday afternoon, February 26, at the chapel of the Jewel City Undertaking company. Interment will be at Forest Lawn cemetery, the ceremony in charge of the N. P. Banks post of the G. A. R.

**DEATHS, FUNERALS**  
**JOHN S. McLARRIN**  
 John S. McLarrin of 915 East Colorado street died yesterday, Friday, February 23, 1923, at the age of 70.

Funeral services will be held at 1 o'clock Monday morning, February 26, 1923, in the chapel of Kiefer and Eyerick.

Funeral services for Mrs. Irma Orr Edwards of 435 Ivy street died yesterday, Friday, February 23, 1923, after a residence of about a year in Glendale.

Mrs. Edwards was born in Greeley, Colorado, March 26, 1879. She was 44 years of age. She was a member of the Pythian Sisters of Fillmore and the Neighbors of Woodcraft of Idaho Springs, Colorado.

Mrs. L. B. Orr survives her daughter. She is survived also by her husband, J. H. Edwards, and three children: Evelyn, Joe and Raymond. There are three sisters and a brother: Mrs. L. H. Pomeroy of Glendale, Mrs. Bess Allen of Los Angeles, Mrs. Lillian McIntyre of Los Angeles and George H. Orr of Grirley, Colorado.

Funeral arrangements are being made by Kiefer and Eyerick.

Mrs. LOUIVA RICHARDSON  
 Mrs. Louviva Richardson of 329 North Belmont street, died this morning, Saturday, February 24, 1923, after a protracted illness.

Mrs. Richardson was a native daughter of California. She was born at Grass Valley, November 12, 1883. She had been a resident of Glendale for the past nine years.

### BUSINESS CALLS FOR EXTRA ROOM

#### May & Hellman to Move Into Suite of Offices on Maryland Ave.

May & Hellman, contractors, Monday are moving their offices from 205 East Broadway to 108-A East Broadway, in order to secure additional office space to keep pace with their expanding business.

James W. Morrison of 702 Orange Grove avenue, a certified architect, will have charge of the architectural department. Mr. Morrison has had considerable experience in high-class building construction of all kinds.

A real estate department is being added by this firm. This will be under the management and supervision of E. W. Kingsley of 108-A East Broadway. This department will handle realty sales and exchanges, loans, investments and insurance.

**COUNCIL ORDERS TRAPS INSTALLED**  
 Plumbing Ordinance Amended by Rules Affecting Cafes and Garages

An amendment to the plumbing ordinance was introduced at last night's session of the City Council.

Ordinances leasing property on the new municipal airport came up for first reading last night by the City Council.

**CRIPPLES STORM HOME OF HEALER**  
 Police Summoned to Manage Throgs Calling at Berry Residence

Milton H. Berry, who is heralded in a story now being published in a Los Angeles newspaper as "the saint of paraplegics," was in Glendale this morning on business, stating it was the first opportunity he has had to escape from the constantly-increasing number of cripples who seek his aid.

It was necessary two days ago for the Eagle Rock police department to assign a traffic officer to the corner of North Castle avenue and Colorado street to control the number of autoists calling at Mr. Berry's home, 209 North Castle.

"I have had to employ two stenographers to handle the great amount of mail received this week," said Mr. Berry. He is a member of the Glendale Elks' lodge and well known here.

**Revolver and Whisky Bring Jail Sentence**

Joe Carlos, a Mexican, was taken to the county jail yesterday by Detective Sergeants W. J. Royle and J. H. Simmons. He was arrested a few days ago near the intersection of San Fernando road and Brand boulevard while carrying a bottle of bootleg whisky in one pocket and a .38 calibre revolver in another. He said that he had found a deputy sheriff badge which was in his possession. Owing to the necessity of getting an interpreter, he was obliged to languish in a cell at Fire Station No. 2 while his case was being delayed.

### Uncle Wiggily Bedtime Stories

UNCLE WIGGILY'S RUBBER COAT.  
 One day when Uncle Wiggily came home from the five and ten-cent store, where he had gone to see about getting a new piano, the bunny rabbit gentleman saw Nurse Jane picking leaves from the rubber plant in the front hall.

"What are you doing, Janie?" asked the bunny rabbit. "You'll spoil your rubber plant that I gave you for Christmas."

"Oh, no," answered Miss Fuzzy Wuzzy. "It has many more leaves than it needs," and she picked off half a dozen.

"But what are you going to do with them?" asked Mr. Longears.  
 "Make you a rubber coat," answered the muskrat lady. "Since you were so kind as to go out in the rain yesterday and get me headache medicine, I have been thinking that you needed a new rubber coat. And the best thing to make it from are leaves from the rubber plant."

"You are very kind," said Uncle Wiggily.  
 Nurse Jane sewed together the broad, flat leaves from her house rubber plant, until she had made the bunny rabbit gentleman a fine rubber coat.

"There you are," she called, holding it up. "Try it on, Uncle Wiggily."  
 "I'm afraid it's too small," said Mr. Longears.  
 "Oh, it will stretch," said Nurse Jane. "Try it."

The new rubber coat did look very small—hardly large enough for Sammie Littletail, the rabbit boy. But when Uncle Wiggily put it on the rubber coat stretched out larger until it fitted him perfectly.

"That's a fine coat," said Uncle Wiggily. "Now when I go out in the rain—even if I don't have my umbrella with celluloid windows in it—I shall not get wet." Just then in came Mr. Whitewash, the polar bear, bringing some ice for Uncle Wiggily's supper, and Mr. Whitewash said:  
 "Oh, what a fine coat. Of course it's too small for me, but it is very nice, otherwise."  
 "It will fit you, too," said Nurse Jane. "That rubber plant grows very stretchy. Try it, Mr. Whitewash, and if you like it I'll make one for you."

Uncle Wiggily took off the rubber coat, which shrank back in size until it looked right for Sammie Littletail, and then Mr. Whitewash slipped his paws in the sleeves.

"Why," exclaimed the polar bear gentleman in surprise. "It fits me like a glove! My, what a fine, stretchy rubber coat," and he took hold of one corner and pulled it out.

"Snap!" the end of the coat flew back, hitting Mr. Whitewash on the paw.  
 "Ouch!" howled the polar bear gentleman with a little laugh.

comes this way I'll catch him by his long rubber coat and pull him in. Then I can nibble his ears."  
 The bunny passed the puddle. Up went the snout of the gator and he caught hold of the rubber coat.  
 "Let go!" cried Uncle Wiggily, pulling back.  
 "No! No!" bellowed the alligator, pulling forward.  
 The rubber coat began to stretch. Longer and longer it was pulled out, one corner in the gator's mouth. All of a sudden the gator lost his hold. Back flew the rubber coat, and it snapped Uncle Wiggily away out of reach of the bad animal.  
 The rubber coat began to pant the bunny for the breath was knocked from him. "But that's better than having my ears nibbled," he said. "My snappy, stretchy rubber coat saved my life!"  
 And so it had, for when the gator let go he fell back in the mud puddle and bumped his nose, and it served him right, I'll say. And if the lollypop doesn't hide down inside the ice cream cone to get away from the peppermint drop, I'll tell you next about Uncle Wiggily and Sammie's bird. Copyright, 1922, by McClure Newspaper Syndicate.

**Professional Cards**  
**W. H. Appleton, M. D.**  
 Rooms 14-15-16 Central Bldg. Office Phone Glen. 71. Residence Phone 2283-R. Office Hours, 1 to 4 p. m., or by appointment.  
 X-RAY ELECTRONIC DIAGNOSIS AND TREATMENT (Abrams).

**DR. MARLENEE**  
 Optometrist-Optician  
 RELIABILITY, QUALITY SERVICE  
 20 YEARS A SPECIALIST  
 Own Complete Grinding Plant  
 Phone for Appointment—Office Glendale 18-N—Res. Glen. 23-1  
 104 E. BROADWAY GLENDALE

**Dr. Frank N. Arnold**  
 DENTIST  
 Flower Block, over Glendale Savings Bank, Brand and Broadway  
 Hours: 9 to 12; 1:30 to 5  
 PHONE GLENDALE 463

**James A. Belyea, M. D.**  
 Nervous and Mental Diseases  
 Suite 4 and 5, Central Bldg., 111 E. Broadway, Glendale, Calif.  
 Residence Phone Glen. 1722-W.  
 Office Phone Glen. 2500.  
 Office Hours 10 to 12; 2 to 5, or by appointment.

**DR. R. C. LOGAN**  
 DENTIST  
 Fifteen Years' Experience  
 Latest X-Ray Equipment  
 Phone Glen. 1432  
 Office: Glendale Theatre Bldg., 124 S. Brand Blvd.

**TRUCKING**  
 WE MOVE ANYTHING  
 Prices Reasonable  
**HARRY'S TRUCK CO.**  
 312 E. Broadway—Glendale 190  
 C. E. Phillips, Prop.  
 Night Phone Glendale 365-R

**Morgan Bros. Transfer**  
 Formerly  
**Jesse's Express**  
 Glendale 75 117 E. Broadway

**Panama Transfer & Storage Co.**  
 BARRAGE STORED SEVEN DAYS FREE.  
 Trunks, Freight, Furniture, Pianos, General House Goods.  
 115 E. Broadway, Glendale, 390.  
 Night Phone, Glendale 1878-W

**STAY**  
 —Delaying repairs on the most essential part of your home—"The Plumbing"—and call GLENDALE 885  
 PHONE 885 134-136  
 GLENDALE PLUMBING COMPANY

**SERVICE TRANSFERS**  
 Transfer of light and water service has been requested by the following residents' and orders are now on file in the public service department at the city hall: E. Stromberg, 217 West Garfield street, 1148 Green street; S. E. Broyles, 465 Salem street, 354 Myrtle street, R. Yokel, 720 South Louise street, 126 East Maple street, to Burbank; A. B. Woodside, 538 North Kenwood street, 465 Salem street; A. B. Heacock, 708 East Raleigh street, 709 East Windsor road; G. W. Inebitt, 216 North Jackson street, to Grand Ronde, Ore.; A. J. Gains, 1061 Raymond street, 612 East Colorado street; W. T. Herbert, 216 North Cedar street, 1423 Rock Glen avenue.  
 Installation of meters has been requested by the following: J. R. Luttrell, 1835 Vassar street; Blossom Bee, 347 West Euclid street; Mrs. Harting, 407 Vine street; Martin Veselich, 1827 South San Fernando road; E. Stromberg, 1148 Green street.  
 Service has been obtained by the following: F. B. Webster, 121 East Lomita avenue; Mrs. MacKenzie, 541 North Kenwood street; J. R. Thompson, 1003 North Louise street; S. Mertz, 217 West Garfield street; H. E. Reynolds, 181 South Delaware street; Eagle Rock; Rose Annerberg, 708 North Jackson street; T. A. Tweedy, 538 North Kenwood street; Mrs. Anna Johnson, 433 West Garfield avenue; M. M. Howard, 703 East Colorado street; Rice Brannock, 314 West Hawthorne street; Mrs. Mabale Royer, 112 North Cedar street; F. H. Dagley, 430 South Columbia avenue; L. Johnson, 720 South Louise street; A. J. Gains, 612 East Colorado street; J. A. Holden, 101 East Doran street; W. T. Herbert, 1423 Rock Glen avenue; J. A. Bechtler, 559 West Elk avenue.

**Electronic Reactions of Dr. Abrams**  
 Diagnosis and Treatment  
 Dr. W. Bruce Lynd E. R. A.  
 Dr. N. Richard Lynd E. R. A.  
 702 E. Broadway Glen. 2201

**WHY BE SICK?**  
 Adjustments Remove the Cause of Dis-ease  
**Dr. Albert Vack, D. C. Ph. C.**  
 CHIROPRACTOR  
 105 S. Maryland, cor. Broadway  
 Glendale 1822-W. Hours 9-12, 1-7.  
 Examination Free

**OSTEOPATHY**  
**DR. OTLEY**—Day and Evening  
 Graduate Kirsaville, Mo., 1907  
 702 East Broadway Glen. 2201  
 Folding Tables for Home Treatment

**DR. W. B. LYND, E. R. A.**  
 Electronic Reactions of Dr. Abrams

**RED FEATHER MATERIALS CO.**  
 3408 Glendale Blvd. GL. 1901-W  
 BUILDING SUPPLIES  
 Builders' Hardware, Paints, Plaster Board, Roofing, Etc.

**SOFT THROAT**  
 Gargle with warm salt water—then apply over throat—  
**VICKS VAPORUB**  
 Over 17 Million Jars Used Yearly

**Professional Cards**  
**Dr. W. E. Sunderman**  
 DENTIST  
 Nesselroad Bldg., 221-A W. B'd'y  
 Hours, 9 to 12; 1:30 to 5 P. M.  
 Phone Glen. 2977

**PIANO TUNING**  
 Adjusting by Our Experienced Workmen; Satisfaction Guaranteed. FREE ESTIMATES.  
**GLENDALE MUSIC CO**  
 SALMACIA BROS.  
 108 North Brand, Glendale 80

**SYSTEM**  
 DYE WORKS  
 Expert Cleaning, Pressing and Dyeing

**Phone Glendale 1634**  
 109 W. Broadway  
 E. P. Beck M. M. Beck

9 to 5:30 Daily, Wed. and Friday Evenings  
**Barnett System of Growing Plants**  
 221 W. Broadway  
 Phone Glen. 2881

**Dr. Bion S. Warner**  
 OSTEOPATH  
 PHYSICIAN AND SURGEON  
 108 N. Brand Blvd.  
 Office Phone Glendale 2205-M  
 Res. Phone Glendale 2725-N

**CHIROPRACTORS**  
 Cobb & Wilkins  
 3-5 Monarch Building  
 206 S. Brand Blvd.  
 Glen. 2092  
 Hours, 10-12 A. M., 1-5 P. M.  
 Mon., Wed., Fri., 7-8 P. M.

**TELEPHONE GLENDALE 2190-R**  
 OFFICE 2770  
 Estimates Furnished on Application  
**EXPERT TILE WORK OF EVERY DESCRIPTION**  
**GLENDALE TILE & MANTEL CO.**  
 FLOORS, WALLS, MANTELS  
 TILE, SINKS, BATH TUBS  
 Office 107 E. Doran St.  
 Residence 534 N. Isabel St.  
 GLENDALE, CALIF.  
 JOSEPH FORTUNATO, Prop.

**AUTOMOBILE REPAIRING**  
 Worth White  
 HERB VAIL  
 314 E. Broadway

**We Know How to Do It**  
 GLENDALE CARPET & MATTRESS WORKS  
 1411 S. San Fernando Road, Mattresses renovated new ones, any kind; carpets cleaned; upholstery. Glendale 1928.

**STEVEN'S PAINT STORE**  
 PATTON'S SUN PROOF PAINT, Wall Paper, Window Shades, Roofing, Plaster Wall Board, \$35.00 per 1000 square feet, 219 1/2 E. Broadway, Glen. 680-J

**Electronic Reactions of Dr. Abrams**  
 Diagnosis and Treatment  
 Dr. W. Bruce Lynd E. R. A.  
 Dr. N. Richard Lynd E. R. A.  
 702 E. Broadway Glen. 2201

**WHY BE SICK?**  
 Adjustments Remove the Cause of Dis-ease  
**Dr. Albert Vack, D. C. Ph. C.**  
 CHIROPRACTOR  
 105 S. Maryland, cor. Broadway  
 Glendale 1822-W. Hours 9-12, 1-7.  
 Examination Free

**OSTEOPATHY**  
**DR. OTLEY**—Day and Evening  
 Graduate Kirsaville, Mo., 1907  
 702 East Broadway Glen. 2201  
 Folding Tables for Home Treatment

**DR. W. B. LYND, E. R. A.**  
 Electronic Reactions of Dr. Abrams

**RED FEATHER MATERIALS CO.**  
 3408 Glendale Blvd. GL. 1901-W  
 BUILDING SUPPLIES  
 Builders' Hardware, Paints, Plaster Board, Roofing, Etc.

**J. F. SMITH**  
 THE PLUMBING REPAIR MAN  
 —Jobbing a Specialty, also Sheet Metal Work.  
 110 W. Broadway Phone 880  
 GLENDALE, CALIF.

**ROOFING**  
 New Composition Roofs Laid, Old Roofs Rebuilt or Repaired. Material and Labor Fully Guaranteed. Estimates Cheerfully Given  
**BENTLEY LUMBER COMPANY**  
 Glendale 49 460 West Los Feliz Road

**AUTHORIZED Ford DEALER**  
 YOUR OLD FORD TAKEN IN TRADE. BALANCE MONTHLY. Parts, Repairs, Accessories.  
**JESSE E. SMITH**  
 118-125 W. Colorado St. Glendale 432

**ROBINSON BROS. TRANSFER**  
 FIRE-PROOF STORAGE CO.  
 Phone Glendale 428 Night Phone 1023-J  
 304-306 SO. BRAND BLVD., GLENDALE  
 PACKING MOVING VANS SHIPPING

**LEWIS C. DAVIS**  
 Shades, Linoleums, Curtain Rods, Linoleum Rugs  
 Measurements Taken and Estimates Gladly Given  
 210 E. Broadway, Glen. 2012.

**AUTO BODY and FENDER REPAIRING**  
 —BAKED ENAMELING AND RADIATOR REPAIRING—  
**Glendale Auto Body and Fender Shop**  
 Rear of 133 South Brand Phone Glendale 904-J

**BIRTHS**  
 A son was born to Mr. and Mrs. M. E. Pringle of 216 Ellis avenue, Eagle Rock, last night, Friday, February 23, 1923, at the Glendale Sanitarium and Hospital.

**NOTICE FOR PUBLICATION**  
 Notice is hereby given that by a resolution adopted by the Board of Directors of the Glendale Savings Bank at the regular meeting held on February 6th, 1923, it was ordered, and a meeting is hereby called of the stockholders of said Glendale Savings Bank, to be held on Wednesday, the 18th day of April, 1923, at 7:30 p. m. of that day, at the banking room of said corporation, at No. 191 South Brand boulevard, in the City of Glendale, State of California, for the purpose of considering and acting upon a proposition to increase the capital stock of said corporation from Five Hundred Dollars divided into Five Hundred Shares of the par value of One Hundred Dollars each, to One Hundred Thousand Dollars divided into One Thousand Shares of the par value of One Hundred Dollars each.

And also to consider and adopt the necessary amendments to the articles of incorporation and the By-laws to include and to establish a commercial department, subject to the approval of the State Banking Department. And further to take all steps necessary and appropriate to increase the capital stock and establish a commercial department in the manner provided and prescribed by the laws of the State of California.  
 W. H. PRANCY, Secretary.  
 Feb. 10-17-24, Mch. 3-10-17-24-31, Apr. 7-14.

**THEATRES**  
 The GLENDALE  
 Five acts of standard vaudeville are on the boards of the Glendale Theater today, headlined by Casson Bros. & Marie, in "Novel Originalities." The other four acts are Gates & Grant, in "Music, Songs and Dances;" Harry Lee, in "Ventriquoil Bell-Hop;" Clifton & Young, in "Musical Comedy," and the Stratford Comedy Trio, in "Typical Jokers."  
 The picture today is "The Infamous Miss Revell," a Metro feature, with Alice Lake and an all-star cast.  
 Starting tomorrow (Sunday) the picture at the Glendale Theatre will be Reginald Barker's newest classic, "Hearts Aflame," with Anna Q. Nilsson and Frank Keenan.  
 The picture today is "The Infamous Miss Revell," a Metro feature, with Alice Lake and an all-star cast.  
 Starting tomorrow (Sunday) the picture at the Glendale Theatre will be Reginald Barker's newest classic, "Hearts Aflame," with Anna Q. Nilsson and Frank Keenan.  
 Air humidifying apparatus is being installed in many homes.

**CESSPOOLS**  
**E. H. KOBER**  
 110 W. Bdwy. Phone Gl. 894

**THE GLENDALE EVENING NEWS**

Published Daily Except Sunday

A. T. COWAN - - - - - Publisher and Proprietor  
Office of Publication, 139 South Brand Boulevard  
PHONE GLENDALE 132

**THE GLENDALE EVENING NEWS HAS THE COMPLETE LEASED WIRE REPORT OF THE INTERNATIONAL NEWS SERVICE**

Entered as second-class matter, January 12, 1922, at the Postoffice at Glendale, Cal., under the Act of Congress of March 3, 1879

Subscription Rate: Single Copy, 5 Cents; One Year, \$6.00; Six Months, \$3.25; Three Months, \$1.75; Two Months, \$1.25; One Month, 70c

GLENDALE, CALIFORNIA, SATURDAY, FEBRUARY 24, 1923

**CLASSIFIED ADS**

To assure proper classification copy for classified ads should be in this office before 11:30 o'clock a. m.  
First insertion—Minimum charge, 30 cents, including four lines counting five words to the line. Additional lines 5 cents per line.  
Subsequent consecutive insertions—5 cents per line. Minimum 15 cents.  
Ads inserted under "Announcements" will be charged for at the rate of 10c per line.  
Not responsible for errors in ads received over the telephone.  
No display advertising accepted on classified pages.  
Office hours, 9:30 a. m. to 9:30 p. m., except Sunday.  
139 South Brand Boulevard.  
Phone Glendale 132.

**REAL ESTATE FOR SALE**

**GLENDALE PROPERTY**

**GLENDALE BARGAINS**  
New, 6 rooms, near new high school, all oak floors, very attractive and a real home. Three bed rooms, large garage. Selling \$1000.00 below value—\$5700—\$1000 cash.

6-room bungalow, 3 bed rooms, oak floors, fire place, 1/2 block from Broadway. Lot alone worth \$2500. A real bargain—\$5750—\$1500 cash.  
6-room colonial on Louise St., 3 bed rooms, all oak floors, gas furnace, fine interior decorations. Very attractive throughout. This place cannot be duplicated for the money—\$7600—\$2000 cash.  
New 5 rooms, oak floors, 2 blocks to car line. Very neat. A good buy—\$5500—\$1250 cash.  
New 5 rooms, 2 bed rooms and sleeping porch, double garage. Sold to sell quick—\$5250—\$1000 cash, \$3750 per month.  
3 rooms—\$3700—\$650 cash.  
5 rooms, California house, \$3500—\$1500 cash.  
4 rooms, \$4200—\$500 cash.  
Salem lot, \$1050—\$275 cash.  
Palm Drive lot, \$1265—\$525 cash.  
Columbus, \$1350.  
Palm Drive, near Columbus, \$1250.  
Lot just off Central, \$1800—a pick-up.

**R. N. STRYKER**

217 N. Brand Glen. 846

**FOR SALE—New 5 room stucco bungalow and garage, all conveniences**. Lot 50x150, 815 E. Windsor Rd. Phone Glen. 417. Courtesy to agents.

**BUNGALOWS**

Five rooms, large rooms, modern, close in, hdw. floors, built-ins, large porches, garage, lawn and flowers, \$1,000 down and move in.  
Six rooms northeast section with 3 bed rooms, hdw. floors, gum finish, best section of city, \$2,350 down.  
Business block on boulevard, a corner with 3 stores all leased for three years, a bargain if sold quick.

**JAMES W. PEARSON, Realtor**

715 S. Brand. Phone Glen. 346

**BRAND BLVD. BUY**

Corner 54x160, new 5 room house and garage in rear, \$14,500 or Brand frontage, \$9,500. Very easy terms, this is a snap.

**JESSIE A. RUSSELL CO.**

Exclusive agents, Ph. Glen. 1141-W. 208 So. Brand

**A \$300 GIFT**

6 room, two story home, on No. Belmont, 1 1/2 blocks to Broadway. Home in best of repair. Lot 50x150, 20 ft. alley, large garage, 2 porches, lawn and fruit trees, now \$6,000, \$2,000 down.

**STEWART REALTY COMPANY**

219 E. Bdw. Glen. 105

**ARTISTIC HOMES**

Up in foothills, amongst beautiful homes, 3 blocks from N. Brand car; price \$5750, terms, \$3000 down.

**ANOTHER**

Large and spacious, all modern conveniences, fruit, flowers, basement; price \$8250, terms, \$3750 down.  
W. A. HORN INVESTMENT CO., 221 N. Louise St., Glen. 2136M

**COLORADO, COMING BUSINESS**

**\$11,000 \$6500 CASH**

Large lot, improved with store bldg. and modern 7-room bungalow. Large living and dining room. Hardwood throughout. 2 bed rooms and 2 sleeping porches, garage. A real home and income.

**YALE BROS. REALTY**

249 N. Brand Blvd. Glen. 1569

**COLORADO, COMING BUSINESS**

**\$11,000 \$6500 CASH**

Large lot, improved with store bldg. and modern 7-room bungalow. Large living and dining room. Hardwood throughout. 2 bed rooms and 2 sleeping porches, garage. A real home and income.

**YALE BROS. REALTY**

249 N. Brand Blvd. Glen. 1569

**COLORADO, COMING BUSINESS**

**\$11,000 \$6500 CASH**

Large lot, improved with store bldg. and modern 7-room bungalow. Large living and dining room. Hardwood throughout. 2 bed rooms and 2 sleeping porches, garage. A real home and income.

**YALE BROS. REALTY**

249 N. Brand Blvd. Glen. 1569

**REAL ESTATE FOR SALE**

**GLENDALE PROPERTY**

**BUYS AT BARNEY'S**

\$5500—CASH \$1500  
A pretty 5 room Stucco Bungalow, close in, with 2 bedrooms, all H. W. floors, fireplace, breakfast room, every built-in feature, large lot with lawn and garage, beautiful view of the mountains, Bal. like rent. A good buy.

**\$6300—CASH \$1500**

One of the best 5 room stucco houses in Glendale, having 2 light airy bedrooms, all H. W. floors, pretty fireplace, and built-in features of every description, breakfast room in a well arranged kitchen, lot is 50x170 with nice lawn and shrubbery, garage. House has a large front porch. Can be bought furnished for \$300 more.

**\$6950—CASH \$2000**

Only 1 block to the new high school, and close to Colorado Blvd. This fine new 5 room house, has 2 large airy bed rooms leading off a hall, bath room has built-in features, living room has a beautiful stone fireplace, book-cases, writing desk, dining room has pretty buffet, kitchen has every built-in convenience, large back screen porch with two sets of stairs and plenty of room for an electric washer, lot is 50x183 with fruit trees, double garage. Balance easy terms.

**\$8000—CASH \$1500**

Completely furnished and ready to move right into, this pretty 5-room bungalow, close to the new high school, all oak floors, fireplace, buffet, basement, kitchen has pretty breakfast nook, and every built-in feature, large garage, lawn, shade and flowers. A place that you can rent for \$75 per month.

**J. E. BARNEY Real Estate**

131 N. Brand Blvd. Glen. 2590

**PAGE-STONE CO., Inc.**

**THE LOCATION WITH A FUTURE SAN FERNANDO BLVD. BUSINESS BLOCK**

**PAYING \$400 MONTHLY**

We have this conservative investment at a very attractive price and easy terms.

**PAGE-STONE CO., Inc.**

113 E. Broadway Gl. 2339  
Open Sunday—Evenings 7 to 9

**A. T. GRAY**

209 W. Broadway Glen. 2147-R

**WHY PAY RENT?**

Small 5 room bungalow near new high school. All for \$3200; \$500 down, balance \$40 per month.

5 room, new, N. W. section, 2 bedrooms, all built-in features, H. W. floors; fruit trees; very special, \$5250. \$1500 cash, balance \$375.

5 room Spanish stucco, 5 rooms, has two large bedrooms, plenty of closets and all built-in features. \$6200. \$1000 down, and \$50 per mo. Vacant lot, 3 blocks from car. \$1150.

Brand Blvd. 50x225 \$3500.

**VANDEHOFF**

295 No. Brand Blvd. Ph. Gl. 2976

**A REAL HOME IN THE RIGHT PLACE Verdugo Woodlands**

Strictly new 6 room house with all the luxuries a person would desire, cement basement under all the house. Extra large lot on one of the most quiet streets, priced at \$7800. Terms. Phone Hail, 51-J-3 and I'll tell you all about it or drive up to 1621 Don Carlos, Verdugo Woodlands.

**A REAL HOME**

Near new Glendale High School, five large rooms, nook, garage, cement work, stucco garden, fruit trees, lawn, shrubbery, fenced, on paved street, lined with shade trees, lot 50x133, \$1750 cash handles. Call Garvz, 5092 any time.

**\$2000 DOWN—\$40 PER MONTH**

New 5 room bungalow and garage; one block from Broadway; 14 orange trees on place. 1112 E. Harvard St., near Adams.

**A REAL HOME**

Lot 45x170, with 5-room modern house, lawn in, shade trees and flowers, 1/2 block to car, close to school, an ideal place. Price \$3250. 1055 Justin Ave. Phone Glendale 2402-J.

**FOR SALE—by owner, six room house, nearly new; modern; garage; pergola; lawn; flowers; near park, carline, bus. \$7000, \$1500 cash. 500 Fairmont.**

**NEW DUPLEX LESS THAN COST**

Easy terms, small down payment, vacant, rental value \$45 each side, low carfare to L. A. Owner at the property Sunday afternoon. Located at 1934 Gardena.

**FOR SALE—\$700 down; four-room new and modern furnished bungalow, on good street, 2 bedrooms, living room and dining room combination, complete bath, very convenient kitchen, large screen porch with laundry tray, garage; if you want a very comfortable and neat little home, see this one, price \$4400, monthly payments like rent, 210 E. Bdw., phone 1238-J or 2734-W.**

**FOR SALE—By Owner and Builder; six-room stucco bungalow on Vassar street, half block east of Brand Blvd., all hardwood floors. Look this house over. A. E. Woodmansee, 424 1/2 W. Windsor Rd. Phone Glendale 1694 W.**

**ASK TO BE SHOWN**

Court site, close to Brand, 90x170, 5 room house, price \$6500.  
South Brand corner, 100 foot frontage, big modern house, price \$23,000.  
6-13 acres, apricots bearing this year, on good boulevard in fast developing section, \$1400 per acre.  
Nearly new, house on fine view lot, very complete house, large rooms, \$1000 cash, price \$6500.

**V. E. WEST**

217 So. Brand Ph. Gl. 3015

**REAL ESTATE FOR SALE**

**GLENDALE PROPERTY**

**DIETRICH CO. BARGAINS**

A Home "set upon a hill, beautiful for situation," overlooking Glendale, Universal City, Hollywood and panorama of mountains and valley. Frontage 150 feet, depth 400 feet, house brown stucco, new, 15 rooms, interior finished in ivory and silver grey, large living room across entire front, library, music room, dining room, breakfast room, kitchen, laundry room and 4-room servants' quarters. Upstairs, sitting room commanding view mentioned above, bed rooms with private baths, card room and billiard room; basement, plastered and finished. Special water softener system, unit heat system, electric wiring, from basement to top floor inclusive. The grounds consist of lawns, rose garden, shrubbery, fruit and vegetable gardens, and winding walks and drives. Price \$35,000.00 Terms to suit.

**100 feet off Kenneth road, 6 room Colonial Bungalow, tile fireplace, every modern built-in feature, only 3 blocks from car line, 2 blocks from school, southeast front. Tapestry wall paper, real mahogany finish; this house has just been furnished by Los Angeles Decorator, and if desired furniture can be had at reasonable price. This house is surrounded by lawns, shrubbery and roses, and must be seen to be at all appreciated at its right value. East-west frontage, but for sale within the next 10 days at \$7900, \$3900 cash.**

**If you want a bargain in a 5 room home, we have it. Brand new, north front, lawn, 7 fruit trees, garage, decorated paneled paper, chrome with care to match interior finish, clear hardwood floors throughout, \$1500 cash. Price only \$5200.**

**Besides our Glendale vacant properties we are specializing in Verdugo Woodlands, Glendale Crest, Glendale Heights, Flint-ridge and La Canada.**

**Dietrich REALTY CO.**

133 1/2 S. Brand. Gl. 2921

**A DANDY 4 ROOM HOUSE NEAR CENTRAL FOR ONLY \$3800**

Complete in every way, well built, hardwood floors; see it.

**W. WALLACE PLUMB CO.**

229 N. Brand. Ph. Glen. 2954

**FOR SALE—Pretty 5-room bungalow on Palm Drive at a bargain. Inquire of owner, 538 Palm Drive.**

**WHO WILL BE THE ONE?**

We have just one cheap lot left our **ORCHARD HOMES TRACT** And it is a good one. Only \$1600, 1/2 cash; 5% disc't. for all cash. "Who will be the lucky one to get this? Close to New High School and car line.

**WRIGHT & HOGAN, INC.**

1319 E. Broadway

**OWNER MAKES UNUSUAL OFFER**

My splendid Swiss chalet, 7 rooms, 4 light, airy bedrooms. All other rooms are unusually built and equipped with every built-in feature. Totally one of the best places in Glendale, and by bank appraisal worth \$10,000. I must sell at once and no fair price will be refused. If you want this fine home on such an unusual offer, come up tomorrow. Small cash payment and a late model standard, auto considered. 430 W. Burchett.

**Name Your Terms**

Just one left of those cute homes on Glenwood road, 2 bedrooms, hardwood floors. Fireplace and everything. Garage built honest. Price \$4950. Come in and let's get together. See Mr. High.

**LEHIGH INV. CORP.**

"Own Your Home" 113 E. Broadway. Gl. 2859-W

**FOR SALE—New, five room, modern bungalow, with breakfast nook, 12x20 living room, with real fireplace, tiled in Calif. tub, numerous built-in features. 3 1/2 blocks from Brand Blvd. Price \$6000, \$2000 down. See owner on premises, 619 E. Maple.**

**FOR SALE—One 5-room Colonial, one 6-room stucco. In fine location; bargain from owner. Ph. Glen. 2649-M.**

**3961 SENECA AVENUE**

260 feet from Los Feliz Road. An unfinished 4 room bungalow. Must be sold by March 1, 1923. Cash \$500, balance long time payments, owner 119 N. Central Ave., phone Glendale 1692-J.

**FOR SALE—By owner; an acre right in Glendale, five-room modern bungalow, garage, chicken pen, 75 assorted fruit trees. Will sell all or part, terms if desired. 1009 S. Columbus Ave.**

**FOR SALE—9 room, new, modern house at 404 Ross St., right at foothills, will take unimproved property as part payment. Phone Glen. 735.**

**REAL ESTATE FOR SALE**

**GLENDALE PROPERTY**

**PAGE-STONE CO., Inc. A HOME TO SUIT EVERY PURSE**

**4 ROOMS—\$3250. \$500 DOWN**  
The balance \$35.00 monthly.

**4 ROOMS—\$2200. \$1200 DOWN**  
The balance \$35.00 monthly.

**4 ROOMS—\$3500. \$1200 DOWN**  
A real bargain. See this today.

**6 ROOMS—\$6800. \$1000 DOWN**  
Not a new house, but a really beautiful home and in a splendid location. It is underpriced.

**5 ROOMS—\$3250. \$1250 DOWN**  
A new Spanish stucco home in a nice location. H. W. floors, built ins, fireplace, garage a very attractive home and a good buy.

**5 ROOMS—\$6600. \$2500 DOWN**  
A new home, beautiful gum finish, oak floors, built ins, garage. This is one you will certainly like.

**6 ROOMS—\$6000. \$2000 DOWN**  
H. W. floors, built ins, fireplace, garage. This is priced right.

**5 ROOMS—\$5750. \$1000 DOWN**  
New with many built ins, H. W. floor, garage, inst. heater, etc. A good home and a bargain.

**6 ROOMS—\$7500. \$3000 DOWN**  
New Tile Stucco, 3 bedrooms, beautiful built ins, fireplace, H. W. floors, gas furnace, double garage. A wonderful view. This home is underpriced.

**5 ROOMS—\$5800. \$1500 DOWN**  
This is a fine home, sun porch with mountain view, built ins, H. W. floors, garage, lawn, flowers, etc.

We have a large listing of properties: Duplexes, business buildings and vacant frontage. A large list of vacant residential lots, many of which are priced below present market values. Phone or call and make appointment for showing.

**PAGE-STONE CO., Inc.**

113 E. Broadway - - Gl. 2339  
Open Sunday, Evening 7 to 9

**EXTRA FINE SIX-ROOM HOME**

Large, well-lighted living and dining rooms; real fireplace; bachelor tile mantel; bookcases on each side; spacious buffet in dining room. These two rooms are finished in southern figured gum; selected for its richness of color and beautiful grain; Ward floor furnace in dining room.

KITCHEN, tile drainboard; built-in ironing board; every built-in feature so as to provide maximum efficiency with minimum effort to make life easy for the housewife.

Laundry room has two tubs and automatic water heater. All bedrooms have 2 bedrooms, extra large closets with built-in chest of drawers in each. Front bedroom may be used for a den or music room.

SELECTION HARDWOOD FLOORS (1 1/2 face) throughout house.

BATHROOM, best plumbing tiled-in tub; shower, linen cabinet and medicine chest and plate mirror.

Large linen closet in hall.

Walls in all rooms are Tiffany blend (painted four coats) all woodwork inside has four coats and outside three coats; best lead and oil.

Basement with cement floor; fine, brick front porch enclosed with brick retaining wall.

This house is exceptionally well built. Floor joist are 18 in. apart; 2x4 studding all the way thru. Tar paper between studding and siding to make the home warm in the winter.

Home located at 320 East Raleigh, just off Adams, fest.

**G. EDWIN MURPHY**

Phone Glen. 2974-J  
DESIGNER AND BUILDER

**FOR SALE—4 room, all modern bungalow, 2 bed rooms, screened in back porch; garage, chicken house and run, full bearing fruit trees, lawn. Near carline in fine neighborhood. Splendid mountain view. \$1150 cash; terms like rent. 415 West Stocker.**

**FOR SALE—By owner. Just what you have been looking for, two 5-room houses, modern in every way, just being completed. Have bearing fruit trees, located near the foothills, two blocks from car line. Remarkable low price. See Owner, 608 West Doran.**

**FOR SALE—3 room bungalow, on high lot, with beautiful view, 60x188, north of Kenneth near Highland. Price \$2500, terms; lot alone worth the money.**

**New, ideal, 6 room bungalow on Atwater, 1 block from Brand, if you see it you'll buy it; really worth while investigating. Price \$6500. Can sell furnished.**

**J. M. BOLAND**

213 W. Broadway Ph. Gl. 1179

**FOR SALE—The best investment and income corner in city, at surprising figure and terms. A fine 6-room house on front, 3 bed rooms; plans all made for a 3-unit 4-room bungalow facing Columbus Ave., home rented for \$65. Total income of all 4 will be \$2400 or above 25% on investment; and you can buy this now for \$6350, cash \$2250, rest more than covered by rent. Call 430 W. Burchett St.**

**FOR SALE—Just what you are looking for, a cozy, well built, 4 room bungalow, in the best part of town. This is put at \$500 below value, \$1250 cash, \$300 W. Doran.**

**REAL ESTATE FOR SALE**

**GLENDALE PROPERTY**

**SACRIFICE**

Owner anxious to leave, offers classy, 5-room residence, new and modern in a fine location, at \$5200. A splendid home, all built-in features, lawn in, garage and everything. Quick action required. See us at once. \$1000 cash will handle.

**WONDERFUL BARGAIN**

Wake up, investors. Magnificent big business corner on San Fernando Road, 85x144. Room for six stores and two houses. This piece of ground holds tremendous possibilities and will be worth \$10,000 in less than two years. Buy it now for \$4750 on easy terms.

**SPLendid HOME**

of eight large rooms, close-in, on North Louise. Has double garage, basement and furnace. Everything the best. Lot 50x150 with a number of bearing fruit trees and a fine assortment of rare shrubs and flowers.

A rare buy at \$10,000. Terms arranged to suit.

**J. R. GREY REALTY CO.**

124 N. Brand Glen. 2008

**\$30 PER MONTH \$3200—\$500 DOWN**

You can't buy the earth or Kenneth Road on these terms, but you can buy as fine a little 4-room plastered house as could be desired at this price with 2 bedrooms, bath, hot and cold water, hall breakfast nook, large kitchen, built-in effects, cement porch, lot 50x150, no garage. Just off Parkdale. New, and built by individual; good neighbors.

**REAL ESTATE FOR SALE**

**VACANT LOTS AND ACRES**

**SOUTH BRAND CORNER**

Nearly 100 ft. Frontage. On one of the best corners on South Brand Blvd. Excellent location for high class oil station or first class business block. Only short block from Gate-Way Market and new \$40,000 Miller Theatre. Offered for short time at \$150 per front foot. You will never have this chance again, so take advantage of it now.

**S. BRAND, 50x180 TO ALLEY**

Here is the best buy in a real business lot on Brand Blvd. Located within a stone's throw of both the new Miller Theater and the Gate-Way Market. Someone is going to make a killing on this lot. Why not you? Price \$7500. \$3,000 cash, balance to suit.

**EDWARD HENNES, Realtor**

"Where Prices are Right" 719 S. Brand, Tel. Gl. 114-W

**\$1800 CASH**

for a lot north of Lexington, east of Brand, south of the wash and West of Geneva. Hurry! Someone is going to get this money and I want a lot at once. Address: Box A-920 Glendale Evening News.

**LA CRESCENTA**

Residence lot 50x238, \$700; small cash payment with \$15 per month. Other splendid values in residence and cottages. Come to see at once and get in on these lots.

**ALEXANDER & SON**

202 N. Central Gl. 35-J

FOR SALE—Beautiful football lot, 50x217 feet, street paved with concrete paving, all assessments paid, 10th, between Elwood and Providencia streets, \$1350. Phone Burbank 330, business hours.

**LOTS—LOTS**

60x250 \$2000 Terms  
50x167 \$2500 "  
50x125 Close in \$1900 "  
50x160 Close to Brand \$2000 "  
40x137 Corner \$2250 "  
90x150 Corner \$3500 "  
56x154 N. Brand \$2650 "  
50x177 N. Brand \$3500 "

**ENDICOTT & LARSON**

116 S. Brand Gl. 822

**LOTS FOR SALE BY OWNER**  
Go one block north from Casa Verdugo postoffice on Central Ave., turn to the left on Loraine to Columbus; 8 of them on Columbus and Loraine; just plowed, size 60x250, priced \$2000 and up. Your own terms if within reason. Call Matzkus, owner, Vermont 975 L. A.

**ONLY LOT LEFT**

Adjoins new High School, \$1500. Terms.

**PARR & ZOOK**

Glen. 761-J 102 E. Broadway

FOR SALE—Near Kenneth Road, half acre lot, with all improvements paid for, \$2300. Owner 875 Burchett.

**LAST COURT SITE**

On east Harvard, 90x219. Near Broadway and new high schools, \$2900 and up.

**GRAHAM & KIRK**

1120 E. Colorado, Gl. 1348-M

"DO IT NOW"

**TODAY'S BEST BUY**

**FOR CORNER LOT NORTHWEST SECTION**

Extra large, 60 1/2 x 189; fine location on Tenth St. Has double garage with cement floor. Priced only \$3000, \$1000 cash. W. WALLACE PLUMB CO. 229 N. Brand Ph. Gl. 2954

**A BARGAIN—Two lots at \$675**

each, cash, \$225, balance \$10 per month, near Park Ave. and Griffith Park. Owner 348 W. Park Ave.

**\$2000—A Buy—\$2000**

Duplex site on Raleigh street, just off of Glendale avenue, 50 by 150, with shed garage, worth \$2500 now. Takes \$1225 cash to handle, balance \$25.00 per month. This is where values are sure to go higher.

**LEHIGH INV. CORP.**

113 E. Broadway, Gl. 2859-W

**LOTS—o—LOTS**

50x138 East Palmer, terms. 50x182 Viola street, terms. 50x150 Mariposa St., terms. Also lots at Montrose. See owner at 202 N. Central. Tel. Gl. 35-J

**MY LAST CARD**

Unable to meet payment so will sell my \$700 equity on two beautiful Pasadena home sites for \$500. Lots adjoin the Annapolis Country Club Grounds. Size of lots are 50x180, 1 block from schools, stage and car line. Would consider a good car. See Mr. Schaefer, 1715 S. San Fernando Road.

FOR SALE—On Highland Ave. Just off Kenneth Rd., 2 lots 50x200, \$1750 and \$1650, if sold to cash, \$3200, 1-3 down. Call Gl. 2466-J.

**REAL ESTATE FOR SALE**

**VACANT LOTS AND ACRES**

**SUNSET GROVE**

FULL SIZE LOTS, \$975 UP \$100 CASH, \$20 AND \$25 PER MONTH

Beautiful, level lots covered with bearing fruit trees between Kenneth Road and Tenth St. in northwest section. No temporary homes. Restrictions \$3000 and \$3500. Unsurpassed panoramic view; fine soil. Selling rapidly. Don't delay. Buy at opening prices.

**HAMLIN & HEPBURN**

Glendale 996-J 203 W. Broadway

**NO. BRAND GOING FAST**

SEE OUR 'JUST SOLD' SIGNS  
A few splendid bargains left handed on good terms. Don't wait until they are all gone. Close-in corner 10x143. \$25,000. East front next to corner. 55x164. \$11,500. East front near California, 50x150. \$16,800. West front, 50x140. \$9,000. West front near Wilson. \$22,500.

**ENDICOTT & LARSON**

116 S. Brand Gl. 822

**BUSINESS PROPERTY**

A good investment, 2 lots 50x177 each, in direct path of business district, prices \$4250 and \$2500—half cash will handle.

**LOT BARGAINS**

For investment and building. We have several good lots that can be bought for \$150 down—get your today.

**WM. H. SULLIVAN**

112 South Brand, Ph. Gl. 983-R

**OUT OF TOWN PROPERTY**

FOR SALE—Four room house in Montrose, plastered and full plumbing, \$2800; \$250 down, balance cash. C. E. WILLIAMS, owner, 471 West Windsor Rt. Phone Gl. 2184J.

**BUSINESS OPPORTUNITIES**

WANTED—Partner by an experienced plumber and business man to go into the plumbing business in Glendale. \$1000 required. Experience not necessary. Box A-917 Glendale Evening News.

**WANTED TO BUY**

Five or 6 room house on large lot; must be priced right and prefer location just outside of Glendale, but within reasonable distance of school and carline. Address: Box A-921 Glendale Evening News.

**WANTED—Have a buyer for a 5 room modern house in Eagle Rock**

not over \$5500 with \$1000 down; if you want to sell, list your property. CHAS. C. KANSEN 111 E. Broadway

**WANTED—5 room bungalow**

close in; will give Buick coupe as first payment. Tel. Gl. 2681.

**MONEY TO LOAN**

**MONEY TALKS**

I can place your money at 7 and 8% on good security. 1st mortgages and 1st trust deeds. Building loans and collaterals.

**DUTTON THE HOME FYNDR**

S. W. Corner Glendale Ave. & Colorado

**GET A HOME**

Am not a real estate dealer, but a practical builder, 18 years in Glendale; will furnish part or all the money and plans to suit, terms. J. J. Burke, 1242 South Maryland, Gl. 256-J.

**MY LAST CARD**

Homes built and financed, no building too large or small. Put a duplex on that lot and double your money.

**DUTTON THE HOME FYNDR**

S. W. Cor. Glendale Ave. & Colorado

**WE WILL LOAN 50% OR MORE ON YOUR RESIDENCE PROPERTY**

Money available for building homes. Trust Deeds bought. HAYES, Gl. 864.

**MONEY WANTED**

**FOR SALE—Will sell at a discount**

first mortgages, trust deeds and first trust deeds, drawing 7 per cent to 8 per cent interest. Phone Glendale 2147-R or call at office, 209 W. Broadway.

**WANTED—\$8000 on 1st Mtg.**

Box 918 Glendale Evening News.

**FOR EXCHANGE**

ANY ONE WANTING to exchange Boulder or Denver, Colorado property for Glendale or Montrose lots or houses, see ALLBACK & SCHROEDER 700 S. Brand Blvd. Gl. 1865

**FOR EXCHANGE—Modern bungalow**

good as new, 6 large rooms, built-in features, hdw. floors, 1 1/2 bath west of Western Ave., in new Vermont Square, Los Angeles, for 6 or 7 room modern bungalow in Glendale. Ph. Gl. 2088-W in forenoon.

**TRUST DEEDS & MTGS.**

WILL buy trust deeds, discount 1% per month. Give location of property, etc. Box 912 Glendale Evening News.

**WILL discount Trust Deed for \$3000**

Box A 919 Glendale Evening News.

**FOR RENT**

FURNISHED APTS. & HOUSES  
FOR RENT—Furnished 4 rooms, bath and garage. Children welcome. W. N. BOTT 108 W. Colorado, Gl. 2394-W

**FOR RENT—4 room house**

with bath, partly furnished, on California Ave. Owner at 216-A E. Broadway (rear).

**FOR RENT—4 room apt.**

also 3 room apt., large, pleasant rooms, well furn., piano. Call 724 E. Bdv.

**FOR RENT—New single apts.**

furnished completely, all modern conveniences. 111 So. Orange. Gl. 1047-W.

**FOR RENT—Furnished 6 room home**

1125 East Maple St.

**FOR RENT—Elegantly furnished**

complete 4-room flat, tile bath and sink, everything thoroughly modern. 317 S. Glendale Avenue.

**FOR RENT—If it's worth renting**

we have it. Call or phone SUBURBAN REALTY CO., INC. Glendale 2424-W. 508 S. Brand

**Dandy Repairing and welding**

shop, free light, water, power and telephone. Separate motor and all line shaft complete. 124 N. Geneva, Ph. Gl. 179-M.

**FOR RENTALS**

Call MARY E. LINDSAY with YALE BROS REALTY CO., 249 N. Brand. Gl. 1569 "We Please the Homeowner"

**FOR RENT—New attractive**

completely furnished 4 room duplex, large living rooms, all built-in features, garage, adults. Own-er 406 Salem St.

**FOR RENT—Single Apartment**

furnished \$35. 114 W. Broadway Apt. 2; Adults.

**FOR RENT—Large living room and business room**

light housekeeping \$25.00. 105 S. Maryland, Apt. 8.

**FOR RENT—Houses furnished**

and unfurnished. ALEXANDER & SON 202 N. Central Ave. Gl. 35-J

**FOR RENT—Apt. 3 rooms and bath**

nice furnished, desirable neighborhood, close in, adults, \$50. 327 N. Louise.

**FOR RENT—Furnished or unfurnished**

strictly modern, 4-room apt. 312 1/2 So. Orange. Phone Gl. 2340-R.

**FOR RENT—2 connecting**

beautiful furnished rooms, for two adults, housekeeping privileges. 346 Pioneer Dr. Phone 2378-J.

**FOR RENT—Furnished half duplex**

four large rooms, choice, close in location, adults. Owner, 337 Myrtle.

**FOR LEASE—Furnished, adults only**

desirable, close-in 4-room apt., large sleeping porch, garage. See owner, 516 E. Harvard, Gl. 2352-M.

**FOR RENT—5 rooms, nicely furnished**

garage, 614 N. North Brand, Phone Gl. 2916-W.

**FOR RENT**

**UNFUR. APTS. & HOUSES**

FOR RENT—Modern newly decorated bungalow, 2 bed rooms, 625 South Louise St. Also apartment.

**BOLEN-BOWLER CO.**

200 E. Broadway, Ph. Gl. 2163

**FOR RENT—Half duplex**

4 rooms, modern, gas range in; couple preferred; close in, \$40 per month. Gl. 2530J.

**FOR RENT—3 room unfurnished house**

fine little home for couple. 419 West Broadway.

**FOR RENT—Nice, 4-room**

stucco bungalow, 3 blocks from P. O., \$46. HAMILTON & HARRIS, 115 W. Broadway.

**FOR RENT—5 rooms and breakfast nook**

\$50 per month, 554 W. Harvard St.

**FOR RENT—Unfurnished 4 room new flat**

and garage, tile bath and sink, everything thoroughly modern. 319 So. Glendale Ave.

**FOR RENT—Unfurn.**

two (3-room and bath) apts. in new duplex building, never been occupied, no objection to two or three small children. 707 N. Kenwood, phone Glendale 1057.

**CLOSE IN**

For rent—4-room strictly modern duplex, garage, beautiful location, \$50, water paid; adults; no agents. 365 Vine St.

**FOR RENT—9-room home**

arranged to sublet. Apply 827 East Colorado.

**FURNISHED ROOMS**

FOR RENT—Furnished room, all conveniences, one block from car, 390 N. Orange.

**FOR RENT—Nicely furnished**

room close in, garage, gentleman, ref. 318 W. Elk.

**FOR RENT—Pleasant and airy**

sleeping room, garage and bath, with privilege of kitchen and living room, for 1 or 2 gentlemen, or married couple, reasonable. Close-in. Phone Glendale 2856-W.

**FOR RENT—Pleasant room**

with board, for gentleman, close in, reasonable; 315 North Louise, phone Glendale 1051-W.

**FOR RENT—Room next to bath**

in beautiful home, 1/2 block from car, 262 W. Maple.

**FOR RENT—Front room, next bath**

near car line, close in, 420 W. Elk.

**FOR RENT—Furnished room**

in new home, close to car, kitchen privileges. 427 E. Elk.

**FOR RENT—Sunny rooms**

running water, meals if desired, 147 S. Belmont.

**FOR RENT—Beautiful, new furnished room**

garage if desired. 712 Raleigh St.

**FOR RENT—Furnished rooms**

and Garage, every convenience, 341 310 N. Cedar Ph. Glendale 2928-W.

**FOR RENT—Sunny room**

suitable for one or two persons. Reasonable rent. Phone Gl. 227-J 329 West California.

**FOR RENT—Cozy, furnished room**

close in, reasonable, gentleman or business woman preferred. Breakfast optional. 169 S. Cedar St.

**FOR RENT—2 furn. rooms**

gentleman, 311 So. Central, near Colorado.

**FOR RENT—Large, pleasant, newly furnished room**

with kitchenette, adults only. 1115 N. Central Ave.

**HOUSEHOLD GOODS**

**DINING Set, Rocker, Bedroom**

Suites, Mattresses, all high-grade goods at low prices. 119 North Glendale. CHANDLERS.

**FOR SALE—Furniture of three**

room bungalow, whole or by piece. Bargain. 623 E. Maple.

**MOTOR VEHICLES**

**USED CAR BARGAINS**

Ford Chassis \$500.00  
Ford Touring \$85.00  
1918 Ford Touring \$125.00  
1920 Ford Sedan \$385.00

1917 Buick Touring \$375.00  
1919 Buick Touring \$450.00

1916 Davis Sedan \$125.00  
1917 Model N Humboldt \$275.00  
1918 Vette Touring \$400.00  
1917 Chandler, 7 Pas. \$400.00  
1920 Saxton Duplex \$400.00  
1920 Oakland Touring \$350.00  
1920 Hudson Speedster.  
Model 9-B Franklin Tour. \$800.00

All of these cars are in excellent condition, and many have been refinished and equipped with new tops and tires. Liberal terms. Open evenings and Sunday.

**ANDERS & HALFHILL**

246 So. Brand. Ph. Gl. 2486-J

**BARGAINS**

Oldsmobile tour. Fine condition. At a bargain. Olds, 6 Rdst., lots of extras, only \$300.

Oakland, six touring, refinished, Cord tires, A1 condition. Best buy in Glendale. See this one at \$255.

Auturn Beauty six, 1920; good condition. A snap if there ever was one, only \$455, terms.

**C. H. HUNTER**

208 W. Broadway Gl. 2373

**OPEN SUNDAYS & EVENINGS**

**FOR SALE—5-passenger touring car**

in fine condition. Will sell cheap. Call Saturday afternoon or Sunday. 638 East Orange Grave avenue.

**FOR SALE—1920 Franklin**

in first class condition. A bargain. Call at 447 W. Vine St. or phone Glendale 175-M.

**FOR SALE—1919 Chevrolet**

490, touring, plate glass top, good rubber, motor re-ground, best offer, cash or terms. Sunday A. M., 619 S. Pacific.

**FOR SALE**

1917 Buick Touring \$350  
Buick Touring \$75  
Ford Sedan \$400  
1922 Chevrolet Delivery \$400  
Chevrolet and Fords \$75 and up

**C. L. SMITH**

Colorado at Orange, Gl. 2443

**1 NEW CHEVROLET SEDAN**

1 NEW CHEVROLET TOURING Liberal reduction for cash—or terms. Call at 1105 Melrose Ave., phone Gl. 2549-W.

**FOR SALE—Ford touring car**

**T.D.&L. THEATRE**  
**Program**  
 4 DAYS STARTING SUNDAY

**George Fitzmaurice PRODUCTION**  
**"To Have and To Hold"**  
 WITH **Betty Compson and Bert Lytell**

Supported by Theodore Kosloff, W. J. Ferguson, Raymond Hatton and Walter Long.

GORGEOUS THRILLS  
 DARING ADVENTURE  
 BRILLIANT BEAUTY

LAST TIMES TODAY  
 LEATRICE JOY IN "JAVA HEAD"  
 DOROTHY DEVORE IN "LET 'ER RUN"

**PAST WEEK BUSY FOR GUTHRIE CO.**

**Realty Sales Range in Price From Five Thousand to 70 Thousand Dollars**

Judging from the real estate sales chalked up in favor of Charles B. Guthrie and his organization, the past week has been a busy one. Sales not only on individual lots, but including several large home site tracts and ranging in price from \$5,000 to \$70,000, have been transacted by this firm within the past week.

The record made shows that all unsold lots in the West Kenneth Square have been sold to the Suburban Realty Company of this city who are putting on an intensive campaign of building and selling in this particular district, the first announcement appearing in the advertising columns of today's Evening News.

A local syndicate composed of Glendale business men have purchased from Mr. Guthrie, eighteen acres situated at the intersection of Kenneth road and Grand View for a reported consideration of \$70,000.

**More Home Sites**

It is stated on good authority that this tract will be subdivided in the near future and will be opened up for new home sites. Twenty lots on Irving and Allan avenues, near Kenneth road, were sold by Mr. Newman to O. M. Newby and associates. The corner of Tenth and Western and the corner of Tenth and Winchester were sold to Dr. Colby and associates of Hollywood for home sites.

The southwest corner of Harvard and Orange has been purchased by Mr. Guthrie for investment purposes. Friends inferred that Mr. Guthrie was contemplating the erection of a business block on this site within the immediate future.

**THE CHURCH REVEALS WILL OF THE DIVINE**

RELIGIOUS liberty is one of the rights we, as American citizens, enjoy. Each individual may regulate his own religious activities, he may accept or reject any creed, adopt any or no form of worship without interference. Since religion is personal, being a direct relationship between the individual and a Higher Power, it must be voluntary on the part of the individual.

There is and always has been an almost universal belief in an Eternal and Divine Power that controls the destinies of men and nations. Long observation of the facts of life and the study of the world's history only tend to confirm this belief. The very few who do not admit such a belief seem to be the exceptions that prove the rule.

There are certain occurrences and conditions that man cannot govern. Life and death are inevitable. The elements are beyond man's control. Men make plans and bend every effort to accomplish certain ends but gradually become conscious of something outside of themselves leading and controlling them. Gradually men learn to submit to this Power, noting its effects in themselves and the world around them.

The church is established to bring about a better understanding of the Divine element in its relationship to life. It aims to help the individual to work with this Higher Power instead of struggling against it.

Since religion is personal and voluntary it is a prerogative of the individual either to come into closer relationship with the Divine and to work in harmony with Him or to struggle and strive fruitlessly against Him.

The Bible is the only book that deals with the relations that exist between the Divine and the world and the church is the avenue through which these principles are spread abroad.

**CHURCHES**

It was on September 8, 1911, that Dr. E. H. Willisford visited Glendale and made arrangements for holding Congregational church services in the K. of P. hall, and that visit is to be celebrated tomorrow by three services marking the dedication of the new church building of the First Congregational church at Wilson and Broadway.

There will be three services during the day, as follows: Morning worship, 10:30 o'clock; Rev. George F. Kennegott, presiding; Doxology; invocation; quartet, "Lord God of Morning" (Galbreth); Mrs. W. Q. Widdows, Howard E. Cavanaugh, Mrs. Howard E. Cavanaugh, Myron Carman; responsive reading, "Isaiah"; scripture reading, "Isaiah"; prayer; tenor solo, "Open the Gates of the Temple" (Knapp); H. E. Cavanaugh; offering; anthem, "Praise the Lord" (Watson); hymn, "I Love Thy Kingdom" (Lord); sermon by Rev. C. M. Calderwood; hymn, "In Loud Exalted Strains"; benediction.

Dedication service, 3 o'clock; Rev. C. M. Calderwood presiding; prelude; hymn, "The Church's Foundation"; anthem, "Behold Now, Praise the Lord" (Ickes); greetings; Rev. Carl S. Patton of Los Angeles, Rev. Jas. H. Lash of Hollywood, Rev. E. Morgan Isaac of Eagle Rock, Rev. Henry I. Rasmus of Glendale, offering; anthem, "Great is the Lord" (Liston); Scripture, First Chronicles 28:9, 10; 20:1, 10-18, Second Chronicles 7:1, 18; 40, 41, transfer of keys, Blake Franklin, chairman of the building committee to A. W. Yarik, chairman of board of trustees; scripture response; prayer of dedication, Rev. Wilson J. Marsh of Yorba Linda; sermon of dedication, R. V. Daniel, F. Fox, D. D. of Pasadena; hymn, "O Thou, Whose Own Vast Temple Stands"; benediction.

Evening musical service, 7:30 o'clock; Howard Edward Cavanaugh, director of music; prelude, "Novallette" (Schumann); by Mrs. Gertrude Champlain Erb; quartet, "Sing Praises" (Pease); scripture lesson, "Violin solo," "Ave Maria" (Schubert) by Julius Kranz; concert, "At Twilight" (Hueter); "Souvenir" (Gillette); anthem, "A Friend in the Homeland" (Havens); offertory solo, "How Beautiful Upon the Mountains" (Harker), by Miss Isabelle Isgrig; duet, "My Faith Looks Up to Thee" (Schneer); Miss Isgrig; and J. B. Clarke; postlude, "Postlude in G" (Schuler).

**OFFICIALS SEEK SEWER SOLUTION**

**Conference With Engineer Is Held to Plan Laying of Sewage Lines**

A conference over the solution of Glendale's sewer system was held in Los Angeles this morning between Mayor Spencer Robinson, Councilman A. H. Lapham and J. B. Lippencott, who has been employed by the city as an engineer to give his attention to the subject.

The Los Angeles city council has postponed its consideration of granting Glendale permission to lay sewer lines through it until Tuesday morning.

**Elsa Jane to Open Second Realty Office**

Glendale friends of the well-known local realtor, Elsa Jane, are congratulating her on the announcement of the opening of a second realty office at 212 1/2 North Brand boulevard. The other Elsa Jane office is at 1424 South Central avenue.

**INCOME TAX RETURNS**

Assistance rendered in preparing income tax returns. James F. McBryde and Eugene J. Wix, 111 E. Broadway, Rm. 2. Central Bldg.—Advertisement 148.

**MUSIC PROGRAMS IN GLENDALE CHURCHES SUNDAY**

**BROADWAY METHODIST (M. E. Church South)**  
 Afternoon, prelude by Mrs. Francis Knight, pianist; hymn, "I Must Tell Jesus"; solo by Miss Rehr, "Oh May My Walk be Close With God" (Johnson); quartet numbers directed by Mrs. Eva K. Christ; solo, "The Lord is Mindful of his Own."

**CASA VERDUGO M. E.**  
 Morning, anthem, "Arise Shine" (Meredith); solo, "The Voice in the Wilderness" (Scott) by Mrs. R. D. Jones. Evening, anthem "Rock of Ages" (Excell); duet "Drifting" by J. W. Cotton and R. D. Jones.

**FIRST BAPTIST**  
 Morning, prelude "Ave Maria" (Sudds); anthem, "Christian the Morn" (Shelley); postlude, "Credo" (Haydn). Evening, prelude, "Voluntary" (Lemaire); anthem, "Seek Ye the Lord" (Roberts); male quartet selected; offertory, tenor solo, William Herwig; postlude, "Cantzonetta" (Hellar).

**BROADWAY METHODIST (M. E. Church South)**  
 Morning — Prelude, "Morning" (Read); anthem, "The Lord, Our God" (Merritt); Miss Elizabeth Mottera, soprano; Mrs. Fannie Marple, alto; contralto, Malcolm Huddy, tenor; Leaman Peckham, bass; prayer response "The Soul That Clings to Thee" (Batiste); soprano solo, "Light" (Stevenson); by Miss Mottera; postlude, "Processional March" (Stults). Evening—Organ recital at 7:15 o'clock, "Morgan" (Weily); "Nearer My God to Thee" (with variations, "Pastorale" (Flagler); quartet, "As the Waters Cover the Sea" (Lorenz); bass solo, "Repent, Ye" (Scott), Mr. Peckham; offertory, "Offertory" (Batiste); quartet, "Worthy the Lamb" (Adam); postlude, "Festal March in F" (Roberts).

**CHRISTIAN SCIENCE**  
 Church at corner of Maryland and California avenues. Sunday school 9:30 o'clock; church services at 11 and 8 o'clock. Subject, "Mind." Testimony service on Wednesday night at 8 o'clock. Reading room, Ralph building, open daily except Sunday and holidays, 12 until 5 o'clock; Tuesday and Saturday, 7 till 9 o'clock.

**NAZARENE**  
 Church at 102 S. Glendale avenue. Rev. Henry Scheideman, pastor. Sunday school, 2 o'clock, preaching at 3 and 7:30 o'clock.

**GOSPEL TABERNACLE (Christian and Missionary Alliance)**  
 Church at corner of Louise and Chestnut streets. Rev. C. H. Chrisman, pastor. Sunday school 9:45 o'clock; morning worship, 11 o'clock; young people's meeting, 6:15 o'clock; evangelist's message, 7:30 o'clock; prayer meeting Thursday night, 7:30 o'clock.

**LATTER DAY SAINTS**  
 Services held in the K. of P. hall, corner of South Brand boulevard and Park avenue; Sunday school 10 o'clock; preaching service 11:45 o'clock.

**FIRST M. E.**  
 Church at corner of Wilson avenue and Kenwood street. Dr.

**HUGE EGGS LAID BY LEGHORN HEN**

**Mrs. M. L. Lindsey Is Owner Of Chicken Producing Big Hen Fruit**

Egg fanciers, here's the biggest yet—a pair of White Leghorn eggs identical in size, measuring in circumference 8 1/4 x 6 3/4 inches each, both laid by the same hen, just three days apart. Yes, sir! We measured 'em right here in the office, and we have witnesses!

The hen producing these two record spheroids is of the England strain of White Leghorn and is the property of Mrs. M. L. Lindsey, 1421 East Wilson avenue.

Now, who has an egg machine that can beat that?

**THE REDEEMER EVANGELICAL LUTHERAN (Missouri Synod)**  
 Church at corner of California and Isabel street; Rev. Henry O. Krings, pastor; Sunday school 9 o'clock; morning worship 10 o'clock; sermon by Rev. Krings, "What Think Ye of Christ?"

**FIRST LUTHERAN**  
 "The Friendly Church," corner of East Harvard street and Maryland avenue; Dr. H. C. Funk, pastor. Sunday school 10 o'clock; J. H. Niebank, superintendent; morning worship, 11 o'clock, sermon by Dr. Funk, "Did Jesus have any real brothers and sisters?"; Luther League 7:30 o'clock.

**BROADWAY METHODIST (M. E. Church South)**  
 Church at Corner of Broadway and Cedar street. Rev. D. M. Barr, pastor; Mrs. Frances Knight, organist; Mrs. Eva K. Christ, choir director. Service Sunday afternoon, 2 o'clock; sermon by Rev. Barr, a review of the last page of bulletin on the "Trinity."

**FIRST BAPTIST**  
 Church at corner Wilson avenue and Louise street; Rev. E. Ford, pastor; Sunday school 9:30, Roy L. Kent, superintendent; morning worship 11 o'clock, sermon by Rev. Ford, "The Sun of Encouragement"; young people's meeting 6:30 o'clock; song service 7:30 o'clock; sermon by Rev. Ford, "The Night of Jesus"; important meeting of advertising committee, Monday night; business and covenant meeting Wednesday night.

**PACIFIC AVENUE M. E.**  
 Church at corner of Harvard street and Pacific avenue; Rev. H. C. Mullen, pastor; Sunday school 9:30 o'clock; John Campbell, superintendent; morning worship, 11 o'clock; sermon by Rev. Mullen, "Unseeing Eyes"; Epworth League 6:30 o'clock; evening service 7:30 o'clock, sermon by Rev. Mullen, "Is God Dead?"

**CENTRAL CHRISTIAN**  
 Church at corner of Colorado and Louise streets; Rev. C. A. Cole, pastor; Sunday school (graded) 9:30 o'clock; morning worship and communion 10:30 o'clock. Sermon and children's sermon by Rev. Cole; sixth session of school of missions and world problems 6:30 o'clock, classes for all; evening service 7:30 o'clock, second in the series on "Our Homes and Folks." Rev. Cole will comment on twenty questionnaires sent to husbands on the virtues and faults of wives.

**CASA VERDUGO M. E.**  
 Church at corner of Park and North Central avenues. Rev. J. C. Livingston, pastor; Sunday school 9:45 o'clock; George W. Tyrrell, superintendent; morning worship, 11 o'clock, sermon by Rev. Livingston, "Some Provoking Things, Good and Bad"; young people meet at the regular time; evening service 7:30 o'clock, sermon by Rev. Livingston, "Seeing Jesus."

**GLENDALE PRESBYTERIAN**  
 "The Church of the Lighted Cross," Broadway and Cedar street; Rev. W. E. Edmonds, pastor; Rev. Louis "Pinning," assistant pastor. Sunday school 9:30 o'clock; Men's Bible class, city hall, same time, taught by Keith Brooks; morning worship 11 o'clock by Rev. Edmonds, "Prayer and Natural Law, or the Problem of Prayer"; Christian Endeavor meetings 3, 6 and 6:15 o'clock; evening service 7:30 o'clock, Rev. Edmonds will give another address based on Sidney Watson's book, "The Mark of the Beast"; School of Missions and mid-week prayer service Wednesday night, 7 to 8 o'clock and 8 till 9 o'clock; Thursday morning Bible class for women, 10 till 11 o'clock, undenominational and interdenominational.

**CENTRAL AVENUE M. E.**  
 Church at South Central and Palmer avenues. Rev. V. Hunter Brink, D. D., pastor; Dr. Joseph Marple, musical director; Mrs. Casper Tuttle, pianist. Sunday school 9:30 o'clock; D. C. Bear, superintendent; Mrs. Elsie Moore, chorister, graded lessons; morning worship 11 o'clock, addresses by five-minute-men; Epworth League 6:30 o'clock, leader, Pauline Ennis; evening service 7:30 o'clock, sermon by Rev. Brink.

If you are hard to fit and can't get what you want, see Fred Minden, 322 E. Broadway, Merchant Tailor.—Advertisement. —2-20 to 3-5 incl.

**Glendale Theatre**  
 Wm. A. Howe ----- Lessee and Manager

TODAY AT 2:30, 7:00 and 9:00  
 METRO PRESENTS  
**ALICE LAKE**  
 WITH AN ALL-STAR SUPPORT IN

**"The Infamous Mrs. Revell"**  
 FIVE ACTS  
**STANDARD VAUDEVILLE**  
 HEADLINED BY  
**Casson Bros. & Marie**  
 —IN—  
**NOVEL ORIGINALITIES**

Harry Lee Ventriloquist Bell-Hop	Cliston & Young Musical Comedy
Gates & Grant Music, Songs and Dance	Stratford Comedy Trio Typical Jokesters

POPULAR PRICES — COME EARLY

MATINEE AT 2:30 **SUNDAY** EVENING AT 7:30 ONLY

LOUIS B. MAYER PRESENTS  
**Anna Q. Nilsson and Frank Keenan**  
 —IN—  
**"HEARTS AFLAME"**  
 DIRECTED BY  
 REGINALD BARKER  
 A METRO PICTURE

MR. PAUL CARSON  
 GLENDALE THEATRE ORGANIST  
 PLAYS  
**"I HEAR YOU CALLING ME"**

**PENDROY'S BRAND AT HARVARD**

**ANNOUNCE**  
 A Sale of Children's Milan. Straw  
**HATS**  
 Age 3 to 12 Years  
**For Monday Only**

Consisting of over 250 new shapes in Straw Hats for children. A hat for every child in the family—15 distinct styles, in small, medium and large shapes; roll and droop brim, made of Milan straw, trimmed with bands of ribbon with streamers; colors white, black, navy, new blue, sand, brown and red. They'll go fast, so come early. One special price.

**\$ 50**

If you are hard to fit and can't get what you want, see Fred Minden, 322 E. Broadway, Merchant Tailor.—Advertisement. —2-20 to 3-5 incl.

Read The Evening News Classified Ads For Profit

**OUR CONSTANT AND UNTIRING ENDEAVOR**

Is to render a Mortuary Service that is modern and efficient in every detail. Our Funeral Home, which is as complete and beautiful as any in Southern California; our Auto equipment, which has all the dignity and elegance that money can procure; our Chapel, which is at the service of our patrons without extra charge, as well as the balance of our modern equipment, all combine to give the people of Glendale and vicinity an undertaking establishment that is not surpassed in larger cities.

A well-known feature that has helped us achieve our enviable position is the moderate charge for our service.

**OUR INVALID COACH PROMPTLY RESPONDS TO CALLS DAY OR NIGHT**

Phone Glen. 360  
**JEWEL CITY UNDERTAKING COMPANY**  
 (Incorporated)  
 MR. and MRS. J. E. PHILLIPS  
 202 N. Brand Blvd., Glendale



# Progressive Real Estate Values In Glendale Make Many People Independent

## GREAT AUTOMOBILE CARAVAN VISITS GLENDALE ON SUNDAY

Experts Estimate About 100,000 Persons In City Or Vicinity During 24 Hours

A CARAVAN of autos that would reach from Glendale to San Francisco passes through this city every Sunday, while on week-days the train of them that come and go would extend beyond Santa Barbara. This is a pictorial way of putting forth the summary of a traffic analysis prepared for The Glendale Evening News by the local branch of the Automobile Club of Southern California.

## PASS RECORD OF 1922 BUILDINGS

Survey of January Business Shows Big Advance in Construction

The year 1923 has started with a fair prospect and possibly exceeding the unprecedented building record of 1922, according to a national building survey just completed by S. W. Straus & Company. The survey includes building records of 206 cities, the records of 175 of which are comparable with 1922 figures. The January total of new buildings and alterations in 175 cities was \$196,114,052 as against \$143,829,108 for January, 1922, a gain of \$52,284,944, or 37 per cent. The total for January in 206 principal cities was \$207,469,017.

## Glendale Woman Builds Hotel in Wilmington

Mrs. Katherine L. Hart of 321 North Jackson street, Glendale, is building a thirty room hotel block in the business center of Wilmington, port of Los Angeles, according to information received by The Glendale Evening News.

It has been estimated by this organization, after careful study and count, that during the "jam" hours, 1000 cars pass hourly, on a Sunday, over each of the following main arteries in and out of the city—Los Feliz road, San Fernando road, Brand boulevard and Colorado street; while 500 cars pass hourly over Verdugo road. This average, maintained during the congested period, and with allowance for reduced traffic during the balance of the day, and the night, brings the total of autos visiting Glendale during the twenty-four hours from Sunday till Monday, to the amazing total of 50,000 cars.

Some Figures, Eh? Allowing an average of two passengers to a car, it is seen that this city is host to 100,000 motorists one day out of every seven. And figures prepared by the automobile club show that on the other six days of each week, autos in excess of 10,000 come into the city, with an average of 20,000 passengers.

In addition, on week-days the Pacific Electric cars carry an average of over 10,000 passengers to and from this city. Consideration of these figures is at once proof and explanation of Glendale's slogan of which she is justly proud — "the fastest growing city in America."

## Day By Day, In Every Way, Glendale Is Growing Bigger And Better! Summer Excursions To Bring Many People Here; Invest In Local Real Estate!

GLENDALE, the fourth largest city in Los Angeles county, absorbs population like a sponge in a bucket of milk. A mere half million tourists visited southern California this winter season, according to statistics compiled by the Los Angeles Chamber of Commerce from railroad and auto club reports.

Twenty per cent, or 100,000 of this number, are here to stay. The climate and the real estate men and their relatives can be carelessly called responsible. That is the "bucket of milk" into which Glendale dips like a self-filling fountain pen. With a population estimated at 40,000 and that of Los Angeles around 850,000, it is only reasonable to assume that this city gets a mathematical proportion of 5 per cent—or 5000 newcomers this season.

But that isn't all Glendale gets. As Los Angeles grows larger and larger day by day, thousands of its residents are moving to this particularly favored suburb where commuting is a pleasure.

There is a lure of the vampire in this "fastest growing city in America." The superior inducements, the American population, the high type of citizenship, all tend to make the aggregate gain in population at the present time score about 10,000 per annum.

And, on top of all this, mind you, comes the announcement from various realty firms that no less than \$100,000 will be spent during the ensuing year advertising Glendale, the city of homes.

Summer excursions are going to bring the greatest multitude ever seen, according to railroad authorities. Are you going to be prepared with a home of your own to meet your friends? Are you going to reserve a homesite for them? Are you going to pass up the opportunity of taking the profit by buying on the ground floor?

No, not unless you are deaf, dumb, blind and indifferent. You are going to get out today and see what is offered in advertising columns of The Glendale Evening News. That is the way to make Glendale greater!

## CONGREGATIONAL CHURCH ATTRACTS

New Building Artistic and Well Equipped; Spanish Colonial in Style

By KATHERINE V. SINKS  
Of The Evening News Staff  
Congregationalists of Glendale and other cities of Southern California will witness tomorrow the dedication of the new Congregational church building and the ceremony will indeed be the consecration of a beautiful and adequate edifice to the service of the brotherhood of man, the great basic principle of Congregationalism.

Architect Carleton Monroe Winslow had at his command a piece of property 104 by 135 feet at the northwest corner of Central and Wilson avenues. He took for his inspiration the Spanish-Colonial style of architecture, letting the California atmosphere dominate, and designed and supervised the construction of a church building that will undoubtedly bring wide recognition to the city of Glendale.

Happy Combination  
In the exterior of the new church building there is a happy combining of architectural units into a dignified structure of worship; a building that is entirely harmonious with California's unique historic background and tendency to preserve that background through the coming years. In the interior of the church the practical and artistic have been deftly blended to create an awe-inspiring church atmosphere.

Built in the shape of a letter L, enclosing a walled sunken garden on the southeast corner of the property, the buff stucco finished building faces east, while its artistic and inspiring tower rises for ninety-five feet toward the heavens.

Chapel Entrance  
The entrance into the chapel proper is on Central avenue. Features of this facade are the stone steps, the massive oak doors adorned with specially designed wrought iron handles, the circular windows and east stone ornamentation. (Continued on Page 5)

## PLENTY OF EVIDENCE TO SHOW PROPERTY GIVES BIG RETURNS

Ample Opportunity for Homemaker to Secure Desirable Lots, Sure to Grow In Price

FORTUNE smiles on Glendale real estate transactions. Statistics prove this, but the stories which could be written around the fabulous wealth made here on the investment and re-investment of a few hundred dollars would make Merlin's magic wand look like a toothpick!

Not alone in business property has this been true, but residential sites which looked as barren as any subdivision may seem today have grown in the last decade from \$500 to \$3500 or \$750 to \$7000, as the case may be. Let us consider a particular instance to stress this point.

Twelve years ago a tract bounded on the north by Pioneer drive, on the south by Lexington drive, on the east by Central avenue and on the west by Columbus avenue, was subdivided into something like 200 average sized lots. They were sold at about \$500 each, on easy payments.

Today that property is considered choice, close-in residential investment, and you can not buy the one or two vacant pieces of ground for less than \$3500, while two corners now for sale are held at \$7000. The owners will get their price, too.

Must Pay for Location.  
"The price of place" has become a factor in Glendale realty values. You must pay for location, yet there is ample opportunity for the homemaker to secure equally desirable lots, a little further out, for as low as \$900 and up. Car service, bus service and private motor cars have made all these things possible.

Citing another instance of how time has told, one of the pioneer realtors recites that ten years ago property north of Lexington drive, on Kenwood, Jackson and Isabel streets, was subdivided for \$600 to \$800. Today they are worth fully \$2000 and more. Mostly more, and within the last thirty days lots on Howard and Geneva streets to the east have advanced from \$1500 to \$1000 with great activity pending nearby.

There are lessons to be learned from these parallel instances of progressive real estate values in Glendale. First, it shows that values here move according to well established laws. There are no sections suffering from under-development. Second, the moral involved is that PEOPLE WHO HAD THE VISION IN 1910 AND KEPT FAITH IN GLENDALE ARE INDEPENDENT TODAY. Among other instances which are more significant as to the potentialities of wise investing let it be known that—

## DATA WILL TELL USES OF LUMBER

Association to Issue Series Of Volumes Dealing With Industry

The National Lumber Manufacturers' Association, Washington, D. C. announces that the first chapter, separately printed, of the series of volumes on "Lumber and Its Utilization," is now ready for distribution. It is mainly introductory and explanatory of the plan of the series. (Continued on Page 2)

## Blossom Time Now Here! Make Journey In Highways, Byways

It is blossom time in the Green Verdugo Hills, folks. Motor out on the boulevards—Verdugo road, San Fernando road or Kenneth road—and go into the byways and see nature at her best.

The trees are fragrant, hedges are pink, skies are azure and little hills are running in sandy washes. It is an inspiration, at the same time a revelation, this Southern California of ours in the Springtime.

No wonder the realty market is active. A person who wouldn't take pride in owning a bit of the verdure that can be cultivated has lost all hope, it would seem. So "get out and get under" the sunshine of prosperity by buying a homesite now for soon the best will all be gone. Otherwise you will pay the penalty of procrastination.

## MANY MAKE BIG FORTUNES HERE

Others Doing What Youth Achieved in Two Years, Reports Indicate

Relative to one young man's making \$100,000 in real estate in Glendale during the past two years, it is learned by The Glendale Evening News that several others have done almost as well. A Texas station agent, who tired of railroading came here in 1920 with \$1,000 and made money. With his brother pooling a small estate they have made more than \$50,000 profit in two years' time, although some of their property is outside of this city.

An advertising man for a large Los Angeles store in the last three years has invested and re-invested in Glendale until today the fruits of his labor would net him no less than \$40,000. Another advertising man has made as much.

## BUILDING PERMIT RECORD \$1,950,622

Number of New Homes Are Under Construction in Different Sections

Ten thousand dollars' worth of building permits were issued yesterday at the city hall. With three business days left in February, the total for this month so far is \$936,286. The total for the year to date is \$1,950,622. Permits issued recently include the following:

Oliver Wright, 5 rooms and garage 565 Stocker street.....	3,800
John Clark, 3 apartment and garage, 228 South Cedar street.....	3,500
W. T. Elliott, 5 rooms and garage, 1135 East Adams Place.....	2,700
W. F. Tower, garage, 408 East Elk street.....	800
E. H. Olmsted, additional cost, 921 East California avenue.....	500
J. H. Summer, garage 1940 Fourth street.....	500
W. W. Collette, garage, 1113 Alameda street.....	300
Charles Newhouse, addition, 202 North Cedar street.....	250
C. H. Anheuer, additional cost, 208 Arden Ave.....	200
Mrs. R. E. Hinker, garage, 1520 Orange Grove avenue.....	150
Mary E. Norton, storage shed, 324 North Maryland avenue.....	100

## Law Institute Names Wickersham President

WASHINGTON, Feb. 24.—The council of the American Law Institute, in session here, today elected George W. Wickersham of New York, former United States attorney general, as executive president. Elihu Root, internationally known lawyer, was made honorary president of the institute.

The Dodo has been extinct since the seventeenth century.

## BUSINESS BLOCKS RISE IN GLENDALE

Broadway, Brand, Maryland, Orange and Harvard See Developments

The spring building season is seeing radical changes in Glendale's business section with new blocks being completed on Brand and Broadway and Harvard and Orange and Maryland and Glendale avenue.

Among several prospective buildings reported is a 4-story office and business block for East Broadway, near Brand; a 3-story apartment hotel; and business block farther east; two more store buildings of the same thoroughfare; an office building of one story for Glendale avenue; and so on. Architects have many of these plans under way now, but are not ready to reveal the builders' names.

## Grant Permission to Remove Parkway Trees

Trees may be removed from the parkways on San Fernando road between Los Feliz road and Pacific avenue as the result of an action taken last night by the City Council.

A petition requesting that such permission be granted was received from property owners interested who called attention to the fact that the street is being made into a business thoroughfare and that some of the trees might interfere with the ornamental lights. The petition was filed and its request was granted.

## Wilson Takes Ferry's Post as Commissioner

Lloyd H. Wilson of 1034 South San Fernando road last night was appointed a member of the park, playground and recreation center commission by the City Council. He will take the place of Peter L. Ferry of 614 East Acacia street, who resigned.

Announcing the Opening Sale of the Second Unit of HILLCREST At the Extraordinary Terms of Only 10% Down These lots are all over size—in the beautiful Kenneth Road Residential District. Just compare their price and location with other lots in this vicinity.

72x203-foot Lots at.....	\$2150
50x203-foot Lots at.....	\$1600

Price includes paving, cement sidewalks, curbs and all improvements. All are East front lots on Virginia avenue. Restrictions of \$5,000 with 30-ft setback from street insure high-class residences.

Come out and select your lot at once—as there are only eleven on sale, and at low prices asked these should all be closed out Saturday and Sunday.

Call at 110 East Broadway, or go direct to Tract Office, which is open every day. Drive out Kenneth Road and Virginia Avenue.

### Arthur Campbell

"I Specialize In Foothill Property"

110 East Broadway • Glendale, Calif.  
Office Phone 274—Residence Phone 2103-W

DAMAGED

## NOTED LECTURER WILL SPEAK HERE

U. S. C. Philosophy Department Head Will Address Glendale Women

"The Old Individualism and the Newer Personalism" is to be the subject discussed before the Tuesday Afternoon club next Tuesday by Dr. Ralph Tyler Flewelling, lecturer, editor and head of the department of philosophy of the University of Southern California.

An endorsement of Dr. Flewelling of interest to Glendale, is that given by Mrs. Charles H. Toll of 1635 Kenneth road, at the time she was president of the Ebelle club of Los Angeles.

Mrs. Toll said, "May I reiterate my expression of the real pleasure which your lecture on 'Some Aspects of Modern Thought' gave to our club members. On every hand I still hear that you made the distinctions between the philosophy of Freud, Einstein and Bergson so very clear as to leave an indelible impression on the minds of your hearers."

**Community Singing**  
"I think your earnestness in delivery and your familiarity with the phases of these men's work and their published works, together with a very keen understanding of the limitations of the human mind, make for success in such lectures, which another speaker of less intelligence would fail to achieve."

In addition to Dr. Flewelling's address there will be the usual hour of community singing led by Hugo Kirchofer, the cooked food sale and the regular club session.

## Deny Reports Prison Population in Terror

**SAN QUENTIN, Cal., Feb. 24.**—Sensational reports that the prison population of the state penitentiary here were in terror because of the discovery of two lepers were denied today by prison authorities.

It was stated the two men, Lin Fook, a Chinaman, and Eladisa-Guarra, a Mexican, have been

## RELIGIOUS NOVEL IS SERMON TOPIC

Pastor to Present Another Phase of Stirring Book By Watson

Large audiences are gathering each Sunday evening at the Glendale Presbyterian church to hear the series of Sunday evening sermons now being presented by the pastor, Rev. W. E. Edmonds. These sermons are based on Sydney Watson's book, "The Mark of the Beast."

"In England and America for the past ten years this book has had an unprecedented sale for a religious novel and has passed through several editions. In a masterly way the author tells of the awful conditions in this world after Jesus Christ has come and taken out the true believers. The events related are so thrilling and terrible that they would be regarded as ridiculous were they not based on Scripture."

**Stirs Men's Minds**  
The following excerpts give some idea of the purpose and message of the book: "The Sunday of the Puritans is dead and damned. Their Bible is a dead letter." "Two or three coarse boys were kicking along the street (football fashion) half-burned copies of the Bible." "None will be able to trade, or buy, or sell unless they bear on their forehead or right hand 'The Mark of the Beast.'" "Where's your wife? Have you done away with her? No, she's gone and got raptured."

"The devil of blasphemy is growing bolder." "If the doings recorded in this book were only the ingenious imaginings of a man's fertile brain they would be cast aside as worthless. But from beginning to end it is based on God's Holy Word. No book has been put on the market in recent years which has so stirred the minds of thinking men."

News want ads produce results.

## ATTENDS INDIAN WELFARE LEAGUE

Mrs. Brattain Shows Interest In Preservation of Redmen's Relics

Pearl Keller Brattain of 169-A North Brand boulevard, was in Los Angeles on Tuesday of this week attending a meeting of the Indian Welfare League, at the studio of Edward S. Curtis at 668 South Rampart boulevard.

Mrs. Brattain, who was born and reared in Spokane, Washington, an early frontier town with many Indian inhabitants, understands the Indians and their habits and customs, is a member of the league, and is vitally interested in the work the Indian Welfare League is carrying on to preserve Indian relics and traditions and to help the Indians to help themselves.

Mr. Curtis, who is widely known for his Indian photography for the government and is also authorized to conduct research work among the Indians.

Speakers at the meeting Tuesday were William S. Hart, moving picture actor, and Dr. John A. Comstock of the Southwest Museum.

## Would Halt Sunday Burials in Florida

TAMPA, Fla., Feb. 24.—In a recent public address to prominent negroes of the city, including the preachers and teachers, Dr. J. R. Harris, city health officer, deplored the practice of negro secret societies holding so many funerals on Sundays. It has been the custom here, Dr. Harris pointed out, for the lodges and relatives of negroes dying during the week to postpone the funerals until the following Sunday. This often necessitates a considerable delay which is not only opposed to the rules of public health, but also is a hardship upon the feelings of numerous bereaved relatives, whose sufferings are prolonged by postponed and elaborate lodge funeral ceremonies. The negro ministers adopted a resolution supporting the stand of the city health officer.

## RUSH PAVING ON HARVARD STREET

Contractors Are Authorized To Work Sunday to Complete Work

The Los Angeles Paving Company was given permission by the City Council last night to work Sunday if necessary, in order to complete the paving of Harvard street as speedily as possible.

Mrs. M. A. Slater of 427 Ivy street appeared personally before the Council. City Clerk A. J. Van Wie read the following communication on the subject: "We, the undersigned business men, some of whom are property owners on Harvard street, wish to commend the members of the City Council at a meeting of your honorable body last Thursday night in holding street contractors to their contracts."

**Will Rush Work**  
"While we favor street and other improvements, having streets torn up, as they are in front of our places now, is a serious detriment to our business. We believe your body will agree that the work in front of our business houses should be put through as rapidly as it is consistent to do so."

"Thanking members of the Council in an anticipation of seeing that there is no further delay in putting through this work in front of our respective places of business, we are: H. W. Parker, G. A. Terrill, M. A. Stone, William A. Slater, M. C. Reid, Charles C. Bann, Max L. Green, J. J. Lamberty, Harry T. Moore, Dilley & Armstrong, R. E. Corrigan."

## Specify Dimensions of Street Electroliers

The exact dimensions and construction of ornamental one-light street electroliers is specified under the terms of an ordinance introduced last night by Councilman A. H. Lapham before the City Council.

"The electroliers shall be one-light standards made of concrete reinforced with steel rods and manufactured by the centrifugal process," states this ordinance. "Concrete shall be standard Portland cement."

## Girl Bans Flapperism But Remains Popular

CHICAGO, Feb. 24.—Thirteen years old, ready to enter high school, never been out to a midnight supper, doesn't drink, smoke or swear, hasn't any use for a lipstick, powder or rouge, and yet is enjoying life to the fullest extent.

That's the record of Miss Jeannette Searcy, of Chicago. Miss Searcy has finished eight grades in the grammar schools in five years and graduated from her school with the highest honors. And despite the fact that she is what some might designate "an old-fashioned" girl, Jeannette is one of the most popular girls in her school and neighborhood.

To prove the modern girl does not need to be a "flapper" to enjoy life, Miss Searcy holds the reputation of being a great basketball player and a fancy skater.

She explains her remarkable progress in school to regular hours. She is always in bed at 9 o'clock and up at 7:30, and never has been tardy or absent.

## Tremblor Recorded on St. Louis Seismograph

ST. LOUIS, Feb. 24.—An earthquake of moderate intensity was recorded on the St. Louis university seismograph this morning. Brother George E. Rueppel, in charge of the observatory, announced. The tremor was located 4700 miles in a southwesterly direction.

"The instrument recorded the time as from 1:45 a. m. to 2:22 a. m.," Brother Rueppel said. "The quake was at some point in the Pacific off Hawaii. The S-6 was eight minutes and fifty-two seconds."

## Autos In Collision On Glendale Avenue

A collision occurred about 2 o'clock yesterday afternoon between automobiles driven by Mrs. Henry Hockhausen of 610 East Lomita avenue and R. E. Smith of 1260 George street, Los Angeles. Mrs. Hockhausen was driving south on Glendale avenue and Mr. Smith was turning around on San Fernando Road.

## COUNCIL TO ASK GRADE CROSSING

Request Will Be Sent to Railroad Commission by City Attorney

Steps to secure the establishment of a grade crossing over the Pacific Electric right of way at Kennilworth avenue were taken last night by the City Council.

Godfrey Edwards, member of the firm of Edwards & Willey, appeared personally before the Council and requested such action. He said that he had been informed by Pacific Electric officials that they would have no objection but that the best procedure would be for the city of Glendale to make an official request to the state railroad commission.

**May Need Wig-Wag**  
After some discussion as to whether or not the railroad commission would follow the precedent in the Garden crossing application and demand that the city maintain a wig-wag, City Attorney Hartley Shaw was instructed to make the requested application.

"Kenilworth, before we get through with it will be as much used as Pacific," stated Mr. Edwards. "There is no wig-wag there."

White corpuscles surround and destroy any dangerous germ that invades the blood.

## Tips Prove Nemesis Of Girl Bootblacks

CLEVELAND, Feb. 24.—"It's the tips."

Thus E. F. Hodges, manager of a shoe-shining shop in Euclid avenue, explained why he had dismissed his corps of girl "bootblacks" and replaced them with men. The experiment had been in effect three weeks.

"The men patrons couldn't resist the girls' smiles," he continued. "They tipped them more than they could afford. While a shine costs a dime, the girls frequently got tips of a quarter or a half."

"Patrons quit coming to our shop. The girls were making good money, many of them as much as \$30 a week, and liked their jobs, but business was bad. Lots of our customers went elsewhere, so I've let the girls go, and the men are back. Business is picking up already."

"There's another thing—girls can't resist the mirror. After every shine they had to go to the mirror and powder their noses, and that took time. Besides, they haven't the strength to give the mirror-like polish lots of customers want."

## Theft of Spotlight From Car Reported

The theft of a spotlight from his automobile last night while it was parked in front of the high school, was reported to Patrolman Thomas McGuire by Sam Border of 209 North Kennilworth avenue.

## DATA WILL TELL USES OF LUMBER

Association to Issue Series Of Volumes Dealing With Industry

(Continued From Page 1)  
Altogether there will be six volumes of five chapters each in these publications.

Although the chapters will be printed separately they will be identical in size and typography so that recipients can easily bind them into their respective volumes; also, so they can be issued in book form when all the chapters are completed.

**Fire Prevention.**  
For example: The second volume to be issued will be Chapter No. 5, the fire prevention series on "Personal Liability for Preventable Fires."

The titles of the other volumes are as follows: Volume No. 1, "General Information;" volume No. 2, "Timber Information;" volume No. 3, "Lumber Information;" and volume No. 4, "Craft and Carpentry."

First use of columns to support an arcade was in the palace of Diocletian in Dalmatia, 300 A. D.

Glass beads are successfully used to insulate bare wire, proving ornamental as well.

# S. S. BERAN & CO.

is quoting entirely new prices. Five room strictly modern house, stucco or frame, hardwood floors throughout, \$2931. Duplex \$4100.

We will duplicate the exterior of No. 1421 East Broadway just completed by us, with interior stock plans, for \$4500. See the other contractors, then call on us.

Our prices and quality of material and workmanship are right. We can finance your building. We furnish bonds.

Call Glen. 1426-M at 305 S. Brand Blvd., Glendale

# IN THE VERY NECK OF THE FUNNEL



## Study This Diagram

It Is a Correct Representation of the Strategic Position of

# SPARR HEIGHTS

In Relation to the Verdugo, La Crescenta, Tujunga and Sunland Valleys.

Owing to the configuration of the three mountain chains, the ONLY DIRECT LINES of ingress or egress between Los Angeles and this vast amphitheatre PASS THROUGH SPARR HEIGHTS.

## We Could Not, If We Tried,

Stop the development of a big business centre and a great community of homes at this point. Remember that it is as near in time to Fifth and Broadway as the center of Hollywood.

## Millions Will Be Spent in Improvements

Its beautiful rolling hills and gentle slopes will be covered with artistic homes. Every social, domestic and economic need will be fully met. Here one can build an ideal home where he can experience all the delights of wonderful scenic environment and still enjoy the advantages of the city.

## Look Ahead—Get the Vision and Buy Yours Now

# Francis-Barnum-Walters Co.

MAIN OFFICE: Verdugo Road at Montrose  
Hollywood Office: 6612 Hollywood Blvd.  
Phone 438-910

Phone Glendale 2123-J-4  
Glendale Office: 200 East Broadway  
Phone Glendale 2163

### Features

High Elevation, Glorious View, Perfect Climate, Wonderful Scenic Environment, Hard-Surfaced Roads, Gas, Water, Electricity, Splendid Golf Course, Community Center Bldg., Supervising Board of Architects, Artistically Planned, Segregated Business District, Perfect Transportation With Single Fare to Center of Los Angeles.

From Glendale Drive Out Verdugo Road to Tract, or Take La Crescenta Car to Our Office.

LOS ANGELES

# FOOTHILL LANDS ARE SUBDIVIDED

## Edward Estate to Be Offered Homebuyers With All Improvements

Another beautiful Glendale foothill estate now is in the process of subdivision and soon will be sold to people who are fortunate in selecting their slightly home place at once.

The Henry T. Edward home place in the green foothills along Glendale's northern boundary has been acquired by J. Will Johnson and Colorado associates. This large property, including the most scenic acreage within the city, is being surveyed and reservations may now be made.

In speaking of his acquisition Mr. Johnson, a Colorado capitalist, says: "For discriminating purchasers of ideal homesite property this splendidly scenic property offers the best to be had. It is surrounded by the palatial homes of L. C. Brand and others, including Attorney Mattison B. Jones. The fact that these men have selected this most desirable part of Glendale for their permanent homes is sufficient to convince the most skeptical as to the value of the Edward estate.

**Wonderful Vista**

"Overlooking the city of Glendale, facing the foothills with Mr. Brand's castle as a background, high and dry on a terrace from which the whole of the San Fernando valley can be seen—that is the wonderful scenic advantage of what we have to offer.

"Every advantage of a well-established residential district is included. Cement sidewalks and curbs, improved streets, shade trees as well as the trees and vines already on the property, electricity and water from the Glendale municipal system, are among the features.

"There are only a limited number of homesites available and the restrictions are sufficient to protect the most discriminating, yet the price of each individual lot will be well within the means of the business and professional man.

**Lots Are Larger**

"In subdividing this property we have made the lots larger so that more stately homes may be built; we are offering more for the money than most subdividers, some of whom inform me we are offering too much for such rare and valuable land.

"However, our surveys have completed their task. Our price has been set and we are ready to 'go' in giving Glendale more room in which to grow."

An invitation is extended by Mr. Johnson and his associates to the public of Glendale to motor out Kenneth Road to Grand View to Tenth and then to Western street where the tract office is located.

You will be delighted with the view and amazed at the growth of Glendale into the San Fernando valley. The Suburban Realty Co. of 508 South Brand are the subdividers and the tract will be known as Suburban Heights. Formal opening of the tract will be Sunday morning.

**Open Los Feliz Road For Traffic Today**

Los Feliz road is scheduled to be open for traffic before the day is over. City Engineer Ben F. Dupuy was assured yesterday by Ernest Warden, president of the Los Angeles Paving Company, that the last bars would be removed today.

Rotary tooth brushes are among the new health ideas.

# Plenty of Evidence to Show City's Prosperity

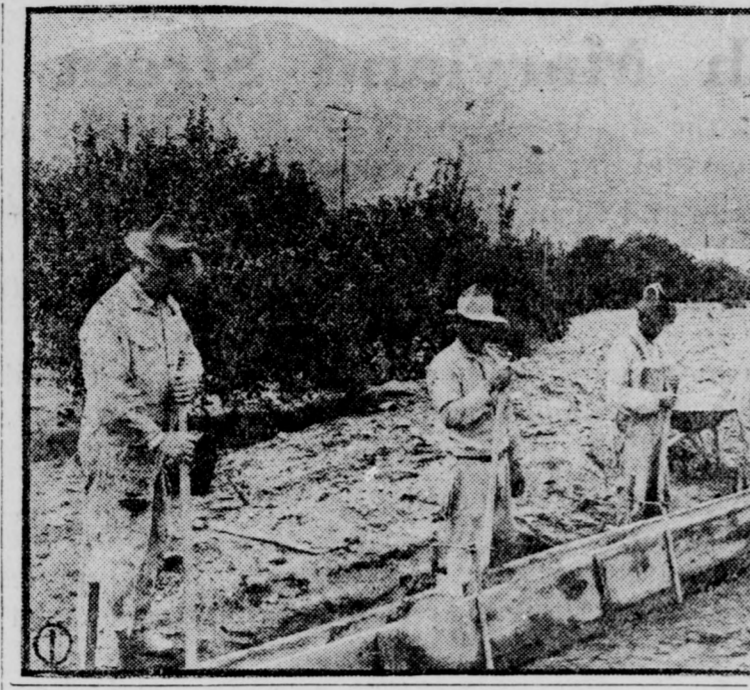
(Continued From Page 1)

Brisbane should be heeded. From Minneapolis, from Seattle, from Oakland, from Chicago, from New York, from everywhere comes the crowd—the subdividers in the vanguard, but listen to this, folks:

A Seattle millionaire realtor confided to the writer yesterday that he had the names of 10,000 eastern families intending to move to the Pacific coast, the promised land.

"When my forces are centered here I intend to divert half of that number to Glendale."

As has been tritely said, "Put that in your sun-kist pipe and smoke it."



# CLAIM DEDUCTION IN NEW TAX RULE

## Revenue Collector Explains Method of Computing Return of Losses

Collector of Internal Revenue Rex Goodcell received from Washington an important income tax ruling which holds that the net loss allowable under Section 204 of the Revenue Act of 1921 should be claimed as an ordinary deduction in the taxpayer's return for the current year and the tax computed on the net income determined with the benefit of this section.

The decision directs attention to the requirements of Article 1602 of Regulations 62 with regard to claiming deductions for net losses under Section 204 and to the proper procedure to be followed in assessing returns in which such deductions are claimed.

**Show Net Loss**

The provision of Article 1602 of Regulations 62, that a taxpayer desiring to secure the benefit of Section 204 should file a claim with his return for the year in which the loss is to be deducted, does not require the filing of a claim on Form 843. This article refers merely to an explanatory statement which should be attached to the return showing that the deduction claimed is a net loss within the definition of Section 204 and that the amount of the loss has been determined in the manner prescribed by Article 1601.

In every case the net loss should be treated as an ordinary deduction in the return and the tax should be computed on the net income determined with the benefit of this deduction. The assessment of tax should be made as in the case of any other return and the correctness of the deduction for the net loss will be passed upon in the subsequent audit of the return in the regular course of official business.

# SPARR HEIGHTS RUSHING ITS DEVELOPMENT WORK

## Gangs Of Workmen Busy On Improvements; Number of New Homes



### DEVELOPMENT WORK IS UNDER WAY AT SPARR HEIGHTS

These pictures show that there is plenty of activity at Sparr Heights, the big tract where a definite program of development work is being carried out by the owners. A dozen homes are practically finished and ground is being broken for that many more. The pictures show: (1) workmen laying curbs; (2) one of the cement mixers; (3) a portion of the six miles of water main pipes; (4) one of the grading outfits.

# L. A. MAINTAINS BUILDING GAIT

## Third Among U. S. Cities In Report for January; San Francisco Tenth

Los Angeles was third among the cities of the U. S. in building for the month of January, 1923. This city was third in building for the year 1922, and, unless some of the larger eastern cities take an unexpected spurt in building, will maintain this position during 1923. Philadelphia was fourth in building for January, while Detroit was fifth and Cleveland sixth. San Francisco was tenth in the list and Oakland was nineteenth.

Building activities during January, 1923, were extraordinary for the first month of the year throughout the country.

Evidence abounds on every hand at Sparr Heights of the desire on the part of the Francis-Barnum-Walters Company, the owners and developers of the beautiful tract, to push to completion as rapidly as possible their development work.

Several gangs of workmen are busily engaged in installing the six miles of four-inch pipe that will furnish the mains for the distribution of the water throughout the immense tract, while three others are busy with a plow and scraper grading the roads. Curbs, sidewalks and gutters are being constructed, and it will not be long before that locality will begin to assume a metropolitan aspect.

**Engineers at Work.**

An engineer corps is working hard establishing the grades of the curved boulevards that will lead in, around and over the rolling hills that are such a distinctive feature of this tract. A dozen homes are practically finished and ground is being broken for many more. There is what might be termed a surge of development throughout the whole tract that is very reassuring to the many purchasers of property therein, for it convinces them that the general plan of improvement will be carried out rapidly and that the millions that are to be spent will add an incalculable value to the property of the early investors and any doubts that may have existed as to the purpose and ability of the owners to carry out their comprehensive plans have been set at rest.

**Strategic Position.**

Lying at the point of a great equilateral triangle which is bounded by three mountain chains, and embracing the Verdugo, La Crescenta and Tujunga valleys, Sparr Heights occupies a strategic position where all traffic to and from Los Angeles and this immense territory must pass through it. This, of necessity, will create a large and prosperous community and, when to this is added the fact that no similar area in such close proximity to Los Angeles affords the opportunity for such a wide divergence of choice in sites for beautiful homes, it is easy to see why its future is assured.

The business district has been definitely defined and, as it will be artistically planned under the supervision of a board of architectural experts, will prove an attraction instead of the usual eyesore.

It requires the exercise of but very little imagination to visualize the beautiful territory lying within the confines of this immense triangle, capable of housing 250,000 people, when it will be covered with artistic and distinctive homes whose architectural perfection will be enhanced, not only by the natural scenic beauty by which they are surrounded, but by original landscaping effects that are only possible where nature has developed a wonderful foundation upon which the expert can work out original ideas.

Sparr Heights is the only large residential tract within twenty-five minutes of the heart of Los Angeles where development is proceeding according to a definite plan, it is declared by the owners. Before the property was purchased, its possibilities were thor-

oroughly studied. Engineers, architects and landscape gardeners worked together in the evolution of this plan before a single stake was set. The fact that they were working upon a virgin territory has simplified matters materially and assures, when their work is finished.

# INCREASE SHOWN IN TAX RETURNS

## Receipts to February 19 Exceed Entire Month of February, 1922

Income tax receipts for nineteen days of the present month were thirty-five per cent greater than the collections for the entire month of February, 1922. Collector Rex Goodcell announced yesterday.

From February 1 to February 19, the receipts were \$838,189.72 as against \$599,836.56 for the whole month of February, 1922. While income tax collections are showing tremendous increases, the number of returns filed to date is less than the number filed during the same period of 1922. Approximately 25,000 returns have been filed which means that during the next eighteen days

# ADD TO NUMBERS OF HOME OWNERS

## S. P. Employees to Co-operate in Move to Simplify Housing Problem

Employees of the Southern Pacific Company in Los Angeles and other communities along its lines are to be of material aid to each other in building or buying homes.

Announcement of the plan whereby the thousands of railroad men who own or are paying for their homes will co-operate with fellow workers who still are paying rent was made in the February issue of the Southern Pacific Bulletin, just issued.

The Southern Pacific has more than 6000 employees in Los Angeles and about 50,000 on its Pacific system. The co-operative plan is expected to increase to a large extent the percentage of the workers who are home owners.

**Plan Is Outlined.**

In outlining the home-owning plan of assistance the Bulletin, which is distributed without charge to the railroad employees, says in part:

"Every man who has either built or bought a home has acquired knowledge that will be helpful to others. But this experience can't help others unless you tell them about it. You can do this through the Bulletin.

"The Bulletin, therefore, will devote part of its space in each issue to consideration of 'Own Your Home' problems.

"We want pictures of your home that can be reproduced in the Bulletin for the guidance and encouragement of the fellow who hasn't quite mustered up courage to tackle the problem on his own account.

"We want short stories of how you managed to build your own home—or to buy it. If you turned a good bargain tell us about it. There may be similar chances in our community."

## Golden Rule Heights Property Sells Fast

Golden Rule Heights, south on Verdugo road and just over the line from Glendale in Los Angeles, are being snapped up fast by wise investors, according to J. P. Lampert and John Yung, the subdividers, who have offices of the Golden Rule Real Estate concern at 622 East Broadway.

For the most part you will find Messrs. Lampert and Yung on their tract directing the development work. It is one of the most slightly pieces of property being subdivided at the present.

The gray wolf of Montana is the hardest animal to capture in a trap.

## Stove 100 Years Old Still Giving Service

LEWISTOWN, Pa., Feb. 24.—A stove which bears a date of more than 100 years ago and which has been in continuous use during the entire century is still doing duty for David Hammann, a nearby farmer.

Although the firm which made the stove has long since gone out of business, Hammann went to considerable trouble to trace its history. It was first bought by a man named Shingler, who sold it to another family named Lauver. Hammann bought the stove from Lauver 40 years ago, and in that time has never spent a cent on it for repairs.

A full grown elephant has a carrying capacity of more than three tons.

# SECOND UNIT OF HILLCREST OPEN

## Arthur Campbell Offering Desirable Property to Homebuilders

Hill Crest—all that the name implies—is now being developed in its second unit, by Arthur Campbell, realtor, at 110 East Broadway, who has sold much of the desirable Kenneth road district to high-class homebuilders.

Mr. Campbell is a resident of the northern hillside section of the city, close to his Hill Crest tract, and he declares that the values to be found there cannot be beat.

For instance, he is offering lots with an east front, unobstructed view of Glendale, and all improvements waiting for the house, for \$2150, and they have more breadth and depth than most homesites, being 72 by 203 feet on Virginia avenue.

As little as 10 per cent down will reserve one of these ideal lots, according to Mr. Campbell, and he expects to sell a great deal of his second Hill Crest unit over this week-end.

"With comparative values in the vicinity it is easy for the buyer to see that I am offering the most for the money I know in Glendale today, and I have been here for 29 years."

Mr. Campbell has his tract office on Kenneth road at Virginia avenue, which extends south to Glenwood road.

Chimney of a copper mining company at Great Falls, Mont., is 566 feet high.

### Development Work Under Way at Sparr Heights

These pictures show that there is plenty of activity at Sparr Heights, the big tract where a definite program of development work is being carried out by the owners. A dozen homes are practically finished and ground is being broken for that many more. The pictures show: (1) workmen laying curbs; (2) one of the cement mixers; (3) a portion of the six miles of water main pipes; (4) one of the grading outfits.

## L. A. MAINTAINS BUILDING GAIT

### Third Among U. S. Cities In Report for January; San Francisco Tenth

Los Angeles was third among the cities of the U. S. in building for the month of January, 1923. This city was third in building for the year 1922, and, unless some of the larger eastern cities take an unexpected spurt in building, will maintain this position during 1923. Philadelphia was fourth in building for January, while Detroit was fifth and Cleveland sixth. San Francisco was tenth in the list and Oakland was nineteenth.

Building activities during January, 1923, were extraordinary for the first month of the year throughout the country.

Evidence abounds on every hand at Sparr Heights of the desire on the part of the Francis-Barnum-Walters Company, the owners and developers of the beautiful tract, to push to completion as rapidly as possible their development work.

Several gangs of workmen are busily engaged in installing the six miles of four-inch pipe that will furnish the mains for the distribution of the water throughout the immense tract, while three others are busy with a plow and scraper grading the roads. Curbs, sidewalks and gutters are being constructed, and it will not be long before that locality will begin to assume a metropolitan aspect.

**Engineers at Work.**

An engineer corps is working hard establishing the grades of the curved boulevards that will lead in, around and over the rolling hills that are such a distinctive feature of this tract. A dozen homes are practically finished and ground is being broken for many more. There is what might be termed a surge of development throughout the whole tract that is very reassuring to the many purchasers of property therein, for it convinces them that the general plan of improvement will be carried out rapidly and that the millions that are to be spent will add an incalculable value to the property of the early investors and any doubts that may have existed as to the purpose and ability of the owners to carry out their comprehensive plans have been set at rest.

**Strategic Position.**

Lying at the point of a great equilateral triangle which is bounded by three mountain chains, and embracing the Verdugo, La Crescenta and Tujunga valleys, Sparr Heights occupies a strategic position where all traffic to and from Los Angeles and this immense territory must pass through it. This, of necessity, will create a large and prosperous community and, when to this is added the fact that no similar area in such close proximity to Los Angeles affords the opportunity for such a wide divergence of choice in sites for beautiful homes, it is easy to see why its future is assured.

The business district has been definitely defined and, as it will be artistically planned under the supervision of a board of architectural experts, will prove an attraction instead of the usual eyesore.

It requires the exercise of but very little imagination to visualize the beautiful territory lying within the confines of this immense triangle, capable of housing 250,000 people, when it will be covered with artistic and distinctive homes whose architectural perfection will be enhanced, not only by the natural scenic beauty by which they are surrounded, but by original landscaping effects that are only possible where nature has developed a wonderful foundation upon which the expert can work out original ideas.

Sparr Heights is the only large residential tract within twenty-five minutes of the heart of Los Angeles where development is proceeding according to a definite plan, it is declared by the owners. Before the property was purchased, its possibilities were thor-

## L. A. MAINTAINS BUILDING GAIT

### Third Among U. S. Cities In Report for January; San Francisco Tenth

Los Angeles was third among the cities of the U. S. in building for the month of January, 1923. This city was third in building for the year 1922, and, unless some of the larger eastern cities take an unexpected spurt in building, will maintain this position during 1923. Philadelphia was fourth in building for January, while Detroit was fifth and Cleveland sixth. San Francisco was tenth in the list and Oakland was nineteenth.

Building activities during January, 1923, were extraordinary for the first month of the year throughout the country.

Evidence abounds on every hand at Sparr Heights of the desire on the part of the Francis-Barnum-Walters Company, the owners and developers of the beautiful tract, to push to completion as rapidly as possible their development work.

Several gangs of workmen are busily engaged in installing the six miles of four-inch pipe that will furnish the mains for the distribution of the water throughout the immense tract, while three others are busy with a plow and scraper grading the roads. Curbs, sidewalks and gutters are being constructed, and it will not be long before that locality will begin to assume a metropolitan aspect.

**Engineers at Work.**

An engineer corps is working hard establishing the grades of the curved boulevards that will lead in, around and over the rolling hills that are such a distinctive feature of this tract. A dozen homes are practically finished and ground is being broken for many more. There is what might be termed a surge of development throughout the whole tract that is very reassuring to the many purchasers of property therein, for it convinces them that the general plan of improvement will be carried out rapidly and that the millions that are to be spent will add an incalculable value to the property of the early investors and any doubts that may have existed as to the purpose and ability of the owners to carry out their comprehensive plans have been set at rest.

**Strategic Position.**

Lying at the point of a great equilateral triangle which is bounded by three mountain chains, and embracing the Verdugo, La Crescenta and Tujunga valleys, Sparr Heights occupies a strategic position where all traffic to and from Los Angeles and this immense territory must pass through it. This, of necessity, will create a large and prosperous community and, when to this is added the fact that no similar area in such close proximity to Los Angeles affords the opportunity for such a wide divergence of choice in sites for beautiful homes, it is easy to see why its future is assured.

The business district has been definitely defined and, as it will be artistically planned under the supervision of a board of architectural experts, will prove an attraction instead of the usual eyesore.

It requires the exercise of but very little imagination to visualize the beautiful territory lying within the confines of this immense triangle, capable of housing 250,000 people, when it will be covered with artistic and distinctive homes whose architectural perfection will be enhanced, not only by the natural scenic beauty by which they are surrounded, but by original landscaping effects that are only possible where nature has developed a wonderful foundation upon which the expert can work out original ideas.

Sparr Heights is the only large residential tract within twenty-five minutes of the heart of Los Angeles where development is proceeding according to a definite plan, it is declared by the owners. Before the property was purchased, its possibilities were thor-

oroughly studied. Engineers, architects and landscape gardeners worked together in the evolution of this plan before a single stake was set. The fact that they were working upon a virgin territory has simplified matters materially and assures, when their work is finished.

## Mildred Harris Hopes Chaplin Will Be Happy

SAN FRANCISCO, Feb. 24.—"I really and truly hope they will be happy."

This was the comment here today of Mildred Harris, first wife of Charlie Chaplin, in commenting on the engagement of "Charlie" and Pola Negri.

# Does Your Roof Leak?

When a roof begins to "go bad," the best thing to do is to replace it with a "Weaver" Roof.

The cost of a "Weaver" Roof is comparatively nominal and when it is once laid, you know your roof troubles are over.

The "Weaver" guarantee assures your permanent satisfaction. You know your "Weaver" Roof won't leak. You know it will stop your roof repair bills. You know there will be no upkeep expense.

"Weaver" Roofing outwears other composition roofings because of the superior quality materials used in its production and because of the "Weaver" weather-proofing process.



# Weaver Roofing

"saves overhead"

Made in various grades, weights and colors for all types of buildings.

Manufactured by Weaver Roof Company, Los Angeles, California Sylvester L. Weaver

Any Qualified Roofing Contractor Can Lay Weaver Roofing.

# Glendale Crest

— THE BEST of the BEST —

## For the Man OF Limited Income

These beautiful foothill homesites can be bought on such easy terms that anyone can afford to buy one. Close in, desirable, high-class foothill property has heretofore been practically unobtainable for the person with a small income.

Glendale Crest, however, was put on the market with the idea of supplying the demand of just such people. Think of it! Terms as low as \$15 a month and only a small down payment. And the prices! As low as \$975. If you haven't the money to build now, buy a lot and get it paid for while you have the opportunity. If you don't build, sell it at a profit as the values at Glendale Crest rise, which they surely will.

Here are the facts. Large, fully improved lots, with gas, water and electricity all installed free. Beautiful winding streets, arranged so that practically every lot has a magnificent view. Only three short blocks to the cars. Two blocks from the new high school. Five minutes from the center of Glendale. On Sycamore Drive, to be made one of the finest boulevards in Southern California, and one block from Verdugo Road.

Come at once. By quick action you get the very best of the very best subdivision in Glendale. At our prices and terms you must act quickly. This is really a rare opportunity for you to make a profitable investment or secure an ideal home place. Just come and see for yourself.

## J. D. MILLAR REALTY CO., Inc.

OWNERS  
326-332 Wilcox Bldg., L. A.  
But Come Direct to Tract Office  
Open Every Day, Including Sunday

**PRICES**  
**\$975 to \$3500**  
We invite comparison with any other property of this class. All improvements included.

**TERMS**  
**\$15 a Month**  
Small down payment and balance in monthly payments as low as \$15 per month.

**RESTRICTIONS**  
The building restrictions are such as to assure you of permanency of property value and an ideal neighborhood.

**TO REACH GLENDALE CREST**  
By Auto: Drive out Glendale Blvd. to Glendale, north on Brand Blvd. to Broadway, east on Broadway to Verdugo Road, then north three blocks to Sycamore Drive. Our office is on corner of Sycamore and Verdugo.  
By Street Car: Take any Glendale car, transfer to Wilson Ave. line at Broadway in Glendale, ride to Verdugo Road, then walk two short blocks to property.  
Office at tract is open every day, including Sunday. Come tomorrow.

# CALLS DECISION INSULT TO RACE

## Hindu Seeks Rehearing in Suit for Admission to Citizenship

PORTLAND, Ore., Feb. 24.—Bhagat Singh Thind, central figure in the recent decision of the United States supreme court declaring high caste Hindus ineligible for American citizenship, was today endeavoring to secure a rehearing of the case.

Thind is working for a lumber company near Portland and expressed much surprise when the decision was made known to him. He said all scientists agree that Hindus are members of the Aryan race, from which descended a great share of Europeans and people now in the United States. He considers the decision an insult to his race.

Charges brought by the naturalization board here that he was an anarchist and bolshevist were denied by Thind.

# LABOR CHIEF TO START SENTENCE

## Big Tim Murphy Yields to Federal Officers as Grace Term Ends

CHICAGO, Feb. 24.—“Big Tim” Murphy, labor leader, ended his game of hide-and-seek with federal officers today when he surrendered himself at the United States marshal's office.

Murphy will be taken to Leavenworth prison to begin serving a four-year sentence for complicity in the \$350,000 Dearborn station mail robbery. He disappeared last Tuesday when a stay of execution, granted pending decision of his case by the supreme court, expired.

His surrender came when the court was about to order forfeiture of his \$180,000 bonds.

# OFFICIAL MINUTES OF COUNCIL

Following are the official minutes of the City Council which met in session at City Hall Friday night.

Council assembled at 7:45 o'clock p. m. Present, Davis, Lapham, Robinson, Stephenson, Absent, Kimlin. Minutes of February 15 and 19 read and approved.

### Brand Lighting

This being the time set for continued hearing of protests against lighting assessments on Brand boulevard, on motion of Councilman Davis, hearing was continued until April 19, and so ordered that two propositions be presented to the electors at the general municipal election on April 10.

### Opening Fifth Street

This being the time set for hearing protests against the opening and widening of Fifth street, on motion of Councilman Stephenson, hearing was continued until Monday, February 26 and protests referred to city attorney to prepare resolution overruling same.

### Mountain Street

This being the time to receive protests for the improvement of Mountain street, clerk reported no protests received and there were no protestants present.

### Commercial District

This being the time set for hearing protests against the setting aside of property on Verdugo road at the intersection of Stanley avenue as commercial district, on motion of Councilman Stephenson hearing was continued until Monday, February 26.

### Improve Central Avenue

Mr. Carmack, representing property owners on South Central avenue, appeared before the Council regarding the proposed Central avenue improvement, stating that proceedings should be held up pending some decision as to general sewerage. The matter of improvement was ordered held in abeyance.

### Communications

Communication from the Chamber of Commerce enclosing a recommendation for proposed charter amendment was read and on motion referred to the committee of the whole.

A communication from Edwards & Wilbey requesting that the city attorney make application to the state railway commission for a grade crossing over the right of way of the Pacific Electric at Kenilworth and Gilbert streets, was read and on motion of Councilman Stephenson, referred to city attorney to file the necessary application.

A communication from property

owners on Harvard street commencing the Council on their action taken at a previous meeting relative to granting extension of time to construct street work, was read and on motion ordered filed.

A petition signed by 92 per cent of the property owners on San Fernando road from Los Feliz to Pacific avenue, asking for permission to remove trees in parkway was read and on motion ordered filed.

### Park Commission

On motion of Councilman Stephenson, Lloyd H. Wilson was appointed as a member of the park playground and recreation center commission to fill the vacancy caused by the resignation of Peter L. Ferry.

### Bids On Poles

Bids for one carload of poles referred to the superintendent of plant for checking and report at a previous meeting were returned with the recommendation that the bid of the Illinois Electric Company be accepted. On motion of Councilman Stephenson the bid of the Illinois Electric Company was accepted and all other bids rejected.

### Vacate Ten Foot Strip

A request of B. A. Style to vacate a ten foot strip along the west side of the Mountain street reservoir site having been referred to the city engineer was reported back with the suggestion that matter be referred to the city attorney as this property is in the county and would have to be dedicated to them.

On motion of Councilman Stephenson, the matter was referred to the city attorney.

### Demand

On motion of Councilman Davis, the request of the First National bank of Glendale to be reimbursed in the sum of \$119.21, covering unpaid street assessment against Lot 21 of Tract No. 1066, was approved, warrant ordered drawn and assessment re-demanded.

### Tract Maps

The proposed subdivision presented by Edwards & Wilbey company for tentative approval, together with a request that certain lots be included in a business zone, was discussed, and owners advised that same would be accepted.

A map of a proposed subdivision located at the east terminus of Lomita avenue was offered for

# Announcing

### The Removal of the Offices

# MAY & HELLMAN

205 East Broadway, Glendale

To Their New and More Commodious Quarters at

## 109 North Maryland Street

—This move was made necessary by the steady expansion of our business, which required larger quarters, betterment of facilities and the addition of new departments.

—We are adding new Real Estate, Loan and Insurance departments which will be under the direct management and supervision of Mr. E. W. Kingsley, a well-known resident of Glendale, and experienced in the proper handling of Realty Sales and Exchanges, Loans, Investments, Insurance, Etc.

—The architectural branch of the business, which will be larger, more adequate and strictly up-to-date in equipment, will be under the able management of Mr. J. W. Morrison, a certified architect of ability and long experience in high-class construction of all classes.

—In the addition of these departments, together with the betterment of our present facilities we have endeavored to place ourselves in a position to give REAL SERVICE and meet every requirement such as—the locating, purchase or leasing of properties; financing, designing and construction of business blocks, factories, warehouses or residence buildings, and the insuring, leasing or renting of same.

# MAY & HELLMAN

### ARCHITECTS—BUILDERS—CONTRACTORS

### REAL ESTATE

### LOANS

### INSURANCE

### 109 NORTH MARYLAND

### Phone Glen. 3004

### GLENDALE, CALIF.

tentative approval, and, on motion of Councilman Stephenson, same was continued until Monday evening, February 25th.

### Tract 6195

On motion of Councilman Stephenson, the following resolution was adopted as Resolution No. 1823, "A resolution adopting map of Tract No. 6195, and accepting on behalf of the public the avenues, streets, alleys and public places shown thereon."

### Ordinance Offered

On motion of Councilman Stephenson, the following ordinance was presented, read, and laid over, "An ordinance of the Council of the City of Glendale declaring its intention to order the widening and laying out of San Fernando road in said city."

On motion of Councilman Lapham, the following ordinance was presented, read and laid over, "An ordinance leasing certain real property to the Kinmer Airplane & Motor corporation."

On motion of Councilman Lapham, the following ordinance was presented, read and laid over, "An ordinance of the Council of the City of Glendale changing the names of Chester street to Concord street, and Spazier street to Spazier avenue."

On motion of Councilman Davis, the following ordinance was presented, read and laid over, "An ordinance of the Council of the City of Glendale establishing the grade on Piedmont avenue, and on a portion of Granada street, all within the City of Glendale."

On motion of Councilman Lapham, the following ordinance was presented, read and laid over, "An ordinance of the Council of the City of Glendale naming portions of Ard Even, Ben Lomond drive and Glenview road, and establishing the grade on Lincoln avenue and on portions of Ard Even avenue, Ben Lomond drive and Glenview road, all within the City of Glendale."

On motion of Councilman Stephenson, the following ordinance was presented, read and laid over, "An ordinance authorizing the sale of certain real property owned by the City of Glendale, to Robert C. Plume, Emil O. Kiefer and Eugene J. Wix, trustees of Glendale Post No. 127, American Legion."

On motion of Councilman Stephenson, the following ordinance was presented, read and laid over, "An ordinance amending Ordinance No. 393, passed August 26, 1920, and entitled, "An ordinance of the City of Glendale regulating plumbing, gas fitting, cesspools, and sewer work, and repealing Ordinance No. 84 and all ordinances amendatory thereto," by adding thereto new sections to be numbered Section 30-A and Section 30-B."

### Resolutions Adopted

On motion of Councilman Stephenson, the following resolution was adopted as Resolution No. 1824, "A resolution of the Council of the City of Glendale adopting certain plans, profiles and diagrams on file in the office of the city engineer of the City of Glendale."

On motion of Councilman Lapham, the following resolution was adopted as Resolution No. 1825, "A resolution of the Council of the City of Glendale adopting specifications No. 52, for the furnishing and installing of one light ornamental street lighting standard and equipment in the City of Glendale."

ham, the Mayor and City Clerks were ordered to execute on behalf of the City of Glendale, Contract Agreement between the American Cement Products Company and the City of Glendale, for the construction of concrete lighting posts in accordance with plans designated as Plans No. 607 and 615 on file in the office of the City Engineer, and specification designated as Specification No. 52 on file in the office of the City Clerk, to be installed on Maryland avenue.

On motion of Councilman Lapham, the following resolution was adopted as Resolution No. 1925, "A resolution of the Council of the City of Glendale declaring its intention to improve a portion of Maryland avenue and certain other streets and alleys intersecting and terminating therein in the city of Glendale and describing the district to be assessed to pay the costs and expenses of said improvement and providing bonds for the payment of same."

On motion of Councilman Lapham, the following resolution was adopted as Resolution No. 1827, "A resolution of the Council of the City of Glendale declaring its intention to improve portions of Ruberta avenue, Fifth street, Glenwood road, Kenneth road and Tenth street, and of certain streets and alleys intersecting and terminating therewith in the City of Glendale and describing the district to be assessed to pay the costs and expenses of said improvement and providing bonds for the payment of same."

On motion of Councilman Stephenson, the following resolution was adopted as Resolution No. 1828, "A resolution of the Council of the City of Glendale ordering certain improvements to be made on Fernando Court, San Fernando road, and certain terminating streets and alleys in the City of Glendale."

On motion of Councilman Davis, the following resolution was adopted as Resolution No. 1829, "A resolution of the Council of the City of Glendale, ordering certain improvements to be made on portions of Doran street, Pacific avenue, Chester street, Concord street, Commercial street and San Fernando road, and of certain streets and alleys intersecting and terminating therewith in the City of Glendale."

On motion of Councilman Davis, the following resolution was adopted as Resolution No. 1830, "A resolution of the Council of the City of Glendale changing and re-establishing the grade on a portion of Highland avenue, within the City of Glendale."

Adjourned.

## Minnesota Farmer Is Victim of Bunko Ring

LOS ANGELES, Feb. 24.—Police were searching today for three men, alleged to be members of a national "bunko" ring, who yesterday worked a clever coup on Edward J. Webb, prominent Minnesota farmer, and escaped with \$12,000. The bunko men "pulled" their game at the Los Angeles stock exchange and used a bank roll of \$100,000 in cash to put over their swindle, according to a report of the police. Webb said the deal almost cost him \$50,000 instead of \$12,000.

World's largest automobile street paver, at Milwaukee, Wis., weighs 30 tons.



# BENMAR HILLS BURBANK *The City Beautiful*

Nature's Wonderful Gift to a Thriving Community—the Golden Opportunity Officially Accepted by Burbank to Expand Into a Model City of 100,000 People.

## Let This Model City Grow Up Around YOUR Home!

Benmar Hills in Burbank rises from a superb business frontage on San Fernando Boulevard to ideal residential sites on the slopes of the lovely Verdugo Hills. Nature could not have been more lavish with scenic splendor and superb climate in providing the setting for a beautiful, perfectly planned MODEL AMERICAN COMMUNITY.

### Development Progressing Rapidly

Farsighted officials and citizens of Burbank have perceived this fact and promptly acted upon it. These are the measures they have already taken to recognize Benmar Hills officially as the logical field for the expansion of Burbank:

1. Erected the new Burbank High School in Benmar Hills.

2. Chosen a new grammar school location in Benmar Hills.

3. Accepted deed to a 20-acre site in Benmar Hills for a Model Civic Center—where will be built the city's postoffice, city hall, library and other public buildings.

4. Accepted deeds to large areas for a public park in the foothills, an athletic field and playground and a public auto park, in Benmar Hills.

5. Accepted the dedication of rights of way for a carefully arranged system of streets and boulevards in Benmar Hills.

Plans carefully worked out by community experts provide for the location of schools, churches, clubs, parks, country club, golf grounds, aircraft

landing station, highly restricted residential sections, business and industrial districts, an educational center to include a large university and conservatories of music and art—every feature of an ideally arranged, perfectly developed city.

### Buy at Initial Prices

More than \$1,000,000 worth of property has been purchased in Benmar Hills, yet the prices are still at the initial point. The development of this great property, now steadily and surely taking form, will soon be in full swing. Then you will see values go up by leaps and bounds.

You are wise to buy Benmar Hills property now with the idea of locating in the Model American Community. And you are equally farsighted in buying it with the certainty that it will advance tremendously in price and command an eager market.

Drive out to Benmar Hills TODAY. Let us show you right on the ground, the magnificent plans for its development. Then choose at your leisure a site for your home that, within a few years, will be regarded as among the choicest in all the Southland.

To reach Benmar Hills drive out San Fernando Blvd. till you come to the western outskirts of Burbank.

SOUTHERN CALIFORNIA CORPORATION  
211 Junior Orpheum Bldg., Los Angeles

Phone 822-587



# Last Call

## On Special Offer of Lots in Golden Rule Heights Tract

Attractive Alike to Both Investor and Home Builder

At the Exceptional Terms of

# \$150 Down

And Only \$25 Per Month

AT ORIGINAL OPENING PRICES—OFFER POSITIVELY CLOSES MARCH 1

This most desirable tract for well restricted homes is located on the west side of Verdugo Road, in the city of Los Angeles, just on the border line where the city limits of Glendale and Los Angeles meet, being only a few blocks south of Colorado Street, Glendale.

This tract, having an eastern hillside slope, makes it very desirable for good investments; especially since all the oil and mineral rights go with the lots, all reservations having been released, and considering that all street improvements are paid for, and the lots have a 60-foot frontage.

### IMPROVEMENTS

We agree that improvements consisting of 5-foot cement sidewalk, curbs, hard-surfaced streets, water and gas mains will be installed in the Golden Rule Heights Tract No. 5678 without additional cost to the purchasers of our lots.

# Lots

RESTRICTIONS: Residence and garage to cost not less than \$3500.00 and no temporary houses allowed in rear, the foundation to be 25 feet back from front lot line.

# \$1175 Up to Large, Oversize at \$2250.00

How To Get To Tract—Drive east on Broadway to Verdugo Road, then south about ten blocks to big Golden Rule Sign on west side of Verdugo Road.

## Golden Rule Office

622 East Broadway Opp. City Hall, Glendale

J. P. LAMPERT, Ask Us to Show You Phone Glen. 2345-J  
JOHN YUNG, Owners These Lots



### CONGREGATIONAL CHURCH ATTRACTS

New Building Artistic and Well Equipped; Spanish Colonial in Style

(Continued From Page 1) ments above, and the artistic electric fixtures on either side of the doors. Through these doors one enters a vestibule, with the main door in front leading directly into the center aisle of the chapel, while stairs on either side lead to the second chapel balcony and stairs on either side lead out of the vestibule into the church garden and north walk.

**Ideal For Worship** It is standing in the vestibule door looking down the center aisle of the chapel that one's gaze is unconsciously attracted to the altar, bringing the realization of the hazy church atmosphere of the building. Before him one sees an ideal place for worshipping the Unseen. The walls are of a soft creamy tone, the rough plastering effect giving a pleasing satin texture. Six light comes through the cathedral glass windows, while wonderfully fashioned wrought iron hanging electric fixtures provide the artificial lighting system.

Rows of oaken pews arranged along the center aisle and aisles at either side of the building and a cross aisle leading from the tower room, fill the auditorium. The altar, pulpit and choir pews are also of oak. Over the altar one sees a huge oak beam bearing an oak cross, the gift of Architect Winslow.

**Communion Service** Just in front of the pulpit is a ministerial seat with bench seats on either side for communion services. An oaken communion table, the gift of Mrs. James K. Hill of 429 North Kenwood street, in memory of her late husband, is to occupy the space in front of the ministerial seat and bench seats for the deacons.

The oaken pulpit is a gift from the pastor, Rev. C. M. Calderwood, in memory of his mother, Henrietta Mildenas Calderwood, in whose family for eight generations back have been ministers.

The choir pews are arranged about a pit for the organ console, to be located directly back of the pulpit. To the right of the pulpit is a door leading into the choir room and to the left into a women's parlor well lighted and perfectly equipped with an open fireplace, a kitchenette and closets.

**For Moving Pictures** In the back of the chapel over the vestibule is the balcony, where one sees additional oaken pews and also a projection room for moving picture apparatus. Unlike the ugly boxes accompanying such apparatus in most auditoriums this projection room is artistically arranged with architectural arches, which do away with the box effect.

The mission style has been adhered to in the chapel ceiling, which is of rough wood and heavy beams, roughened and stained with walnut.

Wiring has been installed in the chapel for the use of acoustics by deaf members of the congregation.

The seating capacity of the church including the gallery provides for 620 worshippers. Thirty persons can be seated in the choir pews.

Directly off the chapel to the south is a smaller auditorium to be used for young people's meetings and smaller church gatherings. It seats 150 persons and can be opened into the chapel making a combined seating capacity of 770 persons.

The pastor's study and secretary's office complete the list of rooms for the first story of the building.

**Aid to Invalids** There are two exits from this story in addition to those through the vestibule of the chapel. One leads from the front of the chapel out onto a walk on the north side of the building. This walk is elevated for the convenience of invalids. The other entrance is through the young people's room to the south out onto a porch overlooking the sunken garden.

In the second story are large rooms for the beginners and primary departments with adjoining class rooms and lavatories for boys and girls.

In the basement or ground floor is a large room surrounded by nine small class rooms for the intermediate department.

The big feature of the basement is the lower auditorium, with a large stage, and a seating capacity of 400 persons. This is to be used by the junior department of the Sunday school and by the church members for social gatherings. A vestibule from this lower auditorium has two stairways leading up into the vestibule of the chapel.

Another place of interest in the basement is the splendidly equipped kitchen, arranged with one side built with counter and glass sliding windows. The windows when closed shut the kitchen off entirely from the rest of the basement. When open they provide access to the counter for serving cafeteria meals.

**Modern Equipment** Modern equipment is found throughout the kitchen and adjoining pantry.

In the basement, provision has been made by the architect for the installation of a vault.

The visitor is interested in a trip to the tower. Entrance to the tower stairway is either through the chapel or young people's room. There are three flights of stairs, broken by three small, well lighted rooms.

### RULE OF EARTH'S NEW KING, TOPIC

Lecture in C. of C. Hall to Deal With Messiah's Coming Reign

James Cullen Watt will speak at the Chamber of Commerce hall, Glendale, tomorrow, Sunday, night at 7:45 o'clock. His subject will be "The Government of Earth's New King."

Trouble has a tendency to make the people of earth think for eight years they have suffered greatly. The lecturer will point out that this has been permitted to awaken the people to the fact that the old world is done and the new is beginning. The rulers of the earth are desperately attempting by international conference to patch up the old order. The lecturer will prove from Biblical prophecy that such is impossible and that the new world under the Messiah will establish a righteous reign, bringing the desire of the peoples and nations of earth.

Mr. Watt shows the reconstruction period to be the only remedy for the world's present distress.

**Theme Overlooked** The most momentous event of earth's history is the establishment of God's kingdom among men. But, strange to say, this dominating theme of the Bible has been almost entirely overlooked by those who profess the Christian religion. Everyone of the inspired writers testified concerning a time of everlasting happiness for the human race—"Times of Restitution" (Reconstruction) of lost blessings and possessions. Jesus and His apostles preached that this gospel of blessing was for the vast majority, and not a message of woe for all except a few.

The Kingdom of God which they heralded is the same as foretold by prophets in such thrilling and positive language. Not a mysterious, intangible arrangement having no meaning for the toiler and the sufferer, but one which will bring such practical and understandable things as complete health, beautiful homes, luxuriant vegetation, sublime climate, righteous laws, and greatest of all—unending life upon the earth.

**Vision of Glory** "Close your eyes for a moment to the scenes of misery and woe; degradation and sorrow that yet prevail on account of sin, and picture before your mental vision the glory of the perfect earth. Not a stain of sin mars the harmony and peace of a perfect society; not a bitter thought, not an unkind look or word; there sickness shall be no more; not an ache nor a pain, nor any evidence of decay—not even the fear of such things. The inward purity and mental and moral perfection will stamp and glorify every radiant countenance. Such will earth's society be; and weeping and bereaved ones will have their tears all wiped away, when they shall realize the resurrection work complete."

It is time to disregard creed fences, denominational relationships, and honestly seek the truth as set forth in God's word, which is being revealed before the eyes of the people. This lecture is provided for public instruction, is free to all, and no collection.

**Will Erect Business Building in Montrose** L. A. Hart, well known realtor with offices at 113 East Broadway, has given orders for plans on a two story brick business block to be erected on property he owns in Montrose. He sees a great future for that coming community.

dale and the surrounding country that is an inspiring sight.

From this location of over ninety feet one can see from the church tower Griffith park on the west; the vast distances of San Fernando valley on the northwest; the Verdugo hills to the north; the intervening country and Pasadena mountains to the east; and on the south the rolling hills and vast stretches of populated country, while in the surrounding foreground lies the city of Glendale, the fastest growing city of its size in the United States.

**Highest Point** The highest point of the church's tourelle or tower is ninety-five feet, the smaller tower extending on above the balcony being of cast stone and bearing a wrought iron cross.

Heating of the building is to be done by gas-steam radiators. In construction the church is of heavy frame with reinforced concrete exterior, the gunite system having been used in the concrete work.

Adding to the artistic effect of the exterior of the building are the windows done in Venetian blue and the terra cotta tile roofing.

**Large Investment** Spiritual interpretation of parts of the building are given as, "The nave, symbolizing the body of members, stands beside and is built into the tower, which symbolizes the Eternal Lord, 'my high tower,' surmounted by the cross, the sign of the Redemption by His Blessed Son. The triple windows of the belfry represent the Holy Trinity, and the door at the base the entrance to the church through Christian belief."

The cornerstone of the church, a huge slab of granite, placed July 30, 1922, bears the ancient symbol of the continuity of redemption.

The cost of the building and equipment is given as \$95,000. Value of the property on which the building stands is quoted as \$15,000.

### SCENIC HIGHWAY THROUGH CANYON

Route to Flintridge Will Pass Along Glendale Crest Section

For those who already have bought at Glendale Crest, the J. D. Millar subdivision at the very mouth of Sycamore canyon near Verdugo road, comes the important news that civic and municipal authorities are co-operating with the county supervisors in an effort to have a direct scenic highway built through to Flintridge by way of Sycamore canyon.

Sycamore canyon contains some of the most wonderful home places to be desired. And Glendale Crest is advertised as the best of the best. It is close to car lines, schools and stores, yet at the same time loses none of the rugged beauty for which the hills east of this city are noted.

For instance, the new high school is three or four blocks away. A carline is within two blocks. A grade school is less than a half mile. The Los Angeles line of the Pacific Electric also is about a half mile from a property, easy walking distance. Stores are within one block.

If you would wish to see Glendale Crest, drive to Broadway and Verdugo road, Glendale, north on Verdugo road to Sycamore canyon road and there you are. You will enjoy the view of Glendale to be obtained from Glendale Crest tomorrow.

Salesmen at the tract office will be glad to greet you and explain the modern improvements, incidental to the purchase of a lot or two.

### February Building Permit Record Now Nears Million Mark

WITH three more working days left in February, every effort should be put forth to crowd the building permits over the million mark, now that the goal is so close.

More than \$900,000 was registered on Wednesday of this week, over the Glendale Union High school permit coming in as programmed.

Hundreds of copies of The Glendale Evening News containing the remarkable records of growth have gone forward to eastern homes during the last ten days and it is estimated that the greatest influx of newcomers ever known in the history of Southern California will be swarming here during the months of March, April and May.

### Paper Furniture Now In Vogue in Germany

BERLIN, Feb. 24.—An addition to the list of substitutes for which Germany has become famous since the war has been made by the development of a process for making furniture out of paper.

The inventor, Karl Abt, declares that the finished product is thoroughly substantial and serviceable. Preparations are being made for large scale production.

Paper, as a substitute for less easily obtained materials, played an important part during the war, when raw materials could not be imported. Paper clothing was commonly worn, and the upholstery in railroad cars was made of paper.

### HOMES READY TO SHOW TO BUYERS

Beran Co. Rushing Work on Modern Residence Property Here

The S. S. Beran Company, builders, with offices at 305 South Brand boulevard, reports it is still going "over the top" with construction work in this vicinity.

Mr. Beran states he has several homes now ready for inspection by those who might be interested in seeing the unusual methods of economical and efficient construction.

Among those under way are houses located at 812 North Pacific street; 625 North Pacific avenue; 1529 East Broadway; 427 Arden avenue; 404 Burchett street; 619 North Orange street; 625 North Pacific avenue; 323 El Bonita avenue and 469 Riverdale drive.

In a short time Mr. Beran says he will have five more ready for inspection and he adds that never before has there been such a demand for houses. In other columns you will find his announcement regarding costs, financing, etc.

### Insurance Companies Suffer in Big Blaze

SAN FRANCISCO, Feb. 24.—Fire gutted two large insurance company offices and that of a large importing firm early today when it swept through a two-story structure in California in the heart of the financial district. Two alarms were sounded.

The first iron railroad was laid in England in 1767.

### Jerusalem's Ruler To Give Lectures

Brigadier General Ronald Storrs, of the British army, who has been governor general of Jerusalem, under Lord Allenby, since 1917, has arrived in New York for a lecture tour of the United States and Canada.



Brig. Gen. R. Storrs

Brigadier General Ronald Storrs, of the British army, who has been governor general of Jerusalem, under Lord Allenby, since 1917, has arrived in New York for a lecture tour of the United States and Canada.

### Local Physician Will Address Polytechnic

Dr. Jack Anderson of 102 West California avenue has been invited to address the boys of Venice Union Polytechnic High school.

### ACCEPT \$19 BID ON LIGHT POLES

City Council Buys Carload to Be Installed in Glendale Streets

Taxpayers who thing electric light poles grow in the streets, will be interested to know that they cost over \$19 apiece.

The City Council last night accepted the bid of the Illinois Electric Company to supply the public service department with a carload of poles at a cost of \$19.10 apiece.

Peter Diederich, superintendent of the maintenance department, stated that the same poles could have been bought for \$8 a few years ago. He said that they would be installed wherever needed by the public service department.

### Young Vanderbilt to Leave on Orient Trip

SAN FRANCISCO, Feb. 24.—William H. Vanderbilt, who on his 21st birthday came into \$5,000,000 from the estate of his father, Alfred Gwynne Vanderbilt, who lost his life when the Lusitania went down, denied here today that a trip on which he is about to embark to the Orient had any business significance. "Just a pleasure trip," he said.

More than 500 varieties of pearls have been tested at one time at the Talent station in Oregon.

### URGE FILING OF INCOME RETURNS

Failure to Report Before March 15 May Entail Heavy Penalty

In an appeal to taxpayers to file their income returns early, issued by Collector of Internal Revenue Rex Goodcell, it was pointed out that last March three thousand taxpayers who failed to file on time were penalized \$5 each and five per cent added to the tax due. In addition to this, more than 15,000 incorrect returns were filed, of which fully 80 per cent were returns hastily prepared and filed at the last minute. These 15,000 eleventh-hour filers were not only required to visit the International Revenue Bureau and explain certain items in their returns, but in many cases additional taxes and penalties were imposed. This loss of time and money might have been avoided had the taxpayer filed his return early and not have waited until the eleventh hour to begin its preparation, Collector Goodcell said.

Thirty-one thousand income tax returns have been filed to date in the Southern California district. This means that almost 200,000 returns must be filed before the final date of filing, March 15.

### Thieves Steal Tools And Leash From Auto

W. E. Trautwein of 1144 North Adams place had several tools and a dog leash stolen from his automobile last night while it was parked in front of the Central Christian church.

# Announcing the Opening of SUBURBAN HEIGHTS Glendale

## A Community of Exclusive Estates

facing the famous Brand's Castle and surrounded by palatial homes.

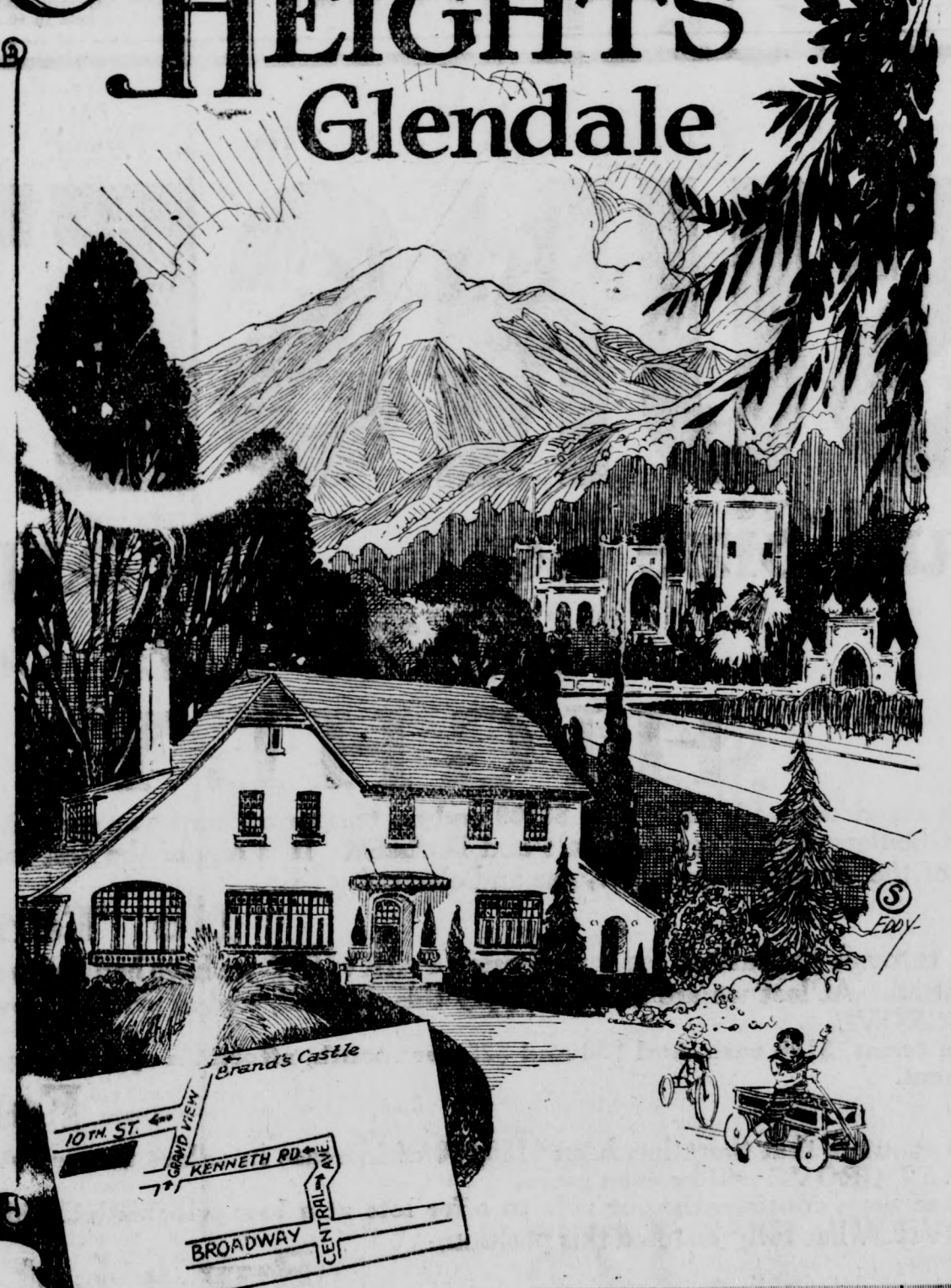
**Suburban Heights**—Located in Glendale's most exclusive residential district, is a small community of super-homesites, unparalleled in Southern California for scenic beauty, tropical verdure and impressive surroundings.

**Suburban Heights Offers Discriminating Buyers Large Wooded Homesites FROM \$1500 ON TERMS**

Prices include cement sidewalks curbs, macadamized streets, light, water and gas. All streets planted with shade trees.

Only a Limited Number of Lots Are Available, Fully Protected by Adequate Restrictions

**Suburban Realty Co. Inc.**  
main office  
508 BRAND BLVD.  
Telephone Glendale 2424 — Glendale Calif.



#### HOW TO GO

Motor out through Glendale on Central Avenue to Kenneth Road, turn right on Grand View, then left on Tenth Street to Tract Office at corner of Western Avenue.

Tract Office  
Western Avenue at Tenth Street

### EX-AMBASSADOR TOWER IS DEAD

#### Prominent Diplomat Passes Away Result of Attack Of Pneumonia

PHILADELPHIA, Feb. 24.—Charles Tower, former ambassador to Germany, after a week's illness with pneumonia, died this morning at 8:05 in the Pennsylvania hospital. Pallbearers were critical and not much hope was held for his recovery. He was internationally known as a diplomatist, philanthropist and writer. Mr. Tower was in his 78th year. Members of his immediate family were at his bedside in the hospital when he died. He was stricken a week ago with a severe attack of pneumonia. Recently he was reported to have successfully passed the crisis, but immediately following a relapse occurred from which he failed to rally.

#### Modern Diplomat

Charles Tower was one of the foremost modern American diplomats. He was born in Philadelphia in 1848 and was educated in American schools. He studied law at Harvard and was admitted to the bar in 1878. Ten years later he was married to Miss Helen Smith, daughter of Mr. and Mrs. Frank Smith of Oakland, Cal. Business interests took Mr. Tower to the northwest and he lived for a time in Duluth, Minn. He was president of the Duluth & Iron Range railroad, and managing director of the Minnesota Iron company. In 1897 Mr. Tower was appointed American ambassador to Austria-Hungary. Later he served in Russia. From 1902 to 1908 he was American ambassador at Berlin.

Mr. Tower received numerous foreign honors. He was grand officer of the French Legion of Honor and held the grand cordon, Order of St. Alexander Newski, Russia. He wrote a book on Lafayette's part in the American War of the Revolution.

### Overslept When Street Car Track Was Mended

POMEROY, Ohio, Feb. 24.—For some years a loose joint in the street railway track in front of George Fick's home served as an alarm clock, awakening him regularly at 6 o'clock in the morning. Recently the rail was replaced by a new one. George overslept two mornings in succession.

Biscuit is the national cake of France.

### KIWANIS BUDGET PLANS ARE LAID

#### Minstrel Show to Be Staged By Members to Raise Club Finances

"The time has come," the war-lus said, "to speak of many things: Of shoes, and ships and sealing wax, and cabbages and kings and why the sea is boiling hot and whether pigs have wings!" The Glendale Kiwanis Club devoted its weekly luncheon yesterday noon in the dining room of the Citizens' Building to the consideration of a variety of subjects ranging from eulogies of Washington and Lincoln to the promotion of a minstrel show. The budget for this year's club activities was read by Secretary Don H. Webb and much optimism was expressed in regard to the club's ability to finance it, at least partially, through a minstrel show.

A eulogy on Abraham Lincoln was delivered by Lee Osborn, junior at Glendale Union High school. Robert Eastman, a classmate, spoke upon George Washington's beneficent influence upon the establishment of an educational system in the United States. He called attention to the fact that well-to-do colonists sent their children to school in England and that colonial schools did not become of much importance until after the Revolution. He said that a number of colleges are monuments to the educational movement influenced by George Washington.

#### Musical Numbers

Patriotic songs were sung by the club, led by O. W. Andresen with "Herb" Henning at the piano. "Kiwanis" was sung as a quartet by special insistence on the part of the "bachelors club": M. B. Towman, Dr. Jack Anderson, "Herb" Henning and "Bill" Bode. At the conclusion the club sang "Out the window they must go!"

A large purple "K" was inscribed upon each slice of ice-cream which was served for dessert. Edwin G. Herring, manager of the Glendale Ice Cream Company at 603 East Broadway, admitted having manufactured this especially for the occasion. He furnished one of the attendance prizes, an order for a gallon of ice cream, which was won by Herman Nelson.

For having three plates of ice cream within radius of his arm, thereby spelling out "K. K. K." Cameron DeHart Thom was fined by President A. L. Ferguson. Much amusement accrued while the assessment was being collected by Burton McGinnis, sergeant-at-arms.

The first Olympian games were in 776 B. C.

### PREDICTS FINISH OF IRISH STRIFE

#### Head of Erin's Parliament Praises Surrender of Guerrilla Troops

DUBLIN, Feb. 24.—Prediction that "Irish violence will end within a few weeks," was made today by William T. Cosgrave, president of the dail eireann. It was contained in a message sent by the Free State official to Commandant Pierce, who, with his column of republicans, surrendered to the Free Staters in western Ireland one week ago today. "I congratulate you upon your decision," said the message. "You have chosen wisely. We are confident that violence will have ended within a few weeks." There were severe disorders in Dublin over the night, one man being killed and one other wounded. The chief fighting was in the center of the city where public buildings were attacked. Free State troops were kept busy responding to alarms. While the property damage was considerable the casualties were small, owing to the fact that both sides were well protected with barricades.

### ARREST VETERAN FOR FEUD DEATH

#### One Killed, Two Wounded in Fierce Pistol Battle in Tennessee

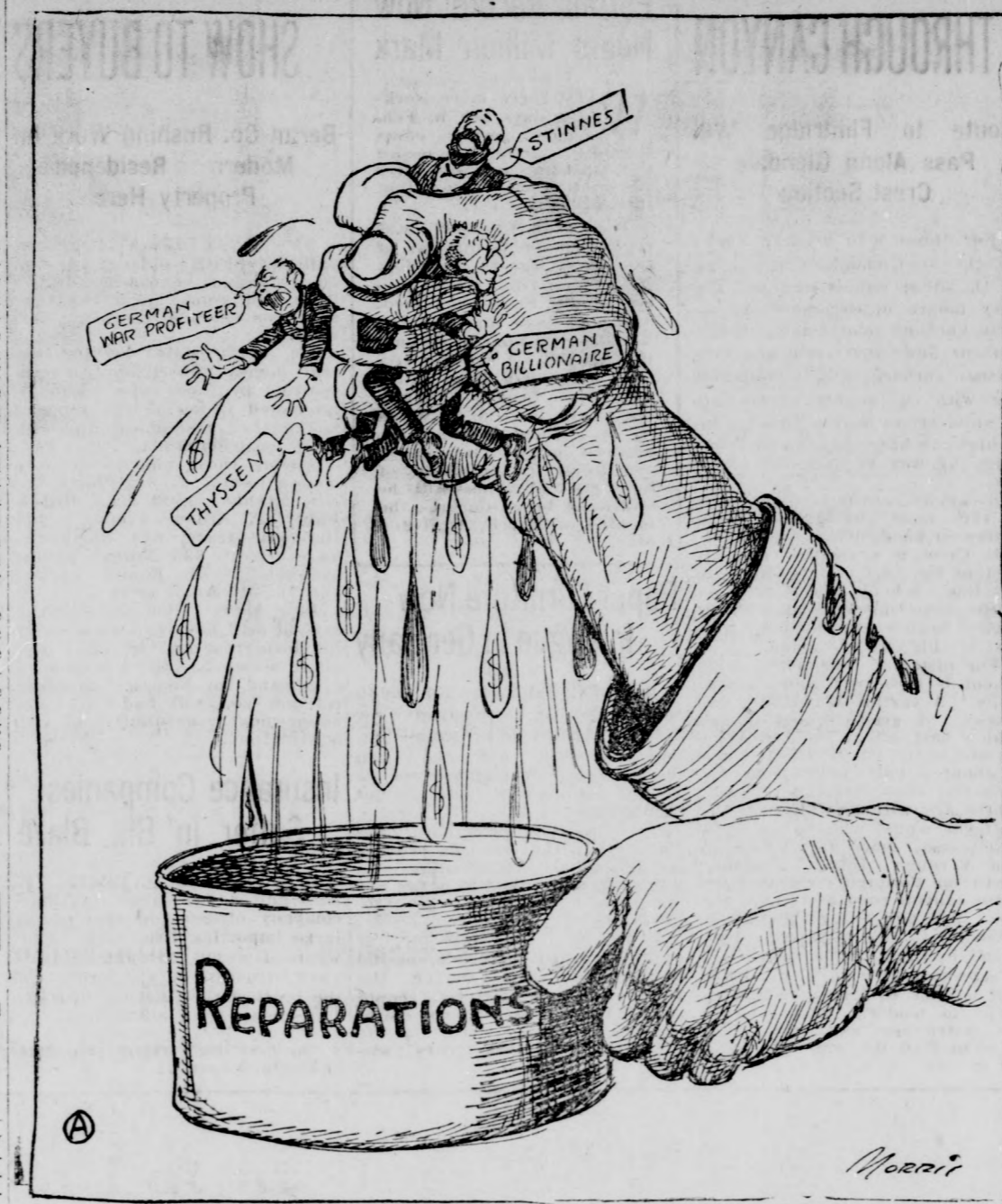
KNOXVILLE, Tenn., Feb. 24.—One dead, two probably mortally wounded and one held in jail today charged with first degree murder, is the result of a feudal outbreak at Jalapa in Monroe county. Greedy Garrand, farmer, is dead; Dewey Smith and Gene Isbell, saw mill workers, are in a hospital here as the result of a shooting affray, in which only one gun was used. Jake Tipton, overseas veteran decorated for unusual bravery in action, is held at Madisonville, charged with the shooting.

### Realty Man Operates On His Own Account

Allan N. Fairchild of 1035 Boynton street stated yesterday that he was now taking real estate listings at his office, 1725 South Brand boulevard, on his own account. Chimney of antiquity was merely a hole in the roof.

### IF GERMANY WANTS TO PAY

By Morris



### Blind Veteran of War Makes College Records

CORVALLIS, Ore., Feb. 24.—Although blind, Emory B. LaMont, of Forest Grove, Ore., is attaining an unusual scholastic average in his class at Oregon Agricultural college here. He averages 95 in his courses in poultry, husbandry and special work in typewriting. He was twenty-one months in France with the Eighteenth engineers. Illness overseas caused the loss of his eyesight. He owns a ten-acre ranch near Forest Grove.

### Windy City Boys and Girls Growing Better

CHICAGO, Feb. 24.—Despite puppy-love scrapes, boy-and-girl elopements, hip-pocket flasks and other modern institutions, Chicago's younger set is improving. That's the story told by the annual report of the juvenile court. It showed that 249 fewer boys and sixty-three fewer girls were committed to institutions for delinquency last year than during 1921. Truancy, however, showed an increase, with 1161 arrests.

### May Deport Aliens Who Sell Dope and Whisky

BUTTE, Mont., Feb. 24.—Deportation awaits aliens in this city convicted of violation of the liquor and narcotics laws, threatens Jack Noonan, special agent of the department of justice. Such violators will be prosecuted in the future, Noonan declares, under the law that makes non-citizens guilty of crimes subject to deportation. Israel Zangwill, the English author, was born in London in 1864.

### FIND RELICS NEAR GARDEN OF EDEN

#### Explorers Locate Remains of Ancient City; Uncover 'Moon's Harem'

LONDON, Feb. 24.—Relics much older than those found in the ancient tomb of Tut-Ankh-Amen are being dug up by the Anglo-American exploration party at work in Mesopotamia, said a Bagdad dispatch to the Times today. The excavators are working under orders from the British museum and the University of Pennsylvania. Starting near the spot where the original Garden of Eden is believed to have existed, the explorers uncovered remains of the ancient city of Ur. They found a new temple in which the moon was worshipped and a building which was utilized as the "moon's harem." T vase dated back 2000 years before the era of Christ. A remains of a brick wall were found which was believed to have been built in the second dynasty of Ur, about 3600 years before Christ. This was about 1000 years before Tut-Ankh-Amen was buried in Egypt in the Valley of Kings. Jewelry has been found which is believed to have belonged to the period of Nebuchadnezzar, the historic king mentioned in the Old Testament.

### Direct U. S. to Italy Wire Service Planned

WASHINGTON, Feb. 24.—A contract providing for direct cable communication between New York and Rome has just been signed by the Italian government with the Western Union Telegraph company, it was learned officially today. Under the terms of the contract, the Western Union is to construct a cable from New York to the Azores, and the Italian government is to continue the line from the Azores up the Mediterranean, to Rome.

MR. AND MRS. PUBLIC  
If you are building or intend to build, you will appreciate how much you can save by buying from us.  
"WE RETAIL AT WHOLE-SALE PRICES"  
FIRST GRADE  
SLATE OR GREEN  
SLATE ROOFING  
Complete With Nails and Cement  
ONLY \$2.15 A ROLL  
Light Weight Roofing 50c Roll  
SCHUMACHER  
PLASTER BOARD  
ONLY \$2.50 PER THOUSAND  
48 inches wide; all lengths.  
Selected Seconds, Edges and one Side Perfect  
"Beware of Imitations"  
PAINT  
Special Lot Only \$1.00 gal.  
Standard House Paint \$1.75 gal.  
Pure Lead, Zinc and Oil,  
all colors \$2.00 gal.  
Outside White \$2.00 gal.  
Flat White \$1.90 gal.  
Lamp Black (dry) 5c lb.  
Calsomine 5c lb.  
House and Shingle Stain,  
in 5-gal. cans only \$6.00 gal.  
Sip's Japan Oil \$1.00 gal.  
White Lead \$1.00 hundred  
WINDOW SHADES  
Stock sizes as low as 50c each.  
We Also Make Shades to Order.  
AWNINGS MADE TO ORDER  
WALL PAPER  
5,000 Rolls 10c a roll  
Tapestry Designs as low as 25c a roll  
Genuine Island Linoleum  
Only \$1.50 Sq. Yd.  
ALL MERCHANDISE FULLY  
GUARANTEED  
FREE DELIVERY  
GLOBE  
BUILDERS'  
SUPPLY CO.  
214 WEST BROADWAY  
Opposite the Postoffice  
PHONE GLENDALE 1439  
OPEN FROM 7 TO 6 DAILY

Read and Use for the  
BEST RESULTS  
Glendale Evening  
News  
WANT ADS

50,000 HOME GROWN  
FRUIT TREES  
Berry Plants, Walnut Trees and Grape Vines, Apple, Peach, Pear, Apricot, Prune, Nectarine, Etc., 50c each, \$5 per ten. Walnut trees, 50c and up, according to variety, size and height. Lemon trees, 1 to 2 inch Caliper, \$1.75 each. Orange trees, \$2.00 each. Burbank and Forey Mammoth Thornless Blackberry plants, 25c each, \$1.25 per ten. Strawberry plants, all varieties, \$1.00 per 100 plants.  
SNYDER NURSERIES  
OLDEST IN BURBANK  
Tel. Burbank 122-J, License No. 624, 721 West San Fernando Boulevard, Opposite High School, Near Cor. Central Ave.

# SUNSET GROVE

Full Size Lots. \$975 up. \$100 Cash. \$20 and \$25 per mo.

Beautiful Lots Covered With Fruit Trees

## HIGHLY RESTRICTED

—The restrictions are \$3000 and \$3500 and no temporary homes are permitted. The location is ideal, being above Kenneth Road, below Tenth Street, which is a main paved boulevard between Glendale and Burbank. It is one of the best locations in the rapidly developing Northwest section, commanding an unsurpassed panoramic view of the whole valley; water, gas and electricity paid.

### No Temporary Homes

—All through the sale of our sub-division FAIRVIEW we have had hundreds of calls for lots with trees on them, and also for lots on which temporary homes were not permitted. At last we are able to supply this demand, and at prices so low that there will undoubtedly be in a very short time remarkable increases in values in SUNSET GROVE.

—The terms, \$100 cash, and \$20 and \$25 per month, afford an opportunity to purchase a lot in a beautiful tract at the low opening prices with a very small cash investment.

### For Investors

—We estimate that there has been \$150,000 of increase in values in our FAIRVIEW sub-division over our opening prices, and we anticipate that the ratio of increase in SUNSET GROVE will be even more.

—It has been consistently our rule to offer lots at a low price with the idea that we desire our purchasers to make as much money as we do, and our experience in FAIRVIEW has fully justified this position.

### Buy a Lot at Opening Prices

—SUNSET GROVE will appeal to people who desire a more exclusive district, and to those who appreciate the great desirability of property in the beautiful Northwest section of Glendale, where development, improvements, increase of population are going ahead with tremendous strides.

—SUNSET GROVE is selling fast, \$15,000 worth of property sold first three days. Don't delay. Come out at once.

—Drive out Kenneth Road, Grandview Avenue and Tenth St., direct to Tract Office on South Side of Tenth Street, beyond Linden Avenue. Tract office open all day Sunday. On Saturday afternoon call at our office on Broadway.

HAMLIN & HEPBURN — 203 West Broadway — Glen. 996-J